

CHAPTER 4

PROJECT EVALUATION AND RECOMMENDATION

THE UNIVERSITY OF CHICAGO

THE UNIVERSITY OF CHICAGO PRESS

505 EAST 57TH STREET, CHICAGO, ILL. 60637

TEL: (773) 707-3000 FAX: (773) 707-3001

WWW.CHICAGO.PRESS.EDU

CHICAGO, ILL. 60637

CHICAGO, ILL. 60637

CHICAGO, ILL. 60637

CHICAGO, ILL. 60637

CHICAGO, ILL. 60637

CHICAGO, ILL. 60637

CHICAGO, ILL. 60637

CHICAGO, ILL. 60637

CHICAGO, ILL. 60637

CHICAGO, ILL. 60637

CHICAGO, ILL. 60637

CHICAGO, ILL. 60637

CHICAGO, ILL. 60637

CHICAGO, ILL. 60637

CHICAGO, ILL. 60637

CHICAGO, ILL. 60637

CHICAGO, ILL. 60637

CHICAGO, ILL. 60637

CHICAGO, ILL. 60637

CHICAGO, ILL. 60637

CHICAGO, ILL. 60637

CHICAGO, ILL. 60637

Chapter 4 Project Evaluation and Recommendation

4-1 Project Effect

The falling health/medical indexes indicate the declining diagnosis and treatment capabilities of the main hospitals (i.e. decreasing number of diagnoses and tests) because of worsening economic conditions in Mongolia and aging and obsolete medical equipment in these hospitals. The subject hospital is not only the key facility that constitutes a top referral system in Ulaanbaatar, the capital of Mongolia, but also is the only national hospital that has an emergency station. To renew and upgrade the medical service capabilities of this hospital will likely contribute to the "strengthening of health and medical systems" and the "improvement of diagnosis and treatment facilities," which are also among the objectives of the country's National Development Plan (1991 - 2001). Implementation of the requested project through Grant Aid is deemed appropriate from the following standpoints:

1) Target population

620,000 people (as of 1997) or 24.7% of Mongolia's total population of about 2.51 million (as of 1997) live in Ulaanbaatar. There are three state-run general hospitals in the city, which have been serving the people in their respective assigned territories. However, division of work among these hospitals seems to be disappearing in recent years. While these hospitals will soon be covering the entire nation as fourth-level hospitals, they will continue to take charge of their respective service areas. Second General Hospital serves 104,000 people in Bayanzurkh district of Ulaanbaatar in addition to 152,862 people in the four Gobi provinces, both of which together will constitute the population to directly benefit from the project (See Table 4-1).

Table 4-1: No. of Patients by Province in 1997

Name of Place	Population	No. of People treated in hospital
Dorno govi	46,734	8,990
Dund govi	50,511	12,500
Omno govi	44,686	5,830
Govisumber	11,931	4,640
Total of 4 provinces	152,862	32,060
Bayanzurkh District	104,000	62,112
Total	256,862	94,172

Second General Hospital is positioned as one of the top referral medical facilities in Mongolia. Thus, if the hospital begins to function as a model of a forth-level hospital, the total population of Mongolia or about 2.51 million people will indirectly benefit from the project.

2) Project Effect

The project will address the current conditions and problems of the subject hospital. The main effects, which the implementation of the project is expected to bring about, include the following:

Improved Diagnostic Function

① Improved Emergency Service

The subject hospital is unable to provide adequate care to emergency patients because of superannuated and quantitatively insufficient medical equipment and supplies. Provision and supplementation of ventilators, patient monitoring systems, a cardiac defibrillator, and portable X-ray apparatus under the project will help the hospital to enhance its emergency service capabilities.

In addition, provision of patient monitoring systems, pulse-oxy meters, operating tables, operating lights, electric scalpels, anesthesia machines, and other apparatuses in the operating theater will further enhance the effectiveness of the hospital's medical services.

② Improved Intensive Care

Many of the instruments in the intensive care units of the hospital are more than 15 years old and do not function properly due to aging and breakage. Because of superannuated patient monitoring systems and the basic shortage thereof, continuous monitoring of patients' vital signs is nearly impossible. In stead, the medical staff have to rely on electrocardiographs and blood pressure manometers as well as doctors' findings and other fragmented information, to check patients' conditions. By providing patient monitoring systems, incubators, ventilators, pulse-oxy meters, transfusion pumps, and other instruments, the project will also enhance the functions of ICUs.

③ Improved Test and Diagnostic Function

The laboratory of the subject hospital handles over 65,000 specimens annually, which is about to exceed the laboratory's capacity because of broken and insufficient testing equipment. By upgrading and supplementing blood gas analyzers, electrolyte analyzers, blood cell counters, and other instruments through the project, the laboratory will be able to provide more qualitatively and quantitatively satisfactory testing results to doctors and thus contribute to the improvement of diagnostic services. In addition, the project plans to provide fiberscopes, ultrasonic apparatuses, and other instruments that can adequately handle various tests for detecting heart conditions and other diseases.

Improved Supervisory and Advisory Capacities over Local and District Hospitals and Clinics in the Jurisdiction

The Local Health and Prevention Promotion Department, a newly established unit in the subject hospital, will start making rounds in the service area of the hospital in the Gobi Provinces. The staff will offer medical services to the residents and provide technical guidance and consultation to the medical staff of the local and district hospitals and clinics in the Provinces. Through these activities, village doctors and nurses will become able to provide improved medical services to the villagers and nomads under proper technical guidance. Periodical visit to remote

areas, where the majority of the population is the low-income bracket, will further expand the target population and area of the project. For these reasons, the project is expected to become a model case of local medicine as well.

Improved Equipment Maintenance and Inventory Charge

This project plans to supply nearly 400 items under Japan's Grant Aid system. For these items to be fully utilized, the current skill levels and organization for equipment maintenance of the hospital need to be upgraded and restructured. Training the hospital staff how to operate and maintain the equipment and how to restructure the inventory charge system and organization, as well as providing other "Operation Training or Management Guidance," will enable them to operate the equipment properly, thereby contributing to the improvement of overall medical service quality of the hospital.

In addition, provision of soft components to review and reform the current systems of the subject hospital as a model case, will likely influence other hospitals through out Mongolia that are under the jurisdiction of Mongolian Ministry of Health and Welfare.

3) Administration and Management

① Administration

The subject hospital operates under the supervision of the Ministry of Health and Welfare of Mongolia. The hospital is given the right to administer itself, and the Director of the hospital is authorized to exercise the right. The equipment to be supplied thought the project will be managed together with the existing equipment. Since most of the new items will be replacing the existing ones, medical activities after the implementation of the project will remain essentially the same. Although the project dose not require additional personnel, increased revenue will enable the hospital to hire new staff. In view of the above, the current administrative system is considered adequate for implementing the project.

② Budget

Again, as most of the new equipment items will be replacing existing ones, the maintenance cost is estimated to increase only by 3.4% or less of the hospital's annual budget. We have made the financial projection for the next five years. If the budget is allocated as planned and the complicated repair cost and inefficient power consumption of old equipment is reduced, the recipient side can adequately sustain the project without external assistance. Although more reagents and other consumable items will need to be purchased for the new testing equipment, additional cost will be set off by a significantly increased number of patients and medical fees collected from them through an insurance system. In addition, the Ministry of Health and Welfare plans to allocate a special budget after the implementation of the project.

Training the medical staff how to operate and maintain the newly installed equipment will elevate the technical levels of doctors, nurses, and paramedics, who will be playing an active part in medical scenes throughout the country in the future. This will indirectly benefit the whole nation, who will be enjoying increased

opportunities to receive enhanced medical services. In addition, increased efficiency brought about by the new equipment will allow the hospital to accept more patients, thereby increasing revenue and improving the financial condition.

③ Maintenance

This project is so designed that the Mongolian side can easily maintain it after the implementation. In selecting equipment items that require technical expertise for maintenance, whether or not the manufactures could provide adequate servicing was an important criterion. As most of the new items will be replacing existing ones, basic maintenance and inspection procedures will not change significantly. When the superannuated equipment is replaced, the need for complex repair work and spare parts will be eliminated. When installing the new equipment, sufficient training will be given to the local staff to enable them to maintain the equipment efficiently. Also, maintenance personnel will be assigned so that local staff can handle simple repair work, detect abnormalities, and contact the manufacturers for assistance when needed.

Our projection of the hospital's budgetary changes based on its past records verifies that the hospital will most likely be able to secure an enough budget for sustaining the project after the implementation. Mongolia has adopted a social insurance system, and the hospital intends to actively collect fees from its patients according to the type of medical services rendered to them. The hospital also serves as a training facility of affiliated medical universities to educate interns. Thus, from the standpoints of finance, human resources, and technical capability, the project is considered viable as it can be maintained, managed, and administered smoothly and adequately.

In conclusion, the verification the hospital's administrative system, budgetary allocation, and maintenance capacity confirms that the project is highly feasible. In addition, as the future plan of the Ministry of Health and Welfare is designed to promote the self-sufficiency of the subject hospital, the viability and appropriateness of the project is deemed high.

4) PDM

To clarify and verify the project objectives of the subject hospital, as well as the activity guidelines of the governments of Mongolia and Japan, a workshop was held during the site survey, using a chart called Project Design Matrix (PDM), which is one of the tools of Project Cycle Management (PCM) method, as outlined below:

53 people from the Ministry of Health and Welfare and Second General Hospital along with the members of the Japanese survey team took part in the workshop. Japanese and Mongolian parties agreed on the PDM as shown in Table 4-2 and decided to use it as guidelines of future activities. The Japanese team used charts and diagrams to explain that Mongolian side should take the initiative in developing and carrying out the project objectives and policies and that the Japanese side would provide only a portion of resources needed to attain such objectives.

Whether or not the hospital is providing appropriate medical services as a forth-level hospital will be checked as needed. However, it will require continuous efforts over a long period of time for the project to take effect on the mortality and morbidity of Mongolian people. Nevertheless, the implementation of the project will most likely improve the quality of medical services especially to low-income people.

To take initiative in utilizing the resources provided by the governments of Mongolia and Japan, the hospital will form the following four groups to conduct various activities for the improvement and strengthening of the hospital operation:

① Medical Service Improvement Team

<Activities>

Aiming at the improvement of medical service capabilities that can be depended upon and trusted by patients, each medical department will hold at least four technical seminars annually.

Beginning in the spring of 1999, the hospital will hold a weekly meeting to discuss death cases and review medical service contents to analyze the problem areas of each department. Based on the analysis, the Director of the hospital plans to evaluate the performance of each medical staff to decide an increase or decrease of their allowances. In addition, the hospital will dispatch its personnel to Mongolian Medical College and overseas institutions and strengthen its in-house training programs to elevate the staff's technical capabilities. It will also work with other hospitals to organize exchange and presentation meetings.

② Hospital Administration Improvement Team

<Activities>

For the hospital to strengthen its administrative system that functions properly, it is necessary to periodically hold a steering committee meeting to incorporate the opinions of the entire hospital staff. To confirm whether or not the hospital is providing satisfactory services for its patients, the current questionnaire survey will be continued to facilitate the improvement efforts.

In addition to the current steering committee meetings and chief doctor meetings, a weekly meeting will be held to discuss the efficient use of facilities, confirm the status of medical services, finance, personnel, and equipment, and check the usage and purchasing of equipment and supplies. To develop valuable human resources, individual skills and talents will be fostered to secure a more stable, younger work force.

③ Local Health/Prevention Promotion Improvement Team

<Activities>

The subject hospital and certain medical facilities in Aimag and Sums will jointly form a liaison committee to establish a referral system. The hospital staff and the representatives of the four Gobi Provinces had a meeting in December 1998 and have already agreed to start sending local doctors to Second General Hospital for technical training around the summer of 1999.

As an increased number of patients from Gobi and other local regions are expected to come to the hospital from the start of the project, a special department will be established in the hospital, which will dispatch personnel to local regions to offer medical services, publicize their medical activities, and exchange views with local medical staff.

④ Facility/Equipment Maintenance Improvement Team

<Activities>

Since the existing facility and equipment will age further, it is necessary to strengthen the current maintenance activities by preparing maintenance manuals, conducting weekly inspection, and reviewing the inspection results periodically. It should be noted, however, that it is difficult for Second General Hospital to solve all maintenance-related problems solely as it is also the responsibility of the Mongolian government.

To assist the project with soft components, the Japan side will organize an education and training committee for equipment maintenance and develop a curriculum. Later on, it will hold equipment maintenance seminars at least twice a year.

Table 4-2: PDM of This Project

Plan name: Project for Improvement of Medical Equipment for Second General Hospital

Target region: Ulaanbaatar City and peripheral area

Project period: 2 years, from 1999 to 2000

Target group: All Mongolian citizens

Date created: Jan. 21, 1999

NARRATIVE SUMMARY	VERIFIABLE INDICATORS	MEANS OF VERIFICATION	IMPORTANT ASSUMPTIONS
OVERALL GOAL The insurance and medical care system in the Ulaanbaatar region will be refurbished.			
PROJECT PURPOSE The appropriate medical services will be provided as a tertiary hospital. 1) Patient diagnosis functions will be improved. 2) Supervision and assistance functions for region hospitals and district hospitals in the same jurisdiction will be improved.	The number of outpatients will be higher than when the project was implemented.	2001 records listing hospitals that are Second General Hospital	There are no significant changes in the medical care policies of the Ministry of Health and Social Welfare.
OUTPUTS 1) The diagnosis function of the hospital will be improved. 2) The administrative management system of the hospital will be strengthened, so that it functions appropriately. 3) Regional health and preventive maintenance functions will be improved. 4) The ability to implement maintenance and operation of facilities and materials will be improved.	Technological seminars will be held at least 4 times per year in each division. Questionnaires will indicate that the level of patient satisfaction has risen since the beginning of the project. The number of patients from Gobi and other areas will have risen since the beginning of the project. Seminars involving maintenance control will be held at least twice a year.	2001 records of seminars held at Second General Hospital 2001 records showing survey of degree of satisfaction at Second General Hospital 2001 records of administrative review meetings held at Second General Hospital 2001 records of seminars held at Second General Hospital	Services are being maintained at various types of medical facilities. Demand counterbalancing the scale of the medical facilities is assured. There are no significant changes in the medical care policies of the Ministry of Health and Social Welfare. Hygiene conditions for low-income persons are being maintained at the same level, or improved.
ACTIVITIES 1) Workshops will be held at regular intervals, to achieve better medical care 2) Holding steering committee meetings periodically to present and reflect the opinions of all categories. 3) The hospital will set up a joint liaison adjustment committee with medical institutions in prefectures and villages, and a referral system will be established. 4) An education and research committee will be established for maintenance and operation purposes, and an education curriculum will be created.	INPUTS (By Mongolia) Renovation of existing hospital facilities Assurance of the necessary personnel Assurance of administrative maintenance and control fees (including medical supplies and consumable items) Assurance of materials other than those procured by the Japan side	(By Japan) Procurement of medical supplies and other items Introduction of intangible and operation (supervision in maintenance and operation)	Medical staff with technical skills will not resign in significant numbers.
			PRE-CONDITIONS There are no persons opposed to proceeding with the project.

The above PDM will allow the consultant to periodically check on the progress of the project in line with proper guidelines, identify any problems and obstacles, and promptly take necessary actions.

Later on, the project will be monitored and its progress will be checked against the "Activity Schedule" to be prepared after the signing of E/N, as well as against "Activities," "Outputs," and "Project Purpose" listed on the PDM. If the project is not progressing as planned, external conditions and internal factors will be examined to identify the obstacles.

4-2 Recommendation

Mongolia is still in need of improving its hygiene and health environment by further promoting the primary health care services. However, while the problem of inadequate primary health care remains to be addressed, its disease structure is becoming similar to that of advanced nations.

The subject hospital of this project is at a relatively high level in terms of its technical and administrative capabilities to provide sufficient health and medical services. In addition, as the hospital has adopted a medical fee collection system under the newly institutionalized social insurance system, its financial standing will further improve with the expansion of its capacity to accommodate more patients. This project falls in line with and constitutes extremely critical elements of Mongolia's National Health and Medical Development Plan. Thus, this project and its implementation is deemed to have great significance.

In concluding this chapter, we would like to make certain recommendation and state several points to be noted by the Mongolian parties so that they can implement the project without delay and run it smoothly and effectively after the installation of the medical equipment to achieve the initially established objectives.

Organization and Personnel

- (1) To make efficient use of limited equipment, a central administration system needs to be established.
 - ① Eliminate private use and prevent free use of equipment outside the clinic hours.
 - ② Examine ways to increase efficiency in equipment utilization and eliminate redundancy among different medical departments.
- (2) Education and development of nurses, clinical technologists, and other paramedical staff needs to be strengthened at universities and other institutions.

Accounting and Finance

- (1) Make continuous efforts to increase the revenue of the hospital.
- (2) Establish a financial plan, and settle the account at least once a month to have an accurate grasp of its income and expenditure.
- (3) Secure a budget for the maintenance and operation of medical equipment, and establish a reserve fund for the replacement of equipment that will superannuate or deteriorate as time passes.
- (4) Conclude (onerous) maintenance contracts for highly sophisticated equipment items and appropriate sufficient funds for such contracts.
- (5) Prepare maintenance manuals, operation manuals, and circuit diagrams, and continue to train maintenance technicians.
- (6) Try to fully understand the manufacturer's scope of guarantee on each equipment item, and take notice of the fact that some equipment may not be covered by the guarantee if it is repaired by the hospital staff or other people who are not the manufacturers' authorized engineers. Highly sophisticated machines should be repaired by their manufacturers for a charge as they are generally extremely difficult for the hospital

APPENDICES

- 1. Member List of Survey Team**
- 2. Survey Schedule**
- 3. List Party Concerned in the Recipient Country**
- 4. Minutes**
- 5. References**

1. Member List of the Survey Team

(Basic Design on the Project)

1. Mr. Norio YONEZAKI, Team Leader
Seconde Project Management Division, Grant Aid Project Management Department
Japan International Cooperation Agency (JICA)
2. Dr. Katsuhiko YOSHITAKE, Technical Adviser,
Bureau of International Cooperation, International Medical Center of Japan
Ministry of Health and Welfare
3. Dr. Toshiyasu SHIMIZU, Technical Adviser,
Bureau of International Cooperation, International Medical Center of Japan
Ministry of Health and Welfare
4. Mr. Fumihiko FUJITA, Project Manager
Medical Engineering & Planning Co., Ltd.
5. Mr. Kesato MIYASHITA, Equipment Planner 1
Medical Engineering & Planning Co., Ltd.
6. Ms. Mikiko DOUTSU, Equipment Planner 2 (Survey in Japan)
Medical Engineering & Planning Co., Ltd.
7. Mr. Hideaki KANAYAMA, Facilities and Utilities Planner
Medical Engineering & Planning Co., Ltd.
8. Mr. Kihei IGARI, Cost and Procurement Planner
Medical Engineering & Planning Co., Ltd.
9. Ms. Sanae ABIKO, Interpreter
Medical Engineering & Planning Co., Ltd.
10. Ms. Masako SUGITA, Equipment Planner 3
Medical Engineering & Planning Co., Ltd.

1. Member List of the Survey Team

(Explanation Study for the Draft Report on Basic Design on the Project)

1. Dr. Masato MUGITANI, Team Leader
International Affairs Division, Ministry of Health and Welfare
2. Mr. Makoto IMANURA, Coordinator
First Project Study Division, Grant Aid Project Study Department
Japan International Cooperation Agency (JICA)
3. Mr. Fumihiko FUJITA, Project Manager
Medical Engineering & Planning Co., Ltd.
4. Mr. Kesato MIYASHITA, Equipment Planner
Medical Engineering & Planning Co., Ltd.
5. Mr. Kihei IGARI, Cost and Procurement Planner
Medical Engineering & Planning Co., Ltd.
6. Ms. Sanae ABIKO, Interpreter
Medical Engineering & Planning Co., Ltd.

2. Survey Schedule(Basic Design on the Project)

	Date		Leader and Technical Advisors	Project Manager	Equipment Planner	Facility Planner	Cost & Procurement Planner	Interpreter
1	Sep. 19	Sat		Hineda(JL115 12:15)→Kansai(OM904 15:00) → Ulanbaatar (18:20)				Same as Equipment Planner
2	20	Sun		Team Meeting / Analysis of Materials				Same as Equipment Planner
3	21	Mon		Meeting with JICA, Ministry of Health and Social Welfare and Clinical Hospital No.2				Same as Equipment Planner
4	22	Tue		Site Survey and Meeting with Clinical Hospital No.2 about Inception report and Questionnaire				Same as Equipment Planner
5	23	Wed		Site Survey and Meeting with Clinical Hospital No.2				Same as Equipment Planner
6	24	Thu		Site Survey and Meeting with Clinical Hospital No.2				Same as Equipment Planner
7	25	Fri		Site Survey and Meeting with Clinical Hospital No.2				Same as Equipment Planner
8	26	Sat	Hineda(JL115 12:15)→ Kansai(OM90415:00) → Ulanbaatar (18:20)	Site Survey and Meeting with Clinical Hospital No.2				Same as Equipment Planner
9	27	Sun		Team Meeting / Analysis of Materials				Same as Equipment Planner
10	28	Mon		Courtesy Call to JICA, Embassy of Japan, Ministry of Health and Social Welfare and Clinical Hospital No.2				Same as Equipment Planner
11	29	Tue		Courtesy Call to ADB, WHO, UNICEF etc. and Survey and Meeting with Clinical Hospital No.2				Same as Equipment Planner
12	30	Wed		Site Survey			Hineda(JL115 12:35)→ Kansai(OM90415:00) → Ulanbaatar (18:20)	Same as Equipment Planner
13	Oct. 1	Thu		Site Survey			Study of Cost & Procurement	Same as Equipment Planner
14	2	Fri		Preparing of Minutes of Discussion			Study of Cost & Procurement	Same as Equipment Planner
15	3	Sat		Team Meeting / Analysis of Materials				Same as Equipment Planner
16	4	Sun		Team Meeting / Analysis of Materials				Same as Equipment Planner
17	5	Mon		Preparing of Minutes of Discussion			Survey of Cost & Procurement	Same as Equipment Planner
18	6	Tue		Signing of Minutes of Discussion, Report to JICA and Embassy of Japan			Survey of Cost & Procurement	Same as Equipment Planner
19	7	Wed	Ulanbaatar0745→ Kansai1255 (OM903) → Hineda	Site Survey			Ulanbaatar (OM223) 10:30 →Beijing 12:30	Same as Equipment Planner
20	8	Thu		Site Survey			Survey of Cost & Procurement	Same as Equipment Planner
21	9	Fri		Report to JICA			Survey of Cost & Procurement	Same as Equipment Planner
22	10	Sat	Ulanbaatar0745→ Kansai1255 (OM903)	Survey of Equipment's Specification	Ulanbaatar0745→ Kansai1255 (OM903)	Beijing (CA932) → Shanghai		Same as Equipment Planner
23	11	Sun		Survey of Equipment's Specification		Survey of Cost & Procurement		Same as Equipment Planner
24	12	Mon		Survey of Equipment's Specification		Survey of Cost & Procurement		Same as Equipment Planner
25	13	Tue		Report to JICA		Shanghai (CA1568) 12:35 → Beijing 14:35		Same as Equipment Planner
26	14	Wed	Ulanbaatar0745→ Kansai1255 (OM903)			Beijing (JL782) 14:50 → Narita 19:00		Same as Equipment Planner

2. Survey Schedule(Explanation Study for the Draft Report on Basic Design on the Project)

	Date		Leader and Technical Advisors	Project Manager	Equipment Planner	Cost & Procurement Planner	Interpreter
1	Jan.17	Sun	Narita(JL781 10:40) → Beijing(13:15)				
2	18	Mon	Beijing(OM224 14:30) → Ulanbaatar(17:30)				
3	19	Tue	Courtesy Call to JICA, Embassy of Japan, Ministry of Health and Social Welfare and Second General Hospital				
4	20	Wed	Explanation Study for Draft Report on Basic Design on the Project				
5	21	Thu	Site survey and Meeting with Second General Hospital				
6	22	Fri	Site survey and Meeting with Second General Hospital				
7	23	Sat	Preparing of Minutes of Discussion				
8	24	Sun	Team Meeting / Analysis of Materials				
9	25	Mon	Preparing of Minutes of Discussion				
10	26	Tue	Signing of Minutes of Discussion				
11	27	Wed	Report to Embassy of Japan. Ulanbaatar(OM223 11:30) → Beijing(12:30)	Site Survey			
12	28	Thu	Beijing(JL782 14:50) → Narita(19:10)	Site Survey			
13	29	Fri		Report to Embassy of Japan and JICA			
14	30	Sat		Ulanbaatar(OM223 11:30) → Beijing(12:30)			
15	31	Sun		Beijing(JL782 14:50) → Narita(19:10)			

3. List of Party Concerned in the Recipient Country (Basic Design Study)

Ministry of Health and Social Welfare

Mr. SH. BATBAYAR

Mr. A. ZANGAD

Dr. SH. ENKHIBAT

Mr. T. OCHIRBAT

Dr. Ch. Chuluunbaatar

Ms. D. SAINTUYA

Ms. V.LHAGVADORJ

Minister of Health and Social Welfare

Secretary

Director-General Dept. of Policy

Coordination and International

Cooperation

Vice-Director-General Dept. of Policy

Coordination and International

Cooperation

Senior Officer Dept. of Policy

Coordination and International

Cooperation

Officer Dept. of Policy Coordination and

International Cooperation

Officer Dept. of Policy Coordination and

International Cooperation

Ministry of External Relations

Mr. D. BOLDBAATAR

Mr. L. DAVAAJARGAL

Mr. BATAA

Director, Dept. of Foreign Trade and

Economic Cooperation

Officer, Dept. of Foreign Trade and

Economic Cooperation

Officer, Dept. of Foreign Trade and

Economic Cooperation

UNICEF

Ms. MARIA GABRIELLA DE VITA

Mr. MATTHEW GIRVIN

Mr. Yuichi TANADA

Assistant Representative

Project Officer Health and Nutrition

Officer, Information

WHO

Dr. U.H. SUSANTHA DE SILVA

Registered Representative in Mongolia

Second General Hospital

Dr. CH.UKHINAA

Dr. ULZIBUREN

Dr. SELENGE

Mr. O.TSETSEGMAA

Ms. L. ULZINARAN

Information)

Mr. B. ARIUNBOLD

Mr. H. SUGAR

Dr. R. BAASANKHUU

Dr. S. BAYARAA

Dr. V. ALTANCHIMEG

Dr. D. CHULUUNBAATAR

Director

Vice-Director

Cardiologist

Chief of Administration

Administration (Statistic and

Administration (Finance)

Chief of Central Sterilization Dept.

Dentist

Dentist

Dentist

ENT

Dr. D. SOYOLZUL
 Dr. V. DASHPAGMA
 Dr. J. TSENDSUREN
 Dr. D. NERGUI
 Dr. J. ADIYABAZAR
 Dr. D. SANJAA
 Dr. E. SOLONGO
 Dr. U. TANYA
 Dr. A. TSERENDAVAA
 Dr. R. TSEDENISH
 Dr. Ts. ENKHAMGALAN
 Dr. D. Urjinkham
 Dr. J. ULZIZBAT
 Dr. S. ALTANTUYA
 Dr. S. PUREVSUREN
 Ms. N. ENKHJARGAL
 Mr. RII. NYAMSUREN
 Dr. D. MUNKHTSETSEG
 Dr. D. NINJEE
 Dr. P. DOLGORMAA
 Ms. D. OYUNTULKHIUR
 Ms. S. OCHIRBAT
 Ms. D. OYUNBAYAR
 Mr. N. BAYARMAA
 Mr. O. NARIYAKHUU
 Mr. Z. ARIYASUREN
 Ms. D. TSAGAA
 Ms. D. BILKHAASUREN
 Dr. J. JARGALSAIKAN
 Mr. L. TSERENCHIMED
 Mr. A. GUNAABAZAR
 Mr. CH. SURENKHOR
 Dr. D. URJINKHAM
 Ms. CH. NYAMKHUU
 Dr. S. SAINBILEG
 Dr. TS. NARMANDAKH
 Dr. J. JARGALSAIKAN

First General Hospital

Dr. Z. MENDSAIIKHAN
 Dr. D. NYAMUSUREN
 Dr. ENKHJARGAL
 Dr. NARAN
 Dr. GANCHIMEG
 Dr. D. BURMAA
 Dr. DAVAATSEREN
 Dr. D. GONCHIGSUREN

Chief of Emergency
 Gynecologist
 Gynecologist
 Chief of ICU
 ICU
 Internal Medicine
 Internal Medicine
 Internal Medicine
 Internal Medicine
 Surgery
 Surgery
 Out patient Surgery
 Laboratory
 Laboratory
 Laboratory
 Chief of Laundry
 Chief of Operation and Maintenance
 Ophthalmology
 Out patient Surgery
 Out patient Internal Medicine
 Nurse, Pediatric
 Nurse, Pediatric ICU
 Chief of Pharmacy
 Pharmacy
 Radiologist
 Radiologist
 Rehabilitation Dept.
 Rehabilitation Dept.
 Urologist
 Ambulance Station
 Operator of Ambulance Station
 Affaire Dept.
 Dermatology
 Kitchen
 Endoscopy
 Chief of Operation room
 Urologist

Director
 Vice-Director
 Hemodialysis
 Dentist
 Endoscopy
 Laboratory
 Operation room, Surgery
 Radiologist

Third General Hospital
 Dr. TS. MUKHAR
 Dr. S. LHAGVASUREN
 Dr. Z. LHAGVASUREN
 Dr. O. OYUNBELEG
 Dr. CH., OYUNTESTSEG
 Dr. D. TUMENBAYAR
 Dr. D. HADKHUU
 Dr. P. KHOROLSUREN
 Mr. A. ERDENECHIMEG
 Mr. D. JADAMBA
 Ms. Z. ULZIMAA
 Mr. BADAMSAD

Director
 Vice-Director
 Radiologist(Angio)
 Cardiologist
 Endoscopy
 ICU
 Laboratory
 Laboratory
 Chief of Maintenance
 Maintenance
 Maintenance
 Radiologist

Central Social Health Center (Tug Aimag)

Dr. L. TUUL
 Dr. DELGERTSOGT
 Dr. TS. DOJINSUREN
 Dr. D. OYUNTSETSEG
 Ms. I. UHURJARGAL

Vice-Director
 Cardiologist
 Laboratory
 Obstetrics
 Radiologist

BAYAZULKH District Hospital

Dr. U. TUUL
 Dr. N. ALIMAA
 Dr. SH. NARANCHIMEG
 Dr. D. NERGUI
 Dr. P. BATBAYAR
 Dr. ERDENEBUGAN
 Ms. ALTANTSETSEG

Director
 Cardiologist
 ICU
 Internal Medicine
 Neurology
 Neurology
 Nurse

Health Post

Dr. BATMUNKH
 Dr. ICHINKHORLOO
 Dr. GANTULGA
 Dr. ARMARJAGAL

Director
 Home Doctor
 Gynecologist
 Gynecologist

MONGOLIAN MEDICAL TECHNICIS

Mr. AG. JARGALSAICHAN
 Mr. NI. NORSLOO
 Mr. SH. CHINCHIULUUN

Electronic Engineer
 Electronic Engineer
 Technician

Emergency Service Center

Mr. TSULBUUR
 Ms. OYUNBILEY
 Ms. TSERENDEJID

Director
 Vice-Director
 Finance Dept.

BRIDGE COMPANY

Mr. KITAYAMA

Chief of Engineer

Forth Thermal Power Plant
Hisashi AKIYAMA

Engineer

Embassy of Japan in Mongolia
Taira Iwasaki

Secretary, Secretary Economic
Cooperation Sec.

Satoshi MATOBA

Second Secretary Economic Cooperation
Sec.

JICA in Mongolia

Yoshifusa SHIKAMA

Resident Representative

Keizo EGAWA

Secretary

Harumichi ITO

Maternal and Child Health Project in
Mongolia

Makoto KAWANAKA
Mongolia

Maternal and Child Health Project in

3. List of Party Concerned in the Recipient Country (Explanation Study for the Draft Report on Basic Design on the Project)

Ministry of Health and Social welfare

Dr. S. SONIN

Dr. SH. ENKHIBAT

Dr. CH. CHULUUNBAATAR

Ms. B. TSOGZOLMAA

Minister of Health and Social Welfare

Director-General Dept. of Policy

Coordination and International

Cooperation

Senior Officer Dept. of Policy

Coordination and International

Cooperation

Officer Dept. of Policy Coordination and

International Cooperation

Ministry of External Relations

Mr. D. BOLDBAATAR

Mr. L. DAVAAJARGAL

Ms. L. NASANBUYAN

Director, Dept. of Foreign Trade and
Economic Cooperation

Officer, Dept. of Foreign Trade and

Economic Cooperation

Officer, Dept. of Foreign Trade and

Economic Cooperation

UNICEF

Ms. MARIA GABRIELLA DE VITA

Mr. MATTHEW GIRVIN

Assistant Representative

Project Officer Health and Nutrition

WHO

Dr. U.H. SUSANTHA DE SILVA

Registered Representative in Mongolia

Second General Hospital

Dr. CH. UKHNAA

Dr. ULZIBUREN

Dr. SELENGE

Ms. L. ULZINARAN

Director

Vice-Director

Cardiologist

Administration (Statistic and
Information)

Chief of Central Sterilization Dept.

Dentist

Dentist

Dentist

ENT

Chief of Emergency

Gynecologist

Chief of ICU

Internal Medicine

Surgery

Surgery

Out patient Surgery

Mr. H. SUGAR

Dr. R. BAASANKHUU

Dr. S. BAYARAA

Dr. V. ALTANCHIMEG

Dr. D. CHULUUNBAATAR

Dr. D. SOYOLZUL

Dr. V. DASHPAGMA

Dr. D. NERGUI

Dr. PUREVSUREN

Dr. R. TSEDENISH

Dr. Ts. ENKHAMGALAN

Dr. D. URJINKHAM

Dr. J. ULZIZBAT
 Dr. S. ALTANTUYA
 Dr. S. PUREVSUREN
 Ms. N. ENKHJARGAL
 Mr. RH. NYAMSUREN
 Dr. D. MUNKHTSETSEG
 Dr. D. NINJEE
 Dr. P. DOLGORMAA
 Dr. D. OTGONCHIMEG
 Dr. BURMAA
 Ms. D. OYUNBAYAR
 Mr. N. BAYARMAA
 Mr. O. NARIYAKHUU
 Ms. D. TSAGAAN
 Dr. J. JARGALSAIKAN
 Mr. L. TSERENCHIMED
 Mr. CH. SURENKHOR
 Dr. D. URJINKHAM
 Ms. CH. NYAMKHUU

First General Hospital
 Dr. G. NYAMKHUU

BRIDGE Company
 Mr. MURAKAMI HIROSHI

Embassy of Japan in Mongolia
 Yoshio KOSHIO

Satoshi MATOBA
 Sec.

JICA in Mongolia
 Keizo EGAWA

Harumichi ITO

Radiologist
 Radiologist
 Radiologist
 Chief of Laundry
 Chief of Operation and Maintenance
 Ophtalmology
 Out patient Surgery
 Out patient Internal Medicine
 Pediatric
 Pediatric
 Chief of Pharmacy
 Pharmacy
 Radiologist
 Rehabilitation Dept.
 Urologist
 Ambulance Station
 Affaire Dept.
 Dermatology
 Kitchen

Surgery

Chief of Engineer

Secretary

Second Secretary Economic Cooperation

Secretary

Maternal and Child Health Project in Mongolia

MINUTES OF DISCUSSIONS
on
The Basic Design Study
on
the Project for Improvement of Medical Equipment for
Second General Hospital
in
Mongolia

In response to the request from the Government of the Mongolia, the Government of Japan decided to conduct the Basic Design Study on the Project for Improvement of Medical Equipment for Second General Hospital (hereinafter refer to as the "Project") and entrusted the study to Japan International Cooperation Agency (JICA).

JICA sent to Mongolia the Basic Design Study Team (hereinafter refer to as "the Team"), which is Headed by Mr. Norio Yonezaki, JICA, and is scheduled to stay in the country from September 19 to October 14, 1998.

The team had a series of discussions with relevant officials of the Government of Mongolia Team (hereinafter refer to as "the Mongolia side") concerned and conducted a field survey.

As a result of discussions and the field survey, both parties have confirmed the main items described on the attached sheets. The Team will proceed to further works and prepare the Basic Design Study Report.

Ulaanbaatar, October 6, 1998



Mr. Norio YONEZAKI
Leader,
Basic Design Study Team,
JICA



Dr. Sh. ENKHBAT
Director-General,
Department Policy Coordination
and International Cooperation,
Ministry of Health and Social Welfare,
Mongolia



Mr. D. BOLDBAATAR
Director,
Foreign Trade and Economic Cooperation Department,
Ministry of External Relations,
Mongolia



ATTACHMENT

1. Objective

To improve the following functions of the Second General Hospital (hereinafter refer to as the "Hospital") through the procurement of medical equipment under the Japan's Grant Aid.

- 1) Clinical Service as a top referral hospital in Mongolia
- 2) Supervision and Advise to regional level's hospitals (District, Aimag, Health Post, Sum level)

2. Project Sites

Second General Hospital (Annex -1)

3. Responsible and Executing Agency (Annex -2)

Responsible Agency: Ministry of Health and Social Welfare

Executing Agency: Second General Hospital

4. Items Requested by the Government of Mongolia

- (1) After the discussions with the Team, the items described in Annex-3 were finally requested by the Mongolia side for the consideration by the Government of Japan to be provided under the Grant Aid.

Principles of selection of equipment and list of equipment with priority as indicated below are attached hereto.

Priority A: Equipment which is judged to be indispensable to manage the hospital.

Priority B: Equipment of which necessity is high, but further assessment on operation and management is needed.

Priority C: Equipment which is not found to be appropriate to the activities of the hospital.

The study team has understood the necessity of the request, however, the final components of the Project will be decided after further studies.

- (2) The Mongolia side has understood Basic Criteria for Selection of Equipment as described Annex-4.

5. Japan's Grant Aid System

- (1) The Mongolia side has understood the system of Japan's Grant Aid on Annex-5 as explained by the Team.

- (2) The Government of Mongolia will take necessary measures, as described in Annex-6 for the smooth implementation of the project on the condition that the Grant Aid is extended to the Project by the Government of Japan.

6. Schedule of Basic Design Study

- (1) The Team will proceed to further study in Mongolia until October 13, 1998.
(2) JICA will prepare the draft report of the basic design and dispatch a mission to Mongolia in order to explain its contents in January, 1999.
(3) In case of the contents of the report is accepted in principle by the Mongolia side, JICA will complete the final report and send its to the Government of Mongolia by April, 1999.

7. Other relevant issues

- (1) Consensus workshop with participatory approach was held in Ulaanbaatar with the Mongolia side and the Team. The result of Workshop is summarized in Annx-7.
(2) The team stressed that the "Project" will be no more than one of the measure for improvement of the function of the Hospital and suggested that the Hospital formulate Working Groups for each field as mentioned below;
1) Clinical Services
2) Hospital Management
3) Community Health Promotion
4) Maintenance of Facilities and Equipment

The Mongolia side agreed to formulate these Working Groups in the Hospital and to submit member list of these Groups to the next Japanese Mission for explanation of the draft report of the Basic Design of the "Project".

- (3) The Team appreciated that the concept of "Community Health Promotion" is considered as a matter of great importance in the National Health Policy of Mongolia. The Team advised that the Hospital, besides the Clinical Services to the patients as a top referral hospital, should take a leadership in the regional level's (District, Aimag, Sum) community health promotion and suggested to establish a new division in the Hospital specifically for it. The Mongolia side agreed with the Team to do so.
- (4) The Team explained that the costs described in Annex-8 should be allocated by the Mongolia side. The Mongolia side confirmed that these costs shall be secured by Ministry of Health and Social Welfare on condition that the Japan's Grant Aid be extended to the "Project".
- (5) The Mongolia side requested Japan's technical support in the following fields;
1) Supervision and Advise to the above mentioned Working Groups.

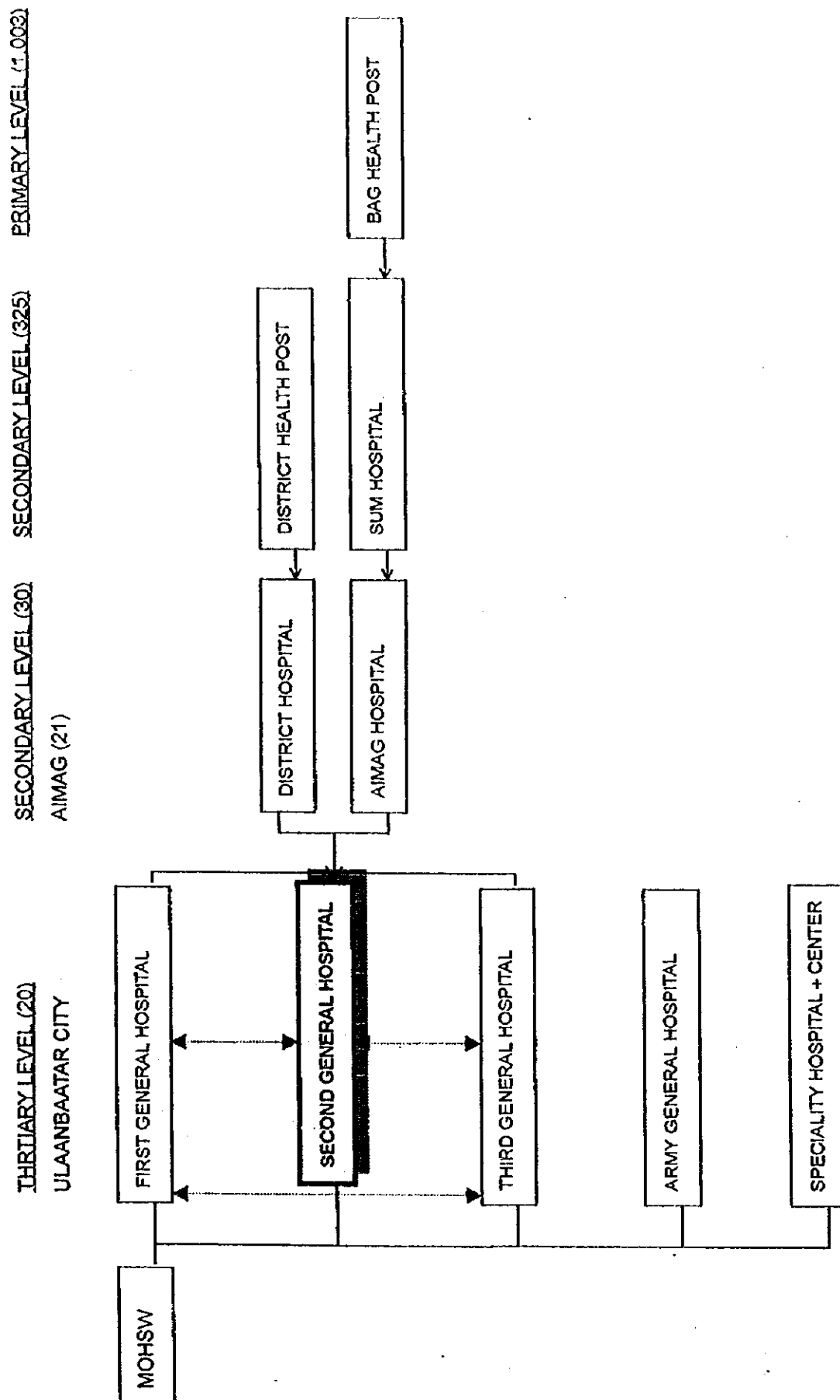
- 2) Training of the personnel for maintenance of the equipment provided by the "Project".
- 3) Training of the personnel for operation of the following equipment in principal.
X-ray apparatus, Ultrasound apparatus, Monitor, Clinical laboratory, Pathology

The Team understood the request and confirmed that the possibility of the assistance will be studied carefully by the Government of Japan.

(6) The Mongolian side agreed to submit annual statistics (from 1999 to 2004) of following items in order to evaluate and monitor the impact of the "Project" on improvement of the hospital functions.

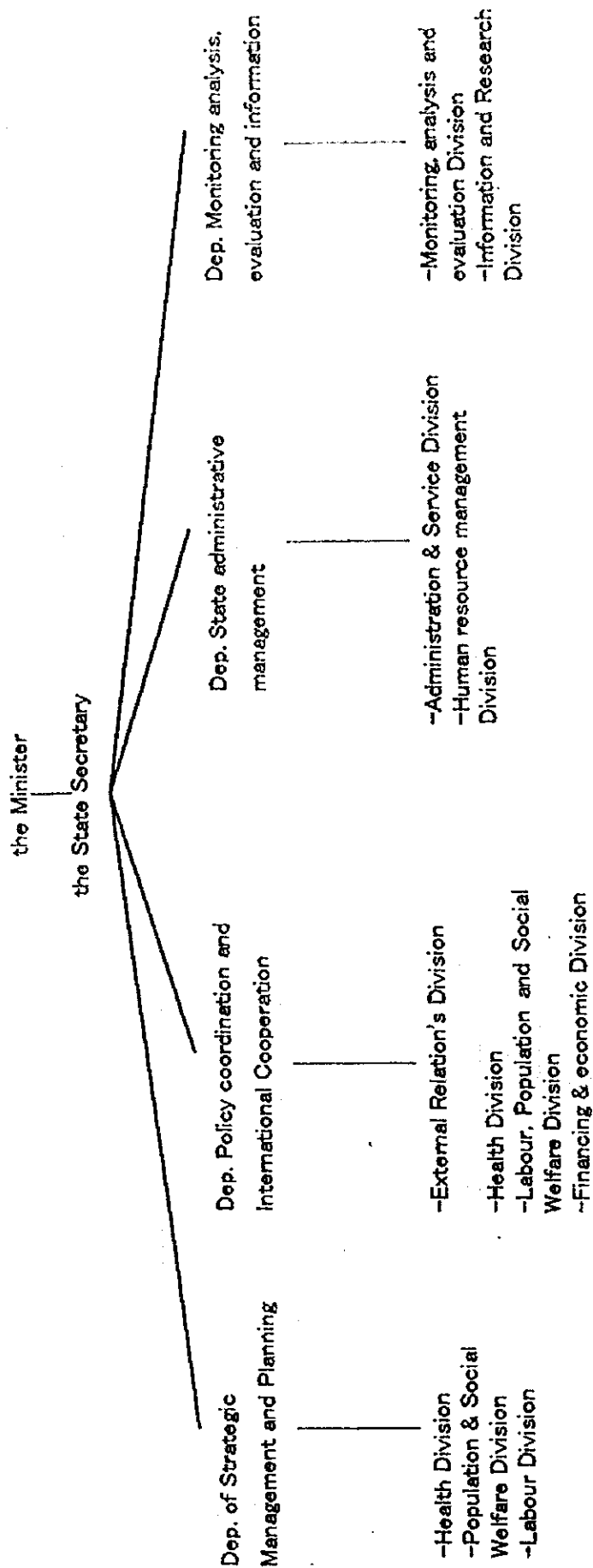
- 1) Hospital Mortality Rate (General, Each department/section)
- 2) Number of Patients (Out-patient, In-patient)
- 3) Number of Referred Patients
- 4) Number of Completely Recovered Patients
- 5) Number of Infectious Complications during Hospital stay
- 6) Number of Patients who Discharged without Permission
- 7) Patients Satisfaction Survey Report
- 8) Average Lengths of Hospital Stay (day)

ANNEX-1 THE STRUCTURE OF HEALTH (HOSPITAL) SERVICES



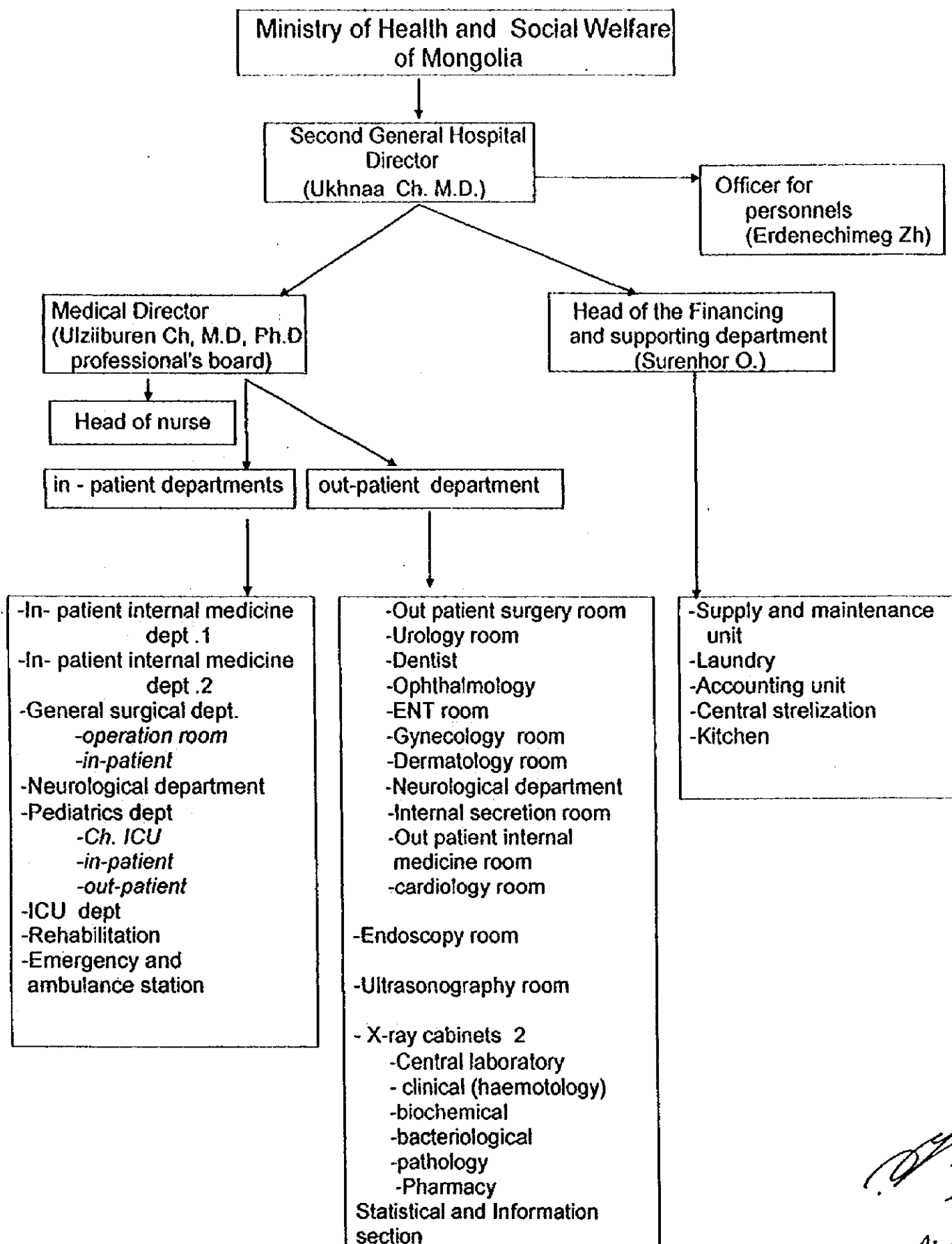
[Handwritten signature]

ANNEX-2(1) ORGANIZATION CHART OF MINISTRY OF HEALTH AND SOCIAL WELFARE



Under each department will work up to 2/3 divisions as a project teams for special issues and problems.
Agencies will work with same position and structure as previously until Law on Agencies approved.

ORGANIZATION CHART OF THE SECOND GENERAL HOSPITAL.



Department		Number of persons					
		Employee	Doctor	Nurse	Semi-nurse	Engineer	Other
Inpatient Dep.	Therapeutical 1	21	4	8	9		
	Therapeutical 2	42	6	18	18		
	Neurological	17	3	8	6		
	General surgical	31	4	17	10		
	Children's	28	4	13	9		
	ICU	24	7	13	4		
	Emergency	19	6	9	4		
	Rehabilitation	17	2	9	6		
	Traditional medicine						
	Total	197	36	95	66		
Outpatient Dep.	X-Ray	4	2	2	-		
	Operation Room	2	1	1			
	Urology	2	1	1			
	Dentist	6	3	3			
	Ophthalmology	2	1	1			
	E.N.T.	2	1	1			
	Internal Secretion	2	1	1			
	E.C.G.	4	2	2			
	Gynecology	4	2	2			
	Dermatology	2	1	1			
	Endoscopy	2	1	1			
	Ultrasonography	2	1	1			
	General internal medicine	10	5	5			
	Medical Card Dep.	4	-	-			
	Total	48	22	22			
Central Laboratories	Clinical Test	4	1	3			
	Biochemistry	4	1	3			
	Bacterium	2	1	1			
	Pathology and Cytology	2	1	1			
	Total	12	4	8			
Others	Central Sterilisation	5	1	4			
	Maintenance and Technical Service	13				13	
	Ambulance station	15					
	Accounting and Information	4	2	1	1		
	Financing Dep.	16					16
	Pharmacy	10	3			7	
	Laundry	8					8
	Administration	7	3			4	
	Total	78	9	5	1	24	24
TOTAL		335	71	130	67	43	24

No.	DEPARTMENT/SECTION	DESCRIPTION	Q'ty	Pri.
1	OPERATING ROOM	Anaesthesia apparatus, with Ventilator and monitor	3	A
2	OPERATING ROOM	Multi-purpose operating table	3	A
3	OPERATING ROOM	Operating light	3	A
4	OPERATING ROOM	Operating light, Stand type with Battery	3	A
5	OPERATING ROOM	Electric suction unit	3	A
6	OPERATING ROOM	Sliding stretcher	3	A
7	OPERATING ROOM	Basin Stand	3	A
8	OPERATING ROOM	Instrument cabinet	3	A
9	OPERATING ROOM	High press. steam sterilizer w. boiler	1	A
10	OPERATING ROOM	X-ray film illuminator	3	A
11	OPERATING ROOM	Medicine cabinet	3	A
12	OPERATING ROOM	Blood transfusion warmer	3	B
13	OPERATING ROOM	Dressing drum stand with Dressing drum	6	A
14	OPERATING ROOM	Gastrectomy instrument set	3	A
15	OPERATING ROOM	Cholecystotomy instrument set	4	A
16	OPERATING ROOM	Thyroidotomy instrument set	2	A
17	OPERATING ROOM	Emergency breast operating inst. set	3	A
18	OPERATING ROOM	Small operating instrument set	3	A
19	OPERATING ROOM	Nephrectomy instrument set	2	A
20	OPERATING ROOM	Prostatectomy instrument set	2	A
21	OPERATING ROOM	Emergency tracheostomy set	1	A
22	OPERATING ROOM	Appendectomy instrument set	5	A
23	OPERATING ROOM	Electric dermatome	1	B
24	OPERATING ROOM	Standard plastic surgery set	2	A
25	OPERATING ROOM	Operating essential instrument set	2	A
26	OPERATING ROOM	Electro Surgical Unit	3	A
27	OPERATING ROOM	Operation microscope for Eye	1	A
28	OPERATING ROOM	Operating instrument set for Eye	2	A
29	OPERATING ROOM	Binocular operating microscope for ENT	1	A
30	OPERATING ROOM	Operating instrument set for ENT	2	A
31	OPERATING ROOM	Laundry Cart	2	A
32	OPERATING ROOM	Defibrillator	2	A
33	OPERATING ROOM	Operating Chair for ENT	1	A
34	OPERATING ROOM	Operating instrument set for Gyn.	2	A
35	OUT-PATIENT INTERNAL MEDICINE DEPARTMENT	Weighing scale	6	A
36	OUT-PATIENT INTERNAL MEDICINE DEPARTMENT	Height scale	6	A
37	OUT-PATIENT INTERNAL MEDICINE DEPARTMENT	Examining couch	6	A
38	OUT-PATIENT INTERNAL MEDICINE DEPARTMENT	Screen	6	A
39	OUT-PATIENT INTERNAL MEDICINE DEPARTMENT	X-ray illuminator	5	A
40	OUT-PATIENT INTERNAL MEDICINE DEPARTMENT	Diagnostic instrument set	5	A
41	OUT-PATIENT INTERNAL MEDICINE DEPARTMENT	Treatment table	6	A
42	OUT-PATIENT INTERNAL MEDICINE DEPARTMENT	Arm rest stand for infusion	1	A
43	OUT-PATIENT INTERNAL MEDICINE DEPARTMENT	Medical cabinet	6	A
44	OUT-PATIENT INTERNAL MEDICINE DEPARTMENT	Microspirometer	1	C
45	OUT-PATIENT INTERNAL MEDICINE DEPARTMENT	Wheelchair	2	A
46	OUT-PATIENT INTERNAL MEDICINE DEPARTMENT	Treatment instrument set for I.M.	2	A
47	OUT-PATIENT INTERNAL MEDICINE DEPARTMENT	Pulmonary function test system	1	A
48	OUT-PATIENT INTERNAL MEDICINE DEPARTMENT	Metabolic measurement system	1	B
49	OUT-PATIENT INTERNAL MEDICINE DEPARTMENT	Electric suction unit	2	A

No.	DEPARTMENT/SECTION	DESCRIPTION	Qty	Pri.
50	OUT-PATIENT SURGERY ROOM	Examining couch	1	A
51	OUT-PATIENT SURGERY ROOM	Examining table	1	A
52	OUT-PATIENT SURGERY ROOM	Double screen	2	A
53	OUT-PATIENT SURGERY ROOM	Treatment table	1	A
54	OUT-PATIENT SURGERY ROOM	Instrument cabinet	2	A
55	OUT-PATIENT SURGERY ROOM	Small operating instrument set	5	A
56	OUT-PATIENT SURGERY ROOM	Diagnostic and Treatment Instrument set for surgery	2	A
57	OUT-PATIENT SURGERY ROOM	Suction Unit	1	A
58	OUT-PATIENT SURGERY ROOM	X-ray Film Illuminator	1	A
59	OUT-PATIENT SURGERY ROOM	Dressing Table	2	A
60	OUT-PATIENT SURGERY ROOM	Examination Light, with Battery	2	A
61	OUT-PATIENT PEDIATRIC DEPARTMENT	Diagnostic Instrument set	3	A
62	OUT-PATIENT PEDIATRIC DEPARTMENT	Automatic infusion pump	1	B
63	OUT-PATIENT PEDIATRIC DEPARTMENT	Neonatal scale	1	A
64	OUT-PATIENT PEDIATRIC DEPARTMENT	Pediatric weighing scale	2	A
65	OUT-PATIENT PEDIATRIC DEPARTMENT	Folding wheelchair	1	A
66	OUT-PATIENT PEDIATRIC DEPARTMENT	X-ray film illuminator	1	A
67	OUT-PATIENT PEDIATRIC DEPARTMENT	Medical cabinet	1	A
68	OUT-PATIENT PEDIATRIC DEPARTMENT	Electric suction unit	1	C
69	OUT-PATIENT PEDIATRIC DEPARTMENT	Suction unit, mobile	1	A
70	OUT-PATIENT PEDIATRIC DEPARTMENT	Nebulizer	3	A
71	OUT-PATIENT PEDIATRIC DEPARTMENT	Stretcher trolley	2	A
72	OUT-PATIENT PEDIATRIC DEPARTMENT	IV hanger stand	1	A
73	OUT-PATIENT PEDIATRIC DEPARTMENT	Screen, double	3	A
74	OUT-PATIENT PEDIATRIC DEPARTMENT	Pediatric examining table	3	A
75	OUT-PATIENT PEDIATRIC DEPARTMENT	Infant resuscitation bag	1	A
76	OUT-PATIENT PEDIATRIC DEPARTMENT	Instrument /dressing table	2	A
77	OUT-PATIENT PEDIATRIC DEPARTMENT	Treatment carriage	3	A
78	OUT-PATIENT PEDIATRIC DEPARTMENT	Dressing carriage	2	A
79	OUT-PATIENT GYNECOLOGY DEPARTMENT	Examining table for gynecology	3	A
80	OUT-PATIENT GYNECOLOGY DEPARTMENT	Gynecological examining unit	2	A
81	OUT-PATIENT GYNECOLOGY DEPARTMENT	Fiber Light for gynecological examination	3	A
82	OUT-PATIENT GYNECOLOGY DEPARTMENT	Stereo colposcope	1	A
83	OUT-PATIENT GYNECOLOGY DEPARTMENT	Weighing scale	1	A
84	OUT-PATIENT GYNECOLOGY DEPARTMENT	Examining couch	2	A
85	OUT-PATIENT GYNECOLOGY DEPARTMENT	Screen	2	A
86	OUT-PATIENT GYNECOLOGY DEPARTMENT	One basin stand	3	A
87	OUT-PATIENT GYNECOLOGY DEPARTMENT	Instrument cabinet	2	A
88	OUT-PATIENT GYNECOLOGY DEPARTMENT	Cryosurgery system for gynecology	1	B
89	OUT-PATIENT GYNECOLOGY DEPARTMENT	Kymographic hydrotubator	1	A
90	OUT-PATIENT GYNECOLOGY DEPARTMENT	Vaginal speculum warmer	1	A
91	OUT-PATIENT GYNECOLOGY DEPARTMENT	Aus-suction unit	2	A
92	OUT-PATIENT GYNECOLOGY DEPARTMENT	Cannula set for abortion	2	A
93	OUT-PATIENT GYNECOLOGY DEPARTMENT	Doppler fetus detector, Display type	1	A
94	OUT-PATIENT GYNECOLOGY DEPARTMENT	Fetal ectocardiograph	1	C
95	OUT-PATIENT GYNECOLOGY DEPARTMENT	Diagnostic Instrument set for Gyne.	2	A
96	OUT-PATIENT OPHTHALMOLOGY DEPARTMENT	Clinical table	1	A
97	OUT-PATIENT OPHTHALMOLOGY DEPARTMENT	Distance test chart	1	A

No.	DEPARTMENT/SECTION	DESCRIPTION	Qty	Pr.
98	OUT-PATIENT OPHTHALMOLOGY DEPARTMENT	Slit lamp microscope	1	A
99	OUT-PATIENT OPHTHALMOLOGY DEPARTMENT	Refracting unit	1	A
100	OUT-PATIENT OPHTHALMOLOGY DEPARTMENT	Trail lense set	1	A
101	OUT-PATIENT OPHTHALMOLOGY DEPARTMENT	Ultrasonic cleaner	1	A
102	OUT-PATIENT OPHTHALMOLOGY DEPARTMENT	Auto-tonography	1	A
103	OUT-PATIENT OPHTHALMOLOGY DEPARTMENT	Echo-scan	1	A
104	OUT-PATIENT OPHTHALMOLOGY DEPARTMENT	Stereo fundus camera	1	A
105	OUT-PATIENT OPHTHALMOLOGY DEPARTMENT	Medical cabinet	1	A
106	OUT-PATIENT OPHTHALMOLOGY DEPARTMENT	Examining table	1	A
107	OUT-PATIENT OPHTHALMOLOGY DEPARTMENT	Hand magnet	1	A
108	OUT-PATIENT OPHTHALMOLOGY DEPARTMENT	Diagnostic Instrument for Eye	2	A
109	OUT-PATIENT OPHTHALMOLOGY DEPARTMENT	Treatment Instrument set for Eye	2	A
110	OUT-PATIENT OPHTHALMOLOGY DEPARTMENT	Perimeter	1	A
111	OUT-PATIENT ENT DEPARTMENT	Laryngo stroboscope	1	A
112	OUT-PATIENT ENT DEPARTMENT	Automatic audiometer	1	A
113	OUT-PATIENT ENT DEPARTMENT	ENT treatment unit & chair	1	A
114	OUT-PATIENT ENT DEPARTMENT	Coagulator	2	A
115	OUT-PATIENT ENT DEPARTMENT	Nasopharyngoscope	1	A
116	OUT-PATIENT ENT DEPARTMENT	Oto-nasal scope	1	A
117	OUT-PATIENT ENT DEPARTMENT	Cold light source	1	A
118	OUT-PATIENT ENT DEPARTMENT	Instrument table	2	A
119	OUT-PATIENT ENT DEPARTMENT	Instrument cabinet	1	A
120	OUT-PATIENT ENT DEPARTMENT	Suction unit	1	A
121	OUT-PATIENT ENT DEPARTMENT	Dressing drum stand	2	A
122	OUT-PATIENT ENT DEPARTMENT	Diagnostic Instrument set for ENT	2	A
123	OUT-PATIENT ENT DEPARTMENT	Treatment Instrument set for ENT	2	A
124	OUT-PATIENT UROLOGY	Cysto-urethroscope	2	A
125	OUT-PATIENT UROLOGY	Lithotriposcope	2	A
126	OUT-PATIENT UROLOGY	Resectoscope	2	A
127	OUT-PATIENT UROLOGY	Visual urethrotome	1	A
128	OUT-PATIENT UROLOGY	Light source unit	1	A
129	OUT-PATIENT UROLOGY	Transurethral operating table	1	A
130	OUT-PATIENT UROLOGY	Erectosurgical unit	1	A
131	OUT-PATIENT UROLOGY	Urethral stone dislodger	2	A
132	OUT-PATIENT UROLOGY	Urethroscope	1	A
133	OUT-PATIENT UROLOGY	Instrument sterilizer	2	A
134	OUT-PATIENT UROLOGY	Treatment Instrument set for Uro.	2	A
135	OUT-PATIENT UROLOGY	Urological Examining Treatment Table with Chair	1	A
136	OUT-PATIENT DENTAL	Chair mounted unit	4	A
137	OUT-PATIENT DENTAL	Air compressor	4	A
138	OUT-PATIENT DENTAL	Treatment cabinet	4	A
139	OUT-PATIENT DENTAL	Apparatus x-ray for Dental	1	B
140	OUT-PATIENT DENTAL	Portable treatment unit	2	A
141	OUT-PATIENT DENTAL	Hot air sterilizer	4	A
142	OUT-PATIENT DENTAL	Lazer stimulator cordless type	3	A
143	OUT-PATIENT DENTAL	Ultrasonic cleaner	3	A
144	OUT-PATIENT DENTAL	Hydraulic flask press	1	A
145	OUT-PATIENT DENTAL	Dental laboratory engine	2	A

No.	DEPARTMENT/SECTION	DESCRIPTION	Qty	Pri.
146	OUT-PATIENT DENTAL	Laboratory lathe	2	A
147	OUT-PATIENT DENTAL	Model trimmer	1	A
148	OUT-PATIENT DENTAL	Casting machine centrifugal	1	A
149	OUT-PATIENT DENTAL	Root canal instruments	5	A
150	OUT-PATIENT DENTAL	Diagnostic Instrument set for DENTAL	5	A
151	EMERGENCY POST	Electrocardiograph, 1ch	1	A
152	EMERGENCY POST	Resuscitator	1	A
153	EMERGENCY POST	Defibrillator	1	A
154	EMERGENCY POST	Bedside Monitor	1	B
155	EMERGENCY POST	Electric suction unit	1	A
156	EMERGENCY POST	Hi-Lo stretcher trolley	1	A
157	EMERGENCY POST	Treatment table	1	A
158	EMERGENCY POST	Patient Bed, 2 crank	4	A
159	EMERGENCY POST	Patient Bed	3	A
160	EMERGENCY POST	Laundry cart	1	A
161	EMERGENCY POST	Hanger stand	1	A
162	EMERGENCY POST	Wheelchair	1	A
163	EMERGENCY POST	X-ray illuminator	1	A
164	EMERGENCY POST	Diagnostic Instrument set for Emergency	3	A
165	EMERGENCY POST	Bedside Cabinet	7	A
166	EMERGENCY POST	Medicine cabinet	3	A
167	ICU DEPARTMENT	ICU Bed, with Side Rail	6	A
168	ICU DEPARTMENT	Bedside monitor	6	A
169	ICU DEPARTMENT	Ventilator	2	A
170	ICU DEPARTMENT	Electric suction unit	4	A
171	ICU DEPARTMENT	Electrocardiograph, 1ch	1	A
172	ICU DEPARTMENT	Defibrillator	1	A
173	ICU DEPARTMENT	Pulse oximeter	3	A
174	ICU DEPARTMENT	Syringe infusion pump	2	B
175	ICU DEPARTMENT	X-ray film illuminator	1	A
176	ICU DEPARTMENT	Portable suction unit	2	A
177	ICU DEPARTMENT	Bedside cabinet	6	A
178	ICU DEPARTMENT	ICU stretcher	2	A
179	ICU DEPARTMENT	Laundry cart	2	A
180	ICU DEPARTMENT	Instrument cabinet	2	A
181	ICU DEPARTMENT	Basin Stand	2	A
182	ICU DEPARTMENT	Examining table	1	A
183	ICU DEPARTMENT	Double screen	1	A
184	ICU DEPARTMENT	Medicine cabinet	1	A
185	ICU DEPARTMENT	Dressing carriage	2	A
186	ICU DEPARTMENT	Emergency cart	2	A
187	ICU DEPARTMENT	Infusion pump	4	A
188	ICU DEPARTMENT	Oxygen flowmeter	6	A
189	ICU DEPARTMENT	Treatment Instrument set for ICU	1	A
190	ICU DEPARTMENT	Diagnostic Instrument set for ICU	1	A
191	ICU DEPARTMENT	Examination Light, with battery	3	A
192	CICU DEPARTMENT	Infant ventilator	1	A
193	CICU DEPARTMENT	Oxygen tent	1	A

No.	DEPARTMENT/SECTION	DESCRIPTION	Qty	Pri.
194	CICU DEPARTMENT	Diagnostic Instrument set	2	A
195	CICU DEPARTMENT	Automatic Infusion Pump	1	B
196	CICU DEPARTMENT	Cardiac Monitor	1	A
197	CICU DEPARTMENT	Defibrillator	1	A
198	CICU DEPARTMENT	Portable Suction Unit	1	A
199	CICU DEPARTMENT	Infant Scale	1	A
200	CICU DEPARTMENT	ICU Bed with Side Rail	2	A
201	CICU DEPARTMENT	X-ray Film Illuminator	1	A
202	CICU DEPARTMENT	Electric Suction Unit	1	A
203	CICU DEPARTMENT	Infant Resuscitator	2	A
204	CICU DEPARTMENT	Oxygen Flowmeter	2	A
205	CICU DEPARTMENT	Infant Incubator	1	A
206	CICU DEPARTMENT	Infant Warmer	1	B
207	CICU DEPARTMENT	Infant Transport Incubator	1	A
208	CICU DEPARTMENT	Oxygen Monitor	2	A
209	CICU DEPARTMENT	Pediatric bed for children (1-4 years)	1	A
210	CICU DEPARTMENT	Ventilator	1	B
211	CICU DEPARTMENT	Examination Light, with battery	1	A
212	IN-PATIENT INTERNAL MEDICINE DEPARTMENT	Patient Bed, with 2 crank	50	A
213	IN-PATIENT INTERNAL MEDICINE DEPARTMENT	Patient Bed	80	A
214	IN-PATIENT INTERNAL MEDICINE DEPARTMENT	Overbed table	10	A
215	IN-PATIENT INTERNAL MEDICINE DEPARTMENT	Bedside cabinet	130	A
216	IN-PATIENT INTERNAL MEDICINE DEPARTMENT	Folding stretcher	6	A
217	IN-PATIENT INTERNAL MEDICINE DEPARTMENT	Treatment carriage	6	A
218	IN-PATIENT INTERNAL MEDICINE DEPARTMENT	Dressing carriage	6	A
219	IN-PATIENT INTERNAL MEDICINE DEPARTMENT	IV hanger stand	15	A
220	IN-PATIENT INTERNAL MEDICINE DEPARTMENT	Hair shampooing basin trolley	6	A
221	IN-PATIENT INTERNAL MEDICINE DEPARTMENT	Electric suction unit	3	A
222	IN-PATIENT INTERNAL MEDICINE DEPARTMENT	Infusion pump	6	C
223	IN-PATIENT INTERNAL MEDICINE DEPARTMENT	Oxygen flowmeter	20	A
224	IN-PATIENT INTERNAL MEDICINE DEPARTMENT	Bedside Monitor	3	A
225	IN-PATIENT INTERNAL MEDICINE DEPARTMENT	Wheelchair	10	A
226	IN-PATIENT INTERNAL MEDICINE DEPARTMENT	Examining Couch	3	A
227	IN-PATIENT INTERNAL MEDICINE DEPARTMENT	Screen	3	A
228	IN-PATIENT INTERNAL MEDICINE DEPARTMENT	X-ray Illuminator	3	A
229	IN-PATIENT SURGERY ROOM	Patient Bed, with 2 crank	20	A
230	IN-PATIENT SURGERY ROOM	Patient Bed	30	A
231	IN-PATIENT SURGERY ROOM	Overbed table	5	A
232	IN-PATIENT SURGERY ROOM	Bedside cabinet	50	A
233	IN-PATIENT SURGERY ROOM	Stretcher trolley	2	A
234	IN-PATIENT SURGERY ROOM	Laundry cart	2	A
235	IN-PATIENT SURGERY ROOM	Treatment carriage	1	A
236	IN-PATIENT SURGERY ROOM	Dressing carriage	1	A
237	IN-PATIENT SURGERY ROOM	Walker	1	A
238	IN-PATIENT SURGERY ROOM	IV hanger stand	8	A
239	IN-PATIENT SURGERY ROOM	Wheelchair	2	A
240	IN-PATIENT SURGERY ROOM	Hair shampooing basin trolley	1	A
241	IN-PATIENT SURGERY ROOM	Emergency cart	1	A
242	IN-PATIENT SURGERY ROOM	Instrument Cabinet	2	A

No	DEPARTMENT/SECTION	DESCRIPTION	Qty	Pr
243	IN-PATIENT SURGERY ROOM	Medicine Cabinet	1	A
244	IN-PATIENT SURGERY ROOM	Suction Unit	1	A
245	IN-PATIENT PEDIATRIC DEPARTMENT	Patient Bed with 2 crank	5	A
246	IN-PATIENT PEDIATRIC DEPARTMENT	Patient Bed	15	A
247	IN-PATIENT PEDIATRIC DEPARTMENT	Pediatric bed for children (1-4 years) with attendance bed	15	A
248	IN-PATIENT PEDIATRIC DEPARTMENT	Bedside cabinet	35	A
249	IN-PATIENT PEDIATRIC DEPARTMENT	Overbed table	2	A
250	IN-PATIENT PEDIATRIC DEPARTMENT	Diagnostic instrument set	2	A
251	IN-PATIENT PEDIATRIC DEPARTMENT	Infant Scale	2	A
252	IN-PATIENT PEDIATRIC DEPARTMENT	IV hanger stand	5	A
253	RADIOLOGY DEPARTMENT	X-ray film illuminator	2	A
254	RADIOLOGY DEPARTMENT	Film loading desk	1	A
255	RADIOLOGY DEPARTMENT	Integrated radio tomography system	1	A
256	RADIOLOGY DEPARTMENT	Diagnostic X-ray TV system	1	A
257	RADIOLOGY DEPARTMENT	Mobile X-ray unit	2	A
258	RADIOLOGY DEPARTMENT	Instrument cabinet	1	A
259	RADIOLOGY DEPARTMENT	Protective floor screen	2	A
260	RADIOLOGY DEPARTMENT	C-arm X-ray TV system for surgery	1	B
261	RADIOLOGY DEPARTMENT	Automatic X-ray film processor	1	C
262	RADIOLOGY DEPARTMENT	X-ray film cabinet	1	A
263	RADIOLOGY DEPARTMENT	X-ray Protection set	4	A
264	RADIOLOGY DEPARTMENT	X-ray Diagnostic Instrument set	2	A
265	RADIOLOGY DEPARTMENT	X-ray Development set	1	A
266	CENTRAL STERILIZATION	High press. steam sterilizer w. boiler	2	A
267	CENTRAL STERILIZATION	Hot air sterilizer	2	A
268	CENTRAL STERILIZATION	Storage cabinet	2	A
269	CENTRAL STERILIZATION	Transfer cart	2	A
270	CENTRAL STERILIZATION	Sink unit	1	A
271	CENTRAL STERILIZATION	Instrument sterilizer	1	A
272	CENTRAL STERILIZATION	Ultrasonic cleaner	1	A
273	CENTRAL STERILIZATION	Tube washer	1	A
274	CENTRAL STERILIZATION	Surgical glove conditioner	1	B
275	CENTRAL STERILIZATION	Instrument set for CSSD	2	A
276	CENTRAL STERILIZATION	Gas sterilizer	2	B
277	ECHO DIAGNOSTIC ROOM	Ultrasound system with doppler	1	A
278	ECHO DIAGNOSTIC ROOM	Ultrasound scanner	3	A
279	ENDOSCOPY ROOM	Gastrointestinal and Esophagus fibroscope set	2	A
280	ENDOSCOPY ROOM	Duodeno fibroscope	2	A
281	ENDOSCOPY ROOM	Colon fibroscope	1	A
282	ENDOSCOPY ROOM	Broncho fibroscope	1	A
283	ENDOSCOPY ROOM	Endoscopic TV system	1	A
284	ENDOSCOPY ROOM	Video-endoscopic system	1	A
285	ENDOSCOPY ROOM	Endoscopic suction unit	2	A
286	ENDOSCOPY ROOM	Laparoscope for cholecystectomy set	1	B
287	ENDOSCOPY ROOM	Universal halogen light source	3	A
288	ENDOSCOPY ROOM	Electro surgical unit	1	A

No.	DEPARTMENT/SECTION	DESCRIPTION	Q'ty	Pri.
289	ENDOSCOPY ROOM	Endoscopic table	1	A
290	ENDOSCOPY ROOM	Endoscopic cabinet	2	A
291	ENDOSCOPY ROOM	Ultrasonic cleaner	2	A
292	ENDOSCOPY ROOM	Fiberscope cleaning machine	1	A
293	ENDOSCOPY ROOM	Endoscopic hanger	1	A
294	ENDOSCOPY ROOM	Sigmoidoscope set	1	C
295	ENDOSCOPY ROOM	Rectoscope	1	C
296	ENDOSCOPY ROOM	Light source	1	C
297	CARDIOLOGICAL DIAGNOSTIC ROOM	Height, weight scale	2	A
298	CARDIOLOGICAL DIAGNOSTIC ROOM	Stress test system	1	B
299	CARDIOLOGICAL DIAGNOSTIC ROOM	Electrocardiograph, 6 channel	2	C
300	CARDIOLOGICAL DIAGNOSTIC ROOM	X-ray film illuminator	1	A
301	CARDIOLOGICAL DIAGNOSTIC ROOM	Screen	3	A
302	CARDIOLOGICAL DIAGNOSTIC ROOM	Examining Bed	3	A
303	CARDIOLOGICAL DIAGNOSTIC ROOM	Electrocardiograph, 1 channel	3	A
304	CARDIOLOGICAL DIAGNOSTIC ROOM	Electrocardiograph, 3 channel	2	B
305	CARDIOLOGICAL DIAGNOSTIC ROOM	Electroencephalograph	1	B
306	REHABILITATION & PHYSIOTHERAPY	Simple bath	2	B
307	REHABILITATION & PHYSIOTHERAPY	Whirlpool bath for full body	2	B
308	REHABILITATION & PHYSIOTHERAPY	Paraffin bath for arms & legs	1	A
309	REHABILITATION & PHYSIOTHERAPY	Shoulder wheel	1	A
310	REHABILITATION & PHYSIOTHERAPY	Rotary wrist	1	A
311	REHABILITATION & PHYSIOTHERAPY	Bicycle exercise	1	A
312	REHABILITATION & PHYSIOTHERAPY	Quadriceps table	1	A
313	REHABILITATION & PHYSIOTHERAPY	Lower limb exten. flex. exercise chair	1	A
314	REHABILITATION & PHYSIOTHERAPY	Parallel bars	1	A
315	REHABILITATION & PHYSIOTHERAPY	Posture training mirror	1	A
316	REHABILITATION & PHYSIOTHERAPY	Rowing machine	2	A
317	REHABILITATION & PHYSIOTHERAPY	Galvanization & faradization unit	2	A
318	REHABILITATION & PHYSIOTHERAPY	Low frequency Therapy apparatus	2	A
319	REHABILITATION & PHYSIOTHERAPY	Microwave therapy unit	1	A
320	REHABILITATION & PHYSIOTHERAPY	Shortwave diathermy	1	A
321	REHABILITATION & PHYSIOTHERAPY	Ultrasound therapy unit	2	A
322	REHABILITATION & PHYSIOTHERAPY	Infrared ray energy & thermal stimula.	1	A
323	REHABILITATION & PHYSIOTHERAPY	Ultraviolet lamp apparatus	2	A
324	REHABILITATION & PHYSIOTHERAPY	Electric traction	2	A
325	REHABILITATION & PHYSIOTHERAPY	Hand finger dynamometer	1	A
326	REHABILITATION & PHYSIOTHERAPY	Hand dynamometer	1	A
327	REHABILITATION & PHYSIOTHERAPY	Auto stop walker	1	A
328	REHABILITATION & PHYSIOTHERAPY	Sports treadmill	1	A
329	REHABILITATION & PHYSIOTHERAPY	Training mat	2	A
330	REHABILITATION & PHYSIOTHERAPY	Reclining training bed	1	A
331	REHABILITATION & PHYSIOTHERAPY	Pulse Generator	1	A
332	LABORATORY DEPARTMENT	Binocular microscope	4	A
333	LABORATORY DEPARTMENT	Incubator, low temperature	1	A
334	LABORATORY DEPARTMENT	Incubator	1	A
335	LABORATORY DEPARTMENT	Autoclave	1	A
336	LABORATORY DEPARTMENT	Hot air sterilizer	1	A

No	DEPARTMENT/SECTION	DESCRIPTION	Qty	Pri
337	LABORATORY DEPARTMENT	Water bath	2	A
338	LABORATORY DEPARTMENT	Medical refrigerator	1	A
339	LABORATORY DEPARTMENT	Blood bank refrigerator	1	A
340	LABORATORY DEPARTMENT	Ultra-low temperature freezer	1	A
341	LABORATORY DEPARTMENT	Stirrer	1	A
342	LABORATORY DEPARTMENT	Mixer	1	A
343	LABORATORY DEPARTMENT	Pipette washer & dryer	5	A
344	LABORATORY DEPARTMENT	Pipette shaker	1	A
345	LABORATORY DEPARTMENT	Hemoglobin meter	1	A
346	LABORATORY DEPARTMENT	Refractometer	1	A
347	LABORATORY DEPARTMENT	Coagulometer	1	A
348	LABORATORY DEPARTMENT	Densitometer	1	A
349	LABORATORY DEPARTMENT	Immuno-electrophoresis	1	A
350	LABORATORY DEPARTMENT	Analyzer glucose	1	A
351	LABORATORY DEPARTMENT	Analyzer bilirubin	1	A
352	LABORATORY DEPARTMENT	Electrolyte analyzer	1	B
353	LABORATORY DEPARTMENT	Calcium magnesium meter	1	B
354	LABORATORY DEPARTMENT	Blood gas analyzer	1	B
355	LABORATORY DEPARTMENT	Clinical spectrophotometer	1	A
356	LABORATORY DEPARTMENT	Clinical chemistry analyzer	1	B
357	LABORATORY DEPARTMENT	Photoelectric colorimeter	1	A
358	LABORATORY DEPARTMENT	JET washer, counter top	1	A
359	LABORATORY DEPARTMENT	Fume hood	1	A
360	LABORATORY DEPARTMENT	Table top centrifuge	1	A
361	LABORATORY DEPARTMENT	Microhematocrit centrifuge	1	A
362	LABORATORY DEPARTMENT	Water distilling apparatus and Still Diastill, each 1	2	A
363	LABORATORY DEPARTMENT	Aseptic box	1	A
364	LABORATORY DEPARTMENT	Weight balance	2	A
365	LABORATORY DEPARTMENT	Analytical balance	1	A
366	LABORATORY DEPARTMENT	Anaerator	1	A
367	LABORATORY DEPARTMENT	pH meter	1	A
368	LABORATORY DEPARTMENT	Large capacity refrigerated centrifuge	1	A
369	LABORATORY DEPARTMENT	Laboratory instrument set	1	A
370	LABORATORY DEPARTMENT	Glass Ware set	1	A
371	LABORATORY DEPARTMENT	Blood Cell counter	1	B
372	PATHOLOGICAL LABORATORY	Autopsy table	1	A
373	PATHOLOGICAL LABORATORY	Autopsy shadowless light, stand type	1	A
374	PATHOLOGICAL LABORATORY	Morgue cart	1	A
375	PATHOLOGICAL LABORATORY	Autopsy instrument set	1	A
376	PATHOLOGICAL LABORATORY	Refrigerator unit	1	A
377	PATHOLOGICAL LABORATORY	Large sledge microtome	1	A
378	PATHOLOGICAL LABORATORY	Automatic tissue processor	1	A
379	PATHOLOGICAL LABORATORY	Binocular microscope	2	A
380	PATHOLOGICAL LABORATORY	Instrument cabinet	1	A
381	PATHOLOGICAL LABORATORY	Medical refrigerator	1	A
382	PATHOLOGICAL LABORATORY	Instrument table	2	A
383	PATHOLOGICAL LABORATORY	Full automatic photomicrographic system	1	C
384	PATHOLOGICAL LABORATORY	Pathology instrument set	2	A
385	EQUIPMENT FOR TRAINING & ADMINISTRATION	Overhead projector with screen	1	A

No.	DEPARTMENT/SECTION	DESCRIPTION	Q'ty	Pri
388	EQUIPMENT FOR TRAINING & ADMINISTRATION	Slide projector	1	A
387	EQUIPMENT FOR TRAINING & ADMINISTRATION	Personal computer with printer	3	A
388	EQUIPMENT FOR TRAINING & ADMINISTRATION	Copy machine	1	A
389	EQUIPMENT FOR TRAINING & ADMINISTRATION	Color TV with video cassette recorder and Video camera	1	A
390	EQUIPMENT FOR TRAINING & ADMINISTRATION	Automatic electric generator for emer.	2	A
391	EQUIPMENT FOR TRAINING & ADMINISTRATION	Hospital communication system	1	A
392	GENERAL- TRANSPORT, LAUNDRY, KITCHEN ETC.	Ambulance, 4-wheel Drive	10	A
393	GENERAL- TRANSPORT, LAUNDRY, KITCHEN ETC.	Telecommunication equipment of ambulance	10	A
394	GENERAL- TRANSPORT, LAUNDRY, KITCHEN ETC.	Central calling system for ambulance	1	A
395	GENERAL- TRANSPORT, LAUNDRY, KITCHEN ETC.	Automatic washer extractor	1	A
396	GENERAL- TRANSPORT, LAUNDRY, KITCHEN ETC.	Drying tumbler	1	A
397	GENERAL- TRANSPORT, LAUNDRY, KITCHEN ETC.	Flatwork ironer	1	A
398	GENERAL- TRANSPORT, LAUNDRY, KITCHEN ETC.	Wagon, for laundry	4	A
399	GENERAL- TRANSPORT, LAUNDRY, KITCHEN ETC.	Hot wagon	4	A
400	GENERAL- TRANSPORT, LAUNDRY, KITCHEN ETC.	Automatic dish washer	1	A
401	GENERAL- TRANSPORT, LAUNDRY, KITCHEN ETC.	Refrigerator	1	A
402	GENERAL- TRANSPORT, LAUNDRY, KITCHEN ETC.	Freezer	1	A
403	GENERAL- TRANSPORT, LAUNDRY, KITCHEN ETC.	Air Ventilator system	3	B
404	GENERAL- TRANSPORT, LAUNDRY, KITCHEN ETC.	Hot Air Sterilizer	2	A
405	GENERAL- TRANSPORT, LAUNDRY, KITCHEN ETC.	High press. steam sterilizer w. boiler	1	A
406	GENERAL- TRANSPORT, LAUNDRY, KITCHEN ETC.	Redistillation Apparatus	1	A
407	GENERAL- TRANSPORT, LAUNDRY, KITCHEN ETC.	Medical Refrigerator	1	A
408	GENERAL- TRANSPORT, LAUNDRY, KITCHEN ETC.	Pharmacy instrument set	1	A
409	EQUIPMENT FOR MAINTENANCE SECTION	Maintenance set	1	A
		consist of :		
		1. Field electric test pack	1	
		2. Digital multimeter	1	
		3. Analog multimeter	1	
		4. Insulation resistance meter	1	
		5. Analog handy oscilloscope	1	
		6. Digital gas leak checker	1	
		7. Light set	1	
		8. Digital clamp meter	1	
		9. Tool set	1	

Note: No.403 Air Ventilation system This item will be decided after further studies.

1. Criteria for giving High priority

- (1) Equipment that is to be replaced for existing old/decrepit equipment.
- (2) Equipment that is to be supplement for the equipment lacking distinctly in its quantity.
- (3) Equipment that is required for basic hospital treatment/diagnosis.
- (4) Equipment that is easy to operate and maintain.
- (5) Equipment that may give much benefit/effect to hospital.
- (6) Equipment that is highly cost-effective.
- (7) Equipment that is proven for its medical usefulness (necessity).

2. Criteria for giving Low priority

- (1) Equipment that required high operation and maintenance cost.
- (2) Equipment that has limited benefit/effect to hospital.
- (3) Equipment that is lowly cost-effective.
- (4) Equipment that is not for treatment / diagnosis use, but for academic research purposes.
- (5) Equipment that can be substituted with a simple ones.
- (6) Equipment that may cause environmental pollution by its medical waste etc.
- (7) Equipment that is not proven for its medical usefulness (necessity).
- (8) Equipment that is for personal usage by hospital staff (not medical use).
- (9) Equipment that has than minimum required quantity (inefficient, repetitive equipment).

Additional Criteria for Selecting the Equipment

(After field survey and considering Recipients condition)

1. Additional Criteria for giving High priority

- (1) Equipment that can be operated by hospital's current technical capabilities.
- (2) Equipment that can be operated / maintained by hospital staff.
- (3) Equipment that matches with hospital's social position / function (referral system, local needs).
- (4) Equipment that can be expected to be useful with other donor's assistance.

2. Additional Criteria for giving Low priority

- (1) Equipment that is difficult to locally procure its spare parts and consumables.
- (2) Equipment that cannot be operated by hospital's current technical capability.
- (3) Equipment that seem to be difficult to operate / maintained by present hospital's staff.
- (4) Equipment that dose not match with hospital's social position / function (referral system, local needs).
- (5) Equipment that requires large scope of infrastructure work (water, electricity supply, drain, etc.) for its installation.
- (6) Equipment that can be substituted by efficient usage of existing equipment

Criteria when International Standard Exists

Standard of WHO (ex. X-ray equipment, etc) is applicable on case by case basis.

ANNEX-5

JAPAN'S GRANT AID SCHEME

1) What is Grant Aid?

The Grant Aid Program provides a recipient country with non-reimbursable funds needed to procure the facilities, equipment and services (engineering services and transportation of the products, etc.) for economic and social development of the country under principals in accordance with the relevant laws and regulations of Japan. Grant Aid is not supplied through the donation of materials as such.

2) Exchange of Notes (E/N)

Japan's Grant Aid is extended in accordance with the Notes exchanged by the two Governments concerned, in which the objectives of the Project, period of execution, conditions and amount of the Grant Aid, etc., are confirmed.

- 3) "The period of the Grant Aid" means the one fiscal year in which the Cabinet approves the Project for. Within the fiscal year, all procedure such as exchanging of the Notes, concluding contracts with (a) consultant firm(s) and (a) contractor(s) and final payment to them must be completed. However in case of delays in delivery, installation or construction due to unforeseen factors such as weather, the period of the Grant Aid can be further extended for a maximum of one fiscal year at most by mutual agreement between the two Governments.

- 4) Under the Grant Aid, in principle, Japanese products and services including transport or those of the recipient country are to be purchased.

When both Governments deem it necessary, the Grant Aid may be used for the purchase of the products or services of the third country.

However the prime contractors, namely, consulting contracting and procurement firms, are limited to "Japanese nationals". (The term "Japanese nationals" means persons of Japanese nationality or Japanese corporations controlled by persons of Japanese nationality.)

5) Necessity of "Verification"

The Government of recipient country or its designated authority will conclude contracts denominated in Japanese yen with Japanese nationals. Those contracts shall be verified by the Government of Japan. This "Verification" is deemed necessary to secure accountability to Japanese taxpayers.

6) Undertakings required of the Government of recipient country

In the implementation of the Grant Aid Project, the recipient country is required to undertake such necessary measures as the following:

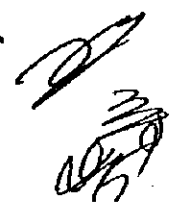
- (1) To secure land necessary for the sites of the Project and to clear, level and reclaim the land prior to commencement of the construction.
- (2) To provide facilities of the distribution of electricity, water supply and drainage and other incidental facilities in and around the sites.
- (3) To secure buildings prior to the procurement in case the installation of the equipment.
- (4) To ensure all the expenses and prompt execution for unloading, customs clearance at the port of disembarkation and internal transportation of the products purchased under the Grant Aid.
- (5) To exempt Japanese nationals from customs duties, internal taxes and other fiscal levies which will be imposed in the recipient country with respect to the supply of the products and services under the Verified Contracts.
- (6) To accord Japanese nationals whose services may be required in connection with the supply of the products and services under the Verified contracts, such facilities as may be necessary for their entry into the recipient country and stay therein for the performance of their work.
- (7) "Proper Use"
The recipient country is required to maintain and use the facilities constructed and the equipment purchased under the Grant Aid properly and effectively and to assign the necessary staff for operation and maintenance of them as well as to bear all the expenses other than those covered by the Grant Aid.
- (8) "Re-export"
The products purchased under the Grant Aid shall not be re-exported from the recipient country.
- (9) Banking Arrangements (B/A)
 - a) The Government of the recipient country or its designated authority should open an account in the name of the Government of the recipient country in a bank in Japan (hereinafter referred to as "the Bank"). The Government of Japan will execute the Grant Aid by making payments in Japanese yen to cover the obligations incurred by the Government of the recipient country or its designated authority under the Verified Contracts.
 - b) The payments will be made when payment requests are presented by the Bank to the Government of Japan under an authorization to pay issued by the Government of the recipient country or its designated authority.

Necessary Measures to be Taken by the Government of Mongolia

Following necessary measures should be taken by the Government of Mongolia on condition that the Grant Aid by the Government of Japan be extended to the Project.

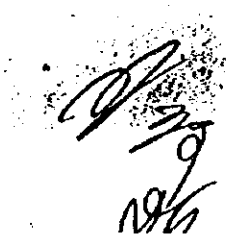
To

1. bear commissions to the Bank of Japan for its banking service based upon the Banking Arrangement (B/A), namely the advertising commission of the Authorization to Pay (A/P) and payment commission,
2. ensure prompt unloading, tax exemption, custom clearance at the port of disembarkation in Mongolia and prompt internal transportation therein of the materials and equipment for the Project purchased under the Grant Aid,
3. exempt Japanese juridical and physical nationals engaged in the Grant Aid from customs duties, internal taxes and other fiscal levies which may be imposed in Mongolia with respect to the supply of the products and services under the verified contracts,
4. accord Japanese nationals whose services may be required in connection with the supply of the products and services under the verified contracts such facilities as may be necessary for their entry into Mongolia and stay therein for the performance of their work,
5. provide necessary permissions, licenses and other authorizations for implementing the Grant Aid, if necessary,
6. assign appropriate budget and teaching and administrative staff members for proper and effective operation and maintenance of equipment procured under the Grant Aid,
7. maintain and use properly and effectively the facilities constructed and the equipment procured under the Grant Aid,
8. complete the removal of the existing equipment, facilities and civil working requested prior to the installation of the equipment and setting, and
9. bear all the expenses, other than those to be borne by the Japan's Grant Aid within the scope of the Project.



Department	Name
Director	Ukhnaa
Vice-director	Ulziburen
Senior officer, MOH in Mongolia	Chuluunbaatar
Cadiology	Selenge
Cardiologist	Namjirman
Chemistry	Daramragehaa
Chemistry	Ojunbaiar
Dental	Baasankhuu
Dental	Bajara
Dermatology	Otgonjargal
Emergency	Amarjargal
Emergency	Aquiunsanaa
Emergency	Miagmanjav
Emergency	Sojolzul
Endocrinology	Sainbileg
Engineer	Niamsuren
Ginecology	Dashpagma
ICU	Batkhisig
ICU	Bumchin
ICU	Hosbaiar
ICU	Nergui
ICU	Tsendsuren
Infection	Mandah
Infection	Ojunerdene
Infection	Sugar
Laboratory	Anhtuja
Laboratory	Purevsuren
Loundry	Enhjargal
Manpower office	Erolenechimep
Neurology	Aftanzagas
Old nursery	Davaa
Old nursery	Tumur
Ophtalmology	Munhtsetseg
ORL	Chulaunbaatar

Department	Name
Out patient	Dolzormaa
Out patient	Khishgee
Out patient	Narjahuu
Pediatric	Niamsuren
Pediatric	Otgonohimep
Radiology	Arjasuren
Rehabilitation	Tania
Statistic	Ulziinaran
Surgery	Eeltbaatar
Surgery	Enhamgalan
Surgery	Narmamdar
Surgery	Ninjee
Therapy I	Purevjal
Therapy I	Sanjaa
Therapy I	Tsetsge
Therapy II	Bianba
Therapy II	Tserendavaa
Therapy II	Tsolmon
Urology	Jargalsaikhan



Insufficient human resource development

Problems	Measures
Insufficient education system for medical staff	Employment of high specialist
Insufficient education program	Supply of training equipment and technical information
Insufficient education	Execution of training in foreign country (exchange of informations)
Insufficient maintenance persons	Increase training in advanced countries
Insufficient exchange of communication with advanced nations	Obtain the information from japanese medical persons
Enenough of education for the administration and for the management	Install equipment for training
Insufficient equipment for education	Obtain modern information and method in advanced contries
Insufficient professional books, medical books or manuals.	Training doctors more professional.
Bad condition of facilities for educatgion.	Employment of high technicians.
Insufficient maintenance of medical equipment.	Training actual staffs.
Insufficient management education.	

THE RESULT OF WORKSHOP

Insufficient medical examination, treatment and test

Problems	Measures
Insufficient medical examination, treatment and test.	
Problem of staff's organization.	Execution of operation training of Japanese equipment (for Doctor, Nurses). Send specialist for C/P training.
Insufficient measures for infection.	Repair water works drainage for decreasing of infection in hospital.
Hospital cannot buy consumables.	Secure budget for buy consumables.
Hospital cannot repair medical equipment.	Contract with maintenance office Maintenance staff receive the training in hospital (Training by Japanese engineer).
Equipment are too old.	Japan supplies necessary and available equipment.
Frequent nurses relieving.	Improvement of employment terms.
No spare parts cause of older equipment.	Obtain spare parts with conclusion of supply contract with Japanese (medical) equipment manufacturer.
No manuals for repair.	
Insufficient technique of maintenance.	

Sperannuation of Hospital, Facility

Problems	Measures
Sperannuation of hospital, facility.	
Health check of hospital staff.	Improvement of condition of illumination and ventilation.
Sperannuation facility of kitchen.	
Sperannuation and imperfection of sewage facility.	Check up regularly of sewage.
Imperfection of running water supply system (Low pressure).	Install pump (obtained already).
Sperannuation and imperfection of central heating system.	Check up regulary of heating system.
Inssufficient illumination local of each room.	Replace illumination of ICU and Operation room.
Unrationalized arrangement of facility.	Improve arrangement of facility of ICU and Operation room.
Unsuitable ventilation facility.	Install ventilator (simple one) at suitable place.
Integrated service of administration is confused.	
Facility design is not suitable for keep cleanliness.	
Facility are is not suitable (too small).	

Insufficient supply of medical services

Problems	Measures
Problem about supply system of medical service.	Replace medical equipment.
	Upgrade confirmation system of supply medical services.
	Make deep relation with subordinate hospital through doctor's training.
Problem of system in hospital.	Improve Financial System.
	Improve Medical Insurance System.
Problem of system except for hospital.	Increase times of confirmation of Administration.
	Attention patient's opinion.
Insufficient Personnel Administration.	Improve employment terms.
Insufficient participation concerning administration and management of hospital by all department.	
Insufficient maintenance of facility, institution and equipment.	
Insufficient analyze information .	
Not clear goal of upgrading of medical services.	
Not enough of referral system among hospitals, aimaks and soms.	Dispatch doctor(specialist) to aimaks, soms hospital for doctor's training.
Insufficient medical equipment at Gobi.	
Frequent staff (nurse) relieving.	Raise salary.
Lack of ability to evaluation for the hospital staff.	
Insufficient traveling medical examination.	Increase times of travel medical examination for prevention.
Inconvenient access to Hospital.	Prepare portable equipment, and send doctor team from Second General Hospital
	Procure Vehicle and equipment for medical examination
	Execution of medical training for doctors of district hospital at Gobi by traveling examination team
	execution of medical training for doctors of district hospital by doctor of Second General Hospital at Ulaanbaatar
Insufficient establishment of trust relation with hospital.	
Insufficient training of district hospital	Execution training of definite object;every department (general department), every department(special department),every disease
Low quality of diagnostic cause of equipment sperannuation	Replace medical equipment.

PRIOR TO THE INSTALLATION OF THE EQUIPMENT

	Tug
1. Removal of Existing Equipment	1,660,000
Room and Equipment name:	
Operating Room: Operating light, High pressure steam sterilizer	
Radioogy Room: X-ray diagnostic system	
Central sterilization Room: High pressure steam sterilizer, Sink unit	
Rehabilitation Room: Bath	
Laboratory Room: Fume hood, Water distilling apparatus	
Pathological Room: Autopsy table, Refrigerator unit	
Administration Room: Electric generator, Hospital communication system, Air ventilation system	
Transportation Room: Antenna for central	
Laundry: Washer extractor, Drying tumber, Flatwork ironer	
Kitchen: Dish washer, Refrigerator, Freezer	
Pharmacy: High pressure steam sterilizer, Redistillation apparatus	
2. Modification of Existing Room	3,735,000
The above remarks of exitsting room	
Total	5,395,000

AFTER ONE YEAR FROM INSTALLATION OF THE EQUIPMENT
(Anuual cost)

	Tug
1. Consumable Goods	66,984,000
Equipment No.: 1, 62, 139, 151, 154, 168, 169, 174, 187, 192, 195, 196, 210, 224, 255, 256, 257, 276, 277, 278, 303, 304, 305, 352, 353, 354, 355, 356, 371, 390, 392 and the other equipment	
Consisit of: Recording paper, Ink, Gel, Electrode, Film, Reagent etc.	
2. Depreciation	175,000,000
Principal equipment amount x 7% except for cabinet, forceps and small item	
3. Maintenance Agreement Cost	22,500,000
Equipment No.: 1, 139, 154, 168, 169, 192, 196, 210, 224, 255, 256, 257, 277, 278, 305, 352, 353, 354, 356, 371	
Under the condition of regular service: round twice per year, not including major spare parts	
Total Amount x 3%	
Total	264,484,000

MINUTES OF DISCUSSIONS

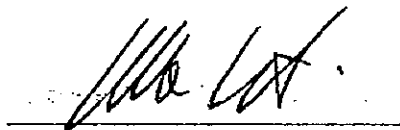
Basic Design Study on the Project for Improvement of the Medical Equipment
for
Second General Hospital
in
Mongolia
(Consultation on Draft Report)

In September/October 1998, the Japan International Cooperation Agency (hereinafter referred to as "JICA") dispatched the Basic Design Study Team on the Project for Improvement of the Medical Equipment for the Second General Hospital in Mongolia (hereinafter referred to as the "Project") to Mongolia and has prepared the draft report of the study through discussions, field survey , and technical examination of the results in Japan.

In order to explain and to consult the officials concerned the Government of Mongolia on the components of the draft report, JICA sent to Mongolia the Draft Report Explanation Team (hereinafter referred to as "the Team"), which is headed by Dr. Masato MUGITANI, Office of International Cooperation, Ministry of Health and Welfare from January 18 to 30, 1999.


In the course of discussions, both parties have confirmed the main items described on the attached sheets.

Ulaanbaatar, January 26, 1999



Dr. Masato MUGITANI

Leader,
Draft Report Explanation Team,
JICA



Dr. Sh. ENKHBAT

Director-General,
Department of Policy Coordination
and International Cooperation,
Ministry of Health and Social Welfare,
Mongolia



Mr. D. BOLDBAATAR

Director,
Foreign Trade and Economic Cooperation Department,
Ministry of External Relations,
Mongolia

ATTACHMENT

1. Components of the Draft Report

The Government of Mongolia has agreed and accepted in principle the components of the draft report explained by the Team.

2. Items requested by Mongolian side

The procurement of the equipment described in ANNEX-1, and finally requested by the Government of Mongolia for the consultation by the Team to be provided under the Grant Aid.

However, the final components which will be procured under the Grant Aid will be decided by Japanese side after further study.

3. Japan's Grant Aid System

- (1) The Government of Mongolia has understood the Japan's Grant Aid system as described in ANNEX-2 through the explanation by the Team.
- (2) The Government of Mongolia will take necessary measures, described in ANNEX-3 for the smooth implementation of the Project, on condition that the Japan's Grant Aid is extended to the Project.

4 Further Schedule

The Team will make the final report in accordance with the confirmed items and send it to the Government of Mongolia by the end of April, 1999.

5. Other Relevant Issues

- (1) Ministry of Health and Social Welfare ensures to allocate necessary budget for operating and maintaining (including the spare parts, the consumable supplies, etc.) the equipment provided to Second General Hospital under the Grant Aid.
- (2) The existing equipment to be replaced with the new one should be removed, if necessary.
- (3) The facilities where new equipment is to be installed should be renovated by Mongolian side for the smooth and effective implementation of the Project.
- (4) Mongolian side will conduct periodical monitoring on the activities and evaluate the impact of the Project in respect of the medical services. The result of the monitoring and evaluation indicators, described in ANNEX-4 will be reported annually to Embassy of Japan.
- (5) Mongolian side requested technical support in the following field;
 - Training of the personnel for operation and maintenance of the equipment in principal.
 - Supervision and advice on the management of the Project.



NO	DEPARTMENT/ SECTION NAME	DESCRIPTION	QTY
1	OPERATING ROOM	Anaesthesia apparatus, with Ventilator and monitor	3
2	OPERATING ROOM	Multi-purpose operating table	3
3	OPERATING ROOM	Operating light	3
4	OPERATING ROOM	Operating light, Stand type with Battery	3
5	OPERATING ROOM	Electric suction unit	3
6	OPERATING ROOM	Sliding stretcher	3
7	OPERATING ROOM	Basin Stand	3
8	OPERATING ROOM	Instrument cabinet	3
9	OPERATING ROOM	Autoclave	1
10	OPERATING ROOM	X-ray film illuminator	3
11	OPERATING ROOM	Medicine cabinet	3
12	OPERATING ROOM	Blood transfusion warmer	3
13	OPERATING ROOM	Dressing drum stand with Dressing drum	6
14	OPERATING ROOM	Gastrectomy instrument set	3
15	OPERATING ROOM	Cholecystotomy instrument set	4
16	OPERATING ROOM	Thyroidotomy instrument set	2
17	OPERATING ROOM	Emergency breast operating inst. set	3
18	OPERATING ROOM	Small operating instrument set	3
19	OPERATING ROOM	Nephrectomy instrument set	2
20	OPERATING ROOM	Prostatomy instrument set	2
21	OPERATING ROOM	Emergency tracheostomy set	1
22	OPERATING ROOM	Appendectomy instrument set	5
24	OPERATING ROOM	Standard plastic surgery set	2
25	OPERATING ROOM	Operating essential instrument set	2
26	OPERATING ROOM	Electro Surgical Unit	3
27	OPERATING ROOM	Operation microscope for Eye	1
28	OPERATING ROOM	Operating instrument set for Eye	2
29	OPERATING ROOM	Binocular operating microscope for ENT	1
30	OPERATING ROOM	Operating instrument set for ENT	2
31	OPERATING ROOM	Laundry Cart	2
32	OPERATING ROOM	Defibrillator	2
33	OPERATING ROOM	Operating Chair for ENT	1
34	OPERATING ROOM	Operating instrument set for Gynec.	2
35	OUT-PATIENT INTERNAL MEDICINE DEPARTMENT	Weighing scale	6
36	OUT-PATIENT INTERNAL MEDICINE DEPARTMENT	Height scale	6
37	OUT-PATIENT INTERNAL MEDICINE DEPARTMENT	Examining couch	6
38	OUT-PATIENT INTERNAL MEDICINE DEPARTMENT	Screen	6
39	OUT-PATIENT INTERNAL MEDICINE DEPARTMENT	X-ray illuminator	5
40	OUT-PATIENT INTERNAL MEDICINE DEPARTMENT	Diagnostic instrument set	5
41	OUT-PATIENT INTERNAL MEDICINE DEPARTMENT	Treatment table	6
42	OUT-PATIENT INTERNAL MEDICINE DEPARTMENT	Arm rest stand for infusion	1
43	OUT-PATIENT INTERNAL MEDICINE DEPARTMENT	Medical cabinet	6

NO.	DEPARTMENT/SECTION NAME	DESCRIPTION	Q'TY
45	OUT-PATIENT INTERNAL MEDICINE DEPARTMENT	Wheelchair	2
46	OUT-PATIENT INTERNAL MEDICINE DEPARTMENT	Treatment Instrument set for I.M.	2
47	OUT-PATIENT INTERNAL MEDICINE DEPARTMENT	Pulmonary function test system	1
49	OUT-PATIENT INTERNAL MEDICINE DEPARTMENT	Electric suction unit	2
50	OUT-PATIENT SURGERY ROOM	Examining couch	1
51	OUT-PATIENT SURGERY ROOM	Examining table	1
52	OUT-PATIENT SURGERY ROOM	Screen	2
53	OUT-PATIENT SURGERY ROOM	Treatment table	1
54	OUT-PATIENT SURGERY ROOM	Instrument cabinet	2
55	OUT-PATIENT SURGERY ROOM	Small operating instrument set	5
56	OUT-PATIENT SURGERY ROOM	Diagnostic and Treatment Instrument set for surgery	2
57	OUT-PATIENT SURGERY ROOM	Suction Unit	1
58	OUT-PATIENT SURGERY ROOM	X-ray Film Illuminator	1
59	OUT-PATIENT SURGERY ROOM	Dressing Table	2
60	OUT-PATIENT SURGERY ROOM	Examination Light, with Battery	2
61	OUT-PATIENT PEDIATRIC DEPARTMENT	Diagnostic Instrument set	3
62	OUT-PATIENT PEDIATRIC DEPARTMENT	Automatic infusion pump	1
63	OUT-PATIENT PEDIATRIC DEPARTMENT	Neonatal scale	1
64	OUT-PATIENT PEDIATRIC DEPARTMENT	Pediatric weighing scale	2
65	OUT-PATIENT PEDIATRIC DEPARTMENT	Wheel chair	1
66	OUT-PATIENT PEDIATRIC DEPARTMENT	X-ray film illuminator	1
67	OUT-PATIENT PEDIATRIC DEPARTMENT	Medical cabinet	1
69	OUT-PATIENT PEDIATRIC DEPARTMENT	Suction unit, mobile	1
70	OUT-PATIENT PEDIATRIC DEPARTMENT	Nebulizer	3
71	OUT-PATIENT PEDIATRIC DEPARTMENT	Stretcher trolley	2
72	OUT-PATIENT PEDIATRIC DEPARTMENT	IV hanger stand	1
73	OUT-PATIENT PEDIATRIC DEPARTMENT	Screen	3
74	OUT-PATIENT PEDIATRIC DEPARTMENT	Pediatric examining table	3
75	OUT-PATIENT PEDIATRIC DEPARTMENT	Infant resuscitation bag	1
76	OUT-PATIENT PEDIATRIC DEPARTMENT	Instrument /dressing table	2
77	OUT-PATIENT PEDIATRIC DEPARTMENT	Treatment carriage	3
78	OUT-PATIENT PEDIATRIC DEPARTMENT	Dressing carriage	2
79	OUT-PATIENT GYNECOLOGY DEPARTMENT	Examining table for gynecology	3
80	OUT-PATIENT GYNECOLOGY DEPARTMENT	Gynecological examining unit	2
81	OUT-PATIENT GYNECOLOGY DEPARTMENT	Fiber Light for gynecological examination	3
82	OUT-PATIENT GYNECOLOGY DEPARTMENT	Stereo colposcope	1
83	OUT-PATIENT GYNECOLOGY DEPARTMENT	Weighing scale	1
84	OUT-PATIENT GYNECOLOGY DEPARTMENT	Examining couch	2
85	OUT-PATIENT GYNECOLOGY DEPARTMENT	Screen	2
86	OUT-PATIENT GYNECOLOGY DEPARTMENT	One basin stand	3
87	OUT-PATIENT GYNECOLOGY DEPARTMENT	Instrument cabinet	2
88	OUT-PATIENT GYNECOLOGY DEPARTMENT	Compuator	1

NO.	DEPARTMENT/SECTION NAME	DESCRIPTION	QTY
89	OUT-PATIENT GYNECOLOGY DEPARTMENT	Kymographic hydrotubator	1
90	OUT-PATIENT GYNECOLOGY DEPARTMENT	Vaginal speculum warmer	1
91	OUT-PATIENT GYNECOLOGY DEPARTMENT	Aut-suction unit	2
92	OUT-PATIENT GYNECOLOGY DEPARTMENT	Canula set for abortion	2
93	OUT-PATIENT GYNECOLOGY DEPARTMENT	Doppler fetus detector, Display type	1
95	OUT-PATIENT GYNECOLOGY DEPARTMENT	Diagnostic Instrument set for Gynec,	2
96	OUT-PATIENT OPHTHALMOLOGY DEPARTMENT	Clinical table	1
97	OUT-PATIENT OPHTHALMOLOGY DEPARTMENT	Distance test chart	1
98	OUT-PATIENT OPHTHALMOLOGY DEPARTMENT	Slit lamp microscope	1
99	OUT-PATIENT OPHTHALMOLOGY DEPARTMENT	Refracting unit	1
100	OUT-PATIENT OPHTHALMOLOGY DEPARTMENT	Trail lense set	1
101	OUT-PATIENT OPHTHALMOLOGY DEPARTMENT	Ultrasonic cleaner	1
102	OUT-PATIENT OPHTHALMOLOGY DEPARTMENT	Auto-tonography	1
103	OUT-PATIENT OPHTHALMOLOGY DEPARTMENT	Echo-scan	1
104	OUT-PATIENT OPHTHALMOLOGY DEPARTMENT	Stereo fundus camera	1
105	OUT-PATIENT OPHTHALMOLOGY DEPARTMENT	Medical cabinet	1
106	OUT-PATIENT OPHTHALMOLOGY DEPARTMENT	Examining table	1
107	OUT-PATIENT OPHTHALMOLOGY DEPARTMENT	Hand magnet	1
108	OUT-PATIENT OPHTHALMOLOGY DEPARTMENT	Diagnostic Instrument for Eye	2
109	OUT-PATIENT OPHTHALMOLOGY DEPARTMENT	Treatment Instrument set for Eye	2
110	OUT-PATIENT OPHTHALMOLOGY DEPARTMENT	Perimeter	1
111	OUT-PATIENT ENT DEPARTMENT	Larynge stroboscope	1
112	OUT-PATIENT ENT DEPARTMENT	Automatic audiometer	1
113	OUT-PATIENT ENT DEPARTMENT	ENT treatment unit & chair	1
114	OUT-PATIENT ENT DEPARTMENT	Congulator	2
115	OUT-PATIENT ENT DEPARTMENT	Nasopharyngoscope	1
116	OUT-PATIENT ENT DEPARTMENT	Oto-nasal scope	1
117	OUT-PATIENT ENT DEPARTMENT	Cold light source	2
118	OUT-PATIENT ENT DEPARTMENT	Instrument table	2
119	OUT-PATIENT ENT DEPARTMENT	Instrument cabinet	1
120	OUT-PATIENT ENT DEPARTMENT	Suction unit	1
121	OUT-PATIENT ENT DEPARTMENT	Dressing drum stand	2
122	OUT-PATIENT ENT DEPARTMENT	Diagnostic Instrument set for ENT	2
123	OUT-PATIENT ENT DEPARTMENT	Treatment Instrument set for ENT	2
124	OUT-PATIENT UROLOGY	Cysto-urethroscope	2
125	OUT-PATIENT UROLOGY	Lithotriposcope	2
126	OUT-PATIENT UROLOGY	Resectoscope	2
127	OUT-PATIENT UROLOGY	Visual urethroscope	1
128	OUT-PATIENT UROLOGY	Light source unit	2
129	OUT-PATIENT UROLOGY	Urological Examling & Treatment Table	1
130	OUT-PATIENT UROLOGY	Erectrosurgical unit	1
131	OUT-PATIENT UROLOGY	Urethral stone dislodger	2

NO.	DEPARTMENT/SECTION NAME	DESCRIPTION	QTY
132	OUT-PATIENT UROLOGY	Urethroscope	1
133	OUT-PATIENT UROLOGY	Fiberscope cleaning machine	2
134	OUT-PATIENT UROLOGY	Treatment Instrument set for Uro.	2
135	OUT-PATIENT UROLOGY	Chair for Urological Examining Treatment Table	1
136	OUT-PATIENT DENTAL	Chair mounted unit	4
137	OUT-PATIENT DENTAL	Air compressor	4
138	OUT-PATIENT DENTAL	Treatment cabinet	4
139	OUT-PATIENT DENTAL	Apparatus x-ray for Dental	1
140	OUT-PATIENT DENTAL	Portable treatment unit	2
141	OUT-PATIENT DENTAL	Hot air sterilizer	4
142	OUT-PATIENT DENTAL	Laser stimulator cordless type	3
143	OUT-PATIENT DENTAL	Ultrasonic cleaner	3
144	OUT-PATIENT DENTAL	Hydraulic flask press	1
145	OUT-PATIENT DENTAL	Dental laboratory engine	2
146	OUT-PATIENT DENTAL	Laboratory lathe	2
147	OUT-PATIENT DENTAL	Model trimmer	1
148	OUT-PATIENT DENTAL	Casting machine centrifugal	1
149	OUT-PATIENT DENTAL	Root, canal instruments	5
150	OUT-PATIENT DENTAL	Diagnostic Instrument set for DENTAL	5
151	EMERGENCY POST	Electrocardiograph, 1ch	1
152	EMERGENCY POST	Resuscitator	1
153	EMERGENCY POST	Defibrillator	1
154	EMERGENCY POST	Bedside Monitor	1
155	EMERGENCY POST	Electric suction unit	1
156	EMERGENCY POST	Stretcher trolley	1
157	EMERGENCY POST	Treatment table	1
158	EMERGENCY POST	Patient Bed, 2 crank	4
159	EMERGENCY POST	Patient Bed	3
160	EMERGENCY POST	Laundry cart	1
161	EMERGENCY POST	Hanger stand	1
162	EMERGENCY POST	Wheelchair	1
163	EMERGENCY POST	X-ray illuminator	1
164	EMERGENCY POST	Diagnostic Instrument set for Emergency	3
165	EMERGENCY POST	Bedside Cabinet	7
166	EMERGENCY POST	Medicine cabinet	3
167	ICU DEPARTMENT	ICU Bed, with Side Rail	6
168	ICU DEPARTMENT	Bedside monitor	6
169	ICU DEPARTMENT	Ventilator	2
170	ICU DEPARTMENT	Electric suction unit	4
171	ICU DEPARTMENT	Electrocardiograph, 1ch	1
172	ICU DEPARTMENT	Defibrillator	1
173	ICU DEPARTMENT	Pulse oxymeter	3

NO.	DEPARTMENT/SECTION NAME	DESCRIPTION	Q'TY
174	ICU DEPARTMENT	Syringe infusion pump	1
175	ICU DEPARTMENT	X-ray film illuminator	1
176	ICU DEPARTMENT	Portable suction unit	2
177	ICU DEPARTMENT	Bedside cabinet	6
178	ICU DEPARTMENT	ICU stretcher	2
179	ICU DEPARTMENT	Laundry cart	2
180	ICU DEPARTMENT	Instrument cabinet	2
181	ICU DEPARTMENT	Bath Stand	2
182	ICU DEPARTMENT	Examining table	1
183	ICU DEPARTMENT	Screen	1
184	ICU DEPARTMENT	Medicine cabinet	1
185	ICU DEPARTMENT	Dressing carriage	2
186	ICU DEPARTMENT	Emergency cart	2
187	ICU DEPARTMENT	Infusion pump	4
188	ICU DEPARTMENT	Oxygen flowmeter	6
189	ICU DEPARTMENT	Treatment Instrument set for ICU	1
190	ICU DEPARTMENT	Diagnostic instrument set for ICU	1
191	ICU DEPARTMENT	Examination Light, with battery	3
192	CICU DEPARTMENT	Infant ventilator	1
193	CICU DEPARTMENT	Oxygen tent	1
194	CICU DEPARTMENT	Diagnostic instrument set	2
195	CICU DEPARTMENT	Automatic Infusion Pump	1
196	CICU DEPARTMENT	Cardiac Monitor	1
197	CICU DEPARTMENT	Defibrillator	1
198	CICU DEPARTMENT	Portable Suction Unit	1
199	CICU DEPARTMENT	Infant Scale	1
200	CICU DEPARTMENT	ICU Bed with Side Rail	2
201	CICU DEPARTMENT	X-ray Film Illuminator	1
202	CICU DEPARTMENT	Electric Suction Unit	1
203	CICU DEPARTMENT	Infant Resuscitator	2
204	CICU DEPARTMENT	Oxygen Flowmeter	2
205	CICU DEPARTMENT	Infant Incubator	1
206	CICU DEPARTMENT	Infant Warmer	1
208	CICU DEPARTMENT	Oxygen Monitor	2
209	CICU DEPARTMENT	Pediatric bed for children (1-4 years) with attendance bed	1
210	CICU DEPARTMENT	Ventilator	1
211	CICU DEPARTMENT	Examination Light, with battery	1
212	CICU DEPARTMENT	Syringe infusion pump	1
213	IN-PATIENT INTERNAL MEDICINE DEPARTMENT	Patient Bed, with 2 crank	50
214	IN-PATIENT INTERNAL MEDICINE DEPARTMENT	Patient Bed	80
215	IN-PATIENT INTERNAL MEDICINE DEPARTMENT	Overbed table	10
216	IN-PATIENT INTERNAL MEDICINE DEPARTMENT	Bedside cabinet	130

NO.	DEPARTMENT/SECTION NAME	DESCRIPTION	QTY
217	IN-PATIENT INTERNAL MEDICINE DEPARTMENT	Stretcher trolley	6
218	IN-PATIENT INTERNAL MEDICINE DEPARTMENT	Treatment carriage	6
219	IN-PATIENT INTERNAL MEDICINE DEPARTMENT	Dressing carriage	6
220	IN-PATIENT INTERNAL MEDICINE DEPARTMENT	IV hanger stand	15
221	IN-PATIENT INTERNAL MEDICINE DEPARTMENT	Hair shampooing basin trolley	6
222	IN-PATIENT INTERNAL MEDICINE DEPARTMENT	Electric suction unit	3
224	IN-PATIENT INTERNAL MEDICINE DEPARTMENT	Oxygen flowmeter	20
225	IN-PATIENT INTERNAL MEDICINE DEPARTMENT	Bedside Monitor	3
226	IN-PATIENT INTERNAL MEDICINE DEPARTMENT	Wheelchair	10
227	IN-PATIENT INTERNAL MEDICINE DEPARTMENT	Examining Couch	3
228	IN-PATIENT INTERNAL MEDICINE DEPARTMENT	Screen	3
229	IN-PATIENT INTERNAL MEDICINE DEPARTMENT	X-ray Illuminator	3
230	IN-PATIENT SURGERY ROOM	Patient Bed, with 2 crank	20
231	IN-PATIENT SURGERY ROOM	Patient Bed	30
232	IN-PATIENT SURGERY ROOM	Overbed table	5
233	IN-PATIENT SURGERY ROOM	Bedside cabinet	50
234	IN-PATIENT SURGERY ROOM	Stretcher trolley	2
235	IN-PATIENT SURGERY ROOM	Laundry cart	2
236	IN-PATIENT SURGERY ROOM	Treatment carriage	1
237	IN-PATIENT SURGERY ROOM	Dressing carriage	1
238	IN-PATIENT SURGERY ROOM	Walker	1
239	IN-PATIENT SURGERY ROOM	IV hanger stand	8
240	IN-PATIENT SURGERY ROOM	Wheelchair	2
241	IN-PATIENT SURGERY ROOM	Hair shampooing basin trolley	1
242	IN-PATIENT SURGERY ROOM	Emergency cart	1
243	IN-PATIENT SURGERY ROOM	Instrument Cabinet	2
244	IN-PATIENT SURGERY ROOM	Medicine Cabinet	1
245	IN-PATIENT SURGERY ROOM	Suction Unit	1
246	IN-PATIENT PEDIATRIC DEPARTMENT	Patient Bed, with 2 crank	5
247	IN-PATIENT PEDIATRIC DEPARTMENT	Patient Bed	15
248	IN-PATIENT PEDIATRIC DEPARTMENT	Pediatric bed for children (1-4 years) with attendance bed	15
249	IN-PATIENT PEDIATRIC DEPARTMENT	Bedside cabinet	35
250	IN-PATIENT PEDIATRIC DEPARTMENT	Overbed table	2
251	IN-PATIENT PEDIATRIC DEPARTMENT	Diagnostic Instrument set	2
252	IN-PATIENT PEDIATRIC DEPARTMENT	Infant Scale	2
253	IN-PATIENT PEDIATRIC DEPARTMENT	IV hanger stand	5
254	RADIOLOGY DEPARTMENT	X-ray film illuminator	2
255	RADIOLOGY DEPARTMENT	Film loading desk	1
256	RADIOLOGY DEPARTMENT	Integrated radio. tomography system	1
257	RADIOLOGY DEPARTMENT	Diagnostic X-ray TV system	1
258	RADIOLOGY DEPARTMENT	Mobile X-ray unit	2
259	RADIOLOGY DEPARTMENT	Instrument cabinet	1

NO.	DEPARTMENT/SECTION NAME	DESCRIPTION	QTY
260	RADIOLOGY DEPARTMENT	Protective floor screen	2
261	RADIOLOGY DEPARTMENT	C-arm X-ray TV system for surgery	1
263	RADIOLOGY DEPARTMENT	X-ray film cabinet	1
264	RADIOLOGY DEPARTMENT	X-ray Protection set	4
265	RADIOLOGY DEPARTMENT	X-ray Diagnostic Instrument set	2
266	RADIOLOGY DEPARTMENT	X-ray Development set	1
267	CENTRAL STERILIZATION	High press. steam sterilizer w. boiler	2
268	CENTRAL STERILIZATION	Hot air sterilizer	2
269	CENTRAL STERILIZATION	Storing cabinet	2
270	CENTRAL STERILIZATION	Transfer cart	2
271	CENTRAL STERILIZATION	Sink unit	1
272	CENTRAL STERILIZATION	Autoclave	1
273	CENTRAL STERILIZATION	Ultrasonic cleaner	1
274	CENTRAL STERILIZATION	Tube washer	1
276	CENTRAL STERILIZATION	Instrument set for CSSD	2
278	ECHO DIAGNOSTIC ROOM	Ultrasound system with doppler	1
279	ECHO DIAGNOSTIC ROOM	Ultrasound scanner	3
280	ENDOSCOPY ROOM	Gastrointestinal and Esophagus fibroscope set	2
281	ENDOSCOPY ROOM	Duodeno fibroscope	2
282	ENDOSCOPY ROOM	Colon fibroscope	1
283	ENDOSCOPY ROOM	Broncho fibroscope	1
284	ENDOSCOPY ROOM	Endoscopic TV system	1
285	ENDOSCOPY ROOM	Video-endoscopic system	1
286	ENDOSCOPY ROOM	Endoscopic suction unit	2
287	ENDOSCOPY ROOM	Laparoscope for cholecystectomy set	1
288	ENDOSCOPY ROOM	Universal halogen light source	3
289	ENDOSCOPY ROOM	Electro surgical unit	1
290	ENDOSCOPY ROOM	Endoscopic table	1
291	ENDOSCOPY ROOM	Endoscopic cabinet	2
292	ENDOSCOPY ROOM	Ultrasonic cleaner	2
293	ENDOSCOPY ROOM	Fiberscope cleaning machine	1
294	ENDOSCOPY ROOM	Endoscopic hanger	1
298	CARDIOLOGICAL DIAGNOSTIC ROOM	Height, weight scale	2
299	CARDIOLOGICAL DIAGNOSTIC ROOM	Stress test system	1
301	CARDIOLOGICAL DIAGNOSTIC ROOM	X-ray film illuminator	1
302	CARDIOLOGICAL DIAGNOSTIC ROOM	Screen	3
303	CARDIOLOGICAL DIAGNOSTIC ROOM	Examining Bed	3
304	CARDIOLOGICAL DIAGNOSTIC ROOM	Electrocardiograph, 1 channel	3
305	CARDIOLOGICAL DIAGNOSTIC ROOM	Electrocardiograph, 3 channel	2
306	CARDIOLOGICAL DIAGNOSTIC ROOM	Electroencephalograph	1
308	REHABILITATION & PHYSIOTHERAPY	Whirlpool bath for full body	2
309	REHABILITATION & PHYSIOTHERAPY	Paraffin bath for arms & legs	1

NO.	DEPARTMENT/SECTION NAME	DESCRIPTION	Q'TY
310	REHABILITATION & PHYSIOTHERAPY	Shoulder wheel	1
311	REHABILITATION & PHYSIOTHERAPY	Rotary wrist	1
312	REHABILITATION & PHYSIOTHERAPY	Bicycle exercise	1
313	REHABILITATION & PHYSIOTHERAPY	Quadriceps table	1
314	REHABILITATION & PHYSIOTHERAPY	Lower limb exten. flex. exercise chair	1
315	REHABILITATION & PHYSIOTHERAPY	Parallel bars	1
316	REHABILITATION & PHYSIOTHERAPY	Posture training mirror	1
317	REHABILITATION & PHYSIOTHERAPY	Rowing machine	2
318	REHABILITATION & PHYSIOTHERAPY	Galvanization & faradization unit	2
319	REHABILITATION & PHYSIOTHERAPY	Low frequency Therapy apparatus	2
320	REHABILITATION & PHYSIOTHERAPY	Microwave therapy unit	1
321	REHABILITATION & PHYSIOTHERAPY	Shortwave diathermy	1
322	REHABILITATION & PHYSIOTHERAPY	Ultrasound therapy unit	2
323	REHABILITATION & PHYSIOTHERAPY	Infrared ray energy & thermal stimulus	1
324	REHABILITATION & PHYSIOTHERAPY	Ultraviolet lamp apparatus	2
325	REHABILITATION & PHYSIOTHERAPY	Electric traction	2
326	REHABILITATION & PHYSIOTHERAPY	Hand finger dynamometer	1
327	REHABILITATION & PHYSIOTHERAPY	Hand dynamometer	1
328	REHABILITATION & PHYSIOTHERAPY	Auto stop walker	1
329	REHABILITATION & PHYSIOTHERAPY	Sports treadmill	1
330	REHABILITATION & PHYSIOTHERAPY	Training mat	2
331	REHABILITATION & PHYSIOTHERAPY	Reclining training bed	1
332	REHABILITATION & PHYSIOTHERAPY	Pulse Generator	1
333	LABORATORY DEPARTMENT	Binocular microscope	4
334	LABORATORY DEPARTMENT	Incubator, low temperature	1
335	LABORATORY DEPARTMENT	Incubator	1
336	LABORATORY DEPARTMENT	Autoclave	1
337	LABORATORY DEPARTMENT	Hot air sterilizer	1
338	LABORATORY DEPARTMENT	Water bath	2
339	LABORATORY DEPARTMENT	Medical refrigerator	1
340	LABORATORY DEPARTMENT	Blood bank refrigerator	1
341	LABORATORY DEPARTMENT	Ultra-low temperature freezer	1
342	LABORATORY DEPARTMENT	Stirrer	1
343	LABORATORY DEPARTMENT	Mixer	1
344	LABORATORY DEPARTMENT	Pipette washer & dryer	5
345	LABORATORY DEPARTMENT	Pipette shaker	1
346	LABORATORY DEPARTMENT	Hemoglobin meter	1
347	LABORATORY DEPARTMENT	Refractometer	1
348	LABORATORY DEPARTMENT	Coagulometer	1
349	LABORATORY DEPARTMENT	Densitometer	1
350	LABORATORY DEPARTMENT	Immuno-electrophoresis	1
351	LABORATORY DEPARTMENT	Analyzer glucose	1

NO.	DEPARTMENT/SECTION NAME	DESCRIPTION	QTY
352	LABORATORY DEPARTMENT	Analyzer bilirubin	1
353	LABORATORY DEPARTMENT	Electrolyte analyzer	1
354	LABORATORY DEPARTMENT	Blood gas analyzer	1
356	LABORATORY DEPARTMENT	Clinical spectrophotometer	1
358	LABORATORY DEPARTMENT	Photoelectric colorimeter	1
359	LABORATORY DEPARTMENT	JET washer, counter top	1
360	LABORATORY DEPARTMENT	Fume hood	1
361	LABORATORY DEPARTMENT	Table top centrifuge	1
362	LABORATORY DEPARTMENT	Microhematocrit centrifuge	1
363	LABORATORY DEPARTMENT	Water distilling apparatus and Still Distill, each 1	2
364	LABORATORY DEPARTMENT	Aseptic box	1
365	LABORATORY DEPARTMENT	Weight balance	2
366	LABORATORY DEPARTMENT	Analytical balance	1
367	LABORATORY DEPARTMENT	Anaerator	1
368	LABORATORY DEPARTMENT	pH meter	1
369	LABORATORY DEPARTMENT	Large capacity refrigerated centrifuge	1
370	LABORATORY DEPARTMENT	Laboratory instrument set	1
371	LABORATORY DEPARTMENT	Glass Ware set	1
372	LABORATORY DEPARTMENT	Blood Cell counter	1
373	PATHOLOGICAL LABORATORY	Autopsy table	1
374	PATHOLOGICAL LABORATORY	Autopsy shadowless light, stand type	1
375	PATHOLOGICAL LABORATORY	Morgue cart	1
376	PATHOLOGICAL LABORATORY	Autopsy instrument set	1
377	PATHOLOGICAL LABORATORY	Cooling unit	1
378	PATHOLOGICAL LABORATORY	Large sledge microtome	1
379	PATHOLOGICAL LABORATORY	Automatic tissue processor	1
380	PATHOLOGICAL LABORATORY	Binocular microscope	2
381	PATHOLOGICAL LABORATORY	Instrument cabinet	1
382	PATHOLOGICAL LABORATORY	Medical refrigerator	1
383	PATHOLOGICAL LABORATORY	Instrument table	2
385	PATHOLOGICAL LABORATORY	Pathology instrument set	2
386	EQUIPMENT FOR TRAINING & ADMINISTRATION	Overhead projector with screen	1
387	EQUIPMENT FOR TRAINING & ADMINISTRATION	Slide projector	1
388	EQUIPMENT FOR TRAINING & ADMINISTRATION	Personal computer with printer	3
389	EQUIPMENT FOR TRAINING & ADMINISTRATION	Copy machine	1
390	EQUIPMENT FOR TRAINING & ADMINISTRATION	Color TV with video cassette recorder and Video camera	1
391	EQUIPMENT FOR TRAINING & ADMINISTRATION	Electric generator for emer.	1
392	EQUIPMENT FOR TRAINING & ADMINISTRATION	Hospital broadcast	1
393	GENERAL- TRANSPORT, LAUNDRY, KITCHEN ETC.	Ambulance	2
394	GENERAL- TRANSPORT, LAUNDRY, KITCHEN ETC.	Telecommunication equipment of ambulance	4
395	GENERAL- TRANSPORT, LAUNDRY, KITCHEN ETC.	Central calling system for ambulance	1
396	GENERAL- TRANSPORT, LAUNDRY, KITCHEN ETC.	Automatic washer extractor	2

NO.	DEPARTMENT/SECTION NAME	DESCRIPTION	Q'TY
397	GENERAL- TRANSPORT, LAUNDRY, KITCHEN ETC.	Drying tumbler	2
398	GENERAL- TRANSPORT, LAUNDRY, KITCHEN ETC.	Flatwork ironer	1
399	GENERAL- TRANSPORT, LAUNDRY, KITCHEN ETC.	Wagon, for laundry	4
400	GENERAL- TRANSPORT, LAUNDRY, KITCHEN ETC.	Hot wagon	4
401	GENERAL- TRANSPORT, LAUNDRY, KITCHEN ETC.	Automatic dish washer	2
402	GENERAL- TRANSPORT, LAUNDRY, KITCHEN ETC.	Cooling unit	1
403	GENERAL- TRANSPORT, LAUNDRY, KITCHEN ETC.	Freezer	1
405	GENERAL- TRANSPORT, LAUNDRY, KITCHEN ETC.	Hot Air Sterilizer	2
406	GENERAL- TRANSPORT, LAUNDRY, KITCHEN ETC.	High press. steam sterilizer w. boiler	1
407	GENERAL- TRANSPORT, LAUNDRY, KITCHEN ETC.	Redistillation Apparatus	1
408	GENERAL- TRANSPORT, LAUNDRY, KITCHEN ETC.	Medical Refrigerator	1
409	GENERAL- TRANSPORT, LAUNDRY, KITCHEN ETC.	Pharmacy Instrument set	1
410	EQUIPMENT FOR MAINTENANCE SECTION	Maintenance set	1
411	COMMUNITY HEALTH PROMOTION	Computer with Printer	1
412	COMMUNITY HEALTH PROMOTION	Copy Machine	1
413	COMMUNITY HEALTH PROMOTION	Printing Machine	1
414	COMMUNITY HEALTH PROMOTION	Diagnostic Instrument set	5
415	COMMUNITY HEALTH PROMOTION	Vehicle with Microphone	2
416	COMMUNITY HEALTH PROMOTION	Loud Speaker	3
417	COMMUNITY HEALTH PROMOTION	Electric Generator	1

1) What is Grant Aid?

The Grant Aid Program provides a recipient country with non-reimbursable funds needed to procure the facilities, equipment and services (engineering services and transportation of the products, etc.) for economic and social development of the country under principals in accordance with the relevant laws and regulations of Japan's Grant Aid is not supplied through the donation of materials as such.

2) Exchange of Notes (E/N)

Japan's Grant Aid is extended in accordance with the Notes exchanged by the two Governments concerned, in which the objectives of the Project, period of execution, conditions and amount of the Grant Aid, etc., are confirmed.

- 3) "The period of the Grant Aid" means the one fiscal year in which the Cabinet approves the Project for. Within the fiscal year, all procedure such as exchanging of the Notes, concluding contracts with (a) consultant firm(s) and (a) contractor(s) and final payment to them must be completed. However in case of delays in delivery, installation or construction due to unforeseen factors such as weather, the period of the Grant Aid can be further extended for a maximum of one fiscal year at most by mutual agreement between the two Governments.

- 4) Under the Grant Aid, in principle, Japanese products and services including transport or those of the recipient country are to be purchased.

When both Governments deem it necessary, the Grant Aid may be used for the purchase of the products or services of the third country.

However the prime contractors, namely, consulting contracting and procurement firms, are limited to "Japanese nationals". (The term "Japanese nationals" means persons of Japanese nationality or Japanese corporations controlled by persons of Japanese nationality.)

5) Necessity of "Verification"

The Government of recipient country or its designated authority will conclude contracts denominated in Japanese yen with Japanese nationals. Those contracts shall be verified by the Government of Japan. This "Verification" is deemed necessary to secure accountability to Japanese taxpayers.



6) Undertakings required of the Government of recipient country

In the implementation of the Grant Aid Project, the recipient country is required to undertake such necessary measures as the following:

- (1) To secure land necessary for the sites of the Project and to clear, level and reclaim the land prior to commencement of the construction.
- (2) To provide facilities of the distribution of electricity, water supply and drainage and other incidental facilities in and around the sites.
- (3) To secure buildings prior to the procurement in case the installation of the equipment.
- (4) To ensure all the expenses and prompt execution for unloading customs clearance at the port of disembarkation and internal transportation of the products purchased under the Grant Aid.
- (5) To exempt Japanese nationals from customs duties, internal taxes and other fiscal levies which will be imposed in the recipient country with respect to the supply of the products and services under the Verified Contracts.
- (6) To accord Japanese nationals whose services may be required in connection with the supply of the products and services under the Verified contracts, such facilities as may be necessary for their entry into the recipient country and stay therein for the performance of their work.
- (7) "Proper Use"
The recipient country is required to maintain and use the facilities constructed and the equipment purchased under the Grant Aid properly and effectively and to assign the necessary staff for operation and maintenance of them as well as to bear all the expenses other than those covered by the Grant Aid.
- (8) "Re-export"
The products purchased under the Grant Aid shall not be re-exported from the recipient country.
- (9) Banking Arrangements (B/A)
 - a) The Government of the recipient country or its designated authority should open an account in the name of the Government of the recipient country in a bank in Japan (hereinafter referred to as "the Bank"). The Government of Japan will execute the Grant Aid by making payments in Japanese yen to cover the obligations incurred by the Government of the recipient country or its designated authority under the Verified Contracts.
 - b) The payments will be made when payment requests are presented by the Bank to the Government of Japan under an authorization to pay issued by the Government of the recipient country or its designated authority.

Following necessary measures should be taken by the Government of Mongolia on condition that the Grant Aid by the Government of Japan be extended to the Project.

To

1. bear commissions to the Bank of Japan for its banking service based upon the Banking Arrangement (B/A), namely the advertising commission of the Authorization to Pay (A/P) and payment commission,
2. ensure prompt unloading, tax exemption, custom clearance at the port of disembarkation in Mongolia and prompt internal transportation therein of the materials and equipment for the Project purchased under the Grant Aid,
3. exempt Japanese juridical and physical nationals engaged in the Grant Aid from customs duties, internal taxes and other fiscal levies which may be imposed in Mongolia with respect to the supply of the products and services under the verified contracts,
4. accord Japanese nationals whose services may be required in connection with the supply of the products and services under the verified contracts such facilities as may be necessary for their entry into Mongolia and stay therein for the performance of their work,
5. provide necessary permissions, licenses and other authorizations for implementing the Grant Aid, if necessary,
6. assign appropriate budget and teaching and administrative staff members for proper and effective operation and maintenance of equipment procured under the Grant Aid,
7. maintain and use properly and effectively the facilities constructed and the equipment procured under the Grant Aid,
8. complete the removal of the existing equipment, facilities and civil working requested prior to the installation of the equipment and setting.
9. ensure the following items, and
 - ① Submission of information and documents necessary for the installation and setting up of the equipment.
 - ② Provision of an office space in the hospital site during the implementation period.
 - ③ Provision of necessary facilities and space for the installation of the equipment.
 - ④ Preparation of necessary infrastructure (electric power, water, sewage, etc.) and the completion of the construction of primary-side service systems as well as the removal of existing equipment before the arrival of the new equipment.
 - ⑤ Provision of space to store the equipment between its arrival and installation.
 - ⑥ Provision of necessary assistance and securing of safety for the Japanese personnel in bringing in necessary equipment and performing their duties for the Project.
 - ⑦ Allocation of budget and personnel necessary for the effective implementation of this Project, including the Operation/Maintenance cost of the equipment to be provided through the Grant Aid.
 - ⑧ Preparation of a 5-year usage plan of the equipment to be provided through the Grant Aid and periodic reporting of actual usage to Embassy of Japan in Mongolia.
10. bear all the expenses, other than those to be borne by the Japan's Grant Aid within the scope of the Project.

The following indicators should be reported to Embassy of Japan annually (from 1999 to 2004) by Second General Hospital through the Ministry of Health and Social Welfare.

1. Status of Second General Hospital

(1) Financial Situation

(a) Annual income and expenditure

- Transition and breakdown of Income (Fees of diagnosis, Test, and Hospitalization etc.)
- Transition and breakdown of Expenditure (Salaries and wages, Medicine, Food, Maintenance cost, Electricity, Others)

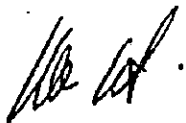
(b) Contents of Expenditure in Annual Maintenance Cost

(2) Transition of Staff

- (a) Doctor
- (b) Nurse
- (c) Semi-nurse
- (d) Engineer
- (e) Other Medical Staff
- (f) Staff in department of Management
- (g) Staff in department of Maintenance and Operation
- (h) Other

(3) Activity of Second General Hospital

- (a) Hospital Mortality Rate (General, Each department/section)
- (b) Number of Patients (Out-patients/In-patients)
- (c) Number of Referred Patients
- (d) Number of Recovered Patients
- (e) Number of Infectious Complications during Hospital Stay
- (f) Number of Patients who Discharged without Permission
- (g) Patients Satisfaction Survey Report
- (h) Average Lengths of Hospital Stay (day)



2. Equipment Procured under Japan's Grant Aid

Utilization of Equipment Procured

Equipment	Number of operators (cases/day)	Examinations fees(Tug.)	Running costs (Tug.)	Accident (Time/year)	Check up regularly (Time/year)
Anesthesia apparatus, with Ventilator and Monitor					
Bedside Monitor					
Ventilator					
Electrocardiograph					
Electroencephalograph					
Integrated radio. Tomography system					
Mobile X-ray system					
Diagnostic X-ray TV system					
C-arm X-ray TV system for surgery					
Ultrasound scanner					
Stress test System					
Apparatus x-ray for Dental					
Electrolyte analyzer					
Blood Gas Analyzer					
Blood Cell counter					
Laparoscope for cholecystectomy set					





5. References

- 1) Answer of Questionnair
- 2) Drawing of Second General Hospital
- 3) Annual Statistic in Mongolia
- 4) National Health Policy (1991~2001)
- 5) ADB Project for Devevelopment of Health Sector in Mongolia1997
- 6) Flannning Report of Project by Mongolian Government

JICA

118