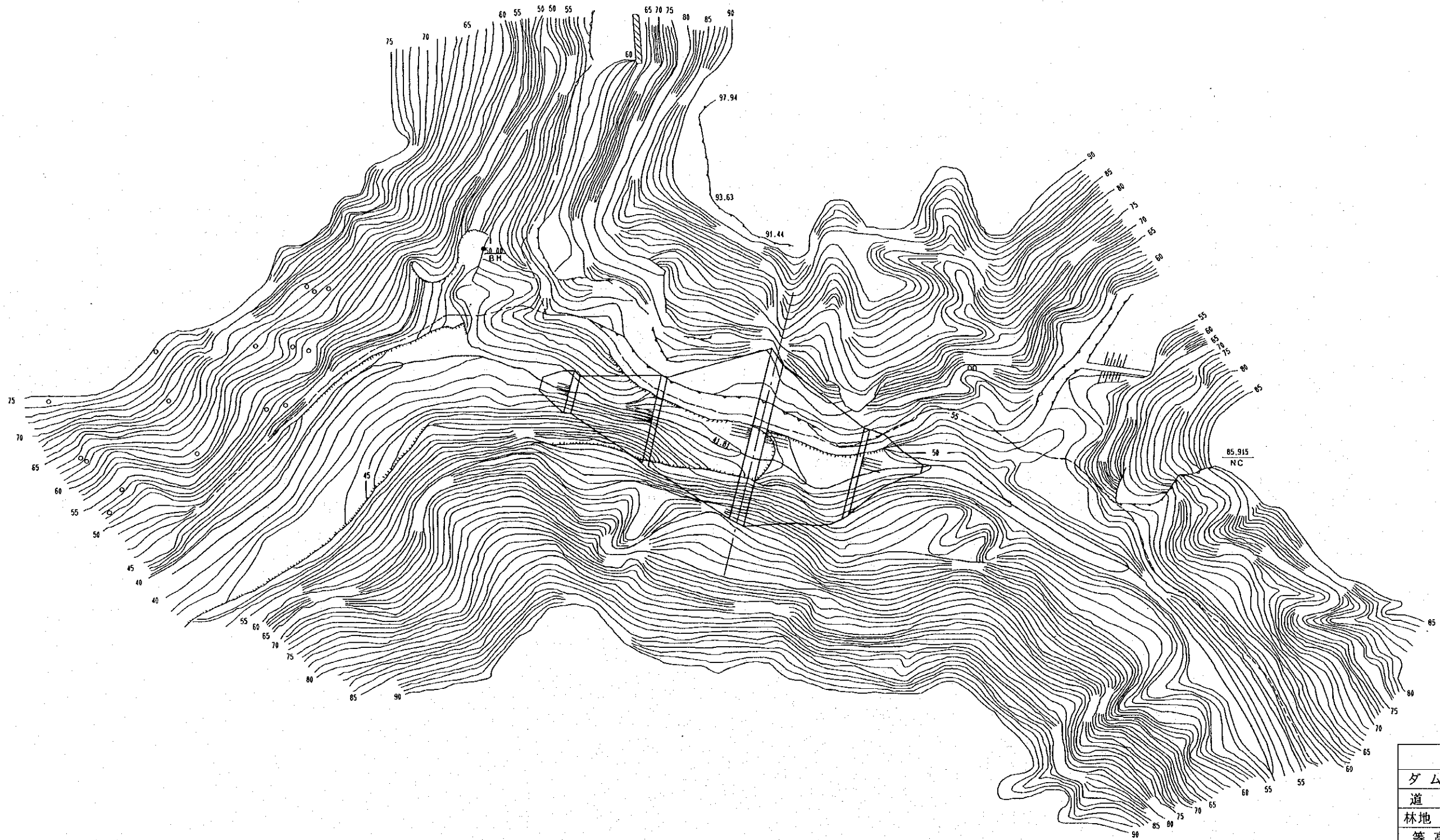
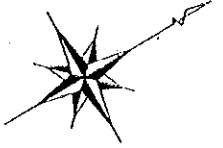


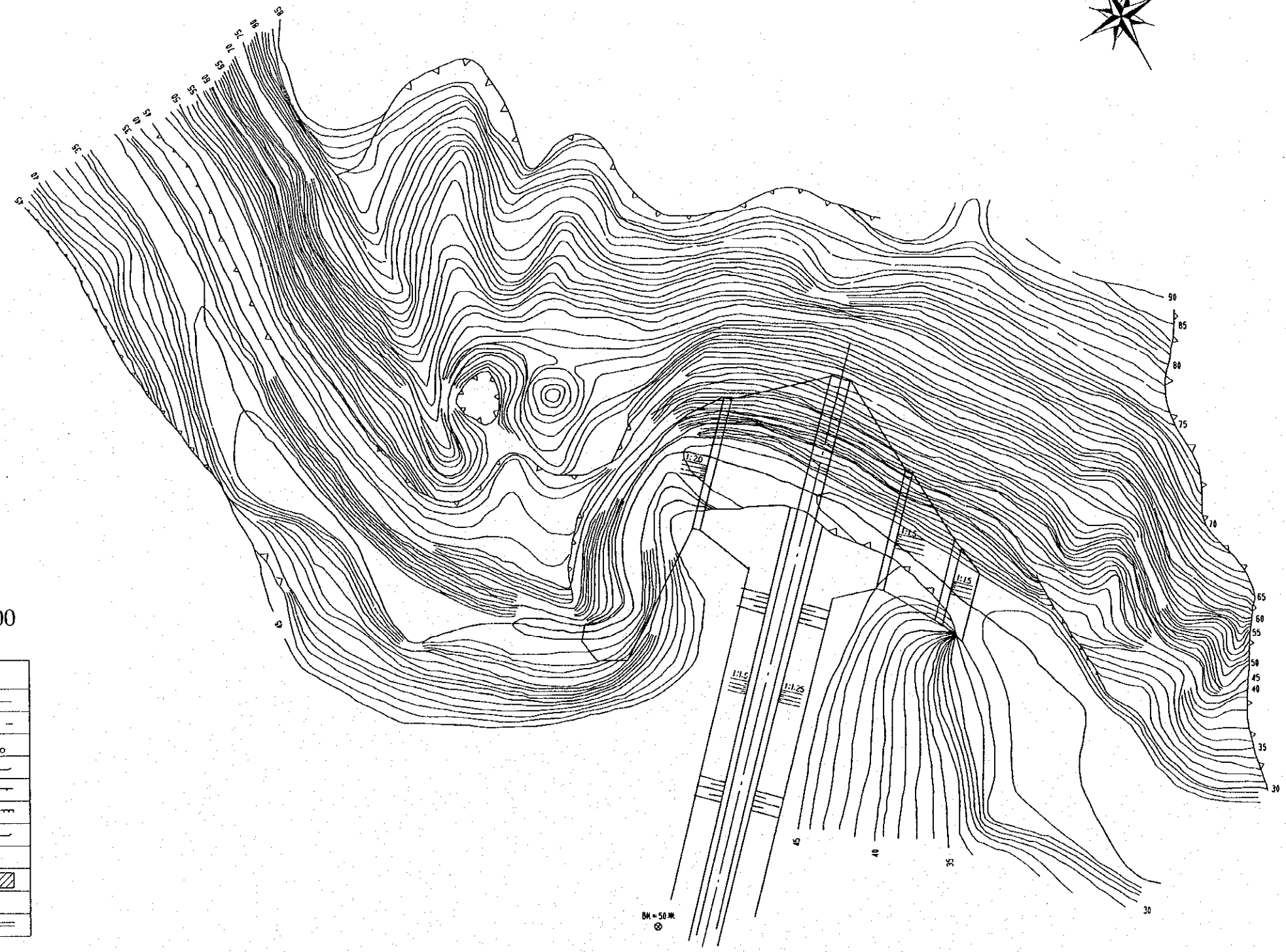
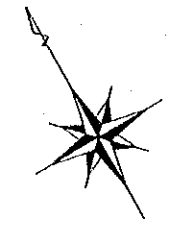
圓子湾溝 典型区 老床溝ダム計画平面図 (D-1)



1/500

凡	例
ダム軸	———
道路	- - - - -
林地(成林)	○ ○ ○ ○
等高線	~~~~~
崖(土砂)	———
崖(岩)	~~~~~
河川	~~~~~
B. M	● 84.66
住宅地	▨ ▨ ▨ ▨
木戸(住居)	∩ ∩
ダム堤体	≡ ≡ ≡ ≡

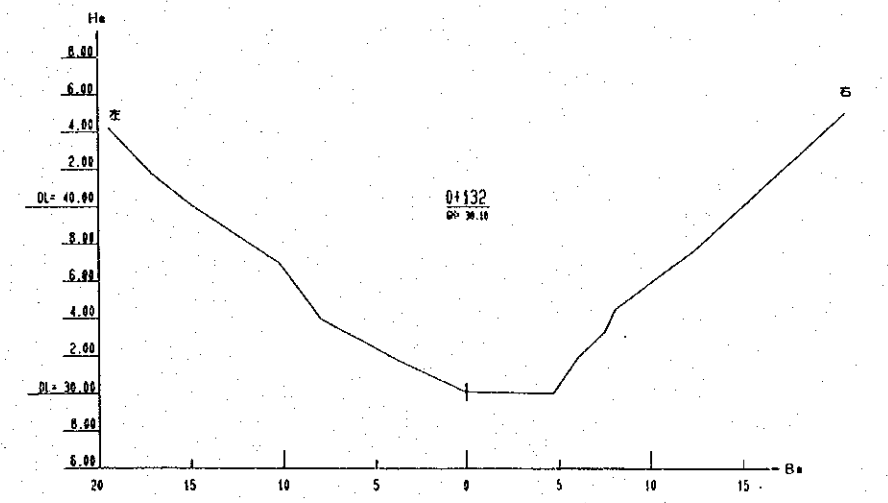
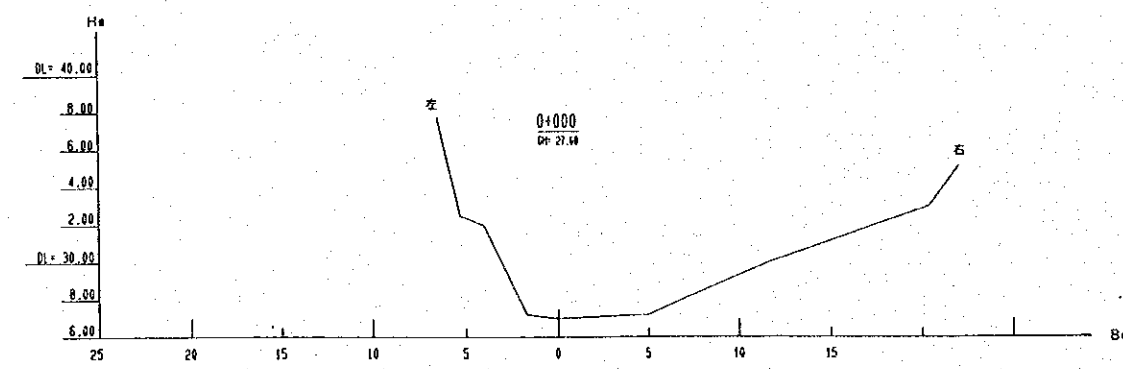
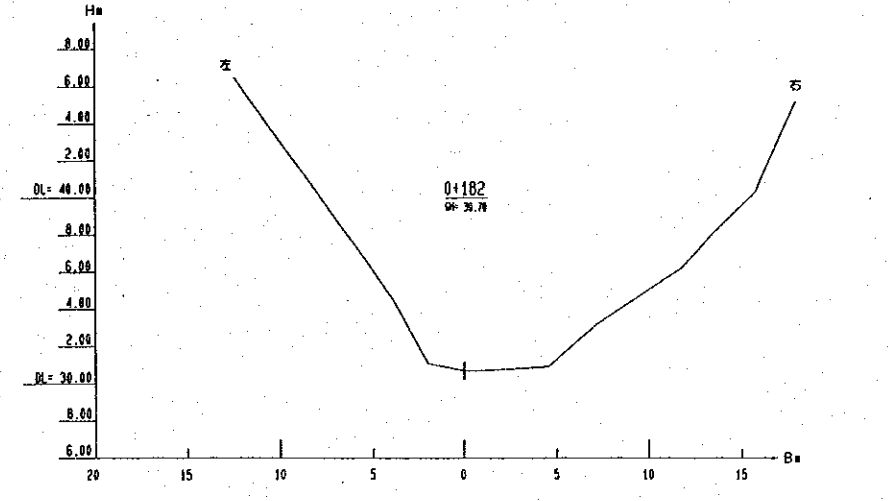
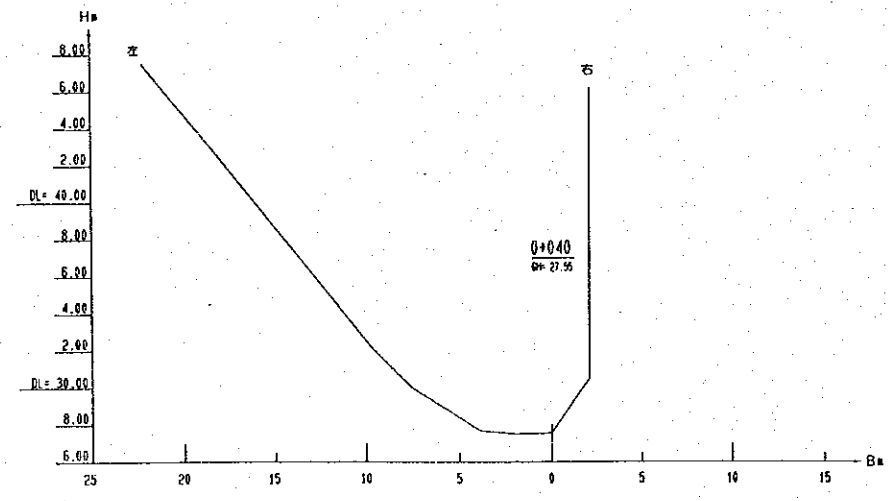
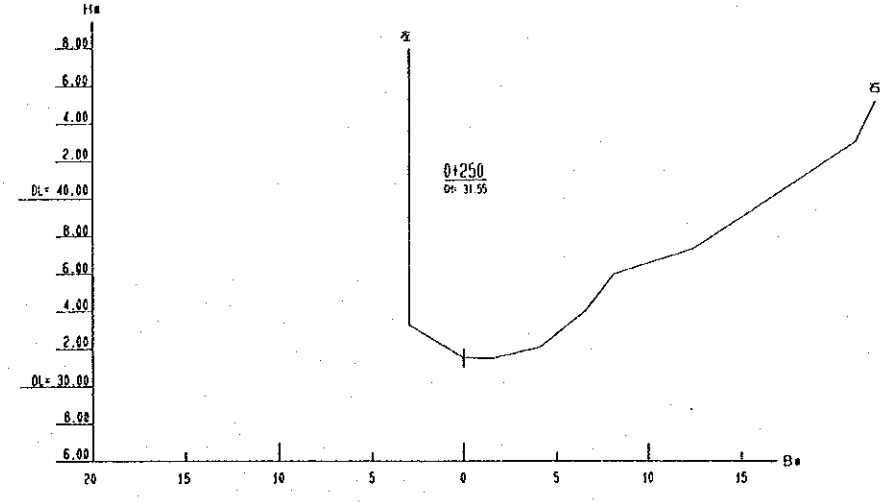
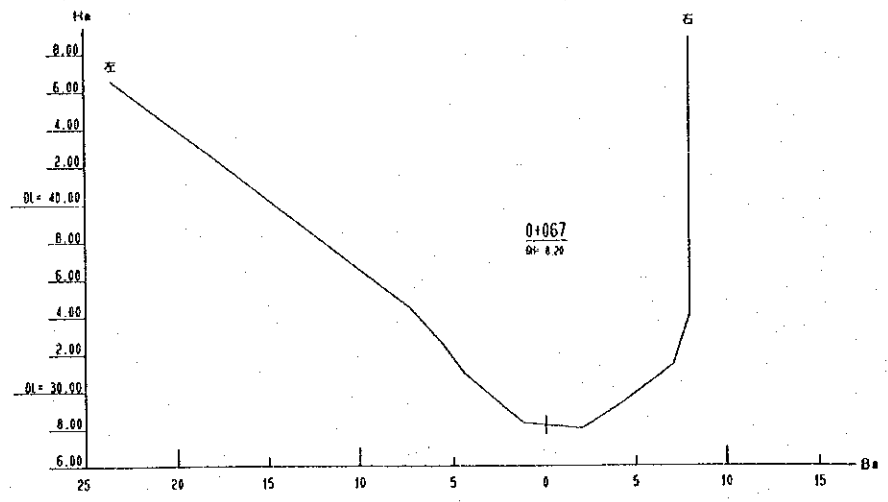
大西溝 典型区 洞則溝ダム改修計画平面図 (D-2)



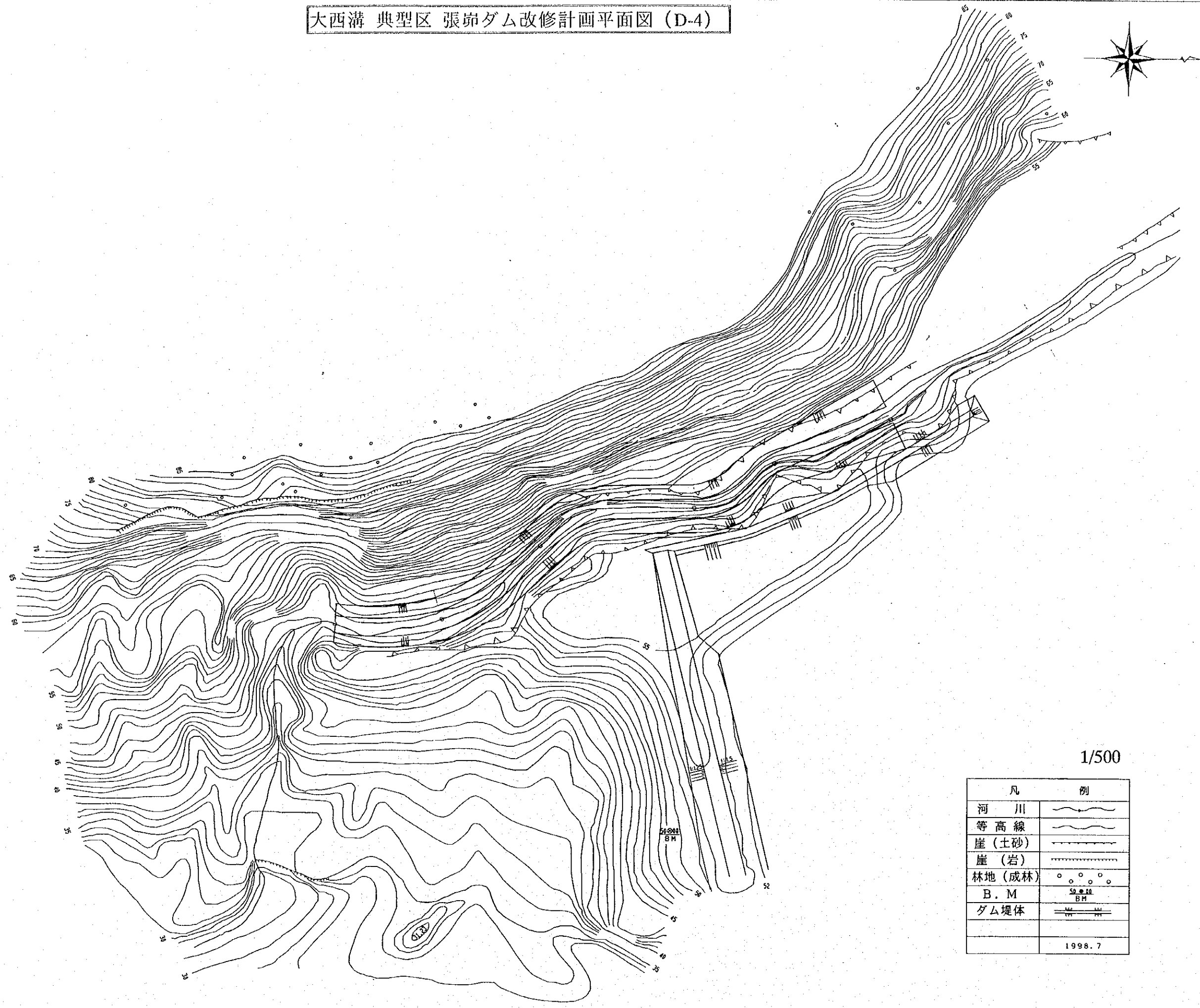
1/500

凡	例
ダム軸	———
道路	———
林地(成林)	○ ○ ○ ○
等高線	~~~~~
崖(土砂)	———
崖(岩)	———
河川	~~~~~
B. M	● 50.00 B.M
住宅地	▨ ▨ ▨ ▨
ツト(住居)	∩ ∩
ダム堤体	———

大西溝 典型区 洞則溝ダム改修計画横断図 (D-3)



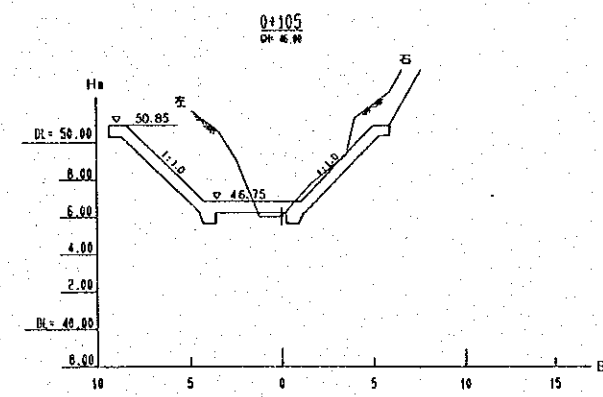
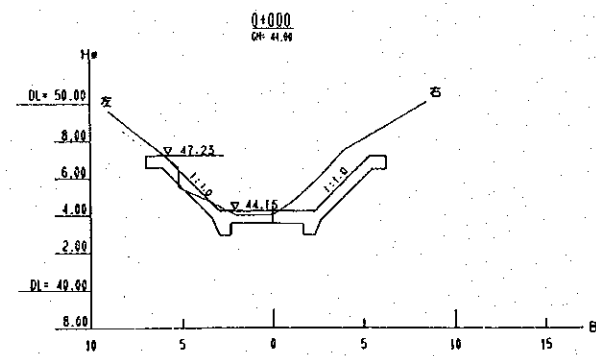
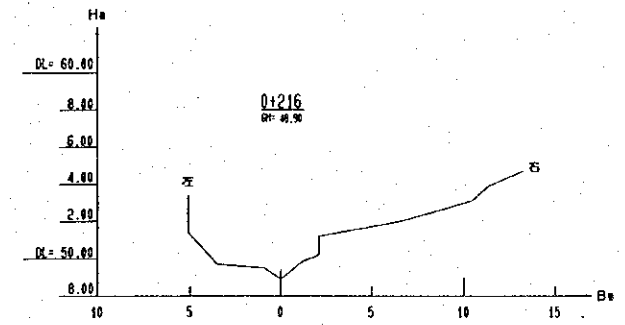
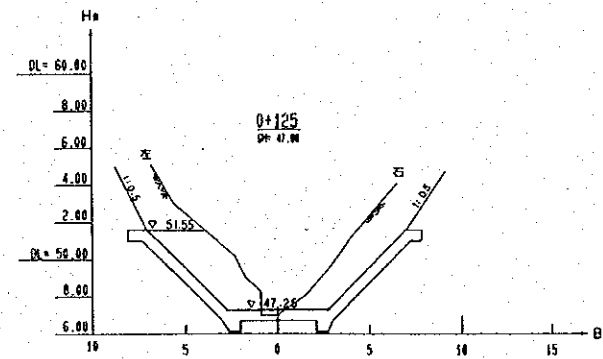
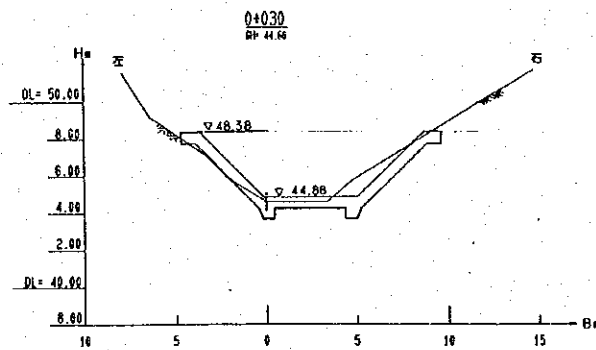
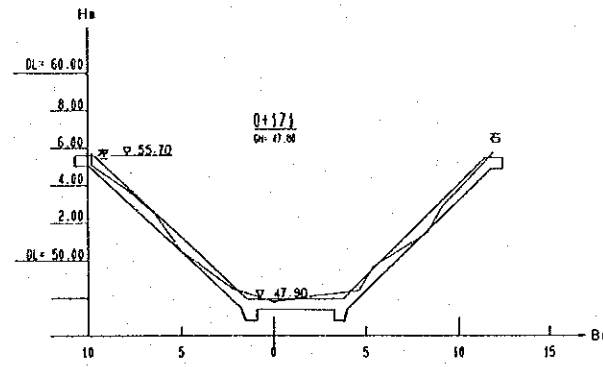
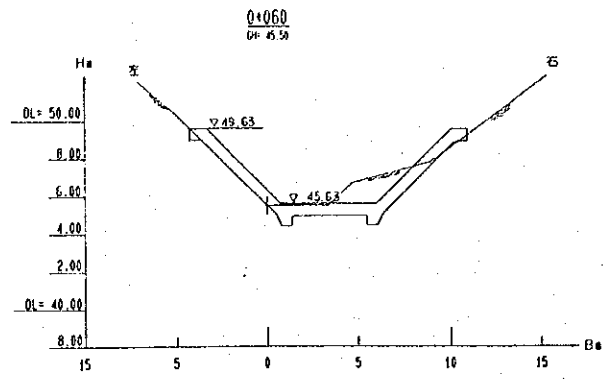
大西溝 典型区 張岬ダム改修計画平面図 (D-4)



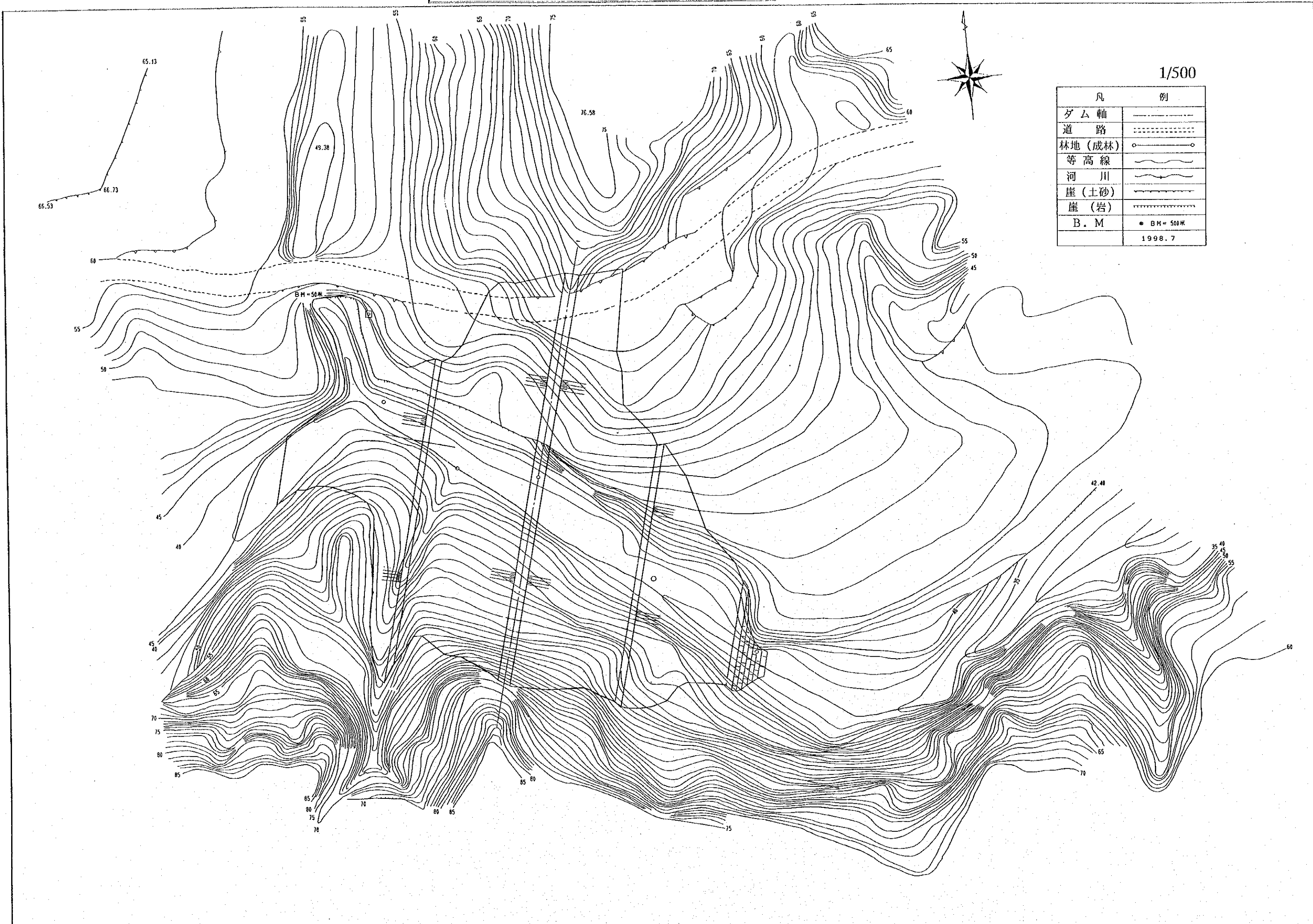
1/500

凡	例
河 川	
等 高 線	
崖 (土砂)	
崖 (岩)	
林地 (成林)	
B. M	
ダム堤体	
	1998. 7

大西溝 典型区 張峯ダム改修計画横断図 (D-5)



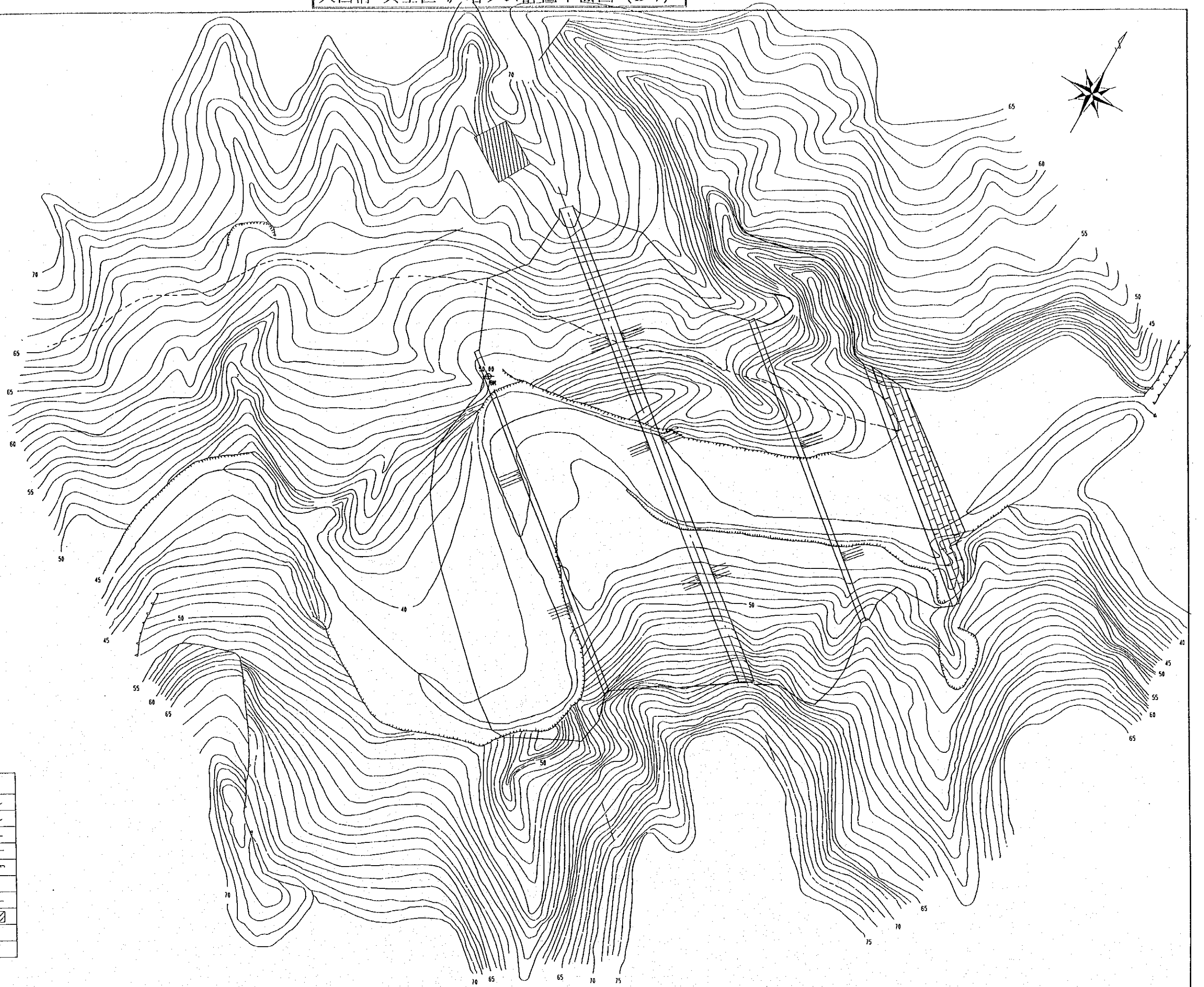
大西溝 典型区 柳溝ダム計画平面図 (D-6)



1/500

凡	例
ダム軸	-----
道路	-----
林地(成林)	○-----○
等高線	~~~~~
河川	~~~~~
崖(土砂)	~~~~~
崖(岩)	~~~~~
B. M	● B.M. = 500米
	1998.7

大西溝 典型区 伊塔ダム計画平面図 (D-7)

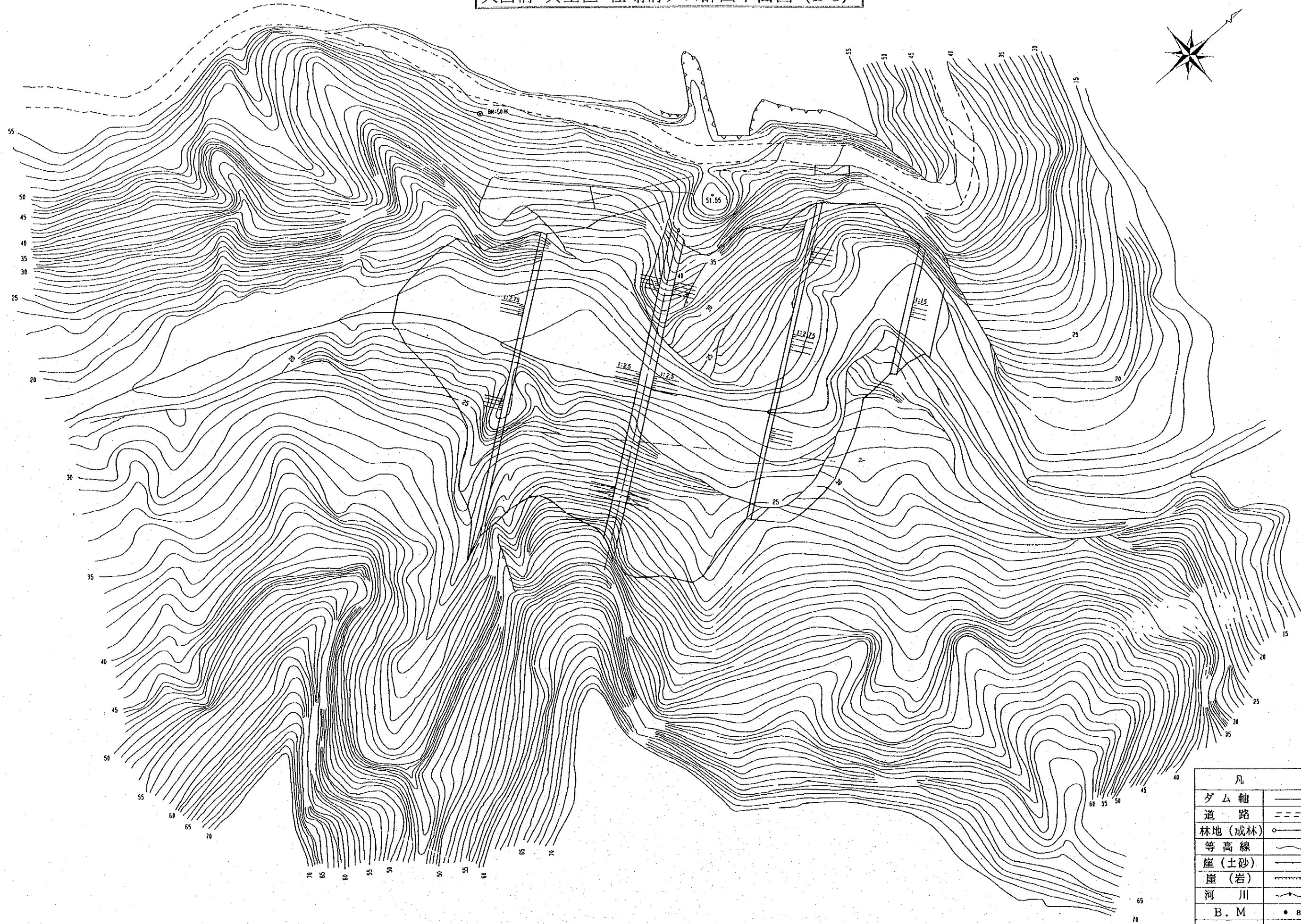


1:500

凡	例
等高線	
河川	
道路	
崖(土砂)	
崖(岩)	
B. M	
ダム軸	
住宅地	

1998.7

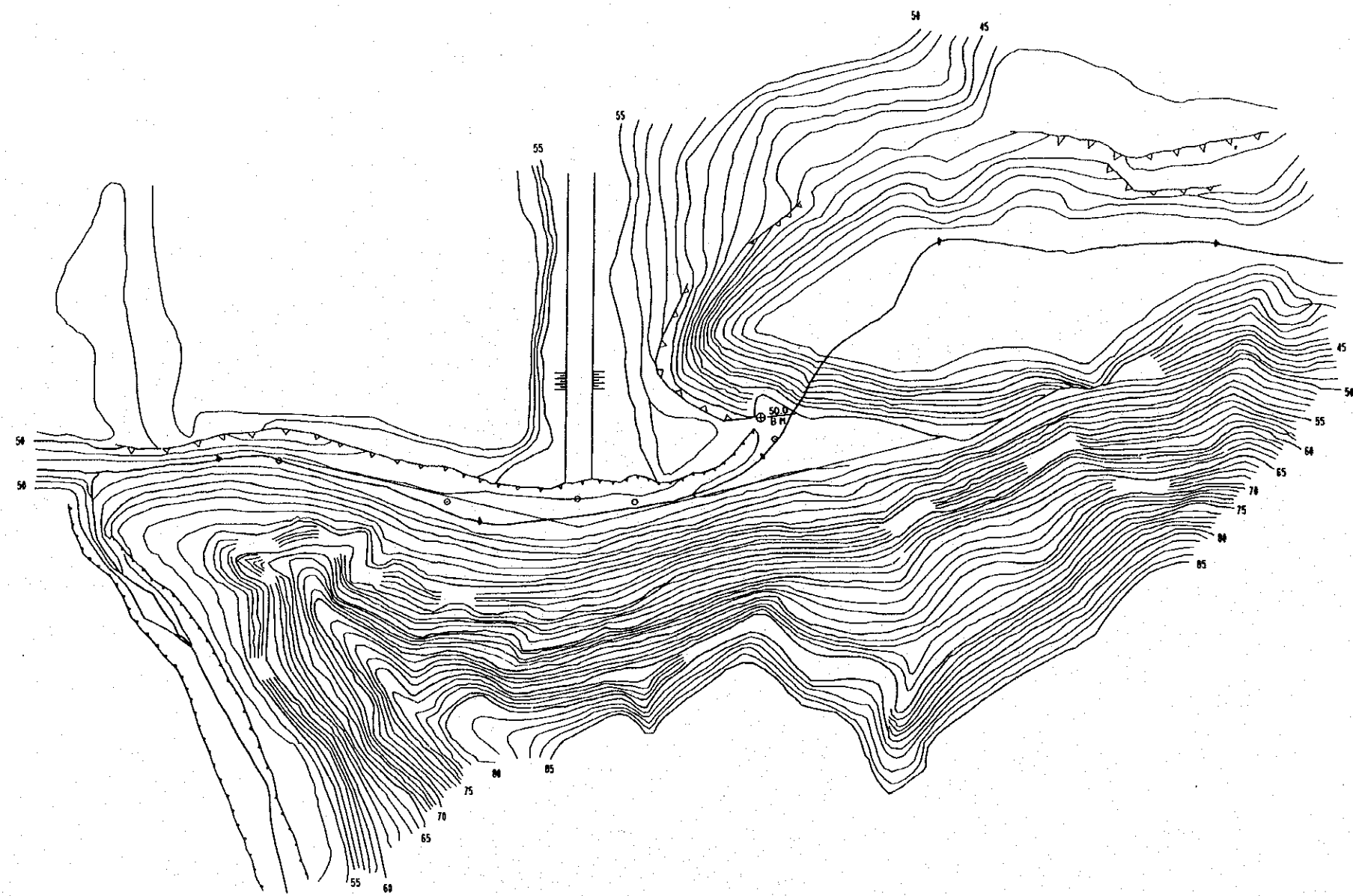
大西溝 典型区 任場溝ダム計画平面図 (D-8)



1/500

凡	例
ダム軸	———
道路	-----
林地(成林)	○-----○
等高線	~~~~~
崖(土砂)	———
崖(岩)	~~~~~
河川	~~~~~
B. M	● BM-50*
1998.7	

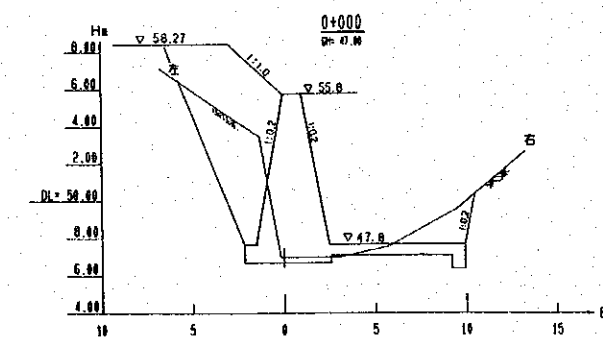
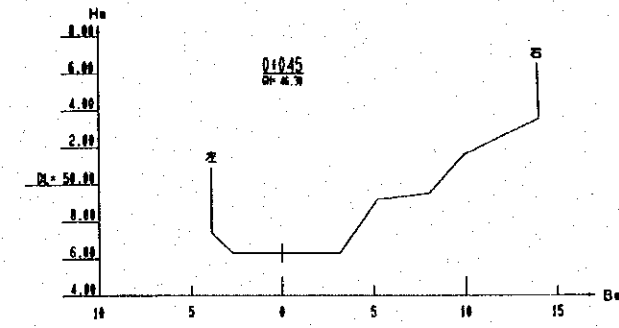
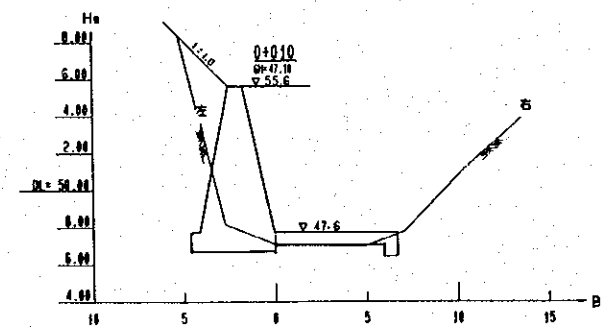
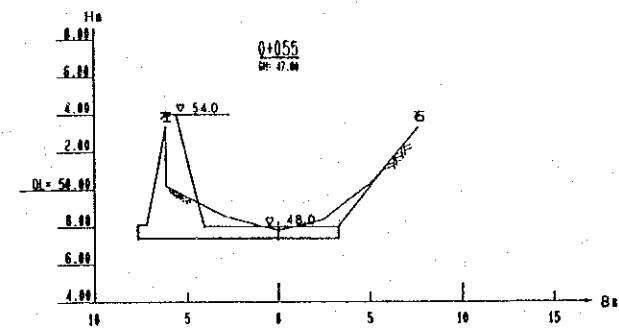
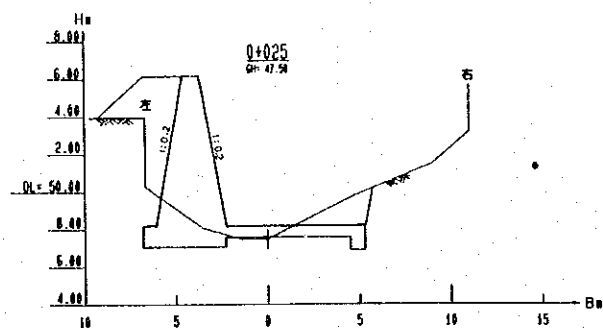




凡	例
ダム軸	— — — — —
道路	· · · · ·
林地(成林)	○ ○ ○ ○ ○
等高線	~~~~~
崖(土砂)	———▲———
崖(岩)	———▲———
河川	~~~~~
B. M	● $\frac{85.0}{B.M.}$
住宅地	▨▨▨▨▨
林(住居)	∩ ∩
ダム堤体	

1/500

大西溝 典型区 湯家河ダム改修計画横断図 (D-10)

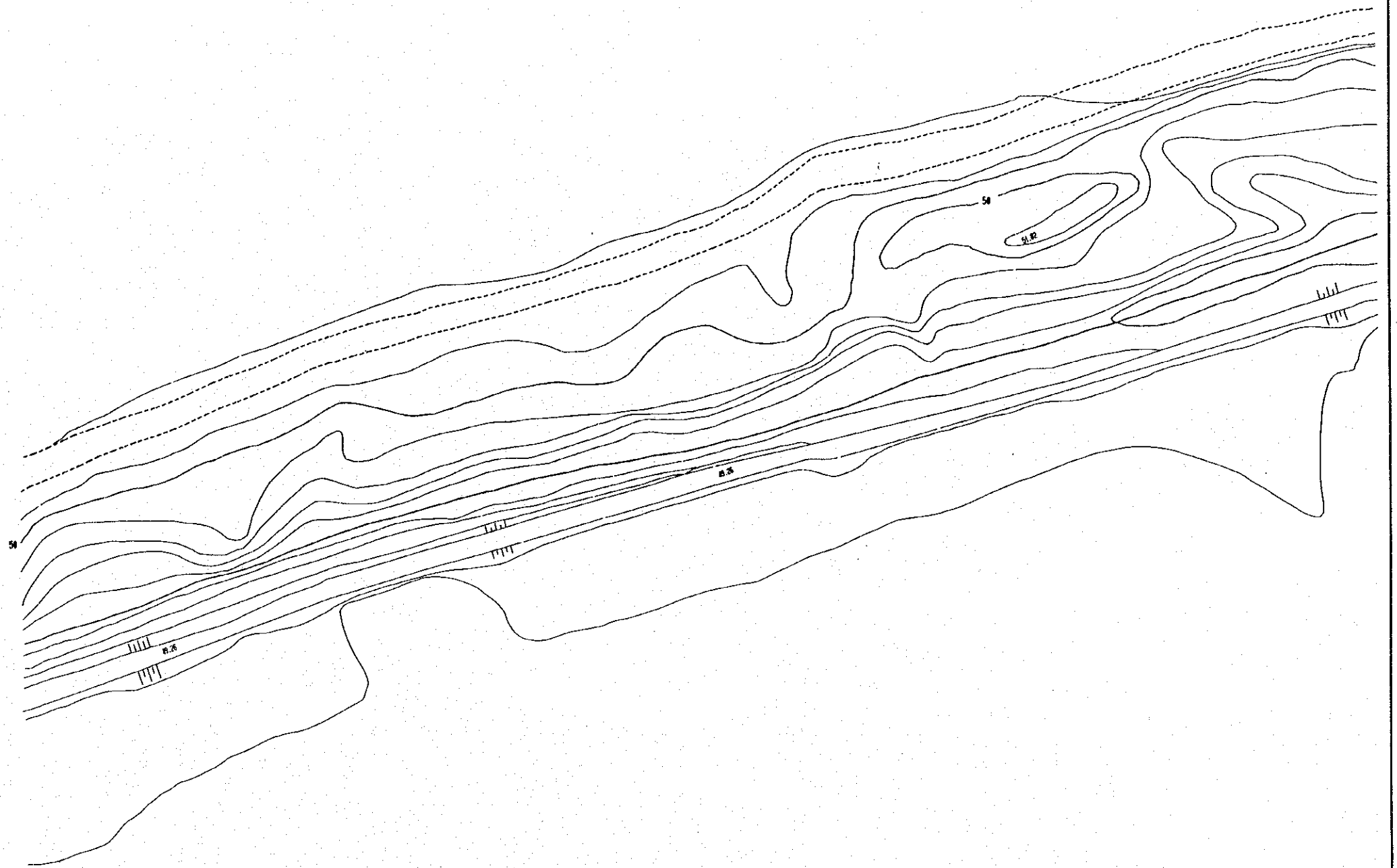


大西溝 典型区 李圪塔ダム改修計画平面図その1 (D-11)

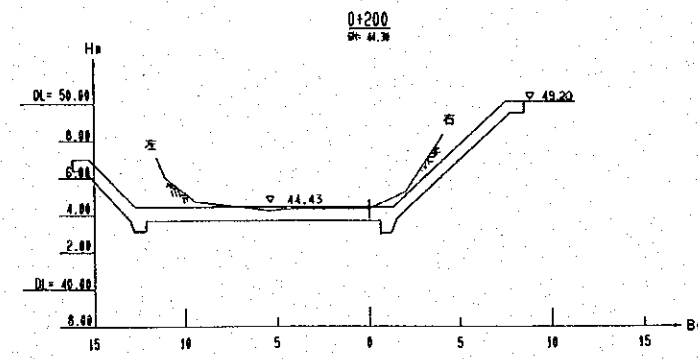
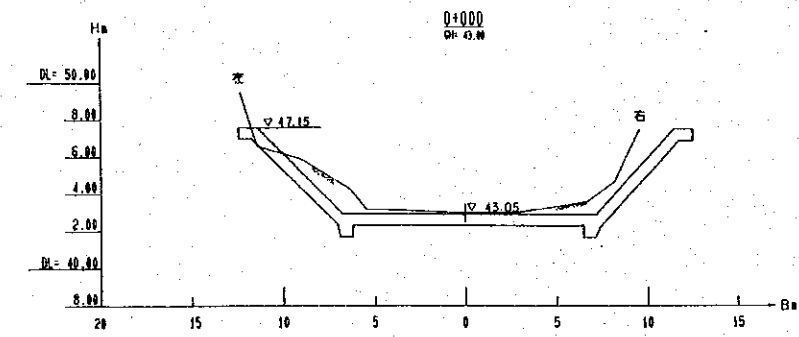
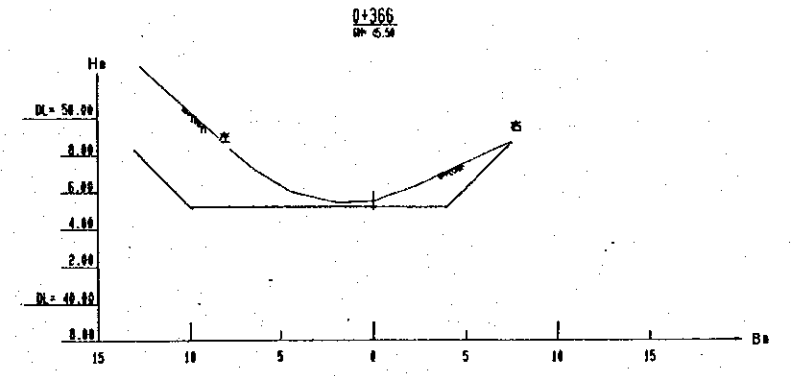
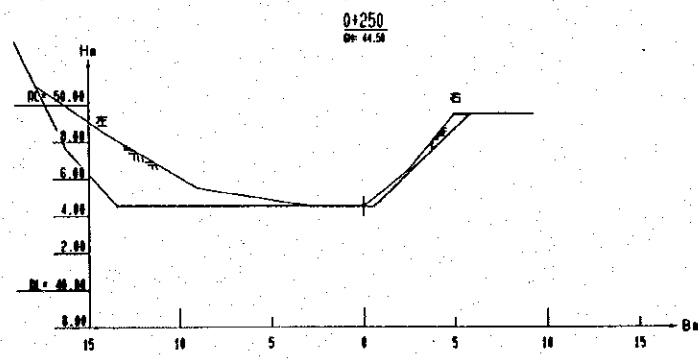
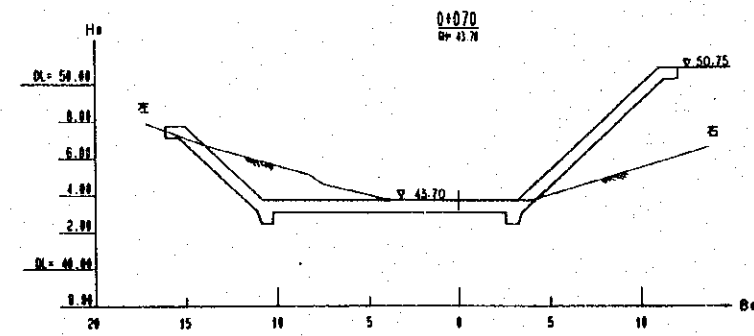
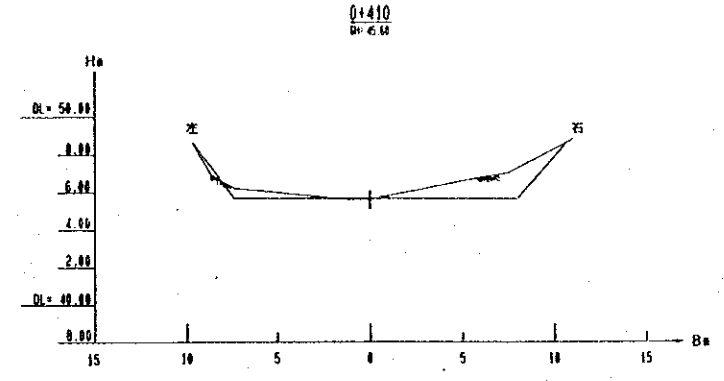
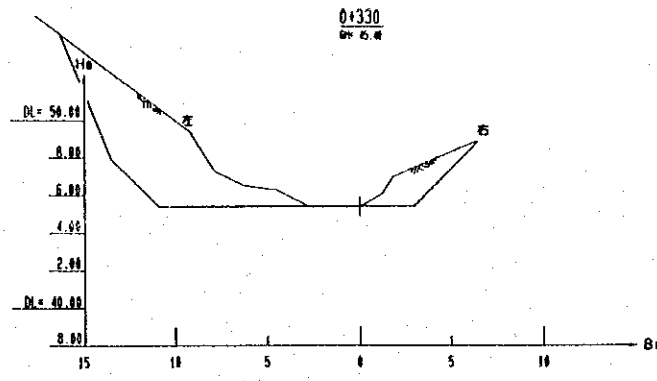
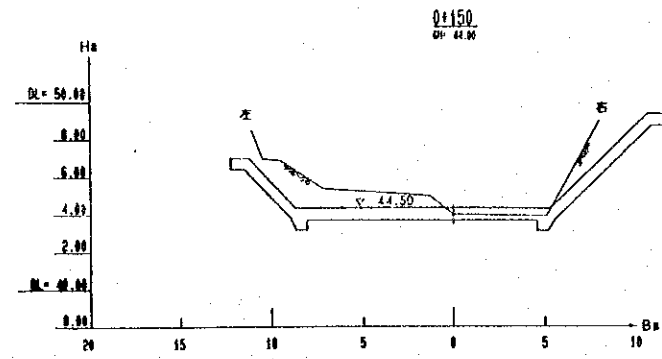


凡	例
等高線	
河川	
道路	
ダム軸	
崖(土砂)	
崖(岩)	
B. M	● B.H=50M
	1998.7

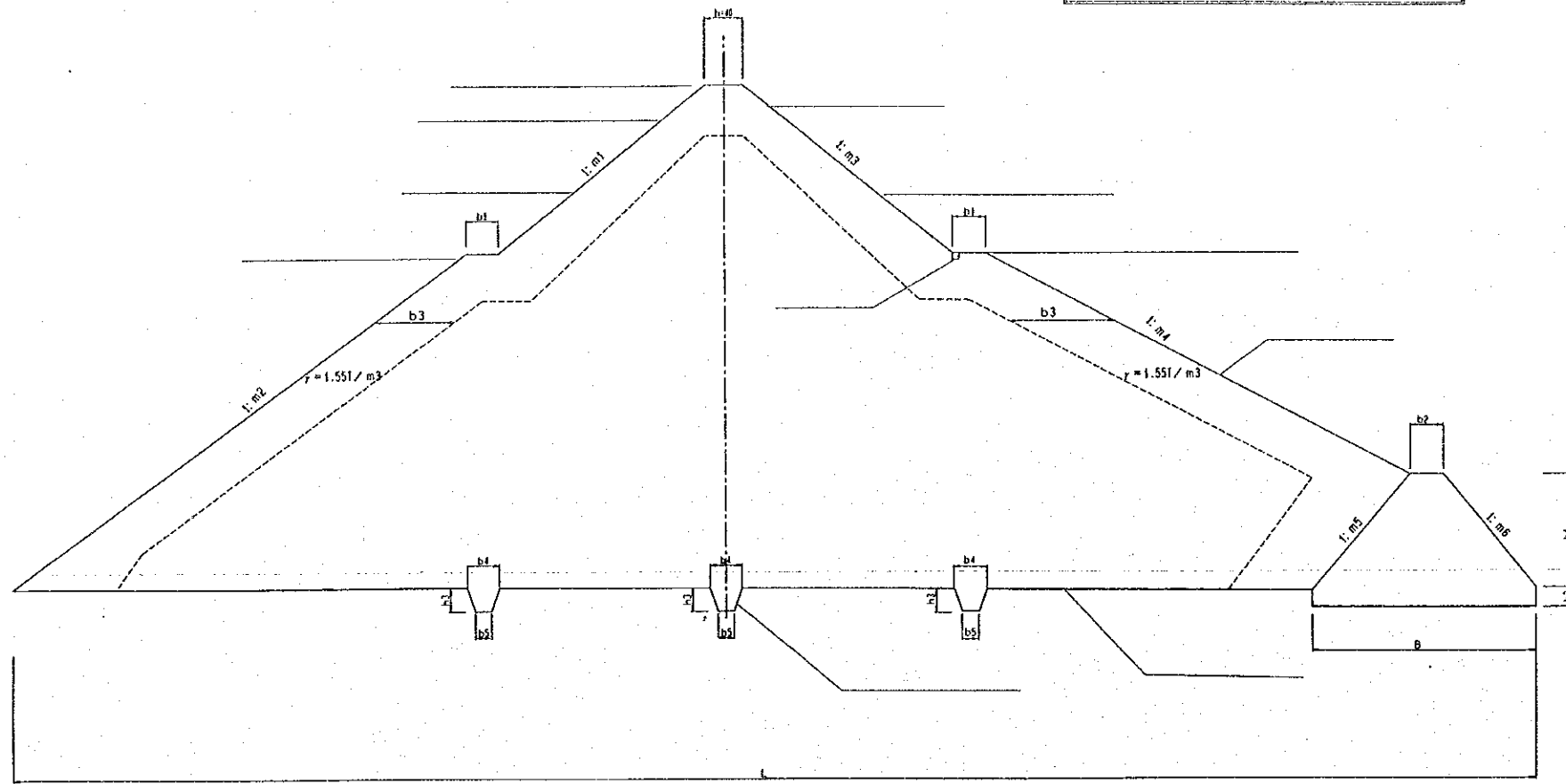
1/500



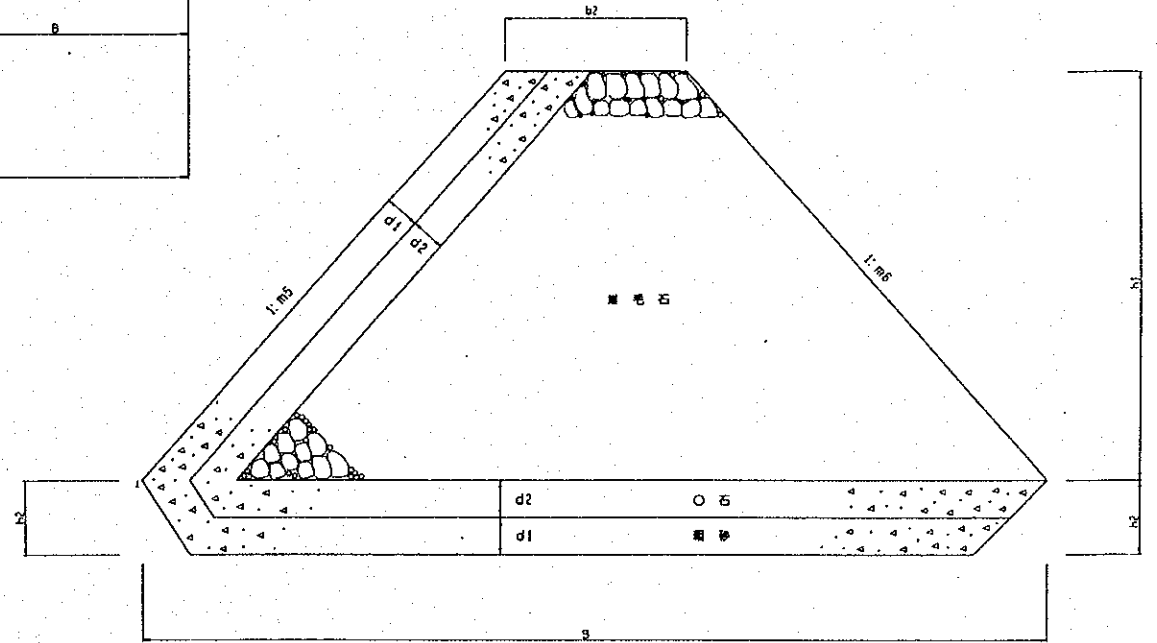
大西溝 典型区 李圪塔ダム改修計画横断図 (D-13)



ダム標準断面図 (D-14)



○○○○横断面図

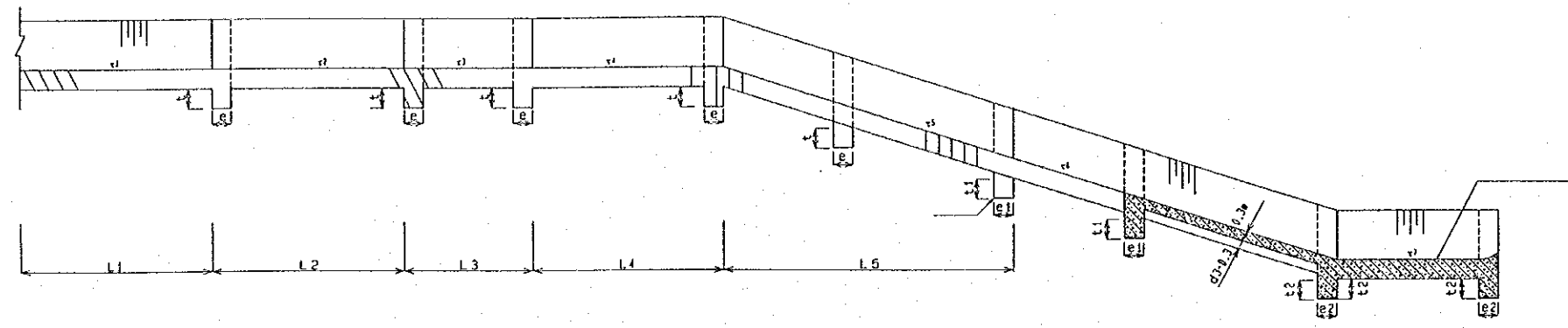


○○○○横断面図

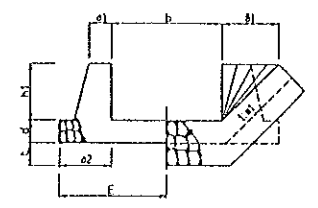
ダム設計各部尺寸表

ダム名	crest					L (m)	upstream slope					foundation					downstream slope					other main dimensions										
	H (m)	H1 (m)	H6 (m)	H3 (m)	H5 (m)		H2 (m)	b1 (m)	1:m1	1:m2	1:m3	1:m4	h1 (m)	h2 (m)	h3 (m)	B (m)	1:m5	1:m6	d1 (m)	d2 (m)	b4 (m)	b5 (m)	h3 (m)	B3 (m)	V (m)	γ (t/m <sup>3</sup> )	▽ (m)	▽ (m)	▽ (m)	t (m)	▽ (m)	▽ (m)
老庄橋	62.60	63.60	42.60	47.00	41.30	95	53.60	1.5	1:2.25	1:2.25	1:2.5	1:2.5	4.50	0.6	2.0	14.4	1:1.25	1:1.5	0.3	0.3	3.0	1.0	1.0	7.0	0.2	1.55	57.60	60.40	2.20	50.60	0.2×0.2	
任形	43.30	44.50	15.50	17.00	14.00	155	30.50	1.5	1:2.5	1:2.5	1:2.75	1:2.75	5.50	0.6	2.0	16.5	1:1.25	1:1.5	0.3	0.3	4.5	1.5	1.5	7.0	0.2	1.55	27.00	36.00	41.30	2.00	38.50	0.2×0.2
伊塔	64.30	65.40	37.30	39.40	36.00	147	51.30	1.5	1:2.5	1:2.5	1:2.75	1:2.75	5.50	0.6	2.0	16.9	1:1.25	1:1.5	0.3	0.3	4.5	1.5	1.5	7.0	0.2	1.55	50.00	58.30	62.60	1.70	60.90	0.2×0.2
柳川橋	65.00	66.00	36.00	38.40	36.60	154	53.00	2.0	1:2.5	1:2.5	1:2.75	1:2.75	5.20	0.6	2.0	16.3	1:1.25	1:1.5	0.3	0.3	4.5	1.5	1.5	8.0	0.2	1.55	51.00	55.50	63.00	2.00	58.00	0.2×0.2
柳川橋	50.70	50.70	28.20	30.00	27.20	77	30.20	1.5	1:1.5	1:1.25	1:2	1:1.5	4.20	0.6	2.0	10.0	1:1.25	1:1.5	0.3	0.3	3.0	1.0	1.0		1.55	43.60	40.70	1.96	46.10	0.2×0.2		
須賀橋	56.79	56.79	53.69	52.31	52.19	17			1:1.5	1:1.25															1.55	47.90	55.21	1.50	52.31			
柳川	58.27		58.27									1:2													1.55	47.60	55.28	2.93	52.10			
宇佐橋	52.23	52.23	50.73	46.50	42.23	27			1:1.5	1:1.25															1.55	43.70	50.25	1.90	46.50			

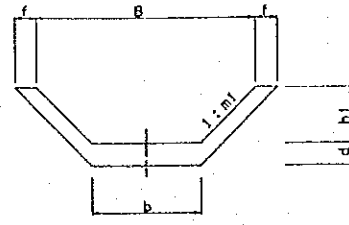
ダム洪水吐標準断面図 (D-15)



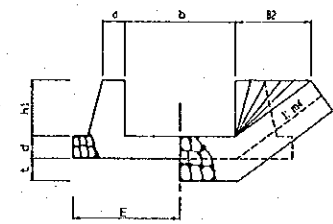
甲-甲剖面 ( )



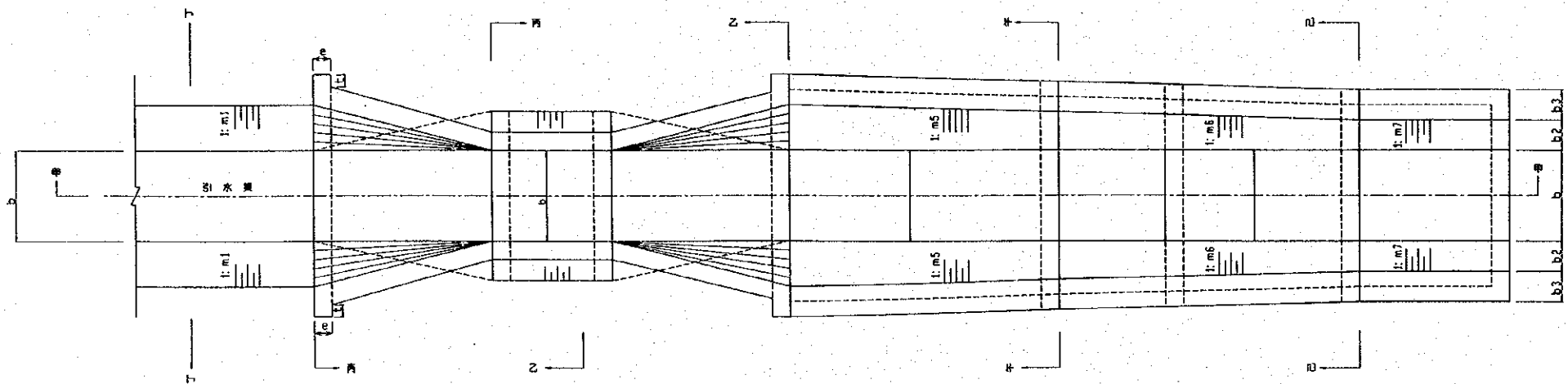
丙-丙 剖面图 (天比例)



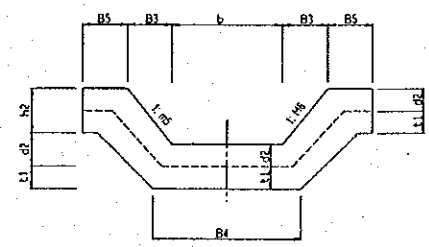
丁-丁 剖面图 (天比例)



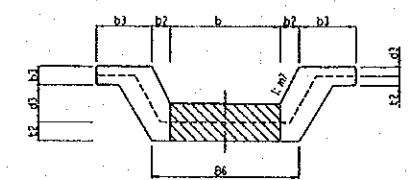
乙-乙 剖面图 (天比例)



○ 洪水平面布置图



午-午 剖面图 (天比例)

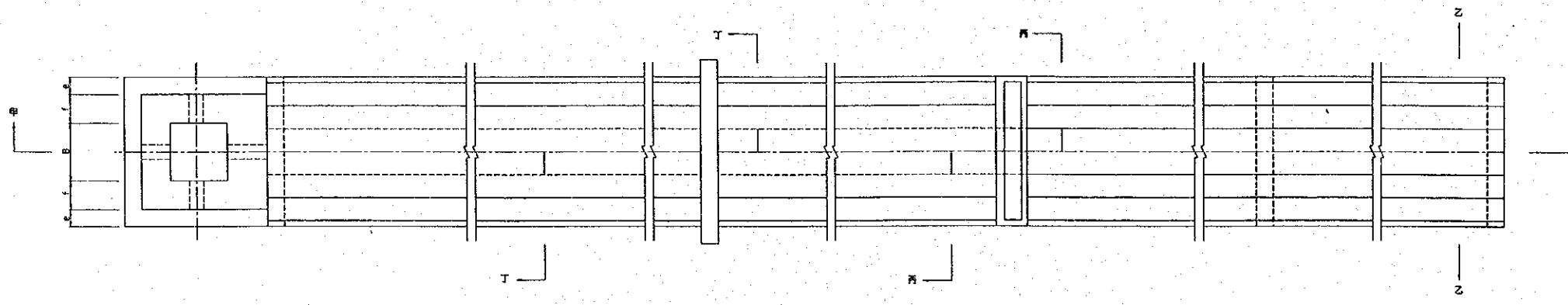
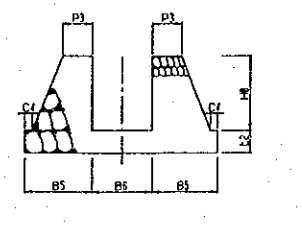
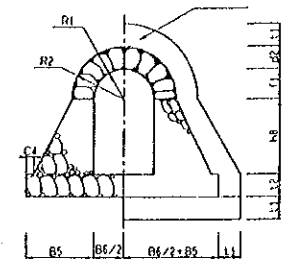
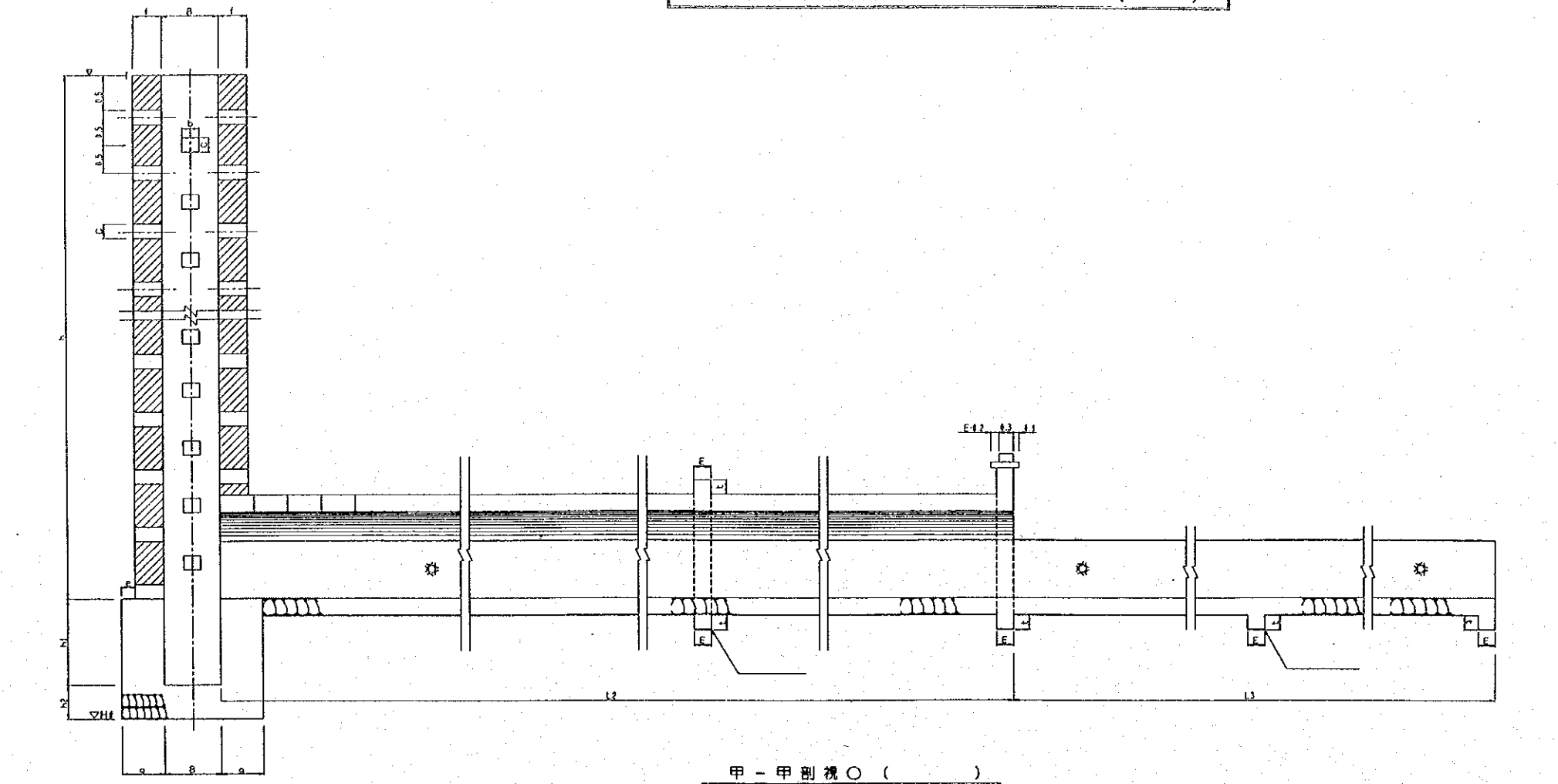


己-己 剖面图 (天比例)

洪水吐各部尺寸表

	引水渠・排水渠										溢流										出口部構造																												
	h1 (m)	d (m)	v1	L1 (m)	b (m)	B (m)	f (m)	L2 (m)	L3 (m)	v2	e (m)	t (m)	B1 (m)	L4 (m)	v3	e1 (m)	2E (m)	e2 (m)	L5 (m)	v4	B2 (m)	L6 (m)	v5	1:m5	B3 (m)	B5 (m)	d2 (m)	L7 (m)	v6	1:m6	h3 (m)	d3 (m)	e1 (m)	t1 (m)	L8 (m)	e2 (m)	t2 (m)	L9 (m)	v7	1:m7	b2 (m)	b3 (m)	B5 (m)						
老庄橋	3.3				2.7					0.6	0.6								105	2.1	1/50	1:1	2.1	1.0	0.6											0.8	1.0												
任那	6.0				6.9														140	5.0	1/100	1:02																											
伊塔	5.0	0.6	1/200	1:1	5.4	15.4	0.9	10	15	1/200	0.6	0.6	5.0	15	0	0.8	11.2	3	5	1/30	5	135	2.5	1/30	1:1	2.5	1.0	0.6	50	1/3	1:1	1.9	0.8	0.8	1.0	50	0.8	1.5	17	0	1:0	0	1.0	15					
柳瀬橋	8.0				8.7	18.7		15	1/50	0.6	0.6	5.0	20	0	0.8	16.9	4		210	4.7	1/50	1:0	0	0.6	0.6																								
西野橋	5.7	0.6	1/200	1:1	5.8	17.2	0.9	20	15	1/200	0.6	0.6	5.7	20	0	0.8	11.6	3	5	1/50	3.4	65	2.6	1/50	1:1	2.6	1.0	0.6	50	1/4	1:1	1.7	0.8	0.8	1.0	30	0.8	1.5	5	0	1:1	1.7	1.0	11					
張家橋	4.6	0.6	1/250	1:1	5.3	14.5	0.9	65											135	2.5	1/40	1:1	2.5	1.0	0.6																								
黒河	8.0	0.6	1/200		7.5		0.6	100											120	5.8	1/100				0.6																								
李比塔	2.5	0.6	1/200	1:1	14.0	19.0	0.9	1,150											65	4.1	1/100	1:1	4.1	1.0	0.6																								

ダム取水施設標準断面図その1 (D-16)



放水工各部尺寸表

		壩													井															閘																△石〇																
ΔH	井	h2	h1	B	g	e	b	c	h	f	H	b1	o	h4	h3	∞	t	a1	G	f2	D	d	K	P	B2	B1	C2	h7	a2	d1	P1	B3	B4	h5	h6	C3	L	b3	L1	a3	R1	R2	C4	t1	d2		f1	hg	B5	B6	t2	E	P3	L2	L3							
(m)	(m)	(m)	(m)	(m)	(m)	(m)	(m)	(m)	(m)	(m)	(m)	(m)	(m)	(m)	(m)	(m)	(m)	(m)	(m)	(m)	(m)	(m)	(m)	(m)	(m)	(m)	(m)	(m)	(m)	(m)	(m)	(m)	(m)	(m)	(m)	(m)	(m)	(m)	(m)	(m)	(m)	(m)	(m)	(m)	(m)	(m)	(m)	(m)	(m)	(m)	(m)	(m)	(m)	(m)	(m)	(m)	(m)					
任填溝	26.48	41.80	0.60	2.00	1.00	0.80	0.20	0.25	0.26	12.80	0.60																																											110	32	29.00						
伊塔											13.16	0.60	0.40	0.40	0.60	1:2	0.40	0.40	0.40	0.40	0.45	0.39	0.18	0.30	0.60	0.60	0.16	0.16	0.15	0.90	0.65	1.00	1.70	2.10	0.26	0.26	6.70	1.20	8.20	0.36	0.4	0.7	0.1	0.5	0.3	0.4	0.8	0.9	0.8	0.4	0.5	0.6	90	50	50.00							
柳溝	48.40	63.00	0.60	2.80	1.00	0.80	0.20	0.28	0.30	12.00	0.60																																																			



ダム取水施設標準断面図その2 (D-17)

