

Department of Social Development (DSD)

Department of Social Development

Department of Social Development

THE GROUP

(1)

THE GROUP, A DIVISION OF THE NATIONAL MANAGEMENT CENTER

FOR THE DEVELOPMENT OF HUMAN RESOURCES

FOR THE

DEVELOPMENT OF HUMAN RESOURCES

Human Resource

Human Resource

JICA LIBRARY

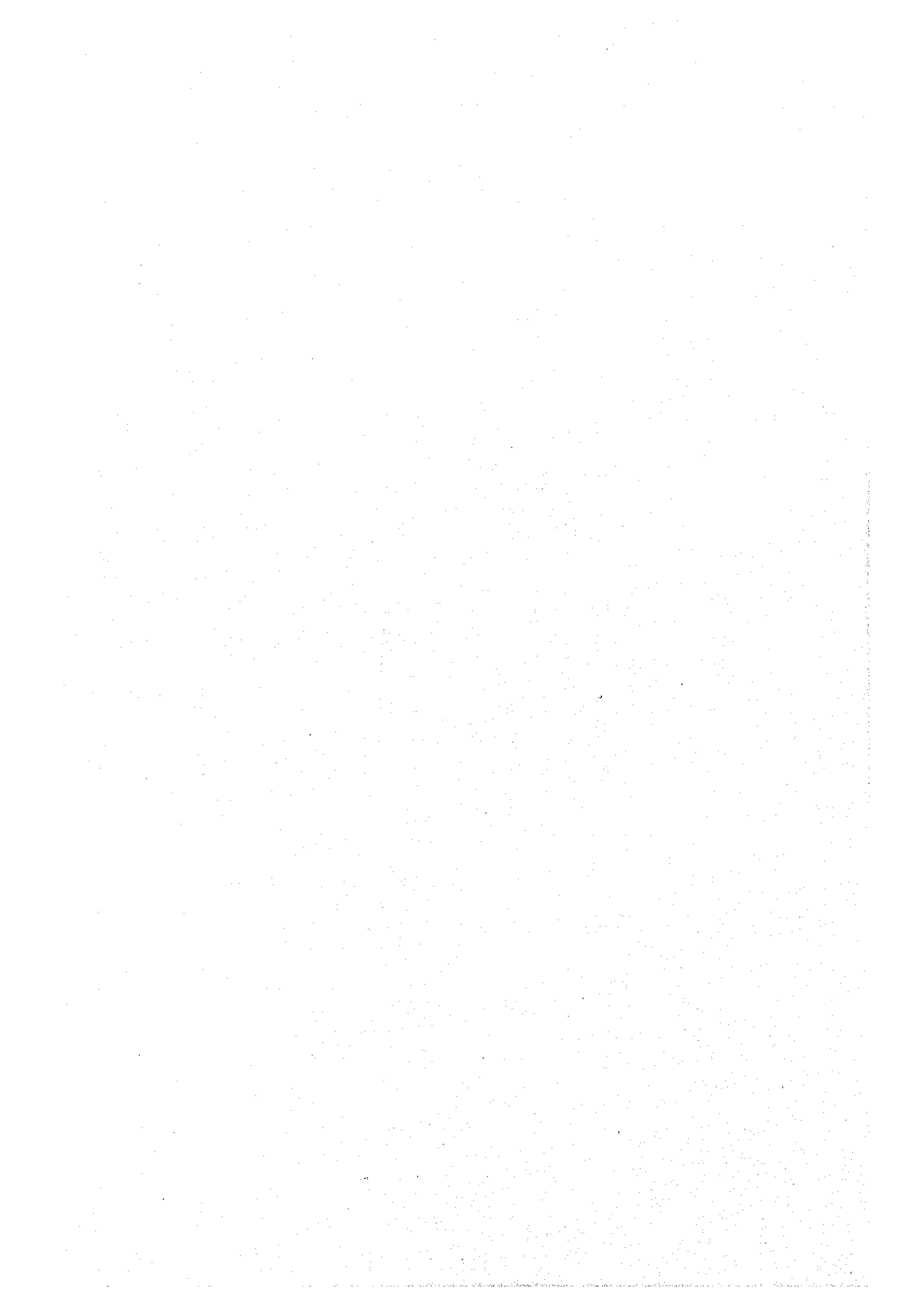


J 1149875 (5)

196

Department of Social Development, National Management Center, Tokyo, Japan

196



**Japan International Cooperation Agency (JICA)**

**Ministry of Environment and Waters  
Republic of Bulgaria**

**THE STUDY  
ON  
INTEGRATED ENVIRONMENTAL MANAGEMENT FOR  
THE MARITZA RIVER BASIN  
IN THE  
REPUBLIC OF BULGARIA**

**Final Report**

**Data Book**

**March 1999**

**Pacific Consultants International, Tokyo**

1149875 [5]

## LIST OF DATA BOOK

### Data Book for Supporting Report D: Meteorology, Hydrology and River Cross Section Survey

Data D.1	Monthly Precipitation, Temperature and Relative Humidity
Data D.2	Daily Precipitation, Temperature and Relative Humidity
Data D.3	Monthly Discharge and Water Level
Data D.4	Daily Discharge and Water Level
Data D.5	Discharge Measurement Survey by JICA
Data D.6	Cross-sectional Survey by JICA
Data D.7	Some Additional Data on Meteorology and Hydrology

### Data Book for Supporting Report E: Water Resources

Data E.1	Data of Reservoir Balance
Data E.2	Data of Irrigation Water Supply
Data E.3	Irrigation Water Consumption by Crops in 1996
Data E.4	Monthly Rainfall of the Irrigation System in 1994 and 1995
Data E.5	Monthly Average Potential Evapotranspiration and Crop Efficiency of Irrigation Systems
Data E.6	Inter-basin Water Transfer
Data E.7	Inner-basin Water Transfer
Data E.8	Ponds in the Maritza River Basin

### Data Book for Supporting Report F: Water Supply and Water Use Survey

Data F.1	Organization of Water Supply and Sewerage Company
Data F.2	Ground Water Quality Data
Data F.3	Water Use Survey

### Data Book for Supporting Report G: Water Quality

Data G.1	Water Quality Data from NCESD
----------	-------------------------------

Data Book for Supporting Report J: Socio-economy

Data J.1 Population in the Maritza River Basin

Additional Data

Data Book N: Topographic Survey

Data N.1 Pazardjik Wastewater Treatment Plant Site Plan

Data N.2 Stara Zagora Wastewater Treatment Plant Site Plan

Data N.3 Dimitrovgrad Wastewater Treatment Plant Site Plan

**DATA BOOK FOR  
SUPPORTING REPORT D  
METEOROLOGY, HYDROLOGY  
AND RIVER CROSS SECTION SURVEY**

**DATA D.1**

**MONTHLY  
PRECIPITATION,  
TEMPERATURE AND  
RELATIVE HUMIDITY**



TABLE D.1.1 SADIEVO STATION (CODE NO. 41030)

Year Month	Monthly Total Precipitation (mm)												Annual (mm)
	Jan.	Feb.	Mar.	Apr.	May	June	July	Aug.	Sep.	Oct.	Nov.	Dec.	
1963	128.00	85.30	47.40	73.00	66.90	51.70	75.20	40.00	18.50	36.70	39.50	35.40	697.60
1964	9.00	21.10	31.00	29.00	62.80	31.40	15.40	38.60	84.10	34.70	39.80	39.50	436.40
1965	40.70	80.30	7.00	33.60	95.00	9.60	30.50	23.70	1.10	5.30	72.60	112.20	511.60
1966	58.10	16.10	27.50	67.70	54.40	123.10	98.70	39.50	38.70	38.20	235.90	127.00	924.90
1967	32.60	20.10	10.00	31.80	29.90	41.10	50.40	45.30	62.40	20.10	17.80	39.50	401.00
1968	37.20	52.50	6.30	4.90	7.80	69.90	19.90	99.60	88.50	16.20	35.60	43.30	481.70
1969	57.80	76.10	80.20	24.20	38.30	67.40	73.00	2.80	25.00	0.00	12.50	182.00	639.30
1970	26.50	44.50	61.00	70.80	37.00	69.90	36.60	19.30	4.30	40.90	51.30	21.50	483.60
1971	25.90	61.30	51.20	27.30	80.90	36.00	108.90	9.00	35.90	55.20	24.00	23.20	538.80
1972	24.70	16.10	2.50	83.40	51.00	28.90	65.30	47.40	47.50	130.70	17.60	2.60	517.70
1973	46.10	27.30	75.30	114.90	33.80	54.50	113.20	2.00	33.20	15.50	23.20	34.30	573.30
1974	5.40	15.60	55.70	54.30	56.80	49.50	58.20	12.90	17.70	25.80	70.60	56.60	479.10
1975	12.10	14.70	56.90	43.50	82.80	70.50	65.60	118.40	1.00	112.70	24.40	22.50	625.10
1976	3.60	17.80	7.60	51.10	42.90	31.70	103.30	59.30	33.60	37.40	73.10	21.90	483.30
1977	48.40	33.70	8.80	35.20	93.50	83.00	47.10	9.30	33.90	18.20	27.70	23.20	462.00
1978	20.30	46.70	47.10	57.40	88.30	72.30	11.40	33.80	71.60	9.30	19.90	35.90	514.00
1979	46.40	42.30	4.00	42.80	84.90	48.00	47.70	112.80	3.80	52.10	86.90	13.60	585.30
1980	73.80	12.30	6.70	74.40	129.30	19.20	39.50	42.30	37.10	4.10	60.80	63.60	563.10
1981	54.80	34.50	19.50	28.10	20.10	42.10	31.30	36.00	5.40	14.10	46.70	55.50	388.10
1982	15.00	39.00	49.00	37.00	9.00	77.00	33.00	84.00	39.00	22.00	51.00	73.00	528.00
1983	8.00	3.00	18.00	15.00	10.00	151.00	54.00	28.00	26.00	27.00	29.00	29.00	398.00
1984	41.00	61.00	60.00	16.00	60.00	75.00	22.00	63.00	25.00	3.00	35.00	38.00	499.00
1985	32.00	42.00	15.00	53.00	65.00	61.00	9.00	27.00	10.00	3.00	101.00	4.00	422.00
1986	31.00	136.00	12.00	8.00	12.00	45.00	17.00	34.00	26.00	34.00	3.00	11.00	369.00
1987	39.00	37.00	20.00	103.00	36.00	41.00	24.00	8.00	19.00	36.00	45.00	64.00	472.00
1988	14.00	38.00	65.00	23.00	44.00	69.00	1.00	1.00	14.00	29.00	61.00	23.00	382.00
1989	0.00	4.00	47.00	26.00	45.00	53.00	34.00	51.00	39.00	38.00	40.00	55.00	432.00
1990	3.00	9.00	0.00	67.00	29.00	32.00	33.00	20.00	42.00	36.00	15.00	107.00	393.00
1991	14.00	58.00	20.00	33.00	97.00	42.00	60.00	24.00	2.00	36.00	26.00	16.00	428.00
1992	4.00	5.00	38.00	69.00	43.00	175.00	62.00	4.00	7.00	17.00	50.00	16.00	490.00
1993	5.00	11.00	35.00	78.00	95.00	52.00	19.00	42.00	13.00	48.00	91.00	16.00	505.00
1994	17.00	4.00	28.00	91.00	26.00	49.00	70.00	9.00	6.00	57.00	27.00	92.00	476.00
1995	51.00	8.00	52.00	24.00	42.00	43.00	39.00	37.00	68.00	7.00	55.00	81.00	507.00
1996	12.80	42.90	29.60	27.40	34.00	11.10	14.90	77.30	121.90	6.50	56.30	77.10	511.80

TABLE D.1.2 STARA ZAGORA STATION (CODE NO. 42010)

Year	Month	Monthly Total Precipitation (mm)												Annual (mm)
		Jan.	Feb.	Mar.	Apr.	May	June	July	Aug.	Sep.	Oct.	Nov.	Dec.	
1963		156.80	85.30	47.50	79.50	53.40	48.80	68.30	14.30	19.20	61.80	37.20	47.00	719.10
1964		8.90	32.40	36.90	63.10	61.80	29.50	26.30	29.20	70.80	39.00	39.80	27.10	464.80
1965		25.80	133.40	17.10	36.50	109.50	27.30	15.60	36.00	0.20	3.30	71.30	65.50	541.50
1966		60.50	14.90	27.00	58.20	52.00	91.10	115.30	37.30	74.90	41.10	178.40	130.80	818.10
1967		29.00	13.80	17.40	46.50	75.60	20.30	36.70	30.30	70.60	36.40	18.20	33.50	432.60
1968		40.00	55.40	9.10	6.20	19.00	48.50	57.70	76.30	70.60	12.00	35.60	55.60	486.00
1969		95.90	99.30	109.60	30.20	34.00	104.20	28.60	11.20	27.10	0.10	8.70	184.30	733.20
1970		37.10	62.20	79.10	43.40	83.70	100.20	10.90	43.10	7.30	54.10	37.20	29.50	587.80
1971		40.80	72.20	69.20	24.20	122.80	59.90	75.40	13.60	60.00	62.50	11.40	29.20	641.20
1972		28.20	29.80	3.70	50.50	61.10	65.50	60.50	59.30	45.00	216.70	24.00	0.60	644.90
1973		69.10	37.50	77.10	134.70	72.90	26.80	129.10	4.00	35.80	18.30	35.60	39.10	680.00
1974		13.40	12.70	57.70	49.50	86.80	51.30	66.20	48.00	12.50	22.60	65.00	93.20	578.90
1975		14.00	13.20	43.50	63.40	96.90	58.00	58.60	128.60	15.00	75.50	24.10	37.60	628.40
1976		21.00	15.50	11.70	47.10	41.70	83.50	111.30	65.00	31.60	62.30	73.00	21.50	585.20
1977		93.40	29.50	2.50	31.90	76.50	107.90	81.90	11.30	47.90	17.00	31.70	37.10	568.60
1978		26.10	34.30	30.70	77.20	95.40	107.30	26.00	63.00	117.10	10.70	33.90	36.50	658.20
1979		71.90	18.10	2.10	44.10	78.20	38.40	60.80	223.80	8.20	59.70	73.50	23.40	702.20
1980		67.80	0.70	6.60	76.90	130.20	23.90	57.10	72.30	14.30	3.50	52.20	95.70	601.20
1981		98.50	16.90	13.20	15.80	15.10	39.60	48.60	40.40	14.10	34.60	32.00	44.80	413.60
1982		4.00	30.00	46.00	51.00	20.00	51.00	27.00	116.00	32.00	22.00	59.00	33.00	491.00
1983		2.00	3.00	17.00	9.00	19.00	65.00	38.00	11.00	42.00	16.00	21.00	47.00	290.00
1984		46.00	45.00	107.00	18.00	35.00	73.00	21.00	42.00	35.00	2.00	45.00	36.00	505.00
1985		20.00	18.00	11.00	31.00	28.00	84.00	11.00	49.00	19.00	3.00	96.00	0.00	370.00
1986		35.00	113.00	10.00	19.00	9.00	105.00	17.00	54.00	18.00	30.00	4.00	6.00	420.00
1987		42.00	35.00	21.00	61.00	29.00	54.00	31.00	43.00	14.00	38.00	62.00	49.00	479.00
1988		6.00	33.00	66.00	19.00	82.00	44.00	1.00	4.00	25.00	16.00	80.00	25.00	401.00
1989		0.00												
1990														
1991								114.00	35.00	2.00	19.00	31.00	3.00	
1992		7.00	7.00	35.00	80.00	26.00	130.00	17.00	0.00	4.00	17.00	38.00	15.00	376.00
1993		9.00	34.00	44.00	42.00	101.00	43.00	29.00	44.00	9.00	19.00	79.00	4.00	457.00
1994		18.00	9.00	34.00	75.00	36.00	25.00	51.00	3.00	0.00	48.00	27.00	77.00	403.00
1995		77.00	8.00	71.00	26.00	36.00	59.00	63.00	26.00	64.00	6.00	51.00	83.00	570.00
1996		5.60	37.00	32.20	14.40	40.80	12.00	6.50	81.00	102.90	13.00	80.90	97.20	523.50

TABLE D.1.3 HASKOVO STATION (CODE NO. 43010)

Year Month	Monthly Total Precipitation (mm)												Annual (mm)
	Jan.	Feb.	Mar.	Apr.	May	June	July	Aug.	Sep.	Oct.	Nov.	Dec.	
1963	127.80	60.90	52.40	101.50	116.20	70.40	40.60	6.10	19.50	55.50	30.90	69.20	751.00
1964	25.10	47.80	41.30	44.70	93.60	56.20	11.80	33.10	207.50	37.70	45.30	62.10	706.20
1965	50.50	117.20	58.40	41.40	128.20	11.10	34.70	20.80	1.50	9.20	65.30	87.80	626.10
1966	83.60	21.40	58.60	73.60	68.20	109.40	50.90	73.10	9.80	14.70	171.30	139.70	874.30
1967	57.10	32.30	68.50	52.00	72.30	97.10	11.90	45.00	74.90	28.60	26.20	34.50	600.40
1968	58.30	49.00	22.20	3.90	10.10	28.00	25.80	83.40	53.90	14.00	65.10	68.80	482.50
1969	155.00	45.90	74.70	23.00	38.30	52.80	22.60	17.70	94.80	0.50	2.50	258.40	786.20
1970	26.80	69.40	97.10	35.60	40.60	48.90	11.10	24.00	7.00	95.70	67.10	40.80	564.10
1971	58.50	106.20	104.00	43.20	81.00	75.80	132.90	44.20	48.90	49.80	9.00	50.70	804.20
1972	17.80	47.20	5.30	83.40	109.80	77.90	112.60	42.10	59.40	233.70	28.20	2.40	819.80
1973	63.20	57.70	73.60	121.20	22.40	79.30	80.30	3.70	42.30	45.00	47.30	21.40	657.40
1974	17.30	37.50	75.00	29.50	86.70	50.70	33.80	12.70	10.10	36.80	83.60	97.80	571.50
1975	66.20	14.70	39.40	158.20	86.40	112.10	32.50	207.90	10.80	115.20	63.80	35.80	943.00
1976	14.60	17.90	14.00	41.90	55.10	52.90	54.10	77.10	7.00	85.00	59.50	32.30	511.40
1977	109.40	63.60	33.50	16.40	97.20	80.90	82.50	10.70	57.30	13.70	27.60	71.70	664.50
1978	45.30	54.40	97.50	100.90	104.20	77.40	25.10	46.70	130.70	86.20	47.50	48.60	864.50
1979	45.30	79.80	5.00	35.90	68.90	66.80	35.70	97.60	12.70	96.80	125.70	46.20	716.40
1980	88.40	26.20	16.00	108.60	108.90	41.30	27.50	111.60	20.80	29.90	56.40	85.60	721.20
1981	178.10	53.10	25.80	17.90	30.30	18.70	40.10	43.60	4.50	7.00	95.50	61.40	576.00
1982	34.00	47.00	81.00	91.00	28.00	47.00	46.00	34.00	3.00	10.00	63.00	74.00	558.00
1983	25.00	33.00	19.00	17.00	46.00	133.00	27.00	59.00	46.00	28.00	31.00	79.00	543.00
1984	64.00	54.00	208.00	51.00	16.00	59.00	29.00	48.00	21.00	0.00	32.00	69.00	651.00
1985	55.00	39.00	26.00	45.00	53.00	45.00	14.00	15.00	7.00	10.00	110.00	12.00	431.00
1986	95.00	155.00	8.00	23.00	37.00	35.00	24.00	59.00	8.00	43.00	20.00	26.00	533.00
1987	68.00	45.00	48.00	167.00	29.00	51.00	119.00	26.00	11.00	37.00	49.00	72.00	722.00
1988	12.00	50.00	103.00	23.00	25.00	79.00	2.00	1.00	23.00	16.00	125.00	68.00	527.00
1989	1.00	1.00	125.00	2.00	43.00	58.00	24.00	18.00	8.00	42.00	96.00	132.00	550.00
1990	1.00	6.00	26.00	60.00	56.00	34.00	11.00	18.00	44.00	44.00	20.00	193.00	513.00
1991	19.00	92.00	18.00	59.00	79.00	22.00	68.00	51.00	27.00	88.00	29.00	40.00	592.00
1992	12.00	11.00	33.00	58.40	45.00	71.00	20.00	0.00	33.00	18.00	63.00	31.00	395.40
1993	35.00	58.00	79.00	35.00	86.00	27.00	21.00	72.00	4.00	48.00	98.00	40.00	603.00
1994	25.00	37.00	43.00	63.00	23.00	75.00	37.00	6.00	0.00	122.00	62.00	78.00	571.00
1995	133.00	28.00	135.00	49.00	28.00	25.00	44.00	48.00	59.00	11.00	68.00	70.00	698.00
1996	21.80	103.40	48.90	37.10	66.50	3.20	1.00	94.10	76.80	27.50	93.00	132.30	705.60

TABLE D.1.4 SVILENGRAD STATION (CODE NO. 43020)

Year Month	Monthly Total Precipitation (mm)												Annual (mm)
	Jan.	Feb.	Mar.	Apr.	May	June	July	Aug.	Sep.	Oct.	Nov.	Dec.	
1963	131.10	74.40	59.90	82.80	54.20	83.60	65.70	22.80	26.20	131.90	19.70	84.50	836.80
1964	12.10	50.10	33.50	36.60	47.50	34.00	22.90	36.70	179.50	26.50	31.10	46.10	556.60
1965	35.60	115.90	31.80	34.80	114.20	5.70	28.10	17.30	0.40	2.50	86.60	109.50	582.40
1966	83.10	23.30	43.90	59.10	81.70	56.30	18.30	46.10	25.90	95.50	216.80	158.20	908.20
1967	75.30	15.80	31.60	64.80	37.70	51.00	40.40	46.40	74.90	41.20	19.60	41.00	539.70
1968	65.50	24.60	3.80	2.70	13.10	30.40	4.90	51.40	43.00	13.10	31.80	81.50	365.80
1969	78.60	94.80	47.00	72.40	11.30	74.10	24.80	8.20	26.40	3.30	11.50	177.20	629.60
1970	43.30	72.90	92.00	45.70	39.90	23.90	15.30	7.10	31.20	95.30	68.40	41.40	576.40
1971	81.00	72.60	100.90	46.80	72.50	89.80	68.10	3.60	46.70	74.90	42.80	49.90	749.60
1972	18.20	30.40	4.60	79.60	72.00	24.70	55.40	11.20	70.70	165.80	11.40	3.50	547.50
1973	77.40	70.30	55.40	89.90	26.00	37.30	29.20	1.60	16.20	39.10	24.30	27.80	494.50
1974	17.00	28.70	62.40	21.40	62.90	33.70	32.90	23.60	25.00	22.20	86.10	55.70	471.60
1975	48.10	7.10	46.80	106.50	161.20	94.90	17.50	151.10	2.00	135.90	72.40	33.00	876.50
1976	6.50	22.90	20.50	42.30	46.00	36.10	45.00	51.80	5.80	60.40	54.60	48.60	440.50
1977	100.00	69.20	28.50	24.80	61.60	98.00	85.50	2.70	62.80	20.00	28.60	45.70	627.40
1978	33.80	62.40	71.90	90.30	76.00	50.00	1.90	13.30	110.10	14.90	41.20	34.20	600.00
1979	126.90	113.20	1.90	38.30	67.10	19.50	28.40	30.90	2.70	119.00	91.20	55.60	694.70
1980	70.80	30.50	12.60	45.20	97.20	55.60	15.20	31.70	19.30	22.40	60.70	76.70	537.90
1981	152.30	67.10	49.70	11.70	27.70	13.90	21.40	24.10	4.30	29.00	108.00	61.60	570.80
1982	25.00	49.00	61.00	87.00	11.00	23.00	18.00	17.00	20.00	19.00	38.00	113.00	481.00
1983	8.00	32.00	17.00	19.00	58.00	109.00	33.00	26.00	84.00	16.00	31.00	40.00	473.00
1984	66.00	62.00	171.00	52.00	42.00	63.00	9.00	40.00	10.00	1.00	58.00	25.00	599.00
1985	74.00	43.00	15.00	47.00	30.00	21.00	26.00	14.00	6.00	11.00	68.00	7.00	362.00
1986	82.00	118.00	12.00	13.00	24.00	27.00	41.00	9.00	4.00	66.00	39.00	30.00	465.00
1987	45.00	16.00	30.00	104.00	31.00	57.00	25.00	32.00	3.00	47.00	76.00	84.00	550.00
1988	9.00	42.00	97.00	39.00	27.00	44.00	6.00	0.00	22.00	18.00	129.00	75.00	508.00
1989	0.00	0.00	113.00	15.00	56.00	57.00	10.00	13.00	13.00	43.00	52.00	105.00	477.00
1990	1.00	1.00	2.00	79.00	52.00	15.00	18.00	26.00	44.00	66.00	20.00	145.00	469.00
1991	9.00	41.00	20.00	39.00	65.00	6.00	23.00	33.00	13.00	109.00	38.00	51.00	447.00
1992	1.00	16.80	33.00	37.00	18.00	113.00	25.00	0.00	11.00	53.00	100.00	42.00	449.80
1993	12.00	50.00	28.00	33.00	176.00	23.00	6.00	18.00	0.00	40.00	98.00	36.00	520.00
1994	12.00	11.00	28.00	67.00	40.00	44.00	51.00	3.00	0.00	89.00	60.00	82.00	487.00
1995	126.00	21.00	65.00	52.00	21.00	34.00	36.00	26.00	41.00	15.00	114.00	62.00	613.00
1996	19.70	87.00	41.20	54.80	7.00	22.70	0.00	58.10	47.70	11.90	92.40	111.70	554.20

TABLE D.1.5 HARMANLI STATION (CODE NO. 43030)

Year Month	Monthly Total Precipitation (mm)												Annual (mm)
	Jan.	Feb.	Mar.	Apr.	May	June	July	Aug.	Sep.	Oct.	Nov.	Dec.	
1963	106.80	35.40	35.30	63.00	56.70	71.70	26.10	19.40	16.60	53.50	32.40	78.80	595.70
1964	10.50	37.00	37.50	26.50	78.20	39.40	32.10	22.40	159.20	46.10	30.50	46.50	565.90
1965	32.30	94.10	39.20	35.10	106.40	16.30	6.00	22.90	1.80	0.70	73.50	110.80	539.10
1966	66.60	22.70	51.50	46.60	51.00	75.70	17.10	29.20	14.90	32.50	220.50	142.50	770.80
1967	39.60	29.20	21.00	42.30	70.50	58.10	18.60	19.00	37.20	30.10	41.10	57.20	463.90
1968	92.20	33.60	6.20	8.20	36.00	24.90	7.40	47.00	72.90	8.50	42.30	74.20	453.40
1969	95.70	77.50	83.10	45.70	13.50	66.90	30.70	6.00	33.30	0.00	10.30	169.80	632.50
1970	24.90	51.70	65.00	52.00	39.80	45.30	12.40	10.50	15.50	73.10	52.40	26.10	468.70
1971	86.50	72.70	98.40	48.20	89.40	35.60	139.10	7.40	52.10	81.50	14.00	52.70	777.60
1972	20.50	33.30	10.80	51.50	56.60	31.00	60.40	20.50	74.90	179.40	37.50	0.00	576.40
1973	58.00	41.60	64.90	102.10	32.00	21.50	35.50	0.60	26.30	43.30	29.20	22.10	477.10
1974	13.30	33.00	46.60	27.30	56.90	34.90	54.70	33.00	21.30	20.30	69.90	72.80	484.00
1975	30.50	11.00	44.40	105.70	84.60	111.30	39.70	177.40	18.50	88.20	63.10	32.50	806.90
1976	7.90	11.60	11.80	48.20	47.90	76.60	42.90	46.70	12.60	73.70	76.90	48.20	505.00
1977	98.90	70.20	39.00	33.30	102.10	89.10	85.10	5.60	35.50	20.00	22.40	51.30	652.50
1978	28.50	45.30	65.10	85.10	74.30	46.00	3.30	26.00	127.80	27.80	32.50	66.20	627.90
1979	78.80	39.80	4.00	55.60	59.00	41.70	47.80	39.40	8.20	99.20	85.30	62.50	621.30
1980	64.40	23.10	9.80	80.10	97.90	19.20	16.50	85.70	16.60	18.00	61.90	85.70	578.90
1981	156.10	50.90	30.90	14.50	28.10	16.00	29.10	31.70	8.80	20.90	100.70	57.90	545.60
1982	27.00	37.00	71.00	74.00	37.00	28.00	34.00	8.00	1.00	11.00	49.00	96.00	473.00
1983	13.00	26.00	18.00	28.00	33.00	107.00	63.00	59.00		25.00	22.00	41.00	
1984	50.00	35.00	251.00	51.00	23.00	74.00	18.00	53.00	25.00	1.00	45.00	30.00	656.00
1985	50.00	50.00	17.00	66.00	49.00	60.00	15.00	8.00	3.00	6.00	70.00	6.00	400.00
1986	77.00	123.00	6.00	17.00	20.00	82.00	33.00	21.00	5.00	32.00	17.00	23.00	456.00
1987	37.00	35.00	29.00	107.00	24.00	36.00	37.00	22.00	3.00	37.00	45.00	72.00	484.00
1988	11.00	25.00	90.00	23.00	18.00	60.00	2.00	0.00	14.00	17.00	81.00	70.00	411.00
1989	0.00	0.00	96.00	9.00	47.00	153.00	28.00	18.00	6.00	44.00	59.00	125.00	585.00
1990	1.00	0.00	20.00	58.00	42.00	26.00	12.00	1.00	49.00	35.00	8.00	112.00	364.00
1991	5.00	23.00	18.00	44.00	90.00	14.00	63.00	14.00	17.00	70.00	26.00	27.00	411.00
1992	7.00	14.00	39.00	50.00	38.00	44.00	11.00	0.00	7.00	25.00	82.00	58.00	375.00
1993	15.00	49.00	52.00	56.00	164.00	36.00	3.00	34.00	0.00	37.00	78.00	56.00	580.00
1994	25.00	23.00	34.00	66.00	35.00	54.00	40.00	8.00	0.00	87.00	62.00	74.00	508.00
1995	96.00	27.00	111.00	48.00	23.00	30.00	49.00	37.00	44.00	7.00	82.00	58.00	612.00
1996	21.10	74.40	51.60	50.50	41.80	10.10	0.20	68.60	83.40	31.50	96.40	84.50	614.10

TABLE D.1.6 HVOINA STATION (CODE NO. 45060)

Year	Month	Monthly Total Precipitation (mm)												Annual (mm)
		Jan.	Feb.	Mar.	Apr.	May	June	July	Aug.	Sept.	Oct.	Nov.	Dec.	
1963		67.60	69.00	62.50	71.20	109.20	64.30	75.40	9.60	21.90	31.70	32.20	54.20	668.80
1964		17.20	21.10	16.30	47.70	115.10	57.00	33.00	41.30	131.30	53.20	23.00	48.80	605.00
1965		57.60	36.40	35.00	46.00	86.90	28.00	30.40	30.60	0.00	2.50	28.60	32.20	414.20
1966		77.20	29.20	46.70	81.20	77.50	147.20	57.10	135.50	54.90	23.50	141.60	104.70	976.30
1967		41.40	25.80	42.30	45.40	60.10	58.90	35.70	54.80	43.30	11.80	11.60	30.30	461.40
1968		50.30	63.70	31.90	1.40	49.10	68.30	8.60	69.50	57.60	33.20	53.20	59.90	546.70
1969		86.40	54.00	29.30	45.10	34.50	67.70	86.10	15.10	33.90	0.00	16.30	174.90	643.30
1970		24.00	51.80	70.70	27.00	90.10	50.60	35.50	21.60	10.80	74.10	21.50	25.70	503.40
1971		91.00	40.70	131.90	32.50	115.80	84.00	74.10	49.20	79.50	52.10	30.50	25.50	806.80
1972		10.20	16.40	11.10	119.30	41.10	85.00	77.90	137.90	93.20	112.40	15.50	4.00	724.00
1973		29.70	54.50	86.50	111.10	26.10	56.30	96.30	7.00	38.40	20.90	31.00	51.30	609.10
1974		34.10	21.90	25.00	47.30	137.80	137.00	63.70	57.50	8.70	24.30	30.40	54.30	642.00
1975		57.60	55.10	32.70	102.70	113.40	123.80	86.00	197.10	6.30	75.60	55.70	20.70	926.70
1976		49.70	21.20	33.50	50.20	82.40	94.10	192.40	81.90	9.30	56.30	48.50	42.70	762.20
1977		84.40	40.10	38.40	16.50	104.80	126.30	82.40	11.00	49.10	4.70	31.20	98.60	687.30
1978		40.60	56.80	38.90	69.80	119.00	43.90	32.40	63.10	109.20	97.00	15.10	60.10	745.90
1979		40.90	31.00	5.60	55.80	142.70	65.20	54.50	116.90	13.60	64.70	59.70	13.20	663.80
1980		87.00	29.80	35.50	94.40	117.70	35.40	47.30	38.20	6.30	34.70	24.80	68.90	620.00
1981		202.40	19.00	4.20	52.70	84.60	30.70	30.80	66.00	20.70	10.80	89.50	60.90	672.30
1982		20.00	50.00	28.00	107.00	91.00	56.00	70.00	71.00	31.00	24.00	54.00	97.00	699.00
1983		39.00	28.00	39.00	24.00	33.00	139.00	69.00	60.00	87.00	13.00	23.00	79.00	633.00
1984		42.00	47.00	115.00	75.00	42.00	68.00	42.00	40.00	20.00	6.00	23.00	33.00	553.00
1985		39.00	46.00	44.00	39.00	69.00	54.00	36.00	45.00	11.00	18.00	56.00	2.00	459.00
1986		84.00	104.00	8.00	31.00	86.00	113.00	163.00	41.00	16.00	34.00	10.00	84.00	774.00
1987		71.00	50.00	47.00	72.00	44.00	39.00	71.00	22.00	15.00	44.00	69.00	38.00	582.00
1988		7.00	83.00	74.00	35.00	94.00	200.00	0.00	17.00	34.00	15.00	119.00	86.00	764.00
1989		3.00	12.00	84.00	11.00	87.00	75.00	103.00	49.00	27.00	21.00	43.00	68.00	583.00
1990		0.00	20.00	14.00	31.00	82.00	48.00	44.00	57.00	36.00	33.00	20.00	167.00	552.00
1991		24.00	68.00	15.00	107.00	105.00	69.00	149.00	94.00	17.00	102.00	48.00	43.00	841.00
1992		16.00	30.00	35.00	77.00	50.00	121.00	24.00	6.00	2.00	39.00	35.00	29.00	464.00
1993		44.00	28.00	80.00	33.00	117.00	17.00	16.00	70.00	10.00	8.00	55.00	40.00	518.00
1994		28.00	28.00	44.00	79.00	54.00	74.00	72.00	21.00	1.00	33.00	37.00	67.00	538.00
1995		105.00	24.00	76.00	35.00	45.00	128.00	105.00	56.00	33.00	5.00	53.00	84.00	749.00
1996		30.20	92.20	49.30	20.40	204.10	23.50	18.50	63.90	85.90	33.00	50.10	93.50	764.60

TABLE D.1.7 DEVIN STATION (CODE NO. 45130)

Year	Month	Monthly Total Precipitation (mm)												Annual (mm)
		Jan.	Feb.	Mar.	Apr.	May	June	July	Aug.	Sep.	Oct.	Nov.	Dec.	
1963		103.60	121.00	72.00	81.50	114.00	74.40	62.40	0.80	37.10	46.40	25.80	83.00	822.00
1964		8.10	19.50	31.40	40.60	112.90	76.60	37.30	52.80	89.00	70.80	28.80	78.50	646.30
1965		58.70	56.70	10.40	39.50	108.00	26.80	29.10	48.10	3.30	3.40	40.20	61.90	486.10
1966		89.70	29.10	64.00	56.90	55.30	84.70	67.30	74.20	43.20	29.70	215.80	99.50	909.40
1967		46.00	7.30	34.30	97.00	68.50	76.70	53.80	53.20	39.60	21.70	17.50	68.40	584.00
1968		62.00	74.70	25.60	1.10	56.30	81.20	17.90	71.20	73.50	9.10	38.90	48.40	559.90
1969		75.30	67.40	33.20	65.80	41.90	84.90	33.20	44.40	33.80	0.00	25.30	182.10	687.30
1970		66.80	44.00	52.30	42.80	53.80	98.80	23.00	17.10	21.20	76.50	44.00	47.00	587.30
1971		82.80	37.80	187.50	19.00	87.90	71.40	132.30	45.90	83.40	58.70	45.50	36.50	888.70
1972		14.10	51.40	3.60	80.50	61.60	84.90	71.00	43.30	116.30	100.90	22.50	0.40	650.50
1973		38.20	89.90	73.70	93.60	41.20	44.80	71.50	20.90	49.80	40.90	31.20	73.90	669.60
1974		36.50	33.70	37.20	57.90	82.70	90.10	61.60	17.80	18.40	73.10	44.60	76.30	629.90
1975		32.30	11.10	28.50	48.50	82.10	73.90	97.20	86.10	20.10	54.80	57.70	26.40	618.70
1976		18.30	6.00	29.70	42.80	57.90	58.40	169.10	55.10	19.80	65.00	63.30	84.70	670.10
1977		45.20	34.50	31.10	26.50	132.20	87.80	65.90	9.40	42.10	8.00	56.60	23.60	562.90
1978		47.20	59.00	46.40	58.10	121.60	28.50	49.70	52.20	115.40	39.70	29.70	55.60	703.10
1979		66.10	55.20	26.60	61.10	111.20	54.00	60.50	58.80	15.70	78.30	80.40	28.80	696.70
1980		89.80	12.00	44.60	94.20	113.80	37.40	120.50	37.90	17.60	63.30	51.00	138.10	820.20
1981		77.10	44.90	17.90	19.20	62.80	33.80	87.10	78.90	44.40	14.80	68.00	109.90	658.80
1982		36.00	26.00	38.00	73.00	57.00	59.00	87.00	93.00	44.00	20.00	64.00	100.00	697.00
1983		14.00	58.00	57.00	30.00	34.00	175.00	42.00	57.00	48.00	19.00	43.00	71.00	648.00
1984		55.00	50.00	123.00	50.00	36.00	47.00	57.00	63.00	21.00	8.00	37.00	20.00	567.00
1985		61.00	36.00	53.00	39.00	50.00	32.00	47.00	73.00	18.00	10.00	89.00	2.00	510.00
1986		65.00	103.00	5.00	31.00	77.00	78.00	54.00	49.00	18.00	29.00	9.00	32.00	550.00
1987		74.00	45.00	29.00	92.00	45.00	45.00	59.00	36.00	10.00	39.00	102.00	39.00	615.00
1988		9.00	70.00	89.00	39.00	95.00	118.00	18.00	5.00	31.00	19.00	61.00	58.00	612.00
1989		1.00	21.00	26.00	26.00	59.00	127.00	87.00	39.00	36.00	50.00	81.00	30.00	583.00
1990		2.00	5.00	25.00	33.00	100.00	40.00	38.00	76.00	35.00	39.00	18.00	146.00	557.00
1991		10.00	68.00	8.00	90.00	99.00	11.00	123.00	53.00	54.00	73.00	64.00	23.00	676.00
1992		5.00	24.00	55.00	61.00	52.00	78.00	32.00	9.00	2.00	27.00	64.00	50.00	459.00
1993		8.00	26.00	78.00	26.00	60.00	41.00	11.00	61.00	7.00	1.00	43.00	63.00	425.00
1994		53.00	14.00	37.00	64.00	38.00	51.00	147.00	16.00	27.00	44.00	23.00	68.00	582.00
1995		61.00	24.00	82.00	40.00	55.00	211.00	115.00	66.00	30.00	5.00	65.00	77.00	831.00
1996							2.70	29.80	88.80	114.20	16.70	93.10	78.20	

TABLE D.1.8 PLOVDIV STATION (CODE NO. 46010)

Year	Month	Monthly Total Precipitation (mm)												Annual (mm)
		Jan.	Feb.	Mar.	Apr.	May	June	July	Aug.	Sep.	Oct.	Nov.	Dec.	
1963		101.20	35.20	29.80	46.20	90.90	89.20	44.40	7.70	41.80	57.00	30.50	34.40	608.30
1964		16.10	18.80	34.20	18.30	79.70	10.40	34.40	16.60	114.70	31.70	29.30	32.10	436.30
1965		28.90	41.20	53.30	33.00	84.50	9.00	12.80	25.30	0.20	4.90	44.90	38.80	376.80
1966		40.70	15.50	59.10	43.60	40.00	81.30	59.40	39.30	32.90	23.90	109.10	80.40	625.20
1967		31.80	8.40	23.40	73.00	108.20	103.00	30.70	16.80	36.80	11.80	43.90	35.10	522.90
1968		41.60	35.30	25.50	0.90	24.70	31.20	34.70	39.60	81.20	17.00	82.50	39.20	453.40
1969		71.80	65.40	50.60	25.50	25.70	98.40	26.50	6.50	57.40	0.00	7.50	114.60	549.90
1970		24.80	44.20	57.60	34.10	74.50	50.80	9.40	9.20	6.10	45.20	26.70	15.30	397.90
1971		62.00	62.00	73.10	31.90	95.70	69.70	147.30	37.60	34.00	35.10	11.00	38.20	697.60
1972		28.10	24.20	9.80	68.70	51.10	44.30	48.10	20.60	60.10	104.20	14.50	6.20	479.90
1973		34.60	58.80	57.60	128.10	46.70	41.20	68.60	26.20	23.50	13.10	33.90	29.00	561.30
1974		33.00	15.50	51.80	40.20	68.30	55.80	53.70	25.70	4.80	12.40	65.10	74.70	501.00
1975		42.70	18.90	28.50	71.00	90.90	39.90	37.60	74.30	4.20	48.40	51.60	21.20	529.20
1976		21.80	22.70	20.20	50.20	79.30	58.80	111.60	49.00	6.40	70.90	53.50	14.30	558.70
1977		69.80	39.00	26.20	11.70	91.80	89.20	121.50	2.10	49.30	1.20	26.00	56.10	583.90
1978		37.10	40.50	26.50	88.60	120.70	45.60	18.90	28.60	119.00	44.50	15.80	68.70	654.50
1979		38.90	63.50	1.90	47.60	199.30	57.80	46.80	72.70	5.20	80.10	77.00	20.90	711.70
1980		77.20	24.20	17.20	63.00	90.10	17.20	28.20	77.30	18.90	32.60	40.30	54.30	540.50
1981		99.50	38.60	21.20	19.30	16.60	49.20	28.70	35.40	6.70	2.90	84.10	22.20	424.40
1982		32.00	31.00	56.00	71.00	24.00	34.00	59.00	81.00	25.00	38.00	17.00	50.00	518.00
1983		16.00	21.00	26.00	10.00	41.00	104.00	181.00	80.00	38.00	13.00	17.00	67.00	614.00
1984		37.00	40.00	101.00	39.00	26.00	37.00	34.00	86.00	19.00	2.00	13.00	28.00	462.00
1985		23.00	23.00	23.00	31.00	52.00	30.00	13.00	87.00	19.00	7.00	83.00	2.00	393.00
1986		42.00	102.00	17.00	2.00	30.00	46.00	16.00	25.00	8.00	25.00	16.00	24.00	353.00
1987		51.00	42.00	47.00		15.00	32.00	41.00	39.00	8.00	46.00	50.00	22.00	
1988		6.00	17.00	69.00	8.00	29.00	56.00	9.00	2.00	17.00	23.00	109.00	65.00	410.00
1989		0.00	5.00	86.00	7.00	62.00	51.00	12.00	38.00	17.00	3.00	34.00	46.00	361.00
1990		1.00	5.00	30.00	29.00	64.00	39.00	12.00	29.00	41.00	16.00	14.00	110.00	390.00
1991		17.00	29.00	19.00	53.00	57.00	35.00	54.00	19.00	17.00	20.00	33.00	14.00	367.00
1992		7.00	3.00	22.00	74.00	28.00	79.00	24.00	9.00	5.00	18.00	35.00	23.00	327.00
1993		20.00	14.00	31.00	34.00	74.00	8.00	24.00	17.00	5.00	30.00	63.00	13.00	333.00
1994		13.00	28.00	32.00	56.00	30.00	33.00	16.00	13.00	5.00	67.00	44.00	75.00	412.00
1995		97.00	16.00	108.00	15.00	23.00	62.00	45.00	34.00	34.00	7.00	40.00	85.00	566.00
1996		23.50	63.60	35.90	17.30	79.20	32.00	3.90	10.10	63.70	22.70	40.90	47.60	440.40



TABLE D.1.9 IVAILO (PAZARDJIK) STATION (CODE NO. 47010)

Year Month	Monthly Total Precipitation (mm)												Annual (mm)
	Jan.	Feb.	Mar.	Apr.	May	June	July	Aug.	Sep.	Oct.	Nov.	Dec.	
1963	99.00	65.00	29.50	59.50	95.10	72.50	55.20	1.60	20.30	51.80	26.70	38.10	614.30
1964	14.90	10.40	40.30	35.30	75.90	54.00	61.60	22.30	80.40	28.50	53.40	36.50	513.50
1965	38.70	37.40	41.20	40.60	85.30	8.00	6.10	15.50	0.10	10.00	33.90	39.90	356.70
1966	42.30	14.40	49.40	45.70	34.10	47.70	34.00	55.70	24.70	9.90	126.90	103.90	588.70
1967	24.60	7.10	45.20	48.20	99.10	45.70	55.20	23.10	24.60	8.00	17.20	30.50	428.50
1968	36.00	33.60	23.10	0.20	51.80	20.70	18.40	29.70	59.30	16.00	111.90	47.50	448.20
1969	87.10	60.80	70.30	19.70	9.10	64.30	14.00	17.40	49.90	0.00	11.40	107.50	511.50
1970	31.10	41.90	59.20	19.50	43.30	18.80	70.70	20.10	11.80	44.00	20.40	19.60	400.40
1971	53.20	61.60	93.50	34.10	135.30	51.50	124.80	18.90	49.50	34.60	13.20	36.80	707.00
1972	30.50	26.70	14.60	42.00	100.90	12.40	41.70	26.10	50.50	105.50	22.70	9.90	483.50
1973	42.90	38.80	70.90	157.50	27.80	25.80	58.10	16.40	36.40	9.70	27.20	27.70	539.20
1974	38.00	13.50	52.40	38.20	59.20	72.40	25.40	16.20	12.60	19.40	91.10	51.30	489.70
1975	35.20	23.00	43.40	69.90	123.70	49.90	49.80	163.00	3.40	44.60	55.30	15.70	676.90
1976	21.50	32.60	15.00	51.00	123.00	36.10	103.10	61.80	6.00	71.40	68.40	16.50	606.40
1977	53.00	28.30	12.60	16.80	85.00	69.20	88.40	11.70	54.60	4.10	28.70	40.80	493.20
1978	27.60	34.60	29.90	56.60	75.30	46.90	18.10	41.30	134.10	51.00	5.60	53.40	574.40
1979	14.70	39.50	2.00	54.80	96.50	17.30	43.10	121.70	3.20	79.80	73.30	17.80	563.70
1980	56.90	22.10	23.50	47.00	93.70	11.50	40.00	31.80	10.30	16.90	38.40	29.90	422.00
1981	69.00	28.50	21.10	27.80	37.50	63.00	32.90	34.90	6.90	5.30	80.90	11.90	419.70
1982	23.00	35.00	59.00	73.00	45.00	26.00	24.00	83.00	53.00	40.00	18.00	55.00	534.00
1983	24.00	12.00	22.00	13.00	66.00	77.00	83.00	2.00	29.00	19.00	18.00	49.00	414.00
1984	33.00	58.00	86.00	43.00	31.00	17.00	24.00	79.00	17.00	5.00	13.00	33.00	439.00
1985	37.00	16.00	22.00	20.00	17.00	39.00	13.00	58.00	25.00	9.00	102.00	3.00	361.00
1986	64.00	103.00	8.00	6.00	51.00	100.00	20.00	16.00	17.00	28.00	9.00	20.00	442.00
1987	48.00	41.00	37.00	108.00	28.00	13.00	49.00	3.00	15.00	46.00	58.00	18.00	464.00
1988	4.00	21.00	63.00	13.00	29.00	121.00	15.00	0.00	10.00	22.00	93.00	44.00	435.00
1989	1.00	9.00	84.00	8.00	52.00	132.00	32.00	9.00	9.00	10.00	40.00	37.00	395.00
1990	1.00	4.00	19.00	52.00	48.00	18.00	30.00	39.00	33.00	21.00	5.00	125.00	485.00
1991	24.00	54.00	13.00	47.00	90.00	27.00	85.00	64.00	17.00	11.00	41.00	12.00	485.00
1992	9.00	5.00	24.00	81.00	60.00	66.00	41.00	2.00	3.00	20.00	47.00	35.00	393.00
1993	33.00	16.00	27.00	28.00	69.00	14.00	22.00	4.00	6.00	3.00	62.00	15.00	299.00
1994	18.00	23.00	34.00	56.00	21.00	29.00	20.00	12.00	6.00	81.00	47.00	55.00	402.00
1995	62.00	14.00	68.00	15.00	33.00	53.00	65.00	40.00	24.00	4.00	37.00	75.00	490.00
1996	33.40	61.70	41.40	11.30	49.80	24.60	7.70	43.10	72.90	24.90	44.80	54.00	469.60

TABLE D.1.10 VELINGRAD STATION (CODE NO. 47040)

Year	Month	Monthly Total Precipitation (mm)												Annual (mm)
		Jan.	Feb.	Mar.	Apr.	May	June	July	Aug.	Sep.	Oct.	Nov.	Dec.	
1963		192.10	100.20	32.30	65.30	109.90	68.30	48.60	6.90	15.20	53.40	24.90	45.00	762.10
1964		8.90	13.80	19.90	31.80	91.50	37.00	35.80	29.60	84.50	37.40	49.10	47.10	486.40
1965		77.20	47.10	34.70	50.60	80.10	12.30	13.30	27.50	1.40	3.10	21.40	54.20	422.90
1966		71.50	22.90	52.00	94.40	64.30	53.30	52.60	119.60	34.60	21.30	124.40	83.20	794.10
1967		38.80	5.80	50.30	67.10	94.50	78.00	56.50	51.10	27.80	13.30	22.00	51.80	557.00
1968		44.20	63.40	34.10	4.40	74.20	55.80	34.00	57.10	51.70	16.20	67.20	49.70	552.00
1969		104.10	52.50	51.30	51.80	33.10	60.30	87.20	25.00	16.10	0.90	19.80	115.20	617.30
1970		39.10	25.90	61.50	29.90	49.60	70.80	82.80	30.20	28.40	54.90	21.50	23.80	518.40
1971		62.30	57.70	128.60	29.20	61.90	88.80	77.20	45.70	78.60	52.90	18.70	54.50	756.10
1972		28.10	34.80	12.50	58.80	44.40	30.50	61.10	51.40	97.10	144.30	32.00	2.10	597.10
1973		37.70	57.80	82.00	83.00	27.00	43.10	67.90	12.20	49.70	12.00	49.20	85.30	606.90
1974		26.50	28.80	50.00	37.80	112.80	86.20	48.50	22.10	15.50	30.30	36.00	66.30	560.80
1975		36.00	25.10	40.20	55.10	102.60	104.40	81.00	88.60	19.70	47.10	73.00	16.30	689.10
1976		32.60	28.80	31.10	42.40	122.90	84.30	174.50	60.90	5.50	84.00	54.10	55.60	776.70
1977		60.40	48.10	18.80	12.70	100.00	92.90	71.70	16.60	60.40	12.30	59.90	39.90	593.70
1978		30.80	42.80	38.50	66.30	123.00	49.90	27.70	42.60	110.60	58.30	19.10	79.80	689.40
1979		57.00	53.50	9.00	65.70	89.30	86.00	40.80	106.40	21.60	49.80	78.50	17.90	675.50
1980		80.20	21.70	40.70	67.30	95.00	23.70	52.80	50.00	17.40	52.40	45.30	85.20	631.70
1981		92.20	41.70	34.70	28.90	41.50	32.00	40.30	70.10	16.30	8.70	64.00	56.70	527.10
1982		34.00	37.00	74.00	75.00	74.00	71.00	57.00	38.00	16.00	33.00	55.00	97.00	661.00
1983		24.00	32.00	27.00	26.00	36.00	125.00	90.00	25.00	30.00	18.00	41.00	57.00	531.00
1984		52.00	39.00	76.00	54.00	29.00	34.00	24.00	75.00	28.00	3.00	22.00	48.00	484.00
1985		56.00	35.00	46.00	18.00	92.00	81.00	27.00	69.00	30.00	10.00	122.00	4.00	590.00
1986		83.00	138.00	17.00	22.00	102.00	93.00	74.00	35.00	10.00	25.00	10.00	34.00	643.00
1987		102.00	34.00	39.00	82.00	55.00	72.00	30.00	41.00	9.00	50.00	60.00	38.00	612.00
1988		8.00	60.00	70.00	35.00	39.00	121.00	18.00	1.00	19.00	16.00	169.00	53.00	609.00
1989		2.00	30.00	73.00	17.00	70.00	78.00	47.00	75.00	17.00	38.00	59.00	41.00	547.00
1990		3.00	10.00	33.00	57.00	93.00	17.00	22.00	67.00	37.00	43.00	9.00	117.00	508.00
1991		22.00	61.00	13.00	85.00	74.00	45.00	148.00	30.00	34.00	33.00	52.00	18.00	615.00
1992		10.00	23.00	30.00	114.00	71.00	99.00	37.00	9.00	5.00	33.00	71.00	43.00	545.00
1993		32.00	45.00	55.00	30.00	88.00	76.00	25.00	28.00	12.00	5.00	67.00	54.00	517.00
1994		25.00	21.00	40.00	54.00	36.00	35.00	67.00	50.00	7.00	54.00	36.00	68.00	493.00
1995		70.00	17.00	63.00	28.00	52.00	66.00	93.00	49.00	34.00	3.00	49.00	88.00	612.00
1996		11.70	86.90	51.80	26.10	67.70	14.00	32.30	17.70	123.70	18.30	48.50	68.40	567.10

TABLE D.1.11 PANAGYURISHTE STATION (CODE NO. 47050)

Year Month	Monthly Total Precipitation (mm)												Annual (mm)
	Jan.	Feb.	Mar.	Apr.	May	June	July	Aug.	Sep.	Oct.	Nov.	Dec.	
1963	133.30	79.40	32.60	63.00	134.60	133.40	58.20	0.00	25.50	106.70	68.20	47.20	882.10
1964	10.60	32.00	31.00	56.00	137.50	44.50	25.40	22.40	64.90	42.10	65.00	48.50	579.90
1965	57.30	41.50	35.30	37.30	113.00	43.80	10.00	15.30	2.60	6.50	44.50	65.00	472.10
1966	39.50	14.80	49.70	71.10	69.40	102.30	85.80	83.50	69.70	26.30	106.80	99.90	818.80
1967	13.90	15.00	46.10	52.80	115.70	125.70	52.70	44.60	71.20	7.70	52.40	46.00	643.80
1968	40.10	49.90	39.60	0.00	128.10	50.30	40.40	147.40	67.90	14.60	119.20	76.00	773.50
1969	144.60	98.10	122.40	45.10	47.30	133.30	67.50	29.60	337.20	0.00	16.90	110.20	1152.20
1970	21.60	65.50	49.60	27.80	75.90	20.30	106.80	30.40	11.20	51.60	26.60	27.10	514.40
1971	48.90	57.30	111.40	26.80	117.80	62.90	75.80	70.80	81.80	38.90	14.20	32.80	739.40
1972	31.30	41.00	45.00	56.90	64.80	54.30	59.60	71.80	92.30	206.70	22.70	8.00	754.40
1973	43.40	48.30	56.50	109.60	39.00	62.60	67.20	47.50	52.70	16.50	29.40	35.80	608.50
1974	28.90	14.30	48.00	36.70	87.10	65.60	65.70	35.10	11.20	30.00	55.80	98.50	576.90
1975	13.30	30.70	64.90	23.60	106.40	81.10	64.10	125.60	11.60	46.90	56.60	15.20	640.00
1976	22.30	35.40	20.00	75.30	125.80	114.20	207.60	102.40	11.30	114.40	80.40	52.40	961.50
1977	61.90	61.70	26.70	41.40	81.10	93.70	90.00	31.20	54.50	4.40	42.30	43.50	632.40
1978	17.80	47.80	38.40	51.30	68.50	102.40	32.70	17.90	95.30	22.50	12.40	59.30	566.30
1979	30.30	33.90	5.40	60.70	167.80	41.60	65.90	162.80	28.10	97.30	59.00	18.60	771.40
1980	51.00	24.40	61.50	36.90	210.10	30.60	30.10	40.00	16.30	75.10	38.40	35.40	649.80
1981	51.70	32.00	23.40	40.00	63.50	65.10	68.20	34.60	5.60	23.60	84.70	22.10	514.50
1982	44.00	38.00	85.00	102.00	31.00	43.00	39.00	67.00	32.00	36.00	36.00	72.00	625.00
1983	25.00	9.00	23.00	21.00	48.00	136.00	54.00	48.00	32.00	18.00	26.00	58.00	498.00
1984	31.00	54.00	51.00	27.00	42.00	47.00	18.00	124.00	47.00	10.00	15.00	72.00	538.00
1985	39.00	18.00	21.00	29.00	89.00	43.00	39.00	49.00	24.00	6.00	91.00	4.00	452.00
1986	82.00	111.00	15.00	10.00	29.00	72.00	54.00	38.00	23.00	32.00	17.00	14.00	497.00
1987	59.00	36.00	34.00	72.00	41.00	56.00	55.00	6.00	48.00	42.00	69.00	56.00	574.00
1988	4.00	32.00	72.00	27.00	48.00	141.00	20.00	7.00	34.00	17.00	107.00	37.00	546.00
1989	1.00	10.00	40.00	23.00	90.00	107.00	8.00	32.00	29.00	26.00	54.00	40.00	460.00
1990	1.00	12.00	12.00	63.00	71.00	20.00	25.00	31.00	35.00	20.00	10.00	150.00	450.00
1991	22.00	49.00	21.00	79.00	75.00	20.00	140.00	22.00	29.00	48.00	69.00	4.00	578.00
1992	17.00	16.00	28.00	83.00	47.00	138.00	35.00	11.00	4.00	28.00	42.00	32.00	481.00
1993	28.00	23.00	21.00	44.00	96.00	26.00	15.00	4.00	18.00	20.00	91.00	26.00	412.00
1994	17.00	36.00	25.00	56.00	32.00	43.00	35.00	25.00	4.00	97.00	43.00	53.00	466.00
1995	81.00	4.00	63.00	15.00	76.00	97.00	76.00	57.00	35.00	7.00	51.00	105.00	667.00
1996	25.40	56.90	31.10	12.30	48.40	14.40	19.20	48.80	101.90	18.10	21.60	60.60	458.70

TABLE D.1.12 IHTIMAN STATION (CODE NO. 64101)

Year Month	Monthly Total Precipitation (mm)												Annual (mm)
	Jan.	Feb.	Mar.	Apr.	May	June	July	Aug.	Sep.	Oct.	Nov.	Dec.	
1963	83.50	61.90	20.70	48.50	96.60	84.60	68.20	5.10	18.80	80.40	50.50	36.00	654.80
1964	11.50	17.30	21.80	36.50	101.80	43.90	48.60	26.40	88.30	33.40	58.90	36.70	525.10
1965	46.60	36.00	24.10	68.80	68.70	56.40	23.10	25.10	2.70	2.60	31.20	52.50	437.80
1966	38.60	3.60	48.00	80.70	60.30	66.20	22.20	77.50	38.10	20.50	93.20	93.70	642.60
1967	21.00	16.70	60.00	70.50	104.70	72.80	52.30	38.30	31.90	7.50	23.10	27.00	525.80
1968	26.30	30.70	20.40	1.40	37.00	65.60	20.10	85.50	64.90	11.00	107.90	58.00	528.80
1969	57.70	41.70	54.90	44.00	31.20	141.60	33.50	44.90	69.90	0.00	11.90	76.50	607.80
1970	18.70	67.00	58.10	23.00	68.90	47.90	112.50	15.70	3.50	36.10	26.50	19.70	497.60
1971	37.70	44.90	67.80	24.60	58.50	30.50	100.00	71.90	51.30	29.90	16.70	21.80	555.60
1972	24.50	19.30	22.20	38.80	41.00	57.70	89.70	89.50	64.70	106.00	26.70	4.20	584.30
1973	41.70	47.20	47.50	106.30	53.80	86.80	86.80	25.60	49.10	22.70	24.70	32.50	624.70
1974	19.10	13.00	38.10	31.10	85.40	65.40	17.10	21.90	4.20	26.30	64.60	80.00	466.20
1975	41.50	12.70	15.10	50.70	131.20	115.90	61.80	98.30	10.80	40.40	78.30	12.00	668.70
1976	28.50	28.00	24.80	65.60	114.90	98.20	154.60	83.90	15.80	70.50	58.30	22.40	765.50
1977	44.90	27.20	28.40	13.60	52.90	64.10	74.50	18.20	39.60	4.60	44.30	24.80	437.10
1978	22.80	44.50	34.20	37.70	88.80	90.80	18.50	28.70	101.50	32.80	14.00	63.10	577.40
1979	35.70	27.40	7.50	45.90	43.80	88.30	23.20	146.00	6.50	28.90	43.40	30.20	526.80
1980	54.80	16.20	29.30	62.20	102.90	45.00	40.00	35.00	11.80	58.60	24.50	28.70	509.00
1981	89.70	41.00	46.30	17.90	64.60	35.50	34.20	37.30	8.40	21.10	104.40	27.80	528.20
1982	19.00	44.00	82.00	93.00	51.00	34.00	71.00	83.00	30.00	24.00	51.00	71.00	633.00
1983	37.00	21.00	14.00	22.00	22.00	99.00	72.00	14.00	23.00	12.00	29.00	57.00	422.00
1984	29.00	34.00	75.00	28.00	48.00	40.00	24.00	67.00	17.00	6.00	16.00	40.00	424.00
1985	20.00	27.00	34.00	24.00	103.00	43.00	40.00	91.00	22.00	13.00	53.00	7.00	477.00
1986	80.00	84.00	10.00	15.00	60.00	67.00	42.00	12.00	21.00	34.00	11.00	32.00	468.00
1987	49.00	28.00	26.00	70.00	51.00	27.00	27.00	17.00	37.00	27.00	50.00	36.00	445.00
1988	4.00	71.00	63.00	38.00	64.00	115.00	17.00	5.00	11.00	32.00	100.00	57.00	577.00
1989	1.00	7.00	51.00	20.00	84.00	73.00	4.00	65.00	41.00	41.00	54.00	60.00	501.00
1990	3.00	6.00	28.00	58.00	44.00	44.00	35.00	106.00	51.00	17.00	6.00	112.00	510.00
1991	23.00	56.00	13.00	63.00	92.00	18.00	104.00	29.00	40.00	45.00	54.00	17.00	554.00
1992	17.00	16.00	29.00	78.00	100.00	110.00	62.00	17.00	5.00	28.00	34.00	25.00	521.00
1993	30.00	17.00	27.00	34.00	80.00	22.00	17.00	8.00	21.00	15.00	59.00	23.00	353.00
1994	19.00	21.00	25.00	56.00	88.00	73.00	38.00	35.00	12.00	67.00	29.00	35.00	498.00
1995	63.00	14.00	55.00	22.00	73.00	41.00	121.00	58.00	31.00	5.00	49.00	88.00	620.00
1996	17.30	61.90	39.90	15.70	41.20	21.00	14.20	40.60	113.00	24.50	24.40	63.70	477.40

TABLE D.1.13 POLSKI GRADETZ STATION (CODE NO. 41480)

Year	Monthly Total Precipitation (mm)												Annual (mm)
	Jan.	Feb.	Mar.	Apr.	May	June	July	Aug.	Sep.	Oct.	Nov.	Dec.	
1963	143.40	83.80	39.50	69.40	62.30	88.60	57.60	11.50	18.70	55.70	28.70	53.60	712.80
1964	12.00	37.40	42.80	56.40	77.70	21.10	39.40	58.80	122.00	37.00	39.40	62.60	606.60
1965	31.00	145.40	55.30	34.10	107.20	13.10	20.90	42.20	0.00	0.00	86.90	98.00	634.10
1966	77.10	31.20	43.90	66.00	52.00	129.40	31.30	32.30	16.20	83.60	208.60	155.60	927.20
1967	44.80	31.20	23.40	46.60	49.90	48.10	12.10	14.20	57.70	34.90	14.30	42.20	419.40
1968	89.10	78.90	15.00	9.20	40.00	24.40	12.60	65.30	52.60	17.60	39.50	95.30	539.50
1969	113.70	90.60	73.10	50.50	39.10	91.00	35.70	15.70	38.70	0.00	22.90	179.40	750.40
1970	46.60	94.20	99.20	56.40	50.20	53.10	27.00	8.30	9.10	58.80	79.90	43.60	626.40
1971	74.60	82.80	105.70	21.70	103.50	51.30	125.80	26.70	67.60	87.40	18.40	41.70	807.20
1972	30.50	32.40	2.00	69.20	72.90	34.90	114.20	46.70	71.70	165.20	27.60	0.00	667.30
1973	59.90	71.40	72.30	109.20	43.00	74.50	71.50	8.40	12.70	21.00	31.60	37.10	612.60
1974	5.20	29.20	58.70	31.90	66.90	26.90	55.40	75.90	24.50	46.40	67.50	59.80	548.30
1975	61.50	13.90	47.70	125.80	76.10	59.70	23.20	113.00	8.60	90.40	64.70	33.50	718.10
1976	18.30	9.10	23.20	47.30	33.70	69.20	106.50	38.10	9.60	46.20	51.90	19.70	472.80
1977	43.40	74.00	16.90	63.50	113.00	100.80	124.10	19.60	53.20	18.20	52.60	83.80	763.10
1978	37.30	58.10	70.80	96.00	105.70	32.50	7.00	31.50	125.80	23.50	19.50	21.70	629.40
1979	92.80	50.30	25.60	42.30	71.60	74.00	48.40	76.10	30.60	66.60	126.30	29.20	733.80
1980	151.70	22.90	11.90	97.10	149.60	33.90	52.60	126.00	30.90	21.70	100.70	170.90	969.90
1981	185.10	49.80	25.10	52.90	72.90	34.40	37.50	61.40	11.40	33.90	100.90	90.10	755.40
1982	31.00	36.00	63.00	55.00	10.00	31.00	42.00	34.00	5.00	17.00	50.00	51.00	425.00
1983	17.00	25.00	13.00	13.00	25.00	96.00	40.00	11.00	74.00	30.00	31.00	43.00	418.00
1984	43.00	37.00	152.00	35.00	27.00	67.00	30.00	43.00	51.00	0.00	38.00	26.00	549.00
1985	36.00	49.00	14.00	52.00	55.00	45.00	26.00	18.00	7.00	13.00	59.00	2.00	376.00
1986	68.00	124.00	6.00	6.00	10.00	52.00	27.00	17.00	22.00	39.00	19.00	34.00	424.00
1987	51.00	35.00	27.00	114.00	27.00	68.00	44.00	4.00	12.00	38.00	31.00	41.00	492.00
1988	5.00	16.00	87.00	23.00	29.00	74.00	14.00	30.00	25.00	19.00	101.00	54.00	477.00
1989	0.00	3.00	97.00	12.00	72.00	97.00	31.00	30.00	3.00	43.00	57.00	108.00	553.00
1990	2.00	0.00	3.00	59.00	65.00	22.00	21.00	46.00	44.00	37.00	24.00	86.00	409.00
1991	6.00	44.00	15.00	20.00	87.00	81.00	43.00	24.00	4.00	23.00	39.00	21.00	407.00
1992	3.40	2.00	40.30	43.00	29.00	94.00			3.20	40.30	66.20	29.50	
1993	14.00	27.00	68.00	43.00	98.00	44.00	7.00	77.00	12.00	32.00	89.00	27.00	538.00
1994	14.00	12.00	49.00	69.00	22.00	52.00	46.00	11.00	0.00	65.00	45.00	78.00	463.00
1995	79.00	17.00	88.00	61.00	19.00	23.00	78.00	54.00	46.00	10.00	86.00	52.00	613.00
1996	125.00	565.00	703.00	457.00	375.00	0.00	10.00	375.00	1180.00	135.00	665.00	830.00	5420.00

TABLE D.1.14 ORESHETZ STATION (CODE NO. 43460)

Year Month	Monthly Total Precipitation (mm)												Annual (mm)
	Jan.	Feb.	Mar.	Apr.	May	June	July	Aug.	Sep.	Oct.	Nov.	Dec.	
1963	149.80	94.30	88.70	85.80	64.10	153.60	29.80	13.50	25.00	105.90	42.70	96.40	949.60
1964	31.80	70.70	46.70	43.60	78.80	64.80	45.80	45.60	202.80	39.90	34.50	74.40	779.40
1965	40.50	143.50	70.20	34.20	117.10	13.50	0.80	14.60	0.80	3.30	75.40	121.80	635.70
1966	88.70	13.20	51.80	46.50	41.80	67.60	7.30	26.20	35.50	19.30	191.00	194.50	783.40
1967	73.30	41.30	40.40	65.00	57.90	95.50	55.10	37.30	28.30	42.90	11.20	84.40	632.60
1968	120.20	46.60	19.50	10.20	20.10	44.10	11.20	55.00	40.00	11.30	61.90	109.60	549.70
1969	196.60	101.30	85.20	71.80	8.20	38.40	40.90	6.60	21.10	0.00	27.00	184.50	781.60
1970	52.30	101.40	146.00	59.90	53.00	50.50	19.60	18.50	14.80	74.10	88.10	39.30	717.50
1971	131.90	79.10	160.60	39.00	80.50	47.30	101.20	18.80	64.10	118.40	42.20	86.20	969.30
1972	37.50	61.60	22.10	71.10	102.20	70.10	62.30	17.00	59.90	217.60	31.70	4.80	757.90
1973	101.60	74.70	94.00	107.80	31.50	51.10	71.60	9.80	53.40	49.30	45.50	57.00	747.30
1974	27.30	60.80	72.10	58.70	74.60	113.60	36.70	3.70	20.00	22.40	97.80	105.80	693.50
1975	73.00	34.80	68.50	109.10	113.60	157.00	32.00	149.80	6.30	143.00	93.70	42.30	1023.10
1976	20.70	28.00	28.40	68.50	95.70	97.50	69.50	110.70	17.60	92.50	85.00	67.20	781.30
1977	114.50	90.80	58.50	36.00	75.60	125.60	29.70	3.70	61.70	13.80	29.90	39.90	679.70
1978	47.60	73.50	112.60	108.70	75.90	65.70	4.40	30.80	167.10	115.70	45.80	70.30	918.10
1979	131.40	85.70	0.90	38.70	95.60	21.10	23.60	55.00	4.40	123.40	146.80	78.50	805.10
1980	94.70	44.50	16.60	80.30	100.40	44.70	43.40	84.90	18.00	18.90	109.70	103.80	759.90
1981	285.80	75.00	34.50	15.90	33.40	27.20	49.70	30.40	7.20	14.70	113.30	62.20	749.30
1982	48.00	78.00	93.00	101.00	27.00	43.00	38.00	10.00	13.00	27.00	40.00	157.00	675.00
1983	27.00	58.00	20.00	31.00	31.00	90.00	117.00	19.00	81.00	24.00	41.00	93.00	632.00
1984	69.00	73.00	275.00	86.00	34.00	81.00	28.00	46.00	31.00	1.00	73.00	44.00	841.00
1985	113.00	69.00	20.00	58.00	68.00	54.00	20.00	9.00	6.00	15.00	91.00	16.00	539.00
1986	142.00	214.00	9.00	25.00	33.00	77.00	20.00	32.00	13.00	53.00	44.00	87.00	749.00
1987	96.00	50.00	51.00	165.00	13.00	41.00	43.00	56.00	5.00	53.00	74.00	98.00	745.00
1988	20.00	54.00	157.00	44.00	38.00	78.00	11.00	4.00	38.00	19.00	192.00	132.00	787.00
1989	2.00	2.00	155.00	13.00	70.00	68.00	35.00	12.00	11.00	59.00	76.00	150.00	653.00
1990	1.00	3.00	17.00	96.00	55.00	22.00	22.00	21.00	62.00	55.00	19.00	202.00	575.00
1991	20.00	67.00	19.00	56.00	92.00	22.00	66.00	49.00	9.00	116.00	30.00	43.00	589.00
1992	10.00	14.00	62.00	68.00	51.00	45.00	26.00	1.00	4.00	37.00	95.00	69.00	482.00
1993	32.00	57.00	70.00	53.00	73.00	20.00	9.00	19.00	0.00	49.00	129.00	74.00	585.00
1994	25.00	32.00	53.00	78.00	41.00	48.00	70.00	3.00	0.00	157.00	75.00	85.00	667.00
1995	191.00	16.00	139.00	53.00	26.00	27.00	40.00	46.00	47.00	10.00	108.00	84.00	787.00
1996	403.00	1173.00	816.00	600.00	164.00	55.00	0.00	789.00	774.00	203.00	1020.00	1103.00	7100.00

TABLE D.1.15 MANASTIR STATION (CODE NO. 45530)

Year	Monthly Total Precipitation (mm)												Annual (mm)
	Jan.	Feb.	Mar.	Apr.	May	June	July	Aug.	Sep.	Oct.	Nov.	Dec.	
1963	100.30	263.40	114.70	81.50	215.10	88.50	102.10	30.70	64.80	100.00	111.70	140.90	1413.70
1964	21.20	58.40	39.10	44.60	157.80	59.20	47.90	65.00	182.20	79.60	18.60	131.20	904.80
1965	223.20	87.30	49.30	42.50	183.30	28.00	43.50	45.40	0.00	5.50	45.00	121.80	874.80
1966	113.40	39.20	56.40	100.40	125.60	221.80	61.20	34.50	72.90	90.70	230.60	216.90	1363.60
1967	83.20	60.90	72.70	57.50	121.00	76.00	45.10	65.80	86.10	28.40	30.40	58.80	785.90
1968	80.60	127.70	42.70	0.00	100.40	61.00	26.30	114.30	102.80	10.50	168.00	82.50	916.80
1969	206.80	169.60	77.50	82.30	49.20	129.80	103.20	28.90	52.90	0.00	50.20	304.60	1255.00
1970	78.40	103.10	103.70	115.30	113.70	112.80	97.50	32.90	13.00	111.80	52.80	75.80	1010.80
1971	232.90	101.10	222.20	20.50	85.20	113.90	129.00	58.80	138.00	88.70	59.40	96.00	1345.70
1972	38.90	56.90	28.20	166.90	117.30	75.20	116.50	164.40	84.30	197.10	17.70	7.20	1070.60
1973	45.30	109.50	111.80	156.60	45.10	63.90	159.60	30.30	61.50	48.30	34.90	74.30	941.10
1974	39.20	83.50	45.90	89.60	154.30	171.20	92.90	43.60	17.00	109.20	130.50	172.30	1149.20
1975	73.10	56.70	40.10	118.00	134.50	190.60	105.10	243.70	16.10	88.40	81.90	34.10	1182.30
1976	78.90	41.90	42.70	36.50	114.30	83.70	231.50	120.30	23.20	165.10	123.20	145.80	1207.10
1977	145.40	54.80	58.00	47.70	123.90	147.60	70.80	36.20	68.00	6.60	125.70	90.90	975.60
1978	76.60	93.40	102.90	116.00	208.70	50.40	45.40	99.80	177.90	90.60	80.80	61.00	1203.50
1979	119.10	60.40	21.60	72.70	239.50	73.00	121.30	143.00	15.10	118.80	187.20	64.30	1236.00
1980	127.10	46.80	36.70	114.10	151.30	72.40	133.50	110.80	39.40	60.60	73.40	188.30	1154.40
1981	272.10	56.10	33.00	44.50	90.70	47.40	57.70	105.60	23.50	32.60	133.50	195.10	1091.80
1982	42.00	54.00	69.00	120.00	129.00	89.00	146.00	83.00	12.00	52.00	181.00	237.00	1214.00
1983	35.00	94.00	94.00	105.00	101.00	240.00	120.00	57.00	134.00	18.00	54.00	134.00	1186.00
1984	66.00	104.00	188.00	128.00	43.00	103.00	58.00	80.00	48.00	3.00	60.00	75.00	956.00
1985	140.00	73.00	73.00	47.00	79.00	60.00	59.00	16.00	20.00	31.00	116.00	9.00	723.00
1986	130.00	179.00	5.00	58.00	124.00	238.00	94.00	106.00	22.00	49.00	27.00	72.00	1104.00
1987	142.00	121.00	81.00	162.00	106.00	123.00	105.00	48.00	12.00	66.00	162.00	66.00	1194.00
1988	17.00	151.00	178.00	66.00	123.00	164.00	12.00	9.00	59.00	28.00	180.00	137.00	1124.00
1989	5.00	8.00	111.00	39.00	147.00	100.00	112.00	77.00	64.00	79.00	133.00	87.00	962.00
1990	7.00	26.00	26.00	75.00	126.00	64.00	84.00	47.00	75.00	58.00	50.00	318.00	956.00
1991	26.00	118.00	22.00	125.00	94.00	74.00	165.00	127.00	17.00	99.00	0.00	314.00	1181.00
1992	0.00	124.00	36.00	92.00	176.00	192.00	33.00	35.00	2.00	39.00	7.00	34.00	681.00
1993	43.00	27.00	54.00	44.00	176.00	95.00	31.00	71.00	10.00	2.00	80.00	101.00	734.00
1994	83.00	51.00	52.00	129.00	72.00	123.00	104.00	50.00	20.00	99.00	39.00	80.00	902.00
1995	104.00	31.00	136.00	58.00	72.00	109.00	160.00	55.00	48.00	15.00	75.00	107.00	970.00
1996	577.00	2731.00	549.00	841.00		222.00	272.00	553.00	1146.00	313.00	1007.00	1243.00	

TABLE D.1.16 TOPOLOVO STATION (CODE NO. 46410)

Year Month	Monthly Total Precipitation (mm)												Annual (mm)
	Jan.	Feb.	Mar.	Apr.	May	June	July	Aug.	Sep.	Oct.	Nov.	Dec.	
1963	106.90	106.30	68.00	103.70	194.70	75.00	53.10	29.40	17.00	117.30	128.80	55.40	1055.60
1964	23.30	20.60	36.70	44.00	184.00	67.50	43.70	53.40	136.80	41.90	24.20	54.20	730.30
1965	88.30	65.40	82.20	54.40	88.60	24.00	13.30	23.00	0.00	14.50	37.50	38.50	529.70
1966	97.10	20.00	87.00	103.30	140.00	176.20	136.10	104.00	27.10	35.50	169.00	180.80	1276.10
1967	31.60	14.10	90.40	82.50	82.40	52.00	69.50	7.10	57.80	28.70	42.70	29.70	588.50
1968	85.80	68.60	26.60	4.50	34.90	34.30	14.90	32.80	97.30	45.50	132.20	71.00	648.40
1969	140.10	81.90	80.70	36.80	25.10	70.40	30.90	10.80	86.10	0.40	13.40	195.40	772.00
1970	23.10	55.80	120.30	33.80	71.40	83.80	19.20	17.70	6.80	77.50	26.60	32.70	568.70
1971	112.70	64.60	88.50	62.90	114.80	138.30	152.00	24.00	43.00	50.50	12.20	55.50	919.00
1972	21.90	29.70	37.10	99.40	43.50	74.40	53.10	56.70	82.50	222.40	12.90	10.50	744.10
1973	42.10	51.30	102.60	100.20	22.70	41.00	182.20	21.30	64.00	22.60	37.50	30.30	717.80
1974	30.20	32.50	67.90	41.00	102.40	102.50	49.20	49.10	8.30	25.00	100.20	119.10	727.40
1975	59.80	41.10	27.10	92.40	92.70	135.80	62.40	218.10	8.80	103.80	61.50	27.20	930.70
1976	50.70	49.90	23.80	63.80	93.80	95.60	162.80	51.00	18.80	144.80	96.30	24.90	876.20
1977	97.20	47.90	34.80	20.40	100.20	93.90	77.60	20.90	61.90	6.80	27.80	70.70	660.10
1978	29.40	57.80	57.30	106.80	116.20	33.90	20.30	52.20	188.80	85.90	30.70	57.10	836.40
1979	45.30	103.50	2.90	63.40	192.90	33.96	71.40	73.90	7.50	112.80	144.90	53.00	905.46
1980	93.70	37.70	34.00	119.50	139.90	46.30	37.40	74.20	22.30	43.70	32.70	99.20	780.60
1981	214.90	64.10	9.20	22.90	64.00	48.40	21.50	72.00	7.90	6.60	106.00	87.60	725.10
1982	29.00	62.00	74.00	149.00	124.00	43.00	61.00	57.00	23.00	76.00	62.00	98.00	858.00
1983	32.00	20.00	33.00	50.00	42.00	159.00	77.00	20.00	66.00	13.00	28.00	108.00	648.00
1984	37.00	80.00	185.00	108.00	42.00	84.00	39.00	148.00	9.00	7.00	24.00	65.00	828.00
1985	55.00	29.00	40.00	44.00	55.00	34.00	38.00	28.00	26.00	19.00	89.00	1.00	458.00
1986	95.00	137.00	8.00	14.00	57.00	72.00	78.00	80.00	24.00	52.00	26.00	53.00	696.00
1987	88.00	50.00	94.00	154.00	48.00	42.00	48.00	18.00	20.00	57.00	91.00	28.00	738.00
1988	7.00	74.00	109.00	31.00	44.00	111.00	6.00	0.00	14.00	27.00	140.00	110.00	673.00
1989	2.00	11.00	132.00	10.00	114.00	80.00	42.00	21.00	16.00	22.00	71.00	79.00	600.00
1990	1.00	10.00	31.00	39.00	102.00	35.00	30.00	27.00	50.00	33.00	18.00	186.00	562.00
1991	35.00	37.00	8.00	90.00	57.00	43.00	119.00	48.00	5.00	77.00	30.00	62.00	611.00
1992	0.00	10.00	39.00	84.00	46.00	88.00	46.00	0.00	7.00	29.00	34.00	57.00	440.00
1993	25.00	19.00	64.00	49.00	149.00	11.00	10.00	55.00	5.00	3.00	87.00	26.00	503.00
1994	22.00	50.00	49.00	89.00	33.00	59.00	57.00	7.00	18.00	137.00	70.00	66.00	657.00
1995	110.00	23.00	97.00	21.00	38.00	100.00	69.00	50.00	36.00	15.00	50.00	86.00	695.00
1996	395.00	993.00	470.00	185.00	1008.00	381.00	98.00	933.00	863.00	278.00	901.00	1083.00	7588.00



TABLE D.1.17 PARVOMAI STATION (CODE NO. 46440)

Year	Monthly Total Precipitation (mm)												Annual (mm)
	Jan.	Feb.	Mar.	Apr.	May	June	July	Aug.	Sept.	Oct.	Nov.	Dec.	
1963	124.10	96.10	53.60	71.30	86.90	56.80	93.40	8.30	14.50	61.30	40.90	47.20	754.40
1964	22.30	30.70	35.00	26.20	92.50	70.50	34.10	45.70	170.10	28.10	15.00	30.90	601.10
1965	22.40	85.10	40.10	54.40	119.00	21.80	7.40	33.20	0.00	1.80	51.90	41.80	478.90
1966	69.40	14.40	49.00	55.20	64.70	117.00	57.30	61.70	11.10	14.10	199.40	116.80	830.10
1967	37.40	19.20	26.60	63.00	61.50	60.30	65.10	0.00	48.00	27.30	33.50	40.30	482.20
1968	62.00	36.80	22.60	2.80	31.90	33.00	23.00	50.40	60.40	12.90	103.80	62.40	502.00
1969	125.80	99.90	77.00	19.30	11.50	88.50	48.80	4.00	44.00	0.00	5.80	137.50	662.10
1970	32.40	46.20	86.60	39.80	32.70	34.00	9.30	13.20	1.30	45.50	49.50	26.70	417.20
1971	72.90	59.10	82.90	64.20	84.70	79.60	178.60	24.90	50.90	63.70	3.90	48.00	813.40
1972	21.40	16.20	13.40	86.80	59.80	50.30	32.80	67.70	43.10	193.40	29.10	2.90	616.90
1973	52.20	49.40	83.40	119.60	108.20	72.20	81.70	38.60	34.70	21.30	51.30	26.10	738.70
1974	16.30	12.40	70.40	41.00	81.20	80.40	36.20	12.50	7.50	9.20	78.20	82.40	527.70
1975	58.70	17.70	24.60	87.10	60.10	61.50	69.20	199.30	2.90	89.50	41.90	30.10	742.60
1976	17.90	14.70	12.50	64.60	57.20	52.50	98.50	63.00	2.30	66.00	68.10	13.50	530.80
1977	133.60	28.20	31.90	11.00	136.30	50.10	102.30	8.60	46.90	6.30	23.00	68.20	646.40
1978	29.00	46.50	50.00	82.20	76.00	101.80	5.10	35.80	194.80	66.60	18.60	43.90	750.30
1979	44.70	81.60	2.40	49.70	77.80	35.60	31.50	102.50	6.30	74.10	96.00	40.80	643.00
1980	70.00	28.70	18.00	82.00	88.10	31.60	29.60	87.60	29.50	42.00	54.20	100.70	662.00
1981	144.80	49.70	12.60	16.00	22.50	37.20	33.10	58.10	10.00	9.50	73.50	48.60	515.60
1982	34.00	48.00	78.00	101.00	14.00	63.00	36.00	39.00	7.00	21.00	34.00	49.00	524.00
1983	29.00	19.00	20.00	9.00	45.00	104.00	102.00	54.00	77.00	21.00	18.00	126.00	624.00
1984	64.00	60.00	128.00	55.00	15.00	56.00	44.00	47.00	26.00	1.00	30.00	57.00	583.00
1985	32.00	34.00	25.00	32.00	58.00	36.00	8.00	14.00	13.00	7.00	82.00	3.00	344.00
1986	85.00	166.00	8.00	19.00	36.00	46.00	49.00	48.00	12.00	27.00	17.00	51.00	564.00
1987	65.00	45.00	49.00	133.00	40.00	25.00	77.00	15.00	8.00	39.00	50.00	40.00	586.00
1988	4.00	24.00	87.00	15.00	25.00	67.00	25.00	4.00	18.00	13.00	126.00	128.00	536.00
1989	1.00	2.00	90.00	6.00	62.00	36.00	26.00	25.00	35.00	11.00	71.00	91.00	456.00
1990	0.00	3.00	41.00	35.00	94.00	44.00	7.00	28.00	31.00	35.00	21.00	174.00	513.00
1991	21.00	47.00	20.00	57.00	69.00	24.00	83.00	71.00	17.00	43.00	34.00	20.00	506.00
1992	7.00	1.00	22.00	59.00	56.00	102.00	45.00	3.00	3.00	14.00	32.00	21.00	365.00
1993	24.00	24.00	52.00	43.00	104.00	20.00	6.00	36.00	3.00	22.00	115.00	25.00	474.00
1994	15.00	42.00	25.00	64.00	32.00	46.00	34.00	4.00	18.00	88.00	41.00	59.00	468.00
1995	70.00	18.00	57.00	24.00	2.00	23.00	74.00	31.00	31.00	0.00	43.00	95.00	468.00
1996	218.00	953.00	553.00	197.00	442.00	130.00	15.00	1379.00	630.00	171.00	862.00	827.00	6377.00

TABLE D.1.18 BANIA (PLOVDIVSKO) STATION (CODE NO. 46690)

Year Month	Monthly Total Precipitation (mm)												Annual (mm)
	Jan.	Feb.	Mar.	Apr.	May	June	July	Aug.	Sep.	Oct.	Nov.	Dec.	
1963	121.00	67.20	33.10	46.90	81.70	81.50	93.30	9.00	45.30	55.30	23.30	35.80	693.40
1964	11.30	22.10	26.30	22.10	112.30	28.20	25.50	43.60	66.80	38.20	38.80	24.80	460.00
1965	18.90	57.90	43.20	42.10	140.20	27.20	24.60	29.10	0.20	2.20	51.30	51.20	488.10
1966	42.80	28.70	46.10	68.60	47.80	78.00	185.90	68.80	46.50	40.40	121.40	97.50	872.50
1967	27.50	14.80	12.40	29.40	43.50	19.80	43.10	69.00	29.20	3.20	39.60	50.00	381.50
1968	16.60	47.80	21.20	0.00	56.20	54.70	31.20	144.40	95.80	8.60	106.80	51.70	635.00
1969	57.10	74.70	54.60	26.70	24.40	125.40	16.60	34.90	78.00	0.20	12.60	156.80	662.00
1970	36.40	43.10	48.20	47.20	80.90	69.60	74.40	39.50	5.10	32.70	28.10	18.20	523.40
1971	45.20	52.30	82.40	48.00	117.70	77.30	92.30	23.10	66.70	36.20	19.50	21.20	681.90
1972	21.20	34.50	10.30	76.50	61.20	18.70	115.30	68.30	120.70	204.50	30.00	1.80	763.00
1973	55.40	36.50	68.00	111.80	54.00	22.60	111.00	45.30	30.30	25.80	38.40	21.80	620.90
1974	13.60	17.40	42.10	39.40	41.70	53.70	54.50	224.80	6.40	25.90	43.90	79.90	643.30
1975	10.70	10.60	32.70	31.60	65.10	73.90	87.70	108.90	8.70	61.40	52.90	0.00	544.20
1976	12.20	11.40	21.80	60.70	85.00	52.20	75.90	102.90	1.50	72.30	73.80	18.50	588.20
1977	33.90	39.30	10.00	33.90	81.60	79.30	81.50	37.50	37.10	1.10	51.90	39.50	526.60
1978	17.00	53.50	36.40	69.40	127.40	89.10	31.80	77.10	150.60	14.30	13.00	35.70	715.30
1979	33.80	29.30	15.30	43.50	122.00	45.40	54.80	178.20	2.50	102.30	53.00	10.50	690.60
1980	85.50	10.70	10.60	67.10	83.90	49.00	63.00	133.50	17.00	24.50	60.50	43.00	648.30
1981	27.50	27.50	12.50	33.00	36.50	53.00	102.50	81.00	12.00	22.50	34.50	17.60	460.10
1982	21.00	24.00	35.00	73.00	46.00	61.00	40.00	161.00	11.00	33.00	18.00	38.00	561.00
1983	13.00	5.00	21.00	20.00	25.00	119.00	66.00	6.00	48.00	35.00	23.00	41.00	422.00
1984	34.00	45.00	77.00	22.00	36.00	42.00	49.00	73.00	55.00	1.00	18.00	33.00	485.00
1985	27.00	16.00	28.00	31.00	73.00	53.00	28.00	27.00	25.00	2.00	105.00	2.00	417.00
1986	52.00	91.00	18.00	18.00	31.00	76.00	55.00	13.00	26.00	22.00	16.00	22.00	440.00
1987	51.00	36.00	37.00	77.00	36.00	48.00	45.00	6.00	43.00	41.00	48.00	50.00	518.00
1988	1.00	21.00	66.00	8.00	26.00	109.00	0.00	6.00	30.00	18.00	98.00	40.00	423.00
1989	0.00	15.00	47.00	31.00	45.00	133.00	15.00	60.00	14.00	38.00	41.00	47.00	486.00
1990	1.00	3.00	28.00	49.00	45.00	13.00	39.00	22.00	72.00	10.00	19.00	117.00	418.00
1991	12.00	31.00	21.00	76.00	82.00	62.00	133.00	30.00	9.00	17.00	34.00	9.00	516.00
1992	0.00	17.00	18.00	72.00	52.00	115.00	11.00	0.00	4.00	25.00	44.00	9.00	367.00
1993	4.00	38.00	32.00	53.00	82.00	0.00	18.00	2.00	3.00	75.00	74.00	5.00	336.00
1994	9.00	19.00	49.00	84.00	36.00	11.00	65.00	0.00	1.00	75.00	39.00	63.00	451.00
1995	34.00	10.00	44.00	3.00	34.00	148.00	57.00	59.00	30.00	4.00	47.00	71.00	541.00
1996	311.00	625.00	284.00	216.00	466.00	387.00	9.00	274.00	1167.00	152.00	666.00	329.00	4886.00

TABLE D.1.19 ROZOVETZ STATION (CODE NO. 46700)

Year Month	Monthly Total Precipitation (mm)												Annual (mm)
	Jan.	Feb.	Mar.	Apr.	May	June	July	Aug.	Sep.	Oct.	Nov.	Dec.	
1963	121.90	69.90	72.50	52.30	76.20	67.40	124.30	35.30	51.20	57.70	41.10	38.60	808.40
1964	12.50	34.40	31.60	27.40	87.60	35.90	30.40	44.90	85.40	37.00	37.70	15.90	480.70
1965	19.60	69.10	38.10	31.10	140.30	16.30	12.90	37.40	0.00	0.50	62.30	53.20	480.80
1966	73.40	13.10	50.60	49.40	44.00	80.60	149.60	51.40	21.80	24.90	178.20	93.10	830.10
1967	42.40	16.20	23.60	53.30	49.20	61.20	65.20	69.10	44.40	23.30	35.40	44.40	527.70
1968	30.90	45.40	27.00	3.40	134.10	26.30	32.70	167.60	40.60	15.10	117.10	49.40	689.60
1969	49.70	92.60	85.10	50.40	47.30	119.60	28.50	49.70	61.70	0.00	12.20	160.10	756.90
1970	45.90	47.10	45.90	50.10	72.70	159.30	15.10	36.20	5.00	38.90	38.30	14.40	568.90
1971	37.80	58.90	77.70	23.00	110.50	34.60	121.00	44.50	52.00	45.00	13.50	6.50	625.00
1972	24.50	37.50	8.30	84.00	33.10	43.00	122.40	62.40	108.70	152.90	35.80	6.70	719.30
1973	54.10	30.40	67.20	109.20	48.90	46.10	166.00	53.20	37.90	17.00	48.20	37.50	715.70
1974	18.80	14.20	38.70	76.90	83.60	73.20	85.80	27.80	5.50	27.70	69.20	85.20	606.60
1975	8.20	9.20	37.80	47.00	72.20	86.50	73.90	111.80	8.80	62.50	62.30	35.70	615.90
1976	22.30	6.30	32.20	49.30	75.70	88.30	116.90	109.90	13.20	62.20	81.40	18.00	675.70
1977	77.10	44.40	8.70	36.30	112.40	141.70	126.60	10.60	44.60	2.00	51.20	39.40	695.00
1978	28.80	64.20	36.50	108.00	141.90	98.40	28.20	75.20	102.60	21.50	30.30	41.80	777.40
1979	42.40	38.90	26.10	30.40	133.80	27.40	80.00	142.00	0.20	108.20	48.70	22.40	700.50
1980	95.60	12.00	22.70	62.60	128.70	30.60	85.90	128.80	30.00	41.30	58.20	109.20	805.60
1981	94.80	41.70	15.90	28.10	37.30	38.90	62.60	52.10	23.20	10.60	104.00	50.20	559.40
1982	40.00	40.00	48.00	58.00	42.00	50.00	43.00	141.00	16.00	15.00	18.00	58.00	569.00
1983	16.00	32.00	31.00	22.00	59.00	116.00	66.00	27.00	19.00	16.00	24.00	50.00	478.00
1984	73.00	72.00	94.00	40.00	72.00	78.00	47.00	61.00	39.00	2.00	21.00	55.00	654.00
1985	23.00	32.00	36.00	47.00	72.00	57.00	20.00	9.00	37.00	5.00	108.00	1.00	447.00
1986	65.00	92.00	12.00	24.00	49.00	90.00	64.00	16.00	26.00	30.00	14.00	30.00	512.00
1987	57.00	36.00	49.00	105.00	48.00	53.00	31.00	11.00	34.00	47.00	70.00	61.00	602.00
1988	4.00	43.00	53.00	19.00	80.00	111.00	0.00	16.00	39.00	22.00	96.00	43.00	526.00
1989	0.00	20.00	48.00	15.00	80.00	128.00	35.00	112.00	34.00	28.00	56.00	58.00	615.00
1990	6.00	2.00	36.00	78.00	105.00	46.00	50.00	32.00	89.00	34.00	26.00	188.00	692.00
1991	19.00	35.00	23.00	72.00	87.00	46.00	130.00	29.00	6.00	27.00	42.00	17.00	533.00
1992	0.00	22.00	36.00	69.00	60.00	123.00	41.00	7.00	8.00	30.00	38.00	8.00	442.00
1993	12.00	31.00	42.00	47.00	152.00	43.00	86.00	42.00	11.00	7.00	98.00	31.00	602.00
1994	11.00	17.00	47.00	71.00	31.00	94.00	53.00	31.00	13.00	82.00	37.00	87.00	574.00
1995	48.00	14.00	98.00	44.00	55.00	139.00	64.00	29.00	33.00	4.00	60.00	104.00	692.00
1996	267.00	599.00	437.00	400.00	498.00	328.00	12.00	652.00	1136.00	188.00	1126.00	415.00	6058.00

TABLE D.1.20 ROZINO STATION (CODE NO. 46750)

Year	Month	Monthly Total Precipitation (mm)												Annual (mm)
		Jan.	Feb.	Mar.	Apr.	May	June	July	Aug.	Sep.	Oct.	Nov.	Dec.	
1963		144.40	70.20	17.50	83.80	116.70	98.10	77.80	35.20	36.00	82.10	71.00	53.70	886.50
1964		9.10	33.20	33.50	37.30	127.40	32.50	63.70	47.70	98.80	46.20	68.80	39.80	638.00
1965		78.70	53.30	31.90	51.90	95.50	18.20	37.20	29.30	0.00	2.30	27.90	76.30	502.50
1966		56.60	25.20	52.70	56.70	75.00	93.30	149.60	53.10	27.40	132.30	124.70	89.00	955.60
1967		13.60	16.90	28.90	32.80	110.50	77.30	14.80	41.10	46.60	8.10	19.50	34.00	444.10
1968		29.20	43.90	42.70	1.30	111.00	72.50	113.70	119.90	89.40	13.10	131.90	85.90	854.50
1969		36.90	97.00	116.40	44.30	21.00	181.50	83.00	38.50	131.10	0.20	10.00	200.50	960.40
1970		27.50	63.00	40.50	63.40	77.90	106.60	59.50	59.30	1.20	44.60	23.20	25.60	592.30
1971		24.90	43.80	131.20	36.50	60.20	98.30	86.70	77.00	51.70	71.50	13.10	22.60	717.50
1972		28.30	59.00	18.50	51.90	92.20	60.00	54.40	89.90	72.50	247.90	21.90	1.50	798.00
1973		52.40	34.40	74.20	148.60	53.00	90.00	164.00	44.60	40.00	23.50	43.70	57.40	825.80
1974		34.50	26.40	38.50	35.60	78.40	79.00	69.50	25.30	22.60	21.00	68.40	100.50	599.70
1975		9.00	13.20	33.50	16.10	44.50	68.00	129.50	155.70	13.00	63.20	50.30	9.60	605.60
1976		17.80	17.50	13.30	51.00	113.80	65.00	80.00	112.90	15.90	113.20	129.90	22.10	752.40
1977		32.30	57.50	26.00	42.70	43.80	122.90	81.00	36.00	34.60	2.90	52.20	42.20	574.10
1978		26.20	37.80	61.60	84.80	89.10	79.80	68.50	46.40	83.00	14.60	19.40	66.60	677.80
1979		40.90	23.70	8.30	52.40	118.50	46.80	92.50	151.80	21.40	61.20	58.20	14.40	690.10
1980		72.50	5.60	35.30	106.20	194.10	27.10	73.70	79.70	4.80	32.00	45.90	77.30	754.20
1981		28.70	22.30	34.40	70.00	66.90	37.60	62.90	84.60	5.50	21.40	32.70	51.80	518.80
1982		9.00	37.00	50.00	42.00	67.00	41.00	87.00	59.00	19.00	40.00	37.00	91.00	579.00
1983		15.00	11.00	26.00	37.00	15.00	129.00	91.00	22.00	43.00	12.00	48.00	72.00	521.00
1984		35.00	112.00	67.00	41.00	70.00	50.00	40.00	55.00	43.00	11.00	27.00	118.00	669.00
1985		54.00	39.00	30.00	25.00	103.00	103.00	39.00	43.00	17.00	3.00	143.00	2.00	601.00
1986		59.00	121.00	29.00	11.00	55.00	95.00	101.00	9.00	30.00	23.00	8.00	23.00	564.00
1987		88.00	65.00	81.00	78.00	68.00	58.00	30.00	20.00	49.00	31.00	110.00	71.00	749.00
1988		7.00	69.00	44.00	18.00	61.00	122.00	12.00	22.00	33.00	14.00	79.00	24.00	505.00
1989		2.00	7.00	36.00	27.00	60.00	183.00	27.00	83.00	43.00	37.00	35.00	33.00	573.00
1990		4.00	14.00	38.00	55.00	94.00	27.00	65.00	15.00	37.00	18.00	22.00	203.00	592.00
1991		24.00	73.00	33.00	87.00	112.00	73.00	200.00	65.00	9.00	43.00	95.00	9.00	823.00
1992		0.00	43.00	24.00	80.00	82.00	98.00	25.00	33.00	39.00	24.00	54.00	42.00	544.00
1993		16.00	21.00	34.00	48.00	70.00	31.00	24.00	26.00	20.00	13.00	75.00	41.00	419.00
1994		27.00	19.00	18.00	79.00	45.00	42.00	43.00	22.00	20.00	103.00	28.00	67.00	513.00
1995		43.00	12.00	67.00	27.00	84.00	159.00	104.00	57.00	44.00	5.00	58.00	151.00	811.00
1996		349.00	502.00	309.00	344.00	664.00	154.00	148.00	226.00	1348.00	264.00	593.00	650.00	5551.00

TABLE D.1.21 SESTRIMO STATION (CODE NO. 47520)

Year	Monthly Total Precipitation (mm)												Annual (mm)
	Jan.	Feb.	Mar.	Apr.	May	June	July	Aug.	Sep.	Oct.	Nov.	Dec.	
1963	127.60	165.80	47.70	7.13	190.50	88.00	120.40	0.00	54.80	102.90	85.80	73.30	1063.93
1964	15.30	14.50	58.80	55.70	128.70	72.40	25.30	47.10	114.30	39.90	73.30	59.90	705.20
1965	72.40	46.40	47.50	92.90	103.40	26.30	13.80	34.10	2.00	11.30	21.10	50.10	521.30
1966	50.90	24.80	62.00	96.40	69.40	60.20	31.60	113.30	25.50	46.40	161.80	126.00	868.30
1967	22.60	9.80	82.40	30.50	129.20	65.00	29.00	49.80	24.00	6.00	24.90	46.40	519.60
1968	62.10	49.90	51.90	0.20	20.70	53.90	28.70	70.00	39.40	7.10	141.20	57.50	582.60
1969	100.60	103.60	107.80	61.60	32.30	97.60	36.90	6.90	57.60	0.00	18.00	158.10	781.00
1970	36.70	76.20	78.10	23.40	109.00	63.80	80.90	34.10	15.50	61.00	35.50	28.40	642.60
1971	75.20	76.10	133.30	44.10	76.90	79.40	86.10	150.70	67.40	43.40	27.60	45.80	906.00
1972	43.20	39.70	27.40	72.70	44.70	20.60	77.40	100.40	75.30	136.10	13.00	6.20	636.70
1973	38.60	61.00	78.30	140.10	41.80	74.60	82.10	63.80	58.00	14.40	19.70	48.80	721.20
1974	31.00	43.50	53.80	47.20	93.00	84.30	52.70	28.90	15.60	41.40	95.60	74.20	661.20
1975	48.80	33.20	49.00	90.20	129.30	114.90	134.10	195.70	20.80	66.50	65.10	9.30	956.90
1976	32.90	45.90	9.70	61.10	229.70	146.90	217.00	118.80	3.20	217.20	86.10	57.60	1226.10
1977	48.50	45.50	38.70	16.30	121.80	113.40	147.80	36.20	102.30	13.60	46.50	40.90	771.50
1978	34.40	48.60	23.50	112.20	120.90	48.00	33.10	49.00	116.60	46.30	17.60	72.70	722.90
1979	27.40	59.10	1.80	78.20	114.80	88.20	45.40	151.10	5.30	67.10	120.30	42.90	801.60
1980	77.40	19.20	43.00	67.50	126.70	41.20	50.40	70.40	15.50	87.40	33.80	46.60	679.10
1981	55.90	29.20	44.70	51.80	69.30	44.30	25.80	58.10	23.90	12.20	105.50	40.70	561.40
1982	27.00	46.00	136.00	110.00	50.00	39.00	39.00	36.00	38.00	93.00	53.00	94.00	761.00
1983	24.00	33.00	23.00	27.00	64.00	176.00	82.00	15.00	44.00	11.00	26.00	64.00	589.00
1984	28.00	56.00	77.00	61.00	45.00	47.00	28.00	97.00	28.00	13.00	32.00	57.00	569.00
1985	79.00	32.00	39.00	21.00	66.00	54.00	23.00	77.00	27.00	14.00	146.00	4.00	582.00
1986	96.00	163.00	8.00	18.00	92.00	147.00	37.00	33.00	16.00	47.00	22.00	24.00	703.00
1987	61.00	57.00	46.00	117.00	27.00	29.00	66.00	19.00	22.00	51.00	66.00	30.00	591.00
1988	8.00	53.00	68.00	41.00	59.00	126.00	44.00	0.00	16.00	30.00	96.00	53.00	594.00
1989	4.00	19.00	91.00	17.00	113.00	63.00	21.00	25.00	38.00	42.00	49.00	37.00	519.00
1990	0.00	11.00	20.00	93.00	56.00	53.00	30.00	56.00	26.00	27.00	12.00	144.00	528.00
1991	38.00	72.00	22.00	102.00									
1992	0.00	24.00	19.00	110.00	44.00	103.00	54.00	18.00	9.00	28.00	40.00	51.00	500.00
1993	37.00	23.00	52.00	24.00	113.00	0.00	13.00	15.00	9.00	30.00	81.00	33.00	430.00
1994	27.00	33.00	26.00	63.00	55.00	36.00	80.00	11.00	75.00	67.00	59.00	55.00	587.00
1995	68.00	13.00	82.00	24.00	68.00	93.00	97.00	54.00	31.00	8.00	29.00	142.00	709.00
1996	240.00	965.00	442.00	125.00	475.00	201.00	221.00	888.00	1409.00	310.00	497.00	848.00	6621.00

TABLE D.1.22 ANTON STATION (CODE NO. 64525)

Year	Monthly Total Precipitation (mm)												Annual (mm)
	Jan.	Feb.	Mar.	Apr.	May	June	July	Aug.	Sep.	Oct.	Nov.	Dec.	
1963	129.30	65.70	26.50	119.50	98.90	90.10	62.80	3.20	15.40	56.00	25.00	43.30	735.70
1964	5.90	26.00	16.40	47.00	119.90	33.90	69.30	49.60	111.00	38.00	52.60	46.90	616.50
1965	65.10	36.30	23.30	52.20	163.40	32.10	5.70	14.30	2.70	0.00	31.60	54.20	480.90
1966	43.30	11.20	37.90	43.70	50.00	75.40	25.20	60.50	15.70	18.80	60.10	53.10	494.90
1967	28.90	31.50	15.70	58.10	106.70	105.90	27.70	7.70	30.50	4.10	41.40	21.80	480.00
1968	17.00	40.20	51.90	0.70	68.80	86.60	54.40	101.80	41.80	4.20	42.70	89.90	600.00
1969	53.70	50.40	61.00	18.80	15.10	128.60	77.70	61.10	50.60	0.00	10.20	50.40	577.60
1970	13.30	65.60	36.00	56.70	112.40	82.10	129.80	45.80	1.50	54.60	23.60	8.60	630.00
1971	16.50	20.40	68.80	22.60	50.70	61.20	58.40	22.70	41.40	22.10	20.40	40.70	445.90
1972	14.90	3.60	16.80	33.40	46.80	98.70	62.70	104.70	80.20	153.50	16.00	0.60	631.90
1973	36.30	33.80	82.20	132.80	108.40	91.80	66.40	34.90	14.40	33.80	36.90	27.90	699.60
1974	12.90	8.40	16.90	30.60	84.20	103.20	35.50	28.30	18.20	32.40	43.80	90.60	505.00
1975	4.70	7.10	21.50	12.60	118.70	97.60	80.60	77.80	3.00	32.20	39.20	18.30	513.30
1976	27.80	24.00	21.70	96.20	109.60	97.50	183.40	97.30	10.50	63.90	82.20	21.40	835.50
1977	19.30	45.70	38.70	40.70	68.40	122.20	72.20	79.70	29.00	0.00	47.10	35.70	598.70
1978	32.30	44.40	50.50	47.70	69.20	88.70	57.30	33.40	111.20	9.10	13.00	65.00	621.80
1979	42.10	19.20	8.60	40.90	105.50	81.70	91.30	112.50	15.10	54.40	43.40	9.20	623.90
1980	18.90	11.90	24.80	44.60	138.50	55.90	39.70	93.20	16.20	56.50	17.40	36.40	554.00
1981	100.00	60.20	37.20	29.60	144.50	75.60	74.30	43.60	1.80	20.30	33.30	15.70	636.10
1982	20.00	32.00	35.00	48.00	107.00	57.00	82.00	89.00	15.00	21.00	37.00	74.00	617.00
1983	28.00	23.00	14.00	72.00	42.00	199.00	87.00	20.00	28.00	27.00	34.00	53.00	627.00
1984	43.00	42.00	41.00	61.00	86.00	47.00	41.00	133.00	43.00	22.00	13.00	55.00	627.00
1985	12.00	38.00	17.00	41.00	162.00	95.00	33.00	75.00	20.00	11.00	73.00	2.00	579.00
1986	65.00	50.00	19.00	11.00	80.00	105.00	146.00	15.00	27.00	38.00	5.00	22.00	583.00
1987	103.00	29.00	22.00	71.00	88.00	41.00	52.00	15.00	42.00	37.00	64.00	103.00	667.00
1988	7.00	68.00	71.00	44.00	84.00	217.00	22.00	33.00	105.00	31.00	104.00	35.00	821.00
1989	6.00	7.00	27.00	31.00	70.00	174.00	55.00	87.00	35.00	72.00	30.00	25.00	619.00
1990	14.00	8.00	48.00	65.00	87.00	48.00	48.00	33.00	55.00	24.00	21.00	76.00	527.00
1991	20.00	7.00	14.00	106.00	133.00	97.00	172.00	26.00	22.00	80.00	56.00	16.00	749.00
1992	0.00	77.00	26.00	67.00	65.00	0.00	0.00	14.00	0.00	31.00	51.00	26.00	357.00
1993	11.00	21.00	16.00	45.00	97.00	71.00	29.00	14.00	21.00	16.00	41.00	41.00	423.00
1994	13.00	8.00	29.00	71.00	36.00	46.00	72.00	30.00	0.00	79.00	18.00	61.00	463.00
1995	37.00	29.00	41.00	57.00	150.00	157.00	85.00	73.00	48.00	12.00	76.00	83.00	848.00
1996	170.00	581.00	387.00	299.00	1023.00	419.00	280.00	879.00	1647.00	263.00	445.00	630.00	7023.00

TABLE D.1.23 STARA ZAGORA STATION (CODE NO. 42010)

Year	Month	Monthly Average Temperature (°C)												Annual Avg. (°C)
		Jan.	Feb.	Mar.	Apr.	May	June	July	Aug.	Sep.	Oct.	Nov.	Dec.	
1963		-4.00	2.10	4.40	11.00	17.10	21.20	23.80	24.10	19.70	13.00	8.40	2.30	11.92
1964		-1.50	1.60	5.90	12.10	15.30	21.50	22.80	21.80	17.50	14.20	8.70	3.80	11.98
1965		2.20	-2.20	5.70	9.50	15.80	21.80	24.20	21.10	19.40	11.30	7.20	4.60	11.72
1966		1.40	7.60	6.80	13.20	16.20	19.90	23.20	23.20	18.40	16.20	10.00	3.50	13.30
1967		-2.00	1.40	7.30	11.20	17.40	19.80	23.50	23.80	20.00	13.70	8.70	2.40	12.27
1968		0.30	4.30	6.30	14.50	20.50	21.30	23.60	21.40	18.60	12.00	8.90	1.80	12.79
1969		-3.30	2.70	4.10	10.30	19.20	20.40	21.20	22.90	19.60	12.40	8.90	4.60	11.92
1970		3.50	4.40	7.00	13.80	15.50	20.70	24.00	22.90	18.90	11.20	7.60	3.40	12.74
1971		3.70	3.10	5.50	11.00	18.00	20.30	21.40	23.30	17.00	10.80	6.70	3.60	12.03
1972		1.10	2.30	7.20	14.40	17.20	21.70	23.10	22.80	16.50	11.00	6.80	2.20	12.19
1973		-0.10	4.70	4.90	11.20	17.80	20.00	22.50	20.90	19.20	12.80	4.30	0.80	11.58
1974		0.70	4.60	6.40	9.90	15.70	20.20	22.60	23.00	19.40	15.70	6.30	3.10	12.30
1975		1.60	1.90	9.20	13.40	17.80	21.50	23.10	21.40	21.10	13.20	6.50	2.40	12.76
1976		2.50	1.00	5.60	12.60	16.70	20.00	22.10	19.00	17.60	12.70	3.90	2.30	11.33
1977		0.80	7.80	8.40	12.80	17.80	20.70	23.20	23.30	18.10	11.60	9.40	0.60	12.88
1978		1.10	4.00	8.00	11.60	16.70	20.60	23.10	21.70	17.10	13.30	5.30	2.20	12.07
1979		0.10	2.90	9.20	11.60	17.90	22.50	21.40	21.50	18.80	11.40	8.70	4.80	12.57
1980		-1.80	0.80	5.70	10.20	15.10	20.40	23.10	21.00	17.50	14.50	7.70	4.00	11.52
1981		-0.20	2.20	8.70	11.60	15.70	23.30	22.40	22.20	18.90	15.40	6.00	4.70	12.58
1982		-0.40	1.30	6.00	10.50	17.50	21.40	22.10	22.20	20.40	13.80	5.80	5.10	12.14
1983		3.30	2.40	7.60	13.30	18.40	19.00	23.50	21.30	18.90	11.40	4.70	2.40	12.18
1984		3.00	2.30	4.50	10.00	17.80	19.60	21.30	20.40	19.20	15.20	7.80	2.30	11.95
1985		0.50	-1.20	4.60	13.10	18.30	19.70	22.70	23.60	18.60	12.10	7.60	4.40	12.00
1986		3.80	0.80	5.70	14.60	17.90	20.90	22.80	23.80	20.00	12.30	4.90	0.70	12.55
1987		-0.80	4.20	2.00	10.40	15.50	21.20	25.00	22.20	20.80	11.80	8.70	2.80	11.98
1988		2.60	2.90	6.60	10.60	16.20	20.50	26.80	23.40	18.90	11.50	2.10	2.50	12.05
1989		1.10												
1990														
1991								22.90	22.00	18.70	13.30	7.60	-0.20	
1992		1.60	2.40	7.30	12.00	15.80	20.20	22.00	25.50	18.30	14.60	7.90	0.50	12.34
1993		-0.30	0.40	5.70	11.40	16.40	20.40	22.80	23.60	18.50	15.10	4.00	3.70	11.81
1994		3.90	3.10	8.00	13.30	18.30	21.90	24.40	25.60	23.50	13.70	5.60	2.10	13.62
1995		0.00	5.60	6.10	10.20	15.60	22.20	23.90	22.30	18.30	12.70	4.10	2.90	11.99
1996		0.20	0.00	2.20	10.80	18.80	22.50	24.50	23.10	16.10	11.80	8.40	3.40	11.82

TABLE D.1.24 HASKOVO STATION (CODE NO. 43010)

Year Month	Monthly Average Temperature (°C)												Annual Avg.(°C)
	Jan.	Feb.	Mar.	Apr.	May	June	July	Aug.	Sep.	Oct.	Nov.	Dec.	
1963	-3.60	2.70	5.20	11.30	16.90	20.90	23.60	24.10	20.60	13.10	9.90	2.60	12.28
1964	-0.80	2.10	6.30	12.70	15.40	21.80	23.10	22.20	17.20	14.30	9.40	4.10	12.32
1965	2.80	-1.70	6.50	10.10	16.00	22.20	24.70	21.40	19.90	11.50	8.20	5.30	12.24
1966	1.80	9.10	7.20	13.90	16.80	19.90	23.30	23.70	18.80	17.00	9.80	3.70	13.75
1967	-0.80	1.70	7.40	11.80	17.40	19.50	23.00	23.50	19.00	13.60	8.50	3.60	12.35
1968	0.60	4.80	7.00	14.80	20.70	21.10	23.50	21.50	18.70	12.00	8.90	1.10	12.89
1969	-4.10	2.70	3.90	10.50	19.60	20.30	21.30	23.20	19.80	12.30	10.20	4.00	11.98
1970	3.20	3.70	7.00	14.10	15.50	20.80	23.70	23.00	18.40	11.30	8.40	3.10	12.68
1971	3.10	3.00	5.40	11.30	17.90	20.10	21.10	22.50	17.00	11.30	7.40	3.70	11.98
1972	0.90	2.20	7.00	14.20	17.00	21.30	22.50	22.30	16.40	10.60	6.80	1.70	11.91
1973	-0.40	4.80	4.50	11.30	17.50	19.90	22.60	21.00	18.90	12.80	4.40	0.60	11.49
1974	0.50	3.90	6.00	9.50	15.50	19.90	22.00	22.20	19.50	15.70	6.20	3.00	11.99
1975	1.00	2.20	9.00	12.90	17.10	20.60	22.80	20.10	19.30	12.10	5.40	2.00	12.04
1976	2.60	0.30	4.30	12.00	15.90	19.10	21.30	18.30	17.20	12.70	8.40	1.70	11.15
1977	-0.10	7.50	7.40	11.90	17.00	20.10	22.60	22.40	17.10	10.70	9.60	0.20	12.20
1978	0.60	3.90	7.50	10.90	15.70	20.20	22.80	20.90	16.40	11.90	4.60	2.70	11.51
1979	-0.40	2.60	9.10	11.10	17.20	22.10	21.30	21.40	18.60	10.60	7.90	4.30	12.15
1980	-3.90	0.70	6.00	10.50	15.30	20.40	22.70	20.90	16.50	14.70	7.60	3.70	11.26
1981	-1.20	-0.40	8.60	11.50	14.70	22.90	21.90	22.10	18.70	15.20	5.20	5.10	12.03
1982	-1.10	0.50	5.30	10.60	16.70	20.60	21.00	21.40	19.80	13.60	5.00	5.10	11.54
1983	3.20	1.80	7.50	13.40	17.80	18.50	22.90	20.70	18.40	11.10	4.40	1.40	11.76
1984	2.80	2.30	4.30	9.60	17.80	20.20	21.70	20.50	19.90	15.40	7.70	1.80	12.00
1985	0.30	-1.40	4.70	13.30	18.30	20.40	22.40	23.40	18.50	10.90	7.40	5.10	11.94
1986	3.50	0.50	5.20	14.80	17.70	21.50	23.00	24.00	19.60	12.10	4.00	0.70	12.22
1987	-0.20	3.90	2.00	10.30	15.70	21.50	25.00	21.90	20.60	10.80	8.40	2.70	11.88
1988	2.70	3.30	6.50	10.40	16.40	20.60	26.40	24.40	19.40	10.90	1.60	1.80	12.03
1989	1.60	5.00	9.50	15.20	15.70	19.30	22.70	23.40	18.90	12.10	5.70	0.90	12.50
1990	-1.70	5.20	9.70	12.00	15.90	21.10	23.80	22.50	17.50	12.30	8.50	3.80	12.55
1991	0.20	0.90	5.80	10.20	14.50	21.50	22.80	22.10	18.60	13.10	6.70	-0.60	11.32
1992	1.40	2.40	7.00	7.00	15.10	20.40	22.30	25.60	17.90	15.60	8.00	0.10	11.90
1993	0.50	0.20	5.70	11.60	16.70	21.20	23.30	23.40	18.90	15.00	3.40	4.50	12.03
1994	3.70	2.50	8.50	13.40	18.20	21.20	24.00	25.20	23.40	13.80	6.20	2.70	13.57
1995	-0.10	6.50	6.90	11.50	16.80	22.50	23.50	22.10	18.60	11.90	3.70	2.60	12.21
1996	-0.70	-0.30	1.80	10.90	19.60	22.90	24.90	22.80	16.70	11.70	8.40	3.30	11.83



TABLE D.1.25 SVILENGRAD STATION (CODE NO. 43020)

Year Month	Monthly Average Temperature (°C)												Annual Avg.(°C)
	Jan.	Feb.	Mar.	Apr.	May	June	July	Aug.	Sep.	Oct.	Nov.	Dec.	
1963	-1.80	4.80	6.30	12.30	17.90	21.30	25.10	25.70	22.00	13.80	10.20	3.80	13.45
1964	-0.50	2.40	7.00	13.50	15.90	22.30	24.20	22.80	18.20	15.50	9.80	5.30	13.03
1965	3.60	-0.50	7.10	10.80	16.20	22.20	24.50	21.90	20.80	12.40	9.40	6.80	12.93
1966	2.90	9.50	7.60	13.80	16.70	20.40	24.20	24.50	18.90	17.20	10.90	4.40	14.25
1967	-0.80	1.90	7.70	12.10	17.70	20.20	23.70	24.30	19.90	14.00	8.70	3.60	12.75
1968	0.80	5.70	7.10	14.90	21.20	21.90	25.20	22.90	19.70	12.20	10.00	2.60	13.68
1969	-2.60	5.10	5.30	11.20	20.30	21.90	22.30	23.90	20.40	12.60	10.20	5.70	13.03
1970	4.50	5.90	7.90	14.40	16.10	21.80	25.30	24.50	19.10	11.70	8.40	3.80	13.62
1971	4.60	3.90	6.30	12.10	18.60	21.10	21.90	24.00	18.00	11.00	7.80	3.80	12.76
1972	2.10	3.00	7.20	14.60	17.40	22.90	24.00	23.70	17.40	11.20	8.00	2.80	12.86
1973	0.40	5.40	5.10	12.20	18.10	20.30	23.40	22.00	20.10	13.80	5.00	2.30	12.34
1974	0.80	4.80	7.00	10.30	16.00	20.80	23.10	23.60	20.10	16.10	7.10	3.50	12.77
1975	1.60	2.20	9.50	13.70	17.70	21.50	23.80	21.10	19.90	12.40	6.50	2.30	12.68
1976	2.40	1.20	4.90	12.60	16.70	20.00	22.10	19.20	17.40	13.20	9.30	3.00	11.83
1977	1.60	8.90	7.90	12.50	17.30	20.90	23.30	23.00	17.60	10.60	9.90	1.30	12.90
1978	1.60	5.40	8.30	11.40	16.50	20.80	23.30	22.00	16.80	12.90	5.50	3.90	12.37
1979	1.00	4.60	9.70	11.40	18.00	23.00	22.20	22.80	19.50	11.90	8.90	4.80	13.15
1980	-1.40	1.70	6.40	11.20	15.70	20.40	23.40	21.80	17.40	15.10	8.50	5.00	12.10
1981	0.30	2.50	8.90	11.60	15.90	23.90	22.90	22.90	19.50	15.50	5.70	6.50	13.01
1982	0.40	1.30	5.90	10.80	16.80	21.50	22.10	22.50	20.90	13.90	6.00	5.90	12.33
1983	2.80	2.70	7.30	14.10	18.50	19.00	23.50	21.00	18.50	11.30	5.30	3.10	12.26
1984	3.90	3.60	5.50	10.60	18.20	20.60	22.70	21.20	20.70	15.70	8.50	3.20	12.87
1985	2.00	-1.40	5.70	13.90	19.30	21.20	23.40	24.10	18.90	11.00	8.90	6.00	12.75
1986	5.10	2.30	6.30	15.10	17.90	22.30	23.50	24.90	20.10	12.80	5.00	0.90	13.02
1987	0.40	4.90	3.10	10.80	16.70	22.20	25.50	22.40	21.50	12.00	10.00	2.80	12.69
1988	4.10	4.20	7.70	11.30	17.10	21.80	26.70	24.80	19.60	11.80	2.90	2.20	12.85
1989	0.80	5.40	9.90	15.90	16.20	20.30	23.30	23.60	19.70	12.40	6.60	1.20	12.94
1990	-0.10	5.90	10.40	13.20	17.00	21.80	24.90	23.20	18.30	13.40	10.30	5.50	13.65
1991	1.50	2.60	6.80	11.40	15.70	22.40	24.10	23.40	19.30	13.90	8.30	0.20	12.47
1992	1.70	2.40	7.40	12.50	15.70	21.40	22.80	25.70	18.30	16.80	8.40	1.30	12.87
1993	0.40	0.60	6.20	12.10	17.20	21.60	23.60	24.30	19.10	15.30	4.90	5.40	12.56
1994	4.30	3.90	8.90	14.40	19.00	22.10	24.90	25.80	23.80	15.00	6.50	3.30	14.33
1995	1.80	7.50	7.90	11.90	17.60	23.80	24.40	23.20	19.30	12.20	4.80	4.50	13.24
1996	0.60	1.60	3.10	11.70	20.50	23.20	25.30	23.80	17.80	12.70	9.20	5.40	12.91

TABLE D.1.26 HVOINA STATION (CODE NO. 45060)

Year Month	Monthly Average Temperature (°C)												Annual Avg.(°C)
	Jan.	Feb.	Mar.	Apr.	May	June	July	Aug.	Sep.	Oct.	Nov.	Dec.	
1966	-0.40	6.50	4.10	10.40	12.80	15.90	18.80	18.90	13.90	12.70	6.70	0.80	10.09
1967	-2.80	-1.30	4.70	8.70	13.60	15.80	18.50	19.00	14.80	10.70	6.20	2.00	9.16
1968	-1.20	2.60	3.10	11.20	16.00	16.70	19.10	17.50	14.80	8.50	6.00	-0.10	9.52
1969	-3.50	1.60	1.70	8.10	15.50	17.20	17.00	18.60	15.20	8.70	7.70	2.00	9.15
1970	2.40	2.20	4.40	11.20	11.70	16.60	19.50	19.00	14.90	9.20	6.10	1.80	9.92
1971	1.80	0.90	3.10	9.00	14.10	16.50	18.40	18.20	13.00	7.90	4.90	3.10	9.24
1972	-1.40	-0.20	4.30	11.80	13.20	17.80	18.50	17.10	13.30	7.60	5.90	-0.50	8.95
1973	-1.70	2.50	1.90	8.30	14.80	16.90	18.50	17.10	15.80	10.30	2.60	0.70	8.98
1974	-1.10	2.30	3.80	6.60	12.30	16.00	18.20	18.70	15.20	11.60	4.00	1.50	9.09
1975	-1.20	-0.80	6.50	10.30	14.10	16.40	18.70	16.80	15.80	8.90	3.50	0.50	9.13
1976	1.10	-1.40	1.90	8.90	12.60	15.50	17.30	14.70	13.00	10.00	5.60	0.10	8.28
1977	-0.80	5.70	5.60	8.70	13.90	16.30	19.20	18.00	13.70	8.80	8.00	-1.30	9.65
1978	-1.80	2.50	5.30	8.20	12.80	17.30	18.90	16.70	13.40	8.60	2.20	1.80	8.83
1979	0.40	1.00	6.30	7.60	13.60	17.80	18.10	17.70	14.70	8.30	6.20	2.00	9.48
1980	-3.80	-0.40	3.30	6.70	11.50	16.70	18.60	17.50	13.80	11.40	6.70	2.10	8.68
1981	-2.00	-0.20	6.60	8.30	11.30	18.80	17.80	17.70	14.70	12.50	3.20	3.00	9.31
1982	-1.10	-2.10	3.20	7.70	13.10	17.30	17.40	18.00	15.40	10.40	3.60	3.10	8.83
1983	1.40	-0.90	5.20	11.30	14.50	14.70	18.30	16.30	14.30	8.30	2.40	1.10	8.91
1984	1.50	0.00	1.90	6.50	14.30	16.20	17.10	16.30	15.30	12.10	5.10	-0.50	8.82
1985	-0.90	-3.10	2.00	10.20	14.70	16.20	18.80	18.70	14.20	7.20	5.70	4.50	9.02
1986	1.30	-1.30	3.10	10.90	13.20	16.90	17.50	18.40	14.50	8.50	1.60	-1.80	8.57
1987	-1.70	1.80	-0.30	7.50	12.20	17.10	20.20	18.10	16.80	8.30	5.80	2.10	8.99
1988	0.70	0.90	3.50	7.60	12.60	16.40	21.30	19.60	15.00	7.90	0.00	0.40	8.83
1989	-0.90	2.50	6.20	11.70	11.60	14.80	17.50	17.80	14.80	8.50	3.40	0.60	9.04
1990	-2.20	3.20	6.90	9.20	12.60	17.00	19.30	17.90	13.70	9.20	6.20	5.60	9.88
1991	-1.20	-1.00	4.30	7.10	11.40	18.00	18.40	17.30	14.00	9.30	5.20	-2.90	8.33
1992	-0.30	-0.40	3.70	9.60	11.80	16.40	17.80	19.90	14.10	12.90	5.80	-1.90	9.12
1993	-1.30	-1.50	3.30	8.80	13.20	17.70	19.50	19.40	14.50	11.90	1.40	2.60	9.13
1994	2.40	-0.10	6.00	10.90	14.90	17.30	19.00	20.30	18.20	10.80	4.30	1.00	10.42
1995	-1.40	3.90	3.80	8.30	13.00	17.60	18.80	17.20	14.40	8.50	1.80	1.40	8.94
1996	-2.30	-1.50	-0.90	7.20	14.90	18.30	19.90	18.20	12.30	8.60	5.90	2.30	8.58

TABLE D.1.27 PLOVDIV STATION (CODE NO. 46010)

Year Month	Monthly Average Temperature (°C)												Annual Avg. (°C)
	Jan.	Feb.	Mar.	Apr.	May	June	July	Aug.	Sep.	Oct.	Nov.	Dec.	
1966	-0.40	6.50	4.10	10.40	12.80	15.90	18.80	18.90	13.90	12.70	6.70	0.80	10.09
1967	-2.80	-1.30	4.70	8.70	13.60	15.80	18.50	19.00	14.80	10.70	6.20	2.00	9.16
1968	-1.20	2.60	3.10	11.20	16.00	16.70	19.10	17.50	14.80	8.50	6.00	-0.10	9.52
1969	-3.50	1.60	1.70	8.10	15.50	17.20	17.00	18.60	15.20	8.70	7.70	2.00	9.15
1970	2.40	2.20	4.40	11.20	11.70	16.60	19.50	19.00	14.90	9.20	6.10	1.80	9.92
1971	1.80	0.90	3.10	9.00	14.10	16.50	18.40	18.20	13.00	7.90	4.90	3.10	9.24
1972	-1.40	-0.20	4.30	11.80	13.20	17.80	18.50	17.10	13.30	7.60	5.90	-0.50	8.95
1973	-1.70	2.50	1.90	8.30	14.80	16.90	18.50	17.10	15.80	10.30	2.60	0.70	8.98
1974	-1.10	2.30	3.80	6.60	12.30	16.00	18.20	18.70	15.20	11.60	4.00	1.50	9.09
1975	-1.20	-0.80	6.50	10.30	14.10	16.40	18.70	16.80	15.80	8.90	3.50	0.50	9.13
1976	1.10	-1.40	1.90	8.90	12.60	15.50	17.30	14.70	13.00	10.00	5.60	0.10	8.28
1977	-0.80	5.70	5.60	8.70	13.90	16.30	19.20	18.00	13.70	8.80	8.00	-1.30	9.65
1978	-1.80	2.50	5.30	8.20	12.80	17.30	18.90	16.70	13.40	8.60	2.20	1.80	8.83
1979	0.40	1.00	6.30	7.60	13.60	17.80	18.10	17.70	14.70	8.30	6.20	2.00	9.48
1980	-3.80	-0.40	3.30	6.70	11.50	16.70	18.60	17.50	13.80	11.40	6.70	2.10	8.68
1981	-2.00	-0.20	6.60	8.30	11.30	18.80	17.80	17.70	14.70	12.50	3.20	3.00	9.31
1982	-1.10	-2.10	3.20	7.70	13.10	17.30	17.40	18.00	15.40	10.40	3.60	3.10	8.83
1983	1.40	-0.90	5.20	11.30	14.50	14.70	18.30	16.30	14.30	8.30	2.40	1.10	8.91
1984	1.50	0.00	1.90	6.50	14.30	16.20	17.10	16.30	15.30	12.10	5.10	-0.50	8.82
1985	-0.90	-3.10	2.00	10.20	13.70	16.20	18.80	18.70	14.20	7.20	5.70	4.50	9.02
1986	1.30	-1.30	3.10	10.90	13.20	16.90	17.50	18.40	14.50	8.50	1.60	-1.80	8.57
1987	-1.70	1.80	-0.30	7.50	12.20	17.10	20.20	18.10	16.80	8.30	5.80	2.10	8.99
1988	0.70	0.90	3.50	7.60	12.60	16.40	21.30	19.60	15.00	7.90	0.00	0.40	8.83
1989	-0.90	2.50	6.20	11.70	11.60	14.80	17.50	17.80	14.80	8.50	3.40	0.60	9.04
1990	-2.20	3.20	6.90	9.20	12.60	17.00	19.30	17.90	13.70	9.20	6.20	5.60	9.88
1991	-1.20	-1.00	4.30	7.10	11.40	18.00	18.40	17.30	14.00	9.30	5.20	-2.90	8.33
1992	-0.30	-0.40	3.70	9.60	11.80	16.40	17.80	19.90	14.10	12.90	5.80	-1.90	9.12
1993	-1.30	-1.50	3.30	8.80	13.20	17.70	19.50	19.40	14.50	11.90	1.40	2.60	9.13
1994	2.40	-0.10	6.00	10.90	14.90	17.30	19.00	20.30	18.20	10.80	4.30	1.00	10.42
1995	-1.40	3.90	3.80	8.30	13.00	17.60	18.80	17.20	14.40	8.50	1.80	1.40	8.94
1996	-0.10	-0.20	2.80	11.60	19.70	22.60	24.20	23.40	16.70	12.30	7.80	3.60	12.03

TABLE D.1.28 PANAGYURISHTE STATION (CODE NO. 47050)

Year Month	Monthly Average Temperature (°C)												Annual Avg. (°C)
	Jan.	Feb.	Mar.	Apr.	May	June	July	Aug.	Sep.	Oct.	Nov.	Dec.	
1963	-4.70	0.30	3.20	9.10	14.20	18.20	20.20	21.00	16.90	10.60	7.90	1.10	9.83
1964	-2.70	-0.20	4.20	10.00	13.00	18.60	19.50	18.50	14.70	11.60	6.90	1.30	9.62
1965	0.40	-3.70	3.90	7.60	13.60	18.20	20.80	18.00	16.70	9.00	5.20	3.00	9.39
1966	-0.90	6.60	4.40	11.10	13.70	16.50	19.90	20.10	15.30	13.70	7.20	0.60	10.68
1967	-2.30	0.10	5.10	9.40	14.40	16.20	19.50	20.20	16.30	11.60	6.20	1.60	9.86
1968	-1.30	2.90	4.30	12.10	17.80	18.70	20.20	18.20	15.30	9.70	6.80	-0.50	10.35
1969	-4.10	1.20	2.70	8.60	18.10	18.00	18.60	19.40	16.60	9.30	7.70	1.90	9.83
1970	1.20	2.20	5.30	11.20	12.60	17.90	19.60	18.80	15.20	9.70	6.00	1.30	10.08
1971	1.30	1.40	3.90	9.70	15.20	17.60	18.20	19.80	14.00	8.90	4.60	2.90	9.79
1972	-0.90	0.30	4.70	11.90	14.20	18.80	19.70	18.60	13.50	7.80	5.00	-0.20	9.45
1973	-1.80	2.30	2.40	8.80	15.10	16.80	19.50	17.40	15.70	9.70	2.70	-0.10	9.04
1974	-1.00	2.00	4.10	7.30	12.90	16.30	18.90	19.00	15.60	11.00	3.90	2.30	9.38
1975	0.50	-0.50	6.50	10.50	15.20	17.40	19.40	17.80	16.30	9.60	3.40	1.10	9.77
1976	1.60	-0.80	3.10	9.80	13.70	16.30	18.70	15.40	13.90	10.20	6.30	0.00	9.02
1977	-1.20	5.20	5.80	8.90	14.70	17.40	20.00	19.10	14.20	8.50	7.30	-1.50	9.87
1978	-1.50	1.90	5.30	8.60	13.60	17.50	18.90	17.60	13.70	8.90	2.00	1.80	9.03
1979	-1.30	1.10	6.20	8.50	14.80	19.40	18.60	18.20	15.10	8.50	6.20	2.50	9.82
1980	-4.20	0.30	3.70	8.00	12.40	17.90	20.00	18.70	14.40	11.10	6.20	1.40	9.16
1981	-2.10	0.30	6.80	8.80	12.10	19.40	18.80	18.40	15.80	11.70	3.70	1.40	9.59
1982	-1.30	-1.60	3.00	7.70	14.30	18.60	18.70	18.90	17.10	10.80	2.40	2.70	9.28
1983	1.90	-0.90	5.30	11.30	15.50	18.30	20.00	18.20	15.40	8.70	2.30	0.60	9.72
1984	1.00	0.50	2.70	7.40	15.30	17.40	18.90	17.10	15.90	12.20	5.30	-0.30	9.45
1985	-2.50	-3.30	2.60	11.10	15.90	17.30	19.70	20.50	15.10	8.00	4.90	3.40	9.39
1986	0.90	-1.50	3.60	11.40	14.80	18.50	18.90	20.20	16.30	9.10	2.40	-0.60	9.50
1987	-1.40	2.10	0.10	8.30	13.10	18.20	21.60	19.00	17.60	8.40	5.80	1.50	9.53
1988	1.20	1.00	3.40	8.00	13.90	17.30	22.30	19.90	15.50	8.50	-0.60	1.10	9.29
1989	0.10	3.10	7.30	11.90	12.40	16.20	19.60	21.20	15.10	9.20	3.30	0.10	9.96
1990	-2.40	3.80	8.00	9.80	13.90	19.10	22.00	19.80	14.90	10.00	5.90	1.70	10.54
1991	-0.80	-1.60	5.00	8.60	12.50	19.30	19.80	18.90	15.70	10.80	5.70	-1.80	9.34
1992	0.30	0.70	4.50	10.40	13.30	18.10	19.50	22.40	15.60	12.30	6.00	-1.40	10.14
1993	0.50	-1.10	4.00	9.30	14.70	18.80	20.70	21.20	16.00	13.00	1.50	2.90	10.13
1994	2.70	1.00	6.70	11.40	5.50	18.10	21.00	21.50	20.10	11.70	5.30	1.90	10.58
1995	-1.40	4.80	4.60	9.20	13.70	18.80	19.70	18.50	15.10	9.60	2.40	1.10	9.68
1996	-2.20	-1.60	0.40	8.70	16.80	19.40	21.10	19.90	13.50	9.60	6.40	2.40	9.53

TABLE D.1.29 IHTIMAN STATION (CODE NO. 64101)

Year	Monthly Average Temperature (°C)												Annual Avg.(°C)
	Jan.	Feb.	Mar.	Apr.	May	June	July	Aug.	Sep.	Oct.	Nov.	Dec.	
1963	-6.60	-1.00	1.90	8.40	13.20	17.20	18.60	19.80	15.30	9.30	6.50	-0.50	8.51
1964	-5.00	-0.90	3.10	9.40	11.80	17.90	18.40	17.50	13.40	10.80	6.00	0.50	8.58
1965	-0.70	-5.60	2.90	6.60	12.50	17.00	19.60	16.80	15.40	7.20	3.80	1.80	8.11
1966	-3.00	5.40	3.30	10.40	12.90	15.90	19.10	19.20	14.00	12.40	5.70	-1.30	9.50
1967	-4.90	-1.00	4.40	8.50	13.30	15.20	17.70	18.80	14.40	10.50	4.90	-0.20	8.47
1968	-3.40	1.60	3.40	11.00	16.60	17.20	19.30	17.40	14.40	8.20	5.70	-1.80	9.13
1969	-6.20	-0.90	2.00	7.50	15.80	16.20	16.90	17.60	14.90	6.80	5.30	0.30	8.02
1970	-0.40	0.60	3.90	10.10	11.50	16.80	18.30	18.20	14.30	8.00	4.50	0.20	8.83
1971	-0.30	0.30	2.80	9.00	14.40	16.50	17.00	18.20	12.30	7.30	3.00	1.60	8.51
1972	-1.70	-0.30	4.30	11.20	13.40	18.00	19.20	17.20	12.20	6.40	4.10	-1.20	8.57
1973	-2.40	1.10	1.60	8.00	14.40	16.20	18.60	16.50	15.00	9.60	1.80	-1.90	8.21
1974	-1.50	1.80	3.70	6.60	11.90	15.70	18.30	18.40	15.40	10.10	3.10	-0.20	8.61
1975	-3.20	-1.90	5.70	9.70	14.60	16.70	18.50	17.20	15.00	8.70	2.20	0.20	8.62
1976	0.20	-1.70	2.10	9.20	12.70	15.30	17.40	14.40	12.60	9.50	5.30	-1.10	7.99
1977	-2.20	5.00	5.90	8.80	14.40	16.60	19.30	18.30	12.90	8.00	6.20	-3.00	9.18
1978	-2.60	0.40	5.00	8.30	12.70	17.00	18.50	17.30	13.00	8.40	1.20	1.80	8.42
1979	-2.10	0.50	6.20	8.40	14.10	18.10	17.90	18.10	15.00	8.30	5.50	1.40	9.28
1980	-5.10	-0.20	3.70	7.40	12.40	17.00	18.50	17.40	13.30	10.10	6.40	0.80	8.48
1981	-3.10	-0.80	6.80	8.50	12.40	19.50	18.40	17.80	15.70	11.10	2.70	1.00	9.17
1982	-1.30	-1.50	3.10	7.90	14.50	18.80	18.40	18.10	15.80	9.70	1.20	2.90	8.97
1983	2.20	-0.60	5.20	11.80	15.40	16.00	20.00	17.60	12.90	6.50	1.60	-0.10	9.04
1984	0.40	0.60	2.30	7.50	15.10	17.20	17.60	17.00	15.30	11.20	3.80	-1.40	8.88
1985	-4.60	-5.10	1.80	10.40	16.50	17.00	19.50	19.60	13.90	7.30	4.50	2.80	8.63
1986	-0.30	-1.10	3.90	12.00	14.60	17.20	17.80	18.80	15.70	8.90	3.00	-2.00	9.04
1987	-3.20	2.10	-0.20	8.20	13.10	18.10	22.30	18.90	17.50	8.80	4.80	0.70	9.26
1988	2.20	1.20	4.00	8.20	13.70	17.20	21.20	19.20	15.30	8.00	-2.20	-0.10	8.99
1989	-0.70	3.10	7.10	11.80	12.40	15.70	19.30	21.20	13.50	7.90	2.50	-1.50	9.36
1990	-3.90	3.20	7.10	9.10	12.90	17.50	19.30	19.20	14.10	10.40	6.10	0.90	9.66
1991	-2.50	-2.40	5.30	7.80	11.00	18.30	18.50	17.30	14.20	9.30	5.40	-3.10	8.26
1992	-0.50	0.10	3.90	9.60	12.30	17.00	18.30	21.70	15.80	11.80	5.00	-1.40	9.38
1993	-1.60	-2.20	3.20	9.00	13.80	18.20	20.20	20.70	15.80	13.00	0.90	2.40	9.45
1994	1.90	0.70	6.10	11.30	15.30	17.50	20.10	20.50	19.40	10.60	4.40	0.30	10.68
1995	-3.00	3.50	4.00	8.50	12.90	18.00	19.70	17.70	14.30	9.20	1.50	0.30	8.88
1996	-2.40	-2.50	-0.60	8.70	16.50	19.50	20.60	19.60	12.30	8.80	6.10	1.60	9.02

TABLE D.1.30 STARA ZAGORA STATION (CODE NO. 42010)

Year Month	Monthly Average Relative Humidity (%)												Annual Avg. (%)
	Jan.	Feb.	Mar.	Apr.	May	June	July	Aug.	Sep.	Oct.	Nov.	Dec.	
1963	82.00	83.00	75.00	73.00	68.00	64.00	60.00	55.00	59.00	74.00	82.00	85.00	71.67
1964	74.00	78.00	76.00	59.00	72.00	66.00	56.00	58.00	64.00	72.00	79.00	85.00	70.00
1965	86.00	84.00	77.00	72.00	72.00	56.00	51.00	54.00	60.00	60.00	76.00	87.00	69.58
1966	80.00	76.00	69.00	73.00	69.00	68.00	61.00	61.00	64.00	77.00	84.00	80.00	71.83
1967	83.00	77.00	67.00	68.00	65.00	65.00	57.00	59.00	69.00	78.00	78.00	83.00	70.75
1968	76.00	81.00	70.00	56.00	62.00	60.00	58.00	67.00	68.00	71.00	81.00	83.00	69.42
1969	78.00	85.00	81.00	69.00	67.00	67.00	62.00	56.00	66.00	61.00	72.00	88.00	71.00
1970	81.00	78.00	75.00	72.00	66.00	68.00	59.00	63.00	61.00	77.00	74.00	84.00	71.50
1971	85.00	81.00	77.00	74.00	74.00	69.00	69.00	59.00	69.00	69.00	80.00	81.00	73.92
1972	83.00	84.00	69.00	72.00	71.00	63.00	65.00	64.00	72.00	79.00	80.00	81.00	73.58
1973	84.00	81.00	75.00	76.00	71.00	69.00	71.00	68.00	73.00	72.00	78.00	86.00	75.33
1974	78.00	75.00	75.00	69.00	69.00	66.00	57.00	62.00	65.00	69.00	84.00	84.00	71.08
1975	84.00	76.00	76.00	63.00	75.00	70.00	66.00	74.00	64.00	75.00	81.00	83.00	73.92
1976	79.00	75.00	69.00	70.00	70.00	70.00	69.00	72.00	75.00	87.00	88.00	88.00	75.75
1977	91.00	80.00	74.00	69.00	73.00	75.00	69.00	61.00	70.00	76.00	80.00	90.00	75.67
1978	86.00	85.00	76.00	82.00	72.00	69.00	64.00	67.00	78.00	73.00	80.00	86.00	76.50
1979	88.00	79.00	69.00	62.00	72.00	67.00	64.00	67.00	68.00	75.00	79.00	78.00	72.33
1980	82.00	80.00	74.00	75.00	75.00	69.00	60.00	67.00	69.00	67.00	85.00	81.00	73.67
1981	87.00	81.00	70.00	57.00	66.00	62.00	60.00	66.00	75.00	73.00	73.00	82.00	71.00
1982	86.00	78.00	72.00	67.00	58.00	61.00	64.00	66.00	68.00	75.00	78.00	80.00	71.08
1983	73.00	67.00	66.00	66.00	60.00	65.00	61.00	60.00	56.00	67.00	75.00	85.00	66.75
1984	82.00	85.00	76.00	64.00	63.00	63.00	59.00	70.00	68.00	69.00	77.00	81.00	71.42
1985	89.00	82.00	81.00	64.00	74.00	64.00	62.00	55.00	54.00	61.00	81.00	82.00	70.75
1986	78.00	87.00	73.00	60.00	55.00	71.00	61.00	59.00	58.00	73.00	81.00	74.00	69.17
1987	83.00	82.00	75.00	68.00	69.00	65.00	54.00	62.00	61.00	76.00	79.00	81.00	71.25
1988	84.00	75.00	72.00	69.00	69.00	66.00	53.00	59.00	62.00	61.00	73.00	72.00	67.92
1989	69.00												
1990													
1991							77.00	67.00	64.00	73.00	79.00	77.00	
1992	78.00	73.00	63.00	67.00	61.00	70.00	63.00	56.00	60.00	71.00	74.00	77.00	67.75
1993	75.00	67.00	72.00	69.00	79.00	64.00	59.00	58.00	57.00	67.00	75.00	81.00	68.58
1994	78.00	79.00	67.00	70.00	63.00	56.00	59.00	56.00	54.00	78.00	75.00	78.00	67.75
1995	78.00	68.00	71.00	72.00	69.00	65.00	63.00	63.00	68.00	66.00	79.00	84.00	70.50
1996	83.00	85.00	76.00	67.00	66.00	59.00	56.00	67.00	75.00	76.00	84.00	89.00	73.58

TABLE D.1.31 HASKOVO STATION (CODE NO. 43010)

Year	Month	Monthly Average Relative Humidity (%)												Annual Avg. (%)
		Jan.	Feb.	Mar.	Apr.	May	June	July	Aug.	Sept.	Oct.	Nov.	Dec.	
1963		89.00	83.00	76.00	76.00	72.00	66.00	61.00	55.00	60.00	79.00	81.00	85.00	73.58
1964		80.00	82.00	78.00	64.00	74.00	68.00	57.00	59.00	69.00	75.00	80.00	85.00	72.58
1965		81.00	79.00	80.00	74.00	71.00	58.00	53.00	56.00	55.00	62.00	76.00	85.00	69.17
1966		78.00	75.00	72.00	70.00	66.00	68.00	61.00	61.00	64.00	74.00	85.00	83.00	71.42
1967		79.00	81.00	73.00	71.00	69.00	71.00	62.00	65.00	72.00	80.00	76.00	83.00	73.50
1968		79.00	84.00	69.00	64.00	65.00	66.00	54.00	63.00	67.00	69.00	84.00	85.00	70.75
1969		87.00	88.00	87.00	70.00	60.00	61.00	65.00	51.00	67.00	67.00	70.00	86.00	71.58
1970		85.00	80.00	76.00	68.00	66.00	62.00	59.00	62.00	59.00	75.00	74.00	84.00	70.83
1971		87.00	82.00	78.00	72.00	70.00	71.00	70.00	68.00	74.00	72.00	81.00	82.00	75.58
1972		89.00	86.00	68.00	74.00	72.00	66.00	68.00	65.00	74.00	79.00	79.00	84.00	75.42
1973		87.00	82.00	83.00	74.00	67.00	65.00	69.00	67.00	76.00	73.00	80.00	90.00	76.08
1974		84.00	81.00	78.00	75.00	74.00	73.00	67.00	61.00	62.00	71.00	85.00	83.00	74.50
1975		82.00	73.00	71.00	68.00	79.00	73.00	67.00	79.00	71.00	79.00	82.00	84.00	75.67
1976		74.00	77.00	73.00	70.00	73.00	68.00	68.00	73.00	66.00	82.00	87.00	83.00	74.50
1977		85.00	80.00	74.00	63.00	67.00	73.00	70.00	60.00	65.00	71.00	78.00	87.00	72.75
1978		83.00	87.00	79.00	77.00	76.00	70.00	61.00	64.00	74.00	74.00	79.00	87.00	75.92
1979		88.00	84.00	75.00	71.00	76.00	66.00	71.00	71.00	72.00	84.00	86.00	83.00	77.25
1980		86.00	86.00	80.00	78.00	79.00	71.00	69.00	75.00	70.00	74.00	88.00	81.00	78.08
1981		86.00	82.00	72.00	66.00	71.00	66.00	61.00	60.00	66.00	66.00	78.00	82.00	71.33
1982		85.00	82.00	76.00	77.00	64.00	72.00	76.00	74.00	68.00	76.00	78.00	83.00	75.92
1983		76.00	75.00	69.00	69.00	67.00	73.00	70.00	69.00	66.00	72.00	84.00	91.00	73.42
1984		90.00	91.00	86.00	78.00	67.00	64.00	62.00	71.00	70.00	73.00	81.00	88.00	76.75
1985		90.00	74.00	82.00	70.00	73.00	65.00	59.00	54.00	52.00	64.00	86.00	81.00	70.83
1986		79.00	87.00	77.00	62.00	64.00	59.00	56.00	53.00	53.00	68.00	80.00	72.00	67.50
1987		81.00	80.00	71.00	69.00	65.00	57.00	55.00	56.00	56.00	72.00	80.00	81.00	68.58
1988		85.00	75.00	73.00	71.00	66.00	62.00	49.00	48.00	56.00	60.00	77.00	78.00	66.67
1989		70.00	64.00	69.00	57.00	61.00	64.00	55.00	54.00	60.00	66.00	77.00	79.00	64.67
1990		81.00	67.00	57.00	66.00	63.00	55.00	50.00	53.00	63.00	44.00	79.00	85.00	63.58
1991		77.00	77.00	73.00	71.00	64.00	60.00	61.00	63.00	61.00	73.00	82.00	76.00	69.83
1992		70.00	64.00	62.00	58.00	67.00	67.00	59.00	47.00	56.00	63.00	66.00	76.00	66.00
1993		70.00	69.00	70.00	60.00	72.00	57.00	49.00	50.00	55.00	66.00	80.00	79.00	64.75
1994		83.00	79.00	68.00	69.00	65.00	59.00	55.00	50.00	55.00	79.00	74.00	79.00	67.92
1995		83.00	73.00	72.00	64.00	61.00	62.00	59.00	60.00	62.00	68.00	78.00	86.00	69.00
1996		79.00	82.00	78.00	65.00	66.00	55.00	63.00	69.00	76.00	78.00	78.00	88.00	73.08

TABLE D.1.32 SVILENGRAD STATION (CODE NO. 43020)

Year Month	Monthly Average Relative Humidity (%)												Annual Avg.(%)
	Jan.	Feb.	Mar.	Apr.	May	June	July	Aug.	Sep.	Oct.	Nov.	Dec.	
1963	89.00	88.00	78.00	74.00	74.00	69.00	58.00	55.00	63.00	78.00	85.00	84.00	74.58
1964	80.00	87.00	81.00	69.00	75.00	66.00	57.00	61.00	70.00	75.00	83.00	85.00	74.08
1965	83.00	85.00	81.00	74.00	76.00	67.00	63.00	63.00	64.00	61.00	79.00	86.00	73.50
1966	82.00	82.00	76.00	77.00	73.00	68.00	62.00	67.00	69.00	79.00	86.00	85.00	75.50
1967	87.00	83.00	74.00	72.00	69.00	68.00	60.00	63.00	71.00	80.00	81.00	85.00	74.42
1968	85.00	84.00	72.00	58.00	67.00	62.00	53.00	64.00	69.00	73.00	82.00	87.00	71.33
1969	78.00	58.00	81.00	69.00	67.00	67.00	62.00	56.00	66.00	61.00	72.00	88.00	68.75
1970	87.00	80.00	77.00	73.00	66.00	63.00	59.00	58.00	62.00	79.00	80.00	86.00	72.50
1971	86.00	82.00	81.00	70.00	69.00	69.00	65.00	58.00	69.00	72.00	83.00	84.00	74.00
1972	87.00	84.00	71.00	74.00	71.00	60.00	67.00	64.00	74.00	81.00	84.00	86.00	75.25
1973	88.00	84.00	81.00	76.00	70.00	65.00	69.00	62.00	70.00	71.00	79.00	89.00	75.33
1974	84.00	83.00	79.00	74.00	72.00	66.00	55.00	55.00	57.00	69.00	85.00	88.00	72.25
1975	84.00	74.00	74.00	65.00	78.00	70.00	62.00	76.00	63.00	79.00	82.00	85.00	74.33
1976	79.00	79.00	76.00	69.00	67.00	64.00	66.00	79.00	68.00	79.00	86.00	84.00	74.67
1977	88.00	80.00	74.00	64.00	69.00	68.00	65.00	55.00	62.00	71.00	79.00	81.00	71.33
1978	80.00	84.00	77.00	76.00	72.00	67.00	58.00	58.00	73.00	72.00	75.00	86.00	73.17
1979	86.00	79.00	71.00	69.00	70.00	58.00	62.00	61.00	62.00	79.00	85.00	84.00	72.17
1980	82.00	81.00	77.00	73.00	76.00	70.00	60.00	66.00	66.00	68.00	85.00	82.00	73.83
1981	86.00	83.00	77.00	66.00	66.00	57.00	58.00	56.00	64.00	73.00	81.00	84.00	70.92
1982	84.00	78.00	76.00	75.00	66.00	63.00	61.00	62.00	63.00	75.00	79.00	85.00	72.25
1983	80.00	76.00	70.00	69.00	66.00	71.00	65.00	66.00	65.00	73.00	83.00	90.00	72.83
1984	87.00	85.00	83.00	71.00	65.00	62.00	56.00	65.00	64.00	68.00	81.00	83.00	72.50
1985	85.00	76.00	80.00	66.00	72.00	65.00	56.00	53.00	61.00	71.00	87.00	88.00	71.67
1986	84.00	89.00	80.00	67.00	58.00	63.00	59.00	54.00	58.00	71.00	82.00	82.00	70.58
1987	86.00	84.00	77.00	75.00	68.00	63.00	56.00	60.00	58.00	73.00	82.00	88.00	72.50
1988	85.00	79.00	75.00	72.00	68.00	65.00	53.00	55.00	66.00	67.00	83.00	85.00	71.08
1989	77.00	67.00	73.00	62.00	67.00	67.00	59.00	58.00	62.00	71.00	78.00	84.00	68.75
1990	82.00	70.00	58.00	67.00	64.00	60.00	53.00	58.00	63.00	74.00	80.00	87.00	68.00
1991	82.00	79.00	77.00	76.00	69.00	64.00	61.00	61.00	64.00	73.00	83.00	77.00	72.17
1992	79.00		68.00	70.00	63.00	65.00	59.00	50.00	57.00	66.00	75.00	76.00	
1993	79.00	68.00	73.00	67.00	76.00	61.00	53.00	53.00	57.00	72.00	79.00	84.00	68.50
1994	87.00	76.00	67.00	68.00	63.00	56.00	55.00	48.00	51.00	74.00	76.00	84.00	67.08
1995	83.00	74.00	72.00	69.00	61.00	60.00	59.00	58.00	64.00	69.00	80.00	81.00	69.17
1996	81.00	80.00	77.00	64.00	62.00	53.00	48.00	60.00	68.00	74.00	79.00	85.00	69.25



TABLE D.1.33 HVOINA STATION (CODE NO. 45060)

Year	Monthly Average Relative Humidity (%)												Annual Avg (%)	
	Jan.	Feb.	Mar.	Apr.	May	June	July	Aug.	Sep.	Oct.	Nov.	Dec.		
1963														
1964														
1965														
1966	75.00	67.00	72.00	70.00	68.00	76.00	69.00	73.00	76.00	80.00	85.00	85.00	74.67	
1967	76.00	77.00	69.00	68.00	68.00	71.00	66.00	66.00	72.00	70.00	70.00	71.00	70.33	
1968	69.00	76.00	71.00	56.00	69.00	71.00	60.00	71.00	73.00	71.00	84.00	81.00	71.00	
1969	83.00	83.00	85.00	65.00	69.00	70.00	71.00	66.00	74.00	67.00	66.00	87.00	73.83	
1970	77.00	75.00	74.00	68.00	73.00	71.00	69.00	64.00	64.00	72.00	70.00	72.00	70.75	
1971	80.00	76.00	72.00	71.00	72.00	72.00	73.00	68.00	75.00	69.00	71.00	75.00	72.83	
1972	81.00	82.00	67.00	67.00	70.00	66.00	72.00	75.00	77.00	80.00	69.00	72.00	73.17	
1973	80.00	71.00	73.00	67.00	68.00	72.00	74.00	70.00	72.00	66.00	70.00	75.00	71.50	
1974	78.00	73.00	75.00	69.00	68.00	71.00	62.00	63.00	64.00	67.00	75.00	75.00	70.00	
1975	72.00	77.00	65.00	58.00	73.00	74.00	70.00	79.00	71.00	77.00	78.00	76.00	72.50	
1976	74.00	79.00	78.00	73.00	77.00	77.00	79.00	82.00	79.00	85.00	83.00	80.00	78.83	
1977	73.00	67.00	63.00	59.00	67.00	73.00	70.00	64.00	65.00	65.00	67.00	75.00	67.33	
1978	75.00	75.00	69.00	73.00	70.00	65.00	61.00	67.00	72.00	73.00	73.00	77.00	70.83	
1979	74.00	75.00	64.00	67.00	72.00	69.00	66.00	69.00	70.00	78.00	76.00	76.00	71.33	
1980	76.00	78.00	74.00	70.00	74.00	65.00	65.00	71.00	69.00	70.00	75.00	72.00	71.58	
1981	79.00	70.00	69.00	65.00	71.00	67.00	65.00	67.00	72.00	67.00	69.00	73.00	69.50	
1982	72.00	74.00	74.00	70.00	69.00	69.00	67.00	69.00	71.00	77.00	58.00	76.00	71.33	
1983	70.00	66.00	62.00	64.00	66.00	73.00	71.00	73.00	69.00	70.00	74.00	81.00	69.92	
1984	75.00	86.00	83.00	71.00	62.00	67.00	63.00	70.00	69.00	69.00	74.00	79.00	72.33	
1985	79.00	74.00	84.00	64.00	74.00	66.00	63.00	59.00	63.00	71.00	77.00	68.00	70.17	
1986	74.00	80.00	75.00	61.00	69.00	74.00	71.00	66.00	64.00	69.00	74.00	71.00	70.67	
1987	74.00	77.00	72.00	67.00	66.00	65.00	64.00	63.00	67.00	77.00	77.00	78.00	70.58	
1988	75.00	70.00	71.00	74.00	72.00	74.00	62.00	59.00	67.00	69.00	75.00	75.00	70.25	
1989	68.00	66.00	72.00	60.00	69.00	73.00	71.00	70.00	71.00	71.00	72.00	66.00	69.08	
1990	67.00	64.00	58.00	68.00	68.00	67.00	59.00	63.00	68.00	75.00	76.00	84.00	68.08	
1991	73.00	77.00	76.00	83.00	74.00	66.00	73.00	74.00	71.00	79.00	80.00	81.00	75.58	
1992	72.00	70.00	66.00	68.00	69.00	76.00	70.00	61.00	63.00	70.00	71.00	71.00	68.92	
1993	67.00	67.00	71.00	63.00	76.00	63.00	56.00	58.00	63.00	66.00	76.00	74.00	66.67	
1994	76.00	79.00	68.00	67.00	67.00	64.00	68.00	58.00	60.00	77.00	73.00	74.00	69.25	
1995	75.00	70.00	72.00	66.00	68.00	71.00	72.00	69.00	69.00	65.00	72.00	80.00	70.75	
1996	79.00	77.00	75.00	67.00	72.00	63.00	60.00	68.00	77.00	75.00	73.00	80.00	72.17	

TABLE D.1.34 PLOVDIV STATION (CODE NO. 46010)

Year Month	Monthly Average Relative Humidity (%)												Annual Avg.(%)
	Jan.	Feb.	Mar.	Apr.	May	June	July	Aug.	Sep.	Oct.	Nov.	Dec.	
1963	85.00	87.00	74.00	73.00	73.00	67.00	63.00	56.00	62.00	76.00	83.00	86.00	73.75
1964	78.00	78.00	76.00	60.00	73.00	65.00	58.00	60.00	71.00	77.00	79.00	88.00	71.92
1965	86.00	83.00	82.00	73.00	71.00	61.00	53.00	55.00	59.00	64.00	78.00	85.00	70.83
1966	82.00	74.00	70.00	72.00	65.00	69.00	63.00	64.00	68.00	77.00	86.00	81.00	72.58
1967	79.00	75.00	69.00	67.00	69.00	69.00	62.00	63.00	70.00	75.00	76.00	80.00	71.17
1968	71.00	80.00	65.00	54.00	62.00	61.00	54.00	64.00	69.00	72.00	87.00	85.00	68.67
1969	84.00	85.00	84.00	64.00	65.00	67.00	63.00	61.00	70.00	64.00	72.00	89.00	72.33
1970	84.00	79.00	72.00	67.00	66.00	63.00	60.00	61.00	57.00	73.00	71.00	79.00	69.33
1971	87.00	79.00	75.00	72.00	67.00	64.00	65.00	64.00	69.00	64.00	77.00	76.00	71.58
1972	88.00	83.00	66.00	69.00	69.00	60.00	61.00	62.00	68.00	78.00	77.00	89.00	71.58
1973	86.00	74.00	70.00	73.00	65.00	62.00	65.00	64.00	71.00	70.00	70.00	89.00	71.58
1974	83.00	78.00	75.00	68.00	65.00	64.00	57.00	60.00	63.00	67.00	81.00	75.00	69.67
1975	76.00	65.00	68.00	60.00	75.00	68.00	60.00	74.00	63.00	75.00	80.00	77.00	70.08
1976	71.00	76.00	68.00	63.00	69.00	64.00	67.00	69.00	64.00	80.00	83.00	80.00	71.17
1977	79.00	78.00	68.00	56.00	67.00	68.00	66.00	57.00	60.00	66.00	74.00	79.00	68.17
1978	77.00	79.00	69.00	70.00	69.00	65.00	56.00	61.00	70.00	69.00	74.00	81.00	70.00
1979	81.00	81.00	64.00	61.00	68.00	63.00	62.00	65.00	65.00	77.00	79.00	75.00	70.08
1980	81.00	77.00	68.00	69.00	74.00	61.00	61.00	70.00	67.00	70.00	81.00	78.00	71.42
1981	83.00	81.00	72.00	66.00	68.00	63.00	62.00	64.00	69.00	72.00	71.00	81.00	71.00
1982	79.00	78.00	71.00	74.00	69.00	65.00	65.00	71.00	74.00	82.00	77.00	81.00	73.83
1983	69.00	69.00	66.00	66.00	65.00	71.00	68.00	70.00	69.00	74.00	77.00	86.00	70.83
1984	82.00	85.00	80.00	72.00	66.00	66.00	67.00	70.00	70.00	70.00	76.00	81.00	73.75
1985	86.00	74.00	78.00	63.00	73.00	63.00	58.00	60.00	60.00	69.00	84.00	79.00	70.58
1986	78.00	86.00	74.00	59.00	65.00	62.00	60.00	58.00	57.00	67.00	78.00	71.00	67.92
1987	81.00	85.00	75.00	109.60	72.00	62.00	60.00	60.00	63.00	77.00	80.00	75.00	74.97
1988	81.00	70.00	66.00	66.00	67.00	67.00	59.00	60.00	69.00	73.00	80.00	74.00	69.33
1989	68.00	63.00	71.00	62.00	69.00	68.00	61.00	64.00	70.00	71.00	75.00	76.00	68.17
1990	81.00	65.00	53.00	70.00	64.00	58.00	56.00	60.00	67.00	77.00	82.00	83.00	68.00
1991	82.00	82.00	78.00	79.00	75.00	64.00	67.00	65.00	65.00	71.00	81.00	78.00	73.92
1992	71.00	68.00	65.00	69.00	62.00	67.00	61.00	54.00	58.00	71.00	66.00	76.00	65.67
1993	71.00	65.00	68.00	62.00	74.00	57.00	53.00	56.00	59.00	73.00	81.00	81.00	66.67
1994	81.00	79.00	66.00	70.00	66.00	60.00	59.00	54.00	57.00	76.00	74.00	77.00	68.25
1995	82.00	74.00	75.00	66.00	67.00	63.00	64.00	63.00	64.00	66.00	74.00	84.00	70.17
1996	83.00	83.00	74.00	60.00	67.00	59.00	52.00	59.00	67.00	71.00	76.00	85.00	69.67

TABLE D.1.35 PANAGYURISHTE STATION (CODE NO. 47050)

Year	Monthly Average Relative Humidity (%)												Annual Avg.(%)
	Jan.	Feb.	Mar.	Apr.	May	June	July	Aug.	Sep.	Oct.	Nov.	Dec.	
1963	80.00	81.00	71.00	75.00	76.00	75.00	71.00	63.00	67.00	80.00	77.00	87.00	75.25
1964	84.00	86.00	83.00	72.00	81.00	77.00	67.00	68.00	76.00	78.00	82.00	85.00	78.25
1965	86.00	85.00	78.00	76.00	74.00	72.00	63.00	64.00	65.00	68.00	77.00	85.00	74.42
1966	84.00	75.00	75.00	71.00	69.00	76.00	69.00	72.00	78.00	80.00	85.00	85.00	76.58
1967	79.00	75.00	76.00	73.00	73.00	77.00	72.00	73.00	72.00	75.00	78.00	82.00	75.42
1968	79.00	81.00	76.00	59.00	69.00	67.00	63.00	73.00	75.00	73.00	86.00	85.00	73.83
1969	85.00	90.00	88.00	73.00	68.00	71.00	71.00	70.00	76.00	73.00	72.00	91.00	77.33
1970	86.00	80.00	75.00	69.00	72.00	71.00	73.00	72.00	69.00	73.00	73.00	84.00	74.75
1971	85.00	85.00	81.00	76.00	77.00	72.00	73.00	71.00	78.00	71.00	78.00	82.00	77.42
1972	9.00	7.60	3.90	6.10	4.80	4.30	5.30	4.70	6.10	6.20	3.50	5.30	5.57
1973	88.00	78.00	80.00	74.00	74.00	75.00	75.00	72.00	78.00	75.00	76.00	87.00	77.67
1974	87.00	85.00	82.00	70.00	70.00	72.00	61.00	67.00	69.00	73.00	83.00	83.00	75.17
1975	81.00	81.00	76.00	66.00	77.00	76.00	70.00	81.00	74.00	79.00	82.00	82.00	77.08
1976	76.00	78.00	77.00	72.00	74.00	67.00	72.00	76.00	72.00	85.00	87.00	82.00	76.50
1977	82.00	79.00	75.00	70.00	70.00	74.00	70.00	66.00	68.00	74.00	74.00	87.00	74.08
1978	84.00	84.00	75.00	74.00	70.00	73.00	64.00	67.00	77.00	79.00	83.00	89.00	76.58
1979	86.00	85.00	71.00	68.00	73.00	69.00	70.00	73.00	75.00	82.00	82.00	81.00	76.25
1980	84.00	82.00	79.00	75.00	79.00	66.00	67.00	71.00	68.00	78.00	82.00	84.00	76.25
1981	83.00	86.00	79.00	71.00	77.00	76.00	64.00	69.00	73.00	75.00	76.00	87.00	76.33
1982	85.00	85.00	83.00	76.00	71.00	69.00	72.00	73.00	79.00	83.00	81.00	87.00	78.67
1983	79.00	76.00	67.00	70.00	67.00	77.00	73.00	72.00	70.00	73.00	76.00	85.00	73.75
1984	80.00	90.00	83.00	72.00	66.00	66.00	60.00	75.00	74.00	74.00	80.00	87.00	75.58
1985	84.00	74.00	85.00	63.00	74.00	64.00	63.00	58.00	64.00	73.00	85.00	77.00	72.00
1986	83.00	89.00	82.00	66.00	70.00	65.00	69.00	63.00	80.00	74.00	83.00	77.00	75.08
1987	81.00	85.00	80.00	72.00	72.00	69.00	64.00	62.00	65.00	82.00	82.00	85.00	74.92
1988	86.00	79.00	79.00	75.00	74.00	73.00	65.00	65.00	72.00	71.00	81.00	78.00	74.83
1989	74.00	70.00	74.00	66.00	74.00	72.00	64.00	71.00	74.00	75.00	79.00	75.00	72.33
1990	82.00	74.00	66.00	76.00	73.00	59.00	55.00	62.00	71.00	79.00	81.00	90.00	72.33
1991	79.00	84.00	80.00	75.00	68.00	66.00	72.00	70.00	68.00	72.00	81.00	75.00	74.17
1992	73.00	76.00	69.00	67.00	73.00	73.00	68.00	58.00	58.00	71.00	69.00	77.00	68.83
1993	70.00	69.00	71.00	64.00	73.00	60.00	52.00	53.00	56.00	71.00	83.00	79.00	66.75
1994	82.00	84.00	67.00	69.00	69.00	65.00	63.00	57.00	59.00	79.00	74.00	76.00	70.33
1995	81.00	71.00	70.00	65.00	71.00	71.00	73.00	70.00	69.00	69.00	78.00	88.00	73.00
1996	86.00	81.00	80.00	63.00	67.00	65.00	57.00	68.00	75.00	77.00	76.00	85.00	73.33

TABLE D.1.36 IHTIMAN STATION (CODE NO. 64101)

Year	Monthly Average Relative Humidity (%)												Annual Avg. (%)
	Jan.	Feb.	Mar.	Apr.	May	June	July	Aug.	Sep.	Oct.	Nov.	Dec.	
1963	81.00	83.00	74.00	76.00	76.00	76.00	73.00	62.00	66.00	81.00	82.00	85.00	76.25
1964	79.00	77.00	81.00	65.00	78.00	73.00	67.00	67.00	77.00	76.00	82.00	84.00	75.50
1965	83.00	78.00	78.00	77.00	73.00	70.00	62.00	64.00	64.00	67.00	78.00	86.00	73.33
1966	83.00	77.00	76.00	73.00	70.00	76.00	66.00	72.00	76.00	79.00	88.00	84.00	76.67
1967	81.00	78.00	77.00	74.00	74.00	76.00	75.00	72.00	76.00	76.00	78.00	82.00	76.58
1968	77.00	83.00	72.00	62.00	70.00	73.00	63.00	73.00	72.00	76.00	90.00	88.00	74.92
1969	81.00	86.00	83.00	67.00	68.00	73.00	70.00	68.00	75.00	73.00	74.00	92.00	75.83
1970	86.00	77.00	74.00	68.00	74.00	71.00	74.00	67.00	59.00	73.00	73.00	79.00	72.92
1971	81.00	72.00	74.00	72.00	68.00	61.00	71.00	61.00	70.00	72.00	81.00	82.00	72.08
1972	89.00	89.00	79.00	73.00	70.00	66.00	69.00	71.00	77.00	81.00	76.00	82.00	76.83
1973	85.00	81.00	77.00	76.00	70.00	72.00	73.00	74.00	77.00	69.00	72.00	83.00	75.75
1974	85.00	82.00	80.00	78.00	76.00	73.00	60.00	66.00	62.00	70.00	82.00	80.00	74.50
1975	81.00	78.00	75.00	68.00	80.00	79.00	74.00	82.00	76.00	82.00	80.00	77.00	77.67
1976	71.00	82.00	74.00	70.00	72.00	67.00	70.00	74.00	74.00	85.00	87.00	83.00	75.75
1977	82.00	77.00	72.00	66.00	71.00	74.00	71.00	65.00	69.00	73.00	77.00	82.00	75.25
1978	79.00	81.00	72.00	73.00	70.00	71.00	64.00	67.00	78.00	78.00	82.00	84.00	74.92
1979	81.00	83.00	74.00	71.00	76.00	75.00	69.00	74.00	77.00	81.00	86.00	82.00	77.42
1980	80.00	81.00	79.00	75.00	80.00	71.00	72.00	71.00	69.00	74.00	82.00	80.00	76.17
1981	77.00	78.00	75.00	69.00	73.00	69.00	70.00	75.00	76.00	77.00	81.00	84.00	75.33
1982	82.00	82.00	81.00	75.00	71.00	70.00	72.00	75.00	77.00	82.00	79.00	87.00	77.75
1983	80.00	76.00	71.00	75.00	72.00	82.00	81.00	77.00	76.00	76.00	81.00	88.00	77.92
1984	86.00	91.00	85.00	78.00	70.00	69.00	70.00	74.00	76.00	74.00	81.00	88.00	78.50
1985	86.00	75.00	88.00	70.00	77.00	66.00	65.00	62.00	70.00	77.00	85.00	78.00	74.92
1986	84.00	88.00	82.00	69.00	75.00	72.00	73.00	66.00	67.00	78.00	82.00	77.00	76.08
1987	82.00	84.00	75.00	71.00	69.00	66.00	61.00	63.00	65.00	82.00	84.00	84.00	73.83
1988	87.00	78.00	78.00	76.00	77.00	77.00	65.00	68.00	73.00	75.00	82.00	78.00	76.17
1989	76.00	73.00	76.00	70.00	78.00	77.00	67.00	71.00	82.00	78.00	83.00	82.00	76.08
1990	82.00	76.00	79.00	77.00	77.00	74.00	70.00	71.00	73.00	76.00	80.00	88.00	76.92
1991	80.00	86.00	81.00	80.00	75.00	72.00	79.00	77.00	79.00	83.00	85.00	83.00	80.00
1992	81.00	78.00	74.00	74.00	74.00	81.00	74.00	64.00	67.00	76.00	76.00	80.00	74.92
1993	76.00	76.00	75.00	69.00	78.00	66.00	61.00	60.00	67.00	77.00	84.00	82.00	72.58
1994	84.00	82.00	72.00	73.00	73.00	70.00	69.00	64.00	66.00	83.00	80.00	84.00	75.00
1995	85.00	78.00	79.00	75.00	82.00	78.00	76.00	78.00	79.00	73.00	80.00	90.00	79.42
1996	88.00	85.00	87.00	70.00	71.00	66.00	63.00	70.00	78.00	79.00	76.00	85.00	76.50