

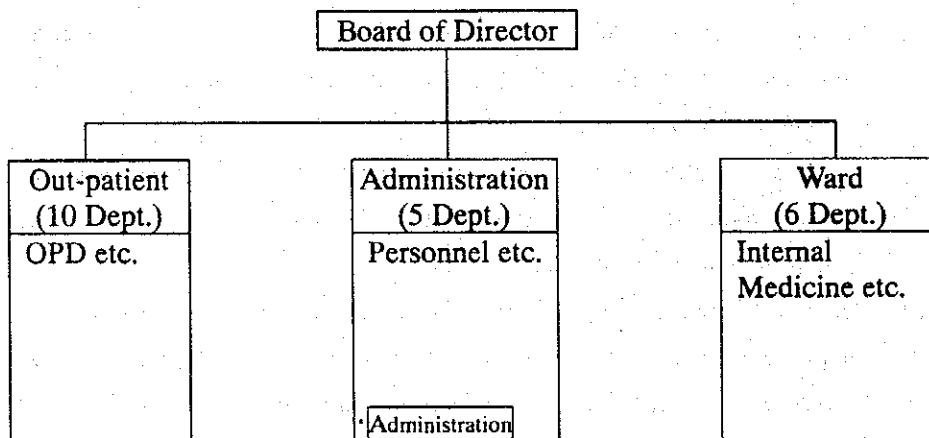
3-2 Operation and Maintenance Plan

(1) Maintenance and Management System

A hospital facilities and medical equipment should generally be maintained and managed by the hospital staff. However, some of them need more elaborate maintenance works by outside maintenance specialists. Since this project will not introduce any of highly advanced facilities or equipment, the new hospital should be designed and organized to complete the maintenance works internally to the utmost extent on establishing the section for maintenance and management, which is called workshop in the hospital.

1) Present Maintenance and Management System

At Sethathirath Hospital, maintenance activities are being carried out mainly by the "administration" section of the administration department.



A maintenance team consisting of three electrical technicians, a water supply/drainage technician and a carpentry technician is responsible for routine operation and repair of the architectural, electrical and mechanical facilities and equipment. The team is making every effort to restore the original functions of these facilities and equipment by using outdated and old-fashioned maintenance tools. But actually no systematized routine maintenance is not conducted.

At this moment Sethathirath Hospital has no staff in charge of medical equipment maintenance. In the case of breakdowns of medical equipment repair works are generally done by a private maintenance company. For simple breakdowns of medical devices such as electrical sterilizers and operating light, the above-mentioned electrical technicians are to repair such items of medical equipment by procuring replacement parts. In reality, however, such repair works are not complete in most cases because of insufficient technical

knowledge as well as the almost prohibitive scarcity of spare parts or maintenance tools due to a lack of budgetary appropriations.

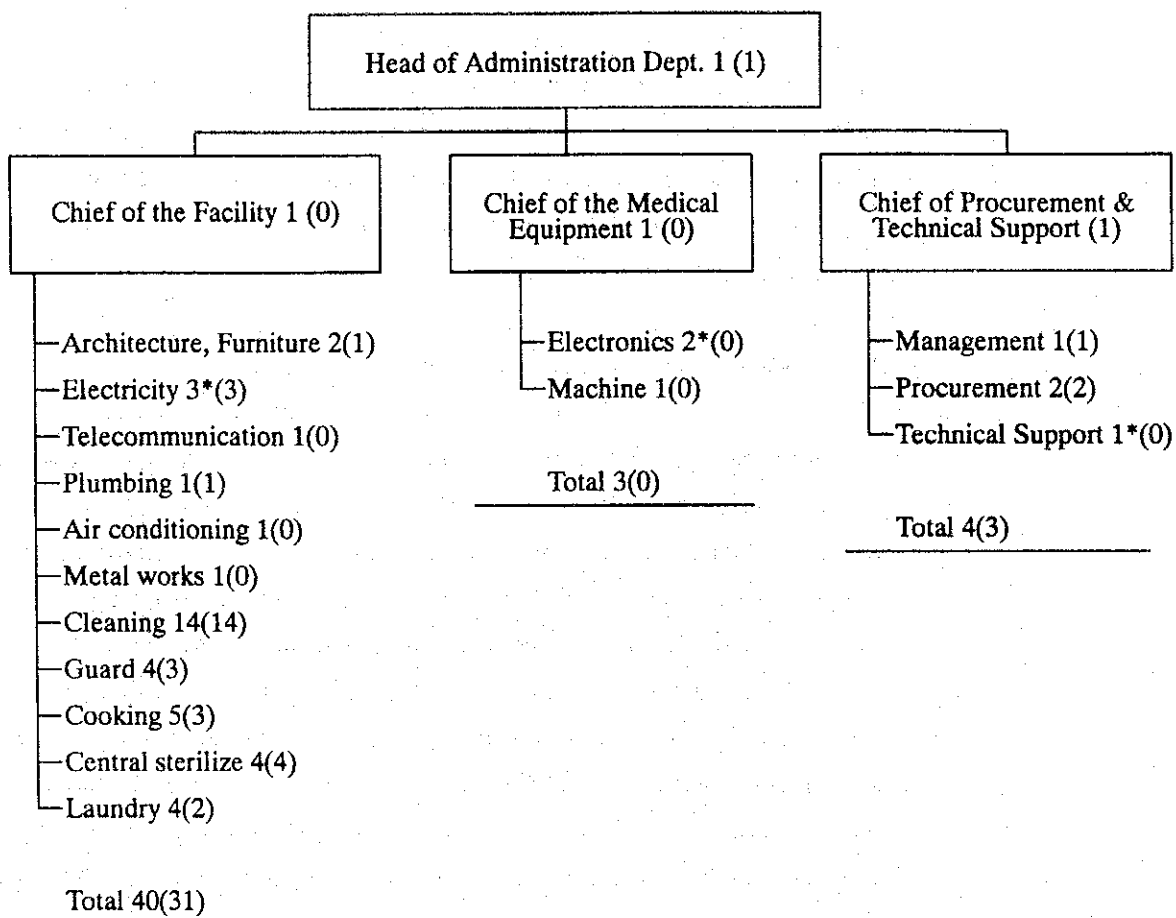
At present, Sethathirath Hospital has a small workshop in its outpatient building. As mentioned above, however, the staff at this workshop is finding it very difficult to offer even simple repair service, without mentioning routine maintenance service, because of its limited manpower, a lack of experience and expertise, a short supply of maintenance tools, obsolete if any all derived from the infinitesimal budgetary appropriations.

2) Future Maintenance and Management System

The director and the deputy-director of the hospital are well aware of such circumstances, as well as the importance of maintenance and the need to establish an efficient maintenance system. From the standpoint of securing sufficient budgetary appropriations for maintenance and ensuring smooth maintenance operations, the hospital's management is planning to put a maintenance organization as shown in Fig. 8 into shape. More specifically, the maintenance organization is to consist of a facility section, a medical equipment section and a procurement/technology section which is to procure equipment and spare parts, provide technical support to the two other sections, coordinate the operations carried out by the two other sections, give guidance and training, and conduct centralized management of equipment and spare parts. Each section is to be headed by an engineer. The number of technicians is to be increased for the qualitative and quantitative improvement of the hospital's maintenance operations.

For this reason, Sethathirath Hospital requested that a space for the above-mentioned maintenance room (workshop) be secured in the architectural design of the proposed facilities. It is considered appropriate to provide a facility maintenance room and a medical equipment room because the two types of maintenance rooms differ from each other in terms of the degree of cleanliness and the need for air-conditioning.

Fig. 3-6 Proposed Organization of Maintenance



[Note] 1. Figures indicate the necessary number of staff members during the implementation of the project.

2. * Denotes the function to be performed by the head of the section.

3) **Training in Facility/Equipment Maintenance and Management**

Instructions for the operation of facilities and equipment are usually given immediately before their delivery. In light of the total number and the technical level of Sethathirath Hospital's maintenance technicians, it is essential to train them repeatedly over a long time of period. The proposed facilities and equipment require expertise as well as basic knowledge on the part of the maintenance technicians. It is therefore recommended that the maintenance technicians be trained in administration, adjustment and trial operation of the proposed facilities from the stage of the construction work so that they may acquire sufficient skills to operate and troubleshoot the proposed facilities and equipment.

(2) Maintenance and Management Cost

The estimated maintenance and management cost of this project is as shown in Table 3-7. It should be noted that facility maintenance expenses in the items ① through ⑨ are annual expenses for the year 2001, the year of opening of the new hospital, while equipment expenses ⑩ represents an addition to the annual equipment maintenance expenses for the existing equipment.

Table 3-7 Operation and Maintenance Cost
Unit (US\$)

	Year 2006
① Electricity	8,160
② Telephone	2,451
③ Medical gas	1,440
④ Water	4,128
⑤ Propane Gas	7,920
⑥ General fuel	439
⑦ Incinerator fuel	1,980
⑧ Laundry cleanser	1,404
⑨ Building Maintenance	7,600
⑩ Medical Equipment Maintenance	75,719
Total	111,241

In the projection of earnings and expenses after the implementation of this project (Table 3-32), the amounts in dollar terms of these maintenance expenses were converted into KIP (US\$1.00 = 4,100 KIP). As a result, the total amount of annual facility maintenance expenses ① through ⑨ for the year 2001 is estimated at US\$35,522 (145,640,200 KIP). As regards the equipment maintenance expenses, the amount of maintenance expenses for newly procured equipment (US\$75,719, or 310,447,900 KIP) is added to the amount of maintenance expenses for the existing equipment (400,786,100 KIP for the year 2001).

The projected increases in the facility/equipment maintenance expenses for 2001 are a 24 percent increase in the facility maintenance expenses and a 130 percent increase in the equipment maintenance expenses. The ratio of these projected increased amounts to the projected annual total maintenance expenses (1,746,119 KIP) are about 8.5 percent and about 40.7 percent, respectively. It is concluded that these projected increased amounts may be fully covered by the increase in the central government's budgetary appropriations for the hospital, the introduction of a medical insurance system and the introduction of a fee system.

① Electricity charges US\$8,160/year

According to the power supply rules of Electricite Du Laos (EDL), the electricity charge structure applicable to the proposed facilities is as follows.

Basic charge : US\$0/kW·month
(no basic charge at this point in time)

Usage-based charge : US\$0.017/kWh (60 KIP/kWh)

In light of the sizes of the proposed facilities, the contract load capacity for the proposed facility is estimated at 330 kW. Average electricity usage is estimated at about 60 percent of the load capacity (about 200 kW).

Shown below is the numerical formula for the calculation of the annual amount of electricity charges.

$$200 \text{ kW} \times 8 \text{ hours} \times 25 \text{ days} \times 12 \text{ months/year} \times \text{US\$}0.017/\text{kWh} \\ = \text{US\$}8,160/\text{year}$$

Therefore the annual amount of electricity charges is estimated at US\$8,160.

② Telephone charges US\$2,451/year

The frequency of use of telephone circuits is estimated as follows.

Domestic : 3 minutes/time, 30 time/day

Overseas : 5 minutes/time, 2 times/day (to Bangkok)

Shown below is the numerical formula for the calculation of the annual amount of telephone charges.

$$\text{Domestic} : \text{US\$}0.013/\text{minute} \times 3 \text{ minutes} \times 30 \text{ times/day} \times 25 \text{ days} \\ \times 12 \text{ months} = \text{US\$}351/\text{year}$$

$$\text{Overseas} : \text{US\$}0.7/\text{minute} \times 5 \text{ minutes} \times 2 \text{ times/day} \times 25 \text{ days} \times 12 \\ \text{months} = \text{US\$}2,100$$

Therefore the annual amount of telephone charges is estimated at US\$2 451.

③ Medical gas charges US\$1,440/year

The medical gas used at the hospital is oxygen gas. On the assumption that there will be a total of 11 operations a day at the operating rooms and a total of 4 deliveries a day at the delivery rooms, the average daily supply of oxygen gas to these rooms is estimated at about 3,600 l. This quantity plus the daily supply of oxygen gas to other oxygen gas outlets (about 2,000 l) is 5,600 l.

$$5,600 \text{ l} \div 7,000 \text{ l/cylinder} \times 30 \text{ days} = 24 \text{ cylinders}$$

Monthly usage

Oxygen gas 24 cylinders/month current charge : US\$5/cylinder

Shown below is the numerical formula for the calculation of the annual amount of generator fuel expenses.

Monthly fuel consumption $50 \text{ l/h} \times 1 \text{ h} \times 4 \text{ times/month} = 200 \text{ l/month}$
 Monthly fuel expenses $\text{US}\$0.183/\text{l} \times 200 \text{ l/month} = \text{US}\$36.6/\text{month}$

Therefore,

Annual fuel expenses $\text{US}\$36.6/\text{month} \times 12 \text{ months/year}$
 $= \text{US}\$439/\text{year}$

⑦ Incinerator fuel expenses $\text{US}\$1,980/\text{year}$

Waste from the hospital is divided into general waste and medical waste. It is assumed that the incinerator will be used mainly to incinerate medical waste and that the daily quantity of medical waste will be about 30 kg. Daily oil consumption is estimated at 30 l. Oil charge is $\text{US}\$0.183/\text{l}$.

Monthly oil consumption $30 \text{ l/day} \times 30 \text{ days/month} = 900 \text{ l/month}$
 Monthly oil charge $\text{US}\$0.183/\text{l} \times 900 \text{ l/month} = \text{US}\$165/\text{month}$

Therefore,

Annual oil charge $\text{US}\$165/\text{month} \times 12 \text{ months/year}$
 $= \text{US}\$1,980/\text{year}$

⑧ Detergent expenses $\text{US}\$1,404/\text{year}$

At the proposed facilities, it is estimated that there will be about 50 kg/day of washing from the operating rooms and the CSSD and about 100 kg/day of washing from patients as well as from the hospital's midwives and nurses. On the assumption that the daily quantity of washing will be 150 kg and that detergent consumption will be about two percent of the total quantity of washing, the daily amount of detergent is estimated at about 3 kg.

Monthly detergent consumption $3 \text{ kg/day} \times 30 \text{ days/month} = 90 \text{ kg/month}$
 Monthly detergent expenses $\text{US}\$1.3/\text{kg} \times 90 \text{ kg/month}$
 $= \text{US}\$117/\text{month}$

Therefore,

Annual detergent expenses $\text{US}\$117/\text{month} \times 12 \text{ months/year}$
 $= \text{US}\$1,404/\text{year}$

⑨ Building maintenance expenses $\text{US}\$7,600/\text{year}$

Interior and exterior finishing materials which are easy to maintain and manage are to be chosen for the proposed facilities. Exterior finish will be mostly terrazzo finish by washing so that it may be maintained only by cleaning. Interior finish (for floors and walls) will be mostly tile finish and paint finish so that they may be maintained only by cleaning. This arrangement will minimize

building maintenance expenses. It is assumed that building maintenance expenses, including interior/exterior finish expenses and expenses for repair parts of electrical equipment, plumbing equipment and air-conditioners, will be about one-third of the average in Japan and that annual building maintenance expenses per square meter will be US\$1.00.

$$7,600 \text{ m}^2 \times \text{US}\$1.00/\text{m}^2/\text{year} = \text{US}\$7,600/\text{year}$$

⑩ Medical equipment maintenance expenses US\$75,719/year

Medical equipment maintenance expenses are to cover those items of equipment not to be provided under this project.

In the tentative calculation, medical equipment maintenance expenses were classified into maintenance contract expenses, repair parts expenses, and reagent/ expendable expenses.

Budgetary appropriations for equipment procurement for this project include expendable expenses at the time of trial operation and repair parts expenses for the first year of operation of the proposed facilities. From the second year onward, budgetary appropriations for equipment maintenance and management as shown in Table 3-8 will be necessary. Shown below are the main equipment maintenance and management expenses and a breakdown of them.

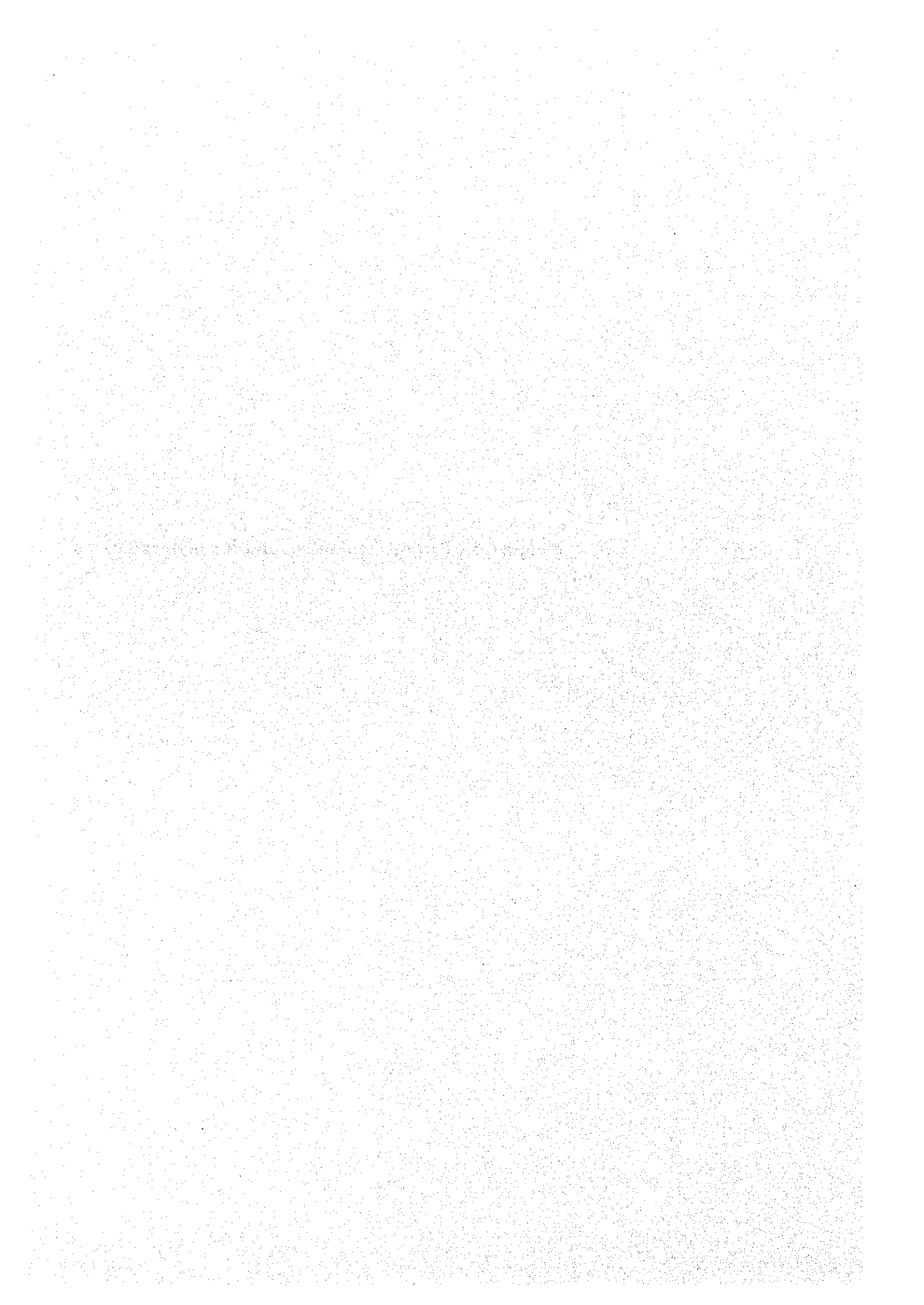
Table 3-8 Operation Maintenance Cost of Medical Equipment

Code No.	Equipment	maintenance contract per year			spare parts					consumable material					Total price for 1 unit (US\$)	Q'ty	Total amount (US\$)
		condition	times /year	amount (US\$)	spare parts	frequency	unit price (us\$)	Q'ty	amount (US\$)	material	frequency	unit price (US\$)	Q'ty	amount (US\$)			
13	X-ray unit with TV monitor Condition Service life: 6 year Working day: 250 days Working hour 30 pic./day	Including Technical fee & spare parts	3	1,500	X-ray tube	10,000 /pictur	13,000	0.33	4,290	X-ray film Barium	100 /pictur 100 /pictur	36 36	32.5 32.5	1,170 1,170			
		Total		1,500					4,290						2,340		
76	Blood cell counter Condition Service life: 4 years Working day: 250 days Working hour 50 test/day	Including Technical fee & spare parts	2	400	detector tubing set	10,000 tests 5,000 tests	600 120	1.25 2.50	750 300	reagent kit detergent test tube recording paper control blood	1,000 tests 500 tests 2,000 tests 2,500 tests 1,000 tests	160 35 120 35 180	12.5 25 6.25 5 12.5	2,000 875 750 175 2,250			
		Total		400					1,050						6,050		
86/87	Ventilator (infant and adult) Condition Service life: 5 years Working day: 300 days Working hour 8 hour/day	Including Technical fee & spare parts	3	200						bioeris filter humidifier patient circuit mask flow sensor	100 hours 1,000 hours 250 hours 250 hours 500 hours	15 200 170 18 44	24 2.4 9.6 9.6 4.8	360 480 1,632 173 211			
		Total		200					0						2,856		
92	ECG machine Condition Service life: 8 years Working day: 250 days Working hour 10 test/day	Including Technical fee & spare parts	1	150						gel recording paper	25 tests 25 tests	15 8	100 100	1,500 800			
		Total		150					0						2,300		
93	Patient monitor Condition Service life: 6 years Working day: 300 days Working hour 1patient/day	Including Technical fee & spare parts	1	80						Ag/AgCl electrode disposable electrode lead electrode recording paper	100 patient 1 /patient 150 patient 10 patient	65 3 22 15	3 300 1.5 12	195 900 33 180			
		Total		80					0						1,308		
109	Ultrasound diagnosis apparatus Condition Service life: 6 years Working day: 250 days Working hour 10 test/day	Including Technical fee & spare parts	3	500	Probe A Probe B Probe C	10,000 tests 10,000 tests tests	3,000 3,000	0.25 0.25	750 750	gel recording paper	50 tests 50 tests	22 36	50 50	1,100 1,800			
		Total		500					1,500						2,900		
152	Anesthesia apparatus Condition Service life: 5 years Working day: 250 days Working hour 2 ope./day	Including Technical fee & spare parts	3	200						halothan influen atholen	20 ope. 100 ope. 100 ope.	11 120 120	25 5 5	275 800 600			
		Total		200					0						1,475		
	Other equipment	Equipment which requires consumable material and spare parts less than US\$2,000/year												34 model /108 units		16,058	

Total amount of operation & maintenance cost (US\$) **75,719**

*Exchange rate US\$1.00=¥120.00

Chapter 4 Project Evaluation and Recommendations



CHAPTER 4 PROJECT EVALUATION AND RECOMMENDATIONS

4-1 Project Effect

4-1-1 Population to Benefit from the Implementation of the Project

Sethathirath Hospital is the city of Vientiane's largest general hospital operated by Vientiane Municipality (which is positioned administratively equal to prefectures and therefore is an administrative unit operating independently of Vientiane Prefecture). It has a population of 524,107 (source: 1995 Census, which is also the source for other figures as shown below). A total of nine district hospitals are operating under the supervision of this hospital. It is expected, therefore, that the positive effects of this project will extend to all peripheral areas in the city. Moreover, the combined total population of 504,221 of the two neighboring prefectures and one neighboring special area (Vientiane Prefecture, Xaysomboon Special Area and Borikhamxay Prefecture) will also benefit from the implementation of this project. All in all, a population of about one million is expected to benefit directly from the implementation of this project.

Sethathirath Hospital is positioned as one of the three major central hospitals in Laos under the central government's national plan. After the completion of this project, the hospital is expected to benefit the country's total population of 4.75 million as one of the top referral hospitals or as a higher institution of medical education.

4-1-2 Project Effect

(1) Improvement in the Medical Care Service Function

New Sethathirath Hospital is to be provided with facilities and equipment to deal with increases over the five years from now in the number of outpatients (800 patients/day), the number of beds (175 beds), the number of deliveries (four deliveries/day), and the number of patients to undergo surgical operations (11/day). As a result, it is expected that medical care services offered at each section of the hospital's clinical department will be improved both qualitatively and quantitatively and that the hospital will be able to meet the demand for medical care in the city of Vientiane, the capital of the country, and the neighboring prefectures. The improvement of medical care services in the fields of MCH and pediatrics at New Sethathirath Hospital, as these function have been the hospital's outstanding features vis-a-vis the two other central hospitals) will lead to a marked improvement in the level of medical care services in these areas of medicine.

(2) Improvement in the Clinical Education Function

The construction of facilities of New Sethathirath Hospital will mark the start of the central government's strategy to improve the quality of health care by the year 2020. The new hospital is expected to point to the future direction of self reliant hospital management in the country reflecting the central notion of the National Plan as being one of the three central hospitals and the regional hospital in Vientiane Municipality.

The hospital is performing its clinical education function to train medical students and medical professionals. In this connection, provision of facilities and equipment required for the hospital to step up its clinical education efforts will form a basis for future manpower development in the field of health care in the country.

(3) Improvement in the Support Function for Hospitals at the Lower Levels

The hospital is able to strengthen its function to support district hospitals and health centers placed beneath within the hierarchical of the country's national health care system. In particular the Sethathirath Hospital, already one of the leading hospitals in the area of MCH and public health will be able to further

contribute to the betterment of health services at the grass root level by spreading their expertise through training and supporting local medical professionals with the help of multinational technical cooperations.

4-1-3 Examination of the Hospital's Capabilities of Operation and Maintenance

(1) **The Hospital's Capabilities to Operate and Manage Its Facilities**

At present, Sethathirath Hospital is finding it very difficult to operate and manage its facilities satisfactorily because of the poor quality due to outdated facilities and a lack of necessary items of equipment. It will be necessary, therefore, to explain in detail how to maintain the proposed facilities to the staff members in charge as well as to the hospital's management during the construction period and at the same time afford technical cooperation for the maintenance and management of the proposed facilities and equipment. For this reason, it was decided to provide facilities which are highly durable and repairable by using locally available material and expertise. Likewise, it was decided to provide only basic items of equipment which can serve practical purposes rather than expensive, state-of-the-art items. Such basic items of equipment can be maintained and repaired by the hospital's staff members in charge as well as by using maintenance contractors locally procurable or otherwise in the neighboring countries to offer maintenance service for these items of equipment.

(2) **Recommendations Concerning Operation of the Proposed Facilities**

- 1) The hospital's present maintenance and management staff is insufficient in terms of both number and capability. It is desirable to train local engineers to achieve the necessary technical knowledge enough to operate both in facility management and equipment maintenance.
- 2) Actual maintenance and inspection programs should be established at the earliest time and started education and training during Construction Phase. The following points are important to implement although it appears basic and simple.
 - ① To establish a periodical inspection/repair record system for effective operation and maintenance.
 - ② To keep a set of maintenance manuals, operation manuals and complete drawings in the workshop.
 - ③ To retain a team of facility cleaning staff and educate them thoroughly in terms of sanitation. It should be noted that there should be two categories of cleaning in the hospital, i.e., general cleaning and highly

sanitized cleaning (the facilities are to be divided into general facilities and those which require careful cleaning and washing).

- ④ To ensure early detection and resolution of problems such as water leakage. It will be necessary to conduct periodical maintenance for the water supply system and the septic tanks very carefully not to bring about omissions of disinfectants.

(3) Hospital Management

New Sethathirath Hospital is planning to adopt an organizational structure consistent with the functions of its facilities as shown in its organization chart. In this connection, it will be necessary to afford technical cooperation for the rational and thorough management of medical information and for the establishment of a modernized accounting system required to attain financial independence.

One of the greatest challenges facing Laos is to create a viable market economy. In this connection, the hospital is also required to find ways to achieve financial and operational independence. Most hopefully the establishment of a health insurance system, which, according to the Lao side, is already on the national policy agenda, will be realized at the earliest time possible. Also it is most recommendable for the hospital to make best efforts to restructure and streamline the organization, including the establishment of a more efficient personnel system, and to ask patients to pay their reasonable share of medical expenses while ensuring the municipality's budgetary support for its personnel expenses.

4-1-4 The Project's Contributions to the National Goals

The grant aid cooperation for the implementation of this project was requested in the process of fulfilling the "Strategies for the Development of the Laos Health System," which is the most imminent agenda among the national plans and medium- to long-term health policy goals of Lao Government. The three main objectives of the strategies are the spread of the concept and practice of public health at the regional and village levels, the raising of the technical level of medical care services through the improvement and expansion of hospital facilities, and the establishment of a viable health care system, including the spread of the concept of health insurance.

This project is aimed at establishing new facilities of Sethathirath Hospital, which, together with Mahosot Hospital and Friendship Hospital, ranks among three major hospitals in the Vientiane Municipality, and thereby pave the way for the improvement of the quality of medical care services provided in the city of Vientiane as well those provided nationwide as one of the country's central hospitals.

In this sense, this project is consistent with the central government's national goals and therefore is expected to make great contributions to the achievement of the national goals, which can be summarized in the followings.

- (1) Public Health, Prevention of Epidemics and Other Diseases, and Health Promotion Project
 - ① Improvement in the quality of health care at the regional and village levels through the promotion of primary health care and measures against malaria and dengue.
 - ② Vaccinating children against epidemics.
 - ③ Measures to make city water and the environment cleaner.
 - ④ MCH-related measures (including family planning and measures against iodine-deficiency diseases, vitamin A-deficiency diseases, diarrhea, cholera and acute respiratory infectious diseases).
 - ⑤ Measures against tuberculosis and Hansen's disease
 - ⑥ General improvement in nutrition

(2) Hospital Modernization Projects

- ① Development of a better knowledge of health care through the introduction of new technologies in the central and district hospitals.
- ② Modernization of Mahosot Hospital, Friendship Hospital and Sethathirath Hospital
- ③ Development of prefectural hospitals into modernized district hospitals.
- ④ Establishment of a cost recovery system.
- ⑤ Establishment of two private hospitals in a big city or an influential prefecture.

(3) Human Resource Development Projects

- ① Establishment of a health insurance system.
- ② Review of health care standards under the laws and regulations now in force for the enactment of new health care laws and regulations.
- ③ Promotion of research on basic medicine, health care systems and health care policies for the establishment of a viable health care system.

New Sethathirath Hospital, whose objectives include;

Procurement of facilities and equipment befitting to a general/teaching hospital, which has the potential to be a model of modernized hospital operation, and introduction of rational health management and operation know-how, and

Reinforcement of its support to the regional and village hospitals operating under its supervision and improvement in the quality of regional health care, represents a large-scale, substantial step toward the attainment of the above-mentioned national goals and is therefore pertaining to symbolic significance in the Grant Area Project.

4-2 Technical Cooperation and Collaboration with Other Donors

Two French NGOs, Sante' Sud and EED (Enfant et Development), are implementing assistance projects in Laos for a period from 1993 to 1999. The former one is NGO's project to provide ophthalmologic and laboratory equipment and technical assistance. As part of the project three medical doctors from Sethathirath Hospital are receiving training in Marseilles. The budget for this technical assistance program is 1,675,254 FF. According to the explanation from the Lao Side at the time of the basic design study, this assistance project has almost been completed. The latter one was also NGO's project to implemented from 1996 to 1997. It was a project to afford technical cooperation in the field of obstetrics and gynecology. As these French NGOs' projects have been completed, this project for the construction of facilities of New Sethathirath Hospital will have no direct relation with these projects and there will be no need to coordinate this project with them.

The dispatch of JICA's Japan Overseas Cooperation Volunteers to Sethathirath Hospital has been continued since 1992. To date nurses and clinical laboratory technicians have been sent to the hospital to cooperate with its MCH, radiology, ICU and pediatrics and clinical laboratory staffs.

JICA sent a "Preliminary Study Team for the Project for the Improvement of the Facilities of Sethathirath Hospital" to Laos in August 1997, and a "Short-term Study Team for the Project for the Improvement of the Facilities of Sethathirath Hospital" from April to May 1998. During the latter study discussions were narrowed down to most important problems using the participative planning method, and basic data and information on technical cooperation relating to this project were gathered. For the future, it is expected that "Project for the Improvement of Sethathirath Hospital," a project-type technical cooperation program, will be started in October 1999.

4-3 Recommendation

- (1) From the standpoint of establishing an self-reliant management system, it is necessary to make the size of the hospital's staff optimal through the rationalization and to raise the technical level of medical care activities through education and retraining. However it should be noted to increase the number of staff responsible for operation and maintenance, which is already in short at the existing hospital.

The most viable scenario is that Japanese experts on the technical cooperation is to educate and train the hospital's operation and maintenance staff and then it will be handled solely by workshop manned with these staff in the future. The most important is to carry out periodical maintenance and inspection to prevent equipment breakdowns.

- (2) Management policy should be established for the financially independent hospital. At present, Sethathirath Hospital is providing free medical services to the poor and needed. For a public hospital, it is important to help the weak. However it is the time for the hospital to consider the introduction of the income producing measures including charging equitable medical fees to materialize economical independence. The first step for the hospital to take for this purpose is to adopt a modernized accounting system. The health insurance system soon to be established nationwide should justify and require such accounting system.
- (3) At Sethathirath Hospital so far, traditionally families and allowed to stay in patients' rooms and have meals together with them. This has been a major obstacle to attain the hygienic conditions within the hospital. It is highly recommendable, therefore, that lodging and catering facilities for families will be built, hopefully on the expense of Lao side in the adjacent area to the hospital. The ground is spacious enough to build such facilities.

Appendices

Member List of the Survey Team

Basic Design Study Team (28 July 1998~16 August 1998)

Role	Name	Organization
Team Leader	Dr. Kiyomichi FUJISAKI	Director, Department of Public Health Administration, National Institute of Public Health, Ministry of Health and Welfare
Technical Adviser	Dr. Takao OHTA	Professor, Department of Pediatrics, Faculty of Medicine, University of Ryukyus
Project Coordinator	Ms. Rina HIRAI	First Project Study Division, Grand Aid Project Study Department, Japan International Cooperation Agency
Project Manager/ Construction Planner I	Mr. Tomonao HAMADA	Nihon Sekkei, Inc.
Hospital Management Planner	Mr. Kesato MIYASHITA	Nihon Sekkei, Inc.
Construction Planner II	Mr. Kanichi KUWANA	Nihon Sekkei, Inc.
Facility Planner	Mr. Shuzo ISHIKAWA	Nihon Sekkei, Inc.
Equipment Planner	Mr. Takashi YOZA	Nihon Sekkei, Inc.
Procurement Planner	Mr. Shimematsu NAKAYAMA	Nihon Sekkei, Inc.
Equipment Facility Planner	Mr. Motohiro OKADA	Nihon Sekkei, Inc.
Construction Designer	Mr. Junji MURAYAMA	Nihon Sekkei, Inc.

Explanation Team for Draft Basic Design (28 October 1998~8 November 1998)

Role	Name	Organization
Team Leader	Dr. Takefumi FUKUHARA	Managing Director, Medical Cooperation Department, Japan International Cooperation Agency
Technical Adviser	Dr. Kaoru SAKUMOTO	Lecturer, Department of Obstetrics and Gynecology
Project Coordinator	Ms. Rina HIRAI	First Project Study Division, Grand Aid Project Study Department, Japan International Cooperation Agency
Project Manager, Construction Planner I	Mr. Tomonao HAMADA	Nihon Sekkei, Inc.
Construction Planner II	Mr. Kanichi KUWANA	Nihon Sekkei, Inc.
Equipment Planner	Mr. Takashi YOZA	Nihon Sekkei, Inc.
Construction Designer	Mr. Hitoshi ITO	Nihon Sekkei, Inc.

Survey Schedule

Basic Design Study Team (28 July 1998~16 August 1998)

No.	Date	Stay	Activities
1	7/28 (Tue)	Bangkok	Lev. Narita – Arr. Bangkok
2	29 (Wed)	Vientiane	Lev. Bangkok – Arr. Vientiane · Meeting with JICA Laos Office · Courtesy call to Embassy of Japan
3	30 (Thu)	Vientiane	· Courtesy call to Committee for Investment and Cooperation · Courtesy call to Mayer of Vientiane Municipality · Courtesy call to Service of Public Health, Vientiane Municipality · Courtesy call to Sethathirath Hospital
4	31 (Fri)	Vientiane	· Meeting with Sethathirath Hospital · Survey of the new site · Discussion on the utility infrastructure
5	8/01 (Sat)	Vientiane	· Visit to Similar Facilities (Mahosot Hospital, Mittaphb Hospital)
6	02 (Sun)	Vientiane	· Internal Meeting within the Team
7	03 (Mon)	Vientiane	· Discussion with ST Hospital · Survey on ST Hospital existing facilities Cost Planner Arr. Vientiane
8	04 (Tue)	Vientiane	· Meeting with the Ministry of Public Health (MOH) · Discussion with ST Hospital (Building Plan, Medical Equipment Plan, Maintenance Plan, others) · Survey on ST Hospital
9	05 (Wed)	Vientiane	· Discussion on the Minutes of Meeting with MPH and ST Hospital · Signing of the Minutes of Meeting
10	06 (Thu)	Vientiane	· Report to JICA Laos Office · Discussion with ST Hospital · Discussion with Municipal Fire Department · Discussion with Municipal City Planning Department
		--	Official Members Lev. Vientiane
11	07 (Fri)	--	Official Members Arr. Narita
		Vientiane	· Discussion with ST Hospital · Discussion with Municipal Cleaning Dept. · Survey on the Municipal Sewage Treatment Facility
12	08 (Sat)	Vientiane	· Meeting within the Team · Review of the Data · Preparation of the Report
13	09 (Sun)	Vientiane	· Internal Meeting within the Team

No.	Date	Stay	Activities
14	10 (Mon)	Vientiane	<ul style="list-style-type: none"> · Discussion with ST Hospital (Site Condition, Facility Plan, Personnel Plan, Maintenance Service System, others) · Site Explanation for Geological and Soil Survey · Discussion with ST Hospital
15	11 (Tue)	Vientiane	· Discussion with ST Hospital
		--	Cost and Building Engineers (Consultant): Arr. Narita
16	12 (Wed)	Vientiane	· Discussion with ST Hospital
17	13 (Thu)	Vientiane	<ul style="list-style-type: none"> · Discussion with ST Hospital · Signing on the Technical Notes
18	14 (Fri)	Vientiane	· Report to JICA Laos Office
19	15 (Sat)	--	Consultants: Lev. Vientiane (via Bangkok)
20	16 (Sun)	--	Consultant: Arr. Narita

Explanation Team for Draft Basic Design (28 October 1998~8 November 1998)

No.	Date	Stay	Activities
1	10/28 (Wed)	Bangkok	Lev. Narita and Arr. Bangkok
2	29 (Thu)	Vientiane	Lev. Bangkok and Arr. Vientiane
3	30 (Fri)	Vientiane	<ul style="list-style-type: none"> · Meeting with JICA Laos Office · Courtesy call on the Minister for Public Health · Courtesy call on the Municipal Department of Public Health · Courtesy call on the Mayor of Vientiane · Courtesy call on the Embassy
4	31 (Sat)	Vientiane	· Survey of Existing ST Hospital and New Site
5	11/01 (Sun)	Vientiane	· Data Review and Team Meeting
6	02 (Mon)	Vientiane	· Discussion with ST Hospital
7	03 (Tue)	Vientiane	<ul style="list-style-type: none"> · Courtesy call on CIC · Discussion with ST Hospital
8	04 (Wed)	Vientiane	· Discussion with ST Hospital
9	05 (Thu)	Vientiane	<ul style="list-style-type: none"> · Discussion with MOH · Signing on the Minutes
10	06 (Fri)	Vientiane	· Report to JICA Laos Office
11	07 (Sat)	Bangkok	· Lev. Vientiane -- Arr. Bangkok
12	08 (Sun)	--	· Lev. Bangkok -- Arr. Narita

List of Party Concerned in the Recipient Country

1) Committee for Investment and Cooperation

Mr. Thongphachanh SONNASINH Director General
 Dr. Soulasith OUPRAVANH Deputy Director General
 Mr. Latsamy KEOMANY

2) Ministry of Health

Dr. Ponmek DALALOY Minister of Health
 Mrs. Chanthanom MANODHAM Director of Cabinet
 Dr. Khemphet VANTHANOUVONG General Director of Health Care Sector JICA
 Coordinator
 Dr. Somphone PHOUNSAVATH Director of Therapy Dept.
 Dr. Manivanh SAVATDY Chief of Hospital Administration Div.
 Dr. Phoukhong CHOMMALA Director of Foreign Relation Dept.
 Dr. Hiroyuki AMANO JICA Advisor
 Dr. Hiroyuki NOZAKI JICA PHC Project Chief Advisor

3) Vientiane Municipality

Mr. Bounheuang DOUANGPHACHANH · Mayor
 Dr. Chanphomma VONGSAMPHANH ··· Director of Public Health Service Dept.
 Dr. Bounlay PHOMMASACK Deputy Director of Public Health Service Dept.
 Mr. Khampet DARAVONG Deputy Director of Fire Service Dept.
 Mr. Xonglao YONGNOU Chief of Housing & Urban Planning Management
 Div.
 Mr. Boualouane DOUANGSYLA Deputy Chief of Housing & Urban Planning
 Management Div.
 Dr. Sayamang NANTHANAVONE Deputy Director of Urban Service Dept.
 Dr. Oukeo KHOUNTHALYVONG Curative Division, Public Health Vientiane
 Municipality

4) Sethathirath Hospital

Dr. Bouaphan PHANTHAVADY Director
 Dr. Vanphenh PHOLSENA Deputy Director
 Dr. Khampe PHOMMASAVATH Deputy Director
 Dr. Thongdy LUANGXAY Chief of Medical Technology Dept.
 Dr. Sengthong BIRAKOUN Chief of Personnel Dept.
 Dr. Vanekhan SENGCHANH Vice Chief of Nursery Dept.
 Dr. Khammanh PHIPHAK Chief of surgery Dept.
 Dr. Bounthieng APHAY Chief of OB/GY
 Dr. Panyavong Chief of Internal Medicine Dept.
 Dr. Prem KANECHANA Vice Chief of Pediatrics Dept.
 Dr. Phatthakone BANOUVONG Chief of ICU for Adult

Dr. Thotsakanh	Chief of X-Ray section
Dr. Keo	Vice Chief of Anesthesia
Dr. Amphoy	Chief of cancer research
Dr. Pavith	Chief of Training and Research
Dr. Sisomphone	Chief of Internal Medicine (OPD)
Dr. Southiphat SOUNTHONE	Chief of Dental
Dr. Bounma SENETHAVY	Chief of MCH
Dr. Sinouanchanh BOUNNAPHOL	Chief of Ophthalmology
As.Dr. Choummaly	Chief of Rehabilitation
Dr. Sengthong KHAMBOUNTA	Chief of Pharmacy
As.Dr. Kathinh	Chief of Lab.
Dr. Shinthavong PHIATHEP	Chief of Emergency
Dr. Viengxay MANIVONG	Vice Chief of Surgery

5) Mahosot Hospital

Dr. Chan PHENG	Director
Dr. Kong SUB	Deputy Director

6) Friendship Hospital

Dr. Eksavang VONGVICHIT	Deputy Director
-------------------------------	-----------------

7) Electricite Du Laos (EDL)

Mr. Mixay CHITTARATH	Manager of Municipality Branch Dept.
Mr. Chansom PHILALOM	Staff of Municipality Branch Dept

8) Lao Telecommunications Co., Ltd. (LAO TELECOM)

Mr. Khammouane XOMSIHPANYA	Deputy Manager of PSTN Div.
----------------------------------	-----------------------------

9) Lao Water Supply Co., Ltd. (NPL)

Mr. Oth KEOMANIUONG	Chief of Engineering Dept.
---------------------------	----------------------------

MINUTES OF DISCUSSIONS
BASIC DESIGN STUDY
ON THE PROJECT FOR THE CONSTRUCTION OF NEW SETHATHIRATH HOSPITAL
IN LAO PEOPLE'S DEMOCRATIC REPUBLIC

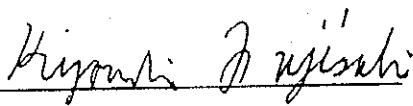
In response to a request from the Government of Lao People's Democratic Republic (hereinafter referred to as "Lao P.D.R."), the Government of Japan decided to conduct a basic design study on the Project for the Construction of New Sethathirath Hospital (hereinafter referred to as "the Project"), and entrusted the study to Japan International Cooperation Agency (JICA).

JICA dispatched to Lao P.D.R the Basic Design Study Team (hereinafter referred to as "the Team") which is headed by Dr. Kiyomichi Fujisaki, Director, Department of Public Health Administration, National Institute of Public Health, and which is scheduled to stay in the country from July 29 to August 15, 1998.

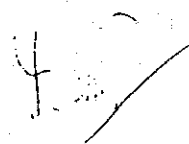
The Team had a series of discussions with officials concerned of the Government of Lao P.D.R. and conducted a field survey at the study area.

In the course of discussions and field survey, both sides have confirmed the main items described on the attached sheets. The team will proceed to further works and prepare the Basic Design Study Report.

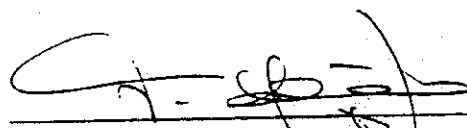
Vientiane, August 5, 1998



Dr. Kiyomichi FUJISAKI
Leader,
Basic Design Study Team,
Japan International Cooperation
Agency



Mrs. Chanthanom MANODHAM
Director of Cabinet,
Ministry of Health



Dr. Chanphomma VONGSAMPHANH
Director,
Department of Health,
Vientiane Municipality

ATTACHMENT

1. Objective of the Project

The Objective of the Project is to improve medical services and training capability of the Sethathirath Hospital through the construction of facilities and procurement of necessary equipment.

2. Project Site

The Project site is located at Done koy village, Sisattanak district, Vientiane Municipality shown in ANNEX-I.

3 Responsible and Executing Agencies

(1) Responsible Agency

Ministry of Health

(2) Executing Agencies

Department of Health , Vientiane Municipality

4. Items requested by the Government of Lao P.D.R.

(1) The construction of facilities as described in ANNEX-II was finally requested by the Government of Lao P.D.R..

(2) The procurement of equipment as described in ANNEX-III was finally requested by the Government of Lao P.D.R..

However, the final components of the Project will be decided after further studies.

5. Basic Criteria for selecting the equipment

The equipment will be selected by the basic criteria attached as ANNEX-IV.

6. Japan's Grant Aid Scheme

(1) The Lao side has understood the Japan's Grant Aid Scheme explained by the team, as described in ANNEX-V.

(2) The Lao side will take necessary measures, as described in Annex-VI for smooth implementation of the Project on condition that the Grant Aid by the Government of Japan is extended to the Project.

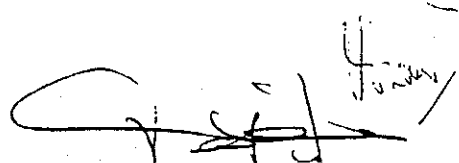
7. Schedule of the Study

(1) The consultant team will proceed to further study in Lao P.D.R. by August 15, 1998.

(2) JICA will prepare the draft report and dispatch a mission to Lao P.D.R. in order to explain its contents in October, 1998.

(3) In case the contents of the draft report are accepted in principle by the Government of Lao P.D.R., JICA will complete the final report and send it to the Government of Lao P.D.R. around February, 1999.

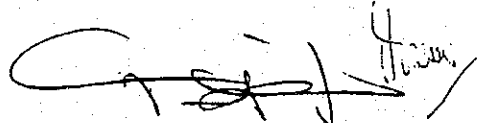
K. J.

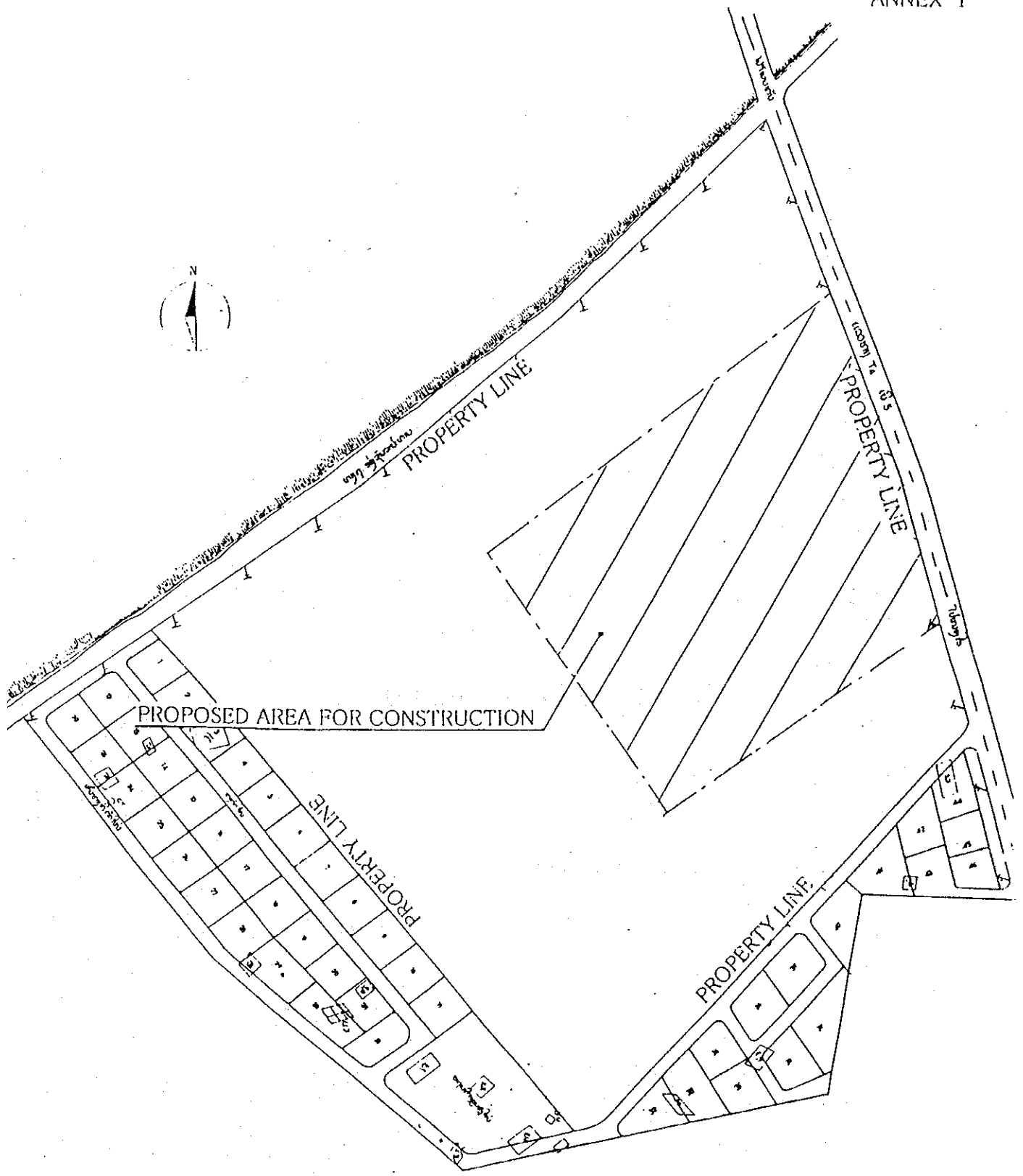


8. Other relevant issues

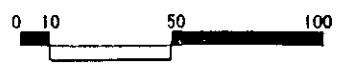
- (1) The Japanese side requested the Lao side to allocate the budget necessary for operation and maintenance of facilities and equipment, and the Lao side agreed to it.
- (2) The Lao side requested the Japanese side to provide technical guidance of operation and maintenance of facilities and equipment during the period of the construction, and the Japanese side agreed to it.
- (3) The Lao side explained to the Japanese side that the following plans of the Project site were on the progress: (a) the plan of moving the primary school and the people's facilities from the site, (b) the plan of leveling the site for construction, (c) the plan of providing facilities for distribution of electricity, water supply, telephone, drainage.
On the other hand, the Japanese side requested the Lao side that the implementation of the plan should be completed by the commencement of the construction, and the Lao side agreed to it.
- (4) The Japanese side also requested the Lao side to construct the access road and provide the means of transportation such as the bus line, and the Lao side agreed to it.
- (5) The Lao side requested the Japanese side to construct fences around the site. On the other hand, the Japanese side explained to the Lao side that the fencing could not be covered by the Grant Aid.
- (6) The Japanese side asked the Lao side to submit the answer of the Questionnaire to the Team by August 15, 1998, and the Lao side agreed to it.

16. 7.

A large, stylized handwritten signature in black ink, possibly reading 'C. S. H.', is located at the bottom right of the page.



*Proposed area for construction may be changed subject to the result of the land survey.



H. J.

Requested Facilities for the Project

(1) Administration Department

(2) Out-patient Service for the following Departments

- Internal Medicine
- Surgery
- OB/GY
- Pediatrics
- MCH
- Dental
- Rehabilitation
- Ophthalmology
- ENT
- Tuberculosis and Dermatology

(3) Emergency Department

- 1(one) Emergency Room with a minor Operation Room

(4) Pharmacy Department

- 1(one) Dispensary with a storage

(5) Laboratory Examination Department

- Hematological Examination
- Bio Chemical Examination
- Microbiological Examination
- Pathology Examination

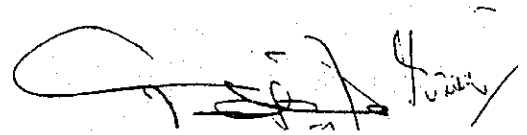
(6) Radiological Examination Department

- 2(two) X-ray Rooms
- 1(one) Dark Room

(7) Physiological Examination Department

- 1(one) Ultrasound Room

16. 7.



(8) Operation Department

- 2 (two) Operation Rooms

(9) OB/GY Department

- 2(two) Delivery Rooms with total 3 beds
- 1(one) Labor Room with 4 beds

(10) I.C.U (H.C.U) Department

- 12(twelve) beds for Adults
- 8(eight) beds for post operation
- 10(ten) beds for Pediatrics
- 6(six) beds for Neonatal

(11) CSSD

- Washing
- Sterilizing
- Packing

(12) Ward (Max. 200 beds)

- Internal Medicine
- Surgery
- OB/GY
- Pediatrics

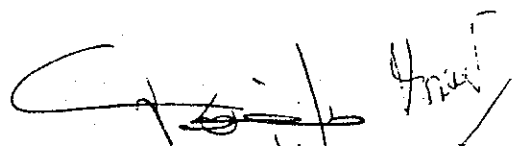
(13) Training Department

- 1(one) Lecture Room with 150 Seats
- 2(two) Seminar Rooms with 40 Seats

(14) Service Department and Others

- 1(one) Kitchen
- 1(one) Staff Dining
- 1(one) Laundry
- 1(one) Maintenance Work Shop with a storage
- 1(one) Mortuary

H. N.



Equipment List

ANNEX-III

NO.	ITEM NO.	DEPARTMENT	SECTION	EQUIPMENT	Equipment (Japanese)	Q'ty	Priority
1	A-1-1	O.P.D.	1. Physiological Exam.	Electroencephalograph, 18ch	脳波計, 18チャンネル	2	B
2	A-1-2	O.P.D.	1. Physiological Exam.	Electrocardiograph, 3ch	心電計, 3チャンネル	2	A
3	A-1-4	O.P.D.	1. Physiological Exam.	Autospirometer	肺活量計	1	B
4	A-1-6	O.P.D.	1. Physiological Exam.	Ultrasound Diagnostic Equipment	超音波診断装置 (消化器採用)	1	H
5	A-1-7	O.P.D.	1. Physiological Exam.	Solution Bottle Support Stand	溶液ビンスタンド	2	B
6	A-1-8	O.P.D.	1. Physiological Exam.	Examining Table	診察台	2	A
7	A-1-9	O.P.D.	1. Physiological Exam.	Instrument Table	器械台	2	A
8	A-1-10	O.P.D.	1. Physiological Exam.	Instrument Cabinet	器械戸棚	2	A
9	A-1-11	O.P.D.	1. Physiological Exam.	Examining Instrument Set	器具セット (診断用)	2	A
10	A-1-12	O.P.D.	1. Physiological Exam.	Waste Receptacle	汚物缶	2	B
11	A-1-13	O.P.D.	1. Physiological Exam.	Examining Light	スポットライト	2	A
12	A-1-14	O.P.D.	1. Physiological Exam.	Chair	椅子	2	B
13	A-1-17	O.P.D.	1. Physiological Exam.	Doctor Consulting Desk	机 (診察用)	2	A
14	A-1-18	O.P.D.	1. Physiological Exam.	Doctor Chair	椅子 (診察用)	2	A
15	A-2-1	O.P.D.	2. Dental Clinic	X-ray Unit for dental	X線装置 (歯科用)	1	A
16	A-2-2	O.P.D.	2. Dental Clinic	Dental Unit	歯科ユニット	2	A
17	A-2-3	O.P.D.	2. Dental Clinic	Laboratory Micromotor	ラボ用マイクロモータ	1	A
18	A-2-4	O.P.D.	2. Dental Clinic	Operator Chair	椅子 (手術用)	2	A
19	A-2-10	O.P.D.	2. Dental Clinic	Ultrasonic Scaler	超音波歯石除去装置	1	A
20	A-2-11	O.P.D.	2. Dental Clinic	Hydraulic Flask Press	油圧フラスコ・プレス	1	A
21	A-2-12	O.P.D.	2. Dental Clinic	Dental Laboratory Engine	歯科用ラボエンジン	1	A
22	A-2-13	O.P.D.	2. Dental Clinic	Model Trimmer	模型トリマー	1	A
23	A-2-14	O.P.D.	2. Dental Clinic	Casting Machine Centrifugal	遠心鑄造機	1	A
24	A-2-19	O.P.D.	2. Dental Clinic	Vacuum Mixing Machine	真空ミキシングマシン	1	A
25	A-2-20	O.P.D.	2. Dental Clinic	Trimmer	トリマー	1	A
26	A-2-22	O.P.D.	2. Dental Clinic	Mobile Clinic Chair	診療用移動椅子	2	A
27	A-2-24	O.P.D.	2. Dental Clinic	Hot air sterilizer	乾熱滅菌機	1	A
28	A-2-25	O.P.D.	2. Dental Clinic	Dental Treatment Set	歯科治療セット	1	A
29	A-2-26	O.P.D.	2. Dental Clinic	Laboratory Lathe with Cover	ラボ用旋盤 (カバーつき)	1	A
30	A-2-32	O.P.D.	2. Dental Clinic	Doctor Consulting Desk	机 (診察用)	2	A
31	A-2-33	O.P.D.	2. Dental Clinic	Doctor Chair	椅子 (診察用)	2	A
32	A-2-34	O.P.D.	2. Dental Clinic	Refrigerator	保冷庫	1	A
33	A-2-35	O.P.D.	2. Dental Clinic	Furnace	ファーネス	1	A
34	A-2-36	O.P.D.	2. Dental Clinic	Vibrator	バイブレータ	1	A
35	A-2-37	O.P.D.	2. Dental Clinic	Dental Mizer for Impression	型取り材料ミキサー	1	A
36	A-2-38	O.P.D.	2. Dental Clinic	Articulators	咬合器	1	A
37	A-2-39	O.P.D.	2. Dental Clinic	Flask	フラスコ	5	A
38	A-2-40	O.P.D.	2. Dental Clinic	Amalgam Engine	アマルガム・エンジン	1	A
39	A-2-65	O.P.D.	2. Dental Clinic	Instrument set	器具セット	1	A
40	A-3-3	O.P.D.	3. Ophthalmology	Ophthalmic Operating Table	眼科手術台	1	B
41	A-3-5	O.P.D.	3. Ophthalmology	Electric Optometer	屈折計	1	B
42	A-3-6	O.P.D.	3. Ophthalmology	Trial Lens Set	トライアルレンズセット	1	A
43	A-3-12	O.P.D.	3. Ophthalmology	Cryosurgery Unit	冷凍手術器	1	B
44	A-3-13	O.P.D.	3. Ophthalmology	Diatery Unit	電気メス	1	B
45	A-3-14	O.P.D.	3. Ophthalmology	Mayo Instrument Table	メヨー器械台	1	B
46	A-3-15	O.P.D.	3. Ophthalmology	Instrument Table	器械台	1	B
47	A-3-16	O.P.D.	3. Ophthalmology	Dressing Drum Stand	ドレッシングドラムスタンド	1	B
48	A-3-17	O.P.D.	3. Ophthalmology	Instrument Cabinet	器械戸棚	2	B
49	A-3-18	O.P.D.	3. Ophthalmology	Kick Bucket	キックバケツ	1	B
50	A-3-20	O.P.D.	3. Ophthalmology	Waste Receptacle	汚物缶	1	B
51	A-3-21	O.P.D.	3. Ophthalmology	Doctor Consulting Desk	机 (診察用)	1	B
52	A-3-22	O.P.D.	3. Ophthalmology	Doctor Chair	椅子 (診察用)	1	A
53	A-3-23	O.P.D.	3. Ophthalmology	Chair	椅子	1	B
54	A-3-24	O.P.D.	3. Ophthalmology	Patient Stool	椅子 (患者用)	3	B
55	A-3-25	O.P.D.	3. Ophthalmology	Operator Chair	椅子 (手術用)	1	B
56	A-3-27	O.P.D.	3. Ophthalmology	Lensmeter	レンズメーカー	1	B
57	A-3-29	O.P.D.	3. Ophthalmology	Ophthalmoscope Binocular Indirect	間接式双眼鏡顕鏡	1	B
58	A-3-30	O.P.D.	3. Ophthalmology	Ophthalmoscope Direct	直接式眼鏡顕鏡	3	A
59	A-3-31	O.P.D.	3. Ophthalmology	Syringe Pump	シリンジポンプ	1	B
60	A-3-33	O.P.D.	3. Ophthalmology	Keratometer (Banch and Lomb)	角膜湾曲測定器 (Banch and Lomb)	1	B
61	A-3-34	O.P.D.	3. Ophthalmology	Goniometer (Contact Lens)	ゴニオレンズ	1	B
62	A-3-36	O.P.D.	3. Ophthalmology	Tonometer	眼圧計	1	A
63	A-3-37	O.P.D.	3. Ophthalmology	Ultrasound for ophthalmology	超音波診断装置 (眼科用)	1	A
64	A-3-38	O.P.D.	3. Ophthalmology	Instrument set	器具セット	1	A
65	A-4-1	O.P.D.	4. ENT	ENT Treatment Unit, Single Type	耳鼻咽喉科ユニット	1	A
66	A-4-2	O.P.D.	4. ENT	ENT Treatment Chair	耳鼻咽喉科治療椅子	1	A
67	A-4-3	O.P.D.	4. ENT	Film Illuminator	シャーカステン	1	B
68	A-4-4	O.P.D.	4. ENT	Instrument Cabinet	器械戸棚	1	B
69	A-4-5	O.P.D.	4. ENT	Exam and Treat Instrument Set	器具セット (診断・治療用)	1	B
70	A-4-6	O.P.D.	4. ENT	Waste Receptacle	汚物缶	2	B
71	A-4-8	O.P.D.	4. ENT	Sound-proof Chamber	聴覚試験防音チャンバー	1	B

K. N.

Equipment List

ANNEX-III

NO.	ITEM NO.	DEPARTMENT	SECTION	EQUIPMENT	Equipment (Japanese)	Q'ty	Priority
72	A-4-9	O.P.D.	4. ENT	Audiometer	聴力計	1	B
73	A-4-10	O.P.D.	4. ENT	Infant Audiometer	聴力計 (小児用)	1	B
74	A-4-11	O.P.D.	4. ENT	Treatment Table	処置台	1	B
75	A-4-12	O.P.D.	4. ENT	Nebulizer Unit	超音波ネブライザー	1	A
76	A-4-13	O.P.D.	4. ENT	Suction Unit	吸引器	1	A
77	A-4-14	O.P.D.	4. ENT	Instrument Table	器械台	1	A
78	A-4-15	O.P.D.	4. ENT	Doctor Consulting Desk	机 (診察用)	1	A
79	A-4-16	O.P.D.	4. ENT	Doctor Chair	椅子 (診察用)	1	A
80	A-4-17	O.P.D.	4. ENT	Patient Stool	椅子 (患者用)	3	A
81	A-4-18	O.P.D.	4. ENT	Otoscope Examination	耳鏡検査器具	1	A
82	A-4-19	O.P.D.	4. ENT	Electro Cutting	電気メス	1	A
83	A-4-22	O.P.D.	4. ENT	Sinusoscope	副鼻腔スコープ	1	B
84	A-4-29	O.P.D.	4. ENT	Chair for Tonsillectomy	椅子 (ヘントウ切除用)	1	B
85	A-4-30	O.P.D.	4. ENT	Head Light (Binocular)	ヘッドライト (双眼)	1	B
86	A-4-32	O.P.D.	4. ENT	Microscope for the Ear	耳用顕微鏡	1	B
87	A-4-36	O.P.D.	4. ENT	Instrument set	器具セット	1	A
88	A-5-7	O.P.D.	5. Rehabilitation	Parallel Bar	平行棒	1	A
89	A-5-12	O.P.D.	5. Rehabilitation	Wheel Chair	車椅子	1	A
90	A-5-15	O.P.D.	5. Rehabilitation	Massage Bed	マッサージ台	1	A
91	A-5-16	O.P.D.	5. Rehabilitation	Overhead Frame Set	オーバヘッド・フレーム・セット	1	A
92	A-5-19	O.P.D.	5. Rehabilitation	Bicycle Exercise	自転車運動器	1	A
93	A-5-29	O.P.D.	5. Rehabilitation	Walkerette	小型歩行器	1	A
94	A-5-31	O.P.D.	5. Rehabilitation	Goniometer	ゴニオメータ	1	A
95	A-6-1	O.P.D.	6. Tuberculosis	Examining and Treatment Table	診察治療台	2	A
96	A-6-2	O.P.D.	6. Tuberculosis	Film Illuminator	シャーカステン	1	A
97	A-6-3	O.P.D.	6. Tuberculosis	Instrument Table	器械台	1	A
98	A-6-4	O.P.D.	6. Tuberculosis	Instrument Cabinet	器械戸棚	1	A
99	A-6-5	O.P.D.	6. Tuberculosis	Medicine Cabinet	薬品戸棚	1	A
100	A-6-6	O.P.D.	6. Tuberculosis	Exam and Treat Instrument Set	器具セット (診断・治療用)	1	A
101	A-6-7	O.P.D.	6. Tuberculosis	Waste Receptacle	汚物缶	2	B
102	A-6-8	O.P.D.	6. Tuberculosis	Refrigerator	冷蔵庫	1	A
103	A-6-9	O.P.D.	6. Tuberculosis	Examining Light	スポットライト	1	A
104	A-6-10	O.P.D.	6. Tuberculosis	Weight and Height Scale	身長体重計	1	A
105	A-6-11	O.P.D.	6. Tuberculosis	Doctor Consulting Desk	机 (診察用)	1	A
106	A-6-12	O.P.D.	6. Tuberculosis	Doctor Chair	椅子 (診察用)	1	A
107	A-6-13	O.P.D.	6. Tuberculosis	Patient Stool	椅子 (患者用)	2	A
108	A-6-16	O.P.D.	6. Tuberculosis	IDR's Room (Bed)	IDRルーム(ベッド)	1	B
109	A-6-17	O.P.D.	6. Tuberculosis	Cupboard	戸棚	1	B
110	A-7-1	O.P.D.	7. Dispensary	Electronic Analytical Balance	電子天秤	1	A
111	A-7-2	O.P.D.	7. Dispensary	Medical Refrigerator	薬品冷蔵庫	2	A
112	A-7-3	O.P.D.	7. Dispensary	Still Distill	純水製造装置	1	A
113	A-7-4	O.P.D.	7. Dispensary	Pharmacy Equipment Set	薬局装置セット	1	B
114	A-7-5	O.P.D.	7. Dispensary	Personal Computer Set	コンピュータ+プリンター	1	B
115	A-7-6	O.P.D.	7. Dispensary	Trolley	台車	1	A
116	A-7-7	O.P.D.	7. Dispensary	Prescription Counter	処方カウンター	2	B
117	A-7-8	O.P.D.	7. Dispensary	Medicine Cabinet	薬品戸棚	2	B
118	A-7-9	O.P.D.	7. Dispensary	Inspection Counter	検査カウンター	1	B
119	A-7-10	O.P.D.	7. Dispensary	Narcotic Safe	麻薬金庫	1	A
120	A-8-1	O.P.D.	8. Radiology	Ultrasound Set	超音波診断装置 (汎用)	1	A
121	A-8-2	O.P.D.	8. Radiology	CT scanner	CTスキャナー	1	B
122	A-8-3	O.P.D.	8. Radiology	X-ray Film Processor	X線フィルム自動現像機	1	A
123	A-8-4	O.P.D.	8. Radiology	Film Loading Table	フィルム装填テーブル	1	A
124	A-8-5	O.P.D.	8. Radiology	Cassette Pass Box	カセットパスボックス	1	A
125	A-8-6	O.P.D.	8. Radiology	Film Illuminator	シャーカステン	2	A
126	A-8-7	O.P.D.	8. Radiology	X-ray Accessories Set	X線アクセサリセット	1	A
127	A-8-9	O.P.D.	8. Radiology	Chair	椅子	1	B
128	A-8-10	O.P.D.	8. Radiology	Business Desk	机 (事務用)	1	A
129	A-8-15	O.P.D.	8. Radiology	Portable X-ray	X線撮影装置 (移動式)	2	A
130	A-8-16	O.P.D.	8. Radiology	X-ray unit with TV monitor	X線撮影装置 (TVモニター付)	1	A
131	A-9-1	O.P.D.	9. Gy/Ob Clinic	Colposcope	コルポスコープ	1	A
132	A-9-2	O.P.D.	9. Gy/Ob Clinic	Kymographie Hydrotubator	卵管通気装置	1	B
133	A-9-3	O.P.D.	9. Gy/Ob Clinic	Ultrasound Linear Scanner	超音波診断装置 (産婦人科用)	1	A
134	A-9-4	O.P.D.	9. Gy/Ob Clinic	Examining Table	診察台	2	A
135	A-9-6	O.P.D.	9. Gy/Ob Clinic	Cryosurgery Unit	冷凍手術器	1	B
136	A-9-7	O.P.D.	9. Gy/Ob Clinic	Film Illuminator	シャーカステン	2	A
137	A-9-8	O.P.D.	9. Gy/Ob Clinic	Instrument Table	器械台	3	A
138	A-9-9	O.P.D.	9. Gy/Ob Clinic	Instrument Cabinet	器械戸棚	3	A
139	A-9-10	O.P.D.	9. Gy/Ob Clinic	Irrigator Stand	点滴台	3	A
140	A-9-11	O.P.D.	9. Gy/Ob Clinic	Medicine Cabinet	薬品戸棚	2	A
141	A-9-12	O.P.D.	9. Gy/Ob Clinic	Gynecology examining table	診察台 (産婦人科用)	2	A
142	A-9-14	O.P.D.	9. Gy/Ob Clinic	Doppler Sound Detector	ドップラー音波検出器	2	A

H. F.

Equipment List

ANNEX-III

NO.	ITEM NO.	DEPARTMENT	SECTION	EQUIPMENT	Equipment (Japanese)	Q'ty	Priority
143	A-9-15	O.P.D.	9. Gy/Ob Clinic	Examining Light	スポットライト	2	A
144	A-9-16	O.P.D.	9. Gy/Ob Clinic	Foot Stool (Two-step)	踏台 (2段)	2	A
145	A-9-17	O.P.D.	9. Gy/Ob Clinic	Clothes Basket	脱衣籠	5	A
146	A-9-18	O.P.D.	9. Gy/Ob Clinic	Waste Receptacle	汚物缶	5	B
147	A-9-19	O.P.D.	9. Gy/Ob Clinic	Weight and Height Scale	身長体重計	2	A
148	A-9-20	O.P.D.	9. Gy/Ob Clinic	Refrigerator	保冷庫	1	A
149	A-9-22	O.P.D.	9. Gy/Ob Clinic	Doctor Consulting Desk	机 (診察用)	3	A
150	A-9-23	O.P.D.	9. Gy/Ob Clinic	Doctor Chair	椅子 (診察用)	3	A
151	A-9-24	O.P.D.	9. Gy/Ob Clinic	Operator Stool	椅子 (手術用)	3	A
152	A-9-25	O.P.D.	9. Gy/Ob Clinic	Patient Stool	椅子 (患者用)	3	A
153	A-9-40	O.P.D.	9. Gy/Ob Clinic	Dryer Gloves	ドライヤーグローブ	1	A
154	A-9-41	O.P.D.	9. Gy/Ob Clinic	Suction Unit	吸引器	1	A
155	A-9-44	O.P.D.	9. Gy/Ob Clinic	Gynecology examining table	診察台 (産婦人科用)	3	A
156	A-9-45	O.P.D.	9. Gy/Ob Clinic	Instrument set	器具セット	1	A
157	A-9-46	O.P.D.	9. Gy/Ob Clinic	Ambioscope (Jsize)	羊膜鏡	1	A
158	A-9-47	O.P.D.	9. Gy/Ob Clinic	pH meter	pHメータ	1	A
159	A-10-1	O.P.D.	10. MCH	Examining Table	診察台	2	A
160	A-10-2	O.P.D.	10. MCH	Consulting Desk	机 (診察用)	2	B
161	A-10-4	O.P.D.	10. MCH	Instrument Cabinet	器械戸棚	1	A
162	A-10-5	O.P.D.	10. MCH	Examining Instrument Set	器具セット (診察用)	2	A
163	A-10-6	O.P.D.	10. MCH	Examining Light	スポットライト	2	A
164	A-10-7	O.P.D.	10. MCH	Waste Receptacle	汚物缶	2	B
165	A-10-8	O.P.D.	10. MCH	Infant Dressing Table	処置台 (小児用)	2	A
166	A-10-9	O.P.D.	10. MCH	Infant Scale	身長体重計 (小児用)	2	A
167	A-10-10	O.P.D.	10. MCH	Chair	椅子	5	B
168	A-10-13-1	O.P.D.	10. MCH	Examining Table	診察台	3	A
169	A-10-13-2	O.P.D.	10. MCH	Instrument cabinet	器械戸棚	1	A
170	A-10-13-3	O.P.D.	10. MCH	Bed side table	ベッドサイドテーブル	3	A
171	A-10-13-4	O.P.D.	10. MCH	Chair	椅子	3	B
172	A-10-13-5	O.P.D.	10. MCH	Waste receptacle	汚物缶	1	B
173	A-10-13-6	O.P.D.	10. MCH	Ultrasound capture foetus unit	超音波胎児撮像装置	1	A
174	A-10-13-7	O.P.D.	10. MCH	Hand basin	手洗台	2	A
175	A-10-13-11	O.P.D.	10. MCH	Weighting scale	体重計	1	A
176	A-10-14-1	O.P.D.	10. MCH	Examining Table	診察台	2	A
177	A-10-14-2	O.P.D.	10. MCH	Chair	椅子	2	B
178	A-10-14-3	O.P.D.	10. MCH	Refrigerator	保冷庫	1	A
179	A-10-14-4	O.P.D.	10. MCH	Instrument cabinet	器械戸棚	1	A
180	A-10-14-5	O.P.D.	10. MCH	Tongue depressor	舌圧子	5	A
181	A-10-14-6	O.P.D.	10. MCH	Hand basin	手洗台	1	A
182	A-10-14-7	O.P.D.	10. MCH	Flash light	懐中電灯	2	A
183	A-10-14-11	O.P.D.	10. MCH	Stethoscope	聴診器	2	A
184	A-10-15-1	O.P.D.	10. MCH	Bed for baby	ベビーコット	1	A
185	A-10-15-2	O.P.D.	10. MCH	Gynecology examining table	診察台 (産婦人科用)	1	A
186	A-10-15-3	O.P.D.	10. MCH	Chair	椅子	1	B
187	A-10-15-4	O.P.D.	10. MCH	Waste receptacle	汚物缶	1	B
188	A-10-15-5	O.P.D.	10. MCH	Instrument cabinet	器械戸棚	1	A
189	A-10-15-6	O.P.D.	10. MCH	Bed side table	ベッドサイドテーブル	1	A
190	A-10-15-7	O.P.D.	10. MCH	Examining light	スポットライト	1	A
191	A-10-15-8	O.P.D.	10. MCH	Speculum (middle size)	陰鏡 (中型)	20	A
192	A-10-15-9	O.P.D.	10. MCH	Foot Stool (Two-step)	踏台 (2段)	1	A
193	A-10-15-11	O.P.D.	10. MCH	Hand basin	手洗台	1	A
194	A-10-15-1	O.P.D.	10. MCH	Examining Table	診察台	1	A
195	A-10-16-2	O.P.D.	10. MCH	Instrument cabinet	器械戸棚	1	A
196	A-10-16-3	O.P.D.	10. MCH	Chair	椅子	2	B
197	A-10-16-4	O.P.D.	10. MCH	Bed for baby	ベビーコット	1	A
198	A-10-16-5	O.P.D.	10. MCH	Suction (infant)	吸引器 (小児用)	1	A
199	A-10-16-6	O.P.D.	10. MCH	Foot Stool (Two-step)	踏台 (2段)	1	A
200	A-10-16-7	O.P.D.	10. MCH	Desk	机 (事務用)	1	B
201	A-10-17-1	O.P.D.	10. MCH	Gynecology examining table	診察台 (産婦人科用)	1	A
202	A-10-17-2	O.P.D.	10. MCH	Desk	机 (事務用)	1	B
203	A-10-17-3	O.P.D.	10. MCH	Chair	椅子	1	B
204	A-10-17-4	O.P.D.	10. MCH	IUD set	IUDセット	10	A
205	A-10-17-5	O.P.D.	10. MCH	Examining light	スポットライト	1	A
206	A-10-17-6	O.P.D.	10. MCH	Foot Stool (Two-step)	踏台 (2段)	1	A
207	A-10-17-7	O.P.D.	10. MCH	Instrument cabinet	器械戸棚	2	A
208	A-10-17-8	O.P.D.	10. MCH	Speculum (middle size)	陰鏡 (中型)	10	A
209	A-10-17-9	O.P.D.	10. MCH	Hand basin	手洗台	1	A
210	A-10-18-1	O.P.D.	10. MCH	Counter table	カウンターテーブル	1	B
211	A-10-18-3	O.P.D.	10. MCH	White plastic board	ホワイトボード	1	A
212	A-10-18-4	O.P.D.	10. MCH	Documentation cupboard	書棚	2	A
213	A-10-18-5	O.P.D.	10. MCH	Waste receptacle	汚物缶	1	B

Id. 7.

Equipment List

ANNEX-III

NO.	ITEM NO.	DEPARTMENT	SECTION	EQUIPMENT	Equipment (Japanese)	Q'ty	Priority
214	A-10-18-6	O.P.D.	10. MCH	Chair	椅子	3	B
215	A-10-19-1	O.P.D.	10. MCH	Desk	机 (事務用)	1	B
216	A-10-19-2	O.P.D.	10. MCH	Instrument cabinet	器械戸棚	1	A
217	A-10-19-3	O.P.D.	10. MCH	Chair	椅子	2	B
218	A-10-19-4	O.P.D.	10. MCH	Waste receptacle	汚物缶	1	B
219	A-10-19-5	O.P.D.	10. MCH	Jar for infection	ドレッシングジャー	1	A
220	A-10-19-6	O.P.D.	10. MCH	Cooler box	クーラーボックス	1	A
221	A-11-1	O.P.D.	11. Laboratory	Clinical Laboratory Microscope	双眼顕微鏡	10	A
222	A-11-2	O.P.D.	11. Laboratory	Fluorescent Microscope	蛍光顕微鏡	3	A
223	A-11-3	O.P.D.	11. Laboratory	Electronic Analytical Balance	電子天秤	2	A
224	A-11-4	O.P.D.	11. Laboratory	Centrifuge	遠心分離器	2	A
225	A-11-5	O.P.D.	11. Laboratory	Refrigerated Centrifuge	冷却遠心分離器	1	A
226	A-11-6	O.P.D.	11. Laboratory	Hematocrit Centrifuge	ヘマトクリット遠心分離器	2	A
227	A-11-7	O.P.D.	11. Laboratory	Spectrophotometer	分光光度計	2	A
228	A-11-8	O.P.D.	11. Laboratory	Sterilizer, Vertical (Autoclave)	蒸気滅菌機	1	A
229	A-11-9	O.P.D.	11. Laboratory	Water Purifier	純水製造装置	1	A
230	A-11-10	O.P.D.	11. Laboratory	pH meter	pHメータ	1	A
231	A-11-11	O.P.D.	11. Laboratory	Flame Photometer	炎光光度計	1	A
232	A-11-12	O.P.D.	11. Laboratory	Laboratory Incubator	フランジ	2	A
233	A-11-13	O.P.D.	11. Laboratory	Low Temperature Incubator	低温インキュベータ	1	A
234	A-11-14	O.P.D.	11. Laboratory	Water Bath	恒温槽	2	A
235	A-11-15	O.P.D.	11. Laboratory	Drying Oven	ドライイングオーブン	1	A
236	A-11-16	O.P.D.	11. Laboratory	Hot Air Rapid Drying Oven	乾熱滅菌機	1	A
237	A-11-17	O.P.D.	11. Laboratory	Hot Air Sterilizer	乾熱滅菌機	1	A
238	A-11-19	O.P.D.	11. Laboratory	Slide Flocculation Test Set	スライドフロキュレーションセット	1	A
239	A-11-20	O.P.D.	11. Laboratory	Colony Analyzer System	コロニーアナライザー	1	A
240	A-11-21	O.P.D.	11. Laboratory	Freezer, -40 deg.	フリーザー(-40°)	1	A
241	A-11-22	O.P.D.	11. Laboratory	Clean Bench	クリーン・ベンチ	1	A
242	A-11-23	O.P.D.	11. Laboratory	Magnetic Stirrer	電磁攪拌機	1	A
243	A-11-24	O.P.D.	11. Laboratory	Super Sonic Pipette Washer	超音波ピペット洗浄器	2	A
244	A-11-25	O.P.D.	11. Laboratory	Ultrasonic Cleaner	超音波洗浄器	1	A
245	A-11-26	O.P.D.	11. Laboratory	Refrigerator	保冷庫	2	A
246	A-11-27	O.P.D.	11. Laboratory	Blood Bank Refrigerator	血液保冷庫	1	A
247	A-11-28	O.P.D.	11. Laboratory	Medical Refrigerator	薬品保冷庫	1	A
248	A-11-29	O.P.D.	11. Laboratory	Glucose Analyzer	グルコースアナライザー	1	A
249	A-11-30	O.P.D.	11. Laboratory	Automatic Blood Cell Counter	自動血球カウンター	1	A
250	A-11-31	O.P.D.	11. Laboratory	Congulometer	凝固計	1	A
251	A-11-33	O.P.D.	11. Laboratory	Rotary Microtome	ロータリーマイクローム	1	A
252	A-11-34	O.P.D.	11. Laboratory	Paraffin Melting Apparatus	パラフィン溶解装置	1	A
253	A-11-35	O.P.D.	11. Laboratory	Slide Warming Table	スライド式加温テーブル	1	A
254	A-11-36	O.P.D.	11. Laboratory	Laboratory Glassware Set	検査器具及びガラス器具セット	1	A
255	A-11-37	O.P.D.	11. Laboratory	Locker	ロッカー	3	B
256	A-11-38	O.P.D.	11. Laboratory	Patient Stool	椅子 (患者用)	2	A
257	A-11-39	O.P.D.	11. Laboratory	Chair	椅子	8	B
258	A-11-41	O.P.D.	11. Laboratory	Business Desk	机 (事務用)	2	A
259	A-11-45	O.P.D.	11. Laboratory	Micro Pipette	マイクロピペット	1	A
260	A-11-46	O.P.D.	11. Laboratory	Instrument cabinet	器械戸棚	1	A
261	A-11-47	O.P.D.	11. Laboratory	Medicine Cabinet	薬品戸棚	1	B
262	A-11-48	O.P.D.	11. Laboratory	Micrometer	マイクロメータ	2	A
263	A-11-49	O.P.D.	11. Laboratory	Serological Rotator	血清ロテータ	1	A
264	A-11-50	O.P.D.	11. Laboratory	Pipette Shaker	ピペットシェーカー	2	A
265	A-11-53	O.P.D.	11. Laboratory	Bacteriological Hood	クリーンベンチ	1	A
266	A-11-53	O.P.D.	11. Laboratory	Tissue processor	包埋装置	1	A
267	A-11-54	O.P.D.	11. Laboratory	Paraffin shaker	パラフィン浸透機	1	A
268	A-11-55	O.P.D.	11. Laboratory	Slide warmer	スライドウォーマ	1	A
269	A-11-56	O.P.D.	11. Laboratory	Pathology instrument set	病理器具セット	1	A
270	A-11-57	O.P.D.	11. Laboratory	Blood gas analyzer	血液ガス分析装置	1	A
271	A-11-58	O.P.D.	11. Laboratory	Electrolite analyzer	電解質分析装置	1	A
272	A-12-1	O.P.D.	12. Pharmaceutical	Prescription Counter Set	調剤カウンター	2	B
273	A-12-2	O.P.D.	12. Pharmaceutical	Litebin Set	メッキビン	2	B
274	A-12-3	O.P.D.	12. Pharmaceutical	Inspection Counter	検査カウンター	2	B
275	A-12-4	O.P.D.	12. Pharmaceutical	Workable Set	ワークセット	2	B
276	A-12-5	O.P.D.	12. Pharmaceutical	Rotary Medicine Bottle Rack-Set	ロータリー薬品瓶ラック	2	B
277	A-12-6	O.P.D.	12. Pharmaceutical	Medicament Cabinet Set	医薬品棚	2	B
278	A-12-7	O.P.D.	12. Pharmaceutical	Powder / Tablet Packing Machine	粉薬・錠剤パッキングマシン	1	B
279	A-12-8	O.P.D.	12. Pharmaceutical	Clean Ventilator Set	空気清浄機	1	B
280	A-12-9	O.P.D.	12. Pharmaceutical	Counter Balance Set	カウンター秤量セット	1	B
281	A-12-10	O.P.D.	12. Pharmaceutical	Prescription Balance Set	調剤秤量	1	B
282	A-12-11	O.P.D.	12. Pharmaceutical	Medical Refrigerator	薬品保冷庫	1	B
283	A-12-12	O.P.D.	12. Pharmaceutical	Medical Freezer Set	冷凍機	1	B
284	A-12-13	O.P.D.	12. Pharmaceutical	Narcotic Safe	麻薬金庫	1	B

16. 7.

Equipment List

ANNEX-III

NO.	ITEM NO.	DEPARTMENT	SECTION	EQUIPMENT	Equipment (Japanese)	Q'ty	Priority
285	A-12-14	O.P.D.	12. Pharmaceutical	Pharmaceutical Storage Cabinet	医薬品保管棚	2	B
286	A-12-15	O.P.D.	12. Pharmaceutical	Pharmaceutical Laboratory Table	薬品検査テーブル	1	B
287	A-12-16	O.P.D.	12. Pharmaceutical	Distilling Apparatus Set	純水製造装置	1	B
288	A-12-17	O.P.D.	12. Pharmaceutical	Medicine Bottle Set	薬品瓶	200	B
289	A-12-18	O.P.D.	12. Pharmaceutical	Liquid Measuring Beaker	ビーカーセット	10	B
290	A-12-19	O.P.D.	12. Pharmaceutical	Filtering Funnel	濾過漏斗	5	B
291	A-12-20	O.P.D.	12. Pharmaceutical	Glass Funnel	ガラス漏斗	5	B
292	A-12-21	O.P.D.	12. Pharmaceutical	Mortar and Pestle	乳鉢、乳棒	5	B
293	A-12-22	O.P.D.	12. Pharmaceutical	Medicine Mixing Sieve	薬品混合フルイ	2	B
294	A-12-23	O.P.D.	12. Pharmaceutical	Medicine Spoon & Ointment Spatula	薬品スプーン&軟膏ヘラ	10	B
295	A-12-24	O.P.D.	12. Pharmaceutical	Instrument cabinet	器械戸棚	2	B
296	A-12-25	O.P.D.	12. Pharmaceutical	Revolving Chair	回転椅子	2	H
297	A-12-26	O.P.D.	12. Pharmaceutical	Instrument set	器具セット	1	B
298	A-13-1	O.P.D.	13. CSSD	Steam Sterilizer	高圧蒸気滅菌機	2	A
299	A-13-2	O.P.D.	13. CSSD	Ultrasonic Cleaner	超音波洗浄器	1	A
300	A-13-3	O.P.D.	13. CSSD	Surgical Glove Condition	手袋コンディショナー	1	B
301	A-13-4	O.P.D.	13. CSSD	Sink	流石	2	A
302	A-13-5	O.P.D.	13. CSSD	Tube Washer	チューブ洗浄器	1	A
303	A-13-6	O.P.D.	13. CSSD	Tube Dryer	チューブ乾燥器	1	A
304	A-13-7	O.P.D.	13. CSSD	Working Table	作業台	2	A
305	A-13-8	O.P.D.	13. CSSD	Heat Sealer	ヒートシーラー	1	B
306	A-13-9	O.P.D.	13. CSSD	Erecta Shelf	エレクタシェルフ	2	A
307	A-13-10	O.P.D.	13. CSSD	Dressing Case Cabinet	包帯ケース・キャビネット	2	A
308	A-13-11	O.P.D.	13. CSSD	Instrument cabinet	器械戸棚	3	A
309	A-13-12	O.P.D.	13. CSSD	Chair	椅子	3	B
310	A-13-13	O.P.D.	13. CSSD	Sterilizing Instrument Set	器具セット(中材用)	1	B
311	A-14-1	O.P.D.	14. Surgical	Examining and Treatment Table	診断治療台	3	A
312	A-14-2	O.P.D.	14. Surgical	Film Illuminator	シャークステン	2	A
313	A-14-3	O.P.D.	14. Surgical	Instrument Table	器械台	4	A
314	A-14-4	O.P.D.	14. Surgical	Instrument cabinet	器械戸棚	1	A
315	A-14-5	O.P.D.	14. Surgical	Medicine Cabinet	薬品戸棚	1	A
316	A-14-6	O.P.D.	14. Surgical	Exam and Treat Instrument Set	器具セット(診断・治療用)	3	A
317	A-14-7	O.P.D.	14. Surgical	Waste Receptacle	汚物缶	4	B
318	A-14-8	O.P.D.	14. Surgical	Refrigerator	保冷庫	1	A
319	A-14-9	O.P.D.	14. Surgical	Examining Light	スポットライト	2	A
320	A-14-10	O.P.D.	14. Surgical	Plaster Bandage Table	ギブス台	1	A
321	A-14-11	O.P.D.	14. Surgical	Gypsum Instrument Set	ギブスセット	1	A
322	A-14-12	O.P.D.	14. Surgical	Stock Shelf for Plaster	プラスター保管棚	1	A
323	A-14-13	O.P.D.	14. Surgical	Foot Stool (Two-step)	踏台(2段)	1	A
324	A-14-14	O.P.D.	14. Surgical	Doctor Consulting Desk	机(診察用)	2	A
325	A-14-15	O.P.D.	14. Surgical	Doctor Chair	椅子(診察用)	2	A
326	A-14-16	O.P.D.	14. Surgical	Patient Stool	椅子(患者用)	3	A
327	A-15-1	O.P.D.	15. Emergency	Operating Table	手術台	1	A
328	A-15-2	O.P.D.	15. Emergency	Emergency Light	非常灯	2	B
329	A-15-3	O.P.D.	15. Emergency	Film Illuminator	シャークステン	2	A
330	A-15-4	O.P.D.	15. Emergency	Defibrillator	除細動器	1	A
331	A-15-5	O.P.D.	15. Emergency	Infusion Pump	輸液ポンプ	2	A
332	A-15-7	O.P.D.	15. Emergency	Mayo Instrument Table	メヨール器械台	1	A
333	A-15-8	O.P.D.	15. Emergency	Dressing Drum Stand	ドレッシングドラムスタンド	1	A
334	A-15-9	O.P.D.	15. Emergency	Instrument table	器械台	1	A
335	A-15-10	O.P.D.	15. Emergency	Instrument cabinet	器械戸棚	2	A
336	A-15-11	O.P.D.	15. Emergency	Kick Bucket	キックバケツ	1	A
337	A-15-12	O.P.D.	15. Emergency	Irrigator Stand	点滴台	1	A
338	A-15-13	O.P.D.	15. Emergency	Linen Hamper	ランドリーカート	1	B
339	A-15-14	O.P.D.	15. Emergency	Operator Chair	椅子(手術用)	1	A
340	A-15-15	O.P.D.	15. Emergency	Stretcher (adult & child)	ストレッチャー(成人&小児)	1	A
341	A-15-16	O.P.D.	15. Emergency	Table Top Steam Sterilizer	蒸気滅菌装置(卓上型)	1	A
342	A-15-17	O.P.D.	15. Emergency	Suction Unit	吸引器	1	A
343	A-15-18	O.P.D.	15. Emergency	Oxygen Inhaler Apparatus	酸素吸入セット	1	A
344	A-15-19	O.P.D.	15. Emergency	Exam and Treat Instrument Set	器具セット(診断・治療用)	1	A
345	A-15-20	O.P.D.	15. Emergency	Treatment Carriage	回診車	1	A
346	A-15-21	O.P.D.	15. Emergency	Ultrasonic Nebulizer	超音波ネブライザー	1	A
347	A-15-22	O.P.D.	15. Emergency	Blood Bank Refrigerator	血液保冷庫	1	B
348	A-15-23	O.P.D.	15. Emergency	Examining and Treatment Table	診断治療台	2	A
349	A-15-24	O.P.D.	15. Emergency	Refrigerator	保冷庫	1	A
350	A-15-25	O.P.D.	15. Emergency	Waste Receptacle	汚物缶	1	B
351	A-15-26	O.P.D.	15. Emergency	Emergency Cart	救急カート	1	A
352	A-15-27	O.P.D.	15. Emergency	Emergency Instrument Set	器具セット(器具用)	2	A
353	A-15-28	O.P.D.	15. Emergency	Surgery Basic Instrument Set	外科基本器具セット	1	A
354	A-15-29	O.P.D.	15. Emergency	Double Basin Stand	手洗台	1	A
355	A-15-30	O.P.D.	15. Emergency	Oxygen Tent	酸素テント	2	B

H. F.

Equipment List

ANNEX-III

NO.	ITEM NO.	DEPARTMENT	SECTION	EQUIPMENT	Equipment (Japanese)	Q'ty	Priority
356	A- 15-31	O.P.D.	15. Emergency	Standard Bed	患者ベッド	2	A
357	A- 15-33	O.P.D.	15. Emergency	Bedside Cabinet	ベッドサイドキャビネット	2	A
358	A- 15-36	O.P.D.	15. Emergency	Chair	椅子	2	B
359	A- 15-46	O.P.D.	15. Emergency	Revolving Chair	回転椅子	3	B
360	A- 15-47	O.P.D.	15. Emergency	Manual Resuscitator	手動蘇生器	3	B
361	A- 15-53	O.P.D.	15. Emergency	Foot Stool (Two-step)	踏台 (2段)	2	B
362	A- 15-54	O.P.D.	15. Emergency	Dressing Drum	ドレッシングドラム	3	B
363	A- 15-56	O.P.D.	15. Emergency	Instrument set	器具セット	1	A
364	B- 1-1	IN PATIENT	1. Operation Theater	Universal Operating Table	汎用手術台	2	A
365	B- 1-2	IN PATIENT	1. Operation Theater	Orthopaedic Operating Table	手術台 (骨形外科用)	1	B
366	B- 1-3	IN PATIENT	1. Operation Theater	Operating Light (Ceiling)	无影灯 (天井型)	3	A
367	B- 1-4	IN PATIENT	1. Operation Theater	Emergency Light	非常灯	3	B
368	B- 1-5	IN PATIENT	1. Operation Theater	Electro Surgical Unit	電気メス	3	A
369	B- 1-6	IN PATIENT	1. Operation Theater	Bedside Monitor	ベッドサイドモニター	2	A
370	B- 1-7	IN PATIENT	1. Operation Theater	Cryosurgery Unit	冷凍手術器	1	A
371	B- 1-8	IN PATIENT	1. Operation Theater	Anesthesia Apparatus w/ Ventilator	麻酔装置 (人工呼吸器付)	3	A
372	B- 1-9	IN PATIENT	1. Operation Theater	Infant Ventilator	人工呼吸器 (小児用)	1	A
373	B- 1-10	IN PATIENT	1. Operation Theater	Diathermy Unit	電気メス	1	A
374	B- 1-12	IN PATIENT	1. Operation Theater	Surgical Scrub Station	手洗滅菌器	1	A
375	B- 1-13	IN PATIENT	1. Operation Theater	Film Illuminator	シャーカステン	3	A
376	B- 1-14	IN PATIENT	1. Operation Theater	Operating Binocular Microscope	双視野顕微鏡 (手術用)	1	B
377	B- 1-15	IN PATIENT	1. Operation Theater	Defibrillator	除細動器	1	A
378	B- 1-17	IN PATIENT	1. Operation Theater	Infusion Pump	輸液ポンプ	3	A
379	B- 1-18	IN PATIENT	1. Operation Theater	Syringe Pump	シリンジポンプ	2	A
380	B- 1-21	IN PATIENT	1. Operation Theater	Mayo Instrument Table	メヨール器械台	3	A
381	B- 1-22	IN PATIENT	1. Operation Theater	Instrument Table	器械台	3	A
382	B- 1-23	IN PATIENT	1. Operation Theater	Working Table	作業台	1	B
383	B- 1-24	IN PATIENT	1. Operation Theater	Dressing Drum Stand	ドレッシングドラムスタンド	3	A
384	B- 1-25	IN PATIENT	1. Operation Theater	Instrument cabinet	器械戸棚	3	A
385	B- 1-26	IN PATIENT	1. Operation Theater	Kirk Bucket	キックバケツ	3	A
386	B- 1-27	IN PATIENT	1. Operation Theater	Irrigator Stand	点滴台	3	A
387	B- 1-29	IN PATIENT	1. Operation Theater	Instrument Tray Table	器械台	3	A
388	B- 1-30	IN PATIENT	1. Operation Theater	Linen Hopper	ランドリーカート	3	B
389	B- 1-31	IN PATIENT	1. Operation Theater	Linen Cart	リネンカート	2	A
390	B- 1-32	IN PATIENT	1. Operation Theater	Instrument Receptacle	器具入れ	3	A
391	B- 1-34	IN PATIENT	1. Operation Theater	Anesthetist Stool	麻酔医師用椅子	3	A
392	B- 1-35	IN PATIENT	1. Operation Theater	Operator Chair	椅子 (手術用)	3	A
393	B- 1-36	IN PATIENT	1. Operation Theater	Stretcher	ストレッチャー	3	A
394	B- 1-37	IN PATIENT	1. Operation Theater	Recovery Bed	回復ベッド	3	A
395	B- 1-48	IN PATIENT	1. Operation Theater	Suction Unit	吸引器	3	A
396	B- 1-49	IN PATIENT	1. Operation Theater	High-class Desk	高級デスク	2	B
397	B- 1-50	IN PATIENT	1. Operation Theater	Chair with Arms	アームチェア	2	B
398	B- 1-51	IN PATIENT	1. Operation Theater	Business Desk	机 (事務用)	1	A
399	B- 1-52	IN PATIENT	1. Operation Theater	Chair	椅子	1	B
400	B- 1-53	IN PATIENT	1. Operation Theater	Locker	ロッカー	8	B
401	B- 1-54	IN PATIENT	1. Operation Theater	Cabinet	戸棚	2	A
402	B- 1-56	IN PATIENT	1. Operation Theater	EKG monitor	心電図モニター	1	A
403	B- 1-57	IN PATIENT	1. Operation Theater	Laryngoscope (Anesthetic)	喉頭鏡セット (麻酔医師用)	3	A
404	B- 1-58	IN PATIENT	1. Operation Theater	Intubation Set	挿管治療セット	3	A
405	B- 1-58	IN PATIENT	1. Operation Theater	TV camera for operation	手術用TVモニター	1	A
406	B- 1-59	IN PATIENT	1. Operation Theater	Instrument set	器具セット	1	A
407	B- 2-1	IN PATIENT	2. Surgical Ward	Hi-Lo Gatch Bed	ギャッチベット	7	A
408	B- 2-3	IN PATIENT	2. Surgical Ward	Bedside Cabinet	ベッドサイドキャビネット	7	A
409	B- 2-4	IN PATIENT	2. Surgical Ward	Locker	ロッカー	7	B
410	B- 2-5	IN PATIENT	2. Surgical Ward	Bed side table	ベッドサイドテーブル	7	A
411	B- 2-7	IN PATIENT	2. Surgical Ward	Standard Bed	患者ベッド	48	A
412	B- 2-9	IN PATIENT	2. Surgical Ward	Bedside Cabinet	ベッドサイドキャビネット	48	A
413	B- 2-11	IN PATIENT	2. Surgical Ward	Traction Apparatus Set	牽引装置セット	5	A
414	B- 2-12	IN PATIENT	2. Surgical Ward	Oxygen Apparatus Set	酸素吸入セット	5	A
415	B- 2-13	IN PATIENT	2. Surgical Ward	Treatment Table	処置台	2	A
416	B- 2-14	IN PATIENT	2. Surgical Ward	Film Illuminator	シャーカステン	2	A
417	B- 2-15	IN PATIENT	2. Surgical Ward	Instrument Table	器械台	4	A
418	B- 2-16	IN PATIENT	2. Surgical Ward	Treatment tray	トレー	4	A
419	B- 2-17	IN PATIENT	2. Surgical Ward	Instrument cabinet	器械戸棚	3	A
420	B- 2-18	IN PATIENT	2. Surgical Ward	Medicine Cabinet	薬品戸棚	2	A
421	B- 2-19	IN PATIENT	2. Surgical Ward	Exam and Treat Instrument Set	器具セット (診断・治療用)	2	A
422	B- 2-20	IN PATIENT	2. Surgical Ward	Basic Receptacle	汚物缶	4	B
423	B- 2-21	IN PATIENT	2. Surgical Ward	Refrigerator	保冷庫	1	A
424	B- 2-23	IN PATIENT	2. Surgical Ward	Ultrasonic Nebulizer	超音波ネブライザー	1	A
425	B- 2-24	IN PATIENT	2. Surgical Ward	Linen Hopper	ランドリーカート	4	B
426	B- 2-25	IN PATIENT	2. Surgical Ward	Linen Cart	リネンカート	2	A

K. J.

F. J. J. J.

Equipment List

ANNEX-III

NO.	ITEM NO.	DEPARTMENT	SECTION	EQUIPMENT	Equipment (Japanese)	Q'ty	Priority
427	B- 2-27	IN PATIENT	2. Surgical Ward	Urinal & Bedpan Rack	ベッドパンラック	2	A
428	B- 2-28	IN PATIENT	2. Surgical Ward	Stretcher	ストレッチャー	3	A
429	B- 2-29	IN PATIENT	2. Surgical Ward	Wheel Chair	車椅子	6	A
430	B- 2-31	IN PATIENT	2. Surgical Ward	Irrigator Stand	点滴台	6	A
431	B- 2-32	IN PATIENT	2. Surgical Ward	Suction Unit	吸引器	2	A
432	B- 2-33	IN PATIENT	2. Surgical Ward	Doctor Consulting Desk	机 (診察用)	1	A
433	B- 2-34	IN PATIENT	2. Surgical Ward	Doctor Chair	椅子 (診察用)	1	B
434	B- 2-36	IN PATIENT	2. Surgical Ward	Chair	椅子	6	B
435	B- 2-38	IN PATIENT	2. Surgical Ward	Cabinet	戸棚	4	A
436	B- 2-39	IN PATIENT	2. Surgical Ward	Patient Stool	椅子 (患者用)	2	A
437	B- 3-2	IN PATIENT	3 Post Operated	IV Hanger Stand	点滴台	6	A
438	B- 3-3	IN PATIENT	3 Post Operated	Overbed Table	オーバベッドテーブル	6	A
439	B- 3-4	IN PATIENT	3 Post Operated	Treatment Carriage	回診車	2	A
440	B- 3-5	IN PATIENT	3 Post Operated	Infant Stretcher	ストレッチャー (小児用)	1	A
441	B- 3-6	IN PATIENT	3 Post Operated	Recovery Bed	回復ベッド	3	A
442	B- 3-7	IN PATIENT	3 Post Operated	Linen Hamper Carriage	ランドリーカート	1	A
443	B- 3-8	IN PATIENT	3 Post Operated	Dressing Drum	ドレッシングドラム	2	A
444	B- 3-21	IN PATIENT	3 Post Operated	Electric Suction Unit	吸引器	3	A
445	B- 3-22	IN PATIENT	3 Post Operated	Instrument cabinet	器械戸棚	1	A
446	B- 3-23	IN PATIENT	3 Post Operated	Kick Bucket	キックバケツ	2	A
447	B- 3-26	IN PATIENT	3 Post Operated	Transfer Cart	台車	1	A
448	B- 3-27	IN PATIENT	3 Post Operated	Working Table	作業台	1	B
449	B- 3-29	IN PATIENT	3 Post Operated	Instrument Tray	器具トレイ	1	A
450	B- 3-32	IN PATIENT	3 Post Operated	Documentary Cabinet	書棚	1	A
451	B- 3-33	IN PATIENT	3 Post Operated	Chair	椅子	1	B
452	B- 3-36	IN PATIENT	3 Post Operated	Film Illuminator	シャーカステン	1	A
453	B- 3-37	IN PATIENT	3 Post Operated	Instrument set	器具セット	1	A
454	B- 4-1	IN PATIENT	4. ICU	ICU Bed	ICUベッド	16	A
455	B- 4-2	IN PATIENT	4. ICU	Bedside Monitor	ベッドサイドモニター	16	A
456	B- 4-3	IN PATIENT	4. ICU	Defibrillator	除細動器	2	A
457	B- 4-4	IN PATIENT	4. ICU	Ventilator	人工呼吸器	8	A
458	B- 4-6	IN PATIENT	4. ICU	Electrocardiograph Ich	心電計、1チャンネル	8	A
459	B- 4-7	IN PATIENT	4. ICU	Exam and Treat Instrument Set	器具セット (診断・治療用)	8	A
460	B- 4-8	IN PATIENT	4. ICU	Oxygen Tent	酸素テント	2	A
461	B- 4-9	IN PATIENT	4. ICU	Infusion Pump	輸液ポンプ	16	A
462	B- 4-10	IN PATIENT	4. ICU	Syringe Pump	シリンジポンプ	4	A
463	B- 4-11	IN PATIENT	4. ICU	Film Illuminator	シャーカステン	2	A
464	B- 4-12	IN PATIENT	4. ICU	Instrument cabinet	器械戸棚	2	A
465	B- 4-13	IN PATIENT	4. ICU	Instrument Table	器械台	4	A
466	B- 4-14	IN PATIENT	4. ICU	Medicine Cabinet	薬品戸棚	2	A
467	B- 4-15	IN PATIENT	4. ICU	Waste Receptacle	汚物缶	4	B
468	B- 4-16	IN PATIENT	4. ICU	Ultrasonic Nebulizer	超音波ネブライザー	2	A
469	B- 4-17	IN PATIENT	4. ICU	Continuous Suction Unit	持続吸引装置	2	A
470	B- 4-18	IN PATIENT	4. ICU	Blood Bank Refrigerator	血液保冷庫	2	A
471	B- 4-20	IN PATIENT	4. ICU	Treatment Carriage	回診車	2	A
472	B- 4-22	IN PATIENT	4. ICU	Urinal & Bedpan Rack	ベッドパンラック	16	A
473	B- 4-23	IN PATIENT	4. ICU	Refrigerator	保冷庫	1	A
474	B- 4-24	IN PATIENT	4. ICU	Nurse Table	看護員用テーブル	1	B
475	B- 4-25	IN PATIENT	4. ICU	Chart Carriage	チャート車	1	A
476	B- 4-26	IN PATIENT	4. ICU	Chair	椅子	4	B
477	B- 4-27	IN PATIENT	4. ICU	Locker	ロッカー	1	B
478	B- 4-28	IN PATIENT	4. ICU	Autoclave	蒸気滅菌器	1	A
479	B- 4-33	IN PATIENT	4. ICU	Wheel Stretcher	ストレッチャー	2	A
480	B- 4-34	IN PATIENT	4. ICU	Resuscitating Mask	蘇生マスク	16	A
481	B- 4-35	IN PATIENT	4. ICU	Oxygen Face Mask	酸素マスク	16	A
482	B- 4-36	IN PATIENT	4. ICU	Laryngoscope Set for Infant	喉鏡 (新生児用)	2	A
483	B- 5-4	IN PATIENT	5. Obstetric ward	Examining Table	診察台	2	B
484	B- 5-5	IN PATIENT	5. Obstetric ward	Examining and Treatment Table	診察治療台	3	B
485	B- 5-7	IN PATIENT	5. Obstetric ward	Film Illuminator	シャーカステン	2	A
486	B- 5-8	IN PATIENT	5. Obstetric ward	Instrument Table	器械台	3	A
487	B- 5-9	IN PATIENT	5. Obstetric ward	Instrument cabinet	器械戸棚	3	A
488	B- 5-10	IN PATIENT	5. Obstetric ward	Irrigator Stand	点滴台	10	A
489	B- 5-11	IN PATIENT	5. Obstetric ward	Medicine Cabinet	薬品戸棚	1	A
490	B- 5-13	IN PATIENT	5. Obstetric ward	Exam and Treat Instrument Set	器具セット (診断・治療用)	2	A
491	B- 5-14	IN PATIENT	5. Obstetric ward	Doppler Sound Detector	ドップラー音波検出器	2	A
492	B- 5-15	IN PATIENT	5. Obstetric ward	Examining Light	スポットライト	2	B
493	B- 5-16	IN PATIENT	5. Obstetric ward	Foot Stool (Two-step)	踏台 (2段)	2	B
494	B- 5-17	IN PATIENT	5. Obstetric ward	Clothes Basket	脱衣籠	5	A
495	B- 5-18	IN PATIENT	5. Obstetric ward	Waste Receptacle	汚物缶	5	B
496	B- 5-19	IN PATIENT	5. Obstetric ward	Weight and Height Scale	身長体重計	2	A
497	B- 5-20	IN PATIENT	5. Obstetric ward	Refrigerator	保冷庫	1	A

K. F.

C. F.

H. K.

Equipment List

ANNEX-III

NO.	ITEM NO.	DEPARTMENT	SECTION	EQUIPMENT	Equipment (Japanese)	Q'ty	Priority
498	B- 5-22	IN PATIENT	5. Obstetric ward	Doctor Consulting Desk	机 (診察用)	3	B
499	B- 5-23	IN PATIENT	5. Obstetric ward	Doctor Chair	椅子 (診察用)	3	B
500	B- 5-25	IN PATIENT	5. Obstetric ward	Patient Stool	椅子 (患者用)	3	A
501	B- 5-26	IN PATIENT	5. Obstetric ward	Instrument set	器具セット	1	A
502	B- 6-1	IN PATIENT	6. Gynecology Ward	Hi-Lo Catch Bed	ギャッチベット	5	A
503	B- 6-3	IN PATIENT	6. Gynecology Ward	Bedside cabinet	ベッドサイドキャビネット	5	A
504	B- 6-4	IN PATIENT	6. Gynecology Ward	Locker	ロッカー	5	B
505	B- 6-5	IN PATIENT	6. Gynecology Ward	Bed side table	ベッドサイドテーブル	5	B
506	B- 6-7	IN PATIENT	6. Gynecology Ward	Standard Bed	患者ベッド	30	A
507	B- 6-9	IN PATIENT	6. Gynecology Ward	Bedside Cabinet	ベッドサイドキャビネット	30	A
508	B- 6-11	IN PATIENT	6. Gynecology Ward	Bassinets Cart	ベビーコット	15	B
509	B- 6-14	IN PATIENT	6. Gynecology Ward	Film Illuminator	シャーカステン	2	A
510	B- 6-19	IN PATIENT	6. Gynecology Ward	Clothes Basket	脱衣籠	2	B
511	B- 6-20	IN PATIENT	6. Gynecology Ward	Instrument Table	器械台	3	A
512	B- 6-21	IN PATIENT	6. Gynecology Ward	Treatment Carriage	回診車	1	A
513	B- 6-22	IN PATIENT	6. Gynecology Ward	Instrument cabinet	器械戸棚	1	A
514	B- 6-23	IN PATIENT	6. Gynecology Ward	Medicine Cabinet	薬品戸棚	1	A
515	B- 6-24	IN PATIENT	6. Gynecology Ward	Exam and Treat Instrument Set	器具セット (診断・治療用)	2	A
516	B- 6-25	IN PATIENT	6. Gynecology Ward	Waste Receptacle	汚物缶	1	B
517	B- 6-26	IN PATIENT	6. Gynecology Ward	Refrigerator	保冷庫	1	A
518	B- 6-28	IN PATIENT	6. Gynecology Ward	Ultrasonic Nebulizer	超音波ネブライザー	1	A
519	B- 6-29	IN PATIENT	6. Gynecology Ward	Linen Hopper	ランドリーカート	3	B
520	B- 6-30	IN PATIENT	6. Gynecology Ward	Linen Cart	リネンカート	1	B
521	B- 6-32	IN PATIENT	6. Gynecology Ward	Urinal & Bedpan Rack	ベッドパンラック	1	A
522	B- 6-33	IN PATIENT	6. Gynecology Ward	Stretcher	ストレッチャー	1	A
523	B- 6-34	IN PATIENT	6. Gynecology Ward	Wheel Chair	車椅子	2	A
524	B- 6-35	IN PATIENT	6. Gynecology Ward	Invalid Walker	歩行介助具	1	A
525	B- 6-36	IN PATIENT	6. Gynecology Ward	Irrigator Stand	点滴台	5	A
526	B- 6-37	IN PATIENT	6. Gynecology Ward	Weight and Height Scale	身長体重計	1	A
527	B- 6-38	IN PATIENT	6. Gynecology Ward	Infant Dressing Table	処置台 (小児用)	1	B
528	B- 6-39	IN PATIENT	6. Gynecology Ward	Infant Scale	体重計 (小児用)	1	A
529	B- 6-40	IN PATIENT	6. Gynecology Ward	Continuous Suction Unit	連続吸引装置	1	B
530	B- 6-41	IN PATIENT	6. Gynecology Ward	Oxygen Apparatus Set	酸素吸入セット	3	A
531	B- 6-44	IN PATIENT	6. Gynecology Ward	Infusion Pump	輸液ポンプ	3	A
532	B- 6-45	IN PATIENT	6. Gynecology Ward	Syringe Pump	シリンジポンプ	2	A
533	B- 6-48	IN PATIENT	6. Gynecology Ward	Diaper Sterilizing Case	滅菌ケース	1	B
534	B- 6-49	IN PATIENT	6. Gynecology Ward	Nursing Bottle Sterilizer	哺乳ビン滅菌装置	1	B
535	B- 6-50	IN PATIENT	6. Gynecology Ward	Nursing Bottle Warmer	哺乳ビン・ウォーマー	1	B
536	B- 6-51	IN PATIENT	6. Gynecology Ward	Doctor Consulting Desk	机 (診察用)	1	A
537	B- 6-52	IN PATIENT	6. Gynecology Ward	Doctor Chair	椅子 (診察用)	1	B
538	B- 6-53	IN PATIENT	6. Gynecology Ward	Nurse Table	看護婦用テーブル	1	B
539	B- 6-56	IN PATIENT	6. Gynecology Ward	Cabinet	戸棚	4	B
540	B- 6-57	IN PATIENT	6. Gynecology Ward	Patient Stool	椅子 (患者用)	3	B
541	B- 7-1	IN PATIENT	7. Delivery Theater	Obstetric Delivery Table	分娩台	3	A
542	B- 7-2	IN PATIENT	7. Delivery Theater	Operating Ligh (Ceiling)	无影灯 (天井型)	2	A
543	B- 7-2-1	IN PATIENT	7. Delivery Theater	Operating Ligh (floor)	无影灯 (移動型)	1	A
544	B- 7-3	IN PATIENT	7. Delivery Theater	Automatic Oxygen Resuscitator	自動酸素蘇生器	1	A
545	B- 7-4	IN PATIENT	7. Delivery Theater	Aux-Suction	吸引器	1	B
546	B- 7-5	IN PATIENT	7. Delivery Theater	Vacuum Extractor	吸引分娩器	1	A
547	B- 7-6	IN PATIENT	7. Delivery Theater	Labour Bed	陣痛ベッド	5	A
548	B- 7-7	IN PATIENT	7. Delivery Theater	pH meter	pHメータ	1	B
549	B- 7-8	IN PATIENT	7. Delivery Theater	Amnioscope	羊膜鏡	1	A
550	B- 7-9	IN PATIENT	7. Delivery Theater	Surgical Scrub Station	手洗滅菌器	1	A
551	B- 7-11	IN PATIENT	7. Delivery Theater	Infant Dressing Table	処置台 (小児用)	1	B
552	B- 7-12	IN PATIENT	7. Delivery Theater	Infant Scale	体重計 (小児用)	1	A
553	B- 7-13	IN PATIENT	7. Delivery Theater	Medicine Cabinet	薬品戸棚	1	A
554	B- 7-14	IN PATIENT	7. Delivery Theater	Refrigerator	保冷庫	1	A
555	B- 7-15	IN PATIENT	7. Delivery Theater	Instrument cabinet	器械戸棚	2	A
556	B- 7-16	IN PATIENT	7. Delivery Theater	Irrigator Stand	点滴台	2	A
557	B- 7-17	IN PATIENT	7. Delivery Theater	Linen Hopper	ランドリーカート	2	B
558	B- 7-18	IN PATIENT	7. Delivery Theater	Stretcher	ストレッチャー	2	A
559	B- 7-19	IN PATIENT	7. Delivery Theater	Business Desk	机 (事務用)	1	A
560	B- 7-20	IN PATIENT	7. Delivery Theater	Chair	椅子	3	B
561	B- 7-21	IN PATIENT	7. Delivery Theater	Locker	ロッカー	2	B
562	B- 7-22	IN PATIENT	7. Delivery Theater	Infant Warmer	インファントウォーマー	3	A
563	B- 7-23	IN PATIENT	7. Delivery Theater	Resuscitator for Infant	新生児蘇生器	1	A
564	B- 7-24	IN PATIENT	7. Delivery Theater	ECG monitor	心電図モニター	1	A
565	B- 8-1	IN PATIENT	8. Ped. ICU (Infant)	Hi-Lo Catch Bed	ギャッチベット	3	A
566	B- 8-3	IN PATIENT	8. Ped. ICU (Infant)	Bedside Cabinet	ベッドサイドキャビネット	9	A
567	B- 8-4	IN PATIENT	8. Ped. ICU (Infant)	Locker	ロッカー	9	B
568	B- 8-5	IN PATIENT	8. Ped. ICU (Infant)	Bed side table	ベッドサイドテーブル	3	B

K. J.

Equipment List

ANNEX-III

NO.	ITEM NO.	DEPARTMENT	SECTION	EQUIPMENT	Equipment (Japanese)	Q'ty	Priority
569	B-8-7	IN PATIENT	B. Ped. ICU (Infant)	Paediatric Bed	ベッド (小児用)	6	A
570	B-8-9	IN PATIENT	B. Ped. ICU (Infant)	Overbed Table	オーバベッドテーブル	30	B
571	B-8-10	IN PATIENT	B. Ped. ICU (Infant)	Paediatric Bed	ベッド (小児用)	24	A
572	B-8-12	IN PATIENT	B. Ped. ICU (Infant)	Standard Bed	患者ベッド	12	A
573	B-8-14	IN PATIENT	B. Ped. ICU (Infant)	Bedside Cabinet	ベッドサイドキャビネット	36	B
574	B-8-16	IN PATIENT	B. Ped. ICU (Infant)	Treatment Table	処置台	2	A
575	B-8-17	IN PATIENT	B. Ped. ICU (Infant)	Film Illuminator	シャーカステン	1	A
576	B-8-18	IN PATIENT	B. Ped. ICU (Infant)	Instrument Table	器械台	2	A
577	B-8-19	IN PATIENT	B. Ped. ICU (Infant)	Treatment Carriage	回診車	3	A
578	B-8-20	IN PATIENT	B. Ped. ICU (Infant)	Instrument cabinet	器械戸棚	2	A
579	B-8-21	IN PATIENT	B. Ped. ICU (Infant)	Medicine Cabinet	薬品戸棚	1	A
580	B-8-22	IN PATIENT	B. Ped. ICU (Infant)	Exam and Treat Instrument Set	器具セット (診断・治療用)	1	A
581	B-8-23	IN PATIENT	B. Ped. ICU (Infant)	Waste Receptacle	汚物缶	6	D
582	B-8-24	IN PATIENT	B. Ped. ICU (Infant)	Refrigerator	保冷庫	1	A
583	B-8-26	IN PATIENT	B. Ped. ICU (Infant)	Ultrasonic Nebulizer	超音波ネブライザー	2	A
584	B-8-27	IN PATIENT	B. Ped. ICU (Infant)	Linen Hopper	ランドリーカート	2	B
585	B-8-28	IN PATIENT	B. Ped. ICU (Infant)	Linen Cart	リネンカート	1	A
586	B-8-30	IN PATIENT	B. Ped. ICU (Infant)	Urinal & Bedpan Rack	ベッドパンラック	2	A
587	B-8-31	IN PATIENT	B. Ped. ICU (Infant)	Stretcher	ストレッチャー	2	A
588	B-8-32	IN PATIENT	B. Ped. ICU (Infant)	Wheel Chair	車椅子	3	A
589	B-8-33	IN PATIENT	B. Ped. ICU (Infant)	Invalid Walker	歩行介助具	3	A
590	B-8-34	IN PATIENT	B. Ped. ICU (Infant)	Irrigator Stand	点滴台	5	A
591	B-8-35	IN PATIENT	B. Ped. ICU (Infant)	Weight and Height Scale	身長体重計	1	A
592	B-8-36	IN PATIENT	B. Ped. ICU (Infant)	Infant Dressing Table	処置台 (小児用)	1	B
593	B-8-37	IN PATIENT	B. Ped. ICU (Infant)	Infant Scale	体重計 (小児用)	1	A
594	B-8-38	IN PATIENT	B. Ped. ICU (Infant)	Doctor Consulting Desk	机 (診察用)	2	A
595	B-8-39	IN PATIENT	B. Ped. ICU (Infant)	Doctor Chair	椅子 (診察用)	2	B
596	B-8-40	IN PATIENT	B. Ped. ICU (Infant)	Nurse Table	看護婦用テーブル	2	B
597	B-8-41	IN PATIENT	B. Ped. ICU (Infant)	Chair	椅子	12	B
598	B-8-43	IN PATIENT	B. Ped. ICU (Infant)	Cabinet	戸棚	4	A
599	B-8-44	IN PATIENT	B. Ped. ICU (Infant)	Patient Stool	椅子 (患者用)	10	A
600	B-8-45	IN PATIENT	B. Ped. ICU (Infant)	Suction Apparatus	吸引器	2	A
601	B-8-46	IN PATIENT	B. Ped. ICU (Infant)	Monitoring	心電図モニター	2	A
602	B-8-47	IN PATIENT	B. Ped. ICU (Infant)	Syringe Pump	シリンジポンプ	2	A
603	B-8-48	IN PATIENT	B. Ped. ICU (Infant)	Infant Warmer	インフアントウォーマー	2	A
604	B-8-49	IN PATIENT	B. Ped. ICU (Infant)	Infant Ventilator	人工呼吸器 (小児用)	2	A
605	B-8-50	IN PATIENT	B. Ped. ICU (Infant)	Infusion Pump	輸液ポンプ	3	A
606	B-8-51	IN PATIENT	B. Ped. ICU (Infant)	Infant Laryngoscope	咽喉鏡 (新生児用)	2	A
607	B-8-52	IN PATIENT	B. Ped. ICU (Infant)	Infant Reanimation Set	蘇生器 (小児用)	2	A
608	B-8-55	IN PATIENT	B. Ped. ICU (Infant)	Baby cot	ベビーコット	6	A
609	B-8-57	IN PATIENT	B. Ped. ICU (Infant)	Baby incubator	保育機	6	A
610	B-8-54	IN PATIENT	B. Ped. ICU (Infant)	Infant Otoloscope	耳鏡 (小児用)	2	A
611	B-8-59	IN PATIENT	B. Ped. ICU (Infant)	Instrument set	器具セット	1	A
612	B-8-58	IN PATIENT	B. Ped. ICU (Infant)	Phototherapy unit	光線治療機	2	A
613	B-8-56	IN PATIENT	B. Ped. ICU (Infant)	Pulse oximeter	パルスオキシメータ	1	A
614	B-9-1	IN PATIENT	9. Internal Medicine	Hi-Lo Catch Bed	ギャッチベット	11	A
615	B-9-3	IN PATIENT	9. Internal Medicine	Bedside Cabinet	ベッドサイドキャビネット	11	A
616	B-9-4	IN PATIENT	9. Internal Medicine	Locker	ロッカー	11	B
617	B-9-5	IN PATIENT	9. Internal Medicine	Bed side table	ベッドサイドテーブル	11	B
618	B-9-7	IN PATIENT	9. Internal Medicine	Standard Bed	患者ベッド	54	A
619	B-9-9	IN PATIENT	9. Internal Medicine	Bedside Cabinet	ベッドサイドキャビネット	54	A
620	B-9-11	IN PATIENT	9. Internal Medicine	Infrared Ray Lamp	赤外線ランプ	1	B
621	B-9-12	IN PATIENT	9. Internal Medicine	Ultraviolet Lamp	紫外線ランプ	1	B
622	B-9-13	IN PATIENT	9. Internal Medicine	Treatment Table	処置台	1	B
623	B-9-14	IN PATIENT	9. Internal Medicine	Film Illuminator	シャーカステン	1	A
624	B-9-15	IN PATIENT	9. Internal Medicine	Instrument Table	器械台	1	A
625	B-9-16	IN PATIENT	9. Internal Medicine	Treatment Carriage	回診車	1	A
626	B-9-17	IN PATIENT	9. Internal Medicine	Instrument cabinet	器械戸棚	1	A
627	B-9-18	IN PATIENT	9. Internal Medicine	Medicine Cabinet	薬品戸棚	1	A
628	B-9-19	IN PATIENT	9. Internal Medicine	Exam and Treat Instrument Set	器具セット (診断・治療用)	2	A
629	B-9-20	IN PATIENT	9. Internal Medicine	Waste Receptacle	汚物缶	1	B
630	B-9-21	IN PATIENT	9. Internal Medicine	Refrigerator	保冷庫	1	A
631	B-9-23	IN PATIENT	9. Internal Medicine	Ultrasonic Nebulizer	超音波ネブライザー	2	B
632	B-9-24	IN PATIENT	9. Internal Medicine	Linen Hopper	ランドリーカート	2	B
633	B-9-25	IN PATIENT	9. Internal Medicine	Linen Cart	リネンカート	2	A
634	B-9-27	IN PATIENT	9. Internal Medicine	Urinal & Bedpan Rack	ベッドパンラック	2	A
635	B-9-28	IN PATIENT	9. Internal Medicine	Irrigator Stand	点滴台	5	A
636	B-9-29	IN PATIENT	9. Internal Medicine	Weight and Height Scale	身長体重計	1	A
637	B-9-30	IN PATIENT	9. Internal Medicine	Continuous Suction Unit	連続吸引装置	1	A
638	B-9-31	IN PATIENT	9. Internal Medicine	Oxygen Apparatus Set	酸素吸入セット	5	A
639	B-9-32	IN PATIENT	9. Internal Medicine	Doctor Consulting Desk	机 (診察用)	2	B

H. J.

NO.	ITEM NO.	DEPARTMENT	SECTION	EQUIPMENT	Equipment (Japanese)	Q'ty	Priority
640	B- 9-33	IN PATIENT	9. Internal Medicine	Doctor Chair	椅子 (診察用)	2	B
641	B- 9-34	IN PATIENT	9. Internal Medicine	Nurse Table	看護婦用テーブル	1	B
642	B- 9-35	IN PATIENT	9. Internal Medicine	Chair	椅子	6	B
643	B- 9-37	IN PATIENT	9. Internal Medicine	Cabinet	戸棚	4	B
644	B- 9-38	IN PATIENT	9. Internal Medicine	Patient Stool	椅子 (患者用)	2	B
645	B- 10-1	IN PATIENT	10. Mortuary	Mortuary Refrigerator, 4 bodies	液体冷蔵庫, 4体	1	B
646	B- 10-2	IN PATIENT	10. Mortuary	Coffin Carrier	棺運搬車	1	B
647	B- 10-3	IN PATIENT	10. Mortuary	Stretcher Scale	担架式体重計	1	B
648	B- 10-4	IN PATIENT	10. Mortuary	Medicine Cabinet	薬品戸棚	1	B
649	B- 10-5	IN PATIENT	10. Mortuary	Cart	カート	1	B
650	B- 10-7	IN PATIENT	10. Mortuary	Autopsy table	解剖台	1	B
651	B- 10-8	IN PATIENT	10. Mortuary	Autopsy Instrument Set	器具セット (解剖用)	1	B
652	C- 1-2	Administration	1. Committer Directr	Desk with 3 drawers	机 (事務用)	3	B
653	C- 1-3	Administration	1. Committer Directr	Comfortable Chair with Arms	椅子 (重役用)	3	B
654	C- 1-5	Administration	1. Committer Directr	Computer + Printer	コンピュータ+プリンター	3	B
655	C- 1-6	Administration	1. Committer Directr	Documentary Shelf	書棚	3	A
656	C- 2-1	Administration	2. Personnel Office	Desk with 3 Drawers	机 (事務用)	3	B
657	C- 2-2	Administration	2. Personnel Office	Comfortable Chair with Arms	椅子 (重役用)	3	B
658	C- 2-4	Administration	2. Personnel Office	Computer + Printer	コンピュータ+プリンター	1	B
659	C- 2-5	Administration	2. Personnel Office	Documentary Shelf	書棚	1	A
660	C- 3-1	Administration	3. Tech. Management	Desk with 3 Drawers	机 (事務用)	5	B
661	C- 3-2	Administration	3. Tech. Management	Comfortable Chair with Arms	椅子 (重役用)	5	B
662	C- 3-4	Administration	3. Tech. Management	Computer	コンピュータ	3	B
663	C- 3-5	Administration	3. Tech. Management	Printer	プリンター	3	B
664	C- 3-6	Administration	3. Tech. Management	Documentation Shelf	書棚	3	B
665	C- 3-10	Administration	3. Tech. Management	Overhead Projector Set	OHP	1	A
666	C- 3-11	Administration	3. Tech. Management	Photo Copy Set	複写機	1	A
667	C- 4-1	Administration	4. Nursing Administration	Desk with Drawers	机 (事務用)	3	B
668	C- 4-2	Administration	4. Nursing Administration	Comfortable Chair with Arms	椅子 (重役用)	3	B
669	C- 5-1	Administration	5. General Services	Desk with Drawers	机 (事務用)	2	B
670	C- 5-2	Administration	5. General Services	Comfortable Chair with Arms	椅子 (重役用)	2	B
671	D- 1	Administration	6. Work Shop	Avometer	絶縁テスタ	1	A
672	D- 2	Administration	6. Work Shop	Analog IC tester	IC テスター(アナログ)	1	A
673	D- 3	Administration	6. Work Shop	Digital IC tester	IC テスター(デジタル)	2	A
674	D- 4	Administration	6. Work Shop	Clamp Multimeter	クランプメータ	1	A
675	D- 5	Administration	6. Work Shop	Storage Cabinet	保管棚	2	A
676	D- 6	Administration	6. Work Shop	ECC Simulator	ECCシミュレータ	1	A
677	D- 7	Administration	6. Work Shop	Maintenance Tool Set	メンテナンス工具セット	2	A
678	E- 3-1	Transportation	3. Mini-bus, 12 seats	Gesoline Engine	ミニバス (12シート)	1	B
679	E- 5-1	Transportation	5. Ambulance Car	Ambulance	救急車	1	B
680	F- 1	Education	6. Education	Camera	カメラ	1	A
681	F- 2	Education	6. Education	Slide projector	スライドプロジェクタ	1	A
682	F- 3	Education	6. Education	Vidoe with TV monitor	ビデオモニター	1	A
683	F- 4	Education	6. Education	Microscope w/camera	カメラ付顕微鏡 (研修用)	1	A
684	F- 5	Education	6. Education	Screen	スクリーン	1	A

Priority

A: Equipment which is judged to be indispensable for medical activities

B: Equipment which the further study is needed

Note 1) All equipment is still changeable by further study even priority "A"

Note 2) Quantity is still changeable by further study

H. J.

Basic Criteria for Selecting the Equipment

1. Criteria for giving High priority
 - (1) Equipment that is to be replaced for existing old/ decrepit equipment.
 - (2) Equipment that is to be a supplement for the equipment lacking distinctly in its quantity.
 - (3) Equipment that is required for basic hospital treatment / diagnosis.
 - (4) Equipment that is easy to operate and maintain.
 - (5) Equipment that may give much benefit / effect to hospital.
 - (6) Equipment that is highly cost-effective.
 - (7) Equipment that is proven for its medical usefulness (necessity).

2. Criteria for giving Low priority
 - (1) Equipment that required high operation and maintenance cost.
 - (2) Equipment that has limited benefit / effect to hospital.
 - (3) Equipment that is lowly cost-effective.
 - (4) Equipment that is not for treatment / diagnosis use, but for academic research purposes.
 - (5) Equipment that can be substituted with a simple ones.
 - (6) Equipment that may cause environmental pollution by its medical waste etc.
 - (7) Equipment that is not proven for its medical usefulness (necessity).
 - (8) Equipment that is for personal usage by hospital staff (not medical use).
 - (9) Equipment that has than minimum required quantity (inefficient, repetitive equipment).

Additional Criteria for Selecting the Equipment

(After field survey and considering Recipients condition)

1. Additional Criteria for giving High priority.
 - (1) Equipment that can be operated by hospital's current technical capabilities.
 - (2) Equipment that can be operated / maintained by hospital staff.
 - (3) Equipment that matches with hospital's social position / function (referral system, local needs).
 - (4) Equipment that can be expected to be useful with other donor's assistance.

2. Additional Criteria for giving Low priority
 - (1) Equipment that is difficult to locally procure its spare parts and consumables.
 - (2) Equipment that cannot be operated by hospital's current technical capability.
 - (3) Equipment that seem to be difficult to operate / maintained by present hospital's staff.
 - (4) Equipment that dose not match with hospital's social position / function (referral system, local needs).
 - (5) Equipment that requires large scope of infrastructure work (water, electricity supply, drain, etc) for its installation.
 - (6) Equipment that can be substituted by efficient usage of existing equipment.

Criteria when International Standard Exists

Standard of WHO(ex. X-ray equipment, etc) is applicable on case by case basis.

H. J.

[Handwritten signature]

Japan's Grant Aid Scheme

1. Grant Aid Procedures

1) Japan's Grant Aid Program is executed through the following procedures.

Application	(Request made by a recipient country)
Study	(Basic Design Study conducted by JICA)
Appraisal & Approval	(Appraisal by the Government of Japan and Approval by Cabinet)
Determination of Implementation	(The Notes exchanged between the Governments of Japan and the recipient country)

2) Firstly, the application or request for a Grant Aid project submitted by a recipient country is examined by the Government of Japan (the Ministry of Foreign Affairs) to determine whether or not it is eligible for Grant Aid. If the request is deemed appropriate, the Government of Japan assigns JICA (Japan International Cooperation Agency) to conduct a study on the request.

Secondly, JICA conducts the study (Basic Design Study), using (a) Japanese consulting firm(s).

Thirdly, the Government of Japan appraises the project to see whether or not it is suitable for Japan's Grant Aid Program, based on the Basic Design Study report prepared by JICA, and the results are then submitted to the Cabinet for approval.

Fourthly, the project, once approved by the Cabinet, becomes official with the Exchange of Notes signed by the Governments of Japan and the recipient country.

Finally, for the implementation of the project, JICA assists the recipient country in such matters as preparing tenders, contracts and so on.

2. Basic Design Study

1) Contents of the Study

The aim of the Basic Design Study (hereafter referred to as "the Study"), conducted by JICA on a requested project (hereafter referred to as "the Project") is to provide a basic document necessary for the appraisal of the Project by the Japanese Government. The contents of the Study are as follows:

- a) Confirmation of the background, objectives, and benefits of the requested Project and also institutional capacity of agencies concerned of the recipient country necessary for the Project's implementation.
- b) Evaluation of the appropriateness of the Project to be implemented under the Grant Aid Scheme from a technical, social and economic point of view.
- c) Confirmation of items agreed on by both parties concerning the basic concept of the Project.
- d) Preparation of a basic design of the Project.
- e) Estimation of the costs of the Project.

M. F.

[Signature]

The contents of the original request are not necessarily approved in their initial form as the contents of the Grant Aid Project. The Basic Design of the Project is confirmed considering the guidelines of Japan's Grant Aid Scheme.

The Government of Japan requests the Government of the recipient country to take whatever measures are necessary to ensure its self-reliance in the implementation of the Project. Such measures must be guaranteed even though they may fall outside of jurisdiction of the organization in the recipient country actually implementing the Project. Therefore, the implementation of the Project is confirmed by all relevant organizations in the recipient country through the Minutes of Discussions.

2) Selection of Consultants

For the smooth implementation of the Study, JICA uses (a) registered consultant firm(s). JICA selects (a) firms(s) based on proposals submitted by interested firms. The firm(s) selected carry (ies) out the Basic Design Study and write(s) a report, based upon terms of reference set by JICA. The consulting firm(s) used for the Study which is (are) recommended by JICA to the recipient country to also work on the Project's implementation after the Exchange of Notes, in order to maintain technical consistency.

3. Japan's Grant Aid Scheme

1) What is Grant Aid ?

The Grant Aid Program provides a recipient country with non-reimbursable funds needed to procure the facilities, equipment and services (engineering services and transportation of the products, etc.) for economic and social development of the country under the principals in accordance with the relevant laws and regulations of Japan. Grant Aid is not supplied through the donation of materials as such.

2) Exchange of Notes (E/N)

Japan's Grant Aid is extended in accordance with the Notes exchanged by the two Governments concerned, in which the objectives of the Project, period of execution, conditions and amount of the Grant Aid, etc., are confirmed.

3) "The period of the Grant Aid" means the one fiscal year in which the Cabinet approves the Project for. Within the fiscal year, all procedure such as exchanging of the Notes, concluding contracts with (a) consultant firm(s) and (a) contractor(s) and final payment to them must be completed. However in case of delays in delivery, installation or construction due to unforeseen factors such as weather, the period of the Grant Aid can be further extended for a maximum of one fiscal year at most by mutual agreement between the two Governments.

4) Under the Grant Aid, in principle, Japanese products and services including transport or those of the recipient country are to be purchased.

When both Governments deem it necessary, the Grant Aid may be used for the purchase of the products or services of the third country.

However the prime contractors, namely, consulting contracting and procurement firms, are limited to "Japanese nationals". (The term "Japanese nationals" means persons of Japanese nationality or Japanese corporations controlled by persons of Japanese nationality.)

H. J.



5) Necessity of "Verification"

The Government of recipient country or its designated authority will conclude contracts denominated in Japanese yen with Japanese nationals. Those contracts shall be verified by the Government of Japan. This "Verification" is deemed necessary to secure accountability to Japanese taxpayers.

6) Undertakings required of the Government of recipient country

In the implementation of the Grant Aid Project, the recipient country is required to undertake such necessary measures as the following:

- a) To secure land necessary for the sites of the Project and to clear, level and reclaim the land prior to commencement of the construction.
- b) To provide facilities of the distribution of electricity, water supply and drainage and other incidental facilities in and around the sites.
- c) To secure buildings prior to the procurement in case the installation of the equipment.
- d) To ensure all the expenses and prompt execution for unloading, customs clearance at the port of disembarkation and internal transportation of the products purchased under the Grant Aid.
- e) To exempt Japanese nationals from customs duties, internal taxes and other fiscal levies which will be imposed in the recipient country with respect to the supply of the products and services under the Verified Contracts.
- f) To accord Japanese nationals whose services may be required in connection with the supply of the products and services under the Verified contracts, such facilities as may be necessary for their entry into the recipient country and stay therein for the performance of their work.

7) "Proper Use"

The recipient country is required to maintain and use the facilities constructed and the equipment purchased under the Grant Aid properly and effectively and to assign the necessary staff for operation and maintenance of them as well as to bear all the expenses other than those covered by the Grant Aid.

8) "Re-export"

The products purchased under the Grant Aid shall not be re-exported from the recipient country.

9) Banking Arrangements (B/A)

- a) The Government of the recipient country or its designated authority should open an account in the name of the Government of the recipient country in a bank in Japan (hereinafter referred to as "the Bank"). The Government of Japan will execute the Grant Aid by making payments in Japanese yen to cover the obligations incurred by the Government of the recipient country or its designated authority under the Verified Contracts.
- b) The payments will be made when payment requests are presented by the Bank to the Government of Japan under an authorization to pay issued by the Government of the recipient country or its designated authority.

H. F.

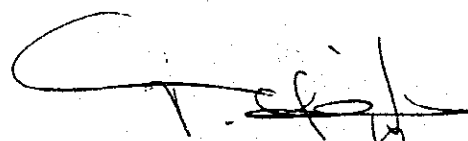
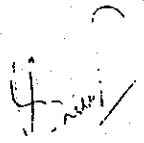


NECESSARY MEASURES TO BE TAKEN BY THE LAO SIDE

The following measures should be taken by the Government of Lao P.D.R. on condition that the Grant Aid by the Government of Japan is extended to the Project.

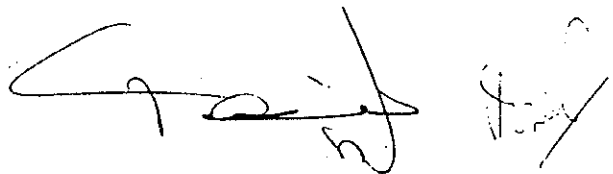
1. To provide data and information necessary for the Project ;
2. To secure, clean, level and reclaim the site for the Project prior to the commencement of the construction (by August, 1999);
3. To construct the access road to the site;
4. To undertake gardening , fencing , exterior lighting , and other incidental outdoor works in and around the Project site;
5. To provide facilities for the distribution of electricity, water supply, drainage and other incidental facilities:
 - (1) The electricity distribution line to the site,
 - (2) The city water supply distribution main to the site,
 - (3) The drainage main to the site,
 - (4) The telephone trunk line to the site,
 - (5) The general furniture such as carpets, curtains, tables, chairs and others;
6. To bear the following commissions to a Bank of Japan for the banking services based upon the Banking Arrangement, namely
 - (1) Advising commission of " Authorization to Pay"
 - (2) Payment commission;
8. To ensure prompt unloading, tax exemption and customs clearance of the products at the port of disembarkation in Lao P.D.R.;
9. To accord Japanese nationals whose services may be required in connection with the supply of the products and the services under the verified contract such facilities as may be necessary for their entry into Lao P.D.R. and stay therein for the performance of their work ;

H. J.

10. To exempt Japanese nationals from customs duties, internal taxes and other fiscal levies which may be imposed in Lao P.D.R. with respect to the supply of the products and services under the verified contract ;
11. To maintain and use properly and effectively the facilities constructed and the equipment provided under the Grant ; and
12. To bear all the expenses, other than those to be borne by the Grant, necessary for construction of the facilities as well as for the transportation and installation of the equipment.

Id. 7.

Handwritten signatures in black ink, consisting of several stylized, overlapping marks.

MINUTES OF DISCUSSIONS
BASIC DESIGN STUDY
ON
THE PROJECT FOR THE CONSTRUCTION OF NEW SETHATHIRATH HOSPITAL
IN
THE LAOPEOPLE'S DEMOCRATIC REPUBLIC
(CONSULTATION ON DRAFT REPORT)

In July 1998, the Japan International Cooperation Agency (JICA) dispatched a Basic Design Study Team on the Project for the Construction of New Sethathirath Hospital (hereinafter referred to as "the Project"), and through discussions, field survey, and technical examination of the results in Japan, has prepared the draft report of the study.

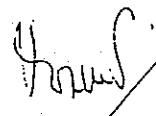
In order to explain and to consult the Lao side on the components of the draft report, JICA sent to the Lao People's Democratic Republic (hereinafter referred to as "Lao P.D.R.") a Draft Report Explanation Team (hereinafter referred to as "the Team"), which is headed by Dr. Takefumi Fukuhara, Managing Director, Medical Cooperation Department, JICA, and is scheduled to stay in the country from October 30 to November 6, 1998.

As a result of discussions, both sides have confirmed the main items described on the attached sheets.

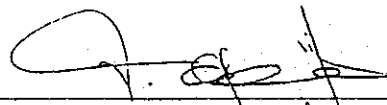
Vientiane, November 5, 1998



Dr. Takefumi FUKUHARA
Leader
Draft Report Explanation Team
Japan International Cooperation Agency



Mrs. Chanthanom MANODHAM
Director of Cabinet
Ministry of Health



Dr. Chanphomma VONGSAMPHANH
Director
Department of Health
Vientiane Municipality

ATTACHMENT

1. Components of draft report

The Government of Lao P.D.R. has in principal agreed and accepted the components of the draft report proposed by the Team.

2. Japan's Grant Aid System

- 1) The Government of Lao P.D.R. has understood the system of Japan's Grant Aid explained by the Team as described in ANNEX-I.
- 2) The Government of Lao P.D.R. will take necessary measures, described in Annex-II for smooth implementation of the Project on condition that the Grant Aid by the Government of Japan is extended to the Project.

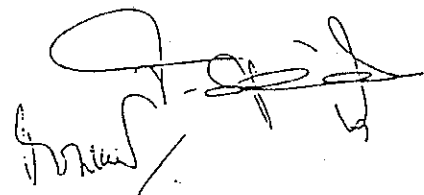
3. Further Schedule

JICA will make the final report in accordance with the confirmed items, and send it to the Government of Lao P.D.R. around February, 1999.

4. Other Relevant Issues

- 1) The Japanese side required the Lao side to ensure enough budget to operate and maintain the facilities constructed and equipment procured under the Grant Aid, and the Lao side agreed to it.
- 2) The Japanese side requested the Lao side to complete the execution of the following works prior to the commencement of the construction (by May, 1999): (a) moving the existing facilities from the site for the Project, (b) leveling the land within the site, (c) providing infrastructure such as electricity, water supply, drainage, telephone, and the Lao side agreed to it.
- 3) The Japanese side also requested the Lao side to construct the access road and provide the bus route to the site, and the Lao side agreed to it.
- 4) Both sides agreed that New Sethathirath Hospital has the responsibility in monitoring progress of the Project based upon the indicators given in Annex III and reporting it to the JICA Laos Office annually through the Ministry of Health. The reporting forms shall be presented in the final report.

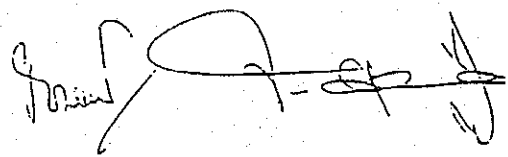
2.70



5)The Lao side requested the Japanese side to construct fences and to provide the general furniture, and the Japanese side agreed to explain it to the Government of Japan.

6)The Lao side requested the Japanese side to introduce CT scanner and ambulance to New Sethathirath Hospital in the future, and the Japanese side agreed to explain it to the Government of Japan.

福

A handwritten signature in black ink, appearing to be a stylized name or set of initials, located at the bottom right of the page.

Japan's Grant Aid Scheme

1. Grant Aid Procedures

1) Japan's Grant Aid Program is executed through the following procedures.

Application	(Request made by a recipient country)
Study	(Basic Design Study conducted by JICA)
Appraisal & Approval	(Appraisal by the Government of Japan and Approval by Cabinet)
Determination of Implementation	(The Notes exchanged between the Governments of Japan and the recipient country)

2) Firstly, the application or request for a Grant Aid project submitted by a recipient country is examined by the Government of Japan (the Ministry of Foreign Affairs) to determine whether or not it is eligible for Grant Aid. If the request is deemed appropriate, the Government of Japan assigns JICA (Japan International Cooperation Agency) to conduct a study on the request.

Secondly, JICA conducts the study (Basic Design Study), using (a) Japanese consulting firm(s).

Thirdly, the Government of Japan appraises the project to see whether or not it is suitable for Japan's Grant Aid Program, based on the Basic Design Study report prepared by JICA, and the results are then submitted to the Cabinet for approval.

Fourthly, the project, once approved by the Cabinet, becomes official with the Exchange of Notes signed by the Governments of Japan and the recipient country.

Finally, for the implementation of the project, JICA assists the recipient country in such matters as preparing tenders, contracts and so on.

2. Basic Design Study

1) Contents of the Study

The aim of the Basic Design Study (hereafter referred to as "the Study"), conducted by JICA on a requested project (hereafter referred to as "the Project") is to provide a basic document necessary for the appraisal of the Project by the Japanese Government. The contents of the Study are as follows:

- a) Confirmation of the background, objectives, and benefits of the requested Project and also institutional capacity of agencies concerned of the recipient country necessary for the Project's implementation.
- b) Evaluation of the appropriateness of the Project to be implemented under the Grant Aid Scheme from a technical, social and economic point of view.
- c) Confirmation of items agreed on by both sides concerning the basic concept of the Project.
- d) Preparation of a basic design of the Project
- e) Estimation of the costs of the Project

7-60

[Handwritten signature]

The contents of the original request are not necessarily approved in their initial form as the contents of the Grant Aid Project. The Basic Design of the Project is confirmed considering the guidelines of Japan's Grant Aid Scheme.

The Government of Japan requests the Government of the recipient country to take whatever measures are necessary to ensure its self-reliance in the implementation of the Project. Such measures must be guaranteed even though they may fall outside of jurisdiction of the organization in the recipient country actually implementing the Project. Therefore, the implementation of the Project is confirmed by all relevant organizations in the recipient country through the Minutes of Discussions.

2) Selection of Consultants

For the smooth implementation of the Study, JICA uses (a) registered consultant firm(s). JICA selects (a) firms(s) based on proposals submitted by interested firms. The selected firm(s) carry (ies) out the Basic Design Study and write(s) a report, based upon terms of reference set by JICA. The consulting firm(s) used for the Study which is (are) recommended by JICA to the recipient country to also work on the Project's implementation after the Exchange of Notes, in order to maintain technical consistency.

3. Japan's Grant Aid Scheme

1) What is Grant Aid ?

The Grant Aid Program provides a recipient country with non-reimbursable funds needed to procure the facilities, equipment and services (engineering services and transportation of the products, etc.) for economic and social development of the country under the principles in accordance with the relevant laws and regulations of Japan. Grant Aid is not supplied through the donation of materials as such.

2) Exchange of Notes (E/N)

Japan's Grant Aid is extended in accordance with the Notes exchanged by the two Governments concerned, in which the objectives of the Project, period of execution, conditions and amount of the Grant Aid, etc., are confirmed.

3) "The period of the Grant Aid" means the one fiscal year in which the Cabinet approves the Project for. Within the fiscal year, all procedure such as exchanging of the Notes, concluding contracts with (a) consultant firm(s) and (a) contractor(s) and final payment to them must be completed. However in case of delays in delivery, installation or construction due to unforeseen factors such as weather, the period of the Grant Aid can be further extended for a maximum of one fiscal year at most by mutual agreement between the two Governments.

4) Under the Grant Aid, in principle, Japanese products and services including transport or those of the recipient country are to be purchased.

When both Governments deem it necessary, the Grant Aid may be used for the purchase of the products or services of the third country.

However the prime contractors, namely, consulting contracting and procurement firms, are limited to "Japanese nationals". (The term "Japanese nationals" means persons of Japanese nationality or Japanese corporations controlled by persons of Japanese nationality.)

5) Necessity of "Verification"

The Government of recipient country or its designated authority will conclude contracts denominated in Japanese yen with Japanese nationals. Those contracts shall be verified by the Government of Japan. This "Verification" is deemed necessary to secure accountability to Japanese taxpayers.

6) Undertakings to be required to the Government of recipient country

In the implementation of the Grant Aid Project, the recipient country is required to undertake such necessary measures as the following:

- a) To secure land necessary for the sites of the Project and to clear, level and reclaim the land prior to commencement of the construction.
- b) To provide facilities of the distribution of electricity, water supply and drainage and other incidental facilities in and around the sites.
- c) To secure buildings prior to the procurement in case the installation of the equipment.
- d) To ensure all the expenses and prompt execution for unloading, customs clearance at the port of disembarkation and internal transportation of the products purchased under the Grant Aid.
- e) To exempt Japanese nationals from customs duties, internal taxes and other fiscal levies which will be imposed in the recipient country with respect to the supply of the products and services under the Verified Contracts.
- f) To accord Japanese nationals whose services may be required in connection with the supply of the products and services under the Verified contracts, such facilities as may be necessary for their entry into the recipient country and stay therein for the performance of their work.

7) "Proper Use"

The recipient country is required to maintain and use the facilities constructed and the equipment purchased under the Grant Aid properly and effectively and to assign the necessary staff for operation and maintenance of them as well as to bear all the expenses other than those covered by the Grant Aid.

8) "Re-export"

The products purchased under the Grant Aid shall not be re-exported from the recipient country.

9) Banking Arrangements (B/A)

- a) The Government of the recipient country or its designated authority should open an account in the name of the Government of the recipient country in a bank in Japan (hereinafter referred to as "the Bank"). The Government of Japan will execute the Grant Aid by making payments in Japanese yen to cover the obligations incurred by the Government of the recipient country or its designated authority under the Verified Contracts.
- b) The payments will be made when payment requests are presented by the Bank to the Government of Japan under an authorization to pay issued by the Government of the recipient country or its designated authority.

NECESSARY MEASURES TO BE TAKEN BY THE LAO SIDE

The following measures should be taken by the Government of Lao P.D.R. on condition that the Grant Aid by the Government of Japan is extended to the Project.

1. To provide data and information necessary for the Project ;
2. To secure, clean, level and reclaim the site for the Project prior to the commencement of the construction;
3. To construct the access road to the site;
4. To undertake gardening , fencing , exterior lighting , and other incidental outdoor works in and around the Project site;
5. To provide facilities for the distribution of electricity, water supply, drainage and other incidental facilities:
 - (1) The electricity distribution line to the site,
 - (2) The city water supply distribution main to the site,
 - (3) The drainage main to the site,
 - (4) The telephone trunk line to the site,
 - (5) The general furniture such as carpets, curtains, tables, chairs and others;
6. To bear the following commissions to a Bank of Japan for the banking services based upon the Banking Arrangement, namely
 - (1) Advising commission of " Authorization to Pay"
 - (2) Payment commission;
7. To provide necessary permissions, licenses, and other authorization for implementing the Project;
8. To ensure prompt unloading, tax exemption and customs clearance of the products at the port of disembarkation in Lao P.D.R. and internal transportation from the port to the Project site;

9. To accord Japanese nationals whose services may be required in connection with the supply of the products and the services under the verified contract such facilities as may be necessary for their entry into Lao P.D.R. and stay therein for the performance of their work ;
10. To exempt Japanese nationals from customs duties, internal taxes and other fiscal levies which may be imposed in Lao P.D.R. with respect to the supply of the products and services under the verified contract ;
11. To maintain and use properly and effectively the facilities constructed and the equipment provided under the Grant ;
12. To transport existing items of equipment which are to be relocated and installed to the facilities constructed under the Grant, and
13. To bear all the expenses, other than those to be borne by the Grant, within the scope of the Project.

7.70

7.70
7.70

Monitoring and Reporting of the Project

The following indicators should be reported to the JICA Laos Office annually by New Sethathirath Hospital through the Ministry of Health.

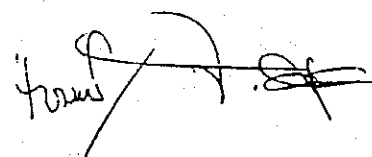
1. Activity of New Sethathirath Hospital

- Number of Outpatients
- Number of Inpatients
- Number of Operations
- Number of Referred case from the other hospital
- Number of Referring case to the other hospital
- Mortality Rate
- Bed Occupancy Rate
- Average Length of Stay etc.

2. Utilization of Equipment Procured under Japan's Grant Aid

- X-ray Unit with TV monitor
- Blood Cell Counter
- Ventilator
- ECG machine
- Patient Monitor
- Ultrasound Diagnosis Apparatus
- Anesthesia Apparatus etc.

i. 7D



APPENDIX 5

COST ESTIMATION BORNE BY THE RECIPIENT COUNTRY

A breakdown of the cost for the scope of works by the Laotian side is as shown below.

Items	Expenses
1 . Preparation of construction site	700,000,000Kips
2 . Fence work	100,000,000Kips
3 . Lead-in and connection work	510,000,000Kips
4 . Moving, furniture and Utensils, others	250,000,000Kips
Total	1,560,000,000Kips

