

Basic Design Study Report
on
The Project for Construction of
New Sethathirath Hospital
in
The Lao People's Democratic Republic

JICA LIBRARY



J1149464(8)

January 1999

Japan International Cooperation Agency

Nihon Sekkei, Inc.

GRO
CR (3)
99-034

LIBRARY

PREFACE

In response to a request from the Government of the Lao People's Democratic Republic the Government of Japan decided to conduct a basic design study on the Project for Construction of New Sethathirath Hospital and entrusted the study to the Japan International Cooperation Agency (JICA).

JICA sent to Lao P.D.R. a study team from July 28th to August 15th, 1998.

The team held discussions with the officials concerned of the Government of Lao P.D.R., and conducted a field study at the study area. After the team returned to Japan, further studies were made. Then, a mission was sent to Lao P.D.R. in order to discuss a draft basic design, and as this result, the present report was finalized.

I hope that this report will contribute to the promotion of the project and to the enhancement of friendly relations between our two countries.

I wish to express my sincere appreciation to the officials concerned of the Government of the Lao People's Democratic Republic for their close cooperation extended to the teams.

January 1999

Kimio Fujita
President
Japan International Cooperation Agency



1149464 [8]

January 1999

Letter of Transmittal

We are pleased to submit to you the basic design study report on the Project for Construction of New Sethathirath Hospital in the Lao People's Democratic Republic.

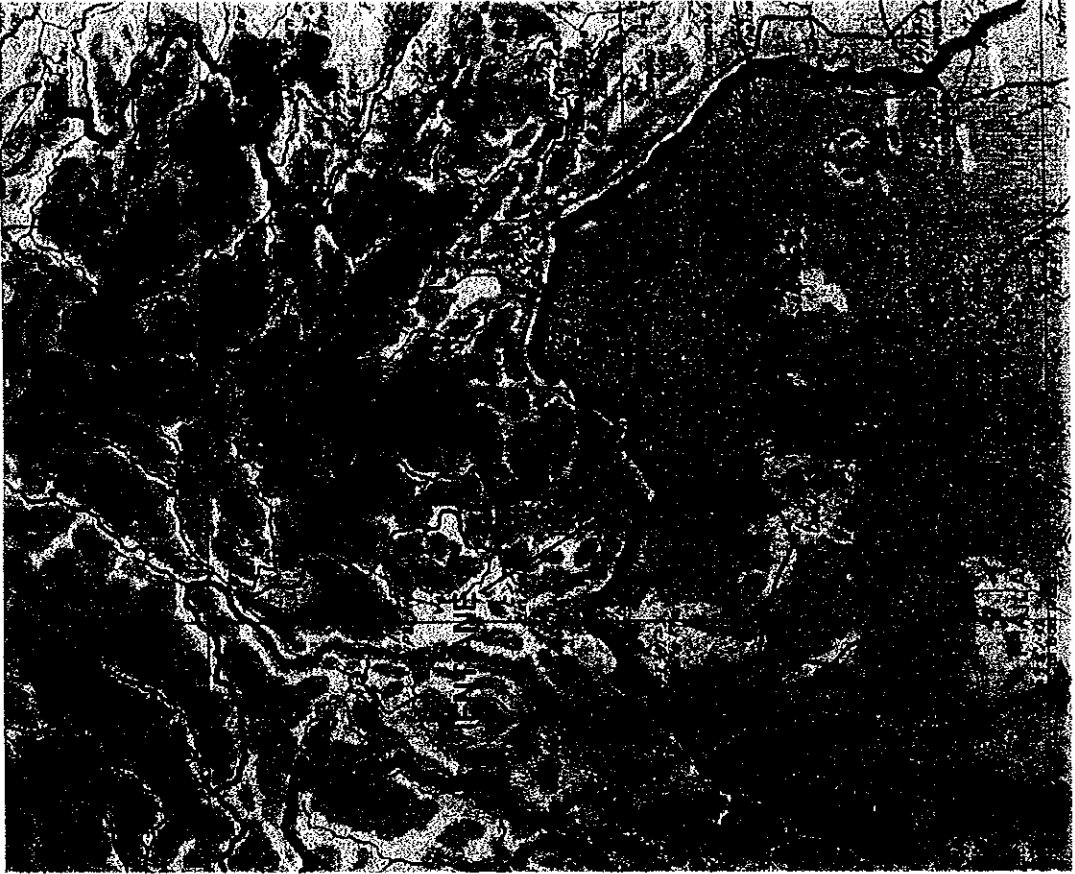
This study was conducted by Nihon Sekkei, Inc., under a contract to JICA, during the period from July 23rd, 1998 to February 22nd, 1999. In conducting the study, we have examined the feasibility and rationale of the project with due consideration to the present situation of Lao P.D.R. and formulated the most appropriate basic design for the project under Japan's grant aid scheme.

Finally, we hope that this report will contribute to further promotion of the project.

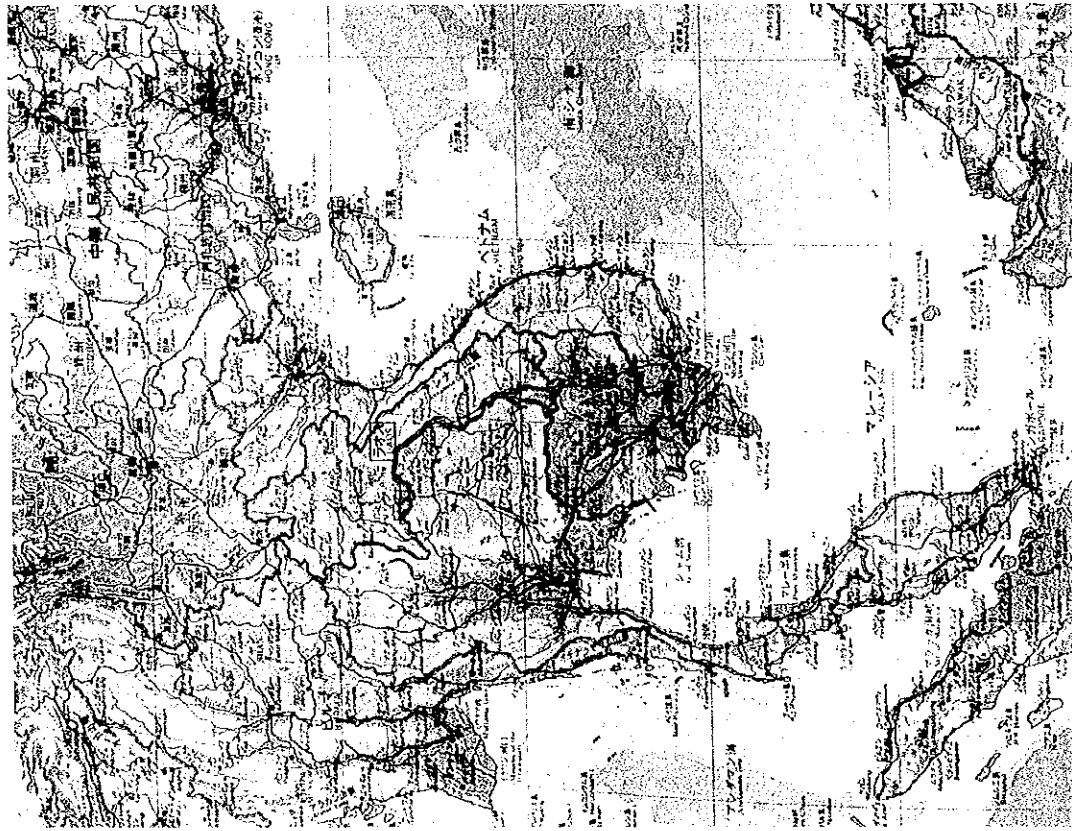
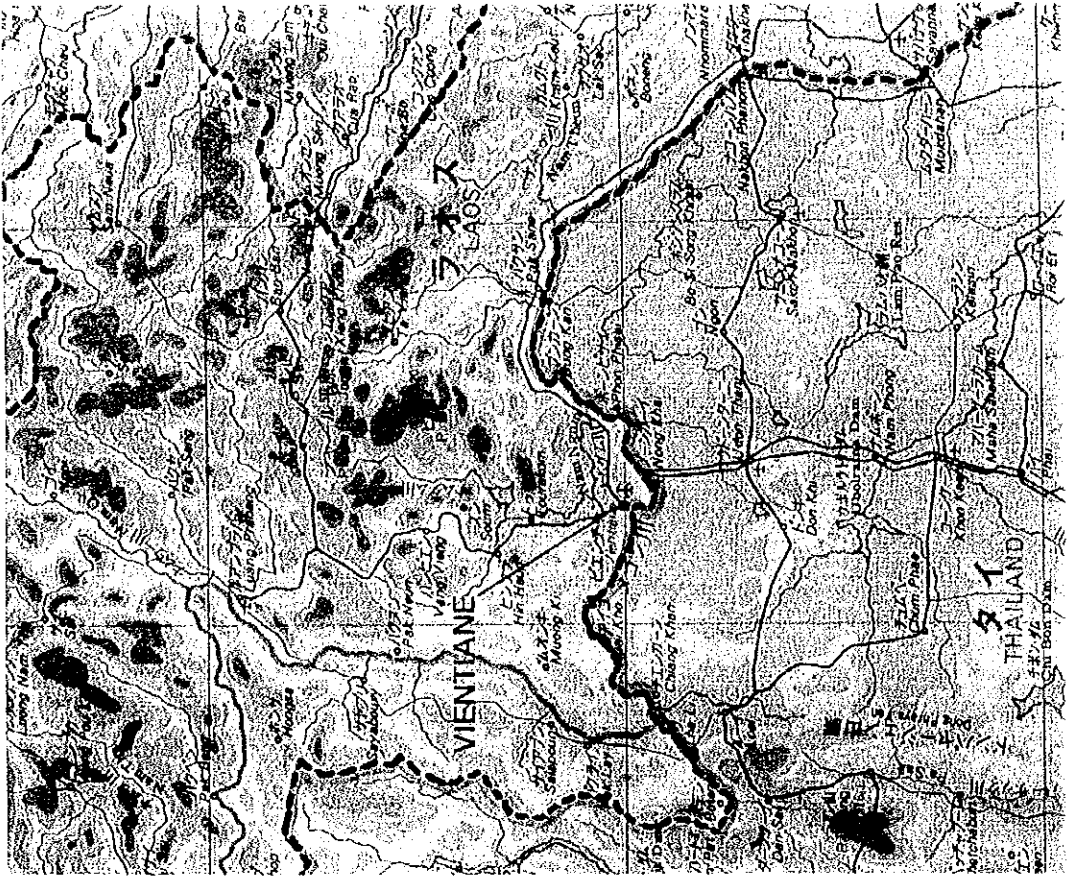
Very truly yours,

Tomonao Hamada
Project manager,
Basic design study team on
The Project for Construction of New Sethathirath Hospital
Nihon Sekkei, Inc.

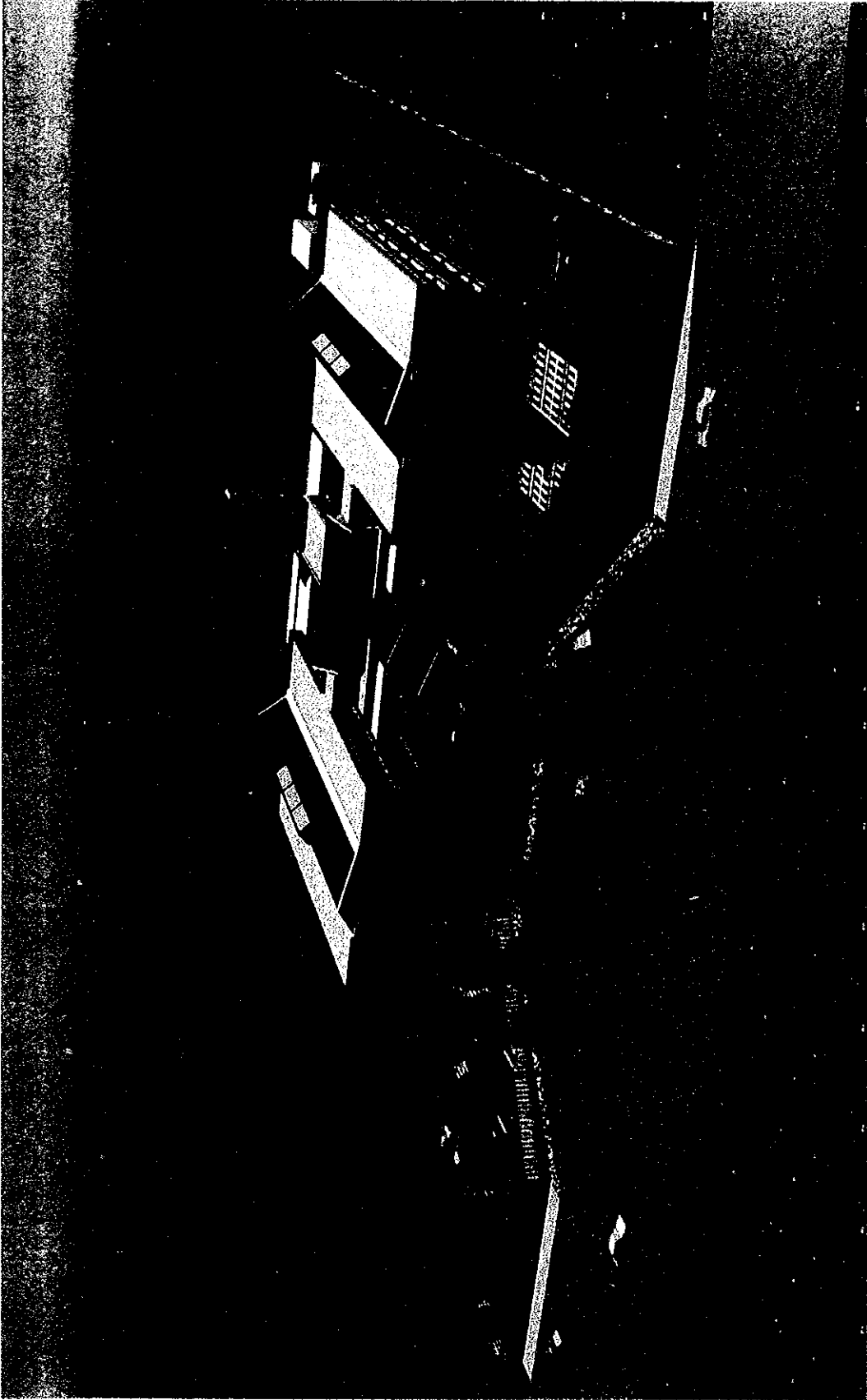
Location Map



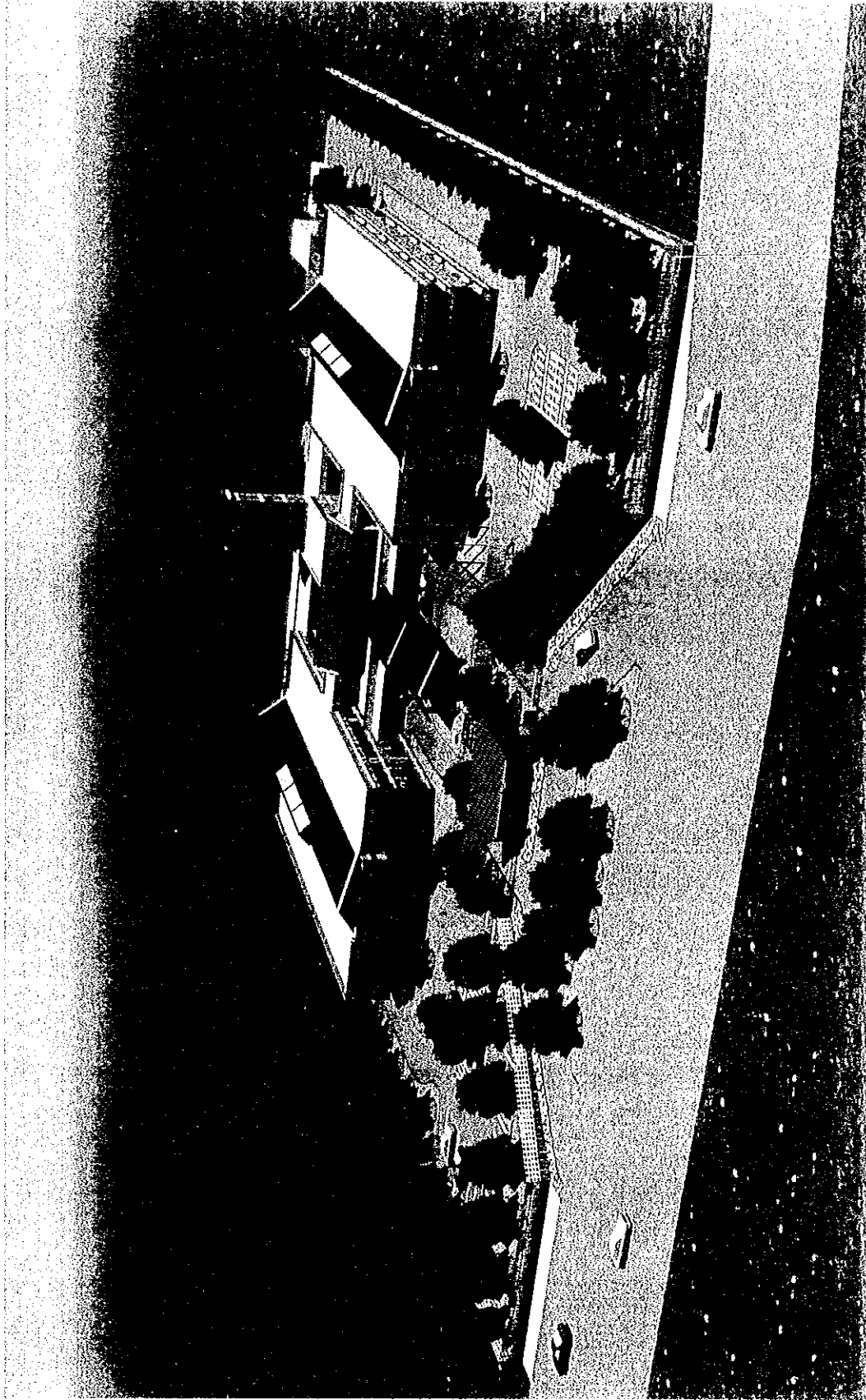
Location Map



Perspective Drawing



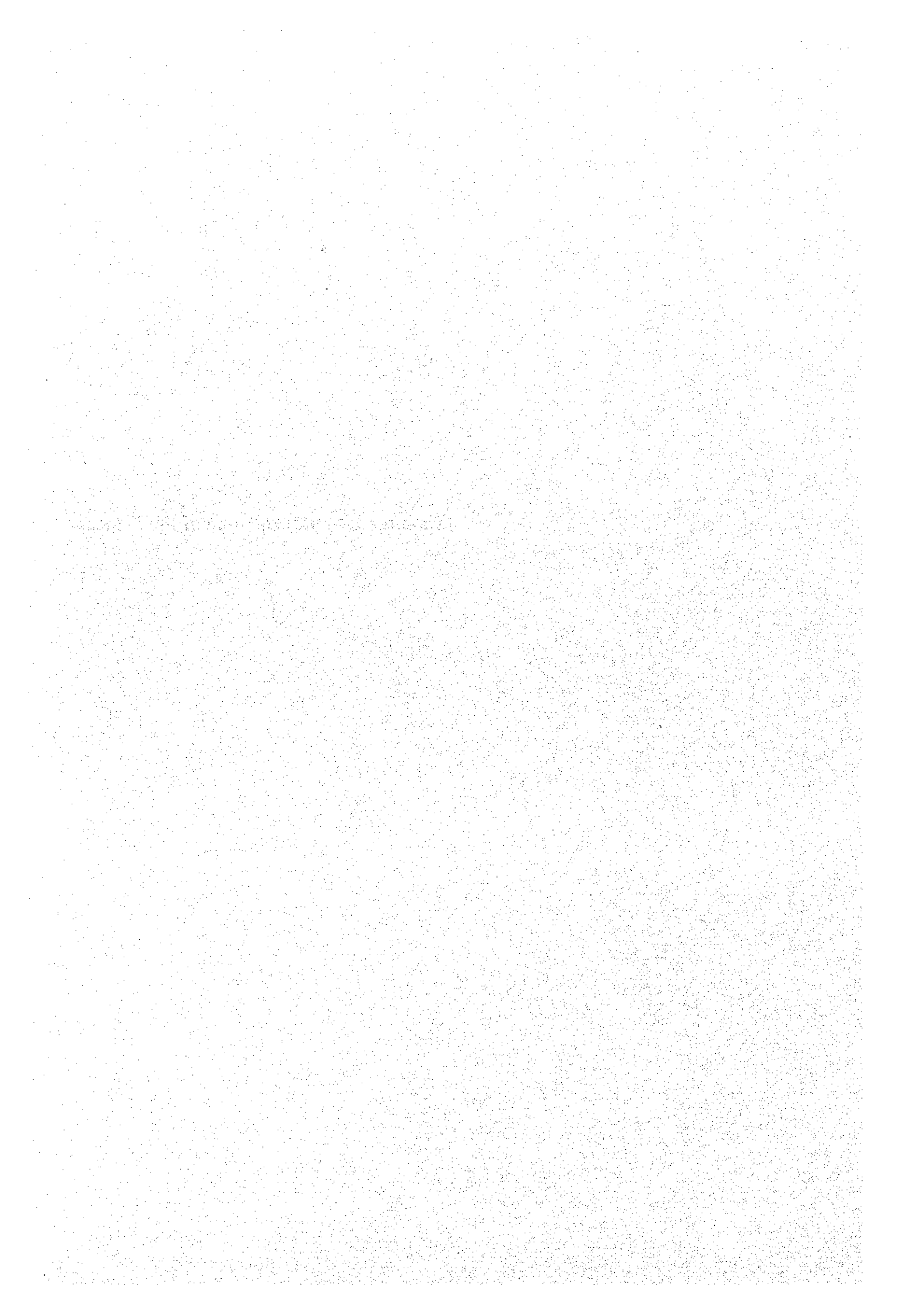
Perspective Drawing



CONTENTS

Chapter 1.	Background of the Project	1
1-1	Details of the Request	1
1-2	Outline of the Request	3
Chapter 2.	Contents of the Project	7
2-1	Objectives of the Project	7
2-2	Basic Concept of the Project	8
2-2-1	Guidelines for Cooperation	8
2-2-2	Study of the Contents of the Request (Facilities)	9
2-2-3	Study of the Contents of the Request (Medical Equipment)	19
2-3	Basic Design	35
2-3-1	Basic Concept	35
2-3-2	Design Conditions	43
2-3-3	Site Plan	48
2-3-4	Architectural Plan	49
2-3-5	Structural Plan	52
2-3-6	Mechanical and Electrical Systems	54
2-3-7	Construction Material Plan	59
2-3-8	Medical Equipment Plan	61
2-3-9	Basic Design Drawings	65
Chapter 3	Implementation Plan	72
3-1	Implementation Plan	72
3-1-1	Implementation Concept	72
3-1-2	Implementation Conditions	74
3-1-3	Scope of Works	77
3-1-4	Construction Administration	78
3-1-5	Procurement Plan	81
3-1-6	Implementation Schedule	86
3-1-7	Obligations of the Recipient Country	88
3-2	Operation and Maintenance Plan	89
Chapter 4	Project Evaluation and Recommendations	98
4-1	Project Effect	98
4-1-1	Population to Benefit from the Implementation of the Project	98
4-1-2	Project Effect	99
4-1-3	Examination of the Hospital's Capabilities of Operation and Maintenance	101
4-1-4	The Projects Contributions to the National Goals	103
4-2	Technical Cooperation and Collaboration with Other Donors	105
4-3	Recommendation	106
Appendix 1.	Member List of the Survey Team	
Appendix 2.	Survey Schedule	
Appendix 3.	List of Party Concerned in the Recipient Country	
Appendix 4.	Minutes of Discussion	
Appendix 5.	Cost Estimation Borne by the Recipient Country	

Chapter 1. Background of the Project



CHAPTER 1 BACKGROUND OF THE PROJECT

1-1 Details of the Request

Lao People's Democratic Republic (hereinafter referred to as "Laos") is faced with a serious shortage of social infrastructure relating to health and sanitation as a result of the colonial rule that extended over a long period of time, the political confusion after World War II. What made the situation worse is the preferential allocation of resources to the agricultural and manufacturing sectors rather than to the welfare sector. For this reason, the country's health-related indicators, such as the life expectancy (man 61 years, woman 65 years), the infant mortality rate (104/1000 newborns) and the maternal mortality rate (656/10,000 births), are at the lowest levels in Asia. In the area of health care services, the number of beds for every 100,000 residents is only 130 (1,322 beds in Japan). The number of medical doctors as of 1996 for 100,000 residents counted 22 (183 in Japan). Both figures are at very low levels. The poor quality of medical care service, say, unavailability of medical staff members during consultation hours and a shortage of drugs' is often pointed out. It can be said that the country's health care service is still of very poor quality.

Under the fourth five-year plan (1996-2000) adopted at the sixth party convention, the "Strategies for the Development of the Lao Health System by the Year 2020" was adopted, and measures to put the national health system into shape are being taken.

One of the main pillars of the above-mentioned "Strategies for the Year 2020" is the modernization of hospitals. High priority is given to the improvement and modernization of the facilities of the big three general hospitals in the Vientiane Municipality -- Mahosot Hospital, Friendship Hospital, and Sethathirath Hospital of which facilities are to be improved under this project. The development of a hierarchical national health system with the big three general hospitals at its top forms the core of the above-mentioned strategy. In particular, Sethathirath Hospital's one-storied wooden building, which was constructed in 1956, represents inefficiency and malfunctioning due to extremely outdated structure and repeated uncoordinated modification. The existing items of equipment of the hospital are extremely obsolete as well. Moreover, the hospital is faced with an equipment shortage in terms of both the number of items and quantity. Under such circumstances, the Government of Laos made a request to the Government of Japan for project-typed technical cooperation for "the improvement of Sethathirath Hospital". In response to the request, the Government of Japan sent a preliminary study team to Laos in September 1997. Also in 1998, from April to May, a short-term study was made of this project for the improvement of the hospital's facilities, on the premise of starting the Project in 1999. The request for grant aid cooperation is premised on the above-mentioned project-typed technical

cooperation program. The Sethathirath Hospital is not only under the urgent requirement for improvement of obsolete facilities and medical equipment but also obliged to move out of the present location due to the City Planning Decision for the City Center. This project is therefore aimed at relocating the hospital's existing facilities, constructing new facilities and procuring necessary equipment and machines.

1-2 Outline of the Request

(1) Objectives of the Request

To provide health care services of high quality to residents of the Vientiane Municipality and the neighboring prefectures and improve the medical examination and treatment activities in these areas by relocating Sethathirath Hospital's existing facilities and constructing new facilities for the hospital, as well as by replacing its existing medical equipment.

(2) Project Implementing Organization

The Health Department of the Vientiane Municipality is responsible to implement this project. The Ministry of Health of Laos is responsible to supervise for all aspects of this project.

(3) Outline of the Project

The proposed hospital in the request is to have the following Blocks including necessary medical equipment.

Administration Block

Out-patient Treatment Block

Emergency Treatment and Examination Block

Operation Block

MCH

General In-patient Rooms Block

Surgical In-patient Rooms Block

Pediatric In-patient Rooms Block

OB and Gynecology In-patient Rooms Block

Service Department and Other

Furthermore, in the process of the basic design survey the Lao side requested the installation of following five points:

- ① A day care center for the hospital staff
- ② A new herb sauna room for the use of traditional therapies
- ③ Lodging facilities for patients' families
- ④ A CT scanner room
- ⑤ Inclusion of the fence work

The requested items of equipment is enumerated in the table 1-1 in comparison of the final list of equipment concluded through the discussion with the hospital.

Table 1-1 (1) Comparison Table for Requested Equipment

NO.	DEPARTMENT	SECTION	REQUESTED BEFORE STUDY	MINUTES
1	O.P.D. OUT PATIENT DEPARTMENT	Physiological Examination	Endoscopy system ECG Patient Monitor Ultrasound Scanner Defibrillator	Desk for Doctor Consulting Stool for Patient Exsmination Table
		Surgical Clinic	No Information	Desk for Doctor Consulting Stool for Patient Exsmination Table
		Gyneco and Obstetries Clinic	Gynecological Examination Table Gynecological Examination Unit Doppler Sound Detector Colposcope	Gynecological Examination Table Gynecological Examination Unit Exsmination Table Colposcope Stool for Patient
			Exam. and Treat. Instrument Set	Desk for Doctor Consulting Stool for Patient Exsmination Table Film illuminator Examining light
		MCH(Mother & Child Health Care)	Weighing Scale Drying Oven Fetal Monitor	Gynecological Examination Table Gynecological Examination Unit Infant Bassinet Stand Suction Unit
		Pneumology Clinic	No Information	Desk for Doctor Consulting Stool for Patient Exsmination Table
		Dermatology Clinic	No Information	Desk for Doctor Consulting Stool for Patient Exsmination Table
		Dental Clinic	No Information	Dental Unit Micromotor Flask Press Model Trimmer
		Ophthalmology Clinic	No Information	Ophthalmic Operating Table Diathermy Unit Cryosurgery Unit Instrument Table Instrument Cabinet
		ENT Clinic	No Information	Sound proof Chamber Audiometer ENT Treatment Chair Nebizer Unit
		Rehabilitation	No Information	Parallel Bar Wheel Chair Overhead Frame Bicycle Exercise
		Tuberculosis	No Information	- Nil -
		Emergency	No Information	Operating Table Operating Light Diathermy Unit Defibrillator Infusion Pump Patient Bed
		Dispensary	No Information	Medical Refrigerator Distilling Apparatus Computer Prescription Counter

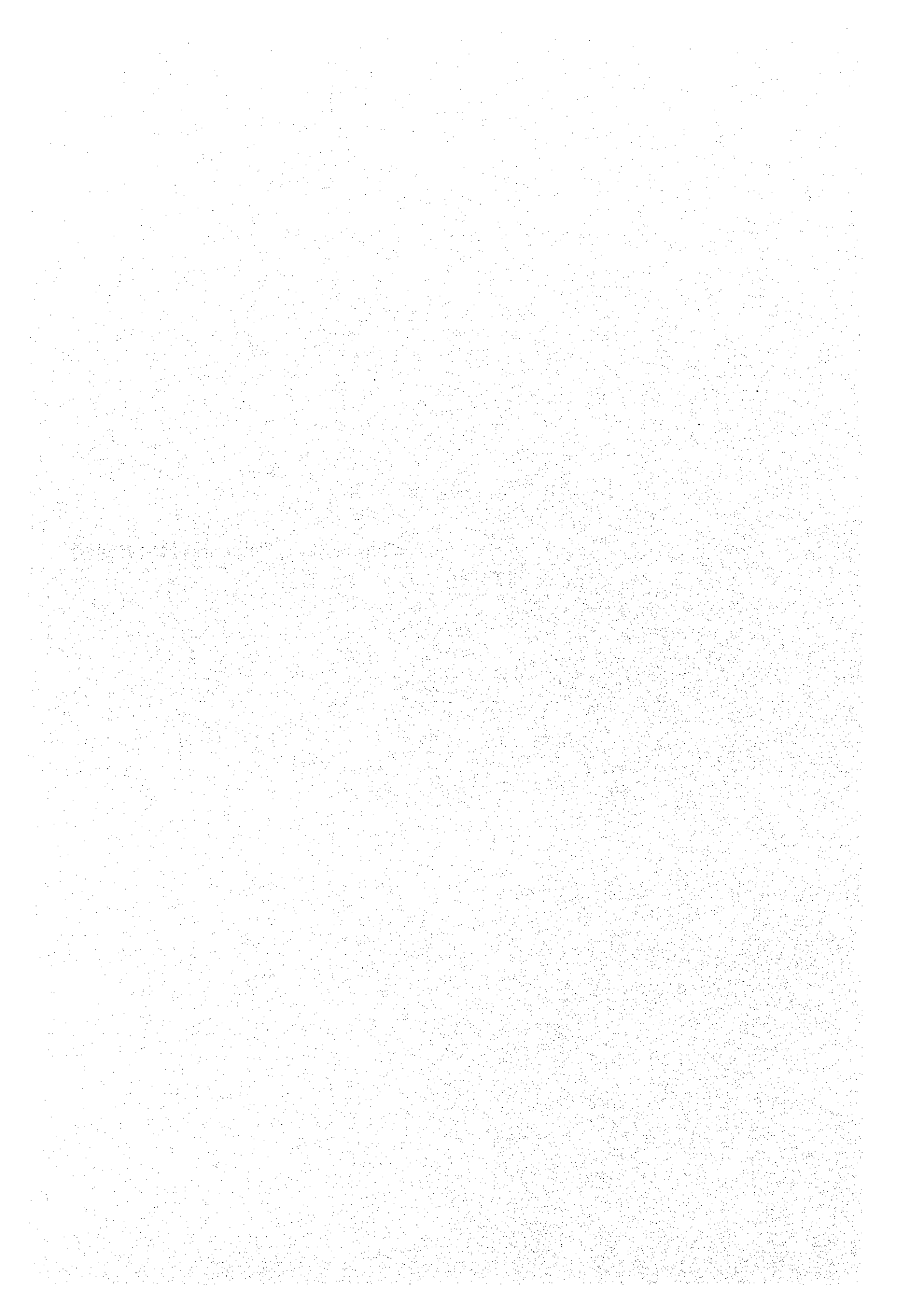
Table 1-1 (2) Comparison Table for Requested Equipment

NO.	DEPARTMENT	SECTION	REQUESTED BEFORE STUDY	MINUTES
2	OPERATION THEATER	Operation Theater	Operating Table Operating Light Diathermy Unit Suction Pump Instrument Set	Operating Table Operating Light Diathermy Unit Anesthesia Apparatus Suction Pump Instrument Set
		CSSD Central Sterilizing Supply Division	No Information	High Pressure Steam Sterilizer Ultrasound Sterilizer Scrub Station Tube Wwasher
		Post Operated	No Information	Recovery Bed I.V Hanger Stretcher Instrument Cabinet
		ICU	Ventilator Anesthesia Apparatus Patient Monitor Drying Oven Infusion Pump	Ventilator Defibrillator Patient Monitor ECG Infusion Pump
3	DELIVERY	Delivery Room	Delivery Table Vacuum Extractor Infusion Pump Infant Warmer	Delivery Table Operation Light Vacuum Extractor Infusion Pump Infant Warmer Patient Monitor
		Delivery Theater	Delivery Table Vacuum Extractor Infusion Pump Infant Warmer	- Nil -
		ICU for Infant	Neonetal Monitor Infant Ventilator Infusion Pump Syringe Pump	Patient Monitor Gatch Bed Patient Bed Treatment Table
		NICU	Infant Incubator Infant Warmer Phototherapy Unit Infusion Pump Instrument Cabinet	Infant Incubator Infant Warmer Phototherapy Unit Infusion Pump
		Nursary	No Information	Infant Bassinet Stand Instrument Table Instrument Cabinet
4	RADIOLOGY	Radiology	Angiography Apparatus Fluoroscopy apparatus General X-ray	CT Scanner Fluoroscopy apparatus General X-ray Mobile X-ray
		Physiological Examination	No Information	Ultrasound Scanner ECG Treatment Table
5	LABORATORY	Laboratory	Fluorescent Microscope Distilling Water Apparatus Deep Freezer Ultrasound Washer Spectrophotometer Blood Gas Analyzer	Binocular Microscope Fluorescent Microscope Distilling Water Apparatus Deep Freezer Electrolyte Analyzer Spectrophotometer Blood Gas Analyzer
6	IN PATIENT DEPARTMENTS	Internal Medicine Ward	No Information	Endoscopy System Treatment Table Gatch Bed Patient Bed
		Surgical Ward	No Information	Gatch Bed Patient Bed
		Obstetrics & Gynecology Ward	No Information	Gatch Bed Patient Bed
		Pediatric Ward	No Information	Gatch Bed Patient Bed
		Mortuary	No Information	Mortuary Refrigerator Stretcher Medicine Cabinet Trolley

Table 1-1 (3) Comparison Table for Requested Equipment

NO.	DEPARTMENT	SECTION	REQUESTED BEFORE STUDY	MINUTES
7	ADMINISTRATION DIVISION	Comitter Directr	No Information	Desk Chair Book Cabinet
		Personnel Office	No Information	Desk Chair Book Cabinet
		Technical Management	No Information	Desk Chair Book Cabinet
		Nursing Administration Office	No Information	Desk Chair Book Cabinet
		General Services	No Information	Desk Chair Book Cabinet
		Work shop	No Information	Desk Chair Book Cabinet
		Edication & Training	No Information	Camera Sride Projector
		Transportation	No Information	Mitsubishi Pick-up Ambulance Car

Chapter 2. Contents of the Project



CHAPTER 2 CONTENTS OF THE PROJECT

2-1 Objectives of the Project

This project is to be implemented for the purpose of improving the facilities of a medical institution playing a central role in health care not only in the city of Vientiane but also across the country within the framework of the country's national plans, including the "fourth five-year plan" and the "Strategies for the Development of the Lao Health System by the Year 2020."

This project is aimed primarily at rebuilding a municipal general hospital's facilities. As such, this project is required to contribute greatly to the improvement of the quality of health care services provided in the Vientiane Municipality and the neighboring prefectures. At the same time, it will be necessary to take into consideration the need to build facilities to be a credible model for health care services in the years to come, in light of the hospital's function to support medical institutions at lower levels in the country's present hierarchical health system as well as its function to serve as a teaching hospital for medical students and medical professionals. It is also necessary that this project help the hospital to operate and manage its facilities on its own and that this project promote transfer of necessary management know-how.

Thus this project is also aimed at providing the general hospital with all necessary basic items of equipment for the improvement of sanitary conditions within the hospital and thereby changing the hospital into one with facilities easy for both patients and its medical professionals to utilize and one where both patients and its medical professionals feel at ease.

2-2 Basic Concept of the Project

2-2-1 Guidelines for Cooperation

- ① To formulate a basic design which makes it possible for New Sethathirath Hospital to give full play to its functions in view of the fact that the hospital has an educational function (teaching hospital function) in addition to its functions as the central hospital in Laos and Vientiane, in particular.
- ② To work out a basic design which ensures the scale and content required to enable the new hospital to recover its original functions as a general hospital and as an institution of medical education on condition that the scale of the existing facilities and equipment of the hospital be maintained as it is.
- ③ To work out facility/equipment plans which ensures the new hospital to achieve and maintain technical and financial independence sustainable in the coming years taking into consideration the hospital's current number of medical professionals, their present technical level, the hospital's financial capability and the present availability of expendables and spare parts.
- ④ To select basic items of equipment which are compatible with the medical staff's present technical level, not those intended for advanced medical treatment.
- ⑤ To work out facility/equipment plans in which special attention is paid to facility/equipment operation and maintenance as well as to the need to save energy.
- ⑥ To develop minimum necessary infrastructures and utilities for this project with high priority for stability of such supply and exhaust systems.
- ⑦ To make full use of locally available construction methods and materials.
- ⑧ To consider procurement of necessary items of equipment in Japan and third countries in view of the fact that none of these items of equipment are manufactured in the country (priority is to be given to manufacturers who have well-established maintenance and management systems).
- ⑨ To make this project closely linked to a project-typed technical cooperation program titled "Project for the Improvement of Sethathirath Hospital" (scheduled to be started in October 1999).

2-2-2 Study of the Contents of the Request (Facilities)

(1) Contents of the Request

Table 2-1 shows the list of requested facilities to be relocated or newly built for the outpatient, central clinical, ward, training/administration and service departments under this project. All these facilities were confirmed by the preliminary study team.

Table 2-1 Requested Facilities

Out-patient			
Internal Medicine		Rehabilitation	
Surgery		Ophthalmology	
OB/GY		ENT	
Pediatrics		Urology and Dermatology	
MCH		Emergency (One Emergency Room and	
Dental		minor Operation Room)	
		Emergency Ward	(6beds)
Technical Block			
Pharmacy (One Dispensary with a storage)		Darkroom	1 Room
Hematological Examination		Ultrasound	1 Room
Bio Chemical Examination		Operation	2 Rooms
Microbiological Examination		Delivery	2Rooms(3Beds)
Pathological Examination		Labor	1 Room (4 Beds)
X-ray	2Rooms		
In-patient			
Internal Medicine		ICU (HCU) Adults	12 Beds
Surgery		Post Operation	8 Beds
OB/GY		Pediatrics	8 Beds
Pediatrics		Neonatal	6 Beds
Administration			
Lecture Room	1 Room (150Seats)	Administration	
Small Lecture Room	2 Rooms (each 40 Seats)		
Service, etc			
CSSD (Washing, Sterilizing, Packing)		Maintenance Workshop	each 1Room
Kitchen, Staff Dining	each 1 Room	Storage, Laundry, Mortuary	each 1Room

One of the important changes in the design conditions made as a result of the field study is the change in the shape of the project site. The project site as shown in an attachment to the Government of Laos's written request was enlarged to have an area of 12 ha. Of the total area, about 9 ha., exclusive of the spaces for relocation of current dwellers in the project site and for relocation of the village elementary school, is available for the new facilities of the hospital. In the center of the project site, the hospital's main buildings are to be built facing the arterial road running in front of the project site. The project facilities are surrounded by the circular road. The space surrounded by such roads is the area under this project.

A request for the following four facilities was made by the Lao side during the discussions between the study team and the Lao side.

① Establishment of a day-care center for the use of female staff members:

This facility is necessary because Sethathirath Hospital has one currently and many women pursuing intellectual occupations are badly in need of this facility.

② Installation of a new herb sauna room for use in traditional therapies:

③ Accommodations for patients' families:

Since the location of the new hospital is not in downtown areas, it is necessary to provide accommodations for patients' families coming to the hospital from distant places.

④ Installation of a CT scanner room:

This is a room where a CT scanner is to be installed.

⑤ Fence construction work:

The Lao side requested that the fence construction work should be included within the scope of work for this project.

(2) Study of the Contents of the Request

1) Clinical Department

The scale of each of the proposed facility for each clinical section was determined taking into consideration the minimum necessary functions required of a standard general hospital and the minimum necessary scale of each proposed facility. The calculations were conducted based on the projected number of patients for the year 2006. Fig. 2-2 shows the projected frequency of medical treatment at New Sethathirath Hospital. Based on the hospital's past record of medical treatment (for 1995, 1996 and 1997), the yearly rate of increase in the number of outpatients is estimated at 3.0 to 3.6 percent. Using 1997 as the base year, therefore, the target scale of each proposed facility was determined on the assumption that the annual number of outpatients for the year 2006 (10 years

from the base year, or five years from the opening of New Sethathirath Hospital) will be a 35 percent increase over 1997.

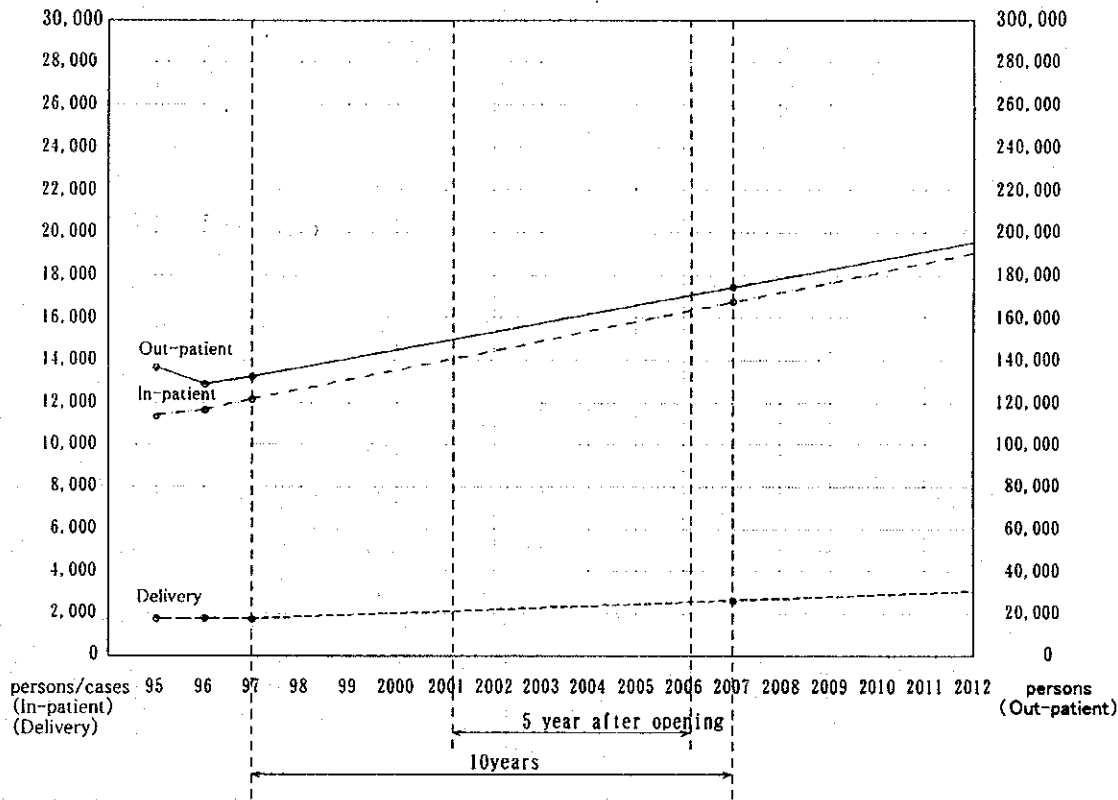


Table 2-2 Estimated Increase of Medical Treatment at New Sethathirath Hospital

Table 2-3 shows the results of calculation of the necessary number of rooms for the clinical department. The calculation was conducted on the basis of the above-mentioned premise.

Table 2-3 (1) Estimation of Required Number of Rooms (Clinical Departments)

OPD/ IPD	Department	Activities	1994-1995 No. of patient	1995-1996 No. of patient	1996-1997 No. of patient	2006 year (35% increase) (A)	No. of days/year (B)	
OPD	Int. Medicine	Consultation	33,145	35,968	40,510	54,689	250	
	Surgery	Consultation	8,031	8,569	7,752	10,465	250	
	Pediatrics	Consultation	14,255	14,120	14,566	19,664	250	
	Gynecology	Consultation	4,620	3,586	3,924	5,297	250	
	MCH	Prenatal consultation		9,071	13,589	11,820	15,957	250
		Prenatal counseling		40,224	24,214	25,152	33,955	250
		Post natal consultation		676	583	295	398	250
		Healthy child consultation		6,119	8,929	7,438	10,041	250
		Birth spacing(consultation)		5,183	4,164	3,119	4,211	250
		Birth spacing(IUD)		-	159	556	751	250
	Pneumology	Consultation	1,478	262	148	200	250	
	Dermatology	Consultation		460	788	1,064	250	
	Dental	Consul. & treat.(2 unit)	5,726	5,266	4,744	6,404	250	
	Ophthalmology	Consul. & treat.	4,067	4,448	5,197	7,016	250	
	Rihabilitation	Consul. & treat.	2,721	2,594	4,759	6,425	250	
	ENT	Consul. & treat.	1,647	2,547	2,642	3,567	250	
	Emergency	Consultation(Adult)		7,292	7,798	9,586	12,941	365
		Consultation(Child)		6,261	6,350	7,275	9,821	365
		Emergency treat.		4,210	-	3,208	4,331	365
Small surgery			4,033	531	2,511	3,390	365	
Radiology	Ultrasound diagnosis	1,777	2,738	3,357	4,532	250		
	EKG test	-	841	1,095	1,478	250		
	Radiology exam.	5,363	4,385	6,679	9,017	250		
Laboratory	No. of patient	54,073	51,746	62,275	84,071			
Operation	Major operation	363	298	384	518	250		
	Normal operation	487	347	414	559	250		
ICU	Adult	2,190	2,220	1,980	2,673	365		
	Post ope.	2,000	2,260	2,043	2,758	365		
Delivery	Delivery	1,491	1,527	1,549	2,091	365		
	Ob/Gy operation	278	254	189	255	365		
ICU	Pediatric	1,070	1,305	1,250	1,688	365		
	NICU	511	497	505	682	365		
IPD	Inter. Medicine	Exist 70 bed	3,002	3,374	3,769	5,088	365	
	Surgery	Exist 36 bed	3,350	3,381	3,257	4,397	365	
	Ob/Gy	Exist 31 bed	2,369	2,346	2,413	3,258	365	
	Pediatrics	Exist 29 bed	2,638	2,583	2,752	3,715	365	
	Total	11,359	11,684	12,191	16,458			

Table 2-3 (2) Estimation of Required Number of Rooms (Clinical Departments)

Time of diagnosis/tr eatment (min.)	No.of treat. /day (person/8hr) (C)	Name of rooms	No.of room (calculated value)	No.of room	Calculated measure
10	48	Examination	4.56	5	(A)÷(B)÷(C)
10	48	"	0.87	1	"
		Plaster rm.		1	
10	48	Examination	1.64	2	"
10	48	"	0.44	1	Includes Internal Exam.
		Total		10	
10	48	Examination	1.33	2	Common use with Birth spacing(consultation
		Internal Examination		1	Common use with Birth spacing(IUD)
3	160	Waiting hall	0.85	0	MCH activity,class room for mather
10	48	Examination	0.03	0	(A)÷(B)÷(C)
10	48	"	0.84	1	"
10	48	"	0.35	0	Common use with Prenatal consultation
20	24	Internal Examination	0.13	0	Common use with Prenatal consultation
		Total		4	
20	24	Examination	0.03	1	Planned 1 room for disinfection
10	48	"	0.09	1	Planned 1 room by request
		Total		2	
30	32	Exam.& Treat.	0.80	1	(A)÷(B)÷(C)
		Dental laboratory		1	Planned 1 room
15	32	Exam.& Treat.	0.88	1	(A)÷(B)÷(C)
		Examination		1	
20	24	"	1.07	1	"
15	32	"	0.45	1	(A)÷(B)÷(C)
		Total		6	
10	48	Examination	0.74	0	Use the treatment rm.
10	48	"	0.56	0	Use the treatment rm.
30	16	Treatment	0.74	1	Planned 1 room (2 beds)
10	48	Minor surgery	0.19	1	(A)÷(B)÷(C)
		Emergency bed		(7)	Planned 1 room (7beds)
		Total		3	
20	24	Physiology exam.	0.76	1	(A)÷(B)÷(C)
10	48	"	0.12	0	Included in physiology exam.
10	48	Radiology exam.	0.75	1	(A)÷(B)÷(C)
		Total		2	Darkroom, reading room is needed
		Heamatology		1	
		Biochemistry		1	
		Bacteriology		1	
		Pathology		1	
		syringing rm.		1	
		Darkroom		1	Room for flourescent microscope
		Total		6	
180	3	Major ope.	0.78	1	(A)÷(B)÷(C)
120	4	Normal ope.	0.56	1	"
		CSSD		1	Washing,sterilizing,storage room needed
		Total		3	
Average of length of stay (LOS)				No.of beds	
2.0			14.65	(14)	(A)÷(B) X LOS
1.0			7.56	(8)	"
60	4	Delivery room	1.43	1	(A)÷(B)÷(C)
60	4	Ob/Gy operation	0.17	1	
		Labor (4 bed)		1	4 bed
		New born (6 bed)		1	6 bed
		Total		4	
Average of length of stay (LOS)				No.of beds	
1.5			6.93	(8)	(A)÷(B) X LOS
3.0			5.60	(6)	"
5.0		Patient ward	69.70	70	"
3.5		"	42.16	42	"
3.0		"	26.77	27	"
3.5		"	35.63	36	"
Total No.of beds				175	Included ICU,PICU,NICU,etc

2) Training and Education Department

At Sethathirath Hospital, the training rooms are presently used very effectively. If Japan's technical cooperation program is started in earnest, the quality of the hospital's training and clinical education activities will be more improved. As shown in Table 2-4, the annual total number of training is 756 times · day (twice a day). As the training department's primary function is clinical education, both training and lectures can be given at the lecture hall (with a seating capacity of 100).

Table 2-4 Training and Educational Activities

	Trainees	Period	Courses/ Year	Total Training (course · day)
Staff	1) MDs	2 months	2courses	40days × 2courses=80
	2) MDs and Associate Doctors	1 day 2 days	40courses 2courses	1day × 40courses=40 2days × 2courses= 4
	3) Nurses	3 days	4courses	3days × 4courses=12
	4) Staffs of District hospital, Health center and Medical staff			
	Sub-Total		48courses	136 courses · day
Students	1) Medical	3 months	4 courses	60days × 4courses=240
	2) Medical	4 weeks	7 courses	20days × 7courses=140
	3) Dental	4 weeks	5 courses	20days × 5courses=100
	4) Pharmacy	2 months	2 courses	40days × 2courses= 80
	5) Midwives, High school	4 weeks	3 courses	20days × 3courses=60
	Sub-Total		21courses	620 courses · day
English conversation course		3 months	4 courses	
District hospital meetings		1 week	72 courses	
Total				756 courses · day

3) Administration/Service Department

The necessary number of staff members is as shown in the "Operation, Maintenance and Management Plan." At present Sethathirath Hospital has a staff of 291. Compared with the average number of staff members at Japanese hospitals of the same scale, the number of the hospital's staff members seems to be larger by about 70. If these staff members are redundant, it might be possible to post some of them to the new departments as shown in the Organization Chart of New Sethathirath Hospital.

Assuming that the new hospital will supply meals to 175 patients and 210 full-time staff members, the new hospital's kitchen will have to have the capacity of 400 meals supply at a time. However in consideration of the local eating customs--meals are also supplied at street side cafes and some patients do their own cooking, the proposed kitchen capacity is for 300 meals at a time. The kitchen also must be so designed that it may be expanded in keeping with the future increase in the number of beds.

Of the total number of the hospital's staff members, about 210 will be at work, excepting those who have just completed night duty. It is expected that 70 percent of them will take meals in three shifts at the dining hall. It seems, therefore, that a seating capacity of about 50 will be sufficient with three turnover of seats. Since it is expected that some of patients' families will also have meals at the dining hall, however, meals should also be served at the courtyard terrace and the lounge on the second floor.

A breakdown of the total necessary number of rooms for the administration/service department is as shown in Table 2-5.

Table 2-5 Rooms in the Administration/Service Department

Rooms	Remarks
Welfare	Doctor's room, Night duty rooms
Administration	Offices(Personnel, Tech. Management, Finance) Administration Nursing office Medical records administration
Locker's room	180 persons
Storage, Kitchen, Laundry, Security, Guard house	Office administration (Material control, Kitchen, Laundry, Transportation, Guard)
Workshop(Maintenance, Medical equipment)	Maintenance (Facility, Medical equipment, Cleaning)

(3) Results of the Study

Shown below is the outline of the facilities considered to be sufficient in light of the results of the above-mentioned "Study of the Contents of the Request."

Table 2-6 and Table 2-7 show the necessary number of rooms for each proposed facility and the scale of each facility, respectively.

Table 2-6 Principle Department and Rooms

Out-Patient	MCH	Exam. rm. × 3, Internal Medicine × 1	
	Pediatrics	Exam. rm. × 2	
	In-patient	Exam. rm. 5	
	Dental Clinic	Treat. rm. × 1	
	Ophthalmology	Treat. rm. × 1, Exam. rm. × 1	
	ENT	Exam. rm. × 1	
	Dermatology	Exam. rm. × 1	
	Rehabilitation	Treat. rm. × 1	
	Pneumology	Exam. rm. × 1	
	Gynecology	Exam. rm. × 1	
	Surgery	Exam. rm. × 1, Plaster rm. × 1	
	Emergency	Emergency treat. rm., Minor surgery, Emergency bed (7beds)	
	Technical Block	Operation theater	Operation
Post. op.			POST. OP (8beds)
ICU			ICU (14beds), PICU (8beds), NICU (6beds)
Delivery			Delivery × 1, Ob/Gy OP. × 1, Labor rm. (4beds), Nursery (6beds)
CSSD			CSSD
Central laboratory		Radiology	X-Ray
		Laboratory	Hematology, Biochemistry, Bacteriology, Pathology, Washing, Dark rm.
		Physiological Exam.	Physiology
Drug Management		Pharmaceutical	Pharmacy, Drug storage
In-patient		Internal Medicine	68beds
	Surgery	39beds (Include Emergency, POST. OP., ICU)	
	Ob/Gy	25beds (Include Labor rm.)	
	Pediatrics	43beds (Include Nursery, PICU, NICU)	
Administration	Organization management	Personnel	Security, Medical office, Medical Records, Office × 2, Doctor's rm., Library, Medical Records Administration Director's rm., Vice Director's rm. × 2, Day nursery
		Tech Man. Nursing Finance Office Ad.	
	Maintenance	Kitchen, Dining, Laundry, Storage, Guard house Workshop (Maintenance, Medical Equipment)	
Training	Training, Education	Lecture rm. (Approx. 100 seats)	

Table 2-7 Floor Area of the Facilities Used (m²)

	Rooms	Common and others	Total
Penthouse 2F	24.00	—	24.00
Penthouse 1F	24.00	—	24.00
2F	2,666.98	511.78	3,178.76
1F	3,440.32	776.31	4,216.63
Total	6,155.30	1,288.09	7,443.39
Main building			7,443.39
Attached buildings	Guard house (Includes Waiting house)		20.00
	Incinerator rm.		36.00
Total			7,499.39
Others	Sewage treatment plant, oil tank		(254,00)

The results of the Study on of the Lao side's request for additional facilities are shown below.

- ① Day-care center for the use of female staff members:
Sethathirath Hospital currently has a day-care center and the facility is utilized very effectively. It is therefore quite appropriate to establish a day-care center under this project.
- ② Herb sauna room for use in traditional therapies:
Sethathirath Hospital has no such sauna room at this moment. In accordance with the principle of maintaining the status quo of the hospital's existing facilities, therefore, this facility should be excluded from this project, despite of full understanding of such necessity to establish one.
- ③ Accommodations for patients' families:
It should be referred that it is necessary to secure accommodations for patients' families. In accordance with the above-mentioned principle of maintaining the status quo of the hospital's existing facilities, however, this facility should be excluded from this project. A space for this facility should be secured within the project site.

④ CT scanner room:

This facility should be excluded from this project. However, a space for this facility should be secured within the project site.

⑤ Fence construction work:

In accordance with the principle for the scope of work within the framework of grant aid cooperation program, the fence construction work is within the scope of work for the Lao side. As this work is already included in the project budget on the Lao side, this work is excluded from the scope of this project.

2-2-3 Study of the Contents of the Request (Medical Equipment)

(1) Problems and Solutions to be Taken to Resolve Them

Problem ①: There is some overlap between the requested items of equipment for the existing facilities and those to be procured under the future plan. In the Lao side's list, there is some overlap between the requested items of equipment for the existing facilities and those to be procured under the future plan. That confusion makes the requested list not fully consistent with those to be procured for the departments as shown in the present organization chart of the hospital or in those to be procured under the future plan. For this reason, the study team proposed the new organization chart for the future plan and the Lao side agreed to it. All the requested items of equipment were therefore examined on the assumption that they are to be procured for the departments as shown in the organization chart of the new hospital. (See "Fig. 2-8 Organization Chart of New Sethathirath Hospital.")

Solution ①: To reconfirm the present organizational structure and clearly distinguish between it and the one to be established under the future plan.

The hospital's present organizational structure and the main functions of each department within the framework of the present organizational structure were reconfirmed for the purpose of resolving the confusion in the Lao side's list of requested items of equipment. As a result, it has been found that there were redundancy and absence of some functions, which are essential to be a workable general hospital in both the present organizational structure and the future plan. The results of the effort to resolve the confusion in the present organizational structure and the future plan are shown as "Fig. 2-9 Present Organization Chart of Sethathirath Hospital" and "Fig. 2-8 Organization Chart of New Sethathirath Hospital."

Fig. 2-8 Organization Chart of New Sethathirath Hospital

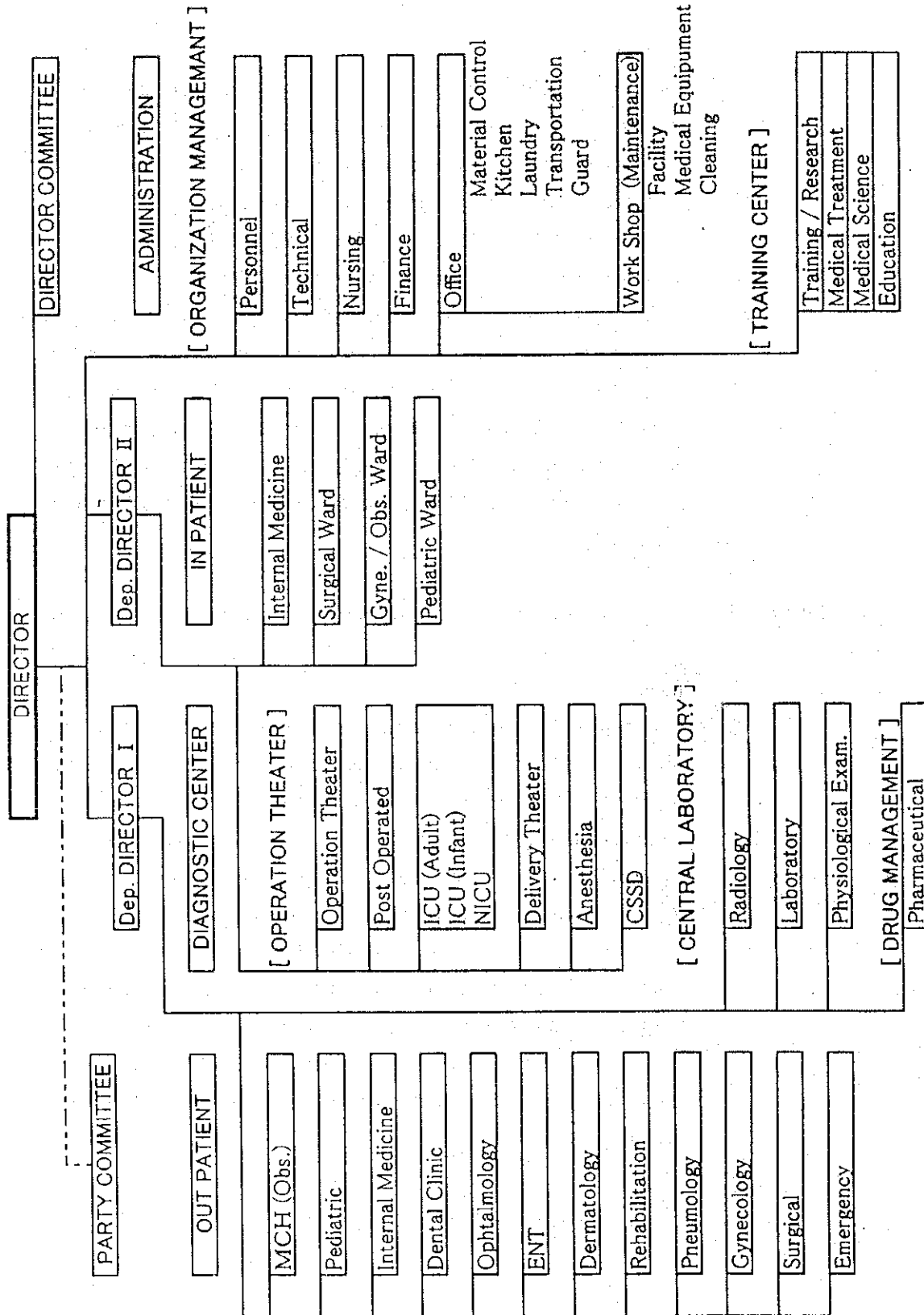
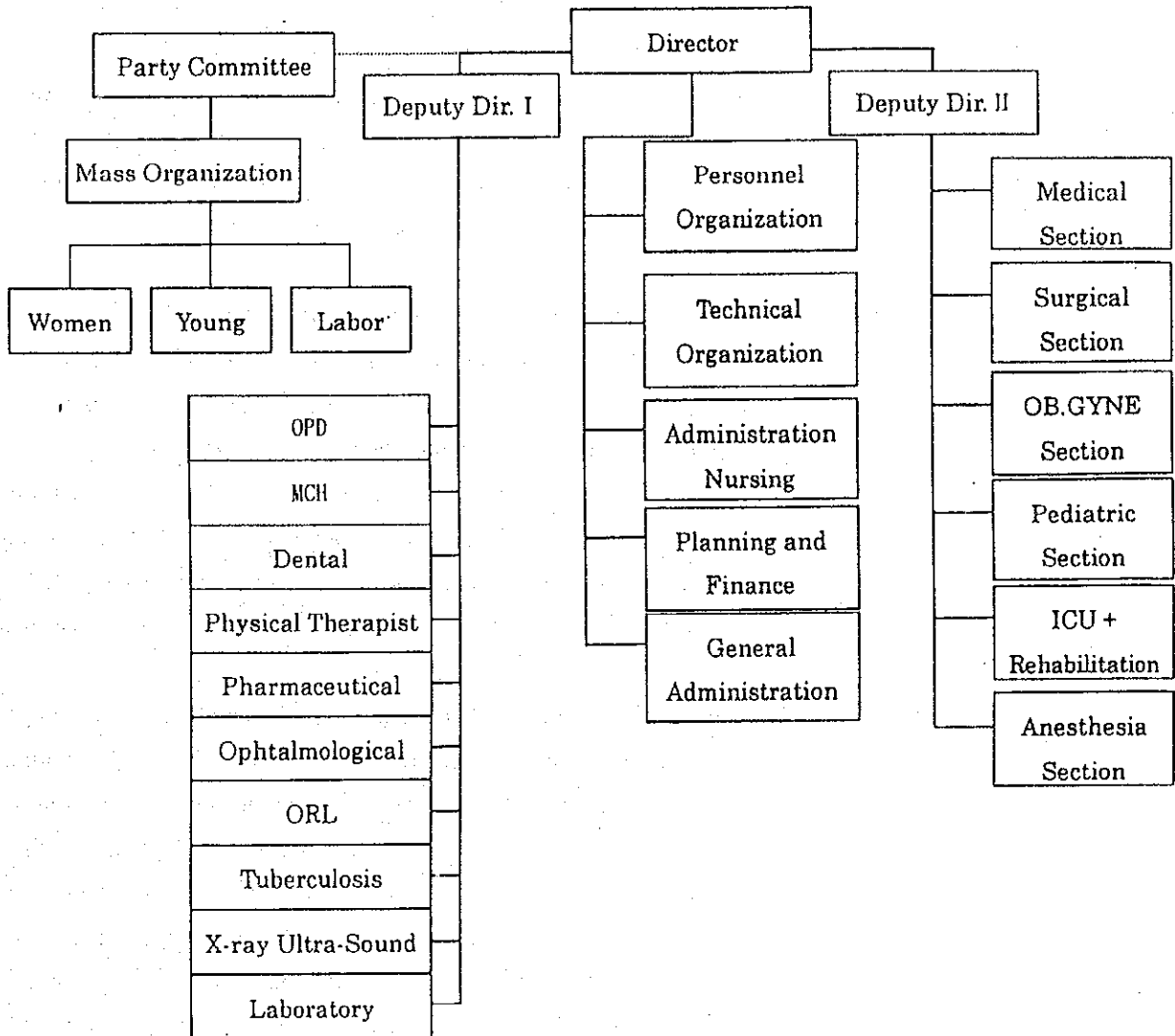


Fig. 2-9 Present Organization Chart of Sethathirath Hospital



Problem ②: There is some redundancy in the request due to insufficient interdepartmental coordination.

The Lao side's list of requested items of equipment represents just the collection of items of equipment requested by chiefs of the respective departments. There was a considerable redundancy of requested items of equipment, reflecting a lack of interdepartmental coordination. Due to the confusion of the future plan with the existing organizational structure, it took a hard time to identify and verify the requested items of equipment.

Solution ②: To reexamine the contents of the request after confirming the existing organizational structure and the problems concerning the future plan. A proper equipment plan is to be worked out after reconfirming the existing organizational structure and clearly distinguishing between it and the future plan. The requested list of items of equipment contains unnecessary or inappropriate items of equipment, overlap of items of equipment and those which are questionable in terms of layout. These problems have to be resolved in the equipment plan.

Problem ③: Included in the requested list are many items of advanced equipment which are questionable in light of the hospital's equipment maintenance and management system and budgetary appropriations. The requested items of equipment include such items as the CT scanner (for the radiology department), the electroencephalograph (for the physiological laboratory) and the endoscope system (for the internal ward department). At this moment the hospital is not prepared to use these advanced items of equipment in terms of the present technical level, and staffing of specialists as well as budgetary appropriations for the operation of these items of equipment.

Solution ③: To work out an equipment plan consistent with the hospital's present equipment operation, maintenance and management system and budgetary appropriations.

It will be possible to make the basic design more feasible by working out an equipment plan consistent with the hospital's present equipment operation, maintenance and management system and budgetary appropriations. For this reason, those items requested by

the departments desirous to introduce new items of equipment should be excluded from this project. In principle, only items of equipment to replace the existing ones or to replenish the supply of the existing ones should be included in this project.

However, those items of equipment which only require some improvement in the present equipment operation, maintenance and management system or budgetary appropriations will be introduced after studies item by item for necessity and propriety. Their relationship with the technical cooperation program will also be taken into consideration.

Problem ④: The requested items of equipment include those which have little relevance to medical care activities.

The pickup truck, the station wagon, the car with four-wheel drive, the director's chair and the reception room furniture for the administration department are judged not to be necessary for carrying out medical care activities.

Solution ④: To select necessary items of equipment in accordance with the basic principle of selection of items of equipment.

In accordance with the basic principle of selection of items of equipment, the pickup truck, the station wagon and the over specified furniture and fixtures were excluded from this project. The consultation desk/chair and the examination table are included in this project because they are indispensable in conducting medical examination and treatment.

(2) Some of Requested Items of Equipment for Special Remarks

The newly presented list of requested items of equipment include such high-grade items as the CT scanner, the endoscope system and the electroencephalograph. The following criteria apply to the selection these items of equipment.

① CT Scanner

In light of the local disease structure, the technical level of the staff, the equipment operation, maintenance / management system and budgetary appropriations currently seen at the hospital as well as the scarcity of manufacturers' local distributors, this item of equipment should be excluded from this project because it is judged not to be urgently necessary to procure this

equipment. However, a space for this equipment should be secured within the project site.

② Vehicles

The pickup truck, the car with four-wheel drive, the station wagon and the ambulance car are included in the requested items of equipment. With the only exception of the ambulance car, all these items of equipment have little relevance to medical care activities. The ambulance now in use was procured with the financial aid of the Government of Japan and is still functioning satisfactorily.

The ambulance goes out on mission four to five times a day on the average. The hospital has three drivers. They are working on 24 hours shift. At present, the ambulance car is used for transporting not only patients but also the hospital's medical doctors.

The requested ambulance car is to replace the existing one. But this item of equipment should be excluded from this project in view of the fact that the existing one is still serviceable, that the city of Vientiane has no well-established emergency medical care system and that the existing one is used also for purposes other than transportation of patients.

③ Electroencephalograph

The electroencephalograph is helpful in diagnosing infantile epilepsy. However, it seems desirable not to include this item of equipment in the equipment plan in view of the fact that at present the hospital has no equipment maintenance staff with an expertise of the operation of this equipment, that although this equipment requires frequent maintenance and inspection there are no local distributors of this equipment in the city of Vientiane and that it is difficult to procure expendables and spare parts in the country.

④ Dissecting Table

No dissecting equipment is installed in the hospital's existing facilities. The initial equipment plan included only a refrigerator to store remains of the deceased for use in the mortuary. However, the Lao side requested that a dissecting table be procured under this project for the reason that "when a pregnant woman dies, it is impossible to bury her body unless it is separated from her unborn baby." In view of the fact that dissection is conducted at the mortuary, a simple dissecting table, a drain ditch and a faucet are to be included in the equipment plan.

⑤ **Other Items of Equipment**

Other necessary items of equipment are to be selected in accordance with the criteria of selection of items of equipment agreed to in the minutes of discussions. In principle, only those for the replacement or replenishment of the supply of the existing ones are to be selected.

(3) **Study of the Requested Equipment**

Table 2-10 shows the process of analysis for each items of the requested equipment.

Table 2-10 (1) Process of Analysis for Requested Equipment

Ref. No.	Minutes NO.	SECTION	ITEM NO.	EQUIPMENT	Req. Q'ty	Minutes	Equipment Plan	Criteria	Agency of Manufacture	Reference
1	1	1. Physiological Examination	A-1-1	Electroencephalograph, 18ch	1	0	0	2-(1)	*	Cannot be maintained
2	2	1. Physiological Examination	A-1-2	Electrocardiograph, 3ch	1	0	0	1-(3)	*	
4	4	1. Physiological Examination	A-1-4	Autopneumometer	1	0	0	1-(3)	*	
6	6	1. Physiological Examination	A-1-6	Ultrasound Diagnostic Equipment in Digestive System	1	0	0	AD2-(6)	*	Continuous use of existing unit
7	7	1. Physiological Examination	A-1-7	Solution Bottle Support Stand	2	0	0	2-(2)	*	Not frequent use
8	8	1. Physiological Examination	A-1-8	Examining Table	2	0	0	1-(2)	*	
9	9	1. Physiological Examination	A-1-9	Instrument Table	2	0	0	1-(2)	*	
10	10	1. Physiological Examination	A-1-10	Instrument Cabinet	2	0	0	1-(2)	*	
11	11	1. Physiological Examination	A-1-11	Examination Instruments	2	0	0	2-(2)	*	Included in instrument set
12	12	1. Physiological Examination	A-1-12	Waste Receptacle	2	0	0	AD2-(6)	*	Substituted by existing equipment
15	13	1. Physiological Examination	A-1-13	Examining Light	2	0	0	2-(2)	*	Apply by existing unit
14	14	1. Physiological Examination	A-1-14	Chair	2	0	0	1-(3)	*	
17	17	1. Physiological Examination	A-1-17	Doctor Consulting Desk	2	0	0	1-(3)	*	
18	18	1. Physiological Examination	A-1-18	Doctor Chair	2	0	0	1-(3)	*	
20	20	2. Dental Clinic	A-2-1	X-ray Unit Panoramic Set	1	0	0	2-(5)	*	Apply general dental X-ray unit
21	21	2. Dental Clinic	A-2-2	Dental Chair Unit	2	0	0	1-(3)	*	
22	22	2. Dental Clinic	A-2-3	Laboratory Micromotor	1	0	0	1-(3)	*	
23	23	2. Dental Clinic	A-2-4	Operating Stool	2	0	0	1-(3)	*	
29	29	2. Dental Clinic	A-2-10	Ultrasonic Scaler with Endodontic Function	1	0	0	2-(1)	*	Not frequent use
30	30	2. Dental Clinic	A-2-12	Dental Laboratory Engine	1	0	0	1-(3)	*	
31	30	2. Dental Clinic	A-2-11	Hydraulic Flask Press	1	0	0	1-(3)	*	
32	32	2. Dental Clinic	A-2-13	Model Trimmer	1	0	0	1-(3)	*	
33	33	2. Dental Clinic	A-2-14	Casting Machine Centrifugal	1	0	0	1-(3)	*	
38	38	2. Dental Clinic	A-2-19	Vacuum Mixing Machine	1	0	0	2-(2)	*	Not frequent use
39	39	2. Dental Clinic	A-2-20	Trimmer	1	0	0	2-(9)	*	Duplicated with A-2-13
41	41	2. Dental Clinic	A-2-22	Mobile Clinic Chair	2	0	0	2-(9)	*	Duplicated with A-2-23
43	43	2. Dental Clinic	A-2-24	Autoclave (Middle Size)	1	0	0	1-(1)	*	
44	44	2. Dental Clinic	A-2-25	Dental Treatment Set	1	0	0	1-(1)	*	
45	45	2. Dental Clinic	A-2-26	Laboratory Lathe with Cover	1	0	0	1-(3)	*	
67	67	2. Dental Clinic	A-2-32	Doctor Consulting Desk	2	0	0	1-(3)	*	
68	68	2. Dental Clinic	A-2-33	Doctor Chair	2	0	0	1-(3)	*	
69	69	2. Dental Clinic	A-2-34	Refrigerator	1	0	0	2-(9)	*	Common use in treatment room
70	70	2. Dental Clinic	A-2-36	Vibrator	1	0	0	2-(2)	*	Not much needed
71	70	2. Dental Clinic	A-2-35	Furnace	1	0	0	2-(9)	*	Duplicated with A-2-14
72	72	2. Dental Clinic	A-2-37	Dental Mixer for Impression Material	1	0	0	2-(3)	*	Not frequent use
73	73	2. Dental Clinic	A-2-38	Articulators	1	0	0	2-(9)	*	Make groups in instrument set
74	71	2. Dental Clinic	A-2-39	Flask	5	0	0	2-(9)	*	Duplicated with A-2-11
75	75	2. Dental Clinic	A-2-40	Amalgam Engine	1	0	0	2-(9)	*	Duplicated with A-2-12
100	ADD	2. Dental Clinic	A-2-65	Instrument set for dental	1	0	0	1-(3)	*	
103	102	3. Ophthalmology Clinic	A-3-3	Ophthalmic Operating Table	1	0	0	2-(5)	*	Not frequent use
105	104	3. Ophthalmology Clinic	A-3-5	Electric Ophthalmometer	1	0	0	2-(2)	*	Not frequent use
106	105	3. Ophthalmology Clinic	A-3-6	Trial Lens Set	1	0	0	1-(3)	*	
124	124	3. Ophthalmology Clinic	A-3-12	Cryosurgery Unit	1	0	0	2-(1)	*	Not frequent use
125	121	3. Ophthalmology Clinic	A-3-13	Diathermy Unit	1	0	0	2-(2)	*	Not frequent use
126	125	3. Ophthalmology Clinic	A-3-14	Mayo Instrument Table	1	0	0	2-(2)	*	Allocated in ope. room
127	126	3. Ophthalmology Clinic	A-3-15	Instrument Table	1	0	0	2-(2)	*	Allocated in ope. room
128	127	3. Ophthalmology Clinic	A-3-16	Dressing Drum Stand	1	0	0	2-(2)	*	Allocated in CSSD
129	128	3. Ophthalmology Clinic	A-3-17	Instrument Cabinet	2	0	0	1-(3)	*	
130	129	3. Ophthalmology Clinic	A-3-18	Kick Bucket	1	0	0	2-(2)	*	Allocated in ope. room
132	131	3. Ophthalmology Clinic	A-3-20	Waste Receptacle	1	0	0	1-(3)	*	
133	132	3. Ophthalmology Clinic	A-3-21	Doctor Consulting Desk	1	0	0	1-(3)	*	
151	133	3. Ophthalmology Clinic	A-3-22	Doctor Chair	1	0	0	1-(3)	*	
135	134	3. Ophthalmology Clinic	A-3-23	Chair	1	0	0	2-(9)	*	Not needed
136	135	3. Ophthalmology Clinic	A-3-24	Patient Stool	3	0	0	1-(3)	*	
137	136	3. Ophthalmology Clinic	A-3-25	Operator Chair	1	0	0	2-(2)	*	Allocated in ope. room
139	138	3. Ophthalmology Clinic	A-3-27	Lensometer	1	0	0	1-(3)	*	
141	140	3. Ophthalmology Clinic	A-3-29	Ophthalmoscope Binocular Indirect	1	0	0	2-(9)	*	Included in instrument set
142	141	3. Ophthalmology Clinic	A-3-30	Ophthalmoscope Direct	3	0	0	2-(9)	*	Included in instrument set
143	142	3. Ophthalmology Clinic	A-3-31	Syringe Pump	1	0	0	2-(2)	*	Allocated in ope. room
145	144	3. Ophthalmology Clinic	A-3-33	Keratometer (Banc and Lomb)	1	0	0	2-(3)	*	Not much needed
146	145	3. Ophthalmology Clinic	A-3-34	Coniokens (Contact Lens)	1	0	0	2-(2)	*	Not much needed
148	147	3. Ophthalmology Clinic	A-3-35	Schiotz Tonometer	1	0	0	2-(2)	*	Not much needed
149	ADD	3. Ophthalmology Clinic	A-3-37	Ultrasound diagnosis unit for ophthalmology	1	0	0	2-(1)	*	Not much needed
150	ADD	3. Ophthalmology Clinic	A-3-38	Instrument set	1	0	0	1-(3)	*	
151	148	4. ENT Clinic	A-4-1	ENT Treatment Unit, Single Type	1	0	0	1-(4)	*	
152	149	4. ENT Clinic	A-4-2	ENT Treatment Chair	1	0	0	1-(4)	*	
153	150	4. ENT Clinic	A-4-3	Film Illuminator	1	0	0	1-(3)	*	
151	151	4. ENT Clinic	A-4-4	Instrument Cabinet	1	0	0	1-(3)	*	
155	152	4. ENT Clinic	A-4-5	Exam and Treat Instrument Set	1	0	0	2-(9)	*	Included in instrument set
156	153	4. ENT Clinic	A-4-6	Waste Receptacle	2	0	0	1-(3)	*	
158	155	4. ENT Clinic	A-4-8	Sound-proof Chamber for Hearing Test	1	0	0	2-(1)	*	Not frequent use
159	156	4. ENT Clinic	A-4-9	Audiometer	1	0	0	2-(2)	*	Not much needed
160	157	4. ENT Clinic	A-4-10	Infant Audiometer	1	0	0	2-(2)	*	Not much needed
161	158	4. ENT Clinic	A-4-11	Treatment Table	1	0	0	2-(5)	*	Replaced to ENT unit
162	159	4. ENT Clinic	A-4-12	Nebulizer Unit	1	0	0	2-(9)	*	Included in ENT unit
163	160	4. ENT Clinic	A-4-13	Suction Unit	1	0	0	2-(9)	*	Included in ENT unit
164	161	4. ENT Clinic	A-4-14	Instrument Table	1	0	0	1-(3)	*	
165	162	4. ENT Clinic	A-4-15	Doctor Consulting Desk	1	0	0	1-(3)	*	
166	163	4. ENT Clinic	A-4-16	Doctor Chair	1	0	0	1-(3)	*	
167	164	4. ENT Clinic	A-4-17	Patient Stool	3	0	0	1-(3)	*	
168	165	4. ENT Clinic	A-4-18	Otoscope Examination	1	0	0	2-(9)	*	Included in instrument set
169	166	4. ENT Clinic	A-4-19	Electro Cutting	1	0	0	2-(9)	*	Allocated in ope. room

Table 2-10 (2) Process of Analysis for Requested Equipment

Ref.No.	Minutes NO.	SECTION	ITEM NO.	EQUIPMENT	Req. Q'ty	Minutes	Equipment Plan	Criteria	Agency of Manufacturer	Reference
172	169	4. ENT Clinic	A-4-22	Sinoscope	1	0	0	2-(3)		Not much needed
179	176	4. ENT Clinic	A-4-29	Chair for Tonsillectomy	1	0	0	2-(2)		Not much needed
180	177	4. ENT Clinic	A-4-30	Head Light (Binocular)	1	0	0	2-(9)		Included in ENT unit
182	179	4. ENT Clinic	A-4-32	Microscope for Microscope of the Ear	1	0	0	2-(9)		Included in instrument set
185	ADD	4. ENT Clinic	A-4-36	Instrument set	1	0	0	1-(3)		
193	189	5. Rehabilitation	A-5-7	Parallel Bar	1	0	0	1-(3)		
196	191	5. Rehabilitation	A-5-12	Wheel Chair	1	0	0	1-(3)		
201	197	5. Rehabilitation	A-5-15	Massage Bed	1	0	0	1-(3)		
202	198	5. Rehabilitation	A-5-16	Overhead Frame Set	1	0	0	1-(4)		
205	201	5. Rehabilitation	A-5-19	Bicycle Exercise	1	0	0	1-(4)		
213	209	6. Tuberculosis	A-6-1	Examining and Treatment Table	2	0	0	1-(3)	*	
216	211	5. Rehabilitation	A-5-29	Walkerette	1	0	0	1-(6)		
218	213	5. Rehabilitation	A-5-31	Jinnaka's Gonioscoper	1	0	0	1-(3)		
224	220	6. Tuberculosis	A-6-3	Instrument Table	1	0	0	1-(3)		
225	220	6. Tuberculosis	A-6-2	Film Illuminator	1	0	0	1-(3)	*	
226	222	6. Tuberculosis	A-6-4	Instrument Cabinet	1	0	0	1-(3)		
227	223	6. Tuberculosis	A-6-5	Medicine Cabinet	1	0	0	2-(9)	*	Common use with instrument cabinet
228	224	6. Tuberculosis	A-6-6	Exam and Treat Instrument Set	1	0	0	1-(3)		
229	225	6. Tuberculosis	A-6-7	Waste Receptacle	2	0	0	1-(3)		
230	226	6. Tuberculosis	A-6-8	Refrigerator	1	0	0	2-(9)		Common use in treatment room
231	227	6. Tuberculosis	A-6-9	Examining Light	1	0	0	1-(4)	*	
232	228	6. Tuberculosis	A-6-10	Automatic Weight and Height Scale	1	0	0	2-(9)		Common use in treatment room
233	229	6. Tuberculosis	A-6-11	Doctor Consulting Desk	1	0	0	1-(3)		
234	230	6. Tuberculosis	A-6-13	Patient Stool	2	0	0	1-(3)		
235	230	6. Tuberculosis	A-6-12	Doctor Chair	1	0	0	1-(3)		
236	231	6. Tuberculosis	A-6-15	IDR's Room (Bed)	1	0	0	2-(9)	*	Common use with other dept.
239	235	6. Tuberculosis	A-6-17	Cupboard	1	0	0	2-(9)		Common use with instrument cabinet
240	236	7. Dispensary	A-7-1	Electronic Analytical Balance	1	0	0	2-(9)		Unite with pharmacy
241	237	7. Dispensary	A-7-2	Medicine Refrigerator	2	0	0	2-(9)		Unite with pharmacy
242	238	7. Dispensary	A-7-3	Automatic Still Distill	1	0	0	2-(9)		Unite with pharmacy
243	239	7. Dispensary	A-7-4	Pharmacy Equipment Set	1	0	0	2-(9)		Unite with pharmacy
244	240	7. Dispensary	A-7-5	Personal Computer Set	1	0	0	2-(8)		Unite with pharmacy
245	241	7. Dispensary	A-7-6	Trolley	1	0	0	AD2-(6)		Unite with pharmacy
246	242	7. Dispensary	A-7-7	Prescription Counter	2	0	0	AD2-(6)		Unite with pharmacy
247	243	7. Dispensary	A-7-8	Medicine Cabinet	2	0	0	2-(9)	*	Unite with pharmacy
248	244	7. Dispensary	A-7-9	Inspection Counter	1	0	0	AD2-(6)		Unite with pharmacy
249	245	7. Dispensary	A-7-10	Narcotic Safe	1	0	0	AD2-(6)		Unite with pharmacy
250	246	8. Radiology	A-8-1	Ultrasound Set	1	0	0	2-(1)	*	Use existing unit
251	247	8. Radiology	A-8-2	SCT 5000 HI Set	1	0	0	2-(1)	*	Not suitable
252	248	8. Radiology	A-8-3	X-ray Film Processor	1	0	0	1-(4)	*	Replace with manual tank
253	249	8. Radiology	A-8-4	Film Loading Table	1	0	0	1-(4)	*	
254	250	8. Radiology	A-8-5	Cassette Pass Box	2	0	0	1-(3)	*	
255	251	8. Radiology	A-8-6	Film Illuminator	2	0	0	1-(4)	*	
256	252	8. Radiology	A-8-7	X-ray Accessories Set	1	0	0	1-(3)	*	
258	254	8. Radiology	A-8-9	Chair	4	0	0	1-(2)		
259	255	8. Radiology	A-8-10	Business Desk	1	0	0	1-(2)		
264	260	8. Radiology	A-8-15	X-Ray Fluoroscopy Table	2	0	0	2-(9)	*	Common use with general X-ray
265	261	8. Radiology	A-8-16	Surgical X-ray (C-Arm)	1	0	0	1-(5)	*	
268	264	9. Gyneco and Obstetrics Clinic	A-9-1	Colposcope	1	0	0	2-(2)	*	Use existing unit
269	265	9. Gyneco and Obstetrics Clinic	A-9-2	Kymographic Hydrotubator	1	0	0	2-(3)	*	Not frequent use
270	266	9. Gyneco and Obstetrics Clinic	A-9-3	Ultrasound Linear Scanner	1	0	0	1-(5)	*	
271	267	9. Gyneco and Obstetrics Clinic	A-9-4	Clinical Examination Table	2	0	0	1-(4)	*	
273	269	9. Gyneco and Obstetrics Clinic	A-9-6	Cryosurgery Unit	1	0	0	2-(1)	*	Not frequent use
274	270	9. Gyneco and Obstetrics Clinic	A-9-7	Film Illuminator	2	0	0	1-(3)	*	
275	271	9. Gyneco and Obstetrics Clinic	A-9-8	Instrument Table	3	0	0	1-(3)		
276	272	9. Gyneco and Obstetrics Clinic	A-9-9	Instrument Cabinet	3	0	0	1-(3)		
277	273	9. Gyneco and Obstetrics Clinic	A-9-10	Irrigator Stand	3	0	0	2-(9)		Included with A-9-4
278	274	9. Gyneco and Obstetrics Clinic	A-9-11	Medicine Cabinet	2	0	0	2-(9)	*	Common use with instrument cabinet
279	275	9. Gyneco and Obstetrics Clinic	A-9-12	Gynecological Examining Unit	2	0	0	1-(3)	*	
281	277	9. Gyneco and Obstetrics Clinic	A-9-14	Doppler Sound Detector	2	0	0	2-(2)	*	Not much needed
282	278	9. Gyneco and Obstetrics Clinic	A-9-15	Examining Light	2	0	0	1-(3)	*	
283	279	9. Gyneco and Obstetrics Clinic	A-9-16	Foot Stool	2	0	0	1-(3)		
284	280	9. Gyneco and Obstetrics Clinic	A-9-17	Clothes Basket	5	0	0	1-(3)		
285	281	9. Gyneco and Obstetrics Clinic	A-9-18	Waste Receptacle	5	0	0	1-(3)		
286	282	9. Gyneco and Obstetrics Clinic	A-9-19	Automatic Weight and Height Scale	2	0	0	2-(9)		Common use with other dept.
287	283	9. Gyneco and Obstetrics Clinic	A-9-20	Refrigerator	1	0	0	2-(9)		Allocated in treatment room
289	285	9. Gyneco and Obstetrics Clinic	A-9-22	Doctor Consulting Desk	3	0	0	1-(3)		
290	286	9. Gyneco and Obstetrics Clinic	A-9-23	Doctor Chair	3	0	0	1-(3)		
291	287	9. Gyneco and Obstetrics Clinic	A-9-24	Operator Stool	3	0	0	2-(5)	*	Not much needed
292	288	9. Gyneco and Obstetrics Clinic	A-9-25	Patient Stool	3	0	0	1-(3)		
307	303	9. Gyneco and Obstetrics Clinic	A-9-40	Dryer Gloves	1	0	0	2-(2)		Not much needed
308	304	9. Gyneco and Obstetrics Clinic	A-9-41	Suction	1	0	0	2-(9)	*	Included with A-9-12
312	308	9. Gyneco and Obstetrics Clinic	A-9-44	Gynecology Examining Table	3	0	0	1-(6)	*	
313	ADD	9. Gyneco and Obstetrics Clinic	A-9-45	Instrument set	1	0	0	1-(3)		
314	ADD	9. Gyneco and Obstetrics Clinic	A-9-46	Otoscope	1	0	0	2-(9)		Included in instrument set
315	ADD	9. Gyneco and Obstetrics Clinic	A-9-47	pH meter	1	0	0	1-(3)		
317	309	10. MCH (Mother & Child Health Care)	A-10-1	Examining Table	2	0	0	1-(3)	*	
318	310	10. MCH (Mother & Child Health Care)	A-10-2	Consulting Desk	2	0	0	1-(3)		
320	312	10. MCH (Mother & Child Health Care)	A-10-4	Instrument Cabinet	1	0	0	2-(9)		Common use in treatment room
321	313	10. MCH (Mother & Child Health Care)	A-10-5	Examining Instrument Set	2	0	0	1-(3)		
322	311	10. MCH (Mother & Child Health Care)	A-10-6	Examining Light	2	0	0	1-(3)	*	
323	315	10. MCH (Mother & Child Health Care)	A-10-7	Waste Receptacle	2	0	0	1-(3)		

Table 2-10 (3) Process of Analysis for Requested Equipment

Ref.No	Minutes NO.	SECTION	ITEM NO.	EQUIPMENT	Req. Q't y	Minutes	Equipment Plan	Criteria	Agency of Manufacturer	Reference
324	316	10. MCH (Mother & Child Health Care)	A-10-8	Infant Dressing Table	2	0	0	2-(9)	*	Common use in treatment room
325	317	10. MCH (Mother & Child Health Care)	A-10-9	Automatic Infant Scale	2	0	0	2-(9)	*	Common use in treatment room
326	318	10. MCH (Mother & Child Health Care)	A-10-10	Chair	5	0	0	1-(3)	*	
329	321	10. MCH (Mother & Child Health Care)	A-10-13-1	Bed for consultation	3	0	0	1-(3)	*	
330	322	10. MCH (Mother & Child Health Care)	A-10-13-2	Instrument cabinet	1	0	0	1-(3)	*	
331	323	10. MCH (Mother & Child Health Care)	A-10-13-3	Bed side table	3	0	0	2-(2)	*	Planned in patient ward
332	324	10. MCH (Mother & Child Health Care)	A-10-13-4	Chair	3	0	0	1-(3)	*	
333	325	10. MCH (Mother & Child Health Care)	A-10-13-5	Waste receptacle	1	0	0	1-(3)	*	
334	326	10. MCH (Mother & Child Health Care)	A-10-13-6	Ultrasound capture focus unit	1	0	0	2-(3)	*	Apply by ultrasound unit
335	327	10. MCH (Mother & Child Health Care)	A-10-13-7	Hand basin	2	0	0	1-(3)	*	
338	330	10. MCH (Mother & Child Health Care)	A-10-13-10	Weighing scale	1	0	0	2-(9)	*	Common use in OPD
339	331	10. MCH (Mother & Child Health Care)	A-10-14-1	Bed for consulting	2	0	0	1-(3)	*	
340	332	10. MCH (Mother & Child Health Care)	A-10-14-2	Chair	2	0	0	1-(3)	*	
341	333	10. MCH (Mother & Child Health Care)	A-10-14-3	Refrigerator	1	0	0	2-(9)	*	Common use in treatment room
342	334	10. MCH (Mother & Child Health Care)	A-10-14-4	Instrument cabinet	1	0	0	2-(9)	*	Common use in treatment room
343	335	10. MCH (Mother & Child Health Care)	A-10-14-5	Tongue depressor	5	0	0	2-(2)	*	Not much needed
344	336	10. MCH (Mother & Child Health Care)	A-10-14-6	Hand basin	1	0	0	1-(3)	*	
345	337	10. MCH (Mother & Child Health Care)	A-10-14-7	Flash light	2	0	0	1-(3)	*	
348	340	10. MCH (Mother & Child Health Care)	A-10-14-10	Stethoscope	2	0	0	2-(9)	*	Common use in treatment room
349	341	10. MCH (Mother & Child Health Care)	A-10-15-1	Bed for baby	1	0	0	1-(3)	*	
350	342	10. MCH (Mother & Child Health Care)	A-10-15-2	Gynecology examining table	1	0	0	1-(3)	*	
351	343	10. MCH (Mother & Child Health Care)	A-10-15-3	Chair	1	0	0	1-(3)	*	
352	344	10. MCH (Mother & Child Health Care)	A-10-15-4	Waste receptacle	1	0	0	1-(3)	*	
353	345	10. MCH (Mother & Child Health Care)	A-10-15-5	Instrument cabinet	1	0	0	1-(3)	*	
354	346	10. MCH (Mother & Child Health Care)	A-10-15-6	Bed side table	1	0	0	2-(2)	*	Planned in patient ward
355	347	10. MCH (Mother & Child Health Care)	A-10-15-7	Examining light	1	0	0	1-(4)	*	
356	348	10. MCH (Mother & Child Health Care)	A-10-15-8	Speculum (middle size)	20	0	0	2-(9)	*	Included with instrument set
357	349	10. MCH (Mother & Child Health Care)	A-10-15-9	Foot Stool	1	0	0	1-(3)	*	
358	350	10. MCH (Mother & Child Health Care)	A-10-15-10	Hand basin	1	0	0	1-(3)	*	
359	351	10. MCH (Mother & Child Health Care)	A-10-16-1	Examining table	1	0	0	1-(3)	*	
360	352	10. MCH (Mother & Child Health Care)	A-10-16-2	Instrument cabinet	1	0	0	1-(3)	*	
361	353	10. MCH (Mother & Child Health Care)	A-10-16-3	Chair	2	0	0	1-(3)	*	
362	354	10. MCH (Mother & Child Health Care)	A-10-16-4	Bed for baby	1	0	0	2-(9)	*	Planned in patient ward
363	355	10. MCH (Mother & Child Health Care)	A-10-16-5	Suction (infant)	1	0	0	2-(9)	*	Common use in treatment room
364	356	10. MCH (Mother & Child Health Care)	A-10-16-6	Foot Stool	1	0	0	1-(3)	*	
365	357	10. MCH (Mother & Child Health Care)	A-10-16-7	Desk	1	0	0	1-(3)	*	
368	360	10. MCH (Mother & Child Health Care)	A-10-17-2	Desk	1	0	0	1-(3)	*	
369	360	10. MCH (Mother & Child Health Care)	A-10-17-1	Gynecology table	1	0	0	1-(4)	*	
370	362	10. MCH (Mother & Child Health Care)	A-10-17-3	Chair	1	0	0	1-(3)	*	
371	363	10. MCH (Mother & Child Health Care)	A-10-17-4	I.D set	10	0	0	1-(3)	*	
372	364	10. MCH (Mother & Child Health Care)	A-10-17-5	Examining light	1	0	0	1-(4)	*	
373	365	10. MCH (Mother & Child Health Care)	A-10-17-6	Foot Stool	1	0	0	1-(3)	*	
374	366	10. MCH (Mother & Child Health Care)	A-10-17-7	Instrument cabinet	2	0	0	1-(3)	*	
375	367	10. MCH (Mother & Child Health Care)	A-10-17-8	Speculum (middle size)	10	0	0	2-(9)	*	Included in IUD set
376	368	10. MCH (Mother & Child Health Care)	A-10-17-9	Hand basin	1	0	0	1-(3)	*	
379	371	10. MCH (Mother & Child Health Care)	A-10-18-1	Counter table	1	0	0	2-(9)	*	Construction portion
381	373	10. MCH (Mother & Child Health Care)	A-10-18-3	White plastic board	1	0	0	2-(9)	*	Allocated in Lecture hall
382	374	10. MCH (Mother & Child Health Care)	A-10-18-4	Documentation cupboard	2	0	0	2-(9)	*	Portion of construction
383	375	10. MCH (Mother & Child Health Care)	A-10-18-5	Waste receptacle	1	0	0	1-(3)	*	
384	376	10. MCH (Mother & Child Health Care)	A-10-18-6	Chair	3	0	0	1-(3)	*	
385	377	10. MCH (Mother & Child Health Care)	A-10-19-1	Desk	1	0	0	1-(3)	*	
386	378	10. MCH (Mother & Child Health Care)	A-10-19-2	Instrument cabinet	1	0	0	2-(9)	*	Common use in treatment room
387	379	10. MCH (Mother & Child Health Care)	A-10-19-3	Chair	2	0	0	2-(9)	*	Common use in treatment room
388	380	10. MCH (Mother & Child Health Care)	A-10-19-4	Waste receptacle	1	0	0	2-(9)	*	Common use in treatment room
389	381	10. MCH (Mother & Child Health Care)	A-10-19-5	Jar for infection	1	0	0	2-(2)	*	Allocated in CSSD
390	ADD	10. MCH (Mother & Child Health Care)	A-10-19-6	Cooler box	1	0	0	2-(2)	*	Not much needed
392	383	11. Laboratory	A-11-1	Clinical Laboratory Microscope	10	0	0	1-(3)	*	
393	384	11. Laboratory	A-11-2	Fluorescent Microscope with Photographic System	3	0	0	1-(7)	*	
394	385	11. Laboratory	A-11-3	Electronic Analytical Balance	2	0	0	1-(4)	*	
395	386	11. Laboratory	A-11-4	Centrifuge	2	0	0	1-(3)	*	
396	387	11. Laboratory	A-11-5	Refrigerated Centrifuge	1	0	0	1-(4)	*	
397	388	11. Laboratory	A-11-6	Hematocrit Centrifuge	2	0	0	1-(1)	*	
398	389	11. Laboratory	A-11-7	Spectrophotometer	2	0	0	1-(1)	*	
399	390	11. Laboratory	A-11-8	Sterilizer, Vertical (Autoclave)	1	0	0	1-(3)	*	
400	391	11. Laboratory	A-11-9	RO Water Purifier (Distilling Water Machine)	1	0	0	1-(5)	*	
401	392	11. Laboratory	A-11-10	pH Meter	1	0	0	1-(1)	*	
402	393	11. Laboratory	A-11-11	Flame Photometer	1	0	0	1-(5)	*	
403	394	11. Laboratory	A-11-12	Incubator	2	0	0	1-(3)	*	
404	395	11. Laboratory	A-11-13	Low Temperature Incubator	1	0	0	2-(2)	*	Not frequent use
405	396	11. Laboratory	A-11-14	Water Bath	2	0	0	1-(1)	*	
406	397	11. Laboratory	A-11-15	Drying Oven	1	0	0	1-(4)	*	
407	398	11. Laboratory	A-11-16	Hot Air Rapid Drying Oven	1	0	0	1-(4)	*	
408	399	11. Laboratory	A-11-17	Automatic Hot Air Sterilizer	1	0	0	2-(9)	*	Duplicated with hot air drying oven
410	401	11. Laboratory	A-11-19	Slide Flocculation Test Set	1	0	0	AD2-(6)	*	Not much needed
411	402	11. Laboratory	A-11-20	Colony Analyzer System	1	0	0	AD2-(6)	*	Not much needed
412	403	11. Laboratory	A-11-21	Freezer, -40 deg.	1	0	0	1-(6)	*	
413	404	11. Laboratory	A-11-22	Clean Bench	1	0	0	1-(7)	*	
414	405	11. Laboratory	A-11-23	Magnetic Stirrer	1	0	0	1-(3)	*	
415	406	11. Laboratory	A-11-24	Super Sonic Pipette Washer	2	0	0	1-(3)	*	
416	407	11. Laboratory	A-11-25	Ultrasonic Cleaner	1	0	0	2-(5)	*	Not much needed
417	408	11. Laboratory	A-11-26	Refrigerator	2	0	0	1-(3)	*	
418	409	11. Laboratory	A-11-27	Blood Bank Refrigerator	1	0	0	1-(3)	*	

Table 2-10 (4) Process of Analysis for Requested Equipment

Ref.No.	Minutes NO.	SECTION	ITEM NO.	EQUIPMENT	Req. Q't Y	Minutes	Equipment Plan	Criteria	Agency of Manufacturer	Reference
419	410	11. Laboratory	A-11-28	Medicine Refrigerator	1	0		2-(9)		Common use in treatment room
420	411	11. Laboratory	A-11-29	Glucose Analyzer	1	0		AD2-(6)		Not much needed
421	412	11. Laboratory	A-11-30	Automatic Blood Cell Counter	1	0		1-(1)		
422	413	11. Laboratory	A-11-31	Coagulometer	1	0		AD2-(6)		Not much needed
424	415	11. Laboratory	A-11-33	Rotary Microscope	1	0		2-(2)		Not frequent use
425	416	11. Laboratory	A-11-34	Paraffin Melting Apparatus	1	0		AD2-(6)		Not much needed
426	417	11. Laboratory	A-11-35	Slide Warming Table	1	0		AD2-(6)		Not much needed
427	418	11. Laboratory	A-11-36	Laboratory Implement and Glassware Set	1	0		AD2-(6)		Not much needed
428	419	11. Laboratory	A-11-37	Locker	3	0		2-(9)		Construction portion
429	420	11. Laboratory	A-11-38	Patient Stool	2	0		1-(3)		
430	421	11. Laboratory	A-11-39	Chair	8	0		1-(3)		
432	423	11. Laboratory	A-11-41	Business Desk	2	0		2-(7)		Not medical equipment
436	427	11. Laboratory	A-11-45	Micro Pipette	1	0		1-(3)		
437	428	11. Laboratory	A-11-46	Instrument Cabinet	1	0		1-(3)		
438	429	11. Laboratory	A-11-47	Medicine Cabinet	1	0		2-(9)	*	Common use with instrument cabinet
439	430	11. Laboratory	A-11-48	Microtome	2	0		2-(2)		Not frequent use
440	431	11. Laboratory	A-11-49	Serological Rotator	1	0		1-(3)		
441	432	11. Laboratory	A-11-50	Pipette Shaker	2	0		AD2-(6)		Not much needed
444	435	11. Laboratory	A-11-53	Bacteriological Hood	1	0		1-(7)		
445	ADD	11. Laboratory	A-11-54	Paraffin Melting Apparatus	1	0		1-(3)		
446	ADD	11. Laboratory	A-11-55	Slide warmer	1	0		1-(3)		
447	ADD	11. Laboratory	A-11-56	Instrument set for pathology	1	0		1-(3)		
448	ADD	11. Laboratory	A-11-57	Blood gas analyzer	1	0		1-(6)		
449	ADD	11. Laboratory	A-11-58	Electrolyte analyzer	1	0		AD2-(6)		Not much needed
450	436	12. Pharmaceutical Section	A-12-1	Prescription Counter Set	2	0		2-(9)	*	Construction portion
451	437	12. Pharmaceutical Section	A-12-2	Lixibin Set (Lixibin Caja Medicamento)	2	0		AD2-(6)		Not much needed
452	438	12. Pharmaceutical Section	A-12-3	Inspection Counter Set	2	0		2-(9)	*	Construction portion
453	439	12. Pharmaceutical Section	A-12-4	Workable Set	2	0		AD2-(6)		Not much needed
454	440	12. Pharmaceutical Section	A-12-5	Rotary Medicine Bottle Rack Set	2	0		2-(5)		Not much needed
455	441	12. Pharmaceutical Section	A-12-6	Medicament Cabinet Set	2	0		2-(9)	*	Common use with medicine cabinet
456	442	12. Pharmaceutical Section	A-12-7	Powder and Tablet Packing Machine Set	1	0		2-(3)		Not much needed
457	443	12. Pharmaceutical Section	A-12-8	Clean Ventilator Set	1	0		2-(9)		Allocated in laboratory
458	444	12. Pharmaceutical Section	A-12-9	Counter Balance Set	1	0		2-(9)		Apply by A-12-10
459	445	12. Pharmaceutical Section	A-12-10	Prescription Balance Set	1	0		1-(3)		
460	446	12. Pharmaceutical Section	A-12-11	Medical Refrigerator Set	1	0		1-(3)		
461	447	12. Pharmaceutical Section	A-12-12	Medical Freezer Set	1	0		2-(2)		Not frequent use
462	448	12. Pharmaceutical Section	A-12-13	Narcotic Safe Set	1	0		2-(2)		Not much needed
463	449	12. Pharmaceutical Section	A-12-14	Pharmaceutical Storage Cabinet Set	2	0		2-(9)	*	Duplicated with A-12-6
464	450	12. Pharmaceutical Section	A-12-15	Pharmaceutical Laboratory Table Set	1	0		2-(9)		Construction portion
465	451	12. Pharmaceutical Section	A-12-16	Distilling Apparatus Set	1	0		2-(9)		Common use with laboratory
466	452	12. Pharmaceutical Section	A-12-17	Medicine Bottle, 300ml and 500ml Set	200	0		AD2-(6)		Included in instrument set (lab.)
467	453	12. Pharmaceutical Section	A-12-18	Liquid Measuring Beaker, 500ml and 1,000ml Set	10	0		AD2-(6)		Included in instrument set (lab.)
468	454	12. Pharmaceutical Section	A-12-19	Filtering Funnel	5	0		AD2-(6)		Included in instrument set (lab.)
469	455	12. Pharmaceutical Section	A-12-20	Glass Funnel	5	0		AD2-(6)		Included in instrument set (lab.)
470	456	12. Pharmaceutical Section	A-12-21	Mortar and Pestle	5	0		AD2-(6)		Included in instrument set (lab.)
471	457	12. Pharmaceutical Section	A-12-22	Medicine Mixing Sieve	2	0		AD2-(6)		Included in instrument set (lab.)
472	458	12. Pharmaceutical Section	A-12-23	Medicine Spoon and Ointment Spatula	10	0		AD2-(6)		Included in instrument set (lab.)
473	459	12. Pharmaceutical Section	A-12-24	Instrument Cabinet	2	0		1-(3)		
474	460	12. Pharmaceutical Section	A-12-25	Revolving Chair	2	0		1-(3)		
475	ADD	12. Pharmaceutical Section	A-12-26	Instrument set	1	0		AD2-(6)		Included in instrument set
476	461	13. CSSD Central Sterilizing Supply Division	A-13-1	Computer Controlled Steam Sterilizer	2	0		1-(5)		
477	462	13. CSSD Central Sterilizing Supply Division	A-13-2	Ultrasonic Cleaner	1	0		2-(5)	*	Not much needed
478	463	13. CSSD Central Sterilizing Supply Division	A-13-3	Surgical Glove Condition	1	0		2-(6)	*	Not much needed
479	464	13. CSSD Central Sterilizing Supply Division	A-13-4	Sink	2	0		2-(9)		Construction portion
480	465	13. CSSD Central Sterilizing Supply Division	A-13-5	Tube Washer	1	0		2-(5)		Not much needed
481	466	13. CSSD Central Sterilizing Supply Division	A-13-6	Tube Dryer	1	0		2-(5)		Not much needed
482	467	13. CSSD Central Sterilizing Supply Division	A-13-7	Working Table	2	0		1-(5)		
483	468	13. CSSD Central Sterilizing Supply Division	A-13-8	Heat Sealer	1	0		2-(2)		Not frequent use
484	469	13. CSSD Central Sterilizing Supply Division	A-13-9	Erecta Shelf	2	0		1-(3)		
485	470	13. CSSD Central Sterilizing Supply Division	A-13-10	Dressing Case Cabinet	2	0		AD2-(6)		Not much needed
486	471	13. CSSD Central Sterilizing Supply Division	A-13-11	Instrument Cabinet	3	0		2-(9)		Not much needed
487	472	13. CSSD Central Sterilizing Supply Division	A-13-12	Chair	3	0		1-(3)		
488	473	13. CSSD Central Sterilizing Supply Division	A-13-13	Sterilizing Instrument Set	1	0		AD2-(6)		Included in instrument set
489	474	14. Surgical Clinic	A-14-1	Examining and Treatment Table	3	0		1-(3)	*	
490	475	14. Surgical Clinic	A-14-2	Film Illuminator	2	0		1-(3)	*	
491	476	14. Surgical Clinic	A-14-3	Instrument Table	4	0		2-(9)		Common use in treatment room
492	477	14. Surgical Clinic	A-14-4	Instrument Cabinet	1	0		2-(9)		Common use in treatment room
493	478	14. Surgical Clinic	A-14-5	Medicine Cabinet	1	0		2-(9)	*	Common use in treatment room
494	479	14. Surgical Clinic	A-14-6	Exam and Treat Instrument Set	3	0		2-(9)		Included in instrument set
495	480	14. Surgical Clinic	A-14-7	Waste Receptacle	4	0		AD2-(6)		Substituted by existing equipment
496	481	14. Surgical Clinic	A-14-8	Refrigerator	1	0		2-(9)		Common use in treatment room
497	482	14. Surgical Clinic	A-14-9	Examining Light	2	0		AD2-(6)	*	Substituted by existing equipment
498	483	14. Surgical Clinic	A-14-10	Plaster Bandage Table	1	0		1-(3)		
499	484	14. Surgical Clinic	A-14-11	Gypsum Instrument Set	1	0		1-(3)	*	
500	485	14. Surgical Clinic	A-14-12	Stock Shelf for Plaster	1	0		1-(3)		
501	486	14. Surgical Clinic	A-14-13	Foot Stool	1	0		1-(3)		
502	487	14. Surgical Clinic	A-14-14	Doctor Consulting Desk	2	0		1-(3)		
503	488	14. Surgical Clinic	A-14-15	Doctor Chair	2	0		1-(3)		
504	489	14. Surgical Clinic	A-14-16	Patient Stool	3	0		1-(3)		
505	490	15. Emergency (Adult / Children / Small)	A-15-1	Operating Table	2	0		2-(5)	*	Replaced with stretcher
506	491	15. Emergency (Adult / Children / Small)	A-15-2	Emergency Light	2	0		2-(9)	*	Construction portion
507	492	15. Emergency (Adult / Children / Small)	A-15-3	Film Illuminator	2	0		1-(4)	*	

Table 2-10 (5) Process of Analysis for Requested Equipment

Ref.No.	Minutes NO.	SECTION	ITEM NO.	EQUIPMENT	Req. Qty	Minutes	Equipment Plan	Criteria	Agency of Manufacturer	Reference
508	493	15. Emergency (Adult / Children / Small)	A-15-4	Defibrillator	1	0	0	1-(4)	*	
505	494	15. Emergency (Adult / Children / Small)	A-15-5	Automatic Infusion Pump	2	0	0	1-(6)	*	
511	495	15. Emergency (Adult / Children / Small)	A-15-7	Mayo Instrument Table	2	0	0	AD2-(6)	*	Substituted by existing equipment
512	497	15. Emergency (Adult / Children / Small)	A-15-8	Dressing Drum Stand	2	0	0	AD2-(6)	*	Substituted by existing equipment
513	498	15. Emergency (Adult / Children / Small)	A-15-9	Instrument Table	2	0	0	1-(3)	*	
514	499	15. Emergency (Adult / Children / Small)	A-15-10	Instrument Cabinet	2	0	0	1-(3)	*	
515	500	15. Emergency (Adult / Children / Small)	A-15-11	Kick Bucket	2	0	0	AD2-(6)	*	Substituted by existing equipment
516	501	15. Emergency (Adult / Children / Small)	A-15-12	Irrigator Stand	2	0	0	1-(3)	*	
517	502	15. Emergency (Adult / Children / Small)	A-15-13	Linen Hamper	2	0	0	AD2-(6)	*	Substituted by existing equipment
518	503	15. Emergency (Adult / Children / Small)	A-15-14	Operator Chair	2	0	0	1-(3)	*	
519	504	15. Emergency (Adult / Children / Small)	A-15-15	Stretcher	2	0	0	1-(3)	*	
520	505	15. Emergency (Adult / Children / Small)	A-15-16	Table Top Steam Sterilizer	2	0	0	1-(3)	*	
521	506	15. Emergency (Adult / Children / Small)	A-15-17	Suction Unit	2	0	0	1-(3)	*	
522	507	15. Emergency (Adult / Children / Small)	A-15-18	Oxygen Inhaler Apparatus	2	0	0	1-(4)	*	
523	508	15. Emergency (Adult / Children / Small)	A-15-19	Exam and Treat Instrument Set	2	0	0	AD2-(6)	*	Substituted by existing equipment
524	509	15. Emergency (Adult / Children / Small)	A-15-20	Treatment Carriage	2	0	0	AD2-(6)	*	Substituted by existing equipment
525	510	15. Emergency (Adult / Children / Small)	A-15-21	Ultrasonic Nebulizer	2	0	0	1-(4)	*	
526	511	15. Emergency (Adult / Children / Small)	A-15-22	Blood Bank Refrigerator	1	0	0	1-(6)	*	
527	512	15. Emergency (Adult / Children / Small)	A-15-23	Examining And Treatment Table	2	0	0	1-(3)	*	
528	513	15. Emergency (Adult / Children / Small)	A-15-24	Refrigerator	2	0	0	1-(4)	*	
529	514	15. Emergency (Adult / Children / Small)	A-15-25	Waste Receptacle	2	0	0	AD2-(6)	*	Substituted by existing equipment
530	515	15. Emergency (Adult / Children / Small)	A-15-26	Emergency Cart	1	0	0	AD2-(6)	*	Substituted by existing equipment
531	516	15. Emergency (Adult / Children / Small)	A-15-27	Emergency Instrument Set	2	0	0	AD2-(6)	*	Substituted by existing equipment
532	517	15. Emergency (Adult / Children / Small)	A-15-28	Surgery Basic Instrument Set	2	0	0	AD2-(6)	*	Substituted by existing equipment
533	518	15. Emergency (Adult / Children / Small)	A-15-29	Double Basin Stand	2	0	0	2-(9)	*	Construction portion
534	519	15. Emergency (Adult / Children / Small)	A-15-30	Oxygen Tent	2	0	0	2-(2)	*	Not much needed
535	520	15. Emergency (Adult / Children / Small)	A-15-31	Standard Bed	2	0	0	1-(5)	*	
537	522	15. Emergency (Adult / Children / Small)	A-15-33	Bedside Cabinet	2	0	0	2-(2)	*	Not much needed
540	525	15. Emergency (Adult / Children / Small)	A-15-36	Chair	2	0	0	1-(3)	*	
550	535	15. Emergency (Adult / Children / Small)	A-15-46	Revolving Chair	3	0	0	1-(3)	*	
551	536	15. Emergency (Adult / Children / Small)	A-15-47	Manual Resuscitator	3	0	0	AD2-(6)	*	Substituted by existing equipment
552	542	15. Emergency (Adult / Children / Small)	A-15-53	Two-step Foot Stool	2	0	0	AD2-(6)	*	Substituted by existing equipment
558	543	15. Emergency (Adult / Children / Small)	A-15-54	Dressing Drum	3	0	0	AD2-(6)	*	Substituted by existing equipment
560	ADD	15. Emergency (Adult / Children / Small)	A-15-56	Instrument set	1	0	0	AD2-(6)	*	Substituted by existing equipment
575	545	1. Operation Theater	B-1-1	Universal Operating Table	2	0	0	1-(6)	*	
576	546	1. Operation Theater	B-1-2	Orthopaedic Operating Table	1	0	0	2-(9)	*	Apply by universal op.table
577	547	1. Operation Theater	B-1-3	Operating Light	3	0	0	1-(6)	*	
578	548	1. Operation Theater	B-1-4	Emergency Light	1	0	0	2-(9)	*	Construction portion
579	549	1. Operation Theater	B-1-5	Electro Surgical Unit	3	0	0	1-(7)	*	
580	550	1. Operation Theater	B-1-6	Bedside Monitor	2	0	0	1-(7)	*	
581	551	1. Operation Theater	B-1-7	Cryosurgery Unit	1	0	0	2-(1)	*	Cannot purchase gas
582	552	1. Operation Theater	B-1-8	Anesthesia Apparatus with Built-in Ventilator	3	0	0	1-(6)	*	
583	553	1. Operation Theater	B-1-9	Infant Ventilator	1	0	0	2-(9)	*	Bring from PICU in case of needs
584	554	1. Operation Theater	B-1-10	Dialysis Unit	1	0	0	1-(7)	*	
586	556	1. Operation Theater	B-1-12	Surgical Scrub Station	1	0	0	1-(7)	*	
587	557	1. Operation Theater	B-1-13	Film Illuminator	3	0	0	1-(3)	*	
588	558	1. Operation Theater	B-1-14	Operating Binocular Microscope	1	0	0	2-(2)	*	Not much needed
589	559	1. Operation Theater	B-1-15	Defibrillator	1	0	0	1-(7)	*	
591	561	1. Operation Theater	B-1-17	Automatic Infusion Pump	3	0	0	1-(4)	*	
597	562	1. Operation Theater	B-1-18	Syringe Pump	2	0	0	2-(9)	*	Common use with ICU
596	563	1. Operation Theater	B-1-21	Mayo Instrument Table	3	0	0	AD2-(6)	*	Substituted by existing equipment
596	566	1. Operation Theater	B-1-22	Instrument Table	3	0	0	1-(3)	*	
597	567	1. Operation Theater	B-1-23	Working Table	3	0	0	1-(3)	*	
598	568	1. Operation Theater	B-1-24	Dressing Drum Stand	3	0	0	AD2-(6)	*	Substituted by existing equipment
599	569	1. Operation Theater	B-1-25	Instrument Cabinet	3	0	0	2-(9)	*	Construction portion
600	570	1. Operation Theater	B-1-26	Kick Bucket	3	0	0	AD2-(6)	*	Substituted by existing equipment
601	571	1. Operation Theater	B-1-27	Irrigator Stand	3	0	0	1-(3)	*	
603	573	1. Operation Theater	B-1-29	Instrument Tray Table	3	0	0	AD2-(6)	*	Included in instrument set
604	574	1. Operation Theater	B-1-30	Linen Hamper	3	0	0	2-(2)	*	Not much needed
605	575	1. Operation Theater	B-1-31	Linen Cart	2	0	0	AD2-(6)	*	Substituted by existing equipment
606	576	1. Operation Theater	B-1-32	Instrument Receptacle	3	0	0	2-(9)	*	Construction portion
608	578	1. Operation Theater	B-1-34	Anesthetist Stool	3	0	0	2-(9)	*	Duplicated with op.stool
609	579	1. Operation Theater	B-1-35	Operator Chair	3	0	0	1-(3)	*	
610	580	1. Operation Theater	B-1-36	Stretcher	3	0	0	1-(3)	*	
611	581	1. Operation Theater	B-1-37	Recovery Bed	3	0	0	2-(3)	*	Apply by post op.room
622	592	1. Operation Theater	B-1-48	Suction Unit	3	0	0	1-(5)	*	
623	593	1. Operation Theater	B-1-49	High-class Desk	2	0	0	2-(8)	*	Not needed
624	594	1. Operation Theater	B-1-50	Chair with Arms	2	0	0	2-(8)	*	Not needed
625	595	1. Operation Theater	B-1-51	Business Desk	1	0	0	2-(8)	*	Not needed
626	596	1. Operation Theater	B-1-52	Chair	1	0	0	2-(9)	*	Construction portion
627	597	1. Operation Theater	B-1-53	Locker	8	0	0	2-(9)	*	Construction portion
628	598	1. Operation Theater	B-1-54	Cabinet	2	0	0	2-(9)	*	Construction portion
629	599	1. Operation Theater	B-1-55	Monitoring	3	0	0	1-(7)	*	
630	600	1. Operation Theater	B-1-56	ECG Machine	1	0	0	2-(9)	*	Apply by ECG monitor
631	601	1. Operation Theater	B-1-57	Laryngoscope (Anesthetic)	3	0	0	2-(9)	*	Included in instrument set
632	602	1. Operation Theater	B-1-58	Intubation Set	3	0	0	2-(9)	*	Included in instrument set
633	ADD	1. Operation Theater	B-1-59	Operation lamp with TV camera	1	0	0	2-(3)	*	Not frequent use
634	ADD	1. Operation Theater	B-1-60	Instrument set	1	0	0	AD2-(6)	*	Substituted by existing equipment
635	603	2. Surgical Ward	B-2-1	Hi-Lo Gatch Bed	7	0	0	1-(3)	*	
638	605	2. Surgical Ward	B-2-3	Bedside Cabinet	7	0	0	1-(3)	*	
639	606	2. Surgical Ward	B-2-4	Locker	7	0	0	2-(9)	*	Construction portion
640	607	2. Surgical Ward	B-2-5	Bedside Table	7	0	0	1-(3)	*	

Table 2-10 (6) Process of Analysis for Requested Equipment

Ref.No.	Minutes NO.	SECTION	ITEM NO.	EQUIPMENT	Req. Q't y	Minutes	Equipment Plan	Criteria	Agency of Manufacturer	Reference
642	606	2. Surgical Ward	B-2-7	Standard Bed	48	0	0	1-(3)	*	
644	611	2. Surgical Ward	B-2-9	Bedside Cabinet	48	0	0	1-(3)	*	
646	613	2. Surgical Ward	B-2-11	Traction Apparatus Set	5	0	0	2-(2)	*	Not much needed
647	614	2. Surgical Ward	B-2-12	Oxygen Apparatus Set	5	0	0	2-(9)	*	Common use in treatment room
648	615	2. Surgical Ward	B-2-13	Treatment Table	2	0	0	2-(9)	*	Common use in treatment room
649	616	2. Surgical Ward	B-2-14	Film Illuminator	2	0	0	2-(9)	*	Common use in treatment room
650	617	2. Surgical Ward	B-2-15	Instrument Table	4	0	0	2-(9)	*	Common use in treatment room
651	618	2. Surgical Ward	B-2-16	Treatment Cartage	4	0	0	AD2-(6)	*	Common use in treatment room
652	619	2. Surgical Ward	B-2-17	Instrument Cabinet	3	0	0	2-(9)	*	Common use in treatment room
653	620	2. Surgical Ward	B-2-18	Medicine Cabinet	2	0	0	2-(9)	*	Common use in treatment room
654	621	2. Surgical Ward	B-2-19	Examination & Treatment Instrument Set	2	0	0	2-(9)	*	Common use in treatment room
655	622	2. Surgical Ward	B-2-20	Waste Receptacle	4	0	0	AD2-(6)	*	Common use in treatment room
656	623	2. Surgical Ward	B-2-21	Refrigerator	2	0	0	2-(9)	*	Common use in treatment room
658	625	2. Surgical Ward	B-2-23	Ultrasonic Nebulizer	2	0	0	2-(2)	*	Common use in treatment room
659	626	2. Surgical Ward	B-2-24	Linen Hamper	4	0	0	AD2-(6)	*	Substituted by existing equipment
660	627	2. Surgical Ward	B-2-25	Linen Cart	2	0	0	AD2-(6)	*	Substituted by existing equipment
662	629	2. Surgical Ward	B-2-27	Urinal & Bedpan Rack	2	0	0	2-(2)	*	Not much needed
663	630	2. Surgical Ward	B-2-28	Stretcher	3	0	0	2-(2)	*	Not much needed
664	631	2. Surgical Ward	B-2-29	Wheel Chair	6	0	0	2-(2)	*	Not much needed
666	633	2. Surgical Ward	B-2-31	Irrigator Stand	6	0	0	1-(3)	*	
667	634	2. Surgical Ward	B-2-32	Continuous Suction Unit	2	0	0	2-(2)	*	Not much needed
668	635	2. Surgical Ward	B-2-33	Doctor Consulting Desk	1	0	0	2-(2)	*	Not much needed
669	636	2. Surgical Ward	B-2-34	Doctor Chair	1	0	0	2-(2)	*	Not much needed
671	638	2. Surgical Ward	B-2-36	Chair	6	0	0	2-(9)	*	Common use in treatment room
673	640	2. Surgical Ward	B-2-38	Cabinet	4	0	0	2-(9)	*	Common use in treatment room
674	641	2. Surgical Ward	B-2-39	Patient Stool	2	0	0	2-(9)	*	Common use in treatment room
676	643	3 Post Operated	B-3-2	IV Hanger Stand	6	0	0	1-(3)	*	
677	644	3 Post Operated	B-3-3	Overbed Table	6	0	0	1-(3)	*	
678	645	3 Post Operated	B-3-4	Treatment Cartage	2	0	0	AD2-(6)	*	Allocated in nurse station
679	646	3 Post Operated	B-3-5	Infant Stretcher	1	0	0	2-(5)	*	Common use with adult type
680	647	3 Post Operated	B-3-6	Recovery Bed	1	0	0	1-(5)	*	
681	648	3 Post Operated	B-3-7	Linen Hamper Cartage	1	0	0	2-(2)	*	Not much needed
682	649	3 Post Operated	B-3-8	Dressing Drum	2	0	0	AD2-(6)	*	Allocated in Ope. Room
695	682	3 Post Operated	B-3-21	Electric Suction Unit	3	0	0	2-(9)	*	Allocated in Ope. room
696	663	3 Post Operated	B-3-22	Instrument Cabinet	1	0	0	2-(9)	*	Allocated in nurse station
697	664	3 Post Operated	B-3-23	Kick Bucket	2	0	0	AD2-(6)	*	Allocated in Ope. room
700	667	3 Post Operated	B-3-26	Transfer Cart	1	0	0	2-(2)	*	Not needed
701	668	3 Post Operated	B-3-27	Working Table	1	0	0	AD2-(6)	*	Not needed
703	670	3 Post Operated	B-3-29	Instrument Tray	1	0	0	AD2-(6)	*	Included in instrument set
706	673	3 Post Operated	B-3-32	Documentary Cabinet Office	1	0	0	2-(9)	*	Construction portion
707	674	3 Post Operated	B-3-33	Chair	1	0	0	AD2-(6)	*	Allocated in nurse station
710	677	3 Post Operated	B-3-36	Film Illuminator	1	0	0	2-(9)	*	Allocated in ope. room
713	679	4. ICU - RESUSCITATION ANESTHESIA	B-4-1	ICU Bed	16	0	0	1-(5)	*	
714	680	4. ICU - RESUSCITATION ANESTHESIA	B-4-2	Bedside Monitor (2 Central Monitor - 16 BSM)	16	0	0	1-(6)	*	
715	681	4. ICU - RESUSCITATION ANESTHESIA	B-4-3	Defibrillator	2	0	0	1-(6)	*	
716	682	4. ICU - RESUSCITATION ANESTHESIA	B-4-4	Ventilator	8	0	0	1-(1)	*	
718	684	4. ICU - RESUSCITATION ANESTHESIA	B-4-6	Electrocardiograph Ich	8	0	0	2-(9)	*	Apply by patient monitor
719	685	4. ICU - RESUSCITATION ANESTHESIA	B-4-7	Diagnostic and Treatment Set	8	0	0	2-(9)	*	Included in instrument set
720	686	4. ICU - RESUSCITATION ANESTHESIA	B-4-8	Oxygen Tent	2	0	0	2-(2)	*	Not much needed
721	687	4. ICU - RESUSCITATION ANESTHESIA	B-4-9	Automatic Infusion Pump	16	0	0	1-(4)	*	
722	688	4. ICU - RESUSCITATION ANESTHESIA	B-4-10	Syringe Pump	4	0	0	1-(4)	*	
723	689	4. ICU - RESUSCITATION ANESTHESIA	B-4-11	Film Illuminator	2	0	0	1-(5)	*	
724	690	4. ICU - RESUSCITATION ANESTHESIA	B-4-12	Instrument Cabinet	2	0	0	1-(3)	*	
725	691	4. ICU - RESUSCITATION ANESTHESIA	B-4-13	Instrument Table	4	0	0	1-(3)	*	
726	692	4. ICU - RESUSCITATION ANESTHESIA	B-4-14	Medicine Cabinet	2	0	0	1-(3)	*	
727	693	4. ICU - RESUSCITATION ANESTHESIA	B-4-15	Waste Receptacle	4	0	0	AD2-(6)	*	Substituted by existing equipment
728	694	4. ICU - RESUSCITATION ANESTHESIA	B-4-16	Ultrasonic Nebulizer	2	0	0	1-(5)	*	
729	695	4. ICU - RESUSCITATION ANESTHESIA	B-4-17	Continuous Suction Unit	2	0	0	1-(3)	*	
730	696	4. ICU - RESUSCITATION ANESTHESIA	B-4-18	Blood Bank Refrigerator	2	0	0	1-(3)	*	
732	698	4. ICU - RESUSCITATION ANESTHESIA	B-4-20	Treatment Cartage	2	0	0	1-(3)	*	
734	700	4. ICU - RESUSCITATION ANESTHESIA	B-4-22	Urinal & Bedpan Rack	16	0	0	AD2-(6)	*	Apply by existing unit
735	701	4. ICU - RESUSCITATION ANESTHESIA	B-4-23	Refrigerator	1	0	0	1-(3)	*	
736	702	4. ICU - RESUSCITATION ANESTHESIA	B-4-24	Nurse Table	1	0	0	2-(9)	*	Construction portion
737	703	4. ICU - RESUSCITATION ANESTHESIA	B-4-25	Chair Cartage	1	0	0	AD2-(6)	*	Substituted by existing equipment
738	704	4. ICU - RESUSCITATION ANESTHESIA	B-4-26	Chair	4	0	0	2-(9)	*	Construction portion
739	705	4. ICU - RESUSCITATION ANESTHESIA	B-4-27	Locker	1	0	0	2-(9)	*	Construction portion
740	706	4. ICU - RESUSCITATION ANESTHESIA	B-4-28	Autoclave	1	0	0	1-(5)	*	
745	711	4. ICU - RESUSCITATION ANESTHESIA	B-4-33	Wheel Stretcher	2	0	0	2-(2)	*	Not much needed
746	712	4. ICU - RESUSCITATION ANESTHESIA	B-4-34	Resuscitating Mask	16	0	0	2-(3)	*	Not much needed
747	713	4. ICU - RESUSCITATION ANESTHESIA	B-4-35	Oxygen Face Mask	16	0	0	2-(3)	*	Construction portion
748	714	4. ICU - RESUSCITATION ANESTHESIA	B-4-36	Laryngoscope Set for Infant	2	0	0	AD2-(6)	*	Included in instrument set
754	719	5. Obstetrics & Gynecology	B-5-1	Clinical Examination Table	2	0	0	1-(3)	*	
755	720	5. Obstetrics & Gynecology	B-5-5	Examining & Treatment Table	3	0	0	2-(9)	*	Duplicated with B-5-4
757	722	5. Obstetrics & Gynecology	B-5-7	Film Illuminator	2	0	0	1-(3)	*	
758	723	5. Obstetrics & Gynecology	B-5-8	Instrument Table	3	0	0	1-(3)	*	
759	724	5. Obstetrics & Gynecology	B-5-9	Instrument Cabinet	3	0	0	1-(3)	*	
760	725	5. Obstetrics & Gynecology	B-5-10	Irrigator Stand	10	0	0	1-(3)	*	
761	726	5. Obstetrics & Gynecology	B-5-11	Medicine Cabinet	1	0	0	2-(9)	*	Common use with instrument cabinet
763	728	5. Obstetrics & Gynecology	B-5-13	Examining & Treatment Instrument Set	2	0	0	AD2-(6)	*	Included in instrument set
764	729	5. Obstetrics & Gynecology	B-5-14	Doppler Sound Detector	2	0	0	2-(3)	*	Included in instrument set
765	730	5. Obstetrics & Gynecology	B-5-15	Examining Light	2	0	0	2-(9)	*	Included function in B-5-12
766	731	5. Obstetrics & Gynecology	B-5-16	Foot Stool	2	0	0	1-(3)	*	

Table 2-10 (7) Process of Analysis for Requested Equipment

Ref.No.	Minutes NO.	SECTION	ITEM NO.	EQUIPMENT	Req. Q't y	Minutes	Equipment Plan	Criteria	Agency of Manufacturer	Reference
767	732	5. Obstetrics & Gynecology	B-5-17	Clothes Basket	5	0	0	AD2-(6)		Common use in treatment room
768	733	5. Obstetrics & Gynecology	B-5-18	Waste Receptacle	5	0	0	AD2-(6)		Common use in treatment room
769	734	5. Obstetrics & Gynecology	B-5-19	Automatic Weight and Height Scale	2	0	0	2-(9)		Common use in treatment room
770	735	5. Obstetrics & Gynecology	B-5-20	Refrigerator	1	0	0	2-(9)		Common use in treatment room
771	737	5. Obstetrics & Gynecology	B-5-22	Doctor Consulting Desk	3	0	0	2-(9)		Common use in treatment room
773	738	5. Obstetrics & Gynecology	B-5-23	Doctor Chair	3	0	0	2-(9)		Common use in treatment room
775	740	5. Obstetrics & Gynecology	B-5-25	Patient Stool	3	0	0	2-(9)		Common use in treatment room
776	741	5. Obstetrics & Gynecology	B-5-26	Stethoscope	2	0	0	AD2-(6)		Included in instrument set
790	753	6. Gynae. Obstet. Ward	B-6-1	Hi-Lo Catch Bed	5	0	0	1-(3)	*	
792	757	6. Gynae. Obstet. Ward	B-6-3	Bedside Cabinet	5	0	0	1-(3)	*	
793	758	6. Gynae. Obstet. Ward	B-6-4	Locker	5	0	0	2-(9)		Construction portion
794	759	6. Gynae. Obstet. Ward	B-6-5	Bedside Table	5	0	0	1-(3)	*	
796	761	6. Gynae. Obstet. Ward	B-6-7	Standard Bed	30	0	0	1-(3)	*	
798	763	6. Gynae. Obstet. Ward	B-6-9	Bedside Cabinet	30	0	0	1-(3)	*	
800	765	6. Gynae. Obstet. Ward	B-6-11	Basinet Cart	15	0	0	2-(9)	*	Not much needed
803	768	6. Gynae. Obstet. Ward	B-6-14	Film Illuminator	2	0	0	2-(9)	*	Common use in treatment room
808	772	6. Gynae. Obstet. Ward	B-6-19	Clothes Basket	2	0	0	AD2-(6)		Not much needed
809	774	6. Gynae. Obstet. Ward	B-6-20	Instrument Table	3	0	0	1-(3)	*	
810	775	6. Gynae. Obstet. Ward	B-6-21	Treatment Cartage	1	0	0	AD2-(6)		Common use in treatment room
811	776	6. Gynae. Obstet. Ward	B-6-22	Instrument Cabinet	1	0	0	2-(9)		Common use in treatment room
812	777	6. Gynae. Obstet. Ward	B-6-23	Medicine Cabinet	1	0	0	2-(9)	*	Apply by instrument cabinet
813	778	6. Gynae. Obstet. Ward	B-6-24	Exam & Treat Instrument Set	2	0	0	AD2-(6)		Included in instrument set
814	779	6. Gynae. Obstet. Ward	B-6-25	Waste Receptacle	1	0	0	AD2-(6)		Common use in treatment room
815	780	6. Gynae. Obstet. Ward	B-6-26	Refrigerator	1	0	0	2-(9)		Common use in treatment room
817	782	6. Gynae. Obstet. Ward	B-6-28	Ultrasonic Nebuliser	2	0	0	1-(5)	*	
818	783	6. Gynae. Obstet. Ward	B-6-29	Linen Hamper	3	0	0	AD2-(6)		Substituted by existing equipment
819	784	6. Gynae. Obstet. Ward	B-6-30	Linen Cart	1	0	0	AD2-(6)		Not much needed
821	786	6. Gynae. Obstet. Ward	B-6-32	Urinal & Bedpan Rack	1	0	0	2-(2)		Not much needed
822	787	6. Gynae. Obstet. Ward	B-6-33	Stretcher	1	0	0	1-(3)	*	
823	788	6. Gynae. Obstet. Ward	B-6-34	Wheel Chair	2	0	0	2-(9)		Apply by stretcher
824	789	6. Gynae. Obstet. Ward	B-6-35	Invalid Walker	4	0	0	2-(2)		Not much needed
825	790	6. Gynae. Obstet. Ward	B-6-36	Irrigator Stand	5	0	0	1-(3)	*	
826	791	6. Gynae. Obstet. Ward	B-6-37	Automatic Weight and Height Scale	1	0	0	2-(9)		Common use in treatment room
827	792	6. Gynae. Obstet. Ward	B-6-38	Infant Dressing Table	1	0	0	2-(5)	*	Common use with adult type
828	793	6. Gynae. Obstet. Ward	B-6-39	Automatic Infant Scale	1	0	0	1-(5)	*	
829	794	6. Gynae. Obstet. Ward	B-6-40	Continuous Suction Unit	2	0	0	1-(6)	*	
830	795	6. Gynae. Obstet. Ward	B-6-41	Oxygen Apparatus Set	3	0	0	2-(2)		Not frequent use
833	798	6. Gynae. Obstet. Ward	B-6-44	Automatic Infusion Pump	3	0	0	1-(5)	*	
834	799	6. Gynae. Obstet. Ward	B-6-45	Syringe Pump	2	0	0	2-(9)	*	Common use in treatment room
837	802	6. Gynae. Obstet. Ward	B-6-48	Diaper Sterilizing Case	1	0	0	2-(11)		Not much needed
838	803	6. Gynae. Obstet. Ward	B-6-49	Nursing Bottle Sterilizer	1	0	0	2-(11)		Not much needed
839	804	6. Gynae. Obstet. Ward	B-6-50	Nursing Bottle Warmer	1	0	0	2-(2)	*	Not much needed
840	805	6. Gynae. Obstet. Ward	B-6-51	Doctor Consulting Desk	1	0	0	AD2-(6)		Not much needed
841	806	6. Gynae. Obstet. Ward	B-6-52	Doctor Chair	1	0	0	AD2-(6)		Not much needed
842	807	6. Gynae. Obstet. Ward	B-6-53	Nurse Table	1	0	0	AD2-(6)		Not much needed
845	810	6. Gynae. Obstet. Ward	B-6-56	Cabinet	4	0	0	2-(2)		Not much needed
846	811	6. Gynae. Obstet. Ward	B-6-57	Patient Stool	1	0	0	1-(3)	*	
848	812	7. Delivery Theater	B-7-1	Obstetric Delivery Table	3	0	0	1-(6)	*	
849	813	7. Delivery Theater	B-7-2	Operating Light (Delivers)	3	0	0	2-(5)	*	Not much needed
850	ADD	7. Delivery Theater	B-7-2-1	Operation lamp floor type	1	0	0	1-(5)	*	
851	814	7. Delivery Theater	B-7-3	Automatic Oxygen Resuscitator	1	0	0	2-(5)		Not much needed
852	815	7. Delivery Theater	B-7-4	Aus-Suction	1	0	0	1-(5)	*	
853	816	7. Delivery Theater	B-7-5	Vacuum Extractor	1	0	0	1-(5)	*	
854	817	7. Delivery Theater	B-7-6	Labour Bed	5	0	0	1-(6)	*	
855	818	7. Delivery Theater	B-7-7	Doppler Sound Detector	1	0	0	2-(3)	*	Apply ultrasound unit in OPD
856	819	7. Delivery Theater	B-7-8	Ambioscope	1	0	0	2-(2)	*	Included in instrument set
857	820	7. Delivery Theater	B-7-9	Surgical Scrub Station	1	0	0	1-(7)		Allocated in delivery theater
859	822	7. Delivery Theater	B-7-11	Infant Dressing Table	1	0	0	2-(5)	*	Apply infant warmer in NICU
860	823	7. Delivery Theater	B-7-12	Automatic Infant Scale	1	0	0	1-(3)	*	
861	824	7. Delivery Theater	B-7-13	Medicine Cabinet	1	0	0	2-(9)	*	Common use in treatment room
862	825	7. Delivery Theater	B-7-14	Refrigerator	1	0	0	2-(9)		Common use in treatment room
863	826	7. Delivery Theater	B-7-15	Instrument Cabinet	2	0	0	1-(3)	*	
864	827	7. Delivery Theater	B-7-16	Irrigator Stand	2	0	0	1-(3)	*	
865	828	7. Delivery Theater	B-7-17	Linen Hamper	2	0	0	AD2-(6)		Substituted by existing equipment
866	829	7. Delivery Theater	B-7-18	Stretcher	2	0	0	1-(3)	*	
867	830	7. Delivery Theater	B-7-19	Business Desk	1	0	0	2-(2)		Not needed
868	831	7. Delivery Theater	B-7-20	Chair	3	0	0	1-(3)	*	
869	832	7. Delivery Theater	B-7-21	Locker	2	0	0	2-(9)		Construction portion
870	833	7. Delivery Theater	B-7-22	Baby Warmer	3	0	0	1-(5)	*	
871	834	7. Delivery Theater	B-7-23	Resuscitator for Infant	1	0	0	AD2-(6)	*	Substituted by existing equipment
872	ADD	7. Delivery Theater	B-7-24	Patient monitor	1	0	0	1-(7)	*	
876	835	8. Pediatric Ward ICU (Infant)	B-8-1	Hi-Lo Catch Bed	3	0	0	1-(5)	*	
878	837	8. Pediatric Ward ICU (Infant)	B-8-3	Bedside Cabinet	9	0	0	2-(2)	*	Not needed
879	838	8. Pediatric Ward ICU (Infant)	B-8-4	Locker	9	0	0	2-(9)		Construction portion
880	839	8. Pediatric Ward ICU (Infant)	B-8-5	Bedside Table	3	0	0	2-(2)	*	Not needed
882	841	8. Pediatric Ward ICU (Infant)	B-8-7	High Grade Paediatric Bed	6	0	0	1-(5)	*	
884	843	8. Pediatric Ward ICU (Infant)	B-8-9	Overbed Table	30	0	0	1-(3)	*	
885	844	8. Pediatric Ward ICU (Infant)	B-8-10	Paediatric Bed	24	0	0	1-(5)	*	
887	846	8. Pediatric Ward ICU (Infant)	B-8-12	Standard Bed	12	0	0	1-(3)	*	
889	848	8. Pediatric Ward ICU (Infant)	B-8-14	Bedside Cabinet	36	0	0	2-(2)	*	Not needed
891	850	8. Pediatric Ward ICU (Infant)	B-8-16	Treatment Table	2	0	0	1-(3)	*	
892	851	8. Pediatric Ward ICU (Infant)	B-8-17	Film Illuminator	1	0	0	1-(3)	*	

Table 2-10 (8) Process of Analysis for Requested Equipment

Ref. No.	Minutes NO.	SECTION	ITEM NO.	EQUIPMENT	Req. Qty	Minutes	Equipment Plan	Criteria	Agency of Manufacturer	Reference
893	852	8. Pediatric Ward ICU (Infant)	B-8-18	Instrument Table	2	0	0	1-(3)		
894	853	8. Pediatric Ward ICU (Infant)	B-8-19	Treatment Cartage	3	0	0	AD2-(6)		Substituted by existing equipment
895	854	8. Pediatric Ward ICU (Infant)	B-8-20	Instrument Cabinet	2	0	0	AD2-(6)		Substituted by existing equipment
896	855	8. Pediatric Ward ICU (Infant)	B-8-21	Medicine Cabinet	1	0	0	AD2-(6)	*	Substituted by existing equipment
897	856	8. Pediatric Ward ICU (Infant)	B-8-22	Exam. & Treat. Instrument Set	1	0	0	AD2-(6)		Included in instrument set
898	857	8. Pediatric Ward ICU (Infant)	B-8-23	Waste Receptacle	6	0	0	AD2-(6)		Substituted by existing equipment
899	858	8. Pediatric Ward ICU (Infant)	B-8-24	Refrigerator	1	0	0	1-(5)		
901	860	8. Pediatric Ward ICU (Infant)	B-8-26	Ultrasonic Nebulizer	2	0	0	1-(5)	*	
902	861	8. Pediatric Ward ICU (Infant)	B-8-27	Linen Hamper	2	0	0	AD2-(6)		Substituted by existing equipment
903	862	8. Pediatric Ward ICU (Infant)	B-8-28	Linen Cart	1	0	0	AD2-(6)		Not much needed
905	861	8. Pediatric Ward ICU (Infant)	B-8-30	Urinal & Bedpan Rack	2	0	0	2-(2)		Not much needed
906	865	8. Pediatric Ward ICU (Infant)	B-8-31	Wheel Stretcher	2	0	0	2-(9)	*	Not much needed
907	866	8. Pediatric Ward ICU (Infant)	B-8-32	Wheel Chair	3	0	0	2-(9)		Not much needed
908	867	8. Pediatric Ward ICU (Infant)	B-8-33	Invalid Walker	3	0	0	2-(9)		Not much needed
909	868	8. Pediatric Ward ICU (Infant)	B-8-34	Irrigator Stand	5	0	0	1-(3)		
910	869	8. Pediatric Ward ICU (Infant)	B-8-35	Automatic Weight and Height Scale	1	0	0	2-(9)		Common use in treatment room
911	870	8. Pediatric Ward ICU (Infant)	B-8-36	Infant Dressing Table	1	0	0	2-(9)	*	Common use in treatment room
912	871	8. Pediatric Ward ICU (Infant)	B-8-37	Automatic Infant Scale	1	0	0	2-(9)		Common use in treatment room
913	872	8. Pediatric Ward ICU (Infant)	B-8-38	Doctor Consulting Desk	2	0	0	2-(2)		Not much needed
914	873	8. Pediatric Ward ICU (Infant)	B-8-39	Doctor Chair	2	0	0	2-(2)		Not much needed
915	874	8. Pediatric Ward ICU (Infant)	B-8-40	Nurse Table	2	0	0	2-(2)		Not much needed
916	875	8. Pediatric Ward ICU (Infant)	B-8-41	Chair	12	0	0	2-(9)		Not much needed
918	877	8. Pediatric Ward ICU (Infant)	B-8-43	Cabinet	4	0	0	2-(9)		Not much needed
919	878	8. Pediatric Ward ICU (Infant)	B-8-44	Patient Stool	10	0	0	2-(9)		Common use in treatment room
920	879	8. Pediatric Ward ICU (Infant)	B-8-45	Suction Apparatus	2	0	0	1-(5)	*	
921	880	8. Pediatric Ward ICU (Infant)	B-8-46	Monitoring	2	0	0	1-(7)	*	
922	881	8. Pediatric Ward ICU (Infant)	B-8-47	Automatic Syringe Pump	2	0	0	1-(5)	*	
923	882	8. Pediatric Ward ICU (Infant)	B-8-48	Baby Warmer	2	0	0	2-(9)	*	Common use with Ob/gy
924	883	8. Pediatric Ward ICU (Infant)	B-8-49	Infant Ventilator	2	0	0	1-(6)	*	
925	884	8. Pediatric Ward ICU (Infant)	B-8-50	Automatic Infusion Pump	3	0	0	1-(5)	*	
926	885	8. Pediatric Ward ICU (Infant)	B-8-51	Infant Laryngoscope	2	0	0	AD2-(6)	*	Included in instrument set
927	886	8. Pediatric Ward ICU (Infant)	B-8-52	Infant Resuscitation Set	2	0	0	AD2-(6)	*	Substituted by existing equipment
929	888	8. Pediatric Ward ICU (Infant)	B-8-54	Infant Oescope	2	0	0	AD2-(6)		Included in instrument set
930	ADD	8. Pediatric Ward ICU (Infant)	B-8-55	Baby cot	6	0	0	1-(3)		
931	ADD	8. Pediatric Ward ICU (Infant)	B-8-57	Infant incubator	6	0	0	1-(6)		
932	ADD	8. Pediatric Ward ICU (Infant)	B-8-58	Instrument set	1	0	0	AD2-(6)		Substituted by existing equipment
933	ADD	8. Pediatric Ward ICU (Infant)	B-8-59	Phototherapy unit	2	0	0	1-(5)		
934	ADD	8. Pediatric Ward ICU (Infant)	B-8-60	Pulseoximeter	1	0	0	2-(2)		Not much needed
935	889	9. Internal Medicine Medical Ward	B-9-1	Hi-Lo Gatch Bed	11	0	0	1-(5)	*	
945	891	9. Internal Medicine Medical Ward	B-9-3	Bedside Cabinet	11	0	0	1-(3)	*	
946	892	9. Internal Medicine Medical Ward	B-9-4	Locker	11	0	0	2-(9)		Construction portion
947	893	9. Internal Medicine Medical Ward	B-9-5	Bedside Table	11	0	0	1-(3)	*	
949	895	9. Internal Medicine Medical Ward	B-9-7	Standard Bed	54	0	0	1-(3)	*	
951	897	9. Internal Medicine Medical Ward	B-9-9	Bedside Cabinet	54	0	0	1-(3)	*	
953	899	9. Internal Medicine Medical Ward	B-9-11	Infrared Ray Lamp	1	0	0	2-(2)		Not much needed
954	900	9. Internal Medicine Medical Ward	B-9-12	Ultraviolet Lamp	1	0	0	2-(2)		Not much needed
955	901	9. Internal Medicine Medical Ward	B-9-13	Treatment Table	2	0	0	1-(3)	*	
956	902	9. Internal Medicine Medical Ward	B-9-14	Film Illuminator	2	0	0	1-(3)	*	
957	903	9. Internal Medicine Medical Ward	B-9-15	Instrument Table	3	0	0	2-(9)		Common use in treatment room
958	904	9. Internal Medicine Medical Ward	B-9-16	Treatment Cartage	1	0	0	AD2-(6)		Common use in treatment room
959	905	9. Internal Medicine Medical Ward	B-9-17	Instrument Cabinet	2	0	0	2-(9)		Common use in treatment room
960	906	9. Internal Medicine Medical Ward	B-9-18	Medicine Cabinet	2	0	0	2-(9)	*	Common use with instrument cabinet
961	907	9. Internal Medicine Medical Ward	B-9-19	Exam. & Treat. Instrument Set	2	0	0	AD2-(6)		Substituted by existing equipment
962	908	9. Internal Medicine Medical Ward	B-9-20	Waste Receptacle	4	0	0	AD2-(6)		Substituted by existing equipment
963	909	9. Internal Medicine Medical Ward	B-9-21	Refrigerator	2	0	0	2-(9)		Common use in treatment room
965	911	9. Internal Medicine Medical Ward	B-9-23	Ultrasonic Nebulizer	4	0	0	2-(9)	*	Common use in treatment room
966	912	9. Internal Medicine Medical Ward	B-9-24	Linen Hamper	1	0	0	AD2-(6)		Substituted by existing equipment
967	913	9. Internal Medicine Medical Ward	B-9-25	Linen Cart	2	0	0	2-(2)		Not much needed
969	915	9. Internal Medicine Medical Ward	B-9-27	Urinal & Bedpan Rack	2	0	0	2-(2)		Not much needed
970	916	9. Internal Medicine Medical Ward	B-9-28	Irrigator Stand	5	0	0	1-(3)		
971	917	9. Internal Medicine Medical Ward	B-9-29	Automatic Weight and Height Scale	1	0	0	2-(9)		Common use in treatment room
972	918	9. Internal Medicine Medical Ward	B-9-30	Continuous Suction Unit	3	0	0	2-(2)	*	Not frequent use
973	919	9. Internal Medicine Medical Ward	B-9-31	Oxygen Apparatus Set	5	0	0	2-(2)		Not frequent use
974	920	9. Internal Medicine Medical Ward	B-9-32	Doctor Consulting Desk	2	0	0	2-(9)		Not much needed
975	921	9. Internal Medicine Medical Ward	B-9-33	Doctor Chair	2	0	0	2-(9)		Not much needed
976	922	9. Internal Medicine Medical Ward	B-9-34	Nurse Table	1	0	0	2-(9)		Not much needed
977	923	9. Internal Medicine Medical Ward	B-9-35	Chair	6	0	0	2-(9)		Not much needed
979	925	9. Internal Medicine Medical Ward	B-9-37	Cabinet	4	0	0	1-(3)		Not much needed
980	926	9. Internal Medicine Medical Ward	B-9-38	Patient Stool	2	0	0	1-(3)		
997	944	10. Mortuary	B-10-1	Mortuary Refrigerator, 4 bodes	1	0	0	1-(5)	*	
998	945	10. Mortuary	B-10-2	Coffin Carrier	1	0	0	2-(2)	*	Apply by stretcher
999	946	10. Mortuary	B-10-3	Stretcher Scale	1	0	0	2-(2)	*	Not much needed
1000	947	10. Mortuary	B-10-4	Medical Cabinet	1	0	0	2-(2)		Not much needed
1001	948	10. Mortuary	B-10-5	Cart	1	0	0	2-(9)		Not much needed
1005	ADD	10. Mortuary	B-10-9	Anatomy table	1	0	0	2-(2)		Not frequent use
1006	ADD	10. Mortuary	B-10-10	Instrument set	1	0	0	AD2-(6)		Not frequent use
1008	953	1. Computer Directr	C-1-2	Desk with 3 drawers	3	0	0	2-(8)		Not needed
1009	954	1. Computer Directr	C-1-3	Comfortable Chair with Arms	3	0	0	2-(8)		Not needed
1011	956	1. Computer Directr	C-1-5	Computer Version 6 - Printer 1170	3	0	0	2-(2)		Not suitable
1012	957	1. Computer Directr	C-1-6	Documentary Shelf	3	0	0	2-(8)		Construction portion
1015	960	2. Personnel Office	C-2-1	Desk with 3 Drawers	3	0	0	2-(9)		Not needed
1016	961	2. Personnel Office	C-2-2	Comfortable Chair with Arms	3	0	0	2-(8)		Construction portion

Table 2-10 (9) Process of Analysis for Requested Equipment

SECTION	ITEM NO.	EQUIPMENT	Req. Qty	Minutes	Equipment Plan	Criteria	Agency of Manufacturer	Reference
2. Personnel Office	C-2-4	Computer Version 6 - Printer 1170	1	0		2-(2)		Not suitable
2. Personnel Office	C-2-5	Documentary Shelf	1	0		2-(9)		Construction portion
3. Technical Management	C-3-1	Desk with 3 Drawers	5	0		2-(9)		Construction portion
3. Technical Management	C-3-2	Comfortable Chair with Arms	5	0		2-(8)		Not needed
3. Technical Management	C-3-4	Computer Version 6	3	0		2-(2)		Not suitable
3. Technical Management	C-3-5	Printer 1170	3	0		2-(2)		Not suitable
3. Technical Management	C-3-6	Statistical Documentation Shelf	3	0		AD2-(6)		Not frequent use
3. Technical Management	C-3-10	Overhead Projector Set	1	0		AD2-(6)		Not frequent use
3. Technical Management	C-3-11	Photo Copy Set	2	0		2-(2)		Not frequent use
3. Technical Management	C-4-1	Desk with Drawers	3	0		2-(9)		Construction portion
1. Nursing Administration Office	C-4-2	Comfortable Chair with Arms	3	0		2-(8)		Not needed
5. General Services	C-5-1	Desk with Drawers	2	0		2-(9)		Construction portion
5. General Services	C-5-2	Comfortable Chair with Arms	2	0		2-(8)		Not needed
6. Work Shop	D-2	Avometer	10	0		AD2-(3)		Included in maintenance set
6. Work Shop	D-4	Analog IC tester	1	0		AD2-(3)		Included in maintenance set
6. Work Shop	D-5	Digital IC tester	1	0		AD2-(3)		Included in maintenance set
6. Work Shop	D-7	Clamp Multimeter	1	0		AD2-(3)		Included in maintenance set
6. Work Shop	D-8	Storage Cabinet	1	0		2-(9)		Construction portion
6. Work Shop	D-10	EKG Simulator	5	0		AD2-(3)		Included in maintenance set
6. Work Shop	D-16	Maintenance Test Set	1	0		AD2-(6)		Substituted by existing equipment
3. Mini-bus, 12 seats	E-3-1	Gasoline Engine	1	0		AD2-(4)		Not needed
3. Ambulance Car	E-5-1	Gasoline Engine	1	0		AD2-(4)		Not much needed

Basic Criteria for Selecting the Equipment

1 Criteria for giving high priority

- 1-(1) Equipment that is to be replaced for existing old/decrepit equipment.
- 1-(2) Equipment that is to be a supplement for the equipment lacking distinctly in its quantity.
- 1-(3) Equipment that is required for basic hospital treatment / diagnosis.
- 1-(4) Equipment that is easy to operate and maintain.
- 1-(5) Equipment that may give much benefit / effect to hospital.
- 1-(6) Equipment that is highly cost-effective.
- 1-(7) Equipment that is proven for its medical usefulness(necessity).

2 Criteria for giving low priority

- 2-(1) Equipment that required high operation and maintenance cost.
- 2-(2) Equipment that has limited benefit / effect to hospital.
- 2-(3) Equipment that is lowly cost-effective.
- 2-(4) Equipment that is not for treatment / diagnosis use, but for academic research purposes.
- 2-(5) Equipment that can be substituted with a simple ones.
- 2-(6) Equipment that may cause environmental pollution by its medical waste etc.
- 2-(7) Equipment that is not proven for its medical usefulness (necessity).
- 2-(8) Equipment that is for personal usage by hospital staff (not medical use).
- 2-(9) Equipment that has than minimum required quantity (inefficient, repetitive equipment).

Additional Criteria for Selecting the Equipment

(After field survey and considering Recipients condition)

1. Additional Criteria for giving High priority.

- AD1-(1) Equipment that can be operated by hospital's current technical capabilities.
- AD1-(2) Equipment that can be operated / maintained by hospital staff.
- AD1-(3) Equipment that matches with hospital's social position / function (referral system, local needs).
- AD1-(4) Equipment that can be expected to be useful with other donor's assistance.

2. Additional Criteria for giving Low priority

- AD2-(1) Equipment that is difficult to locally procure its spare parts and consumables.
- AD2-(2) Equipment that cannot be operated by hospital's current technical capability.
- AD2-(3) Equipment that seem to be difficult to operate / maintained by present hospital's staff.
- AD2-(4) Equipment that does not match with hospital's social position / function (referral system, local needs).
- AD2-(5) Equipment that requires large scope of infrastructure work (water, electricity supply, drain, etc.) for its installation.
- AD2-(6) Equipment that can be substituted by efficient usage of existing equipment.

Criteria when International Standard Exists

Standard of WHO (ex. X-ray equipment, etc) is applicable on case by case basis.