

A.7 Relation between code and job

Table A.7-1: Relation Between Code and Job (1/19)
(Common Job for client)

No.	Code Name	User ID, Password Check	Job Menu	Change Password	PIB Monitor	PEB Monitor	Company / Person Summary
1	Address/Postal Code					√	√
2	Bank Code						
3	Citizen ID Card Code				√	√	√
4	Company Position Code						
5	Company Type Code						√
6	Container Model Code						
7	Container Number Code				√	√	
8	Container Size Code				√	√	
9	Container Status Code				√	√	
10	Country Code				√	√	
11	Country/Currency Code						
12	Currency Code				√	√	
13	Customs Broker Code						√
14	Customs Value Method Code						
15	Decision Maker Code						
16	DJBC Office Code	√			√	√	√
17	DJBC Position Code						
18	DJBC Service Office Type Code	√			√	√	√
19	Document Origin Code						
20	Eyes Color Code						√
21	Facility Decree Code				√	√	
22	Facility Type Code						
23	Gender Code						
24	Good Package Code				√	√	
25	Good Unit Code				√	√	
26	Goods Condition Code						
27	Hair Color Code						√
28	Hair Type Code						√
29	HS Code				√	√	
30	Identity Type Code				√	√	√
31	Import License Code				√		√
32	Importer Type Code				√		
33	International Channel Code						
34	Job Classification Code						
35	Management in Charge Code						
36	Means Of Transportation Code				√	√	
37	Motive on Channel Settlement Code				√		
38	Nature Of Business Code						√
39	NIP (State Employer ID) Number				√	√	

Table A.7-1: Relation Between Code and Job (2/19)
(Common Job for client)

No.	Code Name	User ID, Password Check	Job Menu	Change Password	PIB Monitor	PEB Monitor	Company / Person Summary
40	NPWP 10 Digit (Tax Payer Code Number)				√	√	√
41	NPWP 12 Digit (Tax Payer Code Number)				√	√	√
42	Organization Classification Code						
43	Organization Code						
44	Ownership Code						
45	Passport Code				√	√	√
46	Payment Type Code					√	
47	Percentage Code						
48	Physical Examination Result Code						
49	Port Code				√	√	
50	Province Code					√	√
51	Rank Code						
52	Red-Green Status Code						
53	Skin Color Code						√
54	Tax Collection Code						
55	Tobacco Product Code						
56	Transportation Method Code				√	√	
57	Vessel Type Code						
58	Visa Type Code						
59	Warehouse Type Code						
60	Yes-No Status Code						

Table A.7-1: Relation Between Code and Job (3/19)
(Verification and Audit Job Group)

No.	Code Name	PIB Verification	Audit
1	Address/Postal Code		√
2	Bank Code		
3	Citizen ID Card Code		
4	Company Position Code		
5	Company Type Code		√
6	Container Model Code		
7	Container Number Code		
8	Container Size Code		
9	Container Status Code		
10	Country Code		
11	Country/Currency Code	√	
12	Currency Code		
13	Customs Broker Code		√
14	Customs Value Method Code	√	
15	Decision Maker Code		
16	DJBC Office Code	√	√
17	DJBC Position Code		
18	DJBC Service Office Type Code		
19	Document Origin Code		
20	Eyes Color Code		
21	Facility Decree Code		√
22	Facility Type Code		√
23	Gender Code		
24	Good Package Code		
25	Good Unit Code		
26	Goods Condition Code		
27	Hair Color Code		
28	Hair Type Code		
29	HS Code	√	
30	Identity Type Code		
31	Import License Code		√
32	Importer Type Code		√
33	International Channel Code		
34	Job Classification Code		
35	Management in Charge Code		√
36	Means Of Transportation Code		
37	Motive on Channel Settlement Code	√	
38	Nature Of Business Code		√
39	NIP (State Employer ID) Number	√	√
40	NPWP 10 Digit (Tax Payer Code Number)	√	√
41	NPWP 12 Digit (Tax Payer Code Number)	√	√
42	Organization Classification Code		
43	Organization Code		
44	Ownership Code		

**Table A.7-1: Relation Between Code and Job (4/19)
(Verification and Audit Job Group)**

No.	Code Name	PIB Verification	Audit
45	Passport Code		
46	Payment Type Code		
47	Percentage Code		
48	Physical Examination Result Code		
49	Port Code		
50	Province Code		√
51	Rank Code		
52	Red-Green Status Code		
53	Skin Color Code		
54	Tax Collection Code		
55	Tobacco Product Code		
56	Transportation Method Code		
57	Vessel Type Code		
58	Visa Type Code		
59	Warehouse Type Code		
60	Yes-No Status Code		√

Table A.7-1: Relation Between Code and Job (5/19)
(Prevention and Investigation Job Group)

No.	Code Name	N/NHI	Violation	Past Record and Blocked importer	Company Profile	Inter Island Transportation	Physical Examination Result	Personal Violation
1	Address/Postal Code	√			√		√	
2	Bank Code							
3	Citizen ID Card Code			√				√
4	Company Position Code							
5	Company Type Code			√				
6	Container Model Code							
7	Container Number Code	√					√	
8	Container Size Code	√					√	
9	Container Status Code							
10	Country Code						√	√
11	Country/Currency Code							
12	Currency Code							
13	Customs Broker Code				√			
14	Customs Value Method Code							
15	Decision Maker Code							
16	DJBC Office Code	√	√			√	√	√
17	DJBC Position Code							
18	DJBC Service Office Type Code							
19	Document Origin Code	√						
20	Eyes Color Code							√
21	Facility Decree Code							
22	Facility Type Code							
23	Gender Code							√
24	Good Package Code	√					√	
25	Good Unit Code						√	
26	Goods Condition Code							
27	Hair Color Code							√
28	Hair Type Code							√
29	HS Code							
30	Identity Type Code			√	√			√
31	Import License Code				√			
32	Importer Type Code							
33	International Channel Code							
34	Job Classification Code							√
35	Management in Charge Code							
36	Means Of Transportation Code							
37	Motive on Channel Settlement Code							
38	Nature Of Business Code				√			
39	NIP (State Employer ID) Number	√		√			√	
40	NPWP 10 Digit (Tax Payer Code Number)	√	√	√	√	√	√	

Table A.7-1: Relation Between Code and Job (6/19)
(Prevention and Investigation Job Group)

No.	Code Name	N/NHI	Violation	Past Record and Blocked importer	Company Profile	Inter Island Transportation	Physical Examination Result	Personal Violation
41	NPWP 12 Digit (Tax Payer Code Number)	√	√	√	√	√	√	
42	Organization Classification Code							
43	Organization Code							
44	Ownership Code				√			
45	Passport Code							
46	Payment Type Code							
47	Percentage Code						√	
48	Physical Examination Result Code						√	
49	Port Code				√	√		
50	Province Code		√		√			
51	Rank Code	√					√	
52	Red-Green Status Code							
53	Skin Color Code							√
54	Tax Collection Code							
55	Tobacco Product Code							
56	Transportation Method Code							
57	Vessel Type Code				√	√		
58	Visa Type Code							
59	Warehouse Type Code							
60	Yes-No Status Code							

Table A.7-1: Relation Between Code and Job (7/19)
(Customs Facilitation and Technique Job Group)

No.	Code Name	Bonded Storage	Temporary Admission
1	Address/Postal Code	√	√
2	Bank Code		
3	Citizen ID Card Code		
4	Company Position Code		
5	Company Type Code		
6	Container Model Code		
7	Container Number Code		
8	Container Size Code		
9	Container Status Code		
10	Country Code		
11	Country/Currency Code		
12	Currency Code		
13	Customs Broker Code		
14	Customs Value Method Code		
15	Decision Maker Code		
16	DJBC Office Code	√	√
17	DJBC Position Code		
18	DJBC Service Office Type Code		
19	Document Origin Code		
20	Eyes Color Code		
21	Facility Decree Code	√	√
22	Facility Type Code		
23	Gender Code		
24	Good Package Code		
25	Good Unit Code		
26	Goods Condition Code		
27	Hair Color Code		
28	Hair Type Code		
29	HS Code		
30	Identity Type Code	√	
31	Import License Code		
32	Importer Type Code		
33	International Channel Code		
34	Job Classification Code		
35	Management in Charge Code		√
36	Means Of Transportation Code		
37	Motive on Channel Settlement Code		
38	Nature Of Business Code		
39	NIP (State Employer ID) Number		
40	NPWP 10 Digit (Tax Payer Code Number)	√	√
41	NPWP 12 Digit (Tax Payer Code Number)	√	√
42	Organization Classification Code		
43	Organization Code		
44	Ownership Code		
45	Passport Code		

Table A.7-1: Relation Between Code and Job (8/19)
(Customs Facilitation and Technique Job Group)

No.	Code Name	Bonded Storage	Temporary Admission
46	Payment Type Code		
47	Percentage Code		
48	Physical Examination Result Code		
49	Port Code		√
50	Province Code	√	√
51	Rank Code		
52	Red-Green Status Code		
53	Skin Color Code		
54	Tax Collection Code		
55	Tobacco Product Code		
56	Transportation Method Code		
57	Vessel Type Code		
58	Visa Type Code		
59	Warehouse Type Code		
60	Yes-No Status Code		

**Table A.7-1: Relation Between Code and Job (9/19)
(Excise Job Group)**

No.	Code Name	Excise Company
1	Address/Postal Code	√
2	Bank Code	
3	Citizen ID Card Code	
4	Company Position Code	
5	Company Type Code	√
6	Container Model Code	
7	Container Number Code	
8	Container Size Code	
9	Container Status Code	
10	Country Code	√
11	Country/Currency Code	
12	Currency Code	
13	Customs Broker Code	
14	Customs Value Method Code	
15	Decision Maker Code	
16	DJBC Office Code	√
17	DJBC Position Code	
18	DJBC Service Office Type Code	
19	Document Origin Code	
20	Eyes Color Code	
21	Facility Decree Code	
22	Facility Type Code	
23	Gender Code	
24	Good Package Code	
25	Good Unit Code	
26	Goods Condition Code	
27	Hair Color Code	
28	Hair Type Code	
29	HS Code	
30	Identity Type Code	√
31	Import License Code	
32	Importer Type Code	
33	International Channel Code	
34	Job Classification Code	
35	Management in Charge Code	√
36	Means Of Transportation Code	
37	Motive on Channel Settlement Code	
38	Nature Of Business Code	
39	NIP (State Employer ID) Number	
40	NPWP 10 Digit (Tax Payer Code Number)	√
41	NPWP 12 Digit (Tax Payer Code Number)	√
42	Organization Classification Code	
43	Organization Code	
44	Ownership Code	
45	Passport Code	

**Table A.7-1: Relation Between Code and Job (10/19)
(Excise Job Group)**

No.	Code Name	Excise Company
46	Payment Type Code	√
47	Percentage Code	
48	Physical Examination Result Code	
49	Port Code	√
50	Province Code	√
51	Rank Code	
52	Red-Green Status Code	
53	Skin Color Code	
54	Tax Collection Code	
55	Tobacco Product Code	√
56	Transportation Method Code	
57	Vessel Type Code	
58	Visa Type Code	
59	Warehouse Type Code	
60	Yes-No Status Code	

Table A.7-1: Relation Between Code and Job (11/19)
(Common Revenue and Planning Job Group)

No.	Code Name	Revenue Data Collection	PIB Data Collection	PEB Data Collection
1	Address/Postal Code			
2	Bank Code	√	√	√
3	Citizen ID Card Code			
4	Company Position Code			
5	Company Type Code			
6	Container Model Code			
7	Container Number Code			
8	Container Size Code			
9	Container Status Code			
10	Country Code	√	√	√
11	Country/Currency Code	√	√	√
12	Currency Code	√	√	√
13	Customs Broker Code			
14	Customs Value Method Code			
15	Decision Maker Code			
16	DJBC Office Code	√	√	√
17	DJBC Position Code			
18	DJBC Service Office Type Code			
19	Document Origin Code			
20	Eyes Color Code			
21	Facility Decree Code		√	√
22	Facility Type Code			
23	Gender Code			
24	Good Package Code			
25	Good Unit Code			
26	Goods Condition Code			
27	Hair Color Code			
28	Hair Type Code			
29	HS Code	√	√	√
30	Identity Type Code			
31	Import License Code			
32	Importer Type Code			
33	International Channel Code			
34	Job Classification Code			
35	Management in Charge Code			
36	Means Of Transportation Code			
37	Motive on Channel Settlement Code			
38	Nature Of Business Code			
39	NIP (State Employer ID) Number			
40	NPWP 10 Digit (Tax Payer Code Number)	√	√	√
41	NPWP 12 Digit (Tax Payer Code Number)	√	√	√
42	Organization Classification Code			
43	Organization Code			
44	Ownership Code			

Table A.7-1: Relation Between Code and Job (12/19)
(Common Revenue and Planning Job Group)

No.	Code Name	Revenue Data Collection	PIB Data Collection	PEB Data Collection
45	Passport Code			
46	Payment Type Code			
47	Percentage Code			
48	Physical Examination Result Code			
49	Port Code		√	√
50	Province Code			
51	Rank Code			
52	Red-Green Status Code			
53	Skin Color Code			
54	Tax Collection Code			
55	Tobacco Product Code	√		
56	Transportation Method Code			
57	Vessel Type Code			
58	Visa Type Code			
59	Warehouse Type Code			
60	Yes-No Status Code			

Table A.7-1: Relation Between Code and Job (13/19)
(Common Job for server)

No.	Code Name	Management of User Information	Registration of Import Declaration	Registration of Export Declaration	Create Profile
1	Address/Postal Code				
2	Bank Code				
3	Citizen ID Card Code				
4	Company Position Code				
5	Company Type Code				
6	Container Model Code				
7	Container Number Code				
8	Container Size Code				
9	Container Status Code				
10	Country Code				
11	Country/Currency Code				
12	Currency Code				
13	Customs Broker Code				
14	Customs Value Method Code				
15	Decision Maker Code				
16	DJBC Office Code				
17	DJBC Position Code				
18	DJBC Service Office Type Code				
19	Document Origin Code				
20	Eyes Color Code				
21	Facility Decree Code				
22	Facility Type Code				
23	Gender Code				
24	Good Package Code				
25	Good Unit Code				
26	Goods Condition Code				
27	Hair Color Code				
28	Hair Type Code				
29	HS Code				
30	Identity Type Code				
31	Import License Code				
32	Importer Type Code				
33	International Channel Code				
34	Job Classification Code				
35	Management in Charge Code				
36	Means Of Transportation Code				
37	Motive on Channel Settlement Code				
38	Nature Of Business Code				
39	NIP (State Employer ID) Number				
40	NPWP 10 Digit (Tax Payer Code Number)				
41	NPWP 12 Digit (Tax Payer Code Number)				
42	Organization Classification Code				
43	Organization Code				

Table A.7-1: Relation Between Code and Job (14/19)
(Common Job for server)

No.	Code Name	Management of User Information	Registration of Import Declaration	Registration of Export Declaration	Create Profile
44	Ownership Code				
45	Passport Code				
46	Payment Type Code				
47	Percentage Code				
48	Physical Examination Result Code				
49	Port Code				
50	Province Code				
51	Rank Code				
52	Red-Green Status Code				
53	Skin Color Code				
54	Tax Collection Code				
55	Tobacco Product Code				
56	Transportation Method Code				
57	Vessel Type Code				
58	Visa Type Code				
59	Warehouse Type Code				
60	Yes-No Status Code				

**Table A.7-1: Relation Between Code and Job (15/19)
(Prevention and Investigation Job Group)**

No.	Code Name	NI/NHI	Violation	Past Record and Blocked importer	Company Profile	Inter Island Transportation	Physical Examination Result	Personal Violation
1	Case Settlement Code		√					√
2	Case Status Code		√					√
3	Detection Method Code		√					√
4	Information Media Code							
5	Information Resource Code		√					√
6	Inter Island Goods Code					√		
7	Location for Secure goods Code						√	
8	NI Position Code	√						
9	NI/NHI Classification Code	√						
10	NI/NHI Scope Code	√						
11	NI/NHI Target Code							
12	NI/NHI Type Code	√						
13	Past Record Number							
14	Violation Code		√	√				√
15	Violation State Code							
16	Violation Subject Code							

**Table A.7-1: Relation Between Code and Job (16/19)
(Verification and Audit Job Group)**

No.	Code Name	PIB Verification	Audit
1	Audit Assignment Letter Number		√
2	Audit Method Code		
3	Audit Object Code		√
4	Audit Process Code		
5	Audit Recommendation Note Code		√
6	Audit Result Category Code		
7	Audit Result Code		
8	Auditor Position (Rank) Code		
9	Company Book keeping Existence Code		
10	DNP Request Code	√	
11	Reason for Auditing Target Code		
12	Verification And Audit Job Group Code		
13	Verification Method Code		
14	Verification Process Code		
15	Verification Recommendation Note Code		
16	Verification Result Code		
17	Verifier Position (Rank) Code		

**Table A.7-1: Relation Between Code and Job (17/19)
(Customs Technique Job Group)**

No.	Code Name	Temporary Admission	PIB Monitor	PEB Monitor
1	Admission Decree Code	√		
2	Admission Decree Issuer Code	√		
3	Admission Decree Status Code	√		
4	Admission Settlement Code	√		
5	Admission Type Code	√		
6	BOP Code			
7	BC. 11 Number			
8	Customs Examination Classification Code			
9	Delivery Code			
10	Examination Objectives Code			
11	Export Type Code			√
12	Exporter Type Code			
13	Import Type Code		√	
14	KIMAP Code			
15	LPSE Number			
16	PEB Media Code			
17	PEB Type Code			√
18	PEB/PEBT Number			√
19	Pertamina Subcontractor Code			
20	Pertamina/KPS Code			
21	PIB Type Code	√	√	
22	PIB/PIBT Number	√	√	
23	SSBC Number			
24	SSP Number			
25	Temporary Admission Application Form Code	√		

**Table A.7-1: Relation Between Code and Job (18/19)
(Customs Facilitation Job Group)**

No.	Code Name	Bonded Storage
1	Bonded Storage Type Code	√
2	Duty Free Shop Type Code	√
3	Role Status in Bonded Ware House Code	√
4	Role Status in Bonded Zone Code	√

**Table A.7-1: Relation Between Code and Job (19/19)
(Excise Job Group)**

No.	Code Name	Excise Company
1	Excisable Goods Kinds Code	√
2	Excise Document Type Code	√
3	Excise Stamps Color Code	√
4	Excise Stamps Sheet Code	√
5	MMEA Brand Code	√
6	Tobacco Brand Code	√

A.8 Code List and Object

Table A.8-1: Code and Object (1/7)
(Common Codes)

No.	Code Name	Object				Number of code item
		Text box	Combo box	Radio button	Others	
1.	Address/Postal Code	√				-
2.	Bank Code		√			-
3.	Citizen ID Card Code	√				-
4.	Company Position Code		√			7
5.	Company Type Code				Checkbox	14
6.	Container Model Code		√			5
7.	Container Number Code	√				-
8.	Container Size Code		√			4
9.	Container Status Code			√		2
10.	Country Code		√			Hundreds
11.	Country/Currency Code		√			132
12.	Currency Code		√			Hundreds
13.	Customs Broker Code	√				-
14.	Customs Value Method Code		√			6
15.	Decision Maker Code		√			7
16.	DJBC Office Code		√			934
17.	DJBC Position Code		√			19
18.	DJBC Service Office Type Code		√			3
19.	Document Origin Code		√			-
20.	Eyes Color Code		√			4
21.	Facility Decree Code		√			-
22.	Facility Type Code		√			29
23.	Gender Code			√		2
24.	Good Package Code		√			99
25.	Good Unit Code		√			99
26.	Goods Condition Code			√		2
27.	Hair Color Code		√			3
28.	Hair Type Code		√			3
29.	HS Code		√			-
30.	Identity Type Code		√			5
31.	Import License Code		√			3
32.	Importer Type Code		√			9
33.	International Channel Code		√			-
34.	Job Classification Code		√			-
35.	Management in Charge Code		√			3
36.	Means Of Transportation Code		√			4
37.	Motive on Channel Settlement Code		√			4
38.	Nature Of Business Code		√			-
39.	NIP (State Employer ID) Number	√				-
40.	NPWP 10 Digit (Tax Payer Code Number)	√				-
41.	NPWP 12 Digit (Tax Payer Code Number)	√				-
42.	Organization Classification Code		√			-
43.	Organization Code					-
44.	Ownership Code		√			5

Table A.8-1: Code and Object (2/7)
(Common Codes)

No.	Code Name	Object				Number of code item
		Text box	Combo box	Radio button	Others	
45.	Passport Code	√				-
46.	Payment Type Code			√		2
47.	Percentage Code		√			3
48.	Physical Examination Result Code			√		2
49.	Port Code		√			Thousands
50.	Red-Green Status Code			√		2
51.	Province Code		√			27
52.	Rank Code		√			17
53.	Skin Color Code		√			6
54.	Tax Collection Code		√			6
55.	Tobacco Product Code		√			7
56.	Transportation Method Code			√		3
57.	Vessel Type Code		√			4
58.	Visa Type Code		√			3
59.	Warehouse Type Code			√		2
60.	Yes-No Status Code			√		2

Table A.8-1: Code and Object (3/7)
(Customs Technique Job Group Codes)

No.	Code Name	Object				Number of code item
		Text box	Combo box	Radio button	Others	
1	Admission Decree Code		√			6
2	Admission Decree Issuer Code			√		2
3	Admission Decree Status Code				Checkbox	2
4	Admission Settlement Code		√			4
5	Admission Type Code			√		2
6	BOP Code					2
7	BC. 11 Number					-
8	Customs Examination Classification Code				Checkbox	2
9	Delivery Code		√			4
10	Examination Objectives Code			√		3
11	Export Type Code		√			13
12	Exporter Type Code					-
13	Import Type Code			√		6
14	KIMAP Code					96
15	LPSE Number					-
16	PEB Media Code			√		3
17	PEB Type Code		√			2
18	PEB/PEBT Number	√				-
19	Pertamina Subcontractor Code					45
20	Pertamina/KPS Code					45
21	PIB Type Code		√			7
22	PIB/PIBT Number	√				-
23	SSBC Number					-
24	SSP Number					-
25	Temporary Admission Application Form Number					-

Table A.8-1: Code and Object (4/7)
(Customs Facilitation Job Group Codes)

No.	Code Name	Object				Number of code item
		Text box	Combo box	Radio button	Others	
1	Bonded Storage Type Code			√		4
2	Duty Free Shop Type Code			√		2
3	Role Status in Bonded Ware House Code				Checkbox	3
4	Role Status in Bonded Zone Code				Checkbox	3

Table A.8-1: Code and Object (5/7)
(Prevention and Investigation Job Group Codes)

No.	Code Name	Object				Number of code item
		Text box	Combo box	Radio button	Others	
1	Case Settlement Code		√			16
2	Case Status Code		√			12
3	Detection Method Code		√			9
4	Information Media Code		√			7
5	Information Resource Code		√			13
6	Inter Island Goods Code		√			Thousands
7	Location for Secure goods Code			√		6
8	NI Position Code		√			6
9	NI/NHI Classification Code			√		3
10	NI/NHI Scope Code			√		2
11	NI/NHI Target Code		√			8
12	NI/NHI Type Code			√		3
13	Past Record Number	√				-
14	Violation Code				Checkbox	57
15	Violation State Code			√		3
16	Violation Subject Code	√				11

Table A.8-1: Code and Object (6/7)
(Verification and Audit Job Group Codes)

No.	Code Name	Object				Number of code item
		Text box	Combo box	Radio button	Others	
1	Audit Assignment Letter Number	√				-
2	Audit Method Code			√		2
3	Audit Object Code		√			11
4	Audit Process Code		√			13
5	Audit Recommendation Note Code				Checkbox	9
6	Audit Result Category Code		√			-
7	Audit Result Code		√			3
8	Auditor Position (Rank) Code		√			4
9	Company Book keeping Existence Code			√		3
10	DNP Request Code	√				-
11	Reason for Auditing Target Code				Checkbox	7
12	Verification And Audit Directorate Code					10
13	Verification Method Code			√		2
14	Verification Process Code		√			10
15	Verification Recommendation Note Code				Checkbox	10
16	Verification Result Code		√			3
17	Verifier Position (Rank) Code		√			4

Table A.8-1: Code and Object (7/7)
(Excise Job Group Codes)

No.	Code Name	Object				Number of code item
		Text box	Combo box	Radio button	Others	
1	Excisable Goods Kinds Code			√		3
2	Excise Document Type Code			√		2
3	Excise Stamp Color Code				Checkbox	3
4	Excise Stamp Sheet Code				Checkbox	3
5	MMEA Brand Code	√				-
6	Tobacco Brand Code	√				Hundreds

A.9 Codes and stored location

Table A.9-1: Codes and Stored Location (1/7)
(Common Codes)

No.	Code Name	1 st Stage			2 nd Stage	Notes
		Client PC Table	Program (Hardcoded)	Server DB		
1.	Address/Postal Code			√		-
2.	Bank Code	√				-
3.	Citizen ID Card Code			√		-
4.	Company Position Code				√	-
5.	Company Type Code		√			-
6.	Container Model Code					-
7.	Container Number Code			√		-
8.	Container Size Code	√				-
9.	Container Status Code		√			-
10.	Country Code	√				-
11.	Country/Currency Code	√				-
12.	Currency Code	√				-
13.	Customs Broker Code			√		-
14.	Customs Value Method Code	√				-
15.	Decision Maker Code				√	-
16.	DJBC Office Code	√				Separated table
17.	DJBC Position Code				√	-
18.	DJBC Service Office Type Code	√				-
19.	Document Origin Code	√				-
20.	Eyes Color Code	√				-
21.	Facility Decree Code	√				-
22.	Facility Type Code	√				-
23.	Gender Code		√			-
24.	Good Package Code	√				-
25.	Good Unit Code	√				-
26.	Goods Condition Code		√			-
27.	Hair Color Code	√				-
28.	Hair Type Code	√				-
29.	HS Code	√				-
30.	Identity Type Code	√				-
31.	Import License Code	√				-
32.	Importer Type Code	√				-
33.	International Channel Code					Not used
34.	Job Classification Code	√				-
35.	Management in Charge Code	√				-
36.	Means Of Transportation Code		√			-
37.	Motive on Channel Settlement Code	√				-
38.	Nature Of Business Code	√				-
39.	NIP (State Employer ID) Number			√		-
40.	NPWP 10 Digit (Tax Payer Code Number)			√		-
41.	NPWP 12 Digit (Tax Payer Code Number)			√		-

Table A.9-1: Codes and Stored Location (2/7)
(Common Codes)

No.	Code Name	1 st Stage			2 nd Stage	Notes
		Client PC Table	Program (Hardcoded)	Server DB		
42.	Organization Classification Code				√	-
43.	Organization Code	√				-
44.	Ownership Code	√				-
45.	Passport Code			√		-
46.	Payment Type Code		√			-
47.	Percentage Code	√				-
48.	Physical Examination Result Code		√			-
49.	Port Code	√				-
50.	Province Code	√				-
51.	Rank Code	√				-
52.	Red-Green Status Code		√			-
53.	Skin Color Code	√				-
54.	Tax Collection Code				√	-
55.	Tobacco Product Code	√				-
56.	Transportation Method Code		√			-
57.	Vessel Type Code	√				-
58.	Visa Type Code				√	-
59.	Warehouse Type Code		√			-
60.	Yes-No Status Code		√			-

Table A.9-1: Codes and Stored Location (3/7)
(Customs Technique Job Group Codes)

No.	Code Name	1 st Stage			2 nd Stage	Notes
		Client PC Table	Program (Hardcoded)	Server DB		
1	Admission Decree Code	√				-
2	Admission Decree Issuer Code	√				-
3	Admission Decree Status Code	√				-
4	Admission Settlement Code	√				-
5	Admission Type Code	√				-
6	BOP Code				√	-
7	BC. 11 Number			√		-
8	Customs Examination Classification Code				√	-
9	Delivery Code				√	-
10	Examination Objectives Code				√	-
11	Export Type Code	√				-
12	Exporter Type Code				√	-
13	Import Type Code		√√			-
14	KIMAP Code				√	-
15	LPSE Number			√		-
16	PEB Media Code				√	-
17	PEB Type Code	√				-
18	PEB/PEBT Number			√		-
19	Pertamina Subcontractor Code				√	-
20	Pertamina/KPS Code				√	-
21	PIB Type Code	√				-
22	PIB/PIBT Number			√		-
23	SSBC Number			√		-
24	SSP Number			√		-
25	Temporary Admission Application Form Number			√		-

Table A.9-1: Codes and Stored Location (4/7)
(Customs Facilitation Job Group Codes)

No.	Code Name	1 st Stage			2 nd Stage	Notes
		Client PC Table	Program (Hardcoded)	Server DB		
1	Bonded Storage Type Code		√			-
2	Duty Free Shop Type Code		√			-
3	Role Status in Bonded Ware House Code		√			-
4	Role Status in Bonded Zone Code		√			-

Table A.9-1: Codes and Stored Location (5/7)
(Prevention and Investigation Job Group Codes)

No.	Code Name	1 st Stage			2 nd Stage	Notes
		Client PC Table	Program (Hardcoded)	Server DB		
1	Case Settlement Code	√				-
2	Case Status Code	√				-
3	Detection Method Code	√				-
4	Information Media Code				√	-
5	Information Resource Code	√				-
6	Inter Island Goods Code	√				-
7	Location for Secure goods Code		√			-
8	NI Position Code	√				-
9	NI/NHI Classification Code		√			-
10	NI/NHI Scope Code		√			-
11	NI/NHI Target Code				√	-
12	NI/NHI Type Code		√			-
13	Past Record Number			√		-
14	Violation Code		√			-
15	Violation State Code				√	-
16	Violation Subject Code				√	-

**Table A.9-1: Codes and Stored Location (6/7)
(Verification and Audit Job Group Codes)**

No.	Code Name	1 st Stage			2 nd Stage	Notes
		Client PC Table	Program (Hardcoded)	Server DB		
1	Audit Assignment Letter Number			√		-
2	Audit Method Code				√	-
3	Audit Object Code	√				-
4	Audit Process Code				√	-
5	Audit Recommendation Note Code		√			-
6	Audit Result Category Code				√	-
7	Audit Result Code				√	-
8	Auditor Position (Rank) Code				√	-
9	Company Book keeping Existence Code				√	-
10	DNP Request Code	√				-
11	Reason for Auditing Target Code				√	-
12	Verification And Audit Directorate Code				√	-
13	Verification Method Code				√	-
14	Verification Process Code				√	-
15	Verification Recommendation Note Code				√	-
16	Verification Result Code				√	-
17	Verifier Position (Rank) Code				√	-

Table A.9-1: Codes and Stored Location (7/7)
(Excise Job Group Codes)

No.	Code Name	1 st Stage			2 nd Stage	Notes
		Client PC Table	Program (Hardcoded)	Server DB		
1	Excisable Goods Kinds Code		√			-
2	Excise Document Type Code		√			-
3	Excise Stamp Color Code		√			-
4	Excise Stamp Sheet Code		√			-
5	MMEA Brand Code	√				-
6	Tobacco Brand Code	√				-

SUPPLEMENT B

HS Code Classification for Revenue Reports



B.1 HS code classification for export based on petroleum and natural gas

Table B-1: HS Code Classification for Export Based on Petroleum and Natural Gas

No	Group of Goods		HS Code
	English	Indonesia	
1	Crude Oil	Minyak mentah	2709.00.100
			2709.00.900
2	Petroleum product	Hasil minyak	2710.00.100
			2710.00.210
			2710.00.290
			2710.00.310
			2710.00.390
			2710.00.400
			2710.00.500
			2710.00.600
			2710.00.700
			2710.00.910
			2710.00.920
			2710.00.930
			2710.00.950
2710.00.960			
2710.00.990			
3	Natural gas	Gas alam	2711.11.000

B.2 HS code classification for export based on primary goods non-petroleum and natural gas

**Table B-2: HS Code Classification for Export Based on Primary Goods
Non- Petroleum and Natural Gas (1/34)**

No	Group of Goods		HS Code
	English	Indonesia	
Agriculture Product			
A-1	Coffee	Kopi	0901.11.200
			0901.11.300
			0901.11.900
			0901.12.200
			0901.12.300
			0901.12.900
			0901.21.000
			0901.22.100
			0901.22.900
			0901.90.000
A-2	Shrimp	Udang	0306.11.000
			0306.12.000
			0306.13.000
			0306.14.000
			0306.19.100
			0306.19.900
			0306.21.100
			0306.21.900
			0306.22.100
			0306.22.900
			0306.23.100
			0306.23.900
			0306.24.100
			0306.24.900
A-3	Spices	Rempah-rempah	0910.10.100
			0910.10.900
			0910.20.100
			0910.20.900
			0910.30.100
			0910.30.900
			0910.40.000
			0910.50.000
A-4	Tea	Teh	0902.10.100
			0902.10.200
			0902.20.100

**Table B-2: HS Code Classification for Export Based on Primary Goods
Non- Petroleum and Natural Gas (2/34)**

No	Group of Goods		HS Code
	English	Indonesia	
A-4	Tea	Teh	0902.20.200
			0902.30.000
			0902.40.100
			0902.40.200
			0903.00.000
A-5	Fish and others	Ikan dan lain-lain	0301.10.100
			0301.10.910
			0301.10.920
			0301.91.100
			0301.91.900
			0301.92.100
			0301.92.900
			0301.93.100
			0301.93.900
			0301.99.100
			0301.99.900
			0302.11.000
			0302.12.000
			0302.19.000
			0302.21.000
			0302.22.000
			0302.23.000
			0302.29.000
			0302.31.000
			0302.32.000
			0302.33.000
			0302.39.000
			0302.40.000
			0302.50.000
			0302.61.000
			0302.62.000
			0302.63.000
0302.64.000			
0302.65.000			
0302.66.000			
0302.69.100			
0302.69.900			
0302.70.100			
0302.70.200			
0303.10.000			
0303.21.000			
0303.22.000			

**Table B-2: HS Code Classification for Export Based on Primary Goods
Non- Petroleum and Natural Gas (3/34)**

No	Group of Goods		HS Code
	English	Indonesia	
A-5	Fish and others	Ikan dan lain-lain	0303.29.000
			0303.31.000
			0303.32.000
			0303.33.000
			0303.39.000
			0303.41.000
			0303.42.000
			0303.43.000
			0303.49.000
			0303.50.000
			0303.60.000
			0303.71.000
			0303.72.000
			0303.73.000
			0303.74.000
			0303.75.000
			0303.76.000
			0303.77.000
			0303.78.000
			0303.79.100
			0303.79.900
			0303.80.100
			0303.80.200
			0304.10.100
			0304.10.910
			0304.10.990
			0304.20.000
			0304.90.100
			0304.90.900
			0305.10.000
			0305.20.100
			0305.20.900
0305.30.000			
0305.41.000			
0305.42.000			
0305.49.000			
0305.51.000			
0305.59.100			
0305.59.300			
0305.59.900			
0305.61.000			
0305.62.000			

**Table B-2: HS Code Classification for Export Based on Primary Goods
Non- Petroleum and Natural Gas (4/34)**

No	Group of Goods		HS Code
	English	Indonesia	
A-5	Fish and others	Ikan dan lain-lain	0305.63.000
			0305.69.100
			0305.69.900
A-6	Chocolate beans	Biji coklat	1801.00.000
Industrial product			
I-1	Sawn timber processed wood	Kayu lapis	4408.10.100
			4408.10.900
			4408.31.100
			4408.31.900
			4408.39.100
			4408.39.900
			4408.90.100
			4408.90.900
			4412.13.000
			4412.14.000
			4412.19.100
			4412.19.900
			4412.22.000
			4412.23.000
			4412.29.000
			4412.92.000
4412.93.000			
4412.99.000			
I-2	Ready-made wear	Pakaian jadi	6101.10.000
			6101.20.000
			6101.30.000
			6101.90.000
			6102.10.000
			6102.20.000
			6102.30.000
			6102.90.000
			6103.11.000
			6103.12.000
			6103.19.100
			6103.19.900
			6103.21.000
			6103.22.000
6103.23.000			
6103.29.000			
6103.31.000			
6103.32.000			
6103.33.000			

**Table B-2: HS Code Classification for Export Based on Primary Goods
Non- Petroleum and Natural Gas (5/34)**

No	Group of Goods		HS Code
	English	Indonesia	
1-2	Ready-made wear	Pakaian jadi	6103.39.000
			6103.41.000
			6103.42.000
			6103.43.000
			6103.49.000
			6104.11.000
			6104.12.000
			6104.13.000
			6104.19.000
			6104.21.000
			6104.22.000
			6104.23.000
			6104.29.000
			6104.31.000
			6104.32.000
			6104.33.000
			6104.39.000
			6104.41.000
			6104.42.000
			6104.43.000
			6104.44.000
			6104.49.000
			6104.51.000
			6104.52.000
			6104.53.000
			6104.59.000
			6104.61.000
			6104.62.000
			6104.63.000
			6104.69.000
			6105.10.000
			6105.20.000
			6105.90.000
			6106.10.000
6106.20.000			
6106.90.100			
6106.90.900			
6107.11.000			
6107.12.000			
6107.19.100			
6107.19.900			
6107.21.000			

**Table B-2: HS Code Classification for Export Based on Primary Goods
Non- Petroleum and Natural Gas (6/34)**

No	Group of Goods		HS Code
	English	Indonesia	
I-2	Ready-made wear	Pakaian jadi	6107.22.000
			6107.29.100
			6107.29.900
			6107.91.000
			6107.92.000
			6107.99.100
			6107.99.900
			6108.11.000
			6108.19.100
			6108.19.900
			6108.21.000
			6108.22.000
			6108.29.100
			6108.29.900
			6108.31.000
			6108.32.000
			6108.39.100
			6108.39.900
			6108.91.000
			6108.92.000
			6108.99.100
			6108.99.900
			6109.10.100
			6109.10.900
			6109.90.100
			6109.90.900
			6110.10.000
			6110.20.000
			6110.30.000
			6110.90.000
			6111.10.100
			6111.10.200
			6111.10.300
6111.10.400			
6111.10.500			
6111.10.600			
6111.10.900			
6111.20.000			
6111.30.000			
6111.90.000			
6112.11.000			
6112.12.000			

**Table B-2: HS Code Classification for Export Based on Primary Goods
Non- Petroleum and Natural Gas (7/34)**

No	Group of Goods		HS Code
	English	Indonesia	
I-2	Ready-made wear	Pakaian jadi	6112.19.000
			6112.20.000
			6112.31.000
			6112.39.000
			6112.41.000
			6112.49.000
			6113.00.000
			6114.10.000
			6114.20.000
			6114.30.000
			6114.90.000
			6115.11.000
			6115.12.000
			6115.19.000
			6115.20.000
			6115.91.000
			6115.92.100
			6115.92.900
			6115.93.000
			6115.99.000
			6116.10.000
			6116.91.000
			6116.92.000
			6116.93.000
			6116.99.000
			6117.10.000
			6117.20.100
			6117.20.900
			6117.80.100
			6117.80.900
			6117.90.000
			6201.11.000
			6201.12.100
			6201.12.900
6201.13.100			
6201.13.910			
6201.13.990			
6201.19.100			
6201.19.900			
6201.91.000			
6201.92.100			
6201.92.200			

**Table B-2: HS Code Classification for Export Based on Primary Goods
Non- Petroleum and Natural Gas (8/34)**

No	Group of Goods		HS Code
	English	Indonesia	
I-2	Ready-made wear	Pakaian jadi	6201.92.300
			6201.92.400
			6201.92.900
			6201.93.100
			6201.93.910
			6201.93.990
			6201.99.100
			6201.99.900
			6202.11.100
			6202.11.900
			6202.12.100
			6202.12.900
			6202.13.100
			6202.13.910
			6202.13.990
			6202.19.100
			6202.19.900
			6202.91.100
			6202.91.900
			6202.92.100
			6202.92.200
			6202.92.300
			6202.92.400
			6202.92.900
			6202.93.100
			6202.93.910
			6202.93.990
			6202.99.100
			6202.99.900
			6203.11.100
			6203.11.900
			6203.12.100
			6203.12.900
			6203.19.110
6203.19.190			
6203.19.210			
6203.19.290			
6203.19.910			
6203.19.990			
6203.21.000			
6203.22.100			
6203.22.900			

**Table B-2: HS Code Classification for Export Based on Primary Goods
Non- Petroleum and Natural Gas (9/34)**

No	Group of Goods		HS Code
	English	Indonesia	
I-2	Ready-made wear	Pakaian jadi	6203.23.100
			6203.23.900
			6203.29.100
			6203.29.900
			6203.31.000
			6203.32.100
			6203.32.900
			6203.33.100
			6203.33.900
			6203.39.100
			6203.39.900
			6203.41.000
			6203.42.100
			6203.42.900
			6203.43.100
			6203.43.910
			6203.43.990
			6203.49.100
			6203.49.900
			6204.11.000
			6204.12.100
			6204.12.900
			6204.13.100
			6204.13.900
			6204.19.100
			6204.19.900
			6204.21.000
			6204.22.100
			6204.22.900
			6204.23.100
			6204.23.900
			6204.29.100
			6204.29.900
			6204.31.000
6204.32.100			
6204.32.900			
6204.33.100			
6204.33.900			
6204.39.100			
6204.39.900			
6204.41.000			
6204.42.100			

**Table B-2: HS Code Classification for Export Based on Primary Goods
Non- Petroleum and Natural Gas (10/34)**

No	Group of Goods		HS Code
	English	Indonesia	
I-2	Ready-made wear	Pakaian jadi	6204.42.900
			6204.43.100
			6204.43.900
			6204.44.100
			6204.44.900
			6204.49.100
			6204.49.900
			6204.51.000
			6204.52.100
			6204.52.900
			6204.53.100
			6204.53.900
			6204.59.100
			6204.59.900
			6204.61.000
			6204.62.100
			6204.62.900
			6204.63.100
			6204.63.910
			6204.63.990
			6204.69.100
			6204.69.900
			6205.10.000
			6205.20.000
			6205.30.100
			6205.30.200
			6205.90.000
			6206.10.110
			6206.10.190
			6206.10.910
			6206.10.990
			6206.20.000
			6206.30.110
6206.30.190			
6206.30.910			
6206.30.990			
6206.40.110			
6206.40.190			
6206.40.910			
6206.40.990			
6206.90.110			
6206.90.190			

**Table B-2: HS Code Classification for Export Based on Primary Goods
Non- Petroleum and Natural Gas (11/34)**

No	Group of Goods		HS Code
	English	Indonesia	
I-2	Ready-made wear	Pakaian jadi	6206.90.910
			6206.90.990
			6207.11.000
			6207.19.000
			6207.21.000
			6207.22.000
			6207.29.000
			6207.91.100
			6207.91.900
			6207.92.110
			6207.92.190
			6207.92.910
			6207.92.990
			6207.99.100
			6207.99.910
			6207.99.990
			6208.11.000
			6208.19.000
			6208.21.000
			6208.22.000
			6208.29.000
			6208.91.100
			6208.91.900
			6208.92.000
			6208.99.100
			6208.99.900
			6209.10.100
			6209.10.900
			6209.20.110
			6209.20.190
			6209.20.210
			6209.20.290
			6209.20.310
			6209.20.390
6209.20.410			
6209.20.490			
6209.20.510			
6209.20.590			
6209.20.900			
6209.30.110			
6209.30.190			
6209.30.210			

**Table B-2: HS Code Classification for Export Based on Primary Goods
Non- Petroleum and Natural Gas (12/34)**

No	Group of Goods		HS Code
	English	Indonesia	
1-2	Ready-made wear	Pakaian jadi	6209.30.290
			6209.30.310
			6209.30.390
			6209.30.410
			6209.30.490
			6209.30.510
			6209.30.590
			6209.30.900
			6209.90.110
			6209.90.190
			6209.90.210
			6209.90.290
			6209.90.310
			6209.90.390
			6209.90.410
			6209.90.490
			6209.90.510
			6209.90.590
			6209.90.900
			6210.10.000
			6210.20.300
			6210.20.900
			6210.30.000
			6210.40.200
			6210.40.900
			6210.50.000
			6211.11.110
			6211.11.190
			6211.11.210
			6211.11.290
			6211.11.910
			6211.11.990
			6211.12.100
			6211.12.210
6211.12.290			
6211.12.310			
6211.12.390			
6211.12.910			
6211.12.990			
6211.20.100			
6211.20.900			
6211.31.000			

**Table B-2: HS Code Classification for Export Based on Primary Goods
Non- Petroleum and Natural Gas (13/34)**

No	Group of Goods		HS Code
	English	Indonesia	
I-2	Ready-made wear	Pakaian jadi	6211.32.100
			6211.32.900
			6211.33.100
			6211.33.900
			6211.39.100
			6211.39.900
			6211.41.000
			6211.42.100
			6211.42.900
			6211.43.100
			6211.43.900
			6211.49.100
			6211.49.900
			6212.10.000
			6212.20.000
			6212.30.000
			6212.90.000
			6213.10.100
			6213.10.900
			6213.20.100
			6213.20.900
			6213.90.110
			6213.90.190
			6213.90.910
			6213.90.990
			6214.10.100
			6214.10.900
			6214.20.100
			6214.20.900
			6214.30.100
			6214.30.900
			6214.40.100
			6214.40.900
6214.90.110			
6214.90.190			
6214.90.910			
6214.90.990			
6215.10.100			
6215.10.900			
6215.20.100			
6215.20.900			
6215.90.100			

**Table B-2: HS Code Classification for Export Based on Primary Goods
Non- Petroleum and Natural Gas (14/34)**

No	Group of Goods		HS Code
	English	Indonesia	
I-2	Ready-made wear	Pakaian jadi	6215.90.210
			6215.90.290
			6215.90.910
			6215.90.990
			6216.00.000
			6217.10.100
			6217.10.900
			6217.90.000
I-3	Processed rubber	Karet olahan	4001.22.110
			4001.22.150
			4001.22.160
			4001.22.190
I-4	Furniture and parts	Mebel dan bagiannya	9401.10.000
			9401.20.000
			9401.30.000
			9401.40.000
			9401.50.100
			9401.50.900
			9401.61.000
			9401.69.000
			9401.71.000
			9401.79.000
			9401.80.100
			9401.80.900
			9401.90.100
			9401.90.200
			9401.90.300
			9401.90.900
			9403.10.000
			9403.20.000
			9403.30.100
			9403.30.200
			9403.30.900
			9403.40.000
			9403.50.000
			9403.60.000
9403.70.000			
9403.80.100			
9403.80.900			
9403.90.100			
9403.90.200			
9403.90.900			

**Table B-2: HS Code Classification for Export Based on Primary Goods
Non- Petroleum and Natural Gas (15/34)**

No	Group of Goods		HS Code
	English	Indonesia	
I-5	Woven cloth	Kain Tenunan	5111.11.100
			5111.11.900
			5111.19.100
			5111.19.900
			5111.20.100
			5111.20.900
			5111.30.100
			5111.30.900
			5111.90.100
			5111.90.900
			5112.11.100
			5112.11.900
			5112.19.100
			5112.19.900
			5112.20.100
			5112.20.900
			5112.30.100
			5112.30.900
			5112.90.100
5112.90.900			
5113.00.000			
I-6	Non-precious metal goods (Articles of Iron or Steel)	Barang logam tidak mulia (Barang dari besi atau baja)	7301.10.000
			7301.20.000
			7302.10.000
			7302.20.000
			7302.30.000
			7302.40.000
			7302.90.000
			7303.00.110
			7303.00.120
			7303.00.130
			7303.00.900
			7304.10.000
			7304.21.000
			7304.29.000
			7304.31.000
			7304.39.000
			7304.41.000
			7304.49.000
			7304.51.000
7304.59.000			
7304.90.000			

**Table B-2: HS Code Classification for Export Based on Primary Goods
Non- Petroleum and Natural Gas (16/34)**

No	Group of Goods		HS Code
	English	Indonesia	
I-6	(Articles of Iron or Steel)	(Barang dari besi atau baja)	7305.11.000
			7305.12.000
			7305.19.000
			7305.20.000
			7305.31.000
			7305.39.000
			7305.90.000
			7306.10.000
			7306.20.000
			7306.30.100
			7306.30.200
			7306.30.900
			7306.40.100
			7306.40.900
			7306.50.100
			7306.50.900
			7306.60.100
			7306.60.900
			7306.90.100
			7306.90.900
			7307.11.000
			7307.19.000
			7307.21.000
			7307.22.000
			7307.23.000
			7307.29.000
			7307.91.000
			7307.92.000
			7307.93.000
			7307.99.000
7308.10.000			
7308.20.000			
7308.30.000			
7308.40.000			
7308.90.200			
7308.90.300			
7308.90.400			
7308.90.900			
7309.00.000			
7310.10.100			
7310.10.200			

**Table B-2: HS Code Classification for Export Based on Primary Goods
Non- Petroleum and Natural Gas (17/34)**

No	Group of Goods		HS Code
	English	Indonesia	
I-6	(Articles of Iron or Steel)	(Barang dari besi atau baja)	7310.10.910
			7310.10.920
			7310.10.930
			7310.10.990
			7310.21.100
			7310.21.910
			7310.21.920
			7310.21.990
			7310.29.100
			7310.29.200
			7310.29.900
			7311.00.000
			7312.10.110
			7312.10.120
			7312.10.190
			7312.10.900
			7312.90.000
			7313.00.000
			7314.12.000
			7314.13.000
			7314.14.000
			7314.19.000
			7314.20.000
			7314.31.000
			7314.39.000
			7314.41.000
			7314.42.000
			7314.49.000
			7314.50.000
			7315.11.100
			7315.11.900
			7315.12.000
			7315.19.000
7315.20.000			
7315.81.000			
7315.82.000			
7315.89.000			
7315.90.000			
7316.00.000			
7317.00.100			
7317.00.200			
7317.00.300			

**Table B-2: HS Code Classification for Export Based on Primary Goods
Non- Petroleum and Natural Gas (18/34)**

No	Group of Goods		HS Code
	English	Indonesia	
I-6	(Articles of Iron or Steel)	(Barang dari besi atau baja)	7317.00.400
			7317.00.500
			7317.00.600
			7317.00.900
			7318.11.000
			7318.12.000
			7318.13.000
			7318.14.000
			7318.15.100
			7318.15.200
			7318.15.900
			7318.16.000
			7318.19.000
			7318.21.000
			7318.22.000
			7318.23.000
			7318.24.000
			7318.29.000
			7319.10.000
			7319.20.000
			7319.30.000
			7319.90.000
			7320.10.100
			7320.10.900
			7320.20.110
			7320.20.190
			7320.20.900
			7320.90.000
			7321.11.000
			7321.12.000
			7321.13.000
			7321.81.000
			7321.82.000
7321.83.000			
7321.90.000			
7322.11.000			
7322.19.000			
7322.90.000			
7323.10.000			
7323.91.000			
7323.92.000			
7323.93.000			

**Table B-2: HS Code Classification for Export Based on Primary Goods
Non- Petroleum and Natural Gas (19/34)**

No	Group of Goods		HS Code
	English	Indonesia	
I-6	(Articles of Iron or Steel)	(Barang dari besi atau baja)	7323.94.000
			7323.99.000
			7324.10.000
			7324.21.000
			7324.29.000
			7324.90.100
			7324.90.900
			7325.10.000
			7325.91.100
			7325.91.900
			7325.99.000
			7326.11.000
			7326.19.000
			7326.20.000
			7326.90.000
	(Articles of Cooper)	(Barang dari tembaga)	7412.10.000
			7412.20.000
			7413.00.000
			7414.20.100
			7414.20.900
7414.90.000			
7415.10.000			
7415.21.000			
7415.29.000			
7415.31.000			
7415.32.000			
7415.39.000			
7416.00.000			
7417.00.000			
7418.11.000			
7418.19.000			
7418.20.000			
7419.10.000			
7419.91.110			
7419.91.120			
7419.91.210			
7419.91.290			
7419.91.300			
7419.91.900			
7419.99.110			
7419.99.120			
7419.99.210			

**Table B-2: HS Code Classification for Export Based on Primary Goods
Non- Petroleum and Natural Gas (20/34)**

No	Group of Goods		HS Code
	English	Indonesia	
I-6	(Articles of Cooper)	(Barang dari tembaga)	7419.99.290
			7419.99.300
			7419.99.900
(Articles of Nickel)	(Barang dari Nikel)	7507.11.000	
		7507.12.000	
		7507.20.000	
		7508.10.000	
		7508.90.100	
		7508.90.200	
		7508.90.900	
(Articles of Aluminium)	(Barang dari aluminium)	7609.00.000	
		7610.10.000	
		7610.90.000	
		7611.00.000	
		7612.10.000	
		7612.90.000	
		7613.00.000	
		7614.10.000	
		7614.90.000	
		7615.11.000	
		7615.19.100	
		7615.19.900	
		7615.20.000	
		7616.10.000	
		7616.91.000	
7616.99.100			
7616.99.900			
(Articles of Lead)	(Barang of timah hitam)	7805.00.000	
		7806.00.100	
		7806.00.200	
		7806.00.300	
		7806.00.900	
(Articles of Zinc)	(Barang dari seng)	7906.00.000	
		7907.00.100	
		7907.00.910	
		7907.00.920	
		7907.00.930	
		7907.00.940	
		7907.00.950	
		7907.00.960	
7907.00.990			

**Table B-2: HS Code Classification for Export Based on Primary Goods
Non- Petroleum and Natural Gas (21/34)**

No	Group of Goods		HS Code
	English	Indonesia	
I-6	(Articles of Tin)	(Barang dari Timah)	8005.00.000
			8006.00.000
			8007.00.100
			8007.00.900
	(Articles of other base metals)	(Barang dari logam tidak mulia lainnya)	8101.10.000
			8101.91.000
			8101.92.000
			8101.93.000
			8101.99.000
			8102.10.000
			8102.91.000
			8102.92.000
			8102.93.000
			8102.99.000
			8103.10.000
			8103.90.000
			8104.11.000
			8104.19.000
			8104.20.000
			8104.30.000
			8104.90.000
			8105.10.000
			8105.90.000
			8106.00.000
			8107.10.000
			8107.90.000
			8108.10.000
			8108.90.000
8109.10.000			
8109.90.000			
8110.00.000			
8111.00.000			
8112.11.000			
8112.19.000			
8112.20.000			
8112.30.000			
8112.40.000			
8112.91.000			
8112.99.000			
8113.00.000			
I-7	Electric equipment	Alat listrik	8501.10.100
			8501.10.900

**Table B-2: HS Code Classification for Export Based on Primary Goods
Non- Petroleum and Natural Gas (22/34)**

No	Group of Goods		HS Code
	English	Indonesia	
I-7	Electric equipment	Alat listrik	8501.20.000
			8501.31.000
			8501.32.000
			8501.33.000
			8501.34.000
			8501.40.000
			8501.51.000
			8501.52.000
			8501.53.000
			8501.61.000
			8501.62.000
			8501.63.000
			8501.64.000
			8502.11.000
			8502.12.000
			8502.13.000
			8502.20.000
			8502.31.000
			8502.39.000
			8502.40.000
			8503.00.100
			8503.00.900
			8504.10.000
			8504.21.000
			8504.22.000
			8504.23.000
			8504.31.100
			8504.31.200
			8504.31.900
			8504.32.100
			8504.32.910
			8504.32.990
			8504.33.000
			8504.34.000
8504.40.110			
8504.40.190			
8504.40.200			
8504.40.900			
8504.50.000			
8504.90.110			
8504.90.190			
8504.90.200			

**Table B-2: HS Code Classification for Export Based on Primary Goods
Non- Petroleum and Natural Gas (23/34)**

No	Group of Goods		HS Code
	English	Indonesia	
1-7	Electric equipment	Alat listrik	8504.90.300
			8504.90.910
			8504.90.990
			8505.11.000
			8505.19.000
			8505.20.000
			8505.30.000
			8505.90.000
			8506.10.000
			8506.30.000
			8506.40.000
			8506.50.000
			8506.60.000
			8506.80.000
			8506.90.000
			8507.10.100
			8507.10.910
			8507.10.990
			8507.20.000
			8507.30.000
			8507.40.000
			8507.80.000
			8507.90.100
			8507.90.900
			8508.10.000
			8508.20.000
			8508.80.000
			8508.90.000
			8509.10.000
			8509.20.000
			8509.30.000
			8509.40.000
8509.80.000			
8509.90.000			
8510.10.000			
8510.20.000			
8510.30.000			
8510.90.000			
8511.10.100			
8511.10.900			
8511.20.000			
8511.30.000			

**Table B-2: HS Code Classification for Export Based on Primary Goods
Non- Petroleum and Natural Gas (24/34)**

No	Group of Goods		HS Code
	English	Indonesia	
I-7	Electric equipment	Alat listrik	8511.40.100
			8511.40.900
			8511.50.100
			8511.50.900
			8511.80.000
			8511.90.100
			8511.90.200
			8511.90.900
			8512.10.000
			8512.20.300
			8512.20.900
			8512.30.000
			8512.40.000
			8512.90.000
			8513.10.100
			8513.10.900
			8513.90.000
			8514.10.000
			8514.20.000
			8514.30.000
			8514.40.000
			8514.90.000
			8515.11.100
			8515.11.900
			8515.19.100
			8515.19.900
			8515.21.100
			8515.21.900
			8515.29.100
			8515.29.900
			8515.31.100
			8515.31.900
8515.39.100			
8515.39.900			
8515.80.000			
8515.90.000			
8516.10.000			
8516.21.000			
8516.29.000			
8516.31.000			
8516.32.000			
8516.33.000			

**Table B-2: HS Code Classification for Export Based on Primary Goods
Non- Petroleum and Natural Gas (25/34)**

No	Group of Goods		HS Code
	English	Indonesia	
I-7	Electric equipment	Alat listrik	8516.40.000
			8516.50.000
			8516.60.000
			8516.71.000
			8516.72.000
			8516.79.000
			8516.80.000
			8516.90.100
			8516.90.910
			8516.90.990
			8517.11.000
			8517.19.000
			8517.21.000
			8517.22.000
			8517.30.100
			8517.30.200
			8517.50.000
			8517.80.000
			8517.90.100
			8517.90.900
			8518.10.000
			8518.21.000
			8518.22.000
			8518.29.000
			8518.30.000
			8518.40.000
			8518.50.000
			8518.90.100
			8518.90.900
			8519.10.000
			8519.21.000
			8519.29.000
8519.31.000			
8519.39.000			
8519.40.000			
8519.92.000			
8519.93.000			
8519.99.100			
8519.99.200			
8519.99.900			
8520.10.000			
8520.20.000			

**Table B-2: HS Code Classification for Export Based on Primary Goods
Non- Petroleum and Natural Gas (26/34)**

No	Group of Goods		HS Code
	English	Indonesia	
I-7	Electric equipment	Alat listrik	8520.32.000
			8520.33.000
			8520.39.000
			8520.90.100
			8520.90.200
			8520.90.900
			8521.10.000
			8521.90.000
			8522.10.000
			8522.90.100
			8522.90.200
			8522.90.910
			8522.90.990
			8523.11.000
			8523.12.000
			8523.13.000
			8523.20.100
			8523.20.900
			8523.30.000
			8523.90.100
			8523.90.200
			8523.90.300
			8523.90.900
			8524.10.000
			8524.31.100
			8524.31.900
			8524.32.000
			8524.39.000
			8524.40.100
			8524.40.900
			8524.51.000
			8524.52.000
			8524.53.000
8524.60.000			
8524.91.100			
8524.91.900			
8524.99.000			
8525.10.000			
8525.20.100			
8525.20.910			
8525.20.990			
8525.30.000			

**Table B-2: HS Code Classification for Export Based on Primary Goods
Non- Petroleum and Natural Gas (27/34)**

No	Group of Goods		HS Code
	English	Indonesia	
I-7	Electric equipment	Alat listrik	8525.40.000
			8526.10.000
			8526.91.000
			8526.92.000
			8527.12.000
			8527.13.000
			8527.19.000
			8527.21.000
			8527.29.000
			8527.31.000
			8527.32.000
			8527.39.000
			8527.90.100
			8527.90.900
			8528.12.000
			8528.13.000
			8528.21.000
			8528.22.000
			8528.30.000
			8529.10.100
			8529.10.200
			8529.10.300
			8529.10.910
			8529.10.990
			8529.90.200
			8529.90.900
			8530.10.000
			8530.80.100
			8530.80.300
			8530.80.400
			8530.80.900
			8530.90.000
			8531.10.000
			8531.20.000
8531.80.100			
8531.80.900			
8531.90.100			
8531.90.900			
8532.10.000			
8532.21.000			
8532.22.000			
8532.23.000			

**Table B-2: HS Code Classification for Export Based on Primary Goods
Non- Petroleum and Natural Gas (28/34)**

No	Group of Goods		HS Code
	English	Indonesia	
I-7	Electric equipment	Alat listrik	8532.24.000
			8532.25.000
			8532.29.000
			8532.30.000
			8532.90.000
			8533.10.000
			8533.21.000
			8533.29.000
			8533.31.000
			8533.39.000
			8533.40.000
			8533.90.000
			8534.00.000
			8535.10.000
			8535.21.000
			8535.29.000
			8535.30.100
			8535.30.900
			8535.40.000
			8535.90.000
			8536.10.000
			8536.20.000
			8536.30.000
			8536.41.000
			8536.49.000
			8536.50.100
			8536.50.900
			8536.61.000
			8536.69.000
			8536.90.100
			8536.90.200
			8536.90.300
8536.90.400			
8536.90.900			
8537.10.000			
8537.20.000			
8538.10.000			
8538.90.000			
8539.10.100			
8539.10.200			
8539.10.900			
8539.21.000			

**Table B-2: HS Code Classification for Export Based on Primary Goods
Non- Petroleum and Natural Gas (29/34)**

No	Group of Goods		HS Code
	English	Indonesia	
I-7	Electric equipment	Alat listrik	8539.22.000
			8539.29.000
			8539.31.100
			8539.31.200
			8539.31.900
			8539.32.000
			8539.39.100
			8539.39.900
			8539.41.000
			8539.49.000
			8539.90.000
			8540.11.000
			8540.12.000
			8540.20.000
			8540.40.000
			8540.50.000
			8540.60.000
			8540.71.000
			8540.72.000
			8540.79.000
			8540.81.000
			8540.89.000
			8540.91.000
			8540.99.000
			8541.10.000
			8541.21.000
			8541.29.000
			8541.30.000
			8541.40.100
			8541.40.900
			8541.50.000
			8541.60.000
			8541.90.000
			8542.12.000
8542.13.000			
8542.14.000			
8542.19.000			
8542.30.000			
8542.40.000			
8542.50.000			
8542.90.000			
8543.11.000			

**Table B-2: HS Code Classification for Export Based on Primary Goods
Non- Petroleum and Natural Gas (30/34)**

No	Group of Goods		HS Code
	English	Indonesia	
I-7	Electric equipment	Alat listrik	8543.19.000
			8543.20.000
			8543.30.000
			8543.40.000
			8543.81.000
			8543.89.100
			8543.89.900
			8543.90.100
			8543.90.900
			8544.11.110
			8544.11.190
			8544.11.200
			8544.11.300
			8544.11.910
			8544.11.990
			8544.19.300
			8544.19.900
			8544.20.100
			8544.20.210
			8544.20.290
			8544.30.000
			8544.41.000
			8544.49.110
			8544.49.190
			8544.49.910
			8544.49.990
			8544.51.000
			8544.59.110
			8544.59.190
			8544.59.910
			8544.59.990
			8544.60.000
			8544.70.000
			8545.11.000
8545.19.000			
8545.20.000			
8545.90.200			
8545.90.900			
8546.10.000			
8546.20.100			
8546.20.900			
8546.90.000			

**Table B-2: HS Code Classification for Export Based on Primary Goods
Non- Petroleum and Natural Gas (31/34)**

No	Group of Goods		HS Code
	English	Indonesia	
I-7	Electric equipment	Alat listrik	8547.10.000
			8547.20.000
			8547.90.100
			8547.90.910
			8547.90.990
I-8	Fertilizer	Pupuk	3101.00.140
			3101.00.190
			3101.00.900
			3102.10.000
			3102.21.000
			3102.29.000
			3102.30.000
			3102.40.000
			3102.50.100
			3102.50.900
			3102.60.000
			3102.70.100
			3102.70.900
			3102.80.000
			3102.90.000
			3103.10.000
			3103.20.000
			3103.90.000
			3104.10.000
			3104.20.000
			3104.30.000
			3104.90.000
			3105.10.100
			3105.10.200
			3105.10.300
			3105.10.400
			3105.10.900
3105.20.000			
3105.30.000			
3105.40.000			
3105.51.000			
3105.59.000			
3105.60.000			
3105.90.000			
I-9	Palm Oil	Minyak sawit	1513.11.000
			1513.19.000
			1513.21.000

**Table B-2: HS Code Classification for Export Based on Primary Goods
Non- Petroleum and Natural Gas (32/34)**

No	Group of Goods		HS Code
	English	Indonesia	
I-9	Palm Oil	Minyak sawit	1513.29.000
I-10	Footwear	Alas kaki	6401.10.000
			6401.91.000
			6401.92.000
			6401.99.200
			6401.99.900
			6402.12.000
			6402.19.000
			6402.20.000
			6402.30.000
			6402.91.000
			6402.99.100
			6402.99.200
			6402.99.900
			6403.12.000
			6403.19.100
			6403.19.200
			6403.19.900
			6403.20.000
			6403.30.000
			6403.40.000
			6403.51.000
			6403.59.100
			6403.59.200
			6403.59.300
			6403.59.900
			6403.91.100
			6403.91.900
			6403.99.100
			6403.99.200
			6403.99.900
6404.11.100			
6404.11.200			
6404.19.110			
6404.19.120			
6404.19.190			
6404.20.000			
6405.10.000			
6405.20.000			
6405.90.100			
6405.90.900			
6406.10.000			

**Table B-2: HS Code Classification for Export Based on Primary Goods
Non- Petroleum and Natural Gas (33/34)**

No	Group of Goods		HS Code
	English	Indonesia	
I-10	Footwear	Alas kaki	6406.20.000
			6406.91.000
			6406.99.000
I-11	Processed food	Makanan olahan	2101.11.000
			2101.12.000
			2101.20.000
			2101.30.000
			2102.10.000
			2102.20.100
			2102.20.200
			2102.30.000
			2103.10.100
			2103.10.200
			2103.10.900
			2103.20.100
			2103.20.200
			2103.20.300
			2103.20.900
			2103.30.100
			2103.30.200
			2103.90.300
			2103.90.400
			2103.90.900
			2104.10.100
			2104.10.900
			2104.20.000
			2105.00.000
			2106.10.000
			2106.90.100
			2106.90.210
2106.90.291			
2106.90.299			
2106.90.300			
2106.90.400			
2106.90.510			
2106.90.590			
2106.90.900			
Mining products			
M-1	Copper ore	Biji tembaga	2603.00.000
M-2	Coal	Batubara	2701.11.000
			2701.12.000
			2701.19.000

**Table B-2: HS Code Classification for Export Based on Primary Goods
Non- Petroleum and Natural Gas (34/34)**

No	Group of Goods		HS Code
	English	Indonesia	
M-2	Coal	Batubara	2701.20.000
			2702.10.000
			2702.20.000
M-3	Nickel ore	Biji nikel	2604.00.000
M-4	Granite	Granit	6802.10.100
			6802.10.200
			6802.10.900
			6802.21.000
			6802.22.000
			6802.23.100
			6802.23.900
			6802.29.000
			6802.91.000
			6802.92.000
			6802.93.000
6802.99.000			
M-5	Bauxite	Bauksit	3802.90.900
			2606.00.000
M-6	Tin ore	Biji timah	2609.00.000



**B.3 HS code classification for revenue on import duty and excise
of importation**

**Table B-3: HS Code Classification for Revenue on
Import Duty and Excise of Importation**

No	Group of Goods		HS Code
	English	Indonesia	
1	Tobacco product	Hasil tembakau	2401.10.100
			2401.10.900
			2401.20.100
			2401.20.900
			2401.30.000
			2402.10.000
			2402.20.200
			2402.20.900
			2402.90.000
			2403.10.100
			2403.10.200
			2403.10.900
			2403.91.000
			2403.99.300
2403.99.900			
2	Alcoholic beverage	Minuman mengandung etil alkohol	2203.00.000
			2204.10.000
			2204.21.100
			2204.21.200
			2204.21.900
			2204.29.100
			2204.29.200
			2204.29.900
3	Ethyl-alcohol	Etil alkohol	2207.10.000
			2207.20.000
			2208.20.000
			2208.30.000
			2208.40.000
			2208.50.000
			2208.60.000
			2208.70.000
2208.90.000			

SUPPLEMENT C

**File Format List for Exchanging File Between
CIS and CFRS**



C.1 File Format for Receiving Files

Table C.1-1: Data Structure of PIB Header (1/2)

No	Field Name	Type	Width	Description
1	SREGISTERNUM	Number	6	Registration Number
2	DTREGISTERDATE	Date	---	Registration Date
3	SINDENTORID	Varchar2	12	Indentor ID
4	SINVOICENUM	Varchar2	25	Invoice Number
5	DTINVOICEDATE	Date	---	Invoice Date
6	SLCNUM	Varchar2	15	L.C. Number
7	DTLCDATE	Date	---	L.C. Date
8	SBLAWBNUM	Varchar2	15	BL/AWB Number
9	DTBLAWBDATE	Date	---	BL/AWB Date
10	SBCINUM	Varchar2	15	BC 1.1 Number
11	SBCIPOST	Varchar2	6	BC 1.1 Post
12	DTBCIDATE	Date	---	BC 1.1 Date
13	LEXCHANGERATE	Number	20	Exchange Rate
14	LFOBVALUE	Number	20	FOB Value
15	LFREIGHTTOTVAL	Number	20	Freight Total Value
16	LINSURANCEVAL	Number	20	Insurance Value
17	LCIFVALUE	Number	20	CIF Value
18	LQUANTITYCONTAINER	Number	3	Quantity of Container
19	SBRANDCONTAINER	Varchar2	30	Brand of Container
20	LGROSSWEIGHT	Number	15	Gross Weight
21	LNETWEIGHT	Number	15	Net Weight
22	SCAR	Varchar2	25	CAR
23	SCORRECTIONNOTEFLAG	Varchar2	1	Correction Note Flag
24	STRANSPORTATIONTYPE	Varchar2	1	Transportation Type
25	INDENTID_OF_SCODEGRP	Varchar2	3	Code Group of Indentor ID Code
26	INDENTID_OF_SCODEID	Varchar2	3	Code ID of Indentor ID Code
27	CURRCODE_OF_SCODEGRP	Varchar2	3	Code Group of Currency Code
28	CURRCODE_OF_SCODEID	Varchar2	3	Code ID of Currency Code
29	IMPTYPE_OF_SCODEID	Varchar2	3	Code ID of Importer Type Code
30	IMPTYPE_OF_SCODEGRP	Varchar2	3	Code Group of Importer Type Code
31	PIBTYPE_OF_SCODEGRP	Varchar2	3	Code Group of PIB Type Code
32	PIBTYPE_OF_SCODEID	Varchar2	3	Code ID of PIB Type Code
33	PCKCODE_OF_SCODEGRP	Varchar2	3	Code Group of Package Code
34	PCKCODE_OF_SCODEID	Varchar2	3	Code ID of Package Code

Table C.1-1: Data Structure of PIB Header (2/2)

No	Field Name	Type	Width	Description
35	FACILITY_OF_SFACILITY DECREENUM	Varchar2	25	Facilitation Decree Number
36	FACILITY_OF_DTFACILITY DECREEDATE	Date	—	Facilitation Decree Date
37	FACILITY_OF_FACILITY_OF_SCODEG RP	Varchar2	3	Code Group of Facilitation
38	FACILITY_OF_FACILITY_OF_SCODEID	Varchar2	3	Code ID of Facilitation
39	SAVEGOOD_IN_SDECREENUM	Varchar2	50	Number of Decree of Bonded Storage
40	SAVEGOOD_IN_DTDECREEDATE	Date	—	Date of Decree of Bonded Storage
41	DELIVERED_BY_SVOYAGENUM	Varchar2	7	Voyage Number (Means of Transport Movement)
42	DJBCOFFC_OF_SCODE	Varchar2	6	DJBC Office Code
43	CUSTBRKR_IN_SCUSTOMSBROKERLI CNUM	Varchar2	12	Customs Broker License Number
44	IMPORTER_IN_SIMPORTERLICNUM	Varchar2	12	Importer License Number
45	SUPP_IN_SSUPPLIERNAME	Varchar2	30	Supplier's Name
46	TEMPADM_HAS_SDECREENUM	Varchar2	30	Number of Decree of Temporary Admission
47	TEMPADM_HAS_DTDECREEDATE	Date	—	Number of Decree of Temporary Admission

Table C.1-2: Data Structure of PIB Detail (Detail of Goods)

No	Field Name	Type	Width	Description
1	LTARIFFCODE	Number	10	Tariff Code
2	LGOODSERIALNO	Number	4	Goods Serial Number
3	LIMPORTDUTY	Number	4	Import Duty
4	LVAT	Number	3	VAT
5	LSALESTAXLUXURY	Number	3	Sales Tax on Luxury Goods
6	LINCOMETAX	Number	3	Income Tax
7	LEXCISE	Number	3	Excise
8	SDESCRIPTIONGOOD	Varchar2	100	Description of Goods
9	LQUANTITYGOOD	Number	12	Quantity of Goods
10	LUNITPRICE	Number	20	Unit Price
11	LGROSSWEIGHT	Number	15	Gross Weight
12	LNETWEIGHT	Number	15	Net Weight
13	GOODUNIT_OF_SCODEGRP	Varchar2	3	Code Group of Goods Unit Code
14	GOODUNIT_OF_SCODEID	Varchar2	3	Code ID of Goods Unit Code
15	CURRCODE_OF_SCODEGRP	Varchar2	3	Code Group of Currency Code
16	CURRCODE_OF_SCODEID	Varchar2	3	Code ID of Currency Code
17	ORIGCTRY_OF_SCODEGRP	Varchar2	3	Code Group of Country of Origin Code
18	ORIGCTRY_OF_SCODEID	Varchar2	3	Code ID of Country of Origin Code
19	PIBHDR_HAS_SREGISTERNUM	Varchar2	6	PIB Registration Number
20	PIBHDR_HAS_DTREGISTERDATE	Date	—	PIB Registration Date

Table C.1-3: Data Structure of Container (PIB Container)

No	Field Name	Type	Width	Description
1	LCONTAINERSERIALNO	Number	4	Container Serial Number
2	SCONTAINERNUM	Varchar2	12	Container Number
3	SOUTFLAG	Varchar2	1	Out Flag
4	DTOUTDATE	Date	—	Out Date
5	PIBHDR_HAS_SREGISTERNUM	Varchar2	6	PIB Registration Number
6	PIBHDR_HAS_DTREGISTERDATE	Date	—	PIB Registration Date
7	CNTRCODE_OF_SCODEGRP	Varchar2	3	Code Group of Container Code
8	CNTRCODE_OF_SCODEID	Varchar2	3	Code ID of Container Code
9	OFFICER_OF_SNIP	Varchar2	9	Customs Officer ID Number

Table C.1-4: Data Structure of Payment (PIB Payment)

No	Field Name	Type	Width	Description
1	SPAYMENTCODE	Number	4	Payment Code
2	LAMOUNTPAYMENT	Number	20	Amount of Payment
3	PIBHDR_HAS_SREGISTERNUM	Varchar2	6	PIB Registration Number
4	PIBHDR_HAS_DTREGISTERDATE	Date	—	PIB Registration Date

Table C.1-5: Data Structure of PIB Process

No	Field Name	Type	Width	Description
1	DTLOADINGDATE	Date	—	Loading Date
2	DTPROCESSSTARTDATE	Date	—	Process Starting Date
3	DTCUSRES900DATE	Date	—	Cusres 900 Date
4	DTCUSRES900FINISHDATE	Date	—	Cusres 900 Finish Date
5	DTCHANNELDECISIONDATE	Date	—	Channel Decision Date
6	SCHANNELFLAG	Varchar2	1	Channel Flag
7	SREASONCHANNELFLAG	Varchar2	1	Reason of Channel Flag
8	DTRESTAREASTARTDATE	Date	—	Rest Area Starting Date
9	DTRESTAREAFINISHDATE	Date	—	Rest Area Finish Date
10	DTRELEASEPERMITLETTERDATE	Date	—	Release Permit Letter Date
11	DTFACILITATIONFINISHDATE	Date	—	Facilitation Finish Date
12	DTPLLSTARTDATE	Date	—	PLL Starting Date
13	DTPLLFINISHDATE	Date	—	PLL Finish Date
14	SPLLRESULTFLAG	Varchar2	1	PLL Result Flag
15	DTRELEASEGOODDATE	Date	—	Release of Goods Date
16	PIBHDR_HAS_SREGISTERNUM	Varchar2	6	PIB Registration Number
17	PIBHDR_HAS_DTREGISTERDATE	Date	—	PIB Registration Date
18	GOODINSP_OF_SNIP	Varchar2	9	Goods Inspector's ID Number
19	ENDDOC_OF_SNIP	Varchar2	9	Document Inspector ID Number (Finish)
20	STARTDOC_OF_SNIP	Varchar2	9	Document Inspector ID Number (Start)

Table C.1-6: Data Structure of Correction Note

No	Field Name	Type	Width	Description
1	SGOODSERIALNO	Number	4	Goods Serial Number
2	SERRORCODE	Varchar2	1	Error Code
3	LPAYMENTDIFFERENCE	Number	20	Payment Difference
4	SSETTLEMENTFLAG	Varchar2	1	Settlement Flag
5	PIBHDR_HAS_SREGISTERNUM	Varchar2	6	PIB Registration Number
6	PIBHDR_HAS_DTREGISTERDATE	Date	—	PIB Registration Date

Table C.1-7: Data Structure of FSSBCS

No	Field Name	Type	Width	Description
1	SDOCCODE	Varchar2	1	Document Code
2	SSSBCSSPNUM	Varchar2	25	SSBC/SSP Number
3	SPAYMENTCODE	Number	4	Payment Code
4	LAMOUNTPAYMENT	Number	20	Amount of Payment
5	SSENDERBANK	Varchar2	13	Sender Bank
6	PIBHDR_HAS_SREGISTERNUM	Varchar2	6	PIB Registration Number
7	PIBHDR_HAS_DTREGISTERDATE	Date	—	PIB Registration Date

Table C.1-8: Data Structure of PIBT Header

No	Field Name	Type	Width	Description
1	LREGISTERNUM	Number	6	Registration Number
2	DTREGISTERDATE	Date	---	Registration Date
3	SINVOICENUM	Varchar2	25	Invoice Number
4	DTINVOICEDATE	Date	---	Invoice Date
5	SBLAWBNUM	Varchar2	15	BL/AWB Number
6	DTBLAWBDATE	Date	---	BL/AWB Date
7	LBCINUM	Number	6	BC 1.1. Number
8	LBCIPOST	Number	6	BC 1.1. Post
9	DTBC1DATE	Date	---	BC 1.1. Date
10	LEXCRATE	Number	20	Exchange Rate
11	LFOBVAL	Number	20	FOB Value
12	LFREIGHTTOTALVAL	Number	20	Freight Total Value
13	LINSURANCEVAL	Number	19	Insurance Total Value
14	LCIFVAL	Number	20	CIF Value
15	SCAR	Varchar2	25	CAR
16	SCORRECTIONNOTEFLAG	Varchar2	1	Correction Note Flag
17	STRANSPORTTYPE	Varchar2	1	Transportation Type
18	CURRCODE_OF_SCODEGRP	Varchar2	3	Code Group of Currency Code
19	CURRCODE_OF_SCODEID	Varchar2	3	Code ID of Currency Code
20	IMPTYPE_OF_SCODEGRP	Varchar2	3	Code Group of Type of Import Code
21	IMPTYPE_OF_SCODEID	Varchar2	3	Code ID of Type of Import Code
22	PCKCODE_OF_SCODEGRP	Varchar2	3	Code Group of Package Code
23	PCKCODE_OF_SCODEID	Varchar2	3	Code ID of Package Code
24	ORIGCTRY_OF_SCODEGRP	Varchar2	3	Code Group of Country of Origin Code
25	ORIGCTRY_OF_SCODEID	Varchar2	3	Code ID of Country of Origin Code
26	DELIVERED_BY_SVOYAGENUM	Varchar2	7	Voyage Number (Means of Transport Movement)
27	DJBCOFFC_OF_SCODE	Varchar2	6	Code of DJBC Office
28	CUSTBRKR_IN_SCUSTOMSBROKERLICNUM	Varchar2	12	Customs Broker License Number
29	SUPPLIER_IN_SSUPPLIERNAME	Varchar2	30	Supplier's Name
30	IMPORTER_IN_SIMPORTERLICNUM	Varchar2	12	Importer License Number

Table C.1-9: Data Structure of Details of Goods (PIBT Detail)

No	Field Name	Type	Width	Description
1	LTARIFFCODE	Number	10	Tariff Code
2	LGOODSERIALNO	Number	4	Goods Serial Number
3	LIMPORTDUTY	Number	20	Import Duty
4	LVAT	Number	20	VAT
5	LSALETAXLUXURY	Number	20	Sales Tax on Luxury Goods
6	LINCOMETAX	Number	20	Income Tax
7	LEXCISE	Number	20	Excise
8	SDESCGOOD	Varchar2	100	Description of Goods
9	LQTYGOOD	Number	3	Quantity of Goods
10	LUNITPRICE	Number	20	Unit Price
11	LGROSSWEIGHT	Number	15	Gross Weight
12	LNETWEIGHT	Number	15	Net Weight
13	PIBTHDR_HAS_SREGISTERNUM	Varchar2	6	PIBT Registration Number
14	PIBTHDR_HAS_DTREGISTERDATE	Date	—	PIBT Registration Date
15	CURRCODE_OF_SCODEGRP	Varchar2	3	Code Group of Currency Code
16	CURRCODE_OF_SCODEID	Varchar2	3	Code ID of Currency Code
17	GOODUNIT_OF_SCODEGRP	Varchar2	3	Code Group of Unit of Goods Code
18	GOODUNIT_OF_SCODEID	Varchar2	3	Code ID of Unit of Goods Code

Table C.1-10: Data Structure of Payment (PIBT Payment)

No	Field Name	Type	Width	Description
1	LPAYMENTCODE	Number	4	Payment Code
2	LAMOUNTPAYMENT	Number	15	Amount of Payment
3	PIBTHDR_HAS_SREGISTERNUM	Varchar2	6	PIBT Registration Number
4	PIBTHDR_HAS_DTREGISTERDATE	Date	—	PIBT Registration Date

Table C.1-11: Data Structure of PIBT Process

No	Field Name	Type	Width	Description
1	DTLOADINGDATE	Date	—	Loading Date
2	DTPROCESSSTARTDATE	Date	—	Process Starting Date
3	DTCUSRES900DATE	Date	—	Cusres 900 Date
4	DTCUSRES900FINISHDATE	Date	—	Cusres 900 Finish Date
5	DTCHANNELDECISIONDATE	Date	—	Channel Decision Date
6	SCHANNELFLAG	Varchar2	1	Channel Flag
7	SREASONCHANNELFLAG	Varchar2	1	Reason of Red Channel Flag
8	DRESTAREASTARTDATE	Date	—	Rest Area Starting Date
9	DRESTAREAFINISHDATE	Date	—	Rest Area Finish Date
10	DRELEASEPERMITDATE	Date	—	Release Permit Letter Date
11	DTFACILITYFINISHDATE	Date	—	Facilitation Finish Date
12	DTPLLSTARTDATE	Date	—	PLL Starting Date
13	DTPLLFINISHDATE	Date	—	PLL Finish Date
14	DTPLLRESULTFLAG	Varchar2	1	PLL Result Flag
15	DRELEASEGOODDATE	Date	—	Release of Goods Date
16	PIBTHDR_HAS_SREGISTERNUM	Varchar2	6	PIBT Registration Number
17	PIBTHDR_HAS_DTREGISTERDATE	Date	—	PIBT Registration Date
18	STARTDOC_OF_SNIP	Varchar2	9	Document Inspector ID Number (Start)
19	ENDDOC_OF_SNIP	Varchar2	9	Document Inspector ID Number (Finish)
20	GOODINSP_OF_SNIP	Varchar2	9	Goods Inspector ID Number

Table C.1-12: Data Structure of Correction Note

No	Field Name	Type	Width	Description
1	LGOODSERIALNO	Number	4	Goods Serial Number
2	SERRORCODE	Varchar2	1	Error Code
3	LPAYMENTDIFFERENT	Number	15	Payment Different
4	SSETTLEMENTFLAG	Varchar2	1	Settlement Flag
5	PIBTHDR_HAS_SREGISTERNUM	Varchar2	6	PIBT Registration Number
6	PIBTHDR_HAS_DTREGISTERDATE	Date	—	PIBT Registration Date

Table C.1-13: Data Structure of FSSBCS

No	Field Name	Type	Width	Description
1	SSSBCSSPNUM	Varchar2	25	SSBC/SSP Number
2	SDOCUMENTCODE	Varchar2	1	Document Code
3	LPAYMENTCODE	Number	4	Payment Code
4	LAMOUNTPAYMENT	Number	20	Amount of Payment
5	SSENDERBANK	Varchar2	13	Sender Bank
6	PIBTHDR_HAS_SREGISTERNUM	Varchar2	6	PIBT Registration Number
7	PIBTHDR_HAS_DTREGISTERDATE	Date	—	PIBT Registration Date

Table C.1-14: Data Structure of PEB Header (1/3)

No	Field Name	Type	Width	Description
1	SREGNUM	Varchar2	6	Registration Number
2	DTREGDATE	Date	—	Registration Date
3	SEXPORTERVIOLATIONFLAG	Varchar2	1	Exporter's Violation Flag
4	SINDENTORID	Varchar2	12	Indentor's ID
5	SINDENTORNAME	Varchar2	40	Indentor's Name
6	SINDENTORADDRESS	Varchar2	50	Indentor's Address
7	SINDENTORVIOLATIONFLAG	Varchar2	1	Indentor's Violation Flag
8	SCUSTOMSBROKERVERIOLFLAG	Varchar2	1	Customs Broker's Violation Flag
9	DTEXPORTESTIDATE	Date	—	Estimated Export Date
10	SINVOICENUM	Varchar2	25	Invoice Number
11	DTINVOICEDATE	Date	—	Invoice Date
12	SLPSENUM	Varchar2	10	LPSE Number (issued by P.T. Sucofindo)
13	DTLPSEDATE	Date	—	LPSE Date (issued by P.T. Sucofindo)
14	SLPSEDOCFLAG	Varchar2	1	LPSE Document Flag
15	LFREIGHTVAL	Number	20	Freight Value
16	LINSURVAL	Number	20	Insurance Value
17	LFOBVAL	Number	20	FOB Value
18	LQUANTITYBRANDCONTAINER	Number	3	Quantity of Brand
19	SBRANDCONTAINER	Varchar2	100	Brand of Container
20	LQUANTITYCONTAINER	Number	5	Quantity of Container
21	LQUANTITYPACKAGE	Number	8	Quantity of Package

Table C.1-14: Data Structure of PEB Header (2/3)

No	Field Name	Type	Width	Description
22	LGROSSWEIGHT	Number	18	Gross Weight
23	LNETWEIGHT	Number	15	Net Weight
24	LQUANTITYGOOD	Number	3	Quantity of Goods
25	LAMOUNTEXPORTTAX	Number	20	Amount of Export Tax (in Rupiah)
26	SLOCATIONBANK	Varchar2	4	Location of Bank
27	SSTBSNUM	Varchar2	6	STBS Number
28	DTSTBSDATE	Date	—	STBS Date
29	SPROMISSORYNOTEFLAG	Varchar2	1	Promissory Note Flag
30	SCREDITADVICEFLAG	Varchar2	1	Credit Advice Flag
31	SPEBRECEIPTCODE	Varchar2	6	PEB Receipt Code
32	SPEBRECEIPTNUM	Varchar2	6	PEB Receipt Number
33	DTPEBRECEIPTDATE	Date	—	PEB Receipt Date
34	SCAR	Varchar2	27	CAR
35	SNHINPWPFLAG	Varchar2	1	NHI Flag for NPWP
36	SNHIRECEIPTFLAG	Varchar2	1	NHI Flag for Receipt Number
37	SNHIREGISTERFLAG	Varchar2	1	NHI Flag for Registration Number
38	DTNHIFLAGDATE	Date	—	Date of NHI Flag
39	DTNHIFLAGTIME	Date	—	Time of NHI Flag
40	SVIOLATIONFLAG	Varchar2	1	Violation Flag
41	DTVIOLATIONFLAGDATE	Date	—	Date of Violation Flag
42	DTBAPEKSTASENDDATE	Date	—	Sending Date to Bapeksta
43	SMANIFOUTWARDNUM	Varchar2	6	Manifest Outward Number
44	DTMANIFOUTWARDDATE	Date	—	Manifest Outward Date
45	LMANIFOUTWARDGROSS	Number	13	Manifest Outward Gross Weight
46	SSHIPPINGORDERNUM	Varchar2	25	Shipping Order Number
47	DTSHIPPINGORDERDATE	Date	—	Shipping Order Date
48	SBLAWBNUM	Varchar2	25	BL/AWB Number
49	DTBLAWBDATE	Date	—	BL/AWB Date
50	STRANSPORTTYPE	Varchar2	1	Transportation Type
51	PEBCODE_OF_SCODEGRP	Varchar2	3	Code Group of PEB Code
52	PEBCODE_OF_SCODEID	Varchar2	3	Code Group of PEB Code
53	PEBTYPE_OF_SCODEGRP	Varchar2	3	Code Group of PEB Type Code
54	PEBTYPE_OF_SCODEID	Varchar2	3	Code ID of PEB Type Code
55	PAYMTYPE_OF_SCODEGRP	Varchar2	3	Code Group of Payment Type Code
56	PAYMTYPE_OF_SCODEID	Varchar2	3	Code ID of Payment Type Code

Table C.1-14: Data Structure of PEB Header (3/3)

No	Field Name	Type	Width	Description
57	EXPTYPE_OF_SCODEGRP	Varchar2	3	Code Group of Export Type Code
58	EXPTYPE_OF_SCODEID	Varchar2	3	Code ID of Export Type Code
59	INDENTID_OF_SCODEGRP	Varchar2	3	Code Group of Indentor ID Code
60	INDENTID_OF_SCODEID	Varchar2	3	Code ID of Indentor ID Code
61	BUYCTRY_OF_SCODEGRP	Varchar2	3	Code Group of Buyer Country Code
62	BUYCTRY_OF_SCODEID	Varchar2	3	Code ID of Buyer Country Code
63	ORIGPROV_OF_SCODEGRP	Varchar2	3	Code Group of Province of Origin Code
64	ORIGPROV_OF_SCODEID	Varchar2	3	Code ID of Province of Origin Code
65	DESTCTRY_OF_SCODEGRP	Varchar2	3	Code Group of Destination Country Code
66	DESTCTRY_OF_SCODEID	Varchar2	3	Code ID of Destination Country Code
67	DELICODE_OF_SCODEGRP	Varchar2	3	Code Group of Delivery Code
68	DELICODE_OF_SCODEID	Varchar2	3	Code ID of Delivery Code
69	CURRCODE_OF_SCODEGRP	Varchar2	3	Code Group of Currency Code
70	CURRCODE_OF_SCODEID	Varchar2	3	Code ID of Currency Code
71	PCKCODE_OF_SCODEGRP	Varchar2	3	Code Group of Package Code
72	PCKCODE_OF_SCODEID	Varchar2	3	Code ID of Package Code
73	BANKCODE_OF_SCODEGRP	Varchar2	3	Code Group of Bank Code
74	BANKCODE_OF_SCODEID	Varchar2	3	Code ID of Bank Code
75	SIGNOFFR_OF_SNIP	Varchar2	9	DJBC Officer ID Number
76	STATISTIC_OF_DTMONTH	Date	—	Name of the month when the PEB Statistical is made
77	HAND_BY_SCUSTOMSBROKERLICNUM	Varchar2	12	Customs Broker Lisence Number
78	GATEOFFC_OF_SCODE	Varchar2	6	Code of Gate Office
79	DJBCOFFC_OF_SCODE	Varchar2	6	Code of DJBC Office
80	EXPTYPE_OF_SEXPORTEERLICNUM	Varchar2	12	Exporter License Number
81	BUYER_OF_SNAME	Varchar2	45	Information of Buyer
82	TRNSMVMT_OF_SVOYAGENUM	Varchar2	7	Voyage Number (Means of Transport Movement)
83	TEMPADM_HAS_SDECREENUM	Varchar2	30	Number of Decree of Temporary Admission
84	TEMPADM_HAS_DTDECREEDATE	Date	—	Date of Decree of Temporary Admission

Table C.1-15: Data Structure of PEB Detail

No	Field Name	Type	Width	Description
1	SSERIALTYPEGOOD	Number	3	Serial Type of Goods
2	LTARIFFCODE	Number	10	Tariff Code
3	DTNHITARIFFCODEDATE	Date	—	Date of NHI per Tariff Code
4	DTNHITARIFFCODETIME	Date	—	Date of NHI for Tariff Code
5	SDESCGOOD1	Varchar2	40	Description of Goods 1
6	SDESCGOOD2	Varchar2	40	Description of Goods 2
7	SDESCGOOD3	Varchar2	40	Description of Goods 3
8	SPROHIBIGOODFLAG	Varchar2	1	Prohibited Goods Flag
9	SREGULGOODPERMITFLAG	Varchar2	1	Regulated Goods Permit Flag
10	SREGULGOODPERMITNUM	Varchar2	20	Regulated Goods Permit Number
11	SREGULGOODPERMITDATE	Date	—	Regulated Goods Permit Date
12	SPERMITLETTERFLAG	Varchar2	1	Permit Letter Flag
13	SCOMMODITYEXPORTTAXFLAG	Varchar2	1	Commodity Subjected to Export Tax Flag
14	LNETWEIGHT	Number	15	Net Weight
15	LPACKAGENUM	Number	8	Number of Package
16	LSTANDARDPRICEUSD	Number	20	Standard Price (in USD)
17	SADVALORUMFLAG	Varchar2	1	Advalorum Flag
18	CCURRENCYVAL	Number	9	Currency Value
19	LTARIFFUNITPERCENTAGE	Number	8	Tariff in Unit/Percentage
20	LGOODUNITNUM	Number	14	Number of Goods (in unit)
21	LUNITFOBNUM	Number	14	Unit of Goods Code for FOB
22	LFOBPERUNIT	Number	18	FOB per Unit
23	LFOBPERGOOD	Number	18	FOB per Goods
24	PEBHDR_HAS_SREGNUM	Varchar2	6	Information of PEB Header
25	PEBHDR_HAS_DTREGDATE	Date	—	Information of PEB Header
26	PCKCODE_OF_SCODEGRP	Varchar2	3	Package Code
27	PCKCODE_OF_SCODEID	Varchar2	3	Package Code
28	CURRCODE_OF_SCODEGRP	Varchar2	3	Currency Code
29	CURRCODE_OF_SCODEID	Varchar2	3	Currency Code
30	UNITGOOD_OF_SCODEGRP	Varchar2	3	Unit of Goods Code per FOB
31	UNITGOOD_OF_SCODEID	Varchar2	3	Unit of Goods Code per FOB
32	UNITFOB_OF_SCODEGRP	Varchar2	3	FOB per Unit Code
33	UNITFOB_OF_SCODEID	Varchar2	3	FOB per Unit Code

Table C.1-16: Data Structure of Container (PEB Container)

No	Field Name	Type	Width	Description
1	LCONTAINERSERIALNO	Number	5	Container Serial Number
2	SCONTAINERNUM	Varchar2	15	Container Number
3	DTNHICONTAINERNUMDATE	Date	---	NHI Date of Container Number
4	DTNHICONTAINERNUMTIME	Date	---	NHI Time of Container Number
5	SPACKAGESEALNUM	Varchar2	15	Package Seal Number
6	SCONTAINERSIZE	Varchar2	2	Container Size
7	SETERGATEFLAG	Varchar2	1	Enter Gate Realization Flag
8	DTENTERGATEDATE	Date	---	Enter Gate Realization Date
9	SETERGATETIME	Varchar2	8	Enter Gate Realization Time
10	PEBHDR_HAS_SREGNUM	Varchar2	6	PEB Registration Number
11	PEBHDR_HAS_DTREGDATE	Date	---	PEB Registration Date
12	CNTRCODE_OF_SCODEGRP	Varchar2	3	Code Group of Container Code
13	CNTRCODE_OF_SCODEID	Varchar2	3	Code ID of Container Code
14	GATEOFFR_OF_SNIP	Varchar2	9	Gate Officer ID Number

Table C.1-17: Data Structure of NPWP File

No	Field Name	Type	Width	Description
1	IDIMP	Number	1	Importer's ID Code
2	NPWP IMP	Varchar2	12	Importer's ID (NPWP)
3	NAMA	Varchar2	40	Importer's Name
4	ALAMAT	Varchar2	50	Importer's Address
5	STATUS NPWP	Varchar2	3	NPWP Status Code
6	API/APIT	Varchar2	1	API/APIT Code
7	NO API/APIT	Varchar2	15	API/APIT Number
8	KPBC NO PPJK	Number	6	Customs Broker License Issuer
9	TGL NO PPJK	Date	8	Date of Issuance of Customs Broker License
10	NOPPJK	Number	6	Customs Broker License Number
11	TGLREK	Date	8	Registration Date



C.2 File Format for Sending Files

Table C.2-1: Data Structure of Past Record and Blocked Importer

No	Field Name	Type	Width	Description
1	BASIC_OF_SCODEGRP	Varchar2	3	Code Group of Basic Information
2	BASIC_OF_SCODEID	Varchar2	3	Code ID of Basic Information
3	DTUPDATE	Date	—	Date of Updating
4	SDIRECTORFLAG	Varchar2	1	Director Flag
5	DTSAVINGDATE	Date	—	Date of Saving
6	DTVALIDATIONDATE	Date	—	Date of Validation
7	DTEXPIREDDATE	Date	—	Date of Expired
8	SNOTES	Varchar2	40	Notes
9	BASIC_OF_SIDNUM	Varchar2	12	ID Number of Basic Information of Past Record and Blocked Importer
10	ANALOFFR_OF_SNIP	Varchar2	9	ID Number of Officer who Analyzed
11	INPTOFFR_OF_SNIP	Varchar2	9	ID Number of Officer who Inputted
12	VIOLCODE_OF_SCODEGRP	Varchar2	3	Code Group of Violation in Past Record and Blocked Importer
13	VIOLCODE_OF_SCODEID	Varchar2	3	Code ID of Violation in Past Record and Blocked Importer

Table C.2-2: Data Structure of NI/NHI (1/3)

No	Field Name	Type	Width	Description
1	SNINHINUM	Varchar2	26	NI/NHI Number
2	DTNINHIDATE	Date	—	Date of NI/NHI
3	SNPINUM	Varchar2	26	NPI No
4	DTNPIDATE	Date	—	Date of NPI
5	SNINHIFLAG	Varchar2	1	Flag NI/NHI
6	SMATTERSTOBECONCERN	Varchar2	60	Matters to be concerned
7	SNINHITYPE	Varchar2	1	NI/NHI Type
8	SCLASSIFICATION	Varchar2	1	Classification
9	SOBJECT	Varchar2	1	Object
10	SGOODKIND	Varchar2	3	Kind of Goods
11	LCONTAINERNUM	Number	3	Number of Container
12	LPACKAGENUM	Number	3	Number of Package
13	SCOMPNAME	Varchar2	45	Company Name
14	SCOMPSTREET	Varchar2	100	Company Street
15	SCOMPCITY	Varchar2	30	Company City
16	SCOMPPOSTAL	Varchar2	5	Company Postal Code
17	SCOMPPHONE	Varchar2	12	Company Phone
18	SPPJKNAME	Varchar2	45	PPJK Name
19	SPPJKSTREET	Varchar2	100	PPJK Street
20	SPPJKCITY	Varchar2	30	PPJK City
21	SPPJKPOSTAL	Varchar2	5	PPJK Postal Code
22	SPPJKPHONE	Varchar2	12	PPJK Phone
23	OFFICER_OF_SNIP	Varchar2	9	Customs Officer ID Number
24	DJBCPOS_FROM_SCODE	Varchar2	6	Office Code where Position of DJBC Officer whom NHI is reported from is belong
25	DJBCPOS_FROM_SCODEID	Varchar2	3	Code ID of Position of DJBC Officer whom NHI is reported from is belong
26	DJBCPOS_FROM_SCODEGRP	Varchar2	3	Code Group of Position of DJBC Officer whom NHI is reported from is belong
27	DJBCRPT_TO_SCODE	Varchar2	6	Office Code where Position of DJBC Officer whom NI/NHI is reported to is belong
28	DJBCRPT_TO_SCODEID	Varchar2	3	Code ID of Position of DJBC Officer whom NI/NHI is reported to is belong
29	DJBCRPT_TO_SCODEGRP	Varchar2	3	Code Group of Position of DJBC Officer whom NI/NHI is reported to is belong

Table C.2-2: Data Structure of NI/NHI (2/3)

No	Field Name	Type	Width	Description
30	DJBCPOS1_TO_CODE	Varchar2	6	Office Code where Position of DJBC Officer whom copy of NHI is sent to is belong
31	DJBCPOS1_TO_CODEID	Varchar2	3	Code ID of Position of DJBC Officer whom copy of NHI is sent to is belong
32	DJBCPOS1_TO_CODEGRP	Varchar2	3	Code Group of Position of DJBC Officer whom copy of NHI is sent to is belong
33	DJBCPOS2_TO_CODE	Varchar2	6	Office Code where Position of DJBC Officer whom copy of NI/NHI is sent to is belong
34	DJBCPOS2_TO_CODEID	Varchar2	3	Code ID of Position of DJBC Officer whom copy of NI/NHI is sent to is belong
35	DJBCPOS2_TO_CODEGRP	Varchar2	3	Code Group of Position of DJBC Officer whom copy of NI/NHI is sent to is belong
36	DJBCPOS3_TO_CODE	Varchar2	6	Office Code where Position of DJBC Officer whom copy of NI/NHI is sent to is belong
37	DJBCPOS3_TO_CODEID	Varchar2	3	Code ID of Position of DJBC Officer whom copy of NI/NHI is sent to is belong
38	DJBCPOS3_TO_CODEGRP	Varchar2	3	Code Group of Position of DJBC Officer whom copy of NI/NHI is sent to is belong
39	DJBCPOS4_TO_CODE	Varchar2	6	Office Code where Position of DJBC Officer whom copy of NI/NHI is sent to is belong
40	DJBCPOS4_TO_CODEID	Varchar2	3	Code ID of Position of DJBC Officer whom copy of NI/NHI is sent to is belong
41	DJBCPOS4_TO_CODEGRP	Varchar2	3	Code Group of Position of DJBC Officer whom copy of NI/NHI is sent to is belong
42	DJBCPOS5_TO_CODE	Varchar2	6	Office Code where Position of DJBC Officer whom copy of NI/NHI is sent to is belong
43	DJBCPOS5_TO_CODEID	Varchar2	3	Code ID of Position of DJBC Officer whom copy of NI/NHI is sent to is belong

Table C.2-2: Data Structure of NI/NHI (3/3)

No	Field Name	Type	Width	Description
44	DJBCPOS5_TO_SCODEGRP	Varchar2	3	Code Group of Position of DJBC Officer whom copy of NI/NHI is sent to is belong
45	PCKCODE_OF_SCODEGRP	Varchar2	3	Code Group of Package Code of NI/NHI
46	PCKCODE_OF_SCODEID	Varchar2	3	Code ID of Package Code of NI/NHI
47	ACTION_OF_SCODEID	Varchar2	3	Code ID of Action on NI/NHI
48	ACTION_OF_SCODEGRP	Varchar2	3	Code Group of Action on NI/NHI

Table C.2-3: Data Structure of NI/NHI for Imported Goods

No	Field Name	Type	Width	Description
1	SPIBPIBTFLAG	Varchar2	1	PIB/PIBT Flag
2	LCUSTOMDECNUM	Number	6	Customs Declaration Number
3	DTCUSTOMDECDATE	Date	—	Customs Declaration Date
4	DTARRIVALDATE	Date	—	Arrival Date
5	SBLAWBNUM	Varchar2	13	BL/AWB Number
6	DTBLAWBDATE	Date	—	Date of BL/AWB
7	SVESSELNAME	Varchar2	30	Name of Vessel
8	SBC1POST	Varchar2	10	Pos BC 1.1 Number
9	SVOYAGEFLIGHTNUM	Varchar2	7	Voyage/Flight Number
10	IMPORTER_OF_SIMPORTERLICNUM	Varchar2	12	Importer License Number
11	CUSTBRKR_OF_SCUSTOMSBROKERLICNUM	Varchar2	12	Customs Broker License Number
12	MANIFEST_OF_LMANIFESTNUM	Number	9	Manifest Number

Table C.2-4: Data Structure of NI/NHI for Exported Goods

No	Field Name	Type	Width	Description
1	SVESSELNAME	Varchar2	30	Name of Vessel
2	SVOYAGEFLIGHTNUM	Varchar2	7	Voyage/Flight Number
3	EXPORTER_OF_SEXPORTERLICNUM	Varchar2	12	Exporter License Number
4	CUSTBRKR_OF_SCUSTOMSBROKERLICNUM	Varchar2	12	Customs Broker License Number

Table C.2-5: Data Structure of NI/NHI for Excise Goods

No	Field Name	Type	Width	Description
1	SEXCISEGOODKIND	Varchar2	60	Kind of Excisable Goods
2	FACTORY_OF_LNPPBKC	Number	10	NPPBKC
3	FACTORY_OF_LNPP	Number	10	NPP

Table C.2-6: Data Structure of NI/NHI Container

No	Field Name	Type	Width	Description
1	LCONTAINERSERIALNO	Number	3	Container Serial Number
2	SCONTAINERNUM	Varchar2	11	Container Number
3	LCONTAINERSIZE	Number	4	Container Size
4	CNTRNHI_HAS_SNINHINUM	Varchar2	26	NI/NHI Number
5	CNTRNHI_HAS_DTININHIDATE	Date	---	Date of NI/NHI

Table C.2-7: Data Structure of NI/NHI Package

No	Field Name	Type	Width	Description
1	LPACKAGESERIALNO	Number	4	Package Serial Number
2	LPACKAGENUM	Number	11	Package Number
3	SPACKAGEMARK	Varchar2	20	Package Mark
4	MASTER_OF_SNINHINUM	Varchar2	26	NI/NHI Number
5	MASTER_OF_DTININHIDATE	Date	---	Date of NI/NHI

Table C.2-8: Data Structure of Basic Information

No	Field Name	Type	Width	Description
1	SIDNUM	Varchar2	12	Importer's ID (NPWP)
2	SNAME	Varchar2	40	Importer's Name
3	SSTREET	Varchar2	100	Street
4	SCITY	Varchar2	30	City
5	SPOSTAL	Varchar2	5	Postal Code
6	SPHONE	Varchar2	12	Phone Number
7	SFAX	Varchar2	12	Fax Number
8	STELEX	Date	—	Last Update
9	SIMPORTERFLAG	Varchar2	1	Importer Flag
10	SEXPORTERFLAG	Varchar2	1	Exporter Flag
11	SCUSTOMBROKERFLAG	Varchar2	1	Customs Broker Flag
12	SSHIPPINGCOMPFLAG	Varchar2	1	Shipping Company Flag
13	SBONDEDSTRGFLAG	Varchar2	1	Bonded Storage Operator
14	SEXCISECOMPFLAG	Varchar2	1	Excise Company Flag
15	IDTYPE OF SCODEGRP	Varchar2	3	Code Group of ID Type
16	IDTYPE OF SCODEID	Varchar2	3	Code ID of ID Type
17	PROVINCE OF SCODEGRP	Varchar2	3	Code Group of Province
18	PROVINCE OF SCODEID	Varchar2	3	Code ID of Province
19	MNGMCHRG_OF_SCODEGRP	Varchar2	3	Code Group of Management in Charge
20	MNGMCHRG_OF_SCODEID	Varchar2	3	Code ID of Management in Charge



SUPPLEMENT D

Standardization for Designer/2000

1) Naming rules for Entity Relationship Diagrammer

Table D-1: List of Naming

Object	Item	Naming rules	Note
Diagram	Name	Follow code standard	Max 40 characters
Entity	Short name	Follow code standard	Max 10 characters
	Name	Nouns + "Code" for code entity Nouns + "Profile" for profile entity Nouns + "Transaction" for transaction entity Nouns + "Master" for master entity Nouns + "History" for history entity Maximum number of words in Nouns is three	Max 40 characters
	Plural	Nouns + "Codes" for code entity Nouns + "Profiles" for profile entity Nouns + "Transactions" for transaction entity Nouns + "Masters" for master entity Nouns + "Histories" for history entity Nouns is the same with name property	Max 40 characters
	Attributes and Domains	Follow code standard	Max 40 characters
	Text (entity description)	Short description + data example of the entity	Max 240 characters in one line
Relationship	From name	Verb + Preposition	Max 60 characters
	To name	Verb + Preposition	Max 60 characters
Domain	Name	Nouns Maximum number of words in Nouns is three	Max 40 characters
	Super-type	Not necessary	Max 40 characters
	Comment	Short description + data example of the entity	Max 240 characters in one line

2) Codes standards for Entity Relationship Diagrammer

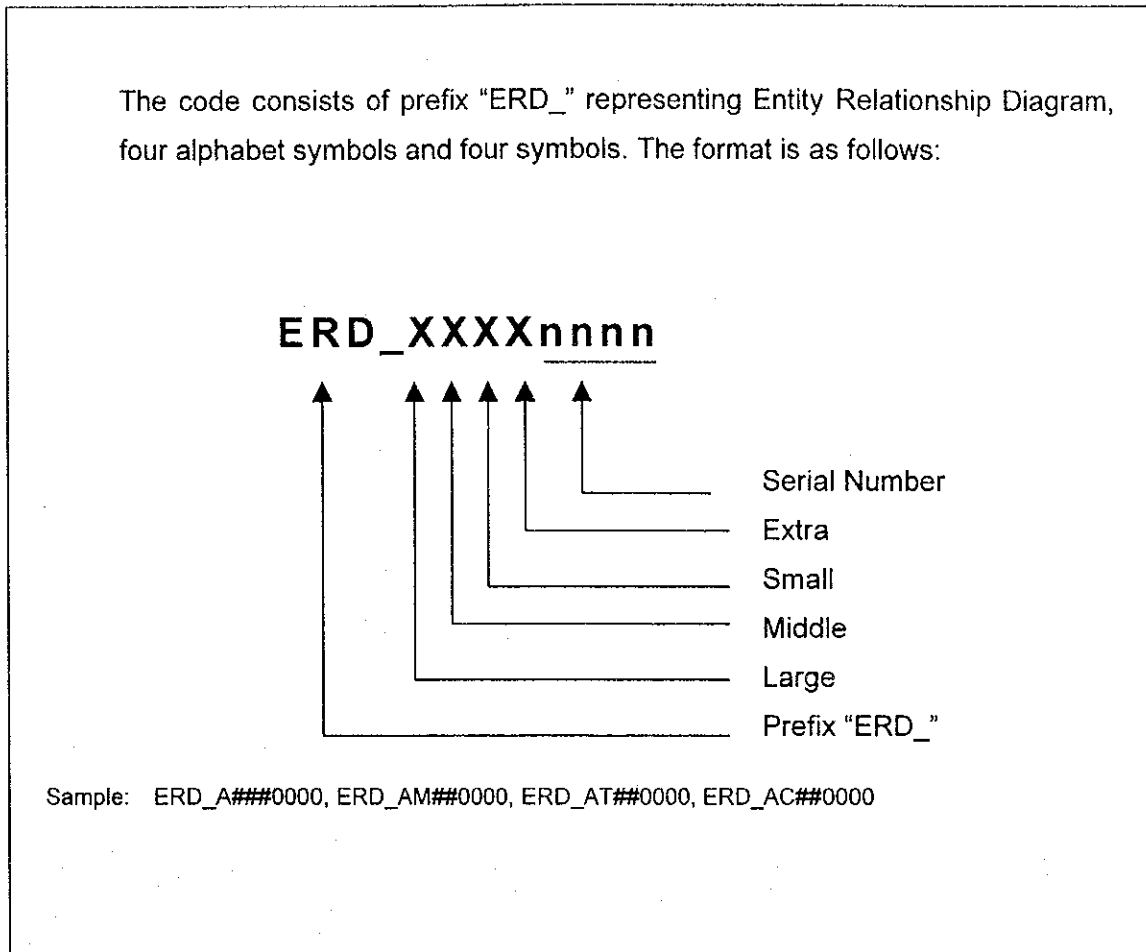


Figure D-1: Diagram Name

Table D-2: Large Code Standard

Large	Description
A	Customs Technique Directorate
B	Customs Facilitation Directorate
C	Verification and Audit Directorate
D	Prevention and Investigation Directorate
E	Revenue Planning Directorate
F	Excise Directorate
G	Executive Secretary
H	Central of Automated Data and Information Processing
Z	Common

Table D-3: Middle Code Standard

Middle	Description
M	Master Entity Relationship Diagram
T	Transaction Entity Relationship Diagram
C	Code Entity Relationship Diagram
Z	Common

Table D-4: Small Code Standard

Small	Description
#	Unused (represents this level of classification is not used in the object)
A to Y	Arbitrary
Z	Common

Table D-5: Extra Code Standard

Extra	Description
#	Unused (represents this level of classification is not used in the object)
A To Y	Arbitrary
Z	Common

Table D-6: Serial Number Code Standard

Serial Number	Description
nnnn	Always "0000"(for future extension)

The code consist of 3 alphabet symbols, 1 numeric symbols, and 3 alphabet symbols. The format is as follows:

XXXnXXX

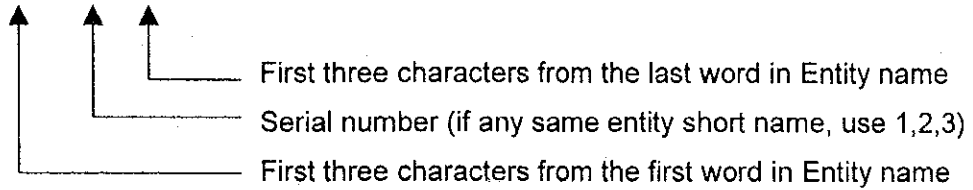


Figure D-2: Entity Short Name

Table D-7: Sample of Entity Short Name

Entity Name	Entity Short Name
<u>Importer Profile</u>	IMP0PRO
<u>Administrative Type Code</u>	ADM0COD
<u>Admission Type Code</u>	ADM1COD
<u>NI Type Code</u>	NI#0COD

The code consists of three elements. The format is as follows:

<Prefix><Body><Qualifier>

Where the prefix describes the use and the scope of the attribute, the body describes the attribute itself, and qualifier is used to denote standard derivatives of the attribute. For Prefix, we used Hungarian Code and use lowercase characters. Qualifier is optional.

Sample: IValueMax, IValueMin, sPortSrc, sPortDst, sName, sAddress, sPhoneNumber

Figure D-3: Attributes and domain name

Table D-8: Prefix Code Standard

Prefix	Description
b	Boolean
c	Currency – 64 bits
d	Double – 46 bit signed quantity
dt	Date+Time
f	Float/ single – 32 bit signed floating point
l	Long – 32 bit signed quantity
n	Integer
s	String
sng	Single
u	Unsigned – 16 bit unsigned quantity
ul	Unsigned long – 32 bit unsigned quantity
w	Word – 16 bit signed quantity
udt	User defined type

Table D-9: Body Code Standard

Body	Description
Nouns	Nouns without spacing. Maximum number of words in Nouns is three

Table D-10: Qualifier Code Standard

Qualifier	Description
First	First element
Last	Last element
Next	Next element
Prev	Previous element
Cur	Current element
Min	Minimum value
Max	Maximum value
Src	Source
Dst	Destination



SUPPLEMENT E

Entity Relationship Diagram (ERD)



E.1 Explanation of Entity Relationship Diagram

The Entity Relationship Diagram is a modeling tool used for defining the information needs of business as an entity relationship model. Entity relationship modeling involves:

- The things of importance in an organization (entities)
- The properties of those things (attributes)
- How they are related to one another (relationship)

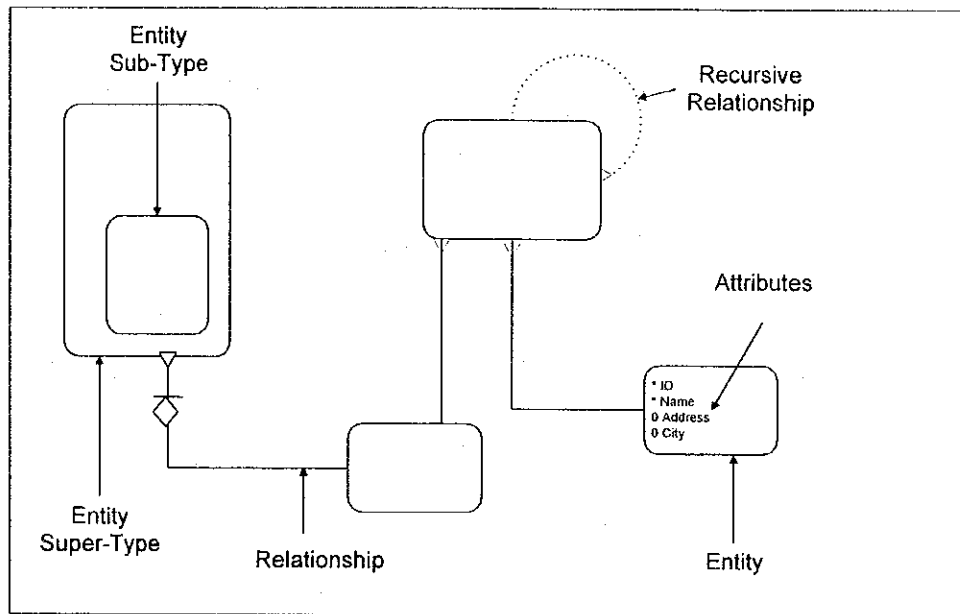


Figure E.1-1: Entity Relationship Diagram

1) Entity

An entity is a thing of significance, whether real or conceptual, about which the business or system being modeled needs to hold information.

Entities can be nested on a diagram to produce super-types and sub-types.

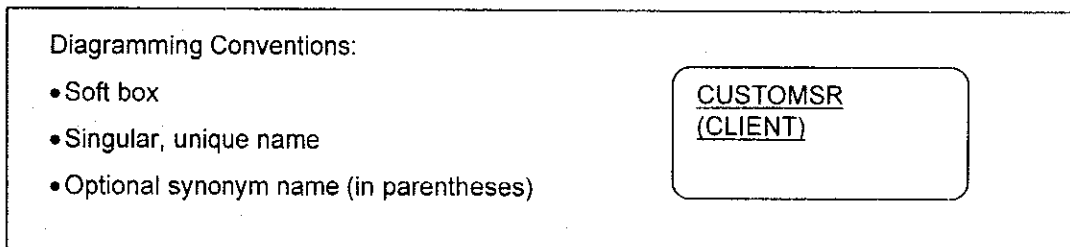


Figure E.1-2: Entity Conventions

2) Attributes

An attribute is any detail that servers to qualify, identify, classify, quantify or express the state of an entity. The types of the attributes that are displayed on an entity are indicated by the symbol displayed to the left of the attribute name.

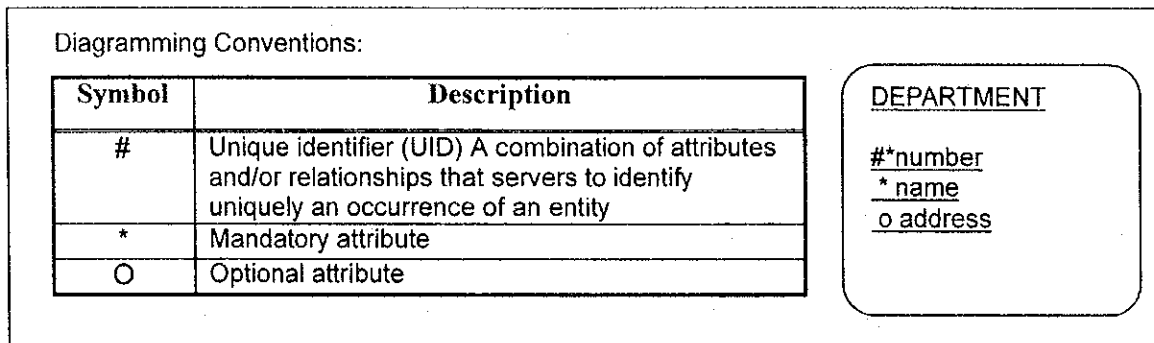


Figure E.1-3: Attributes Conventions

3) Relationship

A relationship is a two-directional, significant association between two entities, or between an entity and itself.

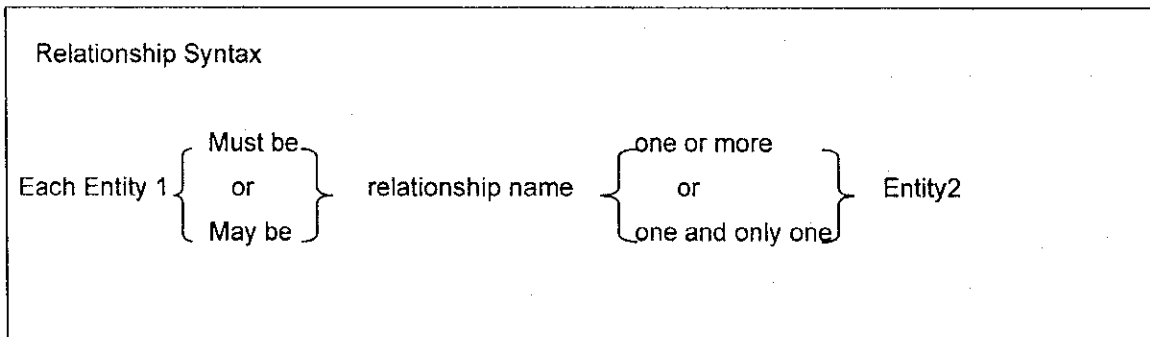


Figure E.1-4: Relationship

Each direction of a relationship has:

- A name
- An optionality, must be or may be
- A degree, one or more or one and only one

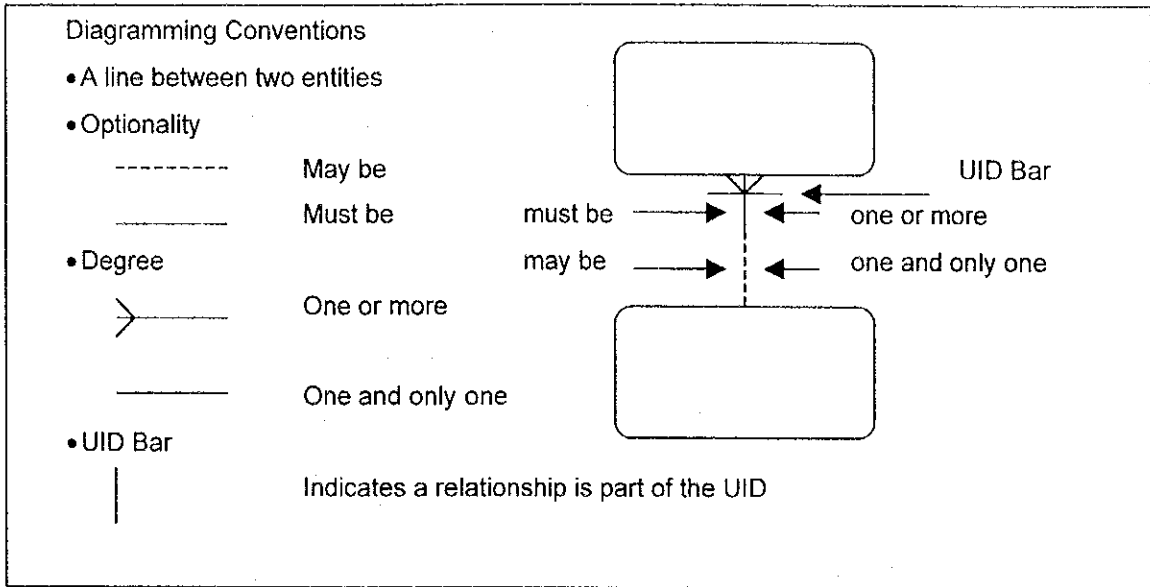


Figure E.1-5: Relationship Conventions

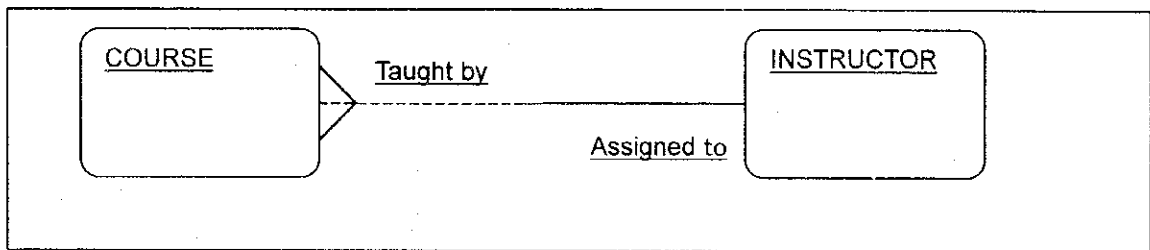


Figure E.1-6: Relationship Example

The relationship between COURSE and INSTRUCTOR is:

- Each COURSE may be taught by one and the only one INSTRUCTOR
- Each INSTRUCTOR must be assigned to one or more COURSES

4) Physical Model

In physical model, super-types entity and each sub-types entity are generated as one table. Attributes of the table are its own attributes and their super-types attributes.

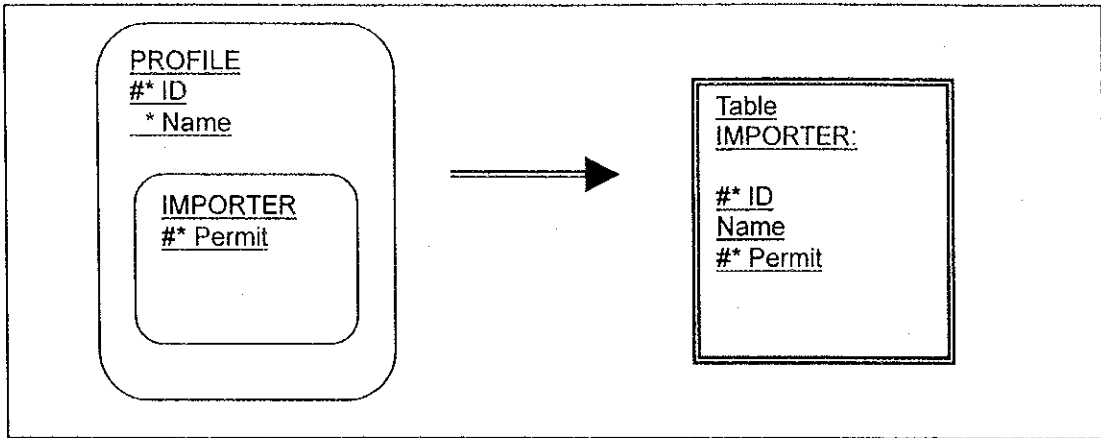


Figure E.1-7: Super-Types and Sub-Types Physical Model

In physical model, there are relationship attributes as attributes of one entity and no effect for another entity.

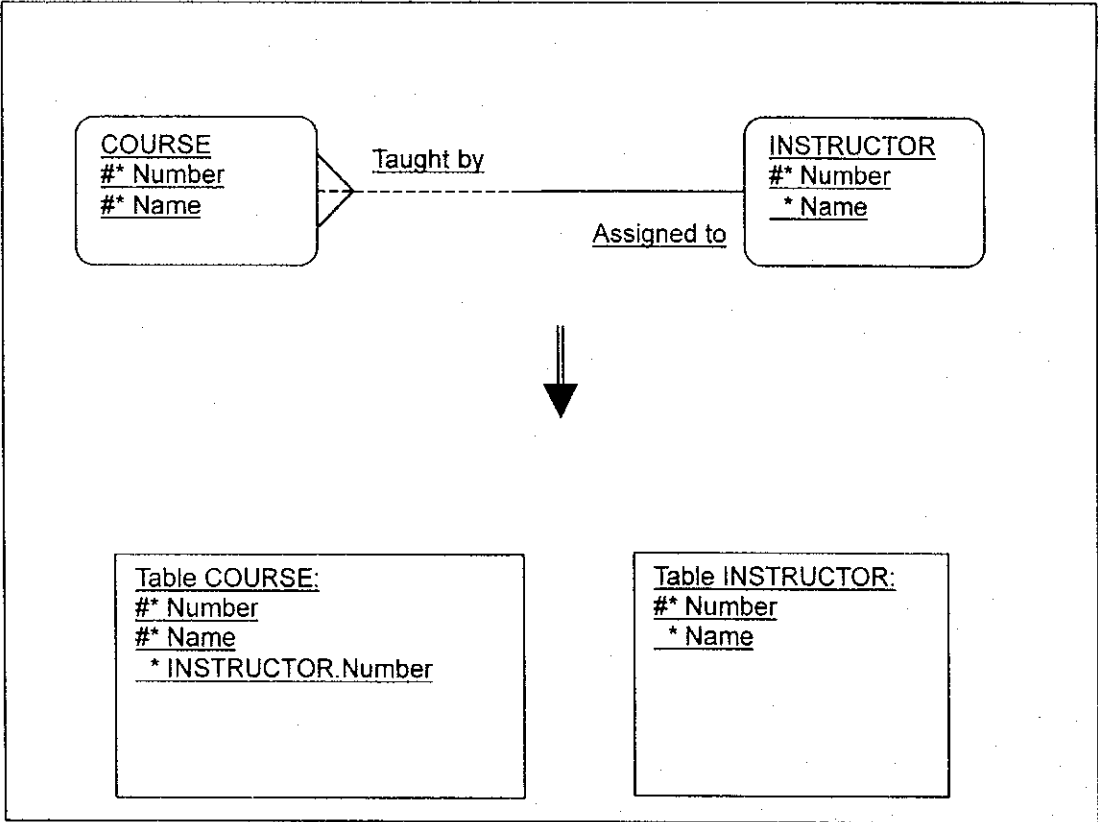


Figure E.1-8: Relationship Physical Model