

6.6 PIB Verification II Result Update

Volume II Figure 2.6.2-7 and Table 2.6.2-7 show the outline of PIB Verification II Result Update Process. As a result of System Design, the process is designed as below. Volume III Appendix A is referred to understand how to view figures and tables.

- Process Procedure

- 1) Retrieval of PIB Verification II Result

- i) Input

Read inputted data from Retrieval Window. Table 6.6-4 shows details of data items on the window.

- ii) Input Check

Check value of inputted data following Table 6.6-5.

- iii) Code Retrieval

Retrieves server Date from server and regional office code from common parameter. Regional office code is 2 digit values from beginning of office code. Retrieve data from tables using the inputted codes. Edit and display the retrieved data into data fields corresponding to its code on the window. Table 6.6-1 shows list and location of codes to be used.

Table 6.6-1: List of codes

Code	Location of Table	Note
Regional Office Code	Client	Retrieves 2 digits from beginning of office code
Red - Green Status Code	Program	Counter of Red, Green Status Code
Yes - No Status Code	Program	Counter of Yes, No Status Code
NPWP of Importer	Server	—

- iv) Retrieval

- Retrieve data in PIB Verification II Result table with the following conditions (Figure 6.6-1 shows the flow of retrieval process):
 - a) Inputted NPWP matches "NPWP.PIB Verification II Result"
 - b) Regional Office Code matches "Regional Office Code.PIB Verification II Result"
 - c) Date matches "Date.PIB Verification II Result"

If no selected record then display an error message (Message ID E0000002).

If value in "Update Flag.PIB Verification II Result" = 0 then displaying output.

If value in "Update Flag.PIB Verification II Result" = 1 then perform this following calculations:

- Application searches records in PIB Verification I Result table following conditions:

a) Inputted NPWP matches "NPWP.PIB VERIFICATION I RESULT"

b) Regional Office Code matches

"REGIONAL OFFICE CODE.PIB VERIFICATION I RESULT"

(Regional Office Code = 2 digits from beginning of Office Code). Regional office code is retrieved from common parameter.

c) Date matches "VERIFICATION II DATE.PIB VERIFICATION I RESULT"

Based on those conditions application will do looping process to count and to display the output shown at table 6.6-2.

Table 6.6-2: List of Counted Items and Procedures (1/2)

No	Displayed Items in Update Window	Level			Items in PIB Ver. I Result Table	Procedure
		1	2	3		
1	Amount of Verified PIB <i>Jumlah PIB yang dianalisa</i>	✓			PIB VERIFICATION I RESULT	Count the number of selected records.
2	Quantity of PIB in which additional payment effected <i>Jumlah PIB yang berakibat tambah bayar:</i>	✓			ADDITIONAL PAYMENT.PIB VERIFICATION I RESULT	From the selected records, count the number of "ADDITIONAL PAYMENT.PIB VERIFICATION I RESULT" records, which have value other than null value or zero.
3	Amount of additional Payment <i>Kekurangan pembayaran sebesar Rp.</i>	✓			ADDITIONAL PAYMENT.PIB VERIFICATION I RESULT	Sum the amount of value in "ADDITIONAL PAYMENT.PIB VERIFICATION I RESULT" records.
4	Quantity of PIB in which restitution effected : <i>Jumlah PIB yang berakibat restitusi:</i>	✓			REFUND.PIB VERIFICATION I RESULT	From the selected records, count the number of "REFUND.PIB VERIFICATION I RESULT" records, which have value other than null value or zero.

Table 6.6-2: List of Counted Items and Procedures (2/2)

No	Displayed Items in Update Window	Level			Items in PIB Ver. I Result Table	Procedure
		1	2	3		
5	Amount of overpayment: Rp. <i>Dengan jumlah kelebihan pembayaran sebesar Rp</i>	✓			REFUND.PIB VERIFICATION I RESULT	Sum the amount of value in "REFUND.PIB VERIFICATION I RESULT" records.
7	Importer Performance <i>Kinerja Importer</i>	✓			—	—
8	Correctness of filling in PIB <i>Kebenaran pengisian PIB</i>		✓		CORRECTNESS OF FILLING IN PIB.PIB VERIFICATION I RESULT	(Number of "yes" value in "CORRECTNESS OF FILLING IN PIB.PIB VERIFICATION I RESULT" records / Amount of Verified PIB) x 100%
9	Completeness of PIB supporting document <i>Kelengkapan dokumen pelengkap PIB</i>		✓		COMPLETENESS OF PIB SUPPORTING DOC.PIB VERIFICATION I RESULT	(Number of "yes" value in "COMPLETENESS OF PIB SUPPORTING DOC.PIB VERIFICATION I RESULT" records / Amount of Verified PIB) x 100%
10	Correctness of reported quantity and type of goods <i>Kewajaran pemberitahuan jumlah dan jenis barang</i>		✓		CORRECTNESS OF RPT QTY_TYPE OF GOOD.PIB VERIFICATION I RESULT	(Number of "yes" value in "CORRECTNESS OF RPT QTY_TYPE OF GOOD.PIB VERIFICATION I RESULT" records / Amount of Verified PIB) x 100%
11	Correctness of reported Customs Value <i>Kewajaran pemberitahuan nilai pabean</i>		✓		CORRECTNESS OF RPT CUSTOMS VALUES.PIB VERIFICATION I RESULT	(Number of "yes" value in "CORRECTNESS OF RPT CUSTOMS VALUES.PIB VERIFICATION I RESULT" records / Amount of Verified PIB) x 100%
12	Correctness of import duty calculation <i>Kebenaran perhitungan Bea</i>		✓		CORRECTNESS OF IMPORT DUTY CALC.PIB VERIFICATION I RESULT	(Number of "yes" value in "CORRECTNESS OF IMPORT DUTY CALC.PIB VERIFICATION I RESULT" records / Amount of Verified PIB) x 100%
13	Channel Decision <i>Penetapan jalur</i>		✓		CHANNEL FLAG. PIB PROCESS	(Number of "red" value in "CHANNEL FLAG. PIB PROCESS" records / Amount of Verified PIB) x 100%

- Display a message to user that data in PIB Verification I Result has been changed.

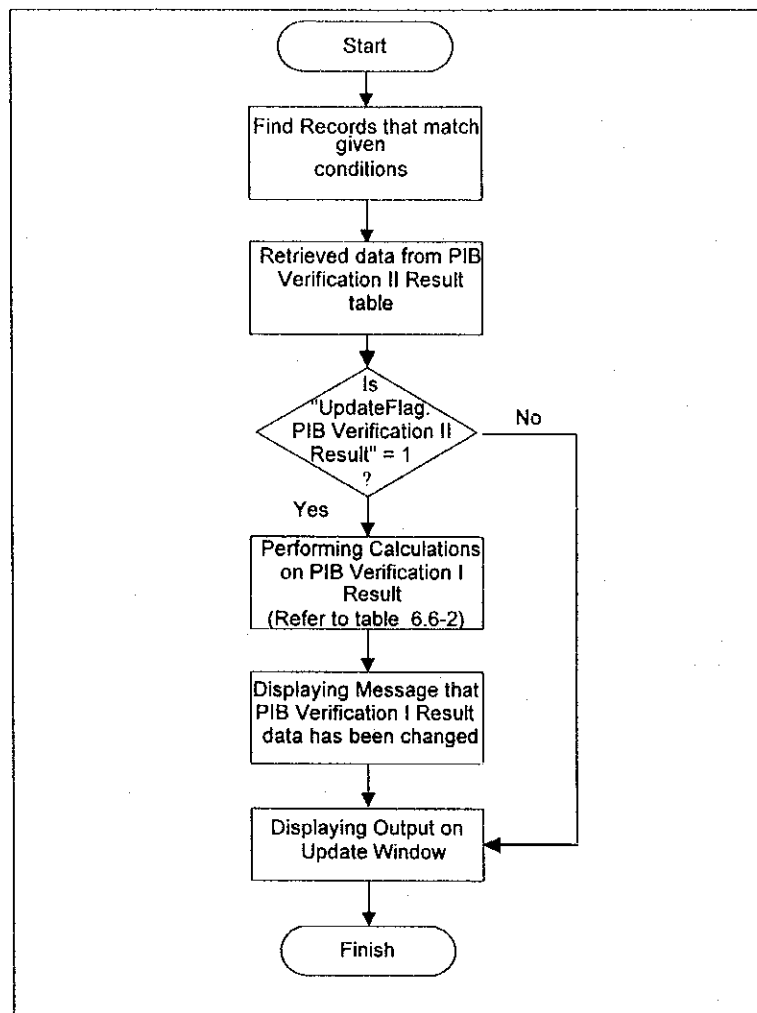


Figure 6.6-1: Retrieving PIB Verification II Result Data Procedure

v) Output

Display Update Window. Table 6.6-6 shows details of data items on the window.

2) Update of PIB Verification II Result

i) Input

Read inputted data from Update Window.

ii) Input Check

Check if all mandatory items are inputted. Then check value of inputted data following Table 6.6-7.

iii) Confirmation

Display a response-requiring message. (Message ID;R0000002)

iv) Update

If user press cancel button then this process will be skipped.

If value of "Update Flag.PIB Verification II Result" = 1 then updates it into 0.

Update data into PIB Verification II Result Table.

v) Output

Display a normal message. (Message ID;N0000003)

vi) Print of Attachment I of NHVDI-II

Press Print NHVDI-II button on Update Window will print NHVDI-II. Table 6.6-8 shows detail of data items on NHVDI-II.

• Window Layout / Report Layout

□ Windows

- Retrieval Window Figure 6.6-2
- Update Window Figure 6.6-3

□ Report

- Attachment I of NHVDI-II Figure 6.6-4

• Error Procedure

Display an error message following Table 6.6-3.

Table 6.6-3: Error Procedure

Case	Error Contents	Message ID	Note
1)-ii), 2)-ii)	An error is detected at Input Check.	See Table 6.6-5 and 6.6-7	—
1)-iii), 2)-iii), 2)-v)	SQL returned an error code.	E0000001	Fill in the blank part of the message text with the error code.
1)-iii), 2)-iii)	The code to be retrieved at Code Retrieval does not exist in the code table.	E0000008	—
1)-iii)	The record to be updated does not exist.	E0000002	—
2)-ii)	There are one or more mandatory items which have not been inputted.	E0000007	—

• Restriction

None.

• Note

For details of each message, see Volume II 1.4.

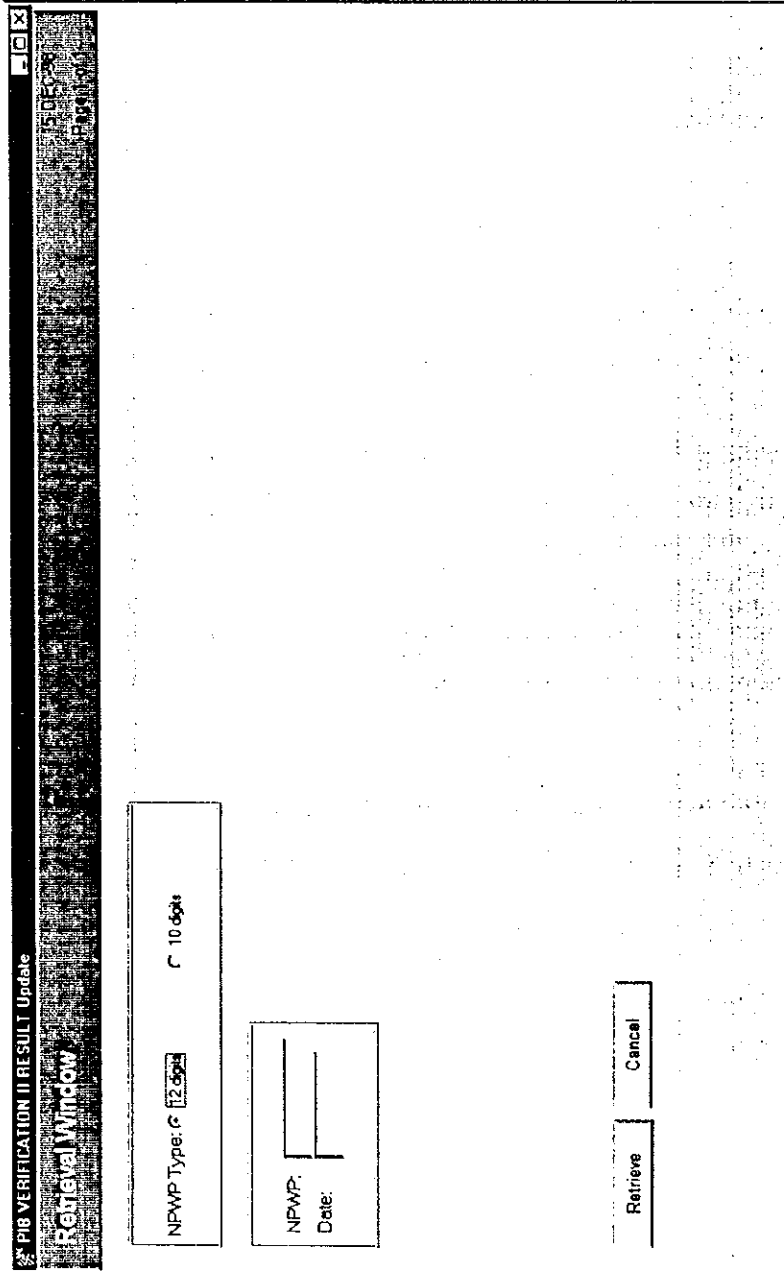


Figure 6.6-2: Window Layout for PIB Verification II Result Update (Retrieval Window)

Table 6.6-4: List of Items
(Window Name: PIB VERIFICATION II RESULT Update (Retrieval Window))

No	Item Name	Level			Description	Item in File	Note
		1	2	3			
1	NPWP Type <i>Type NPWP</i>		✓		Type of NPWP Radio button (Input, Mandatory)	TYPE. BASIC INFORMATION	1 Digit., Numeric
2	NPWP <i>NPWP</i>		✓		Tax Payer Code Number (Input, Mandatory)	ID NUMBER. BASIC INFORMATION	12 Char., Alpha- numeric
3	Date <i>Tanggal</i>		✓		Date of filling Verification II Result, DDMMYYYY. (Input, Mandatory)	DATE.PIB VERIFICATION II RESULT	8 Digits., Date

Table 6.6-5: Input Check List
(Window Name: PIB Ver II Result Update(Retrieval Window))

No.	Item Name	Condition (range, format, and so on)	Message ID	Note
1	NPWP	Must have full length according to NPWP type.	E0000015	—
2	NPWP	Must start with "0" when NPWP is 12 digits.	E0000016	—
3	NPWP	Must be numeric.	E0000009	—
4	Date	Must have date format, DDMMYYYY.	E0000009	—

PIB VERIFICATION II RESULT Update
Update Window Page 1 of 3

Importer Basic Information

NPWP: _____
 Importer Name: _____
 Date: _____
 Amount of Verified PIB: _____

Regional Office Code: _____
 Regional Office Name: _____
 Custom Broker on his behalf: _____

Period of Verification: _____ To: _____

Analysis Result

Importer Performance: _____

Service Performance in Import Section: _____

Officer Performance: _____

Update Cancel Previous Page Next Page Print Attach

Figure 6.6-3: Window Layout for PIB Verification II Result Update (Update Window) (1/3)

PIB VERIFICATION II RESULT Update

Page 2 of 3

Additional Payment and Refund

Quantity of PIB in which additional payment effected:	Quantity of PIB in which restitution effected:
Amount of additional Payment	Amount of overpayment:
Reason:	Reason:

Reason of Recommending on to be audited:	
Reason of Recommending on Revocation of its facility:	
Reason of Recommending to be investigated:	
Reason of Recommending Action On Customs Official:	
Recommendation for Updating Valuation Database:	
Recommendation for Updating Commodity Profile and its motive	

Figure 6.6-3: Window Layout for PIB Verification II Result Update (Update Window) (2/3)

PIB VERIFICATION II RESULT Update

Page 3 of 5

Recommendation for updating importer profile and its motive

Reason of Recommending Intelligent Operation

Recommendation for improving customs service system on import

Verifier I

Name: _____

NIP: _____

Rank: _____

Verifier II

Name: _____

NIP: _____

Rank: _____

Note From Direct Superior:

Update Cancel Previous Page Next Page Print Attach

Figure 6.6-3: Window Layout for PIB Verification II Result Update (Update Window) (3/3)

Table 6.6-6: List of Items
(Window Name: PIB VERIFICATION II RESULT Update (Update Window)) (1/6)

No.	Item Name	Level			Description	Item in File	Note
		1	2	3			
1	Importer Basic Information <i>Informasi Importir</i>	✓			Importer Basic Information (Output, Mandatory)	— (Group title)	—
2	NPWP <i>NPWP</i>		✓		Tax Payer Code Number (Output, Mandatory)	ID NUMBER. BASIC IMPFORMATION	12 Char., Alpha- numeric
3	Importer Name <i>Nama Importir</i>		✓		Importer name (Output, Mandatory)	NAME. BASIC INFORMATION	40 Char., Alpha- numeric
4	Date <i>Tanggal</i>		✓		Date of filling Verification II Result, DDMMYYYY. (Output, Mandatory)	DATE.PIB VERIFICATION II RESULT	8 Digits., Date (Sys.Date)
5	Amount of Verified PIB <i>Jumlah PIB yang dianalisa</i>		✓		Amount of Verified PIB (Output, Mandatory)	AMOUNT OF VERIFIED PIB.PIB VERIFICATION II	5 Digits., Numeric
6	Regional Office Code <i>Kode kantor Wilayah</i>		✓		Regional Office Code (Output, Mandatory)	REGIONAL OFFICE CODE. PIB VERIFICATION II RESULT	2 Digits., Numeric
7	Regional Office Name <i>Nama Kantor Wilayah</i>		✓		Importer name (Output, Mandatory)	REGIONAL OFFICE NAME.COMPANY COMMON INFORMATION	30 Char., Alpha- numeric
8	Custom Broker on his behalf <i>PPJK yang dikuaskan</i>		✓		Name of Custom broker who has authorized of PIB management. (Output, Optional)	NAME.BASIC INFORMATION	40 Char., Alpha- numeric
9	Period of Verification <i>Periode Verifikasi</i>	✓			Period of Verification (Output, Mandatory)	— (Group title)	—
10	From <i>Dari</i>		✓		Earliest date of Registered Date.PIB Verification I Result that has relation to PIB Verification II Result (Output, Mandatory)	—	8 Digits., Date

Table 6.6-6: List of Items
(Window Name: PIB VERIFICATION II RESULT Update (Update Window)) (2/6)

No.	Item Name	Level			Description	Item in File	Note
		1	2	3			
11	To <i>Sampai</i>		✓		Latest date of Registered Date. PIB Verification I Result that has relation to PIB Verification II Result (Output, Mandatory)	—	8 Digits., Date
12	Analysis Result <i>Hasil analisa</i>	✓			Verification Analysis Result	— (Group title)	—
13	Importer Performance <i>Kinerja Importir</i>		✓		Importer Performance Data will be displayed automatically, but user still can add additional information. (Output, Optional)	ANALYSIS-IMPORTER PERFORMANCE. PIB VERIFICATION II RESULT	500 Char., Alpha-numeric.
14	Service Performance in Import Section <i>Kinerja Sistim Pelayanan Pabean di bidang impor</i>		✓		Service Performance in Import Section (Input/Output, Optional)	ANALYSIS-SERVICE PERFORMANCE. PIB VERIFICATION II RESULT	500 Char., Alpha-numeric
15	Officer Performance <i>Kinerja Pegawai</i>		✓		Officer Performance (Input/Output, Optional)	ANALYSIS-OFFICER PERFORMANCE. PIB VERIFICATION II RESULT	500 Char., Alpha-numeric
16	Additional Payment and Refund <i>Pembayaran Tambahan dan Restitusi</i>	✓			Additional Payment and Refund	— (Group title)	—
17	Quantity of PIB in which additional payment effected <i>Jumlah PIB yg berakibat tambah bayar</i>		✓		Quantity of PIB in which additional payment effected (Output, Optional)	QTY OF PIB-ADDITIONAL PAYMENT EFFECTED. PIB VERIFICATION II RESULT	5 Digits., Numeric

Table 6.6-6: List of Items
(Window Name: PIB VERIFICATION II RESULT Update (Update Window)) (3/6)

No.	Item Name	Level			Description	Item in File	Note
		1	2	3			
18	Amount of additional Payment <i>Kekurangan pembayaran sebesar Rp.</i>		✓		Amount of additional Payment (Output, Optional)	AMOUNT OF ADDITIONAL PAYMENT.PIB VERIFICATION II RESULT	15 Digits., Numeric
19	Reason : <i>Karena kesalahan</i>		✓		Reason : (Input/Output, Optional)	REASON FOR ADDITIONAL PAYMENT.PIB VERIFICATION II RESULT	255 Char., Alpha-numeric
20	Quantity of PIB in which restitution effected : <i>Jumlah PIB yg berakibat restitusi:</i>		✓		Quantity of PIB in which restitution effected : (Output, Optional)	QTY OF PIB-RESTITUTION EFFECTED.PIB VERIFICATION II RESULT	5 Digits., Numeric
21	Amount of overpayment: Rp. <i>Dengan jumlah kelebihan pembayaran sebesar Rp</i>		✓		Amount of overpayment : (Output, Optional)	AMOUNT OF OVERPAYMENT.PIB VERIFICATION II RESULT	15 Digits., Numeric
22	Reason : <i>Karena kesalahan:</i>		✓		Reason : (Input/Output, Optional)	REASON FOR OVER PAYMENT.PIB VERIFICATION II RESULT	255 Char., Alpha-numeric
23	Reason of recommending to be audited: <i>Rekomendasi untuk di audit karena</i>	✓			Reason of recommending to be audited : (Input/Output, Optional)	REASON OF BEING AUDITED.PIB VERIFICATION II RESULT	255 Char., Alpha-numeric.
24	Reason of recommending on revocation of its facility <i>Rekomendasi untuk di cabut fasilitasnya karena</i>	✓			Reason of recommending on revocation of its facility (Input/Output, Optional)	REASON OF REVOCATION OF ITS FACILITY.PIB VERIFICATION II RESULT	255 Char., Alpha-numeric.

Table 6.6-6: List of Items
(Window Name: PIB VERIFICATION II RESULT Update (Update Window)) (4/6)

No.	Item Name	Level			Description	Item in File	Note
		1	2	3			
25	Reason of recommending to be investigated <i>Rekomendasi untuk diselidik/disidik karena</i>	✓			Reason of recommending to be investigated (Input/Output, Optional)	REASON OF BEING INVESTIGATED.P IB VERIFICATION II RESULT	255 Char., Alpha-numeric
26	Reason of recommending action on customs official <i>Recomendasi tindakan terhadap pegawai dan alasannya</i>	✓			Reason of recommending action on customs official (Input/Output, Optional)	REASON OF ACTION ON CUSTOMS OFFICAL.PIB VERIFICATION II RESULT	255 Char., Alpha-numeric
27	Recommendation for updating valuation database <i>Rekomendasi updating Data Base Harga</i>	✓			Recommendation for updating valuation database (Input/Output, Optional)	REC-UPDATING VALUATION.PIB VERIFICATION II RESULT	255 Char., Alpha-numeric
28	Recommendation for updating commodity profile and its motive <i>Rekomendasi up dating profil komoditi dan alasannya</i>	✓			Recommendation for updating commodity profile and its motive (Input/Output, Optional)	REC-UPDATING COMMODITY PROFILE.PIB VERIFICATION II RESULT	255 Char., Alpha-numeric

Table 6.6-6: List of Items
(Window Name: PIB VERIFICATION II RESULT Update (Update Window)) (5/6)

No.	Item Name	Level			Description	Item in File	Note
		1	2	3			
29	Recommendation for updating importer profile and its motive <i>Rekomendasi updating profil importir dan alasannya</i>	✓			Recommendation for updating importer profile and its motive (Input/Output, Optional)	REC-UPDATING IMPORTER PROFILE.PIB VERIFICATION II RESULT	255 Char., Alpha-numeric
30	Reason of recommending intelligent operation <i>Rekomendasi operasi intelijen karena</i>	✓			Reason of recommending intelligent operation (Input/Output, Optional)	REASON OF INTELLIGENT OPERATION.PIB VERIFICATION II RESULT	255 Char., Alpha-numeric
31	Recommendation for improving customs service system on import <i>Rekomendasi penyempurnaan sistim pelayanan pabean di bidang Impor</i>	✓			Recommendation for improving customs service system on import (Input/Output, Optional)	REC-IMPROVING CUSTOMS SERVICE.PIB VERIFICATION II RESULT	255 Char., Alpha-numeric
32	Verifictor I <i>Verifikator I</i>	✓			Identification of Verifier I	— (Group title)	—
33	Name <i>Nama</i>		✓		Officer of PIB Verification I Name (Output, Optional)	NAME.DJBC OFFICER	40 Char., Alpha-numeric
34	NIP (Officer Identification Number)(I) <i>NIP (I)</i>		✓		Officer Identification Number of verifier I (Input/Output, Optional)	NO. OF CIVIL SERVANT.DJBC OFFICER	9 Char., Alpha-numeric
35	Rank <i>Pangkat</i>		✓		Rank or position of Officer of PIB Verification I (Output, Optional)	RANK.DJBC OFFICER	50 Char., Alpha-numeric

Table 6.6-6: List of Items
(Window Name: PIB VERIFICATION II RESULT Update (Update Window)) (6/6)

No.	Item Name	Level			Description	Item in File	Note
		1	2	3			
36	Verificator II <i>Verifikator II</i>	✓			Identification of Verifier II	— (Group title)	—
37	Name <i>Nama</i>		✓		Officer of PIB Verification II Name (Output, Mandatory)	NAME.DJBC OFFICER	40 Char., Alpha- numeric
38	NIP (Officer Identification Number)(II) <i>NIP (II)</i>		✓		Officer Identification Number of verifier II (Input/Output, Optional)	NO. OF CIVIL SERVANT.DJBC OFFICER	9 Char., Alpha- numeric
39	Rank <i>Pangkat</i>		✓		Rank or position of Officer of PIB Verification II (Output, Optional)	RANK.DJBC OFFICER	50 Char., Alpha- numeric
40	Note from direct superior <i>Catatan atasan langsung</i>	✓			Note from direct superior of PIB Verification II (Input/Output, Optional)	NOTE FROM DIRECT SUPERIOR.PIB VERIFICATION II RESULT	255 Char., Alpha- numeric Comment from the Head of section in text

**Table 6.6-7: Input Check List
(Window Name: PIB Verification II Result Update (Update Window))**

No.	Item Name	Condition (range, format, and so on)	Message ID	Note
1	Service Performance in Import Section	Error if exceed 500 Characters	E0000009	—
2	Officer Performance	Error if exceed 500 Characters	E0000009	—
3	Reason : (for Add Payment)	Error if exceed 255 Characters	E0000009	—
4	Reason : (for refund)	Error if exceed 255 Characters	E0000009	—
5	Reason of recommending to be audited:	Error if exceed 255 Characters	E0000009	—
6	Reason of recommending on revocation of its facility	Error if exceed 255 Characters	E0000009	—
7	Reason of recommending to be investigated	Error if exceed 255 Characters	E0000009	—
8	Reason of recommending action on customs official	Error if exceed 255 Characters	E0000009	—
9	Recommendation for updating valuation database	Error if exceed 255 Characters	E0000009	—
10	Recommendation for updating commodity profile and its motive	Error if exceed 255 Characters	E0000009	—
11	Recommendation for updating importer profile and its motive	Error if exceed 255 Characters	E0000009	—
12	Reason of recommending intelligent operation	Error if exceed 255 Characters	E0000009	—
13	Recommendation for improving customs service system on import	Error if exceed 255 Characters	E0000009	—
14	NIP (Officer Identification Number)(I) <i>NIP (I)</i>	Must have 9 Characters	E0000009	—
15	NIP (Officer Identification Number)(II)	Must have 9 Characters	E0000009	—
16	Note from direct superior	Error if exceed 255 Characters	E0000009	—

**Attachment I of
NVHDI-II
Importer Performance Data**

Lampiran IV
Keputusan Direktur Jenderal Bea dan
Cukai
Nomor :Kep-32/BC/1997
Tanggal : 01 April 1997

Importer Name :
Period of Verification : to

No	PIB		Desc. of Goods	Qty of goods	Weight of Goods	Package		Origin Country	Not Complied to Manifest	Filling in PIB		Completeness of PIB Supporting Doc.	Validity of Supporting Documents	Completeness of quantity and type of goods desc.	Correctness of HS classification	Correctness of tariff quotation	Correctness of used exchange rate	Correctness of import duty calculation	Compliance with Commerce Regulation	Channel Decision	Red Channel	Effectiveness of Physical Examination Note	Correctness of reported quantity and type of goods	Validity of Invoice	Effectiveness of invoice	Method of Customs Value	Determination on Customs Values	Correctness of reported Customs Value	Additional Payment / OverPayment			
	No	Date				Amount Type	Size			Correctness	Completeness																			HT/HH/HS/MD/MK/DDP		
1	2	3	4	5	6	7	8	9	10	11	12	13	14	15	16	17	18	19	20	21	22	23	24	25	26	27	28	29	30			
5	7	8	9	10	11	13	14	15	16	21	25	29	33	37	41	45	49	53	57	61	65	69	73	77	81	85	92	96	100			
									Amount		Y=17 N=18 P=19	Y=22 N=23 P=24	Y=26 N=27 P=28	Y=30 N=31 P=32	Y=34 N=35 P=36	Y=38 N=39 P=40	Y=42 N=43 P=44	Y=46 N=47 P=48	Y=50 N=51 P=52	Y=54 N=55 P=56	Y=58 N=59 P=60	R=62 G=63 P=64	Y=66 N=67 P=68	Y=70 N=71 P=72	Y=74 N=75 P=76	Y=78 N=79 P=80	Y=82 N=83 P=84	HT=86 HH=87 HS=88	MD=89 MK=90 DDP=91	Y=93 N=94 P=95	Y=97 N=98 P=99	

Remark
Y = Yes
N = No
HT = Harga Transaksi
HI = Harga Barang Identik
P = Percentage

HS = Harga Barang Serupa
MD = Metode Deduktif
MK = Metode Komputatif
DDP = Data yang Tersedia di Kantor Pabean

Recapitulation Note:

..... 19
Verifier :
Name :
NIP :
Rank :
Signature :

Figure 6.6-4: Report Layout for Attachment I of NHVDI-II

Table 6.6-8: List of Items
(Report Name: PIB VERICATION II RESULT Update (Attachment I of NHVDI-II)) (1/10)

No.	Item Name	Level			Description	Item in File	Note
		1	2	3			
1	Importer Name <i>Nama Importir</i>	✓			Importer name (Output, Mandatory)	NAME.BASIC INFORMATION	40 Char., Alpha- numeric
2	Period of Verification <i>Periode Verifikasi</i>	✓			Period of Verification (Output, Mandatory)	— (Group title)	—
3	From <i>Dari</i>		✓		Earliest date of Registered Date.PIB Verification I Result that has relation to PIB Verification II Result (Output, Mandatory)	DATE. PIB VERIFICATION II RESULT	8 Digits., Date
4	To <i>Sampai</i>		✓		Latest date of Registered Date.PIB Verification I Result that has relation to PIB Verification II Result (Output, Mandatory)	DATE. PIB VERIFICATION II RESULT	8 Digits., Date
5	No. <i>Nomor Urut</i>	✓			Sequence Number of PIB. Automatically produce by computer program.	—	5 Digits., Numerical
6	PIB <i>PIB</i>	✓			Pemberitahuan Impor Barang	— (Group title)	—
7	No. <i>No.</i>		✓		PIB number (Output, Mandatory)	REGISTRATION NUMBER.PIB HEADER	6 Digits., Numerical
8	Date <i>Tanggal</i>		✓		The date of PIB registered in CFRS, DDMMYYYY. (Output, Mandatory)	REGISTRATION DATE.PIB HEADER	8 Digits., Date
9	Desc. of goods <i>Uraian Jenis Barang</i>	✓			Description of goods (Output, Mandatory)	DESCRIPTION OF GOODS.PIB DETAIL	25 Char., Alpha- numeric
10	Qty of goods <i>Jml Barang</i>	✓			Quantity of goods (Output, Mandatory)	QUANTITY OF GOODS.PIB DETAIL	12 Digits., Numerical
11	Weight of goods <i>Brt Barang</i>	✓			Weight of goods (Output, Optional)	NET WEIGHT.PIB DETAIL	15 Digits., Numerical
12	Package <i>Kemasan</i>	✓			Package Details of goods (Output, Mandatory)	— (Group title)	—

Table 6.6-8: List of Items
(Report Name: PIB VERIFICATION II RESULT Update (Attachment I of NHVDI-II)) (2/10)

No.	Item Name	Level			Description	Item in File	Note
		1	2	3			
13	Amount Type <i>Jumlah Tipe</i>		✓		Amount of Package and Type of Package (example: 5 Boxes) (Output, Mandatory)	• AMOUNT.PACKAGE DETAIL • pckcode_of. PACKAGE DETAIL	• 1 Digit., Numeric • 6 Digits., Numeric
14	Size <i>Ukuran</i>		✓		Size of Package (Output, Mandatory)	SIZE.PACKAGE DETAIL	25 Char., Alpha- numeric
15	Origin Country <i>Neg. Asal</i>	✓			Origin Country (Output, Mandatory)	CODE NAME.CODE	30 Char Alpha- numeric
16	Not complied to Manifest <i>Rekonsiliasi Manifest</i>	✓			Not complied to Manifest (Output, Mandatory)	NOT COMPLIED TO MANIFEST.PIB VERIFICATION RESULT STATISTICAL	1 Char., Alpha- numeric
17	Y (Yes) <i>Jumlah Y (Ya)</i>		✓		Counter of number of Y value in Not compliened to manifest (Output)	—	5 Digits., Numeric
18	N (No) <i>Jumlah N (Tidak)</i>		✓		Counter of number of N value in Not compliened to manifest (Output)	—	5 Digits., Numeric
19	P (Percentage) <i>Persentasi</i>		✓		Percentage of Y value in Not compliened to manifest (Output) $17[Y]/(17[Y]+18[N]) \times 100\%$	—	5 Digits., Numeric
20	Filling in PIB <i>Pengisian PIB</i>	✓			—	— (Group title)	—
21	Correctness Kebenaran <i>Pengisian PIB</i>		✓		Correctness of filling in PIB (Output, Mandatory)	CORRECTNESS OF FILLING IN PIB.PIB VERIFICATION II RESULT	1 Char., Alpha- numeric
22	Y (Yes) <i>Jumlah Y (Ya)</i>			✓	Counter of number of Y value in Correctness of filling in PIB (Output)	—	5 Digits., Numeric
23	N (No) <i>Jumlah N (Tidak)</i>			✓	Counter of number of N value in Correctness of filling in PIB (Output)	—	5 Digits., Numeric

Table 6.6-8: List of Items
(Report Name: PIB VERICATION II RESULT Update (Attachment I of NHVDI-II)) (3/10)

No.	Item Name	Level			Description	Item in File	Note
		1	2	3			
24	P (Percentage) <i>Persentasi</i>			✓	Percentage of Y value in Correctness of filling in PIB (Output) $22[Y]/(22[Y]+23[N]) \times 100\%$	—	5 Digits., Numeric
25	Complete-ness <i>Kelengkapan pengisian PIB</i>		✓		Completeness of filling in PIB (Output, Mandatory)	COMPLETENESS OF FILLING IN PIB.PIB VERIFICATION II RESULT	1 Char., Alpha-numeric
26	Y (Yes) <i>Jumlah Y (Ya)</i>			✓	Counter of number of Y value in Completeness of filling in PIB (Output)	—	5 Digits., Numeric
27	N (No) <i>Jumlah N (Tidak)</i>			✓	Counter of number of N value in Completeness of filling in PIB (Output)	—	5 Digits., Numeric
28	P (Percentage) <i>Persentasi</i>			✓	Percentage of Y value in Correctness of filling in PIB (Output) $26[Y]/(26[Y]+27[N]) \times 100\%$	—	5 Digits., Numeric
29	Complete-ness of PIB supporting document <i>Kelengkapan Dok. Pelengkap</i>	✓			Completeness of PIB supporting document (Output, Mandatory)	COMPLETENESS OF PIB SUPPORTING DOC.PIB VERIFICATION II RESULT	1 Char., Alpha-numeric
30	Y (Yes) <i>Jumlah Y (Ya)</i>		✓		Counter of number of Y value in Completeness of PIB supporting document (Output)	—	5 Digits., Numeric
31	N (No) <i>Jumlah N (Tidak)</i>		✓		Counter of number of N value in Completeness of PIB supporting document (Output)	—	5 Digits., Numeric
32	P (Percentage) <i>Persentasi</i>		✓		Percentage of Y value in Completeness of PIB supporting document (Output) $30[Y]/(30[Y]+31[N]) \times 100\%$	—	5 Digits., Numeric
33	Validity of Supporting Doc. <i>Validasi Dok. Pelengkap</i>	✓			Validity of PIB supporting document (Output, Mandatory)	VALIDITY OF PIB SUPPORTING DOC.PIB VERIFICATION I RESULT	1 Char., Alpha-numeric

Table 6.6-8: List of Items
(Report Name: PIB VERICATION II RESULT Update (Attachment I of NHVDI-II)) (4/10)

No.	Item Name	Level			Description	Item in File	Note
		1	2	3			
34	Y (Yes) <i>Jumlah Y (Ya)</i>		✓		Counter of number of Y value in Validity of PIB supporting document (Output)	—	5 Digits., Numeric
35	N (No) <i>Jumlah N (Tidak)</i>		✓		Counter of number of N value in Validity of PIB supporting document (Output)	—	5 Digits., Numeric
36	P (Percentage) <i>Persentasi</i>		✓		Percentage of Y value in Validity of PIB supporting document (Output) $34[Y]/(34[Y]+35[N]) \times 100\%$	—	5 Digits., Numeric
37	Completeness of quantity and type of goods description <i>Ur. Jml & Jns Brg</i>	✓			Completeness of quantity and type of goods description (Output, Mandatory)	COMPLETENESS OF QUANTITY_TYPE OF GOOD.PIB VERIFICATION I RESULT	1 Char., Alpha-numeric
38	Y (Yes) <i>Jumlah Y (Ya)</i>		✓		Counter of number of Y value in Completeness of quantity and type of goods description (Output)	—	5 Digits., Numeric
39	N (No) <i>Jumlah N (Tidak)</i>		✓		Counter of number of N value in Completeness of quantity and type of goods description (Output)	—	5 Digits., Numeric
40	P (Percentage) <i>Persentasi</i>		✓		Percentage of Y value in Completeness of quantity and type of goods description (Output) $38[Y]/(38[Y]+39[N]) \times 100\%$	—	5 Digits., Numeric
41	Correctness of HS classification <i>Kebenaran Klasifikasi H.S.</i>	✓			Correctness of HS classification (Output, Mandatory)	CORRECTNESS OF HS CODE.PIB VERIFICATION I RESULT	1 Char., Alpha-numeric
42	Y (Yes) <i>Jumlah Y (Ya)</i>		✓		Counter of number of Y value in Correctness of HS classification (Output)	—	5 Digits., Numeric
43	N (No) <i>Jumlah N (Tidak)</i>		✓		Counter of number of N value in Correctness of HS classification (Output)	—	5 Digits., Numeric

Table 6.6-8: List of Items
(Report Name: PIB VERICATION II RESULT Update (Attachment I of NHVDI-II)) (5/10)

No.	Item Name	Level			Description	Item in File	Note
		1	2	3			
44	P (Percentage) <i>Persentasi</i>		✓		Percentage of Y value in Correctness of HS classification (Output) $42[Y]/(42[Y]+43[N]) \times 100\%$	—	5 Digits., Numeric
45	Correctness of tariff quotation <i>Kebenaran tarif Quota</i>	✓			Correctness of tariff quotation (Output, Mandatory)	CORRECTNESS OF TARIFF QUOTATION.PIB VERIFICATION I RESULT	1 Char., Alpha-numeric
46	Y (Yes) <i>Jumlah Y (Ya)</i>		✓		Counter of number of Y value in Correctness of tariff quotation (Output)	—	5 Digits., Numeric
47	N (No) <i>Jumlah N (Tidak)</i>		✓		Counter of number of N value in Correctness of tariff quotation (Output)	—	5 Digits., Numeric
48	P (Percentage) <i>Persentasi</i>		✓		Percentage of Y value in Correctness of tariff quotation (Output) $46[Y]/(46[Y]+47[N]) \times 100\%$	—	5 Digits., Numeric
49	Correctness of used exchange rate <i>Kebenaran Penggunaan Kurs</i>	✓			Correctness of used exchange rate (Output, Mandatory)	CORRECTNESS OF USED EXCHANGE RATE.PIB VERIFICATION I RESULT	1 Char., Alpha-numeric
50	Y (Yes) <i>Jumlah Y (Ya)</i>		✓		Counter of number of Y value in Correctness of used exchange rate (Output)	—	5 Digits., Numeric
51	N (No) <i>Jumlah N (Tidak)</i>		✓		Counter of number of N value in Correctness of used exchange rate (Output)	—	5 Digits., Numeric
52	P (Percentage) <i>Persentasi</i>		✓		Percentage of Y value in Correctness of used exchange rate (Output) $50[Y]/(50[Y]+51[N]) \times 100\%$	—	5 Digits., Numeric
53	Correctness of import duty calculation <i>Kebenaran Perhitungan Bea</i>	✓			Correctness of import duty calculation (Output, Mandatory)	CORRECTNESS OF IMPORT DUTY CALC.PIB VERIFICATION I RESULT	1 Char., Alpha-numeric

Table 6.6-8: List of Items
(Report Name: PIB VERICATION II RESULT Update (Attachment I of NHVDI-II)) (6/10)

No.	Item Name	Level			Description	Item in File	Note
		1	2	3			
54	Y (Yes) <i>Jumlah Y</i> <i>(Ya)</i>		✓		Counter of number of Y value in Correctness of import duty calculation (Output)	---	5 Digits., Numeric
55	N (No) <i>Jumlah N</i> <i>(Tidak)</i>		✓		Counter of number of N value in Correctness of import duty calculation (Output)	---	5 Digits., Numeric
56	P (Percentage) <i>Persentasi</i>		✓		Percentage of Y value in Correctness of import duty calculation (Output) $54[Y]/(54[Y]+55[N]) \times 100\%$	---	5 Digits., Numeric
57	Compliance with Commerce Regulation <i>Peraturan T. Niaga</i>	✓			Compliance with Commerce Regulation (Output, Mandatory)	COMPLIANCE WITH COMMERCE REGULATION.PIB VERIFICATION I RESULT	1 Char., Alpha-numeric
58	Y (Yes) <i>Jumlah Y</i> <i>(Ya)</i>		✓		Counter of number of Y value in Compliance with Commerce Regulation (Output)	---	5 Digits., Numeric
59	N (No) <i>Jumlah N</i> <i>(Tidak)</i>		✓		Counter of number of N value in Compliance with Commerce Regulation (Output)	---	5 Digits., Numeric
60	P (Percentage) <i>Persentasi</i>		✓		Percentage of Y value in Compliance with Commerce Regulation (Output) $58[Y]/(58[Y]+59[N]) \times 100\%$	---	5 Digits., Numeric
61	Channel Decision <i>Penetapan Jalur</i>	✓			Channel Decision (Output, Mandatory) • Red • Green	CHANNEL DECISION.PIB VERIFICATION II RESULT	5 Char Alpha-numeric
62	R (Red) <i>Jumlah Jalur Merah</i>		✓		Counter of number of R value in Channel Decision (Output)	---	5 Digits., Numeric
63	G (Green) <i>Jumlah Jalur Hijau</i>		✓		Counter of number of N value in Channel Decision (Output)	---	5 Digits., Numeric

Table 6.6-8: List of Items
(Report Name: PIB VERICATION II RESULT Update (Attachment I of NHVDI-II)) (7/10)

No.	Item Name	Level			Description	Item in File	Note
		1	2	3			
64	P (Percentage) <i>Persentasi</i>		✓		Percentage of R value in Channel Decision (Output) $62[R]/(62[G]+63[P]) \times 100\%$	---	5 Digits., Numeric
65	Red Channel <i>Jalur Merah</i>	✓			Physical Examination Result (Output, Mandatory) • Red • Green	CONDITION FLAG.PIB VERIFICATION I RESULT	5 Digit., Numeric
66	Y (Yes) <i>Jumlah Y</i> <i>(Ya)</i>		✓		Counter of number of R value in Condition Flag (Output)	---	5 Digits., Numeric
67	N (No) <i>Jumlah N</i> <i>(Tidak)</i>		✓		Counter of number of G value in Condition Flag (Output)	---	5 Digits., Numeric
68	P (Percentage) <i>Persentasi</i>		✓		Percentage of R value in Channel Decision (Output) $62[R]/(62[G]+63[P]) \times 100\%$	---	5 Digits., Numeric
69	Effectiveness of Physical Examination Note <i>Nota pemeriksaan fisik</i>	✓			Effectiveness of Physical Examination Note (Output, Mandatory) • Yes • No	EFFECTIVENESS OF PHYSICAL EXAMINATION NT.PIB VERIFICATION I RESULT	1 Char., Alpha- numeric
70	Y (Yes) <i>Jumlah Y</i> <i>(Ya)</i>		✓		Counter of number of Y value in Effectiveness of Physical Examination Note (Output)	---	5 Digits., Numeric
71	N (No) <i>Jumlah N</i> <i>(Tidak)</i>		✓		Counter of number of N value in Effectiveness of Physical Examination Note (Output)	---	5 Digits., Numeric
72	P (Percentage) <i>Persentasi</i>		✓		Percentage of Y value in Effectiveness of Physical Examination Note (Output) $70[Y]/(70[Y]+71[N]) \times 100\%$	---	5 Digits., Numeric
73	Correctness of reported quantity and type of goods <i>Pemb. Jml & Jns Brg</i>	✓			Correctness of reported quantity and type of goods (Output, Mandatory)	CORRECTNESS OF RPT QTY_TYPE OF GOOD.PIB VERIFICATION I RESULT	1 Char., Alpha- numeric

Table 6.6-8: List of Items
 (Report Name: PIB VERICATION II RESULT Update (Attachment I of NHVDI-II)) (8/10)

No.	Item Name	Level			Description	Item in File	Note
		1	2	3			
74	Y (Yes) <i>Jumlah Y</i> <i>(Ya)</i>		✓		Counter of number of Y value in Correctness of reported quantity and type of goods (Output)	—	5 Digits., Numeric
75	N (No) <i>Jumlah N</i> <i>(Tidak)</i>		✓		Counter of number of N value in Correctness of reported quantity and type of goods (Output)	—	5 Digits., Numeric
76	P (Percentage) <i>Persentasi</i>		✓		Percentage of Y value in Correctness of reported quantity and type of goods (Output) $74[Y]/(74[Y]+75[N]) \times 100\%$	—	5 Digits., Numeric
77	Validity of Invoice <i>Validitas Invoice</i>	✓			Validity of Invoice (Output, Mandatory)	VALIDITY OF INVOICE.PIB VERIFICATION I RESULT	1 Char., Alpha- numeric
78	Y (Yes) <i>Jumlah Y</i> <i>(Ya)</i>		✓		Counter of number of Y value in Validity of Invoice (Output)	—	5 Digits., Numeric
79	N (No) <i>Jumlah N</i> <i>(Tidak)</i>		✓		Counter of number of N value in Validity of Invoice (Output)	—	5 Digits., Numeric
80	P (Percentage) <i>Persentasi</i>		✓		Percentage of Y value in Validity of Invoice (Output) $78[Y]/(78[Y]+79[N]) \times 100\%$	—	5 Digits., Numeric
81	Effectiveness of invoice <i>Daya Guna Invoice</i>	✓			Effectiveness of invoice (Output, Mandatory)	EFFECTIVENESS OF INVOICE.PIB VERIFICATION I RESULT	1 Char., Alpha- numeric
82	Y (Yes) <i>Jumlah Y</i> <i>(Ya)</i>		✓		Counter of number of Y value in Effectiveness of invoice (Output)	EFFECTIVENESS OF INVOICE.PIB VERIFICATION I RESULT	5 Digits., Numeric
83	N (No) <i>Jumlah N</i> <i>(Tidak)</i>		✓		Counter of number of N value in Effectiveness of invoice (Output)	EFFECTIVENESS OF INVOICE.PIB VERIFICATION I RESULT	5 Digits., Numeric
84	P (Percentage) <i>Persentasi</i>		✓		Percentage of Y value in Effectiveness of invoice (Output) $82[Y]/(82[Y]+83[N]) \times 100\%$	EFFECTIVENESS OF INVOICE.PIB VERIFICATION I RESULT	5 Digits., Numeric

Table 6.6-8: List of Items
(Report Name: PIB VERICATION II RESULT Update (Attachment I of NHVDI-II)) (9/10)

No.	Item Name	Level			Description	Item in File	Note
		1	2	3			
85	Method of Customs Value <i>Metode N.P.</i>	✓			Method of Customs Value (Output)	METHCUST_OF.PIB VERIFICATION I RESULT	6 Char., Alpha-numeric
86	HT <i>Jumlah Metode HT</i>		✓		Counter of number of HT value in Method of Customs Value (Output)	—	5 Digits., Numeric
87	HI <i>Jumlah Metode HI</i>		✓		Counter of number of HI value in Method of Customs Value (Output)	—	5 Digits., Numeric
88	HS <i>Jumlah Metode HS</i>		✓		Counter of number of HS value in Method of Customs Value (Output)	—	10 Digits., Numeric
89	MD <i>Jumlah Metode MD</i>		✓		Counter of number of MD value in Method of Customs Value (Output)	—	5 Digits., Numeric
90	MK <i>Jumlah Metode MK</i>		✓		Counter of number of MK value in Method of Customs Value (Output)	—	5 Digits., Numeric
91	DDP <i>Jumlah Metode DDP</i>		✓		Counter of number of DDP value in Method of Customs Value (Output)	—	5 Digits., Numeric
92	Determination on Customs Values <i>Penetapan N.P.</i>	✓			Determination on Customs Values (Output, Mandatory)	DETERMINATION ON CUSTOMS VALUES.PIB VERIFICATION I RESULT	1 Char., Alpha-numeric
93	Y (Yes) <i>Jumlah Y (Ya)</i>		✓		Counter of number of Y value in Determination on Customs Values (Output)	—	5 Digits., Numeric
94	N (No) <i>Jumlah N (Tidak)</i>		✓		Counter of number of N value in Determination on Customs Values (Output)	—	5 Digits., Numeric
95	P (Percentage) <i>Persentasi</i>		✓		Percentage of Y value in Determination on Customs Values (Output) $93[Y]/(93[Y]+94[N]) \times 100\%$	—	5 Digits., Numeric

Table 6.6-8: List of Items
(Report Name: PIB VERICATION II RESULT Update (Attachment I of NHVDI-II)) (10/10)

No.	Item Name	Level			Description	Item in File	Note
		1	2	3			
96	Correctness of reported Customs Value <i>Pemberitahuan N.P</i>	✓			Correctness of reported Customs Value (Output, Mandatory)	CORRECTNESS OF RPT CUSTOMS VALUES.PIB VERIFICATION I RESULT	1 Char., Alpha-numeric
97	Y (Yes) <i>Jumlah Y (Ya)</i>		✓		Counter of number of Y value in Correctness of reported Customs Value (Output)	—	5 Digits., Numeric
98	N (No) <i>Jumlah N (Tidak)</i>		✓		Counter of number of N value in Correctness of reported Customs Value (Output)	—	5 Digits., Numeric
99	P (Percentage) <i>Persentasi</i>		✓		Percentage of Y value in Correctness of reported Customs Value (Output) $97[Y]/(97[Y]+98[N]) \times 100\%$	—	5 Digits., Numeric
100	Additional Payment/Restitution <i>Ket Tambah Bayar/Restitusi</i>	✓			Additional Payment is paying from company to Customs Refund is paid back from customs to company because the company has paid more than necessary amount (Output, Optional)	pibvrs_of.PIB VERIFICATION II RESULT	15 Digits., Numeric

6.7 PIB Verification II Result Deletion

Volume II Figure 2.6.2-8 and Table 2.6.2-8 show the outline of PIB Verification II Result Deletion Process. As a result of System Design, the process is designed as below. Volume III Appendix A is referred to understand how to view figures and tables.

- Process Procedure

- 1) Retrieval of PIB Verification II Result

- i) Input

Read inputted data from Retrieval Window. Table 6.7-3 shows details of data items on the window.

- ii) Input Check

Check value of inputted data following Table 6.7-4.

- iii) Code Retrieval

Retrieves server Date from server and regional office code from common parameter. Regional office code is 2 digit values from beginning of office code. Retrieve data from tables using the inputted codes. Edit and display the retrieved data into data fields corresponding to its code on the window. Table 6.7-1 shows list and location of codes to be used.

Table 6.7-1: List of codes

Code	Location of Table	Note
Regional Office Code	Client	Retrieves 2 digits from beginning of office code
NPWP of Importer	Server	—

- iv) Retrieval

Retrieve data in PIB Verification II Result table with the following conditions

(Figure 6.7-1 shows the flow of retrieval process) :

- a) Inputted NPWP matches "NPWP.PIB VERIFICATION II RESULT"

- b) Regional Office Code matches

"REGIONAL OFFICE CODE.PIB VERIFICATION II RESULT". Regional office code is retrieved from common parameter.

- c) Date matches "DATE.PIB VERIFICATION II RESULT"

If there is no selected record or no record match those conditions then error message will be displayed (Message ID; E0000002).

v) Output

Deletion Window will be displayed. Table 6.7-5 shows details of data items on the window.

2) Deletion of PIB Verification II Result

i) Confirmation

Display a response-requiring message. (Message ID;R0000003)

ii) Deletion

When user gives confirmation to delete, this triggers following transactions:

On PIB Verification II Result Table deletes all the records in the PIB Verification II Result table that match the given conditions. The process will continue to update PIB Verification I Result Table.

iii) Updating PIB Verification I Result.

Based on the given conditions before, the application will update "Verification II Date.PIB Verification I Result" with the null value. This looping process will continue until all the "Verification II Date.PIB Verification I Result" records that match given condition have been completely updated. See figure 6.7-1 for more information.

iv) Output

Display a normal message. (Message ID;N0000004)

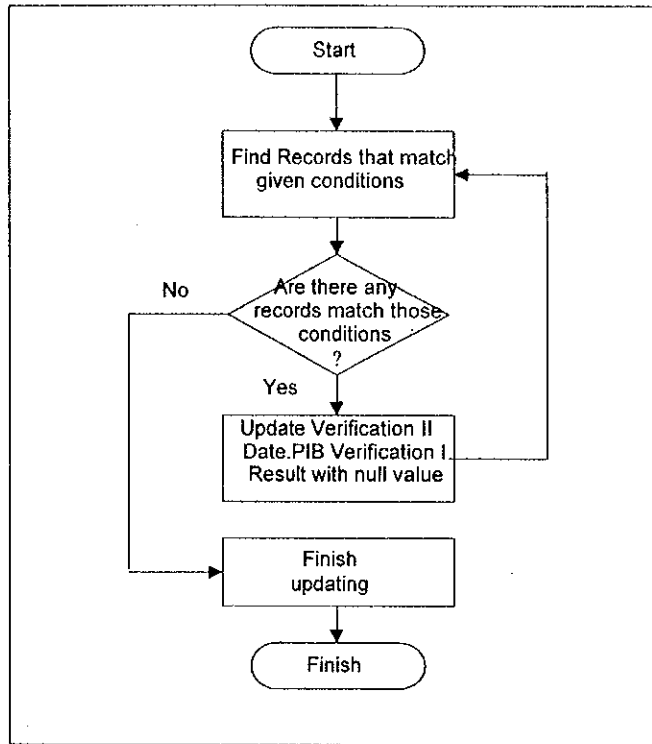


Figure 6.7-1 Updating PIB Verification I Result

- Window Layout / Report Layout

- Windows

- Retrieval Window

Figure 6.7-2

- Registration Window

Figure 6.7-3

- Report

- None

- Error Procedure

Display an error message following Table 6.7-2.

Table 6.7-2: Error Procedure

Case	Error Contents	Message ID	Note
1)-ii)	An error is detected at Input Check.	See Table 6.7-3	—
1)-iii), 2)-ii)	SQL returned an error code.	E0000001	Fill in the blank part of the message text with the error code.
1)-iii)	The record to be deleted does not exist.	E0000002	—
1)-iii)	The code to be retrieved at Code Retrieval does not exist in the code table.	—	Ignore the error and continue the process.

- Restriction

None.

- Note

Deleting record on PIB Verification II Result and updating PIB Verification I Result must be done simultaneously. If one of these transactions fail the transactions must be rolled back.

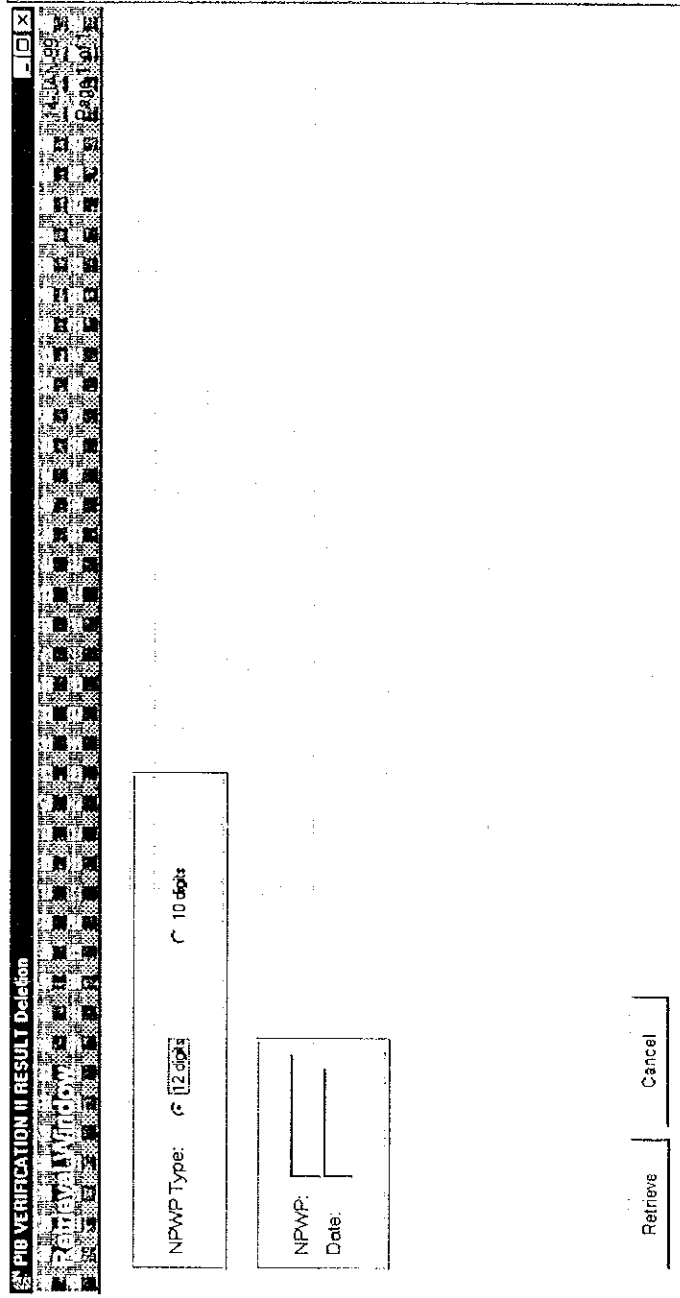


Figure 6.7-2: Window Layout for PIB Verification II Result Deletion (Retrieval Window)

Table 6.7-3: List of Items
(Window Name: PIB VERIFICATION II RESULT Deletion (Retrieval Window))

No	Item Name	Level			Description	Item in File	Note
		1	2	3			
1	NPWP Type <i>Tipe NPWP</i>		✓		Type of NPWP Radio button (Input, Mandatory)	TYPE. BASIC INFORMATION	1 Digit., Numeric
2	NPWP <i>NPWP</i>		✓		Tax Payer Code Number (Input, Mandatory)	ID NUMBER. BASIC INFORMATION	12 Char., Alpha- numeric
3	Date <i>Tanggal</i>		✓		Date of filling Verification II Result, DDMMYYYY. (Input, Mandatory)	DATE.PIB VERIFICATION II RESULT	8 Digits., Date

Table 6.7-4: Input Check List
(Window Name: PIB Ver II Result Deletion (Retrieval Window))

No.	Item Name	Condition (range, format, and so on)	Message ID	Note
1	NPWP	Must have full length according to NPWP type.	E0000015	—
2	NPWP	Must start with "0" when NPWP is 12 digits.	E0000016	—
3	NPWP	Must be numeric.	E0000009	—
4	Date	Must have date format	E0000009	—

PIB VERIFICATION II RESULT DELETION
14 JAN 06
Page 1 of 3

Importer Basic Information

NPWP: _____

 Regional Office Code: _____

Importer Name: _____

 Regional Office Name: _____

Date: _____

 Custom Broker on his behalf: _____

Amount of Verified PIB: _____

Period of Verification:

From: _____ To: _____

Analysis Result

Importer Performance: _____

Service Performance in Import Section: _____

Officer Performance: _____

Delete Cancel Previous Page Next Page

Figure 6.7-3: Window Layout for PIB Verification II Result Deletion (Deletion Window) (1/3)

PIB VERIFICATION II RESULT Deletion Window

Additional Payment and Refund

Quantity of PIB in which additional payment effected:

Quantity of PIB in which restitution effected:

Amount of additional Payment:

Amount of overpayment:

Reason:

Reason:

Reason of Recommending on to be audited:	<input type="text"/>
Reason of Recommending on Revocation of its facility:	<input type="text"/>
Reason of Recommending to be investigated:	<input type="text"/>
Reason of Recommending Action On Customs Official:	<input type="text"/>
Recommendation for Updating Valuation Database:	<input type="text"/>
Recommendation for Updating Commodity Profile and its motive:	<input type="text"/>

Delete Cancel Previous Page Next Page

Figure 6.7-3: Window Layout for PIB Verification II Result Deletion (Deletion Window) (2/3)

PIB VERIFICATION II RESULT Deletion
Deletion Window

Recommendation for updating importer profile and its motive

Reason of Recommending Intelligent Operation

Recommendation for improving customs service system on import.

Verifier I
Name: _____
NIP: _____
Rank: _____

Verifier II
Name: _____
NIP: _____
Rank: _____

Note From Direct Superior.

Delete Previous Page Next Page

Figure 6.7-3: Window Layout for PIB Verification II Result Deletion (Deletion Window) (3/3)

Table 6.7-5: List of Items
(Window Name: PIB VERIFICATION II RESULT Deletion (Deletion Window)) (1/6)

No.	Item Name	Level			Description	Item in File	Note
		1	2	3			
1	Importer Basic Information <i>Informasi Importir</i>	✓			Importer Basic Information (Output, Mandatory)	— (Group title)	—
2	NPWP <i>NPWP</i>				Tax Payer Code Number (Output, Mandatory)	ID NUMBER. BASIC IMPFORMATION	12 Char., Alpha- numeric
3	Importer Name <i>Nama Importir</i>				Importer name (Output, Mandatory)	NAME. BASIC INFORMATION	40 Char., Alpha- numeric
4	Date <i>Tanggal</i>		✓		Date of filling Verification II Result, DDMMYYYY. (Output, Mandatory)	DATE.PIB VERIFICATION II RESULT	8 Digits., Date
5	Amount of Verified PIB <i>Jumlah PIB yang dianalisa</i>		✓		Amount of Verified PIB (Output, Mandatory)	AMOUNT OF VERIFIED PIB.PIB VERIFICATION II	5 Digits., Numeric
6	Regional Office Code <i>Kode kantor Wilayah</i>		✓		Regional Office Code (Output, Mandatory)	REGIONAL OFFICE CODE. PIB VERIFICATION II RESULT	2 Digits., Numeric
7	Regional Office Name <i>Nama Kantor Wilayah</i>		✓		Importer name (Output, Mandatory)	REGIONAL OFFICE NAME.COMPANY COMMON INFORMATION	30 Char., Alpha- numeric
8	Custom Broker on his behalf <i>PPJK yang dikuasakan</i>		✓		Name of Custom broker who has authorized of PIB management. (Output, Optional)	NAME.BASIC INFORMATION	40 Char., Alpha- numeric
9	Period of Verification <i>Periode Verifikasi</i>	✓			Period of Verification (Output, Mandatory)	— (Group title)	—
10	From <i>Dari</i>		✓		Earliest date of Registered Date.PIB Verification I Result that has relation to PIB Verification II Result (Output, Mandatory)	—	8 Digits., Date

Table 6.7-5: List of Items
(Window Name: PIB VERIFICATION II RESULT Deletion (Deletion Window)) (2/6)

No.	Item Name	Level			Description	Item in File	Note
		1	2	3			
11	To <i>Sampai</i>		✓		Latest date of Registered Date. PIB Verification I Result that has relation to PIB Verification II Result (Output, Mandatory)	—	8 Digits., Date
12	Analysis Result <i>Hasil analisa</i>	✓			Verification Analysis Result	— (Group title)	—
13	Importer Performance <i>Kinerja Importir</i>		✓		Importer Performance (Output, Optional)	ANALYSIS-IMPORTER PERFORMANCE. PIB VERIFICATION II RESULT	500 Char., Alpha-numeric Data will be displayed automatically, but user still can add additional information.
14	Service Performance in Import Section <i>Kinerja Sestim Pelayanan Pabean di bidang impor</i>		✓		Service Performance in Import Section (Input/Output, Optional)	ANALYSIS-SERVICE PERFORMANCE. PIB VERIFICATION II RESULT	500 Char., Alpha-numeric
15	Officer Performance <i>Kinerja Pegawai</i>		✓		Officer Performance (Input/Output, Optional)	ANALYSIS-OFFICER PERFORMANCE. PIB VERIFICATION II RESULT	500 Char., Alpha-numeric
16	Additional Payment and Refund <i>Pembayaran Tambahan dan Restitusi</i>	✓			Additional Payment and Refund	— (Group title)	—

Table 6.7-5: List of Items
(Window Name: PIB VERIFICATION II RESULT Deletion (Deletion Window)) (3/6)

No.	Item Name	Level			Description	Item in File	Note
		1	2	3			
17	Quantity of PIB in which additional payment effected <i>Jumlah PIB yg berakibat tambah bayar</i>		✓		Quantity of PIB in which additional payment effected (Output, Optional)	QTY OF PIB-ADDITIONAL PAYMENT EFFECTED.PIB VERIFICATION II RESULT	5 Digits., Numeric
18	Amount of additional Payment <i>Kekurangan pembayaran sebesar Rp.</i>		✓		Amount of additional Payment (Output, Optional)	AMOUNT OF ADDITIONAL PAYMENT.PIB VERIFICATION II RESULT	15 Digits., Numeric
19	Reason : <i>Karena kesalahan</i>		✓		Reason : (Input/Output, Optional)	REASON FOR ADDITIONAL PAYMENT.PIB VERIFICATION II RESULT	255 Char., Alpha-numeric
20	Quantity of PIB in which restitution effected : <i>Jumlah PIB yg berakibat restitusi:</i>		✓		Quantity of PIB in which restitution effected : (Output, Optional)	QTY OF PIB-RESTITUTION EFFECTED.PIB VERIFICATION II RESULT	5 Digits., Numeric
21	Amount of overpayment: Rp. <i>Dengan jumlah kelebihan pembayaran sebesar Rp</i>		✓		Amount of overpayment : (Output, Optional)	AMOUNT OF OVERPAYMENT.PIB VERIFICATION II RESULT	15 Digits., Numeric
22	Reason : <i>Karena kesalahan:</i>		✓		Reason : (Input/Output, Optional)	REASON FOR OVER PAYMENT.PIB VERIFICATION II RESULT	255 Char., Alpha-numeric

Table 6.7-5: List of Items
(Window Name: PIB VERIFICATION II RESULT Deletion (Deletion Window)) (4/6)

No.	Item Name	Level			Description	Item in File	Note
		1	2	3			
23	Reason of recommending to be audited: <i>Rekomendasi untuk di audit karena</i>	✓			Reason of recommending to be audited: (Input/Output, Optional)	REASON OF BEING AUDITED.PIB VERIFICATION II RESULT	255 Char., Alpha-numeric
24	Reason of recommending on revocation of its facility <i>Rekomendasi untuk di cabut fasilitasnya karena</i>	✓			Reason of recommending on revocation of its facility (Input/Output, Optional)	REASON OF REVOCATION OF ITS FACILITY.PIB VERIFICATION II RESULT	255 Char., Alpha-numeric
25	Reason of recommending to be investigated <i>Rekomendasi untuk diselidik/disi dik karena</i>	✓			Reason of recommending to be investigated (Input/Output, Optional)	REASON OF BEING INVESTIGATED.PIB VERIFICATION II RESULT	255 Char., Alpha-numeric
26	Reason of recommending action on customs official <i>Rekomendasi tindakan terhadap pegawai dan alasannya</i>	✓			Reason of recommending action on customs official (Input/Output, Optional)	REASON OF ACTION ON CUSTOMS OFFICAL.PIB VERIFICATION II RESULT	255 Char., Alpha-numeric
27	Recommendation for updating valuation database <i>Rekomendasi updating Data Base Harga</i>	✓			Recommendation for updating valuation database (Input/Output, Optional)	REC-UPDATING VALUATION.PIB VERIFICATION II RESULT	255 Char., Alpha-numeric

Table 6.7-5: List of Items
(Window Name: PIB VERIFICATION II RESULT Deletion (Deletion Window)) (5/6)

No.	Item Name	Level			Description	Item in File	Note
		1	2	3			
28	Recommendation for updating commodity profile and its motive <i>Rekomendasi updating profil komoditi dan alasannya</i>	✓			Recommendation for updating commodity profile and its motive (Input/Output, Optional)	REC-UPDATING COMMODITY PROFILE.PIB VERIFICATION II RESULT	255 Char., Alpha- numeric
29	Recommendation for updating importer profile and its motive <i>Rekomendasi updating profil importir dan alasannya</i>	✓			Recommendation for updating importer profile and its motive (Input/Output, Optional)	REC-UPDATING IMPORTER PROFILE.PIB VERIFICATION II RESULT	255 Char., Alpha- numeric
30	Reason of recommending intelligent operation <i>Rekomendasi operasi intelijen karena</i>	✓			Reason of recommending intelligent operation (Input/Output, Optional)	REASON OF INTELLIGENT OPERATION.PIB VERIFICATION II RESULT	255 Char., Alpha- numeric
31	Recommendation for improving customs service system on import <i>Rekomendasi penyempurnaan sistim pelayanan pabean di bidang Impor</i>	✓			Recommendation for improving customs service system on import (Input/Output, Optional)	REC-IMPROVING CUSTOMS SERVICE.PIB VERIFICATION II RESULT	255 Char., Alpha- numeric

Table 6.7-5: List of Items
(Window Name: PIB VERIFICATION II RESULT Deletion (Deletion Window)) (6/6)

No.	Item Name	Level			Description	Item in File	Note
		1	2	3			
32	Verifikator I <i>Verifikator I</i>	✓			Identification of Verifier I (Group title)	— (Group title)	—
33	Name <i>Nama</i>		✓		Officer of PIB Verification I Name (Output, Optional)	NAME.DJBC OFFICER	40 Char., Alpha- numeric
34	NIP (Officer Identification Number)(I) <i>NIP (I)</i>		✓		Officer of PIB Verification I Identification Number of verifier (Input/Output, Optional)	NO. OF CIVIL SERVANT.DJBC OFFICER	9 Char., Alpha- numeric
35	Rank <i>Pangkat</i>		✓		Rank or position of Officer of PIB Verification I (Output, Optional)	RANK.DJBC OFFICER	50 Char., Alpha- numeric
36	Verifikator II <i>Verifikator II</i>	✓			Identification of Verifier II (Group title)	— (Group title)	—
37	Name <i>Nama</i>		✓		Officer of PIB Verification II Name (Output, Mandatory)	NAME.DJBC OFFICER	40 Char., Alpha- numeric
38	NIP (Officer Identification Number)(II) <i>NIP (II)</i>		✓		Officer of PIB Verification II Identification Number. (Input/Output, Mandatory)	NO. OF CIVIL SERVANT.DJBC OFFICER	9 Char., Alpha- numeric
39	Rank <i>Pangkat</i>		✓		Rank or position of Officer of PIB Verification II (Output, Optional)	RANK.DJBC OFFICER	50 Char., Alpha- numeric
40	Note from direct superior <i>Catatan atasan langsung</i>	✓			Note from direct superior of PIB Verification II (Input/Output, Optional)	NOTE FROM DIRECT SUPERIOR.PIB VERIFICATION II RESULT	255 Char., Alpha- numeric. Comment from the Head of section in text

6.8 PIB Verification II Result Retrieval

Volume II Figure 2.6.2-9 and Table 2.6.2-9 show the outline of PIB Verification II Result Retrieval Process. As a result of System Design, the process is designed as below. Volume III Appendix A is referred to understand how to view figures and tables.

- Process Procedure

- 1) Retrieval of PIB Verification II Result

- i) Input

Read data from Retrieval Window. User inputs NPWP, range of date and Regional Office code. Table 6.8-4 shows details of data items on the window.

- ii) Input Check

Check value of inputted data following by using Table 6.8-5.

- iii) Retrieval for List Retrieval Window

When NPWP, Regional Office Code and the range of Date are inputted, the list of PIB Verification II Result that match those conditions will be retrieved from PIB Verification II Result table. Table 6.8-1 shows list and location of codes to be used.

Table 6.8-1: List of codes

Code	Location of Table	Note
Office Code	Client	—
Red - Green Status Code	Program	Counter of Red, Green Status Code
Yes - No Status Code	Program	Counter of Yes, No Status Code
NPWP of Importer	Server	—

- iv) Confirmation

When the number of records that match the retrieval condition is between 10 to 99,999 display a response-requiring message. (Message ID;R0000004)

- v) Output of List Retrieval Window

When there are items matching the conditions inputted on the Retrieval Window, the List Retrieval Window displays by descending order of Date of PIB Verification II Result. Table 6.8-6 shows details of data items on the window.

If not then display an error message (Message; ID E0000003).

- 2) Detail Retrieval of PIB Verification II Result

- i) Retrieval for Retrieval Result Window

When one of item on List of Retrieval Window is selected, it actually gives information about retrieved Date. In order to display output in Retrieval Result Window following steps on PIB Verification II Result Table needs to be done. Figure 6.8-1 shows the flow of retrieval process.

- Retrieves data in PIB Verification II Result table with the following conditions:
 - a) Inputted NPWP matches "NPWP.PIB VERIFICATION II RESULT"
 - b) Regional Office Code matches
"REGIONAL OFFICE CODE.PIB VERIFICATION II RESULT"
 - c) Date matches "DATE.PIB VERIFICATION II RESULT"

If value in "UPDATE FLAG.PIB VERIFICATION II RESULT" = 1 then perform this following calculations:

- Application searches records in PIB Verification I Result table following these conditions:
 - a) Inputted NPWP matches "NPWP.PIB VERIFICATION I RESULT"
 - b) Regional Office Code matches
"REGIONAL OFFICE CODE.PIB VERIFICATION I RESULT" (Regional Office Code = 2 digits from beginning of Office Code). Regional office code is retrieved from common parameter.
 - c) Date matches "VERIFICATION II DATE.PIB VERIFICATION I RESULT"

Based on those conditions application will do looping process to count and to display the output shown at table 6.8-2

Table 6.8-2: List of Counted Items and Procedures (1/3)

No	Displayed Items in Deletion Window	Level			Items in PIB Ver. I Result Table	Procedure
		1	2	3		
1	Amount of Verified PIB <i>Jumlah PIB yang dianalisa</i>	✓			PIB VERIFICATION I RESULT	Count the number of selected records.
2	Quantity of PIB in which additional payment effected <i>Jumlah PIB yang berakibat tambah bayar:</i>	✓			ADDITIONAL PAYMENT.PIB VERIFICATION I RESULT	From the selected records, count the number of "ADDITIONAL PAYMENT.PIB VERIFICATION I RESULT" records, which have value other than null value or zero.

Table 6.8-2: List of Counted Items and Procedures (2/3)

No	Displayed Items in Deletion Window	Level			Items in PIB Ver. I Result Table	Procedure
		1	2	3		
3	Amount of additional Payment <i>Kekurangan pembayaran sebesar Rp.</i>	✓			ADDITIONAL PAYMENT.PIB VERIFICATION I RESULT	Sum the amount of value in "ADDITIONAL PAYMENT.PIB VERIFICATION I RESULT" records.
4	Quantity of PIB in which restitution effected : <i>Jumlah PIB yang berakibat restitusi:</i>	✓			REFUND.PIB VERIFICATION I RESULT	From the selected records, count the number of "REFUND.PIB VERIFICATION I RESULT" records, which have value other than null (zero).
5	Amount of overpayment: Rp. <i>Dengan jumlah kelebihan pembayaran sebesar Rp</i>	✓			REFUND.PIB VERIFICATION I RESULT	Sum the amount of value in "REFUND.PIB VERIFICATION I RESULT" records.
7	Importer Performance <i>Kinerja Importer</i>	✓			—	---
8	Correctness of filling in PIB <i>Kebenaran pengisian PIB</i>		✓		CORRECTNESS OF FILLING IN PIB.PIB VERIFICATION I RESULT	(Number of "yes" value in "CORRECTNESS OF FILLING IN PIB.PIB VERIFICATION I RESULT" records / Amount of Verified PIB) x 100%
9	Completeness of PIB supporting document <i>Kelengkapan dokumen pelengkap PIB</i>		✓		COMPLETENESS OF PIB SUPPORTING DOC.PIB VERIFICATION I RESULT	(Number of "yes" value in "COMPLETENESS OF PIB SUPPORTING DOC.PIB VERIFICATION I RESULT" records / Amount of Verified PIB) x 100%
10	Correctness of reported quantity and type of goods <i>Kewajaran pemberitahuan jumlah dan jenis barang</i>		✓		CORRECTNESS OF RPT QTY_TYPE OF GOOD.PIB VERIFICATION I RESULT	(Number of "yes" value in "CORRECTNESS OF RPT QTY_TYPE OF GOOD.PIB VERIFICATION I RESULT" records / Amount of Verified PIB) x 100%
11	Correctness of reported Customs Value <i>Kewajaran pemberitahuan nilai pabean</i>		✓		CORRECTNESS OF RPT CUSTOMS VALUES.PIB VERIFICATION I RESULT	(Number of "yes" value in "CORRECTNESS OF RPT CUSTOMS VALUES.PIB VERIFICATION I RESULT" records / Amount of Verified PIB) x 100%

Table 6.8-2: List of Counted Items and Procedures (3/3)

12	Correctness of import duty calculation <i>Kebenaran perhitungan Bea</i>	✓	CORRECTNESS OF IMPORT DUTY CALC.PIB VERIFICATION I RESULT	(Number of "yes" value in "CORRECTNESS OF IMPORT DUTY CALC.PIB VERIFICATION I RESULT" records / Amount of Verified PIB) x 100%
13	Channel Decision <i>Penetapan jalur</i>	✓	CHANNEL FLAG. PIB PROCESS	(Number of "red" value in " Channel flag.PIB process " records / Amount of Verified PIB) x 100%

- Display a message to user that data in PIB Verification I Result has been changed see Figure 6.8-1.

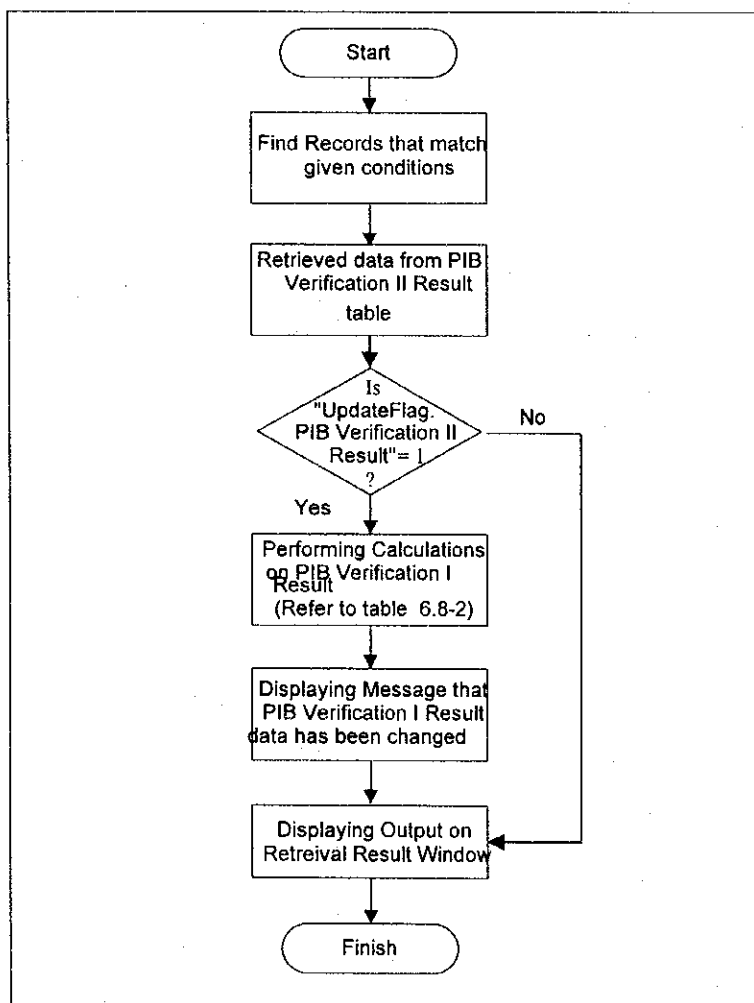


Figure 6.8-1: Retrieving PIB Verification II Result Data Procedure

ii) Output of Retrieval Result Window

After retrieving data from PIB Verification II Result, Retrieval Result Window will be displayed. Table 6.8-7 shows details of data items on the window.

iii) Printing of Attachment I of NHVDI-II

Pressing button on PIB Verification II Result Retrieval Result Window will print Attachment I of NHVDI-II. Table 6.8-8 shows detail of data items on the window.

- Window Layout / Report Layout

- Windows

- Retrieval Window Figure 6.8-2
 - List Retrieval Window Figure 6.8-3
 - Retrieval Result Window Figure 6.8-4

- Report

- Attachment I of NHVDI-II Figure 6.8-5

- Error Procedure

Display an error message following Table 6.8-3.

Table 6.8-3: Error Procedure

Case	Error Contents	Message ID	Note
1)-ii)	An error is detected at Input Check.	See Table 5.8-4	—
1)-iii), 1)-v)	SQL returned an error code.	E0000001	Fill in the blank part of the message text with the error code.
1)-iii), 1)-v)	The record to be retrieved does not exist.	E0000002	—
1)-iv)	The number of records that match the retrieval condition exceeded 99,999.	E0000013	—
1)-v)	The code to be retrieved does not exist in the code table.	E0000008	—

- Restriction

None.

- Note

For details of each message, see Volume II 1.4.

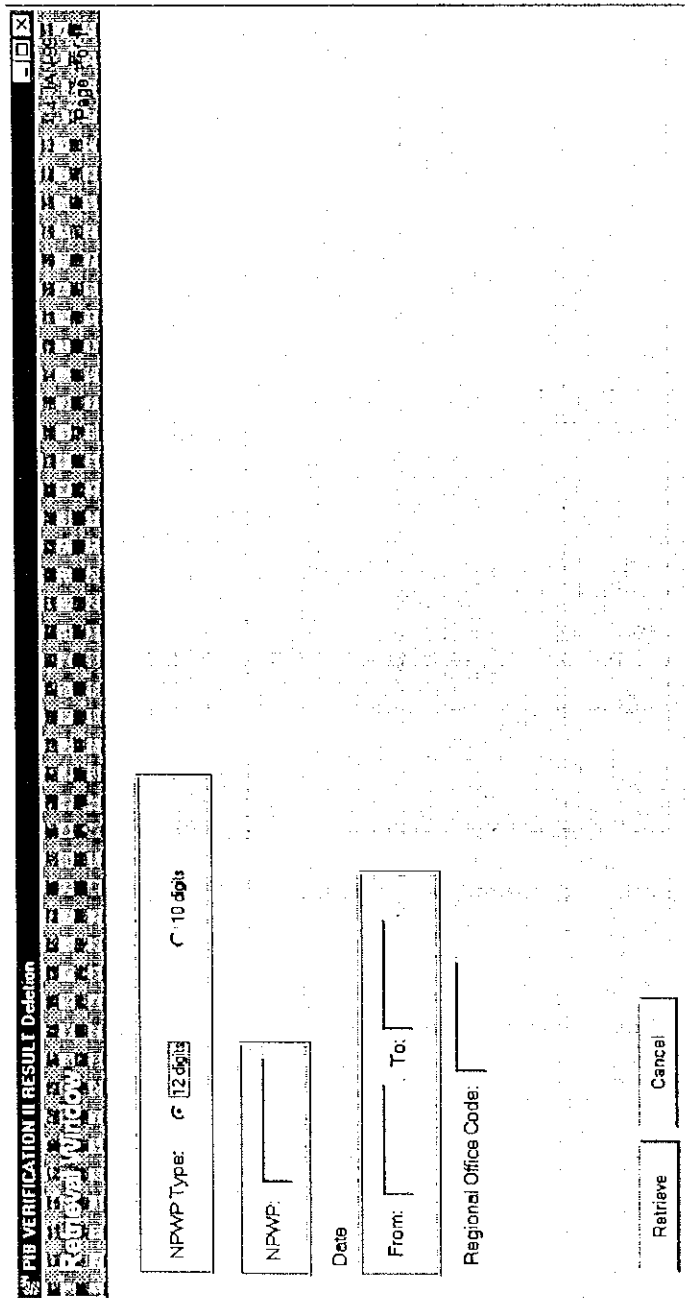


Figure 6.8-2: Window Layout for PIB Verification II Result Retrieval (Retrieval Window)

Table 6.8-4: List of Items
(Window Name: PIB VERIFICATION II RESULT Retrieval (Retrieval Window))

No.	Item Name	Level			Description	Item in File	Note
		1	2	3			
1	NPWP Type <i>NPWP Tipe</i>	✓			Type of NPWP Radio button (Input, Mandatory)	TYPE. BASIC INFORMATION	1 Digit., Numeric
2	NPWP <i>NPWP</i>	✓			Tax Payer Code Number (Input/Output, Mandatory)	ID NUMBER. BASIC INFORMATION	12 Char., Alpha- numeric
3	Date <i>Tanggal</i>	✓			Range of Date of filling Verification II Result, DDMMYYYY.	DATE.PIB VERIFICATION II RESULT	8 Digits., Date
4	From <i>Dari</i>		✓		Starting Date (Earliest date of Registered), DDMMYYYY. (Input Mandatory)	DATE.PIB VERIFICATION II RESULT	8 Digits., Date
5	To <i>Sampai</i>		✓		Ending Date (Latest date of Registered), DDMMYYYY. (Input Mandatory)	DATE.PIB VERIFICATION II RESULT	8 Digits., Date
6	Regional Office Code <i>Kode Kantor Wilayah</i>	✓			Regional Office Code (Input, Mandatory)	REGIONAL OFFICE CODE.PIB VERIFICATION II RESULT	2 Digits., Numeric

Table 6.8-5: Input Check List
(Window Name: PIB Ver II Result Retrieval(Retrieval Window))

No.	Item Name	Condition (range, format, and so on)	Message ID	Note
1	NPWP	Must have full length according to NPWP type.	E0000015	—
2	NPWP	Must start with "0" when NPWP is 12 digits.	E0000016	—
3	NPWP	Must be numeric.	E0000009	—
4	Date	Range must in 12 months. Date inputted in DDMMYYYY	E0000009	—
5	From	Starting Date must be earlier than Ending Date, DDMMYYYY.	E0000009	—
6	To	Ending Date must be latter than Starting Date, DDMMYYYY.	E0000009	—
7	Regional Office Code	Must be Regional Office Code	E0000009	—

PIB VERIFICATION II RESULT Retrieval

List Retrieval Window

Importer Basic Information

NPWP: _____

Importer Name: _____

Regional Office Code: _____

Regional Office Name: _____

PIB VERIFICATION II RESULT

Date	Quantity of PIB in which additional payment effected	Quantity of PIB in which restitution effected	Reason of Recommending on to be audited
_____	_____	_____	_____
_____	_____	_____	_____
_____	_____	_____	_____
_____	_____	_____	_____

Refresh Select Cancel Back to Top

Figure 6.8-3: Window Layout for PIB Verification II Result Retrieval (List Retrieval Window)

Table 6.8-6: List of Items
(Window Name: PIB VERIFICATION II RESULT Retrieval (List Retrieval))

No.	Item Name	Level			Description	Item in File	Note
		1	2	3			
1	NPWP <i>NPWP</i>	✓			Tax Payer Code Number (Output, Mandatory)	ID NUMBER. BASIC INFORMATION	12 Char., Alpha- numeric
2	Importer Name <i>Nama Importir</i>	✓			Importer name (Output, Mandatory)	NAME.BASIC INFORMATION	40 Charac- ters.
3	Regional Office Code <i>Kode Kantor Wilayah</i>	✓			Regional Office Code (Output, Mandatory)	CODE.DJBC OFFICE	2 Digits., Numeric
4	Regional Office Name <i>Nama Kantor Wilayah</i>	✓			Regional Office Name (Output, Mandatory)	NAME.DJBC OFFICE	30 Digits., Numeric
5	<i>Date Tanggal</i>	✓			Date of filling Verification II Result, DDMMYYYY. (Output, Mandatory)	DATE.PIB VERIFICATION II RESULT	8 Digits., Date
6	Quantity of PIB in which additional payment effected <i>Jumlah PIB yang berakibat tambah bayar:</i>	✓			Quantity of PIB in which additional payment effected (Output, Optional) Refer to Table 6.8-2 for how to displaying output	QTY OF PIB- ADDITIONAL PAYMENT EFFECTED.PIB VERIFICATION II RESULT	5 Digits., Numeric
7	Quantity of PIB in which restitution effected : <i>Jumlah PIB yang berakibat restitusi:</i>	✓			Quantity of PIB in which restitution effected : (Output, Optional) Refer to Table 6.8-2 for how to displaying output	QTY OF PIB- RESTITUTION EFFECTED.PIB VERIFICATION II RESULT	5 Digits., Numeric
8	Reason of recommen- ding to be audited: <i>Rekomendasi untuk di audit karena</i>	✓			Reason of recommending to be audited: (Output, Optional)	REASON OF BEING AUDITED.PIB VERIFICATION II RESULT	255 Char., Alpha- numeric.

PIB VERIFICATION II RESULT Retrieval
Retrieval Window

Importer Basic Information

NPWP: _____ Regional Office Code: _____
 Importer Name: _____ Regional Office Name: _____
 Date: _____ Custom Broker on his behalf: _____
 Amount of Verified PIB: _____

Period of Verification: _____
 From: _____ To: _____

Analysis Result

Importer Performance: _____
 Service Performance in Import Section: _____
 Officer Performance: _____

Ok Previous Page Next Page Print Attach I

Figure 6.8-4: Window Layout for PIB Verification II Result Retrieval (Retrieval Result Window) (1/3)

PIB VERIFICATION II RESULT Retrieval
Retrieval Window

Additional Payment and Refund

Quantity of PIB in which additional payment effected: Quantity of PIB in which restitution effected:

Amount of additional Payment: Amount of overpayment:

Reason: Reason:

Reason of Recommending on to be audited:

Reason of Recommending on Revocation of its facility:

Reason of Recommending to be Investigated:

Reason of Recommending Action On Customs Official:

Recommendation for Updating Valuation Database:

Recommendation for Updating Commodity Profile and its motive:

Ok Previous Page Next Page Print Attach

Figure 6.8-4: Window Layout for PIB Verification II Result Retrieval (Retrieval Result Window) (2/3)

PIB VERIFICATION II RESULT Retrieval
 Retrieval Window

Recommendation for updating importer profile and its motive

Reason of Recommending Intelligent Operation

Recommendation for improving customs service system on import

Verifier I

Name: _____
 NIP: _____
 Rank: _____

Verifier II

Name: _____
 NIP: _____
 Rank: _____

Note From Direct Superior:

Ok Previous Page Next Page Print Attach

Figure 6.8-4: Window Layout for PIB Verification II Result Retrieval (Retrieval Result Window) (3/3)

Table 6.8-7: List of Items (Window Name: PIB VERIFICATION II RESULT Retrieval (Retrieval Result Window)) (1/6)

No.	Item Name	Level			Description	Item in File	Note
		1	2	3			
1	Importer Basic Information <i>Informasi Importir</i>	✓			Importer Basic Information (Output, Mandatory)	— (Group title)	—
2	NPWP <i>NPWP</i>				Tax Payer Code Number (Output, Mandatory)	ID NUMBER. BASIC IMPFORMATION	12 Char., Alpha- numeric
3	Importer Name <i>Nama Importir</i>				Importer name (Output, Mandatory)	NAME. BASIC INFORMATION	40 Char., Alpha- numeric
4	Date <i>Tanggal</i>		✓		Date of filling Verification II Result, DDMMYYYY (Output, Mandatory)	DATE.PIB VERIFICATION II RESULT	8 Digits., Date (Sys.Date)
5	Amount of Verified PIB <i>Jumlah PIB yang dianalisa</i>		✓		Amount of Verified PIB (Output, Mandatory)	AMOUNT OF VERIFIED PIB.PIB VERIFICATION II	5 Digits., Numeric
6	Regional Office Code <i>Kode kantor Wilayah</i>		✓		Regional Office Code (Output, Mandatory)	REGIONAL OFFICE CODE. PIB VERIFICATION II RESULT	2 Digits., Numeric
7	Regional Office Name <i>Nama Kantor Wilayah</i>		✓		Importer name (Output, Mandatory)	REGIONAL OFFICE. NAME.COMPANY COMMON INFORMATION	30 Char., Alpha- numeric
8	Custom Broker <i>PPJK</i>		✓		Name of Custom broker who has authorized of PIB management. (Output, Optional)	NAME.BASIC INFORMATION	40 Char., Alpha- numeric
9	Period of Verification <i>Periode Verifikasi</i>	✓			Period of Verification (Output, Mandatory)	— (Group title)	—
10	From <i>Dari</i>		✓		Earliest date of Registered Date.PIB Verification I Result that has relation to PIB Verification II Result (Output, Mandatory)	—	8 Digits., Date

Table 6.8-7: List of Items (Window Name: PIB VERIFICATION II RESULT Retrieval (Retrieval Result Window)) (2/6)

No.	Item Name	Level			Description	Item in File	Note
		1	2	3			
11	To <i>Sampai</i>		✓		Latest date of Registered Date.PIB Verification I Result that has relation to PIB Verification II Result (Output, Mandatory)	—	8 Digits., Date
12	Analysis Result <i>Hasil analisa</i>	✓			Verification Analysis Result	— (Group title)	—
13	Importer Performance <i>Kinerja Importir</i>		✓		Importer Performance (Output, Optional)	ANALYSIS-IMPORTER PERFORMANCE. PIB VERIFICATION II RESULT	500 Char., Alpha-numeric. Data will be displayed automatically, but user still can add additional information.
14	Service Performance in Import Section <i>Kinerja Sistim Pelayanan Pabean ai bidang impor</i>		✓		Service Performance in Import Section (Input/Output, Optional)	ANALYSIS-SERVICE PERFORMANCE.P IB VERIFICATION II RESULT	500 Char., Alpha-numeric.
15	Officer Performance <i>Kinerja Pegawai</i>		✓		Officer Performance (Input/Output, Optional)	ANALYSIS-OFFICER PERFORMANCE.P IB VERIFICATION II RESULT	500 Char., Alpha-numeric.
16	Additional Payment and Refund <i>Pembayaran Tambahan dan Restitusi</i>	✓			Additional Payment and Refund	— (Group title)	—

Table 6.8-7: List of Items (Window Name: PIB VERIFICATION II RESULT Retrieval (Retrieval Result Window)) (3/6)

No.	Item Name	Level			Description	Item in File	Note
		1	2	3			
17	Quantity of PIB in which additional payment effected <i>Jumlah PIB yg berakibat tambah bayar</i>		✓		Quantity of PIB in which additional payment effected (Output, Optional)	QTY OF PIB- ADDITIONAL PAYMENT EFFECTED.PIB VERIFICATION II RESULT	5 Digits., Numeric
18	Amount of additional Payment <i>Kekurangan pembayaran sebesar Rp.</i>		✓		Amount of additional Payment (Output, Optional)	AMOUNT OF ADDITIONAL PAYMENT.PIB VERIFICATION II RESULT	15 Digits., Numeric
19	Reason : <i>Karena kesalahan</i>		✓		Reason : (Input/Output, Optional)	REASON FOR ADDITIONAL PAYMENT.PIB VERIFICATION II RESULT	255 Char., Alpha-numeric
20	Quantity of PIB in which restitution effected : <i>Jumlah PIB yg berakibat restitusi:</i>		✓		Quantity of PIB in which restitution effected : (Output, Optional)	QTY OF PIB- RESTITUTION EFFECTED.PIB VERIFICATION II RESULT	5 Digits., Numeric
21	Amount of overpayment: Rp. <i>Dengan jumlah kelebihan pembayaran sebesar Rp</i>		✓		Amount of overpayment (Output, Optional):	AMOUNT OF OVERPAYMENT. PIB VERIFICATION II RESULT	15 Digits., Numeric
22	Reason : <i>Karena kesalahan:</i>		✓		Reason : (Output, Optional)	REASON FOR OVER PAYMENT. PIB VERIFICATION II RESULT	255 Char., Alpha-numeric

Table 6.8-7: List of Items (Window Name: PIB VERIFICATION II RESULT Retrieval (Retrieval Result Window)) (4/6)

No.	Item Name	Level			Description	Item in File	Note
		1	2	3			
23	Reason of recommending to be audited: <i>Rekomendasi untuk di audit karena</i>	✓			Reason of recommending to be audited: (Input/Output, Optional)	REASON OF BEING AUDITED.PIB VERIFICATION II RESULT	255 Char., Alpha-numeric
24	Reason of recommending on revocation of its facility <i>Rekomendasi untuk di cabut fasilitasnya karena</i>	✓			Reason of recommending on revocation of its facility (Input/Output, Optional)	REASON OF REVOCATION OF ITS FACILITY.PIB VERIFICATION II RESULT	255 Char., Alpha-numeric
25	Reason of recommending to be investigated <i>Rekomendasi untuk diselidik/disidik karena</i>	✓			Reason of recommending to be investigated (Input/Output, Optional)	REASON OF BEING INVESTIGATED.PIB VERIFICATION II RESULT	255 Char., Alpha-numeric
26	Reason of recommending action on customs official <i>Recomendasi tindakan terhadap pegawai dan alasannya</i>	✓			Reason of recommending action on customs official (Input/Output, Optional)	REASON OF ACTION ON CUSTOMS OFFICAL.PIB VERIFICATION II RESULT	255 Char., Alpha-numeric
27	Recommendation for updating valuation database <i>Rekomendasi updating Data Base Harga</i>	✓			Recommendation for updating valuation database (Input/Output, Optional)	REC-UPDATING VALUATION.PIB VERIFICATION II RESULT	255 Char., Alpha-numeric

Table 6.8-7: List of Items (Window Name: PIB VERIFICATION II RESULT Retrieval (Retrieval Result Window)) (5/6)

No.	Item Name	Level			Description	Item in File	Note
		1	2	3			
28	Recommendation for updating commodity profile and its motive <i>Rekomendasi updating profil komoditi dan alasannya</i>	✓			Recommendation for updating commodity profile and its motive (Input/Output, Optional)	REC-UPDATING COMMODITY PROFILE.PIB VERIFICATION II RESULT	255 Char., Alpha- numeric
29	Recommendation for updating importer profile and its motive <i>Rekomendasi updating profil importir dan alasannya</i>	✓			Recommendation for updating importer profile and its motive (Input/Output, Optional)	REC-UPDATING IMPORTER PROFILE.PIB VERIFICATION II RESULT	255 Char., Alpha- numeric
30	Reason of recommending intelligent operation <i>Rekomendasi operasi intelijen karena</i>	✓			Reason of recommending intelligent operation (Input/Output, Optional)	REASON OF INTELLIGENT OPERATION.PIB VERIFICATION II RESULT	255 Char., Alpha- numeric
31	Recommendation for improving customs service system on import <i>Rekomendasi penyempurnaan sistem pelayanan pabean di bidang Impor</i>	✓			Recommendation for improving customs service system on import (Input/Output, Optional)	REC-IMPROVING CUSTOMS SERVICE.PIB VERIFICATION II RESULT	255 Char., Alpha- numeric

Table 6.8-7: List of Items (Window Name: PIB VERIFICATION II RESULT Retrieval (Retrieval Result Window)) (6/6)

No.	Item Name	Level			Description	Item in File	Note
		1	2	3			
32	Verificator I <i>Verifikator I</i>	✓			Identification of Verifier I	— (Group title)	—
33	Name <i>Nama</i>		✓		Officer of PIB Verification I Name (Output, Optional)	NAME.DJBC OFFICER	40 Char., Alpha- numeric
34	NIP (Officer Identification Number)(I) <i>NIP (I)</i>		✓		Officer of PIB Verification I Identification Number of verifier (Input/Output, Optional)	NO. OF CIVIL SERVANT.DJBC OFFICER	9 Char., Alpha- numeric
35	Rank <i>Pangkat</i>		✓		Rank or position of Officer of PIB Verification I (Output, Optional)	RANK.DJBC OFFICER	50 Char., Alpha- numeric.
36	Verificator II <i>Verifikator II</i>	✓			Identification of Verifier II	— (Group title)	—
37	Name <i>Nama</i>		✓		Officer of PIB Verification II Name (Output, Mandatory)	NAME.DJBC OFFICER	40 Charac- ters.
38	NIP (Officer Identification Number)(II) <i>NIP (II)</i>		✓		Officer of PIB Verification II Identification Number. (Input/Output, Mandatory)	NO. OF CIVIL SERVANT.DJBC OFFICER	9 Char., Alpha- numeric
39	Rank <i>Pangkat</i>		✓		Rank or position of Officer of PIB Verification II (Output, Optional)	RANK.DJBC OFFICER	50 Char., Alpha- numeric
40	Note from direct superior <i>Catatan atasan langsung</i>	✓			Note from direct superior of PIB Verification II (Input/Output, Optional)	NOTE FROM DIRECT SUPERIOR.PIB VERIFICATION II RESULT	255 Char., Alpha- numeric. Comment from the Head of section in text

Attachment I of
NVHDI-II
Importer Performance Data

Lampiran IV
Keputusan Direktur Jenderal Bea dan
Cukai
Nomor :Kep-32/BC/1997
Tanggal : 01 April 1997

Importer Name :
Period of Verification : to

No	PIB		Desc. of Goods	Qty of goods	Weight of Goods	Package		Origin Country	Not Complied to Manifest	Filling in PIB		Completeness of PIB Supporting Doc.	Validity of Supporting Documents	Completeness of quantity and type of goods desc.	Correctness of HS classification	Correctness of tariff quotation	Correctness of used exchange rate	Correctness of import duty calculation	Compliance with Commerce Regulation	Channel Decision	Red Channel	Effectiveness of Physical Examination Note	Correctness of reported quantity and type of goods	Validity of Invoice	Effectiveness of invoice	Method of Customs Value	Determination on Customs Values	Correctness of reported Customs Value	Additional Payment / OverPayment			
	No	Date				Amount Type	Size			Correctness	Completeness																			HT/HT/HS/MD/MK/DDP		
1	2	3	4	5	6	7	8	9	10	11	12	13	14	15	16	17	18	19	20	21	22	23	24	25	26	27	28	29	30			
5	7	8	9	10	11	13	14	15	16	21	25	29	33	37	41	45	49	53	57	61	65	69	73	77	81	85	92	96	100			
									Amount		Y=17 N=18 P=19	Y=22 N=23 P=24	Y=26 N=27 P=28	Y=30 N=31 P=32	Y=34 N=35 P=36	Y=38 N=39 P=40	Y=42 N=43 P=44	Y=46 N=47 P=48	Y=50 N=51 P=52	Y=54 N=55 P=56	Y=58 N=59 P=60	R=62 G=63 P=64	Y=66 N=67 P=68	Y=70 N=71 P=72	Y=74 N=75 P=76	Y=78 N=79 P=80	Y=82 N=83 P=84	HT=86 HI=87 HS=88	MD=89 MK=90 DDP=91	Y=93 N=94 P=95	Y=97 N=98 P=99	

Remark
Y = Yes
N = No
HT = Harga Transaksi
HI = Harga Barang Identik
P = Percentage

HS = Harga Barang Serupa
MD = Metode Deduktif
MK = Metode Komputatif
DDP = Data yang Tersedia di Kantor Pabean

Recapitulation Note:

..... 19
Verificator :
Name :
NIP :
Rank :
Signature :

Figure 6.8-5: Report Layout for Attachment I of NHVDI-II

Table 6.8-8: List of Items
(Report Name: PIB VERICATION II RESULT Retrieval (Attachment I of NHVDI-II)) (1/10)

No.	Item Name	Level			Description	Item in File	Note
		1	2	3			
1	Importer Name <i>Nama Importir</i>	✓			Importer name (Output, Mandatory)	NAME.BASIC INFORMATION	40 Char., Alpha- numeric
2	Period of Verification <i>Periode Verifikasi</i>	✓			Period of Verification (Output, Mandatory)	— (Group title)	—
3	From <i>Dari</i>		✓		Earliest date of Registered Date.PIB Verification I Result that has relation to PIB Verification II Result (Output, Mandatory)	DATE. PIB VERIFICATION II RESULT	8 Digits., Date
4	To <i>Sampai</i>		✓		Latest date of Registered Date.PIB Verification I Result that has relation to PIB Verification II Result (Output, Mandatory)	DATE. PIB VERIFICATION II RESULT	8 Digits., Date
5	No. <i>Nomor Urut</i>	✓			Sequence Number of PIB. Automatically produce by computer program.	—	5 Digits., Numerical
6	PIB <i>PIB</i>	✓			Pemberitahuan Impor Barang	— (Group title)	—
7	No. <i>No.</i>		✓		PIB number (Output, Mandatory)	REGISTRATION NUMBER.PIB HEADER	6 Digits., Numerical
8	Date <i>Tanggal</i>		✓		The date of PIB registered in CFRS, DDMMYYYY. (Output, Mandatory)	REGISTRATION DATE.PIB HEADER	8 Digits., Date
9	Desc. of goods <i>Uraian Jenis Barang</i>	✓			Description of goods (Output, Mandatory)	DESCRIPTION OF GOODS.PIB DETAIL	25 Char., Alpha- numeric
10	Qty of goods <i>Jml Barang</i>	✓			Quantity of goods (Output, Mandatory)	QUANTITY OF GOODS.PIB DETAIL	12 Digits., Numerical
11	Weight of goods <i>Brt Barang</i>	✓			Weight of goods (Output, Optional)	NET WEIGHT.PIB DETAIL	15 Digits., Numerical
12	Package <i>Kemasan</i>	✓			Package Details of goods (Output, Optional)	— (Group title)	—

Table 6.8-8: List of Items
(Report Name: PIB VERICATION II RESULT Retrieval (Attachment I of NHVDI-II)) (2/10)

No.	Item Name	Level			Description	Item in File	Note
		1	2	3			
13	Amount Type <i>Jumlah Tipe</i>		✓		Amount of Package and Type of Package (example: 5 Boxes) (Output, Optional)	• AMOUNT.PACKAGE DETAIL • pckcode_of. PACKAGE DETAIL	• 1 Digit., Numeric • 6 Digits., Numeric
14	Size <i>Ukuran</i>		✓		Size of Package (Output, Optional)	SIZE.PACKAGE DETAIL	25 Char., Alpha- numeric
15	Origin Country <i>Neg. Asal</i>	✓			Origin Country (Output, Mandatory)	CODE NAME.CODE	30 Char., Alpha- numeric
16	Not complied to Manifest <i>Rekonsiliasi Manifest</i>	✓			Not complied to Manifest (Output, Mandatory)	NOT COMPLIED TO MANIFEST.PIB VERIFICATION RESULT STATISTICAL	1 Char., Alpha- numeric
17	Y (Yes) <i>Jumlah Y (Ya)</i>		✓		Counter of number of Y value in Not complienced to manifest (Output)	—	5 Digits., Numeric
18	N (No) <i>Jumlah N (Tidak)</i>		✓		Counter of number of N value in Not complienced to manifest (Output)	—	5 Digits., Numeric
19	P (Percentage) <i>Persentasi</i>		✓		Percentage of Y value in Not complienced to manifest (Output) $17[Y]/(17[Y]+18[N]) \times 100\%$	—	5 Digits., Numeric
20	Filling in PIB <i>Pengisian PIB</i>	✓			—	— (Group title)	—
21	Correctness Kebenaran <i>Pengisian PIB</i>		✓		Correctness of filling in PIB (Output, Mandatory)	CORRECTNESS OF FILLING IN PIB.PIB VERIFICATION II RESULT	1 Char., Alpha- numeric
22	Y (Yes) <i>Jumlah Y (Ya)</i>			✓	Counter of number of Y value in Correctness of filling in PIB (Output)	—	5 Digits., Numeric
23	N (No) <i>Jumlah N (Tidak)</i>			✓	Counter of number of N value in Correctness of filling in PIB (Output)	—	5 Digits., Numeric

Table 6.8-8: List of Items
(Report Name: PIB VERICATION II RESULT Retrieval (Attachment I of NHVDI-II)) (3/10)

No.	Item Name	Level			Description	Item in File	Note
		1	2	3			
24	P (Percentage) <i>Persentasi</i>			✓	Percentage of Y value in Correctness of filling in PIB (Output) $22[Y]/(22[Y]+23[N]) \times 100\%$	—	5 Digits., Numeric
25	Complete-ness <i>Kelengkapan pengisian PIB</i>		✓		Completeness of filling in PIB (Output, Mandatory)	COMPLETENESS OF FILLING IN PIB.PIB VERIFICATION II RESULT	1 Char., Alpha-numeric
26	Y (Yes) <i>Jumlah Y (Ya)</i>			✓	Counter of number of Y value in Completeness of filling in PIB (Output)	—	5 Digits., Numeric
27	N (No) <i>Jumlah N (Tidak)</i>			✓	Counter of number of N value in Completeness of filling in PIB (Output)	—	5 Digits., Numeric
28	P (Percentage) <i>Persentasi</i>			✓	Percentage of Y value in Correctness of filling in PIB (Output) $26[Y]/(26[Y]+27[N]) \times 100\%$	—	5 Digits., Numeric
29	Complete-ness of PIB supporting document <i>Kelengkapan Dok. Pelengkap</i>	✓			Completeness of PIB supporting document (Output, Mandatory)	COMPLETENESS OF PIB SUPPORTING DOC.PIB VERIFICATION II RESULT	1 Char., Alpha-numeric
30	Y (Yes) <i>Jumlah Y (Ya)</i>		✓		Counter of number of Y value in Completeness of PIB supporting document (Output)	—	5 Digits., Numeric
31	N (No) <i>Jumlah N (Tidak)</i>		✓		Counter of number of N value in Completeness of PIB supporting document (Output)	—	5 Digits., Numeric
32	P (Percentage) <i>Persentasi</i>		✓		Percentage of Y value in Completeness of PIB supporting document (Output) $30[Y]/(30[Y]+31[N]) \times 100\%$	—	5 Digits., Numeric
33	Validity of Supporting Doc. <i>Validasi Dok. Pelengkap</i>	✓			Validity of PIB supporting document (Output, Mandatory)	VALIDITY OF PIB SUPPORTING DOC.PIB VERIFICATION I RESULT	1 Char., Alpha-numeric

Table 6.8-8: List of Items
(Report Name: PIB VERICATION II RESULT Retrieval (Attachment I of NHVDI-II)) (4/10)

No.	Item Name	Level			Description	Item in File	Note
		1	2	3			
34	Y (Yes) <i>Jumlah Y (Ya)</i>		✓		Counter of number of Y value in Validity of PIB supporting document (Output)	—	5 Digits., Numeric
35	N (No) <i>Jumlah N (Tidak)</i>		✓		Counter of number of N value in Validity of PIB supporting document (Output)	—	5 Digits., Numeric
36	P (Percentage) <i>Persentasi</i>		✓		Percentage of Y value in Validity of PIB supporting document (Output) $34[Y]/(34[Y]+35[N]) \times 100\%$	—	5 Digits., Numeric
37	Completeness of quantity and type of goods description <i>Ur. Jml & Jns Brg</i>	✓			Completeness of quantity and type of goods description (Output, Mandatory)	COMPLETENESS OF QUANTITY_TYPE OF GOOD.PIB VERIFICATION I RESULT	1 Char., Alpha-numeric
38	Y (Yes) <i>Jumlah Y (Ya)</i>		✓		Counter of number of Y value in Completeness of quantity and type of goods description (Output)	—	5 Digits., Numeric
39	N (No) <i>Jumlah N (Tidak)</i>		✓		Counter of number of N value in Completeness of quantity and type of goods description (Output)	—	5 Digits., Numeric
40	P (Percentage) <i>Persentasi</i>		✓		Percentage of Y value in Completeness of quantity and type of goods description (Output) $38[Y]/(38[Y]+39[N]) \times 100\%$	—	5 Digits., Numeric
41	Correctness of HS classification <i>Kebenaran Klasifikasi H.S.</i>	✓			Correctness of HS classification (Output, Mandatory)	CORRECTNESS OF HS CODE.PIB VERIFICATION I RESULT	1 Char., Alpha-numeric
42	Y (Yes) <i>Jumlah Y (Ya)</i>		✓		Counter of number of Y value in Correctness of HS classification (Output)	—	5 Digits., Numeric
43	N (No) <i>Jumlah N (Tidak)</i>		✓		Counter of number of N value in Correctness of HS classification (Output)	—	5 Digits., Numeric

Table 6.8-8: List of Items
(Report Name: PIB VERICATION II RESULT Retrieval (Attachment I of NHVDI-II)) (5/10)

No.	Item Name	Level			Description	Item in File	Note
		1	2	3			
44	P (Percentage) <i>Persentasi</i>		✓		Percentage of Y value in Correctness of HS classification (Output) $42[Y]/(42[Y]+43[N]) \times 100\%$	—	5 Digits., Numeric
45	Correctness of tariff quotation <i>Kebenaran tarif Quota</i>	✓			Correctness of tariff quotation (Output, Mandatory)	CORRECTNESS OF TARIFF QUOTATION.PIB VERIFICATION I RESULT	1 Char., Alpha- numeric
46	Y (Yes) <i>Jumlah Y (Ya)</i>		✓		Counter of number of Y value in Correctness of tariff quotation (Output)	—	5 Digits., Numeric
47	N (No) <i>Jumlah N (Tidak)</i>		✓		Counter of number of N value in Correctness of tariff quotation (Output)	—	5 Digits., Numeric
48	P (Percentage) <i>Persentasi</i>		✓		Percentage of Y value in Correctness of tariff quotation (Output) $46[Y]/(46[Y]+47[N]) \times 100\%$	—	5 Digits., Numeric
49	Correctness of used exchange rate <i>Kebenaran Penggunaan Kurs</i>	✓			Correctness of used exchange rate (Output, Mandatory)	CORRECTNESS OF USED EXCHANGE RATE.PIB VERIFICATION I RESULT	1 Char., Alpha- numeric
50	Y (Yes) <i>Jumlah Y (Ya)</i>		✓		Counter of number of Y value in Correctness of used exchange rate (Output)	—	5 Digits., Numeric
51	N (No) <i>Jumlah N (Tidak)</i>		✓		Counter of number of N value in Correctness of used exchange rate (Output)	—	5 Digits., Numeric
52	P (Percentage) <i>Persentasi</i>		✓		Percentage of Y value in Correctness of used exchange rate (Output) $50[Y]/(50[Y]+51[N]) \times 100\%$	—	5 Digits., Numeric
53	Correctness of import duty calculation <i>Kebenaran Perhitungan Bea</i>	✓			Correctness of import duty calculation (Output, Mandatory)	CORRECTNESS OF IMPORT DUTY CALC.PIB VERIFICATION I RESULT	1 Char., Alpha- numeric

Table 6.8-8: List of Items
 (Report Name: PIB VERICATION II RESULT Retrieval (Attachment I of NHVDI-II)) (6/10)

No.	Item Name	Level			Description	Item in File	Note
		1	2	3			
54	Y (Yes) <i>Jumlah Y (Ya)</i>		✓		Counter of number of Y value in Correctness of import duty calculation (Output)	—	5 Digits., Numeric
55	N (No) <i>Jumlah N (Tidak)</i>		✓		Counter of number of N value in Correctness of import duty calculation (Output)	—	5 Digits., Numeric
56	P (Percentage) <i>Persentasi</i>		✓		Percentage of Y value in Correctness of import duty calculation (Output) $54[Y]/(54[Y]+55[N]) \times 100\%$	—	5 Digits., Numeric
57	Compliance with Commerce Regulation <i>Peraturan T. Niaga</i>	✓			Compliance with Commerce Regulation (Output, Mandatory)	COMPLIANCE WITH COMMERCE REGULATION.PIB VERIFICATION I RESULT	1 Char., Alpha-numeric
58	Y (Yes) <i>Jumlah Y (Ya)</i>		✓		Counter of number of Y value in Compliance with Commerce Regulation (Output)	—	5 Digits., Numeric
59	N (No) <i>Jumlah N (Tidak)</i>		✓		Counter of number of N value in Compliance with Commerce Regulation (Output)	—	5 Digits., Numeric
60	P (Percentage) <i>Persentasi</i>		✓		Percentage of Y value in Compliance with Commerce Regulation (Output) $58[Y]/(58[Y]+59[N]) \times 100\%$	—	5 Digits., Numeric
61	Channel Decision <i>Penetapan Jalur</i>	✓			Channel Decision (Output, Mandatory) • Red • Green	CHANNEL DECISION.PIB VERIFICATION II RESULT	5 Char Alpha-numeric
62	R (Red) <i>Jumlah Jalur Merah</i>		✓		Counter of number of R value in Channel Decision (Output)	—	5 Digits., Numeric
63	G (Green) <i>Jumlah Jalur Hijau</i>		✓		Counter of number of N value in Channel Decision (Output)	—	5 Digits., Numeric

Table 6.8-8: List of Items
(Report Name: PIB VERICATION II RESULT Retrieval (Attachment I of NHVDI-II)) (7/10)

No.	Item Name	Level			Description	Item in File	Note
		1	2	3			
64	P (Percentage) <i>Persentasi</i>		✓		Percentage of R value in Channel Decision (Output) $62[R]/(62[G]+63[P]) \times 100\%$	—	5 Digits., Numeric
65	Red Channel <i>Jalur Merah</i>	✓			Channel Decision (Output, Mandatory) • Red • Green	CHANNEL DECISION.PIB VERIFICATION II RESULT	1 Char Alpha- numeric
66	Y (Yes) <i>Jumlah Y</i> <i>(Ya)</i>		✓		Counter of number of R value in Channel Decision (Output)	—	5 Digits., Numeric
67	N (No) <i>Jumlah N</i> <i>(Tidak)</i>		✓		Counter of number of N value in Channel Decision (Output)	—	5 Digits., Numeric
68	P (Percentage) <i>Persentasi</i>		✓		Percentage of R value in Channel Decision (Output) $62[R]/(62[G]+63[P]) \times 100\%$	—	5 Digits., Numeric
69	Effectiveness of Physical Examination Note <i>Nota pemeriksaan pisik</i>	✓			Effectiveness of Physical Examination Note (Output, Mandatory) • Yes • No	EFFECTIVENESS OF PHYSICAL EXAMINATION NT.PIB VERIFICATION I RESULT	1 Char., Alpha- numeric
70	Y (Yes) <i>Jumlah Y</i> <i>(Ya)</i>		✓		Counter of number of Y value in Effectiveness of Physical Examination Note (Output)	—	5 Digits., Numeric
71	N (No) <i>Jumlah N</i> <i>(Tidak)</i>		✓		Counter of number of N value in Effectiveness of Physical Examination Note (Output)	—	5 Digits., Numeric
72	P (Percentage) <i>Persentasi</i>		✓		Percentage of Y value in Effectiveness of Physical Examination Note (Output) $70[Y]/(70[Y]+71[N]) \times 100\%$	—	5 Digits., Numeric
73	Correctness of reported quantity and type of goods <i>Pemb. Jml & Jns Brg</i>	✓			Correctness of reported quantity and type of goods (Output, Mandatory)	CORRECTNESS OF RPT QTY_TYPE OF GOOD.PIB VERIFICATION I RESULT	1 Char., Alpha- numeric

Table 6.8-8: List of Items
(Report Name: PIB VERICATION II RESULT Retrieval (Attachment I of NHVDI-II)) (8/10)

No.	Item Name	Level			Description	Item in File	Note
		1	2	3			
74	Y (Yes) <i>Jumlah Y</i> <i>(Ya)</i>		✓		Counter of number of Y value in Correctness of reported quantity and type of goods (Output)	—	5 Digits., Numeric
75	N (No) <i>Jumlah N</i> <i>(Tidak)</i>		✓		Counter of number of N value in Correctness of reported quantity and type of goods (Output)	—	5 Digits., Numeric
76	P (Percentage) <i>Persentasi</i>		✓		Percentage of Y value in Correctness of reported quantity and type of goods (Output) $74[Y]/(74[Y]+75[N]) \times 100\%$	—	5 Digits., Numeric
77	Validity of Invoice <i>Validitas Invoice</i>	✓			Validity of Invoice (Output, Mandatory)	VALIDITY OF INVOICE.PIB VERIFICATION I RESULT	1 Char., Alpha-numeric
78	Y (Yes) <i>Jumlah Y</i> <i>(Ya)</i>		✓		Counter of number of Y value in Validity of Invoice (Output)	—	5 Digits., Numeric
79	N (No) <i>Jumlah N</i> <i>(Tidak)</i>		✓		Counter of number of N value in Validity of Invoice (Output)	—	5 Digits., Numeric
80	P (Percentage) <i>Persentasi</i>		✓		Percentage of Y value in Validity of Invoice (Output) $78[Y]/(78[Y]+79[N]) \times 100\%$	—	5 Digits., Numeric
81	Effectiveness of invoice <i>Daya Guna Invoice</i>	✓			Effectiveness of invoice (Output, Mandatory)	EFFECTIVENESS OF INVOICE.PIB VERIFICATION I RESULT	1 Char., Alpha-numeric
82	Y (Yes) <i>Jumlah Y</i> <i>(Ya)</i>		✓		Counter of number of Y value in Effectiveness of invoice (Output)	EFFECTIVENESS OF INVOICE.PIB VERIFICATION I RESULT	5 Digits., Numeric
83	N (No) <i>Jumlah N</i> <i>(Tidak)</i>		✓		Counter of number of N value in Effectiveness of invoice (Output)	EFFECTIVENESS OF INVOICE.PIB VERIFICATION I RESULT	5 Digits., Numeric
84	P (Percentage) <i>Persentasi</i>		✓		Percentage of Y value in Effectiveness of invoice (Output) $82[Y]/(82[Y]+83[N]) \times 100\%$	EFFECTIVENESS OF INVOICE.PIB VERIFICATION I RESULT	5 Digits., Numeric

Table 6.8-8: List of Items
 (Report Name: PIB VERICATION II RESULT Retrieval (Attachment I of NHVDI-II)) (9/10)

No.	Item Name	Level			Description	Item in File	Note
		1	2	3			
85	Method of Customs Value <i>Metode N.P.</i>	✓			Method of Customs Value (Output)	METHCUST_OF.PIB VERIFICATION I RESULT	6 Char., Alpha-numeric
86	HT <i>Jumlah Metode HT</i>		✓		Counter of number of HT value in Method of Customs Value (Output)	—	5 Digits., Numeric
87	HI <i>Jumlah Metode HI</i>		✓		Counter of number of HI value in Method of Customs Value (Output)	—	5 Digits., Numeric
88	HS <i>Jumlah Metode HS</i>		✓		Counter of number of HS value in Method of Customs Value (Output)	—	10 Digits., Numeric
89	MD <i>Jumlah Metode MD</i>		✓		Counter of number of MD value in Method of Customs Value (Output)	—	5 Digits., Numeric
90	MK <i>Jumlah Metode MK</i>		✓		Counter of number of MK value in Method of Customs Value (Output)	—	5 Digits., Numeric
91	DDP <i>Jumlah Metode DDP</i>		✓		Counter of number of DDP value in Method of Customs Value (Output)	—	5 Digits., Numeric
92	Determination on Customs Values <i>Penetapan N.P.</i>	✓			Determination on Customs Values (Output, Mandatory)	DETERMINATION ON CUSTOMS VALUES.PIB VERIFICATION I RESULT	1 Char., Alpha-numeric
93	Y (Yes) <i>Jumlah Y (Ya)</i>		✓		Counter of number of Y value in Determination on Customs Values (Output)	—	5 Digits., Numeric
94	N (No) <i>Jumlah N (Tidak)</i>		✓		Counter of number of N value in Determination on Customs Values (Output)	—	5 Digits., Numeric
95	P (Percentage) <i>Persentasi</i>		✓		Percentage of Y value in Determination on Customs Values (Output) $93[Y]/(93[Y]+94[N]) \times 100\%$	—	5 Digits., Numeric

Table 6.8-8: List of Items
(Report Name: PIB VERICATION II RESULT Retrieval (Attachment I of NHVDI-II)) (10/10)

No.	Item Name	Level			Description	Item in File	Note
		1	2	3			
96	Correctness of reported Customs Value <i>Pemberitahuan N.P</i>	✓			Correctness of reported Customs Value (Output, Mandatory)	CORRECTNESS OF RPT CUSTOMS VALUES.PIB VERIFICATION I RESULT	1 Char., Alpha-numeric
97	Y (Yes) <i>Jumlah Y (Ya)</i>		✓		Counter of number of Y value in Correctness of reported Customs Value (Output)	—	5 Digits., Numeric
98	N (No) <i>Jumlah N (Tidak)</i>		✓		Counter of number of N value in Correctness of reported Customs Value (Output)	—	5 Digits., Numeric
99	P (Percentage) <i>Persentasi</i>		✓		Percentage of Y value in Correctness of reported Customs Value (Output) $97[Y]/(97[Y]+98[N]) \times 100\%$	—	5 Digits., Numeric
100	Additional Payment/Restitution <i>Ket Tambah Bayar/Restitusi</i>	✓			Additional Payment is paying from company to Customs Refund is paid back from customs to company because the company has paid more than necessary amount (Output, Optional)	pibvrs_of.PIB VERIFICATION II RESULT	15 Digits., Numeric