

6.3 PIB Verification I Result Deletion

Volume II Figure 2.6.2-4 and Table 2.6.2-4 show the outline of PIB Verification I Result Deletion Process. As a result of System Design, the process is designed as below. Volume III Appendix A is referred to understand how to view figures and tables.

- Process Procedure

- 1) Retrieval of PIB Verification I Result

- i) Input

Read inputted data from Retrieval Window. Table 6.3-4 shows details of data items on the window.

- ii) Input Check

Check value of inputted data following Table 6.3-5.

- iii) Code Retrieval

Retrieve data from tables using the inputted codes. Edit and display the retrieved data into data fields corresponding to its code on the window. Table 6.3-1 shows list and location of codes to be used.

Table 6.3-1: List of codes

Code	Location of Table	Note
Office Code	Client	—
PIB Declaration No.	Server	Date of Customs Declaration is also necessary.

- iv) Retrieval

Retrieve data from the databases and code tables. Table names of the databases are shown in Table 6.3-6. Send retrieval request to PIB Header Table to make sure the management number (Declared Office Code + Declared Date + PIB No.) does already exist. Send another retrieval request to PIB Verification I Result Table to make sure the management number (Declared Office Code + Declared Date + PIB No.) does also exist.

- v) Output

Edit retrieved data and display Deletion Window. Table 6.3-6 shows details of data items on the window.

2) Deletion of PIB Verification I Result

i) Confirmation

Display a response-requiring message. (Message ID;R0000003)

ii) Deletion

Deletion data from the database. Table names of the database are shown in Table 6.3-6.

PIB Verification Result Statistical table is linked to PIB Verification I Result table, so that it must be counted down as follows.

a) Retrieve record that matches inputted NPWP, Regional Office Code (the first 2 digits of the Service Office Code) and Month (the date used in server) from PIB Verification Result Statistical table or PIB Statistical table.

b) Count down methods for PIB Verification I Result Statistical is listed in the Table 6.3-2.

Table 6.3-2: Count Down Method for PIB Verification I Result Statistical (1/4)

No.	Item in PIB Verification Result Statistical	Count down regulation	Count down procedure
1	The amount of verified PIB	Count down on every deletion.	Count down 1 (subtract 1) from this item in PIB Verification Result Statistical.
2	Not complied to manifest	Count down when NO was selected for the item, [Complied to manifest.PIB Verification I Result].	Count down 1 (subtract 1) from this item in PIB Verification Result Statistical.
3	Incorrect in filling document	Count down when NO was selected for the item, [Correctness of filling in PIB.PIB Verification I Result].	Count down 1 (subtract 1) from this item in PIB Verification Result Statistical.
4	Incomplete in filling document	Count down when NO was selected for the item, [Completeness of filling in PIB.PIB Verification I Result].	Count down 1 (subtract 1) from this item in PIB Verification Result Statistical.
5	Insufficient supporting document	Count down when NO was selected for the item, [Completeness of PIB supporting document.PIB Verification I Result].	Count down 1 (subtract 1) from this item in PIB Verification Result Statistical.
6	Doubt in Validity of supporting documents	Count down when NO was selected for the item, [Validity of PIB supporting document.PIB Verification I Result].	Count down 1 (subtract 1) from this item in PIB Verification Result Statistical.

Table 6.3-2: Count Down Method for PIB Verification I Result Statistical (2/4)

No.	Item in PIB Verification Result Statistical	Count down regulation	Count down procedure
7	Insufficient description of amount of price and type of goods	Count down when NO was selected for the item, [Completeness of quantity and type of goods.PIB Verification I Result].	Count down 1 (subtract 1) from this item in PIB Verification Result Statistical.
8	Incorrect HS classification	Count down when NO was selected for the item, [Correctness of HS classification.PIB Verification I Retrieval Summary].	Count down 1 (subtract 1) from this item in PIB Verification Result Statistical.
9	Incorrect tariff	Count down when NO was selected for the item, [Correctness of tariff quotation.PIB Verification I Result].	Count down 1 (subtract 1) from this item in PIB Verification Result Statistical.
10	Incorrect currency	Count down when NO was selected for the item, [Correctness of currency.PIB Verification I Result].	Count down 1 (subtract 1) from this item in PIB Verification Result Statistical.
11	Incorrect import duty	Count down when NO was selected for the item, [Correctness of import duty calculation.PIB Verification I Result].	Count down 1 (subtract 1) from this item in PIB Verification Result Statistical.
12	Disobey in commerce regulation	Count down when NO was selected for the item, [Compliance with commerce regulation.PIB Verification I Result].	Count down 1 (subtract 1) from this item in PIB Verification Result Statistical.
13	Unfair declaration of kind and amount of goods	Count down when NO was selected for the item, [Correctness of reported quantity and type of goods.PIB Verification I Result].	Count down 1 (subtract 1) from this item in PIB Verification Result Statistical.
14	Unfair declaration of customs value	Count down when NO was selected for the item, [Correctness of reported Customs Value.PIB Verification I Result].	Count down 1 (subtract 1) from this item in PIB Verification Result Statistical.
15	Doubt in validity of invoice	Count down when NO was selected for the item, [Validity of invoice.PIB Verification I Result].	Count down 1 (subtract 1) from this item in PIB Verification Result Statistical.

Table 6.3-2: Count Down Method for PIB Verification I Result Statistical (3/4)

No.	Item in PIB Verification Result Statistical	Count down regulation	Count down procedure
16	Insufficient invoice	Count down when NO was selected for the item, [Completeness of invoice.PIB Verification I Result].	Count down 1 (subtract 1) from this item in PIB Verification Result Statistical.
17	Additional Payment	Subtract every time value was inputted in the item, [Additional Payment. PIB Verification I Retrieval Summary].	Count down by inputted number (subtract the inputted number) in PIB Verification Result Statistical.
18	Refund	Subtract every time value was inputted in the item, [Refund. PIB Verification I Result].	Count down by inputted number (subtract the inputted number) in PIB Verification Result Statistical.
19	Red Channel PIB – with DNP	Count down when “Red” flag was selected in [Channel Flag.PIB Process], and “Yes” was selected in [Existence of DNP. PIB Verification I Result].	Count down 1 (subtract 1) from this item in PIB Verification Result Statistical.
20	No. of Red Channel PIB – with DNP and non compliance	Count down when “Red” flag was selected in [Channel Flag.PIB Process], and “Red” flag was selected in [Condition Flag. PIB Verification I Retrieval Summary], and also “Yes” was selected in [Existence of DNP.PIB Verification I Result].	Count up 1 (add 1) to this item in PIB Verification Result Statistical.
21	Transaction Price	Count down when Transaction Price was selected for the item, [Method of Customs Value.PIB Verification I Result], in deletion	Count down 1 (subtract 1) from this item in PIB Verification Result Statistical.
22	Identical Goods Price	Count down when Identical Goods Price was selected for the item, [Method of Customs Value.PIB Verification I Result], in deletion.	Count down 1 (subtract 1) from this item in PIB Verification Result Statistical.
23	Similar Goods Price	Count down when Similar Goods Price was selected for the item, [Method of Customs Value.PIB Verification I Result], in deletion.	Count down 1 (subtract 1) from this item in PIB Verification Result Statistical.

Table 6.3-2: Count Down Method for PIB Verification I Result Statistical (4/4)

No.	Item in PIB Verification Result Statistical	Count down regulation	Count down procedure
24	Deductive Method	Count down when Deductive Method was selected for the item, [Method of Customs Value.PIB Verification I Result], in deletion.	Count down 1 (subtract 1) from this item in PIB Verification Result Statistical.
25	Computative Method	Count down when Computative Method was selected for the item, [Method of Customs Value.PIB Verification I Result], in deletion.	Count down 1 (subtract 1) from this item in PIB Verification Result Statistical.
26	DDKP	Count down when DDKP was selected for the item, [Method of Customs Value.PIB Verification I Result], in deletion.	Count down 1 (subtract 1) from this item in PIB Verification Result Statistical.

iii) Output

Display a normal message. (Message ID;N0000004)

- Window Layout / Report Layout

- Windows

- Retrieval Window

Figure 6.3-1

- Deletion Window

Figure 6.3-2

- Report

- None

- Error Procedure

Display an error message following Table 6.3-3.

Table 6.3-3: Error Procedure

Case	Error Contents	Message ID	Note
1)-ii)	An error is detected at Input Check.	See Table 6.3-4	—
1)-iv), 1)-v), 2)-ii), 2)-iii)	SQL returned an error code.	E0000001	Fill in the blank part of the message text with the error code.
1)-iv)	The requested record does not exist.	E0000002	—
1)-iv)	The record to be deleted does not exist.	E0000002	—
1)-iii)	The code to be retrieved at Code Retrieval does not exist in the code table.	—	Ignore the error and continue the process.
2)-ii)	Relations to PIB Verification II Results still exist.	EV010002	—

- Restriction
 - PIB Verification I Result can not be deleted if linking information (NPWP, Regional Office Code, Verification II Date) is filled in. In this case, the related PIB Verification II Result must be deleted first, before PIB Verification I Result is deleted.
 - Retrieved data by codes are not registered in PIB Verification I Result database. Should the meaning of those codes are changed, the original corresponding data cannot be retrieved by PIB Verification I Result Retrieval.

- Note
 - For details of each message, see Volume II 1.4.

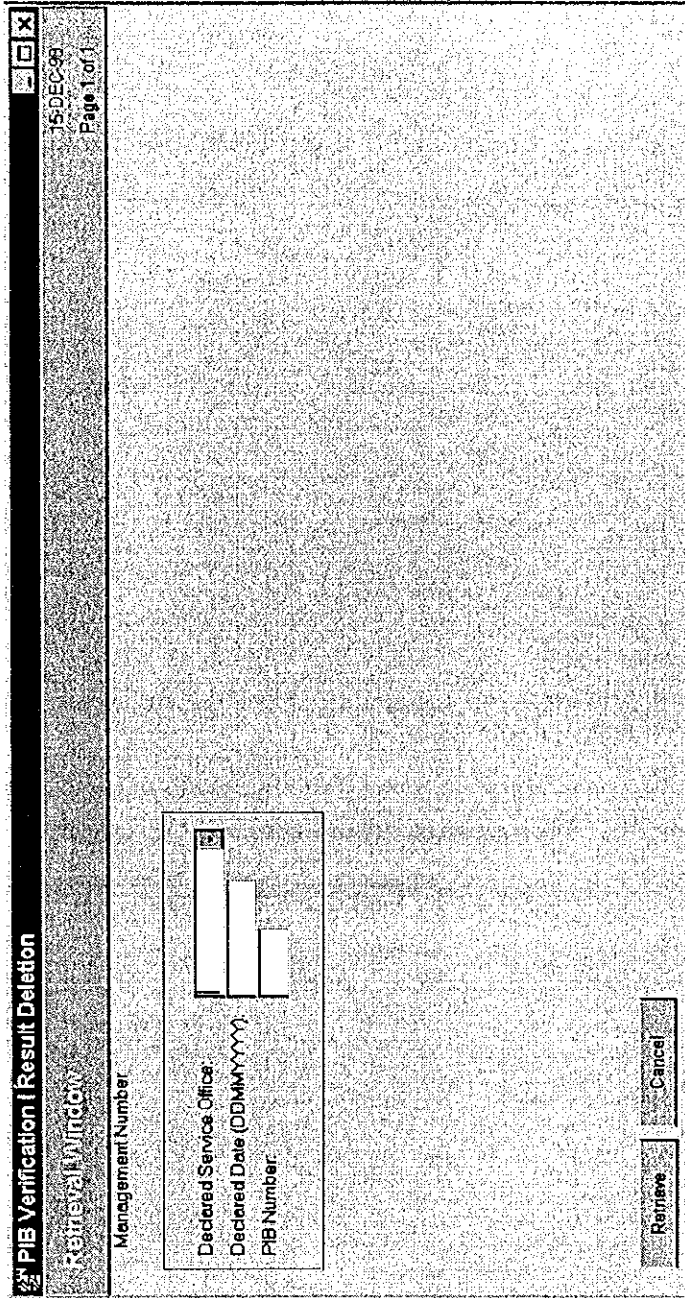


Figure 6.3-1: Window Layout for PIB Verification I Result Deletion (Retrieval Window)

Table 6.3-4: List of Items
(Window Name: PIB Verification I Result Deletion (Retrieval Window))

No.	Item Name	Level			Description	Item in File	Note
		1	2	3			
1	Management Number <i>Nomor manajemen</i>	✓			Unique key (No repeat)	— (Group title)	—
2	Declared Service Office <i>KPBC tempat pemberitahuan</i>		✓		Office code of which PIB was declared. (Input, Mandatory)	CODE.DJBC OFFICE	40 digits, Numeric
3	Declared Date (DDMMYY YY) <i>Tanggal pemberitahuan (DDMMYY YY)</i>		✓		The date of PIB registered in CFRS (Input, Mandatory)	REGISTRATION DATE.PIB HEADER	8 digits, Date
4	PIB Number (Import Declaration Number) <i>Pemberitahuan Impor Barang (PIB) Nomor</i>		✓		PIB number (Input, Mandatory)	REGISTRATION NUMBER.PIB HEADER	6 digits, Numeric

Table 6.3-5: Input Check List (PIB Verification I Result Deletion (Retrieval Window))

No.	Item Name	Condition (range, format, and so on)	Message ID	Note
1	Declared Date	Must have full length.	E0000015	—
2	Declared Date	Must be past date including today.	E0000010	—
3	PIB Number (Import Declaration Number)	Must have full length.	E0000015	—

PIB Verification I Result Deletion 15-DEC-98 Page 1 of 3

Management Number

Declared Service Office:
 Declared Date (DDMMYY):
 PIB Number:

Basic Information on Importer

NPWP:
 Name:
 Street:
 City:
 Postal Code:
 Telephone Number:
 Fax Number:

Delete Previous Page Next Page Cancel

Figure 6.3-2: Window Layout for PIB Verification I Result Deletion (Deletion Window) (1/3)

PIB Verification I Result Deletion		01-FEB-98	Page 2 of 3
PIB VERIFICATION I RESULT			
Correctness of Filing in PIB:	<input checked="" type="radio"/> Yes	<input type="radio"/> No	
Completeness of Filing in PIB:	<input type="radio"/> Yes	<input type="radio"/> No	
Completeness of PIB Supporting Document:	<input type="radio"/> Yes	<input type="radio"/> No	
Validity of PIB Supporting Document:	<input type="radio"/> Yes	<input type="radio"/> No	
Completeness of Quantity and Type of Goods:	<input type="radio"/> Yes	<input type="radio"/> No	
Correctness of Reported Quantity and Type of Goods:	<input type="radio"/> Yes	<input type="radio"/> No	
Compliance with Commerce Regulation:	<input type="radio"/> Yes	<input type="radio"/> No	
Correctness of Currency:	<input type="radio"/> Yes	<input type="radio"/> No	
Correctness of HS Classification:	<input type="radio"/> Yes	<input type="radio"/> No	
Wrong HS Code:	<input type="text" value=""/>		
Correct HS Code:	<input type="text" value=""/>		
Country of Origin:	<input type="text" value=""/>		
Correctness of Import Duty Calculation:	<input type="radio"/> Yes	<input type="radio"/> No	
Correctness of Tariff Quotation:	<input type="radio"/> Yes	<input type="radio"/> No	
Correctness of Used Exchange Rate:	<input type="radio"/> Yes	<input type="radio"/> No	
Channel Decision:	<input type="radio"/> Green	<input type="radio"/> Red	
Reason for Red Channel Determination:	<input type="text" value=""/>		
Completeness of Invoice:	<input type="radio"/> Yes	<input type="radio"/> No	
Validity of Invoice:	<input type="radio"/> Yes	<input type="radio"/> No	
Effectiveness of Invoice:	<input type="radio"/> Yes	<input type="radio"/> No	
Effectiveness of Database:	<input type="radio"/> Yes	<input type="radio"/> No	
		<input type="button" value="Delete"/>	<input type="button" value="Cancel"/>
		<input type="button" value="Previous Page"/>	<input type="button" value="Next Page"/>

Figure 6.3-2: Window Layout for PIB Verification I Result Deletion (Deletion Window) (2/3)

Table 6.3-6: List of Items
(Window Name: PIB Verification I Result Deletion (Deletion Window)) (1/8)

No.	Item Name	Level			Description	Item in File	Note
		1	2	3			
1	Management Number <i>Nomor manajemen</i>	✓			Unique key (No repeat)	— (Group title)	—
2	Declared Service Office Name <i>Nama KPBC pemberitahuan</i>		✓		Name of the service office (Output)	NAME.DJBC OFFICE	40 char., Alpha-numeric
3	Declared Date (DDMMYY YY) <i>Tanggal pemberitahuan (DDMMYY Y)</i>		✓		The date of PIB registered in CFRS (Output)	REGISTRATION DATE.PIB HEADER	8 digits, Date
4	PIB Number (Import Declaration Number) <i>Pemberitahuan Impor Barang (PIB) Nomor</i>		✓		PIB number (Output)	REGISTRATION NUMBER.PIB HEADER	6 digits, Numeric
5	Basic Information on Importer <i>Informasi Umum Importir</i>	✓			Information related to the importer (No repeat)	— (Group title)	—
6	NPWP <i>NPWP</i>		✓		Tax Payer Code Number (Output)	ID NUMBER.BASIC INFORMATION	12 Char., Alpha-numeric
7	Name <i>Nama</i>		✓		Name of the importer (Output)	NAME.BASIC INFORMATION	40 char., Alpha-numeric
8	Street <i>Jalan</i>		✓		Street (Output)	STREET.BASIC INFORMATION	100 Char., Alpha-numeric

01-FEB-96
Page 3 of 3

PIB Verification I Result Deletion

PIB VERIFICATION I RESULT

Existence of DNP: Yes No

Motive on DNP: Yes No

Effectiveness of DNP: Yes No

Not Complied to Manifest: Yes No

Physical Examination Result: Green Red

Effectiveness of Physical Examination: Yes No

Correctness of Reported Customs Value: Yes No

Determination on Customs Value: Yes No

Method of Customs Value:

Additional Payment:

Refund:

PACKAGE DETAILS

Goods Description	Package Code	Package Description	Amount	Size
<input type="text"/>	<input type="text"/>	<input type="text"/>	<input type="text"/>	<input type="text"/>
<input type="text"/>	<input type="text"/>	<input type="text"/>	<input type="text"/>	<input type="text"/>

Resume I:

Note From Direct Superior I:

Nip I:

Figure 6.3-2: Window Layout for PIB Verification I Result Deletion (Deletion Window) (3/3)

Table 6.3-6: List of Items
(Window Name: PIB Verification I Result Deletion (Deletion Window)) (2/8)

No.	Item Name	Level			Description	Item in File	Note
		1	2	3			
9	City <i>Kota</i>		✓		City (Output)	CITY.BASIC INFORMATION	30 char., Alpha- numeric
10	Postal Code <i>Kode Pos</i>		✓		Postal Code (Output)	POSTAL CODE.BASIC INFORMATION	5 digits, Numeric
11	Telephone Number <i>Nomor telepon</i>		✓		Telephone number (Output)	PHONE NUMBER.BASIC INFORMATION	12 digits, Numeric
12	Fax Number <i>Nomor Fax</i>		✓		Fax number (Output)	FAX NUMBER.BASIC INFORMATION	12 digits, Numeric
13	PIB Verification I Result <i>Hasil Verifikasi Dokumen PIB I</i>	✓			PIB Verification I Result (No repeat)	— (Group title)	—
14	Correctness of filling in PIB <i>Kebenaran pengisian PIB</i>		✓		Correctness of filling in PIB (Output) • Yes • No	CORRECTNESS OF FILLING IN PIB.PIB VERIFICATION I RESULT	1 digit, Numeric
15	Complete- ness of filling in PIB <i>Kelangka- pan pengisian PIB</i>		✓		Completeness of filling in PIB (Output) • Yes • No	COMPLETENESS OF FILLING IN PIB.PIB VERIFICATION I RESULT	1 digit, Numeric
16	Complete- ness of PIB supporting document <i>Kelangka- pan dokumen pelengkap PIB</i>		✓		Completeness of PIB supporting document (Output) • Yes • No	COMPLETENESS OF PIB SUPPORTING DOC.PIB VERIFICATION I RESULT	1 digit, Numeric

Table 6.3-6: List of Items
(Window Name: PIB Verification I Result Deletion (Deletion Window)) (3/8)

No.	Item Name	Level			Description	Item in File	Note
		1	2	3			
17	Validity of PIB supporting document <i>Validitas dokumen pelengkap PIB</i>		✓		Validity of PIB supporting document (Output) • Yes • No	VALIDITY OF PIB SUPPORTING DOC.PIB VERIFICATION I RESULT	1 digit, Numeric
18	Completeness of quantity and type of goods description <i>Kelengkapan uraian jumlah dan jenis barang</i>		✓		Completeness of quantity and type of goods description (Output) • Yes • No	COMPLETENESS OF QUANTITY_TYPE OF GOODS.PIB VERIFICATION I RESULT	1 digit, Numeric
19	Correctness of reported quantity and type of goods <i>Kewajaran pemberitahuan jumlah dan jenis barang</i>		✓		Correctness of reported quantity and type of goods (Output) • Yes • No	CORRECTNESS OF RPT QTY_TYPE OF GOOD. PIB VERIFICATION I RESULT	1 digit, Numeric
20	Compliance with Commerce Regulation <i>Pemenuhan Peraturan Tata Niaga</i>		✓		Compliance with Commerce Regulation (Output) • Yes • No	COMPLIANCE WITH COMMERCE REGULATION.PIB VERIFICATION I RESULT	1 digit, Numeric
21	Correctness of currency <i>Kebenaran kursnya</i>		✓		Correctness of currency (Output) • Yes • No	CORRECTNESS OF CURRENCY. PIB VERIFICATION I RESULT	1 digit, Numeric
22	Correctness of HS classification <i>Kebenaran klasifikasi HS</i>		✓		Correctness of HS classification (Output) • Yes • No	CORRECTNESS OF HS CLASSIFICATION. PIB VERIFICATION I RETRIEVAL SUMMARY	1 digit, Numeric

Table 6.3-6: List of Items
(Window Name: PIB Verification I Result Deletion (Deletion Window)) (4/8)

No.	Item Name	Level			Description	Item in File	Note
		1	2	3			
23	Wrong HS Code <i>Kode HS Salah</i>		✓		Wrong HS Code (Output)	WRONG HS CODE.PIB VERIFICATION I RESULT	10 digits, Numeric
24	Correct HS Code <i>Kode HS Benar</i>		✓		Correct HS Code (Output)	CORRECT HS CODE. PIB VERIFICATION I RESULT	10 digits, Numeric
25	Country of Origin <i>Negara Asal</i>		✓		The Country of the goods originated. (Output)	ctry_of.PIB VERIFICATION I RESULT	30 char., Alpha-numeric
26	Correctness of import duty calculation <i>Kebenaran perhitungan Bea</i>		✓		Correctness of import duty calculation (Output) • Yes • No	CORRECTNESS OF IMPORT DUTY CALC.PIB VERIFICATION I RESULT	1 digit, Numeric
27	Correctness of tariff quotation <i>Kebenaran pembebanan tarif</i>		✓		Correctness of tariff quotation (Output) • Yes • No	CORRECTNESS OF TARIFF QUOTATION.PIB VERIFICATION I RESULT	1 digit, Numeric
28	Correctness of used exchange rate <i>Kebenaran penggunaan kurs</i>		✓		Correctness of used exchange rate (Output) • Yes • No	CORRECTNESS OF USED EXCHANGE RATE.PIB VERIFICATION I RESULT	1 digit, Numeric
29	Channel Decision <i>Penetapan jalur</i>		✓		Channel Decision • Red • Green (Output)	CHANNEL FLAG.PIB PROCESS	1 digit, Numeric

Table 6.3-6: List of Items
(Window Name: PIB Verification I Result Deletion (Deletion Window)) (5/8)

No.	Item Name	Level			Description	Item in File	Note
		1	2	3			
30	Reason for Red Channel Determination <i>Alasan penetapan jalur merah</i>		✓		Reason for Red Channel Determination Code that describes the reasonable reason. (Output)	redchnl_of.PIB VERIFICATION I RESULT	20 char., Alpha-numeric
31	Completeness of invoice <i>Kelengkapan invoice</i>		✓		Completeness of invoice • Yes • No	COMPLETENESS OF INVOICE.PIB VERIFICATION I RESULT	1 digit, Numeric
32	Validity of Invoice <i>Validitas invoice</i>		✓		Validity of Invoice (Output) • Yes • No	VALIDITY OF INVOICE.PIB VERIFICATION I RESULT	1 digit, Numeric
33	Effectiveness of invoice <i>Daya guna invoice</i>		✓		Effectiveness of invoice (Output) • Yes • No	EFFECTIVENESS OF INVOICE.PIB VERIFICATION I RESULT	1 digit, Numeric
34	Effectiveness of Database <i>Daya guna Data Base Harga</i>		✓		Effectiveness of Data base (Output) • Yes • No	EFFECTIVENESS OF DATABASE.PIB VERIFICATION I RESULT	1 digit, Numeric
35	Existence of DNP <i>Keberadaan DNP</i>		✓		Existence of DNP (Output) • Yes • No	EXISTENCE OF DNP.PIB VERIFICATION I RESULT	1 digit, Numeric
36	Motive on DNP (Customs Value Declaration List) request <i>Alasan permintaan DNP</i>		✓		Motive on DNP (Customs Value Declaration List) request coding (Output)	dnpreq_of.PIB VERIFICATION I RESULT	2 char., Alpha-numeric
37	Effectiveness of DNP <i>Daya guna DNP</i>		✓		Effectiveness of DNP (Output) • Yes • No	EFFECTIVENESS OF DNP.PIB VERIFICATION I RESULT	1 digit, Numeric

Table 6.3-6: List of Items
(Window Name: PIB Verification I Result Deletion (Deletion Window)) (6/8)

No.	Item Name	Level			Description	Item in File	Note
		1	2	3			
38	Complied to manifest <i>Sesuai manifest</i>		✓		Complied to Manifest (Output) • Yes • No	COMPLIED TO MANIFEST.PIB VERIFICATION I RESULT	1 digit, Numeric
39	Physical Examination Result <i>Hasil pemeriksaan fisik</i>		✓		Physical Examination Result (Output) • Compliance • Non compliance	CONDITION FLAG.PIB VERIFICATION I RETRIEVAL	1 digit, Numeric
40	Effectiveness of Physical Examination Note <i>Daya dan hasil guna nota pemeriksaan fisik</i>		✓		Effectiveness of Physical Examination Note (Output) • Yes • No	EFFECTIVENESS OF PHYSICAL EXAMINATION NT.PIB VERIFICATION I RESULT	1 digit, Numeric
41	Correctness of reported Customs Value <i>Kewajaran pemberitahuan nilai pabean</i>		✓		Correctness of reported Customs Value (Output) • Yes • No	CORRECTNESS OF RPT CUSTOMS VALUES.PIB VERIFICATION I RESULT	1 digit, Numeric
42	Determination on Customs Values <i>Penetapan nilai pabean</i>		✓		Determination on Customs Values (Output) • Yes • No	DETERMINATION ON CUSTOMS VALUES.PIB VERIFICATION I RESULT	1 digit, Numeric
43	Method of Customs Value <i>Metode nilai pabean</i>		✓		Method of Customs Value (Output)	methcust_of.PIB VERIFICATION I RESULT	6 char, Alpha-numeric
44	Additional Payment <i>Tambah bayar</i>		✓		Additional Payment requested from Customs for a company to pay. (Output)	ADDITIONAL PAYMENT.PIB VERIFICATION I RETRIEVAL	15 digits, Numeric

Table 6.3-6: List of Items
(Window Name: PIB Verification I Result Deletion (Deletion Window)) (7/8)

No.	Item Name	Level			Description	Item in File	Note
		1	2	3			
45	Refund <i>Restitusi</i>		✓		Refund is paid back from customs to company because the company has paid more than necessary amount (Output)	REFUND.PIB VERIFICATION I RESULT	15 digits, Numeric
46	Package Details <i>Keterangan Kemasan</i>	✓			Package Details (Repeat 3 times)	— (Group Title)	—
47	Goods Description <i>Nama Barang</i>		✓		Description of goods (Output, Mandatory)	DESCRIPTION OF GOODS.PIB DETAIL	40 Char., Alpha- numeric
48	Package Code <i>Kode Kemasan</i>		✓		Package Code (Input, Mandatory)	Pckcode_of. PACKAGE DETAIL	1 digit, Numeric
49	Package Description <i>Uraian Kemasan</i>		✓		Package Description (Output, Optional)	CODENAME. CODE	15 Char., Alpha- numeric
50	Amount <i>Jumlah</i>		✓		Amount of Packages (Input, Optional)	AMOUNT. PACKAGE DETAIL	6 digits, Numeric
51	Size <i>Ukuran</i>		✓		Size of Packages (Input, Optional)	SIZE.PACKAGE DETAIL	25 Char., Alpha- numeric
52	Resume (I) <i>Kesimpulan (I)</i>	✓			Resume (I) The number of character shown on the Note section is the maximum length of display. The maximum length of input is 500 characters. (Output)	RESUME (I).PIB VERIFICATION I RESULT	210 char., Alpha- numeric
53	Note from direct superior (I) <i>Catatan atasan langsung (I)</i>	✓			Note from direct superior (I) (Section Head) The number of character shown on the Note section is the maximum length of display. The maximum length of input is 500 characters. (Output)	NOTE FROM DIRECT SUPERIOR.PIB VERIFICATION I RESULT	210 char., Alpha- numeric

Table 6.3-6: List of Items
(Window Name: PIB Verification I Result Deletion (Deletion Window)) (8/8)

No.	Item Name	Level			Description	Item in File	Note
		1	2	3			
54	NIP (Officer Identification Number) <i>NIP (I)</i>	✓			Officer Identification Number of verifier I (Output)	NIP.PIB VERIFICATION I RESULT	9 digits, Numeric

6.4 PIB Verification I Result Retrieval

Volume II Figure 2.6.2-5 and Table 2.6.2-5 show the outline of PIB Verification I Result Retrieval Process. As a result of System Design, the process is designed as below. Volume III Appendix A is referred to understand how to view figures and tables.

- Process Procedure

- 1) Retrieval of PIB Verification I Result

- i) Input

Read inputted data from Retrieval Window. Table 6.4-4 shows details of data items on the window.

- ii) Input Check

Check value of inputted data following Table 6.4-5. If PIB Number, Declared Service Office Code and declared Date are inputted, do 2). If NPWP and Declared Service Office is inputted, do 1) iii).

- iii) Code Retrieval

Retrieve data from tables using the inputted codes. Edit and display the retrieved data into data fields corresponding to its code on the window. Table 6.4-1 shows list and location of codes to be used.

Table 6.4-1: List of codes

Code	Location of Table	Note
Office Code	Client	—
NPWP Type Code	Client	—
PIB Declaration No.	Server	Date of Customs Declaration is also necessary.

- iv) Retrieval for List Retrieval Window

Retrieve data from the databases and code tables. Table names of the databases are shown in Table 6.4-6.

- v) Confirmation

When the number of records that match the retrieval condition is between 10 to 99,999, display a response-requiring message. (Message ID;R0000004)

vi) Output of List Retrieval Window

Edit retrieved data and display List Retrieval Window. Table 6.4-6 shows details of data items on the window.

2) Detail Retrieval Procedure

i) Input

Read selected record from List Retrieval Window. Table 6.4-6 shows details of data items on the window.

ii) Retrieval

Retrieve the requested record which were either specified by inputting the PIB Number + Declared Service Office Code + Declared Date in the Retrieval Window, or selecting appropriate record in List Retrieval Window.

iii) Output

a) Display a normal message. (Message ID;N0000002)

b) Display Retrieval Result Window. Table 6.4-7 shows details of data items in the Retrieval Result Window.

• Window Layout / Report Layout

▫ Windows

- Retrieval Window Figure 6.4-1
- List Retrieval Window Figure 6.4-2
- Retrieval Result Window Figure 6.4-3

▫ Report

- None

• Error Procedure

Display an error message following Table 6.4-3.

Table 6.4-3: Error Procedure (1/2)

Case	Error Contents	Message ID	Note
1)-ii)	An error is detected at Input Check.	See Table 6.4-4	—
1)-iv), 1)-v), 2)-iii), 2)-iv)	SQL returned an error code.	E0000001	Fill in the blank part of the message text with the error code.
1)-iv), 1)-v)	The record to be retrieved does not exist.	E0000002	—

Table 6.4-3: Error Procedure (2/2)

Case	Error Contents	Message ID	Note
1)-iii), 2)-ii)	The code to be retrieved does not exist in the code table.	E0000008	---

- Restriction

None.

- Note

For details of each message, see Volume II 1.4.

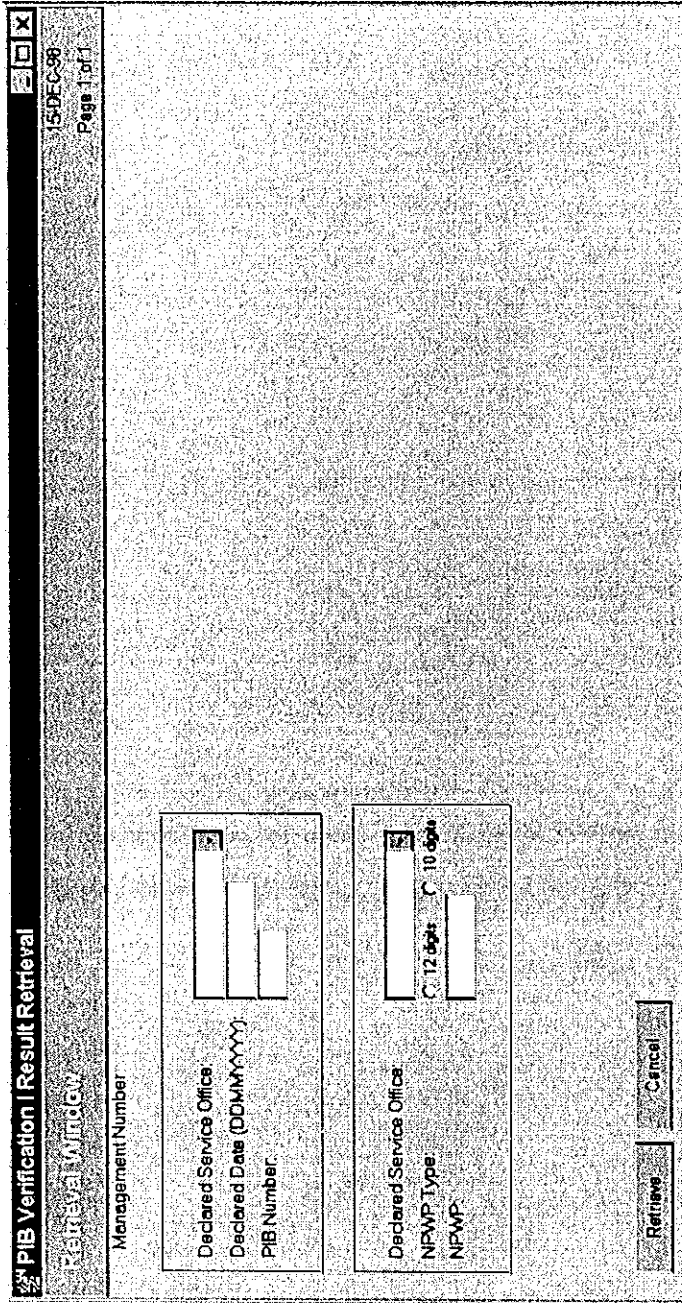


Figure 6.4-1: Window Layout for PIB Verification | Result Retrieval (Retrieval Window)

Table 6.4-4: List of Items
(Window Name: PIB Verification I Result Retrieval (Retrieval Window))

No.	Item Name	Level			Description	Item in File	Note
		1	2	3			
1	Management Number <i>Nomor manajemen</i>	✓			Unique key (No repeat)	— (Group title)	—
2	Declared Service Office <i>KPBC tempat pemberitahuan</i>		✓		Office code of which PIB was declared. (Input, Mandatory)	CODE.DJBC OFFICE	40 digits, Numeric
3	Declared Date (DDMMYY YY) <i>Tanggal pemberitahuan (DDMMYY YY)</i>		✓		The date of PIB registered in CFRS (Input, Optional)	REGISTRATION DATE.PIB HEADER	8 digits, Date
4	PIB Number (Import Declaration Number) <i>Pemberitahuan Impor Barang (PIB) Nomor</i>		✓		PIB number (Input, one of 4[PIB Number (Import Declaration Number)] and 7[NPWP] is mandatory)	REGISTRATION NUMBER.PIB HEADER	6 digits, Numeric
5	Declared Service Office <i>KPBC tempat pemberitahuan</i>		✓		Office code of which PIB was declared. (Input, Mandatory)	CODE.DJBC OFFICE	40 digits, Numeric
6	NPWP Type <i>Tipe NPWP</i>		✓		Type of NPWP (Input, Mandatory)	idtype_of.BASIC INFORMATION	1 digit, Numeric
7	NPWP <i>NPWP</i>		✓		Tax Payer Code Number (Input, one of 4[PIB Number (Import Declaration Number)] and 7[NPWP] is mandatory)	ID NUMBER.BASIC INFORMATION	12 Char., Alpha- numeric

Table 6.4-5: Input Check List (PIB Verification I Result Retrieval (Retrieval Window))

No.	Item Name	Condition (range, format, and so on)	Message ID	Note
1	Declared Date	Must be past date including today.	E0000010	---
2	Declared Date	Must be past date including today.	E0000010	---
3	NPWP	Must have full length according to NPWP Type.	E0000015	---
4	NPWP	Must start with "0" when NPWP is 12 digits.	E0000016	---
5	NPWP	Must be numeric.	E0000009	---
6	PIB Number (Import Declaration Number)	Must have full length.	E0000009	---
7	<ul style="list-style-type: none"> • PIB Number (Import Declaration Number) • NPWP 	Either one of PIB Number or NPWP can be filled in.	EV010001	---

15-DEC-99
Page 1 of 1

PIB Verification I Result Retrieval
List Retrieval Window

Basic Information on Importer

NPWP Name:

City:

Street:

Postal Code:

Telephone Number:

Fax Number:

Declared Service Office:

PIB VERIFICATION I RESULT

Declared Service Office Name	Declared Date (DDMMYY)	PIB Number	Additional Payment	Physical Examination Result	Correctness of HS Classification	Channel Decision
<input type="text"/>	<input type="text"/>	<input type="text"/>	<input type="text"/>	<input type="text"/>	<input type="text"/>	<input type="text"/>
<input type="text"/>	<input type="text"/>	<input type="text"/>	<input type="text"/>	<input type="text"/>	<input type="text"/>	<input type="text"/>
<input type="text"/>	<input type="text"/>	<input type="text"/>	<input type="text"/>	<input type="text"/>	<input type="text"/>	<input type="text"/>
<input type="text"/>	<input type="text"/>	<input type="text"/>	<input type="text"/>	<input type="text"/>	<input type="text"/>	<input type="text"/>
<input type="text"/>	<input type="text"/>	<input type="text"/>	<input type="text"/>	<input type="text"/>	<input type="text"/>	<input type="text"/>
<input type="text"/>	<input type="text"/>	<input type="text"/>	<input type="text"/>	<input type="text"/>	<input type="text"/>	<input type="text"/>
<input type="text"/>	<input type="text"/>	<input type="text"/>	<input type="text"/>	<input type="text"/>	<input type="text"/>	<input type="text"/>
<input type="text"/>	<input type="text"/>	<input type="text"/>	<input type="text"/>	<input type="text"/>	<input type="text"/>	<input type="text"/>
<input type="text"/>	<input type="text"/>	<input type="text"/>	<input type="text"/>	<input type="text"/>	<input type="text"/>	<input type="text"/>

Refresh Retrieve Cancel Back to Top

Figure 6.4-2: Window Layout for PIB Verification I Result Retrieval (List Retrieval Window)

Table 6.4-6: List of Items
(Window Name: PIB Verification I Result Retrieval (List Retrieval Window)) (1/2)

No.	Item Name	Level			Description	Item in File	Note
		1	2	3			
1	Basic Information on Importer <i>Informasi Umum Importir</i>	✓			Information related to the importer (No repeat)	— (Group title)	—
2	NPWP <i>NPWP</i>		✓		Tax Payer Code Number (Output)	ID NUMBER.BASIC INFORMATION	12 char., Alpha- numeric
3	Name <i>Nama</i>		✓		Name of the importer (Output)	NAME.BASIC INFORMATION	40 char., Alpha- numeric
4	Street <i>Jalan</i>		✓		Street (Output)	STREET.BASIC INFORMATION	100 char., Alpha- numeric
5	City <i>Kota</i>		✓		City (Output)	CITY.BASIC INFORMATION	30 char., Alpha- numeric
6	Postal Code <i>Kode Pos</i>		✓		Postal Code (Output)	POSTAL CODE.BASIC INFORMATION	5 digits, Numeric
7	Telephone Number <i>Nomor telepon</i>		✓		Telephone number (Output)	PHONE NUMBER.BASIC INFORMATION	12 digits, Numeric
8	Fax Number <i>Nomor Fax</i>		✓		Fax number (Output)	FAX NUMBER.BASIC INFORMATION	12 digits, Numeric
9	Declared Service Office <i>KPBC pemberitahuan</i>		✓		Name of the service office (Output)	NAME.DJBC OFFICE	40 char., Alpha- numeric
10	PIB Verification I Result <i>Hasil Verifikasi Dokumen PIB I</i>	✓			Summary of PIB Verification I Result for specific selection. (Repeat 8 times)	— (Group title)	—

Table 6.4-6: List of Items
(Window Name: PIB Verification I Result Retrieval (List Retrieval Window)) (2/2)

No.	Item Name	Level			Description	Item in File	Note
		1	2	3			
11	Declared Service Office Name <i>Nama KPBC pemberitahuan</i>		✓		Name of the service office (Output)	NAME.DJBC OFFICE	20 char., Alpha-numeric
12	Declared Date (DDMMYY YY) <i>Tanggal pemberitahuan (DDMMYYY Y)</i>		✓		The date of PIB registered in CFRS (Output)	REGISTRATION DATE.PIB HEADER	8 digits, Date
13	PIB Declaration Number <i>Pemberitahuan Impor Barang (PIB) Nomor</i>		✓		PIB number (Output)	REGISTRATION NUMBER.PIB HEADER	6 digits, Numeric
14	Additional Payment <i>Tambah bayar</i>		✓		Additional Payment requested from Customs for a company to pay. (Output)	ADDITIONAL PAYMENT.PIB VERIFICATION I RETRIEVAL SUMMARY	15 digits, Numeric
15	Physical Examination Result <i>Hasil pemeriksaan pisik</i>		✓		Physical Examination Result (Output) <ul style="list-style-type: none"> • Compliance • Non compliance 	CONDITION FLAG.PIB VERIFICATION I RETRIEVAL SUMMARY	8 char., Alpha-numeric
16	Correctness of HS classification <i>Kebenaran klasifikasi HS</i>		✓		Correctness of HS classification (Output) <ul style="list-style-type: none"> • Yes • No 	CORRECTNESS OF HS CLASSIFICATION.PIB VERIFICATION I RETRIEVAL SUMMARY	3 char., Alpha-numeric
17	Channel Decision <i>Penetapan jalur</i>		✓		Channel Decision <ul style="list-style-type: none"> • Red • Green (Output)	CHANNEL FLAG.PIB PROCESS	5 char., Alpha-numeric

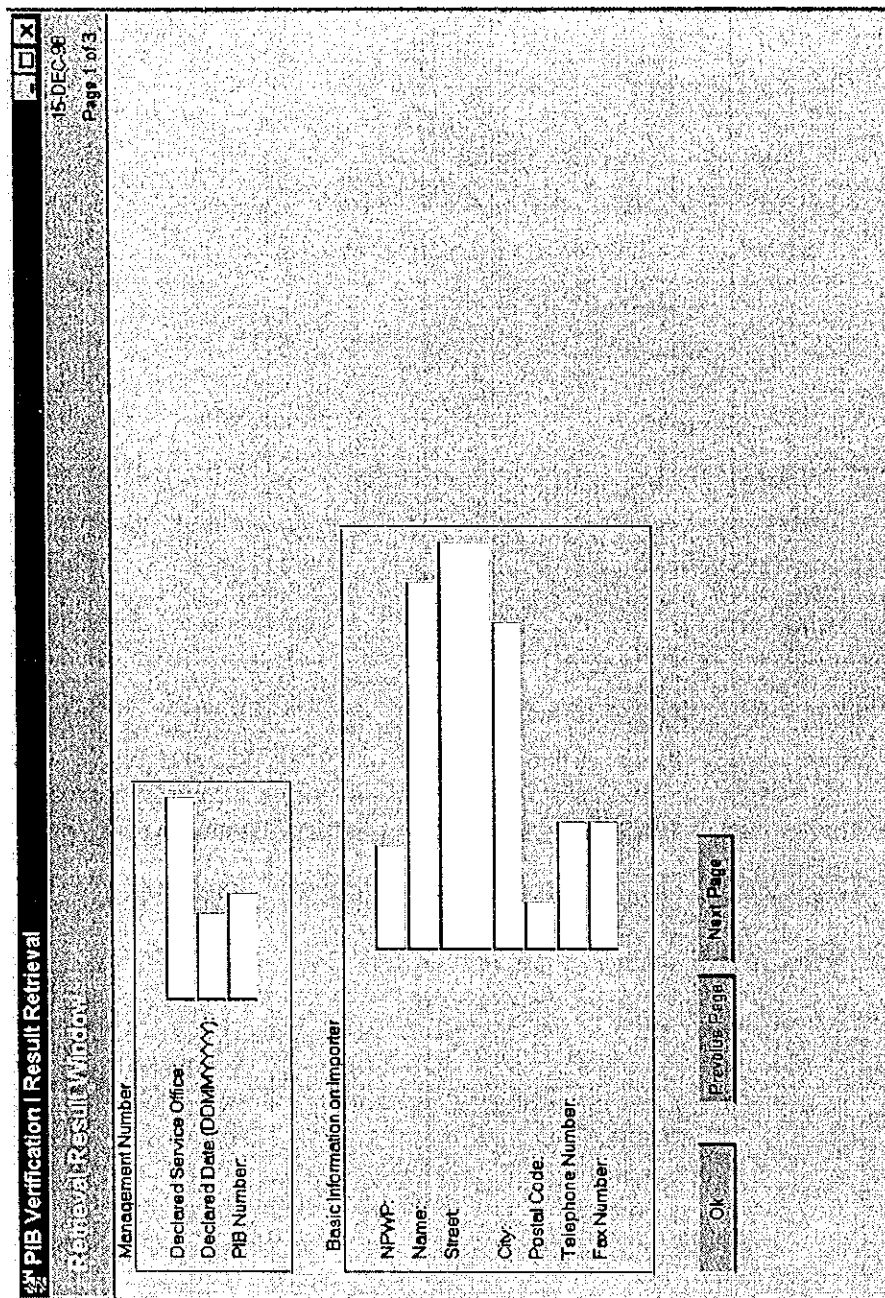


Figure 6.4-3: Window Layout for PIB Verification I Result Retrieval (Retrieval Result Window) (1/3)

PIB Verification I Result Retrieval
01-FEB-99
Page 2 of 3

Retrieval Result Window

PIB VERIFICATION RESULT

Correctness of Filing in PIB: Yes No

Completeness of Filing in PIB: Yes No

Completeness of PIB Supporting Document: Yes No

Validity of PIB Supporting Document: Yes No

Completeness of Quantity and Type of Goods: Yes No

Correctness of Reported Quantity and Type of Goods: Yes No

Compliance with Commerce Regulation: Yes No

Correctness of Currency: Yes No

Correctness of HS Classification: Yes No

Wrong HS Code:

Correct HS Code:

Country of Origin:

Correctness of Import Duty Calculation: Yes No

Correctness of Tariff Quotation: Yes No

Correctness of Used Exchange Rate: Yes No

Channel Decision: Green Red

Reason for Red Channel Determination:

Completeness of Invoice: Yes No

Validity of Invoice: Yes No

Effectiveness of Invoice: Yes No

Effectiveness of Database: Yes No

Figure 6.4-3: Window Layout for PIB Verification I Result Retrieval (Retrieval Result Window) (2/3)

01-FEB-99
Page 3 of 3

PIB Verification I Result Retrieval
Retrieve Result Window

PIB VERIFICATION I RESULT
Existence of DNP: Yes No

Motive on Drip: _____

Motive in Description: _____

Effectiveness of DNP: Yes No

Not Complied to Manifest: Yes No

Physical Examination Result: Green Red

Effectiveness of Physical Examination: Yes No

Correctness of Reported Customs Value: Yes No

Determination on Customs Value: Yes No

Method of Customs Value: _____

Additional Payment: _____

Refund: _____

PACKAGE DETAILS

Goods Description	Package Code	Package Description	Amount	Size
_____	_____	_____	_____	_____
_____	_____	_____	_____	_____
_____	_____	_____	_____	_____

Resume I: _____

Note From Direct Superior I: _____

Nip I: _____

Figure 6.4-3: Window Layout for PIB Verification I Result Retrieval (Retrieval Result Window) (3/3)

Table 6.4-7: List of Items
(Window Name: PIB Verification I Result Retrieval (Retrieval Result Window)) (1/8)

No.	Item Name	Level			Description	Item in File	Note
		1	2	3			
1	Management Number <i>Nomor manajemen</i>	✓			Unique key (No repeat)	— (Group title)	—
2	Declared Service Office Name <i>Nama KPBC pemberitahuan</i>		✓		Name of the service office (Output)	NAME.DJBC OFFICE	40 char., Alpha- numeric
3	Declared Date (DDMMYY YY) <i>Tanggal pemberitahuan (DDMMYY Y)</i>		✓		The date of PIB registered in CFRS (Output)	REGISTRATION DATE.PIB HEADER	8 digits, Date
4	PIB Number (Import Declaration Number) <i>Pemberitahuan Impor Barang (PIB) Nomor</i>		✓		PIB number (Output)	REGISTRATION NUMBER.PIB HEADER	6 digits, Numeric
5	Basic Information on Importer <i>Informasi Umum Importir0</i>	✓			Information related to the importer (No repeat)	— (Group title)	—
6	NPWP <i>NPWP</i>		✓		Tax Payer Code Number (Output)	ID NUMBER.BASIC INFORMATION	12 char., Alpha- numeric
7	Name <i>Nama</i>		✓		Name of the importer (Output)	NAME.BASIC INFORMATION	40 char., Alpha- numeric
8	Street <i>Jalan</i>		✓		Street (Output)	STREET.BASIC INFORMATION	100 char., Alpha- numeric

Table 6.4-7: List of Items
(Window Name: PIB Verification I Result Retrieval (Retrieval Result Window)) (2/8)

No.	Item Name	Level			Description	Item in File	Note
		1	2	3			
9	City <i>Kota</i>		✓		City (Output)	CITY.BASIC INFORMATION	30 char., Alpha- numeric
10	Postal Code <i>Kode Pos</i>		✓		Postal Code (Output)	POSTAL CODE.BASIC INFORMATION	5 digits, Numeric
11	Telephone Number <i>Nomor telepon</i>		✓		Telephone number (Output)	PHONE NUMBER.BASIC INFORMATION	12 digits, Numeric
12	Fax Number <i>Nomor Fax</i>		✓		Fax number (Output)	FAX NUMBER.BASIC INFORMATION	12 digits, Numeric
13	PIB Verification I Result <i>Hasil Verifikasi Dokumen PIB I</i>	✓			PIB Verification I Result (No repeat)	— (Group title)	—
14	Correctness of filling in PIB <i>Kebenaran pengisian PIB</i>		✓		Correctness of filling in PIB (Output) • Yes • No	CORRECTNESS OF FILLING IN PIB.PIB VERIFICATION I RESULT	1 digit, Numeric
15	Complete- ness of filling in PIB <i>Kelangka- pan pengisian PIB</i>		✓		Completeness of filling in PIB (Output) • Yes • No	COMPLETENESS OF FILLING IN PIB.PIB VERIFICATION I RESULT	1 digit, Numeric
16	Complete- ness of PIB supporting document <i>Kelangka- pan dokumen pelengkap PIB</i>		✓		Completeness of PIB supporting document (Output) • Yes • No	COMPLETENESS OF PIB SUPPORTING DOC.PIB VERIFICATION I RESULT	1 digit, Numeric

Table 6.4-7: List of Items
(Window Name: PIB Verification I Result Retrieval (Retrieval Result Window)) (3/8)

No.	Item Name	Level			Description	Item in File	Note
		1	2	3			
17	Validity of PIB supporting document <i>Validitas dokumen pelengkap PIB</i>		✓		Validity of PIB supporting document (Output) • Yes • No	VALIDITY OF PIB SUPPORTING DOC.PIB VERIFICATION I RESULT	1 digit, Numeric
18	Completeness of quantity and type of goods description <i>Kelengkapan uraian jumlah dan jenis barang</i>		✓		Completeness of quantity and type of goods description (Output) • Yes • No	COMPLETENESS OF QUANTITY_TYPE OF GOODS.PIB VERIFICATION I RESULT	1 digit, Numeric
19	Correctness of reported quantity and type of goods <i>Kewajaran pemberitahuan jumlah dan jenis barang</i>		✓		Correctness of reported quantity and type of goods (Output) • Yes • No	CORRECTNESS OF RPT QTY_TYPE OF GOOD. PIB VERIFICATION I RESULT	1 digit, Numeric
20	Compliance with Commerce Regulation <i>Pemenuhan Peraturan Tata Niaga</i>		✓		Compliance with Commerce Regulation (Output) • Yes • No	COMPLIANCE WITH COMMERCE REGULATION.PIB VERIFICATION I RESULT	1 digit, Numeric
21	Correctness of currency <i>Kebenaran kursnya</i>		✓		Correctness of currency (Output) • Yes • No	CORRECTNESS OF CURRENCY. PIB VERIFICATION I RESULT	1 digit, Numeric
22	Correctness of HS classification <i>Kebenaran klasifikasi HS</i>		✓		Correctness of HS classification (Output) • Yes • No	CORRECTNESS OF HS CLASSIFICATION. PIB VERIFICATION I RETRIEVAL SUMMARY	1 digit, Numeric

Table 6.4-7: List of Items
(Window Name: PIB Verification I Result Retrieval (Retrieval Result Window)) (4/8)

No.	Item Name	Level			Description	Item in File	Note
		1	2	3			
23	Wrong HS Code <i>Kode HS Salah</i>		✓		Wrong HS Code (Output)	WRONG HS CODE.PIB VERIFICATION I RESULT	10 digits, Numeric
24	Correct HS Code <i>Kode HS Benar</i>		✓		Correct HS Code (Output)	CORRECT HS CODE. PIB VERIFICATION I RESULT	10 digits, Numeric
25	Country of Origin <i>Negara Asal</i>		✓		The Country of the goods originated. (Output)	ctry_of.PIB VERIFICATION I RESULT	30 char., Alpha-numeric
26	Correctness of import duty calculation <i>Kebenaran perhitungan Bea</i>		✓		Correctness of import duty calculation (Output) • Yes • No	CORRECTNESS OF IMPORT DUTY CALC.PIB VERIFICATION I RESULT	1 digit, Numeric
27	Correctness of tariff quotation <i>Kebenaran pembebanan tarif</i>		✓		Correctness of tariff quotation (Output) • Yes • No	CORRECTNESS OF TARIFF QUOTATION.PIB VERIFICATION I RESULT	1 digit, Numeric
28	Correctness of used exchange rate <i>Kebenaran penggunaan kurs</i>		✓		Correctness of used exchange rate (Output) • Yes • No	CORRECTNESS OF USED EXCHANGE RATE.PIB VERIFICATION I RESULT	1 digit, Numeric
29	Channel Decision <i>Penetapan jalur</i>		✓		Channel Decision • Red • Green (Output)	CHANNEL FLAG. PIB PROCESS	1 digit, Numeric

Table 6.4-7: List of Items
(Window Name: PIB Verification I Result Retrieval (Retrieval Result Window)) (5/8)

No.	Item Name	Level			Description	Item in File	Note
		1	2	3			
30	Reason for Red Channel Determination <i>Alasan penetapan jalur merah</i>		✓		Reason for Red Channel Determination Code that describes the reasonable reason. (Output)	redchnl_of.PIB VERIFICATION I RESULT	20 char., Alpha-numeric
31	Completeness of invoice <i>Kelengkapan invoice</i>		✓		Completeness of invoice (Output) • Yes • No	COMPLETENESS OF INVOICE.PIB VERIFICATION I RESULT	1 digit, Numeric
32	Validity of Invoice <i>Validitas invoice</i>		✓		Validity of Invoice (Output) • Yes • No	VALIDITY OF INVOICE.PIB VERIFICATION I RESULT	1 digit, Numeric
33	Effectiveness of invoice <i>Daya guna invoice</i>		✓		Effectiveness of invoice (Output) • Yes • No	EFFECTIVENESS OF INVOICE.PIB VERIFICATION I RESULT	1 digit, Numeric
34	Effectiveness of Database <i>Daya guna Data Base Harga</i>		✓		Effectiveness of Data base (Output) • Yes • No	EFFECTIVENESS OF DATABASE.PIB VERIFICATION I RESULT	1 digit, Numeric
35	Existence of DNP <i>Keberadaan DNP</i>		✓		Existence of DNP (Output) • Yes • No	EXISTENCE OF DNP.PIB VERIFICATION I RESULT	1 digit, Numeric
36	Motive on DNP (Customs Value Declaration List) request <i>Alasan permintaan DNP</i>		✓		Motive on DNP (Customs Value Declaration List) request coding (Output)	dnpreq_of.PIB VERIFICATION I RESULT	2 char., Alpha-numeric
37	Motive in Description <i>Alasan</i>		✓		Motive on DNP request in description (Output)	CODE NAME.CODE	76 char, Alpha-numeric

Table 6.4-7: List of Items
(Window Name: PIB Verification I Result Retrieval (Retrieval Result Window)) (6/8)

No.	Item Name	Level			Description	Item in File	Note
		1	2	3			
38	Effective- ness of DNP <i>Daya guna DNP</i>		✓		Effectiveness of DNP (Output) • Yes • No	EFFECTIVENESS OF DNP.PIB VERIFICATION I RESULT	1 digit, Numeric
39	Complied to manifest <i>Sesuai manifest</i>		✓		Complied to Manifest (Output) • Yes • No	COMPLIED TO MANIFEST.PIB VERIFICATION I RESULT	1 digit, Numeric
40	Physical Examination Result <i>Hasil pemeriksaan pisik</i>		✓		Physical Examination Result (Output) • Compliance • Non compliance	CONDITION FLAG.PIB VERIFICATION I RETRIEVAL SUMMARY	1 digit, Numeric
41	Effective- ness of Physical Examination Note <i>Daya dan hasil guna nota pemeriksaan pisik</i>		✓		Effectiveness of Physical Examination Note (Output) • Yes • No	EFFECTIVENESS OF PHYSICAL EXAMINATION NT.PIB VERIFICATION I RESULT	1 digit, Numeric
42	Correctness of reported Customs Value <i>Kewajaran pemberita- huan nilai pabean</i>		✓		Correctness of reported Customs Value (Output) • Yes • No	CORRECTNESS OF RPT CUSTOMS VALUES.PIB VERIFICATION I RESULT	1 digit, Numeric
43	Determina- tion on Customs Values <i>Penetapan nilai pabean</i>		✓		Determination on Customs Values (Output) • Yes • No	DETERMINATION ON CUSTOMS VALUES.PIB VERIFICATION I RESULT	1 digit, Numeric
44	Method of Customs Value <i>Metode nilai pabean</i>		✓		Method of Customs Value (Output)	methcust_of.PIB VERIFICATION I RESULT	6 char, Alpha- numeric

Table 6.4-7: List of Items
(Window Name: PIB Verification I Result Retrieval (Retrieval Result Window)) (7/8)

No.	Item Name	Level			Description	Item in File	Note
		1	2	3			
45	Additional Payment <i>Tambah bayar</i>		✓		Additional Payment requested from Customs for a company to pay. (Output)	ADDITIONAL PAYMENT.PIB VERIFICATION I RETRIEVAL SUMMARY	15 digits, Numeric
46	Refund <i>Restitusi</i>		✓		Refund is paid back from customs to company because the company has paid more than necessary amount. (Output)	REFUND.PIB VERIFICATION I RESULT	15 digits, Numeric
47	Package Details <i>Keterangan Kemasan</i>	✓			Package Details (Repeat 3 times)	— (Group Title)	—
48	Goods Description <i>Nama Barang</i>		✓		Description of goods (Output, Mandatory)	DESCRIPTION OF GOODS.PIB DETAIL	40 Char., Alpha-numeric
49	Package Code <i>Kode Kemasan</i>		✓		Package Code (Input, Mandatory)	Pckcode_of.PACKAGE DETAIL	1 digit, Numeric
50	Package Description <i>Uraian Kemasan</i>		✓		Package Description (Output, Optional)	CODENAME.CODE	15 Char., Alpha-numeric
51	Amount <i>Jumlah</i>		✓		Amount of Packages (Input, Optional)	AMOUNT.PACKAGE DETAIL	6 digits, Numeric
52	Size <i>Ukuran</i>		✓		Size of Packages (Input, Optional)	SIZE.PACKAGE DETAIL	25 Char., Alpha-numeric
53	Resume (I) <i>Kesimpulan (I)</i>		✓		Resume (I) The number of character shown on the Note section is the maximum length of display. The maximum length of input is 500 characters. (Output)	RESUME (I).PIB VERIFICATION I RESULT	210 char., Alpha-numeric

Table 6.4-7: List of Items
(Window Name: PIB Verification I Result Retrieval (Retrieval Result Window)) (8/8)

No.	Item Name	Level			Description	Item in File	Note
		1	2	3			
54	Note from direct superior (I) <i>Catatan atasan langsung (I)</i>		✓		Note from direct superior (I) (Section Head) The number of character shown on the Note section is the maximum length of display. The maximum length of input is 500 characters. (Output)	NOTE FROM DIRECT SUPERIOR.PIB VERIFICATION I RESULT	210 char., Alpha-numeric
55	NIP (Officer Identification Number) <i>NIP (I)</i>		✓		Officer Identification Number of verifier I (Output)	NIP (I).PIB VERIFICATION I RESULT	9 digits, Numeric

6.5 PIB Verification II Result Registration

Volume II Figure 2.6.2-6 and Table 2.6.2-6 show the outline of PIB Verification II Result Registration Process. As a result of System Design, the process is designed as below. Volume III Appendix A is referred to understand how to view figures and tables.

- Process Procedure

- 1) Registration of PIB Verification II Result Registration

- i) Input

Read inputted data from Retrieval Window. Table 6.5-5 shows details of data items on the window.

- ii) Input Check

Application will check whether inputted NPWP already exist or not. Check value of inputted data following in Table 6.5-6.

- iii) Code Retrieval

Retrieves server Date from server and regional office code from common parameter. Regional office code is 2 digit values from beginning of office code. Retrieve data from tables using the inputted codes. Edit and display the retrieved data into data fields corresponding to its code on the window. Table 6.5-1 shows list and location of codes to be used.

Table 6.5-1: List of codes

Code	Location of Table	Note
Regional Office Code	Client	Retrieves 2 digits from beginning of office code
NPWP of Importer	Server	—

- iv) Retrieval

Retrieve data from the database and code tables. Table names of the database are shown in Table 6.5-7. Sends retrieval request to the PIB Verification II Result table to check whether given NPWP, server Date, and Regional Office Code already exist or not.

- v) Confirmation

Display a response-requiring message. (Message ID;R0000001)

vi) Performing calculation on PIB Verification I Result table

After receiving confirmation from user application will do following steps.

Application will search records in PIB Verification I Result table following these conditions:

- a) Inputted NPWP matches "NPWP.PIB VERIFICATION I RESULT"
- b) Regional Office Code matches :
"REGIONAL OFFICE CODE.PIB VERIFICATION I RESULT"
(Regional Office Code = 2 digits from beginning of Office Code). Regional office code is retrieved from common parameter.
- c) All "VERIFICATION II DATE.PIB VERIFICATION I RESULT" records that have null value.

If there is no selected record than error message will be displayed (Message ID E0000002). Based on those conditions application will do looping process to count and to display the output shown at Table 6.5-2.

Table 6.5-2: List of Counted Items and Procedures (1/2)

No	Displayed Items in NHVDI-II	Level			Items in PIB Ver. I Result Table	Procedure
		1	2	3		
1	Amount of Verified PIB <i>Jumlah PIB yang dianalisa</i>	✓			PIB VERIFICATION I RESULT	Count the number of selected records.
2	Quantity of PIB in which additional payment effected <i>Jumlah PIB yang berakibat tambah bayar:</i>	✓			ADDITIONAL PAYMENT.PIB VERIFICATION I RESULT	From the selected records, count the number of "ADDITIONAL PAYMENT.PIB VERIFICATION I RESULT" records, which have value other than null value or zero.
3	Amount of additional Payment <i>Kekurangan pembayaran sebesar Rp.</i>	✓			ADDITIONAL PAYMENT.PIB VERIFICATION I RESULT	Sum the amount of value in "ADDITIONAL PAYMENT.PIB VERIFICATION I RESULT" records.
4	Quantity of PIB in which restitution effected : <i>Jumlah PIB yang berakibat restitusi:</i>	✓			REFUND.PIB VERIFICATION I RESULT	From the selected records, count the number of "REFUND.PIB VERIFICATION I RESULT" records, which have value other than null value or zero.

Table 6.5-2: List of Counted Items and Procedures (2/2)

No	Displayed Items in NHVDI-II	Level			Items in PIB Ver. I Result Table	Procedure
		1	2	3		
5	Amount of overpayment: Rp. <i>Dengan jumlah kelebihan pembayaran sebesar Rp</i>	✓			REFUND.PIB VERIFICATION I RESULT	Sum the amount of value in "REFUND.PIB VERIFICATION I RESULT" records.
6	Importer Performance <i>Kinerja Importer</i>	✓			—	—
7	Correctness of filling in PIB <i>Kebenaran pengisian PIB</i>		✓		CORRECTNESS OF FILLING IN PIB.PIB VERIFICATION I RESULT	(Number of "yes" value in "CORRECTNESS OF FILLING IN PIB.PIB VERIFICATION I RESULT" records / Amount of Verified PIB) x 100%
8	Completeness of PIB supporting document <i>Kelengkapan dokumen pelengkap PIB</i>		✓		COMPLETENESS OF PIB SUPPORTING DOC.PIB VERIFICATION I RESULT	(Number of "yes" value in "COMPLETENESS OF PIB SUPPORTING DOC.PIB VERIFICATION I RESULT" records / Amount of Verified PIB) x 100%
9	Correctness of reported quantity and type of goods <i>Kewajaran pemberitahuan jumlah dan jenis barang</i>		✓		CORRECTNESS OF RPT QTY_TYPE OF GOOD.PIB VERIFICATION I RESULT	(Number of "yes" value in "CORRECTNESS OF RPT QTY_TYPE OF GOOD.PIB VERIFICATION I RESULT" records / Amount of Verified PIB) x 100%
10	Correctness of reported Customs Value <i>Kewajaran pemberitahuan nilai pabean</i>		✓		CORRECTNESS OF RPT CUSTOMS VALUES.PIB VERIFICATION I RESULT	(Number of "yes" value in "CORRECTNESS OF RPT CUSTOMS VALUES.PIB VERIFICATION I RESULT" records / Amount of Verified PIB) x 100%
11	Correctness of import duty calculation <i>Kebenaran perhitungan Bea</i>		✓		CORRECTNESS OF IMPORT DUTY CALC.PIB VERIFICATION I RESULT	(Number of "yes" value in "CORRECTNESS OF IMPORT DUTY CALC.PIB VERIFICATION I RESULT" records / Amount of Verified PIB) x 100%
12	Channel Decision <i>Penetapan jalur</i>		✓		CHANNEL FLAG. PIB PROCESS	(Number of "red" value in "CHANNEL FLAG. PIB PROCESS" records / Amount of Verified PIB) x 100%

vii) Updating PIB Verification I Result.

Based on the given conditions before, the application will update "Verification II Date.PIB Verification I Result" with the current server Date. This looping process will continue until all the "Verification II Date.PIB Verification I Result" records that match given condition have been completely updated. See figure 6.5-1 for more information.

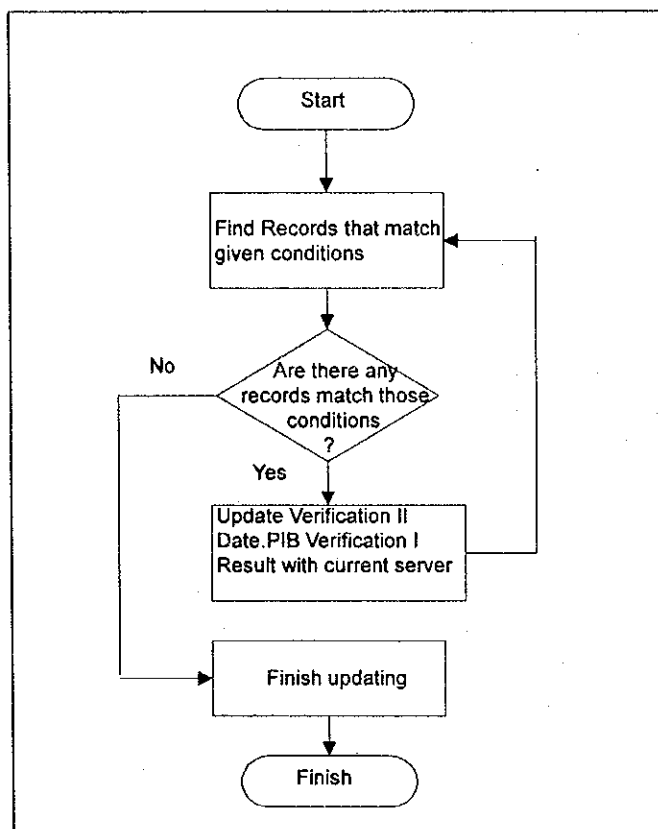


Figure 6.5-1: Updating PIB Verification I Result

viii) Registration

Application registers NPWP, Regional Office Code, Date, counted data and update flag in PIB Verification II Result Table. See Table 6.5-3.

Table 6.5-3: Stored items in PIB Verification II Result Table (1/2)

Items	Register Items in PIB Verification II Result Table	Note
NPWP NPWP	ID NUMBER.BASIC INFORMATION	—

Table 6.5-3: Stored items in PIB Verification II Result Table (2/2)

Items	Register Items in PIB Verification II Result Table	Note
Regional Office Code <i>Kode Kantor Wilayah</i>	REGIONAL OFFICE CODE. PIB VERIFICATION II RESULT	—
Date <i>Tanggal</i>	DATE. PIB VERIFICATION II RESULT	—
Amount of Verified PIB <i>Jumlah PIB yang dianalisa</i>	AMOUNT OF VER PIB. PIB VERIFICATION II RESULT	—
Quantity of PIB in which additional payment effected <i>Jumlah PIB yang berakibat tambah bayar:</i>	QTY OF PIB ADD PAYMENT. PIB VERIFICATION II RESULT	—
Amount of additional Payment <i>Kekurangan pembayaran sebesar Rp.</i>	AMOUNT OF ADD PAYMENT. PIB VERIFICATION II RESULT	—
Quantity of PIB in which restitution effected : <i>Jumlah PIB yang berakibat restitusi:</i>	QTY OF PIB REFUND. PIB VERIFICATION II RESULT	—
Amount of overpayment: Rp. <i>Dengan jumlah kelebihan pembayaran sebesar Rp</i>	AMOUNT OF REFUND. PIB VERIFICATION II RESULT	—
Importer Performance <i>Kinerja Importer</i>	ANALYSIS – IMPORTER PERFORMANCE. PIB VERIFICATION II RESULT	—
Update flag	UPDATE FLAG. VERIFICATION II RESULT	Registers "0" value.

Update flag only has two values, those are "1" and "0". "0" means that data in PIB Verification I Result has not changed. "1" means that data in PIB Verification I Result has been changed after the registration process. The first time application registers it will register "0" value into "Update flag. Verification II Result".

ix) Output

Print blank format NHVDI-II with information shown in Table 6.5-7 on it.

- Window Layout / Report Layout

- Window

- Retrieval Window

Figure 6.5-2

- Report

- NHVDI-II

Figure 6.5-3

- Error Procedure

Display an error message following Table 6.5-4.

Table 6.5-4: Error Procedure

Case	Error Contents	Message ID	Note
1)-ii), 2)-ii)	An error is detected at Input Check.	See Table 6.5-6	—
1)-iii), 2)-iii), 2)-v)	SQL returned an error code.	E0000001	Fill in the blank part of the message text with the error code.
1)-iii)	Requested data is not registered.	E0000002	—
1)-iii)	The record to be registered already exists.	E0000003	—
2)-ii)	There are one or more mandatory items which have not been inputted.	E0000007	—
2)-iii)	The code to be retrieved at Code Retrieval does not exist in the code table.	E0000008	—

- Restriction

- Related PIB Verification I Result to PIB Verification II must exist.

- The number of verified PIB Verification I Result must below 100.000.

- Note

- For details of each message, see Volume II 1.4.

- Updating of Verification II Date in PIB Verification I Result and registering PIB Verification II Result must be done at the same time.

- This process is done for each PIB Verification I Result grouped by NPWP (Importer).

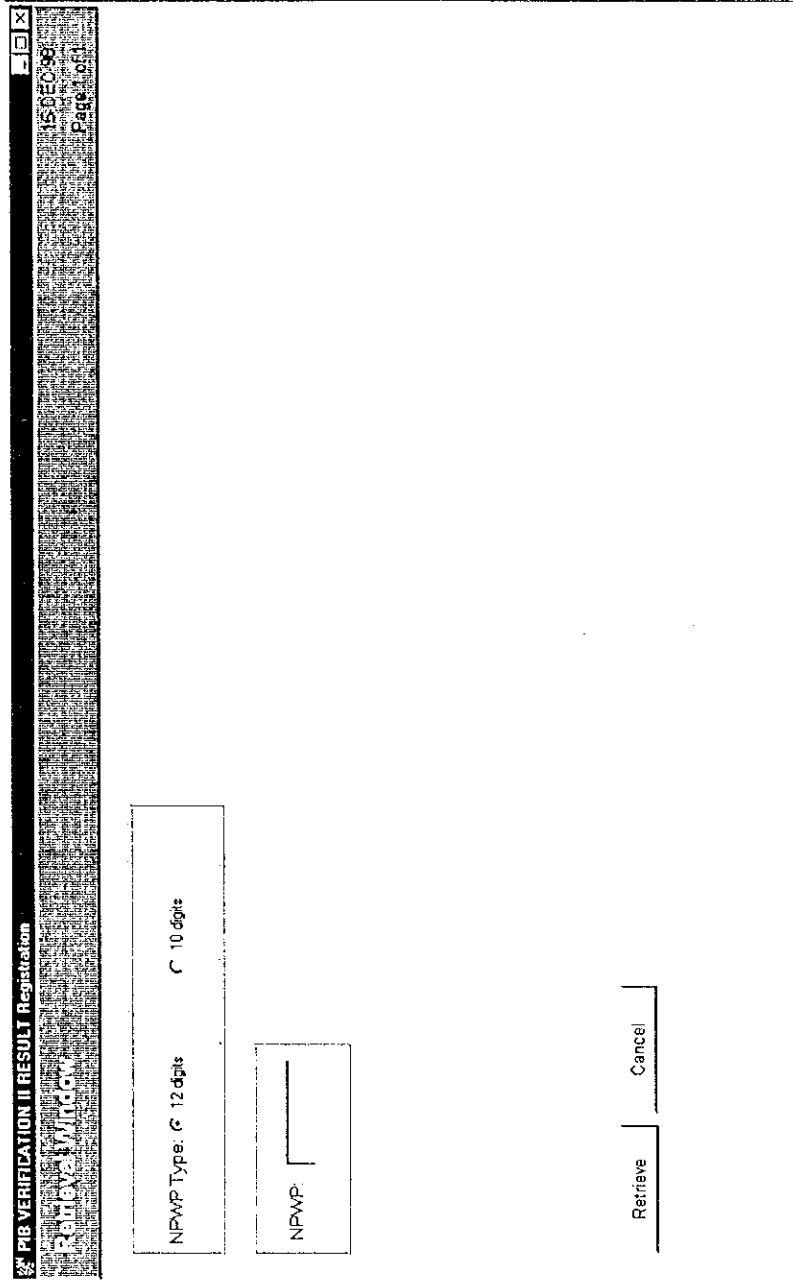


Figure 6.5-2: Window Layout for PIB Verification II Result Registration (Retrieval Window)

Table 6.5-5: List of Items
(Window Name: PIB VERIFICATION II RESULT Registration (Retrieval Window))

No.	Item Name	Level			Description	Item in File	Note
		1	2	3			
1	NPWP Type <i>Type NPWP</i>	✓			Type of NPWP Radio button (Input, Mandatory)	TYPE. BASIC INFORMATION	1 Digit., Numeric
2	NPWP <i>NPWP</i>	✓			Tax Payer Code Number (Input, Mandatory)	ID NUMBER. BASIC INFORMATION	12 Char., Alpha- numeric

**Table 6.5-6: Input Check List
(Window Name:PIB Ver II Result Registration(Retrieval Window))**

No.	Item Name	Condition (range, format, and so on)	Message ID	Note
1	NPWP	Must have full length according to NPWP type.	E0000015	—
2	NPWP	Must start with "0" when NPWP is 12 digits.	E0000016	—
3	NPWP	Must be numeric.	E0000009	—

**NOTA HASIL VERIFIKASI
DOKUMEN IMPOR TAHAP-II
(NHVDI-II)**

I. Importer Name : Date:

II. NPWP :

III. Custom Broker on
his behalf :

IV. Period of Verification : from to

V. Amount of Verified PIB :

VI. Analysis Result :

A. Importer Performance:

10

B. Service Performance in Import Section:

C. Officer Performance:

VII. Resume

A. 1. Quantity of PIB in which additional payment effected: PIB
Amount of additional Payment Rp.
Reason:

Figure 6.5-3: Report Layout for NHVDI-II (1/3)

2. Quantity of PIB in which restitution effected : 14 PIB
Amount of overpayment. Rp. 15
Reason:

B. Reason of recommending to be audited:

C. Reason of recommending on revocation of its facility

D. Reason of recommending to be investigated

E. Reason of recommending action on customs official

F. Recommendation for updating valuation database

Figure 6.5-3: Report Layout for NHVDI-II (2/3)

G. Recommendation for updating commodity profile and its motive

H. Recommendation for updating importer profile and its motive

I. Reason of recommending intelligent operation

J. Recommendation for improving customs service system on import

..... 19

Verificator I

Name :
NIP :
Rank :
Sign :

Verificator II

Name :
NIP :
Rank :
Sign :

Figure 6.5-3: Report Layout for NHVDI-II (3/3)

Table 6.5-7 List of Items
(Report Name: PIB VERIFICATION II RESULT Registration (NHVDI-II)) (1/2)

No.	Item Name	Level			Description	Item in File	Note
		1	2	3			
1	Importer Name <i>Nama Importir</i>	✓			Importer name (Output, Mandatory)	NAME.BASIC INFORMATION	40 Char., Alpha- numeric
2	Date <i>Tanggal</i>	✓			Date of filling Verification II Result. Date will be automatically produced by computer, DDMMYYYY. (Output, Mandatory)	Server Date	8 Digits., Date (Server Date)
3	NPWP <i>NPWP</i>	✓			Tax Payer Code Number (Output, Mandatory)	ID NUMBER. BASIC INFORMATION	12 Char., Alpha- numeric
4	Custom Broker on his behalf <i>PPJK yang dikuasakan</i>	✓			Name of Custom broker who has authorized of PIB management. (Output, Optional)	NAME.BASIC INFORMATION	40 Char., Alpha- numeric
5	Period of Verification <i>Periode Verifikasi</i>	✓			Period of Verification (Output, Mandatory) (No Repeat)	— (Group Title)	—
6	From <i>Dari</i>		✓		Earliest date of Registered Date.PIB Verification I Result that has relation to PIB Verification II Result. (Output, Mandatory)	—	8 Digits., Date
7	To <i>Sampai</i>		✓		Latest date of Registered Date.PIB Verification I Result that has relation to PIB Verification II Result, (Output, Mandatory)	—	8 Digits., Date
8	Amount of Verified PIB <i>Jumlah PIB yang dianalisa</i>	✓			Amount of Verified PIB (Output, Mandatory) Refer to Table 6.5-2 for how to displaying output	AMOUNT OF VERIFIED PIB.PIB VERIFICATION II RESULT	5 Digits., Numeric
9	Analysis Result <i>Hasil analisa</i>	✓			Verification Analysis Result	— (Group Title)	—
10	Importer Performance <i>Kinerja Importir</i>		✓		Importer Performance (Output, Optional) Data has 500 Chars alpha numeric but only 70 Chars will be displayed on window.	ANALYSIS- IMPORTER PERFORMANCE. PIB VERIFICATION II RESULT	70 Char., Alpha- numeric.

Table 6.5-7 List of Items
(Report Name: PIB VERIFICATION II RESULT Registration (NHVDI-II)) (2/2)

No.	Item Name	Level			Description	Item in File	Note
		1	2	3			
11	Resume <i>Kesimpulan</i>	✓			Resume	— (Group Title)	—
12	Quantity of PIB in which additional payment effected <i>Jumlah PIB yang berakibat tambah bayar:</i>		✓		Quantity of PIB in which additional payment effected (Output, Optional) Refer to Table 6.5-2 for how to displaying output	QTY OF PIB-ADDITIONAL PAYMENT EFFECTED.PIB VERIFICATION II RESULT	5 Digits., Numeric
13	Amount of additional Payment <i>Kekurangan pembayaran sebesar Rp.</i>		✓		Amount of additional Payment (Output, Optional) Refer to Table 6.5-2 for how to displaying output	AMOUNT OF ADDITIONAL PAYMENT. PIB VERIFICATION II RESULT	15 Digits., Numeric
14	Quantity of PIB in which restitution effected : <i>Jumlah PIB yang berakibat restitusi:</i>		✓		Quantity of PIB in which restitution effected : (Output, Optional) Refer to Table 6.5-2 for how to displaying output	QTY OF PIB-RESTITUTION EFFECTED.PIB VERIFICATION II RESULT	5 Digits., Numeric
15	Amount of overpayment: Rp. <i>Dengan jumlah kelebihan pembayaran sebesar Rp</i>		✓		Amount of overpayment (Output, Optional): Refer to Table 6.5-2 for how to displaying output	AMOUNT OF OVERPAYMENT. PIB VERIFICATION II RESULT	15 Digits., Numeric