

5.19 Inter Island Transportation Deletion

Volume II Figure 2.5.2-20 and Table 2.5.2-20 show the outline of Inter Island Transportation Deletion Process. As a result of System Design, the process is designed as below. Volume III Appendix A is referred to understand how to view figures and tables.

- Process Procedure

- 1) Retrieval of Inter Island Transportation from Port of Loading

- i) Input

Read inputted data from Retrieval Window. Table 5.19-4 shows details of data items on the window.

- ii) Retrieval

Retrieve data from the database and code tables. Table names of the database are shown in Table 5.19-5. Table 5.19-1 shows list and location of codes to be used.

Table 5.19-1: List of codes

Code	Location of Table	Note
Office Code	Client	Used for Office Name
Country Code	Client	Used for Flag
Port Code	Client	Used for Port of Loading/Transit/Destination
Inter Island Goods Code	Client	Used for Type of Goods

- iii) Output

Edit retrieved data and display Deletion Window1. Table 5.19-5 shows details of data items on the window.

- 2) Deletion of Inter Island Transportation from Port of Loading

- i) Deletion of Goods Information

When the function to delete goods information is selected, do 3).

- ii) Confirmation

Display a response-requiring message. (Message ID;R0000003)

- iii) Deletion

Delete data from the database. Table names of the database are shown in Table 5.19-5.

- iv) Output

Display a normal message. (Message ID;N0000004)

3) Deletion of Goods Information

i) Retrieval

Retrieve data from the database and code tables. Table names of the database are shown in Table 5.19-7. Table 5.19-2 shows list and location of codes to be used.

Table 5.19-2: List of codes

Code	Location of Table	Note
Good Unit Code	Client	Used for Unit at Port of Loading/Transit/Destination
Identity Type Code	Client	Used for NPWP Type
NPWP 10 Digit (Tax Payer Code Number)	Server	Used for NPWP (of Sender and Receiver)
NPWP 12 Digit (Tax Payer Code Number)	Server	Used for NPWP (of Sender and Receiver)

ii) Output

Display Deletion Window2. Table 5.19-7 shows details of data items on the window.

iii) Return

Return to Deletion Window1.

- Window/Report Design

- Windows

- Retrieval Window Figure 5.19-1
 - Deletion Window 1 Figure 5.19-2
 - Deletion Window 2 Figure 5.19-3

- Reports

None.

- Error Procedure

Display an error message following Table 5.19-3.

Table 5.19-3: Error Procedure(1/2)

Case	Error Contents	Message ID	Note
1)-ii), 2)-iii), 3)-i)	SQL returned an error code.	E0000001	Fill in the blank part of the message text with the error code.

Table 5.19-3: Error Procedure(2/2)

Case	Error Contents	Message ID	Note
1)-ii)	The record to be deleted does not exist.	E0000002	---
1)-ii), 3)-i)	The code to be retrieved at Code Retrieval does not exist in the code table.	E0000008	---
2)-iii)	The record to be deleted has child record(s).	E0000017	---

- **Restriction**

None.

- **Note**

For details of each message, see Volume II 1.4.

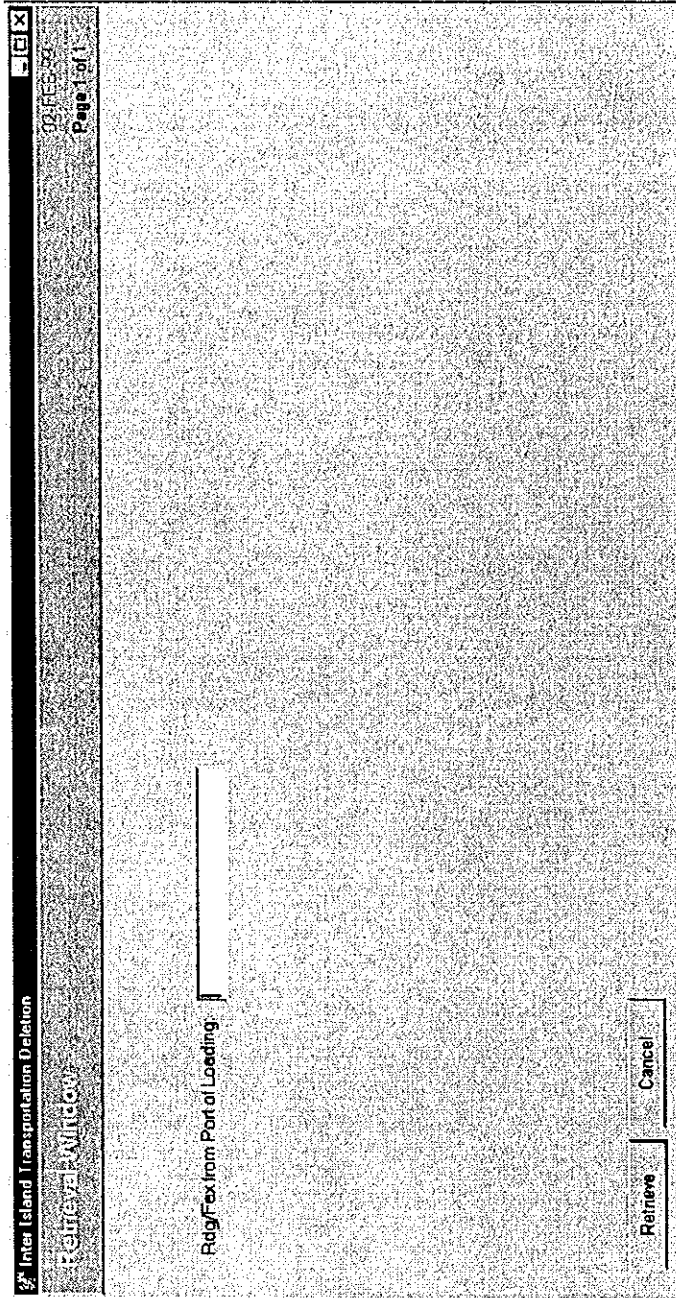


Figure 5.19-1: Window Layout for Inter Island Transportation Deletion (Retrieval Window)

**Table 5.19-4: List of Items (Window Name: Inter Island Transportation
Deletion(Retrieval Window))**

No.	Item Name	Level			Description	Item in File	Note
		1	2	3			
1	Rdg/Fax from Port of Loading <i>Rdg/Fax Asal</i>	✓			Rdg/Fax number from Port of Loading (input, mandatory)	ORIGIN RADIOGRAM. INTER ISLAND TRANSPORTA- TION	28 char, alpha- numeric

Inter Island Transportation Deletion
 Deletion Window
 08/24/98
 Page 1 of 1

Office Name:

Voyage Number:

Vessel Name:

Flag:

Shipping Agent:

Rdg/Fax From/Port of Loading: (DDMMYY)
 Part of Loading: (DDMMYY)
 Rdg/Fax From/Port of Destination: (DDMMYY)
 Part of Destination: (DDMMYY)

Date Of Rdg/Fax From/Port of Loading: (DDMMYY)
 Date Of Departure: (DDMMYY)
 Date Of Rdg/Fax From/Port of Destination: (DDMMYY)
 Date Of Arrival: (DDMMYY)

Rdg/Fax From/Transit Port: (DDMMYY)
 Part of Transit: (DDMMYY)
 Date Of Transit: (DDMMYY)
 Select

Type Of Goods: Select

History: Last Operator: Operation Date: Note:

Delete Cancel Previous Page Next Page

Figure 5.19-2: Window Layout for Inter Island Transportation Deletion (Deletion Window 1)

Table 5.19-5: List of Items (Window Name: Inter Island Transportation Deletion (Deletion Window1))(1/4)

No.	Item Name	Level			Description	Item in File	Note
		1	2	3			
1	Office Name <i>Nama Kantor</i>	✓			Service office name of origin radiogram/fax (output, mandatory)	NAME.DJBC OFFICE	40 char, alpha-numeric
2	Vessel Name <i>Nama Alat Pengangkut</i>	✓			Name of the vessel (output, optional)	NAME.VESSEL	30 char, alpha-numeric
3	Voyage Number <i>Nomor Pelayaran</i>	✓			Voyage number (output, optional)	VOYAGE NUMBER.INTER ISLAND TRANSPORTATION	7 char, alpha-numeric
4	Flag <i>Bendera</i>	✓			The flag of the vessel (output, optional)	flgcty_of.VESSEL	30 char, alpha-numeric
5	Shipping Agent <i>Agen Pelayaran</i>	✓			Company who has the vessel (output, optional)	NAME.OWNER	40 char, alpha-numeric
6	Rdg/Fax from Port of Loading <i>Rdg/Fax Asal</i>	✓			Origin radiogram/fax that came from loading port (output, mandatory)	ORIGIN RADIOGRAM.INTER ISLAND TRANSPORTATION	28 char, alpha-numeric
7	Date of Rdg/Fax from Port of Loading (DDMM YYYY) <i>Tanggal Rdg/Fax Asal (DDMM YYYY)</i>	✓			Date of origin radiogram/fax (output, optional)	DATE OF ORIGIN RADIOGRAM.INTER ISLAND TRANSPORTATION	8 digits, date
8	Port of Loading <i>Pelabuhan Muat</i>	✓			Port of loading (output, optional)	loadport_of.INTER ISLAND TRANSPORTATION	40 char, alpha-numeric

Table 5.19-5: List of Items (Window Name: Inter Island Transportation Deletion (Deletion Window1))(2/4)

No.	Item Name	Level			Description	Item in File	Note
		1	2	3			
9	Date of Departure (DDMM YYYY) <i>Tanggal Muat</i> (DDMM YYYY)	✓			Date of departure (output, optional)	DATE OF LOADING. INTER ISLAND TRANSPORTA- TION	8 digits, date
10	Rdg/Fax from Port of Destination <i>Rdg/Fax</i> <i>Tujuan</i>	✓			Destination radiogram/fax (output, mandatory)	DISCHARGE RADIOGRAM. INTER ISLAND TRANSPORTA- TION	28 char, alpha- numeric
11	Date of Rdg/Fax from Port of Destination (DDMM YYYY) <i>Tanggal</i> <i>Rdg/Fax</i> <i>Tujuan</i> (DDMM YYYY)	✓			Date of destination radiogram/fax (output, mandatory)	DATE OF DISCHARGE. INTER ISLAND TRANSPORTA- TION	8 digitis, date
12	Port of Destination <i>Pelabuhan</i> <i>Bongkar</i>	✓			Port of discharge (output, optional)	desport_of. INTER ISLAND TRANSPORTATIO N	40 char, alpha- numeric
13	Date of Arrival (DDMM YYYY) <i>Tanggal</i> <i>Bongkar</i> (DDMM YYYY)	✓			Date of discharge (output, optional)	DATE OF DISCHARGE. INTER ISLAND TRANSPORTA- TION	8 digits, date
14	Transit List <i>Daftar</i> <i>Transit</i>	✓			Grouping title (repeat)	—	—
15	Rdg/Fax from Transit Port <i>Rdg/Fax</i> <i>Transit</i>		✓		Transit radiogram/fax (output, optional)	TRANSIT RADIOGRAM. INTER ISLAND TRANS TRANSIT	28 char, alpha- numeric

Table 5.19-5: List of Items (Window Name: Inter Island Transportation Deletion (Deletion Window1))(3/4)

No.	Item Name	Level			Description	Item in File	Note
		1	2	3			
16	Date of Rdg/Fax from Transit Port (DDMM YYYY) <i>Tanggal Rdg/Fax Transit (DDMM YYYY)</i>		✓		Date of transit radiogram/fax (output, optional)	DATE OF TRANSIT.INTER ISLAND TRANS TRANSIT	8 digits, date
17	Port of Transit <i>Pelabuhan Transit</i>		✓		Port of transit (output, optional)	transport_of. INTER ISLAND TRANS TRANSIT	40 char, alpha-numeric
18	Date of Transit (DDMM YYYY) <i>Tanggal Transit (DDMM YYYY)</i>		✓		Date of transit (output, optional)	DATE OF TRANSIT. INTER ISLAND TRANS TRANSIT	8 digits, date
19	Goods List <i>Daftar Barang</i>	✓			Grouping title (repeat)	—	—
20	Type of Goods <i>Jenis Barang</i>		✓		Type of goods (output, optional)	TYPE OF GOODS. INTER ISLAND TRANS GOODS	30 char, alpha-numeric
21	History <i>Sejarah</i>				Grouping title for History of this record (no repeat)	—	—
22	Last Operator <i>Operator Terkini</i>	✓			User-id of operator who registered (output, mandatory)	LAST OPERATOR. INTER ISLAND TRANSPORTATION	6 char, alpha-numeric
23	Operation Date <i>Tanggal Pengoperasian</i>	✓			Registration date (output, mandatory)	LAST UPDATE. INTER ISLAND TRANSPORTATION	8 digits, date

Table 5.19-5: List of Items (Window Name: Inter Island Transportation Deletion (Deletion Window1))(4/4)

No.	Item Name	Level			Description	Item in File	Note
		1	2	3			
24	Note <i>Catatan</i>	✓			Note for history information. The number of characters shown on the Note section is the maximum length of display. The maximum length of input is 800 characters. (output, optional)	NOTE. INTER ISLAND TRANSPORTATION	320 char, alpha-numeric

Inter Island Transportation Deletion
 22 DEC 98
 Page 1 of 2

Deletion Window 2

Goods

Type Of Goods

Document Number (DDMMYY)

Document Date

Quantity at Port of Loading

Quantity at Port of Destination

Unit at Port of Loading

Unit at Port of Destination

Quantity at Transit Port

Quantity Of Discharge at Transit Port

Unit at Transit Port

Quantity at Transit Port

Quantity Of Discharge at Transit Port

Unit at Transit Port

Ok Cancel Previous Page Next page

Figure 5.19-3: Window Layout for Inter Island Transportation Deletion (Deletion Window 2) (1/2)

Inter Island Transportation Deletion
 15-10 E-31
 Page 2 of 2

Deletion Window 2

Sender

NPWP Type: C 12 digit
 NPWP: C 10 digit
 Name: []
 Street: []
 City: []

Postal Code: []
 Phone Number: []
 Fax Number: []
 Telex Number: []

Receiver

NPWP Type: C 12 digit
 NPWP: C 10 digit
 Name: []
 Street: []
 City: []

Postal Code: []
 Phone Number: []
 Fax Number: []
 Telex Number: []

Ok Cancel Previous Page Next Page

Figure 5.19-3: Window Layout for Inter Island Transportation Deletion (Deletion Window 2) (2/2)

Table 5.19-6: List of Items (Window Name: Inter Island Transportation Deletion (Deletion Window2))(1/4)

No.	Item Name	Level			Description	Item in File	Note
		1	2	3			
1	Goods <i>Barang</i>	✓			Grouping title (no repeat)	—	—
2	Type of Goods <i>Jenis Barang</i>		✓		Kind of goods (output, optional)	TYPE OF GOODS. INTER ISLAND TRANS GOODS	30 char, alpha- numeric
3	Document Number <i>Nomor Documen</i>		✓		Document number (output, optional)	DOCUMENT NUMBER. INTER ISLAND TRANS GOODS	25 char, alpha- numeric
4	Document Date (DDMM YYYY) <i>Tanggal Documen (DDMM YYYY)</i>		✓		Document date (output, optional)	DOCUMENT DATE. INTER ISLAND TRANS GOODS	8 digits, date
5	Quantity at Port of Loading <i>Jumlah Barang dari Tempat Asal</i>		✓		Quantity of goods (output, optional)	QUANTITY AT PORT OF LOADING. INTER ISLAND TRANS GOODS	20 digits, numeric
6	Unit at Port of Loading <i>Satuan Barang dari Tempat Asal</i>		✓		Unit of goods (output, optional)	loadgdunit_of. INTER ISLAND TRANS GOODS	30 char, alpha- numeric
7	Quantity at Port of Destination <i>Jumlah Barang pada Tempat Bongkar</i>		✓		Quantity of goods at destination (output, optional)	QUANTITY AT PORT OF DISCHARGE. INTER ISLAND TRANS GOODS	25 digits, numeric
8	Unit at Port of Destination <i>Satuan Barang dari Tempat Bongkar</i>		✓		Unit of goods at destination (output, optional)	discgdunit_of. INTER ISLAND TRANS GOODS	30 char, alpha- numeric

Table 5.19-6: List of Items (Window Name: Inter Island Transportation Deletion (Deletion Window2))(2/4)

No.	Item Name	Level			Description	Item in File	Note
		1	2	3			
9	Transit Information <i>Informasi Transit</i>		✓		Grouping title (repeat)	---	---
10	Quantity at Transit Port <i>Jumlah Barang pada Tempat Transit</i>			✓	Quantity of goods at transit (output, optional)	QUANTITY OF GOOD. TRANSIT GOODS	25 digits, numeric
11	Quantity of Discharge at Transit Port <i>Jumlah Barang pada Tempat Transit</i>			✓	Quantity of discharge of goods at transit (output, optional)	QUANTITY OF DISCHARGE. TRANSIT GOODS	25 digits, numeric
12	Unit at Transit <i>Satuan Barang dari Tempat Transit</i>			✓	Unit of goods at transit (output, optional)	loadgdunit_of. INTER ISLAND TRANS GOODS	30 char, alpha-numeric
13	Sender <i>Pengirim</i>		✓		Grouping title for sender of goods (no repeat)	---	---
14	NPWP Type <i>Tipe NPWP</i>			✓	Type of NPWP Option: • 12 digits • 10 digits (output, mandatory when 15[NPWP] is inputted)	idtype_of.SENDER	1 digit, numeric
15	NPWP <i>NPWP</i>			✓	Tax Payer Code Number of the Sender (output, optional)	NPWP. SENDER	12 char, alpha-numeric
16	Name <i>Nama</i>			✓	Company's Name (output, optional)	COMPANY NAME.SENDER	40 char, alpha-numeric
17	Street <i>Jalan</i>			✓	Address of Company (output, optional)	STREET. SENDER	100 char, alpha-numeric

Table 5.19-6: List of Items (Window Name: Inter Island Transportation Deletion (Deletion Window2))(3/4)

No.	Item Name	Level			Description	Item in File	Note
		1	2	3			
18	City <i>Kota</i>			✓	City address of company (output, optional)	CITY. SENDER	30 char, alpha- numeric
19	Postal Code <i>Kode Pos</i>			✓	Postal Code of Company (output, optional)	POSTAL CODE. SENDER	5 digits, numeric
20	Fax Number <i>Nomor Fax</i>			✓	Fax Number of Company (output, optional)	FAX NUMBER. SENDER	12 digits, numeric
21	Telephone Number <i>Nomor Telepon</i>			✓	Phone Number of Company (output, optional)	PHONE NUMBER. SENDER	12 digits, numeric
22	Telex Number <i>Nomor Telex</i>			✓	Telex Number of Company (output, optional)	TELEX. SENDER	20 char, alpha- numeric
23	Receiver <i>Penerima</i>		✓		Grouping title for receiver of the goods (no repeat)	—	—
24	NPWP Type <i>Tipe NPWP</i>			✓	Type of NPWP Option: • 12 digits • 10 digits (output, mandatory when 25[NPWP] is inputted)	idtype_of. RECEIVER	1 digit, numeric
25	NPWP <i>NPWP</i>			✓	Tax Payer Code Number of the Receiver (output, optional)	NPWP. RECEIVER	12 char, alpha- numeric
26	Name <i>Nama</i>			✓	Company's Name (output, mandatory)	COMPANY NAME. RECEIVER	40 char, alpha- numeric
27	Street <i>Jalan</i>			✓	Address of Company (output, optional)	STREET. RECEIVER	100 char, alpha- numeric
28	City <i>Kota</i>			✓	City address of company (output, optional)	CITY. RECEIVER	30 char, alpha- numeric
29	Postal Code <i>Kode Pos</i>			✓	Postal Code of Company (output, optional)	POSTAL CODE. RECEIVER	5 digits, numeric
30	Fax Number <i>Nomor Fax</i>			✓	Fax Number of Company (output, optional)	FAX NUMBER. RECEIVER	12 digits, numeric
31	Telephone Number <i>Nomor Telepon</i>			✓	Phone Number of Company (output, optional)	PHONE NUMBER. RECEIVER	12 digits, numeric

Table 5.19-6: List of Items (Window Name: Inter Island Transportation Deletion
(Deletion Window2))(4/4)

No.	Item Name	Level			Description	Item in File	Note
		1	2	3			
32	Telex Number <i>Nomor</i> <i>Telex</i>			✓	Telex Number of Company (output, optional)	TELEX. RECEIVER	20 char, alpha- numeric

5.20 Inter Island Transportation Retrieval

Volume II Figure 2.5.2-21 and Table 2.5.2-21 show the outline of Inter Island Transportation Retrieval Process. As a result of System Design, the process is designed as below. Volume III Appendix A is referred to understand how to view figures and tables.

- Process Procedure

- 1) Retrieval of Inter Island Transportation

- i) Input

Read inputted data from Retrieval Window. Table 5.20-5 shows details of data items on the window.

- ii) Retrieval for List Retrieval Window

When keys other than Rdg/Fax from Port of Loading are inputted on Retrieval Window, retrieve data from the database and code tables under the inputted condition. Items on Retrieval Window are to be related each other with "and" excluding blank items. Table names of the database are shown in Table 5.20-6. Table 5.20-1 shows list and location of codes to be used.

Table 5.20-1: List of codes

Code	Location of Table	Note
Office Code	Client	Used for Office Name
Port Code	Client	Used for Port of Loading/Transit/Destination
Inter Island Goods Code	Client	Used for Type of Goods

- iii) Confirmation

When the number of records that match the retrieval condition is between 10 and 99,999, display a response-requiring message. (Message ID;R0000004)

- iv) Output of List Retrieval Window

When keys other than Rdg/Fax from Port of Loading are inputted on Retrieval Window, edit retrieved data and display List Retrieval Window by descending order of Date of Inter Island Transportation. Table 5.20-6 shows details of data items on the window.

v) Printout of List of Inter Island Transportation by Goods and Office

When the printout function is selected from List Retrieval Window, edit retrieved data and printout List of Inter Island Transportation by Goods and Office. Table 5.20-9 shows details of data items on the report.

vi) Retrieval for Retrieval Result Window1

Retrieve data from the database and code tables. Table names of the database are shown in Table 5.20-7. Table 5.20-2 shows list and location of codes to be used.

Table 5.20-2: List of codes

Code	Location of Table	Note
Country Code	Client	Used for Flag

vii) Output of Retrieval Result Window

Edit retrieved data and display Retrieval Result Window1. Table 5.20-7 shows details of data items on the window.

viii) Retrieval of Goods Information

When the function to retrieve goods information is selected, do 2).

2) Retrieval of Goods Information

i) Retrieval

Retrieve data from the database and code tables. Table names of the database are shown in Table 5.20-8. Table 5.20-3 shows list and location of codes to be used.

Table 5.20-3: List of codes

Code	Location of Table	Note
Good Unit Code	Client	Used for Unit at Port of Loading/Transit/Destination
Identity Type Code	Client	Used for NPWP Type
NPWP 10 Digit (Tax Payer Code Number)	Server	Used for NPWP (of Sender and Receiver)
NPWP 12 Digit (Tax Payer Code Number)	Server	Used for NPWP (of Sender and Receiver)

ii) Output

Display Retrieval Result Window2. Table 5.20-8 shows details of data items on the window.

iii) Return

Return to Retrieval Result Window 1.

• Window/Report Design

□ Windows

- Retrieval Window Figure 5.20-1
- List Retrieval Window Figure 5.20-2
- Retrieval Result Window 1 Figure 5.20-3
- Retrieval Result Window 2 Figure 5.20-4

□ Reports

- List of Inter Island Transportation by Goods and Office Figure 5.20-5

• Error Procedure

Display an error message following Table 5.20-4.

Table 5.20-4: Error Procedure

Case	Error Contents	Message ID	Note
1)-ii), 1)-vi), 2)-i)	SQL returned an error code.	E0000001	Fill in the blank part of the message text with the error code.
1)-ii), 1)-vi)	The record to be retrieved does not exist.	E0000002	---
1)-ii), 1)-vi), 2)-i)	The code to be retrieved does not exist in the code table.	E0000008	---
1)-iv)	The number of records that match the retrieval condition exceeded 99,999.	E0000013	---

• Restriction

None.

• Note

- For details of each message, see Volume II 1.4.
- If the units of goods at Port of Loading and Port of Destination are different each other, Difference of Quantity and Percentage of Difference in List of Inter Island Transportation by Goods and Office show incorrect value.

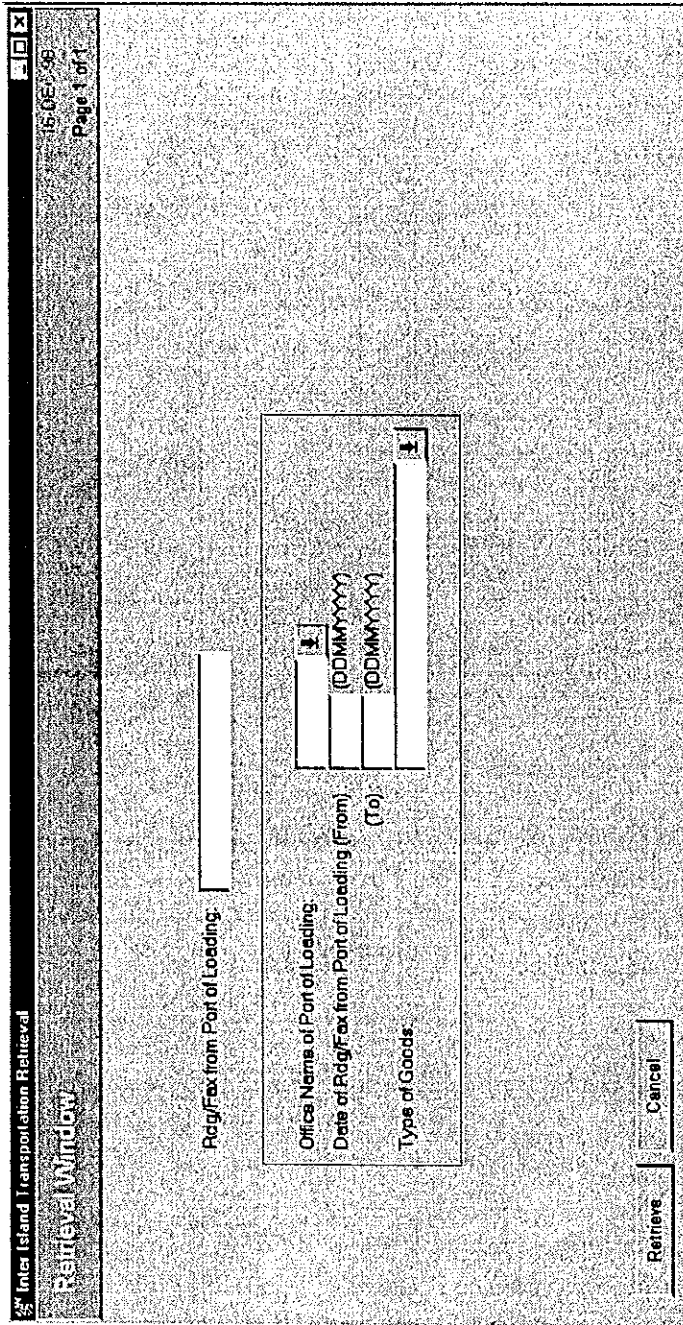


Figure 5.20-1: Window Layout for Inter Island Transportation Retrieval (Retrieval Window)

Table 5.20-5: List of Items (Window Name: Inter Island Transportation Retrieval (Retrieval Window))

No.	Item Name	Level			Description	Item in File	Note
		1	2	3			
1	Rdg/Fax from Port of Loading <i>Rdg/Fax Asal</i>	✓			Rdg/Fax number (input, optional)	ORIGIN RADIOGRAM. INTER ISLAND TRANSPORTATION	28 char, alpha-numeric
2	Office Name of Port of Loading <i>Nama Kantor Asal</i>	✓			Office name of Port of Loading (input, optional)	NAME.DJBC OFFICE	40 char, alpha-numeric
3	Date of Rdg/Fax from Port of Loading (DDMM YYYY) <i>Tanggal Rdg/Fax Asal (DDMM YYYY)</i>	✓			Starting Date of origin radiogram/fax (output, optional)	DATE OF ORIGIN RADIOGRAM. INTER ISLAND TRANSPORTATION	8 digits, date
4	(To) (DDMM YYYY) <i>(Hingga) (DDMM YYYY)</i>	✓			Ending Date of origin radiogram/fax (output, optional)	DATE OF ORIGIN RADIOGRAM. INTER ISLAND TRANSPORTATION	8 digits, date
5	Type of Goods <i>Jenis Barang</i>	✓			Type of goods (input, optional)	TYPE OF GOODS. INTER ISLAND TRANSPORTATION	30 char, alpha-numeric

Table 5.20-6: List of Items (Window Name: Inter Island Transportation Retrieval (List Retrieval Window))

No.	Item Name	Level			Description	Item in File	Note
		1	2	3			
1	Office Name <i>Nama Kantor</i>	✓			Service office code (output, mandatory)	NAME.DJBC OFFICE	40 char, alpha- numeric
2	List <i>Daftar</i>	✓			Grouping title (repeat)	—	—
3	Rdg/Fax from Port of Loading <i>Rdg/Fax Asal</i>		✓		Origin radiogram/fax that came from loading port (output, mandatory)	ORIGIN RADIOGRAM. INTER ISLAND TRANSPORTA- TION	28 char, alpha- numeric
4	Date of Rdg/Fax from Port of Loading (DDMM YYYY) <i>Tanggal Rdg/Fax Asal (DDMM YYYY)</i>		✓		Date of origin radiogram/fax (input/output, optional)	DATE OF ORIGIN RADIOGRAM. INTER ISLAND TRANSPORTA- TION	8 digits, date
5	Type of Goods <i>Jenis Barang</i>		✓		Type of goods (output, optional)	TYPE OF GOODS. INTER ISLAND TRANSPORTA- TION	30 char, alpha- numeric
6	Sender <i>Nama Perusahaan Pengirim</i>		✓		Sender Company Name (output, optional)	COMPANY NAME.SENDER	40 char, alpha- numeric
7	Receiver <i>Nama Perusahaan Penerima</i>		✓		Receiver Company Name (output, optional)	COMPANY NAME.RECEIVER	40 char, alpha- numeric

Inter Island Transportation Retrieval
 Retrieval Result Window
 06/14/2005 Page 1 of 1

Inter Island Transportation Office Name: []

Vessel Name: [] Voyage Number: []
 Flag: [] Shipping Agent: []

Rdg/Fex From Port of Loading: [] Date Of Rdg/Fex From Port of Loading: (DDMMYYYY)
 Port of Loading: [] Date Of Departure: (DDMMYYYY)
 Rdg/Fex From Port of Destination: [] Date Of Rdg/Fex From Port of Destination: (DDMMYYYY)
 Port of Destination: [] Date Of Arrival: (DDMMYYYY)

Rdg/Fex From Transit Port: [] Date Of Rdg/Fex From Transit Port: (DDMMYYYY) Port of Transit: [] Date Of Transit: (DDMMYYYY)

Type Of Goods: [] Selected

History Last Operator: [] Operation Date: [] Note: []

Ok [] Displays Page No: 1 of 1

Figure 5.20-3: Window Layout for Inter Island Transportation Retrieval (Retrieval Result Window1)

Table 5.20-7: List of Items (Window Name: Inter Island Transportation Retrieval (Retrieval Result Window1))(1/4)

No.	Item Name	Level			Description	Item in File	Note
		1	2	3			
1	Office Name <i>Nama Kantor</i>	✓			Office name of origin radiogram/fax (output, mandatory)	NAME.DJBC OFFICE	40 char, alpha-numeric
2	Vessel Name <i>Nama Alat Pengangkut</i>	✓			Name of the vessel (output, optional)	NAME.VESSEL	30 char, alpha-numeric
3	Voyage Number <i>Nomor Pelayaran</i>	✓			Voyage number (output, optional)	VOYAGE NUMBER.INTER ISLAND TRANSPORTATION	7 char, alpha-numeric
4	Flag <i>Bendera</i>	✓			The flag of the vessel (output, optional)	flgcty_of.VESSEL	30 char, alpha-numeric
5	Shipping Agent <i>Agen Pelayaran</i>	✓			Company who has the vessel (output, optional)	NAME.OWNER	40 char, alpha-numeric
6	Rdg/Fax from Port of Loading <i>Rdg/Fax Asal</i>	✓			Origin radiogram/fax that came from loading port (output, mandatory)	ORIGIN RADIOGRAM.INTER ISLAND TRANSPORTATION	28 char, alpha-numeric
7	Date of Rdg/Fax from Port of Loading (DDMM YYYY) <i>Tanggal Rdg/Fax Asal (DDMM YYYY)</i>	✓			Date of origin radiogram/fax (output, optional)	DATE OF ORIGIN RADIOGRAM.INTER ISLAND TRANSPORTATION	8 digits, date
8	Port of Loading <i>Pelabuhan Muat</i>	✓			Port of loading (output, optional)	loadport_of.INTER ISLAND TRANSPORTATION	40 char, alpha-numeric

Table 5.20-7: List of Items (Window Name: Inter Island Transportation Retrieval (Retrieval Result Window1))(2/4)

No.	Item Name	Level			Description	Item in File	Note
		1	2	3			
9	Date of Departure (DDMM YYYY) <i>Tanggal Muat (DDMM YYYY)</i>	✓			Date of departure (output, optional)	DATE OF LOADING. INTER ISLAND TRANSPORTATION	8 digits, date
10	Rdg/Fax from Port of Destination <i>Rdg/Fax Tujuan</i>	✓			Destination radiogram/fax (output, mandatory)	DISCHARGE RADIOGRAM. INTER ISLAND TRANSPORTATION	28 char, alpha-numeric
11	Date of Rdg/Fax from Port of Destination (DDMM YYYY) <i>Tanggal Rdg/Fax Tujuan (DDMM YYYY)</i>	✓			Date of destination radiogram/fax (output, mandatory)	DATE OF DISCHARGE. INTER ISLAND TRANSPORTATION	8 digits, date
12	Port of Destination <i>Pelabuhan Bongkar</i>	✓			Port of discharge (output, optional)	descport_of. INTER ISLAND TRANSPORTATION	40 char, alpha-numeric
13	Date of Arrival (DDMM YYYY) <i>Tanggal Bongkar (DDMM YYYY)</i>	✓			Date of discharge (output, optional)	DATE OF DISCHARGE. INTER ISLAND TRANSPORTATION	8 digits, date
14	Transit List <i>Daftar Transit</i>	✓			Grouping title (repeat)	—	—
15	Rdg/Fax from Transit Port <i>Rdg/Fax Transit</i>		✓		Transit radiogram/fax (output, optional)	TRANSIT RADIOGRAM. INTER ISLAND TRANSIT	28 char, alpha-numeric

Table 5.20-7: List of Items (Window Name: Inter Island Transportation Retrieval (Retrieval Result Window1))(3/4)

No.	Item Name	Level			Description	Item in File	Note
		1	2	3			
16	Date of Rdg/Fax from Transit Port (DDMM YYYY) <i>Tanggal Rdg/Fax Transit (DDMM YYYY)</i>		✓		Date of transit radiogram/fax (output, optional)	DATE OF TRANSIT.INTER ISLAND TRANS TRANSIT	8 digits, date
17	Port of Transit <i>Pelabuhan Transit</i>		✓		Port of transit (output, optional)	transport_of. INTER ISLAND TRANS TRANSIT	40 char, alpha-numeric
18	Date of Transit (DDMM YYYY) <i>Tanggal Transit (DDMM YYYY)</i>		✓		Date of transit (output, optional)	DATE OF TRANSIT. INTER ISLAND TRANS TRANSIT	8 digits, date
19	Goods List <i>Daftar Barang</i>	✓			Grouping title (repeat)	—	—
20	Type of Goods <i>Jenis Barang</i>		✓		Type of goods (output, optional)	TYPE OF GOODS. INTER ISLAND TRANS GOODS	30 char, alpha-numeric
21	History <i>Sejarah</i>	✓			Grouping title for History of this record (no repeat)	—	—
22	Last Operator <i>Operator Terkini</i>		✓		User-id of operator who registered (output, mandatory)	LAST OPERATOR. INTER ISLAND TRANSPORTATION	6 char, alpha-numeric
23	Operation Date <i>Tanggal Pengoperasian</i>		✓		Registration date (output, mandatory)	LAST UPDATE. INTER ISLAND TRANSPORTATION	8 digits, date

Table 5.20-7: List of Items (Window Name: Inter Island Transportation Retrieval (Retrieval Result Window1))(4/4)

No.	Item Name	Level			Description	Item in File	Note
		1	2	3			
24	Note <i>Catatan</i>		✓		Note for history information. The number of characters shown on the Note section is the maximum length of display. The maximum length of input is 800 characters. (output, optional)	NOTE. INTER ISLAND TRANSPORTATION	320 char, alpha-numeric

Table 5.20-8: List of Items (Window Name: Inter Island Transportation Retrieval (Retrieval Result Window2))(1/4)

No.	Item Name	Level			Description	Item in File	Note
		1	2	3			
1	Goods <i>Barang</i>	✓			Grouping title (no repeat)	---	---
2	Type of Goods <i>Jenis Barang</i>		✓		Kind of goods (output, optional)	TYPE OF GOODS. INTER ISLAND TRANS GOODS	30 char, alpha- numeric
3	Document Number <i>Nomor Documen</i>		✓		Document number (output, optional)	DOCUMENT NUMBER. INTER ISLAND TRANS GOODS	25 char, alpha- numeric
4	Document Date (DDMM YYYY) <i>Tanggal Documen (DDMM YYYY)</i>		✓		Document date (output, optional)	DOCUMENT DATE. INTER ISLAND TRANS GOODS	8 digits, date
5	Quantity at Port of Loading <i>Jumlah Barang dari Tempat Asal</i>		✓		Quantity of goods (output, optional)	QUANTITY AT PORT OF LOADING. INTER ISLAND TRANS GOODS	20 digits, numeric
6	Unit at Port of Loading <i>Satuan Barang dari Tempat Asal</i>		✓		Unit of goods (output, optional)	loadgdunit_of. INTER ISLAND TRANS GOODS	30 char, alpha- numeric
7	Quantity at Port of Destination <i>Jumlah Barang pada Tempat Bongkar</i>		✓		Quantity of goods at destination (output, optional)	QUANTITY AT PORT OF DISCHARGE. INTER ISLAND TRANS GOODS	25 digits, numeric
8	Unit at Port of Destination <i>Satuan Barang dari Tempat Bongkar</i>		✓		Unit of goods at destination (output, optional)	discgdunit_of. INTER ISLAND TRANS GOODS	30 char, alpha- numeric

Table 5.20-8: List of Items (Window Name: Inter Island Transportation Retrieval (Retrieval Result Window2))(2/4)

No.	Item Name	Level			Description	Item in File	Note
		1	2	3			
9	Transit Information <i>Informasi Transit</i>		✓		Grouping title (repeat)	—	—
10	Quantity at Transit Port <i>Jumlah Barang pada Tempat Transit</i>			✓	Quantity of goods at transit (output, optional)	QUANTITY OF GOOD. TRANSIT GOODS	25 digits, numeric
11	Quantity of Discharge at Transit Port <i>Jumlah Barang pada Tempat Transit</i>			✓	Quantity of discharge of goods at transit (output, optional)	QUANTITY OF DISCHARGE. TRANSIT GOODS	25 digits, numeric
12	Unit at Transit <i>Satuan Barang dari Tempat Transit</i>			✓	Unit of goods at transit (output, optional)	loadgdunit_of. INTER ISLAND TRANS GOODS	30 char, alpha-numeric
13	Sender <i>Pengirim</i>		✓		Grouping title for sender of goods (no repeat)	—	—
14	NPWP Type <i>Tipe NPWP</i>			✓	Type of NPWP • 12 digits • 10 digits (output, mandatory when 15[NPWP] is inputted)	idtype_of.SENDER	1 digit, numeric
15	NPWP <i>NPWP</i>			✓	Tax Payer Code Number of the Sender (output, optional)	NPWP. SENDER	12 char, alpha-numeric
16	Name <i>Nama</i>			✓	Company's Name (output, optional)	COMPANY NAME.SENDER	40 char, alpha-numeric
17	Street <i>Jalan</i>			✓	Address of Company (output, optional)	STREET. SENDER	100 char, alpha-numeric

Table 5.20-8: List of Items (Window Name: Inter Island Transportation Retrieval (Retrieval Result Window2))(3/4)

No.	Item Name	Level			Description	Item in File	Note
		1	2	3			
18	City <i>Kota</i>			✓	City address of company (output, optional)	CITY. SENDER	30 char, alpha- numeric
19	Postal Code <i>Kode Pos</i>			✓	Postal Code of Company (output, optional)	POSTAL CODE. SENDER	5 digits, numeric
20	Fax Number <i>Nomor Fax</i>			✓	Fax Number of Company (output, optional)	FAX NUMBER. SENDER	12 digits, numeric
21	Telephone Number <i>Nomor Telepon</i>			✓	Phone Number of Company (output, optional)	PHONE NUMBER. SENDER	12 digits, numeric
22	Telex Number <i>Nomor Telex</i>			✓	Telex Number of Company (output, optional)	TELEX. SENDER	20 char, alpha- numeric
23	Receiver <i>Penerima</i>		✓		Grouping title for receiver of the goods (no repeat)	—	—
24	NPWP Type <i>Tipe NPWP</i>			✓	Type of ID • 12 digits • 10 digits (output, mandatory when 25[NPWP] is inputted)	idtype_of. RECEIVER	1 digit, numeric
25	NPWP <i>NPWP</i>			✓	Tax Payer Code Number of the Receiver (output, optional)	NPWP. RECEIVER	12 char, alpha- numeric
26	Name <i>Nama</i>			✓	Company's Name (output, mandatory)	COMPANY NAME. RECEIVER	40 char, alpha- numeric
27	Street <i>Jalan</i>			✓	Address of Company (output, optional)	STREET. RECEIVER	100 char, alpha- numeric
28	City <i>Kota</i>			✓	City address of company (output, optional)	CITY. RECEIVER	30 char, alpha- numeric
29	Postal Code <i>Kode Pos</i>			✓	Postal Code of Company (output, optional)	POSTAL CODE. RECEIVER	5 digits, numeric
30	Fax Number <i>Nomor Fax</i>			✓	Fax Number of Company (output, optional)	FAX NUMBER. RECEIVER	12 digits, numeric
31	Telephone Number <i>Nomor Telepon</i>			✓	Phone Number of Company (output, optional)	PHONE NUMBER. RECEIVER	12 digits, numeric

**Table 5.20-8: List of Items (Window Name: Inter Island Transportation Retrieval
(Retrieval Result Window2))(4/4)**

No.	Item Name	Level			Description	Item in File	Note
		1	2	3			
32	Telex Number <i>Nomor</i> <i>Telex</i>			✓	Telex Number of Company (output, optional)	TELEX. RECEIVER	20 char, alpha- numeric

Report code: RP05410

List of Inter Island Transportation by Goods and Office

Date: 99/99/9999
Page: 999/999

Office Name : 1 Date of Rdg/Fax From Port of Loading(From) : 3
Type of Goods : 2 (To) : 4

NO	RDG/FAX FROM PORT OF LOADING	PORT OF LOADING	SENDER	PORT OF DESTINATION	RECEIVER	VESSEL NAME	QUANTITY AT PORT OF LOADING	UNIT	TYPE	DIFFERENCE (PERCENTAGE)	DATE OF DEPARTURE	DATE OF ARRIVAL
6	7	8	9	10	11	12	13	14	15	16	18	19
6	7	8	9	10	11	12	13	14	15	16	18	19
6	7	8	9	10	11	12	13	14	15	16	18	19
6	7	8	9	10	11	12	13	14	15	16	18	19

Figure 5-20-5 : Report Layout for Inter Island Transportation

Table 5.20-9: List of Items
(Report Name: List of Inter Island Transportation by Goods and Office)(1/3)

No.	Item Name	Level			Description	Item in File	Note
		1	2	3			
1	Office Name <i>Nama Kantor</i>	✓			Office name of origin radiogram/fax as report header (output, mandatory)	NAME.DJBC OFFICE	40 char, alpha-numeric
2	Type of Goods <i>Jenis Barang</i>	✓			Type of Goods (output, mandatory)	TYPE OF GOODS. INTER ISLAND TRANS GOODS	30 char, alpha-numeric
3	Date of Rdg/ fax from Port of Loading (From) <i>Tanggal Rdg/Fax Asal (Dari)</i>	✓			Starting Date of origin radiogram/fax (output, optional)	DATE OF ORIGIN RADIOGRAM. INTER ISLAND TRANSPORTATION	8 digits, date
4	(To) <i>(Hingga)</i>	✓			Ending Date of origin radiogram/fax (output, optional)	DATE OF ORIGIN RADIOGRAM. INTER ISLAND TRANSPORTATION	8 digits, date
5	Detail <i>Daftar</i>	✓			Grouping title (repeat)	—	—
6	No. <i>Nomor</i>		✓		Serial number of detail (output, mandatory)	—	4 digits, numeric
7	Rdg/fax From Port of Loading <i>Rdg/Fax Asal</i>		✓		Origin radiogram/fax that came from loading port (output, mandatory)	ORIGIN RADIOGRAM. INTER ISLAND TRANSPORTATION	28 char, alpha-numeric
8	Port of Loading <i>Pelabuhan Muat</i>		✓		Port of loading (output, optional)	loadport_of. INTER ISLAND TRANSPORTATION	40 char, alpha-numeric
9	Sender <i>Pengirim</i>		✓		Company's Name (output, mandatory)	COMPANY NAME.SENDER	40 char, alpha-numeric
10	Port of Destination <i>Pelabuhan Bongkar</i>		✓		Port of destination (output, optional)	disport_of. INTER ISLAND TRANSPORTATION	40 char, alpha-numeric
11	Receiver <i>Penerima</i>		✓		Company's Name (output, mandatory)	COMPANY NAME.RECEIVER	40 char, alpha-numeric

Table 5.20-9: List of Items
(Report Name: List of Inter Island Transportation by Goods and Office)(2/3)

No.	Item Name	Level			Description	Item in File	Note
		1	2	3			
12	Vessel Name <i>Nama Alat Pengangkut</i>		✓		Name of the vessel (output, optional)	NAME.VESSEL	30 char, alpha- numeric
13	Quantity at Port of Loading <i>Jumlah Barang dari Tempat Asal</i>		✓		Quantity of goods (output, optional)	QUANTITY AT PORT OF LOADING. INTER ISLAND TRANS GOODS	25 digits, numeric
14	Unit <i>Unit</i>		✓		Unit of goods (output, optional)	loadgdunit of. INTER ISLAND TRANS GOODS	30 char, alpha- numeric
15	Type <i>Jenis Barang</i>		✓		Type of goods (output, optional)	TYPE OF GOODS. INTER ISLAND TRANSPORTATION	30 char, alpha- numeric
16	Difference <i>Perbedaan</i>		✓		Difference of quantity of goods between origin and destination ([Quantity of Goods at Port of Loading]- [Quantity of Goods at Port of Destination]-[Quantity of Discharge at Transit Port]) (output, optional)	CALUCULATED BY: QUANTITY AT PORT OF LOADING. INTER ISLAND TRANS GOODS • QUANTITY AT PORT OF LOADING. INTER ISLAND TRANS GOODS • QUANTITY AT PORT OF DISCHARGE. INTER ISLAND TRANS GOODS • QUANTITY OF DISCHARGE. TRANSIT GOODS	25 digits, numeric

Table 5.20-9: List of Items
(Report Name: List of Inter Island Transportation by Goods and Office)(3/3)

No.	Item Name	Level			Description	Item in File	Note
		1	2	3			
17	Percentage <i>Prosentase</i>		✓		Percentage of the difference of quantity of goods between origin and destination $10[\text{Difference}] + 9[\text{Quantity at Origin}] \times 100$ (output, optional)	CALUCULATED BY: • QUANTITY OF GOODS (ORIGIN). GOODS • QUANTITY OF GOODS (ARRIVAL). GOODS	25 digits, numeric
18	Date of Departure <i>Tanggal Muat</i>		✓		Date of loading (output, optional)	DATE OF LOADING. INTER ISLAND TRANSPORTATION	8 digits, date
19	Date of Arrival <i>Tanggal Bongkar</i>		✓		Date of discharge (output, optional)	DATE OF LOADING. INTER ISLAND TRANSPORTATION	8 digits, date