

## 5.17 Inter Island Transportation Registration

Volume II Figure 2.5.2-18 and Table 2.5.2-18 show the outline of Inter Island Transportation Registration Process. As a result of System Design, the process is designed as below. Volume III Appendix A is referred to understand how to view figures and tables.

- Process Procedure

- 1) Retrieval of Inter Island Transportation from Port of Loading

- i) Input

Read inputted data from Retrieval Window. Table 5.17-6 shows details of data items on the window.

- ii) Retrieval

Send retrieval request to the database to make sure that the Rdg/Fax does not exist.

If the Rdg/Fax already exists, check Rdg/Fax from Port of Destination has not been filled, and then do 4).

- iii) Output

Display Registration Window1. Table 5.17-7 shows details of data items on the window.

- 2) Registration of Inter Island Transportation from Port of Loading

- i) Input

Read inputted data from Registration Window1.

- ii) Input Check

Check if all mandatory items are inputted. Then check value of inputted data following Table 5.17-8.

- iii) Code Retrieval

Retrieve data from tables by using the inputted codes. Edit and display the retrieved data into data fields corresponding to its code on the window. Table 5.17-1 shows list and location of codes to be used.

**Table 5.17-1: List of codes**

Code	Location of Table	Note
DJBC Office Code	Client	Used for Office Name
Country Code	Client	Used for Flag
Port Code	Client	Used for Port of Loading/Transit/Destination

iv) Registration of Goods Information at Port of Loading

When registering goods, do 3).

v) Confirmation

Display a response-requiring message. (Message ID;R0000001)

vi) Registration

Edit and register inputted data into the database. Table names of the database are shown in Table 5.17-7.

vii) Output

Display a normal message. (Message ID;N0000002)

3) Registration of Goods Information at Port of Loading

i) Output

Display Registration Window2. Table 5.17-9 shows details of data items on the window.

ii) Input

Read inputted data from Registration Window2.

iii) Input Check

Check if all mandatory items are inputted. Then check value of inputted data following Table 5.17-10.

iv) Code Retrieval

Retrieve data from tables by using the inputted codes. Edit and display the retrieved data into data fields corresponding to its code on the window. For details, see Table 5.17-2.

**Table 5.17-2: List of codes**

Code	Location of Table	Note
Inter Island Goods Code	Client	Used for Type of Goods
Good Unit Code	Client	Used for Unit at Port of Loading
Identity Type Code	Client	Used for NPWP Type
NPWP 10 Digit (Tax Payer Code Number)	Server	Used for NPWP (of Sender and Receiver)
NPWP 12 Digit (Tax Payer Code Number)	Server	Used for NPWP (of Sender and Receiver)

v) Return

Return to Registration Window1.

4) Registration of Inter Island Transportation of Transit/Destination

i) Retrieval

Retrieve data from the database and code tables. Table names of the database are shown in Table 5.17-7. Table 5.17-1 shows list and location of codes to be used.

ii) Output

Edit retrieved data and display Registration Window1. Table 5.17-7 shows details of data items on the window.

iii) Input

Read inputted data from Registration Window1.

iv) Input Check

Check if all mandatory items are inputted. Then check value of inputted data following Table 5.17-8.

v) Code Retrieval

Retrieve data from tables by using the inputted codes. Edit and display the retrieved data into data fields corresponding to its code on the window. Table 5.17-3 shows list and location of codes to be used.

**Table 5.17-3: List of codes**

Code	Location of Table	Note
Port Code	Client	Used for Port of Transit/Destination
Inter Island Goods Code	Client	Used for Type of Goods

vi) Registration of Goods Information at Port of Transit/Destination

When updating goods information to register transit/destination information, do 5).

vii) Confirmation

Display a response-requiring message. (Message ID;R0000001)

viii) Registration

Edit and register inputted data into the database. Table names of the database are shown in Table 5.17-7.

ix) Output

Display a normal message. (Message ID;N0000002)

5) Registration of Goods Information at Port of Transit/Destination

i) Retrieval

Retrieve data from the database and code tables. Table names of the database are shown in Table 5.17-9. Table 5.17-4 shows list and location of codes to be used.

**Table 5.17-4: List of codes**

Code	Location of Table	Note
Good Unit Code	Client	Used for Unit at Port of Transit/Destination

ii) Output

Display Registration Window2. Table 5.17-9 shows details of data items on the window.

iii) Input

Read inputted data from Registration Window2.

iv) Input Check

Check if all mandatory items are inputted. Then check value of inputted data following Table 5.17-10.

v) Code Retrieval

Retrieve data from tables by using the inputted codes. Edit and display the retrieved data into data fields corresponding to its code on the window. For details, see Table 5.17-4.

vi) Return

Return to Registration Window1.

- Window/Report Design

- Windows

- Retrieval Window Figure 5.17-1
- Registration Window 1 Figure 5.17-2
- Registration Window 2 Figure 5.17-3

- Reports

None.

- Error Procedure

Display an error message following Table 5.17-5.

**Table 5.17-5: Error Procedure**

Case	Error Contents	Message ID	Note
2)-ii), 3)-iii), 4)-iv), 5)-iv)	An error is detected at Input Check.	See Table 5.17-8 and 5.17-10	—
1)-ii), 2)-iii), 2)-vi) 3)-iv), 4)-i), 4)-v), 4)-viii), 5)-i), 5)-v)	SQL returned an error code.	E0000001	Fill in the blank part of the message text with the error code.
1)-ii)	The record to be registered already exists.	E0000003	When Rdg/Fax of Destination is filled.
2)-ii), 3)-iii), 4)-iv)	There are one or more mandatory items which have not been inputted.	E0000007	—
2)-iii), 3)-iv), 4)-i), 4)-v), 5)-i), 5)-v)	The code to be retrieved at Code Retrieval does not exist in the code table.	E0000008	—

- Restriction

None.

- Note

- For details of each message, see Volume II 1.4.
- Rdg/Fax from Port of Transit cannot be registered after registering Rdg/Fax from Port of Destination.
- Retrieved data by codes are not registered in the Inter Island Transportation database. Should the meaning of those codes be changed, the original corresponding data cannot be retrieved by Inter Island Transportation Retrieval.

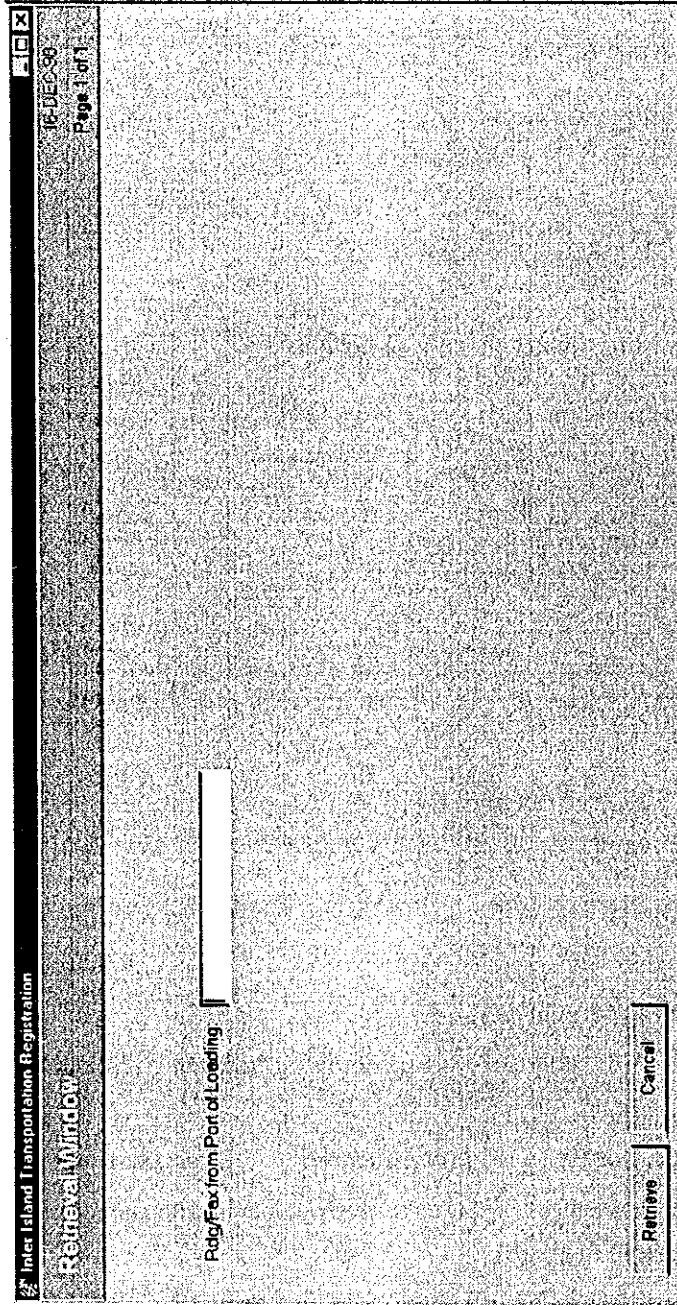


Figure 5.17-1: Window Layout for Inter Island Transportation Registration (Retrieval Window)

**Table 5.17-6: List of Items (Window Name: Inter Island Transportation Registration (Retrieval Window))**

No.	Item Name	Level			Description	Item in File	Note
		1	2	3			
1	Rdg/Fax from Port of Loading <i>Rdg/Fax Asal</i>	✓			Rdg/Fax number from Port of Loading (input, mandatory)	ORIGIN RADIOGRAM. INTER ISLAND TRANSPORTA- TION	28 char, alpha- numeric

Inter Island Transportation Registration  
 Registration Window  
 08-JAN-99 Page 1 of 1

Office Name:

Voyage Number:

Vessel Name:

Flag:

Shipping Agent:

Rdg/Fax From/Port of Loading:

Port of Loading:

Date Of Rdg/Fax From/Port of Loading: (DDMMYY)

Rdg/Fax From/Port of Destination:

Port of Destination:

Date Of Departure: (DDMMYY)

Date Of Rdg/Fax From/Port of Destination: (DDMMYY)

Date Of Arrival: (DDMMYY)

Rdg/Fax From/Transit Port:

Port of Transit:

Date Of Rdg/Fax From/Transit Port: (DDMMYY)

Date Of Transit: (DDMMYY)

Type Of Goods:

History Last Operator:

Operation Date:

Note:

Register Cancel Previous Page Next Page

Figure 5.17-2: Window Layout for Inter Island Transportation Registration (Registration Window1)



**Table 5.17-7: List of Items (Window Name: Inter Island Transportation Registration(Registration Window1))(1/4)**

No.	Item Name	Level			Description	Item in File	Note
		1	2	3			
1	Inter Island Transportation <i>Transportasi Antar Pulau</i>	✓			Grouping title. All "input/output" items in this group are "input" when registering Rdg/Fax from Port of Loading, while "output" when registering Rdg/Fax from Port of Transit/Destination. (no repeat)	—	—
2	Office Name <i>Nama Kantor</i>		✓		Office name of origin radiogram/fax (input/output, mandatory)	NAME.DJBC OFFICE	40 char, alpha-numeric
3	Vessel Name <i>Nama Alat Pengangkut</i>		✓		Name of the vessel (input/output, optional)	NAME.VESSEL	30 char, alpha-numeric
4	Voyage Number <i>Nomor Pelayaran</i>		✓		Voyage number (input/output, optional)	VOYAGE NUMBER.INTER ISLAND TRANSPORTA- TION	7 char, alpha-numeric
5	Flag <i>Bendera</i>		✓		The flag of the vessel (input/output, optional)	flgcty_of.VESSEL	30 char, alpha-numeric
6	Shipping Agent <i>Agen Pelayaran</i>		✓		Company who has the vessel (output, optional)	NAME.OWNER	40 char, alpha-numeric
7	Rdg/Fax from Port of Loading <i>Rdg/Fax Asal</i>		✓		Origin radiogram/fax that came from loading port (output, mandatory)	ORIGIN RADIOGRAM. INTER ISLAND TRANSPORTA- TION	28 char, alpha-numeric
8	Date of Rdg/Fax from Port of Loading (DDMM YYYY) <i>Tanggal Rdg/Fax Asal (DDMM YYYY)</i>		✓		Date of origin radiogram/fax (input/output, optional)	DATE OF ORIGIN RADIOGRAM. INTER ISLAND TRANSPORTA- TION	8 digits, date

**Table 5.17-7: List of Items (Window Name: Inter Island Transportation Registration(Registration Window1))(2/4)**

No.	Item Name	Level			Description	Item in File	Note
		1	2	3			
9	Port of Loading <i>Pelabuhan Muat</i>		✓		Port of loading (input/output, optional)	loadport_of. INTER ISLAND TRANSPORTA- TION	40 char, alpha- numeric
10	Date of Departure (DDMM YYYY) <i>Tanggal Muat</i> (DDMM YYYY)		✓		Date of departure (input/output, optional)	DATE OF LOADING. INTER ISLAND TRANSPORTA- TION	8 digits, date
11	Rdg/Fax from Port of Destination <i>Rdg/Fax Tujuan</i>		✓		Destination radiogram/fax (input/output, mandatory)	DISCHARGE RADIOGRAM. INTER ISLAND TRANSPORTA- TION	28 char, alpha- numeric
12	Date of Rdg/Fax from Port of Destination (DDMM YYYY) <i>Tanggal Rdg/Fax Tujuan</i> (DDMM YYYY)		✓		Date of destination radiogram/fax (input/output, mandatory)	DATE OF DISCHARGE. INTER ISLAND TRANSPORTA- TION	8 digitis, date
13	Port of Destination <i>Pelabuhan Bongkar</i>		✓		Port of discharge (input/output, optional)	descport_of. INTER ISLAND TRANSPORTATIO N	40 char, alpha- numeric
14	Date of Arrival (DDMM YYYY) <i>Tanggal Bongkar</i> (DDMM YYYY)		✓		Date of discharge (input/output, optional)	DATE OF DISCHARGE. INTER ISLAND TRANSPORTA- TION	8 digits, date
15	Transit List <i>Daftar Transit</i>		✓		Grouping title (repeat)	—	—

**Table 5.17-7: List of Items (Window Name: Inter Island Transportation  
Registration(Registration Window1))(3/4)**

No.	Item Name	Level			Description	Item in File	Note
		1	2	3			
16	Rdg/Fax from Transit Port <i>Rdg/Fax . Transit</i>			✓	Transit radiogram/fax (input/output, optional)	TRANSIT RADIOGRAM. INTER ISLAND TRANS TRANSIT	28 char, alpha- numeric
17	Date of Rdg/Fax from Transit Port (DDMM YYYY) <i>Tanggal Rdg/Fax Transit (DDMM YYYY)</i>			✓	Date of transit radiogram/fax (input/output, optional)	DATE OF TRANSIT.INTER ISLAND TRANS TRANSIT	8 digits, date
18	Port of Transit <i>Pelabuhan Transit</i>			✓	Port of transit (input/output, optional)	transport_of. INTER ISLAND TRANS TRANSIT	40 char, alpha- numeric
19	Date of Transit (DDMM YYYY) <i>Tanggal Transit (DDMM YYYY)</i>			✓	Date of transit (input/output, optional)	DATE OF TRANSIT. INTER ISLAND TRANS TRANSIT	8 digits, date
20	Goods List <i>Daftar Barang</i>		✓		Grouping title (repeat)	—	—
21	Type of Goods <i>Jenis Barang</i>			✓	Type of goods (input/output, optional)	TYPE OF GOODS. INTER ISLAND TRANS GOODS	30 char, alpha- numeric
22	History <i>Sejarah</i>	✓			Grouping title for History of this record (no repeat)	—	—
23	Last Operator <i>Operator Terkini</i>		✓		User-id of operator who registered (output, mandatory)	LAST OPERATOR. INTER ISLAND TRANSPORTA- TION	6 char, alpha- numeric

**Table 5.17-7: List of Items (Window Name: Inter Island Transportation Registration(Registration Window1))(4/4)**

No.	Item Name	Level			Description	Item in File	Note
		1	2	3			
24	Operation Date <i>Tanggal Pengoperasian</i>		✓		Registration date (output, mandatory)	LAST UPDATE. INTER ISLAND TRANSPORTATION	8 digits, date
25	Note <i>Catatan</i>		✓		Note for history information. The number of characters shown on the Note section is the maximum length of display. The maximum length of input is 800 characters. (input/output, optional)	NOTE. INTER ISLAND TRANSPORTATION	320 char, alphanumeric

**Table 5.17-8: Input Check List(Inter Island Transportation Registration  
(Registration Window1))**

No.	Item Name	Condition (range, format, and so on)	Message ID	Note
1	Date of Rdg/fax from Port of Loading	Must be past date including today.	E0000010	—
2	Date of Transit	Must be after or same date of Departure.	E0000014	—
3	Date of Arrival	Must be after or same date of Departure and Transit.	E0000014	Date of Transit may be blank.
4	Date of Rdg/fax from Port of Transit	Must be after or same date of Rdg/Fax from Port of Loading.	E0000014	—
5	Date of Rdg/fax from Port of Destination	Must be after or same date of Rdg/Fax from Port of Loading and Rdg/Fax from Port of Transit.	E0000014	Date of Rdg/Fax from Port of Transit may be blank.

Inter Island Transportation Registration  
 Registration Window 2  
 Goods

27DEC98  
 Page 1 of 2

Type Of Goods:

Document Number:

Quantity at Port of Loading:

Quantity at Port of Destination:

Document Date:  (DDMMYY)

Unit at Port of Loading:

Unit at Port of Destination:

Quantity at Transit Port:

Quantity Of Discharge at Transit Port:

Unit at Transit Port:

Figure 5.17-3: Window Layout for Inter Island Transportation Registration (Registration Window2)(1/2)

Inter Island Transportation Registration  
 Registration Window 2  
 15-DEC-98  
 Page 2 of 2

Sender

NPWP Type:  12 digit  10 digit

NPWP:

Name:

Street:

City:

Postal Code:

Phone Number:

Fax Number:

Telex Number:

Receiver

NPWP Type:  12 digit  10 digit

NPWP:

Name:

Street:

City:

Postal Code:

Phone Number:

Fax Number:

Telex Number:

Ok Cancel Previous Page Next page

Figure 5.17-3: Window Layout for Inter Island Transportation Registration (Registration Window2)(2/2)

Table 5.17-9: List of Items (Window Name: Inter Island Transportation Registration(Registration Window2))(1/4)

No.	Item Name	Level			Description	Item in File	Note
		1	2	3			
1	Goods <i>Barang</i>	✓			Grouping title (no repeat)	---	---
2	Type of Goods <i>Jenis Barang</i>		✓		Kind of goods (input/output, optional)	TYPE OF GOODS. INTER ISLAND TRANS GOODS	30 char, alpha- numeric
3	Document Number <i>Nomor Documen</i>		✓		Document number (input/output, optional)	DOCUMENT NUMBER. INTER ISLAND TRANS GOODS	25 char, alpha- numeric
4	Document Date (DDMM YYYY) <i>Tanggal Documen (DDMM YYYY)</i>		✓		Document date (input/output, optional)	DOCUMENT DATE. INTER ISLAND TRANS GOODS	8 digits, date
5	Quantity at Port of Loading <i>Jumlah Barang dari Tempat Asal</i>		✓		Quantity of goods (input/output, optional)	QUANTITY AT PORT OF LOADING. INTER ISLAND TRANS GOODS	20 digits, numeric
6	Unit at Port of Loading <i>Satuan Barang dari Tempat Asal</i>		✓		Unit of goods (input/output, optional)	loadgdunit_of. INTER ISLAND TRANS GOODS	30 char, alpha- numeric
7	Quantity at Port of Destination <i>Jumlah Barang pada Tempat Bongkar</i>		✓		Quantity of goods at destination (input/output, optional)	QUANTITY AT PORT OF DISCHARGE. INTER ISLAND TRANS GOODS	25 digits, numeric
8	Unit at Port of Destination <i>Satuan Barang dari Tempat Bongkar</i>		✓		Unit of goods at destination (input/output, optional)	discgdunit_of. INTER ISLAND TRANS GOODS	30 char, alpha- numeric



Table 5.17-9: List of Items (Window Name: Inter Island Transportation Registration(Registration Window2))(2/4)

No.	Item Name	Level			Description	Item in File	Note
		1	2	3			
9	Transit Information <i>Informasi Transit</i>		✓		Grouping title (repeat)	---	---
10	Quantity at Transit Port <i>Jumlah Barang pada Tempat Transit</i>			✓	Quantity of goods at transit (input/output, optional)	QUANTITY OF GOOD. TRANSIT GOODS	25 digits, numeric
11	Quantity of Discharge at Transit Port <i>Jumlah Barang pada Tempat Transit</i>			✓	Quantity of discharge of goods at transit (input/output, optional)	QUANTITY OF DISCHARGE. TRANSIT GOODS	25 digits, numeric
12	Unit at Transit <i>Satuan Barang dari Tempat Transit</i>			✓	Unit of goods at transit (input/output, optional)	loadgunit_of. INTER ISLAND TRANS GOODS	30 char, alpha-numeric
13	Sender <i>Pengirim</i>		✓		Grouping title for sender of goods (no repeat)	---	---
14	NPWP Type <i>Tipe NPWP</i>			✓	Type of NPWP Option: • 12 digits • 10 digits (input, mandatory when 15[NPWP] is inputted)	idtype_of.SENDER	1 digit, numeric
15	NPWP <i>NPWP</i>			✓	Tax Payer Code Number of the Sender (input/output, optional)	NPWP.SENDER	12 char, alpha-numeric
16	Name <i>Nama</i>			✓	Company's Name (input when 15[NPWP] is blank/output when 15[NPWP] is inputted, mandatory)	COMPANY NAME.SENDER	40 char, alpha-numeric

**Table 5.17-9: List of Items (Window Name: Inter Island Transportation  
Registration(Registration Window2))(3/4)**

No.	Item Name	Level			Description	Item in File	Note
		1	2	3			
17	Street <i>Jalan</i>			✓	Address of Company (input when 15[NPWP] is blank/output when 15[NPWP] is inputted, optional)	STREET. SENDER	100 char, alpha- numeric
18	City <i>Kota</i>			✓	City address of company (input when 15[NPWP] is blank/output when 15[NPWP] is inputted, optional)	CITY. SENDER	30 char, alpha- numeric
19	Postal Code <i>Kode Pos</i>			✓	Postal Code of Company (input when 15[NPWP] is blank/output when 15[NPWP] is inputted, optional)	POSTAL CODE. SENDER	5 digits, numeric
20	Fax Number <i>Nomor Fax</i>			✓	Fax Number of Company (input when 15[NPWP] is blank/output when 15[NPWP] is inputted, optional)	FAX NUMBER. SENDER	12 digits, numeric
21	Telephone Number <i>Nomor Telepon</i>			✓	Phone Number of Company (input when 15[NPWP] is blank/output when 15[NPWP] is inputted, optional)	PHONE NUMBER. SENDER	12 digits, numeric
22	Telex Number <i>Nomor Telex</i>			✓	Telex Number of Company (input when 15[NPWP] is blank/output when 15[NPWP] is inputted, optional)	TELEX. SENDER	20 char, alpha- numeric
23	Receiver <i>Penerima</i>		✓		Grouping title for receiver of the goods (no repeat)	—	—
24	NPWP Type <i>Tipe NPWP</i>			✓	Type of NPWP Option: • 12 digits • 10 digits (input, mandatory when 15[Receiver NPWP] is inputted)	idtype_of. RECEIVER	1 digit, numeric
25	NPWP <i>NPWP</i>			✓	Tax Payer Code Number of the Receiver (input/output, optional)	NPWP. RECEIVER	12 char, alpha- numeric
26	Name <i>Nama</i>			✓	Company's Name (input when 25[NPWP] is blank/output when 25[NPWP] is inputted, mandatory)	COMPANY NAME. RECEIVER	40 char, alpha- numeric
27	Street <i>Jalan</i>			✓	Address of Company (input when 25[NPWP] is blank/output when 25[NPWP] is inputted, optional)	STREET. RECEIVER	100 char, alpha- numeric

**Table 5.17-9: List of Items (Window Name: Inter Island Transportation  
Registration(Registration Window2))(4/4)**

No.	Item Name	Level			Description	Item in File	Note
		1	2	3			
28	City <i>Kota</i>			✓	City address of company (input when input when 25[NPWP] is blank/output when 25[NPWP] is inputted, optional)	CITY. RECEIVER	30 char, alpha- numeric
29	Postal Code <i>Kode Pos</i>			✓	Postal Code of Company (input when 25[NPWP] is blank/output when 25[NPWP] is inputted, optional)	POSTAL CODE. RECEIVER	5 digits, numeric
30	Fax Number <i>Nomor Fax</i>			✓	Fax Number of Company (input when 25[NPWP] is blank/output when 25[NPWP] is inputted, optional)	FAX NUMBER. RECEIVER	12 digits, numeric
31	Telephone Number <i>Nomor Telepon</i>			✓	Phone Number of Company (input when 25[NPWP] is blank/output when 25[NPWP] is inputted, optional)	PHONE NUMBER. RECEIVER	12 digits, numeric
32	Telex Number <i>Nomor Telex</i>			✓	Telex Number of Company (input when 25[NPWP] is blank/output when 25[NPWP] is inputted, optional)	TELEX. RECEIVER	20 char, alpha- numeric

**Table 5.17-10: Input Check List(Inter Island Transportation Registration  
(Registration Window2))**

No.	Item Name	Condition (range, format, and so on)	Message ID	Note
1	Unit at Port of Transit	Better to be same with Unit at Port of Loading.	WP050001	—
2	Unit at Port of Destination	Better to be same with Unit at Port of Loading.	WP050001	—
3	NPWP	Must have full length according to NPWP Type.	E0000015	—
4	NPWP	Must start with "0" when NPWP is 12 digits.	E0000016	Fill in the blank part of the message text with "0".
5	NPWP	Must be numeric.	E0000009	—

## 5.18 Inter Island Transportation Update

Volume II Figure 2.5.2-19 and Table 2.5.2-19 show the outline of Inter Island Transportation Update Process. As a result of System Design, the process is designed as below. Volume III Appendix A is referred to understand how to view figures and tables.

- Process Procedure

- 1) Retrieval of Inter Island Transportation from Port of Loading

- i) Input

Read inputted data from Retrieval Window. Table 5.18-4 shows details of data items on the window.

- ii) Retrieval

Retrieve data from tables by using the inputted codes. Edit and display the retrieved data into data fields corresponding to its code on the window. Table 5.18-1 shows list and location of codes to be used.

**Table 5.18-1: List of codes**

Code	Location of Table	Note
Office Code	Client	Used for Office Name
Country Code	Client	Used for Flag
Port Code	Client	Used for Port of Loading/Transit/Destination
Inter Island Goods Code	Client	Used for Type of Goods

- iii) Output

Edit retrieved data and display Update Window1. Table 5.18-5 shows details of data items on the window.

- 2) Update of Inter Island Transportation from Port of Loading

- i) Input

Read inputted data from Update Window1.

- ii) Input Check

Check if all mandatory items are inputted. Then check value of inputted data following Table 5.18-6.

iii) Code Retrieval

Retrieve data from tables by using the inputted codes. Edit and display the retrieved data into data fields corresponding to its code on the window. Table 5.18-1 shows list and location of codes to be used.

iv) Update of Goods Information

When the function to update goods information is selected, do 3).

v) Confirmation

Display a response-requiring message. (Message ID;R0000002)

vi) Update

Edit and update inputted data into the database. Table names of the database are shown in Table 5.18-5.

vii) Output

Display a normal message. (Message ID;N0000003)

3) Update of Goods Information

i) Retrieval

Retrieve data from the database and code tables. Table names of the database are shown in Table 5.18-7. Table 5.18-2 shows list and location of codes to be used.

**Table 5.18-2: List of codes**

Code	Location of Table	Note
Good Unit Code	Client	Used for Unit at Port of Loading/Transit/Destination
Identity Type Code	Client	Used for NPWP Type
NPWP 10 Digit (Tax Payer Code Number)	Server	Used for NPWP (of Sender and Receiver)
NPWP 12 Digit (Tax Payer Code Number)	Server	Used for NPWP (of Sender and Receiver)

ii) Output

Display Update Window2. Table 5.18-7 shows details of data items on the window.

iii) Input

Read inputted data from Update Window2.

iv) Input Check

Check if all mandatory items are inputted. Then check value of inputted data following Table 5.18-8.

v) Code Retrieval

Retrieve data from tables by using the inputted codes. Edit and display the retrieved data into data fields corresponding to its code on the window. For details, see Table 5.18-2.

vi) Return

Return to Update Window1.

- Window/Report Design

- Windows

- Retrieval Window Figure 5.18-1
    - Update Window 1 Figure 5.18-2
    - Update Window 2 Figure 5.18-3

- Reports

None.

- Error Procedure

Display an error message following Table 5.18-3.

**Table 5.18-3: Error Procedure**

Case	Error Contents	Message ID	Note
2)-ii), 3)-iv)	An error is detected at Input Check.	See Table 5.18-6 and 5.18-8.	—
1)-iii), 2)-iii), 2)-vi), 3)-i), 3)-v)	SQL returned an error code.	E0000001	Fill in the blank part of the message text with the error code.
1)-ii)	The record to be updated does not exist.	E0000002	—
2)-ii), 3)-iv)	There are one or more mandatory items which have not been inputted.	E0000007	—
1)-ii), 2)-iii), 3)-i), 3)-v)	The code to be retrieved at Code Retrieval does not exist in the code table.	E0000008	—

- Restriction

None.

- Note

For details of each message, see Volume II 1.4.

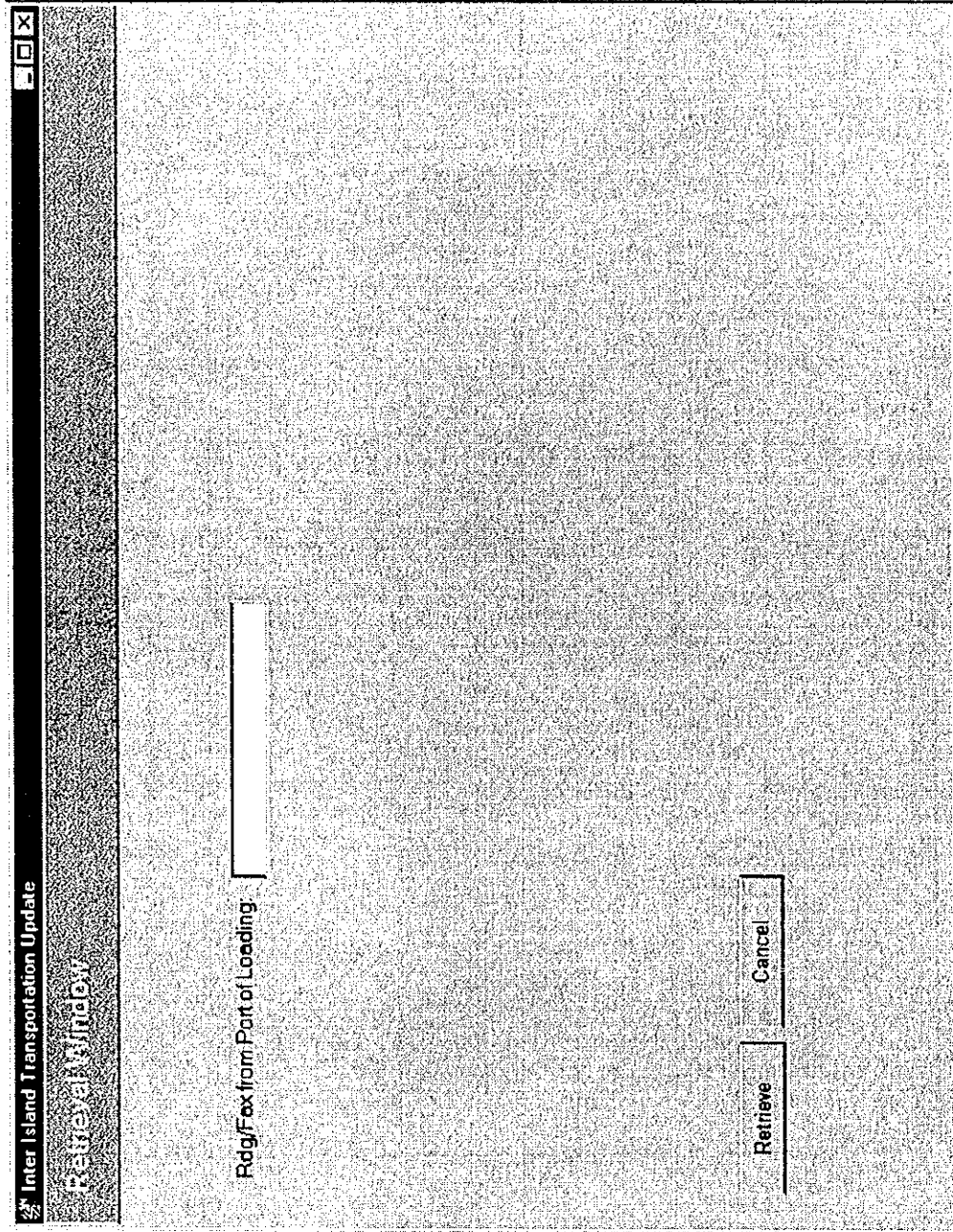


Figure 5.18-1: Window Layout for Inter Island Transportation Update (Retrieval Window)



**Table 5.18-4: List of Items (Window Name: Inter Island Transportation Update (Retrieval Window))**

No.	Item Name	Level			Description	Item in File	Note
		1	2	3			
1	Rdg/Fax from Port of Loading <i>Rdg/Fax</i> <i>Asal</i>	✓			Rdg/Fax number from Port of Loading (input, mandatory)	ORIGIN RADIOGRAM. INTER ISLAND TRANSPORTA- TION	28 char, alpha- numeric

Inter Island Transportation Update

08-31-1999 Page 1 of 1

Update Window

Office Name: [Text Box]

Voyage Number: [Text Box]

Vessel Name: [Text Box]

Shipping Agent: [Text Box]

Flag: [Text Box]

Rdg/Fax From Port of Loading: [Text Box]

Date Of Rdg/Fax From Port of Loading: (DDMMYY) [Text Box]

Port of Loading: [Text Box]

Date Of Departure: (DDMMYY) [Text Box]

Rdg/Fax From Port of Destination: [Text Box]

Date Of Rdg/Fax From Port of Destination: (DDMMYY) [Text Box]

Port of Destination: [Text Box]

Date Of Arrival: (DDMMYY) [Text Box]

Rdg/Fax From Transit Port: [Text Box]

Date Of Rdg/Fax From Transit Port (DDMMYY): [Text Box]

Port of Transit: [Text Box]

Date Of Transit (DDMMYY): [Text Box]

Type Of Goods: [Text Box]

History: [Text Box]

Last Operator: [Text Box]

Operator Date: [Text Box]

Note: [Text Box]

Update [Button] Cancel [Button] Previous Page [Button] Next Page [Button]

Figure 5.18-2: Window Layout for Inter Island Transportation Update (Update Window 1)

**Table 5.18-5: List of Items (Window Name: Inter Island Transportation Update (Update Window1))(1/4)**

No.	Item Name	Level			Description	Item in File	Note
		1	2	3			
1	Office Name <i>Nama Kantor</i>	✓			Service office name of origin radiogram/fax (input/output, mandatory)	NAME.DJBC OFFICE	40 char, alpha-numeric
2	Vessel Name <i>Nama Alat Pengangkut</i>	✓			Name of the vessel (input/output, optional)	NAME.VESSEL	30 char, alpha-numeric
3	Voyage Number <i>Nomor Pelayaran</i>	✓			Voyage number (input/output, optional)	VOYAGE NUMBER.INTER ISLAND TRANSPORTATION	7 char, alpha-numeric
4	Flag <i>Bendera</i>	✓			The flag of the vessel (input/output, optional)	flgcty_of.VESSEL	30 char, alpha-numeric
5	Shipping Agent <i>Agen Pelayaran</i>	✓			Company who has the vessel (output, optional)	NAME.OWNER	40 char, alpha-numeric
6	Rdg/Fax from Port of Loading <i>Rdg/Fax Asal</i>	✓			Origin radiogram/fax that came from loading port (output, mandatory)	ORIGIN RADIOGRAM.INTER ISLAND TRANSPORTATION	28 char, alpha-numeric
7	Date of Rdg/Fax from Port of Loading (DDMM YYYY) <i>Tanggal Rdg/Fax Asal (DDMM YYYY)</i>	✓			Date of origin radiogram/fax (input/output, optional)	DATE OF ORIGIN RADIOGRAM.INTER ISLAND TRANSPORTATION	8 digits, date
8	Port of Loading <i>Pelabuhan Muat</i>	✓			Port of loading (input/output, optional)	loadport_of.INTER ISLAND TRANSPORTATION	40 char, alpha-numeric

**Table 5.18-5: List of Items (Window Name: Inter Island Transportation Update (Update Window1))(2/4)**

No.	Item Name	Level			Description	Item in File	Note
		1	2	3			
9	Date of Departure (DDMM YYYY) <i>Tanggal Muat (DDMM YYYY)</i>	✓			Date of departure (input/output, optional)	DATE OF LOADING. INTER ISLAND TRANSPORTATION	8 digits, date
10	Rdg/Fax from Port of Destination <i>Rdg/Fax Tujuan</i>	✓			Destination radiogram/fax (input/output, mandatory)	DISCHARGE RADIOGRAM. INTER ISLAND TRANSPORTATION	28 char, alphanumeric
11	Date of Rdg/Fax from Port of Destination (DDMM YYYY) <i>Tanggal Rdg/Fax Tujuan (DDMM YYYY)</i>	✓			Date of destination radiogram/fax (input/output, mandatory)	DATE OF DISCHARGE. INTER ISLAND TRANSPORTATION	8 digits, date
12	Port of Destination <i>Pelabuhan Bongkar</i>	✓			Port of discharge (input/output, optional)	descport_of. INTER ISLAND TRANSPORTATION	40 char, alphanumeric
13	Date of Arrival (DDMM YYYY) <i>Tanggal Bongkar (DDMM YYYY)</i>	✓			Date of discharge (input/output, optional)	DATE OF DISCHARGE. INTER ISLAND TRANSPORTATION	8 digits, date
14	Transit List <i>Daftar Transit</i>	✓			Grouping title (repeat)	—	—
15	Rdg/Fax from Transit Port <i>Rdg/Fax Transit</i>		✓		Transit radiogram/fax (input/output, optional)	TRANSIT RADIOGRAM. INTER ISLAND TRANSIT	28 char, alphanumeric

Table 5.18-5: List of Items (Window Name: Inter Island Transportation Update (Update Window1))(3/4)

No.	Item Name	Level			Description	Item in File	Note
		1	2	3			
16	Date of Rdg/Fax from Transit Port (DDMM YYYY) <i>Tanggal Rdg/Fax Transit (DDMM YYYY)</i>		✓		Date of transit radiogram/fax (input/output, optional)	DATE OF TRANSIT.INTER ISLAND TRANS TRANSIT	8 digits, date
17	Port of Transit <i>Pelabuhan Transit</i>		✓		Port of transit (input/output, optional)	transport_of. INTER ISLAND TRANS TRANSIT	40 char, alpha-numeric
18	Date of Transit (DDMM YYYY) <i>Tanggal Transit (DDMM YYYY)</i>		✓		Date of transit (input/output, optional)	DATE OF TRANSIT. INTER ISLAND TRANS TRANSIT	8 digits, date
19	Goods List <i>Daftar Barang</i>	✓			Grouping title (repeat)	---	---
20	Type of Goods <i>Jenis Barang</i>		✓		Type of goods (input/output, optional)	TYPE OF GOODS. INTER ISLAND TRANS GOODS	30 char, alpha-numeric
21	History <i>Sejarah</i>				Grouping title for History of this record (no repeat)	---	---
22	Last Operator <i>Operator Terkini</i>	✓			User-id of operator who registered (output, mandatory)	LAST OPERATOR. INTER ISLAND TRANSPORTATION	6 char, alpha-numeric
23	Operation Date <i>Tanggal Pengoperasian</i>	✓			Registration date (output, mandatory)	LAST UPDATE. INTER ISLAND TRANSPORTATION	8 digits, date

**Table 5.18-5: List of Items (Window Name: Inter Island Transportation Update (Update Window1))(4/4)**

No.	Item Name	Level			Description	Item in File	Note
		1	2	3			
24	Note <i>Catatan</i>	✓			Note for history information. The number of characters shown on the Note section is the maximum length of display. The maximum length of input is 800 characters. (input/output, optional)	NOTE. INTER ISLAND TRANSPORTATION	320 char, alpha-numeric

**Table 5.18-6: Input Check List(Inter Island Transportation Update(Update Window1))**

No.	Item Name	Condition (range, format, and so on)	Message ID	Note
1	Date of Rdg/Fax from Port of Loading	Must be past date including today.	E0000010	—
2	Date of Transit	Must be after or same date of Departure.	E0000014	—
3	Date of Arrival	Must be after or same date of Departure and Transit.	E0000014	Date of Transit may be blank.
4	Date of Rdg/Fax from Port of Transit	Must be after or same date of Rdg/Fax from Port of Loading.	E0000014	—
5	Date of Rdg/Fax from Port of Destination	Must be after or same date of Rdg/Fax from Port of Loading and Rdg/Fax from Port of Transit.	E0000014	Date of Rdg/Fax from Port of Transit may be blank.

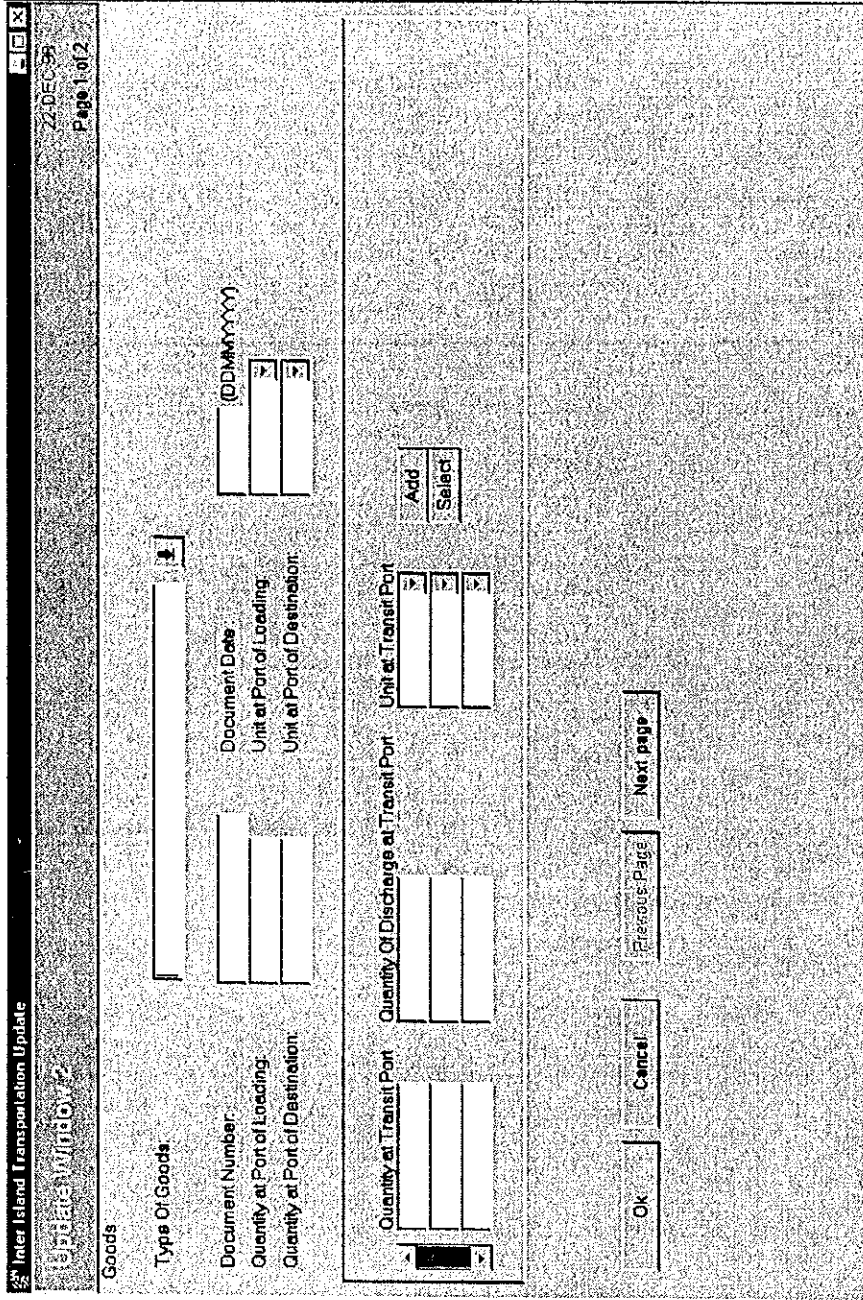


Figure 5.18-3: Window Layout for Inter Island Transportation Update (Update Window 2) (1/2)



Inter Island Transportation Update  
Update Window 2  
Page 2 of 2

19-DEC-98

Sender:

NPWP Type: C 12 digits  
NPWP: C 10 digits  
Name:   
Street:   
City:

Postal Code:   
Phone Number:   
Fax Number:   
Telex Number:

Receiver:

NPWP Type: C 12 digits  
NPWP: C 10 digits  
Name:   
Street:   
City:

Postal Code:   
Phone Number:   
Fax Number:   
Telex Number:

Ok Cancel Previous Page Next Page

Figure 5.18-3: Window Layout for Inter Island Transportation Update (Update Window 2) (2/2)

Table 5.18-7: List of Items (Window Name: Inter Island Transportation Update (Update Window2))(1/4)

No.	Item Name	Level			Description	Item in File	Note
		1	2	3			
1	Goods <i>Barang</i>	✓			Grouping title (no repeat)	---	---
2	Type of Goods <i>Jenis Barang</i>		✓		Kind of goods (input/output, optional)	TYPE OF GOODS. INTER ISLAND TRANS GOODS	30 char, alpha- numeric
3	Document Number <i>Nomor Documen</i>		✓		Document number (input/output, optional)	DOCUMENT NUMBER. INTER ISLAND TRANS GOODS	25 char, alpha- numeric
4	Document Date (DDMM YYYY) <i>Tanggal Documen (DDMM YYYY)</i>		✓		Document date (input/output, optional)	DOCUMENT DATE. INTER ISLAND TRANS GOODS	8 digits, date
5	Quantity at Port of Loading <i>Jumlah Barang dari Tempat Asal</i>		✓		Quantity of goods (input/output, optional)	QUANTITY AT PORT OF LOADING. INTER ISLAND TRANS GOODS	20 digits, numeric
6	Unit at Port of Loading <i>Satuan Barang dari Tempat Asal</i>		✓		Unit of goods (input/output, optional)	loadgdunit_of. INTER ISLAND TRANS GOODS	30 char, alpha- numeric
7	Quantity at Port of Destination <i>Jumlah Barang pada Tempat Bongkar</i>		✓		Quantity of goods at destination (input/output, optional)	QUANTITY AT PORT OF DISCHARGE. INTER ISLAND TRANS GOODS	25 digits, numeric
8	Unit at Port of Destination <i>Satuan Barang dari Tempat Bongkar</i>		✓		Unit of goods at destination (input/output, optional)	discgdunit_of. INTER ISLAND TRANS GOODS	30 char, alpha- numeric

Table 5.18-7: List of Items (Window Name: Inter Island Transportation Update (Update Window2))(2/4)

No.	Item Name	Level			Description	Item in File	Note
		1	2	3			
9	Transit Information <i>Informasi Transit</i>		✓		Grouping title (repeat)	—	—
10	Quantity at Transit Port <i>Jumlah Barang pada Tempat Transit</i>			✓	Quantity of goods at transit (input/output, optional)	QUANTITY OF GOOD. TRANSIT GOODS	25 digits, numeric
11	Quantity of Discharge at Transit Port <i>Jumlah Barang pada Tempat Transit</i>			✓	Quantity of discharge of goods at transit (input/output, optional)	QUANTITY OF DISCHARGE. TRANSIT GOODS	25 digits, numeric
12	Unit at Transit <i>Satuan Barang dari Tempat Transit</i>			✓	Unit of goods at transit (input/output, optional)	loadgdunit_of. INTER ISLAND TRANS GOODS	30 char, alpha-numeric
13	Sender <i>Pengirim</i>		✓		Grouping title for sender of goods (no repeat)	—	—
14	NPWP Type <i>Tipe NPWP</i>			✓	Type of NPWP Option: • 12 digits • 10 digits (input/output, mandatory when 15[NPWP] is inputted)	idtype_of.SENDER	1 digit, numeric
15	NPWP <i>NPWP</i>			✓	Tax Payer Code Number of the Sender (input/output, optional)	NPWP. SENDER	12 char, alpha-numeric
16	Name <i>Nama</i>			✓	Company's Name (input/output, mandatory)	COMPANY NAME.SENDER	40 char, alpha-numeric
17	Street <i>Jalan</i>			✓	Address of Company (input/output, optional)	STREET. SENDER	100 char, alpha-numeric

**Table 5.18-7: List of Items (Window Name: Inter Island Transportation Update (Update Window2))(3/4)**

No.	Item Name	Level			Description	Item in File	Note
		1	2	3			
18	City <i>Kota</i>			✓	City address of company (input/output, optional)	CITY. SENDER	30 char, alpha- numeric
19	Postal Code <i>Kode Pos</i>			✓	Postal Code of Company (input/output, optional)	POSTAL CODE. SENDER	5 digits, numeric
20	Fax Number <i>Nomor Fax</i>			✓	Fax Number of Company (input/output, optional)	FAX NUMBER. SENDER	12 digits, numeric
21	Telephone Number <i>Nomor Telepon</i>			✓	Phone Number of Company (input/output, optional)	PHONE NUMBER. SENDER	12 digits, numeric
22	Telex Number <i>Nomor Telex</i>			✓	Telex Number of Company (input/output, optional)	TELEX. SENDER	20 char, alpha- numeric
23	Receiver <i>Penerima</i>		✓		Grouping title for receiver of the goods (no repeat)	---	---
24	NPWP Type <i>Tipe NPWP</i>			✓	Type of ID Option: • 12 digits • 10 digits (input/output, mandatory when 25[NPWP] is inputted)	idtype_of. RECEIVER	1 digit, numeric
25	NPWP <i>NPWP</i>			✓	Tax Payer Code Number Of the Sender (input/output, optional)	NPWP. RECEIVER	12 char, alpha- numeric
26	Name <i>Nama</i>			✓	Company's Name (input/output, mandatory)	COMPANY NAME. RECEIVER	40 char, alpha- numeric
27	Street <i>Jalan</i>			✓	Address of Company (input/output, optional)	STREET. RECEIVER	100 char, alpha- numeric
28	City <i>Kota</i>			✓	City address of company (input/output, optional)	CITY. RECEIVER	30 char, alpha- numeric
29	Postal Code <i>Kode Pos</i>			✓	Postal Code of Company (input/output, optional)	POSTAL CODE. RECEIVER	5 digits, numeric
30	Fax Number <i>Nomor Fax</i>			✓	Fax Number of Company (input/output, optional)	FAX NUMBER. RECEIVER	12 digits, numeric
31	Telephone Number <i>Nomor Telepon</i>			✓	Phone Number of Company (input when 25[NPWP] is blank/output when 25[NPWP] is inputted, optional)	PHONE NUMBER. RECEIVER	12 digits, numeric

**Table 5.18-7: List of Items (Window Name: Inter Island Transportation Update  
(Update Window2))(4/4)**

No.	Item Name	Level			Description	Item in File	Note
		1	2	3			
32	Telex Number <i>Nomor</i> <i>Telex</i>			✓	Telex Number of Company (input/output, optional)	TELEX. RECEIVER	20 char, alpha- numeric

**Table 5.18-8: Input Check List(Inter Island Transportation Update(Update Window2))**

No.	Item Name	Condition (range, format, and so on)	Message ID	Note
1	Unit at Transit	Better to be same with Unit at Origin.	WP050001	—
2	Unit at Destination	Better to be same with Unit at Origin.	WP050001	—
3	NPWP	Must have full length according to NPWP Type.	E0000015	—
4	NPWP	Must start with "0" when NPWP is 12 digits.	E0000016	Fill in the blank part of the message text with "0".
5	NPWP	Must be numeric.	E0000009	—