

Table 5.4-7: List of Items (Window Name: NI/NHI Retrieval
(Retrieval Result Window))(1/9)

No.	Item Name	Level			Description	Item in File	Note
		1	2	3			
1	NI/NHI Number <i>Nomor NI/NHI</i>	✓			NI/NHI number. Designated unique number (candidate). (output, mandatory)	NI/NHI NUMBER. NI/NHI	26 char, alpha-numeric
2	Date of NI/NHI (DDMM YYYY) <i>Tanggal NI/NHI (DDMM YYYY)</i>	✓			Date of NI/NHI (output, mandatory)	DATE OF NI/NHI. NI/NHI	8 digits, date
3	NPI Number <i>Nomor NPI</i>	✓			NPI(Intelligence Process Note) number (output, mandatory)	NPI NO.NI/NHI	26 char, alpha-numeric
4	Date of NPI (DDMM YYYY) <i>Tanggal NPI (DDMM YYYY)</i>	✓			Date of NPI (output, mandatory)	DATE OF NPI. NI/NHI	8 digits, date
5	NI/NHI Category <i>Kategori NI/NHI</i>	✓			Category of NI/ NHI Option : • NI • NHI (output, mandatory)	FLAG NI/NHI.NI/NHI	1 char, alpha-numeric
6	Type of NI/NHI <i>Sifat NI/NHI</i>	✓			Type of NI/NHI Option: • Normal • Confidential • Very confidential (output, mandatory)	NI/NHI TYPE. NI/NHI	1 char, alpha-numeric
7	Classification <i>Klasifikasi</i>	✓			Classification of NI/NHI Option : • Regular • Urgent • Very urgent (output, mandatory)	CLASSIFICATION. NI/NHI	1 char, alpha-numeric
8	NI/NHI Object <i>Obyek NI/NHI</i>	✓			Object of NI/NHI Option : • Imported goods • Exported goods (output, mandatory)	OBJECT.NI/NHI	1 char, alpha-numeric

Table 5.4-7: List of Items (Window Name: NI/NHI Retrieval (Retrieval Result Window))(2/9)

No.	Item Name	Level			Description	Item in File	Note
		1	2	3			
9	Action <i>Tindakan</i>	✓			Action should be done Option : <ul style="list-style-type: none"> • Complete examination • Detention • Arresting • Handling (output, optional)	action_of.NI/NHI	20 char, alpha- numeric
10	Matters To Be Concerned <i>Hal-hal yang Perlu Diperhati- kan</i>	✓			Matters to be concerned (output, optional)	MATTERS TO BE CONCERNED. NI/NHI	200 char, alpha- numeric
11	Reason <i>Alasan</i>	✓			Reason why NI/NHI was issued (output, optional)	REASON.NI/NHI	200 char, alpha- numeric
12	History <i>Sejarah</i>	✓			Grouping title for History of this record (no repeat)	—	—
13	Last Operator <i>Pengguna Terkini</i>		✓		User-id of operator who registered/updated (output, mandatory)	LAST OPERATOR. NI/NHI	6 char, alpha- numeric
14	Operation Date <i>Tanggal Pengopera- sian</i>		✓		Registration/Updated date (output, mandatory)	LAST UPDATE. NI/NHI	8 digits, date
15	Note <i>Catatan</i>		✓		Note for history information. The number of characters shown on the Note section is the maximum length of display. The maximum length of input is 800 characters. (output, optional)	NOTE.NI/NHI	240 char, alpha- numeric
16	To <i>Kepada</i>	✓			Grouping title for the position of official who will receive NI/NHI (no repeat)	—	—
17	Position <i>Jabatan</i>		✓		Position name of official (output, mandatory)	position_of.DJBC POSITION	40 char, alpha- numeric

**Table 5.4-7: List of Items (Window Name: NI/NHI Retrieval
(Retrieval Result Window))(3/9)**

No.	Item Name	Level			Description	Item in File	Note
		1	2	3			
18	Office Name <i>Nama Kantor</i>		✓		Name of Customs Office (output, mandatory)	NAME. DJBCOFFICE	40 char, alpha- numeric
19	Cc <i>Cc</i>	✓			Grouping title for the position of official who will receive cc of NI/NHI (repeat)	—	—
20	Position <i>Jabatan</i>		✓		Position name of official (output, optional)	position_of.DJBC POSITION	40 char, alpha- numeric
21	Office Name <i>Nama Kantor</i>		✓		Name of Customs Office (output, mandatory when 20[Position] is inputted)	NAME. DJBCOFFICE	40 char, alpha- numeric
22	The Result of NI/NHI is Reported to: <i>Melapor Kepada</i>	✓			Grouping title for the position of official who will receive the result of the implementation of NI/NHI (no repeat)	—	—
23	Position <i>Jabatan</i>		✓		Position name of official (output, mandatory)	position_of.DJBC POSITION	40 char, alpha- numeric
24	Office Name <i>Nama Kantor</i>		✓		Name of Customs Office (output, mandatory)	NAME. DJBCOFFICE	40 char, alpha- numeric
25	From <i>Dari</i>	✓			The position of official who issued NI/NHI	—	—
26	Position <i>Jabatan</i>		✓		Position name of official (output, mandatory)	position_of.DJBC POSITION	40 char, alpha- numeric
27	Office Name <i>Nama Kantor</i>		✓		Name of Customs Office (output, mandatory)	NAME.DJBC OFFICE	40 char, alpha- numeric
28	Issuer <i>Pengirim</i>	✓			Grouping title for the official who issued NI/NHI (no repeat)	—	—
29	NIP <i>NIP</i>		✓		Civil servant number (output, mandatory)	NO.OF CIVIL SERVANT.DJBC OFFICER	9 char, alpha- numeric
30	Name <i>Nama</i>		✓		Name of the official (output, mandatory)	NAME.DJBC OFFICER	30 char, alpha- numeric

**Table 5.4-7: List of Items (Window Name: NI/NHI Retrieval
(Retrieval Result Window))(4/9)**

No.	Item Name	Level			Description	Item in File	Note
		1	2	3			
31	Rank <i>Pangkat</i>		✓		Rank of the official (output, mandatory)	rank_of.DJBC OFFICER	20 char, alpha- numeric
32	Position <i>Jabatan</i>		✓		The position of the official (output, mandatory)	position_of.DJBC POSITION	40 char, alpha- numeric
33	For Imported Goods/ Exported Goods <i>Untuk Barang- barang Impor/ Ekspor</i>	✓			Grouping Title (no repeat)	—	—
34	Importer/ Exporter <i>Importir/ Eksportir</i>		✓		Grouping Title (no repeat)	—	—
35	NPWP Type <i>Tipe NPWP</i>			✓	Type of NPWP Option : • 12 digits • 10 digits (output, mandatory)	idtype_of.BASIC INFORMATION	1 digit, numeric
36	NPWP <i>NPWP</i>			✓	Tax Payer Code Number (output, optional)	ID NUMBER. BASIC INFORMATION	12 char, alpha- numeric
37	Name <i>Nama</i>			✓	Name (output, optional)	COMP-NAME. NI/NHI	40 char, alpha- numeric
38	Street <i>Jalan</i>			✓	Street name (output, optional)	COMP-STREET. NI/NHI	100 char, alpha- numeric
39	City <i>Kota</i>			✓	City (output, optional)	COMP-CITY. NI/NHI	30 char, alpha- numeric
40	Postal Code <i>Kode Pos</i>			✓	Postal code (output, optional)	COMP-POSTAL CODE. NI/NHI	5 digits, numeric
41	Phone Number <i>Nomor Telephon</i>			✓	Telephone number (output, optional)	COMP-PHONE. NI/NHI	12 digits, numeric

Table 5.4-7: List of Items (Window Name: NI/NHI Retrieval (Retrieval Result Window))(5/9)

No.	Item Name	Level			Description	Item in File	Note
		1	2	3			
42	Customs Broker <i>PPJK</i>		✓		Grouping Title (no repeat)	---	---
43	NPWP Type <i>Tipe NPWP</i>			✓	Type of NPWP Option : • 12 digits • 10 digits (output, mandatory)	idtype_of.BASIC INFORMATION	1 digit, numeric
44	NPWP <i>NPWP</i>			✓	Tax Payer Code Number (output, optional)	ID NUMBER. BASIC INFORMATION	12 char, alpha- numeric
45	Name <i>Nama</i>			✓	Name (output, optional)	PPJK-NAME. NI/NHI	40 char, alpha- numeric
46	Street <i>Jalan</i>			✓	Street name (output, optional)	PPJK-STREET. NI/NHI	100 char, alpha- numeric
47	City <i>Kota</i>			✓	City (output, optional)	PPJK-CITY. NI/NHI	30 char, alpha- numeric
48	Postal Code <i>Kode Pos</i>			✓	Postal code (output, optional)	PPJK-POSTAL CODE. NI/NHI	5 digits, numeric
49	Phone Number <i>Nomor Telephon</i>			✓	Telephone number (output, optional)	PPJK-PHONE. NI/NHI	12 digits, numeric
50	Kind of Goods <i>Jenis Barang</i>		✓		Kind of the imported/exported goods (output, optional)	KIND OF GOODS. NI/NHI	180 char, alpha- numeric
51	Voyage/ Flight No. <i>No. Pelayaran/ Penerbang- an</i>		✓		Voyage number for the ship or flight number for the plane (output, optional)	TRANSPORTA- TION NUMBER. NI/NHI	7 char, alpha- numeric
52	Name of Vessel <i>Nama Alat Pengangkut</i>		✓		Name of vessel (Name of the plane or ship) (output, optional)	NAME OF VESSEL.NI/NHI	30 char, alpha- numeric

**Table 5.4-7: List of Items (Window Name: NI/NHI Retrieval
(Retrieval Result Window))(6/9)**

No.	Item Name	Level			Description	Item in File	Note
		1	2	3			
53	Kind of Customs Declaration <i>Jenis Pemberitahuan Pabean</i>		✓		Kind of customs declaration Option : • PIB • PEB (output when 5[NI/NHI Category] is "NI", optional)	PIB/PEB FLAG.NI/NHI	1 char, alpha- numeric
54	Customs Declaration No. <i>No. Pemberitahuan Pabean</i>		✓		Customs declaration number (output when 5[NI/NHI Category] is "NI", optional)	CUSTOMS DECLARATION NUMBER.NI/NHI	6 char, alpha- numeric
55	Date of Customs Declaration (DDMM YYYY) <i>Tanggal Pemberitahuan Pabean (DDMM YYYY)</i>		✓		Date of customs declaration (output when 5[NI/NHI Category] is "NI", optional)	CUSTOMS DECLARATION DATE.NI/NHI	8 digits, date
56	For Imported Goods <i>Untuk Barang-barang Impor</i>		✓		Grouping title. Items in this group are only for exported goods. (no repeat)	—	—
57	Arrival Date (DDMM YYYY) <i>Tanggal Kedatangan (DDMM YYYY)</i>			✓	Arrival date of vessel (output, optional)	ARRIVAL DATE.NI/NHI FOR IMPORTED GOODS	8 digits, date
58	BL/AWB Number <i>Nomor BL/AWB</i>			✓	BL number or AWB number (output, optional)	BL/AWB NUMBER.NI/NHI FOR IMPORTED GOODS	13 char, alpha- numeric

**Table 5.4-7: List of Items (Window Name: NI/NHI Retrieval
(Retrieval Result Window))(7/9)**

No.	Item Name	Level			Description	Item in File	Note
		1	2	3			
59	Date of BL/AWB (DDMM YYYY) <i>Tanggal BL/AWB (DDMM YYYY)</i>			✓	Date of BL or date of AWB (output, optional)	DATE OF BL/AWB.NI/NHI FOR IMPORTED GOODS	8 digits, date
60	BC 1.1 Number <i>Nomor BC 1.1</i>			✓	BC 1.1 number (output when 5[NI/NHI Category] is "NI", optional)	BC1.1 NUMBER.NI/NHI FOR IMPORTED GOODS	11 char, alpha-numeric
61	Date of BC 1.1 (DDMM YYYY) <i>Tanggal BC 1.1 (DDMM YYYY)</i>			✓	Date of BC 1.1 (output when 5[NI/NHI Category] is "NI", optional)	DATE OF BC1.1.NI/NHI FOR IMPORTED GOODS	8 digits, date
62	Pos BC 1.1 Number <i>Nomor Pos BC 1.1</i>			✓	Pos BC 1.1 number (output when 5[NI/NHI Category] is "NI", optional)	POS BC1.1 NUMBER.NI/NHI FOR IMPORTED GOODS	12 char, alpha-numeric
63	Container Information <i>Informasi Kontener</i>		✓		Grouping Title (no repeat)	—	—
64	Number of Container(s) <i>Jumlah Kontener</i>			✓	Number of containers that has NI/NHI (output, optional)	NUMBER OF CONTAINER.NI/NHI	3 digits, numeric
65	Container List <i>Uraian Kontener</i>			✓	Grouping Title (repeat)	—	—
66	Container Serial No. <i>Nomor Seri Kontener</i>			✓ *4	Serial number for container (output, optional)	CONTAINER SERIAL NUMBER.NI/NHI CONTAINER	3 digits, numeric
67	Container No. <i>Nomor Kontener</i>			✓ *4	Container number (output, optional)	CONTAINER NUMBER.NI/NHI CONTAINER	11 char, alpha-numeric

Table 5.4-7: List of Items (Window Name: NI/NHI Retrieval
(Retrieval Result Window))(8/9)

No.	Item Name	Level			Description	Item in File	Note
		1	2	3			
68	Container Size <i>Ukuran Kontener</i>			✓ *4	Size of container Option : • 20' • 40' (output, optional)	cntsize_of.NI/NHI CONTAINER	10 char, alpha- numeric
69	Package Information <i>Informasi Kolli</i>		✓		Grouping Title (no repeat)	—	—
70	Number of Package(s) <i>Jumlah Kolli</i>			✓	Number of package that has NI/NHI (output, optional)	NUMBER OF PACKAGE.NI/NHI	3 digits, numeric
71	Package List <i>Uraian Kolli</i>			✓	Grouping Title (repeat)	—	—
72	Package Serial No. <i>Nomor Seri Kolli</i>			✓ *4	Serial number for package (output, optional)	PACKAGE SERIAL NUMBER.NI/NHI PACKAGE	3 digits, numeric
73	Package No. <i>Nomor Kolli</i>			✓ *4	Package number (output, optional)	PACKAGE NUMBER.NI/NHI PACKAGE	20 char, alpha- numeric
74	Package Mark <i>Merek Kolli</i>			✓ *4	Mark of package (output, optional)	MARK OF PACKAGE.NI/NHI PACKAGE	20 char, alpha- numeric
75	Package Type <i>Jenis Kolli</i>			✓ *4	Type of package (output, optional)	pckcode_of.NI/NHI	25 char, alpha- numeric
76	For Imported Excisable Goods <i>Untuk Barang-barang Impor Kena Cukai</i>	✓			Grouping title (no repeat)	—	—
77	NPPBKC <i>NPPBKC</i>		✓		License of excisable goods entrepeneur (for excise company)	NPPBKC. FACTORY	10 char, alpha- numeric
78	NPP <i>NPP</i>		✓		Exemption registry number (for excise company)	NPP. FACTORY	9 char, alpha- numeric

**Table 5.4-7: List of Items (Window Name: NI/NHI Retrieval
(Retrieval Result Window))(9/9)**

No.	Item Name	Level			Description	Item in File	Note
		1	2	3			
79	Factory/ Storage/ Retail Store Name <i>Nama Pabrik/ Tempat Penimbunan /Tempat Penjualan Eceran</i>		✓		Name (output, optional)	FACTORY NAME. FACTORY	40 char, alpha- numeric
80	Owner Name <i>Nama Pemilik</i>		✓		Name of owner (output, optional)	NAME.OWNER	40 char, alpha- numeric
81	Street <i>Jalan</i>		✓		Street name (output, optional)	STREET. FACTORY LOCATION	100 digits, alpha- numeric
82	City <i>Kota</i>		✓		City (output, optional)	CITY.FACTORY LOCATION	30 digits, alpha- numeric
83	Description of Excisable Goods <i>Urain Barang Kena Cukai</i>		✓		Description of excisable goods (output, optional)	KIND OF EXCISABLE GOODS.NI/NHI FOR EXCISABLE GOODS	60 char, alpha- numeric

NI/NHI Summary Report

Date: 99/99/9999
Page: 999/999

Report code: RP014010

NI/NHI Category
 Period from to
 Office name

No.	NI/NHI No.	Date	Issuer		Office Name	Reason	Action
			Name	Position			
6	7	8	10	11	12	13	14
6	7	8	10	11	12	13	14
6	7	8	10	11	12	13	14

User ID

Figure 5.4-4 : Report Layout for NI/NHI Summary Report

Table 5.4-8: List of Items (Report Name: NI/NHI Summary Report) (1/2)

No.	Item Name	Level			Description	Item in File	Note
		1	2	3			
1	NI/NHI Category <i>Kategori NI/NHI</i>	✓			The category of NI/ NHI Option: • NI • NHI	FLAG NI/NHI.NI/NHI	3 char, alpha- numeric
2	Period From <i>Dari Periode</i>	✓			Period of NI/NHI report (output, mandatory)	DATE OF NI/NHI	8 digits, date
3	Period To <i>Hingga Periode</i>	✓			Period of NI/NHI report (output, mandatory)	DATE OF NI/NHI	8 digits, date
4	Office Name <i>Nama Kantor</i>	✓			Name of Office that issue NI/NHI (output, mandatory)	NAME. DJBCOFFICE	40 char, alpha- numeric
5	Detail <i>Perincian</i>	✓			Grouping title (Repeat)	—	—
6	No. <i>No.</i>		✓		Sequential number (output, mandatory)	—	2 digits, numeric
7	NI/NHI No. <i>Nomor NI/NHI</i>		✓		NI/NHI number. Designated unique number (candidate). (output, mandatory)	NI/NHI NUMBER. NI/NHI	26 char, alpha- numeric
8	Date <i>Tanggal NI/NHI</i>		✓		Date of NI/NHI (output, mandatory)	DATE OF NI/NHI. NI/NHI	8 digits, date
9	Issuer <i>Pengirim</i>		✓		Grouping title for the official who issued NI/NHI (repeat)	—	—
10	Name <i>Nama</i>			✓	Name of the official (output, mandatory)	NAME. DJBCOFFICER	30 char, alpha- numeric
11	Position <i>Jabatan</i>			✓	Position name of official (output, mandatory)	position_of.DJBC POSITION	40 char, alpha- numeric
12	Office Name <i>Nama Kantor</i>			✓	Name of Customs Office (output, mandatory)	NAME. DJBCOFFICE	40 char, alpha- numeric
13	Reason <i>Alasan</i>		✓		Reason why NI/NHI was issued (output, optional)	REASON.NI/NHI	200 char, alpha- numeric

Table 5.4-8: List of Items (Report Name: NI/NHI Summary Report) (1/2)

No.	Item Name	Level			Description	Item in File	Note
		1	2	3			
14	Action <i>Tindakan</i>		✓		Action should be done Option : <ul style="list-style-type: none"> • Complete examination • Detention • Arresting • Handling (output, optional)	action_of.NI/NHI	20 char, alpha- numeric
15	User ID <i>ID</i> <i>Pengguna</i>	✓			User ID of the operator (output, mandatory)	—	6 char, alpha- numeric

5.5 Company Violation Registration

Volume II Figure 2.5.2-6 and Table 2.5.2-6 show the outline of Company Violation Registration Process. As a result of System Design, the process is designed as below. Volume III Appendix A is referred to understand how to view figures and tables.

- Process Procedure

- 1) Retrieval of Company Information

- i) Input

Read inputted data from Retrieval Window. Table 5.5-7 shows details of data items on the window.

- ii) Input Check

Check value of inputted data following Table 5.5-8.

- iii) Retrieval

Send retrieval request to the Basic information database to make sure the NPWP of selected ID Type exists.

- iv) Output

Display Registration Window 1. Table 5.5-9 shows details of data items on the window. The default position of “window select” button on Registration Window 1 is referred to the Table 5.5-1. The details of changed windows are listed in Table 5.5-10, 5.5-12, 5.5-14 and 5.5-16.

Table 5.5-1: Default position of window select button

Button Position (Destinated Window)	Condition of default position
Importer, Exporter, Customs Broker, or Inter island transportation company (Registration Window 3)	When “Importer”, “Exporter”, “Customs broker”, or “Inter island transportation company” flag is checked in Company type.
Shipping lines, or Airlines company (Registration Window 4)	When “Shipping lines”, or “Airlines” flag is checked in company type.
Bonded Storage, or Excise company (Registration Window 5)	When “Bonded storage” or “Excise company” is checked in company type.

- 2) Registration of Company Violation information

- i) Select Window

When “Next Page” is clicked on the window, the window will change to requested window corresponding to the “window select” button.

ii) Registration of Common Company violation

a) Input

Read inputted data from Registration window 2.

b) Input check

Check if all mandatory items are inputted. Then check value of inputted data following Table 5.5-11.

c) Code Retrieval

Retrieve data from tables using inputted codes. Edit and display the retrieved data into data fields corresponding to its code on the window. For details, see Table 5.5-2.

Table 5.5-2: List of codes

Code	Location of Table	Note
Service office code	Client	—
Type of violation	Client	—
HS Code	Server	—
Country of origin code	Client	—
Country of destination code	Client	—
Unit code	Client	—
Condition code	Client	—
Case settlement code	Client	—
Detection method code	Client	—
Source of information code	Client	—

iii) Registration of Importer, Exporter, Customs broker, Inter island transportation violation

a) Input

Read inputted data from Registration window 3.

b) Input Check

Check if all mandatory items are inputted. Then check value of inputted data following Table 5.5-13.

c) Code Retrieval

Retrieve data from tables using inputted codes. Edit and display the retrieved data into data fields corresponding to its code on the window. For details, see Table 5.5-3.

Table 5.5-3 List of codes

Code	Location of Table	Note
Channel determination	Client	—

iv) Registration of Shipping lines/Airlines violation

a) Input

Read inputted data from Registration window 4.

b) Input Check

Check if all mandatory items are inputted. Then check value of inputted data following Table 5.5-15.

c) Code Retrieval

Retrieve data from tables using inputted codes. Edit and display the retrieved data into data fields corresponding to its code on the window. For details, see Table 5.5-4.

Table 5.5-4: List of codes

Code	Location of Table	Note
Type of document code	Client	—

v) Registration of Bonded Storage, Duty free shop, Excise company violation

a) Input

Read inputted data from Registration window 5.

b) Input Check

None.

c) Code Retrieval

Retrieve data from tables using inputted codes. Edit and display the retrieved data into data fields corresponding to its code on the window. For details, see Table 5.5-5.

Table 5.5-5: List of codes

Code	Location of Table	Note
Postal code	Client	—
Province code	Client	—

vi) Confirmation

Display a confirmation message. (Message ID;R0000001)

vii) Registration

Edit and register inputted data into database. Table names of the database are shown in Table 5.5-9.

viii) Output

Display a normal message (Message ID;N0000002).

- Window/Report Design

- Windows

- Retrieval Window Figure 5.5-1
 - Registration Window 1 Figure 5.5-2
 - Registration Window 2 Figure 5.5-3
 - Registration Window 3 Figure 5.5-4
 - Registration Window 4 Figure 5.5-5
 - Registration Window 5 Figure 5.5-6

- Report

- None.

- Error Procedure

Display an error message following Table 5.5-6.

Table 5.5-6: Error Procedure

Case	Error Contents	Message ID	Note
1)-ii), 2)-ii)-b), 2)-iii)-b), 2)-iv)-b), 2)-v)-b)	An error is detected at Input Check.	See Table 5.5-8,5.5-11,5.5-13,5.5-15,5.5-17	—
1)-iii), 2)-ii)-c), 2)-iii)-c), 2)-iv)-c), 2)-v)-c)	SQL returned an error code.	E0000001	Fill in the blank part of the message text with the error code.
1)-iii)	The record to be registered does not exist.	E0000002	—
2)-ii)-c), 2)-iii)-c), 2)-iv)-c), 2)-v)-c),	The code to be retrieved at Code Retrieval does not exist in the code table.	E0000008	—
1)-ii), 2)-ii)-b), 2)-iii)-b), 2)-iv)-b), 2)-v)-b)	There are one or more mandatory items which have not been inputted.	E0000007	—

- Restriction

- Data can not be registered if Basic Information of corresponding NPWP does not exist. Basic Information must be registered in Company Profile Registration process first.

- Note

- For details of each message, see Volume II 1.4.
- Basic information must exist when register violator information.

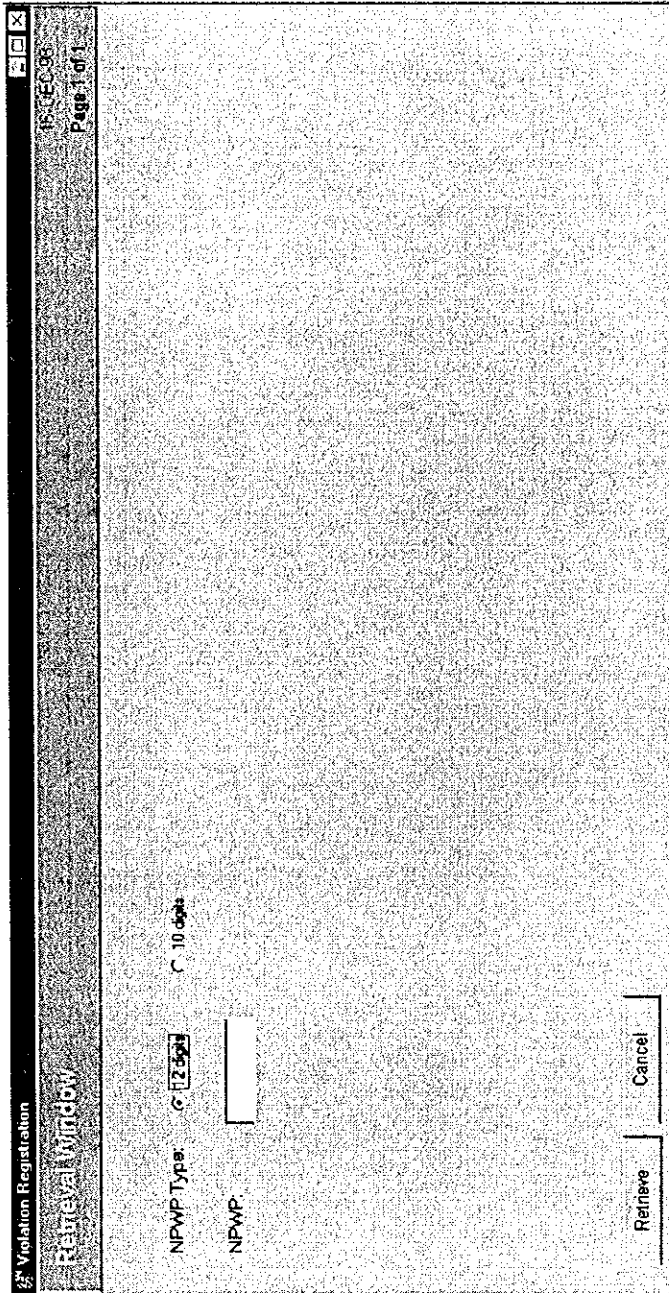


Figure 5.5-1: Window Layout for Violation Registration (Retrieval Window)

Table 5.5-7: List of Items
(Window Name: Company Violation Registration (Retrieval Window))

No.	Item Name	Level			Description	Item in File	Note
		1	2	3			
1	NPWP Type <i>Type NPWP</i>	✓			Type of NPWP (input, mandatory)	idtype_of. BASIC INFORMATION	1 digit, numeric
2	NPWP <i>NPWP</i>	✓			Tax Payer Code Number (input, mandatory)	ID NUMBER. BASIC INFORMATION	12 char., alpha- numeric

**Table 5.5-8: Input Check List
(Company Violation Registration (Retrieval Window))**

No.	Item Name	Condition (range, format, and so on)	Message ID	Note
1	NPWP	Must have full length according to NPWP Type.	E0000015	—
2	NPWP	Must start with "0" when NPWP is 12 digits.	E0000016	—
3	NPWP	Must be numeric.	E0000009	—

Company Violation Registration

23-JAN-93 Page 1 of 3

Registration Window

Violator Information

NPWP:

Name:

Street:

City:

Province:

Postal Code:

Phone Number:

Fax Number:

Telex Number:

Company Type: Importer
 Exporter
 Customs Broker
 Air Lines Company
 Inter-island Transportation
 Bonded Storage
 Excise Company

Classification of Violation: Importer/Exporter/Customs Broker/Inter-island Transportation
 Shipping Lines/Air Lines
 Bonded Storage/DFS/Excise Company

Register Cancel Previous Page Next Page

Figure 5.5-2: Window Layout for Company Violation Registration (Registration Window 1)

Table 5.5-9: List of Items
(Window Name: Company Violation Registration (Registration Window1)) (1/2)

No.	Item Name	Level			Description	Item in File	Note
		1	2	3			
1	Violator Information <i>Keterangan tentang pelanggar</i>	✓			Violator Information (No repeat)	— (Group title)	—
2	NPWP <i>NPWP</i>		✓		Tax Payer Code Number (output)	ID NUMBER. BASIC INFORMATION	12 char., alpha- numeric
3	Name <i>Nama</i>		✓		Company name (output)	NAME. BASIC INFORMATION	40 char., alpha- numeric
4	Street <i>Jalan</i>		✓		The street name of company (output)	STREET. BASIC INFORMATION	100 char., alpha- numeric
5	City <i>Kota</i>		✓		The city address of company (output)	CITY. BASIC INFORMATION	30 char., alpha- numeric
6	Province <i>Propinsi</i>		✓		The province of company (output)	province_of. BASIC INFORMATION	20 char., alpha- numeric
7	Postal Code <i>Kode pos</i>		✓		Postal code of Company (output)	POSTAL CODE. BASIC INFORMATION	5 digits, numeric
8	Phone Number <i>Nomor Telepon</i>		✓		The telephone number of company (output)	PHONE NUMBER. BASIC INFORMATION	12 digits, numeric
9	Fax Number <i>Nomor Fax</i>		✓		Fax number of Company (output)	FAX NUMBER. BASIC INFORMATION	12 digits, numeric
10	Telex <i>Telex</i>		✓		Telex number of Company (output , mandatory)	TELEX NUMBER. BASIC INFORMATION	20 digits, numeric
11	Company Type <i>Jenis perusahaan</i>		✓		Company type (No repeat)	— (Group title)	—
12	Importer <i>Importir</i>			✓	Importer flag (output)	IMPORTER FLAG. BASIC INFORMATION	1 char., alpha- numeric
13	Exporter <i>Eksporir</i>			✓	Exporter flag (output)	EXPORTER FLAG. BASIC INFORMATION	1 char., alpha- numeric

Table 5.5-9: List of Items
(Window Name: Company Violation Registration (Registration Window1)) (2/2)

No.	Item Name	Level			Description	Item in File	Note
		1	2	3			
14	Customs Broker <i>PPJK</i>			✓	Customs broker flag (output)	CUSTOMS BROKER FLAG. BASIC INFORMATION	1 char., alpha- numeric
15	Airlines Company <i>Perusahaan Penerbangan</i>			✓	Airlines flag (output)	AIRLINES FLAG. BASIC INFORMATION	1 char., alpha- numeric
16	Shipping Lines <i>Perusahaan Pelayaran</i>			✓	Shipping lines flag (output)	SHIPPING LINES FLAG. BASIC INFORMATION	1 char., alpha- numeric
17	Inter Island Transportation <i>Pelayaran Antar Pulau</i>			✓	Inter island transportation flag (output)	INTER ISLAND TRANSPORTATION FLAG. BASIC INFORMATION	1 char., alpha- numeric
18	Bonded Storage <i>TPB</i>			✓	Bonded storage flag (output)	BONDED STORAGE FLAG. BASIC INFORMATION	1 char., alpha- numeric
19	Excise Company <i>Perusahaan Cukai</i>			✓	Excise company flag (output)	EXCISE COMPANY FLAG. BASIC INFORMATION	1 char., alpha- numeric
20	Classification of Violation <i>Klasifikasi pelanggaran</i>	✓			Window select button : <ul style="list-style-type: none"> • Importer/Exporter/Customs Broker/Inter Island Transportation • Shipping lines/Airlines • Bonded Storage/DFS/Excise Company (input/output, mandatory)	COMPANY TYPE. BASIC INFORMATION	1 digit, numeric (does not update)

Company Violation Registration
 Registration Window
 2010-01-23
 Page 2 of 3

Company Violation Information
 Service Office: [] Date of Violation: (DDMMYYYY) []

Violation Detail Information

Type of Violation:	HS Code:	Kind of Goods:	Country of Origin:	Country of Destination:
[]	[]	[]	[]	[]
[]	[]	[]	[]	[]
[]	[]	[]	[]	[]

State of Financial Loss: [] Case Settlement: []

Date of Detention: (DDMMYYYY) [] Amount of Administrative Fine: []

Amount of Additional Payment: [] Source of Information: []

Detection Method: []

Modus Operandi: []

History
 Date Entry Operator: [] Date of Date Entry: (DDMMYYYY) []
 Note: []

Register [] Cancel [] Previous Page [] Next Page []

Figure 5.5-3: Window Layout for Company Violation Registration (Registration Window 2) (1/4)

Company Violation Registration
 Registration Window 2
 2013/03/25
 Page 2 of 3

Company Violation Information
 Service Office: [] Date of Violation: (DDMMYY)

Violation Detail Information

Type of Violation	Country of Destination	Customs Value	Brand
[]	[]	[]	[]
[]	[]	[]	[]
[]	[]	[]	[]
[]	[]	[]	[]

State of Financial Loss: [] Case Settlement: []

Date of Detention: (DDMMYY) Amount of Administrative Fine: []

Detection Method: [] Source of Information: []

Moccus Operator: []

History
 Date Entry Operator: [] Date of Data Entry: (DDMMYY)
 Note: []

Register Cancel Previous Page Next Page

Figure 5-5-3: Window Layout for Company Violation Registration (Registration Window 2) (2/4)

Company Violation Registration
 Registration Window
 Page 2 of 3

Company Violation Information
 Service Office: [] Date of Violation: [(DDMMYY)]

Violation Detail Information

Type of Violation	Brand	Type of Goods	Quantity	Unit
[]	[]	[]	[]	[]
[]	[]	[]	[]	[]
[]	[]	[]	[]	[]

State of Financial Loss: []
 Date of Detention: [(DDMMYY)]
 Amount of Additional Payment: []
 Deflection Method: []
 Mollus Operandi: []

Case Settlement: []
 Amount of Administrative Fine: []
 Source of Information: []

History
 Date Entry Operator: []
 Note: []

Register [] Cancel [] Previous Page [] Next Page []

Figure 5.5-3: Window Layout for Company Violation Registration (Registration Window 2) (3/4)

Company Violation Registration
 Registration Window
 Page 2 of 3

Company Violation Information
 Service Office: [] Date of Violation: (DDMMYY)

Violation Detail Information

Type of Violation	Unit	Size	Condition
[]	[]	[]	[]
[]	[]	[]	[]
[]	[]	[]	[]
[]	[]	[]	[]

State of Financial Loss: []
 Date of Detention: (DDMMYY)
 Amount of Additional Payment: []
 Detection Method: []
 Modus Operandi: []

Case Settlement: []
 Amount of Administrative Fine: []
 Source of Information: []

History
 Date Entry Operator: [] Date of Data Entry: (DDMMYY)
 Note: []

Register [] Cancel [] Previous Page [] Next Page []

Figure 5.5-3: Window Layout for Company Violation Registration (Registration Window 2) (4/4)

Table 5.5-10: List of Items
(Window Name: Company Violation Registration (Registration Window 2)) (1/4)

No.	Item Name	Level			Description	Item in File	Note
		1	2	3			
1	Company Violation Information <i>Informasi Pelanggaran Perusahaan</i>	✓			Company Violation information (No repeat)	— (Group title)	—
2	Service Office <i>Kantor Pelayanan</i>		✓		The office name of Customs service office (input,mandatory)	NAME. DJBC OFFICE	30 char., alpha-numeric
3	Date of Violation (DDMMYY YY) <i>Tanggal pelanggaran (DDMMYYYY)</i>		✓		The date of violation to be held (input,mandatory)	VIOLATION DATE. VIOLATION AND INVESTIGATION	8 digits, date
4	Violation Detail Information <i>Rincian Informasi Pelanggaran</i>	✓			Detail Information of violation (Repeat 4 times)	— (Group title)	—
5	Type of Violation <i>Jenis Pelanggaran</i>		✓		The type of violation include : 1) Number of goods differences, 2) Kind of goods, 3) Price, 4) Manifest, 5) Country of origin, 6) No decleration, 7) Brand, 8) HS code, 9) Weight and others (there are 32 type of violations) (input,mandatory)	violcode_of. VIOLATION GOODS	30 char., alpha-numeric
6	HS Code <i>Kode HS</i>		✓		The Harmonized System code (input,mandatory)	TARIFF CODE. VIOLATION GOODS	10 digits, numeric

Table 5.5-10: List of Items
(Window Name: Company Violation Registration (Registration Window 2)) (2/4)

No.	Item Name	Level			Description	Item in File	Note
		1	2	3			
7	Kind of Goods <i>Jenis Barang</i>		✓		Kind of goods. The number of characters shown on the Note section is the maximum length of display. The maximum length of input is 45 characters. (input,mandatory)	KIND OF GOODS. VIOLATION GOODS	15 char., alpha- numeric
8	Country of Origin <i>Negara asal</i>		✓		The country of origin (input,optional)	origctry_ VIOLATION GOODS	30 char., alpha- numeric
9	Country of Destination <i>Negara Tujuan</i>		✓		The country of destination (input,optional)	destctry_ VIOLATION GOODS	30 char., alpha- numeric
10	Customs Value <i>Nilai Pabean</i>		✓		Customs Value (input,optional)	CUSTOMS VALUE. VIOLATION GOODS	14 (12.2) digits, decimal
11	Brand <i>Merek</i>		✓		The name of brand of goods (input,optional)	BRAND. VIOLATION GOODS	30 char., alpha- numeric
12	Type of Goods <i>Tipe barang</i>		✓		Type of goods (input,mandatory)	TYPE OF GOODS. VIOLATION GOODS	25 char., alpha- numeric
13	Quantity <i>Jumlah</i>		✓		The number of goods (input,mandatory)	QUANTITY. VIOLATION GOODS	11 (9.2) digits, decimal
14	Unit <i>Satuan</i>		✓		Type of unit (input,mandatory)	UNIT. VIOLATION GOODS	30 char., alpha- numeric
15	Size <i>Ukuran</i>		✓		The size of goods (input,mandatory)	SIZE. VIOLATION GOODS	15 char., alpha- numeric
16	Condition <i>Keadaan</i>		✓		The condition of goods (input,mandatory)	CONDITION. VIOLATION GOODS	15 char., alpha- numeric
17	State of Financial Loss <i>Kerugian Negara</i>	✓			Value of detriment of state (input,mandatory)	STATE OF FINANCIAL LOSS. VIOLATION AND INVESTIGATION	14 (12.2) digits, decimal

Table 5.5-10: List of Items
(Window Name: Company Violation Registration (Registration Window 2)) (3/4)

No.	Item Name	Level			Description	Item in File	Note
		1	2	3			
18	Date of Detention(D DMMYYY Y) <i>Tanggal penegahan</i> (DDMMYY YY)	✓			The date of detention (input,mandatory)	DETAIN DATE OF CASE SETTLEMENT. VIOLATION AND INVESTIGATION	8 digits, date
19	Amount of Additional Payment <i>Jumlah Tambah Bayar</i>	✓			The amount of additional payment (input,optional)	AMOUNT OF ADDITIONAL PAYMENT. VIOLATION AND INVESTIGATION	16 (14.2) digits, decimal
20	Detection Method <i>Metode Pendeteksi an</i>	✓			The manner of detection ought to be done. It includes : Profile analyze, Behaviour, Unusual clothes, X-Ray, Hi Co Scan, Comparation between Manifest and Bay Plan, Phisical Examination, Past record (input,optional)	dectmthd_of. VIOLATION AND INVESTIGATION	45 char., alpha- numeric
21	Modus Operandi <i>Modus Operandi</i>	✓			Modus operandi (input,mandatory)	MODUS OPERANDI. VIOLATION AND INVESTIGATION	70 char., alpha- numeric
22	Case Settlement <i>Penyelesaia n</i>	✓			The code inculde : released, auctioned, making a bequest, destroyed, goods becoming state property (input,optional)	casestlm_of. VIOLATION AND INVESTIGATION	30 char., alpha- numeric
23	Amount of Administrati ve Fine <i>Jumlah Denda Koreksi</i>	✓			The amount of administrative fine (input,optional)	AMOUNT OF ADMINISTRATIO N FINE. VIOLATION AND INVESTIGATION	16 (14.2) digits, decimal

Table 5.5-10: List of Items
(Window Name: Company Violation Registration (Registration Window 2)) (4/4)

No.	Item Name	Level			Description	Item in File	Note
		1	2	3			
24	Source of Information <i>Sumber Informasi</i>	✓			The source which give information about some violations. It includes : Customs official, Police, Printed media, Electronics media, RILO, Customs from foreign country, INTERPOL, DEA, Project COOK, Instance of home affair, Instance of foreign affair, INFORMANT (input,optional)	srcinfo_of. VIOLATION AND INVESTIGATION	30 char., alpha- numeric
25	History <i>Riwayat Data</i>	✓			History (No Repeat)	— (Group title)	—
26	Data Entry Operator <i>Perekam</i>		✓		The name of computer operator and ID (civil ID) who entry data (output)	COMMON PARAMETER	6 char., alpha- numeric
27	Date of Data Entry (DDMMYY YY) <i>Tanggal Rekam</i> (DDMMYYY Y)		✓		The date of data inputted in the computer by operator (output)	DATE OF SYSTEM SERVER	8 char., date
28	Note <i>Keterangan</i>		✓		The information and explanation everything about Violator information. The number of characters shown on the Note section is the maximum length of display. The maximum length of input is 500 characters. (input,optional)	NOTES. VIOLATION AND INVESTIGATION	45 char., alpha- numeric

**Table 5.5-11: Input Check List
(Company Violation Registration (Registration Window 2))**

No.	Item Name	Condition (range, format, and so on)	Message ID	Note
1	Date of violation (DDMMYYYY)	Must be past date including today.	E0000009	—
2	Date of data entry (DDMMYYYY)	Must be today's date.	E0000009	—
3	Date of detention(DDMMYY YY)	Must be greater than date of violation.	E0000009	—

Company Violation Registration
 Registration Windows
 Page 3 of 3

Violation of Importer/ Exporter/ Customs Broker/ Inter Island Transportation:

Company Type: Importer
 Exporter
 Customs Broker
 Inter Island Transportation

Holding Company: _____

Type of document: _____

Number of document: _____

Date of Document: (DDMMYYYY) _____

Channel Determination: Green Red

Name of Supplier: _____

Address of Supplier: _____

Vessel Name: _____

Voyage/Flight Number: _____

Arrival Date: (DDMMYYYY) _____

Departure Date: (DDMMYYYY) _____

Route: _____

Name of Shipping Line/Airlines: _____

Register Cancel Previous Page Next Page

Figure 5.5-4: Window Layout for Company Violation Registration (Registration Window 3)

Table 5.5-12: List of Items
(Window Name: Company Violation Registration (Registration Window 3)) (1/3)

No.	Item Name	Level			Description	Item in File	Note
		1	2	3			
1	Violation of Importer, Exporter, Customs Broker, Inter Island Transportation <i>Pelanggaran dari Importir, Eksportir, Pelayaran Antar Pulau</i>	✓			Importer, Exporter, Customs broker specific information. (No repeat)	— (Group title)	—
2	Company Type <i>Jenis perusahaan</i>		✓		Company type (No repeat)	— (Group title)	—
3	Importer <i>Importir</i>			✓	Importer flag (output)	IMPORTER FLAG. BASIC INFORMATION	1 char., alpha- numeric
4	Exporter <i>Eksportir</i>			✓	Exporter flag (output)	EXPORTER FLAG. BASIC INFORMATION	1 char., alpha- numeric
5	Customs Broker <i>PPJK</i>			✓	Customs broker flag (output)	CUSTOMS BROKER FLAG. BASIC INFORMATION	1 char., alpha- numeric
6	Inter Island Transportation <i>Pelayaran Antar Pulau</i>			✓	Inter island transportation flag (output)	INTER ISLAND TRANSPORTATIO N FLAG. BASIC INFORMATION	1 char., alpha- numeric
7	Holding company <i>Grup Perusahaan</i>		✓		The group of business (input/output, optional)	BUSINESS GROUP. COMPANY COMMON INFORMATION	30 char., alpha- numeric
8	Type of Document <i>Jenis Document</i>		✓		The document type of violation (input, mandatory)	docorig_of. VIOLATION OF IMP/EXP/CUSTBR KR/IIT	10 char., alpha- numeric

Table 5.5-12: List of Items
(Window Name: Company Violation Registration (Registration Window 3)) (2/3)

No.	Item Name	Level			Description	Item in File	Note
		1	2	3			
9	Number of Document <i>Nomor Dokumen</i>		✓		The document number (input, mandatory)	DOCUMENT NUMBER. VIOLATION OF IMP/EXP/CUSTBR KR/IIT	6 char., alpha-numeric
10	Date of Document (DDMMYY YY) <i>Tanggal Dokumen (DDMMYYY)</i>		✓		The date of document (input, mandatory)	DOCUMENT DATE. VIOLATION OF IMP/EXP/CUSTBR KR/IIT	8 digits, date
11	Channel Determination <i>Penetapan Jalur</i>		✓		Channel determination decides whether the imported goods will get "green channel" or "red channel". The decision is decided by a Document Examiner Functional Officer (PFPD) (input, mandatory)	CHANNEL FLAG. VIOLATION OF IMP/EXP/CUSTBR KR/IIT	14 char., alpha-numeric
12	Name of Supplier <i>Nama Pemasok</i>		✓		The supplier name (input, optional)	SUPPLIER NAME. SUPPLIER	40 char., alpha-numeric
13	Address of Supplier <i>Alamat Supplier</i>		✓		Specific address of supplier (input, optional)	STREET. SUPPLIER	100 char., alpha-numeric
14	Vessel Name <i>Nama Kapal</i>		✓		The name of vessel (input/output, optional)	vessel_of. VIOLATION OF IMP/EXP/CUSTBR KR/IIT	40 char., alpha-numeric
15	Voyage Number/ Flight Number <i>Nomor Pelayaran/ Nomor Penerbangan</i>		✓		The number of voyage/the number of flight (input/output, mandatory)	TRANSPORTATION NUMBER. VIOLATION OF IMP/EXP/CUSTBR KR/IIT	7 char., alpha-numeric

Table 5.5-12: List of Items
(Window Name: Company Violation Registration (Registration Window 3)) (3/3)

No.	Item Name	Level			Description	Item in File	Note
		1	2	3			
16	Arrival date (DDMMYY YY) <i>Tanggal Tiba (DDMMYY Y)</i>		✓		The arrival date (for Import) (input, optional)	ARRIVAL DATE. VIOLATION OF IMP/EXP/CUSTBR KR/IIT	8 digits, date
17	Departure Date (DDMMYY YY) <i>Tanggal Keberangkat an (DDMMYY Y)</i>		✓		The departure date (for Export) (input, optional)	DEPARTURE DATE. VIOLATION OF IMP/EXP/CUSTBR KR/IIT	8 digits, date
18	Route <i>Rute</i>		✓		What country and what city passed by (passed over) by the means of transport (input, optional)	ROUTE. VIOLATION OF IMP/EXP/CUSTBR KR/IIT	25 char., alpha- numeric
19	Name of Shipping Line/Airline s <i>Nama perusahaan pelayaran/p enerbangan</i>		✓		The shipping line name/Airline name (input,mandatory)	trnsagen_of. VIOLATION OF IMP/EXP/CUSTBR KR/IIT	40 char., alpha- numeric

**Table 5.5-13: Input Check List
(Company Violation Registration (Registration Window 3))**

No.	Item Name	Condition (range, format, and so on)	Message ID	Note
1	Date of document (DDMMYYYY)	Must be past date including today	E0000009	---
2	Arrival date (DDMMYYYY)	Must be past date including today	E0000009	---
3	Departure date (DDMMYYYY)	Must be past date including today	E0000009	---

Table 5.5-14: List of Items
(Window Name: Company Violation Registration (Registration Window 4)) (1/2)

No.	Item Name	Level			Description	Item in File	Note
		1	2	3			
1	Shipping lines/Airlines <i>Perusahaan Pelayaran/Penerbangan</i>	✓			Shipping lines/Airlines specific information. (No repeat)	— (Group title)	—
2	Holding Company <i>Grup Perusahaan</i>		✓		The group of business (input/output, optional)	BUSINESS. COMPANY COMMON INFORMATION	40 char., alpha- numeric
3	Carrier Name <i>Nama Pengangkut</i>		✓		The name of carrier (input, optional)	CARRIER NAME. VIOLATION OF SHIPPING LINES/AIRLINES	30 char., alpha- numeric
4	Voyage/ Flight Number <i>Nomor Pelayaran/ Penerbangan</i>		✓		The number of voyage/flight (input/output, optional)	TRANSPORTATION NUMBER. VIOLATION OF SHIPPING LINES/AIRLINES	7 char., alpha- numeric
5	Departure Date (DDMMYY YY) <i>Tanggal Keberangkatan (DDMMYYYY)</i>		✓		The departure date (for Export) (input, optional)	DEPARTURE DATE.VIOLATION OF SHIPPING LINES/AIRLINES	8 digits, date
6	Arrival Date (DDMMYY YY) <i>Tanggal Tiba (DDMMYY YY)</i>		✓		The arrival date (for Import) (input, optional)	ARRIVAL DATE. VIOLATION OF SHIPPING LINES/AIRLINES	8 digits, date
7	DWT <i>Bobot Ton Mati</i>		✓		Dead Weight Ton (input/output, optional)	DEAD WEIGHT TONAGE. VESSEL	9 (7.2) digits, decimal
8	GRT <i>Berat Kotor</i>		✓		Gross Weighted (input/output, optional)	GROSS WEIGHT TONAGE. VESSEL	9 (7.2) digits, decimal

Table 5.5-14: List of Items
(Window Name: Company Violation Registration (Registration Window 4)) (2/2)

No.	Item Name	Level			Description	Item in File	Note
		1	2	3			
9	Flag <i>Bendera</i>		✓		The flag of the ship (input/output , optional)	flagctry_of. VESSEL	3 char., alpha- numeric
10	Type of Document <i>Jenis Dokumen</i>		✓		The document type of violation (input, mandatory)	docorig_of. VIOLATION OF SHIPPING LINE/AIRLINE	10 char., alpha- numeric
11	Number of Document <i>Nomor Dokumen</i>		✓		The document number (input, mandatory)	DOCUMENT NUMBER. VIOLATION OF SHIPPING LINE/AIRLINE	6 char., alpha- numeric
12	Date of Document (DDMMYY YY) <i>Tanggal Dokumen (DDMMYY Y)</i>		✓		The document date (input/output, mandatory)	DOCUMENT DATE. VIOLATION OF SHIPPING LINE/AIRLINE	8 digits, date
13	Route <i>Rute</i>		✓		The route of voyage/flight (input/output , optional)	ROUTE. VIOLATION OF SHIPPING LINE/AIRLINE	25 char., alpha- numeric
14	Name of Ship's Captain <i>Nama Nakhoda</i>		✓		The name of ship's captain (input/output , optional)	CAPTAIN NAME. VESSEL	20 char., alpha- numeric

**Table 5.5-15: Input Check List
(Company Violation Registration (Registration Window 4))**

No.	Item Name	Condition (range, format, and so on)	Message ID	Note
1	Date of document (DDMMYYYY)	Must be past date including today	E0000009	—
2	Arrival date (DDMMYYYY)	Must be past date including today	E0000009	—
3	Departure date (DDMMYYYY)	Must be past date including today	E0000009	—

Company Violation Registration

Registration Window 5

Violation of Bonded Storage/Duty Free Shop/Excise Company

Detail Classification of Violation

Bonded Storage
 Duty Free Shop
 Excise Company

Bonded Storage Information

Name of Storage: _____

City: _____

Province: _____

Fax Number: _____

Street: _____

Phone Number: _____

Postal Code: _____

Duty Free Shop Information

Name of Warehouse: _____

City: _____

Province: _____

Fax Number: _____

Name of Street: _____

Phone Number: _____

Postal Code: _____

Name of Shop: _____

City: _____

Province: _____

Fax Number: _____

Excise Company Information

NPPBKC: _____

Factory Name: _____

Type of Excisable Goods: _____

NPP: _____

Product Name: _____

Ok Previous Page Next Page

Figure 5.5-6: Window Layout for Company Violation Registration (Registration Window 5)

Table 5.5-16: List of Items
(Window Name: Company Violation Registration (Registration Window 5)) (1/4)

No.	Item Name	Level			Description	Item in File	Note
		1	2	3			
1	Violation of Bonded Storage/Duty Free Shop/Excise Company <i>Pelanggaran TPB/TBB/Perusahaan Cukai</i>	✓			Grouping Title (No repeat)	— (Group title)	—
2	Detail Classification of Violation		✓		Grouping Title for classification of violation (no repeat)	— (Group title)	—
3	Bonded Storage <i>TPB</i>			✓	Bonded Storage flag (input, one of [Bonded Storage], [Duty Free] and [Excise] is mandatory)	VIOLATION OF STORAGE. VIOLATION AND INVESTIGATION	1 char., alpha-numeric
4	Duty Free Shop <i>TBB</i>			✓	Duty Free Shop flag (input, one of [Bonded Storage], [Duty Free] and [Excise] is mandatory)	VIOLATION OF DUTY FREE SHOP. VIOLATION AND INVESTIGATION	1 char., alpha-numeric
5	Excise <i>Cukai</i>			✓	Excise flag (input, one of [Bonded Storage], [Duty Free] and [Excise] is mandatory)	VIOLATION OF EXCISE. VIOLATION AND INVESTIGATION	1 char., alpha-numeric
6	Bonded Storage Information <i>Informasi Khusus</i>		✓		Storage specific information. (No repeat) (when [Bonded Storage] is selected Duty Free Shop group and Excise group to be disabled)	— (Group title)	—
7	Name <i>Nama</i>			✓	Name of storage. (input, optional)	NAME. VIOLATION OF STORAGE	40 char., alpha-numeric
8	Street <i>Jalan</i>			✓	Street of storage. (input, optional)	STREET. VIOLATION OF STORAGE	100 char., alpha-numeric
9	City <i>Kota</i>			✓	City of storage. (input, optional)	CITY. VIOLATION OF STORAGE	30 char., alpha-numeric
10	Province <i>Propinsi</i>			✓	Province of storage. (input, optional)	province_of. VIOLATION OF STORAGE	20 char., alpha-numeric

Table 5.5-16: List of Items
(Window Name: Company Violation Registration (Registration Window 5)) (2/4)

No.	Item Name	Level			Description	Item in File	Note
		1	2	3			
11	Postal Code <i>Kode Pos</i>			✓	Postal code of storage. (input, optional)	POSTAL CODE. VIOLATION OF STORAGE	5 digits, numeric
12	Phone Number <i>Nomor Telepon</i>			✓	Phone number of storage. (input, optional)	PHONE. VIOLATION OF STORAGE	12 digits, numeric
13	Fax Number <i>Nomor Fax</i>			✓	Fax number of storage. (input, optional)	FAX.VIOLATION OF STORAGE	12 digits, numeric
14	Duty Free Shop Information <i>Informasi TBB</i>		✓		Grouping items for Duty free shop specific information. (No repeat) (when [Duty Free Shop] is selected Bonded Storage group and Excise group to be disabled)	— (Group title)	—
15	Warehouse <i>Gudang</i>			✓	Grouping item for Warehosue (No repeat)	— (Group title)	—
16	Name of Warehouse <i>Nama Gudang</i>			✓ *4	The warehouse name of company. (input, optional)	WAREHOUSE- NAME. VIOLATION OF DUTY FREE SHOP	40 char., alpha- numeric
17	Street <i>Jalan</i>			✓ *4	The street name of warehouse. (input optional)	WAREHOUSE- STREET. VIOLATION OF DUTY FREE SHOP	100 char., alpha- numeric
18	City <i>Kota</i>			✓ *4	The city address of warehouse. (input, optional)	WAREHOUSE- CITY. VIOLATION OF DUTY FREE SHIP	30 char., alpha- numeric
19	Province <i>Propinsi</i>			✓ *4	Province of warehouse. (input, optional)	wareprov_of. VIOLATION OF DUTY FREE SHOP	20 char., alpha- numeric
20	Postal Code <i>Kode Pos</i>			✓ *4	Postal code of warehouse. (input, optional)	WAREHOUSE- POSTAL CODE.VIOLATIO N OF DUTY FREE SHOP	5 digits, numeric
21	Phone Number <i>Nomor Telepon</i>			✓ *4	Telephone number of warehouse. (input, optional)	WAREHOUSE- PHONE. VIOLATION OF DUTY FREE SHOP	12 digits, numeric
22	Fax Number <i>Nomor Fax</i>			✓ *4	Fax of warehouse. (input, optional)	WAREHOUSE- FAX. VIOLATION OF DUTY FREE SHOP	12 digits, numeric

Table 5.5-16: List of Items
(Window Name: Company Violation Registration (Registration Window 5)) (3/4)

No.	Item Name	Level			Description	Item in File	Note
		1	2	3			
23	Shop <i>Toko</i>			✓	Grouping item for Shop (No repeat)	— (Group title)	—
24	Name <i>Nama</i>			✓ *4	The shop name of company. (input, optional)	SHOP-NAME. VIOLATION OF DUTY FREE SHOP	40 char., alpha- numeric
25	Street <i>Jalan</i>			✓ *4	The street name of shop. (input, optional)	SHOP-STREET. VIOLATION OF DUTY FREE SHOP	100 char., alpha- numeric
26	City <i>Kota</i>			✓ *4	The city address of shop. (input, optional)	SHOP-CITY. VIOLATION OF DUTY FREE SHOP	30 char., alpha- numeric
27	Province <i>Propinsi</i>			✓ *4	Province of shop. (input/output, optional)	shopprov_of. VIOLATION OF DUTY FREE SHOP	20 char., alpha- numeric
28	Postal Code <i>Kode Pos</i>			✓ *4	Postal code of shop. (input, optional)	SHOP-POSTAL CODE. VIOLATION OF DUTY FREE SHOP	5 digits, numeric
29	Fax Number <i>Nomor Fax</i>			✓ *4	Fax of shop. (input, optional)	SHOP-FAX. VIOLATION OF DUTY FREE SHOP	12 digits numeric
30	Phone Number <i>Nomor Telepon</i>			✓ *4	Telephone number of shop. (input, optional)	SHOP-PHONE. VIOLATION OF DUTY FREE SHOP	12 digits, numeric
31	Excise Company Information <i>Informasi Perusahaan Cukai</i>		✓		Excise company specific information. (No repeat) (when [Excise] is selected) Duty Free Shop group and Excise group to be enabled)	— (Group title)	—
32	NPPBKC <i>NPPBKC</i>			✓	Licence of Excisable goods Entrepreneur. (input, optional)	NPPBKC. FACTORY	10 char., alpha- numeric
33	NPP <i>NPP</i>			✓	NPP (Exemption registry number). (input, optional)	NPP.FACTORY	9 digits, numeric
34	Factory Name <i>Nama Pabrik</i>			✓	Factory name. (input, optional)	FACTORY NAME. FACTORY	40 char., alpha numeric

Table 5.5-16: List of Items
(Window Name: Company Violation Registration (Registration Window 5)) (4/4)

No.	Item Name	Level			Description	Item in File	Note
		1	2	3			
35	Name of Product <i>Nama Produk</i>			✓	Name of product. (input, optional)	NAME OF PRODUCT. VIOLATION OF EXCISE	40 char., alpha-numeric
36	Type of Excisable Goods <i>Jenis BKC</i>			✓	Type of Excise goods : <ul style="list-style-type: none"> • Tobacco • MMEA • E A (input, optional)	excigood_of. FACTORY	1 digits, numeric