

Excise Company Retrieval 2
 Retrieval Result Window 6
 SE-16 (MMEA)

04/30/99
 Page 3 of 3

Brand Code: Brand: Alcohol Degree: Excise Tariff: SE-16 Date:

SE-16 (MMEA)

1. Last Month Balance:
 2. Production of The Month Entry:
 3. Total (1+2):
 4. Release:

4.1 Excise Imposed:
 4.2 Unimposed Excise
 4.2.1 Transited/Trans-shipped:
 4.2.2 Expired:
 4.2.3 Destroyed/Damaged Prior to the Release:
 4.3 Exempted Excise
 4.3.1 For Delegation from Foreign Country:
 4.3.2 For Export Staff from Foreign Country:
 4.3.3 Brought into Bonded Storage:
 4.3.4 For Passengers and Ship Crews from Customs Office:
 4.4 Total:
 4.4.1 Total (4.1 s/d 4.3):

5. This Month Balance (3 - 4.4):
 6. Excise Should be Paid (4.1 x Tariff):

Ok Previous Page Next Page

Figure 4.4-20: Window Layout for Excise Company Retrieval 2 (Retrieval Result Window 6) (5/5)

Table 4.4-34: List of Items
(Window Name: Excise Company Retrieval2 (Retrieval Result Window6) (1/12))

No.	Item Name	Level			Description	Item in File	Note
		1	2	3			
1	Excise Factory Information <i>Informasi Pabrik Cukai</i>	✓			Excise Factory Information (no repeat)	— (Group title)	—
2	NPPBKC <i>NPPBKC</i>		✓		NPPBKC (output)	NPPBKC. FACTORY	10 digits, numeric
3	NPPBKC Date (DDMMYY YY) <i>Tanggal NPPBKC (DDMMYY Y)</i>		✓		NPPBKC issuance date (output)	DATE OF NPPBKC. FACTORY	8 digits, date
4	Factory Name <i>Nama Pabrik</i>		✓		Factory Name (output)	FACTORY NAME. FACTORY	40 char., alpha- numeric
5	Month & Year (MMYYYY) <i>Bulan dan Tahun (MMYYYY)</i>		✓		Month of the reports produced (output)	MONTH_YEAR. SE-16(MMEA)	6 digits, date
6	LACK-1 <i>LACK-1</i>	✓			LACK-1 (Report on utilizing / stock of Excisable Goods with unimposed facility) (repeat 10 times)	— (Group title)	—
7	No. <i>No.</i>		✓		Serial number (output)	—	2 digit, numeric
8	Kind of Excise Goods Produced <i>JenisBarang Kena Cukai yang Diproduksi</i>		✓		Kind of Excise produced (output)	KIND OF EXCISABLE GOODS PRODUCED. LACK-1 DETAIL	25 char., Alpha- numeric
9	Beginning Balance <i>Saldo Awal</i>		✓		Beginning Balance (output)	BEGINNING BALANCE. LACK-1 DETAIL	6 digits, numeric

Table 4.4-34: List of Items
(Window Name: Excise Company Retrieval2 (Retrieval Result Window6) (2/12))

No.	Item Name	Level			Description	Item in File	Note
		1	2	3			
10	Entry <i>Pemasukan</i>		✓		Entry (output)	ENTRY. LACK-1 DETAIL	6 digits, numeric
11	Total <i>Jumlah</i>			✓	Total (9[Beginning Balance]+ 10[Entry]) (output)	CALCULATED BY: • BEGINNING BALANCE. LACK-1 DETAIL • ENTRY. LACK-1 DETAIL	6 digits, numeric
12	Used Amount <i>Jumlah yang Digunakan</i>			✓	Used amount (output)	USED AMOUNT. LACK-1 DETAIL	6 digits, numeric
13	Balance <i>Saldo Akhir</i>			✓	Balance (9[Beginning Balance]+ 10[Entry]-12 [Used amount]) (output)	CALCULATED BY: • BEGINNING BALANCE. LACK-1 DETAIL • ENTRY. LACK-1 DETAIL • USED AMOUNT. LACK-1 DETAIL	6 digits, numeric
14	Amount of Production <i>Jumlah Barang Kena Cukai yang Diproduksi</i>		✓		Amount of Excisable Goods Produced (output)	AMOUNT OF EXCISABLE GOODS PRODUCED. LACK-1 DETAIL	6 digits, numeric
15	Total <i>Jumlah</i>		✓		Total amount	— (Group title)	—
16	Beginning Balance <i>Saldo Awal</i>			✓	Total amount of Beginning Balance (output)	CALCULATED BY: • BEGINNING BALANCE. LACK-1 DETAIL	6 digits, numeric

Table 4.4-34: List of Items
(Window Name: Excise Company Retrieval2 (Retrieval Result Window6) (3/12))

No.	Item Name	Level			Description	Item in File	Note
		1	2	3			
17	Entry <i>Pemasukan</i>			✓	Total amount of Entry (output)	CALCULATED BY: • ENTRY. LACK-1 DETAIL	6 digits, numeric
18	Total <i>Jumlah</i>			✓	Total amount of "Total" (output)	CALCULATED BY: • BEGINNING BALANCE. LACK-1 DETAIL • ENTRY. LACK-1 DETAIL	6 digits, numeric
19	Used Amount <i>Jumlah yang Digunakan</i>			✓	Total amount of Used Amount (output)	CALCULATED BY: • USED AMOUNT. LACK-1 DETAIL	6 digits, numeric
20	Balance <i>Saldo Akhir</i>			✓	Total Balance (output)	CALCULATED BY: • BEGINNING BALANCE. LACK-1 DETAIL • ENTRY. LACK-1 DETAIL • USED AMOUNT. LACK-1 DETAIL	6 digits, numeric
21	Amount of Production <i>Jumlah Barang Kena Cukai yang Diproducksi</i>			✓	Total amount of Production (output)	CALCULATED BY: • AMOUNT OF EXCISABLE GOODS PRODUCED. LACK-1 DETAIL	6 digits, numeric

Table 4.4-34: List of Items
(Window Name: Excise Company Retrieval2 (Retrieval Result Window6) (4/12)

No.	Item Name	Level			Description	Item in File	Note
		1	2	3			
22	Official Statement <i>Keterangan</i>		✓		Official Statement (output)	OFFICIAL STATEMENT. LACK-1 (MMEA)	30 char., alpha-numeric
23	LACK-1 Date (DDMMYY YY) <i>Tanggal LACK-1 (DDMMYY Y)</i>		✓		Date of creation of LACK-1 (output)	LACK-1 CREATION DATE. LACK-1(MMEA)	8 digits, date
24	LACK-2 <i>LACK-2</i>	✓			LACK-2 (Report on sales/ release Excisable Goods without Excise) (repeat 10 times)	— (Group Title)	—
25	No. <i>No.</i>		✓		Serial number (output)	—	2 digit, numeric
26	Sales Document Number <i>Nomor Dokumen Pengeluaran</i>		✓		Number of Sales/ Release Document (output)	SALES DOC NUMBER. LACK-2 (MMEA)	15 digits, numeric
27	Date of Sales <i>Tanggal Pengeluaran</i>		✓		Date of Sales/ Release Document (output)	SALES DOC DATE. LACK-2 (MMEA)	8 digits, date
28	Amount of Sales <i>Jumlah Pengeluaran</i>		✓		Amount of sales (output)	SALES AMOUNT. LACK-2 (MMEA)	7 digits, numeric
29	Kind of Sold Goods <i>Jenis Barang Kena Cukai yang Dijual/ Diserahkan</i>			✓	Kind of sold/ used Excisable goods (output)	KIND OF SOLD GOODS. SUPPLIER FACTORY	25 char., alpha-numeric
30	Supplier NPPBKC <i>NPPBKC Pabrik Pemasok</i>			✓	NPPBKC of supplier factory (output)	NPPBKC. SUPPLIER FACTORY	10 digits, numeric

Table 4.4-34: List of Items
(Window Name: Excise Company Retrieval2 (Retrieval Result Window6) (5/12))

No.	Item Name	Level			Description	Item in File	Note
		1	2	3			
31	NPWP Type <i>Tipe NPWP</i>			✓	Type of NPWP (output)	idtype_of. SUPPLIER FACTORY	1 digit, numeric
32	Supplier NPWP <i>NPWP Pabrik Pemasok</i>			✓	Tax Payer Code Number of supplier factory (output)	ID NUMBER. SUPPLIER FACTORY	12 char., alpha- numeric
33	Supplier Name <i>Nama Pabrik Pemasok</i>			✓	Name of supplier factory (output)	NAME. SUPPLIER FACTORY	40 char., alpha- numeric
34	Street <i>Jalan</i>			✓	Address of supplier factory (output)	STREET. SUPPLIER FACTORY	100 char., alpha- numeric
35	City <i>Kota</i>			✓	The city where the supplier factory is located (output)	CITY. SUPPLIER FACTORY	30 char., alpha- numeric
36	Postal Code <i>Kode Pos</i>			✓	Postal code of the supplier factory (output)	POSTAL CODE. SUPPLIER FACTORY	5 digits, numeric
37	Phone <i>Telepon</i>			✓	Phone number of the supplier factory (output)	PHONE NUMBER. SUPPLIER FACTORY	12 digits, numeric
38	Fax <i>Fax</i>			✓	Fax number of the supplier factory (output)	FAX NUMBER. SUPPLIER FACTORY	12 digits, numeric
39	Telex <i>Telex</i>			✓	Telex number of the supplier factory (output)	TELEX NUMBER. SUPPLIER FACTORY	20 digits, numeric
40	LACK-2 Date <i>Tanggal LACK-2</i>			✓	Date of creation of LACK-2 (output)	CREATION DATE. LACK-2(MMEA)	8 digits, date
41	Total Amount of Sales <i>Jumlah Pengeluaran</i>		✓		Total amount of sales (output)	CALCULATED BY: • SALES AMOUNT. LACK-2 (MMEA)	7 digits, numeric

Table 4.4-34: List of Items
(Window Name: Excise Company Retrieval2 (Retrieval Result Window6) (6/12))

No.	Item Name	Level			Description	Item in File	Note
		1	2	3			
42	SE-16 (MMEA) <i>SE-16</i> (MMEA)	✓			SE-16 (Monthly report on production and release of MMEA with its receipts) (no repeat)	— (Group Title)	—
43	Brand code <i>Kode Merek</i>		✓		MMEA Brand code (output)	MMEAbrand_of. SE-16 (MMEA)	4 digits, numeric
44	Brand <i>Merek</i>		✓		MMEA Brand (output)	KIND OF EXCISABLE GOODS PRODUCED. SE-16(MMEA)	25 char., Alpha- numeric
45	Alcohol Degree <i>Kadar</i> <i>Alkohol</i>		✓		Alcohol degree (output)	ALCOHOL DEGREE. SE-16 (MMEA)	2 digits, numeric
46	Excise Tariff <i>Tarif Cukai</i>		✓		Excise Tariff (output)	EXCISE TARIFF. SE-16 (MMEA)	6 digits, numeric
47	SE-16 Date <i>Tanggal</i> <i>SE-16</i>		✓		Date of creation of SE-16(MMEA) (output)	CREATION DATE. SE-16(MMEA)	8 digits, date
48	SE-16 (MMEA) <i>SE-16</i> (MMEA)		✓		SE-16 (MMEA) (no repeat)	— (Group title)	—
49	1. Last Month Balance <i>1. Sisa</i> <i>Bulan Lalu</i>			✓	Last month balance (output)	LAST MONTH BALANCE. SE-16 (MMEA)	10 (8.2) digits, decimal
50	1. Production of The Month/ Entry <i>1. Produksi</i> <i>Bulan Ini/</i> <i>Pemasukan</i>			✓	Production of the month/ entry (output)	PRODUCTION OF THE MONTH. SE-16 (MMEA)	10 (8.2) digits, decimal

Table 4.4-34: List of Items
(Window Name: Excise Company Retrieval2 (Retrieval Result Window6) (7/12))

No.	Item Name	Level			Description	Item in File	Note
		1	2	3			
51	3. Total (1+2) 3. <i>Jumlah</i> (1+2)			✓	Total (50[Last month balance] + 51[Production of the month]) (output)	CALCULATED BY: • LAST MONTH BALANCE. SE-16 (MMEA) • PRODUCTION OF THE MONTH. SE-16 (MMEA)	10 (8.2) digits, decimal
52	4. Release 4. <i>Pengeluaran</i>			✓	Release (no repeat)	(Group Title)	—
53	4.1 Excise Imposed 4.1 <i>Bayar Cukai</i>			✓ *4	Release amount of Excisable goods (output)	EXCISE IMPOSED. SE-16 (MMEA)	10 (8.2) digits, decimal
54	4.2 Unimposed Excise 4.2 <i>Tidak Dipungut Cukai</i>			✓ *4	Amount of Unimposed Excise goods (no repeat)	(Group Title)	—
55	4.2.1 Transited/ Trans-Shipped 4.2.1 <i>Diangkut Terus/ Diangkut Lanjut</i>			✓ *5	Amount of unimposed Excise goods which were transited/ transshipped (output)	UNIMPOSED EXCISE-TRANSIT. SE-16 (MMEA)	10 (8.2) digits, decimal
56	4.2.2 Exported 4.2.2 <i>Diekspor</i>			✓ *5	Amount of unimposed Excise goods which were exported (output)	UNIMPOSED EXCISE-EXPORTED. SE-16 (MMEA)	10 (8.2) digits, decimal

Table 4.4-34: List of Items
(Window Name: Excise Company Retrieval2 (Retrieval Result Window6) (8/12))

No.	Item Name	Level			Description	Item in File	Note
		1	2	3			
57	4.2.3 Destroyed/ Damaged Prior to The Release <i>4.2.3 Musnah/ Rusak Sebelum Dekeluarkan</i>			✓ *5	Amount of unimposed Excise goods which were destroyed/damaged prior to the release (output)	UNIMPOSED EXCISE- DAMAGED. SE-16 (MMEA)	10 (8.2) digits, decimal
58	4.3 Exempted Excise <i>4.3 Pembebasan Cukai</i>			✓ *4	Release of exempted Excise goods (no repeat)	— (Group Title)	—
59	4.3.1 For Delegation from Foreign Country <i>4.3.1 Untuk Perwakilan Negara Asing</i>			✓ *5	Amount of exempted Excise goods for delegation from foreign country (output)	EXEMPTED EXCISE- DELEGATION. SE-16 (MMEA)	10 (8.2) digits, decimal
60	4.3.2 For Expert Staff from Foreign Country <i>4.3.2 Untuk Tenaga Ahli Bangsa Asing</i>			✓ *5	Amount of exempted Excise goods for expert staff from foreign country (output)	EXEMPTED EXCISE-EXPERT. SE-16 (MMEA)	10 (8.2) digits, decimal
61	4.3.3 Brought into Bonded Storage <i>4.3.3 Dimasukan Ketempat Penimbunan Berikat</i>			✓ *5	Amount of exempted Excise goods that are brought into bonded storage (output)	EXEMPTED EXCISE-BONDED STRG. SE-16 (MMEA)	10 (8.2) digits, decimal

Table 4.4-34: List of Items
(Window Name: Excise Company Retrieval2 (Retrieval Result Window6) (9/12))

No.	Item Name	Level			Description	Item in File	Note
		1	2	3			
62	4.3.4 For Passengers and Ship Crews from Customs Office <i>4.3.4 Untuk Penumpang Dan Awak Kapal yang Keluar Daerah Pabean</i>			✓ *5	Amount of exempted Excise goods for passengers and ship crews from customs office (output)	EXEMPTED EXCISE- PASSENGERS. SE-16 (MMEA)	10 (8.2) digits, decimal

Table 4.4-34: List of Items
(Window Name: Excise Company Retrieval2 (Retrieval Result Window6) (10/12))

No.	Item Name	Level			Description	Item in File	Note
		1	2	3			
63	4.4 Total (4.1 s/d 4.3) 4.4 Jumlah (4.1 s/d 4.3)			✓ *4	Total (53[Excise Imposed] +55[Transitted/ transshipped] +56[Exported] +57[Destroyed/ Damaged prior to the release] +59[For delegation from foreign country]+60[For expert staff from foreign country] +61[Brought into Bonded Storage]+62[For passengers and ship crews from customs office]) (output)	CALCULATED BY: • EXCISE IMPOSED. SE-16 (MMEA) • UNIMPOSED EXCISE- TRANSIT. SE-16 (MMEA) • UNIMPOSED EXCISE- EXPORTED. SE-16 (MMEA) • UNIMPOSED EXCISE- DAMAGED. SE-16 (MMEA) • EXEMPTED EXCISE- DELE- GATION. SE-16(MMEA) • EXEMPTED EXCISE- EXPERT. SE-16(MMEA) • EXEMPTED EXCISE- BONDED STRG. SE-16(MMEA) • EXEMPTED EXCISE- PASSEN- GERS. SE-16(MMEA)	10 (8.2) digits, decimal

Table 4.4-34: List of Items
(Window Name: Excise Company Retrieval2 (Retrieval Result Window6) (11/12))

No.	Item Name	Level			Description	Item in File	Note
		1	2	3			
64	5. This Month Balance (3-4.4) 5. Sisa Bulan Ini (3-4.4)			✓	This month balance ((49[Last month balance] + 50[Production of the month]) - (53[Excise Imposed] + 55[Transitted/ transshipped] + 56[Exported] + 57[Destroyed/ Damaged prior to the release] + 59[For delegation from foreign country] + 60[For expert staff from foreign country] + 61[Brought into Bonded Storage] + 62[For passengers and ship crews from customs office]) (output)	CALCULATED BY: <ul style="list-style-type: none"> • LAST MONTH BALANCE. SE-16 (MMEA) • PRODUCTION OF THE MONTH. SE-16 (MMEA) • EXCISE IMPOSED. SE-16 (MMEA) • UNIMPOSED EXCISE-TRANSIT. SE-16 (MMEA) • UNIMPOSED EXCISE-EXPORTED. SE-16 (MMEA) • UNIMPOSED EXCISE-DAMAGED. SE-16 (MMEA) • EXEMPTED EXCISE-DELE-GATION. SE-16(MMEA) • EXEMPTED EXCISE-EXPERT. SE-16(MMEA) • EXEMPTED EXCISE-BONDED STRG. SE-16(MMEA) 	10 (8.2) digits, decimal

Table 4.4-34: List of Items
(Window Name: Excise Company Retrieval2 (Retrieval Result Window6) (12/12))

No.	Item Name	Level			Description	Item in File	Note
		1	2	3			
	(continued)				(continued)	<ul style="list-style-type: none"> EXEMPTED EXCISE-PASSENGERS. SE-16 (MMEA) 	(continued)
65	6. Excise Should be Paid (4.1× Tariff) <i>Jumlah Cukai yang Harus Dibayar (4.1×Tarif)</i>			✓	Excise should be paid (53[Excise imposed] × 46[ExciseTariff]) (output)	CALCULATED BY: <ul style="list-style-type: none"> EXCISE IMPOSED. SE-16 (MMEA) EXCISE TARIFF. SE-16 (MMEA) 	11 (9.2) digits, decimal

Excise Company Retrieval 3
04 JAN 99
Page 3 of 3

Retrieval Result Window

SE-16 (EA)
Excise Tariff:

SE-16 Date:

SE-16 (EA)

1. Last Month Balance:

2. Production of The Month Entry:

3. Total (1+2):

4. Release:

4.1 Excise Imposed:

4.2 Unimposed Excise:

4.2.1 Transited/Trans-shipped:

4.2.2 Exported:

4.2.3 Brought into Factory/Storage:

4.2.4 Used as Raw Material for Production:

4.2.5 Destroyed/Damaged Prior to the Release:

4.3 Exempted Excise:

4.3.1 Used as Raw/Auxiliary Materials for Manufacturing Non-Excisable Goods:

4.3.2 For Research and Scientific Development:

4.3.3 For Social Purposes:

4.3.4 Brought into Bonded Storage:

4.3.5 Denatured to be Brand Spiritus:

4.4 Total:

4.4.1 Total (4.1 s/d 4.3):

5. This Month Balance (3 - 4.4):

6. Excise Should be Paid (4.1 x Tariff):

Ok
Previous Page

Figure 4.4-21: Window Layout for Excise Company Retrieval 3 (Retrieval Result Window 7) (5/5)

Table 4.4-35: List of Items
(Window Name: Excise Company Retrieval3 (Retrieval Result Window7) (1/12)

No.	Item Name	Level			Description	Item in File	Note
		1	2	3			
1	Excise Factory Information <i>Informasi Pabrik Cukai</i>	✓			Excise Factory Information (no repeat)	— (Group title)	—
2	NPPBKC <i>NPPBKC</i>		✓		NPPBKC (output)	NPPBKC. FACTORY	10 digits, numeric
3	NPPBKC Date (DDMMYY YY) <i>Tanggal NPPBKC (DDMMYYY Y)</i>		✓		Date of NPPBKC issuance (output)	DATE OF NPPBKC. FACTORY	8 digits, date
4	NPP <i>NPP</i>		✓		NPP (output)	NPP. FACTORY	9 char., alpha- numeric
5	NPP Date (DDMMYY YY) <i>Tanggal NPP (DDMMYYY Y)</i>		✓		Date of NPP issuance (output)	DATE OF NPP. FACTORY	8 digits, date
6	Factory Name <i>Nama Pabrik</i>		✓		Factory Name (output)	FACTORY NAME. FACTORY	40 char., alpha- numeric
7	Month & Year <i>Bulan dan Tahun</i>		✓		Month of the reports produced (output)	MONTH_YEAR. SE-16(EA)	6 digits, date
8	LACK-4 <i>LACK-4</i>	✓			LACK-4 (Report on utilizing excise exempted EA with facility through non-integrated production process) (repeat 99 times)	— (Group title)	—
9	No. <i>No.</i>		✓		Serial number (output)	—	2 digit, numeric

Table 4.4-35: List of Items
(Window Name: Excise Company Retrieval3 (Retrieval Result Window7) (2/12))

No.	Item Name	Level			Description	Item in File	Note
		1	2	3			
10	Kind of Excise produced <i>JenisBarang Kena Cukai yang Diproduksi</i>		✓		Kind of Excise produced (output)	KIND OF EXCISE PRODUCED. LACK-4 DETAIL	25 char., alpha-numeric
11	Beginning Balance <i>Saldo Awal</i>		✓		Beginning Balance (output)	BEGINNING BALANCE. LACK-4 DETAIL	8 digits, numeric
12	Entry <i>Pemasukan</i>		✓		Entry (output)	ENTRY. LACK-4 DETAIL	7 digits, numeric
13	Total <i>Jumlah</i>			✓	Total (15[Beginning Balance]+ 16[Entry]) (output)	CALCULATED BY: • BEGINNING BALANCE. LACK-4 DETAIL • ENTRY. LACK-4 DETAIL	8 digits, numeric
14	Used Amount <i>Jumlah yang Digunakan</i>			✓	Used amount (output)	USED AMOUNT. LACK-4 DETAIL	7 digits, numeric
15	Balance <i>Saldo Akhir</i>			✓	Balance (13[Total]- 14[Used amount]) (output)	CALCULATED BY: • BEGINNING BALANCE. LACK-4 DETAIL • ENTRY. LACK-4 DETAIL • USED AMOUNT. LACK-4 DETAIL	8 digits, numeric
16	Amount of Production <i>Jumlah Barang Kena Cukai yang Diproduksi</i>		✓		Amount of produced goods (output)	AMOUNT OF EXCISABLE GOODS PRODUCED. LACK-4 DETAIL	8 digits, numeric

Table 4.4-35: List of Items
(Window Name: Excise Company Retrieval3 (Retrieval Result Window7) (3/12))

No.	Item Name	Level			Description	Item in File	Note
		1	2	3			
17	Total <i>Jumlah</i>		✓		Total amount (no repeat)	— (Group title)	—
18	Beginning Balance <i>Saldo Awal</i>			✓	Total amount of 11[Beginning Balance] (output)	CALCULATED BY: BEGINNING BALANCE. LACK- 4 DETAIL	8 digits, numeric
19	Entry <i>Pemasukan</i>			✓	Total amount of 12[Entry] (output)	CALCULATED BY: ENTRY.LACK-4 DETAIL	7 digits, numeric
20	Total <i>Jumlah</i>			✓	Total amount of 13[Total] (output)	CALCULATED BY: • BEGINNING BALANCE. LACK-4 DETAIL • ENTRY. LACK-4 DETAIL	8 digits, numeric
21	Used Amount <i>Jumlah yang Digunakan</i>			✓	Total amount of 14[Used Amount] (output)	CALCULATED BY: USED AMOUNT. LACK-4 DETAIL	7 digits, numeric
22	Balance <i>Saldo Akhir</i>			✓	Total amount of 15[Balance] (output)	CALCULATED BY: • BEGINNING BALANCE. LACK-4 DETAIL • ENTRY. LACK-4 DETAIL • USED AMOUNT. LACK-4 DETAIL	8 digits, numeric
23	Amount of Production <i>Jumlah Barang Kena Cukai yang Diproduksi</i>			✓	Total amount of 16[Amount of Production] (output)	CALCULATED BY: AMOUNT OF EXCISABLE GOODS PRODUCED. LACK-4 DETAIL	8 digits, numeric

Table 4.4-35: List of Items
 (Window Name: Excise Company Retrieval3 (Retrieval Result Window7) (4/12))

No.	Item Name	Level			Description	Item in File	Note
		1	2	3			
24	Official Statement <i>Keterangan</i>		✓		Official Statement (output)	OFFICIAL STATEMENT. LACK-4(EA)	30 char., alpha- numeric
25	LACK-4 Date (DDMMYY YY) <i>Tanggal LACK-4 (DDMMYY Y)</i>		✓		Date of creation of LACK-4 (output)	LACK-4 CREATION DATE. LACK-4 (EA)	8 digits, date
26	LACK-9 <i>LACK-9</i>	✓			LACK-9 (Report on sales/ release Excisable goods without Excise facility) (repeat 10 times)	— (Group Title)	—
27	No. <i>No.</i>		✓		Serial number (output)	—	2 digits, numeric
28	Sales Document Number <i>Nomor Dokumen Pengeluaran</i>		✓		Number of Sales/ Release Document (output)	RELEASE DOC NUMBER. LACK-9(EA)	15 digits, numeric
29	Date of Sales <i>Tanggal Pengeluaran</i>		✓		Date of Sales/ Release Document (output)	RELEASE DOC DATE. LACK-9(EA)	8 digits, date
30	Amount of Sales <i>Jumlah Pengeluaran</i>		✓		Amount of sales (output)	AMOUNT OF SALES. LACK-9(EA)	7 digits, numeric
31	Kind of Sold Goods <i>Jenis Barang Kena Cukai yang Dijual/ Diserahkan</i>			✓	Kind of sold/ used Excisable goods (output)	KIND OF SOLD GOODS. SUPPLIER FACTORY	20 char, alpha- numeric
32	Supplier NPPBKC <i>NPPBKC Pabrik Pemasok</i>			✓	NPPBKC of supplier factory (output)	NPPBKC. SUPPLIER FACTORY	10 digits, numeric

Table 4.4-35: List of Items
(Window Name: Excise Company Retrieval3 (Retrieval Result Window7) (5/12))

No.	Item Name	Level			Description	Item in File	Note
		1	2	3			
33	NPWP Type <i>Tipe NPWP</i>			✓	Type of NPWP (output)	idtype_of. SUPPLIER FACTORY	1 digit, numeric
34	Supplier NPWP <i>NPWP Pabrik Pemasok</i>			✓	Tax Payer Code Number of supplier factory (output)	ID NUMBER. SUPPLIER FACTORY	12 char., alpha- numeric
35	Supplier Name <i>Nama Pabrik Pemasok</i>			✓	Name of supplier factory (output)	NAME. SUPPLIER FACTORY	40 char., alpha- numeric
36	Street <i>Jalan</i>			✓	Address of supplier factory (output)	STREET. SUPPLIER FACTORY	100 char., alpha- numeric
37	City <i>Kota</i>			✓	City where the factory is located. (output)	CITY. SUPPLIER FACTORY	30 char., Alpha- numeric
38	Postal code <i>Kode Pos</i>			✓	Postal code (output)	POSTAL CODE. SUPPLIER FACTORY	5 digits, numeric
39	Phone <i>Telepon</i>			✓	The phone number of supplier factory (output)	PHONE NUMBER. SUPPLIER FACTORY	12 digits, numeric
40	Fax <i>Fax</i>			✓	The fax number of supplier factory (output)	FAX NUMBER. SUPPLIER FACTORY	12 digits, numeric
41	Telex <i>Telex</i>			✓	The telex number of supplier factory (output)	TELEX NUMBER. SUPPLIER FACTORY	20 digits, numeric
42	LACK-9 Date <i>Tanggal LACK-9</i>			✓	Date of creation of LACK-9 (output)	CREATION DATE. LACK-9 (EA)	8 digits, date
43	Total Amount <i>Jumlah Total</i>		✓		Total amount of sales (output)	CALCULATED BY: AMOUNT OF SALES. LACK-9 (EA)	8 digits, numeric
44	SE-16 (EA) <i>SE-16 (EA)</i>	✓			SE-16 (Monthly report on production and release of EA with its receipts) (no repeat)	— (Group Title)	—

Table 4.4-35: List of Items
(Window Name: Excise Company Retrieval3 (Retrieval Result Window7) (6/12))

No.	Item Name	Level			Description	Item in File	Note
		1	2	3			
45	Excise Tariff <i>Tarif Cukai</i>		✓		Excise Tariff (output)	EXCISE TARIFF. SE-16 (EA)	6 digits, numeric
46	SE-16 Date <i>Tanggal</i> <i>SE-16</i>		✓		Date of creation of SE-16(EA) (output)	CREATION DATE. SE-16(EA)	8 digits, date
47	SE-16 (EA) <i>SE-16 (EA)</i>		✓		SE-16 (EA) (no repeat)	— (Group Title)	—
48	1. Last Month Balance <i>1. Sisa</i> <i>Bulan Lalu</i>			✓	Last month balance (output)	LAST MONTH BALANCE. SE-16 (EA)	9 (7.2) digits, decimal
49	2. Production of The Month/ Entry <i>2. Produksi</i> <i>Bulan Ini/</i> <i>Pemasukan</i>			✓	Production of the month/ entry (output)	PRODUCTION OF THE MONTH. SE-16 (EA)	8 (6.2) digits, decimal
50	3. Total (1+2) <i>3. Jumlah</i> <i>(1+2)</i>			✓	Total (48[Last month balance] + 49[Production of the month]) (output)	CALCULATED BY: • LAST MONTH BALANCE. SE-16 (EA) • PRODUCTION OF THE MONTH. SE-16 (EA)	9 (7.2) digits, decimal
51	4. Release <i>4..Pengelu-</i> <i>ran</i>			✓	Release (no repeat)	— (Group Title)	—
52	4.1 Excise Imposed <i>4.1 Bayar</i> <i>Cukai</i>			✓ *4	Release amount of Excisable goods (output)	EXCISE IMPOSED. SE-16 (EA)	8 (6.2) digits, decimal
53	4.2 Unimposed Excise <i>4.2 Tidak</i> <i>Dipungut</i> <i>Cukai</i>			✓ *4	Amount of Unimposed Excise goods (no repeat)	— (Group Title)	—

Table 4.4-35: List of Items
(Window Name: Excise Company Retrieval3 (Retrieval Result Window7) (7/12))

No.	Item Name	Level			Description	Item in File	Note
		1	2	3			
54	4.2.1 Transited/ Trans- Shipped 4.2.1 <i>Diangkut Terus/ Diangkut Lanjut</i>			✓ *5	Amount of unimposed Excise goods which were transited/ transshipped (output)	UNIMPOSED EXCISE-TRANSIT. SE-16 (EA)	8 (6.2) digits, decimal
55	4.2.2 Exported 4.2.2 <i>Diekspor</i>			✓ *5	Amount of unimposed Excise goods which were exported (output)	UNIMPOSED EXCISE- EXPORTED. SE-16 (EA)	8 (6.2) digits, decimal
56	4.2.3 Brought into Factory/ Storage 4.2.3 <i>Dimasukkan ke Pabrik/ Tempat Penyimpanan</i>			✓ *5	Amount of unimposed Excise goods which were brought into factory or storage (output)	UNIMPOSED EXCISE- FACTORY AND STRG. SE-16 (EA)	8 (6.2) digits, decimal
57	4.2.4 Used as Raw Material for Production 4.2.4 <i>Untuk Bahan Baku/ Penolong Produksi BKC</i>			✓ *5	Amount of unimposed Excise goods which were used as raw material for production (output)	UNIMPOSED EXCISE- RAW MATERIAL. SE-16 (EA)	8 (6.2) digits, decimal
58	4.2.5 Destroyed/ Damaged Prior to The Release 4.2.5 <i>Musnah/ Rusak Sebelum Dikeluarkan</i>			✓ *5	Amount of unimposed Excise goods which were destroyed/ damaged prior to the release (output)	UNIMPOSED EXCISE- DAMAGED. SE-16 (EA)	8 (6.2) digits, decimal

Table 4.4-35: List of Items
(Window Name: Excise Company Retrieval3 (Retrieval Result Window7) (8/12))

No.	Item Name	Level			Description	Item in File	Note
		1	2	3			
59	4.3 Exempted Excise 4.3 <i>Pembebasan Cukai</i>			✓ *4	Release of exempted Excise goods (no repeat)	— (Group Title)	—
60	4.3.1 Used as Raw/ Auxiliary Materials for Manufacturi ng Non- Excisable Goods 4.3.1 <i>Untuk Bahan Baku/ Penolong Produksi Bukan BKC</i>			✓ *5	Used as raw/ auxiliary materials for manufacturing non-Excisable goods (output)	EXEMPTED EXCISE-RAW MATERIAL. SE-16 (EA)	8 (6.2) digits, decimal
61	4.3.2 For Research and Scientific Develop- ment 4.3.2 <i>Untuk Penelitian Ilmu Pengetahua n dan Teknologi</i>			✓ *5	For research and scientific development (output)	EXEMPTED EXCISE- RESEARCH. SE-16 (EA)	8 (6.2) digits, decimal
62	4.3.3 For Social Purposes 4.3.3 <i>Untuk Tujuan Sosial</i>			✓ *5	For social purposes (output)	EXEMPTED EXCISE-SOCIAL. SE-16 (EA)	8 (6.2) digits, decimal

Table 4.4-35: List of Items
(Window Name: Excise Company Retrieval3 (Retrieval Result Window7) (9/12))

No.	Item Name	Level			Description	Item in File	Note
		1	2	3			
63	4.3.4 Brought into Bonded Storage <i>4.3.4 Dimasukan Ke Tempat Penimbunan Berikut</i>			✓ *5	Amount of exempted Excise goods that are brought into bonded storage (output)	EXEMPTED EXCISE-BONDED STRG. SE-16 (EA)	8 (6.2) digits, decimal
64	4.3.5 Denatured to be Brand Spiritus <i>4.3.5 Dirusak Menjadi Spiritus Bakar</i>			✓ *5	Denatured to be brand spiritus (output)	EXEMPTED EXCISE-DENATURED TO BE BRAND. SE-16 (EA)	8 (6.2) digits, decimal

Table 4.4-35: List of Items
(Window Name: Excise Company Retrieval3 (Retrieval Result Window7) (10/12))

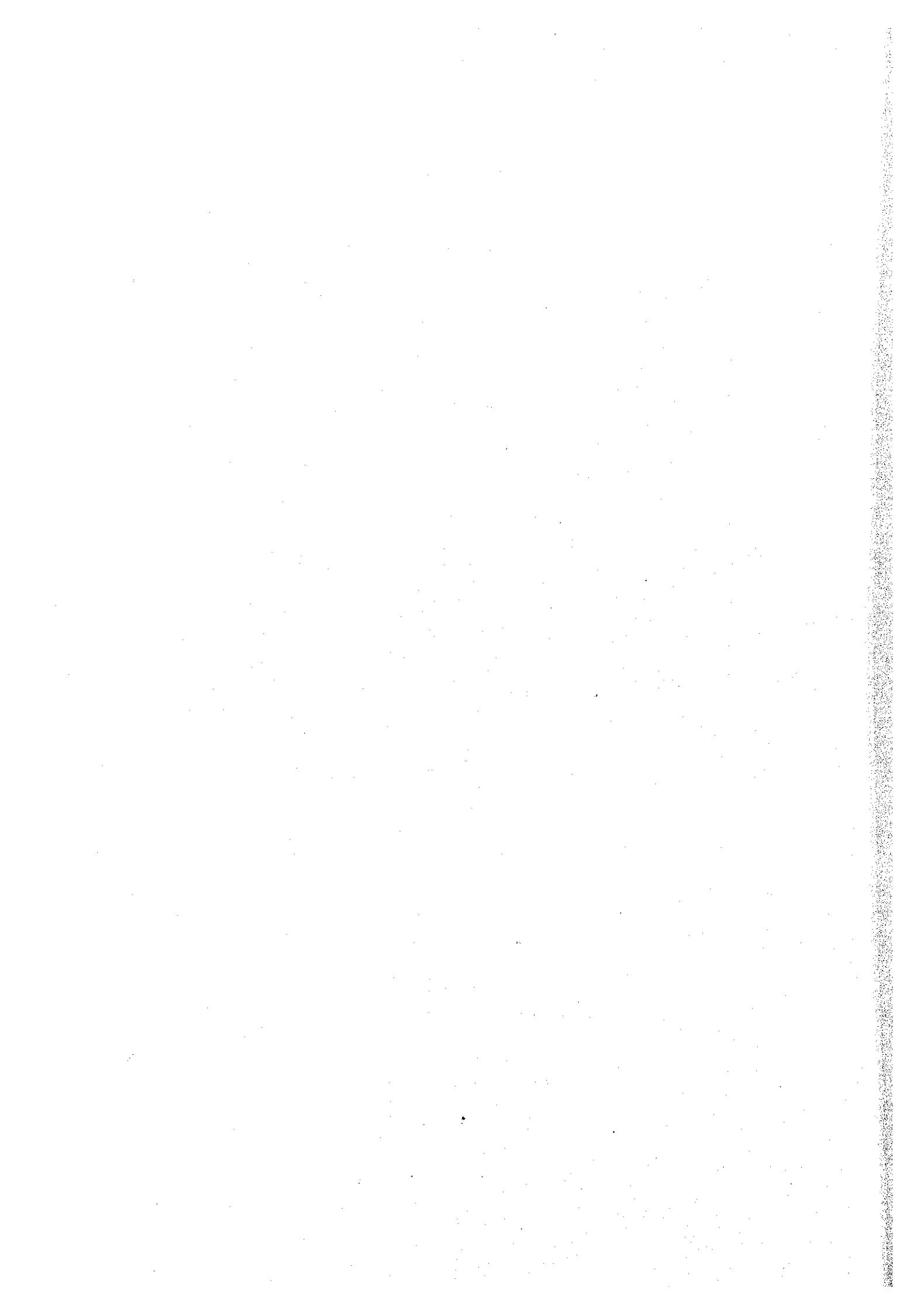
No.	Item Name	Level			Description	Item in File	Note
		1	2	3			
65	4.4 Total (4.1 s/d 4.3) 4.4 Jumlah (4.1 s/d 4.3)			✓ *4	Total (total amount 52[Excise Imposed]+54[Transited/Transshipped]+55[Exported]+56 [Brought into factory/ storage]+57[Used as raw material for production]+58[Destroyed/ damaged prior to the release]+60[Used as raw/ auxiliary materials for manufacturing non-Excisable goods]+61[For research and scientific development]+62[For social purposes]+63[Brought into Bonded Storage]+64[Denatured to be brand spiritus]) (output)	CALCULATED BY: <ul style="list-style-type: none"> • EXCISE IMPOSED. SE-16 (EA) • UNIMPOSED EXCISE-TRANSIT. SE-16 (EA) • UNIMPOSED EXCISE-EXPORTED. SE-16 (EA) • UNIMPOSED EXCISE-FACTORY AND STRG. SE-16 (EA) • UNIMPOSED EXCISE- RAW MATERIAL. SE-16 (EA) • UNIMPOSED EXCISE-DAMAGED. SE-16 (EA) • EXEMPTED EXCISE-RAW MATERIAL. SE-16 (EA) • EXEMPTED EXCISE-RESEARCH. SE-16 (EA) 	9 (7.2) digits, decimal

Table 4.4-35: List of Items
(Window Name: Excise Company Retrieval3 (Retrieval Result Window7) (11/12))

No.	Item Name	Level			Description	Item in File	Note
		1	2	3			
	(continued)				(continued)	<ul style="list-style-type: none"> • EXEMPTED EXCISE-SOCIAL. SE-16 (EA) • EXEMPTED EXCISE-BONDED STRG. SE-16 (EA) • EXEMPTED EXCISE-DENATURED TO BE BRAND. SE-16 (EA) 	(continued)
66	5. This Month Balance (3-4.4) 5. Sisa Bulan Ini (3-4.4)			✓	This month balance (50[Total]-65[Total]) (output)	CALCULATED BY: <ul style="list-style-type: none"> • LAST MONTH BALANCE. SE-16 (EA) • PRODUCTION OF THE MONTH. SE-16 (EA) • EXCISE IMPOSED. SE-16 (EA) • UNIMPOSED EXCISE-TRANSIT. SE-16 (EA) • UNIMPOSED EXCISE-EXPORTED. SE-16 (EA) • UNIMPOSED EXCISE-FACTORY AND STRG. SE-16 (EA) • UNIMPOSED EXCISE- RAW MATERIAL. SE-16 (EA) 	9 (7.2) digits, decimal

Table 4.4-35: List of Items
(Window Name: Excise Company Retrieval3 (Retrieval Result Window7) (12/12))

No.	Item Name	Level			Description	Item in File	Note
		1	2	3			
	(continued)				(continued)	<ul style="list-style-type: none"> • UNIMPOSED EXCISE-DAMAGED. SE-16 (EA) • EXEMPTED EXCISE-RAW MATERIAL. SE-16 (EA) • EXEMPTED EXCISE-RESEARCH. SE-16 (EA) • EXEMPTED EXCISE-SOCIAL. SE-16 (EA) • EXEMPTED EXCISE-BONDED STRG. SE-16 (EA) • EXEMPTED EXCISE-DENATURED TO BE BRAND. SE-16 (EA) 	(continued)
67	6. Excise Should be Paid (4.1×Tariff) 6. Jumlah Cukai (4.1×Tarif Cukai)			✓	Excise should be paid (52[Excise Imposed] × 45[ExciseTariff]) (output)	CALCULATED BY: <ul style="list-style-type: none"> • EXCISE IMPOSED. SE-16(EA) • EXCISE TARIFF. SE-16(EA) 	12 (10.2) digits, decimal



**Table 4.4-36: List of Items (Report Name:
Monthly Report for EA Based on LACK-1, LACK-2 and SE-16 (Summary) (1/10)**

No.	Item Name	Level			Description	Item in File	Note
		1	2	3			
1	Excise Factory Information <i>Informasi Pabrik Cukai</i>	✓			Excise Factory Information (no repeat)	— (Group title)	—
2	NPPBKC <i>NPPBKC</i>		✓		NPPBKC (output)	NPPBKC. FACTORY	10 digits, numeric
3	NPPBKC Date <i>Tanggal NPPBKC</i>		✓		Date of NPPBKC issuance (output)	DATE OF NPPBKC. FACTORY	8 digits, date
4	NPP <i>NPP</i>		✓		NPP (output)	NPP. FACTORY	9 char., alpha- numeric
5	NPP Date <i>Tanggal NPP</i>		✓		Date of NPP issuance (output)	DATE OF NPP. FACTORY	8 digits, date
6	Factory Name <i>Nama Pabrik</i>		✓		Factory Name (output)	FACTORY NAME. FACTORY	40 char., alpha- numeric
7	Month & Year <i>Bulan dan Tahun</i>		✓		Month of the reports produced (output)	MONTH_YEAR. SE-16(EA)	6 digits, date
8	LACK-4 <i>LACK-4</i>	✓			LACK-4 (Report on utilizing excise exempted EA with facility through non-integrated production process) (repeat 99 times)	— (Group title)	—
9	LACK-4 Date <i>Tanggal LACK-4</i>		✓		Date of creation of LACK-4 (output)	LACK-4 CREATION DATE. LACK-4 (EA)	8 digits, date
10	Total <i>Jumlah</i>		✓		Total amount (no repeat)	— (Group title)	—
11	Beginning Balance <i>Saldo Awal</i>			✓	Total amount of beginning balance of the month (output)	CALCULATED BY: BEGINNING BALANCE. LACK- 4 DETAIL	8 digits, numeric

**Table 4.4-36: List of Items (Report Name:
Monthly Report for EA Based on LACK-1, LACK-2 and SE-16 (Summary) (2/10)**

No.	Item Name	Level			Description	Item in File	Note
		1	2	3			
12	Entry <i>Pemasukan</i>			✓	Total amount of entry of the month (output)	CALCULATED BY: ENTRY.LACK-4 DETAIL	7 digits, numeric
13	Total <i>Jumlah</i>			✓	Total amount of 11[Beginning Balance] and 12[Entry] (output)	CALCULATED BY: • BEGINNING BALANCE. LACK-4 DETAIL • ENTRY. LACK-4 DETAIL	8 digits, numeric
14	Used Amount <i>Jumlah yang Digunakan</i>			✓	Total amount of used amount of the month (output)	CALCULATED BY: USED AMOUNT. LACK-4 DETAIL	7 digits, numeric
15	Balance <i>Saldo Akhir</i>			✓	Total amount of balance of the month (output)	CALCULATED BY: • BEGINNING BALANCE. LACK-4 DETAIL • ENTRY. LACK-4 DETAIL • USED AMOUNT. LACK-4 DETAIL	8 digits, numeric
16	Amount of Production <i>Jumlah Barang Kena Cukai yang Diproduksi</i>			✓	Total amount of production of the month (output)	CALCULATED BY: AMOUNT OF EXCISABLE GOODS PRODUCED. LACK-4 DETAIL	8 digits, numeric
17	LACK-9 <i>LACK-9</i>	✓			LACK-9 (Report on sales/ release Excisable goods without Excise facility) (repeat 10 times)	— (Group Title)	—
18	No. <i>No.</i>		✓		Serial number (output)	—	2 digits, numeric

**Table 4.4-36: List of Items (Report Name:
Monthly Report for EA Based on LACK-1, LACK-2 and SE-16 (Summary) (3/10)**

No.	Item Name	Level			Description	Item in File	Note
		1	2	3			
19	Sales Document Number <i>Nomor Dokumen Pengeluaran</i>		✓		Number of Sales/ Release Document (output)	RELEASE DOC NUMBER. LACK-9(EA)	15 digits, numeric
20	Date of Sales <i>Tanggal Pengeluaran</i>		✓		Date of Sales/ Release Document (output)	RELEASE DOC DATE. LACK-9(EA)	8 digits, date
21	Amount of Sales <i>Jumlah Pengeluaran</i>		✓		Amount of sales (output)	AMOUNT OF SALES. LACK-9(EA)	7 digits, numeric
22	Kind of Sold Goods <i>Jenis Barang Kena Cukai yang Dijual/ Diserahkan</i>			✓	Kind of sold/ used Excisable goods (output)	KIND OF SOLD GOODS. SUPPLIER FACTORY	20 char, alpha-numeric
23	Supplier NPPBKC <i>NPPBKC Pabrik Pemasok</i>			✓	NPPBKC of supplier factory (output)	NPPBKC. SUPPLIER FACTORY	10 digits, numeric
24	Supplier NPWP <i>NPWP Pabrik Pemasok</i>			✓	Tax Payer Code Number of supplier factory (output)	ID NUMBER. SUPPLIER FACTORY	12 char., alpha-numeric
25	Supplier Name <i>Nama Pabrik Pemasok</i>			✓	Name of supplier factory (output)	NAME. SUPPLIER FACTORY	40 char., alpha-numeric
26	Street <i>Jalan</i>			✓	Address of supplier factory (output)	STREET. SUPPLIER FACTORY	100 char., alpha-numeric
27	City <i>Kota</i>			✓	City where the factory is located. (output)	CITY. SUPPLIER FACTORY	30 char., Alpha-numeric
28	Postal code <i>Kode Pos</i>			✓	Postal code (output)	POSTAL CODE. SUPPLIER FACTORY	5 digits, numeric

**Table 4.4-36: List of Items (Report Name:
Monthly Report for EA Based on LACK-1, LACK-2 and SE-16 (Summary) (4/10)**

No.	Item Name	Level			Description	Item in File	Note
		1	2	3			
29	Phone <i>Telepon</i>			✓	The phone number of supplier factory (output)	PHONE NUMBER. SUPPLIER FACTORY	12 digits, numeric
30	Fax <i>Fax</i>			✓	The fax number of supplier factory (output)	FAX NUMBER. SUPPLIER FACTORY	12 digits, numeric
31	Telex <i>Telex</i>			✓	The telex number of supplier factory (output)	TELEX NUMBER. SUPPLIER FACTORY	20 digits, numeric
32	LACK-9 Date <i>Tanggal LACK-9</i>			✓	Date of creation of LACK-9 (output)	CREATION DATE. LACK-9 (EA)	8 digits, date
33	Total Amount of Sales <i>Jumlah Total Pengeluaran</i>		✓		Total amount of sales (output)	CALCULATED BY: AMOUNT OF SALES. LACK-9 (EA)	8 digits, numeric
34	SE-16 (EA) <i>SE-16 (EA)</i>	✓			SE-16 (Monthly report on production and release of EA with its receipts) (no repeat)	(Group Title)	—
35	Excise Tariff <i>Tarif Cukai</i>		✓		Excise Tariff (output)	EXCISE TARIFF. SE-16 (EA)	6 digits, numeric
36	SE-16 Date <i>Tanggal SE-16</i>		✓		Date of creation of SE-16(EA) (output)	CREATION DATE. SE-16(EA)	8 digits, date
37	SE-16 (EA) <i>SE-16 (EA)</i>		✓		SE-16 (EA) (no repeat)	(Group Title)	—
38	1. Last Month Balance <i>1. Sisa Bulan Lalu</i>			✓	Last month balance (output)	LAST MONTH BALANCE. SE-16 (EA)	9 (7.2) digits, decimal
39	2. Production of The Month/ Entry <i>2. Produksi Bulan Ini/ Pemasukan</i>			✓	Production of the month/ entry (output)	PRODUCTION OF THE MONTH. SE-16 (EA)	8 (6.2) digits, decimal

**Table 4.4-36: List of Items (Report Name:
Monthly Report for EA Based on LACK-1, LACK-2 and SE-16 (Summary) (5/10)**

No.	Item Name	Level			Description	Item in File	Note
		1	2	3			
40	3. Total (1+2) 3. <i>Jumlah</i> (1+2)			✓	Total (38[Last month balance] + 39[Production of the month]) (output)	CALCULATED BY: • LAST MONTH BALANCE. SE-16 (EA) • PRODUCTION OF THE MONTH. SE-16 (EA)	9 (7.2) digits, decimal
41	4. Release 4. <i>Pengeluaran</i>			✓	Release (no repeat)	— (Group Title)	—
42	4.1 Excise Imposed 4.1 <i>Bayar</i> <i>Cukai</i>			✓ *4	Release amount of Excisable goods (output)	EXCISE IMPOSED. SE-16 (EA)	8 (6.2) digits, decimal
43	4.2 Unimposed Excise 4.2 <i>Tidak</i> <i>Dipungut</i> <i>Cukai</i>			✓	Amount of Unimposed Excise goods (no repeat)	— (Group Title)	—
44	4.2.1 Transited/ Trans- Shipped 4.2.1 <i>Diangkut</i> <i>Terus/</i> <i>Diangkut</i> <i>Lanjut</i>			✓ *4	Amount of unimposed Excise goods which were transited/ transshipped (output)	UNIMPOSED EXCISE-TRANSIT. SE-16 (EA)	8 (6.2) digits, decimal
45	4.2.2 Exported 4.2.2 <i>Diekspor</i>			✓ *4	Amount of unimposed Excise goods which were exported (output)	UNIMPOSED EXCISE- EXPORTED. SE-16 (EA)	8 (6.2) digits, decimal
46	4.2.3 Brought into Factory/ Storage 4.2.3 <i>Dimasukkan</i> <i>ke Pabrik/</i> <i>Tempat</i> <i>Penyimpanan</i>			✓ *4	Amount of unimposed Excise goods which were brought into factory or storage (output)	UNIMPOSED EXCISE- FACTORY AND STRG. SE-16 (EA)	8 (6.2) digits, decimal

**Table 4.4-36: List of Items (Report Name:
Monthly Report for EA Based on LACK-1, LACK-2 and SE-16 (Summary) (6/10)**

No.	Item Name	Level			Description	Item in File	Note
		1	2	3			
47	4.2.4 Used as Raw Material for Production <i>4.2.4 Untuk Bahan Baku/ Penolong Produksi BKC</i>			✓ *4	Amount of unimposed Excise goods which were used as raw material for production (output)	UNIMPOSED EXCISE- RAW MATERIAL. SE-16 (EA)	8 (6.2) digits, decimal
48	4.2.5 Destroyed/ Damaged Prior to The Release <i>4.2.5 Musnah/ Rusak Sebelum Dikeluarkan</i>			✓ *4	Amount of unimposed Excise goods which were destroyed/ damaged prior to the release (output)	UNIMPOSED EXCISE- DAMAGED. SE-16 (EA)	8 (6.2) digits, decimal
49	4.3 Exempted Excise <i>4.3 Pembebasan Cukai</i>			✓	Release of exempted Excise goods (no repeat)	— (Group Title)	—
50	4.3.1 Used as Raw/ Auxiliary Materials for Manufacturing Non-Excisable Goods <i>4.3.1 Untuk Bahan Baku/ Penolong Produksi Bukan BKC</i>			✓ *4	Used as raw/ auxiliary materials for manufacturing non-Excisable goods (output)	EXEMPTED EXCISE-RAW MATERIAL. SE-16 (EA)	8 (6.2) digits, decimal

**Table 4.4-36: List of Items (Report Name:
Monthly Report for EA Based on LACK-1, LACK-2 and SE-16 (Summary) (7/10)**

No.	Item Name	Level			Description	Item in File	Note
		1	2	3			
51	4.3.2 For Research and Scientific Development <i>4.3.2 Untuk Penelitian Ilmu Pengetahuan dan Teknologi</i>			✓ *4	For research and scientific development (output)	EXEMPTED EXCISE-RESEARCH. SE-16 (EA)	8 (6.2) digits, decimal
52	4.3.3 For Social Purposes <i>4.3.3 Untuk Tujuan Sosial</i>			✓ *4	For social purposes (output)	EXEMPTED EXCISE-SOCIAL. SE-16 (EA)	8 (6.2) digits, decimal
53	4.3.4 Brought into Bonded Storage <i>4.3.4 Dimasukan Ke Tempat Penimbunan Berikat</i>			✓ *4	Amount of exempted Excise goods that are brought into bonded storage (output)	EXEMPTED EXCISE-BONDED STRG. SE-16 (EA)	8 (6.2) digits, decimal
54	4.3.5 Denatured to be Brand Spiritus <i>4.3.5 Dirusak Menjadi Spiritus Bakar</i>			✓ *4	Denatured to be brand spiritus (output)	EXEMPTED EXCISE-DENATURED TO BE BRAND. SE-16 (EA)	8 (6.2) digits, decimal

**Table 4.4-36: List of Items (Report Name:
Monthly Report for EA Based on LACK-1, LACK-2 and SE-16 (Summary) (8/10)**

No.	Item Name	Level			Description	Item in File	Note
		1	2	3			
55	4.4 Total (4.1 s/d 4.3) 4.4 Jumlah (4.1 s/d 4.3)			✓	Total (total amount 42[Excise Imposed]+44[Transited/Transshipped]+45[Exported]+46 [Brought into factory/ storage]+47[Used as raw material for production]+48[Destroyed/ damaged prior to the release]+50[Used as raw/ auxiliary materials for manufacturing non-Excisable goods]+51[For research and scientific development]+52[For social purposes]+53[Brought into Bonded Storage]+54[Denatured to be brand spiritus]) (output)	CALCULATED BY: <ul style="list-style-type: none"> • EXCISE IMPOSED. SE-16 (EA) • UNIMPOSED EXCISE- TRANSIT. SE-16 (EA) • UNIMPOSED EXCISE- EXPORTED. SE-16 (EA) • UNIMPOSED EXCISE- FACTORY AND STRG. SE-16 (EA) • UNIMPOSED EXCISE- RAW MATERIAL. SE-16 (EA) • UNIMPOSED EXCISE- DAMAGED. SE-16 (EA) • EXEMPTED EXCISE-RAW MATERIAL. SE-16 (EA) • EXEMPTED EXCISE- RESEARCH. SE-16 (EA) • EXEMPTED EXCISE- SOCIAL. SE-16 (EA) • EXEMPTED EXCISE- BONDED STRG. SE-16 (EA) 	9 (7.2) digits, decimal

**Table 4.4-36: List of Items (Report Name:
Monthly Report for EA Based on LACK-1, LACK-2 and SE-16 (Summary) (9/10)**

No.	Item Name	Level			Description	Item in File	Note
		1	2	3			
	(continued)				(continued)	<ul style="list-style-type: none"> EXEMPTED EXCISE-DENATURED TO BE BRAND. SE-16 (EA) 	(continued)
56	5. This Month Balance (3-4.4) 5. Sisa Bulan Ini (3-4.4)		✓		This month balance (40[Total]-55[Total]) (output)	CALCULATED BY: <ul style="list-style-type: none"> LAST MONTH BALANCE. SE-16 (EA) PRODUCTION OF THE MONTH. SE-16 (EA) EXCISE IMPOSED. SE-16 (EA) UNIMPOSED EXCISE-TRANSIT. SE-16 (EA) UNIMPOSED EXCISE-EXPORTED. SE-16 (EA) UNIMPOSED EXCISE-FACTORY AND STRG. SE-16 (EA) UNIMPOSED EXCISE- RAW MATERIAL. SE-16 (EA) UNIMPOSED EXCISE-DAMAGED. SE-16 (EA) EXEMPTED EXCISE-RAW MATERIAL. SE-16 (EA) 	9 (7.2) digits, decimal

**Table 4.4-36: List of Items (Report Name:
Monthly Report for EA Based on LACK-1, LACK-2 and SE-16 (Summary) (10/10)**

No.	Item Name	Level			Description	Item in File	Note
		1	2	3			
	(continued)				(continued)	<ul style="list-style-type: none"> • EXEMPTED EXCISE-RESEARCH. SE-16 (EA) • EXEMPTED EXCISE-SOCIAL. SE-16 (EA) • EXEMPTED EXCISE-BONDED STRG. SE-16 (EA) • EXEMPTED EXCISE-DENATURED TO BE BRAND. SE-16 (EA) 	(continued)
57	6. Excise Should be Paid (4.1× Tariff) 6. Jumlah Cukai (4.1× Tarif Cukai)		✓		Excise that should be paid (42[Excise Imposed] × 35[Excise Tariff]) (output)	CALCULATED BY: <ul style="list-style-type: none"> • EXCISE IMPOSED. SE-16(EA) • EXCISE TARIFF. SE-16(EA) 	12 (10.2) digits, decimal





JICA