

Excise Company Retrieval 5
 Retrieval Result Window 9
 Page 1 of 3

Tobacco Product Export Report

Month & Year: Service Office: Regional Office:

Details of Report:

No.	Number of Cans	Number of Boxes	Number of Sticks	Retail Price (Rp)	Amount of Retail Price (Rp)	Amount of Exchange (US\$)	Country of Destination
1							
2							
3							
4							
5							
6							
7							
8							
9							
10							
11							
12							
13							
14							
15							
16							
17							
18							
19							
20							
21							
22							
23							
24							
25							
26							
27							
28							
29							
30							
31							
32							
33							
34							
35							
36							
37							
38							
39							
40							
41							
42							
43							
44							
45							
46							
47							
48							
49							
50							
51							
52							
53							
54							
55							
56							
57							
58							
59							
60							
61							
62							
63							
64							
65							
66							
67							
68							
69							
70							
71							
72							
73							
74							
75							
76							
77							
78							
79							
80							
81							
82							
83							
84							
85							
86							
87							
88							
89							
90							
91							
92							
93							
94							
95							
96							
97							
98							
99							
100							

Total
 Number of Cans: Number of Boxes: Number of Sticks:
 Amount of Retail Price (Rp): Amount of Exchange (US\$):

Ok Previous Page Next Page Print

Figure 4.4-11: Window Layout for Excise Company Retrieval 5 (Retrieval Result Window 9) (2/2)

Table 4.4-25: List of Items
(Window Name: Excise Company Retrieval5 (Retrieval Result Window9)) (1/3)

No.	Item Name	Level			Description	Item in File	Note
		1	2	3			
1	Tobacco Product Export Report <i>Laporan Ekspor Hasil Tembakau</i>	✓			Tobacco product export report (monthly report created from CK-8 data) (no repeat)	— (Group title)	—
2	Month & Year <i>Bulan dan Tahun</i>		✓		Month & Year of Tobacco product export report (output)	—	6 digits, date
3	Service Office <i>Kantor Pelayanan</i>		✓		Regional office (output)	CODE. DJBC OFFICE	40 char., alpha-numeric
4	Regional Office <i>Kantor Wilayah</i>		✓		Service office (output)	CODE. DJBC OFFICE	40 char., alpha-numeric
5	Details of Report <i>Rincian Raporan</i>		✓		Details of Report (shown in the chronological order of CK-8 Date) (repeat 15,000 times)	(Group title) —	—
6	No. <i>No.</i>			✓	Serial number (output)	—	5 digits, numeric
7	CK-8 Date <i>Tanggal CK-8</i>			✓	CK-8 issuance date (output)	CK-8 DATE. CK-8 (DECLARATION OF EXPORT)	8 digits, date
8	CK-8 Number <i>Nomor CK-8</i>			✓	CK-8 number (output)	CK-8 NUMBER. CK-8 (DECLARATION OF EXPORT)	6 digits, numeric
9	Company Name <i>Nama Perusahaan</i>			✓	Company Name (output)	NAME. BASIC INFORMATION	40 char., alpha-numeric
10	Kind of Tobacco <i>Jenis Hasil Tembakau</i>			✓	Kind of Tobacco (output)	tobaproduct of. CK-8 DETAIL	7 char., alpha-numeric
11	Brand <i>Merek</i>			✓	Tobacco Brand (output)	BRAND. CK-8 DETAIL	25 char., alpha-numeric

Table 4.4-25: List of Items
(Window Name: Excise Company Retrieval5 (Retrieval Result Window9)) (2/3)

No.	Item Name	Level			Description	Item in File	Note
		1	2	3			
12	Number of Cartons <i>Banyak Karton</i>			✓	Number of cartons (output)	NUMBER OF CARTONS. CK-8 DETAIL	10 digits, numeric
13	Number of Boxes <i>Banyak Bungkus</i>			✓	Number of boxes (output)	NUMBER OF BOXES. CK-8 DETAIL	10 digits, numeric
14	Number of Sticks <i>Jumlah Batang</i>			✓	Number of sticks (output)	NUMBER OF STICKS. CK-8 DETAIL	10 digits, numeric
15	Retail Price (Rp) <i>HE/BKC(Rp)</i>			✓	Retail Price per box (output)	RETAIL PRICE. CK-8 DETAIL	7 digits, numeric
16	Amount of Retail Price (Rp) <i>Jumlah Harga Eceran (Rp)</i>			✓	Subtotal of Retail Price (output)	RETAIL PRICE. CK-8 DETAIL	15 digits, numeric
17	Amount of Exchange (US\$) <i>Devisa (US\$)</i>			✓	Amount of Exchange (output)	AMOUNT OF EXCHANGE. CK-8 DETAIL	15 digits, numeric
18	Country of Destination <i>Negara Tujuan</i>			✓	Destination country (output)	destctry_of. CK-8 (DECLARATION OF EXPORT)	40 char., alpha-numeric
19	Total <i>Jumlah</i>		✓		Total (no repeat)	— (Group title)	—
20	Number of Cartons <i>Banyak Carton</i>			✓	Total number of cartons (output)	CALCULATED BY: NUMBER OF CARTONS. CK-8 DETAIL	10 digits, numeric
21	Number of Boxes <i>Banyak Bungkus</i>			✓	Total number of boxes (output)	CALCULATED BY: NUMBER OF BOXES. CK-8 DETAIL	10 digits, numeric

Table 4.4-25: List of Items
(Window Name: Excise Company Retrieval5 (Retrieval Result Window9)) (3/3)

No.	Item Name	Level			Description	Item in File	Note
		1	2	3			
22	Number of Sticks <i>Jumlah Batang</i>			✓	Total number of sticks (output)	CALCULATED BY: NUMBER OF STICKS. CK-8 DETAIL	15 digits, numeric
23	Amount of Retail Price <i>Jumlah Harga Eceran (Rp)</i>			✓	Total amount of Retail Price (output)	CALCULATED BY: RETAIL PRICE. CK-8 DETAIL	15 digits, numeric
24	Amount of Exchange (US\$) <i>Devisa (US\$)</i>			✓	Total amount of Exchange(US\$) (output)	AMOUNT OF EXCHANGE. CK-8 DETAIL	15 digits, numeric

Tobacco Product Export Report

Month & Year		Service office	Regional	Brand	No. of			Retail Price (Rp)	Amount of Retail Price (Rp)	Amount of exchange (US\$)	Country of Destination
CK-8	CK-8	Company	Tobacco	Kind of Tobacco	Cartons	Boxes	Sticks				
6	8	9	10	11	12	13	14	15	16	17	18
6	8	9	10	11	12	13	14	15	16	17	18
6	7	9	10	11	12	13	14	15	16	17	18
6	7	9	10	11	12	13	14	15	16	17	18
6	8	9	10	11	12	13	14	15	16	17	18
Total											
6	8	9	10	11	20	21	22	23	24		

Figure 4.4-12 : Report Layout for Tobacco Product Export Report

Table 4.4-26: List of Items (Report Name: Tobacco Product Export Report) (1/3)

No.	Item Name	Level			Description	Item in File	Note
		1	2	3			
1	Tobacco Product Export Report <i>Laporan Ekspor Hasil Tembakau</i>	✓			Tobacco product export report (monthly report created from CK-8 data) (no repeat)	— (Group title)	—
2	Month & Year <i>Bulan dan Tahun</i>		✓		Month & Year of Tobacco product export report (output)	—	6 digits, date
3	Service Office <i>Kantor Pelayanan</i>		✓		Regional office (output)	CODE. DJBC OFFICE	40 char., alpha-numeric
4	Regional Office <i>Kantor Wilayah</i>		✓		Service office (output)	CODE. DJBC OFFICE	40 char., alpha-numeric
5	Details of Report <i>Rincian Raporan</i>		✓		Details of Report (shown in the chronological order of CK-8 Date) (repeat 15,000 times)	(Group title) —	—
6	No. <i>No.</i>			✓	Serial number (output)	—	4 digits, numeric
7	CK-8 Date <i>Tanggal CK-8</i>			✓	CK-8 issuance date (output)	CK-8 DATE. CK-8 (DECLARATION OF EXPORT)	8 digits, date
8	CK-8 Number <i>Nomor CK-8</i>			✓	CK-8 number (output)	CK-8 NUMBER. CK-8 (DECLARATION OF EXPORT)	6 digits, numeric
9	Company Name <i>Nama Perusahaan</i>			✓	Company Name (output)	NAME. BASIC INFORMATION	40 char., alpha-numeric
10	Kind of Tobacco <i>Jenis Hasil Tembakau</i>			✓	Kind of Tobacco (output)	tobaproduct_of. CK-8 (DECLARATION OF EXPORT)	7 char., alpha-numeric
11	Brand <i>Merek</i>			✓	Tobacco Brand (output)	BRAND. CK-8 DETAIL	25 char., alpha-numeric

Table 4.4-26: List of Items (Report Name: Tobacco Product Export Report) (2/3)

No.	Item Name	Level			Description	Item in File	Note
		1	2	3			
12	Number of Cartons <i>Banyak Karton</i>			✓	Number of cartons (output)	NUMBER OF CARTONS. CK-8 DETAIL	10 digits, numeric
13	Number of Boxes <i>Banyak Bungkus</i>			✓	Number of boxes (output)	NUMBER OF BOXES. CK-8 DETAIL	10 digits, numeric
14	Number of Sticks <i>Jumlah Batang</i>			✓	Number of sticks (output)	NUMBER OF STICKS. CK-8 DETAIL	10 digits, numeric
15	Retail Price (Rp) <i>HE(Rp)</i>			✓	Retail Price per box (output)	RETAIL PRICE. CK-8 DETAIL	7 digits, numeric
16	Amount of Retail Price (Rp) <i>Jumlah Harga Eceran (Rp)</i>			✓	Subtotal of Retail Price (output)	RETAIL PRICE. CK-8 DETAIL	15 digits, numeric
17	Amount of Exchange (US\$) <i>Devisa (US\$)</i>			✓	Amount of Exchange (output)	AMOUNT OF EXCHANGE. CK-8 DETAIL	15 digits, numeric
18	Country of Destination <i>Negara Tujuan</i>			✓	Destination country (output)	destctry_of. CK-8 (DECLARATION OF EXPORT)	40 char., alpha-numeric
19	Total <i>Jumlah</i>		✓		Total (no repeat)	— (Group title)	—
20	Number of Cartons <i>Banyak Carton</i>			✓	Total number of cartons (output)	CALCULATED BY: NUMBER OF CARTONS. CK-8 DETAIL	10 digits, numeric
21	Number of Boxes <i>Banyak Bungkus</i>			✓	Total number of boxes (output)	CALCULATED BY: NUMBER OF BOXES. CK-8 DETAIL	10 digits, numeric

Table 4.4-26: List of Items (Report Name: Tobacco Product Export Report) (3/3)

No.	Item Name	Level			Description	Item in File	Note
		1	2	3			
22	Number of Sticks <i>Jumlah Batang</i>			✓	Total number of sticks (output)	CALCULATED BY: NUMBER OF STICKS. CK-8 DETAIL	15 digits, numeric
23	Amount of Retail Price <i>Jumlah Harga Eceran (Rp)</i>			✓	Total amount of Retail Price (output)	CALCULATED BY: RETAIL PRICE. CK-8 DETAIL	15 digits, numeric
24	Amount of Exchange (US\$) <i>Devisa (US\$)</i>			✓	Total amount of Exchange(US\$) (output)	AMOUNT OF EXCHANGE. CK-8 DETAIL	15 digits, numeric

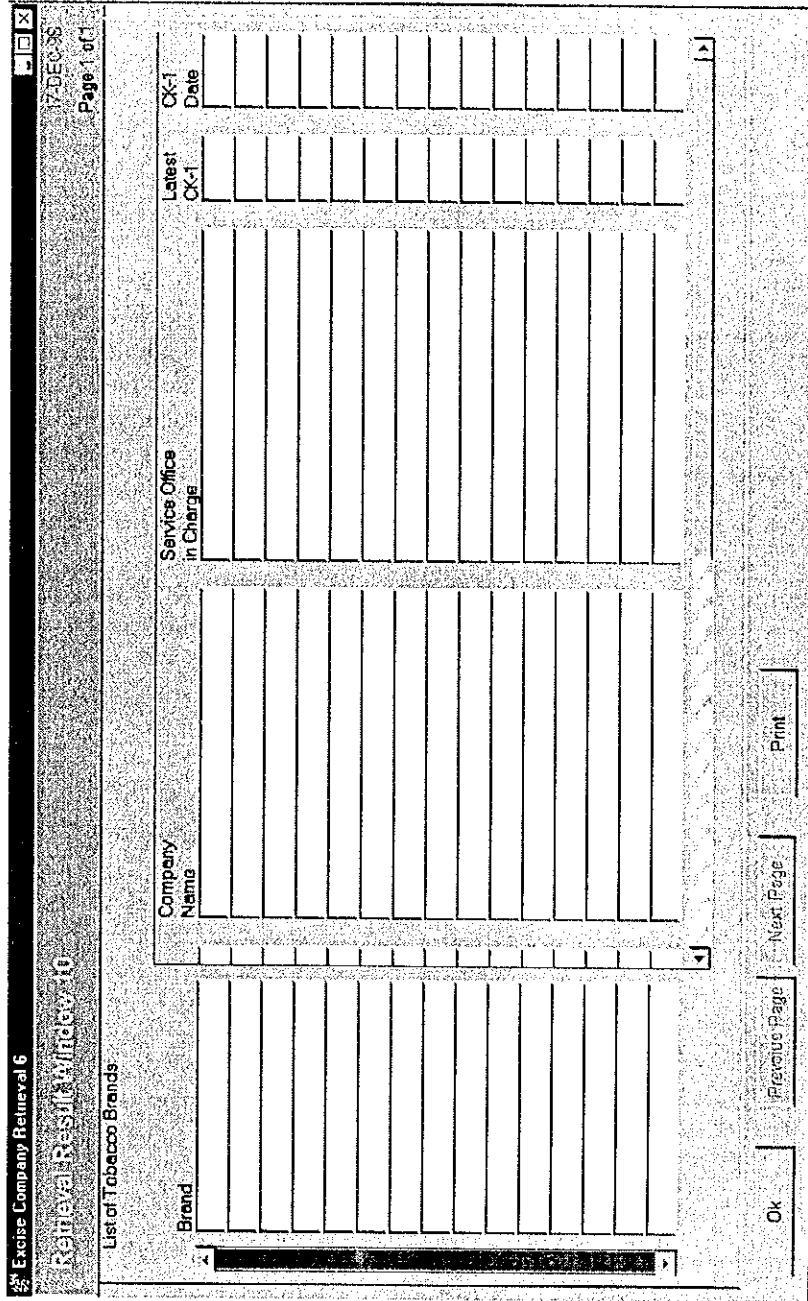


Figure 4.4-13: Window Layout for Excise Company Retrieval 6 (Retrieval Result Window 10) (2/2)

Table 4.4-27: List of Items
(Window Name: Excise Company Retrieval6 (Retrieval Result Window10)) (1/2)

No.	Item Name	Level			Description	Item in File	Note
		1	2	3			
1	List of Tobacco Brands <i>Daftar Merek Hasil Tembakau</i>	✓			List of Tobacco brands (for all the companies) (shown in the alphabetical order of the brands) (repeat 15,000 times)	— (Group title)	—
2	Brand <i>Merek</i>		✓		Name of the Tobacco brand (output)	<ul style="list-style-type: none"> • BRAND. CK-1 DETAIL • BRAND. CK-8 DETAIL 	25 char., alpha-numeric
3	Brand code <i>Kode Merek</i>		✓		Brand code (For future scalability) (output)	<ul style="list-style-type: none"> • tobabrnd_of. CK-1 DETAIL • tobabrnd_of. CK-8 DETAIL 	4 digits, numeric
4	Kind of Tobacco <i>Jenis Hasil Tembakau</i>		✓		Kind of Tobacco product (output)	<ul style="list-style-type: none"> • tobaproduct_of. CK-1 (EXCISE STAMP ORDER) • tobaproduct_of. CK-8 (DECLARATION OF EXPORT) 	7 char., alpha-numeric
5	Tariff(%) <i>Tarif(%)</i>		✓		Excise Tariff (output)	<ul style="list-style-type: none"> • EXCISE TARIFF. CK-1 (EXCISE STAMP ORDER) • EXCISE TARIFF. CK-8 DETAIL 	2 digits, numeric
6	Retail Price (Rp) <i>HJE (Rp)</i>		✓		Retail Price (output)	<ul style="list-style-type: none"> • RETAIL PRICE. CK-1 DETAIL • RETAIL PRICE. CK-8 DETAIL 	7 digits, numeric
7	Contents/ pack <i>Isi/ bks</i>		✓		Content/ pack (output)	<ul style="list-style-type: none"> • CONTENTS/ PACK. CK-1 DETAIL • CONTENTS/ PACK. CK-8 DETAIL 	3 digits, numeric

Table 4.4-27: List of Items
(Window Name: Excise Company Retrieval6 (Retrieval Result Window10)) (2/2)

No.	Item Name	Level			Description	Item in File	Note
		1	2	3			
8	D <i>D</i>		✓		Flag which means the product is for domestic use (output)	—	1 char., alpha-numeric
9	E <i>E</i>		✓		Flag which means the product is exported (output)	—	1 char., alpha-numeric
10	I <i>I</i>		✓		Flag which means the product is imported (output)	—	1 char., alpha-numeric
11	NPWP <i>NPWP</i>		✓		Tax Payer Code Number (output)	ID NUMBER. BASIC INFORMATION	12 char., alpha-numeric
12	Company Name <i>Nama Perusahaan</i>		✓		Name of the company which has the production license for the brand (output)	NAME. BASIC INFORMATION	40 char., alpha-numeric
13	Service Office in Charge <i>Kantor Pelayanan yang Mengawasi</i>		✓		Service office in charge (output)	CODE. DJBC OFFICE	40 char., alpha-numeric
14	Latest CK-1 Number <i>Nomor CK-1 Terakhir</i>		✓		Latest CK-1 number (output)	CALCULATED BY: CK-1 NUMBER. CK-1 (EXCISE STAMP ORDER)	6 digits, numeric
15	CK-1 Date <i>Tanggal CK-1</i>		✓		Date of latest CK-1 (output)	CALCULATED BY: CK-1 DATE. CK-1 (EXCISE STAMP ORDER)	8 digits, date

List of Tobacco Brands

Brand	Brand Code	Kind of Tobacco	Tariff (%)	Retail Price (Rp)	Contents/ pack	D	E	I	NPWP	Company Name	Service Office In charge	Latest CK-1	CK-1 Date
2	3	4	5	6	7	8	9	10	11	12	13	14	15
2	3	4	5	6	7	8	9	10	11	12	13	14	15
2	3	4	5	6	7	8	9	10	11	12	13	14	15
2	3	4	5	6	7	8	9	10	11	12	13	14	15
2	3	4	5	6	7	8	9	10	11	12	13	14	15
2	3	4	5	6	7	8	9	10	11	12	13	14	15

Figure 4.4-14 : Report Layout for List of Tobacco Brands

Table 4.4-28: List of Items (Report Name: List of Tobacco Brands) (1/2)

No.	Item Name	Level			Description	Item in File	Note
		1	2	3			
1	List of Tobacco Brands <i>Daftar Merek Hasil tembakau</i>	✓			List of Tobacco brands (for all the companies) (repeat 15,000 times) (shown in the alphabetical order of the brands)	(Group title)	
2	Brand <i>Merek</i>		✓		Name of the Tobacco brand (output)	<ul style="list-style-type: none"> BRAND. CK-1 DETAIL BRAND. CK-8 DETAIL 	25 char., alpha-numeric
3	Brand code <i>Kode Merek</i>		✓		Brand code (For future scalability) (output)	<ul style="list-style-type: none"> tobabrnd_of. CK-1 DETAIL tobabrnd_of. CK-8 DETAIL 	4 digits, numeric
4	Kind of Tobacco <i>Jenis Hasil Tembakau</i>		✓		Kind of Tobacco product (output)	<ul style="list-style-type: none"> tobaprod_of. CK-1 (EXCISE STAMPS ORDER) tobaprod_of. CK-8 (DECLARATION OF EXPORT) 	7 char., alpha-numeric
5	Tariff(%) <i>Tarif(%)</i>		✓		ExciseTariff (output)	<ul style="list-style-type: none"> EXCISE TARIFF. CK-1 (EXCISE STAMP ORDER) EXCISE TARIFF. CK-8 DETAIL 	2 digits, numeric
6	Retail Price (Rp) <i>HJE (Rp)</i>		✓		Retail Price (output)	<ul style="list-style-type: none"> RETAIL PRICE. CK-1 DETAIL RETAIL PRICE. CK-8 DETAIL 	7 digits, numeric
7	Contents/ pack <i>Isi/ bks</i>		✓		Content/ pack (output)	<ul style="list-style-type: none"> CONTENTS/ PACK. CK-1 DETAIL CONTENTS/ PACK. CK-8 DETAIL 	3 digits, numeric

Table 4.4-28: List of Items (Report Name: List of Tobacco Brands) (2/2)

No.	Item Name	Level			Description	Item in File	Note
		1	2	3			
8	D <i>D</i>		✓		Flag which means the product is for domestic use (output)	—	1 char., alpha-numeric
9	E <i>E</i>		✓		Flag which means the product is exported (output)	—	1 char., alpha-numeric
10	I <i>I</i>		✓		Flag which means the product is imported (output)	—	1 char., alpha-numeric
11	NPWP <i>NPWP</i>		✓		Tax Payer Code Number (output)	ID NUMBER. BASIC INFORMATION	12 char., alpha-numeric
12	Company Name <i>Nama Perusahaan</i>		✓		Name of the company which has the production license for the brand (output)	NAME. BASIC INFORMATION	40 char., alpha-numeric
13	Service Office in Charge <i>Kantor Pelayanan yang Mengawasi</i>		✓		Service office in charge (output)	CODE. DJBC OFFICE	40 char., alpha-numeric
14	Latest CK-1 Number <i>Nomor CK-1 Terakhir</i>		✓		Latest CK-1 number (output)	CALCULATED BY: CK-1 NUMBER. CK-1 (EXCISE STAMP ORDER)	6 digits, numeric
15	CK-1 Date <i>Tanggal CK-1</i>		✓		Date of latest CK-1 (output)	CALCULATED BY: CK-1 DATE. CK-1 (EXCISE STAMP ORDER)	8 digits, date

Table 4.4-29: List of Items
(Window Name: Excise Company Retrieval7 (Retrieval Result Window11))

No.	Item Name	Level			Description	Item in File	Note
		1	2	3			
1	List of MMEA Brands <i>Daftar Merek MMEA</i>	✓			List of MMEA brands (for all the factories) (repeat 3,000 times) (shown in the alphabetical order of the brands)	— (Group title)	—
2	Brand <i>Merek</i>		✓		Name of the MMEA brand (output)	KIND OF EXCISABLE GOODS PRODUCED. SE-16(MMEA)	25 char., alpha-numeric
3	Brand code <i>Kode Merek</i>		✓		Brand code (For future scalability) (output)	MMEAbrand_of. SE-16(MMEA)	4 digits, numeric
4	Alcohol Degree (%) <i>Kadar Alkohol (%)</i>		✓		Alcohol degree (output)	ALCOHOL DEGREE. SE-16(MMEA)	2 digits, numeric
5	Tariff <i>Tarif</i>		✓		Excise Tariff (output)	EXCISE TARIFF. SE-16(MMEA)	6 digits, numeric
6	NPWP <i>NPWP</i>		✓		Tax Payer Code Number (output)	ID NUMBER. BASIC INFORMATION	12 char., alpha-numeric
7	Company Name <i>Nama Perusahaan</i>		✓		Name of the company which has the production license for the brand (output)	NAME. BASIC INFORMATION	40 char., alpha-numeric
8	Service Office in Charge <i>Kantor Pelayanan yang Mengawasi</i>		✓		Service office in charge (output)	CODE. DJBC OFFICE	40 char., alpha-numeric

Report code: RE014050

List of MMEA Brands

Date: 99/99/9999

Page: 999/999

Brand	Brand Code	Alcohol Degree	Tariff	NPWP	Company Name	Service Office In charge
2	3	4	5	6	7	8
2	3	4	5	6	7	8
2	3	4	5	6	7	8
2	3	4	5	6	7	8
2	3	4	5	6	7	8
2	3	4	5	6	7	8
2	3	4	5	6	7	8
2	3	4	5	6	7	8
2	3	4	5	6	7	8

Figure 4.4-16 : Report Layout for List of MMEA Brands

Table 4.4-30: List of Items (Report Name: List of MMEA Brands)

hNo.	Item Name	Level			Description	Item in File	Note
		1	2	3			
1	List of MMEA Brands <i>Daftar Merek MMEA</i>	✓			List of MMEA brands (for all the factories) (shown in the alphabetical order of the brands) (repeat 3,000 times)	— (Group title)	—
2	Brand <i>Merek</i>		✓		Name of the MMEA brand (output)	KIND OF EXCISABLE GOODS PRODUCED. SE-16(MMEA)	25 char., alpha-numeric
3	Brand code <i>Kode Merek</i>		✓		Brand code (For future scalability) (output)	MMEAbrand_of. SE-16(MMEA)	4 digits, numeric
4	Alcohol Degree <i>Kadar Alkohol</i>		✓		Alcohol degree (output)	ALCOHOL DEGREE. SE-16(MMEA)	2 digits, numeric
5	Tariff <i>Tarif</i>		✓		Excise Tariff (output)	EXCISE TARIFF. SE-16(MMEA)	6 digits, numeric
6	NPWP <i>NPWP</i>		✓		Tax Payer Code Number (output)	ID NUMBER. BASIC INFORMATION	12 char., alpha-numeric
7	Company Name <i>Nama Perusahaan</i>		✓		Name of the company which has the production license for the brand (output)	NAME. BASIC INFORMATION	40 char., alpha-numeric
8	Service Office in Charge <i>Kantor Pelayanan yang Mengawasi</i>		✓		Service office in charge (output)	CODE. DJBC OFFICE	40 char., alpha-numeric

Excise Company Retrieval 1
 17-DEC-98
 Page 1 of 1

Retrieval Result Window 2

Excise Factory Information

NPPBKC (DDMMYY)
 NPP (DDMMYY)

Date of NPPBKC
 Date of NPP

Owner Name:
 Street:
 City:
 Postal Code:
 Factory Name:

Phone:
 Fax:
 Telex:

Factory Location

Street:

City:

Phone:

Fax:

Telex:

Kind of Excisable Goods

Kind of Tobacco: MMEA EA

Service Office Code: Service Office in Charge:

Kind of Tobacco:

Ok Previous Page Next Page

Figure 4.4-17: Window Layout for Excise Company Retrieval 1 (Retrieval Result Window 2)

Table 4.4-31: List of Items
(Window Name: Excise Company Retrieval (Retrieval Result Window2)) (1/3)

No.	Item Name	Level			Description	Item in File	Note
		1	2	3			
1	Excise Factory Information <i>Informasi Pabrik Cukai</i>	✓			Excise Factory Information (no repeat)	— (Group title)	—
2	NPPBKC <i>NPPBKC</i>		✓		NPPBKC (License of Excisable Goods entrepreneur) (output)	NPPBKC. FACTORY	10 digits, numeric
3	NPPBKC Date (DDMMYY YY) <i>Tanggal NPPBKC (DDMMYYY Y)</i>		✓		Date of issue of NPPBKC (output)	DATE OF NPPBKC. FACTORY	8 digits, date
4	NPP <i>NPP</i>		✓		NPP(Exemption registry number) (output)	NPP. FACTORY	9 digits, Numeric
5	NPP Date (DDMMYY YY) <i>Tanggal NPP (DDMMYYY Y)</i>		✓		Date of issue of NPP (output)	DATE OF NPP. FACTORY	8 digits, date
6	Owner <i>Pemilik</i>		✓		Owner's information (no repeat)	— (Group title)	—
7	Name <i>Nama</i>			✓	<ul style="list-style-type: none"> • Company name (when company is a corporation) • Name of owner (when company is owned by a person) (output)	NAME. OWNER	30 char., alpha- numeric
8	Street <i>Jalan</i>			✓	Detail of owner's address <ul style="list-style-type: none"> • Company headquarters address (when the company is a corporation) • Compnay owner's address (when the company is owned by a person) (output)	STREET. OWNER	100 char., alpha- numeric

Table 4.4-31: List of Items
(Window Name: Excise Company Retrieval (Retrieval Result Window2)) (2/3)

No.	Item Name	Level			Description	Item in File	Note
		1	2	3			
9	City <i>Kota</i>			✓	Owner's address <ul style="list-style-type: none"> • Company headquarters address (when the company is a corporation) • Company owner's address (when the company is owned by a person) (output)	CITY. OWNER	30 char., alpha-numeric
10	Postal code <i>Kode pos</i>			✓	Postal code (output)	POSTAL CODE. OWNER	5 digits, numeric
11	Phone <i>Telepon</i>			✓	Phone number (output)	PHONE NUMBER. OWNER	12 digits, numeric
12	Fax <i>Fax</i>			✓	Fax number (output)	FAX NUMBER. OWNER	12 digits, numeric
13	Telex <i>Telex</i>			✓	Telex number (output)	TELEX NUMBER. OWNER	20 digits, numeric
14	Factory Name <i>Nama Pabrik</i>		✓		Factory Name (output)	FACTORY NAME. FACTORY	40 char., alpha-numeric
15	Factory Location <i>Lokasi Pabrik</i>		✓		Factory Location (repeat 5 times)	— (Group title)	—
16	Street <i>Jalan</i>			✓	Address of factory/ importer office (street) (output)	STREET. FACTORY LOCATION	100 char., alpha-numeric
17	City <i>Kota</i>			✓	Address of factory/ importer office (city) (output)	CITY. FACTORY LOCATION	30 char., alpha-numeric
18	Phone <i>Telepon</i>			✓	Telephone number of the factory/ importer's office (output)	PHONE. FACTORY LOCATION	12 digits, numeric
19	Fax <i>Fax</i>			✓	Fax number of the factory/ importer's office (output)	FAX. FACTORY LOCATION	12 digits, numeric
20	Telex <i>Telex</i>			✓	Telex number of the factory/ importer's office (output)	TELEX. FACTORY LOCATION	20 digits, numeric
21	Kind of Excisable Goods <i>Jenis Barang Kena Cukai</i>		✓		Kinds of Excisable Goods, which are divided as follows: <ul style="list-style-type: none"> • Tobacco • MMEA • EA (output)	excigood_of. FACTORY	1 digit, numeric

Table 4.4-31: List of Items
(Window Name: Excise Company Retrieval (Retrieval Result Window2)) (3/3)

No.	Item Name	Level			Description	Item in File	Note
		1	2	3			
22	Service office in charge <i>Kantor Pelayanan yang Mengawasi</i>		✓		Service office in charge of the factory. (no repeat)	— (Group title)	—
23	Service Office in Charge Code <i>Kode Kantor Pelayanan yang Mengawasi</i>		✓		Service Office in Charge Code (output)	CODE. DJBC OFFICE	6 digits, numeric
24	Service Office in Charge <i>Kantor Pelayanan yang Mengawasi</i>		✓		Service Office in Charge Code (output)	CODE. DJBC OFFICE	40 char., alpha- numeric
25	Kind of Tobacco <i>Jenis Tembakau</i>		✓		Kind of Tobacco product (output) (activated only when 6 th digit of NPPBKC is 3.)	tobaproduct_of. FACTORY	7 char., alpha- numeric

Excise Company Retrieval 1

Retrieval Result Windows

Page 1 of 1

CK-1 Kind of Document: CK-1 CK-1 Import

Factory Owner: Factory Name:

Factory Street: Factory City:

NPPBKC: NPPBKC Date: (DDMMYYYY)

CK-1 Number: CK-1 Date: (DDMMYYYY)

Payment Type: C T K Kind of Tobacco:

Excise Tariff (%):

Detail of Order		Contents Pack	Retail Price (Rp)	Sheet	Amount Retail Price (Rp)	Amount of Excise (Rp)
No.	Excise Stamps per Sheet Code	Brand Code	Brand			

Total Amount: Retail Price: Excise:

Sheet: Refund Based on CK: Number: Date: (DDMMYYYY) Refund:

SSBC Date: (DDMMYYYY) SSBC Amount:

Amount of Excise Should be Paid:

Ok Previous Page Next Page

Figure 4.4-18: Window Layout for Excise Company Retrieval 1 (Retrieval Result Window 3)

Table 4.4-32: List of Items
(Window Name: Excise Company Retrieval1 (Retrieval Result Window3)) (1/5)

No.	Item Name	Level			Description	Item in File	Note
		1	2	3			
1	CK-1 CK-1	✓			CK-1 (Excise Stamps order form) (no repeat)	— (Group title)	—
2	Kind of Document <i>Jenis Dokumen</i>		✓		Kind of document • CK-1 • CK-1 import (output)	docorig_of. CK-1 (EXCISE STAMPS ORDER)	1 digit, numeric
3	Factory Owner <i>Nama Pengusaha</i>		✓		Name of company owner/ importer (output)	NAME. OWNER	40 char., alpha-numeric
4	Factory Name <i>Nama Pabrik</i>		✓		Name of the factory (output)	FACTORY NAME. FACTORY	40 char., alpha-numeric
5	Factory Street <i>Jalan Pabrik</i>		✓		Street where the main factory is located (Factory address on the top of the list of factory location list will be retrieved.) (output)	STREET. FACTORY	100 char., alpha-numeric
6	Factory City <i>Kota Pabrik</i>		✓		City where the main factory is located. (Factory address on the top of the list of factory location list will be retrieved.) (output)	CITY. FACTORY	30 char., alpha-numeric
7	NPPBKC <i>NPPBKC</i>		✓		NPPBKC (output)	NPPBKC. FACTORY	10 digits, numeric
8	NPPBKC Date (DDMMYY YY) <i>Tanggal NPPBKC (DDMMYY Y)</i>		✓		NPPBKC issuance date (output)	DATE OF NPPBKC. FACTORY	8digits, date
9	CK-1 Number <i>Nomor CK-1</i>		✓		CK-1 number (output)	CK-1 NUMBER. CK-1 (EXCISE STAMP ORDER)	6 digits, numeric

Table 4.4-32: List of Items
(Window Name: Excise Company Retrieval1 (Retrieval Result Window3)) (2/5)

No.	Item Name	Level			Description	Item in File	Note
		1	2	3			
10	CK-1 Date (DDMMYY YY) <i>Tanggal CK-1 (DDMMYY Y)</i>		✓		CK-1 date (output)	CK-1 DATE. CK-1 (EXCISE STAMP ORDER)	8 digits, date
11	Payment Type <i>Cara Pembayaran</i>		✓		Method of payment • "T" for <i>Tunai</i> (Cash) • "K" for <i>Kredit</i> (Credit) (output)	paytype_of. CK-1 (EXCISE STAMP ORDER)	1 char., alpha- numeric
12	Kind of Tobacco Product <i>Jenis Hasil Tembakau</i>		✓		Kind Tobacco product (output)	tobaproduct_of. CK-1 (EXCISE STAMP ORDER)	7 char., alpha- numeric
13	Excise Tariff (%) <i>Tarif Cukai (%)</i>		✓		Excise Tariff (output)	EXCISE TARIFF. CK-1 (EXCISE STAMP ORDER)	2 digits, numeric
14	Details of Order <i>Rincian Pemesanan</i>		✓		Details of order (repeat 10 times)	— (Group title)	—
15	Sequence Number <i>No. Urut</i>			✓	Sequence number (output)	SEQUENCE NUMBER. CK-1 DETAIL	2 digits, numeric
16	Excise Stamps per Sheet <i>Seri</i>			✓	Code for the number of Excise Stamps a sheet contains • <i>Seri I</i> =120 stamps • <i>Seri II</i> =56 stamps • <i>Seri III</i> =150 stamps (output)	excistamp_of. CK-1 DETAIL	1 char., numeric
17	Brand Code <i>Kode Merek</i>			✓	Tobacco brand code (For future scalability) (output)	tobabrnd_of. CK-1 DETAIL	4 digits, numeric
18	Brand <i>Merek</i>			✓	Tobacco brand (output)	BRAND. CK-1 DETAIL	25 char., alpha- numeric
19	Contents/ Pack <i>Isi/ bks</i>			✓	Contents/ pack (output)	CONTENTS/ PACK. CK-1 DETAIL	3 digits, numeric
20	Retail Price (Rp) <i>HJE(Rp)</i>			✓	Retail Price in Rupiah (output)	RETAIL PRICE. CK-1 DETAIL	7 digits., numeric

Table 4.4-32: List of Items
(Window Name: Excise Company Retrieval1 (Retrieval Result Window3)) (3/5)

No.	Item Name	Level			Description	Item in File	Note
		1	2	3			
21	Sheet <i>Lembar</i>			✓	Number of Excise Stamps sheets (input/output, mandatory)	SHEET. CK-1 DETAIL	7 digits, numeric
22	Amount of Retail Price (Rp) <i>Jumlah HJE</i> (Rp)			✓	Amount of Retail Price (21[Sheet]×20[RetailPrice]× 16[Excise Stamps per sheet]) (output)	CALCULATED BY: • SHEET. CK-1 DETAIL • RETAIL PRICE. CK-1 DETAIL • excistam_of. CK-1 DETAIL	15 digits, numeric
23	Amount of Excise(Rp) <i>Jumlah</i> <i>Cukai(Rp)</i>			✓	Amount of Excise (21[Sheet]×20[RetailPrice]× 16[Excise Stamps per sheet] 13[Excise Tariff]) (output)	CALCULATED BY: • SHEET. CK-1 DETAIL • RETAIL PRICE. CK-1 DETAIL • excistam_of. CK-1 DETAIL • EXCISE TARIFF. CK-1 (EXCISE STAMP ORDER)	15 digits, numeric
24	Total Amount <i>Jumlah</i> <i>Total</i>		✓		Total amount of order (no repeat)	— (Group title)	—
25	Sheet <i>Jumlah</i> <i>Lembar</i>			✓	Total amount of Excise Stamps sheets (output)	CALCULATED BY: • SHEET. CK-1 DETAIL	11 digits, numeric
26	Retail Price <i>Jumlah HJE</i>			✓	Total amount of Retail Price (21[Sheet]×20[RetailPrice]× 16[Excise Stamps per sheet]) (output)	CALCULATED BY: • SHEET. CK-1 DETAIL • RETAIL PRICE. CK-1 DETAIL • excistam_of. CK-1 DETAIL	15 digits, numeric

Table 4.4-32: List of Items
 (Window Name: Excise Company Retrieval1 (Retrieval Result Window3)) (4/5)

No.	Item Name	Level			Description	Item in File	Note
		1	2	3			
27	Excise <i>Jumlah Cukai</i>			✓	Total amount of Excise (21[Sheet]× 20[RetailPrice]× 16[Excise Stamps per sheet] 13[Excise Tariff]) (output)	CALCULATED BY: • SHEET. CK-1 DETAIL • RETAIL PRICE. CK-1 DETAIL • excistam_of. CK-1 DETAIL • EXCISE TARIFF. CK-1 (EXCISE STAMP ORDER)	15 digits, numeric
28	Refund Cukai <i>Pengembali an Cukai</i>		✓		The amount of Excise refund (no repeat)	— (Group title)	—
29	Based on CK <i>Sesuai CK</i>			✓	Kind of CK-XX document (e.g. CK-3) which authorizes Excise refund (output)	EXCISE REFUND- BASED ON CK. CK-1 (EXCISE STAMP ORDER)	2 digits, numeric
30	Number <i>Nomor</i>			✓	Number of CK-XX document (e.g. CK-3) which authorizes Excise refund (output)	EXCISE REFUND- NUMBER. CK-1 (EXCISE STAMP ORDER)	6 digits, numeric
31	Date (DDMMYY YY) <i>Tanggal. (DDMMYY Y)</i>			✓	Date of CK-XX document (e.g. CK-3) which authorizes Excise refund (output)	EXCISE REFUND- DATE. CK-1 (EXCISE STAMP ORDER)	8 digits, date
32	Refund Amount <i>Jumlah Pengembali an Cukai</i>			✓	Refund amount (output)	EXCISE REFUND- AMOUNT. CK-1 (EXCISE STAMP ORDER)	7 digits, numeric
33	SSBC <i>SSBC</i>		✓		SSBC (Excise receipt) (no repeat)	— (Group title)	—

Table 4.4-32: List of Items
(Window Name: Excise Company Retrieval1 (Retrieval Result Window3)) (5/5)

No.	Item Name	Level			Description	Item in File	Note
		1	2	3			
34	SSBC Date (DDMMYY YY) <i>Tanggal SSBC (DDMMYY Y)</i>			✓	SSBC Date (input/output, optional)	SSBC DATE. CK-1 (EXCISE STAMP ORDER)	8 digits, date
35	SSBC Amount <i>Jumlah SSBC</i>			✓	SSBC Amount (input/output, optional)	SSBC AMOUNT. CK-1 (EXCISE STAMP ORDER)	15 digits, numeric
36	Amount of Excise Should be Paid <i>Jumlah Cukai yang Seharusnya Dibayar</i>		✓		Amount of Excise that should be paid (21[Sheet]× 20[RetailPrice]× 16[Excise Stamps per sheet] 13[Excise Tariff]-32[Refund amount]) (output)	CALCULATED BY: <ul style="list-style-type: none"> • SHEET. CK-1 DETAIL • RETAIL PRICE. CK-1 DETAIL • excistam_of. CK-1 DETAIL • EXCISE TARIFF. CK-1 (EXCISE STAMP ORDER) • EXCISE REFUND- AMOUNT. CK-1 (EXCISE STAMP ORDER) 	15 digits, numeric

Excise Company Retrieval 1
 17 DEC 85
 Page 1 of 1

Retrieval Result Window 4

CK-8

Factory Owner: _____
 Factory Street: _____
 Factory Name: _____
 Factory City: _____
 NPPBKC: _____
 NPPBKC Date: (DDMMYYYY) _____
 CK-8 Number: _____
 CK-8 Date: (DDMMYYYY) _____
 Country of Destination: _____
 Last Port of Call: _____
 Port of Loading: _____

Detail of Declaration

Seq. No.	Kind of Tobacco	Brand Code	Brand	Number of Cartons	Number of Boxes	Sticks per Box	Number of Sticks	Retail Price (Pg)	Excise Tariff (%)	Amount Excis
1										
2										
3										
4										
5										
6										
7										
8										
9										
10										

Figure 4.4-19: Window Layout for Excise Company Retrieval 1 (Retrieval Result Window 4) (1/2)

Excise Company Retrieval 1

7/10/2008 Page 1 of 1

Retrieve Results Window

CK-8

Factory Owner: _____

Factory Street: _____

NPPBKC: _____

CK-8 Number: _____

Country of Destination: _____

Last Port of Call: _____

Factory Name: _____

Factory City: _____

NPPBKC Date: (DDMMYYYY) _____

CK-8 Date: (DDMMYYYY) _____

Port of Loading: _____

Detail of Declaration

Seq No	Number of Cartons	Number of Boxes	Sticks per Box	Number of Sticks	Retail Price (Fp)	Excise Tariff (%)	Amount of Excise (Fp)	Amount of Exchange (US\$)
1								
2								
3								
4								
5								
6								
7								
8								
9								
10								

Ok Previous Page Next Page

Figure 4.4-19: Window Layout for Excise Company Retrieval 1 (Retrieval Result Window 4) (2/2)

Table 4.4-33: List of Items
(Window Name: Excise Company Retrieval1 (Retrieval Result Window4)) (1/3)

No.	Item Name	Level			Description	Item in File	Note
		1	2	3			
1	CK-8 CK-8	✓			CK-8 (Declaration of release of Excisable Goods with unpaid Excise from factory or storage place for export destination) (no repeat)	— (Group title)	—
2	Factory Owner Nama Pengusaha		✓		Name of company owner/ importer (output)	NAME. OWNER	40 char., alpha- numeric
3	Factory Name Nama Pabrik		✓		Name of factory (output)	FACTORY NAME. FACTORY	40 char., alpha- numeric
4	Factory Street Jalan Pabrik		✓		The address where the factory is located (output)	STREET. FACTORY LOCATION	100 char., alpha- numeric
5	Factory City KotaPabrik		✓		The city where the factory is located (output)	CITY. FACTORY LOCATION	30 char., alpha- numeric
6	NPPBKC NPPBKC		✓		NPPBKC (output)	NPPBKC. FACTORY	10 digits, numeric
7	NPPBKC Date (DDMMYY YY) Tanggal NPPBKC (DDMMYY Y)		✓		NPPBKC issuance date (output)	DATE OF NPPBKC. FACTORY	8 digits, date
8	CK-8 Number Nomor CK-8		✓		CK-8 number (output)	CK-8 NUMBER. CK-8 (DECLARATION OF EXPORT)	6 digits, numeric
9	CK-8 Date (DDMMYY YY) Tanggal CK-8 (DDMMYY Y)		✓		Date of CK-8 creation (output)	CK-8 DATE. CK-8 (DECLARATION OF EXPORT)	8 digits, date
10	Country of Destination Negara Tujuan		✓		Destination country (output)	destctry_of. CK-8 (DECLARATION OF EXPORT)	30 char., alpha- numeric

Table 4.4-33: List of Items
(Window Name: Excise Company Retrieval1 (Retrieval Result Window4)) (2/3)

No.	Item Name	Level			Description	Item in File	Note
		1	2	3			
11	Port of Loading <i>Pelabuhan Muat</i>		✓		Loading port (output)	loadport_of. CK-8 (DECLARATION OF EXPORT)	40 char., alpha- numeric
12	Last Port of Call <i>Pelabuhan Singgah Terakhir</i>		✓		Last port of call (output)	lastport_of. CK-8 (DECLARATION OF EXPORT)	40 char., apha- numeric
13	Detail of Declaration <i>Rincian Pemberitahuan</i>		✓		Detail of declaration (repeat 10 times)	— (Group title)	—
14	Sequence Number <i>No. Urut</i>			✓	Sequence number (output)	SEQUENCE NUMBER. CK-8 DETAIL	2 digits, numeric
15	Kind of Tobacco <i>Jenis Hasil Tembakau</i>			✓	Kind of tobacco product (output)	tobaproduct_of. CK-8 (DECLARATION OF EXPORT)	7 char., apha- numeric
16	Brand Code <i>Kode Merek</i>			✓	Code for Tobacco brand (output)	tobabrnd_o. CK-8 DETAIL	4 digits, numeric
17	Brand <i>Merek</i>			✓	Name of Tobacco brand (output)	BRAND. CK-8 DETAIL	25 char., apha- numeric
18	Number of Cartons <i>Jumlah Karton</i>			✓	Number of cartons (output)	NUMBER OF CARTONS. CK-8 DETAIL	7 digits, numeric
19	Number of Boxes <i>Jumlah Bungkus</i>			✓	Number of boxes (output)	NUMBER OF BOXES. CK-8 DETAIL	10 digits, numeric
20	Sticks per Box <i>Isi/bks</i>			✓	Sticks per box (output)	CONTENTS/PACK .CK-8 DETAIL	3 digits, numeric
21	Number of Sticks <i>Jumlah Batang</i>			✓	Number of sticks (output)	NUMBER OF STICKS. CK-8 DETAIL	13 digits, numeric
22	Retail Price (Rp) <i>HJE (Rp)</i>			✓	Retail Price per pack (output)	RETAIL PRICE. CK-8 DETAIL	7 digits, numeric

Table 4.4-33: List of Items
(Window Name: Excise Company Retrieval1 (Retrieval Result Window4)) (3/3)

No.	Item Name	Level			Description	Item in File	Note
		1	2	3			
23	Excise Tariff(%) <i>Tarif Cukai (%)</i>			✓	Excise Tariff (output)	EXCISE TARIFF. CK-8 DETAIL	2 digits, numeric
24	Amount of Excise (Rp) <i>Jumlah Cukai (Rp)</i>			✓	Amount of Excise (19[Number of boxes] × 22[Retail Price] × 23[Excise Tariff]) (output)	CALCULATED BY: • NUMBER OF BOXES. CK-8 DETAIL • RETAIL PRICE. CK-8 DETAIL • EXCISE TARIFF. CK-8 DETAIL	11 digits, numeric
25	Amount of Exchange (US\$) <i>Jumlah Devisa (US\$)</i>			✓	Amount of Exchange (output)	AMOUNT OF EXCHANGE. CK-8 DETAIL	11 digits, numeric