

4.4 Excise Company Retrieval

Volume II Figure 2.4.4-5 and Table 2.4.4-5 show the outline of Excise Company Retrieval Process. As a result of System Design, the process is designed as below. Volume III Appendix A is referred to understand how to view figures and tables.

- Process Procedure

1) Retrieval of basic information/ List of Tobacco Brands Owned by Company/ List of MMEA Brands Owned by Company/ Tobacco factory(Master)/ MMEA factory(Master)/ EA factory(Master)/ BDCK-3/ Tobacco Product Export Report/ List of Tobacco Brands/ List of MMEA Brands

i) Input

Read the inputted data from Retrieval Window1. Table 4.4-14 shows details of data items on the window. "NPWP & NPWP Type," "NPPBKC & NPP," "BDCK-3" item group, "Tobacco Product Export Report" item group, and "List of Brands" item group have exclusive relationships one another.

NPPBKC and NPP are considered as combine keys. However, if NPPBKC is unknown and the user inputs NPP only, input field for NPPBKC will be filled with all zero ("0") automatically. Likewise, if NPP is unknown and the user inputs NPPBKC only, input field for NPP will be filled with all zero ("0"). In these cases, the zeros will be registered in the Excise company management database.

ii) Input Check

Check value of inputted data by following Table 4.4-15.

When "NPWP & NPWP Type" is inputted, do 1)-iii).

When "NPPBKC & NPP" is inputted and 6th digit of NPPBKC is 3, which means Tobacco factory, do 1)-vi).

When "NPPBKC & NPP" is inputted and 6th digit of NPPBKC is 2, which means MMEA, do 1)-vii).

When "NPPBKC & NPP" is inputted and 6th digit of NPPBKC is 1 or/and NPP is inputted, which means EA, do 1)-viii).

When "BDCK-3" item group is inputted, do 1)-ix).

When "Tobacco Product Export Report" is inputted, do 1)-x).

When function to retrieve List of Tobacco Brands is selected, do 1)-xi).

When function to retrieve List of MMEA Brands is selected, do 1)-xii).

iii) Retrieval of basic information

a) Retrieval

Retrieve data from the database and code tables. Table names of the database are shown in Table 4.4-16. Table 4.4-1 shows list and location of codes to be used.

Table 4.4-1: List of codes

Code	Location of Table	Note
Identity Type Code	Client	Used for NPWP Type.
Province Code	Client	—
Address/Postal Code	Server	Postal Code existence check only.
Management in Charge Code	Client	—

b) Output

Edit retrieved data and display Retrieval Window 2. Table 4.4-16 shows details of data items on the window.

When the function to retrieve List of Tobacco Brands Owned by Company is selected, do 1)-iv)

When the function to retrieve List of MMEA Brands Owned by Company is selected, do 1)-v).

When one of Tobacco factories is selected, do 1)-vi).

When one of MMEA factories is selected, do 1)-vii).

When one of EA factories is selected, do 1)-viii).

iv) Retrieval of List of Tobacco Brands Owned by Company

a) Retrieval

Retrieve data from the database and code tables. Table names of the databases are shown in Table 4.4-17. Table 4.4-2 shows list and location of codes to be used.

Table 4.4-2: List of codes

Code	Location of Table	Note
Tobacco Product Code	Client	—
Tobacc Brand code	Client	—

b) Confirmation

When the number of records that match the retrieval condition is between 10 and 99,000, display a response-requiring message. (Message ID; R0000004)

c) Output of List of Tobacco Brands Owned by Company

Edit retrieved data and display Retrieval Result Window 1. Table 4.4-17 shows details

of data items on the window.

When the record is from the file CK-1(EXCISE STAMP ORDER), display "D," which means the Tobacco product is for domestic use.

When the record is from the file CK-8(DECLARATION OF EXPORT), display "E," which means the Tobacco product is exported.

When the record is from the file CK-1 Import, display "I," which means the Tobacco product is imported.

When latest CK-1 date is more than 6 months ago, display a warning message.

(Message ID: WE010001)

d) Printout of List of Tobacco Brands Owned by Company

When the printout function is selected, printout List of Tobacco Brands Owned by Company. Table 4.4-18 shows details of data items on the report.

v) Retrieval of List of MMEA Brands Owned by Company

a) Retrieval

Retrieve data from the database and code tables. Table names of the databases are shown in Table 4.4-19. Table 4.4-3 shows list and location of codes to be used.

Table 4.4-3: List of codes

Code	Location of Table	Note
MMEA Brand Code	Client	

b) Confirmation

When the number of records that match the retrieval condition is between 10 and 99,000, display a response-requiring message. (Message ID; R0000004)

c) Output of List of MMEA Brands Owned by Company

Edit retrieved data and display Retrieval Result Window 5. Table 4.4-19 shows details of data items on the window.

d) Printout of List of MMEA Brands Owned by Company

When the printout function is selected, printout List of MMEA Brands Owned by Company. Table 4.4-20 shows details of data items on the report.

vi) Retrieval of Tobacco factory(Master), CK-1 and CK-8

a) Retrieval

Retrieve data from the database. Table names of the database are shown in Table 4.4-21.

b) Output

Edit retrieved data and display Retrieval Window 3. Table 4.4-21 shows details of data

items on the window.

When Tobacco factory (Detail) is selected, do 2)-i).

When one of CK-1 is selected, do 2)-ii).

When one of CK-8 is selected, do 2)-iii).

vii) Retrieval of MMEA factory(Master), LACK-1, LACK-2 and SE-16(MMEA)

a) Retrieval

Retrieve data from the database. Table names of the database are shown in Table 4.4-22.

b) Output

Edit retrieved data and display Retrieval Window 4. Table 4.4-22 shows details of data items on the window.

When MMEA factory (Detail) is selected, do 2)-i).

When one set of LACK-1, LACK-2 and SE-16(MMEA) is selected, do 2)-iv).

viii) Retrieval of EA factory(Master), LACK-4, LACK-9 and SE-16(EA)

a) Retrieval

Retrieve data from the database. Table names of the database are shown in Table 4.4-23.

b) Output

Edit retrieved data and display Retrieval Window 5. Table 4.4-23 shows details of data items on the window.

When EA factory (Detail) is selected, do 2)-i).

When one set of LACK-4, LACK-9 and SE-16(EA) is selected, do 2)-v).

ix) Retrieval of BDCK-3

a) Retrieval

Retrieve data from the database and code tables. Table names of the database are shown in Table 4.4-24. Table 4.4-4 shows list and location of codes to be used.

Table 4.4-4: List of codes

Code	Location of Table	Note
Tobacco Product Code	Client	—
Tobacco Brand Code	Client	—
Excise Stamp Per Sheet Code	Program	—
DJBC Office Code	Client	Used for Service Office in Charge and Regional Office in Charge.

b) Confirmation

When the number of records that match the retrieval condition is between 10 and 99,000, display a response-requiring message. (Message ID; R0000004)

c) Output

Edit retrieved data and display Retrieval Result Window 8. Table 4.4-24 shows details of data items on the window.

d) Export of BDCK-3

When "Export to MS-Excel" function is executed, export BDCK-3 to MS-Excel file.

x) Retrieval of Tobacco Product Export Report

a) Retrieval

Retrieve data from the database and code tables. Table names of the database are shown in Table 4.4-25. Table 4.4-5 shows list and location of codes to be used.

Table 4.4-5: List of codes

Code	Location of Table	Note
Tobacco Product Code	Client	---
Tobacco Brand Code	Client	---
Country Code	Client	Used for Destination Country.
DJBC Office Code	Client	Used for Service Office in Charge and Regional Office in Charge.

b) Confirmation

When the number of records that match the retrieval condition is between 10 and 99,000, display a response-requiring message. (Message ID; R0000004)

c) Output

Edit retrieved data and display Retrieval Result Window 9. Table 4.4-25 shows details of data items on the window.

d) Printout of Tobacco Product Export Report

When the printout function is selected, printout Tobacco Product Export Report. Table 4.4-26 shows details of data items on the report.

xi) Retrieval of List of Tobacco Brands

a) Retrieval

Retrieve data from the database and code tables. Table names of the database are shown in Table 4.4-27. Table 4.4-6 shows list and location of codes to be used.

Table 4.4-6: List of codes

Code	Location of Table	Note
Tobacco Product Code	Client	—
Tobacco Brand Code	Client	—
DJBC Office Code	Client	Used for Service Office in Charge.

b) Confirmation

When the number of records that match the retrieval condition is between 10 and 99,000, display a response-requiring message. (Message ID; R0000004)

c) Output

Edit retrieved data and display Retrieval Result Window 10. Table 4.4-27 shows details of data items on the window.

When the record is from CK-1(EXCISE STAMP ORDER) , display “D,” which means the tobacco product is for domestic use.

When the record is from CK-8(DECLARATION OF EXPORT), display “E,” which means the tobacco product is for export.

When the record is from CK-1 Impor (CK-1 Import), display “I,” which means the tobacco product is imported.

When latest CK-1 date is more than 6 months ago, display a warning message. (Message ID: WE010001)

d) Printout of List of Tobacco Brands

When the printout function is selected, printout List of Tobacco Brands. Table 4.4-28 shows details of data items on the report.

xii) Retrieval of List of MMEA Brands

a) Retrieval

Retrieve data from the database and code tables. Table names of the database are shown in Table 4.4-29. Table 4.4-7 shows list and location of codes to be used.

Table 4.4-7: List of codes

Code	Location of Table	Note
MMEA Brand Code	Client	—
DJBC Office Code	Client	Used for Service Office in Charge.

b) Confirmation

When the number of records that match the retrieval condition is between 10 and 99,000, display a response-requiring message. (Message ID; R0000004)

c) Output

Edit retrieved data and display Retrieval Result Window 11. Table 4.4-29 shows details of data items on the window.

d) Printout of List of MMEA Brands

When the printout function is selected, printout List of MMEA Brands. Table 4.4-30 shows details of data items on the report.

2) Retrieval of Tobacco factory(Detail)/ CK-1/ CK-8/ MMEA factory(Detail)/ LACK-1, LACK-2, and SE-16(MMEA)/ EA factory(Detail) / LACK-4, LACK-9 and SE-16 (EA)

i) Retrieval of Tobacco factory(Detail)/ MMEA factory(Detail)/ EA factory(Detail)

a) Retrieval

Retrieve data from the database and code tables. Table names of the database are shown in Table 4.4-31. Table 4.4-8 shows list and location of codes to be used.

Table 4.4-8: List of codes

Code	Location of Table	Note
Excisable Goods Kinds Code	Program	---
Tobacco Product Code	Client	---
DJBC Office Code	Client	Used for Service Office in Charge.

b) Output

Edit retrieved data and display Retrieval Result Window 2. Table 4.4-31 shows details of data items on the window.

ii) Retrieval of CK-1

a) Retrieval

Retrieve data from the database and code tables. Table names of the database are shown in Table 4.4-32. Table 4.4-9 shows list and location of codes to be used.

Table 4.4-9: List of codes

Code	Location of Table	Note
Excise Document Type Code	Program	---
Payment Type Code	Program	---
Tobacco Product Code	Client	---
Excise Stamps Per Sheet Code	Program	---
Tobacco Brand code	Client	---

b) Output

Edit retrieved data and display Retrieval Result Window 3. Table 4.4-32 shows details of data items on the window.

iii) Retrieval of CK-8

a) Retrieval

Retrieve data from the database and code tables. Retrieve data from the database and code tables. Table names of the database are shown in Table 4.4-33. Table 4.4-10 shows list and location of codes to be used.

Table 4.4-10: List of codes

Code	Location of Table	Note
Country Code	Client	Used for Destination Country.
Port Code	Client	Used for Port of Loading and Last Port of Call.
Tobacco Product Code	Client	---
Tobacco Brand code	Client	---

b)Output

Edit retrieved data and display Retrieval Result Window 4. Table 4.4-33 shows details of data items on the window.

iv) Retrieval of LACK-1, LACK-2 and SE-16(MMEA)

a) Retrieval

Retrieve data from the database. Table names of the database are shown in Table 4.4-34. Table 4.4-11 shows list and location of codes to be used.

Table 4.4-11: List of codes

Code	Location of Table	Note
Identity Type code	Client	Used for NPWP Type.
Address/Postal code	Server	Postal Code existence check only.

b) Output

Edit retrieved data and display Retrieval Result Window 6. Table 4.4-34 shows details of data items on the window.

When the calculation result values of "Total-Entry" in LACK-1 and "Total Amount of Sales" in LACK-2 differ, display a warning message. (Message ID: WE010002)

c) Export of LACK-1, LACK-2 and SE-16

When "Export to Excel" function is selected, export LACK-1, LACK-2 and SE-16 to Excel file.

v) Retrieval of LACK-4, LACK-9 and SE-16(EA)

a) Retrieval

Retrieve data from the database. Table names of the database are shown in Table 4.4-35. Table 4.4-12 shows list and location of codes to be used.

Table 4.4-12: List of codes

Code	Location of Table	Note
Identity Type Code	Client	Used for NPWP Type.
Address/Postal Code	Server	Postal Code existence check only.

b) Output

Edit retrieved data and display Retrieval Result Window 7. Table 4.4-35 shows details of data items on the window.

When the calculation result values of "Total-Entry" in LACK-4 and "Total Amount of Sales" in LACK-9 differ, display a warning message. (Message ID: WE010003)

c) Export of LACK-4, LACK-9 and SE-16

When "Export to MS-Excel" function is selected, export LACK-4, LACK-9 and SE-16 to Excel file.

d) Printout of Monthly report for EA Based on LACK-4, LACK-9 and SE-16(EA) (Summary)

When the printout function is selected, printout Monthly report for EA Based on

LACK-4, LACK-9 and SE-16(EA) (Summary).

Table 4.4-36 shows details of data items on the report.

- Window/Report Design

- Windows

- Retrieval Window 1 Figure 4.4-1
- Retrieval Window 2 Figure 4.4-2
- Retrieval Window 3 Figure 4.4-7
- Retrieval Window 4 Figure 4.4-8
- Retrieval Window 5 Figure 4.4-9
- Retrieval Result Window 1 Figure 4.4-3
- Retrieval Result Window 2 Figure 4.4-17
- Retrieval Result Window 3 Figure 4.4-18
- Retrieval Result Window 4 Figure 4.4-19
- Retrieval Result Window 5 Figure 4.4-5
- Retrieval Result Window 6 Figure 4.4-20
- Retrieval Result Window 7 Figure 4.4-21
- Retrieval Result Window 8 Figure 4.4-10
- Retrieval Result Window 9 Figure 4.4-11
- Retrieval Result Window 10 Figure 4.4-13
- Retrieval Result Window 11 Figure 4.4-15

- Reports

- List of Tobacco Brands Owned by Company Figure 4.4-4
- List of MMEA Brands Owned by Company Figure 4.4-6
- Monthly Report for EA Based on LACK-4, LACK-9 and SE-16 (Summary) Figure 4.4-22
- Tobacco Product Export Report Figure 4.4-12
- List of Tobacco Brands Figure 4.4-14
- List of MMEA Brands Figure 4.4-16

- Error Procedure

Display an error message by following Table 4.4-13.

Table 4.4-13: Error Procedure

Case	Error Contents	Message ID	Note
1)-ii)	An error is detected at Input Check.	See Table 4.4-15	—
1)-iii)-a), 1)-iv)-a), 1)-v)-a), 1)-vi)-a), 1)-vii)-a), 1)-viii)-a), 1)-ix)-a), 1)-x)-a), 1)-xi)-a), 1)-xii)-a), 2)-i)-a), 2)-ii)-a), 2)-iii)-a), 2)-iv)-a), 2)-v)-a)	SQL returned an error check.	E0000001	Fill in the blank part of the message text with the error code.
1)-ix)-d), 2)-iv)-c), 2)-v)-c)	Error occurred when the data is being exported to MS-Excel.	E0000001	—
1)-iii)-a), 1)-iv)-a), 1)-v)-a), 1)-ix)-a), 1)-x)-a), 1)-xi)-a), 1)-xii)-a), 2)-i)-a), 2)-ii)-a), 2)-iii)-a), 2)-iv)-a), 2)-v)-a)	The code to be retrieved at Code Retrieval does not exist in the code table.	E0000008	—
1)-iii)-a), 1)-ix)-a), 1)-x)-a)	The record to be retrieved does not exist.	E0000002	—
1)-iv)-b), 1)-v)-b), 1)-ix)-b), 1)-x)-b), 1)-xi)-b), 1)-xii)-b)	The number of records that match the retrieval condition exceeded 99,999.	E0000013	—

- Restriction

None.

- Note

- For details of each message, see Volume II 1.4.

Excise Company Retrieval 17-DEC-99 Page 1 of 1

Retrieval Window

NPWP NPWP Type: 12 digits 10 digits NPWP: NPPBK NPPBK: NPP NPP:

BDCX-3 Month & Year: (MMYY) Service Office Code: Service Office: Regional Office Code: Regional Office:

Tobacco Product Export Report Month & Year: (MMYY) Service Office Code: Service Office: Regional Office Code: Regional Office:

List of Brands List of Tobacco Brands List of MMEA Brands

Retrieve Cancel

Figure 4.4-1: Window Layout for Excise Company Retrieval (Retrieval Window 1)

Table 4.4-14: List of Items
(Window Name: Excise Company Retrieval (Retrieval Window1)) (1/3)

No.	Item Name	Level			Description	Item in File	Note
		1	2	3			
1	NPWP <i>NPWP</i>	✓			Tax Payer Code Number (One of 1[NPWP], 4&6([NPPBKC] and [NPP]), 8[BDCK-3],14[Tobacco product export report], and 20[List of Brands] is mandatory.) (no repeat)	— (Group title)	—
2	NPWP Type <i>Type NPWP</i>		✓		Type of NPWP (input, mandatory when 3[NPWP] is inputted.)	idtype of. BASIC INFORMATION	1 digit, numeric
3	NPWP <i>NPWP</i>		✓		Tax Payer Code Number (input, mandatory when 2[NPWP Type] is inputted.)	ID NUMBER. BASIC INFORMATION	12 char., alpha- numeric
4	NPPBKC <i>NPPBKC</i>	✓			NPPBKC (One of 1[NPWP], 4&6([NPPBKC] and [NPP]), 8[BDCK-3],14[Tobacco product export report], and 20[List of Brands] is mandatory.) (no repeat)	— (Group title)	—
5	NPPBKC <i>NPPBKC</i>		✓		NPPBKC (input, mandatory when 7[NPP] is inputted.) (5[NPPBKC] and 7[NPP] compose a combine key: When the user inputs 7[NPP] only, 5[NPPBKC] will be inputted all zero ("0") automatically.)	NPPBKC. FACTORY	10 char., alpha- numeric
6	NPP <i>NPP</i>	✓			NPP (One of 1[NPWP], 4&6([NPPBKC] and [NPP]), 8[BDCK-3],14[Tobacco product export report], and 20[List of Brands] is mandatory.) (no repeat)	— (Group title)	—
7	NPP <i>NPP</i>		✓		NPP (input, mandatory when 5[NPPBKC] is inputted.) (5[NPPBKC] and 7[NPP] compose a combine key: When the user inputs 5[NPPBKC] only, 7[NPP] will be inputted all zero ("0") automatically.)	NPP. FACTORY	9 char., alpha- numeric

Table 4.4-14: List of Items
(Window Name: Excise Company Retrieval (Retrieval Window1)) (2/3)

No.	Item Name	Level			Description	Item in File	Note
		1	2	3			
8	BDCK-3 <i>BDCK-3</i>	✓			BDCK-3 (One of 1[NPWP], 4&6([NPPBKC] and [NPP]), 8[BDCK-3],14[Tobacco product export report], and 20[List of Brands] is mandatory.) (no repeat)	— (Group title)	—
9	Month & Year (MMYYYY) <i>Bulan dan Tahun (MMYYYY)</i>		✓		Month and year when BDCK-3 (Excise Stamps order list) was created (input, mandatory when 8[BDCK-3] is selected.)	—	6 digits, date
10	Service Office Code <i>Kode Kantor Pelayanan</i>		✓		Service office (input, optional)	CODE. DJBC OFFICE	6 digits, numeric
11	Service Office <i>Kantor Pelayanan</i>		✓		Service office (input, optional)	CODE. DJBC OFFICE	40 char., alpha- numeric
12	Regional Office Code <i>Kode Kantor Wilayah</i>		✓		Service office (input, optional)	CODE. DJBC OFFICE	6 digits, numeric
13	Regional Office <i>Kantor Wilayah</i>		✓		Service office (input, optional)	CODE. DJBC OFFICE	40 char., alpha- numeric
14	Tobacco Product Export Report <i>Laporan Ekspor Produk Hasil Tembakau</i>	✓			Tobacco product export report (One of 1[NPWP], 4&6([NPPBKC] and [NPP]), 8[BDCK-3],14[Tobacco product export report], and 20[List of Brands] is mandatory.) (no repeat)	— (Group title)	—

Table 4.4-14: List of Items
(Window Name: Excise Company Retrieval (Retrieval Window1)) (3/3)

No.	Item Name	Level			Description	Item in File	Note
		1	2	3			
15	Month & Year (MMYYYY) <i>Bulan dan Tahun</i> (MMYYYY)		✓		Month and year when Tobacco product export report was created (input, mandatory when 14[Tobacco product export report] is selected.)	—	6 digits, date
16	Service OfficeCode <i>Kode Kantor Pelayanan</i>		✓		Seivice office (input, optional)	CODE. DJBC OFFICE	6 digits, numeric
17	Service Office <i>Kantor Pelayanan</i>		✓		Seivice office (input, optional)	CODE. DJBC OFFICE	40 char., alpha-numeric
18	Regional Office Code <i>Kode Kantor Wilayah</i>		✓		Regional office (input,optional)	CODE. DJBC OFFICE	6 digits, numeric
19	Regional Office <i>Kantor Wilayah</i>		✓		Regional office (input,optional)	CODE. DJBC OFFICE	40 char., alpha-numeric
20	List of Brands	✓			List of Brands (One of 1[NPWP], 4&6([NPPBKC] and [NPP]), 8[BDCK-3],14[Tobacco product export report], and 20[List of Brands] is mandatory.) (no repeat)	— (Group title)	—
21	List of Tobacco Brands		✓		Radio button to retrieve List of Tobacco Brands (input, optional)	—	—
22	List of MMEA Brands		✓		Radio button to retrieve List of MMEA Brands (input, optional)	—	—

Table 4.4-15: Input Check List(Excise company Retrieval(Retrieval window1))

No.	Item Name	Condition (range,format,and so on)	Message ID	Note
1	NPWP	Must be numeric.	E0000009	---
2	NPWP	Must have full length according to NPWP Type.	E0000015	---
3	NPWP	Must start with "0" when NPWP is 12 digits.	E0000016	---
4	NPPBKC	Must have full length.	E0000009	---
5	NPP	Must have full length.	E0000009	---
6	Month & Year of BDCK-3	Month & Year must be past including the month.	E0000010	---
7	Month & Year of Tobacco product report	Month & Year must be past including the month.	E0000010	---
8	Service Office in charge	Must have full length.	E0000009	---
9	Regional Office in charge	Must have full length.	E0000009	---

Excise Company Retrieval
Page 1 of 1

Retrieval Window 2

Basic Information on Excise Company

NPWP Type	C: 12 digit	Postal Code	
NPWP	<input type="text"/>	Phone	<input type="text"/>
Company Name	<input type="text"/>	Fax	<input type="text"/>
Street	<input type="text"/>	Telex	<input type="text"/>
City	<input type="text"/>		
Province	<input type="text"/>		
Company Type	<input type="checkbox"/> Importer <input type="checkbox"/> Exporter <input type="checkbox"/> Excise Company		
Management in Charge	<input type="text"/>		

List of Tobacco Brands

List of MIEA Brands

Factory List		
NPPBKC	NPP	Factory Name
<input type="text"/>	<input type="text"/>	<input type="text"/>
<input type="text"/>	<input type="text"/>	<input type="text"/>
<input type="text"/>	<input type="text"/>	<input type="text"/>
<input type="text"/>	<input type="text"/>	<input type="text"/>

Select
Cancel

Figure 4.4-2: Window Layout for Excise Company Retrieval (Retrieval Window 2)

Table 4.4-16: List of Items
(Window Name: Excise Company Retrieval (Retrieval Window2)) (1/2)

No.	Item Name	Level			Description	Item in File	Note
		1	2	3			
1	Basic Information on Excise Company <i>Informasi Umum tentang Perusahaan</i>	✓			Basic information on Excise company (no repeat)	— (Group title)	—
2	NPWP Type <i>Tipe NPWP</i>		✓		Type of NPWP (output)	idtype_of. BASIC INFORMATION	1 digit, numeric
3	NPWP <i>NPWP</i>		✓		Tax Payer Code Number (output)	ID NUMBER. BASIC INFORMATION	12 char., alpha-numeric
4	Company Name <i>Nama Perusahaan</i>		✓		Company Name (output)	NAME. BASIC INFORMATION	40 char., alpha-numeric
5	Street <i>Jalan</i>		✓		Address of Company (output)	STREET. BASIC INFORMATION	100 char., alpha-numeric
6	City <i>Kota</i>		✓		City where the company is located (output)	CITY. BASIC INFORMATION	30 char., alpha-numeric
7	Province <i>Propinsi</i>		✓		Province (output)	province_of. BASIC INFORMATION	20 char., alpha-numeric
8	Postal Code <i>Kode Pos</i>		✓		Postal Code of Company (output)	POSTAL CODE. BASIC INFORMATION	5 digits, numeric
9	Phone <i>Telepon</i>		✓		Telephone number of Company (output)	PHONE NUMBER. BASIC INFORMATION	12 digits, numeric
10	Fax <i>Fax</i>		✓		Fax number of Importer Company (output)	FAX NUMBER. BASIC INFORMATION	12 digits, numeric
11	Telex <i>Telex</i>		✓		Telex number of Importer Company (output)	TELEX NUMBER. BASIC INFORMATION	20 digits, numeric
12	Company Type <i>Tipe Perusahaan</i>		✓		Company type	— (Group title)	—

Table 4.4-16: List of Items
(Window Name: Excise Company Retrieval (Retrieval Window2)) (2/2)

No.	Item Name	Level			Description	Item in File	Note
		1	2	3			
13	Importer <i>Importir</i>			✓	Importer flag for Company Type (output)	IMPORTER FLAG. BASIC INFORMATION	1 char., alpha- numeric
14	Exporter <i>Eksportir</i>			✓	Exporter flag for Company Type (output)	EXPORTER FLAG. BASIC INFORMATION	1 char., alpha- numeric
15	Excise Company <i>Perusahaan Cukai</i>			✓	Excise Company flag for Company Type (output)	EXCISE COMPANY FLAG.BASIC INFORMATION	1 char., alpha- numeric
16	Management in Charge <i>Direktorat yang bertanggung jawab</i>		✓		Information about which directorate can update the data. (output)	mngmchrg_of. BASIC INFORAMTION	30 char., alpha- numeric
17	Factory List <i>Tabel Pabrik</i>		✓		Factory list (Factories with NPPBKC will be shown in the reverse of NPPBKC order; factories with NPP will be shown in the reverse of NPP order; factories with NPPBKC&NPP will be shown in the reverse of NPPBKC order.) (repeat 5 times)	— (Group title)	—
18	NPPBKC <i>NPPBKC</i>			✓	NPPBKC (output)	NPPBKC. FACTORY	10digits, numeric
19	NPP <i>NPP</i>			✓	NPP (output)	NPP. FACTORY	9 char., alpha- numeric
20	Factory Name <i>Nama Pabrik</i>			✓	Factory name (output)	FACTORY NAME. FACTORY	40 char., alpha- numeric

Excise Company Retrieval 1

7/15/2001 Page 1 of 7

Retrieval Result Window

List of Tobacco Brands Owned by Company

NPWP
Company Name:

List of Brands

Brand	Brand Code	Kind of Tobacco	Tariff (%)	Retail Price (\$)	Contents (Pack)	D	E	Latest CK-1	OK-1 Date

OK Previous Page Next Page Print

Figure 4.4-3: Window Layout for Excise Company Retrieval 1 (Retrieval Result Window 1)

Table 4.4-17: List of Items
(Window Name: Excise Company Retrieval1 (Retrieval Result Window1)) (1/2)

No.	Item Name	Level			Description	Item in File	Note
		1	2	3			
1	List of Tobacco Brands Owned by Company <i>Merek-merek Hasil tembakau yang Dimiliki Perusahaan</i>	✓			List of Brands Owned by Company (Tobacco) (no repeat)	— (Group title)	—
2	NPWP <i>NPWP</i>		✓		Tax Payer Code Number (output)	ID NUMBER. BASIC INFORMATION	12 char., alpha-numeric
3	Company Name <i>Nama Perusahaan</i>		✓		Company Name (output)	NAME. BASIC INFORMATION	40 char., alpha-numeric
4	List of Brands <i>Tabel Merek</i>		✓		List of Tobacco Brands (shown in alphabetical order of brands) (repeat 30 times)	— (Group title)	—
5	Brand <i>Merek</i>			✓	Tobacco Brand (output)	<ul style="list-style-type: none"> • BRAND. CK-1 DETAIL • BRAND. CK-8 DETAIL 	25 char., alpha-numeric
6	Brand code <i>Kode merek</i>			✓	Code for Tobacco brand (output)	<ul style="list-style-type: none"> • tobabrnd_of. CK-1 DETAIL • tobabrnd_of. CK-8 DETAIL 	4 digits, numeric
7	Kind of Tobacco <i>Jenis Hasil Tembakau</i>			✓	Kind of Tobacco product (output)	<ul style="list-style-type: none"> • tobaproduct_of. CK-1 (EXCISE STAMP ORDER) • tobaproduct_of. CK-8 (DECLARATION OF EXPORT) 	7 char., alpha-numeric

Table 4.4-17: List of Items
(Window Name: Excise Company Retrieval1 (Retrieval Result Window1)) (2/2)

No.	Item Name	Level			Description	Item in File	Note
		1	2	3			
8	Tariff(%) <i>Tarif(%)</i>			✓	Excise Tariff (output)	<ul style="list-style-type: none"> • EXCISE TARIFF. CK-1 (EXCISE STAMP ORDER) • EXCISE TARIFF. CK-8 DETAIL 	2 digits, numeric
9	Retail Price (Rp) <i>HJE (Rp)</i>			✓	Retail Price (output)	<ul style="list-style-type: none"> • RETAIL PRICE. CK-1 DETAIL • RETAIL PRICE. CK-8 DETAIL 	7 digits, numeric
10	Contents/ pack <i>Isi/ bks</i>			✓	Content/ pack (output)	<ul style="list-style-type: none"> • CONTENTS/ PACK. CK-1 DETAIL • CONTENTS/ PACK. CK-8 DETAIL 	3 digits, numeric
11	D <i>D</i>			✓	Flag which means the product is for domestic use (output)	—	1 char., alpha-numeric
12	E <i>E</i>			✓	Flag which means the product is exported (output)	—	1 char., alpha-numeric
13	I <i>I</i>			✓	Flag which means the product is imported (output)	—	1 char., alpha-numeric
14	Latest CK-1 Number <i>Nomor CK-1</i>			✓	Latest CK-1 number (output)	CK-1 NUMBER. CK-1(EXCISE STAMP ORDER)	6 digits, numeric
15	CK-1 Date <i>Tanggal CK-1</i>			✓	Latest CK-1 date (output)	CK-1 DATE. CK-1(EXCISE STAMP ORDER)	8 digits, numeric

Report code: RE014020

List of Tobacco Brands Owned by Company

Date: 99/99/9999

Page: 999/999

NPWP Company Name

List of Brands

Brand	Brand Code	Kind of Tobacco	Tariff (%)	Retail Price (Rp)	Contents/ pack	D	E	I	Latest CK-1	CK-1 Date
<input type="text" value="5"/>	<input type="text" value="6"/>	<input type="text" value="7"/>	<input type="text" value="8"/>	<input type="text" value="9"/>	<input type="text" value="10"/>	<input type="text" value="11"/>	<input type="text" value="12"/>	<input type="text" value="13"/>	<input type="text" value="14"/>	<input type="text" value="15"/>
<input type="text" value="5"/>	<input type="text" value="6"/>	<input type="text" value="7"/>	<input type="text" value="8"/>	<input type="text" value="9"/>	<input type="text" value="10"/>	<input type="text" value="11"/>	<input type="text" value="12"/>	<input type="text" value="13"/>	<input type="text" value="14"/>	<input type="text" value="15"/>
<input type="text" value="5"/>	<input type="text" value="6"/>	<input type="text" value="7"/>	<input type="text" value="8"/>	<input type="text" value="9"/>	<input type="text" value="10"/>	<input type="text" value="11"/>	<input type="text" value="12"/>	<input type="text" value="13"/>	<input type="text" value="14"/>	<input type="text" value="15"/>
<input type="text" value="5"/>	<input type="text" value="6"/>	<input type="text" value="7"/>	<input type="text" value="8"/>	<input type="text" value="9"/>	<input type="text" value="10"/>	<input type="text" value="11"/>	<input type="text" value="12"/>	<input type="text" value="13"/>	<input type="text" value="14"/>	<input type="text" value="15"/>
<input type="text" value="5"/>	<input type="text" value="6"/>	<input type="text" value="7"/>	<input type="text" value="8"/>	<input type="text" value="9"/>	<input type="text" value="10"/>	<input type="text" value="11"/>	<input type="text" value="12"/>	<input type="text" value="13"/>	<input type="text" value="14"/>	<input type="text" value="15"/>
<input type="text" value="5"/>	<input type="text" value="6"/>	<input type="text" value="7"/>	<input type="text" value="8"/>	<input type="text" value="9"/>	<input type="text" value="10"/>	<input type="text" value="11"/>	<input type="text" value="12"/>	<input type="text" value="13"/>	<input type="text" value="14"/>	<input type="text" value="15"/>

Figure 4.4-4 : Report Layout for List of Tobacco Brands Owned by Company

Table 4.4-18: List of Items
(Report Name: List of Tobacco Brands Owned by Company) (1/2)

No.	Item Name	Level			Description	Item in File	Note
		1	2	3			
1	List of Tobacco Brands Owned by Company <i>Merek-merek Hasil tembakau yang Dimiliki Perusahaan</i>	✓			List of Brands Owned by Company (Tobacco) (no repeat)	— (Group title)	—
2	NPWP <i>NPWP</i>		✓		Tax Payer Code Number (output)	ID NUMBER. BASIC INFORMATION	12 char., alpha- numeric
3	Company Name <i>Nama Perusahaan</i>		✓		Company Name (output)	NAME. BASIC INFORMATION	40 char., alpha- numeric
4	List of Brands <i>Tabel Merek</i>		✓		List of Tobacco Brands (shown in alphabetical order of brands) (repeat 30 times)	— (Group title)	—
5	Brand <i>Merek</i>			✓	Tobacco Brand (output)	<ul style="list-style-type: none"> • BRAND. CK-1 DETAIL • BRAND. CK-8 DETAIL 	25 char., alpha- numeric
6	Brand code <i>Kode merek</i>			✓	Code for Tobacco brand (output)	<ul style="list-style-type: none"> • tobabrnd_of. CK-1 DETAIL • tobabrnd_of. CK-8 DETAIL 	4 digits, numeric
7	Kind of Tobacco <i>Jenis Hasil Tembakau</i>			✓	Kind of Tobacco product (output)	<ul style="list-style-type: none"> • tobaproduct_of. CK-1 (EXCISE STAMP ORDER) • tobaproduct_of. CK-8 (DECLARA- TION OF EXPORT) 	7 char., alpha- numeric

Table 4.4-18: List of Items
(Report Name: List of Tobacco Brands Owned by Company) (2/2)

No.	Item Name	Level			Description	Item in File	Note
		1	2	3			
8	Tariff(%) <i>Tarif(%)</i>			✓	ExciseTariff (output)	<ul style="list-style-type: none"> • EXCISE TARIFF. CK-1 (EXCISE STAMP ORDER) • EXCISE TARIFF. CK-8 DETAIL 	2 digits, numeric
9	Retail Price (Rp) <i>HJE (Rp)</i>			✓	Retail Price (output)	<ul style="list-style-type: none"> • RETAIL PRICE. CK-1 DETAIL • RETAIL PRICE. CK-8 DETAIL 	7 digits, numeric
10	Contents/ pack <i>Isi/ bks</i>			✓	Content/ pack (output)	<ul style="list-style-type: none"> • CONTENTS/ PACK. CK-1 DETAIL • CONTENTS/ PACK. CK-8 DETAIL 	3 digits, numeric
11	D <i>D</i>			✓	Flag which means the product is for domestic use (output)	—	1 char., alpha-numeric
12	E <i>E</i>			✓	Flag which means the product is exported (output)	—	1 char., alpha-numeric
13	I <i>I</i>			✓	Flag which means the product is imported (output)	—	1 char., alpha-numeric
14	Latest CK-1 Number <i>Nomor CK-1</i>			✓	Latest CK-1 number (output)	CK-1 NUMBER. CK-1(EXCISE STAMP ORDER)	6 digits, numeric
15	CK-1 Date <i>Tanggal CK-1</i>			✓	Latest CK-1 date (output)	CK-1 DATE. CK-1(EXCISE STAMP ORDER)	8 digits, numeric

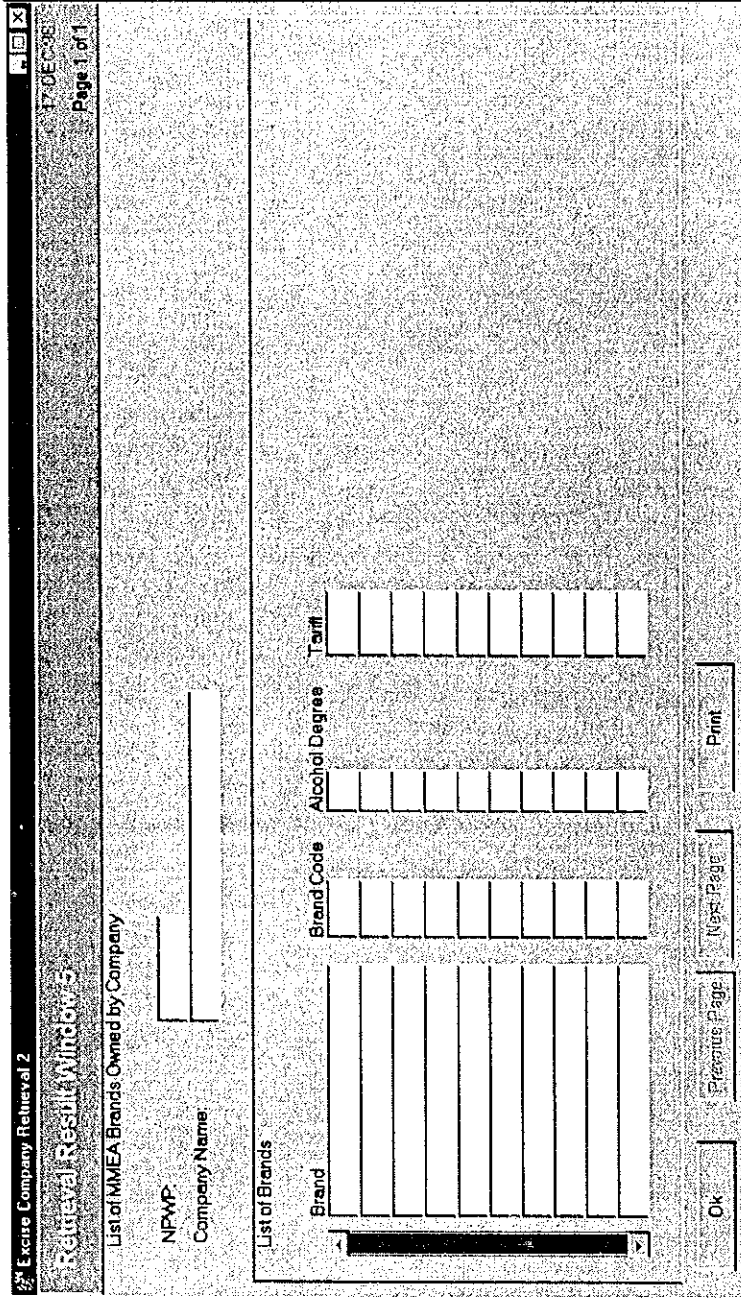


Figure 4.4-5: Window Layout for Excise Company Retrieval 2 (Retrieval Result Window 5)

Table 4.4-19: List of Items
(Window Name: Excise Company Retrieval2 (Retrieval Result Window5))

No.	Item Name	Level			Description	Item in File	Note
		1	2	3			
1	List of MMEA Brands Owned by Company <i>Merek-merek MMEA yang Dimiliki Perusahaan</i>	✓			List of Brands Owned by Company (MMEA) (no repeat)	— (Group title)	—
2	NPWP <i>NPWP</i>		✓		Tax Payer Code Number (output)	ID NUMBER. BASIC INFORMATION	12 char., alpha-numeric
3	Company Name <i>Nama Perusahaan</i>		✓		Name of the company which has the production license for the brand (output)	NAME. BASIC INFORMATION	40 char., alpha-numeric
4	List of Brands <i>Tabel Merek</i>		✓		List of MMEA brands owned by a factory (repeat 30 times) (shown in the alphabetical order of the brands)	— (Group title)	—
5	MMEA Brand <i>Merek MMEA</i>			✓	Name of the MMEA brand (output)	KIND OF EXCISABLE GOODS PRODUCED. SE-16 (MMEA)	25 char., alpha-numeric
6	Brand Code <i>Kode Merek</i>			✓	Brand code (For future scalability) (output)	MMEAbrand_of. SE-16 (MMEA)	4 digits, numeric
7	Alcohol Degree (%) <i>Kadar Alkohol (%)</i>			✓	Alcohol degree (output)	ALCOHOL DEGREE. SE-16(MMEA)	2 digits, numeric
8	Tariff <i>Tarif</i>			✓	Excise Tariff (output)	EXCISE TARIFF. SE-16(MMEA)	6 digits, numeric

Report code: RE014040

List of MMEA Brands Owned by Company

Date: 99/99/9999

Page: 999/999

NPWP

2

Company Name

3

List of Brands

Brand	Brand Code	Alcohol Degree	Tariff
5	6	7	8
5	6	7	8
5	6	7	8
5	6	7	8
5	6	7	8

5 6 7 8

Figure 4.4-6 : Report Layout for List of MMEA Brands Owned by Company

Table 4.4-20: List of Items (Report Name: List of MMEA Brands Owned by Company)

No.	Item Name	Level			Description	Item in File	Note
		1	2	3			
1	List of MMEA Brands Owned by Company <i>Merek-merek MMEA yang Dimiliki Perusahaan</i>	✓			List of Brands Owned by Company (MMEA) (no repeat)	— (Group title)	—
2	NPWP <i>NPWP</i>		✓		Tax Payer Code Number (output)	ID NUMBER. BASIC INFORMATION	12 char., alpha-numeric
3	Company Name <i>Nama Perusahaan</i>		✓		Name of the company which has the production license for the brand (output)	NAME. BASIC INFORMATION	40 char., alpha-numeric
4	List of Brands <i>Tabel Merek</i>		✓		List of MMEA brands owned by a factory (repeat 30 times) (shown in the alphabetical order of the brands)	— (Group title)	—
5	MMEA Brand <i>Merek MMEA</i>			✓	Name of the MMEA brand (output)	KIND OF EXCISABLE GOODS PRODUCED. SE-16 (MMEA)	25 char., alpha-numeric
6	Brand Code <i>Kode Merek</i>			✓	Brand code (For future scalability) (output)	MMEAbrand_of. SE-16 (MMEA)	4 digits, numeric
7	Alcohol Degree (%) <i>Kadar Alkohol (%)</i>			✓	Alcohol degree (output)	ALCOHOL DEGREE. SE-16(MMEA)	2 digits, numeric
8	Tariff <i>Tarif</i>			✓	Excise Tariff (output)	EXCISE TARIFF. SE-16(MMEA)	6 digits, numeric

Excise Company Retrieval

17-BEUG Page 1 of 1

Retrieval Windows

Excise Factory Information

NPPBKC: NPPBKC Date: (DDMMYYYY)

Factory Owner:

Factory Name:

CK-1 List

CK-1 Date:

CK-1 Number:

CK-2 Number:

CK-3 Number:

CK-4 Number:

CK-5 Number:

CK-6 Number:

CK-7 Number:

CK-8 Number:

CK-9 Number:

CK-10 Number:

Select Cancel

Figure 4.4-7: Window Layout for Excise Company Retrieval (Retrieval Window 3)

Table 4.4-21: List of Items
(Window Name: Excise Company Retrieval1 (Retrieval Window3)) (1/2)

No.	Item Name	Level			Description	Item in File	Note
		1	2	3			
1	Excise Factory Information <i>Informasi Pabrik Cukai</i>	✓			Excise Factory Information (no repeat)	— (Group title)	—
2	NPPBKC <i>NPPBKC</i>		✓		NPPBKC (License of Excisable Goods entrepreneur) (output)	NPPBKC. FACTORY	10 digits, numeric
3	NPPBKC Date (DDMMYY YY) <i>Tanggal NPPBKC (DDMMYY Y)</i>		✓		Date of issue of NPPBKC (output)	DATE OF NPPBKC. FACTORY	8 digits, date
4	Factory Owner <i>Nama Pemilik</i>		✓		<ul style="list-style-type: none"> • Company name (when company is a corporation) • Name of owner (when company is owned by a person) (output)	NAME. OWNER	40 char., alpha- numeric
5	Factory Name <i>Nama Pabrik</i>		✓		Factory Name (output)	FACTORY NAME. FACTORY	40 char., alpha- numeric
6	CK-1 List <i>Tabel CK-1</i>		✓		CK-1 list (shown in the reverse of chronological order of CK-1) (repeat 1,800 times)	— (Group title)	—
7	CK-1 Date <i>Tanggal CK-1</i>			✓	CK-1 date (output)	CK-1 DATE. CK-1 (EXCISE STAMP ORDER)	8 digits, date
8	CK-1 Number <i>Nomor CK-1</i>			✓	CK-1 number (output)	CK-1 NUMBER. CK-1 (EXCISE STAMP ORDER)	6 digits, numeric
9	CK-8 List <i>Tabel CK-8</i>		✓		CK-8 list (shown in the reverse of chronological order of CK-8) (repeat 1,800 times)	— (Group title)	—

Table 4.4-21: List of Items
(Window Name: Excise Company Retrieval1 (Retrieval Window3)) (2/2)

No.	Item Name	Level			Description	Item in File	Note
		1	2	3			
10	CK-8 Date <i>Tanggal</i> CK-8			✓	CK-8 date (output)	CK-8 DATE. CK-8 (DECLARATION OF EXPORT)	8 digits, date
11	CK-8 Number <i>Nomor</i> CK-8			✓	CK-8 number (output)	CK-8 NUMBER. CK-8 (DECLARATION OF EXPORT)	6 digits, numeric

Excise Company Retrieval
 Retrieval Window 4
 17 DEC 88
 Page 1 of 1

Excise Factory Information

NPPBKC NPPBKC Date: (DDMMYYYY)

Factory Owner
 Factory Name

List of Month & Year of LACK-1/LACK-2/SE-16

Month & Year

Select Cancel

Figure 4.4-8: Window Layout for Excise Company Retrieval (Retrieval Window 4)

Table 4.4-22: List of Items
(Window Name: Excise Company Retrieval2 (Retrieval Window4))

No.	Item Name	Level			Description	Item in File	Note
		1	2	3			
1	Excise Factory Information <i>Informasi Pabrik Cukai</i>	✓			Excise Factory Information (no repeat)	— (Group title)	—
2	NPPBKC <i>NPPBKC</i>		✓		NPPBKC (License of Excisable Goods entrepreneur) (output)	NPPBKC. FACTORY	10 digits, numeric
3	NPPBKC Date (DDMMYY YY) <i>Tanggal NPPBKC (DDMMYY Y)</i>		✓		Date of issue of NPPBKC (output)	DATE OF NPPBKC. FACTORY	8 digits, date
4	Factory Owner <i>Nama Pemilik</i>		✓		<ul style="list-style-type: none"> Company name (when company is a corporation) Name of owner (when company is owned by a person) (output)	NAME. OWNER	40 char., alpha-numeric
5	Factory Name <i>Nama Pabrik</i>		✓		Factory Name (output)	FACTORY NAME. FACTORY	40 char., alpha-numeric
6	List of Month & Year of LACK-1, LACK-2, and SE-16 <i>Tabel Bulan dan Tahun LACK-1, LACK-2, dan SE-16</i>	✓			List of Month & Year of LACK-1, LACK-2, and SE-16(MMEA) (shown in the reverse of chronological order) (repeat 60 times)	— (Group title)	—
7	Month & Year <i>Bulan dan Tahun</i>		✓		Month & Year of LACK-1, LACK-2 and SE-16(MMEA) (output)	MONTH_YEAR. SE-16(MMEA)	6 digits, date

Excise Company Retrieval
Retrieval Window C
Page 1 of 1

Excise Factory Information:

NPPBKC: NPPBKG Date: (DDMMYY)
NPP: NPP date: (DDMMYY)

Factory Owner:
Factory Name:

List of Month & Year of LACK-4, LACK-9, and SE-16

Month & Year
<input type="text"/>
<input type="text"/>
<input type="text"/>
<input type="text"/>
<input type="text"/>
<input type="text"/>
<input type="text"/>
<input type="text"/>
<input type="text"/>
<input type="text"/>
<input type="text"/>

Select Cancel

Figure 4.4-9: Window Layout for Excise Company Retrieval (Retrieval Window 5)

Table 4.4-23: List of Items
(Window Name: Excise Company Retrieval3 (Retrieval Window5)) (1/2)

No.	Item Name	Level			Description	Item in File	Note
		1	2	3			
1	Excise Factory Information <i>Informasi Pabrik Cukai</i>	✓			Excise Factory Information (no repeat)	— (Group title)	—
2	NPPBKC <i>NPPBKC</i>		✓		NPPBKC (License of Excisable Goods entrepreneur) (output)	NPPBKC. FACTORY	10 digits, numeric
3	NPPBKC Date (DDMMYY YY) <i>Tanggal NPPBKC (DDMMYYY Y)</i>		✓		Date of issue of NPPBKC (output)	DATE OF NPPBKC. FACTORY	8 digits, date
4	NPP <i>NPP</i>		✓		NPP (output)	NPP. FACTORY	9 digits, Numeric
5	NPP Date (DDMMYY YY) <i>Tanggal NPP (DDMMYYY Y)</i>		✓		Date of issue of NPP (output)	DATE OF NPP. FACTORY	8 digits, date
6	Factory Owner <i>Nama Pemilik</i>		✓		<ul style="list-style-type: none"> • Company name (when company is a corporation) • Name of owner (when company is owned by a person) (output)	NAME. OWNER	40 char., alpha- numeric
7	Factory Name <i>Nama Pabrik</i>		✓		Factory Name (output)	FACTORY NAME. FACTORY	40 char., alpha- numeric

Table 4.4-23: List of Items
(Window Name: Excise Company Retrieval3 (Retrieval Window5)) (2/2)

No.	Item Name	Level			Description	Item in File	Note
		1	2	3			
8	List of Month & Year of LACK-4, LACK-9, and SE-16 <i>Tabel Bulan dan Tahun LACK-4, LACK-9, dan SE-16</i>	✓			List of Month & Year of LACK-4, LACK-9, and SE-16(EA) (shown in the reverse of chronological order) (repeat 60 times)	— (Group title)	—
9	Month & Year <i>Bulan dan Tahun</i>		✓		Month & Year of LACK-4, LACK-9 and SE-16(EA) (output)	MONTH_YEAR. SE-16 (EA)	6 digits, date

Excise Company Retrieval Result 4

Retrieve Result Window 8

17-01-93 Page 1 of 1

BDOX-3

Month & Year: _____

Service Office: _____

Regional Office: _____

Activate Excel | Export to Excel | Excel File Name: _____

Details of BDOX-3

No.	CK-1 Date	CK-1 No.	Factory Owner	Factory Name	NPPBKC	Product

Total Amount of Production: _____ Total Amount of Excise: _____ Cash (Rp): _____ Credit (Rp): _____ Total (Rp): _____

Previous Page | Next Page | Ok

Figure 4.4-10: Window Layout for Excise Company Retrieval 4 (Retrieval Result Window 8) (1/2)

Table 4.4-24: List of Items
(Window Name: Excise Company Retrieval8 (Retrieval Result Window8)) (1/5)

No.	Item Name	Level			Description	Item in File	Note
		1	2	3			
1	BDCK-3 <i>BDCK-3</i>	✓			BDCK-3 (Excise Stamps order list) (no repeat)	— (Group title)	—
2	Month & Year <i>Bulan dan Tahun</i>		✓		Month & Year of BDCK-3 (output)	—	6 digits, date
3	Service Office <i>Kantor Pelayanan</i>		✓		Service office (output)	CODE. DJBC OFFICE	40 char., alpha- numeric
4	Regional Office <i>Kantor Wilayah</i>		✓		Regional office (output)	CODE. DJBC OFFICE	40 char., alpha- numeric
5	Excel File Name <i>Nama Excel File</i>		✓		Excel File Name (input, optional) Used when BDCK-3 is exported to MS-Excel.	—	30 char., alpha- numeric
6	Details of BDCK-3 <i>Rincian BDCK-3</i>		✓		Details of BDCK-3 (shown in the chronological order of CK-1 Date) (repeat 15,000 times)	— (Group title)	—
7	No. <i>No.</i>		✓		Serial number (output)	—	5 digits, numeric
8	CK-1 Date <i>Tanggal CK-1</i>			✓	CK-1 Date (output)	CK-1 DATE. (EXCISE STAMP ORDER)	8 digits, date
9	CK-1 Number <i>Nomor CK-1</i>			✓	CK-1 number (output)	CK-1NUMBER. CK-1 (EXCISE STAMP ORDER)	6 digits, numeric
10	Factory Owner <i>Nama Pemelik</i>			✓	Name of license owner (output)	NAME. OWNER	40 char., alpha- numeric
11	Factory Name <i>Nama Pabrik</i>			✓	Factory name (output)	FACTORY NAME. FACTORY	40 char., alpha- numeric
12	NPPBKC <i>NPPBKC</i>			✓	NPPBKC (output)	NPPBKC. FACTORY	10 digits, numeric

Table 4.4-24: List of Items
(Window Name: Excise Company Retrieval8 (Retrieval Result Window8)) (2/5)

No.	Item Name	Level			Description	Item in File	Note
		1	2	3			
13	Production <i>Produksi</i>			✓	Amount of production ((Excise Stamps per sheet) × 18[contents/pack] × [Sheet]) (Data items[Excise Stamps per sheet] and [Sheet] are not displayed on the window.) (output)	CALCULATED BY: <ul style="list-style-type: none"> • excistam_of. CK-1 DETAIL • CONTENTS/ PACK.CK-1 DETAIL • SHEET. CK-1 DETAIL 	15 digits, numeric
14	Kind of Tobacco Product <i>Jenis Produk Hasil Tembakau</i>			✓	Code of ind of Tobacco product (output)	tobaproduct_of. CK-1 (EXCISE STAMP ORDER)	7 char., alpha- numeric
15	Excise Tariff (%) <i>Tarif Cukai (%)</i>			✓	Excise Tariff (%) (output)	EXCISE TARIFF. CK-1 (EXCISE STAMP ORDER)	2 digits, numeric
16	Brand <i>Merek Dagang</i>			✓	Brand of Excisable Goods (output)	BRAND. CK-1 DETAIL	25 char., alpha- numeric
17	Retail Price (Rp.) <i>HJE(Rp.)</i>			✓	Retail Price in Rupiah (output)	RETAIL PRICE. CK-1 DETAIL	7 digits, numeric
18	Contents/ pack <i>Isi/ bks</i>			✓	Contents per pack (output)	CONTENTS/ PACK. CK-1 DETAIL	5 digits, numeric

Table 4.4-24: List of Items
(Window Name: Excise Company Retrieval8 (Retrieval Result Window8)) (3/5)

No.	Item Name	Level			Description	Item in File	Note
		1	2	3			
19	Amount of Excise /Cash (Rp.) <i>Jumlah Cukai/Tunai (Rp.)</i>			✓	Amount of Excise should be paid (Cash) $((\text{Sheet}) \times 17[\text{RetailPrice}] \times [\text{Excise Stamps per sheet}] - 15[\text{Excise Tariff}] - [\text{Refund amount}])$ (Data items [Sheet][Excise Stamps per sheet][Refund amount] are not displayed on the window.) (output)	CALCULATED BY: <ul style="list-style-type: none"> • SHEET. CK-1 DETAIL • RETAIL PRICE. CK-1 DETAIL • excistam_of. CK-1 DETAIL • EXCISE TARIFF. CK-1 (EXCISE STAMP ORDER) • EXCISE REFUND AMOUNT. CK-1 (EXCISE STAMP ORDER). 	11 digits, numeric
20	Amount of Excise /Credit (Rp.) <i>Jumlah Cukai/Kredit (Rp.)</i>			✓	Amount of Excise should be paid (Credit) $((\text{Sheet}) \times 17[\text{RetailPrice}] \times [\text{Excise Stamps per sheet}] - 15[\text{Excise Tariff}] - [\text{Refund amount}])$ (Data items [Sheet][Excise Stamps per sheet][Refund amount] are not displayed on the window.) (output)	CALCULATED BY: <ul style="list-style-type: none"> • SHEET. CK-1 DETAIL • RETAIL PRICE. CK-1 DETAIL • excistam_of. CK-1 DETAIL • EXCISE TARIFF. CK-1 (EXCISE STAMP ORDER) • EXCISE REFUND AMOUNT. CK-1 (EXCISE STAMP ORDER). 	11 digits, numeric

Table 4.4-24: List of Items
(Window Name: Excise Company Retrieval8 (Retrieval Result Window8)) (4/5)

No.	Item Name	Level			Description	Item in File	Note
		1	2	3			
21	Total Amount of Production <i>Produksi</i>		✓		Total mount of production $([\text{Excise Stamps per sheet}] \times 18[\text{contents/pack}] \times [\text{Sheet}])$ (Data items [Excise Stamps per sheet] and [Sheet] are not displayed on the window.) (output)	CALCULATED BY: <ul style="list-style-type: none"> • excistam_of. CK-1 DETAIL • CONTENTS/PACK.CK-1 DETAIL • SHEET. CK-1 DETAIL 	11 digits, numeric
22	Total Amount of Excise <i>Jumlah Cukai</i>		✓		Total amount of Excise should be paid (no repeat)	— (Group title)	—
23	Cash(Rp) <i>Tunai(Rp)</i>			✓	Total Amount of Excise should be paid (Cash) $([\text{Sheet}] \times 17[\text{RetailPrice}] \times [\text{Excise Stamps per sheet}] 15[\text{Excise Tariff}] - [\text{Refund amount}])$ (Data items [Sheet][Excise Stamps per sheet][Refund amount] are not displayed on the window.) (output)	CALCULATED BY: <ul style="list-style-type: none"> • SHEET. CK-1 DETAIL • RETAIL PRICE. CK-1 DETAIL • excistam_of. CK-1 DETAIL • EXCISE TARIFF. CK-1 (EXCISE STAMP ORDER) • EXCISE REFUND AMOUNT. CK-1 (EXCISE STAMP ORDER). 	15 digits, numeric

Table 4.4-24: List of Items
 (Window Name: Excise Company Retrieval8 (Retrieval Result Window8)) (5/5)

No.	Item Name	Level			Description	Item in File	Note
		1	2	3			
24	Credit(Rp) <i>Kredit(Rp)</i>			✓	Total Amount of Excise should be paid (Credit) $([\text{Sheet}] \times 17[\text{RetailPrice}] \times [\text{Excise Stamps per sheet}] - 15[\text{Excise Tariff}] - [\text{Refund amount}])$ (Data items [Sheet][Excise Stamps per sheet][Refund amount] are not displayed on the window.) (output)	CALCULATED BY: <ul style="list-style-type: none"> • SHEET. CK-1 DETAIL • RETAIL PRICE. CK-1 DETAIL • excistam_of. CK-1 DETAIL • EXCISE TARIFF. CK-1 (EXCISE STAMP ORDER) • EXCISE REFUND AMOUNT. CK-1 (EXCISE STAMP ORDER) 	15 digits, numeric
25	Total Amount (Rp.) <i>Jumlah Total (Rp.)</i>			✓	Total Amount of Excise should be paid (Cash and Credit) $([\text{Sheet}] \times 17[\text{RetailPrice}] \times [\text{Excise Stamps per sheet}] - 15[\text{Excise Tariff}] - [\text{Refund amount}])$ (Data items [Sheet][Excise Stamps per sheet][Refund amount] are not displayed on the window.) (output)	CALCULATED BY: <ul style="list-style-type: none"> • SHEET. CK-1 DETAIL • RETAIL PRICE. CK-1 DETAIL • excistam_of. CK-1 DETAIL • EXCISE TARIFF. CK-1 (EXCISE STAMP ORDER) • EXCISE REFUND AMOUNT. CK-1 (EXCISE STAMP ORDER) 	15 digits, numeric