

Excise Company Update 1

Update Window 5

OK-8

Factory Owner: _____

Factory Street: _____

NPPBKC: _____

OK-8 Number: _____

Country of Destination: _____

Last Part of Call: _____

Factory Name: _____

Factory City: _____

NPPBKC Date: (DDMMYYYY) _____

OK-8 Data: (DDMMYYYY) _____

Part of Loading: _____

Detail of Declaration

Seq. No.	Kind of Tobacco	Brand Code	Brand	Number of Cartons	Number of Boxes	Sticks per Box	Number of Sticks	Retail Price (Pp)	Excise Tariff (%)	Amot Excs
1	Tobacco									
2	Tobacco									
3	Tobacco									
4	Tobacco									
5	Tobacco									

Ok Cancel Previous Page Next page

Figure 4.2-8: Window Layout for Excise Company Update 1 (Update Window 5) (1/2)

Excise Company Update 1

Update Window 5

CK-8

Factory Owner
Factory Street
NPPBKC
CK-8 Number
County of Destination
Last Port of Call:

Factory Name
Factory City
NPPBKC Date
CK-8 Date
Port of Loading:

Detail of Declaration

Seq No	hd	Number of Carons	Number of Boxes	Sticks per Box	Number of Sticks	Retail Price (Rp)	Excise Tariff (%)	Amount of Excise (Rp)	Amount of Exchange (US\$)

Ok Cancel Previous Page Next page

Figure 4.2-8: Window Layout for Excise Company Update 1 (Update Window 5) (2/2)

54 Excise Company Update 1
 Update Windows
 CK-8
 7:05:38
 Page 1 of 1

Factory Owner: _____
 Factory Street: _____
 Factory Name: _____
 Factory City: _____
 NPPBKC: _____
 CK-8 Number: _____
 NPPBKC Date: (DDMMYYYY)
 CK-8 Date: (DDMMYYYY)
 Country of Destination: _____
 Last Port of Call: _____
 Port of Loading: _____

Date of Declaration: _____

Seq. No.	Number of Cartons	Number of Boxes	Sticks per Box	Number of Sticks	Retail Price (Rp)	Excise Tariff (%)	Amount of Excise (Rp)	Amount of Exchange (US\$)
1								
2								
3								
4								
5								
6								
7								
8								
9								
10								
11								
12								
13								
14								
15								
16								
17								
18								
19								
20								

Ok Cancel Previous Page Next Page

Figure 4.2-8: Window Layout for Excise Company Update 1 (Update Window 5) (2/2)

Table 4.2-19: List of Items
(Window Name: Excise Company Update1 (Update Window5)) (1/3)

No.	Item Name	Level			Description	Item in File	Note
		1	2	3			
1	CK-8 CK-8	✓			CK-8 (Declaration of release of Excisable Goods with unpaid Excise from factory or storage place for export destination) (no repeat)	— (Group title)	—
2	Factory Owner <i>Nama Pengusaha</i>		✓		Name of company owner/ importer (output)	NAME. OWNER	40 char., alpha-numeric
3	Factory Name <i>Nama Pabrik</i>		✓		Name of factory (output)	FACTORY NAME. FACTORY	40 char., alpha-numeric
4	Factory Street <i>Jalan Pabrik</i>		✓		The address where the factory is located (output)	STREET. FACTORY LOCATION	100 char., alpha-numeric
5	Factory City <i>Kota Pabrik</i>		✓		The city where the factory is located (output)	CITY. FACTORY LOCATION	30 char., alpha-numeric
6	NPPBKC NPPBKC		✓		NPPBKC (output)	NPPBKC. FACTORY	10 digits, numeric
7	NPPBKC Date (DDMMYY YY) <i>Tanggal NPPBKC (DDMMYYY Y)</i>		✓		NPPBKC issuance date (output)	DATE OF NPPBKC. FACTORY	8 digits, date
8	CK-8 Number <i>Nomor CK-8</i>		✓		CK-8 number (input/output, mandatory)	CK-8 NUMBER. CK-8 (DECLARATION OF EXPORT)	6 digits, numeric
9	CK-8 Date (DDMMYY YY) <i>Tanggal CK-8 (DDMMYYY Y)</i>		✓		Date of CK-8 creation (input/output, mandatory)	CK-8 DATE. CK-8 (DECLARATION OF EXPORT)	8 digits, date
10	Country of Destination <i>Negara Tujuan</i>		✓		Destination country (input/output, mandatory)	destctry_of. (DECLARATION OF EXPORT)	30 char., alpha-numeric

Table 4.2-19: List of Items
(Window Name: Excise Company Update1 (Update Window5)) (2/3)

No.	Item Name	Level			Description	Item in File	Note
		1	2	3			
11	Port of Loading <i>Pelabuhan Muat</i>		✓		Loading port (input/output, mandatory)	loadport_of. CK-8 (DECLARATION OF EXPORT)	40 char., alpha- numeric
12	Last Port of Call <i>Pelabuhan Singgah Terakhir</i>		✓		Last port of call (input/output, mandatory)	lastport_of. CK-8 (DECLARATION OF EXPORT)	40 char., apha- numeric
13	Detail of Declaration <i>Rincian Pemberitahuan</i>		✓		Detail of declaration (repeat 10 times)	— (Group title)	—
14	Sequence Number <i>No. Urut</i>			✓	Sequence number (output) (generated automatically as the user inputs a new row.)	SEQUENCE NUMBER. CK-8 DETAIL	2 digits, numeric
15	Kind of Tobacco <i>Jenis Hasil Tembakau</i>			✓	Kind of tobacco product (input/output, mandatory)	tobaproduct_of. CK-8 (DECLARATION OF EXPORT)	7 char., apha- numeric
16	Brand Code <i>Kode Merek</i>			✓	Code for Tobacco brand (input/output, optional)	tobabrnd_of. CK-8 DETAIL	4 digits, numeric
17	Brand <i>Merek</i>			✓	Name of Tobacco brand (input/output, mandatory)	BRAND. CK-8 DETAIL	25 char., apha- numeric
18	Number of Cartons <i>Jumlah Karton</i>			✓	Number of cartons (input/output, mandatory)	NUMBER OF CARTONS. CK-8 DETAIL	7 digits, numeric
19	Number of Boxes <i>Jumlah Bungkus</i>			✓	Number of boxes (input/output, mandatory)	NUMBER OF BOXES. CK-8 DETAIL	10 digits, numeric
20	Sticks per Box <i>Isi/bks</i>			✓	Sticks per box (input/output, mandatory)	CONTENTS/PACK .CK-8 DETAIL	3 digits, numeric
21	Number of Sticks <i>Jumlah Batang</i>			✓	Number of sticks (input/output, mandatory)	NUMBER OF STICKS. CK-8 DETAIL	13 digits, numeric
22	Retail Price (Rp) <i>HJE (Rp)</i>			✓	Retail Price per pack (input/output, mandatory)	RETAIL PRICE. CK-8 DETAIL	7 digits, numeric

Table 4.2-19: List of Items
(Window Name: Excise Company Update1 (Update Window5)) (3/3)

No.	Item Name	Level			Description	Item in File	Note
		1	2	3			
23	Excise Tariff(%) <i>Tarif Cukai</i> (%)			✓	Excise Tariff (input/output, mandatory)	EXCISE TARIFF. CK-8 DETAIL	2 digits, numeric
24	Amount of Excise (Rp) <i>Jumlah</i> <i>Cukai (Rp)</i>			✓	Amount of Excise (19[Number of boxes] × 22[Retail Price] × 23[Excise Tariff]) (output)	CALCULATED BY: <ul style="list-style-type: none"> • NUMBER OF BOXES. CK-8 DETAIL • RETAIL PRICE. CK-8 DETAIL • EXCISE TARIFF. CK-8 (DECLARA- TION OF EXPORT) 	11 digits, numeric
25	Amount of Exchange (US\$) <i>Jumlah</i> <i>Devisa</i> (US\$)			✓	Amount of Exchange (input/output, mandatory)	AMOUNT OF EXCHANGE. CK-8 DETAIL	11 digits, numeric

Table 4.2-20: Input Check List(Excise Company Update(Update Window 5))

No.	Item Name	Condition (range,format,and so on)	Message ID	Note
1	CK-8 Number	Must have full length.	E0000009	---
2	CK-8 Date	Must be past date including today.	E0000010	---
3	Brand code	Must have full length.	E0000009	---

Excise Company Update 2
 Update Window
 17 DEC 88
 Page 1 of 3

Excise Factory Information

NPPBKC: _____ NPPBKC Date: _____ (DDMMYYYY)
 Factory Name: _____ Month & Year: _____ (MMYYYY)

LACK-1

No.	Kind of Excisable Goods Produce	Beginning Balance	Entry	Total	Used Amount	Balance	Amount of Production
Total:							

Official Statement
 LACK-1 Date: _____ (DDMMYYYY)

Ok Cancel Previous Page Next page

Figure 4.2-9: Window Layout for Excise Company Update 2 (Update Window 7) (1/5)

Excise Company Update 2
Update Window 7
 LACK-2

No.	Sales Document Number	Date of Sales	Amount of Sales	Kind of Sold Goods	Supplier NPPBKC	NPWP Type	Supplier NPWP	Supplier Name
						C: 12 digits		
						C: 12 digits		
						C: 10 digits		
						C: 10 digits		
						C: 12 digits		
						C: 12 digits		
						C: 10 digits		
						C: 10 digits		
						C: 12 digits		
						C: 12 digits		
						C: 10 digits		
						C: 10 digits		
						C: 12 digits		
						C: 12 digits		
						C: 10 digits		
						C: 10 digits		

Total Amount of Sales: _____

Ok Cancel Previous Page Next page

Figure 4.2-9: Window Layout for Excise Company Update 2 (Update Window 7) (2/5)

Excise Company Update 2 DEC-98
Page 2 of 3

Update Window 7

LACK2

No.	Sales Document Number	Date of Sales	Amount of Sales	Kind of Sold Goods	Supplier NPPBKC	NPWP Type	Supplier NPWP	Supplier Name
						12 digits		
						10 digits		
						10 digits		
						10 digits		
						10 digits		
						10 digits		
						10 digits		
						10 digits		
						10 digits		
						10 digits		
						10 digits		
			Total Amount of Sales:					

OK Cancel Previous Page Next page

Figure 4.2-9: Window Layout for Excise Company Update 2 (Update Window 7) (2/5)

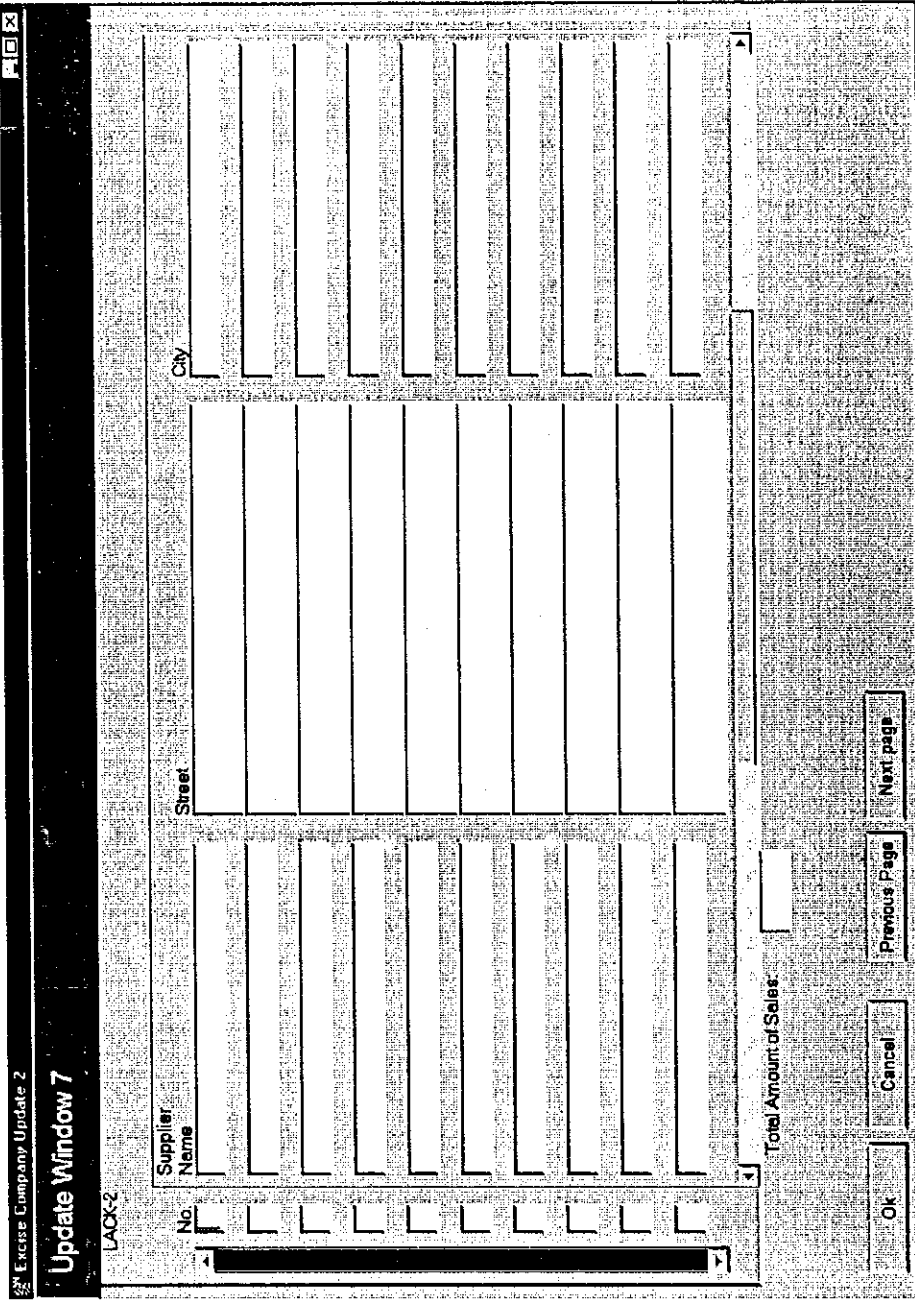


Figure 4.2-9: Window Layout for Excise Company Update 2 (Update Window 7) (3/5)

Excise Company Update 2
Update Window 7
LACK-2

No.	Supplier Name	Street	City

Total Amount of Sales: _____

Ok Cancel Previous Page Next page

Figure 4.2-9: Window Layout for Excise Company Update 2 (Update Window 7) (3/15)

F O X

Excise Company Update 2

Update Window 7

SE-16 (MMEA)

Brand Code: Brand: Alcohol Degree: Excise Tariff: SE-16 Date:

SE-16 (MMEA)

1. Last Month Balance:

2. Production of The Month Entry:

3. Total (1+2):

4. Release:

4.1 Excise Imposed:

4.2 Unimposed Excise

4.2.1 Transited/Trans-shipped:

4.2.2 Exported:

4.2.3 Destroyed/Damaged Prior to the Release:

4.3 Exempted Excise

4.3.1 For Delegation from Foreign Country:

4.3.2 For Export Staff from Foreign Country:

4.3.3 Brought into Bonded Storage:

4.3.4 For Passengers and Ship Crews from Customs Office:

4.4 Total:

4.4.1 Total (4.1 & 4.3):

5. This Month Balance (3 - 4.4):

6. Excise Should be Paid (4.1 x Tariff):

Ok Cancel Previous Page Next Page

Figure 4.2-9: Window Layout for Excise Company Update 2 (Update Window 7) (5/5)

Excise Company Update 2
 Update Window 7
 SE-16 (MMEA)

Brand Code: [] Brand: [] Alcohol Degree: [] Excise Tariff: [] SE-16 Date: []

SE-16 (MMEA)

1. Last Month Balance: []
 2. Production of The Month/Entry: []
 3. Total (1-2): []
 4. Release:

4.1 Excise Imposed: []
 4.2 Unimposed Excise
 4.2.1 Transited/Trans-shipped: []
 4.2.2 Exported: []
 4.2.3 Destroyed/Damaged Prior to the Release: []
 4.3 Exempted Excise
 4.3.1 For Delegation from Foreign Country: []
 4.3.2 For Expert Staff from Foreign Country: []
 4.3.3 Brought into Bonded Storage: []
 4.3.4 For Passengers and Ship Crews from Customs Office: []
 4.4 Total
 4.4.1 Total (4.1 s/d 4.3): []

5. This Month Balance (3 - 4.4): []
 6. Excise Should be Paid (4.1 x Tariff): []

OK [] Cancel [] Previous Page [] Next Page []

Figure 4.2-9: Window Layout for Excise Company Update 2 (Update Window 7) (5/5)

Table 4.2-21: List of Items
(Window Name: Excise Company Update 2 (Update Window7) (1/12)

No.	Item Name	Level			Description	Item in File	Note
		1	2	3			
1	Excise Factory Information <i>Informasi Pabrik Cukai</i>	✓			Excise Factory Information (no repeat)	— (Group title)	—
2	NPPBKC <i>NPPBKC</i>		✓		NPPBKC (output)	NPPBKC. FACTORY	10 digits, numeric
3	NPPBKC Date (DDMMYY YY) <i>Tanggal NPPBKC (DDMMYYY Y)</i>		✓		NPPBKC issuance date (output)	DATE OF NPPBKC. FACTORY	8 digits, date
4	Factory Name <i>Nama Pabrik</i>		✓		Factory Name (output)	FACTORY NAME. FACTORY	40 char., alpha- numeric
5	Month & Year (MMYYYY) <i>Bulan dan Tahun (MMYYYY)</i>		✓		Month of the reports produced (input/output, mandatory)	MONTH_YEAR. SE-16(MMEA)	6 digits, date
6	LACK-1 <i>LACK-1</i>	✓			LACK-1 (Report on utilizing / stock of Excisable Goods with unimposed facility) (repeat 10 times)	— (Group title)	—
7	No. <i>No.</i>		✓		Serial number (output)	—	2 digit, numeric
8	Kind of Excise Goods Produced <i>JenisBarang Kena Cukai yang Diproduksi</i>		✓		Kind of Excise produced (input/output, mandatory)	KIND OF EXCISABLE GOODS PRODUCED. LACK-1 DETAIL	25 char., Alpha- numeric

Table 4.2-21: List of Items
(Window Name: Excise Company Update 2 (Update Window7) (2/12)

No.	Item Name	Level			Description	Item in File	Note
		1	2	3			
9	Beginning Balance <i>Saldo Awal</i>		✓		Beginning Balance (input, mandatory: first time) (input/output: from second time)	BEGINNING BALANCE. LACK-1 DETAIL	6 digits, numeric
10	Entry <i>Pemasukan</i>		✓		Entry (input/output, mandatory)	ENTRY. LACK-1 DETAIL	6 digits, numeric
11	Total <i>Jumlah</i>			✓	Total (9[Beginning Balance]+ 10[Entry]) (output)	CALCULATED BY: • BEGINNING BALANCE. LACK-1 DETAIL • ENTRY. LACK-1 DETAIL	6 digits, numeric
12	Used Amount <i>Jumlah yang Digunakan</i>			✓	Used amount (input/output, mandatory)	USED AMOUNT. LACK-1 DETAIL	6 digits, numeric
13	Balance <i>Saldo Akhir</i>			✓	Balance (9[Beginning Balance]+ 10[Entry]-12 [Used amount]) (output)	CALCULATED BY: • BEGINNING BALANCE. LACK-1 DETAIL • ENTRY. LACK-1 DETAIL • USED AMOUNT. LACK-1 DETAIL	6 digits, numeric
14	Amount of Production <i>Jumlah Barang Kena Cukai yang Diproduksi</i>		✓		Amount of Excisable Goods Produced (input/output, mandatory)	AMOUNT OF EXCISABLE GOODS PRODUCED. LACK-1 DETAIL	6 digits, numeric
15	Total <i>Jumlah</i>		✓		Total amount (no repeat)	— (Group title)	—

Table 4.2-21: List of Items
(Window Name: Excise Company Update 2 (Update Window7) (3/12))

No.	Item Name	Level			Description	Item in File	Note
		1	2	3			
16	Beginning Balance <i>Saldo Awal</i>			✓	Total amount of Beginning Balance (output)	CALCULATED BY: • BEGINNING BALANCE. LACK-1 DETAIL	6 digits, numeric
17	Entry <i>Pemasukan</i>			✓	Total amount of Entry (output)	CALCULATED BY: • ENTRY. LACK-1 DETAIL	6 digits, numeric
18	Total <i>Jumlah</i>			✓	Total amount of "Total" (output)	CALCULATED BY: • BEGINNING BALANCE. LACK-1 DETAIL • ENTRY. LACK-1 DETAIL	6 digits, numeric
19	Used Amount <i>Jumlah yang Digunakan</i>			✓	Total amount of Used Amount (output)	CALCULATED BY: • USED AMOUNT. LACK-1 DETAIL	6 digits, numeric
20	Balance <i>Saldo Akhir</i>			✓	Total Balance (output)	CALCULATED BY: • BEGINNING BALANCE. LACK-1 DETAIL • ENTRY. LACK-1 DETAIL • USED AMOUNT. LACK-1 DETAIL	6 digits, numeric

Table 4.2-21: List of Items
(Window Name: Excise Company Update 2 (Update Window7) (4/12))

No.	Item Name	Level			Description	Item in File	Note
		1	2	3			
21	Amount of Production <i>Jumlah Barang Kena Cukai yang Diproduksi</i>			✓	Total amount of Production (output)	CALCULATED BY: • AMOUNT OF EXCISABLE GOODS PRODUCED. LACK-1 DETAIL	6 digits, numeric
22	Official Statement <i>Keterangan</i>		✓		Official Statement (input/output, optional)	OFFICIAL STATEMENT. LACK-1 (MMEA)	30 char., alpha-numeric
23	LACK-1 Date (DDMMYY YY) <i>Tanggal LACK-1 (DDMMYY Y)</i>		✓		Date of creation of LACK-1 (input/output, mandatory)	LACK-1 CREATION DATE. LACK-1(MMEA)	8 digits, date
24	LACK-2 <i>LACK-2</i>	✓			LACK-2 (Report on sales/ release Excisable Goods without Excise) (repeat 10 times)	— (Group Title)	—
25	No. <i>No.</i>		✓		Serial number (output)	—	2 digit, numeric
26	Sales Document Number <i>Nomor Dokumen Pengeluaran</i>		✓		Number of Sales/ Release Document (input/output, mandatory)	SALES DOC NUMBER. LACK-2 (MMEA)	15 digits, numeric
27	Date of Sales <i>Tanggal Pengeluaran</i>		✓		Date of Sales/ Release Document (input/output, mandatory)	SALES DOC DATE. LACK-2 (MMEA)	8 digits, date
28	Amount of Sales <i>Jumlah Pengeluaran</i>		✓		Amount of sales (input/output, mandatory)	SALES AMOUNT. LACK-2 (MMEA)	7 digits, numeric

Table 4.2-21: List of Items
(Window Name: Excise Company Update 2 (Update Window7) (5/12))

No.	Item Name	Level			Description	Item in File	Note
		1	2	3			
29	Kind of Sold Goods <i>Jenis Barang Kena Cukai yang Dijual/ Diserahkan</i>			✓	Kind of sold/ used Excisable goods (input/output, mandatory)	KIND OF SOLD GOODS. SUPPLIER FACTORY	25 char., alpha-numeric
30	Supplier NPPBKC <i>NPPBKC Pabrik Pemasok</i>			✓	NPPBKC of supplier factory (input/output, optional)	NPPBKC. SUPPLIER FACTORY	10 digits, numeric
31	NPWP Type <i>Tipe NPWP</i>			✓	Type of NPWP (input/output, mandatory when NPWP is inputted)	idtype_of. SUPPLIER FACTORY	1 digit, numeric
32	Supplier NPWP <i>NPWP Pabrik Pemasok</i>			✓	Tax Payer Code Number of supplier factory (input/output, optional)	ID NUMBER. SUPPLIER FACTORY	12 char., alpha-numeric
33	Supplier Name <i>Nama Pabrik Pemasok</i>			✓	Name of supplier factory (input/output, mandatory)	NAME. SUPPLIER FACTORY	40 char., alpha-numeric
34	Street <i>Jalan</i>			✓	Address of supplier factory (input/output, mandatory)	STREET. SUPPLIER FACTORY	100 char., alpha-numeric
35	City <i>Kota</i>			✓	The city where the supplier factory is located (input/output, mandatory)	CITY. SUPPLIER FACTORY	30 char., alpha-numeric
36	Postal Code <i>Kode Pos</i>			✓	Postal code of the supplier factory (input/output, mandatory)	POSTAL CODE. SUPPLIER FACTORY	5 digits, numeric
37	Phone <i>Telepon</i>			✓	Phone number of the supplier factory (input/output, mandatory)	PHONE NUMBER. SUPPLIER FACTORY	12 digits, numeric
38	Fax <i>Fax</i>			✓	Fax number of the supplier factory (input/output, mandatory)	FAX NUMBER. SUPPLIER FACTORY	12 digits, numeric
39	Telex <i>Telex</i>			✓	Telex number of the supplier factory (input/output, optional)	TELEX NUMBER. SUPPLIER FACTORY	20 digits, numeric

Table 4.2-21: List of Items
(Window Name: Excise Company Update 2 (Update Window7) (6/12))

No.	Item Name	Level			Description	Item in File	Note
		1	2	3			
40	LACK-2 Date <i>Tanggal</i> <i>LACK-2</i>			✓	Date of creation of LACK-2 (input/output, mandatory)	LACK-2 CREATION DATE. LACK-2(MMEA)	8 digits, date
41	Total Amount of Sales <i>Jumlah</i> <i>Pengeluaran</i>		✓		Total amount of sales (output)	CALCULATED BY: • SALES AMOUNT. LACK-2 (MMEA)	7 digits, numeric
42	SE-16 (MMEA) <i>SE-16</i> <i>(MMEA)</i>	✓			SE-16 (Monthly report on production and release of MMEA with its receipts)(no repeat)	— (Group Title)	—
43	Brand code <i>Kode Merek</i>		✓		MMEA Brand code (input/output, optional)	MMEAbrand_of. SE-16 (MMEA)	4 digits, numeric
44	Brand <i>Merek</i>		✓		MMEA Brand (input/output, mandatory)	KIND OF EXCISABLE GOODS PRODUCED. SE-16(MMEA)	25 char., Alpha- numeric
45	Alcohol Degree <i>Kadar</i> <i>Alkohol</i>		✓		Alcohol degree (input/output, mandatory)	ALCOHOL DEGREE. SE-16 (MMEA)	2 digits, numeric
46	Excise Tariff <i>Tarif Cukai</i>		✓		Excise Tariff (input/output, mandatory)	EXCISE TARIFF. SE-16 (MMEA)	6 digits, numeric
47	SE-16 Date <i>Tanggal</i> <i>SE-16</i>		✓		Date of creation of SE- 16(MMEA) (input/output, mandatory)	SE-16(MMEA) CREATION DATE. SE-16(MMEA)	8 digits, date
48	SE-16 (MMEA) <i>SE-16</i> <i>(MMEA)</i>		✓		SE-16 (MMEA) (no repeat)	— (Group title)	—
49	1. Last Month Balance <i>1. Sisa</i> <i>Bulan Lalu</i>			✓	Last month balance (input/output, mandatory: first time) (input/output, mandatory: from second time) This item can be updated after the automatic output.	LAST MONTH BALANCE. SE-16 (MMEA)	10 (8.2) digits, decimal

Table 4.2-21: List of Items
(Window Name: Excise Company Update 2 (Update Window7) (7/12))

No.	Item Name	Level			Description	Item in File	Note
		1	2	3			
50	1.Production of The Month/ Entry <i>1.Produksi Bulan Ini/ Pemasukan</i>			✓	Production of the month/ entry (input/output, mandatory)	PRODUCTION OF THE MONTH. SE-16 (MMEA)	10 (8.2) digits, decimal
51	3. Total (1+2) <i>3. Jumlah (1+2)</i>			✓	Total (50[Last month balance] + 51[Production of the month]) (output)	CALCULATED BY: • LAST MONTH BALANCE. SE-16 (MMEA) • PRODUCTION OF THE MONTH. SE-16 (MMEA)	10 (8.2) digits, decimal
52	4. Release <i>4.Penge-luaran</i>			✓	Release (no repeat)	— (Group Title)	—
53	4.1 Excise Imposed <i>4.1 Bayar Cukai</i>			✓ *4	Release amount of Excisable goods (input/output, mandatory)	EXCISE IMPOSED. SE-16 (MMEA)	10 (8.2) digits, decimal
54	4.2 Unimposed Excise <i>4.2 Tidak Dipungut Cukai</i>			✓ *4	Amount of Unimposed Excise goods (no repeat)	— (Group Title)	—
55	4.2.1 Transited/ Trans-Shipped <i>4.2.1 Diangkut Terus/ Diangkut Lanjut</i>			✓ *5	Amount of unimposed Excise goods which were transited/ transshipped (input/output, mandatory)	UNIMPOSED EXCISE-TRANSIT. SE-16 (MMEA)	10 (8.2) digits, decimal
56	4.2.2 Exported <i>4.2.2 Diekspor</i>			✓ *5	Amount of unimposed Excise goods which were exported (input/output, mandatory)	UNIMPOSED EXCISE-EXPORTED. SE-16 (MMEA)	10 (8.2) digits, decimal

Table 4.2-21: List of Items
(Window Name: Excise Company Update 2 (Update Window7) (8/12))

No.	Item Name	Level			Description	Item in File	Note
		1	2	3			
57	4.2.3 Destroyed/ Damaged Prior to The Release 4.2.3 <i>Musnah/ Rusak Sebelum Dekeluarkan</i>			✓ *5	Amount of unimposed Excise goods which were destroyed/damaged prior to the release (input/output, mandatory)	UNIMPOSED EXCISE- DAMAGED. SE-16 (MMEA)	10 (8.2) digits, decimal
58	4.3 Exempted Excise 4.3 <i>Pembebasan Cukai</i>			✓ *4	Release of exempted Excise goods (input/output, mandatory) (no repeat)	— (Group Title)	—
59	4.3.1 For Delegation from Foreign Country 4.3.1 <i>Untuk Perwakilan Negara Asing</i>			✓ *5	Amount of exempted Excise goods for delegation from foreign country (input/output, mandatory)	EXEMPTED EXCISE- DELEGATION. SE-16 (MMEA)	10 (8.2) digits, decimal
60	4.3.2 For Expert Staff from Foreign Country 4.3.2 <i>Untuk Tenaga Ahli Bangsa Asing</i>			✓ *5	Amount of exempted Excise goods for expert staff from foreign country (input/output, mandatory)	EXEMPTED EXCISE-EXPERT. SE-16 (MMEA)	10 (8.2) digits, decimal

Table 4.2-21: List of Items
(Window Name: Excise Company Update 2 (Update Window7) (9/12))

No.	Item Name	Level			Description	Item in File	Note
		1	2	3			
61	4.3.3 Brought into Bonded Storage 4.3.3 <i>Dimasukan Ketempat Penimbunan Berikat</i>			✓ *5	Amount of exempted Excise goods that are brought into bonded storage (input/output, mandatory)	EXEMPTED EXCISE-BONDED STRG. SE-16 (MMEA)	10 (8.2) digits, decimal
62	4.3.4 For Passengers and Ship Crews from Customs Office 4.3.4 <i>Untuk Penumpang Dan Awak Kapal yang Keluar Daerah Pabean</i>			✓ *5	Amount of exempted Excise goods for passengers and ship crews from customs office (input/output, mandatory)	EXEMPTED EXCISE- PASSENGERS. SE-16 (MMEA)	10 (8.2) digits, decimal

Table 4.2-21: List of Items
(Window Name: Excise Company Update 2 (Update Window7) (10/12))

No.	Item Name	Level			Description	Item in File	Note
		1	2	3			
63	4.4 Total (4.1 s/d 4.3) 4.4 Jumlah (4.1 s/d 4.3)			✓ *4	Total (53[Excise Imposed] +55[Transitted/ transshipped] +56[Exported] +57[Destroyed/ Damaged prior to the release] +59[For delegation from foreign country]+60[For expert staff from foreign country] +61[Brought into Bonded Storage]+62[For passengers and ship crews from customs office]) (output)	CALCULATED BY: • EXCISE IMPOSED. SE-16 (MMEA) • UNIMPOSED EXCISE- TRANSIT. SE-16 (MMEA) • UNIMPOSED EXCISE- EXPORTED. SE-16 (MMEA) • UNIMPOSED EXCISE- DAMAGED. SE-16 (MMEA) • EXEMPTED EXCISE- DELE- GATION. SE-16(MMEA) • EXEMPTED EXCISE- EXPERT. SE-16(MMEA) • EXEMPTED EXCISE- BONDED STRG. SE-16(MMEA) • EXEMPTED EXCISE- PASSEN- GERS. SE-16(MMEA)	10 (8.2) digits, decimal

Table 4.2-21: List of Items
(Window Name: Excise Company Update 2 (Update Window7) (11/12))

No.	Item Name	Level			Description	Item in File	Note
		1	2	3			
64	5. This Month Balance (3-4.4) 5. Sisa Bulan Ini (3-4.4)			✓	This month balance ((49[Last month balance] + 50[Production of the month]) - (53[Excise Imposed] + 55[Transitted/ transshipped] + 56[Exported] + 57[Destroyed/ Damaged prior to the release] + 59[For delegation from foreign country] + 60[For expert staff from foreign country] + 61[Brought into Bonded Storage] + 62[For passengers and ship crews from customs office]) (output)	CALCULATED BY: <ul style="list-style-type: none"> • LAST MONTH BALANCE. SE-16 (MMEA) • PRODUCTION OF THE MONTH. SE-16 (MMEA) • EXCISE IMPOSED. SE-16 (MMEA) • UNIMPOSED EXCISE-TRANSIT. SE-16 (MMEA) • UNIMPOSED EXCISE-EXPORTED. SE-16 (MMEA) • UNIMPOSED EXCISE-DAMAGED. SE-16 (MMEA) • EXEMPTED EXCISE-DELEGATION. SE-16(MMEA) • EXEMPTED EXCISE-EXPERT. SE-16(MMEA) • EXEMPTED EXCISE-BONDED STRG. SE-16(MMEA) 	10 (8.2) digits, decimal

Table 4.2-21: List of Items
(Window Name: Excise Company Update 2 (Update Window7) (12/12))

No.	Item Name	Level			Description	Item in File	Note
		1	2	3			
	(continued)				(continued)	<ul style="list-style-type: none"> EXEMPTED EXCISE-PASSENGERS SE-16(MMEA) 	EXEMPTED EXCISE-PASSENGERS
65	6. Excise Should be Paid (4.1× Tariff) <i>Jumlah Cukai yang Harus Dibayar (4.1×Tarif)</i>			✓	Excise should be paid (53[Excise imposed] × 46[ExciseTariff]) (output)	CALCULATED BY: <ul style="list-style-type: none"> EXCISE IMPOSED. SE-16 (MMEA) EXCISE TARIFF. SE-16 (MMEA) 	11 (9.2) digits, decimal

Table 4.2-22: Input Check List (Excise Company Update (Update Window 7))

No.	Item Name	Condition (range,format,and so on)	Message ID	Note
1	Sales/Release Document -Date	Must be past including today.	E0000010	---
2	Supplier factory -NPWP	Must be numeric.	E0000009	---
3	Supplier factory -NPWP	Must have full length according to NPWP Type.	E0000015	---
4	Supplier factory -NPWP	Must start with "0" when NPWP is 12 digits.	E0000016	---
5	Supplier factory -NPPBKC	Must be full length.	E0000009	---

Excise Company Update 3

Update Window 9

Excise Factory Information:

NPPBKC: (DDMMYYYY) NPPBKC Date: (DDMMYYYY)

NPP: (DDMMYYYY) NPP Date: (DDMMYYYY)

Factory Name: Month & Year: (MMYYYY)

LAGX-4	Kind of Excisable Goods Produced	Beginning Balance	Entry	Total	Used Amount	Balance	Amount of Production
No. 1							
2							
3							
4							
5							
6							
7							
8							
9							
10							
11							
12							
13							
14							
15							
16							
17							
18							
19							
20							
21							
22							
23							
24							
25							
26							
27							
28							
29							
30							
31							
32							
33							
34							
35							
36							
37							
38							
39							
40							
41							
42							
43							
44							
45							
46							
47							
48							
49							
50							
51							
52							
53							
54							
55							
56							
57							
58							
59							
60							
61							
62							
63							
64							
65							
66							
67							
68							
69							
70							
71							
72							
73							
74							
75							
76							
77							
78							
79							
80							
81							
82							
83							
84							
85							
86							
87							
88							
89							
90							
91							
92							
93							
94							
95							
96							
97							
98							
99							
100							
Total:							

Official Statement: (DDMMYYYY)

LAGX-4 Date: (DDMMYYYY)

Buttons: OK, Cancel, Previous Page, Next page

Figure 4.2-10: Window Layout for Excise Company Update 3 (Update Window 9) (1/5)

Excise Company Update 3
Update Window 9
 LACK-9

No.	Sales Document Number	Date of Sales	Amount of Sales	Kind of Sold Goods	Supplier NPPBKC	NPWP Type	Supplier NPWP	Supplier Name
					C 12.digits	C 10.digits		
					C 12.digits	C 10.digits		
					C 12.digits	C 10.digits		
					C 12.digits	C 10.digits		
					C 12.digits	C 10.digits		
					C 12.digits	C 10.digits		
					C 12.digits	C 10.digits		
					C 12.digits	C 10.digits		
					C 12.digits	C 10.digits		
					C 12.digits	C 10.digits		

Total Amount of Sales: []

Ok Previous Page Cancel Next page

Figure 4.2-10: Window Layout for Excise Company Update 3 (Update Window 9) (2/5)

Excise Company Update 3

Update Windows

Page 2 of 3

No.	Sales Document Number	Date of Sales	Amount of Sales	Kind of Sold Goods	Supplier NPPBK	NPWP Type	Supplier NPATP	Supplier Name
						12 digits	10 digits	
						12 digits	10 digits	
						12 digits	10 digits	
						12 digits	10 digits	
						12 digits	10 digits	
						12 digits	10 digits	
						12 digits	10 digits	
						12 digits	10 digits	
						12 digits	10 digits	
						12 digits	10 digits	
						12 digits	10 digits	
						12 digits	10 digits	
						12 digits	10 digits	
						12 digits	10 digits	
						12 digits	10 digits	
						12 digits	10 digits	
						12 digits	10 digits	
						12 digits	10 digits	
						12 digits	10 digits	
						12 digits	10 digits	
Total Amount of Sales:								

Ok Cancel Previous Page Next page

Figure 4.2-10: Window Layout for Excise Company Update 3 (Update Window 9) (2/5)

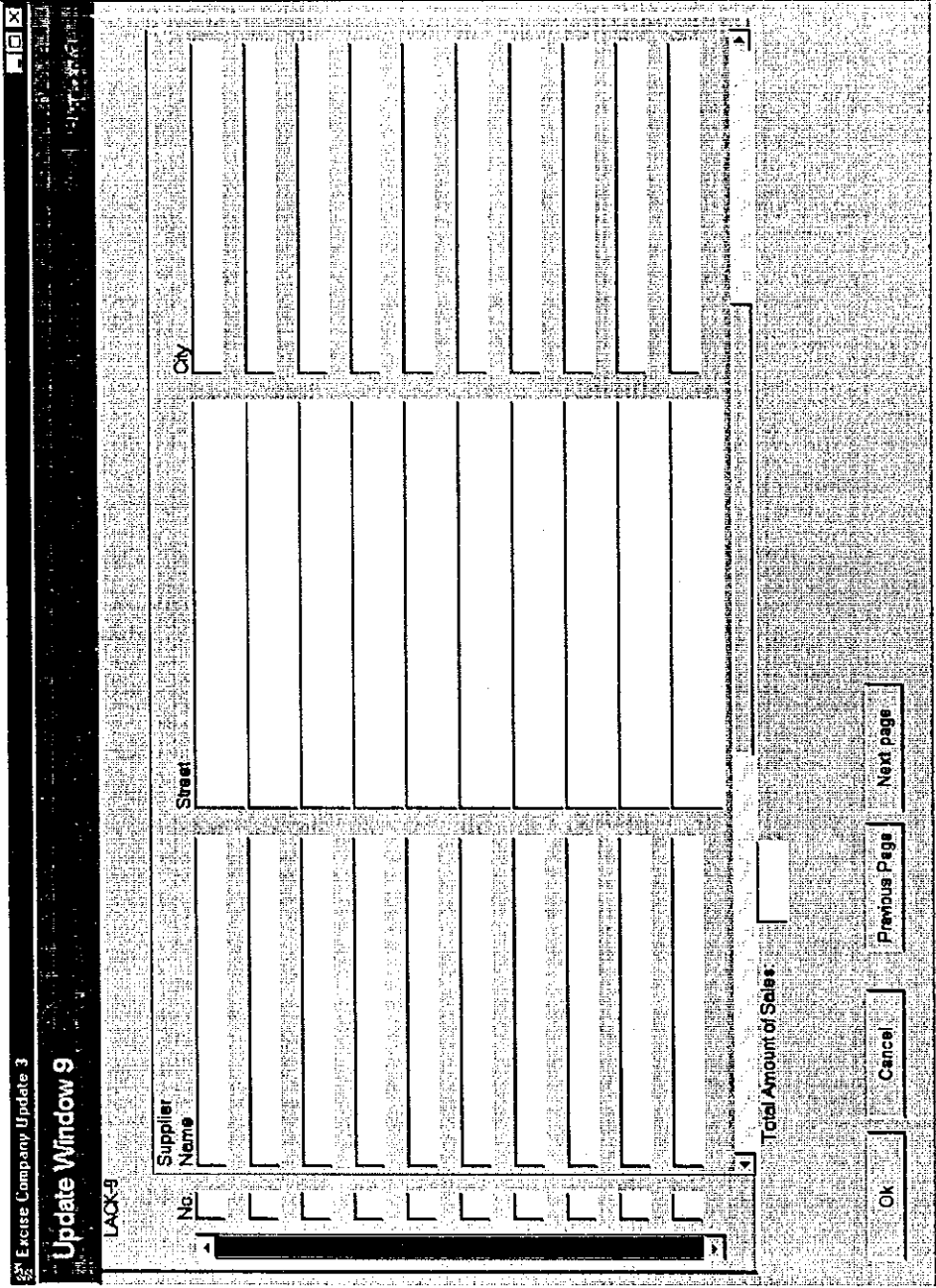


Figure 4.2-10: Window Layout for Excise Company Update 3 (Update Window 9) (3/5)

Excise Company Update 3

Update Window 9

LAX-9

700000
Payroll

No.	Supplier Name	Street	City

Total Amount of Sales: _____

Ok Cancel Previous Page Next page

Figure 4.2-10: Window Layout for Excise Company Update 3 (Update Window 9) (3/5)

Excise Company Update 3

Update Window 9

LACK-9

No.	City	Postal Code	Phone	Fax	Telex	LACK-9 Date

Total Amount of Sales:

Ok Cancel Previous Page Next page

Figure 4.2-10: Window Layout for Excise Company Update 3 (Update Window 9) (4/5)

Excise Company Update 3

Update Window 9

SE-16 (EA) Excise Tariff: SE-16 Date:

SE-16 (EA)

1. Last Month Balance:

2. Production of The Month Entry:

3. Total (1+2):

4. Release:

4.1 Excise Imposed:

4.2 Unimposed Excise

4.2.1 Transited/Trans-shipped:

4.2.2 Exported:

4.2.3 Brought into Factory/Storage:

4.2.4 Used as Raw Material for Production:

4.2.5 Destroyed/Damaged Prior to the Release:

4.3 Exempted Excise

4.3.1 Used as Raw/Auxiliary Materials for Manufacturing Non-Excisable Goods:

4.3.2 For Research and Scientific Development:

4.3.3 For Social Purposes:

4.3.4 Brought into Bonded Storage:

4.3.5 Declared to be Brand Spiritus:

4.4 Total

4.4.1 Total (4.1 + (d) 4.3):

5. This Month Balance (3 - 4.4):

6. Excise Should be Paid (4.1 x Tariff):

Ok Cancel Previous Page Next page

Figure 4.2-10: Window Layout for Excise Company Update 3 (Update Window 9) (5/5)

Excise Company Update 3
Update Window 9
 SE-16 (EA) SE-16 Date: _____
 Excise Tariff: _____

SE-16 (EA)
 1. Last Month Balance: _____
 2. Production of The Month/Entry: _____
 3. Total (1+2): _____
 4. Release:

4.1 Excise Imposed: _____
 4.2 Unimposed Excise
 4.2.1 Transited/Trans-shipped: _____
 4.2.2 Exported: _____
 4.2.3 Brought into Factory/Storage: _____
 4.2.4 Used as Raw Material for Production: _____
 4.2.5 Destroyed/Damaged Prior to the Release: _____

4.3 Exempted Excise
 4.3.1 Used as Raw/Auxiliary Materials for Manufacturing Non-Excisable Goods: _____
 4.3.2 For Research and Scientific Development: _____
 4.3.3 For Social Purposes: _____
 4.3.4 Brought into Bonded Storage: _____
 4.3.5 Denatured to be Brand Spirits: _____

4.4 Total:
 4.4.1 Total (4.1 s/d 4.3): _____

5. This Month Balance (3 - 4.4): _____
 6. Excise Should be Paid (4.1 x Tariff): _____

Ok Cancel Previous Page Next page

Figure 4.2-10: Window Layout for Excise Company Update 3 (Update Window 9) (5/5)

Table 4.2-23: List of Items
(Window Name: Excise Company Update 3 (Update Window 9) (1/12))

No.	Item Name	Level			Description	Item in File	Note
		1	2	3			
1	Excise Factory Information <i>Informasi Pabrik Cukai</i>	✓			Excise Factory Information (no repeat)	— (Group title)	—
2	NPPBKC <i>NPPBKC</i>		✓		NPPBKC (output)	NPPBKC. FACTORY	10 digits, numeric
3	NPPBKC Date (DDMMYY YY) <i>Tanggal NPPBKC (DDMMYY Y)</i>		✓		Date of NPPBKC issuance (output)	DATE OF NPPBKC. FACTORY	8 digits, date
4	NPP <i>NPP</i>		✓		NPP (output)	NPP. FACTORY	9 char., alpha- numeric
5	NPP Date (DDMMYY YY) <i>Tanggal NPP (DDMMYY Y)</i>		✓		Date of NPP issuance (output)	DATE OF NPP. FACTORY	8 digits, date
6	Factory Name <i>Nama Pabrik</i>		✓		Factory Name (output)	FACTORY NAME. FACTORY	40 char., alpha- numeric
7	Month & Year (MMYYYY) <i>Bulan dan Tahun (MMYYYY)</i>		✓		Month of the reports produced (input/ output, mandatory)	MONTH AND YEAR. SE-16(EA)	6 digits, date
8	LACK-4 <i>LACK-4</i>	✓			LACK-4 (Report on utilizing excise exempted EA with facility through non-integrated production process) (repeat 99 times)	— (Group title)	—
9	No. <i>No.</i>		✓		Serial number (output)	—	2 digit, numeric

Table 4.2-23: List of Items
(Window Name: Excise Company Update 3 (Update Window 9) (2/12))

No.	Item Name	Level			Description	Item in File	Note
		1	2	3			
10	Kind of Excisable Goods Produced <i>JenisBarang Kena Cukai yang Diproduksi</i>		✓		Kind of Excise produced (input/output, mandatory)	KIND OF EXCISE PRODUCED. LACK-4 DETAIL	25 char., alpha-numeric
11	Beginning Balance <i>Saldo Awal</i>		✓		Beginning Balance (input, mandatory: first time) (output/output: from second time)	BEGINNING BALANCE. LACK-4 DETAIL	8 digits, numeric
12	Entry <i>Pemasukan</i>		✓		Entry (input/output, mandatory)	ENTRY. LACK-4 DETAIL	7 digits, numeric
13	Total <i>Jumlah</i>			✓	Total (15[Beginning Balance]+16[Entry]) (output)	CALCULATED BY: • BEGINNING BALANCE. LACK-4 DETAIL • ENTRY. LACK-4 DETAIL	8 digits, numeric
14	Used Amount <i>Jumlah yang Digunakan</i>			✓	Used amount (input/output, mandatory)	USED AMOUNT. LACK-4 DETAIL	7 digits, numeric
15	Balance <i>Saldo Akhir</i>			✓	Balance (13[Total]-14[Used amount]) (output)	CALCULATED BY: • BEGINNING BALANCE. LACK-4 DETAIL • ENTRY. LACK-4 DETAIL • USED AMOUNT. LACK-4 DETAIL	8 digits, numeric

Table 4.2-23: List of Items
(Window Name: Excise Company Update 3 (Update Window 9) (3/12))

No.	Item Name	Level			Description	Item in File	Note
		1	2	3			
16	Amount of Production <i>Jumlah Barang Kena Cukai yang Diproduksi</i>		✓		Amount of produced goods (input/output, mandatory)	AMOUNT OF EXCISABLE GOODS PRODUCED. LACK-4 DETAIL	8 digits, numeric
17	Total <i>Jumlah</i>		✓		Total amount (no repeat)	— (Group title)	—
18	Beginning Balance <i>Saldo Awal</i>			✓	Total amount of 11[Beginning Balance] (output)	CALCULATED BY: BEGINNING BALANCE. LACK-4 DETAIL	8 digits, numeric
19	Entry <i>Pemasukan</i>			✓	Total amount of 12[Entry] (output)	CALCULATED BY: ENTRY. LACK-4 DETAIL	7 digits, numeric
20	Total <i>Jumlah</i>			✓	Total amount of 13[Total] (output)	CALCULATED BY: • BEGINNING BALANCE. LACK-4 DETAIL • ENTRY. LACK-4 DETAIL	8 digits, numeric
21	Used Amount <i>Jumlah yang Digunakan</i>			✓	Total amount of 14[Used Amount] (output)	CALCULATED BY: USED AMOUNT. LACK-4 DETAIL	7 digits, numeric
22	Balance <i>Saldo Akhir</i>			✓	Total amount of 15[Balance] (output)	CALCULATED BY: • BEGINNING BALANCE. LACK-4 DETAIL • ENTRY. LACK-4 DETAIL • USED AMOUNT. LACK-4 DETAIL	8 digits, numeric

Table 4.2-23: List of Items
(Window Name: Excise Company Update 3 (Update Window 9) (4/12))

No.	Item Name	Level			Description	Item in File	Note
		1	2	3			
23	Amount of Production <i>Jumlah Barang Kena Cukai yang Diproduksi</i>			✓	Total amount of 16[Amount of Production] (output)	CALCULATED BY: AMOUNT OF EXCISABLE GOODS PRODUCED. LACK-4 DETAIL	8 digits, numeric
24	Official Statement <i>Keterangan</i>		✓		Official Statement (input/output, optional)	OFFICIAL STATEMENT. LACK-4(EA)	30 char., alpha-numeric
25	LACK-4 Date (DDMMYY YY) <i>Tanggal LACK-4 (DDMMYYY Y)</i>		✓		Date of creation of LACK-4 (input/output, mandatory)	LACK-4 CREATION DATE. LACK-4	8 digits, date
26	LACK-9 <i>LACK-9</i>	✓			LACK-9 (Report on sales/ release Excisable goods without Excise facility) (repeat 10 times)	— (Group Title)	—
27	No. <i>No.</i>		✓		Serial number (output)	—	2 digits, numeric
28	Sales Document Number <i>Nomor Dokumen Pengeluaran</i>		✓		Number of Sales/ Release Document (input/output, mandatory)	RELEASE DOC NUMBER. LACK-9(EA)	15 digits, numeric
29	Date of Sales <i>Tanggal Pengeluaran</i>		✓		Date of Sales/ Release Document (input/output, mandatory)	RELEASE DOC DATE. LACK-9(EA)	8 digits, date
30	Amount of Sales <i>Jumlah Pengeluaran</i>		✓		Amount of sales (input/output, mandatory)	AMOUNT OF SALES. LACK-9(EA)	7 digits, numeric
31	Kind of Sold Goods <i>Jenis Barang Kena Cukai yang Dijual/ Diserahkan</i>			✓	Kind of sold/ used Excisable goods (input/output, mandatory)	KIND OF SOLD GOODS. SUPPLIER FACTORY	20 char, alpha-numeric

Table 4.2-23: List of Items
(Window Name: Excise Company Update 3 (Update Window 9) (5/12))

No.	Item Name	Level			Description	Item in File	Note
		1	2	3			
32	Supplier NPPBKC NPPBKC Pabrik Pemasok			✓	NPPBKC of supplier factory (input/output, mandatory)	NPPBKC. SUPPLIER FACTORY	10 digits, numeric
33	NPWP Type Tipe NPWP			✓	Type of NPWP (input/output, mandatory when NPWP is inputted)	idtype_of. SUPPLIER FACTORY	1 digit, numeric
34	Supplier NPWP NPWP Pabrik Pemasok			✓	Tax Payer Code Number of supplier factory (input/output, optional)	ID NUMBER SUPPLIER FACTORY	12char., alpha- numeric
35	Supplier Name Nama Pabrik Pemasok			✓	Name of supplier factory (input/output, mandatory)	NAME. SUPPLIER FACTORY	40 char., alpha- numeric
36	Street Jalan			✓	Address of supplier factory (input/output, mandatory)	STREET. SUPPLIER FACTORY	100 char., alpha- numeric
37	City Kota			✓	City where the factory is located (input/output, mandatory)	CITY. SUPPLIER FACTORY	30 char., Alpha- numeric
38	Postal code Kode Pos			✓	Postal code (input/output, mandatory)	POSTAL CODE. SUPPLIER FACTORY	5 digits, numeric
39	Phone Telepon			✓	The phone number of supplier factory (input/output, mandatory)	PHONE NUMBER. SUPPLIER FACTORY	12 digits, numeric
40	Fax Fax			✓	The fax number of supplier factory (input/output, mandartory)	FAX NUMBER. SUPPLIER FACTORY	12 digits, numeric
41	Telex Telex			✓	The telex number of supplier factory (input/output, optional)	TELEX NUMBER. SUPPLIER FACTORY	20 digits, numeric
42	LACK-9 Date Tanggal LACK-9			✓	Date of creation of LACK-9 (input/output, mandatory)	CREATION DATE. LACK-9 (EA)	8 digits, date

Table 4.2-23: List of Items
(Window Name: Excise Company Update 3 (Update Window 9) (6/12))

No.	Item Name	Level			Description	Item in File	Note
		1	2	3			
43	Total Amount of Sales <i>Jumlah Total Pengeluaran</i>		✓		Total amount of sales (output)	CALCULATED BY: AMOUNT OF SALES. LACK-9 (EA)	8 digits, numeric
44	SE-16 (EA) <i>SE-16 (EA)</i>	✓			SE-16 (Monthly report on production and release of EA with its receipts) (no repeat)	— (Group Title)	—
45	Excise Tariff <i>Tarif Cukai</i>		✓		Excise Tariff (input/output, mandatory)	EXCISE TARIFF. SE-16 (EA)	6 digits, numeric
46	SE-16 Date <i>Tanggal SE-16</i>		✓		Date of creation of SE-16(EA) (input/output, mandatory)	CREATION DATE. SE-16(EA)	8 digits, date
47	SE-16 (EA) <i>SE-16 (EA)</i>		✓		SE-16 (EA) (no repeat)	— (Group Title)	—
48	1. Last Month Balance <i>1. Sisa Bulan Lalu</i>			✓	Last month balance (input, mandatory: first time) (input/output, mandatory: from second time) This item can be updated after the automatic output.	LAST MONTH BALANCE. SE-16 (EA)	9 (7.2) digits, decimal
49	2. Production of the Month/ Entry <i>2. Produksi Bulan Ini/ Pemasukan</i>			✓	Production of the month/ entry (input/output, mandatory)	PRODUCTION OF THE MONTH. SE-16 (EA)	8 (6.2) digits, decimal
50	3. Total (1+2) <i>3. Jumlah (1+2)</i>			✓	Total (48[Last month balance] + 49[Production of the month]) (output)	CALCULATED BY: • LAST MONTH BALANCE. SE-16 (EA) • PRODUCTION OF THE MONTH. SE-16 (EA)	9 (7.2) digits, decimal
51	4. Release <i>4. Pengeluaran</i>			✓	Release (no repeat)	— (Group Title)	—

Table 4.2-23: List of Items
(Window Name: Excise Company Update 3 (Update Window 9) (7/12))

No.	Item Name	Level			Description	Item in File	Note
		1	2	3			
52	4.1 Excise Imposed <i>4.1 Bayar Cukai</i>			✓ *4	Release amount of Excisable goods (input/output, mandatory)	EXCISE IMPOSED. SE-16 (EA)	8 (6.2) digits, decimal
53	4.2 Unimposed Excise <i>4.2 Tidak Dipungut Cukai</i>			✓ *4	Amount of Unimposed Excise goods (no repeat)	— (Group Title)	—
54	4.2.1 Transited/ Trans-Shipped <i>4.2.1 Diangkut Terus/ Diangkut Lanjut</i>			✓ *5	Amount of unimposed Excise goods which were transited/ transshipped (input/output, mandatory)	UNIMPOSED EXCISE-TRANSIT. SE-16 (EA)	8 (6.2) digits, decimal
55	4.2.2 Exported <i>4.2.2 Diekspor</i>			✓ *5	Amount of unimposed Excise goods which were exported (input/output, mandatory)	UNIMPOSED EXCISE-EXPORTED. SE-16 (EA)	8 (6.2) digits, decimal
56	4.2.3 Brought into Factory/ Storage <i>4.2.3 Dimasukkan ke Pabrik/ Tempat Penyimpanan</i>			✓ *5	Amount of unimposed Excise goods which were brought into factory or storage (input/output, mandatory)	UNIMPOSED EXCISE-FACTORY AND STRG. SE-16 (EA)	8 (6.2) digits, decimal
57	4.2.4 Used as Raw Material for Production <i>4.2.4 Untuk Bahan Baku/ Penolong Produksi BKC</i>			✓ *5	Amount of unimposed Excise goods which were used as raw material for production (input/output, mandatory)	UNIMPOSED EXCISE- RAW MATERIAL. SE-16 (EA)	8 (6.2) digits, decimal

Table 4.2-23: List of Items
(Window Name: Excise Company Update 3 (Update Window 9) (8/12))

No.	Item Name	Level			Description	Item in File	Note
		1	2	3			
58	4.2.5 Destroyed/ Damaged Prior to The Release <i>4.2.5 Musnah/ Rusak Sebelum Dikeluarkan</i>			✓ *5	Amount of unimposed Excise goods which were destroyed/damaged prior to the release (input/output, mandatory)	UNIMPOSED EXCISE- DAMAGED. SE-16 (EA)	8 (6.2) digits, decimal
59	4.3 Exempted Excise <i>4.3 Pembebasan Cukai</i>			✓ *4	Release of exempted Excise goods (no repeat)	— (Group Title)	—
60	4.3.1 Used as Raw/ Auxiliary Materials for Manu- facturing Non- Excisable Goods <i>4.3.1 Untuk Bahan Baku/ Penolong Produksi Bukan BKC</i>			✓ *5	Used as raw/ auxiliary materials for manufacturing non-Excisable goods (input/output, mandatory)	EXEMPTED EXCISE-RAW MATERIAL. SE-16 (EA)	8 (6.2) digits, decimal
61	4.3.2 For Research and Scientific Develop- ment <i>4.3.2 Untuk Penelitian Ilmu Pengetahua n dan Teknologi</i>			✓ *5	For research and scientific development (input/output, mandatory)	EXEMPTED EXCISE- RESEARCH. SE-16 (EA)	8 (6.2) digits, decimal

Table 4.2-23: List of Items
(Window Name: Excise Company Update 3 (Update Window 9) (9/12))

No.	Item Name	Level			Description	Item in File	Note
		1	2	3			
62	4.3.3 For Social Purposes <i>4.3.3 Untuk Tujuan Sosial</i>			✓ *5	For social purposes (input/output, mandatory)	EXEMPTED EXCISE-SOCIAL. SE-16 (EA)	8 (6.2) digits, decimal
63	4.3.4 Brought into Bonded Storage <i>4.3.4 Dimasukan Ke Tempat Penimbunan Berikat</i>			✓ *5	Amount of exempted Excise goods that are brought into bonded storage (input/output, mandatory)	EXEMPTED EXCISE-BONDED STRG. SE-16 (EA)	8 (6.2) digits, decimal
64	4.3.5 Denatured to be Brand Spiritus <i>4.3.5 Dirusak Menjadi Spiritus Bakar</i>			✓ *5	Denatured to be brand spiritus (input/output, mandatory)	EXEMPTED EXCISE-DENATURED TO BE BRAND. SE-16 (EA)	8 (6.2) digits, decimal

Table 4.2-23: List of Items
(Window Name: Excise Company Update 3 (Update Window 9) (10/12))

No.	Item Name	Level			Description	Item in File	Note
		1	2	3			
65	4.4 Total (4.1 s/d 4.3) 4.4 Jumlah (4.1 s/d 4.3)			✓ *4	Total (total amount 52[Excise Imposed]+54[Transited/Transshi pped]+55[Exported]+56 [Brought into factory/ storage]+57[Used as raw material for production]+58[Destroyed/ damaged prior to the release]+60[Used as raw/ auxiliary materials for manufacturing non-Excisable goods]+61[For research and scientific development]+62[For social purposes]+63[Brought into Bonded Storage]+64[Denatured to be brand spiritus]) (output)	CALCULATED BY: • EXCISE IMPOSED. SE-16 (EA) • UNIMPOSED EXCISE- TRANSIT. SE-16 (EA) • UNIMPOSED EXCISE- EXPORTED. SE-16 (EA) • UNIMPOSED EXCISE- FACTORY AND STRG. SE-16 (EA) • UNIMPOSED EXCISE- RAW MATERIAL. SE-16 (EA) • UNIMPOSED EXCISE- DAMAGED. SE-16 (EA) • EXEMPTED EXCISE-RAW MATERIAL. SE-16 (EA) • EXEMPTED EXCISE- RESEARCH. SE-16 (EA)	9 (7.2) digits, decimal

Table 4.2-23: List of Items
(Window Name: Excise Company Update 3 (Update Window 9) (11/12))

No.	Item Name	Level			Description	Item in File	Note
		1	2	3			
	(continued)				(continued)	<ul style="list-style-type: none"> • EXEMPTED EXCISE-SOCIAL. SE-16 (EA) • EXEMPTED EXCISE-BONDED STRG. SE-16 (EA) • EXEMPTED EXCISE-DENATURED TO BE BRAND. SE-16 (EA) 	(continued)
66	5. This Month Balance (3-4.4) 5. Sisa Bulan Ini (3-4.4)			✓	This month balance (50[Total]-65[Total]) (output)	CALCULATED BY: <ul style="list-style-type: none"> • LAST MONTH BALANCE. SE-16 (EA) • PRODUCTION OF THE MONTH. SE-16 (EA) • EXCISE IMPOSED. SE-16 (EA) • UNIMPOSED EXCISE-TRANSIT. SE-16 (EA) • UNIMPOSED EXCISE-EXPORTED. SE-16 (EA) • UNIMPOSED EXCISE-FACTORY AND STRG. SE-16 (EA) • UNIMPOSED EXCISE- RAW MATERIAL. SE-16 (EA) 	9 (7.2) digits, decimal

Table 4.2-23: List of Items
(Window Name: Excise Company Update 3 (Update Window 9) (12/12))

No.	Item Name	Level			Description	Item in File	Note
		1	2	3			
	(continued)				(continued)	<ul style="list-style-type: none"> • UNIMPOSED EXCISE-DAMAGED. SE-16 (EA) • EXEMPTED EXCISE-RAW MATERIAL. SE-16 (EA) • EXEMPTED EXCISE-RESEARCH. SE-16 (EA) • EXEMPTED EXCISE-SOCIAL. SE-16 (EA) • EXEMPTED EXCISE-BONDED STRG. SE-16 (EA) • EXEMPTED EXCISE-DENATURED TO BE BRAND. SE-16 (EA) 	(continued)
67	6. Excise Should be Paid (4.1×Tariff) 6. Jumlah Cukai (4.1×Tarif Cukai)			✓	Excise should be paid (52[Excise Imposed] × 45[ExciseTariff]) (output)	CALCULATED BY: <ul style="list-style-type: none"> • EXCISE IMPOSED. SE-16(EA) • EXCISE TARIFF. SE-16(EA) 	12 (10.2) digits, decimal

Table 4.2-24: Input Check List (Excise Company Update (Update Window 9))

No.	Item Name	Condition (range,format,and so on)	Message ID	Note
1	Sales/Release Document -Date	Must be past including today.	E0000010	—
2	Supplier factory -NPWP	Must be numeric.	E0000009	—
3	Supplier factory -NPWP	Must be full length according to NPWP Type.	E0000015	—
4	Supplier factory -NPWP	Must start with "0" when NPWP is 12 digits.	E0000016	—
5	Supplier factory -NPPBKC	Must be full length.	E0000009	—
6	Supplier factory -NPP	Must be full length.	E0000009	—