

2) Deletion

When Basic Information is deleted, do 3).

When Bonded Storage Operator is deleted, do 4).

When Bonded Storage is deleted, do 5).

When Duty Free Shop is deleted, do 6).

i) Confirmation

Display a response-requiring message (Message ID: R0000003).

ii) Deletion

Delete record from the database.

iii) Output

Display a normal message if succeeded (Message ID: N0000004). Display an error message if did not succeeded (see Table 3.3-2).

3) Deletion Basic Information

i) Retrieve

Retrieve the Basic Information from the database. Display the Basic Information on the Deletion Window 2. Table 3.3-6 shows details of the items on the window.

ii) Confirmation

Display a response-requiring message (Message ID: R0000003).

iii) Deletion

Delete the record from the database. Table names of the database are shown in Table 3.3-6.

iv) Output

Return to Deletion Window 1 with displaying corresponding items in the window.

4) Deletion Bonded Storage Operator

i) Retrieve

Retrieve the Operator Information from the database. Display the Operator Information on the Deletion Window 3. Table 3.3-7 shows details of the items on the window.

ii) Confirmation

Display a response-requiring message (Message ID: R0000003).

iii) Deletion

Delete the record from the database. Table names of the database are shown in Table 3.3-7.

iv) Output

Return to Deletion Window 1 with displaying corresponding items in the window.

5) Deletion Bonded Storage

i) Retrieve

Retrieve the Bonded Storage Information from the database. Display the Bonded Storage Information on the Deletion Window 4. Table 3.3-8 shows details of the items on the window.

ii) Confirmation

Display a response-requiring message (Message ID: R0000003).

iii) Deletion

Delete the record from the database. Table names of the database are shown in Table 3.3-8.

iv) Output

Return to Retrieval Window.

6) Deletion Duty Free Shop

i) Retrieval

Retrieve the Duty Free Shop Information from the database. Display the Duty Free Shop Information on the Deletion Window 5. Table 3.3-9 shows details of the items on the window.

ii) Input

When Decree of Duty Free Shop is deleted, do 7).

When Location of Duty Free Shop is deleted, do 8).

v) Output

Return to the Deletion Window 5 with displaying corresponding items in the window.

7) Decree of Duty Free Shop

i) Retrieval

Retrieve the Duty Free Shop Information from the database. Display the Duty Free Shop Information on the Deletion Window 6. Table 3.3-10 shows details of the items on the window.

ii) Confirmation

Display a response-requiring message (Message ID: R0000003).

iii) Deletion

Delete the record from the database. Table names of the database are shown in Table 3.3-10.

iv) Output

Return to the Deletion Window 5 with displaying corresponding items in the window.

8) Location of Duty Free Shop

i) Retrieve

Retrieve the Location of Duty Free Shop Information from the database. Display the Location of Duty Free Shop Information on the Deletion Window 7. Table 3.3-11 shows details of the items on the window.

ii) Confirmation

Display a response-requiring message (Message ID: R0000003).

iii) Deletion

Delete the record from the database. Table names of the database are shown in Table 3.3-11.

iv) Output

Return to the Deletion Window 5 with displaying corresponding items in the window.

• Window Layout / Report Layout

□ Windows

- Retrieval Window Figure 3.3-1
- Deletion Window 1 Figure 3.3-2
- Deletion Window 2 Figure 3.3-3
- Deletion Window 3 Figure 3.3-4
- Deletion Window 4 Figure 3.3-5
- Deletion Window 5 Figure 3.3-6
- Deletion Window 6 Figure 3.3-7
- Deletion Window 7 Figure 3.3-8

□ Reports

None.

• Error Procedure

Display an error message following Table 3.3-2.

Table 3.3-2: Error Procedure (1/2)

Case	Error Contents	Message ID	Note
1)-ii)	An error is detected at Input Check.	See Table 3.3-4	—
1)-iii), 2)-ii), 3)-iii), 4)-iii),	SQL returned an error code.	E0000001	Fill in the blank part of the message text with the error code.

Table 3.3-2: Error Procedure (2/2)

Case	Error Contents	Message ID	Note
5)-iii), 7)-iii) and 8)-iii)			
1)-iii)	The record to be deleted does not exist.	E0000002	—
1)-iii)	The code to be retrieved at Code Retrieval does not exist in the code table.	E0000008	Ignore the error and continue the process.

- Restriction

None.

- Note

- For details of each message, see Volume II 1.4.
- When deleting Basic Information, management of this company must be assigned to Customs and all the child information must have been deleted before by using delete button for do this.

Bonded Storage Deletion
 Retrieval Window

12/24/99
 Page 1 of 1

NPWP Type: 12 Digs 10 Digs

NPWP:

Number of Decees:

Decees Type: PKB or PGB PKB or PGBB
 PKB also PDKB or PGB also PPGB Duty Free Shop

Retrieve Cancel

Figure 3.3-1: Window Layout for Bonded Storage Deletion (Retrieval Window)

Table 3.3-3: List of Items (Window Name: Bonded Storage Deletion (Retrieval Window))

No.	Item Name	Level			Description	Item in File	Note
		1	2	3			
1	NPWP Type <i>Tipe NPWP</i>	✓			Type of NPWP 12 digits or 10 digits. (input,mandatory)	idtype_of. BASIC INFORMATION	1 digit, numeric
2	NPWP <i>NPWP</i>	✓			Tax Payer Code Number. (input,mandatory)	ID NUMBER. BASIC INFORMATION	12 char, alpha-numeric
3	Number of Decree <i>No.Skep</i>	✓			Decree number from Minister of Finance. Item in file is recording to 4 Decree Type. (input,mandatory)	<ul style="list-style-type: none"> • NUMBER OF DECREE LETTER. OPERATOR • NUMBER OF DECREE. BONDED STORAGE 	50 char, alpha-numeric
4	Decree Type <i>Tipe Skep</i>	✓			Decree Type are: <ul style="list-style-type: none"> • PKB or PGB • PKB also PDKB or PGB also PPGB • PDKB or PPGB • Duty Free Shop Only for choosing window and process. (input,mandatory)	—	1 digit, numeric

Table 3.3-4: Input Check List (Bonded Storage Deletion (Retrieval Window))

No.	Item Name	Condition (range, format, and so on)	Message ID	Note
1	NPWP	Must have full length according to NPWP Type.	E0000015	—
2	NPWP	Must start with "0" when NPWP Type is 12 digits.	E0000016	—
3	NPWP	Must be numeric.	E0000009	—

Banded Storage Deletion
 27 JAN 98
 Page 1 of 1

Banded Storage Deletion

Basic Information on Bonded Storage

NPWP: Province:

Company Name: Phone Number:

Street: Telex Number:

City: E-Mail:

Banded Storage Information

Owner:

Name: City:

Street: Province:

Phone Number:

Number of Decree:

Date of Decree: (DDMMYYYY)

Street:

City:

Province:

Postal Code:

Phone Number:

Fax Number:

Telex Number:

E-Mail:

Figure 3.3-2: Window Layout for Bonded Storage Deletion (Deletion Window 1)

Table 3.3-5: List of Items
(Window Name: Bonded Storage Deletion (Deletion Window 1)) (1/3)

No.	Item Name	Level			Description	Item in File	Note
		1	2	3			
1	Basic Information on Bonded Storage <i>Informasi Dasar pada TPB</i>	✓			Grouping title of basic information. (no repeat)	—	—
2	NPWP <i>NPWP</i>		✓		Tax Payer Code Number. (output,mandatory)	ID NUMBER.BASIC INFORMATION	12 char, alpha-numeric
3	Company Name <i>Nama Perusahaan</i>		✓		Name of the company. (output,mandatory)	NAME.BASIC INFORMATION	40 char, alpha-numeric
4	Street <i>Alamat</i>		✓		Name of street of the company. (output,mandatory)	STREET.BASIC INFORMATION	100 char, alpha-numeric
5	City <i>Kota</i>		✓		Name of city of the company. (output,mandatory)	CITY.BASIC INFORMATION	30 char, alpha-numeric
6	Province <i>Propinsi</i>		✓		Name of province of the company. (output,mandatory)	province_of.BASIC INFORMATION	20 char, alpha-numeric
7	Phone Number <i>Nomor Telepon</i>		✓		Telephone number of the company. (output,optional)	PHONE NUMBER.BASIC INFORMATION	12 digits, numeric
8	Telex Number <i>Nomor Telex</i>		✓		Telex number of the company. (output,optional)	TELEX NUMBER.BASIC INFORMATION	20 char, alpha-numeric
9	E-Mail <i>E-Mail</i>		✓		E-mail address of the company. (output,optional)	EMAIL ADDRESS.COM PANY COMMON INFORMATION	50 char, alpha-numeric
10	Bonded Storage Information <i>Informasi TPB</i>	✓			Grouping title for Bonded Storage information. (no repeat)	—	—
11	Owner <i>Pemilik</i>		✓		Grouping title for owner Information. (no repeat)	—	—
12	Name <i>Nama</i>			✓	Name of the owner. (output,mandatory)	OWNER-NAME. OPERATOR	40 char, alpha-numeric

Table 3.3-5: List of Items
(Window Name: Bonded Storage Deletion (Deletion Window 1)) (2/3)

No.	Item Name	Level			Description	Item in File	Note
		1	2	3			
13	Street <i>Alamat</i>			✓	Name of street of owner. (output,mandatory)	OWNER-STREET. OPERATOR	100 char, alpha- numeric
14	City <i>Kota</i>			✓	Name of city of the owner. (output,mandatory)	OWNER-CITY. OPERATOR	30 char, alpha- numeric
15	Province <i>Propinsi</i>			✓	Name of province the owner. (output,mandatory)	tblprov_of.OPER ATOR	20 char, alpha- numeric
16	Phone Number <i>Nomor Telepon</i>			✓	Phone number of the owner. (output,optional)	OWNER-PHONE NUMBER. OPERATOR	12 digits, numeric
17	Number of Decree <i>Nomor Skep</i>		✓		Number of Decree of Bonded Storage. (output,mandatory)	NUMBER OF DECREE LETER.OPERA TOR	50 char, alpha- numeric
18	Date of Decree(DD MMYYYY) <i>Tanggal Skep (DDM MYYYY)</i>		✓		Date of Decree of Bonded Storage. (output,mandatory)	DATE OF DECREE LETER. OPERATOR	8 digits, date
19	Street <i>Jalan</i>		✓		Name of street or location. (output,mandatory)	TBB- STREET.OPERA TOR	100 char, alpha- numeric
20	City <i>Kota</i>		✓		Name of city of Bonded Storage. (output,mandatory)	TBB- CITY.OPERATOR	50 char, alpha- numeric
21	Province <i>Propinsi</i>		✓		Name of province of Bonded Storage. (output,mandatory)	tbbprov_of.OPERA TOR	20 char, alpha- numeric
22	Postal Code <i>Kode Pos</i>		✓		Postal Code of Bonded Storage. (output,mandatory)	TBB-POSTAL CODE.OPERATOR	5 digits, numeric
23	Phone Number <i>Nomor Telepon</i>		✓		Phone number of Bonded Storage. (output,optional)	TBB-PHONE NUMBER.OPERA TOR	12 digits, numeric
24	Fax Number <i>Nomor Fax</i>		✓		Fax number of Bonded Storage. (output,optional)	TBB-FAX NUMBER.OPERA TOR	12 digits, numeric

Table 3.3-5: List of Items
(Window Name: Bonded Storage Deletion (Deletion Window 1)) (3/3)

No.	Item Name	Level			Description	Item in File	Note
		1	2	3			
25	Telex Number <i>Nomor Telex</i>		✓		Telex number of Bonded Storage. (output,optional)	TBB-TELEX NUMBER.OPERA TOR	20 char, alpha- numeric
26	E-Mail <i>E-Mail</i>		✓		E-mail address of Bonded Storage. (output,optional)	TBB-EMAIL ADDRESS.OPERA TOR	50 char, alpha- numeric

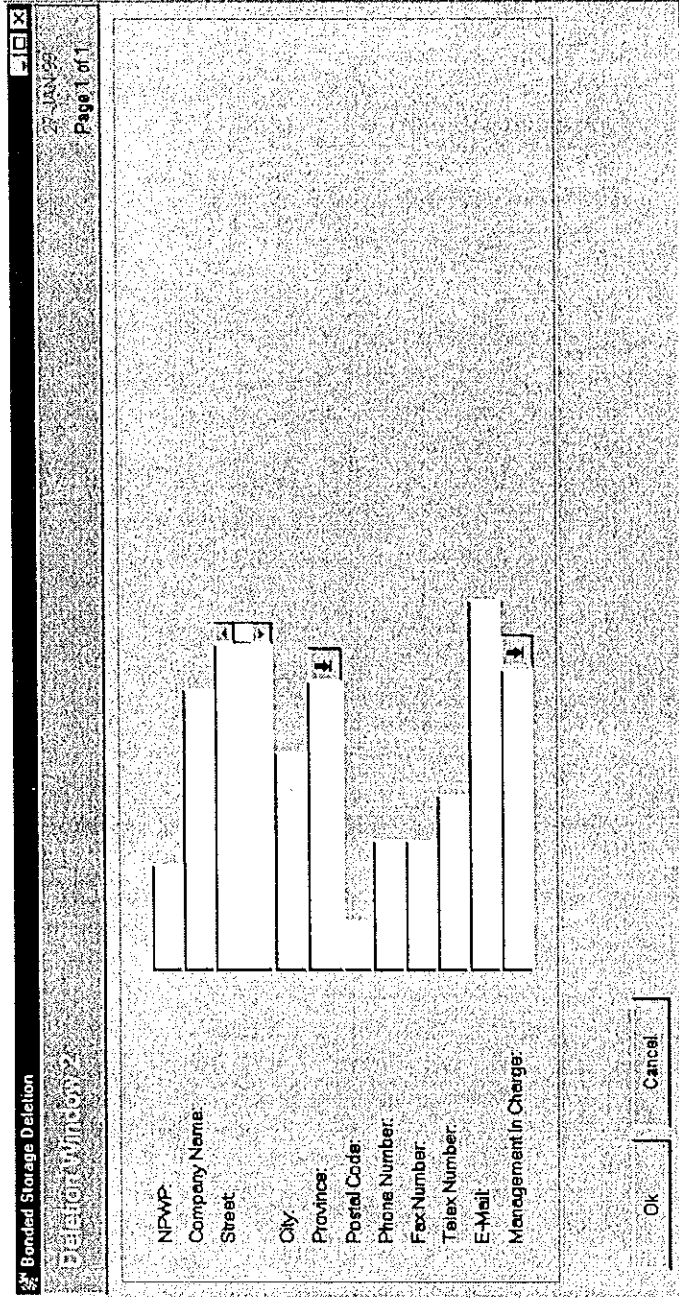


Figure 3.3-3: Window Layout for Bonded Storage Deletion (Deletion Window 2)

Table 3.2-6: List of Items
(Window Name: Bonded Storage Deletion (Deletion Window 2))

No.	Item Name	Level			Description	Item in File	Note
		1	2	3			
1	NPWP Type <i>Tipe NPWP</i>	✓			Type of NPWP 12 digits or 10 digits.	idtype_of.BASIC INFORMATION	1 digit, numeric
2	NPWP <i>NPWP</i>	✓			Tax Payer Code Number. (output,mandatory)	ID NUMBER. BASIC INFORMATION	12 char, alpha-numeric
3	Company Name <i>Nama Perusahaan</i>	✓			Name of the company. (input/output,mandatory)	NAME.BASIC INFORMATION	40 char, alpha-numeric
4	Street <i>Jalan</i>	✓			Name of street of the company. (input/output,mandatory)	STREET.BASIC INFORMATION	100 char, alpha-numeric
5	City <i>Kota</i>	✓			Name of city of the company. (input/output,mandatory)	CITY.BASIC INFORMATION	30 char, alpha-numeric
6	Province <i>Propinsi</i>	✓			Code of province of the company. (input/output, mandatory)	province_of.BASIC INFORMATION	20 char, alpha-numeric
7	Postal Code <i>Kode Pos</i>	✓			Post code of the company. (input/output, optional)	POSTAL CODE.BASIC INFORMATION	5 digits, numeric
8	Phone Number <i>Nomor Tel.</i>	✓			Telephone number of the company. (input/output, optional)	PHONE NUMBER.BASIC INFORMATION	12 digits, numeric
9	Fax number <i>Nomor Fax</i>	✓			Fax number of the company. (input/output, optional)	FAX NUMBER.BASIC INFORMATION	12 digits, numeric
10	Telex Number <i>Nomor Telex</i>	✓			Telex of the company. (input/output, optional)	TELEX NUMBER.BASIC INFORMATION	20 char alpha-numeric
11	E-Mail <i>E-Mail</i>	✓			E-mail Address of company. (input/output, optional)	EMAIL ADDRESS.COM PANY COMMON INFORMATION	50 char alpha-numeric
12	Management In Charge <i>Direktorat Yang Bertanggung Jawab</i>	✓			Name of directorate in charge. (input/output,mandatory)	mngmchrg_of. BASIC INFORMATION	30 char, alpha-numeric

Banded Storage Deletion

28-3-1999 Page 1 of 1

Deletion Wizard

Owner Information

Name: [] Street: [] City: [] Province: []

Postal Code: [] Phone Number: [] Fax Number: [] Telex Number: [] E-Mail: []

Number of Decree: [] Date of Decree: (DDMMYY) [] NPWP of Location: [] Location Street: [] Location City: [] Province: [] Postal Code: [] Phone Number: []

Fax Number: [] Telex Number: [] E-Mail: [] Dimension: [] (sqm) Bonded Zone: Bonded Warehouse

Product Type: [] NPPBKC: [] Authorizing Customs Service: []

Ok Cancel

Figure 3.3-4: Window Layout for Bonded Storage Deletion (Deletion Window 3)

Table 3.3-7: List of Items
(Window Name: Bonded Storage Deletion (Deletion Window 3)) (1/4)

No.	Item Name	Level			Description	Item in File	Note
		1	2	3			
1	Owner Information <i>Informasi Pemilik</i>	✓			Grouping title for owner information. (no repeat)	—	—
2	Name <i>Nama</i>		✓		Name of the owner. (output,mandatory)	<ul style="list-style-type: none"> • OWNER-NAME.OPERATOR • OWNER-NAME.BONDED STORAGE 	40 char, alpha-numeric
3	Street <i>Alamat</i>		✓		Name of street of the owner. (output,mandatory)	<ul style="list-style-type: none"> • OWNER-STREET.OPERATOR • OWNER-STREET.BONDED STORAGE 	100 char, alpha-numeric
4	City <i>Kota</i>		✓		City of the owner. (output,mandatory)	<ul style="list-style-type: none"> • OWNER-CITY.OPERATOR • OWNER-CITY.BONDED STORAGE 	30 char, alpha-numeric
5	Province <i>Propinsi</i>		✓		Name of province of the owner. (output,mandatory)	<ul style="list-style-type: none"> • ownprov_of.OPERATOR • owprov_of.BONDED STORAGE 	20 char, alpha-numeric
6	Postal Code <i>Kode Pos</i>		✓		Postal code of the owner. (output,mandatory)	<ul style="list-style-type: none"> • OWNER-POSTAL CODE.OPERATOR • OWNER-POSTAL CODE.BONDED STORAGE 	5 digits, numeric
7	Phone Number <i>Nomor Telepon</i>		✓		Phone number of the owner. (output,optional)	<ul style="list-style-type: none"> • OWNER-PHONE NUMBER.OPERATOR • OWNER-PHONE NUMBER.BONDED STORAGE 	12 digits, numeric

Table 3.3-7: List of Items
(Window Name: Bonded Storage Deletion (Deletion Window 3)) (2/4)

No.	Item Name	Level			Description	Item in File	Note
		1	2	3			
8	Fax Number <i>Nomor Fax</i>		✓		Fax number of the owner. (output,optional)	<ul style="list-style-type: none"> OWNER-FAX NUMBER.OPERATOR OWNER-FAX NUMBER.BONDED STORAGE 	12 digits, numeric
9	Telex Number <i>Nomor Telex</i>		✓		Telex number of the owner. (output,optional)	<ul style="list-style-type: none"> OWNER TELEX NUMBER.OPERATOR OWNER TELEX NUMBER.BONDED STORAGE 	20 char, alpha-numeric
10	E-Mail <i>E-Mail</i>		✓		E-mail address of the owner. (output,optional)	<ul style="list-style-type: none"> OWNER EMAIL ADDRESS.OPERATOR OWNER EMAIL.BONDED STORAGE 	50 char, alpha-numeric
11	Number of Decree <i>Nomor Skep</i>	✓			Number of Decree of Bonded Storage. (output,mandatory)	<ul style="list-style-type: none"> NUMBER OF DECREE LETTER.OPERATOR NUMBER OF DECREE.BONDED STORAGE managed_by.OPERATOR 	50 char, alpha-numeric
12	Date of Decree(DDMMYYYY) <i>Tanggal Skep (DDMMYYYY)</i>	✓			Date of Decree of Bonded Storage. (output,mandatory)	<ul style="list-style-type: none"> DATE OF DECREE LETTER.OPERATOR DATE OF DECREE.BONDED STORAGE 	8 digits, date
13	NPWP of Location <i>NPWP Lokasi</i>	✓			NPWP of location or Bonded Storage. (output,mandatory)	<ul style="list-style-type: none"> NPWP BONDED.OPERATOR NPWP.BONDED STORAGE 	12 char, alpha-numeric

Table 3.3-7: List of Items
(Window Name: Bonded Storage Deletion (Deletion Window 3)) (3/4)

No.	Item Name	Level			Description	Item in File	Note
		1	2	3			
14	Location Street <i>Alamat Lokasi</i>	✓			Name of street of location. (output,mandatory)	<ul style="list-style-type: none"> • TBB-STREET.OPERATOR • LOCATION-STREET.BONDED STORAGE 	100 char, alphanumeric
15	Location City <i>Kota Lokasi</i>	✓			Name of city of location. (output,mandatory)	<ul style="list-style-type: none"> • TBB-CITY.OPERATOR • LOCATION-CITY.BONDED STORAGE 	30 char, alphanumeric
16	Province <i>Propinsi</i>	✓			Name of province of location. (output,mandatory)	<ul style="list-style-type: none"> • tbbprov_of.OPERATOR • locprov_of.BONDED STORAGE 	20 char, alphanumeric
17	Postal Code <i>Kode Pos</i>	✓			Postal Code of Bonded Storage. (output,mandatory)	<ul style="list-style-type: none"> • TBB-POSTAL CODE.OPERATOR • LOCATION-POSTAL CODE.BONDED STORAGE 	5 digits, numeric
18	Phone Number <i>Nomor Telepon</i>	✓			Phone number of Bonded Storage. (output,optional)	<ul style="list-style-type: none"> • TBB-PHONE NUMBER.OPERATOR • LOCATION-PHONE NUMBER.BONDED STORAGE 	12 digits, numeric
19	Fax Number <i>Nomor Fax</i>	✓			Fax number of Bonded Storage. (output,optional)	<ul style="list-style-type: none"> • TBB-FAX NUMBER.OPERATOR • LOCATION-FAX NUMBER.BONDED STORAGE 	12 digits, numeric

Table 3.3-7: List of Items
(Window Name: Bonded Storage Deletion (Deletion Window 3)) (4/4)

No.	Item Name	Level			Description	Item in File	Note
		1	2	3			
20	Telex Number <i>Nomor Telex</i>	✓			Telex number of Bonded Storage. (output,optional)	<ul style="list-style-type: none"> TBB-TELEX NUMBER.OPERATOR LOCATION-TELEX NUMBER.BONDED STORAGE 	20 char, alpha-numeric
21	E-Mail <i>E-Mail</i>	✓			E-mail address of the Bonded Storage. (output,optional)	<ul style="list-style-type: none"> TBB-EMAIL ADDRESS.OPERATOR LOCATION-EMAIL ADDRESS.BONDED STORAGE 	50 char, alpha-numeric
22	Dimension <i>Luas</i>	✓			Dimension or size of the Bonded Storage in square meters. (input/output,mandatory)	DIMENSION.BONDED STORAGE	20 digits (16.4), decimal
23	Bonded Type <i>Tipe Berikat</i>	✓			The type of the Bonded Storage such as: <ul style="list-style-type: none"> Bonded Zone Bonded Warehouse <input <="" output,mandatory)="" td=""/> <td>WAREHOUSE TYPE.BONDED STORAGE</td> <td>1 char, alpha-numeric</td>	WAREHOUSE TYPE.BONDED STORAGE	1 char, alpha-numeric
24	Product Type <i>Jenis Hasil Produksi</i>	✓			Product result from Bonded Zone (input/output,mandatory when Bonded Type is Bonded Zone)	PRODUCT TYPE.BONDED STORAGE	50 char, alpha-numeric
25	NPPBKC <i>NPPBKC</i>	✓			NPPBKC. (input/output,optional)	NPPBKC.BONDED STORAGE	10 char, alpha-numeric
26	Authorizing Customs Service <i>Kantor Pelayanan Bea Cukai yang Mengawasi</i>	✓			Name of DJBC office. (input/output,mandatory)	DJBCoffc_of.BONDED STORAGE	40 char, alpha-numeric

Bonded Storage Deletion

Page 1 of 1

Number of PKB or PGB Decree: []

Owner Information

Name: []

Street: []

City: []

Province: []

Postal Code: []

Phone Number: []

Fax Number: []

Telex Number: []

E-Mail: []

Number of Decree: []

Date of Decree: (DDMMYY) []

NFPWP Location: []

Location Street: []

Location City: []

Province: []

Postal Code: []

Phone Number: []

Fax Number: []

Telex Number: []

E-Mail: []

Dimension: [] (sqm)

Bonded Type: Bonded Zone Bonded Warehouse

Product Type: []

NPPBKC: []

Authorizing Customs Service: []

Delete [] Cancel []

Figure 3.3-5: Window Layout for Bonded Storage Deletion (Deletion Window 4)

Table 3.3-8: List of Items
(Window Name: Bonded Storage Deletion (Deletion Window 4)) (1/3)

No.	Item Name	Level			Description	Item in File	Note
		1	2	3			
1	Number of PKB or PGB Decree <i>Nomor Skep PKB atau PGB</i>	✓			Decree number of PKB or PGB. (input/output,mandatory)	managed_by.BONDED STORAGE	50 char, alpha-numeric
2	Owner Information <i>Informasi Pemilik</i>	✓			Grouping title for owner information. (no repeat)	---	---
3	Name <i>Nama</i>		✓		Name of the owner. (input/output,mandatory)	OWNER-NAME.BONDED STORAGE	40 char, alpha-numeric
4	Street <i>Alamat</i>		✓		Name of street of owner. (input/output,mandatory)	OWNER-STREET.BONDED STORAGE	100 char, alpha-numeric
5	City <i>Kota</i>		✓		City of the owner. (input/output,mandatory)	OWNER-CITY.BONDED STORAGE	30 char, alpha-numeric
6	Province <i>Propinsi</i>		✓		Name of province of the owner. (input/output,mandatory)	owprov_of.BONDED STORAGE	20 char, alpha-numeric
7	Postal Code <i>Kode Pos</i>		✓		Postal code of the owner. (input/output,mandatory)	OWNER-POSTAL CODE.BONDED STORAGE	5 digits, numeric
8	Phone Number <i>Nomor Telepon</i>		✓		Phone number of the owner. (input/output,optional)	OWNER-PHONE NUMBER.BONDED STORAGE	12 digits, numeric
9	Fax Number <i>Nomor Fax</i>		✓		Fax number of the owner. (input/output,optional)	OWNER-FAX NUMBER.BONDED STORAGE	12 digits, numeric
10	Telex Number <i>Nomor Telex</i>		✓		Telex number of the owner. (input/output,optional)	OWNER TELEX NUMBER.BONDED STORAGE	20 char, alpha-numeric
11	E-Mail <i>E-Mail</i>		✓		E-mail address of the owner. (input/output,optional)	OWNER EMAIL.BONDED STORAGE	50 char, alpha-numeric
12	Number of Decree <i>Nomor Skep</i>	✓			Number of Decree of Bonded Storage. (input/output,mandatory)	NUMBER OF DECREE.BONDED STORAGE	50 char, alpha-numeric
13	Date of Decree(DD MMYYYY) <i>Tanggal Skep (DDM MYYYY)</i>	✓			Date of Decree of Bonded Storage. (input/output,mandatory)	DATE OF DECREE.BONDED STORAGE	8 digits, date

Table 3.3-8: List of Items
(Window Name: Bonded Storage Deletion (Deletion Window 4)) (2/3)

No.	Item Name	Level			Description	Item in File	Note
		1	2	3			
14	NPWP of Location <i>NPWP Lokasi</i>	✓			Tax Payer Code Number of location of Bonded Storage. (input/output,mandatory)	NPWP.BONDED STORAGE	12 char, alpha-numeric
15	Location City <i>Kota Lokasi</i>	✓			Name of city of location. (input/output,mandatory)	LOCATION-CITY.BONDED STORAGE	30 char, alpha-numeric
16	Location Street <i>Alamat</i>	✓			Name of street or location. (input/output,mandatory)	LOCATION-STREET.BONDED STORAGE	100 char, alpha-numeric
17	Province <i>Propinsi</i>	✓			Name of province of Bonded Storage. (input/output,mandatory)	locprov_of.BONDED STORAGE	20 char, alpha-numeric
18	Postal Code <i>Kode Pos</i>	✓			Postal Code of Bonded Storage. (input/output,mandatory)	LOCATION-POSTAL CODE.BONDED STORAGE	5 digits, numeric
19	Phone Number <i>Nomor Telepon</i>	✓			Phone number of Bonded Storage. (input/output,optional)	LOCATION-PHONE NUMBER.BONDED STORAGE	12 digits, numeric
20	Fax Number <i>Nomor Fax</i>	✓			Fax number of Bonded Storage. (input/output,optional)	LOCATION-FAX NUMBER.BONDED STORAGE	12 digits, numeric
21	Telex Number <i>Nomor Telex</i>	✓			Telex number of Bonded Storage. (input/output,optional)	LOCATION-TELEX NUMBER.BONDED STORAGE	20 char, alpha-numeric
22	E-Mail <i>E-Mail</i>	✓			E-mail address of Bonded Storage. (input/output,optional)	LOCATION-EMAIL ADDRESS.BONDED STORAGE	50 char, alpha-numeric
23	Dimension <i>Luas</i>	✓			Dimension or size of Bonded Storage in square meters. (input/output,mandatory)	DIMENSION.BONDED STORAGE	20 digits (16,4), decimal
24	Bonded Type <i>Tipe Berikat</i>	✓			The type of Bonded Storage such as: <ul style="list-style-type: none"> • Bonded Zone • Bonded Warehouse <input type="checkbox"/> (input/output,mandatory)	WAREHOUSE TYPE.BONDED STORAGE	1 char, alpha-numeric
25	Product Type <i>Jenis Hasil Produksi</i>	✓			Product result from Bonded Zone. (input/output,mandatory when Bonded Type is Bonded Zone)	PRODUCT TYPE.BONDED STORAGE	50 char, alpha-numeric
26	NPPBKC <i>NPPBKC</i>	✓			NPPBKC. (input/output,optional)	NPPBKC.BONDED STORAGE	10 char, alpha-numeric

Table 3.3-8: List of Items
(Window Name: Bonded Storage Deletion (Deletion Window 4)) (3/3)

No.	Item Name	Level			Description	Item in File	Note
		1	2	3			
27	Authorizing Customs service <i>Kantor Pelayanan Bea Cukai yang Mengawasi</i>	✓			Name of DJBC office. (input/output,mandatory)	DJBCoffc_of.BON DED STORAGE	40 char, alpha- numeric

Bonded Storage Deletion
 Deletion Window
 02 FEB 99
 Page 1 of 1

Basic Information on Duty Free Shop

NPWP: _____

Company Name: _____

Street: _____

City: _____

Province: _____

Phone Number: _____

Duty Free Shop

Decree Information

Number of Decree: _____

Date of Decree: _____ (DDMMYY)

Location

NPWP of Location: _____

Type of DFS: _____

Street: _____

City: _____

Province: _____

Postal Code: _____

Down Town: Departure Arrival

Phone Number: _____

Fax Number: _____

Telex Number: _____

E-Mail: _____

Dimension: _____ (m2)

Length: _____ (m)

Width: _____ (m)

Delete Cancel

Figure 3.3-6: Window Layout for Bonded Storage Deletion (Deletion Window 5)

Table 3.3-9: List of Items
(Window Name: Bonded Storage Deletion (Deletion Window 5)) (1/2)

No.	Item Name	Level			Description	Item in File	Note
		1	2	3			
1	Basic Information on Duty Free Shop <i>Informasi Dasar pada Toko Bebas Bea</i>	✓			Grouping title of basic information. (no repeat)	---	---
2	NPWP <i>NPWP</i>		✓		Tax Payer Code Number. (output,mandatory)	ID NUMBER. BASIC INFORMATION	12 char, alpha-numeric
3	Company Name <i>Nama Perusahaan</i>		✓		Name of the company. (output,mandatory)	NAME.BASIC INFORMATION	40 char, alpha-numeric
4	Street <i>Alamat</i>		✓		Name of street of the company. (output,mandatory)	STREET.BASIC INFORMATION	100 char, alpha-numeric
5	City <i>Kota</i>		✓		Name of city of the company. (input/output,mandatory)	CITY.BASIC INFORMATION	30 char, alpha-numeric
6	Province <i>Propinsi</i>		✓		Name of province of the company. (output,mandatory)	province_of.BASIC INFORMATION	20 char, alpha-numeric
7	Phone Number <i>Nomor Telepon</i>		✓		Telephone number of the company. (output,optional)	PHONE NUMBER. BASIC INFORMATION	12 digits, numeric
8	Duty Free Shop <i>Toko Bebas Bea</i>	✓			Grouping title for Duty Free Shop. (no repeat)	---	---
9	Decree Information <i>Informasi Skep</i>		✓		Grouping of Decree Information. (no repeat)	---	---
10	Number of Decree <i>Nomor Skep</i>			✓	Number of Decree of Duty Free Shop. (output,mandatory)	NUMBER OF DECREE LETER. DFS	50 char, alpha-numeric
11	Date of Decree(DDMMYYYY) <i>Tanggal Skep (DDMMYYYY)</i>			✓	Date of Decree of Duty Free Shop. (output,mandatory)	DATE OF DECREE LETER.DFS	8 digits, date

Table 3.3-9: List of Items Items
(Window Name: Bonded Storage Deletion (Deletion Window 5)) (2/2)

No.	Item Name	Level			Description	Item in File	Note
		1	2	3			
12	Location <i>Lokasi</i>		✓		Grouping title for Location. (no repeat)	—	—
13	NPWP of Location <i>NPWP Lokasi</i>			✓	Tax Payer Code Number for location of Duty Free Shop. (output,mandatory)	NPWP.LOCATION OF DECREE	12 char, alpha- numeric
14	Type of DFS <i>Tipe TBB</i>			✓	Type of DFS are: • Down Town • Departure • Arrivall (output,mandatory)	TYPE OF DFS. LOCATION DFS	1 char, alpha- numeric
15	Street <i>Alamat</i>			✓	Name of street or location of Duty Free Shop. (output,mandatory)	STREET. LOCATION DFS	100 char, alpha- numeric
16	City <i>Kota</i>			✓	Name of city of location of duty free Shop. (output,mandatory)	CITY.LOCATION DFS	50 char, alpha- numeric
17	Province <i>Propinsi</i>			✓	Name of province location. (output,mandatory)	province_of. LOCATION DFS	20 char, alpha- numeric
18	Postal Code <i>Kode Pos</i>			✓	Postal Code of Duty Free Shop. (output,mandatory)	POSTAL CODE. LOCATION DFS	5 digits, numeric
19	Phone Number <i>Nomor Telepon</i>			✓	Phone number of Duty Free Shop. (output,optional)	PHONE NUMBER. LOCATION DFS	12 digits, numeric
20	Fax Number <i>Nomor Fax</i>			✓	Fax number of Duty Free Shop. (output,optional)	FAX NUMBER. LOCATION DFS	12 digits, numeric
21	Telex Number <i>Nomor Telex</i>			✓	Telex number of Duty Free Shop. (output,optional)	TELEX NUMBER. LOCATION DFS	20 char, alpha- numeric
22	E-Mail <i>E-Mail</i>			✓	E-mail address of Duty Free Shop. (output,optional)	EMAIL ADDRESS. LOCATION DFS	50 char, alpha- numeric
23	Dimension <i>Luas</i>			✓	Dimension of Duty Free Shop in square meters. (output,mandatory)	DIMENSION. LOCATION DFS	20 digits (16.4), decimal
24	Length <i>Panjang</i>			✓	Length of Duty Free Shop in meter. (output,mandatory)	LONG.LOCATION DFS	20 digits (16.4), decimal
25	Width <i>Lebar</i>			✓	Width of Duty Free Shop in meter. (output,mandatory)	WIDE.LOCATION DFS	20 digits (16.4), decimal

Bonded Storage Deletion

27 JAN 96 Page 1 of 1

Deletion Window

Decree of Duty Free Shop

Number of Decree: []

Date of Decree: [] (DDMMYY)

Decree Status: Revoke Extended Expired

Number of Last Decree: []

OK Cancel

Figure 3.3-7: Window Layout for Bonded Storage Deletion (Deletion Window 6)

Table 3.3-10: List of Items
(Window Name: Bonded Storage Deletion (Deletion Window 6))

No.	Item Name	Level			Description	Item in File	Note
		1	2	3			
1	Decree of Duty Free Shop <i>Skep Toko Bebas Bea</i>	✓			Grouping title of Duty Free Shop. (no repeat)	—	—
2	Number of Decree <i>Nomor Skep</i>		✓		Number of Decree of Duty Free Shop. (output,mandatory)	NUMBER OF DECREE LETTER.DFS	50 char, alpha-numeric
3	Date of Decree(DDMMYYYY) <i>Tanggal Skep (DDMMYYYY)</i>		✓		Date of decree. (output,mandatory)	DATE OF DECREE LETTER.DFS	8 digits, date
4	Decree Status <i>Status Skep</i>		✓		Status is: <ul style="list-style-type: none"> • Revoke • Valid • Expired (output,mandatory)	DECREE STATUS.DFS	1 char, alpha-numeric
5	Number of Last Decree <i>Nomor Skep Lama</i>		✓		Number of last decree (input/output,optional)	previous_of.DFS	50 char, alpha-numeric

Bonded Storage Deletion (C:\EBS\00) Page 1 of 1

Deletion Window

Location of Duty Free Shop

NIPWP of Location:

Type of Duty Free Shop: Down Town Departure Arrival

Street:

City:

Province:

Postal Code:

Phone Number:

Fax Number:

Telex Number:

E-Mail:

Dimension: (m²)

Length: (m)

Width: (m)

OK Cancel

Figure 3.3-8: Window Layout for Bonded Storage Deletion (Deletion Window 7)

Table 3.3-11: List of Items
(Window Name: Bonded Storage Deletion (Deletion Window 7))

No.	Item Name	Level			Description	Item in File	Note
		1	2	3			
1	Location of Duty Free Shop <i>Lokasi Toko Bebas Bea</i>	✓			Grouping title of location of Duty Free Shop. (no repeat)	—	—
2	NPWP of Location <i>NPWP Lokasi</i>		✓		Tax Payer Code Number for location of Duty Free Shop. (output,mandatory)	NPWP.LOCATION OF DECREE	12 char, alpha-numeric
3	Type of Duty Free Shop <i>Tipe Toko Bebas Bea</i>		✓		Type of DFS are: <ul style="list-style-type: none"> • Down Town • Departure • Arrival (output,mandatory)	TYPE OF DFS. LOCATION DFS	1 char, alpha-numeric
4	Street <i>Alamat</i>		✓		Name of street or location of Duty Free Shop. (output,mandatory)	STREET. LOCATION DFS	100 char, alpha-numeric
5	City <i>Kota</i>		✓		Name of city of location of Duty Free Shop. (output,mandatory)	CITY.LOCATION DFS	30 char, alpha-numeric
6	Province <i>Propinsi</i>		✓		Name of province of location of Duty Free Shop. (output,mandatory)	province_of. LOCATION DFS	20 char, alpha-numeric
7	Postal Code <i>Kode Pos</i>		✓		Postal Code of Duty Free Shop (output,mandatory)	POSTAL CODE. LOCATION DFS	5 digits, numeric
8	Phone Number <i>Nomor Telepon</i>		✓		Phone number of Duty Free Shop. (output,optional)	PHONE NUMBER. LOCATION DFS	12 digits, numeric
9	Fax Number <i>Nomor Fax</i>		✓		Fax number of Duty Free Shop. (output,optional)	FAX NUMBER. LOCATION DFS	12 digits, numeric
10	Telex Number <i>Nomor Telex</i>		✓		Telex number of Duty Free Shop. (output,optional)	TELEX NUMBER. LOCATION DFS	20 char, alpha-numeric
11	E-Mail <i>E-Mail</i>		✓		E-mail address of Duty Free Shop. (output,optional)	EMAIL ADDRESS. LOCATION DFS	50 char, alpha-numeric
12	Dimension <i>Luas</i>		✓		Dimension of Duty Free Shop in square meters. (output,mandatory)	DIMENSION. LOCATION DFS	20 digits (16.4), decimal
13	Length <i>Panjang</i>		✓		Length of Duty Free Shop in meters. (output,mandatory)	LONG.LOCATION DFS	20 digits (16.4), decimal
14	Width <i>Lebar</i>		✓		Width of Duty Free Shop in meters. (output,mandatory)	WIDE.LOCATION DFS	20 digits (16.4), decimal

3.4 Bonded Storage Retrieval

Volume II Figure 2.3.2-5 and Table 2.3.2-5 show the outline of Bonded Storage Retrieval Process. As a result of System Design, the process is designed as below. Volume III Appendix A is referred to understand how to view figures and tables.

- Process Procedure

- 1) Retrieval of Basic Information, Bonded Storage Operator, Bonded Storage and Duty Free Shop

- i) Input

Read data from the Retrieval Window. Table 3.4-3 shows details of data items on the window.

- ii) Input Check

Check value of inputted data by following Table 3.4-4.

- iii) Retrieval for List Retrieval Window

Table names of the database are shown in Table 3.4-3.

When keys other than Decree number are inputted on the Retrieval Window, retrieve data from the database under the inputted condition.

- iv) Confirmation

When the number of records that match the retrieval condition is between 10 to 99,999, display a response-requiring message (Message ID: R0000004).

- v) Output of List Retrieval Window

Output of the List Retrieval Window as follows:

- When Decree Type is PKB, PGB, PKB also PDKB or PGB also PPGB

When keys other than Decree Number are inputted on Retrieval Window, edit retrieved data and display the List Retrieval Window 1 by descending order of Date of Decree Number. Table 3.4-5 shows details of data items on the window.

- When Decree type is Duty Free Shop

When keys other than Decree Number are inputted on Retrieval Window, edit retrieved data and display the List Retrieval Window 2 by descending order of Date of Decree Number. Table 3.4-6 shows details of data items on the window.

- vi) Retrieval for Retrieval Result Window

- When Decree Type is PKB, PGB, PKB also PDKB or PGB also PPGB

When Decree Number is inputted on Retrieval Window, or when one Decree is selected from the List Retrieval Window 1, retrieve data from the database and code tables.

- When Decree type is Duty Free Shop
When Decree Number is inputted on Retrieval Window, or when one Decree is selected from the List Retrieval Window 2, retrieve data from the database and code tables.
- Decree type is PPGB or PDGB
When Decree Number is inputted on the Retrieval Window, retrieve data from the database and code tables.

Table 3.4-1 shows list and location of codes to be used.

Table 3.4-1: List of codes

Code	Location of Table	Note
Identity Type Code	Client	Used for NPWP Type
NPWP 12 Digit	Server	—
NPWP 10 Digit	Server	—
Management in Charge Code	Client	—
Bonded Storage Type Code	Client	Used for Bonded Type
Duty Free Shop type Code	Client	Used for Type of DFS
Province Code	Client	—

vii) Output of Retrieval Result Window

- Decree Type is PKB, PGB, PKB also PDKB or PGB also PPGB
When Decree Number is inputted on the Retrieval Window, or when one Decree Number is selected from the List Retrieval Window 1, edit retrieved data and display the Retrieval Result Window 1. Table 3.4-7 shows details of data items on the window.
- Decree Type is PDKB or PPGB
When Decree Number is inputted on the Retrieval Window, edit retrieved data and display the Retrieval Result Window 2. Table 3.4-8 shows details of data items on the window.
- Decree type is Duty Free Shop
When Decree Number is inputted on the Retrieval Window, or when one Decree Number is selected from the List Retrieval Window 3, edit retrieved data and display the Retrieval Result Window. Table 3.4-9 shows details of data items on the window.

- Window Layout / Report Layout

- Windows

- Retrieval Window

Figure 3.4-1

- List Retrieval Window 1

Figure 3.4-2

- List Retrieval Window 2 Figure 3.4-3
- Retrieval Result Window 1 Figure 3.4-4
- Retrieval Result Window 2 Figure 3.4-5
- Retrieval Result Window 3 Figure 3.4-6

- Reports
 - None.

- Error Procedure

Display an error message following Table 3.4-2.

Table 3.4-2: Error Procedure

Case	Error Contents	Message ID	Note
1)-ii)	An error is detected at Input Check.	See Table 3.4-4	---
1)-iii), 1)-vi)	SQL returned an error code.	E0000001	Fill in the blank part of the message text with the error code.
1)-iii), 1)-vi)	The record to be retrieved does not exist.	E0000002	---
1)-iv)	The number of records that match the retrieval condition exceeded 99,999.	E0000013	---
1)-vi)	The code to be retrieved does not exist in the code table.	E0000008	---

- Restriction

None.

- Note

For details of each message, see Volume II 1.4.

Bonded Storage Retrieval
 Retrieval Window
 12 JAN 09
 Page 1 of 1

NPWP Type: 12 Digit 10 Digit
 NPWP:

Number of Decree:

Decree Type: PKB or PGB PKB or PGB
 PKB also PKB or PGB also PPGB Duty Free Shop

Retrieval

Figure 3.4-1: Window Layout for Bonded Storage Retrieval (Retrieval Window)

Table 3.4-3: List of Items
(Window Name: Bonded Storage Retrieval (Retrieval Window))

No.	Item Name	Level			Description	Item in File	Note
		1	2	3			
1	Type of NPWP	✓			Type of NPWP 12 digits or 10 digits. (input,mandatory)	idtype_of. BASIC INFORMATION	1 digits, numeric
2	NPWP <i>NPWP</i>	✓			Tax Payer Code Number. (input,mandatory)	ID NUMBER. BASIC INFORMATION	12 digits, alpha-numeric
3	Number of Decree <i>No.Skep</i>	✓			Decree number from Minister of Finance. Item in file is recording to 4 Decree Type. (input,mandatory)	NUMBER OF DECREE. BONDED STORAGE	50 chars, alpha-numeric
4	Decree Type <i>Tipe Skep</i>	✓			Decree Type are: <ul style="list-style-type: none"> • PKB or PGB • PKB also PDKB or PGB also PPGB • PDKB or PPGB • Duty Free Shop Only for choosing window and process. (input,mandatory)		1 digit, numeric

Table 3.4-4: Input Check List (Bonded Storage Retrieval (Retrieval Window))

No.	Item Name	Condition (range, format, and so on)	Message ID	Note
1	NPWP	Must have full length according to NPWP Type.	E0000015	—
2	NPWP	Must start with "0" when NPWP Type is 12 digits.	E0000016	—
3	NPWP	Must be numeric.	E0000009	—

Bonded Storage Retrieval

27 JAN 99 Page 1 of 1

Basic Information on Bonded Storage

NPWP: _____ Province: _____

Company Name: _____ Phone Number: _____

Street: _____ Telex Number: _____

City: _____ E-Mail: _____

Bonded Storage Information

Number of Decree	Date of Decree	Location	Location City
_____	_____	_____	_____
_____	_____	_____	_____
_____	_____	_____	_____
_____	_____	_____	_____

Refresh Select Cancel Back to Top

Figure 3.4-2: Window Layout for Bonded Storage Retrieval (List Retrieval Window 1)

Table 3.4-5: List of Items (Window Name: Bonded Storage Retrieval (List Retrieval Window 1)) (1/2)

No.	Item Name	Level			Description	Item in File	Note
		1	2	3			
1	Basic Information on Bonded Storage <i>Informasi Dasar pada TPB</i>	✓			Grouping title of basic information. (no repeat)	—	—
2	NPWP <i>NPWP</i>		✓		Tax Payer Code Number. (output)	ID NUMBER. BASIC INFORMATION	12 char, alpha-numeric
3	Company Name <i>Nama Perusahaan</i>		✓		Name of the company. (output)	NAME.BASIC INFORMATION	40 char, alpha-numeric
4	Street <i>Alamat</i>		✓		Name of street of the company. (output)	STREET.BASIC INFORMATION	100 char, alpha-numeric
5	City <i>Kota</i>		✓		Name of city of the company. (output)	CITY.BASIC INFORMATION	30 char, alpha-numeric
6	Province <i>Propinsi</i>		✓		Name of province of the company. (output)	province_of.BASIC INFORMATION	20 char, alpha-numeric
7	Phone Number <i>Nomor Telepon</i>		✓		Telephone number of the company. (output)	PHONE NUMBER. BASIC INFORMATION	12 digits, numeric
8	Telex Number <i>Nomor Telex</i>		✓		Telex number of the company. (output)	TELEX NUMBER. BASIC INFORMATION	20 char, alpha-numeric
9	E-Mail <i>E-Mail</i>		✓		E-mail address of the company. (output)	EMAIL ADDRESS. COMPANY COMMON INFORMATION	50 char, alpha-numeric
10	Bonded Storage Information <i>Informasi TPB</i>	✓			Grouping title for Bonded Storage information. (repeat 4 times)	—	—
11	Number of Decree <i>Nomor Skep</i>		✓		Number of Decree of Bonded Storage. (output)	NUMBER OF DECREE LETER. OPERATOR	50 char, alpha-numeric

Table 3.4-5: List of Items (Window Name: Bonded Storage Retrieval (List Retrieval Window 1)) (2/2)

No.	Item Name	Level			Description	Item in File	Note
		1	2	3			
12	Date of Decree (DDMMYYYY) <i>Tanggal Skep (DDMMYYYY)</i>		✓		Date of Decree of Bonded Storage. (output)	DATE OF DECREE LETER. OPERATOR	8 digits, date
13	Location <i>Lokasi</i>		✓		Name of street or location. (output)	TBB-STREET. OPERATOR	100 char, alpha- numeric
14	Location City <i>Kota</i>		✓		Name of city of Bonded Storage. (output)	TBB-CITY. OPERATOR	50 char, alpha- numeric

Bonded Storage Retrieval

Page 1 of 1

Basic Information on Duty Free Shop

NPWP: _____

Company Name: _____

Street: _____

City: _____

Province: _____

Postal Code: _____

Phone Number: _____

Fax Number: _____

Telex Number: _____

E-Mail: _____

Decree of Duty Free Shop

Number of Decree:	Date of Decree:	Last Number of Decree:
_____	_____	_____
_____	_____	_____
_____	_____	_____
_____	_____	_____

Refresh Select Cancel Back to Top

Figure 3.4-3: Window Layout for Bonded Storage Retrieval (List Retrieval Window 2)

Table 3.4-6: List of Items (Window Name: Bonded Storage Retrieval (List Retrieval Window 2)) (1/2)

No.	Item Name	Level			Description	Item in File	Note
		1	2	3			
1	Basic Information on Duty Free Shop <i>Informasi Dasar Toko Bebas Bea</i>	✓			Grouping title of basic information. (no repeat)	—	—
2	NPWP <i>NPWP</i>		✓		Tax Payer Code Number. (input/output,mandatory)	ID NUMBER. BASIC INFORMATION	12 char, alpha-numeric
3	Company Name <i>Nama Perusahaan</i>		✓		Name of the company. (input/output,mandatory)	NAME.BASIC INFORMATION	40 char, alpha-numeric
4	Street <i>Alamat</i>		✓		Name of street of the company. (input/output,mandatory)	STREET.BASIC INFORMATION	100 char, alpha-numeric
5	City <i>Kota</i>		✓		Name of city of the company. (input/output,mandatory)	CITY.BASIC INFORMATION	30 char, alpha-numeric
6	Province <i>Propinsi</i>		✓		Name of province of the company. (input/output,mandatory)	province_of.BASIC INFORMATION	20 char, alpha-numeric
7	Postal Code <i>Kode Pos</i>		✓		Postal code of company. (input/output,mandatory)	POSTAL CODE. BASIC INFORMATION	5 digits, numeric
8	Phone Number <i>Nomor Telepon</i>		✓		Telephone number of the company. (input/output,optional)	PHONE NUMBER. BASIC INFORMATION	12 digits, numeric
9	Fax Number <i>Nomor Fax</i>		✓		Fax number of company. (input/output,optional)	FAX NUMBER. BASIC INFORMATION	12 digits, numeric
10	Telex Number <i>Nomor Telex</i>		✓		Telex number of company. (input/output,optional)	TELEX NUMBER. BASIC INFORMATION	20 char, alpha-numeric
11	E-Mail <i>E-Mail</i>		✓		E-mail address of Duty Free Shop. (input/output,optional)	EMAIL ADDRESS. COMPANY COMMON INFORMATION	50 char, alpha-numeric
12	Decre of Duty Free Shop <i>Toko Bebas Bea</i>	✓			Grouping title for Duty Free Shop. (repeat 4 times)	—	—

Table 3.4-6: List of Items (Window Name: Bonded Storage Retrieval (List Retrieval Window 2)) (2/2)

No.	Item Name	Level			Description	Item in File	Note
		1	2	3			
13	Number of Decree <i>Nomor Skep</i>		✓		Number of Decree of Duty Free Shop. (input/output,mandatory)	NUMBER OF DECREE LETER.DFS	50 char, alpha-numeric
14	Date of Decree (DDMMYYYY) <i>Tanggal Skep (DDMYYYY)</i>		✓		Date of Decree of Duty Free Shop. (output)	DATE OF DECREE LETER.DFS	8 digits, date
15	Number of Last Decree <i>Nomor Skep lama</i>		✓		Number of Last Decree. (output)	previous_of.DFS	50 char, alpha-numeric

Bonded Storage Retrieval

7-14-09
Page 1 of 1

POSTAL RETRIEVAL

Owner Information

Name: _____

Street: _____

City: _____

Province: _____

Postal Code: _____

Phone Number: _____

Fax Number: _____

Telex Number: _____

E-Mail: _____

Number of Decreas: _____

Date of Decreas: _____ (DDMMYY)

NPWP of Location: _____

Location Street: _____

Location City: _____

Province: _____

Postal Code: _____

Phone Number: _____

Fax Number: _____

Telex Number: _____

E-Mail: _____

Dimension: _____ (sqm)

Bonded Type: Bonded Zone Bonded Warehouse

Product Type: _____

NIPPEK: _____

Authorizing: _____

Customs Service: _____

Ok Cancel

Figure 3.4-4: Window Layout for Bonded Storage Retrieval (Retrieval Result Window 1)

Table 3.4-7: List of Items (Window Name: Bonded Storage Retrieval (Retrieval Result Window 1)) (1/4)

No.	Item Name	Level			Description	Item in File	Note
		1	2	3			
1	Owner Information <i>Informasi Pemilik</i>	✓			Grouping title for owner information. (no repeat)	---	---
2	Name <i>Nama</i>		✓		Name of the owner. (output)	<ul style="list-style-type: none"> • OWNER-NAME. OPERATOR • OWNER-NAME. BONDED STORAGE 	40 char, alpha-numeric
3	Street <i>Alamat</i>		✓		Name of street of the owner. (output)	<ul style="list-style-type: none"> • OWNER-STREET. OPERATOR • OWNER-STREET. BONDED STORAGE 	100 char, alpha-numeric
4	City <i>Kota</i>		✓		City of the owner. (output)	<ul style="list-style-type: none"> • OWNER-CITY. OPERATOR • OWNER-CITY. BONDED STORAGE 	30 char, alpha-numeric
5	Province <i>Propinsi</i>		✓		Name of province of the owner. (output)	<ul style="list-style-type: none"> • tblprov_of. OPERATOR • owprov_of. BONDED STORAGE 	20 char, alpha-numeric
6	Postal Code <i>Kode Pos</i>		✓		Postal code of the owner. (output)	<ul style="list-style-type: none"> • OWNER-POSTAL CODE. OPERATOR • OWNER-POSTAL CODE. BONDED STORAGE 	5 digits, numeric
7	Phone Number <i>Nomor Telepon</i>		✓		Phone number of the owner. (output)	<ul style="list-style-type: none"> • OWNER-PHONE NUMBER. OPERATOR • OWNER-PHONE NUMBER. BONDED STORAGE 	12 digits, numeric

Table 3.4-7: List of Items (Window Name: Bonded Storage Retrieval (Retrieval Result Window 1)) (2/4)

No.	Item Name	Level			Description	Item in File	Note
		1	2	3			
8	Fax Number <i>Nomor Fax</i>		✓		Fax number of the owner. (output)	<ul style="list-style-type: none"> OWNER-FAX NUMBER. OPERATOR OWNER-FAXNUMBER. BONDED STORAGE 	12 digits, numeric
9	Telex Number <i>Nomor Telex</i>		✓		Telex number of the owner. (output)	<ul style="list-style-type: none"> OWNER TELEX NUMBER. OPERATOR OWNER TELEX NUMBER. BONDED STORAGE 	20 char, alpha-numeric
10	E-Mail <i>E-Mail</i>		✓		E-mail address of the owner. (output)	<ul style="list-style-type: none"> OWNER EMAIL ADDRESS. OPERATOR OWNER EMAIL. BONDED STORAGE 	50 char, alpha-numeric
11	Number of Decree <i>Nomor Skep</i>	✓			Number of Decree of Bonded Storage. (output)	<ul style="list-style-type: none"> NUMBER OF DECREE LETER. OPERATOR NUMBER OF DECREE. BONDED STORAGE managed by. OPERATOR 	50 char, alpha-numeric
12	Date of Decree (DD MMYYYY) <i>Tanggal Skep (DDM MYYYY)</i>	✓			Date of Decree of Bonded Storage. (output)	<ul style="list-style-type: none"> DATE OF DECREE LETER. OPERATOR DATE OF DECREE. BONDED STORAGE 	8 digits, date

Table 3.4-7: List of Items (Window Name: Bonded Storage Retrieval (Retrieval Result Window 1)) (3/4)

No.	Item Name	Level			Description	Item in File	Note
		1	2	3			
13	NPWP of Location <i>NPWP Lokasi</i>	✓			Tax Payer Code Number of location of Bonded Storage. (input/output,mandatory)	<ul style="list-style-type: none"> • NPWP BONDED. OPERATOR • NPWP. BONDED STORAGE 	12 char, alpha-numeric
14	Location Street <i>Alamat</i>	✓			Name of street or location . (output)	<ul style="list-style-type: none"> • TBB-STREET. OPERATOR • LOCATION-STREET. BONDED STORAGE 	100 char, alpha-numeric
15	Location City <i>Kota</i>	✓			Name of city of Bonded Storage. (output)	<ul style="list-style-type: none"> • TBB-CITY. OPERATOR • LOCATION-CITY. BONDED STORAGE 	30 char, alpha-numeric
16	Province <i>Propinsi</i>	✓			Name of province Bonded Storage. (output)	<ul style="list-style-type: none"> • tblprov_of. OPERATOR • locprov_of. BONDED STORAGE 	20 char, alpha-numeric
17	Postal Code <i>Kode Pos</i>	✓			Postal Code of Bonded Storage. (output)	<ul style="list-style-type: none"> • TBB-POSTAL CODE. OPERATOR • LOCATION-POSTAL CODE. BONDED STORAGE 	5 digits, numeric
18	Phone Number <i>Nomor Telepon</i>	✓			Phone number of Bonded Storage. (output)	<ul style="list-style-type: none"> • TBB-PHONE NUMBER. OPERATOR • LOCATION-PHONE NUMBER. BONDED STORAGE 	12 digits, numeric
19	Fax Number <i>Nomor Fax</i>	✓			Fax number of Bonded Storage. (output)	<ul style="list-style-type: none"> • TBB-FAX NUMBER. OPERATOR • LOCATION-FAX NUMBER. BONDED STORAGE 	12 digits, numeric

Table 3.4-7: List of Items (Window Name: Bonded Storage Retrieval (Retrieval Result Window 1)) (4/4)

No.	Item Name	Level			Description	Item in File	Note
		1	2	3			
20	Telex Number <i>Nomor Telex</i>	✓			Telex number of Bonded Storage. (output)	<ul style="list-style-type: none"> TBB-TELEX NUMBER. OPERATOR LOCATION-TELEX NUMBER. BONDED STORAGE 	20 char, alpha-numeric
21	E-Mail <i>E-Mail</i>	✓			E-mail address of Bonded Storage. (output)	<ul style="list-style-type: none"> TBB-EMAIL ADDRESS. OPERATOR LOCATION-EMAIL ADDRESS. BONDED STORAGE 	50 char, alpha-numeric
22	Dimension <i>Luas</i>	✓			Dimension or size of Bonded Storage in square meters. (output)	DIMENSION. BONDED STORAGE	20 digits (16.4), decimal
23	Bonded Type <i>Tipe Berikat</i>	✓			The type of Bonded Storage such as: <ul style="list-style-type: none"> Bonded Zone Bonded Warehouse (output)	WAREHOUSE TYPE. BONDED STORAGE	1 char, alpha-numeric
24	Product Type <i>Jenis Hasil Produksi</i>	✓			Product result from Bonded Zone. (output)	PRODUCT TYPE. BONDED STORAGE	50 char, alpha-numeric
25	NPPBKC <i>NPPBKC</i>	✓			NPPBKC. (output)	NPPBKC. BONDED STORAGE	10 char, alpha-numeric
26	Authorizing Customs Service <i>Kantor Pelayanan Bea Cukai yang Mengawasi</i>	✓			Name of DJBC office. (output)	DJBCoffc_of. BONDED STORAGE	40 char, alpha-numeric

Bonded Storage Retrieval

28-JUN-99 Page 1 of 1

Number of PKB or PGB Decree: _____

Owner information

Name: _____

Street: _____

City: _____

Province: _____

Postal Code: _____

Phone Number: _____

Fax Number: _____

Telex Number: _____

E-Mail: _____

Number of Decree: _____

Date of Decree: _____ (DDMMYY)

NPWP of Location: _____

Location Street: _____

Location City: _____

Province: _____

Postal Code: _____

Phone Number: _____

Fax Number: _____

Telex Number: _____

E-Mail: _____

Dimension: _____ (sqm)

Bonded Type: Bonded Zone Bonded Warehouse

Product Type: _____

NPPBKC: _____

Authorizing Customs Service: _____

Ok Cancel

Figure 3.4-5: Window Layout for Bonded Storage Retrieval (Retrieval Result Window 2)

Table 3.4-8: List of Items (Window Name: Bonded Storage Retrieval (Retrieval Result Window 2)) (1/3)

No.	Item Name	Level			Description	Item in File	Note
		1	2	3			
1	Number of PKB or PGB Decree <i>Nomor Skep PKB atau PGB</i>	✓			Decree number of PKB or PGB. (output)	managed_by. BONDED STORAGE	50 char, alpha- numeric
2	Owner Information <i>Informasi Pemilik</i>	✓			Grouping title for owner information. (no repeat)	—	—
3	Name <i>Nama</i>		✓		Name of the owner. (output)	OWNER-NAME. BONDED STORAGE	40 char, alpha- numeric
4	Street <i>Alamat</i>		✓		Name of street of the owner. (output)	OWNER-STREET. BONDED STORAGE	100 char, alpha- numeric
5	City <i>Kota</i>		✓		Name of city of the owner. (output)	OWNER-CITY. BONDED STORAGE	30 char, alpha- numeric
6	Province <i>Propinsi</i>		✓		Name of province of the owner. (output)	owprov_of. BONDED STORAGE	20 char, alpha- numeric
7	Postal Code <i>Kode Pos</i>		✓		Postal code of the owner. (output)	OWNER-POSTAL CODE.BONDED STORAGE	5 digits, numeric
8	Phone Number <i>Nomor Telepon</i>		✓		Phone number of the owner. (output)	OWNER-PHONE NUMBER. BONDED STORAGE	12 digits, numeric
9	Fax Number <i>Nomor Fax</i>		✓		Fax number of the owner. (output)	OWNER-FAX NUMBER. BONDED STORAGE	12 digits, numeric
10	Telex Number <i>Nomor Telex</i>		✓		Telex number of the owner. (output)	OWNER TELEX NUMBER. BONDED STORAGE	20 char, alpha- numeric
11	E-Mail <i>E-Mail</i>		✓		E-mail address of the owner. (output)	OWNER EMAIL.BONDED STORAGE	50 char, alpha- numeric
12	Number of Decree <i>Nomor Skep</i>	✓			Number of Decree of Bonded Storage. (output)	NUMBER OF DECREE.BONDED STORAGE	50 char, alpha- numeric

Table 3.4-8: List of Items (Window Name: Bonded Storage Retrieval (Retrieval Result Window 2)) (2/3)

No.	Item Name	Level			Description	Item in File	Note
		1	2	3			
13	Date of Decree (DDMMYYYY) <i>Tanggal Skep (DDMMYYYY)</i>	✓			Date of Decree of Bonded Storage. (output)	DATE OF DECREE.BONDED STORAGE	8 digits, date
14	NPWP of Location <i>NPWP Lokasi</i>	✓			Tax Payer Code Number of location of Bonded Storage. (output)	NPWP.BONDED STORAGE	12 char, alpha-numeric
15	Location Street <i>Alamat</i>	✓			Name of street or location of Bonded Storage. (output)	LOCATION-STREET.BONDED STORAGE	100 char, alpha-numeric
16	Location City <i>Kota</i>	✓			Name of city of Bonded Storage. (output)	LOCATION-CITY.BONDED STORAGE	30 char, alpha-numeric
17	Province <i>Propinsi</i>	✓			Name of province of Bonded Storage. (output)	locprov_of.BONDED STORAGE	20 char, alpha-numeric
18	Postal Code <i>Kode Pos</i>	✓			Postal Code of Bonded Storage. (output)	LOCATION-POSTAL CODE.BONDED STORAGE	5 digits, numeric
19	Phone Number <i>Nomor Telepon</i>	✓			Phone number of Bonded Storage. (output)	LOCATION-PHONE NUMBER.BONDED STORAGE	12 digits, numeric
20	Fax Number <i>Nomor Fax</i>	✓			Fax number of Bonded Storage. (output)	LOCATION-FAX NUMBER.BONDED STORAGE	12 digits, numeric
21	Telex Number <i>Nomor Telex</i>	✓			Telex number of Bonded Storage. (output)	LOCATION-TELEX NUMBER.BONDED STORAGE	20 char, alpha-numeric
22	E-Mail <i>E-Mail</i>	✓			E-mail address of Bonded Storage. (output)	LOCATION-EMAIL ADDRESS.BONDED STORAGE	50 char, alpha-numeric
23	Dimension <i>Luas</i>	✓			Dimension or size of Bonded Storage in square meters. (output)	DIMENSION.BONDED STORAGE	20 digits (16.4), decimal
24	Bonded Type <i>Tipe Berikat</i>	✓			The type of Bonded Storage such as: <ul style="list-style-type: none"> • Bonded Zone • Bonded Warehouse (output)	WAREHOUSE TYPE.BONDED STORAGE	1 char, alpha-numeric

Table 3.4-8: List of Items (Window Name: Bonded Storage Retrieval (Retrieval Result Window 2)) (3/3)

No.	Item Name	Level			Description	Item in File	Note
		1	2	3			
25	Product Type <i>Jenis Hasil Produksi</i>	✓			Product result from Bonded Zone. (output)	PRODUCT TYPE. BONDED STORAGE	50 char, alpha- numeric
26	NPPBKC <i>NPPBKC</i>	✓			NPPBKC. (output)	NPPBKC.BONDED STORAGE	10 char, alpha- numeric
27	Authorizing Customs Service <i>Kantor Pelayanan Bea Cukai yang Mengawasi</i>	✓			Name of DJBC office. (output)	DJBCoffc_of. BONDED STORAGE	40 char, alpha- numeric

Banded Storage Retrieval

Retrieve Result Window 3

Page 1 of 1

Number of Decree: (DDMMYY)

Date of Decree: (DDMMYY)

Decree Status: Revoke Valid Expired

Number of Last Decree: (DDMMYY)

Date of Last Decree: (DDMMYY)

Location of Duty Free Shop

NPWP of Location:

Type of DFS: Down Town Departure Arrival

Street:

City:

Province:

Postal Code:

Phone Number:

Fax Number:

Telex Number:

E-Mail:

Dimension: (msec)

Length: (m)

Width: (m)

Ok Cancel

Figure 3.4-6: Window Layout for Bonded Storage Retrieval (Retrieval Result Window 3)

Table 3.4-9: List of Items (Window Name: Bonded Storage Retrieval (Retrieval Result Window 3)) (1/2)

No.	Item Name	Level			Description	Item in File	Note
		1	2	3			
1	Number of Decree <i>Nomor Skep</i>	✓			Number of decree of Duty Free Shop. (output)	NUMBER OF DECREE LETTER.DFS	50 char, alpha-numeric
2	Decree Status <i>Status Skep</i>	✓			Status is: • Revoke • Valid • Expired (output)	DECREE STATUS.DFS	1 char, alpha-numeric
3	Number of Last Decree <i>Nomor Skep lama</i>	✓			Number of Last Decree. (output)	previous_of.DFS	50 char, alpha-numeric
4	Date of Decree (DD MMYYYY) <i>Tanggal Skep (DDM MYYYY)</i>	✓			Date of Decree. (output)	DATE OF DECREE LETTER.DFS	8 digits, date
5	Date of Last Decree (DD MMYYYY) <i>Tanggal Skep lama (DDMMYY YY)</i>	✓			Link to Date of Last Decree that has relationship. (output)	DATE OF DECREE LETTER.DFS	8 digits, date
6	Location of Duty Free Shop <i>Lokasi Toko Bebas Bea</i>	✓			Grouping title of location of Duty Free Shop. (repeat)	—	—
7	NPWP of Location <i>NPWP Lokasi</i>		✓		Tax Payer Code Number for location of Duty Free Shop. (no output)	NPWP.LOCATION OF DECREE	12 cahr, alpha-numeric
8	Type of DFS <i>Tipe TBB</i>		✓		Type of DFS are: • Down Town • Departure • Arrival (output)	TYPE OF DFS.LOCATION DFS	1 char, alpha-numeric
9	Street <i>Alamat</i>		✓		Name of street or location of Duty Free Shop. (output)	STREET.LOCATION DFS	100 char, alpha-numeric
10	City <i>Kota</i>		✓		Name of city of location of Duty Free Shop. (output)	CITY.LOCATION DFS	30 char, alpha-numeric

Table 3.4-9: List of Items (Window Name: Bonded Storage Retrieval (Retrieval Result Window 3)) (2/2)

No.	Item Name	Level			Description	Item in File	Note
		1	2	3			
11	Province <i>Propinsi</i>		✓		Name of province of Duty Free Shop. (output)	province_of. LOCATION DFS	20 char, alpha- numeric
12	Postal Code <i>Kode Pos</i>		✓		Postal Code of Duty Free Shop. (output)	POSTAL CODE. LOCATION DFS	5 digits, numeric
13	Phone Number <i>Nomor Telepon</i>		✓		Phone number of Duty Free Shop. (output)	PHONE NUMBER. LOCATION DFS	12 digits, numeric
14	Fax Number <i>Nomor Fax</i>		✓		Fax number of Duty Free Shop. (output)	FAX NUMBER. LOCATION DFS	12 digits, numeric
15	Telex Number <i>Nomor Telex</i>		✓		Telex number of Duty Free Shop. (output)	TELEX NUMBER. LOCATION DFS	20 char, alpha- numeric
16	E-Mail <i>E-Mail</i>		✓		E-mail address of Duty Free Shop. (output)	EMAIL ADDRESS. LOCATION DFS	50 char, alpha- numeric
17	Dimension <i>Luas</i>		✓		Dimension of Duty Free Shop in square meters. (output)	DIMENSION. LOCATION DFS	20 digits (16.4), decimal
18	Length <i>Panjang</i>		✓		Length of Duty Free Shop in meter. (output)	LONG.LOCATION DFS	20 digits (16.4), decimal
19	Width <i>Lebar</i>		✓		Width of Duty Free Shop in meter. (output)	WIDE.LOCATION DFS	20 digits (16.4), decimal

