

JAPAN INTERNATIONAL COOPERATION AGENCY (JICA)  
DIRECTORATE GENERAL OF CUSTOMS & EXCISE  
MINISTRY OF FINANCE  
REPUBLIC OF INDONESIA

**THE STUDY  
OF  
IMPROVEMENT OF CUSTOMS SYSTEM  
IN  
INDONESIA  
FINAL REPORT**

**VOLUME III CIS DETAIL APPLICATION  
DESIGN (1)**

**MARCH, 1999**

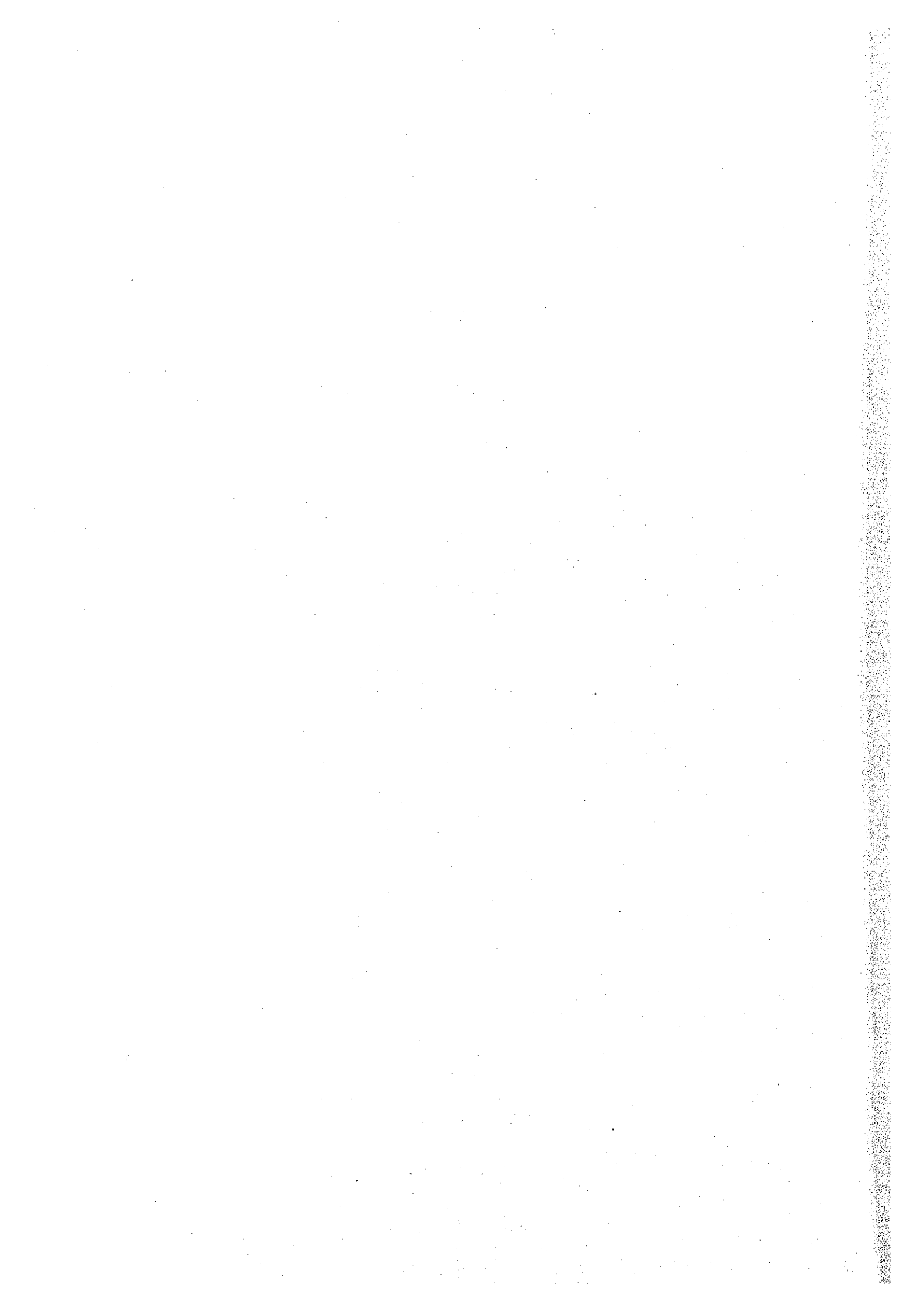
**NTT DATA CORPORATION**

JICA LIBRARY



J 1149295 (6)

SSF
CR (2)
99-042



JAPAN INTERNATIONAL COOPERATION AGENCY (JICA)  
DIRECTORATE GENERAL OF CUSTOMS & EXCISE  
MINISTRY OF FINANCE  
REPUBLIC OF INDONESIA

**THE STUDY  
OF  
IMPROVEMENT OF CUSTOMS SYSTEM  
IN  
INDONESIA  
FINAL REPORT**

**VOLUME III CIS DETAIL APPLICATION  
DESIGN (1)**

**MARCH, 1999**

**NTT DATA CORPORATION**



1149295 [6]

Exchange Rate of Currency

November 30<sup>th</sup>, 1998

US\$1=Rp.7,375

# Final Report

## Table of Contents

### Volume III CIS Detail Application Design

<b>CHAPTER 1</b>	<b>Revenue Planning Job Group .....</b>	<b>1-1</b>
<b>CHAPTER 2</b>	<b>Customs Technique Job Group .....</b>	<b>2-1</b>
	2.1 Temporary Admission Registration	2-1
	2.2 Temporary Admission Update	2-17
	2.3 Temporary Admission Deletion	2-35
	2.4 Temporary Admission Retrieval	2-50
<b>CHAPTER 3</b>	<b>Customs Facilitation Job Group .....</b>	<b>3-1</b>
	3.1 Bonded Storage Registration	3-1
	3.2 Bonded Storage Update	3-36
	3.3 Bonded Storage Deletion	3-72
	3.4 Bonded Storage Retrieval	3-102
<b>CHAPTER 4</b>	<b>Excise Job Group .....</b>	<b>4-1</b>
	4.1 Excise Company Registration	4-1
	4.2 Excise Company Update	4-17
	4.3 Excise Company Deletion	4-96
	4.4 Excise Company Retrieval	4-167
<b>CHAPTER 5</b>	<b>Prevention and Investigation Job Group .....</b>	<b>5-1</b>
	5.1 NI/NHI Registration	5-1
	5.2 NI/NHI Update	5-32
	5.3 NI/NHI Deletion	5-56
	5.4 NI/NHI Retrieval	5-78
	5.5 Company Violation Registration	5-106
	5.6 Company Violation Update	5-140
	5.7 Company Violation Deletion	5-175
	5.8 Company Violation Retrieval	5-207
	5.9 Past Record and Blocked Importer Registration	5-241
	5.10 Past Record and Blocked Importer Update	5-253
	5.11 Past Record and Blocked Importer Deletion	5-265
	5.12 Past Record and Blocked Importer Retrieval	5-275

5.13 Company Profile Registration	5-294
5.14 Company Profile Update	5-319
5.15 Company Profile Deletion	5-344
5.16 Company Profile Retrieval	5-366
5.17 Inter Island Transportation Registration	5-415
5.18 Inter Island Transportation Update	5-435
5.19 Inter Island Transportation Deletion	5-453
5.20 Inter Island Transportation Retrieval	5-469
5.21 Physical Examination Result Registration	5-491
5.22 Physical Examination Result Update	5-516
5.23 Physical Examination Result Deletion	5-541
5.24 Physical Examination Result Retrieval	5-563
5.25 Personal Violation Registration	5-604
5.26 Personal Violation Update	5-625
5.27 Personal Violation Deletion	5-650
5.28 Personal Violation Retrieval	5-672

**CHAPTER 6 Verification and Audit Job Group ..... 6-1**

6.1 PIB Verification I Result Registration	6-1
6.2 PIB Verification I Result Update	6-26
6.3 PIB Verification I Result Deletion	6-55
6.4 PIB Verification I Result Retrieval	6-75
6.5 PIB Verification II Result Registration	6-95
6.6 PIB Verification II Result Update	6-109
6.7 PIB Verification II Result Deletion	6-138
6.8 PIB Verification II Result Retrieval	6-154
6.9 PIB Verification Result Quarterly Report A1 Retrieval	6-184
6.10 Audit Result Registration	6-199
6.11 Audit Result Update	6-210
6.12 Audit Result Deletion	6-229
6.13 Audit Result Retrieval	6-246

**CHAPTER 7 Client Common Job Group ..... 7-1**

7.1 User ID, Password Check	7-1
7.2 Job Menu	7-6
7.3 Change Password	7-11
7.4 PIB Retrieval	7-16
7.5 PEB Retrieval	7-48

7.6 Company/Person Summary Retrieval 7-74

<b>APPENDIX A</b>	<b>How to View the Application Design Documents for System Design Phase II .....</b>	<b>A-1</b>
	A.1 Overview	A-2
	A.2 How to View the Documents	A-3
<b>APPENDIX B</b>	<b>Rules for Partial Strings Match.....</b>	<b>B-1</b>





# CHAPTER 1 Revenue Planning Job Group

As previously described in Volume II 2.1.1.4, Window/Report Layout was not prepared for processes in Revenue Planning Job Group, because they are decided to be made with a EUC tool.

Following documents are List of Items for Window/Report. Standard describing style described in Volume III Appendix A is not applied to these documents. Items with brackets in Item in File do not exist in ERD because they are used by the view function only.

## Import Based on Country of Origin

List of Items (Retrieval Window) ..... Table 1-1

List of Items (Report)..... Table 1-2

## Import Based on Port of Discharge

List of Items (Retrieval Window) ..... Table 1-3

List of Items (Report)..... Table 1-4

## Import Based on Chapter of HS

List of Items (Retrieval Window) ..... Table 1-5

List of Items (Report)..... Table 1-6

## Import Based on Tariff Headings and Country of Origin

List of Items (Retrieval Window) ..... Table 1-7

List of Items (Report)..... Table 1-8

## Import Based on Sector

List of Items (Retrieval Window) ..... Table 1-9

List of Items (Report)..... Table 1-10

## Import Based on Chapter of HS for Private/Government

List of Items (Retrieval Window) ..... Table 1-11

List of Items (Report)..... Table 1-12

## Hundred Biggest Importers (Private) Based on CIF Value

List of Items (Retrieval Window) ..... Table 1-13

List of Items (Report)..... Table 1-14

## Import Based on Group (1 to 5)

List of Items (Retrieval Window) ..... Table 1-15

List of Items (Report)..... Table 1-16

## Twenty Biggest Exporters Countries Based on Importation

List of Items (Retrieval Window) ..... Table 1-17

List of Items (Report)..... Table 1-18

<b>Ten Biggest Banks for Import Duty Payment Based on Importation</b>	
List of Items (Retrieval Window) .....	Table 1-19
List of Items (Report).....	Table 1-20
<b>Export Based on Country of Destination</b>	
List of Items (Retrieval Window) .....	Table 1-21
List of Items (Report).....	Table 1-22
<b>Export Based on Port of Loading</b>	
List of Items (Retrieval Window) .....	Table 1-23
List of Items (Report).....	Table 1-24
<b>Export Based on Chapter of HS</b>	
List of Items (Retrieval Window) .....	Table 1-25
List of Items (Report).....	Table 1-26
<b>Export Based on Tariff Headings and Country of Destination</b>	
List of Items (Retrieval Window) .....	Table 1-27
List of Items (Report).....	Table 1-28
<b>Export Based on Petroleum and Natural Gas</b>	
List of Items (Retrieval Window) .....	Table 1-29
List of Items (Report).....	Table 1-30
<b>Export Based on Primary Goods Non-Petroleum and Natural Gas</b>	
List of Items (Retrieval Window) .....	Table 1-31
List of Items (Report).....	Table 1-32
<b>Revenue on Foreign Exchange of Import</b>	
List of Items (Retrieval Window) .....	Table 1-33
List of Items (Report).....	Table 1-34
<b>Revenue on Import Duty and Excise for Importation</b>	
List of Items (Retrieval Window) .....	Table 1-35
List of Items (Report).....	Table 1-36
<b>Revenue on Import Tax</b>	
List of Items (Retrieval Window) .....	Table 1-37
List of Items (Report).....	Table 1-38
<b>Revenue on Tobacco Product Excise</b>	
List of Items (Retrieval Window) .....	Table 1-39
List of Items (Report).....	Table 1-40
<b>Revenue on Ethyl Alcohol and Alcoholic Beverage Excise</b>	
List of Items (Retrieval Window) .....	Table 1-41
List of Items (Report).....	Table 1-42

Revenue on Tobacco Production

List of Items (Retrieval Window) ..... Table 1-43

List of Items (Report)..... Table 1-44

Revenue on Ethyl Alcohol and Alcoholic Beverage Production

List of Items (Retrieval Window) ..... Table 1-45

List of Items (Report)..... Table 1-46

Revenue on Exportation

List of Items (Retrieval Window) ..... Table 1-47

List of Items (Report)..... Table 1-48

Common Items of Import

List of Items (Retrieval Window) ..... Table 1-49

List of Items (Report)..... Table 1-50

Common Items of Export

List of Items (Retrieval Window) ..... Table 1-51

List of Items (Report)..... Table 1-52

Common Items of Excise

List of Items (Retrieval Window) ..... Table 1-53

List of Items (Report)..... Table 1-54

ASEAN Import Report

List of Items (Retrieval Window) ..... Table 1-55

List of Items (Report)..... Table 1-56

ASEAN Export Report

List of Items (Retrieval Window) ..... Table 1-57

List of Items (Report)..... Table 1-58

Facility Report

List of Items (Retrieval Window) ..... Table 1-59

List of Items (Report)..... Table 1-60

**Table 1-1: List of Items**  
**(Window Name: Import Based on Country of Origin (DB Accessing Tool Window))**

No.	Item Name	Level			Description	Item in File	Note
		1	2	3			
1	Date of PIB <i>Taggal PIB</i>	✓			Date or period of payment for SSBC of certain PIB (input, optional)	SSBC DATE. FSSBCS	—
2	KWBC <i>KWBC</i>	✓			Customs and Excise Regional Office (input, optional)	CODE.DJBC OFFICE	—
3	KPBC <i>KPBC</i>	✓			Customs and Excise Service Office (input, optional)	CODE.DJBC OFFICE	—
4	Country of Origin <i>Negara Asal</i>	✓			Country of Origin (input, optional)	origctry_of.PIB DETAIL	—

**Table 1-2: List of Items (Report Name: Import Based on Country of Origin)**

No.	Item Name	Level			Description	Item in File	Note
		1	2	3			
1	KWBC <i>KWBC</i>	✓			Customs and Excise Regional Office	CODE.DJBC OFFICE	---
2	KPBC <i>KPBC</i>	✓			Customs and Excise Service Office	CODE.DJBC OFFICE	---
3	Country of Origin <i>Negara Asal</i>	✓			Country of Origin	origctry_of.PIB DETAIL	---
4	CIF Value <i>Nilai Pabean</i>		✓		Sum of CIF Value (Customs Value) grouped by Country of Origin ([Unit Price]×[Quantity of Good]×[Rate])	CALCULATED BY: • UNIT PRICE. PIB DETAIL • QUANTITY OF GOODS.PIB DETAIL • (RATE. EXCHANGE RATE)	(In thousand USD)
5	Number of importation <i>Jumlah Importasi</i>		✓		Sum of importation grouped by Country of Origin	---	---

**Table 1-3: List of Items**  
**(Window Name: Import Based on Port of Discharge (DB Accessing Tool Window))**

No.	Item Name	Level			Description	Item in File	Note
		1	2	3			
1	Date of PIB <i>Tanggal PIB</i>	✓			Date or period of payment for SSBC of certain PIB (input, optional)	SSBC DATE. FSSBCS	—
2	KWBC <i>KWBC</i>	✓			Customs and Excise Regional Office (input, optional)	CODE.DJBC OFFICE	—
3	KPBC <i>KPBC</i>	✓			Customs and Excise Service Office (input, optional)	CODE.DJBC OFFICE	—
4	Port of Discharge <i>Pelabuhan Bongkar</i>	✓			Port of Discharge (input, optional)	discport_of.PIB HEADER	—

Table 1-4: List of Items (Report Name: Import Based on Port of Discharge)

No.	Item Name	Level			Description	Item in File	Note
		1	2	3			
1	KWBC <i>KWBC</i>	✓			Customs and Excise Regional Office	CODE.DJBC OFFICE	—
2	KPBC <i>KPBC</i>	✓			Customs and Excise Service Office	CODE.DJBC OFFICE	—
3	Port of Discharge <i>Pelabuhan Bongkar</i>	✓			Port of Discharge	discport_of.PIB HEADER	—
4	CIF Value <i>Nilai Pabean</i>		✓		Sum of CIF Value (Customs Value) grouped by Port of Discharge ([CIF Value]×[Rate])	CALCULATED BY: • CIF VALUE.PIB HEADER • (RATE. EXCHANGE RATE)	(In thousand USD)
5	Number of Importation <i>Jumlah Importasi</i>		✓		Sum of importation grouped by Port of Discharge	—	—

**Table 1-5: List of Items**  
**(Window Name: Import Based on Chapter of HS (DB Accessing Tool Window))**

No.	Item Name	Level			Description	Item in File	Note
		1	2	3			
1	Date of PIB <i>Tanggal PIB</i>	✓			Date or period of payment for SSBC of certain PIB (input,optional)	SSBC DATE. FSSBCS	—
2	KWBC <i>KWBC</i>	✓			Customs and Excise Regional Office (input,optional)	CODE.DJBC OFFICE	—
3	KPBC <i>KPBC</i>	✓			Customs and Excise Service Office (input,optional)	CODE.DJBC OFFICE	—
4	Chapter of HS <i>Bab HS</i>	✓			Chapter of HS (input,optional)	TARIFF CODE. PIB DETAIL	The first 2 digits of HS Code



**Table 1-6: List of Items (Report Name: Import Based on Part/Chapter of HS)**

No.	Item Name	Level			Description	Item in File	Note
		1	2	3			
1	KWBC <i>KWBC</i>	✓			Customs and Excise Regional Office	CODE.DJBC OFFICE	—
2	KPBC <i>KPBC</i>	✓			Customs and Excise Service Office	CODE.DJBC OFFICE	—
3	Chapter of HS <i>Bab HS</i>	✓			Part/Chapter of HS	TARIFF CODE. PIB DETAIL	The first 2 digits of HS Code
4	CIF Value <i>Nilai Pabean</i>		✓		Sum of CIF Value (Customs Value) grouped by Chapter of HS ([Unit Price]×[Quantity of Goods]×[Rate])	CALCULATED BY: • UNIT PRICE. PIB DETAIL • QUANTITY OF GOODS. PIB DETAIL • (RATE. EXCHANGE RATE)	(In thousand USD)

**Table 1-7: List of Items (Window Name: Import Based on Tariff Headings and Country of Origin (DB Accessing Tool Window))**

No.	Item Name	Level			Description	Item in File	Note
		1	2	3			
1	Date of PIB <i>Tanggal PIB</i>	✓			Date or period of payment for SSBC of certain PIB (input,optional)	SSBC DATE. FSSBCS	—
2	KWBC <i>KWBC</i>	✓			Customs and Excise Regional Office (input,optional)	CODE.DJBC OFFICE	—
3	KPBC <i>KPBC</i>	✓			Customs and Excise Service Office (input,optional)	CODE.DJBC OFFICE	—
4	Tariff Headings <i>Pos Tarif</i>	✓			Tariff Headings (input,optional)	TARIFF CODE. PIB DETAIL	—
5	Country of Origin. <i>Negara Asal</i>	✓			Country of Origin (input,optional)	origctry_of.PIB DETAIL	—

**Table 1-8: List of Items**  
**(Report Name: Import Based on Tariff Headings and Country of Origin)**

No.	Item Name	Level			Description	Item in File	Note
		1	2	3			
1	KWBC <i>KWBC</i>	✓			Customs and Excise Regional Office	CODE.DJBC OFFICE	—
2	KPBC <i>KPBC</i>	✓			Customs and Excise Service Office	CODE.DJBC OFFICE	—
3	Tariff Headings <i>Pos Tarif</i>	✓			Tariff Headings	TARIFF CODE. PIB DETAIL	—
4	Country of Origin <i>Negara Asal</i>		✓		Country of Origin	origetry_of.PIB DETAIL	—
5	Number Unit <i>Jumlah Unit</i>			✓	Sum of unit grouped by Tariff Headings, Country of Origin	QUANTITY OF GOODS.PIB DETAIL	—
5	Unit <i>Unit</i>			✓	Unit of goods	goodunit_of.PIB DETAIL	—
6	CIF Value <i>Nilai Pabean</i>			✓	Sum of CIF Value (Customs Value) grouped by Tariff Headings, Country of Origin ([Unit Price]×[Quantity of Goods]×[Rate])	CALCULATED BY: <ul style="list-style-type: none"> <li>• UNIT PRICE. PIB DETAIL</li> <li>• QUANTITY OF GOODS.PIB DETAIL</li> <li>• (RATE. EXCHANGE RATE)</li> </ul>	(In thousand USD)

**Table 1-9: List of Items**  
**(Window Name: Import Based on Sector (DB Accessing Tool Window))**

No.	Item Name	Level			Description	Item in File	Note
		1	2	3			
1	Date of PIB <i>Tanggal PIB</i>	✓			Date or period of payment for SSBC of certain PIB (input,optional)	SSBC DATE. FSSBCS	—
2	KWBC <i>KWBC</i>	✓			Customs and Excise Regional Office (input,optional)	CODE.DJBC OFFICE	—
3	KPBC <i>KPBC</i>	✓			Customs and Excise Service Office (input,optional)	CODE.DJBC OFFICE	—
4	Facility <i>Fasilitas</i>	✓			SKEP Facility (input,optional)	facitype_of. FACILITATION	—

Table 1-10: List of Items (Report Name: Import Based on Sector) (1/2)

No.	Item Name	Level			Description	Item in File	Note
		1	2	3			
1	KWBC <i>KWBC</i>	✓			Customs and Excise Regional Office	CODE.DJBC OFFICE	—
2	KPBC <i>KPBC</i>	✓			Customs and Excise Service Office	CODE.DJBC OFFICE	—
3	Facility <i>Fasilitas</i>	✓			Facility (CEPT, PMA, PMDN, Others)	facitype_of. PIB DETAIL	—
4	Government Sector <i>Sektor Pemerintah</i>		✓		Grouping title for Government Sector Group	—	—
5	Petroleum and Gas <i>Migas</i>			✓	Sum of CIF Value (Customs Value) of Petroleum and Gas grouped by facility ([Unit Price]×[Quantity of Goods]×[Rate])	CALCULATED BY: • UNIT PRICE. PIB DETAIL • QUANTITY OF GOODS. PIB DETAIL • (RATE. EXCHANGE RATE)	(In thousand USD)
6	Government <i>Pemerintah</i>			✓	Sum of CIF Value (Customs Value) of Government grouped by facility ([Unit Price]×[Quantity of Goods]×[Rate])	CALCULATED BY: • UNIT PRICE. PIB DETAIL • QUANTITY OF GOODS. PIB DETAIL • (RATE. EXCHANGE RATE)	(In thousand USD)
7	BUMN <i>BUMN</i>			✓	Sum of CIF Value (Customs value) of State-own company grouped by facility ([Unit Price]×[Quantity of Goods]×[Rate])	CALCULATED BY: • UNIT PRICE. PIB DETAIL • QUANTITY OF GOODS. PIB DETAIL • (RATE. EXCHANGE RATE)	(In thousand USD)
8	Private Sector <i>Sektor Swasta</i>		✓		Grouping title for Private Sector Group	—	—

Table 1-10: List of Items (Report Name: Import Based on Sector) (2/2)

No.	Item Name	Level			Description	Item in File	Note
		1	2	3			
9	PMA <i>PMA</i>			✓	Sum of CIF Value (Customs Value) of Foreign investment grouped by facility ([Unit Price]×[Quantity of Goods]×[Rate])	CALCULATED BY: • UNIT PRICE. PIB DETAIL • QUANTITY OF GOODS. PIB DETAIL • (RATE. EXCHANGE RATE)	(In thousand USD)
10	PMDN <i>PMDN</i>			✓	Sum of CIF Value (Customs Value) of Domestic investment grouped by facility ([Unit Price]×[Quantity of Goods]×[Rate])	CALCULATED BY: • UNIT PRICE. PIB DETAIL • QUANTITY OF GOODS. PIB DETAIL • (RATE. EXCHANGE RATE)	(In thousand USD)
11	Private Company <i>Perusahaan Swasta</i>			✓	Sum of CIF Value (Customs Value) of Private company grouped by facility ([Unit Price]×[Quantity of Goods]×[Rate])	CALCULATED BY: • UNIT PRICE. PIB DETAIL • QUANTITY OF GOODS. PIB DETAIL • (RATE. EXCHANGE RATE)	(In thousand USD)

**Table 1-11: List of Items (Window Name: Import Based on Chapter of HS for Private/Government (DB Accessing Tool Window))**

No.	Item Name	Level			Description	Item in File	Note
		1	2	3			
1	Date of PIB <i>Tanggal PIB</i>	✓			Date or period of payment for SSBC of certain PIB (input,optional)	SSBC DATE. FSSBCS	—
2	KWBC <i>KWBC</i>	✓			Customs and Excise Regional Office (input,optional)	CODE.DJBC OFFICE	—
3	KPBC <i>KPBC</i>	✓			Customs and Excise Service Office (input,optional)	CODE.DJBC OFFICE	—
4	Chapter of HS <i>Bab HS</i>	✓			Chapter of HS (input,optional)	TARIFF CODE. PIB DETAIL	The first 2 digits of HS Code

**Table 1-12: List of Items**  
**(Report Name: Import Based on Chapter of HS for Private/Government)**

No.	Item Name	Level			Description	Item in File	Note
		1	2	3			
1	KWBC <i>KWBC</i>	✓			Customs and Excise Regional Office	CODE.DJBC OFFICE	—
2	KPBC <i>KPBC</i>	✓			Customs and Excise Service Office	CODE.DJBC OFFICE	—
3	Chapter of HS <i>Bab HS</i>	✓			Chapter of HS	TARIFF CODE. PIB DETAIL	The first 2 digits of HS Code
4	CIF Value (Private) <i>Nilai Pabean (Swasta)</i>		✓		Sum of CIF Value (Customs Value) for private company grouped by Chapter of HS ([Unit Price]×[Quantity of Good]×[Rate])	CALCULATED BY: • UNIT PRICE. PIB DETAIL • QUANTITY OF GOODS. PIB DETAIL • (RATE. EXCHANGE RATE)	(In thousand USD)
5	CIF Value (Government) <i>Nilai Pabean (Pemerintah)</i>		✓		Sum of CIF Value (Customs Value) for government grouped by Chapter of HS ([Unit Price]×[Quantity of Good]×[Rate])	CALCULATED BY: • UNIT PRICE. PIB DETAIL • QUANTITY OF GOODS. PIB DETAIL • (RATE. EXCHANGE RATE)	(In thousand USD)



**Table 1-13: List of Items(Window Name: Hundred Biggest Importers (Private)  
Based on Importation (DB Accessing Tool Window))**

No.	Item Name	Level			Description	Item in File	Note
		1	2	3			
1	Date of PIB <i>Tanggal PIB</i>	✓			Date or period of payment for SSBC of certain PIB (input,optional)	SSBC DATE. FSSBCS	---
2	KWBC <i>KWBC</i>	✓			Customs and Excise Regional Office (input,optional)	CODE.DJBC OFFICE	---
3	KPBC <i>KPBC</i>	✓			Customs and Excise Service Office (input,optional)	CODE.DJBC OFFICE	---

**Table 1-14: List of Items**  
**(Report Name: Hundred Biggest Importers (Private) Based on Importation)**

No.	Item Name	Level			Description	Item in File	Note
		1	2	3			
1	KWBC <i>KWBC</i>	✓			Customs and Excise Regional Office	CODE.DJBC OFFICE	—
2	KPBC <i>KPBC</i>	✓			Customs and Excise Service Office	CODE.DJBC OFFICE	—
3	Importer <i>Importir</i>	✓			Name of Importer	NAME.BASIC INFORMATION	—
4	NPWP <i>NPWP</i>	✓			Tax Payer Code Number	ID NUMBER. BASIC INFORMATION	—
5	CIF Value <i>Nilai Pabean</i>		✓		Sum of CIF Value (Customs Value) grouped by NPWP (([CIF Value]×[Rate])	CALCULATED BY: • CIF VALUE. PIB HEADER • (RATE. EXCHANGE RATE)	(In thousand USD)
6	Number of Importation <i>Jumlah importasi</i>		✓		Sum of importation grouped by NPWP	—	—
7	Import Duty <i>Bea Masuk</i>		✓		Sum of Import Duty grouped by NPWP	IMPORT DUTY. PIB DETAIL	(In milion Rupiah)
8	Tax <i>Pajak</i>		✓		Sum of tax grouped by NPWP	INCOME TAX. PIB DETAIL	(In million Rupiah)

**Table 1-15: List of Items**  
**(Window Name: Import Based on Group (1 to 5)(DB Accessing Tool Window))**

No.	Item Name	Level			Description	Item in File	Note
		1	2	3			
1	Date of PIB <i>Tanggal PIB</i>	✓			Date or period of payment for SSBC of certain PIB (input,optional)	SSBC DATE. FSSBCS	—
2	KWBC <i>KWBC</i>	✓			Customs and Excise Regional Office (input,optional)	CODE.DJBC OFFICE	—
3	KPBC <i>KPBC</i>	✓			Customs and Excise Service Office (input,optional)	CODE.DJBC OFFICE	—

Table 1-16: List of Items (Report Name: Import Based on Group) (1/2)

No.	Item Name	Level			Description	Item in File	Note
		1	2	3			
1	KWBC <i>KWBC</i>	✓			Customs and Excise Regional Office	CODE.DJBC OFFICE	—
2	KPBC <i>KPBC</i>	✓			Customs and Excise Service Office	CODE.DJBC OFFICE	—
3	Group <i>Group</i>	✓			Group based on Chapter of Tariff Headings	TARIFF CODE. PIB DETAIL	—
4	Group 1 <i>Group 1</i>		✓		Sum of CIF Value of Group 1 (Chapter 1~24) ([Unit Price]×[Quantity of Good]×[Rate])	CALCULATED BY: • UNIT PRICE. PIB DETAIL • QUANTITY OF GOODS. PIB DETAIL • (RATE. EXCHANGE RATE)	(In thousand USD)
5	Group 2 <i>Group 2</i>		✓		Sum of CIF Value of Group 2 (Chapter 28~40) ([Unit Price]×[Quantity of Good]×[Rate])	CALCULATED BY: • UNIT PRICE. PIB DETAIL • QUANTITY OF GOODS. PIB DETAIL • (RATE. EXCHANGE RATE)	(In thousand USD)
6	Group 3 <i>Group 3</i>		✓		Sum of CIF Value of Group 3 (Chapter 41~70, 90~97) ([Unit Price]×[Quantity of Good]×[Rate])	CALCULATED BY: • UNIT PRICE. PIB DETAIL • QUANTITY OF GOODS. PIB DETAIL • (RATE. EXCHANGE RATE)	(In thousand USD)
7	Group 4 <i>Group 4</i>		✓		Sum of CIF Value of Group 4 (Chapter 84~89) ([Unit Price]×[Quantity of Good]×[Rate])	CALCULATED BY: • UNIT PRICE. PIB DETAIL • QUANTITY OF GOODS. PIB DETAIL • (RATE. EXCHANGE RATE)	(In thousand USD)

Table 1-16: List of Items (Report Name: Import Based on Group) (2/2)

No.	Item Name	Level			Description	Item in File	Note
		1	2	3			
8	Group 5 Group 5		✓		Sum of CIF Value of Group 5 (Chapter 25~27, 71~83) ([Unit Price]×[Quantity of Good]×[Rate])	CALCULATED BY: • UNIT PRICE. PIB DETAIL • QUANTITY OF GOODS.PIB DETAIL • (RATE. EXCHANGE RATE)	(In thousand USD)

**Table 1-17: List of Items (Window Name: Twenty Biggest Exporters Countries Based on Importation (DB Accessing Tool Window))**

No.	Item Name	Level			Description	Item in File	Note
		1	2	3			
1	Date of PIB <i>Tanggal PIB</i>	✓			Date or period of payment for SSBC of certain PIB (input,optional)	SSBC DATE. FSSBCS	—
2	KWBC <i>KWBC</i>	✓			Customs and Excise Regional Office (input,optional)	CODE.DJBC OFFICE	—
3	KPBC <i>KPBC</i>	✓			Customs and Excise Service Office (input,optional)	CODE.DJBC OFFICE	—

**Table 1-18: List of Items**  
**(Report Name: Twenty Biggest Exporters Countries Based on Importation)**

nNo.	Item Name	Level			Description	Item in File	Note
		1	2	3			
1	KWBC <i>KWBC</i>	✓			Customs and Excise Regional Office	CODE.DJBC OFFICE	—
2	KPBC <i>KPBC</i>	✓			Customs and Excise Service Office	CODE.DJBC OFFICE	—
3	Country <i>Negara</i>	✓			Exporter's country	ctrycode_of. SUPPLIER	---
4	CIF Value <i>Nilai Pabean</i>		✓		Sum of CIF Value (Customs Value) grouped by country ((Unit Price)×[Quantity of Good]×[Rate])	CALCULATED BY: <ul style="list-style-type: none"> <li>• UNIT PRICE. PIB DETAIL</li> <li>• QUANTITY OF GOODS. PIB DETAIL</li> <li>• (RATE. EXCHANGE RATE)</li> </ul>	(In thousand USD)

**Table 1-19: List of Items (Window Name: Ten Biggest Banks for Import Duty Payment Based on Importation (DB Accessing Tool Window))**

No.	Item Name	Level			Description	Item in File	Note
		1	2	3			
1	Date of PIB <i>Tanggal PIB</i>	✓			Date or period of payment for SSBC of certain PIB (input,optional)	SSBC DATE. FSSBCS	—
2	KWBC <i>KWBC</i>	✓			Customs and Excise Regional Office (input,optional)	CODE.DJBC OFFICE	—
3	KPBC <i>KPBC</i>	✓			Customs and Excise Service Office (input,optional)	CODE.DJBC OFFICE	—



**Table 1-20: List of Items**  
**(Report Name: Ten Biggest Bank for Import Duty Payment Based on Importation)**

No.	Item Name	Level			Description	Item in File	Note
		1	2	3			
1	KWBC <i>KWBC</i>	✓			Customs and Excise Regional Office	CODE.DJBC OFFICE	—
2	KPBC <i>KPBC</i>	✓			Customs and Excise Service Office	CODE.DJBC OFFICE	—
3	Bank <i>Bank</i>	✓			Name of bank	SENDER BANK.FSSBCS	—
4	Import Duty <i>Bea Masuk</i>		✓		Sum of Import Duty grouped by bank	IMPORT DUTY. PIB DETAIL	(In million Rupiah)
5	Excise <i>Cukai</i>		✓		Sum Excise grouped by bank	EXCISE.PIB DETAIL	(In million Rupiah)

**Table 1-21: List of Items**  
**(Window Name: Export Based on Country of Destination (DB Accessing Tool Window))**

No.	Item Name	Level			Description	Item in File	Note
		1	2	3			
1	Date of PEB <i>Tanggal PEB</i>	✓			Date or period of payment for SSBC of certain PEB (input,optional)	SSBC DATE. FSSBCS	—
2	KWBC <i>KWBC</i>	✓			Customs and Excise Regional Office (input,optional)	CODE.DJBC OFFICE	—
3	KPBC <i>KPBC</i>	✓			Customs and Excise Service Office (input,optional)	CODE.DJBC OFFICE	—
4	Country of Destination <i>Negara Tujuan</i>	✓			Country of Destination (input,optional)	destctry_of.PEB HEADER	—

Table 1-22: List of Items (Report Name: Export Based on Country of Destination)

No.	Item Name	Level			Description	Item in File	Note
		1	2	3			
1	KWBC <i>KWBC</i>	✓			Customs and Excise Regional Office	CODE.DJBC OFFICE	—
2	KPBC <i>KPBC</i>	✓			Customs and Excise Service Office	CODE.DJBC OFFICE	—
3	Country of Destination <i>Negara Tujuan</i>	✓			Country of Destination	destctry_of.PEB HEADER	—
4	Net Weight <i>Berat Bersih</i>		✓		Sum of net weight grouped by Country of Destination	NET WEIGHT. PEB DETAIL	(In TON)
5	FOB Value <i>Nilai FOB</i>		✓		Sum of FOB Value grouped by Country of Destination ((FOB Per Unit)×[Number of Unit for FOB]×[Rate])	CALCULATED BY: • FOB PER UNIT. PEB DETAIL • NUMBER OF UNIT FOR FOB. PEB DETAIL • (RATE. EXCHANGE RATE)	(In thousand USD)
6	Number of document <i>Jumlah dokumen</i>		✓		Sum of document grouped by Country of Destination	—	—

**Table 1-23: List of Items**  
**(Window Name: Export Based on Port of Loading (DB Accessing Tool Window))**

No.	Item Name	Level			Description	Item in File	Note
		1	2	3			
1	Date of PEB <i>Tanggal PEB</i>	✓			Date or period of payment for SSBC of certain PEB (input,optional)	SSBC DATE. FSSBCS	—
2	KWBC <i>KWBC</i>	✓			Customs and Excise Regional Office (input,optional)	CODE.DJBC OFFICE	—
3	KPBC <i>KPBC</i>	✓			Customs and Excise Service Office (input,optional)	CODE.DJBC OFFICE	—
4	Port of Loading <i>Pelabuhan Muat</i>	✓			Port of Loading (input,optional)	loadport_of.PEB HEADER	—

Table 1-24: List of Items (Report Name: Export Based on Port of Loading)

No.	Item Name	Level			Description	Item in File	Note
		1	2	3			
1	KWBC <i>KWBC</i>	✓			Customs and Excise Regional Office	CODE.DJBC OFFICE	---
2	KPBC <i>KPBC</i>	✓			Customs and Excise Service Office	CODE.DJBC OFFICE	---
3	Port of Loading <i>Pelabuhan muat</i>	✓			Port of Loading	loadport_of.PEB HEADER	---
4	Net Weight <i>Berat Bersih</i>		✓		Sum of net weight grouped by Port of Loading	NET WEIGHT. PEB DETAIL	(In TON)
5	FOB Value <i>Nilai FOB</i>		✓		Sum of FOB Value grouped by Port of Loading ((FOB Per Unit)×[Number of Unit for FOB]×[Rate])	CALCULATED BY: <ul style="list-style-type: none"> <li>• FOB PER UNIT. PEB DETAIL</li> <li>• NUMBER OF UNIT FOR FOB. PEB DETAIL</li> <li>• (RATE. EXCHANGE RATE)</li> </ul>	(In thousand USD)

**Table 1-25: List of Items**  
**(Window Name: Export Based on Chapter of HS (DB Accessing Tool Window))**

No.	Item Name	Level			Description	Item in File	Note
		1	2	3			
1	Date of PEB <i>Taggal PEB</i>	✓			Date or period of payment for SSBC of certain PEB (input,optional)	SSBC DATE. FSSBCS	—
2	KWBC <i>KWBC</i>	✓			Customs and Excise Regional Office (input,optional)	CODE.DJBC OFFICE	—
3	KPBC <i>KPBC</i>	✓			Customs and Excise Service Office (input,optional)	CODE.DJBC OFFICE	—
4	Chapter of HS <i>Bab HS</i>	✓			Chapter of HS (input,optional)	TARIFF CODE. PEB DETAIL	The first 2 digits of HS Code

Table 1-26: List of Items (Report Name: Export Based on Chapter of HS)

No.	Item Name	Level			Description	Item in File	Note
		1	2	3			
1	KWBC <i>KWBC</i>	✓			Customs and Excise Regional Office	CODE.DJBC OFFICE	—
2	KPBC <i>KPBC</i>	✓			Customs and Excise Service Office	CODE.DJBC OFFICE	—
3	Chapter of HS <i>Bab HS</i>	✓			Chapter of HS	TARIFF CODE. PEB DETAIL	The first 2 digits of HS Code
4	FOB Value <i>Nilai FOB</i>		✓		Sum of FOB Value grouped by Chapter of HS ((FOB Per Unit)×[Number of Unit for FOB]×[Rate])	CALCULATED BY: • FOB PER UNIT. PEB DETAIL • NUMBER OF UNIT FOR FOB. PEB DETAIL • (RATE. EXCHANGE RATE)	(In thousand USD)
5	Number of PEB <i>Jumlah PEB/PEBT</i>		✓		Sum of PEB grouped by Chapter of HS	—	—

**Table 1-27: List of Items (Window Name: Export Based on Tariff Headings and Country of Destination (DB Accessing Tool Window))**

No.	Item Name	Level			Description	Item in File	Note
		1	2	3			
1	Date of PEB <i>Tanggal PEB</i>	✓			Date or period of payment for SSBC of certain PEB (input,optional)	SSBC DATE. FSSBCS	—
2	KWBC <i>KWBC</i>	✓			Customs and Excise Regional Office (input,optional)	CODE.DJBC OFFICE	—
3	KPBC <i>KPBC</i>	✓			Customs and Excise Service Office (input,optional)	CODE.DJBC OFFICE	—
4	Tariff Headings <i>Pos Tarif</i>	✓			Tariff Headings (input,optional)	TARIFF CODE. PEB DETAIL	—
5	Country of Destination <i>Negara Tujuan</i>	✓			Country of Destination (input,optional)	destctry_of.PEB HEADER	—



**Table 1-28: List of Items**  
**(Report Name: Export Based on Tariff Headings and Country of Destination)**

No.	Item Name	Level			Description	Item in File	Note
		1	2	3			
1	KWBC <i>KWBC</i>	✓			Customs and Excise Regional Office	CODE.DJBC OFFICE	—
2	KPBC <i>KPBC</i>	✓			Customs and Excise Service Office	CODE.DJBC OFFICE	—
3	Tariff Headings <i>Pos Tarif</i>	✓			Tariff Headings	TARIFF CODE. PEB DETAIL	—
4	Country of Destination <i>Negara Tujuan</i>		✓		Country of Destination	destctry_of.PEB HEADER	—
5	FOB Value <i>Nilai FOB</i>			✓	Sum of FOB Value grouped by Tariff Headings and Country of Destination ((FOB Per Unit)×[Number of Unit for FOB]×[Rate])	CALCULATED BY: • FOB PER UNIT. PEB DETAIL • NUMBER OF UNIT FOR FOB. PEB DETAIL • (RATE. EXCHANGE RATE)	(In thousand USD)
6	Number of PEB <i>Jumlah PEB</i>			✓	Sum of PEB grouped by Tariff Headings and Country of Destination	—	—

**Table 1-29: List of Items (Window Name: Export Based on Petroleum and Natural Gas  
(DB Accessing Tool Window))**

No.	Item Name	Level			Description	Item in File	Note
		1	2	3			
1	Date of PEB <i>Tanggal PEB</i>	✓			Date or period of payment for SSBC of certain PEB (input,optional)	SSBC DATE. FSSBCS	—
2	KWBC <i>KWBC</i>	✓			Customs and Excise Regional Office (input,optional)	CODE.DJBC OFFICE	—
3	KPBC <i>KPBC</i>	✓			Customs and Excise Service Office (input,optional)	CODE.DJBC OFFICE	—

Table 1-30: List of Items (Report Name: Export Based on Petroleum and Natural Gas)

No.	Item Name	Level			Description	Item in File	Note
		1	2	3			
1	KWBC <i>KWBC</i>	✓			Customs and Excise Regional Office	CODE.DJBC OFFICE	—
2	KPBC <i>KPBC</i>	✓			Customs and Excise Service Office	CODE.DJBC OFFICE	—
3	Goods <i>Barang-barang</i>	✓			Goods	TARIFF CODE. PEB DETAIL	—
4	Crude Oil <i>Minyak Mentah</i>		✓		Sum of FOB Value of Crude Oil ((FOB Per Unit)×[Number of Unit for FOB]×[Rate])	CALCULATED BY: • FOB PER UNIT. PEB DETAIL • NUMBER OF UNIT FOR FOB. PEB DETAIL • (RATE. EXCHANGE RATE)	(In thousand USD)
5	Petroleum Product <i>Hasil Minyak</i>		✓		Sum of FOB Value of Petroleum Product ((FOB Per Unit)×[Number of Unit for FOB]×[Rate])	CALCULATED BY: • FOB PER UNIT. PEB DETAIL • NUMBER OF UNIT FOR FOB. PEB DETAIL • (RATE. EXCHANGE RATE)	(In thousand USD)
6	Natural Gas <i>Gas Alam</i>		✓		Sum of FOB Value of Natural Gas ((FOB Per Unit)×[Number of Unit for FOB]×[Rate])	CALCULATED BY: • FOB PER UNIT. PEB DETAIL • NUMBER OF UNIT FOR FOB. PEB DETAIL • (RATE. EXCHANGE RATE)	(In thousand USD)

**Table 1-31: List of Items (Window Name: Export Based on Primary Goods  
Non-Petroleum and Natural Gas (DB Accessing Tool Window))**

No.	Item Name	Level			Description	Item in File	Note
		1	2	3			
1	Date of PEB <i>Tanggal PEB</i>	✓			Date or period of payment for SSBC of certain PEB (input,optional)	SSBC DATE. FSSBCS	—
2	KWBC <i>KWBC</i>	✓			Customs and Excise Regional Office (input,optional)	CODE.DJBC OFFICE	—
3	KPBC <i>KPBC</i>	✓			Customs and Excise Service Office (input,optional)	CODE.DJBC OFFICE	—

**Table 1-32: List of Items**  
**(Report Name: Export Based on Primary Goods Non-Petroleum and Natural Gas) (1/8)**

No.	Item Name	Level			Description	Item in File	Note
		1	2	3			
1	KWBC <i>KWBC</i>	✓			Customs and Excise Regional Office	—	—
2	KPBC <i>KPBC</i>	✓			Customs and Excise Service Office	—	—
3	Goods <i>Barang-barang</i>	✓			Goods based on tariff headings	TARIFF CODE. PEB DETAIL	—
4	Agricultural Product <i>Hasil Sektor Pertanian</i>		✓		Agricultural Product group	—	—
5	Coffee <i>Kopi</i>			✓	Sum of FOB Value of coffee ((FOB Per Unit)×[Number of Unit for FOB]×[Rate])	CALCULATED BY: • FOB PER UNIT. PEB DETAIL • NUMBER OF UNIT FOR FOB. PEB DETAIL • (RATE. EXCHANGE RATE)	(In thousand USD)
6	Shrimp <i>Udang</i>			✓	Sum of FOB Value of shrimp ((FOB Per Unit)×[Number of Unit for FOB]×[Rate])	CALCULATED BY: • FOB PER UNIT. PEB DETAIL • NUMBER OF UNIT FOR FOB. PEB DETAIL • (RATE. EXCHANGE RATE)	(In thousand USD)
7	Spices <i>Rempah-Rempah</i>			✓	Sum of FOB Value of spices ((FOB Per Unit)×[Number of Unit for FOB]×[Rate])	CALCULATED BY: • FOB PER UNIT. PEB DETAIL • NUMBER OF UNIT FOR FOB. PEB DETAIL • (RATE. EXCHANGE RATE)	(In thousand USD)

**Table 1-32: List of Items**  
**(Report Name: Export Based on Primary Goods Non-Petroleum and Natural Gas) (2/8)**

No.	Item Name	Level			Description	Item in File	Note
		1	2	3			
8	Tea <i>Teh</i>			✓	Sum of FOB Value of tea ((FOB Per Unit)×[Number of Unit for FOB]×[Rate])	CALCULATED BY: • FOB PER UNIT. PEB DETAIL • NUMBER OF UNIT FOR FOB. PEB DETAIL • (RATE. EXCHANGE RATE)	(In thousand USD)
9	Fish and others <i>Ikan dan lain-lain</i>			✓	Sum of FOB Value of fish ((FOB Per Unit)×[Number of Unit for FOB]×[Rate])	CALCULATED BY: • FOB PER UNIT. PEB DETAIL • NUMBER OF UNIT FOR FOB. PEB DETAIL • (RATE. EXCHANGE RATE)	(In thousand USD)
10	Chocolate Bean <i>Biji Coklat</i>			✓	Sum of FOB Value of chocolate bean ((FOB Per Unit)×[Number of Unit for FOB]×[Rate])	CALCULATED BY: • FOB PER UNIT. PEB DETAIL • NUMBER OF UNIT FOR FOB. PEB DETAIL • (RATE. EXCHANGE RATE)	(In thousand USD)
11	Other <i>Lainnya</i>			✓	Sum of FOB Value of other ((FOB Per Unit)×[Number of Unit for FOB]×[Rate])	CALCULATED BY: • FOB PER UNIT. PEB DETAIL • NUMBER OF UNIT FOR FOB. PEB DETAIL • (RATE. EXCHANGE RATE)	(In thousand USD)

**Table 1-32: List of Items**  
 (Report Name: Export Based on Primary Goods Non-Petroleum and Natural Gas) (3/8)

No.	Item Name	Level			Description	Item in File	Note
		1	2	3			
12	Industrial Product <i>Hasil Sektor Industri</i>		✓		Grouping title for Industrial Product	—	—
13	Sawn timber processed wood <i>Kayu Lapis</i>			✓	Sum of FOB Value of Sawn timber processed wood ((FOB Per Unit)×[Number of Unit for FOB]×[Rate])	CALCULATED BY: • FOB PER UNIT. PEB DETAIL • NUMBER OF UNIT FOR FOB. PEB DETAIL • (RATE. EXCHANGE RATE)	(In thousand USD)
14	Ready made wear <i>Pakaian Jadi</i>			✓	Sum of FOB Value of ready made wear ((FOB Per Unit)×[Number of Unit for FOB]×[Rate])	CALCULATED BY: • FOB PER UNIT. PEB DETAIL • NUMBER OF UNIT FOR FOB. PEB DETAIL • (RATE. EXCHANGE RATE)	(In thousand USD)
15	Processed Rubber (SIR) <i>Karet Olahan (SIR)</i>			✓	Sum of FOB Value of processed rubber ((FOB Per Unit)×[Number of Unit for FOB]×[Rate])	CALCULATED BY: • FOB PER UNIT. PEB DETAIL • NUMBER OF UNIT FOR FOB. PEB DETAIL • (RATE. EXCHANGE RATE)	(In thousand USD)

**Table 1-32: List of Items**  
**(Report Name: Export Based on Primary Goods Non-Petroleum and Natural Gas) (4/8)**

No.	Item Name	Level			Description	Item in File	Note
		1	2	3			
16	Furniture and parts <i>Mebel dan bagiannya</i>			✓	Sum of FOB Value of furniture and parts ([FOB Per Unit]×[Number of Unit for FOB]×[Rate])	CALCULATED BY: <ul style="list-style-type: none"> <li>• FOB PER UNIT. PEB DETAIL</li> <li>• NUMBER OF UNIT FOR FOB. PEB DETAIL</li> <li>• (RATE. EXCHANGE RATE)</li> </ul>	(In thousand USD)
17	Woven cloth <i>Kain Tenunan</i>			✓	Sum of FOB Value of woven cloth ([FOB Per Unit]×[Number of Unit for FOB]×[Rate])	CALCULATED BY: <ul style="list-style-type: none"> <li>• FOB PER UNIT. PEB DETAIL</li> <li>• NUMBER OF UNIT FOR FOB. PEB DETAIL</li> <li>• (RATE. EXCHANGE RATE)</li> </ul>	(In thousand USD)
18	Non-precious metal goods <i>Barang logam tidak mulia</i>			✓	Sum of FOB Value of non-precious metal goods ([FOB Per Unit]×[Number of Unit for FOB]×[Rate])	CALCULATED BY: <ul style="list-style-type: none"> <li>• FOB PER UNIT. PEB DETAIL</li> <li>• NUMBER OF UNIT FOR FOB. PEB DETAIL</li> <li>• (RATE. EXCHANGE RATE)</li> </ul>	(In thousand USD)
19	Electric equipment <i>Alat Listrik</i>			✓	Sum of FOB Value of electric equipment ([FOB Per Unit]×[Number of Unit for FOB]×[Rate])	CALCULATED BY: <ul style="list-style-type: none"> <li>• FOB PER UNIT. PEB DETAIL</li> <li>• NUMBER OF UNIT FOR FOB. PEB DETAIL</li> <li>• (RATE. EXCHANGE RATE)</li> </ul>	(In thousand USD)



**Table 1-32: List of Items**  
 (Report Name: Export Based on Primary Goods Non-Petroleum and Natural Gas) (5/8)

No.	Item Name	Level			Description	Item in File	Note
		1	2	3			
20	Fertilizer <i>Pupuk</i>			✓	Sum of FOB Value of Fertilizer ((FOB Per Unit)×[Number of Unit for FOB]×[Rate])	CALCULATED BY: • FOB PER UNIT. PEB DETAIL • NUMBER OF UNIT FOR FOB. PEB DETAIL • (RATE. EXCHANGE RATE)	(In thousand USD)
21	Palm Oil <i>Minyak Sawit</i>			✓	Sum of FOB Value of Palm Oil ((FOB Per Unit)×[Number of Unit for FOB]×[Rate])	CALCULATED BY: • FOB PER UNIT. PEB DETAIL • NUMBER OF UNIT FOR FOB. PEB DETAIL • (RATE. EXCHANGE RATE)	(In thousand USD)
22	Footwear <i>Alas kaki</i>			✓	Sum of FOB Value of Footwear ((FOB Per Unit)×[Number of Unit for FOB]×[Rate])	CALCULATED BY: • FOB PER UNIT. PEB DETAIL • NUMBER OF UNIT FOR FOB. PEB DETAIL • (RATE. EXCHANGE RATE)	(In thousand USD)
23	Processed Food <i>Makanan olahan</i>			✓	Sum of FOB Value of processed food ((FOB Per Unit)×[Number of Unit for FOB]×[Rate])	CALCULATED BY: • FOB PER UNIT. PEB DETAIL • NUMBER OF UNIT FOR FOB. PEB DETAIL • (RATE. EXCHANGE RATE)	(In thousand USD)

**Table 1-32: List of Items**  
**(Report Name: Export Based on Primary Goods Non-Petroleum and Natural Gas) (6/8)**

No.	Item Name	Level			Description	Item in File	Note
		1	2	3			
24	Others <i>Lainnya</i>			✓	Sum of FOB Value of others ((FOB Per Unit)×[Number of Unit for FOB]×[Rate])	CALCULATED BY: • FOB PER UNIT. PEB DETAIL • NUMBER OF UNIT FOR FOB. PEB DETAIL • (RATE. EXCHANGE RATE)	(In thousand USD)
25	Mining Product <i>Hasil Sektor            Tambang</i>		✓		Mining Product	—	—
26	Copper ore <i>Biji            Tembaga</i>			✓	Sum of FOB Value of Copper ore ((FOB Per Unit)×[Number of Unit for FOB]×[Rate])	CALCULATED BY: • FOB PER UNIT. PEB DETAIL • NUMBER OF UNIT FOR FOB. PEB DETAIL • (RATE. EXCHANGE RATE)	(In thousand USD)
27	Coal <i>Batubara</i>			✓	Sum of FOB Value of Coal ((FOB Per Unit)×[Number of Unit for FOB]×[Rate])	CALCULATED BY: • FOB PER UNIT. PEB DETAIL • NUMBER OF UNIT FOR FOB. PEB DETAIL • (RATE. EXCHANGE RATE)	(In thousand USD)

**Table 1-32: List of Items**  
**(Report Name: Export Based on Primary Goods Non-Petroleum and Natural Gas) (7/8)**

No.	Item Name	Level			Description	Item in File	Note
		1	2	3			
28	Nickel ore <i>Biji Nikel</i>			✓	Sum of FOB Value of Nickel ore ((FOB Per Unit)×[Number of Unit for FOB]×[Rate])	CALCULATED BY: • FOB PER UNIT. PEB DETAIL • NUMBER OF UNIT FOR FOB. PEB DETAIL • (RATE. EXCHANGE RATE)	(In thousand USD)
29	Granite <i>Granit</i>			✓	Sum of FOB Value of Granite ((FOB Per Unit)×[Number of Unit for FOB]×[Rate])	CALCULATED BY: • FOB PER UNIT. PEB DETAIL • NUMBER OF UNIT FOR FOB. PEB DETAIL • (RATE. EXCHANGE RATE)	(In thousand USD)
30	Bauxite <i>Bauksit</i>			✓	Sum of FOB Value of Bauxite ((FOB Per Unit)×[Number of Unit for FOB]×[Rate])	CALCULATED BY: • FOB PER UNIT. PEB DETAIL • NUMBER OF UNIT FOR FOB. PEB DETAIL • (RATE. EXCHANGE RATE)	(In thousand USD)
31	Tin ore <i>Biji Timah</i>			✓	Sum of FOB Value of Tin ore ((FOB Per Unit)×[Number of Unit for FOB]×[Rate])	CALCULATED BY: • FOB PER UNIT. PEB DETAIL • NUMBER OF UNIT FOR FOB. PEB DETAIL • (RATE. EXCHANGE RATE)	(In thousand USD)

**Table 1-32: List of Items**  
**(Report Name: Export Based on Primary Goods Non-Petroleum and Natural Gas) (8/8)**

No.	Item Name	Level			Description	Item in File	Note
		1	2	3			
32	Others <i>Lainmya</i>			✓	Sum of FOB Value of Others ([FOB Per Unit]×[Number of Unit for FOB]×[Rate])	CALCULATED BY: • FOB PER UNIT. PEB DETAIL • NUMBER OF UNIT FOR FOB. PEB DETAIL • (RATE. EXCHANGE RATE)	(In thousand USD)
33	Other Product <i>Product            lainmya</i>		✓		Sum of FOB Value of other product which can not be categorized into above products ([FOB Per Unit]×[Number of Unit for FOB]×[Rate])	CALCULATED BY: • FOB PER UNIT. PEB DETAIL • NUMBER OF UNIT FOR FOB. PEB DETAIL • (RATE. EXCHANGE RATE)	(In thousand USD)

**Table 1-33: List of Items**  
 (Window Name: Revenue on Foreign Exchange of Import (DB Accessing Tool Window))

No.	Item Name	Level			Description	Item in File	Note
		1	2	3			
1	Date of PIB <i>Tanggal PIB</i>	✓			Date or period of payment for SSBC of certain PIB (input,optional)	SSBC DATE. FSSBCS	—
2	KWBC <i>KWBC</i>	✓			Customs and Excise Regional Office (input,optional)	CODE.DJBC OFFICE	—
3	KPBC <i>KPBC</i>	✓			Customs and Excise Service Office (input,optional)	CODE.DJBC OFFICE	—

Table 1-34: List of Items (Report Name: Revenue on Foreign Exchange of Import) (1/2)

No.	Item Name	Level			Description	Item in File	Note
		1	2	3			
1	KWBC <i>KWBC</i>	✓			Customs and Excise Regional Office	CODE.DJBC OFFICE	—
2	KPBC <i>KPBC</i>	✓			Customs and Excise Service Office	CODE.DJBC OFFICE	—
3	Paid foreign exchange <i>Devisa Bayar</i>	✓			Sum of Paid Foreign Exchange	<ul style="list-style-type: none"> <li>• facitype_of. FACILITATION</li> <li>• facility_of.PIB HEADER</li> <li>• CIF VALUE. PIB DETAIL</li> <li>• (RATE. EXCHANGE RATE)</li> </ul>	(In USD)
4	Free Foreign Exchange	✓			Free Foreign Exchange Group	—	—
5	BAPEKSTA <i>BAPEKSTA</i>		✓		Sum of Free Foreign Exchange for BAPEKSTA	<ul style="list-style-type: none"> <li>• facitype_of. FACILITATION</li> <li>• facility_of.PIB HEADER</li> <li>• CIF VALUE. PIB DETAIL</li> <li>• (RATE. EXCHANGE RATE)</li> </ul>	(In USD)
6	BKPM <i>BKPM</i>		✓		Sum of Free Foreign Exchange for BKPM, Investment Coordinating Board	<ul style="list-style-type: none"> <li>• facitype_of. FACILITATION</li> <li>• facility_of.PIB HEADER</li> <li>• CIF VALUE. PIB DETAIL</li> <li>• (RATE. EXCHANGE RATE)</li> </ul>	(In USD)
7	CEPT <i>CEPT</i>		✓		Sum of Free Foreign Exchngae for CEPT	<ul style="list-style-type: none"> <li>• facitype_of. FACILITATION</li> <li>• facility_of.PIB HEADER</li> <li>• CIF VALUE. PIB DETAIL</li> <li>• (RATE. EXCHANGE RATE)</li> </ul>	(In USD)

Table 1-34: List of Items (Report Name: Revenue on Foreign Exchange of Import) (2/2)

No.	Item Name	Level			Description	Item in File	Note
		1	2	3			
8	Others <i>Lainmya</i>		✓		Sum of Free Foreign Exchange for other	<ul style="list-style-type: none"> <li>• facitype_of. FACILITATION</li> <li>• facility_of.PIB HEADER</li> <li>• CIF VALUE. PIB DETAIL</li> <li>• (RATE. EXCHANGE RATE)</li> </ul>	(In USD)
9	Gross Weight <i>Berat kotor</i>	✓			Sum of Gross weight	GROSS WEIGHT. PIB HEADER	(In TON)

**Table 1-35: List of Items (Window Name: Revenue on Import Duty and Excise for Importation (DB Accessing Tool Window))**

No.	Item Name	Level			Description	Item in File	Note
		1	2	3			
1	Date of PIB <i>Tanggal PIB</i>	✓			Date or period of payment for SSBC of certain PIB (input,optional)	SSBC DATE. FSSBCS	—
2	KWBC <i>KWBC</i>	✓			Customs and Excise Regional Office (input,optional)	CODE.DJBC OFFICE	—
3	KPBC <i>KPBC</i>	✓			Customs and Excise Service Office (input,optional)	CODE.DJBC OFFICE	—



**Table 1-36: List of Items**  
(Report Name: Revenue on Import Duty and Excise for Importation)

No.	Item Name	Level			Description	Item in File	Note
		1	2	3			
1	KWBC <i>KWBC</i>	✓			Customs and Excise Regional Office	CODE.DJBC OFFICE	---
2	KPBC <i>KPBC</i>	✓			Customs and Excise Service Office	CODE.DJBC OFFICE	---
3	Number of PIB <i>Jumlah PIB</i>	✓			Sum of PIB document	---	---
4	Import Duty <i>Bea Masuk</i>	✓			Sum of Import Duty	IMPORT DUTY. PIB DETAIL	(In million Rupiah)
5	Excise <i>Cukai</i>	✓			Grouping title for Excise	---	---
6	Tobacco product <i>Hasil Tembakau</i>		✓		Sum of excise for Tobacco Product	<ul style="list-style-type: none"> <li>• EXCISE TYPE. FBCCUKAI</li> <li>• REVENUE. FBCCUKAI DOKUMEN CUKAI</li> </ul>	(In million Rupiah)
7	Alcoholic Beverage <i>Minuman Menganung Ethyl alkohol</i>		✓		Sum of excise for Alcoholic Beverage	<ul style="list-style-type: none"> <li>• EXCISE TYPE. FBCCUKAI</li> <li>• REVENUE. FBCCUKAI DOKUMEN CUKAI</li> </ul>	(In million Rupiah)
8	Ethyl Alcohol <i>Etil alkohol</i>		✓		Sum of excise for Ethyl Alkohol	<ul style="list-style-type: none"> <li>• EXCISE TYPE. FBCCUKAI</li> <li>• REVENUE. FBCCUKAI DOKUMEN CUKAI</li> </ul>	(In million Rupiah)

**Table 1-37: List of Items**  
**(Window Name: Revenue on Import Tax (DB Accessing Tool Window))**

No.	Item Name	Level			Description	Item in File	Note
		1	2	3			
1	Date of PIB <i>Tanggal PIB</i>	✓			Date or period of payment for SSBC of certain PIB (input,optional)	SSBC DATE. FSSBCS	—
2	KWBC <i>KWBC</i>	✓			Customs and Excise Regional Office (input,optional)	CODE.DJBC OFFICE	—
3	KPBC <i>KPBC</i>	✓			Customs and Excise Service Office (input,optional)	CODE.DJBC OFFICE	—

Table 1-38: List of Items (Report Name: Revenue on Import Tax)

No.	Item Name	Level			Description	Item in File	Note
		1	2	3			
1	KWBC <i>KWBC</i>	✓			Customs and Excise Regional Office	CODE.DJBC OFFICE	—
2	KPBC <i>KPBC</i>	✓			Customs and Excise Service Office	CODE.DJBC OFFICE	—
3	PPN <i>PPN</i>	✓			Sum of VAT	VAT. PIB DETAIL	(In million Rupiah)
4	PPh Ps. 22 <i>PPh Ps. 22</i>	✓			Sum of Income Tax article 22	INCOME TAX. PIB DETAIL	(In million Rupiah)
5	PPN BM <i>PPN BM</i>	✓			Sum of sales tax on luxury goods	SALES TAX ON LUXURY GOODS. PIB DETAIL	(In million Rupiah)

**Table 1-39: List of Items**  
**(Window Name: Revenue on Tobacco Product Excise (DB Accessing Tool Window))**

No.	Item Name	Level			Description	Item in File	Note
		1	2	3			
1	Date of Document <i>Tanggal Dokumen</i>	✓			Date or period of document (input,optional)	DOCUMENT DATE.FBCCUKAI DOCUMEN CUKAI	—
2	KWBC <i>KWBC</i>	✓			Customs and Excise Regional Office (input,optional)	CODE.DJBC OFFICE	—
3	KPBC <i>KPBC</i>	✓			Customs and Excise Service Office (input,optional)	CODE.DJBC OFFICE	—

Table 1-40: List of Items (Report Name: Revenue on Tobacco Product Excise) (1/2)

No.	Item Name	Level			Description	Item in File	Note
		1	2	3			
1	KWBC <i>KWBC</i>	✓			Customs and Excise Regional Office	CODE.DJBC OFFICE	—
2	KPBC <i>KPBC</i>	✓			Customs and Excise Service Office	CODE.DJBC OFFICE	—
3	Tobacco Product <i>Hasil Tembakau</i>	✓			Tobacco Product	<ul style="list-style-type: none"> <li>• EXCISE TYPE. FBCCUKAI</li> <li>• TOBACCO BRAND. FBCCUKAI DOKUMEN CUKAI</li> </ul>	(In million Rupiah)
4	SKT <i>SKT</i>		✓		Sum of excise for Hand-Rolled Clove Cigarettes	REVENUE. FBCCUKAI DOKUMEN CUKAI	—
5	SKM <i>SKM</i>		✓		Sum of excise for Machine-Rolled Clove Cigarettes	REVENUE. FBCCUKAI DOKUMEN CUKAI	—
6	SPM <i>SPM</i>		✓		Sum of excise for Machine-Rolled White Cigarettes	REVENUE. FBCCUKAI DOKUMEN CUKAI	—
7	KLB <i>KLB</i>		✓		Sum of excise for Corn Shuck Cigarettes	REVENUE. FBCCUKAI DOKUMEN CUKAI	—
8	KLM <i>KLM</i>		✓		Sum of excise for Kelembak Incense Cigarettes	REVENUE. FBCCUKAI DOKUMEN CUKAI	—
9	Cerutu <i>Cerutu</i>		✓		Sum of excise for Cigars	REVENUE. FBCCUKAI DOKUMEN CUKAI	—
10	TIS <i>TIS</i>		✓		Sum of excise for Sliced Tobacco	REVENUE. FBCCUKAI DOKUMEN CUKAI	—
11	Others <i>Lainnya</i>		✓		Sum of excise for others	REVENUE. FBCCUKAI DOKUMEN CUKAI	—
12	PPN HT <i>PPN HT</i>	✓			Sum of VAT on Tobacco Product	PPN.FBCCUKAI DOKUMEN CUKAI	—

Table 1-40: List of Items (Report Name: Revenue on Tobacco Product Excise) (2/2)

No.	Item Name	Level			Description	Item in File	Note
		1	2	3			
13	Administration Fine <i>Denda administrasi</i>	✓			Sum of Administration Fine	NOTE AMOUNT. FBCCUKAI DOKUMEN CUKAI	(In million Rupiah)
14	Others <i>Lainnya</i>	✓			Sum of others	—	—

**Table 1-41: List of Items (Window Name: Revenue on Ethyl Alcohol and Alcoholic Beverage Excise (DB Accessing Tool Window))**

No.	Item Name	Level			Description	Item in File	Note
		1	2	3			
1	Date of Document <i>Tanggal Dokumen</i>	✓			Date or period of document (input,optional)	DOCUMENT DATE.FBCCUKAI DOCUMEN CUKAI	—
2	KWBC <i>KWBC</i>	✓			Customs and Excise Regional Office (input,optional)	CODE.DJBC OFFICE	—
3	KPBC <i>KPBC</i>	✓			Customs and Excise Service Office (input,optional)	CODE.DJBC OFFICE	—

**Table 1-42: List of Items**  
**(Report Name: Revenue on Ethyl Alcohol and Alcoholic Beverage Excise)**

No.	Item Name	Level			Description	Item in File	Note
		1	2	3			
1	KWBC <i>KWBC</i>	✓			Customs and Excise Regional Office	CODE.DJBC OFFICE	—
2	KPBC <i>KPBC</i>	✓			Customs and Excise Service Office	CODE.DJBC OFFICE	—
3	Ethyl Alcohol <i>Etil alkohol</i>	✓			Sum of excise for Ethyl Alcohol	<ul style="list-style-type: none"> <li>• EXCISE TYPE. FBCCUKAI</li> <li>• REVENUE. FBCCUKAI DOKUMEN CUKAI</li> </ul>	—
4	Alcoholic Beverage <i>Minuman Mengandung Alkohol</i>	✓			Alcoholic Beverage Group	<ul style="list-style-type: none"> <li>• EXCISE TYPE. FBCCUKAI</li> <li>• REVENUE. FBCCUKAI DOKUMEN CUKAI</li> </ul>	(In million Rupiah)
5	Beer <i>Bir</i>		✓		Sum of excise for Beer	<ul style="list-style-type: none"> <li>• EXCISE TYPE. FBCCUKAI</li> <li>• REVENUE. FBCCUKAI DOKUMEN CUKAI</li> </ul>	—
6	Other <i>Lainnya</i>		✓		Sum of excise for other Alcoholic Beverage	<ul style="list-style-type: none"> <li>• EXCISE TYPE. FBCCUKAI</li> <li>• REVENUE. FBCCUKAI DOKUMEN CUKAI</li> </ul>	—
7	Administration Fine <i>Denda administrasi</i>	✓			Sum of Administration Fine	<ul style="list-style-type: none"> <li>• EXCISE TYPE. FBCCUKAI</li> <li>• NOTE AMOUNT. FBCCUKAI DOKUMEN CUKAI</li> </ul>	(In million Rupiah)
8	Others <i>Lainnya</i>	✓			Sum of others	—	(In million Rupiah)



**Table 1-43: List of Items**  
**(Window Name: Revenue on Tobacco Production (DB Accessing Tool Window))**

No.	Item Name	Level			Description	Item in File	Note
		1	2	3			
1	Date of Document <i>Tanggal Dokumen</i>	✓			Date or period of document (input,optional)	DOCUMENT DATE.FBCCUKAI DOCUMEN CUKAI	—
2	KWBC <i>KWBC</i>	✓			Customs and Excise Regional Office (input,optional)	CODE.DJBC OFFICE	—
3	KPBC <i>KPBC</i>	✓			Customs and Excise Service Office (input,optional)	CODE.DJBC OFFICE	—
4	Factory <i>Pabrik</i>	✓			Factory Name (input,optional)	FACTORY NAME.FACTORY	—

**Table 1-44: List of Items (Report Name: Revenue on Tobacco Production) (1/2)**

No.	Item Name	Level			Description	Item in File	Note
		1	2	3			
1	KWBC <i>KWBC</i>	✓			Customs and Excise Regional Office	CODE.DJBC OFFICE	—
2	KPBC <i>KPBC</i>	✓			Customs and Excise Service Office	CODE.DJBC OFFICE	—
3	Factory <i>Pabrik</i>	✓			Grouping title for Factory	—	—
4	Name <i>Nama</i>		✓		Name of the factory	<ul style="list-style-type: none"> <li>• FACTORY NAME.</li> <li>• FACTORY MANUFACTURER CODE.</li> <li>• FBCCUKAI</li> </ul>	—
5	Address <i>Alamat</i>		✓		Address of the factory	<ul style="list-style-type: none"> <li>• STREET.</li> <li>• FACTORY LOCATION</li> <li>• CITY.</li> <li>• FACTORY LOCATION</li> </ul>	—
6	Tobacco Product <i>Hasil Tembakau</i>		✓		Tobacco Product	<ul style="list-style-type: none"> <li>• EXCISE TYPE.</li> <li>• FBCCUKAI</li> <li>• TOBACCO BRAND.</li> <li>• FBCCUKAI</li> <li>• DOCUMENT CUKAI</li> </ul>	—
7	SKT <i>SKT</i>			✓	Sum of stick of Hand-Rolled Clove Cigarettes grouped by factory	NUMBER OF STICK.FBCCUKAI DOCUMENT CUKAI	(In million stick)
8	SKM <i>SKM</i>			✓	Sum of stick of Machine-Rolled Clove Cigarettes grouped by factory	NUMBER OF STICK.FBCCUKAI DOCUMENT CUKAI	(In million stick)
9	SPM <i>SPM</i>			✓	Sum of stick of Machine-Rolled White Cigarettes grouped by factory	NUMBER OF STICK.FBCCUKAI DOCUMENT CUKAI	(In million stick)
10	KLB <i>KLB</i>			✓	Sum of stick of Corn Shuck Cigarettes grouped by factory	NUMBER OF STICK.FBCCUKAI DOCUMENT CUKAI	(In million stick)
11	KLM <i>KLM</i>			✓	Sum stick of Kelembak Incense Cigarettes grouped by factory	NUMBER OF STICK.FBCCUKAI DOCUMENT CUKAI	(In million stick)

Table 1-44: List of Items (Report Name: Revenue on Tobacco Production) (2/2)

No.	Item Name	Level			Description	Item in File	Note
		1	2	3			
12	Cerutu <i>Cerutu</i>			✓	Sum of stick of Cigars grouped by factory	NUMBER OF STICK.FBCCUKAI DOCUMENTEN CUKAI	(In million stick)
13	TIS <i>TIS</i>			✓	Sum of weight of Sliced Tobacco grouped by factory	NUMBER OF STICK.FBCCUKAI DOCUMENTEN CUKAI	(In million KG)
14	Others <i>Lainnya</i>			✓	Sum of others tobacco product grouped by factory	NUMBER OF STICK.FBCCUKAI DOCUMENTEN CUKAI	—

**Table 1-45: List of Items (Window Name: Revenue on Ethyl Alcohol and Alcoholic Beverage Production (DB Accessing Tool Window))**

No.	Item Name	Level			Description	Item in File	Note
		1	2	3			
1	Date of Document <i>Taggal Dokumen</i>	✓			Date or period of document (input,optional)	DOCUMENT DATE.FBCCUKAI DOCUMEN CUKAI	—
2	KWBC <i>KWBC</i>	✓			Customs and Excise Regional Office (input,optional)	CODE.DJBC OFFICE	—
3	KPBC <i>KPBC</i>	✓			Customs and Excise Service Office (input,optional)	CODE.DJBC OFFICE	—
4	Factory <i>Pabrik</i>	✓			Factory Name (input,optional)	FACTORY NAME.FACTORY	—

**Table 1-46: List of Items**  
(Report Name: Revenue on Ethyl Alcohol and Alcoholic Beverage Production)

No.	Item Name	Level			Description	Item in File	Note
		1	2	3			
1	KWBC <i>KWBC</i>	✓			Customs and Excise Regional Office	CODE.DJBC OFFICE	—
2	KPBC <i>KPBC</i>	✓			Customs and Excise Service Office	CODE.DJBC OFFICE	—
3	Factory <i>Pabrik</i>	✓			Grouping title for Factory	—	—
4	Name <i>Nama</i>		✓		Name of the factory	<ul style="list-style-type: none"> <li>• FACTORY NAME.</li> <li>• FACTORY MANUFACTURER CODE.</li> <li>• FBCCUKAI</li> </ul>	—
5	Address <i>Alamat</i>		✓		Address of the factory	<ul style="list-style-type: none"> <li>• STREET.</li> <li>• FACTORY LOCATION</li> <li>• CITY.</li> <li>• FACTORY LOCATION</li> </ul>	—
6	Ethyl Alcohol <i>Etil alkohol</i>		✓		Sum of volume of Ethyl Alcohol grouped by factory	<ul style="list-style-type: none"> <li>• NUMBER OF STICK.</li> <li>• FBCCUKAI DOKUMEN CUKAI</li> <li>• EXCISE TYPE.</li> <li>• FBCCUKAI</li> </ul>	(In million Liter)
7	Alcoholic beverage <i>Minuman Mengandung Alkohol</i>		✓		Alcoholic Beverage Group	—	(In million Liter)
8	Beer <i>Bir</i>			✓	Sum of volume of Beer grouped by factory	<ul style="list-style-type: none"> <li>• NUMBER OF STICK.</li> <li>• FBCCUKAI DOKUMEN CUKAI</li> <li>• EXCISE TYPE.</li> <li>• FBCCUKAI</li> </ul>	—
9	Other <i>Lainnya</i>			✓	Sum of volume of other beverage grouped by factory	<ul style="list-style-type: none"> <li>• NUMBER OF STICK.</li> <li>• FBCCUKAI DOKUMEN CUKAI</li> <li>• EXCISE TYPE.</li> <li>• FBCCUKAI</li> </ul>	—

**Table 1-47: List of Items**  
**(Window Name: Revenue on Exportation (DB Accessing Tool Window))**

No.	Item Name	Level			Description	Item in File	Note
		1	2	3			
1	Date of PEB <i>Tanggal PEB</i>	✓			Date or period of payment for SSBC of certain PEB (input,optional)	SSBC DATE. FSSBCS	—
2	KWBC <i>KWBC</i>	✓			Customs and Excise Regional Office (input,optional)	CODE.DJBC OFFICE	—
3	KPBC <i>KPBC</i>	✓			Customs and Excise Service Office (input,optional)	CODE.DJBC OFFICE	—

Table 1-48: List of Items (Report Name: Revenue on Exportation) (1/2)

No.	Item Name	Level			Description	Item in File	Note
		1	2	3			
1	KWBC <i>KWBC</i>	✓			Customs and Excise Regional Office	CODE.DJBC OFFICE	—
2	KPBC <i>KPBC</i>	✓			Customs and Excise Service Office	CODE.DJBC OFFICE	—
3	Number of PEB <i>Jumlah PEB/PEBT</i>	✓			Sum of PEB document	—	—
4	PNG <i>Migas</i>	✓			Petroleum and Natural gas Group	TARIFF CODE. PEB DETAIL	—
5	Weight of PNG <i>Berat Migas</i>		✓		Sum of Gross weight of Petroleum and Natural Gas	GROSS WEIGHT. PEB DETAIL	(In TON)
6	FOB Value of PNG <i>Nilai FOB Migas</i>		✓		Sum of FOB Value of Petroleum and Natural Gas ((FOB Per Unit)×[Number of Unit for FOB]×[Rate])	CALCULATED BY: • FOB PER UNIT. PEB DETAIL • NUMBER OF UNIT FOR FOB. PEB DETAIL • (RATE. EXCHANGE RATE)	(In thousand USD)
7	Export Tax of PNG <i>Pajak ekspor Migas</i>		✓		Sum of Export Tax of Petroleum and Natural Gas ((Tariff in Unit)×[Number of Unit for FOB])	CALCULATED BY: • TARIFF IN UNIT. PEB DETAIL • NUMBER OF UNIT FOR FOB. PEB DETAIL	(In million Rupiah)
8	Non-PNG <i>Non Migas</i>	✓			Non-Petroleum and Natural Gas Group	TARIFF CODE. PEB DETAIL	—
7	Non-PNG <i>Berat</i>		✓		Sum of Gross weight of Non-Petroleum and Natural Gas	GROSS WEIGHT. PEB DETAIL	(In TON)
8	FOB Value of Non-PNG <i>Nilai FOB</i>		✓		Sum of FOB Value of Non-Petroleum and Natural Gas ((FOB Per Unit)×[Number of Unit for FOB]×[Rate])	CALCULATED BY: • FOB PER UNIT. PEB DETAIL • NUMBER OF UNIT FOR FOB. PEB DETAIL • (RATE. EXCHANGE RATE)	(In thousand USD)

Table 1-48: List of Items (Report Name: Revenue on Exportation) (2/2)

No.	Item Name	Level			Description	Item in File	Note
		1	2	3			
9	Export Tax of Non-PNG <i>Pajak Ekspor</i>		✓		Sum of Export Tax of Non-Petroleum and Natural Gas ((Tariff in Unit)×[Number of Unit for FOB])	CALCULATED BY: • TARIFF IN UNIT.PEB DETAIL • NUMBER OF UNIT FOR FOB. PEB DETAIL	(In million Rupiah)



**Table 1-49: List of Items**  
(Window Name: Common Items of Import (DB Accessing Tool Window))

No.	Item Name	Level			Description	Item in File	Note
		1	2	3			
1	Date of PIB <i>Tanggal PIB</i>	✓			Date or period of payment for SSBC of certain PIB (input,optional)	SSBC DATE. FSSBCS	—
2	KWBC <i>KWBC</i>	✓			Customs and Excise Regional Office (input,optional)	CODE.DJBC OFFICE	—
3	KPBC <i>KPBC</i>	✓			Customs and Excise Service Office (input,optional)	CODE.DJBC OFFICE	—
4	NPWP <i>NPWP</i>	✓			NPWP (input,optional)	ID NUMBER. BASIC INFORMATION	—
5	Country of Origin <i>Negara Asal</i>	✓			Country of Origin (input,optional)	origctry_of.PIB DETAIL	—
6	Port of Discharge <i>Pelabuhan Bongkar</i>	✓			Port of Discharge (input,optional)	discport_of.PIB HEADER	—
7	Tariff Headings <i>Pos Tarif</i>	✓			Tariff Headings (input,optional)	TARIFF CODE.PIB DETAIL	—
8	SKEP Facility <i>SKEP Fasilitas</i>	✓			SKEP Facility (input,optional)	facitype_of. FACILITATION	—
9	CIF Value <i>Nilai CIF</i>	✓			Sum of CIF Value (input,optional)	<ul style="list-style-type: none"> <li>• UNIT PRICE. PIB DETAIL</li> <li>• QUANTITY OF GOODS.PIB DETAIL</li> </ul>	—
10	Import Duty <i>Bea Masuk</i>	✓			Import Duty (input,optional)	IMPORT DUTY.PIB DETAIL	—
11	PPN <i>PPN</i>	✓			VAT (input,optional)	VAT.PIB DETAIL	—
12	PPNBM <i>PPNBM</i>	✓			Sales tax on luxury goods (input,optional)	SALES TAX ON LUXUARY GOODS.PIB DETAIL	—
13	PPh Ps 22 <i>PPh Ps 22</i>	✓			Income tax article 22 (input,optional)	IMPORT DUTY. PIB DETAIL.PIB DETAIL	—
14	Excise <i>Cukai</i>	✓			Excise (input,optional)	EXCISE.PIB DETAIL	—

Table 1-50: List of Items (Report Name: Common Items of Import)

No.	Item Name	Level			Description	Item in File	Note
		1	2	3			
1	Date of PIB <i>Tanggal PIB</i>	✓			Date or period of payment for SSBC of certain PIB	SSBC DATE. FSSBCS	—
2	KWBC <i>KWBC</i>	✓			Customs and Excise Regional Office	CODE.DJBC OFFICE	—
3	KPBC <i>KPBC</i>	✓			Customs and Excise Service Office	CODE.DJBC OFFICE	—
4	NPWP <i>NPWP</i>	✓			NPWP	ID NUMBER. BASIC INFORMATION	—
5	Country of Origin <i>Negara Asal</i>	✓			Country of Origin	origctry_of.PIB DETAIL	—
6	Port of Discharge <i>Pelabuhan Bongkar</i>	✓			Port of Discharge	diseport_of.PIB HEADER	—
7	Tariff Headings <i>Pos Tarif</i>	✓			Tariff Headings	TARIFF CODE.PIB DETAIL	—
8	SKEP Facility <i>SKEP Fasilitas</i>	✓			SKEP Facility	facitype_of. FACILITATION	—
9	CIF Value <i>Nilai CIF</i>	✓			Sum of CIF Value ((Unit Price]×[Quantity of Good]×[Rate])	CALCULATED BY: • UNIT PRICE. PIB DETAIL • QUANTITY OF GOODS.PIB DETAIL • (RATE. EXCHANGE RATE)	—
10	Import Duty <i>Bea Masuk</i>	✓			Import Duty	IMPORT DUTY.PIB DETAIL	—
11	PPN <i>PPN</i>	✓			VAT	VAT.PIB DETAIL	—
12	PPNBM <i>PPNBM</i>	✓			Sales tax on luxury goods	SALES TAX ON LUXUARY GOODS.PIB DETAIL	—
13	PPh Ps 22 <i>PPh Ps 22</i>	✓			Income tax article 22	IMPORT DUTY. PIB DETAIL	—
14	Excise <i>Cukai</i>	✓			Excise	EXCISE.PIB DETAIL	—

**Table 1-51: List of Items**  
**(Window Name: Common Items of Export (DB Accessing Tool Window))**

No.	Item Name	Level			Description	Item in File	Note
		1	2	3			
1	Date of PEB <i>Tanggal PEB</i>	✓			Date or period of payment for SSBC of certain PEB (input,optional)	SSBC DATE. FSSBCS	---
2	KWBC <i>KWBC</i>	✓			Customs and Excise Regional Office (input,optional)	CODE.DJBC OFFICE	---
3	KPBC <i>KPBC</i>	✓			Customs and Excise Service Office (input,optional)	CODE.DJBC OFFICE	---
4	NPWP <i>NPWP</i>	✓			Tax Payer Code Number (input,optional)	ID NUMBER. BASIC INFORMATION	---
5	Country of Destination <i>Negara Tujuan</i>	✓			Country of Destination (input,optional)	destctry_of.PEB HEADER	---
6	Tariff Headings <i>Pos Tarif</i>	✓			Tariff Headings (input,optional)	TARIFF CODE.PEB DETAIL	---
7	Port of Loading <i>Pelabuhan Muat</i>	✓			Port of Loading (input,optional)	loadport_of.PEB HEADER	---
8	FOB Value <i>Nilai FOB</i>	✓			Sum of FOB Value (input,optional)	<ul style="list-style-type: none"> <li>• FOB PER UNIT. PEB DETAIL</li> <li>• NUMBER OF UNIT FOR FOB. PEB DETAIL</li> </ul>	---
9	Export Tax <i>Pajak Ekspor</i>	✓			Sum of Export Tax (input,optional)	<ul style="list-style-type: none"> <li>• TARIFF IN UNIT/ PERCENTAGE.P IB DETAIL</li> <li>• NUMBER OF UNIT FOR FOB. PEB DETAIL</li> </ul>	---

Table 1-52: List of Items (Report Name: Common Items of Export)

No.	Item Name	Level			Description	Item in File	Note
		1	2	3			
1	Date of PEB <i>Tanggal PEB</i>	✓			Date or period of payment for SSBC of certain PEB	SSBC DATE. FSSBCS	—
2	KWBC <i>KWBC</i>	✓			Customs and Excise Regional Office	CODE.DJBC OFFICE	—
3	KPBC <i>KPBC</i>	✓			Customs and Excise Service Office	CODE.DJBC OFFICE	—
4	NPWP <i>NPWP</i>	✓			NPWP	ID NUMBER. BASIC INFORMATION	—
5	Country of Destination <i>Negara Tujuan</i>	✓			Country of Destination	destctry_of.PEB HEADER	—
6	Tariff Headings <i>Pos Tarif</i>	✓			Tariff Headings	TARIFF CODE.PEB DETAIL	—
7	Port of Loading <i>Pelabuhan Muat</i>	✓			Port of Loading	loadport_of.PEB HEADER	—
8	FOB Value <i>Nilai FOB</i>		✓		Sum of FOB Value	<ul style="list-style-type: none"> <li>• FOB PER UNIT. PEB DETAIL</li> <li>• NUMBER OF UNIT FOR FOB</li> </ul>	—
9	Export Tax <i>Pajak Ekspor</i>		✓		Sum of Export Tax	<ul style="list-style-type: none"> <li>• TARIFF IN UNIT/ PERCENTAGE. PEB DETAIL</li> <li>• NUMBER OF UNIT FOR FOB.PEB DETAIL</li> </ul>	—

**Table 1-53: List of Items**  
**(Window Name: Common Items of Excise (DB Accessing Tool Window))**

No.	Item Name	Level			Description	Item in File	Note
		1	2	3			
1	Date of Document <i>Tanggal Dokumen</i>	✓			Date or period of document (input,optional)	DOCUMENT DATE.FBCCUKAI DOKUMEN CUKAI	—
2	KWBC <i>KWBC</i>	✓			Customs and Excise Regional Office (input,optional)	CODE.DJBC OFFICE	—
3	KPBC <i>KPBC</i>	✓			Customs and Excise Service Office (input,optional)	CODE.DJBC OFFICE	—
4	NPWP <i>NPWP</i>	✓			NPWP (input,optional)	ID NUMBER. BASIC INFORMATION	—
5	Factory <i>Pabrik</i>	✓			Factory Name (input,optional)	<ul style="list-style-type: none"> <li>• FACROTY NAME. FACTORY</li> <li>• MANUFAC- TURER CODE. FBCCUKAI</li> </ul>	—
6	Kind of Excise Goods <i>Jenis barang kena cukai</i>	✓			Kind of Excise Goods (input,optional)	EXCISE TYPE. FBCCUKAI	—
7	Amount of Goods <i>Jumlah barang</i>	✓			Amount of Goods (input,optional)	NUMBER OF STICK.FBCCUKAI DOKUMEN CUKAI	—
8	Amount of Excise <i>Jumlah cukai</i>	✓			Amount of Excise (input,optional)	REVENUE. FBCCUKAI DOKUMEN CUKAI	—

Table 1-54: List of Items (Report Name: Common Items of Excise)

No.	Item Name	Level			Description	Item in File	Note
		1	2	3			
1	Date of Document <i>Tanggal Dokumen</i>	✓			Date or period of document	DOCUMENT DATE.FBCCUKAI DOKUMEN CUKAI	—
2	KWBC <i>KWBC</i>	✓			Customs and Excise Regional Office	CODE.DJBC OFFICE	—
3	KPBC <i>KPBC</i>	✓			Customs and Excise Service Office	CODE.DJBC OFFICE	—
4	NPWP <i>NPWP</i>	✓			NPWP	ID NUMBER. BASIC INFORMATION	—
5	Factory <i>Pabrik</i>		✓		Factory Name	<ul style="list-style-type: none"> <li>• FACROTY NAME. FACTORY</li> <li>• MANUFAC-TURER CODE. FBCCUKAI</li> </ul>	—
6	Factory Address <i>Alamat Pabrik</i>		✓		Factory Address	<ul style="list-style-type: none"> <li>• STREET. FACTORY LOCATION</li> <li>• CITY. FACTORY LOCATION</li> </ul>	—
7	Kind of Excise Goods <i>Jenis barang kena cukai</i>		✓		Kind of Excise Goods	EXCISE TYPE. FBCCUKAI	—
8	Amount of Goods <i>Jumlah barang</i>		✓		Amount of Goods	NUMBER OF STICK.FBCCUKAI DOKUMEN CUKAI	—
9	Unit <i>Unit</i>		✓		Unit of Goods	—	—
10	Amount of Excise <i>Jumlah cukai</i>		✓		Amount of Excise	REVENUE. FBCCUKAI DOKUMEN CUKAI	—

Table 1-55: List of Items (Window Name: ASEAN Import (DB Accessing Tool Window))

No.	Item Name	Level			Description	Item in File	Note
		1	2	3			
1	Date of PIB <i>Tanggal PIB</i>	✓			Date or period of payment for SSBC of certain PIB (input,optional)	SSBC DATE. FSSBCS	—

Table 1-56: List of Items (Report Name: ASEAN Import)

No.	Item Name	Level			Description	Item in File	Note
		1	2	3			
1	HS HS	✓			Tariff Code	TARIFF CODE.PIB DETAIL	—
2	Exporter's Country <i>Negara Eksportir</i>		✓		Exporter's country who used CEPT Facility	<ul style="list-style-type: none"> <li>• ctrycode_of. SUPPLIER</li> <li>• facility_of. FACILITATION</li> </ul>	—
3	Unit <i>Unit</i>			✓	Unit of the goods	goodunit_of.PIB DETAIL	—
4	Quantity <i>Jumlah</i>			✓	Sum of Quantity of Goods	QUANTITY OF GOODS.PIB DETAIL	—
5	CIF Value (US\$) <i>Nilai CIF (US\$)</i>			✓	Sum of CIF Value(US\$) grouped by HS and Exporter's Country ([Unit Price]×[Quantity of Goods]×[Rate])	CALCULATED BY: <ul style="list-style-type: none"> <li>• UNIT PRICE. PIB DETAIL</li> <li>• QUANTITY OF GOODS.PIB DETAIL</li> <li>• (RATE. EXCHANGE RATE)</li> </ul>	—
6	CIF Value (Rp.) <i>Nilai CIF (Rp.)</i>			✓	Sum of CIF Value(Rp) grouped by HS and Exporter's Country ([Unit Price]×[Quantity of Goods]×[Rate])	CALCULATED BY: <ul style="list-style-type: none"> <li>• UNIT PRICE. PIB DETAIL</li> <li>• QUANTITY OF GOODS.PIB DETAIL</li> <li>• (RATE. EXCHANGE RATE)</li> </ul>	—
7	FOB Value (Rp.) <i>Nilai FOB (Rp.)</i>			✓	Total cost of the goods grouped by HS and Exporter's Country	—	—
8	Freight <i>Freight</i>			✓	Total freight of the goods grouped by HS and Exporter's Country	—	—



**Table 1-57: List of Items (Window Name: ASEAN Export (DB Accessing Tool Window))**

No.	Item Name	Level			Description	Item in File	Note
		1	2	3			
1	Date of PEB <i>Tanggal PEB</i>	✓			Date or period of payment for SSBC of certain PEB (input,optional)	SSBC DATE. FSSBCS	—

Table 1-58: List of Items (Report Name: ASEAN Export)

No.	Item Name	Level			Description	Item in File	Note
		1	2	3			
1	HS HS	✓			Tariff Code	TARIFF CODE.PEB DETAIL	—
2	Country of Destination <i>Negara Tujuan</i>		✓		Exporter's country who used CEPT Facility	destctry_of.PEB HEADER	—
3	Unit <i>Unit</i>			✓	Unit of the goods	unitgood_of.PEB DETAIL	—
4	Quantity <i>Jumlah</i>			✓	Sum of Quantity of Goods	NUMBER OF GOODS FOR FOB.PEB DETAIL	—
5	FOB Value (US\$) <i>Nilai FOB (US\$)</i>			✓	Sum of FOB Value(US\$) grouped by HS and Country of Destination ((FOB Per Unit)×[Number of Unit]×[Rate])	CALCULATED BY: • FOB PER UNIT.PEB DETAIL • NUMBER OF UNIT FOR FOB. PEB DETAIL • (RATE. EXCHANGE RATE)	—
6	FOB Value (Rp.) <i>Nilai FOB (Rp.)</i>			✓	Sum of FOB Value(Rp) grouped by HS and Country of Destination ((FOB Per Unit)×[Number of Unit]×[Rate])	CALCULATED BY: • FOB PER UNIT.PEB DETAIL • NUMBER OF UNIT FOR FOB. PEB DETAIL • (RATE. EXCHANGE RATE)	—

**Table 1-59: List of Items (Window Name: Facility (DB Accessing Tool Window))**

No.	Item Name	Level			Description	Item in File	Note
		1	2	3			
1	Date of PIB <i>Tanggal PEB</i>	✓			Date or period of payment for SSBC of certain PIB (input,optional)	SSBC DATE. FSSBCS	---
2	Date of PEB <i>Tanggal PEB</i>	✓			Date or period of payment for SSBC of certain PEB (input,optional)	SSBC DATE. FSSBCS	---
3	KWBC <i>KWBC</i>	✓			Customs and Excise Regional Office (input,optional)	CODE.DJBC OFFICE	---
4	KPBC <i>KPBC</i>	✓			Customs and Excise Service Office (input,optional)	CODE.DJBC OFFICE	---

Table 1-60: List of Items (Report Name: Facility) (1/2)

No.	Item Name	Level			Description	Item in File	Note
		1	2	3			
1	KWBC <i>KWBC</i>	✓			Customs and Excise Regional Office	CODE.DJBC OFFICE	---
2	KPBC <i>KPBC</i>	✓			Customs and Excise Service Office	CODE.DJBC OFFICE	---
3	NPWP <i>NPWP</i>	✓			Unit of the goods	ID NUMBER. BASIC INFORMATION	---
4	Facility <i>Fasilitas</i>	✓			Facility(PMA, PMDN, Bapeksta)	facitype_of. FACILITATION	---
5	Decree No. <i>Nomor Decree</i>		✓		Decree No. of the facility	FACILITATION DECREE NUMBER. FACILITATION	---
6	Number of PIB <i>Jumlah PIB</i>			✓	Total Number of PIB grouped by Facility and Decree No.	---	---
7	CIF Import Value (US\$) <i>Nilai Import CIF (US\$)</i>			✓	Sum of CIF Value of importation grouped by Facility and Decree No.	CIF VALUE.PIB HEADER	---
8	CIF Import Value (Rp.) <i>Nilai Import CIF (Rp.)</i>			✓	Sum of CIF Value of importation grouped by Facility and Decree No.	CIF VALUE.PIB HEADER	---
9	Exempted Value (Rp.) <i>Nilai Dibebaskan (Rp.)</i>			✓	Grouping title	---	---
10	BM <i>BM</i>			✓ *4	Sum of Exempted BM of importation grouped by Facility and Decree No.	IMPORT DUTY.PIB DETAIL	---
11	Excise <i>Cukai</i>			✓ *4	Sum of Exempted Excise of importation grouped by Facility and Decree No.	EXCISE.PIB DETAIL	---
12	PPN <i>PPi</i>			✓ *4	Sum of Exempted PPN of importation grouped by Facility and Decree No.	VAT.PIB DETAIL	---
13	PPhBM <i>PPhBM</i>			✓ *4	Sum of Exempted PPhBM of importation grouped by Facility and Decree No.	SALES TAX ON LUXURY GOODS. PIB DETAIL	---
14	PPh <i>PPh</i>			✓ *4	Sum of Exempted PPh of importation grouped by Facility and Decree No.	INCOME TAX.PIB DETAIL	---

Table 1-60: List of Items (Report Name: Facility) (2/2)

No.	Item Name	Level			Description	Item in File	Note
		1	2	3			
15	Postponed Value (Rp.) <i>Nilai Ditanggung-kan Pemerintah (Rp.)</i>			✓	Grouping title	---	---
16	BM <i>BM</i>			✓ *4	Sum of Postponed BM of importation grouped by Facility and Decree No.	IMPORT DUTY.PIB DETAIL	---
17	Excise <i>Cukai</i>			✓ *4	Sum of Postponed Excise of importation grouped by Facility and Decree No.	EXCISE.PIB DETAIL	---
18	PPN <i>PPi</i>			✓ *4	Sum of Postponed PPN of importation grouped by Facility and Decree No.	VAT.PIB DETAIL	---
19	PPhBM <i>PPhBM</i>			✓ *4	Sum of Postponed PPhBM of importation grouped by Facility and Decree No.	SALES TAX ON LUXURY GOODS.PIB DETAIL	---
20	PPh <i>PPh</i>			✓ *4	Sum of Postponed PPh of importation grouped by Facility and Decree No.	INCOME TAX.PIB DETAIL	---
21	Number of PEB <i>Jumlah PEB</i>		✓		Total Number of PEB which was declared as re-export	---	---
22	FOB Re-export Value (US\$) <i>Nilai re-export FOB (US\$)</i>		✓		Sum of FOB Value(US\$) of exportation which was declared as re-export ((FOB Value)×[Rate]) WHERE pebtype_of.PEB HEADER is indicating Re-export.	CALCULATED BY: • FOB VALUE. • PEB HEADER • pebtype_of.PEB HEADER • (RATE. EXCHANGE RATE)	---

