

2.5.2 Specification of processes

As a result of system design (Phase I), the following documents are attached.

G-1 and G-2 of Appendix are referred to understand how to view the diagrams and tables.

List of processes	Table 2.5.2-1
Process structure	Figure 2.5.2-1
NI/NHI	
Registration Process Diagram	Figure 2.5.2-2
Registration Process Summary.....	Table 2.5.2-2
Update Process Diagram	Figure 2.5.2-3
Update Process Summary	Table 2.5.2-3
Deletion Process Diagram	Figure 2.5.2-4
Deletion Process Summary	Table 2.5.2-4
Retrieval Process Diagram	Figure 2.5.2-5
Retrieval Process Summary	Table 2.5.2-5
Company Violation	
Registration Process Diagram	Figure 2.5.2-6
Registration Process Summary.....	Table 2.5.2-6
Update Process Diagram	Figure 2.5.2-7
Update Process Summary	Table 2.5.2-7
Deletion Process Diagram	Figure 2.5.2-8
Deletion Process Summary	Table 2.5.2-8
Retrieval Process Diagram	Figure 2.5.2-9
Retrieval Process Summary	Table 2.5.2-9
Past Record and Blocked Importer	
Registration Process Diagram	Figure 2.5.2-10
Registration Process Summary.....	Table 2.5.2-10
Update Process Diagram	Figure 2.5.2-11
Update Process Summary	Table 2.5.2-11
Deletion Process Diagram	Figure 2.5.2-12
Deletion Process Summary	Table 2.5.2-12
Retrieval Process Diagram	Figure 2.5.2-13
Retrieval Process Summary	Table 2.5.2-13
Company Profile	
Registration Process Diagram	Figure 2.5.2-14

Registration Process Summary.....	Table 2.5.2-14
Update Process Diagram	Figure 2.5.2-15
Update Process Summary	Table 2.5.2-15
Deletion Process Diagram	Figure 2.5.2-16
Deletion Process Summary	Table 2.5.2-16
Retrieval Process Diagram	Figure 2.5.2-17
Retrieval Process Summary	Table 2.5.2-17
Inter Island Transportation	
Registration Process Diagram	Figure 2.5.2-18
Registration Process Summary.....	Table 2.5.2-18
Update Process Diagram	Figure 2.5.2-19
Update Process Summary	Table 2.5.2-19
Deletion Process Diagram	Figure 2.5.2-20
Deletion Process Summary	Table 2.5.2-20
Retrieval Process Diagram	Figure 2.5.2-21
Retrieval Process Summary	Table 2.5.2-21
Physical Examination Result	
Registration Process Diagram	Figure 2.5.2-22
Registration Process Summary.....	Table 2.5.2-22
Update Process Diagram	Figure 2.5.2-23
Update Process Summary	Table 2.5.2-23
Deletion Process Diagram	Figure 2.5.2-24
Deletion Process Summary	Table 2.5.2-24
Retrieval Process Diagram	Figure 2.5.2-25
Retrieval Process Summary	Table 2.5.2-25
Personal Violation	
Registration Process Diagram	Figure 2.5.2-26
Registration Process Summary.....	Table 2.5.2-26
Update Process Diagram	Figure 2.5.2-27
Update Process Summary	Table 2.5.2-27
Deletion Process Diagram	Figure 2.5.2-28
Deletion Process Summary	Table 2.5.2-28
Retrieval Process Diagram	Figure 2.5.2-29
Retrieval Process Summary	Table 2.5.2-29
List of Windows	Table 2.5.2-30
List of Reports	Table 2.5.2-31

Table 2.5.2-1: List of Processes (1/2)

No.	App. Code	Process Name	Process Outline
1	P011	NI/NHI Registration	Register NI (importer, manifest, B/C, B/L, ship and container) and NHI. NI: Information note NHI: Intelligence result note
2	P012	NI/NHI Update	Update NI (importer, manifest, B/C, B/L, ship and container) and NHI.
3	P013	NI/NHI Deletion	Delete NI (importer, manifest, B/C, B/L, ship and container) and NHI.
4	P014	NI/NHI Retrieval	Retrieve contents and circumstance of specific NI/NHI. Retrieve every NI/NHI of specific importers, exporters, and factory owners.
5	P021	Company Violation Registration	Register violation information of importers, exporters, customs brokers and others.
6	P022	Company Violation Update	Update violation information of importers, exporters, customs brokers and others.
7	P023	Company Violation Deletion	Delete violation information of importers, exporters, customs brokers and others.
8	P024	Company Violation Retrieval	Retrieve violation information related to importers, exporters, customs brokers and others.
9	P031	Past Record and Blocked Importer Registration	Register past record and blocked importer. Note: <ul style="list-style-type: none"> • Past record: Importers for caution (black list). It is used for investigation at customs. • Blocked importer : Importers who have no permission to import goods.
10	P032	Past Record and Blocked Importer Update	Update past record and blocked importer.
11	P033	Past Record and Blocked Importer Deletion	Delete past record and blocked importer.
12	P034	Past Record and Blocked Importer Retrieval	Retrieve specific past record and specific blocked importer. Retrieve a list of past record and a list of blocked importer.
13	P041	Company Profile Registration	Register the basic information and the other information of the company. Register the specific information of importer, exporter, customs broker and shipping lines company.
14	P042	Company Profile Update	Update the basic information and the other information of the company. Update the specific information of importer, exporter, customs broker and shipping lines company.
15	P043	Company Profile Deletion	Delete the company information. Delete the specific information of importer, exporter, customs broker and shipping lines company.
16	P044	Company Profile Retrieval	Retrieve specific information of importer, exporter, customs broker and shipping lines company.

Table 2.5.2-1: List of Processes (2/2)

No.	App. Code	Process Name	Process Outline
17	P051	Inter Island Transportation Registration	Register ship transportation information (including goods and ship information) related to Inter-Island transportation or shipment of certain goods (e.g. rattan, woods and CPO) between customs areas.
18	P052	Inter Island Transportation Update	Update ship transportation information (including goods and ship information) related to Inter-Island transportation or shipment of certain goods (e.g. rattan, woods and CPO) between customs areas.
19	P053	Inter Island Transportation Deletion	Delete ship transportation information (including goods and ship information) related to Inter-Island transportation or shipment of certain goods (e.g. rattan, woods and CPO) between customs areas.
20	P054	Inter Island Transportation Retrieval	Retrieve specific transportation information (including goods and ship information).
21	P061	Physical Examination Result Registration	Register information related to physical examination result.
22	P062	Physical Examination Result Update	Update information related to physical examination result.
23	P063	Physical Examination Result Deletion	Delete information related to physical examination result.
24	P064	Physical Examination Result Retrieval	Retrieve information related to physical examination result.
25	P071	Personal Violation Registration	Register information about personal violation for passenger and border crosser
26	P072	Personal Violation Update	Update personal violation for passenger and border crosser information
27	P073	Personal Violation Deletion	Delete personal violation for passenger and border crosser information
28	P074	Personal Violation Retrieval	Retrieve information about personal violation for passenger and border crosser

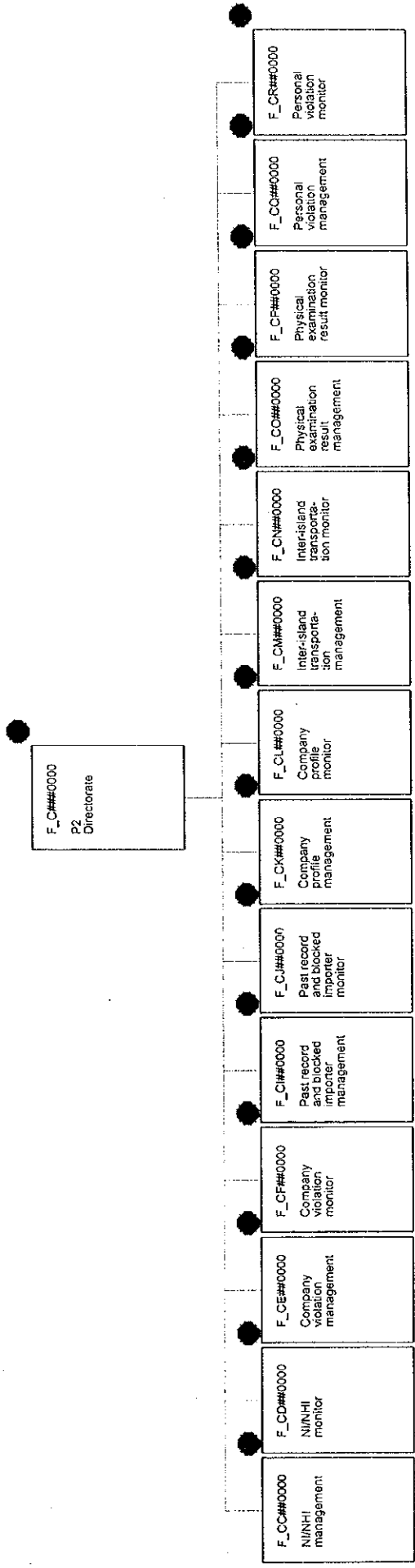


Figure 2.5.2-1: Process Structure (1/5)

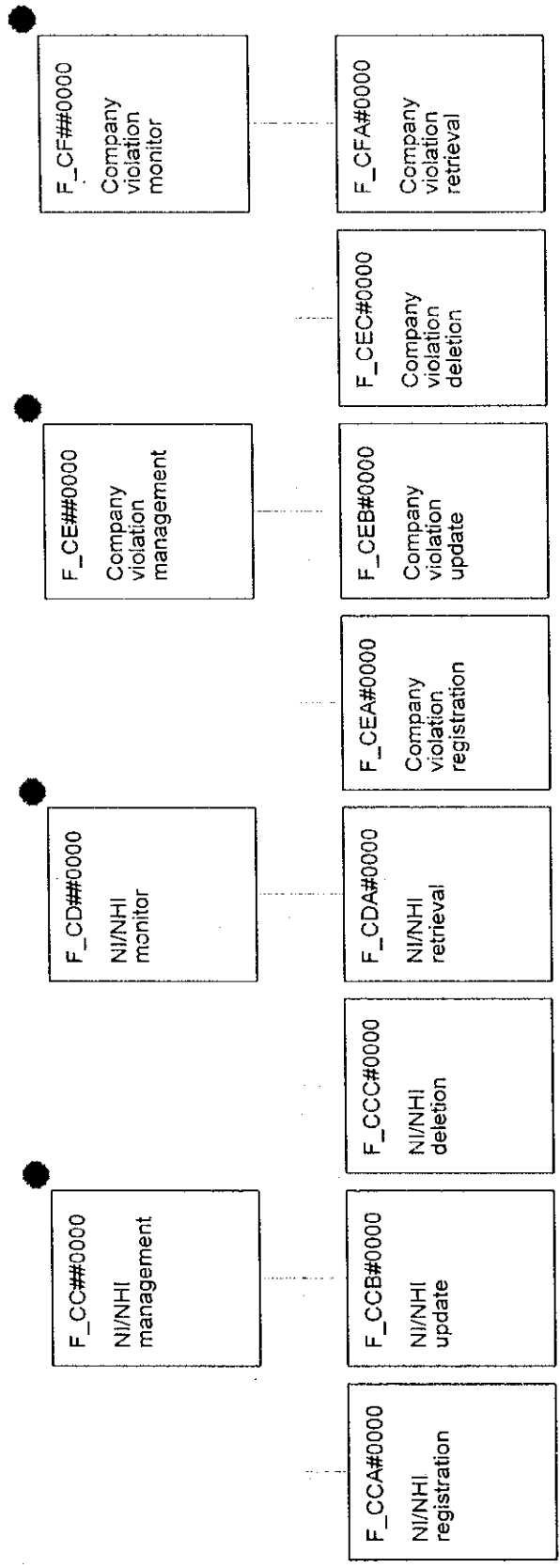


Figure 2.5.2-1: Process Structure (2/5)

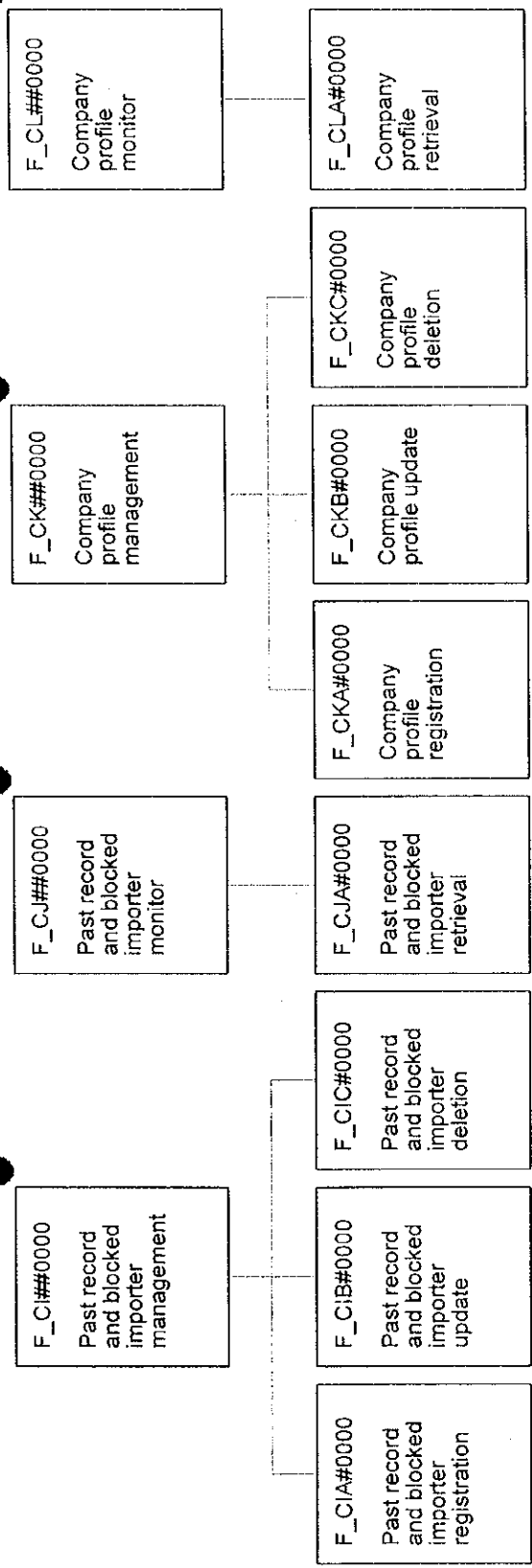


Figure 2.5.2-1: Process Structure (3/5)

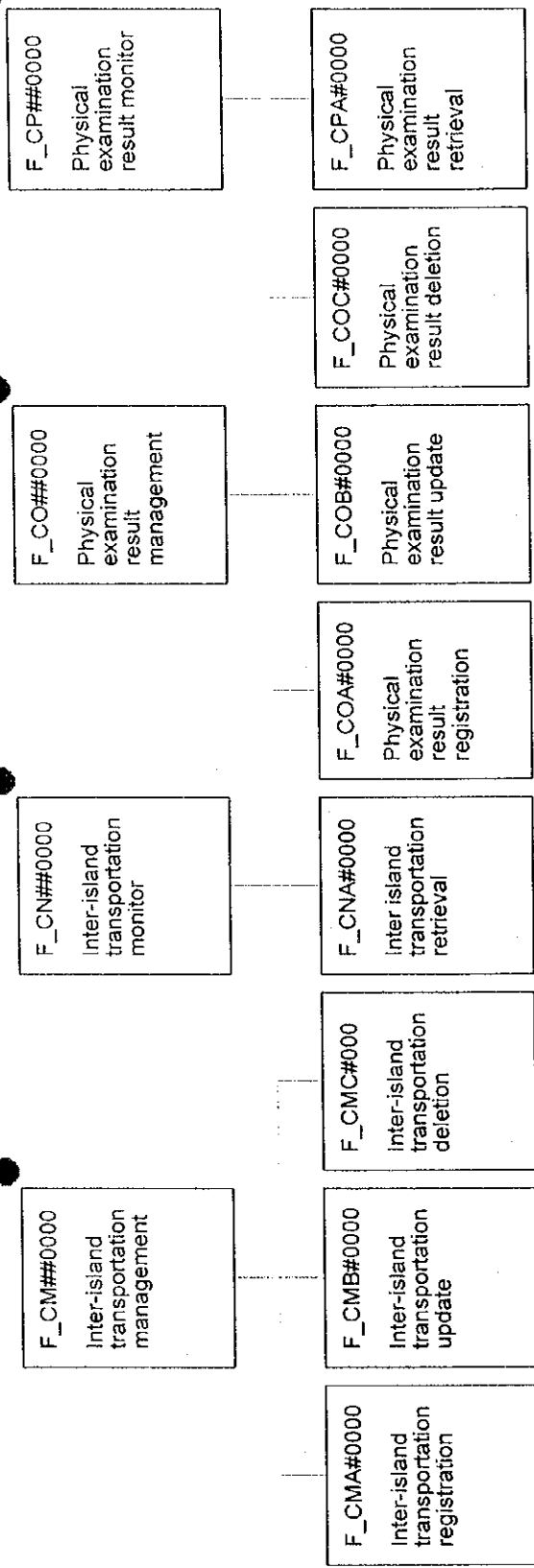


Figure 2.5.2-1: Process Structure (4/5)

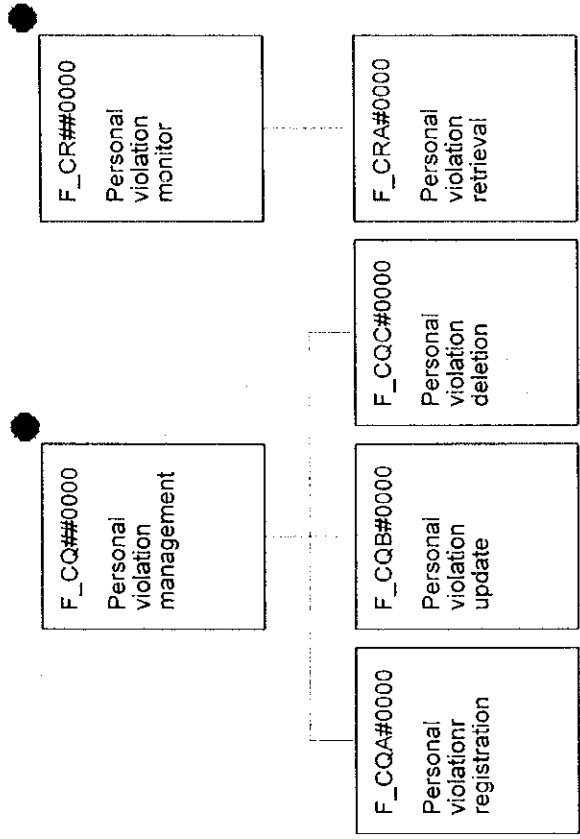


Figure 2.5.2-1: Process Structure (5/5)

Table 2.5.2-2: Process Summary (NI/NHI Registration)

No.	Input		Output		Files	Process Procedure	Process Condition	Notes
	Input Data	Input from:	Output Data	Output to:				
1	<ul style="list-style-type: none"> • Retrieval Window • NI/NHI No. 	CRT (Client)	<ul style="list-style-type: none"> • Registration Window • NI/NHI No. • Date • Type • Classification • To • From 	CRT (Client)	<ul style="list-style-type: none"> • NI/NHI 	<p>(A) Processing Unit Processed on every NI/NHI.</p> <p>(B) Processing Procedure</p> <p>(1) Check</p> <p>When NI/NHI No. is inputted into Retrieval Window, it will be checked if it does not exist.</p> <p>(2) Registration of NI/NHI</p> <p>When NI/NHI data is inputted into Registration Window, it will be checked and registered into the files.</p> <p>(3) Distribution of NI/NHI</p> <p>When destinations are inputted, e-mail of NI/NHI will be created and sent to the destinations using e-mail function.</p> <p>For uncomputerized office, NI/NHI will be printed and sent to the destinations by fax or postage.</p>	<ul style="list-style-type: none"> • Directorate must be Prevention and Investigation (inc. Regional Office and Service Office). • Service Office manages NI. • Head Office and Regional Office manages NHI. 	—
2	<ul style="list-style-type: none"> • Registration Window • NI/NHI No. • Date • Type • Classification • To • From 	CRT (Client)	<ul style="list-style-type: none"> • NI/NHI Distribution Window • Destination 	CRT (Client)	<ul style="list-style-type: none"> • NI/NHI Basic Information 			
3	<ul style="list-style-type: none"> • NI/NHI Distribution Window • Destination 	CRT (Client)	<ul style="list-style-type: none"> • NI/NHI Document • NI/NHI No. • Date • Type • Classification • To • From • E-mail 	Printer (Client)	—			

Table 2.5.2-3: Process Summary (NI/NHI Update)

No.	Input		Output		Files	Process Procedure	Process Condition	Notes
	Input Data	Input from:	Output Data	Output to:				
1	<ul style="list-style-type: none"> • Retrieval Window ◦ NI/NHI No. 	CRT (Client)	<ul style="list-style-type: none"> • Update Window ◦ NI/NHI No. ◦ Date ◦ Type ◦ Classification ◦ To ◦ From 	CRT (Client)	<ul style="list-style-type: none"> • NI/NHI Basic Information 	<p>(A) Processing Unit Processed on every NI/NHI.</p> <p>(B) Processing Procedure</p> <p>(1) Retrieval of NI/NHI When NI/NHI No. is inputted, NI/NHI data will be retrieved into Update Window.</p> <p>(2) Update of NI/NHI When NI/NHI data is updated on the window, it will be checked and updated into the files.</p> <p>(3) Distribution of NI/NHI When destinations are inputted, e-mail of NI/NHI will be created and sent to the destinations using e-mail function.</p> <p>For uncomputerized office, NI/NHI will be printed and sent to the destinations by fax or postage.</p>	<ul style="list-style-type: none"> • Directorate must be Prevention and Investigation (inc. Regional Office and Service Office). • Service Office manages NI. • Head Office and Regional Office manages NHI. • The record to be updated must exist in advance. 	—
2	<ul style="list-style-type: none"> • Update Window ◦ NI/NHI No. ◦ Date ◦ Type ◦ Classification ◦ To ◦ From 	CRT (Client)	<ul style="list-style-type: none"> • NI/NHI Distribution Window ◦ Destination 	CRT (Client)				
3	<ul style="list-style-type: none"> • NI/NHI Distribution Window ◦ Destination 	CRT (Client)	<ul style="list-style-type: none"> • NI/NHI Document ◦ NI/NHI No. ◦ Date ◦ Type ◦ Classification ◦ To ◦ From • E-mail 	Printer (Client)				

Table 2.5.2-4: Process Summary (NI/NHI Deletion)

No.	Input		Output		Files	Process Procedure	Process Condition	Notes
	Input Data	Input from:	Output Data	Output to:				
1	<ul style="list-style-type: none"> • Retrieval Window ◦ NI/NHI No. 	CRT (Client)	<ul style="list-style-type: none"> • Deletion Window ◦ NI/NHI No. ◦ Date ◦ Type ◦ Classification ◦ To ◦ From 	CRT (Client)	<ul style="list-style-type: none"> • NI/NHI Basic Information 	<p>(A) Processing Unit Processed on every NI/NHI.</p> <p>(B) Processing Procedure</p> <p>(1) Retrieval of NI/NHI</p> <p>When NI/NHI No. is inputted, the data will be retrieved into Deletion Window.</p> <p>(2) Deletion of NI/NHI</p> <p>When the user confirms the data in Deletion Window, it will be deleted from the files.</p> <p>(3) Distribution of NI/NHI</p> <p>When destinations are inputted, e-mail of notification will be created and sent to the destinations using e-mail function.</p> <p>For uncomputerized office, notification will be printed and sent to the destinations by fax or postage.</p>	<ul style="list-style-type: none"> • Directorate must be • Investigation (inc. Regional Office and Service Office). • Service Office manages NI. • Head Office and Regional Office manages NHI. • The record to be deleted must exist in advance. 	—
2	<ul style="list-style-type: none"> • Deletion Window ◦ NI/NHI No. ◦ Date ◦ Type ◦ Classification ◦ To ◦ From 	CRT (Client)	<ul style="list-style-type: none"> • NI/NHI Distribution Window ◦ Destination 	CRT (Client)				
3	<ul style="list-style-type: none"> • NI/NHI Distribution Window ◦ Destination 	CRT (Client)	<ul style="list-style-type: none"> • Notification ◦ E-mail 	<p>Printer (Client)</p> <p>CRT (Client)</p>				

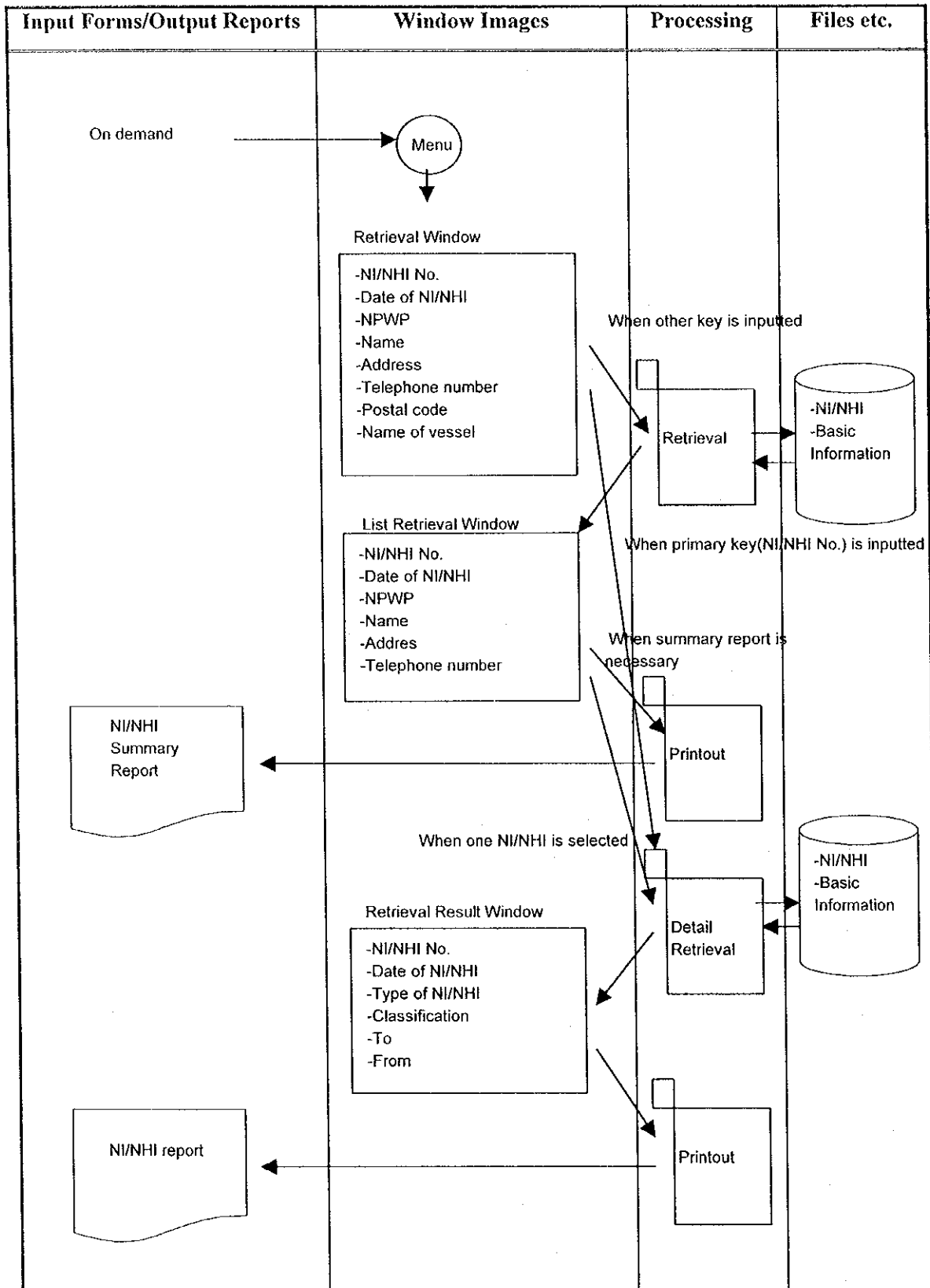


Figure 2.5.2-5: Process Diagram (NI/NHI Retrieval)

Table 2.5.2-5: Process Summary (NI/NHI Retrieval)

No.	Input		Output		Files	Process Procedure	Process Condition	Notes
	Input Data	Input from:	Output Data	Output to:				
1	<ul style="list-style-type: none"> • Retrieval Window □ NI/NHI No. □ Date □ NPWP □ Name □ Address □ Telephone □ Postal code □ Vessel Name 	CRT (Client)	<ul style="list-style-type: none"> • List Retrieval Window □ NI/NHI No. □ Date • Retrieval Result □ Window □ NI/NHI No. □ Date □ Type 	CRT (Client)	<ul style="list-style-type: none"> • NI/NHI • Basic Information 	<p>(A) Processing Unit Processed on every NI/NHI.</p> <p>(B) Processing Procedure (1) Retrieval of NI/NHI When NI/NHI No. is inputted, NI/NHI detail data will be retrieved into Retrieval Result Window. When the other key is inputted, List Retrieval Window will appear.</p> <p>(2) Detail Retrieval When one record is selected from List Retrieval Window, NI/NHI detail data will be retrieved into Retrieval Result Window.</p> <p>(3) Printout When printout function is selected from List Retrieval Window, Summary Report will be printed. When the function is selected from Retrieval Result Window, NI/NHI Report will be printed.</p>	<ul style="list-style-type: none"> • The record to be retrieved must exist in advance. • Retrieval can be done by partial string match. But it will take very long time. Therefore, such use should be limited only in inevitable cases. 	—
2	<ul style="list-style-type: none"> • List Retrieval Window □ NI/NHI No. □ Date 	CRT (Client)	<ul style="list-style-type: none"> • Retrieval Result □ Window □ NI/NHI No. □ Date □ Type • Summary Report 	CRT (Client)				
3	<ul style="list-style-type: none"> • Retrieval Result Window □ NI/NHI No. □ Date of □ NI/NHI □ Type of □ NI/NHI 	CRT (Client)	<ul style="list-style-type: none"> • NI/NHI Report □ NI/NHI No. □ Date of □ NI/NHI □ Type of □ NI/NHI 	Printer (Client)				

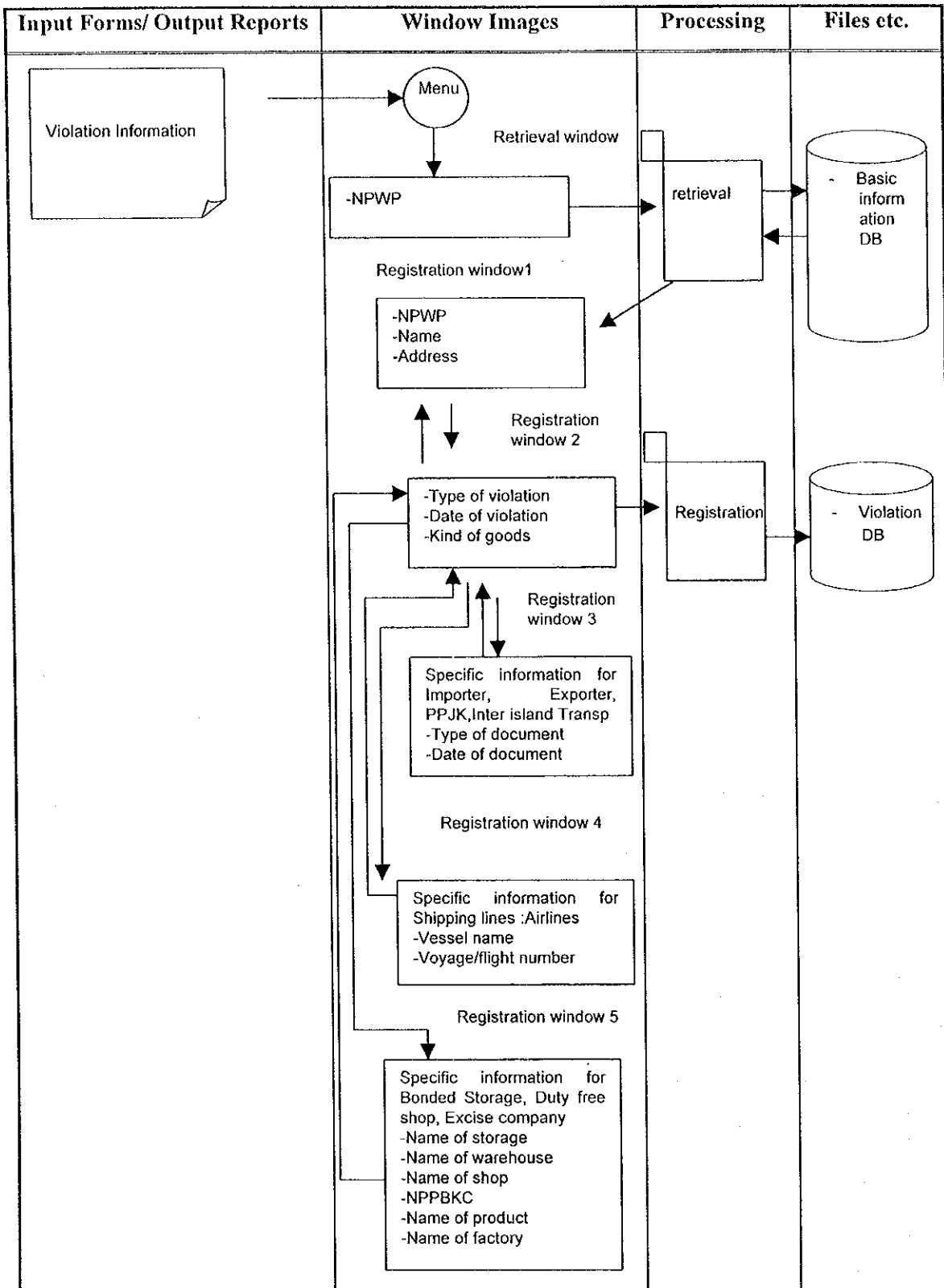


Figure 2.5.2-6 Process diagram (Company Violation Registration)

Table 2.5.2-10 Process Summary (Company Violation registration)

No.	Input		Output		Files	Process Procedure	Process Condition	Notes
	Input Data	Input from:	Output Data	Output to:				
1	<ul style="list-style-type: none"> • Retrieval window ◦ NPWP 	CRT (Client)	<ul style="list-style-type: none"> • Registration Window 1 ◦ Company name ◦ Address 	CRT (Client)	<ul style="list-style-type: none"> • Basic information DB 	<p>(A) Processing Unit Processed on every violation information</p> <p>(B) Processing Procedure</p> <p>(1) Retrieval of company information</p> <p>When NPWP is inputted, retrieve company information.</p> <p>(2) Registration of violation information</p> <p>When violation information is inputted, register to Database.</p>	<ul style="list-style-type: none"> • Company information should exist before registration. • Directorate should be Prevention and Investigation. 	—
2	<ul style="list-style-type: none"> • Registration Window 1 ◦ Address • Registration Window 2 ◦ Type of violation • Registration Window 3 ◦ Type of document • Registration Window 4 ◦ Vessel name • Registration Window 5 ◦ Name of storage ◦ NPPBKC 	CRT (Client)	—	—	<ul style="list-style-type: none"> • Violation DB 			

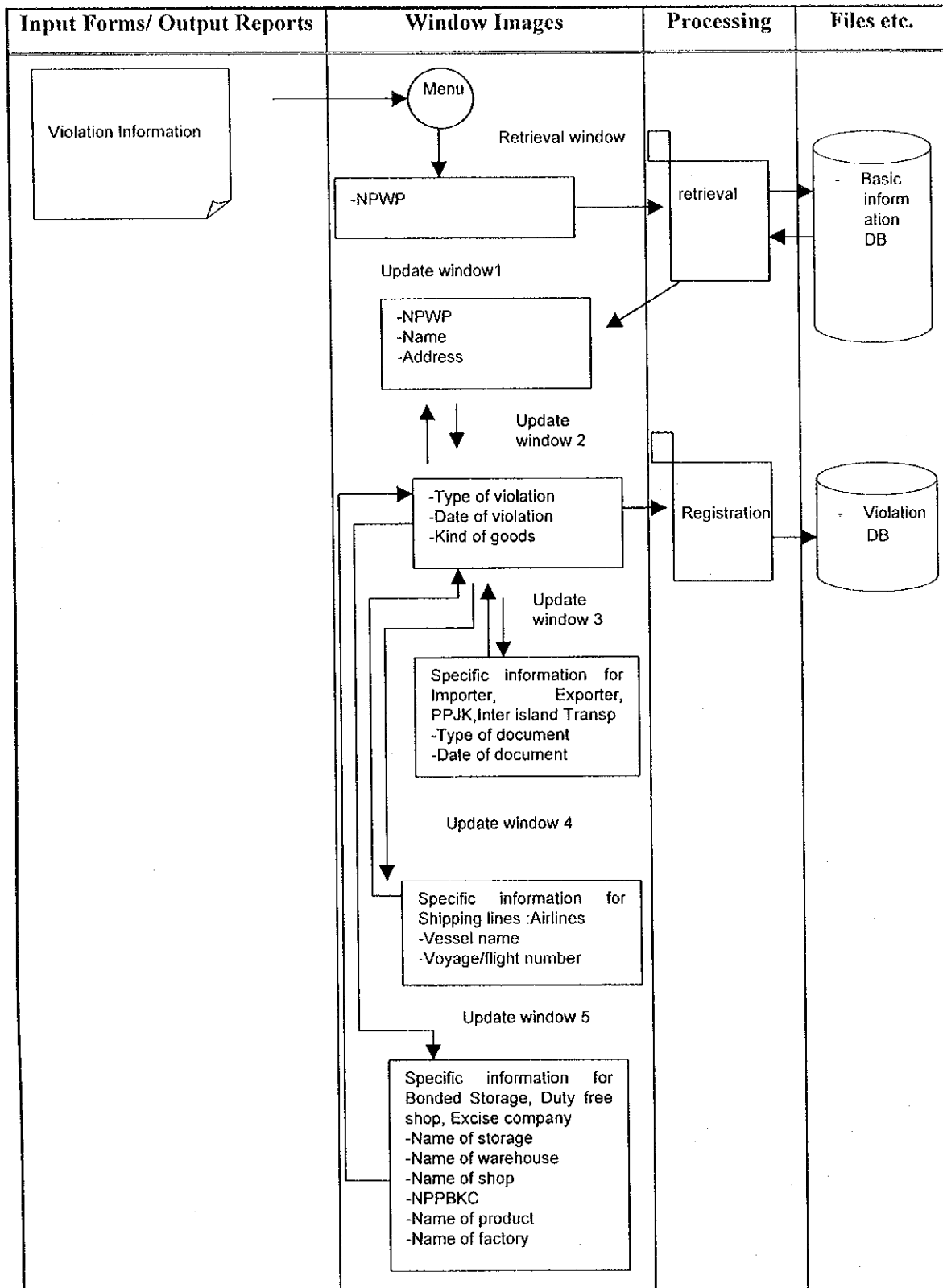


Figure 2.5.2-7 Process diagram (Company Violation Update)

Table 2.5.2-7 Process Summary (Company Violation update)

No.	Input		Output		Files	Process Procedure	Process Condition	Notes
	Input Data	Input from:	Output Data	Output to:				
1	<ul style="list-style-type: none"> • Retrieval window ◦ NPWP 	CRT (Client)	<ul style="list-style-type: none"> • Update Window 1 ◦ Company name ◦ Address 	CRT (Client)	<ul style="list-style-type: none"> • Basic information • Violation 	<p>(A) Processing Unit Processed on every violation information</p> <p>(B) Processing Procedure</p> <p>(1) Retrieval of company information</p> <p>When NPWP is inputted, Basic information will be retrieved.</p> <p>(2) Updating of violation information</p> <p>When violation information is updated, update to Database.</p>	<ul style="list-style-type: none"> • Company information should exist before updating. • Directorate should be Prevention and Investigation. 	—
2	<ul style="list-style-type: none"> • Update Window 1 ◦ Address • Update Window 2 ◦ Type of violation • Update Window 3 ◦ Type of document • Update Window 4 ◦ Vessel name • Update Window 5 ◦ Name of storage ◦ NPPBKC 	CRT (Client)	—	—	<ul style="list-style-type: none"> • Violation 			

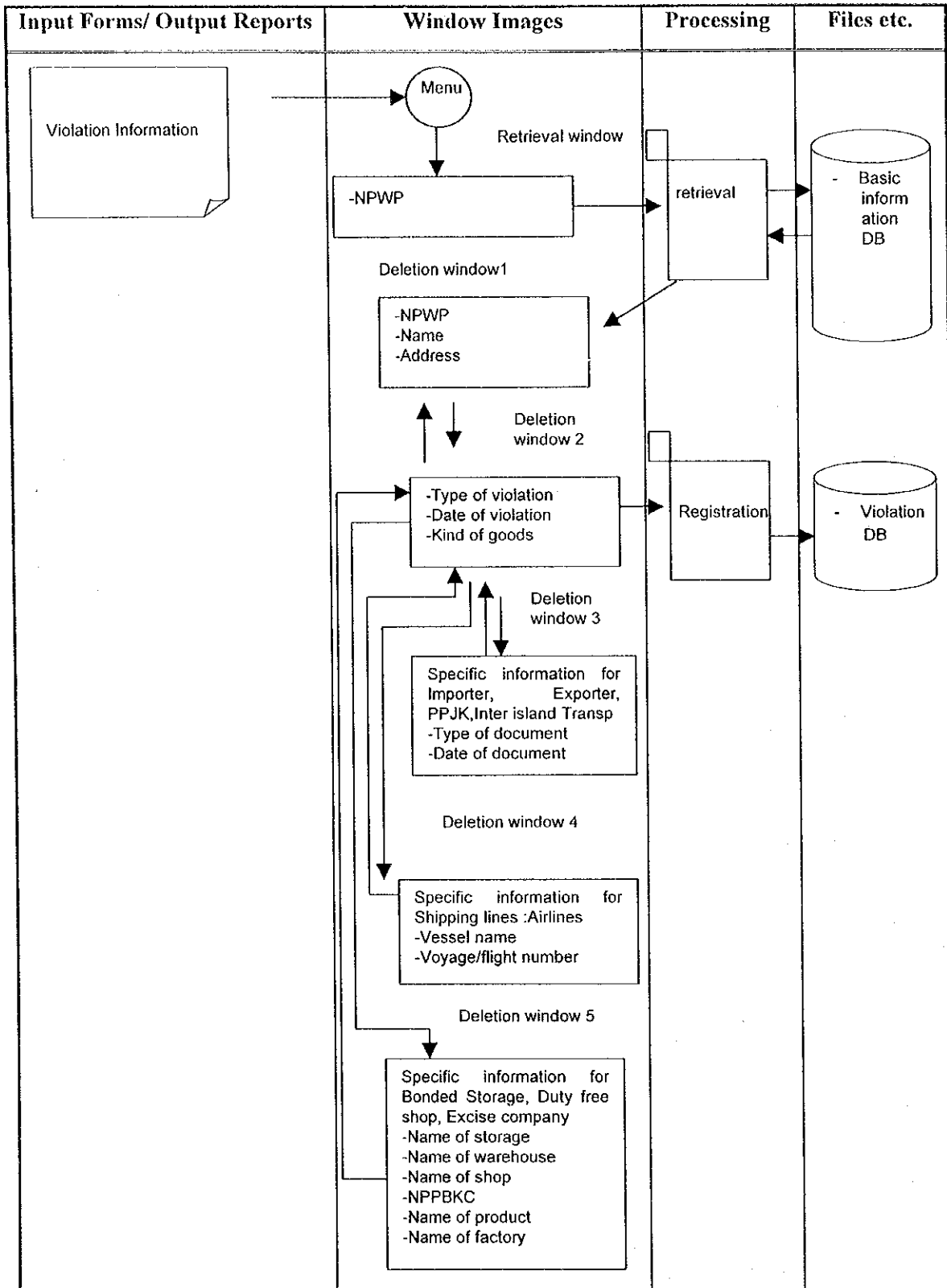


Figure 2.5.2-8 Process diagram (Company Violation Deletion)

Table 2.5.2-8 Process Summary (Company Violation deletion)

No.	Input		Output		Files	Process Procedure	Process Condition	Notes
	Input Data	Input from:	Output Data	Output to:				
1	<ul style="list-style-type: none"> • Retrieval window ▫ NPWP 	CRT (Client)	<ul style="list-style-type: none"> • Deletion Window 1 ▫ Company name ▫ Address 	CRT (Client)	<ul style="list-style-type: none"> • Basic information • Violation 	<p>(A) Processing Unit Processed on every violation information</p> <p>(B) Processing Procedure</p> <p>(1) Retrieval of company information</p> <p>When NPWP is inputted, Basic information will be retrieved.</p> <p>(2) Deletion of violation information is deleted, delete to Database.</p>	<ul style="list-style-type: none"> • Company information should exist before deletion. • Directorate should be Prevention and Investigation. 	—
2	<ul style="list-style-type: none"> • Deletion Window 1 ▫ Address • Deletion Window 2 ▫ Type of violation • Deletion Window 3 ▫ Type of document • Deletion Window 4 ▫ Vessel name • Deletion Window 5 ▫ Name of storage ▫ NPPBKC 	CRT (Client)	—	—	<ul style="list-style-type: none"> • Violation 			

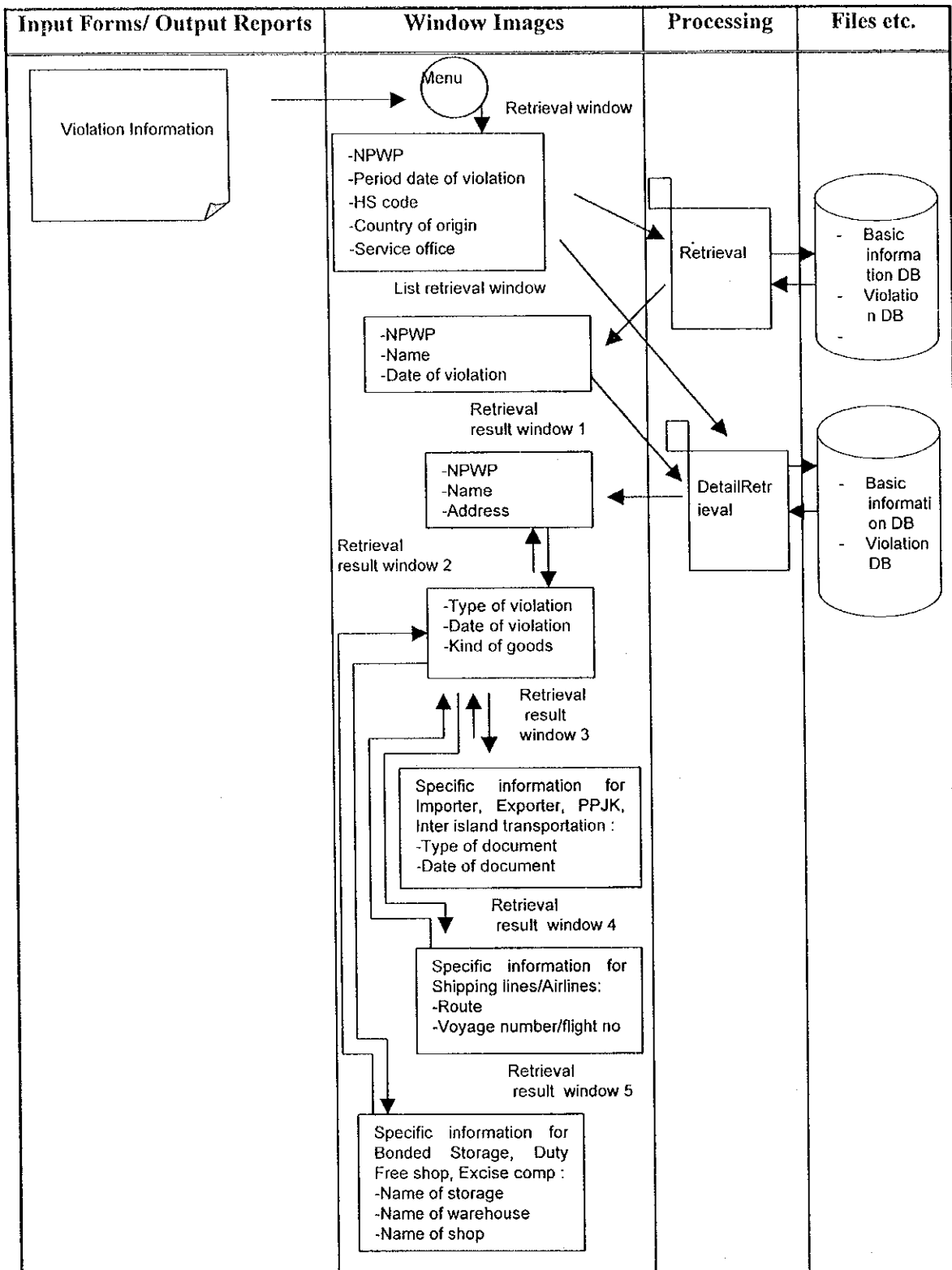


Figure 2.5.2-9 Process diagram (Company Violation Retrieval)

Table 2.5.2-9 Process Summary (Company Violation retrieval)

No.	Input		Output		Files	Process Procedure	Process Condition	Notes
	Input Data	Input from:	Output Data	Output to:				
1	<ul style="list-style-type: none"> • Retrieval window ▫ NPWP ▫ Period date of violation ▫ HS code ▫ Country of origin ▫ Service office 	CRT (Client)	<ul style="list-style-type: none"> • List retrieval window ▫ NPWP ▫ Name • Retrieval result Window 1 ▫ Name ▫ Address 	CRT (Client)	<ul style="list-style-type: none"> • Basic information • Violation 	<p>(A) Processing Unit Processed on every violation information</p> <p>(B) Processing Procedure (1) Retrieval of company information When NPWP is inputted, retrieve company information. (2) Retrieval of violation information When violation information is retrieved, retrieve to Database.</p>	<ul style="list-style-type: none"> • Company information should exist before retrieval. • Directorate should be Prevention and Investigation. 	—

Table 2.5.2-9 Process Summary (Company Violation retrieval)

No.	Input		Output		Files	Process Procedure	Process Condition	Notes	
	Input Data	Input from:	Output Data	Output to:					
2	<ul style="list-style-type: none"> • List retrieval window ▫ NPWP ▫ Name ▫ Date of violation 	CRT (Client)	<ul style="list-style-type: none"> • Retrieval result Window 1 ▫ NPWP • Retrieval result Window 2 ▫ Type of violation • Retrieval result Window 3 ▫ Type of document • Retrieval result Window 4 ▫ Route • Retrieval result Window 5 ▫ NPPBKC 	CRT (Client)	<ul style="list-style-type: none"> • Violation • Basic information 				

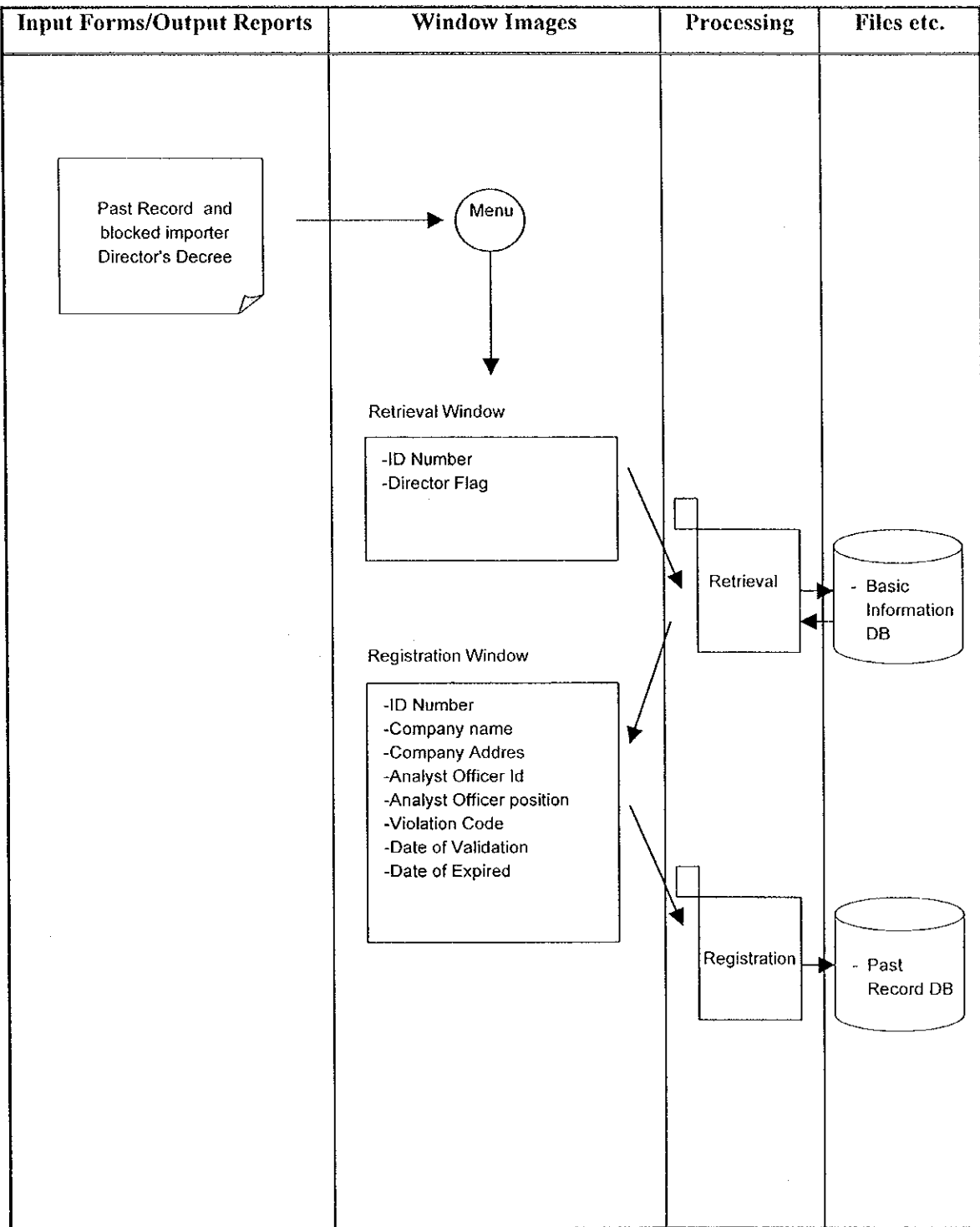


Figure 2.5.2-10: Process Diagram (Past-Record and Blocked Importer Registration)

Table 2.5.2-10: Process Summary (Past Record and Blocked Importer Registration)

No.	Input		Output		Files	Process Procedure	Process Condition	Notes
	Input Data	Input from:	Output Data	Output to:				
1	<ul style="list-style-type: none"> • Retrieval Window • ID Number • Director Flag 	CRT (Client)	<ul style="list-style-type: none"> • Registration Window • Violation Code • Company Name • Company Address 	CRT (Client)	<ul style="list-style-type: none"> • Past Record • Basic Information 	<p>(A) Processing Unit Processed on every Past Record or Blocked Importer Decree.</p> <p>(B) Processing Procedure</p> <p>(1) Retrieval of Past Record and Blocked Importer</p> <p>Retrieve and display Basic Information based on ID Number and Director Flag.</p> <p>(2) Registration The Past Record and Blocked Importer</p> <p>Check the data and then register the Past Record or Blocked Importer data.</p>	<ul style="list-style-type: none"> • Directorate must be Prevention and Investigation. • Basic information must exist. 	—
2	<ul style="list-style-type: none"> • Registration Window • Director Flag • Analyst Officer ID 	CRT (Client)	—	—	<ul style="list-style-type: none"> • Past Record 			

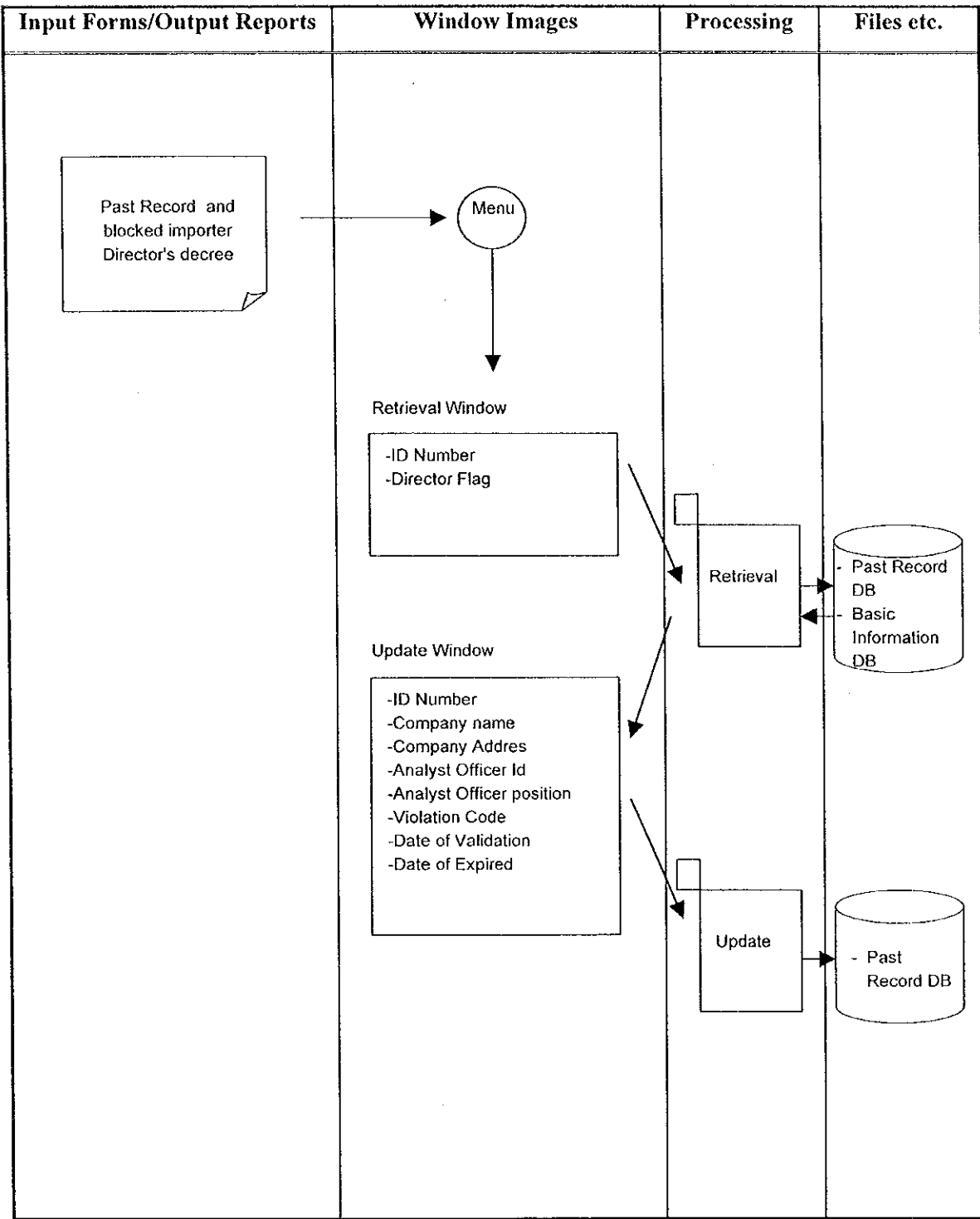


Figure 2.5.2-11: Process Diagram (Past-Record and Blocked Importer Update)

Table 2.5.2-11: Process Summary (Past Record and Blocked Importer Update)

No.	Input		Output		Files	Process Procedure	Process Condition	Notes
	Input Data	Input from:	Output Data	Output to:				
1	<ul style="list-style-type: none"> • Retrieval Window ◦ ID Number ◦ Director Flag 	CRT (Client)	<ul style="list-style-type: none"> • Update Window ◦ Violation Code ◦ Company Name ◦ Company Address 	CRT (Client)	<ul style="list-style-type: none"> • Past Record • Basic Information 	<p>(A) Processing Unit Processed on every Past Record or Blocked Importer Decree.</p> <p>(B) Processing Procedure</p> <p>(1) Retrieval of Past Record and Blocked Importer</p> <p>The retrieval of Past Record and Blocked Importer information is based on inputting ID Number and Director Flag. Display the Past Record or Blocked Importer Data.</p> <p>(2) Updating The Past Record and Blocked Importer</p> <p>Check the data and then update the Past Record or Blocked Importer data.</p>	<ul style="list-style-type: none"> • Directorate must be Prevention and Investigation. • Basic information must exist. 	—
2	<ul style="list-style-type: none"> • Update Window ◦ Analyst Officer ID ◦ Date of Validation 	CRT (Client)	—	—	<ul style="list-style-type: none"> • Past Record 			

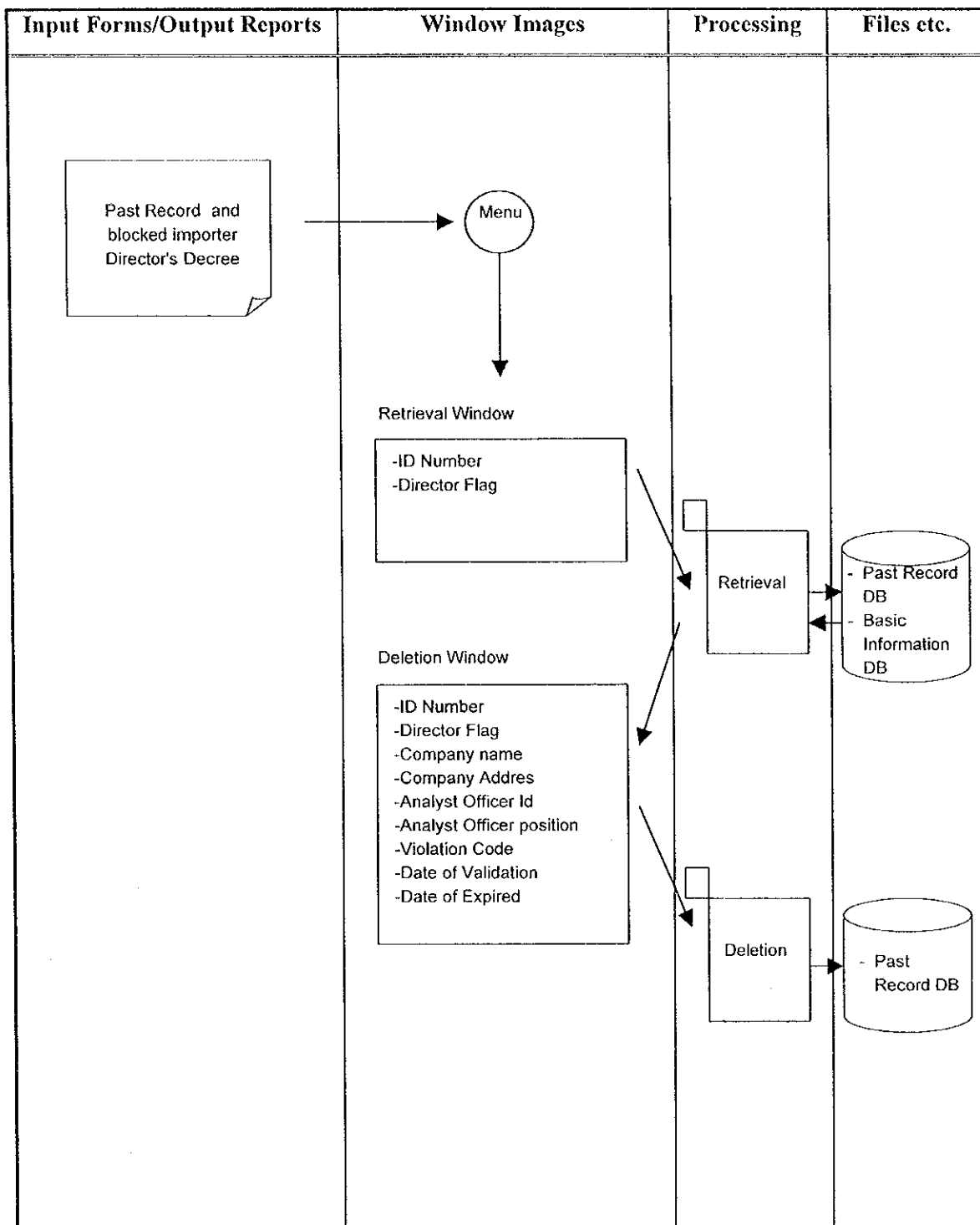


Figure 2.5.2-12: Process Diagram (Past-Record and Blocked Importer Deletion)

Table 2.5.2-12: Process Summary (Past Record and Blocked Importer Deletion)

No.	Input		Output		Files	Process Procedure	Process Condition	Notes
	Input Data	Input from:	Output Data	Output to:				
1	<ul style="list-style-type: none"> • Retrieval Window ◦ ID Number ◦ Director Flag 	CRT (Client)	<ul style="list-style-type: none"> • Deletion Window ◦ Violation Code ◦ Company Name ◦ Company Address 	CRT (Client)	<ul style="list-style-type: none"> • Past Record • Basic Information 	<p>(A) Processing Unit Processed on every Past Record or Blocked Importer Decree.</p> <p>(B) Processing Procedure</p> <p>(1) Retrieval of Past Record and Blocked Importer</p> <p>The retrieval of Past Record and Blocked Importer information is based on inputting ID Number and Director Flag. Display the Past Record or Blocked Importer Data.</p> <p>(2) Deletion of Past Record and Blocked Importer</p> <p>Check the data and then delete the Past Record or Blocked Importer data.</p>	<ul style="list-style-type: none"> • Directorate must be Prevention and Investigation. • Basic information must exist. 	—
2	<ul style="list-style-type: none"> • Deletion Window ◦ Date of Validation ◦ Analyst ◦ Officer ID 	CRT (Client)	—	—	<ul style="list-style-type: none"> • Past Record 			

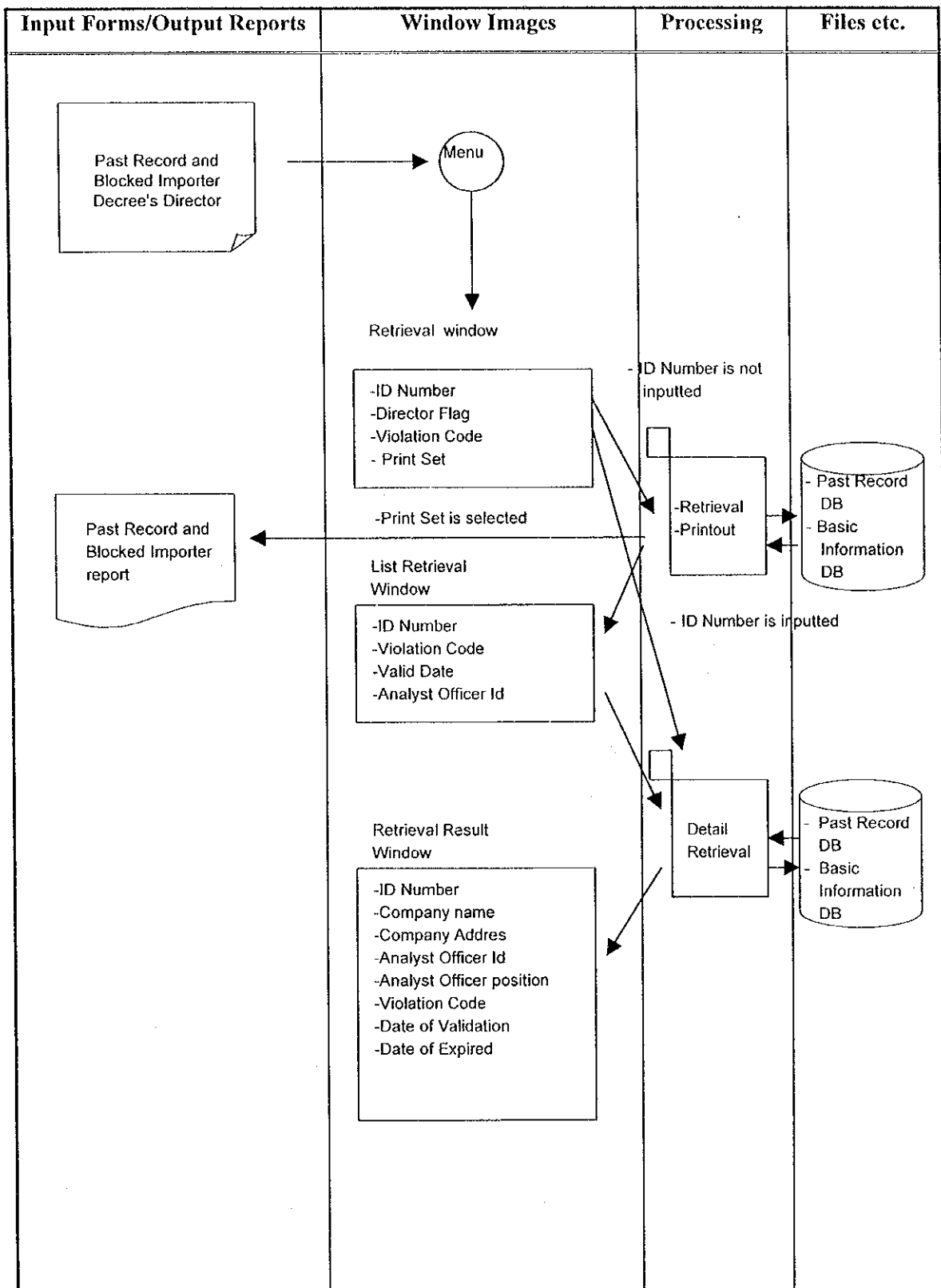


Figure 2.5.2-13: Process Diagram (Past Record and Blocked Importer Retrieval)

Table 2.5.2-13: Process Summary (Past Record and Blocked Importer Retrieval)

No.	Input		Output		Files	Process Procedure	Process Condition	Notes
	Input Data	Input from:	Output Data	Output to:				
1	<ul style="list-style-type: none"> • Retrieval Window ▫ ID Number ▫ Director Flag ▫ Violation Code 	CRT (Client)	<ul style="list-style-type: none"> • Retrieval Result Window ▫ Company Name • List Retrieval Window ▫ Analyst Officer Id • Past Record and Blocked Importer Report ▫ Date of Validation 	CRT (Client)	<ul style="list-style-type: none"> • Past Record • Basic Information 	<p>(A) Processing Unit Processed on every Past Record or Blocked Importer Decree.</p> <p>(B) Processing Procedure</p> <ul style="list-style-type: none"> (1) Retrieval of Past Record and Blocked Importer The retrieval of Past Record and Blocked Importer information is based on inputting ID Number, Violation Code and Director Flag to retrieve List Retrieval Window or Retrieval Result Window. If Print Set checked, the Past Record and Blocked Importer report will be printed out. (2) Retrieval Result of Past Record and Blocked Importer The retrieval result will display in accordance with operator request. 	<ul style="list-style-type: none"> • Directorate must be Prevention and Investigation. • Basic information must exist. 	—
2	<ul style="list-style-type: none"> • List Retrieval Window ▫ ID Type ▫ ID Number ▫ Director Flag 	CRT (Client)	<ul style="list-style-type: none"> • Retrieval Result Window ▫ Company Name ▫ Company Address 	CRT (Client)	<ul style="list-style-type: none"> • Past Record • Basic Information 			

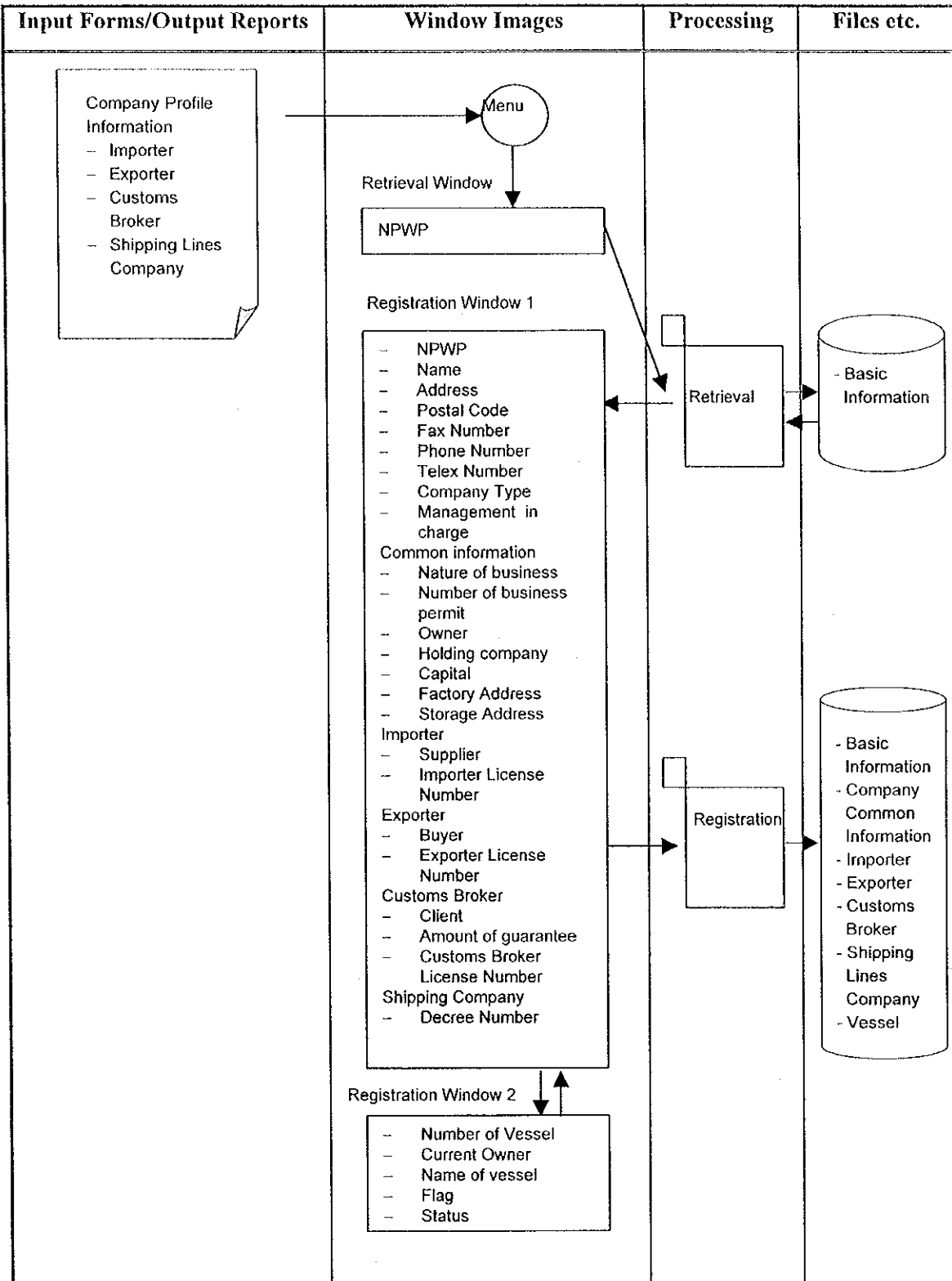


Figure 2.5.2-14: Process Diagram (Company Profile Registration)

Table 2.5.2-14: Process Summary (Company Profile Registration)

No.	Input		Output		Files	Process Procedure	Process Condition	Notes
	Input Data	Input from:	Output Data	Output to:				
1	<ul style="list-style-type: none"> • Retrieval Window □ NPWP 	CRT (Client)	<ul style="list-style-type: none"> • Registration Window 1 □ Basic Info □ Common Info □ Importer/Exporter/Customs Broker/Shipping Lines Company Info 	CRT (Client)	<ul style="list-style-type: none"> • Basic Information • Company Common Information • Importer • Exporter • Customs • Broker • Shipping Lines • Company • Vessel 	<p>(A) Processing Unit Processed on every company profile.</p> <p>(B) Processing Procedure (1) Check When NPWP is inputted, it will be checked if it does not exist.</p> <p>(2) Registration of Company Profile When company information is inputted into Registration Window1, it will be checked and registered into the files. When the function to register vessel information is selected, Registration Window2 will appear.</p> <p>(3) Registration of Vessel When vessel information is inputted into Registration Window2, the window will return to Registration Window1. The data will be registered into the files from Registration Window1.</p>	<ul style="list-style-type: none"> • The record must not exist before registration. • Directorate must be Prevention and Investigation. 	—
2	<ul style="list-style-type: none"> • Registration Window 1 □ Basic Info □ Common Info □ Importer/Exporter/Customs Broker/Shipping Lines Company Info 	CRT (Client)	<ul style="list-style-type: none"> • Registration Window 2 □ Vessel Information 	CRT (Client)				
3	<ul style="list-style-type: none"> • Registration Window 2 □ Vessel Information 	CRT (Client)	—	—				

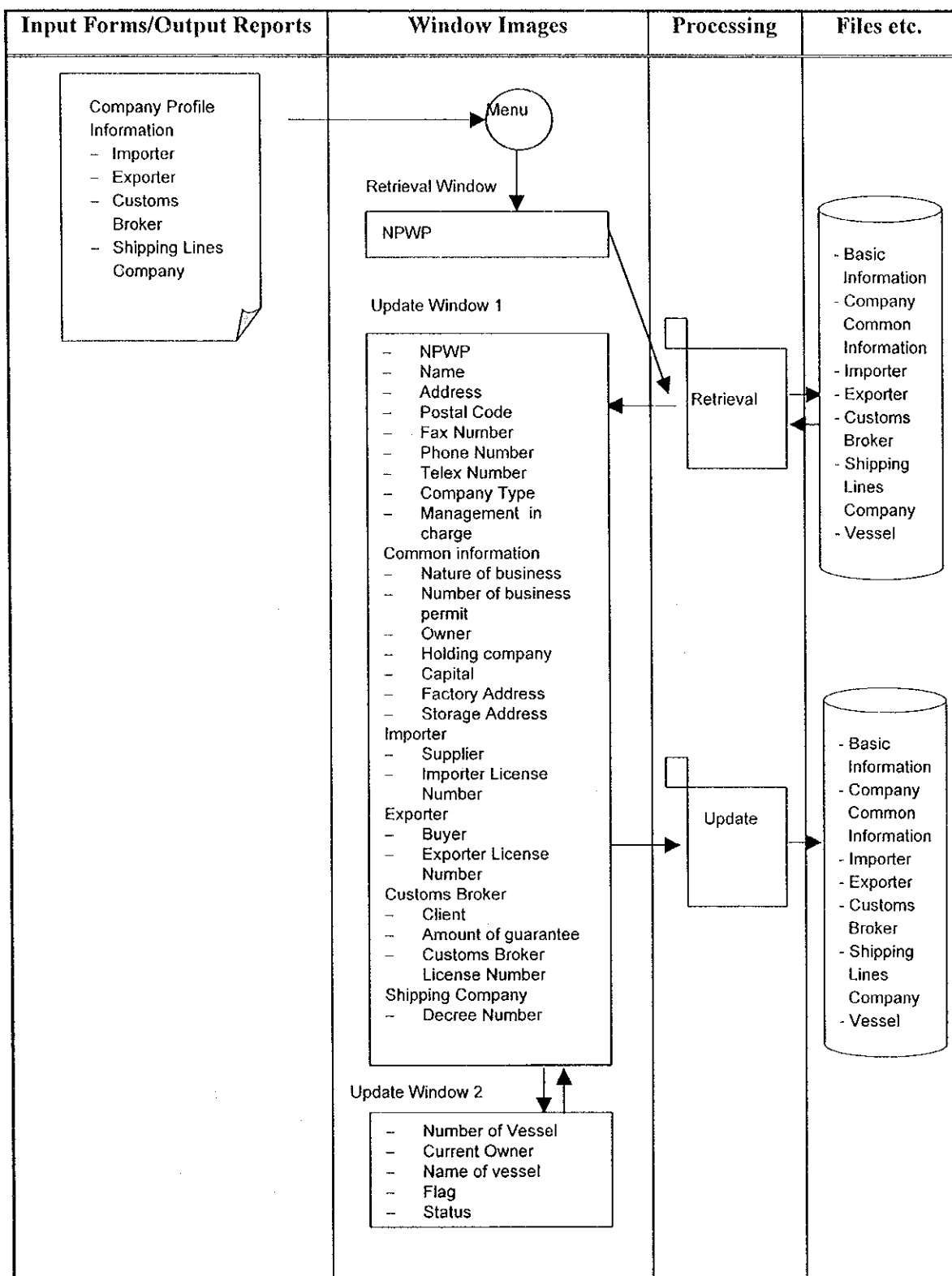


Figure 2.5.2-15: Process Diagram (Company Profile Update)

Table 2.5.2-15: Process Summary (Company Profile Update)

No.	Input		Output		Files	Process Procedure	Process Condition	Notes
	Input Data	Input from:	Output Data	Output to:				
1	<ul style="list-style-type: none"> • Retrieval Window □ NPWP 	CRT (Client)	<ul style="list-style-type: none"> • Update Window 1 <ul style="list-style-type: none"> □ Basic Info □ Common Info □ Importer/Exporter/Customs Broker/Shipping Lines Company Info 	CRT (Client)	<ul style="list-style-type: none"> • Basic Information Company Common Information • Importer • Exporter • Customs Broker • Shipping Lines Company • Vessel 	<p>(A) Processing Unit Processed on every company profile.</p> <p>(B) Processing Procedure (1) Retrieval When NPWP is inputted, company information will be retrieved.</p> <p>(2) Update of Company Profile When company information is updated in Update Window1, it will be checked and updated into the files. When the function to update vessel information is selected, Update Window2 will appear.</p> <p>(3) Update of Vessel When vessel information is updated in Update Window2, the window will return to Update Window1. The data will be updated into the files from Update Window1.</p>	<ul style="list-style-type: none"> • The record to be updated must exist in advance. • Directorate must be Prevention and Investigation. 	—
2	<ul style="list-style-type: none"> • Update Window 1 □ Basic Info □ Common Info □ Importer/Exporter/Customs Broker/Shipping Lines Company Info 	CRT (Client)	<ul style="list-style-type: none"> • Update Window 2 □ Vessel Information 	CRT (Client)				
3	<ul style="list-style-type: none"> • Update Window 2 □ Vessel Information 	CRT (Client)	—	—				

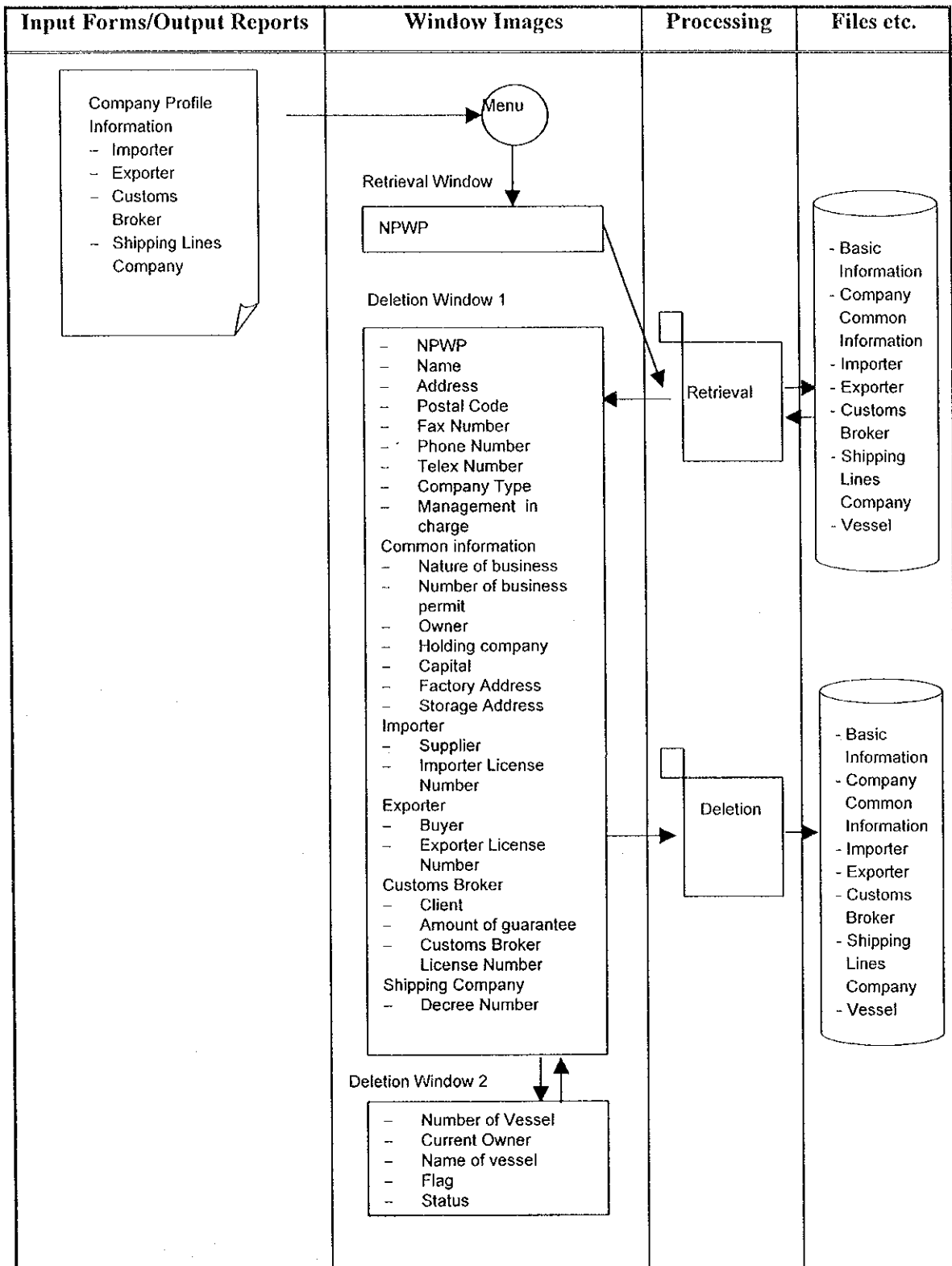


Figure 2.5.2-16: Process Diagram (Company Profile Deletion)

Table 2.5.2-16: Process Summary (Company Profile Deletion)

No.	Input		Output		Files	Process Procedure	Process Condition	Notes
	Input Data	Input from:	Output Data	Output to:				
1	<ul style="list-style-type: none"> • Retrieval Window □ NPWP 	CRT (Client)	<ul style="list-style-type: none"> • Deletion Window 1 □ Basic Info □ Common Info □ Importer/Exporter/Customs Broker/Shipping Lines Company Info 	CRT (Client)	<ul style="list-style-type: none"> • Basic Information Company Common Information • Importer • Exporter • Customs Broker • Shipping Lines Company • Vessel 	<p>(A) Processing Unit Processed on every company profile.</p> <p>(B) Processing Procedure (1) Retrieval When NPWP is inputted, company information will be retrieved.</p> <p>(2) Deletion of Company Profile When the function to delete company information is selected in Deletion Window 1, it will be checked and deleted from the files. When the function to delete vessel information is selected, Deletion Window 2 will appear.</p> <p>(3) Deletion of Vessel When vessel information is confirmed from the user, the window will return to Deletion Window 1. The data will be deleted from the files from Deletion Window 1.</p>	<ul style="list-style-type: none"> • The record to be deleted must exist in advance. • Directorate must be Prevention and Investigation. • Company Information cannot be deleted if it has vessel information. • The user must delete vessel information first. 	—
2	<ul style="list-style-type: none"> • Deletion Window 1 □ Basic Info □ Common Info □ Importer/Exporter/Customs Broker/Shipping Lines Company Info 	CRT (Client)	<ul style="list-style-type: none"> • Deletion Window 2 □ Vessel Information 	CRT (Client)				
3	<ul style="list-style-type: none"> • Deletion Window 2 □ Vessel Information 	CRT (Client)	—	—				

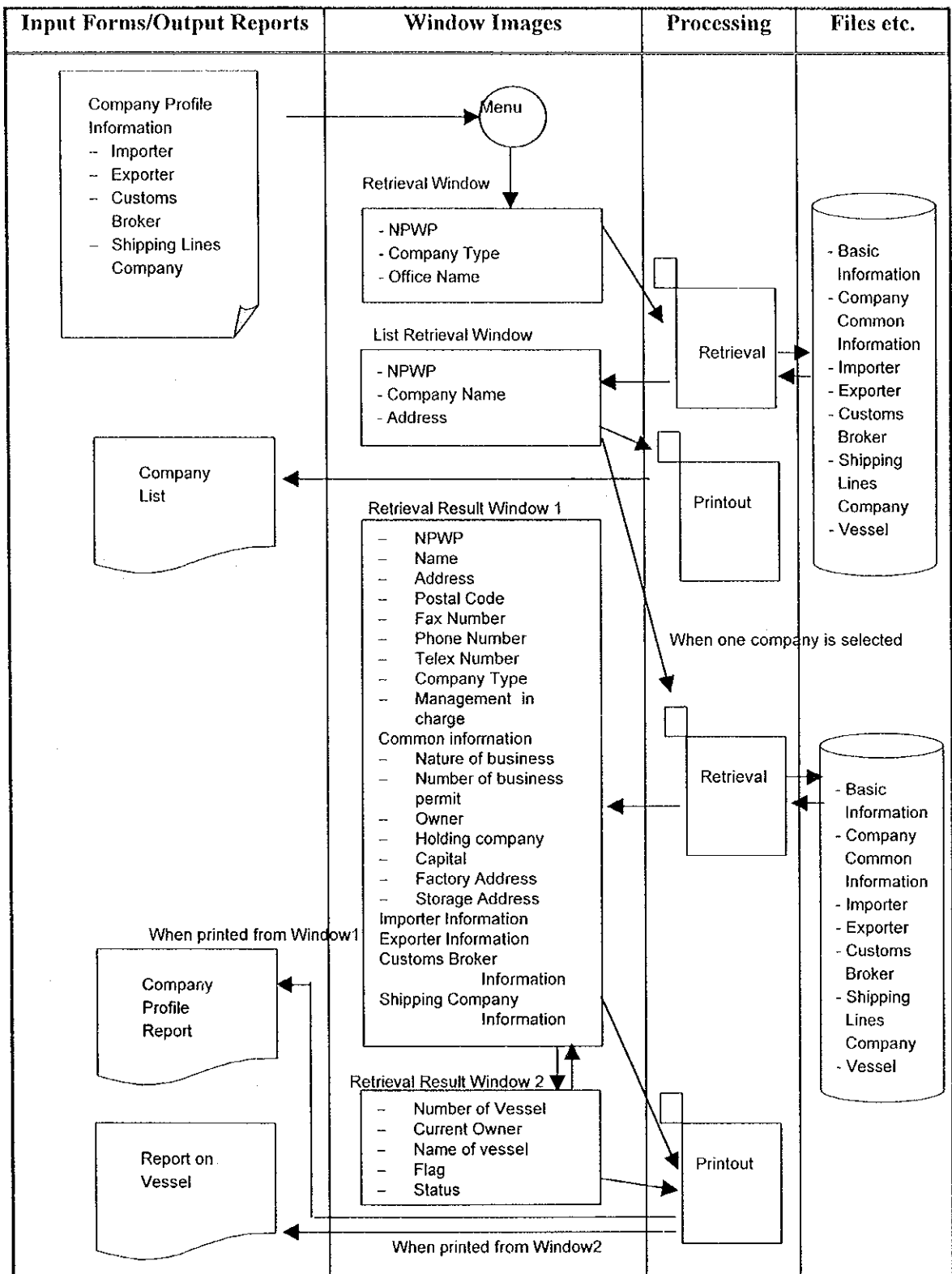


Figure 2.5.2-17: Process Diagram (Company Profile Retrieval)

Table 2.5.2-17: Process Summary (Company Profile Retrieval)

No.	Input		Output		Files	Process Procedure	Process Condition	Notes
	Input Data	Input from:	Output Data	Output to:				
1	<ul style="list-style-type: none"> • Retrieval Window NPWP 	CRT (Client)	<ul style="list-style-type: none"> • List Retrieval Window Retrieval Result Window 1 	CRT (Client)	<ul style="list-style-type: none"> • Basic Information Company Common Information 	<p>(A) Processing Unit Processed on every company.</p> <p>(B) Processing Procedure (1) Retrieval When NPWP is inputted, company data will be retrieved. When other key is inputted, List Retrieval Window will appear.</p> <p>(2) Retrieval of Company Profile When one company is selected from List Retrieval Window, Retrieval Result Window 1 will appear.</p> <p>(3) Retrieval of Vessel When one vessel is selected from Retrieval Result Window 1, Retrieval Result Window 2 will appear.</p> <p>(4) Printout When printout function is selected from List Retrieval Window, Summary Report will be printed. When it is selected from Retrieval Result Window 1, Company Profile Report will be printed. When it is selected from Retrieval Result Window 2, Vessel Report will be printed.</p>	<ul style="list-style-type: none"> • The record to be retrieved must exist in advance. 	—
2	<ul style="list-style-type: none"> • List Retrieval Window NPWP □ Company Name 	CRT (Client)	<ul style="list-style-type: none"> • Retrieval Result Window 1 Summary Report 	CRT (Client)	<ul style="list-style-type: none"> • Importer Exporter Customs Broker Shipping Lines Company Vessel 			
3	<ul style="list-style-type: none"> • Retrieval Result Window 1 □ Basic Info □ Common Info □ Specific Info 	CRT (Client)	<ul style="list-style-type: none"> • Retrieval Result Window 2 □ Vessel Information Company Profile Report 	CRT (Client)				
4	<ul style="list-style-type: none"> • Retrieval Result Window 2 □ Vessel Information 	CRT (Client)	<ul style="list-style-type: none"> • Vessel Report 	Printer (Client)				

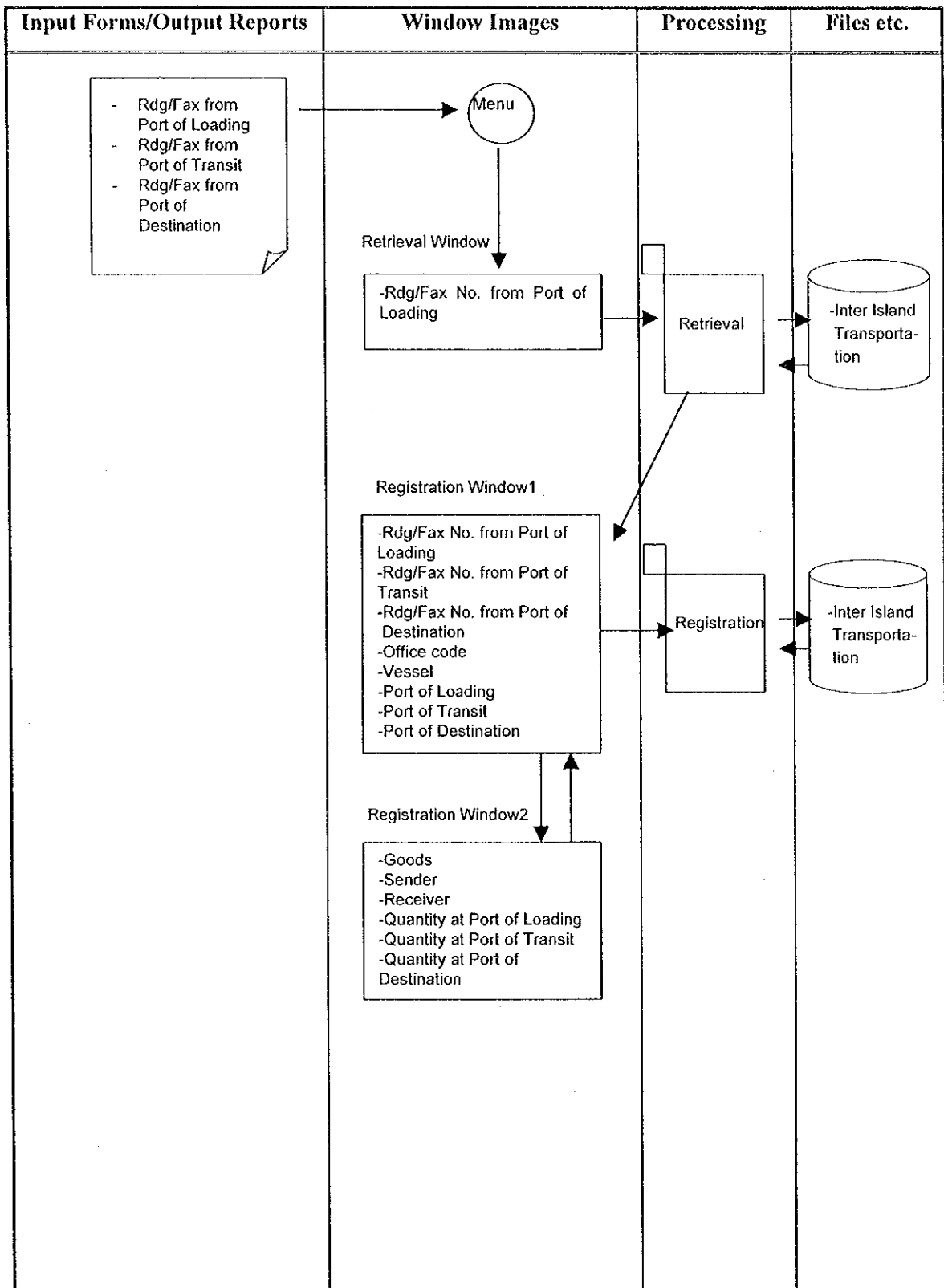


Figure 2.5.2-18: Process Diagram (Inter Island Transportation Registration)

Table 2.5.2-18: Process Summary (Inter Island Transportation Registration)

No.	Input		Output		Files	Process Procedure	Process Condition	Notes
	Input Data	Input from:	Output Data	Output to:				
1	<ul style="list-style-type: none"> • Retrieval Window = Rdg/Fax No. 	CRT (Client)	<ul style="list-style-type: none"> • Registration Window1 = Rdg/Fax No. = Office code = Sender = Receiver = Goods 	CRT (Client)	<ul style="list-style-type: none"> • Inter Island Transportation 	<p>(A) Processing Unit Processed on every Rdg/Fax</p> <p>(B) Processing Procedure</p> <p>(1) Check or Retrieval</p> <p>When Rdg/Fax from Port of Loading is registered, it will be checked if it does not exist in the file. When Rdg/Fax from Port of Transit or Destination is registered, Rdg/Fax from Port of Loading Information will be retrieved into Registration Window1.</p> <p>(2) Registration of Inter Island Transportation</p> <p>When data is inputted into Registration Window1, it will be checked and registered into the files. When the function to register goods information is selected, Registration Window2 will appear.</p> <p>(3) Registration of Goods</p> <p>When data is inputted into Registration Window2, the window will return to Registration Window1. The data will be registered from Registration Window1.</p>	<ul style="list-style-type: none"> • Directorate must be Prevention and Investigation. • Rdg/Fax from Port of Loading must not exist in the file before registration. • Inter Island Transportation Information must exist, but must not contain Rdg/Fax from Port of Destination before registration of Rdg/Fax from Port of Transit or Destination. 	—
2	<ul style="list-style-type: none"> • Registration Window1 = Rdg/Fax No. = Office code = Port 	CRT (Client)	<ul style="list-style-type: none"> • Registration Window2 = Goods = Sender = Receiver = Quantity 	CRT (Client)				
3	<ul style="list-style-type: none"> • Registration Window2 = Goods = Sender = Receiver = Quantity 	CRT (Client)						

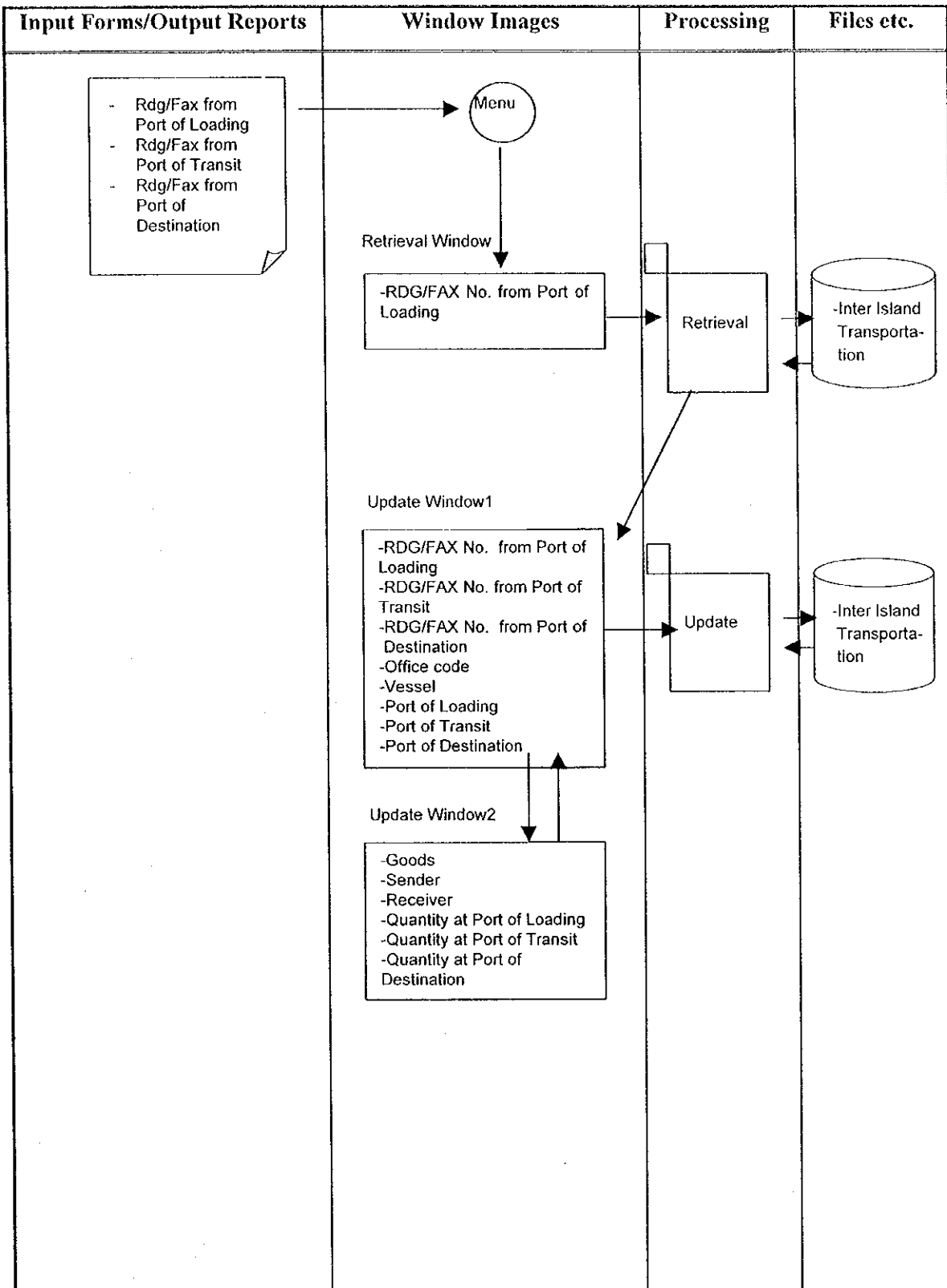


Figure 2.5.2-19: Process Diagram (Inter Island Transportation Update)

Table 2.5.2-19: Process Summary (Inter Island Transportation Update)

No.	Input		Output		Files	Process Procedure	Process Condition	Notes
	Input Data	Input from:	Output Data	Output to:				
1	<ul style="list-style-type: none"> • Retrieval Window ▫ Rdg/Fax No. 	CRT (Client)	<ul style="list-style-type: none"> • Update Window1 ▫ Rdg/Fax No. ▫ Office code ▫ Sender ▫ Receiver ▫ Goods 	CRT (Client)	<ul style="list-style-type: none"> • Inter Island Transportation 	<p>(A) Processing Unit Processed on every Rdg/Fax</p> <p>(B) Processing Procedure</p> <p>(1) Retrieval of Inter Island Transportation</p> <p>When Rdg/Fax No. from Port of Loading is inputted into Retrieval Window, the Inter island transportation Information will be retrieved into Update Window1.</p> <p>(2) Update of Inter Island Transportation</p> <p>When data is updated in Update Window1, it will be checked and updated into the files.</p> <p>When the function to update goods information is selected, Update Window2 will appear.</p> <p>(3) Update of Goods</p> <p>When data is updated into Update Window2, the window will return to Update Window1. The data will be updated from Update Window1.</p>	<ul style="list-style-type: none"> • Directorate must be Prevention and Investigation. • The record to be updated must exist in advance. 	—
2	<ul style="list-style-type: none"> • Update Window1 ▫ Rdg/Fax No. ▫ Office code ▫ Port 	CRT (Client)	<ul style="list-style-type: none"> • Update Window2 ▫ Goods ▫ Sender ▫ Receiver ▫ Quantity 	CRT (Client)				
3	<ul style="list-style-type: none"> • Update Window2 ▫ Goods ▫ Sender ▫ Receiver ▫ Quantity 	CRT (Client)	—	—				

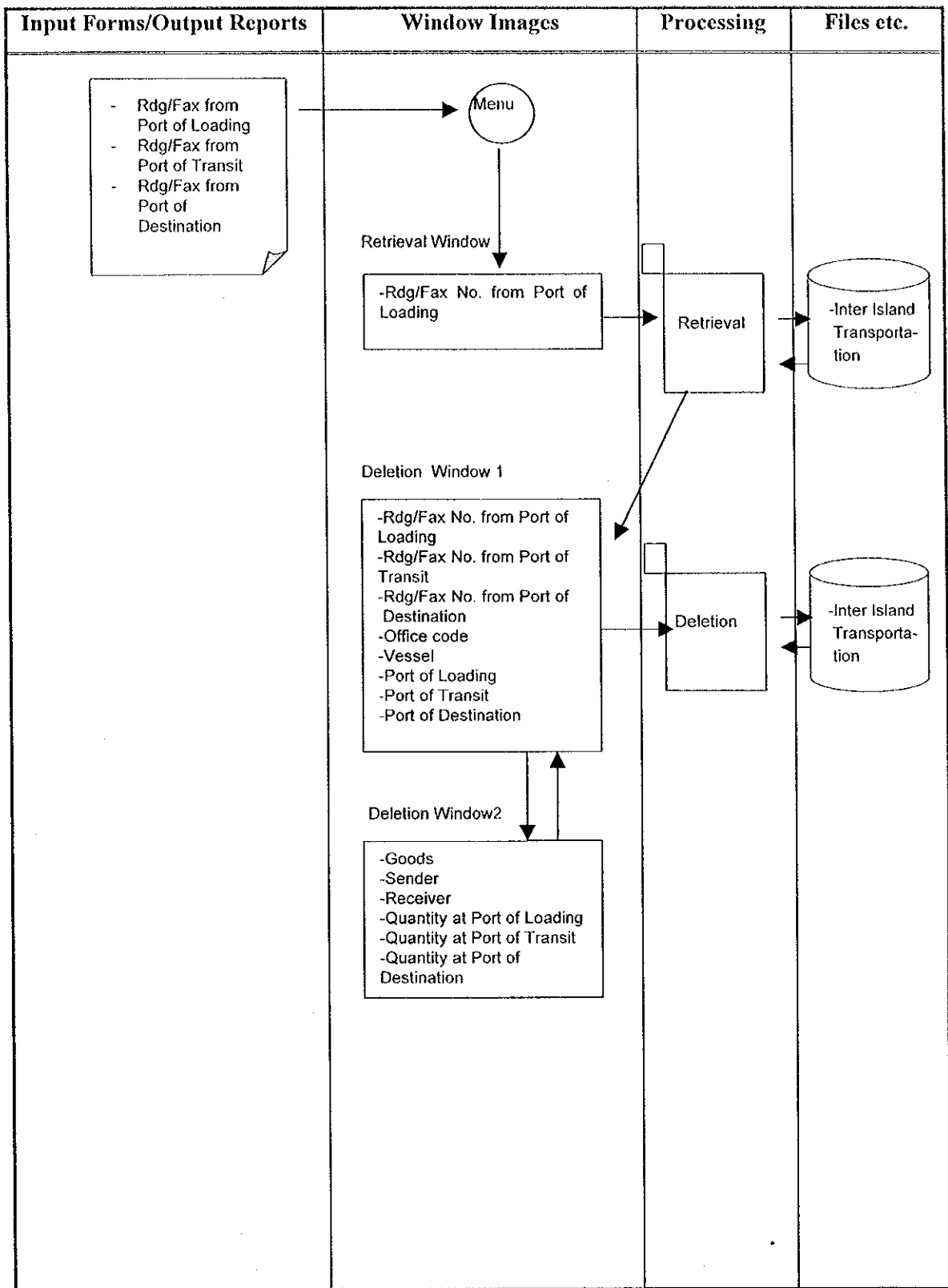


Figure 2.5.2-20: Process Diagram (Inter Island Transportation Deletion)

Table 2.5.2-20: Process Summary (Inter Island Transportation Deletion)

No.	Input		Output		Files	Process Procedure	Process Condition	Notes
	Input Data	Input from:	Output Data	Output to:				
1	<ul style="list-style-type: none"> • Retrieval Window ▫ Rdg/Fax No. 	CRT (Client)	<ul style="list-style-type: none"> • Deletion Window1 ▫ Rdg/Fax No. ▫ Office code ▫ Sender ▫ Receiver ▫ Goods 	CRT (Client)	<ul style="list-style-type: none"> • Inter Island Transportation 	<p>(A) Processing Unit Processed on every Rdg/Fax</p> <p>(B) Processing Procedure</p> <p>(1) Retrieval of Inter Island Transportation</p> <p>When Rdg/Fax No. from Port of Loading is inputted into Retrieval Window, the Inter island transportation Information will be retrieved into Deletion Window1.</p> <p>(2) Deletion of Inter Island Transportation</p> <p>When the user confirms the data in Deletion Window1, it will be checked and deleted from the files. When the function to delete goods information is selected, Deletion Window2 will appear.</p> <p>(3) Deletion of Goods</p> <p>When data is confirmed by the user, the window will return to Deletion Window1. The data will be deleted from Deletion Window1.</p>	<ul style="list-style-type: none"> • Directorate must be Prevention and Investigation. • The record to be deleted must exist in advance. • Inter Island Transportation information cannot be deleted if it has Goods information. • The user must delete Goods information first. 	—
2	<ul style="list-style-type: none"> • Deletion Window1 ▫ Rdg/Fax No. ▫ Office code ▫ Port 	CRT (Client)	<ul style="list-style-type: none"> • Deletion Window2 ▫ Goods ▫ Sender ▫ Receiver ▫ Quantity 	CRT (Client)				
3	<ul style="list-style-type: none"> • Deletion Window2 ▫ Goods ▫ Sender ▫ Receiver ▫ Quantity 	CRT (Client)	—	—				

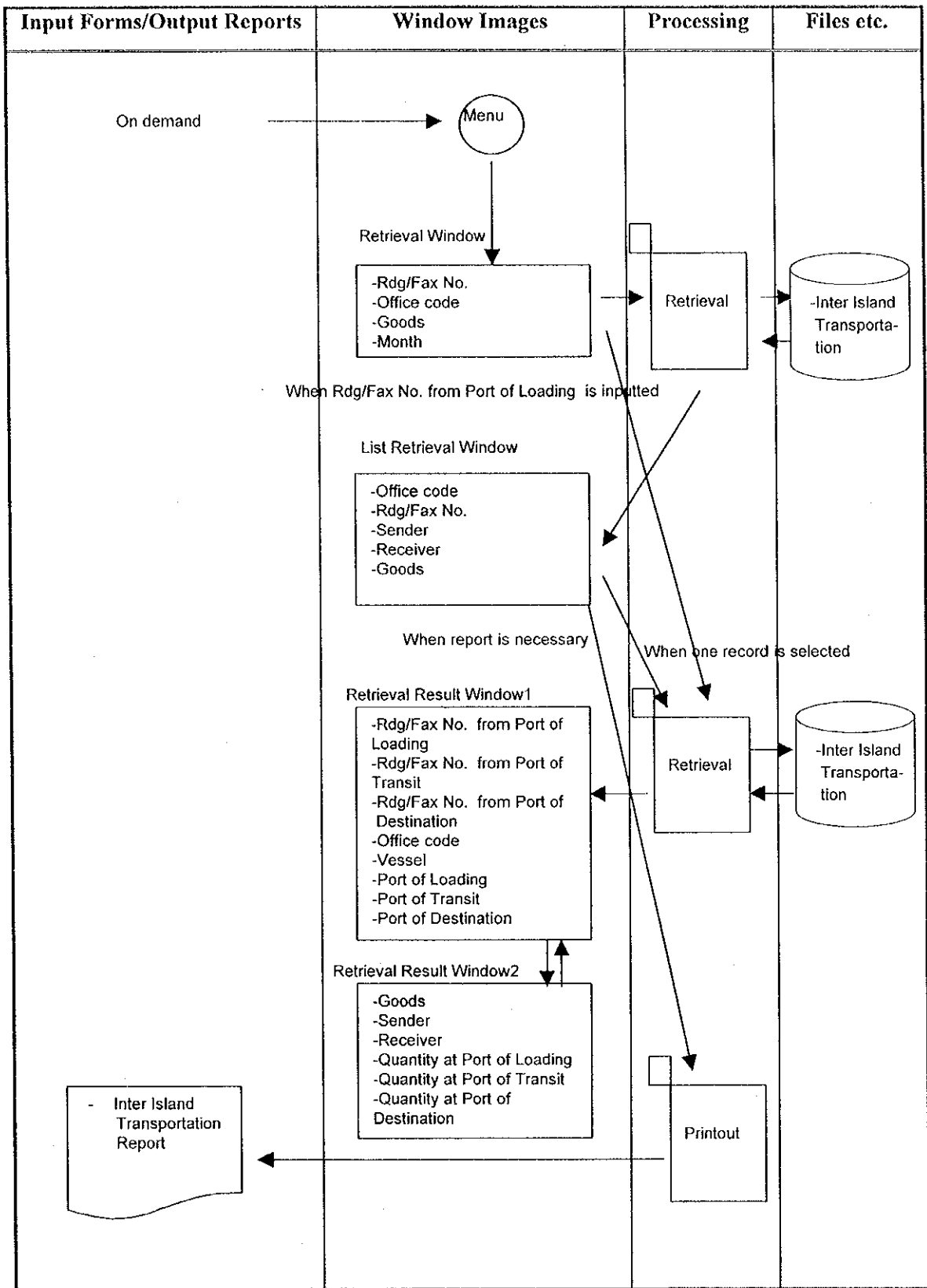


Figure 2.5.2-21: Process Diagram (Inter Island Transportation Retrieval)

Table 2.5.2-21: Process Summary (Inter Island Transportation Retrieval)

No.	Input		Output		Files	Process Procedure	Process Condition	Notes
	Input Data	Input from:	Output Data	Output to:				
1	<ul style="list-style-type: none"> • Retrieval Window ▫ Rdg/Fax No. ▫ Office code ▫ Goods ▫ Month 	CRT (Client)	<ul style="list-style-type: none"> • List Retrieval Window ▫ Rdg/Fax No. ▫ Office code • Retrieval Result Window1 ▫ Office code 	CRT (Client)	<ul style="list-style-type: none"> • Inter Island Transportation 	<p>(A) Processing Unit Processed on every Rdg/Fax</p> <p>(B) Processing Procedure</p> <p>(1) Retrieval of Inter Island Transportation Information</p> <p>When Rdg/Fax from Port of Loading No. is inputted, the detail data of Inter Island Transportation will be retrieved into Retrieval Result Window.</p> <p>When office code or goods is inputted, List Retrieval Window will appear.</p> <p>(2) Detail Retrieval of Inter Island Transportation Information</p> <p>When one record is selected, the Inter island transportation Information will be retrieved into Retrieval Result Window1.</p> <p>When the function to retrieve goods information is selected, Retrieval Result Window2 will appear.</p> <p>(3) Printout</p> <p>When print function is selected from List Retrieval Window, Inter Island Transportation Report will be printed out.</p>	<ul style="list-style-type: none"> • Directorate must be • Prevention and Investigation. • The record to be retrieved must exist in advance. 	—
2	<ul style="list-style-type: none"> • List Retrieval Window ▫ Rdg/Fax No. ▫ Office code ▫ Sender ▫ Receiver ▫ Goods ▫ Month 	CRT (Client)	<ul style="list-style-type: none"> • Retrieval Result Window1 ▫ Rdg/Fax No. ▫ Office code • Inter Island Transportation Report 	CRT (Client) Printer (Client)				
3	<ul style="list-style-type: none"> • Retrieval Result Window1 ▫ Rdg/Fax No. ▫ Office code ▫ Port 	CRT (Client)	<ul style="list-style-type: none"> • Retrieval Result Window2 ▫ Goods ▫ Sender ▫ Receiver ▫ Quantity 	CRT (Client)				

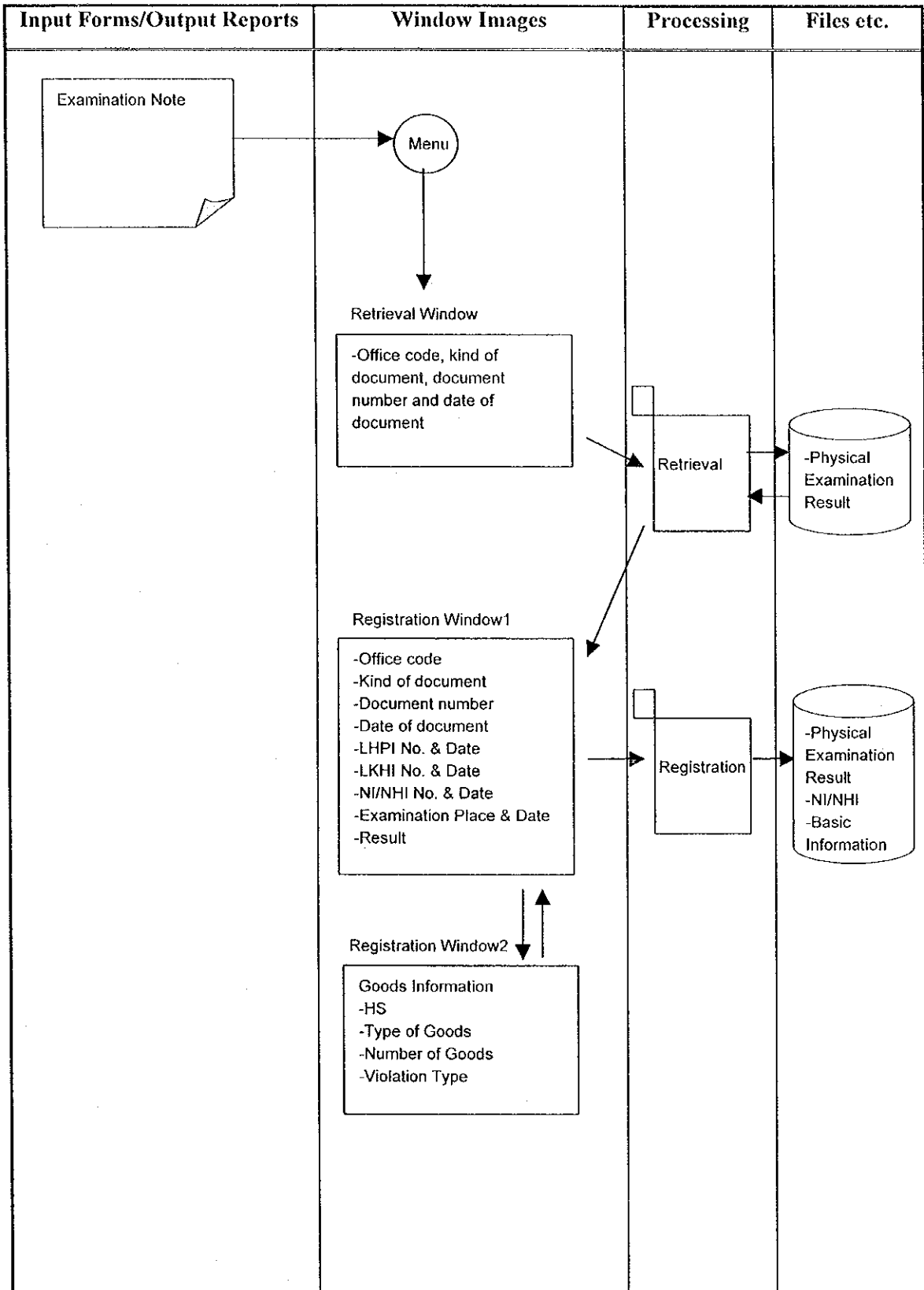


Figure 2.5.2-22: Process Diagram (Physical Examination Result Registration)

Table 2.5.2-22: Process Summary (Physical Examination Result Registration)

No.	Input		Output		Files	Process Procedure	Process Condition	Notes
	Input Data	Input from:	Output Data	Output to:				
1	<ul style="list-style-type: none"> • Retrieval Window ▫ Office code ▫ Kind of document ▫ Document number ▫ Date of document 	CRT (Client)	<ul style="list-style-type: none"> • Registration Window1 ▫ Office code ▫ Kind of document ▫ Document number ▫ Date of document 	CRT (Client)	<ul style="list-style-type: none"> • Physical Examination Result • NI/NHI • Basic Information 	<p>(A) Processing Unit Processed on every Physical Examination Result.</p> <p>(B) Processing Procedure (1) When primary key (Office code, Kind of document, Document Number and Date of document) is inputted, it will be checked if it does not exist in the file.</p> <p>(2) Registration of Physical Examination Result When Physical Examination Result data is inputted into Registration Window1, it will be checked and registered into the files. When the function to register goods information is selected, Registration Window2 will appear.</p> <p>(3) Registration of Goods When goods information is inputted into Registration Window2, the window will return to Registration Window1. The data will be registered into the files from Registration Window1.</p>	<ul style="list-style-type: none"> • Directorate must be Prevention and Investigation (inc. Service Office). 	—
2	<ul style="list-style-type: none"> • Registration Window1 ▫ Office code ▫ Kind of document ▫ Document number ▫ Date of document 	CRT (Client)	<ul style="list-style-type: none"> • Registration Window2 ▫ HS ▫ Type of Goods ▫ Number of Goods ▫ Violation 	CRT (Client)				
3	<ul style="list-style-type: none"> • Registration Window2 ▫ HS ▫ Type of Goods ▫ Number of Goods ▫ Violation 	CRT (Client)	—	—				

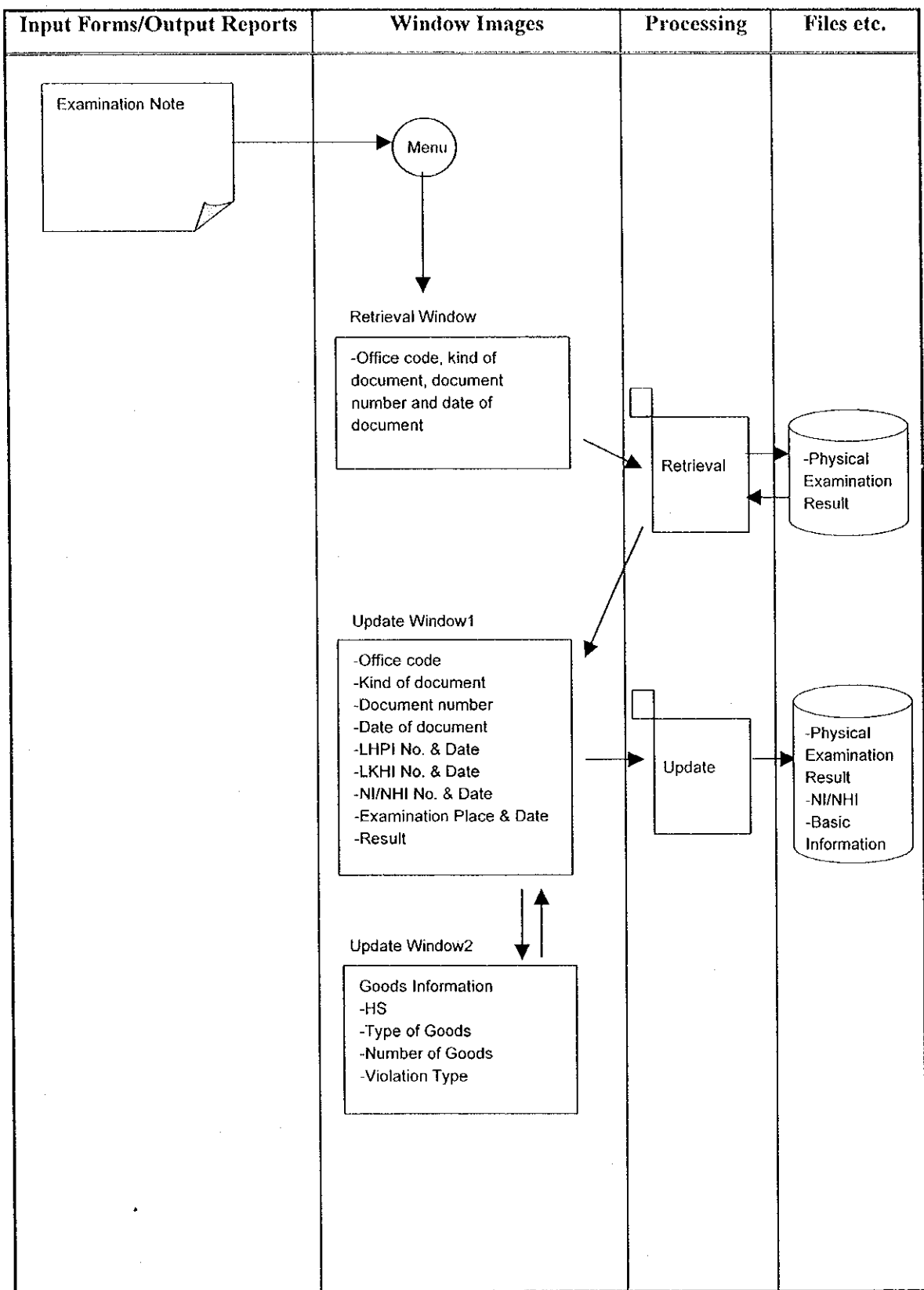


Figure 2.5.2-23: Process Diagram (Physical Examination Result Update)

Table 2.5.2-23: Process Summary (Physical Examination Result Update)

No.	Input		Output		Files	Process Procedure	Process Condition	Notes
	Input Data	Input from:	Output Data	Output to:				
1	<ul style="list-style-type: none"> • Retrieval Window ◦ Office code ◦ Kind of document ◦ Document number ◦ Date of document 	CRT (Client)	<ul style="list-style-type: none"> • Update Window1 ◦ Office code ◦ Kind of document ◦ Document number ◦ Date of document 	CRT (Client)	<ul style="list-style-type: none"> • Physical Examination Result • NI/NHI • Basic Information 	<p>(A) Processing Unit Processed on every Physical Examination Result.</p> <p>(B) Processing Procedure</p> <p>(1) When primary key(Office code, Kind of document, Document Number and Date of document) is inputted, Physical Examination Result information will be retrieved into Update Window1.</p> <p>(2) Update of Physical Examination Result</p> <p>When Physical Examination Result data is inputted into Update Window1, it will be checked and updated into the files. When the function to update goods information is selected, the data will be retrieved and Update Window2 will appear.</p> <p>(3) Update of Goods</p> <p>When goods information is updated into Update Window2, the window will return to Update Window1.</p> <p>The data will be updated into the files from Update Window1.</p>	<ul style="list-style-type: none"> • Directorate must be Prevention and Investigation (inc. Service Office). 	—
2	<ul style="list-style-type: none"> • Update Window1 ◦ Office code ◦ Kind of document ◦ Document number ◦ Date of document 	CRT (Client)	<ul style="list-style-type: none"> • Update Window2 ◦ HS ◦ Type of Goods ◦ Number of Goods ◦ Violation 	CRT (Client)				
3	<ul style="list-style-type: none"> • Update Window2 ◦ HS ◦ Type of Goods ◦ Number of Goods ◦ Violation 	CRT (Client)	—	—				

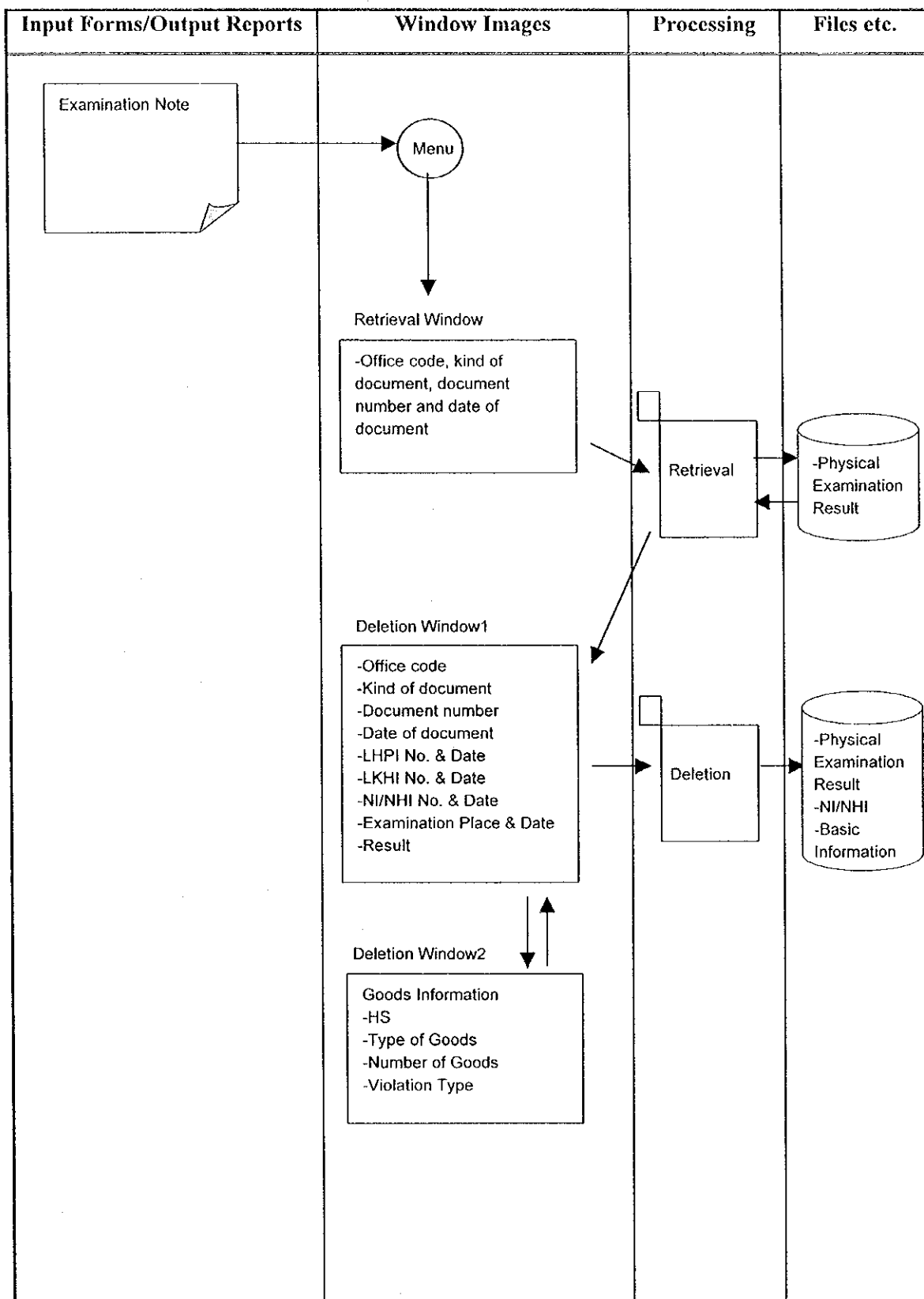


Figure 2.5.2-24: Process Diagram (Physical Examination Result Deletion)

Table 2.5.2-24: Process Summary (Physical Examination Result Deletion)

No.	Input		Output		Files	Process Procedure	Process Condition	Notes
	Input Data	Input from:	Output Data	Output to:				
1	<ul style="list-style-type: none"> • Retrieval Window ◦ Office code ◦ Kind of document ◦ Document number ◦ Date of document 	CRT (Client)	<ul style="list-style-type: none"> • Deletion Window1 ◦ Office code ◦ Kind of document ◦ Document number ◦ Date of document 	CRT (Client)	<ul style="list-style-type: none"> • Physical Examination Result • NI/NHI • Basic Information 	<p>(A) Processing Unit Processed on every Physical Examination Result.</p> <p>(B) Processing Procedure</p> <p>(1) When primary key(Office code, Kind of document, Document Number and Date of document) is inputted, Physical Examination Result information will be retrieved into Deletion Window1.</p> <p>(2) Deletion of Physical Examination Result</p> <p>When Physical Examination Result data is confirmed from the user, it will be checked and deleted from the files. When the function to delete goods information is selected, the data will be retrieved and Deletion Window2 will appear.</p> <p>(3) Deletion of Goods</p> <p>When goods information is confirmed from the user, the window will return to Deletion Window1.</p> <p>The data will be deleted from the files from Deletion Window1.</p>	<ul style="list-style-type: none"> • Directorate must be Prevention and Investigation (inc. Service Office). • Physical Examination Result Information cannot be deleted if it has goods information. The user must delete goods information first. 	—
2	<ul style="list-style-type: none"> • Deletion Window1 ◦ Office code ◦ Kind of document ◦ Document number ◦ Date of document 	CRT (Client)	<ul style="list-style-type: none"> • Deletion Window2 ◦ HS ◦ Type of Goods ◦ Number of Goods ◦ Violation 	CRT (Client)				
3	<ul style="list-style-type: none"> • Deletion Window2 ◦ HS ◦ Type of Goods ◦ Number of Goods ◦ Violation 	CRT (Client)	—	—				

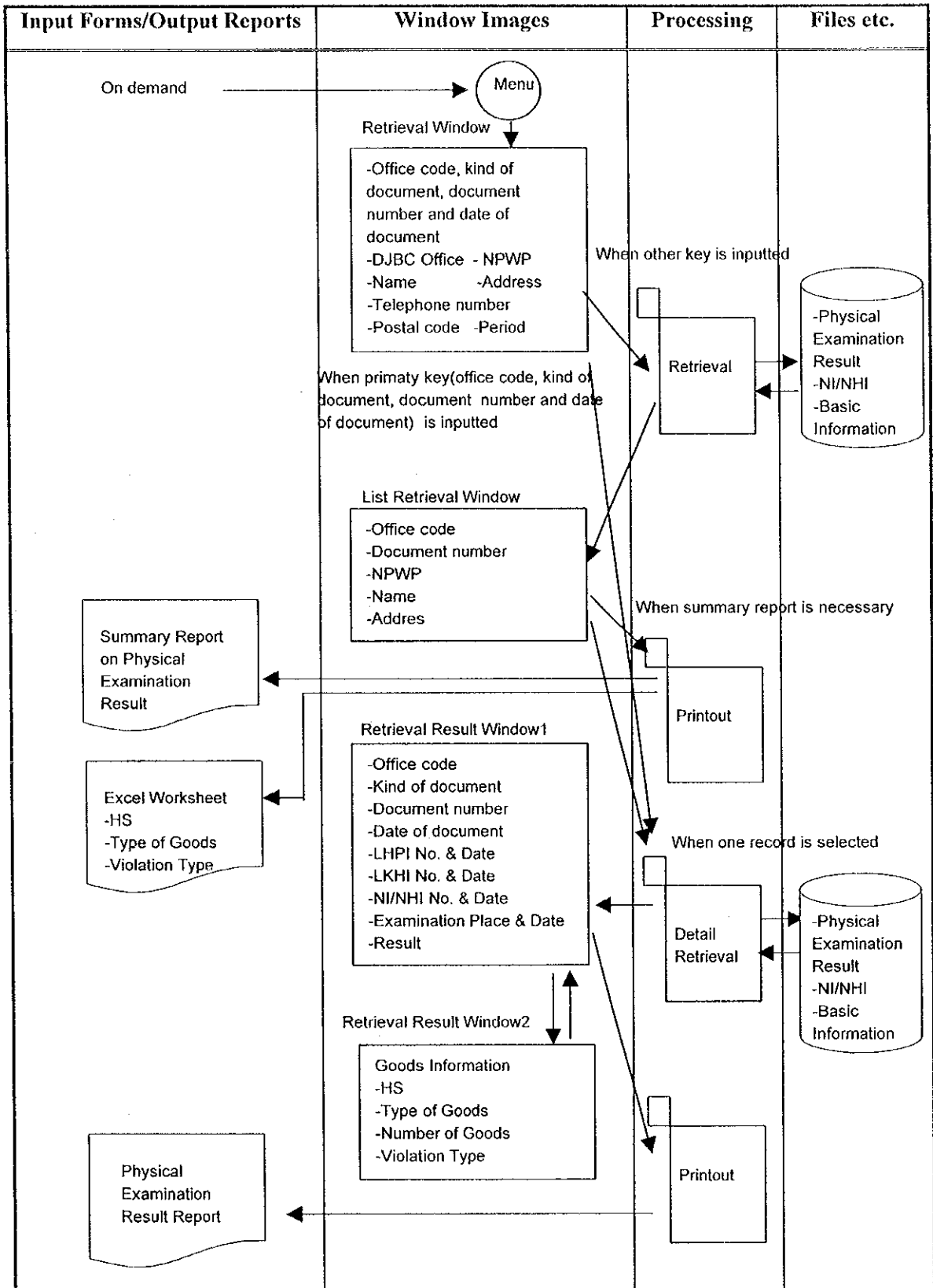


Figure 2.5.2-25: Process Diagram (Physical Examination Result Retrieval)

Table 2.5.2-25: Process Summary (Physical Examination Result Retrieval)

No.	Input		Output		Files	Process Procedure	Process Condition	Notes
	Input Data	Input from:	Output Data	Output to:				
1	<ul style="list-style-type: none"> • Retrieval Window ▫ Office code, kind of document, document number and date of document ▫ NPWP ▫ Name ▫ Address ▫ Phone No. 	CRT (Client)	<ul style="list-style-type: none"> • List Retrieval Window ▫ Office code ▫ Document number • Retrieval Result Window] ▫ Office code ▫ Kind of document ▫ Document number 	CRT (Client)	<ul style="list-style-type: none"> • Physical Examination Result • NI/NHI • Basic Information 	<p>(A) Processing Unit Processed on every Physical Examination Result.</p> <p>(B) Processing Procedure</p> <p>(1) Retrieval When primary key is inputted, the data will be retrieved into Retrieval Result Window1. When other key is inputted, List Retrieval Window will appear.</p> <p>(2) Detail Retrieval When one record is selected from List Retrieval Window, detail data will be retrieved.</p> <p>(3) Retrieval of Goods Information When the function to retrieve goods information is selected, Retrieval Result Window2 will appear.</p> <p>(4) Printout When printout function is selected from List Resrieval Window1, Summary Report will be printed. When the function is selected from Retrieval Result Window1, Physical Examination Result Report will be printed.</p> <p>(5) Export to Excel When excel function is selected, data will be exported to Excel Worksheet.</p>	<ul style="list-style-type: none"> • The record to be retrieved must exist in advance. • Retrieval can be done by partial string match. But it will take very long time to retrieve. So such use should be limited only in inevitable cases. 	
2	<ul style="list-style-type: none"> • List Retrieval Window 	CRT (Client)	<ul style="list-style-type: none"> • Retrieval Result Window1 • Summary Report 	CRT (Client) Printer (Client)				
3	<ul style="list-style-type: none"> • Retrieval Result Window1 	CRT (Client)	<ul style="list-style-type: none"> • Retrieval Result Window2 • Physical Examination Result Report 	CRT (Client) Printer (Client)				
4	<ul style="list-style-type: none"> • Retrieval Result Window2 	CRT (Client)	<ul style="list-style-type: none"> • — 	—				

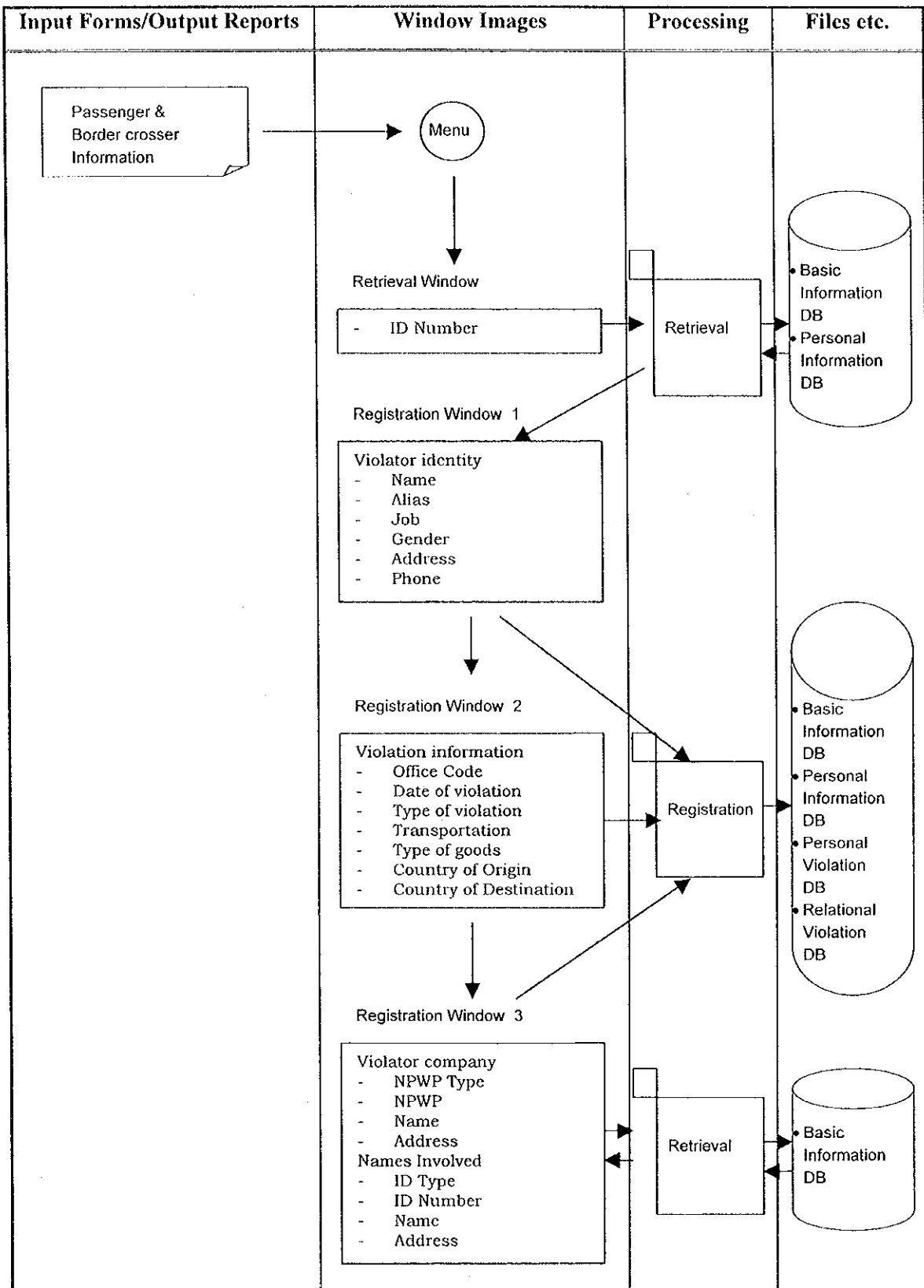


Figure 2.5.2-26: Process Diagram (Personal Violation Registration)

Table 2.5.2-26: Process Summary (Personal Violation Registration)

No.	Input		Output		Files	Process Procedure	Process Condition	Notes
	Input Data	Input from:	Output Data	Output to:				
1	<ul style="list-style-type: none"> • Retrieval window □ ID Number □ Identity Type 	CRT (Client)	<ul style="list-style-type: none"> • Registration Window 	CRT (Client)	<ul style="list-style-type: none"> • Basic Information DB • Personal Information DB 	<p>(A) Processing Unit Processed on personal violation information</p> <p>(B) Processing Procedure</p> <p>(1) Retrieval Window process Input violator ID Number, and enter the requested items, check the data entered from databases</p> <p>(2) Registration Window process Enter required data to be filled for violator identity if needed and violation information and after is done register data information to the databases.</p> <p>(3) Registration data process For related names involved in violation, data will be registered using relational table.</p>	<ul style="list-style-type: none"> • Directorate must be Prevention & Investigation (P2). • When ID Number entered is found then retrieve Registration Window 1 with violator identity displayed, and input violation information on Registration Window 2 and 3. 	—
2	<ul style="list-style-type: none"> • Registration Window 1 □ Violator identity □ Name □ Alias 	CRT (Client)	<ul style="list-style-type: none"> • Registration Window 2 	CRT (Client)	<ul style="list-style-type: none"> • Basic Information DB • Personal Information DB 			
3	<ul style="list-style-type: none"> • Registration Window 2 □ Violation Information □ Office code □ Type of violation 	CRT (Client)	<ul style="list-style-type: none"> • Registration Window 3 	CRT (Client)	<ul style="list-style-type: none"> • Basic Information DB • Personal Information DB • Personal Violation DB • Relational Violation DB 			
4	<ul style="list-style-type: none"> • Registration Window 3 □ Violator company □ Names Involved 	CRT (Client)	—	—	<ul style="list-style-type: none"> • Basic Information DB 			

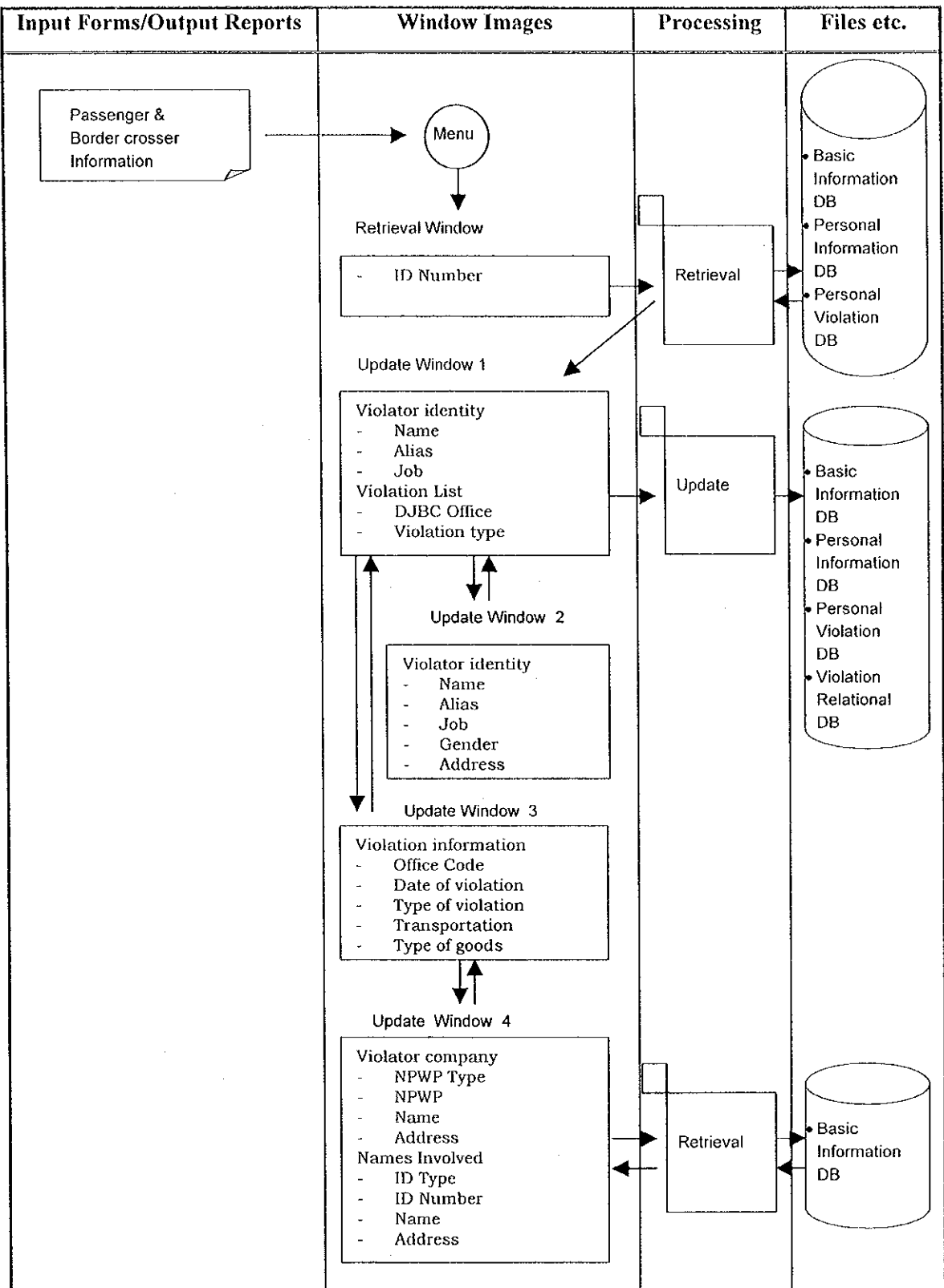


Figure 2.5.2-27: Process Diagram (Personal Violation Update)

Table 2.5.2-27: Process Summary (Personal Violation Update)

No.	Input		Output		Files	Process Procedure	Process Condition	Notes
	Input Data	Input from:	Output Data	Output to:				
1	<ul style="list-style-type: none"> • Retrieval window □ Id Number 	CRT (Client)	<ul style="list-style-type: none"> • Update Window 1 	CRT (Client)	<ul style="list-style-type: none"> • Basic Information DB • Personal Information DB • Personal Violation DB 	<p>(A) Processing Unit Processed on every manifest number.</p> <p>(B) Processing Procedure</p> <p>(1) Retrieval Process</p> <p>Input ID Number to retrieve Update window 1 which will consist selection for violator with some violation information. To retrieve detail information about the violator select retrieval for Update window 2, and to retrieve detail about the violation select on one of the violation listed for Update Window 3.</p> <p>(2) Updating Process</p> <p>On selecting Update window 2 make changes as needed on violator identity information and back to Update Window 1</p>	<ul style="list-style-type: none"> • Directorate must be Prevention & Investigation (P2). • When changes is done either on Update Window 2 or Update Window 3 and Update Window 4 the data is still not saved to the databases, data commit to databases after Update button is pressed on Update Window 1 	—
2	<ul style="list-style-type: none"> • Update Window 1 □ Name □ Alias □ Violation List 	CRT (Client)	<ul style="list-style-type: none"> • Update Window 2 □ Violator Identity • Update Window 3 □ Violation Information 	CRT (Client)	<ul style="list-style-type: none"> • Basic Information DB • Personal Information DB • Personal Violation DB 			
3	<ul style="list-style-type: none"> • Update Window 2 □ Violator Identity □ Name □ Alias □ Address 	CRT (Client)	—	—				

Table 2.5.2-27: Process Summary (Personal Violation Update)

No.	Input		Output		Files	Process Procedure	Process Condition	Notes
	Input Data	Input from:	Output Data	Output to:				
4	<ul style="list-style-type: none"> • Update Window 3 □ Office code □ Date of violation □ Type of violation 	CRT (Client)	<ul style="list-style-type: none"> • Update Window 4 	CRT (Client)	<ul style="list-style-type: none"> • Basic Information DB • Personal Information DB • Personal Violation DB 	<p>(3) Updating Process On Selecting violation detail make changes on Update Window 3 for violation information and person involved in the violation on Update Window 4. After the changes is done back to Update Window 1. And to commit the changes, the update can be done on this window</p>	—	—
5	<ul style="list-style-type: none"> • Update Window 4 □ Violator company □ NPWP □ Name □ Address □ Names Involved □ ID Number □ Name □ Address 	CRT (Client)	<ul style="list-style-type: none"> • Update Window 4 □ Violator Identity • Update Window 3 □ Violation Information 	CRT (Client)	<ul style="list-style-type: none"> • Basic Information DB • Personal Information DB • Personal Violation DB 			

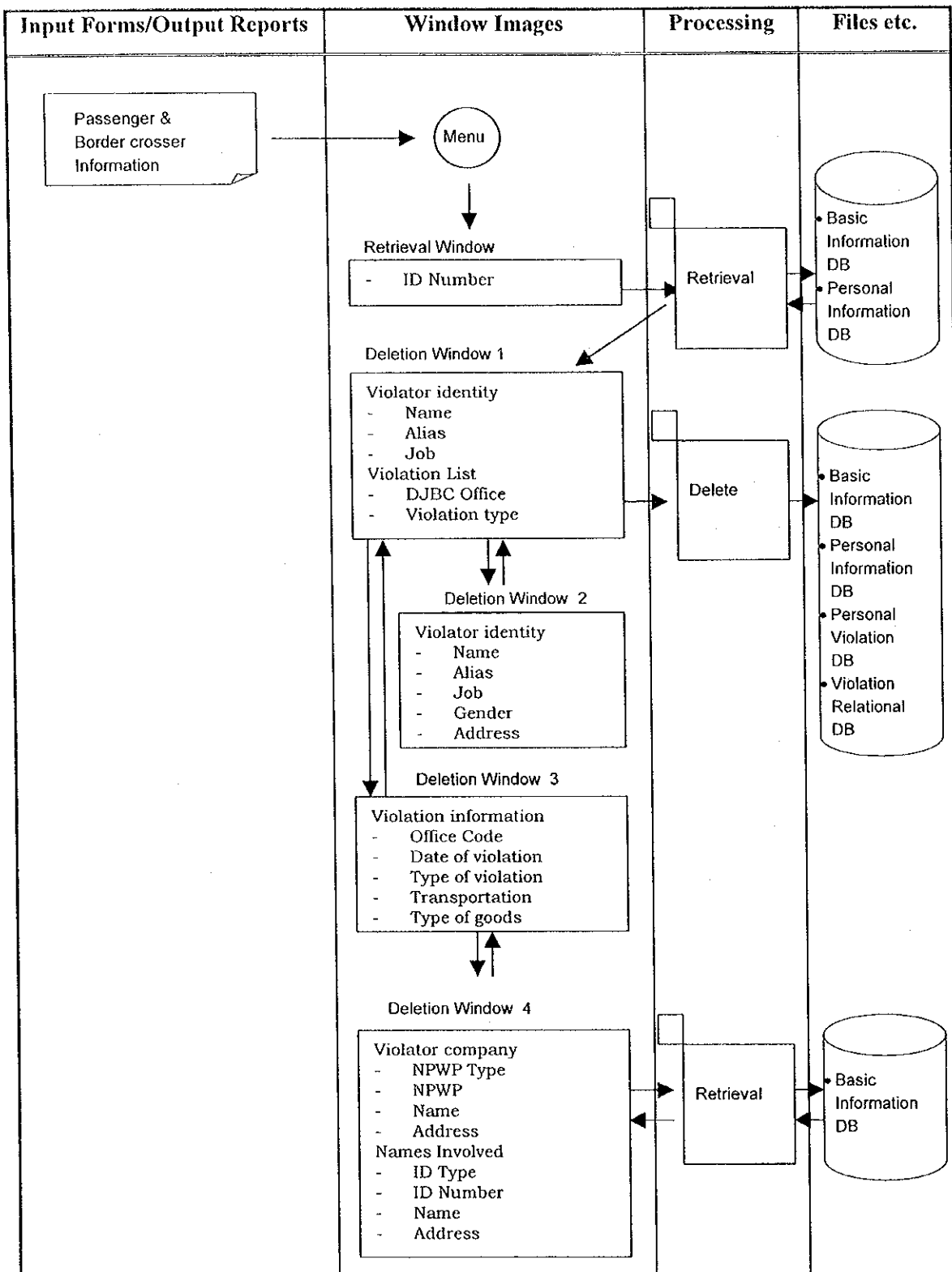


Figure 2.5.2-28: Process Diagram (Personal Violation Deletion)

Table 2.5.2-28: Process Summary (Personal Violation Deletion)

No.	Input		Output		Files	Process Procedure	Process Condition	Notes
	Input Data	Input from:	Output Data	Output to:				
1	<ul style="list-style-type: none"> • Retrieval window □ Id Number 	CRT (Client)	<ul style="list-style-type: none"> • Deletion Window 1 	CRT (Client)	<ul style="list-style-type: none"> • Basic Information DB • Personal Information DB • Personal Violation DB 	<p>(A) Processing Unit Processed on every manifest number.</p> <p>(B) Processing Procedure</p> <p>(1) Retrieval Process</p> <p>Input ID Number to retrieve Deletion window 1 which will consist selection for violator with some violation information. To retrieve detail information about the violator select retrieval for Deletion window 2, and to retrieve detail about the violation select on one of the violation listed for Deletion Window 3.</p> <p>(2) Deletion Process</p> <p>On selecting Deletion window 2 data about violator identity displayed to the screen an can be deleted, after confirmation window can be back to Deletion Window 1</p>	<ul style="list-style-type: none"> • Directorate must be Prevention & Investigation (P2). • When deletion is done either on Deletion Window 2 or Deletion Window 3 and Deletion Window 4 the data is still not deleted from the databases, data commit to be deleted after Deletion button is pressed on Deletion Window 1 	—
2	<ul style="list-style-type: none"> • Deletion Window 1 □ Name □ Alias □ Violation List 	CRT (Client)	<ul style="list-style-type: none"> • Deletion Window 2 □ Violator Identity • Deletion Window 3 □ Violation Information 	CRT (Client)	<ul style="list-style-type: none"> • Basic Information DB • Personal Information DB • Personal Violation DB 			
3	<ul style="list-style-type: none"> • Deletion Window 2 □ Violator Identity □ Name □ Alias □ Address 	CRT (Client)	—	—				

Table 2.5.2-28: Process Summary (Personal Violation Deletion)

No.	Input		Output		Files	Process Procedure	Process Condition	Notes
	Input Data	Input from:	Output Data	Output to:				
4	<ul style="list-style-type: none"> • Deletion Window 3 □ Office code □ Date of violation □ Type of violation 	CRT (Client)	<ul style="list-style-type: none"> • Deletion Window 4 	CRT (Client)	<ul style="list-style-type: none"> • Basic Information DB • Personal Information DB • Personal Violation DB 	(3) Deletion Process On Selecting violation detail Data on Deletion Window 3 for violation information and person involved in the violation on Deletion Window 4 will be retrieved to the screen. This information also can be selected to be deleted. After the confirmation process can be back to Deletion Window 1. And the Deletion can be done on this window	—	—
5	<ul style="list-style-type: none"> • Deletion Window 4 □ Violator company □ NPWP □ Name □ Address □ Names Involved □ ID Number □ Name □ Address 	CRT (Client)	<ul style="list-style-type: none"> • Deletion Window 4 □ Violator Identity • Deletion Window 3 □ Violation Information 	CRT (Client)	<ul style="list-style-type: none"> • Basic Information DB • Personal Information DB • Personal Violation DB 			

Table 2.5.2-29: Process Summary (Personal Violation Retrieval)

No.	Input		Output		Files	Process Procedure	Process Condition	Notes
	Input Data	Input from:	Output Data	Output to:				
1	<ul style="list-style-type: none"> • Retrieval window □ Id Number □ Name 	CRT (Client)	<ul style="list-style-type: none"> • List Retrieval Window 	CRT (Client)	<ul style="list-style-type: none"> • Basic Information DB • Personal Information DB 	<p>(A) Processing Unit Processed on demand</p> <p>(B) Processing Procedure</p> <p>(1) Input items to search, it can be any of the available items, and then retrieve the requested data according to the input items</p> <p>(2) Retrieve List Retrieval Window to give selection of the desire violator data, and select the violator wanted.</p> <p>(3) On the selected violator, retrieve information about the violator and violation list information on Retrieval Result Window 1.</p>	<ul style="list-style-type: none"> • Directorate must be Prevention & Investigation (P2). • Input items on List Retrieval window can be fill for only one item or few items. • If items inputted on List Retrieval Window Is ID Number then Retrieve directly to Retrieval Result Window 1 	
2	<ul style="list-style-type: none"> • List Retrieval Window □ Name □ Alias □ Jobs □ Gender □ ID Number 	CRT (Client)	<ul style="list-style-type: none"> • Retrieval Result Window 1 □ Office code □ Violation date □ Violation Type □ Name □ Alias □ Jobs • Passenger & Border-crosser Report 	CRT (Client)	<ul style="list-style-type: none"> • Basic Information DB • Personal Information DB • Violation Information DB 			

Table 2.5.2-29: Process Summary (Personal Violation Retrieval)

No.	Input		Output		Files	Process Procedure	Process Condition	Notes
	Input Data	Input from:	Output Data	Output to:				
2	<ul style="list-style-type: none"> • Retrieval Result Window 1 □ Name □ Alias □ Violation List 	CRT (Client)	<ul style="list-style-type: none"> • Retrieval Result Window 2 □ Violator Identity • Retrieval Result Window 3 □ Violation Information 	CRT (Client)	<ul style="list-style-type: none"> • Basic Information DB • Personal Information DB • Personal Violation DB 	<p>(4) Retrieve Retrieval Result Window 1 which will consist selection for violator with some violation information. To retrieve detail information about the violator select retrieval for Retrieval Result window 2, and to retrieve detail about the violation select on one of the violation listed for Retrieval Result Window 3.</p> <p>(5) On selecting Retrieval Result window 2 data about violator identity information will displayed on the screen and process will be back to Retrieval Result Window 1</p>	—	—
3	<ul style="list-style-type: none"> • Retrieval Result Window 2 □ Violator Identity □ Name □ Alias □ Address 	CRT (Client)	—	—				

Table 2.5.2-29: Process Summary (Personal Violation Retrieval)

No.	Input		Output		Files	Process Procedure	Process Condition	Notes
	Input Data	Input from:	Output Data	Output to:				
	<ul style="list-style-type: none"> • Retrieval Result Window 3 □ Office code □ Date of violation □ Type of violation 	CRT (Client)	<ul style="list-style-type: none"> • Retrieval Result Window 4 	CRT (Client)	<ul style="list-style-type: none"> • Basic Information DB • Personal Information DB • Personal Violation DB 	(6) On Selecting violation detail retrieve the Retrieval Result Window 3 for violation information and person involved in the violation on Retrieval Result Window 4. After that process will be back to Retrieval Result Window 1.	—	—
5	<ul style="list-style-type: none"> • Retrieval Result Window 4 □ Violator company □ NPWP □ Name □ Address □ Names Involved □ ID Number □ Name □ Address 	CRT (Client)	<ul style="list-style-type: none"> • Retrieval Result Window 4 □ Violator Identity • Retrieval Result Window 3 □ Violation Information 	CRT (Client)	<ul style="list-style-type: none"> • Basic Information DB • Personal Information DB • Personal Violation DB 			

Table 2.5.2-30: List of Windows (1/6)

No.	Window Code	Window Name	Input/Output			Window Type	Note
			Input & Output	Input	Output		
1	WP011010	NI/NHI Registration (Retrieval Window)		✓		Card Pattern	—
2	WP011020	NI/NHI Registration (Registration Window)	✓			Slip Pattern	—
3	WP011030	NI/NHI Registration (Distribution Window)	✓			Card Pattern	—
4	WP012010	NI/NHI Update (Retrieval Window)		✓		Card Pattern	—
5	WP012020	NI/NHI Update (Update Window)	✓			Slip Pattern	—
6	WP012030	NI/NHI Update (Distribution Window)	✓			Card Pattern	—
7	WP013010	NI/NHI Deletion (Retrieval Window)		✓		Card Pattern	—
8	WP013020	NI/NHI Deletion (Deletion Window)			✓	Slip Pattern	—
9	WP013030	NI/NHI Deletion (Distribution Window)			✓	Card Pattern	—
10	WP014010	NI/NHI Retrieval (Retrieval Window)		✓		Card Pattern	—
11	WP014020	NI/NHI Retrieval (List Retrieval Window)	✓			List Pattern	—
12	WP014030	NI/NHI Retrieval (Retrieval Result Window)			✓	Slip Pattern	—
13	WP021010	Company Violation Registration (Retrieval Window)		✓		Card Pattern	—
14	WP021020	Company Violation Registration (Registration Window1)	✓			Card Pattern	—
15	WP021030	Company Violation Registration (Registration Window2)	✓			Card Pattern	—
16	WP021040	Company Violation Registration (Registration Window3)	✓			Card Pattern	—
17	WP021050	Company Violation Registration (Registration Window4)	✓			Card Pattern	—
18	WP021060	Company Violation Registration (Registration Window5)	✓			Card Pattern	—

Table 2.5.2-30: List of Windows (2/6)

No.	Window Code	Window Name	Input/Output			Window Type	Note
			Input & Output	Input	Output		
19	WP022010	Company Violation Update (Retrieval Window)		✓		Card Pattern	—
20	WP022020	Company Violation Update (Update Window1)	✓			Card Pattern	—
21	WP022030	Company Violation Update (Update Window2)	✓			Card Pattern	—
22	WP022040	Company Violation Update (Update Window3)	✓			Card Pattern	—
23	WP022050	Company Violation Update (Update Window4)	✓			Card Pattern	—
24	WP022060	Company Violation Update (Update Window5)	✓			Card Pattern	—
25	WP023010	Company Violation Deletion (Retrieval Window)		✓		Card Pattern	—
26	WP023020	Company Violation Deletion (Deletion Window1)			✓	Card Pattern	—
27	WP023030	Company Violation Deletion (Deletion Window2)			✓	Card Pattern	—
28	WP023040	Company Violation Deletion (Deletion Window3)			✓	Card Pattern	—
29	WP023050	Company Violation Deletion (Deletion Window4)			✓	Card Pattern	—
30	WP023060	Company Violation Deletion (Deletion Window5)			✓	Card Pattern	—
31	WP024010	Company Violation Retrieval (Retrieval Window)		✓		Card Pattern	—
32	WP024020	Company Violation Retrieval (List Retrieval Window)	✓			List Pattern	—
33	WP024030	Company Violation Retrieval (Retrieval Result Window 1)			✓	Card Pattern	—
34	WP024040	Company Violation Retrieval (Retrieval Result Window 2)			✓	Card Pattern	—
35	WP024050	Company Violation Retrieval (Retrieval Result Window 3)			✓	Card Pattern	—
36	WP024060	Company Violation Retrieval (Retrieval Result Window 4)			✓	Card Pattern	—
37	WP024070	Company Violation Retrieval (Retrieval Result Window 5)			✓	Card Pattern	—
38	WP031010	Past Record & Blocked Importer Registration (Retrieval Window)	✓			Card Pattern	—

Table 2.5.2-30: List of Windows (3/6)

No.	Window Code	Window Name	Input/Output			Window Type	Note
			Input & Output	Input	Output		
39	WP031020	Past Record & Blocked Importer Registration (Registration Window)	✓			Card Pattern	—
40	WP032010	Past Record & Blocked Importer Update (Retrieval Window)		✓		Card Pattern	—
41	WP032020	Past Record & Blocked Importer Update (Update Window)	✓			Card Pattern	—
42	WP033010	Past Record & Blocked Importer Deletion (Retrieval Window)		✓		Card Pattern	—
43	WP033020	Past Record & Blocked Importer Deletion (Deletion Window)	✓			Card Pattern	—
44	WP034010	Past Record & Blocked Importer Retrieval (Retrieval Window)		✓		Card Pattern	—
45	WP034020	Past Record & Blocked Importer Retrieval (List Retrieval Window)		✓		List Pattern	—
46	WP034030	Past Record & Blocked Importer Retrieval (Retrieval Result Window)			✓	Card Pattern	—
47	WP041010	Company Profile Registration (Retrieval Window)		✓		Card Pattern	—
48	WP041020	Company Profile Registration (Registration Window1)	✓			Slip Pattern	—
49	WP041030	Company Profile Registration (Registration Window2)	✓			Slip Pattern	—
50	WP042010	Company Profile Update (Retrieval Window)		✓		Card Pattern	—
51	WP042020	Company Profile Update (Update Window1)	✓			Slip Pattern	—
52	WP042030	Company Profile Update (Update Window2)	✓			Slip Pattern	—
53	WP043010	Company Profile Deletion (Retrieval Window)		✓		Card Pattern	—

Table 2.5.2-30: List of Windows (4/6)

No.	Window Code	Window Name	Input/ Output		Window Type	Note	
			Input & Output	Input Output			
54	WP043020	Company Profile Deletion (Deletion Window1)		✓	Slip Pattern	—	
55	WP043030	Company Profile Deletion (Deletion Window2)		✓	Slip Pattern	—	
56	WP044010	Company Profile Retrieval (Retrieval Window)		✓	Card Pattern	—	
57	WP044020	Company Profile Retrieval (List Retrieval Window)	✓		List Pattern	—	
58	WP044030	Company Profile Retrieval (Retrieval Result Window1)			✓	Slip Pattern	—
59	WP044040	Company Profile Retrieval (Retrieval Result Window2)			✓	Slip Pattern	—
60	WP051010	Inter Island Transportation Registration (Retrieval Window)		✓	Card Pattern	—	
61	WP051020	Inter Island Transportation Registration (Registration Window1)	✓		Slip Pattern	—	
62	WP051030	Inter Island Transportation Registration (Registration Window2)	✓		Card Pattern	—	
63	WP052010	Inter Island Transportation Update (Retrieval Window)		✓	Card Pattern	—	
64	WP052020	Inter Island Transportation Update (Update Window1)	✓		Slip Pattern	—	
65	WP052030	Inter Island Transportation Update (Update Window2)	✓		Card Pattern	—	
66	WP053010	Inter Island Transportation Deletion (Retrieval Window)		✓	Card Pattern	—	
67	WP053020	Inter Island Transportation Deletion (Deletion Window1)			✓	Slip Pattern	—
68	WP053030	Inter Island Transportation Deletion (Deletion Window2)			✓	Card Pattern	—
69	WP054010	Inter Island Transportation Retrieval (Retrieval Window)		✓	Card Pattern	—	
70	WP054020	Inter Island Transportation Retrieval (List Retrieval Window)	✓		List Pattern	—	

Table 2.5.2-30: List of Windows (5/6)

No.	Window Code	Window Name	Input/Output		Window Type	Note	
			Input & Output	Input			Output
71	WP054030	Inter Island Transportation Retrieval (Retrieval Result Window1)			✓	Slip Pattern	—
72	WP054040	Inter Island Transportation Retrieval (Retrieval Result Window2)			✓	Card Pattern	—
73	WP061010	Physical Examination Result Registration (Retrieval Window)		✓		Card Pattern	—
74	WP061020	Physical Examination Result Registration (Registration Window1)	✓			Slip Pattern	—
75	WP061030	Physical Examination Result Registration (Registration Window2)	✓			Card Pattern	—
76	WP062010	Physical Examination Result Update (Retrieval Window)		✓		Card Pattern	—
77	WP062020	Physical Examination Result Update (Update Window1)	✓			Slip Pattern	—
78	WP062030	Physical Examination Result Update (Update Window2)	✓			Card Pattern	—
79	WP063010	Physical Examination Result Deletion (Retrieval Window)		✓		Card Pattern	—
80	WP063020	Physical Examination Result Deletion (Deletion Window1)			✓	Slip Pattern	—
81	WP063030	Physical Examination Result Deletion (Deletion Window2)			✓	Card Pattern	—
82	WP064010	Physical Examination Result Retrieval (Retrieval Window)		✓		Card Pattern	—
83	WP064020	Physical Examination Result Retrieval (List Retrieval Window)	✓			List Pattern	—
84	WP064030	Physical Examination Result Retrieval (Retrieval Result Window1)			✓	Slip Pattern	—
85	WP064040	Physical Examination Result Retrieval (Retrieval Result Window2)			✓	Card Pattern	—

Table 2.5.2-30: List of Windows (6/6)

No.	Window Code	Window Name	Input/Output			Window Type	Note
			Input & Output	Input	Output		
86	WP071010	Personal Violation Registration (Retrieval Window)		✓		Card Pattern	—
87	WP071020	Passenger & Border crosser Registration (Registration Window 1)	✓			Card Pattern	—
88	WP071030	Personal Violation Registration (Registration Window 2)		✓		Card Pattern	—
89	WP072010	Personal Violation Update (Retrieval)		✓		Card Pattern	—
90	WP072020	Personal Violation Update (Update Window 1)	✓			Card Pattern	—
91	WP072030	Personal Violation Update (Update Window 2)	✓			Card Pattern	—
92	WP073010	Personal Violation Deletion (Retrieval Window)		✓		Card Pattern	—
93	WP073020	Personal Violation Deletion (Deletion Window 1)			✓	Card Pattern	—
94	WP073030	Personal Violation Deletion (Deletion Window 2)			✓	Card Pattern	—
95	WP074010	Personal Violation Retrieval (Retrieval Window)		✓		Card Pattern	—
96	WP074020	Personal Violation Retrieval (List Retrieval Window)	✓			List Pattern	—
97	WP074030	Personal Violation Retrieval (Retrieval Result Window 1)			✓	Card Pattern	—
98	WP074040	Personal Violation Retrieval (Retrieval Result Window 2)			✓	Card Pattern	—

Table 2.5.2-31: List of Reports

No.	Report Code	Report No.	Report Name	Output Place	Output Cycle	Report Type	Paper Size	Notes
1	RP011010	—	NI/NHI Report <i>Laporan NI/NHI</i>	Head office	On Demand	Slip Pattern	A4	—
2	RP014010	—	NI/NHI Summary Report <i>Laporan Kesimpulan NI/NHI</i>	Head office	On Demand	List Pattern	A4	—
3	RP044010	—	List of Company by Type and Office <i>Laporan Kesimpulan Profil Perusahaan</i>	Head office	On Demand	List Pattern	A4	—
4	RP044020	—	Company Detail Report <i>Laporan Profil Perusahaan</i>	Head office	On Demand	Slip Pattern	A4	—
5	RP044030	—	Specific Vessel Data <i>Data Spesifikasi Kapal</i>	Head office	On Demand	Slip Pattern	A4	—
6	RP034010	—	Past Record and Blocked Importer Report <i>Laporan Past Record dan Blok Importir</i>	Head office	On Demand	Slip Pattern	A4	—
7	RP054010	—	List of Inter Island Transportation by Customs Office and Type of Goods <i>Laporan Inter Island Transportation Berdasarkan Petugas Bea dan Cukai, dan Jenis Barang</i>	Head office	Monthly	List Pattern	A4	—
8	RP064010	—	Summary Report of Physical Examination Result by Office <i>Laporan Kesimpulan Hasil Pemeriksaan Fisik</i>	Head office	On Demand	List Pattern	A4	—
9	RP064020	—	Report of Physical Examination Result <i>Laporan Hasil Pemeriksaan Fisik</i>	Head office	On Demand	List Pattern	A4	—
10	RP074010	—	Summary Report on personal Violation Record for Passenger & Border crosser <i>Laporan Kesimpulan dari catatan pelanggaran yang dilakukan penumpang / pelintas batas.</i>	Head office	On Demand	Card Pattern	A4	—

2.6 Verification & Audit Job Group

2.6.1 Design policy and circumstances

2.6.1.1 Current service

To confirm that the tax declaration for imported goods complies with the regulations, the Verification & Audit Directorate verifies import, export, excise and bonded zone related documents and then produces Verification Report. Audit plan is produced, based on the Verification Report, to target the importers / exporters / companies to be audited. Audit will be carried out to inspect importers, exporters, excise and bonded zone companies by visiting their offices and examining book keeping. Book keeping includes books, records, inventory of importers, inventory of exporters, inventory of excise and inventory of bonded zone companies and correspondence. Correspondence concerns the importation, exportation and excise of goods. Audit report, which contains the result of audit will be produced. Audit Report will be distributed to relevant sections / directorates with instruction note.

The study is mainly conducted in the Head Office by holding interviews with the Verification & Audit Directorate. The Regional Office is also being observed for the necessity of analyzing the job flow. The study of the Regional Office is being conducted by analyzing the outlines of their organization and job flows.

2.6.1.2 Job function after Computerization

The outline of main changes in job flows after computerization, considered in Basic Investigation Phase, were as follows:

- To retrieve PIB / PEB / related information on computer on line and to compare with price profile, tariff, and so forth, which are also retrieved, in order to verify submitted documents;
- To input verification result into CIS to produce verification report. An instruction note will be produced automatically with a permission of the person in charge, and it will be sent to related organizations depending on the decision of that person;
- To retrieve verification report, past audit report and other related information in the process of producing long term audit plan;
- To input audit result into CIS to produce audit report. An instruction note will be produced automatically with a permission of the person in charge, and it will be sent to related organizations depending on the decision of that person.

The following jobs were added to the Second Stage:

- Auditor management
- Audit plan support
- Evaluation of PFPD
- BC 2.3 Verification Management / Monitor
- PEB Verification Management / Monitor

2.6.1.3 Details of design (phase I)

The circumstances of investigation for jobs targeted for computerization are described below.

All jobs related to Export and Excise were transferred to the Second Stage, due to high priority of import-related jobs and limited scale of the system. On the other hand, the scale of import related jobs were expanded due to the changes of job flows after re-organization and promotion of extra processes to fulfill the requirement of users, such as:

- Import Verification Finding Note A[†], B[†] and C[†] (hereinafter referred to as NTVPIB-A, NTVPIB-B, NTVPIB-C) became 2 steps, I and II (hereinafter referred to as NHVDI-I, NHVDI-II). NHVDI-I consists of items included in NTVPIB-A and NTVPIB-B. NHVDI-II consists of items included in NTVPIB-C. The units of transaction of those 2 steps are different. The unit of transaction for NHVDI-I is per PIB. But the transaction unit of NHVDI-II is per several amount of NHVDI-I. Therefore, the process of "PIB Verification Result" had to be divided into "PIB Verification I Result" and "PIB Verification II Result".
- The name of Verification Finding Note Attachment and the name of Verification Result Quarterly Report Attachment were the same but they were actually different documents. One process was added in the First Stage to retrieve the Quarterly Report Attachment.
- There were three other types in Verification Result Quarterly Report Attachments. The processes related to those 3 attachments were transferred to the Second Stage.
- The computerization of the actual Verification Quarterly Report was added to the Second Stage because the report was the statistical information collected from PIB Verification II and was different from its attachments.
- There was a request to add a process to cut down the workload of PIB Verifications. The process was added to the Second Stage and its specification was produced.

The scale of the system was managed to maintain approximately the same level as that in Basic Investigation phase by those carefully selected promotion and declination of jobs in this phase.

Note: † Import Verification Finding Note A, B and C are a kind of work sheet used to fill in the verification result during the verification.

There are mainly seven jobs finally decided to carry out in the First Stage:

- PIB Verification I Result Management / Monitor
- PIB Verification II Result Management / Monitor
- PIB Verification Result Quarterly Report A1 (Attachment 1) Monitor
- Audit Result Management / Monitor

The table below shows the changes after Basic Investigation in processes:

Table 2.6.1.3-1: Circumstances of Investigation and the result (1/2)

No.	Process Name	Circumstances of Investigation	Result of Investigation
1	PIB Verification I Result Registration	It is impossible to verify documents and input the result into the system simultaneously because there is not enough computers.	Verify documents manually and input the result into the system after completing the Verification Finding Note I.
2		The Instruction Note was planned to be printed out in other necessary offices after the registration, but later it was found that the signature of Head of Section (Verification & Audit) must be written on the Instruction Note.	The Instruction Note is printed out in Regional Office and the signature of the Section Head will be written before it is sent to other necessary offices.
3		There are too many PIBs to be verified, and it needs to be cut down.	It is added to the Second Stage as an extra job. Its specification (Phase I level) is already produced.
4	PIB Verification II Result Registration	It is impossible to verify documents and input the result into the system simultaneously because there is not enough computers.	Verify documents manually and input the result into the system after completing the Verification Finding Note II.

Table 2.6.1.3-1: Circumstances of Investigation and the result (2/2)

No.	Process Name	Circumstances of Investigation	Result of Investigation
5	PIB Verification II Result Registration	It was found that about a half of the items included in PIB Verification II Results are the statistical calculations of PIB Verification I Result. It is necessary to investigate again including its operation.	In Registration process, register only the statistical calculation (there is no input item) in Verification II and print out the statistical calculation result as NHVDI-II. Furthermore, this process is considered as a temporary registration, operated by a Verifier I and the actual registration of results are done in Update process.
6	Audit Result Registration	The objectives of Audit Result management in CIS are totally different to that in BI. The Audit Result is already managed by PCs, so that management of the Audit progress was requested instead of result registration.	Data in PCs are to be transferred to CIS. The method of transfer is necessary to be considered. Audit Results are to be managed by CIS as it was described in BI phase.
7		The Instruction Note after Audit needs signature.	Its items are included in Company Performance report.
8		An extra report, list of audit during certain period, was requested.	The extra report was added in Audit job with minimum functions.

2.6.1.4 Details of design (phase II)

The circumstances of investigation for jobs targeted for computerization are described below.

The System Design Phase II was conducted to do detail design of the processes of the First Stage. The Verification & Audit Directorate and the JICA study team agreed to carry on the project with the conditions below.

To meet the requirements from the users, there are mainly seven jobs finally decided to carry out in the First Stage:

- PIB Verification I Result Management / Monitor
- PIB Verification II Result Management / Monitor
- PIB Verification Result Quarterly Report A1 (Attachment 1) Monitor
- Audit Result Management / Monitor

The table below shows the changes after System Design Phase II.

Table 2.6.1.4-1: Circumstances of Investigation and the result

No.	Process Name	Circumstances of Investigation	Result of Investigation
1	PIB Verification II Result Retrieval	Print function of NHPDI-II Attachment was newly required.	The function was added.
2	Audit Result Retrieval	Print function of Audit Report was newly required.	The function was added.
3	Audit Result Retrieval	List Retrieval Window for choosing specific audit result was newly requested.	The window was added
4	Audit Result	Audit Result was requested to be monitored by only office head rank officers. Ranking code is necessary for each User ID.	It was planned in the 2 nd stage by DB team at first due to no request. It will take long time to Pending item.
5	PIB Verification Result Quarterly Report A1	The calculated data for the quarterly report attachment I was also requested to be exported to client computers in sequential format.	The function was added.