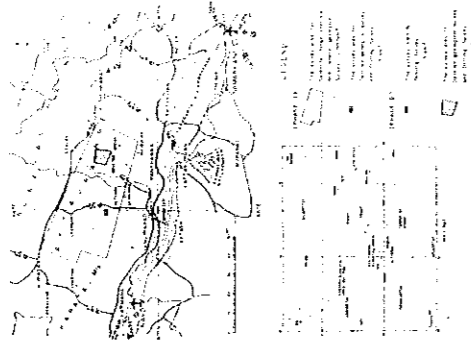


THE MINERAL EXPLORATION
IN
THE SOUTHERN NURATAU AREA
THE REPUBLIC OF UZBEKISTAN
(PHASE II)
LOCATION MAP OF THE SAMPLES
OF THE MAULYAN DEPOSIT



JAPAN INTERNATIONAL COOPERATION AGENCY
METAL MINING AGENCY OF JAPAN
FEBRUARY 1989
PREPARED BY MINDECO

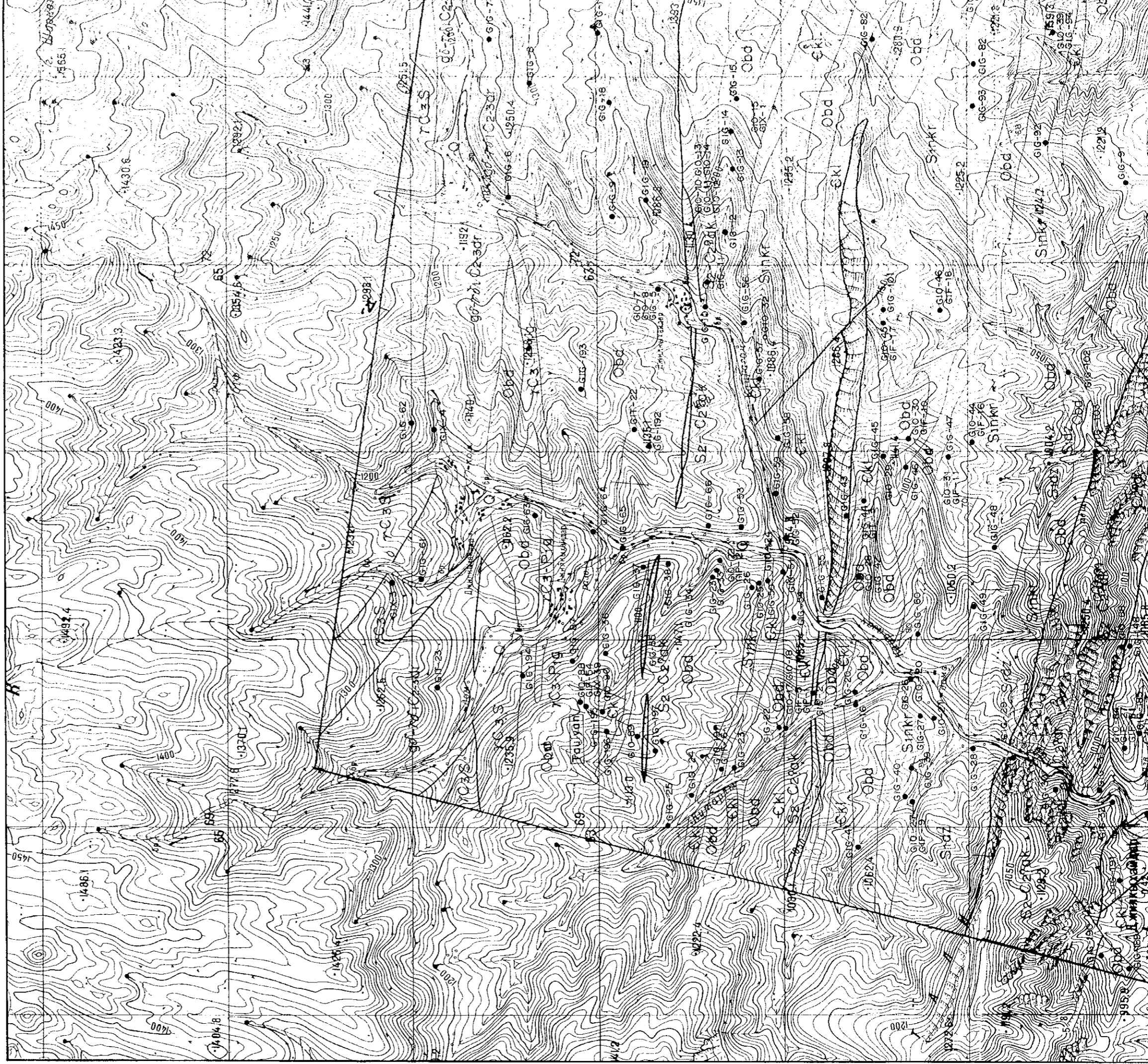


Legend

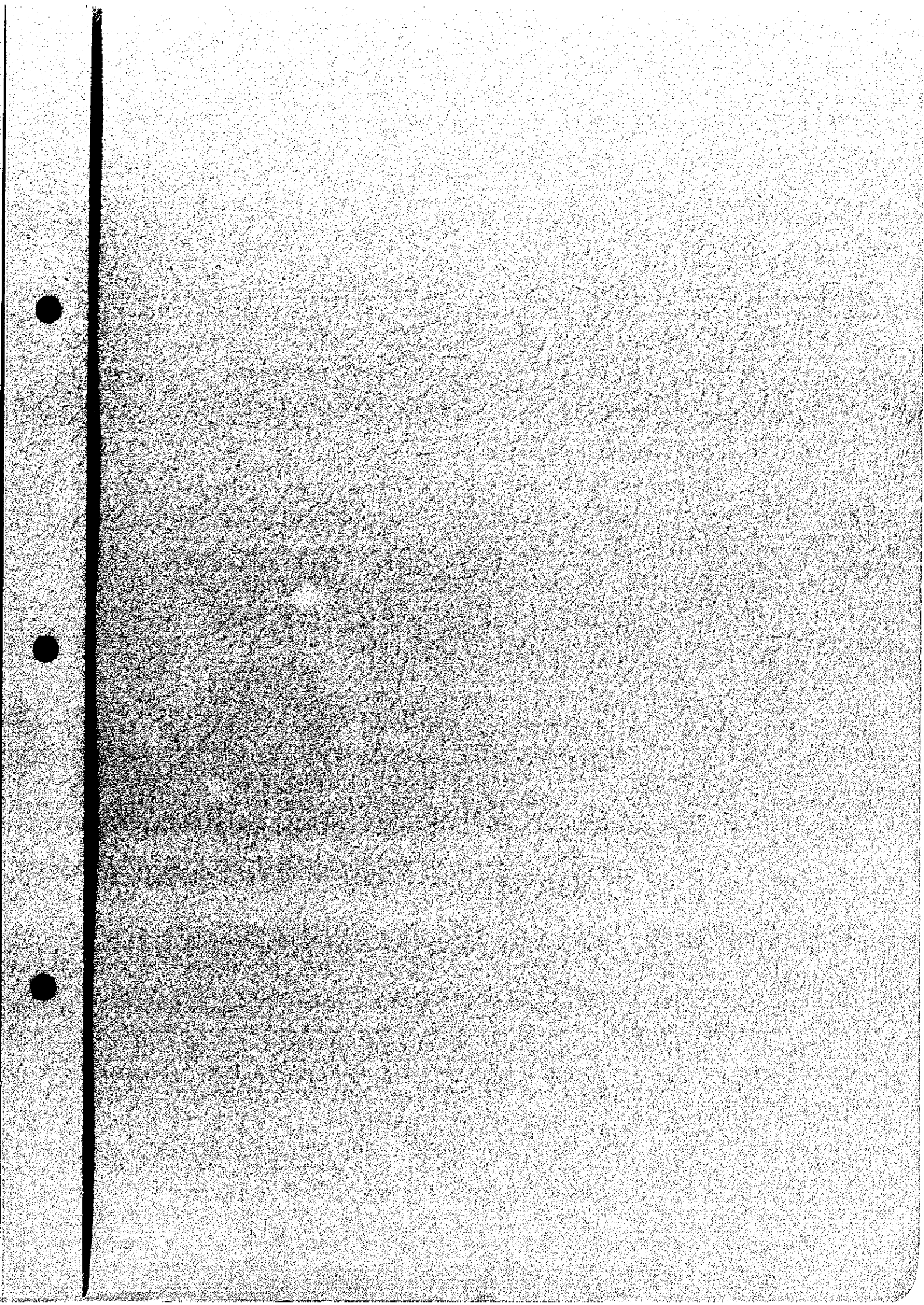
- GIO-50 : Ore assay
- GIG-121 : Geochemical assay
- GIT-23 : Thin section
- GIP-23 : Polished section
- GIF-60 : Fluid inclusion measurement
- GIX-12 : X-ray analysis











JICA