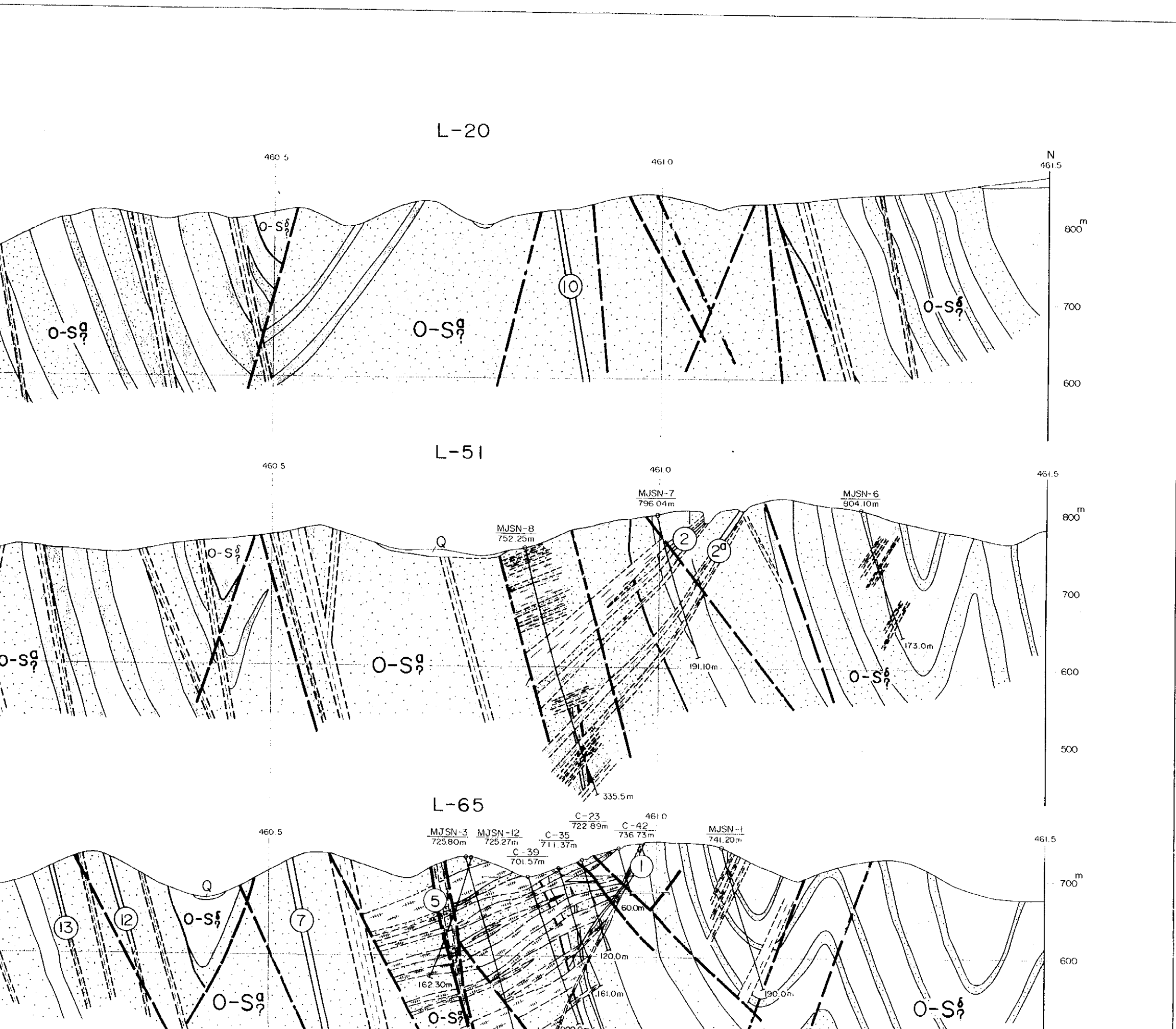


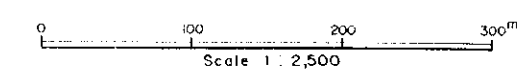
Quaternary  
Lower Silurian  
Silurian  
Ordovician  
Dyke



PL. II-1-1-2

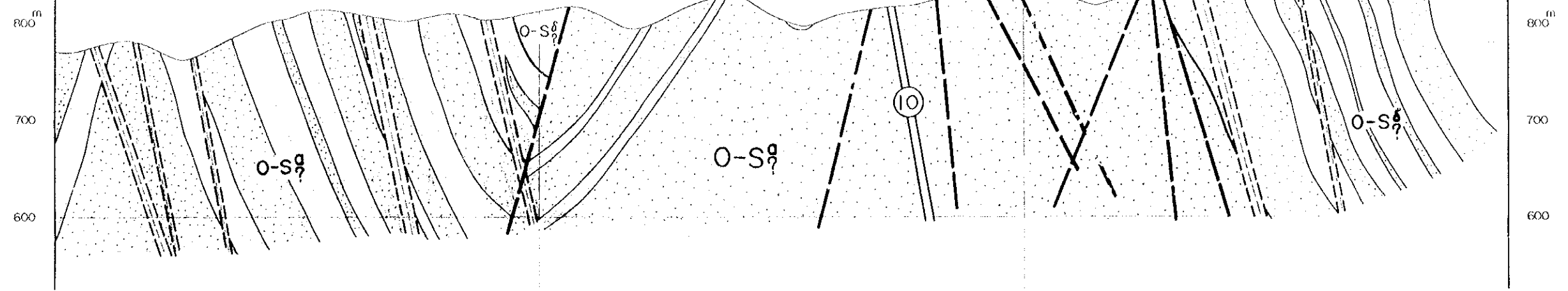
THE MINERAL EXPLORATION  
IN  
THE SOUTHERN NURATAU AREA  
THE REPUBLIC OF UZBEKISTAN  
(PHASE II)  
GEOLOGIC CROSS SECTION OF  
THE ALTYSAI DEPOSIT

JAPAN INTERNATIONAL COOPERATION AGENCY  
METAL MINING AGENCY OF JAPAN  
FEBRUARY 1999  
PREPARED BY MINDECO

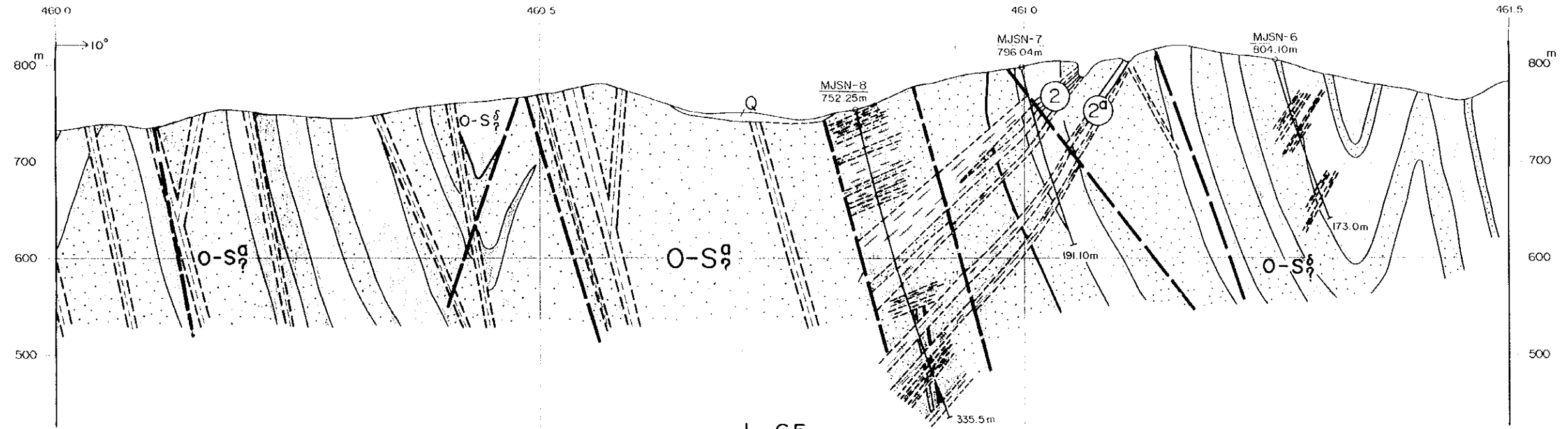


Legend

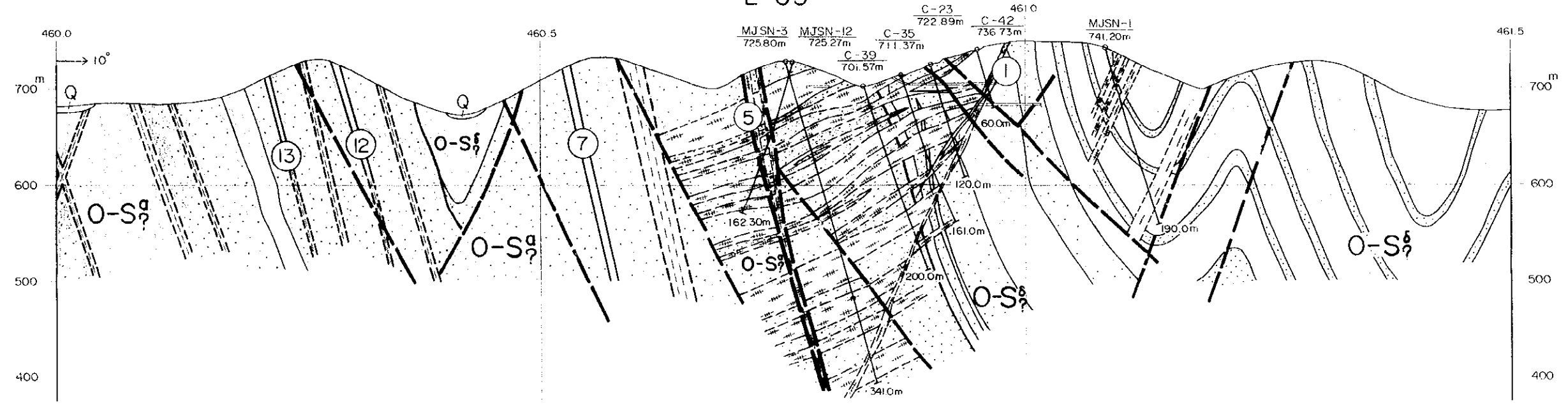
Quaternary	Q	Talus, gravel, sand
Lower Silurian		Slates, Siltstones
		Quartz sandstones
Silurian		} Middle Formation
Ordovician		} Lower Formation
Dyke		Lamprophyres
		Fractures : 1. Traced 2. Supposed
		Zones of brecciation and silicification
		Zones of quartz veins and veinlets
		Ore zone and its number
		Drillholes : 1. Existed 2. MMAJ(1997,1998)



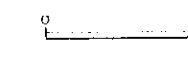
L-51



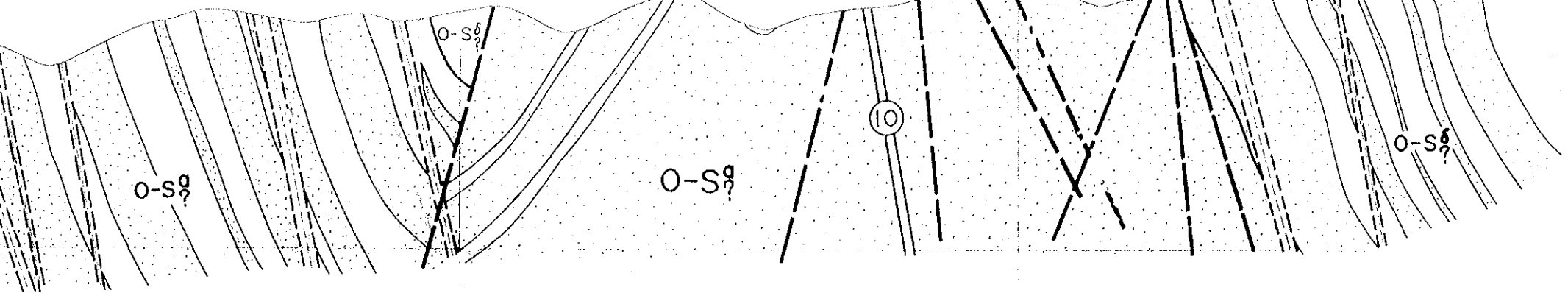
L-65



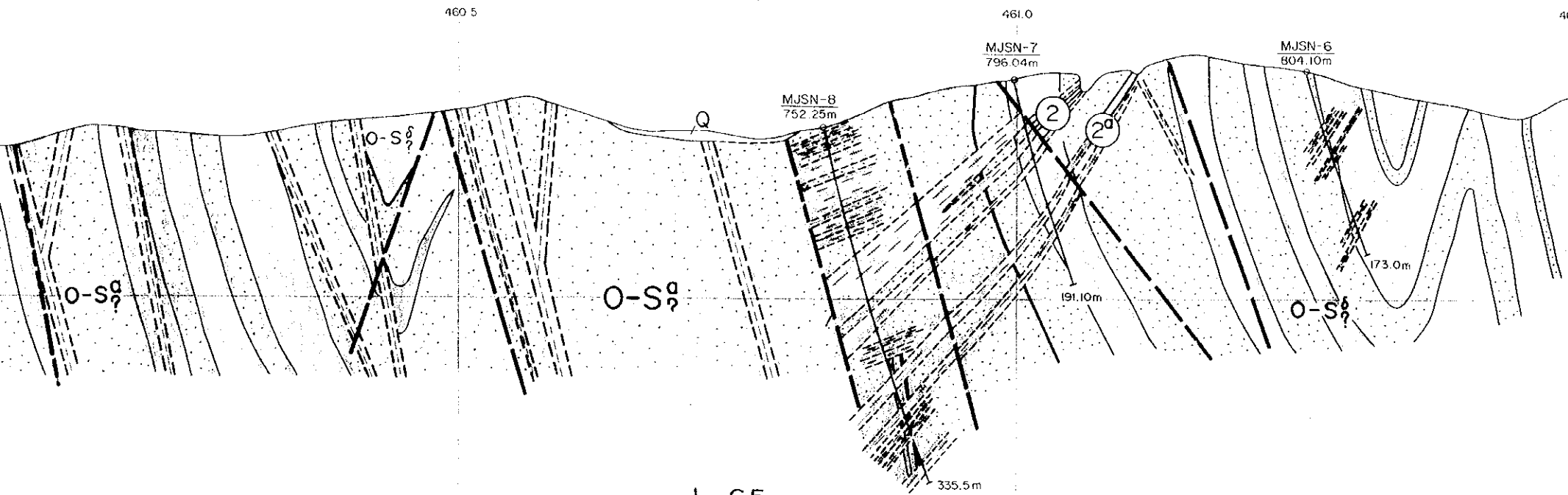
JAPAN INTER  
META



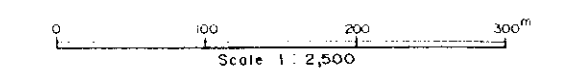
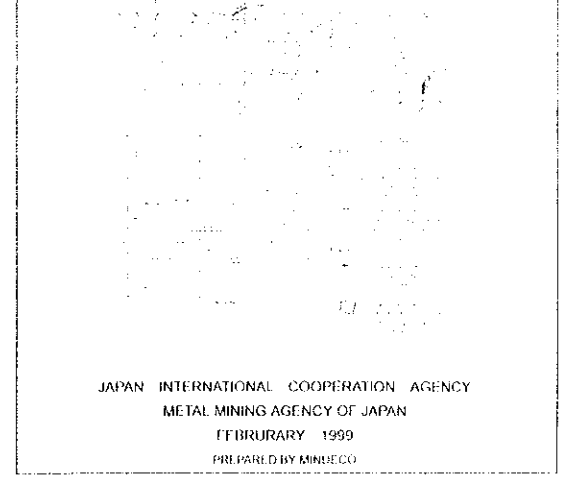
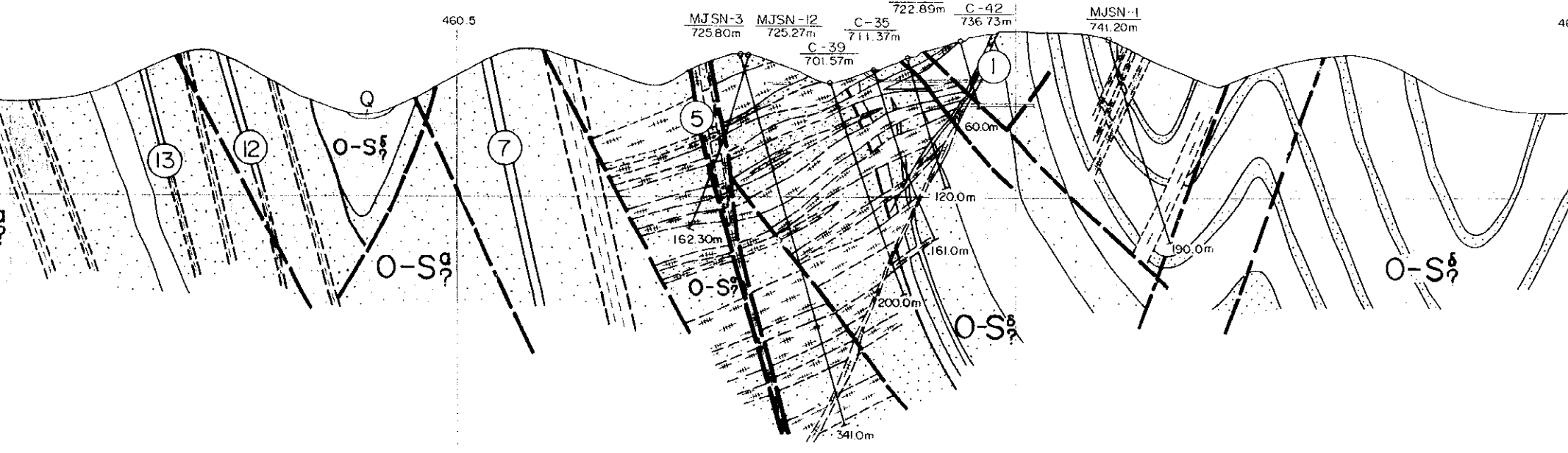
Quaternary	Q
Lower Silurian	
Silurian	O-S <sup>a</sup>
Ordoician	O-S <sup>b</sup>
Dyke	



L-51



L-65

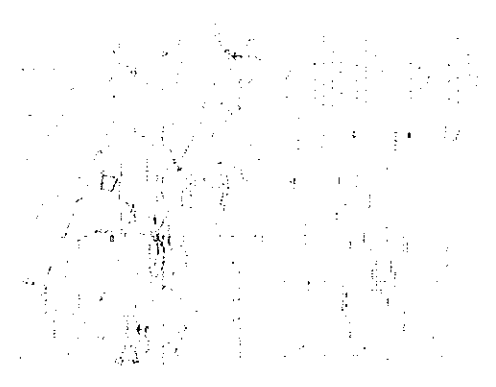


Legend

Quaternary	Q	Talus, gravel, sand
Lower Silurian	(stippled pattern)	Slates, Siltstones
	(dotted pattern)	Quartz sandstones
Silurian	(O-S1 pattern)	Cherty slates
	(O-S2 pattern)	Sandstones
Ordovician	(O-S1 pattern)	Cherty slates
	(O-S2 pattern)	Sandstones
Dyke	(diagonal lines)	Lamprophyres
	(dashed lines)	Fractures : 1. Traced 2. Supposed
	(dotted pattern)	Zones of brecciation and silicification
	(dotted pattern)	Zones of quartz veins and veinlets
	(circle with number)	Ore zone and its number
	(circle with number)	Drillholes : 1. Existed 2. MMAJ(1997,1998)

THE MINERAL EXPLORATION  
IN  
THE SOUTHERN NURATAL AREA  
THE REPUBLIC OF UZBEKISTAN  
(PHASE II)

GEOLOGIC MAP OF THE MAULYAN DISTRICT

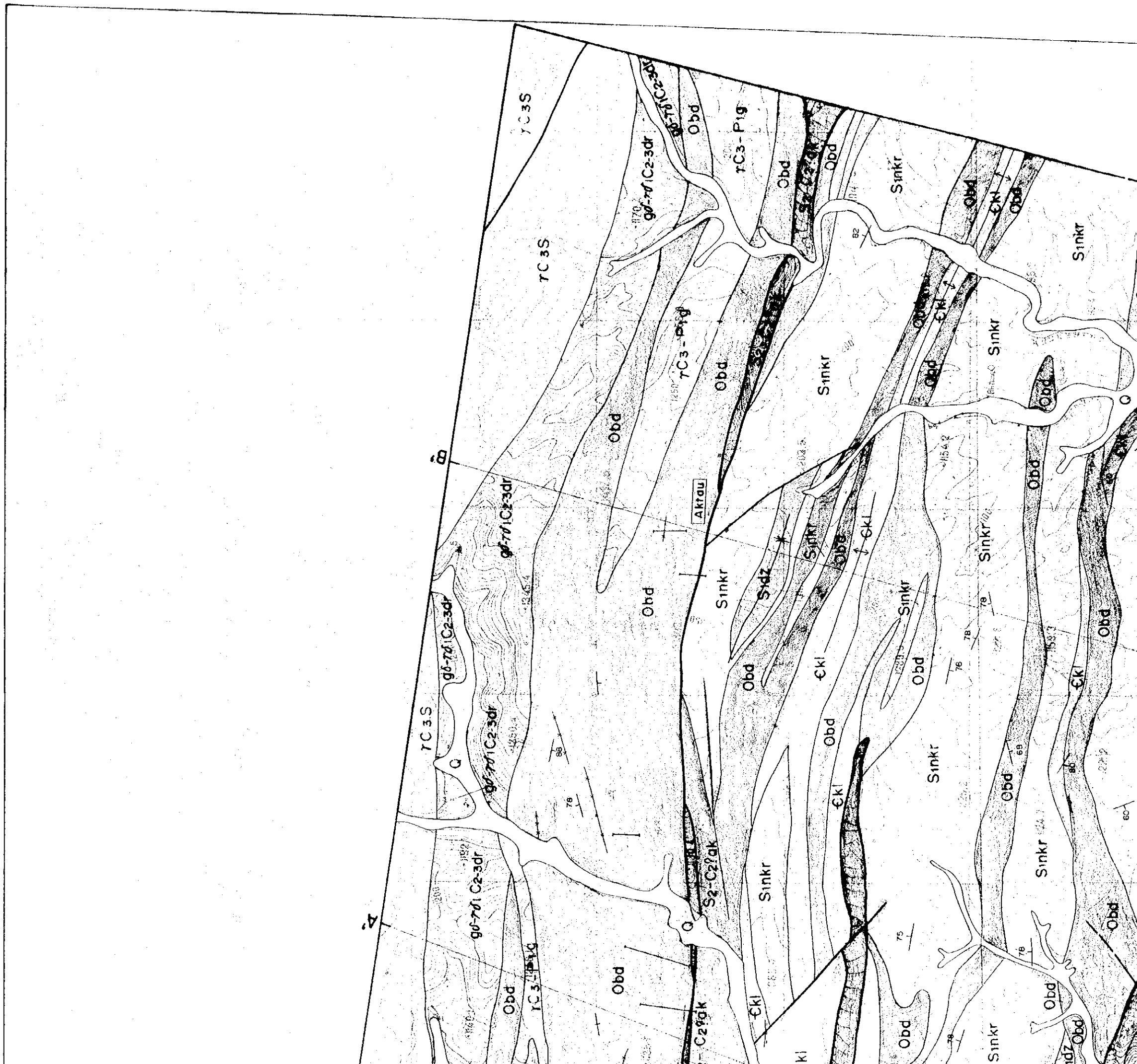


JAPAN INTERNATIONAL COOPERATION AGENCY  
METAL MINING AGENCY OF JAPAN  
FEBRUARY 1999  
PREPARED BY MANRECO

Scale 1:10,000

Legend

- Blanket
- Quaternary
- Basement Complex
  - Carboniferous
    - C2kr
    - S-C2ak
  - Silurian
    - S2k
    - S2kr
  - Ordovician
    - O2k
  - Cambrian
    - C1k
- Intrusive Body
  - Permian
    - P2-C-P2g
  - Carboniferous
    - C2-C2ak
- Dike
  - aplite/diabase
  - diabase
  - amphibolite
- Others
  - fault
  - syncline
  - anticline
  - fracture zone with quartz vein
  - us and strike





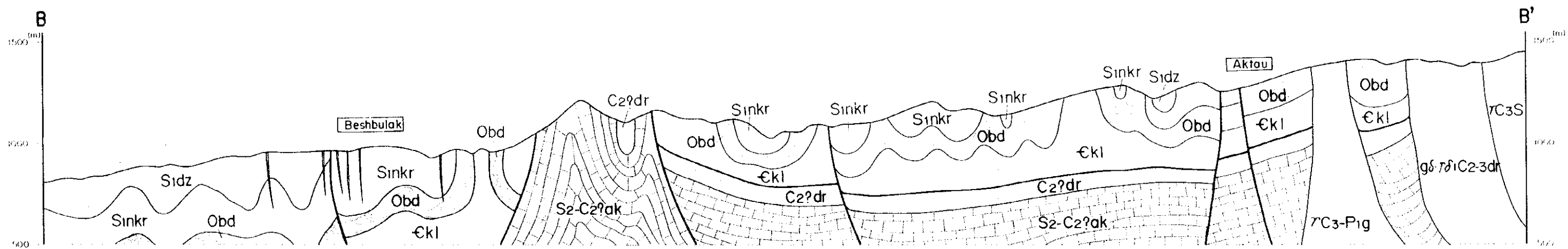
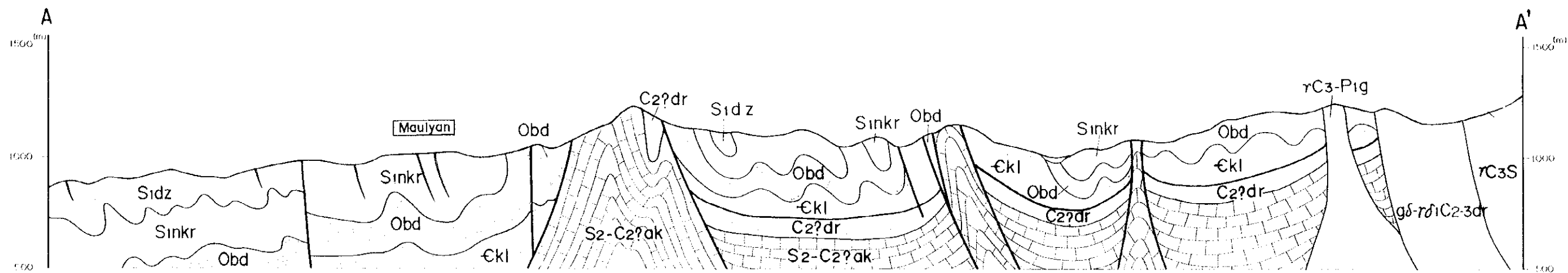


Scale  
Legend  
North  
Elevation  
Contour  
Spot  
Index  
Grid  
Notes

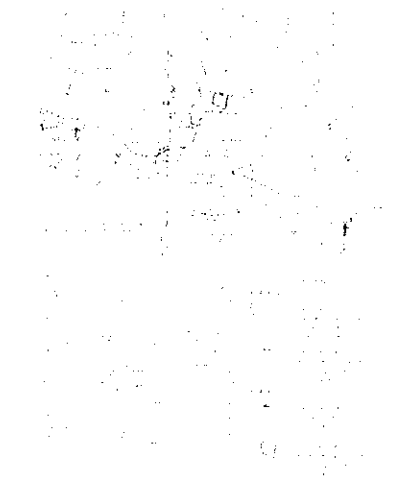




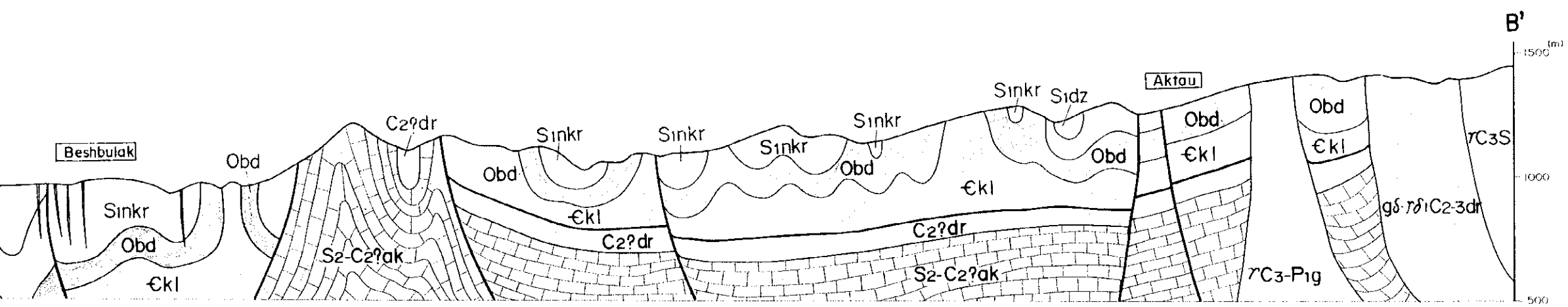
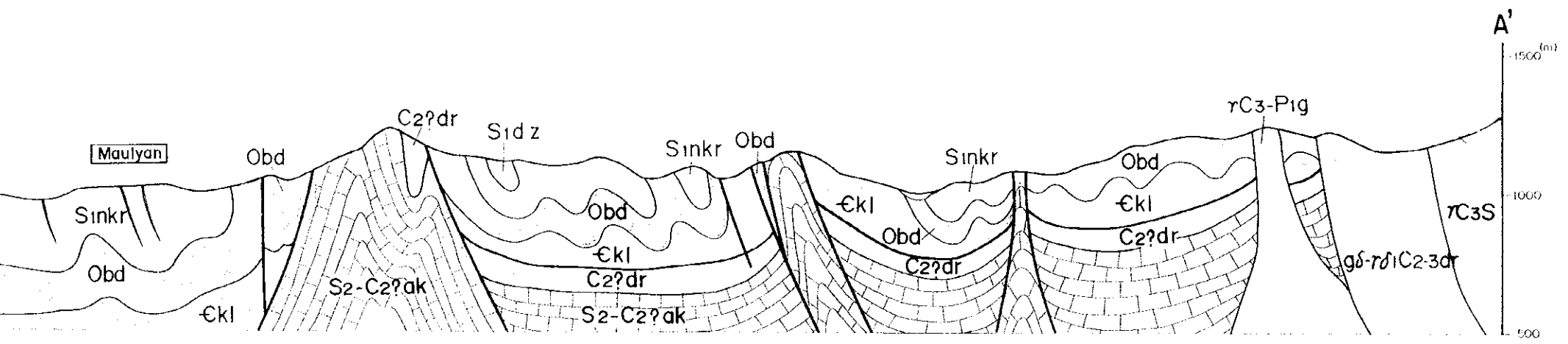
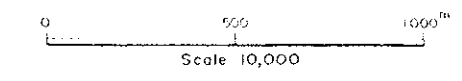




THE MINERAL EXPLORATION  
IN  
THE SOUTHERN NURATAU AREA  
THE REPUBLIC OF UZBEKISTAN  
(PHASE II)  
GEOLOGIC CROSS SECTION OF  
THE MAULYAN DISTRICT

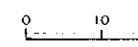
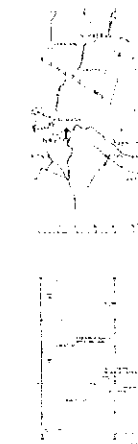


JAPAN INTERNATIONAL COOPERATION AGENCY  
METAL MINING AGENCY OF JAPAN  
FEBRUARY 1999  
PREPARED BY MINERCO

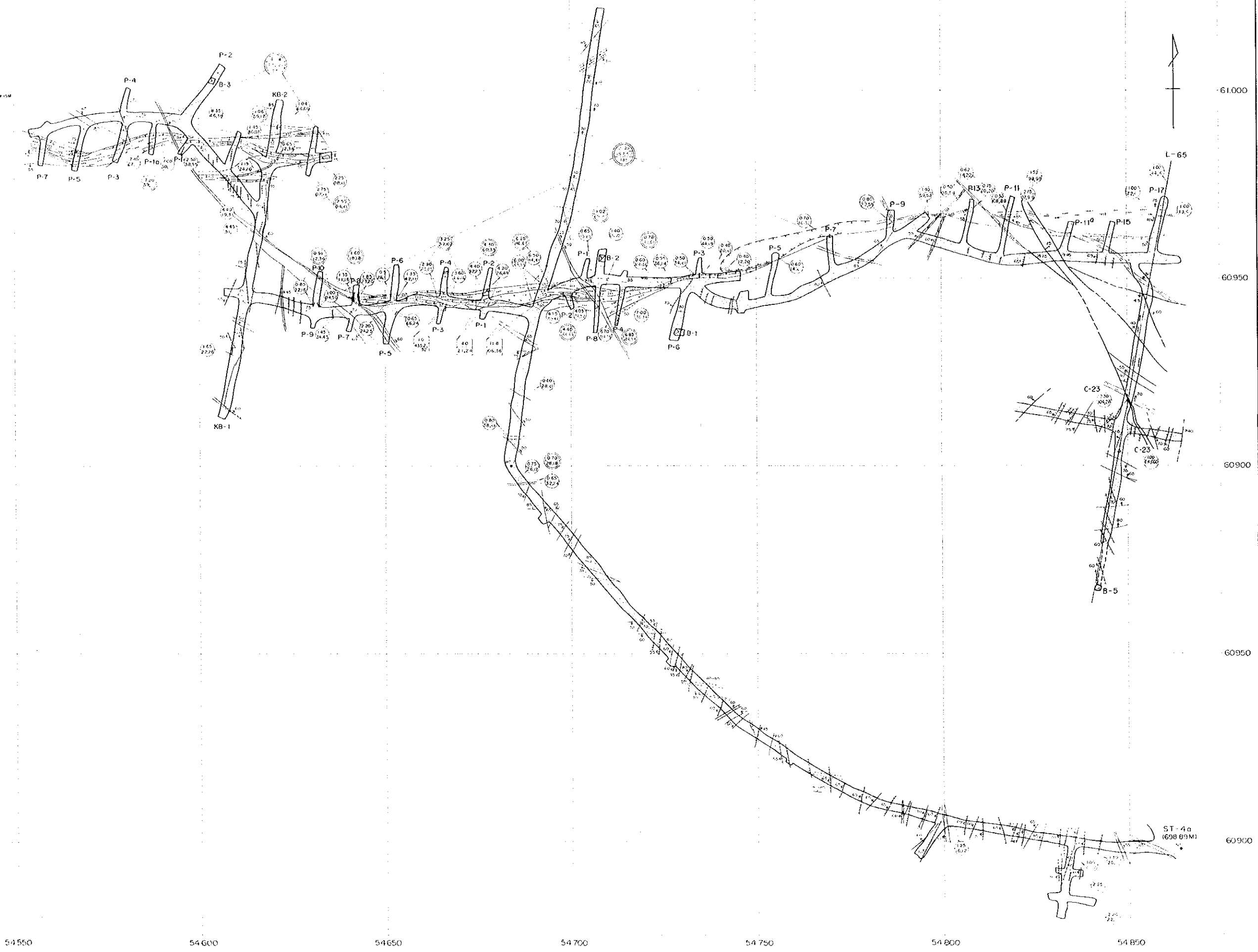


Legend

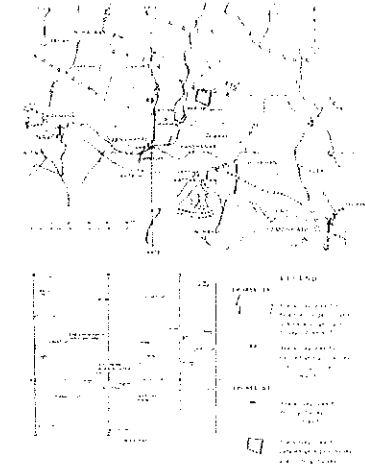
- Blanket
- Quaternary | Q | sand, gravel, silt
- Basement Complex
- Carboniferous | C2dr | Darasai formation: slate, sandstone, limestone
- | S2-C2?ak | Aktou formation: marble
- Silurian | S1dz | Dzharbulak formation: sandstone, siltstone, slate, conglomerate, phyllite
- | Sinkr | Nakiut formation: slate, siltstone, sandstone, horrefels, phyllite
- Ordovician | Obd | Badamchalin formation: shale, siltstone, sandstone
- Cambrian | Ckl | Kalasarin formation: limestone, slate
- Intrusive Body
- Perrnian | rC3-P1g | Gatchin granitoids, pegmatite
- Carboniferous | rC3s | Shirak granitoids, two-mica granite
- | gδ-rδ-C2-3dr | Darasai granitoids, granodiorite
- Aktou granitoid complex
- Dike
- apfite, pegmatite
- diabase
- lanprophyre
- Others
- fault
- syncline
- anticline
- fracture zone with quartz vein
- dp and strike



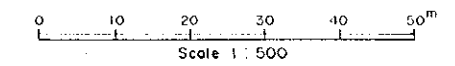
- Sandstone
- Slate
- Quartzite
- Schist
- Fault
- Strike-slip
- Ore
- Thinly bedded
- Thickly bedded
- Average length



THE MINERAL EXPLORATION  
IN  
THE SOUTHERN NURATAU AREA  
THE REPUBLIC OF UZBEKISTAN  
(PHASE II)  
GEOLOGIC MAP OF THE ADFT No. 4 (1698.89M LEVEL)  
OF THE ALTYN-SAI DEPOSIT



JAPAN INTERNATIONAL COOPERATION AGENCY  
METAL MINING AGENCY OF JAPAN  
FEBRUARY 1999  
PREPARED BY MINDECO



Legend

- Sandstone
- Slate
- Quartz vein
- Quartz veinlets
- Shear zone
- Fault
- Strike and dip of bedding plane
- Ore zone (Au ≥ 2g/t)
- Thickness(m)  
Au(g/t) ; Ag(g/t) Existing data
- Thickness(m)  
Au(g/t) ; Ag(g/t) MMAJ(1997)
- Average thickness(m)  
Au (g/t) ; Ag(g/t)  
Length of ore body(m)

