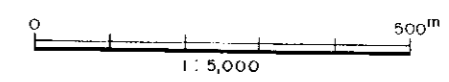
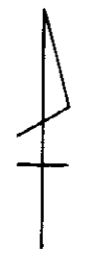
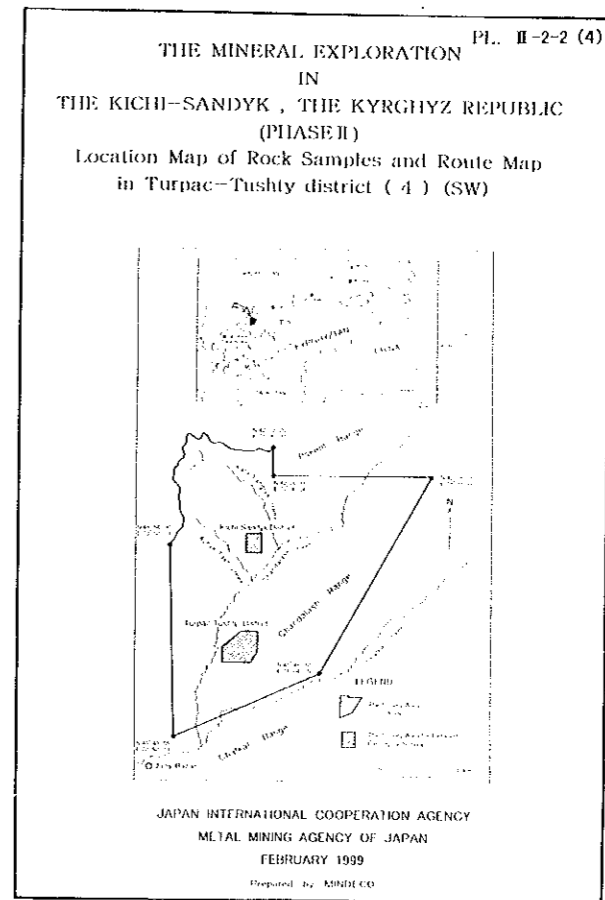
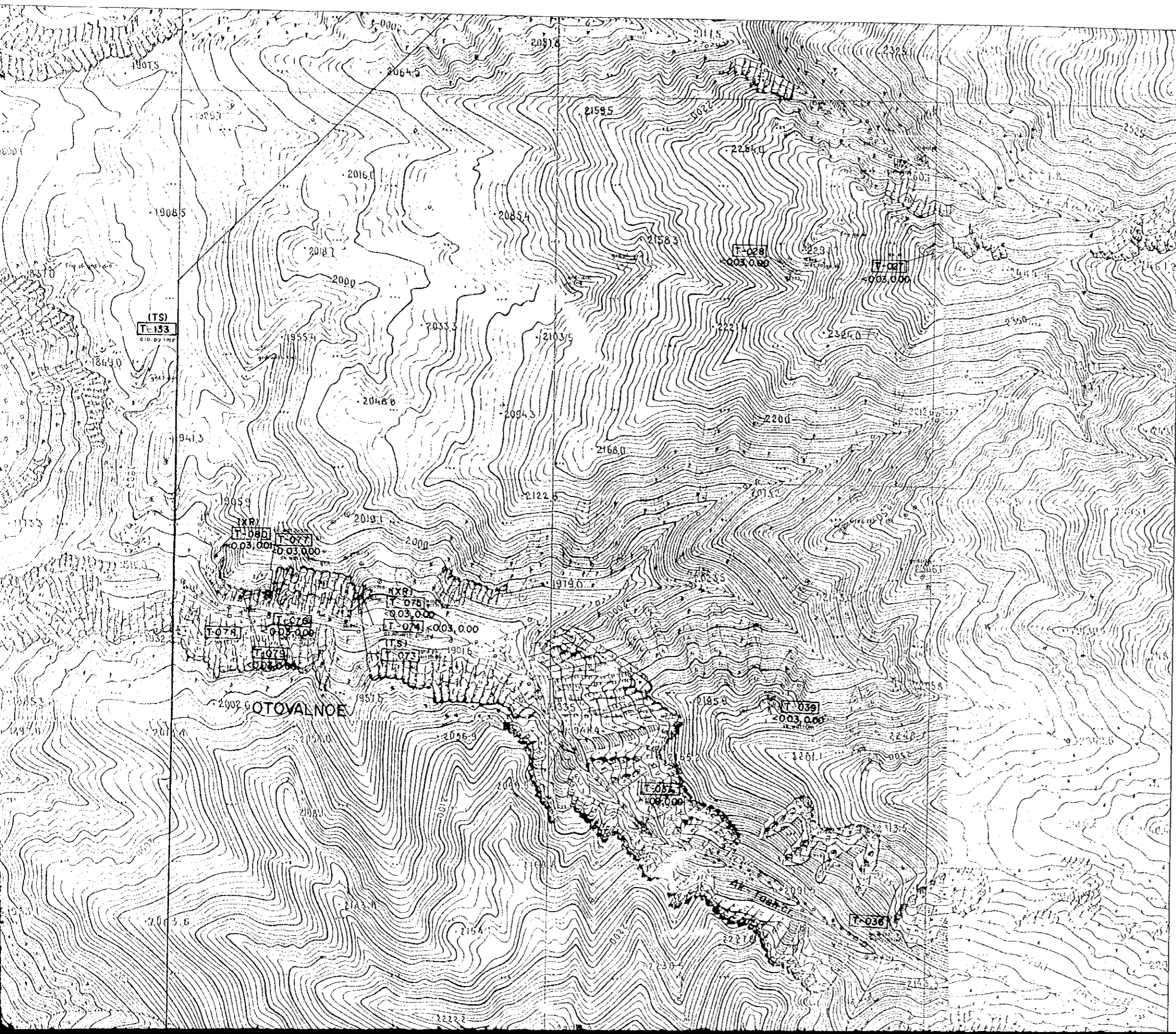


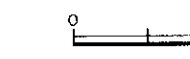
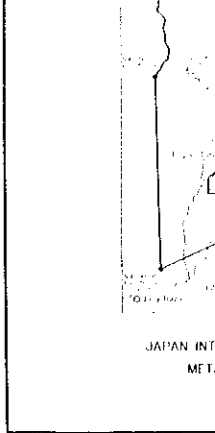
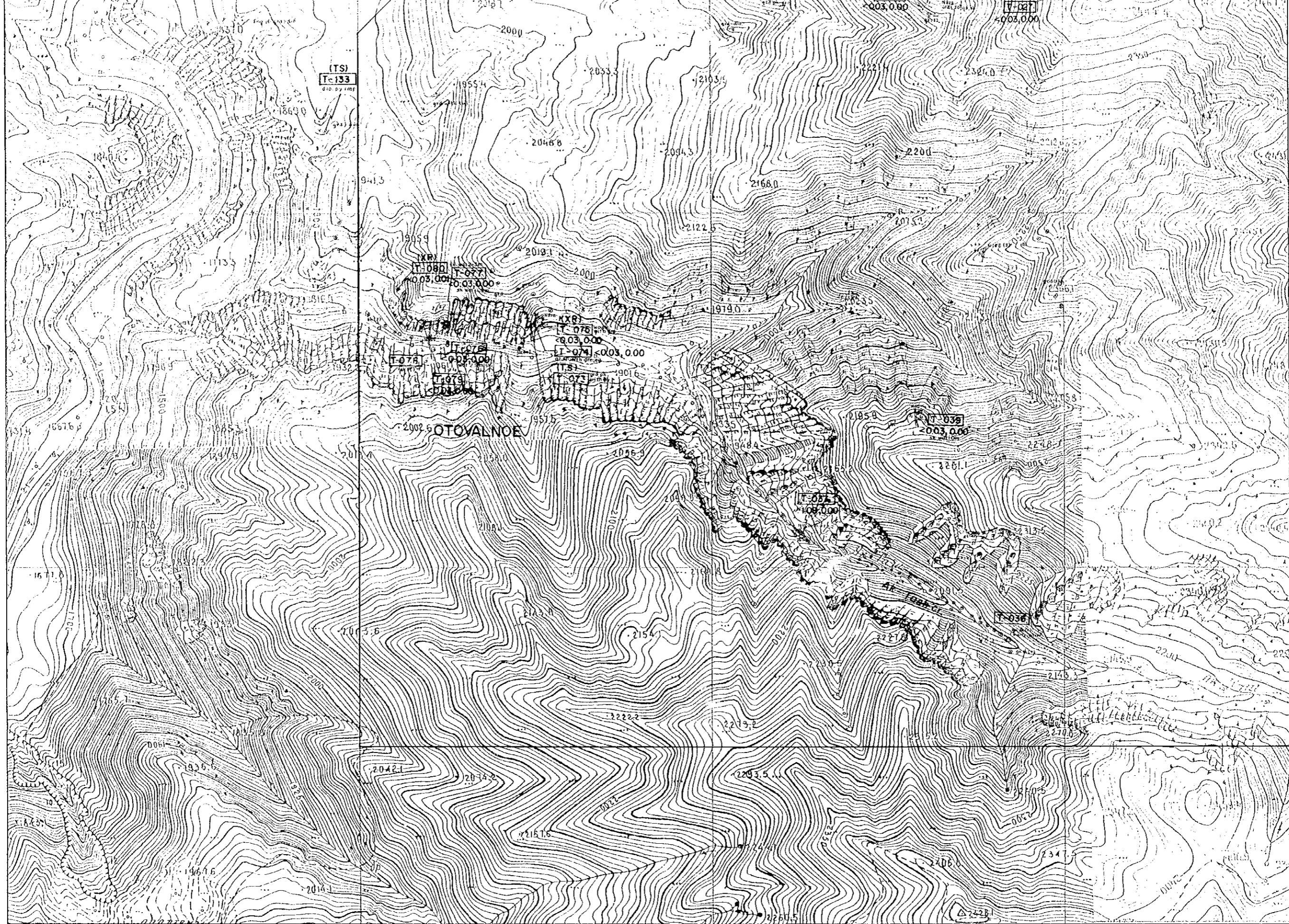
- 0
- ls limestone
 - diiorite
 - granodiorite
 - skarn
 - joint, fissure, fault
 - geological
 - float of skarn
- (PS, XR) laboratory sample
 T-105 Au(VI)
 1291, 209
- TS
PS
FI
CA
XR



LEGEND

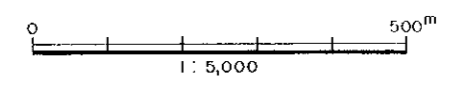
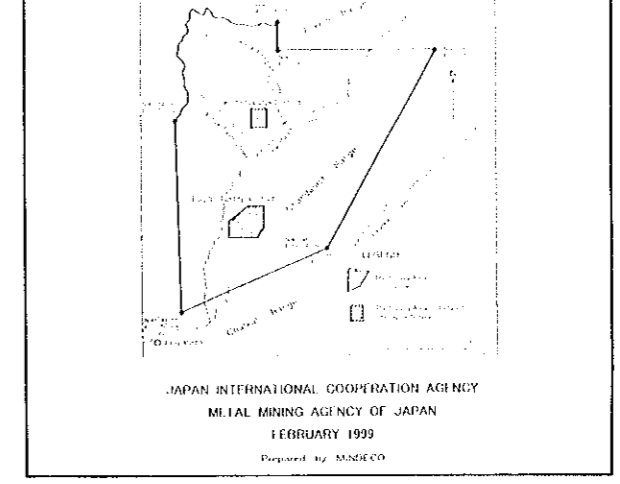
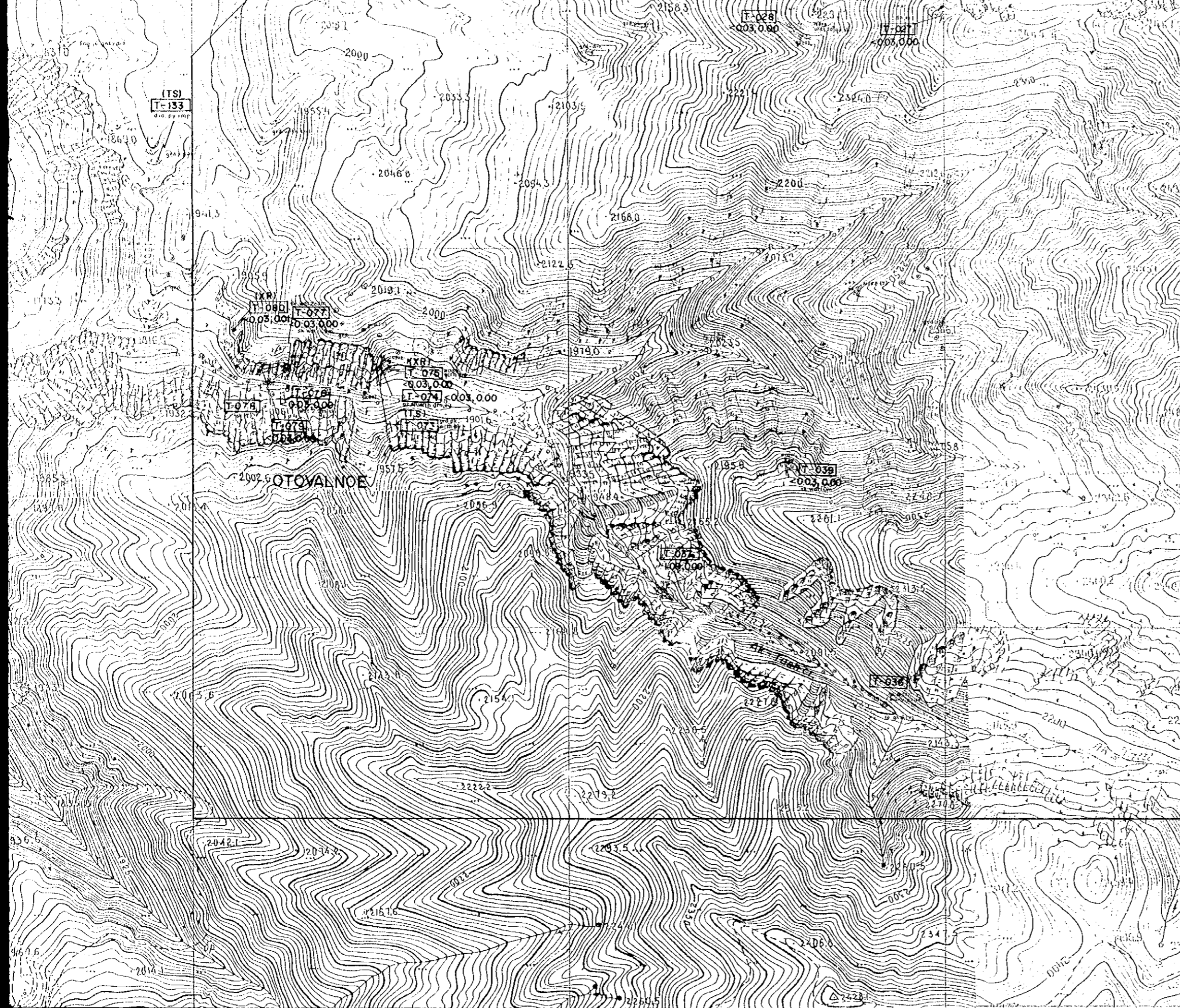
- | | | | |
|--|---------------------------------------|--|-------------------------|
| | limestone | | ancient pit (hard rock) |
| | diorite | | ancient pit (placer) |
| | granodiorite
granodiorite porphyry | | tunnel entrance |
| | skarn | | trench |
| | joint, fissure
fault | | shaft |
| | geological boundary | | |
| | float (of skarn and diorite) | | |

(PS, XR) (laboratory work)
 T-105 [sample No]
 1291,2.09 Au(%) Cu(%)
 TS Thin Section
 PS Polished Thin Section
 FI Fluid Inclusion
 CA Chemical Assay
 XR X-ray Diffraction



- limestone
- △ diorite
- × granodiorite
- skarn
- joint, fissure
- fault
- geological boundary
- ⊙ floor of skarn

(PS, XR)	(laboratory sample)
T-105	Au (%)
1291, 209	TS
	PS
	FI
	CA
	XR



LEGEND

- | | | | |
|----------|---|--|-------------------------|
| ls | limestone | | ancient pit (hard rock) |
| A | diorite | | ancient pit (placer) |
| X X | granodioritiz
granodioritiz porphyry | | tunnel entrance |
| II II | skarn | | trench |
| | joint, fissure
fault | | shaft |
| | geological boundary | | |
| | float (of skarn and diorite) | | |
| (PS,XR) | (laboraty work) | | |
| T-105 | sample No. | | |
| 1291,209 | Au(%) , Cu(%) | | |
| | TS : Thin Section | | |
| | PS : Polished Thin Section | | |
| | FI : Fluid Inclusion | | |
| | CA : Chemical Assay | | |
| | XR : X-ray Diffraction | | |

