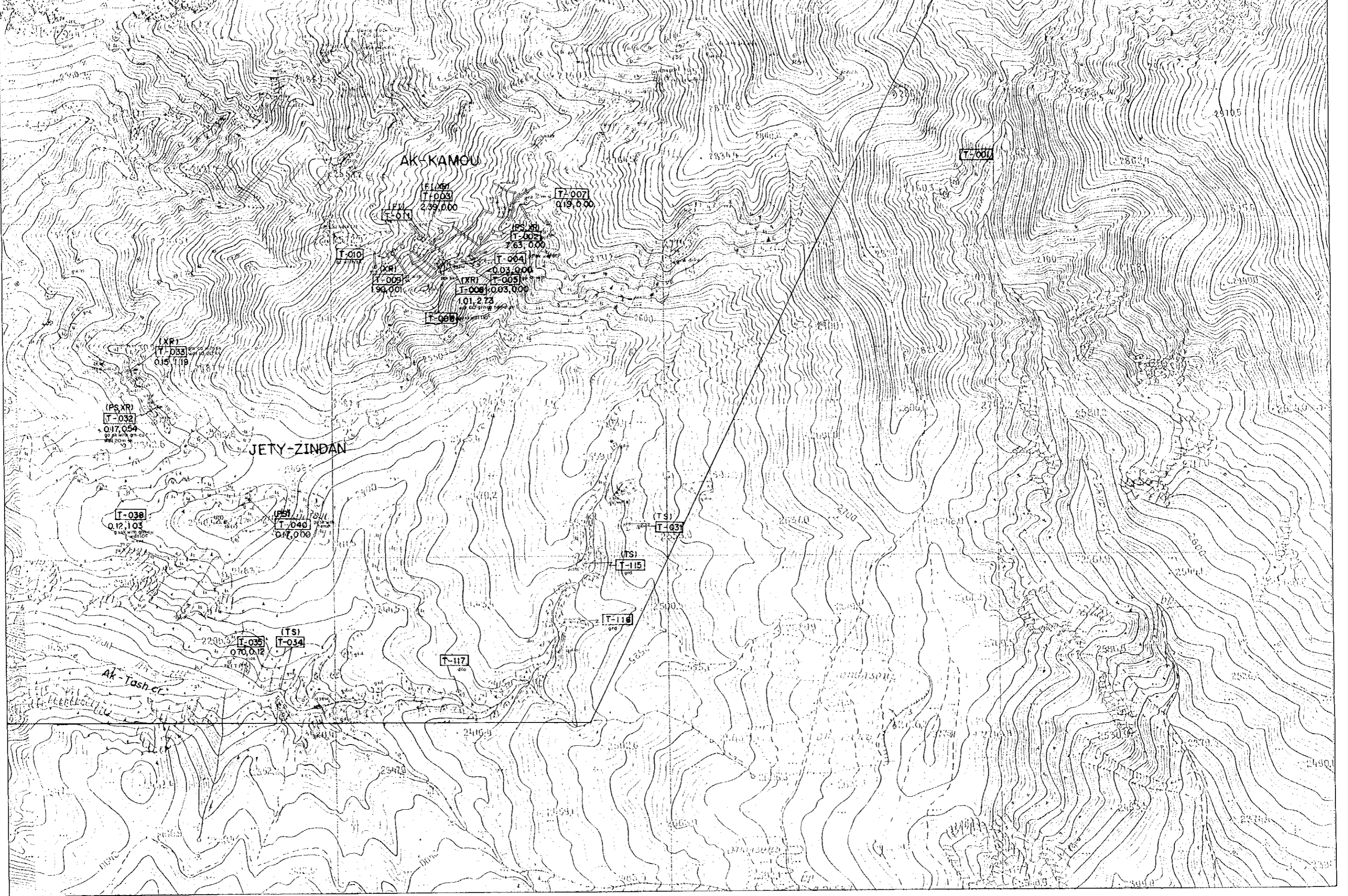
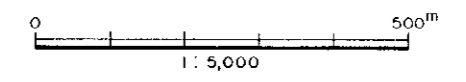
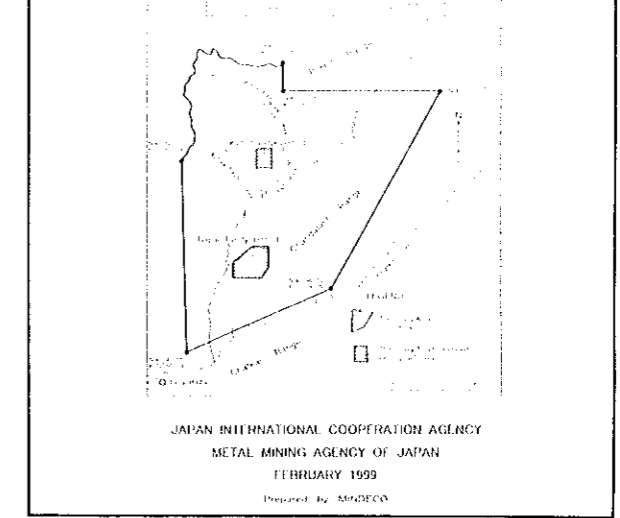
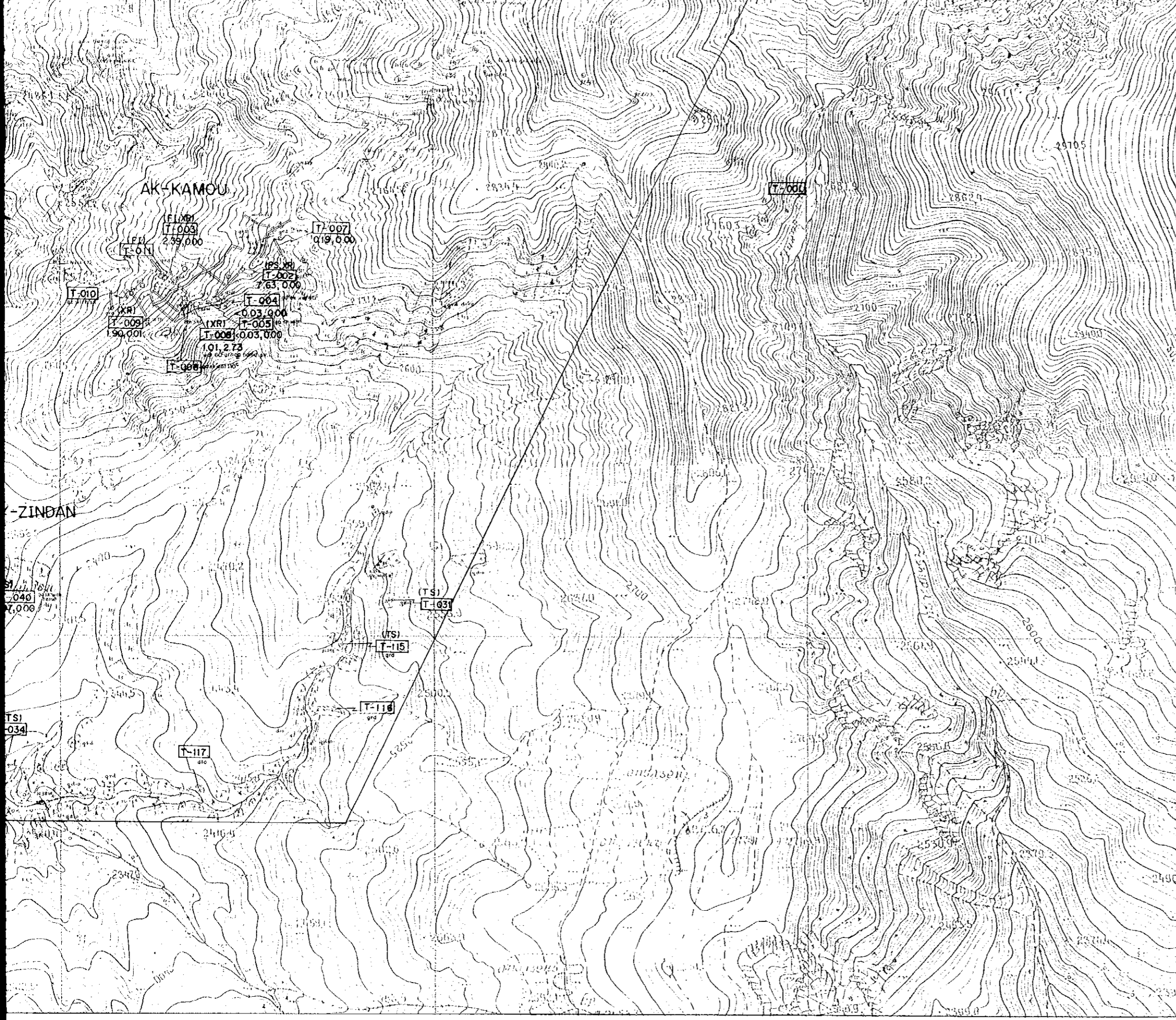


LEGEND

- | | |
|---|-------------------------|
| ls limestone | ancient pit (hard rock) |
| A diorite | ancient pit (placer) |
| X granodiorite
granodiorite porphyry | tunnel entrance |
| II skarn | trench |
| joint, fissure fault | shaft |
| geological boundary | |
| float (of skarn and diorite) | |

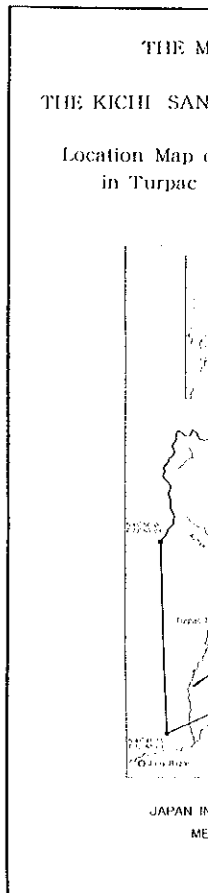
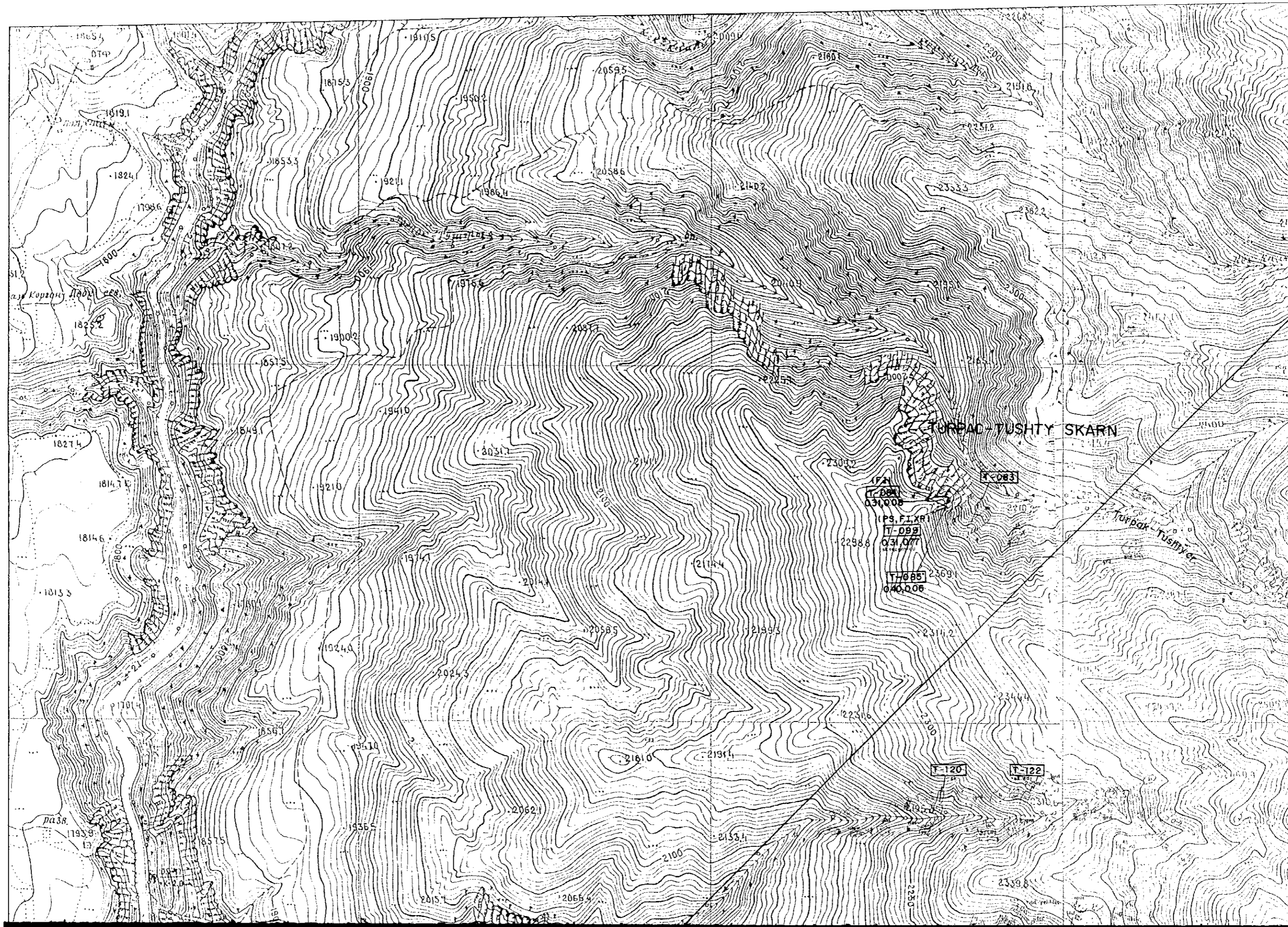
(PS, XR) (laboratory work)
T-105 [sample No.]
 1291, 2.09 Au(%) , Cu(%)
 TS : Thin Section
 PS : Polished Thin Section
 FI : Fluid Inclusion
 CA : Chemical Assay



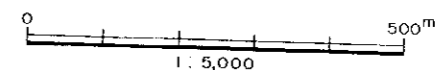
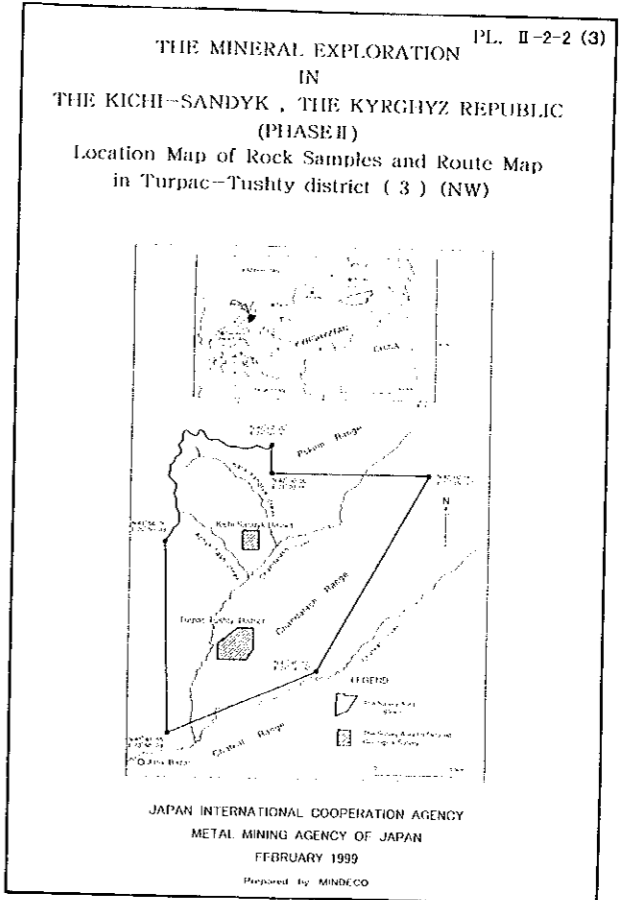


LEGEND

- | | | | |
|--|---------------------------------------|--|-------------------------|
| | limestone | | ancient pit (hard rock) |
| | diorite | | ancient pit (placer) |
| | granodiorite
granodiorite porphyry | | tunnel entrance |
| | skarn | | trench |
| | joint, fissure
fault | | shaft |
| | geological boundary | | |
| | float of skarn and diorite | | |
-
- | | |
|-------------|-----------------------|
| (PS, XR) | (laboratory work) |
| T-105 | sample No. |
| 12.91, 2.09 | Aut(%) , Cu(%) |
| TS | Thin Section |
| PS | Polished Thin Section |
| FI | Fluid Inclusion |
| CA | Chemical Assay |
| XR | X-ray Diffraction |



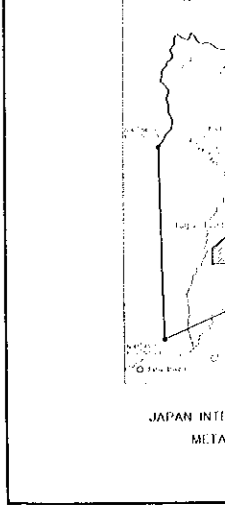
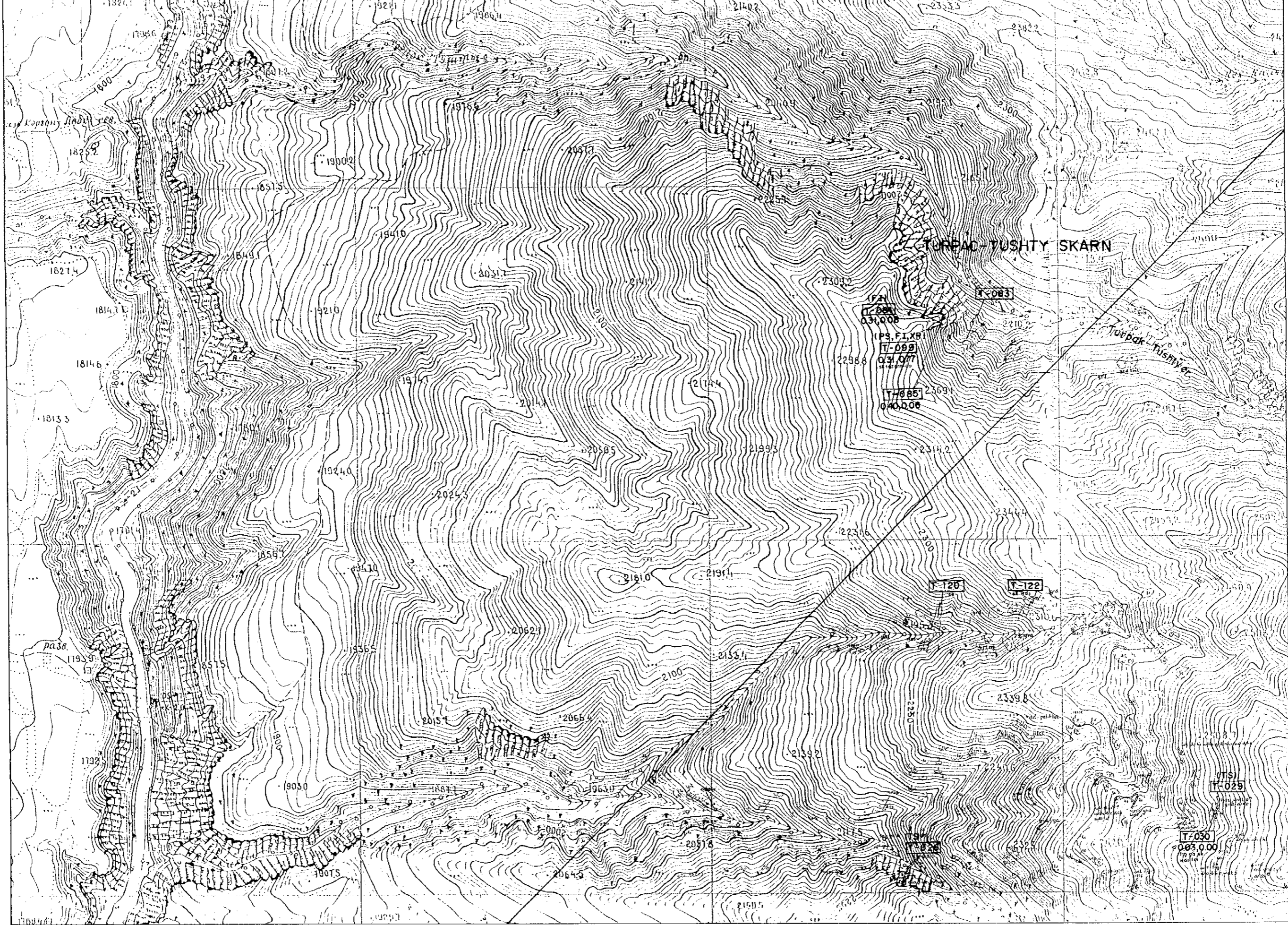
⊂s	limestone
△	diorite
X	granodiorite
	skarn
↘	joint, fissure
—	fault
—	geological
⊙	float of skarn
(PS, XR)	(laboratory sample)
T-105	Au(%)
291,2.09	
TS	
PS	
FI	
CA	
XR	



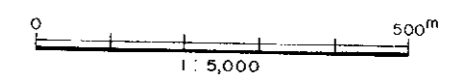
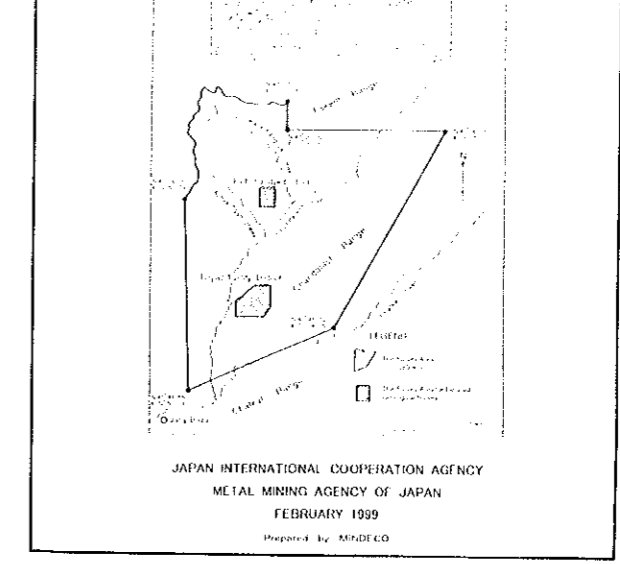
LEGEND

- | | | | |
|-------|---------------------------------------|--|-------------------------|
| ls | limestone | | ancient pit (hard rock) |
| A | diorite | | ancient pit (placer) |
| X | granodiorite
granodiorite porphyry | | tunnel entrance |
| skarn | skarn | | trench |
| | joint, fissure
fault | | shaft |
| | geological boundary | | |
| | float (of skarn and diorite) | | |

(PS, XR) (laboratory work)
 T-105 sample No.
 1291, 2.09 Au(%) , Cu(%)
 TS Thin Section
 PS Polished Thin Section
 FI Fluid Inclusion
 CA Chemical Assay
 XR X-ray Diffraction



- ⊞ limestone
- △ diorite
- ⊞ ⊞ granodiorite
granodiorite
- ⊞ ⊞ skarn
- ↗ joint, fissure
fault
- ⋯ geological boundary
- ⊞ float of skarn
- (PS, XR) laboratory sample
T-105 Au(9)1,
12.91, 2.09
- TS : T
PS : P
FI : F
CA : C
XR : X



LEGEND

- ls limestone
- A diorite
- X granodiorite
granodiorite porphyry
- II skarn
- joint, fissure
fault
- geological boundary
- A float (of skarn and diorite)
- ancient pit (hard rock)
- ancient pit (placer)
- tunnel entrance
- trench
- shaft

(PS, XR) (laboratory work)
T-105 sample No.
 1291,2.09 Au(%) , Cu(%)
 TS : Thin Section
 PS : Polished Thin Section
 FI : Fluid Inclusion
 CA : Chemical Assay
 XR : X-ray Diffraction