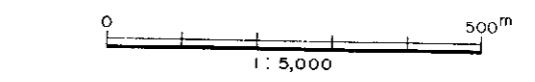
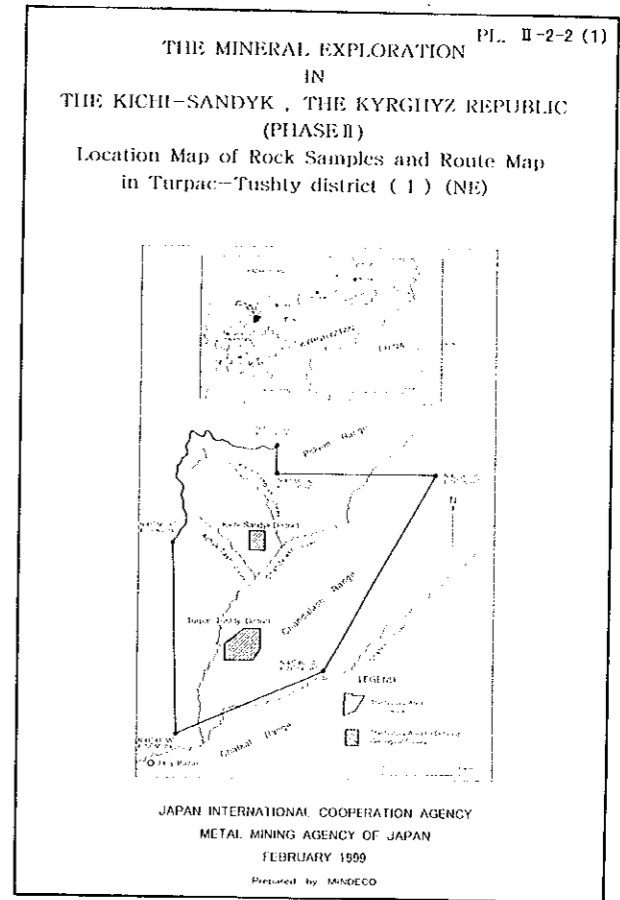
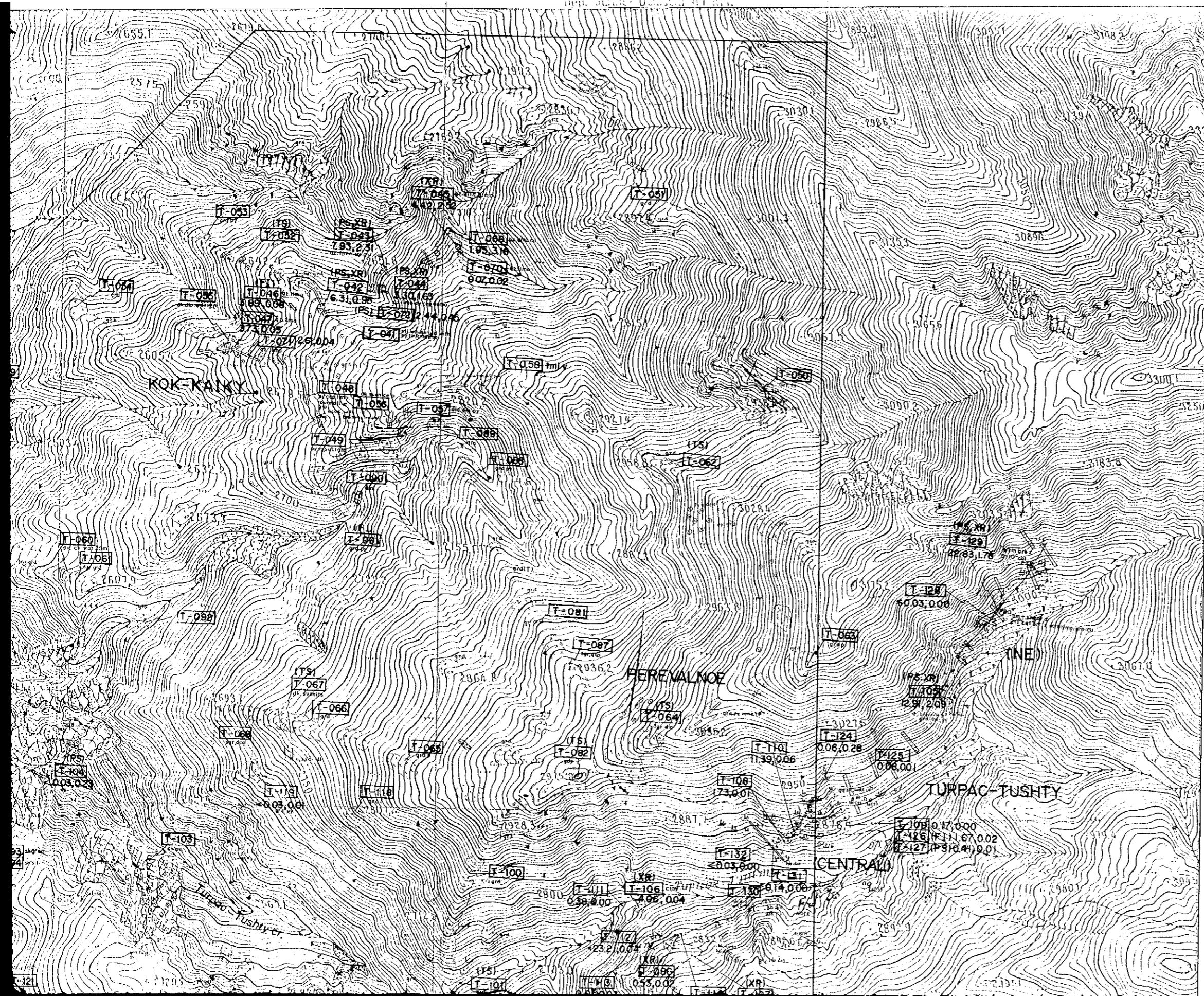
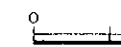
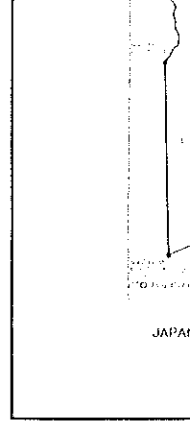
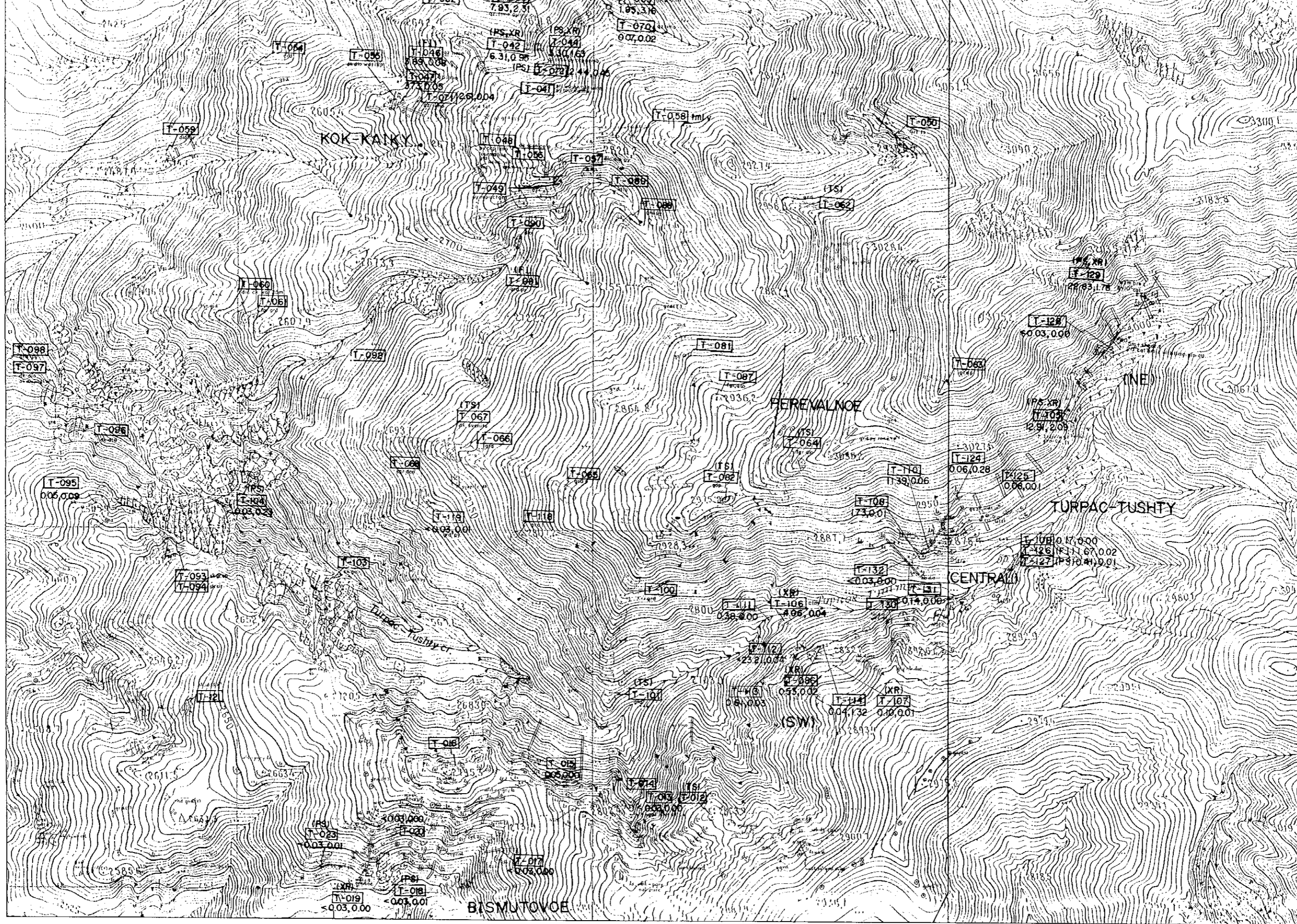


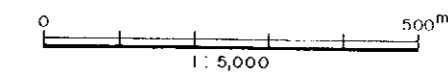
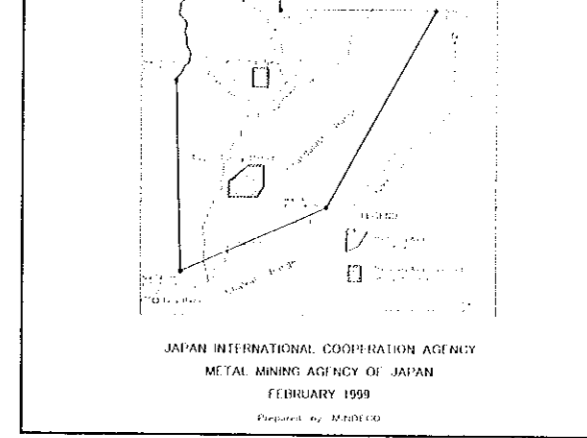
\square_{ls}	limestone
\square_{di}	diorite
\square_{gr}	granodiorite
\square_{sk}	skarn
---	joint, fissure, fault
---	geological
---	float of skarn
(PS, XR)	laboratory sample
T-103	sample
1291,209	Au(%)
TS	TS
PS	PS
FI	FI
CA	CA
XR	XR



- LEGEND
- | | | | |
|--|------------------------------|--|-------------------------|
| | limestone | | ancient pit (hard rock) |
| | diorite | | ancient pit (placer) |
| | granodiorite | | tunnel entrance |
| | skarn | | trench |
| | joint, fissure, fault | | shaft |
| | geological boundary | | |
| | float (of skarn and diorite) | | |
- (PS, XR) [laboratory work]
 T-105 [sample No.]
 12.91, 2.09 Au(%) , Cu(%)
- TS : Thin Section
 PS : Polished Thin Section
 FI : Fluid Inclusion
 CA : Chemical Assay
 XR : X-ray Diffraction



- Ls limestone
- A diorite
- X granodiorite
- II skarn
- joint, fissure, fault
- geological boundary
- float (of)
- (PS, XR) (laboratory sample)
- T-105 Au (g) 1291,2.09
- TS
- PS
- F I
- CA
- XR



LEGEND

- ls limestone
- ancient pit (hard rock)
- diiorite
- ancient pit (placer)
- granodioritiz granodioritiz porphyry
- tunnel entrance
- skarn
- trench
- joint, fissure fault
- shaft
- geological boundary
- float (of skarn and diiorite)

(PS, XR) (laboratry work)
 T-105 sample No.
 12.91, 2.09 Au(%) , Cu(%)
 TS Thin Section
 PS Polished Thin Section
 FI Fluid Inclusion
 CA Chemical Assay
 XR X-ray Diffraction