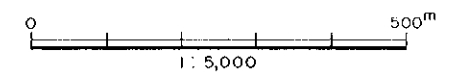
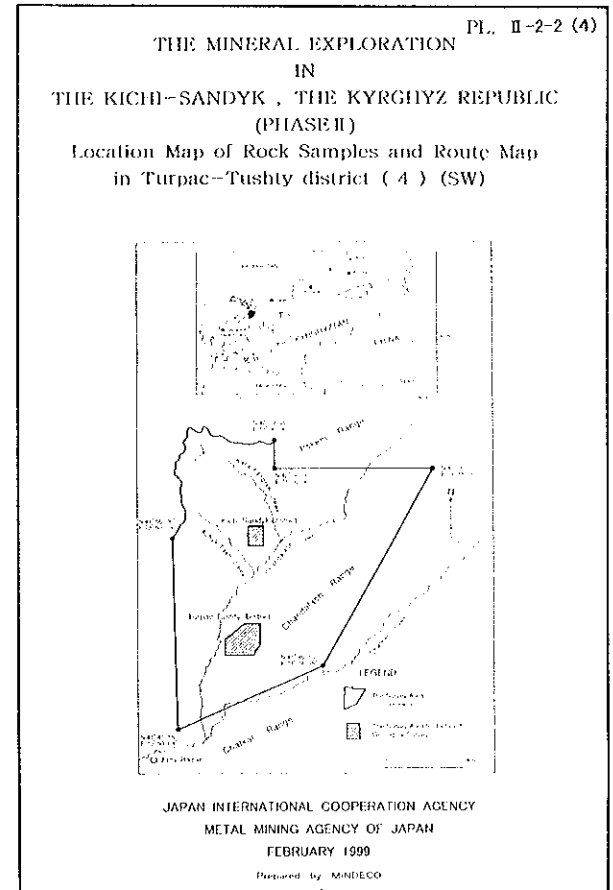
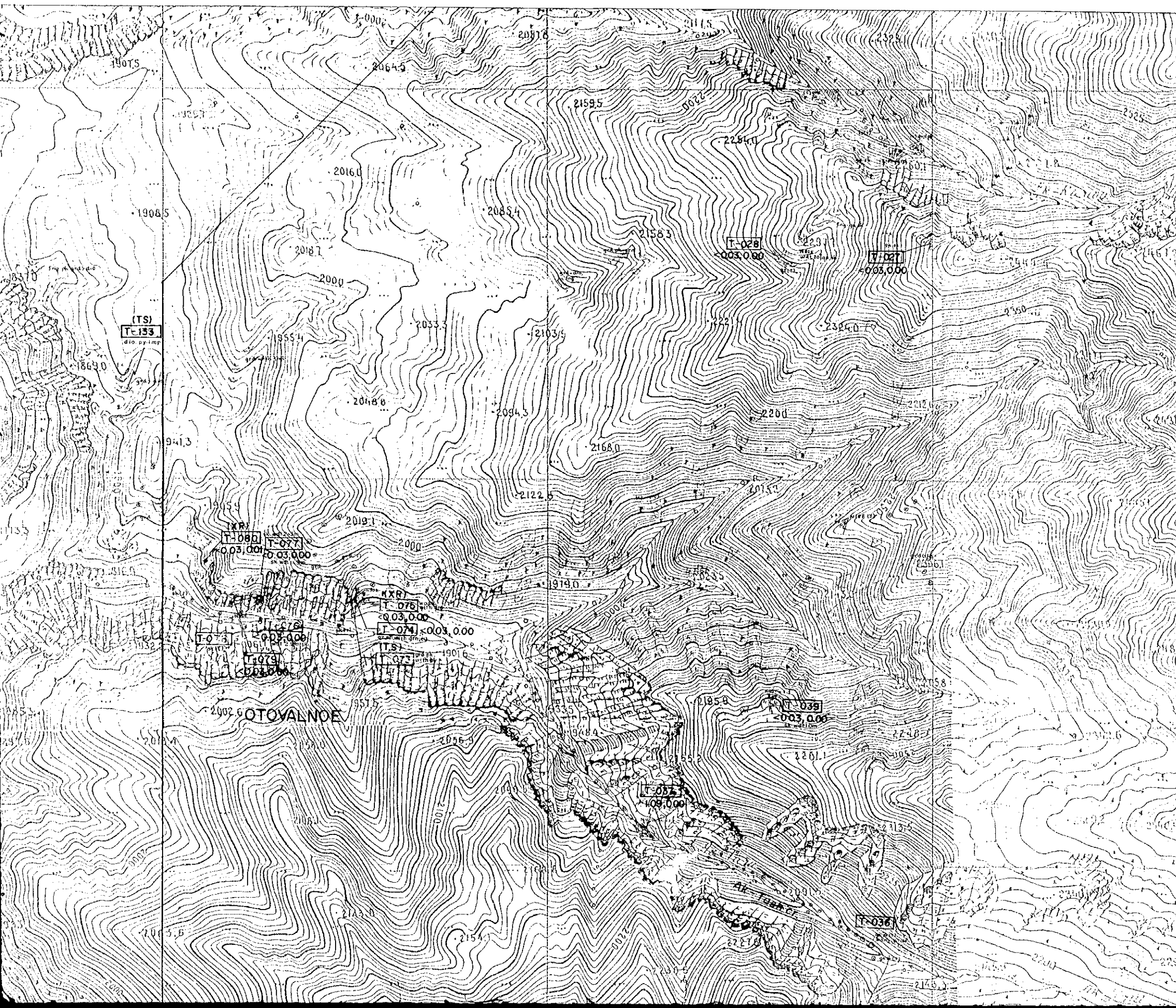


THE  
THE KICH-SA  
Location Map  
in Turpan

JAPAN



- ⊆ limestone
  - ⊆ diorite
  - ⊆ granodiorite
  - ⊆ skarn
  - joint, fault
  - geological
  - float
- (PS, XR) [labo]  
[T-105] [sam]  
[291,2.09] [Aut]
- TS  
PS  
T  
CA  
XR

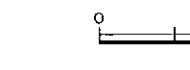
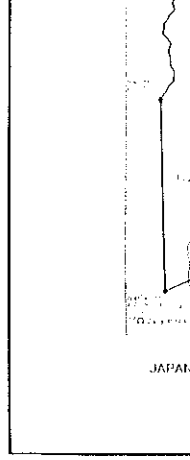
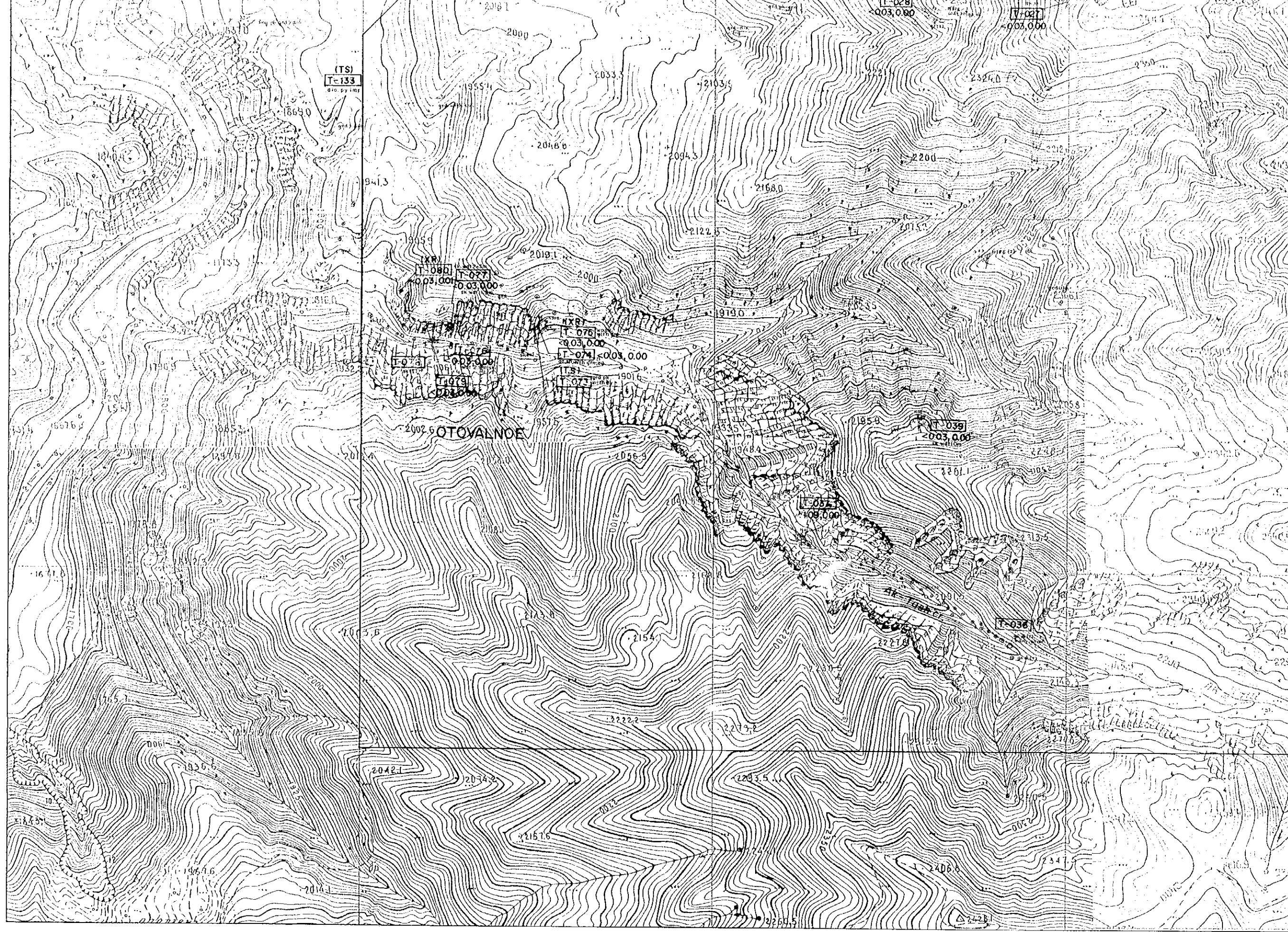


LEGEND

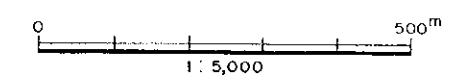
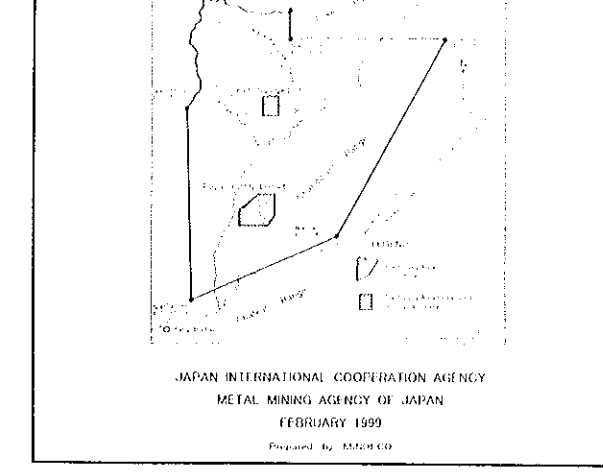
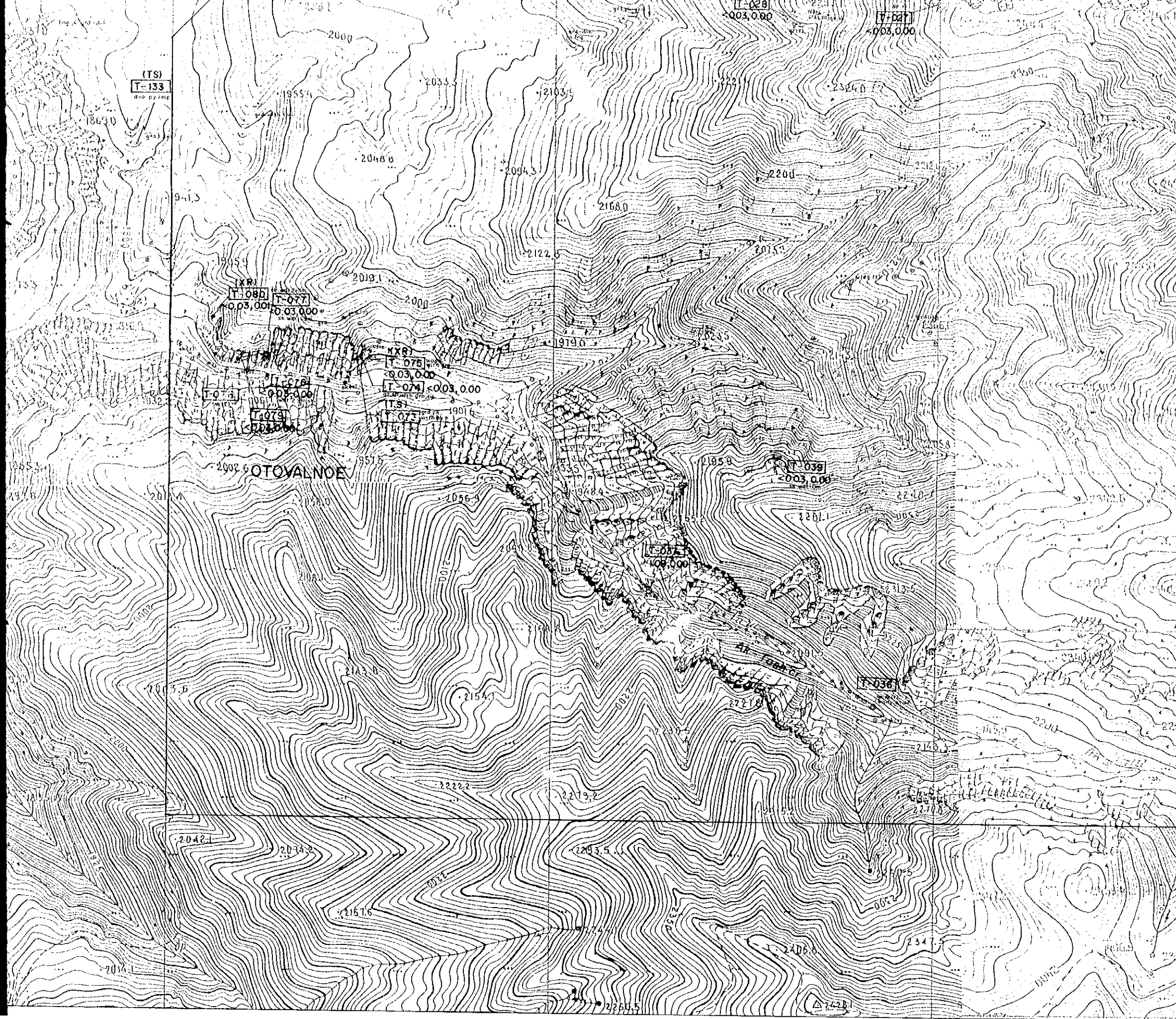
- |  |                              |  |                         |
|--|------------------------------|--|-------------------------|
|  | limestone                    |  | ancient pit (hard rock) |
|  | diorite                      |  | ancient pit (placer)    |
|  | granodiorite                 |  | tunnel entrance         |
|  | granodiorite porphyry        |  | trench                  |
|  | skarn                        |  | shaft                   |
|  | joint, fissure<br>fault      |  |                         |
|  | geological boundary          |  |                         |
|  | float (of skarn and diorite) |  |                         |

- (PS, XR) (laboratory work)
- T-105 sample No.
- 12.91, 2.09 Au(%) , Cu(%)
- TS Thin Section  
PS Polished Thin Section  
FI Fluid Inclusion  
CA Chemical Assay  
XR X-ray Diffraction





- ls limestone
- A diorite
- X granodiorite
- || skarn
- joint, fissure, fault
- geological structure
- float or outcrop
- (PS, XR) (laboratory sample)
- T-105 Au (%) 12.91, 2.09
- TS
- PS
- FT
- CA
- XR



LEGEND

- |                                       |                         |
|---------------------------------------|-------------------------|
| limestone                             | ancient pit (hard rock) |
| diorite                               | ancient pit (placer)    |
| granodiorite<br>granodiorite porphyry | tunnel entrance         |
| skarn                                 | trench                  |
| joint, fissure<br>fault               | shaft                   |
| geological boundary                   |                         |
| float (of skarn and diorite)          |                         |
- (PS, XR) (laboratory work)  
 T-105 sample No.  
 1291,209 Au(%) , Cu(%)  
 TS : Thin Section  
 PS : Polished Thin Section  
 FI : Fluid Inclusion  
 CA : Chemical Assay  
 XR : X-ray Diffraction



