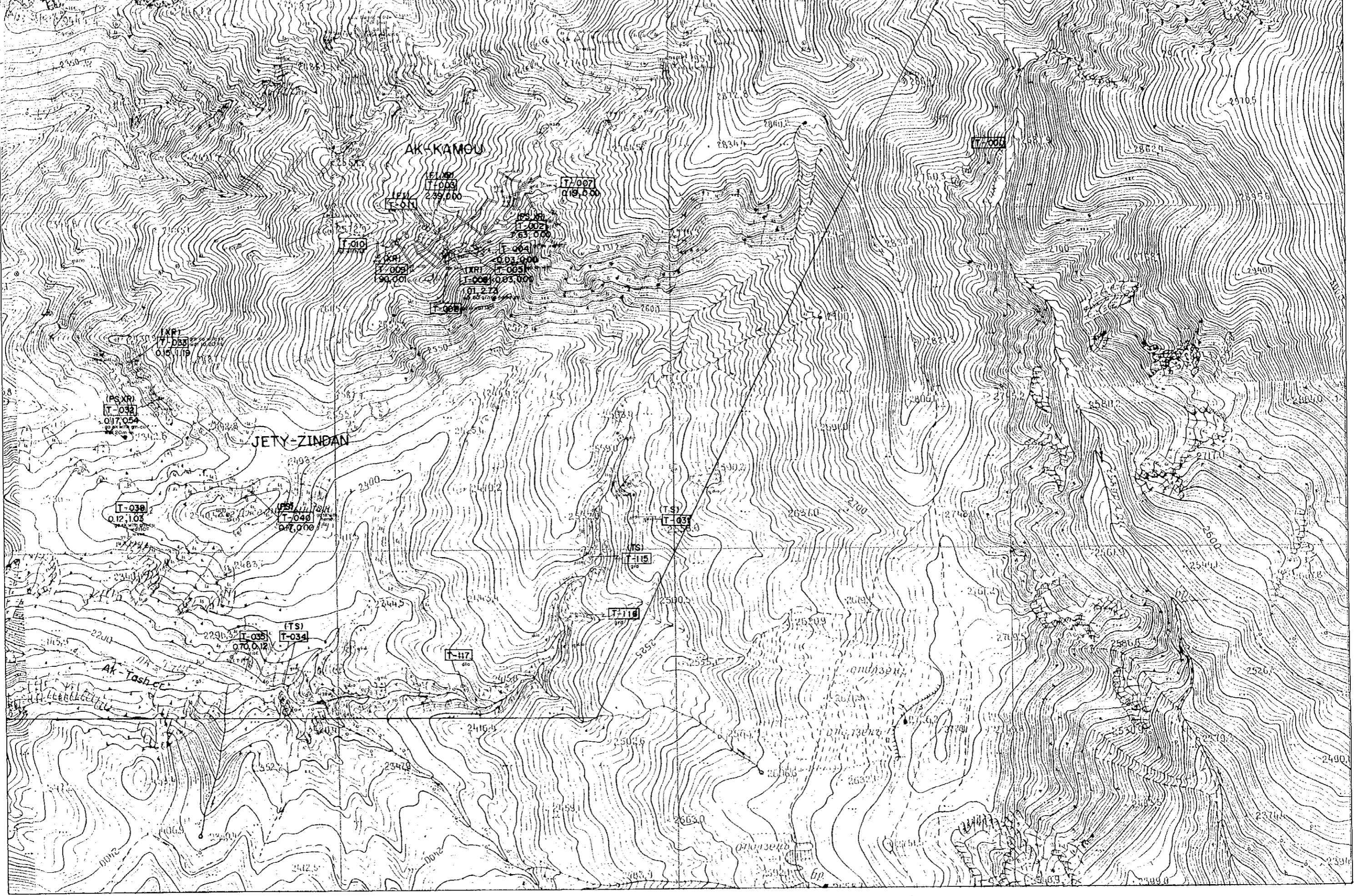
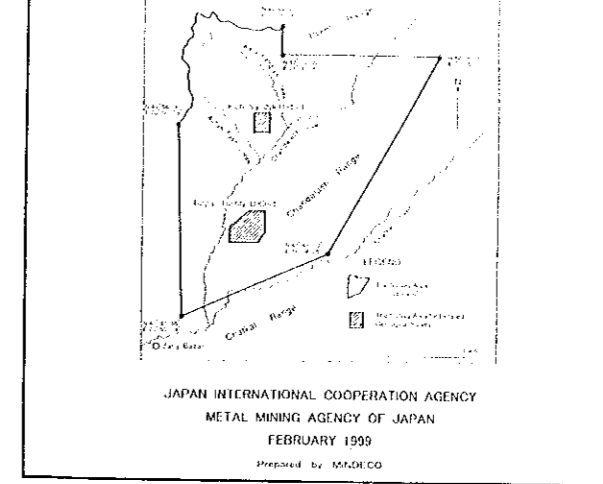
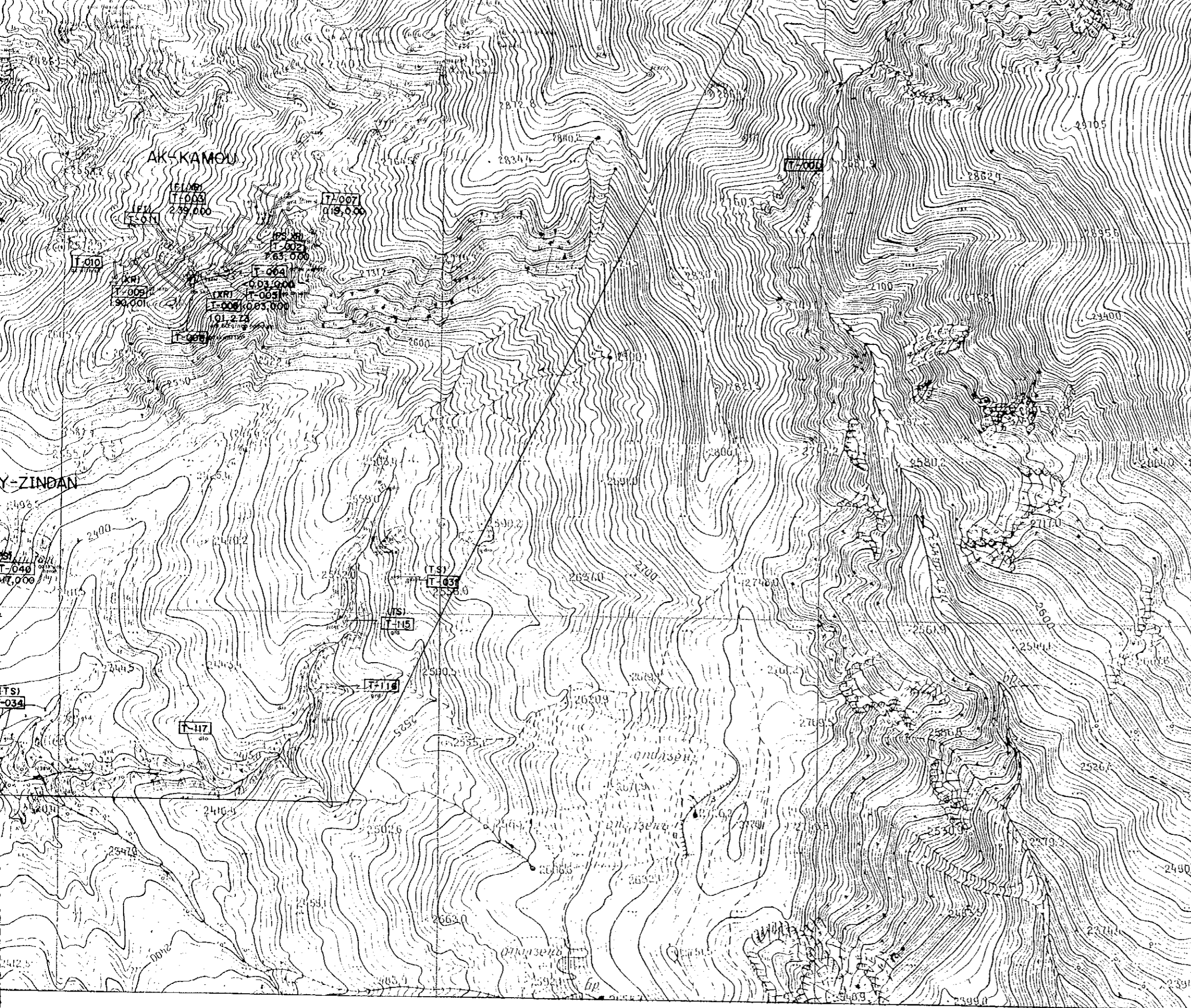


LEGEND

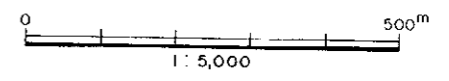
- | | | | |
|--|---------------------------------------|--|-------------------------|
| | limestone | | ancient pit (hard rock) |
| | diorite | | ancient pit (placer) |
| | granodiorite
granodiorite porphyry | | tunnel entrance |
| | skarn | | trench |
| | joint, fissure
fault | | shaft |
| | geological boundary | | |
| | float (of skarn and diorite) | | |

(PS, XR) (laboratory work)
 T-105 (sample No.)
 1291, 2.09 Au(%)
 TS : Thin Section
 PS : Polished Thin Section
 FI : Fluid Inclusion



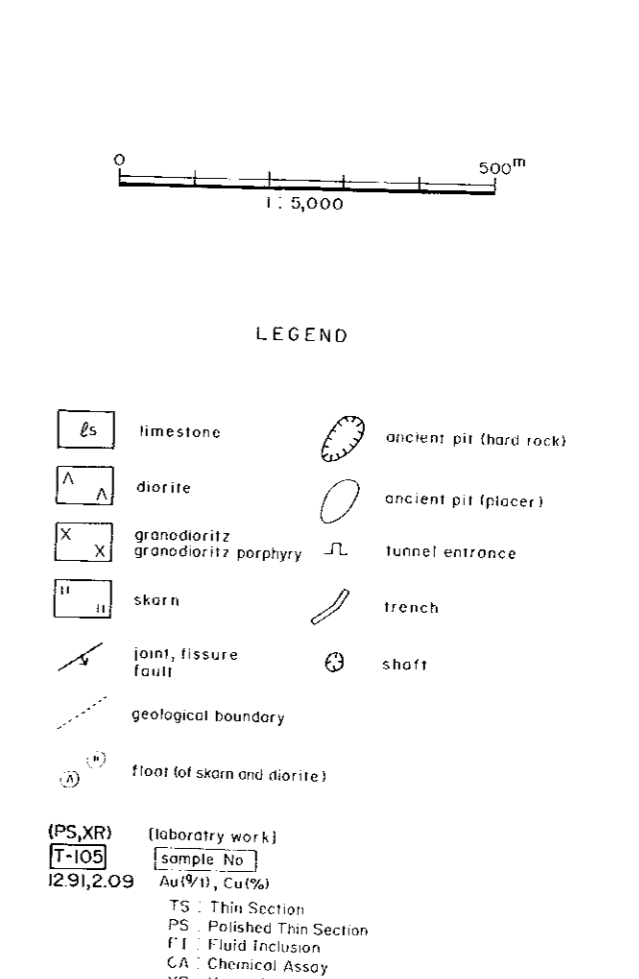
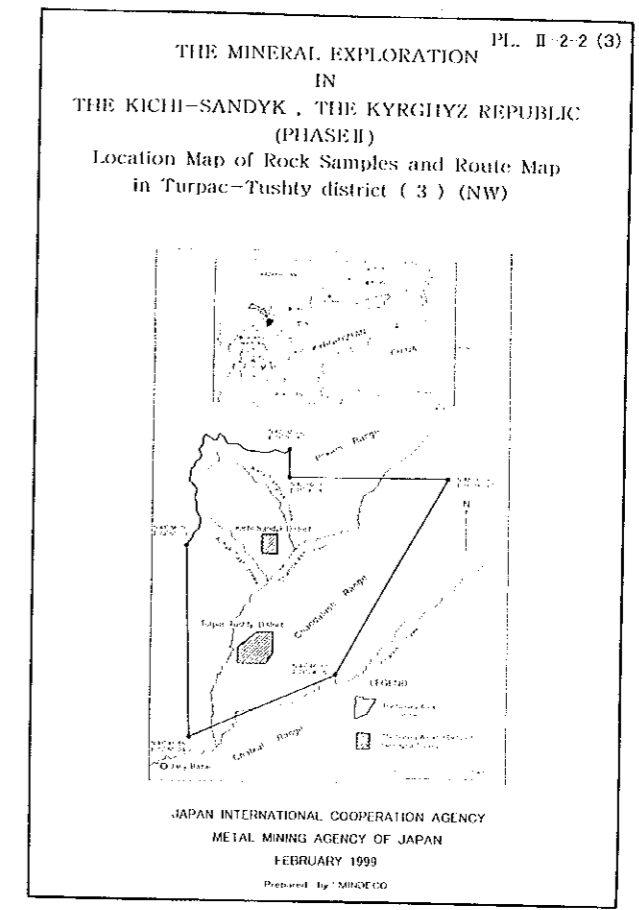
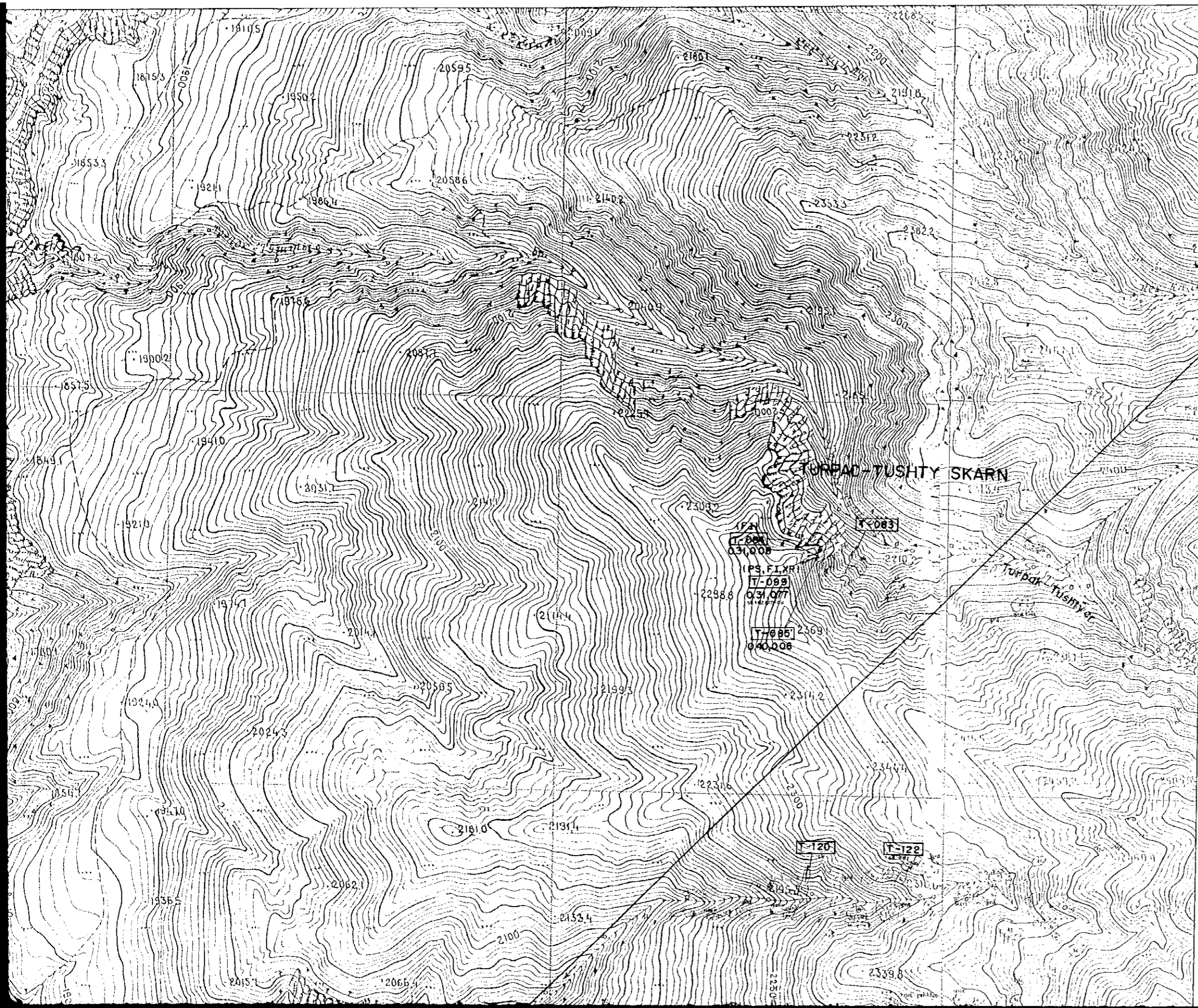


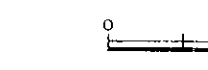
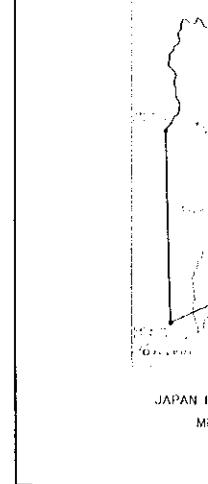
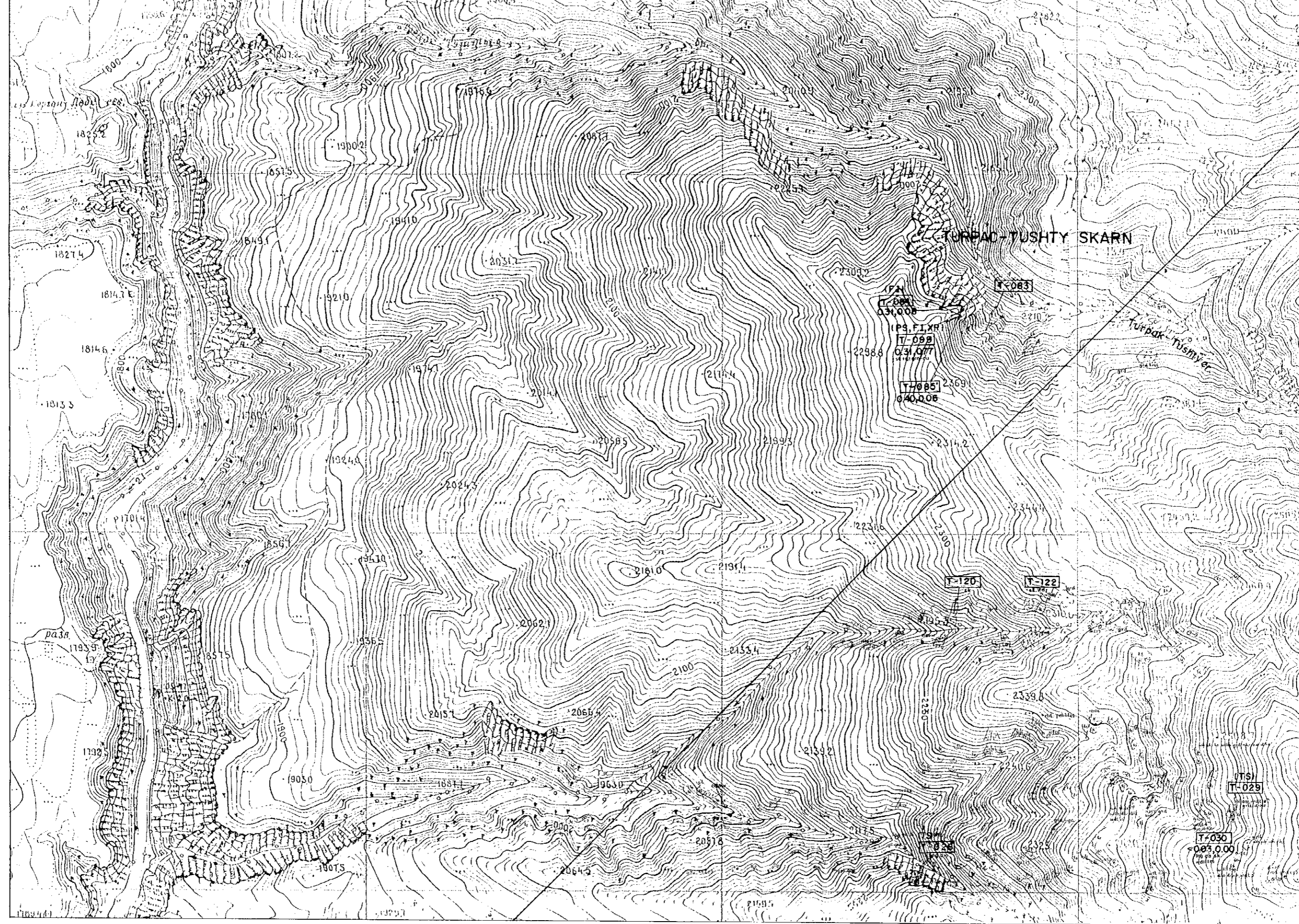
JAPAN INTERNATIONAL COOPERATION AGENCY
 METAL MINING AGENCY OF JAPAN
 FEBRUARY 1999
 Prepared by M.M.D.C.O



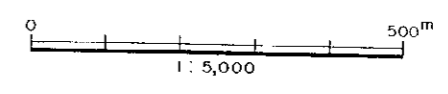
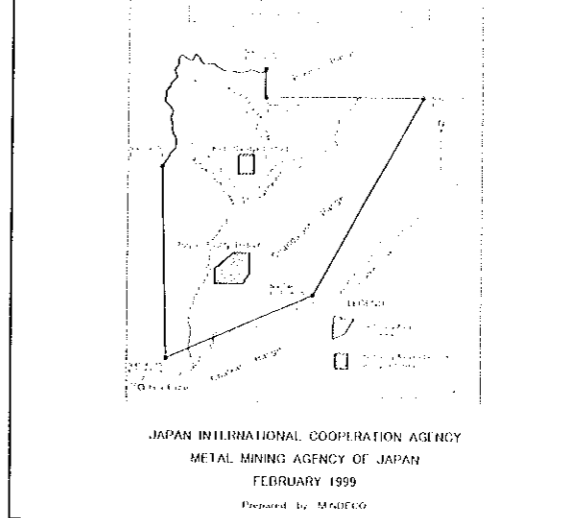
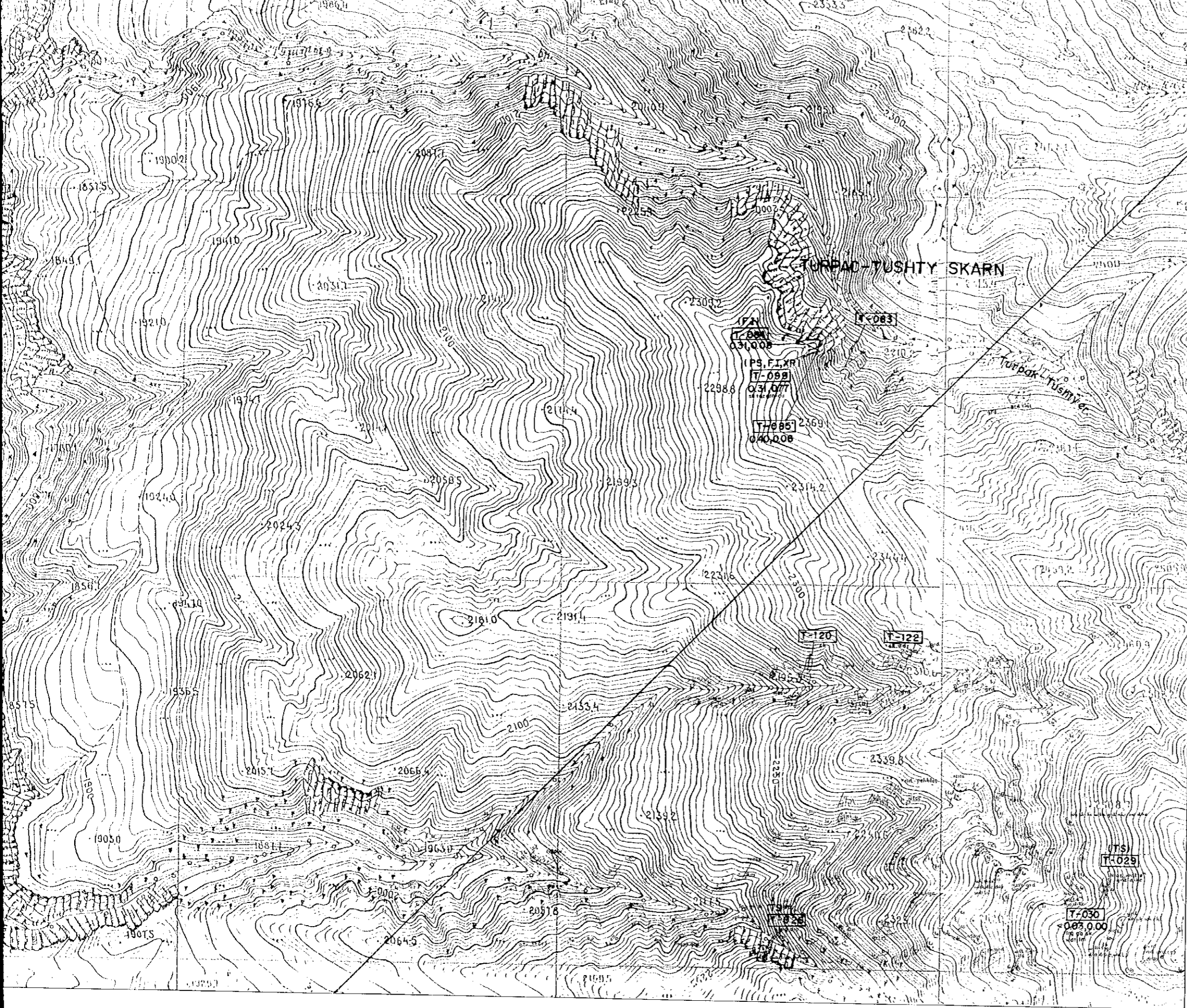
LEGEND

- | | | | |
|--|---------------------------------------|--|-------------------------|
| | limestone | | ancient pit (hard rock) |
| | diorite | | ancient pit (placer) |
| | granodiorite
granodiorite porphyry | | tunnel entrance |
| | skarn | | trench |
| | joint, fissure
fault | | shaft |
| | geological boundary | | |
| | float (of skarn and diorite) | | |
-
- | | |
|-------------|----------------------------|
| (PS,XR) | (laboratory work) |
| T-105 | sample No. |
| 12.91, 2.09 | Au(%) , Cu(%) |
| | TS : Thin Section |
| | PS : Polished Thin Section |
| | FI : Fluid Inclusion |
| | CA : Chemical Assay |
| | XR : X-ray Diffraction |





- ls limestone
 - A diorite
 - X X granodiorite
 - II II skarn
 - joint, fissure
 - geological
 - float (of skarn)
- | | |
|-----------|--------------|
| (PS, XR) | (laboratory) |
| T-105 | sample |
| 1291, 209 | Au (g/t) |
| | TS |
| | PS |
| | FI |
| | CA |
| | XR |



LEGEND

- | | | | |
|--|---------------------------------------|--|-------------------------|
| | limestone | | ancient pit (hard rock) |
| | diorite | | ancient pit (placer) |
| | granodiorite
granodiorite porphyry | | tunnel entrance |
| | skarn | | trench |
| | joint, fissure
fault | | shaft |
| | geological boundary | | |
| | float (of skarn and diorite) | | |

(PS, XR) (laboratory work)
 T-105 sample No.
 12.91, 2.09 Au(%) , Cu(%)
 TS : Thin Section
 PS : Polished Thin Section
 FI : Fluid Inclusion
 CA : Chemical Assay
 XR : X-ray Diffraction