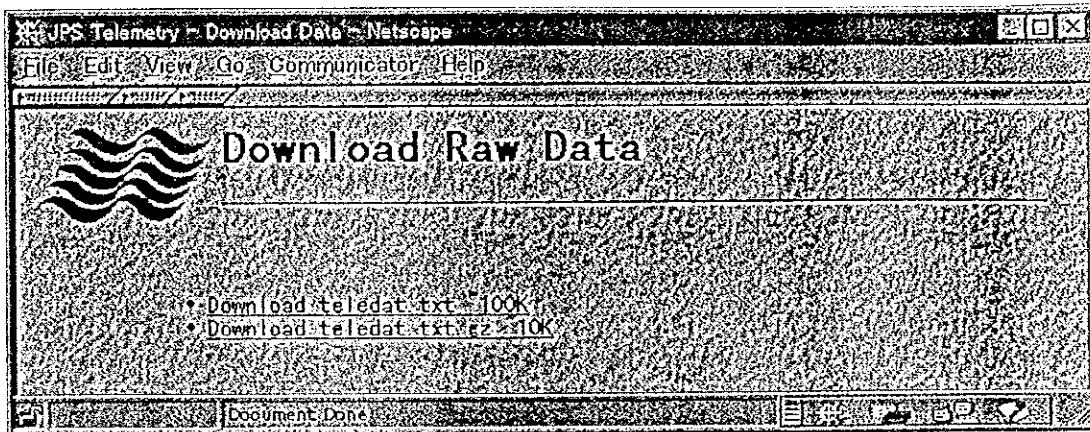
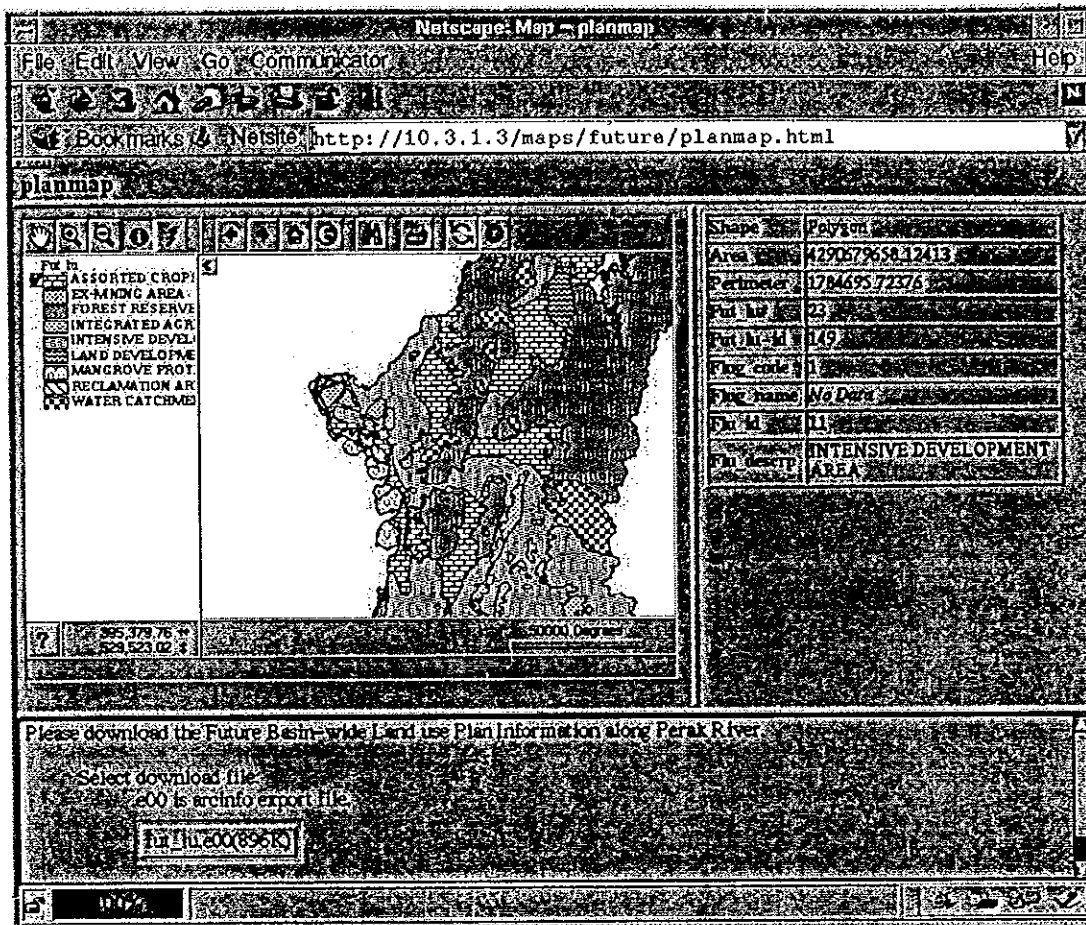


THE STUDY ON THE ESTABLISHMENT OF THE RIVER  
BASIN INFORMATION SYSTEM IN MALAYSIA

JAPAN INTERNATIONAL COOPERATION AGENCY

Fig. IV-20 DATA DOWNLOAD HOMEPAGE OF  
TELEWIN WEB APPLICATION





THE STUDY ON THE ESTABLISHMENT OF THE RIVER  
BASIN INFORMATION SYSTEM IN MALAYSIA

JAPAN INTERNATIONAL COOPERATION AGENCY

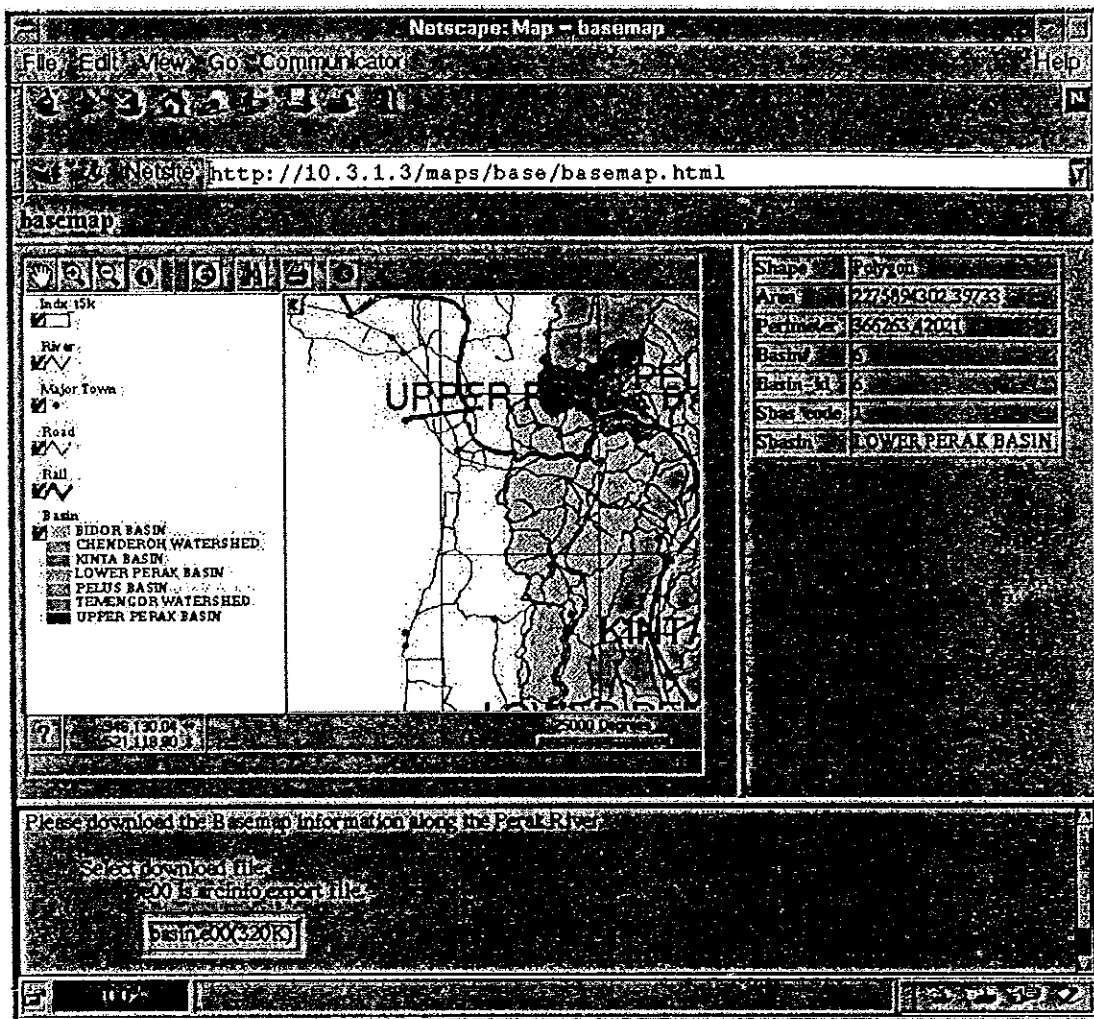
Fig. IV-21 INTERNET MAP SERVER IN-  
STRUCTION



THE STUDY ON THE ESTABLISHMENT OF THE RIVER  
BASIN INFORMATION SYSTEM IN MALAYSIA

JAPAN INTERNATIONAL COOPERATION AGENCY

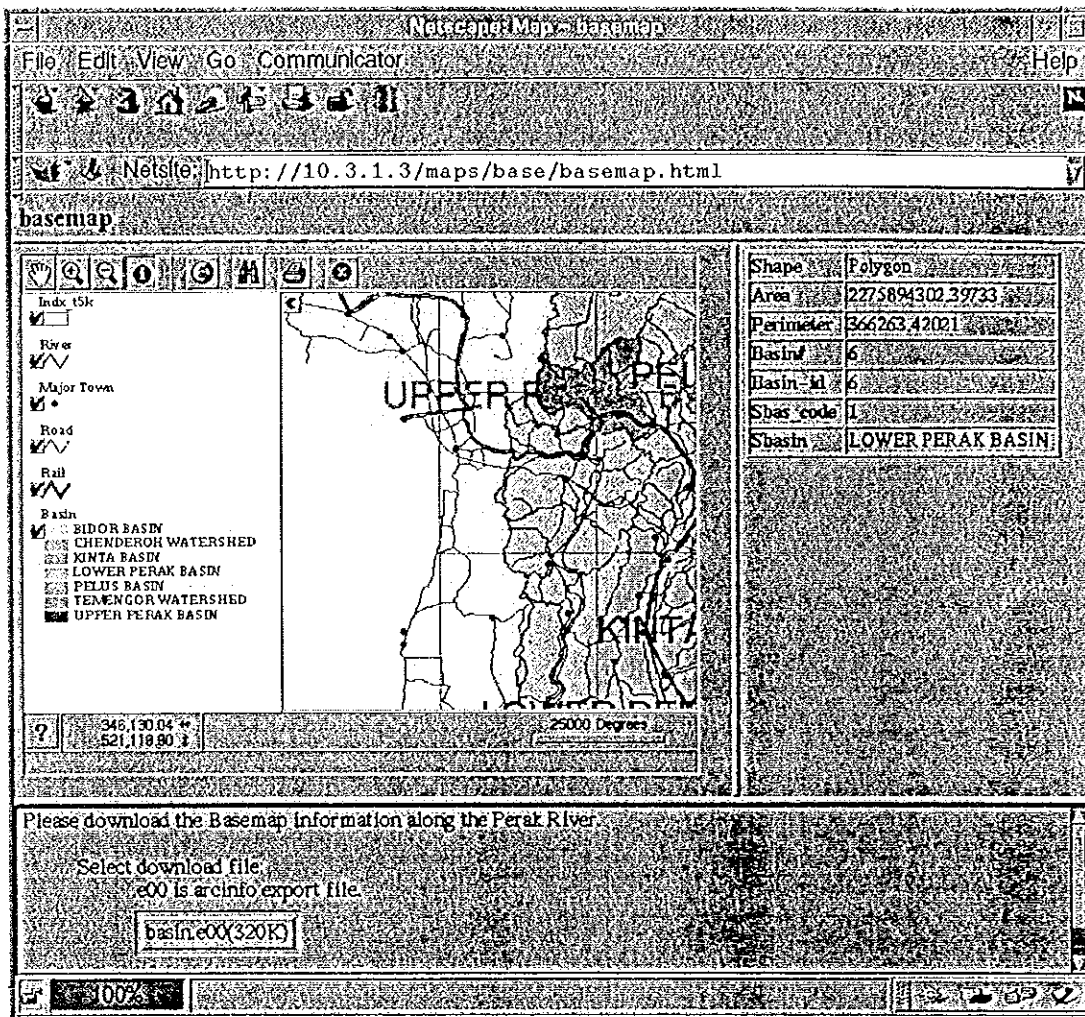
Fig. IV-22 GIS WEB APPLICATION MAIN  
HOMEPAGE

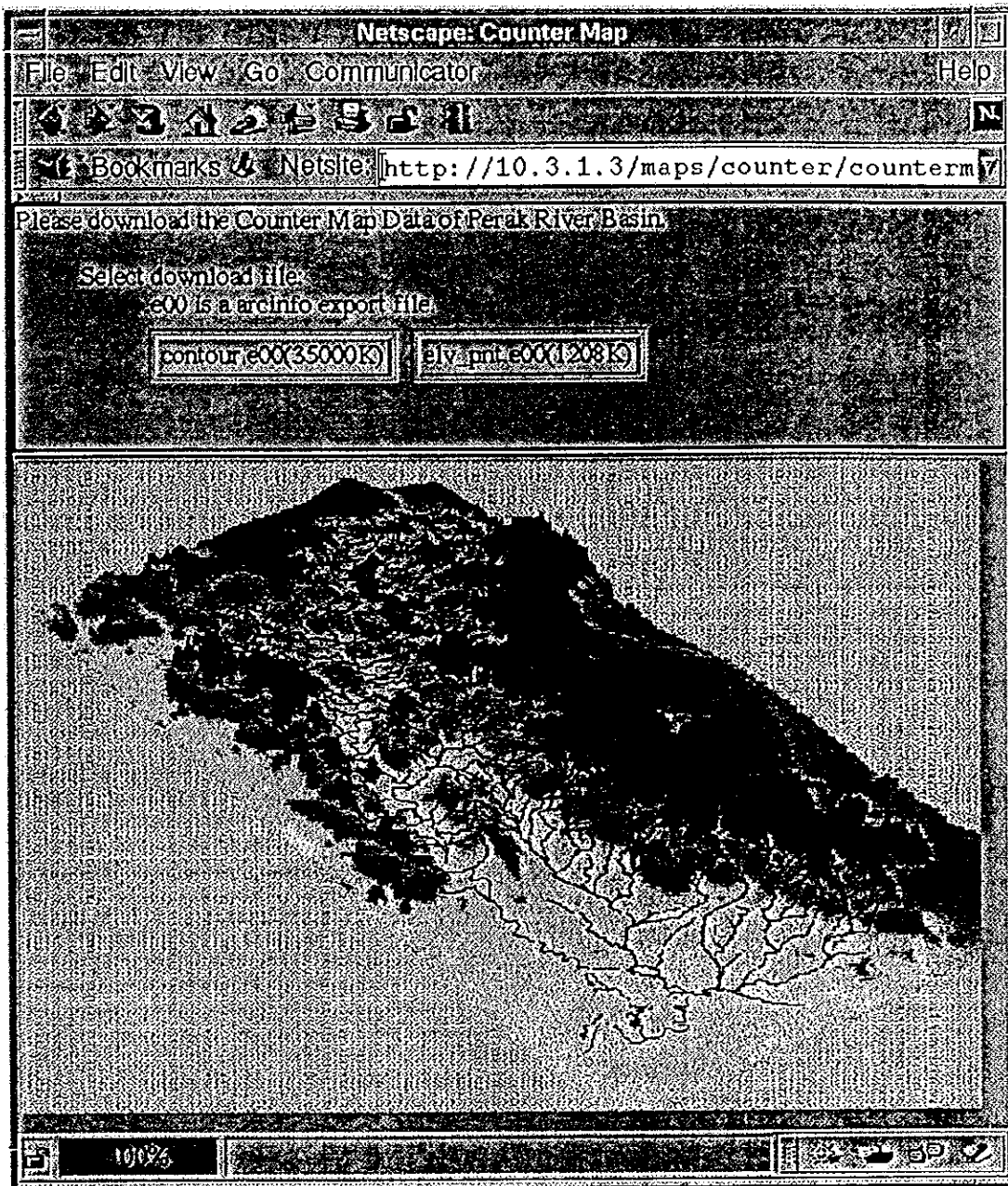


THE STUDY ON THE ESTABLISHMENT OF THE RIVER  
BASIN INFORMATION SYSTEM IN MALAYSIA

Fig. IV-23 BASE MAP OF PERAK RIVER BA-  
SIN HOMEPAGE

JAPAN INTERNATIONAL COOPERATION AGENCY



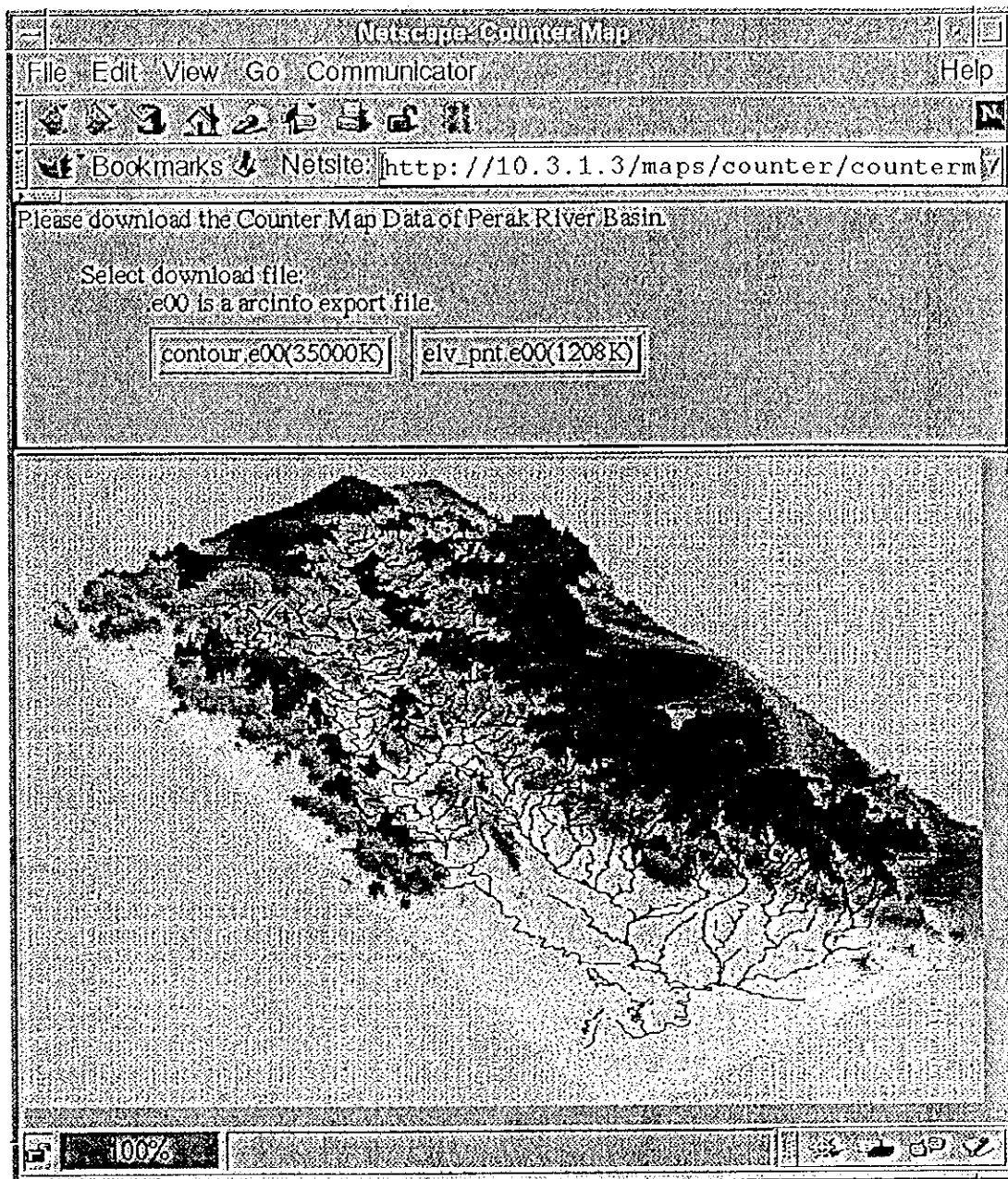


THE STUDY ON THE ESTABLISHMENT OF THE RIVER  
BASIN INFORMATION SYSTEM IN MALAYSIA

JAPAN INTERNATIONAL COOPERATION AGENCY

Fig. IV-24 HOMEPAGE OF 3D MAP FROM  
CONTOUR





THE STUDY ON THE ESTABLISHMENT OF THE RIVER  
BASIN INFORMATION SYSTEM IN MALAYSIA

JAPAN INTERNATIONAL COOPERATION AGENCY

Fig. IV-24 HOMEPAGE OF 3D MAP FROM  
CONTOUR





THE STUDY ON THE ESTABLISHMENT OF THE RIVER  
BASIN INFORMATION SYSTEM IN MALAYSIA

JAPAN INTERNATIONAL COOPERATION AGENCY

Fig. IV-25 RIVER AND WATER BODY HOME-  
PAGE

Netcape (Gais: rivermap)

File Edit View Go Communicator Help

Bookmarks Netsite: http://10.3.1.3/maps/river/rivermap.html

Members WebMail Connections BizJournal SmartUpdate Mktplace

rivermap

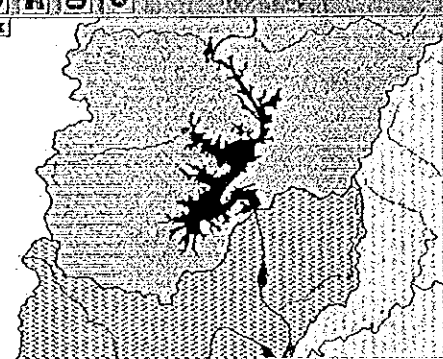
Water body

River

- MAJOR RIVER
- TRIBUTARIES
- UNKNOWN

Basin

- BIDOR BASIN
- CHEENDEROH WAT
- KINTA BASIN
- LOWER PERAK BA
- PELUS BASIN
- TEMENGOR WATE
- UPPER PERAK BAS



342.585.43 \*\* 5000 Degrees  
544.324.86 \*

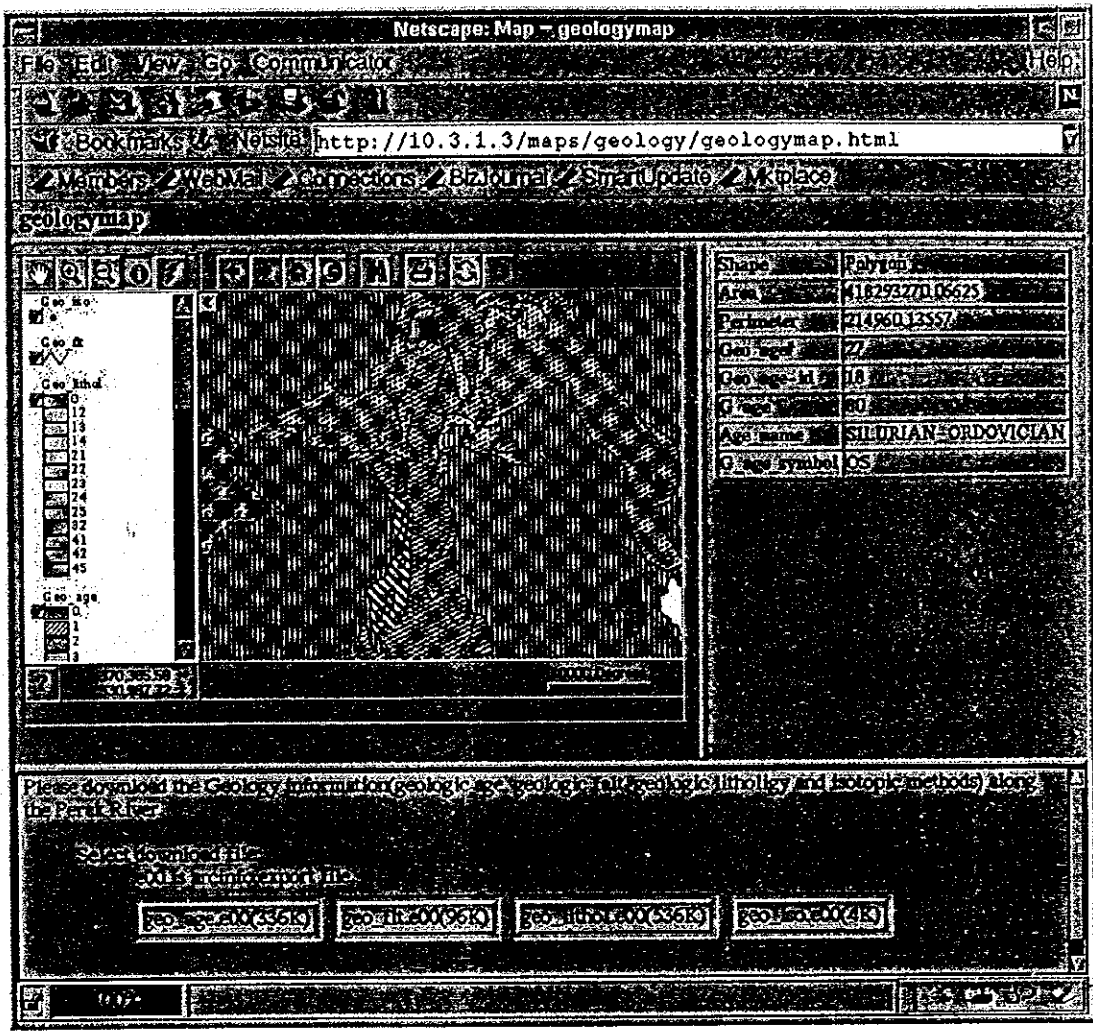
Shape	PolyLine	PolyLine
Fnodef	319	319
Tnodef	327	327
Lpolyf	-1	-1
Rpolyf	-1	-1
Length	1832.21043	1665.16051
River_l	299	300
River_kl	144	143
Rclass_code	1	1
Rclass_name	MAJOR RIVER	MAJOR RIVER
Rriver_code	1	1
Rriver_name	SUNGAI PERAK	SUNGAI PERAK

Please download the Perak River Line and Water Body Data

Select download file:

.e00 is arcinfo export file.

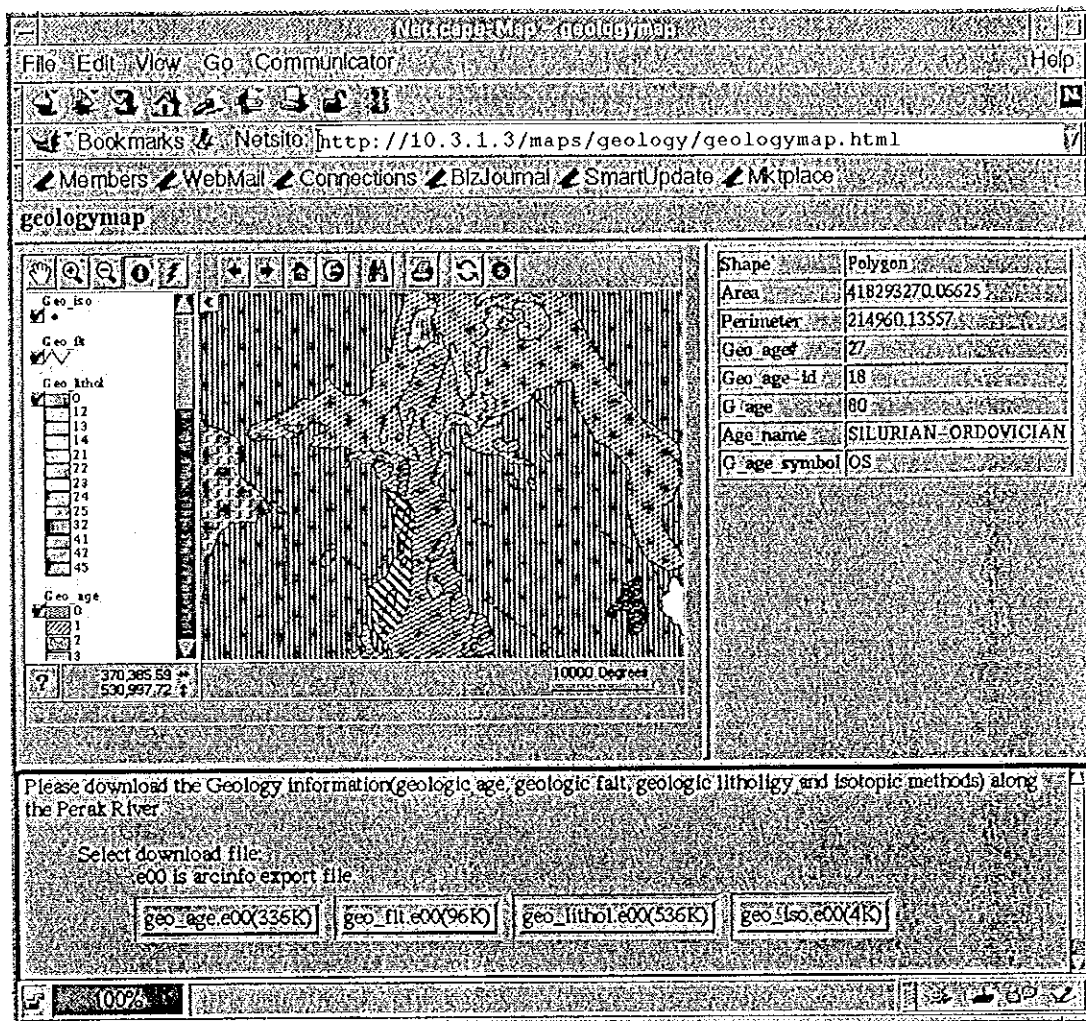
100%



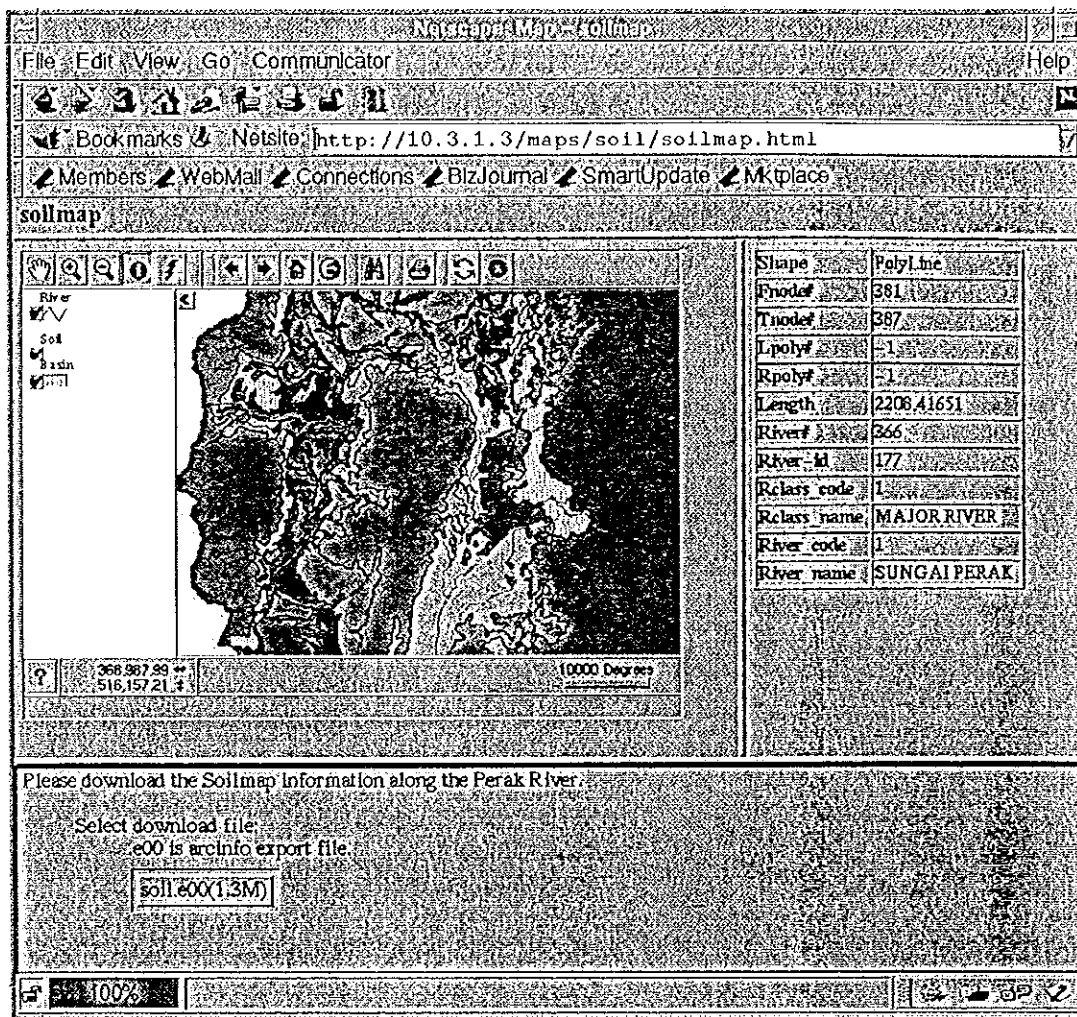
THE STUDY ON THE ESTABLISHMENT OF THE RIVER BASIN INFORMATION SYSTEM IN MALAYSIA

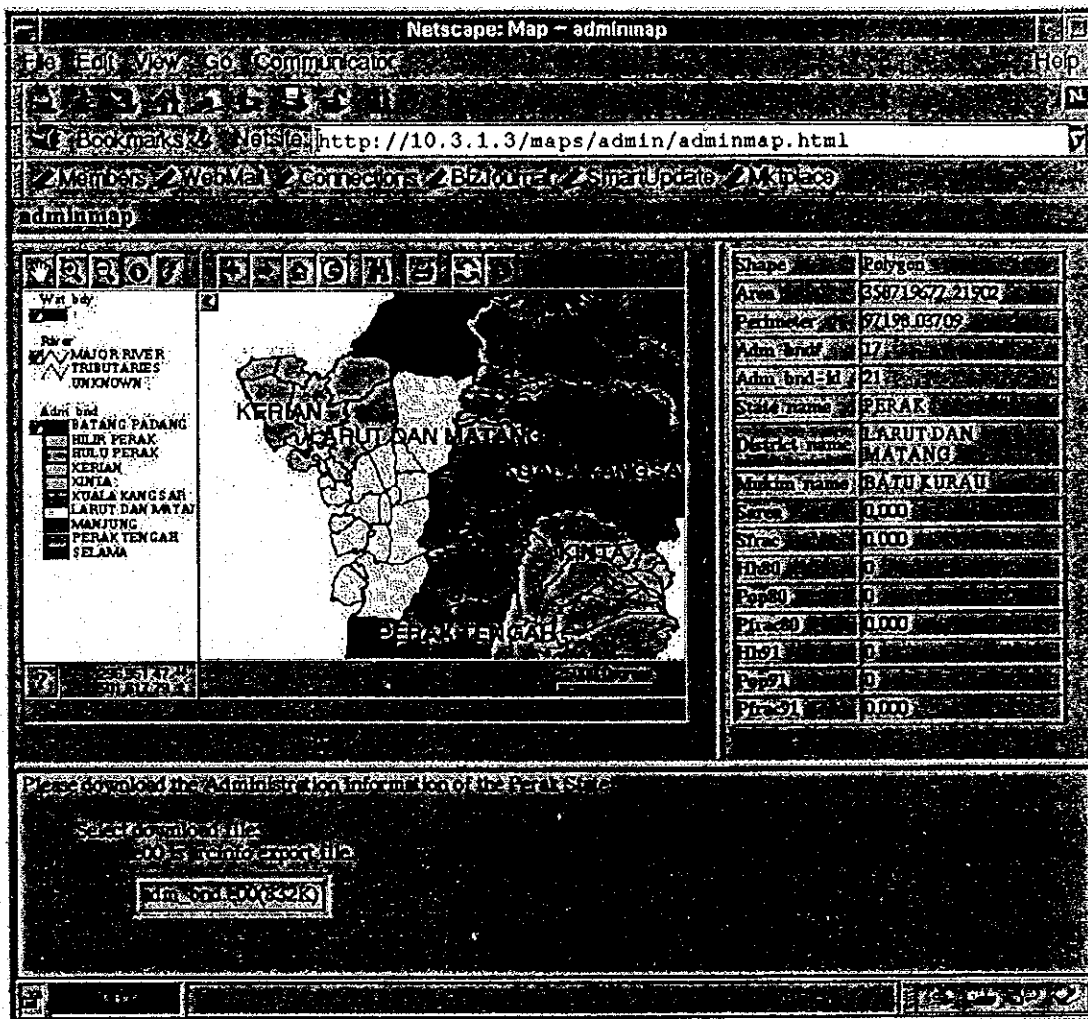
Fig. IV-26 GEOLOGY MAP HOMEPAGE

JAPAN INTERNATIONAL COOPERATION AGENCY









THE STUDY ON THE ESTABLISHMENT OF THE RIVER  
BASIN INFORMATION SYSTEM IN MALAYSIA

JAPAN INTERNATIONAL COOPERATION AGENCY

Fig. IV-28 ADMINISTRATIVE BOUNDARY  
MAP HOMEPAGE



Newscape: Map - adminmap

File Edit View Go Communicator Help

Bookmarks Netsite: http://10.3.1.3/maps/admin/adminmap.html

Members WebMail Connections BizJournal SmartUpdate Mktplace

adminmap

Map navigation icons

Water body

- River
- MAJOR RIVER
- TRIBUTARIES
- UNKNOWN

Admin bnd

- BATANG PADANG
- HILIR PERAK
- HULU PERAK
- KERIAN
- KINTA
- KUALA KANGSAR
- LARUT DAN MATANG
- MANJUNG
- PERAK TENGAH
- SELAMA

296,951.47  
501,817.79

25,000 Degrees

Shape	Polygon
Area	358719677.21902
Perimeter	97198.03709
Adm_bndf	17
Adm_bnd_id	21
State_name	PERAK
District_name	LARUT DAN MATANG
Mukim_name	BATU KURAU
Sarea	0.000
Sfrac	0.000
Hil80	0
Pop80	0
Pfrac80	0.000
Hil91	0
Pop91	0
Pfrac91	0.000

Please download the Administration information of the Perak State

Select download file

e00 is arcinfo export file

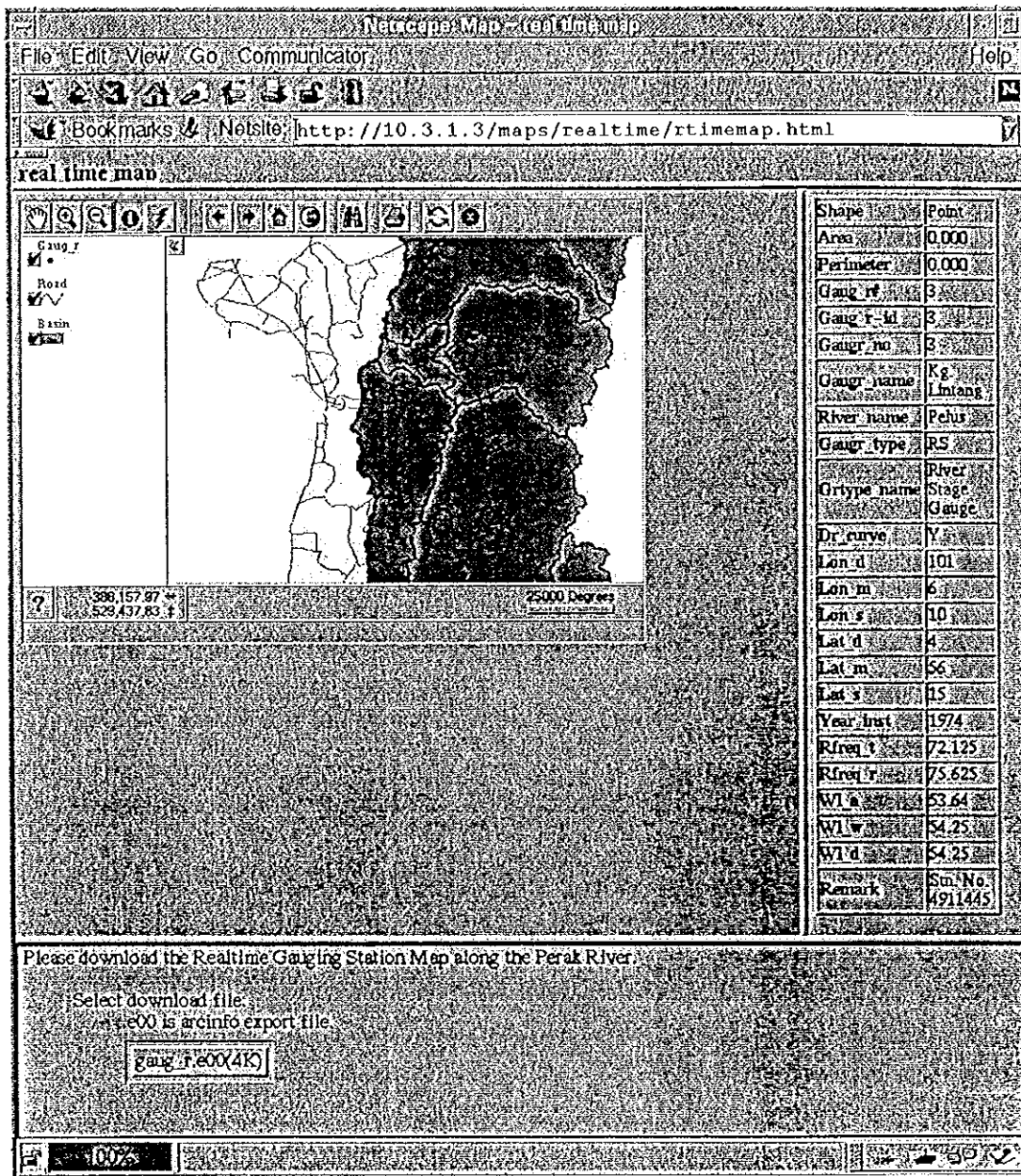
100%

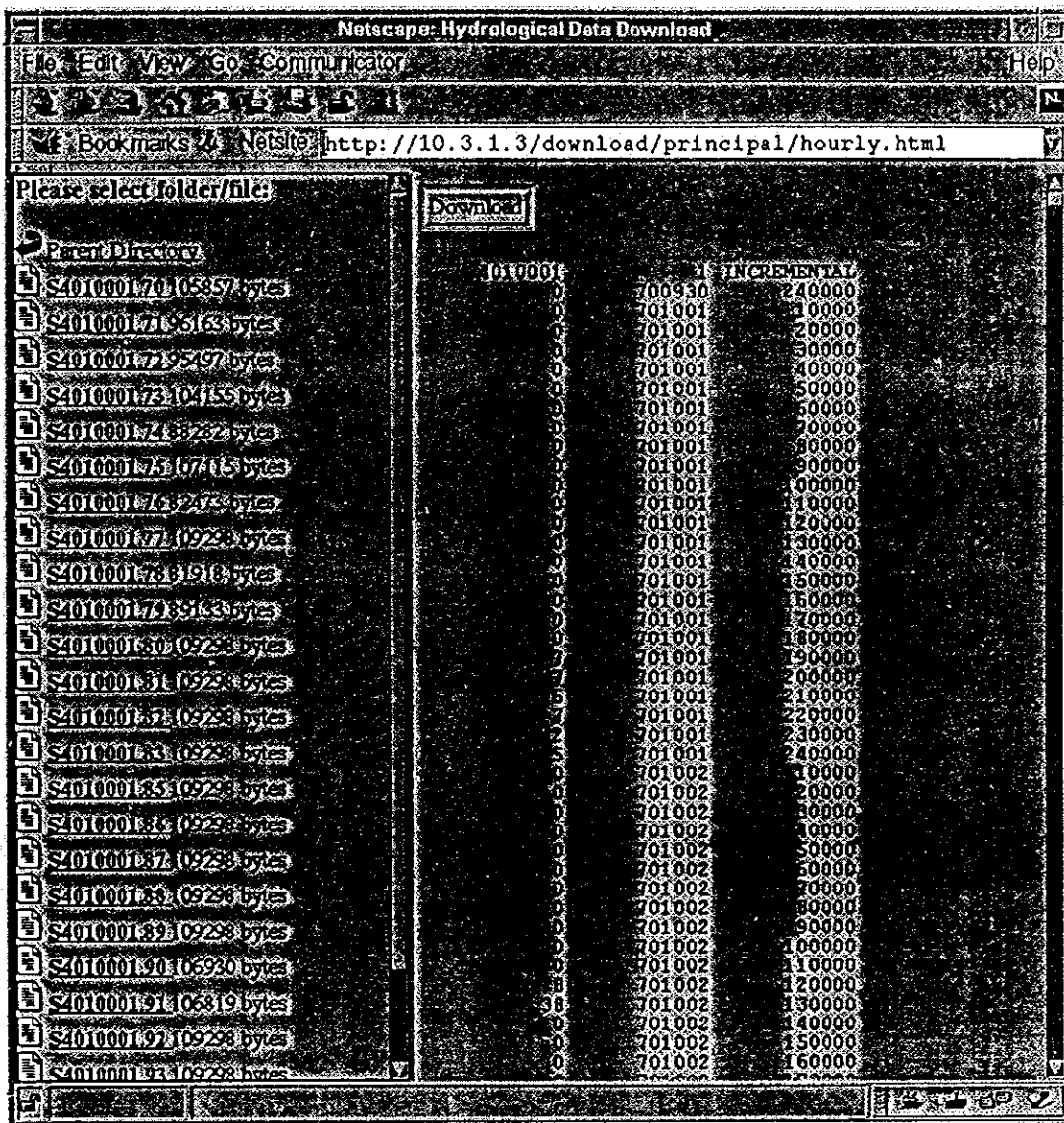
THE STUDY ON THE ESTABLISHMENT OF THE RIVER  
BASIN INFORMATION SYSTEM IN MALAYSIA

JAPAN INTERNATIONAL COOPERATION AGENCY

Fig. IV-28 ADMINISTRATIVE BOUNDARY  
MAP HOMEPAGE



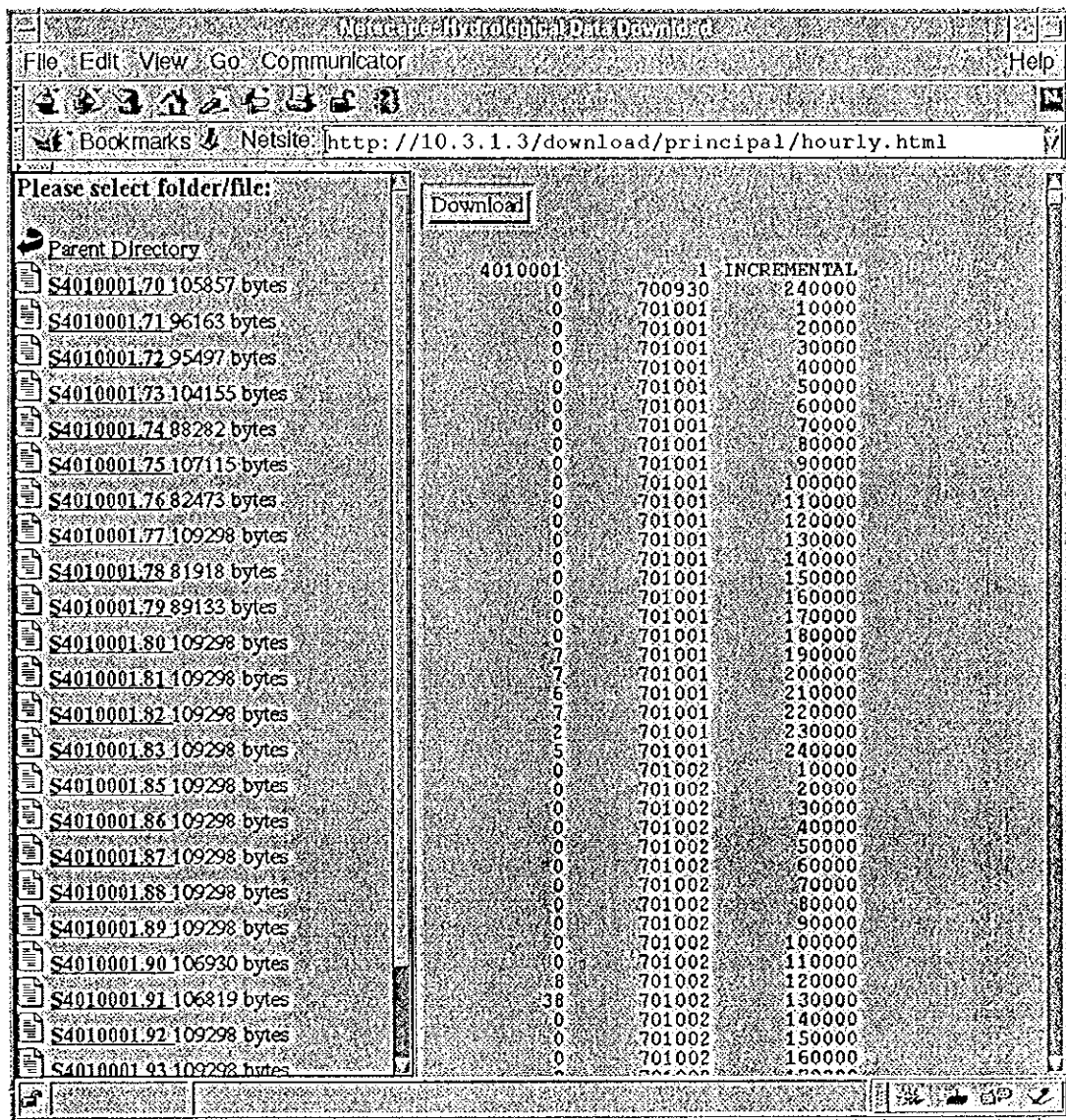




THE STUDY ON THE ESTABLISHMENT OF THE RIVER  
 BASIN INFORMATION SYSTEM IN MALAYSIA

JAPAN INTERNATIONAL COOPERATION AGENCY

Fig. IV-30 HYDROLOGICAL DATA DOWN-  
 LOAD HOMEPAGE



THE STUDY ON THE ESTABLISHMENT OF THE RIVER  
BASIN INFORMATION SYSTEM IN MALAYSIA

JAPAN INTERNATIONAL COOPERATION AGENCY

Fig. IV-30 HYDROLOGICAL DATA DOWN-  
LOAD HOMEPAGE