

THE STUDY ON CONSTRUCTION OF
 THE BRIDGE OVER THE RIVER RUPSA IN KHULNA
 (Phase 1)

ALTERNATIVE ROUTE A(1/6)

PACIFIC CONSULTANTS INTERNATIONAL
 JAPAN OVERSEAS CONSULTANTS, TOKYO JAPAN

Fig. 12.1.14 Alternative Route A and B (1/9)

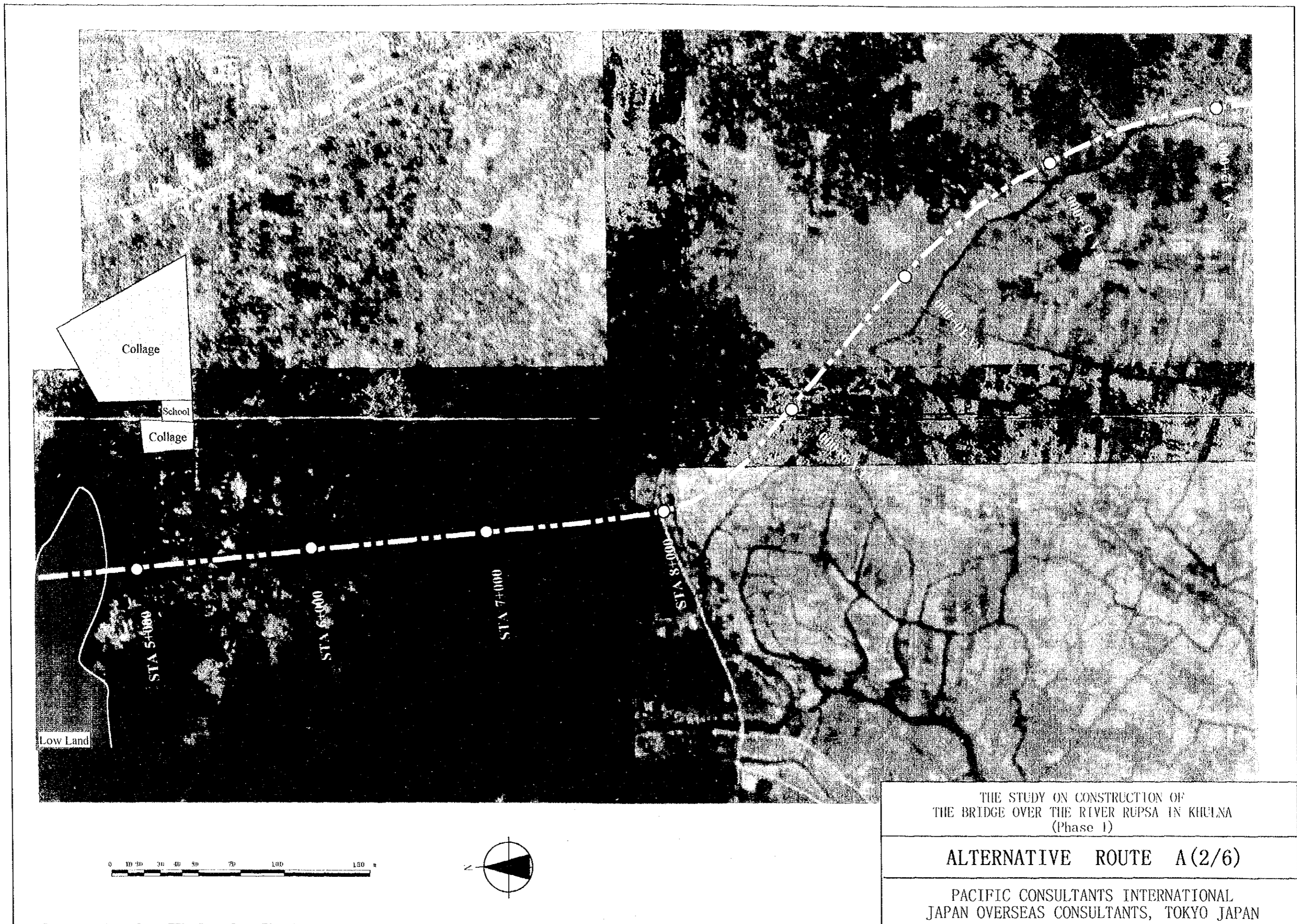
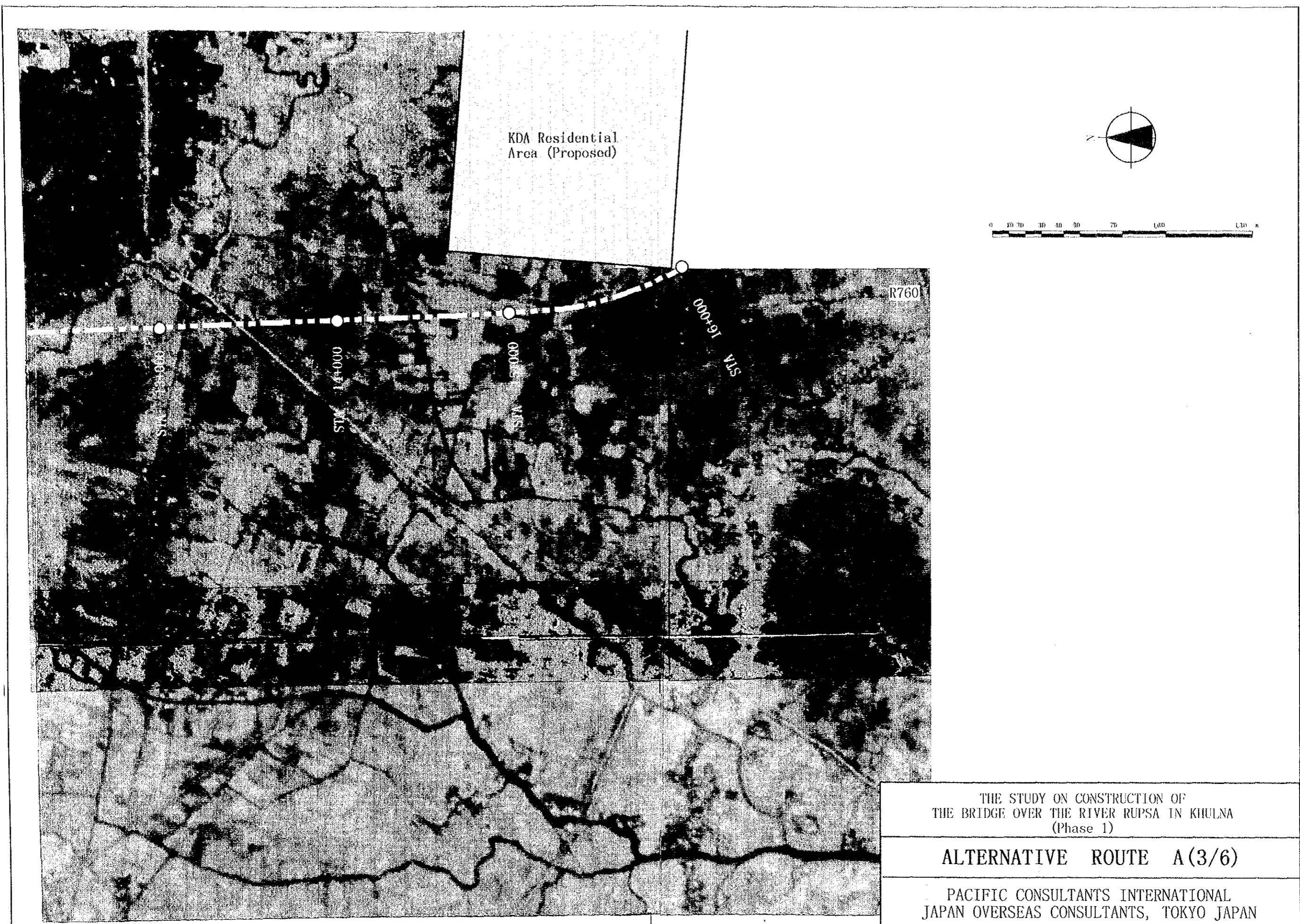


Fig. 12.1.15 Alternative Route A and B (2/9)



THE STUDY ON CONSTRUCTION OF
 THE BRIDGE OVER THE RIVER RUPSA IN KHULNA
 (Phase 1)

ALTERNATIVE ROUTE A (3/6)

PACIFIC CONSULTANTS INTERNATIONAL
 JAPAN OVERSEAS CONSULTANTS, TOKYO JAPAN

Fig. 12.1.16 Alternative Route A and B (3/9)

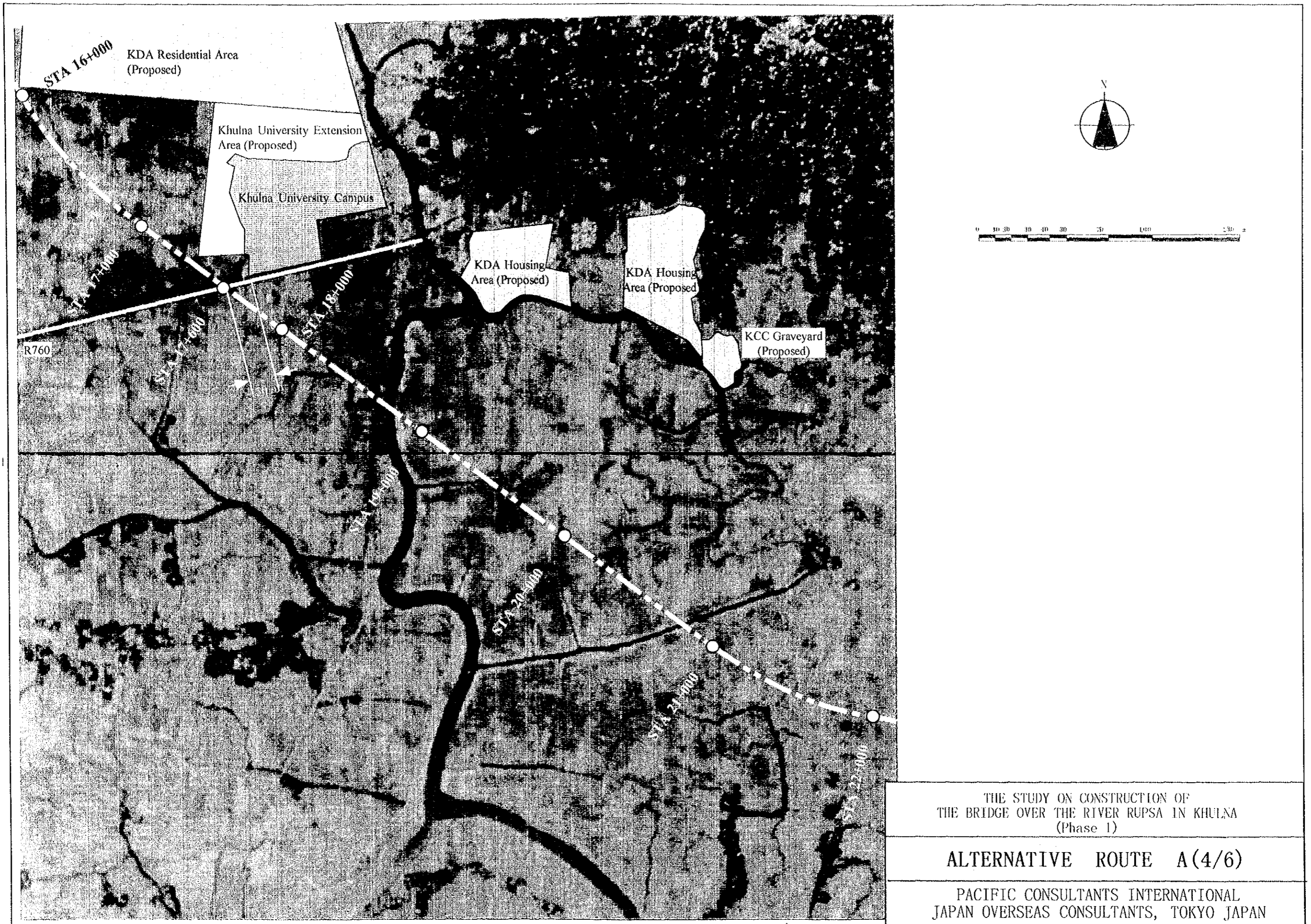
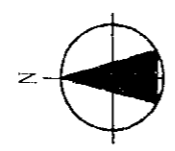
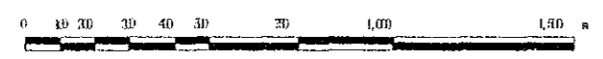
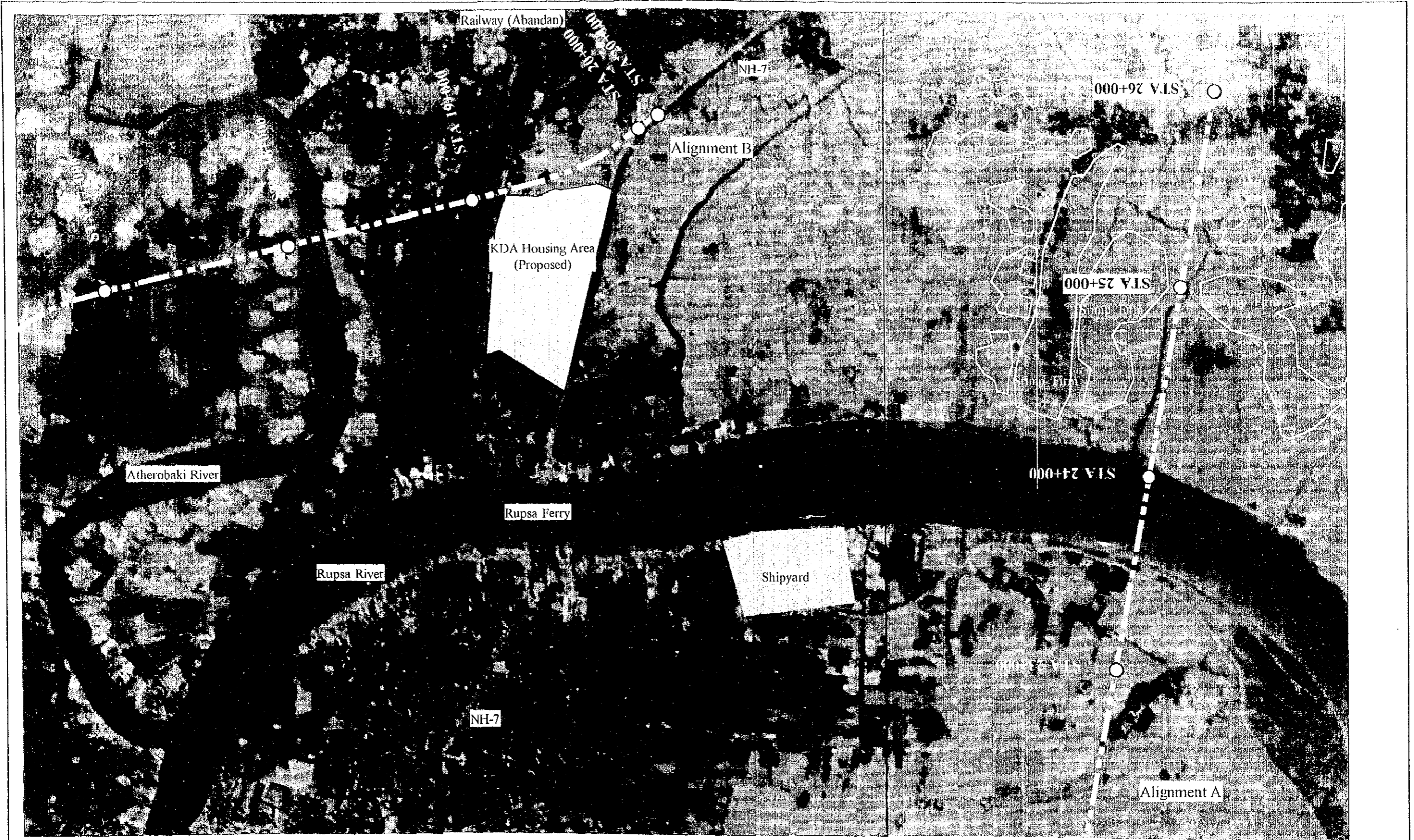


Fig. 12.1.17 Alternative Route A and B (4/9)



THE STUDY ON CONSTRUCTION OF
THE BRIDGE OVER THE RIVER RUPSA IN KULNA
(Phase 1)

ALTERNATIVE ROUTE A(5/6) & B(4/4)

PACIFIC CONSULTANTS INTERNATIONAL
JAPAN OVERSEAS CONSULTANTS, TOKYO JAPAN

Fig. 12.1.18 Alternative Route A and B (5/9)