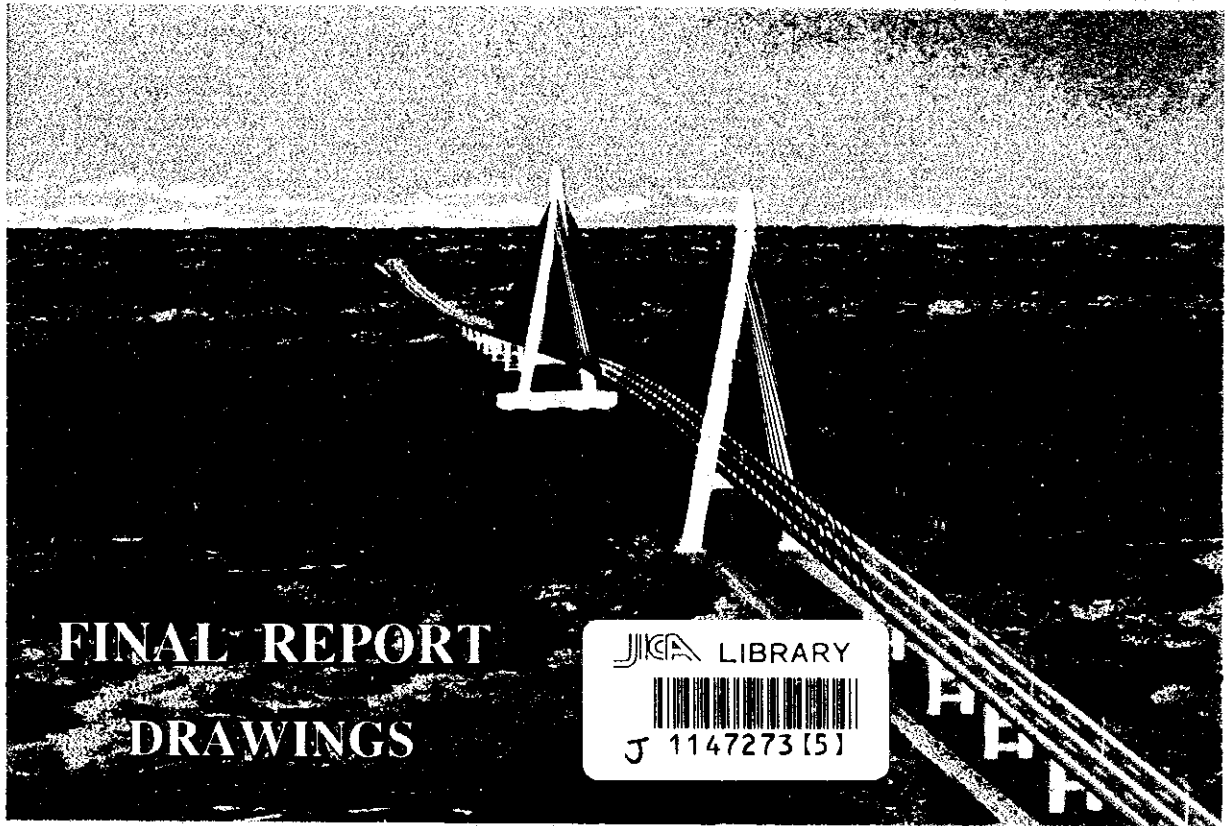
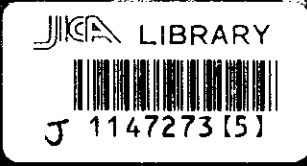


JAPAN INTERNATIONAL COOPERATION AGENCY (JICA)
MINISTRY OF TRANSPORT
SOCIALIST REPUBLIC OF VIET NAM

**THE FEASIBILITY STUDY
ON
THE CAN THO BRIDGE CONSTRUCTION
IN
SOCIALIST REPUBLIC OF VIET NAM**



**FINAL REPORT
DRAWINGS**



September 1998

**NIPPON KOEI CO., LTD.
and
PADECO CO., LTD.**

THE FEASIBILITY STUDY ON THE CAN THO BRIDGE
CONSTRUCTION IN SOCIALIST REPUBLIC OF VIET NAM
FINAL REPORT
DRAWINGS
SEPTEMBER 1998
NIPPON K
CO., LTD.
123
61.5
SSF
BRARY

S S F
98-104

**JAPAN INTERNATIONAL COOPERATION AGENCY (JICA)
MINISTRY OF TRANSPORT
SOCIALIST REPUBLIC OF VIET NAM**

**THE FEASIBILITY STUDY
ON
THE CAN THO BRIDGE CONSTRUCTION
IN
SOCIALIST REPUBLIC OF VIET NAM**

**FINAL REPORT
DRAWINGS**

September 1998

**NIPPON KOEI CO., LTD.
and
PADECO CO., LTD.**



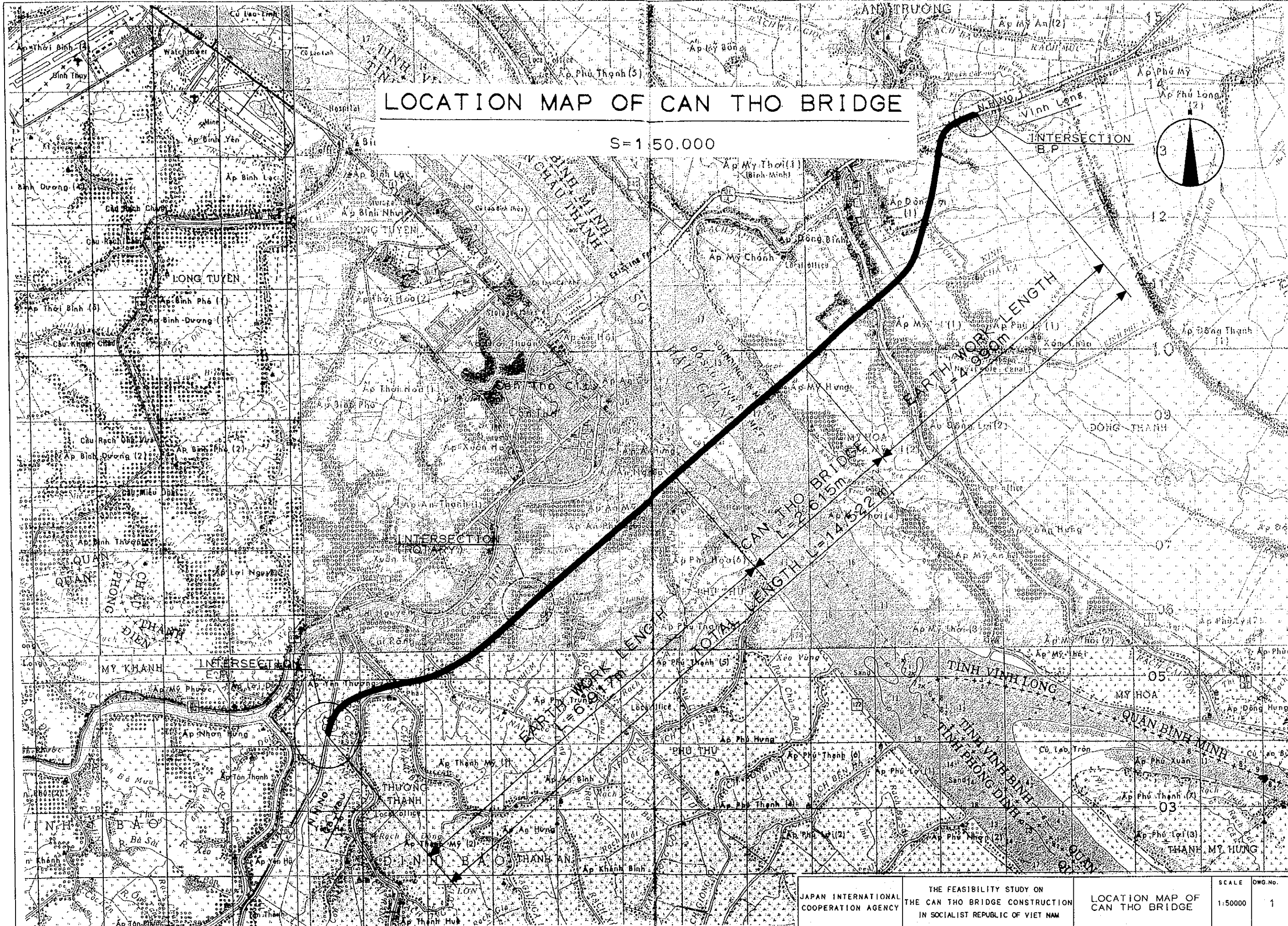
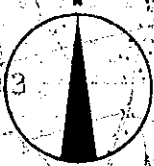
1147273 [5]

CONTENTS OF DRAWINGS

DRAWING TITLE	DRAWING. NO.
1. LOCATION MAP OF CAN THO BRIDGE	1
2. ROUTE AND INTERSECTIONS	2
3. ALIGNMENT LAYOUT	3
4. TYPICAL CROSS - SECTIONS	4
5. PLAN AND PROFILE (1) ~ (11)	5 ~ 15
6. INTERSECTIONS (1) ~ (3)	16 ~ 18
7. MISCELLANEOUS WORKS (1) ~ (2)	19 ~ 20
8. GENERAL VIEW OF BRIDGES (1) ~ (2)	21 ~ 22
9. SUPERSTRUCTURE OF MAIN BRIDGE (1) ~ (3)	23 ~ 25
10. SUBSTRUCTURE (1) ~ (5)	26 ~ 30
11. FOUNDATIONS (1) ~ (3)	31 ~ 33
12. LIST OF MINOR BRIDGE	34
13. RIVERBANK PROTECTION	35
14. LAYOUT OF STAIRS	36
15. HANDRAIL AND EXPANSION JOINT	37
16. ROAD LIGHTING	38
17. NAVIGATION SIGNALS	39
18. CONSTRUCTION YARDS	40

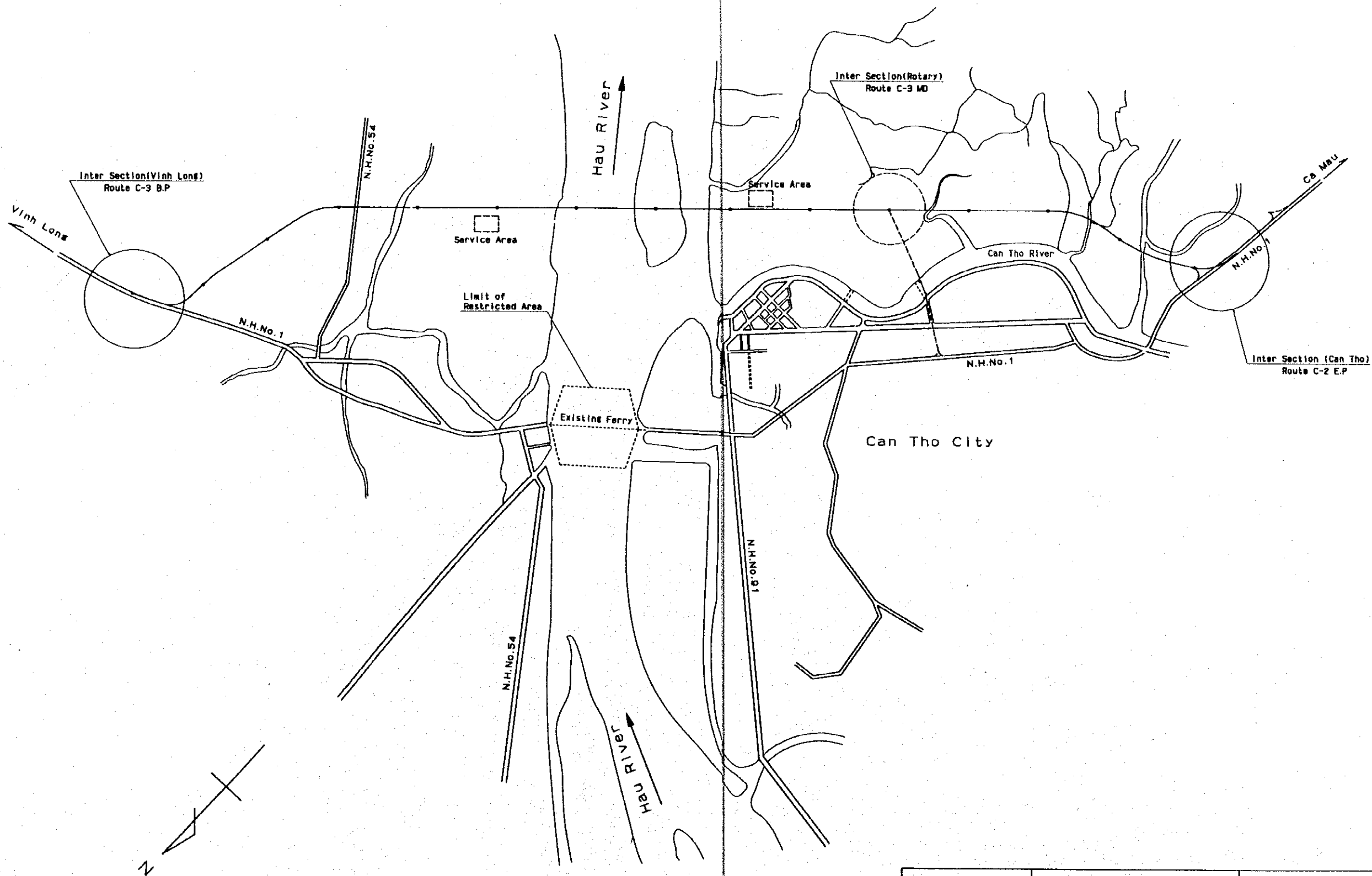
LOCATION MAP OF CAN THO BRIDGE

S=1 50.000



JAPAN INTERNATIONAL COOPERATION AGENCY	THE FEASIBILITY STUDY ON THE CAN THO BRIDGE CONSTRUCTION IN SOCIALIST REPUBLIC OF VIET NAM	LOCATION MAP OF CAN THO BRIDGE	SCALE 1:50000	DWG.No. 1
---	--	-----------------------------------	------------------	--------------

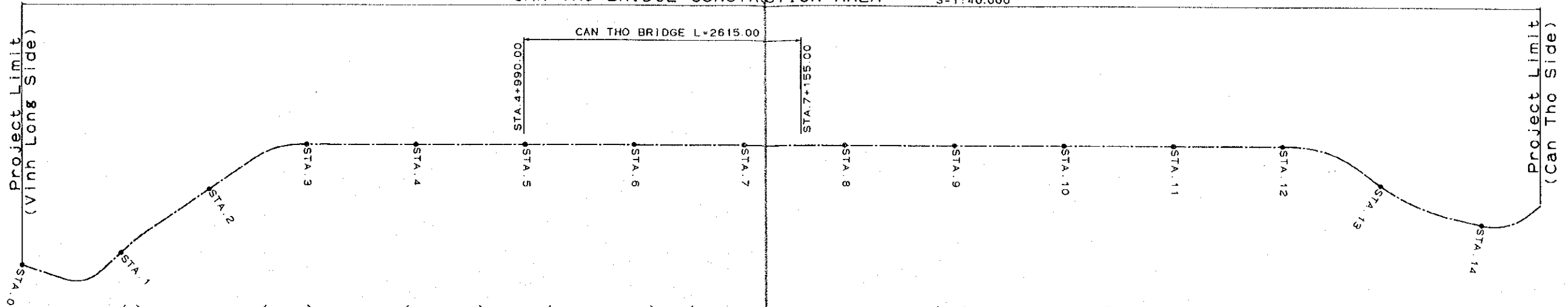
ROUTE AND INTERSECTIONS S=1:50,000



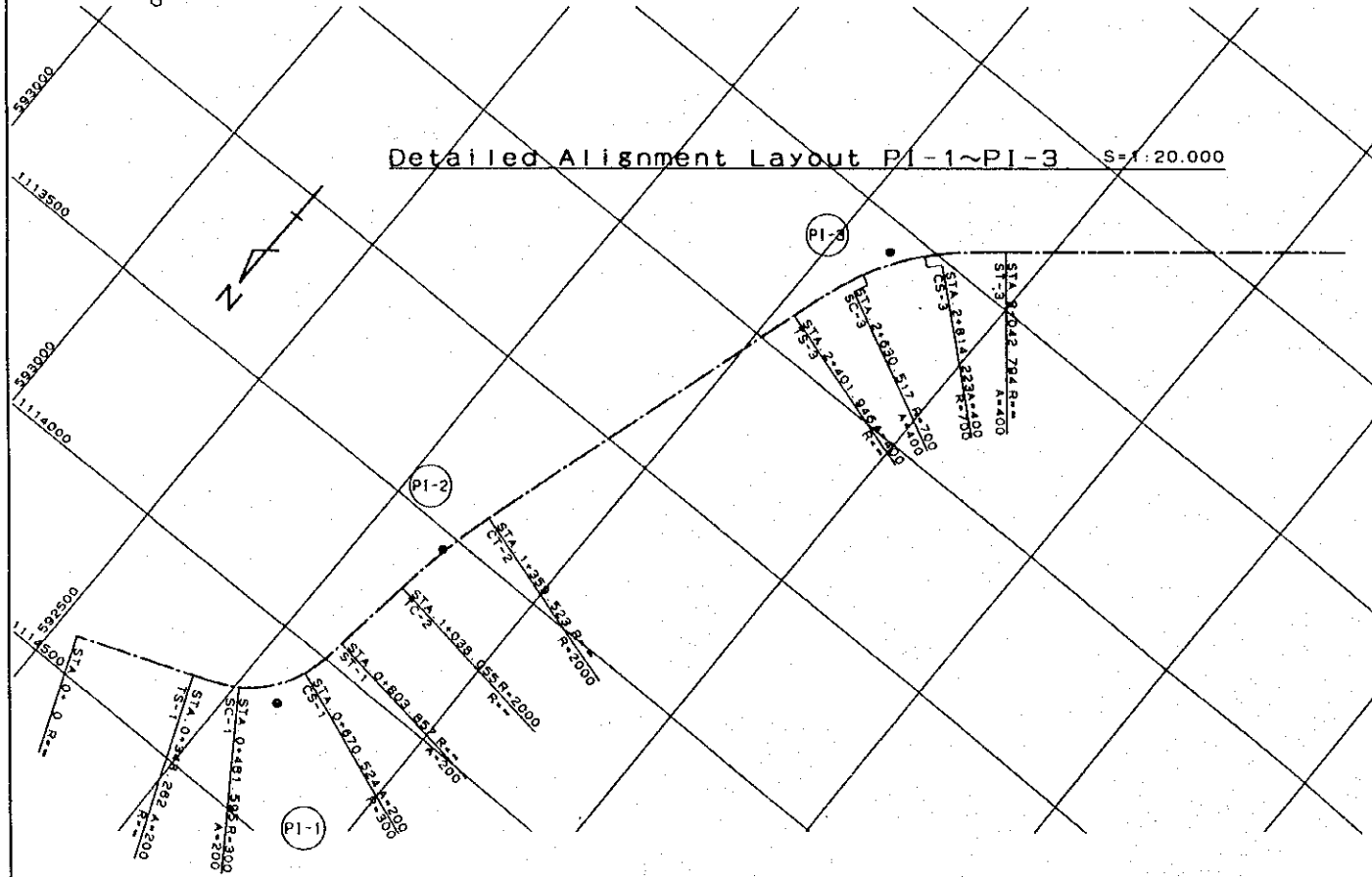
JAPAN INTERNATIONAL COOPERATION AGENCY	THE FEASIBILITY STUDY ON THE CAN THO BRIDGE CONSTRUCTION IN SOCIALIST REPUBLIC OF VIET NAM	ROUTE AND INTERSECTIONS	SCALE AS SHOWN	DRG. No. 2
---	--	-------------------------	-------------------	---------------

ALIGNMENT LAYOUT FOR CAN THO BRIDGE

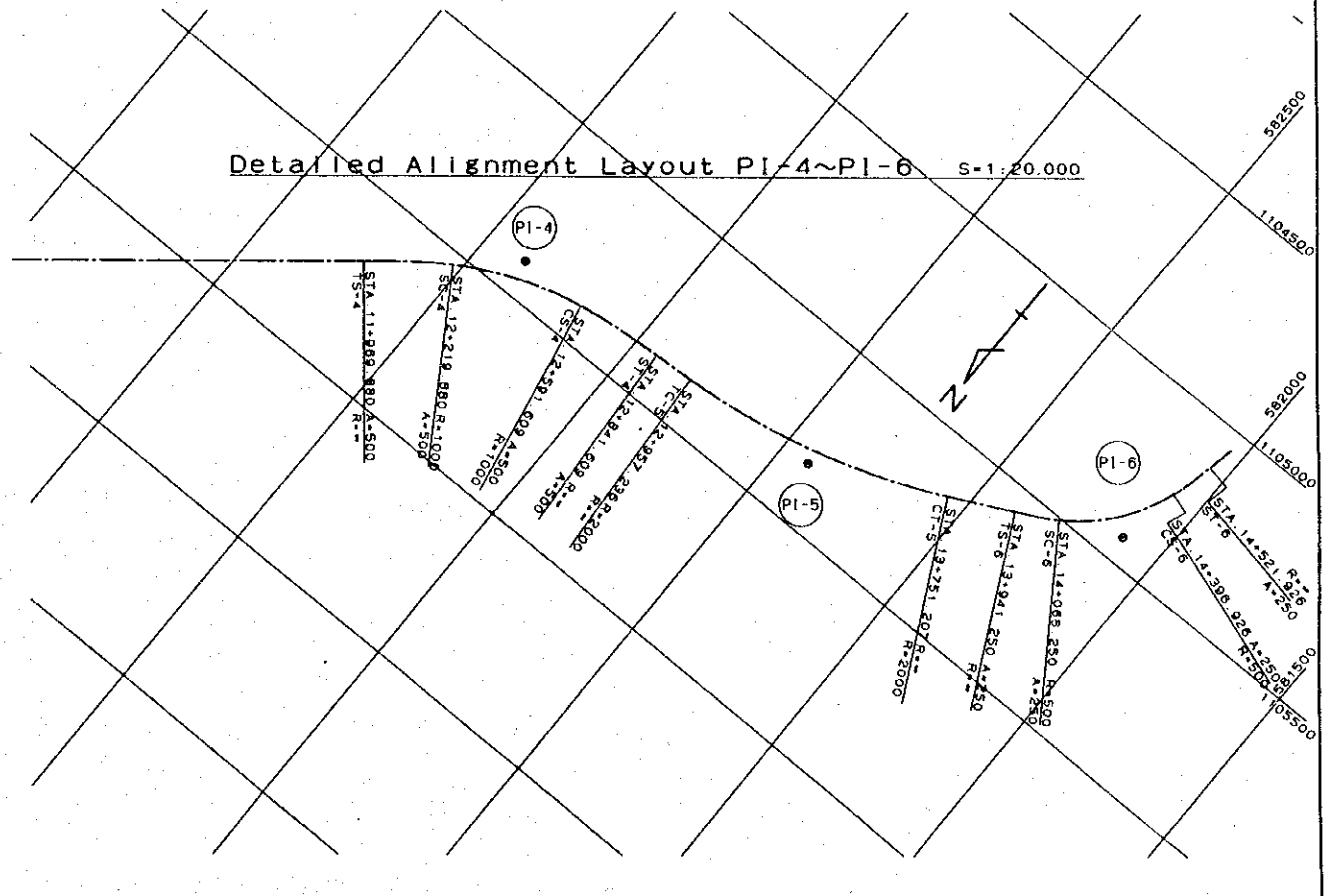
CAN THO BRIDGE CONSTRUCTION AREA S=1:40,000



Detailed Alignment Layout PI-1~PI-3 S=1:20,000



Detailed Alignment Layout PI-4~PI-6 S=1:20,000

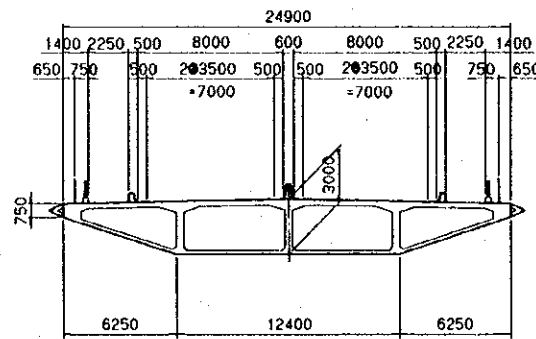


	IA	R	A1	A2	TL1	TL2	CL	L1	L2	LC	IPx	IPy	TSx	TSy	TS-STA	SCx	SCy	SC-STA	CSx	CSy	CS-STA	STx	STy	ST-STA	AZIMUTH	V (Km/H)	E (%)	W (m)	
PI-1	61-32-51	300	200	200	246.675	246.675	455.595	133.333	133.333	188.929	1.114.183.167	591.879.436	1.114.271.413	592.109.786	0+348.26	114.214.758	591.989.411	0+481.60	1.114.068.859	591.874.332	0+670.52	1.113.938.598	591.847.277	0+803.86	187-29-27	80	6	0.6	PI-1
PI-2	9-12-34	2.000	-	-	161.081	161.081	321.468	-	-	321.468	1.113.546.692	591.795.745	1.113.706.398	591.816.745	1+038.06	-	-	-	-	-	-	1.113.392.406	591.749.455	1+359.52	196-42-01	80	3	-	PI-2
PI-3	33-44-43	700	400	400	327.438	327.438	640.849	228.571	228.571	183.706	1.112.080.324	591.355.804	1.112.393.951	591.449.898	2+401.95	112.179.172	591.372.498	2+630.52	1.112.026.550	591.271.200	2+814.22	1.111.871.809	591.103.342	3+042.79	230-26-44	80	4	0.4	PI-3
PI-4	35-37-21	1.000	500	500	447.052	447.052	871.729	250.000	250.000	371.729	1.105.902.270	583.875.682	1.106.186.957	584.220.369	11+969.88	106.036.026	584.021.289	12+219.88	1.105.899.112	583.677.991	12+591.61	1.105.871.616	583.429.682	12+841.61	266-04-05	80	3	-	PI-4
PI-5	22-44-44	2.000	-	-	402.283	402.283	793.971	-	-	793.971	1.105.838.102	582.912.992	1.105.863.687	583.314.328	12+957.24	-	-	-	-	-	-	1.105.655.491	582.553.533	13+751.21	243-19-21	80	3	-	PI-5
PI-6	52-12-60	500	250	250	308.142	308.142	580.676	125.000	125.000	330.676	1.105.431.821	582.108.380	1.105.570.167	582.383.720	13+941.25	105.509.485	582.274.537	14+066.25	1.105.250.915	582.078.170	14+396.93	1.105.129.450	582.049.024	14+521.93		80	6	0.6	PI-6

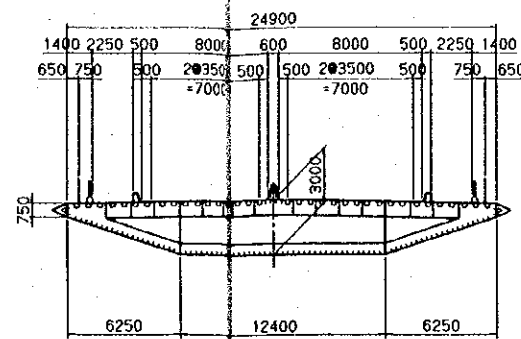
TYPICAL CROSS-SECTIONS SCALE: 1:400

MAIN BRIDGE

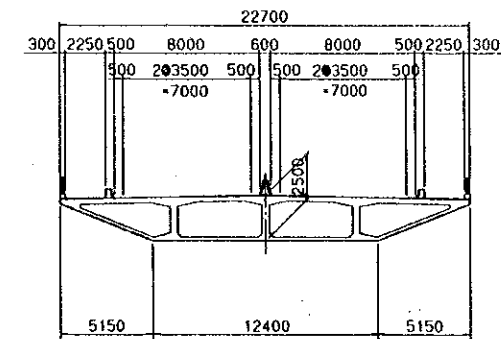
PC BOX GIRDER



STEEL BOX GIRDER

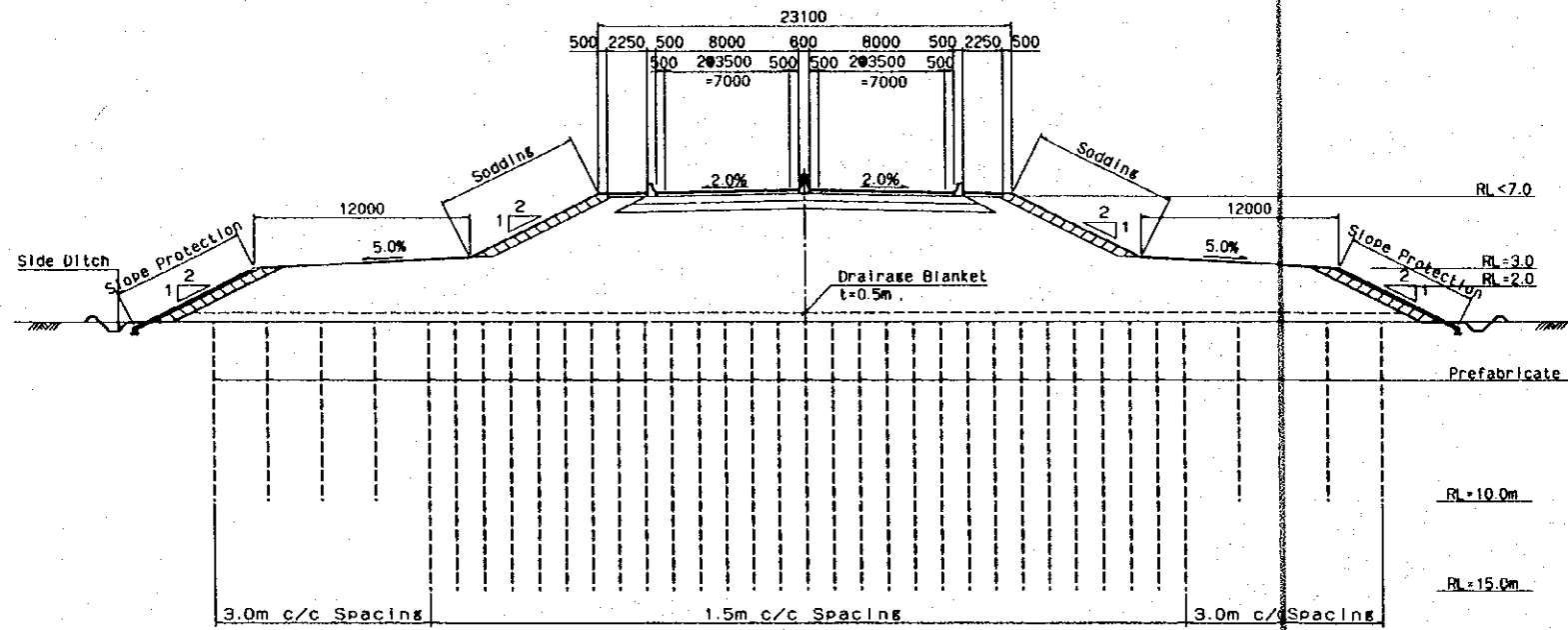


APPROACH BRIDGE
PC BOX GIRDER

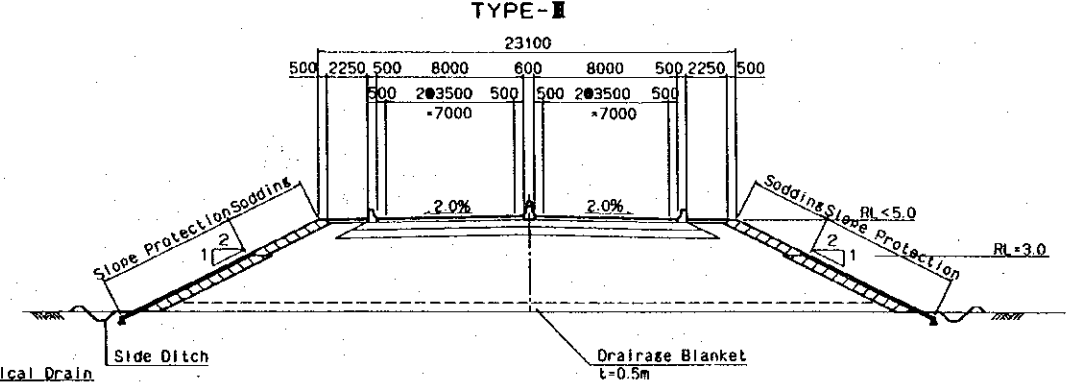


APPROACH ROAD

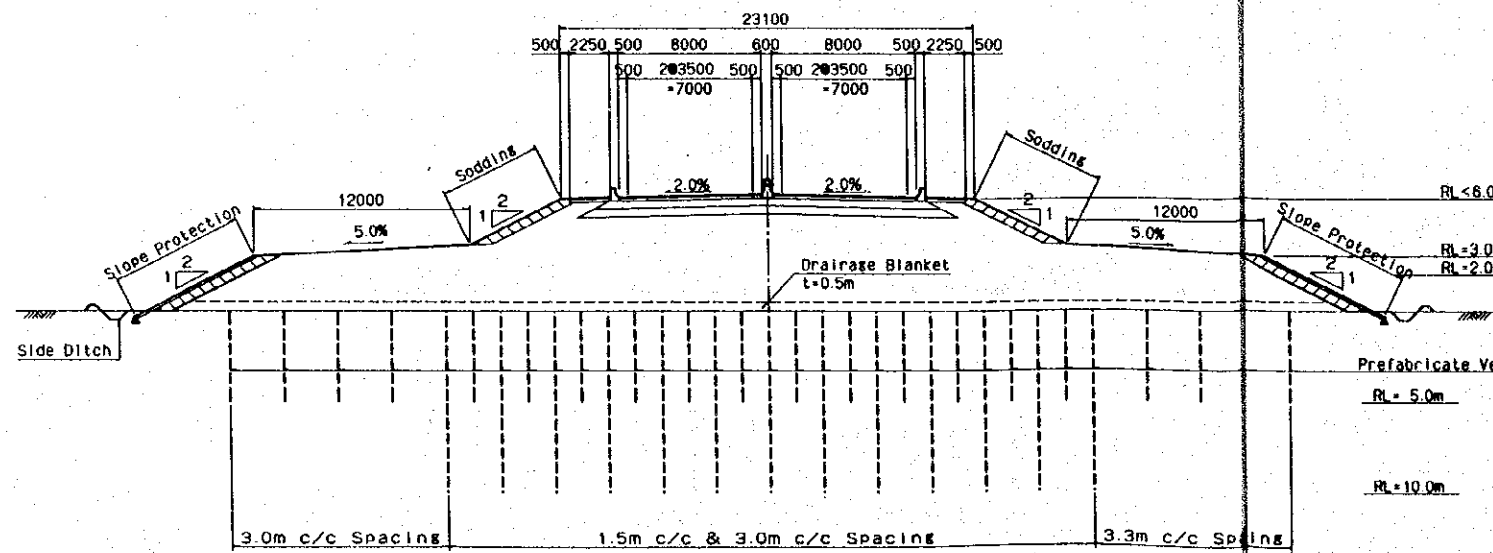
DOUBLE FORMATION $H \geq 5.0$
TYPE-I



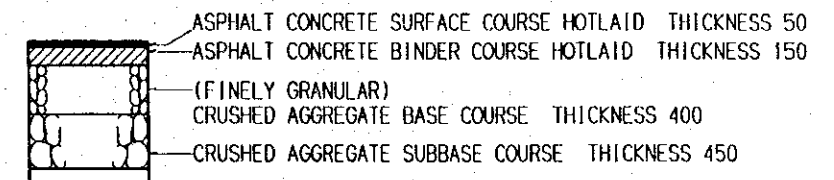
SINGLE FORMATION $H < 5.0$
TYPE-II



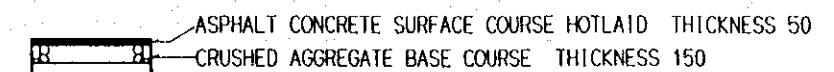
TYPE-II



COMPOSITION OF PAVEMENT
CARRIAGEWAY



PEDESTRIAN



JAPAN INTERNATIONAL COOPERATION AGENCY	THE FEASIBILITY STUDY ON THE CAN THO BRIDGE CONSTRUCTION IN SOCIALIST REPUBLIC OF VIET NAM	TYPICAL CROSS-SECTIONS	SCALE 1:400	DWG. No. 4
--	--	------------------------	----------------	---------------

PLAN AND PROFILE (1)

LEGEND

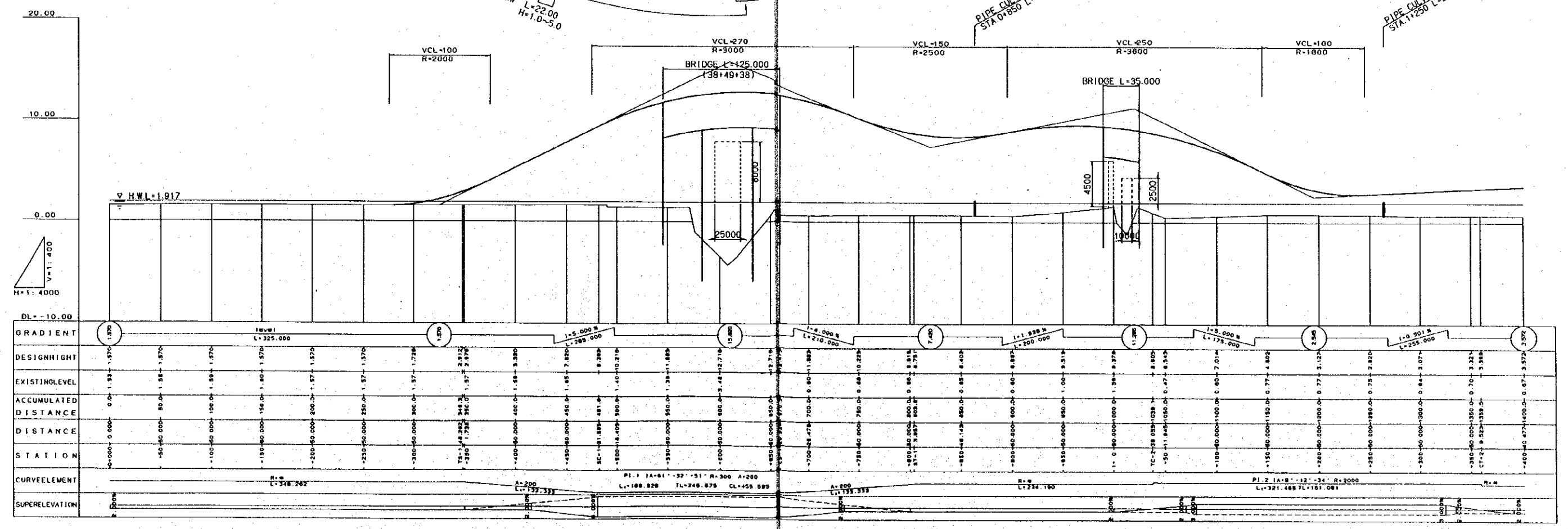
Mark	Description	Type
C.M.B	Concrete Median Barrier	Co. Block 300*300*50
R.L	Road Lighting	
C.C	Concrete Curb	
G.R	Guard Rail	A
S.P	Slope Protection	

PI No.1

A	200	200	Y	9.842	9.842
R	300	W	180.118	180.118	
L	133.333	133.333	T C	246.675	246.675
ΔR	2.465	2.465	α	61-32-51.09	
X M	66.557	66.557	L C	188.929	
X	132.676	132.676	C L	455.595	

PI No.2

A	-	-	Y	-	-
R	2000	W	-	-	
L	-	-	T C	161.081	161.081
ΔR	-	-	α	9-12-33.76	
X M	-	-	L C	321.468	
X	-	-	C L	321.468	



LEGEND

Mark	Description	Type
CMB	Concrete Median Barrier	Co Block 300x300x50
R.L	Road Lightings	
C.C	Concrete Curb	
GR	Guard Rail	A
S.P	Slope Protection	

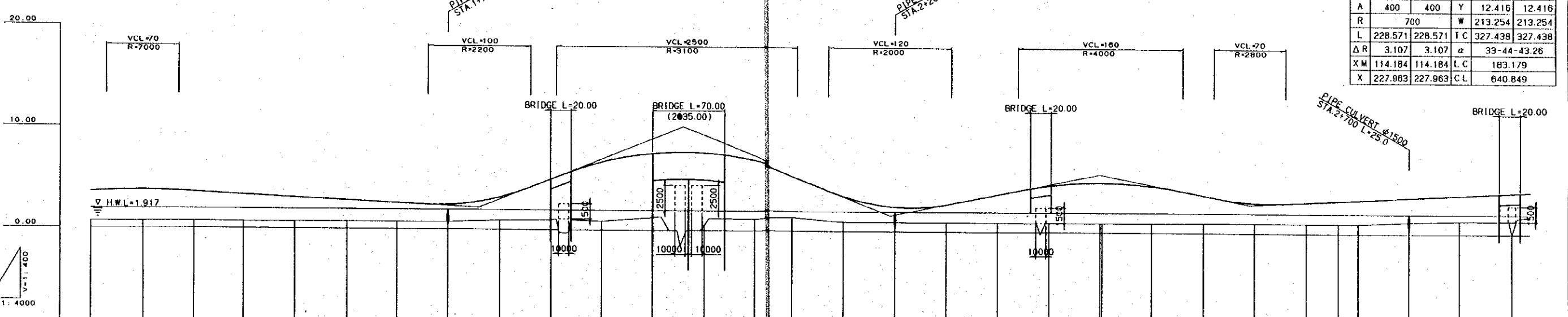
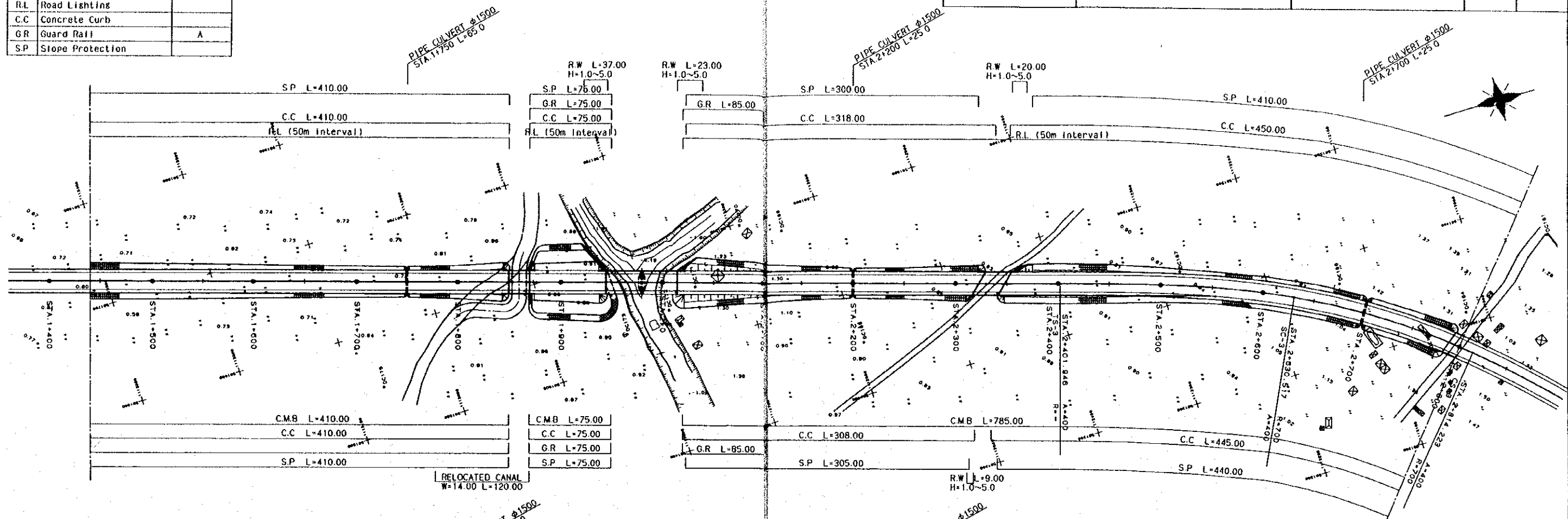
PLAN AND PROFILE (2)

JAPAN INTERNATIONAL COOPERATION AGENCY

THE FEASIBILITY STUDY ON THE CAN THO BRIDGE CONSTRUCTION IN SOCIALIST REPUBLIC OF VIET NAM

PLAN and PROFILE

SCALE V=1:400 H=1:4000 DWG.No. 6



A	400	400	Y	12.416	12.416
R		700	W	213.254	213.254
L	228.571	228.571	T.C	327.438	327.438
ΔR	3.107	3.107	α	33-44	43.26
X.M	114.184	114.184	L.C	183.179	
X	227.963	227.963	C.L	640.849	

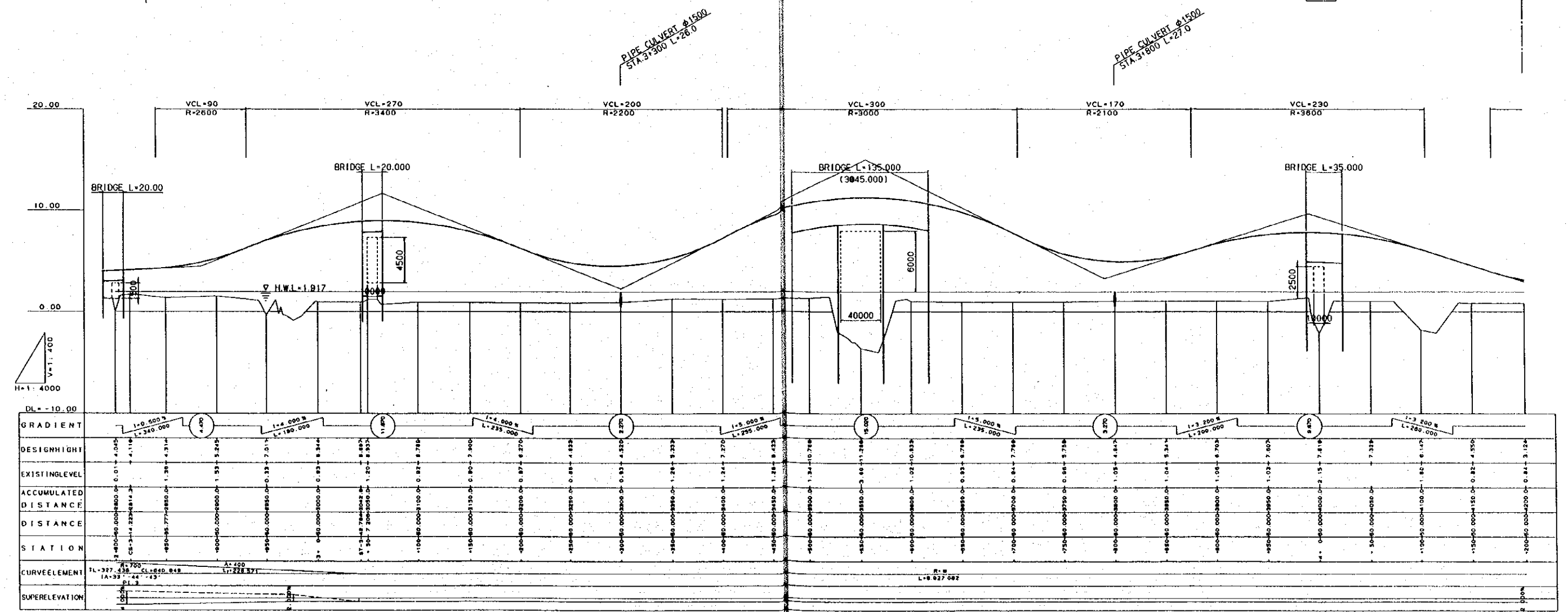
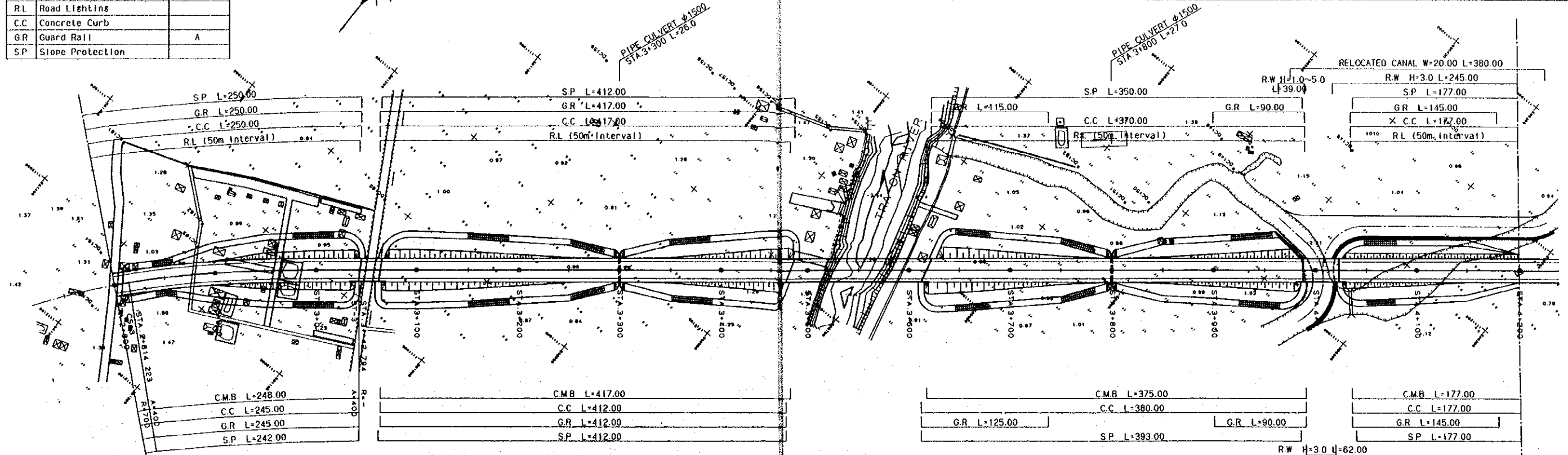
GRADIENT	DESIGN HEIGHT	EXISTING LEVEL	ACCUMULATED DISTANCE	DISTANCE	STATION	CURVELEMENT	SUPERELEVATION
3.82%		1+400.000	0.000	0.000	1+400.000		
3.82%		1+450.000	180.000	180.000	1+450.000		
3.82%		1+500.000	360.000	360.000	1+500.000		
3.82%		1+550.000	540.000	540.000	1+550.000		
3.82%		1+600.000	720.000	720.000	1+600.000		
3.82%		1+650.000	900.000	900.000	1+650.000		
3.82%		1+700.000	1080.000	1080.000	1+700.000		
3.82%		1+750.000	1260.000	1260.000	1+750.000		
3.82%		1+800.000	1440.000	1440.000	1+800.000		
3.82%		1+850.000	1620.000	1620.000	1+850.000		
3.82%		1+900.000	1800.000	1800.000	1+900.000		
3.82%		1+950.000	1980.000	1980.000	1+950.000		
3.82%		2+000.000	2160.000	2160.000	2+000.000		
3.82%		2+050.000	2340.000	2340.000	2+050.000		
3.82%		2+100.000	2520.000	2520.000	2+100.000		
3.82%		2+150.000	2700.000	2700.000	2+150.000		
3.82%		2+200.000	2880.000	2880.000	2+200.000		
3.82%		2+250.000	3060.000	3060.000	2+250.000		
3.82%		2+300.000	3240.000	3240.000	2+300.000		
3.82%		2+350.000	3420.000	3420.000	2+350.000		
3.82%		2+400.000	3600.000	3600.000	2+400.000		
3.82%		2+450.000	3780.000	3780.000	2+450.000		
3.82%		2+500.000	3960.000	3960.000	2+500.000		
3.82%		2+550.000	4140.000	4140.000	2+550.000		
3.82%		2+600.000	4320.000	4320.000	2+600.000		
3.82%		2+650.000	4500.000	4500.000	2+650.000		
3.82%		2+700.000	4680.000	4680.000	2+700.000		
3.82%		2+750.000	4860.000	4860.000	2+750.000		
3.82%		2+800.000	5040.000	5040.000	2+800.000		

LEGEND

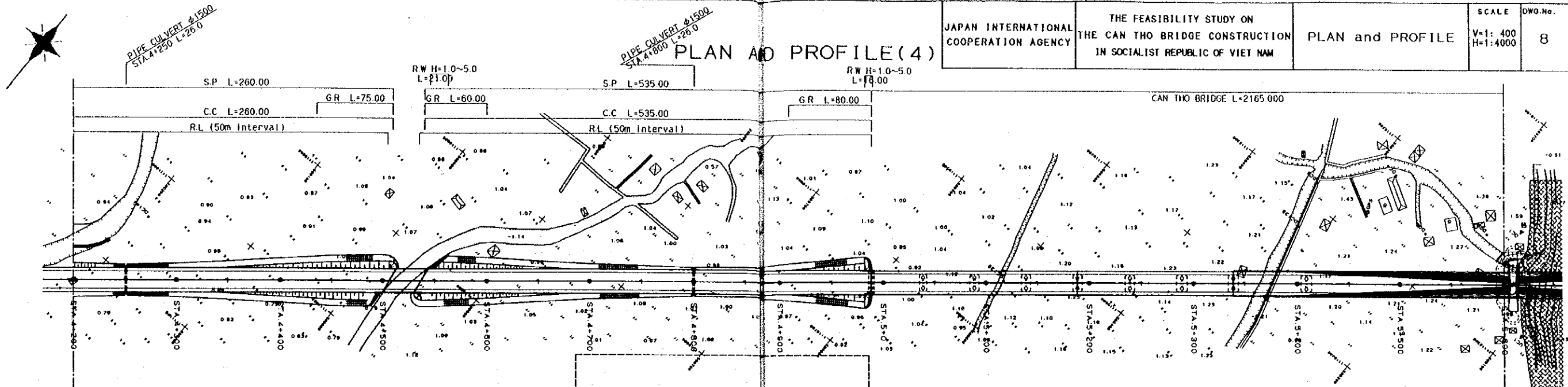
Mark	Description	Type
CMB	Concrete Median Barrier	Co Block 300x300x50
RL	Road Lighting	
C.C	Concrete Curb	
G.R	Guard Rail	A
S.P	Slope Protection	

PLAN AND PROFILE (3)

JAPAN INTERNATIONAL COOPERATION AGENCY	THE FEASIBILITY STUDY ON THE CAN THO BRIDGE CONSTRUCTION IN SOCIALIST REPUBLIC OF VIET NAM	PLAN and PROFILE	SCALE V=1:400 H=1:4000	DWG.No. 7
--	--	------------------	------------------------------	--------------

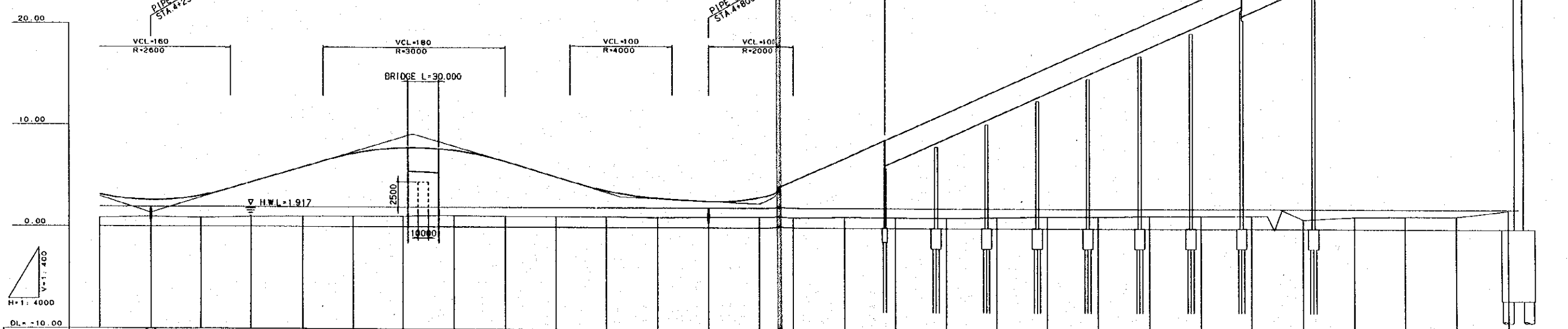


PLAN AND PROFILE (4)



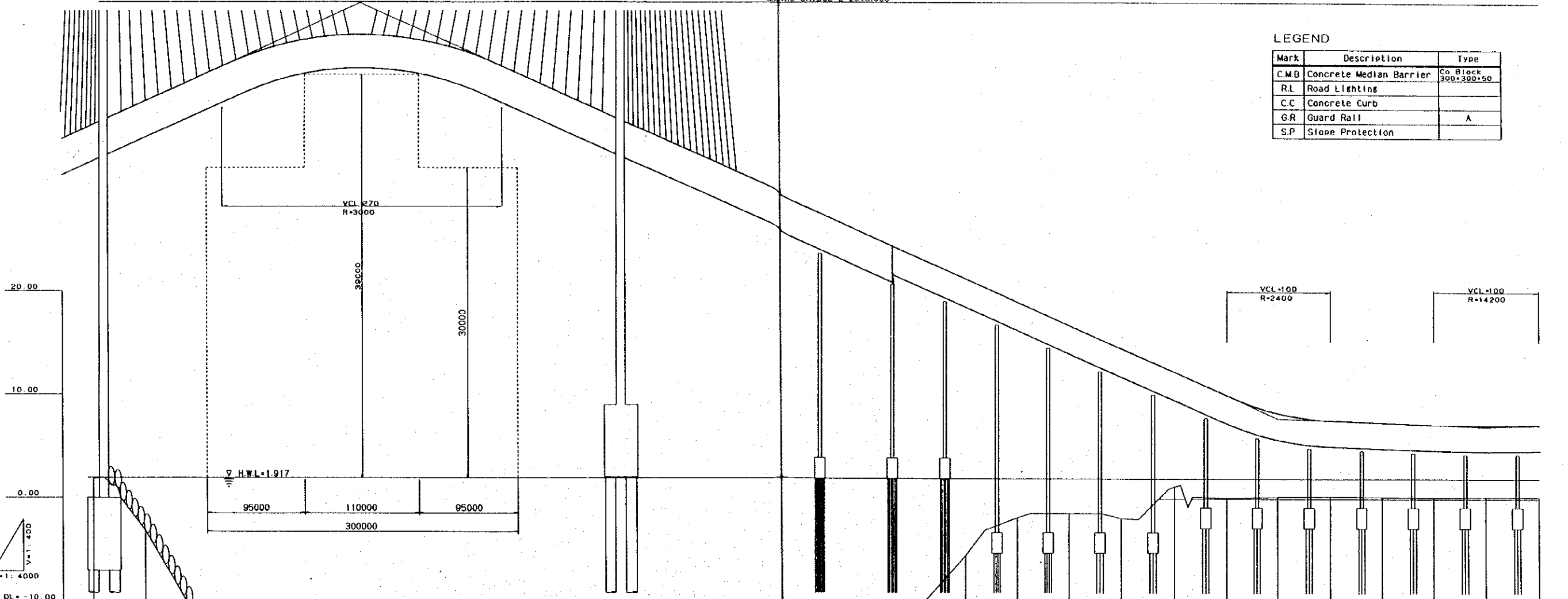
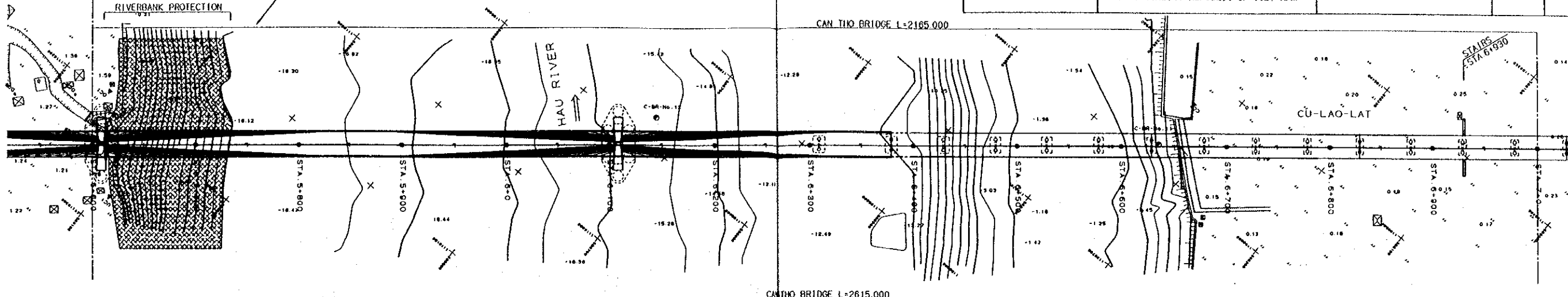
LEGEND

Mark	Description	Type
C.M.B.	Concrete Median Barrier	Co Block 300x300x50
R.L.	Road Lightline	
C.C.	Concrete Curb	
G.R.	Guard Rail	A
S.P.	Slope Protection	



GRADIENT	DESIGN HEIGHT	EXISTING LEVEL	ACCUMULATED DISTANCE	DISTANCE	STATION	CURVE ELEMENT	SUPERELEVATION
0.00%	3.124	0.84	0+000	0+000	4+200		0.00%
0.00%	2.550	0.98	0+250	0+250	4+250	1+3.000 % L=250.000	0.00%
0.00%	3.024	0.84	0+500	0+500	4+500		0.00%
0.00%	4.350	0.98	0+750	0+750	4+750	1+3.000 % L=250.000	0.00%
0.00%	5.850	1.01	1+000	1+000	4+800		0.00%
0.00%	7.200	1.04	1+250	1+250	4+850		0.00%
0.00%	7.782	0.98	1+500	1+500	4+900		0.00%
0.00%	7.332	1.13	1+750	1+750	4+950		0.00%
0.00%	6.450	1.08	2+000	2+000	4+950		0.00%
0.00%	4.350	1.04	2+250	2+250	4+950		0.00%
0.00%	3.812	1.01	2+500	2+500	4+950		0.00%
0.00%	2.872	0.97	2+750	2+750	4+950		0.00%
0.00%	2.800	1.03	3+000	3+000	4+950		0.00%
0.00%	2.800	1.03	3+250	3+250	4+950		0.00%
0.00%	3.350	1.05	3+500	3+500	4+950		0.00%
0.00%	4.800	1.07	3+750	3+750	4+950		0.00%
0.00%	6.150	1.15	4+000	4+000	4+950		0.00%
0.00%	6.350	1.23	4+250	4+250	4+950		0.00%
0.00%	6.800	1.25	4+500	4+500	4+950		0.00%
0.00%	7.100	1.18	4+750	4+750	4+950		0.00%
0.00%	7.350	1.23	5+000	5+000	4+950		0.00%
0.00%	7.850	1.25	5+250	5+250	4+950		0.00%
0.00%	8.100	1.22	5+500	5+500	4+950		0.00%
0.00%	8.100	1.22	5+750	5+750	4+950		0.00%
0.00%	8.100	1.22	6+000	6+000	4+950		0.00%
0.00%	8.100	1.22	6+250	6+250	4+950		0.00%
0.00%	8.100	1.22	6+500	6+500	4+950		0.00%
0.00%	8.100	1.22	6+750	6+750	4+950		0.00%
0.00%	8.100	1.22	7+000	7+000	4+950		0.00%
0.00%	8.100	1.22	7+250	7+250	4+950		0.00%
0.00%	8.100	1.22	7+500	7+500	4+950		0.00%
0.00%	8.100	1.22	7+750	7+750	4+950		0.00%
0.00%	8.100	1.22	8+000	8+000	4+950		0.00%
0.00%	8.100	1.22	8+250	8+250	4+950		0.00%
0.00%	8.100	1.22	8+500	8+500	4+950		0.00%
0.00%	8.100	1.22	8+750	8+750	4+950		0.00%
0.00%	8.100	1.22	9+000	9+000	4+950		0.00%
0.00%	8.100	1.22	9+250	9+250	4+950		0.00%
0.00%	8.100	1.22	9+500	9+500	4+950		0.00%
0.00%	8.100	1.22	9+750	9+750	4+950		0.00%
0.00%	8.100	1.22	10+000	10+000	4+950		0.00%

PLAN AND PROFILE (5)

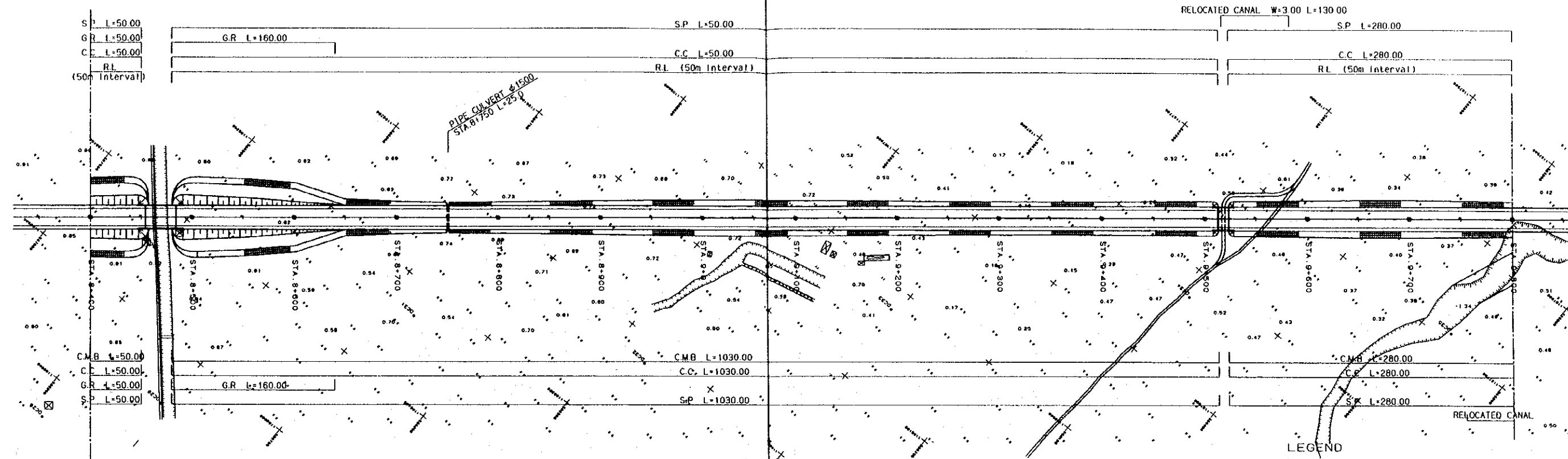


LEGEND

Mark	Description	Type
C.M.B	Concrete Median Barrier	Co Block 300*300*50
R.L	Road Lighting	
C.C	Concrete Curb	
G.R	Guard Rail	A
S.P	Slope Protection	

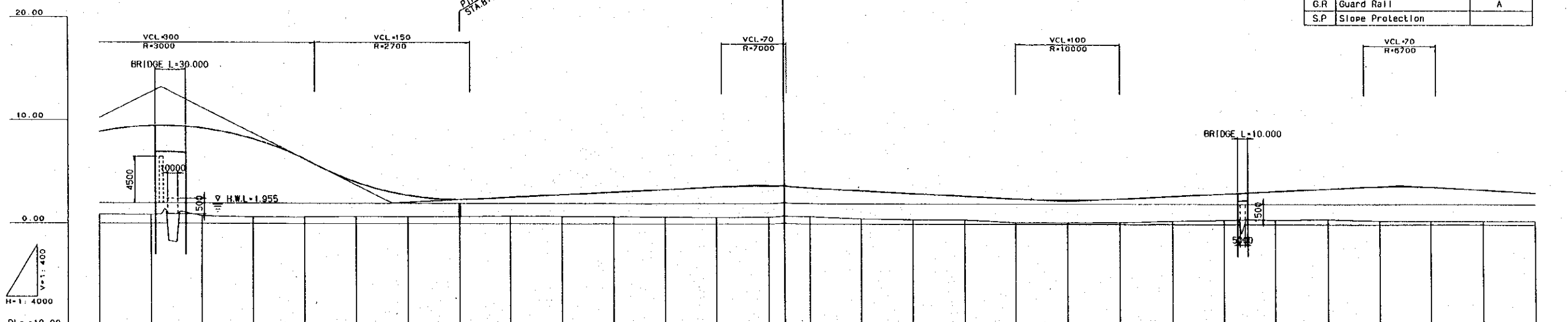
GRADIENT	DESIGN HIGHT	EXISTING LEVEL	ACCUMULATED DISTANCE	DISTANCE	STATION	CURVELEMENT	SUPERELEVATION
					5+000		0.00
					5+100		0.00
					5+200		0.00
					5+300		0.00
					5+400		0.00
					5+500		0.00
					5+600		0.00
					5+700		0.00
					5+800		0.00
					5+900		0.00
					6+000		0.00
					6+100		0.00
					6+200		0.00
					6+300		0.00
					6+400		0.00
					6+500		0.00
					6+600		0.00
					6+700		0.00
					6+800		0.00
					6+900		0.00

PLAN AND PROFILE (7)



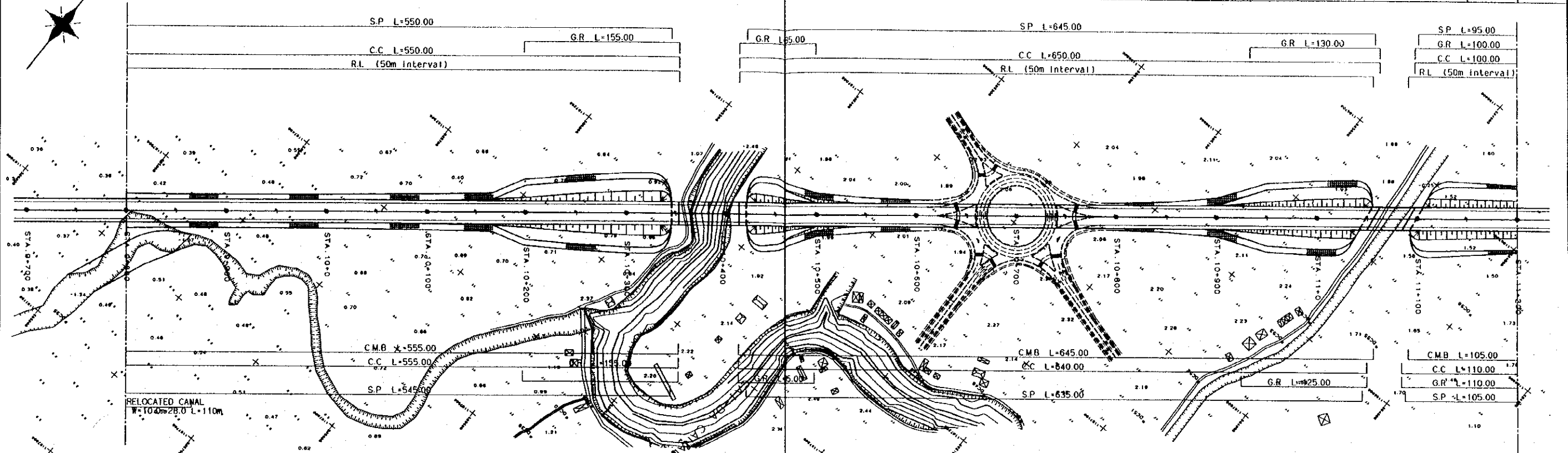
LEGEND

Mark	Description	Type
CMB	Concrete Median Barrier	C6 Block 300x300x50
R.L	Road Lighting	
C.C	Concrete Curb	
G.R	Guard Rail	A
S.P	Slope Protection	



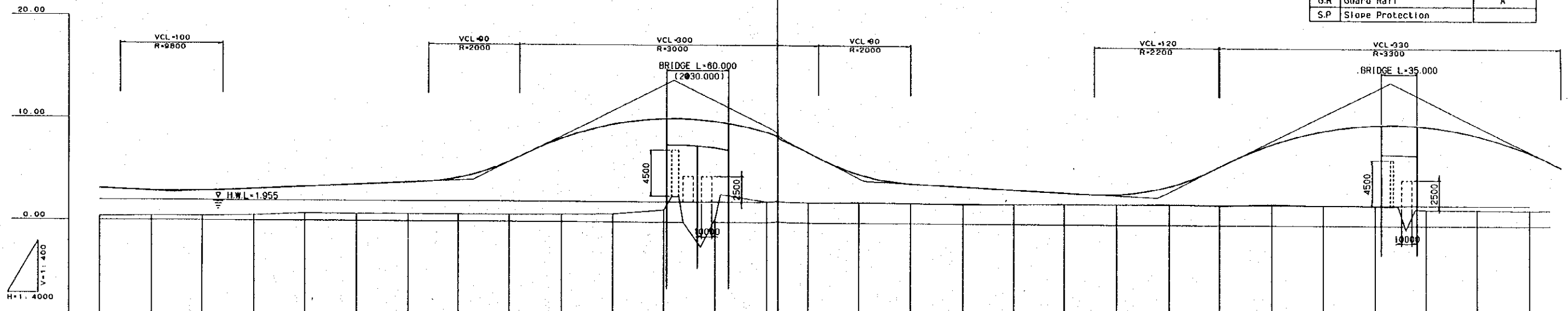
GRADIENT	DESIGN HEIGHT	EXISTING LEVEL	ACCUMULATED DISTANCE	DISTANCE	STATION	CURVE ELEMENT	SUPRELEVATION
1:3.000	1.325	8+000.000	0.000	0.000	8+000.000		0.000
1:3.000	1.325	8+050.000	16.667	16.667	8+050.000		0.000
1:3.000	1.325	8+100.000	33.333	33.333	8+100.000		0.000
1:3.000	1.325	8+150.000	50.000	50.000	8+150.000		0.000
1:3.000	1.325	8+200.000	66.667	66.667	8+200.000		0.000
1:3.000	1.325	8+250.000	83.333	83.333	8+250.000		0.000
1:3.000	1.325	8+300.000	100.000	100.000	8+300.000		0.000
1:3.000	1.325	8+350.000	116.667	116.667	8+350.000		0.000
1:3.000	1.325	8+400.000	133.333	133.333	8+400.000		0.000
1:3.000	1.325	8+450.000	150.000	150.000	8+450.000		0.000
1:3.000	1.325	8+500.000	166.667	166.667	8+500.000		0.000
1:3.000	1.325	8+550.000	183.333	183.333	8+550.000		0.000
1:3.000	1.325	8+600.000	200.000	200.000	8+600.000		0.000
1:3.000	1.325	8+650.000	216.667	216.667	8+650.000		0.000
1:3.000	1.325	8+700.000	233.333	233.333	8+700.000		0.000
1:3.000	1.325	8+750.000	250.000	250.000	8+750.000		0.000
1:3.000	1.325	8+800.000	266.667	266.667	8+800.000		0.000
1:3.000	1.325	8+850.000	283.333	283.333	8+850.000		0.000
1:3.000	1.325	8+900.000	300.000	300.000	8+900.000		0.000
1:3.000	1.325	8+950.000	316.667	316.667	8+950.000		0.000
1:3.000	1.325	9+000.000	333.333	333.333	9+000.000		0.000
1:3.000	1.325	9+050.000	350.000	350.000	9+050.000		0.000
1:3.000	1.325	9+100.000	366.667	366.667	9+100.000		0.000
1:3.000	1.325	9+150.000	383.333	383.333	9+150.000		0.000
1:3.000	1.325	9+200.000	400.000	400.000	9+200.000		0.000
1:3.000	1.325	9+250.000	416.667	416.667	9+250.000		0.000
1:3.000	1.325	9+300.000	433.333	433.333	9+300.000		0.000
1:3.000	1.325	9+350.000	450.000	450.000	9+350.000		0.000
1:3.000	1.325	9+400.000	466.667	466.667	9+400.000		0.000
1:3.000	1.325	9+450.000	483.333	483.333	9+450.000		0.000
1:3.000	1.325	9+500.000	500.000	500.000	9+500.000		0.000
1:3.000	1.325	9+550.000	516.667	516.667	9+550.000		0.000
1:3.000	1.325	9+600.000	533.333	533.333	9+600.000		0.000
1:3.000	1.325	9+650.000	550.000	550.000	9+650.000		0.000
1:3.000	1.325	9+700.000	566.667	566.667	9+700.000		0.000
1:3.000	1.325	9+750.000	583.333	583.333	9+750.000		0.000
1:3.000	1.325	9+800.000	600.000	600.000	9+800.000		0.000
1:3.000	1.325	9+850.000	616.667	616.667	9+850.000		0.000
1:3.000	1.325	9+900.000	633.333	633.333	9+900.000		0.000
1:3.000	1.325	9+950.000	650.000	650.000	9+950.000		0.000
1:3.000	1.325	10+000.000	666.667	666.667	10+000.000		0.000

PLAN AND PROFILE(8)



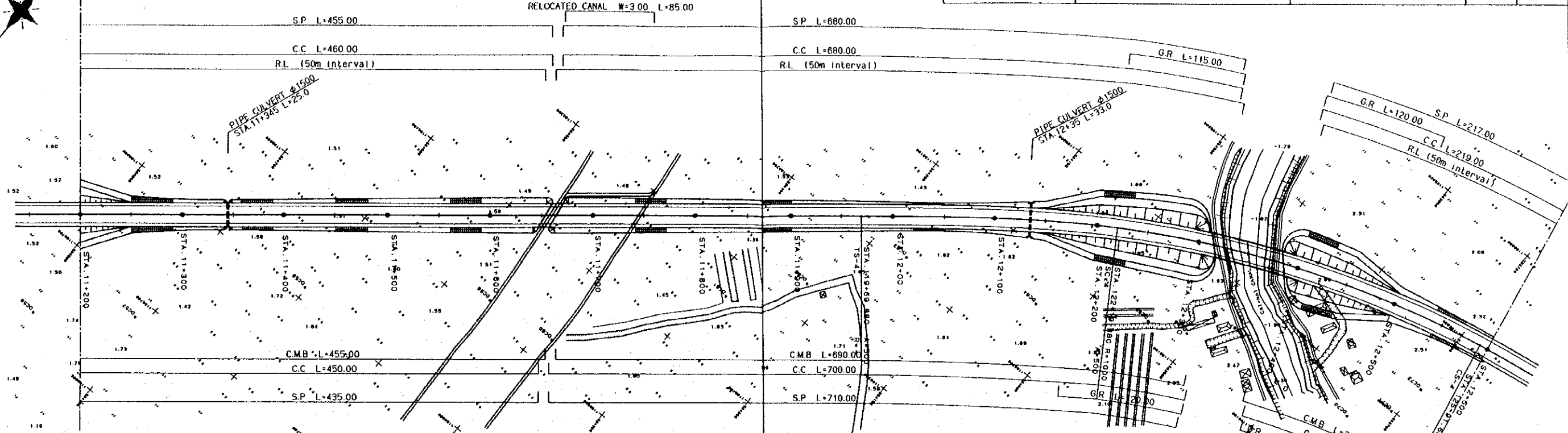
LEGEND

Mark	Description	Type
C.M.B	Concrete Median Barrier	Co Block 300x300x50
R.L	Road Lighting	
C.C	Concrete Curb	
G.R	Guard Rail	A
S.P	Slope Protection	



GRADIENT	DESIGN HIGHT	EXISTING LEVEL	ACCUMULATED DISTANCE	DISTANCE	STATION	CURVE ELEMENT	SUPERELEVATION
1+0.530 R L=200.000	3.08	0.28+3.08	0.00	0.00	9+800.000		0.00%
2.70	2.875	0.41+2.875	200.00	200.00	9+500.000		0.00%
1+0.466 R L=295.000	3.55	0.41+2.875	495.00	495.00	9+205.000		0.00%
0.98	3.28	0.74+3.28	790.00	790.00	8+415.000		0.00%
1+5.000 R L=195.000	4.88	0.98+3.55	985.00	985.00	8+220.000		0.00%
0.98	4.24	0.70+4.24	1180.00	1180.00	7+430.000		0.00%
1+5.000 R L=195.000	4.88	0.98+3.55	1375.00	1375.00	7+235.000		0.00%
0.98	4.88	0.98+3.55	1570.00	1570.00	7+40.000		0.00%
1+2.000 R L=284.000	4.00	0.32+4.88	1854.00	1854.00	7+116.000		0.00%
2.00	3.83	1.84+3.83	2138.00	2138.00	6+322.000		0.00%
1+0.500 R L=278.000	3.12	2.02+4.73	2416.00	2416.00	5+538.000		0.00%
2.00	2.96	1.89+2.96	2700.00	2700.00	4+754.000		0.00%
1+5.000 R L=228.000	2.08	2.07+2.83	2928.00	2928.00	4+526.000		0.00%
13.00	2.08	1.82+2.08	3156.00	3156.00	4+300.000		0.00%
1+5.000 R L=228.000	2.08	1.82+2.08	3384.00	3384.00	4+72.000		0.00%
13.00	2.08	1.82+2.08	3612.00	3612.00	4+504.000		0.00%
1+5.000 R L=228.000	2.08	1.82+2.08	3840.00	3840.00	4+288.000		0.00%
13.00	2.08	1.82+2.08	4068.00	4068.00	4+60.000		0.00%
1+5.000 R L=228.000	2.08	1.82+2.08	4296.00	4296.00	4+384.000		0.00%
13.00	2.08	1.82+2.08	4524.00	4524.00	4+168.000		0.00%
1+5.000 R L=228.000	2.08	1.82+2.08	4752.00	4752.00	4+144.000		0.00%
13.00	2.08	1.82+2.08	4980.00	4980.00	4+120.000		0.00%

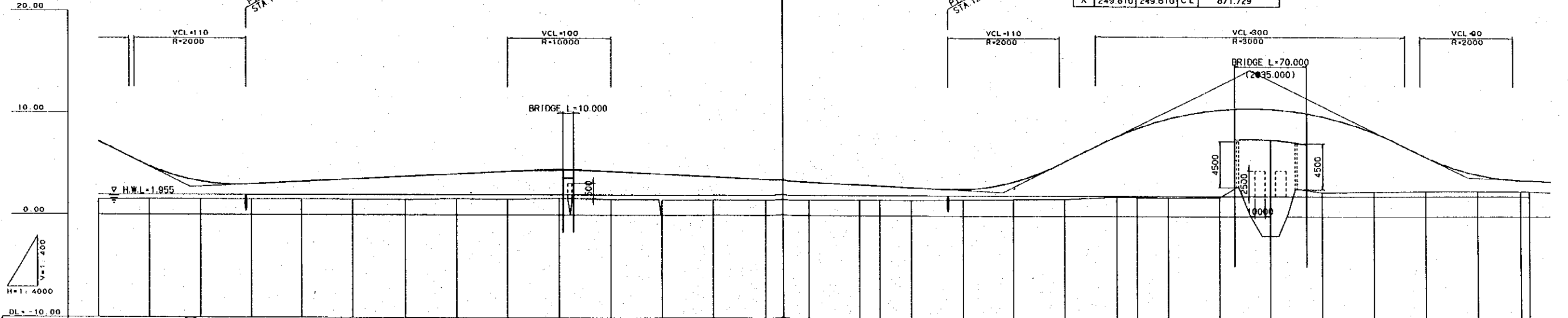
PLAN AND PROFILE (9)



LEGEND

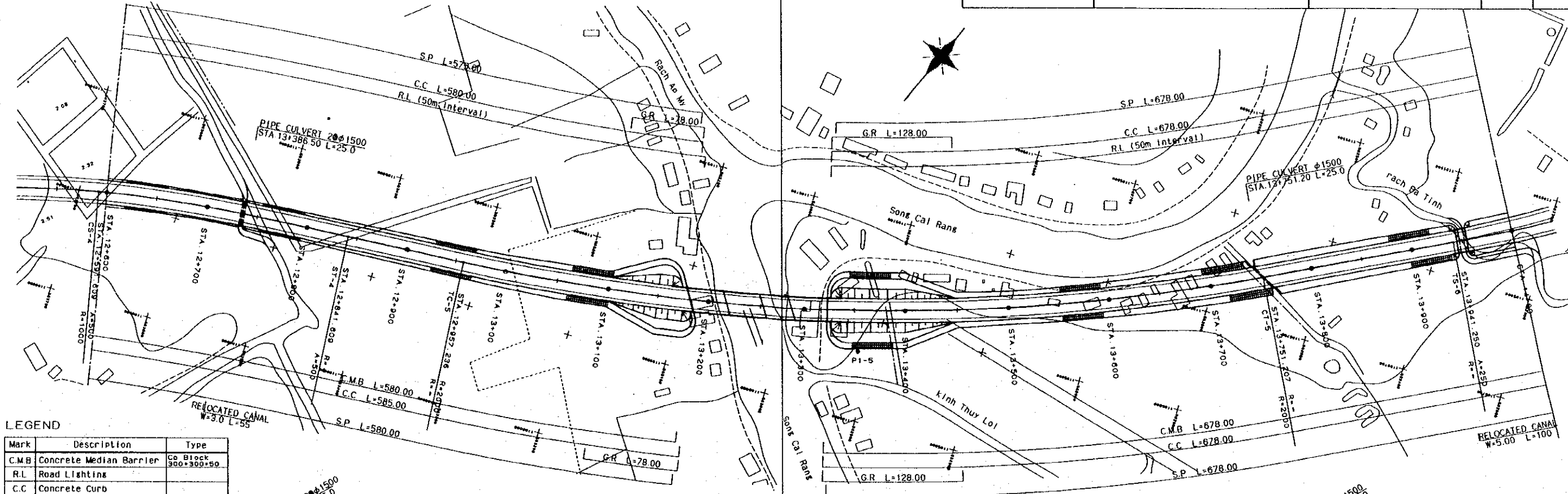
Mark	Description	Type
C.M.B	Concrete Median Barrier	Co Block 300*300*50
R.L	Road Lighting	
C.C	Concrete Curb	
G.R	Guard Rail	A
S.P	Slope Protection	

A	500	500	Y	10.405	10.405
R	1000	W	322.117	322.117	
L	250.000	250.000	T C	447.052	447.052
Δ R	2.603	2.603	α	35-37-20.83	
X M	124.935	124.935	L C	371.729	
X	249.610	249.610	C L	871.729	



GRADIENT	DESIGN HEIGHT	EXISTING LEVEL	ACCUMULATED DISTANCE	DISTANCE	STATION	CURVELEMENT	SUPERELEVATION
1:5.000 R L=225.000	1.51+7.042	1.51+7.042			1+200+000		
2.7%	1.57+8.774	1.57+8.774			1+250+000		
1:0.500 R L=380.000	1.55+9.274	1.55+9.274			1+300+000		
3.2%	1.57+9.816	1.57+9.816			1+350+000		
1:0.500 R L=380.000	1.58+10.316	1.58+10.316			1+400+000		
3.2%	1.58+10.858	1.58+10.858			1+450+000		
1:0.500 R L=380.000	1.51+11.358	1.51+11.358			1+500+000		
3.2%	1.48+11.858	1.48+11.858			1+550+000		
1:0.500 R L=380.000	1.58+12.358	1.58+12.358			1+600+000		
3.2%	1.53+12.858	1.53+12.858			1+650+000		
1:0.500 R L=380.000	1.53+13.358	1.53+13.358			1+700+000		
3.2%	1.53+13.858	1.53+13.858			1+750+000		
1:0.500 R L=380.000	1.48+14.358	1.48+14.358			1+800+000		
3.2%	1.48+14.858	1.48+14.858			1+850+000		
1:0.500 R L=380.000	1.48+15.358	1.48+15.358			1+900+000		
3.2%	1.48+15.858	1.48+15.858			1+950+000		
1:0.500 R L=380.000	1.51+16.358	1.51+16.358			1+000+000		
3.2%	1.51+16.858	1.51+16.858			1+050+000		
1:0.500 R L=380.000	1.50+17.358	1.50+17.358			1+100+000		
3.2%	1.50+17.858	1.50+17.858			1+150+000		
1:0.500 R L=380.000	1.48+18.358	1.48+18.358			1+200+000		
3.2%	1.48+18.858	1.48+18.858			1+250+000		
1:0.500 R L=380.000	1.40+19.358	1.40+19.358			1+300+000		
3.2%	1.40+19.858	1.40+19.858			1+350+000		
1:0.500 R L=380.000	1.48+20.358	1.48+20.358			1+400+000		
3.2%	1.48+20.858	1.48+20.858			1+450+000		
1:0.500 R L=380.000	1.48+21.358	1.48+21.358			1+500+000		
3.2%	1.48+21.858	1.48+21.858			1+550+000		
1:0.500 R L=380.000	1.48+22.358	1.48+22.358			1+600+000		
3.2%	1.48+22.858	1.48+22.858			1+650+000		
1:0.500 R L=380.000	1.48+23.358	1.48+23.358			1+700+000		
3.2%	1.48+23.858	1.48+23.858			1+750+000		
1:0.500 R L=380.000	1.48+24.358	1.48+24.358			1+800+000		
3.2%	1.48+24.858	1.48+24.858			1+850+000		
1:0.500 R L=380.000	1.48+25.358	1.48+25.358			1+900+000		
3.2%	1.48+25.858	1.48+25.858			1+950+000		
1:0.500 R L=380.000	1.48+26.358	1.48+26.358			1+000+000		
3.2%	1.48+26.858	1.48+26.858			1+050+000		
1:0.500 R L=380.000	1.48+27.358	1.48+27.358			1+100+000		
3.2%	1.48+27.858	1.48+27.858			1+150+000		
1:0.500 R L=380.000	1.48+28.358	1.48+28.358			1+200+000		
3.2%	1.48+28.858	1.48+28.858			1+250+000		
1:0.500 R L=380.000	1.48+29.358	1.48+29.358			1+300+000		
3.2%	1.48+29.858	1.48+29.858			1+350+000		
1:0.500 R L=380.000	1.48+30.358	1.48+30.358			1+400+000		
3.2%	1.48+30.858	1.48+30.858			1+450+000		
1:0.500 R L=380.000	1.48+31.358	1.48+31.358			1+500+000		
3.2%	1.48+31.858	1.48+31.858			1+550+000		
1:0.500 R L=380.000	1.48+32.358	1.48+32.358			1+600+000		
3.2%	1.48+32.858	1.48+32.858			1+650+000		
1:0.500 R L=380.000	1.48+33.358	1.48+33.358			1+700+000		
3.2%	1.48+33.858	1.48+33.858			1+750+000		
1:0.500 R L=380.000	1.48+34.358	1.48+34.358			1+800+000		
3.2%	1.48+34.858	1.48+34.858			1+850+000		
1:0.500 R L=380.000	1.48+35.358	1.48+35.358			1+900+000		
3.2%	1.48+35.858	1.48+35.858			1+950+000		
1:0.500 R L=380.000	1.48+36.358	1.48+36.358			1+000+000		
3.2%	1.48+36.858	1.48+36.858			1+050+000		
1:0.500 R L=380.000	1.48+37.358	1.48+37.358			1+100+000		
3.2%	1.48+37.858	1.48+37.858			1+150+000		
1:0.500 R L=380.000	1.48+38.358	1.48+38.358			1+200+000		
3.2%	1.48+38.858	1.48+38.858			1+250+000		
1:0.500 R L=380.000	1.48+39.358	1.48+39.358			1+300+000		
3.2%	1.48+39.858	1.48+39.858			1+350+000		
1:0.500 R L=380.000	1.48+40.358	1.48+40.358			1+400+000		
3.2%	1.48+40.858	1.48+40.858			1+450+000		
1:0.500 R L=380.000	1.48+41.358	1.48+41.358			1+500+000		
3.2%	1.48+41.858	1.48+41.858			1+550+000		
1:0.500 R L=380.000	1.48+42.358	1.48+42.358			1+600+000		
3.2%	1.48+42.858	1.48+42.858			1+650+000		
1:0.500 R L=380.000	1.48+43.358	1.48+43.358			1+700+000		
3.2%	1.48+43.858	1.48+43.858			1+750+000		
1:0.500 R L=380.000	1.48+44.358	1.48+44.358			1+800+000		
3.2%	1.48+44.858	1.48+44.858			1+850+000		
1:0.500 R L=380.000	1.48+45.358	1.48+45.358			1+900+000		
3.2%	1.48+45.858	1.48+45.858			1+950+000		
1:0.500 R L=380.000	1.48+46.358	1.48+46.358			1+000+000		
3.2%	1.48+46.858	1.48+46.858			1+050+000		
1:0.500 R L=380.000	1.48+47.358	1.48+47.358			1+100+000		
3.2%	1.48+47.858	1.48+47.858			1+150+000		
1:0.500 R L=380.000	1.48+48.358	1.48+48.358			1+200+000		
3.2%	1.48+48.858	1.48+48.858			1+250+000		
1:0.500 R L=380.000	1.48+49.358	1.48+49.358			1+300+000		
3.2%	1.48+49.858	1.48+49.858			1+350+000		
1:0.500 R L=380.000	1.48+50.358	1.48+50.358			1+400+000		
3.2%	1.48+50.858	1.48+50.858			1+450+000		
1:0.500 R L=380.000	1.48+51.358	1.48+51.358			1+500+000		
3.2%	1.48+51.858	1.48+51.858			1+550+000		
1:0.500 R L=380.000	1.48+52.358	1.48+52.358			1+600+000		
3.2%	1.48+52.858	1.48+52.858			1+650+000		
1:0.500 R L=380.000	1.48+53.358	1.48+53.358			1+700+000		
3.2%	1.48+53.858	1.48+53.858			1+750+000		
1:0.500 R L=380.000	1.48+54.358	1.48+54.358			1+800+000		
3.2%	1.48+54.858	1.48+54.858			1+850+000		
1:0.500 R L=380.000	1.48+55.358	1.48+55.358			1+900+000		
3.2%	1.48+55.858	1.48+55.858			1+950+000		
1:0.500 R L=380.000	1.48+56.358	1.48+56.358			1+000+000		
3.2%	1.48+56.858	1.48+56.858			1+050+000		
1:0.500 R L=380.000	1.48+57.358	1.48+57.358			1+100+000		
3.2%	1.48+57.858	1.48+57.858			1+150+000		
1:0.500 R L=380.000	1.48+58.358	1.48+58.358			1+200+000		
3.2%	1.48+58.858	1.48+58.858			1+250+000		
1:0.500 R L=380.000	1.48+59.358	1.48+59.358			1+300+000		
3.2%	1.48+59.858	1.48+59.858			1+350+000		
1:0.500 R L=380.000	1.48+60.358	1.48+60.358			1+400+000		
3.2%	1.48+60.858	1.48+60.858			1+450+000		
1:0.500 R L=380.000	1.48+61.358	1.48+61.358			1+500+000		
3.2%	1.48+61.858	1.48+61.858			1+550+000		
1:0.500 R L=380.000	1.48+62.358	1.48+62.358			1+600+000		
3.2%	1.48+62.858	1.48+62.858			1+650+000		
1:0.500 R L=380.000	1.48+63.358	1.48+63.358			1+700+000		
3.2%	1.48+63.858	1.48+63.858			1+750+000		
1:0.500 R L=380.000	1.48+64.358	1.48+64.358			1+800+000		
3.2%	1.48+64.858	1.48+64.858			1+850+000		
1:0.500 R L=380.000	1.48+65.358	1.48+65.358			1+900+000		
3.2%	1.48+65.858	1.48+65.858			1+950+000		
1:0.500 R L=380.000	1.48+66.358	1.48+66.358			1+000+000		
3.2%	1.48+66.858	1.48+66.858			1+050+000		
1:0.500 R L=380.000							

PLAN AND PROFILE (10)

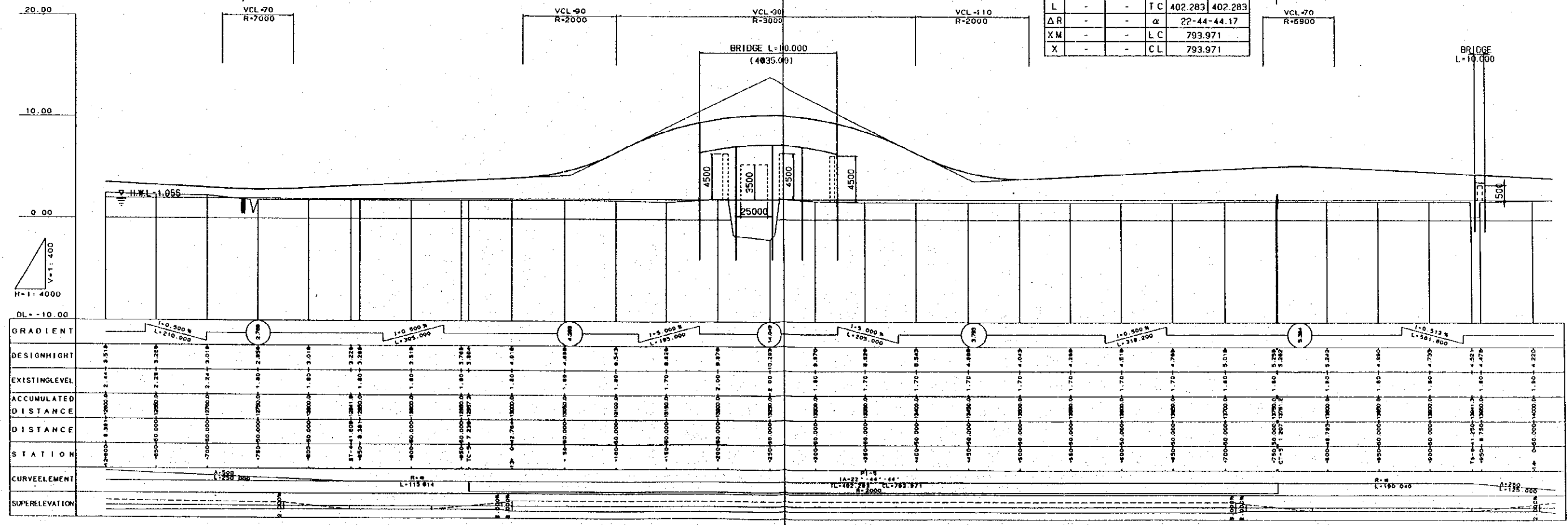


LEGEND

Mark	Description	Type
C.M.B	Concrete Median Barrier	Co Block 300x300x90
R.L	Road Lightings	
C.C	Concrete Curb	
G.R	Guard Rail	A
S.P	Slope Protection	

PI No.5

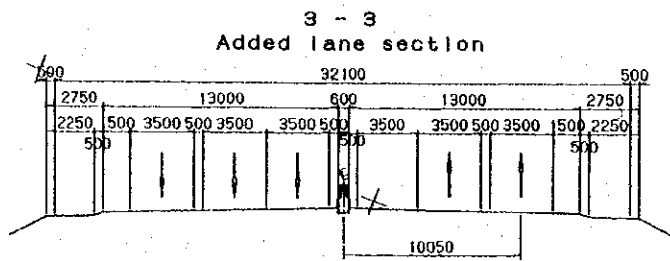
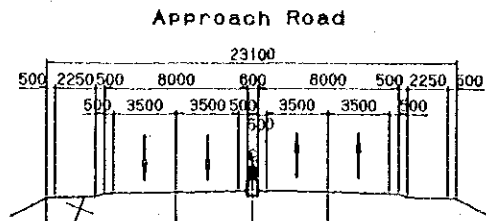
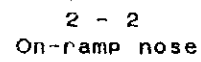
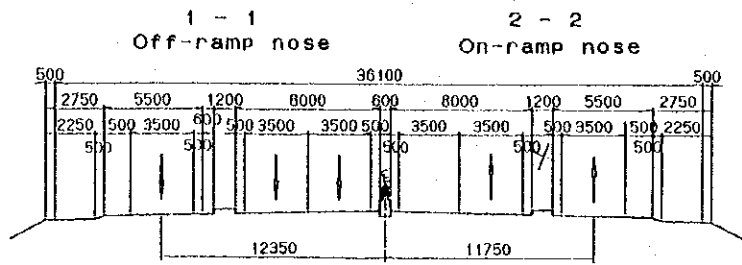
A	-	Y	-	-
R	2000	W	-	-
L	-	TC	402.283	402.283
ΔR	-	α	22-44-44.17	
X.M	-	LC	793.971	
X	-	CL	793.971	



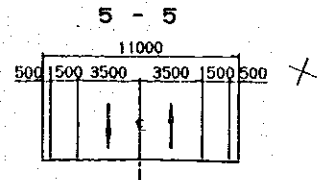
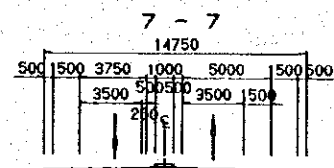
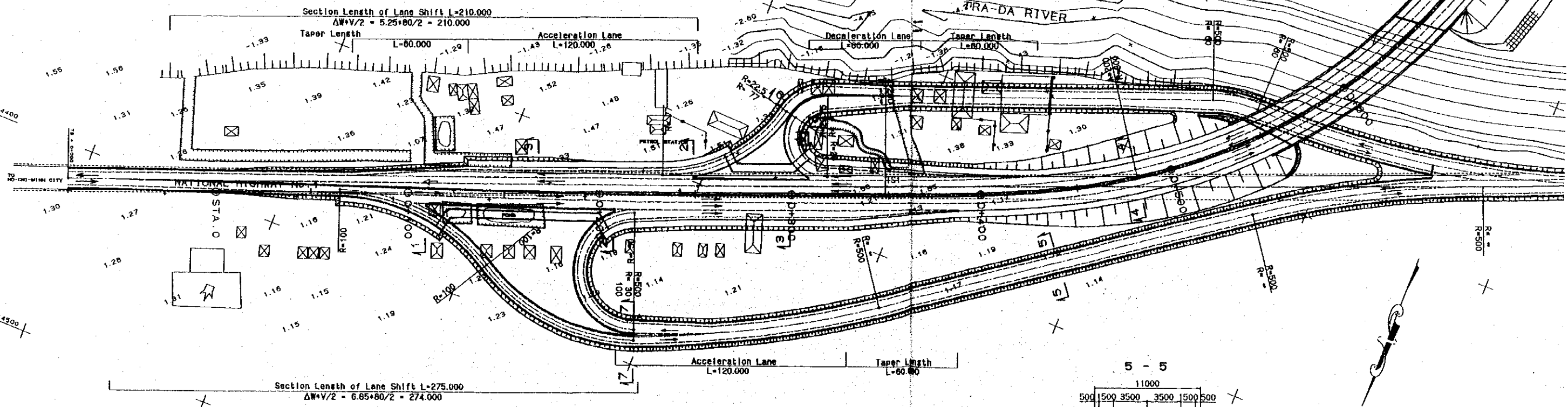
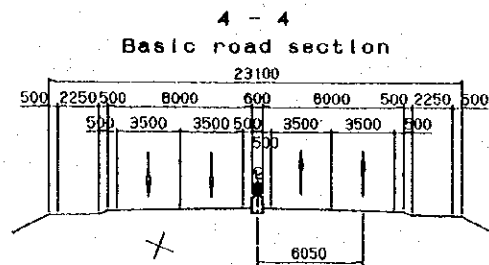
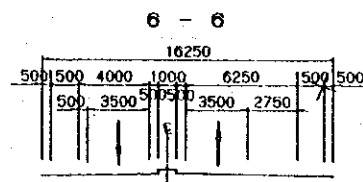
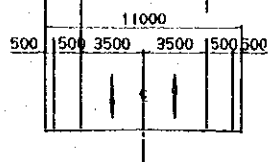
GRADIENT	DESIGN HEIGHT	EXISTING LEVEL	ACCUMULATED DISTANCE	DISTANCE	STATION	CURVELEMENT	SUPERELEVATION
1:0.500 L=210.000	10.00	9.516	0.00	0.00	12+700	R=2000	
1:0.500 L=205.000	10.00	9.516	210.00	210.00	12+905	R=2000	
1:0.500 L=205.000	10.00	9.516	415.00	415.00	13+110	R=2000	
1:0.500 L=205.000	10.00	9.516	620.00	620.00	13+315	R=2000	
1:0.500 L=205.000	10.00	9.516	825.00	825.00	13+520	R=2000	
1:0.500 L=205.000	10.00	9.516	1030.00	1030.00	13+725	R=2000	
1:0.500 L=205.000	10.00	9.516	1235.00	1235.00	13+930	R=2000	
1:0.512 L=218.200	10.00	9.516	1453.20	1453.20	14+148.20	R=6900	

Cross Section Elements of Speed Change Lane

INTERSECTION ROUTE C-3 (BP)



Existing Road



Section Elements of Speed Change Lane

INTERSECTION ROUTE C-3 (BP)

