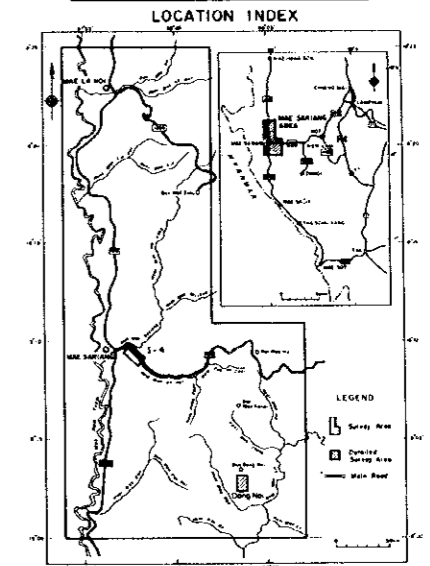
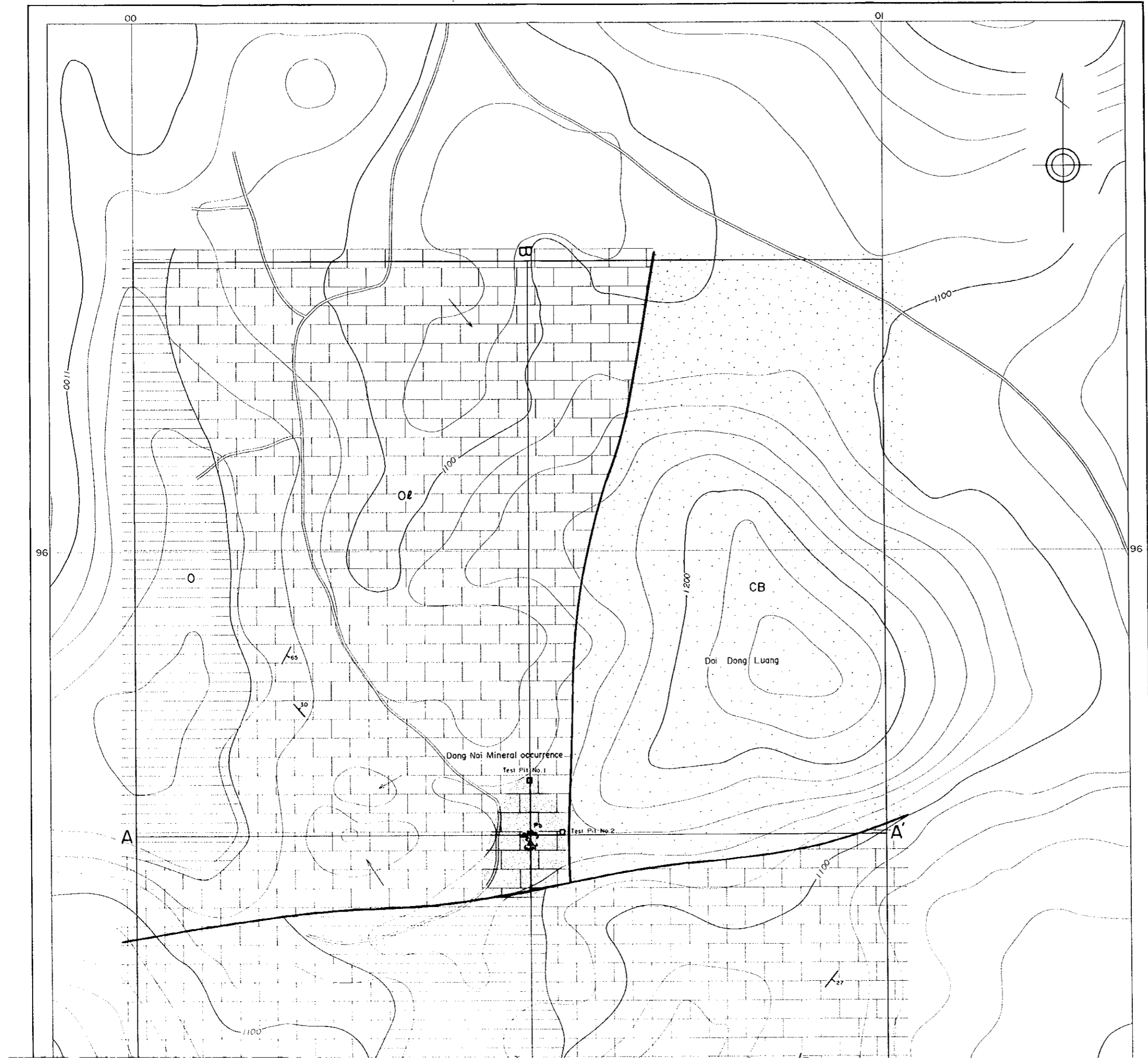


MINERAL EXPLORATION OF MAE SARIANG OF THE DONG NOI AREA GEOLOGIC MAP

Scale 1 : 2,500
0 50 100 200m

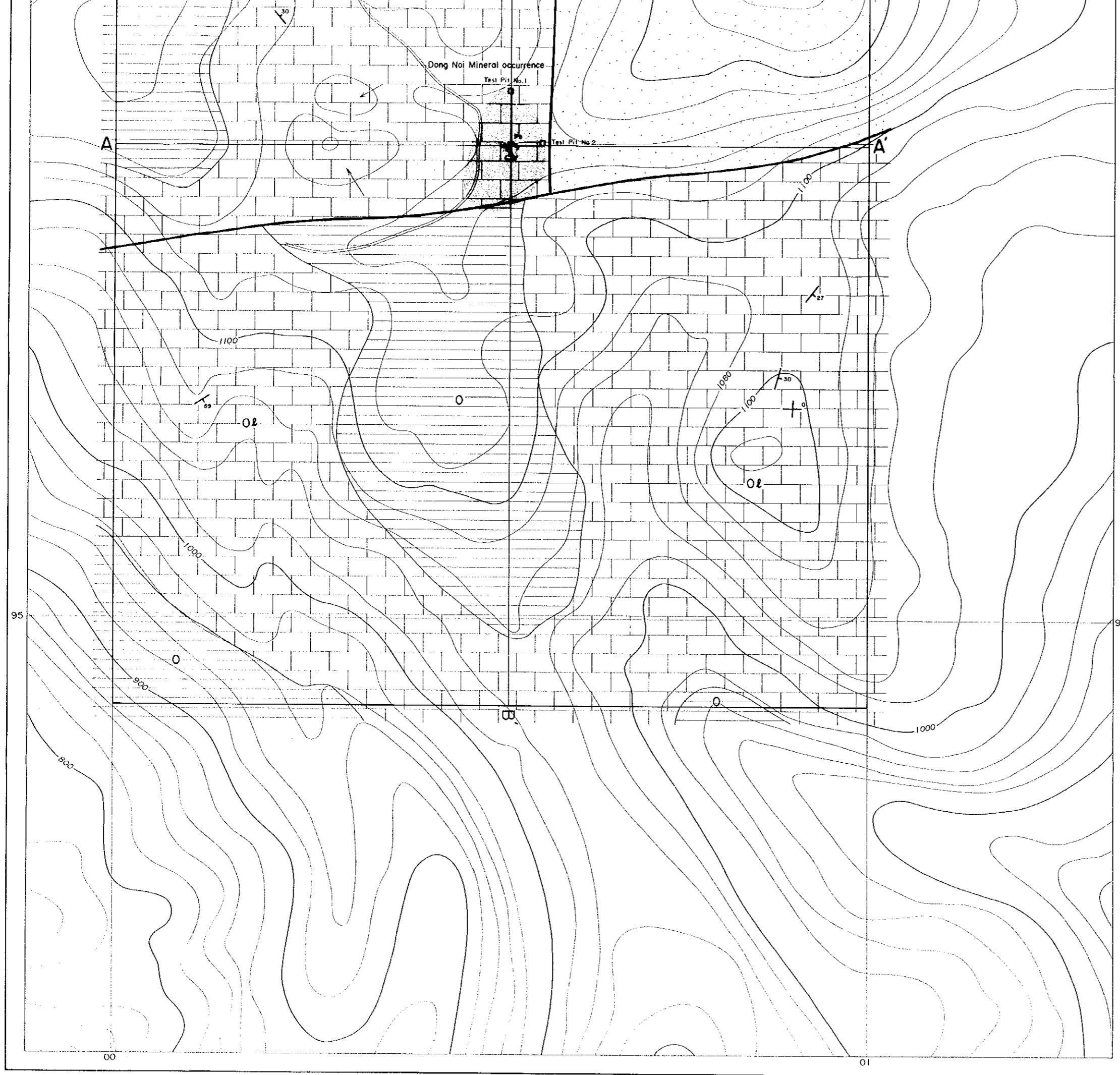



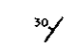


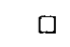
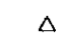
JAPAN INTERNATIONAL COOPERATION AGENCY
METAL MINING AGENCY OF JAPAN
MARCH 1998



LEGEND

- Ordovician
 - limestone
 - shale, sandstone
- Cambrian
 - sandstone
- Fault
- Strike and dip
- Ore outcrops
- Distribution of mineralized floats
- Test pit (this work)
- Test pit (old)



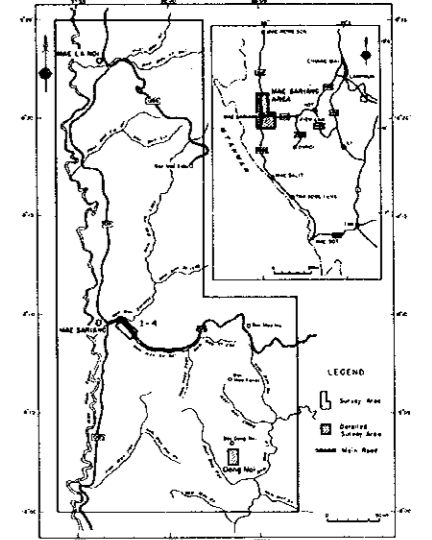
-  Fault
-  Strike and dip
-  Ore outcrops
-  Distribution of mineralized floats
-  Test pit (this work)
-  Test pit (old)

MINERAL EXPLORATION OF MAE SARIANG OF THE DONG NOI AREA GEOLOGIC PROFILE

Scale 1 : 2,500

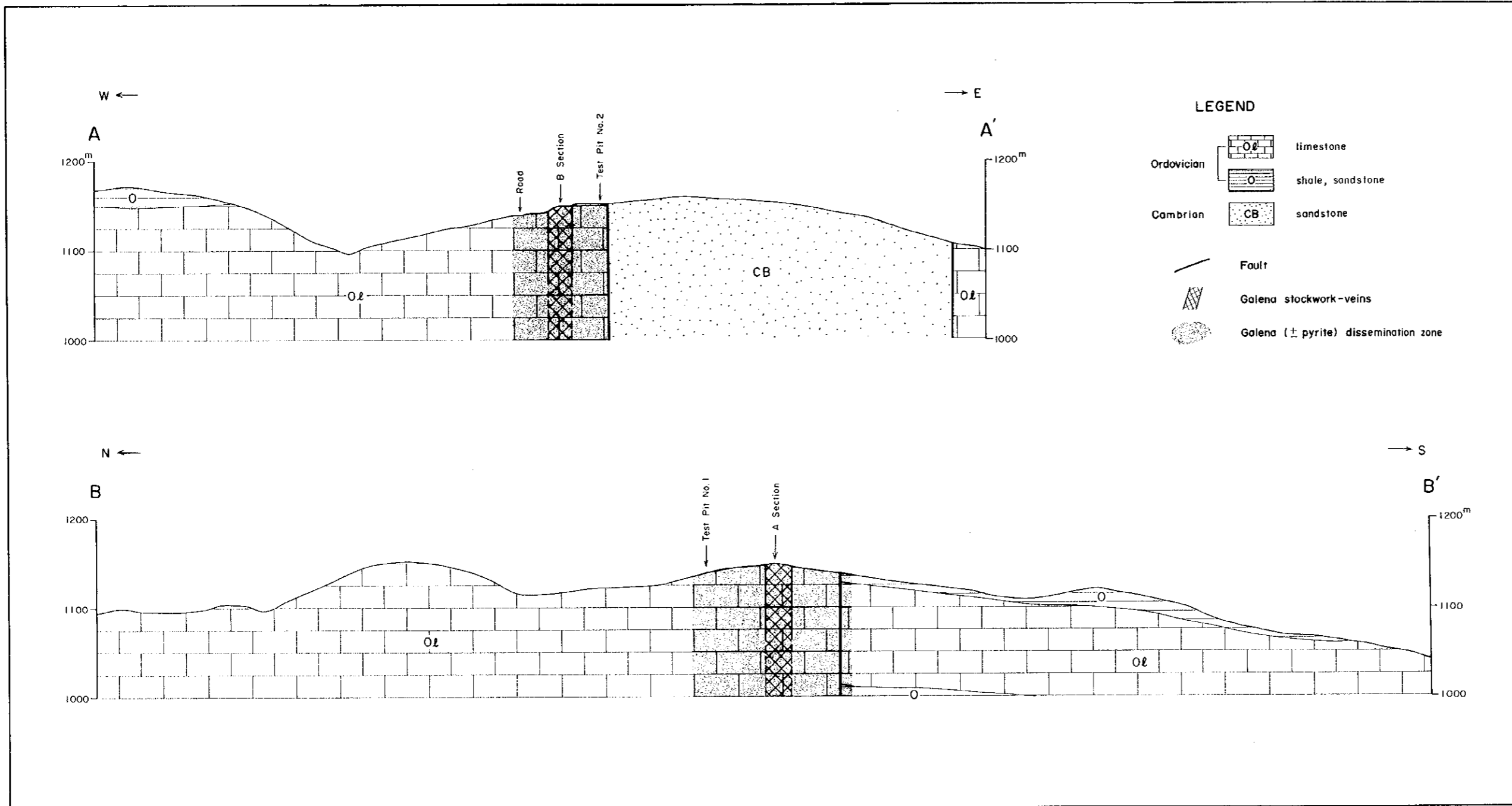
0 50 100 200m

LOCATION INDEX

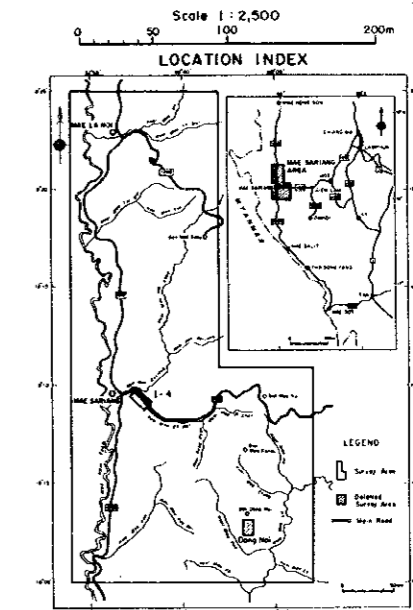


JAPAN INTERNATIONAL COOPERATION AGENCY
METAL MINING AGENCY OF JAPAN

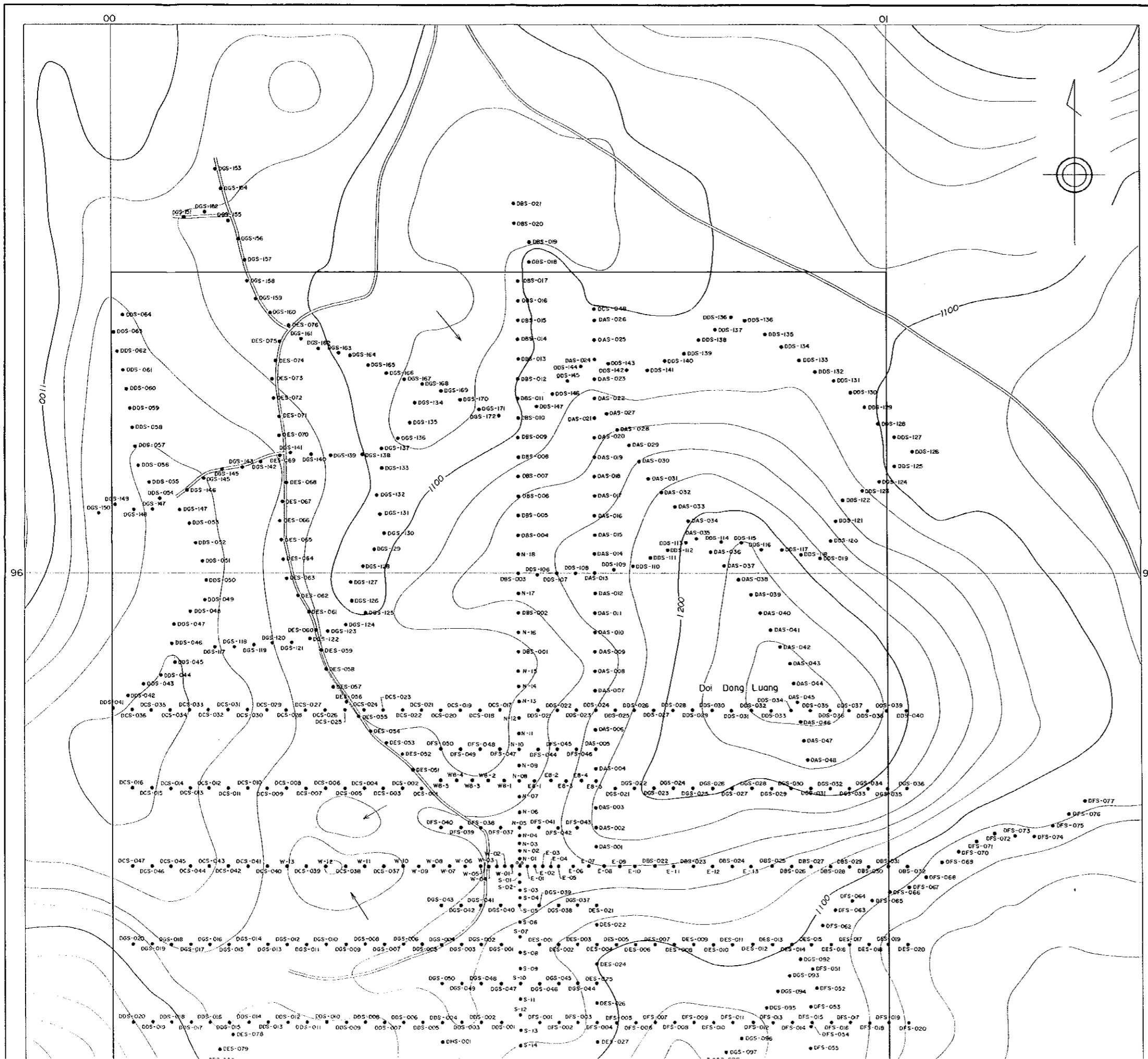
MARCH 1998

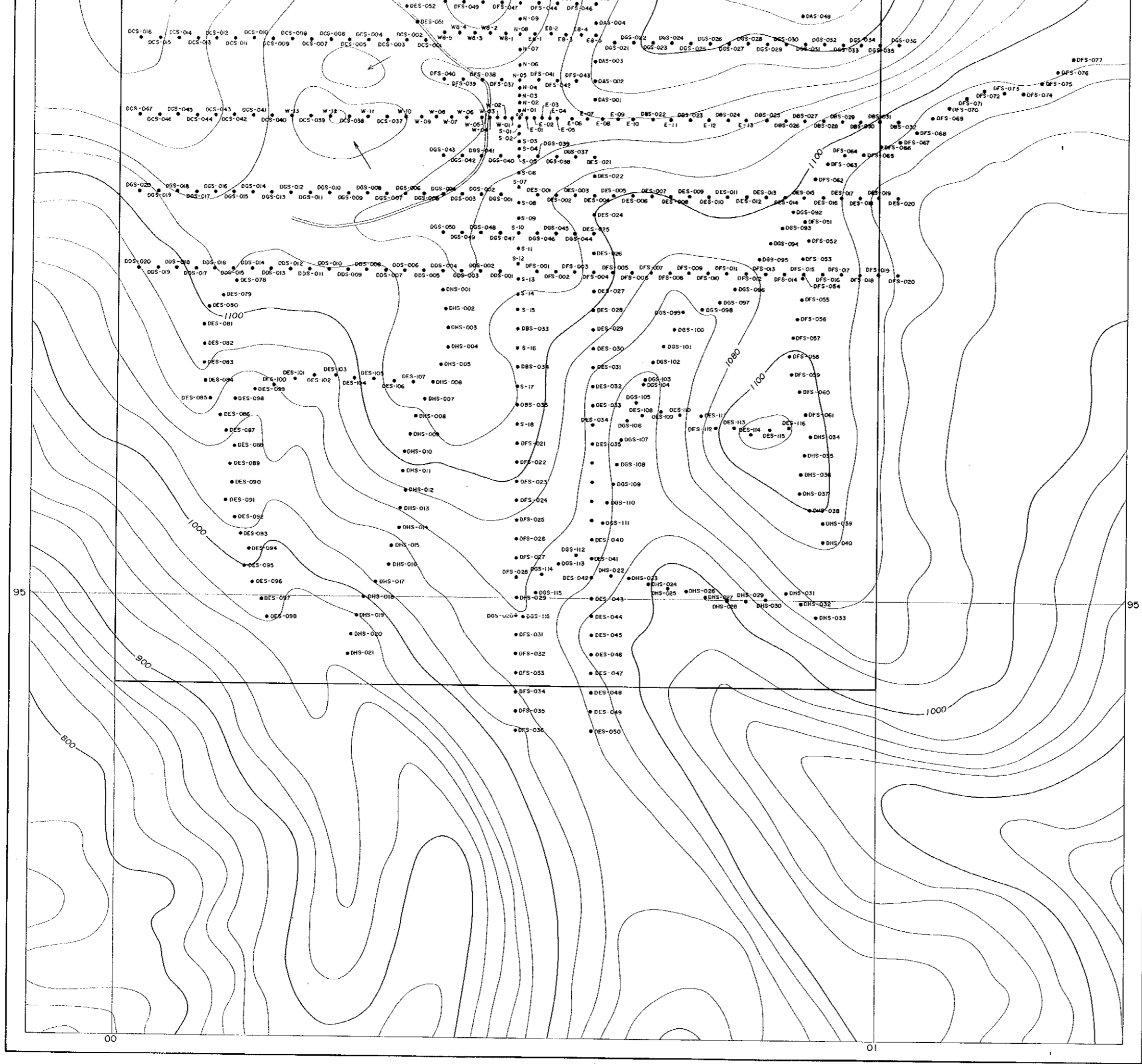


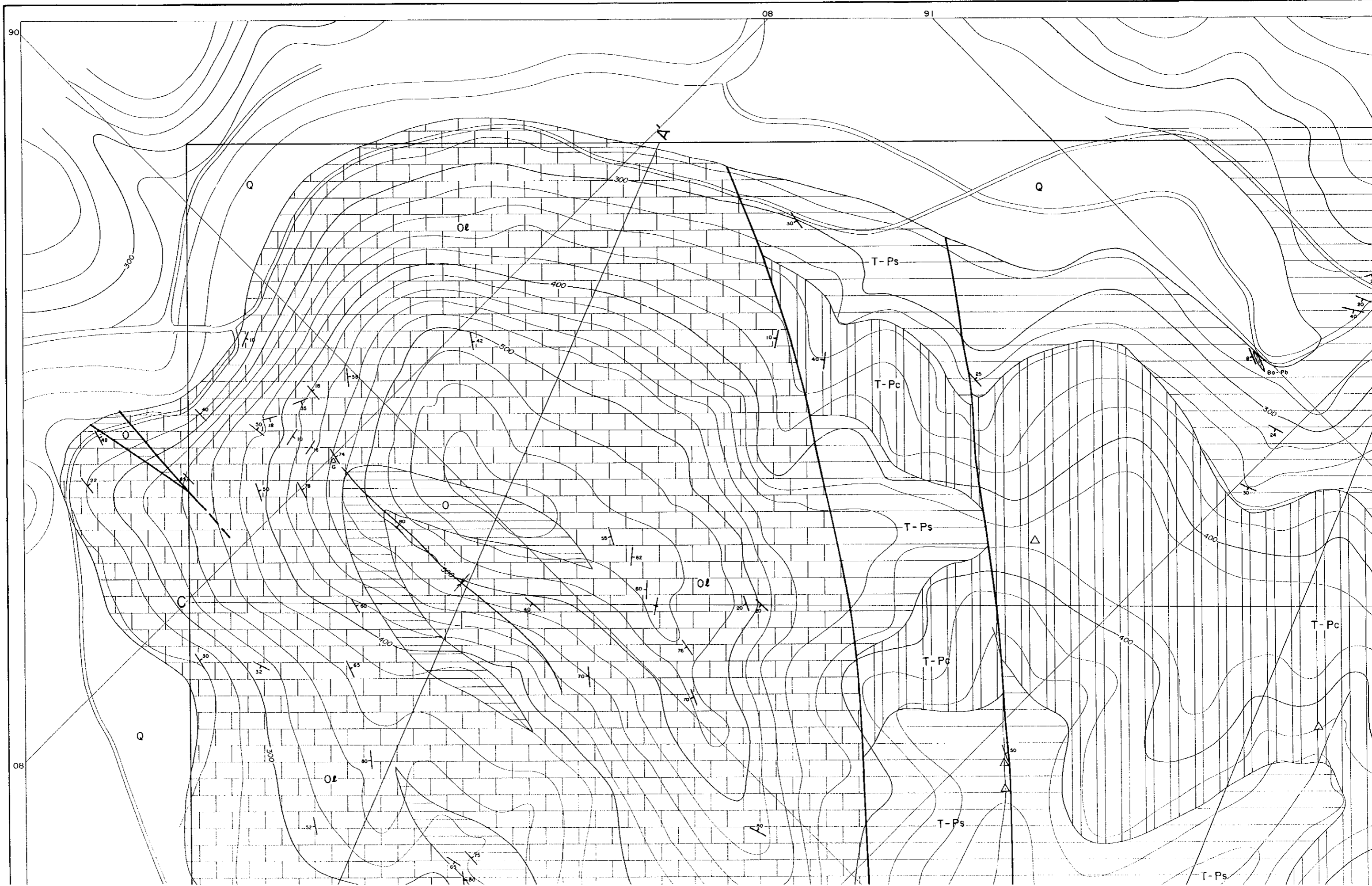
MINERAL EXPLORATION OF MAE SARIANG OF THE DONG NOI AREA LOCALITY MAP OF SOIL SAMPLES

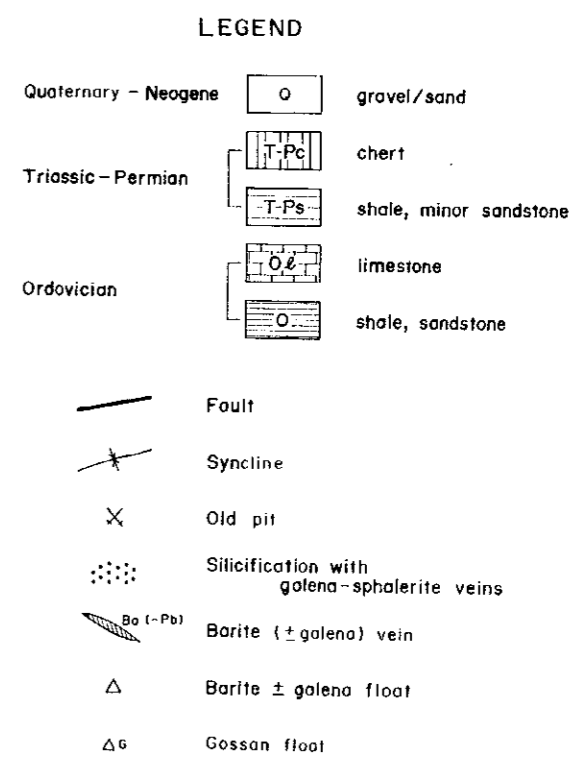
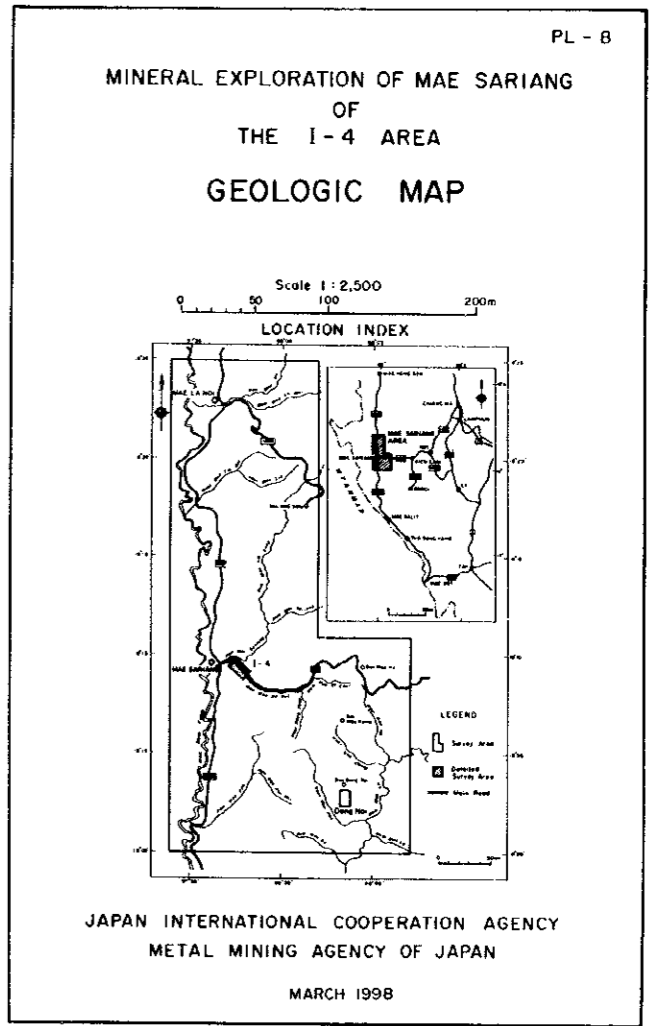
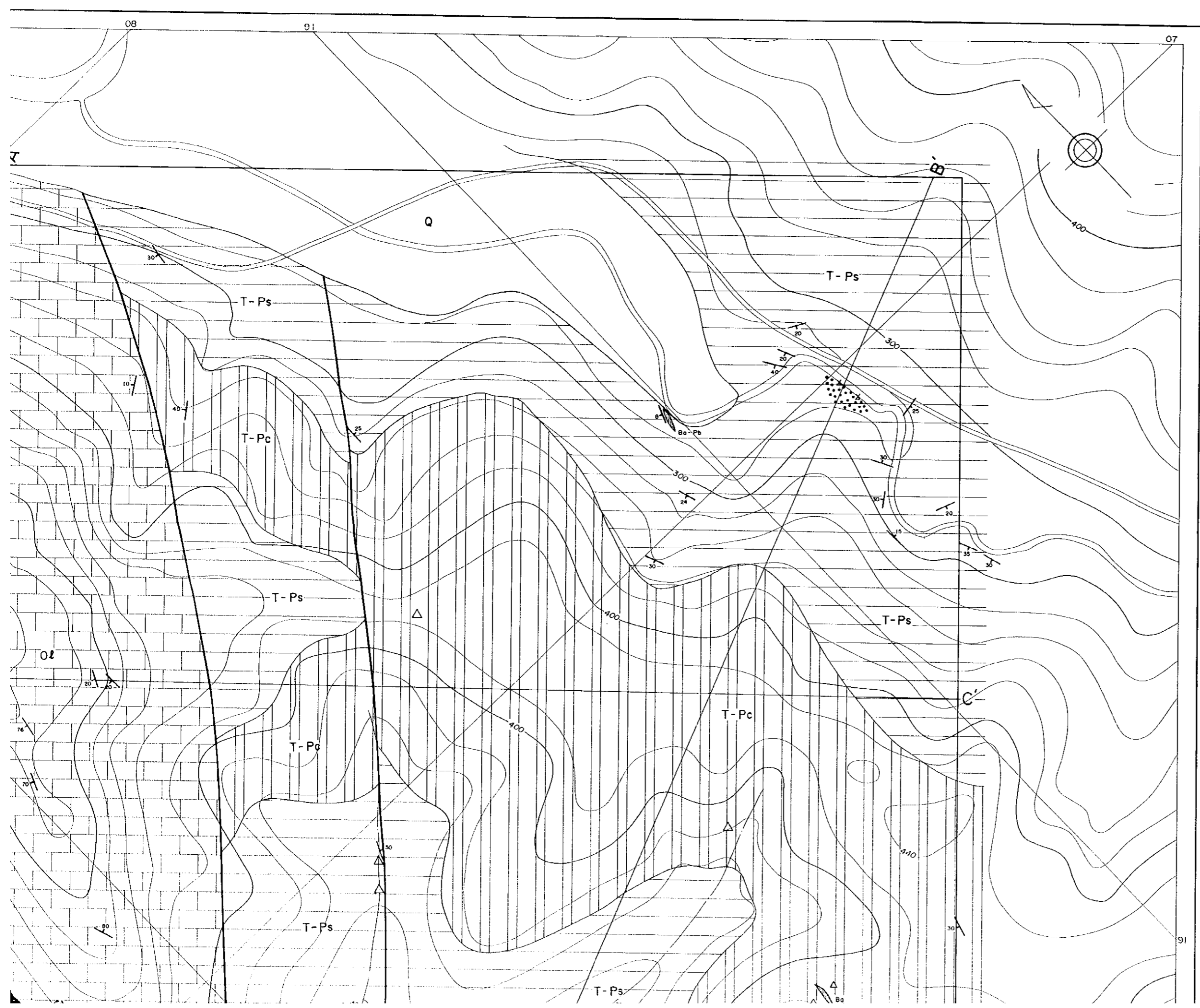


JAPAN INTERNATIONAL COOPERATION AGENCY
METAL MINING AGENCY OF JAPAN
MARCH 1998

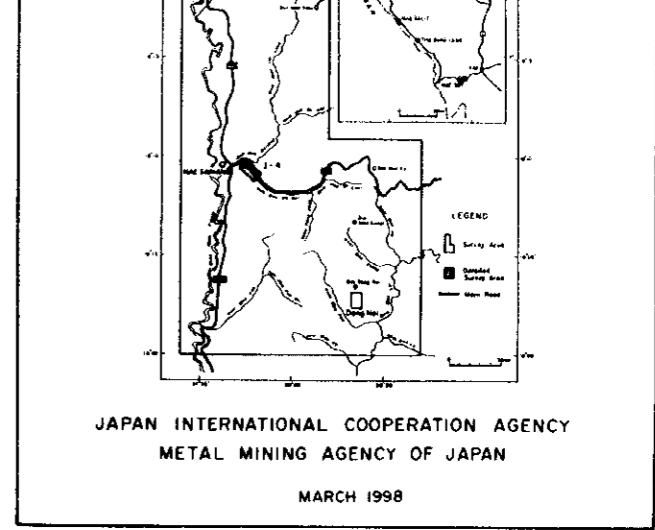
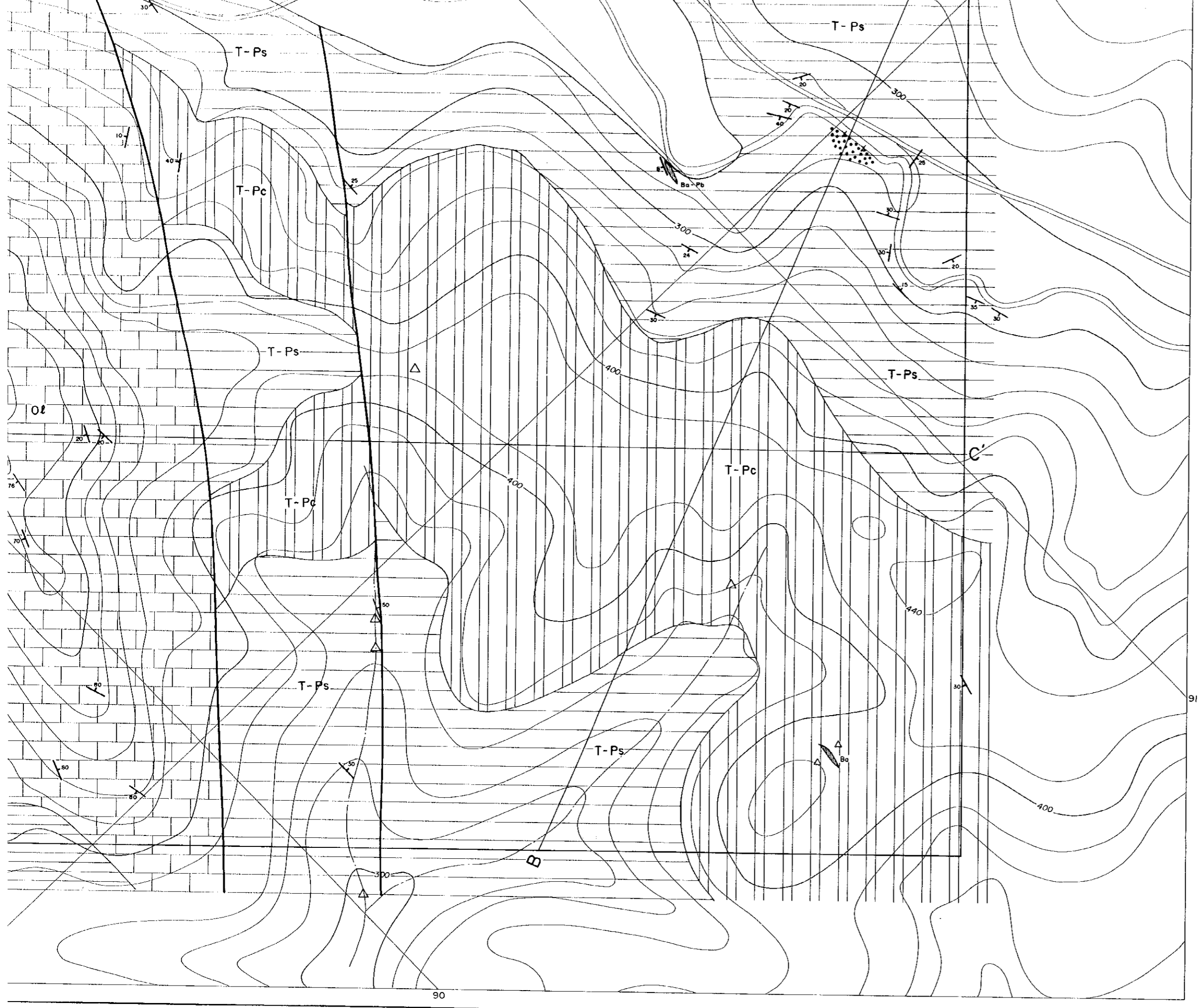






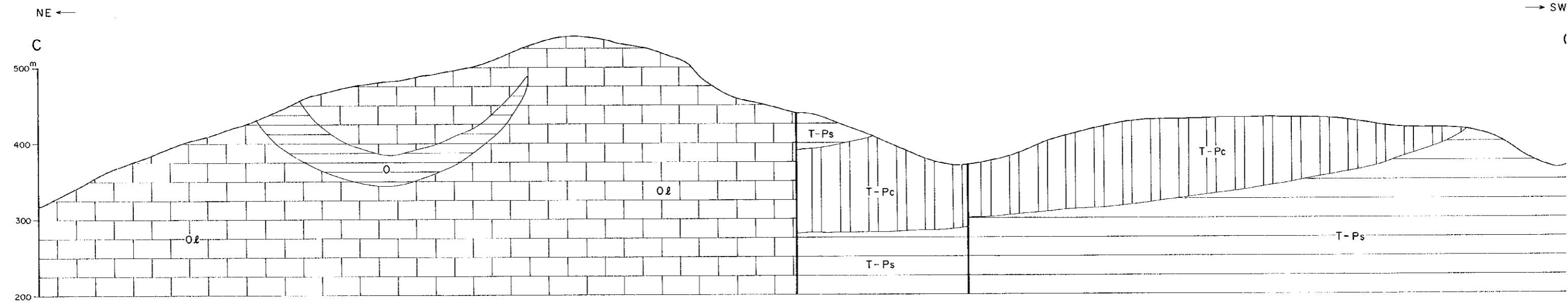
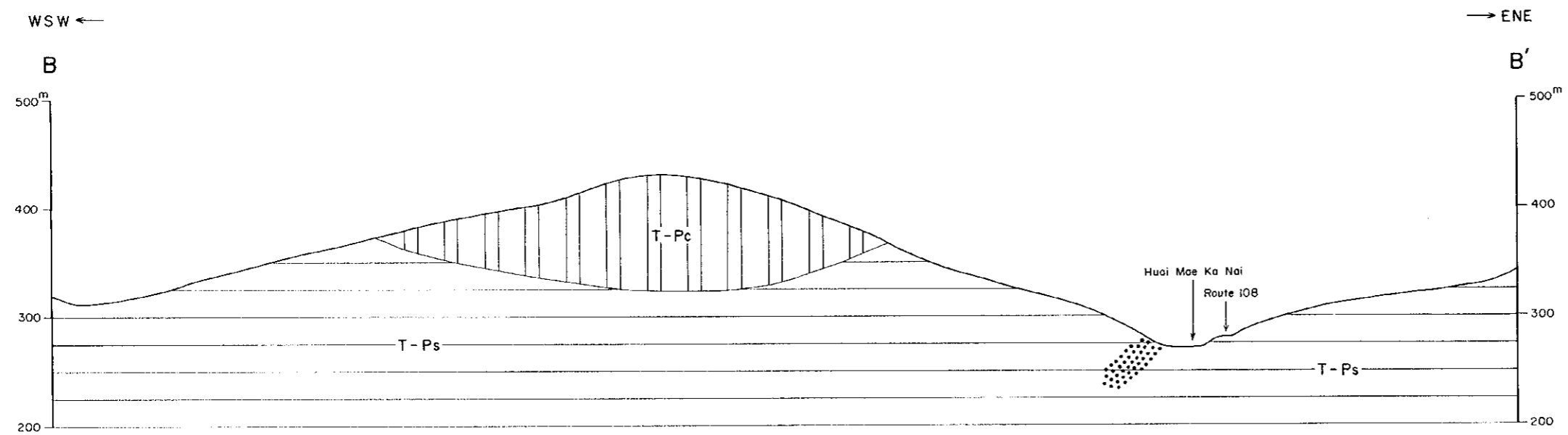
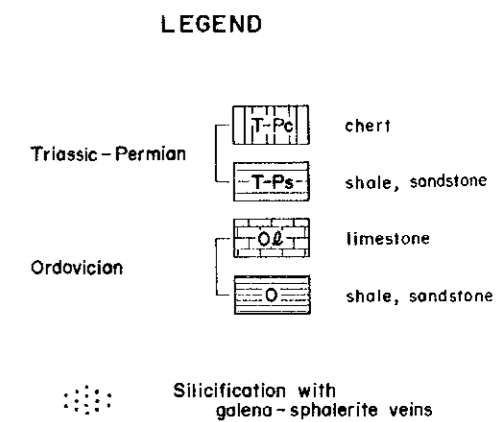
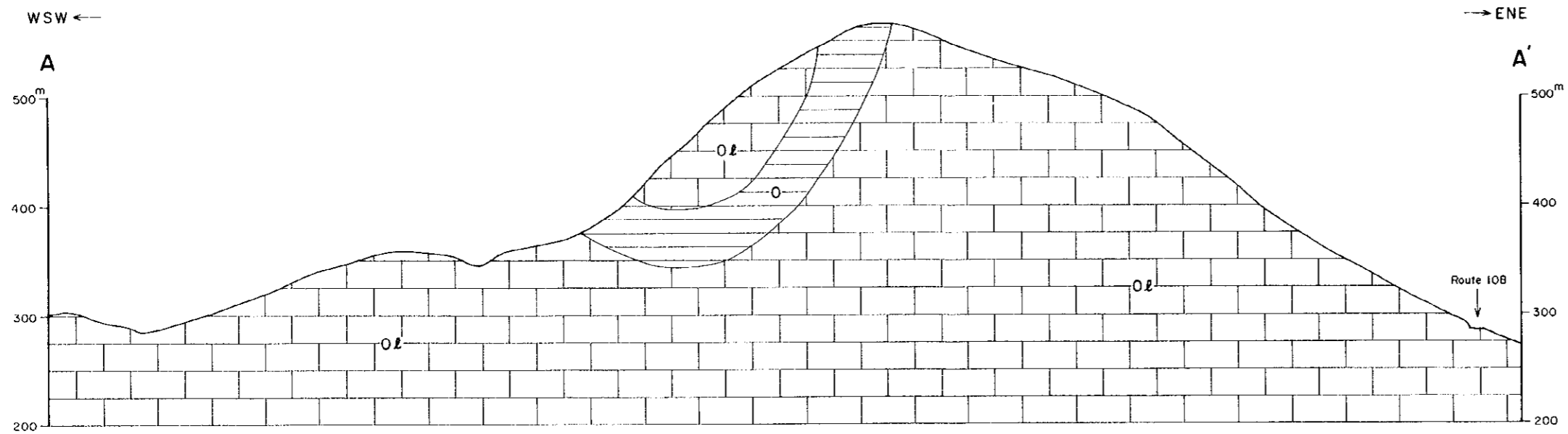




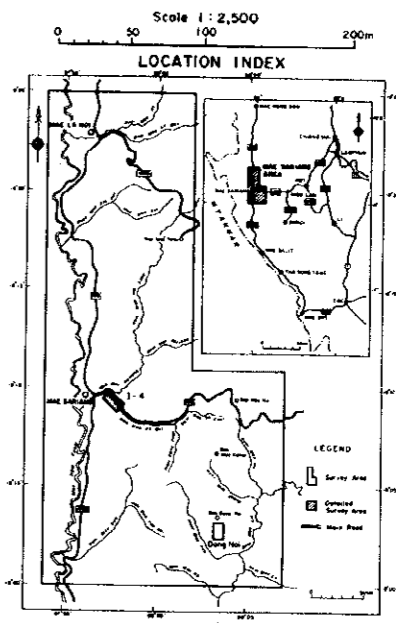


LEGEND

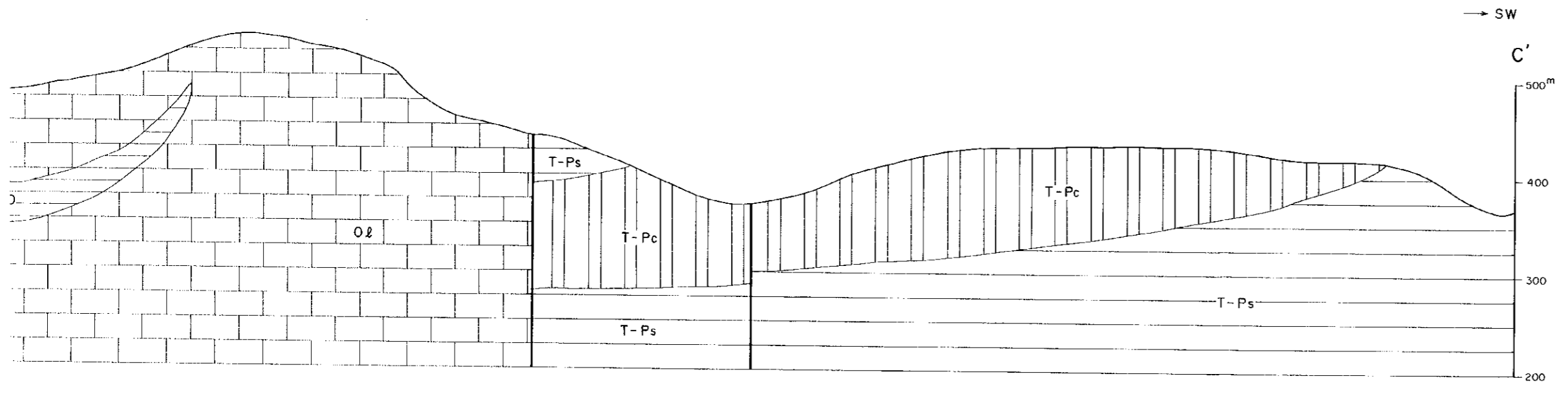
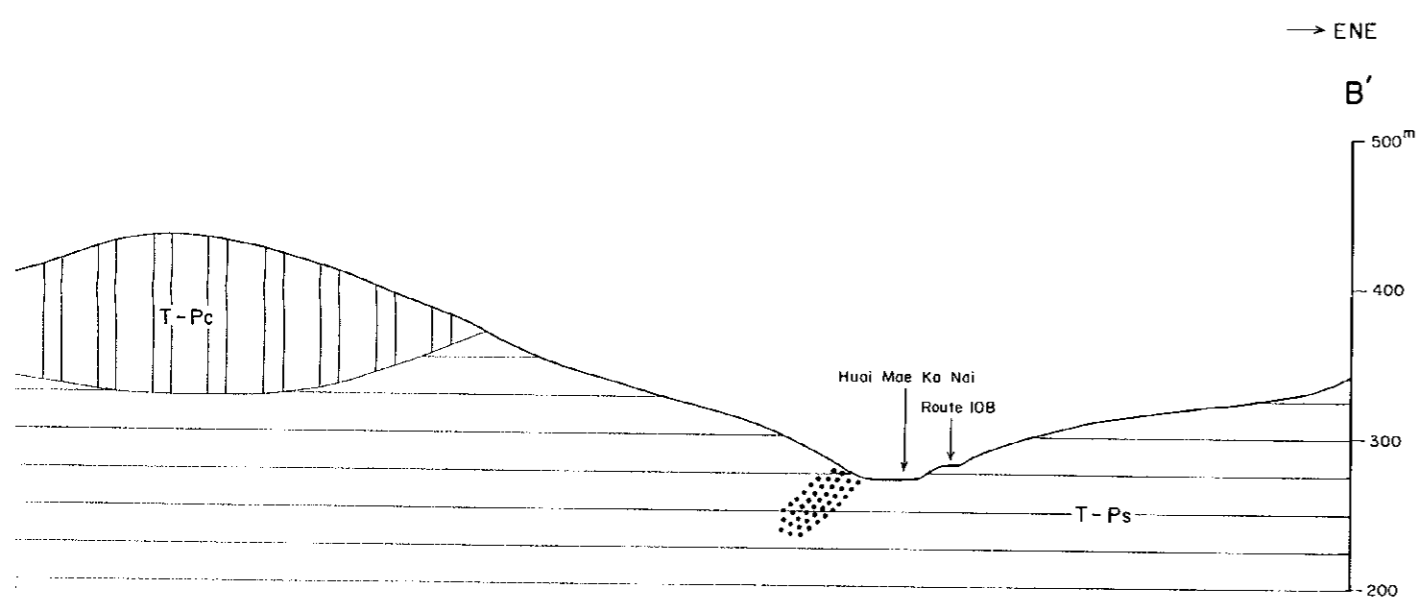
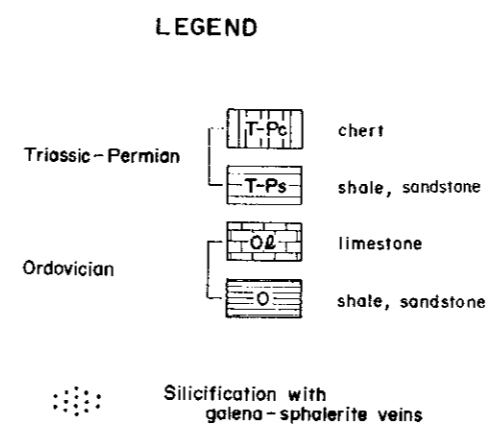
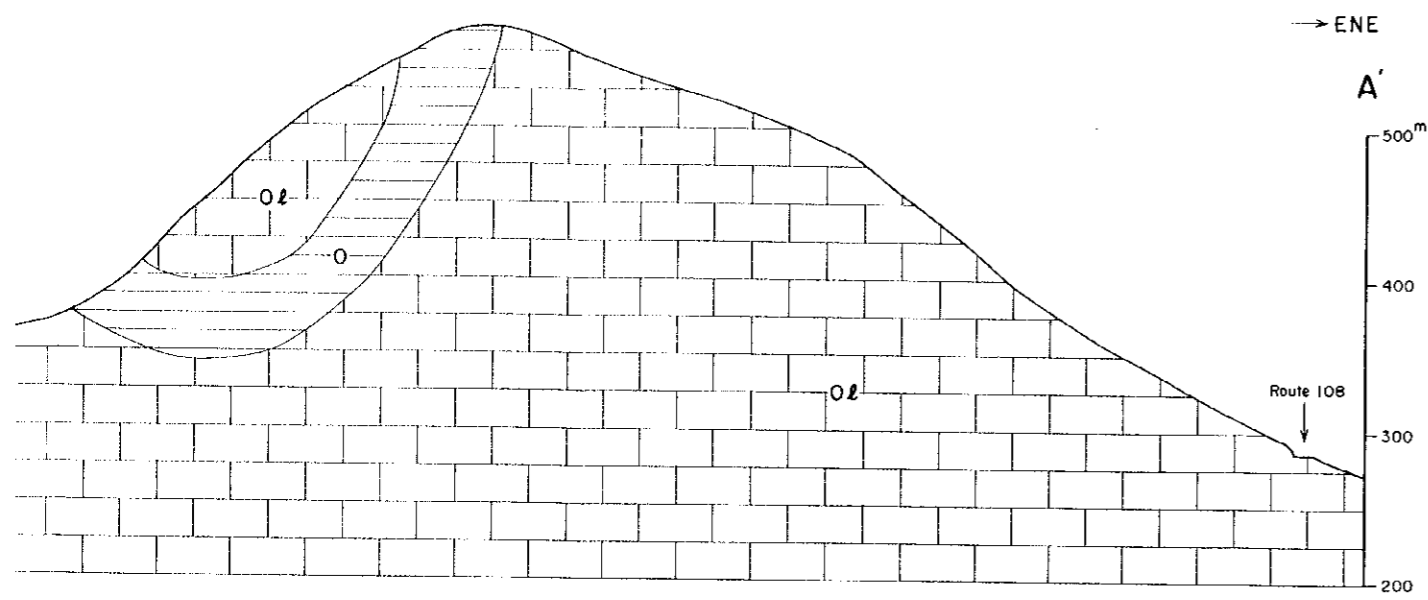
Quaternary - Neogene		gravel/sand
Triassic - Permian		chert
		shale, minor sandstone
Ordovician		limestone
		shale, sandstone
		Fault
		Syncline
		Old pit
		Silicification with galena-sphalerite veins
		Barite (\pm galena) vein
		Barite \pm galena float
		Gossan float



MINERAL EXPLORATION OF MAE SARIANG OF THE I - 4 AREA GEOLOGIC PROFILE



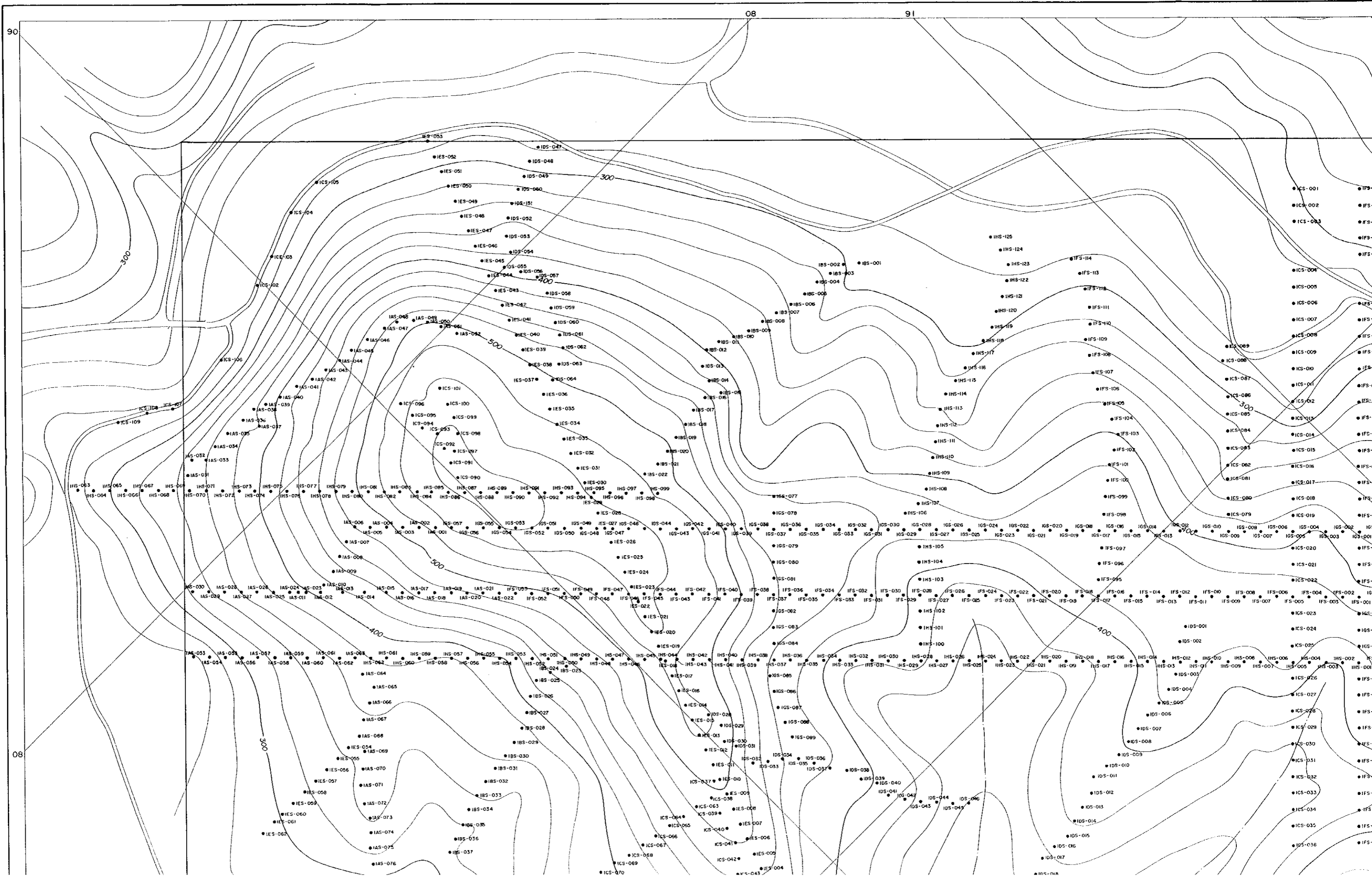
JAPAN INTERNATIONAL COOPERATION AGENCY
METAL MINING AGENCY OF JAPAN
MARCH 1998



90

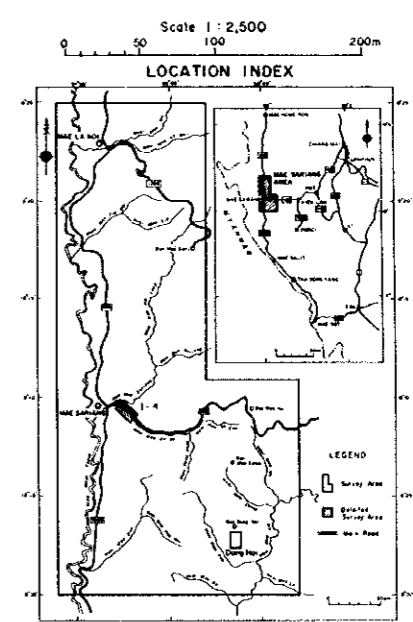
08

91



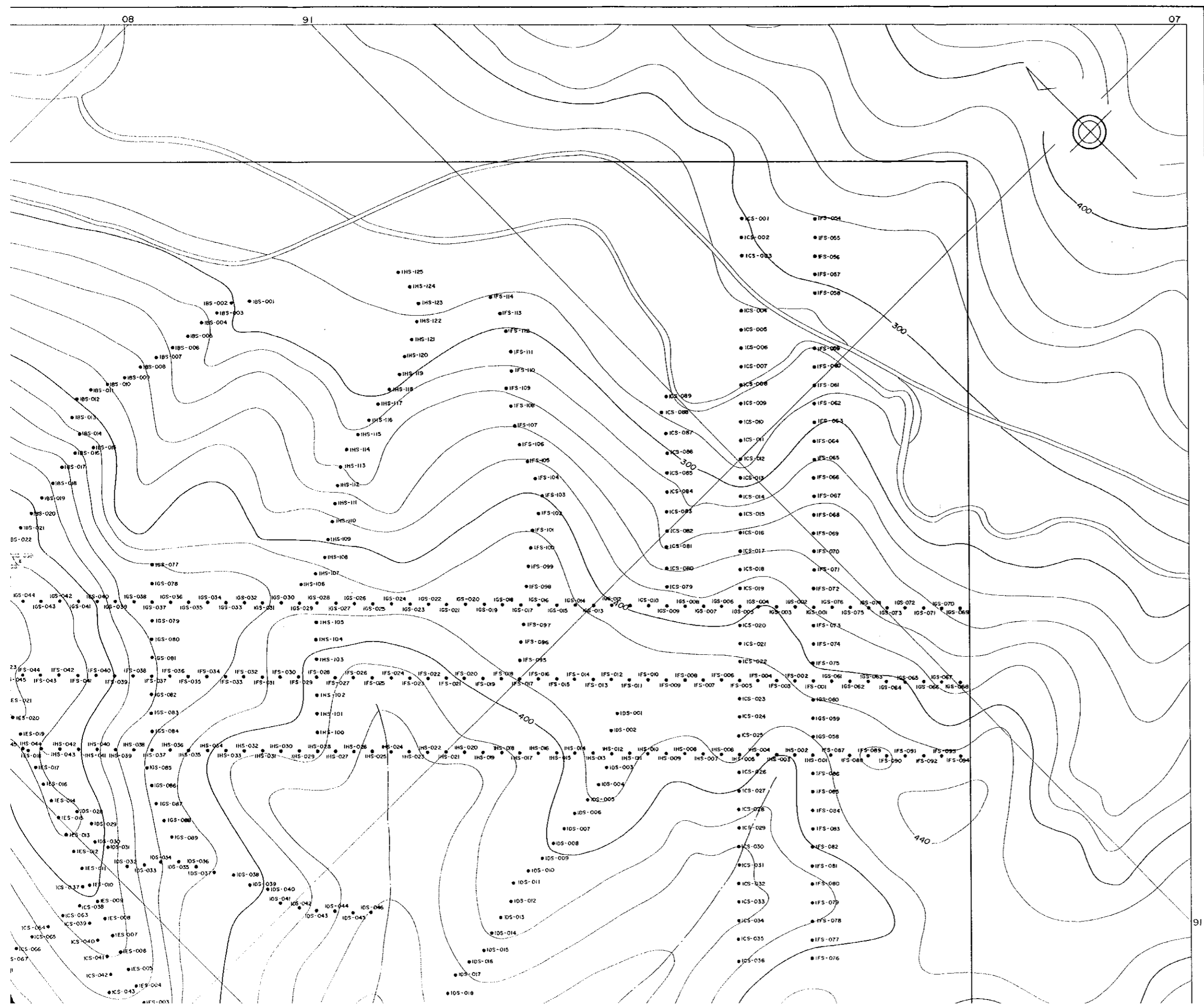
08

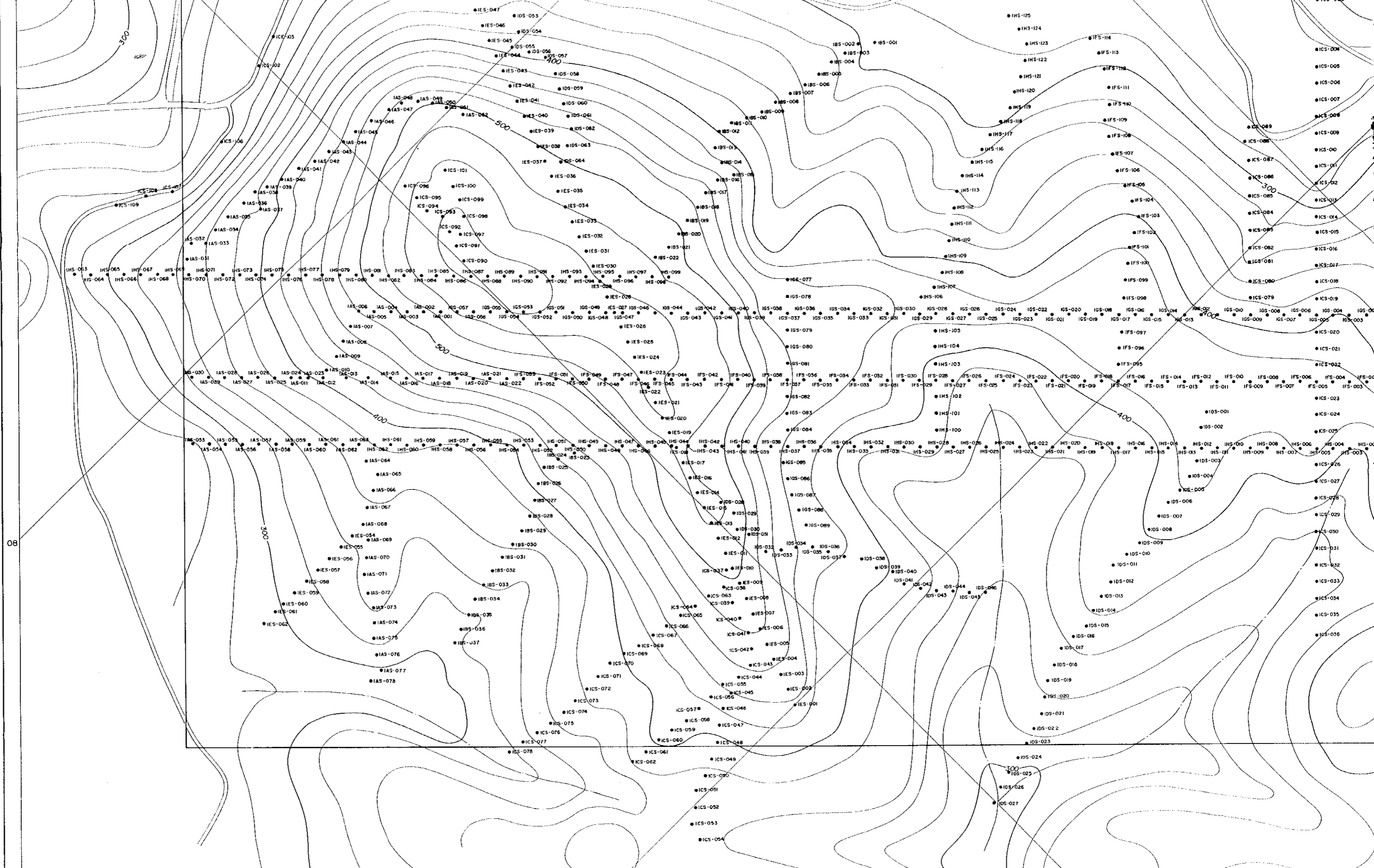
MINERAL EXPLORATION OF MAE SARIANG OF THE 1-4 AREA LOCALITY MAP OF SOIL SAMPLES



JAPAN INTERNATIONAL COOPERATION AGENCY
METAL MINING AGENCY OF JAPAN

MARCH 1998

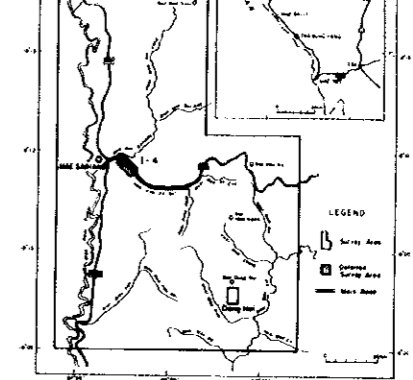




08

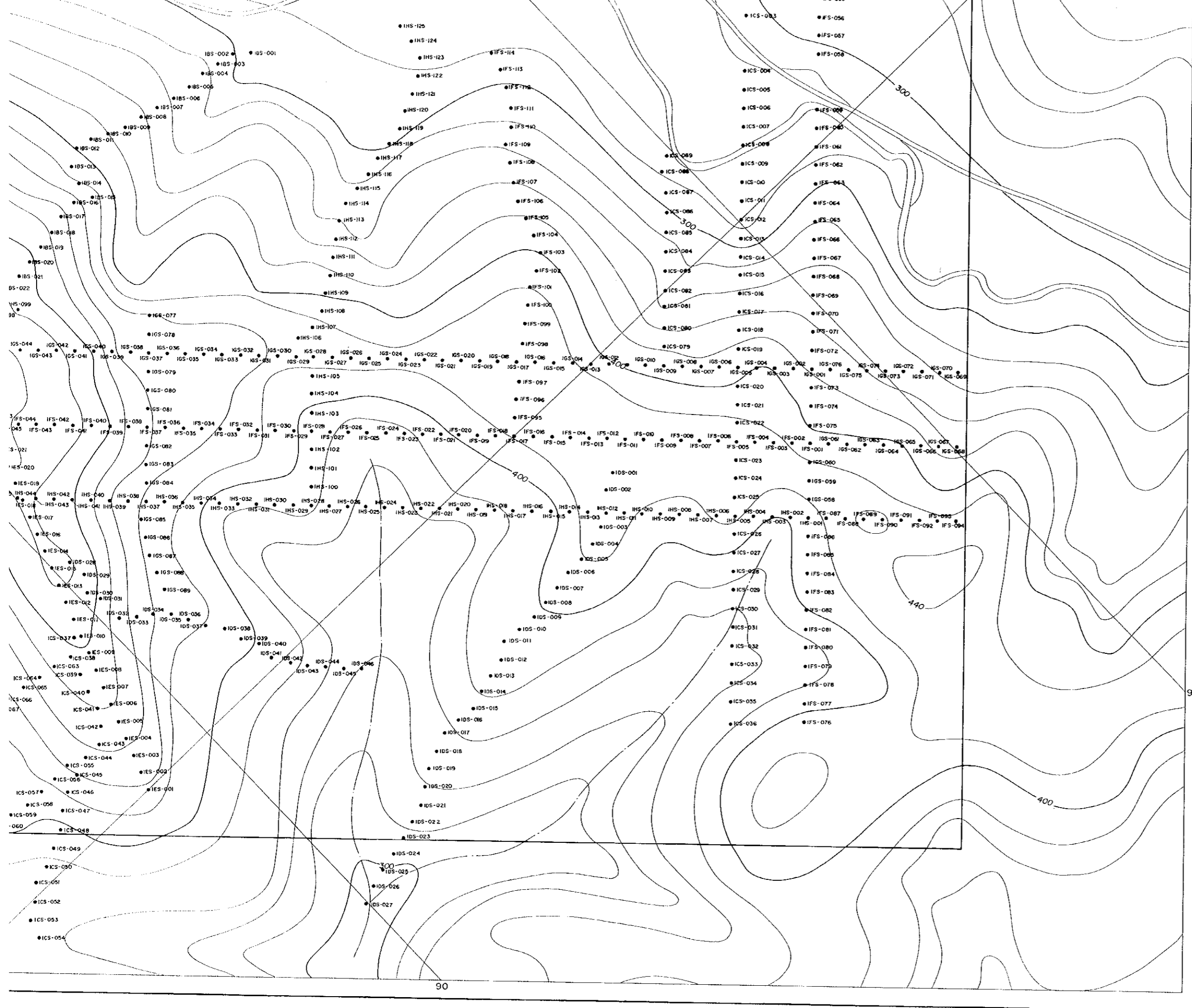
07

90



JAPAN INTERNATIONAL COOPERATION AGENCY
METAL MINING AGENCY OF JAPAN

MARCH 1998





JICA