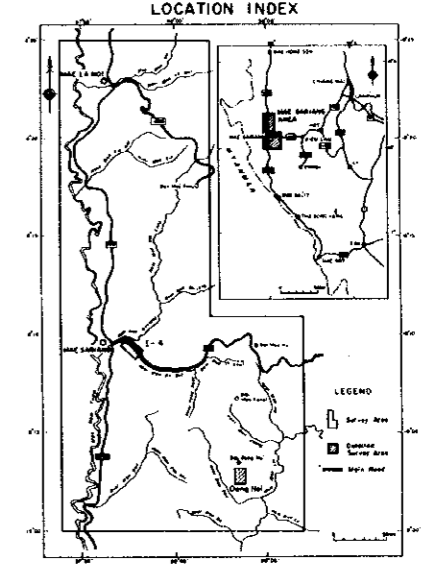
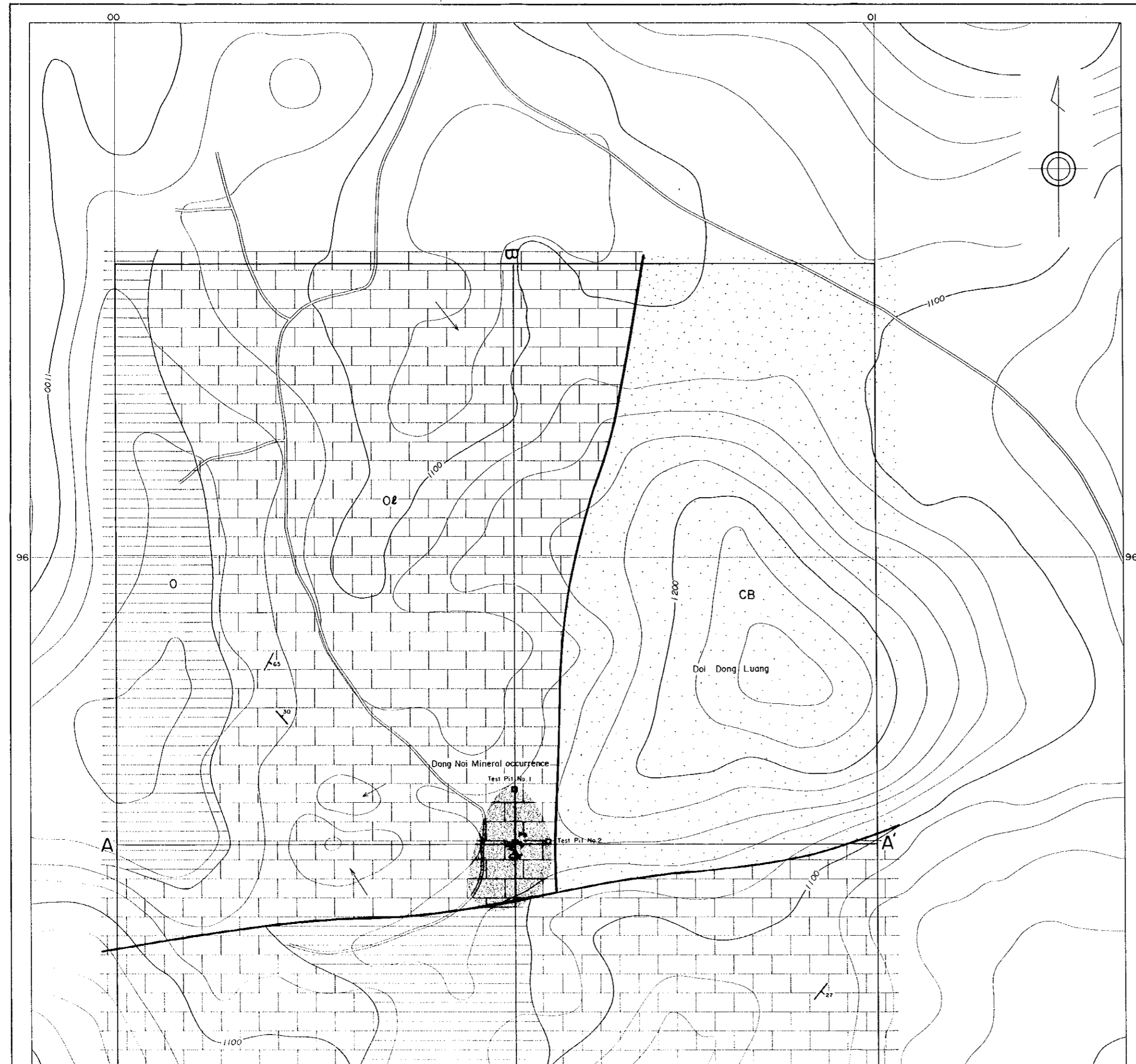


MINERAL EXPLORATION OF MAE SARIANG OF THE DONG NOI AREA GEOLOGIC MAP

Scale 1:2,500
0 50 100 200m

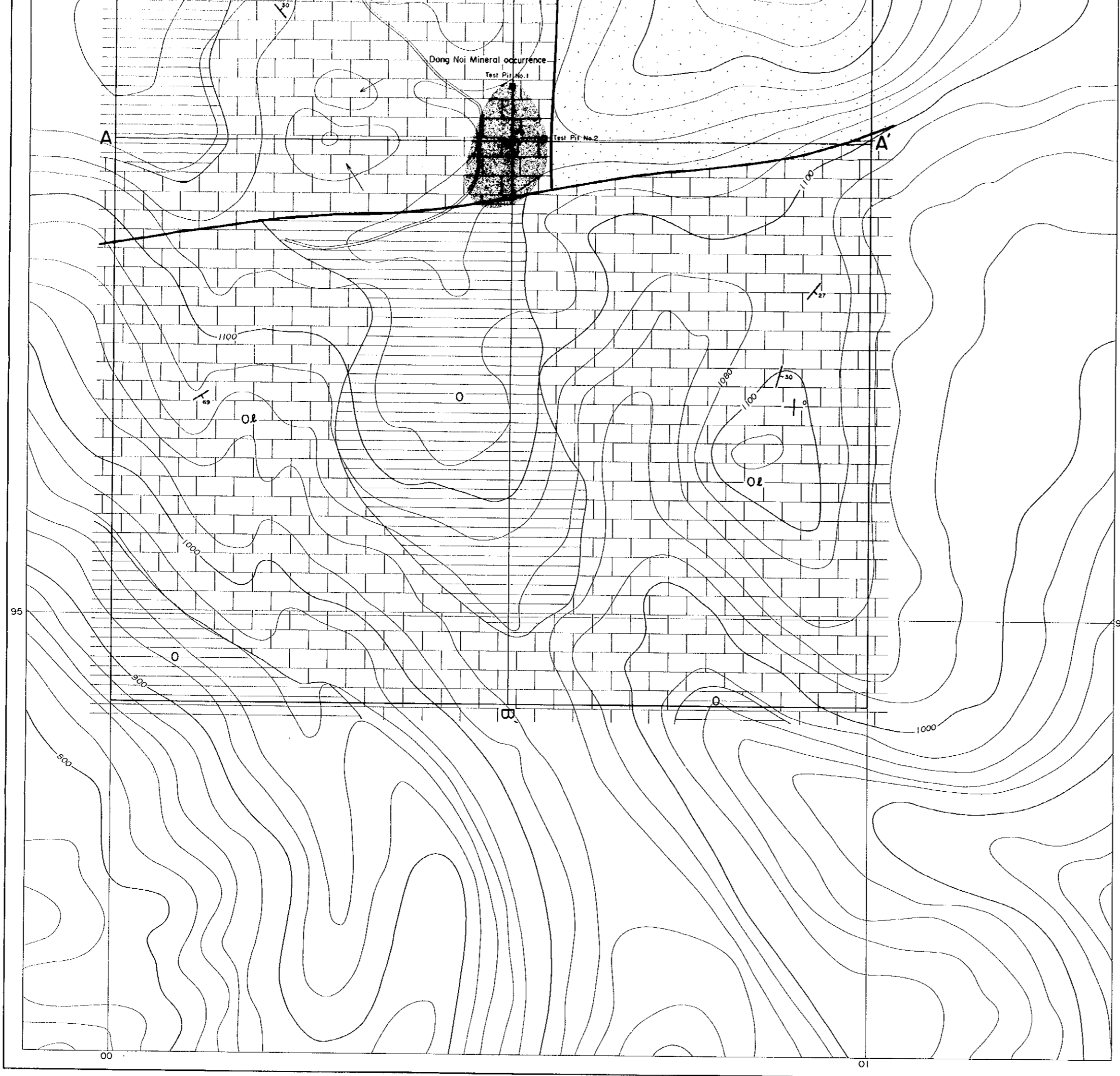



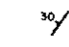
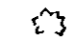

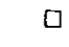
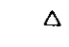
JAPAN INTERNATIONAL COOPERATION AGENCY
METAL MINING AGENCY OF JAPAN
MARCH 1998



LEGEND

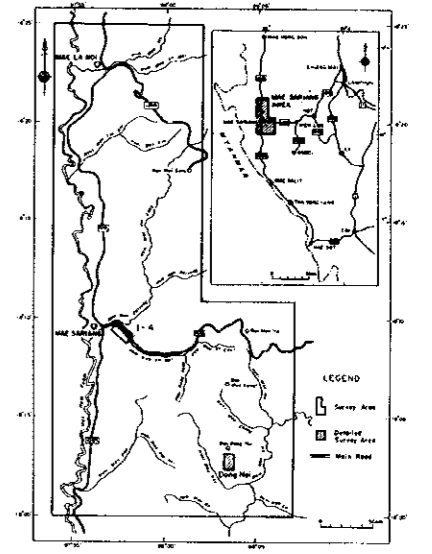
- | | | |
|------------|--|------------------|
| Ordovician | | limestone |
| | | shale, sandstone |
- | | | |
|----------|--|-----------|
| Cambrian | | sandstone |
|----------|--|-----------|
- Fault
- Strike and dip
- Ore outcrops
- Distribution of mineralized floats
- Test pit (this work)
- Test pit (old)



-  Fault
-  Strike and dip
-  Ore outcrops
-  Distribution of mineralized floats
-  Test pit (this work)
-  Test pit (old)

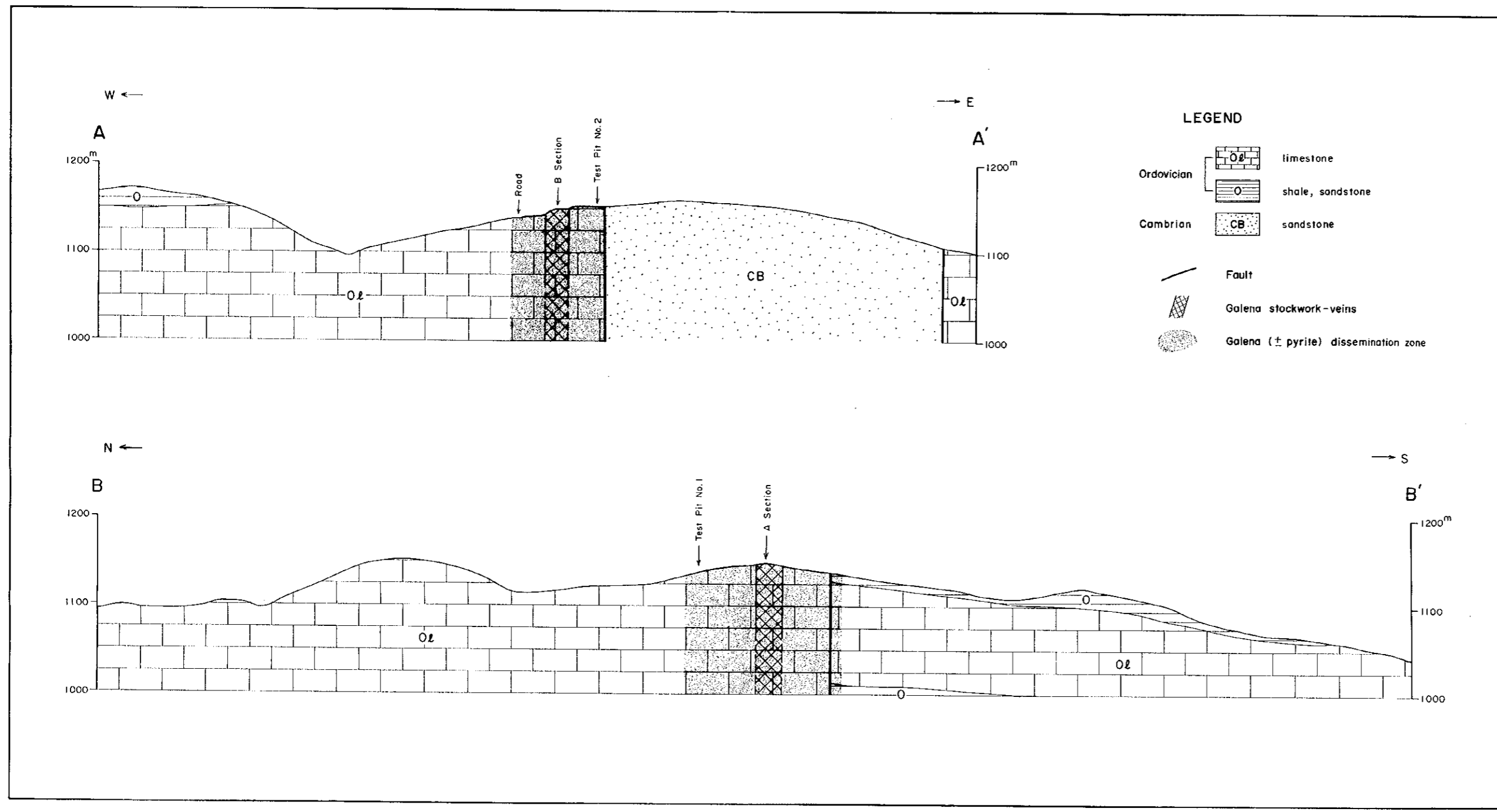
MINERAL EXPLORATION OF MAE SARIANG
OF
THE DONG NOI AREA
GEOLOGIC PROFILE

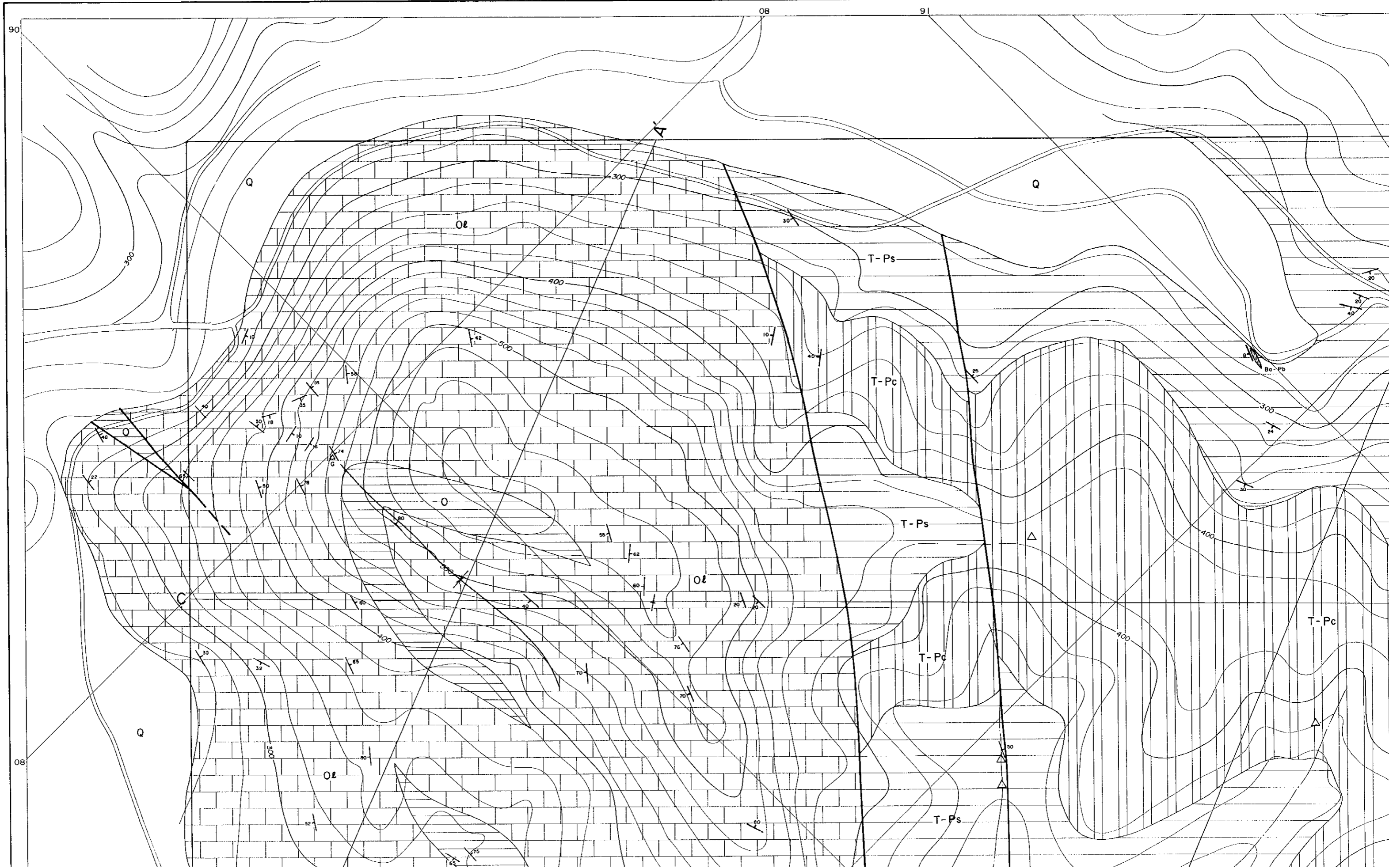
Scale 1:2,500
0 50 100 200m



JAPAN INTERNATIONAL COOPERATION AGENCY
METAL MINING AGENCY OF JAPAN

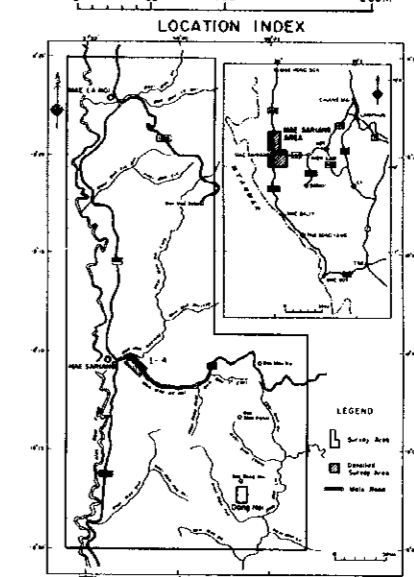
MARCH 1998





MINERAL EXPLORATION OF MAE SARIANG OF THE I-4 AREA GEOLOGIC MAP

Scale 1 : 2,500
0 50 100 200m

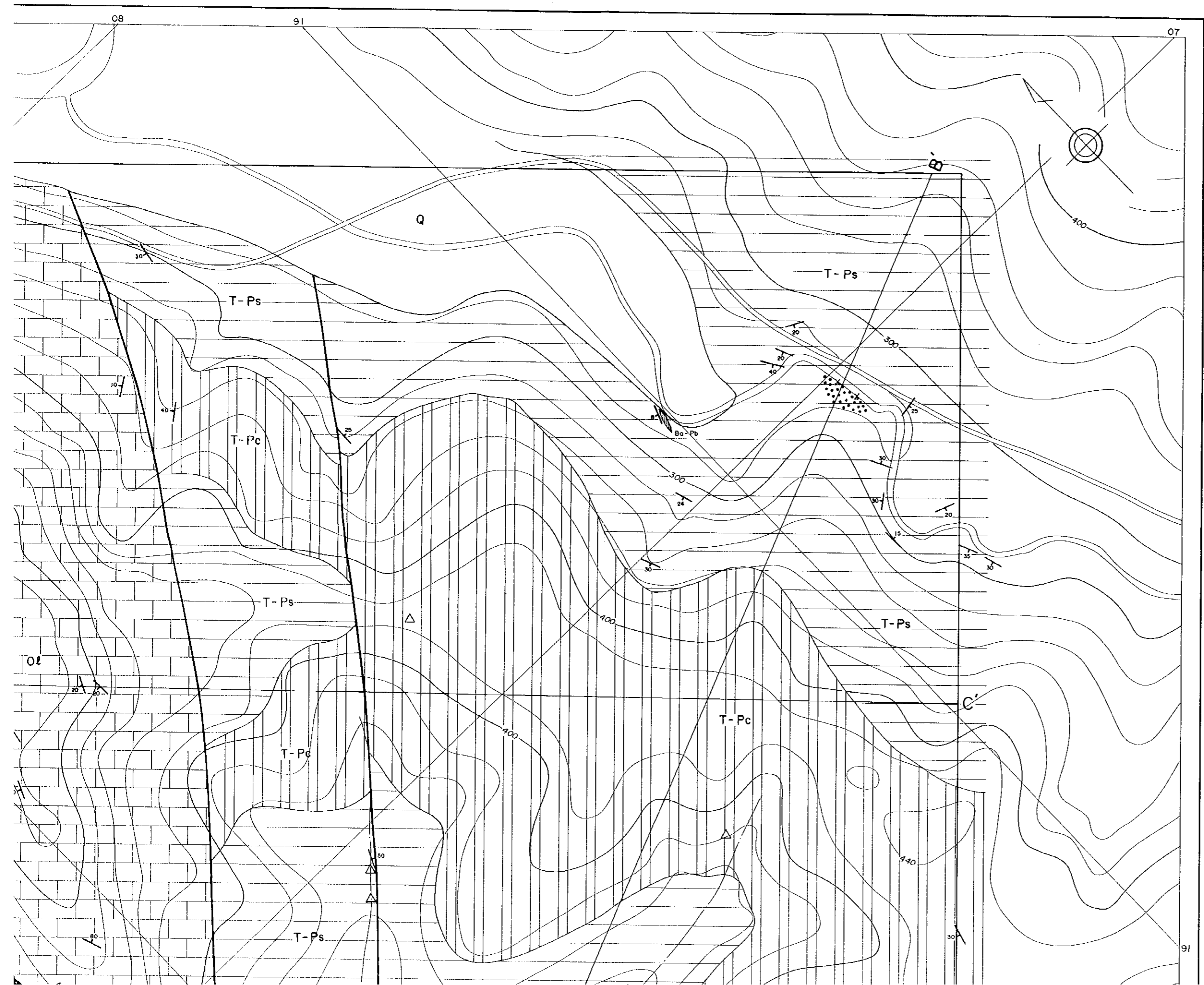


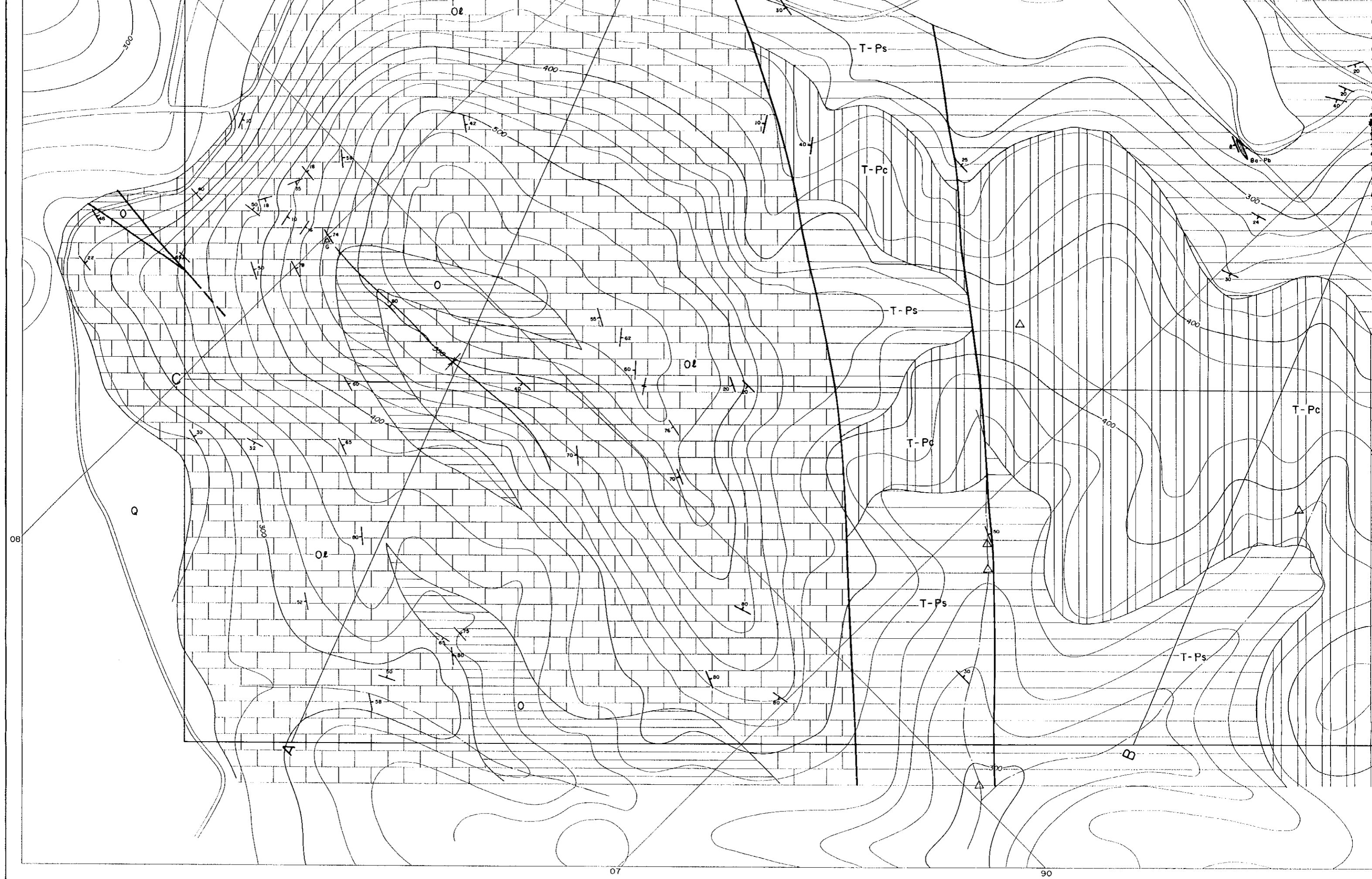
JAPAN INTERNATIONAL COOPERATION AGENCY
METAL MINING AGENCY OF JAPAN
MARCH 1998

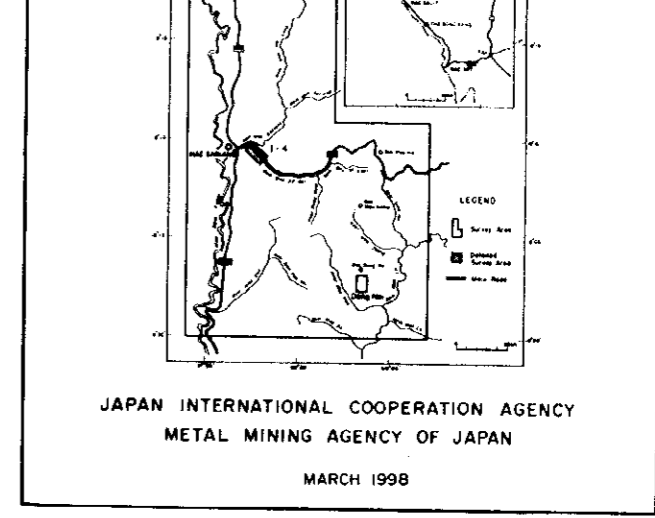
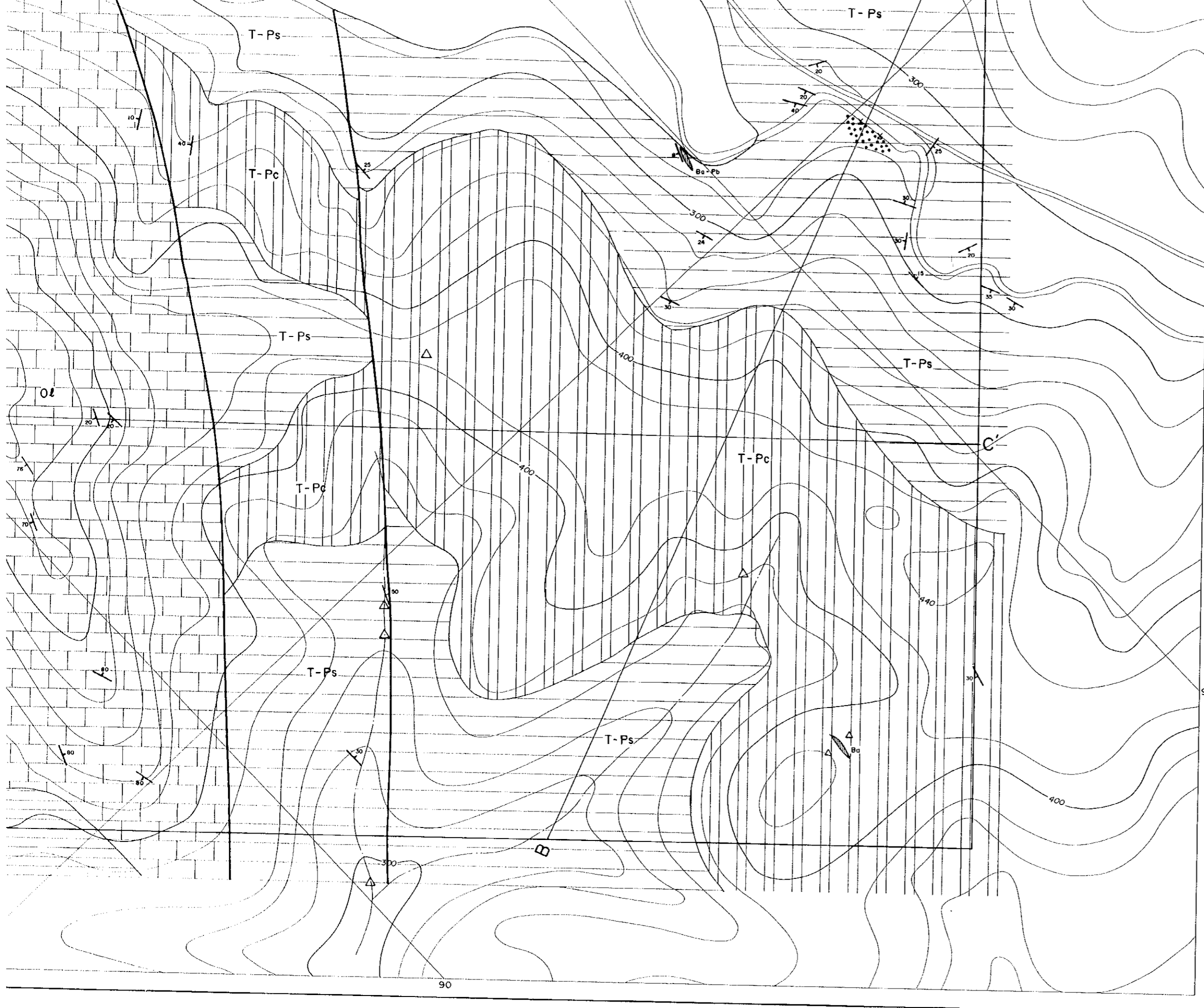
LEGEND

- Quaternary - Neogene gravel/sand
- Triassic - Permian chert
- Triassic - Permian shale, minor sandstone
- Ordovician limestone
- Ordovician shale, sandstone

- Fault
- Syncline
- Old pit
- Silicification with galena-sphalerite veins
- Barite (± galena) vein
- Barite ± galena float
- Gosson float







LEGEND

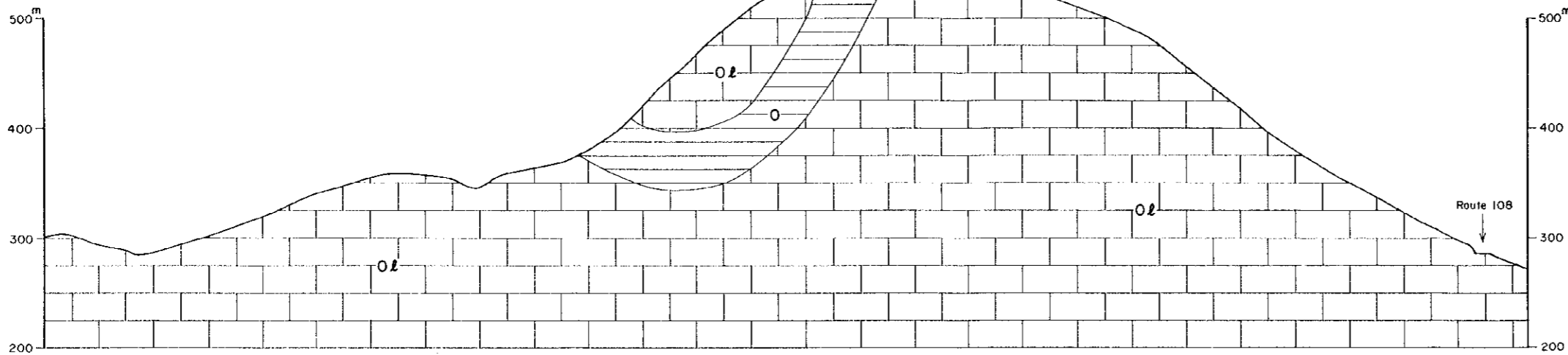
| | | |
|----------------------|--|------------------------|
| Quaternary - Neogene | | gravel/sand |
| Triassic - Permian | | chert |
| | | shale, minor sandstone |
| Ordovician | | limestone |
| | | shale, sandstone |
| | | |
| | | |
| | | |
| | | |
| | | |
| | | |
| | | |

WSW ←

→ ENE

A

A'



LEGEND

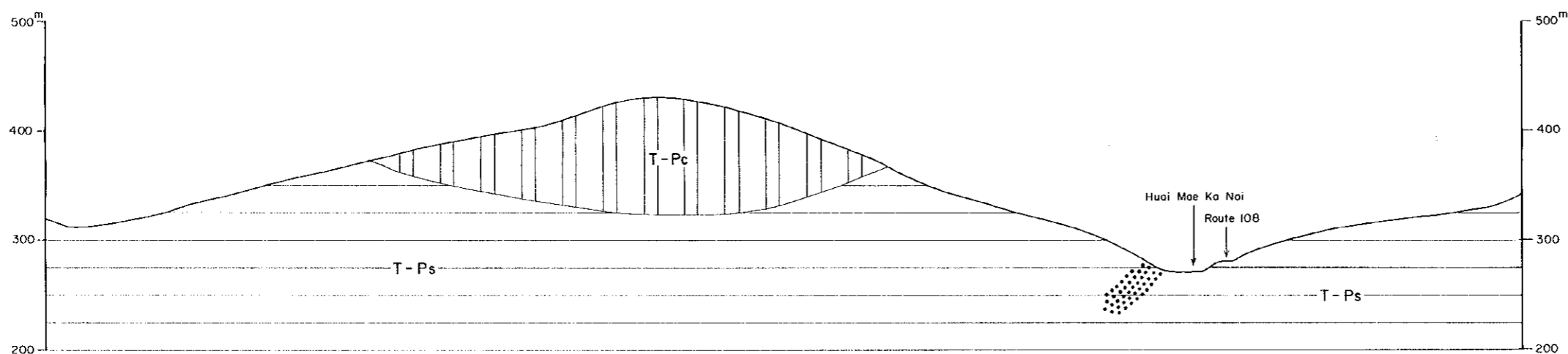
- Triassic-Permian
 - T-Pc chert
 - T-Ps shale, sandstone
- Ordovician
 - O limestone
 - O shale, sandstone
- Silicification with galena-sphalerite veins

WSW ←

→ ENE

B

B'

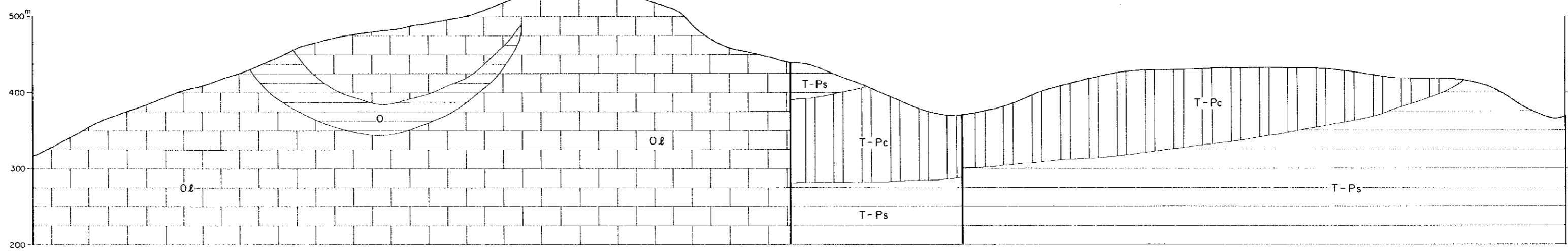


NE ←

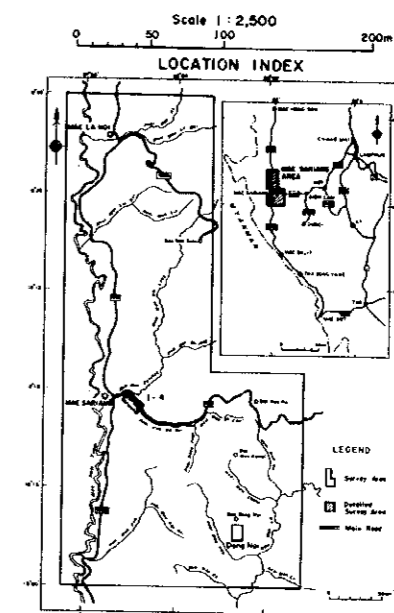
→ SW

C

C



MINERAL EXPLORATION OF MAE SARIANG
OF
THE 1-4 AREA
GEOLOGIC PROFILE

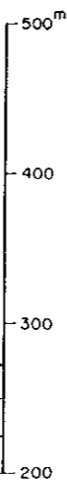


JAPAN INTERNATIONAL COOPERATION AGENCY
METAL MINING AGENCY OF JAPAN

MARCH 1998

→ ENE

A'

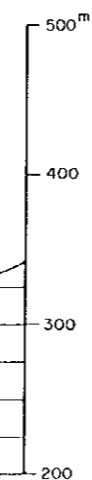


LEGEND

- | | | |
|------------------|--|---|
| Triassic-Permian | | chert |
| | | shale, sandstone |
| Ordovician | | limestone |
| | | shale, sandstone |
| | | Silicification with galena-sphalerite veins |

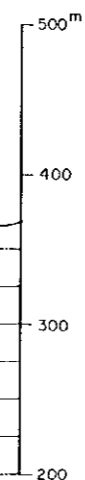
→ ENE

B'



→ SW

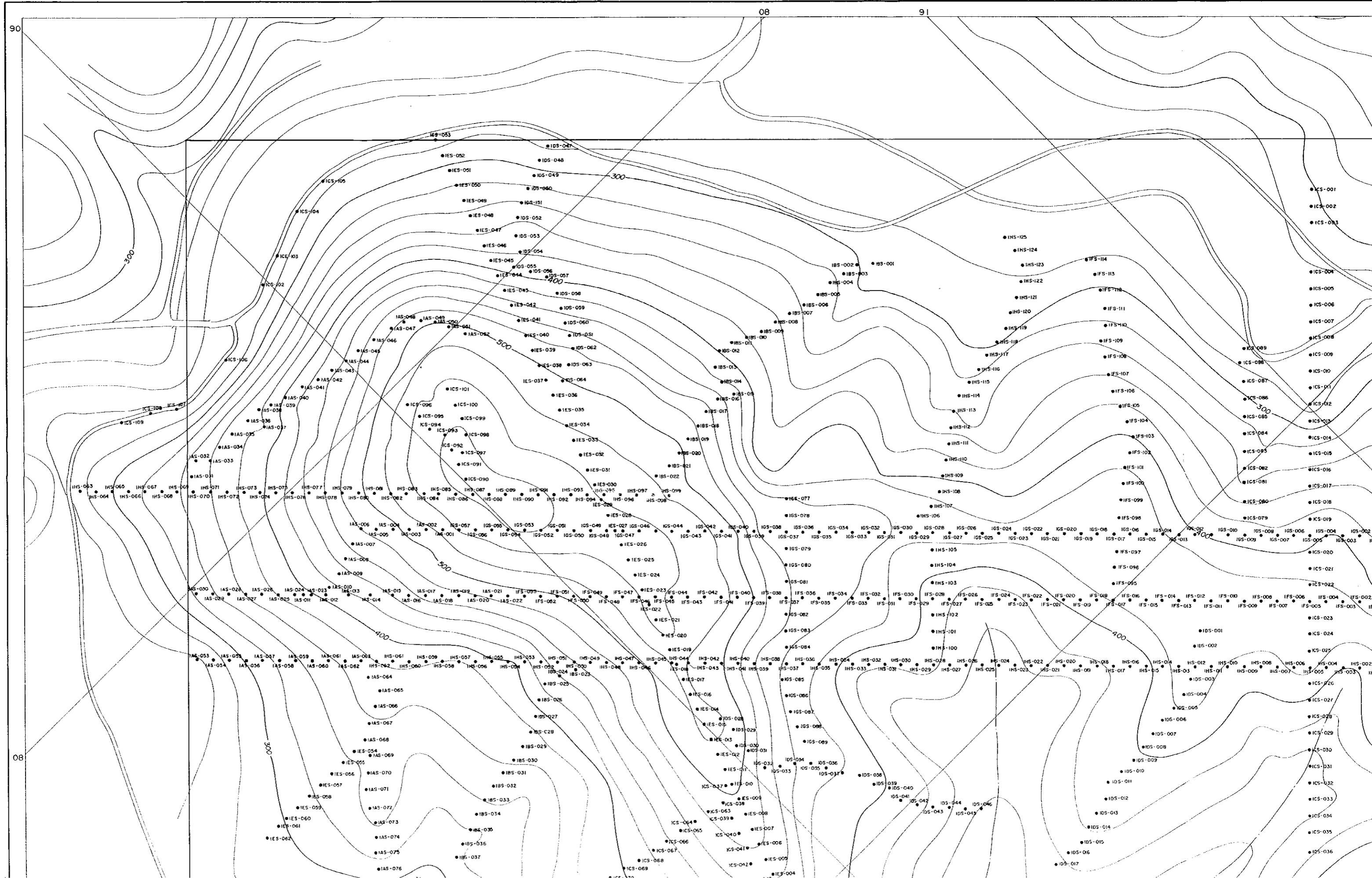
C'

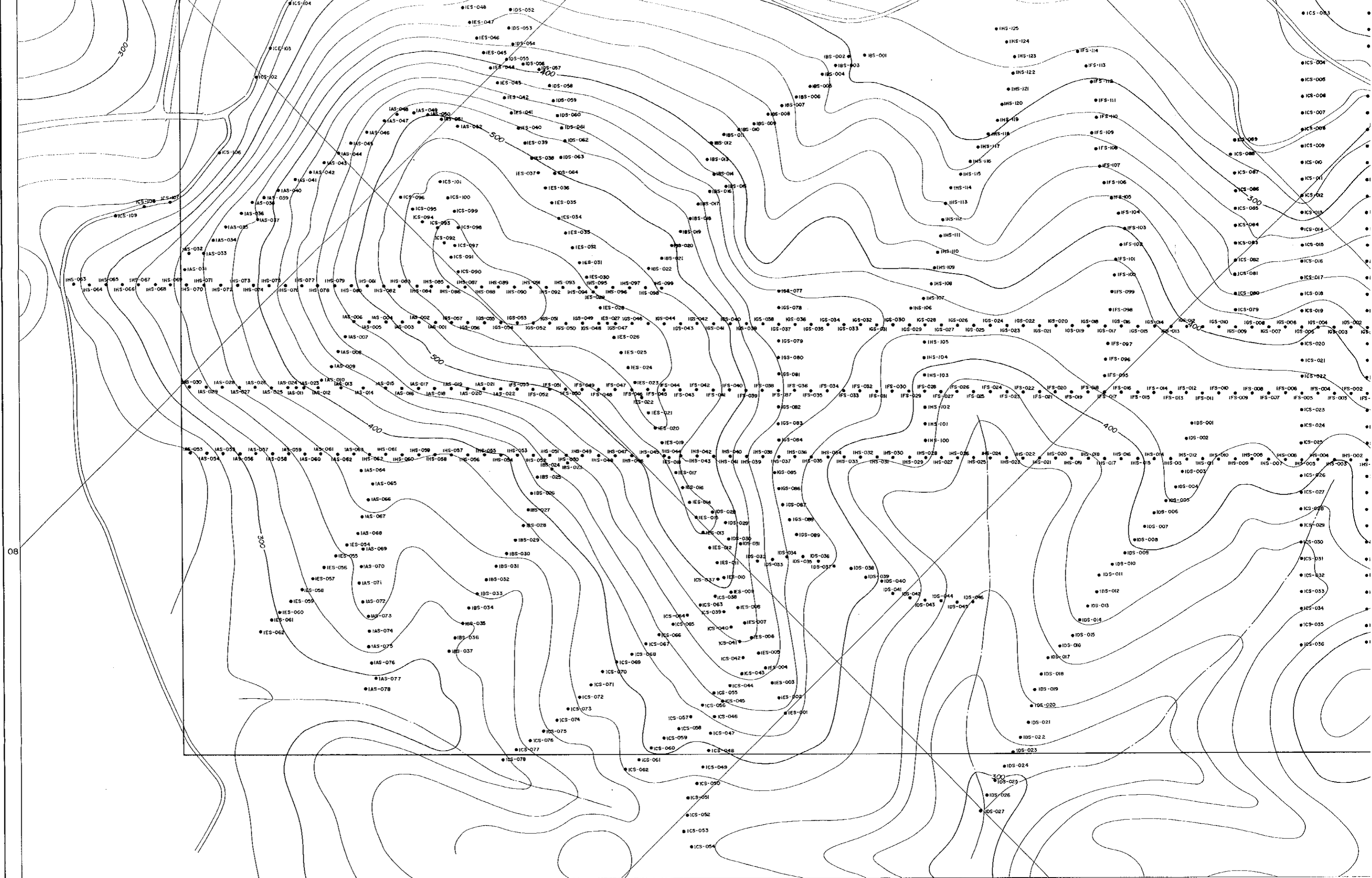


90

08

91

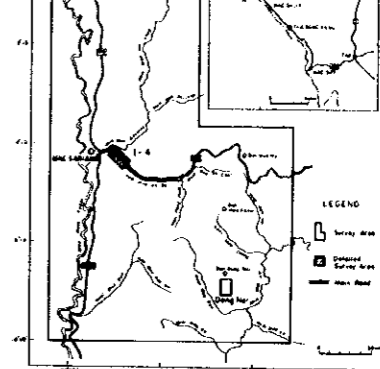




08

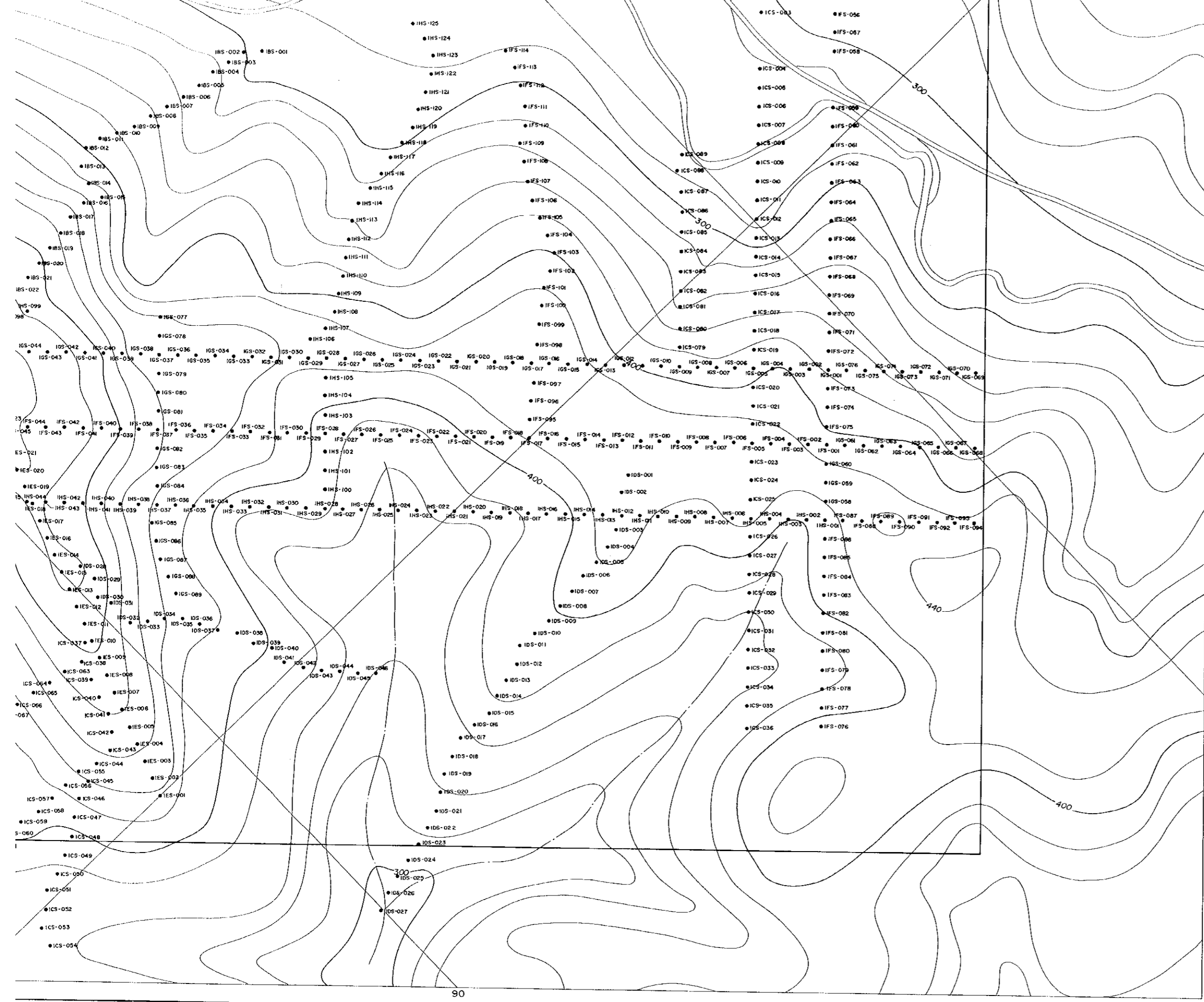
07

90



JAPAN INTERNATIONAL COOPERATION AGENCY
METAL MINING AGENCY OF JAPAN

MARCH 1998



90

91



JICA