

**Apc.5 Résultat d'analyse chimique des roches minerais**

## Apc.5 Résultat d'analyse chimique des roches minerais (1/4)

Seri. No.	Sample No.	Location	Au(ppb)		Au(g/t)	Ag(g/t)	Occurrence		
			FA-EXT-AA	FA-AA	FA-AA	AR-AA			
1	AH-3	Kekoro	---	---	<.005	<.3	float	quartz, coarse grained, white	
2	BR-1		<.1	---	<.005	<.3	float	psammitic schist	
3	BS-1	Banifing-Baoule	<.1	---	<.005	<.3	outcrop	laterite soil	
4	BS-2	Banifing-Baoule	1	---	<.005	<.3	outcrop	laterite soil	
5	BS-3	Banifing-Baoule	1	---	<.005	<.3	outcrop	laterite soil	
6	BS-4	Banifing-Baoule	<.1	---	<.005	<.3	outcrop	laterite soil	
7	DR-1	Diamou	---	---	<.005	<.3	outcrop	quartz	
8	DR-11	Diamou	9	---	<.005	<.3	outcrop	(altered) porphyritic rock with quartz veinlets	
9	DR-12	Diamou	---	---	<.005	<.3	outcrop	quartz, coarse grained, with sulfide ?	
10	DR-13	Diamou	9	---	0.005	<.3	outcrop	weatherd schist	
11	DR-2	Diamou	---	---	<.005	<.3	outcrop	quartz, brown	
12	DR-3	Diamou	1	---	<.005	<.3	outcrop	(altered) porphyritic rock with quartz veinlets	
13	DR-5	Diamou	---	---	0.02	<.3	outcrop	quartz, coarse grained, gray	
14	DR-6	Diamou	4	---	0.01	<.3	outcrop	altered rock, porphyritic	
15	DR-7	Diamou	50	---	0.06	<.3	outcrop	laterite soil	
16	DR-8	Diamou	>1000	530	0.89	<.3	outcrop	laterite soil	
17	DR-9	Diamou	5	---	<.005	<.3	outcrop	schist	
18	DS-1-1	Kekoro	dit	25	---	0.025	<.3	outcrop	laterite soil
19	DS-1-2	Kekoro	dit	8	---	0.01	<.3	outcrop	laterite soil
20	DS-1-3	Kekoro	dit	14	---	0.015	<.3	outcrop	laterite soil
21	DS-1-4	Kekoro	dit	13	---	0.01	<.3	outcrop	laterite soil
22	DS-1-5	Kekoro	dit	19	---	0.02	<.3	outcrop	laterite soil
23	DS-2-1	Kekoro	dit	17	---	0.02	<.3	outcrop	laterite soil
24	DS-2-2	Kekoro	dit	31	---	0.045	0.3	outcrop	laterite soil
25	DS-2-3	Kekoro	dit	20	---	0.01	<.3	outcrop	laterite soil
26	DS-2-4	Kekoro	dit	11	---	0.01	0.9	outcrop	laterite soil
27	DS-2-5	Kekoro	dit	14	---	0.02	0.3	outcrop	laterite soil
28	DS-3-1	Kekoro	dit	1	---	<.005	<.3	outcrop	laterite soil
29	DS-3-2	Kekoro	dit	<.1	---	<.005	<.3	outcrop	laterite soil
30	DS-3-3	Kekoro	dit	1	---	0.02	<.3	outcrop	laterite soil
31	DS-3-4	Kekoro	dit	1	---	<.005	<.3	outcrop	laterite soil
32	DS-4-1	Kekoro	dit	1	---	<.005	<.3	outcrop	laterite soil
33	DS-4-2	Kekoro	dit	1	---	0.035	<.3	outcrop	laterite soil
34	DS-4-3	Kekoro	dit	<.1	---	0.01	<.3	outcrop	laterite soil
35	DS-4-4	Kekoro	dit	1	---	<.005	<.3	outcrop	laterite soil
36	DS-5-1	Kekoro	dit	<.1	---	<.005	<.3	outcrop	laterite soil
37	DS-5-2	Kekoro	dit	1	---	<.005	<.3	outcrop	laterite soil
38	DS-5-3	Kekoro	dit	2	---	<.005	<.3	outcrop	laterite soil
39	DS-5-4	Kekoro	dit	4	---	<.005	<.3	outcrop	laterite soil
40	DS-5-5	Kekoro	dit	2	---	<.005	<.3	outcrop	laterite soil
41	DS-6-1	Kekoro	dit	14	---	0.055	<.3	outcrop	laterite soil
42	DS-6-2	Kekoro	dit	12	---	<.005	<.3	outcrop	laterite soil
43	DS-6-3	Kekoro	dit	5	---	0.005	<.3	outcrop	laterite soil
44	DS-6-4	Kekoro	dit	<.1	---	<.005	<.3	outcrop	laterite soil
45	DS-6-5	Kekoro	dit	1	---	<.005	<.3	outcrop	laterite soil
46	KN-1-1	Kekoro		---	---	<.005	<.3	float	quartz, dark gray
47	KN-2-1	Kekoro		315	---	0.4	0.3	outcrop	laterite soil
48	KN-2-2	Kekoro		>1000	3720	2.69	0.3	outcrop	laterite soil
49	KR-1	Kouloukoro		---	---	0.015	<.3	float	quartz, with tourmaline
50	KR-2	Kouloukoro		---	---	0.015	<.3	outcrop	laterite soil
51	KR-3	Kouloukoro		11	---	0.01	<.3	outcrop	laterite soil
52	KR-4	Kouloukoro		---	---	0.005	<.3	float	quartz, coarse grained, with mica
53	KR-5	Kouloukoro		---	---	<.005	<.3	float	quartz, coarse grained
54	M-1	Kekoro		---	---	0.03	<.3	float	quartz, coarse grained, dark gray
55	M-707622	Kekoro		66	---	0.07	<.3	float	strongly silicified rock
56	MA-10	Kekoro	A-1	---	---	<.005	<.3	float	smoky quartz, dark gray
57	MA-100	Kekoro	A-1	---	---	85.95	7.5	float	quartz, coarse grained, white
58	MA-10-2	Kekoro	A-1	29	---	0.025	<.3	outcrop	laterite soil
59	MAI-175	Kekoro	D-2	11	---	0.015	<.3	outcrop	laterite soil
60	MA-125	Kekoro	A-1	120	---	0.095	<.3	outcrop	laterite soil
61	MAI-250	Kekoro	D-2	---	---	<.005	<.3	float	smoky quartz, dark gray
62	MAI-275	Kekoro	D-2	6	---	0.005	0.3	outcrop	laterite soil
63	MAI-280	Kekoro	D-2	---	---	<.005	<.3	float	quartz, coarse grained, white
64	MAI-290	Kekoro	D-2	7	---	<.005	<.3	outcrop	laterite soil
65	MA-260	Kekoro	A-1	44	---	0.065	<.3	outcrop	laterite soil
66	MA-300	Kekoro	A-1	---	---	0.06	<.3	float	quartz, coarse grained, white
67	MA-310	Kekoro	A-1	58	---	0.045	<.3	outcrop	laterite soil
68	MA-330	Kekoro	A-1	40	---	0.035	<.3	outcrop	laterite soil

## Apc.5 Résultat d'analyse chimique des roches minerais (2/4)

Seri. No.	Sample No.	Location	Au(ppb)		Au(g/t)		Ag(g/t)		Occurrence
			FA-EXT-AA	FA-AA	FA-AA	AR-AA	AR-AA		
69	MA-75	Kekoro A-1	43	---	0.075	<3	outcrop	laterite soil	
70	MAB-50	Kekoro	---	---	<0.005	<3	float	quartz, coarse grained, white	
71	MAD-130	Kekoro	---	---	0.005	<3	float	quartz, coarse grained, white	
72	MAF-175	Kekoro	---	---	<0.005	<3	float	quartz, coarse grained, white	
73	MAG-250	Kekoro	---	---	<0.005	<3	float	quartz, coarse grained, white	
74	MAG-940	Kekoro	10	---	<0.005	<3	float	strongly silicified rock	
75	MB-100	Kekoro A-2	---	---	<0.005	<3	float	quartz, coarse grained, white	
76	MB-125	Kekoro A-2	---	---	0.01	<3	float	quartz, coarse grained, with mica	
77	MB-150	Kekoro A-2	440	---	0.465	<3	float	quartz breccia in peritic rock	
78	MB-150-2	Kekoro A-2	---	---	<0.005	<3	float	quartz, coarse grained, dark gray	
79	MB-150-3	Kekoro A-2	23	---	0.01	<3	float	tourmaline schist	
80	MB-150-4	Kekoro A-2	81	---	0.08	<3	float	tourmaline hornfels	
81	MB-175	Kekoro A-2	18	---	0.01	<3	outcrop	laterite soil	
82	MB-177	Kekoro A-2	---	---	0.01	<3	float	smoky quartz, coarse grained, dark gray	
83	MB-225	Kekoro	---	---	0.005	<3	float	smoky quartz, dark gray	
84	MB-260	Kekoro A-2	12	---	0.02	<3	outcrop	laterite soil	
85	MB-265	Kekoro A-2	260	---	0.02	<3	outcrop	laterite soil	
86	MB-277	Kekoro A-2	2	---	0.05	0.3	outcrop	laterite soil	
87	MB-43	Kekoro A-2	---	---	<0.005	<3	float	quartz, coarse grained	
88	MB-444	Kekoro	---	---	0.005	<3	float	smoky quartz, dark gray	
89	MB-450	Kekoro	---	---	<0.005	<3	float	smoky quartz, light gray	
90	MB-50	Kekoro A-2	---	---	<0.005	<3	float	quartz, coarse grained	
91	MC-100-1	Kekoro	9	---	0.015	<3	outcrop	laterite soil	
92	MC-150-1	Kekoro	16	---	0.02	<3	outcrop	laterite soil	
93	MC-150-2	Kekoro	---	---	<0.005	<3	float	quartz, coarse grained, light gray	
94	MC-150-3	Kekoro	61	---	0.035	<3	outcrop	laterite soil	
95	MC-20	Kekoro	---	---	0.015	<3	float	quartz, coarse grained, white	
96	MC-200-1	Kekoro	---	---	<0.005	<3	float	quartz, coarse grained, light gray	
97	MC-260	Kekoro	---	---	<0.005	<3	float	smoky quartz, dark gray	
98	MC-290	Kekoro	---	---	<0.005	<3	float	quartz, dark gray	
99	MC-320	Kekoro	---	---	<0.005	<3	float	quartz, dark gray	
100	MC-322	Kekoro	---	---	<0.005	<3	float	smoky quartz, gray	
101	MC-350	Kekoro	---	---	<0.005	<3	float	quartz, coarse grained, white	
102	MC-400	Kekoro B-1	15	---	0.01	<3	outcrop	laterite soil	
103	MC-400-2	Kekoro B-1	7	---	0.01	<3	outcrop	laterite soil	
104	MC-400-3	Kekoro B-1	---	---	0.03	<3	float	meta-quartzite	
105	MC-600	Kekoro B-1	5	---	0.005	<3	outcrop	laterite soil	
106	MC-625	Kekoro B-1	<1	---	<0.005	<3	outcrop	laterite soil	
107	MC-625-2	Kekoro B-1	---	---	0.38	<3	float	smoky quartz, light gray	
108	MC-625-3	Kekoro B-1	---	---	<0.005	<3	float	smoky quartz	
109	MC-625-4	Kekoro B-1	---	---	<0.005	<3	float	quartz, coarse grained	
110	MC-625-5	Kekoro B-1	1	---	<0.005	<3	outcrop	laterite soil	
111	MC-640	Kekoro B-1	1	---	<0.005	<3	outcrop	laterite soil	
112	MC-650	Kekoro B-1	2	---	<0.005	<3	outcrop	laterite soil	
113	MC-650-2	Kekoro B-1	---	---	<0.005	<3	float	smoky quartz, dark gray	
114	MC-650-3	Kekoro B-1	---	---	0.01	<3	float	smoky quartz, coarse grained, dark gray	
115	MD-120	Kekoro B-1	---	---	<0.005	<3	float	smoky quartz, dark gray	
116	MD-150	Kekoro B-1	---	---	0.055	<3	float	quartz, coarse grained, white	
117	MD-70	Kekoro B-1	<1	---	<0.005	<3	outcrop	laterite soil	
118	ME-25	Kekoro B-1	13	---	<0.005	<3	outcrop	laterite soil	
119	MF-0	Kekoro	<1	---	<0.005	<3	outcrop	laterite soil	
120	MF-275	Kekoro B-2	1	---	<0.005	<3	outcrop	laterite soil	
121	MF-340	Kekoro B-2	<1	---	<0.005	<3	outcrop	laterite soil	
122	MF-400-2	Kekoro B-2	2	---	<0.005	<3	outcrop	laterite soil	
123	MF-450	Kekoro B-2	<1	---	<0.005	<3	outcrop	laterite soil	
124	MF-475	Kekoro B-2	---	---	<0.005	<3	float	smoky quartz, gray	
125	MF-70	Kekoro B-1	1	---	<0.005	<3	outcrop	laterite soil	
126	MG-20	Kekoro B-2	74	---	0.07	<3	outcrop	laterite soil	
127	MG-50	Kekoro B-2	2	---	<0.005	<3	outcrop	laterite soil	
128	MG-70	Kekoro B-2	2	---	<0.005	<3	outcrop	laterite soil	
129	MH-100	Kekoro	---	---	<0.005	<3	float	smoky quartz, dark gray	
130	ML-575	Kekoro C-1	---	---	<0.005	<3	float	quartz, dark gray	
131	ML-575-2	Kekoro C-1	---	---	<0.005	<3	float	quartz, dark gray, with pyrite & mica	
132	ML-575-3	Kekoro C-1	12	---	<0.005	<3	outcrop	laterite soil	
133	ML-575-4	Kekoro C-1	5	---	<0.005	<3	outcrop	laterite soil	
134	ML-600	Kekoro C-1	---	---	0.015	<3	float	quartz, gray	
135	ML-600-2	Kekoro C-1	3	---	0.005	<3	outcrop	laterite soil	
136	ML-625	Kekoro C-1	2	---	<0.005	<3	outcrop	laterite soil	

## Apc.5 Résultat d'analyse chimique des roches minerais (3/4)

Seri. No.	Sample No.	Location	Au(ppb)		Au(g/t)	Ag(g/t)	Occurrence
			FA-EXT-AA	FA-AA	FA-AA	AR-AA	
137	ML-650	Kekoro C-1	---	---	<.005	<.3	float quartz, coarse grained, with a lot of limonite
138	ML-650-2	Kekoro C-1	---	---	<.005	<.3	float smoky quartz, dark gray
139	ML-650-3	Kekoro C-1	---	---	<.005	<.3	float smoky quartz, dark gray
140	MM-100-2	Kekoro C-1	2	---	<.005	<.3	outcrop laterite soil
141	MM-100-3	Kekoro C-1	2	---	<.005	<.3	outcrop laterite soil
142	MM-125-2	Kekoro C-1	4	---	<.005	<.3	outcrop laterite soil
143	MM-75-2	Kekoro C-1	2	---	<.005	<.3	outcrop laterite soil
144	MM-75	Kekoro C-1	---	---	<.005	<.3	outcrop laterite soil
145	MT-150-2	Kekoro A	---	---	<.005	<.3	float quartz, coarse grained, white
146	MT-150-3	Kekoro A	61	---	0.08	<.3	outcrop laterite soil
147	MT-5	Kekoro A	95	---	0.22	<.3	outcrop laterite soil
148	MT-75	Kekoro A	59	---	0.07	<.3	outcrop laterite soil
149	MU-1000	Kekoro D	---	---	<.005	<.3	float quartz, coarse grained, white
150	MV-230	Kekoro D-1	---	---	<.005	<.3	float smoky quartz
151	MV-230-2	Kekoro D-1	---	---	<.005	<.3	float quartz, coarse grained, white
152	MV-250	Kekoro D-1	8	---	0.01	<.3	outcrop laterite soil
153	MW-100	Kekoro D	---	---	<.005	<.3	float smoky quartz
154	MZ-260	Kekoro D	---	---	<.005	<.3	outcrop laterite soil
155	MZ-300	Kekoro D	---	---	<.005	<.3	float quartz, coarse grained, gray
156	Nag-2	Kekoro F	175	---	0.165	<.3	outcrop strongly silicified rock, with arsenopyrite
157	Nag-3	Kekoro F	26	---	0.025	<.3	outcrop strongly silicified dacite, with arsenopyrite
158	Nag-4	Kekoro F	---	---	0.06	<.3	outcrop quartz, coarse grained, white
159	R-707	---	---	---	0.07	<.3	float strongly silicified dacite, with arsenopyrite
160	RAP-685250	Baoule-Banifing	---	---	<.005	<.3	float quartz
161	RAP-685500	Baoule-Banifing	---	---	<.005	<.3	float quartz, coarse grained, white
162	RAP-685750	Baoule-Banifing	---	---	<.005	<.3	float coarse grained quartz
163	RAQ-685750	Baoule-Banifing	---	---	<.005	<.3	float smoky quartz, gray
164	RAT-682750-1	Baoule-Banifing	---	---	0.015	<.3	float quartz, coarse grained, white
165	RAT-684250	Baoule-Banifing	---	---	<.005	<.3	float quartz with hematite network
166	RAT-688500	Baoule-Banifing	---	---	<.005	<.3	float quartz, coarse grained, white
167	RAW-680070	Baoule-Banifing	---	---	<.005	<.3	float smoky quartz, gray, silicified rock ?
168	RAW-684500	Baoule-Banifing	---	---	<.005	<.3	float coarse grained quartz
169	RAW-687250	Baoule-Banifing	---	---	0.01	<.3	float coarse grained quartz
170	RAW-688000	Baoule-Banifing	---	---	<.005	<.3	float quartz, coarse grained, white
171	RAW-693200	Baoule-Banifing	---	---	<.005	<.3	float coarse grained quartz
172	RAW-693250-1	Baoule-Banifing	26	---	0.03	<.3	float red shale
173	RAX-667000	Baoule-Banifing	---	---	<.005	<.3	float sugary quartz, aprite?
174	RAX-681700	Baoule-Banifing	---	---	<.005	<.3	float quartz, coarse grained, gray
175	RAX-683250	Baoule-Banifing	---	---	<.005	<.3	float quartz, coarse grained
176	RAY-686000	Baoule-Banifing	---	---	<.005	<.3	float quartz with white mica
177	RAZ-691450	Baoule-Banifing	---	---	<.005	<.3	float quartz
178	RAZ-691900	Baoule-Banifing	---	---	<.005	<.3	float quartz
179	RAZ-691950	Baoule-Banifing	135	---	0.13	<.3	float silicified rock
180	RBB-685200	Baoule-Banifing	---	---	<.005	<.3	float quartz, coarse grained, mica rich
181	RBC-685500	Baoule-Banifing	---	---	<.005	<.3	float quartz
182	RBF-692500	Baoule-Banifing	---	---	<.005	<.3	float quartz
183	RBF-692650-2	Baoule-Banifing	---	---	<.005	<.3	float dolerite with sulfide (arsenopyrite ?)
184	RBF-692650-3	Baoule-Banifing	7	---	0.01	<.3	float garnet-mica hornfels, sandy
185	RBF-693250	Baoule-Banifing	---	---	<.005	<.3	float quartz, coarse grained
186	RBF-693400-1	Baoule-Banifing	1	---	<.005	<.3	float altered volcanics, fine grained
187	RBF-693700	Baoule-Banifing	<.1	---	<.005	<.3	float (altered) porphyritic rock, mica rich
188	RBF-693800	Baoule-Banifing	6	---	<.005	<.3	float meta-sediments, fine grained
189	RBF-693900	Baoule-Banifing	---	---	<.005	<.3	float quartz, gray
190	RBF-694200	Baoule-Banifing	---	---	<.005	<.3	float quartz, with mica
191	RBF-697250	Baoule-Banifing	---	---	<.005	<.3	float quartz
192	RBH-697250	Baoule-Banifing	---	---	<.005	<.3	float quartz, coarse grained, white
193	RBJ-699500	Baoule-Banifing	---	---	<.005	<.3	float smoky quartz, dark gray
194	RBK-695850	Baoule-Banifing	---	---	<.005	<.3	float smoky quartz, gray
195	RBK-697000-2	Baoule-Banifing	---	---	<.005	<.3	float quartz, coarse grained, white
196	RBK-698750	Baoule-Banifing	---	---	<.005	<.3	float hematite & quartz
197	RCG-623800-1	Baoule-Banifing	<.1	---	<.005	0.3	outcrop laterite soil
198	RCG-623800-2	Baoule-Banifing	<.1	---	<.005	<.3	outcrop laterite, with quartz pebble
199	RCR-625000	Baoule-Banifing	---	---	<.005	<.3	float quartz, coarse grained
200	RCR-691750	Baoule-Banifing	---	---	<.005	<.3	float quartz, coarse grained, with hematite
201	RMR-21605	Baoule-Banifing	<.1	---	<.005	<.3	float silicified rock with quartz breccia
202	RMR-21610	Baoule-Banifing	---	---	0.01	<.3	float quartz with hematite
203	RMR-21903	Baoule-Banifing	---	---	<.005	<.3	float quartz, coarse grained, white
204	RMR-21904	Baoule-Banifing	---	---	<.005	<.3	outcrop quartz

## Apc.5 Résultat d'analyse chimique des roches minerais (4/4)

Seri No.	Sample No.	Location	Au(ppb)		Ag(g/t)		Occurrence	
			FA-EXT-AA	FA-AA	FA-AA	AR-AA		
205	RMR-21906	Baoule-Banifing	---	---	<.005	0.3	float	quartz
206	RMR-21907	Baoule-Banifing	<1	---	<.005	0.6	float	peritic schist with quartz veinlets
207	RMR-21908	Baoule-Banifing	---	---	<.005	<.3	float	quartz with tourmaline
208	RMR-21911	Baoule-Banifing	---	---	<.005	<.3	float	quartz, coarse grained, white
209	RMR-21912	Baoule-Banifing	---	---	0.01	<.3	float	dacite with brown quartz vein
210	RMR-21914	Baoule-Banifing	---	---	<.005	<.3	float	quartz, coarse grained, white
211	RMR-22003	Baoule-Banifing	---	---	<.005	<.3	float	quartz, coarse grained, white
212	RMR-22005	Baoule-Banifing	1	---	<.005	<.3	float	pegmatite



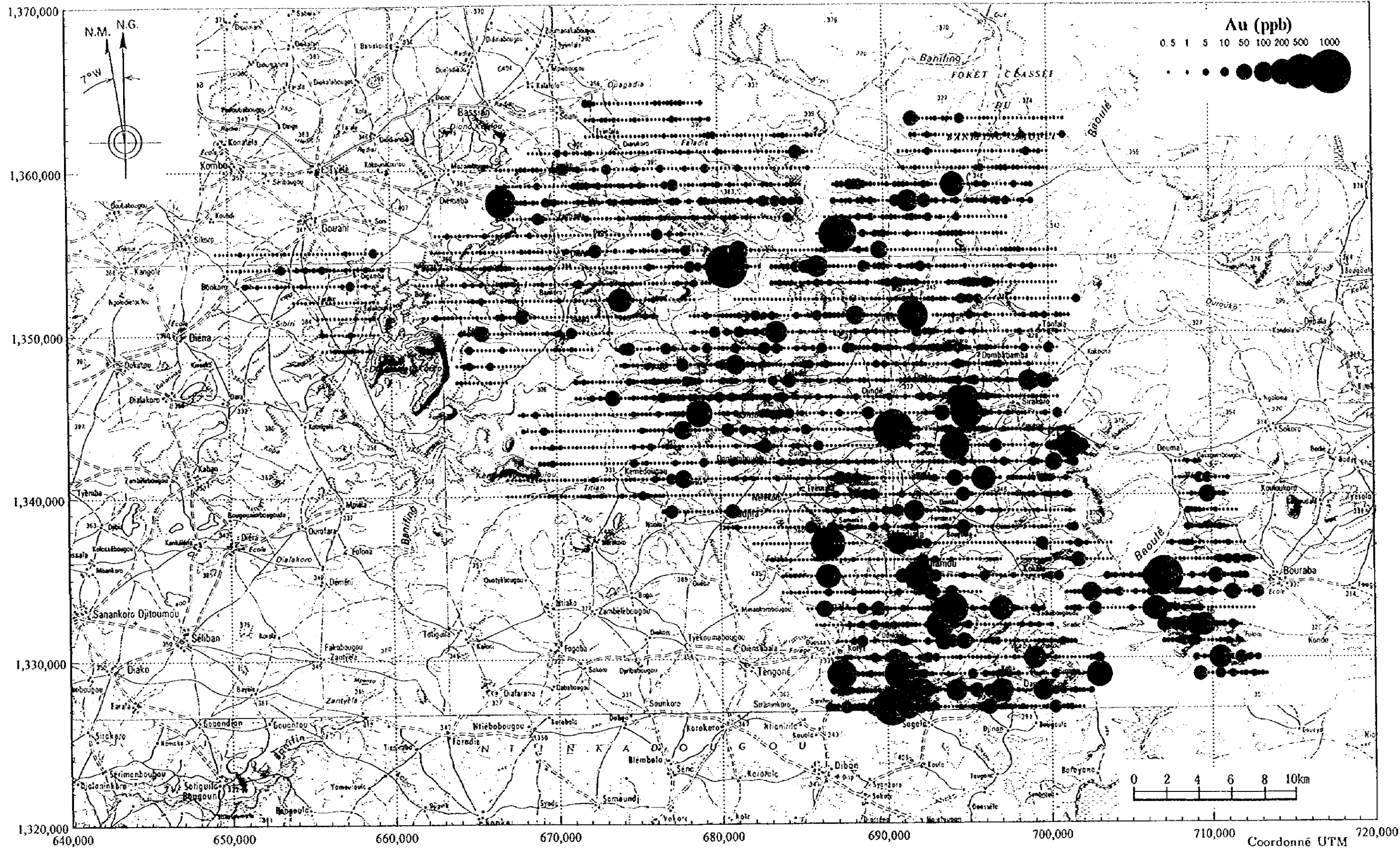
**Apc.6 Résultat d'analyse géochimique, Secteur Est, Baoulé-Banifing**







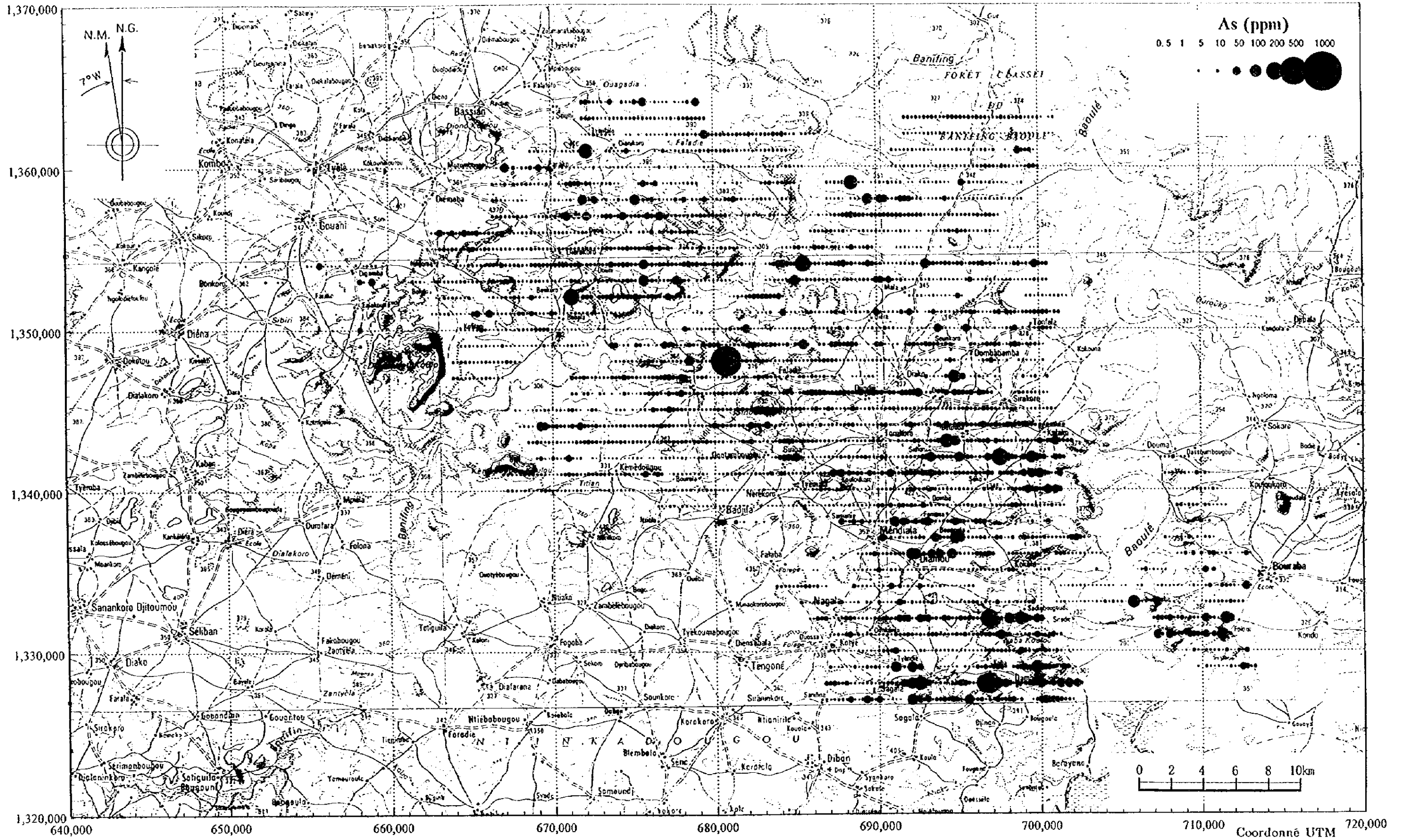
Coordonné UTM



Apç.6-1 Résultat d'analyse géochimique (Au, Secteur Est)



Coordonné UTM



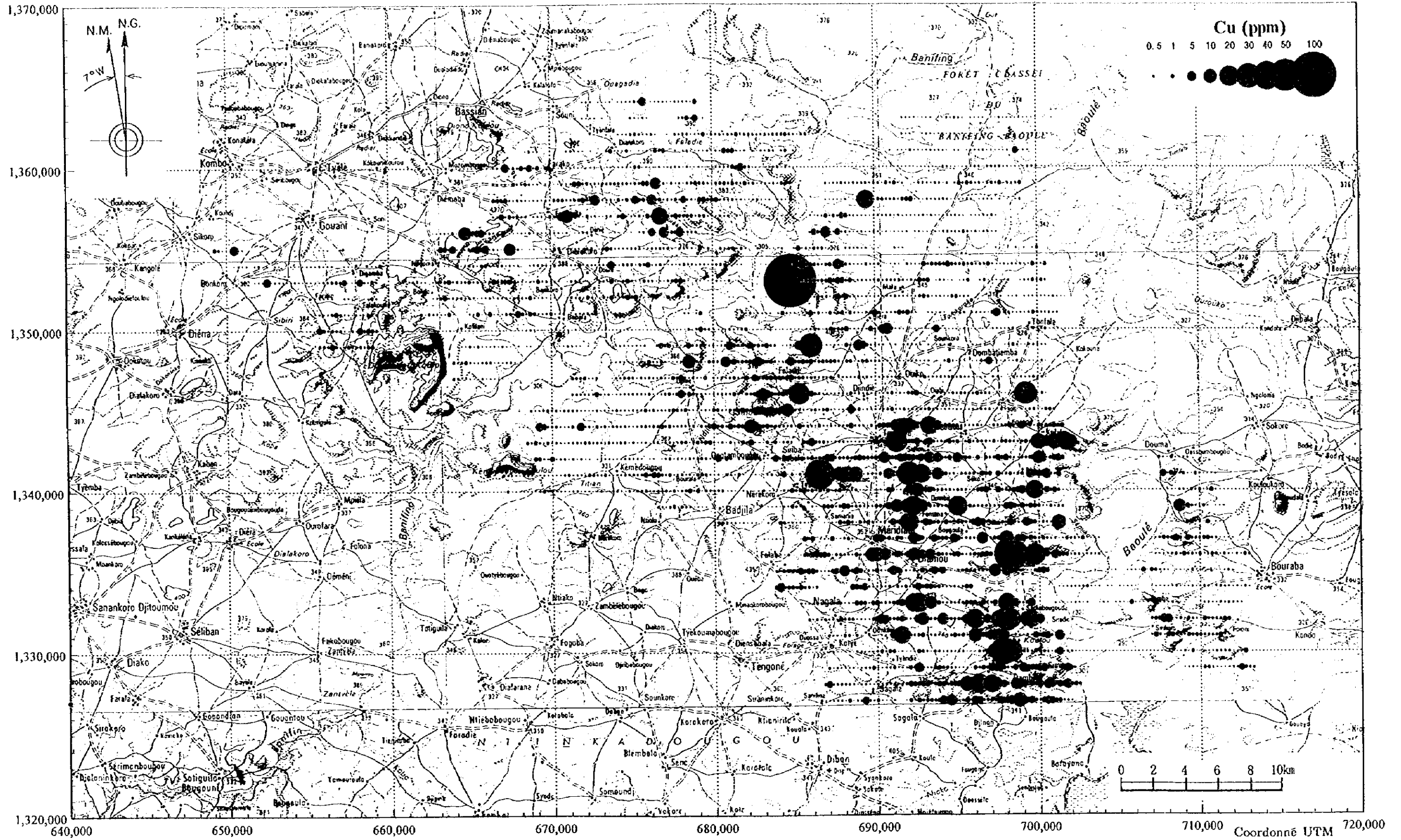
Apc.6-2 Résultat d'analyse géochimique (As, Secteur Est)

D

D

D

Coordonné UTM

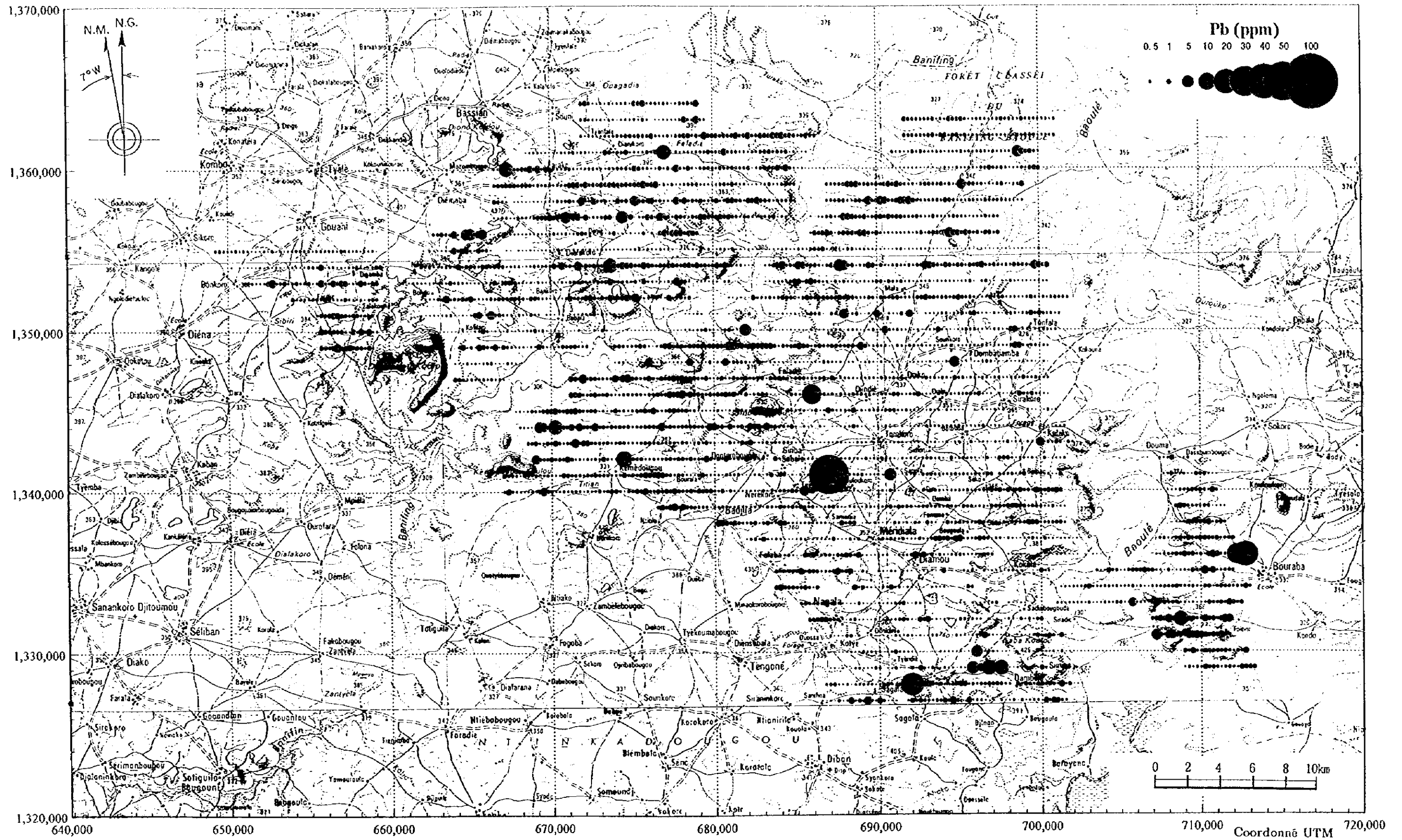


Apc.6-3 Résultat d'analyse géochimique (Cu, Secteur Est)





Coordonné UTM



Apc.6-4 Résultat d'analyse géochimique (Pb, Secteur Est)

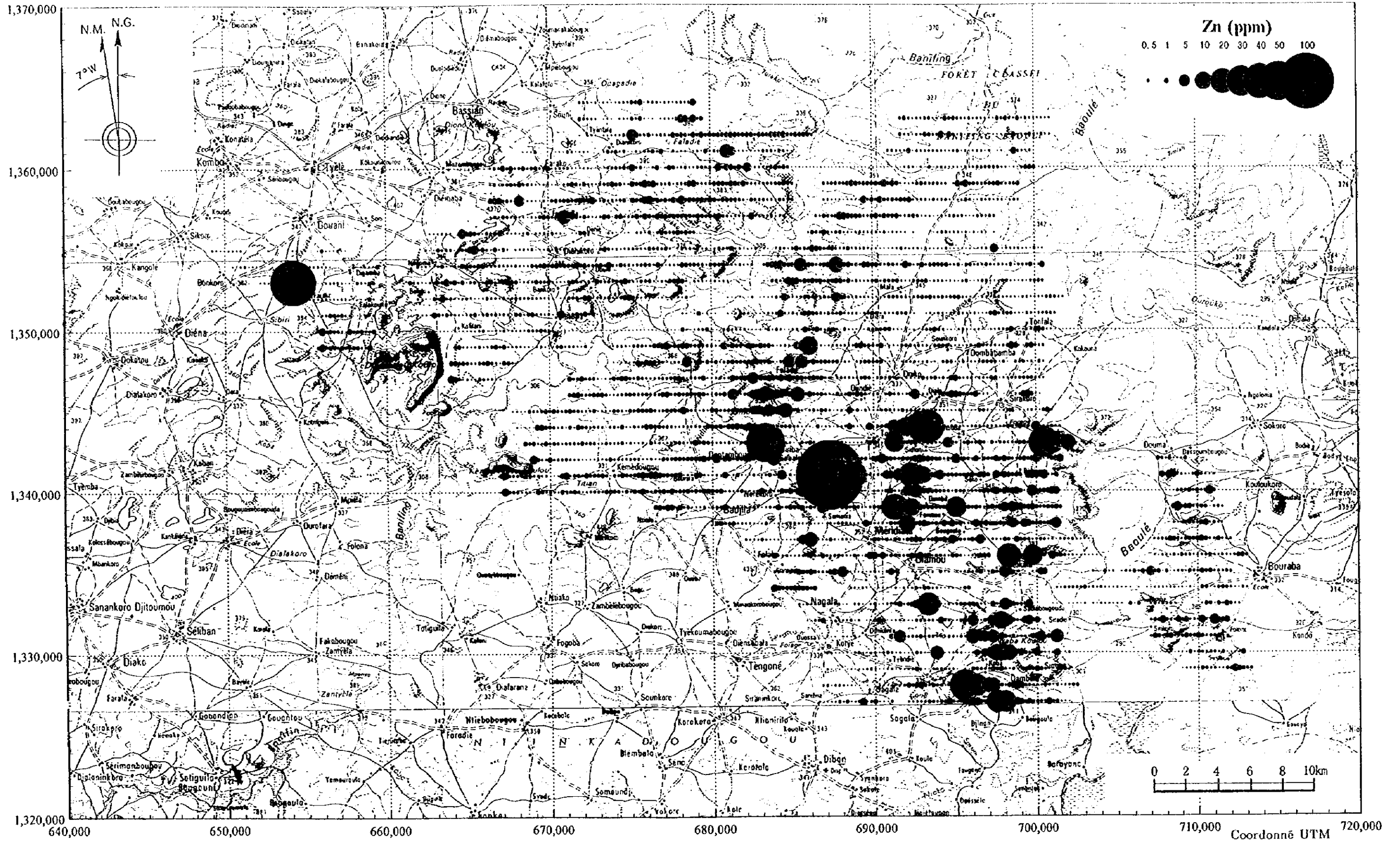


1

2

3

Coordonné UTM



Apc.6-5 Résultat d'analyse géochimique (Zn, Secteur Est)



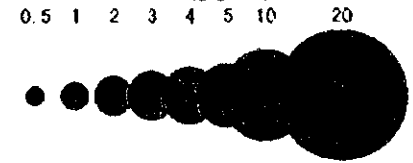
Coordonné UTM

1,370,000

N.M. N.G.

TOW

Mo (ppm)



1,360,000

1,350,000

1,340,000

1,330,000

1,320,000

640,000

650,000

660,000

670,000

680,000

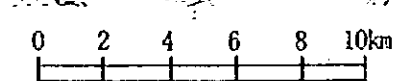
690,000

700,000

710,000

720,000

Coordonné UTM



Apc.6-6 Résultat d'analyse géochimique (Mo, Secteur Est)





**Apc.7 Résultat d'analyse géochimique, Secteur Ouest, Baoulé-Banifing**

Coordonné UTM

1,370,000

1,360,000

1,350,000

1,340,000

1,330,000

1,320,000

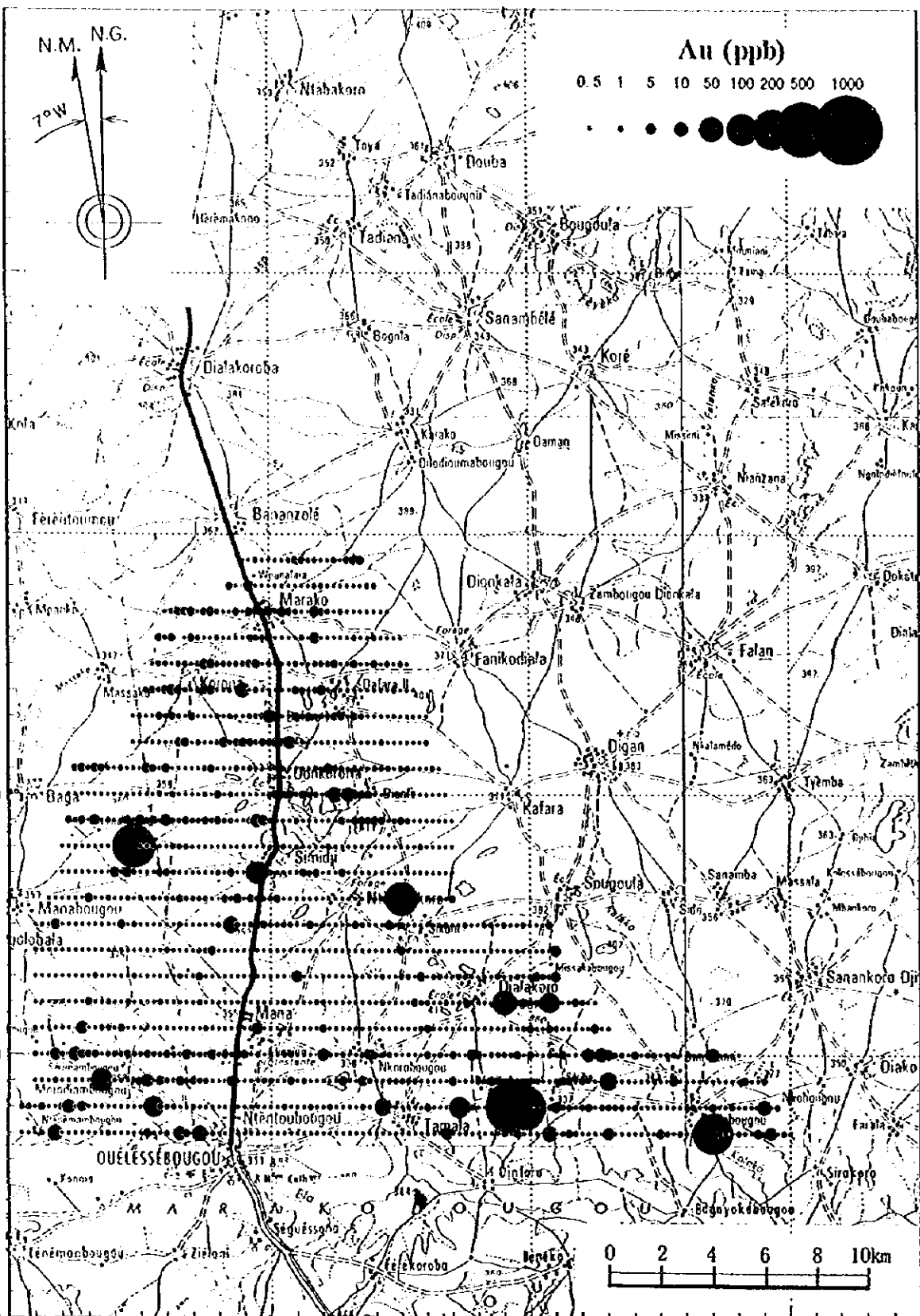
610,000

620,000

630,000

640,000

Coordonné UTM



Apc.7-1 Résultat d'analyse géochimique (Au, Secteur Ouest)



Coordonné UTM

1,370,000

1,360,000

1,350,000

1,340,000

1,330,000

1,320,000

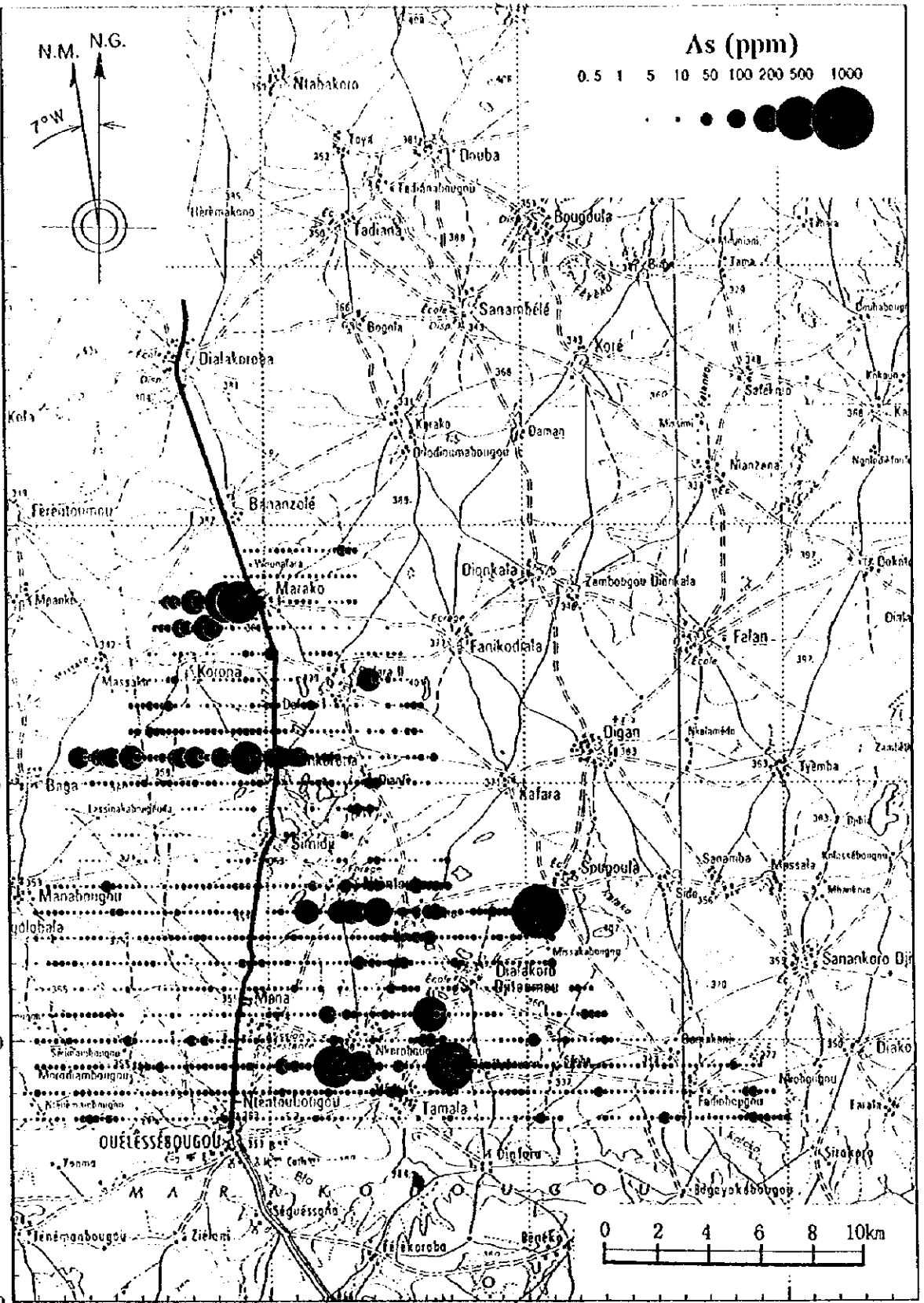
610,000

620,000

630,000

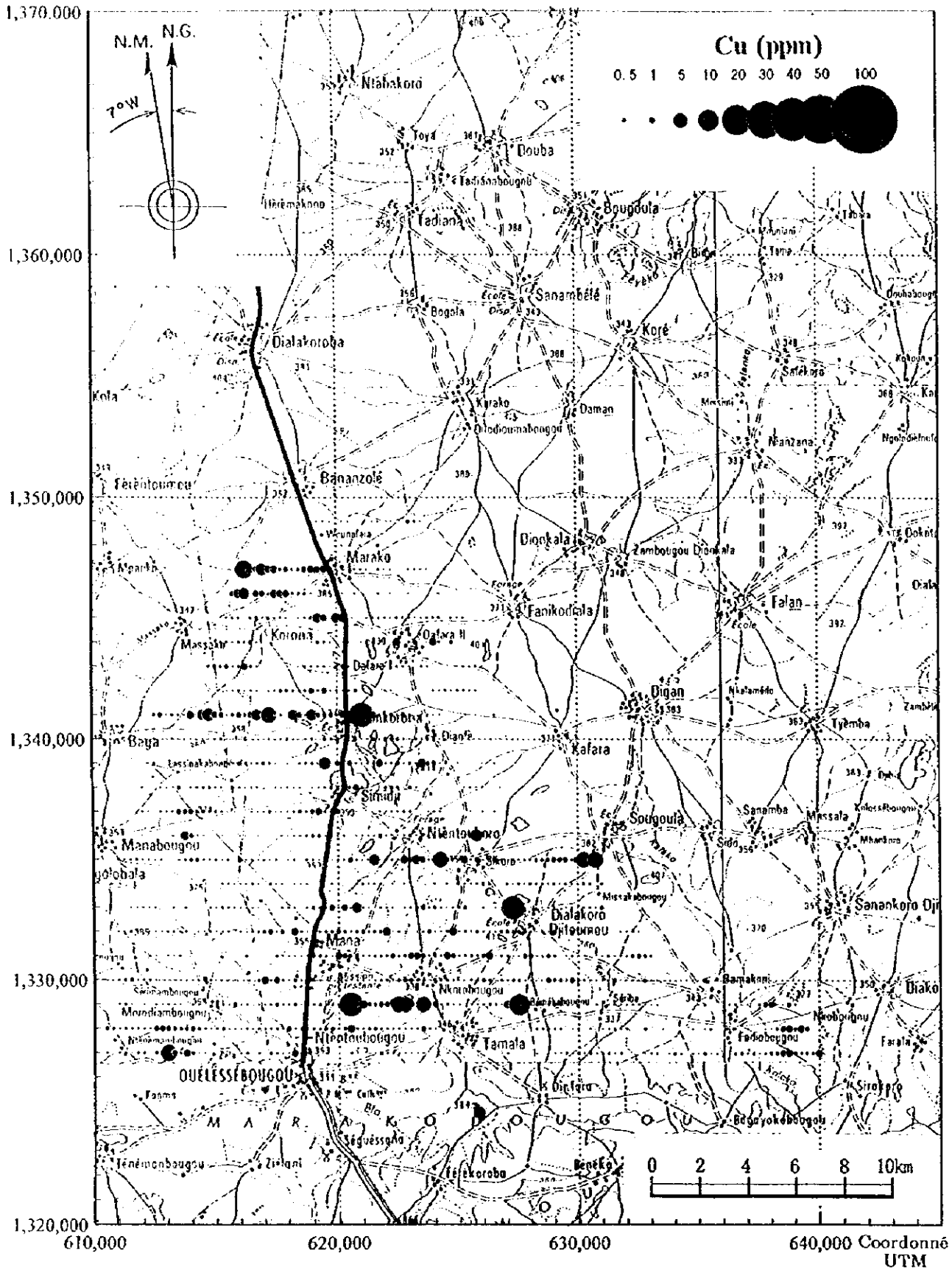
640,000

Coordonné UTM



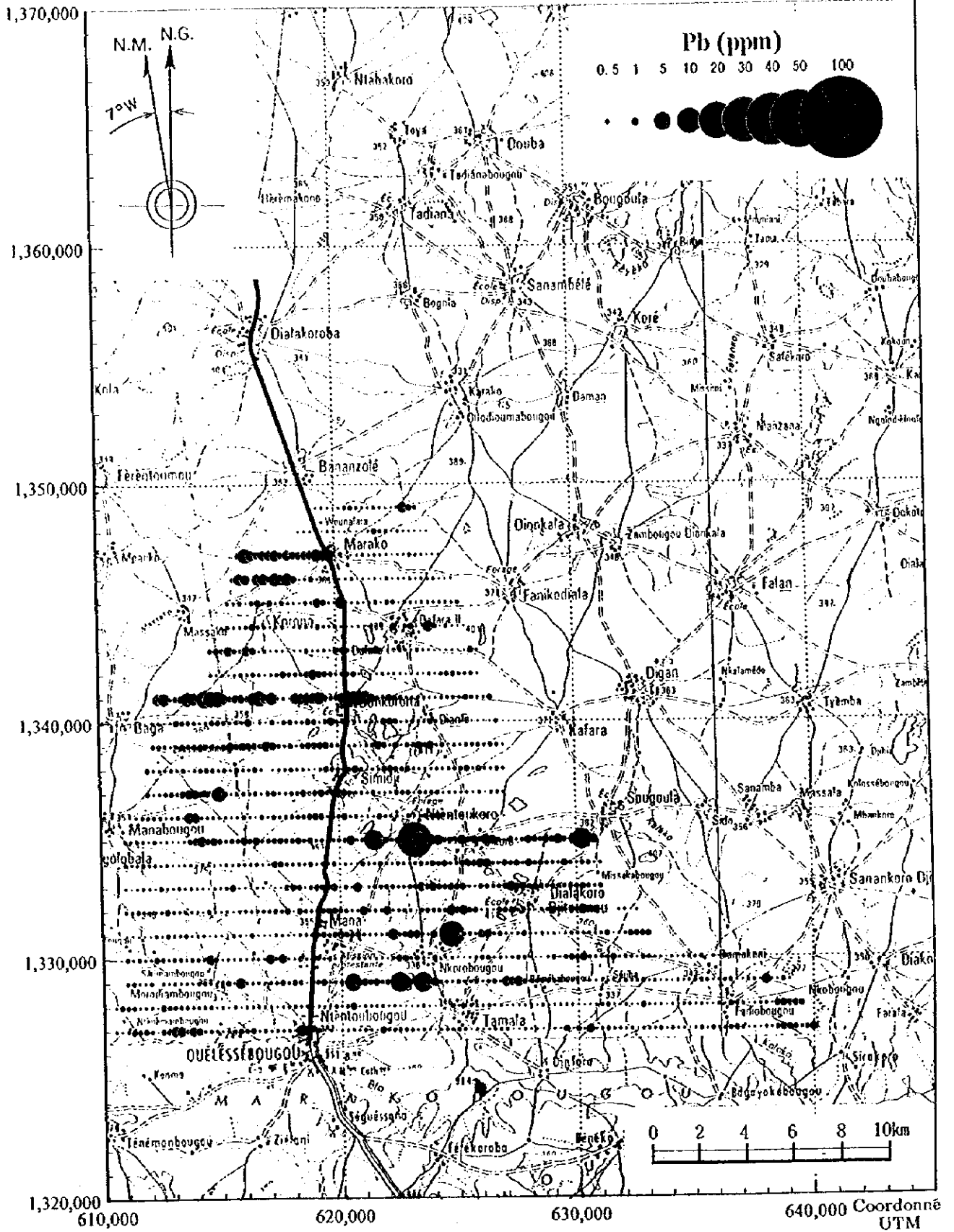
Apç.7-2 Résultat d'analyse géochimique (As, Secteur Ouest)

Coordonné UTM



Apc.7-3 Résultat d'analyse géochimique (Cu, Secteur Ouest)

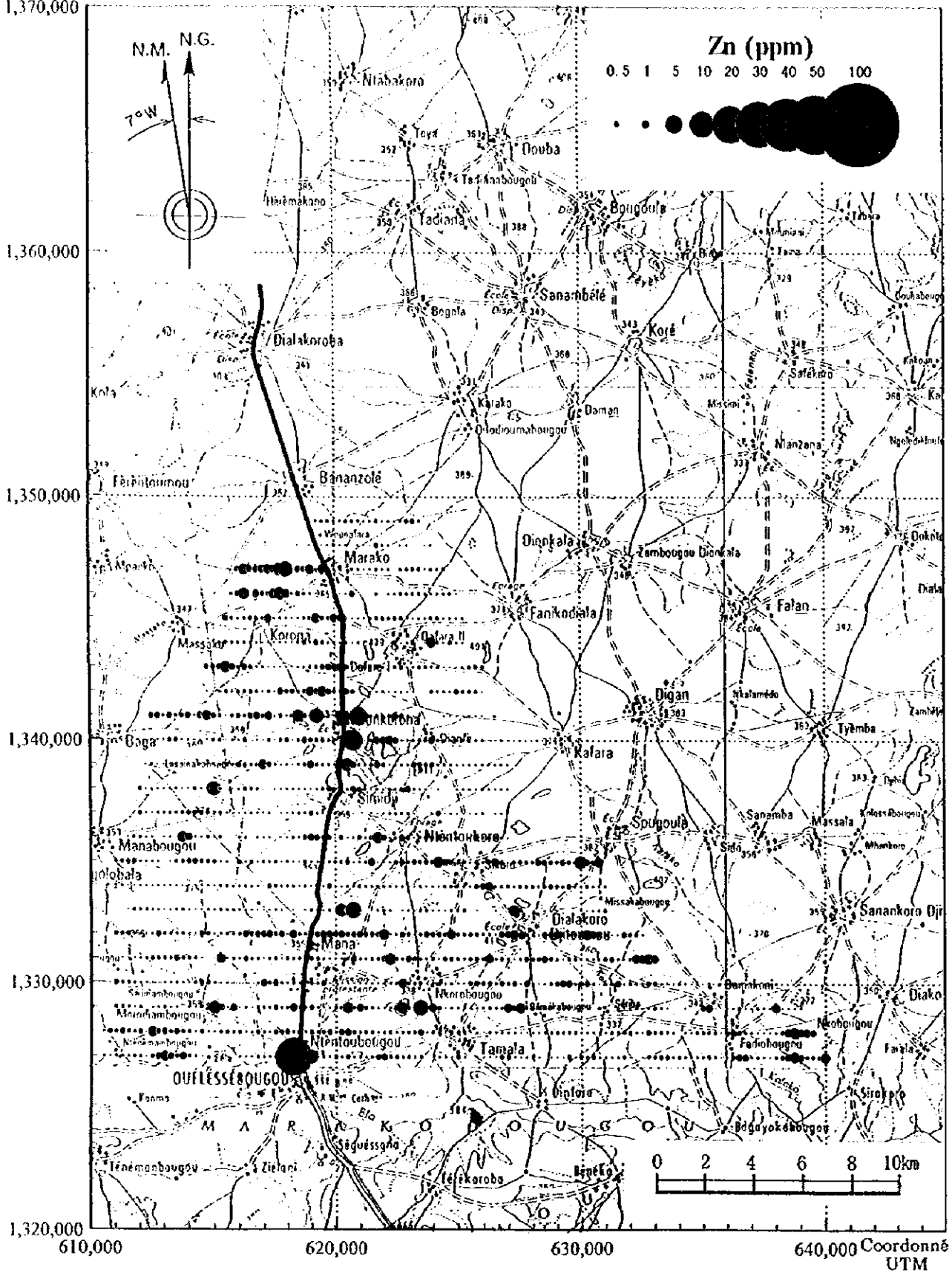
Coordonné UTM



Apç.7-4 Résultat d'analyse géochimique (Pb, Secteur Ouest)

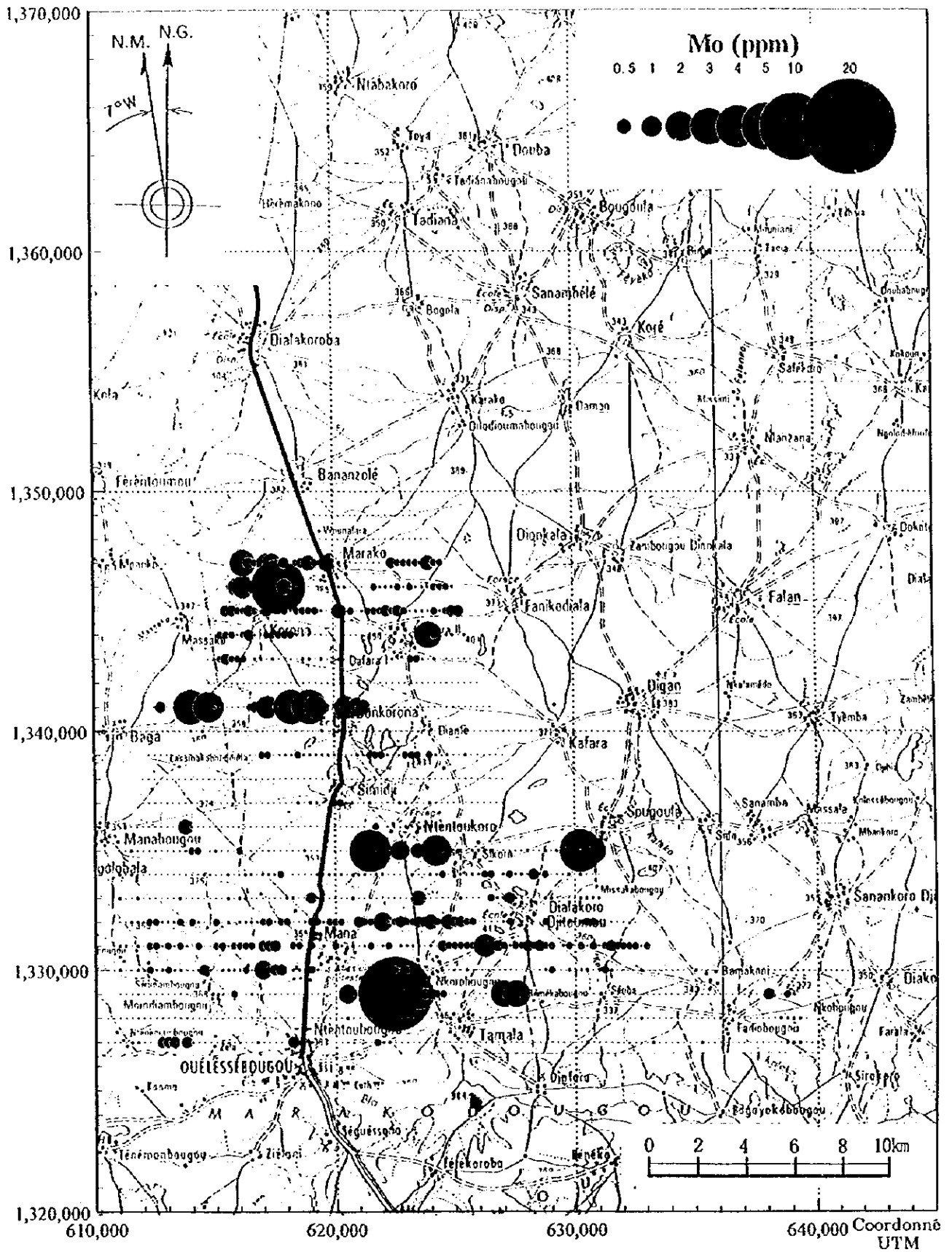
Coordonné UTM

1,370,000



Apç.7-5 Résultat d'analyse géochimique (Zn, Secteur Ouest)

Coordonné UTM



Apc.7-6 Résultat d'analyse géochimique (Mo, Secteur Ouest)



**Apc.8 Résultat d'analyse chimique des sols**

Serial No	Sample No.	UIM Coordination		Au ppb	Ag ppm	As ppm	Cu ppm	Mo ppm	Pb ppm	Sb ppm	Zn ppm	Depth cm	Color	Soil Horizon	Outcrop or float
		East	North												
1	AA-672000	672000	1364000	8	<2	17	8	3	13	<2	8	30	brown	gravel	-
2	AA-672250	672250	1364000	6	<2	21	9	1	15	0.2	9	30	brown	gravel	-
3	AA-672500	672500	1364000	2	<2	11	9	1	11	<2	8	30	brown	gravel	-
4	AA-672750	672750	1364000	<1	<2	7	4	1	6	<2	5	30	brown	gravel	-
5	AA-673000	673000	1364000	<1	<2	6	6	1	7	<2	7	30	brown	gravel	-
6	AA-673250	673250	1364000	1	<2	7	5	<1	8	<2	5	30	brown	lat. f. soil	-
7	AA-673500	673500	1364000	1	<2	3	6	<1	6	<2	6	30	light gray	lat. f. soil	-
8	AA-673750	673750	1364000	<1	<2	22	8	1	9	0.2	5	30	brown	gravel	-
9	AA-674000	674000	1364000	1	<2	2	3	<1	7	<2	4	30	yellowish gray	lat. f. soil	-
10	AA-674250	674250	1364000	<1	<2	<1	5	1	7	<2	6	30	brown	lat. f. soil	-
11	AA-674500	674500	1364000	<1	<2	10	8	1	8	<2	7	30	yellowish gray	lat. f. soil	-
12	AA-674750	674750	1364000	1	<2	6	8	<1	9	<2	8	30	brown	gravel	-
13	AA-675000	675000	1364000	<1	<2	7	8	1	7	<2	8	30	brown	gravel	-
14	AA-675250	675250	1364000	<1	<2	20	12	2	15	0.4	12	30	brown	gravel	-
15	AA-675500	675500	1364000	<1	<2	11	14	<1	14	<2	12	30	brown	gravel	-
16	AA-675750	675750	1364000	1	<2	52	34	8	18	1	16	5	brown	crust	-
17	AA-676000	676000	1364000	<1	<2	3	6	4	8	<2	6	30	yellowish gray	lat. f. soil	-
18	AA-676250	676250	1364000	2	<2	2	6	1	9	<2	8	30	yellowish gray	lat. f. soil	-
19	AA-676500	676500	1364000	2	<2	5	7	5	10	<2	9	30	yellowish gray	lat. f. soil	-
20	AA-676750	676750	1364000	1	<2	3	7	4	8	<2	8	30	yellowish gray	lat. f. soil	-
21	AA-677000	677000	1364000	2	<2	5	8	2	10	<2	5	30	yellowish gray	lat. f. soil	-
22	AA-677250	677250	1364000	3	<2	4	7	2	8	<2	7	30	brown	lat. f. soil	-
23	AA-677500	677500	1364000	2	<2	<1	5	2	5	<2	7	30	yellowish gray	lat. f. soil	-
24	AA-677750	677750	1364000	3	<2	4	8	<1	7	<2	6	30	yellowish gray	lat. f. soil	-
25	AA-678000	678000	1364000	1	<2	3	9	<1	11	<2	8	30	brown	lat. f. soil	-
26	AA-678250	678250	1364000	<1	<2	4	9	1	10	<2	9	30	brown	gravel	-
27	AA-678500	678500	1364000	<1	<2	13	8	2	12	0.4	8	15	brown	crust	-
28	AA-678750	678750	1364000	<1	<2	6	8	1	11	0.2	10	10	brown	crust	-
29	AA-679000	679000	1364000	2	<2	49	20	5	18	3.2	18	5	brown	crust	-
30	AB-672000	672000	1363000	1	<2	11	8	<1	10	<2	12	30	brown	crust	-
31	AB-672250	672250	1363000	1	<2	12	7	<1	11	<2	9	30	dark gray	gravel	-
32	AB-672500	672500	1363000	2	<2	13	7	<1	9	<2	8	30	brown	unknown(f soil)	-
33	AB-672750	672750	1363000	<1	<2	10	7	1	8	<2	7	30	brown	unknown(f soil)	-
34	AB-673000	673000	1363000	2	<2	7	4	<1	7	<2	6	30	brown	unknown(f soil)	-
35	AB-673250	673250	1363000	2	<2	6	6	4	8	<2	3	30	light gray	unknown(f soil)	-
36	AB-673500	673500	1363000	1	<2	6	2	<1	5	<2	4	30	light gray	unknown(f soil)	-
37	AB-673750	673750	1363000	2	<2	7	4	<1	7	<2	5	30	dark gray	unknown(f soil)	-
38	AB-674000	674000	1363000	1	<2	8	2	<1	7	<2	4	30	brown	unknown(f soil)	-
39	AB-674250	674250	1363000	<1	<2	9	2	2	4	<2	3	30	dark gray	unknown(f soil)	-
40	AB-674500	674500	1363000	<1	<2	10	4	<1	6	<2	6	30	dark gray	unknown(f soil)	-
41	AB-674750	674750	1363000	1	<2	7	4	<1	8	<2	6	30	brown	unknown(f soil)	-
42	AB-675000	675000	1363000	2	<2	9	9	<1	8	<2	6	30	brown	unknown(f soil)	-
43	AB-675250	675250	1363000	1	<2	12	7	<1	9	<2	11	30	brown	gravel	-
44	AB-675500	675500	1363000	<1	<2	8	6	<1	7	<2	8	30	brown	gravel	-
45	AB-675750	675750	1363000	1	<2	12	9	<1	11	0.2	12	30	brown	gravel	-
46	AB-676000	676000	1363000	<1	<2	9	5	<1	7	<2	6	30	brown	unknown(f soil)	-
47	AB-676250	676250	1363000	<1	<2	8	2	<1	3	<2	4	30	light gray	unknown(f soil)	-
48	AB-676500	676500	1363000	<1	<2	9	2	<1	5	<2	4	30	brown	unknown(f soil)	-
49	AB-676750	676750	1363000	1	<2	5	3	<1	4	<2	3	30	light gray	unknown(f soil)	-
50	AB-677000	677000	1363000	1	<2	7	3	<1	6	<2	5	30	light gray	unknown(f soil)	-
51	AB-677250	677250	1363000	5	<2	6	2	<1	6	<2	6	30	light gray	unknown(f soil)	-
52	AB-677500	677500	1363000	2	<2	10	2	<1	6	<2	6	30	light gray	unknown(f soil)	-
53	AB-677750	677750	1363000	1	<2	5	3	<1	6	<2	6	30	brown	unknown(f soil)	-
54	AB-678000	678000	1363000	<1	<2	13	11	<1	11	<2	13	30	brown	gravel	-
55	AB-678250	678250	1363000	<1	<2	12	13	<1	17	0.2	22	30	brown	gravel	-
56	AB-678500	678500	1363000	1	<2	13	20	<1	10	<2	19	30	brown	gravel	-
57	AB-678750	678750	1363000	1	<2	12	9	<1	9	<2	8	30	brown	gravel	-
58	AB-679000	679000	1363000	2	<2	12	27	<1	20	0.2	20	30	reddish brown	gravel	-
59	AB-679250	679250	1363000	<1	<2	11	6	<1	10	<2	9	30	brown	gravel	-
60	AB-679500	679500	1363000	2	<2	12	7	1	8	<2	12	30	brown	gravel	-
61	AB-691750	691750	1363000	45	<2	12	9	1	14	<2	10	30	reddish brown	gravel	-
62	AB-692000	692000	1363000	10	<2	12	8	<1	12	0.2	13	30	dark gray	gravel	-
63	AB-692250	692250	1363000	1	<2	9	7	<1	11	<2	9	30	brown	lat. f. soil	-
64	AB-692500	692500	1363000	<1	<2	11	7	<1	10	<2	7	30	light gray	gravel	-
65	AB-692750	692750	1363000	1	<2	8	5	<1	10	<2	8	30	light gray	lat. f. soil	-
66	AB-693000	693000	1363000	1	<2	14	6	<1	10	<2	7	30	brown	lat. f. soil	-
67	AB-693250	693250	1363000	2	<2	12	7	1	10	<2	10	30	yellowish gray	lat. f. soil	-
68	AB-693500	693500	1363000	<1	<2	14	8	<1	12	<2	11	30	dark gray	gravel	-
69	AB-693750	693750	1363000	2	<2	10	4	<1	8	<2	6	30	light gray	lat. f. soil	-
70	AB-694000	694000	1363000	2	<2	8	6	<1	9	<2	7	30	light gray	lat. f. soil	-
71	AB-694250	694250	1363000	1	<2	8	5	<1	8	<2	7	30	brown	lat. f. soil	-
72	AB-694500	694500	1363000	<1	<2	14	11	<1	14	<2	14	30	brown	lat. f. soil	-
73	AB-694750	694750	1363000	15	<2	16	8	<1	12	<2	11	30	dark gray	gravel	-
74	AB-695000	695000	1363000	<1	<2	14	11	<1	12	<2	12	30	dark gray	lat. f. soil	-



Serial No.	Sample No.	UTM Coordinates		Au ppb	Ag ppm	As ppm	Cu ppm	Mo ppm	Pb ppm	Sb ppm	Zn ppm	Depth cm	Color	Soil Horizon	Outcrop or Boat
		East	North												
75	AB-695250	695250	1363000	<1	<2	13	10	<1	14	0.2	10	30	brown	lat. f. soil	-
76	AB-695500	695500	1363000	<1	<2	10	6	<1	10	<2	8	30	brown	gravel	-
77	AB-695750	695750	1363000	<1	<2	13	3	<1	6	<2	8	30	dark gray	gravel	-
78	AB-696000	696000	1363000	1	<2	10	7	<1	8	<2	10	30	brown	lat. f. soil	-
79	AB-696250	696250	1363000	1	<2	15	6	<1	9	<2	7	30	brown	lat. f. soil	-
80	AB-696500	696500	1363000	1	<2	12	6	<1	9	<2	8	30	brown	gravel	-
81	AB-696750	696750	1363000	<1	<2	10	5	<1	8	<2	8	30	brown	lat. f. soil	-
82	AB-697000	697000	1363000	<1	<2	7	3	<1	7	<2	6	30	light gray	lat. f. soil	-
83	AB-697250	697250	1363000	<1	<2	7	5	<1	8	<2	5	30	light gray	gravel	-
84	AB-697500	697500	1363000	1	<2	8	5	<1	10	<2	6	30	light gray	lat. f. soil	-
85	AB-697750	697750	1363000	<1	<2	16	9	<1	12	<2	12	30	dark gray	gravel	-
86	AB-698000	698000	1363000	<1	<2	10	6	<1	10	<2	10	30	light gray	gravel	-
87	AB-698250	698250	1363000	<1	<2	12	7	<1	10	<2	13	30	dark gray	gravel	-
88	AB-698500	698500	1363000	<1	<2	9	6	<1	9	<2	10	30	light gray	lat. f. soil	-
89	AB-698750	698750	1363000	<1	<2	11	6	<1	9	<2	8	30	dark gray	gravel	-
90	AB-699000	699000	1363000	<1	<2	14	8	<1	12	<2	13	30	dark gray	gravel	-
91	AB-699250	699250	1363000	1	<2	7	5	<1	9	<2	8	30	yellowish gray	gravel	-
92	AB-699500	699500	1363000	<1	<2	8	5	<1	9	<2	9	30	light gray	gravel	-
93	AB-699750	699750	1363000	1	<2	7	5	<1	9	<2	8	30	dark gray	gravel	-
94	AB-700000	700000	1363000	1	<2	9	5	<1	8	<2	7	30	dark gray	gravel	-
95	AB-700250	700250	1363000	<1	<2	5	4	<1	9	<2	7	30	light gray	lat. f. soil	-
96	AB-700500	700500	1363000	1	<2	<1	5	<1	10	<2	7	30	light gray	lat. f. soil	-
97	AB-700750	700750	1363000	<1	<2	5	4	<1	7	<2	7	30	light gray	gravel	-
98	AB-701000	701000	1363000	1	<2	9	6	<1	10	<2	7	30	dark gray	lat. f. soil	-
99	AC-672000	672000	1362000	<1	<2	2	4	<1	9	<2	4	30	yellowish gray	gravel	-
100	AC-672250	672250	1362000	<1	<2	3	3	<1	6	0.2	2	30	yellowish gray	gravel	-
101	AC-672500	672500	1362000	<1	<2	5	4	<1	9	<2	7	30	yellowish gray	gravel	-
102	AC-672750	672750	1362000	1	<2	9	6	<1	8	<2	7	30	yellowish gray	crust	-
103	AC-673000	673000	1362000	<1	<2	6	2	<1	7	<2	5	30	yellowish gray	crust	-
104	AC-673250	673250	1362000	<1	<2	6	2	<1	8	<2	3	30	light gray	crust	-
105	AC-673500	673500	1362000	<1	<2	7	5	<1	9	<2	5	30	dark gray	crust	-
106	AC-673750	673750	1362000	<1	<2	4	4	<1	8	<2	4	30	light gray	crust	-
107	AC-674000	674000	1362000	<1	<2	2	4	<1	9	1	6	30	light gray	crust	-
108	AC-674250	674250	1362000	<1	<2	<1	6	<1	10	0.6	6	30	light gray	crust	-
109	AC-674500	674500	1362000	<1	<2	<1	6	<1	10	<2	6	30	yellowish gray	gravel	-
110	AC-674750	674750	1362000	<1	<2	3	9	<1	12	<2	10	30	light gray	gravel	-
111	AC-675000	675000	1362000	<1	<2	5	12	<1	12	<2	10	30	dark gray	crust	-
112	AC-675250	675250	1362000	<1	<2	<1	15	<1	11	<2	30	30	light gray	crust	-
113	AC-675500	675500	1362000	1	<2	3	10	<1	12	<2	17	30	light gray	gravel	-
114	AC-675750	675750	1362000	<1	<2	1	8	<1	11	<2	9	30	light gray	crust	-
115	AC-676000	676000	1362000	<1	<2	6	8	<1	11	<2	9	30	yellowish gray	lat. f. soil	-
116	AC-676250	676250	1362000	1	<2	5	12	<1	15	<2	12	30	dark gray	crust	-
117	AC-676500	676500	1362000	<1	<2	4	6	<1	10	<2	6	30	dark gray	crust	-
118	AC-676750	676750	1362000	2	<2	3	3	<1	8	<2	7	30	dark gray	crust	-
119	AC-677000	677000	1362000	<1	<2	4	4	<1	8	<2	10	30	dark gray	crust	-
120	AC-677250	677250	1362000	1	<2	8	5	<1	10	<2	9	30	dark gray	crust	-
121	AC-677500	677500	1362000	1	<2	5	4	<1	8	<2	8	30	dark gray	crust	-
122	AC-677750	677750	1362000	<1	<2	8	11	<1	11	<2	15	30	light gray	lat. f. soil	-
123	AC-678000	678000	1362000	<1	<2	6	10	<1	12	<2	12	30	dark gray	gravel	-
124	AC-678250	678250	1362000	<1	<2	8	12	<1	14	<2	13	30	yellowish gray	gravel	-
125	AC-678500	678500	1362000	<1	<2	9	12	<1	14	<2	11	30	yellowish gray	lat. f. soil	-
126	AC-678750	678750	1362000	<1	<2	5	7	<1	10	1.4	8	30	yellowish gray	gravel	-
127	AC-679000	679000	1362000	1	<2	9	8	<1	12	<2	15	30	dark gray	gravel	-
128	AC-679250	679250	1362000	2	<2	9	8	<1	10	<2	11	30	yellowish gray	lat. f. soil	-
129	AC-679500	679500	1362000	5	<2	53	18	4	20	1.2	16	30	dark gray	gravel	-
130	AC-679750	679750	1362000	6	<2	14	8	1	14	<2	11	-	-	-	-
131	AC-680000	680000	1362000	1	0.7	11	12	1	14	0.4	13	-	-	-	-
132	AC-680250	680250	1362000	<1	<2	11	11	<1	14	<2	12	-	-	-	-
133	AC-680500	680500	1362000	1	<2	13	12	1	12	<2	13	-	-	-	-
134	AC-680750	680750	1362000	<1	<2	10	10	1	13	<2	13	-	-	-	-
135	AC-681000	681000	1362000	<1	<2	11	12	1	12	<2	15	-	-	-	-
136	AC-681250	681250	1362000	1	<2	9	11	1	13	<2	16	-	-	-	-
137	AC-681500	681500	1362000	1	<2	14	17	1	17	<2	14	-	-	-	-
138	AC-681750	681750	1362000	<1	<2	11	10	1	12	<2	12	-	-	-	-
139	AC-682000	682000	1362000	<1	<2	11	12	<1	13	<2	13	-	-	-	-
140	AC-682250	682250	1362000	<1	<2	17	13	1	18	<2	14	-	-	-	-
141	AC-682500	682500	1362000	<1	<2	10	12	<1	11	<2	14	-	-	-	-
142	AC-682750	682750	1362000	<1	<2	7	10	<1	11	<2	10	-	-	-	-
143	AC-683000	683000	1362000	<1	<2	11	10	<1	15	<2	13	-	-	-	-
144	AC-683250	683250	1362000	<1	<2	11	12	1	14	<2	13	-	-	-	-
145	AC-683500	683500	1362000	2	<2	11	11	<1	14	<2	13	-	-	-	-
146	AC-683750	683750	1362000	2	<2	17	13	1	18	<2	16	-	-	-	-
147	AC-684000	684000	1362000	3	<2	14	14	1	16	<2	16	-	-	-	-
148	AC-684250	684250	1362000	1	<2	21	13	<1	19	<2	16	-	-	-	-

Serial No.	Sample No.	UTM Coordination		Au ppb	Ag ppm	As ppm	Cu ppm	Mo ppm	Pb ppm	Sb ppm	Zn ppm	Depth cm	Color	Soil Horizon	Outcrop or float
		East	North												
149	AC-684500	684500	1362000	<1	<2	9	17	1	13	<2	18	-	-	-	-
150	AC-684750	684750	1362000	<1	<2	5	12	<1	14	<2	12	-	-	-	-
151	AC-685000	685000	1362000	<1	<2	7	8	<1	12	<2	11	-	-	-	-
152	AC-685250	685250	1362000	<1	<2	1	6	<1	10	<2	14	-	-	-	-
153	AC-685500	685500	1362000	2	<2	6	11	<1	12	<2	13	-	-	-	-
154	AC-685750	685750	1362000	1	<2	9	12	<1	15	<2	14	-	-	-	-
155	AC-686000	686000	1362000	<1	<2	6	6	<1	11	<2	13	-	-	-	-
156	AC-686250	686250	1362000	1	<2	7	6	<1	11	<2	10	-	-	-	-
157	AC-691750	691750	1362000	2	<2	7	10	<1	12	<2	11	30	dark gray	gravel	-
158	AC-692000	692000	1362000	2	<2	6	6	<1	11	<2	8	30	light gray	gravel	-
159	AC-692250	692250	1362000	<1	<2	4	7	<1	11	<2	8	30	light gray	lat. f. soil	-
160	AC-692500	692500	1362000	1	<2	4	3	<1	10	<2	6	30	yellowish gray	lat. f. soil	-
161	AC-692750	692750	1362000	4	<2	4	3	<1	10	<2	8	30	yellowish gray	lat. f. soil	-
162	AC-693000	693000	1362000	1	<2	6	8	<1	10	<2	8	30	yellowish gray	lat. f. soil	-
163	AC-693250	693250	1362000	1	<2	9	9	<1	12	<2	13	30	dark gray	gravel	-
164	AC-693500	693500	1362000	<1	<2	9	7	<1	13	<2	12	30	brown	gravel	-
165	AC-693750	693750	1362000	<1	<2	6	5	<1	9	<2	9	30	dark gray	gravel	-
166	AC-694000	694000	1362000	<1	<2	9	8	1	13	<2	10	30	reddish brown	gravel	-
167	AC-694250	694250	1362000	<1	<2	9	10	<1	14	<2	19	30	dark gray	gravel	-
168	AC-694500	694500	1362000	<1	<2	5	5	<1	9	<2	8	30	yellowish gray	gravel	-
169	AC-694750	694750	1362000	<1	<2	6	8	<1	12	<2	16	30	dark gray	gravel	-
170	AC-695000	695000	1362000	<1	<2	5	8	<1	13	<2	10	30	reddish brown	gravel	-
171	AC-695250	695250	1362000	<1	<2	5	5	<1	9	<2	7	30	reddish brown	lat. f. soil	-
172	AC-695500	695500	1362000	1	<2	6	9	<1	11	<2	9	30	reddish brown	gravel	-
173	AC-695750	695750	1362000	3	<2	3	5	<1	8	<2	6	30	dark gray	lat. f. soil	-
174	AC-696000	696000	1362000	1	<2	2	6	<1	9	<2	7	30	yellowish gray	lat. f. soil	-
175	AC-696250	696250	1362000	<1	<2	1	5	<1	8	<2	6	30	light gray	gravel	-
176	AC-696500	696500	1362000	1	<2	1	5	<1	8	<2	6	30	light gray	lat. f. soil	-
177	AC-696750	696750	1362000	<1	<2	3	4	<1	8	<2	5	30	light gray	gravel	-
178	AC-697000	697000	1362000	3	<2	3	5	<1	10	<2	5	30	yellowish gray	lat. f. soil	-
179	AC-697250	697250	1362000	<1	<2	3	4	<1	8	<2	4	30	light gray	gravel	-
180	AC-697500	697500	1362000	2	<2	3	4	<1	8	<2	5	30	yellowish gray	lat. f. soil	-
181	AC-697750	697750	1362000	1	<2	2	2	<1	8	<2	5	30	light gray	lat. f. soil	-
182	AC-698000	698000	1362000	<1	<2	2	2	<1	8	<2	5	30	light gray	lat. f. soil	-
183	AC-698250	698250	1362000	<1	<2	3	3	<1	8	<2	6	30	light gray	lat. f. soil	-
184	AC-698500	698500	1362000	5	<2	4	5	<1	8	<2	7	30	yellowish gray	lat. f. soil	-
185	AC-698750	698750	1362000	<1	<2	7	7	<1	11	0.8	15	30	light gray	gravel	-
186	AC-699000	699000	1362000	1	<2	5	4	<1	9	<2	7	30	light gray	gravel	-
187	AC-699250	699250	1362000	1	<2	6	8	<1	11	<2	8	30	light gray	gravel	-
188	AC-699500	699500	1362000	<1	<2	6	6	<1	10	<2	8	30	light gray	gravel	-
189	AC-699750	699750	1362000	1	<2	3	7	<1	10	<2	11	30	light gray	gravel	-
190	AC-700000	700000	1362000	<1	<2	2	4	<1	7	<2	7	30	yellowish gray	gravel	-
191	AC-700250	700250	1362000	<1	<2	1	5	<1	9	<2	8	30	light gray	gravel	-
192	AC-700500	700500	1362000	<1	<2	5	7	<1	9	<2	10	30	light gray	gravel	-
193	AC-700750	700750	1362000	<1	<2	4	7	<1	9	<2	8	30	light gray	gravel	-
194	AC-701000	701000	1362000	6	<2	4	5	<1	10	<2	8	30	dark gray	gravel	-
195	AD-668500	668500	1361000	<1	<2	1	6	<1	5	<2	4	25	brown	unknown(f soil)	-
196	AD-668750	668750	1361000	<1	<2	6	12	<1	7	<2	4	25	yellowish gray	unknown(f soil)	-
197	AD-669000	669000	1361000	<1	<2	7	6	<1	8	<2	6	25	dark gray	lat. f. soil	-
198	AD-669250	669250	1361000	1	<2	6	7	<1	8	<2	10	25	yellowish gray	lat. f. soil	-
199	AD-669500	669500	1361000	<1	<2	4	4	<1	6	<2	3	25	yellowish gray	unknown(f soil)	-
200	AD-669750	669750	1361000	<1	<2	4	4	<1	6	<2	2	25	brown	unknown(f soil)	-
201	AD-670000	670000	1361000	<1	<2	3	3	<1	5	<2	3	25	light gray	unknown(f soil)	-
202	AD-670250	670250	1361000	6	<2	2	4	<1	5	<2	3	25	brown	unknown(f soil)	-
203	AD-670500	670500	1361000	<1	<2	2	3	<1	6	<2	4	25	brown	unknown(f soil)	-
204	AD-670750	670750	1361000	3	<2	4	4	<1	8	<2	5	25	brown	unknown(f soil)	-
205	AD-671000	671000	1361000	<1	<2	4	8	<1	8	<2	4	25	brown	unknown(f soil)	-
206	AD-671250	671250	1361000	1	<2	3	9	<1	8	<2	9	25	brown	lat. f. soil	-
207	AD-671500	671500	1361000	1	<2	5	8	<1	10	<2	8	20	brown	lat. f. soil	-
208	AD-671750	671750	1361000	<1	<2	6	6	<1	7	<2	5	20	yellowish gray	lat. f. soil	-
209	AD-672000	672000	1361000	2	<2	21	5	<1	8	<2	5	20	yellowish gray	lat. f. soil	-
210	AD-672250	672250	1361000	3	<2	145	4	<1	9	<2	6	25	reddish brown	lat. f. soil	-
211	AD-672500	672500	1361000	<1	<2	15	6	<1	7	<2	5	25	brown	lat. f. soil	-
212	AD-672750	672750	1361000	<1	<2	5	3	<1	5	<2	3	30	brown	unknown(f soil)	-
213	AD-673000	673000	1361000	<1	<2	1	3	<1	6	<2	3	30	brown	unknown(f soil)	-
214	AD-673250	673250	1361000	<1	<2	1	4	<1	7	<2	3	30	yellowish gray	unknown(f soil)	-
215	AD-673500	673500	1361000	1	<2	5	10	<1	15	<2	7	25	reddish brown	lat. f. soil	-
216	AD-673750	673750	1361000	1	<2	8	18	<1	13	<2	11	25	reddish brown	lat. f. soil	-
217	AD-674000	674000	1361000	<1	<2	5	8	<1	8	<2	7	25	brown	lat. f. soil	-
218	AD-674250	674250	1361000	<1	<2	4	8	<1	10	<2	10	30	brown	lat. f. soil	-
219	AD-674500	674500	1361000	<1	<2	6	7	<1	10	<2	7	20	reddish brown	lat. f. soil	-
220	AD-674750	674750	1361000	1	<2	22	14	<1	14	<2	9	15	dark gray	gravel	-
221	AD-675000	675000	1361000	<1	<2	3	5	<1	7	<2	4	20	dark gray	unknown(f soil)	-
222	AD-675250	675250	1361000	1	<2	2	4	<1	8	<2	4	20	yellowish gray	surface soil	-

Serial No.	Sample No.	UTM Coordination		Au ppb	Ag ppm	As ppm	Cu ppm	Mo ppm	Pb ppm	Sb ppm	Zn ppm	Depth cm	Color	Soil Horizon	Outcrop or float
		East	North												
223	AD-675500	675500	1361000	1	<2	5	6	<1	7	<2	7	15	yellowish gray	unknown(f soil)	-
224	AD-675750	675750	1361000	<1	<2	<1	5	<1	8	<2	5	10	reddish brown	crust	-
225	AD-676000	676000	1361000	<1	<2	1	8	<1	11	<2	9	25	yellowish gray	unknown(f soil)	-
226	AD-676250	676250	1361000	<1	<2	<1	7	<1	9	<2	9	15	dark gray	surface soil	-
227	AD-676500	676500	1361000	1	<2	4	18	<1	13	<2	12	25	reddish brown	lat. f. soil	-
228	AD-676750	676750	1361000	<1	<2	2	13	<1	12	<2	8	25	brown	lat. f. soil	-
229	AD-677000	677000	1361000	<1	<2	14	19	1	38	<2	14	20	dark gray	unknown(f soil)	-
230	AD-677250	677250	1361000	1	<2	4	5	<1	6	<2	4	30	light gray	surface soil	-
231	AD-677500	677500	1361000	<1	<2	2	3	<1	5	<2	3	30	light gray	surface soil	-
232	AD-677750	677750	1361000	2	<2	7	7	<1	10	<2	8	25	brown	lat. f. soil	-
233	AD-678000	678000	1361000	<1	<2	5	4	<1	6	<2	4	20	dark gray	unknown(f soil)	-
234	AD-678250	678250	1361000	2	<2	9	8	<1	8	<2	6	30	reddish brown	lat. f. soil	-
235	AD-678500	678500	1361000	<1	<2	6	8	<1	8	<2	5	30	yellowish gray	unknown(f soil)	-
236	AD-678750	678750	1361000	<1	<2	5	5	<1	6	<2	3	30	yellowish gray	unknown(f soil)	-
237	AD-679000	679000	1361000	<1	<2	7	5	<1	9	<2	5	30	reddish brown	unknown(f soil)	-
238	AD-679250	679250	1361000	1	<2	12	5	<1	10	<2	7	25	brown	unknown(f soil)	-
239	AD-679500	679500	1361000	<1	<2	8	7	1	10	<2	6	30	brown	unknown(f soil)	-
240	AD-679750	679750	1361000	<1	<2	12	10	<1	13	<2	13	30	brown	gravel	-
241	AD-680000	680000	1361000	4	<2	9	6	4	10	<2	7	20	yellowish gray	surface soil	-
242	AD-680250	680250	1361000	2	<2	10	9	<1	10	<2	9	20	yellowish gray	surface soil	-
243	AD-680500	680500	1361000	1	<2	10	8	<1	12	<2	10	25	yellowish gray	gravel	-
244	AD-680750	680750	1361000	<1	<2	14	22	<1	19	<2	17	30	reddish brown	lat. f. soil	white mica in the soil
245	AD-681000	681000	1361000	1	<2	10	20	<1	11	<2	36	30	yellowish gray	surface soil	-
246	AD-681250	681250	1361000	1	<2	7	20	<1	10	<2	26	30	brown	lat. f. soil	-
247	AD-681500	681500	1361000	<1	<2	9	9	<1	10	<2	8	30	brown	gravel	-
248	AD-681750	681750	1361000	<1	<2	5	7	7	8	<2	5	25	brown	lat. f. soil	-
249	AD-682000	682000	1361000	1	<2	7	8	6	8	<2	5	30	brown	lat. f. soil	-
250	AD-682250	682250	1361000	<1	<2	5	3	<1	7	<2	5	30	brown	lat. f. soil	-
251	AD-682500	682500	1361000	1	<2	5	6	<1	10	<2	6	30	yellowish gray	lat. f. soil	-
252	AD-682750	682750	1361000	<1	<2	7	5	<1	9	<2	5	25	reddish brown	unknown(f soil)	-
253	AD-683000	683000	1361000	1	<2	6	9	<1	11	<2	6	25	reddish brown	lat. f. soil	-
254	AD-683250	683250	1361000	<1	<2	9	8	<1	12	<2	10	25	reddish brown	lat. f. soil	-
255	AD-683500	683500	1361000	<1	<2	8	12	<1	13	<2	9	25	reddish brown	lat. f. soil	-
256	AD-683750	683750	1361000	1	<2	10	10	<1	10	<2	9	25	brown	lat. f. soil	-
257	AD-684000	684000	1361000	<1	<2	8	4	1	11	<2	7	30	reddish brown	unknown(f soil)	-
258	AD-684250	684250	1361000	1	<2	10	10	1	10	<2	11	25	brown	lat. f. soil	-
259	AD-684500	684500	1361000	<1	<2	10	14	<1	12	<2	9	25	reddish brown	unknown(f soil)	-
260	AD-684750	684750	1361000	32	<2	3	2	<1	6	<2	5	5	brown	surface soil	-
261	AD-685000	685000	1361000	<1	<2	4	9	<1	7	<2	5	25	yellowish gray	unknown(f soil)	-
262	AD-685250	685250	1361000	2	<2	1	3	<1	5	<2	2	30	yellowish gray	unknown(f soil)	-
263	AD-685500	685500	1361000	<1	<2	2	4	<1	6	<2	3	30	light gray	unknown(f soil)	-
264	AD-685750	685750	1361000	<1	<2	<1	2	<1	6	<2	3	30	light gray	unknown(f soil)	-
265	AD-691000	691000	1361000	1	<2	9	7	<1	10	<2	9	25	brown	lat. f. soil	-
266	AD-691250	691250	1361000	<1	<2	5	4	<1	8	<2	9	25	light gray	lat. f. soil	-
267	AD-691500	691500	1361000	1	<2	5	6	<1	8	<2	8	20	brown	lat. f. soil	qz float
268	AD-691750	691750	1361000	<1	<2	6	6	<1	6	<2	7	25	yellowish gray	lat. f. soil	-
269	AD-692000	692000	1361000	1	<2	6	5	<1	8	<2	7	20	brown	lat. f. soil	-
270	AD-692250	692250	1361000	1	<2	9	11	<1	11	<2	14	20	brown	lat. f. soil	-
271	AD-692500	692500	1361000	1	<2	5	6	<1	8	<2	6	10	brown	surface soil	-
272	AD-692750	692750	1361000	6	<2	7	7	<1	11	<2	9	25	reddish brown	lat. f. soil	-
273	AD-693000	693000	1361000	1	<2	8	6	<1	9	<2	7	25	yellowish gray	lat. f. soil	-
274	AD-693250	693250	1361000	<1	<2	5	7	<1	8	<2	8	25	yellowish gray	lat. f. soil	-
275	AD-693500	693500	1361000	<1	<2	5	9	<1	8	<2	8	25	yellowish gray	lat. f. soil	-
276	AD-693750	693750	1361000	<1	<2	5	7	<1	10	<2	8	20	yellowish gray	lat. f. soil	-
277	AD-694000	694000	1361000	<1	<2	5	9	<1	9	<2	8	15	yellowish gray	surface soil	-
278	AD-694250	694250	1361000	<1	<2	6	7	<1	6	<2	7	20	light gray	lat. f. soil	-
279	AD-694500	694500	1361000	2	<2	4	5	<1	7	<2	6	30	brown	unknown(f soil)	-
280	AD-694750	694750	1361000	1	<2	5	4	<1	8	<2	5	25	light gray	unknown(f soil)	-
281	AD-695000	695000	1361000	<1	<2	9	5	<1	8	<2	8	25	yellowish gray	lat. f. soil	-
282	AD-695250	695250	1361000	<1	<2	6	7	<1	10	<2	10	20	reddish brown	lat. f. soil	-
283	AD-695500	695500	1361000	<1	<2	4	4	<1	8	<2	5	15	brown	lat. f. soil	-
284	AD-695750	695750	1361000	<1	<2	8	5	<1	9	<2	8	25	brown	lat. f. soil	-
285	AD-696000	696000	1361000	1	<2	5	7	<1	8	<2	5	30	yellowish gray	gravel	-
286	AD-696250	696250	1361000	<1	<2	3	8	<1	9	<2	6	30	yellowish gray	lat. f. soil	-
287	AD-696500	696500	1361000	<1	<2	7	8	<1	10	<2	8	30	brown	gravel	-
288	AD-696750	696750	1361000	1	<2	10	10	<1	9	<2	8	30	brown	gravel	-
289	AD-697000	697000	1361000	<1	<2	4	6	<1	7	<2	5	30	yellowish gray	gravel	-
290	AD-697250	697250	1361000	1	<2	9	7	<1	10	<2	7	30	yellowish gray	gravel	-
291	AD-697500	697500	1361000	<1	<2	1	5	<1	8	<2	2	30	yellowish gray	lat. f. soil	-
292	AD-697750	697750	1361000	<1	<2	1	5	<1	7	<2	4	30	yellowish gray	gravel	-
293	AD-698000	698000	1361000	1	<2	4	6	<1	8	<2	5	30	yellowish gray	lat. f. soil	-
294	AD-698250	698250	1361000	<1	<2	<1	8	<1	8	<2	3	30	light gray	lat. f. soil	-
295	AD-698500	698500	1361000	2	<2	1	4	<1	9	<2	6	30	brown	lat. f. soil	-
296	AD-698750	698750	1361000	9	<2	42	27	<1	30	0.2	18	30	brown	gravel	-

Serial No.	Sample No.	UTM Coordination		Au	Ag	As	Cu	Mo	Pb	Sb	Zn	Depth cm	Color	Soil Horizon	Outcrop or float
		East	North	ppb	ppm	ppm	ppm	ppm	ppm	ppm	ppm				
297	AD-699000	699000	1361000	1	<2	17	8	2	18	0.2	10	30	brown	gravel	-
298	AD-699250	699250	1361000	1	<2	13	7	<1	13	<2	8	30	yellowish gray	gravel	-
299	AD-699500	699500	1361000	2	<2	16	7	<1	14	<2	8	30	brown	gravel	-
300	AD-699750	699750	1361000	<1	<2	4	4	<1	10	<2	8	30	brown	lat. f. soil	-
301	AD-700000	700000	1361000	<1	<2	2	3	<1	9	<2	5	30	brown	lat. f. soil	-
302	AE-666500	666500	1360000	<1	<2	<1	8	<1	7	<2	7	30	dark gray	crust	-
303	AE-666750	666750	1360000	1	<2	3	10	<1	8	<2	10	30	yellowish gray	crust	-
304	AE-667000	667000	1360000	<1	<2	5	9	<1	8	<2	9	30	light gray	crust	-
305	AE-667250	667250	1360000	1	<2	56	33	4	38	1	15	30	reddish brown	surface soil	-
306	AE-667500	667500	1360000	<1	<2	5	10	<1	10	<2	10	30	dark gray	lat. f. soil	-
307	AE-667750	667750	1360000	1	<2	14	13	<1	12	<2	14	30	dark gray	gravel	-
308	AE-668000	668000	1360000	2	<2	3	10	<1	11	<2	8	30	dark gray	gravel	-
309	AE-668250	668250	1360000	2	<2	8	21	<1	13	<2	10	30	reddish brown	gravel	-
310	AE-668500	668500	1360000	1	<2	8	12	<1	14	<2	13	30	reddish brown	gravel	-
311	AE-668750	668750	1360000	2	<2	14	28	<1	19	<2	9	30	reddish brown	gravel	-
312	AE-669000	669000	1360000	2	<2	5	11	<1	12	<2	11	30	brown	crust	-
313	AE-669250	669250	1360000	1	<2	34	19	2	19	<2	12	30	reddish brown	surface soil	-
314	AE-669500	669500	1360000	<1	<2	5	6	<1	9	<2	8	30	dark gray	gravel	-
315	AE-669750	669750	1360000	<1	<2	9	15	<1	15	<2	9	30	yellowish gray	lat. f. soil	-
316	AE-670000	670000	1360000	4	<2	6	12	<1	12	<2	14	30	dark gray	gravel	-
317	AE-670250	670250	1360000	3	<2	2	8	<1	9	<2	7	30	yellowish gray	lat. f. soil	-
318	AE-670500	670500	1360000	20	<2	<1	4	<1	8	<2	7	30	dark gray	unknown(f soil)	-
319	AE-670750	670750	1360000	3	<2	4	7	<1	7	<2	8	30	yellowish gray	gravel	-
320	AE-671000	671000	1360000	1	<2	3	6	<1	10	<2	8	30	yellowish gray	unknown(f soil)	-
321	AE-671250	671250	1360000	2	<2	4	7	<1	10	<2	8	30	yellowish gray	unknown(f soil)	-
322	AE-671500	671500	1360000	4	<2	4	4	<1	8	<2	5	30	dark gray	unknown(f soil)	-
323	AE-671750	671750	1360000	1	<2	3	3	<1	7	<2	5	30	yellowish gray	unknown(f soil)	-
324	AE-672000	672000	1360000	<1	<2	1	3	<1	7	<2	5	30	yellowish gray	unknown(f soil)	-
325	AE-672250	672250	1360000	<1	<2	2	5	<1	8	<2	6	30	yellowish gray	unknown(f soil)	-
326	AE-672500	672500	1360000	2	<2	3	8	<1	10	<2	7	30	yellowish gray	unknown(f soil)	-
327	AE-672750	672750	1360000	<1	<2	8	7	<1	9	<2	4	30	yellowish gray	gravel	-
328	AE-673000	673000	1360000	<1	<2	2	6	<1	8	<2	5	30	yellowish gray	lat. f. soil	-
329	AE-673250	673250	1360000	15	<2	1	3	<1	8	<2	5	30	yellowish gray	unknown(f soil)	-
330	AE-673500	673500	1360000	<1	<2	3	5	<1	7	<2	5	30	yellowish gray	unknown(f soil)	-
331	AE-673750	673750	1360000	<1	<2	5	8	<1	9	<2	9	25	light gray	surface soil	-
332	AE-674000	674000	1360000	<1	<2	4	7	<1	9	<2	9	30	light gray	surface soil	-
333	AE-674250	674250	1360000	<1	<2	6	7	<1	11	<2	10	30	light gray	gravel	-
334	AE-674500	674500	1360000	<1	<2	6	7	<1	10	<2	9	30	yellowish gray	gravel	-
335	AE-674750	674750	1360000	1	<2	4	9	<1	11	<2	12	30	brown	gravel	-
336	AE-675000	675000	1360000	4	<2	4	8	<1	10	<2	10	30	brown	gravel	-
337	AE-675250	675250	1360000	<1	<2	3	15	<1	16	<2	19	30	brown	gravel	-
338	AE-675500	675500	1360000	1	<2	4	15	<1	13	<2	9	30	yellowish gray	unknown(f soil)	-
339	AE-675750	675750	1360000	<1	<2	<1	5	<1	9	<2	10	30	dark gray	gravel	-
340	AE-676000	676000	1360000	<1	<2	1	5	<1	9	<2	5	30	yellowish gray	unknown(f soil)	-
341	AE-676250	676250	1360000	<1	<2	<1	4	<1	6	<2	5	30	yellowish gray	gravel	-
342	AE-676500	676500	1360000	7	<2	3	7	<1	8	<2	8	30	dark gray	crust	-
343	AE-676750	676750	1360000	<1	<2	9	9	<1	12	<2	14	30	dark gray	unknown(f soil)	-
344	AE-677000	677000	1360000	<1	<2	<1	5	<1	8	<2	5	30	light gray	unknown(f soil)	-
345	AE-677250	677250	1360000	<1	<2	1	6	<1	11	<2	7	30	dark gray	crust	-
346	AE-677500	677500	1360000	<1	<2	6	9	<1	8	<2	14	30	dark gray	gravel	-
347	AE-677750	677750	1360000	<1	<2	8	10	<1	20	<2	12	30	yellowish gray	gravel	-
348	AE-678000	678000	1360000	3	<2	1	8	<1	11	<2	7	30	yellowish gray	unknown(f soil)	-
349	AE-678250	678250	1360000	<1	<2	1	6	<1	9	<2	8	30	dark gray	gravel	-
350	AE-678500	678500	1360000	1	<2	5	10	<1	13	<2	10	30	yellowish gray	gravel	-
351	AE-678750	678750	1360000	<1	<2	<1	5	<1	8	<2	7	30	yellowish gray	unknown(f soil)	-
352	AE-679000	679000	1360000	<1	<2	<1	3	<1	6	<2	6	30	brown	unknown(f soil)	-
353	AE-679250	679250	1360000	10	<2	2	7	<1	10	<2	9	30	yellowish gray	unknown(f soil)	-
354	AE-679500	679500	1360000	<1	<2	5	6	<1	11	<2	10	30	brown	gravel	-
355	AE-679750	679750	1360000	<1	<2	5	7	<1	12	<2	9	30	brown	gravel	-
356	AE-680000	680000	1360000	<1	<2	4	6	<1	10	<2	9	30	brown	surface soil	-
357	AE-680250	680250	1360000	<1	<2	<1	9	<1	8	<2	7	30	brown	unknown(f soil)	-
358	AE-680500	680500	1360000	<1	<2	5	9	<1	12	<2	20	30	brown	crust	-
359	AE-680750	680750	1360000	<1	<2	4	10	<1	10	<2	11	30	brown	gravel	-
360	AE-681000	681000	1360000	<1	<2	6	11	<1	10	<2	18	30	brown	crust	-
361	AE-681250	681250	1360000	5	<2	4	18	<1	11	<2	15	30	brown	unknown(f soil)	-
362	AE-681500	681500	1360000	<1	<2	<1	16	<1	10	<2	11	30	brown	gravel	-
363	AE-681750	681750	1360000	<1	<2	5	30	<1	10	<2	15	30	reddish brown	lat. f. soil	-
364	AE-682000	682000	1360000	<1	<2	3	16	<1	10	<2	11	25	reddish brown	unknown(f soil)	-
365	AE-682250	682250	1360000	<1	<2	5	12	<1	12	<2	24	10	reddish brown	surface soil	-
366	AE-682500	682500	1360000	<1	<2	2	6	1	5	<2	5	30	brown	lat. f. soil	-
367	AE-682750	682750	1360000	<1	<2	<1	4	1	8	<2	6	30	reddish brown	unknown(f soil)	-
368	AE-683000	683000	1360000	<1	<2	2	5	<1	11	<2	7	30	reddish brown	unknown(f soil)	-
369	AE-683250	683250	1360000	<1	<2	7	6	<1	13	<2	8	25	reddish brown	lat. f. soil	-
370	AE-683500	683500	1360000	<1	<2	6	9	<1	12	<2	9	25	brown	lat. f. soil	-

Serial No.	Sample No.	UTM Coordination		Au ppb	Ag ppm	As ppm	Cu ppm	Mo ppm	Pb ppm	Sb ppm	Zn ppm	Depth cm	Color	Soil Horizon	Outcrop or float
		East	North												
371	AE-683750	683750	1360000	<1	<2	5	10	<1	12	<2	12	25	reddish brown	lat. f. soil	-
372	AE-684000	684000	1360000	<1	<2	7	13	<1	15	<2	14	25	brown	lat. f. soil	-
373	AE-684250	684250	1360000	<1	<2	3	5	<1	10	<2	10	30	reddish brown	unknown(f soil)	-
374	AE-684500	684500	1360000	1	<2	9	10	2	18	<2	12	25	reddish brown	lat. f. soil	-
375	AE-684750	684750	1360000	<1	<2	9	4	<1	11	<2	10	25	brown	lat. f. soil	-
376	AE-685000	685000	1360000	<1	<2	4	2	<1	6	<2	5	30	yellowish gray	unknown(f soil)	-
377	AE-685250	685250	1360000	<1	<2	5	2	<1	5	<2	4	30	brown	unknown(f soil)	-
378	AE-685500	685500	1360000	2	<2	5	4	<1	6	<2	4	25	brown	unknown(f soil)	-
379	AE-691000	691000	1360000	<1	<2	5	4	<1	4	<2	4	20	light gray	unknown(f soil)	-
380	AE-691250	691250	1360000	2	<2	6	4	<1	5	<2	4	25	light gray	unknown(f soil)	-
381	AE-691500	691500	1360000	<1	<2	4	3	<1	5	<2	3	25	yellowish gray	unknown(f soil)	-
382	AE-691750	691750	1360000	1	<2	7	4	<1	5	<2	4	25	brown	unknown(f soil)	-
383	AE-692000	692000	1360000	2	<2	5	2	<1	6	<2	6	25	brown	unknown(f soil)	-
384	AE-692250	692250	1360000	1	<2	8	6	<1	7	<2	8	20	brown	lat. f. soil	-
385	AE-692500	692500	1360000	<1	<2	6	5	<1	6	<2	7	20	brown	unknown(f soil)	-
386	AE-692750	692750	1360000	<1	<2	6	4	<1	5	<2	4	20	yellowish gray	unknown(f soil)	-
387	AE-693000	693000	1360000	<1	<2	6	4	<1	5	<2	6	20	light gray	unknown(f soil)	-
388	AE-693250	693250	1360000	<1	<2	5	4	<1	5	<2	5	20	yellowish gray	unknown(f soil)	-
389	AE-693500	693500	1360000	<1	<2	4	4	<1	6	<2	9	20	yellowish gray	unknown(f soil)	-
390	AE-693750	693750	1360000	<1	<2	6	3	<1	4	<2	5	20	light gray	unknown(f soil)	-
391	AE-694000	694000	1360000	<1	<2	6	2	<1	5	<2	6	30	yellowish gray	unknown(f soil)	-
392	AE-694250	694250	1360000	1	<2	9	10	<1	8	<2	8	25	yellowish gray	unknown(f soil)	-
393	AE-694500	694500	1360000	<1	<2	8	8	<1	6	<2	7	20	brown	lat. f. soil	-
394	AE-694750	694750	1360000	1	<2	5	6	<1	6	<2	5	25	brown	lat. f. soil	-
395	AE-695000	695000	1360000	1	<2	6	5	<1	9	<2	5	25	light gray	unknown(f soil)	-
396	AE-695250	695250	1360000	<1	<2	5	5	<1	7	<2	6	30	yellowish gray	unknown(f soil)	-
397	AE-695500	695500	1360000	<1	<2	7	3	<1	7	<2	5	25	brown	unknown(f soil)	-
398	AE-695750	695750	1360000	3	<2	6	7	<1	9	<2	9	30	yellowish gray	lat. f. soil	-
399	AE-696000	696000	1360000	6	<2	7	7	<1	8	<2	7	30	yellowish gray	lat. f. soil	-
400	AE-696250	696250	1360000	<1	<2	9	10	<1	7	<2	8	30	yellowish gray	lat. f. soil	-
401	AE-696500	696500	1360000	1	<2	10	10	<1	10	<2	10	30	yellowish gray	gravel	-
402	AE-696750	696750	1360000	1	<2	15	6	<1	10	<2	10	20	brown	crust	-
403	AE-697000	697000	1360000	2	<2	12	11	<1	14	<2	10	30	brown	gravel	-
404	AE-697250	697250	1360000	3	<2	10	12	<1	10	<2	10	30	brown	lat. f. soil	-
405	AE-697500	697500	1360000	3	<2	7	10	<1	9	<2	10	30	brown	gravel	-
406	AE-697750	697750	1360000	1	<2	16	12	<1	11	<2	10	30	brown	gravel	-
407	AE-698000	698000	1360000	2	<2	12	8	<1	9	<2	7	30	yellowish gray	gravel	-
408	AE-698250	698250	1360000	2	<2	8	8	<1	7	<2	6	30	yellowish gray	gravel	-
409	AE-698500	698500	1360000	1	<2	6	5	<1	6	<2	4	30	brown	gravel	-
410	AE-698750	698750	1360000	1	<2	6	7	<1	7	<2	6	30	yellowish gray	lat. f. soil	-
411	AE-699000	699000	1360000	1	<2	4	7	<1	9	<2	5	30	yellowish gray	lat. f. soil	-
412	AE-699250	699250	1360000	1	<2	7	7	<1	8	<2	9	30	brown	gravel	-
413	AE-699500	699500	1360000	2	<2	19	10	2	13	<2	13	30	brown	gravel	-
414	AE-699750	699750	1360000	1	<2	16	10	2	14	<2	14	30	brown	gravel	-
415	AE-700000	700000	1360000	<1	<2	10	11	2	12	<2	12	30	brown	gravel	-
416	AF-666500	666500	1359000	<1	<2	7	12	1	10	<2	6	30	yellowish gray	crust	-
417	AF-666750	666750	1359000	<1	<2	4	10	1	12	<2	10	30	yellowish gray	crust	-
418	AF-667000	667000	1359000	2	<2	5	9	<1	12	<2	5	30	yellowish gray	crust	-
419	AF-667250	667250	1359000	<1	0.2	10	10	1	13	<2	8	30	dark gray	gravel	-
420	AF-667500	667500	1359000	<1	0.2	4	7	1	13	<2	9	30	dark gray	gravel	-
421	AF-667750	667750	1359000	<1	0.2	9	15	2	12	<2	11	30	yellowish gray	crust	-
422	AF-668000	668000	1359000	1	<2	8	10	2	11	<2	9	30	yellowish gray	gravel	-
423	AF-668250	668250	1359000	<1	<2	8	10	2	12	<2	13	30	dark gray	surface soil	-
424	AF-668500	668500	1359000	1	<2	9	15	2	13	<2	9	30	light gray	crust	-
425	AF-668750	668750	1359000	<1	<2	7	11	1	12	<2	9	30	light gray	crust	-
426	AF-669000	669000	1359000	6	<2	5	6	<1	8	<2	7	30	light gray	gravel	-
427	AF-669250	669250	1359000	<1	<2	6	8	<1	10	<2	6	30	light gray	crust	-
428	AF-669500	669500	1359000	<1	<2	3	4	2	9	<2	5	30	yellowish gray	saprolite	-
429	AF-669750	669750	1359000	<1	<2	7	7	2	10	<2	6	30	dark gray	lat. f. soil	-
430	AF-670000	670000	1359000	<1	0.2	6	5	<1	10	<2	6	30	yellowish gray	lat. f. soil	-
431	AF-670250	670250	1359000	<1	<2	1	5	1	8	<2	5	30	dark gray	unknown(f soil)	-
432	AF-670500	670500	1359000	<1	<2	5	6	<1	9	<2	5	30	dark gray	unknown(f soil)	-
433	AF-670750	670750	1359000	<1	<2	3	7	<1	8	<2	4	30	yellowish gray	unknown(f soil)	-
434	AF-671000	671000	1359000	1	<2	13	8	2	10	<2	8	30	yellowish gray	lat. f. soil	-
435	AF-671250	671250	1359000	5	<2	24	10	2	15	<2	10	30	yellowish gray	lat. f. soil	-
436	AF-671500	671500	1359000	7	<2	21	22	<1	17	<2	14	30	yellowish gray	unknown(f soil)	-
437	AF-671750	671750	1359000	6	<2	24	22	2	16	<2	11	30	brown	lat. f. soil	-
438	AF-672000	672000	1359000	6	<2	7	12	2	11	<2	8	30	yellowish gray	lat. f. soil	-
439	AF-672250	672250	1359000	2	<2	15	15	2	17	<2	12	30	brown	lat. f. soil	-
440	AF-672500	672500	1359000	2	<2	10	10	<1	11	<2	8	30	yellowish gray	unknown(f soil)	-
441	AF-672750	672750	1359000	5	<2	6	9	1	12	<2	7	30	yellowish gray	unknown(f soil)	-
442	AF-673000	673000	1359000	1	<2	4	9	2	12	<2	6	30	yellowish gray	gravel	-
443	AF-673250	673250	1359000	2	<2	7	13	1	14	<2	9	30	yellowish gray	unknown(f soil)	-
444	AF-673500	673500	1359000	2	<2	7	12	2	13	<2	10	30	yellowish gray	lat. f. soil	-

Serial No.	Sample No.	UTM Coordination		Au ppb	Ag ppm	As ppm	Cu ppm	Mo ppm	Pb ppm	Sb ppm	Zn ppm	Depth cm	Color	Soil Horizon	Outcrop or float
		East	North												
445	AF-673750	673750	1359000	1	<2	9	12	1	15	<2	12	30	yellowish gray	lat. f. soil	-
446	AF-674000	674000	1359000	2	<2	3	14	2	15	<2	15	30	yellowish gray	lat. f. soil	-
447	AF-674250	674250	1359000	2	<2	3	13	1	12	<2	10	30	yellowish gray	lat. f. soil	-
448	AF-674500	674500	1359000	1	<2	1	12	2	12	<2	11	30	brown	unknown(f soil)	-
449	AF-674750	674750	1359000	3	<2	1	13	2	13	<2	7	30	yellowish gray	lat. f. soil	-
450	AF-675000	675000	1359000	1	<2	<1	10	2	12	<2	7	30	brown	unknown(f soil)	-
451	AF-675250	675250	1359000	4	<2	<1	12	2	13	<2	15	30	yellowish gray	lat. f. soil	-
452	AF-675500	675500	1359000	2	<2	8	12	2	15	<2	12	30	yellowish gray	saprolite	-
453	AF-675750	675750	1359000	<1	<2	30	20	2	19	0.2	13	30	yellowish gray	lat. f. soil	-
454	AF-676000	676000	1359000	1	<2	10	21	<1	14	<2	20	30	yellowish gray	lat. f. soil	-
455	AF-676250	676250	1359000	1	<2	8	20	<1	15	<2	17	30	brown	lat. f. soil	-
456	AF-676500	676500	1359000	<1	<2	23	45	1	18	<2	18	30	reddish brown	lat. f. soil	-
457	AF-676750	676750	1359000	7	<2	<1	8	1	7	<2	9	30	yellowish gray	unknown(f soil)	-
458	AF-677000	677000	1359000	<1	<2	4	12	1	9	<2	9	30	yellowish gray	unknown(f soil)	-
459	AF-677250	677250	1359000	21	<2	3	6	2	6	<2	8	30	brown	unknown(f soil)	-
460	AF-677500	677500	1359000	<1	<2	6	13	<1	9	<2	10	30	yellowish gray	unknown(f soil)	-
461	AF-677750	677750	1359000	<1	<2	3	8	<1	6	<2	6	30	brown	unknown(f soil)	-
462	AF-678000	678000	1359000	<1	<2	4	10	2	6	<2	8	25	brown	gravel	-
463	AF-678250	678250	1359000	1	<2	6	7	1	9	<2	9	25	brown	gravel	-
464	AF-678500	678500	1359000	1	<2	8	12	2	10	<2	11	25	brown	gravel	-
465	AF-678750	678750	1359000	<1	<2	8	14	<1	11	<2	17	25	brown	gravel	-
466	AF-679000	679000	1359000	1	<2	8	18	<1	11	<2	18	30	brown	lat. f. soil	-
467	AF-679250	679250	1359000	2	<2	<1	15	1	8	<2	9	30	brown	unknown(f soil)	-
468	AF-679500	679500	1359000	1	<2	<1	14	1	8	<2	8	30	brown	unknown(f soil)	-
469	AF-679750	679750	1359000	2	<2	<1	11	1	7	<2	8	25	dark gray	unknown(f soil)	-
470	AF-680000	680000	1359000	4	<2	4	8	<1	6	<2	9	30	brown	unknown(f soil)	-
471	AF-680250	680250	1359000	<1	<2	1	13	2	8	<2	13	30	brown	unknown(f soil)	-
472	AF-680500	680500	1359000	<1	<2	<1	15	2	10	<2	14	25	brown	gravel	-
473	AF-680750	680750	1359000	2	<2	4	16	1	11	<2	14	25	brown	gravel	-
474	AF-681000	681000	1359000	1	<2	<1	13	2	9	<2	12	25	brown	gravel	-
475	AF-681250	681250	1359000	<1	<2	4	17	2	13	<2	16	25	brown	gravel	-
476	AF-681500	681500	1359000	<1	<2	7	13	1	9	<2	14	30	yellowish gray	gravel	-
477	AF-681750	681750	1359000	2	<2	4	11	1	8	<2	12	30	dark gray	gravel	-
478	AF-682000	682000	1359000	1	<2	1	18	<1	8	<2	16	30	dark gray	gravel	-
479	AF-682250	682250	1359000	<1	<2	<1	11	<1	5	<2	10	30	light gray	lat. f. soil	-
480	AF-682500	682500	1359000	<1	<2	<1	13	<1	5	<2	9	30	light gray	lat. f. soil	-
481	AF-682750	682750	1359000	2	<2	<1	7	1	6	<2	8	30	brown	lat. f. soil	-
482	AF-683000	683000	1359000	2	<2	9	8	<1	5	<2	7	30	brown	lat. f. soil	-
483	AF-683250	683250	1359000	2	<2	12	10	1	8	<2	9	30	yellowish gray	lat. f. soil	-
484	AF-683500	683500	1359000	<1	<2	16	8	1	11	<2	10	30	brown	lat. f. soil	-
485	AF-683750	683750	1359000	1	<2	6	11	1	7	<2	9	30	yellowish gray	gravel	-
486	AF-684000	684000	1359000	<1	<2	11	9	1	8	<2	11	30	light gray	gravel	-
487	AF-684250	684250	1359000	2	<2	12	15	2	10	<2	12	30	brown	gravel	-
488	AF-684500	684500	1359000	2	<2	9	14	<1	10	<2	12	30	brown	gravel	-
489	AF-684750	684750	1359000	1	<2	9	9	<1	8	<2	10	30	reddish brown	lat. f. soil	-
490	AF-685000	685000	1359000	<1	<2	8	4	1	8	<2	9	30	dark gray	lat. f. soil	-
491	AF-687000	687000	1359000	1	<2	9	11	2	10	<2	10	25	brown	unknown(f soil)	-
492	AF-687250	687250	1359000	4	<2	7	8	1	9	<2	9	20	brown	unknown(f soil)	-
493	AF-687500	687500	1359000	4	<2	10	8	1	10	<2	11	20	brown	gravel	-
494	AF-687750	687750	1359000	3	<2	8	10	1	10	<2	11	20	brown	gravel	-
495	AF-688000	688000	1359000	17	<2	14	12	2	12	<2	10	25	brown	unknown(f soil)	-
496	AF-688250	688250	1359000	16	<2	32	9	2	16	<2	11	25	brown	unknown(f soil)	-
497	AF-688500	688500	1359000	18	<2	134	10	2	16	<2	14	20	brown	gravel	-
498	AF-688750	688750	1359000	8	<2	7	13	<1	17	<2	17	20	brown	gravel	-
499	AF-689000	689000	1359000	2	<2	6	10	1	11	<2	14	15	brown	gravel	-
500	AF-689250	689250	1359000	2	<2	4	11	2	11	<2	11	15	brown	gravel	-
501	AF-689500	689500	1359000	1	<2	<1	12	2	12	<2	12	15	dark gray	gravel	-
502	AF-689750	689750	1359000	1	<2	4	9	2	10	<2	12	15	dark gray	gravel	-
503	AF-690000	690000	1359000	1	<2	7	11	2	12	<2	12	20	dark gray	gravel	-
504	AF-690250	690250	1359000	2	<2	7	12	<1	11	<2	13	20	dark gray	gravel	-
505	AF-690500	690500	1359000	<1	<2	5	8	1	13	<2	12	20	dark gray	gravel	-
506	AF-690750	690750	1359000	3	<2	11	16	2	16	<2	20	25	brown	unknown(f soil)	-
507	AF-691000	691000	1359000	3	<2	7	11	2	13	<2	13	25	brown	gravel	-
508	AF-691250	691250	1359000	3	<2	6	17	1	16	<2	16	20	brown	unknown(f soil)	-
509	AF-691500	691500	1359000	2	<2	7	9	1	12	<2	13	25	brown	unknown(f soil)	-
510	AF-691750	691750	1359000	1	<2	1	6	2	9	<2	7	25	brown	unknown(f soil)	-
511	AF-692000	692000	1359000	2	<2	3	4	1	8	<2	6	25	dark gray	unknown(f soil)	-
512	AF-692250	692250	1359000	2	<2	3	3	1	9	<2	5	25	brown	unknown(f soil)	-
513	AF-692500	692500	1359000	6	<2	1	6	1	6	<2	7	25	brown	unknown(f soil)	-
514	AF-692750	692750	1359000	3	<2	4	10	<1	10	<2	11	25	reddish brown	unknown(f soil)	-
515	AF-693000	693000	1359000	1	<2	6	12	2	12	<2	12	25	brown	gravel	-
516	AF-693250	693250	1359000	<1	<2	5	10	<1	12	<2	10	30	brown	unknown(f soil)	-
517	AF-693500	693500	1359000	<1	<2	4	7	<1	10	<2	9	20	brown	gravel	-
518	AF-693750	693750	1359000	1	<2	7	11	<1	10	<2	10	20	brown	gravel	-

Serial No.	Sample No.	UTM Coordination		Au ppb	Ag ppm	As ppm	Cu ppm	Mo ppm	Pb ppm	Sb ppm	Zn ppm	Depth cm	Color	Soil Horizon	Outcrop or float
		East	North												
519	AF-694000	694000	1359000	<1	<2	5	10	1	12	<2	10	25	reddish brown	unknown(f soil)	-
520	AF-694250	694250	1359000	185	<2	4	5	<1	8	<2	8	20	yellowish gray	unknown(f soil)	-
521	AF-694500	694500	1359000	4	<2	3	10	<1	11	<2	8	25	reddish brown	unknown(f soil)	-
522	AF-694750	694750	1359000	2	<2	<1	4	<1	8	<2	3	20	brown	unknown(f soil)	-
523	AF-695000	695000	1359000	<1	<2	1	10	<1	12	<2	7	25	dark gray	unknown(f soil)	-
524	AF-695250	695250	1359000	1	<2	33	19	1	26	<2	17	30	brown	gravel	-
525	AF-695500	695500	1359000	1	<2	5	12	1	12	<2	13	30	yellowish gray	unknown(f soil)	-
526	AF-695750	695750	1359000	4	<2	9	17	<1	13	<2	19	30	brown	gravel	-
527	AF-696000	696000	1359000	2	<2	5	14	1	12	<2	12	30	brown	unknown(f soil)	-
528	AF-696250	696250	1359000	5	<2	6	10	<1	9	<2	11	30	yellowish gray	surface soil	-
529	AF-696500	696500	1359000	1	<2	8	12	<1	10	<2	10	30	yellowish gray	saprolite	Metasediment float
530	AF-696750	696750	1359000	<1	<2	5	7	<1	7	<2	9	30	yellowish gray	saprolite	-
531	AF-697000	697000	1359000	<1	<2	8	12	<1	7	<2	10	30	yellowish gray	saprolite	-
532	AF-697250	697250	1359000	<1	<2	6	15	<1	7	<2	11	30	yellowish gray	unknown(f soil)	-
533	AF-697500	697500	1359000	1	<2	4	12	<1	10	<2	12	30	brown	unknown(f soil)	-
534	AF-697750	697750	1359000	<1	<2	5	19	<1	12	<2	14	30	brown	unknown(f soil)	-
535	AF-698000	698000	1359000	5	<2	3	8	2	7	<2	10	30	yellowish gray	unknown(f soil)	-
536	AF-698250	698250	1359000	<1	<2	<1	11	<1	6	<2	8	30	light gray	surface soil	-
537	AF-698500	698500	1359000	1	<2	<1	8	<1	8	<2	9	30	light gray	surface soil	-
538	AF-698750	698750	1359000	2	<2	3	11	<1	10	<2	11	30	yellowish gray	surface soil	-
539	AF-699000	699000	1359000	3	<2	7	17	<1	16	<2	13	30	brown	lat. f. soil	-
540	AG-666500	666500	1358000	1	<2	10	16	<1	13	<2	15	30	brown	gravel	-
541	AG-666750	666750	1358000	370	<2	10	18	<1	10	<2	17	30	brown	gravel	-
542	AG-667000	667000	1358000	7	<2	7	17	<1	9	<2	18	30	brown	gravel	-
543	AG-667250	667250	1358000	5	<2	4	20	<1	7	<2	10	30	brown	gravel	-
544	AG-667500	667500	1358000	2	<2	2	10	<1	3	<2	11	30	brown	unknown(f soil)	-
545	AG-667750	667750	1358000	2	<2	3	8	<1	4	<2	8	30	brown	gravel	-
546	AG-668000	668000	1358000	2	<2	5	11	<1	6	<2	8	30	brown	unknown(f soil)	-
547	AG-668250	668250	1358000	3	<2	4	10	<1	5	<2	29	30	brown	gravel	-
548	AG-668500	668500	1358000	1	<2	2	7	<1	4	<2	5	30	light gray	unknown(f soil)	-
549	AG-668750	668750	1358000	2	<2	1	6	<1	4	<2	6	30	brown	unknown(f soil)	-
550	AG-669000	669000	1358000	1	<2	1	6	<1	5	<2	5	30	brown	unknown(f soil)	-
551	AG-669250	669250	1358000	<1	<2	1	7	<1	5	<2	5	30	light gray	unknown(f soil)	-
552	AG-669500	669500	1358000	11	<2	2	7	<1	5	<2	5	30	light gray	unknown(f soil)	-
553	AG-669750	669750	1358000	5	<2	3	9	<1	6	<2	8	30	brown	unknown(f soil)	-
554	AG-670000	670000	1358000	7	<2	4	7	<1	7	<2	6	30	yellowish gray	unknown(f soil)	-
555	AG-670250	670250	1358000	2	<2	7	14	1	7	<2	10	30	yellowish gray	unknown(f soil)	-
556	AG-670500	670500	1358000	1	<2	5	15	<1	10	<2	12	30	brown	unknown(f soil)	-
557	AG-670750	670750	1358000	1	<2	2	14	<1	9	<2	10	30	brown	unknown(f soil)	-
558	AG-671000	671000	1358000	<1	<2	3	10	<1	10	<2	12	30	yellowish gray	lat. f. soil	-
559	AG-671250	671250	1358000	1	<2	7	10	<1	12	<2	13	30	brown	lat. f. soil	-
560	AG-671500	671500	1358000	3	<2	1	13	1	8	<2	10	30	yellowish gray	lat. f. soil	-
561	AG-671750	671750	1358000	2	<2	4	15	<1	8	<2	12	30	brown	gravel	-
562	AG-672000	672000	1358000	1	<2	62	21	1	22	<2	15	30	yellowish gray	lat. f. soil	-
563	AG-672250	672250	1358000	3	<2	<1	12	1	8	<2	12	30	yellowish gray	lat. f. soil	-
564	AG-672500	672500	1358000	2	<2	4	11	<1	8	<2	13	30	yellowish gray	lat. f. soil	-
565	AG-672750	672750	1358000	1	<2	37	41	1	18	<2	20	30	yellowish gray	lat. f. soil	-
566	AG-673000	673000	1358000	1	<2	3	10	1	10	<2	8	30	yellowish gray	lat. f. soil	-
567	AG-673250	673250	1358000	<1	<2	3	9	<1	10	<2	7	30	yellowish gray	unknown(f soil)	-
568	AG-673500	673500	1358000	5	<2	9	10	<1	11	<2	11	30	reddish brown	lat. f. soil	-
569	AG-673750	673750	1358000	4	<2	2	10	<1	6	<2	8	30	yellowish gray	lat. f. soil	-
570	AG-674000	674000	1358000	<1	<2	3	8	1	8	<2	9	30	yellowish gray	unknown(f soil)	-
571	AG-674250	674250	1358000	3	<2	10	16	<1	15	<2	8	30	yellowish gray	lat. f. soil	-
572	AG-674500	674500	1358000	3	<2	3	9	<1	11	<2	10	30	yellowish gray	lat. f. soil	-
573	AG-674750	674750	1358000	5	<2	7	16	<1	12	<2	12	30	yellowish gray	lat. f. soil	-
574	AG-675000	675000	1358000	2	<2	<1	8	<1	5	<2	5	30	dark gray	unknown(f soil)	-
575	AG-675250	675250	1358000	2	<2	74	32	<1	26	<2	14	30	yellowish gray	crust	-
576	AG-675500	675500	1358000	4	<2	8	17	<1	13	<2	12	30	yellowish gray	lat. f. soil	-
577	AG-675750	675750	1358000	5	<2	11	17	<1	12	<2	12	30	brown	lat. f. soil	-
578	AG-676000	676000	1358000	4	<2	10	14	<1	12	<2	20	30	yellowish gray	lat. f. soil	-
579	AG-676250	676250	1358000	3	<2	20	41	1	16	<2	22	30	yellowish gray	lat. f. soil	-
580	AG-676500	676500	1358000	<1	<2	4	14	<1	9	<2	12	30	yellowish gray	lat. f. soil	-
581	AG-676750	676750	1358000	<1	<2	6	17	<1	10	<2	13	30	yellowish gray	lat. f. soil	-
582	AG-677000	677000	1358000	3	<2	3	10	<1	8	<2	10	30	yellowish gray	unknown(f soil)	-
583	AG-677250	677250	1358000	7	<2	5	11	<1	8	<2	13	30	brown	unknown(f soil)	-
584	AG-677500	677500	1358000	6	<2	5	10	<1	9	<2	10	30	yellowish gray	lat. f. soil	-
585	AG-677750	677750	1358000	<1	<2	14	15	<1	20	<2	16	25	brown	gravel	-
586	AG-678000	678000	1358000	<1	<2	6	11	<1	11	<2	12	25	brown	gravel	-
587	AG-678250	678250	1358000	3	<2	21	27	<1	17	0.2	23	25	dark gray	unknown(f soil)	-
588	AG-678500	678500	1358000	<1	<2	3	12	<1	10	<2	12	25	dark gray	lat. f. soil	-
589	AG-678750	678750	1358000	<1	<2	6	10	<1	11	<2	14	25	brown	gravel	-
590	AG-679000	679000	1358000	9	<2	5	9	<1	10	<2	13	25	brown	lat. f. soil	-
591	AG-679250	679250	1358000	6	<2	9	20	<1	13	<2	13	30	brown	unknown(f soil)	-
592	AG-679500	679500	1358000	2	<2	24	22	<1	9	<2	14	25	brown	lat. f. soil	-



Serial No.	Sample No.	UTM Coordination		Au ppb	Ag ppm	As ppm	Cu ppm	Mo ppm	Pb ppm	Sb ppm	Zn ppm	Depth cm	Color	Soil Horizon	Outcrop or float
		East	North												
593	AG-679750	679750	1358000	3	<2	4	16	<1	9	<2	11	25	brown	lat. f. soil	-
594	AG-680000	680000	1358000	1	<2	5	17	<1	10	<2	15	30	reddish brown	unknown(f soil)	-
595	AG-680250	680250	1358000	4	<2	8	20	<1	14	<2	13	25	brown	lat. f. soil	-
596	AG-680500	680500	1358000	5	<2	5	9	<1	8	0.2	9	30	brown	unknown(f soil)	-
597	AG-680750	680750	1358000	4	<2	11	10	<1	10	<2	13	25	yellowish gray	unknown(f soil)	-
598	AG-681000	681000	1358000	2	<2	15	10	1	16	<2	12	25	brown	gravel	-
599	AG-681250	681250	1358000	3	<2	27	12	<1	16	<2	12	25	brown	gravel	-
600	AG-681500	681500	1358000	1	<2	9	8	<1	12	<2	11	30	brown	gravel	-
601	AG-681750	681750	1358000	1	<2	8	8	1	11	<2	10	30	reddish brown	gravel	-
602	AG-682000	682000	1358000	6	<2	4	6	<1	8	<2	7	30	yellowish gray	lat. f. soil	-
603	AG-682250	682250	1358000	1	<2	2	5	1	15	<2	5	30	yellowish gray	lat. f. soil	-
604	AG-682500	682500	1358000	4	<2	5	8	<1	15	<2	11	30	brown	gravel	-
605	AG-682750	682750	1358000	18	<2	7	11	1	18	<2	9	30	reddish brown	gravel	-
606	AG-683000	683000	1358000	9	<2	9	8	1	13	<2	9	30	yellowish gray	lat. f. soil	-
607	AG-683250	683250	1358000	1	<2	7	5	1	12	<2	10	30	brown	gravel	-
608	AG-683500	683500	1358000	18	<2	6	6	<1	10	<2	8	30	yellowish gray	gravel	-
609	AG-683750	683750	1358000	3	<2	2	4	<1	8	<2	8	30	light gray	gravel	-
610	AG-684000	684000	1358000	11	<2	4	8	1	10	<2	7	30	light gray	gravel	-
611	AG-684250	684250	1358000	3	<2	8	7	1	10	<2	11	30	dark gray	gravel	-
612	AG-684500	684500	1358000	8	<2	6	6	<1	10	<2	9	30	yellowish gray	gravel	-
613	AG-684750	684750	1358000	1	<2	6	7	<1	8	<2	7	30	light gray	gravel	-
614	AG-685000	685000	1358000	7	<2	7	8	<1	8	<2	9	30	yellowish gray	lat. f. soil	-
615	AG-687000	687000	1358000	4	<2	5	6	1	9	<2	7	30	yellowish gray	lat. f. soil	-
616	AG-687250	687250	1358000	1	<2	4	5	2	10	<2	7	30	yellowish gray	lat. f. soil	-
617	AG-687500	687500	1358000	2	<2	4	5	<1	11	<2	6	30	yellowish gray	lat. f. soil	-
618	AG-687750	687750	1358000	2	<2	5	6	1	12	<2	5	30	brown	lat. f. soil	-
619	AG-688000	688000	1358000	3	<2	3	5	<1	11	<2	5	30	brown	lat. f. soil	-
620	AG-688250	688250	1358000	<1	<2	<1	9	1	8	<2	4	30	light gray	lat. f. soil	-
621	AG-688500	688500	1358000	4	<2	3	2	1	8	<2	5	30	yellowish gray	lat. f. soil	-
622	AG-688750	688750	1358000	6	<2	6	5	1	12	<2	6	30	brown	gravel	-
623	AG-689000	689000	1358000	2	<2	6	8	<1	12	<2	6	30	brown	gravel	-
624	AG-689250	689250	1358000	6	<2	4	7	<1	11	<2	7	30	brown	gravel	-
625	AG-689500	689500	1358000	2	<2	77	70	3	23	<2	20	5	brown	crust	-
626	AG-689750	689750	1358000	<1	<2	10	10	1	12	<2	9	10	brown	crust	-
627	AG-690000	690000	1358000	<1	<2	11	12	1	14	<2	13	30	brown	gravel	-
628	AG-690250	690250	1358000	<1	<2	47	15	1	23	<2	10	10	brown	crust	-
629	AG-690500	690500	1358000	<1	<2	46	16	2	20	<2	17	10	brown	crust	-
630	AG-690750	690750	1358000	23	<2	8	11	<1	12	<2	11	30	brown	gravel	-
631	AG-691000	691000	1358000	<1	<2	8	10	1	11	<2	10	30	brown	gravel	-
632	AG-691250	691250	1358000	<1	<2	12	12	2	14	<2	11	30	brown	gravel	-
633	AG-691500	691500	1358000	130	<2	29	10	1	20	<2	10	20	brown	crust	-
634	AG-691750	691750	1358000	4	<2	26	17	1	20	<2	13	25	brown	crust	-
635	AG-692000	692000	1358000	10	<2	24	19	<1	22	1	13	5	brown	crust	-
636	AG-692250	692250	1358000	6	<2	10	21	<1	14	<2	15	30	brown	gravel	-
637	AG-692500	692500	1358000	34	<2	7	7	1	10	<2	7	30	brown	lat. f. soil	-
638	AG-692750	692750	1358000	2	<2	9	7	<1	9	<2	8	30	brown	lat. f. soil	-
639	AG-693000	693000	1358000	2	<2	2	6	<1	9	<2	8	30	yellowish gray	lat. f. soil	-
640	AG-693250	693250	1358000	3	<2	4	10	<1	10	<2	8	30	brown	lat. f. soil	-
641	AG-693500	693500	1358000	<1	<2	5	7	<1	10	<2	7	30	brown	lat. f. soil	-
642	AG-693750	693750	1358000	3	<2	6	10	<1	11	<2	10	30	brown	lat. f. soil	-
643	AG-694000	694000	1358000	<1	<2	7	10	<1	10	<2	7	30	yellowish gray	gravel	-
644	AG-694250	694250	1358000	2	<2	20	11	1	14	<2	8	15	brown	crust	-
645	AG-694500	694500	1358000	5	<2	8	9	1	13	<2	9	30	brown	gravel	-
646	AG-694750	694750	1358000	<1	<2	6	6	1	10	<2	6	30	brown	gravel	-
647	AG-695000	695000	1358000	<1	<2	5	7	1	8	<2	5	30	yellowish gray	surface soil	-
648	AG-695250	695250	1358000	3	<2	4	7	<1	8	<2	6	30	yellowish gray	unknown(f soil)	-
649	AG-695500	695500	1358000	3	<2	7	8	<1	8	<2	7	30	brown	unknown(f soil)	-
650	AG-695750	695750	1358000	2	<2	6	12	<1	10	<2	11	30	reddish brown	gravel	-
651	AG-696000	696000	1358000	2	<2	8	9	<1	10	<2	9	30	yellowish gray	surface soil	-
652	AG-696250	696250	1358000	5	<2	5	4	<1	9	<2	5	30	yellowish gray	surface soil	-
653	AG-696500	696500	1358000	1	<2	5	6	1	8	<2	5	30	dark gray	surface soil	-
654	AG-696750	696750	1358000	5	<2	7	9	<1	11	<2	9	30	reddish brown	lat. f. soil	-
655	AG-697000	697000	1358000	9	<2	6	8	1	10	<2	8	30	brown	unknown(f soil)	-
656	AG-697250	697250	1358000	<1	<2	5	8	1	10	<2	7	30	brown	saprolite	-
657	AG-697500	697500	1358000	8	<2	7	4	1	10	<2	6	30	reddish brown	lat. f. soil	-
658	AG-697750	697750	1358000	1	<2	6	8	1	10	<2	8	30	dark gray	unknown(f soil)	-
659	AG-698000	698000	1358000	<1	<2	3	3	1	9	<2	7	30	brown	unknown(f soil)	-
660	AG-698250	698250	1358000	1	<2	8	5	1	9	<2	4	30	dark gray	unknown(f soil)	-
661	AG-698500	698500	1358000	3	<2	4	3	<1	7	<2	7	35	brown	unknown(f soil)	-
662	AG-698750	698750	1358000	<1	<2	5	7	<1	7	<2	9	30	brown	unknown(f soil)	-
663	AG-699000	699000	1358000	4	<2	7	11	<1	8	<2	7	30	brown	lat. f. soil	-
664	AH-666500	666500	1357000	<1	<2	9	9	2	6	0.2	7	30	brown	gravel	-
665	AH-666750	666750	1357000	<1	<2	9	11	1	6	0.4	10	30	brown	gravel	-
666	AH-667000	667000	1357000	<1	<2	10	23	2	9	0.2	8	30	brown	unknown(f soil)	-



Serial No.	Sample No.	UHM Coordination		Au ppb	Ag ppm	As ppm	Cu ppm	Mn ppm	Pb ppm	Sb ppm	Zn ppm	Depth cm	Color	Soil Horizon	Outcrop or float
		East	North												
667	AH-667250	667250	1357000	<1	<2	8	11	2	9	0.2	12	30	dark gray	gravel	-
668	AH-667500	667500	1357000	<1	<2	8	17	1	6	0.2	10	30	brown	gravel	-
669	AH-667750	667750	1357000	<1	<2	8	13	2	6	0.2	8	30	dark gray	gravel	-
670	AH-668000	668000	1357000	<1	<2	10	15	3	9	0.4	10	30	dark gray	gravel	-
671	AH-668250	668250	1357000	<1	<2	6	9	2	8	0.2	6	30	dark gray	unknown(f soil)	-
672	AH-668500	668500	1357000	<1	<2	7	9	3	8	0.2	6	30	brown	unknown(f soil)	-
673	AH-668750	668750	1357000	3	<2	1	4	2	6	0.2	4	30	dark gray	unknown(f soil)	-
674	AH-669000	669000	1357000	21	<2	5	7	2	10	0.2	7	30	dark gray	unknown(f soil)	-
675	AH-669250	669250	1357000	7	<2	6	8	5	14	0.2	7	30	brown	unknown(f soil)	-
676	AH-669500	669500	1357000	1	<2	7	10	3	14	0.4	11	39	dark gray	gravel	-
677	AH-669750	669750	1357000	<1	<2	7	7	2	14	0.4	13	30	dark gray	gravel	-
678	AH-670000	670000	1357000	<1	<2	9	15	2	18	0.4	12	30	brown	gravel	-
679	AH-670250	670250	1357000	1	<2	10	12	2	14	0.2	9	30	yellowish gray	gravel	-
680	AH-670500	670500	1357000	<1	<2	7	17	2	15	0.4	10	30	yellowish gray	lat. f. soil	-
681	AH-670750	670750	1357000	1	<2	18	37	<1	15	0.4	20	30	yellowish gray	unknown(f soil)	-
682	AH-671000	671000	1357000	<1	<2	52	50	2	29	1.4	36	30	yellowish gray	lat. f. soil	-
683	AH-671250	671250	1357000	<1	<2	4	10	1	10	0.4	10	30	yellowish gray	lat. f. soil	-
684	AH-671500	671500	1357000	<1	<2	21	18	3	18	1.2	14	30	yellowish gray	lat. f. soil	-
685	AH-671750	671750	1357000	<1	<2	20	11	2	18	1.4	12	30	yellowish gray	lat. f. soil	-
686	AH-672000	672000	1357000	5	<2	6	7	1	8	0.4	8	30	yellowish gray	lat. f. soil	-
687	AH-672250	672250	1357000	<1	<2	53	15	2	16	2.2	12	30	yellowish gray	lat. f. soil	-
688	AH-672500	672500	1357000	<1	<2	8	7	1	7	0.4	8	30	yellowish gray	unknown(f soil)	-
689	AH-672750	672750	1357000	<1	<2	6	9	<1	9	0.2	6	30	yellowish gray	gravel	-
690	AH-673000	673000	1357000	<1	<2	5	5	1	8	0.4	6	30	light gray	surface soil	-
691	AH-673250	673250	1357000	1	<2	12	5	<1	10	0.4	8	30	brown	lat. f. soil	-
692	AH-673500	673500	1357000	<1	<2	18	10	1	13	0.4	14	20	yellowish gray	surface soil	-
693	AH-673750	673750	1357000	<1	<2	19	10	1	14	<2	12	20	brown	gravel	-
694	AH-674000	674000	1357000	2	<2	6	3	<1	5	<2	5	20	light gray	lat. f. soil	-
695	AH-674250	674250	1357000	1	<2	15	14	<1	13	0.2	12	30	light gray	gravel	-
696	AH-674500	674500	1357000	<1	<2	44	23	1	32	0.2	13	5	reddish brown	crust	-
697	AH-674750	674750	1357000	1	<2	8	8	1	11	<2	8	30	yellowish gray	surface soil	-
698	AH-675000	675000	1357000	2	<2	9	8	<1	15	<2	8	30	yellowish gray	surface soil	-
699	AH-675250	675250	1357000	3	<2	10	9	<1	5	<2	10	30	yellowish gray	lat. f. soil	-
700	AH-675500	675500	1357000	3	<2	13	13	1	8	<2	14	30	yellowish gray	lat. f. soil	-
701	AH-675750	675750	1357000	2	<2	10	8	<1	9	<2	9	30	light gray	lat. f. soil	-
702	AH-676000	676000	1357000	1	<2	32	20	2	16	0.2	16	30	reddish brown	gravel	-
703	AH-676250	676250	1357000	1	<2	19	14	1	13	<2	12	30	reddish brown	lat. f. soil	-
704	AH-676500	676500	1357000	3	<2	13	11	<1	11	0.2	10	5	yellowish gray	surface soil	-
705	AH-676750	676750	1357000	2	<2	53	67	4	22	1	16	5	reddish brown	crust	-
706	AH-677000	677000	1357000	2	<2	8	18	<1	11	<2	14	5	yellowish gray	surface soil	-
707	AH-677250	677250	1357000	1	<2	11	17	2	12	0.2	13	5	light gray	surface soil	-
708	AH-677500	677500	1357000	2	<2	7	13	<1	8	<2	12	30	yellowish gray	lat. f. soil	-
709	AH-677750	677750	1357000	1	<2	9	20	<1	13	0.2	13	30	brown	lat. f. soil	-
710	AH-678000	678000	1357000	1	<2	7	15	<1	12	<2	12	30	reddish brown	lat. f. soil	-
711	AH-678250	678250	1357000	1	<2	8	15	1	10	<2	12	10	brown	lat. f. soil	-
712	AH-678500	678500	1357000	3	<2	7	15	<1	8	0.2	12	30	yellowish gray	gravel	-
713	AH-678750	678750	1357000	2	<2	12	16	2	11	0.2	12	30	reddish brown	gravel	-
714	AH-679000	679000	1357000	<1	<2	9	10	<1	11	<2	10	20	dark gray	surface soil	-
715	AH-679250	679250	1357000	2	<2	14	14	2	17	0.2	14	30	reddish brown	gravel	-
716	AH-679500	679500	1357000	3	<2	12	15	1	16	0.2	12	30	reddish brown	gravel	-
717	AH-679750	679750	1357000	2	<2	12	9	2	13	<2	10	30	brown	gravel	-
718	AH-680000	680000	1357000	<1	<2	11	10	1	12	<2	12	25	dark gray	gravel	-
719	AH-680250	680250	1357000	1	<2	10	8	2	13	0.2	11	25	brown	unknown(f soil)	-
720	AH-680500	680500	1357000	2	<2	12	11	2	15	0.2	16	25	brown	gravel	-
721	AH-680750	680750	1357000	2	<2	13	9	1	12	0.2	10	25	brown	gravel	-
722	AH-681000	681000	1357000	3	<2	6	12	2	14	<2	9	25	brown	unknown(f soil)	-
723	AH-681250	681250	1357000	<1	<2	<1	4	1	11	<2	6	30	brown	unknown(f soil)	-
724	AH-681500	681500	1357000	1	<2	3	8	1	10	0.2	8	30	brown	unknown(f soil)	-
725	AH-681750	681750	1357000	2	<2	5	5	<1	8	0.2	8	30	brown	unknown(f soil)	-
726	AH-682000	682000	1357000	<1	<2	5	5	<1	10	0.2	8	30	brown	unknown(f soil)	-
727	AH-682250	682250	1357000	<1	<2	8	6	<1	10	<2	7	30	brown	unknown(f soil)	-
728	AH-682500	682500	1357000	<1	<2	8	7	1	9	<2	19	30	dark gray	unknown(f soil)	-
729	AH-682750	682750	1357000	<1	<2	7	4	1	8	<2	8	30	dark gray	unknown(f soil)	-
730	AH-683000	683000	1357000	<1	<2	2	5	1	10	0.2	8	30	dark gray	unknown(f soil)	-
731	AH-683250	683250	1357000	<1	<2	2	5	<1	9	<2	8	30	dark gray	unknown(f soil)	-
732	AH-683500	683500	1357000	<1	<2	10	6	1	10	0.2	9	30	yellowish gray	unknown(f soil)	-
733	AH-683750	683750	1357000	<1	<2	8	9	1	12	<2	10	30	yellowish gray	unknown(f soil)	-
734	AH-684000	684000	1357000	<1	<2	3	5	1	6	0.2	6	30	dark gray	unknown(f soil)	-
735	AH-684250	684250	1357000	12	<2	4	7	2	8	0.2	8	30	yellowish gray	unknown(f soil)	-
736	AH-684500	684500	1357000	<1	<2	5	5	1	8	0.2	7	30	dark gray	unknown(f soil)	-
737	AH-684750	684750	1357000	<1	<2	6	8	2	7	0.2	9	25	yellowish gray	lat. f. soil	-
738	AH-685000	685000	1357000	<1	<2	2	9	1	7	0.2	8	25	brown	lat. f. soil	-
739	AH-685250	685250	1357000	<1	<2	5	18	2	10	<2	12	25	light gray	lat. f. soil	-
740	AH-685500	685500	1357000	<1	<2	8	9	2	11	0.2	10	25	brown	unknown(f soil)	-

Serial No.	Sample No.	UTM Coordination		Au ppb	Ag ppm	As ppm	Cu ppm	Mo ppm	Pb ppm	Sb ppm	Zn ppm	Depth cm	Color	Soil Horizon	Outcrop or float
		East	North												
741	AH-687500	687500	1357000	3	<2	11	15	2	8	0.4	9	30	brown	unknown(f soil)	-
742	AH-687750	687750	1357000	1	<2	10	13	2	9	0.2	12	30	brown	unknown(f soil)	-
743	AH-688000	688000	1357000	2	<2	17	25	2	19	0.2	22	25	reddish brown	lat. f. soil	-
744	AH-688250	688250	1357000	1	<2	21	20	1	18	0.2	20	20	reddish brown	lat. f. soil	-
745	AH-688500	688500	1357000	5	<2	29	10	2	15	0.2	16	25	reddish brown	lat. f. soil	-
746	AH-688750	688750	1357000	2	<2	19	9	2	13	<2	14	25	dark gray	lat. f. soil	-
747	AH-689000	689000	1357000	2	<2	17	7	2	12	0.2	14	25	brown	lat. f. soil	-
748	AH-689250	689250	1357000	6	<2	14	7	2	14	0.4	12	25	light gray	lat. f. soil	-
749	AH-689500	689500	1357000	1	<2	9	7	1	9	0.2	8	15	light gray	gravel	-
750	AH-689750	689750	1357000	<1	<2	16	6	2	10	0.4	9	25	brown	lat. f. soil	-
751	AH-690000	690000	1357000	2	<2	15	8	3	14	0.2	12	20	brown	lat. f. soil	-
752	AH-690250	690250	1357000	2	<2	16	11	3	14	0.2	15	25	reddish brown	lat. f. soil	-
753	AH-690500	690500	1357000	3	<2	16	10	1	12	0.4	10	25	brown	lat. f. soil	-
754	AH-690750	690750	1357000	2	<2	17	11	2	15	0.4	14	25	reddish brown	lat. f. soil	-
755	AH-691000	691000	1357000	1	<2	15	9	1	12	0.2	12	25	brown	lat. f. soil	-
756	AH-691250	691250	1357000	1	<2	15	7	3	13	0.2	12	25	yellowish gray	lat. f. soil	-
757	AH-691500	691500	1357000	4	<2	17	10	2	13	0.2	14	25	reddish brown	lat. f. soil	-
758	AH-691750	691750	1357000	6	<2	12	6	2	10	0.2	8	30	yellowish gray	lat. f. soil	-
759	AH-692000	692000	1357000	3	<2	14	6	2	10	0.2	8	25	yellowish gray	lat. f. soil	-
760	AH-692250	692250	1357000	2	<2	13	8	3	10	0.2	10	25	dark gray	lat. f. soil	-
761	AH-692500	692500	1357000	2	<2	15	7	2	12	0.2	12	25	reddish brown	lat. f. soil	-
762	AH-692750	692750	1357000	9	<2	13	8	2	9	0.2	10	25	yellowish gray	lat. f. soil	-
763	AH-693000	693000	1357000	<1	<2	7	9	2	7	0.2	6	30	yellowish gray	unknown(f soil)	-
764	AH-693250	693250	1357000	1	<2	6	5	2	8	0.2	6	30	light gray	unknown(f soil)	-
765	AH-693500	693500	1357000	2	<2	9	9	2	12	0.2	6	30	yellowish gray	unknown(f soil)	-
766	AH-693750	693750	1357000	<1	<2	9	5	2	9	0.2	4	30	yellowish gray	surface soil	-
767	AH-694000	694000	1357000	<1	<2	6	5	2	8	<2	5	30	yellowish gray	surface soil	-
768	AH-694250	694250	1357000	<1	<2	8	8	2	8	0.4	8	30	yellowish gray	surface soil	-
769	AH-694500	694500	1357000	7	<2	11	8	1	8	0.2	6	30	yellowish gray	surface soil	-
770	AH-694750	694750	1357000	<1	<2	8	9	2	11	0.4	9	30	yellowish gray	surface soil	-
771	AH-695000	695000	1357000	<1	<2	8	11	2	10	0.4	10	30	light gray	lat. f. soil	-
772	AH-695250	695250	1357000	1	<2	8	7	1	9	<2	8	10	light gray	gravel	-
773	AH-695500	695500	1357000	<1	<2	10	6	2	8	0.2	9	20	brown	lat. f. soil	-
774	AH-695750	695750	1357000	<1	<2	9	4	2	6	<2	5	20	yellowish gray	lat. f. soil	-
775	AH-696000	696000	1357000	<1	<2	9	5	2	7	<2	4	20	yellowish gray	surface soil	-
776	AH-696250	696250	1357000	<1	<2	13	5	1	7	<2	6	30	light gray	gravel	-
777	AH-696500	696500	1357000	<1	<2	10	7	3	8	<2	10	5	light gray	surface soil	-
778	AH-696750	696750	1357000	<1	<2	13	10	2	11	<2	9	20	brown	gravel	-
779	AH-697000	697000	1357000	<1	<2	13	7	2	8	0.2	8	10	brown	gravel	-
780	AH-697250	697250	1357000	<1	<2	10	11	1	10	<2	10	10	brown	gravel	-
781	AH-697500	697500	1357000	1	<2	6	7	1	9	<2	9	30	brown	gravel	-
782	AI-662750	662750	1356000	<1	<2	6	5	1	10	<2	5	30	brown	lat. f. soil	-
783	AI-663000	663000	1356000	<1	<2	8	6	1	10	<2	5	30	yellowish gray	lat. f. soil	-
784	AI-663250	663250	1356000	<1	<2	37	8	1	13	0.6	7	20	brown	crust	-
785	AI-663500	663500	1356000	3	<2	10	8	1	10	<2	8	30	brown	lat. f. soil	-
786	AI-663750	663750	1356000	<1	<2	10	7	1	10	<2	7	30	brown	gravel	-
787	AI-664000	664000	1356000	<1	<2	23	14	3	20	<2	7	30	brown	gravel	-
788	AI-664250	664250	1356000	1	<2	8	7	<1	8	<2	3	30	yellowish gray	lat. f. soil	-
789	AI-664500	664500	1356000	<1	<2	13	9	1	11	<2	6	25	brown	crust	-
790	AI-664750	664750	1356000	1	<2	31	52	4	29	<2	25	5	brown	crust	-
791	AI-665000	665000	1356000	<1	<2	17	27	4	30	<2	15	5	brown	crust	-
792	AI-665250	665250	1356000	<1	<2	16	22	3	12	<2	15	5	brown	crust	-
793	AI-665500	665500	1356000	<1	<2	23	27	4	20	<2	12	30	brown	crust	-
794	AI-665750	665750	1356000	3	<2	9	30	1	26	<2	9	30	brown	gravel	-
795	AI-666000	666000	1356000	<1	<2	9	12	2	5	<2	5	30	yellowish gray	gravel	-
796	AI-666250	666250	1356000	<1	<2	11	12	2	5	<2	11	30	yellowish gray	gravel	-
797	AI-666500	666500	1356000	1	<2	7	9	1	4	<2	9	25	yellowish gray	unknown(f soil)	666,600 qz float
798	AI-666750	666750	1356000	<1	<2	7	8	<1	5	<2	11	25	brown	unknown(f soil)	-
799	AI-667000	667000	1356000	<1	<2	7	4	<1	6	<2	5	25	brown	unknown(f soil)	-
800	AI-667250	667250	1356000	<1	<2	4	6	<1	8	<2	5	25	light gray	lat. f. soil	qz float
801	AI-667500	667500	1356000	<1	<2	6	6	<1	8	<2	7	20	brown	lat. f. soil	-
802	AI-667750	667750	1356000	1	<2	6	6	1	7	<2	6	25	brown	gravel	-
803	AI-668000	668000	1356000	<1	<2	5	6	1	6	<2	6	25	yellowish gray	lat. f. soil	-
804	AI-668250	668250	1356000	<1	<2	7	6	1	6	<2	5	25	yellowish gray	lat. f. soil	-
805	AI-668500	668500	1356000	3	<2	6	7	1	7	<2	7	20	dark gray	lat. f. soil	-
806	AI-668750	668750	1356000	<1	<2	9	11	2	8	<2	11	20	dark gray	lat. f. soil	-
807	AI-669000	669000	1356000	1	<2	8	7	1	8	<2	5	15	yellowish gray	saprolite	-
808	AI-669250	669250	1356000	<1	<2	5	7	<1	7	0.8	6	25	light gray	gravel	-
809	AI-669500	669500	1356000	1	<2	6	8	<1	7	<2	7	25	light gray	gravel	-
810	AI-669750	669750	1356000	<1	<2	6	7	<1	7	<2	8	30	light gray	gravel	-
811	AI-670000	670000	1356000	<1	<2	7	8	<1	8	<2	6	25	dark gray	gravel	-
812	AI-670250	670250	1356000	<1	<2	8	8	<1	10	<2	10	25	brown	gravel	-
813	AI-670500	670500	1356000	<1	<2	8	7	1	8	<2	7	25	brown	gravel	-
814	AI-670750	670750	1356000	<1	<2	8	6	1	7	<2	6	25	dark gray	gravel	-