

## 第6章 提言

調査団は、このプロジェクトの自立的な継続運営スキームを確立するために、以下の提言を行った。

(1) CMDFは、今後もさらに政府ならびに民間関係団体との密接な連携強化を図るべきである（貿易工業省建設産業局、公共事業省、運輸通信省、専門技術認定委員会、フィリピン建設業協会）。

(2) プロジェクトのためにフィリピン側の必要十分な投入を確保すること。

カウンターパートの措置（情報処理・分析分野に関する人材も含む）および十分な活動予算の確保。

(3) 地域の建設分野にかかる需要を考慮し、日本人専門家と協議したうえで、技術研修および監督者研修のなかで最大限の機材活用を図ること。

なお、特にハイテク装置の機材に関しては、有効な保守管理プログラムを作成すること。

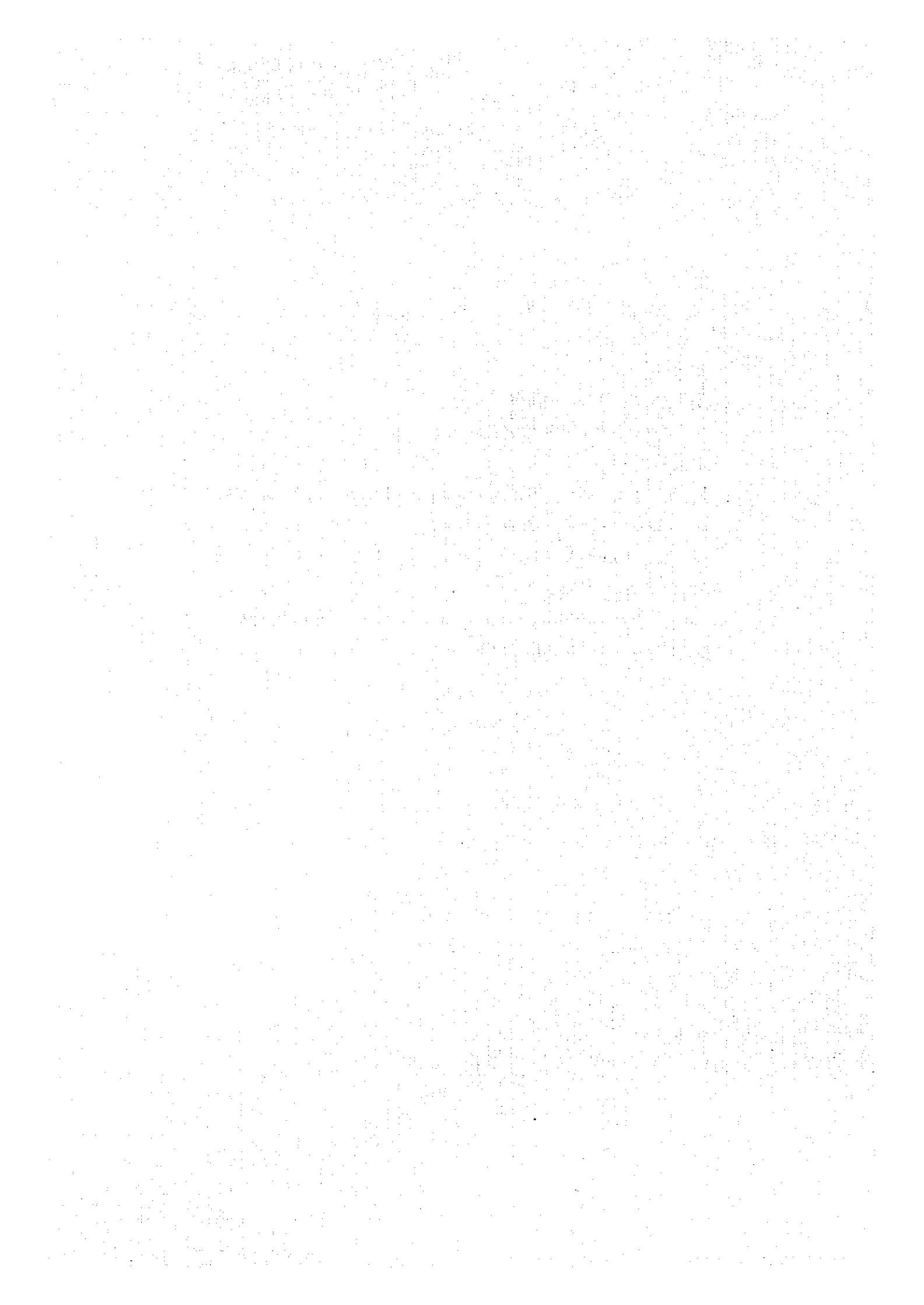
## 第7章 フィリピン側からのフォローアップ協力要請

調査団に対しCMTFから、資格制度確立を完成させるため、協力期間終了後の日本側のフォローアップ協力にかかるプロポーザルの提出があった。フィリピン側は、プロジェクト活動を継続する経費として、1998年から2000年の間に3500万ペソを確保することを約束した。また、資格制度を確立するために政府、民間および教育機関との有効なネットワーク作りを行っていることを調査団に述べた。



## 資 料

- 1 ミニッツ
- 2 フォローアップ要請書
- 3 プロジェクト暫定実施計画
- 4 投入実績
- 5 フィリピンの技術者資格(Continuing Professional Education: C P E)
- 6 セブ・ビサヤ地域建設技術センター  
(Regional Construction Technical Center: R C T C)
- 7 フィリピン建設産業動向——建設産業局 (C I A P) 資料  
(Construction Industry Authority of the Philippines)
- 8 プロジェクト関係掲載記事



MINUTES OF DISCUSSION  
BETWEEN  
THE JAPANESE EVALUATION TEAM  
AND THE AUTHORITIES CONCERNED  
OF THE GOVERNMENT OF THE REPUBLIC OF THE PHILIPPINES  
ON THE JAPANESE TECHNICAL COOPERATION  
FOR  
THE NATIONAL CONSTRUCTION PRODUCTIVITY  
DEVELOPMENT PROJECT

The Japanese Evaluation Team (hereinafter referred to as "the Team") organized by the Japan International Cooperation Agency (hereinafter referred to as "JICA") and headed by Mr. Koichi Tatsumi, Director of Building Maintenance Planning Division, Ministry of Construction, visited the Republic of the Philippines from October 20 - 30, 1997. During their stay in the Republic of the Philippines, the Team had a series of discussions and jointly evaluated the achievements of the National Construction Productivity Development Project (hereinafter referred to as "NCPDP").

As a result of the discussions, the Team and the Construction Manpower Development Foundation (hereinafter referred to as "CMDF") agreed to report and recommend to both the Governments of Japan and the Republic of the Philippines, matters referred to in the documents attached hereto.

Makati City, Philippines

October 29, 1997

*Koichi Tatsumi*

KOICHI TATSUMI

Leader, Japanese Evaluation Team  
Japan International Cooperation Agency  
JAPAN

*Aligia A. Tiongson*

ALIGIA A. TIONGSON  
Officer-in-Charge  
Construction Manpower  
Development Foundation  
PHILIPPINES

*[Signature]*

*[Signature]*

## I. INTRODUCTION

### 1. Preface

The Project has been implemented from April 01, 1993 until March 31, 1998 in accordance with the Record of Discussions (R/D) of January 12, 1993.

With the remaining project period of approximately 5 months, the Team was dispatched by the JICA Headquarters for the final evaluation of NCPDP. The evaluation has been jointly undertaken by the officials of CMDF, parties related to NCPDP, and the Team.

### 2. Methodology of Evaluation

The Team conducted interviews and discussions with the officials of CMDF, and parties related to NCPDP concerning the management and implementation of project activities and confirmed the progress and achievements of NCPDP.

In order to evaluate the past performance and achievements of NCPDP, the Team used the Record of Discussions (R/D) of 1993.

Based on the above results, the Team evaluated the NCPDP on the basis of its effectiveness, impact, efficiency, relevance, and sustainability.

## II. SUMMARY OF THE PROJECT

### 1. Overall Goal of the Project

The overall goal of NCPDP is to attain a globally competitive Philippine construction industry through the practice of productivity improvement.

### 2. Objectives of the Project

The objectives of NCPDP are the following:

a. To develop and establish a system of formulating and certifying work performance standards on a national level for private construction companies and government agencies, and construction engineers, supervisors, and project managers.

b. To promote and disseminate work performance standards among construction companies and government agencies and construction engineers, supervisors, and project managers through training and certification.

KT



### 3. Activities of the Project

The activities of the project are as follows:

1. Development of a system for work performance standards
  - a. Develop a system for work performance standards and undertake data gathering in construction firms;
  - b. Develop and operate an enrolment system for construction firms;
  - c. Create the Technical Committee on Productivity (TECHCOM) and its subcommittees to establish work performance standards;
  - d. Undertake data processing, evaluation, and methods research to develop work performance standards;
  - e. Disseminate work performance standards through handbooks publication and training.
2. Training for engineers, supervisors, and project managers
  - a. Develop training programs for construction engineers, supervisors, and project managers;
  - b. Through discussions with TECHCOM, finalize a training curriculum;
  - c. Conduct training for construction engineers, supervisors, and project managers.
3. Development of a certification system for project managers, supervisors, and engineers
  - a. Develop a certification system for project managers/superintendents;
  - b. Through discussions with TECHCOM, finalize a certification program.
4. Promotion of Total Quality Management (TQM) in the industry
  - a. Conduct awareness campaign on TQM through training;
  - b. Deploy TQM at firm level.
5. Development of a system for continuous upgrading of NCPDP systems

### III. EVALUATION

Evaluation of NCPDP was undertaken on the basis of its effectiveness, impact, efficiency, relevance, and sustainability over the period of five (5) years.

KT

1/9/





## 1. PROJECT EFFECTIVENESS

### 1.1. Project Inputs

In accordance with the R/D signed in 1993, the Japanese side dispatched JICA experts, provided training of Philippine counterpart personnel in Japan, and donated construction training and research equipment. On the other hand, the Philippine side provided personnel services and maintenance, operating and other expenses to NCPDP. (Please see Annex I).

### 1.2. Project Activities

#### 1. Development of a system for work performance standards

Work performance standards ( execution and supervisory ) through handbooks publication were developed in the following work areas of general building construction:

- a. excavation works
- b. piling works
- c. structural steel works
- d. formworks
- e. rebar works
- f. concrete works
- g. electrical works
- h. mechanical works

The handbooks were developed and completed by undertaking data gathering and methods research in the various construction firms. A TECHCOM and its nine (9) subcommittees, namely, Formworks, Rebar Works, Concrete Works, Excavation Works, Piling Works, Steel Fabrication and Erection Works, Electrical Works, Plumbing Works, and Air-conditioning Works were organized for consultation and validation in the preparation of the handbooks. The subcommittees were regularly convened to review and to evaluate the contents and relevance of the work performance standards developed.

The handbooks have been published and are currently disseminated to engineers, supervisors and project managers. These handbooks are utilized as textbooks in the conduct of technical and supervisory training programs.

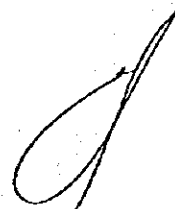
#### 2. Training for construction engineers, supervisors, and project managers

Twenty (20) courses (10 for engineers, and 10 for supervisors) have been developed in the following work areas of general building construction:

- a. excavation works
- b. piling works
- c. structural steel fabrication works
- d. structural steel erection works
- e. formworks
- f. rebar works

KT

1978



- g. concrete works
- h. building electrical works
- i. heating, ventilating, and air-conditioning works
- j. plumbing works

The above-mentioned courses are currently being implemented. Courses on Construction Management for superintendents and project managers are also being implemented.

Orientation Seminars on the ten work areas are being conducted.

A total of 2,208 engineers, supervisors, project managers and Chief Executive Officers have been trained since early 1996, up to the present as shown in Annex II.

### 3. Development of certification system for project managers/superintendents

The Construction Managers' Training and Certification Program (COMTCP) has been developed and promoted. Through discussions with industry leaders, the program has been designed to benefit existing and prospective project managers and project superintendents of general building construction.

The honorary and automatic schemes are operational until all qualified applicants have been evaluated based on educational attainment and job exposure. Forty (40) industry practitioners have been awarded with honorary certification on Oct. 24, 1997.

The regular schemes of the certification system have been developed and include training and testing components. Preparatory works are underway for its full implementation. (Please see Annex III).

Certificates of training completion are issued to engineers and supervisors who have undertaken training programs. The certification system for engineers and supervisors will be developed and implemented after due consultation with the industry.


### 4. Promotion of Total Quality Management in the industry

An enrolment system has been established and operationalized for firm-level management capability build-up on productivity improvement. A Memorandum of Technical Cooperation is signed among each firm, JICA, and CMDF signifying the firm's commitment to the objectives of NCPDP. The firms cooperate in data-gathering for productivity/ methods research.

At present, 109 construction companies are enrolled in the Productivity Exponents Group (PEG) and signified intention to implement a company-level Total Quality Management program.

TQM training programs include Productivity Orientation Seminars for Chief Executive Officers and Construction Productivity Facilitators' Courses.

KT



## 5. Development of a system for continuous upgrading of NCPDP systems

The work performance standards, enrolment, and training systems are in operation. Preparatory works are underway for the full implementation of the certification system. The data gathering and processing systems to support the training and certification systems have not been developed.

## 2. IMPACT OF THE PROJECT

### 2.1. System for work performance standards

Through the publication and promotion of different handbooks which have been reviewed and evaluated in the industry through the TECHCOM, construction firms can now use the handbooks as reference for work execution standards in such areas as improvement of work methods and project performance. It has, also, promoted the consciousness of skills and supervisory certification of workers and project managers respectively, to meet international standards of global competitiveness.

Advantages of the work performance standards are the following:

- a. the introduction of new technologies to improve productivity such as gas pressure welding, systematized formworks, semi-automatic welding processes, among others;
- b. the dissemination of the importance of a safety policy in construction companies;
- c. assistance of subcommittee members in the review and evaluation of the work performance standards. Participation in work performance standards development has accelerated awareness on the need to improve productivity through highly productive work methods and processes among subcommittee member firms.

### 2.2 Accreditation of training courses by PRC through CPE units

The accreditation by the Professional Regulations Commission (PRC) of CMDF courses in granting Continuing Professional Education (CPE) units to licensed professionals has greatly increased participation in training programs and has provided prestige to the training courses. The CPE units are requirements imposed by PRC prior to renewal of licenses of professionals.

### 2.3. Development of certification system for project managers/superintendents

Through COMTCP, a system is established for the evaluation of project engineers at supervisory and managerial levels which will be the basis of certification to ensure that only qualified project superintendents and project managers will handle large and complex projects.

KT

AG

J

MS

MS

Industry practitioners, who are recognized as 'pillars of the Philippine construction industry,' were awarded with the honorary certification of COMTCP. The presence of these honorary members provides more credence to the objective of the program.

#### 2.4. Promotion of Total Quality Management in the industry

The enrolment of construction companies as members of the PEG has emphasized the need to implement productivity and quality concepts at the work sites particularly good house keeping, 5 S (sort, systematize, sweep, sanitize, and self-discipline) and safety practices.

Some of the PEG companies are now implementing such TQM-related activities as the assignment of safety officers at project sites, the designation of construction clean-up periods, good housekeeping, site and cleanliness awards, and the discipline of morning exercises before starting work.

Through the commitment of PEG-member firms in practicing a firm-level TQM, construction firms have better opportunities to attain increased project productivity, thereby increasing project performance and competitiveness.

#### 2.5. Development of a system for continuous upgrading of NCPDP systems

The provision of the necessary systems such as work performance standards, training, and certification are envisioned to create the necessary vehicle for continuing industry wide productivity improvement.

### 3. EFFICIENCY OF THE PROJECT

- 3.1 All inputs on both sides were delivered on time on the part of the Philippine and Japanese Governments. The recruitment of counterpart Philippine personnel, however, has affected the project activities, but the active support of industry practitioners ensured the delivery of project outputs.
- 3.2 The Philippine Government allocated the necessary budget for personnel services and maintenance and other operating expenses for NCPDP. Facilities of the Regional Construction Technical Center (RCTC) - Visayas were also constructed to house needed equipment and improve training facilities.
- 3.3 The Japanese Government provided counterpart training, dispatch of long and short term experts, construction equipment, and other operating expenses to NCPDP.
- 3.4 Results of inputs were mutually agreed upon in view of the unforeseen favorable changes in the conditions of the construction industry. NCPDP targets were regularly monitored and evaluated to better serve the needs of the construction industry in terms of development of work performance standards, training, certification, and TQM deployment.

KT

*[Handwritten signature]*

*[Handwritten signature]*

*[Handwritten signature]*

#### 4. RELEVANCE OF THE PROJECT.

- 4.1 The dramatic changes in economic growth in the mid 1990s, resulting in unprecedented investments in construction activities have brought to focus the importance of competent and qualified construction project management professionals to supervise large and complex projects. It is, therefore, necessary to meet the demand for qualified and certified construction project managers.
- 4.2. NCPDP is a part of the Medium Term Philippine Development Plan (1993 - 1998) National Social Action Agenda for Productivity of the Philippine Government.
- 4.3. NCPDP meets the goals, purposes, mission and vision statements of CMDF and the construction industry.

#### 5. SUSTAINABILITY OF THE PROJECT

##### 5.1 Institutional aspect

CMDF has established the necessary government and private support for the sustainability of all the programs and activities of NCPDP. It has close linkages with government entities such as the Construction Industry Authority of the Philippines (CIAP), Department of Public Works and Highways (DPWH), and others; on the private sector side, it maintains its linkages with the Philippine Constructors Association (PCA) and its affiliates and regional chapters, among others.

CMDF, likewise, has established training network and linkages with different engineering institutions or universities in the National Capital Region and other selected regions of the country.

These linkages can facilitate the needed industry-validation and implementation of the activities of CMDF and the promotion of NCPDP activities in the different parts of the country.

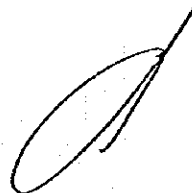
##### 5.2. Financial aspect

CMDF is provided with adequate budgetary allocation by the Department of Budget and Management (DBM) to maintain all its operations. The Productivity Research Division (PRD) is part of the official table of organization of CMDF. Hence, all its personnel services and maintenance, operating, and other expenses have proper allocation from the Philippine Government.

As its charter states, CMDF can also engage in income-generating activities. Hence, CMDF acquires additional funds from the revenues of its programs like training fees, handbooks sales, facilities and equipment rental. These revenues are deposited into the Trust Fund. The Trust Fund may be utilized for training, testing, and certification-related activities. At present, CMDF has P12 million deposited in its Trust Fund.

KT

1999



### 5.3. Technical aspect

In terms of organizational sustainability, CMDF is committed to provide the necessary qualified personnel and establish the appropriate committees and institutional linkages to carry out project activities.

## IV. CONCLUSION

The Team concluded that the objectives of NCPDP have been achieved within the project period. However, it is difficult to complete the establishment of the certification system within the remaining duration of the project.

## V. RECOMMENDATIONS

After a series of discussions, the Team recommends that within the project period, utmost efforts will be done to establish the scheme for the sustenance of all NCPDP activities in the industry.

In particular:

1. Strengthen CMDF linkages with other industry and institutional partners in the government and private sectors.
2. Provide inputs necessary to NCPDP: sufficient number of counterpart personnel and project staff including an expert on data gathering and processing; and adequate operational budget.
3. Ensure the optimum utilization of donated equipment through the conduct of skills and supervisory training courses in consultation with Japanese experts and in consideration of local conditions. Provide an effective maintenance program particularly for high tech precision equipment.

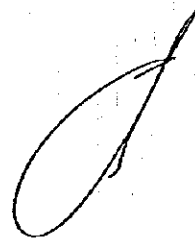
## VI. OTHER MATTERS

A request has been submitted by the CMDF to the Team for a follow-up grant to ensure the full implementation of the certification system for project managers and superintendents.

The CMDF has committed the amount of approximately P35 million from 1998 to 1999 to support the continuation of the project. It has established the appropriate network with government, private and academic institutions to implement the certification system within two years.

KT

199



10



## I. Contribution of Japanese Government (Japanese Fiscal Year)

1. EXPERTS					
Long Term Experts					
1993	1994	1995	1996	1997	TOTAL
5	1	6	0	0	12
Short Term Experts					
1993	1994	1995	1996	1997	TOTAL
6	6	7	7	7	33
2. Equipment Cost					
1993	1994	1995	1996	1997	TOTAL
JY72,000,000	JY69,000,000	JY125,400,000	JY43,000,000	JY13,661,000	JY323,061,00
3. Counterpart Training in Japan					
1993	1994	1995	1996	1997	TOTAL
3	5	4	4	4	20

Note: JY = Japanese Yen

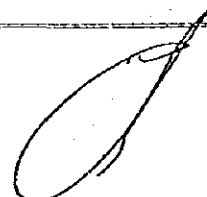
## II. Contribution of Philippine Government (Philippine Fiscal Year)

1. Budget					
1993	1994	1995	1996	1997	TOTAL
PP8,950,000	PP11,260,000	PP9,160,000	PP15,026,000	PP16,340,000	PP60,736,000
2. Counterpart Staff					
The assignment of Philippine counterpart personnel and lead project staff was confirmed.					
3. Facilities					
CMDF provided the necessary facilities for donated machinery and equipment in the Construction Manpower Development Center in Cavite and in the Regional Construction Technical Center in Cebu City.					

Note: PP = Philippine Peso

KT

1/2/97



**SUMMARY OF TRAINING COURSES CONDUCTED UNDER NCPDP**  
(From 1996 to Present)

COURSE TITLE	TOTAL NUMBER OF SEMINARS	TOTAL PARTICIPANTS	BREAKDOWN OF PARTICIPANTS					
			Govt. Sector	Private Sector	Profile of Participants			
					CEO	PM/PS	Supr./ Engrs.	Non-Tech.
CONSTRUCTION MANAGEMENT SERIES	33	1,060	(17)	(122)	(21)	(33)	(64)	(4)
TECHNICAL TRAINING FOR FRESH ENGINEERS	12	107		107			(38)	
SUPERVISORY DEVELOPMENT PROGRAM	8	75	(70)				(70)	
TQM ORIENTATION SEMINAR FOR CEOs in CONSTRUCTION	11	395	10	385	(72)	(86)	(3)	(7)
TQM FACILITATOR'S COURSE	5	104	12	92	(12)	(21)	(9)	(12)
NCPDP ORIENTATION SEMINAR	6	467	125	342	(7)	(29)	(130)	(10)
<b>TOTAL</b>	<b>75</b>	<b>2,208</b>	<b>(234)</b>	<b>(1,048)</b>	<b>(112)</b>	<b>(169)</b>	<b>(314)</b>	<b>(33)</b>
OTHERS - SKILLS TRAINING (Training Related to Donated Equipments)	29	362						
<b>GRAND TOTAL</b>	<b>104</b>	<b>2,570</b>	<b>(234)</b>	<b>(1,048)</b>	<b>(112)</b>	<b>(169)</b>	<b>(314)</b>	<b>(33)</b>

Legend: ( ) = a portion of the total number



# TRAINING AND CERTIFICATION FRAMEWORK

WORKERS LEVEL	ENGINEER	SUPERVISOR	PROJECT SUPERINTENDENT	PROJECT MANAGER	CEO
Rebar Works Masonry Works Formworks Concrete Works Electrical Works Steel Fabrication Works Steel Erection Works Plumbing Works Heavy Equipment Operation Heavy Equipment Maintenance	Intro to Construction Project Management Project Planning Project Control Technical Process	Intro to Construction Project Management Project Planning Project Control Contract Administration Change Management Technical Process Improvement /Supervision Construction Quality Management	Intro to Construction Industry Project Planning and Control Safety Management Human Resource Management Operation Management Technology Update Procurement Management Change Management Construction Quality Management Contract Administration	Intro to Construction Industry Project Planning and Control Contract Administration Human Resource Management Technology Update Safety Management Operation Management Financial Management Management Information Procurement Management Environmental Management Performance Management Marketing Management	TQM/Orientation Course Strategic Management Marketing Management Entrepreneurship
TOTAL QUALITY MANAGEMENT TOOLS Skills Certification	TQM TOOLS Technical Series	TQM TOOLS Technical Supervision Series	TQM TOOLS Project Superintendent Certification	TQM COURSE Project Management Certification	TQM Facilitators Course

KT

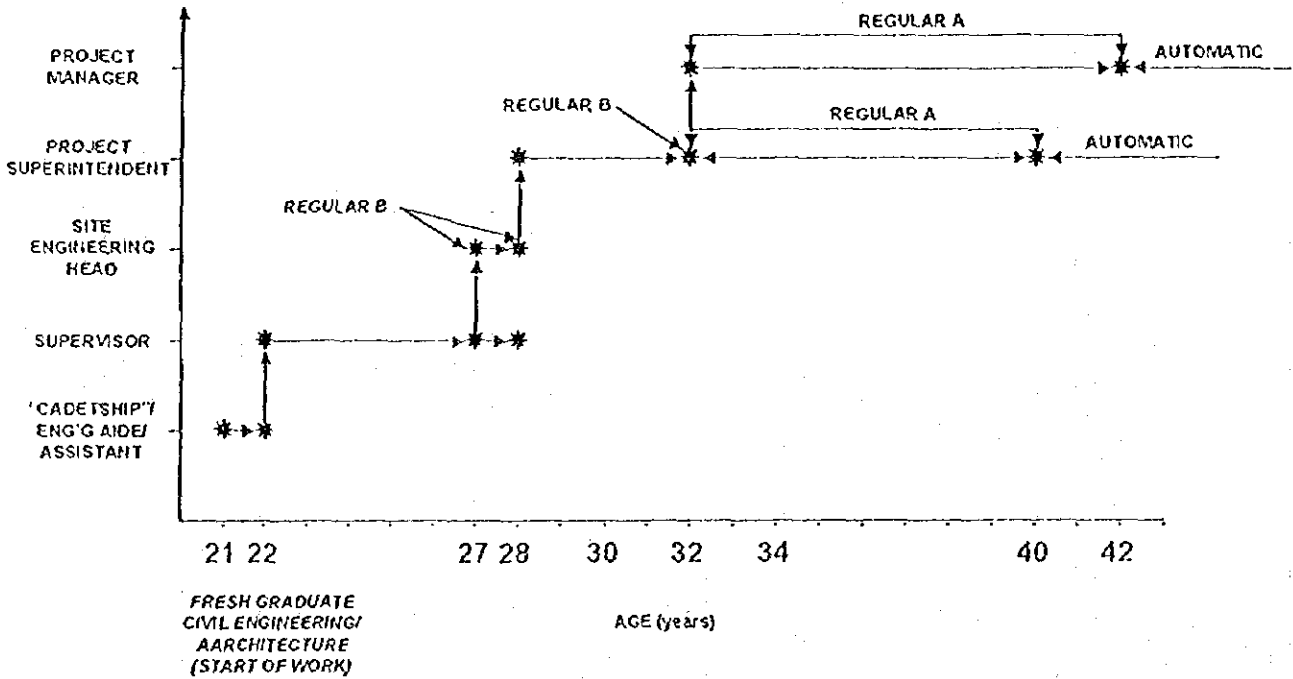
10/10

*[Handwritten signature]*

*[Handwritten signature]*

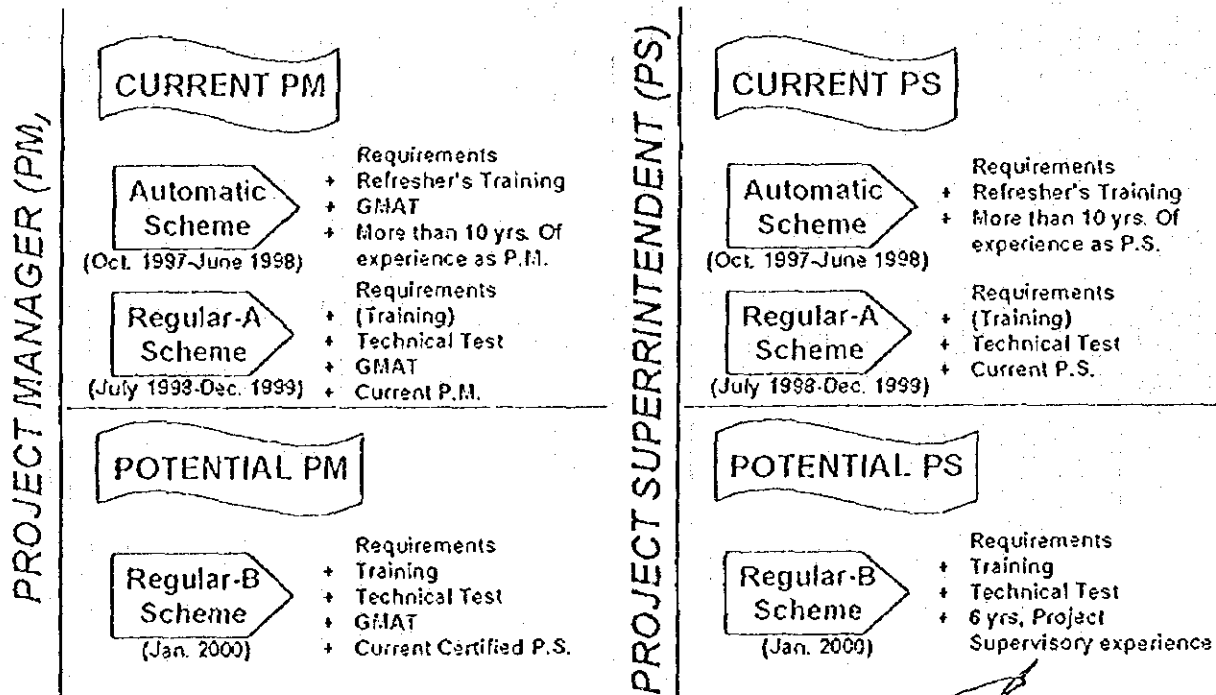
*[Handwritten signature]*

# CAREER PATH OF CONTRACTOR'S PROJECT MANAGER



## CONSTRUCTION PROJECT MANAGER TRAINING & CERTIFICATION PROGRAM

### GENERAL IMPLEMENTATION SCHEMES



KT

2/9/99 Annex III-B

**JOINT COORDINATING COMMITTEE  
MEETING FOR THE  
NCPDI FOLLOW-UP GRANT  
24 October 1997  
Makati City**

**PROPOSED TERMS OF REFERENCE FOR THE  
FULL OPERATION OF CONSTRUCTION MANAGERS'  
TRAINING AND CERTIFICATION PROGRAM (COMTCP)  
(TOR 97-1)**

**I. RATIONALE**

The technology of construction works has been highly developed, specialized, and diversified here and abroad. It is generally recognized that proper execution management of building construction works has become increasingly important to satisfy the buildings' end users, project owners, and contractors in terms of quality, delivery, productivity, and safety.

However, at present, deficient/inadequate execution management in local construction has often resulted to projects not delivered on time, excessive project cost, and occurrences of accidents on sites. The local construction industry has numerous potential problems such as improper construction methods, inefficiency, poor quality, and labor and material wastage which should be addressed for it to be competitive and productive.

Considering the current circumstances of fast changing technology, booming construction industry, the onset of intricately designed buildings, and increasing environmental consciousness, the crucial role of building works execution management should be paralleled with a pool of duly qualified construction managers.

To cope with the situation, it is important to establish a training and certification system to train and evaluate construction engineers at supervisory/managerial levels, which will be the basis to ensure that only qualified Project Managers and Project Superintendents will handle big projects.

**II. OBJECTIVES**

Specifically, this program (COMTCP) was formed:

To improve international competitiveness of the construction industry by affirming the competency level of the construction Project Managers and Project Superintendents ensuring an effective and efficient project execution by the construction firms.

### **III. SCOPE OF WORK**

This program will comprise the following activities of work:

1. Setting-up and establishment of systems within the framework of the program which will include the following activities:

1.1 Completion in the development of test standards;

1.2 Development of an evaluation system;

1.2.1 Applicant Evaluation Mechanism

1.2.2 Test Evaluation Mechanism

1.3 Nationwide promotion of COMTCP.

2. Setting-up and establishment of support systems which will include the following activities:

2.1 Development of Construction Management Handbooks;

2.2 Development and calibration of training curriculum and improvement of audio-visual system;

2.3 Development of a data base system;

2.4 Dissemination of specific technologies to effectively improve productivity.

#### IV. TIMETABLE

WORK ACTIVITIES	1998				1999				2000				REMARKS	
	1	2	3	4	1	2	3	4	1	2	3	4		
1. Setting-up and establishment of systems within the framework of the program:														
1.1 Development of test standards		■				■				■				every 6 mos. starting April 1998
1.2 Development of an evaluation system				■			■							
1.3 Promotion of COMTCP	■	■	■	■	■	■	■	■	■	■	■	■	■	nationwide
2. Setting-up and establishment of support system:														
2.1 Development of Construction Management Handbook		■	■	■	■	■	■	■	■	■	■	■	■	
2.2 Development and calibration of training curriculum and improvement of audio-visual system		■	■	■	■	■	■	■	■	■	■	■	■	
2.3 Development of a data base system		■	■	■	■	■	■	■	■	■	■	■	■	
2.4 Dissemination of specific technologies to effectively improve productivity		■	■	■	■	■	■	■	■	■	■	■	■	

Note: Two (2) pilot runs is planned to be conducted within the 2-year follow-up grant.

## V. BUDGET REQUIREMENTS

BUDGET ITEMS	1998	1999	2000
<b>JICA</b>	<b>JFY</b>	<b>JFY</b>	
1. Daily activities	965,000	965,000	N.A.
2. Printing of handbooks	1,000,000	975,000	
3. Equipment	10,000,000	1,200,000	
<b>TOTAL</b>	<b>11,965,000</b>	<b>3,140,000</b>	
<b>CMDP</b>			
1. Personal Services (PS)	8,206,000	9,847,000	11,816,000
2. Maintenance and Other Operating Expenses (MOOE)	2,310,000	2,772,000	3,326,000
<b>FAPS(NCPDP)</b>			
1. MOOE	5,500,000	6,601,000	7,922,000
<b>TOTAL</b>	<b>16,016,000</b>	<b>19,220,000</b>	<b>23,064,000</b>

## VI. OTHER CONSIDERATION

ITEMS	DESCRIPTION
Item #1: Necessary number of experts and field of expertise	Four (4) experts in total for certification system, construction management technology, data base development and coordination
Item #2: Necessary numbers of counterpart training to Japan and field of training	1. Three (3) persons per year or more 2. In the field of Construction Management, Total Quality Management (TQM), Productivity Measurement, etc.
Item #3: Necessary equipment donation	1. Audio-visual aids and equipment; 2. Improvement of training tools and equipment 3. Data base 4. Equipment related to specific technology
Item #4: Necessary of grant aid*	None
Item #5: Situations of base facility	1. Existing building 2. The condition of the existing building is satisfactory for the Follow-Up duration
Item #6: Relation of Cooperation with Japan	1981-91 Human Resource Skills Development Project  1983 Grant aid (1.41 Billion Yen)
Item #7: Cooperation by Third Country or other International Organization	GATT Fund

\* Grant Aid - refers to financial support to build a facility without any return (financial) to Japanese government.



REPUBLIC OF THE PHILIPPINES  
NATIONAL ECONOMIC AND DEVELOPMENT AUTHORITY  
NEDA, Pasig, Amber Avenue, Pasig City

Cable Address: NEDAPHIL  
P.O. Box 419, Greenhills  
Tel. 831-09-46 to 64

20 November 1997

Honorable Domingo L. Siason, Jr.  
Secretary  
Department of Foreign Affairs  
2330 Roxas Boulevard  
Pasay City

Dear Secretary Siason:

This is to endorse the attached request of the Department of Trade and Industry - Construction Manpower Development Foundation (DTI-CMDF) for a two-year follow-up cooperation to the GOJ/JICA-assisted National Construction Productivity Development Project (NCPDP), i.e., from 1 April 1998 to March 2000. Estimated cost of the Cooperation is P15.105 million to be provided by GOJ/JICA, while GOP contribution is in terms of personnel services and yearly operating and maintenance expenses to be sourced from the regular budget of CMDF. The extension is necessary to fully achieve the objectives of the Project as set forth in the Record of Discussions signed on 12 January 1993.

Early transmittal of this request to the Japanese Embassy will be appreciated. Please inform us of the subsequent action of the Government of Japan regarding the extension of the Project.

Thank you and best regards.

Very truly yours,

**CIELITO F. HABITO**  
Secretary of Socio-Economic Planning  
and Director-General

cc: Resident Representative Hiroshi Goto  
JICA-Manila  
Attention: Deputy Res. Rep. Kazuo Sudo

fn:nepdp.doc/c:/sfor/jicadesk/ueda-projectno/philppngs/all



*Tulong-tulong  
sa Pagsulong*

3 プロジェクト暫定実施計画

プロジェクト 暫定実施 計画 (当初計画)

TENTATIVE SCHEDULE FOR THE IMPLEMENTATION  
OF THE PROJECT

(R/D)

JAPAN FISCAL YEAR	1993	1994	1995	1996	1997
<b>PHILIPPINE INPUTS</b>					
1. ASSIGNMENT OF COUNTERPART PERSONNEL	(The Philippine side shall assign at least one full-time counterpart staff to each Japanese expert.)				
2. PROVISION OF LAND, BUILDING & FACILITIES					
3. PROVISION OF OPERATING EXPENSES					
<b>JAPANESE INPUTS</b>					
1. DISPATCH OF JAPANESE EXPERTS					
A. Long-term Experts					
a) Leader					
b) Coordinator					
c) Building Works					
d) Heavy Equipment Works					
e) Electro-Mechanical Works					
B. Short-term Experts					
a) Earthmoving Works					
b) Rebar Works					
c) Concreting Works					
d) Piling Works					
e) Form Works					
f) Steel Fabrication/Erection Works					
g) Electro-Mechanical Works					
2. TRAINING OF PHILIPPINE COUNTERPART PERSONNEL IN JAPAN	(Number of counterpart personnel accepted per year is subject to change due to budget condition.)				
1) Productivity Management					
2) Earthmoving Works					
3) Rebar Works					
4) Concreting Works					
5) Piling Works					
6) Form Works					
7) Steel Fabrication/Erection Works					
8) Electro-Mechanical Works					
3. PROVISION OF EQUIPMENT					



プロジェクト暫定実施計画（当初計画）

TENTATIVE SCHEDULE FOR THE IMPLEMENTATION  
OF THE PROJECT

(R/D)

JAPAN FISCAL YEAR	1993	1994	1995	1996	1997
TERM OF COOPERATION	-----				
ACTIVITIES					
1. REBAR WORKS					
1) Methods Survey and Research	-----	-----			
2) Handbook Publication		-----	-----		
3) Training & Certification			-----	-----	-----
2. EARTHMOVING WORKS					
1) Method Survey and Research	-----	-----	-----		
2) Handbook Publication			-----	-----	
3) Training & Certification				-----	-----
3. CONCRETING WORKS					
1) Method Survey and Research	-----	-----			
2) Handbook Publication		-----	-----		
3) Training & Certification			-----	-----	-----
4. PILING WORKS					
1) Method Survey and Research	-----	-----	-----		
2) Handbook Publication			-----	-----	
3) Training & Certification				-----	-----
5. STEEL FABRICATION & ERECTION WORKS					
1) Method Survey and Research	-----	-----	-----		
2) Handbook Publication			-----	-----	
3) Training & Certification				-----	-----
6. FORM WORKS					
1) Method Survey and Research	-----	-----			
2) Handbook Publication		-----	-----		
3) Training & Certification			-----	-----	-----
7. ELECTRO-MECHANICAL WORKS					
1) Method Survey and Research		-----	-----		
2) Handbook Publication				-----	-----
3) Training & Certification				-----	-----

プロジェクト 暫定実施 計画 (実績)

TENTATIVE SCHEDULE FOR THE IMPLEMENTATION  
OF THE PROJECT

(FINAL)

JAPAN FISCAL YEAR	1993	1994	1995	1996	1997
<b>PHILIPPINE INPUTS</b>					
1. ASSIGNMENT OF COUNTERPART PERSONNEL	(The Philippine side shall assign at least one full-time counterpart staff to each Japanese expert.)				
2. PROVISION OF LAND, BUILDING & FACILITIES					
3. PROVISION OF OPERATING EXPENSES					
<b>JAPANESE INPUTS</b>					
1. DISPATCH OF JAPANESE EXPERTS					
A. Long-term Experts					
a) Leader					
b) Coordinator					
c) Building Works					
d) Heavy Equipment Works					
e) Electro-Mechanical Works					
B. Short-term Experts					
a) Earthmoving Works					
b) Rebar Works					
c) Concreting Works					
d) Piling Works					
e) Form Works					
f) Steel Fabrication/Erection Works					
g) Electro-Mechanical Works					
2. TRAINING OF PHILIPPINE COUNTERPART PERSONNEL IN JAPAN	(Number of counterpart personnel accepted per year is subject to change due to budget condition.)				
1) Productivity Management					
2) Earthmoving Works					
3) Rebar Works					
4) Concreting Works					
5) Piling Works					
6) Form Works					
7) Steel Fabrication/Erection Works					
8) Electro-Mechanical Works					
3. PROVISION OF EQUIPMENT					

プロジェクト 暫定実施 計画 (実績)  
**TENTATIVE SCHEDULE FOR THE IMPLEMENTATION  
 OF THE PROJECT**

(FINAL)

JAPAN FISCAL YEAR	1993	1994	1995	1996	1997
<b>TERM OF COOPERATION</b>	—————				
<b>ACTIVITIES</b>					
<b>1. REBAR WORKS</b>					
1) Methods Survey and Research	—————				
2) Handbook Publication		—————			
3) Training & Certification			—————		
<b>2. EARTHMOVING WORKS</b>					
1) Method Survey and Research	—————				
2) Handbook Publication			—————		
3) Training & Certification				—————	
<b>3. CONCRETING WORKS</b>					
1) Method Survey and Research	—————				
2) Handbook Publication		—————			
3) Training & Certification			—————		
<b>4. PILING WORKS</b>					
1) Method Survey and Research	—————				
2) Handbook Publication			—————		
3) Training & Certification				—————	
<b>5. STEEL FABRICATION &amp; ERECTION WORKS</b>					
1) Method Survey and Research	—————				
2) Handbook Publication			—————		
3) Training & Certification				—————	
<b>6. FORM WORKS</b>					
1) Method Survey and Research	—————				
2) Handbook Publication		—————			
3) Training & Certification			—————		
<b>7. ELECTRO-MECHANICAL WORKS</b>					
1) Method Survey and Research		—————			
2) Handbook Publication			—————		
3) Training & Certification				—————	

#### 4 投入実績

1. 専門家派遣実績(B1-6&B1-7)
2. 機材の利用管理状況表(B5-1&B5-2)
3. カウンターパート研修  
Counterpart Trainees to Japan(B7)
4. サブコミッテイー実施実績  
Sub-Committee Meeting(D4-5—11 : 7 ページ)
5. フィリピン建設会社ランク別リスト  
Productivity Exponents group( D2-1—3)
6. 短期専門家セミナー  
Seminar by Short Term Experts( D5-11)
7. ハンドブック配布状況  
Handbook Inventory( D6-1)
8. カウンターパート5ヶ年配置状況  
Construction Manpower Development Foundation Employees Listing  
(1993—1997 : D7-2—4 : 3 ページ)
9. 実績審査資格授与者 (40名) リスト  
List of Honorary Certification Through COMTCP(D10-1)

# 1. 専門家派遣実績(B1-6&B1-7)

## 7. 専門家派遣実績

長期専門家（\_\_\_\_\_は現在の専門家を示す）

チーフアドバイザー	戸塚 晃 (建設省)	1993. 6. 15 ~1995. 11. 14
チーフアドバイザー	寺本英治 (建設省)	<u>1995. 11. 1 ~1997. 10. 31</u>
業務調整	小原克美 (J I C E)	1993. 6. 1 ~1995. 5. 31
業務調整	釘町 司 (C. I. N E T)	<u>1995. 5. 16 ~1997. 5. 15</u>
建設機械	木下友敬 (建設機械化協会)	1993. 6. 15 ~1995. 6. 14
建設機械	原田信之 (北海道開発局)	<u>1995. 7. 4 ~1997. 7. 3</u>
建築工事	堀 英行 (熊谷組)	1993. 6. 15 ~1995. 6. 14
建築工事	渡部吉博 (熊谷組)	<u>1995. 6. 1 ~1997. 5. 31</u>
建築工事	白川和司 (建設省)	1993. 7. 14 ~1995. 7. 13
建築工事	柗平 健 (建設省)	<u>1995. 9. 1 ~1997. 8. 31</u>
建築設備	小黒賢一 (建設省)	1994. 5. 16 ~1996. 3. 31
建築設備	大町徹 (建設省)	<u>1996. 3. 22 ~1998. 3. 31</u>

### 短期専門家

(平成5年度) 6名

建築積算	大島和義 (建設省)	1993. 11. 8 ~1993. 11. 23
鉄骨加工	安田博和 (川崎製鉄)	1994. 1. 18 ~1994. 2. 1
建設機械土工	長坂悦夫 (熊谷組)	1994. 1. 18 ~1994. 2. 1
コンクリートポンプ	元地敏哉 (熊谷組)	1994. 3. 1 ~1994. 3. 19
機械施工調査	宮澤 勉 (北海道開発庁)	1994. 3. 7 ~1994. 3. 19
6作業能率測定	小原研二 (飛鳥建設)	1994. 3. 7 ~1994. 3. 19

(平成6年度) 6名

建築設備工事	野村 修 (建設省)	1994. 7. 11 ~1994. 8. 6
コンクリートポンプ	中川哲也 (熊谷組)	1994. 10. 24~1994. 11. 18
建築機械設備	南 真和 (大気社)	1994. 11. 21~1994. 12. 10
建設施工基準	国本忠利 (建設業振興基金)	1994. 12. 7 ~1994. 12. 20
建築設備工事	野村 修 (建設省)	1995. 1. 9 ~1995. 2. 3
12鉄骨工事	柗平 健 (建設省)	1995. 2. 20 ~1995. 3. 11

(平成7年度) 7名

建築機械設備	南 真和 (大気社)	1995. 7. 10 ~1995. 8. 4
土工事施工管理	堺 実 (北海道開発局)	1995. 11. 20~1995. 12. 9
型枠計画	黒沢次夫 (熊谷組)	1995. 11. 20~1995. 12. 9
配管施工	大町 徹 (建設省)	1996. 1. 15 ~1996. 2. 8
くい施工管理	大島 章 (日本コンクリート)	1996. 1. 22 ~1996. 2. 9
鉄骨工事	後藤佳弘 (川崎製鉄)	1996. 2. 12 ~1996. 3. 1
19鉄骨工事	安田博和 (川崎製鉄)	1996. 2. 25 ~1996. 3. 1

(平成8年度) 7名

20資格制度	国本忠利 (公共建築協会)	1996. 8. 18 ~1996. 9. 6
21積算体系	高橋克己 (久米設計)	1996. 8. 18 ~1996. 9. 13
22電気設備	吉賀正昭 (住友電設)	1996. 9. 2 ~1996. 11. 29
23機械設備	門内弘文 (三機工業)	1996. 9. 2 ~1996. 11. 29
24工事改善 (既製くい工事)	中島弘夫 (日本車輜製造)	1997. 2. 24 ~1997. 3. 14
25工事改善 (場所打ちくい工事)	副島虎二郎 (利根地下技術)	1997. 2. 24 ~1997. 3. 14
26工事改善 (RC工事)	手塚武仁 (清水建設)	1997. 2. 24 ~1997. 3. 14

(平成9年度)

27資格制度	国本忠利 (公共建築協会)	1997. 5. 11 ~1997. 5. 30
28工事改善 (鉄骨工事)	後藤佳弘 (川崎製鉄)	1997. 6. 9 ~1997. 7. 4
29データベース企画	富田晋 (東急建設)	1997. 6. 16 ~1997. 8. 8
30工事改善 (土工事)	千田昌平 (土木研究センタ)	1997. 7. 7 ~1997. 7. 17
31工事改善 (電気設備工事)	吉賀正昭 (住友電設)	1997. 7. 7 ~1997. 7. 31

(その他2名を予定)

#### 8. 供与機材実績 (詳細は別紙参照)

平成5年度	約7200万円 (ローダ、4WD、コンピュータ等)
平成6年度	約6900万円 (バックホウ、ローダ、グレーター、4WD等)
平成7年度	約1億2500万円 (ドーザー、ローダ、グレーダ、万能試験機、パンダー等)
平成8年度	約4300万円 (ダンプトラック、車両、試験機器、超音波探傷機等)
平成9年度	約1300万円 (光学式読取り装置、システム型枠等)

#### 9. カウンターパート研修受入実績 (詳細は別紙参照)

平成5年度	3名 (建設先端技術、プログラミング、建設機械施工)
平成6年度	5名 (生産性管理、建設プロジェクト管理、生産性開発、技術普及、建設生産技術)
平成7年度	4名 (空調技術、建築施工基準 2、情報処理技術)
平成8年度	4名 (建設プロジェクト管理、技術開発、建設工学、建設生産性開発)
平成9年度	4名 (生産性開発、先進技術、建設プロジェクト管理、生産性測定)

#### 10. ローカルコスト負担実績 (詳細は別紙参照)

平成5年	8, 874千ペソ (支払い)
平成6年	11, 209千ペソ (支払い)
平成7年	9, 155千ペソ (支払い)
平成8年	12, 782千ペソ (予算)

2. 機材の利用管理状況表(B5-1&B5-2)

8) 機材の利用管理状況表

8)-1 160万円以上の機材

H9年10月6日現在

年度	番号	機材名 MAKE /MODEL)	Qty	LOCATION	備考
93	1	4輪駆動車 (トヨタ)	2	CMDF	
93	2	バックホー (CAT311)	1	RCTC	
93	3	ドーザ (0610)	1	RCTC	
93	4	タンブー (三菱)	1	RCTC	
94	5	4輪駆動車 (トヨタ)	3	CMDF2/RCTC	
94	6	ローダ (CAT950)	1	RCTC	
94	7	バックホー (CAT320)	1	CMDC	
94	8	グレーダ (CAT120)	1	RCTC	
94	9	鉄筋曲げ機	1	RCTC	
94	10	ポンプテスト (HARTRIGE)	1	RCTC	修理中
94	11	型枠 (エコフォーム)	1 (SET)	RCTC	
95	12	ドーザ (085 コマツ)	1	CMDC	
95	13	ローダ (7250コマツ)	1	CMDC	
95	14	グレーダ (611 コマツ)	1	CMDC	
95	15	ダクト製作機 (深川-TDF)	2	CMDC	
95	16	プレス (深川 MA-7000)	1	CMDC	
95	17	万能試験機 (TRITRON)	1	CMDC	修理中
96	18	タンブ (日野)	1	CMDC	
96	19	ガス圧接機	2	CMDC	
96	20	超音波探傷機	2	CMDC	
96	21	4輪駆動車 (TAMARAW)	3	CMDF	

1993-1997 MAJOR NCPDP DONATED EQUIPMENT LIST (As of October, 1997)

Code No.	Item	Specification	Qty.	Arrival	Location		
					CMDF Makati	CMDC Cavite	RCTC Cebu
1	Computer	PSV 2405 Yaw	2	94/Jan.		2	
2	PC Laptop	Thinkpad / Note type	3	94/Jan.	2	1	
3	Printer	Laser LBP AG-2	2	94/Jan.	1	1	
4	Vehicle	Land Cruiser (Automatic)	2	94/Jan.		2	
5	TV	Matsushita	2	94/Feb.		2	
6	Transit	Nikon	1	94/Feb.		1	
7	Media Board	NEC	1	94/Feb.		1	
8	Generator	Kubota AV3800	4	94/Feb.		4	
9	Form System	Eco Form	1	95/Mar.			1
10	Dozer	CAT D6H	1	94/April			1
11	Motor Hydraulic	Excavator Travel	1	94/May			1
12	Engine	MS 110, Used	1	94/May			1
13	Engine	D6D, Used	1	94/May			1
14	Transmission	936 Transmission	1	94/May			1
15	Truck and Parts	13-Ton Dump (Mitsubishi)	1	94/July			1
16	Excavator	CAT 311	1	94/April			1
17	Motor Hydraulic	Excavator Swing	1	94/May			1
18	Pump Hydraulic	Excavator Main	1	94/May			1
19	Vehicle	Land Cruiser (Direct)	3	94/Dec.	3		
20	TV	Sony	3	95/Sep.	3		
21	Loader	CAT 950F-2	1	95/April			1
22	Grader	CAT 120G	1	95/Feb.			1
23	Excavator	CAT 320	1	95/April		1	
24	Compressor	7.5 Kw	1	95/Sep.			1
25	Bar Bender	B40 TKK	1	95/Sep.			1
26	Bar Cutter	C43 TKK	1	95/Sep.			1
27	Pump Tester	12 C31, 7.5 Kw	1	95/Sep.			1
28	PC Laptop	Thinkpad	5	95/Mar.	4	1	
29	Copy Machine	Ublx-Konica	3	95/Feb.	1	1	1
30	VTR	Matsushita	5	95/Aug.	5		
31	Dozer	D85	1	96/Sep.		1	
32	Grader	G11	1	96/Sep.		1	
33	Loader	W250	1	96/Sep.		1	
34	Duct Processor	MA700	1	96/Sep.		1	
35	UTM	Triton	1	96/Sep.			1
36	Camera	Konica EOS555	2	97/Sep.	2		
37	Dump Truck	Hino FS271	1	97/Sep.		1	
38	System Board	Electronic System (Training Aid)	6	97/Sep.		6	
39	Gas Pressure Welder	Manual (Shiga)	6	97/July		6	
40	Gas Pressure Welder	Semi-Auto (Shiga)	6	97/July		6	
41	Ultra-Sonic Apparatus	S25x5A45, LMD-2,RB-PTV (Marui)	2	97/July		2	



3. カウンターパート研修  
Counterpart Trainees to Japan(B7)

No.		FY	1997	STAGE		PROJECT DURATION	5 Years
SECTOR	Construction			SCHEME	PTTC		
PROJECT TITLE	National Construction Productivity Development Project						
PROJECT TITLE (Japanese)							

Common Information	PTTC Information				Individual Expert Info	Development Study/ Grant Aid Information
	Long	Short	C/P	EQ		

Counterpart Trainees to Japan

	NAME	SUBJECT	DURATION
1.	DANO, Leo Neil Z.	ADVANCE TECHNOLOGY	1993/05/06-1993/06/17
2.	RIVERA, Raquel Joy a.	INFORMATION	1993/08/05-1993/11/29
3.	VILLAFLO, Jacinto D.	INDIVIDUAL TRAINING	1994/03/28-1994/04/16
4.	MATURAN, Zenaida C.	PRODUCTIVITY MANAGEMENT	1994/04/11-1994/06/12
5.	LUCIANO, Angelito V.	TQC, STANDARDIZATION	1994/06/23-1994/09/20
6.	ARCENAS, Ernesto V.	INDIVIDUAL TRAINING	1994/09/14-1994/10/19
7.	ZAMORA, Jeffrey C.	CONSTRUCTION MANAGEMENT	1994/09/26-1994/12/21
8.	EMAS, Eduardo C.	INDIVIDUAL TRAINING	1994/10/26-1994/12/13
9.	SANCHEZ, Edgar G.	INFORMATION	1995/03/03-1995/11/27
10.	PAGULAYAN, Gabriel C.	AIR-CONDITIONING	1995/03/07-1995/12/05
11.	NAVERA, Domingo Basilio R., JR.	INDIVIDUAL TRAINING	1995-03/22-1995/10/05
12.	DATOR, Edwin C.	INDIVIDUAL TRAINING	1995-03/22-1995/10/05
13.	BOSTON, Arnel J.	ADVANCE TECHNOLOGY	1996/05/14-1996/08/04
14.	FERNANDEZ, Ricardo C.	CONSTRUCTION MANAGEMENT	1996/09/04-1996/11/14
15.	VALENCIANO, Joji C.	CIVIL WORKS	1996/08/07-1996/11/27
16.	TIONGSON, Alicia A.	INDIVIDUAL TRAINING	1996/06/02-22
17.	ABRERA, Arturo M.	ADVANCE TECHNOLOGY	1997/05/13-1997/07/13
18.	SISON, Florencio G.	INDIVIDUAL TRAINING	1997/06/26-1997/08/09
19.	SANTIAGO, Benito	CONSTRUCTION MANAGEMENT	1997/09/01-1997/11/13
20.	AUREADA, Abelardo	PRODUCTIVITY MEASUREMENT	1997/11/11-1997/12/13

B7

4. サブコミッテイー実施実績

Sub-Committee Meeting(D4-5-11:7ページ)

**SUB-COMMETTEE MEETING - EXCAVATION WORK**

Data	Venue	Attendance	Topics
September 19, 1997	ACEL	5	Second Edition of Handbook
October 1, 1997	ACEL	8	Second Edition of Handbook
October 8, 1997	ACEL	5	Second Edition of Handbook
October 15, 1997	ACEL	11	Second Edition of Handbook

**SUB-COMMETTEE MEETING - PILING WORK**

Data	Venue	Attendance	Topics
August 25, 1995	ACEL	7	Data Gathering Sheet, Contents of Handbook

**SUB-COMMETTEE MEMBERS FOR EXCAVATION WORK**

Company	Person in charge	Topics
F.F. Cruz & Company, Inc.	Mr. Oscar Concepcion	Chairman
	Mr. Eric A. Cruz	
CMDF	Mr. Leo Niel Z. Dano	Co-Chairman
J.V. Angeles Construction Corp. EEI Corporation	Mr. Jose A.R. Angeles	
	Mr. Mario Legaspi	
	Mr. Virgilio Aberante	
NJ Bautista Construction Inc. Buenaseda Commercial	Mr. Michael S. Baulista	
	Mr. Amador T. Buenaseda	
J.H. Pajara Construction Corp.	Mr. Noel R. Pajara	
Monark Contractors Corp.	Mr. Bonifacio B. Lomes	
	Mr. Rene Dionisio	
Monark Equipment Corp.	Mr. Rey Peregrino	
	Mr. Glenn Querubin	
RII Builders, Inc	Mr. Edmund Sese	
	Mr. Cesar M. Navarro	
	Mr. Jose S. Lapso	
DPWH	Mr. Isaelo Jaluena	

**SUB-COMMETTEE MEMBERS FOR PILING WORK**

Company	Person in charge	Topics
Freyssinet Phils.	Mr. Cleto Guerrero	Chairman
CMDF	Mr. Eduardo C. Emas	Co-Chairman
F.F. Cruz	Mr. Danilo Mollasgo	
Concrete Aggregate Corp.	Mr. Isagani Sto. Domingo	
Advanced Foundation	Mr. Ronald Venida	
J.V. Angeles Construction Corp.	Mr. Ramon Amores	
DPWH	Mr. Rodolfo Era	
J.E. Manalo & Co., Inc.	Mr. Andres L. Recato	
Foundation Specialist	Mr. Cris Velencia	

## Structural Steel Works Subcommittee

prepared by Takeshi Kuibira (JICA/CMDF)

### Meeting

	Date	Venue	Topic	Attendance
1995	September 26	CMDF	WPES Development	9
1996	February 29	ACCI	Short-Term Expert Seminar	29
	March 21	ACCI	1st Edition Handbook	12
	March 28	ACCI	ditto	
	April 11	ACCI	ditto	
	June 27	CIAP Boardroom	Handbook Seminar	5
	July 11	PCA Boardroom	WPES and Handbook Seminar	7
1997	April 24	ACCI	2nd Edition Handbook	7
	June 3	ACCI	ditto	4
	June 19	ACCI	ditto	5
	July 1	Metro Club	ditto	7
	July 3	Metro Club	Short-Term Expert Seminar	13
	July 9	ACCI	ditto	4
	September 4	CMDF	ditto	6
	September 20	CMDF	ditto	4
	October 4	CMDF	ditto	4
	October 11	CMDF	ditto	3
	October 22	CMDF	ditto	

### Member 1995

Chairman	Mario M. Legaspi	EEI Corp.
Co-Chairman	Jeffrey C. Zamora	CMDF
Member	Eduardo Makabenta	Grandspan Development
	Virgilio Pagal	BF Metal Corp.
	John Mirason	Alltech
	Andy Mangaron	R.S. Arrieta, Inc.
	Terencio Mancinido	DOTC
	Cid Camba	DOTC
	Edwin C. Dator	CMDF

### 1996

Chairman	Mario M. Legaspi	EEI Corp.
Co-Chairman	Jeffrey C. Zamora	CMDF
Member	Eduardo Makabenta	Grandspan Development
	Virgilio V. Pagal	BF Metal Corp.
	Sweneredo R. Abarca	BF Metal Corp.
	Cesar F. Bartolome	ECCO-Asia
	Andy Mangaron	R.S. Arrieta, Inc.
	Odon V. De Guzman	R.S. Arrieta, Inc.
	Edwin C. Dator	CMDF

### 1997

Chairman	Mario M. Legaspi	EEI Corp.
Co-Chairman	Gabriel C. Pagulayan	CMDF
Member	Virgilio V. Pagal	Sankyu Philippines
	Sweneredo R. Abarca	BF Metal Corp.
	Cesar F. Bartolome	ECCO-Asia
	Adame Crispo	ECCO-Asia
	Godofredo C. Santos	Training Systems Associates
	Honorio M. Padua	CMDF Consultant

### SUB-COMMETTEE MEETING - Formwork

Data	Venue	Attendance	Topics
June 16, 1995	PCA	8	Data Gathering Sheet
July 14, 1995	PCA	6	Data Gathering Sheet
January 12, 1996	PCA	7	Data Gathering Sheet

### SUB-COMMETTEE MEETING - Concrete Work

Data	Venue	Attendance	Topics
September 6, 1996	PCA	6	Handbook Content

### SUB-COMMETTEE MEETING - Rebar Work

Data	Venue	Attendance	Topics
September 13, 1996	PCA	3	Handbook Content

### SUB-COMMETTEE MEETING - RC Work

Data	Venue	Attendance	Topics
February 20, 1997	ACCI	9	Unify of 3 work area as RC Work
March 5, 1997	ACCI	11	Handbook content - General
March 11, 1997	ACCI	11	Handbook content - General
March 14, 1997	ACCI	7	Handbook content - Concrete Work
March 17, 1997	ACCI	6	Handbook content - Concrete Work
March 21, 1997	METRO CLUB	6	Handbook content - Rebar Work
April 1, 1997	METRO CLUB	5	Handbook content - Rebar Work
April 4, 1997	METRO CLUB	6	Handbook content - Work Plan
April 8, 1997	METRO CLUB	6	Handbook content - Formwork
April 16, 1997	METRO CLUB	7	Handbook content - Formwork

### SUB-COMMETTEE MEMBERS FOR RC WORKS (Active)

Company	Person in charge	Topics
DPWH	Ms. Remedios Belleza	Chairman
CMDF	Mr. Domingo Basilio N. Navera, Jr	Co-Chairman
Concrete Aggregate Corp.	Mr. Ronito Mercado	
C.P. Dizon Construction	Mr. Orlando P. Dizon	
EEL	Mr. Efren Galmaitan	
E. Ganzon Inc.	Mr. Jess Orbase	
Philippine Gas Pressure Welding Inc.	Mr. Nolasco M. Pasion	
CMDF	Mr. Arnel J. Boston	
CMDF	Mr. Joji C. Valenciano	

### Sub-Committee Members (Previous)

#### Concrete Work

	Company Name	Person in Charge	Remarks
1	DMCI	Mr. Geronimo Pumzat	Chairman
2	CMDF	Mr. Arnel J. Boston	Co-Chairman
3	DPWH	Ms. Remedios Belleza	
4	Maja Batching BF	Mr. Paul Hordejan	
5	AG&P	Mr. Oscar B. Abella	
6	Concrete Aggregate Corp.	Mr. Ronito Mercado	

### Sub-Committee Members (Previous)

#### Formwork

	Company Name	Person in Charge	Remarks
1	Formally	Mr. Jose Cruz	Chairman
2	CMDF	Mr. Domingo Basilio N. Navera, Jr	Co-Chairman
3	C.P. Dizon Construction	Mr. Orlando P. Dizon	
4	DPWH	Ms. Remedios Belleza	
5	A.M. Oreta & Co.	Mr. Ricardo Khan	
6	Ecoformworks	Mr. Alex San Juan	
7	EEI	Mr. Efren Gatmaitan	
8	AG&P	Mr. Jess Linsangan	
9	AG&P	Mr. Victorico Fernandez	
10	AG&P	Mr. Victorio Vabigting	
11	B. F. Corp.	Mr. Romeo T. Tambis	

### Sub-Committee Members (Previous)

#### Re-bar Work

	Company Name	Person in Charge	Remarks
1	E. Ganzon Inc.	Mr. Jess Orbase	Chairman
2	CMDF	Mr. Robert Consuelo	Co-Chairman
3	C.P. Dizon Construction	Mr. Orlando P. Dizon	
4	DPWH	Mr. Abdul Samad	
5	Makati Development Corp.	Mr. Salvador Jadio	

### SUB-COMMETTEE MEMBERS FOR ELECTRICAL WORKS

Company	Person in charge	Topics
Westco Electric & Equip. Corp.	Mr. Rodolfo Penalosa	Chairman
CMDF	Mr. Angelito V. Luciano	Co-Chairman
NPBI	Mr. Arnold Hipolito	
Advance Engineering Corp.	Mr. Alex B. Arreza	
JBF Industrial Services	Mr. Juvenal B. Francisco	
DOTC	Mr. Florencio dela Cruz	
CIPER Engineering	Mr. Roan de Mesa	
Inphase Construcion	Mr. Rogelio M. Avenido	
MS Electrical	Mr. Wilson Calnasinguin	
Sarte Construcion	Mr. Antonio Ma. M. Sarte	
G.G. Garces	Mr. Gregorio G. Garces	

### SUB-COMMETTEE MEMBERS FOR PLUMBING WORKS

Company	Person in charge	Topics
CMDF	Mr. Gabriel C. Pagulayan	Act. Chairman
EEI Corporation	Mr. Ruber Trilles	
AG&P	Mr. Edgardo M. Vizconde	
L.M. Camus Engineering Corp.	Mr. Jesus Pinugu	
Phil. Plumbing	Mr. Toni Seguerria	

### SUB-COMMETTEE MEMBERS FOR AIR-CONDITIONING WORKS

Company	Person in charge	Topics
O.V. Roy Construction	Mr. Alberto A. Abanilla	Chairman
CMDF	Mr. Gabriel C. Pagulayan	Co-Chairman
ACRONE Industries, Inc.	Mr. Silvestre V. Penasales	
Kalayaan Engineering	Mr. Domingo Nogoy	
DMK Engineering	Mr. Danilo M. Kalingasan	
ALEN International	Mr. Alejandro B. Mendoza	
ARS Constuction Corporation	Mr. Arsenio R. Sazon	
LR Punsalan and Associates	Mr. Laurentino R. Punsalan	

D4-9

# 電気設備工事、機械設備（空調、衛生）工事サブコム実施実績

作成：大町

期間：1996年3月21日～1997年10月17日

サブコムメンバーを中心に集めたセミナーも含む。

## 1. 電気設備工事

番号	開催年月日			時間	場所	討議内容	出席者数	備考
	年	月	日					
1	'96	03	26	午後	ACCI	小黑氏最終報告	不明	
2		11	27	8:00～12:00	ACCI	ハンドブック原稿案提示	6名	

### ・番号1のセミナーについて

帰国前の小黑専門家の最終報告が、サブコムメンバーを中心とした電気設備業界関係者に対して行われた。小黑氏が任期中に作成した、日本の技術を紹介する資料についてプレゼンテーションを行った。

### ・番号2のセミナーについて

吉賀短期専門家が作成した電気設備工事ハンドブックの原稿案と、吉賀氏がフィリピンの現場を見た上で提案する施工の改善点をサブコムのメンバーにプレゼンテーションを行った。

ハンドブックの原稿案は、持ち帰って検討し、各自がコメントを提出することにしたい、というサブコムメンバーの意見に従い、原稿案検討のためのサブコム招集は最小限にすることになった。

吉賀氏の施工提案に対して、積極的に取り入れていこうというメンバーからの反応は薄かった。フィリピン国内の規格との適合性の問題があるのも、その原因である。

## 2. 機械設備工事

番号	開催年月日			時間	場所	討議内容	出席者	備考
	年	月	日					
1	'96	11	27	午後	ACCI	門内氏作成のハンドブック原稿案の提示	空調4名 衛生0名	空調、衛生合同
2		12	13	14:30～17:00	旧 CIAP	ハンドブック原稿の検討	4名、ガビ、大町、エレン	同上

3	'97	01	10	14:00~	ACCI	同上	不明	寺本リーダー出席。大町は健康管理旅行のため欠席。空調、衛生合同
4		02	07	14:00~	ACCI	同上	5名、ガビ、釘町、大町、エレン	空調、衛生合同
5		02	28	14:30~	ACCI	同上	5名、ガビ、釘町、大町、マーシ	同上
6		03	07	1600~19:00	ACCI	同上	3名、ガビ、釘町、大町、エレン	同上
7		03	12	17:00~20:20	ACCI	同上	4名、ガビ、釘町、大町、エレン	同上
8		03	20	17:00~20:00	ACCI	同上	2名、ガビ、寺本、大町、エレン	同上
9		04	03	16:30~2220	ACCI	同上	2名、ガビ、釘町、大町、ネッシー	同上
10		04	10	17:00~20:00	ACCI	同上	3名、ガビ、釘町、大町、ネッシー	同上
11		04	16	16:00~20:30	ACCI	同上	3名、ガビ、寺本、釘町、大町、ネッシー	同上
12		05	08	16:30~20:00	ACCI	同上	3名、ガビ、寺本、大町	同上

・番号1のセミナーについて

門内短期専門家が作成した機械設備工事ハンドブックの原稿案と、門内氏がフィリピンの現場を見た上で提案する施工の改善点をサブCOMのメンバーにプレゼンテーションを行った。

ハンドブックの原稿案は、今後定期的にサブCOMを開催し、検討していくことになった。

施工の改善提案についての反応は、電気設備の場合ほど冷たくはなかったが、大きな反応もなかった。

・番号2～12のサブCOMについて

ハンドブック原稿案を1ページずつ読み合わせ、修正を加えていった。空調と衛生のサブCOMメンバーの招集を行ったが、ダクトに関する記述のところになると、衛生関係者が興味を失ったのか、彼らの出席率が悪くなってしまった。

以上



5. フイリピン建設会社ランキング別リスト

Productivity Exponents group (D2-1-3) PRODUCTIVITY EXPONENTS GROUP

As of October 15, 1997

No.	Company Name	Category	Classification	Date of Signing	City Located	PARTICIPATION				Prod'vty. Mission	Remarks
						CEO Seminar	Factres' Course	NCPDP Seminar	Training		
1	AG&P Company of Manila	AAA	GE/GB	1/26/97	Makati City	1		2	6		
2	BF Corporation	AAA	GE/GB	1/26/97	Pasig City	1			7	2	
3	Buena Vista Commercial, Inc.	A	GE/GB	1/26/97	Quezon City	1					
4	CCT Constructors Corp.	A	GE/GB	1/26/97	Makati City	1					
5	Concrete Aggregates Corp.	AAA	GE/GB	1/26/97	Quezon City	1					
6	DM Consunji, Inc.	AAA	GE/GB	1/26/97	Manila	1	2		28	2	
7	EEL Corporation	AAA	GE/GB	1/26/97	Quezon City	1		1	8	2	
8	FF Cruz & Co., Inc.	AAA	GE/GB	1/26/97	Quezon City	1			4		
9	G. Montini Construction Corp.	AA	GE/GB	1/26/97	Mandaluyong	1		1			
10	IPM Group of Companies	AAA	GE/GB	1/26/97	Pasig City	1					
11	JV Angeles Construction Corp.	AAA	GE/GB	1/26/97	Quezon City	1		1	3	2	
12	LC Builders and Developers, Inc.	AAA	GE/GB	1/26/97	Makati City	1					
13	Manfil Construction & Dev't. Corp.	AAA	GE/GB	1/26/97	Mandaluyong	1	2				
14	NJ Bautista Construction, Inc.	AAA	GE/GB	1/26/97	Makati City	1				2	
15	Phil. National Construction Corp.	AAA	GE/GB	1/26/97	Mandaluyong	1		1	2		
16	Philrock, Incorporated	AAA	GE/GB	1/26/97	Quezon City	1		1			
17	Shimizu Philippine Contractors, Inc.	A	GE/GB	1/26/97	Makati City	1		4			
18	Steel Centre Philippines, Inc.	A	SF&E	1/26/97	Pasig City	1					
19	William Golanco Construction Co.	AAA	GE/GB	1/26/97	Makati City	1	3			2	
20	Alen International Industrial Corp.	AA	AC	10/18/96	Manila	1					
21	Ciper Engineering Corp.	AAA	EW	10/18/96	Pasig City	1	1			2	
22	CM Pancho Construction Co., Inc.	AAA	GE/GB/EW	11/21/96	Quezon City	1			3		
23	E. Ganzon, Inc.	AAA	GE/GB	10/18/96	Makati City	1		1	14		
24	Geostar Philippines, Inc.	B	EE	11/21/96	Manila	1			1		
25	Immacon Construction & Dev't. Corp.	A	GE/GB/CF	11/21/96	Marikina	1		1		2	
26	Inphase Construction Co., Inc.	AAA	GE/GB/EE/CF	11/21/96	Marikina	1	2				
27	Interface Industrial Corp.	A	EE	11/21/96	Manila	1			1		
28	JH Pajara Construction, Inc.	AAA	GE/GB	10/18/96	Pasig City	1					
29	LM Carrus Engineering Co., Inc.	A	GB/AC&R	10/18/96	Quezon City	1					
30	MIDCL Integrated Const. & Allied Serv.	A	ME/EE/AC	11/21/96	Makati City	1	2				

D2-1

No.	Company Name	Category	Classification	Date of Signing	City Located	PARTICIPATION					Remarks
						CEO Seminar	Faceltr's Course	NCPDP Seminar	Training	Prod'vty. Mission	
31	Nationwide Power Builders, Inc	B	ME/EE	10/18/96	San Juan	1					
32	OV Roy Construction, Inc.	AAA	GE/GB/ EW/ME	10/18/96	Manila	1					
33	Phesco, Incorporated	AAA	GE/GB/Geol/ Power Plants	11/21/96	Quezon City	1	1			2	
34	RII Builders, Inc	AAA	GE/GB	10/18/96	Quezon City	1		1			
35	Trans Pacific Const. & Fab. Corp.	AA	GE/GB	10/18/96	Quezon City	1		1	3		
36	Westco Electrical & Equip. Corp.	A	SP-EW/CF	10/18/96	Quezon City	1					
37	Celestron Construction, Inc.			8/05/97	Quezon City	1	2				
38	Primary Structures Corp.	AA	GB	6/05/97	Cebu City	1		15			
39	F.T. Sanchez Construction	AAA	GE/GB	6/05/97	Cebu City	1					
40	Gorones Development Corp.	AAA	HW	6/05/97	Cebu City	1					
41	Oon-ke Construction & Dev't., Inc.	A	GE/GB	6/05/97	Cebu City	1		7			
42	PLD Construction	B	GB/HW	6/05/97	Cebu City	1					
43	JLR Construction & Aggregates, Inc.	B	GE/GB	6/05/97	Cebu City	1					
44	WT Construction, Inc.	AAA	GE/GB	6/05/97	Cebu City	1					
45	5M Group Construction, Inc.	D	GE/GB	8/27/97	Romblon	1		1			
46	Pyramid Construction Eng. & Corp.	AAA	GE/GB	9/03/97	Quezon City	1	3		12		
47	Abesco Construction & Dev't. Corp.	AAA	GE/GB	9/08/97	Quezon City	1			3		
48	4B Construction Corp.			9/10/97	Quezon City	1			5		
49	VP Manceo Const. & Co., Inc.	A	GE/GB	9/10/97	Cebu City	1					
50	La Prueba Construction	D	GB/HW	9/10/97	Cebu City	1		3			
51	WTG Construction	AAA	GE/GB/EW	9/10/97	Cebu City	1		2			
52	Edgar C. Adlawan Construction	A	Roads	9/10/97	Cebu City	1					
53	"L" Paris Construction			9/27/97	Lucena City	1					
54	TAD Construction			9/27/97	Lucena City	1					
55	CAC Construction			9/27/97	Lucena City	1					
56	RM Adalim Construction	D	GE/GB	9/27/97	Lucena City	1					
57	WRJ Construction	C	GE/GB	9/27/97	Lucena City	1					
58	Wheebon Construction and Supply	C	GE/GB/WP	9/27/97	Lucena City	1					
59	E.Dano Const. & Surveying Office			9/27/97	Lucena City	1					
60	JSP Construction	D	GE/GB	9/27/97	Lucena City	1					

No.	Company Name	Category	Classification	Date of Signing	City Located	PARTICIPATION				Prod'vty. Mission	Remarks
						CEO Seminar	Facitrs' Course	NCPDP Seminar	Training		
61	Triple Pillars System Technologies, Inc.			9/19/97	Quezon City	1					
62	Astrobuilt Construction & Dev't.	C	GE/GB	10/10/97	Davao City	1		1			
63	Kimark Const. & Allied Services	D	GE/GB	10/10/97	Davao City	1		1			
64	Samal Island Builders (Saisbu) & Co.	C	GE/GB	10/10/97	Davao City	1					
65	Countrywide Shelters, Inc.	B	GE/GB	10/10/97	Davao City	1					
66	E.B. Villarosa & Partners Co., Ltd.	AAA	GE/GB	10/10/97	Davao City	1		4			
67	LRGS Construction Dev't. & Supply	C	GE/GB	10/10/97	Davao City	1					
68	L.J. Eng'g. Services/Concrete Producers			10/10/97	Davao City	1					
69	Santos Land Development Corp.			10/10/97	Davao City	1		3			
70	First Oriental Const. & Dev. Co., Inc.	B	GE/GB	10/10/97	Davao City	1		4			
71	Jolom Konstruck and Supply			10/10/97	Davao City	1					
72	L.I.R. Construction & Supply			10/10/97	Davao City	1					
73	Jerab Company, Inc.			09/13/97	Marikina	1					
74	3M Construction	C	GE/GB	10/03/97	Legaspi	1					
75	Lo-Tone Construction			10/03/97	Legaspi	1					
76	Willical Construction	D	GE/GB	10/03/97	Legaspi	1					
77	Alcaden Construction Supply			10/03/97	Legaspi	1					
78	Krisohn Construction & Supply	D	GE/GB	10/03/97	Legaspi	1					
79	L.P. Manoz Construction			10/03/97	Legaspi	1					
80	Sunwest Const. & Dev't. Corp.	B	GE/GB	10/03/97	Legaspi	1					
81	CWL Construction	B	GE/GB	10/03/97	Legaspi	1					
82	R.N. Rivera Construction	D	GE/GB/WP	10/03/97	Legaspi	1					
83	Reccmar Construction	D	GE/GB	10/03/97	Legaspi	1					
84	Lwar Construction	B	GE/GB	10/03/97	Legaspi	1					
85	Dejone! Construction	C	GE/GB	10/03/97	Legaspi	1					

Legend: GE-General Engineering      SF&E-Steel Fabrication & Erection.      EW-Electrical Works      CF -Communication Facilities      AC-Air-conditioning  
 GB-General Building      AC&R-Air-conditioning & Refrigeration      MW-Mechanical Works      HW-Horizontal Works      Geo-Geothermal

D23

## 6. 短期専門家セミナー

Seminar by Short Term Experts(D5-11)

## SEMINAR BY SHORT TEMR EXPERTS

No.	Work area	Date	Short Term Expert	Venue	Attendance
1	Estimate	16-Nov-93	OSHIMA Kazuyoshi	ACCI	41
2	Mechanical Work	27-Jan-94	NOMURA Osamu	CMDF	27
3	Estimate	17-Nov-93	OSHIMA Kazuyoshi	TIA NANG (C.d.O.)	41
4	Steel Structure	24-Jan-94	YASUDA Hirokazu	PHILEXPORT(Cebu)	47
5	Steel Structure	26-Jan-94	YASUDA Hirokazu	Hotel Nikko Manila Garden	118
6	Mechanical Work	27-Jul-94	NOMURA Osamu	CMDF	22
7	Mechanical Work	2-Aug-94	NOMURA Osamu	CMDF	31
8	Mechanical Work	31-Jan-95	NOMURA Osamu	PHILEXPORT(Cebu)	10
9	Mechanical Work	1-Feb-95	NOMURA Osamu	Xavler University (C.d.O.)	10
10	Steel Structure	9-Mar-95	KUIBIRA Takeshi	National Steel Corp.	22
11	Mechanical Work	2-Aug-95	MINAMI Masakazu	ACCI	22
12	Excavation Work	7-Dec-95	SAKAI Minoru	ACCI	
13	Formwork	7-Dec-95	KUROSAWA Tsugio	ACCI	
14	Mechanical Work	6-Feb-96	OMACHI Toru	ACCI	
15	Piling Work	8-Feb-96	OSHIMA Akira	ACCI	
16	Steel Structure	29-Feb-96	YASUDA Hirokazu	ACCI	29
17	Steel Structure	29-Feb-96	GOTO Yoshihiro	ACCI	29
18	Electrical Work	27-Nov-96	YOSHIKA Masaaki	ACCI	15
19	Mechanical Work	27-Nov-96	MONNAI Hirofumi	ACCI	14
20	Piling Work	13-Mar-97	SOEJIMA Torajiro	ACCI	30
21	Piling Work	13-Mar-97	NAKAJIMA Hiroo	ACCI	30
22	RC Works	13-Mar-97	TEZUKA Takehito	ACCI	30
23	Steel Structure	3-Jul-97	GOTO Yoshihiro	Metro Club	13
24	Excavation Work	16-Jul-97	CHIDA Shouhei	Metro Club	23

7. ハンドブック配布状況  
Handbook Inventory (D6-1)

HANDBOOK INVENTORY  
(As of 15 October, 1997)

Handbook	Total Copies Printed	Total Copies Sold	Total Copies Given Away	CMDF	Remaining Copies		Total
					Cebu	Davao	
STRUCTURAL STEEL WORKS	500	151	293	12	44	0	56
EXCAVATION WORKS	500	148	296	8	48	0	56
PILING WORKS	500	155	225	59	51	10	120
ELECTRICAL CODE	500	46	147	294	13	0	307
REBAR WORKS	500	84	36	274	72	34	380
FORM WORKS	500	66	36	279	83	36	398
CONCRETE WORKS	500	76	32	283	78	31	392
ELECTRICAL WORKS	500	15	33	410	18	24	452
MECHANICAL WORKS	500	15	39	416	16	14	446

hbk-sum.doc/eval/musdis/nessie

D6-1

8. カウンターパート5ヶ年配置状況

Construction Manpower Development Foundation Employees Listing  
**CONSTRUCTION MANPOWER DEVELOPMENT FOUNDATION**  
**EMPLOYEES LISTING AS OF OCTOBER 13, 1997**



DIVISION	NAMES	1993				1994				1995				1996				1997				
		Q1	Q2	Q3	Q4	Q1	Q2	Q3	Q4	Q1	Q2	Q3	Q4	Q1	Q2	Q3	Q4	Q1	Q2	Q3	Q4	
OED	Rodolfo C. Mengaita																					
	Ma. Luz L. Katipunan																					
FAG	Philip A. Pichay																					
	Leilani V. Alvarez																					
	Grace L. Danao																					
	Enrique L. Navarro																					
	Leonora M. Poblete																					
	Gudelia N. Nuqui																					
	Gloria B. Leaño																					
	Arsenia F. Pelicano																					
	Arnell R. Fajarillo																					
	Ma. Benielinda M. Ranara																					
	Marivic C. Cudilla																					
	Emiliano A. Lamoste																					
	Rufino G. Ranario																					
	Gudelio G. Rañola																					
	Bobby M. Ballon																					
	Norberto C. Corros																					
	Rowena Y. Fernandez																					
	Arlene B. Madela																					
	Ehira N. Tabing																					
	Renalie P. Blanco																					
	Marilyn R. Estacio																					
	Gherica Landicho																					
	Rolando D. Sibal																					
	Elmar M. Panganiban																					
	Virgilio B. Danque Jr.																					
	Hermingildo P. Medina																					
	Lorna P. Ortega																					
	Reyalinda V. Dacoron																					
	Renato L. Pelicano																					
	Feorillo G. Ortiz																					
	Reynante R. Rodriguez																					
	Shirley A. Naungayan																					
Antonio C. Cantiga																						

### CONSTRUCTION MANPOWER DEVELOPMENT FOUNDATION EMPLOYEES LISTING AS OF OCTOBER 13, 1997

DIVISION	NAMES	1993				1994				1995				1996				1997				
		Q1	Q2	Q3	Q4	Q1	Q2	Q3	Q4	Q1	Q2	Q3	Q4	Q1	Q2	Q3	Q4	Q1	Q2	Q3	Q4	
TSG	Ernesto V. Arcenas																				December	
	Natalie C. Zamora												August									
	Angelito V. Luciano																					
	Domingo Basilio Navera																					
	Leo Niel Z. Daño																					
	Gabriel C. Pagulayan																					
	Arnel J. Boston																					
	Roberto V. Consuelo																					
	Roberto R. Hilario, Jr.																					
	Rodolfo C. Fuentes																					
	Arnel L. Rojo																					
	Alicia A. Permejo												February									
	Marcelo R. Abad																					November
	Alfredo V. Merced													October								
	Edgar G. Sanchez																					December
	Charlon E. Manzanero														December							
	Jeffrey C. Zamora																					November
	Rizaldy P. Mendoza													August								
	Florigo C. Varona																					September
	Antonio Benjamin Agnes																					
CMMSG	Arturo M. Abrera																					
	Ofelia E. Ravelas																					
	Danilo C. Chua																					
FMG	Florencio G. Sison																					
	Jose G. Bautista																					
	Faustino C. Genova																					
	Oscar V. Tolentino																					
	Oscar S. Catangui																					
STG	Marcial S. Sipat																					
	Abelardo E. Aureada																					
	Eduardo C. Emas																					
	Rogelio L. Bautista																					December
	Edwin C. Dator															June						
	Norman M. de Mesa																					

**CONSTRUCTION MANPOWER DEVELOPMENT FOUNDATION  
EMPLOYEES LISTING AS OF OCTOBER 13, 1997**

DIVISION	NAMES	1993				1994				1995				1996				1997							
		Q1	Q2	Q3	Q4	Q1	Q2	Q3	Q4	Q1	Q2	Q3	Q4	Q1	Q2	Q3	Q4	Q1	Q2	Q3	Q4				
SSCG	Ricardo C. Fernandez	[Still with CMDF]																							
	Jeanette H. Sanchez	[Still with CMDF]																							
	Reynaldo T. Casama	[Still with CMDF]																Resigned							
	Manuel P. Acosta	[Still with CMDF]												Resigned				[Still with CMDF]							
	Ma. Fatima Socorro Nueva	[Still with CMDF]																Resigned				[Still with CMDF]			
MGT. Staff	Ma. Erlinda L. Aquino	[Still with CMDF]																							
	Zoraida F. Rojo	[Still with CMDF]																							
	Leni C. Gamueda	[Still with CMDF]																Resigned							
RCTC-Vis.	Jacinto D. Villafior, Jr.	[Still with CMDF]												Resigned											
	Rosehyn J. Suelto	[Still with CMDF]																Resigned				[Still with CMDF]			
PRD	Zenaida C. Maturan	[Still with CMDF]																Resigned				[Still with CMDF]			
	Victor R. de Leon	[Still with CMDF]												Resigned				[Still with CMDF]							
	Raquel Joy A. Rivera	[Still with CMDF]																Resigned				[Still with CMDF]			
	Joji C. Valenciano	[Still with CMDF]												Resigned											
	Jeffrey F. Gumasing	[Still with CMDF]																Resigned				[Still with CMDF]			
	Igmidio Aquino, Jr.	[Still with CMDF]																Resigned				[Still with CMDF]			
OED	-	Office of the Executive Director																							
FAG	-	Finance and Admin. Group																							
CMSG	-	Construction Management Series Group																							
TSG	-	Technical Series Group																							
FMG	-	Facilities Management Group																							
STG	-	Skills Training Group																							
SSCG	-	Supervisory and Skills Certification Group																							
RCTC	-	Regional Construction Technical Center																							
PRD	-	Productivity Research Division																							

 Resigned  
 Still with CMDF

D7-4



9. 実績審査資格授与者 (40名) リスト  
List of Honorary Certification Through COMTCP(D10-1)

No.	Name	Present Position	Honorary Position	Remarks
1.	David M. Consunji	Chairman, DMCI	PCA Past President/PICE Adviser/Past President	
2.	Anton C. Kio	President, ACK CONSTRUCTION	PCA Past President	
3.	Alfredo V. Asuncion	retired	PCA Past President	
4.	Rogelio C. Lombos	President, TEKSIL	PCA Past President	
5.	Jose V. Angeles	President, JV ANGELES CONSTRUCTION	PCA Past President	
6.	Jesus R. Ferrer	President, DMCI	PCA Past President	
7.	Juanito N. Ferrer	Chairman, PARMAN, INC.	PCA Past President	
8.	Rogelio C. Lombos	President, TEKSIL	PCA Past President	
9.	Nelson Q. Irasga	City Engineer, CITY ENGINEER'S OFFICE	PICE Adviser/Past President	
10.	Antonio A. Mansueto	President, MCS ENGINEER	PICE Adviser/Past President/COFILCO Past President	
11.	Romulo M. Del Rosario	President, PILIPINAS DRAVO	PICE Adviser/Past President/ PICE Adviser/Past President	
12.	Aber P. Canlas	President, AP CANLAS AND ASSOCIATES	PICE Adviser/Past President	
13.	Antonio S. Dimalanta	Chairman, ASIA PACIFIC MANAGEMENT INC.	CECOPHL Past President	
14.	Jose U. Jovellanos	Chairman, ENGINEERING AND DEVELOPMENT CORP. OF THE PHILIPPINES	CECOPHL Past President	
15.	Antonio I. Goco	President, PROCONSULT	CECOPHL Past President	
16.	Ruperto C. Gaite, FUAP	RC GAITE AND ASSOCIATES INC.	United Architects of the Philippines- Past President	
17.	Cesar V. Canchela, FUAP	CESAR V. CANCELILA AND ASSOCIATES	United Architects of the Philippines- Past President /COFILCO Past President	
18.	Fiorello R. Esmar	F.R. ESTUAR & ASSOCIATES		
19.	Ruperto R. Kapunan III	President, PROJECT MANAGEMENT INSTITUTE /RK DEVELOPMENT & CONST. CO. INC.	Project Management Institute- Philippine Chapter	

LIST OF HONORARY CERTIFICATION THROUGH COMTCP (page 2)

No.	Name	Present Position	Honorary Position	Remarks
20.	Jaime H. Pajara	President PCA / J.H. PAJARA CONSTRUCTION		
21.	Loreto C. Aquino	Member, PCA	PCA Past President	
22.	Claudio B. Altura	Vice President, TCGI	President, CPMAP	
23.	Felicitas A. Pio Roda	ASIAN TECHNICON MANAGERS & CONSULTANTS	Board Member, CPMAP	
24.	Oscar S. Salvacion	DESIGN COORDINATES	CPMAP Past President	
25.	Jesus G. Santamaria	J. SANTAMARIA & ASSOCIATES	CPMAP Past President	
26.	Dennis A. Abcede	President, D.A. ABCEDE & ASSOCIATES	Member, CPMAP	
27.	Gregorio R. Vigilari	Secretary, DPWH		
28.	Conrado R. Lopez		PCA Past President	
29.	Juan J. Carlos	President, UNITED CONSTRUCTION	PCA Past President	
30.	Ricardo R. de Leon	Member, PCA	PCA Past President	
31.	Jesus S. Hipolito	President, GENERAL BUILDERS	PICE Adviser/Past President	
32.	Quintin K. Calderon	Chairman, QK CALDERON CONSTRUCTION	PCA Past President	
33.	Lamberto Ocampo	Director, DCCD ENGINEERING	Board member, CPMAP	
34.	Antonio T. Fernando	Senior V.P. DCCD	Member, CPMAP	
35.	Jose Ailing	President, JOSE AILING CONSTRUCTION	Board member, CPMAP	
36.	Alfredo L. Juinro, Sr.	President, UP Eng'g Research and Development		
37.	Ernesto G. Tabujara	Vice President, DCCD	CECOPHIL Past President	
38.	William Golangco	President, WGCC		
39.	Antolin M. Oreta	President, A.M. ORETA		

ce: list of honorary/worddoc/Margenik

## 5 フィリピン技術者資格 (Continuing Professional Education : C P E)

### 1. 定義

CPE(Continuing Professional Education)は、フィリピンにおけるあらゆる分野(Credit Units Earned-CUE-Requirements 参照)の技術者が常時更新して持っていなければならない資格ポイント(常時 60 ポイントー有効期限 3 年)で、知識、経験、専門的能力等を反復して磨く事によって、専門技術の強化と向上及び専門分野の競争力を持つ事を目的として定められたフィリピン独特のあらゆる技術者にとって必要不可欠な資格ポイントである。

### 2. CPE プログラムの目的

CPE プログラムの具体的目的は次の通りである。

- (1) 科学技術の振興と近代的技術の持続のために、最新技術を備えた国家資格技術者の継続的教育の実施・確立
- (2) 普遍性のある専門的サービスに対する専門家の能力の維持と高揚
- (3) 専門家の最高技術基準と実務能力の獲得・持続
- (4) グローバルな競争力のある技術者の養成
- (5) 公共福祉の促進

### 3. CPE ポイントの取得基準

CPE ポイントの取得基準は「Matrix for CPE Programs, Activities or Sources」に示す通りである。

### 4. CPE ポイントの対象技術者

CPE ポイントの対象技術者は「Credit Units Earned(CUE) Requirements」に示す通りである。

## MATRIX FOR CPE PROGRAMS, ACTIVITIES OR SOURCES

PROGRAMS	CREDIT UNITS	SUPPORTING DOCUMENTS
<b>1 SEMINARS</b>		
as participant LOCAL INTERNATIONAL	1 CU PER HOUR 2 CU PER HOUR	CERTIFICATE OF ATTENDANCE with number of hours, Seminar program & certified list of participants
as resource speaker LOCAL INTERNATIONAL	3 CU PER HOUR 6 CU PER HOUR	PHOTOCOPY OF PLAQUE/CERTIFICATION & COPY OF PAPER, PROGRAM INVITATION
as panelist/reactor LOCAL INTERNATIONAL	2 CU PER SESSION 4 CU PER SESSION	CERTIFICATION FROM SPONSORING ORGANIZATION & COPY OF PROGRAM
as facilitator/moderator LOCAL INTERNATIONAL	1.5 CU PER SESSION 3.0 CU PER SESSION	CERTIFICATION FROM SPONSORING ORGANIZATION & COPY OF PROGRAM
<b>2 CONVENTION</b>		
as participant LOCAL INTERNATIONAL	4 CU PER DAY 6 CU PER DAY	CERTIFICATE OF ATTENDANCE, CONVENTION PROGRAM AND CERTIFIED LIST OF DELEGATES
as resource speaker LOCAL INTERNATIONAL	8 CU 12 CU	PHOTOCOPY OF PLAQUE/ CERTIFICATION & COPY OF PAPER, PROGRAM OR INVITATION
<b>3. ACADEMIC PREPARATION</b>		
3.1 MASTERAL DEGREE	5 CU PER SUBJECT 30 CU FOR THE DEGREE	University Certification Diploma & Transcript of Records
3.2 DOCTORAL DEGREE	8 CU PER SUBJECT 45 CU FOR THE DEGREE	University Certification Diploma & Transcript of Records
3.3 RESIDENCY	10 CU PER YEAR 30 CU UPON COMPLETION	Hospital Certification Certificate of Completion
3.4 FELLOWSHIP	15 CU PER YEAR 45 CU UPON COMPLETION	Certification from the Granting Institution Certificate of Fellowship
4 DISTANCE LEARNING	20 CU PER MODULE	Copy of Duly-Accomplished Module
5 AUTHORSHIP	10 CU	Duly Certified/Published Technical Report/Paper
5.1 RESEARCH/INNOVATIVE PROGRAMS/PROJECTS		
5.2 Books	SINGLE AUTHOR - 30 CU 2 AUTHORS - 20 CU 3 OR MORE - 10 CU	PUBLISHED BOOK WITH PROOF OF COPYRIGHT
5.3 ARTICLES	SINGLE AUTHORSHIP - 5 CU 2 AUTHORS - 3 CU 3 OR MORE - 2 CU	PROOF OF PUBLICATION OF ARTICLE
6 INVENTIONS	10-30 CU PER INVENTION	CERTIFIED COPY OF PATENT CERTIFICATE
7 ON THE JOB TRAINING LOCAL INTERNATIONAL	5 CU PER TRAINING 10 CU PER TRAINING	CERTIFICATE OF TRAINING & TRAINING DESCRIPTION
8 STUDY/OBSERVATION TOUR INTERNATIONAL	6 CU PER TOUR	Certification from Sponsoring Institution
9 PROFESSORIAL CHAIRHOLDER	10 CU PER CHAIR	CERTIFICATION OF GRANT OR APPOINTMENT PAPER
10 SUCH OTHER ACTIVITIES PRE-APPROVED BY THE COUNCIL WHICH ARE IN COMPLIANCE WITH THE OBJECTIVES AS EMBODIED IN E.O. 266.		

CREDIT UNITS EARNED (CUE) REQUIREMENTS							
for Renewal of Professional License							
	1*	2**	1996	1997	1998	1999	
1	Certified Public Accountant	120	60	60	60	60	
2	Aeronautical Engineer	none	none	none	20	40	60
3	Professional Agricultural Engineer	130	60	60	60	60	60
4	Architect	36	36	36	36	40	60
5	Interior Designer	none	none	none	20	40	60
6	Landscape Architect	none	none	none	20	40	60
7	Chemical Engineer	36	36	36	36	40	60
8	Chemist	30	30	30	30	40	60
9	Chemical Technician	none	none	none	10	20	30
10	Civil Engineer	60	60	60	60	60	60
11	Criminologist	none	none	none	20	40	60
12	Customs Broker	none	none	none	20	40	60
13	Dentist	300	60	60	60	60	60
14	Dental Hygienist	none	none	none	10	20	30
15	Professional Electrical Engineer	60	60	60	60	60	60
16	Associate Electrical Engineer***	60	60	60	60	60	60
17	Assistant Electrical Engineer***	60	60	60	60	60	60
18	Master Electrician****	none	none	none	10	20	30
19	Electronics & Communication Engineer	none	none	none	20	40	60
20	Environmental Planner	none	none	none	20	40	60
21	Forester	none	none	none	20	40	60
22	Geodetic Engineer	150	60	60	60	60	60
23	Jr. Geodetic Engineer	150	60	60	60	60	60
24	Geologist	9	9	9	20	40	60
25	Master Mariner	none	none	none	20	40	60
26	Chief Mate	none	none	none	20	40	60
27	Second Mate	none	none	none	20	40	60
28	Third Mate	none	none	none	20	40	60
29	Major Patron	none	none	none	10	20	30
30	Harbor, Bay, River & Lake Patron	none	none	none	10	20	30
31	Chief Marine Engineer	none	none	none	10	20	30
32	Second Marine Engineer	none	none	none	10	20	30
33	Third Marine Engineer	none	none	none	10	20	30
34	Fourth Marine Engineer	none	none	none	10	20	30
35	Motor Engineer	none	none	none	10	20	30
<b>Legend</b>							
1* CUE prior to Nov. 13, 1995							
2** CUE from Nov. 13 to Dec. 31, 1995							
3*** Merged into one and now known as Registered Electrical Engineer under R.A. No. 7920							
4**** Now known as Registered Electrician, supra							

6 セブ・ビサヤ地域建設技術センター  
(Regional Construction Technical Center-Visayas : R C T C)

1. セブ技術センターの目的と機能 (RCTC Objectives and Functions)

機能

このセンターはフィリピン政府及び建設業界の人材育成政策・目的プログラムに沿って人材育成基金(CMDF)のビサヤ地区技術センターとして運用されている。  
実質的な機能は2級クラスの実務エンジニアの育成にある。

開発目的

- 1)ビサヤ地区における建設生産性向上と施工実施基準の促進
- 2)建設生産性改良の為の建設技術者、監督者、組織的な研修者に対する技術移転
- 3)建設産業界に対するトータル品質管理(TQM)確立
- 4)試験制度実施の支援と組織の確立

2. RCTCトレーニング・コースの内容及び実績

RCTCにおけるトレーニング・コースの内容は Training Courses Offered に、1992-1997年における実績は Implemented Training Programs/Courses に示す通りである。

3. RCTCの組織図

RCTCの組織図は Regional Construction Technical Center-Visayas (RCTC)に示す通りである。

**REGIONAL CONSTRUCTION TECHNICAL CENTER - Visayas  
TRAINING COURSES OFFERED**

TRAINING COURSES	DURATION	TRAINING FEE
o PROJECT MANAGEMENT SERIES (PMS)		
- Project Planning and Scheduling	3 days	2,200.00
- Project Monitoring and Cost Control	3 days	2,200.00
- Contract Administration	3 days	2,200.00
o SUPERVISORY DEVELOPMENT COURSES (Intermediate)		
- Formworks Detailing and Cutting List Preparation	3 days	1,500.00
- Rebarworks Detailing and Cutting List Preparation	3 days	1,500.00
- Diesel Fuel Systems Calibration & Testing	5 days	1,800.00
- Hydraulic System	5 days	1,800.00
o BASIC SKILLS/UPGRADING COURSES		
- Heavy Equipment Mechanics Training ( Engine Overhauling )	15 days	2,500.00
- Heavy Equipment Mechanics Training	10 days	2,200.00
- Heavy Equipment Operators Training		
• Bulldozer (D6H)	10 days	5,500.00
• Motor Grader (120 G)	10 days	5,500.00
• Wheel Loader (950F)	10 days	5,500.00
• Excavator (311)	10 days	3,500.00
- Rebarworks Skills Training	15 days	2,500.00
- Formworks (Carpentry) Skills Training	20 days	2,800.00
- Masonry and Finishing Works Skills Trng.	20 days	2,800.00

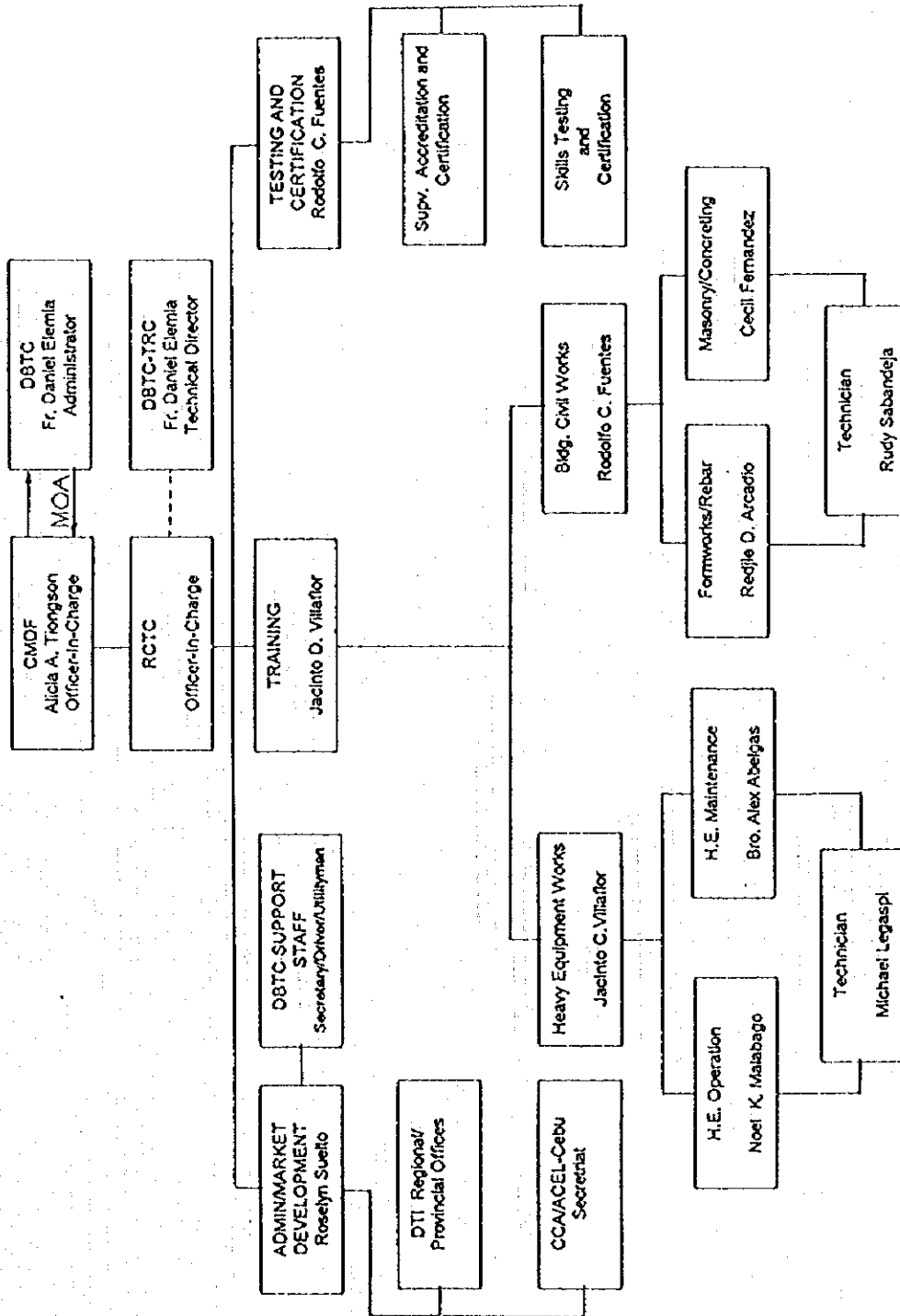
CONSTRUCTION MANPOWER DEVELOPMENT FOUNDATION  
 REGIONAL CONSTRUCTION TECHNICAL CENTER - Visayas  
 Don Bosco Technology Center, Punta Princesa, Cebu City

IMPLEMENTED TRAINING PROGRAMS/COURSES

PROGRAMS/ COURSES	NUMBER OF PARTICIPANTS						TOTAL
	1992	1993	1994	1995	1996	1997	
CMDP							
- PMS/CMS	-	15	60	36	101	98	310
- SUPERVISORY	-	-	8	22	-	48	78
LRDP							
- TRAINORS TRNG.	-	-	-	22	30	-	52
- SKILLS TRNG.							
HEW	-	-	5	51	16	12	84
BCW	29	10	22	-	50	13	124
ICW	-	-	-	-	41	-	41
PEG	-	-	-	-	-	31	31
NCPDP	-	-	-	-	-	229	229
<b>TOTAL</b>	<b>29</b>	<b>25</b>	<b>95</b>	<b>131</b>	<b>238</b>	<b>431</b>	<b>949</b>



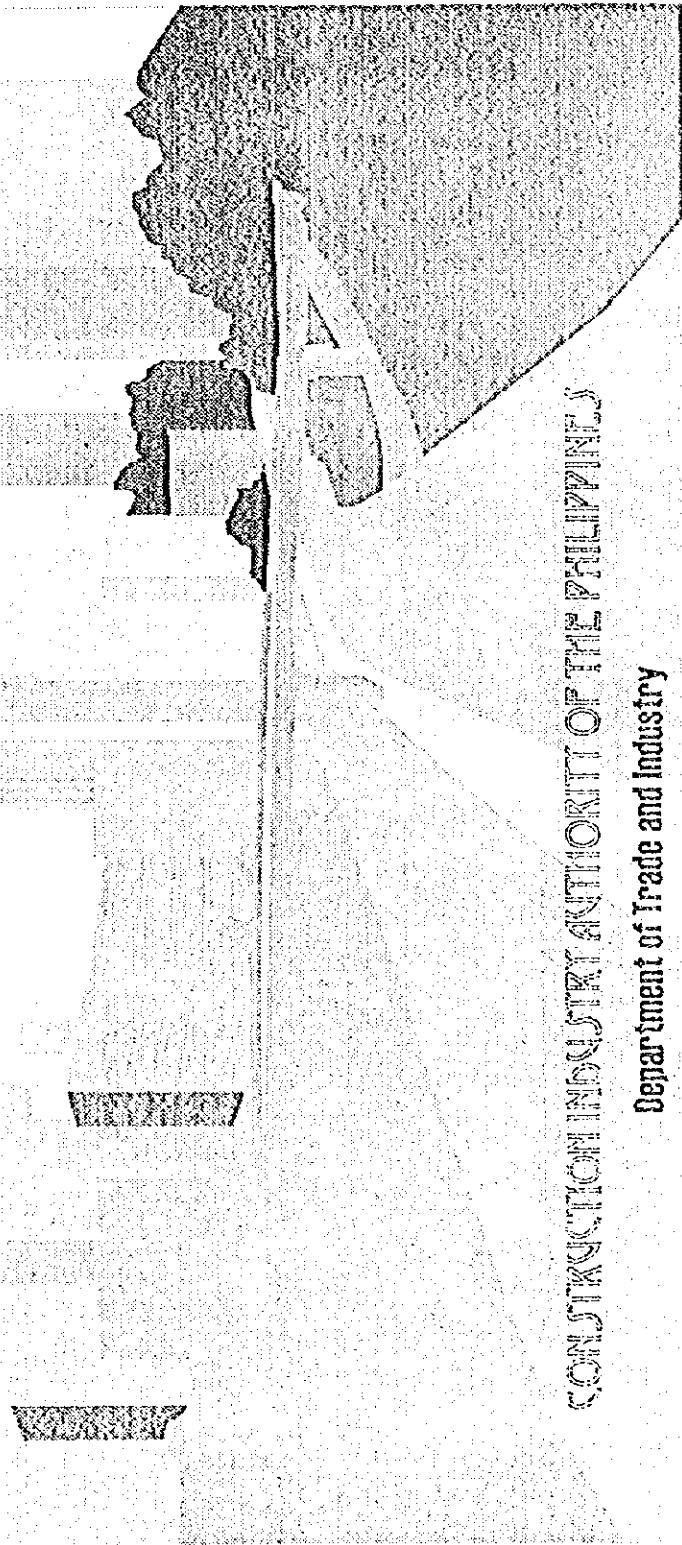
REGIONAL CONSTRUCTION TECHNICAL CENTER-VISAYAS  
(RCTC)



7 フィリピン建設産業動向 — 建設産業局 (C I A P) 資料  
(Construction Industry Authority of the Philippines)

1. GNP 成長率  
Gross National Product % Growth
2. アセアン各国における建設産業投資率  
Asian Executives Poll on Best Investment Destinations
3. アセアン主要国 GDP/建設産業投資成長率  
GDP and Construction Investments of Selected Countries
4. 1990-1998 年の建設需要  
1990-1998 Construction Demand for Construction
5. インフラ開発の投資(1994-1998)  
Investment in Infra Development 1990-1998
6. ランク別建設会社数  
Number of Contractors by Category
7. 資本金に基づく登録建設会社の分布  
Distribution of Licensed Contractors by Capitalization
8. 分野別建設会社数  
Number of Construction Related Professionals

# Philippine Construction Industry

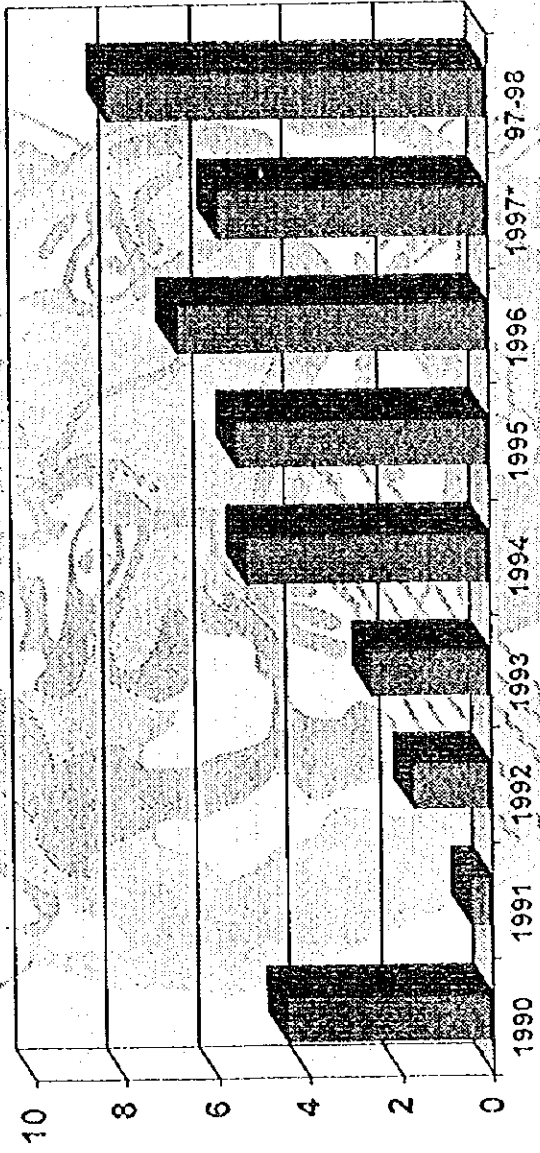


CONSTRUCTION INDUSTRY AUTHORITY OF THE PHILIPPINES

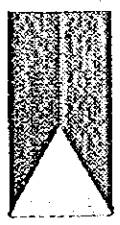
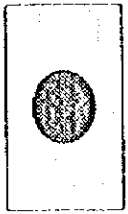
Department of Trade and Industry

Philippine Construction Industry

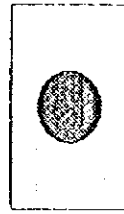
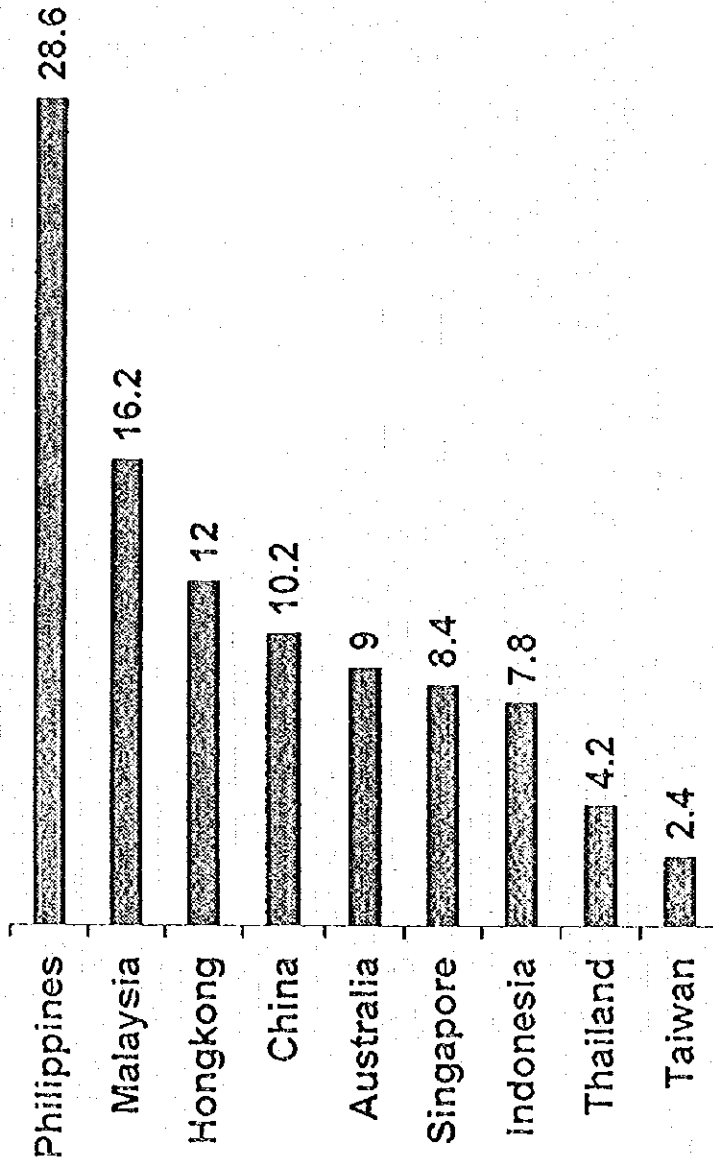
# GROSS NATIONAL PRODUCT % Growth



Source: National Economic and Development Authority  
\* As of 1<sup>st</sup> Sem 1997



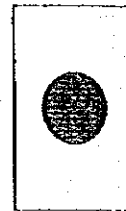
# ASIAN EXECUTIVES POLL ON BEST INVESTMENT DESTINATIONS



Conducted by Far-eastern Economic Review and Asia Business News

# GDP AND CONSTRUCTION INVESTMENTS OF SELECTED COUNTRIES

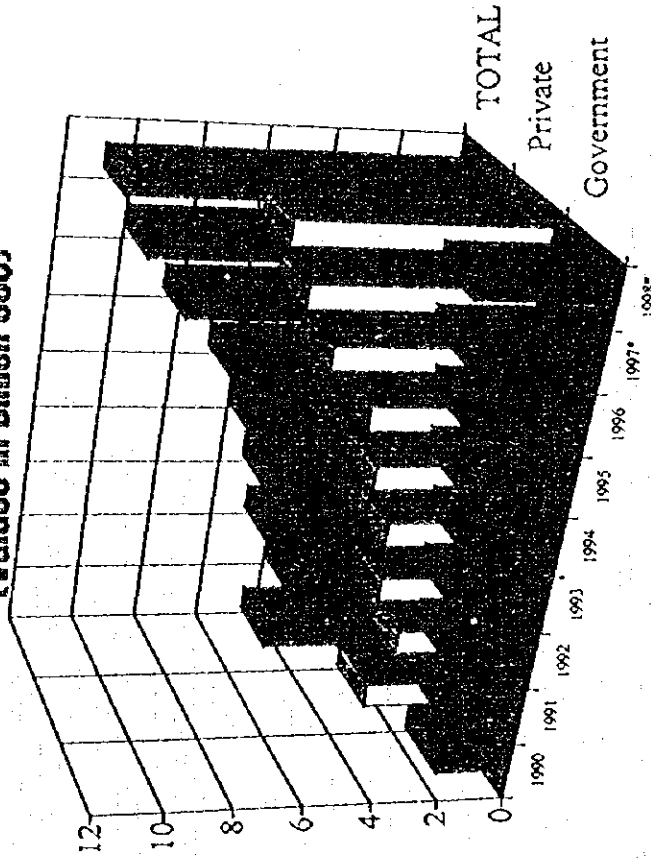
	GDP						Construction investments					
	1992	1993	1994	1995	1996		1992	1993	1994	1995	1996	
Hongkong	6.3	6.4	5.4	1.5	5-5.5		6.0	11.0	14.0	N.A.	N.A.	
Japan	0.3	-0.2	0.6	1.6	1.5		1.0	-0.8	-5.3	3.1	2.1	
Philippines	0.6	2.1	4.3	6.0	7.1			10.6	10.2	12.1	14.2	
Korea	5.1	5.8	8.4	8.7	7.9		7.9	8.9	4.6	8.8	6.5	
Singapore	6.0	10.1	10.1	8-8.5	7.8		N.A.	7.4	15.5	N.A.	N.A.	



1990 - 1998

# CONSTRUCTION DEMAND FOR CONSTRUCTION

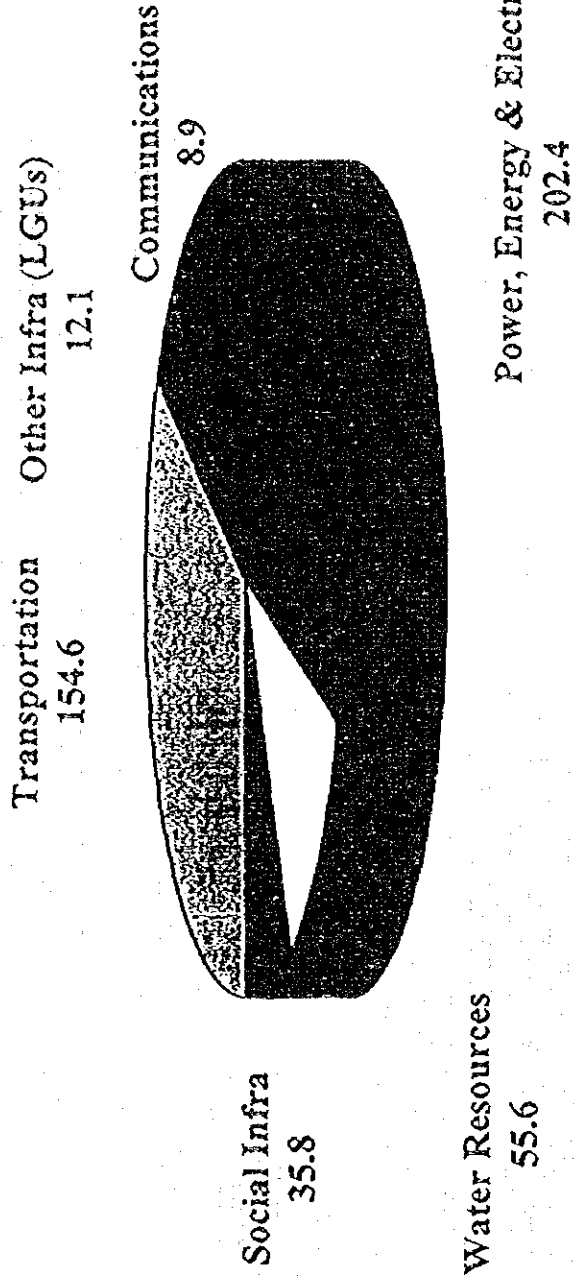
(Values in Billion US\$)



\* Forecast

	1990	1991	1992	1993	1994	1995	1996	1997*	1998*
Real Growth Rate		-8.1	0	10.6	3.7	7.9	15.9	15.5	15.6
Gross Value	4.73	4.16	5.14	5.49	6.25	7.14	8.79	10.1	10.99
Private	2.8	2.12	2.97	3.08	3.77	4.26	5.67	6.65	7.39
Government	1.91	2.04	2.2	2.4	2.48	2.89	3.12	3.45	3.6

# INVESTMENT IN INFRA DEVELOPMENT 1984-1998







## Number Of Contractors By Category

CFY	AAA	AA	A	B	C	D	Trade	Total
90-91	30	31	388	860	1,390	2,313	464	5,485
91-92	42	38	473	1,012	1,524	2,400	414	5,903
92-93	72	60	563	1,215	1,662	2,435	407	6,414
93-94	142	84	651	1,317	1,841	2,603	359	6,997
94-95	158	97	689	1,375	1,849	2,731	612	7,511
95-96	199	89	682	1,502	2,006	3,094	653	8,225

Source: Philippine Contractors Accreditation Board



# DISTRIBUTION OF LICENSED CONTRACTORS By Capitalization

	JAPAN FY1994	PHILIPPINES CFY1994-1995
<b>TOTAL</b>	<b>551,661</b>	<b>TOTAL</b>
Individuals	30.1%	Trade
less than ¥2M	5.4%	Not less than P100,000
¥2M to less than ¥5M	20.8%	Not less than P300,000
¥5M to less than ¥10M	15.2%	Not less than P500,000
¥10M to less than ¥50M	26.0%	Not less than P1M
¥50M to less than ¥100M	1.4%	Not less than P5M
¥100M to less than ¥1,000	0.8%	Not less than P10M
¥1,000M or more	0.3%	
		8.225
		7.9%
		37.6%
		24.4%
		18.3%
		8.3%
		1.1%
		2.4%

## Number of Construction Related Professionals

	1990	1991	1992	1993	1994	1995	Total
Civil Engineer	2,200	2,495	3,649	2,860	2,826	3,067	17,097
Electrical Engineer							
Professional	46	171	164	104	64	134	683
Associate	52	116	122	127	67	95	579
Assistant	1,019	2,640	1,832	1,615	1,405	2,008	10,519
Master	406	852	744	627	649	948	4,226
Mechanical Engineer	1,131	2,553	1,247	558	612	2,611	8,712
Professional	68	49	17	13	40	41	228
Geodetic Engineer	33	80	94	126	218	169	720
Junior	204	228	254	470	626	501	2,283
Sanitary Engineer	164	123	69	73	67	64	560
Master Plumber	49	45	24	25	40	34	217
Architect	218	382	532	282	442	557	2,413
Interior Designer	39	42	44	49	102	24	300
Landscape Architect	4	1	5	8	9	9	36
<b>TOTAL</b>	<b>5,633</b>	<b>9,777</b>	<b>8,797</b>	<b>6,937</b>	<b>7,167</b>	<b>10,262</b>	<b>48,573</b>

Source: Professional Regulation Commission (PRC)

## CMDF's construction managers' certification program launched

The Construction Manpower Development Foundation (CMDF), one of the attached agencies of the Department of Trade and Industry (DTI), is proud to announce the opening of the Construction Manager's Certification Program (COMCP).

It was initially launched last Oct. 24 at the Shangri-La Hotel, Manila by way of honorary certification. This honorary certification is granted to those who have given invaluable contributions to the advancement of the construction project management profession.

Among the awardees of the honorary certification are the founders and owners of large construction companies, past and present secretaries of the Department of Public Works and Highways, past and present president of Philippine Constructors Association and other construction management related associations.

The awardees are the following: David M. Consunji, Jesus S.

Hipolito, Gregorio R. Vigilat, Aber P. Canlas, Anton D. Nho, Alfredo V. Asuncion, Rogelio C. Lombos, Jose V. Angeles, Jesus R. Ferrer, Juanito N. Ferrer, Rogelio M. Murga, Nelson Q. Inasa, Antonio A. Manueto, Romulo M. Del Rosario, Felipe F. Cruz, Antonio S. Dimallana, Jose U. Jovelanos, Antonio I. Coco, Cesar V. Canchela, Ruperto C. Gaite, Fiorella R. Estuar, Ruperto R. Kapunan III, Jaime H. Pajara, Lorenzo C. Aquino, Claudio B. Altura, Felicitas A. Pio Roda, Oscar S. Salvacin, Jesus G. Santamaria, Dennis A. Abcede, Honrado R. Lopez, Juan I. Carlos, Ricardo R. De Leon, Quintin K. Calderon, Lamberto Un Ocampo, Antonio T. Fernando, Jose Alling, Alfredo L. Junio, Ernesto G. Tabulara, Willem Colangco, Antolin M. Orea.

The COMCP shall be an avenue for the construction industry to give due recognition to project managers who

have given hard work and dedication to project development and execution. Certified engineers in specifications contracts of project owners. Through COMCP, project owners will be assured of effective and efficient project execution. The system of certification is supported by a technical cooperation grant project from the Japan International Cooperation Agency (JICA) entitled National Construction Productivity Development Project (NCPDP). Through NCPDP, CMDF promoted and facilitates the practice of continuous productivity improvement in the

various firms of the construction industry. The COMCP is open to anyone who meets the minimum requirements presently registered as civil engineer and who maybe current or prospective project manager (PM) or project superintendent of general building construction.



David M. Consunji, founder and owner of one of the largest construction companies, D.M. Consunji, Inc. receives the plaque of certification from Sec. Jose O. Juliano of the Department of Trade and Industry, Kazuo Sudo, JICA Deputy Representative and Alicia A. Tiongson, Officer-in-Charge, Construction Manpower Development Foundation.

CCMCP Awarding Ceremony (Philippine Star, Nov. 10)

Thurs., Oct. 30, 1997

# Construction managers certification program set

The Construction Management Program (CMP) will be launched on Oct. 24 at the Shimizu Hotel, Manila. The program is a joint venture of the Philippine Construction Managers Association (PCMA) and the Department of Public Works and Highways (DPWH). The program is a response to the demand for professional construction managers in the country.

The CMP will be a three-year program. It will be a joint venture of the Philippine Construction Managers Association (PCMA) and the Department of Public Works and Highways (DPWH). The program is a response to the demand for professional construction managers in the country.

The CMP will be a three-year program. It will be a joint venture of the Philippine Construction Managers Association (PCMA) and the Department of Public Works and Highways (DPWH). The program is a response to the demand for professional construction managers in the country.

**for all your**  
**CONCRETE PUMP SERVICES**  
call 734-19-45 to 46  
"Erwin"  
**Gaw Builders Philippines**

The CMP will be a three-year program. It will be a joint venture of the Philippine Construction Managers Association (PCMA) and the Department of Public Works and Highways (DPWH). The program is a response to the demand for professional construction managers in the country.

The CMP will be a three-year program. It will be a joint venture of the Philippine Construction Managers Association (PCMA) and the Department of Public Works and Highways (DPWH). The program is a response to the demand for professional construction managers in the country.

**HYOSUNG CORPORATION**  
**MANILA OFFICE**  
<http://www.hyosung.com/ibm.html>

To all Importers of Plants, Machinery and Vehicles: If you intend to import directly from Korea, we would like to inform you that we are in the position to supply you with your requirements.

**SAFETY ALIST**

Multi-Purpose Safety Ladders  
Available in 5 different sizes from 1.70m to 3.00m (5' 7" to 9' 10")

2-Mile Ladder  
4.5m (14' 9")  
3.0m (9' 10")

ATTO  
Who serves the construction industry with a wide range of safety equipment.

**Megaworld launches El Jardin del Presidente**

Megaworld Properties and Holdings, Inc. recently held the formal launching ceremony for the development titled El Jardin del Presidente.

The project site is in the ancestral manor of the late President Corason D. Garcia (for. 1986-1992) near the Alibon compound in Quezon City.

El Jardin del Presidente is a redevelopment into an exclusive, elegantly knitted residential enclave comprising three-story mid-rise building featuring amenities, including a swimming pool, children's play ground, centralized aircon system, multiple parking slots and opportunity to enjoy the view level surrounded by luxuriant landscaped gardens.

Megaworld plans to collaborate closely with the late president's heirs in the design and planning of the project to ensure that it lives up to the legacy of the late president Garcia, whose "Filipino First" policy was a milestone during the late '70s.

"Nostalgia and history interplay in the art, architecture and

various forms of the construction industry.

The COMCI is open to anyone who meets the minimum requirements as prescribed in the Civil Engineer and Architectural Law, Republic Act No. 9462, as amended.

The certification program is an integral component of the Development Program of COMCI.

The project manager or person in charge of the overall management of a construction project from preconstruction stage to post construction stage in terms of scope, quality, safety, cost, budget, and environmental protection, could be at the project site in attendance to monitor and ensure the continuous improvement in the project.

Sanctuary, Dennis A. Alcedo, Humberto M. Lopez, Juan J. Caron, Ricardo L. De Leon, Quintin K. Galdeano, Antonio T. Cruz, Jose Alfrico L. Jaramilla, William M. Galante, Antonio M. Orosco.

The COMCI shall be an avenue for the construction industry to give due recognition to project managers who have given hard work and dedication to project development and execution. Certified engineers will be given preference in specifications and project ownership.

Through COMCI, project owners will be assured of effective and

design of El Jardin del Presidente," says Megaworld senior vice president Daniel T. Mariano. "The design elements such as a fountain, miniature Spanish-inspired balconies, pocket garden courtyard, and elegance of style will set the development apart as a landmark in Quezon City, a fitting tribute to the Garcia legacy."

**M2-112** -- For who ever ready himself will be humbled, and whoever humbles himself will be exalted.

# Foundation launches construction managers' certification program

THE CONSTRUCTION Manpower Development Foundation (CMDF), one of the attached agencies of the Department of Trade and Industry, recently introduced the Construction Managers' Certification Program (COMCP) at the Shangri-La Hotel Manila in Makati City.

It was initially launched by way of honorary certification. This honorary certification is granted to those who have given invaluable contributions to the advancement of the construction project management profession.

Among the awardees of the honorary certification are the founders and owners of large construction companies, past and present secretaries of the Department of Public Works and Highways, past and present presidents of Philippine Constructors Association and other construction management-related associations.

The awardees are David M. Consunji, Jesus S. Hipolito, Gregorio R. Vigilari, Aber P. Carlas, Anton C. Kho, Alfredo Y. Asuncion, Rogelio C. Lombos, Jose Y. Angeles, Jesus R. Ferrer, Juanito N. Ferrer, Rogelio M. Murga, Nelson Q. Irasga, Antonio A. Mansueto, Romulo M. Del Rosario, Felipe F. Cruz, Antonio S. Dimalanta, Jose U. Jovellanos, Antonio I. Goco, Cesar V. Cancibela, Ruperto C. Gaite, Fiorello R. Estuar, Ruperto R. Kapunan III, Jaime H. Pajara, Loreto C. Aquino, Claudio B. Alura, Felicitas A. Pio Reda, Oscar S. Salvacion, Jesus G. Santanaria, Dennis A. Abcede, Honrado R. Lopez, Juan J. Carjos, Ricardo R. De Leon, Quinon K. Calderon, Lamberto Un Ocampo, Antonio T. Fernando, Jose Alling, Alfredo L. Junio, Ernesto G. Tabujara, William Golanco and Antonin M. Oreta.

The COMCP will be an avenue for the construction industry to give due recognition to project managers who have given hard work and dedication to project development and execution. Certified engineers will be given preference in specification contracts of project owners. Through COMCP, project owners will be assured of effective and efficient project execution. The system of certification of COMCP will ensure that only qualified project managers and project superintendents will handle large and complex projects.

The certification program is an integral component of the Productivity Development Program of CMDF. CMDF is fully supported by a technical cooperation grant project from the Japan International Cooperation Agency (Jica) titled National Construction Productivity Development Project (NCPDP). Through NCPDP, CMDF promotes and facilitates the practice of continuous productivity improvement in the various firms of the construction industry.

The COMCP is open to anyone who meets the minimum requirements: currently registered as civil engineer and who may be current or prospective project manager (PM) or project superintendent of general building construction.

deal of general building construction.

The project manager takes charge of the overall management of a construction project from preconstruction stage to postconstruction stage in terms of scope, quality, safety, work schedule, project budget and environmental protection. He could be at the project site to attend to matters requiring his direction and decision and, at other times, he leaves the project site to represent the company in liaison meeting with the other parties of the project.

The project superintendent, on the other hand, spends most of his time in the project. He closely supervises and monitors the execution to ensure that the plans and schedules are met. He evaluates any changes in the original scope of the work and submits his evaluation to the project manager.

The CMDF secretariat are now accepting applicants for certification for current project managers and project superintendents of general building works through the automatic scheme.

Philippine Daily  
Iuqairer Nov. 4, '97

JICA

