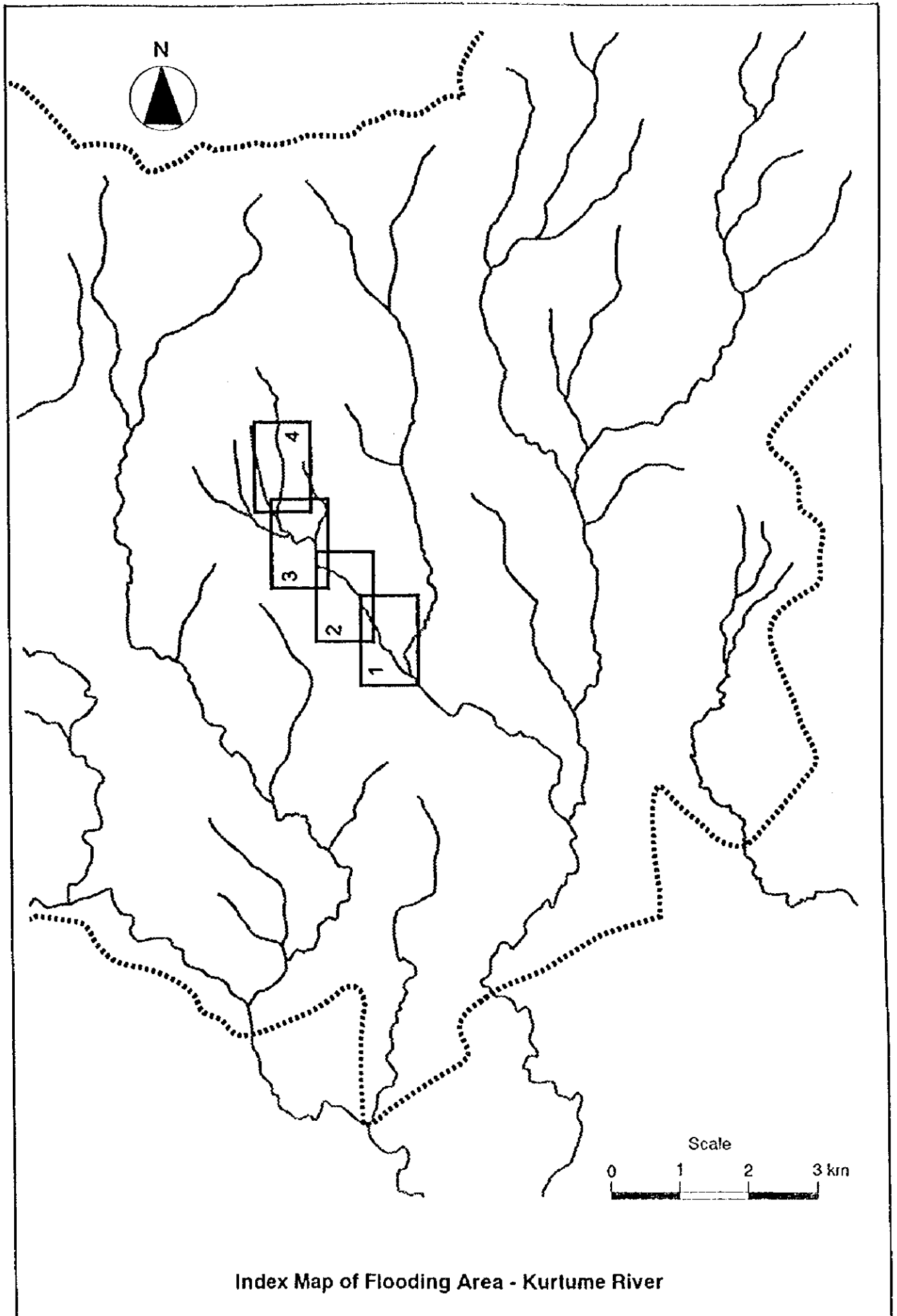


ANNEX

MAP OF FLOODING AREA FOR
PROBABLE 30-YEAR FLOOD



Index Map of Flooding Area - Kurtume River

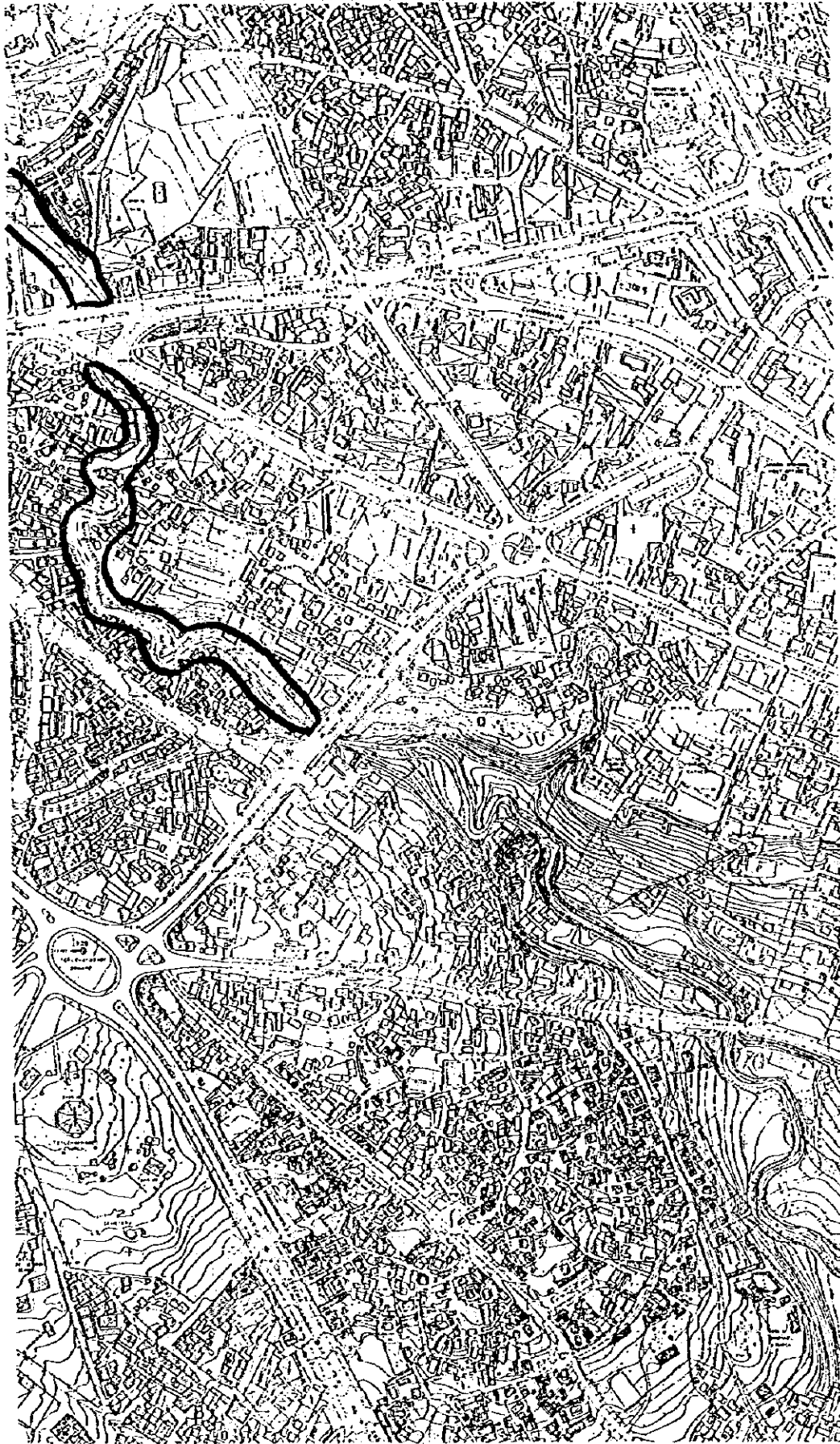
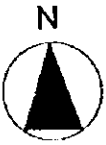


THE STUDY ON ADOPTING ABASA FLOOD CONTROL PROJECT
IN THE FEDERAL DEMOCRATIC REPUBLIC OF ETHIOPIA

JAPAN INTERNATIONAL COOPERATION AGENCY
REGIONAL ADMINISTRATION

DRAWING NO.
KUR-PLAN-01

Map of Flooding Area - Kurtume River (1/4)



THE STUDY ON ADDIS ABABA FLOOD CONTROL PROJECT
IN THE FEDERAL DEMOCRATIC REPUBLIC OF ETHIOPIA

JAPAN INTERNATIONAL COOPERATION AGENCY
REGIONAL ADMINISTRATION

DRAWING NO.
KUR-PLAN-02

Map of Flooding Area - Kurtume River (2/4)



THE STUDY ON ADDIS ABABA FLOOD CONTROL PROJECT
IN THE FEDERAL DEMOCRATIC REPUBLIC OF ETHIOPIA
JAPAN INTERNATIONAL COOPERATION AGENCY
REGIONAL ADMINISTRATION

DRAWING NO.
KUR-PLAN-03

Map of Flooding Area - Kurtume River (3/4)

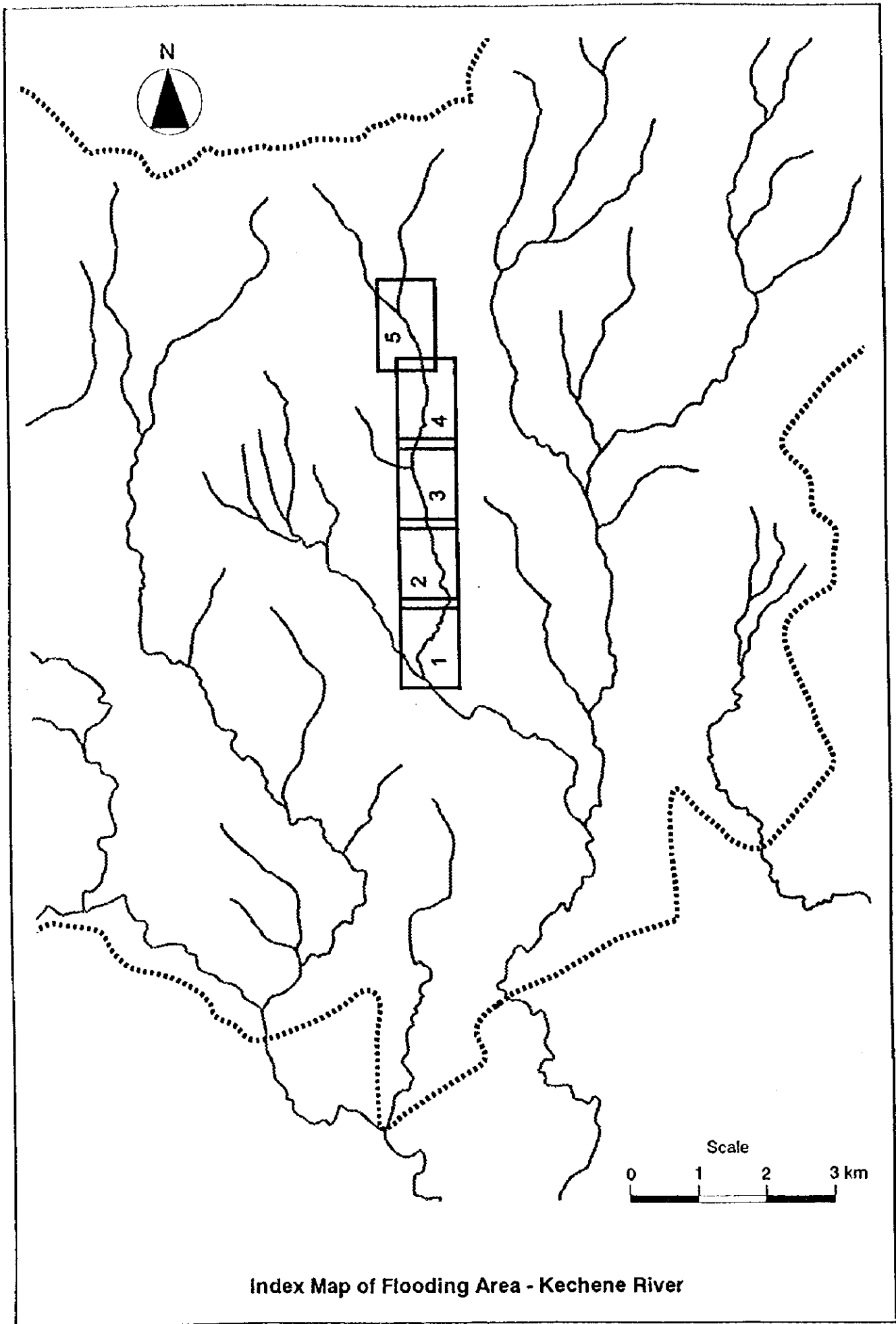


THE STUDY ON ADOPTING ASHARA FLOOD CONTROL PROJECT
IN THE FEDERAL DEMOCRATIC REPUBLIC OF ETHIOPIA
JAPAN INTERNATIONAL COOPERATION AGENCY
REGIONAL ADMINISTRATION

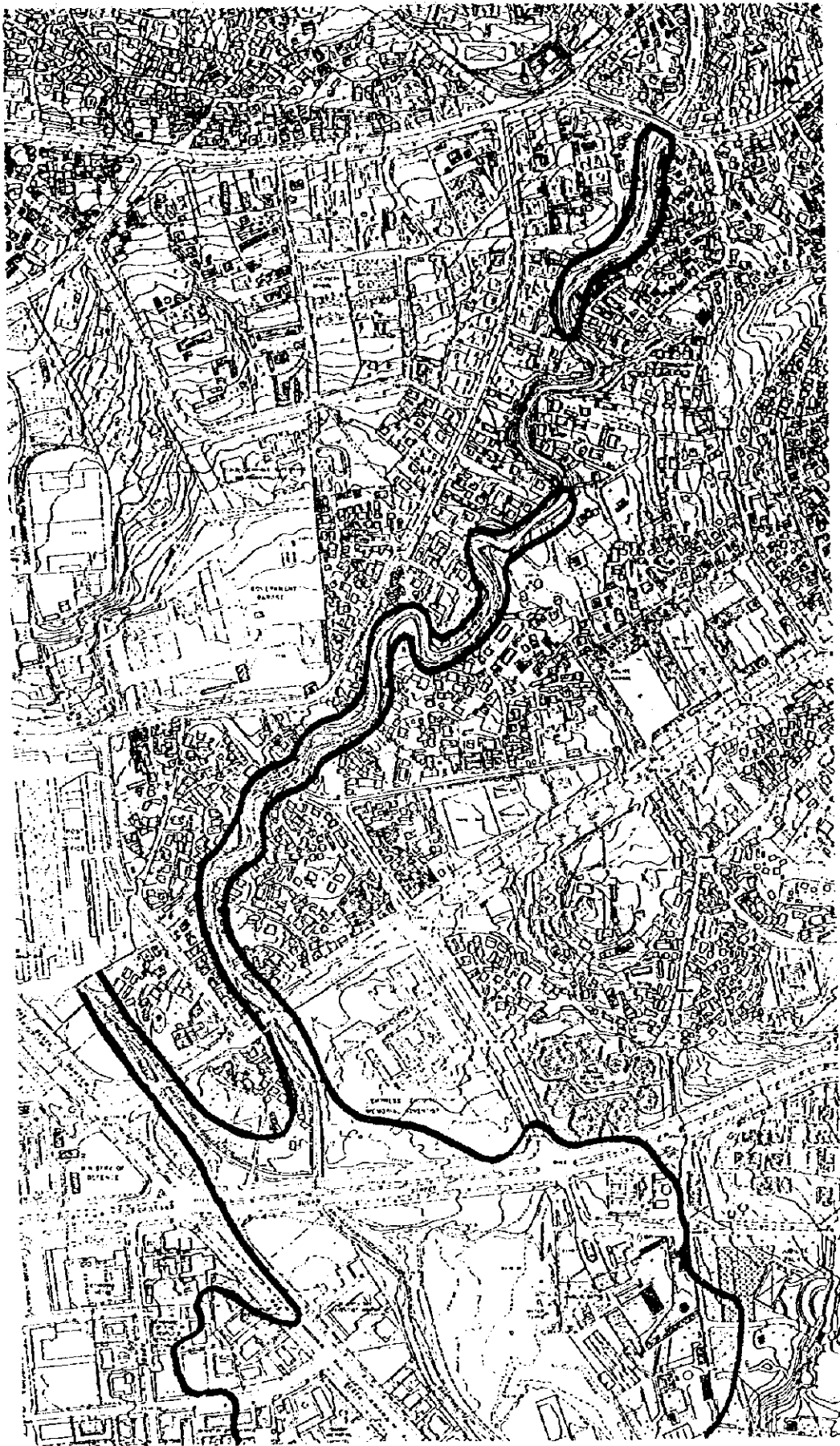
DRAWING NO.
KURM-PLAN-04

Map of Flooding Area - Kurtume River (4/4)





Index Map of Flooding Area - Kechene River

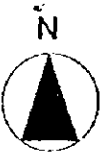


THE STUDY ON ADDIS ABABA FLOOD CONTROL PROJECT
IN THE FEDERAL DEMOCRATIC REPUBLIC OF ETHIOPIA
JAPAN INTERNATIONAL COOPERATION AGENCY
REGIONAL ADMINISTRATION

DRAWING NO.
KEC-PLAN-01

Map of Flooding Area - Kechehe River (1/5)



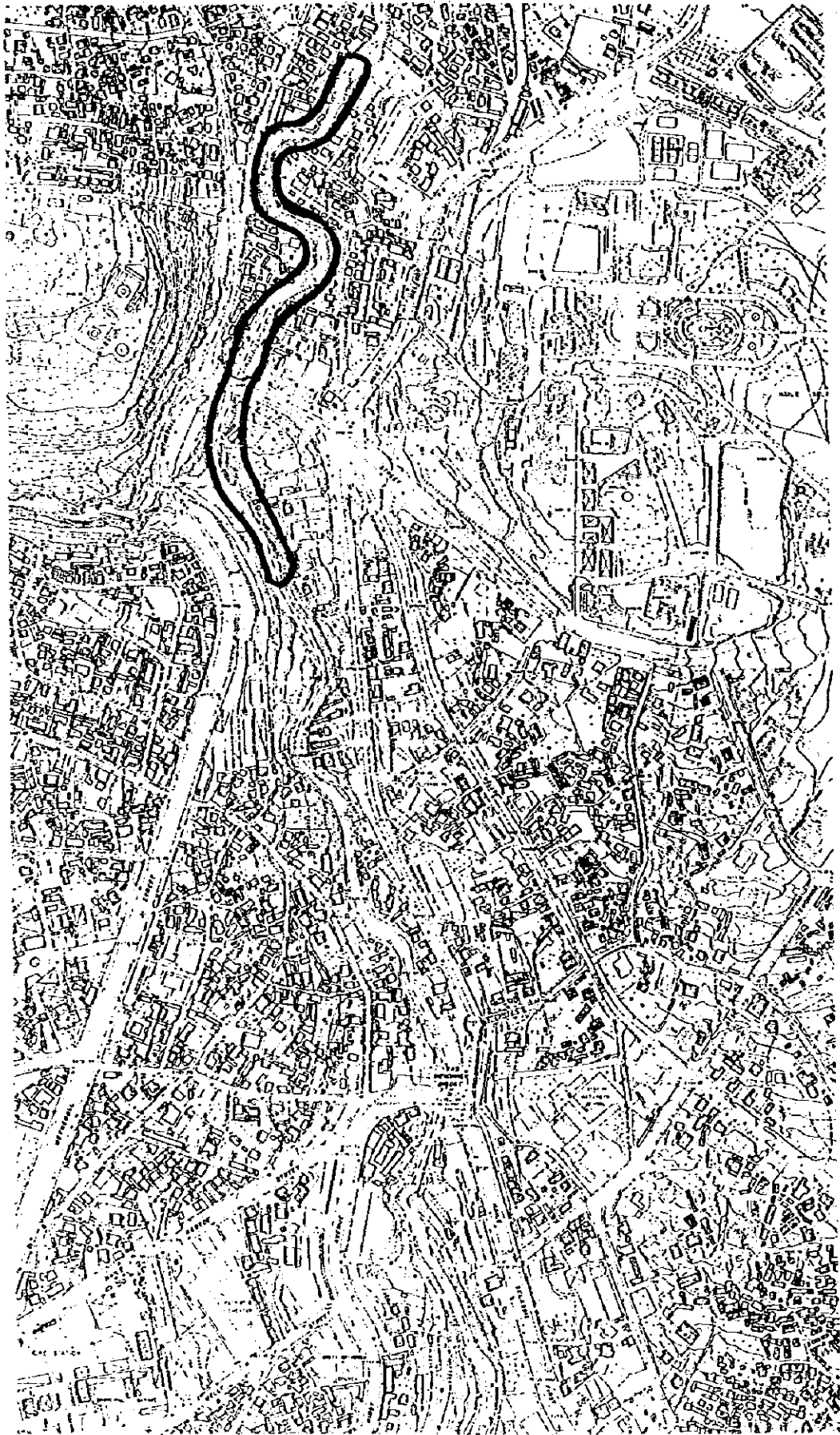
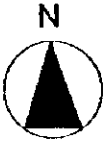


THE STUDY ON ADDIS ABABA FLOOD CONTROL PROJECT
IN THE FEDERAL DEMOCRATIC REPUBLIC OF ETHIOPIA
JAPAN INTERNATIONAL COOPERATION AGENCY
REGION 13 ADMINISTRATION

DRAWING NO.
KEC-PLAN-02

Map of Flooding Area - Kechehe River (2/5)



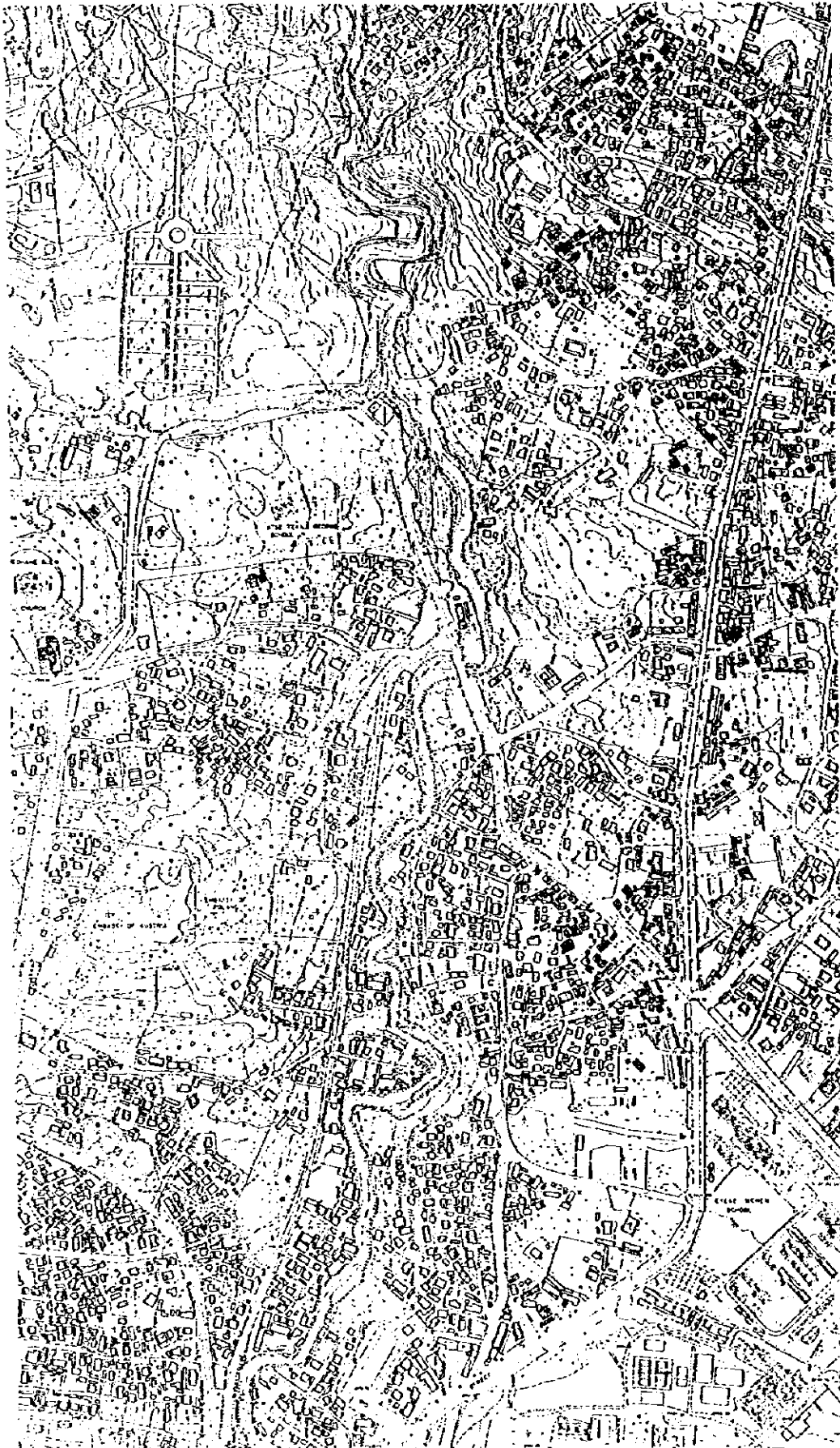


THE STUDY ON ADDIS ABABA FLOOD CONTROL PROJECT
IN THE FEDERAL DEMOCRATIC REPUBLIC OF ETHIOPIA
JAPAN INTERNATIONAL COOPERATION AGENCY
REGIONAL ADMINISTRATION

DRAWING NO.
KEC-PLAN-03

Map of Flooding Area - Kechene River (3/5)



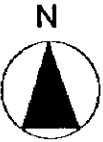


THE STUDY ON ADDIS ABABA FLOOD CONTROL PROJECT
IN THE FEDERAL DEMOCRATIC REPUBLIC OF ETHIOPIA
JAPAN INTERNATIONAL COOPERATION AGENCY
REGIONAL ADMINISTRATION

DRAWING NO.
KEC-PLAN-04

Map of Flooding Area - Kechene River (4/5)



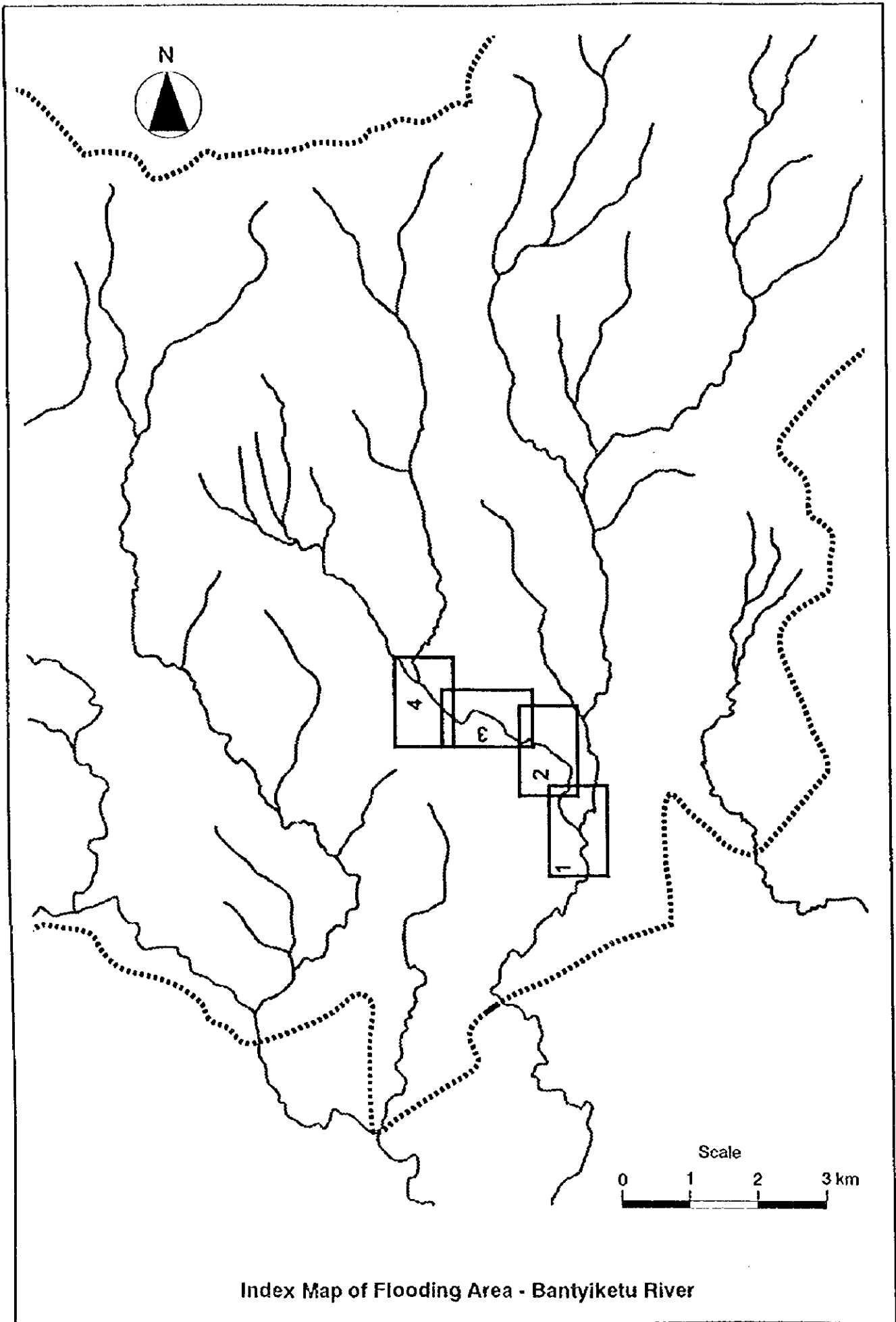


THE STUDY ON ADOBE ABAMA FLOOD CONTROL PROJECT
IN THE FEDERAL DEMOCRATIC REPUBLIC OF ETHIOPIA
JAPAN INTERNATIONAL COOPERATION AGENCY
REGION 14 ADMINISTRATION

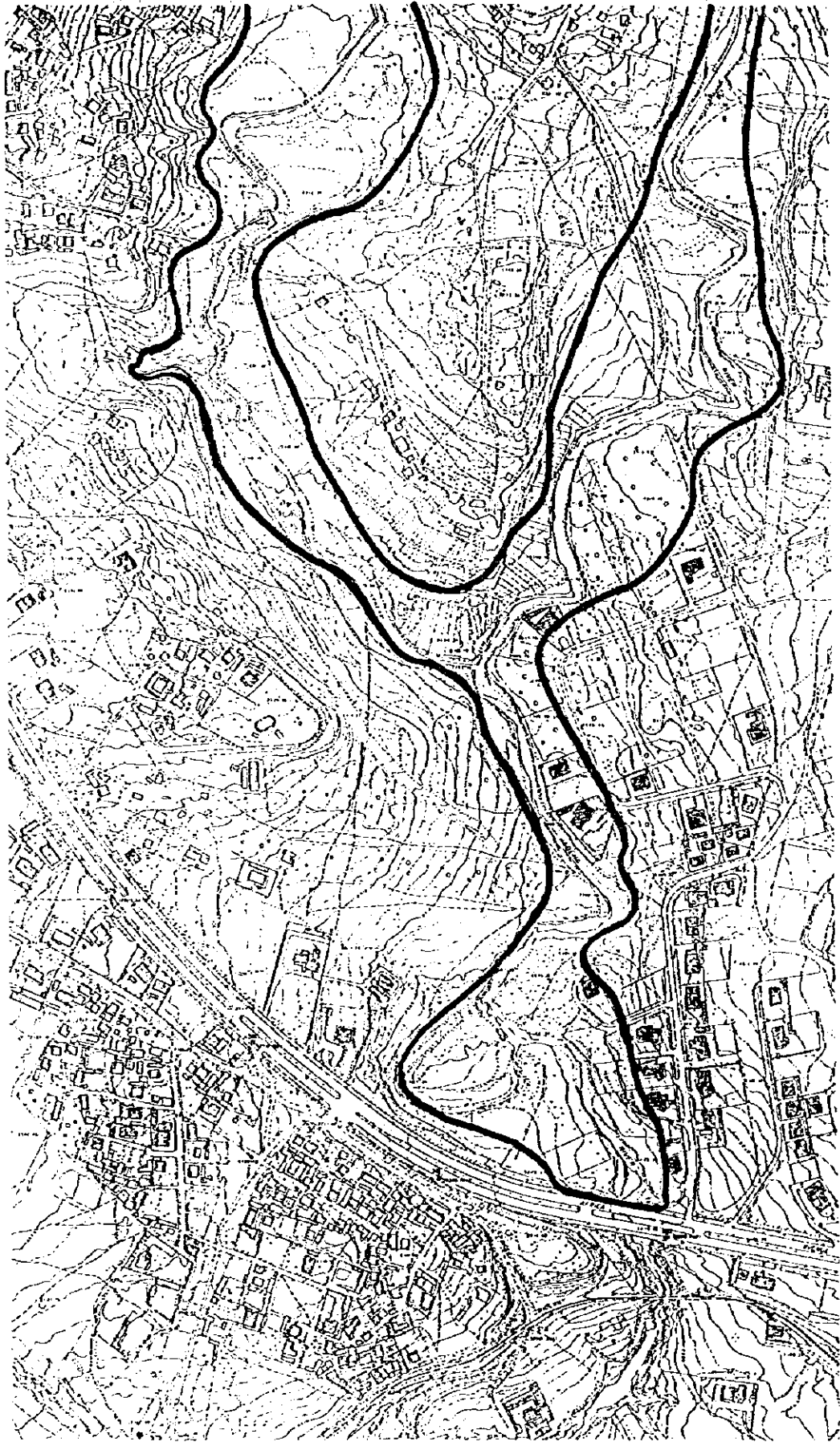
DRAWING NO.
KEC-PLAN-05

Map of Flooding Area - Kechene River (5/5)





Index Map of Flooding Area - Bantuketu River



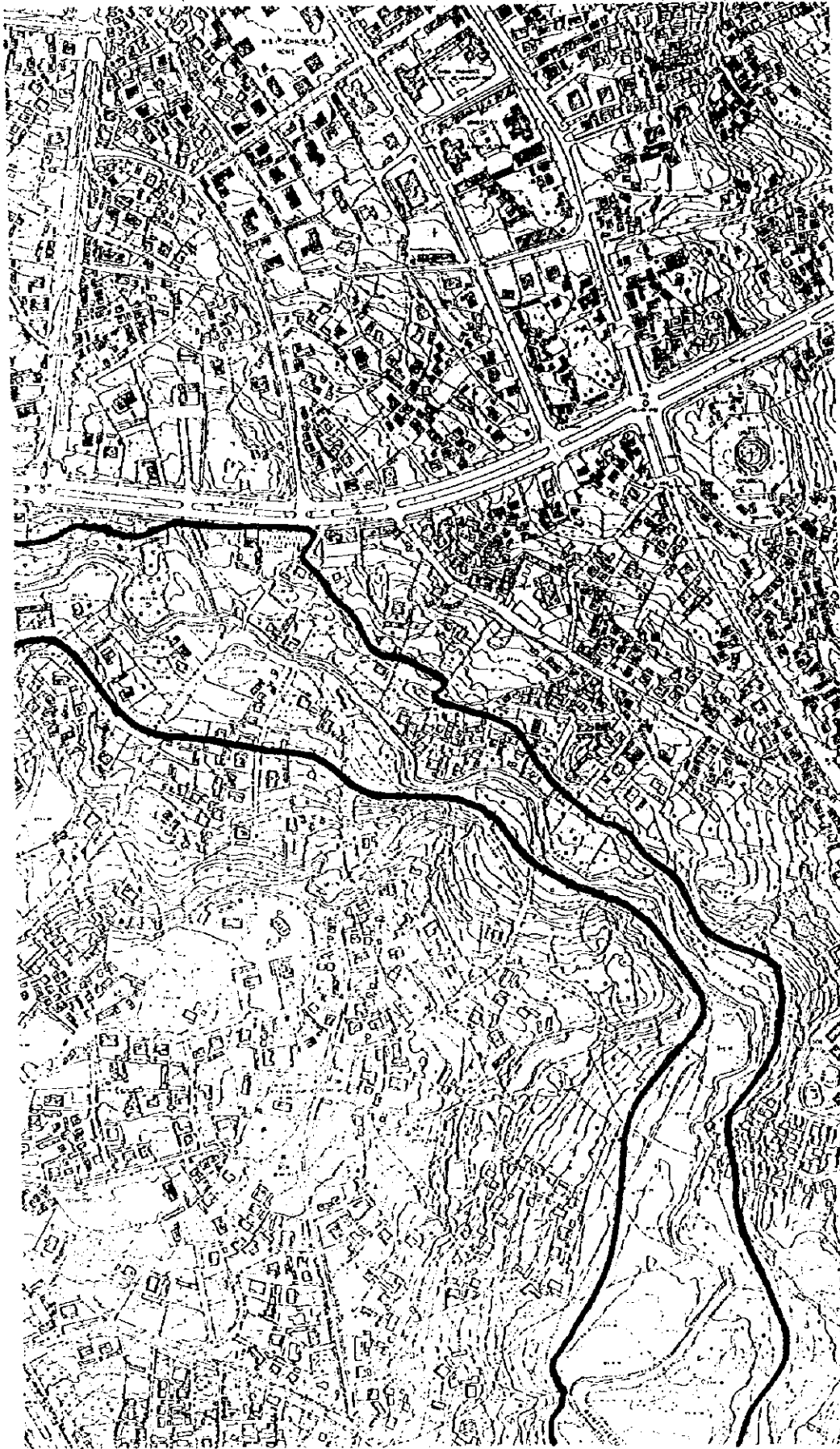
THE STUDY ON ADDIS ABABA FLOOD CONTROL PROJECT
IN THE FEDERAL DEMOCRATIC REPUBLIC OF ETHIOPIA

JAPAN INTERNATIONAL COOPERATION AGENCY
REGIONAL ADMINISTRATION

DRAWING NO.
DAM-PLAN-01

Map of Flooding Area - Bantiyketu River (1/4)





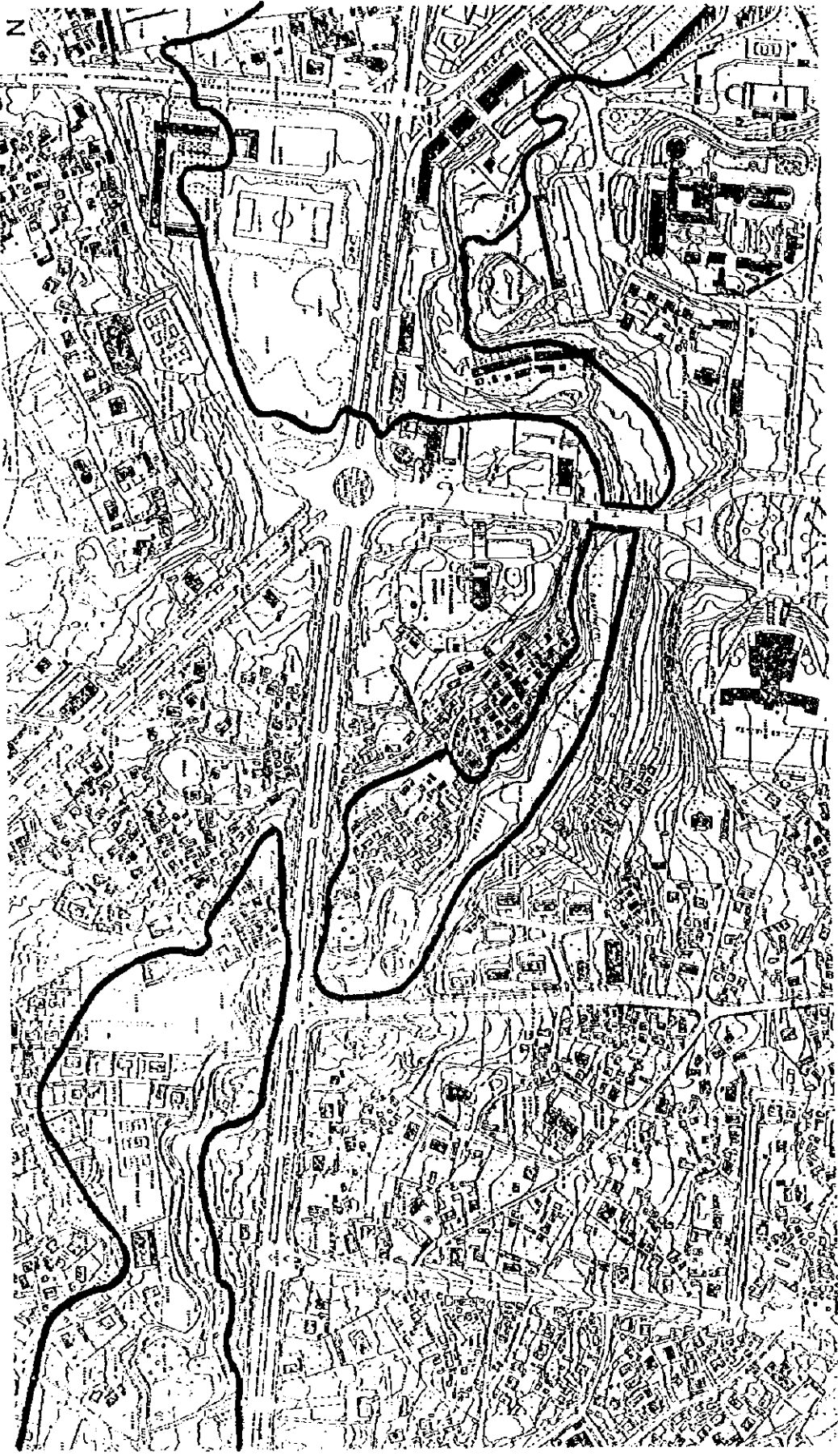
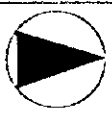
THE STUDY ON ADDIS ABABA FLOOD CONTROL PROJECT
IN THE FEDERAL DEMOCRATIC REPUBLIC OF ETHIOPIA

JAPAN INTERNATIONAL COOPERATION AGENCY
REGION 14 ADMINISTRATION

DRAWING NO.
BAN-PLAN-02

Map of Flooding Area - Bantyketu River (2/4)



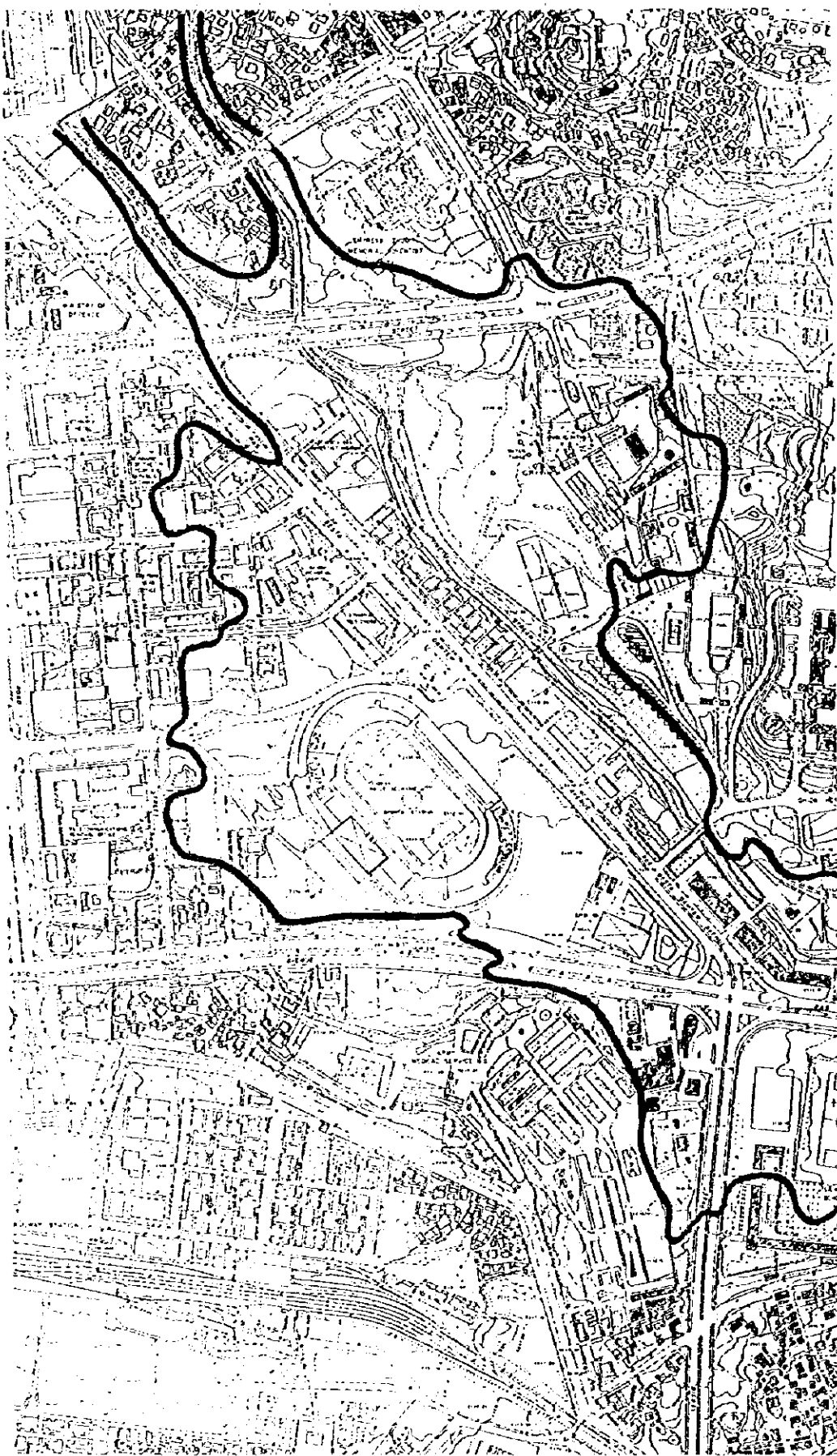


THE STUDY ON ADDIS ABABA FLOOD CONTROL PROJECT
IN THE FEDERAL DEMOCRATIC REPUBLIC OF ETHIOPIA
JAPANESE INTERNATIONAL COOPERATION AGENCY
REGION 14 ADMINISTRATION

DRAWING NO.
BAN-PLAN-03

Map of Flooding Area - Bantyketu River (3/4)



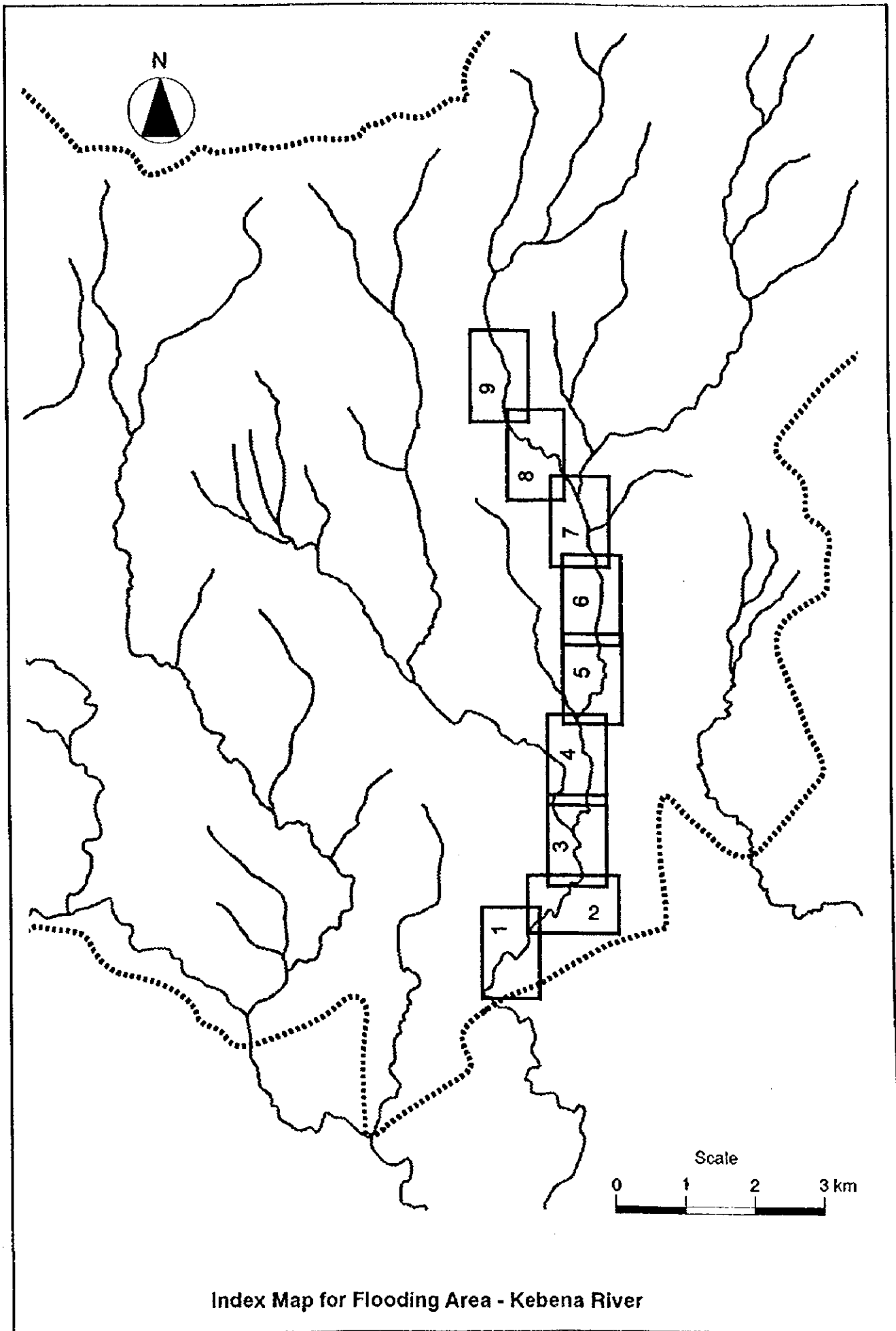


THE STUDY ON ADDIS ABABA FLOOD CONTROL PROJECT
IN THE FEDERAL DEMOCRATIC REPUBLIC OF ETHIOPIA

JAPAN INTERNATIONAL COOPERATION AGENCY
REGION 14 ADMINISTRATION

DRAWING NO.
BAN-PLAN-04

Map of Flooding Area - Bantiyketu River (4/4)

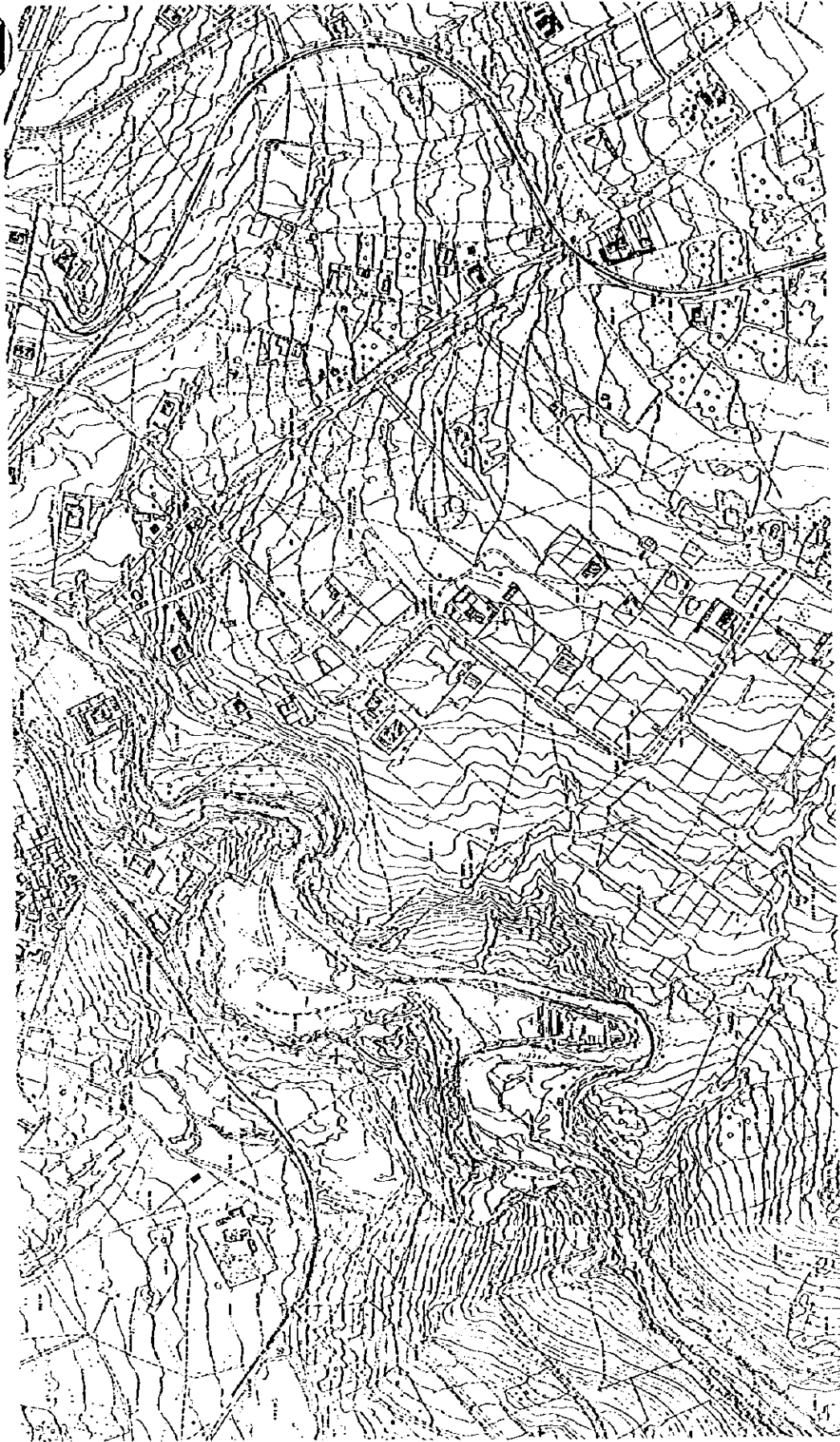


Index Map for Flooding Area - Kebena River



THE STUDY ON ADDIS ABABA FLOOD CONTROL PROJECT IN THE FEDERAL DEMOCRATIC REPUBLIC OF ETHIOPIA	
JAPAN INTERNATIONAL COOPERATION AGENCY REGIONAL ADMINISTRATION	
DRAWING NO.	KEB-PLAN-01

Map of Flooding Area - Kebena River (1/9)

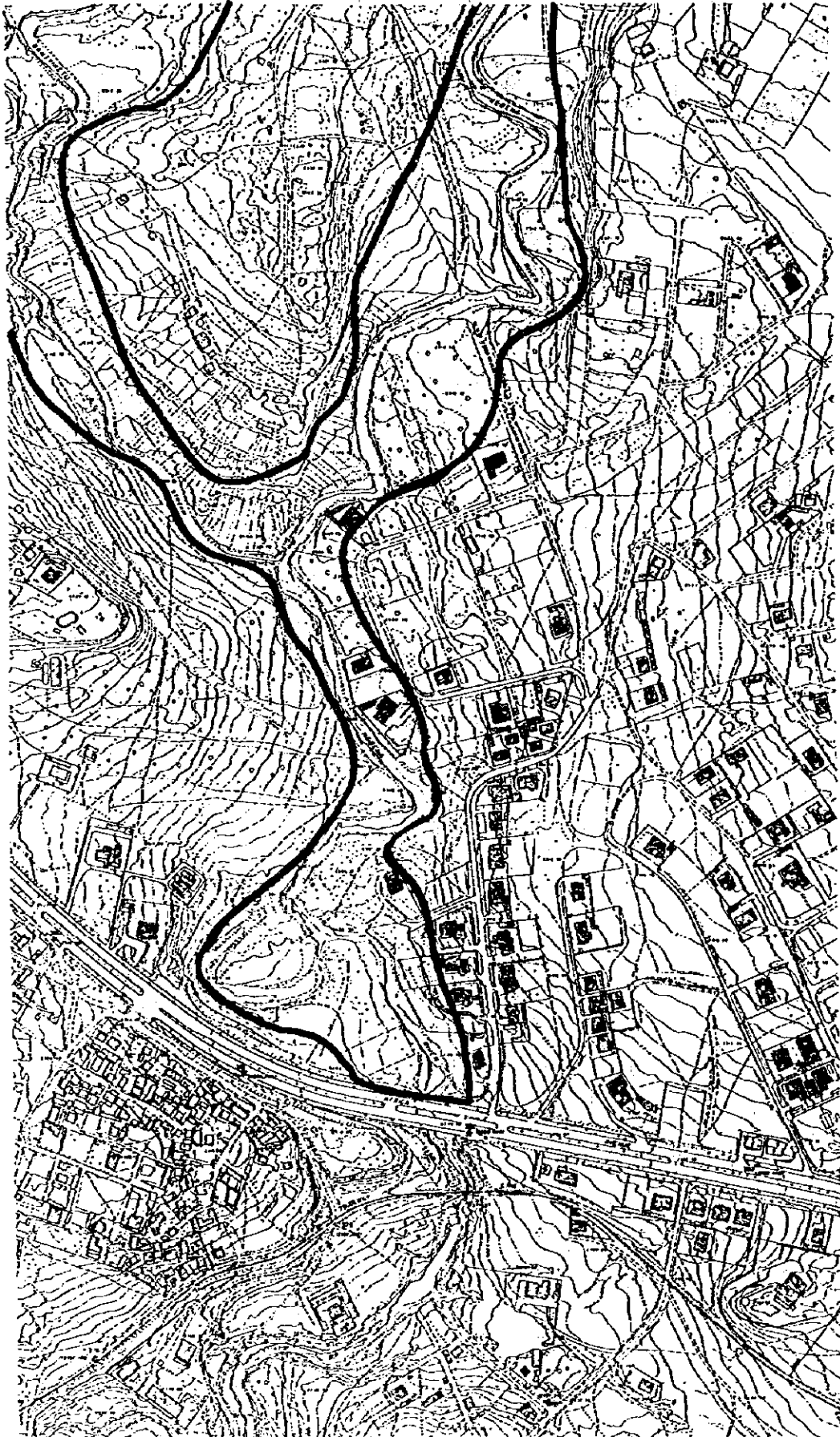


THE STUDY ON ADDIS ABABA FLOOD CONTROL PROJECT
IN THE FEDERAL DEMOCRATIC REPUBLIC OF ETHIOPIA
JAPAN INTERNATIONAL COOPERATION AGENCY
REGIONAL ADMINISTRATION

DRAWING NO.
KEB-PLAN-02

Map of Flooding Area - Kebena River (2/9)



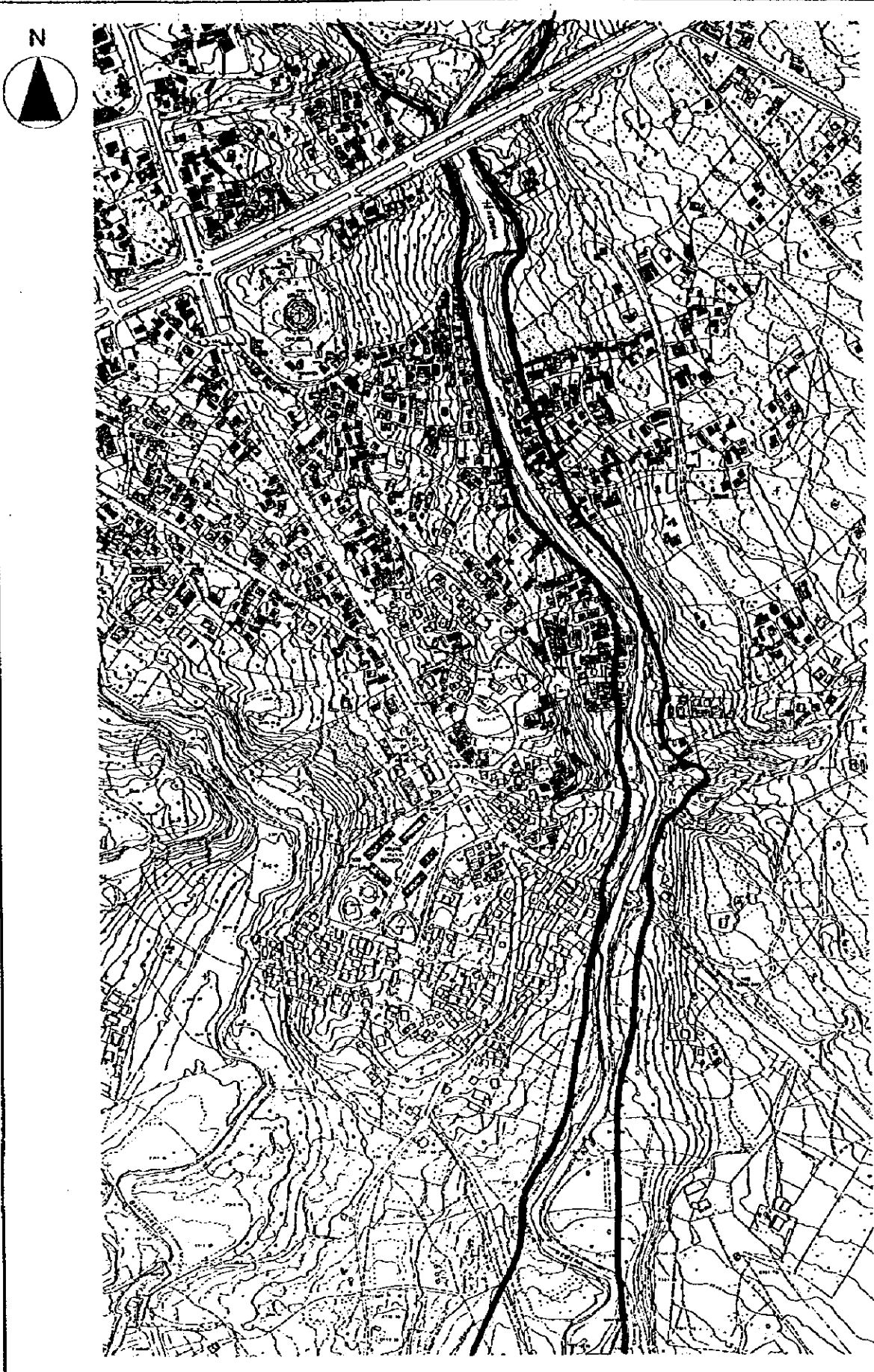


THE STUDY ON AIDING ASAMA FLOOD CONTROL PROJECT
IN THE FEDERAL DEMOCRATIC REPUBLIC OF ETHIOPIA
JAPAN INTERNATIONAL COOPERATION AGENCY
REGION 14 ADMINISTRATION

DRAWING NO.
KEB-PLAN-03

Map of Flooding Area - Kebena River (3/9)



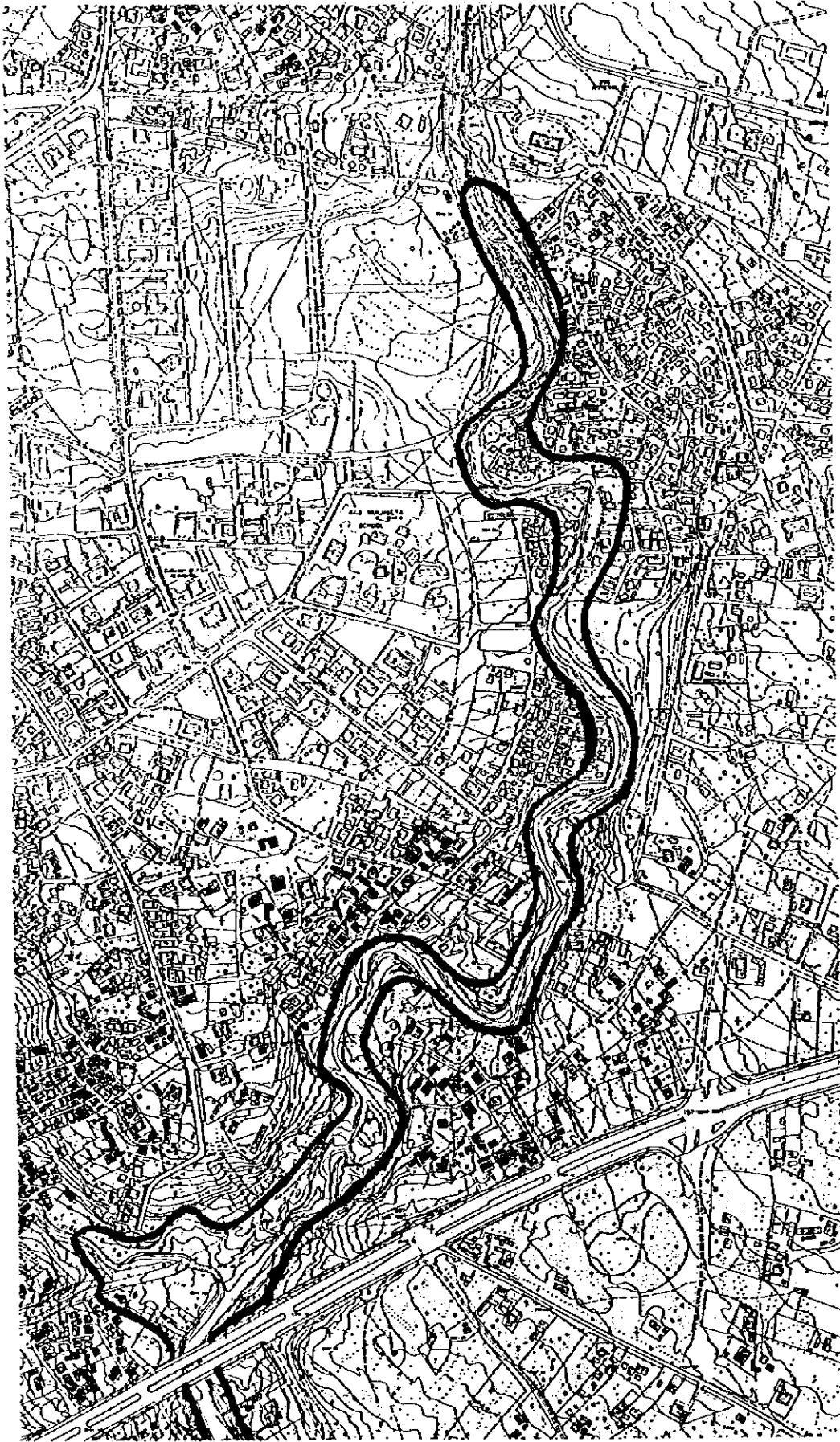


THE STUDY ON ADOBE ABABA FLOOD CONTROL PROJECT
 IN THE FEDERAL DEMOCRATIC REPUBLIC OF ETHIOPIA

JAPAN INTERNATIONAL COOPERATION AGENCY
 REGIONAL ADMINISTRATION

DRAWING NO.
 KEB-PLAN-04

Map of Flooding Area - Kebena River (4/9)

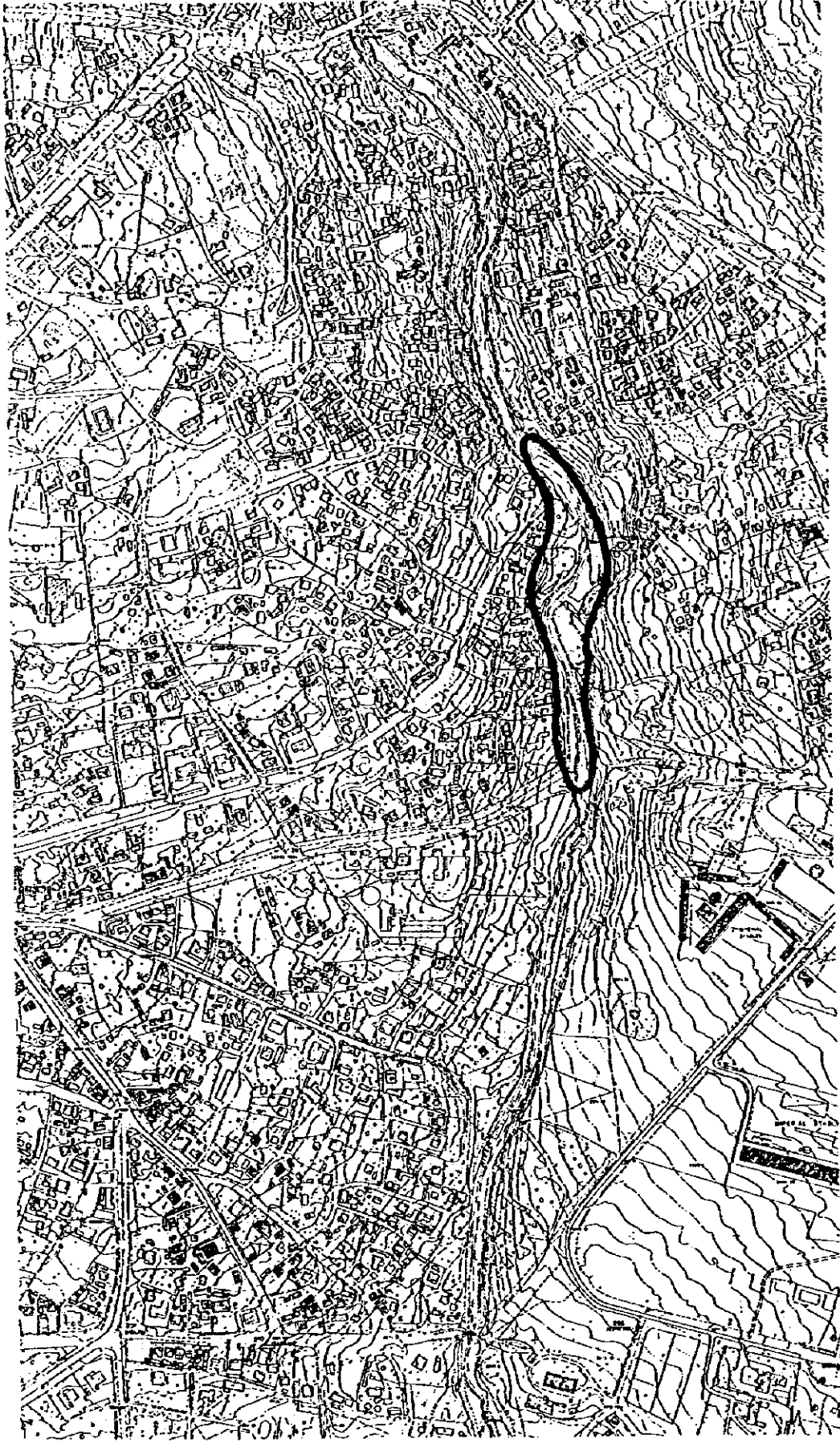


THE STUDY ON ADDIS ABABA FLOOD CONTROL PROJECT
IN THE FEDERAL DEMOCRATIC REPUBLIC OF ETHIOPIA
JAPAN INTERNATIONAL COOPERATION AGENCY
REGION 14 ADMINISTRATION

DRAWING NO.
KEB-PLAN-05

Map of Flooding Area - Kebena River (5/9)





THE STUDY ON ADDIS ABABA FLOOD CONTROL PROJECT
IN THE FEDERAL DEMOCRATIC REPUBLIC OF ETHIOPIA
JAPAN INTERNATIONAL COOPERATION AGENCY
REGION 14 ADMINISTRATION

DRAWING NO.
KEB-PLAN-06

Map of Flooding Area - Kebena River (6/9)





THE STUDY ON ADDING ABABA FLOOD CONTROL PROJECT
IN THE FEDERAL DEMOCRATIC REPUBLIC OF ETHIOPIA
JAPAN INTERNATIONAL COOPERATION AGENCY
REGIONAL ADMINISTRATION

DRAWING NO.
KEB-PLAN-07

Map of Flooding Area - Kebena River (7/9)

