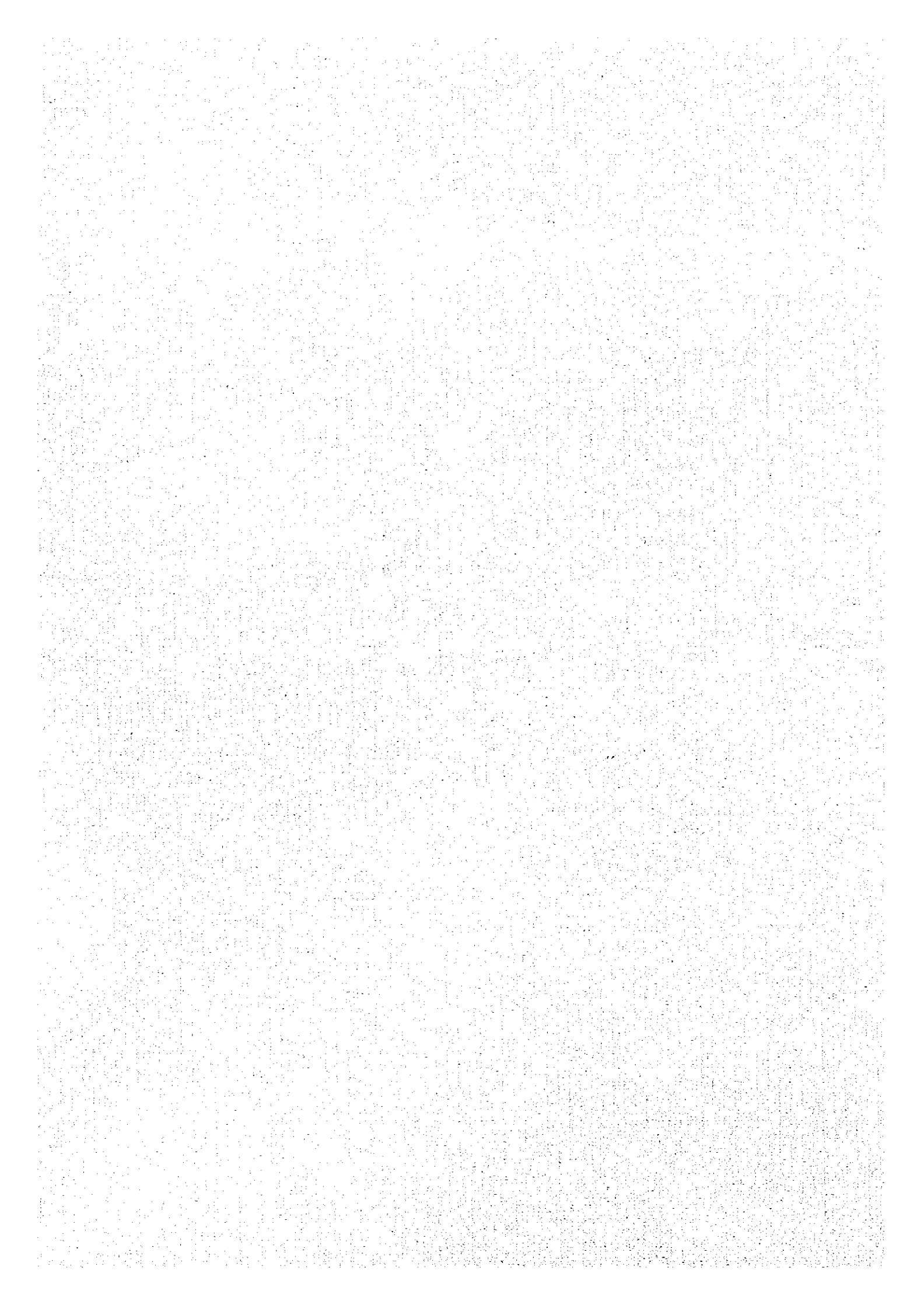


付 属 資 料

1. ミニッツ
2. 農業関連主要省庁及び農業省組織図
3. 西ジャワ州政府組織図
4. 西ジャワ州農業部組織図
5. 第1種子検査所（西ジャワ州）、馬鈴しょ研究室組織図
6. 西ジャワ州原原種農場、原種農場組織図
7. 中部ジャワ州各県配置図
8. 中部ジャワ州農業部組織図
9. 中部ジャワ州農業部原原種・原種農場組織図
10. 中部ジャワ州ウオノソボ県ケチャチャ地域農民グループ組織図
11. 東ジャワ州原原種・原種農場組織図
12. 第3種子検査所（東ジャワ州）組織図
13. 第4種子検査所（南スラウェシ州）組織図
14. P.T.プルタニ（中央）組織図
15. P.T.プルタニの地域（支社）及び支店組織図
16. P.T.プルタニ中央及び支社住所録
17. 各州馬鈴しょ生産関係資料
18. 各州の種子馬鈴しょ増殖試案
19. G4種子生産収支解析表
20. 質問表及びインドネシア側の回答



Minutes of Meeting
on Japanese Technical Cooperation
for Development of
High Quality Seed Potato Multiplication System Project
in the Republic of Indonesia

The Preliminary Study Team (hereinafter referred to as "the Team"), headed by Mr. Kunio HARADA, was dispatched by the Japan International Cooperation Agency (hereinafter referred to as "JICA") in order to clarify the objectives, contents and priorities of the proposed project-type technical cooperation (hereinafter referred to as "the Project").

During the stay of the Team in the Republic of Indonesia from 18 to 29 August 1997, a series of discussions and a field survey were conducted with the concerned authorities of the Government of the Republic of Indonesia. The contents of the discussions are shown in the paper attached herewith.

Both sides have agreed to recommend to their respective Governments to take further steps towards the implementation of the technical cooperation for the Project, based on the findings and results of the preliminary survey.

Jakarta, 28 August 1997

原田都夫

Mr. Kunio HARADA
Team Leader
Preliminary Study Team
Japan International Cooperation Agency



for Dr. Ir. Syarifuddin Karama
Director General of Food Crops
and Horticulture, a.i.
Ministry of Agriculture
Republic of Indonesia

ATTACHMENT

1. Preliminary Study Team

1-1. Objectives

The Team has been dispatched by JICA for the purpose of clarifying the objectives, contents and priorities of the activities of the proposed technical cooperation for the Seed Potato Multiplication System Development Project (proposed title), and of studying the possibility of the cooperation as a project-type technical cooperation scheme of JICA.

1-2. Method

The study was carried out by confirming the present conditions, problems and prospects for seed potato production in Indonesia from the technical and institutional aspects. Relevant information was obtained through discussions with the authorities concerned of the Government of the Republic of Indonesia and some site visits.

1-3. Team Members

See the List of Team Members (Annex 1)

1-4. Schedule

The Team stayed in the Republic of Indonesia from 18 August to 29 August 1997. The detailed schedule of the Team's activities is shown in Annex 2.

2. Background of the Project

The team confirmed the following background for the Project and the request of the Indonesian Government for Japanese technical cooperation.

(1) Relation to the national development plan

The Government of Indonesia has a policy to increase agriculture production as a part of main policy of the agriculture sector in the national development plan.

Indonesia achieved in self-sufficiency in rice in 1984. The Government of Indonesia mentioned that this situation should be maintained, and also to meet the demand of food diversification, laid emphasis on achievement of self-sufficiency in maize and soybean and on increase of horticultural production including potato.

(2) Present situation of seed potato and potato production

According to the recent data in Indonesia, the rate of increase for yield per unit area is still at low level.

The reasons might be due to unstable production and insufficient supply of high quality seed potatoes.

3. Framework of the Technical Cooperation for the Project

In recognition of the above-mentioned background of the Project, a framework of Japanese technical cooperation for the Project was drafted as follows through the discussions between the Team and the Indonesian authorities concerned.

It should be noted that the framework and each component may be modified through further studies and discussions between both sides.

3-1. Project Title

Development of High Quality Seed Potato Multiplication System Project

3-2. Overall goal

In order to contribute to increase of potato production in Indonesia, the amount of high quality seed potato is increased.

3-3. Project Purpose

To strengthen high quality seed potato multiplication system in West Java, and to contribute the development of seed potato multiplication system among West Java, North Sumatra and Central Java at BBI level as a model of nationwide system.

3-4. Project Site

- (1) Directorate of Seed Development, Directorate General of Food Crops and Horticulture, Ministry of Agriculture
- (2) Bandung, West Java

3-5. Expected Output

In order to strengthen high quality seed potato multiplication system in West Java, following outputs will be expected.

- 1) Seed potato production technology is strengthened.
- 2) Seed potato production technology of seed growers is improved.
- 3) Management for seed potato distribution is done smoothly.

In order to contribute the development of seed potato multiplication system (Annex 3) among three provinces above mentioned, following output will be expected.

- 4) Training system in West Java for staff of other provinces (North Sumatra, West Sumatra, Central Java, East Java, South Sulawesi) is strengthened, especially, seed potato multiplication technology at BBI and inspection technology for staff of North Sumatra and Central Java is improved through training programs in West Java.

3-6. Activities

- 1) Improvement of multiplication techniques and pests and diseases control techniques in West Java.
 - 1-1) To improve multiplication techniques
 - 1-2) To improve pests and diseases control techniques
 - 1-3) To make a manual on above two techniques
- 2) Improvement of cultivation and management techniques for seed growers in West Java.
 - 2-1) To develop a guidance system for seed growers
 - 2-2) To verify and modify seed production and management techniques at seed growers' field
- 3) Improvement of management for seed potato distribution system in West Java.
 - 3-1) To establish a method for making plans for supply of seed potato based on demand
 - 3-2) To improve seed potato inspection and certification system
- 4) Enhancement of training system in West Java.
 - 4-1) To improve training plan, curriculum and materials
 - 4-2) To enhance the seed potato production technique for staff of North Sumatra and Central Java concerning seed potato production through training programs
 - 4-3) To train staff of other provinces (West Sumatra, East Java, South Sulawesi) concerning seed potato production through training programs

3-7. Terms of Cooperation

Five (5) years

4. Measures to be taken by the Japanese Side

4-1. Dispatch of Experts

Both long-term and short-term experts will be dispatched for the

implementation of the Project.

4-2. Training of Indonesian Personnel in Japan

In each year, some personnel related to the Project will be trained in Japan.

4-3. Provision of Equipment and Machinery

Equipment and machinery necessary for the activities mentioned above.

5. Measures to be taken by the Indonesian Side

5-1. Assignment of Counterpart Personnel and Staff

- 1) An adequate number of qualified counterpart personnel for each of the long-term and short-term experts.
- 2) Other personnel necessary for the smooth implementation of the Project, such as for administration and accounting.

5-2. Budget Allocation

- 1) Running expenses (maintenance and operation expenses) necessary for the implementation of the Project.
- 2) Expenses necessary for the activities mentioned above.

5-3. Provision of Land and Facilities

Land, buildings and facilities necessary for the implementation of the Project.

6. Other matters to be noted for further study and coordination

- (1) Scale of each facility (facility, equipment, personnel), and equipment necessary for multiplication activities in each province.
- (2) Progress of the Feasibility Study for Agricultural Development Project (ADP) phase III for OECF loan.

7. Others

- (1) The team suggested that in order to develop a new multiplication system, coordination each provinces should be done by the Ministry of Agriculture as the responsible organization.
- (2) The Indonesian side expressed their hope that the Project activities will be extended to other main potato production areas such as West Sumatra, East Java and South Sulawesi and the Team answered to convey it to the Japanese authorities concerned.
- (3) Government of Indonesia requested the provision of special measures of supplement of portion of local cost expenditures for training of middle level technicians.

Leader

Mr. Kunio HARADA

Director, Tokachi Station, National Center for Seeds and Seedlings,

Ministry of Agriculture, Forestry and Fisheries (MAFF)

Cooperation Planning

Ms. Michiyo TANAKA

Chief of Management Section, International Technical Cooperation Division,

Economic Affairs Bureau, MAFF

Multiplication / Cultivation

Mr. Ken NOGUCHI

Chief, Variety Research Section, Kansai Station,

National Center for Seeds and Seedlings, MAFF

Plant Pathology / Inspection

Mr. Nobutoshi SOMA

Senior Inspector, Muroran-Tomakomai Branch, Sapporo Sub-Station,

Yokohama Plant Protection Station, MAFF

Training / Distribution

Mr. Tetsuo YANO

Deputy Director, Upland Crop Division, Agricultural Production Bureau,

MAFF

Technical Cooperation

Ms. Kanako MORIGUCHI

Staff, Agricultural Technical Cooperation Division,

Agricultural Development Cooperation Department, JICA

Schedule for Preliminary Study Mission

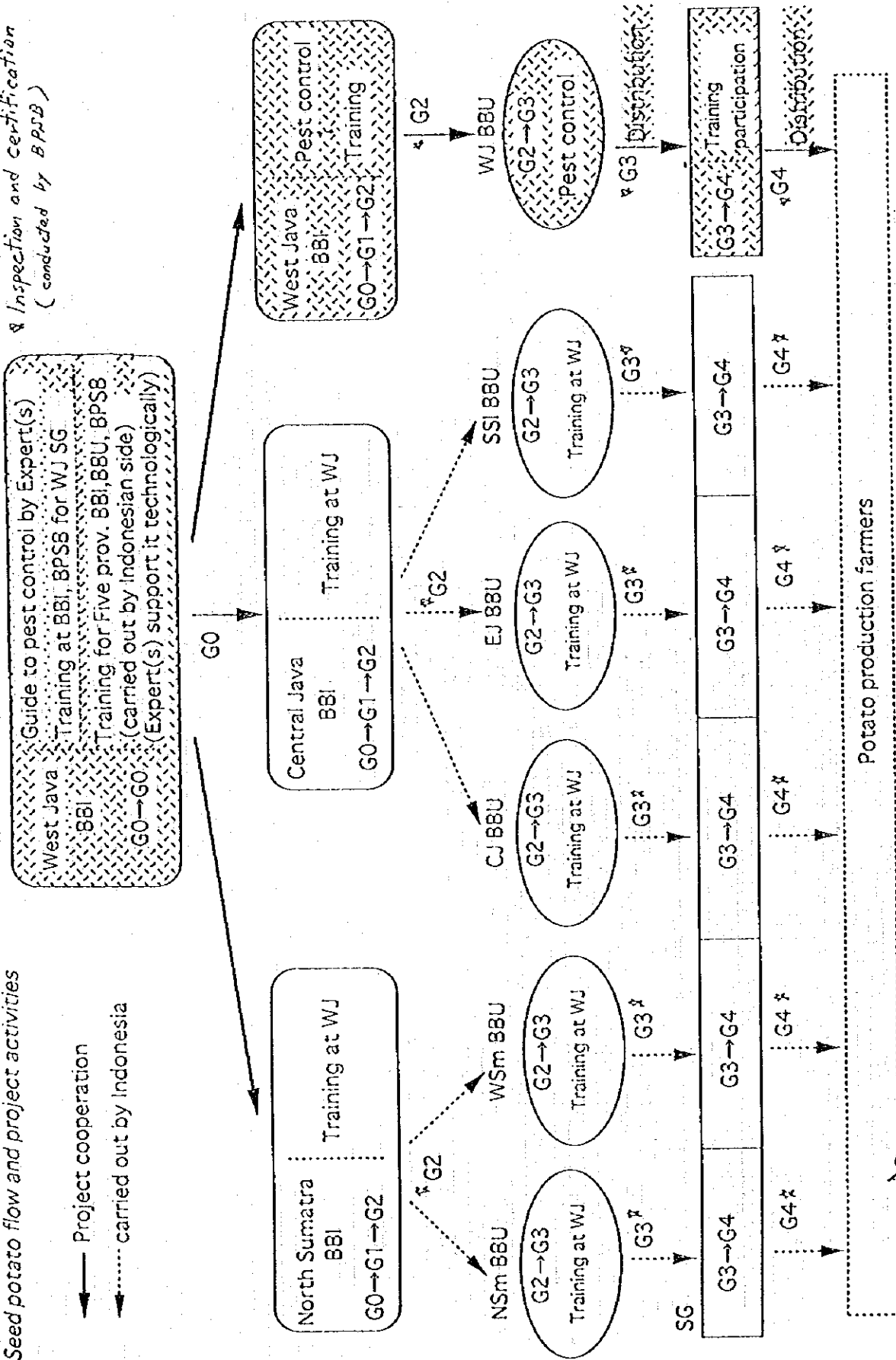
No.	Date	Schedule	Lodging Place
1	Aug. 18(Mon)	Narita → Jakarta GA 873 16:20 着	Jakarta President Hotel
2	19(Tue)	9:00 A.M. Meeting at JICA Office 10:00 A.M. Courtesy call to the Embassy of Japan 1:30 P.M. Courtesy call to Bureau of International Cooperation and Umbrella Office	Jakarta President Hotel Tel 021-2301122 Fax.021-3143631
3	20(Wed)	9:30 A.M. Presentation concerning the new project by each province 1:30 P.M. Discussion about implementation of the project	Jakarta President Hotel
4	21(Thu)	Jakarta (11:20) → Semarang (12:20) GA 412 1:30 P.M. Visiting Dinas Pertanian in Central Java 2:30 P.M. Visiting Seed Distributer (PT. Pertani) Semarang → Solo	Solo Kusuma Sahid Hotel Tel 0271-46356
5	22(Fri)	8:30 A.M. Visiting BPSB-II 1:30 P.M. Visiting BBI Saranang 4:30 P.M. Visiting Foundation Seed Farm in Kuredong	Wonosobo Surya Asia Hotel Tel 0286-22992
6	23(Sat)	7:30 A.M. Visiting Kabupaten Dati II Wonosobo 9:30 A.M. Visiting the candidate of Stock Seed Farm and Seed Growers 2:00 P.M. Moving to Purwokerto	Purwokerto Hotel Queen Garden Tel 0281-39688
7	24(Sun)	Purwokerto → Bandung by bus	Bandung Papandayan Hotel Tel 022-310799
8	25(Mon)	9:00 A.M. Courtesy call and Meeting at Dinas Pertanian in West Java 2:00 P.M. Visiting BPSB-I	Bandung Papandayan Hotel Fax.022-310988
9	26(Tue)	10:00 A.M. Meeting with BBI, BBU and Seed growers	Bandung Papandayan Hotel
10	27(Wed)	9:00 A.M. Meeting at Dinas Pertanian and Making Draft of Minutes 1:30 P.M. Bandung → Jakarta	Jakarta President Hotel
11	28(Thu)	10:00 A.M. Meeting and making the Minutes at MOA 2:00 P.M. Signing the Minutes	Jakarta President Hotel
12	29(Fri)	10:00 A.M. Report to JICA Office 11:00 A.M. Report to the Embassy of Japan P.M. Jakarta JAL726 (11:45) →	
13	30(Sat)	→ Narita	

1

Seed potato flow and project activities

- Project cooperation
- - - - - carried out by Indonesia

Inspection and certification
(conducted by BPSB)



2. 農業関連主要省庁及び農業省組織図

(1993年9月14日付大統領令等から)

農業大臣 Sharifudin Baharsjah 93/3/17-	食糧担当 国務大臣 Ibrahim Hasan 93/3/17-	公共事業 大臣 Radinal Moolhtar 93/3/17-	協同組合 大臣 Subiaktol Fjakrawedaya 93/3/17-	移住大臣 Siswono Yudohusodo 93/3/17-	林業大臣 Djamaledin Soeryohadikoesoemo 93/3/17-
大臣顧問	Balog(食糧調達庁)(長官は食糧大臣の兼任)で食糧等の輸出入を含む政策、軍人・公務員への米の配給	水資源総局で水資源開発、灌漑排水等	農業・漁業協同組合行政	国内移住・森林伐採民定住促進	森林・林業行政
地方農政局(27州)	(地方政府) 州知事 州農業組織(農業局, 畜産局, 水産局, エステート局)				
官房(次官)	計画局, 人事局, 財政局, 組織管理局, 法務局, 広報局, 海外協力局, 総務調達局, 国営企業局, 農業検査センター, 農業データセンター, 農業普及センター				
監査総局	総務局, 職員監査官, 財政・調達監査官, 食用作物・園芸監査官, エステート作物監査官, 畜産監査官, 水産監査官				
食用作物園芸総局	総務局, 計画局, 種苗局, 食用作物生産局, 園芸生産局, 農地整備・開発局, 農業経営・農産加工局, 作物保護局				
エステート局	総務局, 計画局, 種苗局, 生産局, 農業経営・農産加工局, 整備・作付拡大局, 作物保護局				
畜産総局	総務局, 計画局, 種苗局, 生産局, 畜産経営・畜産物加工局, 家畜保健局, 畜産振興局				
水産総局	総務局, 計画局, 種苗局, 生産局, 漁業経営・水産物加工局, 生産資源局, 基礎施設局				
カビシネ庁	総務局, 規格品質保証センター, 開発市場情報センター, 事業開発組織連携センター, 投資開発環境影響分析センター				
研究開発庁	総務局, 研究計画調整センター, 農業図書館研究情報連絡センター, 土壌・農業気象研究センター, 農業社会経済研究センター, 食用作物研究開発センター, 園芸研究開発センター, 工業作物研究開発センター, 畜産研究開発センター, 水産研究開発センター, 農業機械開発センター				
教育訓練庁	総務局, 農業教育指導センター, 職員教育訓練センター, 普及教育訓練センター				
ピマス事務局	総務局, 増産計画局, 増産モニタリング局				

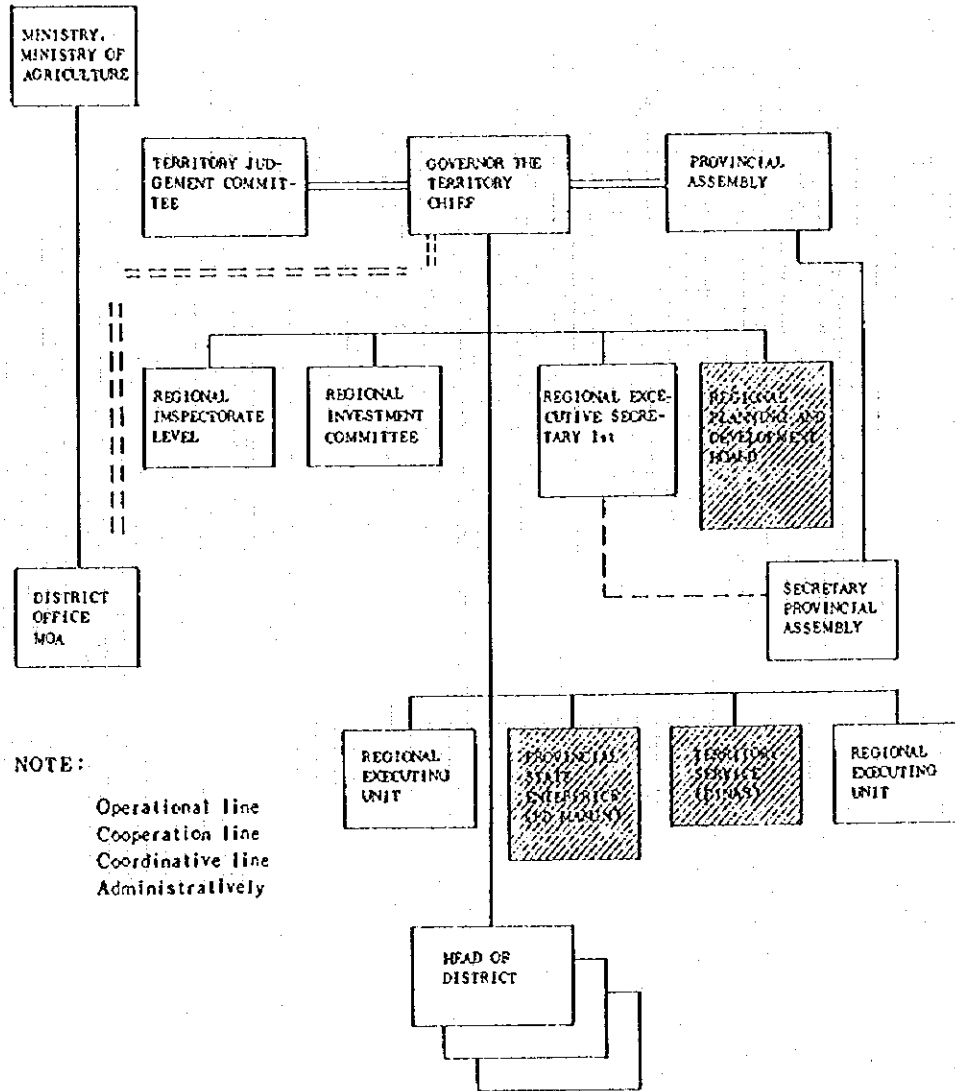
1.2.6. 国会

議員数は500名, うち400名が総選挙(比例代表制, 5年に1回実施)により選出され, 100名(軍人)は大統領が任命。任期は5年, 現議員の任期は1992年10月より5年間となっており, 1997年に総選挙が実施されることとなっている。

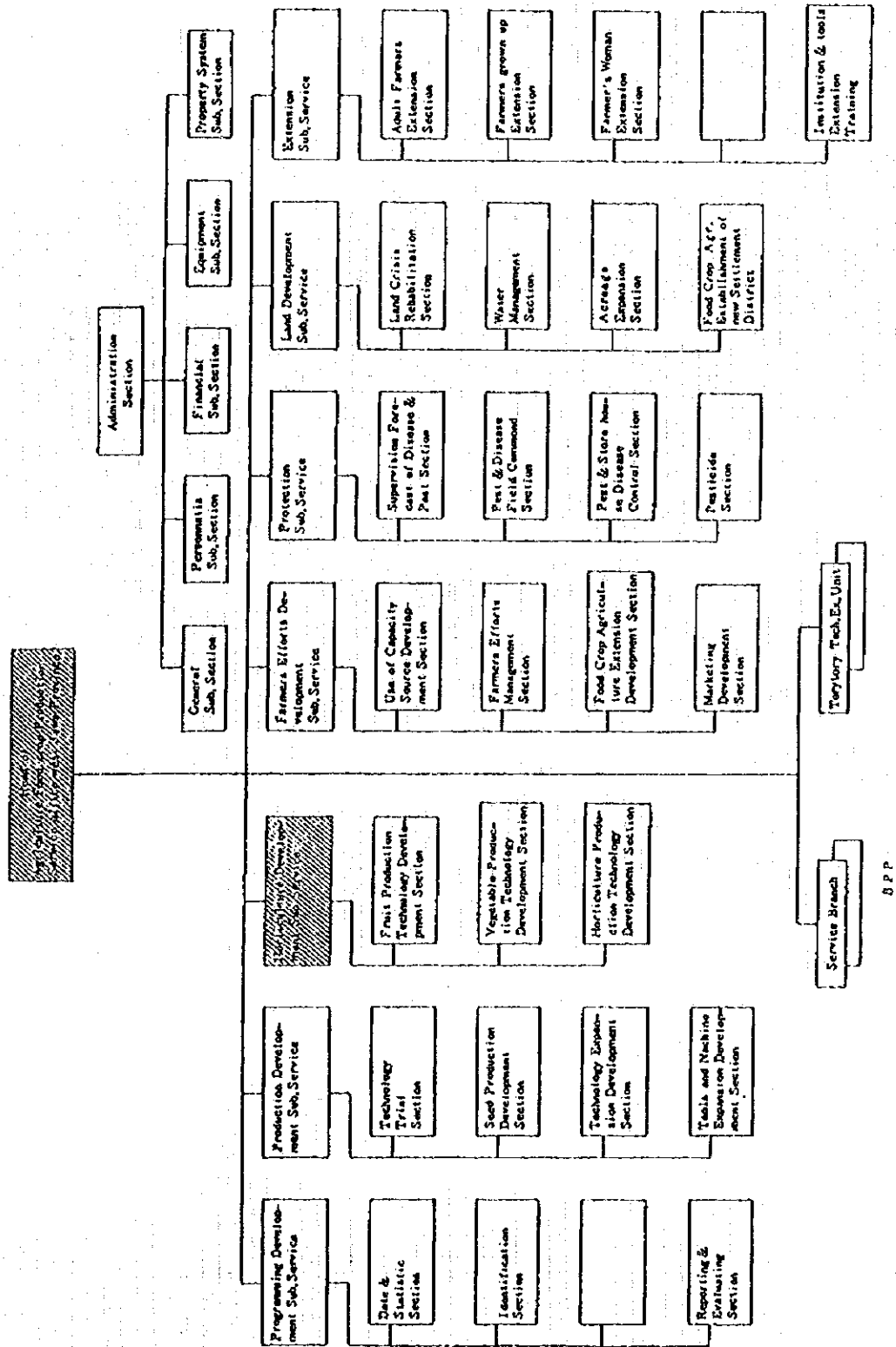
国軍による100名を除いて, 政党は3党あり, ゴルカル282名, 開発連合党62名, インドネシア民主党56名となっている。

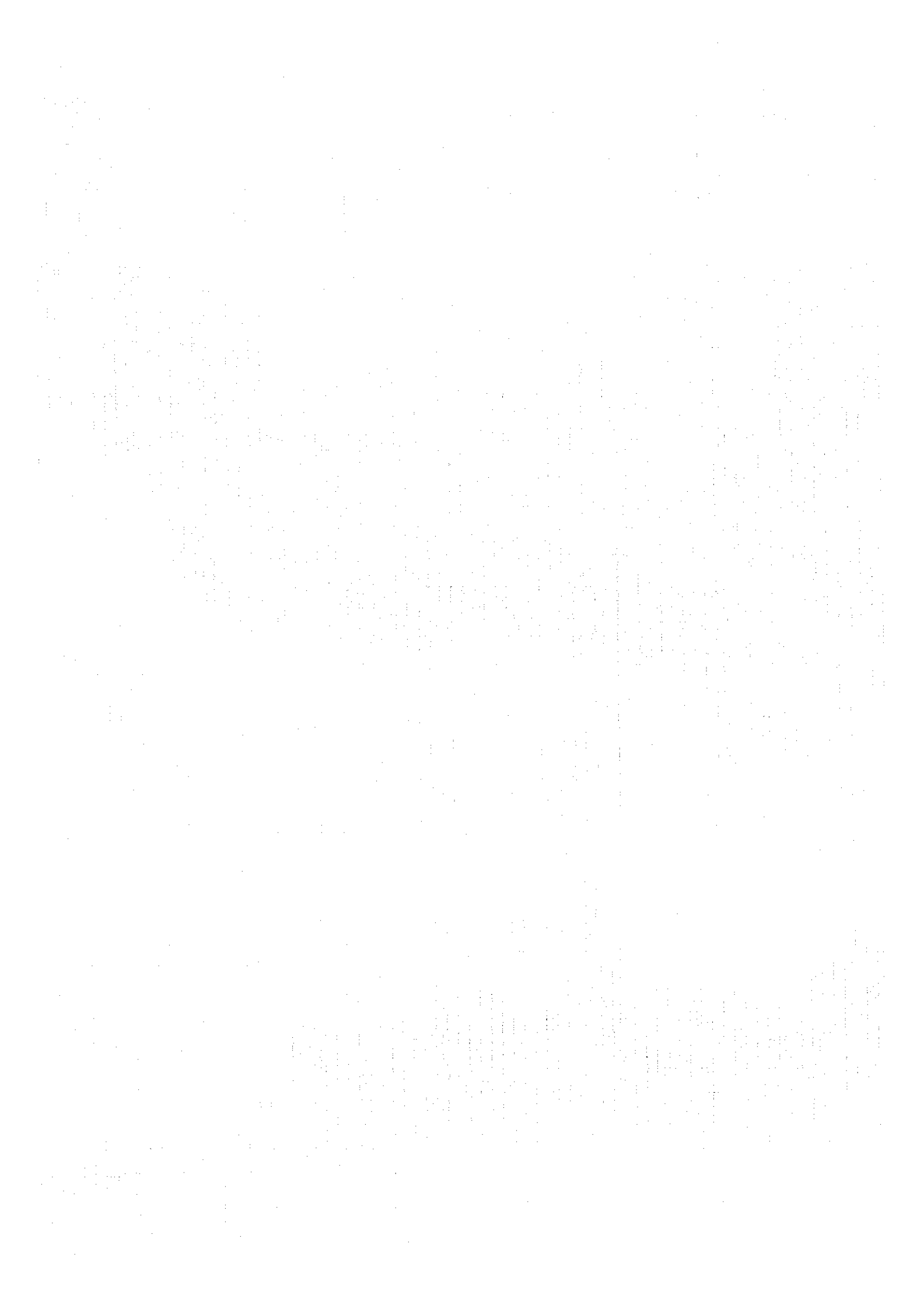
3. 西ジャワ州政府組織図

ORGANIZATION CHART OF PROVINCIAL GOVERNMENT

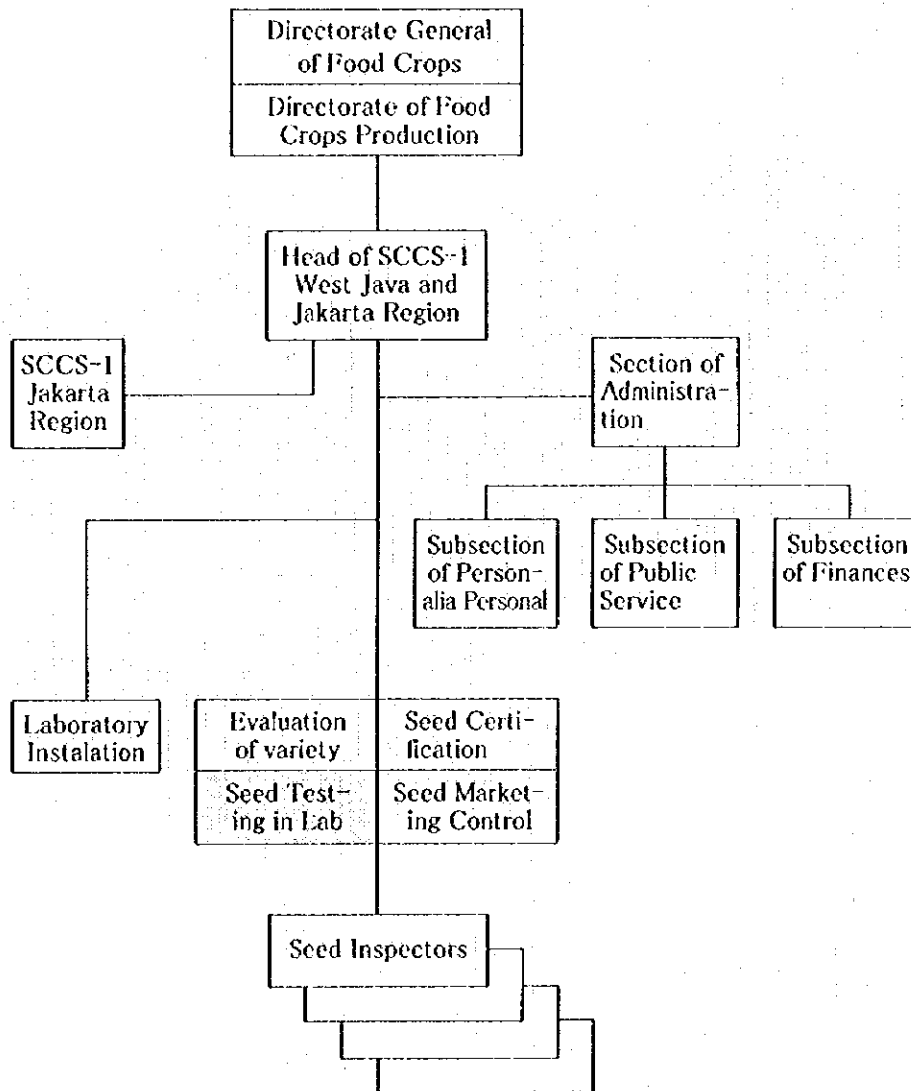


4. 西ジャワ州農業部組織図



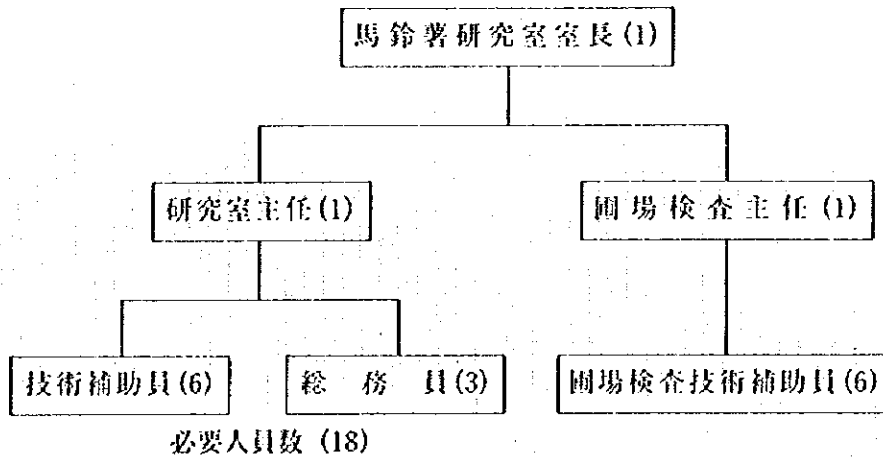


5. 第1種子検査所（西ジャワ州）、馬鈴しょ研究室組織図



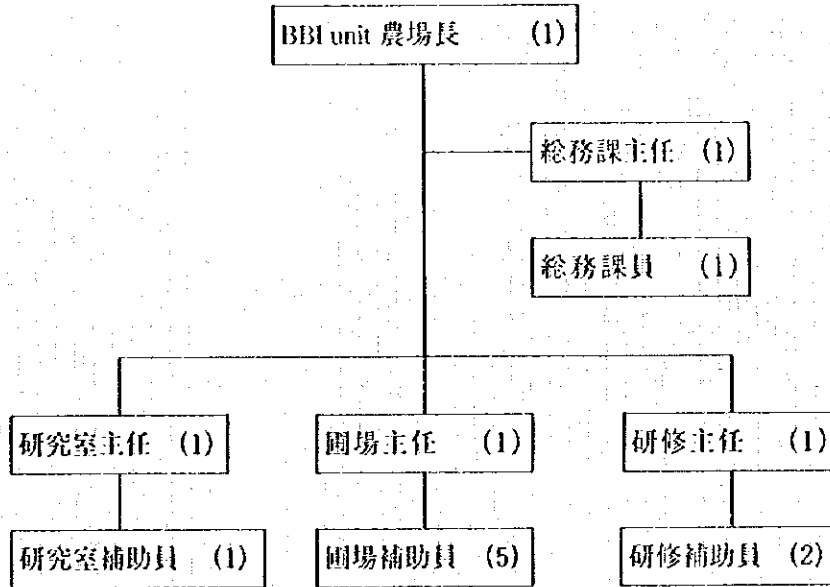
The region of SCCS-1 included West Java and Jakarta.

馬鈴薯関連の組織はSeed Testing in Lab.に属する。



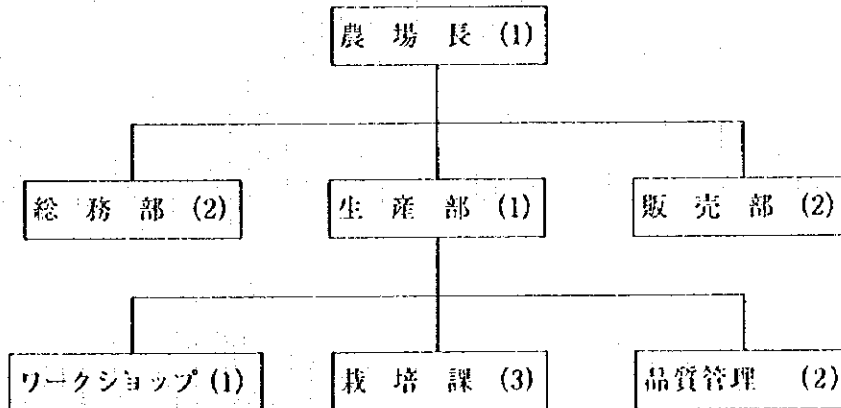
6. 西ジャワ州原原種農場、原種農場組織図

〈原原種農場〉

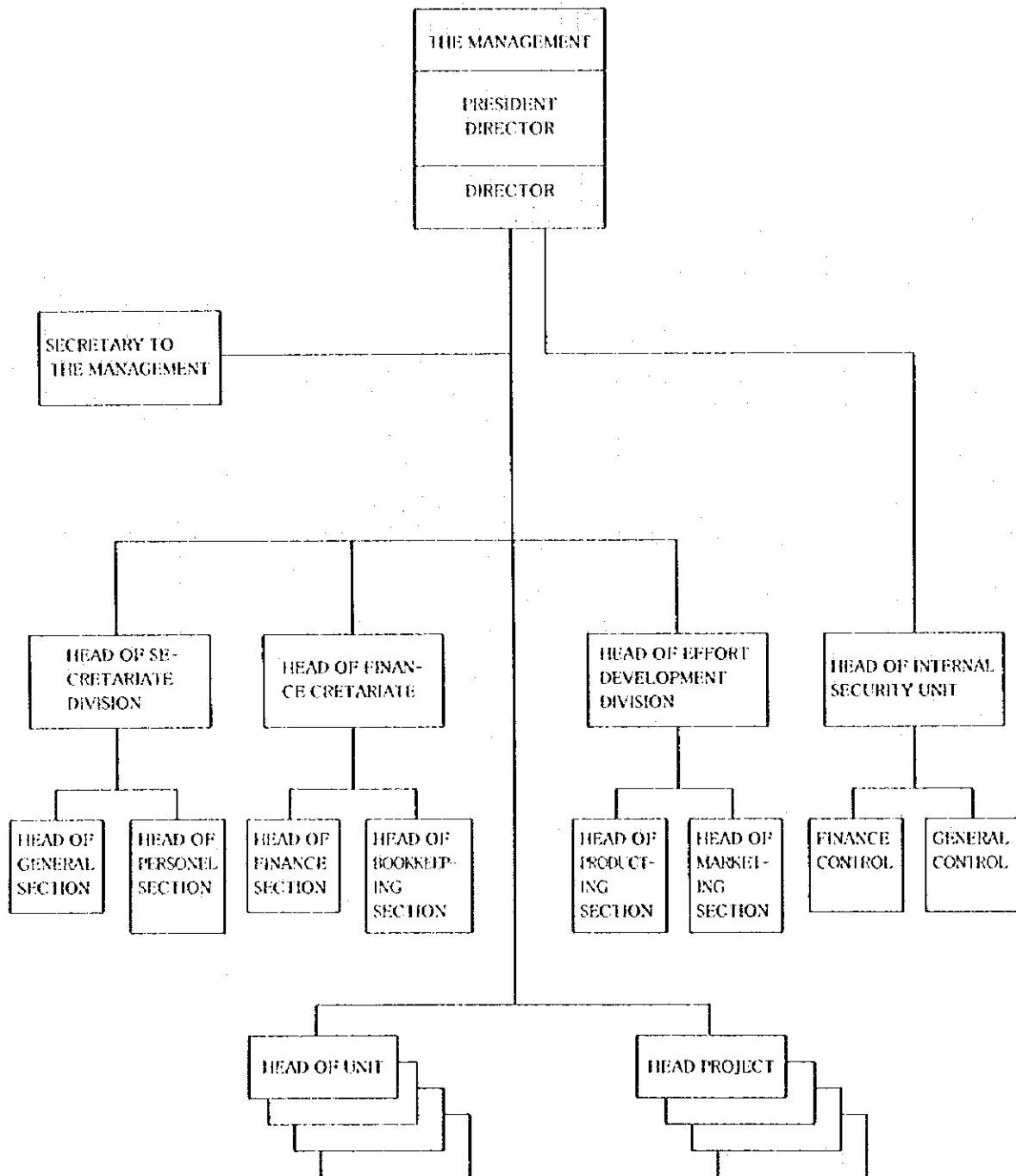


必要人員数 (14)

〈原種農場〉

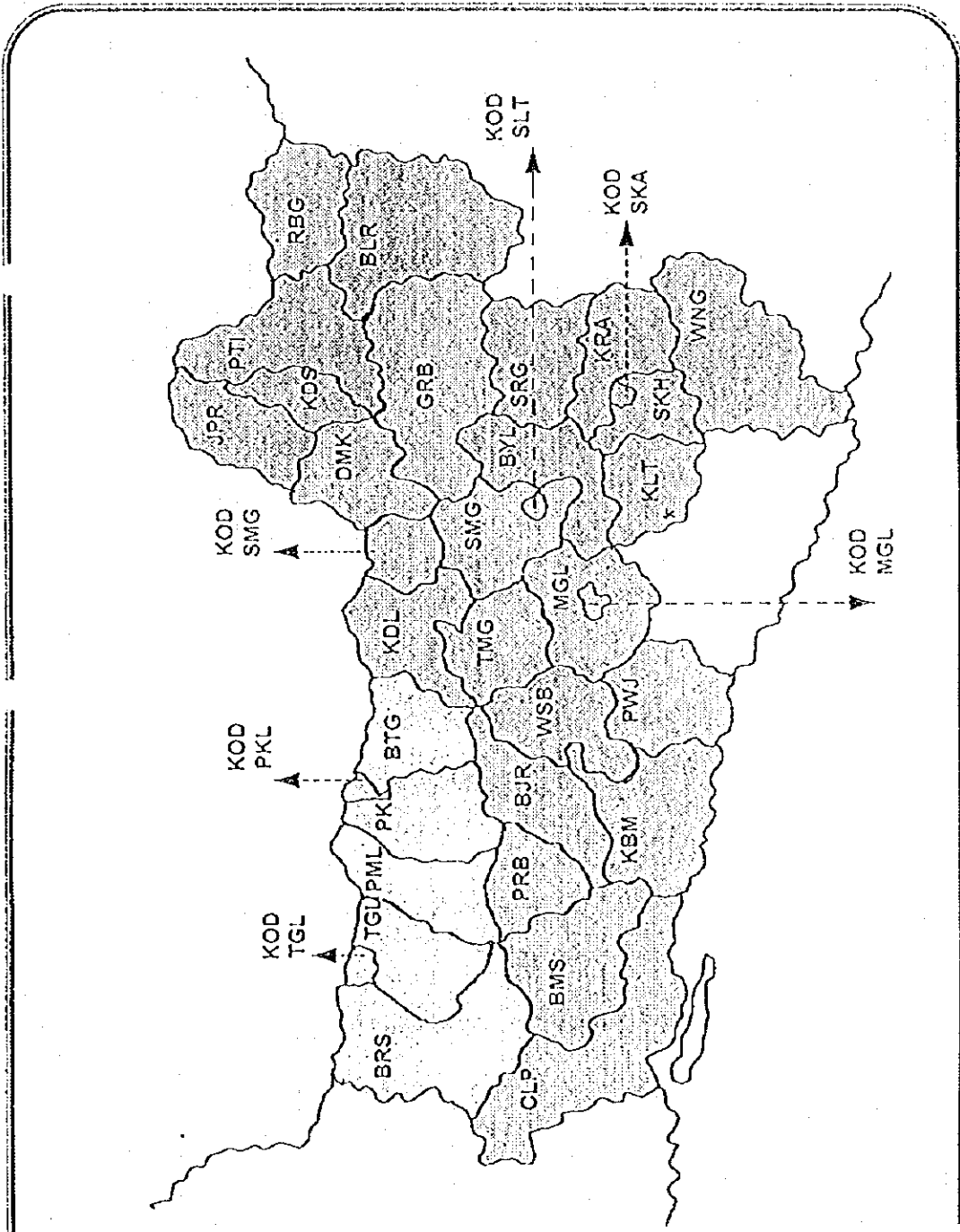


必要人員数 (12)

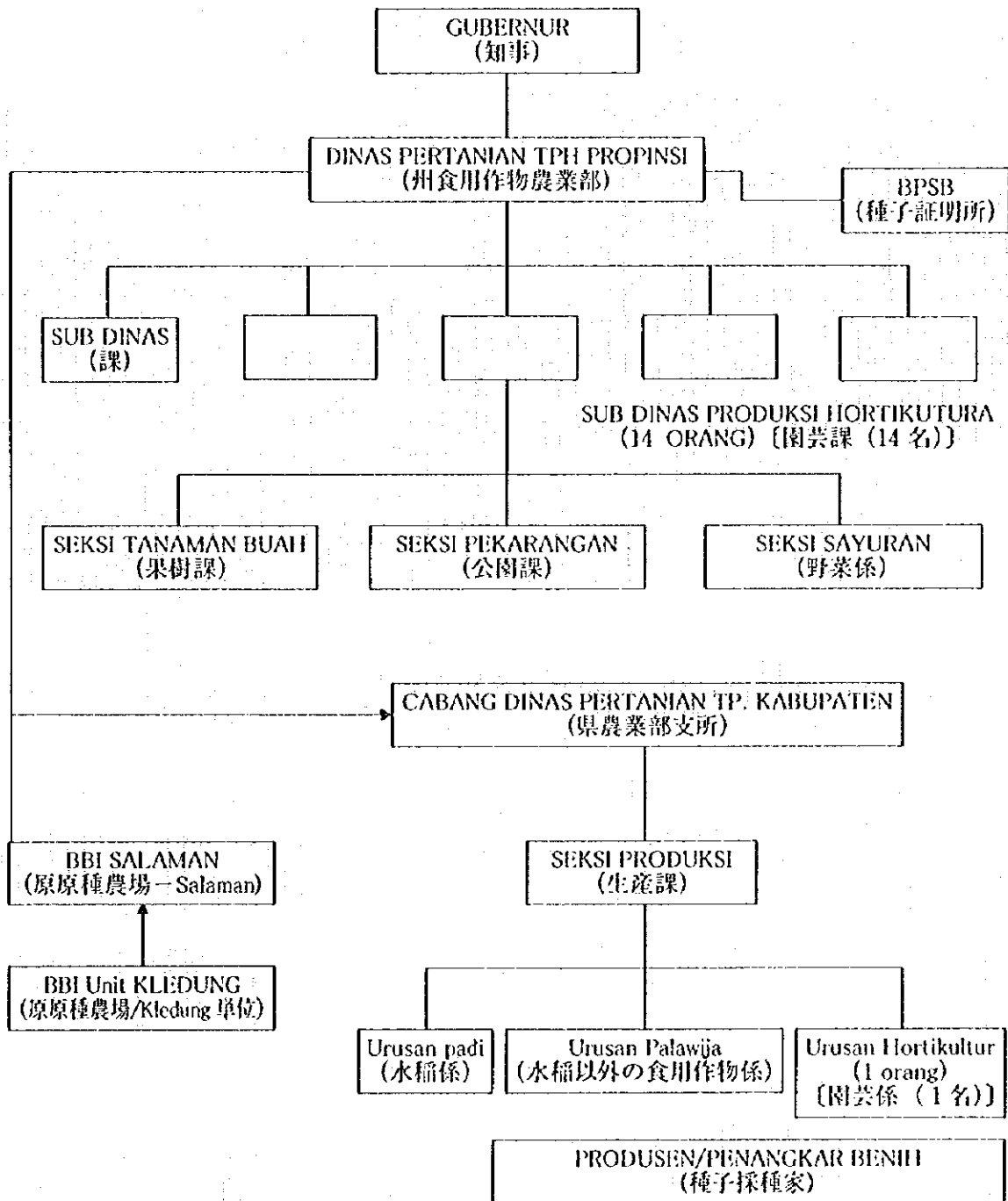


7. 中部ジャワ州各県配置図

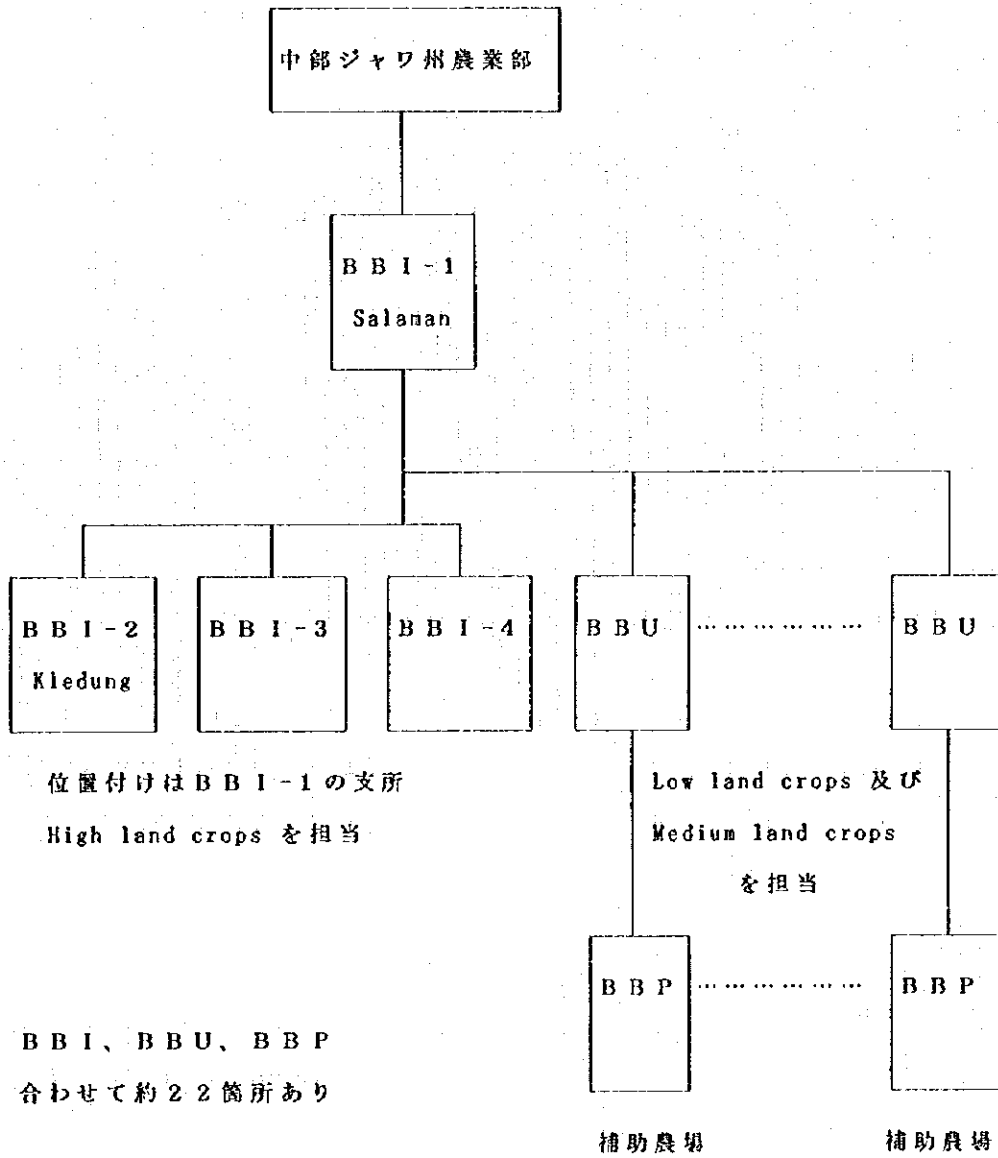
- CENTRAL JAVA
- KAB = DISTRICT
 - BRS = BREBES
 - TGL = TEGAL
 - PML = PEMALANG
 - PKL = PEKALONGAN
 - BTC = SATANG
 - KDL = KENDAL
 - DMK = DEMAK
 - KDS = KUDUS
 - JPR = JEPARA
 - PTI = PATI
 - RBG = REMBANG
 - BLR = BLORA
 - GRB = GROBOGAN
 - SMG = SEMARANG
 - BYL = BOYOLALI
 - SRG = SRAGEN
 - KRA = KARANGANYAN
 - SKH = SUKOHARJO
 - WNG = WONOGAN
 - KLT = KLATEN
 - MGL = MAGELANG
 - WSB = WONOSOBO
 - PWJ = PURWOREJO
 - KBM = KEBUMEN
 - TMG = TEMANGGUNG
 - PRB = PURBALINGGA
 - BMS = BANYLLMAS
 - CLP = CILACAP
 - BJR = BANJARNEGARA
 - KODYA = MUNICIPALITY
 - TGL = TEGAL
 - PKL = PEKALONGAN
 - SMG = SEMARANG



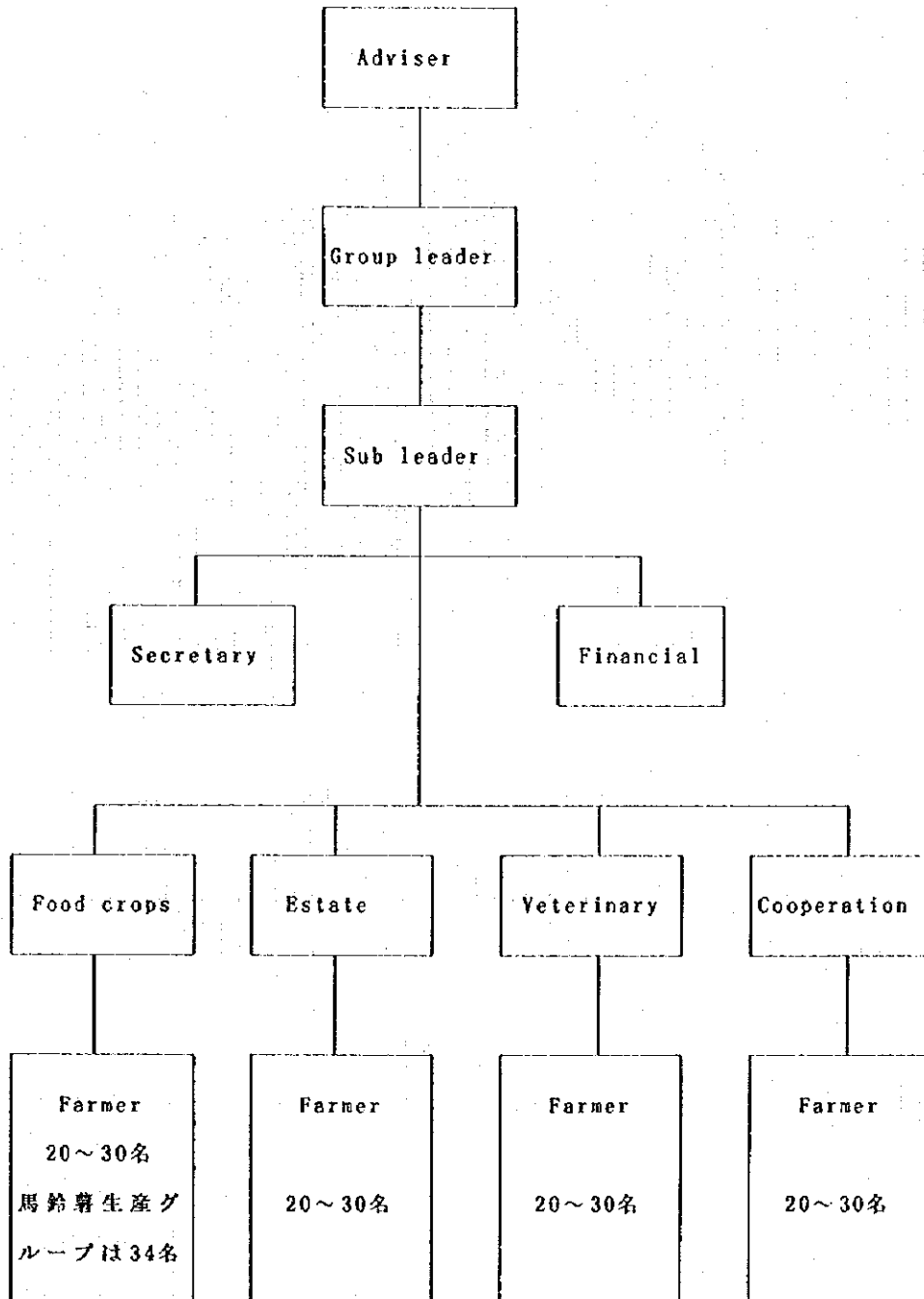
8. 中部ジャワ州農業部組織図



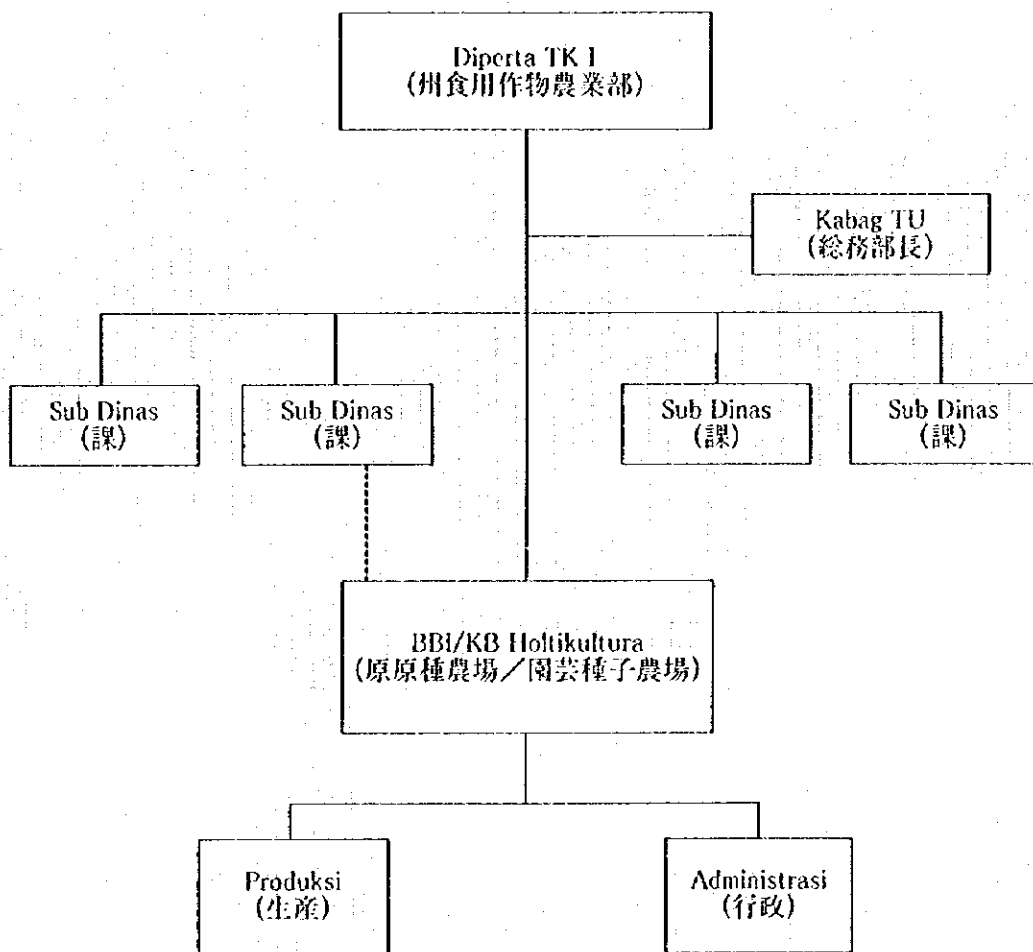
9. 中部ジャワ州農業部原原種・原種農場組織図



10. 中部ジャワ州ウオノソボ県ケチャチャ地域の農民グループ組織図

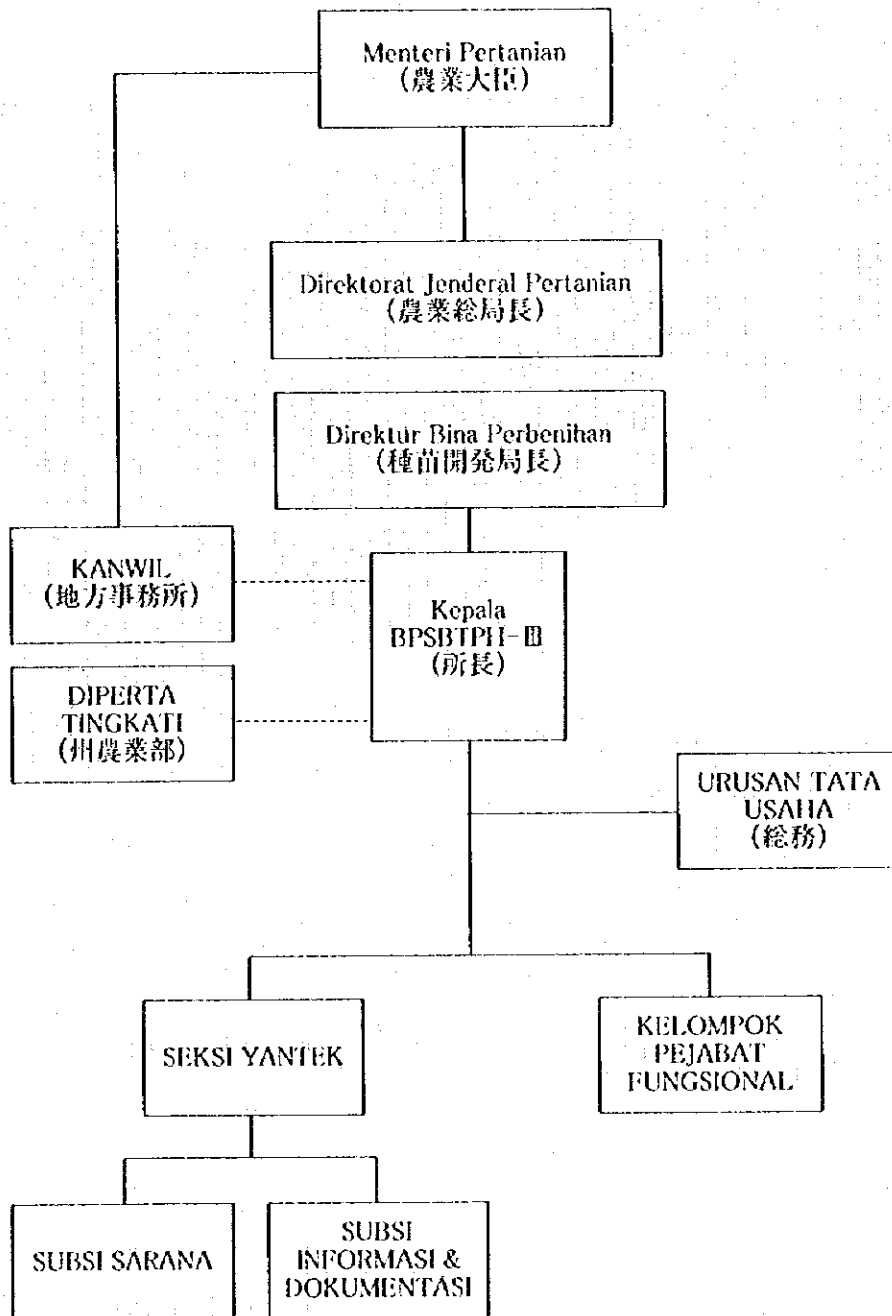


11. 東ジャワ州原原種・原種農場組織図

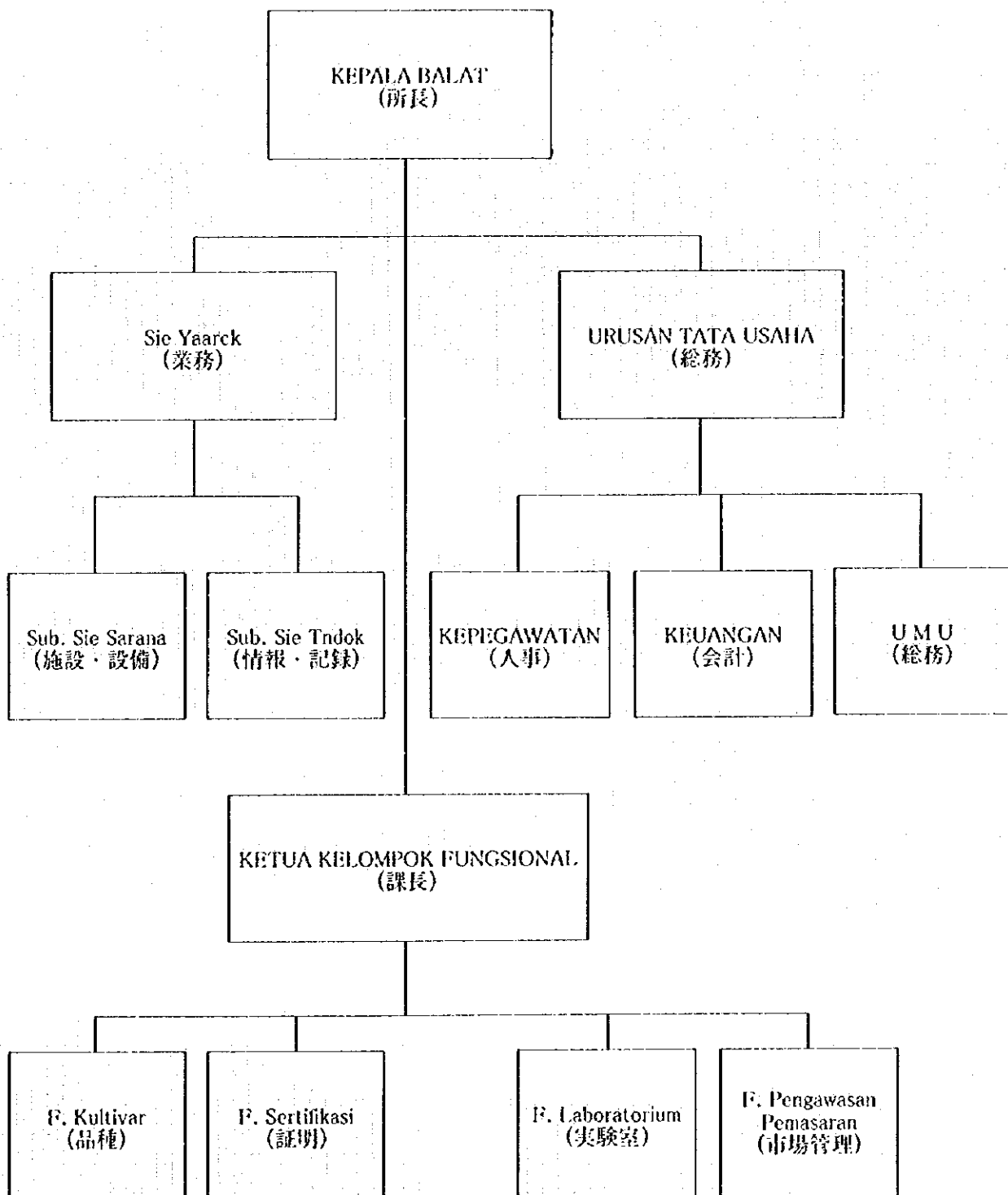


————— Hubungan Instruksi 命令系統
 - - - - - Hubungan Koordinatif 調査系統

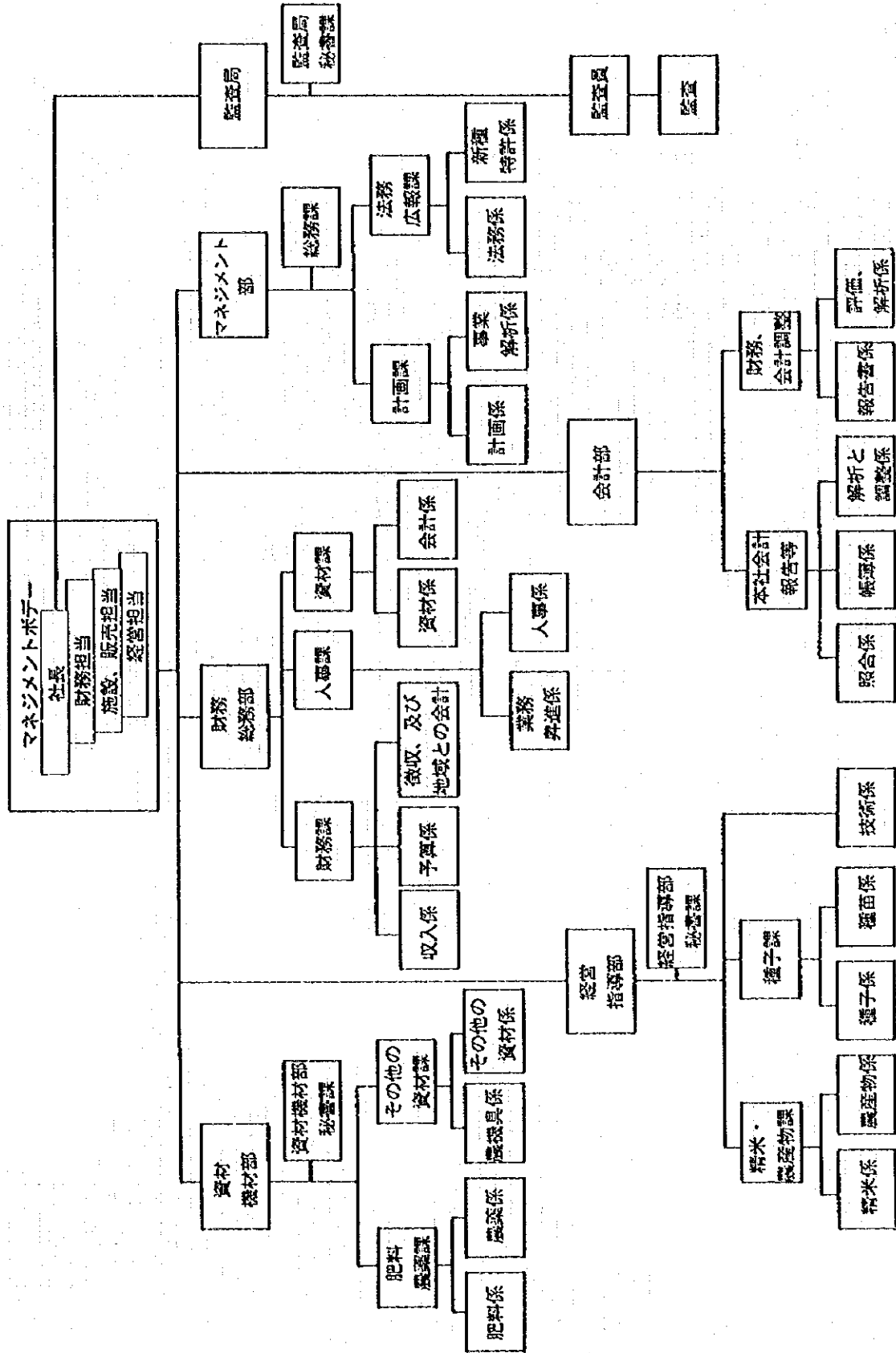
12. 第3種子検査所（東ジャワ州）組織図



13. 第4種子検査所（南スラウェシ州）組織図

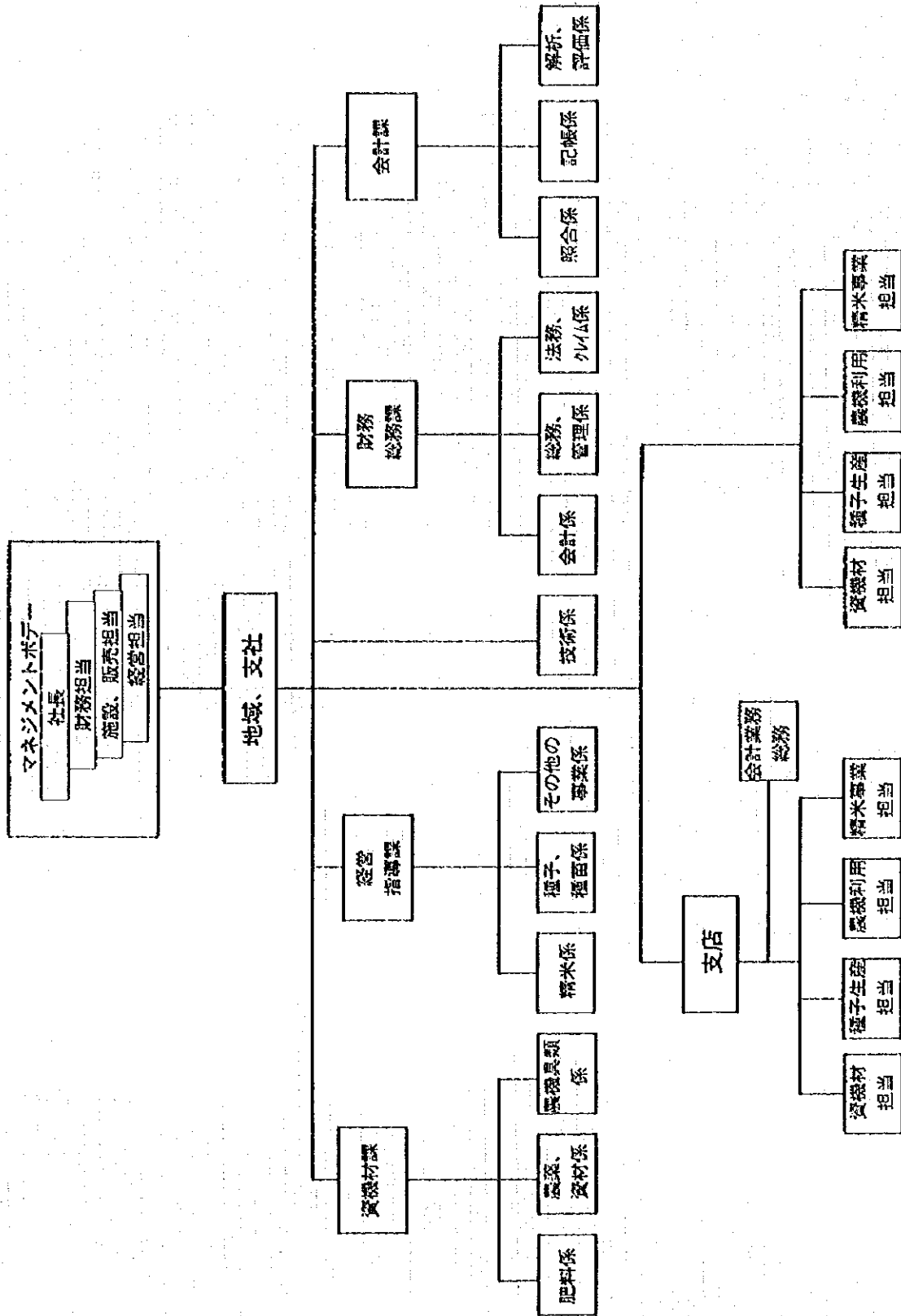


14. P.T.ブルタニ (中央) 組織図





15. P.T.ブルタニの地域（支社）及び支店組織図



16. P.T.ブルタニ中央及び支社住所録

DAFTAR NAMA PEJABAT DAN ALAMAT KANTOR /RUMAH
PT. PERTANI (PERSERO) PUSAT

NO	NAMA	KANTOR	RUMAH
	I. KANTOR PUSAT	本社	職場住所
			自宅
1.	MARSEKAL MUDA (PURN) 氏名 SUTI HARSONO Komisaris Utama 職名	Jln. Pertani No. 1 - 6 Duren Tiga, Jakarta - Selatan P.O. Box. 4266 Telp. 021 - 7991474, 7989751 7990191, 7981311 021 - 7993108 Pes. 302 Fax. 021 - 7993203	Jln. Lengkeng J - 7 Kalibara Indah Jakarta - Selatan 12750 Telp. 021 - 7993876
2.	PM. SOEDARSONO, SE Komisaris	Jln. Pertani No. 1 - 6 Duren Tiga, Jakarta - Selatan P.O. Box. 4266 Telp. 021 - 7993108 Pes. 302 Fax. 021 - 7993203	Jln. Sebrat II / B Jati Padang Pasir Minggu Jakarta Selatan 12450 Telp. 021 - 7806992
3.	Ir. ABDURRAHMAN DAUD RUSYDI Komisaris	Jln. Pertani No. 1 - 6 Duren Tiga, Jakarta - Selatan P.O. Box. 4266 Telp. 021 - 7993108 Pes. 302 Fax. 021 - 7993203	Jln. Duran No. 20 Jagakarsa, Jakarta 12620 Telp. 021 - 7271008 021 - 7270765
4.	AHMAD HELMI Direktur Utama	Jln. Pertani No. 1 - 6 Duren Tiga, Jakarta - Selatan P.O. Box. 4266 Telp. 021 - 7991474, 7989751 7990191, 7981311 021 - 7993108 Pes. 302 Fax. 021 - 7993203	Jln. Sirsak No. 6 Komplek Pertanian Hortikultura, Ps. Minggu Jakarta - Selatan Telp. 021 - 7805176
5.	II. ARTJAN A. IMRAN SE., NISM Direktur Keuangan	Jln. Pertani No. 1 - 6 Duren Tiga, Jakarta - Selatan P.O. Box. 4266 Telp. 021 - 7991474, 7989751 7990191, 7981311 021 - 7993108 Pes. 302 Fax. 021 - 7993203	Jln. Tanjung Keliling No. 33, Rawamangun Jakarta - Timur Telp. 021 - 4895553
6.	MARSOENOE Direktur Penjualan Pemasaran	Jln. Pertani No. 1 - 6 Duren Tiga, Jakarta - Selatan P.O. Box. 4266 Telp. 021 - 7991474, 7989751 7990191, 7981311 021 - 7993108 Pes. 302 Fax. 021 - 7993203	Jln. Batu Ampar I No. 7, Kramat Jati Jakarta Timur Telp. 021 - 8096364
7.	II. FATCHUR RACHMAN Direktur Bina Usaha	Jln. Pertani No. 1 - 6 Duren Tiga, Jakarta - Selatan P.O. Box. 4266 Telp. 021 - 7991474, 7989751 7990191, 7981311 021 - 7993108 Pes. 302 Fax. 021 - 7993203	Jln. M No. 2 Gudang Peluru Barat IV Kebon Baru, Tebet Jakarta 12830 Telp. 021 - 8295377

**DAFTAR NAMA PEJABAT DAN ALAMAT KANTOR /RUMAH
PT. PERTANI (PERSERO) PUSAT**

NO. NAMA	KANTOR	RUMAH
17. Drs. MULYATNO <i>Kepala Bagian Benih</i>	Jln. Pertani No. 1 - 6 Duren Tiga, Jakarta - Selatan P.O. Box. 4266 Telp. 021 - 7993108 Pes. 338 Fax. 021 - 7993203	Jln. Intan II No. 33 Vila Mutiara Ciputat - Tangerang Telp. 021 - 7413043
18. Ir. DHODHIET WII. <i>Kepala Bagian Penggilingan Padi dan Hasil Pertanian</i>	Jln. Pertani No. 1 - 6 Duren Tiga, Jakarta - Selatan P.O. Box 4266 Telp. 021 - 7993108 Pes. 357 Fax. 021 - 7993203	Jl. Kenari III - 13 Korp. Koperasi Bintara Jaya Cibening - Bekasi Telp. : 021 - 8649608
19. Ir. WURYANI PUJIASTUTI <i>Kepala Bagian Personalia</i>	Jln. Pertani No. 1 - 6 Duren Tiga, Jakarta - Selatan P.O. Box. 247 Telp. 021 - 7993108 Pes. 319 Fax. 021 - 7993203	Jln. Kramat Rt. 01 / 08 No. 22 Kel. Tanah Baru Beji, Depok, Jawa - Barat
20. Drs. ISKANDAR ISNAENI <i>Kepala Bagian Keuangan</i>	Jln. Pertani No. 1 - 6 Duren Tiga, Jakarta - Selatan P.O. Box. 247 Telp. 021 - 7993108 Pes. 315 Fax. 021 - 7993203	Taman Cikunir Indah Blok A4 No. 8 Bekasi Selatan, Jawa Barat Telp. 021 - 8205203
21. R. WIRATNO <i>Kepala Bagian Perencanaan</i>	Jln. Pertani No. 1 - 6 Duren Tiga, Jakarta - Selatan P.O. Box. 4266 Telp. 021 - 7993108 Pes. 362 Fax. 021 - 7993203	Jln. Kecipir No. 195 Depok Utara, Bogor Telp. 021 - 7520255
22. <i>Kepala Bagian Hukum & Humas</i>	Jln. Pertani No. 1 - 6 Duren Tiga, Jakarta - Selatan P.O. Box. 4266 Telp. 021 - 7993108 Pes. 355 Fax. 021 - 7993203	
23. <i>Kepala Bagian Laporan Keuangan Kantor Pusat</i>	Jln. Pertani No. 1 - 6 Duren Tiga, Jakarta - Selatan P.O. Box. 4266 Telp. 021 - 7993108 Pes. 352 Fax. 021 - 7993203	
24. <i>Kepala Bagian Laporan Keuangan Konsolidasi</i>	Jln. Pertani No. 1 - 6 Duren Tiga, Jakarta - Selatan P.O. Box. 4266 Telp. 021 - 7993108 Pes. 356 Fax. 021 - 7993203	
25. SLAMET SOEJANTO <i>Sekretaris Satuan Pengawasan Intern</i>	Jln. Pertani No. 1 - 6 Duren Tiga, Jakarta - Selatan P.O. Box. 4266 Telp. 021 - 7993108 Pes. 358 Fax. 021 - 7993203	Jln. Kutilang No. 12A Ciomas, Bogor, Jawa Barat Telp. 0251 - 634421

**DAFTAR NAMA PEJABAT DAN ALAMAT KANTOR /RUMAH
PT. PERTANI (PERSERO) WILAYAH / CABANG**

NO. N A M A	KANTOR	RUMAH
II WILAYAH SUMATERA BAGIAN UTARA		
1. Ir. DIRMAN A. DALIMUNTHE Kepala Wilayah	Jln. Let. Jen. S. Parman No. 75 Medan 20153 Telp. 061 - 553767, 553633 Fax. 061 - 527472	Taman Setia Budi Indah Blok CC - 22 Medan Telp. 061 - 813387
2. Ir. AGUS PURWANTO Wakil Kepala Wilayah	Jln. Let. Jen. S. Parman No. 75 Medan 20153 Telp. 061 - 553633, 553767 Fax. 061 - 527472	Jln. Arias No. 3 Komplek Perumahan Dolog Telp. 061 - 855278
3. DALI SAPARI Kepala Bagian Keuangan / Umum	Jln. Let. Jen. S. Parman No. 75 Medan 20153 Telp. 061 - 553633, 553767 Fax. 061 - 527472	Jln. Brigjen Katamsa Belakang No. 48 A Medan
4. SUNEDI Kepala Bagian Akuntansi	Jln. Let. Jen. S. Parman No. 75 Medan 20153 Telp. 061 - 553633, 553767 Fax. 061 - 527472	Jln. Teh Raya No. 9 Perumnas Simalingkar Medan Telp.
5. SISWANTO MP Kepala Bagian Saproten	Jln. Let. Jen. S. Parman No. 75 Medan 20153 Telp. 061 - 553633, 553767 Fax. 061 - 527472	Jln. Hayam Wunuk No. 36 Medan Telp. 061 - 531890
6. Ir. KETUT SUMADIYASA Kepala Bagian Bina Usaha	Jln. Let. Jen. S. Parman No. 75 Medan 20153 Telp. 061 - 553633, 553767 Fax. 061 - 527472	Jln. Kananga No. 26 Medan Telp. 061 -
7. Ir. DEVI MASDAVIANTO Kepala Cabang D.I. Aceh	Jln. Iskandar Muda No. 159 Banda Aceh Telp. 0651 - 22955 Fax. 0651 - 41246	Jln. Jeumpa Putih Gg. Buntu No. 4 Kunji Ujung B. Aceh Telp. 0651 - 41265
8. MIRWAN SE Kepala Cabang Sumatera Barat	Jln. Gajah Mada Padang Telp. 0751 - 54665 0751 - 51844	Jln. Marsawa No. 14 Lolong Padang 25136 Telp. 0751 - 52015
9. I NYOMAN TAMA Kepala Cabang Riau	Jln. Jend. A. Yani No. 170 Telp. 0761 - 23666, 33106 Pekanbaru	Jln. Jend. A. Yani No. 170 Pekanbaru Telp. 0761 - 23666 0761 - 33106

**DAFTAR NAMA PEJABAT DAN ALAMAT KANTOR /RUMAH
PT. PERTANI (PERSERO) WILAYAH / CABANG**

NO. N A M A	KANTOR	RUMAH
IV. WILAYAH JAIVA BARAT		
1. MEME KAMARUDIN <i>Kepala Wilayah</i>	Jin. Jakarta No. 33 Bandung Telp. 022 - 708473, 771069 Fax. 022 - 708201	Jin. Subang No. 41 Antapani Bandung Telp. 022 - 704246
2. Ir. MUFATIS WIJAYA <i>Wakil Kepala Wilayah</i>	Jin. Jakarta No. 33 Bandung Telp. 022 - 708473 Fax. 022 - 708201	Jin. Rebanda No. 12 A Turangga Bandung Telp. 022 - 308642
3. I WAYAN DANTES <i>Kepala Bagian Keuangan / Umum</i>	Jin. Jakarta No. 33 Bandung Telp. 022 - 708473 Fax. 022 - 708201	Jin. Labuan Dalam No. 6 Bandung
4. DEDI ABDUL KADIR <i>Kepala Bagian Akuntansi</i>	Jin. Jakarta No. 33 Bandung Telp. 022 - 708473 Fax. 022 - 708201	Jin. Venus Barat I/9 Metro - Bandung Telp. 022 - 7502127
5. H. DJAKARIA <i>Kepala Bagian Saprotan</i>	Jin. Jakarta No. 33 Bandung Telp. 022 - 708473 Fax. 022 - 708201	Jin. Sabilulungan No. 30 Telp. 022 - 7101941
6. RUSTI ISHAK, BSc <i>Kepala Bagian Bina Usaha</i>	Jin. Jakarta No. 33 Bandung Telp. 022 - 708473 Fax. 022 - 708201	Jin. Gatot Subroto No. 24/126 B, Rt. 07 / 01 Bandung Telp. 022 - 309153
7. Ir. ASEP RUSLIWAN <i>Kepala Cabang Jawa Barat I</i>	Jin. Raya Pandeglang No. 35 Serang Telp. 0254 - 200413	Jin. Raya Pandeglang No. 39 Serang Telp. 0254 - 200593
8. Ir. HER WIRAWANTO <i>Kepala Cabang Jawa Barat II</i>	Jin. Jend. A. Yani By Pass Karawang Telp. 0267 - 402451	Jin. Arif Rahman Hakim No. 37 Karawang Telp. 0267 - 402329
9. Ir. WAJAN GUNAWAN <i>Kepala Cabang Jawa Barat III</i>	Jin. Oto Iskandardinata No. 61 Subang Telp. 0264 - 91312	Perumnas Raya Sckarahayu Subang Telp. 0264 - 92867

**DAFTAR NAMA PEJABAT DAN ALAMAT KANTOR /RUMAH
PT. PERTANI (PERSERO) WILAYAH / CABANG**

NO. N A M A	KANTOR	RUMAH
VI. KANTOR WILAYAH JAWA TIMUR		
1. ABDUL RASYID <i>Kepala Wilayah</i>	Embong Trengguli 5 - 7 Surabaya Telp. 031 - 43005, 526043 Fax. 031 - 44307	Jln. Dukuh Kupang XXI No. 2 Surabaya Telp. 031 - 578682
2. Ir. AGUNG DARMAWAN <i>Wakil Kepala Wilayah</i>	Embong Trengguli 5 - 7 Surabaya Telp. 031 - 43005, 526043 Fax. 031 - 44307	Jln. Barata Jaya VI No. 18 Surabaya Telp. 031 - 5661278
3. SAMINGAN S. BBA <i>Kabag. Keu. / Umum</i>	Embong Trengguli 5 - 7 Surabaya Telp. 031 - 43005, 526043 Fax. 031 - 44307	Jln. Trosobo Utama Utama III / F 10 Kec. Taman - Sidoarjo Telp. 031 - 783906
4. SAWAB BIYANTO <i>Kepala Bagian Akuntansi</i>	Embong Trengguli 5 - 7 Surabaya Telp. 031 - 43005, 526043 Fax. 031 - 44307	Jln. Candi Mendut Selata Blok II / No. 5, Malang Telp. 0341 - 498611
5. DJUMA'IN DWILAKSONO BA. <i>Kepala Bagian Saprotan</i>	Embong Trengguli 5 - 7 Surabaya Telp. 031 - 43005, 526043 Fax. 031 - 44307	Jln. Siwalankerto No. 85 Surabaya Telp. 031 - 836388
6. Ir. R. TARANGGONO <i>Kepala Bagian Bina Usaha</i>	Embong Trengguli 5 - 7 Surabaya Telp. 031 - 43005, 526043 Fax. 031 - 44307	Jln. Srinaya No. 34 Bojonegoro Telp. 0353 - 84509
7. Drs. ROICHUL ANWAR <i>Kepala Cabang Jatim I</i>	Jln. A. Yani No. 25 Banyuwangi Telp. 0333 - 21242	Gg. Mawar No. 14 Banyuwangi Telp. 0333 - 24298
8. ISNAN SUPA'AT <i>Kepala Cabang Jatim II</i>	Jln. Cihitung 16 Malang Telp. 0341 - 491477	Komp. Perum. pertani Jln. Cihitung No. 10 Malang Telp. 0341 - 491219
9. GUSMAN <i>Kepala Cabang Jawa Tengah III</i>	Jln. Penanggungan 33 Kediri Telp. 0354 - 41677	Komp. Perum. Pertani Jl. Penanggungan 33 Kediri Telp. 0354 - 41677
10. Ir. EKO BUDIANTO <i>Kepala Cabang Kalimantan Selatan / Tengah</i>	Jln. Kampung Malayu Darat No. 117 Banjarmasin Telp. 0511 - 52846 Fax. 0511 - 52846	Jln. Simpang Cemeraya No. 39, Rt 17A Rw VII Kayu Tangi - Banjarmasin

**DAFTAR NAMA PEJABAT DAN ALAMAT KANTOR /RUMAH
PT. PERTANI (PERSERO) WILAYAH / CABANG**

NO. N A M A	KANTOR	RUMAH
VII. KANTOR WILAYAH SULAWESI		
1. Ir. YUNAFRI <i>Kepala Wilayah</i>	Jln. Jend. Sudirman No. 41 Ujung Pandang Telp. 0411-854228, 854655 Fax. 0411-872545 Telex 71102 Pertani UP	Jln. Bungaya No. 45 G Ujung Pandang Telp. 0411-872170
2. ANDI NURMAN <i>Wakil Kepala Wilayah</i>	Jln. Jend. Sudirman No. 41 Ujung Pandang Telp. 0411-854228, 854655 Fax. 0411-872545 Telex 71102 Pertani UP	Jln. Mawas Timur No. 6 Ujung Pandang Telp. 0411-871132
3. VISKEL BA. <i>Kepala Bagian Keuangan / Umum</i>	Jln. Jend. Sudirman No. 41 Ujung Pandang Telp. 0411-854228, 854655 Fax. 0411-872545 Telex 71102 Pertani UP	Parumnas Antang Jln. Pariring Dalam I Blok II No. 8 / 16 Ujung Pandang
4. TOYIB KARSIPAN <i>Kepala Bagian Akuntansi</i>	Jln. Jend. Sudirman No. 41 Ujung Pandang Telp. 0411-854228, 854655 Fax. 0411-872545 Telex 71102 Pertani UP	Panakukang Permai Blok III Jln. Mahoni No. 112 Ujung Pandang Telp. 0411-869353
5. H.M. ALWI LANDON <i>Kepala Bagian Soprotan</i>	Jln. Jend. Sudirman No. 41 Ujung Pandang Telp. 0411-854228, 854655 Fax. 0411-872545 Telex 71102 Pertani UP	No. 3 Rt. G / Rk. X Gamba Jawayya Tello Baru Panakukang 90233 Ujung Pandang Telp. 0411-446946
6. SOEPARLAN <i>Kepala Bagian Bina Usaha</i>	Jln. Jend. Sudirman No. 41 Ujung Pandang Telp. 0411-854228, 854655 Fax. 0411-872545 Telex 71102 Pertani UP	Tamalanrea Permai Blok I No. 36 Ujung Pandang Telp. 0411-511291
7. WANDA SAPUTRA <i>Kepala Cabang Sulawesi Selatan I</i>	Jln. Poros Rappang 8 Komp. PT. Pertani Sereang - Sidrap Telp. 0421-91491	Jln. Poros Rappang 5 Komp. PT. Pertani Sereang - Sidrap Telp. 0421-91492
8. Ir. SUPANGKAT <i>Kepala Cabang Sulawesi Tengah</i>	Jln. Cik Ditoro 22 Palu - Sulawesi Tengah Telp. 0451-21962	Jln. Tanjung Doko Lr. Ekte No. 34 Palu - Sulawesi Tengah Telp. 0451-51565

17. 各州馬鈴しょ生産関係資料

インドネシアの馬鈴しょ生産関係資料

インドネシアにおける馬鈴薯生産の推移 (Potato Production in Indonesia)

項目\年	1988	1989	1990	1991	1992	1993	1994
収穫面積 (ha)	38,983	39,229	44,930	39,620	48,852	54,420	57,510
収量 (t/ha)	11.5	14.3	14.0	13.3	14.4	15.9	15.3
生産量 (t)	447,660	559,396	628,727	525,839	702,584	866,838	880,182

(資料：農業省食用作物園芸総局)

西ジャワ州における馬鈴薯生産の推移 (Potato Production in West Java)

項目\年	1989	1990	1991	1992	1993	1994	1995
収穫面積 (ha)	9,126	9,626	8,316	11,270	12,345	13,097	19,113
収量 (t/ha)	15.44	16.17	17.09	17.49	16.62	19.21	16.12
生産量 (t)	141,497	155,621	142,162	197,165	205,239	251,549	308,157

(資料：西ジャワ州農業部園芸作物課)

北スマトラ州における馬鈴薯生産の推移 (Potato Production in North Sumatra)

項目\年	1988	1989	1990	1991	1992	1993	1994
収穫面積 (ha)	4,352	6,410	5,893	6,495	10,486	11,475	12,622
収量 (t/ha)	14.06	14.49	15.73	16.21	15.49	15.71	15.71
生産量 (t)	61,196	92,881	92,697	105,303	162,444	180,260	198,287

(資料：北スマトラ州食用作物農業部園芸課)

西スマトラ州における馬鈴薯生産の推移 (Potato Production in West Sumatra)

項目\年	1988	1989	1990	1991	1992	1993	1994
収穫面積 (ha)	1,406	1,541	1,020	1,277	1,121	2,037	2,017
収量 (t/ha)	13.99	13.78	12.37	15.66	15.98	14.11	15.68
生産量 (t)	19,671	21,232	12,620	19,999	17,915	28,752	31,632

(資料：食用作物園芸総局種苗局)

中部ジャワ州における馬鈴薯生産の推移 (Potato Production in Central Java)

項目\年	1989	1990	1991	1992	1993	1994	1995
収穫面積 (ha)	9,614	12,853	9,236	10,879	12,861	12,231	13,851
収量 (t/ha)	16.58	15.48	15.17	15.03	16.10	15.43	16.79
生産量 (t)	159,424	199,005	140,123	163,540	207,511	190,994	232,533

(資料：中部ジャワ州食用作物農業部)

東ジャワ州における馬鈴薯生産の推移 (Potato Production in East Java)

項目\年	1989	1990	1991	1992	1993	1994	1995
収穫面積 (ha)	6,885	7,170	8,296	9,034	9,423	7,179	7,576
収量 (t/ha)	11.36	10.09	9.75	13.37	13.83	11.28	12.89
生産量 (t)	78,196	72,355	80,857	120,794	130,364	80,974	97,689

(資料：東ジャワ州食用作物農業部)

南スラウェシ州における馬鈴薯生産の推移 (Potato Production in South Sulawesi)

項目\年	1989	1990	1991	1992	1993	1994	1995
収穫面積 (ha)	1,375	1,423	1,217	2,681	2,543	2,819	
収量 (t/ha)	7.10	8.08	6.65	7.42	11.00	11.72	
生産量 (t)	9,764	11,496	8,099	19,904	27,979	33,026	26,945

(資料：南スラウェシ州食用作物農業部)

西ジャワ州における県別馬鈴薯生産の推移

(単位: ha, ton)

県名 (Kabupaten)	1991		1992		1993		1994		1995	
	面積	生産量	面積	生産量	面積	生産量	面積	生産量	面積	生産量
Serang			0	1						
Pandeglang			2	22					9	72
Lebak			0	1						
Karawang			0	1	142	1,241				
Purwakarta	2	2	1	15	32	261	4	38	6	33
Subang	10	12	45	653	24	325	12	114	51	641
Bogor	38	587	109	1,849	89	770	125	1,902	93	1,203
Sukabumi	34	588	72	1,263	66	1,194	40	571	46	368
Cianjur	850	13,031	949	14,884	427	6,464	269	5,581	261	5,162
Bandung	3,377	58,994	4,060	77,872	4,664	134,384	6,509	151,521	12,043	198,766
Sumedang	176	1,496	171	2,997	678	10,729	98	1,282	150	1,379
Garut	2,792	47,123	4,452	78,411	4,628	26,954	4,621	65,791	4,662	75,078
Tasikmalaya	5	37	52	1,000	406	9,002	64	272	38	217
Cianis			1	13	5	84				
Cirebon			0	1						
Kuningan	155	1,013	248	2,141	215	1,739	270	2,105	385	2,862
Majalengka	877	19,279	1,108	16,041	750	9,239	1,082	22,372	1,380	22,302
Indramayu							211	2,839		
Kodya Bandung					8	64	3	0	29	51
計	8,316	142,162	11,270	197,165	12,345	205,289	13,097	251,549	19,153	308,134

(資料: 西ジャワ州農業部園芸作物課)

北スマトラ州における県別馬鈴薯生産の推移

(単位: ha, ton)

県名 (Kabupaten)	1990		1991		1992		1993		1994	
	面積	生産量	面積	生産量	面積	生産量	面積	生産量	面積	生産量
Sinalungun	1,662	27,870	2,008	33,357	2,254	38,112	2,734	46,751	3,007	51,426
Karo	3,575	53,560	3,840	60,538	7,177	107,619	7,634	115,065	8,397	126,572
Tapanuli Ut	328	3,605	345	3,796	700	7,708	673	7,467	740	8,214
Tapanuli Se	129	2,756	70	2,756	45	1,039	29	670	32	737
Dairi	199	4,906	232	4,906	313	7,966	405	10,307	446	11,338
計	5,893	92,697	6,495	105,353	10,486	162,444	11,475	180,260	12,622	198,287

(資料: 北スマトラ州食用作物農業部園芸課)

西スマトラ州における県別馬鈴薯生産の推移

(単位: ha, ton)

県名 (Kabupaten)	1990		1991		1992		1993		1994	
	面積	生産量	面積	生産量	面積	生産量	面積	生産量	面積	生産量
50 Kota	12		2	16	-	-	5	6	-	-
Agan	231		224	3,472	90	1,404	145	2,196	124	1,942
Tanah Datar	102		87	609	58	464	424	2,442	240	2,460
Kab.Solok	724		956	15,774	968	15,972	1,456	24,024	1,643	27,110
Padang Panjang	5		8	128	5	75	7	84	10	120
計	1,074	12,620	1,277	19,999	1,121	17,915	2,037	28,752	2,017	31,632

(資料: 食用作物園芸総局種苗局)

中部ジャワ州における県別馬鈴薯生産の推移

(単位: ha, ton)

県名 (Kabupaten)	1991		1992		1993		1994		1995	
	面積	生産量	面積	生産量	面積	生産量	面積	生産量	面積	生産量
Batang	184	1,228	244	1,733	150	1,276	156	1,067	147	1,028
Pekalongan	64	511	55	511	94	908	34	327	40	667
Penalang	18	209	44	477	27	300	27	359	32	731
Tegal	80	966	122	1,423	161	2,070	165	2,218	165	2,638
Brebes	610	5,619	1,131	12,273	1,073	11,022	1,058	11,276	1,248	14,732
Semarang	129	1,457	89	919	92	888	37	341	42	317
Kendal	41	278	53	358	50	307	41	347	34	218
Pubalingga	40	471	71	974	45	661	31	465	16	392
Banjarnegara	4,758	76,304	4,542	71,160	4,658	69,055	5,569	79,408	7,529	107,301
Magelang	625	4,022	838	7,039	439	3,268	469	3,976	333	2,125
Temanggung	26	117	42	187	23	104	35	217	47	311
Wonosobo	2,477	47,286	3,430	63,887	5,927	116,217	4,437	88,878	4,000	100,200
Karanganyar	123	1,106	64	684	55	602	48	479	35	308
Wonogiri	24	135	25	188	5	35	38	294	21	112
Klaten	0	0	1	4	0	0	3	12	1	2
Boyolali	37	414	138	1,723	62	798	78	1,330	146	1,451
計	19,236	140,123	10,879	163,540	12,861	207,511	12,231	190,994	13,851	232,533

(資料: 中部ジャワ州食用作物農業部)

東ジャワ州における県別馬鈴薯生産の推移

(単位: ha, ton)

県名 (Kabupaten)	1991		1992		1993		1994		1995	
	面積	生産量	面積	生産量	面積	生産量	面積	生産量	面積	生産量
Malang	2,066	24,444	2,306	27,954	2,445	36,213	1,323	16,212	1,265	16,217
Pasuruan	2,996	20,480	2,491	26,549	2,278	18,180	1,417	8,090	2,300	19,723
Probolinggo	2,450	30,347	3,035	57,847	3,594	68,698	3,057	47,011	2,522	53,104
Luwajang			295	1,872	146	519	172	524	304	1,017
Magetan	784	5,586	835	6,252	871	6,036	1,109	8,184	1,060	6,255
その他			72	293	89	718	101	953	125	1,373
計	8,296	80,857	9,034	120,794	9,423	130,364	7,179	80,974	7,576	97,689

(資料: 東ジャワ州食用作物農業部)

南スラウェシ州における県別馬鈴薯生産の推移

(単位: ha, ton)

県名 (Kabupaten)	1990		1991		1992		1993		1994	
	面積	生産量	面積	生産量	面積	生産量	面積	生産量	面積	生産量
Tator	242	924	159	609	397	1,707	464	2,105	464	2,122
Enrekang	563	6,187	386	3,954	614	5,566	607	7,519	611	7,708
Polnas	6	4	6	16	14	29	13	28	26	76
Gowa	172	316	153	237	1,009	7,945	623	10,704	931	15,920
Jeneponto	27	123	49	185	58	282	47	264	38	180
Bantaeng	345	3,367	402	2,635	486	3,692	625	5,969	698	6,670
Sinjai	3	5	3	6	3	6	32	109	28	126
Bone	65	569	59	457	100	677	132	1,281	23	224
計	1,423	11,495	1,217	8,099	2,681	19,904	2,543	27,979	2,819	33,026

(資料: 南スラウェシ州食用作物農業部)

主産地6州における馬鈴薯生産計画

州	項目\年	1996	1997	1998	1999	2000	年増加率
西シ	収穫面積 (ha)	16,433	16,609	16,787	16,966	17,148	1.07 %
	収 量 (t/ha)	21.34	22.14	22.98	23.85	24.76	3.75
	生産量 (t)	350,599	367,778	385,799	404,704	424,534	4.90
北ス	収穫面積 (ha)	14,370	14,649	14,933	15,223	15,519	1.94
	収 量 (t/ha)	16.98	17.76	18.58	19.43	20.32	4.59
	生産量 (t)	244,059	260,191	277,390	295,726	315,273	6.61
西ス	収穫面積 (ha)	1,740	1,779	1,818	1,858	1,899	2.20
	収 量 (t/ha)	15.07	15.32	15.57	15.83	16.09	1.66
	生産量 (t)	26,229	27,249	28,309	29,411	30,555	3.89
中シ	収穫面積 (ha)	14,662	14,817	14,974	15,133	15,293	1.06
	収 量 (t/ha)	17.65	18.26	18.82	19.40	19.99	3.31
	生産量 (t)	258,758	270,564	281,820	293,544	305,755	4.16
東シ	収穫面積 (ha)	6,226	6,392	6,563	6,738	6,918	2.67 %
	収 量 (t/ha)	11.22	11.37	11.52	11.67	11.83	1.34
	生産量 (t)	69,855	72,670	75,599	78,646	81,815	4.03
南ス	収穫面積 (ha)	3,056	3,145	3,236	3,330	3,426	2.90 %
	収 量 (t/ha)	11.87	12.46	13.08	13.72	14.41	4.97
	生産量 (t)	36,280	39,183	42,318	45,703	49,359	8.00
全国	収穫面積 (ha)	63,454	64,555	65,668	66,807	67,970	1.72
	収 量 (t/ha)	17.14	17.71	18.30	18.90	19.53	3.33
	生産量 (t)	1,087,818	1,143,184	1,201,511	1,262,965	1,327,724	4.88

(資料：農業省食用作物園芸総局資料から抜粋・追加)

西シ：西ジャワ州 北ス：北スマトラ州 西ス：西スマトラ州
 中シ：中部ジャワ州 東シ：東ジャワ州 南ス：南スラウェシ州

18. 各州の種子馬鈴しょ増殖試案

各州の種子馬鈴薯増殖試案

増殖区分	北スマトラ州		西スマトラ州		西ジャワ州	
	栽培面積	収穫量	栽培面積	収穫量	栽培面積	収穫量
G0 (SH-A) *	-	17,800 個	-	-	55,000 本	60,500 個
(うち他州分)	-	-	-	-	-	(45,600)
G1 (BS)	1,600 m ²	2.4t	-	-	1,340 m ²	2.0 t
G2 (FS)	1.2ha	17.2t	-	2.0 t	1.0 ha	13.4 t
(うち他州分)	-	(2.0)	-	-	-	-
G3 (SS)	7.6 ha	106 t	1.0 ha	14.2 t	6.7 ha	94 t
G4 (ES)	53 ha	736 t	7.1 ha	100 t	47 ha	656 t
一般 (1回分)	368 ha	9,190 t	50 ha	1,250 t	328 ha	8,190 t
(年2回分)	735 ha	18,380 t	100 ha	2,500 t	655 ha	16,380 t
(5%更新分)	735 ha	-	100 ha	-	655 ha	-
(全体)	14,700 ha	367,500 t	2,000 ha	50,000 t	13,100 ha	327,500 t
1994 年実績	14,711 ha	246,416 t	2,017 ha	31,632 t	13,097 ha	251,549 t
増殖区分	中部ジャワ州		東ジャワ州		南スラウェシ州	
	栽培面積	収穫量	栽培面積	収穫量	栽培面積	収穫量
G0 (SH-A) *	-	27,800 個	-	-	-	-
G1 (BS)	2,500 m ²	3.8t	-	-	-	-
G2 (FS)	1.9 ha	26.2t	-	11.2 t	-	2.4 t
(うち他州分)	-	(13.6)	-	-	-	-
G3 (SS)	6.3 ha	88 t	5.6 ha	78 t	1.2 ha	16.2 t
G4 (ES)	44 ha	620 t	39 ha	550 t	8.1 ha	114 t
一般 (1回分)	310 ha	7,750 t	275 ha	6,880 t	57 ha	1,430 t
(年2回分)	620 ha	15,500 t	550 ha	13,750 t	114 ha	2,850 t
(5%更新分)	620 ha	-	550 ha	-	114 ha	-
(全体)	12,400 ha	310,000 t	11,000 ha	275,000 t	2,280 ha	57,000 t
1994 年実績	12,381 ha	190,995 t	10,969 ha	160,305 t	2,281 ha	23,838 t

注) * G0生産: BBI-Pangalengan で生産 (6州計: 49,000個); 収量 1.1個/本
 G1生産: 簡易網室: 60 x 15 cm 栽植 (0.09m²/株); 収量 1.5 kg/m² (40個/m²)
 G2生産: 原原種圃: 80 x 22 cm 栽植; 収量 14 t/ha
 G3生産: 原種圃; 収量 14 t/ha
 G4生産: 採種圃; 収量 14 t/ha
 一般栽培; 収量 25 t/ha
 一般農家が n 回再増殖した時の植付面積 = 当初面積 x (25 x 0.3 x 0.5 = 3.75)ⁿ
 西ジャワ州: 1回増殖 328 x (3.75)¹ = 1,230 ha; 3回増殖 328 x (3.75)³ = 17,297 ha

(a) 2000年10月現在

19. G 4 種子生産収支解析表

ANALISA EKONOMI PRODUKSI BENIH KENTANG G4
DI PENANGKAR BENIH
(G 4 種子生産収支解析表)

NO	URAIAN (項目)	VOLUME (数量)	HARGA SATUAN Rp. (単価)	JUMLAH RP. (合計)
1	Nilai sewa tanah 1.5(tb/th) (借地料(1.5ha))	700	1,200	2,520,000
2	Pajak/lpeda/PBB (税金等)			1,071,140
3	Sarana Produksi (雑費)			
	-Benih(kg) (種子)	2,000	2,575	5,150,000
	-Pupuk :-Urea(kg) (尿素)	300	450	135,000
	-TSP(kg) (磷酸)	400	600	240,000
	-KCl(kg) (加里)	300	500	150,000
	-ZA(kg) (硫酸)	300	450	135,000
	-Magnekal(kg) (マンガン肥料)	350	750	262,500
	-Kandang(kg) (堆肥)	20,000	75	1,500,000
	-Insektisida/Fungisida(kg/lt) (殺虫剤費)			1,500,000
4	Tenaga kerja(HOK) (労賃)			4,300,000
5	Kemasan(bh) (袋代)	750	500	375,000
6	Sewa gudang (借賃・倉庫)			300,000
7	Pestisida di gudang(kg) (倉庫内防除薬)	30	20,000	600,000
8	Pemeliharaan di gudang(HOK) (倉庫管理(労賃))			350,000
9	Biaya pemeriksaan lapangan(kali) (圃場検査費用)	1	1,500	1,500
10	Biaya pemeriksaan calon benih(kg) (種子検査費)	20,000	2	40,000
11	Mencetak label(per 20 kg) (ラベル代)	70	30	2,100
12	Keamanan(HOK) (警備費(安全費))			300,000
13	Biaya pengiriman (輸送費)			
	JUMLAH (計)			18,932,240
14	Overhead			1,893,224
15	Penyusutan alat (撻却費)			110,000
16	Bunga pinjaman(24% per tahun) (利子)			2,995,558
17	Laba(10%) (計上その他)			1,893,224
	JUMLAH PENGELUARAN (合計支出)			25,824,246
18	Hasil Penj. Kentang Konsumsi(kg) (消費用売却)	6,000	600	3,600,000
19	Hasil penjualan benih kentang G4(kg) (種子用売却)	4,000	1,587	22,224,246
	JUMLAH PENDAPATAN (合計収入)			25,824,246

20. 質問表及びインドネシア側の回答

質問その1

新增殖体系に対して

1. 5州（北スマトラ、西スマトラ、中部ジャワ、東ジャワ、南スラウェシ）の選定基準は何か。
2. 北スマトラと中部ジャワにてG0→G2生産を行う理由は何か（2州の選定理由）。
3. 新增殖体系は暫定的か、若しくは永続的と考えられるのか。
4. 種子馬鈴薯生産の全体計画はどこが責任機関となって作成するのか。
5. 各州間の調整はどこが行うのか。
6. G3およびG4の流通はどこが担うのか。

農業省に対して

1. 西ジャワ州BBIの位置づけを農業省直轄に格上げする措置は可能か。
2. 各州種馬鈴薯生産の調整のための特別な行政指導はあるか。
3. 西ジャワ州で実施する各州技術者への研修経費の準備はあるのか。
4. 終了時評価調査団が提言した11項目のその後の進捗状況。
 - ・BBU灌漑施設の整備状況
 - ・種子流通を取り扱う団体への指導
 - ・種馬鈴薯生産・流通に関する資金環流と種子馬鈴薯生産農家への融資制度
5. 要請書中の「急速増殖手法」とは何か。
6. 要請書中の「各州の農業環境に適した品種」に要求される形質は何か、また 具体的品種はあるのか。

西ジャワ州に対して

1. 他州への技術移転（研修）を行うに当たり、人員・予算を付ける準備があるのか。
2. 技術面で他州のイニシアティブをとるつもりはあるのか。
3. G3、G4種子の適正・円滑な流通のための具体策は。
4. 種子生産農家の技術向上策
5. 原原種農場、原種農場の運営・種子馬鈴薯生産の将来計画

5州に対して

1. 州内種子馬鈴薯・馬鈴薯生産の現状と将来計画
2. 新增殖体系に関するコメント
3. 各施設の規模（機材、人員、建物）および施設整備計画の有無
4. G3、G4流通事情と種子馬鈴薯価格設定方法
5. 各州における年間種子馬鈴薯需要量・供給量、馬鈴薯生産量

QUESTIONNAIRE
FOR
DEVELOPMENT OF SEED POTATO MULTIPLICATION SYSTEM PROJECT

New multiplication system

1. The reason why 5 provinces were selected.
2. The reason why North Sumatra and Central Java were selected as the production areas for G0 - G2.
3. Is the new system temporary or permanent?
4. Which organization will be responsible for preparing the total plan for seed potato production in Indonesia?
5. Which organization will coordinate among the provinces?
6. Which organization will distribute G3 and G4?

To Ministry of Agriculture

1. Possibility of measures to upgrade the BBI West Java to the BBI under the Ministry of Agriculture.
2. Do you have any administrative guidance program for the coordination of seed potato production among the provinces?
3. Arrangement for covering costs of training program for staff of other provinces carried out by West Java.
4. Progress related to 11 items which were suggested by the evaluation team, especially the following items:
 - Item 6) Irrigation facility in BBU
 - Item 8) Guidance for seed circulation organizations
 - Item 9) Financing plans for seed potato production and distribution, and financial support system such as low interest loans to seed growers
5. What is the "rapid multiplication technique"?
6. What characteristic does each province need to be suitable for agricultural environment? Do you have the varieties you needed?

To West Java

1. Do you make preparations related to finance and personnel for technical transfer (training) to other provinces?
2. Do you take the initiative to help other provinces on technical matters?
3. What concrete measures do you take to promote proper and smooth management of G3 and G4 distribution?
4. What concrete measures do you take to improve seed production techniques of seed growers?
5. Future plan of seed potato production at BBI and BBU and management of BBI and BBU.

To five provinces

1. Present situation and future plan related to seed potato and potato production.
2. Any comments on new multiplication system.
3. Scale of each facility (equipment, personnel, facility) and equipment plan for facilities.
4. Distribution situation of G3 and G4.
5. Scheme to set prices of seed potatoes.
6. Annual demand and supply of seed potatoes, and potato production for past five years in each province.

質問 その2

農業省に対して

1. 国家開発計画の概要、その中の農業分野に関する政策および本要請内容との関係
2. 国際機関、他国からの農業分野の協力プロジェクトおよび協同研究に関する下記項目
 - 1) 協力機関・国名
 - 2) プロジェクト名・協力期間
 - 3) 協力概要
 - 4) イ側関係機関
 - 5) Loan or Grant
- 3) プロジェクト実施予算措置（予算項目、予定額、出所）
- 4) C/Pの配置予定（機関別予定人員数、専任 or 兼任）
- 5) 西ジャリ州での成果をイ側自身では、どの様に全国へ広めようと考えているか。また、その計画の中のどの部分を日本に協力して欲しいのか。
- 6) 本プロジェクトに対する農業省の関わり方、どこが主導権を握るのか。
- 7) 馬鈴薯全体需給計画の策定はどこ行うか。

農業省および各州に対して

- 1) 種子馬鈴薯価格設定基準
- 2) 種子馬鈴薯生産の収益は他作物（食用馬鈴薯含む）と比較して優位か。
- 3) 一般農家が優良種子を使用した場合の収益の見込み。
- 4) 採算のとれるG3の合格率。
- 5) 輸入種子の普及と流通状況、輸入種子代

QUESTIONNAIRE

FOR

DEVELOPMENT OF SEED POTATO MULTIPLICATION SYSTEM PROJECT (No.2)

To Ministry of Agriculture

1. Outline of the national development plan, agricultural policy under this plan and relationship with the proposal
2. Cooperation projects in the field of agriculture by international organizations or other countries, and joint research projects
 - 1) country, cooperative organization
 - 2) project title, project period
 - 3) outline of project, loan or grant
 - 4) Concerned Indonesian agency
3. Budget (items, amounts, sources)
4. Counterparts plan (number of persons, organizations, full-time or concurrent with other work)
5. How do you extend the results of the multiplication system in West Java to the whole country by yourself? And which parts require support of the Japanese Government?
6. How do you participate in the new project? Which organization will assure leadership?
7. Which organization makes "the supply and demand plan" for seed potato?

To Ministry of Agriculture and each province

1. Scheme and standard for selling prices of seed potatoes.
2. How profitable are seed potatoes compared with other crops (including consumption potatoes)?
3. Prospect for the profits of ordinary farmers when they use high quality seed potatoes costing 2,000Rp/kg.
4. What portion of G3 must pass inspection to ensure profitability?
5. Extension and distribution of imported seeds and their prices.

(1)

QUESTIONNAIRE

FOR

DEVELOPMENT OF SEED POTATO MULTIPLICATION SYSTEM PROJECT

(Q = question; A = answer)

New multiplication system.

1. Q. The reason why 5 provinces were selected ?

A. The Government of Indonesia was selected 5 provinces, because

- The 5 provinces have potential areas for development of potato production
- Communication and transportation is very good, so that distribution and marketing (mainly for export to the ASEAN country) of potato will be easy.
- more than 45 percent of farmers at those areas are vegetable grower (especially potato)
- The 5 provinces have BBI as the production areas for multiply G0, G1, and G2
- The 5 provinces are development areas for support another provinces, that is government policy.

2. Q. The reason why North Sumatera and Central Java were selected as the production areas for G0 - G2 ?

A. The first proposal, Indonesian Government decided 5 provinces as developed areas for seed potato production for G0, G1, and G2, however, in accordance with information from Japanese Expert Seed Potato Project, the finance of Japan Government is limited to aid this project; So, Ministry of Agriculture of Republic Indonesia propose the second proposal, and decide 2 provinces (North Sumatera and Central Java) for seed potato the production. In implementation, North Sumatera and Central Java will produce G1 and distributed to another provinces, and make G2 for them selves (selfsufficiency).

3. Q. Is the system temporary or permanent ?
A. The new system should be permanent.
4. Q. Which organization will be responsible for preparing the total plan for seed potato production in Indonesia ?
A. The Directorate General of Food Crops and Horticulture of the Ministry of Agriculture will bear overall responsibility for preparing the total plan for seed potato production in Indonesia, by considering of provincial government proposal.
5. Q. Which organization will coordinate among the provinces ?
A. The DGFC of Ministry of Agriculture will coordinate among the provinces.
6. Q. Which organization will distribute G3 and G4 ?
A. The organization will distribute G3 and G4 is PT Sang Hyang Seri (Annex 1) or PT. Pertani.

To Ministry of Agriculture

1. Q. Possibility of measures to upgrade the BBI West Java to the BBI under Ministry of Agriculture ?
A. All BBI in Indonesia belong to the provincial Government. So, impossible BBI West Java or other one's under the Ministry of Agriculture.
2. Q. Do you have any administrative guidance program for the coordination of seed potato production among the provinces ?
A. We have administrative guidance program for vegetable seed production (included seed potato) and have guidance program for Vegetable seed control & Sertification

3. Q. Arrangement for covering costs of training program for staff of other provinces carried out by West Java ?
- A. The budgeting system for implementation BBI activity will cover by MOA (Including for training) with terminate cost.
4. Q. Progress related to 11 items which were suggested by the evaluation team especially the following items:
- a) Q. Item 6) Irrigation facility in BBU
- A. We already informed to BBU, to make submersible pump (Deepwell) for field irrigation and BBU agree about it.
- b) Q. Item 8). Guidance for seed circulation organizations
- A. We always try in order to make better the flow of seed
- c) Q. Item 9) Financing plans for seed potato production and distribution and financial support system such as low interest loans to seed growers.
- A. The activity in BBI for seed potato product and distribution are financed by the government incase of seed potato. The BBU policy give loans without interest to the Seed Growers, Seed growers will return them, after harvest in accordance with seed potato price, at that moment.
5. Q. What is the "rapid multiplication technique" ?
- A. "Rapid multiplication technique" means to get amount Seedling in short period and disease free, through tissue culture method.
6. a). Q. What characteristic does each province need to be suitable for agricultural environment?
- A. Characteristic need for suitable agriculture environment
- to produce seed potato disease free
 - Seed potato growing with lower pesticide (Integrated Pest Management)

b). Q. Do you have the varieties you needed?

A. Yes, we have some varieties need, especially for potato industry.

a. i. : - Rosset burbank

- Atlantic

- Herta

- Diamant

- Agria

QUESTIONNAIRE
FOR
DEVELOPMENT OF SEED POTATO MULTIPLICATION SYSTEM PROJECT

(Q = question; A = answer)

To Ministry of Agriculture

1. Q. Outline of the national development plan, agricultural policy under this plan and relationship with the proposal
A. Out line of National development plan lay stress on increasing of agriculture production .In case of food crops and horticultura production the policy to be emphasized on : maintain of rice self sufficiently;
- to achieve self sufficient for maize and soybean; and
- to increase horticulture production (including potato production) see Annex 2
The proposal isclose relation to the effort, how to in crease potato production in Indonesia.
2. Q. Cooperation projects in the field of agriculture by inter - national organizations or other country, and joint research projects
 - 1). country, cooperative organization
 - 2). project title, project period
 - 3). outline of of project, loan or grant
 - 4). Concerned Indonesian agency
A. There is no cooperation project with International organization, except for the research. Research Institute for Vegetable had cooperattion with CIP (Central International Potato) for long time; but limited on exchange wild Potato Varieties.

3. Q. Budget (items, amounts, sources)
A. Budget will arrange by MOA later on
4. Q. Counterparts plan (number of persons, organizations, full time or concurrent with other work)
A. Counterpart will be provided by Provincial Agriculture Service (PAS) and Seed control and Certification Service (SCCS) on Preliminary survey meeting
5. Q. How do you extend the results of the multiplication system in West Java to the Japanese Government?
A. The results of the multiplication system in West Java as pilot project. So, We have to make sure that this system can be transfer to whole of Indonesia .
We hope the Japanese Government can support some facilities (building and equipment) and experties.
6. Q. How do you participate in the new project? Which organization will assure leadership?
A. The DGFCH of MOA will appoint Director, Directorate of Seed Development, on responsibility or participate to Coordinate and Manage of New Project.
7. Q. Which organization makes "the supply and demand plan " for seed potato?
A. No organization makes supply and demand Seed Potato, because supply and demand depend on market power.

To Ministry of Agriculture and each province

1. Q. Scheme and standard for setting prices of seed potatoes.
A. Standard price for Seed Potato followed Ministry decree (Annex 3 & 4)
(especially for Cutting, Foundation Seed and Stock Seed).
And for Extention seed decide by Governor decree.
2. Q. How profitable are seed potatoes compared with other crops (including consumption potatoes)?
A. Profitable are Seed Potato Compared with other corps (Annex 5)
3. Q. Prospect for the profits of ordinary farmers when they use high quality seed potatoes costing 2,000 Rp/kg.
A. Prospect for the profit of ordinary farmers with seed potato price Rp 2000/Kg See Annex 6
4. Q. What portion of G3 must pass inspection to ensure profitability
A. See potato quality Standard (Annex 7)
5. Q. Extension and distribution of imported seeds and their prices
A. Imported seed (Annex 8) and prices Rp. 4000 - Rp. 4.500/kg

Daftar Undangan

- | | |
|-------------------------------|--------------------------|
| 1. Mr. Kenjiro Yatabe | Team Leader OECF |
| 2. Mr. Hiraku Oka | Team OECF |
| 3. Dr. Saroso S. | Co Team Leader OECF |
| 4. Mr. Edward Napitupulu | Kasubdit Bantuan Program |
| 5. Mr. Kakiya | Expert DGFCB |
| 6. Kepala Biro KLN. | |
| 7. Mr. Nakakigashi | Expert DGFCB |
| 8. Kapuslithort | |
| 9. Pemimpin Proyek PS2TPH | |
| 10. Kasubdin Sumatera Utara | |
| 11. Kasubdin Sumatera Barat | |
| 12. Kasubdin Sulawesi Selatan | |
| 13. Kasubdin Jawa Barat | |
| 14. Kasubdin Jawa Tengah | |
| 15. Kasubdin Jawa Timur | |



pt. sang hyang seri (persero)

KONDISI PASAR TANAMAN BERBILAH-BILAH (KAPAS, BAWANG, DAN JAGUNG) DI JAKARTA TEL: (021) 8715996 FAKS: (021) 8715997

Nomor : 981/SHS.01/V/1997
Lampiran :
Perihal : Peran serta dalam Rencana Proyek
Kedelai, Jagung dan Kentang.

Jakarta, 23 Mei 1997

Kepada Yth. :
Sdr. Direktur Bina Program
Direktorat Jenderal Tanaman
Pangan & Hortikultura
Jl. AUP, Pasarmingu
JAKARTA.

Menanggapi surat Saudara Nomor : H.210.1592.97 tanggal 15 Mei 1997 perihal tawaran untuk berperan serta dalam rencana proyek kedelai, jagung dan kentang dengan ini kami sampaikan bahwa pada prinsipnya kami berminat untuk dapat ikut sertakan dalam proyek tersebut.

Komoditi yang akan ditangani adalah kedelai, jagung dan kentang dengan lokasi sebagaimana dibawah ini :

Komoditi	Lokasi
大豆 → a. Kedelai	Sumatera Utara dan Jawa Timur
トウモロコシ → b. Jagung	Jawa Timur, Sulawesi Selatan, Lampung dan Sumatera Utara
土豆 → c. Kentang	Sumatera Utara dan Jawa Tengah

Demikian kami sampaikan atas perhatian dan kerjasamanya kami ucapkan terima kasih.

DIREKSI PT SANG HYANG SERI (PERSERO)
DIREKTUR UTAMA,

Drs. M. Sujud,
NRP. 25927

Tembusan Kepala Yth :

1. Bapak Direktur Jenderal Tanaman Pangan dan Hortikultura.
2. Anggota Direksi PT. Sang Hyang Seri (Persero)

Dep. 13/13/227

Projection of Potato Production in Indonesia in 1996 - 2000

No.	PROVINCE	1996	1997	1998	1999	2000	INCREASED (%/Year)
		(Tons)					
1	D.I. Aceh	1,655	1,751	1,852	1,960	2,073	5.80
2	North Sumatera	244,059	260,191	277,390	295,726	315,273	6.61
3	West Sumatera	26,229	27,249	28,309	29,411	30,555	3.89
4	Riau	0	0	0	0	0	0.00
5	Jambi	66,865	69,680	72,614	75,671	78,857	4.21
6	Bengkulu	5,141	5,366	5,601	5,846	6,102	4.38
7	South Sumatera	53	54	56	58	59	3.13
8	Lampung	8,931	9,198	9,473	9,757	10,048	2.99
9	DKI Jakarta	0	0	0	0	0	0.00
10	West Java	350,599	367,778	385,799	404,704	424,534	4.90
11	Central Java	259,758	270,564	281,820	293,544	305,755	4.16
12	DI Yogyakarta	348	369	391	414	439	6.00
13	East Java	69,855	72,670	75,599	78,646	81,815	4.03
14	West Kalimantan	0	0	0	0	0	0.00
15	Central Kalimantan	0	0	0	0	0	0.00
16	South Kalimantan	0	0	0	0	0	0.00
17	East Kalimantan	0	0	0	0	0	0.00
18	North Sulawesi	8,198	8,657	9,142	9,654	10,194	5.60
19	Central Sulawesi	248	263	279	295	313	6.00
20	South Sulawesi	36,280	39,183	42,318	45,703	49,359	8.00
21	Sulawesi Tenggara	0	0	0	0	0	0.00
22	Bali	5,407	5,785	6,190	6,623	7,087	7.00
23	South East Sulawesi	65	71	78	86	94	9.80
24	West Nusa Tenggara	514	599	699	814	949	16.57
25	East Nusa Tenggara	139	147	156	165	175	6.00
26	Maluku	442	477	515	556	601	8.00
27	Irian Jaya	3,033	3,130	3,230	3,334	3,440	3.20
	INDONESIA	1,087,819	1,143,182	1,201,511	1,262,967	1,327,722	

Source: Directorate of Seed Development

Projection of Potato Harvested Area in Indonesia in 1996 - 2000

No.	PROVINCE	1996	1997	1998	1999	2000	INCREASED (%/Year)
		(ha)					
1	D.I. Aceh	276	286	296	306	317	3.50
2	North Sumatera	14,370	14,649	14,933	15,223	15,519	1.94
3	West Sumatera	1,740	1,779	1,818	1,858	1,899	2.20
4	Riau	0	0	0	0	0	0.00
5	Jambi	2,966	3,041	3,117	3,194	3,274	2.50
6	Bengkulu	782	799	815	832	850	2.10
7	South Sumatera	18	18	19	19	20	3.13
8	Lampung	818	893	860	882	904	2.53
9	DKI Jakarta	0	0	0	0	0	0.00
10	West Java	16,433	16,609	16,787	16,966	17,146	1.07
11	Central Java	14,662	14,817	14,974	15,133	15,293	1.08
12	DI Yogyakarta	33	35	36	38	39	4.20
13	East Java	6,226	6,392	6,563	6,738	6,918	2.67
14	West Kalimantan	0	0	0	0	0	0.00
15	Central Kalimantan	0	0	0	0	0	0.00
16	South Kalimantan	0	0	0	0	0	0.00
17	East Kalimantan	0	0	0	0	0	0.00
18	North Sulawesi	565	584	603	623	644	3.32
19	Central Sulawesi	43	46	48	51	54	5.63
20	South Sulawesi	3,056	3,145	3,236	3,330	3,426	2.90
21	Sulawesi Tenggara	0	0	0	0	0	0.00
22	B a l i	458	470	483	496	510	2.70
23	South East Sulawesi	13	14	14	15	15	3.15
24	West Nusa Tenggara	343	356	370	384	398	3.75
25	East Nusa Tenggara	149	154	158	163	168	3.00
26	Maluku	126	131	136	141	146	3.60
27	Irian Jaya	378	390	402	415	428	3.10
	INDONESIA	63,455	64,554	65,668	66,807	67,970	

Source: Directorate of Seed Development



MENTERI PERTANIAN
REPUBLIC INDONESIA

KEPUTUSAN MENTERI PERTANIAN

NOMOR : 820/Kpts/TP.840/11/96

TENTANG

PENENTUAN HARGA JUAL BENIH KENTANG PILOT PROYEK
PEMBIBITAN KENTANG DI JAWA BARAT

MENTERI PERTANIAN

- Menimbang :
- a. bahwa berdasarkan Surat Keputusan Menteri Pertanian Nomor : 665/Kpts/TP.240/10/91 telah ditetapkan Pembentukan Pilot Proyek Pembibitan Kentang di Jawa Barat;
 - b. bahwa pilot proyek pembibitan kentang yang berlokasi di Jawa Barat tersebut telah menghasilkan benih kentang bebas penyakit;
 - c. bahwa sesuai ketentuan diktum ketujuh Surat Keputusan Menteri Pertanian dimaksud pada huruf a, maka dipandang perlu menentukan harga jual benih kentang ditingkat pilot proyek pembibitan kentang di Jawa Barat.
- Mengingat :
1. Undang-undang Republik Indonesia Nomor 12 Tahun 1992;
 2. Peraturan Pemerintah Republik Indonesia Nomor 44 Tahun 1995;
 3. Keputusan Presiden Republik Indonesia Nomor 44 Tahun 1974;
 4. Keputusan Presiden Republik Indonesia Nomor 15 Tahun 1984 jo
 - Keputusan Presiden Republik Indonesia Nomor 83 Tahun 1993;
 5. Keputusan Presiden Republik Indonesia Nomor 96/M Tahun 1993;
 6. Surat Keputusan Menteri Pertanian Nomor 665/Kpts/TP.240/10/91;
 7. Surat Keputusan Menteri Pertanian Nomor 96/Kpts/OT.210/2/1994.

MEMUTUSKAN :

Menetapkan
PERTAMA

Menentukan harga jual benih kentang pilot proyek pembibitan kentang di Jawa Barat sebagai berikut:

1. Stek oleh Balai Penelitian Tanaman Sayuran adalah Rp. 75,- (Tujuh Puluh Lima Rupiah) per stek;
2. Benih Dasar (BD) kentang oleh BBI Pengatengan Kentang adalah Rp. 2.275,- (Dua ribu dua ratus tujuh puluh lima rupiah) per kilogram;
3. Benih Pokok (BP) Kentang oleh PD. Mamin adalah Rp. 2.575,- (Dua ribu lima ratus tujuh puluh lima rupiah) per kilogram.

KEDUA :

- KEDUA : Direktur Jenderal Tanaman Pangan dan Hortikultura memantau pelaksanaan harga benih kentang sebagaimana yang dimaksud pada diktum pertama Keputusan ini.
- KETIGA : Apabila dipandang perlu Direktur Jenderal Tanaman Pangan dan Hortikultura diberi wewenang untuk menyesuaikan harga benih kentang sesuai perkembangan.
- KEEMPAT : Keputusan ini mulai berlaku sejak tanggal ditetapkan.

Ditetapkan di : J a k a r t a

Pada tanggal : 5 N o p e m b e r 1996



MENTERI PERTANIAN,

H. SJARIFUDIN BAHARSJAH

SALINAN Keputusan ini disampaikan kepada Yth. :

1. Menteri Negara Perencanaan Pembangunan Nasional/Ketua Bappenas;
2. Menteri Keuangan;
3. Menteri Dalam Negeri;
4. Sekretaris Jenderal Departemen Pertanian;
5. Inspektur Jenderal Departemen Pertanian;
6. Direktur Jenderal Tanaman Pangan dan Hortikultura;
7. Kepala Badan Penelitian dan Pengembangan Pertanian;
8. Gubernur/KDH Tingkat I Propinsi Jawa Barat;
9. Kepala Pusat Penelitian dan Pengembangan Hortikultura;
10. Kepala Kantor Wilayah Departemen Pertanian Propinsi Jawa Barat.



*Gubernur Kepala Daerah Tingkat I
Jawa Barat*

SURAT KEPUTUSAN GUBERNUR KEPALA DAERAH TINGKAT I JAWA BARAT
NOMOR : 521.32/SK.551-Perpok/1997

TENTANG :

PENETAPAN HARGA BENIH KENTANG GRANOLA L (G4)
DI JAWA BARAT

GUBERNUR KEPALA DAERAH TINGKAT I JAWA BARAT

Menimbang

- a. bahwa Pilot Project Pembibitan Kentang di Jawa Barat yang ditetapkan melalui Surat Keputusan Menteri Pertanian R.I. Nomor : 665/KPTS/TP/240/10/91 tanggal 5 Nopember 1991, telah menghasilkan benih kentang bebas patogen.
- b. bahwa untuk terjaminnya kelancaran perbanyakan benih kentang G4 serta kelangsungan usaha dari para petani penangkar Jawa Barat, dipandang perlu penetapan harga di tingkat produsen dan harga ditingkat konsumen melalui Keputusan Gubernur Kepala Daerah Tingkat I Jawa Barat.

Mengingat

1. Undang-Undang Nomor 11 Tahun 1950 tentang Pembentukan Propinsi Jawa Barat (Berita Negara Republik Indonesia Tanggal 4 Juli 1950);
2. Undang-Undang Nomor : 5 Tahun 1974 tentang Pokok-pokok Pemerintahan di Daerah (Lembaran Negara Republik Indonesia Tahun 1974 Nomor 38, tambahan Lembaran Negara Indonesia Nomor 3037),
3. Surat Keputusan Menteri Pertanian R.I. No 665/KPTS/ TP.240/ 10/91 tentang Penibentukan Pilot Project Pembibitan Kentang di Jawa Barat;

4. Keputusan

4. Keputusan Menteri Pertanian Nomor : 820/Kpts/TP.840/11/96 tanggal 5 Nopember 1996 tentang Penentuan Harga Jual Benih Kentang Pilot Proyek Pembibitan Kentang di Jawa Barat
5. Surat Keputusan Gubernur Kepala Daerah Tingkat I Jawa Barat Nomor : 521.32/SK.113-Perok/95 tanggal 29 Juni 1995 tentang Pembentukan Pilot Project Pembenihan Kentang Propinsi Daerah Tingkat I Jawa Barat;
6. Keputusan Gubernur Kepala Daerah Tingkat I Jawa Barat Nomor : 18 tahun 1997 tanggal 2 April 1997 tentang Sistem Penyaluran Benih Kentang Granola L di Jawa Barat.

Memperhatikan : Hasil Keputusan Rapat tanggal 25 April 1997 tentang Pembahasan Penetapan Benih Kentang G4.

MEMUTUSKAN :

Menetapkan :

- PERTAMA** : Menetapkan harga benih kentang Granola L (G4) di Jawa Barat, sebagai berikut :
Harga kelas benih sebar (ES/G4) sebesar Rp. 2.000,- (Dua Ribu Rupiah)/Kg
- KEDUA** : Apabila terjadi perubahan harga komponen-komponen dan atau sarana produksi yang dibutuhkan, maka perubahan harga benih sebar (ES/G4) akan diatur kemudian.

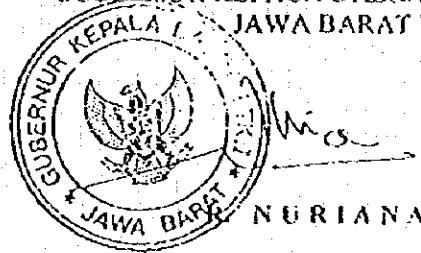
KETIGA ...

KETIGA

Surat Keputusan ini berlaku sejak tanggal ditetapkan, dengan ketentuan akan diadakan perubahan dan perbaikan sebagaimana mestinya apabila ternyata terdapat kekeliruan didalamnya.

DITETAPKAN DI: BANJUNG
PADA TANGGAL: 13 Mei 1997

GUBERNUR KEPALA DAERAH TINGKAT I
JAWA BARAT



NURIANA

TEMBUSAN :

1. Yth. Bapak Menteri Dalam Negeri RI. di Jakarta
2. Yth. Bapak Menteri Pertanian RI. di Jakarta
1. Yth. Bapak Dirjen Tanaman Pangan dan Hortikultura
2. Yth. Tim Koordinasi Pilot Project Perbenihan Kentang Tingkat Pusat
3. Yth. Ketua DPRD Tingkat I Jawa Barat
4. Yth. Tim Koordinasi Pilot Project Perbenihan Kentang Propinsi Jawa Barat
5. Yth. PANGDAM III Siliwangi
6. Yth. KAPOLDA Jawa Barat
7. Yth. Kepala Kejaksaan Tinggi Jawa Barat
10. Yth. Ketua Pengadilan Tinggi Jawa Barat
11. Para Asisten/Inspektur Wilayah/Ketua Bappeda/ Kepala Direktorat Sospol pada Pemerintah Propinsi Daerah Tingkat I Jawa Barat.
12. Yth. Para Pembantu Gubernur Wilayah I s/d V di Jawa Barat
13. Yth. Para Bupati/Walikota/KDH TK. II se Jawa Barat.

Pengeluaran dan pemasukan usaha produksi benih cabai merah dengan menanam sendiri untuk 1 Ha.

Pengeluaran		Pemasukan	
Jenis	Jumlah (Rp)	Jenis	Jumlah (Rp)
1. Pengeluaran langsung		1. Penjualan benih	
a. Sarana Produksi		cabai merah (67,1 kg	
- Benih	48.400	@ Rp 64.580,22)	4.333.333
- Pupuk	568.275	2. Penjualan cabai	
- Pestisida	<u>1.337.500</u>	merah segar	
Jumlah a =	1.954.175	(4.263 kg	
b. Tenaga kerja		@ Rp 1.345,-)	5.733.735
- Pengolahan tanah	535.800		
- Semai dan tanam	122.400		
- Pemupukan	98.125		
- Penyiangan	171.300		
- Pemberantasan hama			
dan penyakit	387.000		
- Penyiraman	360.000		
- Seleksi/roguing	30.667		
- Panen	<u>478.800</u>		
Jumlah b =	2.184.092		
c. Pengolahan benih ¹⁾			
- Pemisahan biji	195.875		
- Pengeringan	126.333		
- Pembersihan	55.000		
- Pengemasan	20.375		
- Penyimpanan	<u>5.500</u>		
Jumlah c =	403.083		
Jumlah 1 (a+b+c) =	4.541.350		
2. Pengeluaran tidak langsung			
a. Sewa tanah	1.046.667		
b. Iuran irigasi	10.000		
c. Izin tanam	5.000		
d. Zakat	<u>137.500</u>		
Jumlah 2 =	1.199.167		
Jumlah pengeluaran =	5.740.517	Jumlah pemasukan =	10.067.068

¹⁾Termasuk biaya tenaga kerja, sarana dan bahan.

Biaya Produksi, Nilai Hasil Produksi dan Keuntungan Usahatani Kentang pada W.K. 1996 per Hektar

No.	Nama Responden	Produksi		Biaya (Rp.)			Keuntungan (Rp.)
		(kg)	(Rp.)	Saproti	T. Kerja	Lain-lain	
Kabupaten Wonorebo							
Kecamatan Kelajar							
1	Sepio Yuwono	18.300	14.520.000	7.034.500	2.219.000	59.000.00	9.312.500.0
2	M. Mafuh	18.400	19.640.000	4.274.320	998.760	97.000.00	5.370.080.0
3	H. Sudjana	12.000	10.350.000	5.522.750	1.347.325	108.550.00	6.978.625.0
4	H. Slamet Rudi	21.530	16.918.500	7.009.750	1.744.575	73.800.00	8.828.125.0
5	H. Bahrodin	18.879	16.514.971	4.748.897	1.885.265	64.911.8	6.699.073.5
6	A. Rohani	18.267	14.678.167	8.089.993	1.753.033	74.533.3	9.917.500.0
7	H. Mukis	16.067	13.100.000	6.747.133	2.036.433	57.000.00	8.810.566.7
8	Anwarudin S.	20.154	15.000.769	5.512.000	1.820.000	70.769.2	7.402.769.2
9	Bambang S.	20.375	14.702.500	5.131.083	1.957.375	110.166.7	7.198.625.0
10	Abu Makom	17.900	14.045.000	5.787.500	2.015.650	78.000.00	7.881.150.0
11	Sutardi Achya	18.000	12.600.000	9.055.000	2.099.300	97.000.00	11.251.300.0
12	Barmadi	19.000	16.200.000	6.827.200	1.677.900	84.000.00	8.589.100.0
13	H. Sudiyono	20.000	20.000.000	5.509.067	1.810.667	99.333.3	7.409.066.7
14	Busrudin	13.736	10.756.560	7.230.000	2.298.800	183.700.00	9.692.500.0
15	Mukodim	17.280	12.690.000	3.389.000	2.396.900	164.600.00	5.910.500.0
16	M. Supandi	22.000	17.907.200	7.591.000	2.359.000	28.900.00	9.978.900.0
17	Noto Provitno	18.000	12.600.000	8.047.000	2.398.900	41.000.00	10.486.900.0
18	H. Musyatak	10.600	8.480.000	3.642.000	2.446.500	50.000.00	6.138.500.0
19	Mubasir	10.800	8.520.000	5.687.000	2.691.700	21.000.00	8.389.700.0
20	Hartadi	6.690	4.917.500	3.490.200	2.041.200	29.100.00	5.560.500.0
21	Supriyadi	28.750	24.437.500	8.971.500	2.604.000	370.000.00	11.945.500.0
22	Benu	19.775	15.729.375	5.252.750	2.913.750	36.750.00	8.203.250.0
23	Nahudi	12.333	9.866.667	6.948.667	2.558.500	14.833.3	9.522.000.0
24	Dukohar	7.433	5.621.667	3.263.667	1.920.333	38.833.3	5.222.833.3
25	Suhardi	12.800	10.360.000	3.489.000	2.648.800	41.200.00	6.179.000.0
26	Suryanto	9.000	5.930.000	3.306.000	2.527.000	285.600.00	6.118.600.0
27	Toha	21.580	16.832.000	4.602.400	2.965.200	29.880.00	7.597.480.0
28	Mahnus	13.764	8.985.500	5.275.000	2.504.600	33.000.00	7.812.600.0
29	Slamet Pamuji	18.350	16.035.000	7.136.250	2.042.250	186.500.00	9.367.000.0
30	Sudarto	16.250	10.195.000	3.794.000	2.989.000	33.000.00	6.816.000.0
Rata-rata		16.567	13.305.462	5.745.552	2.186.391	87.732	8.019.675
Maksimum		28.750	24.437.500	9.055.000	2.989.000	370.000	11.945.500
Minimum		6.690	4.917.500	3.263.667	998.760	14.833	5.222.833
							(643.000.0)

Biaya Produksi, Nilai Hasil dan Keuntungan Usahatani Kentang per Hektar

No.	Nama Responden	Produksi (Kg)	Nilai Hasil (Rp.)	Biaya (Rp.)		Jumlah	Pendapatan (Rp.)
				Saproti.	Lain-lain		
Kabupaten Bandung							
Kecamatan Pangalengan							
1	Rukman	15,000	11,250,000	5,399,000	1,264,200	44,444	6,707,644
2	H. Aca	16,000	12,000,000	5,203,333	1,305,850	44,444	6,553,628
3	Amir	15,000	11,250,000	5,260,667	1,308,533	77,778	6,646,978
4	Em	13,500	10,125,000	5,493,000	1,266,300	33,333	6,792,633
5	Olan	13,500	10,125,000	5,465,000	1,338,400	31,667	6,835,067
6	Jejen	13,500	10,125,000	5,585,000	1,304,800	35,000	6,924,800
7	Nono Hartono	10,000	8,000,000	5,260,000	1,407,350	57,143	6,724,493
8	M. Soleh	16,000	12,800,000	5,428,000	1,352,050	70,000	6,850,050
9	Roni	16,000	12,800,000	5,486,000	1,407,000	70,000	6,963,000
10	Ade Resid	14,000	11,200,000	5,230,000	1,280,650	63,333	6,573,983
11	Pendi	16,000	12,800,000	5,456,000	1,302,350	70,000	6,828,350
12	Asep Tatang	18,000	13,500,000	5,366,000	1,309,650	66,667	6,741,317
13	Asep Komar	16,000	12,800,000	5,428,000	1,229,200	60,000	6,717,200
14	Acep	15,000	12,000,000	6,222,000	2,005,500	70,000	8,297,500
15	Mamat	15,000	11,250,000	5,990,000	1,640,100	76,667	7,706,767
16	Adas	15,333	11,500,000	4,583,333	1,891,833	83,333	6,548,500
17	Wawan	15,333	11,500,000	4,383,333	1,678,833	83,333	6,145,500
18	Ade	15,333	11,500,000	4,186,667	1,652,000	83,333	5,922,000
19	Nurhaya	15,333	11,500,000	4,216,667	1,565,667	83,333	5,578,000
20	Tasman	15,333	11,500,000	3,983,333	1,692,833	83,333	5,634,333
21	Ita	15,000	11,250,000	6,100,000	2,458,750	110,000	8,668,750
22	Yaya	15,000	11,250,000	5,845,000	2,240,000	46,667	8,371,667
23	Edi	15,000	11,250,000	5,945,000	2,390,000	60,000	8,585,250
24	Aca	15,000	11,250,000	6,630,000	1,895,250	46,667	7,506,917
25	Iwan	15,000	11,250,000	5,845,000	1,615,250	93,333	5,738,667
26	Uja	14,000	10,500,000	3,900,000	1,745,333	88,889	6,769,222
27	Sopandi	16,667	10,000,000	4,736,667	1,943,667	93,333	6,534,333
28	Ade Solihin	14,000	10,500,000	4,460,000	1,991,000	93,333	6,782,333
29	Adun	16,000	12,000,000	4,366,667	2,321,667	100,000	6,782,333
30	Mamat	14,000	10,500,000	3,823,333	1,390,667	93,333	5,907,333
	Rata-rata	14,961	11,309,167	5,175,900	1,638,789	68,968	4,425,609
	Maksimum	18,000	13,500,000	6,630,000	2,458,750	110,000	6,568,750
	Minimum	10,000	8,000,000	3,823,333	1,229,200	31,667	5,307,333

**KEBUTUHAN BIAYA PRODUKSI KENTANG KONSUMSI
PER HEKTAR**

No	Uraian kegiatan	Volume	Biaya Satuan (Rp.)	Jumlah biaya (Rp.)
1	Sewa tanah	1 ha	2,100,000	2,100,000
2	luran, pajak dll	1 tahun	50,000	50,000
3	Sarana produksi			
	- benih	2000 kg	2,000	4,000,000
	- pestisida			
	- nematisida	20 kg	17,500	350,000
	- fungisida	40 kg	25,000	1,000,000
	- insektisida	8 ltr	17,000	136,000
	- pelarut	60 ltr	4,500	270,000
	- pupuk kandang	20 ton	75,000	1,500,000
	- pupuk buatan			
	- nitrogen	600 kg	450	270,000
	- kalium dan magnesium	600 kg	675	405,000
	- fospat	400 kg	600	240,000
4	Pengelolaan tanah s/d panen	600 HOK	5,750	3,450,000
5	sewa gudang	1 kali	300,000	300,000
	Biaya produksi			14,071,000
6	Perkiraan hasil & harga jual	30000 kg	800	24,000,000
	Selisih (keuntungan)			9,929,000

5. Inspection Standards of Seed Potato

Field and tuber inspection are guided by the standards below :

a) Field Inspection Standards

No	Factor	G 2 / FS	G 3 / SS	G 4 / ES
1	Isolation (min)	10 m	10 m	10 m
2	Virus diseases (max)	0.1 %	0.5 %	2.0 %
3	Bacterial wilt (max)	0.5 %	1.0 %	1.0 %
4	Late blight and other diseases (serious infection) (max)	10 %	10 %	10 %
5	Varietal mixture (max)	0.0 %	0.1 %	0.5 %
6	Management of field *			

Management of field:

- The field may be rejected in the case of poor field management, such as the existence of volunteer potato plants, diseases, weed reservoirs, and aphids.
- The field may be rejected if inspection is impossible, as a result of mechanical damage of foliage, serious insect damage, or poor growth.

b). Tuber Inspection Standards

No	Factor	G 2 / FS	G 3 / SS	G 4 / ES
1	Brown rot and Soft rot (max)	0.3 %	0.5 %	0.5 %
2	Common scab , Powdery scab, Black scurf, Late blight (light infection) (max)	3.0 %	5.0 %	5.0 %
3	Dry rot (excluding light infection) (max)	1.0 %	3.0 %	3.0 %
4	Damage of tuber by Potato tuber moth (max)	3.0 %	5.0 %	5.0 %
5	Root-knot nematode (light infestation) (max)	3.0 %	5.0 %	5.0 %
6	Varietal mixture (max)	0.0 %	0.1 %	0.5 %
7	Mechanical damage from a hoe or agricultural machinery or biting damage from insects or small animals (excluding light damage) (max)	3.0 %	5.0 %	5.0 %

5. Standar Pemeriksaan Benih Kentang

Pemeriksaan ubi dan lapangan mengacu kepada standar yang berlaku di bawah ini:

a) Standar Pemeriksaan Lapangan

No	Faktor	FS/G2	SS/G3	ES/G4
1	Isolasi (min)	10 m	10 m	10 m
2	Virus (max)	0,1%	0,5%	2%
3	Layu bakteri (max)	0,5%	1,0%	1,0%
4	Busuk daun dan penyakit lain (serangan berat) (max)	10%	10%	10%
5	Campuran varietas lain (max)	0,0%	0,1%	0,5%
6	Pengelolaan lapangan* (max)			

Pengelolaan lapangan

- Dalam hal pengelolaan lapangan yang kurang baik, seperti adanya volutir, gulma yang menjadi sumber penyakit dan Aphid yang tidak dikendalikan, maka lapangan akan ditolak untuk pemeriksaan.
- Apabila pemeriksaan tidak memungkinkan untuk dilaksanakan karena adanya kerusakan mekanis pada daun, kerusakan berat karena serangga dan alau pertumbuhan tanaman yang buruk, maka lapangan akan ditolak untuk pemeriksaan selanjutnya.

b) Standar Pemeriksaan Ubi

No	Faktor	G2/FS	G3/SS	G4/ES
1	Busuk coklat dan Busuk lunak	0,3%	0,5%	0,5%
2	Common scab, Powdery scab, Black scurf, Late blight (infeksi ringan) (max)	3,0%	5,0%	5,0%
3	Busuk kering (kecuali infeksi ringan) (max)	1,0%	3,0%	3,0%
4	Kerusakan oleh Penggerek ubi (max)	3,0%	5,0%	5,0%
5	Nematoda bintil akar (infeksi ringan) (max)	3,0%	5,0%	5,0%
6	Campuran varietas lain (max)	0,0%	0,1%	0,5%
7	Kerusakan akibat cangkul atau mesin pertanian dan gigitan serangga dan hewan kecil (kecuali infeksi ringan) (max)	3,0%	5,0%	5,0%

Impor Bibit Kentang Th. 1991

No:	Nama/alamat	Varietas	Jumlah (Kg)	Negara Asal
1.	Ir. Iwan Subrata PT. Kurnia Miva Tama Jl. Teuku Umar No.7-AG Medan	Kondial Class A	44.000	Belanda
		Horene Class A	42.000	
2.	Ir. D. Naserie PT. Selektani Jl. Jatinegara barat 124 Jakarta	Vangogh Class A	600	Belanda
	Prof. Dr. Ir. Tabas Pandia PT. Selektani Jl. T. Zulkarnaen No.4 Medan	Herta, Agria	100.000	Holand
		Agria, Herta, Crybbella, Vienna	240	Belanda
4.	Ir. C. Willy Siwi PT. Dian Makmur Abadi/ Indofood Group Jl. Kenang raya 18 A. Jakarta-Selatan	W.55, Danoli FL 795, Atlantic Norchip	2.500	U S A
5.	Johny H. susanto Firma Mitra Lestari Jl. Ponconoko III/17 PO.Box 37. Solo	Agria, Paola	6.000	German
6.	H. syamsi B. Nasution PT. marga tawakal Utama Jl. Basuki rachat No.129-137 Surabaya	Diamond	2.000.000	Belanda
Jumlah			2.195.340	

Impor Bibit Kentang Th. 1992

Nama/alamat	Varietas		
Prof.Dr.Syamsudin Mahmud Jl.T.N. Arief Banda Aceh	Baraka, Frisia, Obelix Class A, Vangogh	13.000	Belanda
H. syansi B. Nasution PT. Marga Tawakal utama Jl. Pejaten barat No. 28 Jakarta-Selatan	Baraka, Frisia, Obelix Class A, Vangogh Diamond	12.000	Belanda
BJ. Elting PT. Sumatera Agri Freh Food Industries Jl. Sie Serayu No. 55 Medan	Diamod, Disco, Bingo Aziza, Shepody, Baraka Frisia, Obelix, Vangogh Caisar, Arasmus, Amadeus	34.300	Belanda
Ir. C. Willy Siwi PT. Dian Hakmur Abadi Jl. Kemang raya No. 184 Jakarta - Selatan	Atlantic	80.000	U S A
H. Yusuf PT. Mascasilog Jaya Jl. Legoa terusan III/01-34 Jakarta	Bintje A	140.000	Holland
Sofyan santoso PT. Santoso Prina Haju Jl. Ceylon No. 28 Jakarta	Granola	125.000	Holland
Agus Chandra PT. Sejahtera S. Sempurna Jl. Laks. Martadinata OC-BPP. Unit I 304/305 Jakarta	Granola	240	Hamburg German
Jumlah		2.404.540	

Impor Bibit Kentang Th. 1993

No.	Nama/alamat	Varietas	
1.	Sofyan santoso Pr santoso prima Maju Jl.Ceylon No.28 Jakarta	Granola	250.000
2.	Kelip Benua PT.Indofood Frito-Lay Jl.Kenang Raya 18 A. Jakarta	Atlantic	60.000
	H.Syamsi B.Nasutioan PT.Harga Tawakal Utama Jl.Katampon No.8-10 Surabaya Telp.7802529-31.Jakarta	Diamond	470.000
4.	Yana Syam Sudini PT.Nosavan Banda Aceh	Vangogh, Baraka Frisia, Amadeus	13.000
5.	Andreas Gunawan Jl.Iskandar Muda No.248 Medan	Crebbella, ayax Kondar, Sante	10.000
		Jumlah	803.000

IMPOR BENIH KENTANG TAHUN 1994

No.	Nama Pemohon	Varietas	Jumlah(ton)	Negara Asal	Keterangan
1.	Dr.Ir. Tabas Pandia PT Selektani Jl. Iskandar Muda No. 248 Medan	Herta	95,5	Holland	Importir, ditanam di Medan, kerjasama dengan petani, produksinya ditampung oleh PT Selektani untuk ekspor ke-Singapura.
		Agria	10	Holland	
		Sanmte	55,5	Holland	
2.	Andy S Jl. Majapahit No.86 Medan	Granola (tissue-culture)	200.000 Bibit	Singapore	Industri benih
3.	Kalib Benua PT. Indofood Fritolay, Ariobimo Central Bldg 3 rd Fl, Kuningan, JAKARTA	Atlantic	20	Korsel	Industri olahan
			40	Australia	Kerjasama
			40	Scotlandia	dengan petani
			80	USA	Jeteng, Jatim Jabar produk-sinya dibeli perusahaan
4.	Hasannudin Hortigayo I, PO.BOX 16 Takengon 24502 Aceh Tengah	Baraka	8	Holland	Industri benih
		Amadeus	2		Kerjasama
		Van Gogh	2		dengan Pengusaha Malaysia

5. Mustofa Kop. Jasa Usaha Bersama "Tawar Sejuk" Jl. Kebanyakan, Takengon ACEH TENGAH	Baraka Amadeus Van Gogh, Caesar	38	Holland	Importir, Kerjasama dengan petani
6. Kees C.J.Goossens PT. Gamaess Jl. Kunir II/3 B JAKARTA	Solanum- tuberosum	4,5	Holland	
7. Drs. W.H Siahaan PT. Bibit Unggul Karo Biotek Jl. Veteran No. 16-F/48 MEDAN	Potato No. 88-5 dan 37-2	60 kg 900 bibit	USA	Produksi benih kerjasama dengan pengu- saha Denmark selama 2 th.
8. Sofyan Santoso PT. Santoso Prima Maju Jl. Ceylon No. 28 Jakarta.	Granola Aranka, Solide Fox, Panda Oscar, YP 83-095	525 0,6 0,6 0,6		Importir kerjasama dengan petani Jabar
9. Freddy Setiawan Jl. Puhah No 2 MEDAN	Diamont Cardinal	11,31 1,2	Holland	
10. Ir. Dadang S. Munir Kop. Pemasaran Hortikultura Jl. MI Ridwan Rais No.7 JAKARTA 10110	Granola	60	Germany	
Jumlah		201.894.81		

Impor Benih Kentang tahun 1995

No.	Nama Pemohon	Varietas	Ton	Negara Asal
1.	Elia Yuanita PT. Siantar Top Jln. Tambak Sawah 21 Waru, Surabaya	Atlantik	24	U S A
2.	Freddy Setiawan CV. Surya Abadi Perkasa 22 Jln. Telok dalam No.50 Medan	Cardinal Diamant Atlantic Erntestols Hermans	4,5 19,26 1,05 0,05 0,05	Belanda Belanda Scotlandia Scotlandia Scotlandia
3.	Abdurachmat PT. Indo Food Fritolay Jln. Jend. Sudirman Jakarta	Atlantik Wilstore Atlantic Kennebec Erntestol Hermes	300 10 0,05 0,05 0,05 0,05	U S A Australia Scotlandia Scotlandia Scotlandia Scotlandia
4.	Hasanudin Koperasi Jasa Bersama "Tawar Sejuk" P.O Box 16 Takengon 24502	Amadeus Baroka Obelix	0,99 5,01 6	Belanda Belanda Belanda
5.	Ir. Dadang S. Munir Koperasi pemasaran Hortikultura Jln. MI. Ridwan Rais No. 7 Jakarta 10110	Atlantic Granola	14 48	Australia Germany

6. Drs. H. Azis Rachman PT. Rumpun Kusumawati Agricultura, Gd. Granada Ltg Jln. Jend. Sudirman No.50 Jakarta 12930	Atlantic	11	Australia
	Kennebec	1	Australia
	Sebago	1	Australia
	Desire	1	Australia
7. Zulkarnaen Adro PT. Rima Ceria Sabda Jaya Jln. RE. Maryadinata OC BPP Unit I - 305 Tanjung Priok	Granola	150	Germany
	Pontiac	0,22	
	Foxton	0,22	
	Lain-lain		
8. Sofyan santoso PT. santosa Prima Maju Jln. Leylon No. 28 Jakarta	Granola	218,75	Belanda
	Akira	0,15	Belanda
	Oscar	0,75	Belanda
	Prelude	0,15	Belanda
	Raisa	0,15	Belanda
	Samantha	0,15	Belanda
9. Yuliasstomo PT. Selektani Jl. Iskandar Muda No.248 Medan			Belanda
	Agria	12,51	Belanda
	Diamant	15	Belanda
	Sante	12,51	Belanda
Jumlah		857.82	

Impor Benih Kentang tahun 1996

No.	Nama Pemohon	Varietas	Kg	Negara Asal
1.	PT. Indofood frito-lay corp Wisma BCA Lt-X Jln. Jend. Sudirman Jakarta	Atlantik	692.700	
2.	PT.Rumpun Kusumawat Agrikultura, Gd Granada Lt. 9 Jln.Jenderal Sudirman No. 50 Jakarta	Atlantik	30.000	
3.	Dr. HF.Napitupulu Jln.T. Cik D. tiro No.60 Jln. Iskandar Muda No.85 Mečan	Granola	14.000	
4.	Ed. Arnaen Adro PT. Prima C. a sabda Jaya Jln. Laks. Matadinata OC-BPP Unit 1 305 Tanjung Priuk	Granola	218.000	
	Sofyan Santoso PT. Sersosa Prima Maju Jl. C. on No.28 Jakarta	Granola	30.000	

6.	PT. Selektani Jln. Iskandar Muda No. 218 Medan	Granola	440.000
7.	Koperasi Pemasaran Hortikultura Jln. MI. Ridwan Rais No. 7 Jakarta	Granola	40.000
8.	PT. Antara Pratama Sejati Jln. Anggrek Garuda No.19 Slipi Jakarta	Granola	125.000

	Jumlah	1.589.700
--	--------	-----------

JICA

