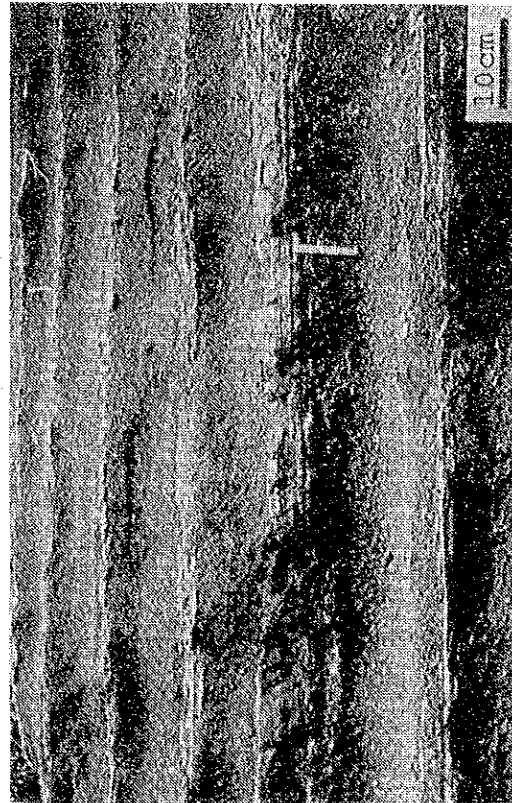
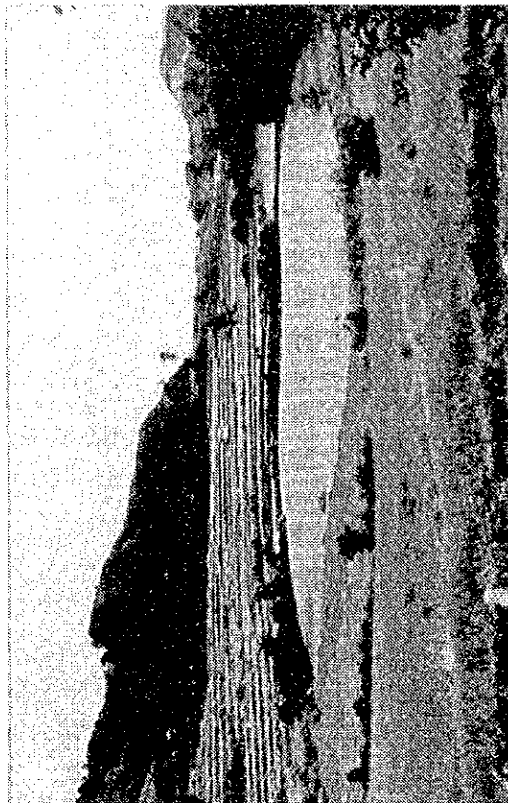


2. Limestone of the B<sub>1</sub> member composing the ridge line of Mount Aguaporonia.



4. Close-up of the left picture.



1. Land slide topography at distribution area of the B<sub>2</sub> member primarily consisting of mudstone, at Bucari.



3. Mudstone interlaminated with sandstone, B<sub>2</sub> member, Aganan River, north to Tarug.

PLATE 2



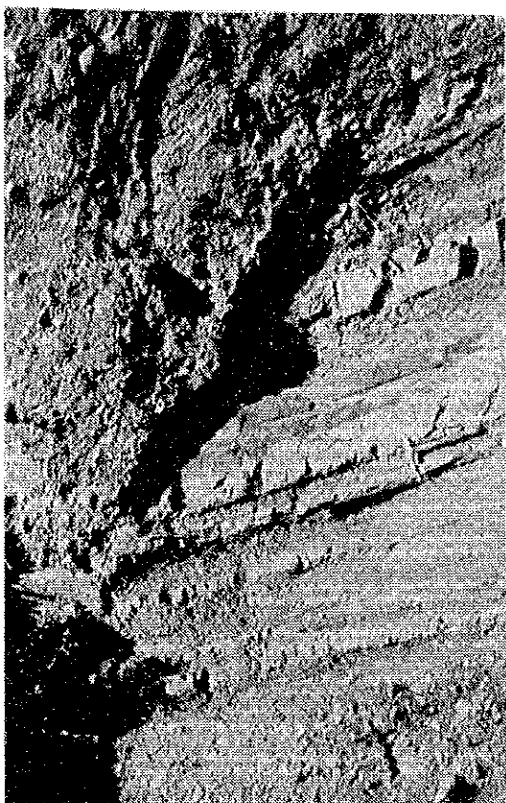
2. Interbedded mudstone and sandstone (mudstone being predominant), C<sub>2</sub> member, 3 km east of Bucari.



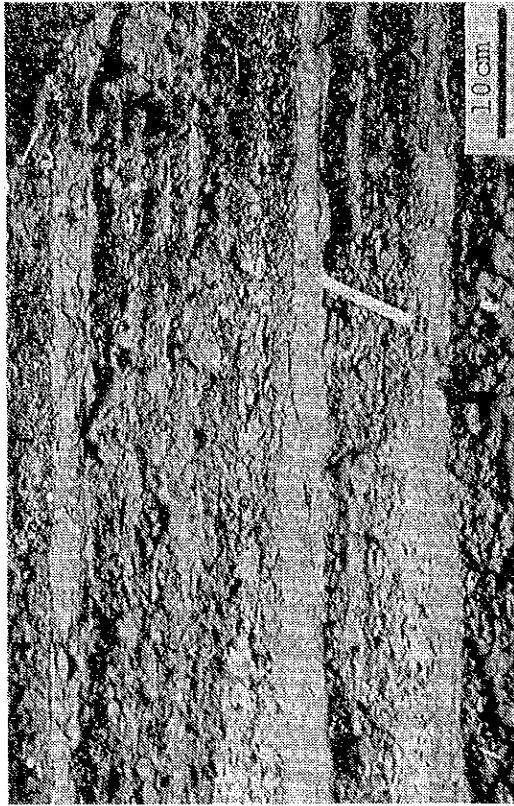
4. Cobble conglomerate, D<sub>1</sub> member, 1 km north of Maritang.



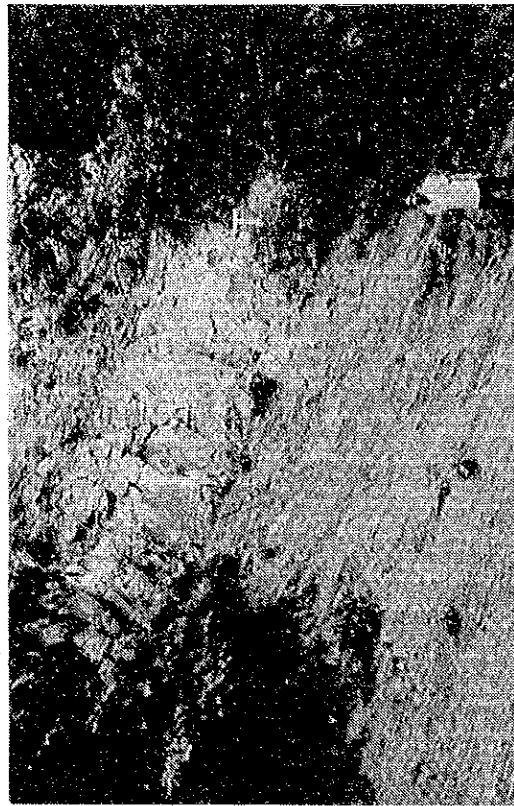
1. Calcareous concretions in sandstone, C<sub>1</sub> member, Aganan River, north of Tarug.



3. Pebbly mudstone including a huge block of mudstone and sandstone in alternation, C<sub>2</sub> member, 2.5 km east of Bucari.



2. Interbedded mudstone and sandstone (mudstone being predominant), D<sub>3</sub> member, Sibalom River east of Tagasing.



4. Acid tuff layer (T) in interbedded mudstone and sandstone, D<sub>3</sub> member, Dorog.

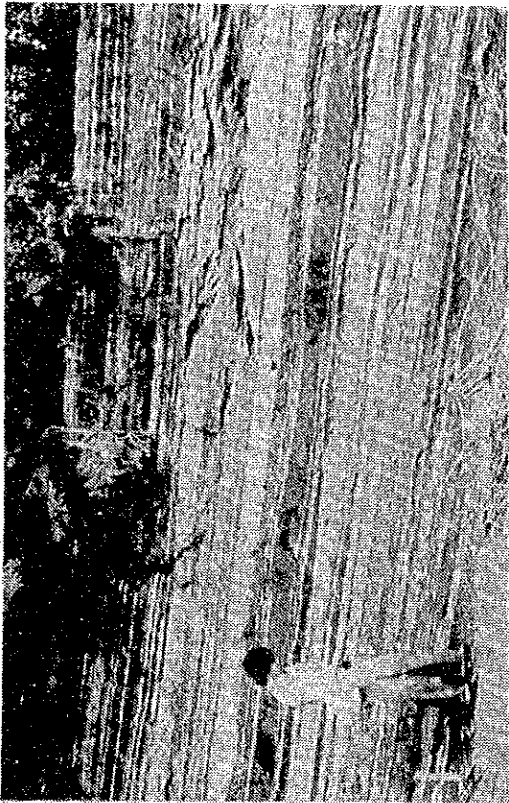


1. Alternating mudstone and sandstone, D<sub>3</sub> member, Sibalom River east of Tagasing.

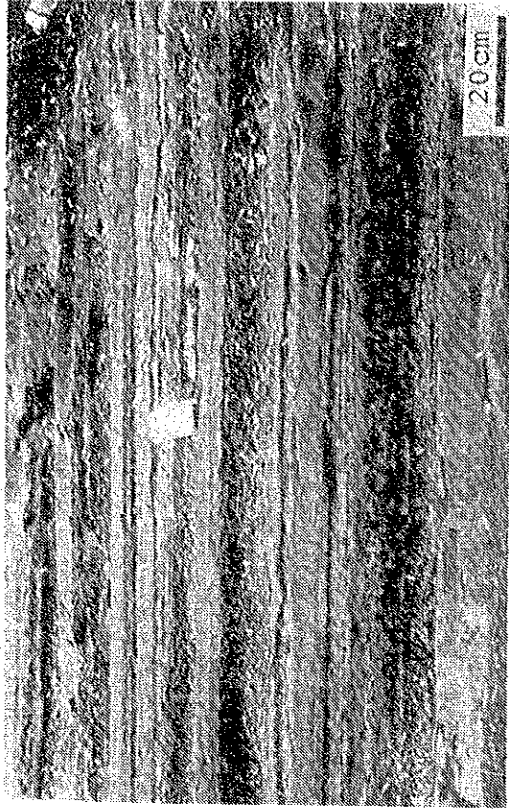


3. Conglomerate (Cg) and sandstone (S) beds in interbedded mudstone and sandstone, D<sub>3</sub> member, Sibalom River near Dorog. Note irregular erosional surface at the base of conglomerate bed.

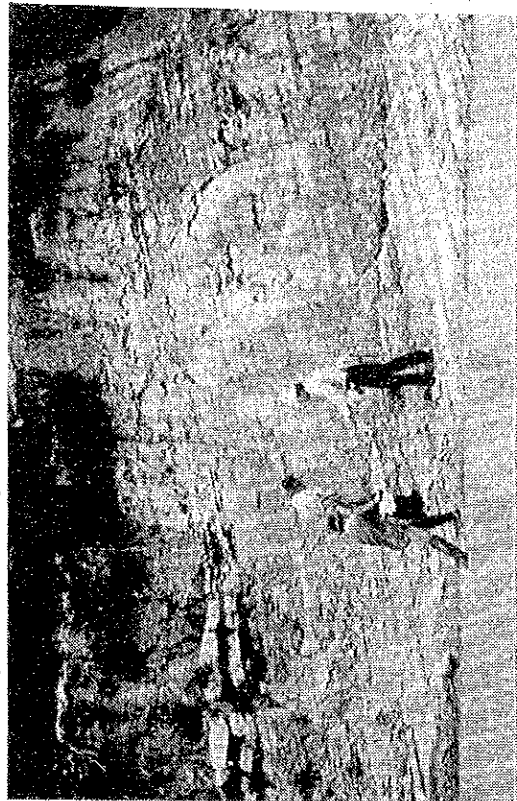
PLATE 4



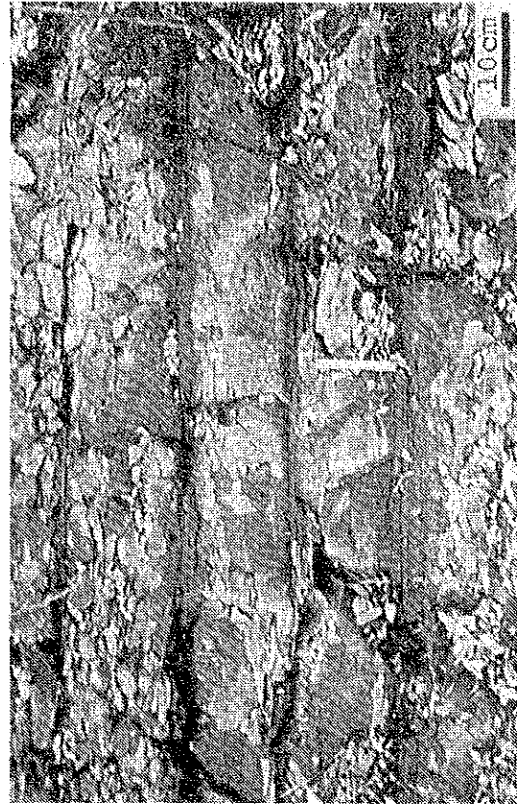
1. Interbedded sandstone and mudstone (sandstone being predominant), E<sub>1</sub> member, Ligros.



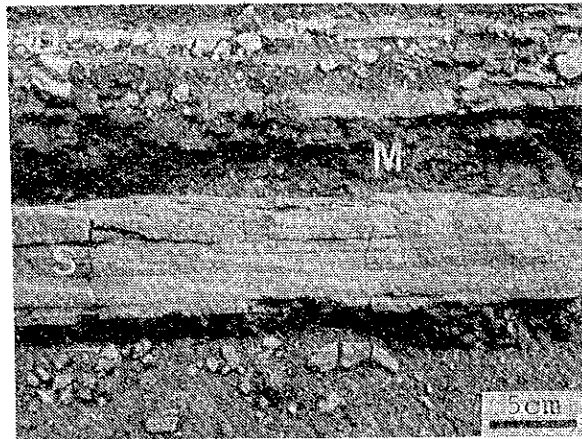
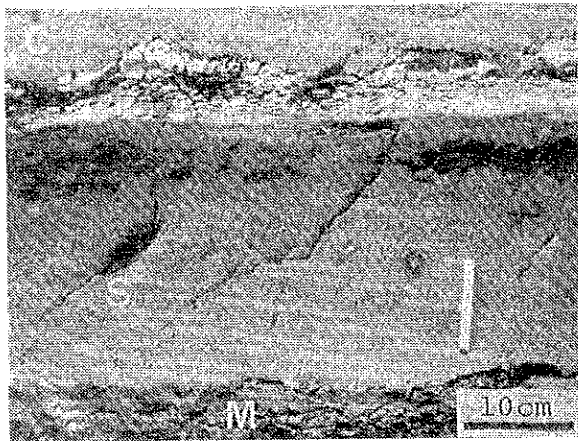
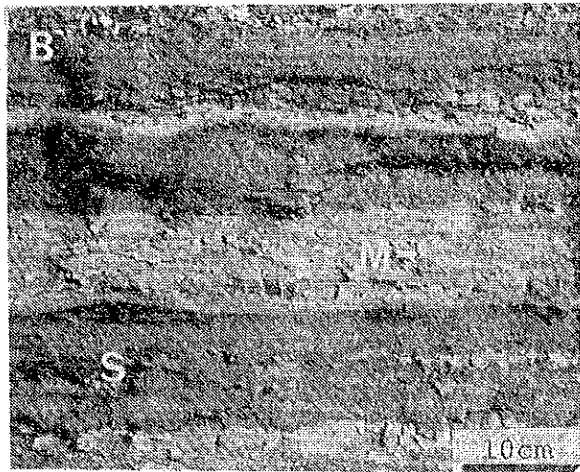
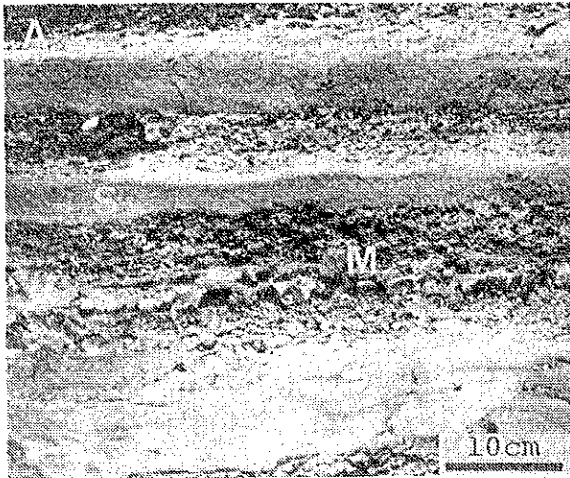
2. Close-up of the left picture.



3. Mudstone interlaminated with sandstone, E<sub>2</sub> member, Sibalom River, east of Leon.



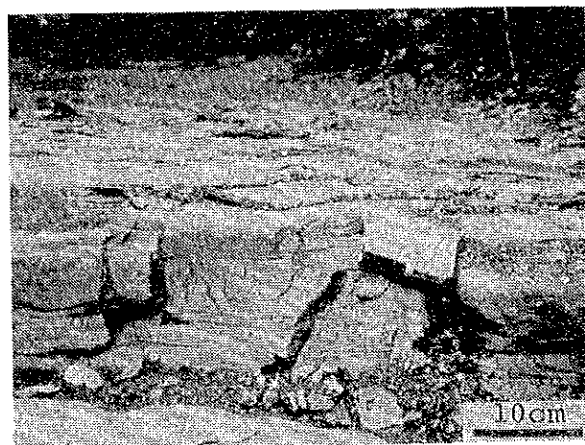
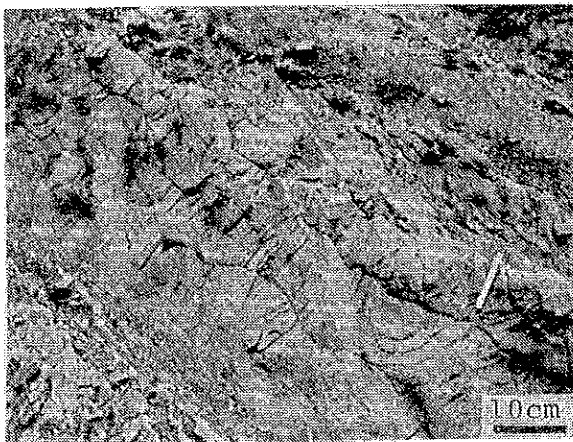
4. Close-up of the left picture.



1. Alternating mudstone and sandstone with distinct graded bedding. Thinner sandstone beds are well laminated, having ripple cross-lamination at their top in many cases.

S: sandstone, M: mudstone.

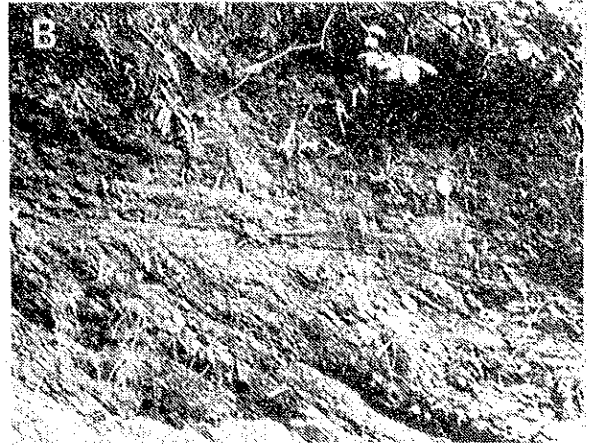
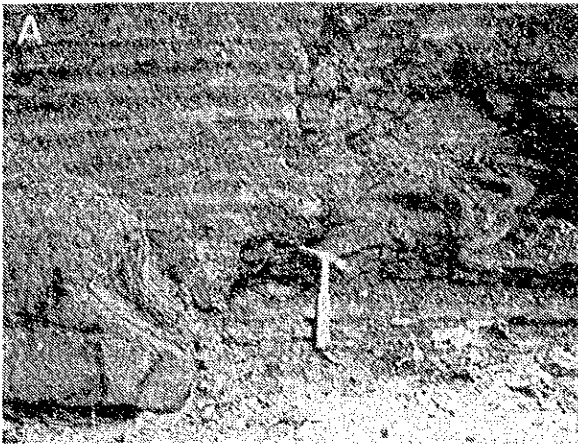
- A. D<sub>3</sub> member, Sibalom River north of Tagsing.
- B. E<sub>1</sub> member, Ligtos.
- C. D<sub>3</sub> member, Sibalom River east of Tagsing.
- D. C<sub>2</sub> member, 3 km east of Bucari.



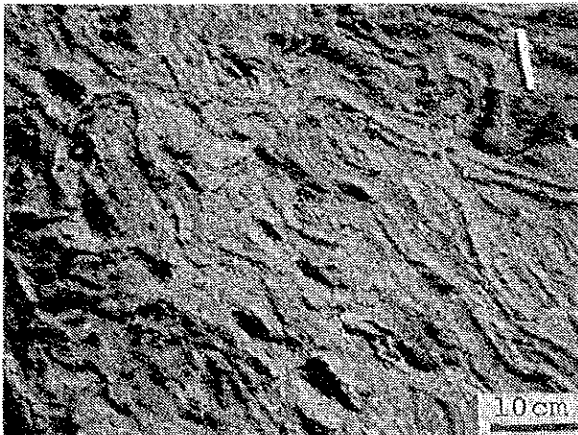
2. Ripple marks on top surface of sandstone beds, C<sub>2</sub> member, 2 km east of Bucari.

3. The same to the left picture.

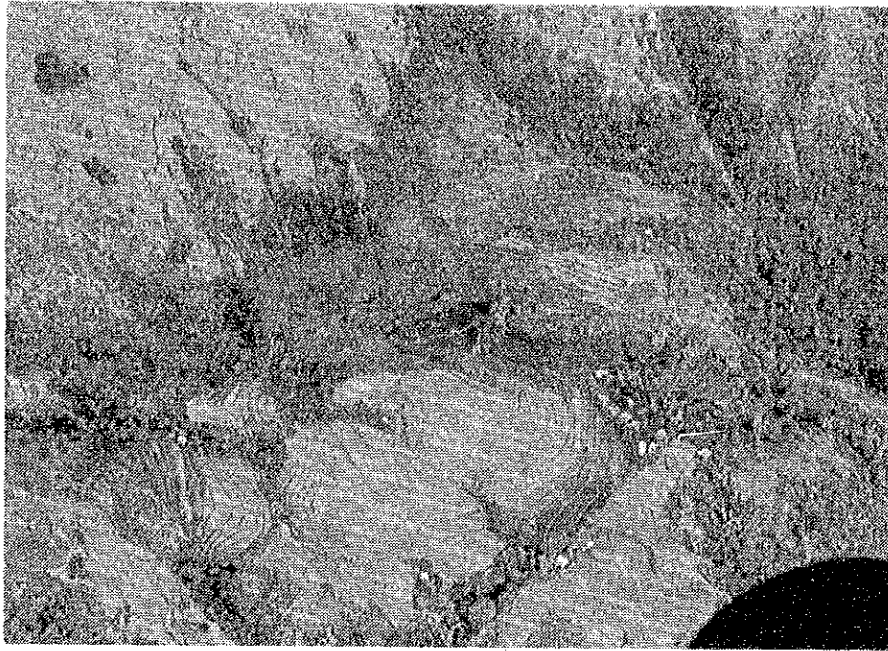
PLATE 6



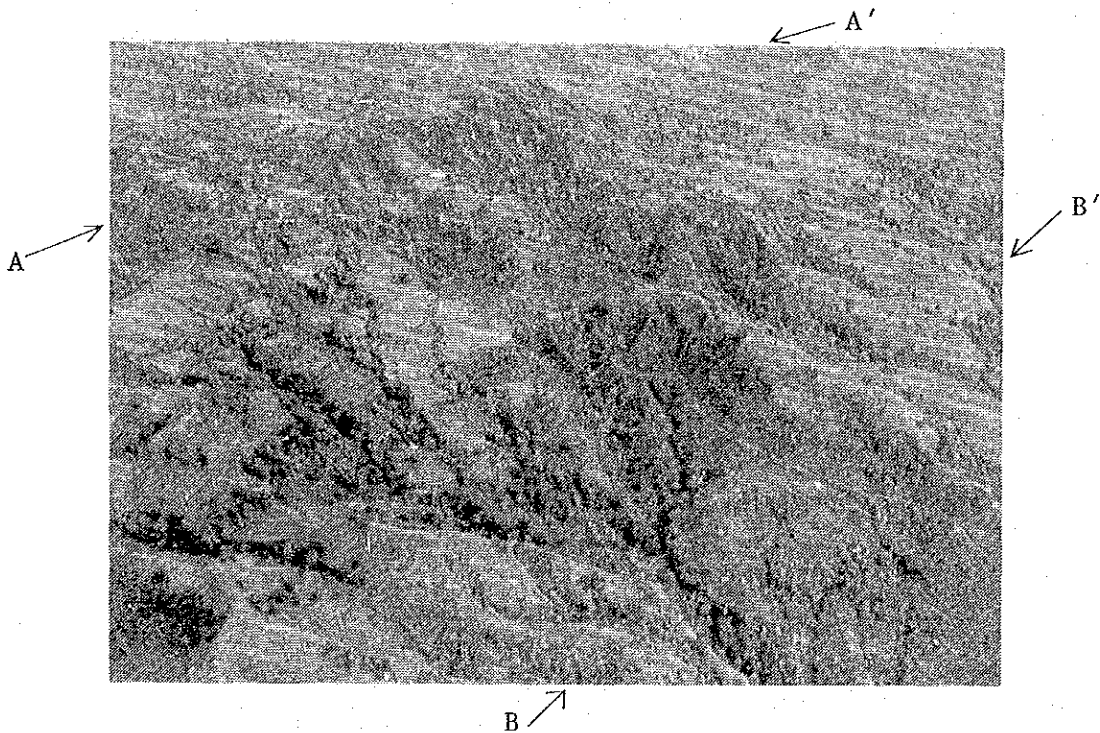
1. A. Slump fold of mudstone alternating with sandstone, D<sub>3</sub> member, Sibalom River, east of Tagsing.
- B. Discordance of mudstone beds due to slumping, E<sub>2</sub> member, 2 km northwest of Baguingin.
- C. Chaotic mixture of fragments of mudstone, sandstone and limestone, E<sub>1</sub> member, Sibalom River west of Buga.
- D. Pebbly mudstone including blocks of folded mudstone interbedded with sandstone, D<sub>2</sub> member, 1 km northwest of Tagsing.



2. *Taphrohelminopsis* on sandstone sole, C<sub>2</sub> member, 3 km east of Bucari.
3. *Buthotrephis*-like burrows on sandstone top, B<sub>2</sub> member, Aganan River north of Tarug.

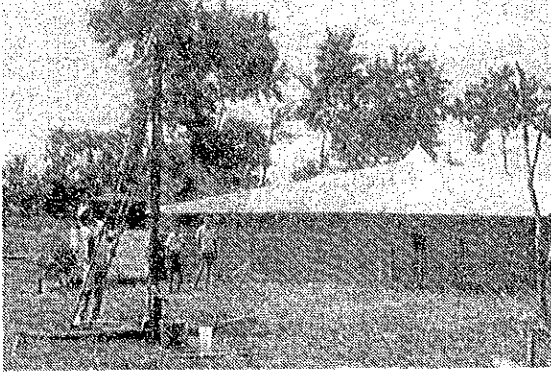


1. Aerial view of landslide depression (about 2 km southwest of Bucari, a village at upstream area of the Sibalom River).

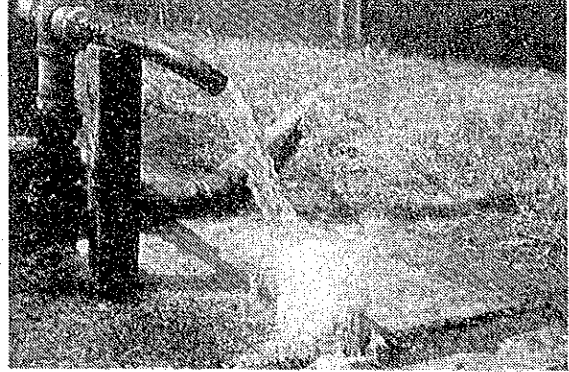


2. Topography composed of conglomerates in the vicinity of west end of Bucari - Leon road, A-A' is a ridgeline formed by pebbly mudstone at upper part of C<sub>2-e</sub>, B-B' is ridge line composed of the D<sub>1</sub> member.

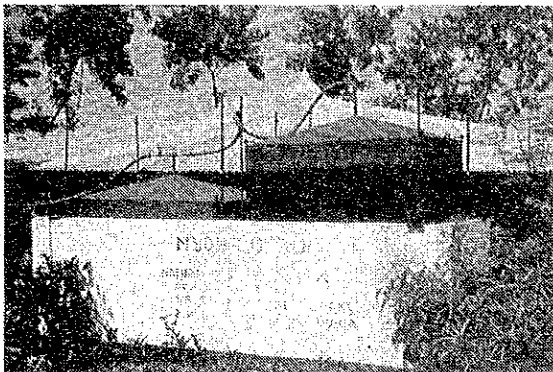
PLATE 8



1. PC-1 free flowing well at the ground of Zarraga Elementary School. A shack behind the well is a water storage tank for water supply concurrently used for aeration.



2. Gas and water flowing out from PC-1 well.



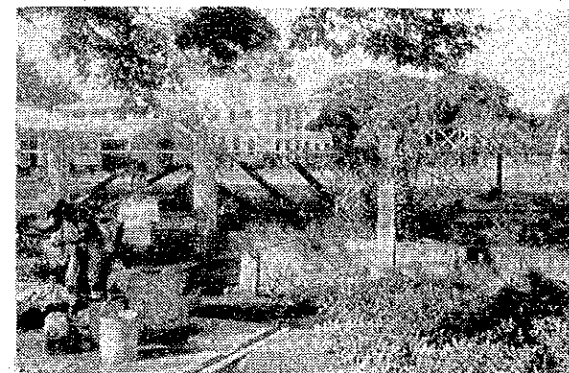
3. Gas-water separator (right) and gas collector (left) of PC-1 well.



4. The kitchen of Zarraga Elementary School utilizing gas of PC-1 well.

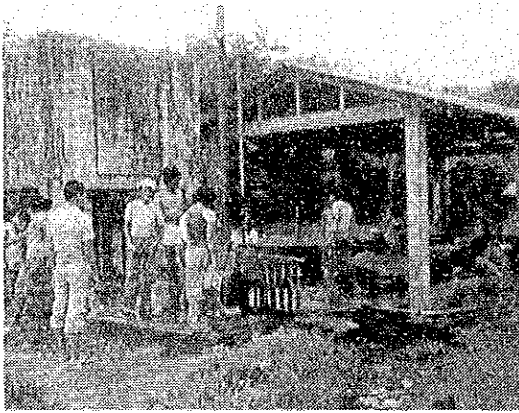


5. The hand pump of PC-2 well at Sigangao Elementary School (Zarraga).

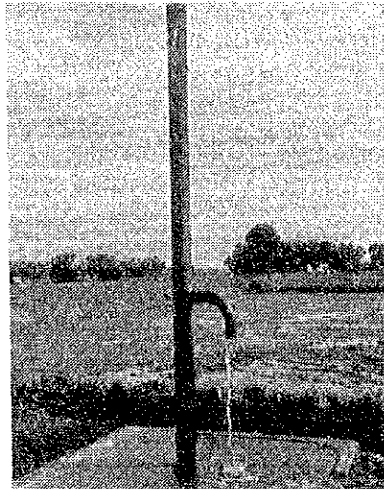


6. PC-3 free flowing well of Sta. Barbara Municipal Hall.





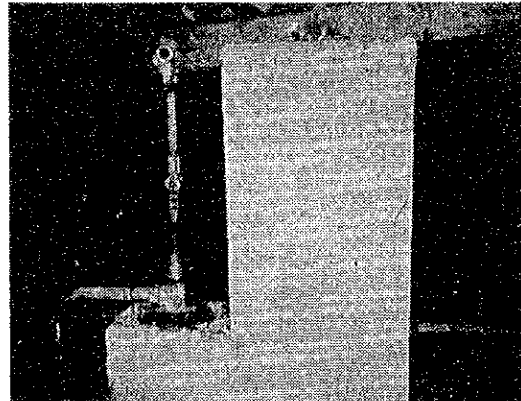
1. PC-4 free flowing well at the back of Sta. Barbara Market.



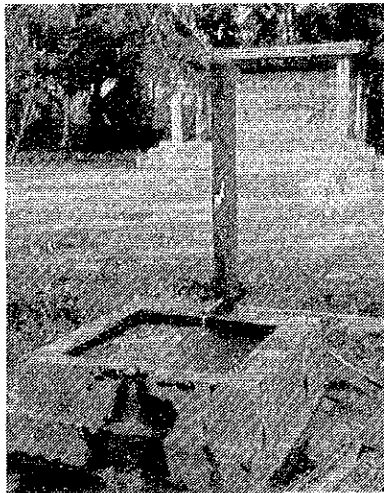
2. PC-5 gas and water free flowing well at the side of Sta. Barbara highway.



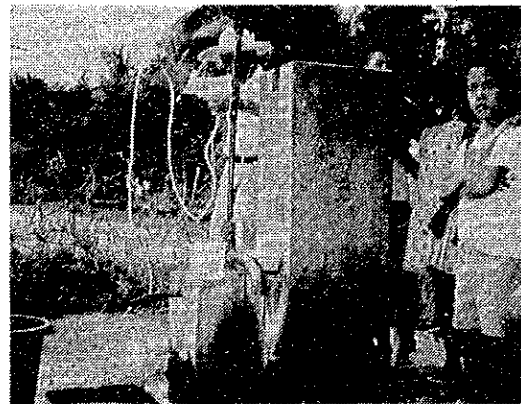
3. PC-6 mud volcano flowing out in the paddy of Naponglan (Lambunao).



4. PC-7 saline water well of Maraguit Elementary School (Cabatuan).



5. PC-8 saline water free flowing well of Bacay Elementary School (Dumangas).

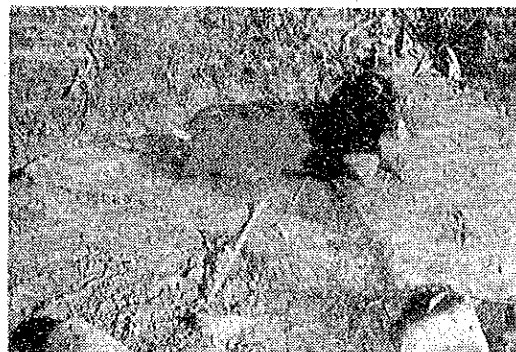


6. PC-9 saline water well at Maquina plaza (Dumangas).

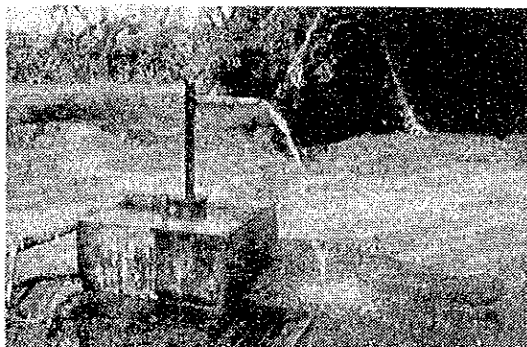
PLATE 10



1. PC-10 saline water well of a village along the beach southwest of Pimolotan Hill (Dumangas).



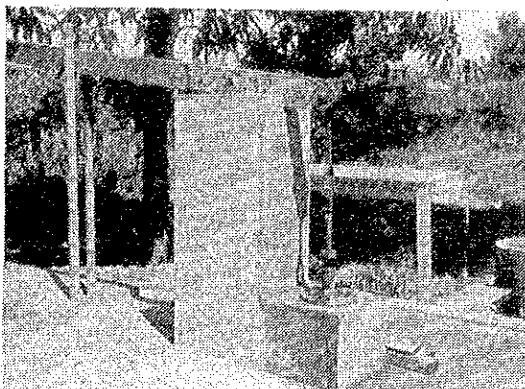
2. PC-11 natural spring at Anilauan (Igaras).



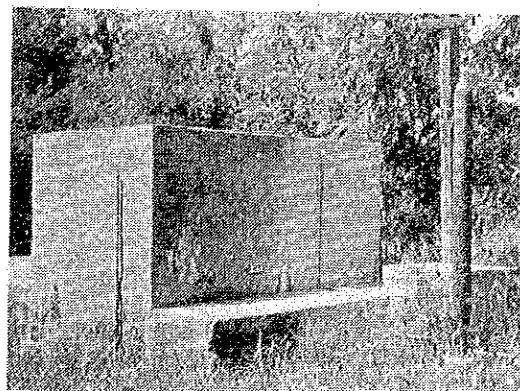
3. PC-13 free flowing well at the side of San Jose highway.



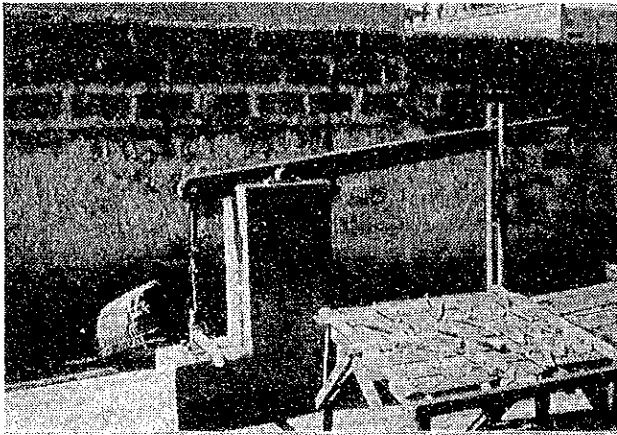
4. PC-14 gas-water free flowing well at Oton public plaza.



5. PC-15 of Aganan Elementary School (Pavia).



6. PC-16 saline water well of San Rafael-Bolilao Elementary School (Mandurriao).



1. PC-17 saline water well at La Paz public market.



2. PC-18 saline water free flowing well at Arevalo plaza.



3. PC-19 free flowing water well at Oton Central Elementary School.



4. PC-20 gas outcrop of Captain Fernando (Leon).



5. PC-21 in the residential area of Tubungan.



6. PC-22 saline water free flowing well of E. Yusay Elementary School.

PLATE 12



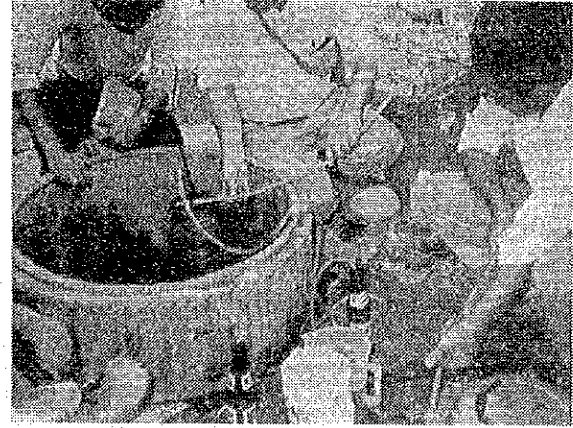
1. Collection of gas at PC-24 gas outcrop (Tampucao no. 1, Lambunao).



2. PC-26 manually bored saline water well (Magsaysay no. 1, Maasin).



3. PC-27 saline water spring (Magsaysay no. 2, Maasin).



4. PC-28 saline water well (Magsaysay no. 3, Maasin).



5. PC-29 fresh water well accompanied with gas indication (Pacuan no. 1, Maasin).



6. PC-30 water well freely flowing saline water accompanied with gas indication (Bagacay Ext. no. 1, Maasin).