

**SEISMIC DEPTH CONTOUR MAP**  
 NW PART OF CENTRAL LUZON BASIN  
 -Tentative Top Malinta Formation-  
 (or Top Aparri Gorge Fm. acc. to San Jose)

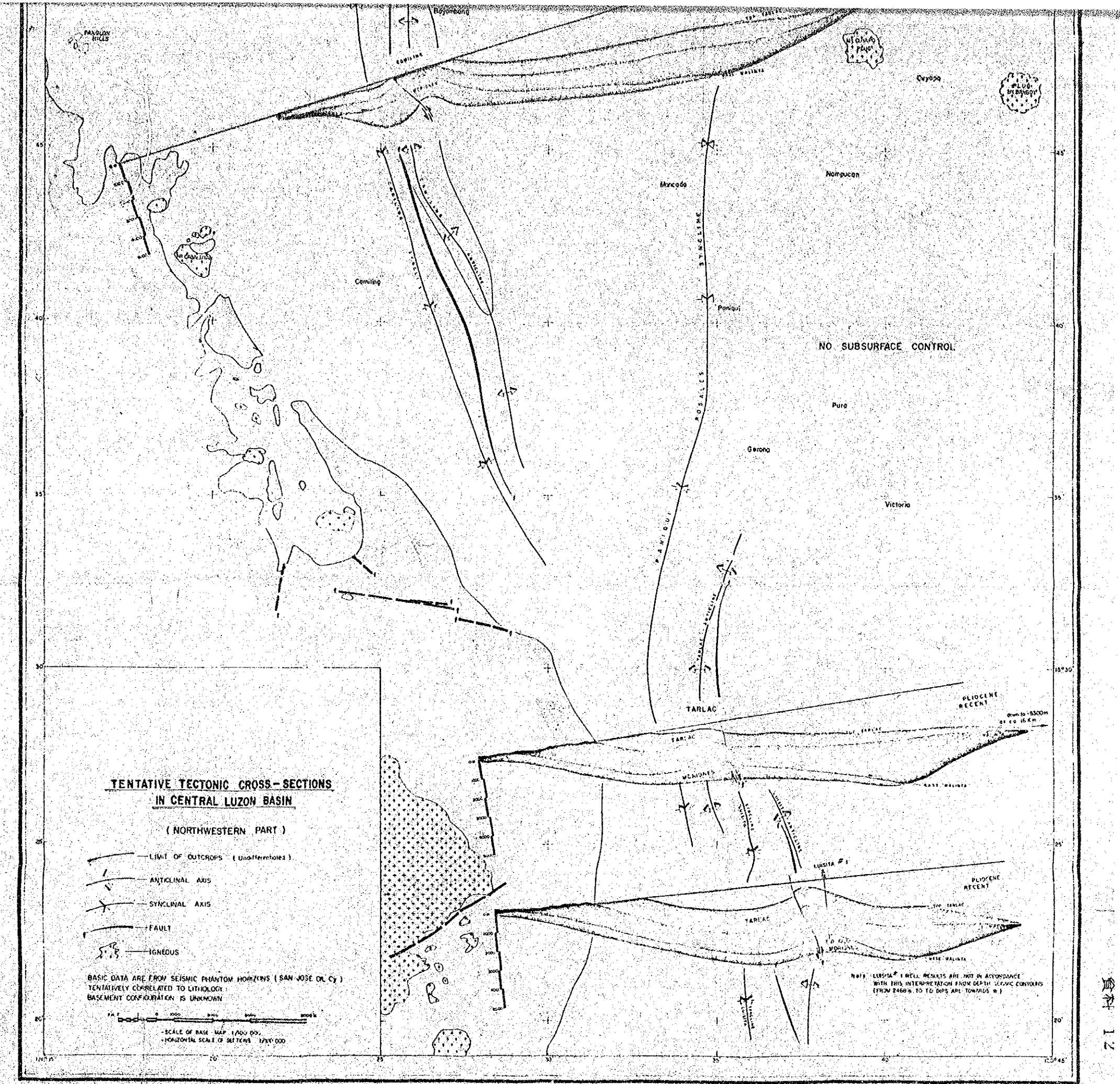
- Outcrop
- Anticlinal axis
- Synclinal axis
- Fault
- Well
- Seismic profile

Curve Interval : 100m.

Interpretation from San Jose Oil Co. Scale 1:100,000







**TENTATIVE TECTONIC CROSS-SECTIONS  
IN CENTRAL LUZON BASIN  
(NORTHWESTERN PART)**

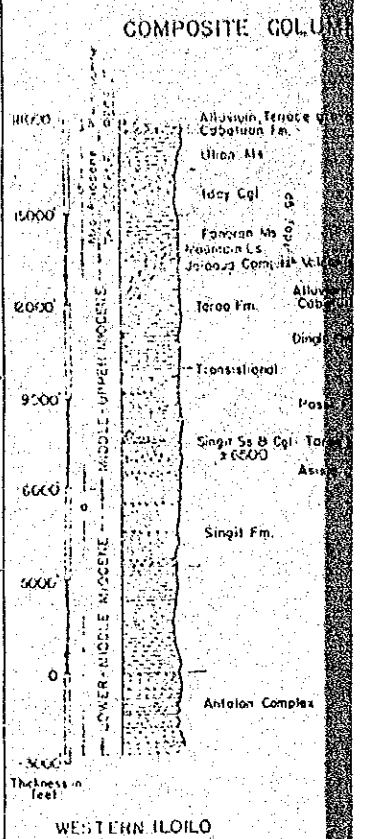
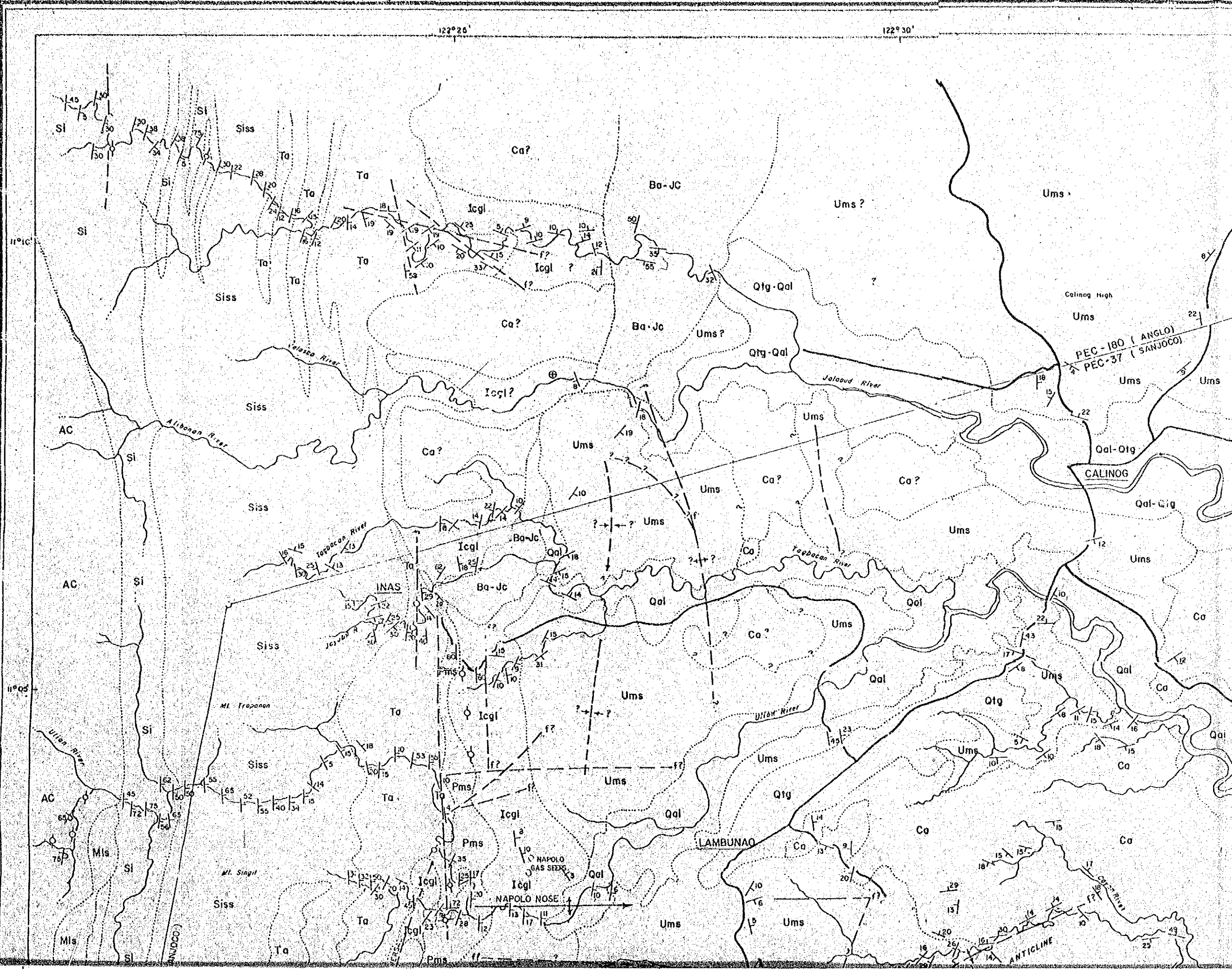
- LIMIT OF OUTCROPS (Undifferentiated)
- ANTICLINAL AXIS
- SYNCLINAL AXIS
- FAULT
- IGNEOUS

BASIC DATA ARE FROM SEISMIC PHANTOM HORIZONS (SAN JOSE DR. CY)  
TENTATIVELY CORRELATED TO LITHOLOGY  
BASEMENT CONFIGURATION IS UNKNOWN

SCALE OF BASE MAP 1:200,000  
HORIZONTAL SCALE OF SECTIONS 1:250,000

PLIOCENE RECENT  
Elevations: 5500m, 16 Km

NOTE: LUSITANIA #1 WELL RESULTS ARE NOT IN ACCORDANCE WITH THIS INTERPRETATION FROM DEPTH CORRELATION (FROM 2400m TO 10 DIPS ARE TOWARDS W)



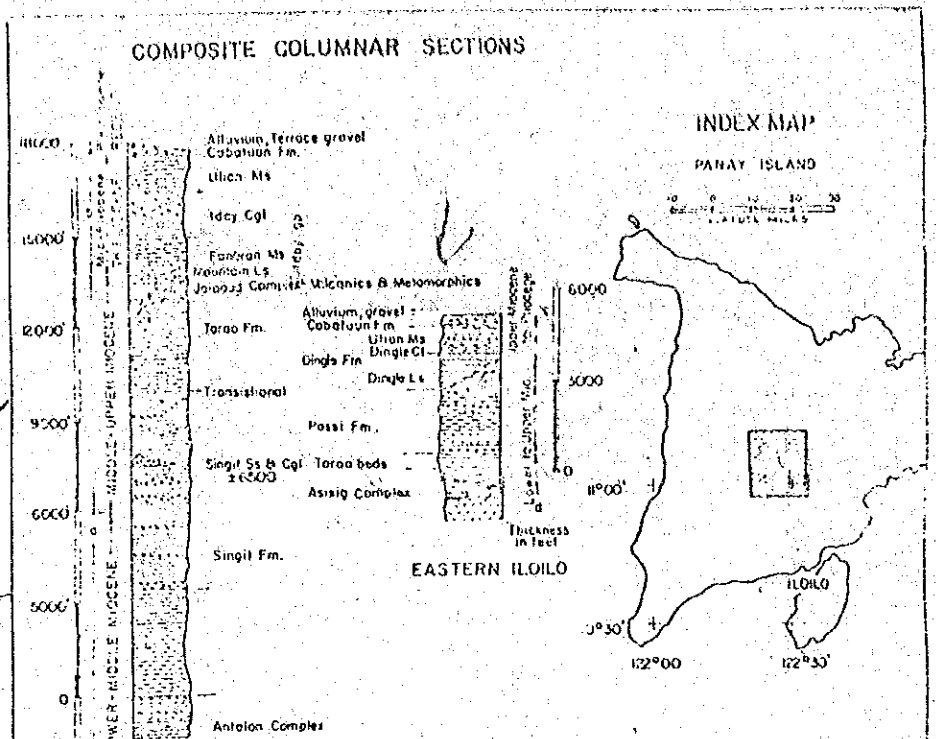
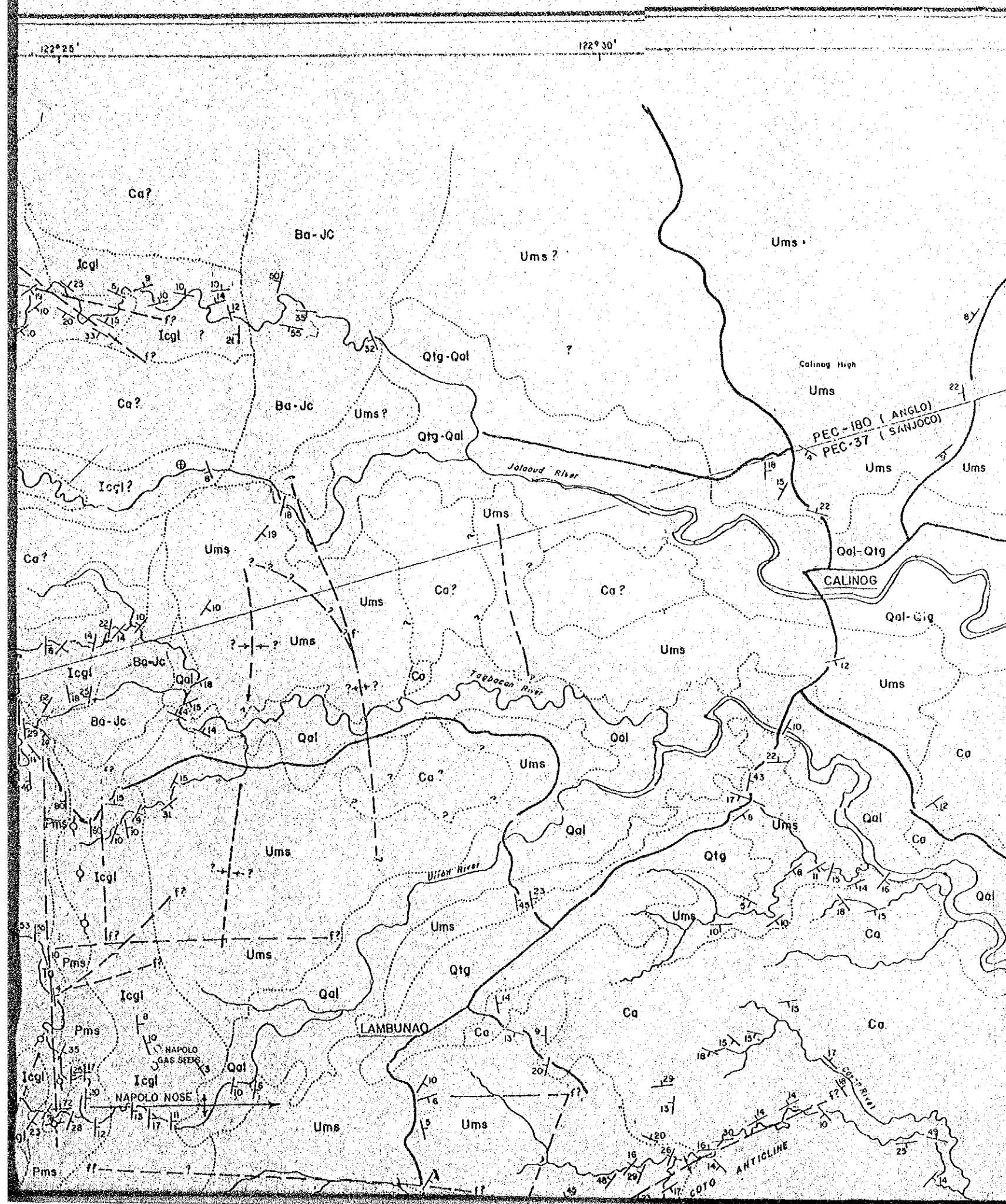
WESTERN ILOILO

COTO, JALA  
PANORAN  
ILOILO

DATE: 1974

RECENT

LOWER PLEISTOCENE



**PLATE - III**

**GEOLOGIC MAP**  
OF  
**COTO, JALAOUD, TAGBACAN, NAPOLO,  
PANORAN and SUAGE PROSPECTS**  
ILOILO PROVINCE, PANAY ISLAND  
PHILIPPINES  
**PEC - 37**

SCALE 1:50,000

DATE: 1974

SAN JOSE OIL COMPANY, INC.  
Concessionaire  
SOUTH SEAS OIL & MINERAL EXPLORATION  
DEVELOPMENT COMPANY, INC.  
Operator

**EXPLANATION**

RECENT	Qal - Qtg	Recent	Alluvium and gravel
LOWER PLEISTOCENE	Ca	L. Pleist.	Cabaluan fm.
	Ums	u-h2	Ulian mudstone Dingle clastic
MID - PLEISTOCENE to PLEISTOCENE	Icgl	u-h	1 day conglomerate



3000  
The base is  
feet

WESTERN ILOILO

COTO, JAPAN  
PANORAMA  
ILOILO

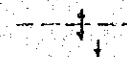
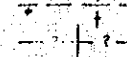
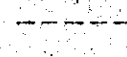
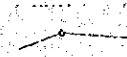

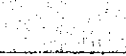
DATE: 1974

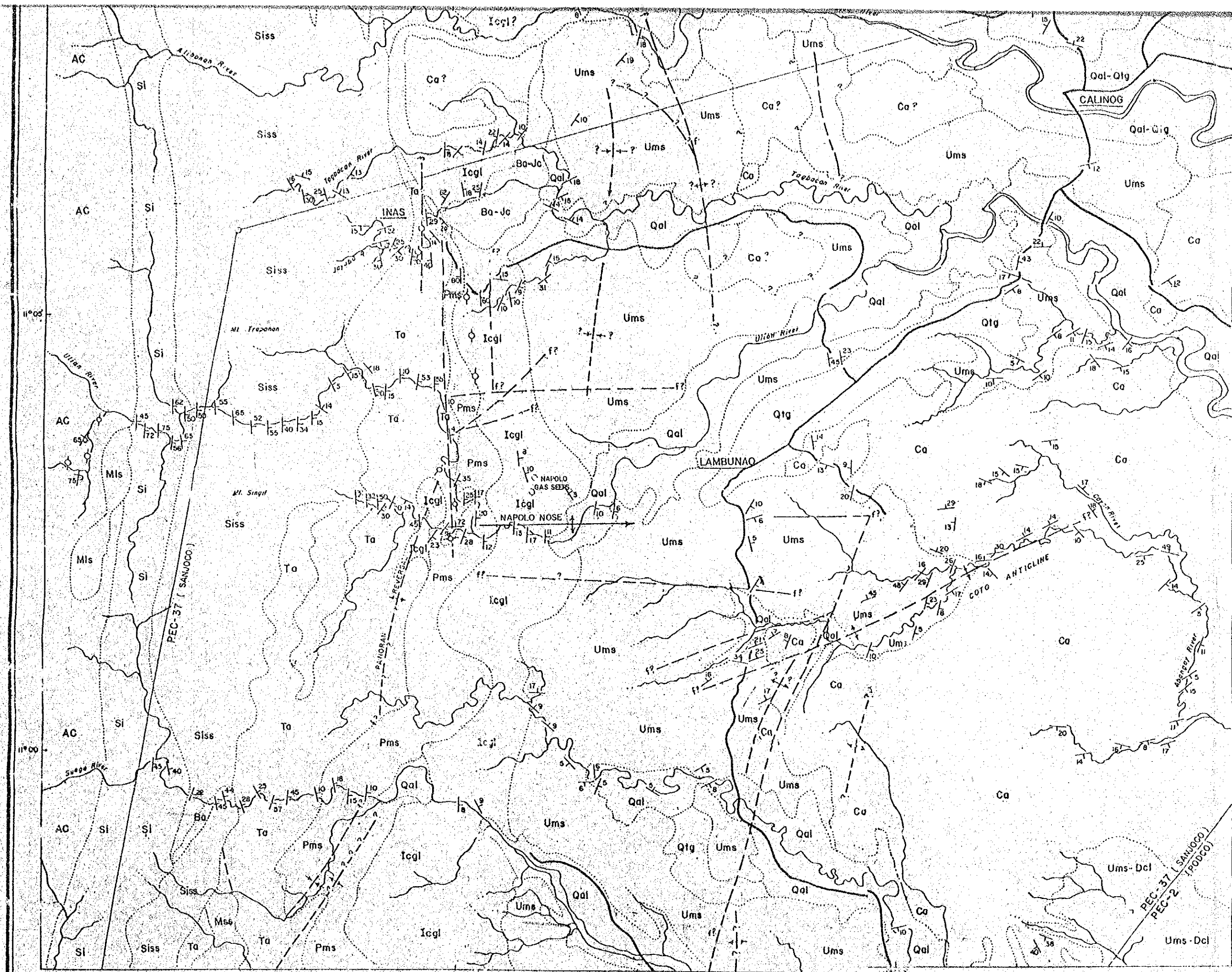
RECENT

LOWER PLEISTOCENE

MIO-PLIOCENE  
to  
PLIOCENE

LOWER TO  
UPPER MIOCENE

-  ANTICLINE
-  SYNCLINE
-  POSSIBLE FAULT
-  FAULT
-  GEOLOGICAL BOUNDARY
-  CONCESSION

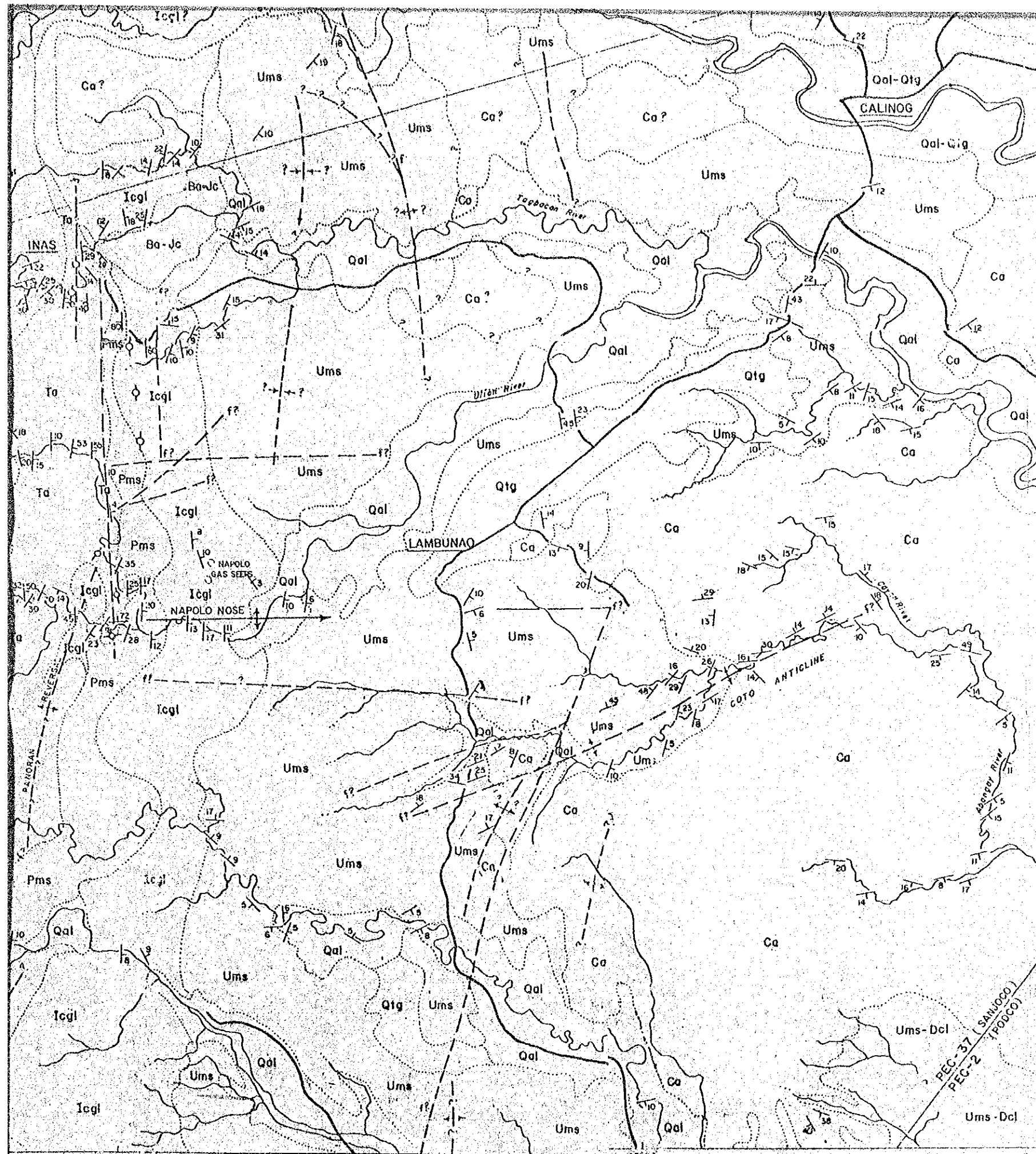


122°20'

122°25'

11°05'

11°00'



WESTERN ILOILO

PLATE - III

GEOLOGIC MAP  
 OF  
**COTO, JALAOUD, TAGBACAN, NAPOLO,  
 PANORAN and SUAGE PROSPECTS**  
 ILOILO PROVINCE, PANAY ISLAND  
 PHILIPPINES  
**PEC - 37**

SCALE 1:50,000

DATE: 1974

SAN JOSE OIL COMPANY, INC.  
 Concessionaire  
 SOUTH SEAS OIL & MINERAL EXPLORATION  
 DEVELOPMENT COMPANY, INC.  
 Operator

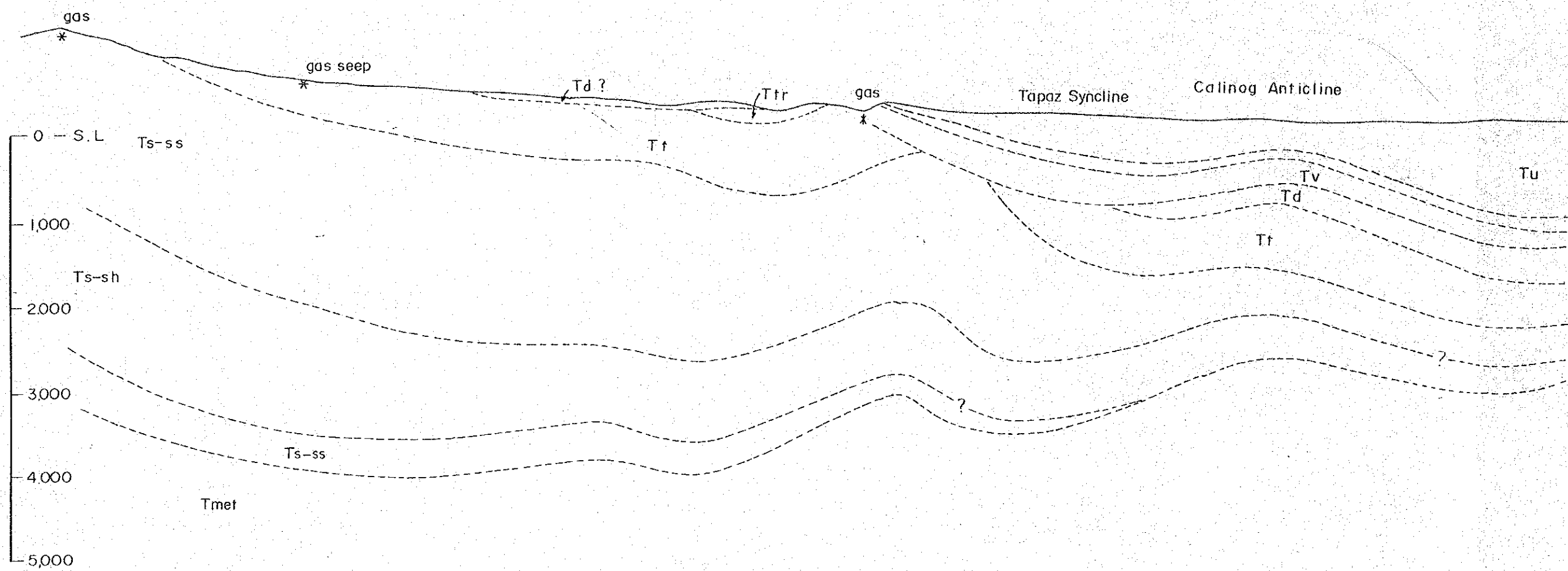
**EXPLANATION**

RECENT	Qal - Qtg	Recent	Alluvium and gravel
LOWER PLEISTOCENE	Ca	L. Pleist.	Cobatuan fm.
MID-PLIOCENE to PLEIOCENE	Ums	9-12	Ulion mudstone Dingle clastic
	Icgl	9-8	Iday conglomerate
	Pms	Mts	Panoran mudstone Mountain limestone - Dingle ls
LOWER TO UPPER MIOCENE	Ta	10-5	Jalaoud complex - Volcanics & Metamorphics Torao fm.
	Siss	6-7	Singit sandstone
	Si	4-5	Singit fm.
	Ac		Antalan Complex

**SYMBOLS**

ANTICLINAL AXIS SYNCLINAL AXIS POSSIBLE STRUCTURAL HIGH FAULT & PROBABLE FAULT GEOLOGICAL CONTACT CONCESSION BOUNDARY	DIP & STRIKE VERTICAL BEDDING GAS SEEP HORIZONTAL BEDDING INFERRED CONTACT ROAD
--	--





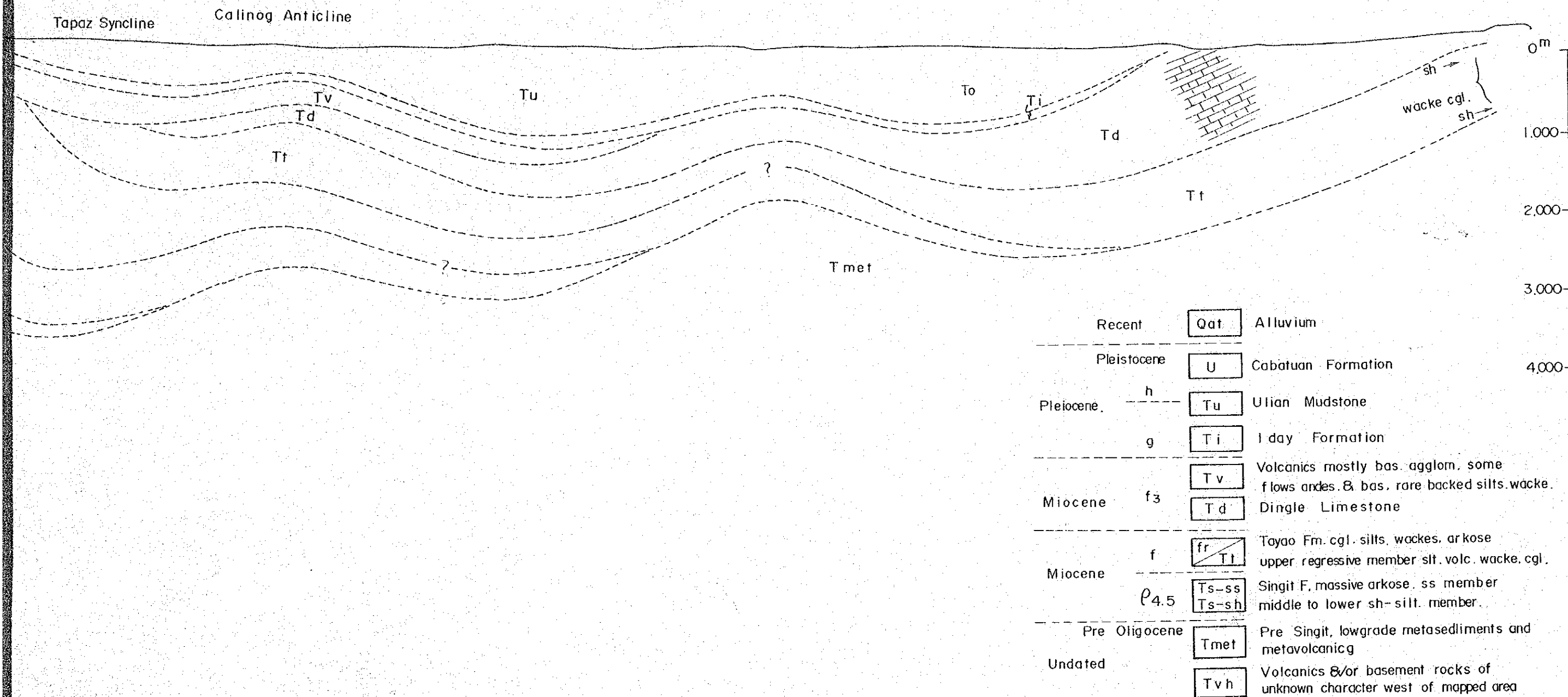
Iloilo Basin の Calinog 北約 8 km を通る東西の地質断面

Structure Sections Pec-180 Nov. 1, '60 1/50,000

Based on surface geology only

Reported by

L. Chistian, F. Albolote, A. Salcedo



4 km を通る東西の地質断面

JICA