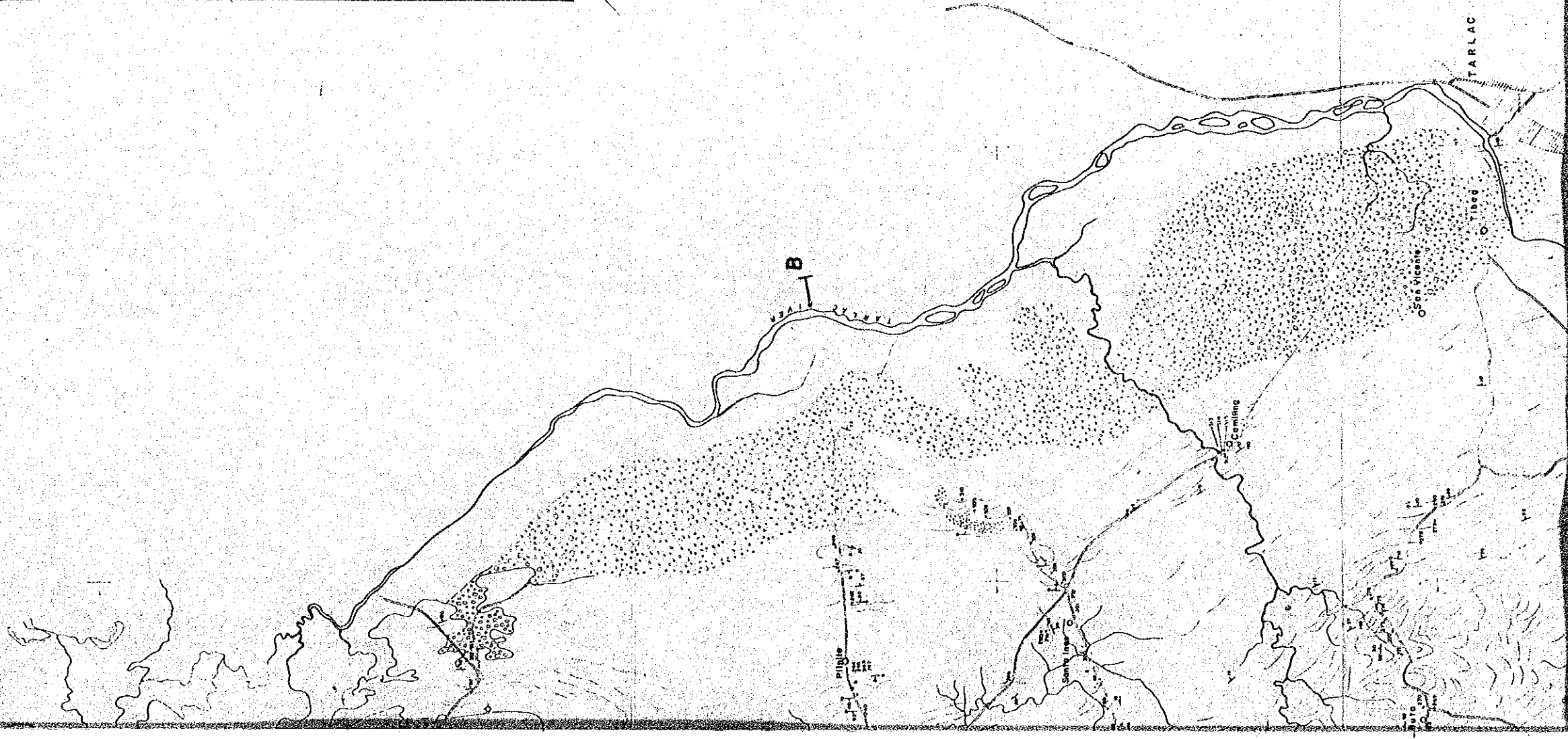
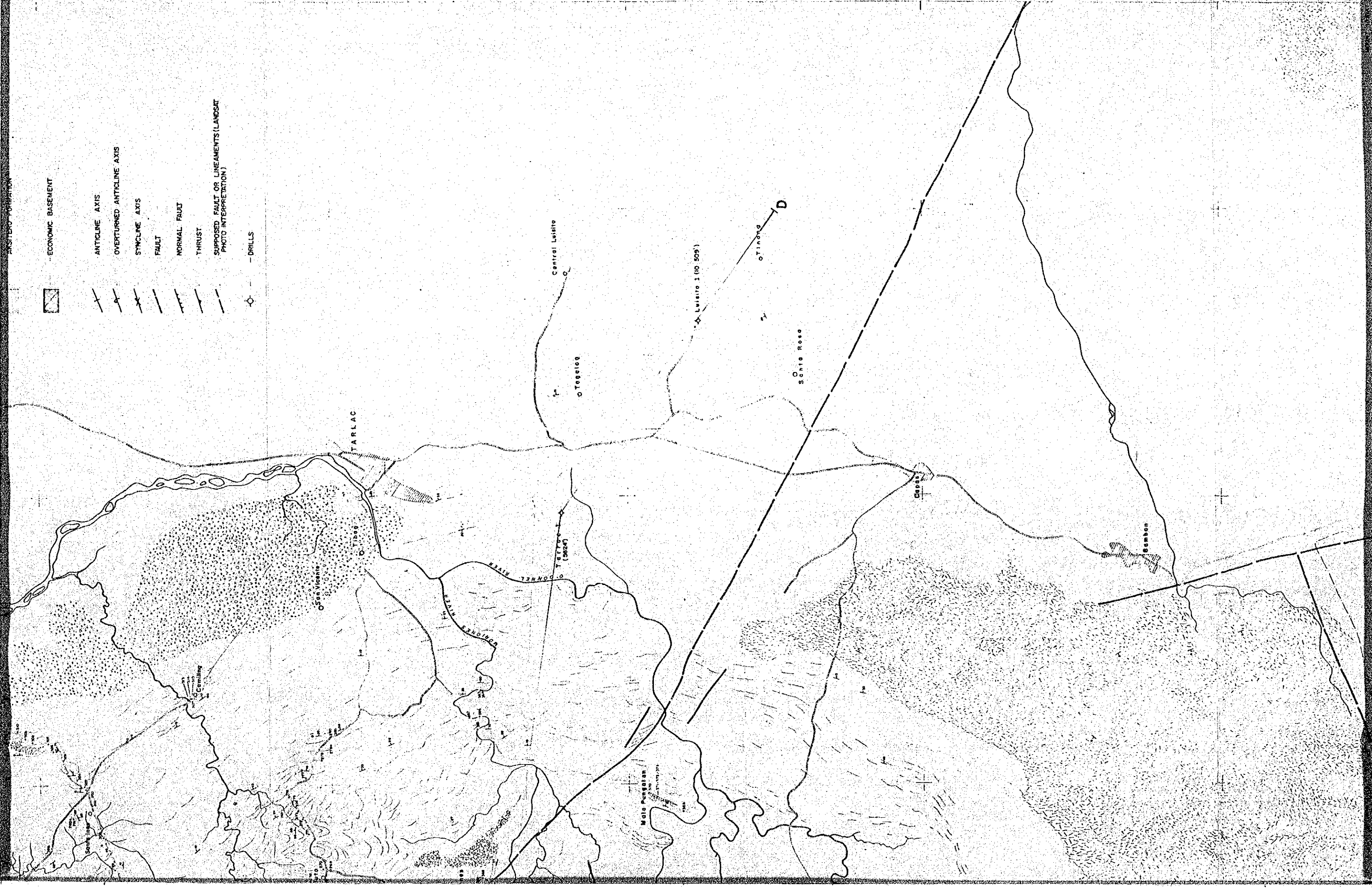


LEGEND

- QUATERNARY DEPOSITS
- SUB-RECENT ALLUVIAL TERRACES
- SUB-RECENT and RECENT VOLCANITES
- ASSOCIATED PYROCLASTICS (e.g. BAMBAN FORMATION)
- TARLAC FORMATION
- MALINTA FORMATION
- MORONES FORMATION (INCLUDING SANSOTERO and other LIMESTONES)
- AKSITERO FORMATION
- ECONOMIC BASEMENT
- ANTICLINE AXIS
- OVERTURNED ANTICLINE AXIS
- SYNCLINE AXIS
- FAULT
- NORMAL FAULT
- THRUST
- SUSPECTED FAULT OR LINEAMENTS (LANDSAT PHOTO INTERPRETION)
- DRILLS



- ECONOMIC BASEMENT
- ANTICLINE AXIS
- OVERTURNED ANTICLINE AXIS
- SYNCLINE AXIS
- FAULT
- NORMAL FAULT
- THRUST
- SUPPOSED FAULT OR LINEMENTS (LANDSAT PHOTO INTERPRETATION)
- DRILLS



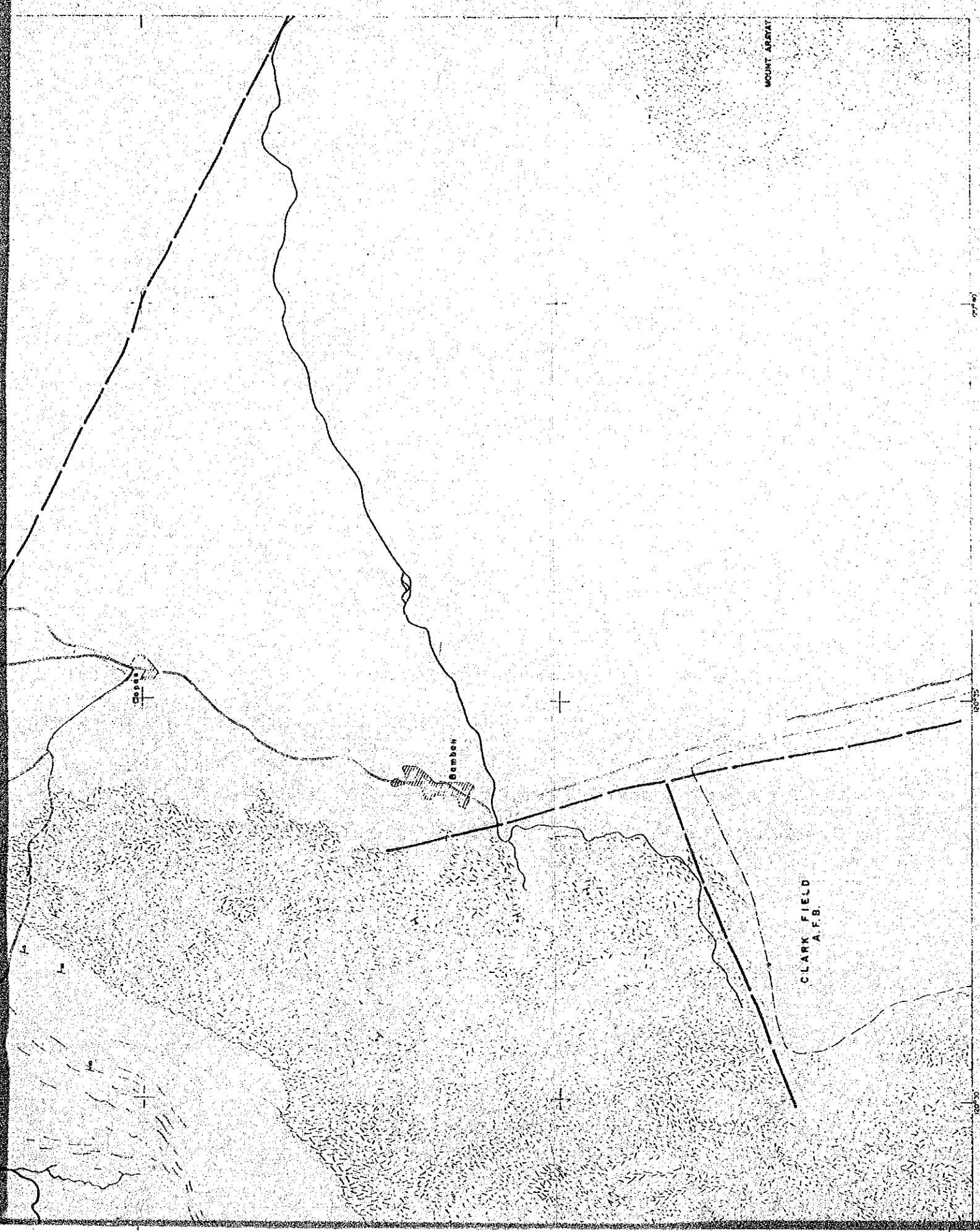


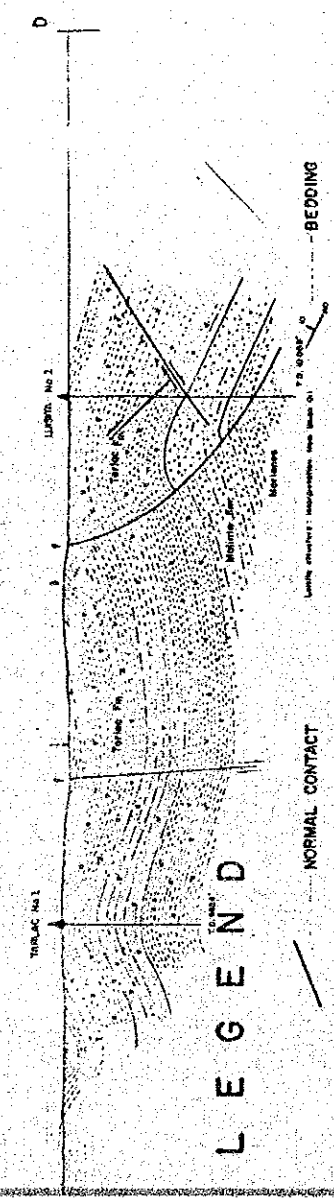
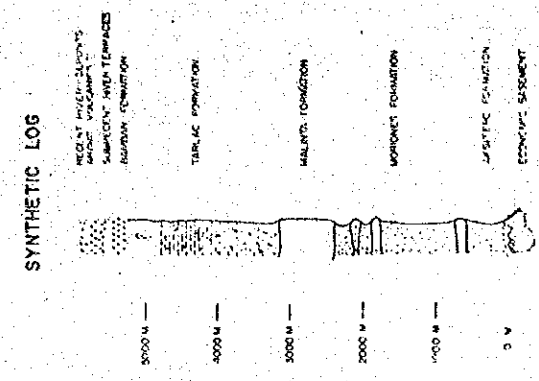
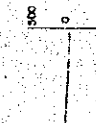
PLATE No. II

MAP OF TARLAC AREA

ENTRAL LUZON)
SCALE 1:50,000

1:50,000 (FIELD CARTOGRAPHY-LAND SAT PHOTO-INTERPRETATION - 1/50,000 PHOTO INTERPRETATION)
A. GONZALES, 1968.
THE PHILIPPINES, BUREAU OF MINES (1962).
TARLAC AREA, IN GEOLOGY AND OIL POSSIBILITIES OF THE PHILIPPINES, G. W. CORBY, 1951

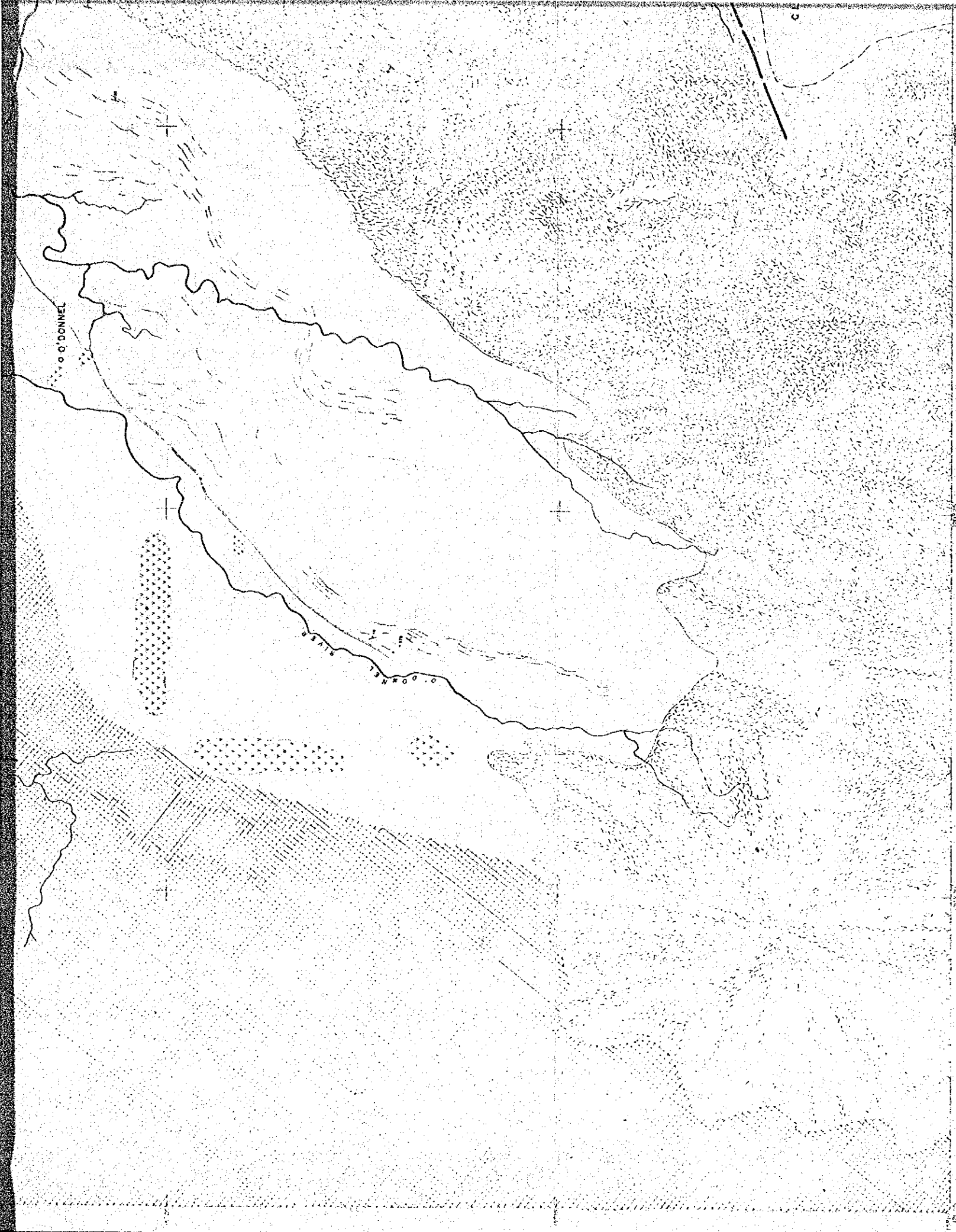
TARLAC AREA B



LEGEND

- NORMAL CONTACT
- SUPPOSED NORMAL CONTACT
- FAULT
- NORMAL FAULT
- THRUST
- SUPPOSED FAULT OR MAIN LINEAMENT (AFTER LANDSAT PHOTO-INTERPRETATION)
- BEDDING
- OVERTURNED BEDDING
- SAMPLE LOCATION
- DRILL (WITH DEPTH IN FEET)
- ATTITUDE OF BEDDING



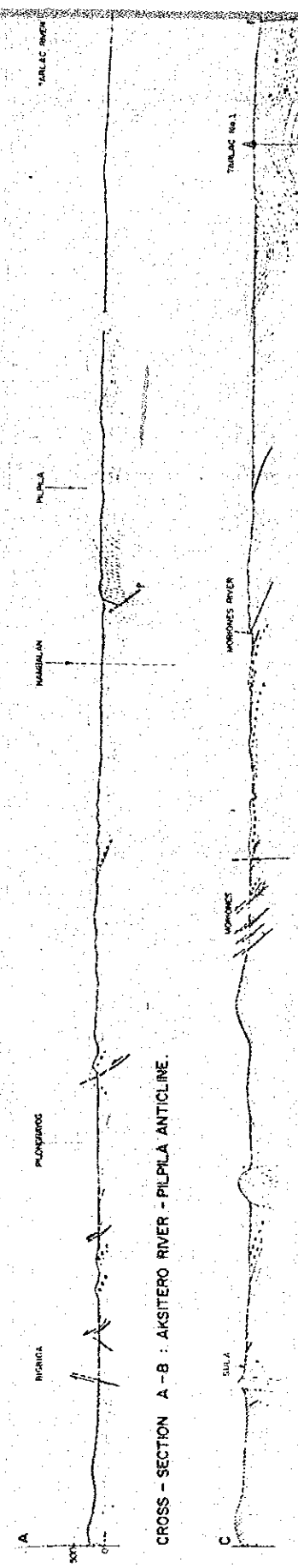


EDB - BEICIP / 1976

GEOLOGICAL MAP OF TARLAC (CENTRAL LUZON)

SCALE 1:50,000

DATA COMPILED AFTER: EDB-BEICIP BASIN STUDY, 1976 (FIELD CARTOGRAPHY-LAND SAT PHOTO-INTERPRETATION)
 UNPUBLISHED MAP, R.A. GONZALES, 1968.
 GEOLOGICAL MAP OF THE PHILIPPINES - BUREAU OF MINES 1962.
 GEOLOGICAL MAP OF TARLAC AREA, IN GEOLOGY AND OIL POSSIBILITIES OF



CROSS - SECTION A - B : AKISITERO RIVER - PILA ANTICLINE.

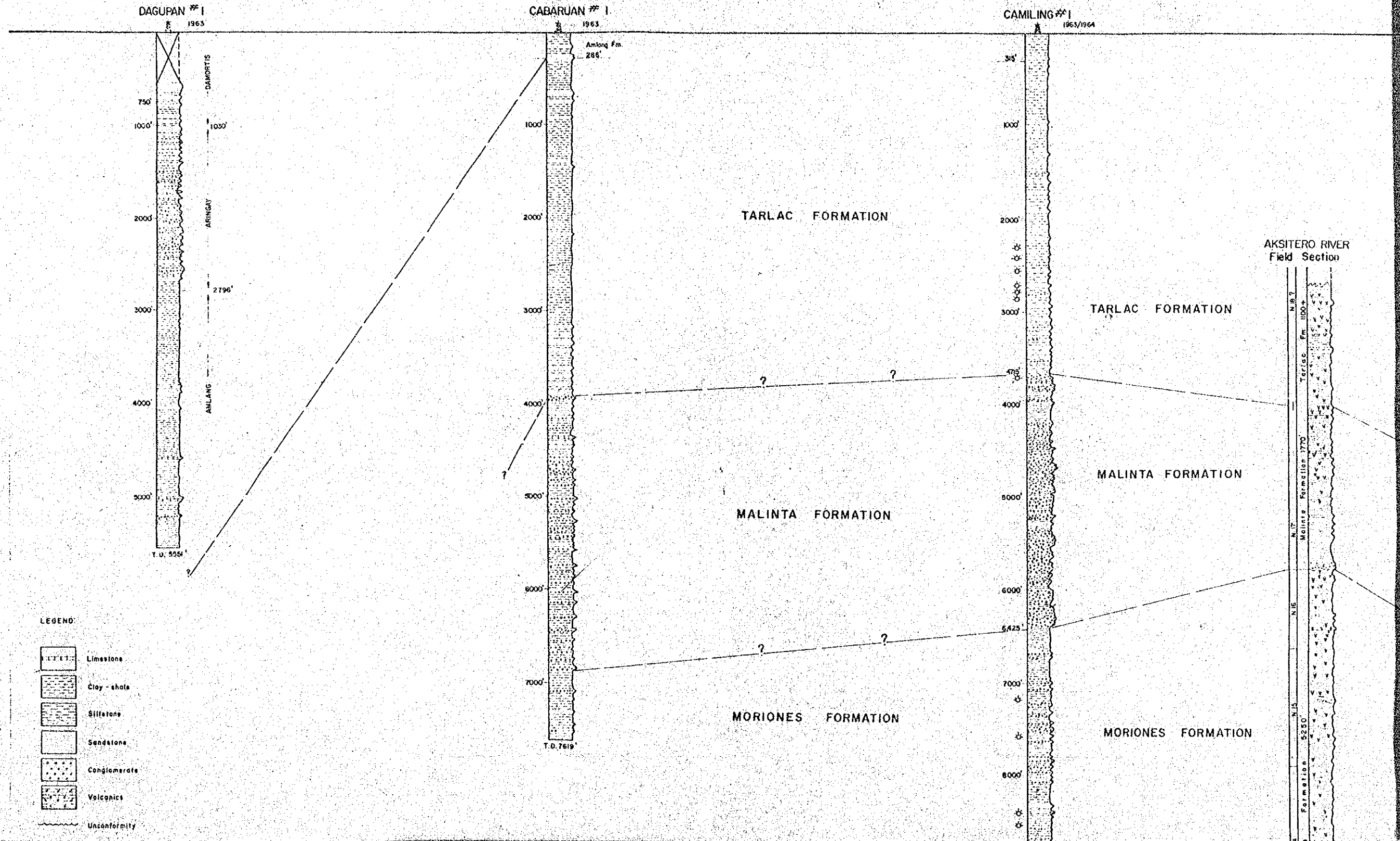
CROSS - SECTION C - D : MORIONES RIVER - TARLAC, LUISITA DRILL

LEGEND



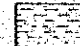

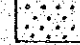

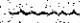
	QUATERNARY DEPOSITS		TARLAC FORMATION		NORMAL FAULT
	SUB-RECENT ALLUVIAL TERRACES		MALINTA FORMATION		SUPPOSED FAULT
	SUB-RECENT and RECENT VOLCANITES and ASSOCIATED PYROCLASTICS (e.g. BAMBAN FORMATION)		MORIONES FORMATION (INCLUDING LIMESTONE (e.g. SANSOTERO FORMATION))		NORMAL FAULT
			AKISITERO FORMATION		THRUST FAULT
			ECONOMIC BASEMENT		SUPPOSED FAULT (AFTER USGS)

EDB - BEICIP
1976

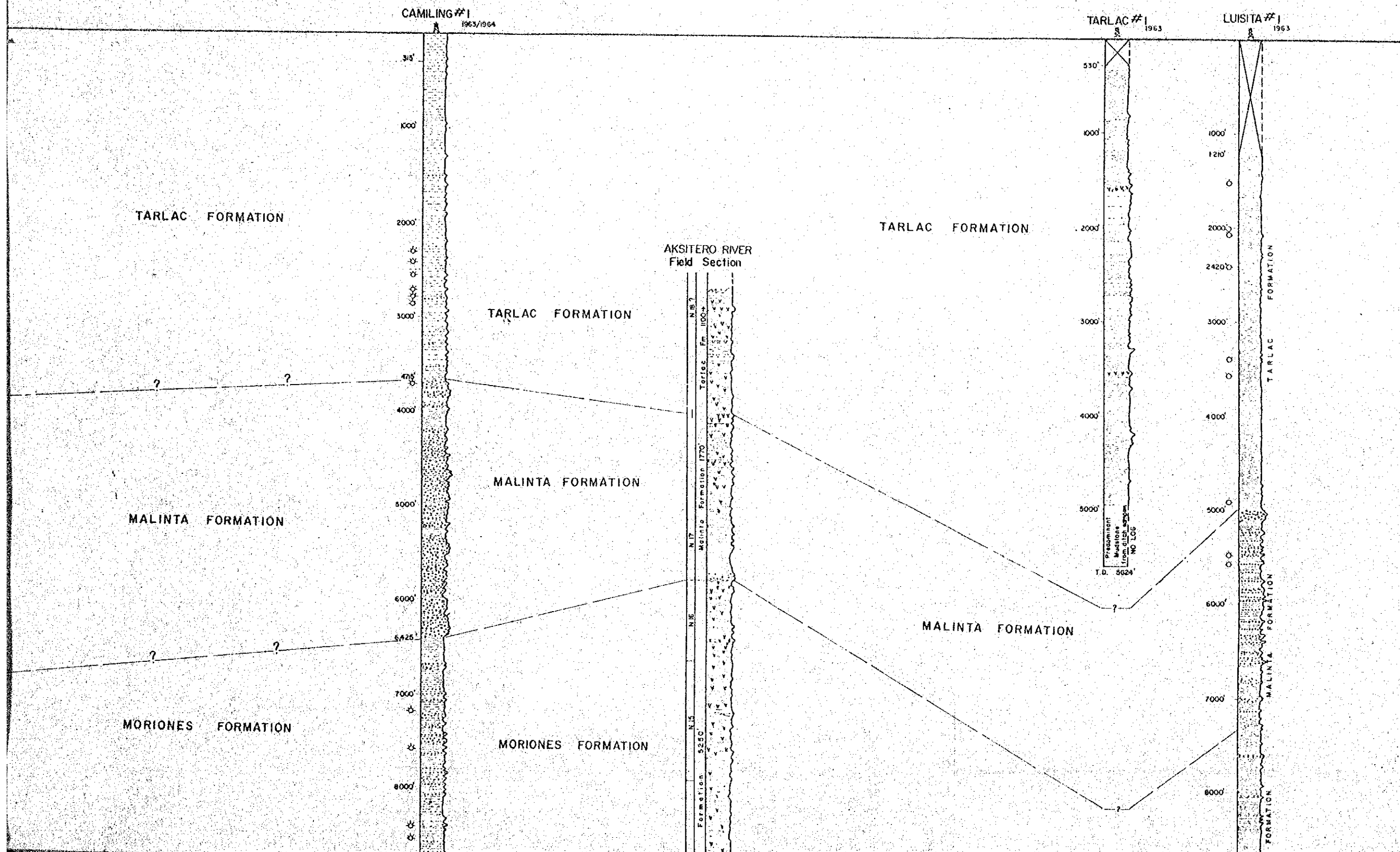
CORRELATION OF WELL DATA WITH SELECTED SURFACE SECTION

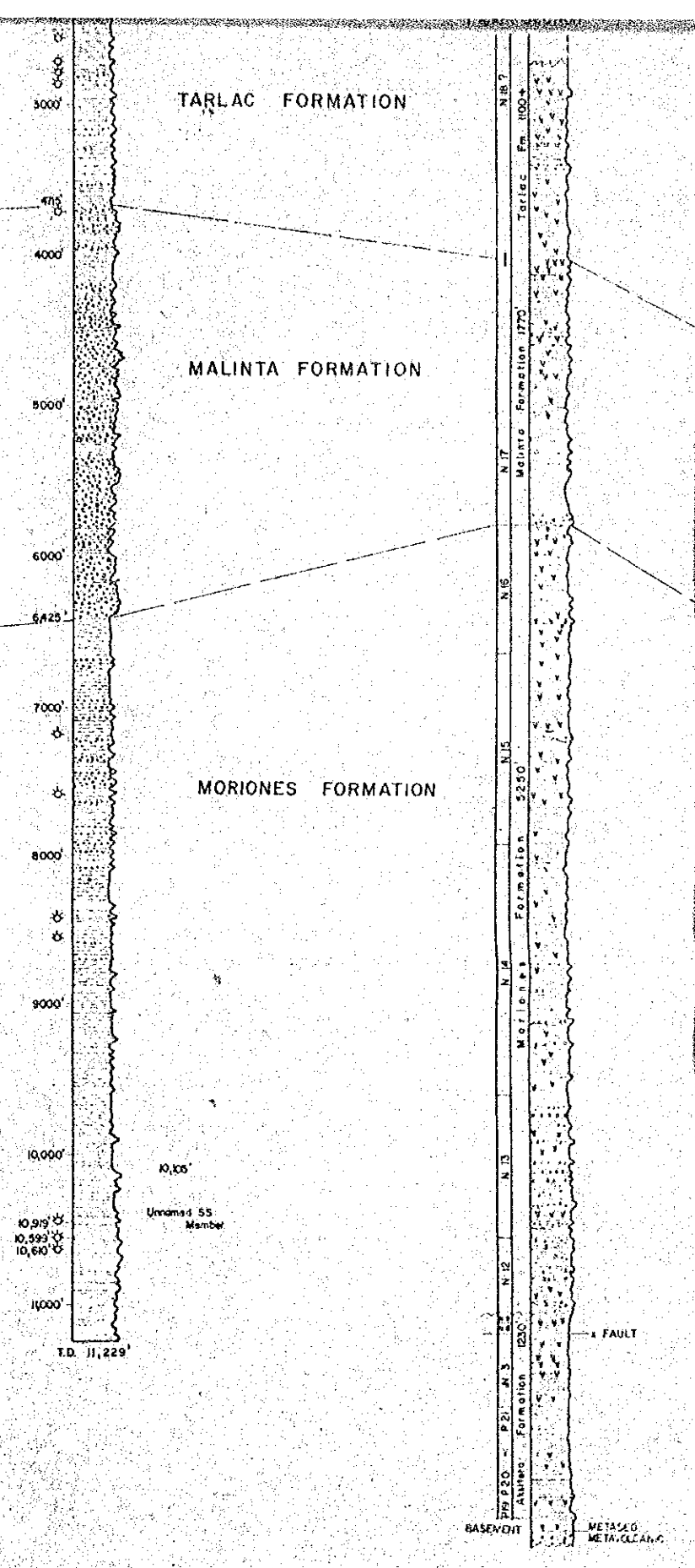
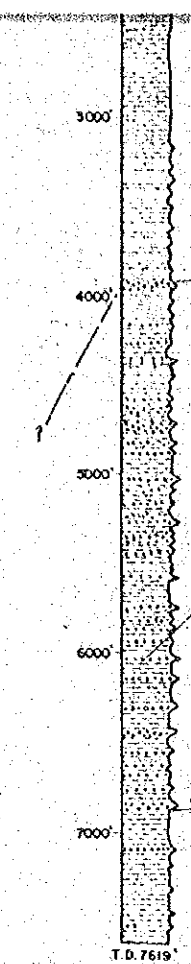
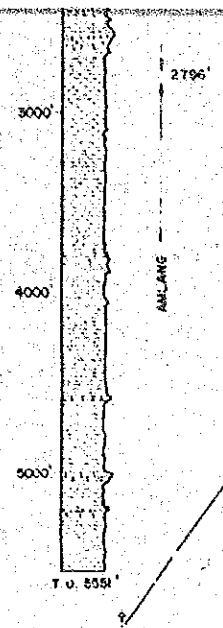


LEGEND:

-  Limestone
-  Clay-shale
-  Siltstone
-  Sandstone
-  Conglomerate
-  Volcanics
-  Unconformity

CORRELATION OF WELL DATA WITH SELECTED SURFACE SECTION



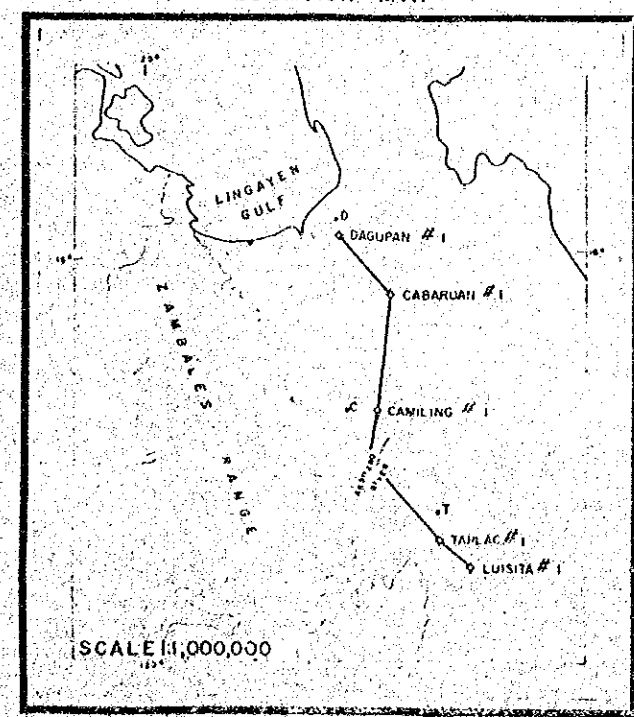


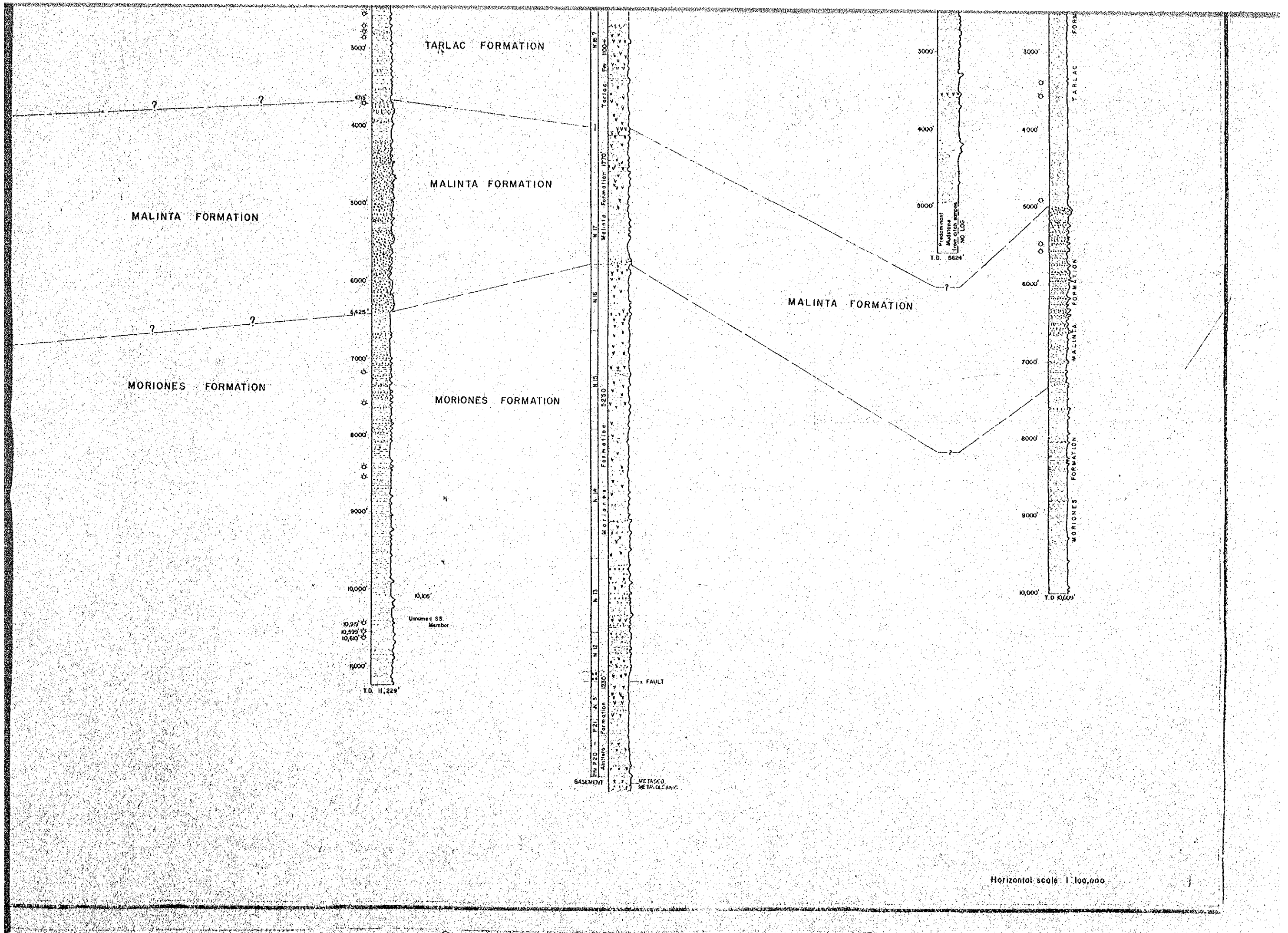
LEGEND:

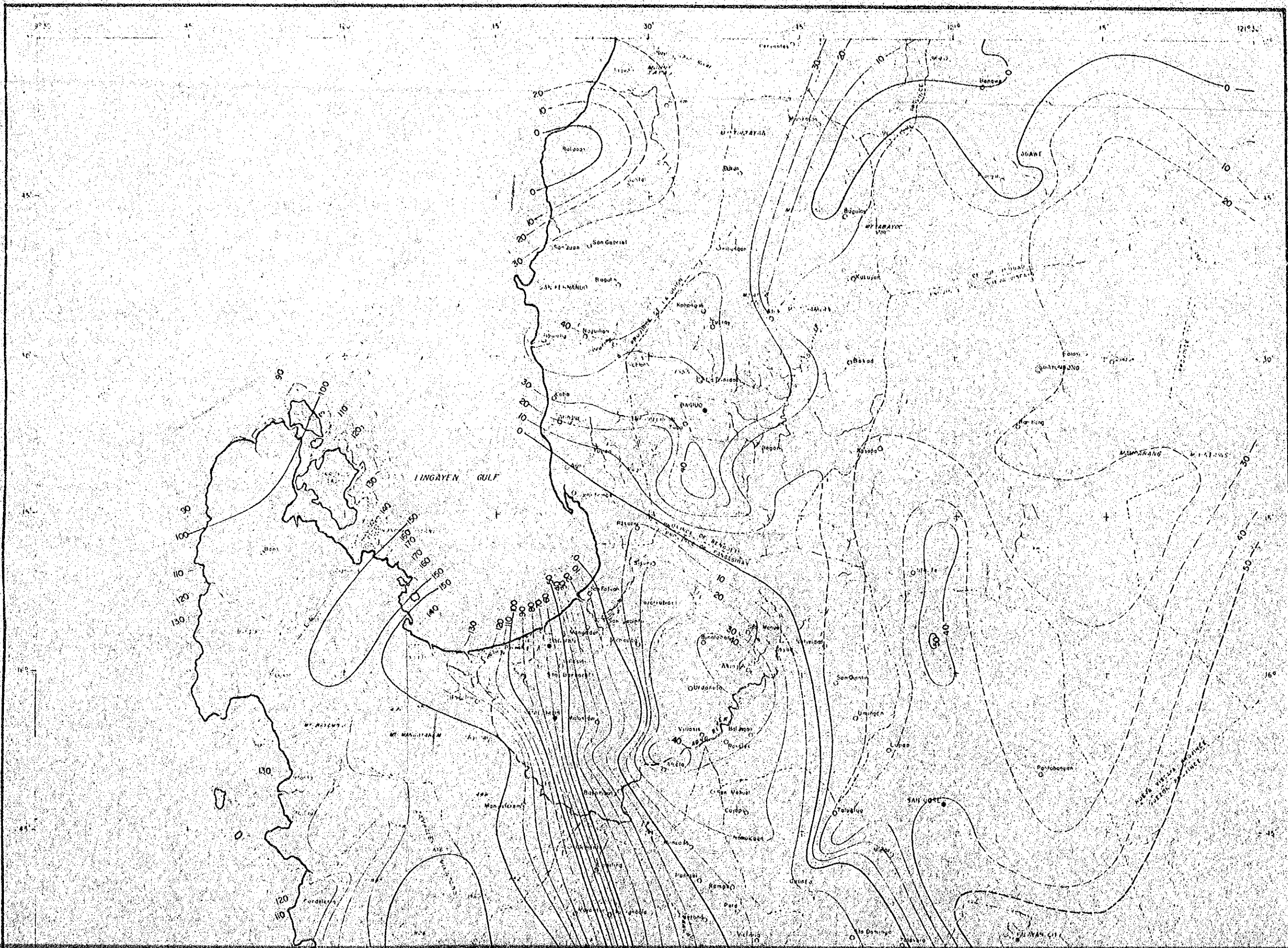
- Limestone
- Clay-shale
- Siltstone
- Sandstone
- Conglomerate
- Volcanics
- Unconformity
- Gas indication

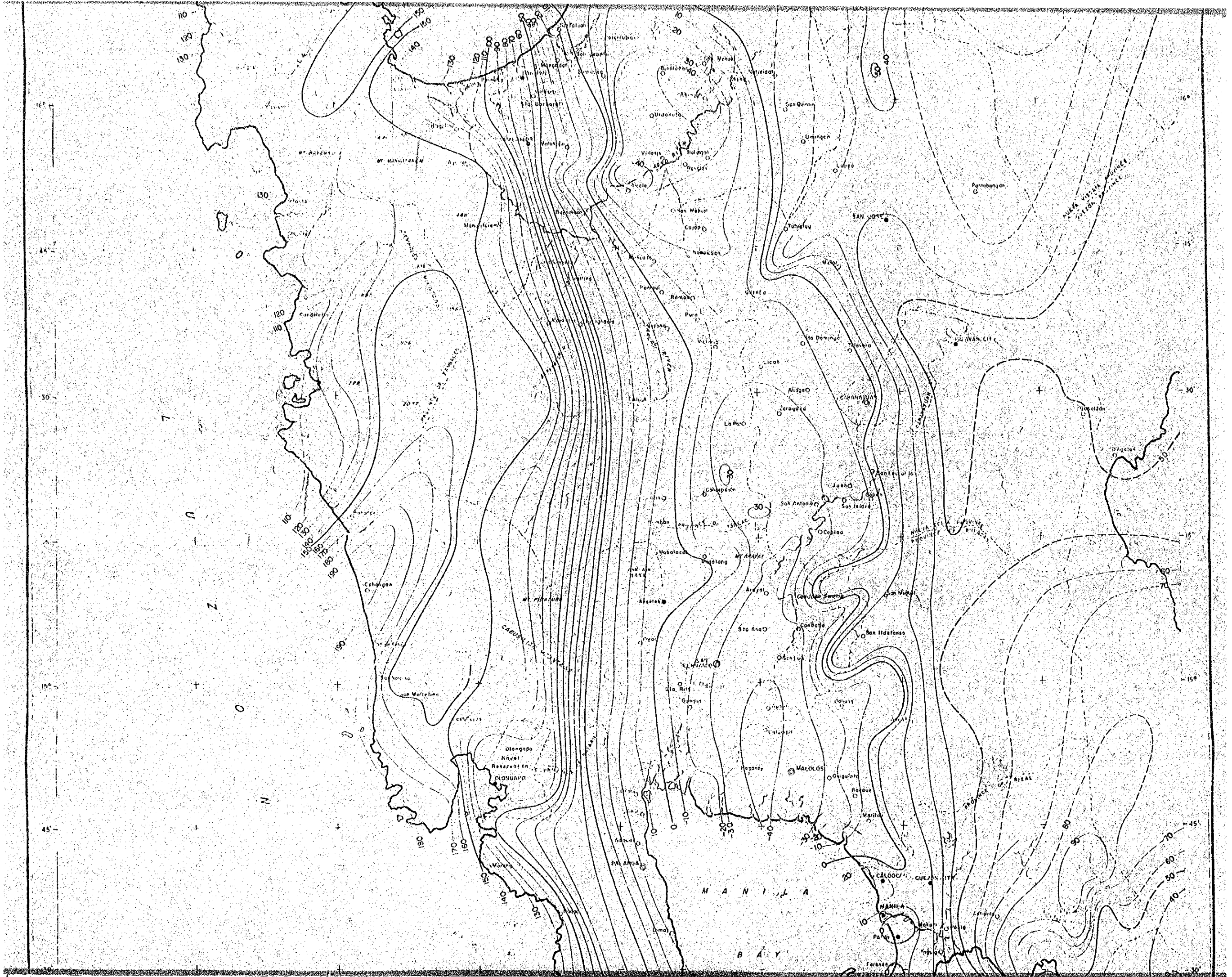
Profile of lithology in wells from induction log

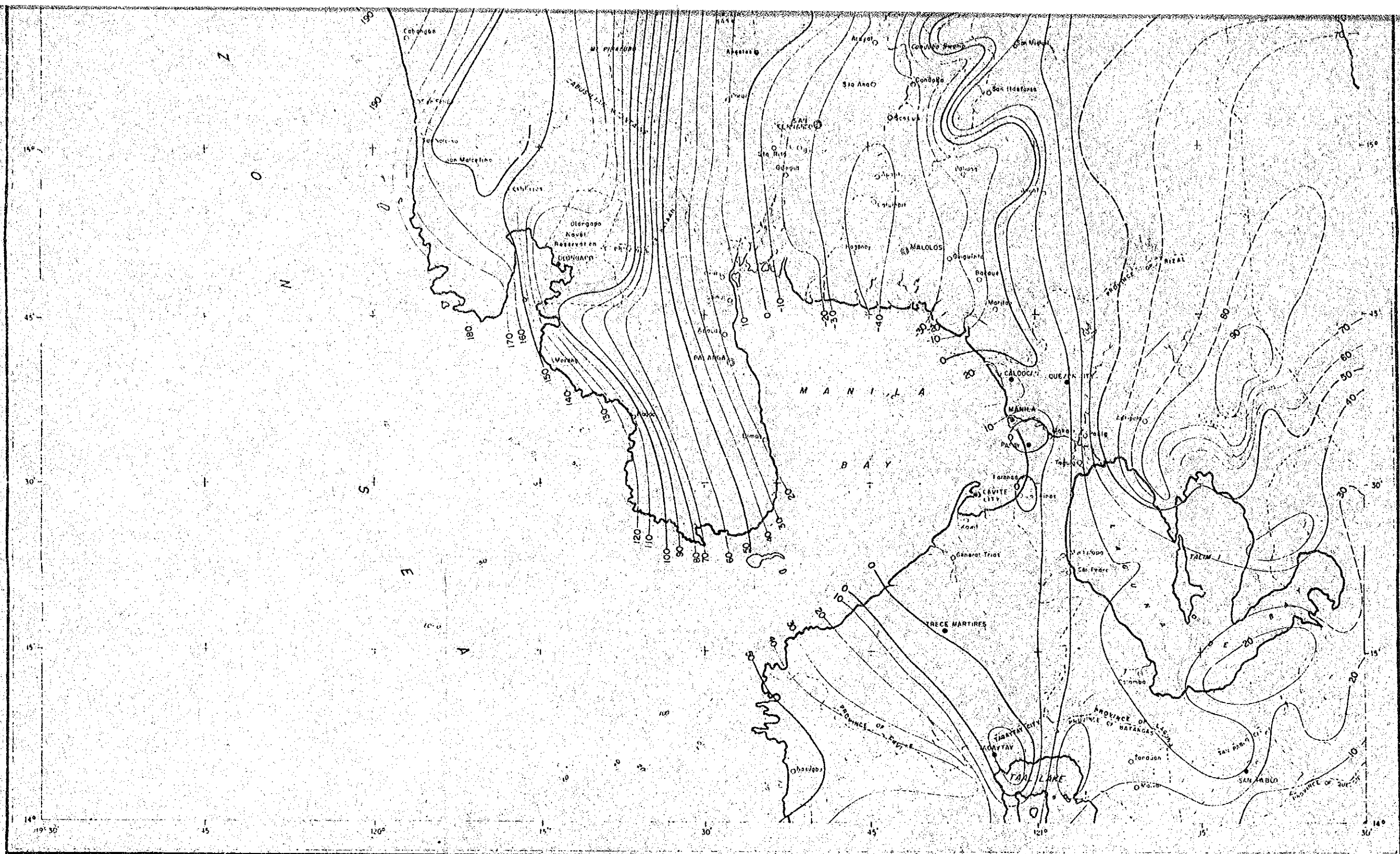
LOCATION MAP





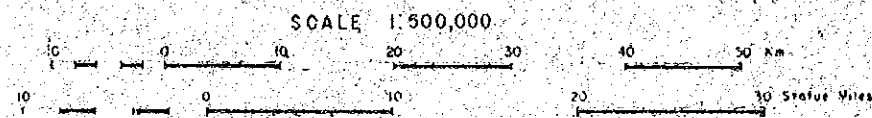






EDB - BEICIP / 1976

PLATE No. 30



BOUGUER GRAVITY MAP

After C. F. Teodoro, 1970