

LEGEND TO GEOLOGIC MAP 1:250,000

(SEE PLATE NO. 1)

AGE LOCATION	SE PART	E PART	NE PART	W PART	CENTRAL PART	NW PART
QUATERNARY	Subrecent volcanics, e.g. Daliman tuff, Bamban formation		Subrecent volcanic plugs	recent volcanics		recent clastics
	Atas conglomerate		San Fernando limestone	Subrecent terraces	Subrecent clastics	marls and limestones (Hundred Islands list)
PLIOCENE			Lingay member	Tarlac formation	Tarlac formation	
			Shala and Amlang	Molinta formation		
				Marionna formation		
MIOCENE						Undifferentiated ("Moriones" formation)
EARLY						
OLIGOCENE						
EOCENE TO LATE CRETACEOUS						

- NORMAL CONTACT
- INFERRED NORMAL CONTACT
- FAULTED CONTACT
- INFERRED FAULTED CONTACT OR LINEAMENTS FROM LANDSAT
- NORMAL FAULT, TEETH ON DOWNTHROW/SIDE
- THRUST FAULT, SAW TEETH ON OVERRIDING SIDE
- WRENCH FAULT
- FLEXURE, ARROWS TOWARD STEEPLY TILTED COMPARTMENT
- SYNCLINAL AXIS
- ANTICLINE AXIS WITH PLUNGE
- OVERTURNED ANTICLINE
- DRILLS WITH DEPTH IN FEET
- LOCATION OF CROSS-SECTIONS
- GAS SEEP

Economic basement

REFERENCES:

- EDB-BEICIP BASIN STUDY, 1976 (FIELD MAPPING, LANDSAT PHOTO INTERPRETATION, 1:50,000 PHOTO-INTERPRETATION.)
- UNPUBLISHED MAPS OF BAGUIO AND TARLAC AREA, R.A. GONZALES.
- GEOLOGICAL MAP OF THE PHILIPPINES, BUREAU OF MINES, 1962.
- GEOLOGY OF NORTHERN LUZON, E.F. DUNKEE AND S.L. PEDERSON, 1961.
- GEOLOGICAL MAPS OUT OF GEOLOGY AND OIL POSSIBILITY OF THE PHILIPPINES, C.W. CORBY, 1951.
- GEOLOGY OF GREATER MANILA AND ITS BEARING TO THE CATASTROPHIC EARTHQUAKE OF AUGUST 2nd, 1968, OCA, 1968.
- GEOLOGY OF SOUTHEASTERN NUEVA ECJA AND EASTERN BULACAN PROVINCES, B.A. GONZALES, 1971.
- PHILIPPINE CRETACEOUS SMALLER FORAMINIFERA, M.V. REYES AND E.P. ORDÓÑEZ, 1970.
- GEOLOGICAL REPORT OF WHITE EAGLE OVERSEAS OIL CO. INCORPORATED, 1961.

LEGEND TO GEOLOGIC MAP 1:250,000

(SEE PLATE NO. 1)

E PART	E PART	NE PART	W PART	CENTRAL PART	NW PART
Subrecent volcanics, e.g. Diliman tuff, Bamban formation	Subrecent volcanic plugs	recent volcanics	recent clastics		
Alat conglomerate	Son Fernando limestone	Subrecent terraces	Subrecent clastics	Tarlac formation	Marta and limestone (Mundrad islands etc)
	Linao member	Tarlac formation	Tarlac formation		
	Shale and Amlang	Malinta formation			
	Ktandyte formation	Marionas formation			Undifferentiated (Marionas formation)
Buehacop 1st member, Angao member, Conglomerate member, Clastic member	Kanan limestone with intercalated volcanics	Aksite formation			
Angat 1st formation					
Volcanoclastics and Bobabaso clastics					
Mantaba formation					
Masungit limestone					
Kinabuan and Maybangan formations					

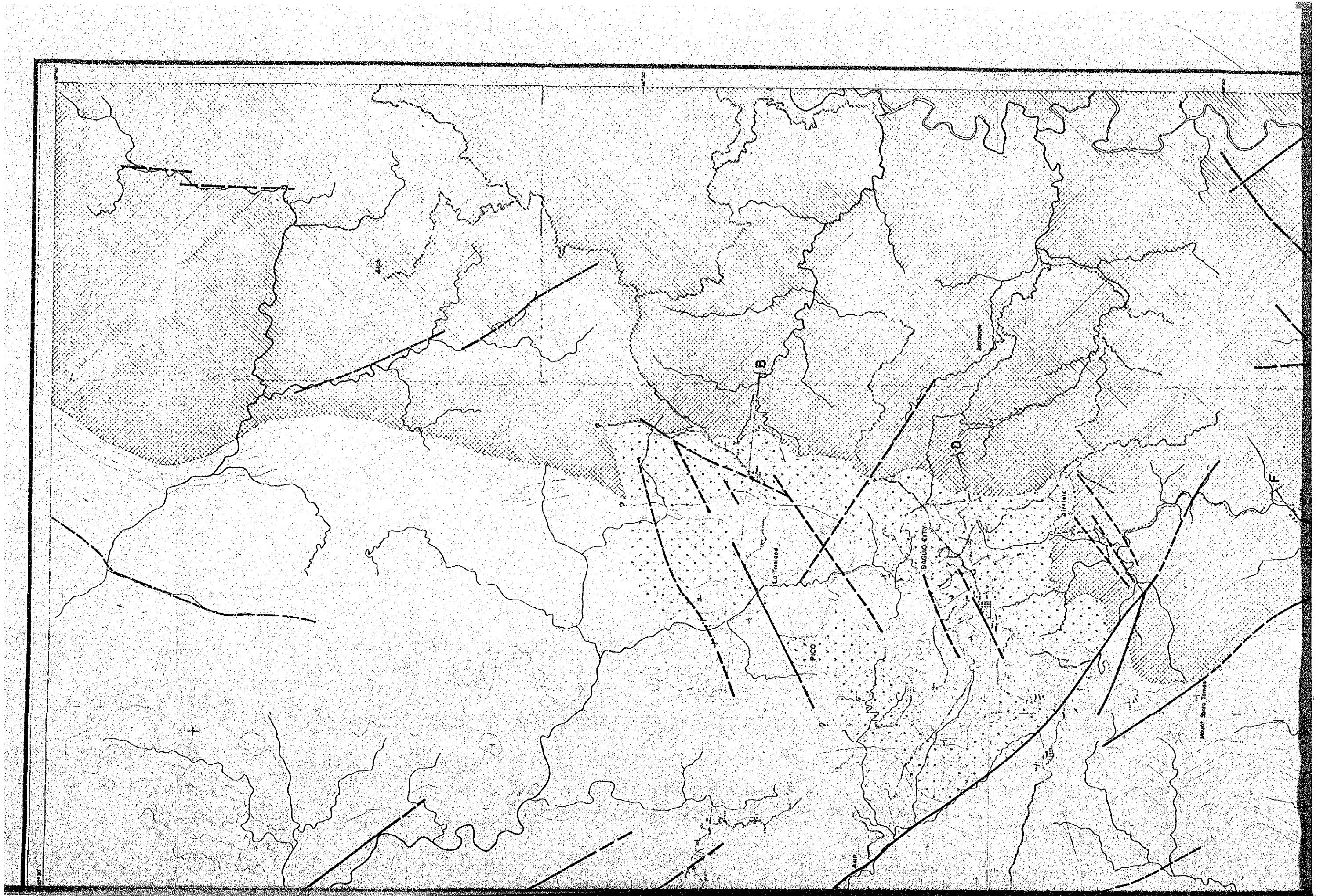
- NORMAL CONTACT
- INFERRED NORMAL CONTACT
- FAULTED CONTACT
- INFERRED FAULTED CONTACT OR LINEAMENTS FROM LANDSAT PHOTOINTERPRETATION
- NORMAL FAULT, TEETH ON DOWNTHROWING SIDE
- THRUST FAULT, SAW TEETH ON OVERRIDING SIDE
- WRENCH FAULT
- FLEXURE, ARROWS TOWARD STEEPLY TILTED COMPARTMENT
- SYNCLINAL AXIS
- ANTICLINE AXIS WITH PLUNGE
- OVERTURNED ANTICLINE
- DRILLS WITH DEPTH IN FEET
- LOCATION OF CROSS-SECTIONS
- GAS SEEP

Economic basement

ICIP BASIN STUDY, 1976 (FIELD MAPPING, LANDSAT PHOTO INTERPRETATION, 1:50,000 PHOTO-INTERPRETATION.)
 ISHED MAPS OF BAGUIO AND TARLAC AREA, R.A. GONZALES.
 CAL MAP OF THE PHILIPPINES, BUREAU OF MINES, 1962.
 Y OF NORTHERN LUZON, E.F. DUNKER AND S.L. PEDERSON, 1961

— GEOLOGICAL MAPS OUT OF GEOLOGY AND OIL POSSIBILITY OF THE PHILIPPINES, C.W. CORBY, 1951.
 — GEOLOGY OF GREATER MANILA AND ITS BEARING TO THE CATASTROPHIC EARTHQUAKE OF AUGUST 2nd, 1968, OCA, 1968
 — GEOLOGY OF SOUTHEASTERN NUEVA ECUIJA AND EASTERN BULACAN PROVINCES, B.A. GONZALES, 1971.
 — PHILIPPINE CRETACEOUS SMALLER FORAMINIFERA., M.V. REYES AND E.P. ORDONEZ, 1970.

— GEOLOGICAL REPORT OF WHITE EAGLE OVERSEAS OIL CO. INCORPORATED, 1961



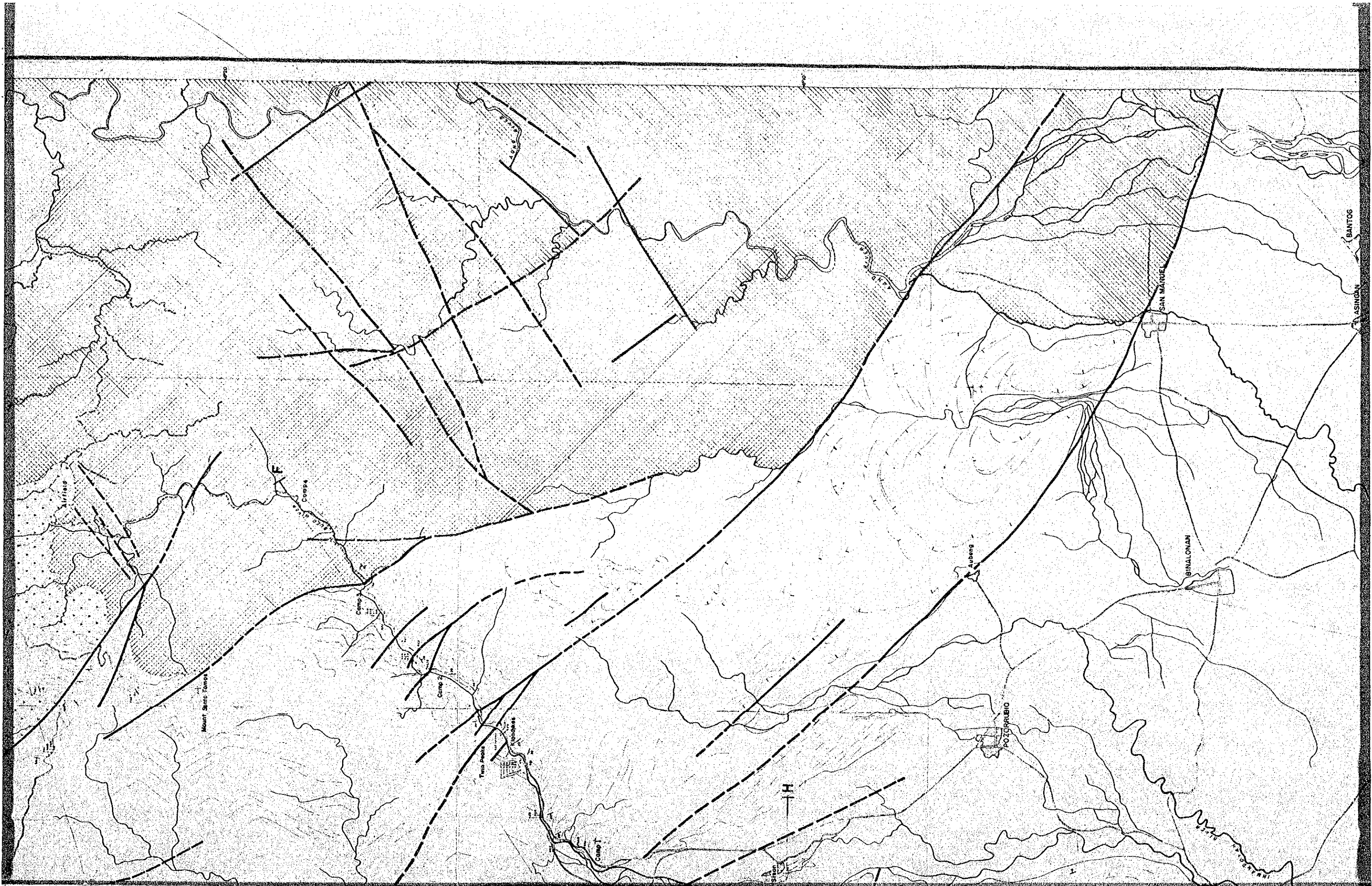




PLATE No. 18

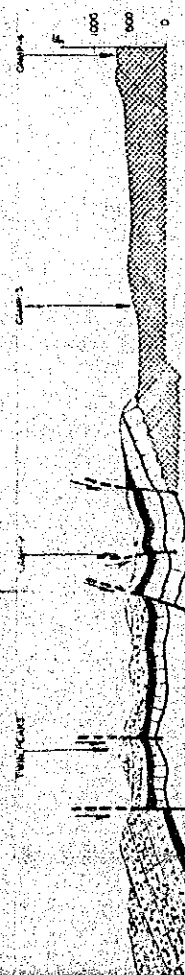
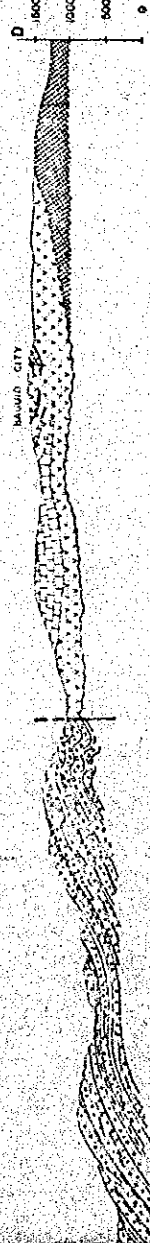
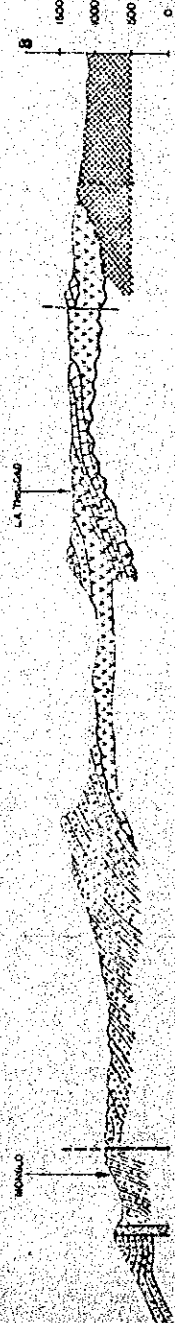
OF BAGUIO AREA - LUZON)

1:50,000

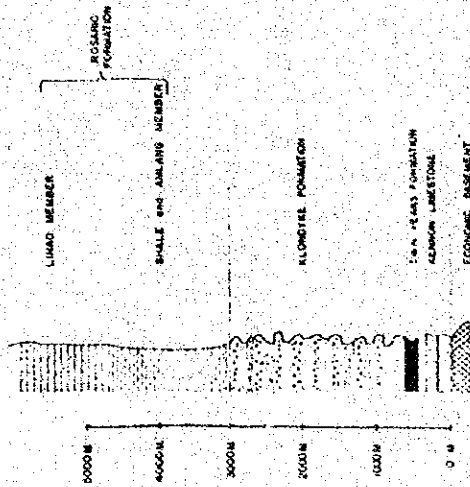
1:50,000

AIRY-LAND SAT. PHOTO INTERPRETATION - (1/50,000 PHOTO INTERPRETATION)

U.S. GEOLOGICAL SURVEY
BUREAU OF MINES 1962
AND S.L. PEDERSON A.A.P.G. 1961
S. OIL CO. (INC.), 1961



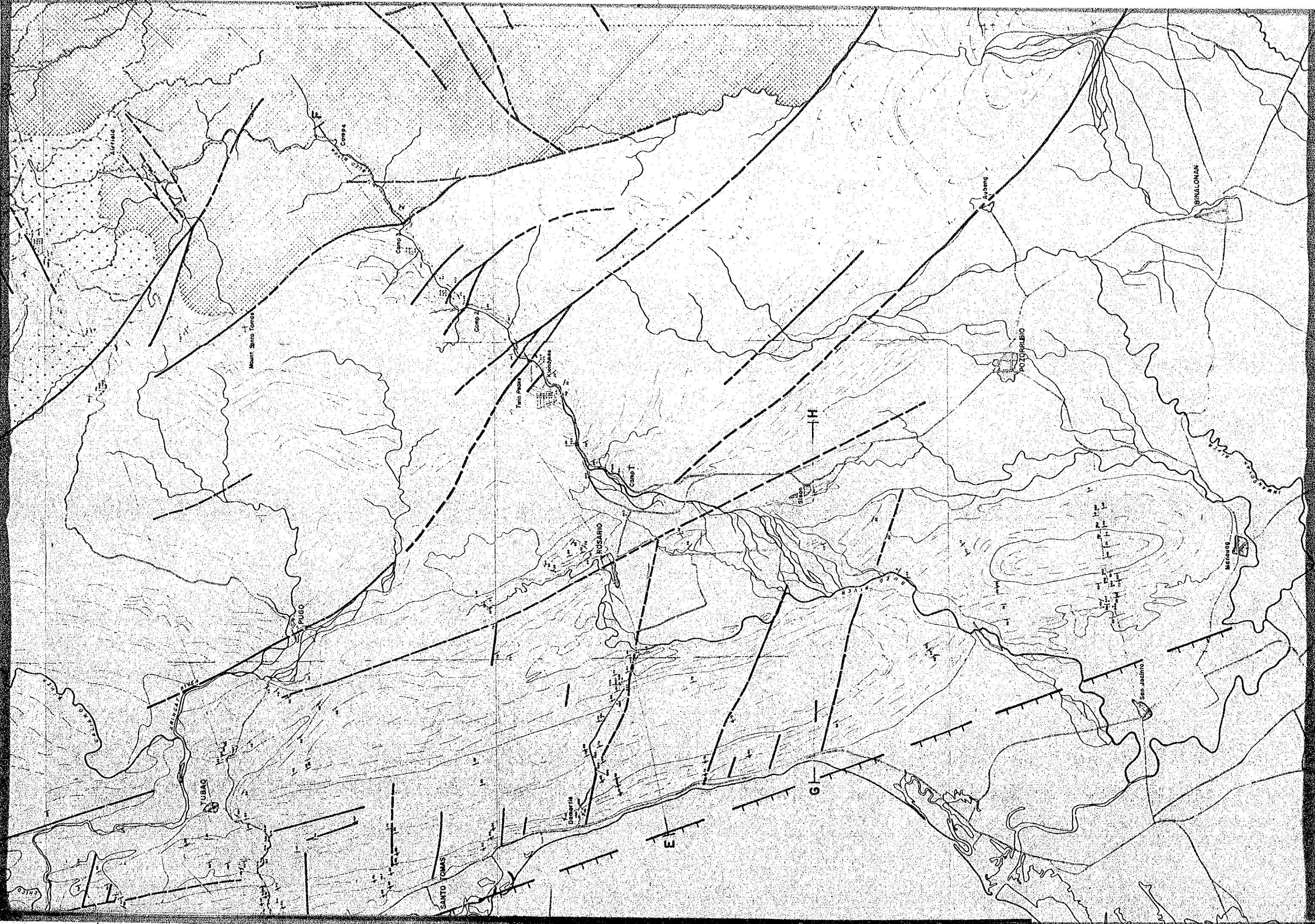
SYNTHETIC LOG (BIUED RIVER - DAMPORTIS)

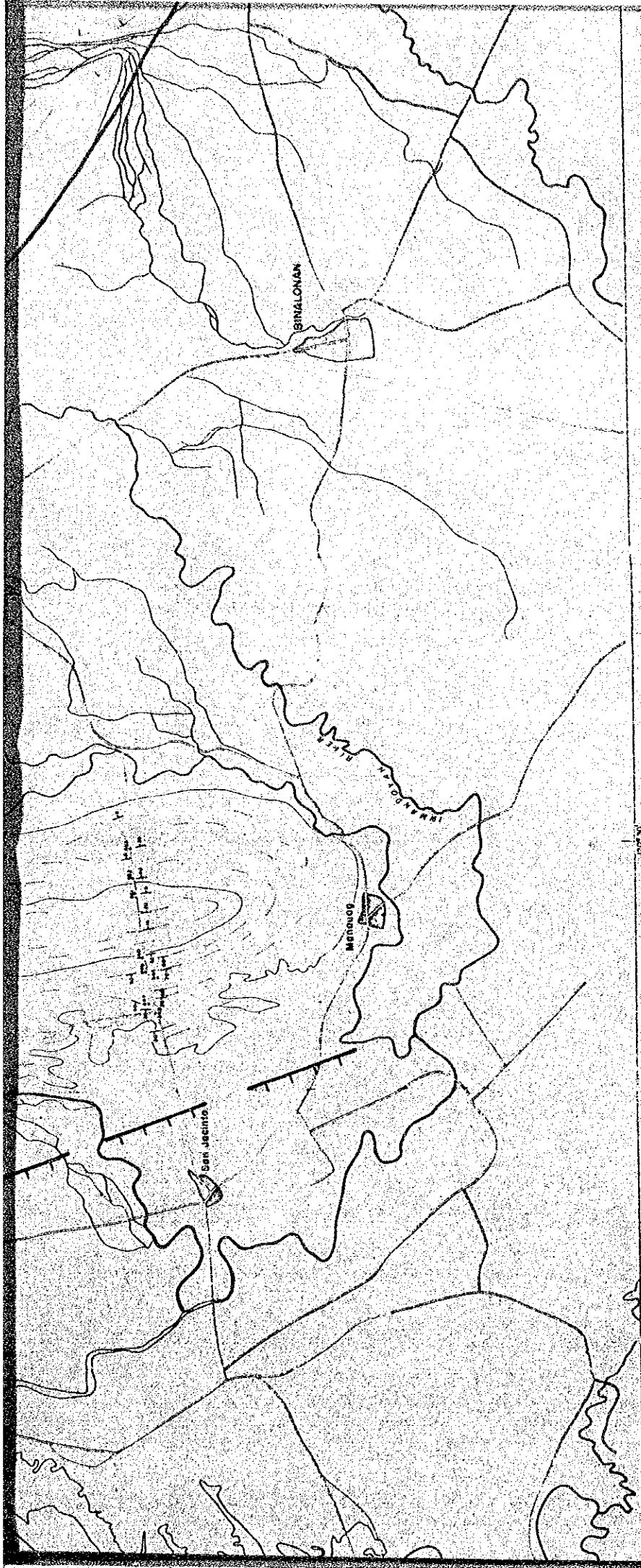


E N D

- | | | | |
|-----------|---|-----|---------------------|
| — | NORMAL CONTACT | — | BEDDING |
| - - - | SUPPOSED NORMAL CONTACT | ∧ | OVERTURNED BEDDING |
| | FAULT | ∩ | VERTICAL BEDDING |
| | NORMAL FAULT | + | HORIZONTAL BEDDING |
| - · - · - | SUPPOSED FAULT OR LINEAMENT
(AFTER LANDSAT PHOTO-INTERPRETATION) | B10 | SAMPLE LOCATION |
| | | ∩ | ATTITUDE OF BEDDING |



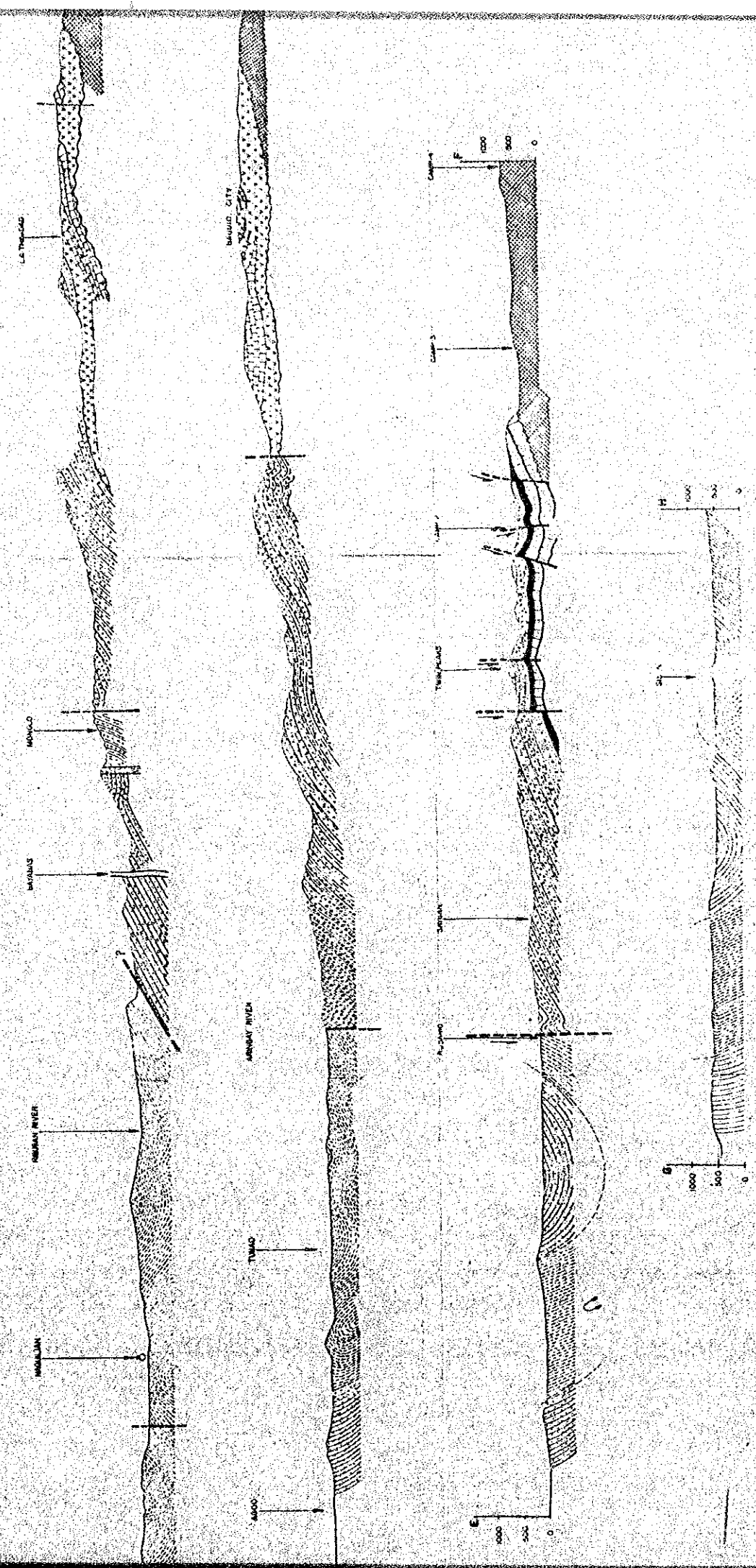




GEOLOGICAL MAP OF BAGUIO AREA (CENTRAL LUZON)

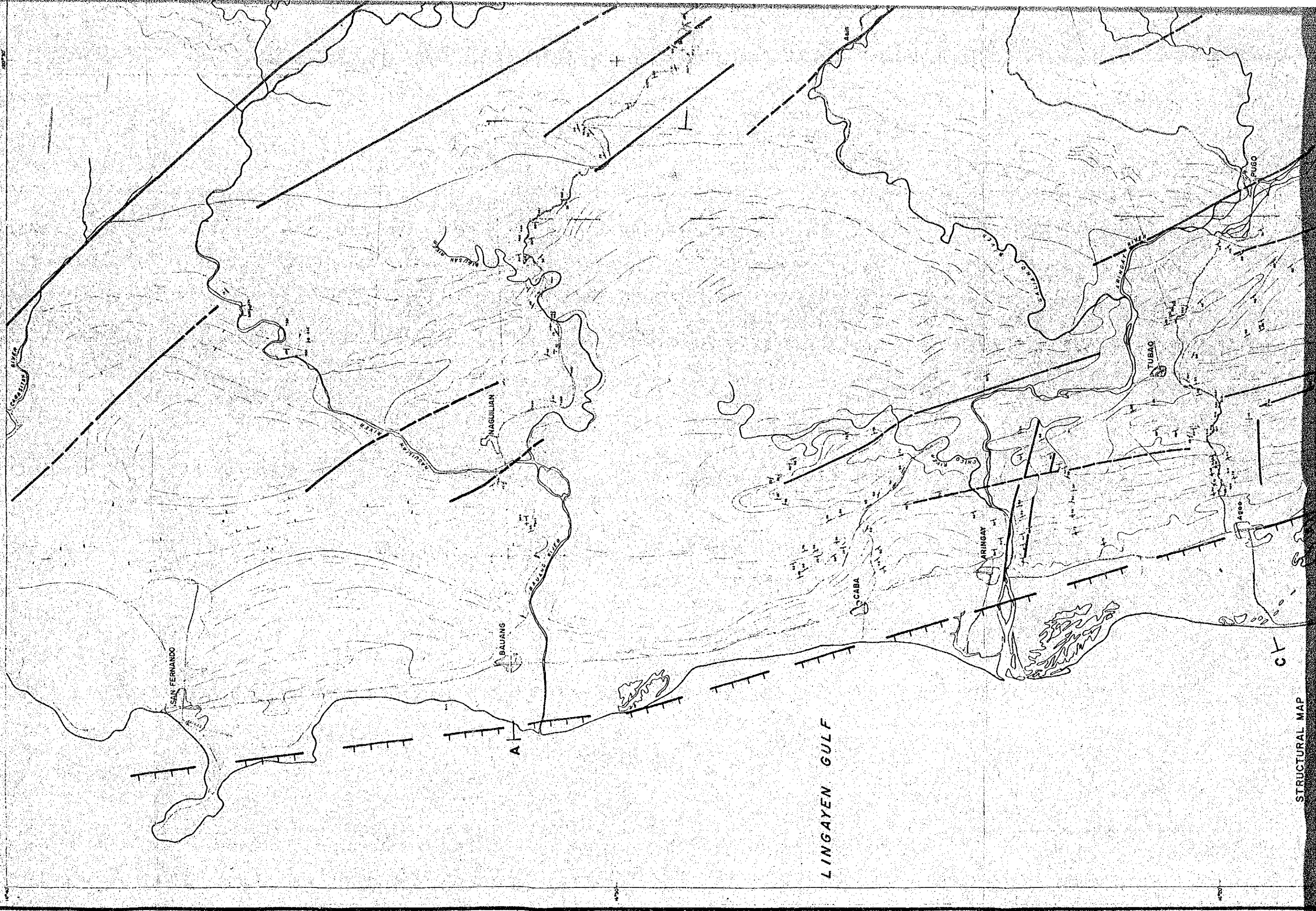
SCALE 1:50,000

DATA COMPILED AFTER: EDM-BECP BASIN STUDY, 1976 (FIELD CARTOGRAPHY-LAND SAT PHOTO INTERPRETATION-1/50,000 PHOTO INTERPRETATION);
 UNPUBLISHED MAP, R.A. GONZALES, 1968
 GEOLOGICAL MAP OF THE PHILIPPINES, BUREAU OF MINES 1962
 GEOLOGY OF NORTHERN LUZON, E.F. DUNKEE AND S.L. PEDERSON A.A.P.G. 1961
 GEOLOGICAL MAP OF WHITE EAGLE OVERSEAS OIL CO., INC., 1961

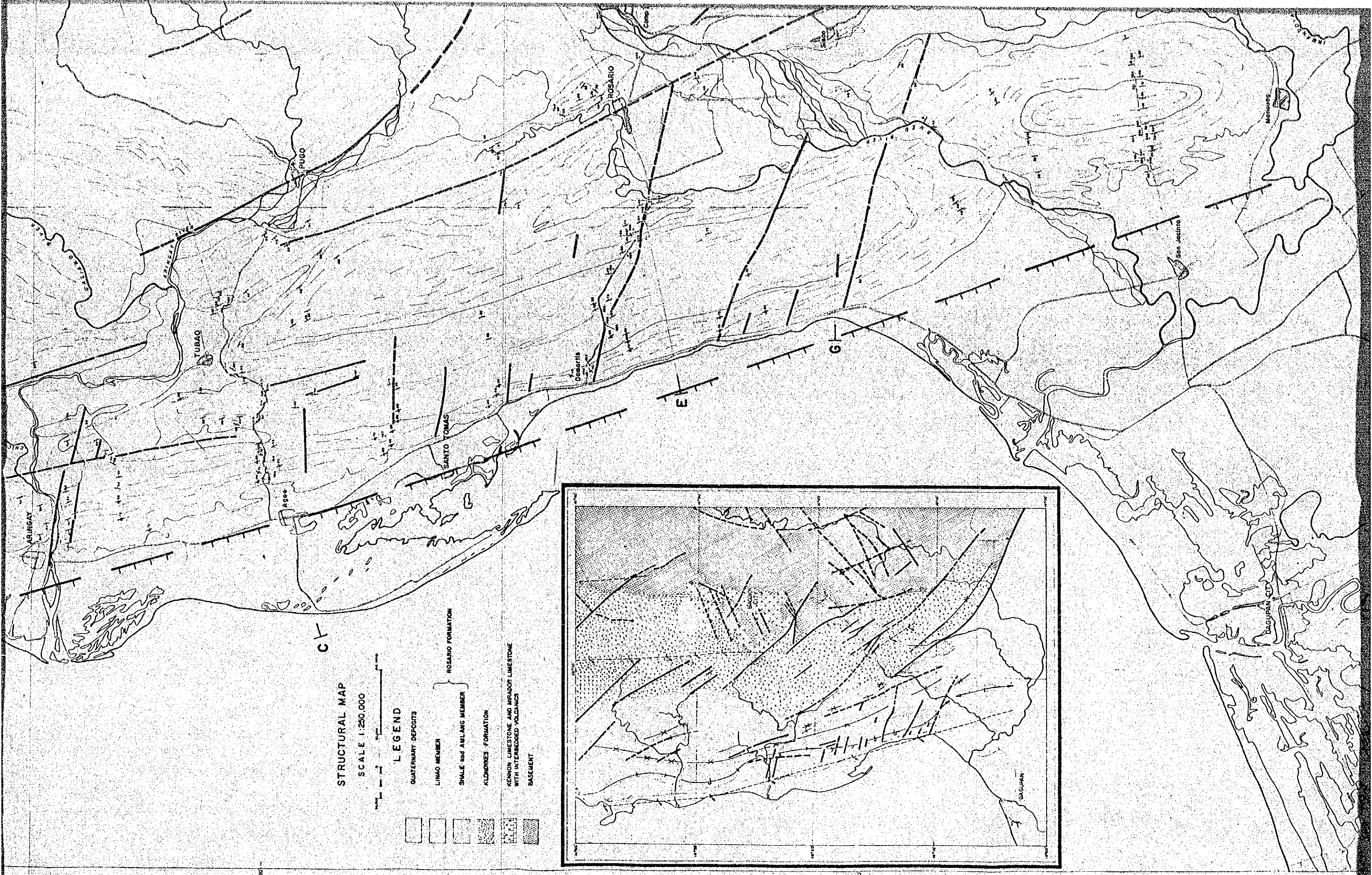


LEGEND

- | | | |
|---|--|--|
| <p> KENNON LIMESTONE
 LATE DYKES and INTRUSIVE VOLCANITES
 MIDDLE MIOCENE VOLCANICS
 ECONOMIC BASEMENT </p> | <p> NORMAL CONTACT
 SUPPOSED NORMAL CONTACT
 FAULT
 NORMAL FAULT
 SUPPOSED FAULT OR LINEAMENT
 <small>(AFTER LANDSAT PHOTO-INTERPRETATION)</small> </p> | <p> BEDDING
 OVERTURNED BEDDING
 VERTICAL BEDDING
 HORIZONTAL BEDDING
 SAMPLE LOCATION
 ATTITUDE OF BEDDING </p> |
|---|--|--|

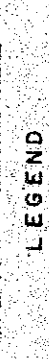


STRUCTURAL MAP



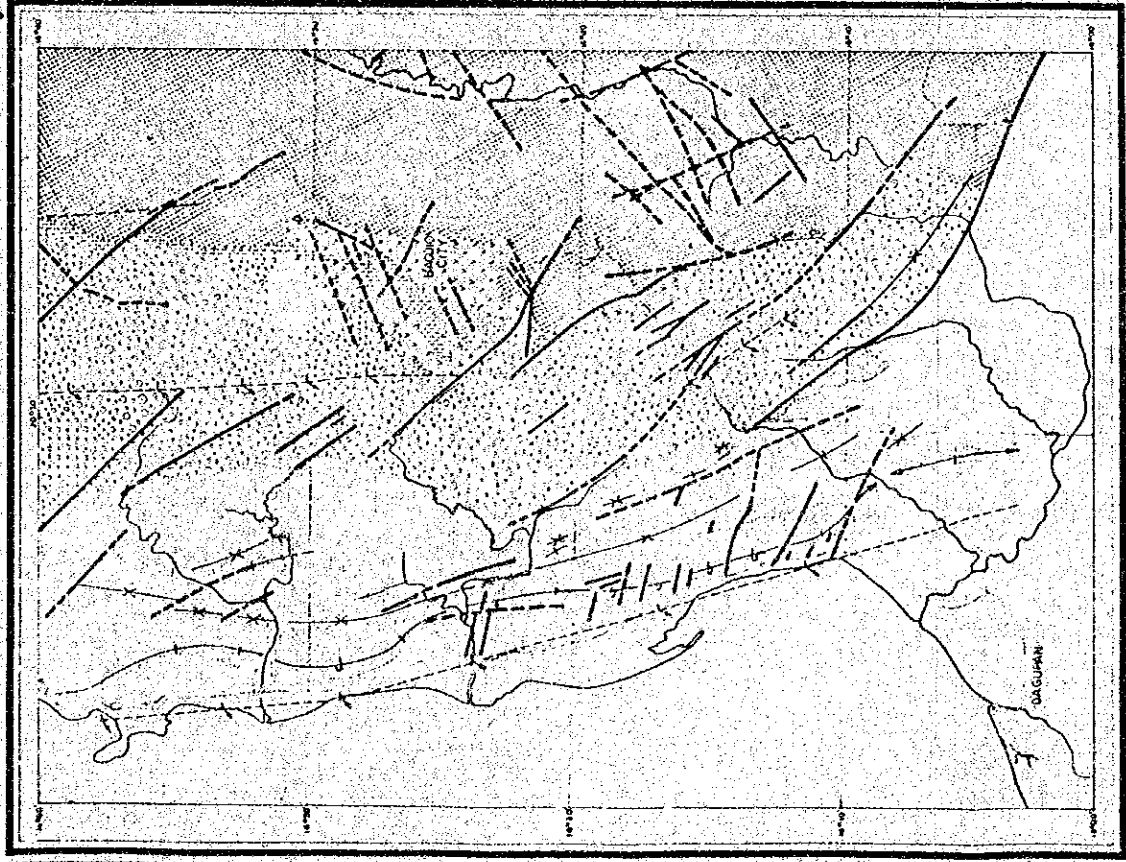
STRUCTURAL MAP

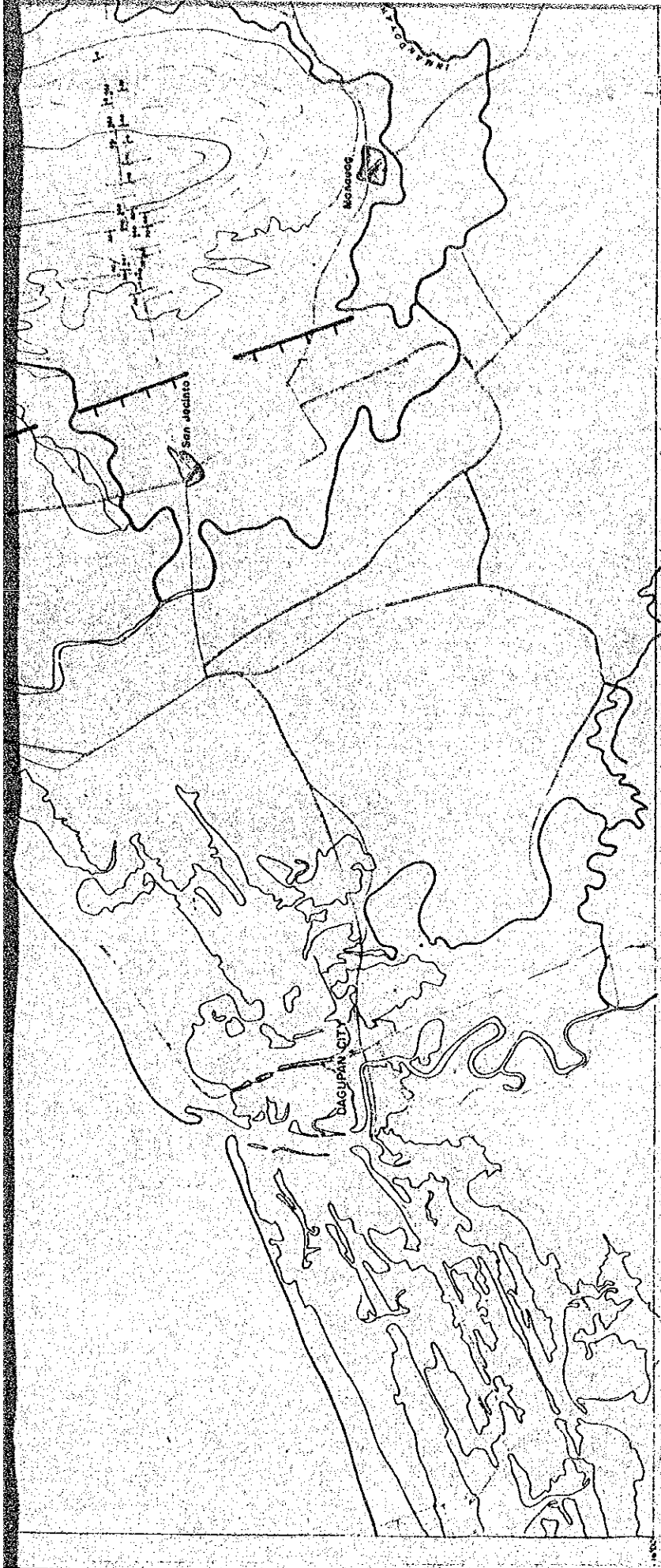
SCALE 1:250,000



LEGEND

- QUATERNARY DEPOSITS
- LIMAO MEMBER
- SHALE and ANLANG MEMBER
- KLONDIKE FORMATION
- KENNON LIMESTONE AND MIRADOR LIMESTONE WITH INTERBEDDED VOLCANICS
- BASEMENT

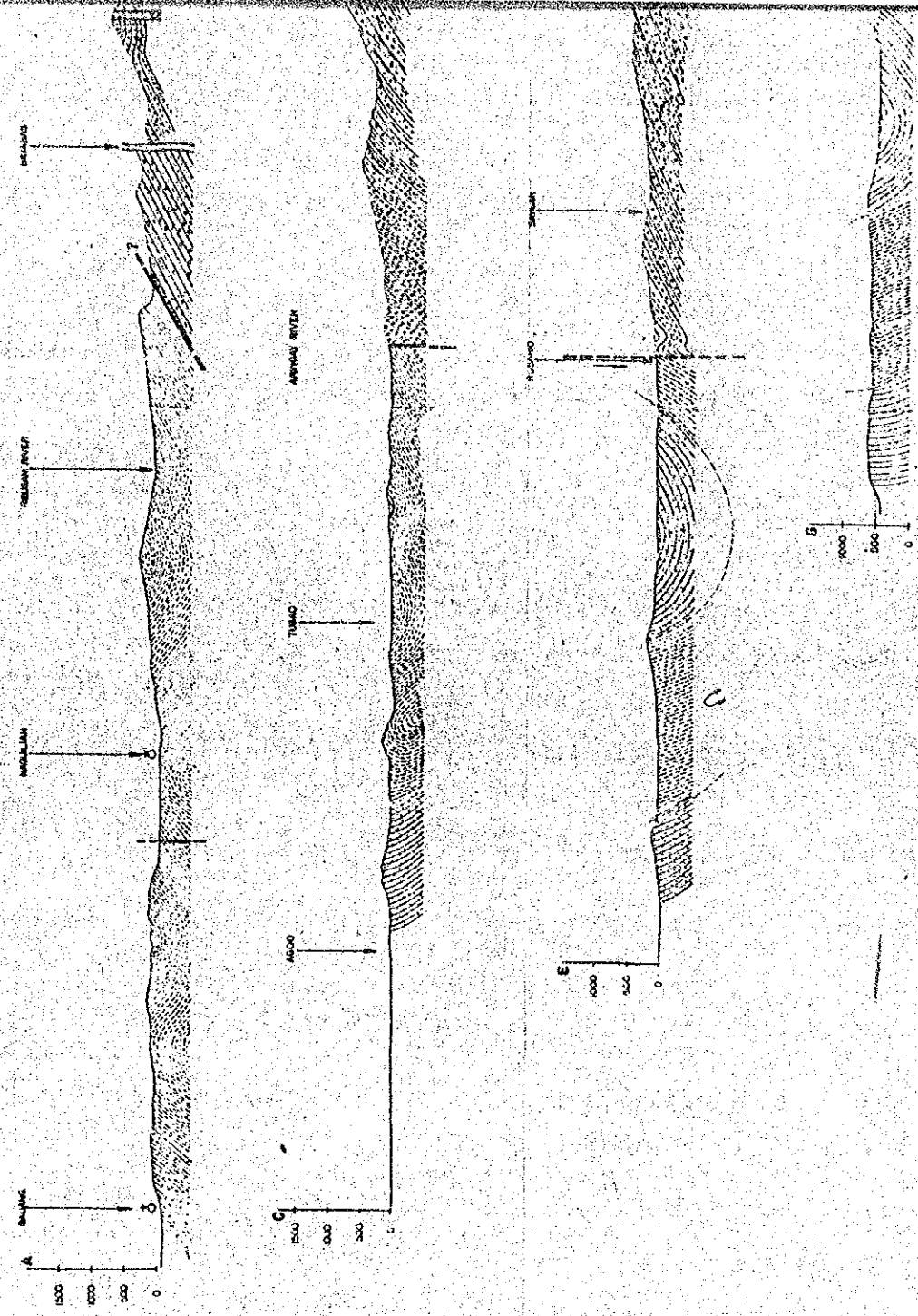




EDB-BEICIP
1976

GEOLOGICAL MAP OF (CENTRAL LUZON SCALE 1:50,000

DATA COMPILED AFTER: EDB-BEICIP BASIN STUDY, 1976 (FIELD CARTOGRAPHY-LAND SURVEYING DIVISION, DEPARTMENT OF GEOGRAPHY, UNIVERSITY OF THE PHILIPPINES, 1968).
UNPUBLISHED MAP BY R. A. GONZALES, 1968.
GEOLOGICAL MAP OF THE PHILIPPINES - BUREAU OF MINES
GEOLOGY OF NORTHERN LUZON, E. F. DUNN AND S. L. PETERSON, 1957.
GEOLOGICAL MAP OF WHITE EAGLE OVERSEAS OIL CO., INC., 1968.



LEGEND

SAN FERNANDO LIMESTONE & QUATERNARY DEPOSITS
 LINAO UPPER MEMBER }
 AMLANG SHALE MEMBER } ROLLING FORMATION
 KLONDYKE FORMATION

MANON LIMESTONE
 LATE DYKES and INTRUSIVE VOLCANICS
 MIDDLE MIOCENE VOLCANICS
 ECONOMIC BASEMENT

