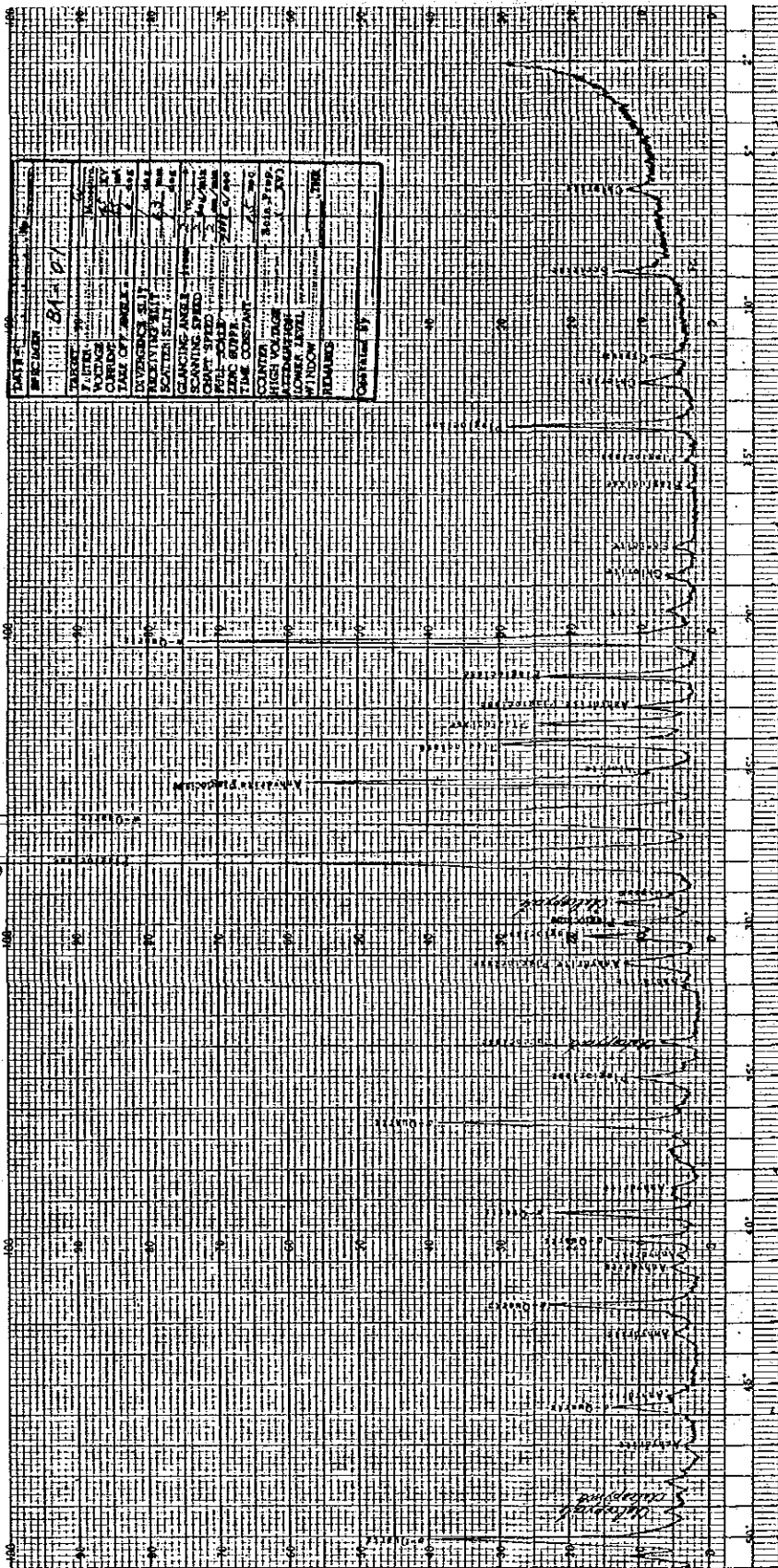


Appendix 5-3

Result of X-Ray Diffraction Analysis (West Negros Area)

Estimated Mineral	Chlorite	Sericite	Sericite/ Montmorillonite	Biotite	Kaolinite	Anhydrite	Gypsum	α -Quartz	Plagioclase	Hornblende	Calcite	Epidote	Chalcopyrite	Pyrite	Anatase
Sample No.															
BA-01	△	△				○	△	◎	◎				△		
BA-02	○			◎		◎	○	◎	◎		△				
BA-05		•			•	•	△	◎							
SI-BG-01			○					◎						△	△?
SI-BG-02					◎			◎						△	△?
SI-BG-04	◎	○						◎	◎					△	
PD-0								◎							
SI-BC-02	○	•						◎	◎						
C-01A	◎							◎	◎						
SI-BM-03	○							◎	◎					•	

◎ Abundant ○ Medium △ Small • Rare



DATE	TIME	NO.
10/11/51	12:00	72
OPERATOR		
ANALYST		
PLUM		
VOLTAG		
COUNT		
TIME OFF		
SLIT		
SCATTER		
SCANNING		
CHART SPEED		
SCALE		
ZINC SUPPLY		
TIME CONSTANT		
COUNTER		
HIGH VOLTAGE		
LOW VOLTAGE		
WINDOW		
REMARKS		

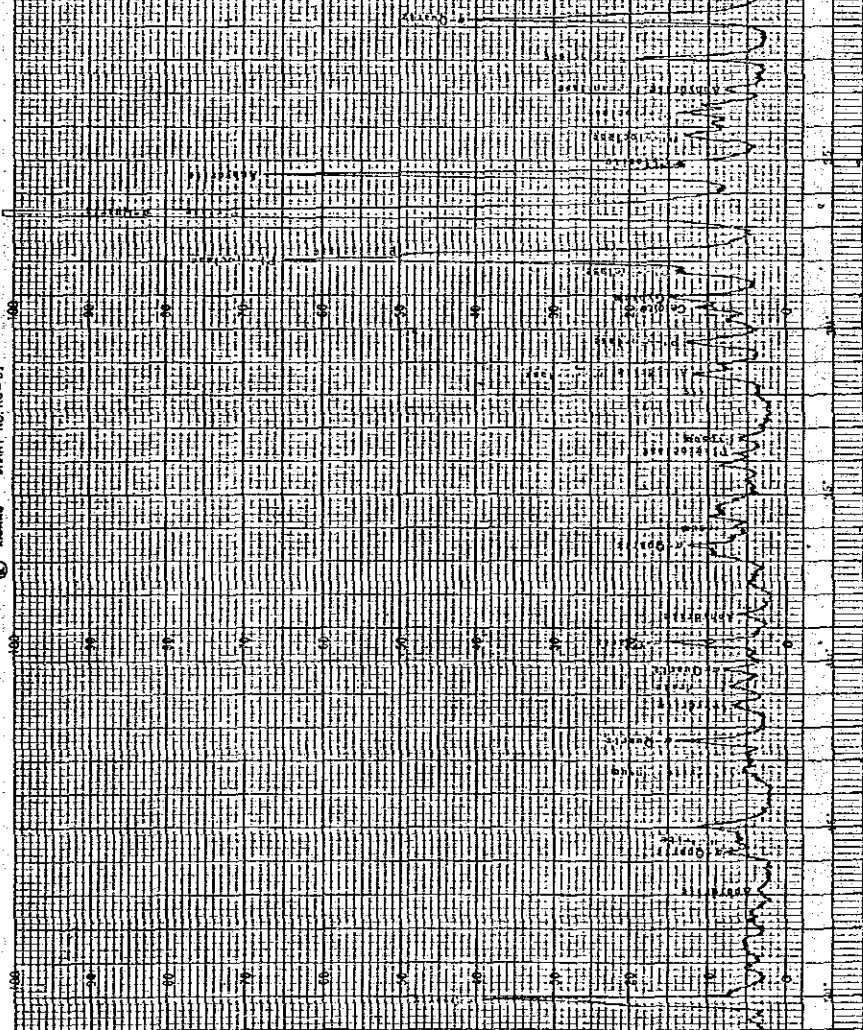
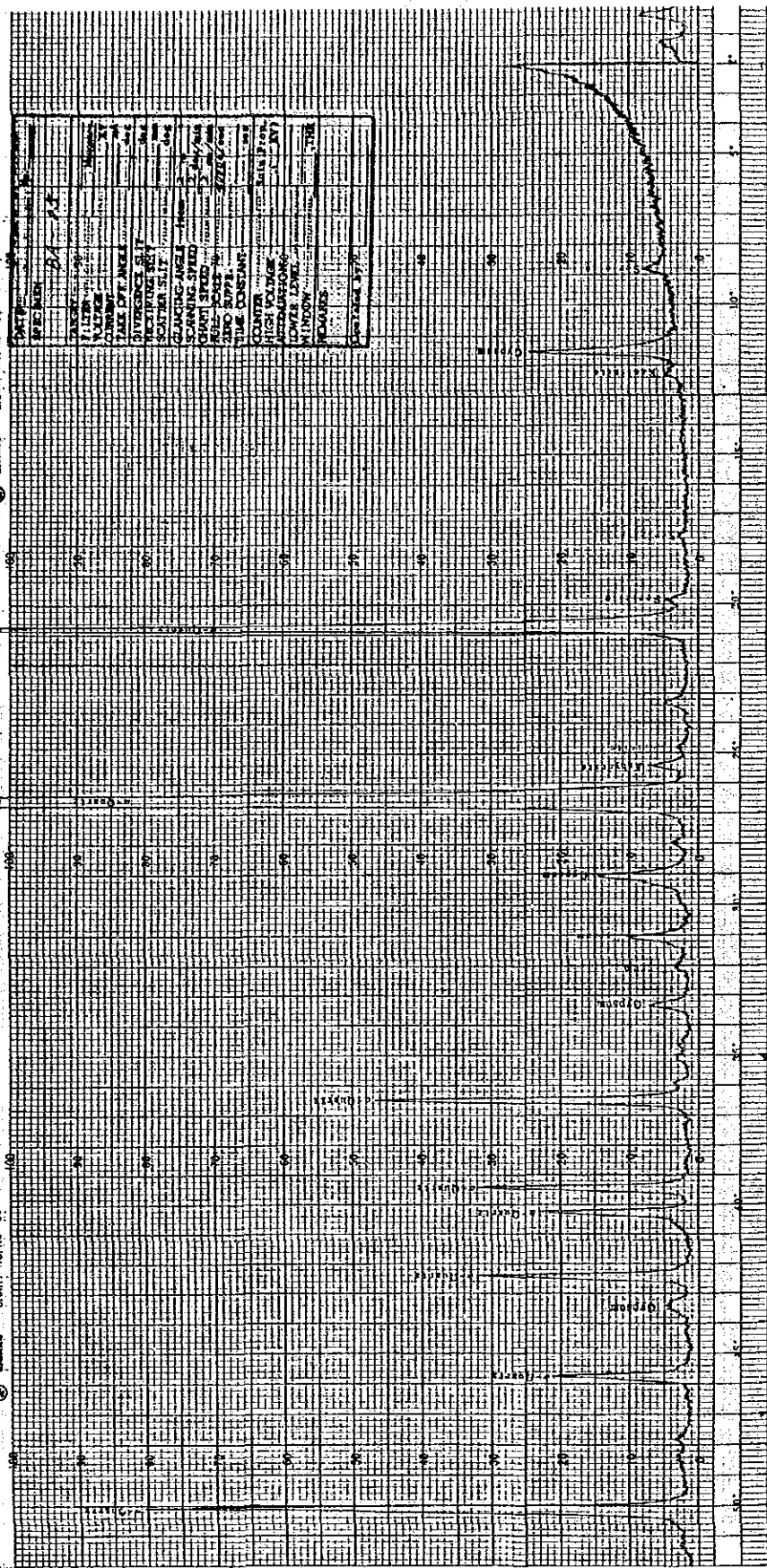


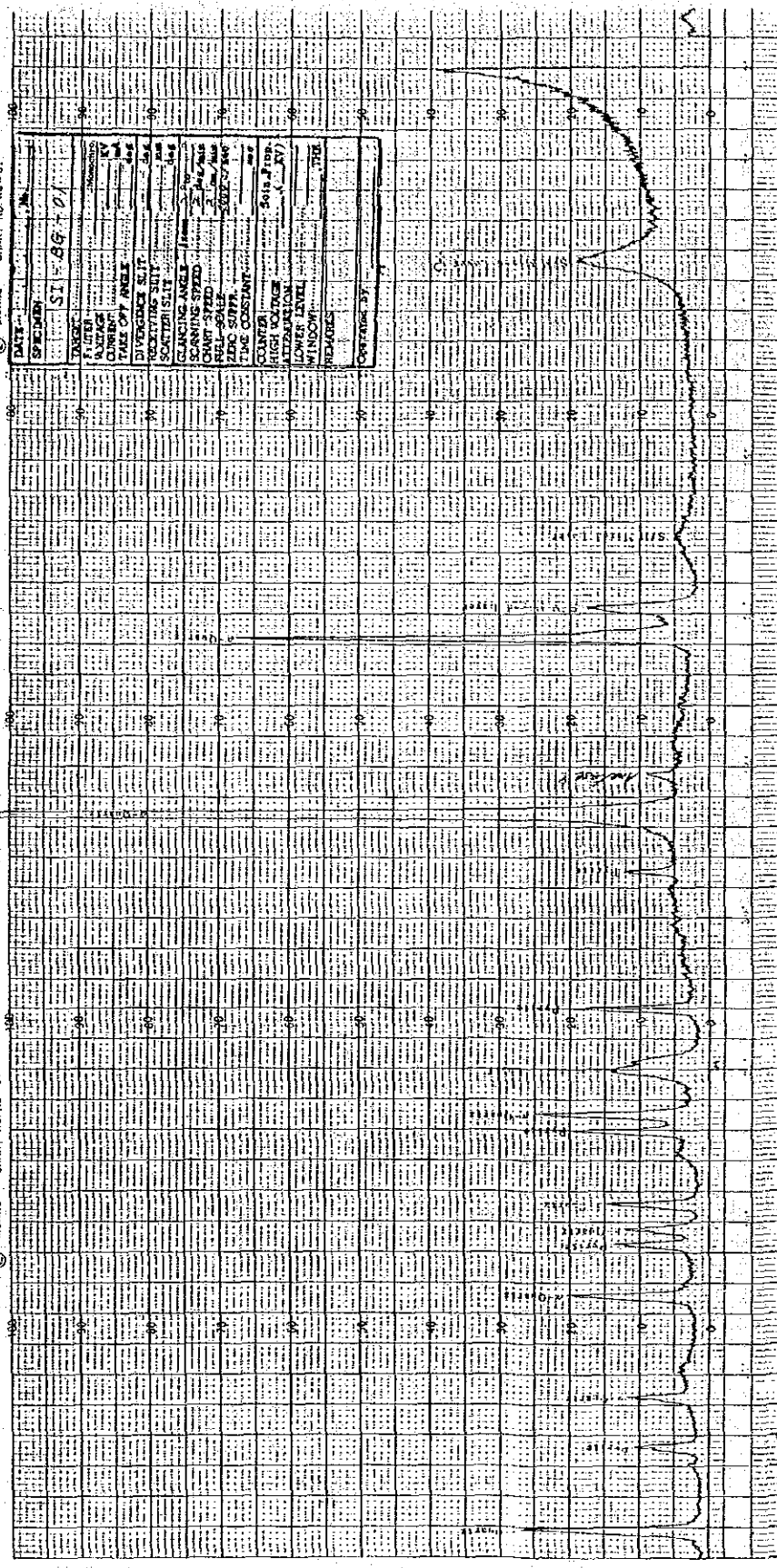
CHART NO. RC-01

CHART NO. RC-01



BOARD CHART NO. NC-01

BOARD CHART NO. NC-01



② HIOAKU CHART NO. KC-01

② HIOAKU CHART NO. KC-01

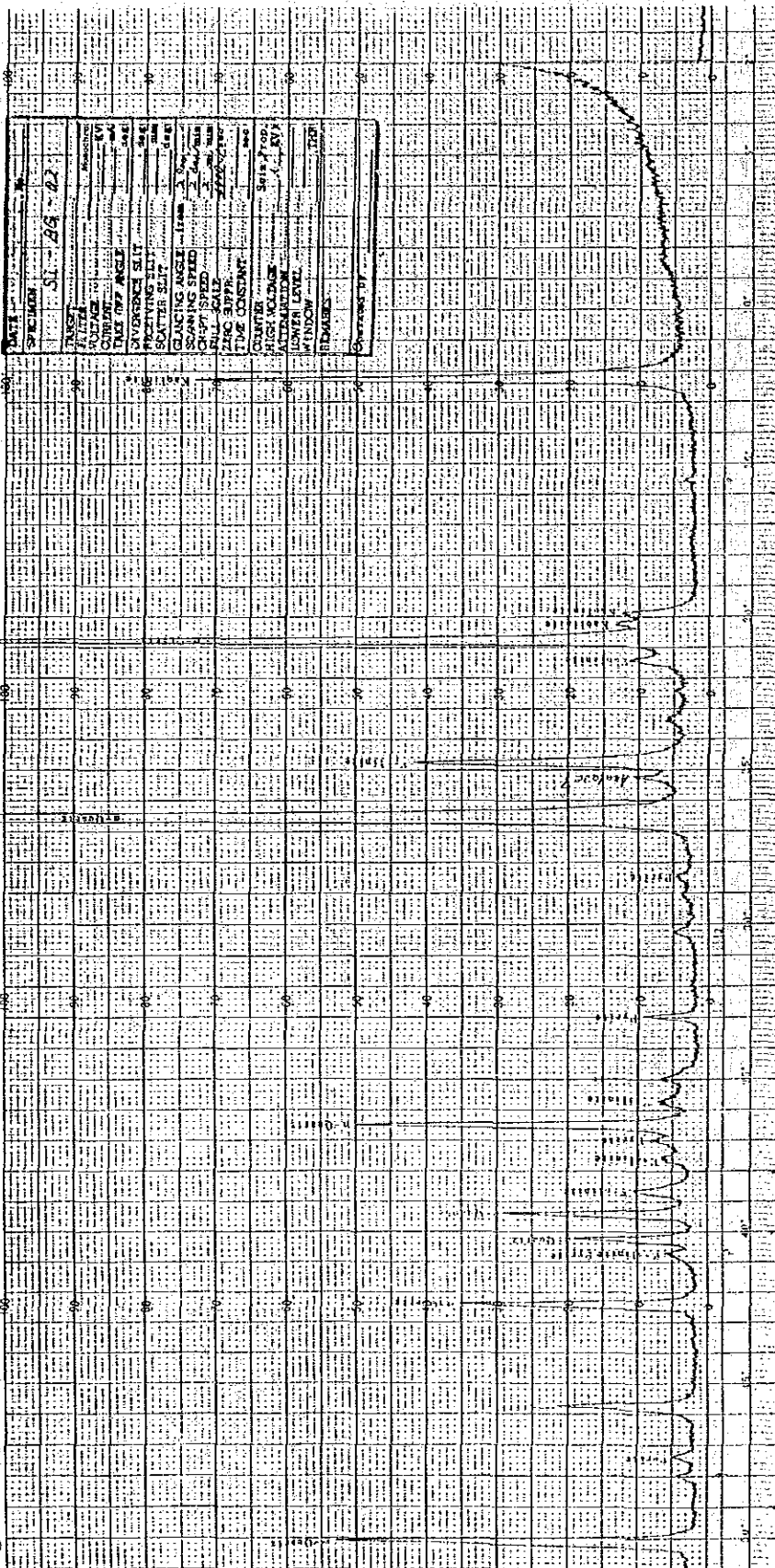
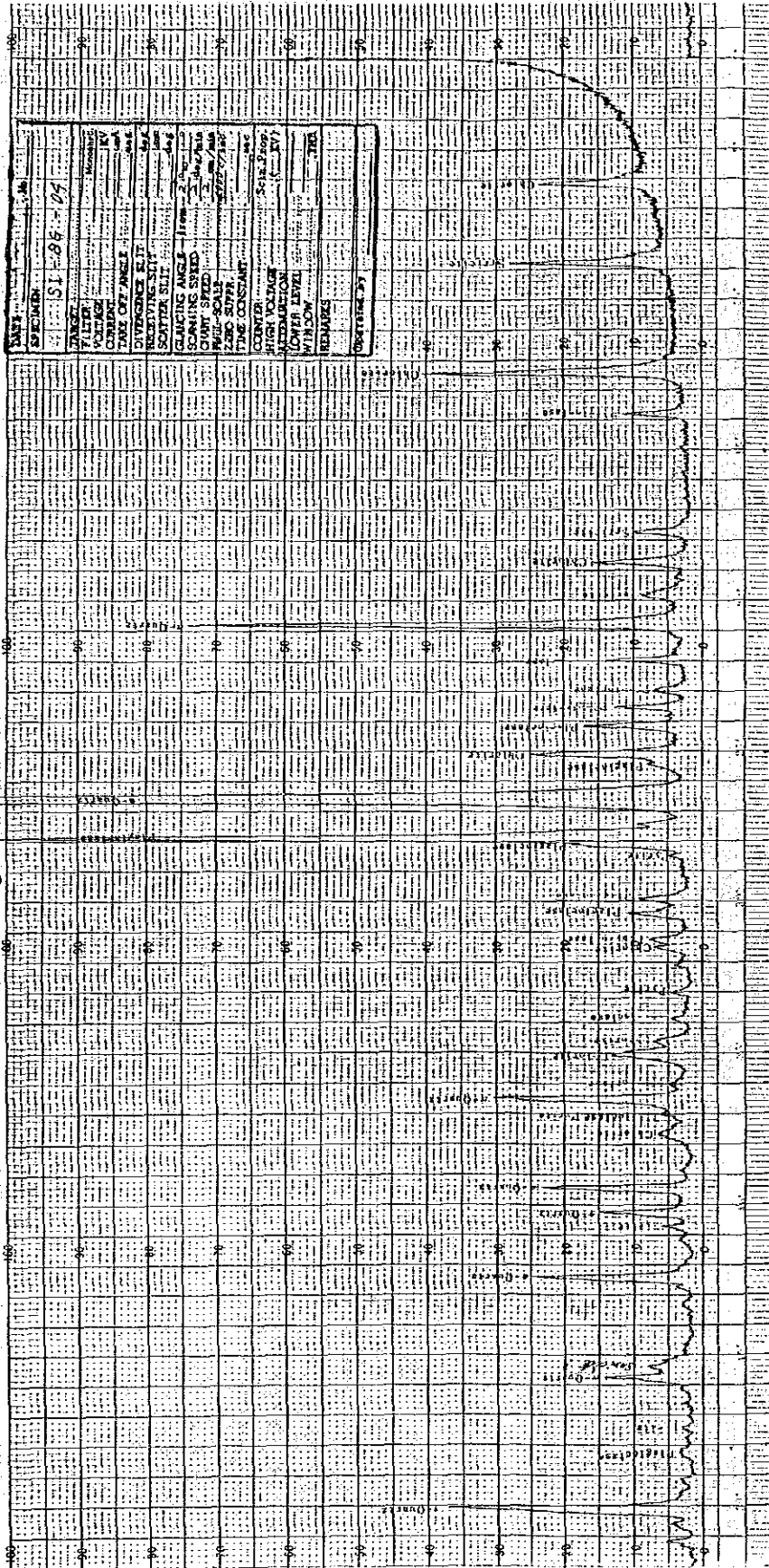
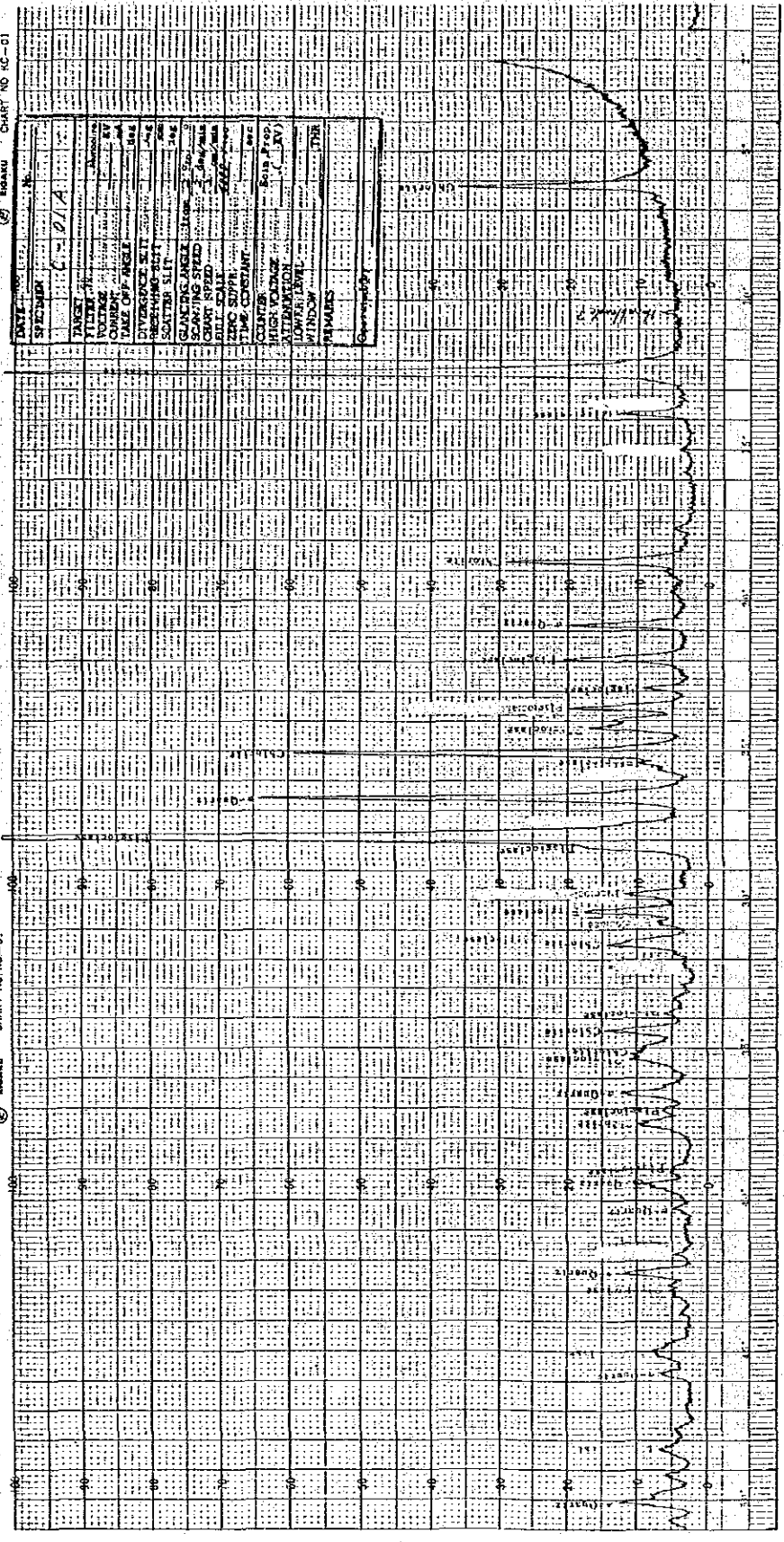


CHART NO. MC-01





Result of X-Ray Diffraction Analysis (Samar I Area)

Estimated Mineral	Quartz	Calcite	Amphibole	Antigorite	Prehnite	Sericite	Paragonite?	Chlorite	Pyrite	Marcasite	Magnetite	Hematite	Goethite	Todorokite?	Pyrolusite?
Sample No.															
EN02	◎											•	•	•	•
EN08	◎					•			◎						
EJ02	◎						△		○	△					
EQ3R			◎		○			△							
EH3R		◎		◎				•	•		△				

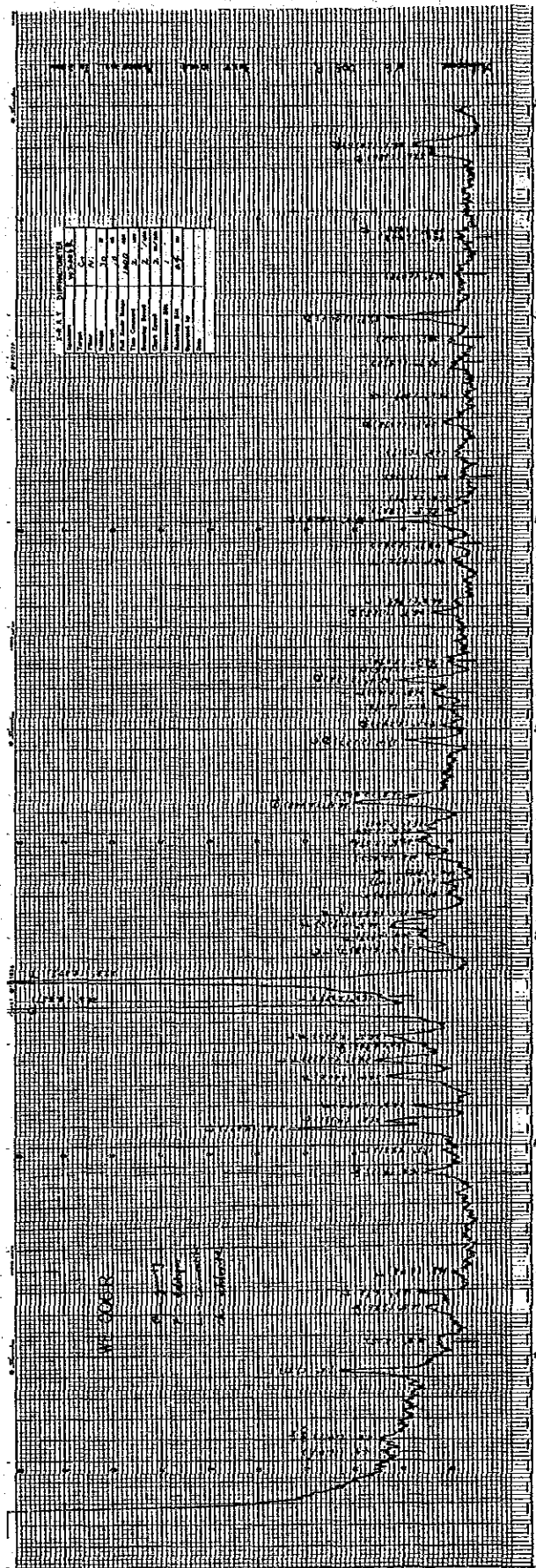
◎ Abundant ○ Medium △ Small • Rare

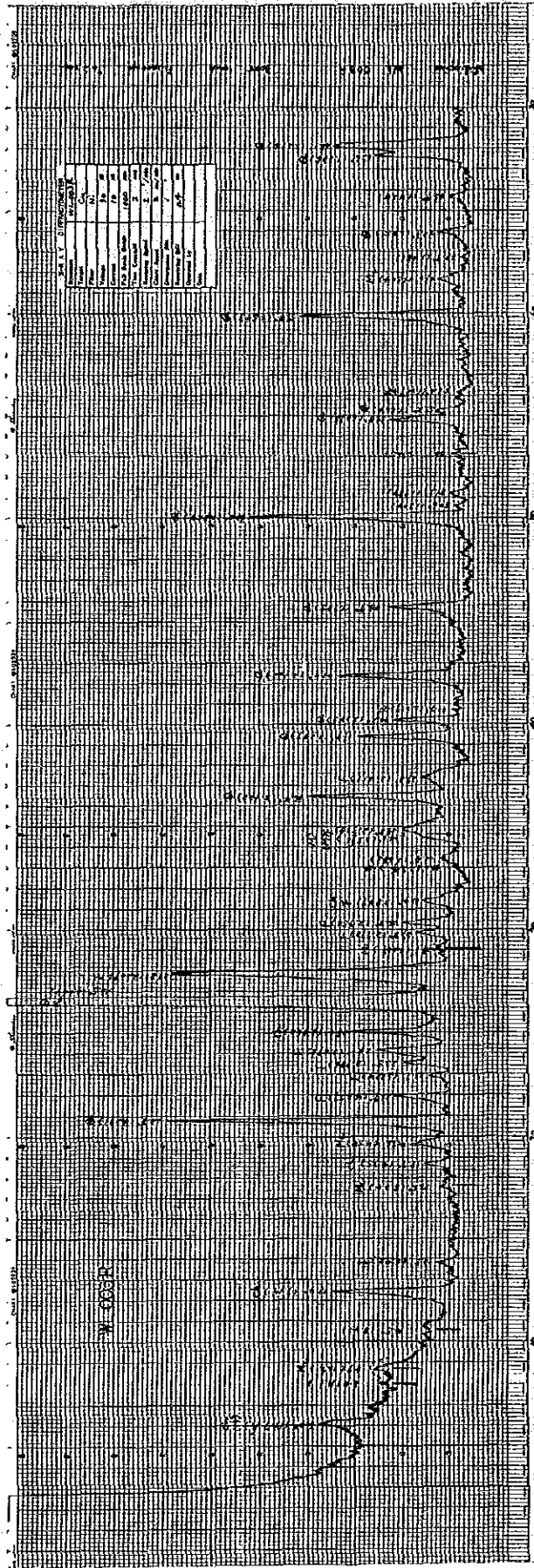
Appendix 5-4

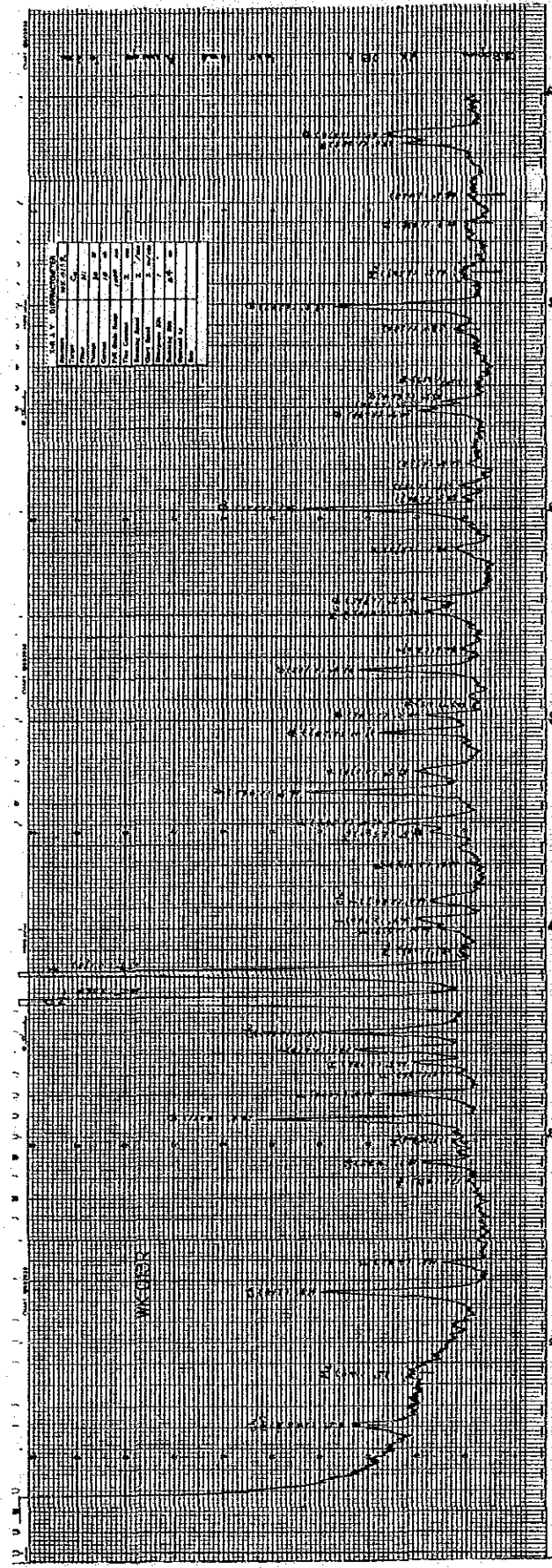
Result of X-Ray Diffraction Analysis (Samar III Area)

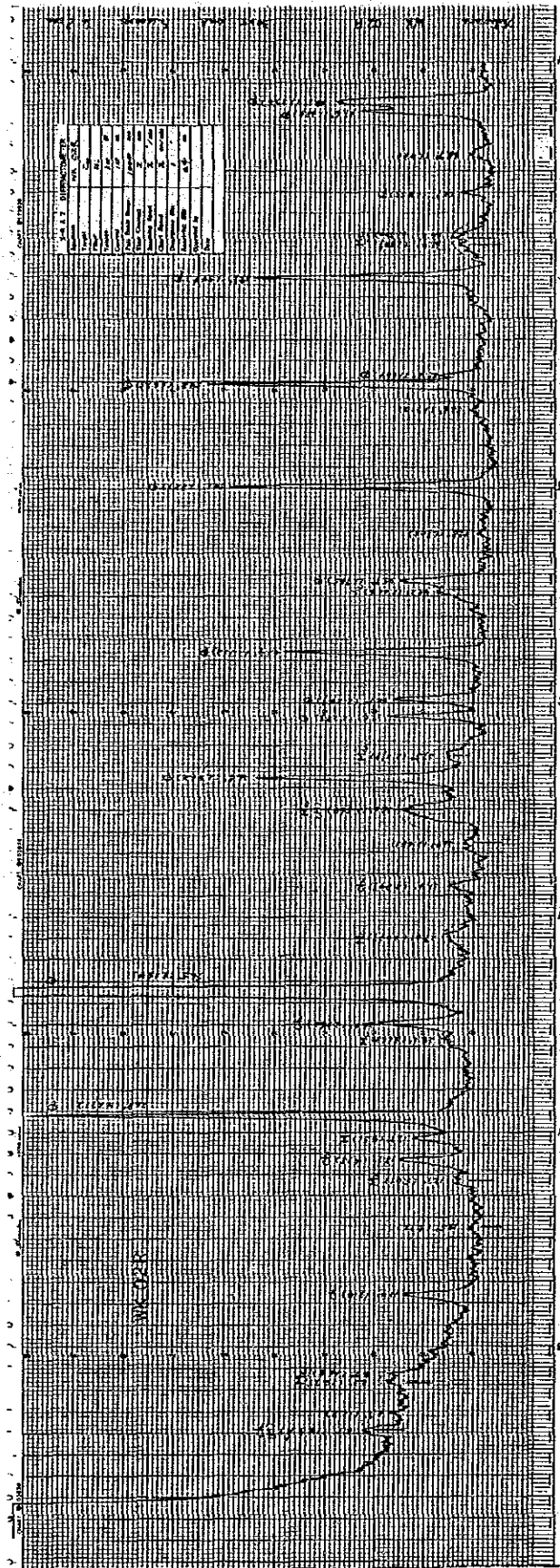
Estimated Mineral	Quartz	Feldspar	Chlorite	Mica clay minerals	Montmorillonite	Laumontite	Serpentine	Calcite	Pyrite
Sample No.	Q	F	Ch	Mc	M	L	Sp	C	Py
WF002R							⊙	△	△
WK002R	⊙		△	△	•?				
WK013R	⊙	⊙	○	△	•?				•
WL003R	⊙	○	○	△	•?				•?
WE006R	⊙	⊙	△		•?	○		△	•?

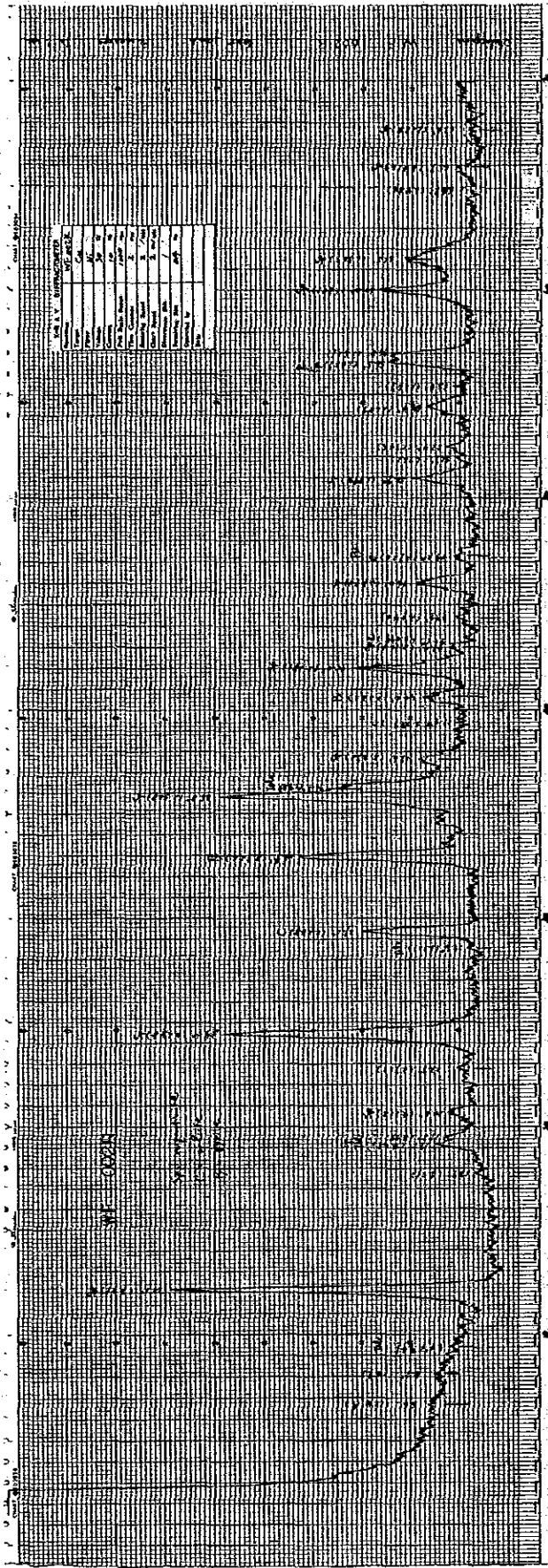
⊙ Abundant ○ Medium △ Small • Rare

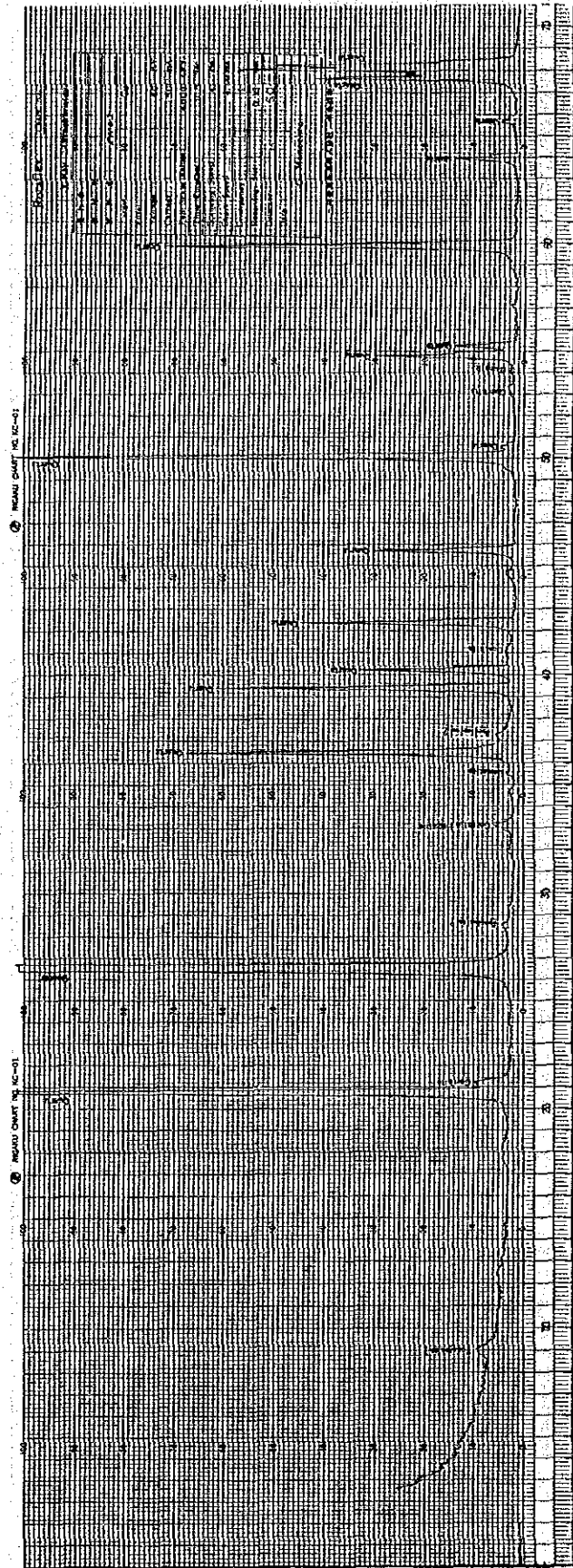


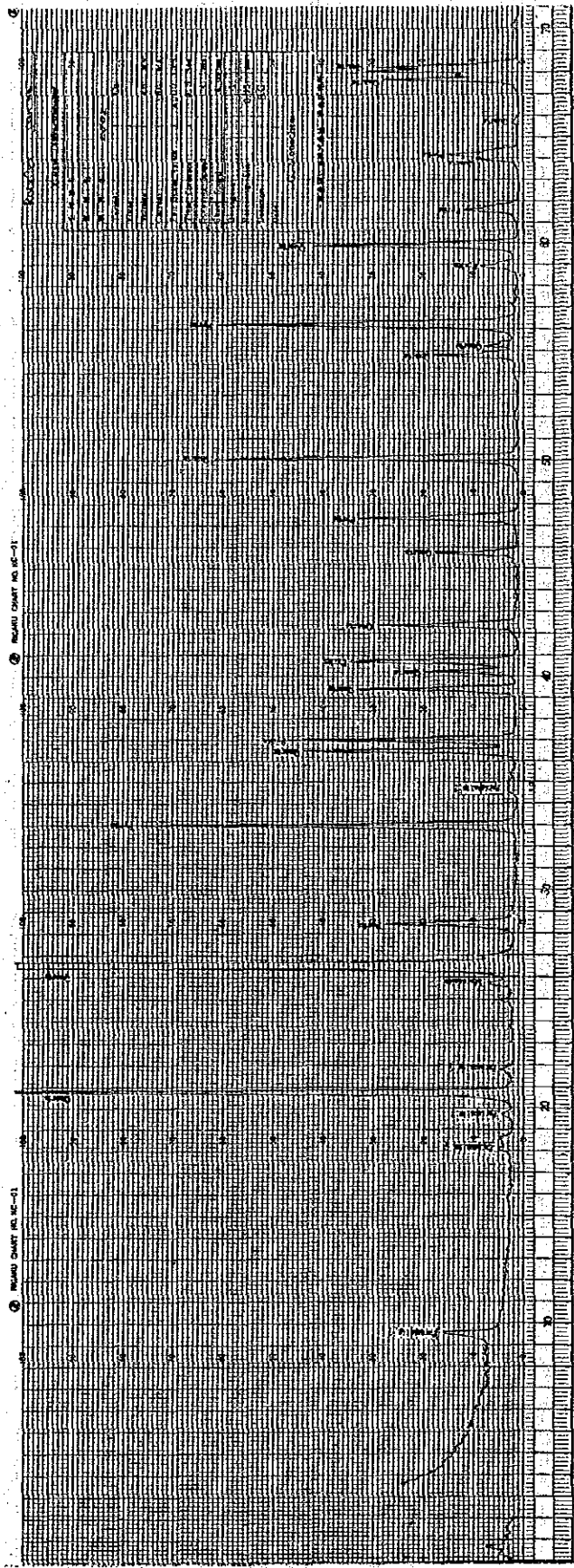


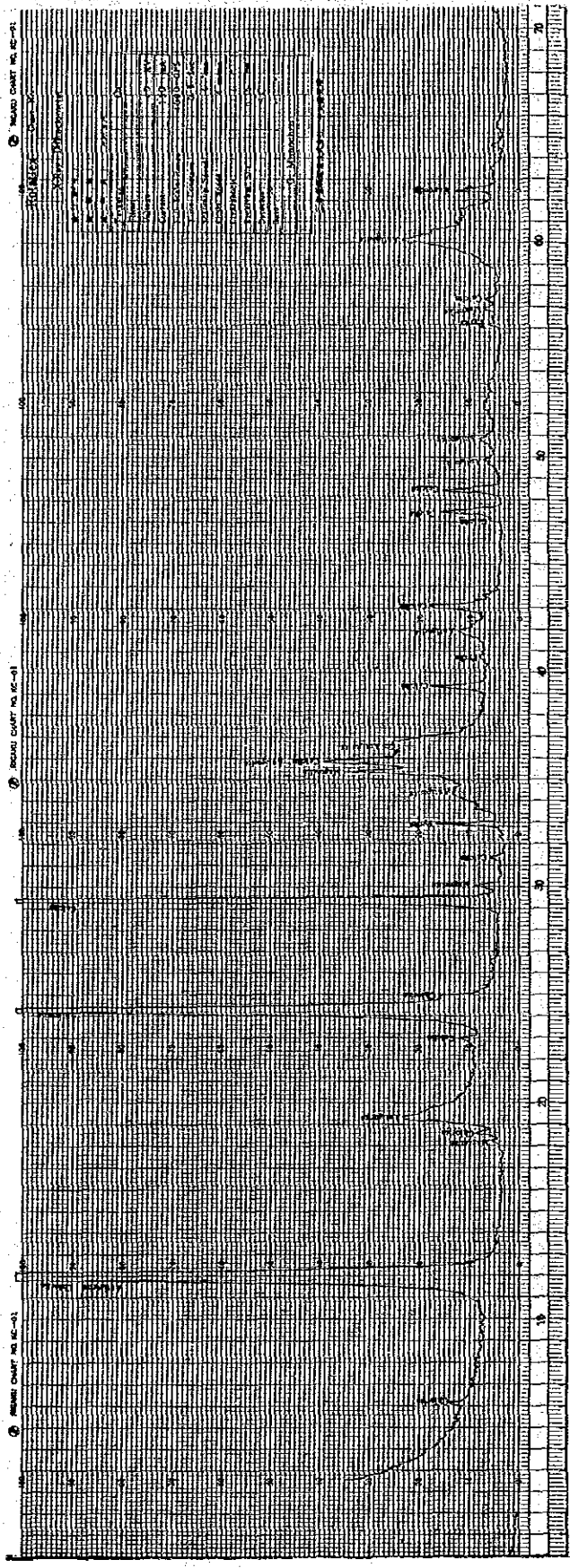












LEAD CHART NO. 12-01
 12-01
 12-02
 12-03
 12-04
 12-05
 12-06
 12-07
 12-08
 12-09
 12-10
 12-11
 12-12
 12-13
 12-14
 12-15
 12-16
 12-17
 12-18
 12-19
 12-20
 12-21
 12-22
 12-23
 12-24
 12-25
 12-26
 12-27
 12-28
 12-29
 12-30
 12-31
 12-32
 12-33
 12-34
 12-35
 12-36
 12-37
 12-38
 12-39
 12-40
 12-41
 12-42
 12-43
 12-44
 12-45
 12-46
 12-47
 12-48
 12-49
 12-50
 12-51
 12-52
 12-53
 12-54
 12-55
 12-56
 12-57
 12-58
 12-59
 12-60
 12-61
 12-62
 12-63
 12-64
 12-65
 12-66
 12-67
 12-68
 12-69
 12-70
 12-71
 12-72
 12-73
 12-74
 12-75
 12-76
 12-77
 12-78
 12-79
 12-80
 12-81
 12-82
 12-83
 12-84
 12-85
 12-86
 12-87
 12-88
 12-89
 12-90
 12-91
 12-92
 12-93
 12-94
 12-95
 12-96
 12-97
 12-98
 12-99
 12-100

