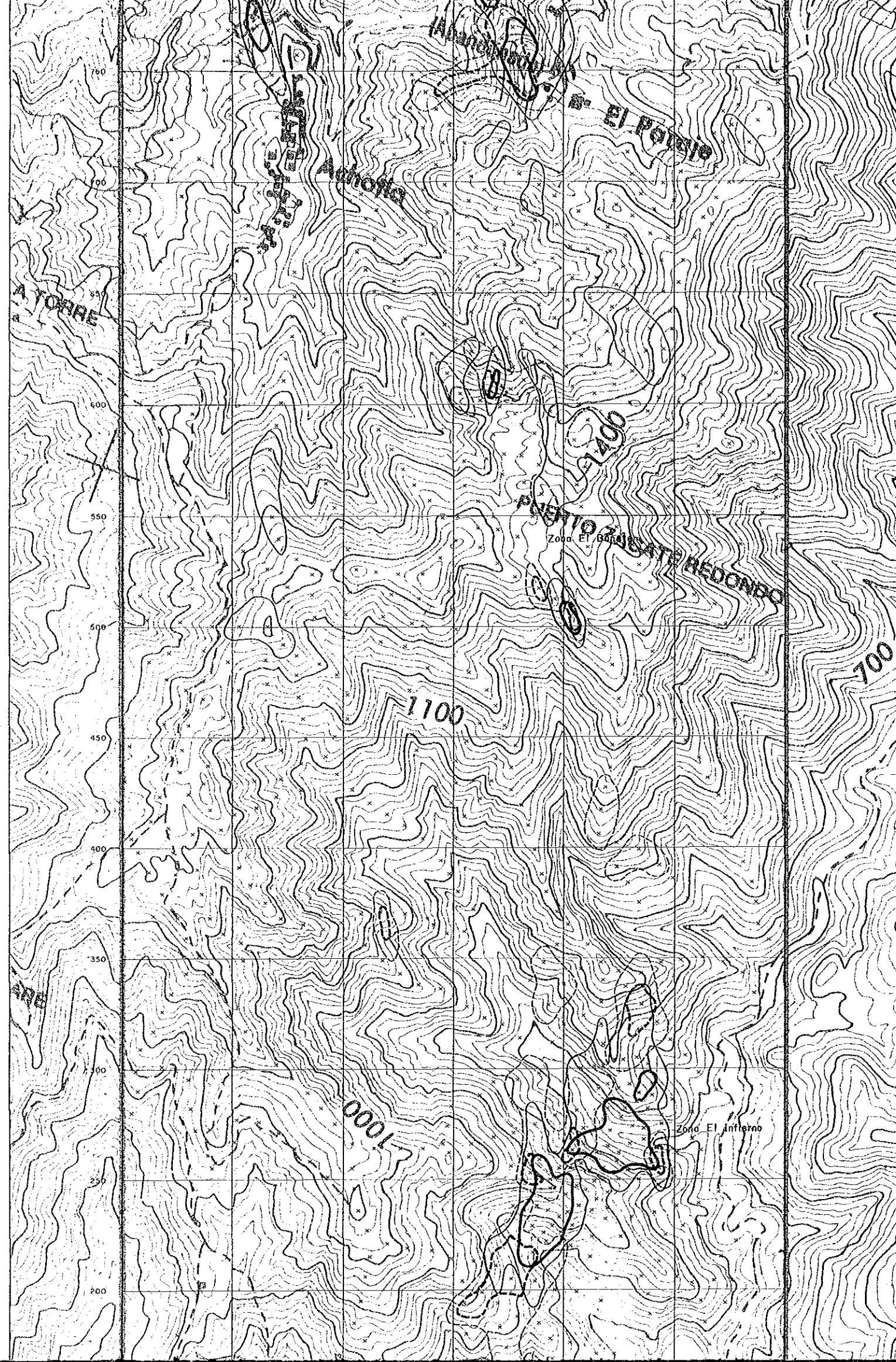






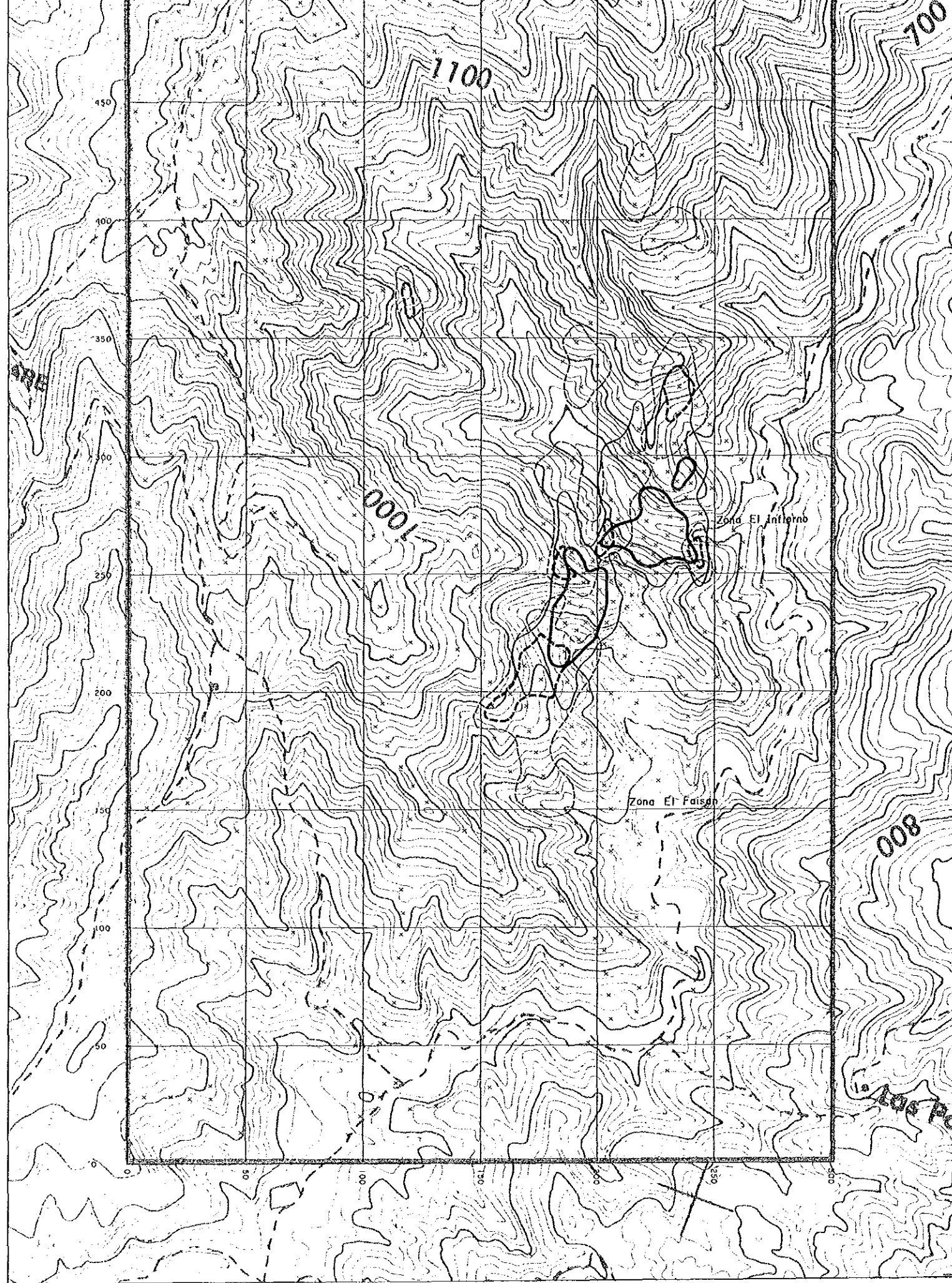
Leyenda

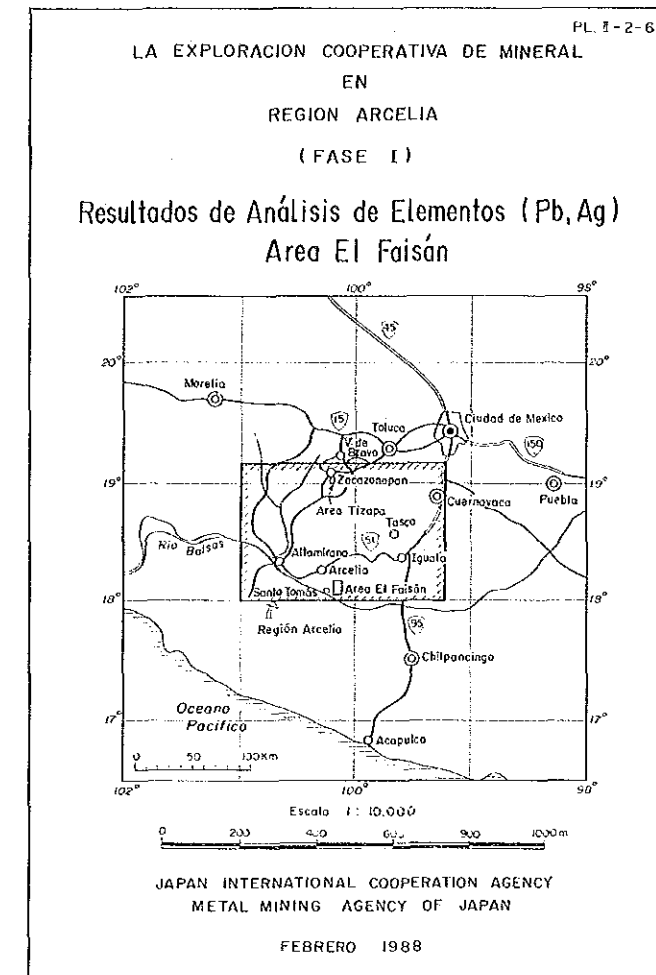
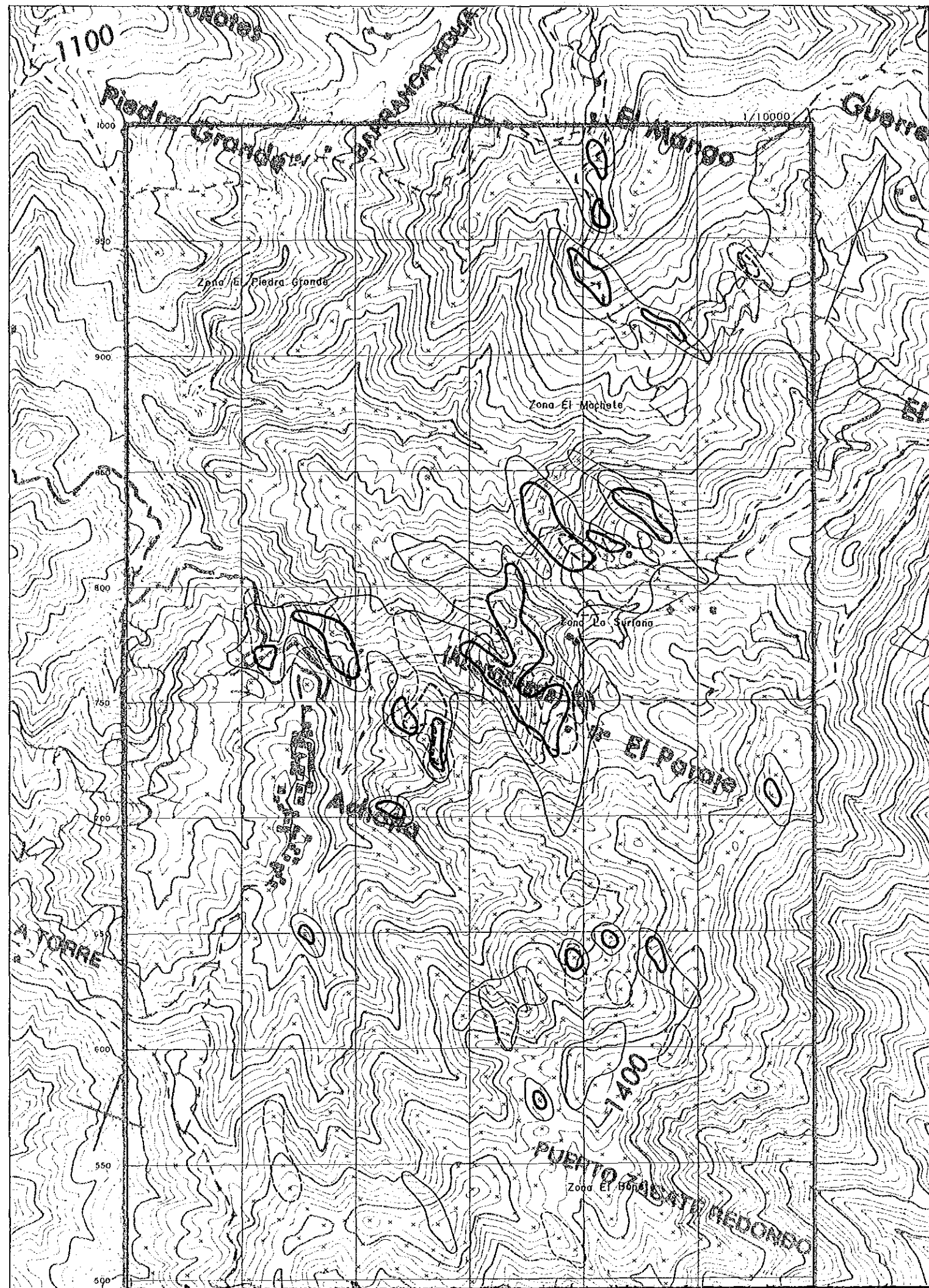
- |             |   |  |
|-------------|---|--|
| Elemento Cu |   |  |
|             | ○ | : Sub - Anomalia ( 147.0 - 362.2 ppm ) |
|             | ○ | : Anomalia ( 362.2 - 2075.2 ppm )      |
| Elemento Zn |   |  |
|             | ○ | : Sub - Anomalia ( 232.0 - 468.4 ppm ) |
|             | ○ | : Anomalia ( 468.4 - 2184.0 ppm )      |



Leyenda

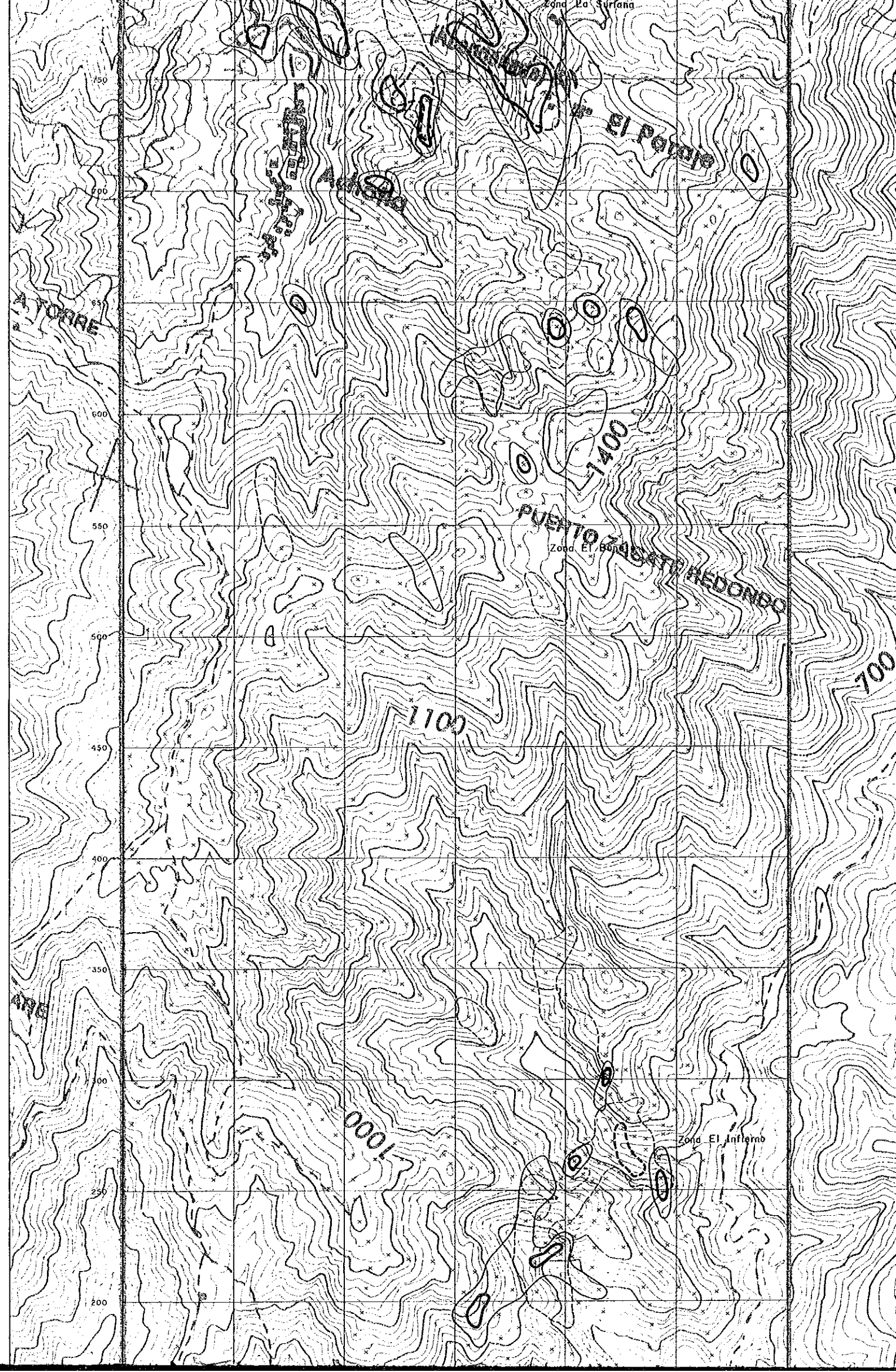
- Elemento Cu
-  : Sub - Anomalia (1147.0 - 362.2 ppm)
  -  : Anomalia (362.2 - 2075.2 ppm)
- Elemento Zn
-  : Sub - Anomalia (232.0 - 468.4 ppm)
  -  : Anomalia (468.4 - 2184.0 ppm)






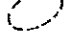


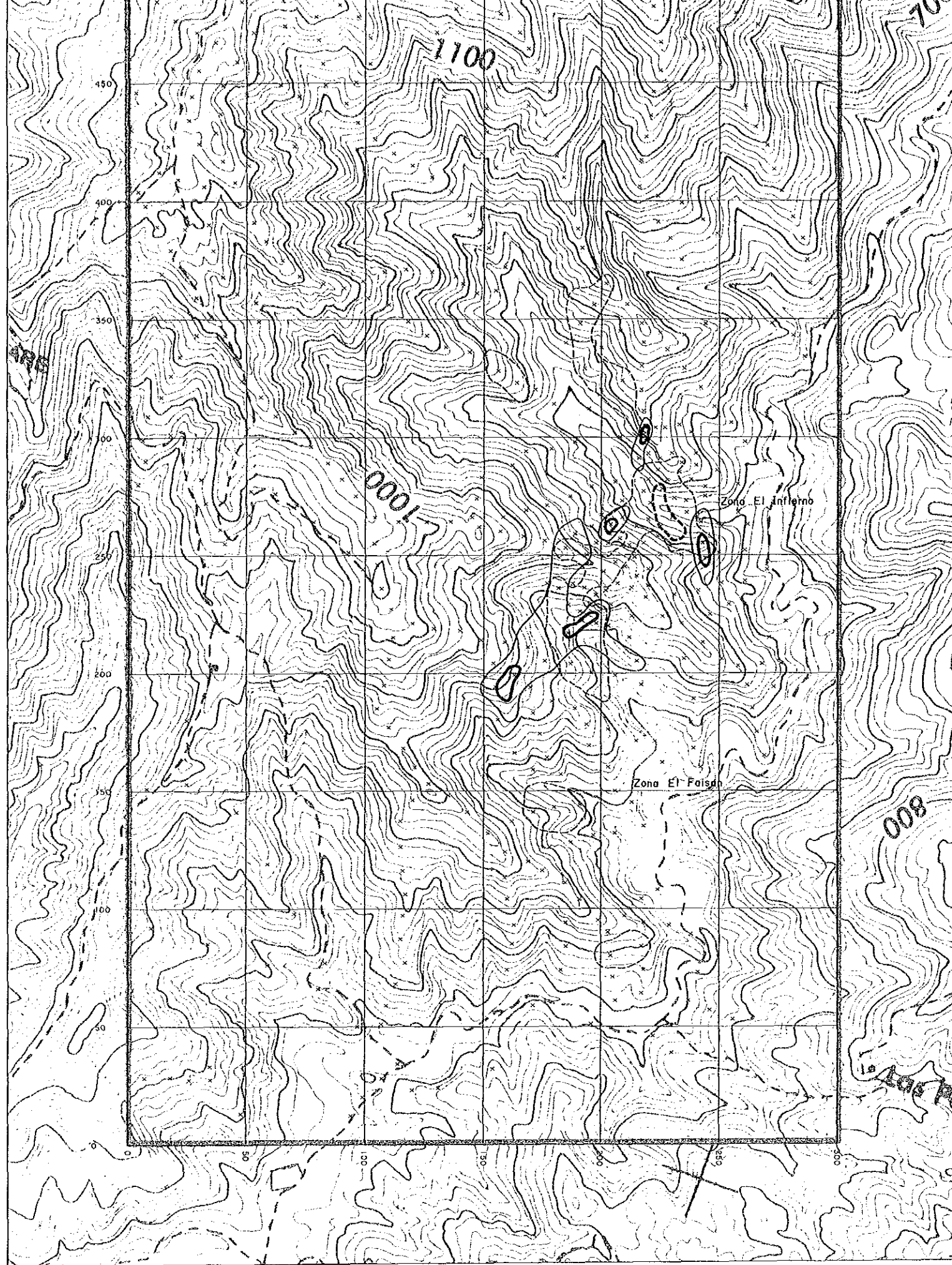
Leyenda

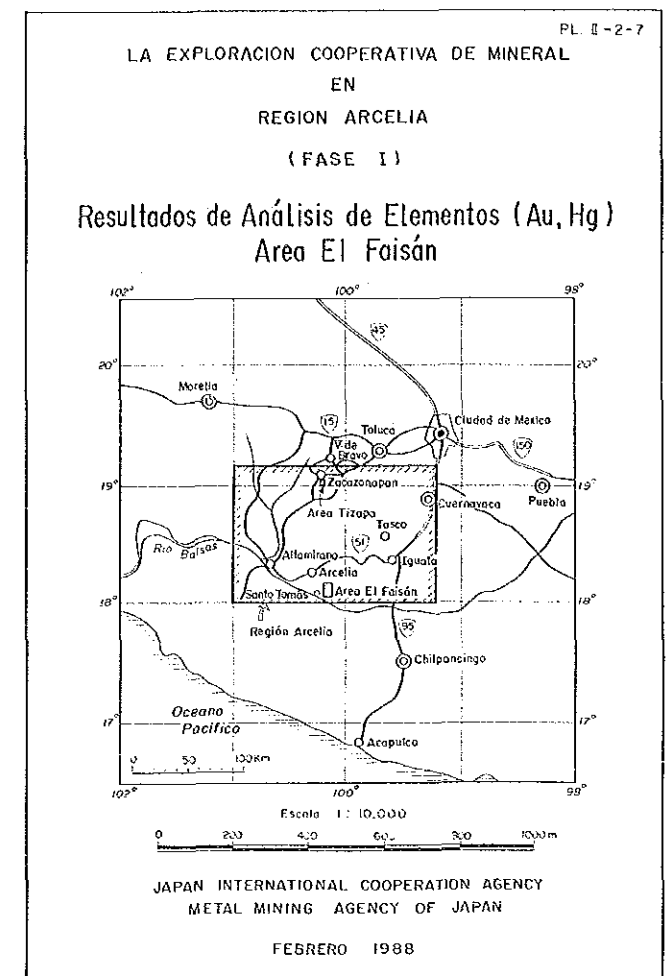
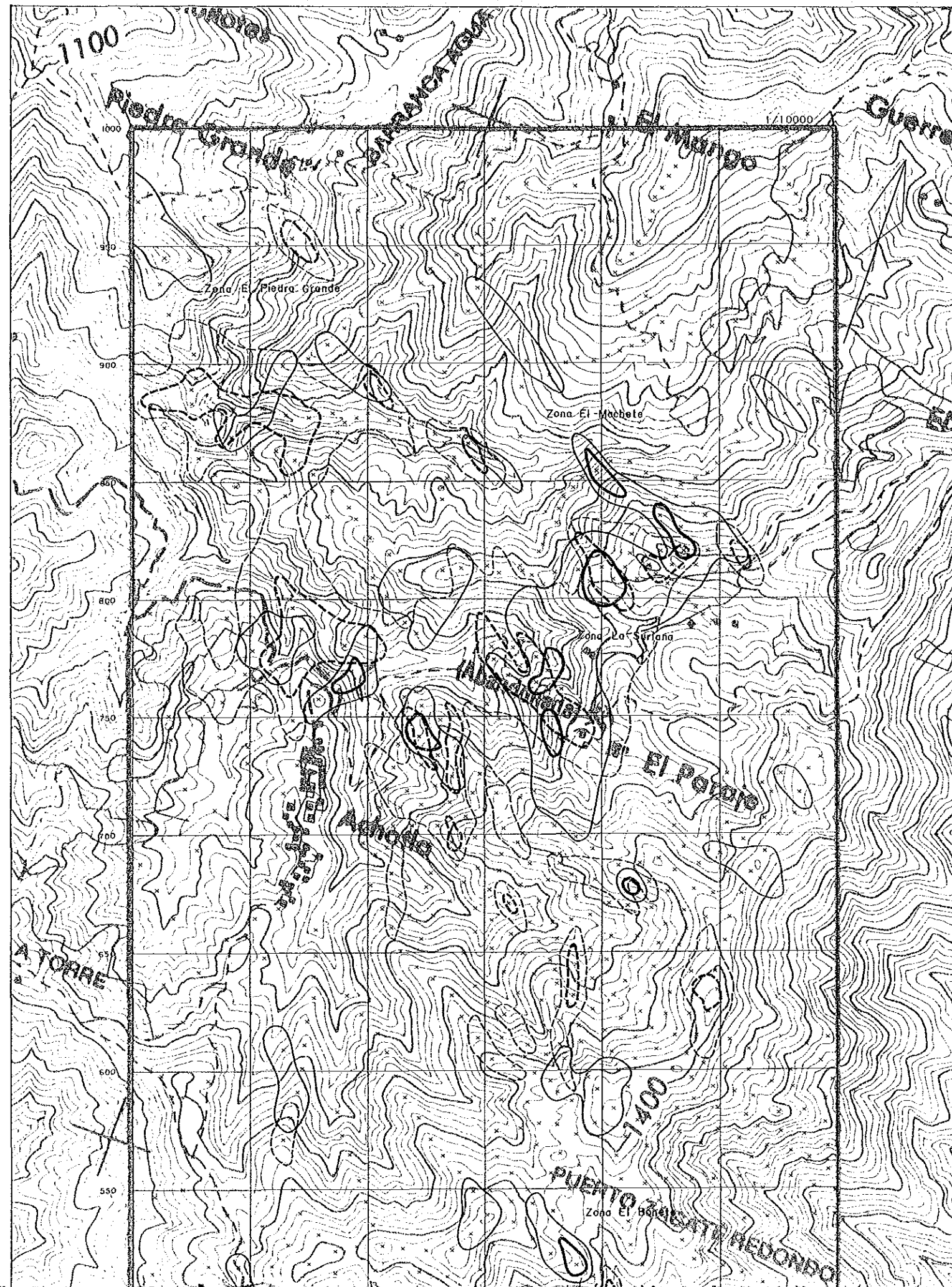
- Elemento Pb
- : Sub - Anomalia ( 91.2 - 188.6 ppm )
  - : Anomalia ( 188.6 - 11690.0 ppm )
- Elemento Ag
- : Sub - Anomalia ( 1.8 - 7.1 ppm )
  - : Anomalia ( 7.1 - 306.8 ppm )



Leyenda

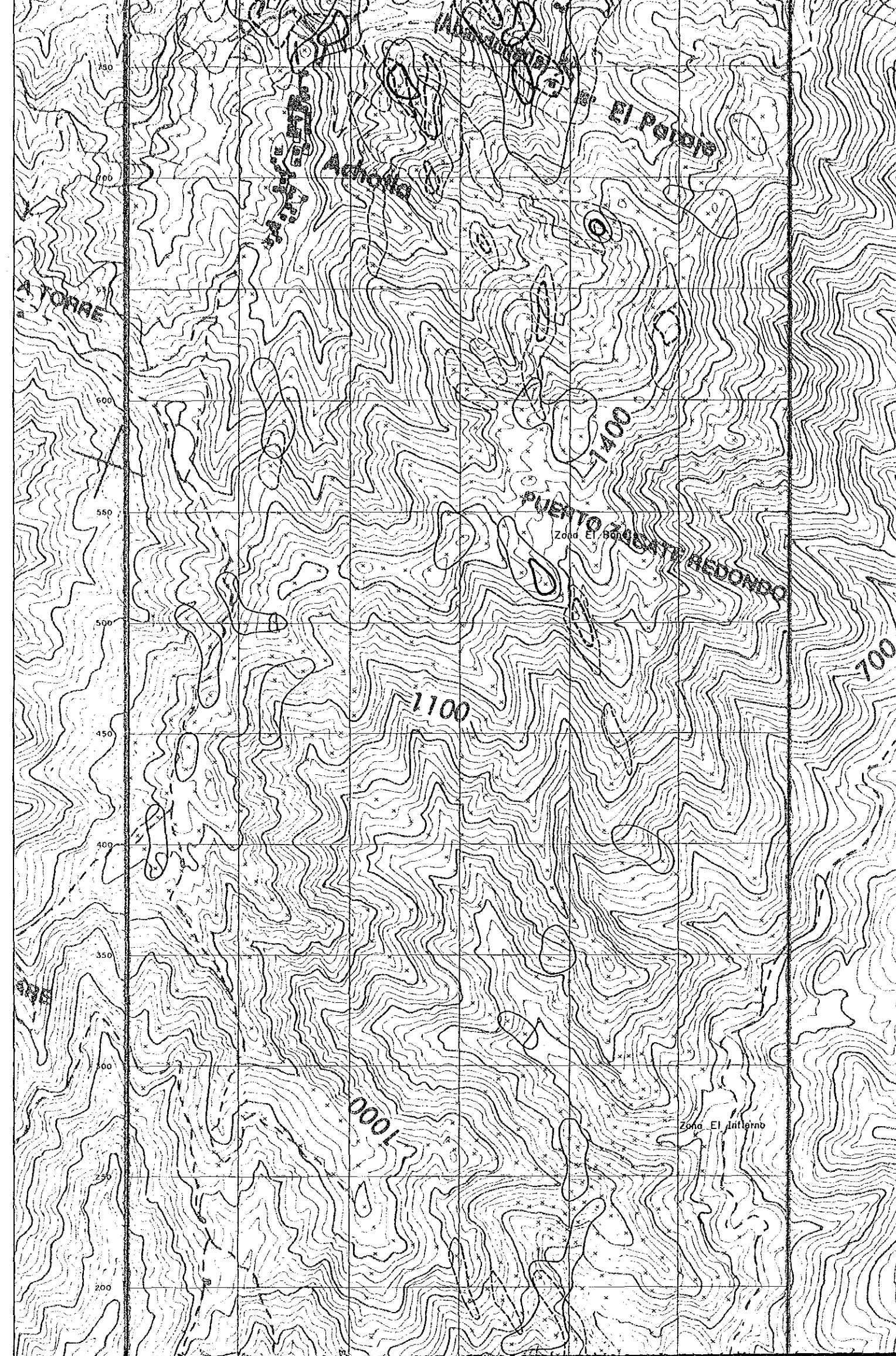
- Elemento Pb
-  : Sub - Anomalia ( 91.2 - 188.6 ppm )
  -  : Anomalia ( 188.6 - 116900 ppm )
- Elemento Ag
-  : Sub - Anomalia ( 1.8 - 7.1 ppm )
  -  : Anomalia ( 7.1 - 306.8 ppm )






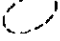


Leyenda

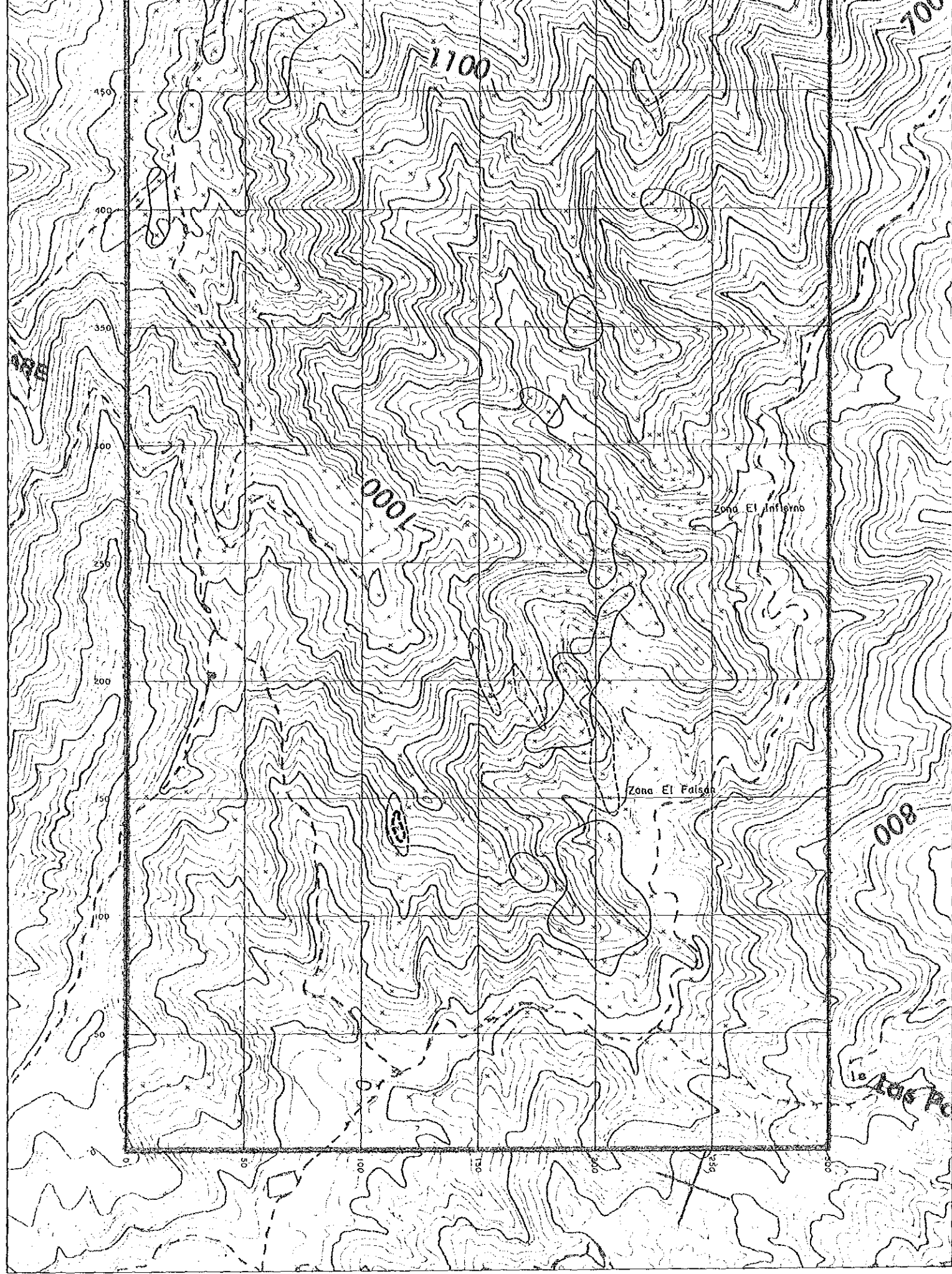
- Elemento Au
- : Sub-Anomalía ( 23 - 132 ppb )
  - : Anomalía ( 132 - 6240 ppb )
- Elemento Hg
- : Sub-Anomalía ( 537 - 1304 ppb )
  - : Anomalía ( 1304 - 37656 ppb )

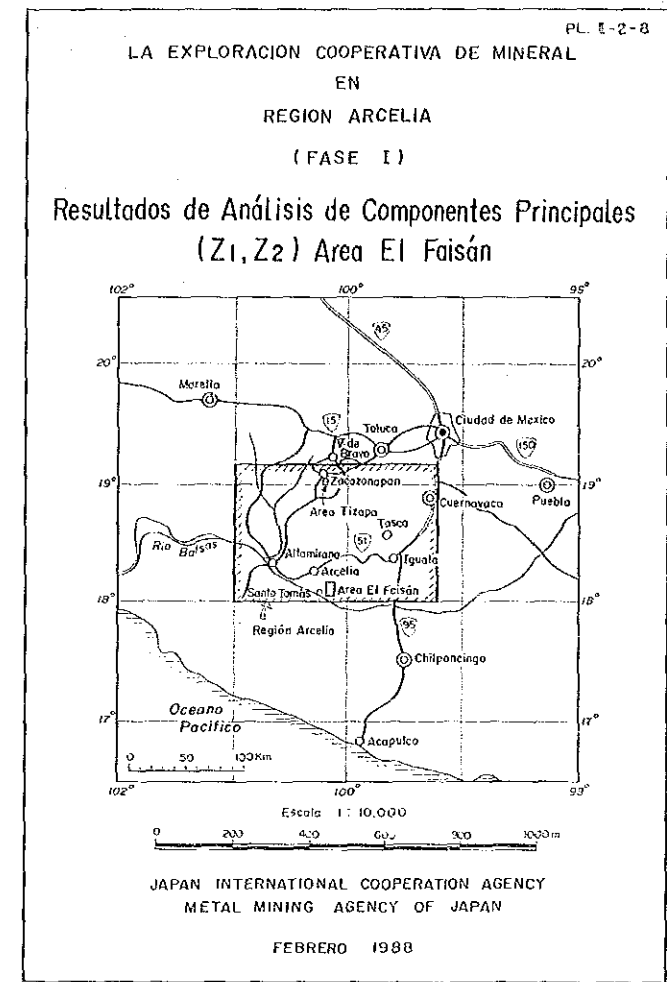
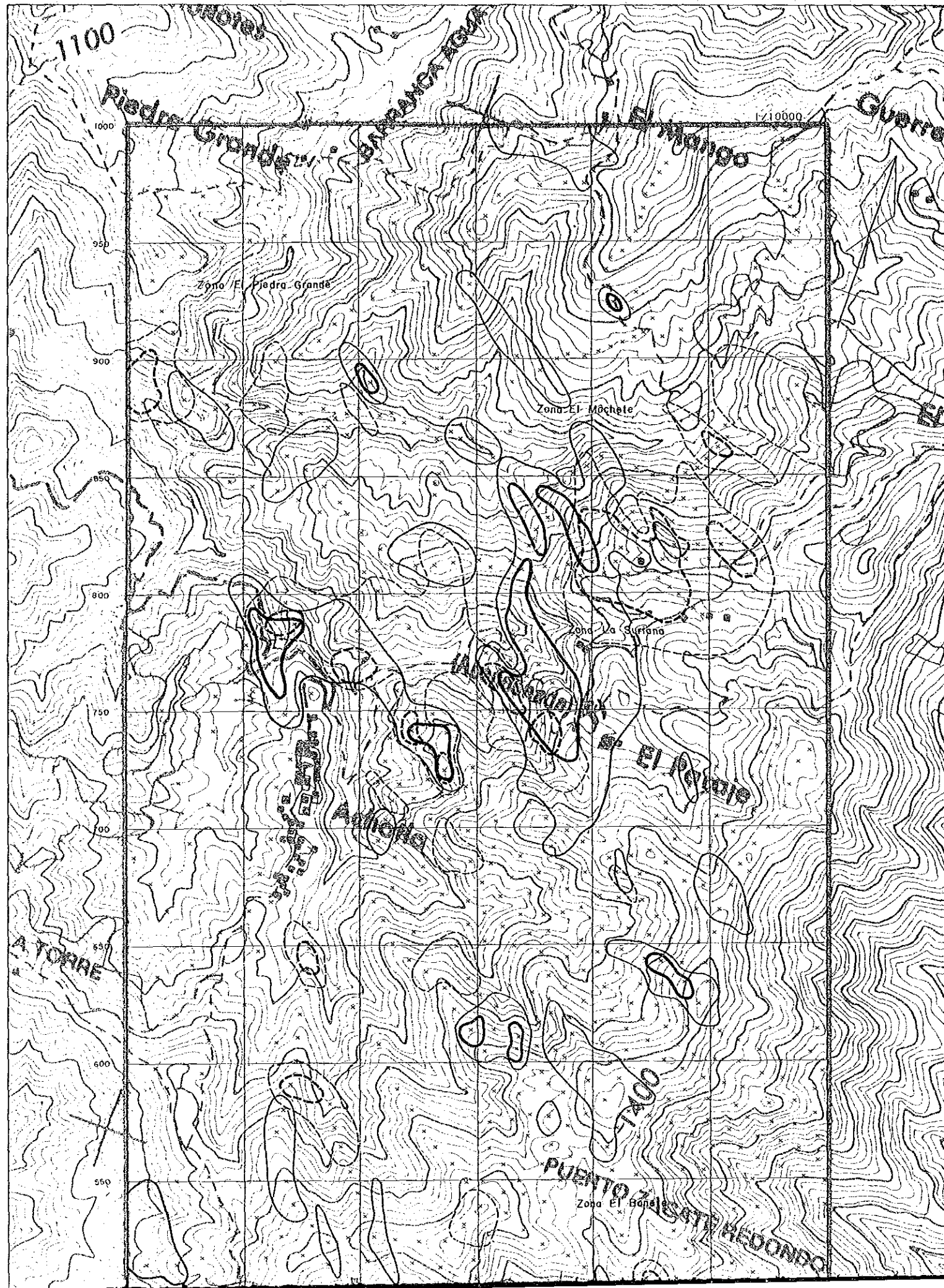


Leyenda

- Elemento Au
-  : Sub-Anomalia ( 23 - 132 ppb )
  -  : Anomalia ( 132 - 6240 ppb )
- Elemento Hg
-  : Sub-Anomalia ( 537 - 1304 ppb )
  -  : Anomalia ( 1304 - 37656 ppb )







Leyenda

Escor de Primero Componente (Z<sub>1</sub>)

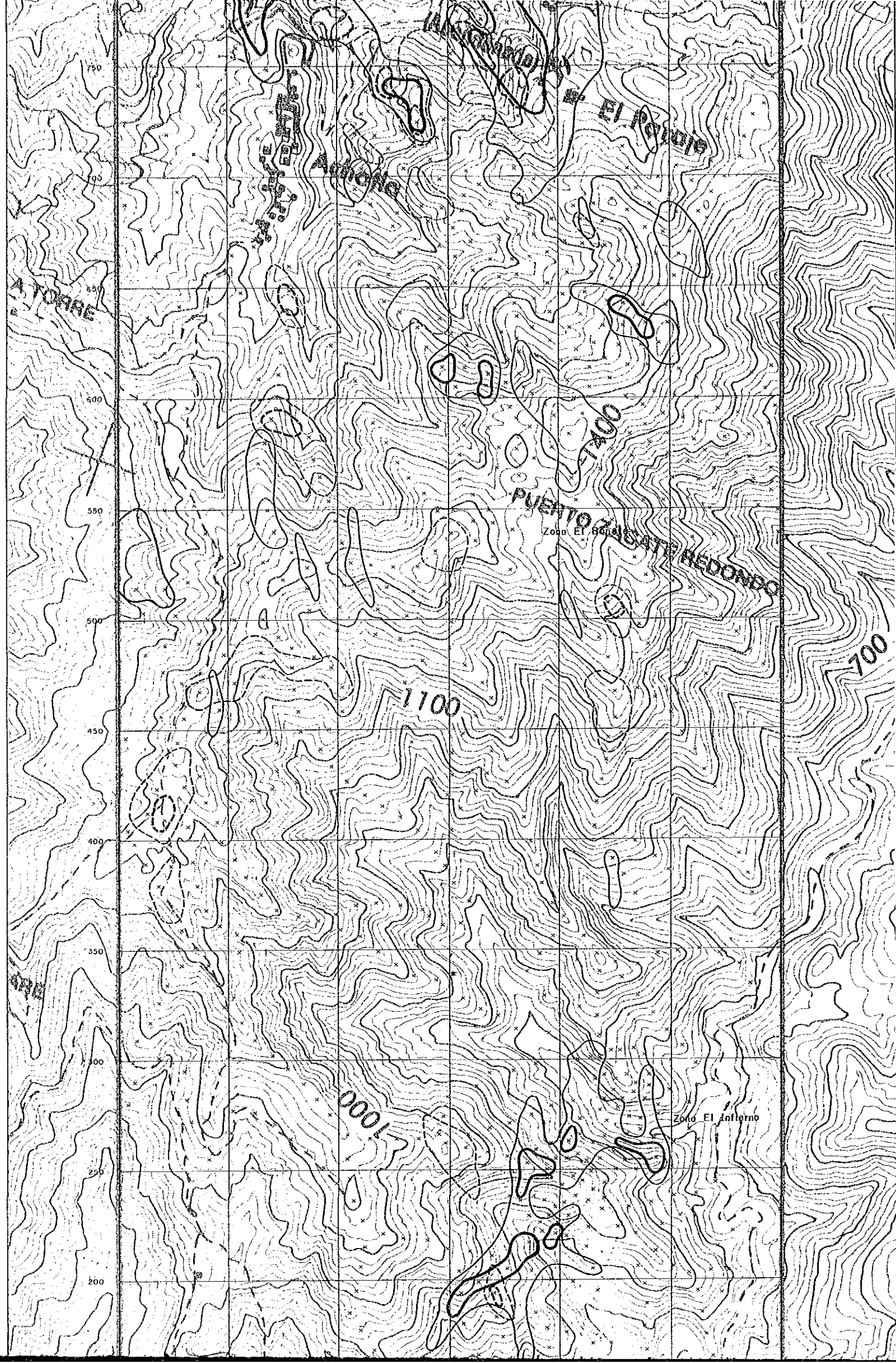
○ : Sub-Anomalía ( 1.62 - 3.24 )

○ : Anomalía ( 3.24 - 11.24 )

Escor de Segundo Componente (Z<sub>2</sub>)

○ : Sub-Anomalía ( 1.01 - 2.02 )

○ : Anomalía ( 2.02 - 4.04 )



Leyenda

Escor de Primero Componente (Z1)

○ : Sub - Anomalia ( 1.62 - 3.24 )

○ : Anomalia ( 3.24 - 11.24 )

Escor de Segundo Componente (Z2)

○ : Sub - Anomalia ( 1.01 - 2.02 )

○ : Anomalia ( 2.02 - 4.04 )

