

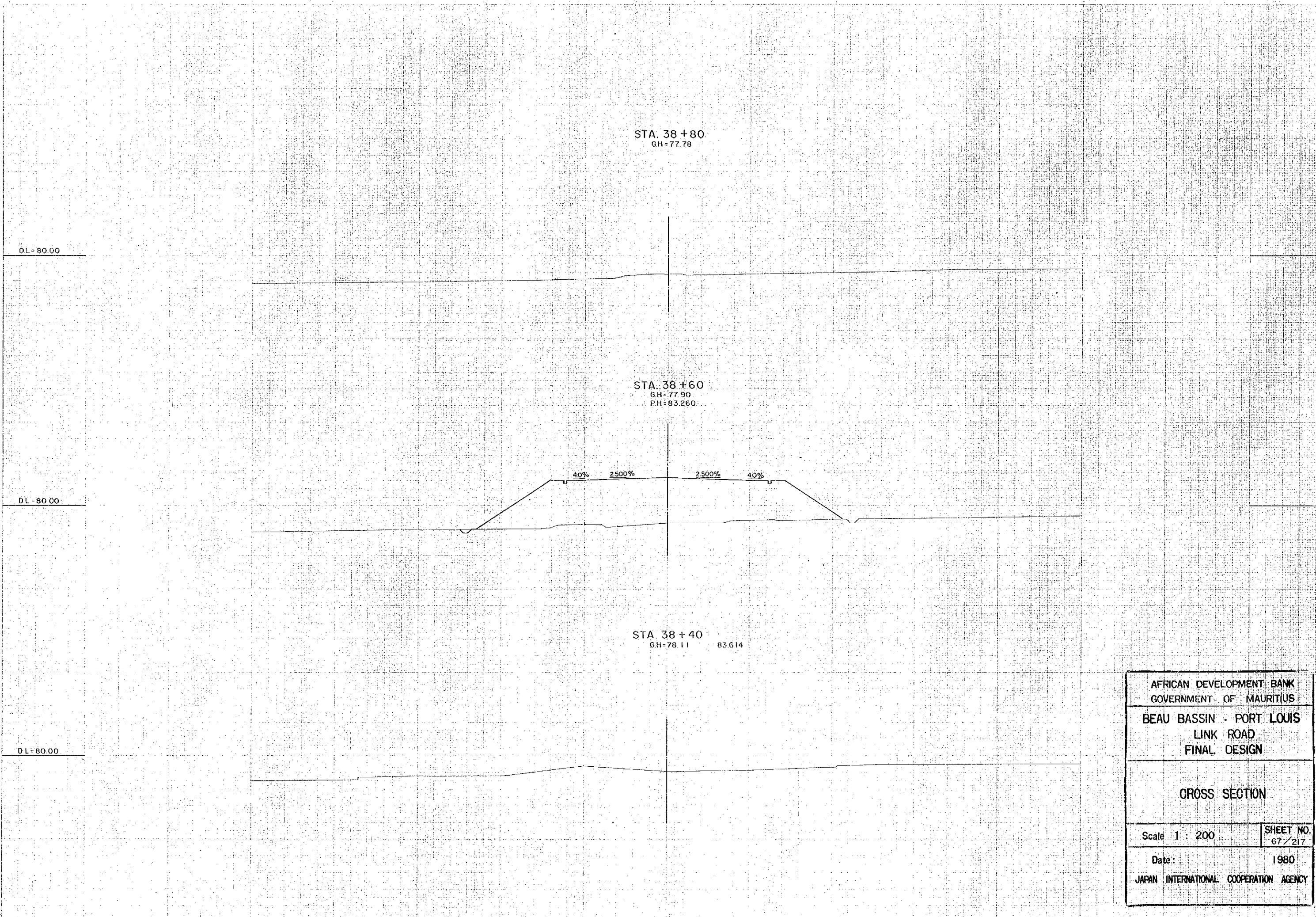
STA. 38 + 20
 GH = 78.73
 PH = 84.036

STA 38 + 00
 GH = 79.97 84.526

STA. 37 + 80
 GH = 82.84
 PH = 85.084

40% 2.500% 2.500% 40%

AFRICAN DEVELOPMENT BANK GOVERNMENT OF MAURITIUS	
BEAU BASSIN - PORT LOUIS LINK ROAD FINAL DESIGN	
CROSS SECTION	
Scale 1 : 200	SHEET NO. 66/217
Date:	1980
JAPAN INTERNATIONAL COOPERATION AGENCY	



STA. 38 + 80
GH = 77.78

STA. 38 + 60
GH = 77.90
PH = 83.260

STA. 38 + 40
GH = 78.11 83.614

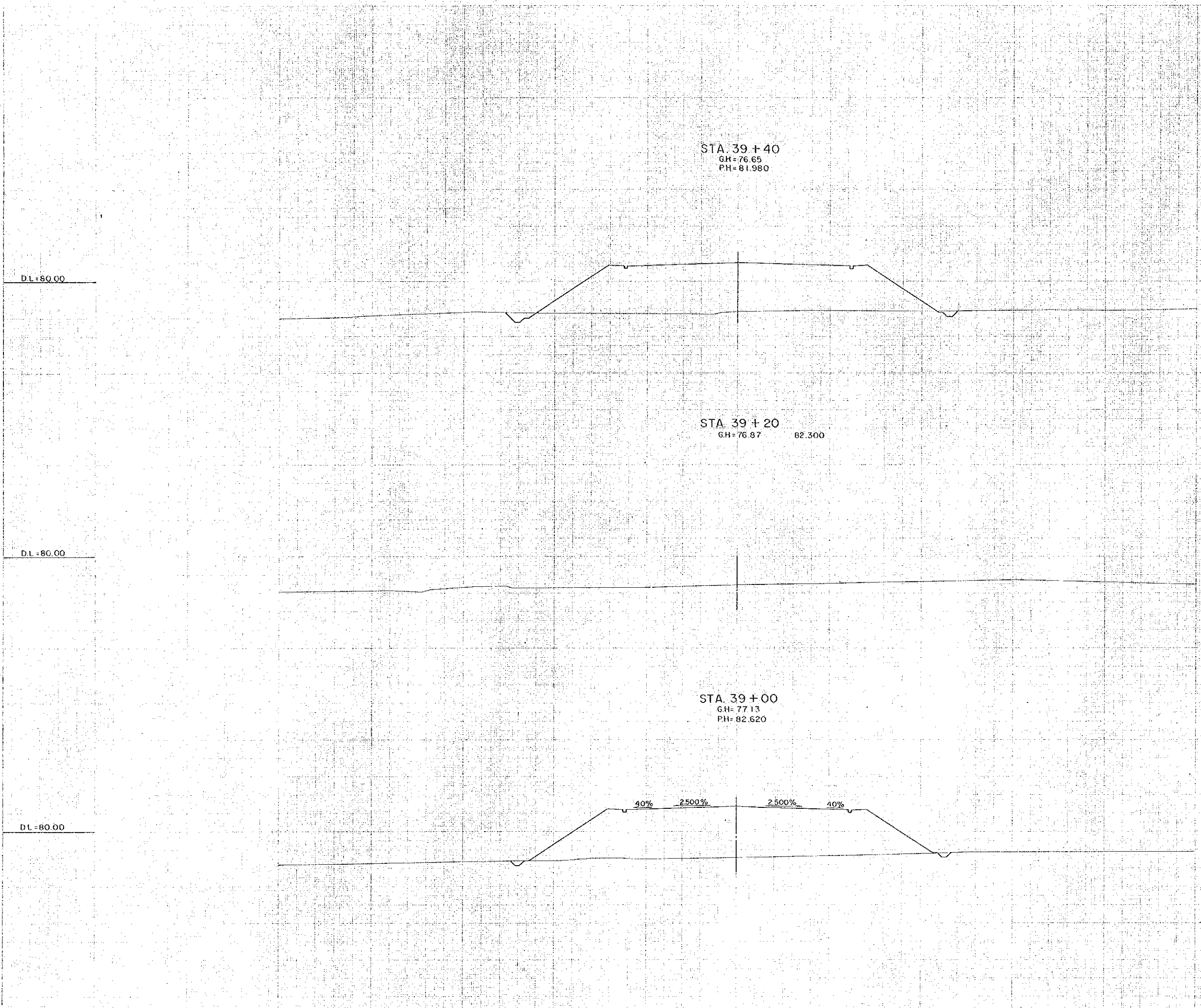
40% 2.500% 2.500% 40%

DL = 80.00

DL = 80.00

DL = 80.00

AFRICAN DEVELOPMENT BANK GOVERNMENT OF MAURITIUS	
BEAU BASSIN - PORT LOUIS LINK ROAD FINAL DESIGN	
CROSS SECTION	
Scale 1 : 200	SHEET NO. 67 / 217
Date:	1980
JAPAN INTERNATIONAL COOPERATION AGENCY	



STA 39 + 40
 GH=76.65
 PH=81.980

STA 39 + 20
 GH=76.87 82.300

STA 39 + 00
 GH=77.13
 PH=82.620

40% 2.500% 2.500% 40%

AFRICAN DEVELOPMENT BANK GOVERNMENT OF MAURITIUS	
BEAU BASSIN - PORT LOUIS LINK ROAD FINAL DESIGN	
CROSS SECTION	
Scale 1 : 200	SHEET NO. 68/217
Date:	1980
JAPAN INTERNATIONAL COOPERATION AGENCY	

STA. 40+00
G.H.=76.37 81.020

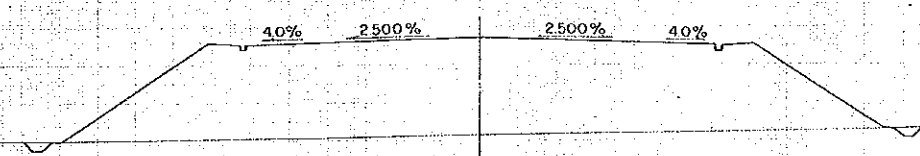
STA. 39+80
G.H.=76.32
P.H.=81.340

STA. 39+60
G.H.=76.13 81.660

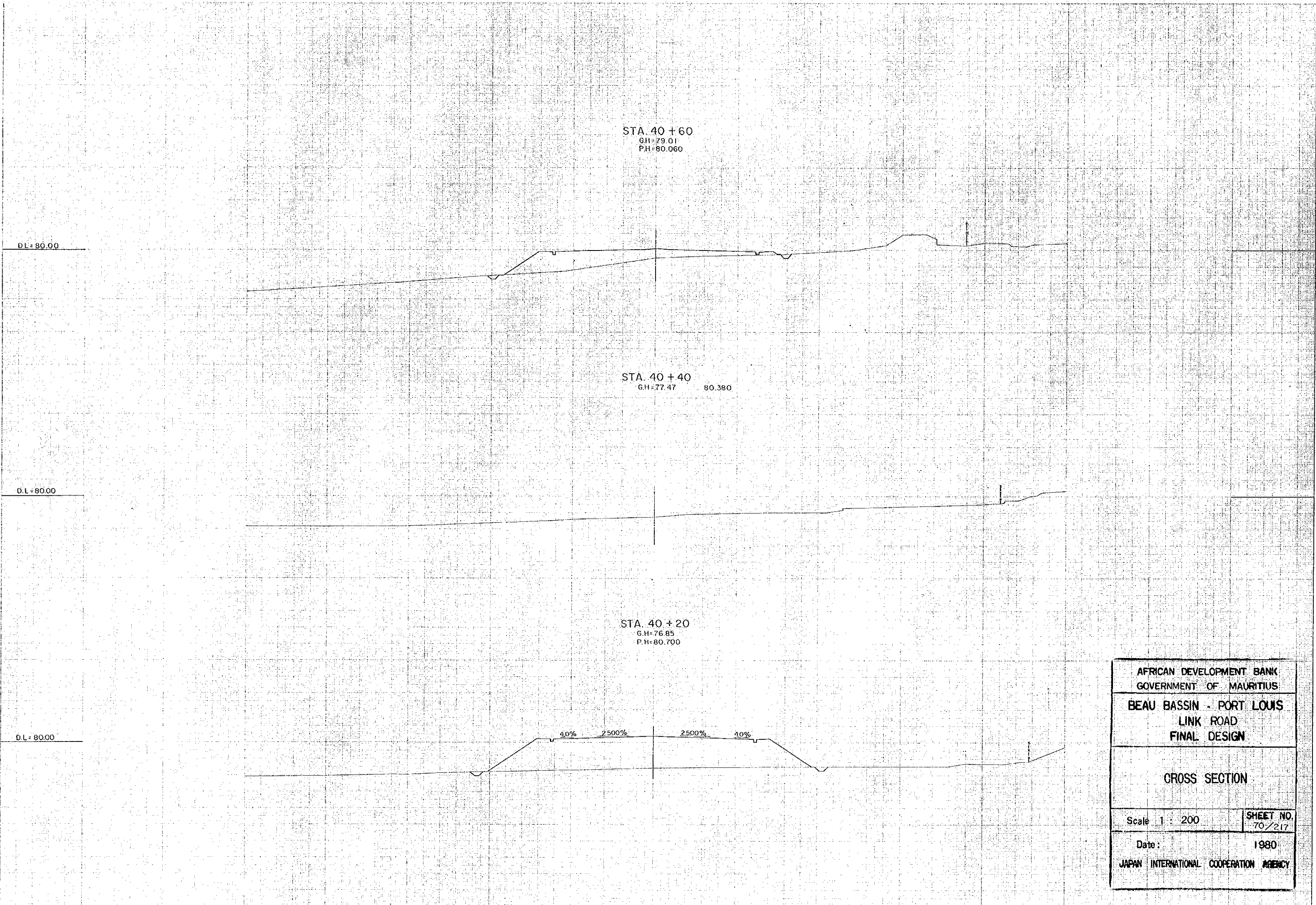
D.L.=80.00

D.L.=80.00

D.L.=80.00



AFRICAN DEVELOPMENT BANK GOVERNMENT OF MAURITIUS	
BEAU BASSIN - PORT LOUIS LINK ROAD FINAL DESIGN	
CROSS SECTION	
Scale 1 : 200	SHEET NO. 69/217
Date: 1980	
JAPAN INTERNATIONAL COOPERATION AGENCY	



STA. 40+60
G.H.=79.01
P.H.=80.060

STA. 40+40
G.H.=77.47 80.380

STA. 40+20
G.H.=76.85
P.H.=80.700

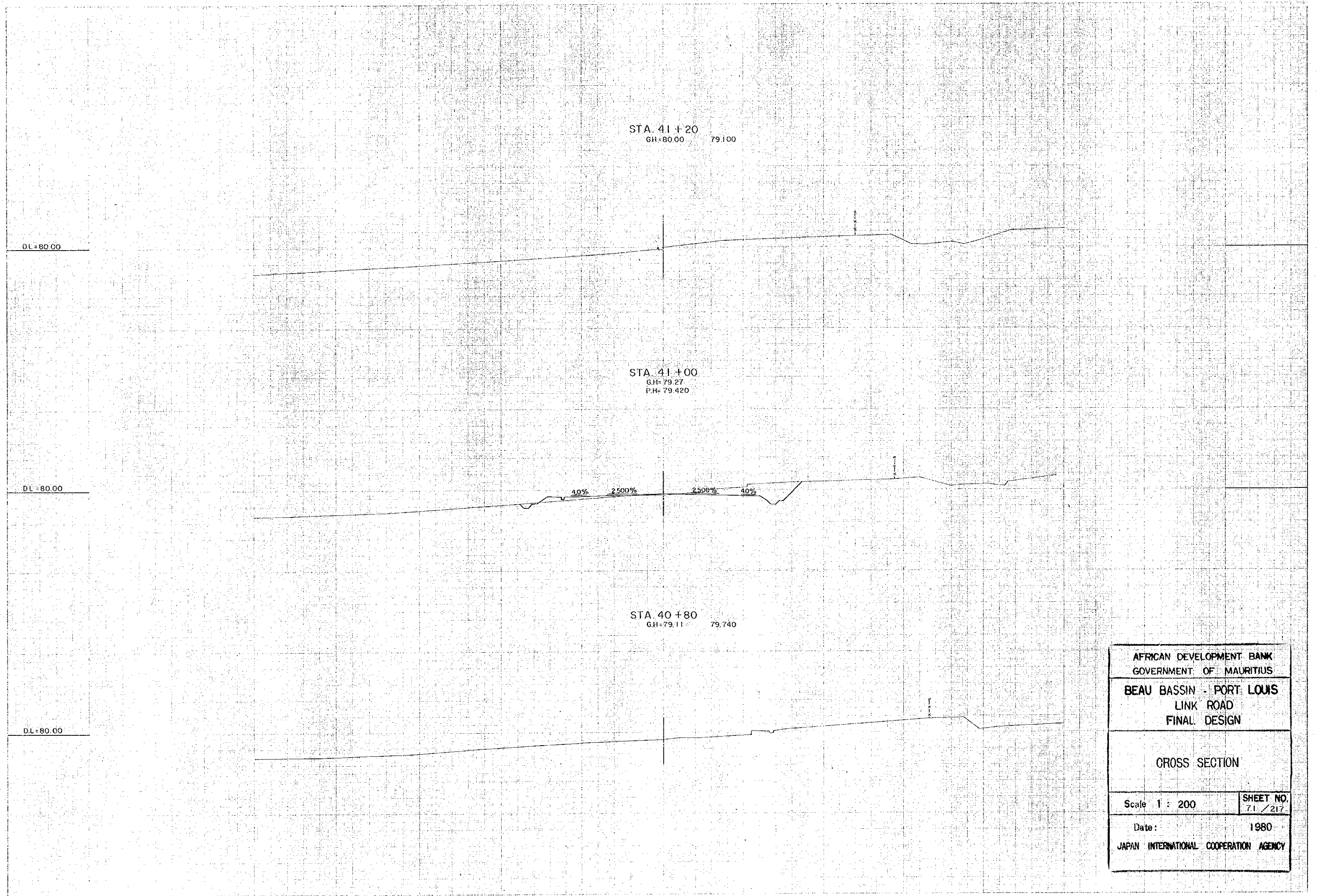
40% 2500% 2500% 10%

D.L.=80.00

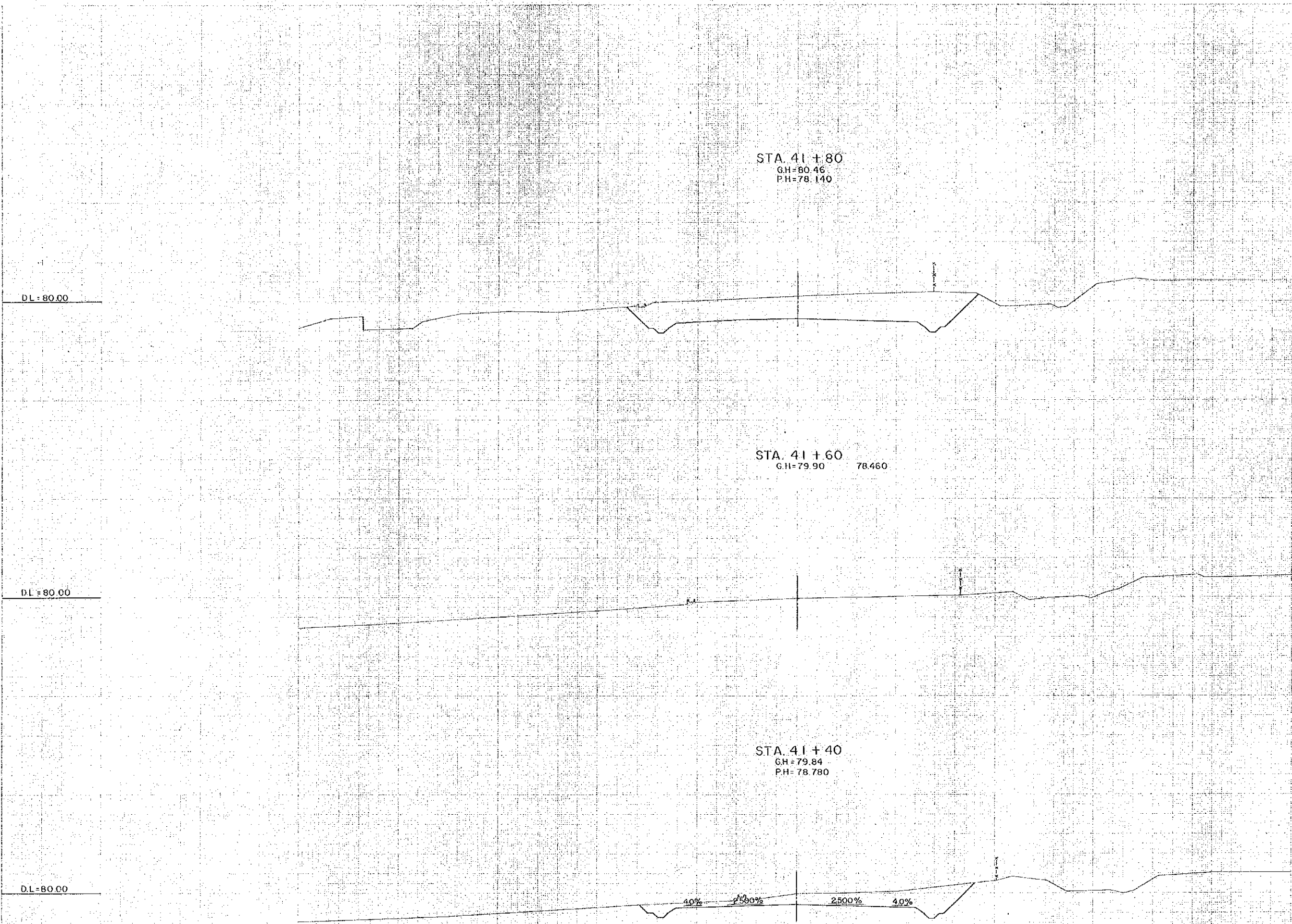
D.L.=80.00

D.L.=80.00

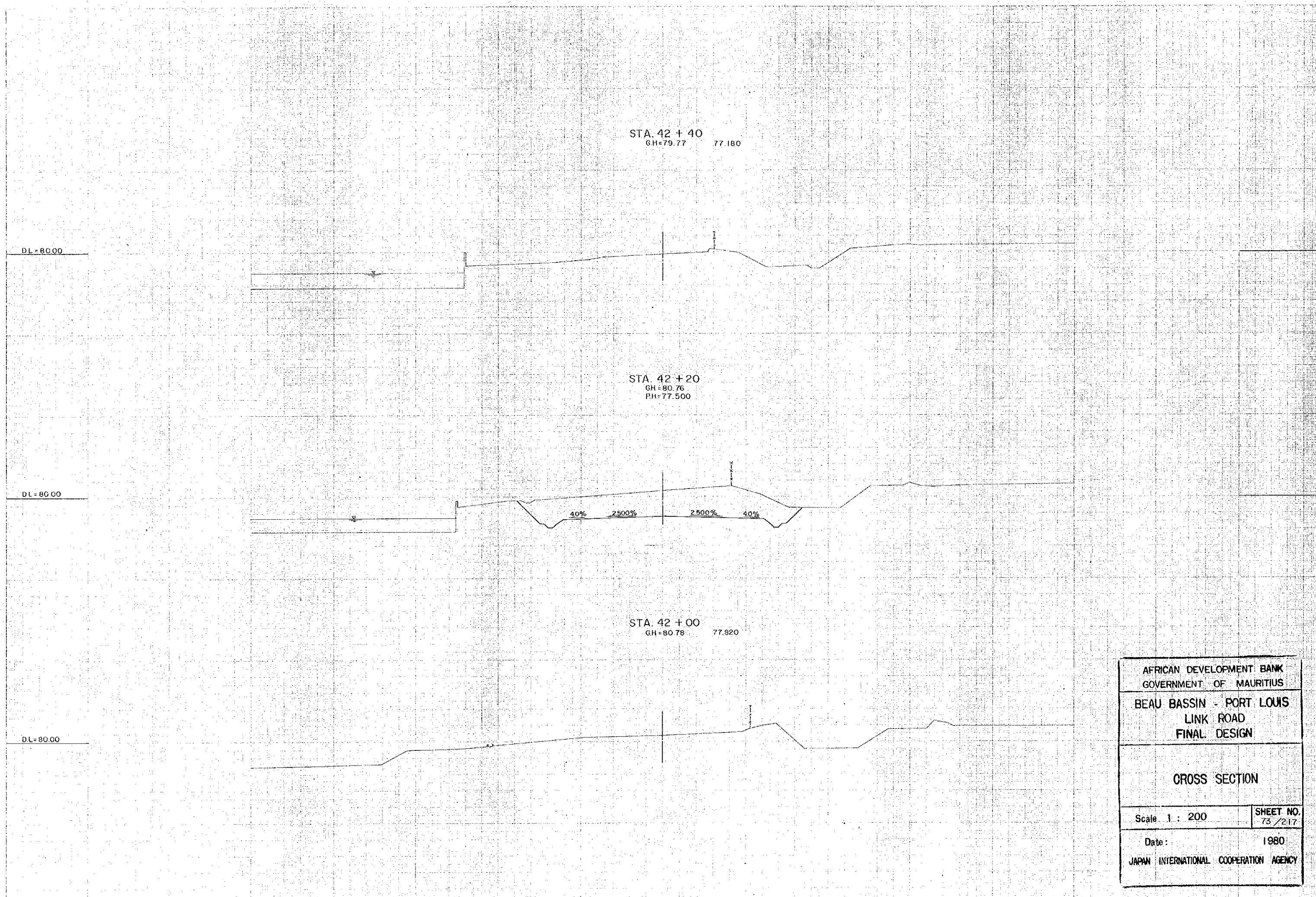
AFRICAN DEVELOPMENT BANK GOVERNMENT OF MAURITIUS	
BEAU BASSIN - PORT LOUIS LINK ROAD FINAL DESIGN	
CROSS SECTION	
Scale 1 : 200	SHEET NO. 70/217
Date:	1980
JAPAN INTERNATIONAL COOPERATION AGENCY	



AFRICAN DEVELOPMENT BANK GOVERNMENT OF MAURITIUS	
BEAU BASSIN - PORT LOUIS LINK ROAD FINAL DESIGN	
CROSS SECTION	
Scale 1 : 200	SHEET NO. 71 / 217
Date : 1980	
JAPAN INTERNATIONAL COOPERATION AGENCY	



AFRICAN DEVELOPMENT BANK GOVERNMENT OF MAURITIUS	
BEAU BASSIN - PORT LOUIS LINK ROAD FINAL DESIGN	
CROSS SECTION	
Scale 1 : 200	SHEET NO. 72 / 217
Date :	1980
JAPAN INTERNATIONAL COOPERATION AGENCY	



STA. 42 + 40
GH=79.77 77.180

STA. 42 + 20
GH=80.76
PH=77.500

STA. 42 + 00
GH=80.78 77.920

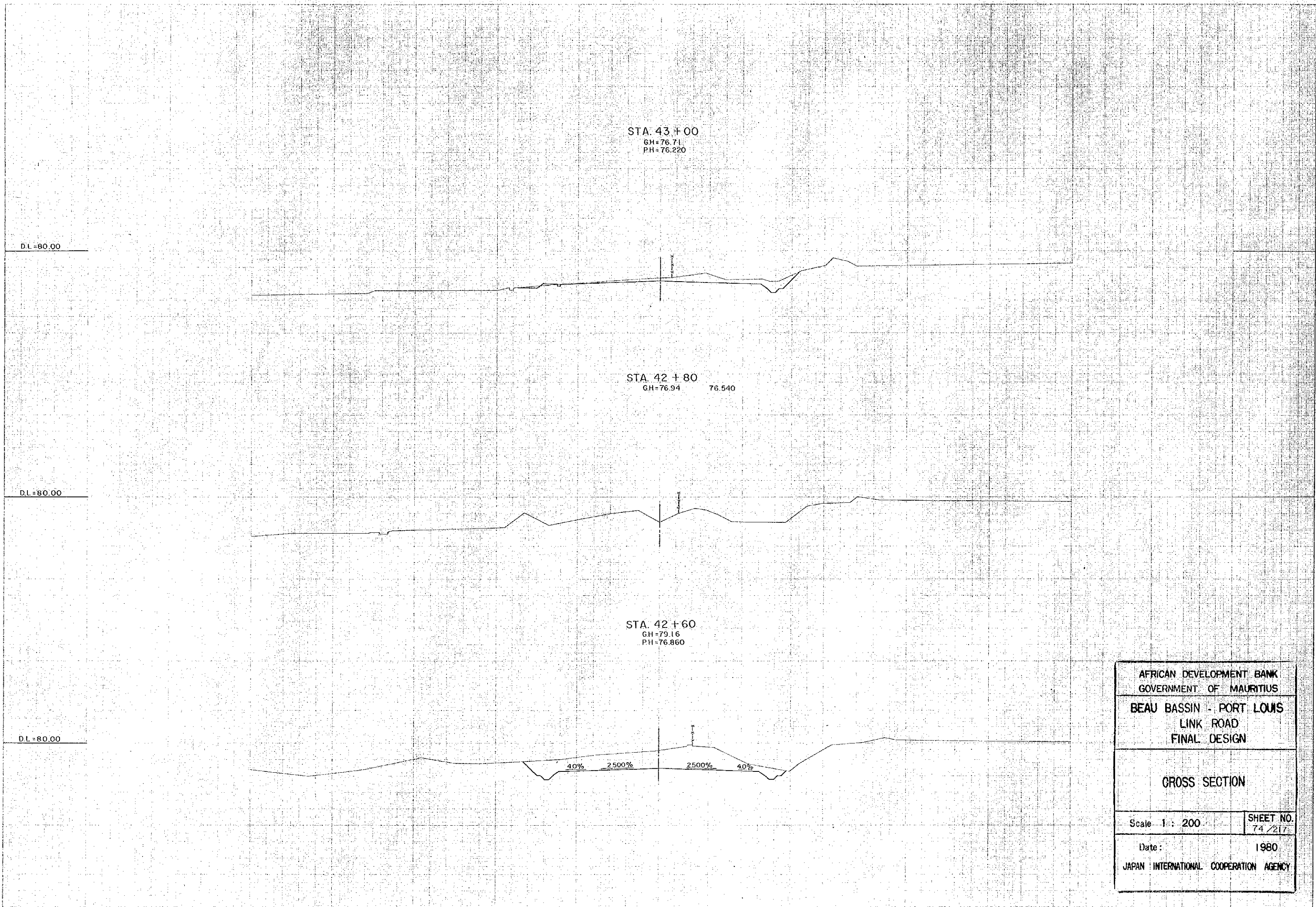
DL=80.00

DL=80.00

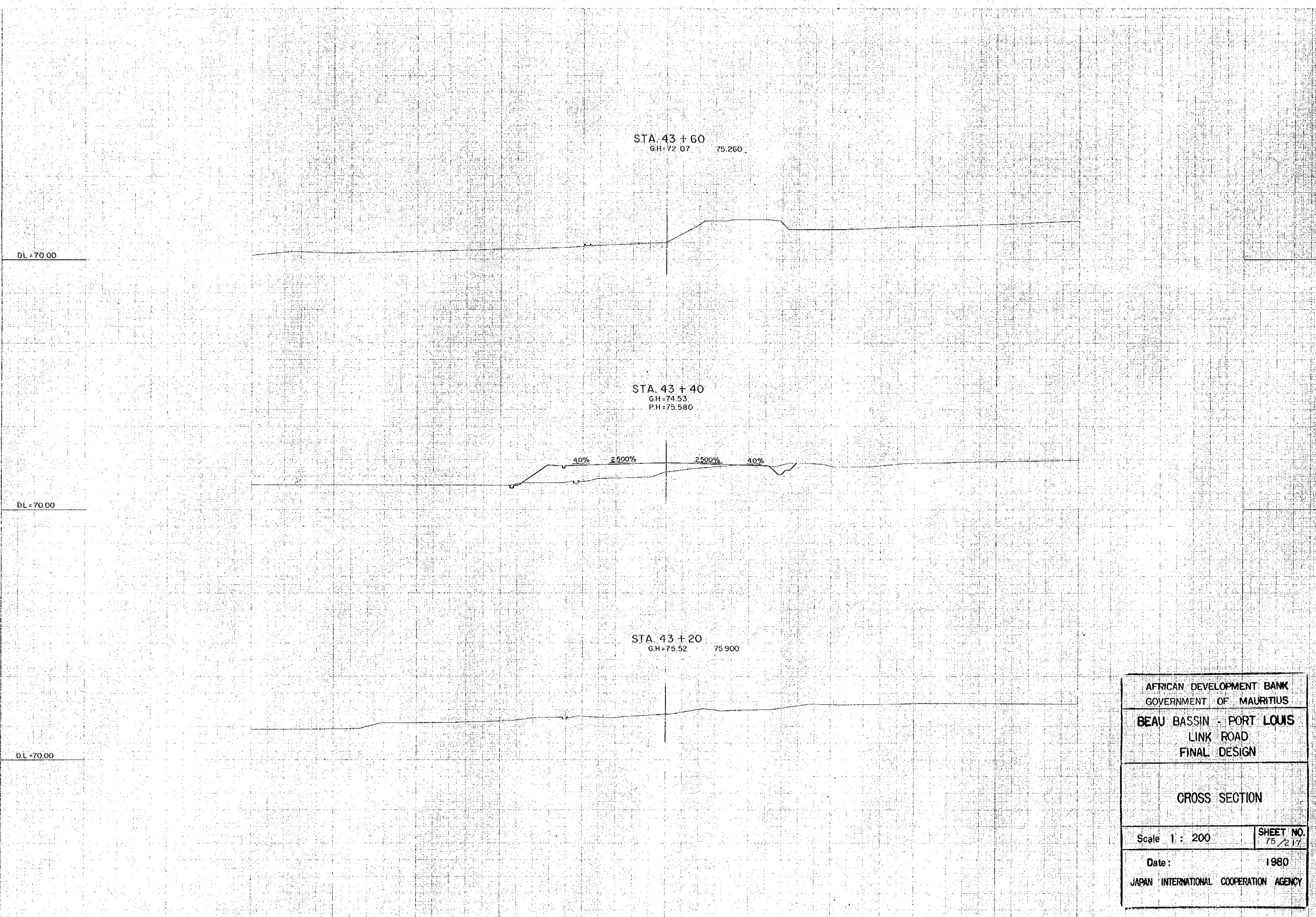
DL=80.00

40% 2500% 2500% 40%

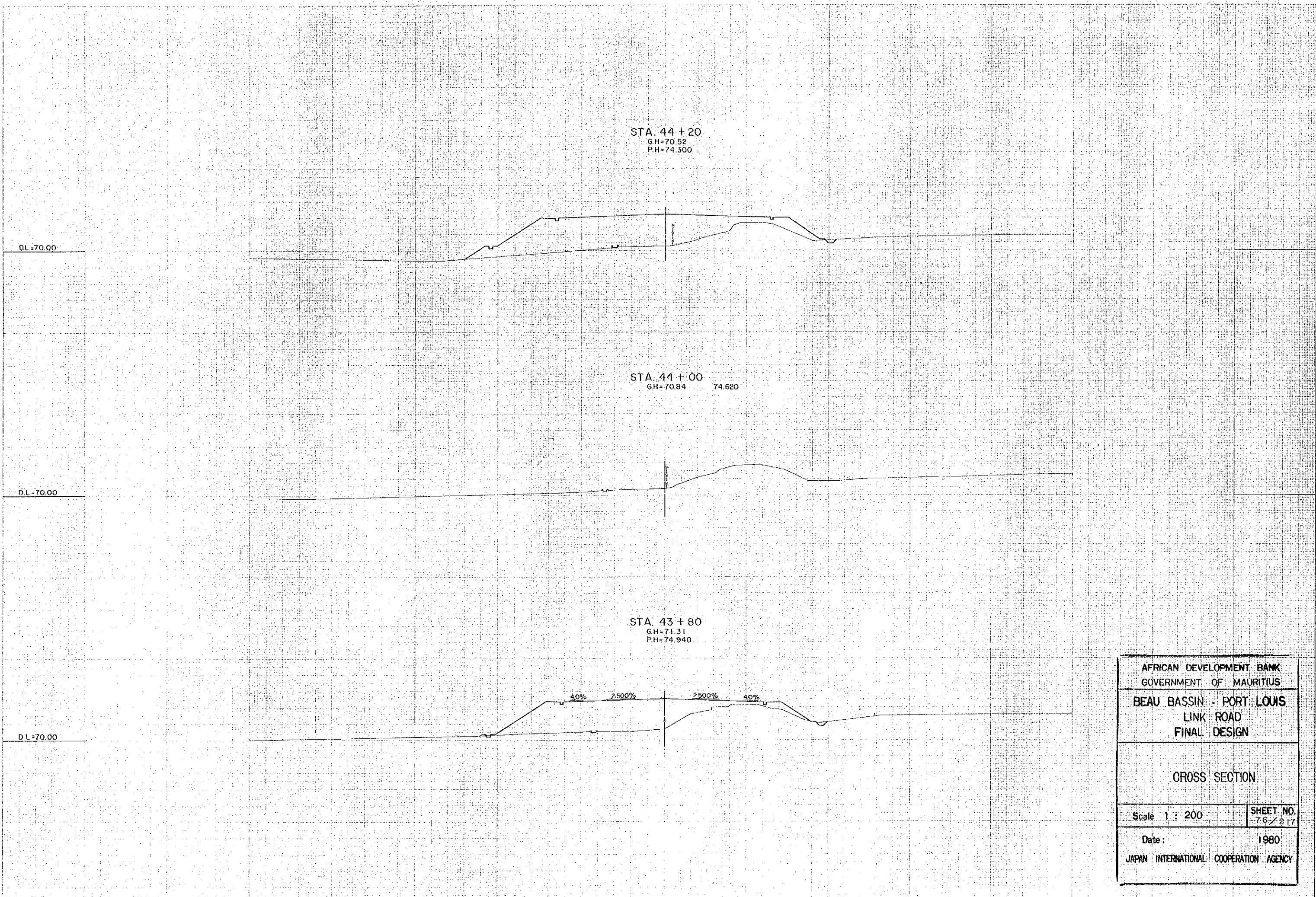
AFRICAN DEVELOPMENT BANK GOVERNMENT OF MAURITIUS	
BEAU BASSIN - PORT LOUIS LINK ROAD FINAL DESIGN	
CROSS SECTION	
Scale 1 : 200	SHEET NO. 73 / 217
Date: 1980	
JAPAN INTERNATIONAL COOPERATION AGENCY	



AFRICAN DEVELOPMENT BANK GOVERNMENT OF MAURITIUS	
BEAU BASSIN - PORT LOUIS LINK ROAD FINAL DESIGN	
CROSS SECTION	
Scale 1 : 200	SHEET NO. 74 / 217
Date:	1980
JAPAN INTERNATIONAL COOPERATION AGENCY	



AFRICAN DEVELOPMENT BANK GOVERNMENT OF MAURITIUS	
BEAU BASSIN - PORT LOUIS LINK ROAD FINAL DESIGN	
CROSS SECTION	
Scale 1 : 200	SHEET NO. 75/217
Date:	1980
JAPAN INTERNATIONAL COOPERATION AGENCY	



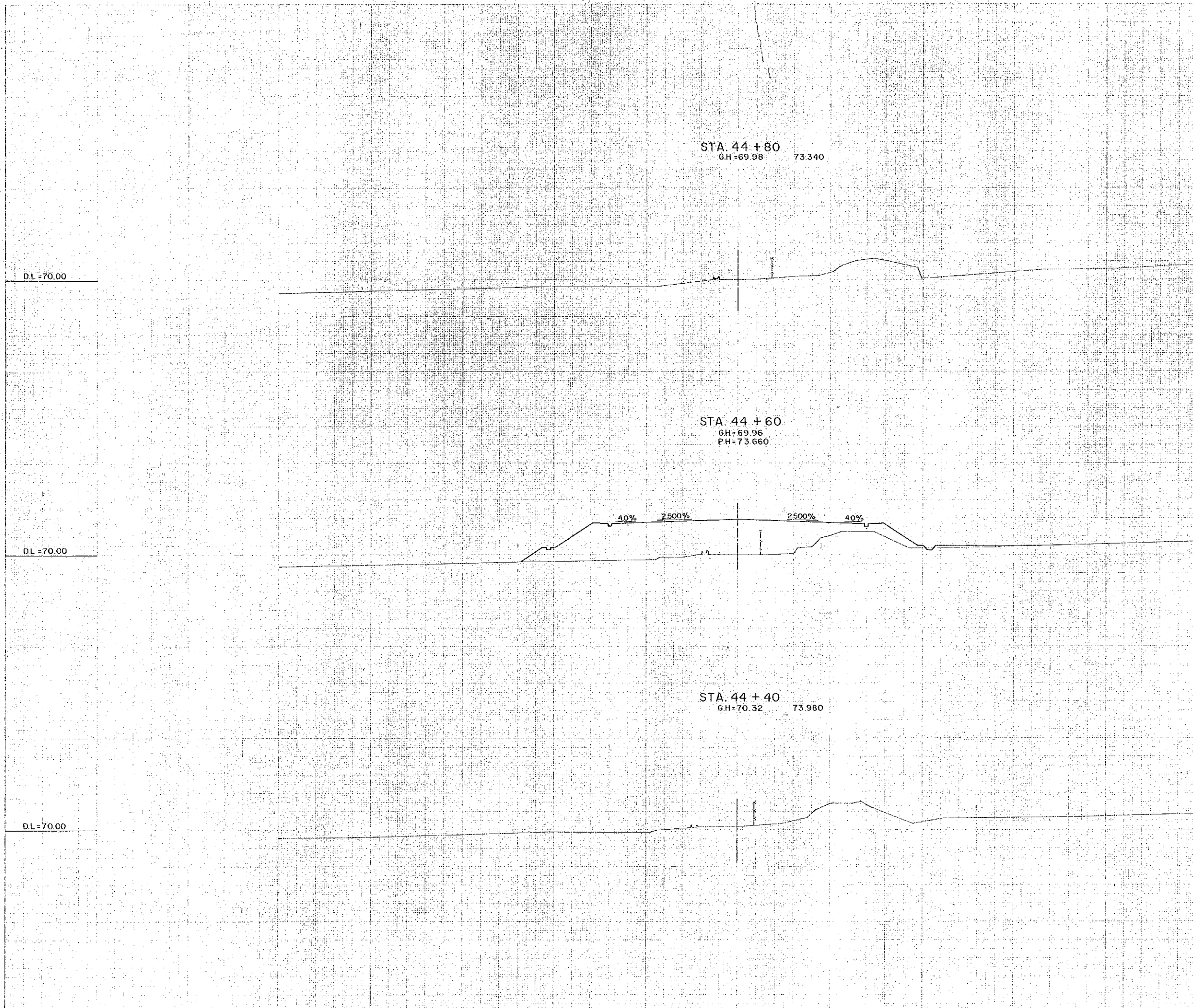
STA. 44 + 20
G.H. = 70.52
P.H. = 74.300

STA. 44 + 00
G.H. = 70.84 74.620

STA. 43 + 80
G.H. = 71.31
P.H. = 74.940

4.0% 2.500% 2.500% 4.0%

AFRICAN DEVELOPMENT BANK GOVERNMENT OF MAURITIUS	
BEAU BASSIN - PORT LOUIS LINK ROAD FINAL DESIGN	
CROSS SECTION	
Scale 1 : 200	SHEET NO. 76 / 217
Date:	1980
JAPAN INTERNATIONAL COOPERATION AGENCY	



STA. 44 + 80
GH=69.98 73.340

DL = 70.00

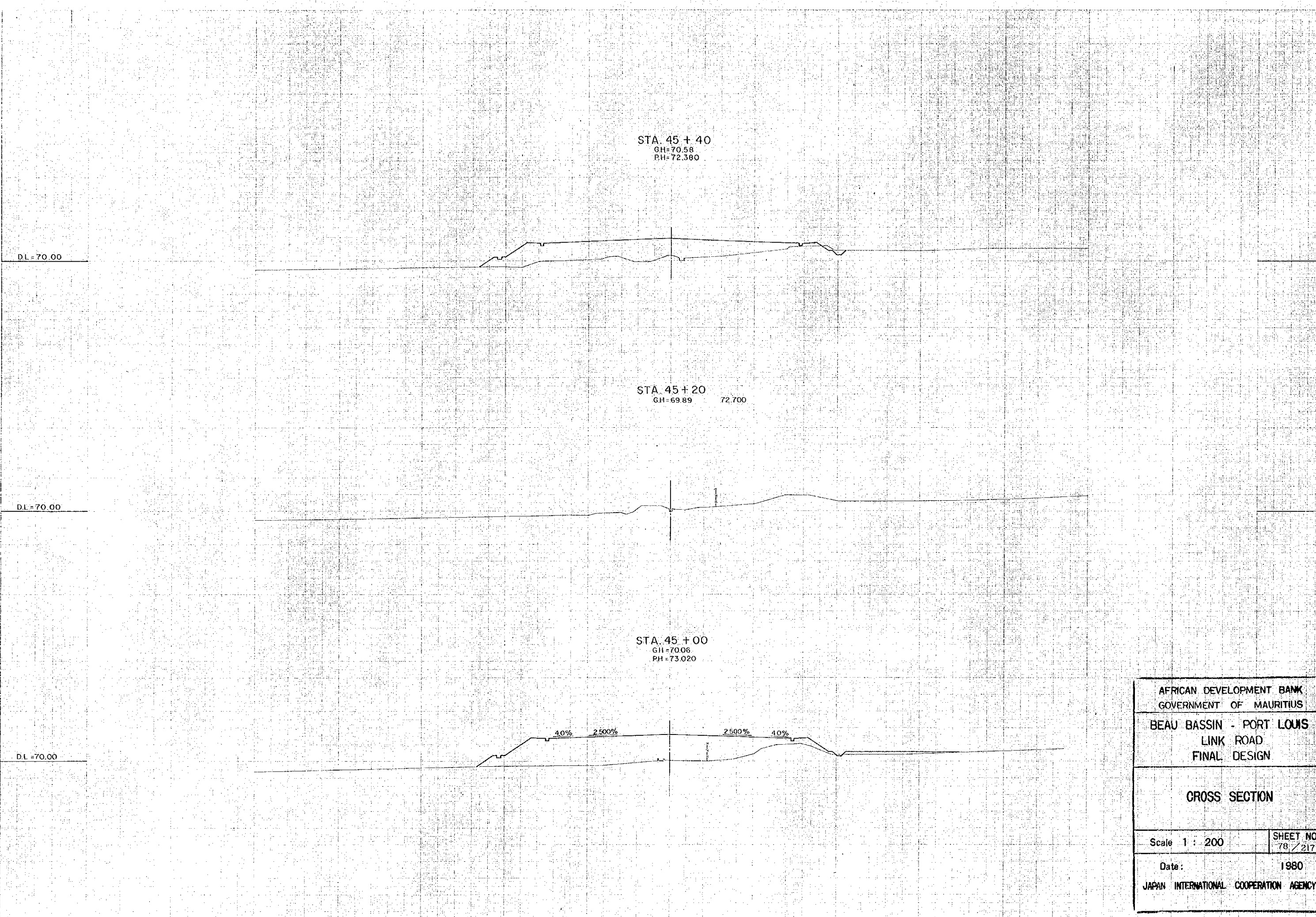
STA. 44 + 60
GH=69.96
PH=73.660

DL = 70.00

STA. 44 + 40
GH=70.32 73.980

DL = 70.00

AFRICAN DEVELOPMENT BANK GOVERNMENT OF MAURITIUS	
BEAU BASSIN - PORT LOUIS LINK ROAD FINAL DESIGN	
CROSS SECTION	
Scale 1 : 200	SHEET NO. 77 / 217
Date:	1980
JAPAN INTERNATIONAL COOPERATION AGENCY	



STA. 45 + 40
 GH = 70.58
 PH = 72.380

STA. 45 + 20
 GH = 69.89 72.700

STA. 45 + 00
 GH = 70.06
 PH = 73.020

DL = 70.00

DL = 70.00

DL = 70.00

AFRICAN DEVELOPMENT BANK GOVERNMENT OF MAURITIUS	
BEAU BASSIN - PORT LOUIS LINK ROAD FINAL DESIGN	
CROSS SECTION	
Scale 1 : 200	SHEET NO. 78 / 217
Date:	1980
JAPAN INTERNATIONAL COOPERATION AGENCY	