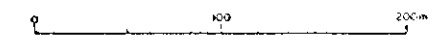
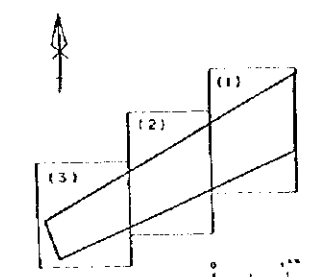


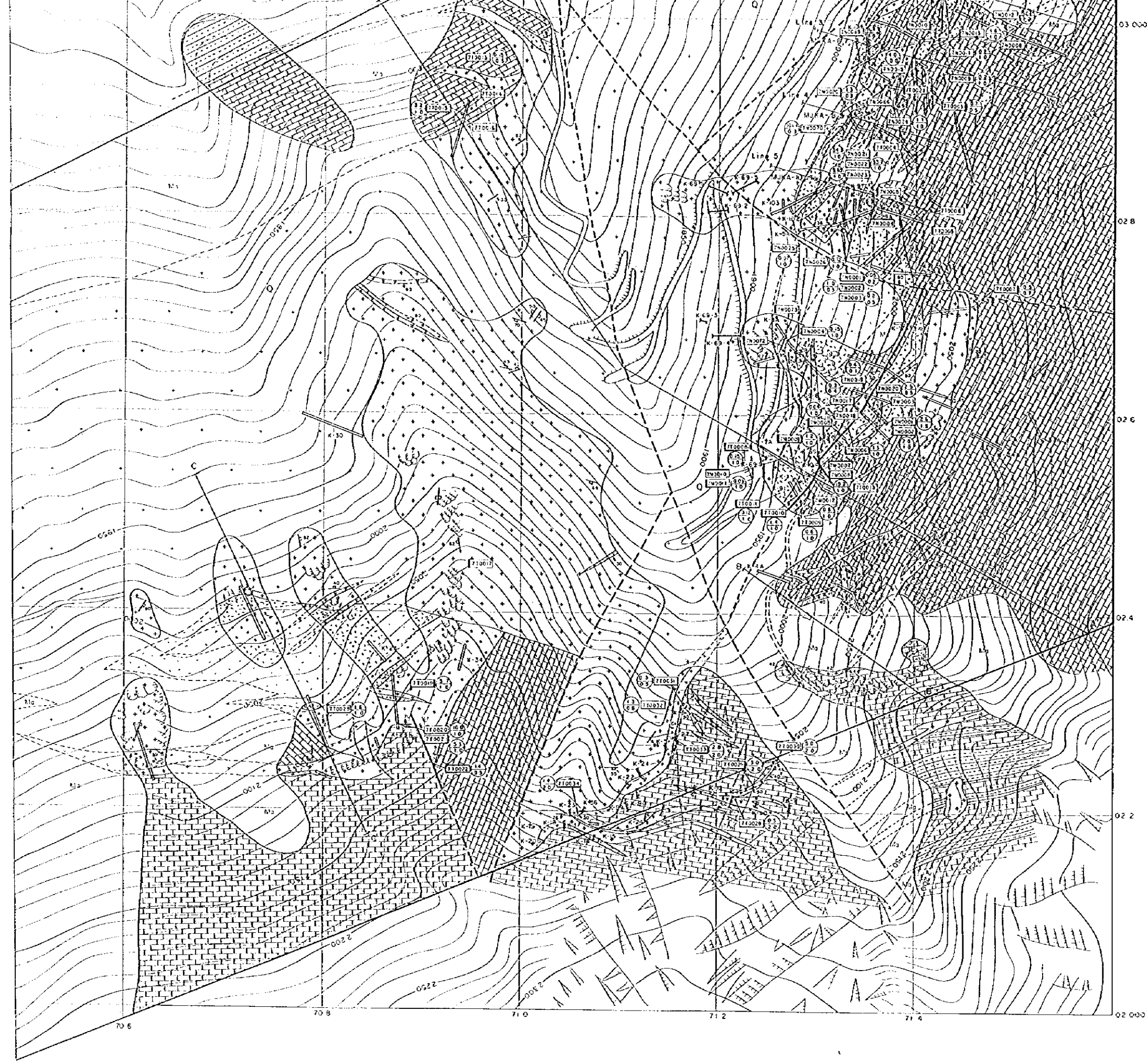
LEGEND

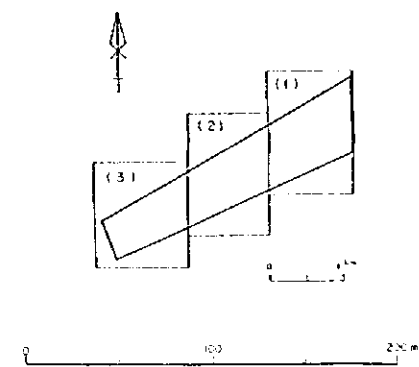
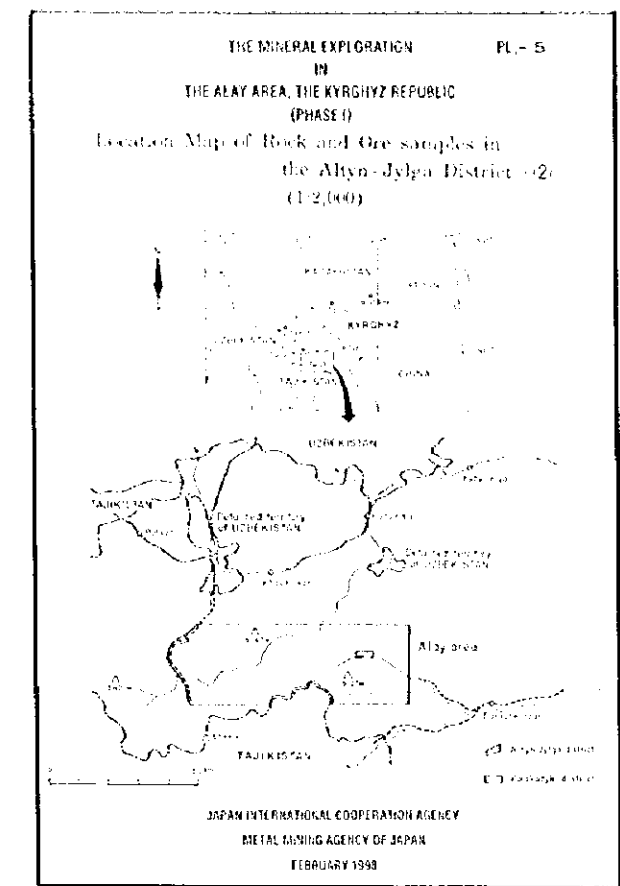
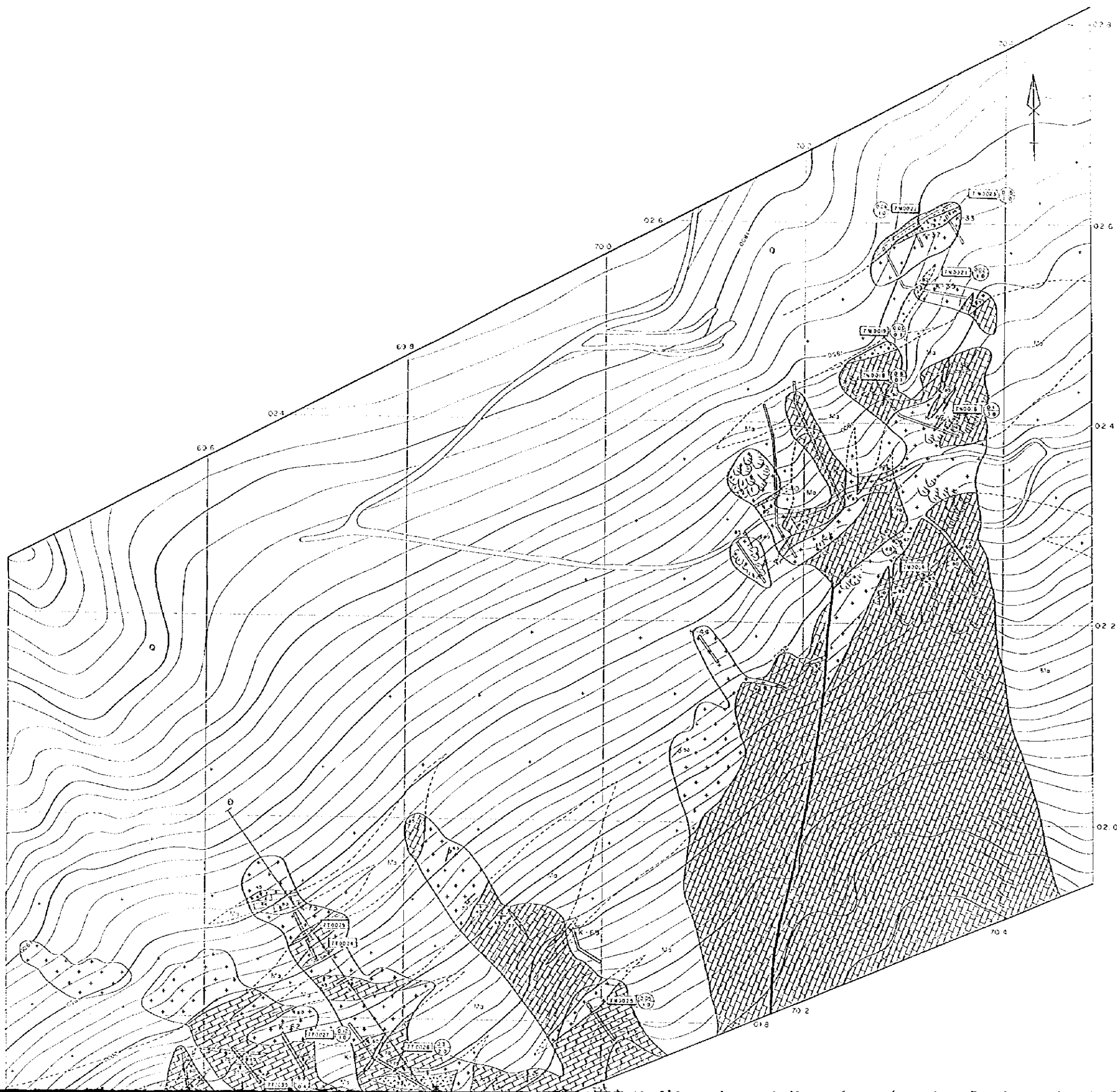
Quaternary	Q	Talus
Devonian to Carboniferous	[Symbol]	Limestone, marble
	[Symbol]	Argillaceous slate
Intrusive Rocks	[Symbol]	Lamprophyre
	[Symbol]	Porphyry
	[Symbol]	Aplite
	[Symbol]	Granitic rock
	[Symbol]	Skein
	[Symbol]	Silicified skarn
	[Symbol]	Limonitization



LEGEND

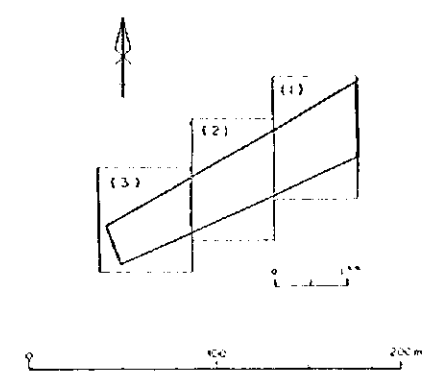
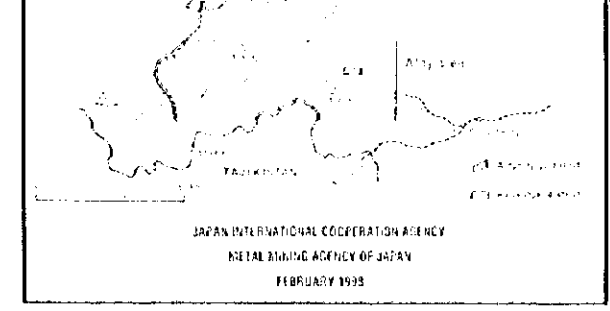
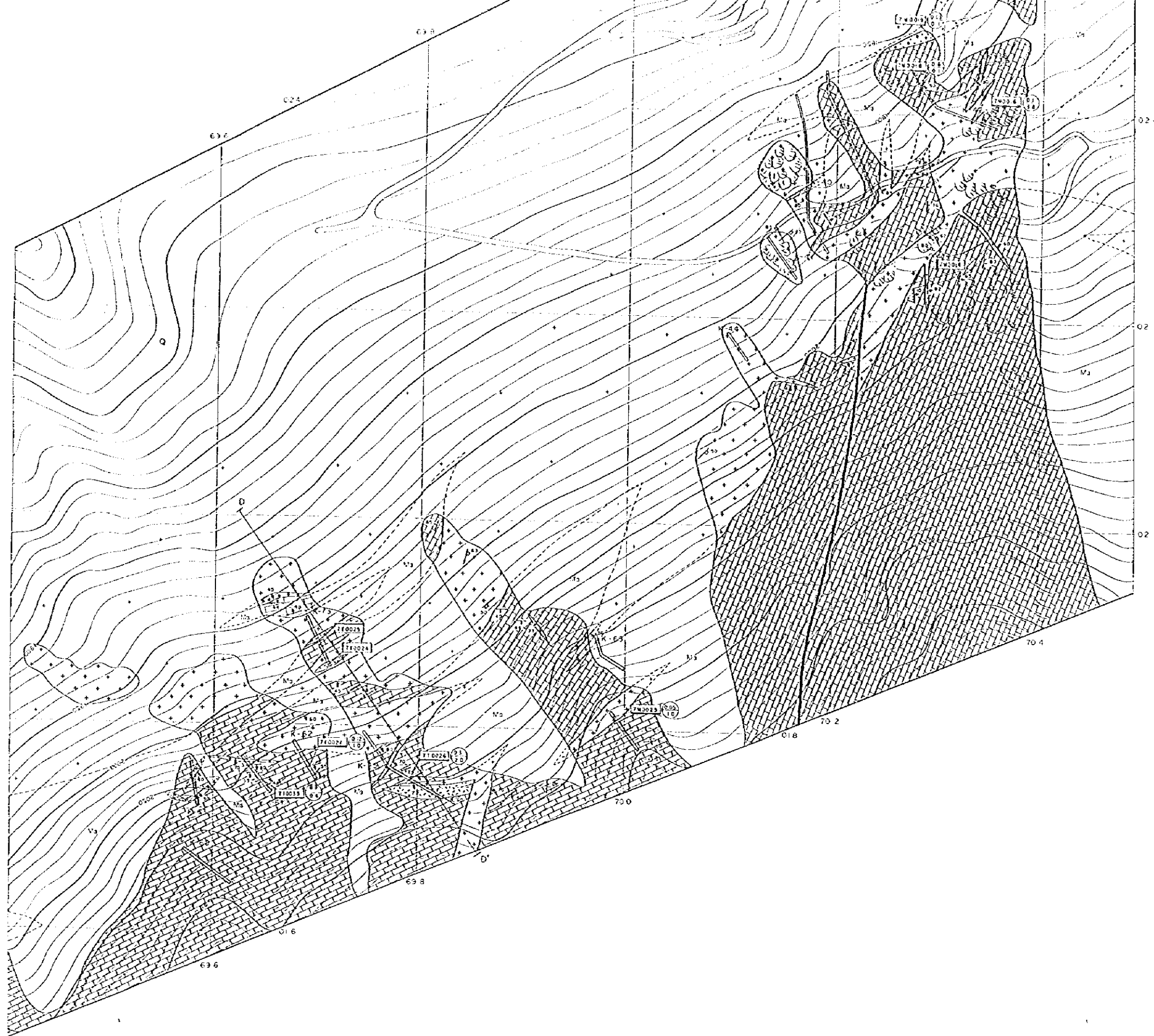
- | | | |
|---------------------------|----------------------|---|
| Quaternary | Q | Talus |
| Devonian to Carboniferous | [diagonal lines] | Limestone, marble |
| | [cross-hatch] | Argillaceous slate |
| Intrusive Rocks | [stippled] | Lamprophyre |
| | [horizontal lines] | Porphyry |
| | [vertical lines] | Aplite |
| | [dotted] | Granitic rock |
| | [diagonal lines] | Skarn |
| | [stippled] | Silicified skarn |
| | [cross-hatch] | Limonitization |
| | [dotted] | Serpentinization |
| | [solid line] | Fault |
| | [dashed line] | Concealed and inferred fault |
| | [V-shape] | bedding |
| | [Z-shape] | fracture, contact |
| MUKA-1 | [circle with dot] | Drill hole |
| | [thick line] | Trench |
| | [dashed line] | Adit |
| | [circle with number] | Sample No. |
| | [circle with number] | Thin section |
| | [circle with number] | Polished section |
| | [circle with number] | Assay |
| | [circle with number] | X-ray diffraction analysis |
| | [circle with number] | Homogenization temperature measurement of fluid inclusion |
| | [circle with number] | Dating |
| | [circle with number] | Au 9.6 width 0.3 |





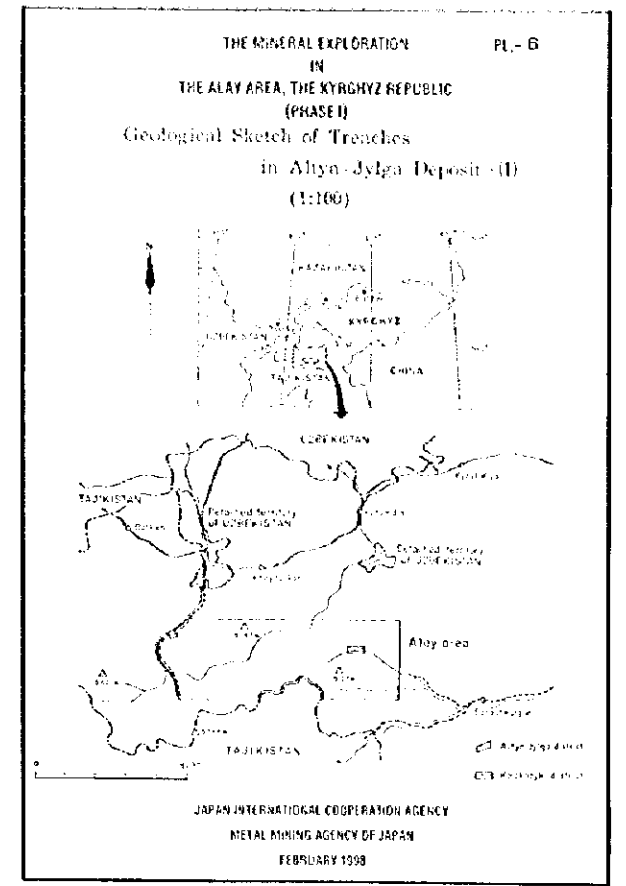
LEGEND

- | | | |
|---------------------------|--|--------------------|
| Quaternary | | Talus |
| Devonian to Carboniferous | | Limestone, marble |
| | | Argillaceous stone |
| Intrusive Rocks | | Lamprophyre |
| | | Porphyry |
| | | Apatite |
| | | Granite rock |
| | | Skarn |
| | | Silicified shales |
| | | Limonitization |
| | | Serpentinization |
| | | Fault |
| | | Fault |



LEGEND

- | | | |
|---------------------------|---|------------------------------|
| Quaternary | | Q |
| Devonian to Carboniferous | | Limestone, marble |
| | | Argillaceous slate |
| Intrusive Rocks | | Lamprophyre |
| | | Porphyry |
| | | Aplite |
| | | Granitic rock |
| | | Skarn |
| | | Sulfidized skarn |
| | | Limonite zone |
| | | Serpentinization |
| | | Fault |
| | | Concealed and inferred fault |
| | Bedding | |
| | Tectonic contact | |
| | Drill hole | |
| | Trench | |
| | Adit | |
| | Sample No. | |
| | Thin section | |
| | Polished section | |
| | Assay | |
| | X-ray diffraction analysis | |
| | Heating reaction temperature measurement of fluid inclusion | |
| | Dating | |
| | Au (g) within m | |



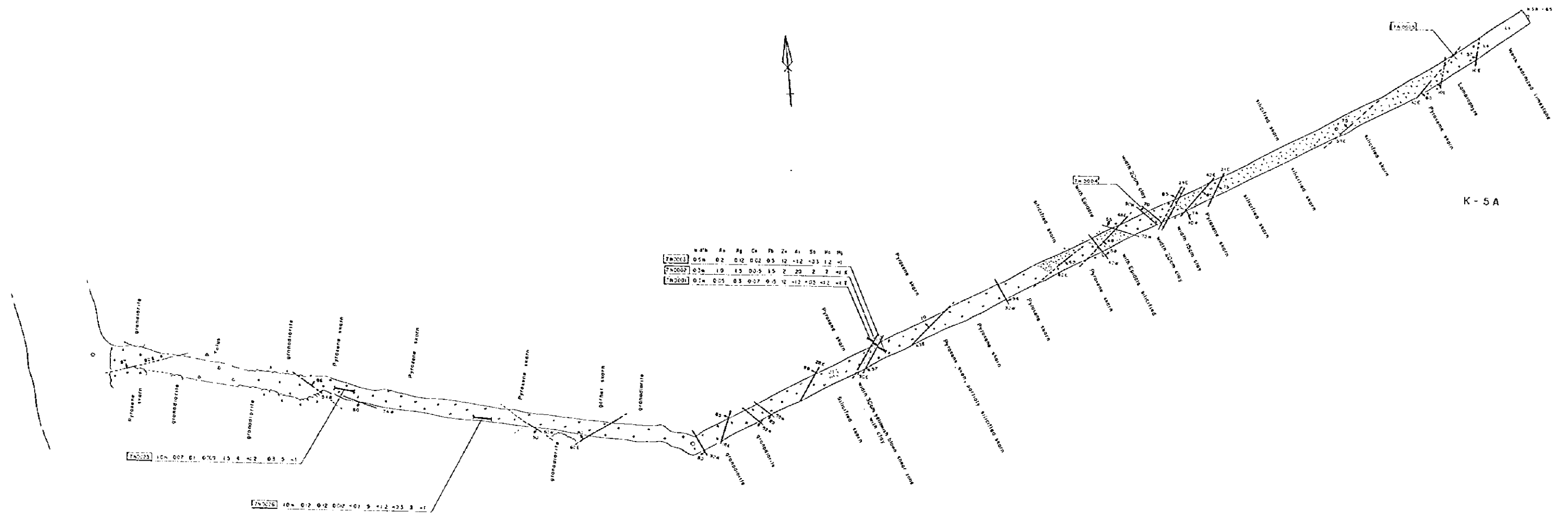
LEGEND

- bedding
- fracture, contact
- Sample No.
- Thin section
- Polished section
- Assay
- X-ray diffraction analysis
- Homogenization temperature measurement of fluid inclusion

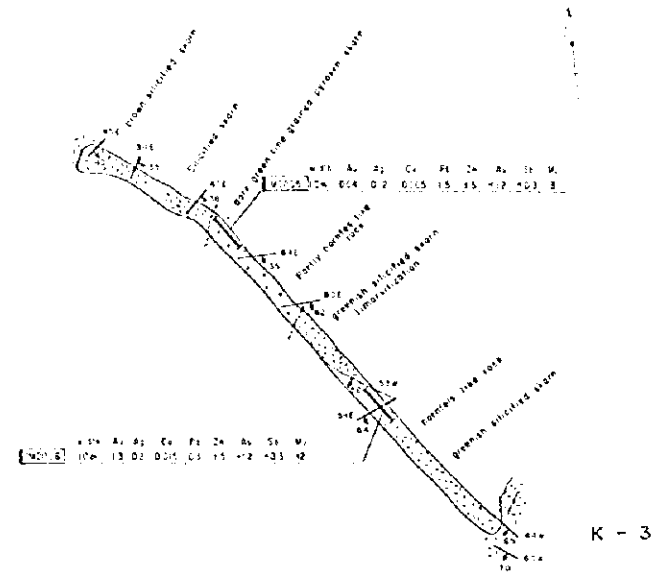
Assay Result

Au	Ag	Cu	Pb	Zn	As	Sb	Mo
g/t	g/t	%	10%	10%	10%	10%	10%

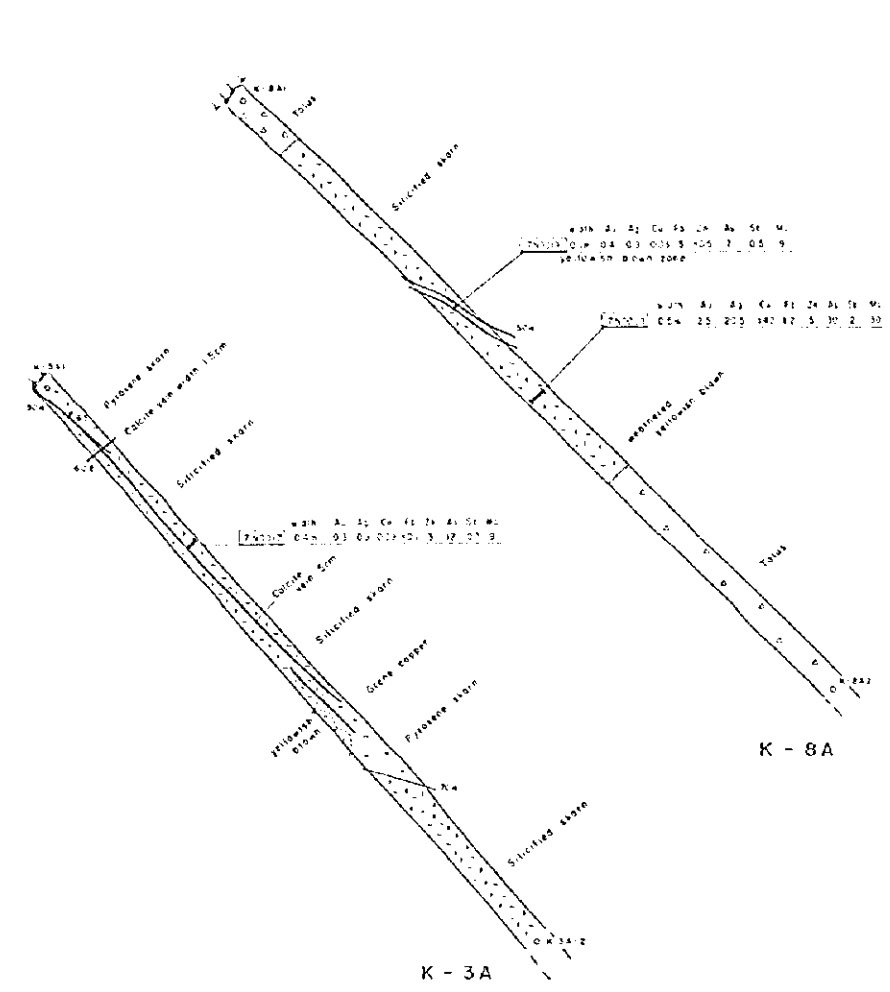
0 10m



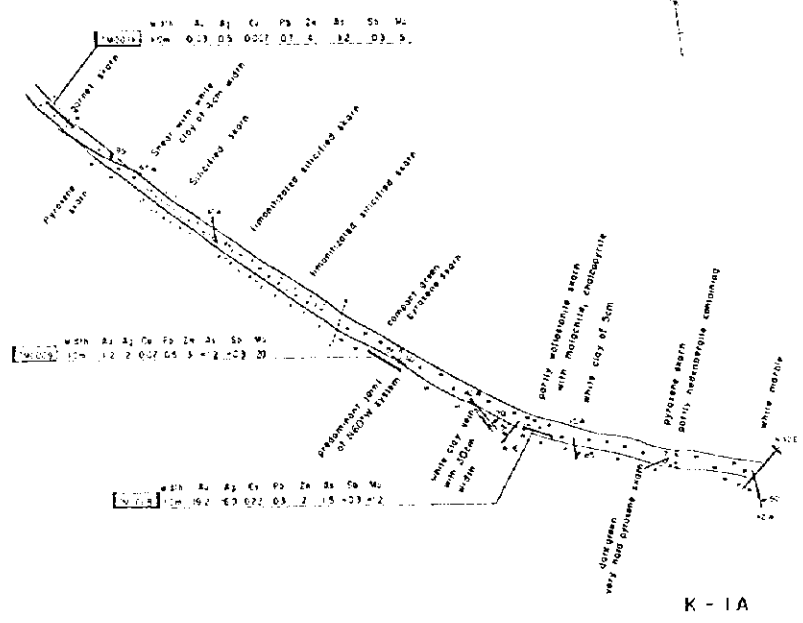
K-5A



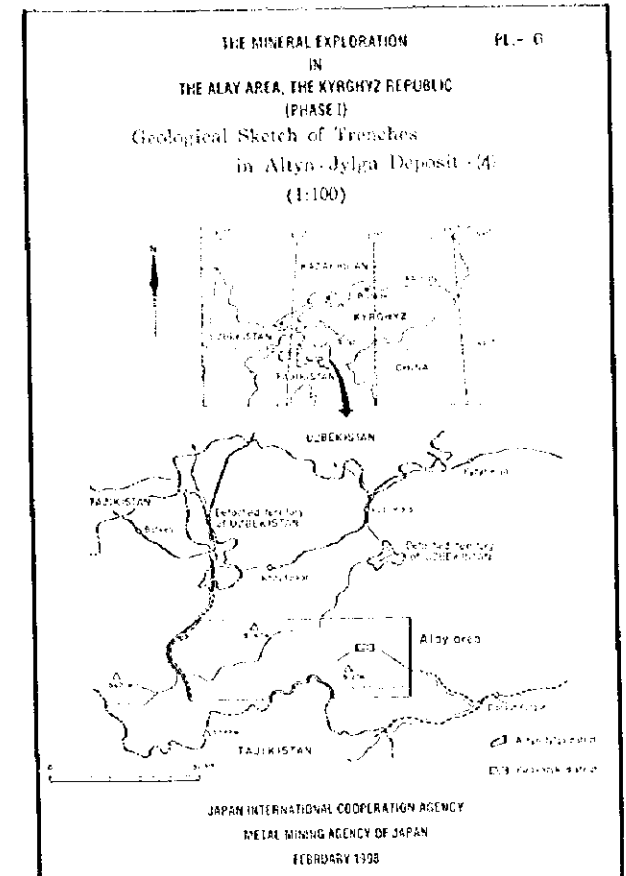
K - 3



K - 8A



K - 1A



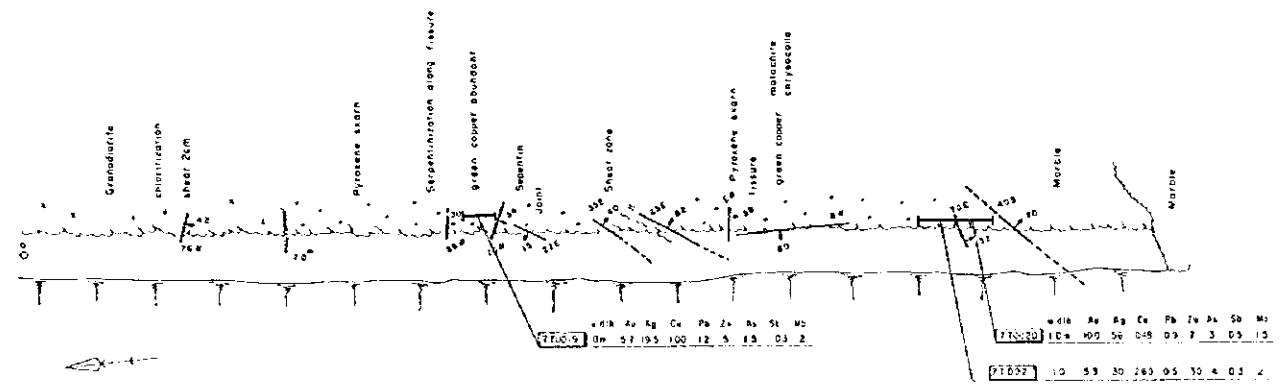
LEGEND

- bedding
- essure, contact
- Sample No.
- Thin section
- Polished section
- Assay
- X-ray diffraction analysis
- Homogenization temperature measurement of lead inclusion

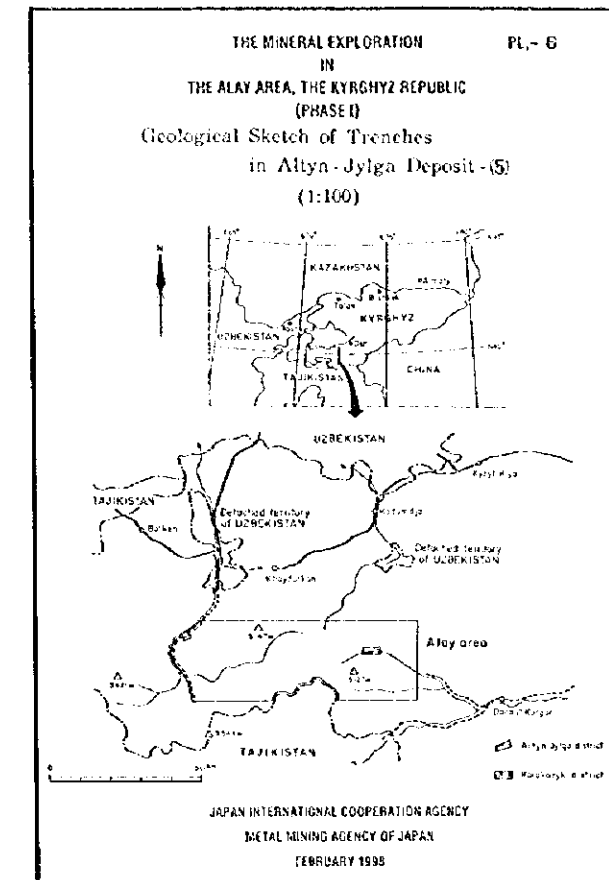
Assay Result

Au	Ag	Cu	Pb	Zn	As	Sb	Mo
10	13	02	005	03	15	+2	+3

0 10m



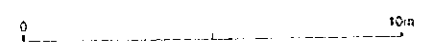
K-23 (Western part)



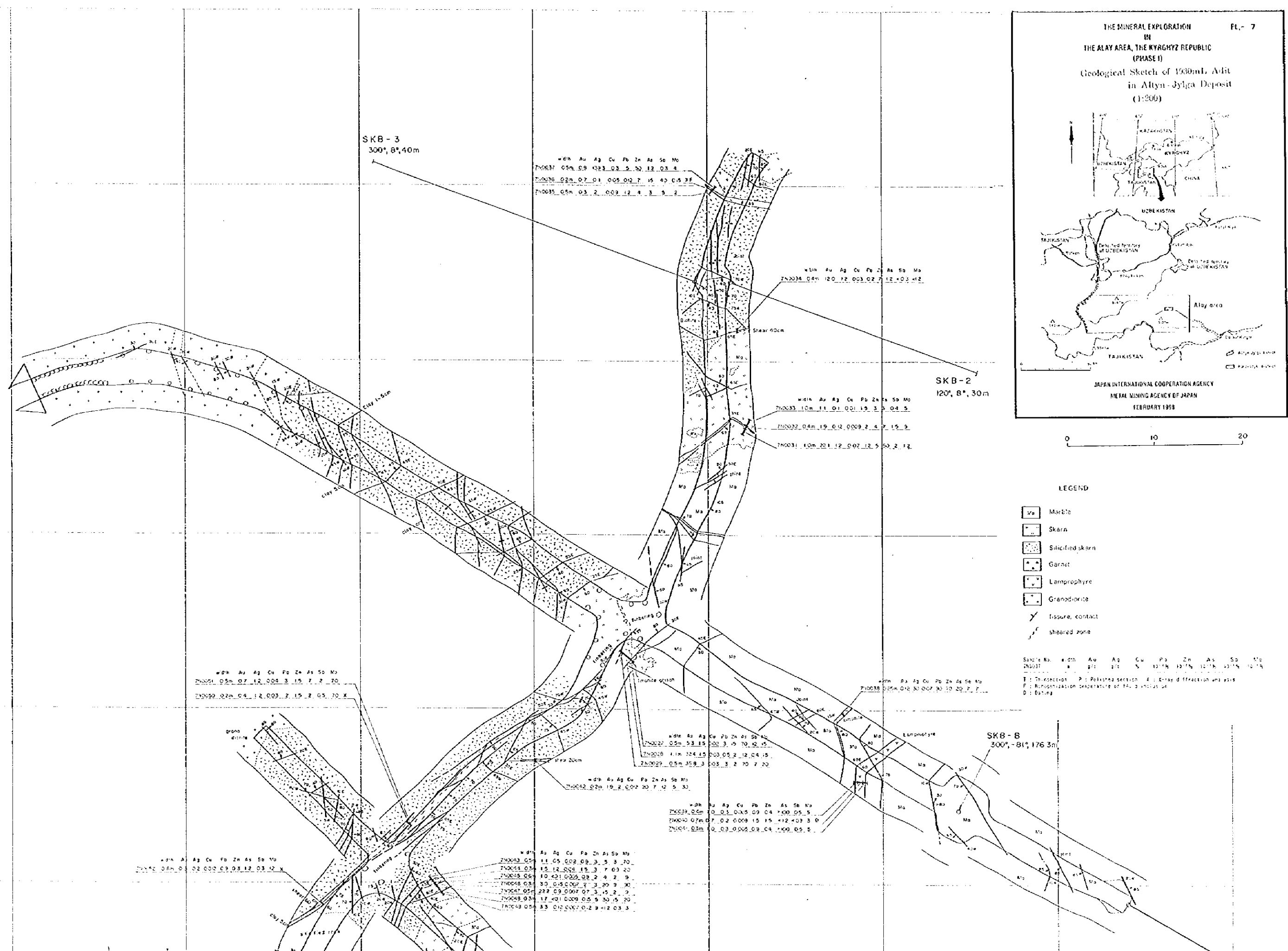
- LEGEND
- Bedding
 - fissure, contact
 - : Sample No.
 - : Thin section
 - : Polished section
 - : Assay
 - : X-ray diffraction analysis
 - F : Homogenization temperature measurement of fluid inclusion

Assay Result

Au	Ag	Cu	Pb	Zn	As	Sb	Mo
5/1	9/1	%	10%	10%	10%	10%	10%



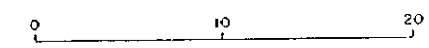
2600
2590
2580
2570
2560
2550
2540
2530
2520
2510
2500



Sample No.	width	Au	Ag	Cu	Pb	Zn	As	Sb	Mo
7N0037	0.5m	0.9	0.23	0.3	5	30	12	0.3	4
7N0038	0.2m	0.7	0.1	0.05	0.02	7	15	4.5	0.5
7N0035	0.5m	0.3	2	0.09	1.2	4	3	5	2
7N0034	0.4m	12	0.2	0.03	0.2	7	12	0.1	12
7N0033	1.0m	1.1	0.1	0.01	1.5	3	5	0.4	5
7N0032	0.4m	1.9	0.12	0.009	2	4	7	1.5	3
7N0031	1.0m	20	1.2	0.02	12	5	50	2	12
7N0051	0.5m	0.7	1.2	0.04	3	15	7	7	70
7N0052	0.2m	0.4	1.2	0.03	2	1.5	2	0.5	70
7N0027	0.5m	5.3	1.5	0.02	3	19	70	12	15
7N0018	1.1m	124	1.5	0.03	0.2	12	0.4	15	
7N0029	0.5m	35.9	3	0.03	3	2	70	7	20
7N0012	0.2m	19	2	0.02	20	7	12	5	30
7N0039	0.5m	10	0.1	0.005	0.9	0.4	7.00	0.5	5
7N0040	0.2m	0.7	0.2	0.009	15	15	12	4.0	3
7N0041	0.3m	0	0.3	0.003	0.8	0.4	1.00	0.5	5
7N0043	0.5m	1.1	0.5	0.02	0.9	3	5	3	20
7N0044	0.5m	1.5	1.2	0.02	1.5	3	7	0.9	20
7N0045	0.5m	1.0	4.2	0.025	0.9	2	4	2	9
7N0046	0.5m	3.0	0.15	0.007	5	3	29	9	30
7N0047	0.5m	2.2	0.9	0.007	0.7	3	1.5	2	9
7N0048	0.5m	1.7	4.1	0.009	0.5	9	30	15	20
7N0049	0.5m	3.3	0.10	0.007	0.2	9	12	0.3	3

THE MINERAL EXPLORATION IN THE ALAY AREA, THE KYRGYZ REPUBLIC (PHASE I)
Geological Sketch of 1930mL Adit in Alay-Jylga Deposit (1:200)

JAPAN INTERNATIONAL COOPERATION AGENCY
METAL MINING AGENCY OF JAPAN
FEBRUARY 1998



LEGEND

- Marble
- Skarn
- Silicified skarn
- Garnet
- Lamprophyre
- Granodiorite
- fissure, contact
- sheared zone

Sample No. width Au Ag Cu Pb Zn As Sb Mo
 I : Intersection P : Releasing section A : Entry of fracture and vein
 F : Mineralization temperature of fluid inclusion
 O : Biting

SKB - 7
300°, 6°, 23m

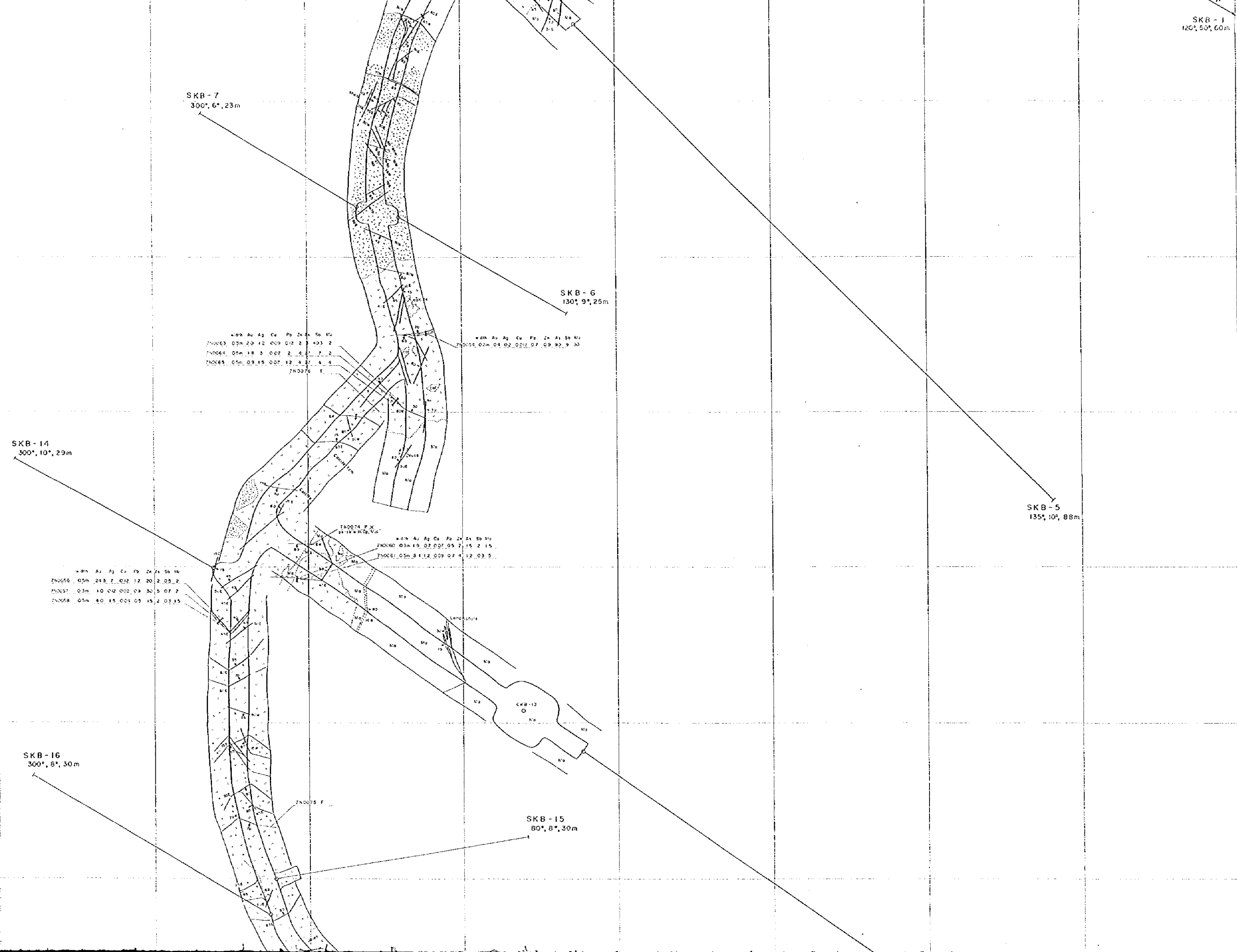
SKB - 6
130°, 9°, 25m

SKB - 5
135°, 10°, 88m

SKB - 14
300°, 10°, 29m

SKB - 16
300°, 8°, 30m

SKB - 15
80°, 8°, 30m



Au Ag As Cu Pb Zn Ni
 710016 0.00 243.7 0.12 12.20 2.05 2
 710017 0.00 10.00 0.02 0.9 33.5 07.2
 710018 0.00 40.15 0.04 0.5 15.2 03.15

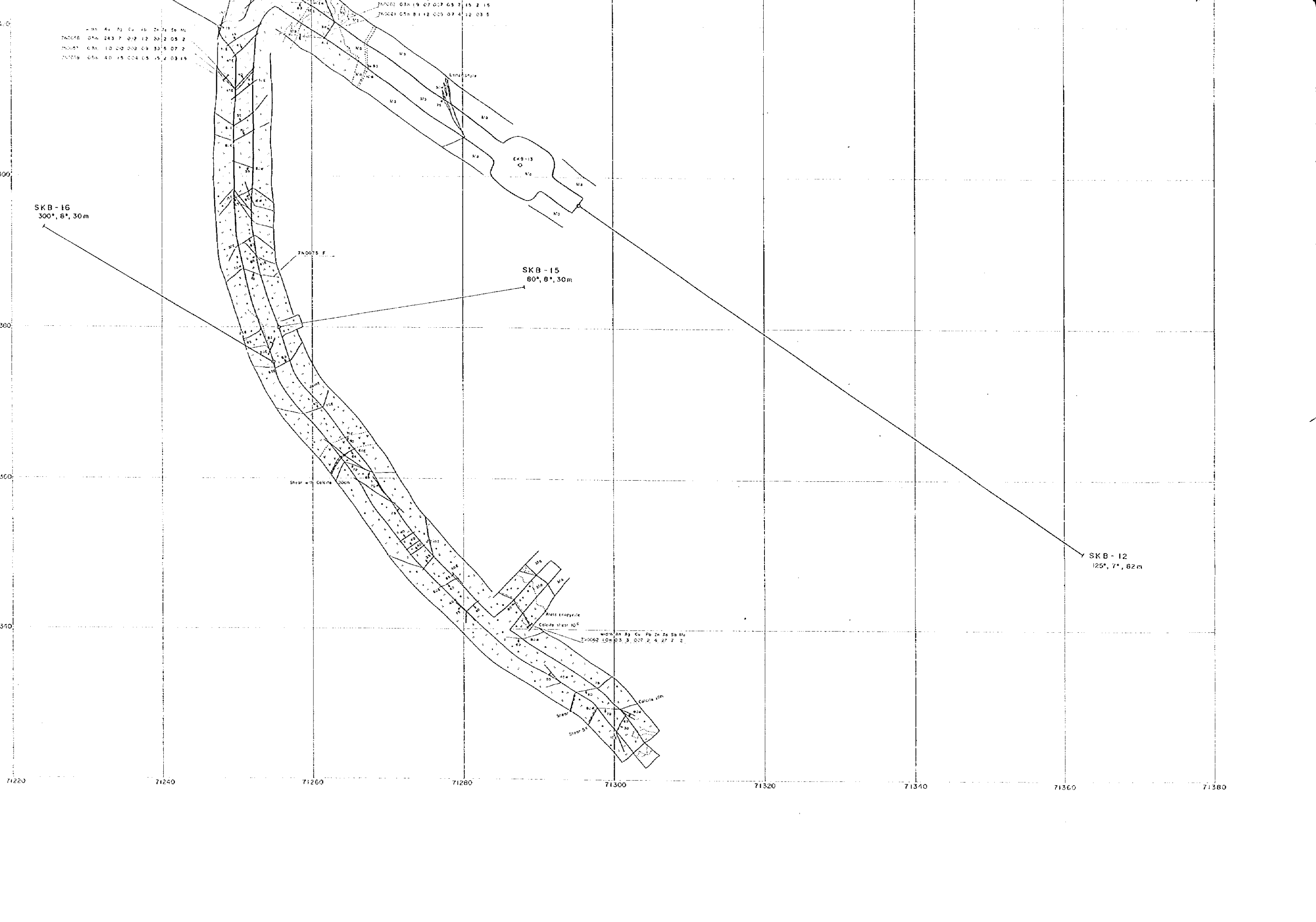
710020 0.00 19.07 0.07 0.5 7.15 2.15
 710021 0.00 8.12 0.03 0.7 4.12 03.5

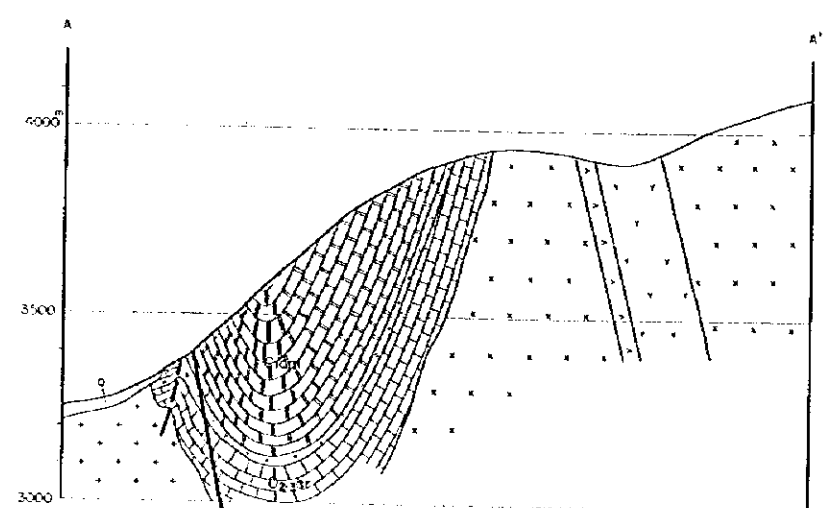
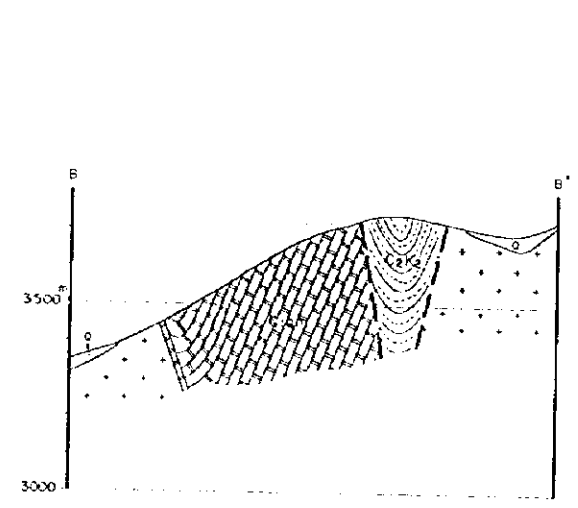
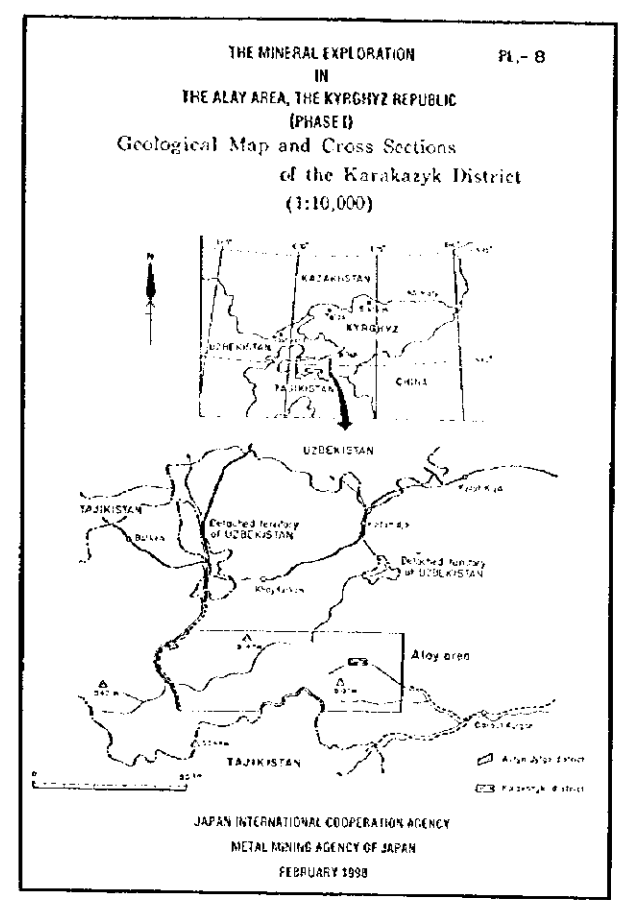
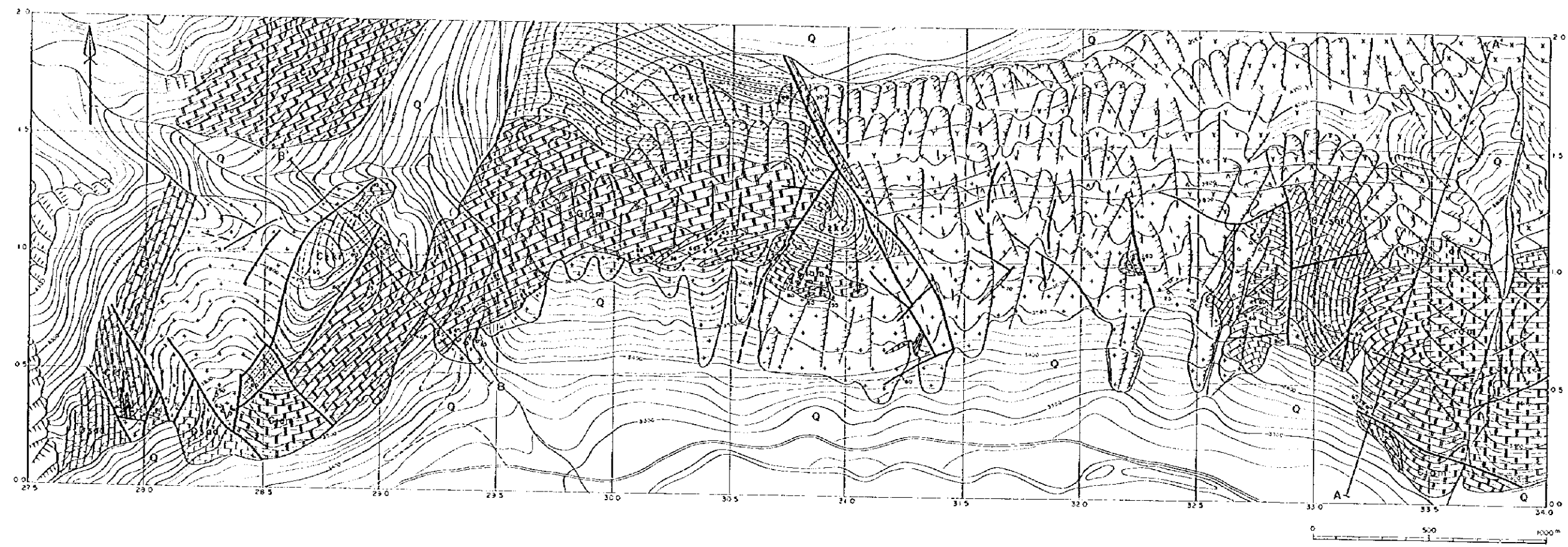
Ni As Cropyrite
 Calcite shear 10%
 710062 0.00 0.3 3.007 2.4 27.7 2

SKB-16
 300°, 8°, 30m

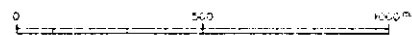
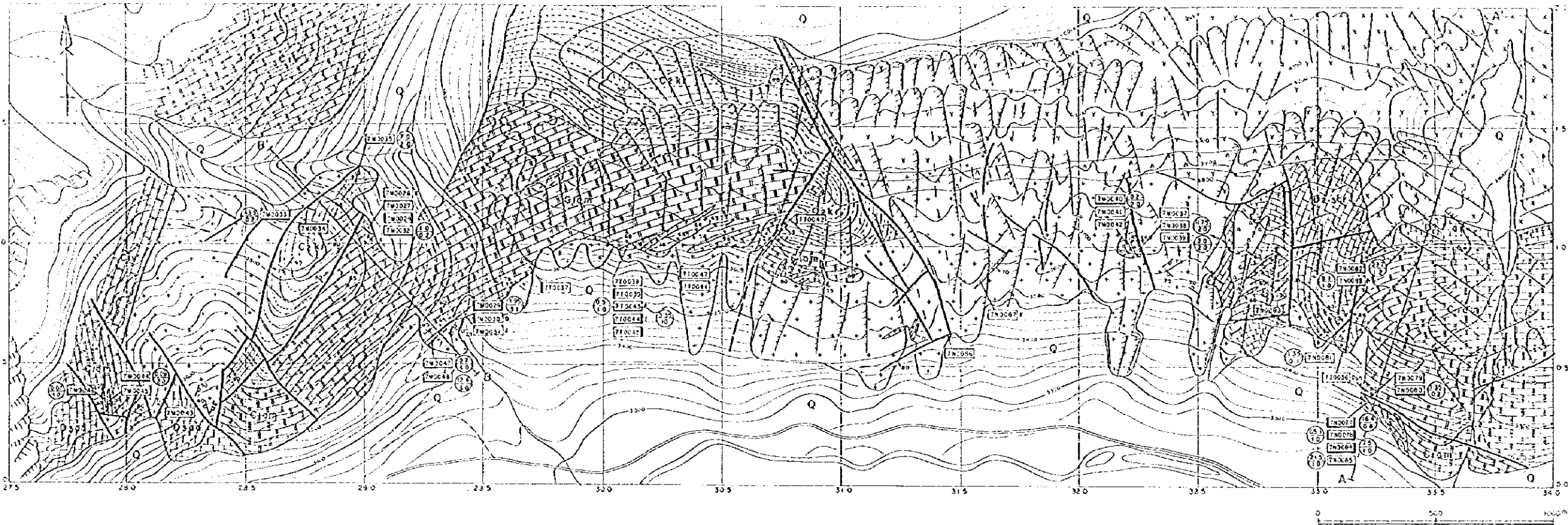
SKB-15
 60°, 8°, 30m

SKB-12
 125°, 7°, 62m





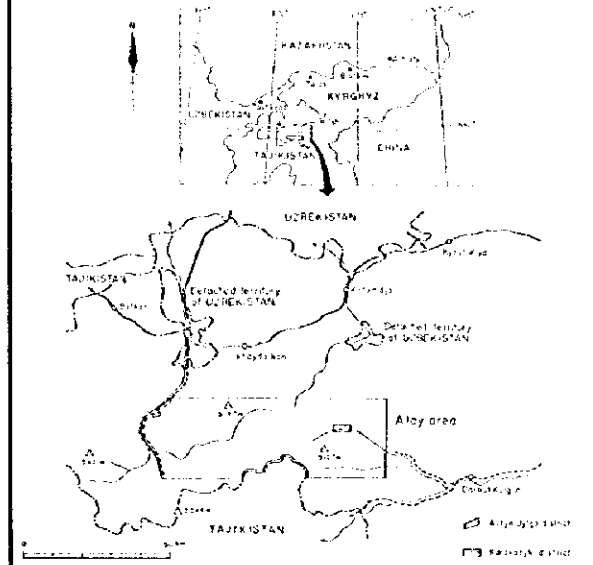
- LEGEND**
- | | | |
|------------------------|--|-------------------|
| Quaternary | | Talus |
| Carboniferous | | Sandstone, shale |
| Karakazyk Fm | | Marble |
| Ayalmn Fm | | Limestone, Marble |
| Alpalyk Fm | | |
| Intrusive Rocks | | |
| Mukhol complex | | Lamprophyre |
| | | Syenite |
| | | Monzonite |
| Karakazyk complex | | Granodiorite |
| | | Skarn |
| | | Fractured zone |
| | | Brecciated Rock |
| | | Fault |
| | | Fissure |



LEGEND

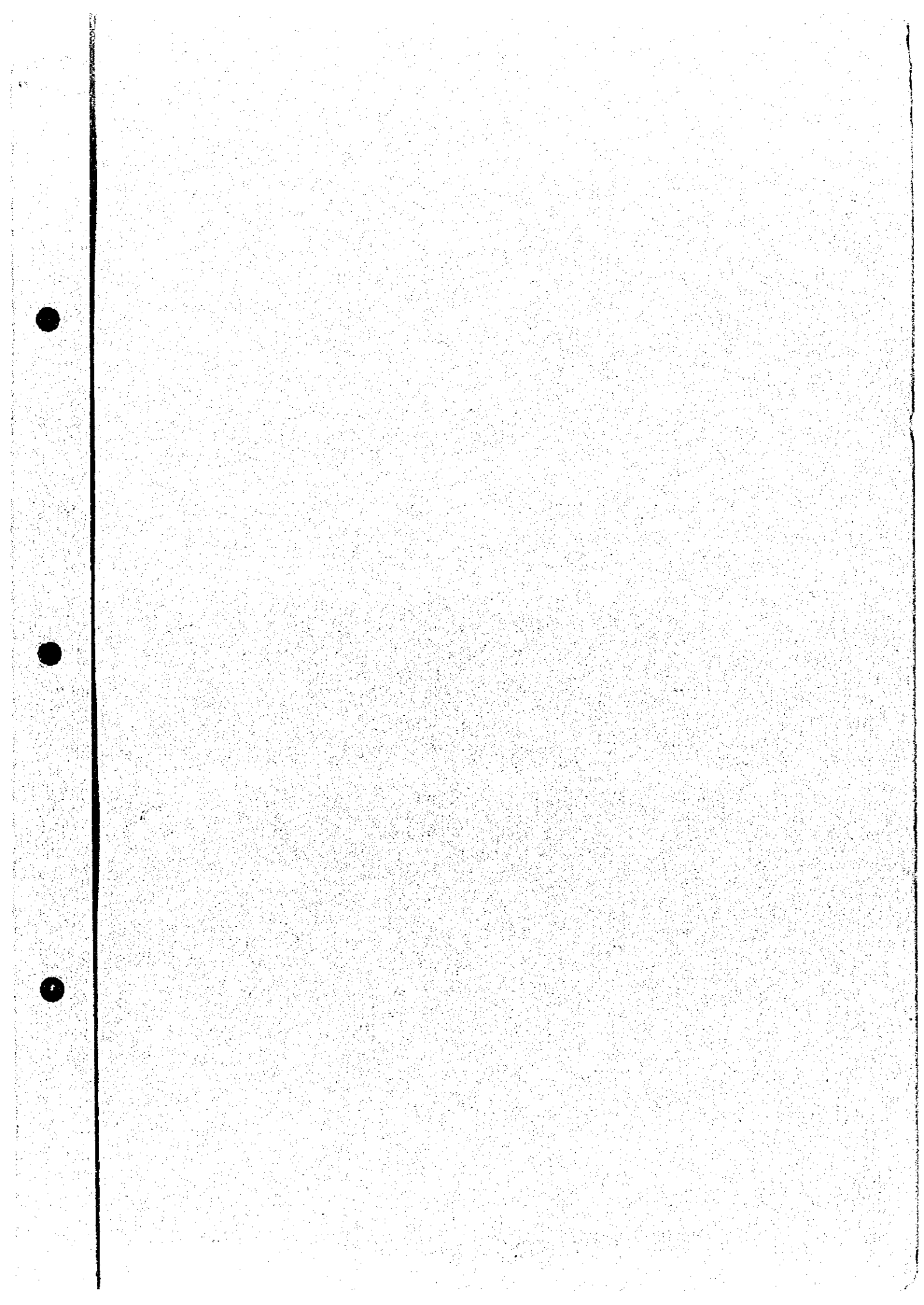
- Quaternary Q Talus
- Carboniferous C Sandstone, shale
- Muravsky Fm M Marble
- Aysyn Fm A Devonian
- Alpalyk Fm AL Limestone, Marble
- Intrusive Rocks
 - Ullakal complex U Lamprophyre
 - S Syenite
 - M Monzonite
 - Karakazyk complex K Granodiorite
 - S Skarn
 - F Fractured zone
 - B Brecciated Rock
 - / Fault
 - / Fissure

THE MINERAL EXPLORATION IN THE ALAY AREA, THE KYRGHYZ REPUBLIC (PHASE I)
Location Map of Rock and Ore Samples in the Karakazyk District (1:10,000)



JAPAN INTERNATIONAL COOPERATION AGENCY
METAL MINING AGENCY OF JAPAN
FEBRUARY 1998

- 7110001 : Sample No.
- 7110001 : Thin section
- 7110001 : Polished section
- 7110001 : Assay
- 7110001 : X-ray diffraction analysis
- 7110001 : Homogenization temperature measurement of fluid inclusion
- 7110001 : Dating
- 7110001 : Au (g/t) width (m)



JICA