







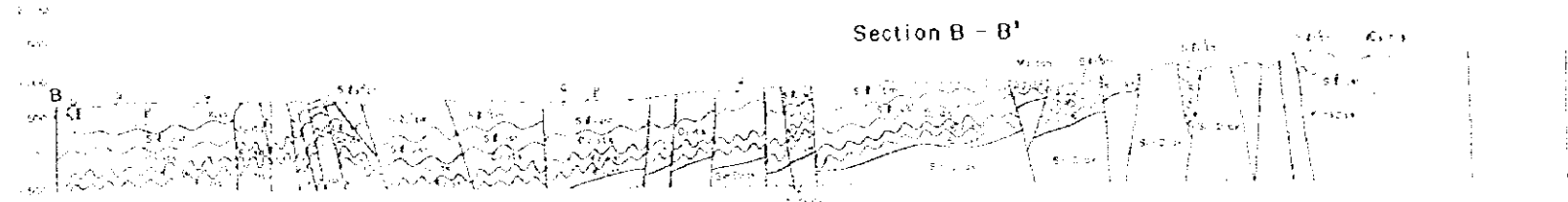


after I. A. Pyatovskaya, 1983, 1984

**Legend**

- three digits: Assay
- P: Polished section
- F: Fluid inclusion measurement
- HG051, HG062, HG120: numbers on a line: taken from a same point
- HG105, HG112
- X: X ray analysis
- T: Thin section

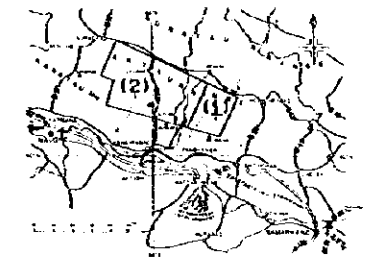
**Section B - B'**



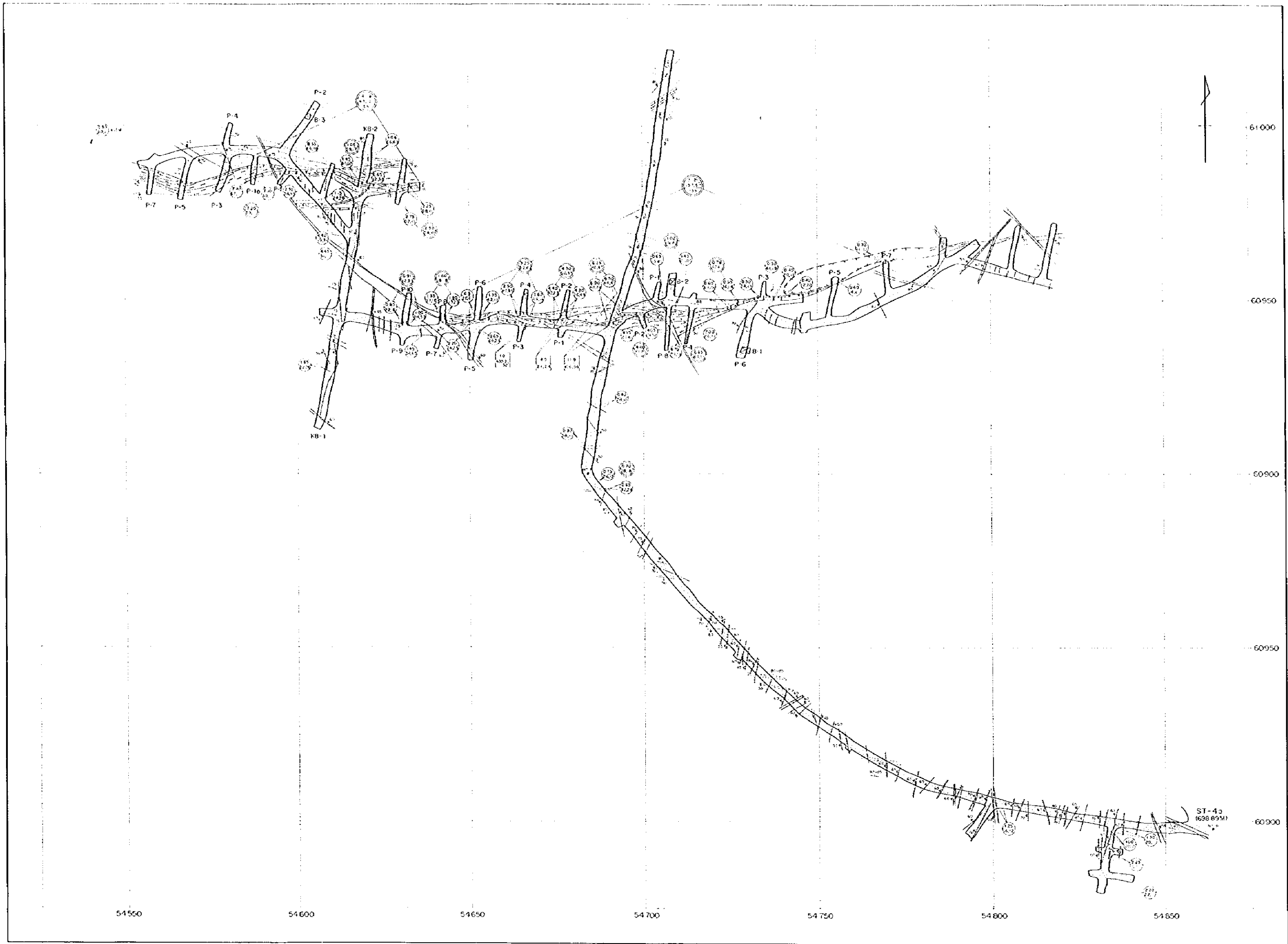
1:25,000

PL. II-2-2-2

**THE MINERAL EXPLORATION  
IN  
THE SOUTHERN NURATAU AREA  
THE REPUBLIC OF UZBEKISTAN  
(PHASE D)  
LOCATION MAP OF THE SAMPLES  
OF THE GENERAL SURVEY AREA (2)**

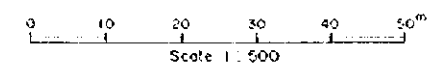
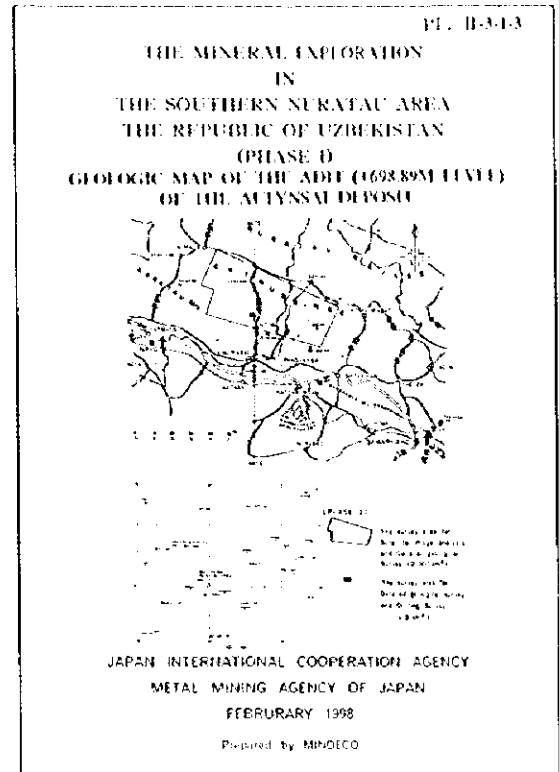
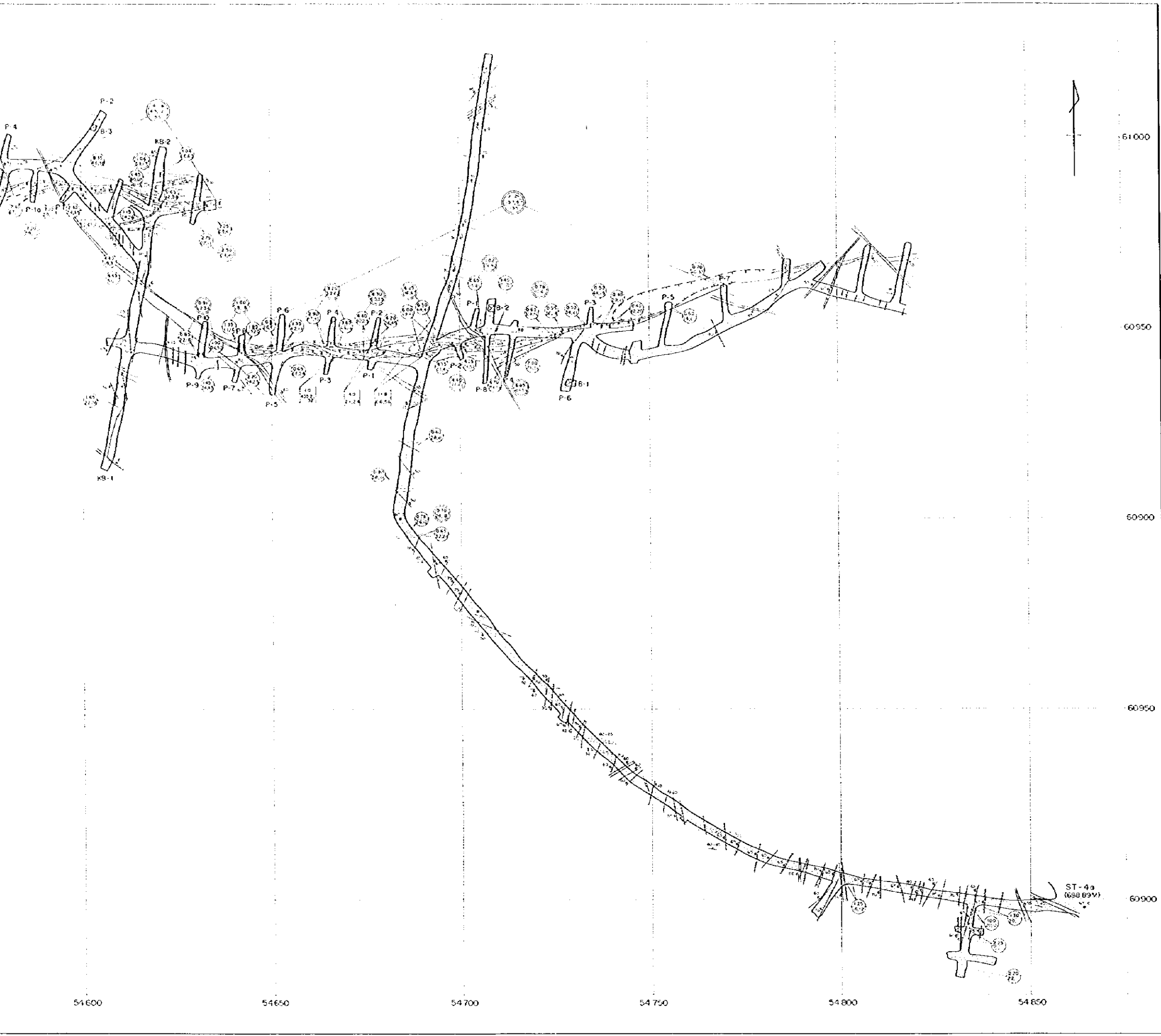


JAPAN INTERNATIONAL COOPERATION AGENCY  
METAL MINING AGENCY OF JAPAN  
FEBRUARY 1978  
Prepared by MINDECO



THE  
1E  
GEOLOG  
JAPA





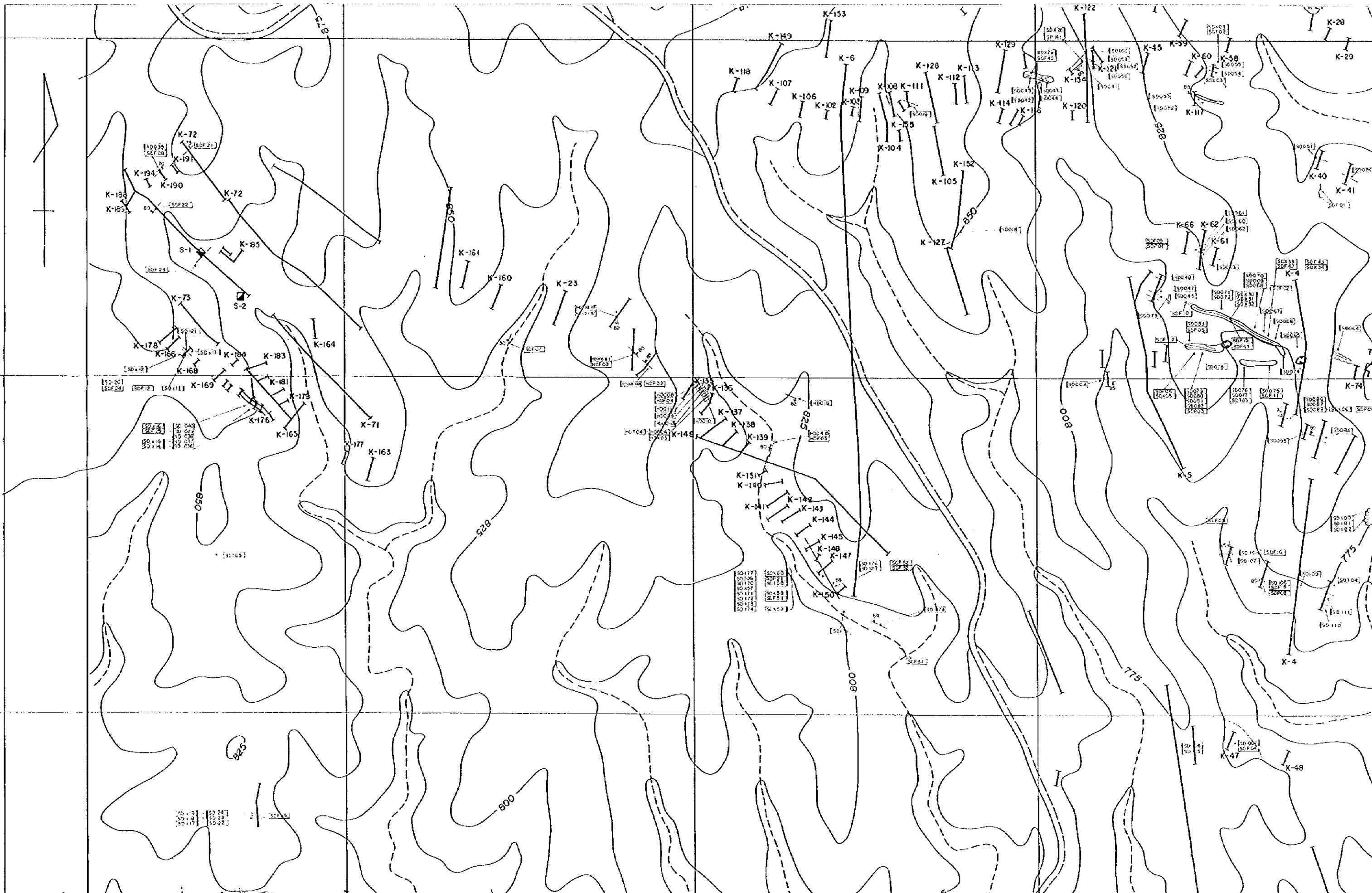
**Legend**

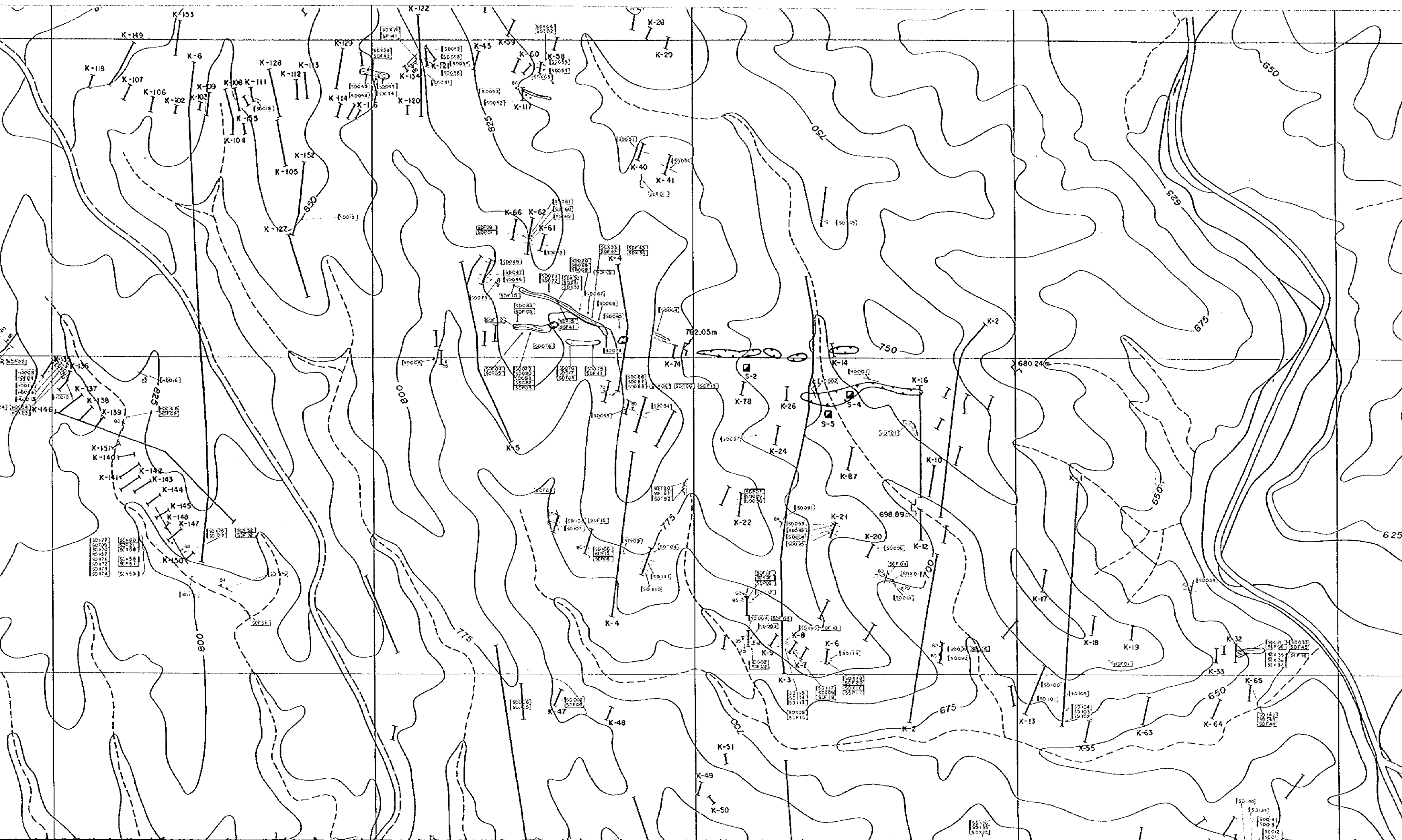
- Sandstone
- Slate
- Quartz-tourmaline vein
- Quartz veinlets
- Shear zone
- Joint
- Strike and dip of bedding plane
- Ore zone (Au ≥ 2g/t)
- Thickness(m)  
Au(g/t); Ag(g/t) Previous results
- Thickness(m)  
Au(g/t); Ag(g/t) MMAJ(1997)
- Average thickness(m)  
Au (g/t); Ag(g/t)  
Length of ore body(m)

461.5

461.0

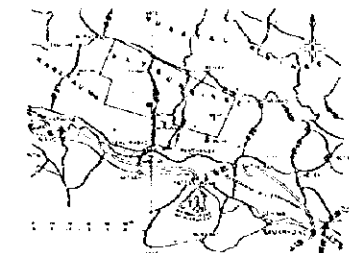
460.5



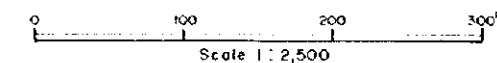




THE MINERAL EXPLORATION  
IN  
THE SOUTHERN NURATAU AREA  
THE REPUBLIC OF UZBEKISTAN  
(PHASE D)  
LOCATION MAP OF THE SAMPLES  
IN THE ALTYNSAI DISTRICT

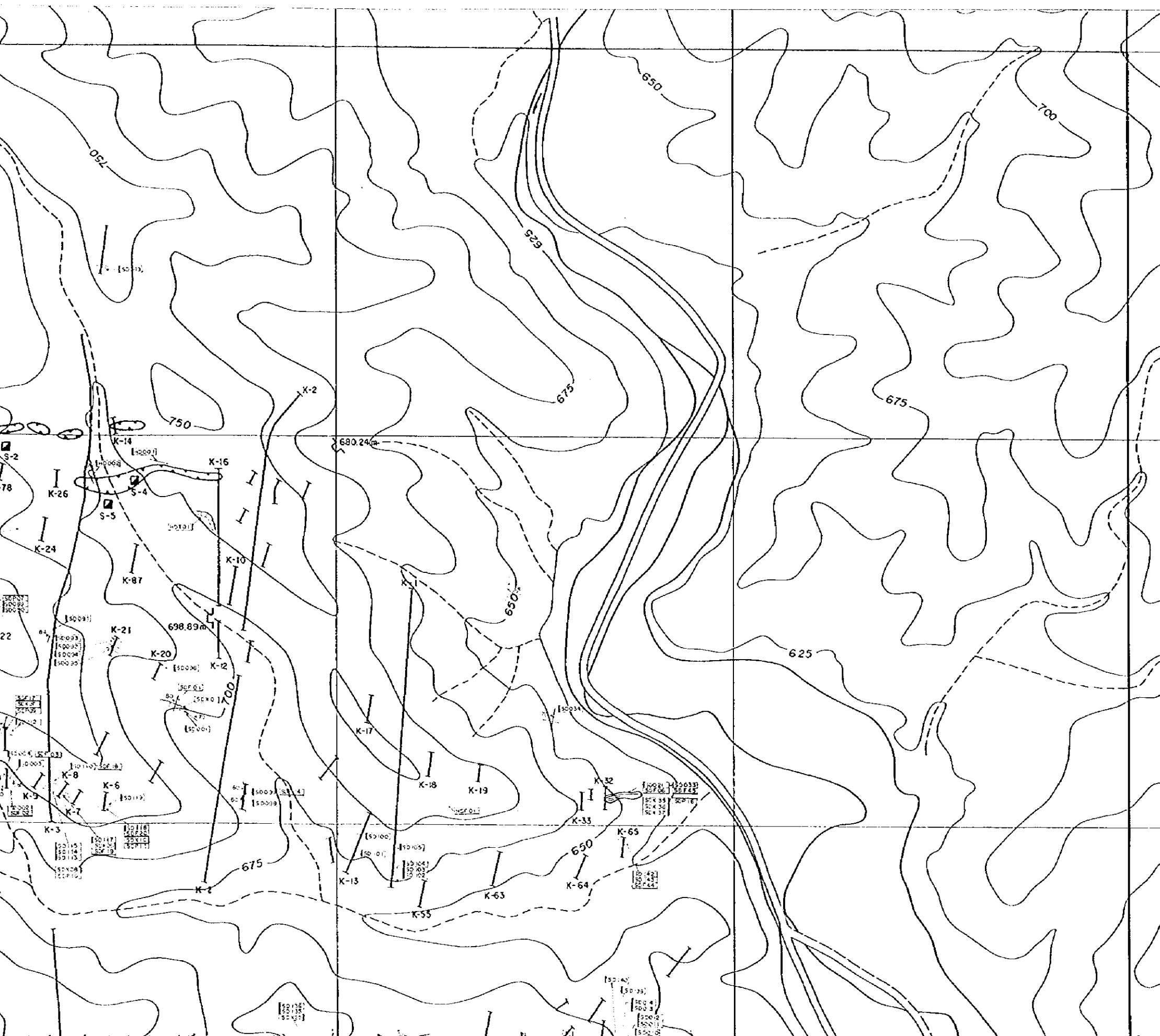


JAPAN INTERNATIONAL COOPERATION AGENCY  
METAL MINING AGENCY OF JAPAN  
FEBRUARY 1998  
Prepared by MIMCO



Legend

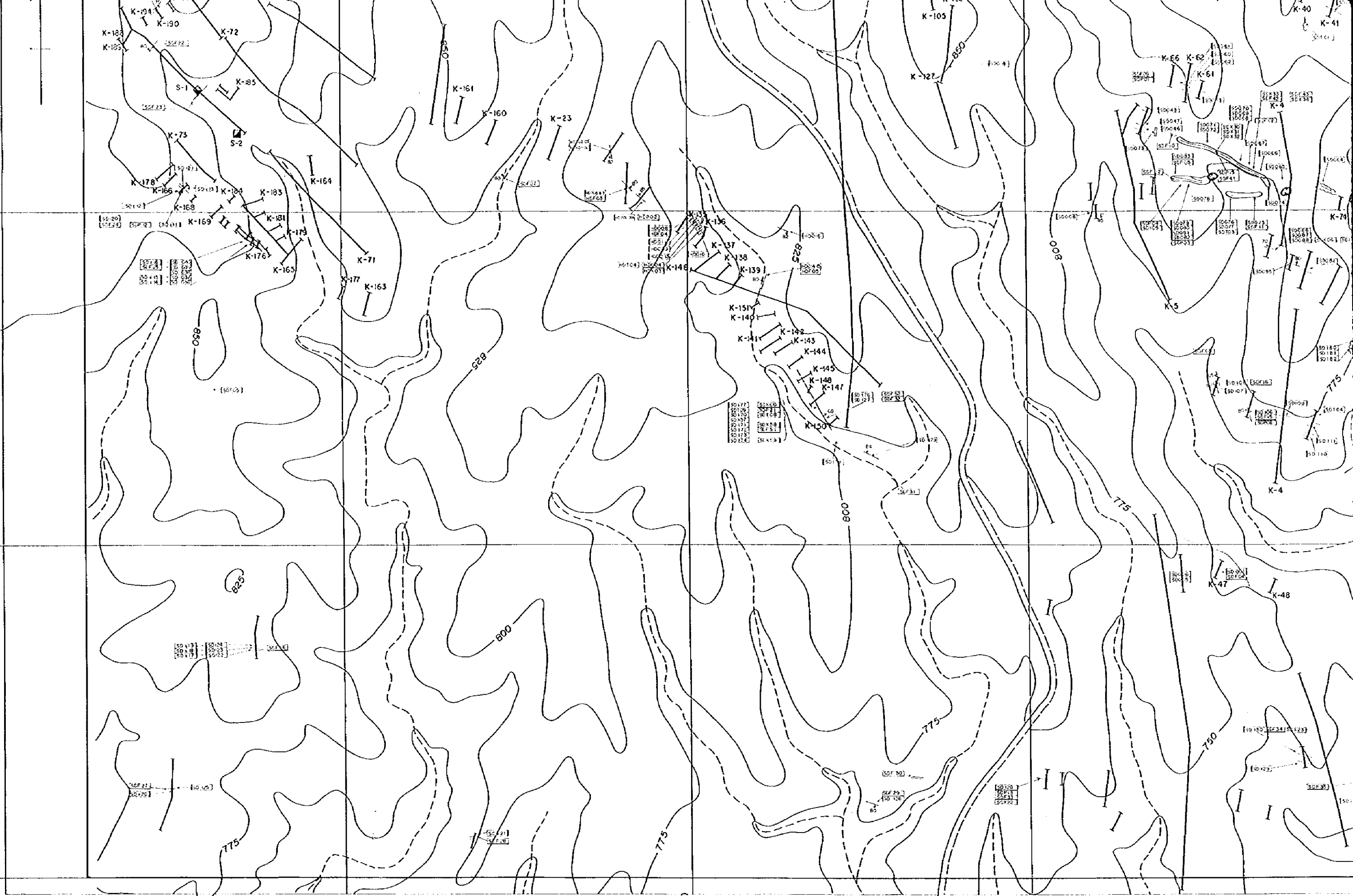
- SD190 Ore analysis sample and its No.
- SDF32 Fluid inclusion test sample and its No.
- SD109 Thin section sample and its No.
- SDP21 Polished section sample and its No.
- SDX00 X-Ray diffraction analysis sample and its No.
- Detailed survey area

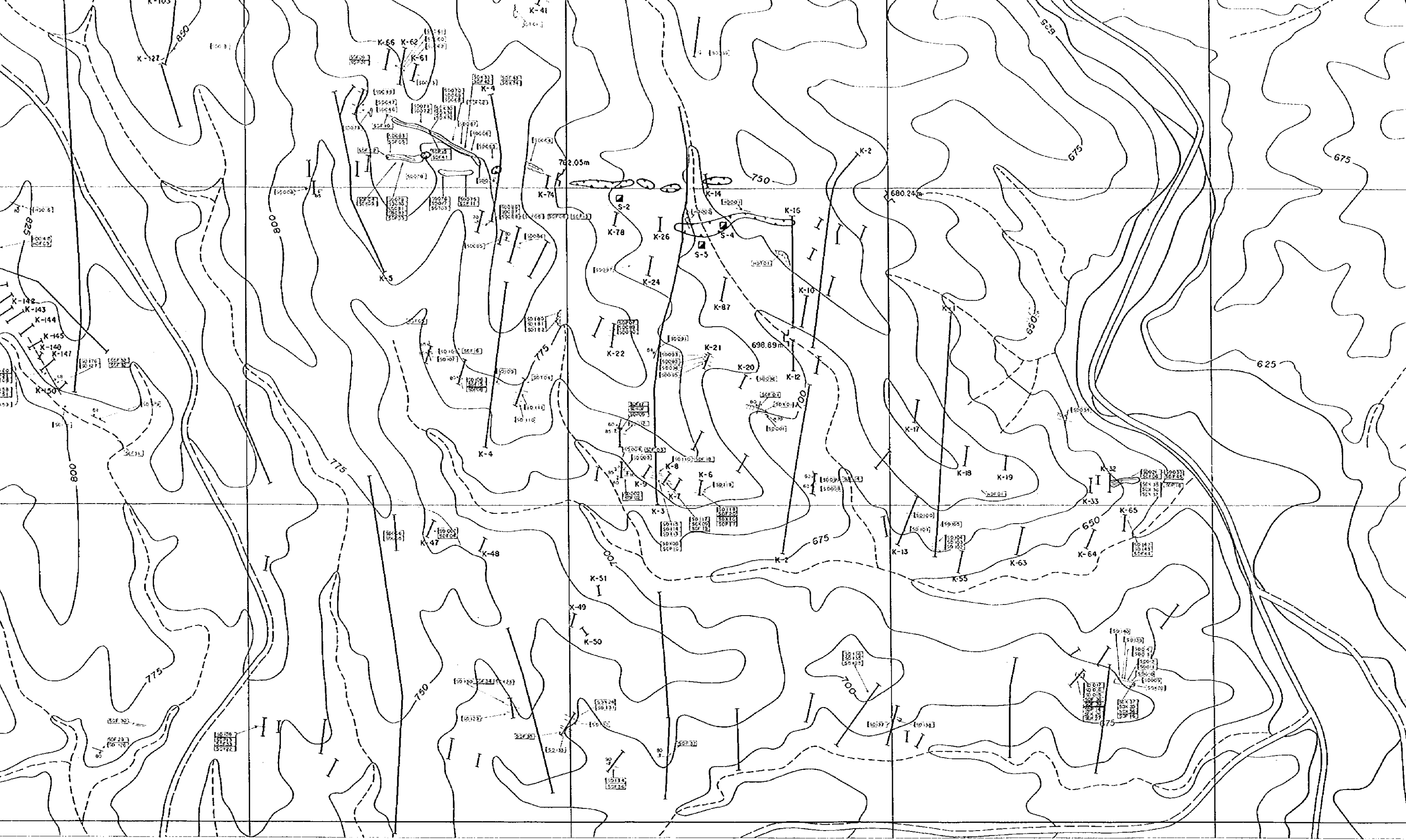


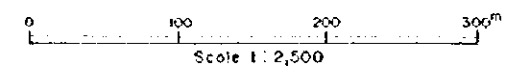
461.0

460.5

460.0

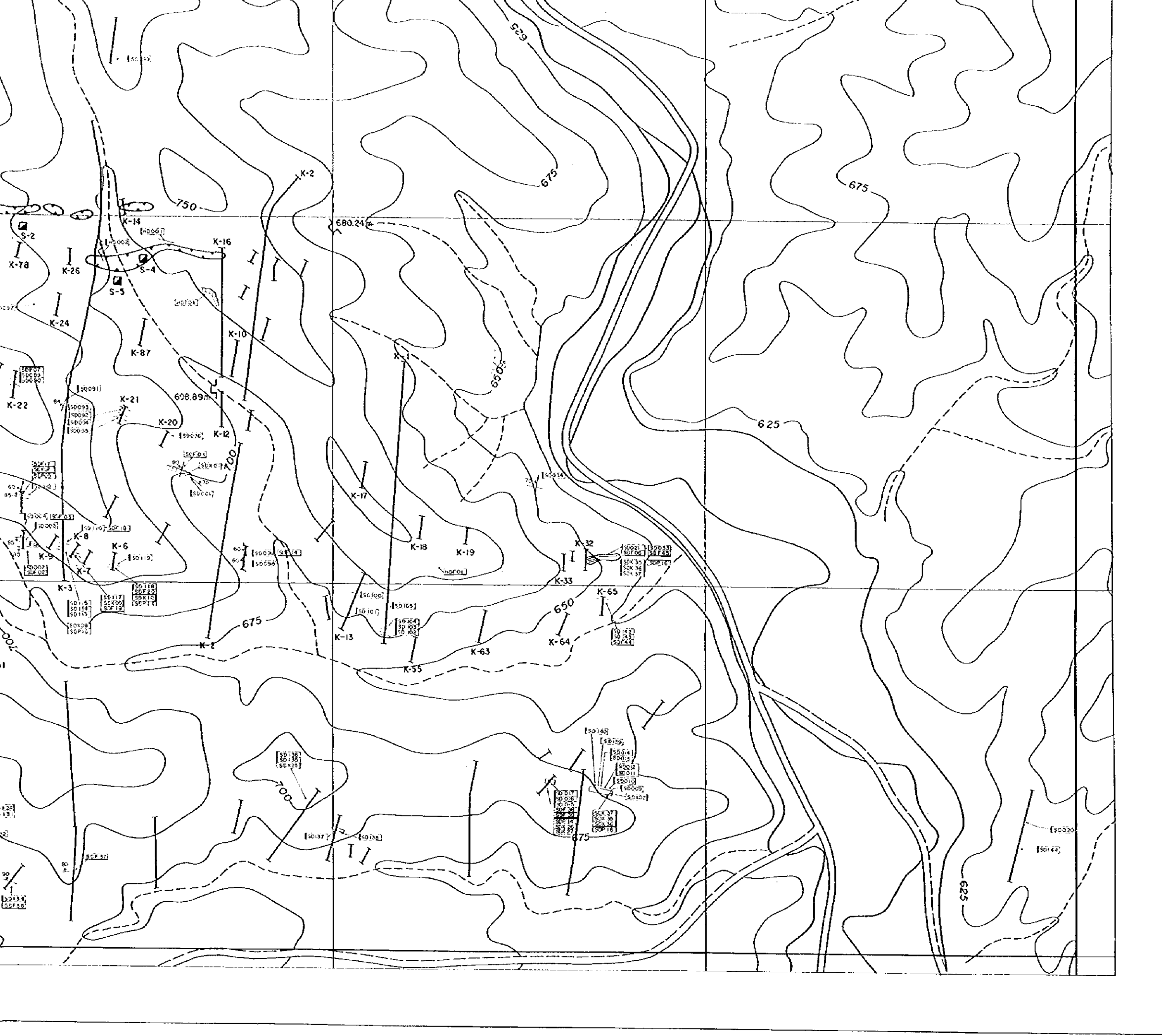


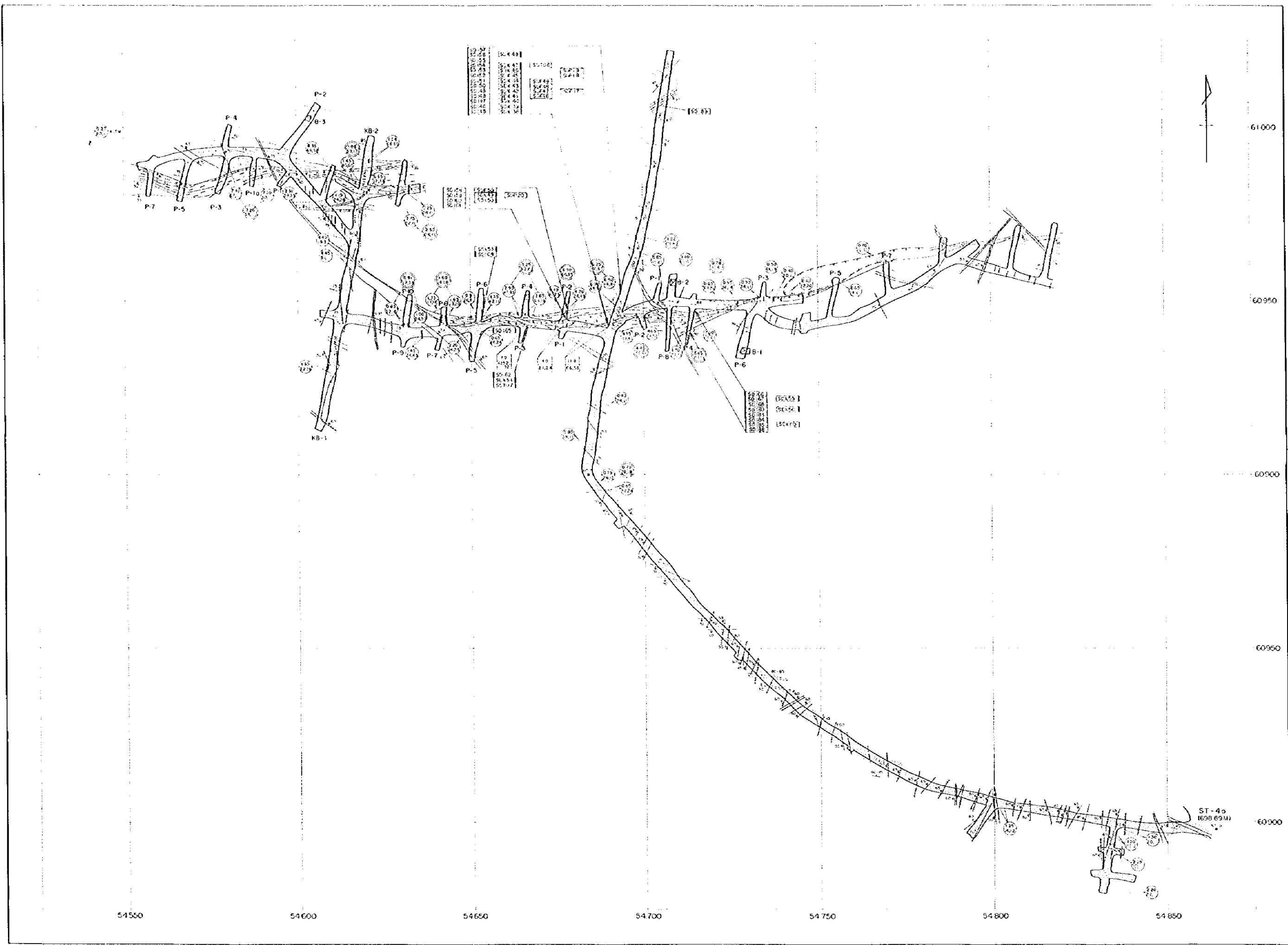




**Legend**

- SD100 Ore analysis sample and its No.
- SDF52 Fluid inclusion test sample and its No.
- SDT03 Thin section sample and its No.
- SDP21 Polished section sample and its No.
- SDX00 X-Ray diffraction analysis sample and its No.
- Detailed survey area

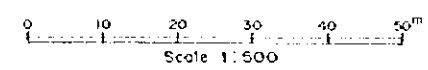
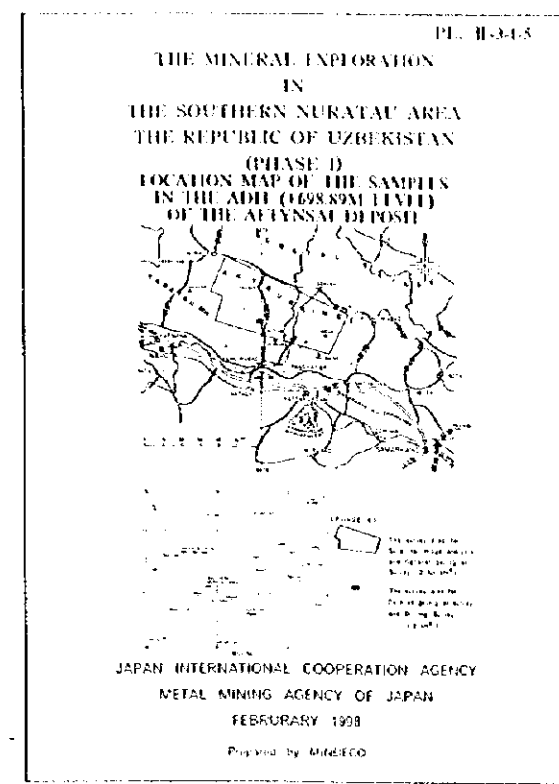




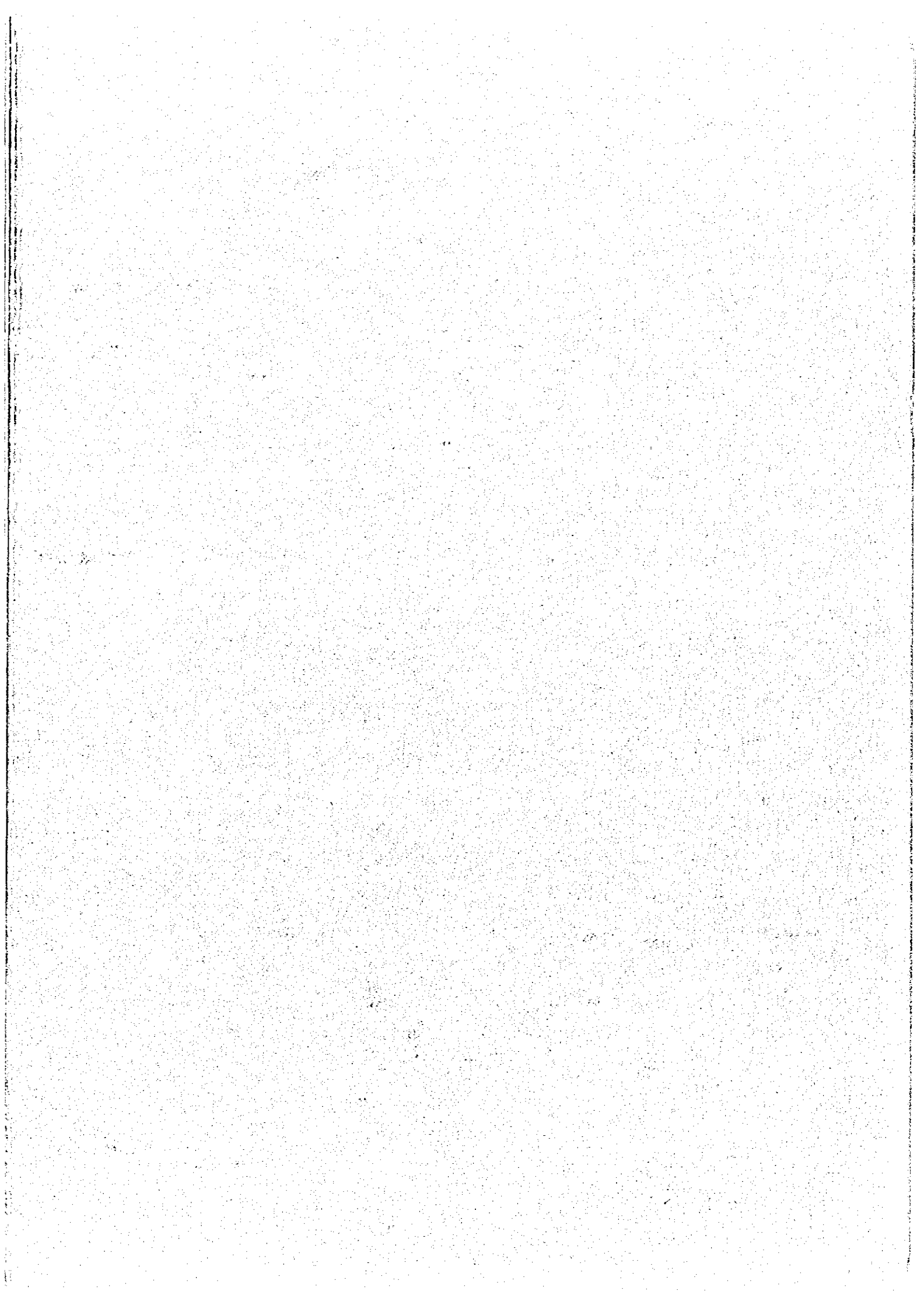
THE M  
 THE SOU  
 THE RE  
 LOCALI  
 IN THE  
 OF T  
 JAPAN INTER  
 METAL



- SD151 Ore analy
- SD152 Fluid incl
- SD153 Thin sect
- SGP21 Polished
- SDX50 X-Ray d



- Legend**
- SD199 Ore analysis sample and its No.
  - SDF52 Fluid inclusion test sample and its No.
  - SDT09 Thin section sample and its No.
  - SDP21 Polished section sample and its No.
  - SDX60 X - Ray diffraction analysis sample and its No.



JICA