


Report on the investigation of mineral potential in the Lonquimay area and regions Los Lagos ...

REPORT
ON
THE INVESTIGATION OF MINERAL POTENTIAL
IN
THE LONQUIMAY AREA AND REGIONS LOS LAGOS
AND AYSÉN, THE REPUBLIC OF CHILE
AYSÉN AREA

PHASE III

FEBRUARY 1992

JICA LIBRARY

J 1141970(2)

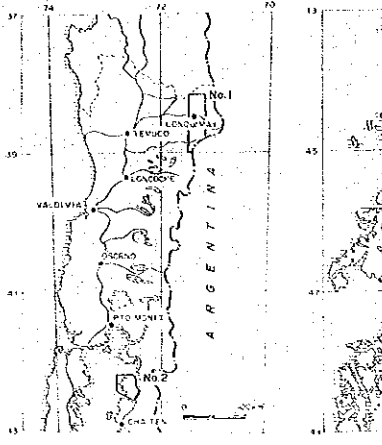
JAPAN INTERNATIONAL COOPERATION AGENCY
METAL MINING AGENCY OF JAPAN

JICA
704
66.1
MPN
LIBRARY

MPN
CR (7)
92-066

THE INVESTIGATION OF MINERAL RESOURCES
IN THE LONQUIMAY AREA AND REGIONS LIMITED BY THE
PHASE III

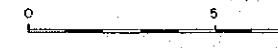
PHOTOGEOLOGICAL INTERPRETATION
OF
THE IBAÑEZ-MURTA AREA



FEBRUARY 1992

JAPAN INTERNATIONAL COOPERATION
METAL MINING AGENCY OF JAPAN

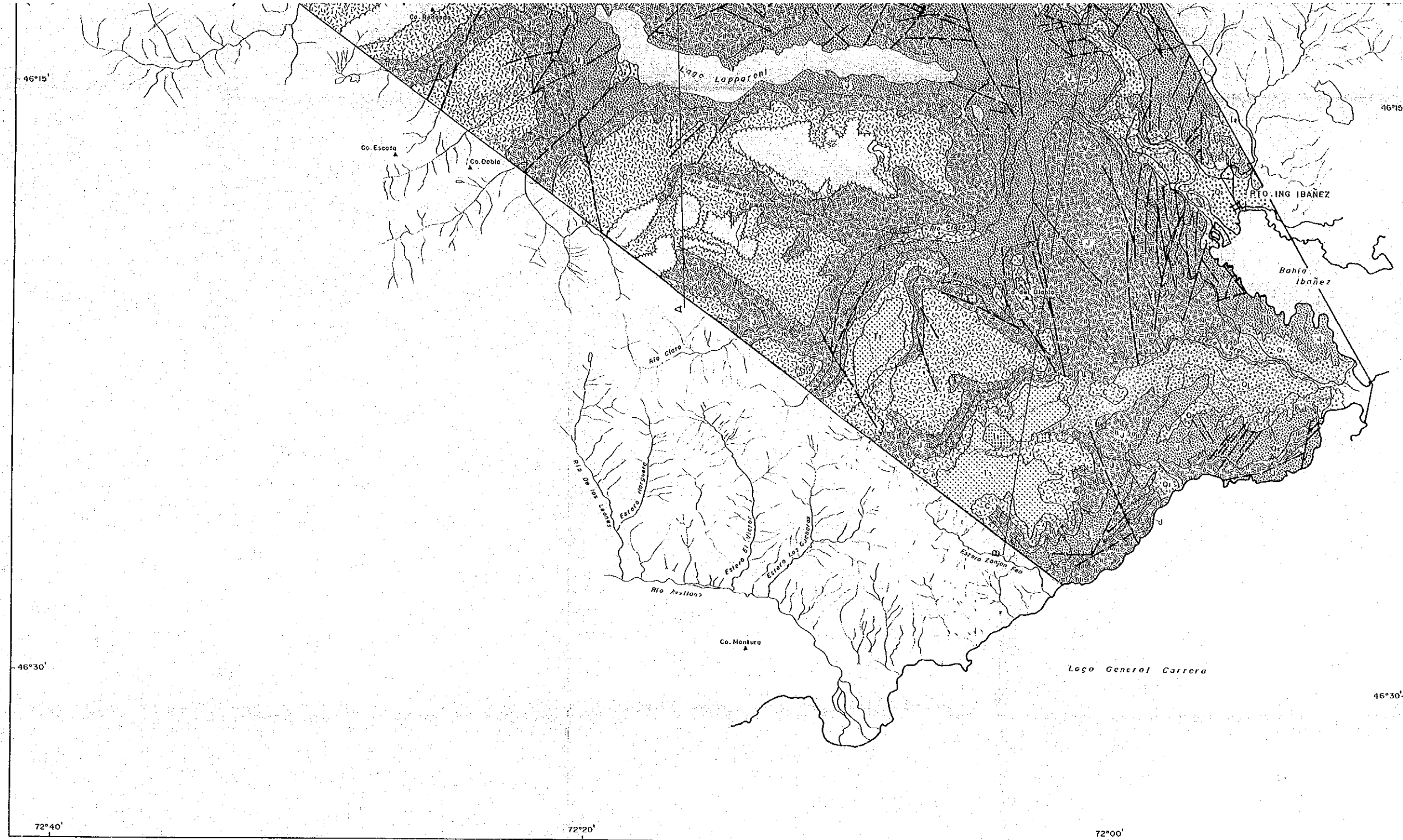
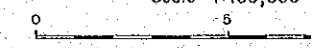
Scale 1:100,000



LEGEND

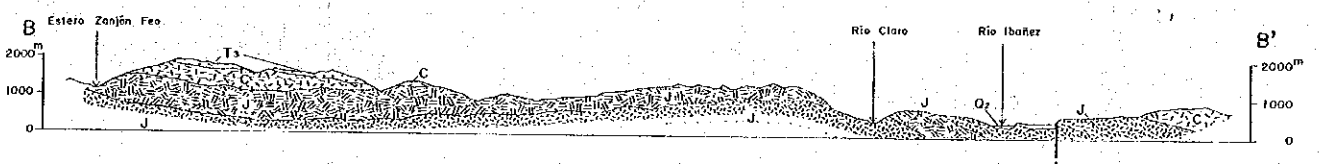
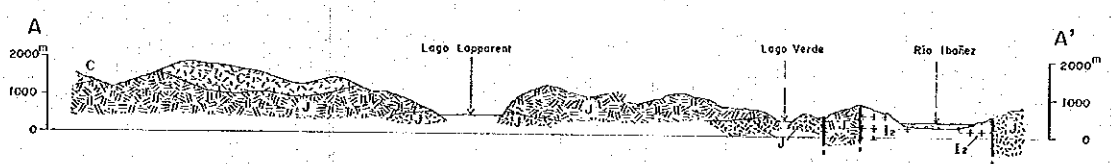
- Qz Alluvium, Fluvium
- O1 Terrace
- T3 Volcanic Rocks
- C Volcanic Rocks
- J Volcanic Rocks, Sedimentation
- I2 Intrusive Rocks
- I1 Intrusive Rocks
- Photo Lineament
- Bedding Trace
- Snow

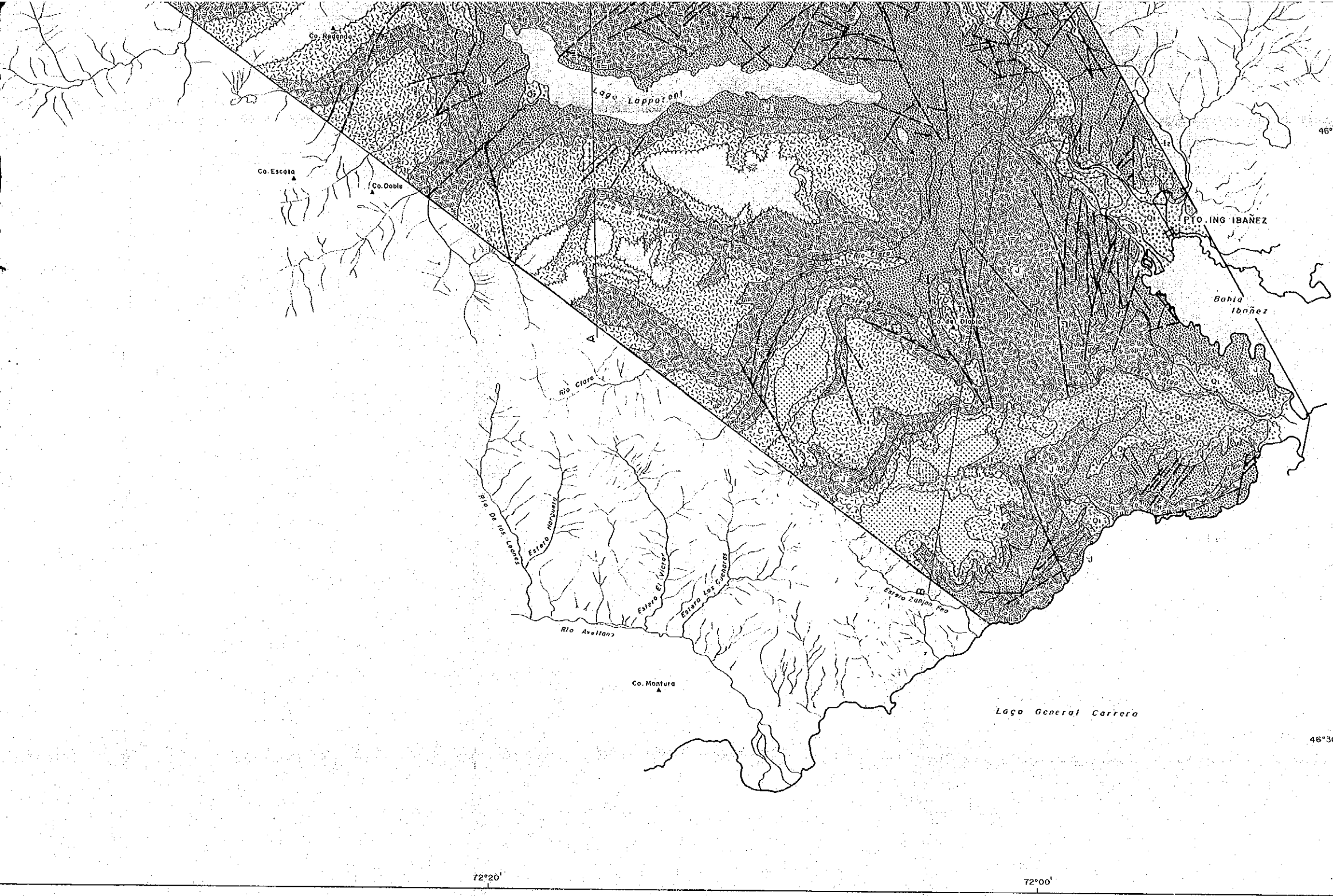




LEGEND

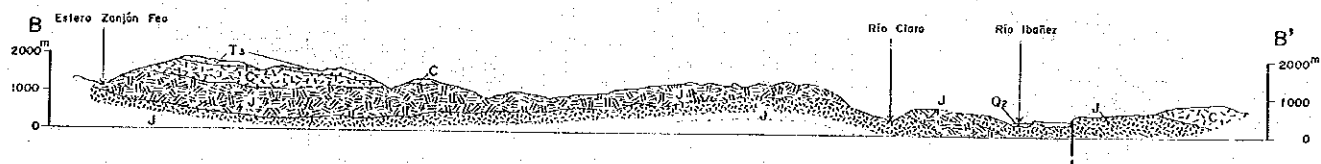
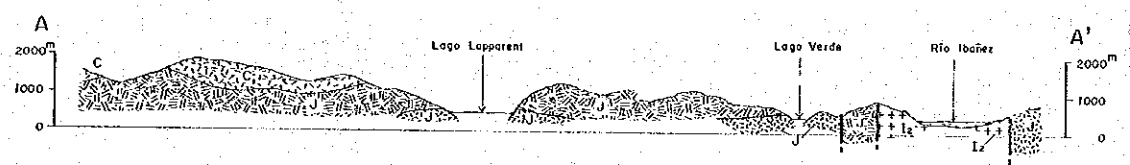
- Qz Alluvium, Fluvium
- Q1 Terrace
- T3 Volcanic Rocks
- C Volcanic Rocks
- J Volcanic Rocks, Sedim
- I2 Intrusive Rocks
- I1 Intrusive Rocks
- Photo Lineament
- Bedding Trace
- Snow





LEGEND

- Qz Alluvium, Fluvium.
- Q1 Terrace.
- Ts Volcanic Rocks.
- C Volcanic Rocks.
- J Volcanic Rocks, Sedimentary Rocks.
- Iz Intrusive Rocks.
- It Intrusive Rocks.
- Photo Lineament.
- Bedding Trace.
- Snow.

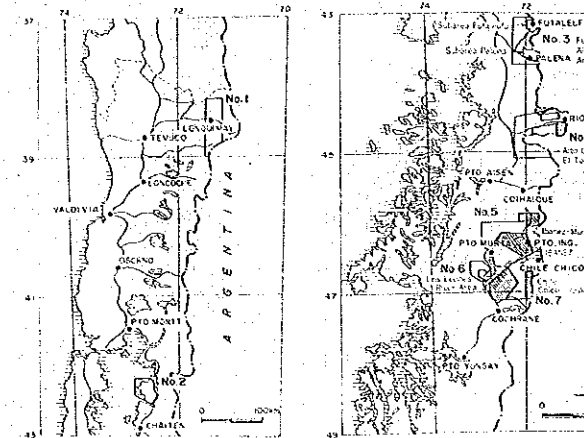


3/14/19702

THE INVESTIGATION OF MINERAL POTENTIAL
IN THE LONQUIMAY AREA AND REGIONS LOS LAGOS AND AYSEN

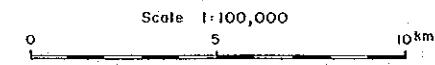
PHASE III

PHOTOGEOLOGICAL INTERPRETATION MAP
OF
THE CHILE CHICO-CHACABUCO AREA



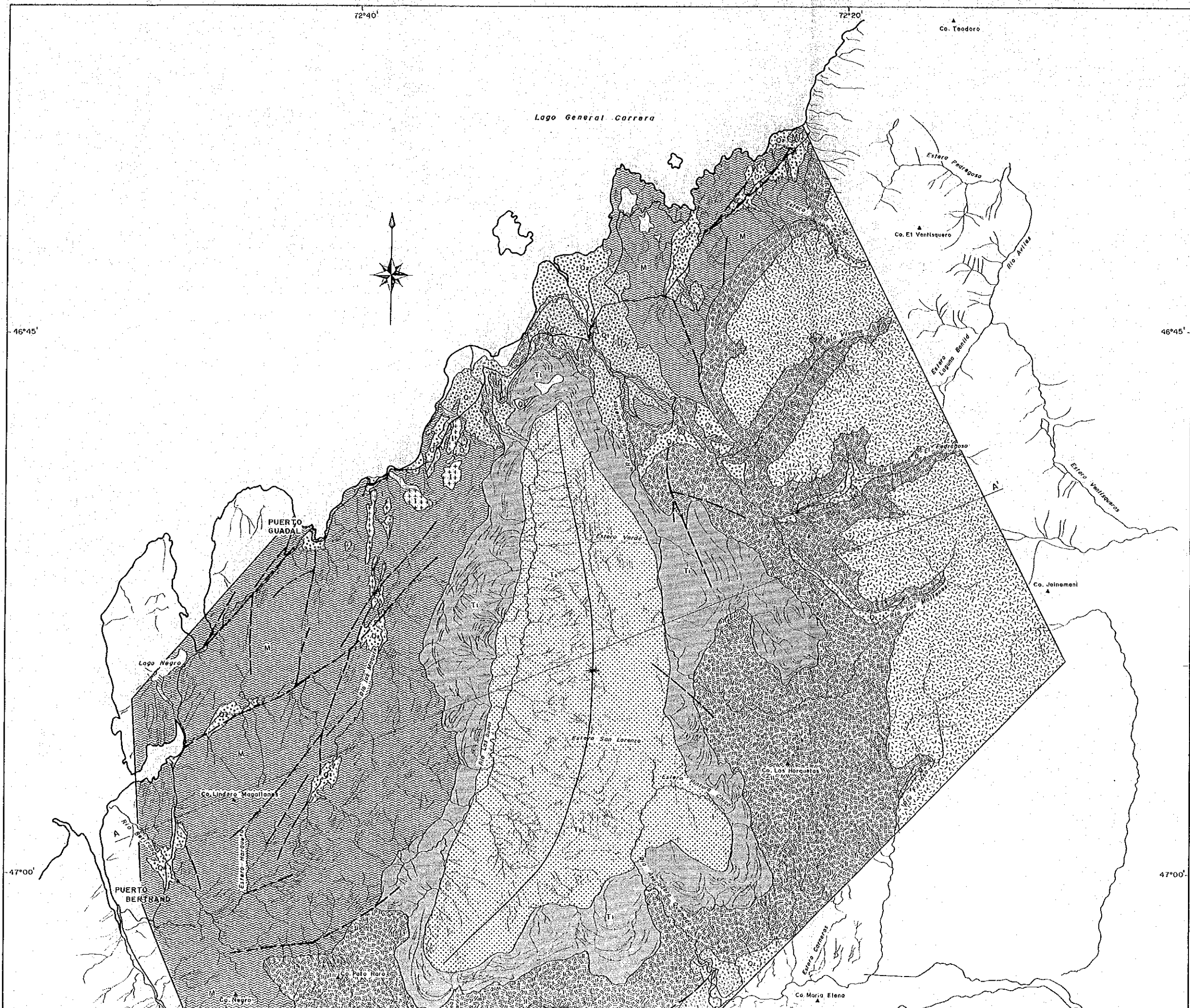
FEBRUARY 1992

JAPAN INTERNATIONAL COOPERATION AGENCY
METAL MINING AGENCY OF JAPAN



LEGEND

- Qz Alluvium, Fluvium.
- O1 Terrace.
- T2 Sedimentary Rocks.
- T1 Sedimentary Rocks.
- C Volcanic Rocks.
- J Volcanic Rocks, Sedimentary Rocks.
- M Metamorphic Rocks.
- I Intrusive Rocks.
- Photo Lineament.
- Bedding Trace, Schistosity.
- Synclinal axis

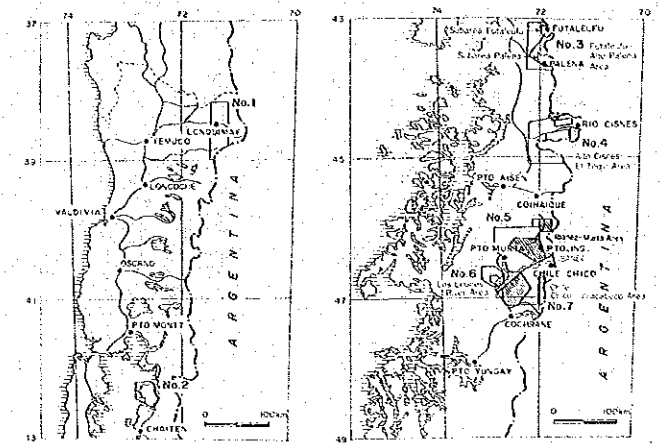


J/14/19702

PL. 2

THE INVESTIGATION OF MINERAL POTENTIAL
IN THE LONQUIMAY AREA AND REGIONS LOS LAGOS AND AYSEN
PHASE III

PHOTOGEOLOGICAL INTERPRETATION MAP
OF
THE CHILE CHICO-CHACABUCO AREA

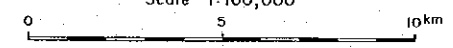


- PHASE I
- PHASE II
- PHASE III

FEBRUARY 1992

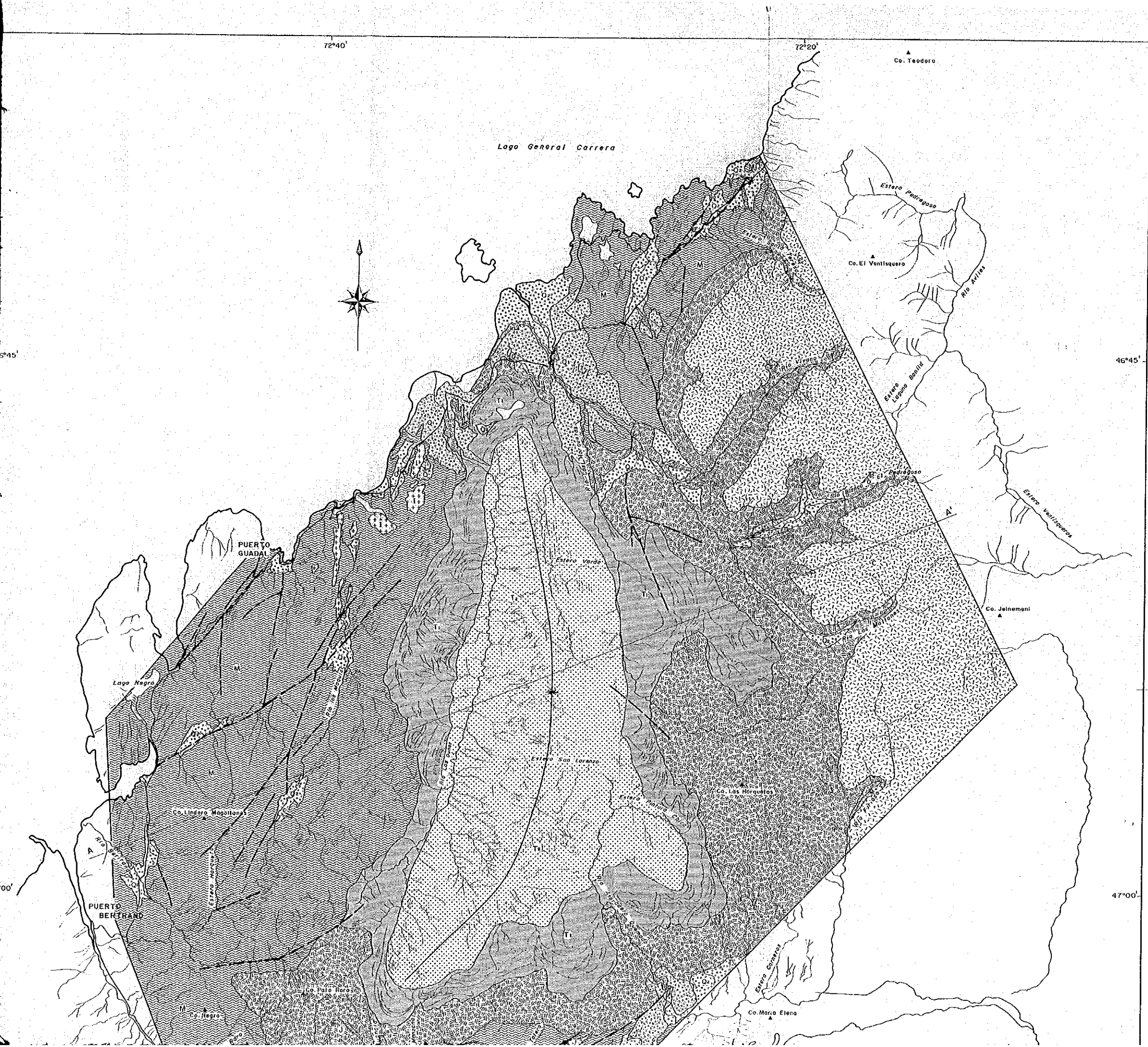
JAPAN INTERNATIONAL COOPERATION AGENCY
METAL MINING AGENCY OF JAPAN

Scale 1:100,000



LEGEND

- Q₂ Alluvium, Fluvium.
- Q₁ Terrace.
- T₂ Sedimentary Rocks.
- T₁ Sedimentary Rocks.
- C Volcanic Rocks.
- J Volcanic Rocks, Sedimentary Rocks.
- M Metamorphic Rocks.
- I Intrusive Rocks.
- Photo Lineament.
- ~ Bedding Trace, Schistosity.
- * Synclinal axis

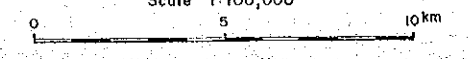


FEBRUARY 1992

JAPAN INTERNATIONAL COOPERATION AGENCY
METAL MINING AGENCY OF JAPAN

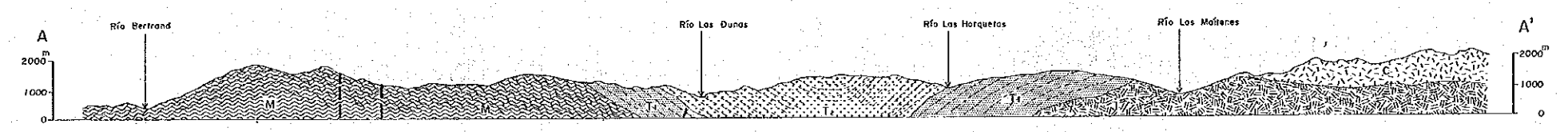
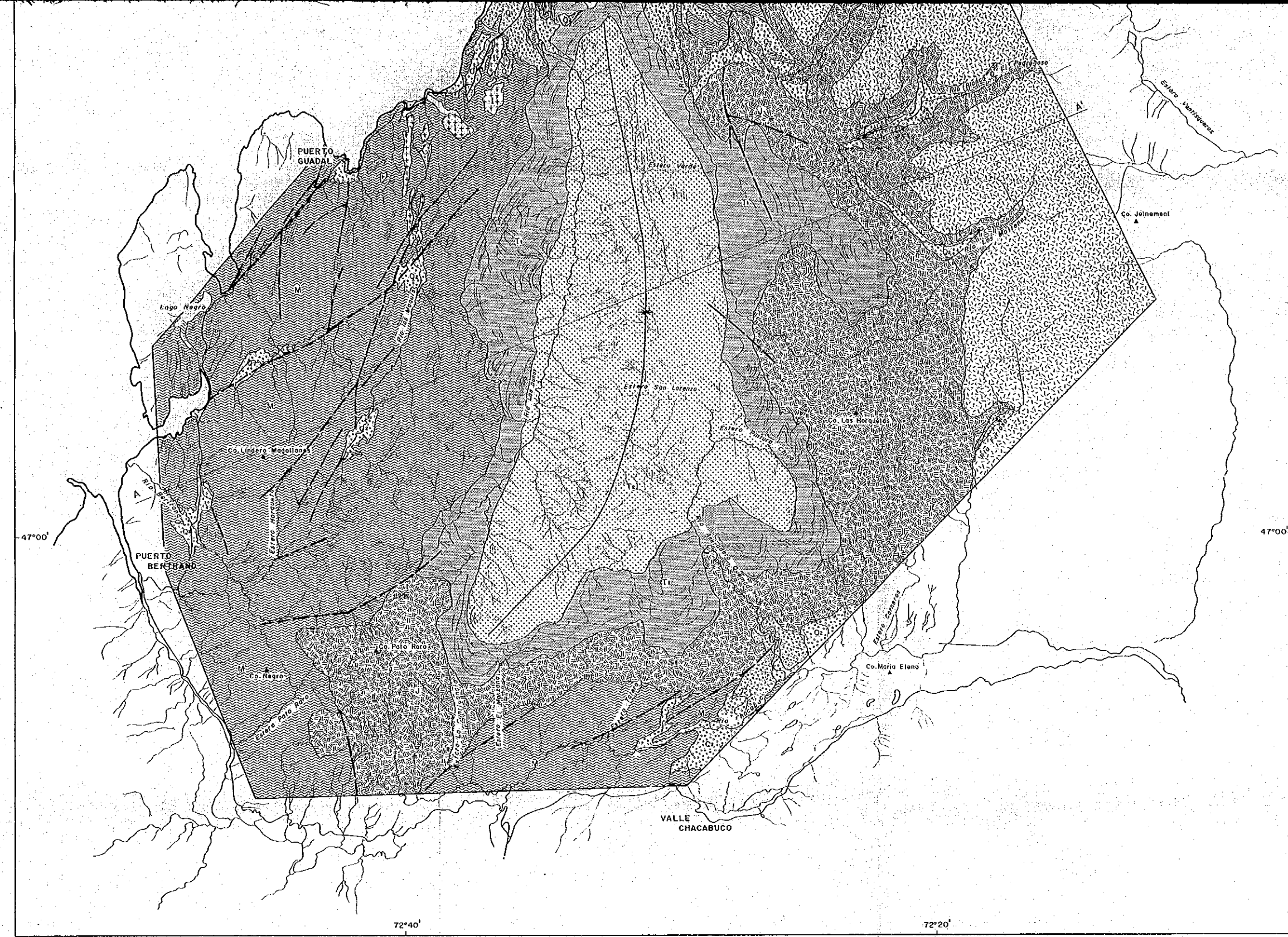
PHASE I
PHASE II
PHASE III

Scale 1:100,000



LEGEND

- Q₂ Alluvium, Fluvium.
- Q₁ Terrace.
- T₂ Sedimentary Rocks.
- T₁ Sedimentary Rocks.
- C Volcanic Rocks.
- J Volcanic Rocks, Sedimentary Rocks.
- M Metamorphic Rocks.
- I Intrusive Rocks.
- Photo Lineament.
- Bedding Trace, Schistosity.
- Synclinal axis



FEBRUARY 1992

JAPAN INTERNATIONAL COOPERATION AGENCY
METAL MINING AGENCY OF JAPAN

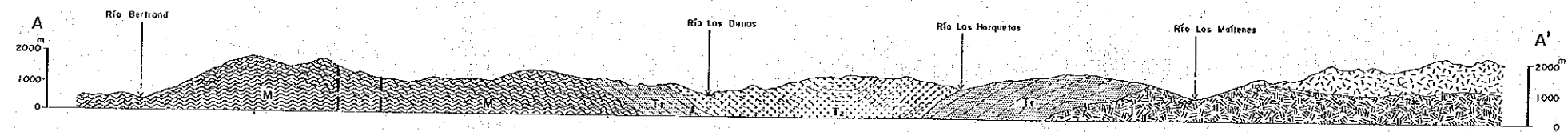
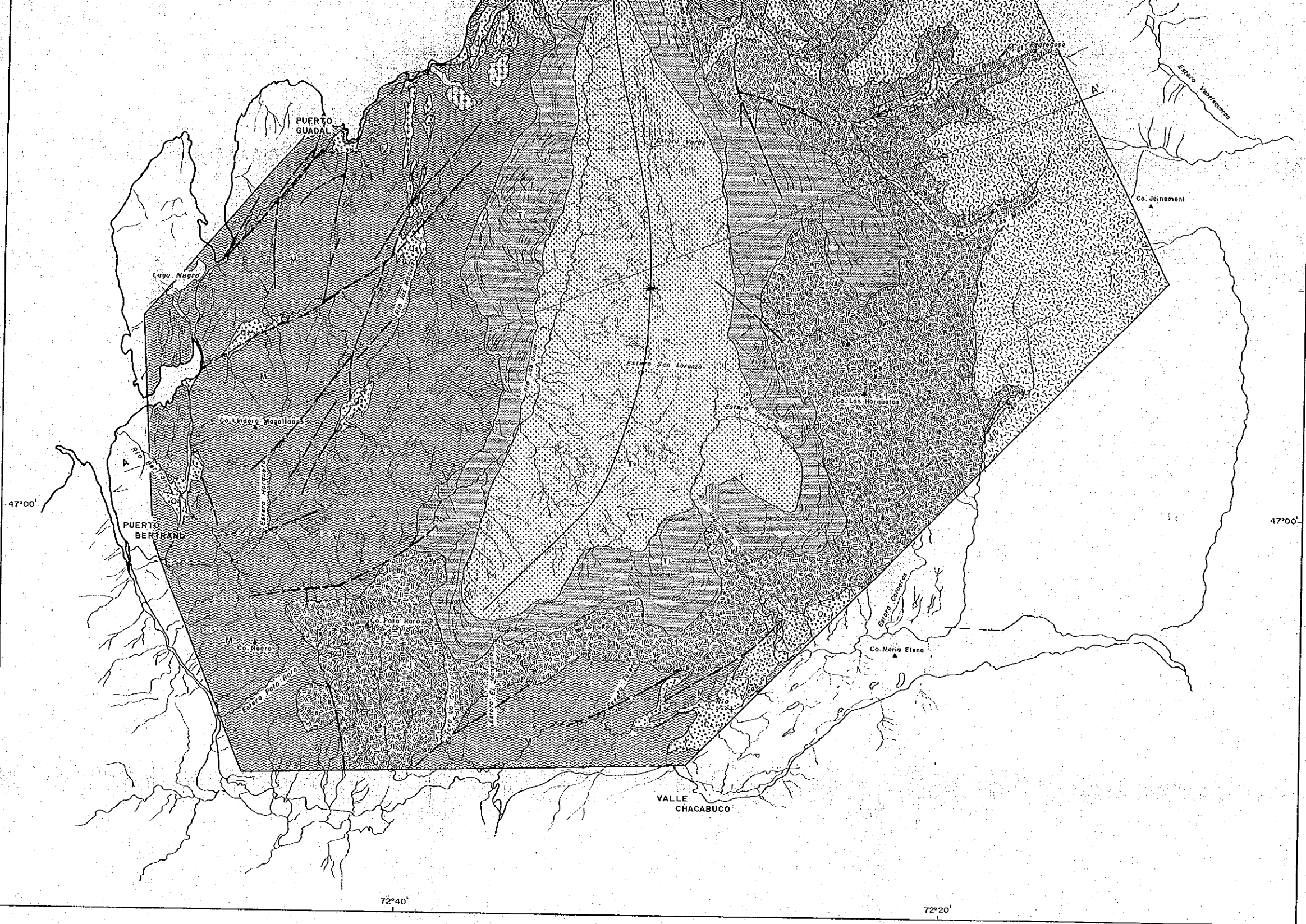
- PHASE I
- PHASE II
- PHASE III

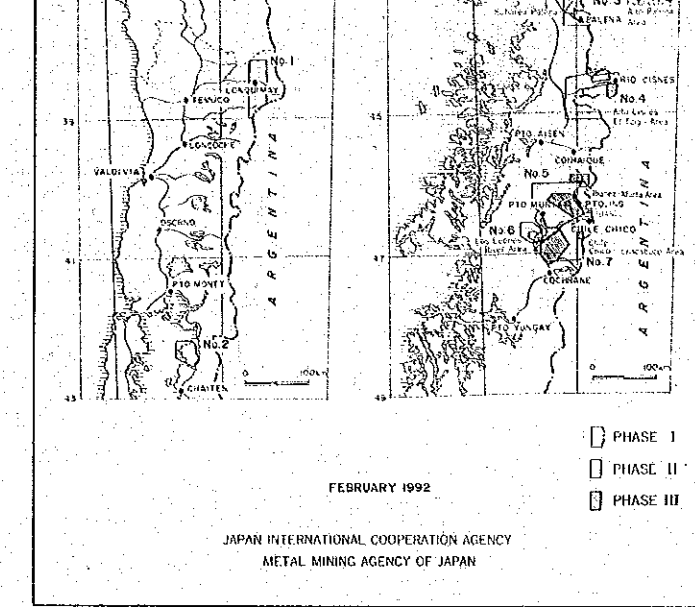
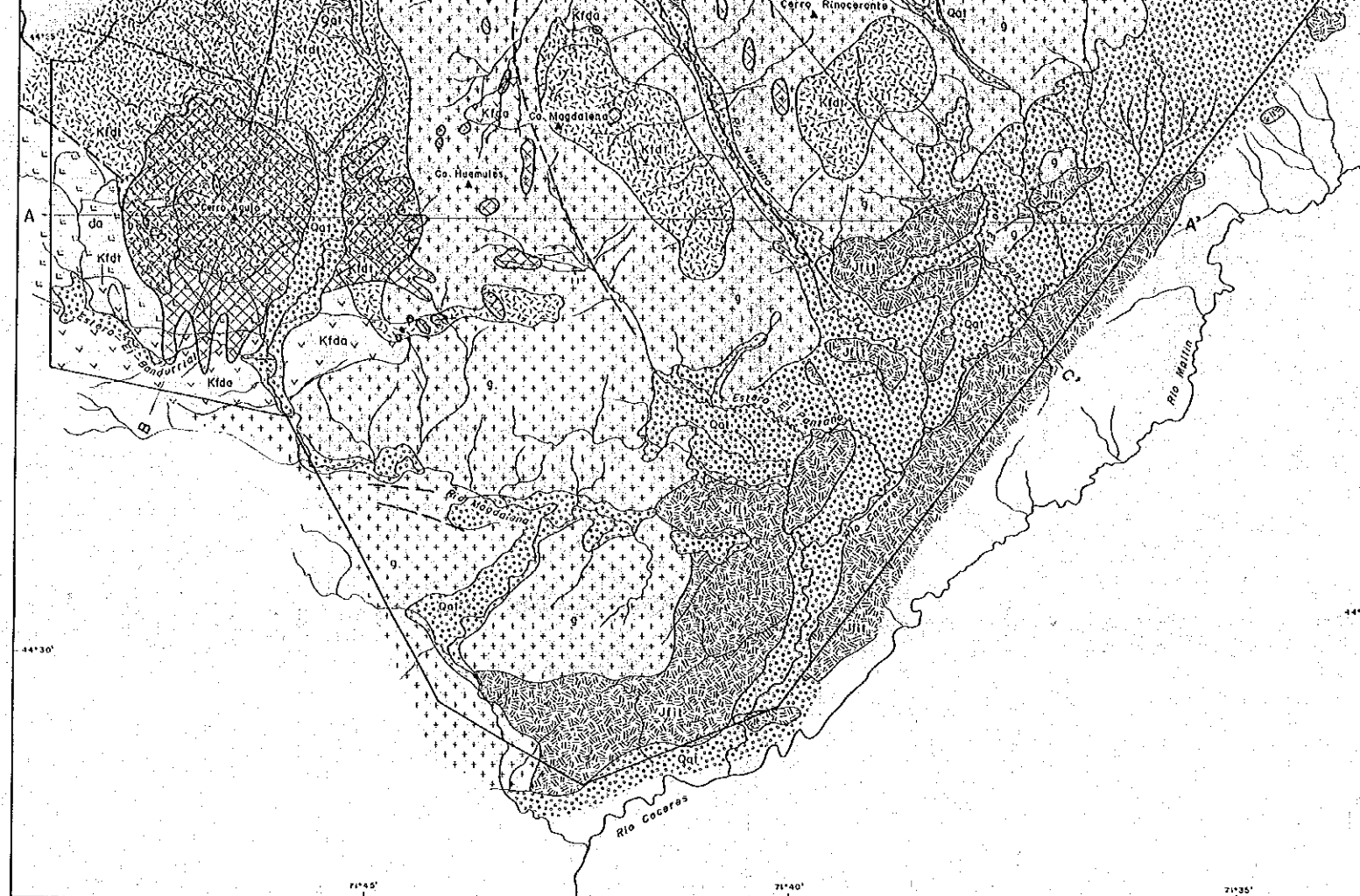
Scale 1:100,000

0 5 10 km

LEGEND

- Q₁ Alluvium, Fluvium.
- Q₂ Terrace.
- T₂ Sedimentary Rocks.
- T₁ Sedimentary Rocks.
- C Volcanic Rocks.
- J Volcanic Rocks, Sedimentary Rocks.
- M Metamorphic Rocks.
- I Intrusive Rocks.
- Photo Lineament.
- Bedding Trace, Schistosity.
- Synclinal axis.





□ PHASE I
 □ PHASE II
 □ PHASE III

JAPAN INTERNATIONAL COOPERATION AGENCY
 METAL MINING AGENCY OF JAPAN

Scale 1 : 50,000
 0 4km

LEGEND

- Quaternary Holocene Pleistocene Qat Alluvial, fluvial, colluvial, terrace, talus and glacial deposits
- Cretaceous Late Cretaceous Kfdt Dacitic lapilli tuffs, fine tuffs, sandy tuffs
- Cretaceous Kfda Divisadero Formation: Mainly dark green andesite lavas
- Jurassic Late to Middle Jurassic Jfil Ibañez Formation: Mainly dacitic lapilli tuffs
- Intrusive rocks b Basalt dikes
- da Dacite porphyry
- g Granite, granodiorite, tonalite
- Hydrothermal alteration zones
- Faults (broken line inferred or latent)
- Bedding trace visible on aerial photographs
- Strike and dip of bedding plane

