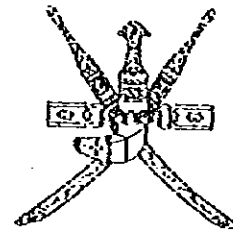


**SULTANATE OF OMAN  
MINISTRY OF COMMUNICATIONS  
DIRECTORATE GENERAL OF ROADS**



**CONSTRUCTION OF PEDESTRIAN UNDERPASS  
AT  
QARIH  
BATINAH HIGHWAY**

**TENDER DOCUMENT**

**DRAWINGS**

JICA LIBRARY



J 1140738(4)

**PACIFIC CONSULTANTS INTERNATIONAL  
FUKUYAMA CONSULTANTS INTERNATIONAL**

March, 1997

SSF
CR(5)
97-015

**DRAWING SCHEDULE**  
**(PU8-QARIH PEDESTRIAN UNDERPASS)**

SHEET NO.	DRAWING TITLE
<b>G</b>	<b>GENERAL</b>
G - 1	Drawing Schedule
<b>P</b>	<b>PEDESTRIAN UNDERPASS</b>
P - 1	General View (1)
P - 2	General View (2)
P - 3	General View (3)
P - 4	Re-bar Arrangement (1)
P - 5	Re-bar Arrangement (2)
P - 6	Re-bar Arrangement (3)
P - 7	Re-bar Arrangement (4)
P - 8	Re-bar Arrangement (5)
P - 9	Re-bar Arrangement (6)
P - 10	Re-bar Arrangement (7)
P - 11	Re-bar Arrangement (8)
P - 12	Re-bar Arrangement (9)
P - 13	Re-bar Arrangement (10)
<b>T</b>	<b>TEMPORARY WORKS</b>
T - 1	Construction Sequence
T - 2	Detour Layout

NOTES:

JAPAN INTERNATIONAL COOPERATION AGENCY  
(JICA)

JICA STUDY TEAM  
PACIFIC CONSULTANTS INTERNATIONAL  
FUKUYAMA CONSULTANTS INTERNATIONAL

CLIENT : MINISTRY OF COMMUNICATIONS, DIRECTORATE GENERAL OF ROADS

PROJECT : D/D ON ROAD DEVELOPMENT PROJECT ON BATINAH HIGHWAY

TITLE : PU-8, QARIH DRAWING SCHEDULE

DATE

DWG NO.

G-1

1140738 (4)

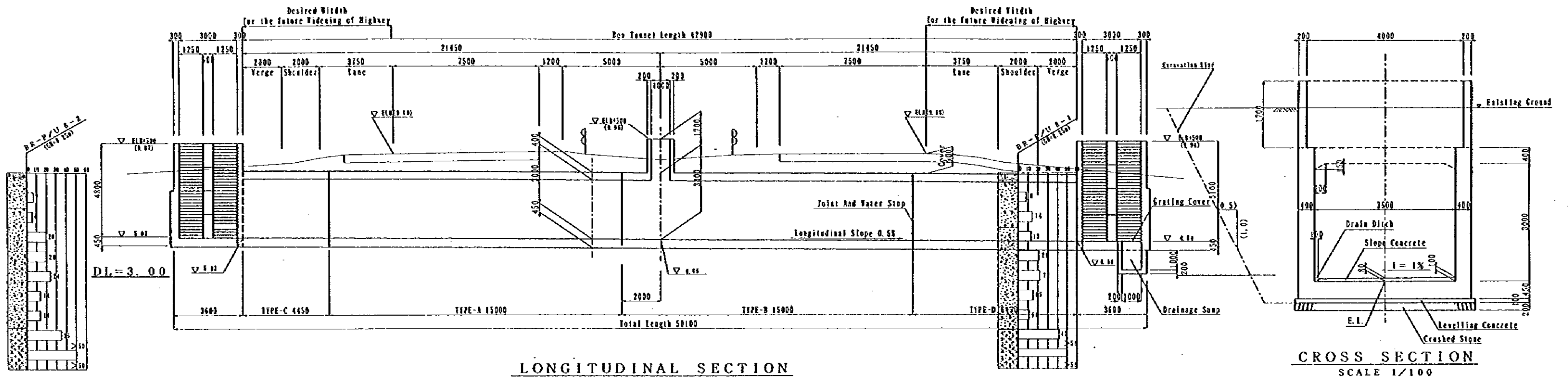


- (1) ...
- (2) ...
- (3) ...
- (4) ...
- (5) ...
- (6) ...
- (7) ...
- (8) ...
- (9) ...
- (10) ...

...

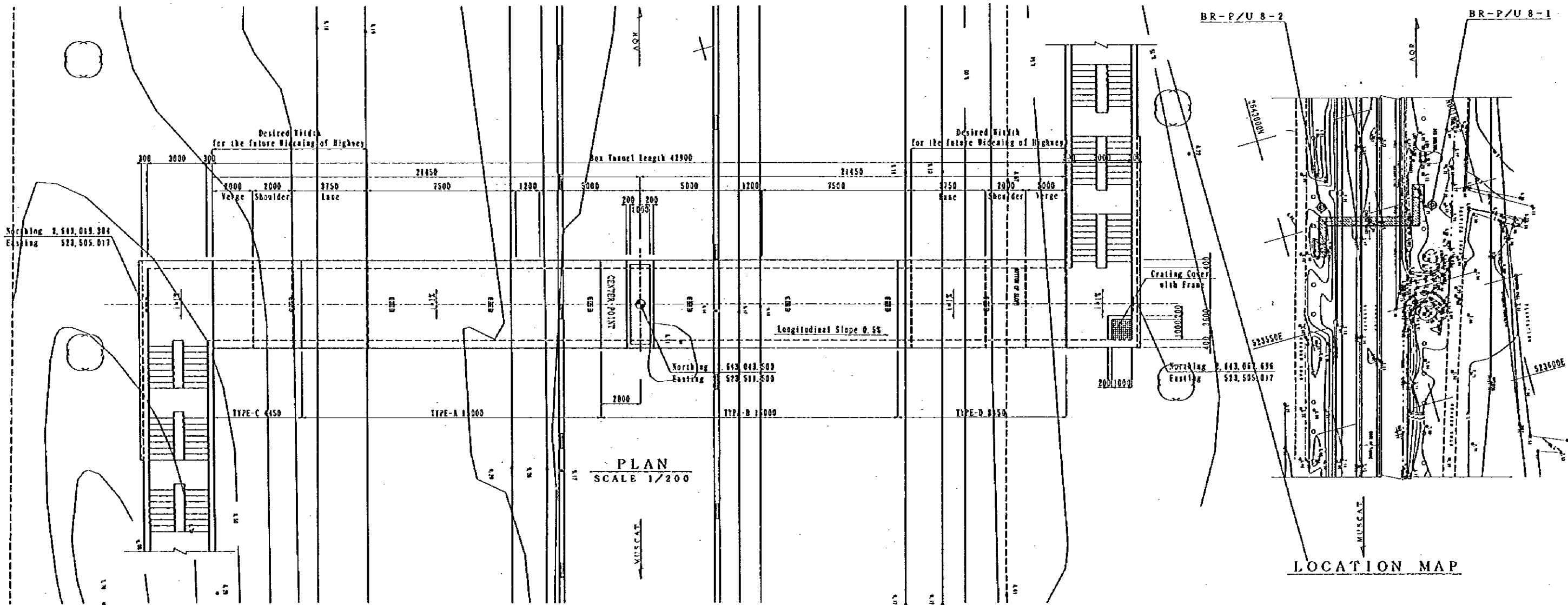
...

...



**LONGITUDINAL SECTION**  
SCALE 1/200

**CROSS SECTION**  
SCALE 1/100



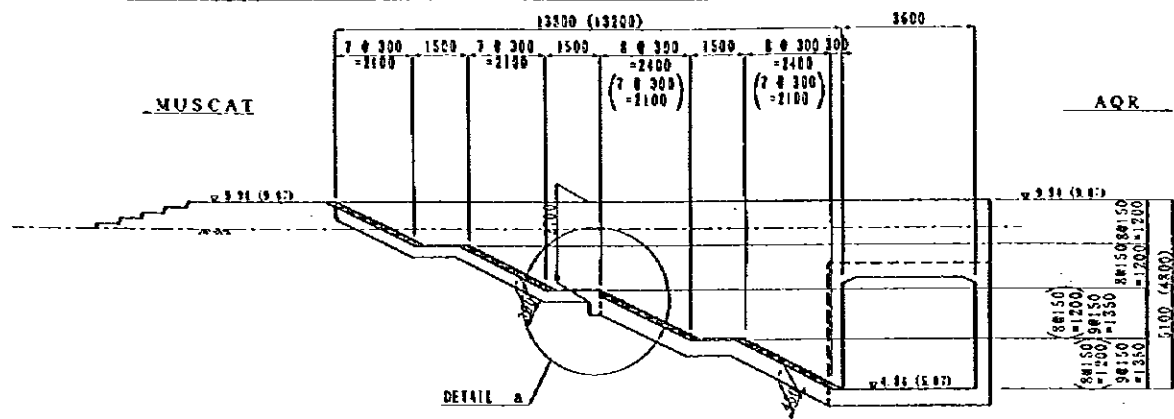
**PLAN**  
SCALE 1/200

**LOCATION MAP**

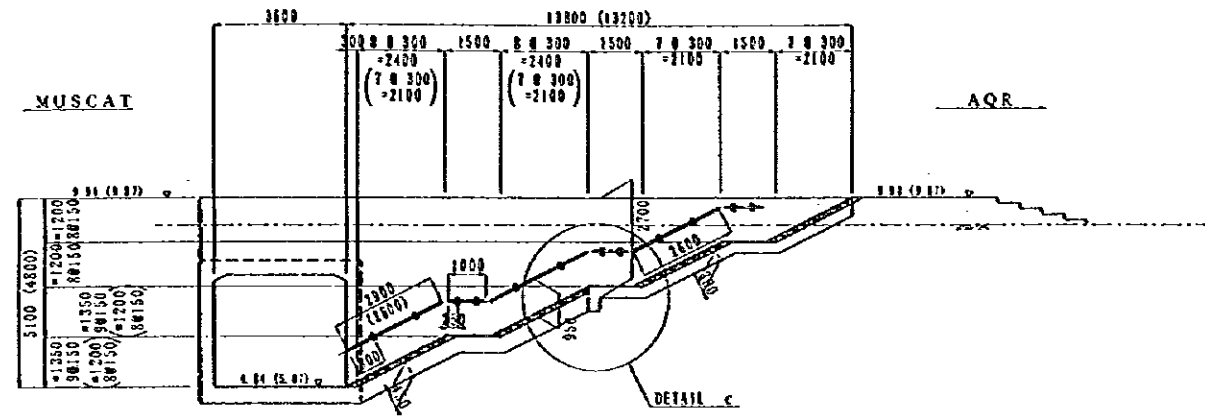
NOTES:

JAPAN INTERNATIONAL COOPERATION AGENCY  
(JICA)  
JICA STUDY TEAM  
PACIFIC CONSULTANTS INTERNATIONAL  
FUKUYAMA CONSULTANTS INTERNATIONAL

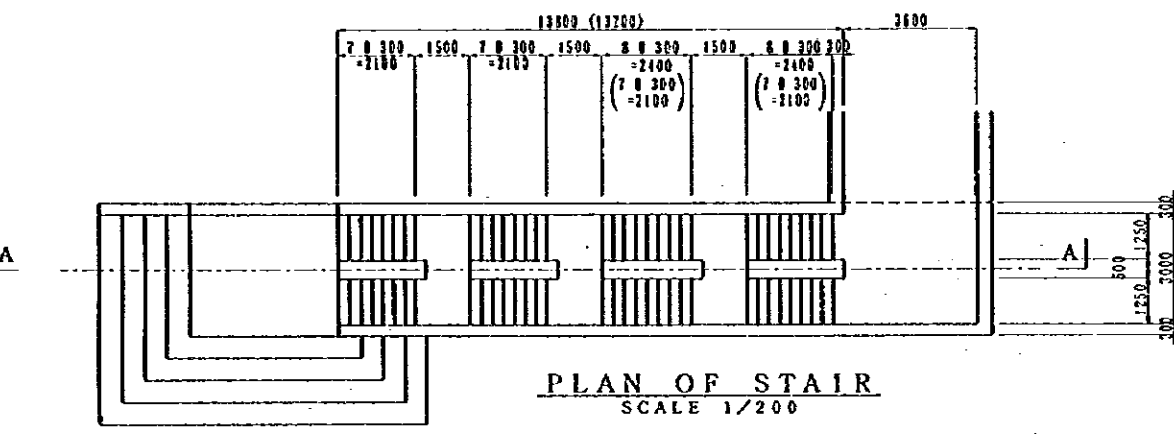
CLIENT : MINISTRY OF COMMUNICATIONS, DIRECTORATE GENERAL OF ROADS  
PROJECT : D/D ON ROAD DEVELOPMENT PROJECT ON BATINAH HIGHWAY  
TITLE : P/U-8, QARIH GENERAL VIEW (1)  
DATE : [ ] DWG NO. P - 1



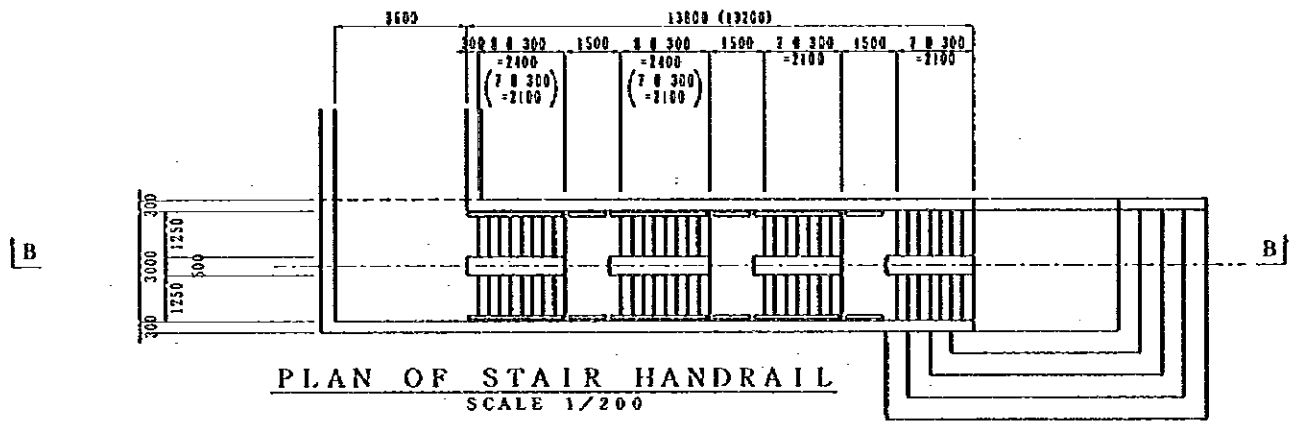
STAIR (SECTION A-A)  
SCALE 1/200



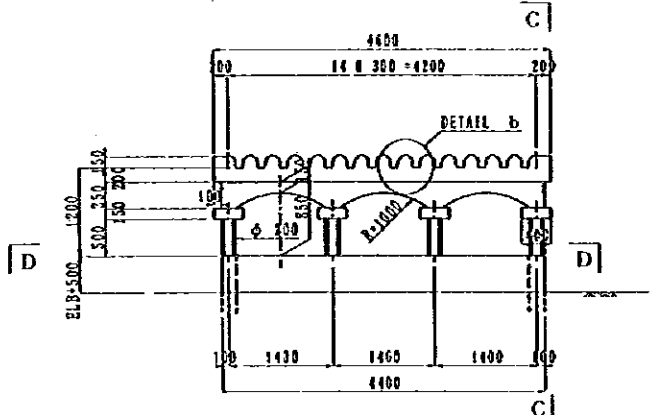
STAIR HANDRAIL (SECTION B-B)  
SCALE 1/200



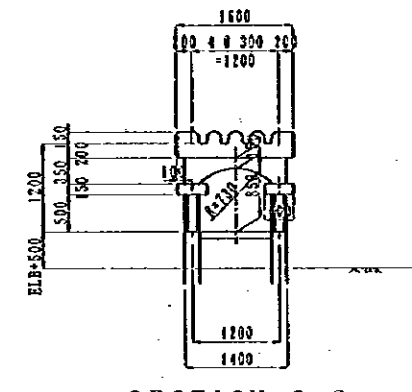
PLAN OF STAIR  
SCALE 1/200



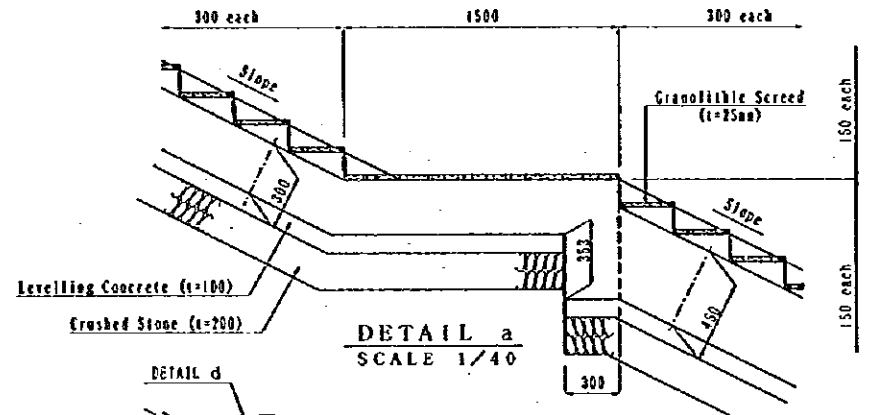
PLAN OF STAIR HANDRAIL  
SCALE 1/200



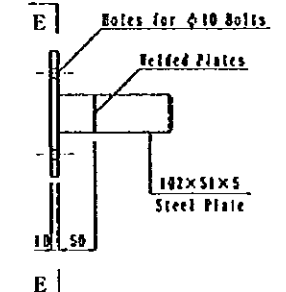
SIDE ELEVATION  
SCALE 1/100



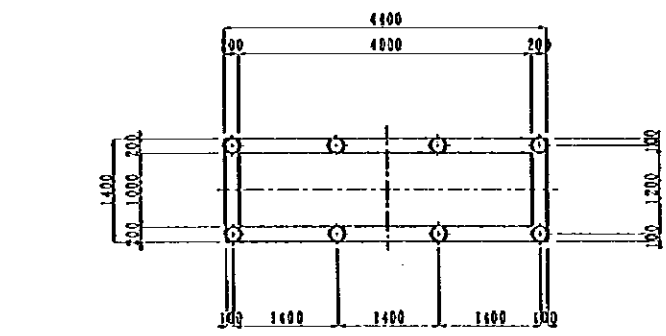
SECTION C-C  
SCALE 1/100



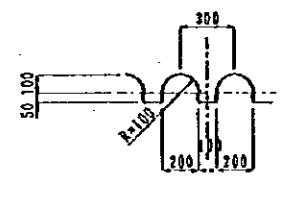
DETAIL a  
SCALE 1/40



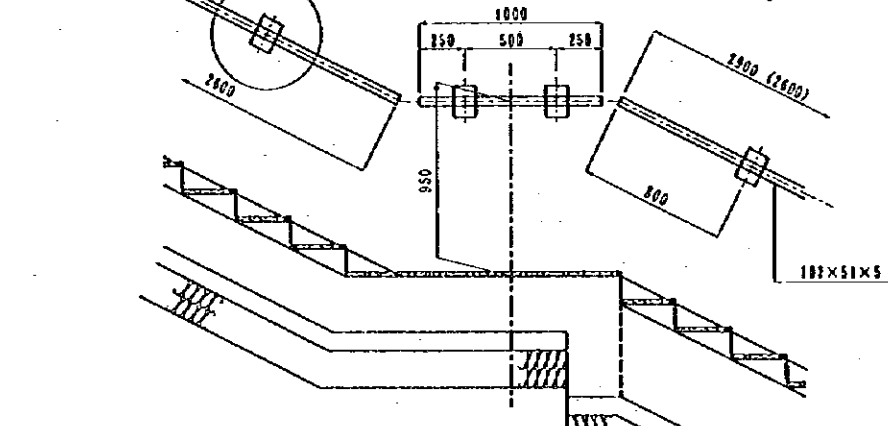
DETAIL d  
SCALE 1/10



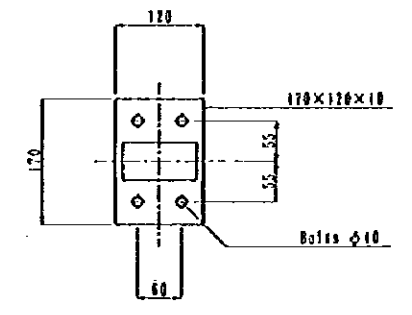
SECTION D-D  
SCALE 1/100



DETAIL b  
SCALE 1/40



DETAIL c  
SCALE 1/40



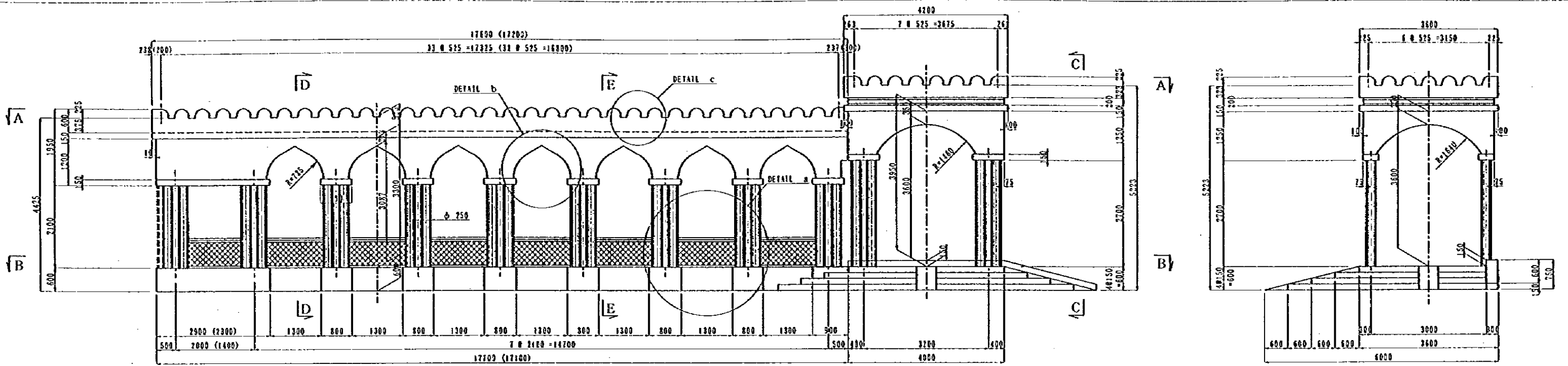
SECTION E-E  
SCALE 1/10

CANOPY ON LIGHT WELL

NOTES: Dimensions of ( ) value are for inland stair.

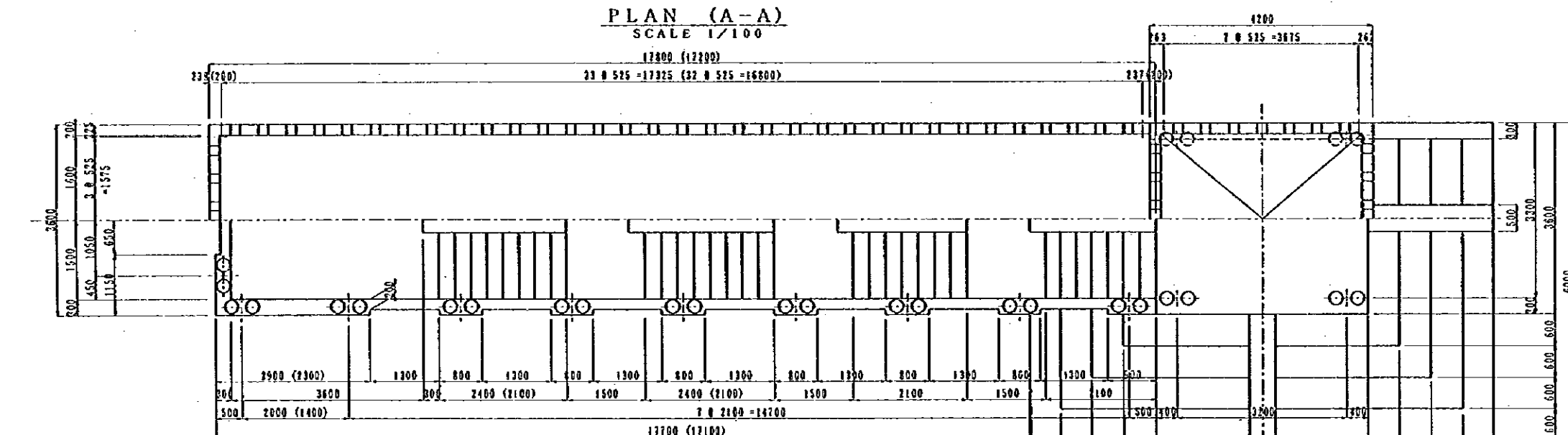
JAPAN INTERNATIONAL COOPERATION AGENCY  
(JICA)  
JICA STUDY TEAM  
PACIFIC CONSULTANTS INTERNATIONAL  
ELRYANA CONSULTANTS INTERNATIONAL

CLIENT : MINISTRY OF COMMUNICATIONS, DIRECTORATE GENERAL OF ROADS  
PROJECT : D/D ON ROAD DEVELOPMENT PROJECT ON BATINAH HIGHWAY  
TITLE : P/U-8, QARH GENERAL VIEW (2)  
DATE :  
DWG NO. P - 2

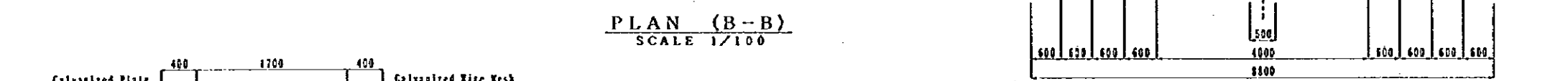


**PROFILE OF CANOPY**  
SCALE 1/100

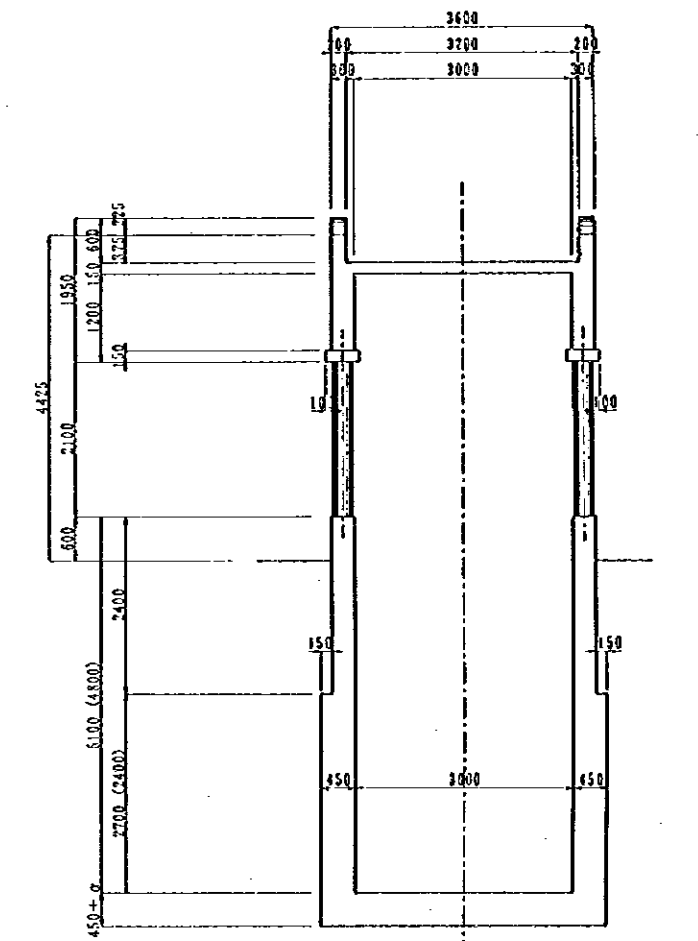
**ENTRANCE (C-C)**  
SCALE 1/100



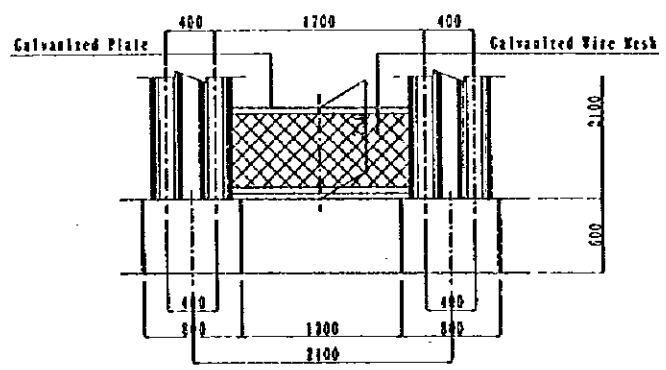
**PLAN (A-A)**  
SCALE 1/100



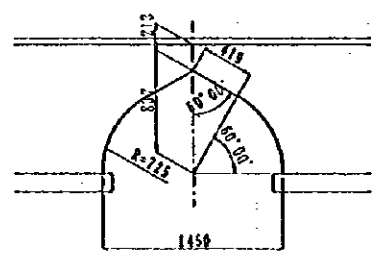
**PLAN (B-B)**  
SCALE 1/100



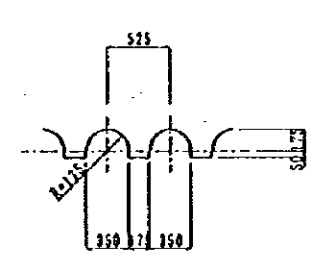
**CROSS SECTION D-D**  
SCALE 1/100



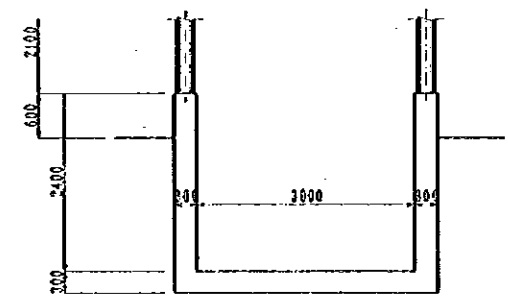
**DETAIL a**  
SCALE 1/60



**DETAIL b**  
SCALE 1/60



**DETAIL c**  
SCALE 1/60



**CROSS SECTION E-E**  
SCALE 1/100

NOTES: Dimensions of ( ) value are for inland stair.

JAPAN INTERNATIONAL COOPERATION AGENCY  
(JICA)

JICA STUDY TEAM  
PACIFIC CONSULTANTS INTERNATIONAL  
FUKUYAMA CONSULTANTS INTERNATIONAL

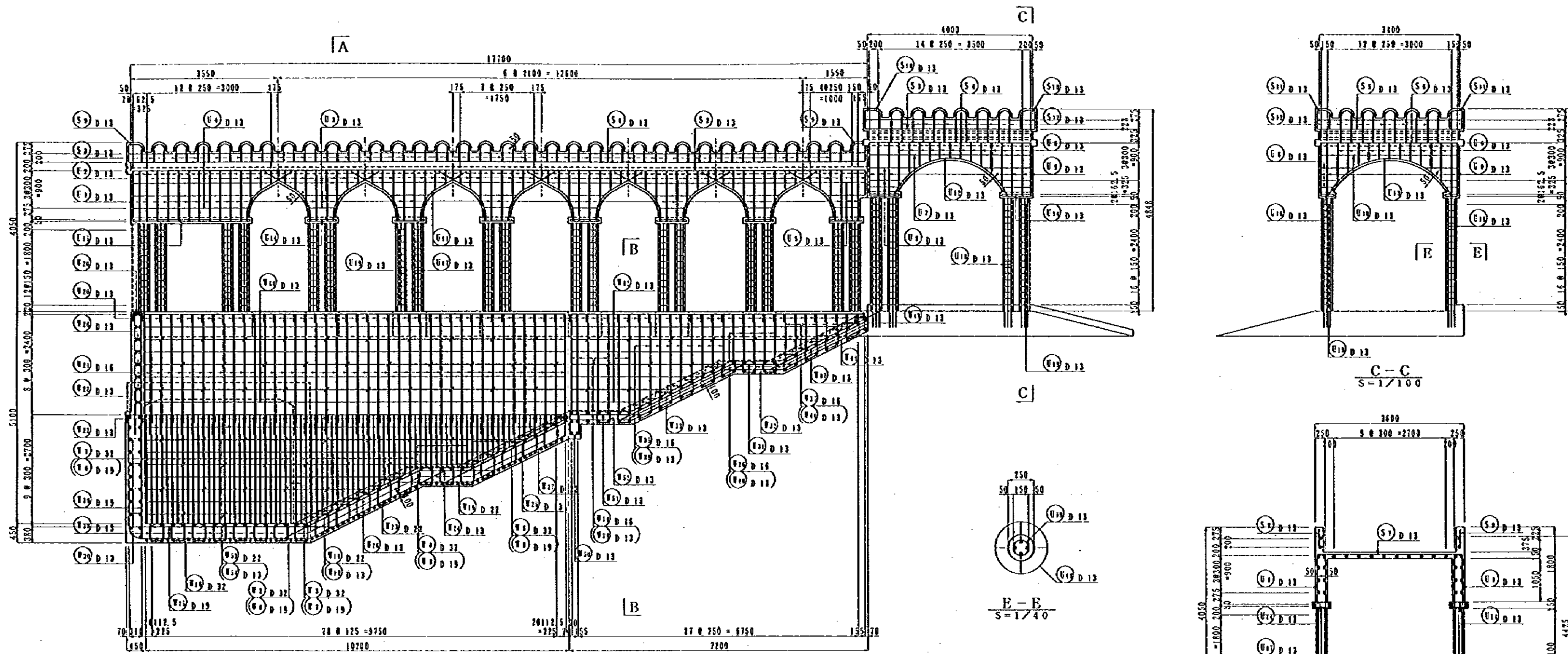
CLIENT : MINISTRY OF COMMUNICATIONS, DIRECTORATE GENERAL OF ROADS

PROJECT : D/D ON ROAD DEVELOPMENT PROJECT ON BATINAH HIGHWAY

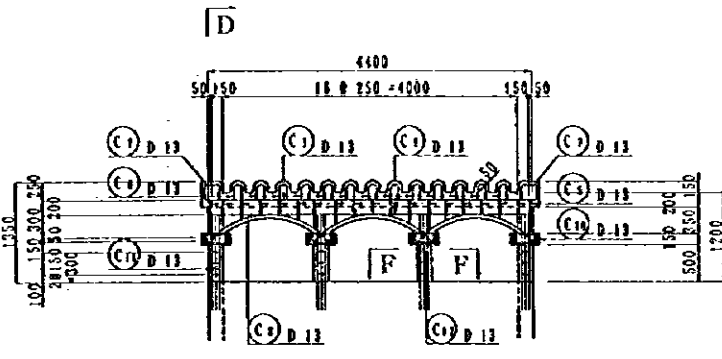
TITLE : P/U-8, QARIH GENERAL VIEW (3)

DATE

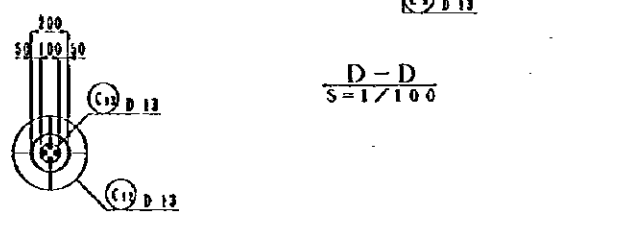
DWG NO. P-3



**A**  
SIDE VIEW  
S=1/100

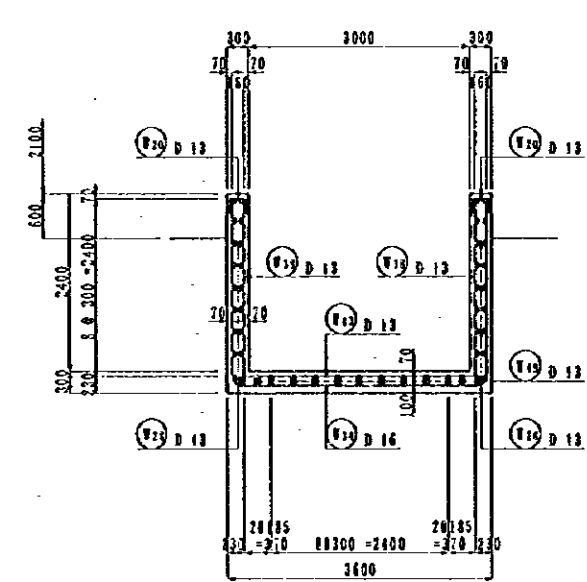


**D**  
CANOPY ON LIGHT  
S=1/100



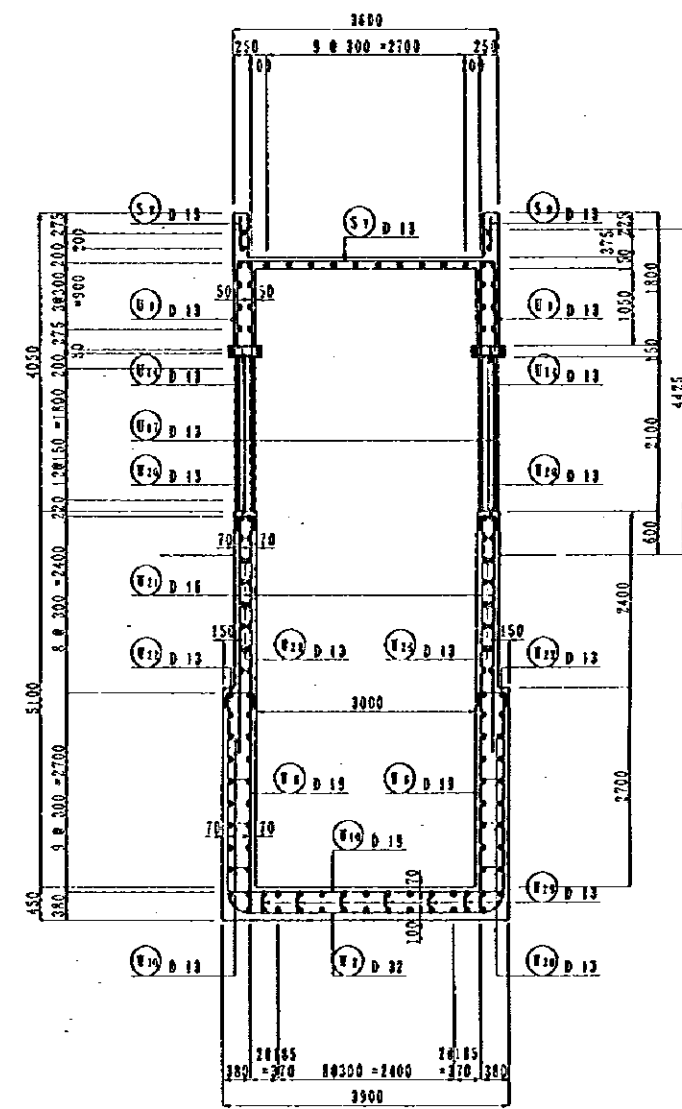
**F-F**  
S=1/40

**D-D**  
S=1/100



**B-B**  
S=1/100

**E-E**  
S=1/40

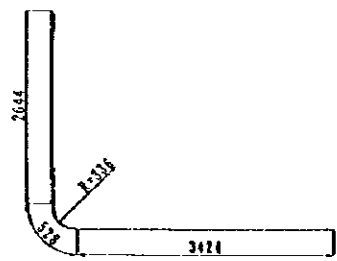


**A-A**  
S=1/100

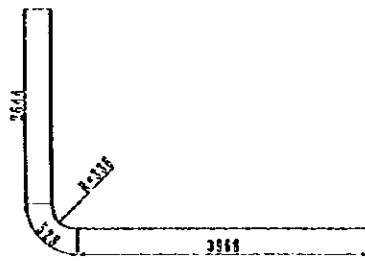
**C-C**  
S=1/100

NOTES:	JAPAN INTERNATIONAL COOPERATION AGENCY (JICA)	CLIENT : MINISTRY OF COMMUNICATIONS, DIRECTORATE GENERAL OF ROADS
	JICA STUDY TEAM PACIFIC CONSULTANTS INTERNATIONAL FUKUYAMA CONSULTANTS INTERNATIONAL	PROJECT : D/D ON ROAD DEVELOPMENT PROJECT ON BATINAH HIGHWAY
		TITLE : P/U-8, QARH RE-BAR ARRANGEMENT (1)
		DATE : _____
		DWG NO. P-4

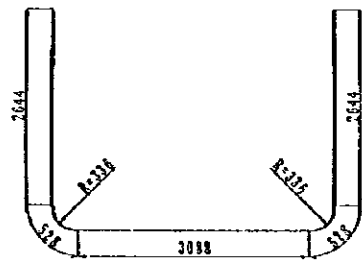




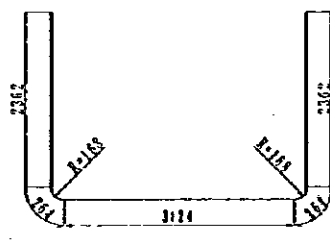
19-D32x 6 600



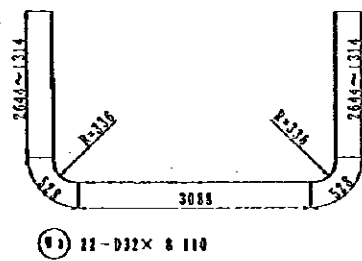
20-D32x 7 140



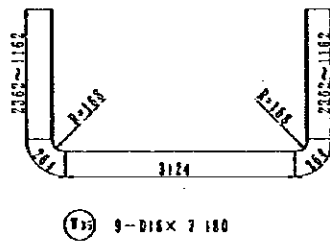
2-D32x 9 440



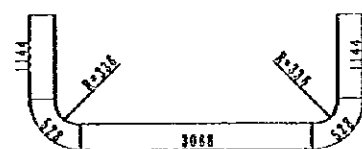
7-D16x 8 360



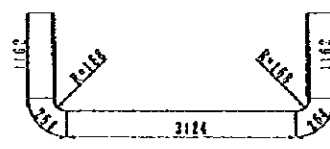
21-D32x 8 110



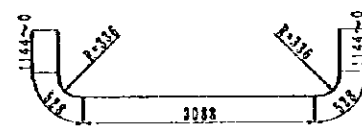
9-D16x 7 180



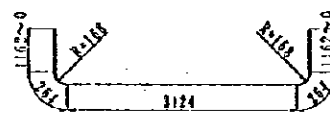
10-D32x 6 440



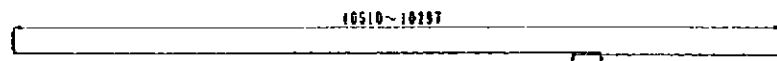
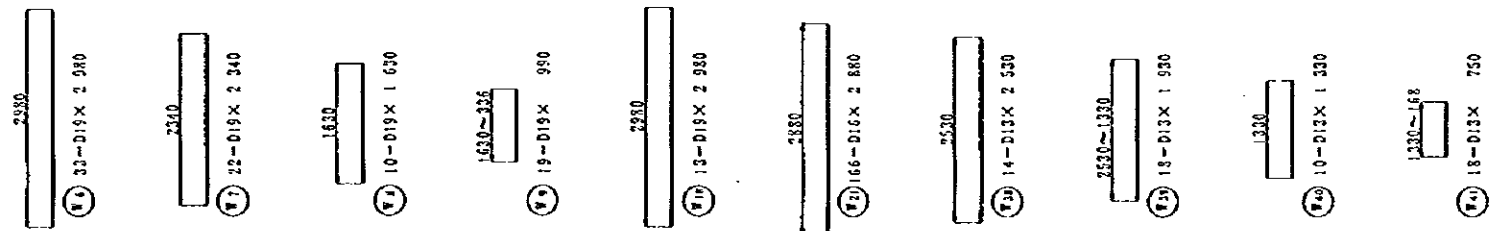
5-D16x 5 980



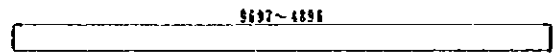
18-D32x 5 180



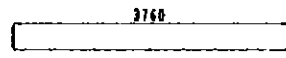
9-D16x 4 820



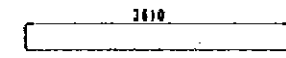
3-D22x (10 410+660) 1680(390)  
 3-D13x (10 410+390)



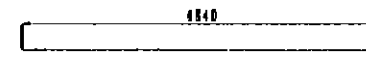
7-D22x 7 300  
 7-D13x 7 300



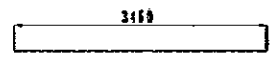
41-D13x 3 760



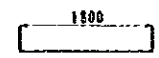
19-D22x 3 610  
 11-D13x 3 610



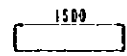
15-D19x 4 840



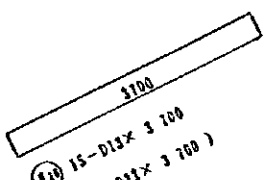
16-D13x 3 460



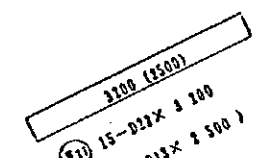
15-D13x 1 800  
 13-D22x 1 800



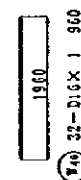
15-D13x 1 500  
 13-D13x 1 500



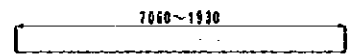
15-D13x 3 700  
 13-D13x 3 700



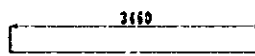
15-D13x 3 200  
 13-D13x 3 500



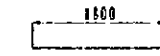
22-D13x 1 900



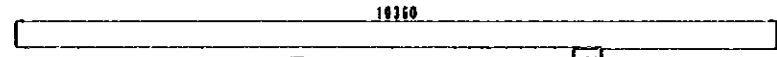
21-D13x 4 500



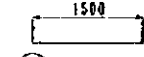
20-D13x 3 460



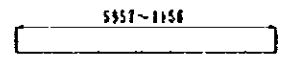
15-D13x 1 800



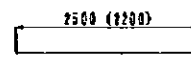
20-D13x (10 350+390) 290



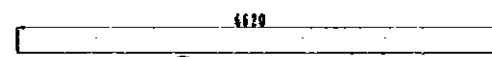
13-D13x 1 500



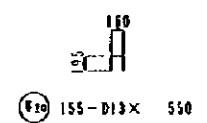
7-D13x 3 500  
 7-D13x 3 500



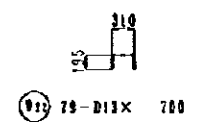
15-D13x 2 500  
 13-D13x 2 200



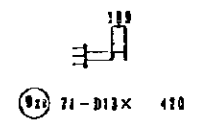
2-D13x 6 620



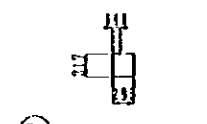
155-D13x 550



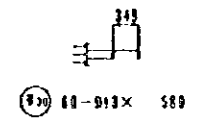
78-D13x 700



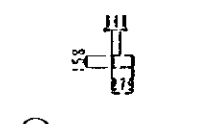
71-D13x 420



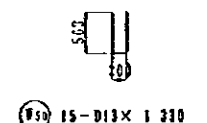
117-D13x 1 160



60-D13x 580



78-D13x 820



15-D13x 1 320

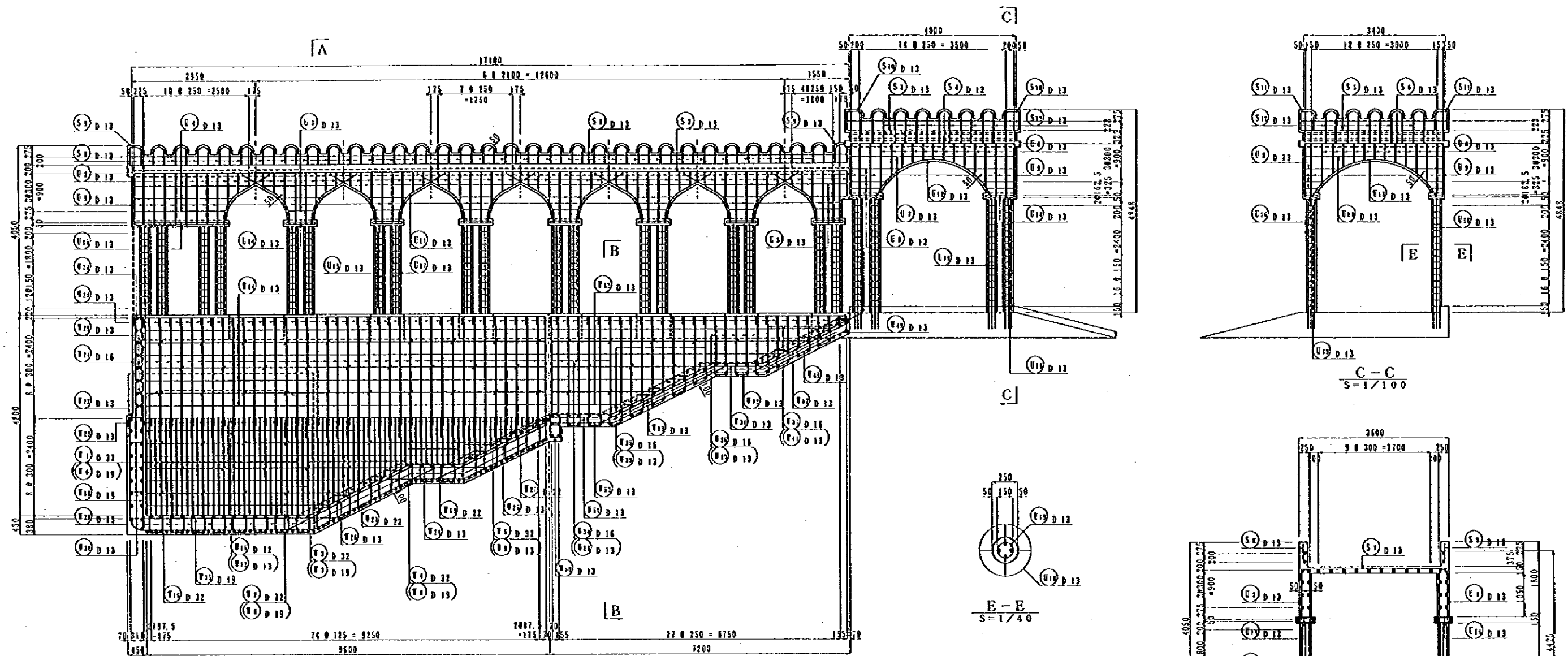
NOTES:

JAPAN INTERNATIONAL COOPERATION AGENCY (JICA)

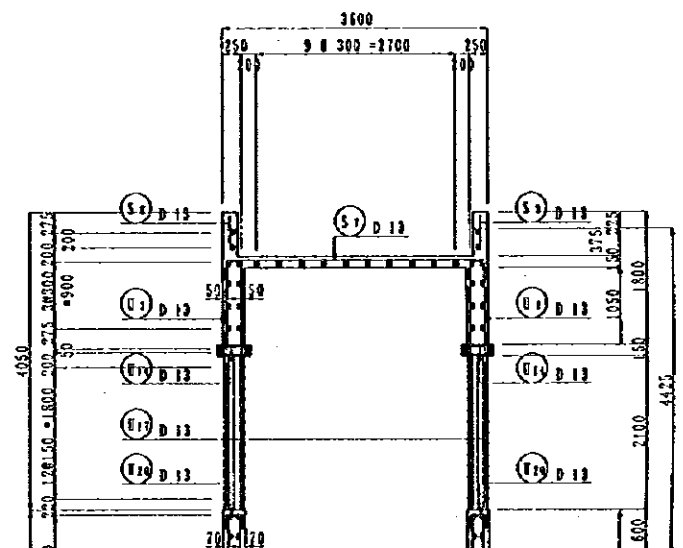
JICA STUDY TEAM  
 PACIFIC CONSULTANTS INTERNATIONAL  
 FUKUYAMA CONSULTANTS INTERNATIONAL

CLIENT : MINISTRY OF COMMUNICATIONS, DIRECTORATE GENERAL OF ROADS  
 PROJECT : D/D ON ROAD DEVELOPMENT PROJECT ON BATINAH HIGHWAY  
 TITLE : P/U-8, QARIH RE-BAR ARRANGEMENT (2)  
 DATE : \_\_\_\_\_ DWG NO. P-5

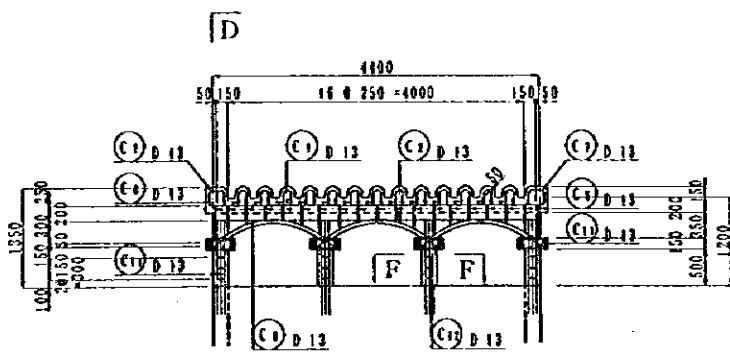




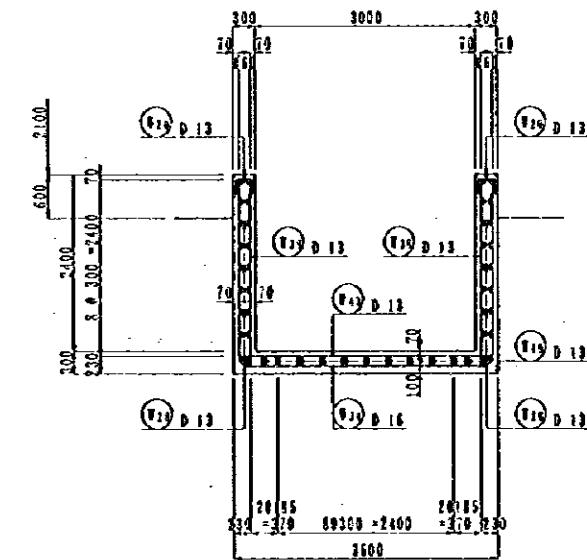
**A**  
SIDE VIEW  
S=1/100



**A-A**  
S=1/100

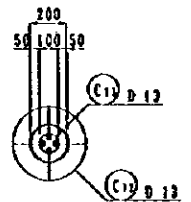


**D-D**  
S=1/100



**B-B**  
S=1/100

**D**  
CANOPY ON LIGHT  
S=1/100

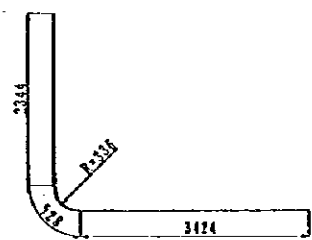


**F-F**  
S=1/40

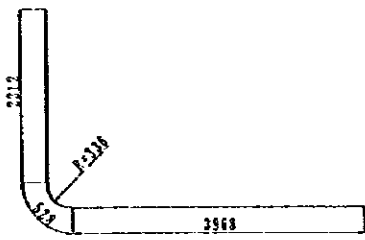
NOTES:

JAPAN INTERNATIONAL COOPERATION AGENCY  
(JICA)  
JICA STUDY TEAM  
PACIFIC CONSULTANTS INTERNATIONAL  
FUJUKAWA CONSULTANTS INTERNATIONAL

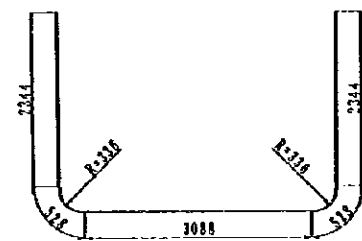
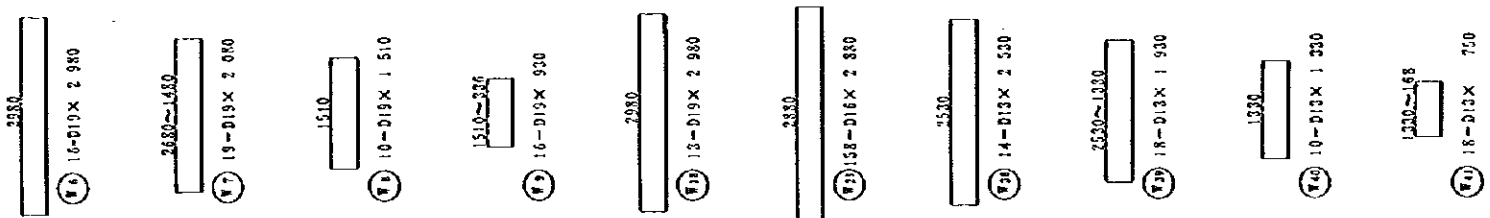
CLIENT : MINISTRY OF COMMUNICATIONS, DIRECTORATE GENERAL OF ROADS  
PROJECT : D/D ON ROAD DEVELOPMENT PROJECT ON BATINAH HIGHWAY  
TITLE : P/U-8. QARIH RE-BAR ARRANGEMENT (4)  
DATE : \_\_\_\_\_ DWG NO. P-7



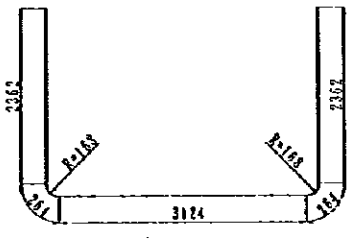
19-D32 x 6 300



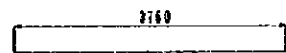
20-D32 x 6 810



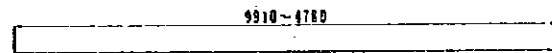
2-D32 x 8 840



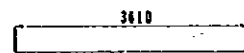
3-D16 x 8 380



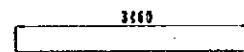
35-D19 x 3 760



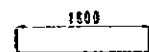
8-D22 x 7 350  
( 8-D13 x 7 350 )



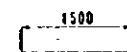
9-D22 x 3 610  
( 10-D13 x 3 610 )



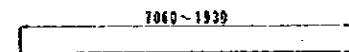
16-D13 x 3 460



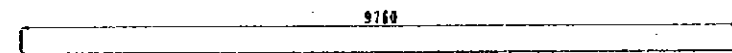
15-D13 x 1 800  
( 13-D22 x 1 800 )



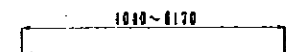
15-D13 x 1 500  
( 13-D13 x 1 500 )



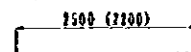
32-D13 x 4 500



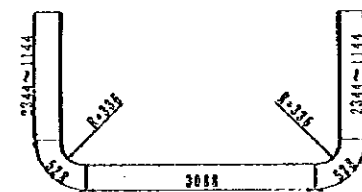
28-D13 x 9 760



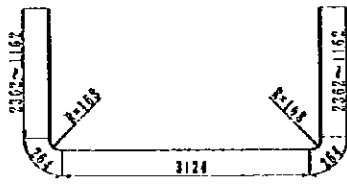
8-D22 x 3 610  
( 8-D13 x 3 610 )



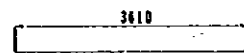
15-D13 x 2 500  
( 13-D13 x 2 200 )



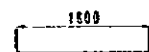
15-D32 x 7 640



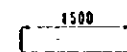
9-D16 x 7 480



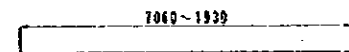
15-D19 x 4 840



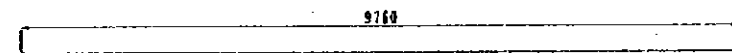
15-D13 x 1 800  
( 13-D22 x 1 800 )



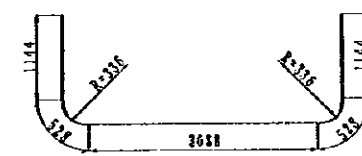
15-D13 x 1 500  
( 13-D13 x 1 500 )



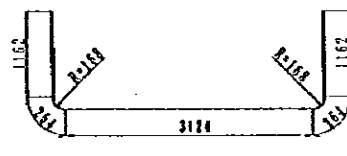
29-D13 x 3 460



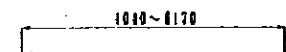
6-D13 x 6 020



10-D32 x 6 440

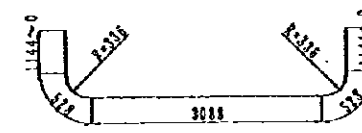


5-D16 x 5 980

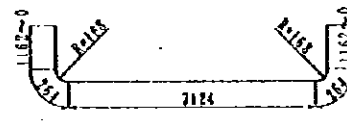


15-D13 x 1 800

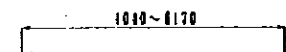
15-D13 x 1 800  
( 13-D13 x 2 200 )



11-D32 x 5 290

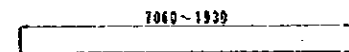


8-D16 x 4 820

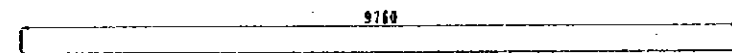


15-D13 x 1 500

15-D13 x 1 500  
( 13-D13 x 2 200 )



25-D13 x 3 460



15-D13 x 2 500  
( 13-D13 x 2 200 )

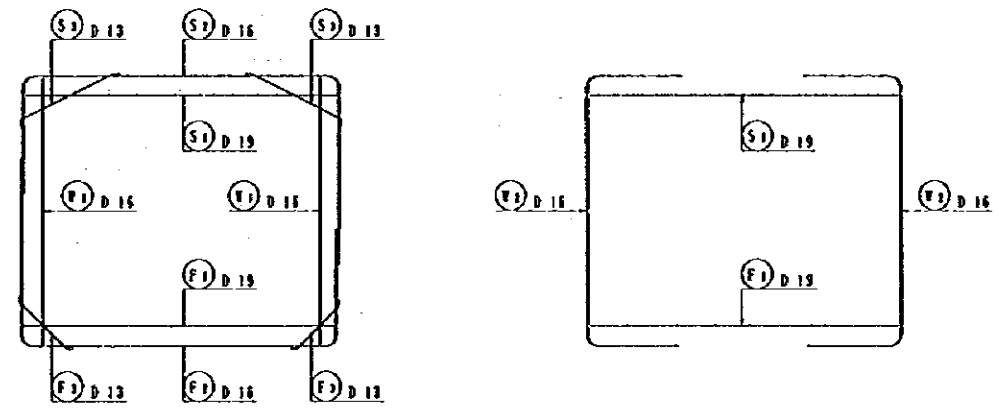
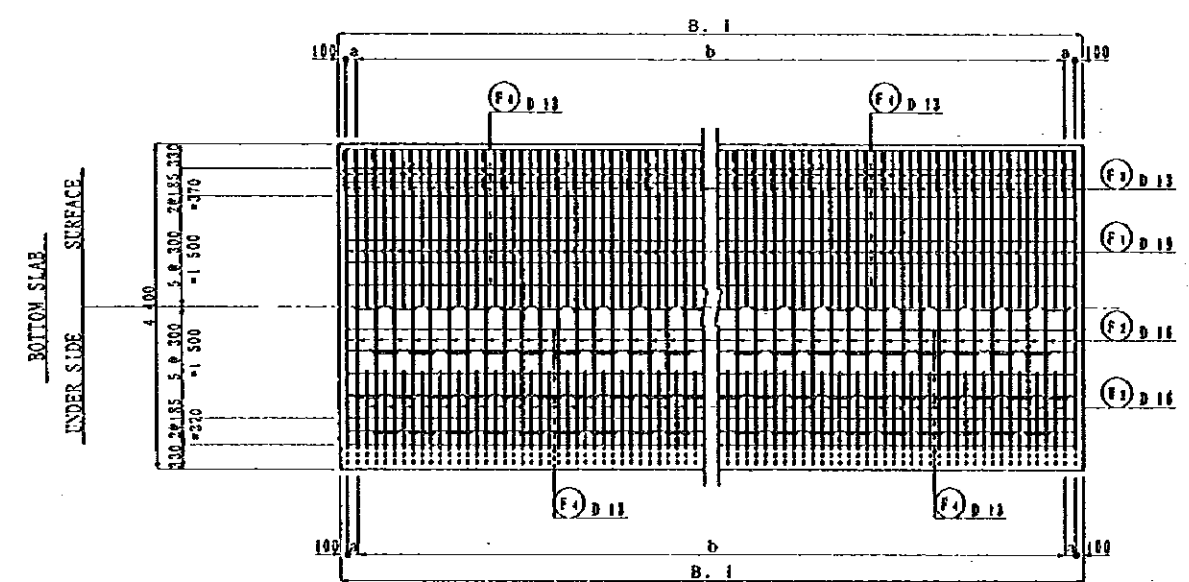
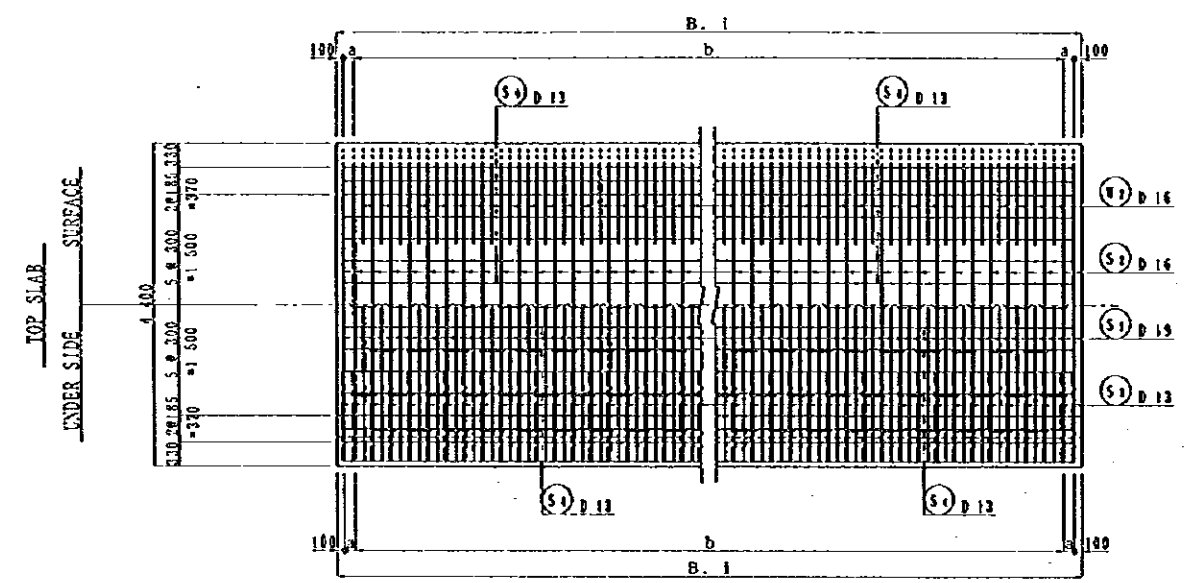
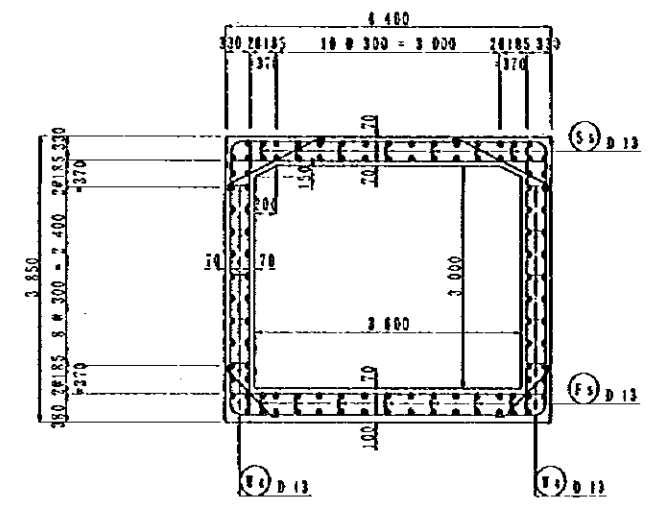
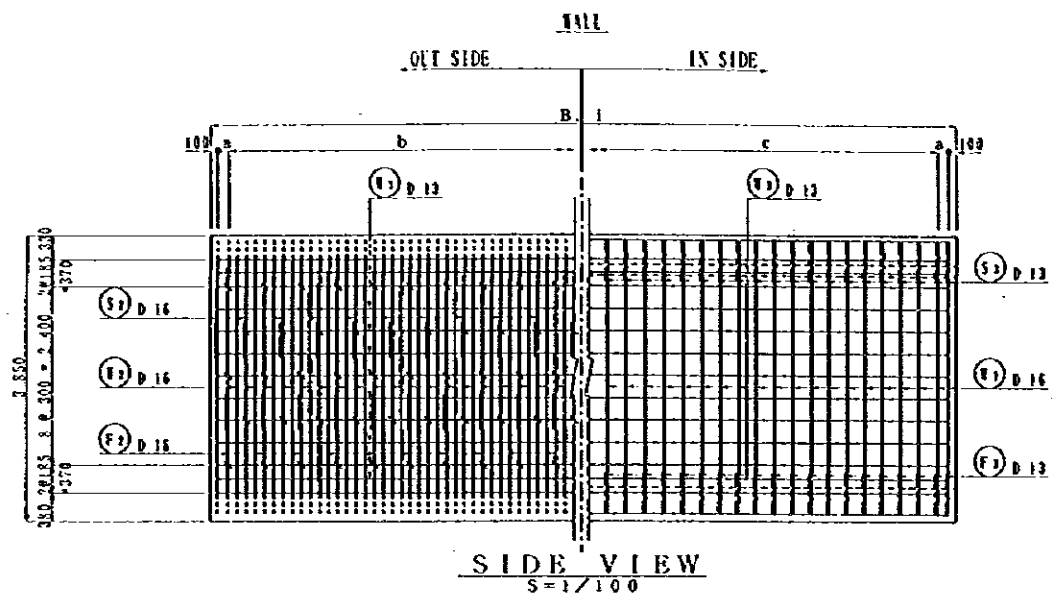
NOTES:

JAPAN INTERNATIONAL COOPERATION AGENCY (JICA)  
JICA STUDY TEAM  
PACIFIC CONSULTANTS INTERNATIONAL  
FUKUYAMA CONSULTANTS INTERNATIONAL

CLIENT : MINISTRY OF COMMUNICATIONS, DIRECTORATE GENERAL OF ROADS  
PROJECT : D/D ON ROAD DEVELOPMENT PROJECT ON BATINAH HIGHWAY  
TITLE : P/U-8, QARIH RE-BAR ARRANGEMENT (S)  
DATE : \_\_\_\_\_

DWG NO. P-8



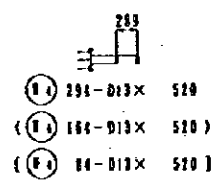
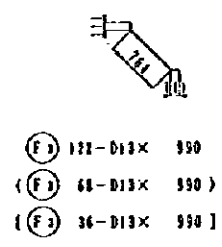
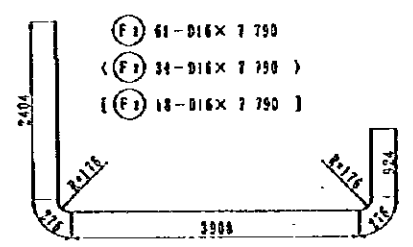
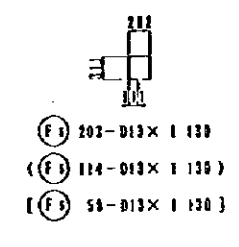
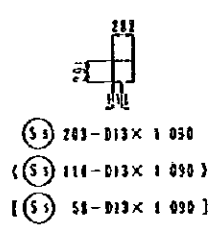
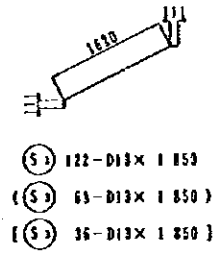
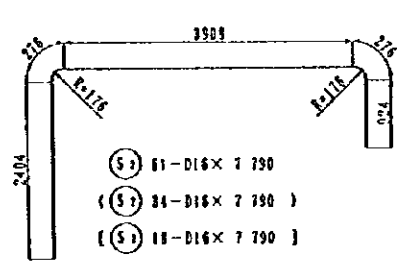
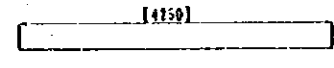
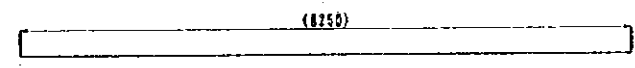
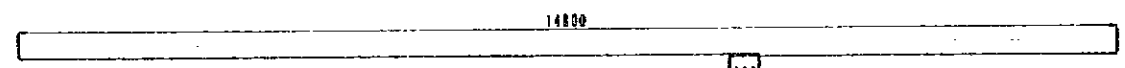
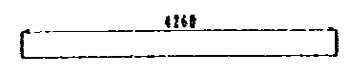
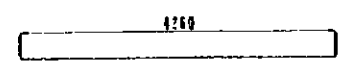
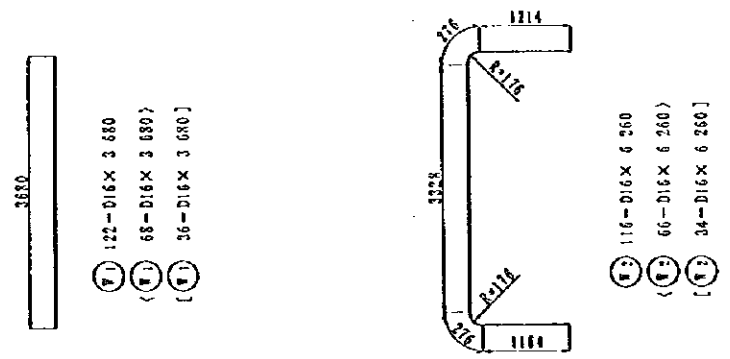


	B. I	a	b	c
TYPE A	15 000	150	116 @ 125	58 @ 250
TYPE C	4 450	—	34 @ 125	17 @ 250
TYPE D	8 450	—	66 @ 125	33 @ 250

NOTES:

JAPAN INTERNATIONAL COOPERATION AGENCY  
(JICA)  
JICA STUDY TEAM  
PACIFIC CONSULTANTS INTERNATIONAL  
FLUKYAMA CONSULTANTS INTERNATIONAL

CLIENT : MINISTRY OF COMMUNICATIONS, DIRECTORATE GENERAL OF ROADS  
PROJECT : D/D ON ROAD DEVELOPMENT PROJECT ON BATINAH HIGHWAY  
TITLE : P/U-8, QARIH RE-BAR ARRANGEMENT (?)  
DATE : \_\_\_\_\_ DWG NO. P-10

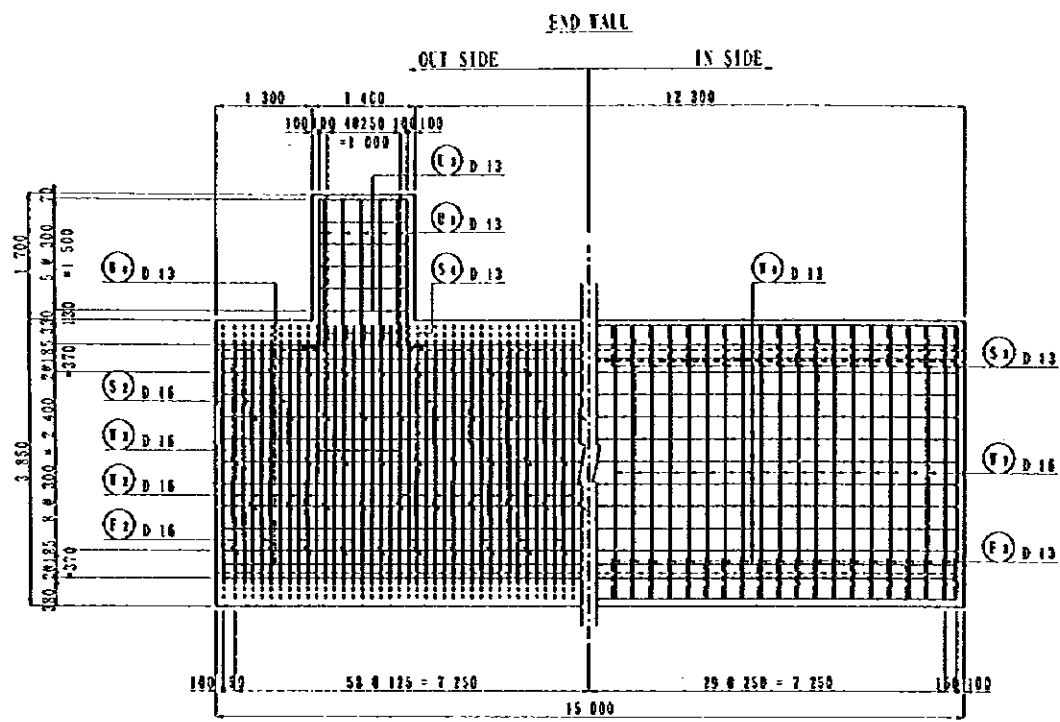


REF. NO.	Ø (mm)	LENGTH (mm)	NOMINAL WEIGHT	NUMB.	G. WEIGHT	WEIGHT	REMARKS
<b>TYPE-A</b>							
S 1	D 19	4 260	2.235	119	9.521	1133.0	—
2	D 16	7 790	1.552	61	12.090	732.5	—
3	D 13	1 850	0.994	122	1.839	224.4	—
4	"	15 190	"	32	15.039	483.2	—
5	"	1 090	"	283	1.083	219.9	□
F 1	D 16	3 680	1.552	122	5.711	696.7	—
2	"	6 260	"	116	9.716	1122.1	—
3	D 13	15 190	0.994	44	15.099	464.4	—
4	"	520	"	294	0.517	152.0	—
F 1	D 19	4 260	2.235	119	9.521	1133.0	—
2	D 16	7 790	1.552	61	12.090	732.5	—
3	D 13	990	0.994	122	0.984	120.0	—
4	"	15 190	"	32	15.039	483.2	—
5	"	1 130	"	203	1.123	228.0	—
							8139.9
<b>TYPE-C</b>							
S 1	D 19	4 260	2.235	67	9.521	637.9	—
2	D 16	7 790	1.552	34	12.090	411.1	—
3	D 13	1 850	0.994	68	1.839	125.1	—
4	"	8 250	"	32	8.201	262.4	—
5	"	1 090	"	114	1.083	123.5	□
F 1	D 16	3 680	1.552	68	5.711	388.3	—
2	"	6 260	"	56	9.716	541.3	—
3	D 13	8 250	0.994	44	8.201	360.8	—
4	"	520	"	164	0.517	84.8	—
F 1	D 19	4 260	2.235	67	9.521	637.9	—
2	D 16	7 790	1.552	34	12.090	411.1	—
3	D 13	590	0.994	68	0.984	66.9	—
4	"	8 250	"	32	8.201	262.4	—
5	"	1 130	"	114	1.123	128.0	—
							4541.5
<b>TYPE-D</b>							
S 1	D 19	4 260	2.235	35	9.521	333.2	—
2	D 16	7 790	1.552	18	12.090	217.6	—
3	D 13	1 850	0.994	36	1.839	66.2	—
4	"	4 250	"	32	4.225	135.2	—
5	"	1 090	"	58	1.083	62.8	□
F 1	D 16	3 680	1.552	56	6.711	285.6	—
2	"	6 260	"	34	9.716	330.3	—
3	D 13	4 250	0.994	44	4.225	185.9	—
4	"	520	"	64	0.517	33.1	—
F 1	D 19	4 260	2.235	35	9.521	333.2	—
2	D 16	7 790	1.552	18	12.090	217.6	—
3	D 13	990	0.994	36	0.984	35.4	—
4	"	4 250	"	32	4.225	135.2	—
5	"	1 130	"	58	1.123	65.1	—
							2266.7
							D 19 4208.3
							D 16 6121.7
							D 13 4718.2
							TOTAL WEIGHT 15048.1

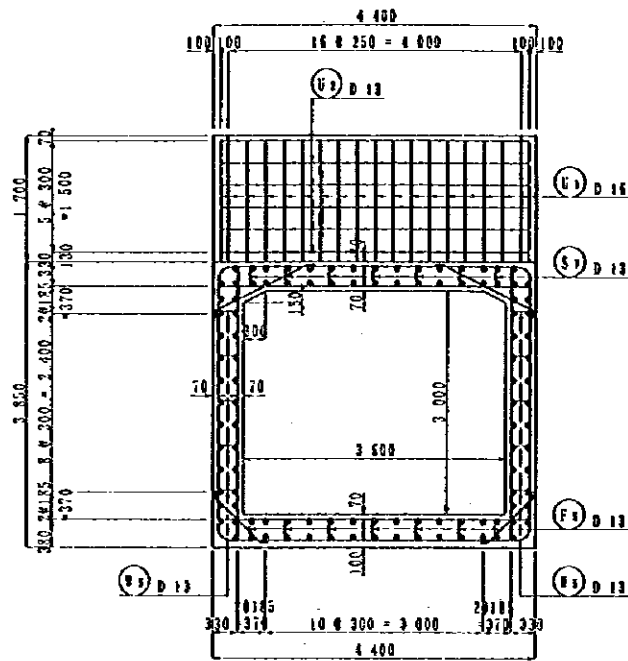
NOTES: ( ) TYPE-C  
[ ] TYPE-D

JAPAN INTERNATIONAL COOPERATION AGENCY (JICA)  
JICA STUDY TEAM  
PACIFIC CONSULTANTS INTERNATIONAL  
FUKUYAMA CONSULTANTS INTERNATIONAL

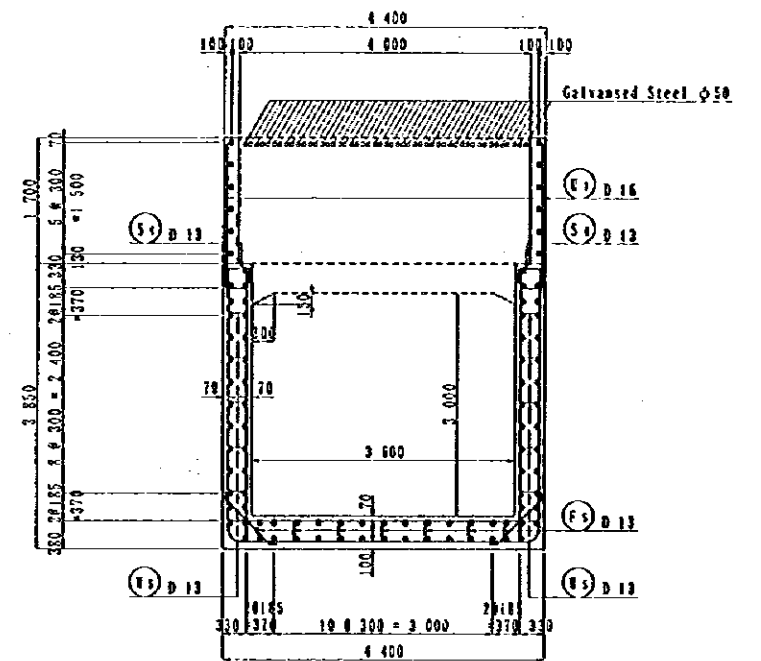
CLIENT : MINISTRY OF COMMUNICATIONS, DIRECTORATE GENERAL OF ROADS  
PROJECT : D/D ON ROAD DEVELOPMENT PROJECT ON BATINAH HIGHWAY  
TITLE : P/U-8, QARIH RE-BAR ARRANGEMENT (8)  
DATE : DYG NO. P-11



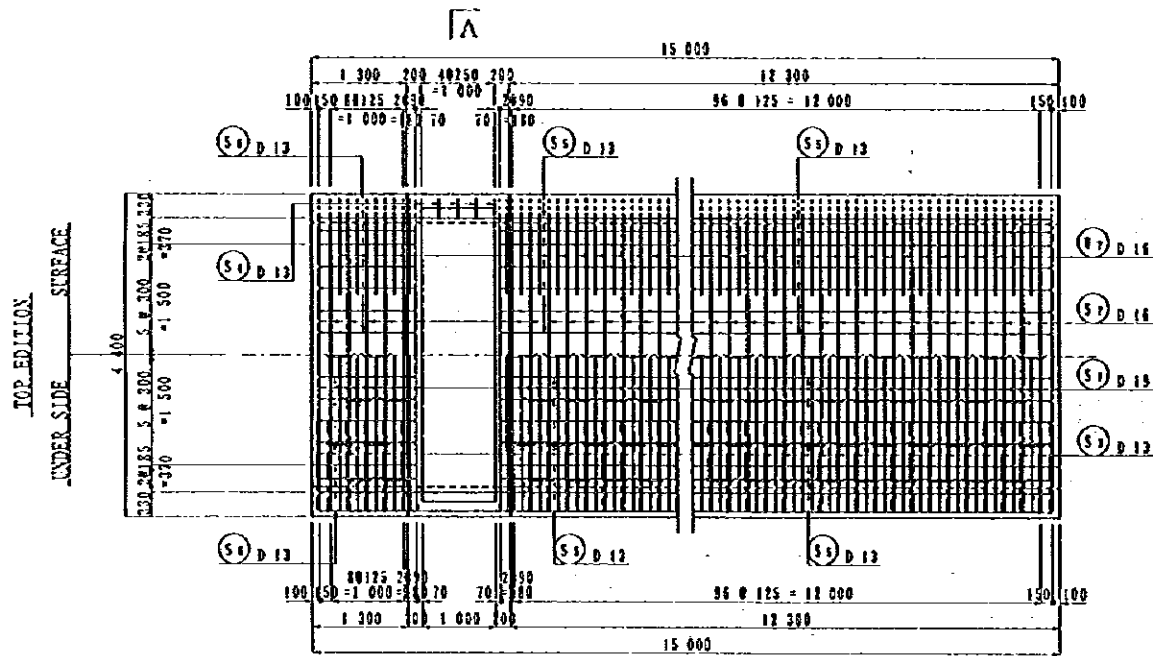
SIDE VIEW  
S=1/100



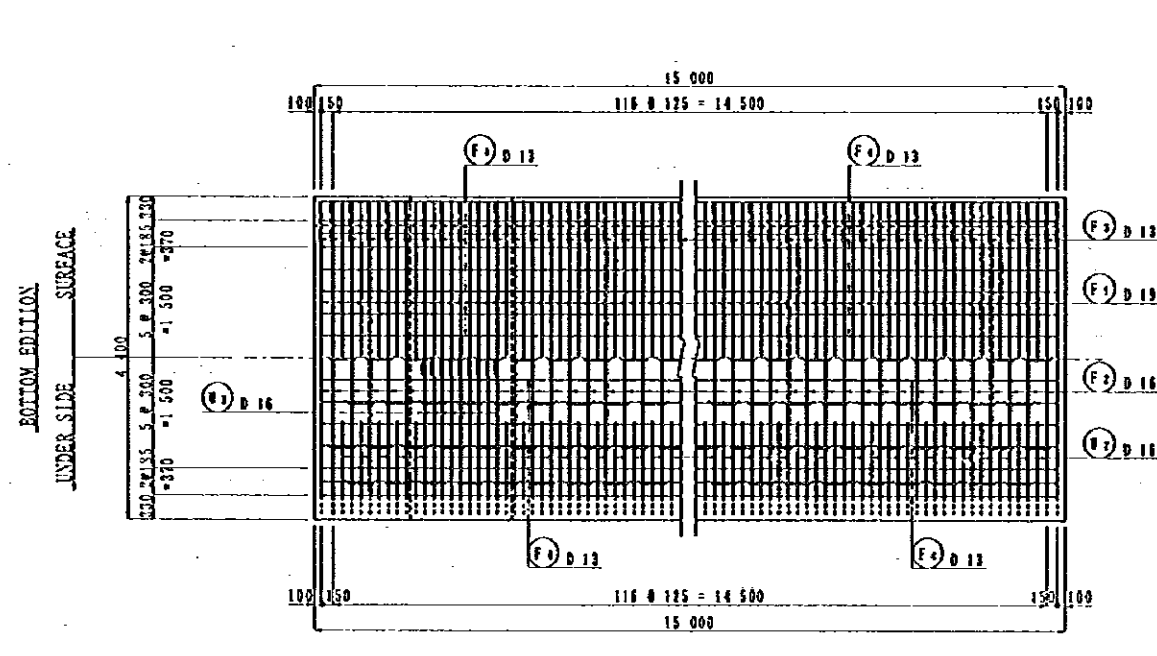
SECTION  
S=1/100



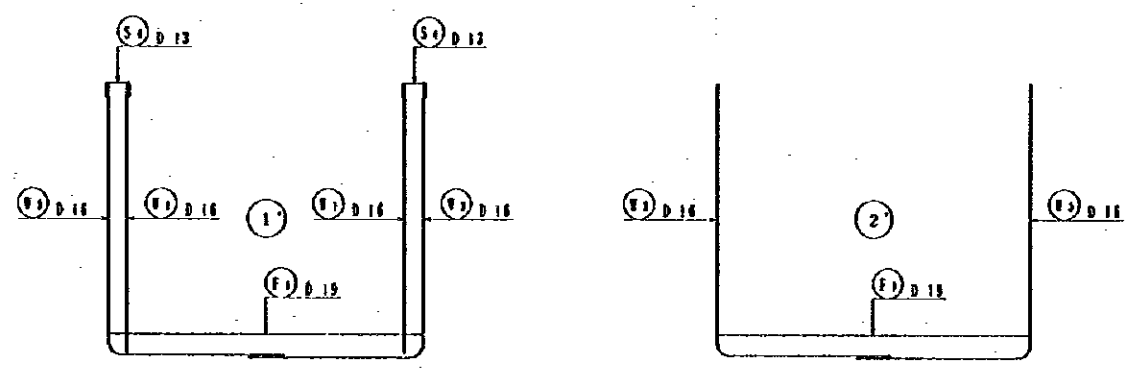
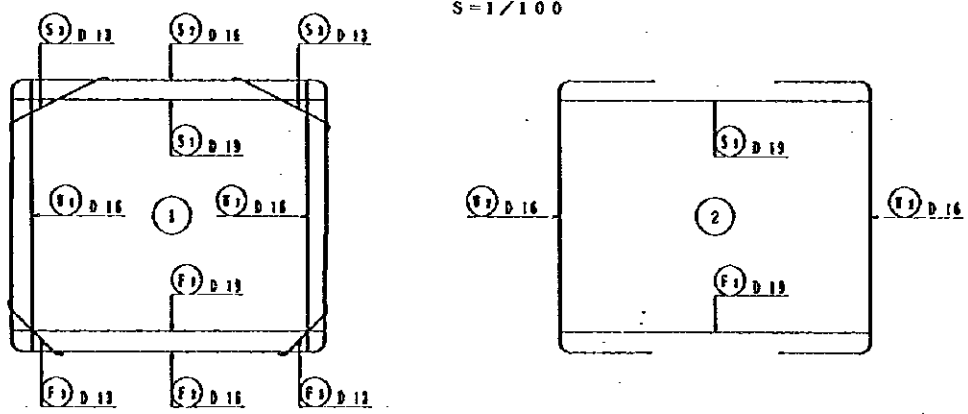
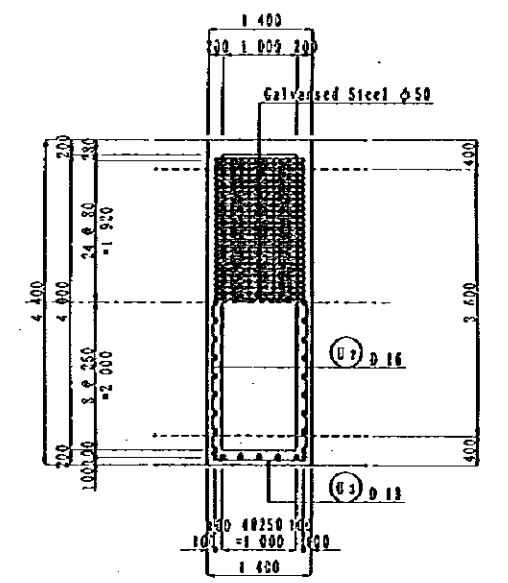
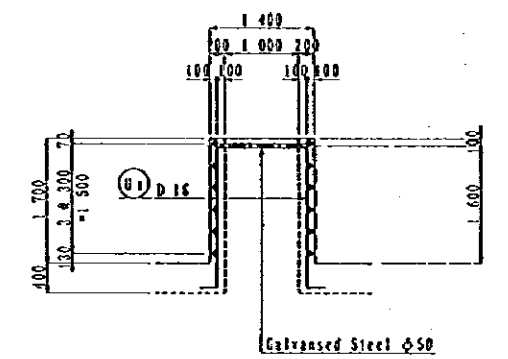
A-A  
S=1/100



PLAN  
S=1/100



PLAN  
S=1/100

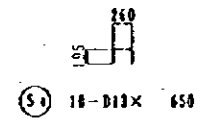
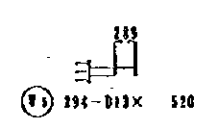
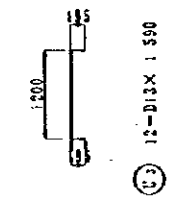
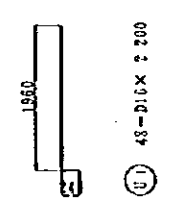
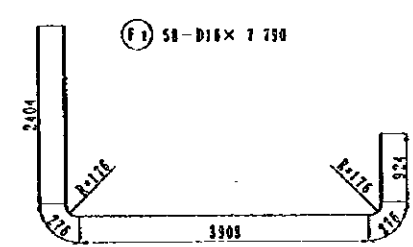
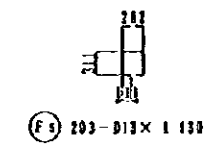
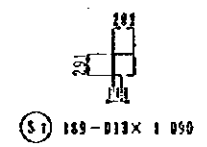
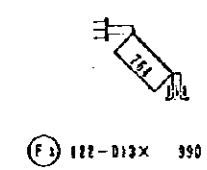
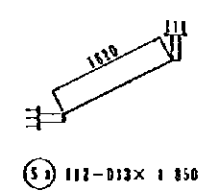
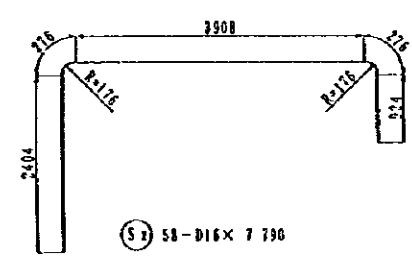
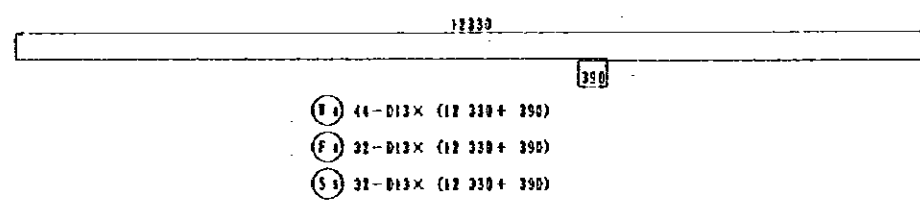
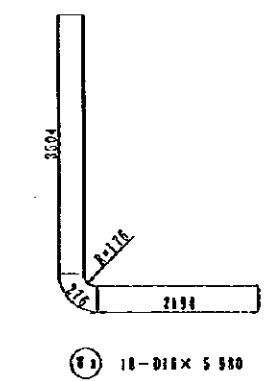
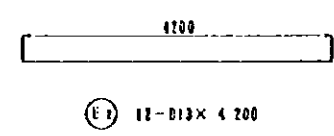
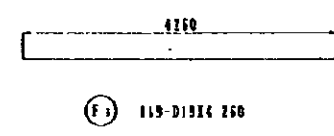
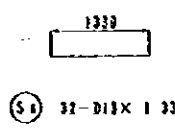
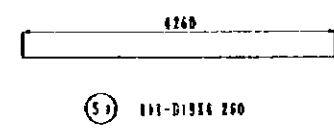
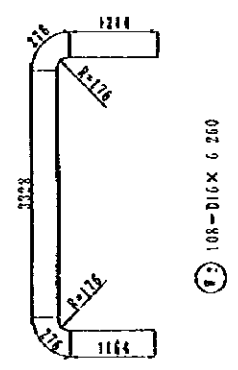
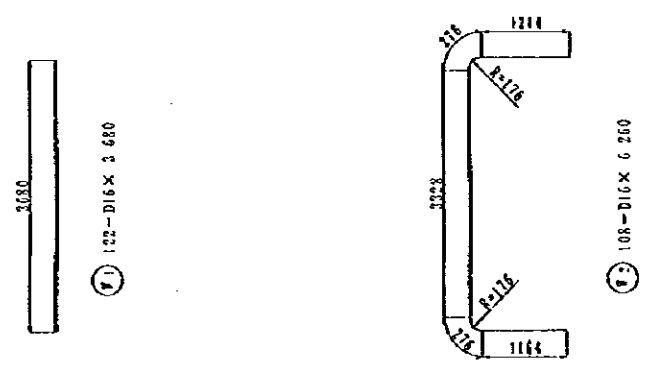


NOTES:

JAPAN INTERNATIONAL COOPERATION AGENCY (JICA)  
JICA STUDY TEAM  
PACIFIC CONSULTANTS INTERNATIONAL  
FUKUYAMA CONSULTANTS INTERNATIONAL

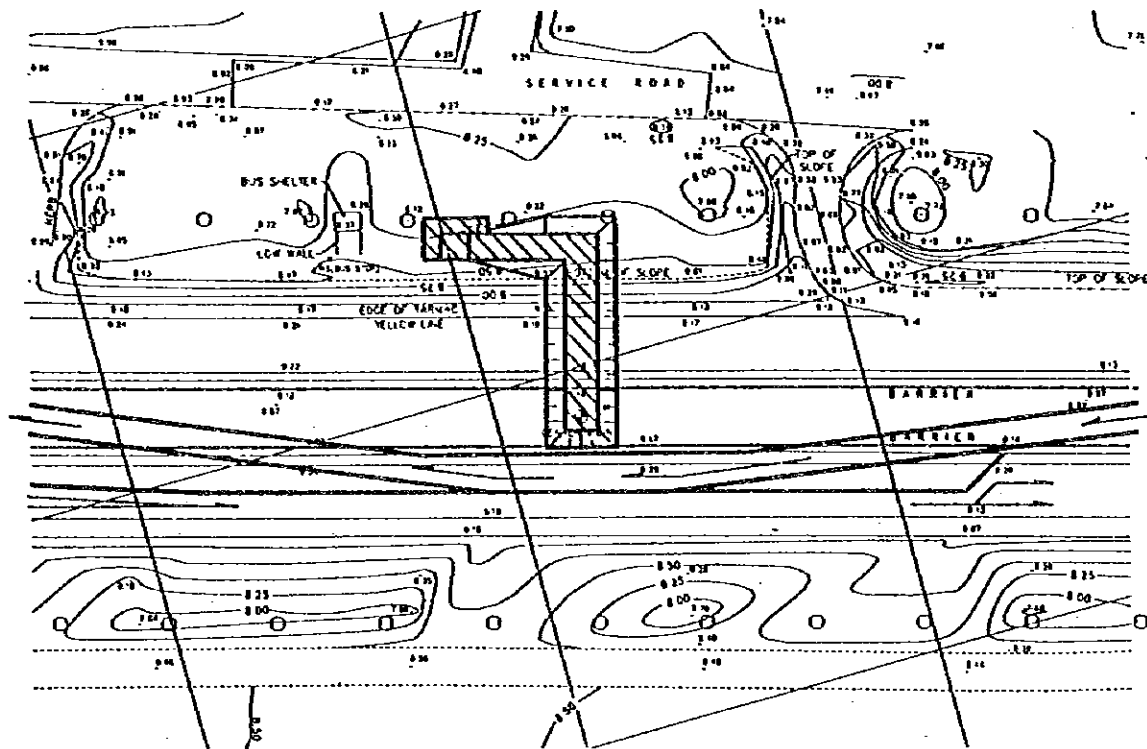
CLIENT : MINISTRY OF COMMUNICATIONS, DIRECTORATE GENERAL OF ROADS  
PROJECT : D/D ON ROAD DEVELOPMENT PROJECT ON BATINAH HIGHWAY  
TITLE : P/U-8, QARIH RE-BAR ARRANGEMENT (9)  
DATE :  
DWG NO. P-12



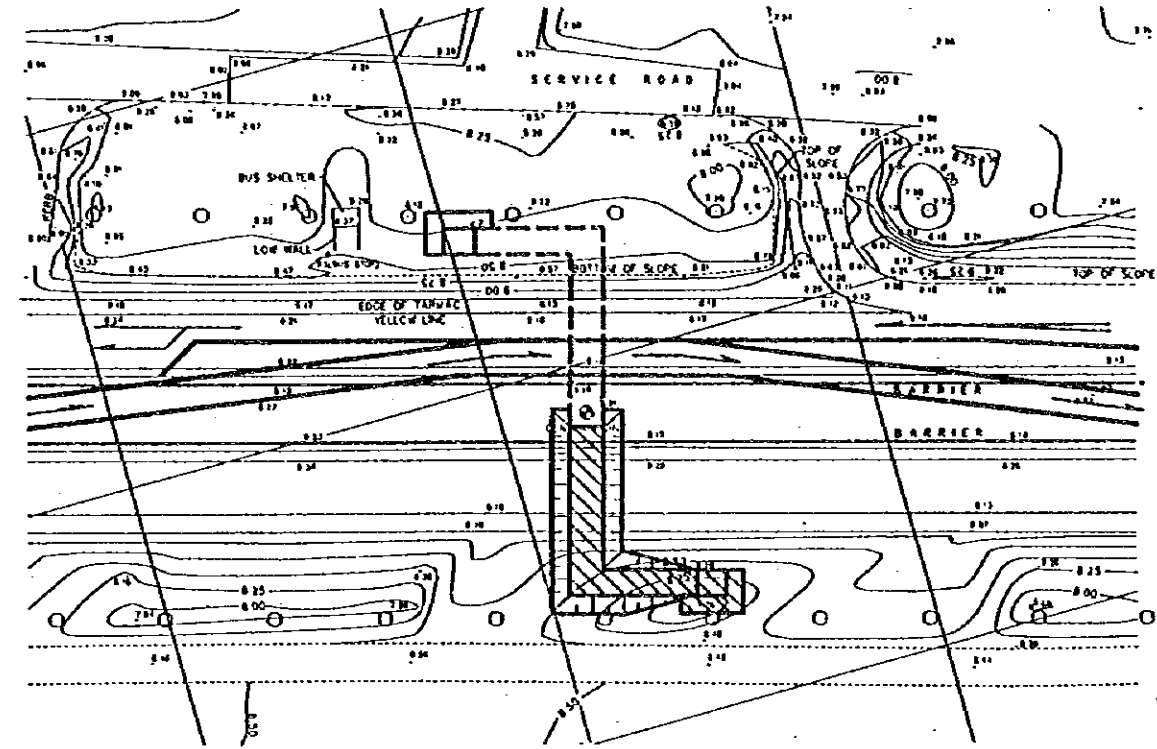


REIN NO.	Ø (mm)	LENGTH (mm)	SONISAL WEIGHT	NMB	U WEIGHT	WEIGHT	REMARKS
<b>TYPE-B</b>							
S 1	D 16	4 260	2.235	111	9.585	1056.8	—
2	D 16	7 750	1.552	58	12.090	701.2	—
3	D 13	1 850	0.994	112	1.841	266.2	—
4	"	650	"	18	0.646	6.5	—
5	"	12 720	"	32	12.644	404.6	—
6	"	1 330	"	32	1.322	42.3	—
7	"	1 050	"	189	1.483	204.7	—
V 1	D 16	3 680	1.552	122	5.711	656.7	—
2	"	6 260	"	100	9.716	1049.3	—
3	"	5 980	"	18	9.281	147.1	—
4	D 13	12 720	0.994	44	12.644	556.3	—
5	"	520	"	294	0.577	152.0	—
F 1	D 16	4 260	2.235	119	9.521	1133.0	—
2	D 16	7 750	1.552	58	12.090	701.2	—
3	D 13	950	0.994	122	0.934	120.0	—
4	"	12 720	"	32	12.644	404.6	—
5	"	1 130	"	203	1.123	228.0	—
U 1	D 16	2 200	1.552	48	3.414	163.9	—
2	D 13	4 200	0.994	12	4.175	50.1	—
3	"	1 550	"	12	1.500	19.0	—
						D 16	2189.8
						D 16	3479.4
						D 13	2394.1
						<b>TOTAL WEIGHT</b>	<b>8063.3</b>

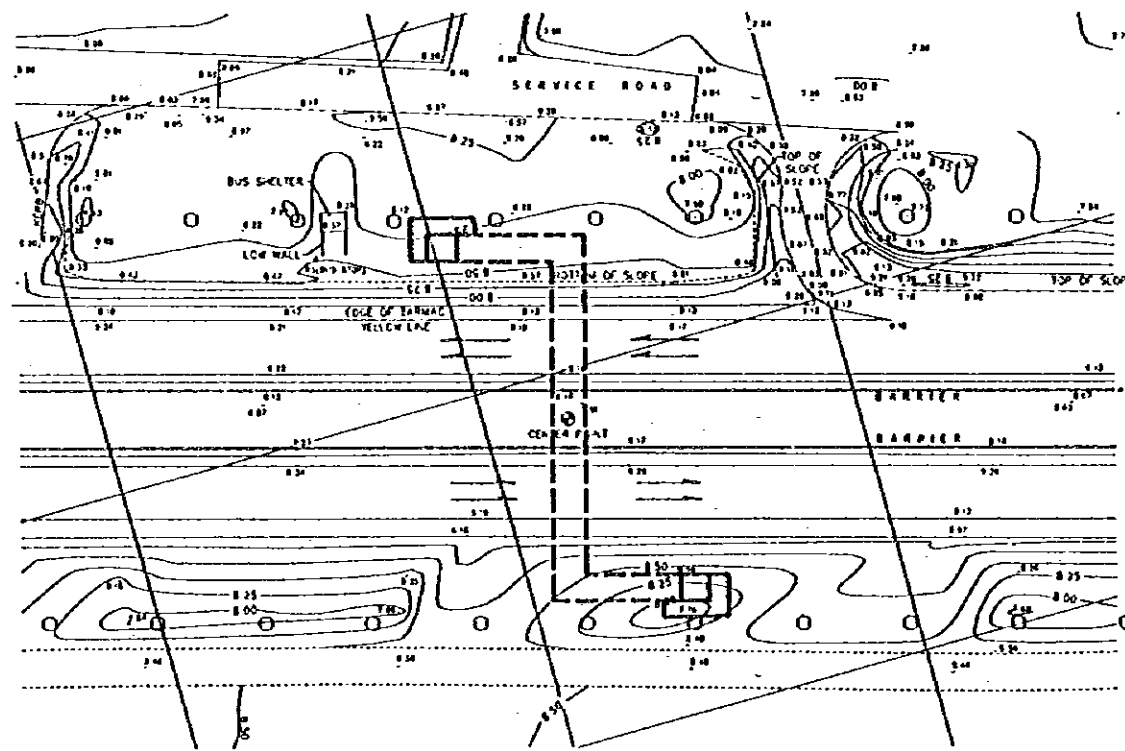
FIRST CONSTRUCTION STAGE



SECOND CONSTRUCTION STAGE



THIRD CONSTRUCTION STAGE



FIRST CONSTRUCTION STAGE

1. Divert traffic from the existing carriageway and demarcate the yard for the first stage of construction.
2. Carry out the first stage of construction for the underpass.
3. After completion of first stage of construction, restore the existing carriageway to allow traffic flow.

SECOND CONSTRUCTION STAGE

1. Divert traffic from the other carriageway and demarcate the yard for the second stage of construction.
2. Carry out the second stage of construction for the underpass.
3. After completion of second stage of construction, restore the existing carriageway to allow traffic flow.

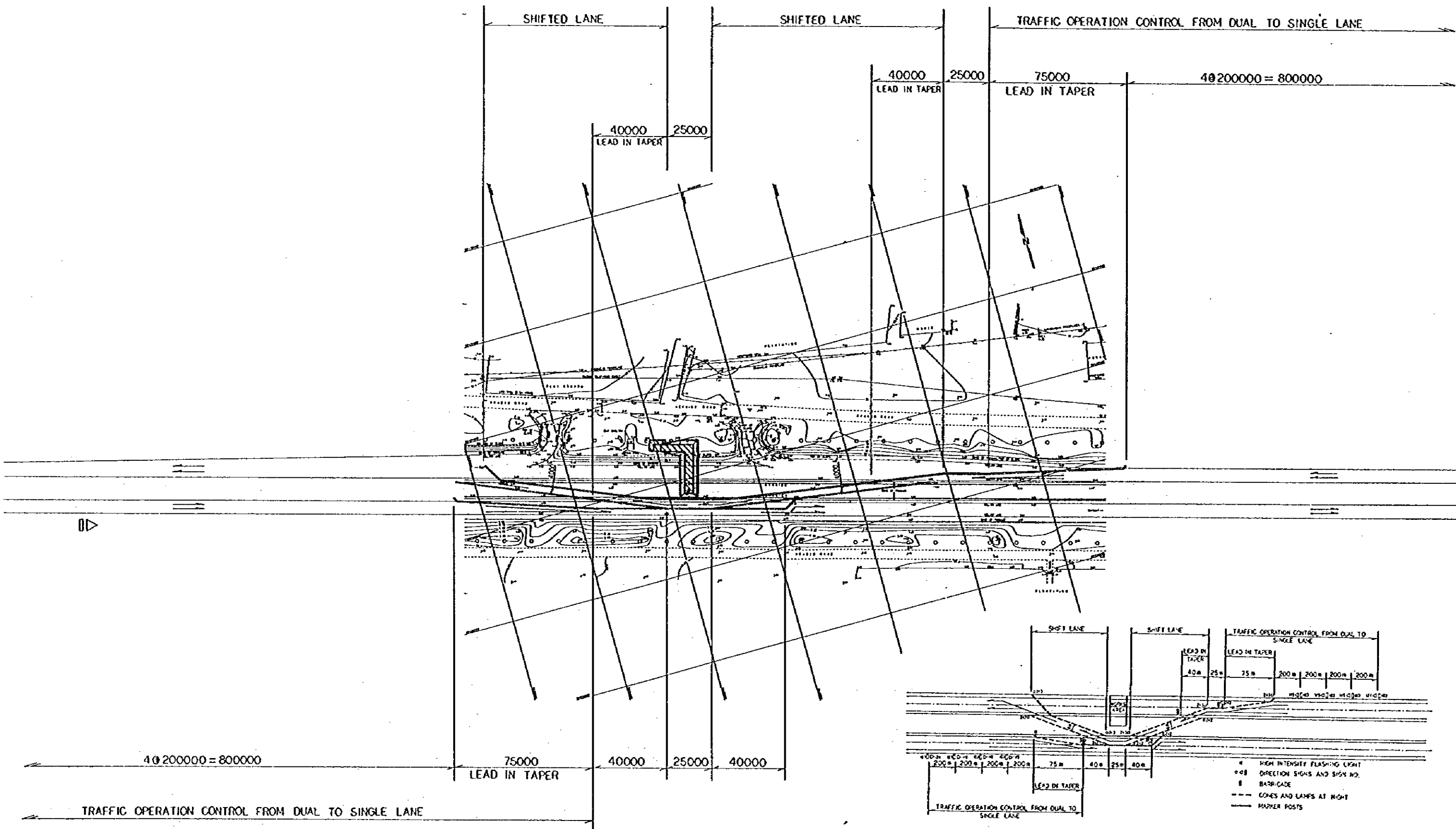
THIRD CONSTRUCTION STAGE

1. Carry out accessory installation work for pedestrian underpass and open it to use.
2. Construction completed.

NOTES:

JAPAN INTERNATIONAL COOPERATION AGENCY  
(JICA)  
JICA STUDY TEAM  
PACIFIC CONSULTANTS INTERNATIONAL,  
FUKUYAMA CONSULTANTS INTERNATIONAL

CLIENT: MINISTRY OF COMMUNICATIONS, DIRECTORATE GENERAL OF ROADS  
PROJECT: D/D ON ROAD DEVELOPMENT PROJECT ON BATINAH HIGHWAY  
TITLE: SEQUENCE OF QARIH PU CONSTRUCTION  
DATE: \_\_\_\_\_ DWGNO. T-1



SCALE 1/2000

GENERAL LAYOUT PLAN OF P/U WORKS

NOTES:

JAPAN INTERNATIONAL COOPERATION AGENCY (JICA) JICA STUDY TEAM PACIFIC CONSULTANTS INTERNATIONAL FUKUYAMA CONSULTANTS INTERNATIONAL	CLIENT: MINISTRY OF COMMUNICATIONS, DIRECTORATE GENERAL OF ROADS
	PROJECT: D/D ON ROAD DEVELOPMENT PROJECT ON BATINAIH HIGHWAY
TITLE: DETOUR LAYOUT OF QARHI P/U WORKS	DATE: _____ DWGNO. T-2



