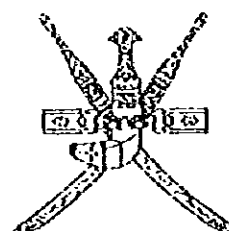


SULTANATE OF OMAN
MINISTRY OF COMMUNICATIONS
DIRECTORATE GENERAL OF ROADS



CONSTRUCTION OF PEDESTRIAN UNDERPASS
AT
A'SUWEIQ
BATINAH HIGHWAY

TENDER DOCUMENT

DRAWINGS

JICA LIBRARY



J 1140737 (6)

PACIFIC CONSULTANTS INTERNATIONAL
FUKUYAMA CONSULTANTS INTERNATIONAL

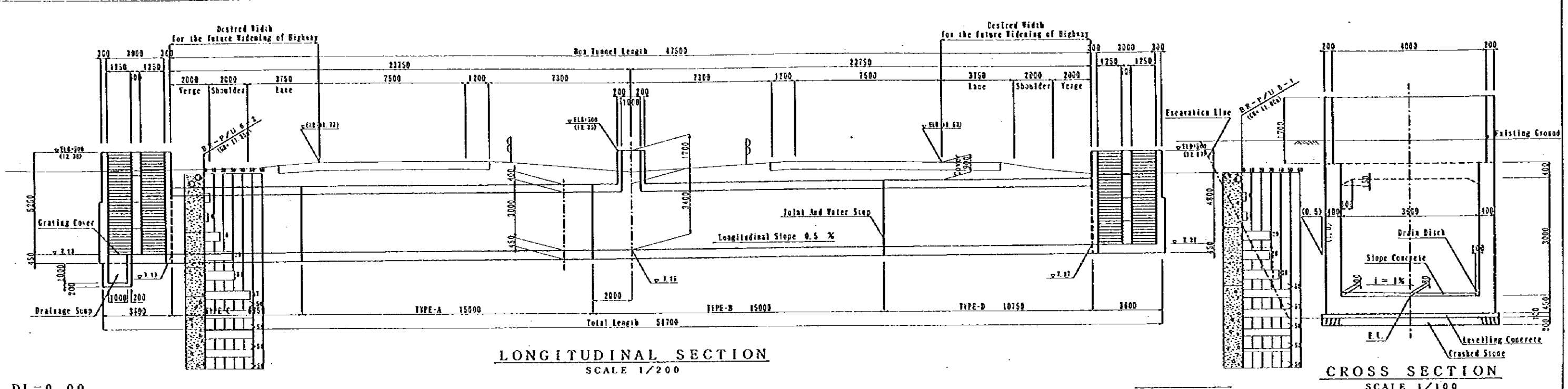
March, 1997

SSF
CR(5)
97-015

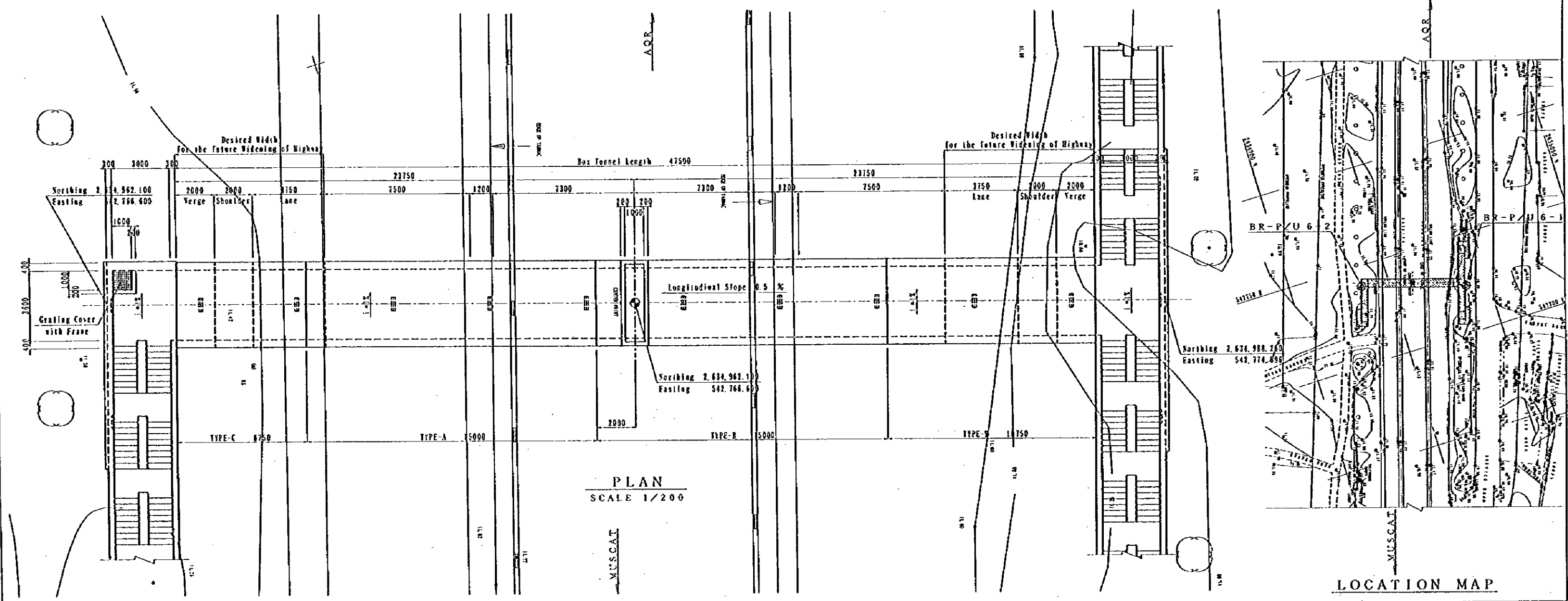
DRAWING SCHEDULE
(PU6-A' SUWEIQ PEDESTRIAN UNDERPASS)

SHEET NO.	DRAWING TITLE
G	GENERAL
G - 1	Drawing Schedule
P	PEDESTRIAN UNDERPASS
P - 1	General View (1)
P - 2	General View (2)
P - 3	General View (3)
P - 4	General View (4)
P - 5	General View (5)
P - 6	Re-bar Arrangement (1)
P - 7	Re-bar Arrangement (2)
P - 8	Re-bar Arrangement (3)
P - 9	Re-bar Arrangement (4)
P - 10	Re-bar Arrangement (5)
P - 11	Re-bar Arrangement (6)
P - 12	Re-bar Arrangement (7)
P - 13	Re-bar Arrangement (8)
P - 14	Re-bar Arrangement (9)
P - 15	Re-bar Arrangement (10)
T	TEMPORARY WORKS
T - 1	Construction Sequence
T - 2	Detour Layout

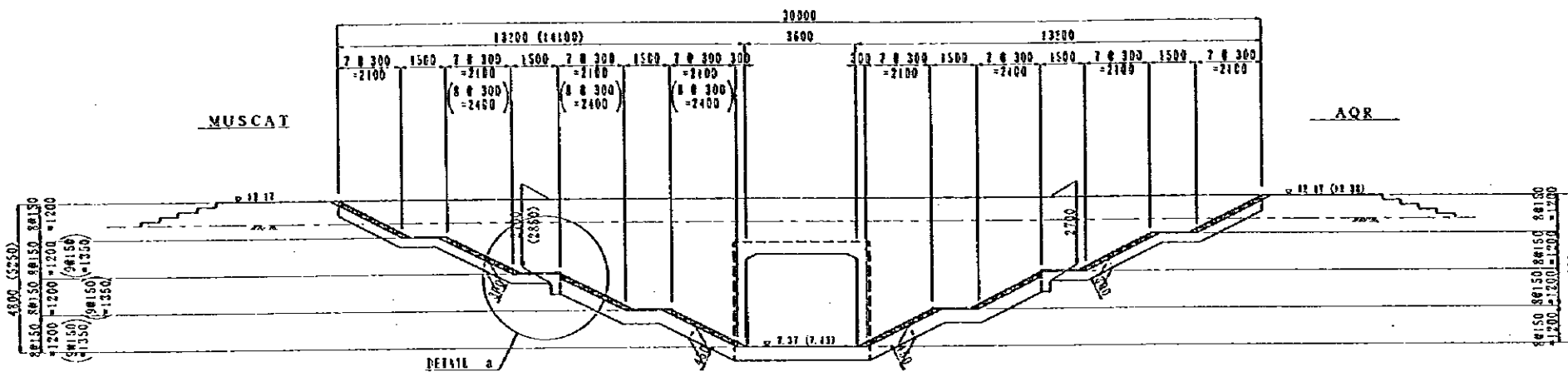
NOTES:		JAPAN INTERNATIONAL COOPERATION AGENCY (JICA)	CLIENT : MINISTRY OF COMMUNICATIONS, DIRECTORATE GENERAL OF ROADS
		JICA STUDY TEAM PACIFIC CONSULTANTS INTERNATIONAL, FUKUYAMA CONSULTANTS INTERNATIONAL	PROJECT : D/D ON ROAD DEVELOPMENT PROJECT ON BATINAH HIGHWAY TITLE : PU-6, A' SUWEIQ DRAWING SCHEDULE
			DATE : _____ DWG NO. : G-1



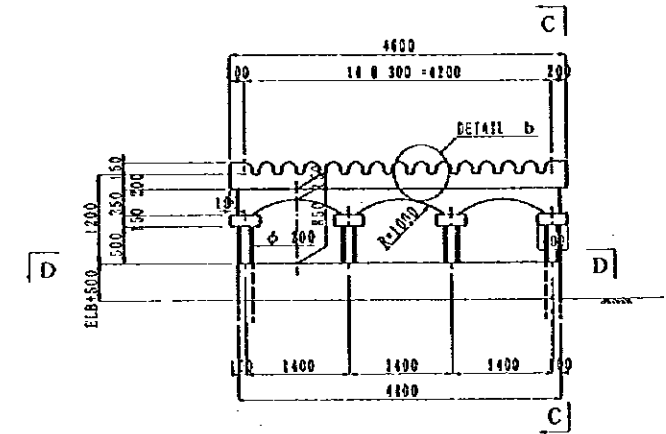
DL = 0.00



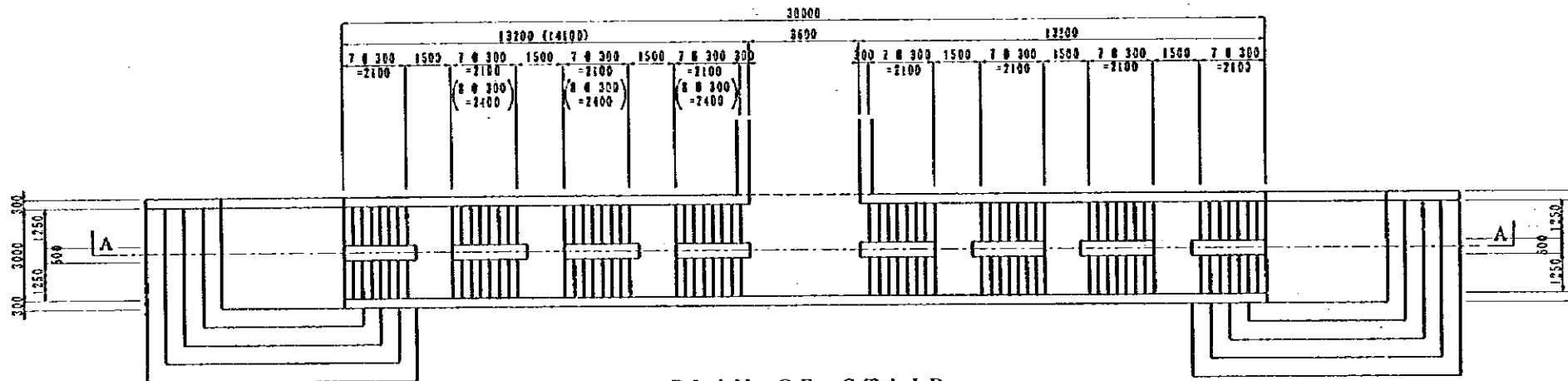
NOTES:	JAPAN INTERNATIONAL COOPERATION AGENCY (JICA)	CLIENT :	MINISTRY OF COMMUNICATIONS, DIRECTORATE GENERAL OF ROADS
	JICA STLOY TEAM PACIFIC CONSULTANTS INTERNATIONAL FLUYAMA CONSULTANTS INTERNATIONAL	PROJECT :	D/D ON ROAD DEVELOPMENT PROJECT ON BATINAH HIGHWAY
		TITLE :	P/U-6, A' SUWAIQ GENERAL VIEW (I)
		DATE	DWG NO. P-1



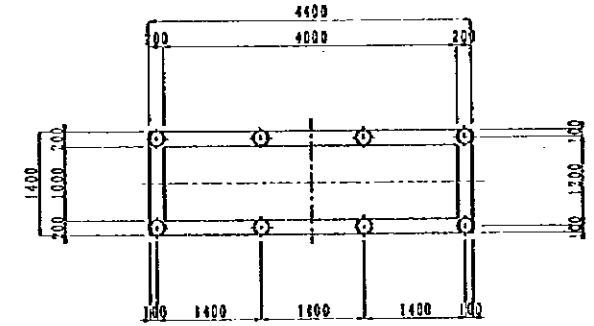
STAIR (SECTION A-A)
SCALE 1/200



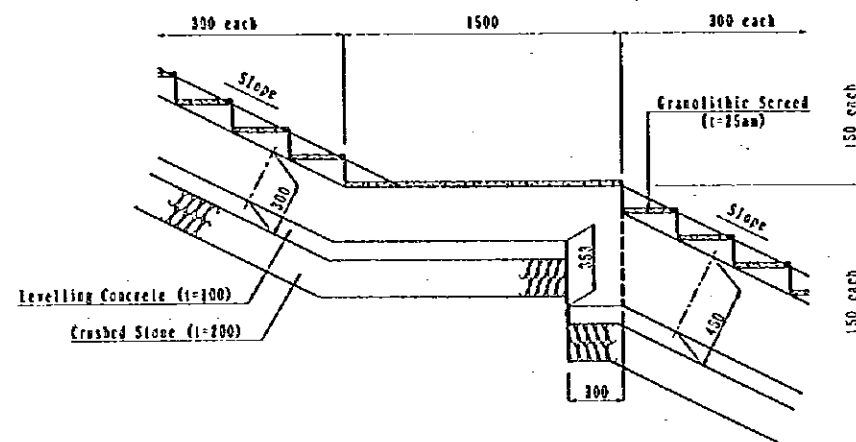
SIDE ELEVATION
SCALE 1/100



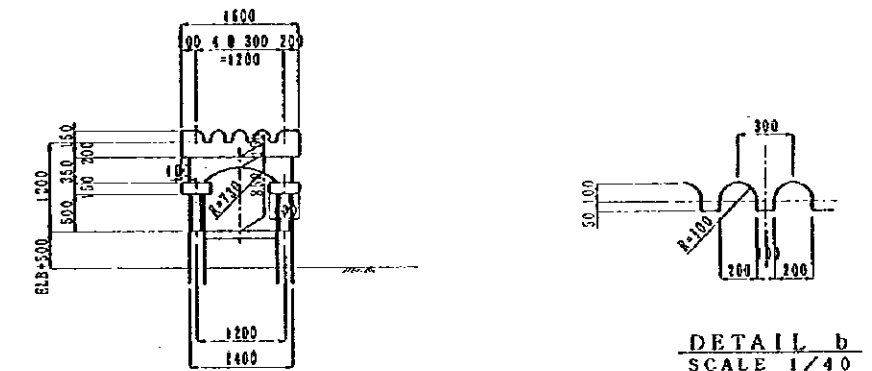
PLAN OF STAIR
SCALE 1/200



SECTION D-D
SCALE 1/100



DETAIL a
SCALE 1/40



SECTION B-B
SCALE 1/100

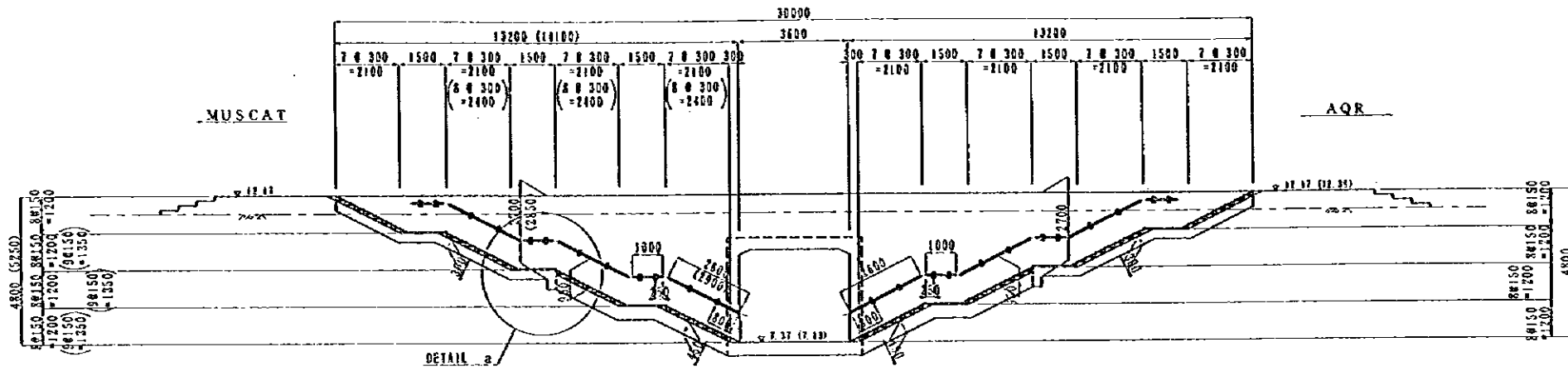
DETAIL b
SCALE 1/40

CANOPY ON LIGHT WELL

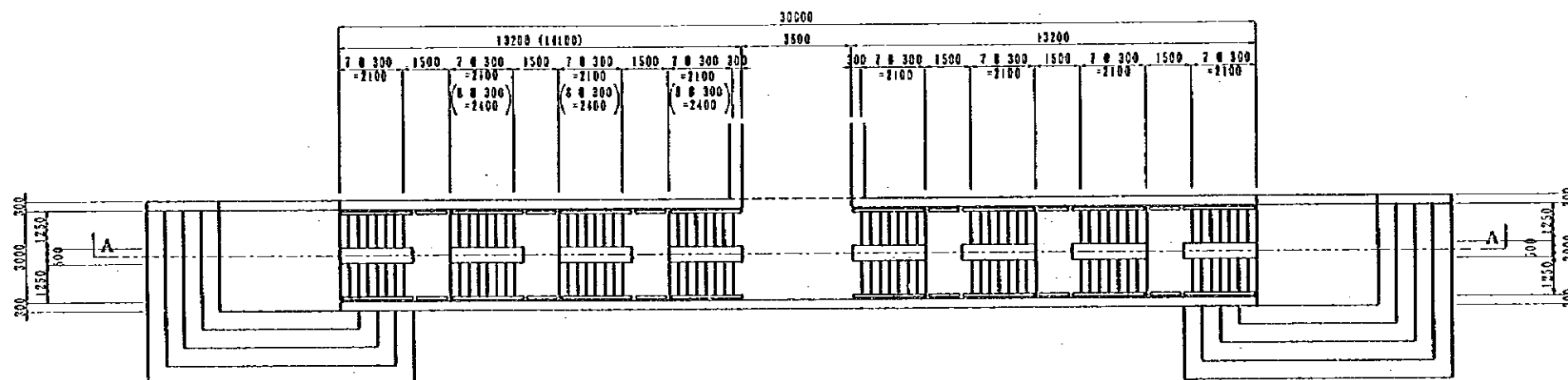
NOTES: Dimensions of () value are for inland stair.

JAPAN INTERNATIONAL COOPERATION AGENCY
(JICA)
JICA STUDY TEAM
PACIFIC CONSULTANTS INTERNATIONAL
FERUYAMA CONSULTANTS INTERNATIONAL

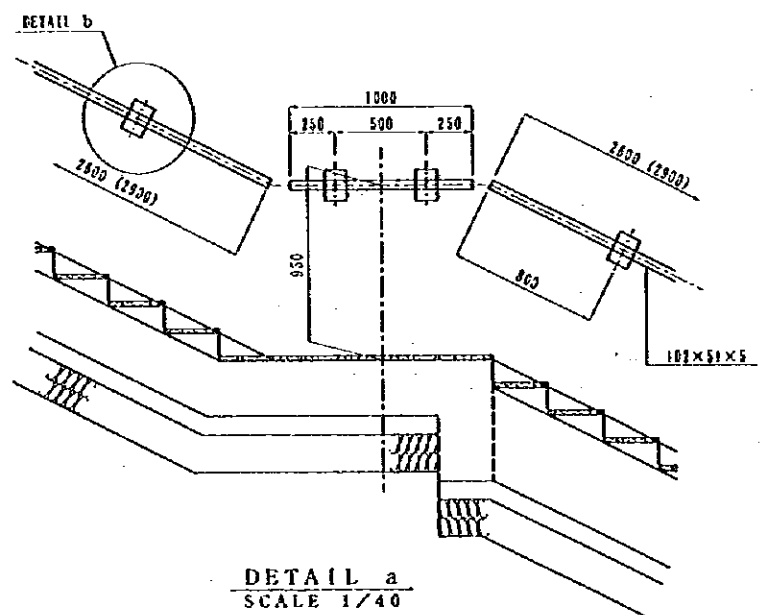
CLIENT : MINISTRY OF COMMUNICATIONS, DIRECTORATE GENERAL OF ROADS
PROJECT : D/D ON ROAD DEVELOPMENT PROJECT ON BATINAH HIGHWAY
TITLE : P/U-6, A' SUWAIQ GENERAL VIEW (2)
DATE : _____ DWG NO. P-2



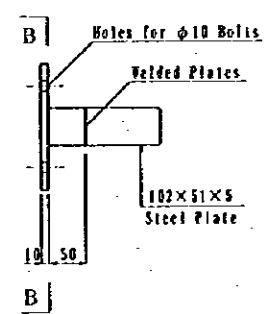
STAIR HANDRAILE (SECTION A-A)
SCALE 1/200



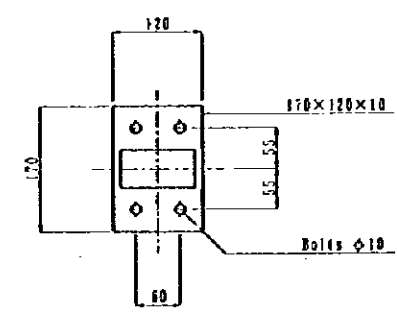
PLAN OF STAIR HANDRAILE
SCALE 1/200



DETAIL a
SCALE 1/40



DETAIL b
SCALE 1/10

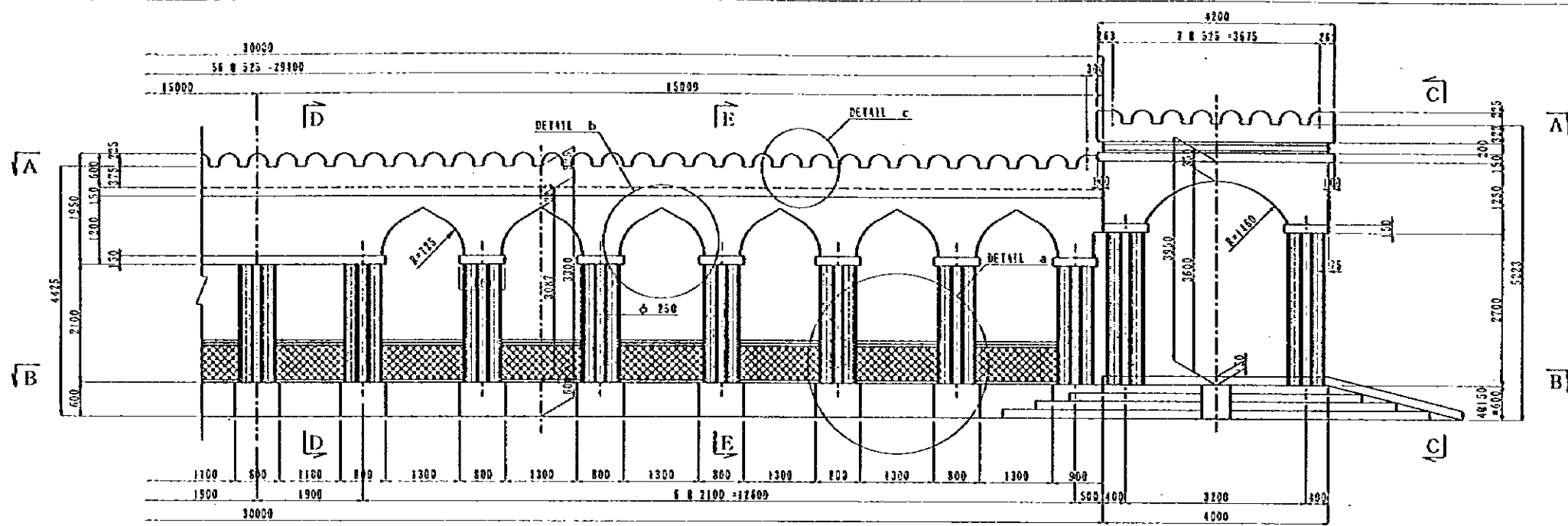


SECTION B-B
SCALE 1/10

NOTES: Dimensions of () value are for inland stair.

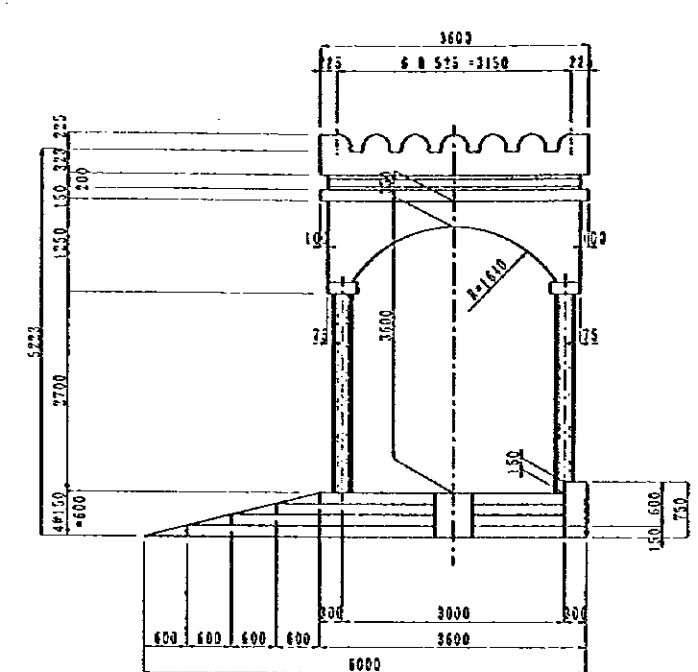
JAPAN INTERNATIONAL COOPERATION AGENCY
(JICA)
JICA STUDY TEAM
PACIFIC CONSULTANTS INTERNATIONAL
PLUYAMA CONSULTANTS INTERNATIONAL

CLIENT : MINISTRY OF COMMUNICATIONS, DIRECTORATE GENERAL OF ROADS
PROJECT : D/D ON ROAD DEVELOPMENT PROJECT ON BATINAH HIGHWAY
TITLE : P/U-G, A' SUWAIQ GENERAL VIEW (3)
DATE : _____ DWG NO. P-3

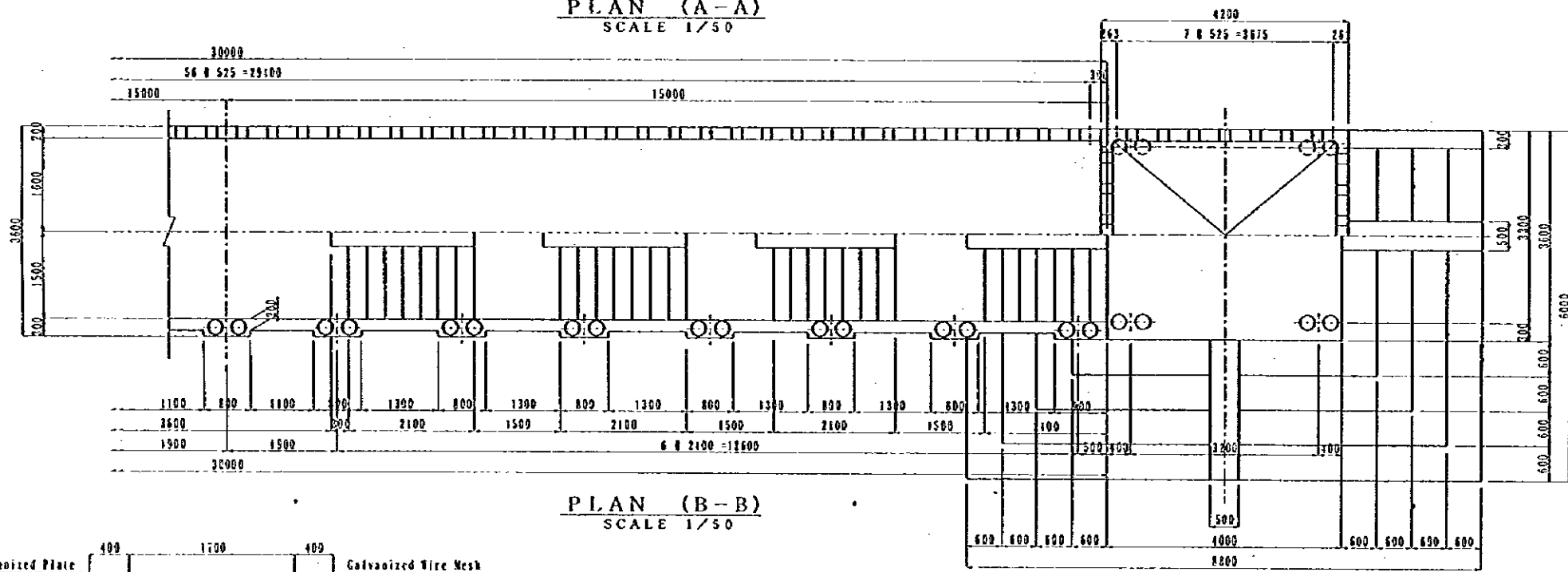


PROFILE OF CANOPY
SCALE 1/50

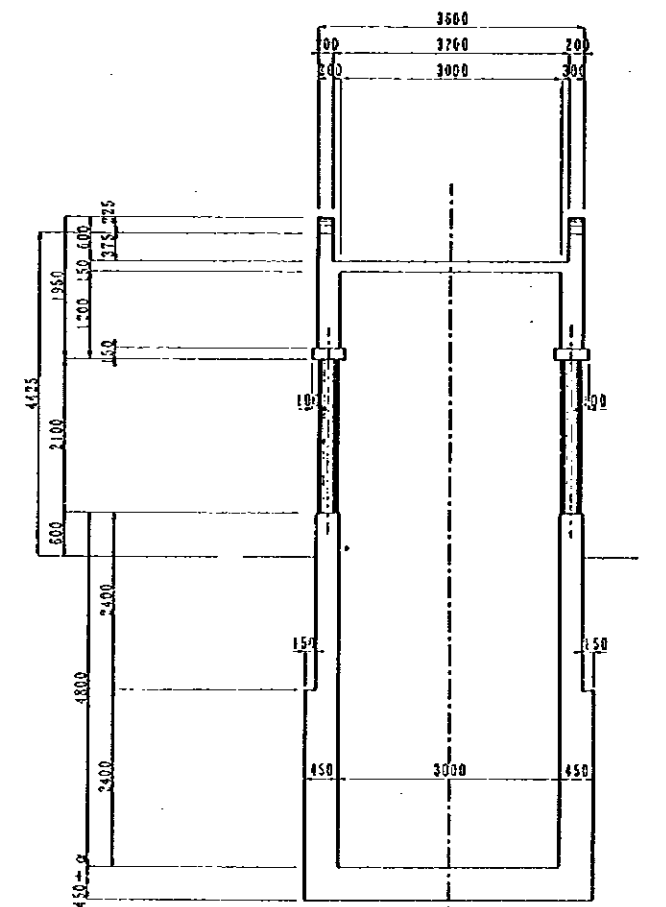
PLAN (A-A)
SCALE 1/50



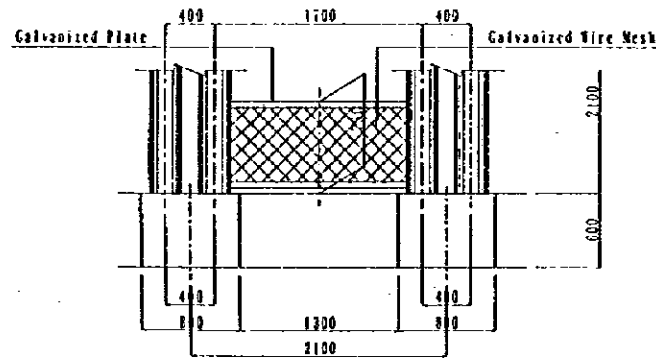
ENTRANCE (C-C)
SCALE 1/50



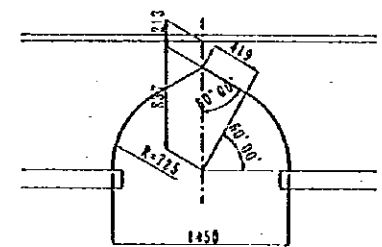
PLAN (B-B)
SCALE 1/50



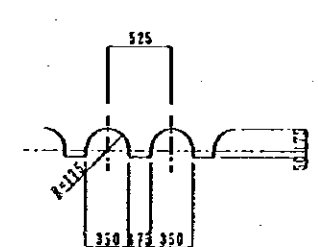
CROSS SECTION D-D
SCALE 1/50



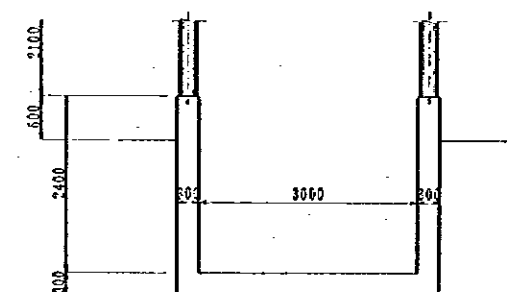
DETAIL a
SCALE 1/30



DETAIL b
SCALE 1/30

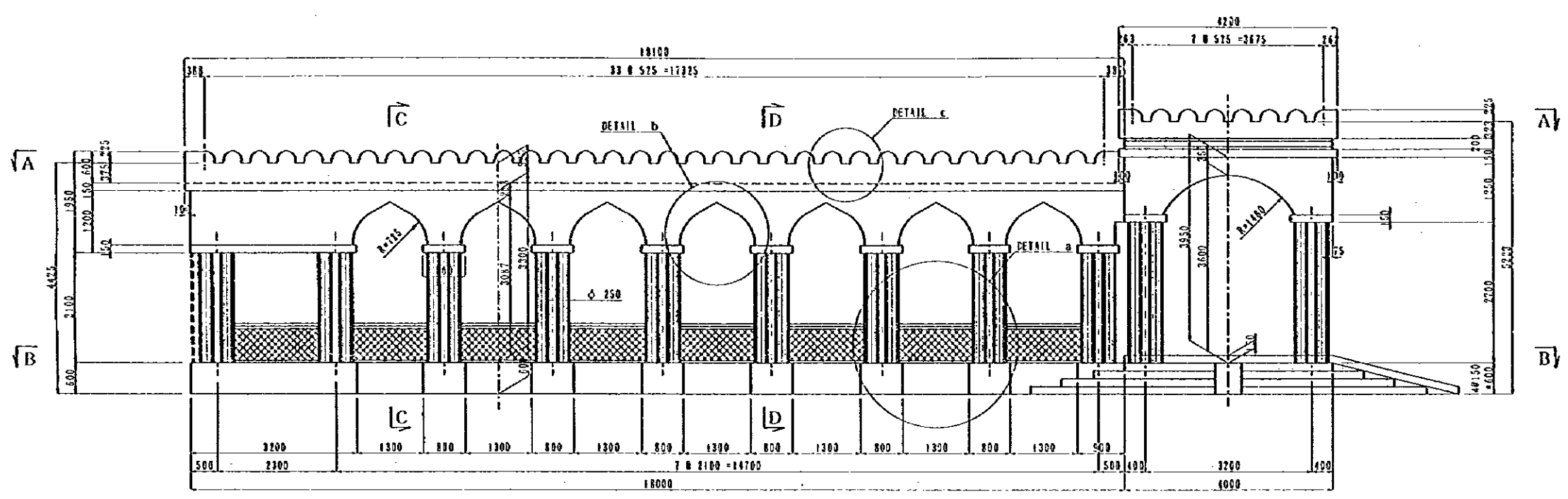


DETAIL c
SCALE 1/30



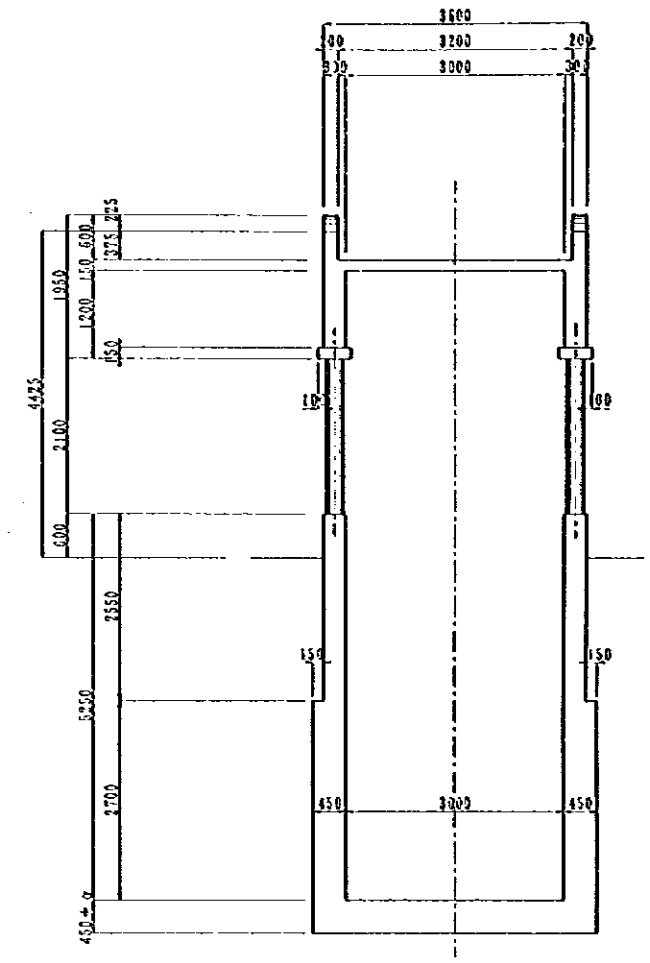
CROSS SECTION E-E
SCALE 1/50

NOTES:	JAPAN INTERNATIONAL COOPERATION AGENCY (JICA)	CLIENT :	MINISTRY OF COMMUNICATIONS, DIRECTORATE GENERAL OF ROADS
	JICA STUDY TEAM	PROJECT :	D/D ON ROAD DEVELOPMENT PROJECT ON BATINAH HIGHWAY
	PACIFIC CONSULTANTS INTERNATIONAL	TITLE :	P/U-6, A' SUWAIQ GENERAL VIEW (4)
	FLUKYAMA CONSULTANTS INTERNATIONAL	DATE	DWG NO. P-4

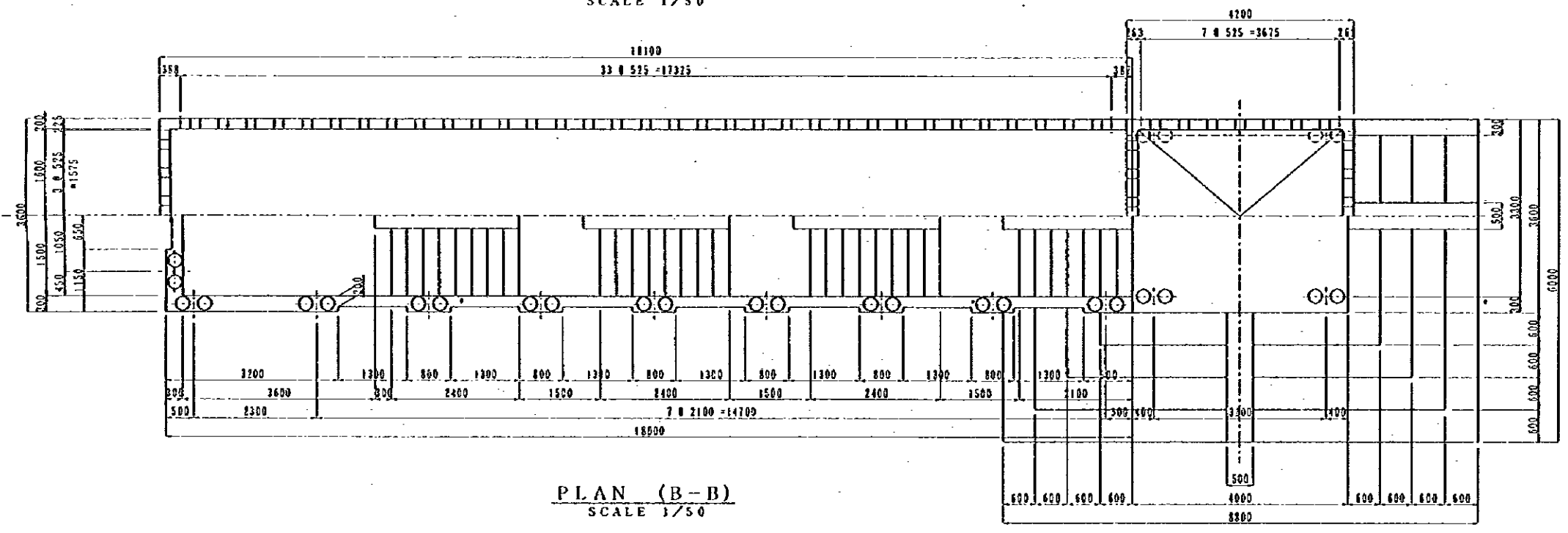


PROFILE OF CANOPY
SCALE 1/50

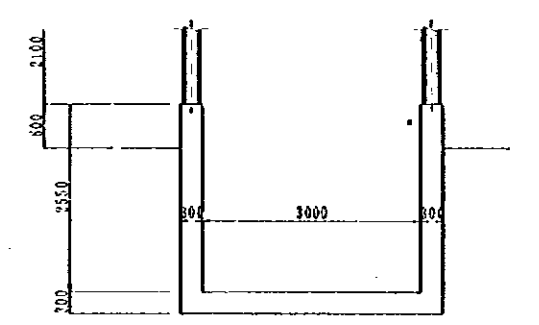
PLAN (A-A)
SCALE 1/50



CROSS SECTION C-C
SCALE 1/50

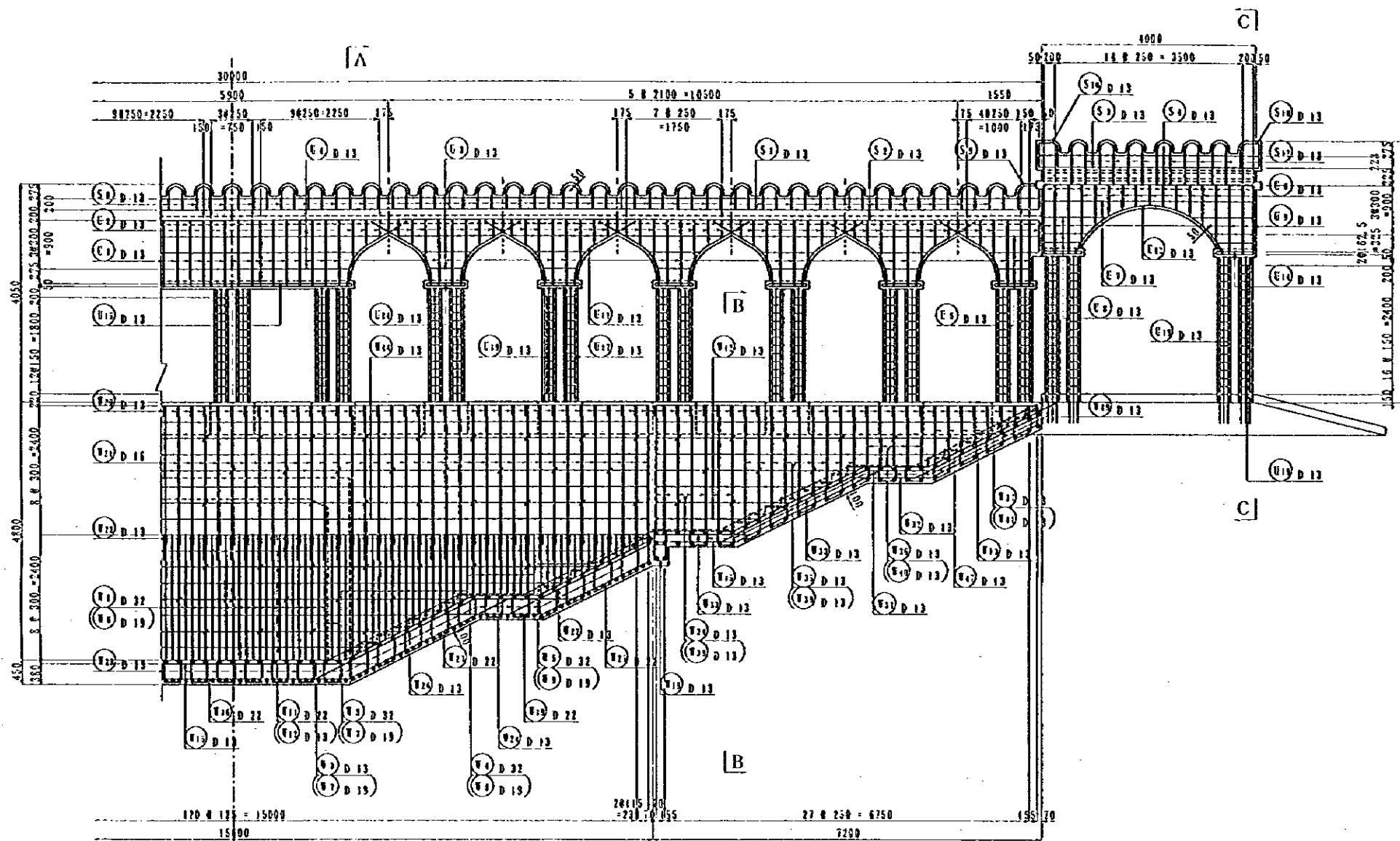


PLAN (B-B)
SCALE 1/50

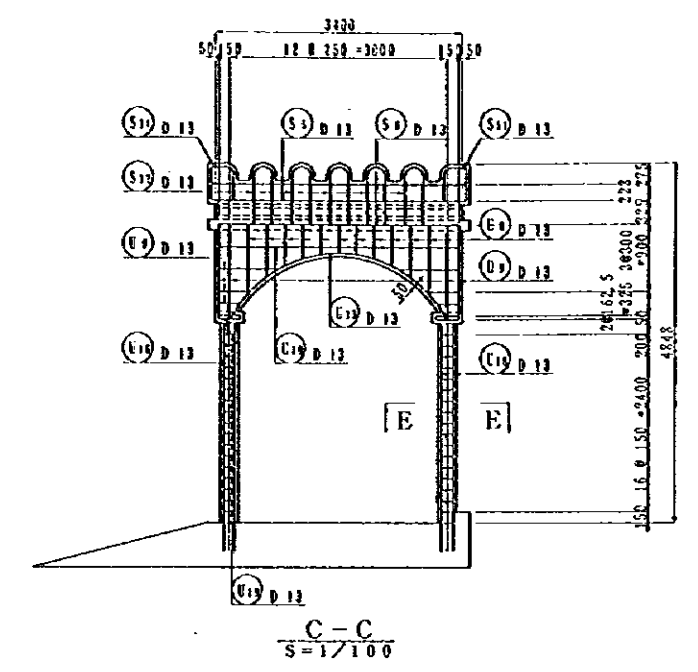


CROSS SECTION D-D
SCALE 1/50

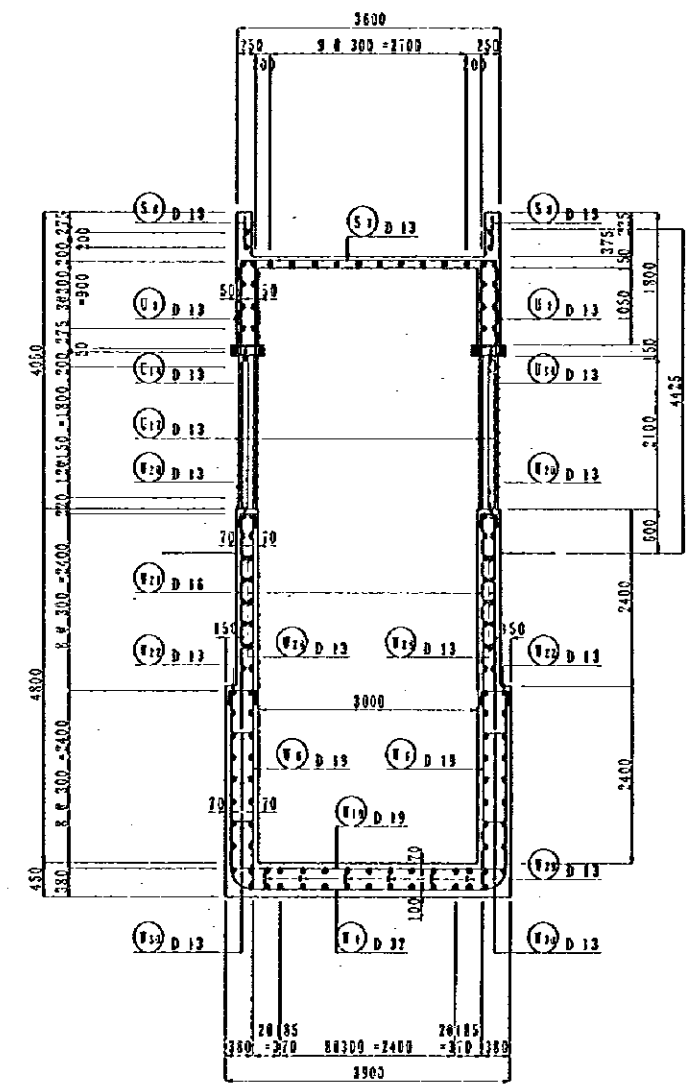
NOTES:	JAPAN INTERNATIONAL COOPERATION AGENCY (JICA)	CLIENT : MINISTRY OF COMMUNICATIONS, DIRECTORATE GENERAL OF ROADS
	JICA STUDY TEAM PACIFIC CONSULTANTS INTERNATIONAL FLUYAMA CONSULTANTS INTERNATIONAL	PROJECT : D/D ON ROAD DEVELOPMENT PROJECT ON BATINAH HIGHWAY
		TITLE : P/U-6, A' SUWAIQ GENERAL VIEW (5)
		DATE : _____
		DWG NO. P-5



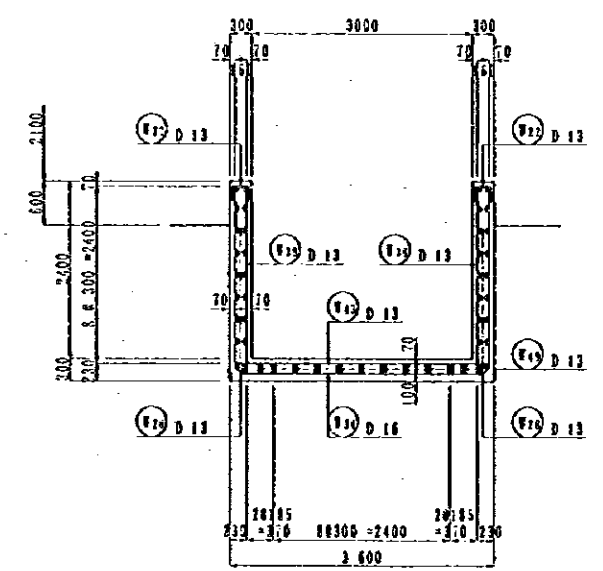
A SIDE VIEW
S=1/100



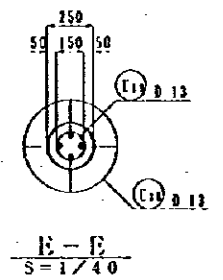
C - C
S=1/100



A - A
S=1/100



B - B
S=1/100

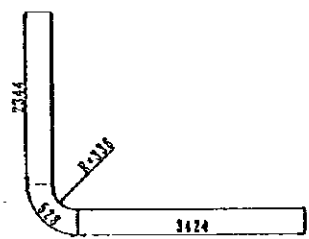


E - E
S=1/40

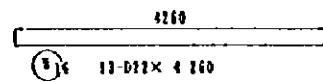
NOTES:

JAPAN INTERNATIONAL COOPERATION AGENCY
(JICA)
JICA STUDY TEAM
PACIFIC CONSULTANTS INTERNATIONAL
FUKUYAMA CONSULTANTS INTERNATIONAL

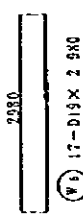
CLIENT : MINISTRY OF COMMUNICATIONS, DIRECTORATE GENERAL OF ROADS
PROJECT : D/D ON ROAD DEVELOPMENT PROJECT ON BATINAH HIGHWAY
TITLE : P/U-6, A' SUWAIQ RE-BAR ARRANGEMENT (1)
DATE : _____ DWG NO. P- 6



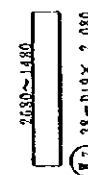
(V1) 23-D32 x 6 300



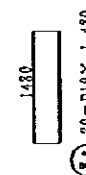
(V6) 13-D13 x 4 160



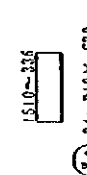
(V3) 17-D13 x 2 580



(V7) 38-D13 x 2 680



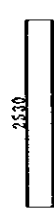
(V2) 20-D13 x 1 480



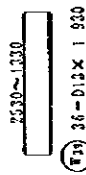
(V4) 34-D13 x 2 30



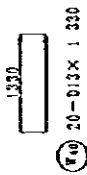
(V11) 218-D16 x 2 820



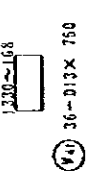
(V13) 28-D13 x 2 580



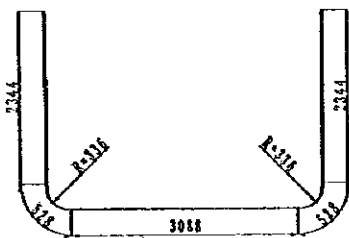
(V14) 36-D13 x 1 980



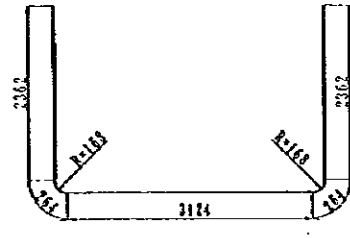
(V15) 20-D13 x 1 320



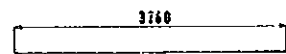
(V16) 36-D13 x 7 50



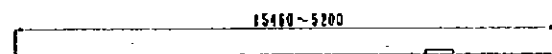
(V2) 4-D32 x 8 340



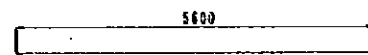
(V3) 14-D16 x 8 380



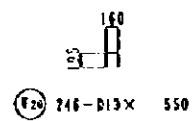
(V10) 63-D13 x 3 760



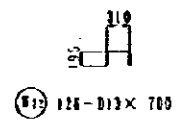
(V11) 8-D22 x 10 990
(V12) 8-D13 x 10 720



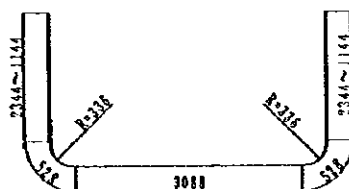
(V13) 15-D13 x 5 600



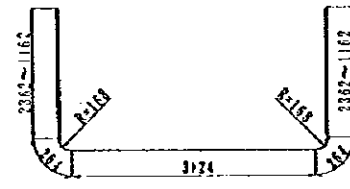
(V20) 246-D13 x 5 50



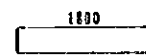
(V17) 128-D13 x 7 00



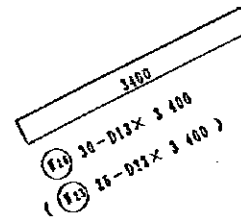
(V4) 33-D32 x 7 440



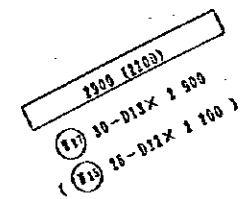
(V5) 18-D16 x 7 180



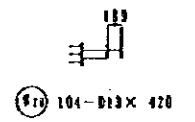
(V14) 30-D13 x 1 800
(V15) 28-D13 x 1 800



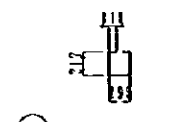
(V16) 30-D13 x 3 400
(V18) 28-D13 x 3 400



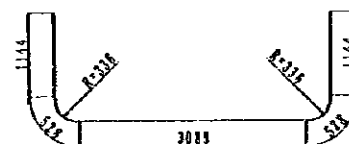
(V19) 30-D13 x 2 900
(V21) 28-D13 x 2 900



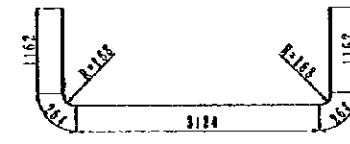
(V18) 104-D13 x 4 20



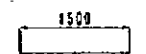
(V22) 180-D13 x 1 160



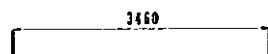
(V1) 20-D32 x 6 440



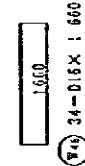
(V16) 10-D16 x 5 380



(V3) 30-D13 x 1 500
(V12) 26-D13 x 1 500



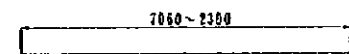
(V10) 60-D13 x 3 460



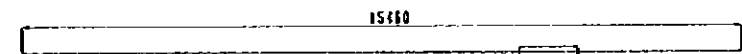
(V4) 34-D13 x 1 600



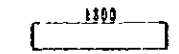
(V19) 39-D13 x 5 80



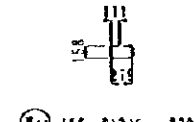
(V12) 68-D13 x 4 680



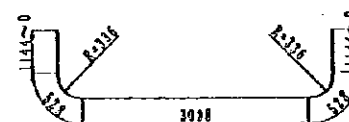
(V12) 28-D13 x (15 480/390)



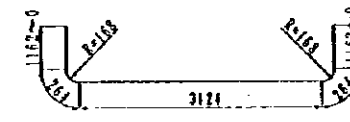
(V13) 30-D13 x 1 300



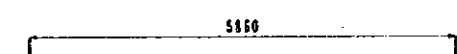
(V17) 156-D13 x 8 20



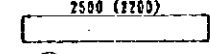
(V3) 34-D32 x 5 290



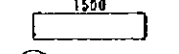
(V13) 18-D16 x 4 820



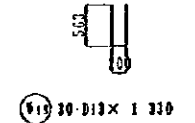
(V17) 8-D13 x 5 860



(V14) 30-D13 x 2 500
(V15) 26-D13 x 2 300



(V16) 26-D13 x 1 500



(V19) 30-D13 x 1 320

NOTES:

JAPAN INTERNATIONAL COOPERATION AGENCY

(JICA)

JICA STUDY TEAM
PACIFIC CONSULTANTS INTERNATIONAL
FURUYAMA CONSULTANTS INTERNATIONAL

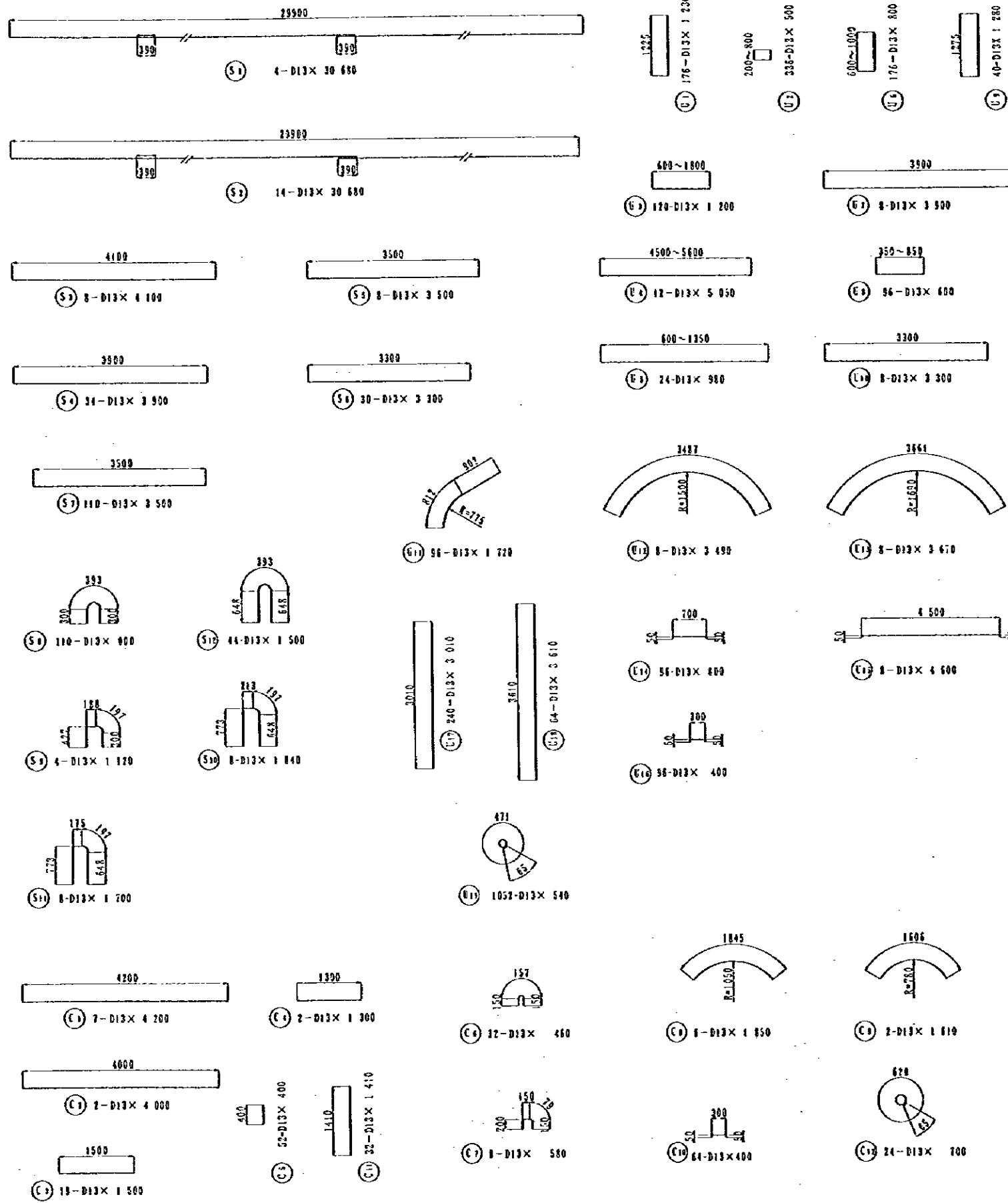
CLIENT : MINISTRY OF COMMUNICATIONS, DIRECTORATE GENERAL OF ROADS

PROJECT : D/D ON ROAD DEVELOPMENT PROJECT ON BATINAH HIGHWAY

TITLE : P/U-6, A' SUWAIQ RE-BAR ARRANGEMENT (2)

DATE

DWG NO. P-7



REIN. NO.	Ø (mm)	LENGTH (mm)	NOMINAL WEIGHT	NO. OF BARS	WEIGHT	REMARKS
1	D 22	6 300	6.403	29	40.929	118.8
2	"	8 800	"	4	56.032	224.4
3	"	7 840	"	38	48.919	1858.9
4	"	6 440	"	10	41.235	412.4
5	"	5 290	"	17	33.872	575.8
6	D 19	2 980	2.735	17	6.660	113.7
7	"	2 920	"	38	5.185	197.0
8	"	1 480	"	20	3.208	64.2
9	"	910	"	24	2.034	48.8
10	"	3 260	"	63	8.404	529.5
11	D 22	10 990	3.042	8	33.410	267.3
12	D 13	10 720	0.994	8	10.656	85.2
13	"	2 200	"	26	2.187	56.9
14	"	870	"	156	0.815	127.2
15	D 13	5 600	0.994	15	5.566	83.5
16	D 22	4 760	3.042	13	12.959	168.5
17	D 13	5 860	0.994	8	5.825	46.6
18	"	1 330	"	30	1.322	39.7
19	D 22	1 800	3.042	26	5.476	142.4
20	D 13	550	0.994	246	0.542	134.6
21	D 16	2 820	1.552	218	4.470	974.5
22	D 13	700	0.994	128	0.694	87.7
23	D 22	3 400	3.042	26	10.343	268.5
24	D 13	1 800	0.994	30	1.789	53.7
25	D 22	2 200	3.042	26	6.692	174.0
26	D 13	3 400	0.994	30	3.330	101.4
27	"	2 905	"	30	2.883	86.5
28	D 13	420	0.994	104	0.417	43.4
29	"	1 160	"	180	1.153	207.5
30	"	580	"	39	0.572	22.5
31	"	1 500	"	30	1.491	44.7
32	"	1 500	"	26	1.491	38.8
33	"	1 800	"	30	1.789	53.7
34	D 16	8 380	1.552	14	13.006	182.1
35	"	7 180	"	18	11.143	200.6
36	"	5 880	"	10	9.281	92.8
37	"	4 820	"	18	7.484	134.7
38	D 13	2 530	0.994	28	2.515	70.4
39	"	1 930	"	26	1.919	69.1
40	"	1 330	"	20	1.322	26.4
41	"	750	"	36	0.746	26.8
42	"	4 680	"	64	4.652	197.7
43	"	3 460	"	60	3.439	206.4
44	"	15 850	"	28	15.755	441.1
45	"	1 500	"	26	1.491	38.8
46	D 16	1 650	1.552	34	2.576	87.6
47	D 13	1 500	0.994	30	2.485	74.6

(0476.3)

REIN. NO.	Ø (mm)	LENGTH (mm)	NOMINAL WEIGHT	NO. OF BARS	WEIGHT	REMARKS
S 1	D 13	30 680	0.994	4	30.436	128.0
2	"	30 630	"	14	30.436	426.9
3	"	4 100	"	8	4.015	32.6
4	"	3 990	"	34	3.877	131.8
5	"	3 500	"	8	3.475	27.8
6	"	3 300	"	30	3.280	98.4
7	"	3 500	"	110	3.475	382.7
8	"	800	"	110	0.795	87.5
9	"	1 120	"	4	1.113	4.5
10	"	1 840	"	8	1.829	14.6
11	"	1 700	"	8	1.690	13.5
12	"	1 500	"	44	1.491	65.6

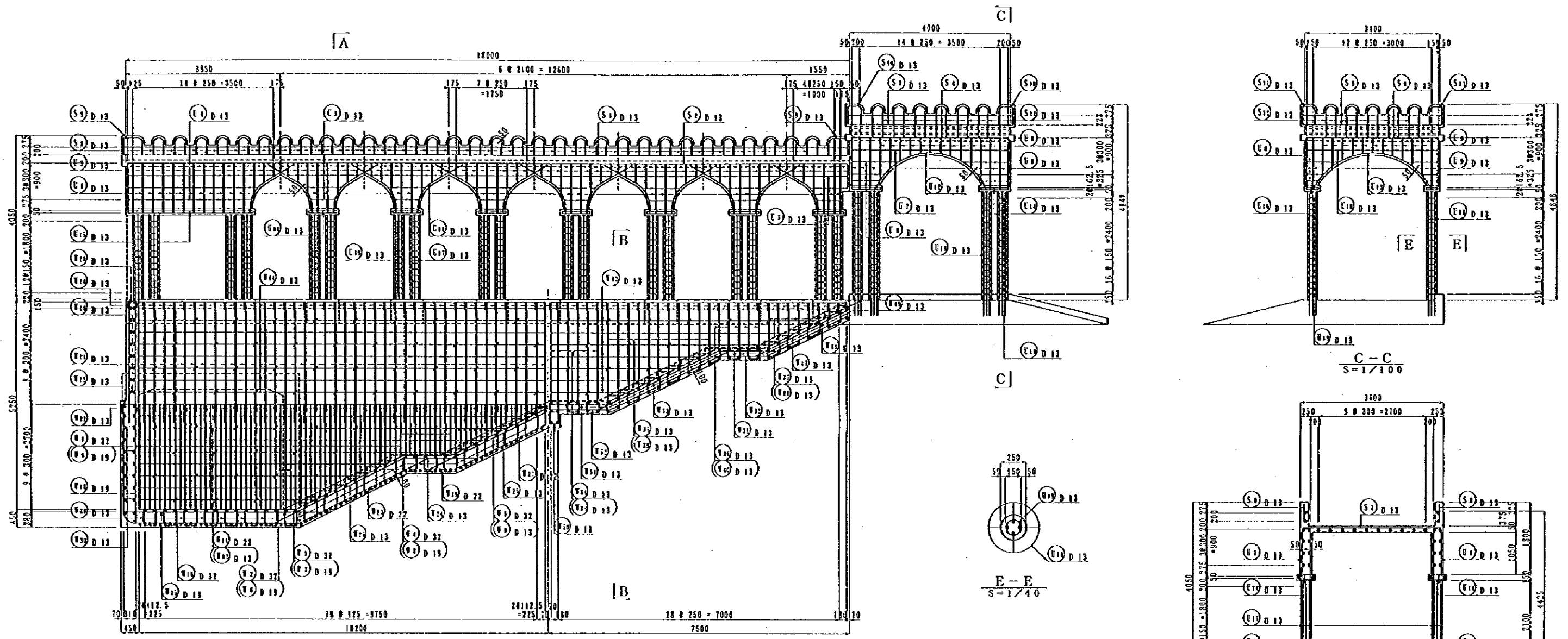
1 407.9						
E 1	D 13	1 230	0.994	126	1.223	215.2
2	"	500	"	336	0.497	167.0
3	"	1 200	"	120	1.193	143.1
4	"	5 050	"	12	5.020	60.2
5	"	980	"	24	0.980	23.5
6	"	800	"	176	0.795	140.0
7	"	3 900	"	8	3.877	31.0
8	"	600	"	96	0.596	57.3
9	"	1 280	"	40	1.222	50.9
10	"	3 300	"	8	3.280	26.2
11	"	1 720	"	96	1.710	164.1
12	"	3 490	"	8	3.469	27.8
13	"	3 670	"	8	3.648	29.2
14	"	800	"	96	0.795	76.3
15	"	4 600	"	8	4.672	36.6
16	"	400	"	96	0.398	38.2
17	"	3 010	"	240	2.992	218.1
18	"	3 610	"	64	3.588	229.7
19	"	540	"	1052	0.537	564.7

2 759.1						
E 1	D 13	4 200	0.994	7	4.175	29.2
2	"	4 000	"	2	3.976	8.0
3	"	1 500	"	19	1.491	28.3
4	"	1 300	"	2	1.292	2.6
5	"	400	"	52	0.398	20.7
6	"	460	"	32	0.457	14.6
7	"	580	"	8	0.572	4.6
8	"	1 850	"	6	1.839	11.0
9	"	1 610	"	2	1.600	3.2
10	"	400	"	64	0.398	25.4
11	"	1 410	"	32	1.402	44.8
12	"	700	"	24	0.698	16.7

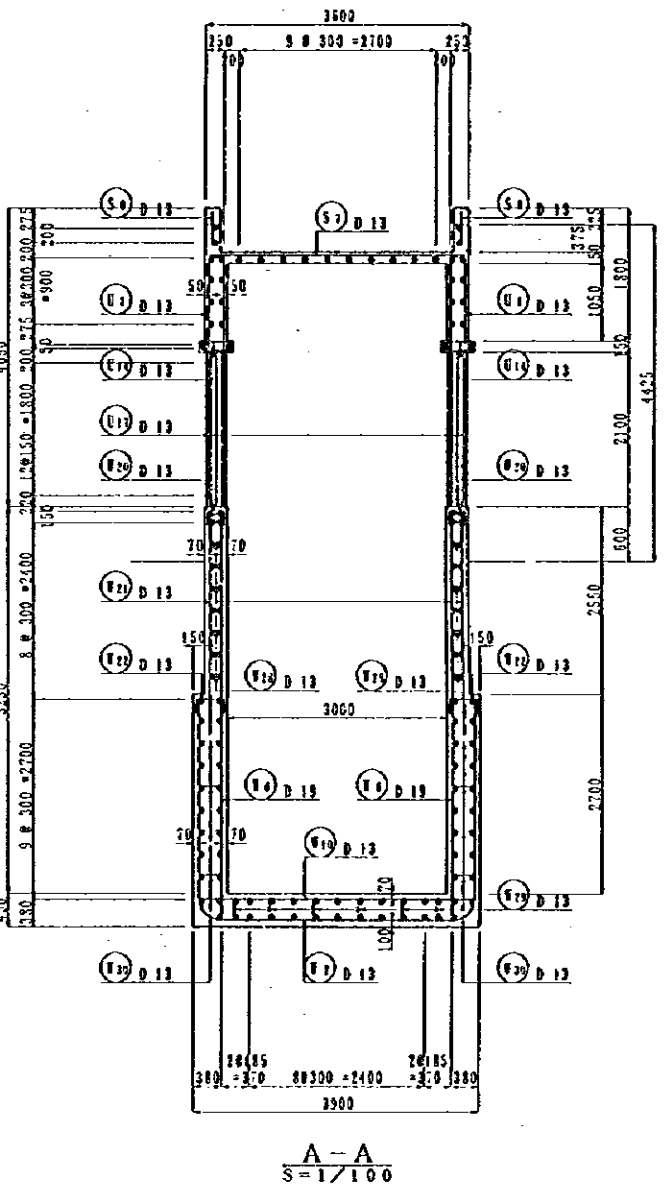
209.1						
					D 32	4 242.3
					D 22	1021.1
					D 19	975.4
					D 16	1 672.3
					D 13	6 981.6
					TOTAL WEIGHT	14 832.4

NOTES:

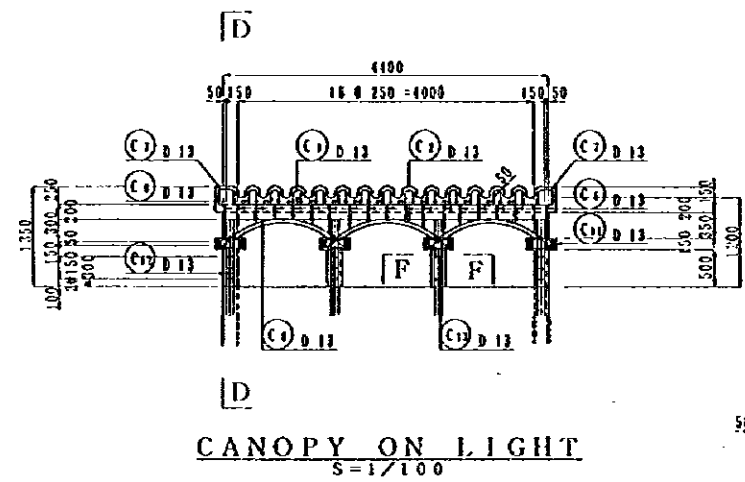
JAPAN INTERNATIONAL COOPERATION AGENCY (JICA)
 CLIENT : MINISTRY OF COMMUNICATIONS, DIRECTORATE GENERAL OF ROADS
 PROJECT : D/D ON ROAD DEVELOPMENT PROJECT ON BATINAH HIGHWAY
 JICA STUDY TEAM
 PACIFIC CONSULTANTS INTERNATIONAL
 FLUKYAMA CONSULTANTS INTERNATIONAL
 TITLE : P/U-6, A' SUWAIQ RE-BAR ARRANGEMENT (3)
 DATE : _____ DWG NO. P-8



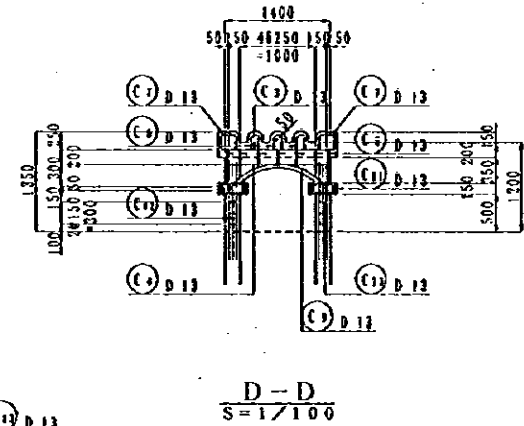
[A]
SIDE VIEW
S=1/100



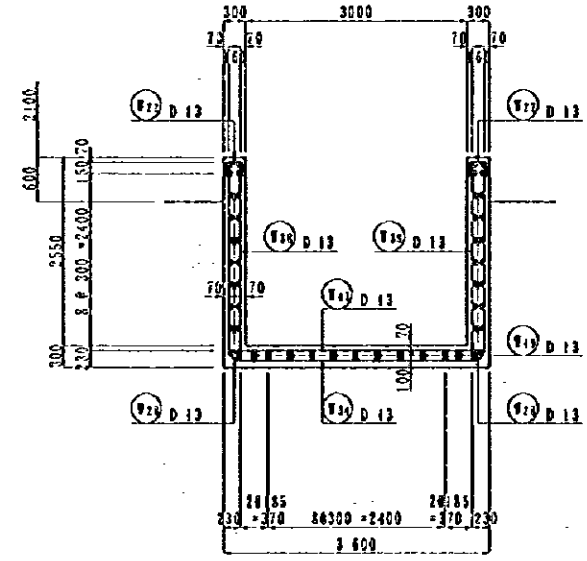
C - C
S=1/100



D - D
CANOPY ON LIGHT
S=1/100



E - E
S=1/100



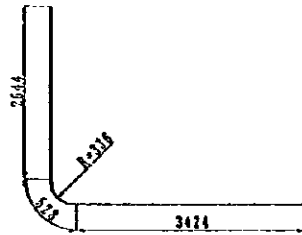
F - F
S=1/100

G - G
S=1/40

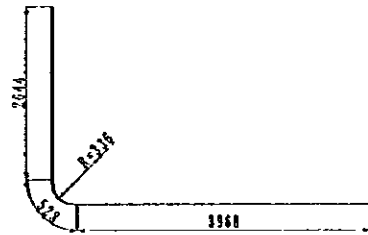
NOTES:

JAPAN INTERNATIONAL COOPERATION AGENCY
(JICA)
JICA STDY TEAM
PACIFIC CONSULTANTS INTERNATIONAL
FUKUYAMA CONSULTANTS INTERNATIONAL

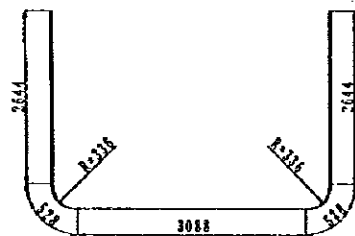
CLIENT : MINISTRY OF COMMUNICATIONS, DIRECTORATE GENERAL OF ROADS
PROJECT : D/D ON ROAD DEVELOPMENT PROJECT ON BATINAH HIGHWAY
TITLE : P/U-6, A' SUWAIQ RE-BAR ARRANGEMENT (4)
DATE :
DVC NO. P-9



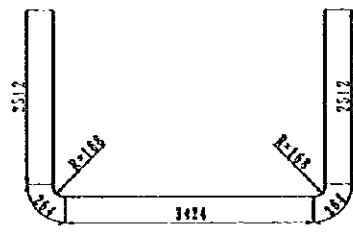
(1) 20-D32X 6 600



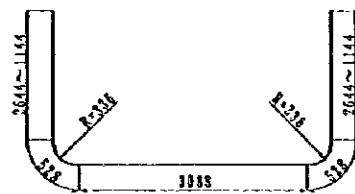
(16) 30-D32X 7 140



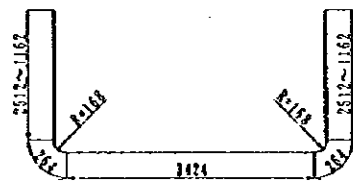
(7) 2-D32X 8 440



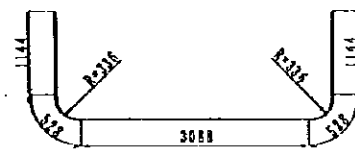
(14) 6-D16X 8 980



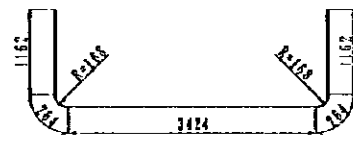
(8) 22-D32X 8 110



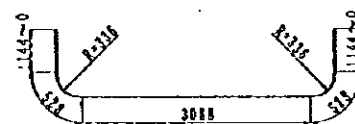
(13) 11-D16X 7 630



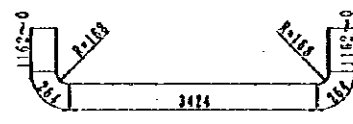
(4) 10-D32X 6 440



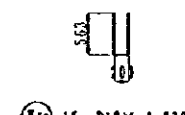
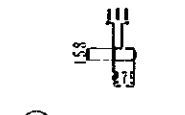
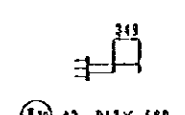
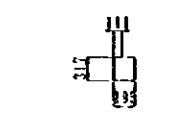
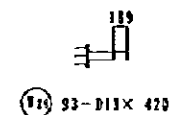
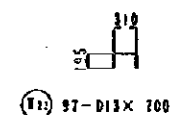
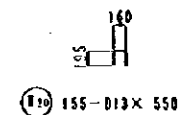
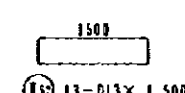
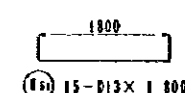
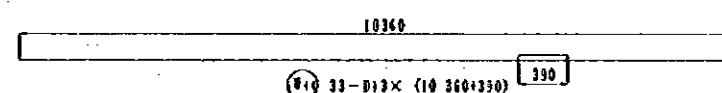
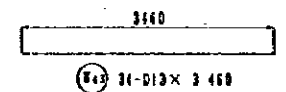
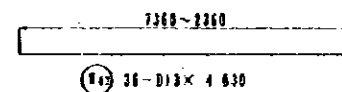
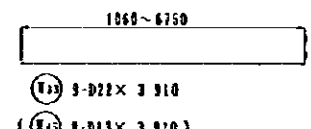
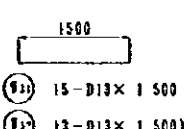
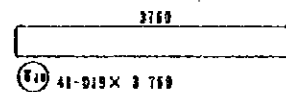
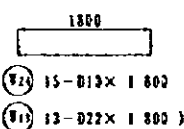
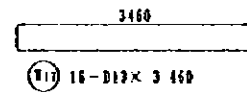
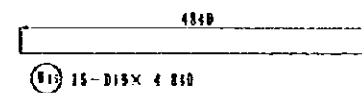
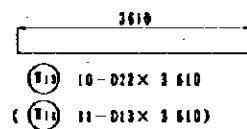
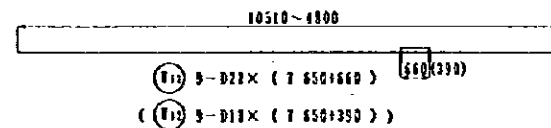
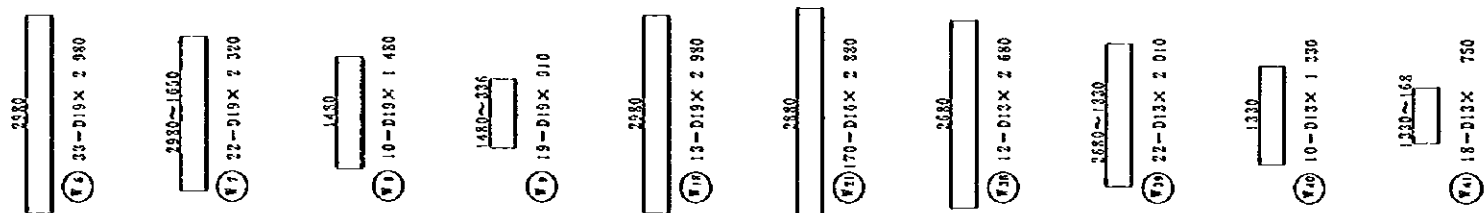
(5) 5-D16X 6 260



(3) 19-D32X 5 290



(2) 8-D16X 5 120



NOTES:

JAPAN INTERNATIONAL COOPERATION AGENCY (JICA)

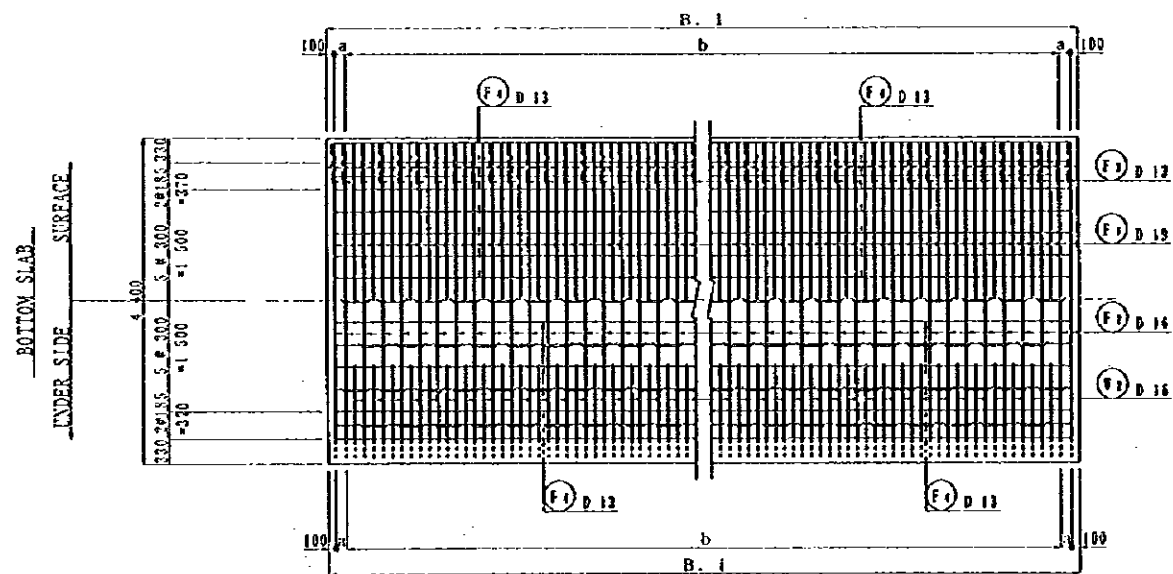
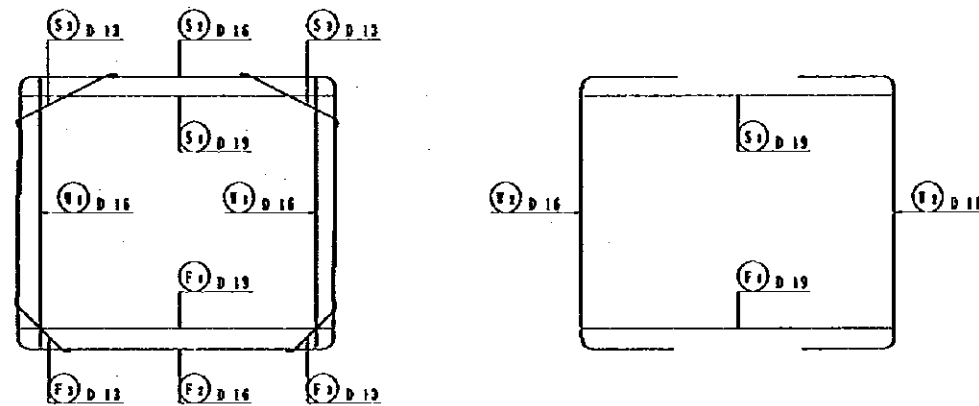
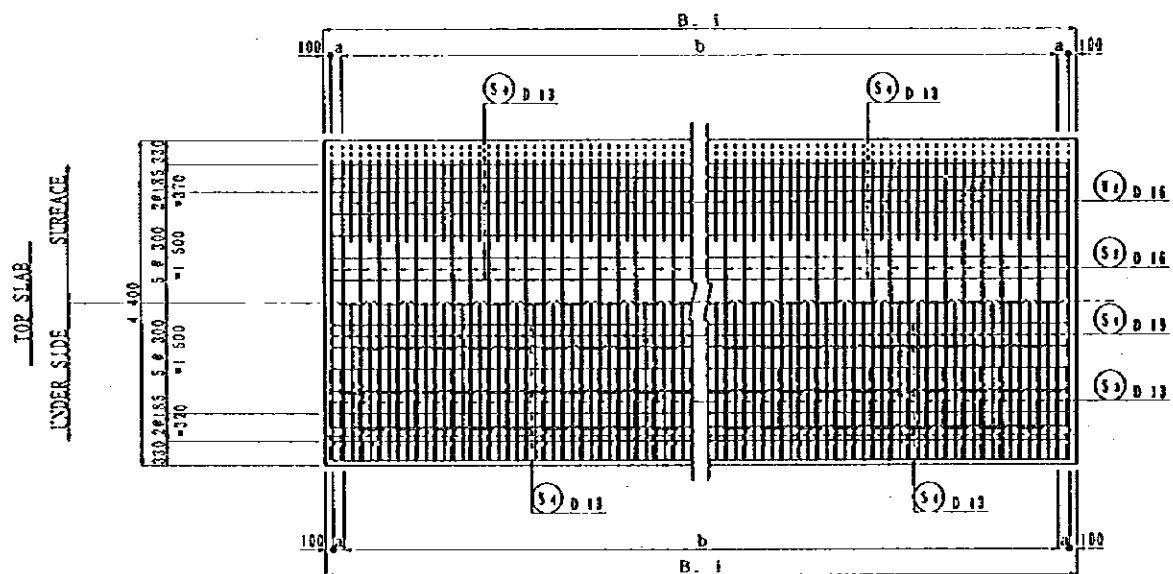
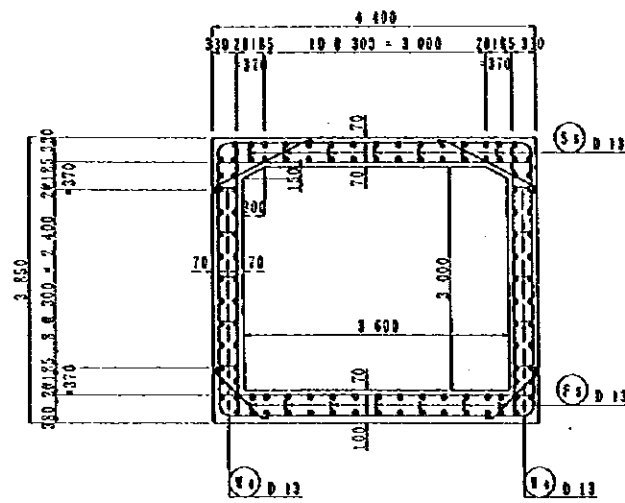
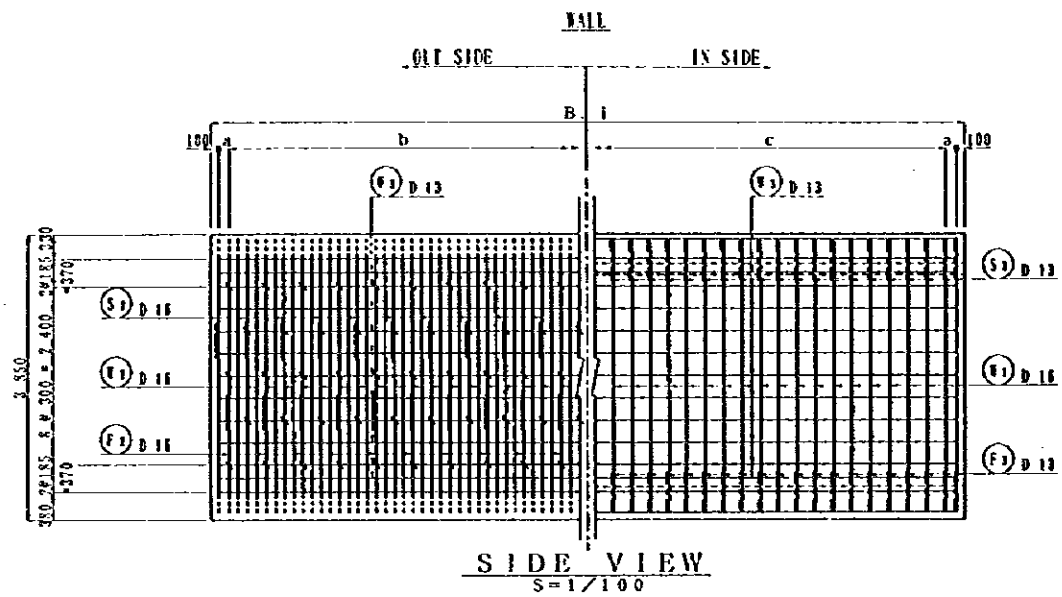
JICA STUDY TEAM
PACIFIC CONSULTANTS INTERNATIONAL
FUKUYAMA CONSULTANTS INTERNATIONAL

CLIENT : MINISTRY OF COMMUNICATIONS, DIRECTORATE GENERAL OF ROADS

PROJECT : D/D ON ROAD DEVELOPMENT PROJECT ON BATINAH HIGHWAY

TITLE : P/U-6, A' SUWAIQ RE-BAR ARRANGEMENT (5)

DATE : DWG NO. P-10



	B. I	a	b	c
TYPE A	15 000	150	116 @ 125	58 @ 250
TYPE C	6 750	150	50 @ 125	25 @ 250
TYPE D	10 750	150	82 @ 125	41 @ 250

PLAN
S=1/100

NOTES:

JAPAN INTERNATIONAL COOPERATION AGENCY
(JICA)

JICA STUDY TEAM
PACIFIC CONSULTANTS INTERNATIONAL
FURUYAMA CONSULTANTS INTERNATIONAL

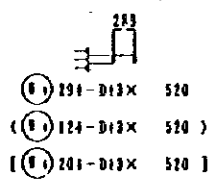
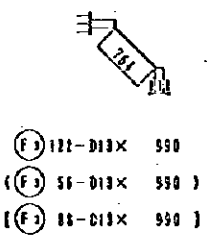
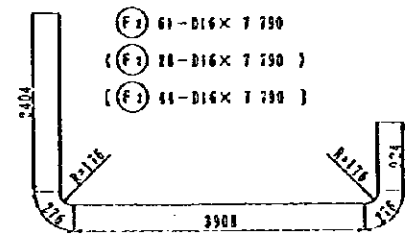
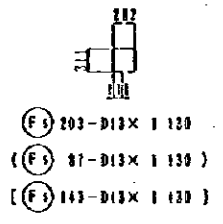
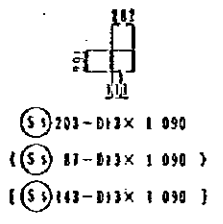
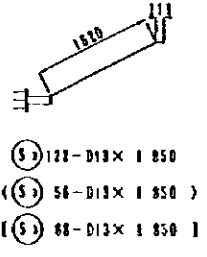
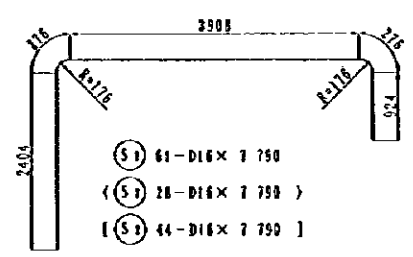
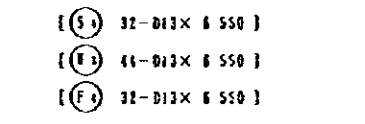
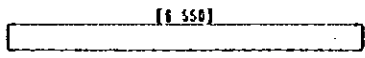
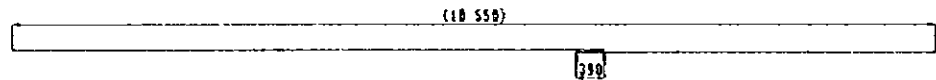
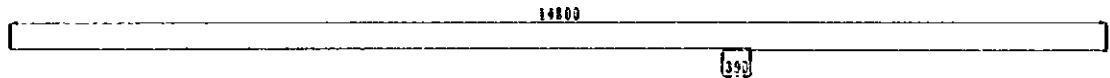
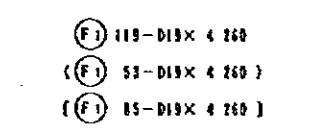
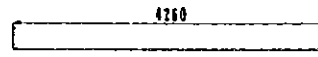
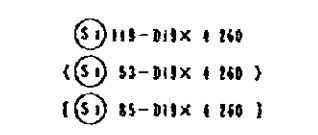
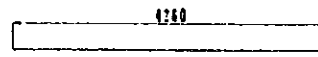
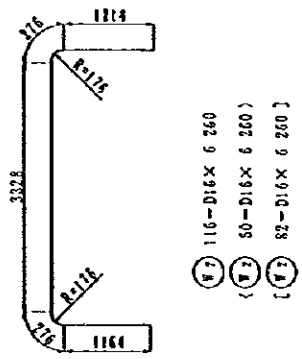
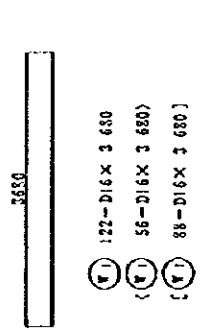
CLIENT : MINISTRY OF COMMUNICATIONS, DIRECTORATE GENERAL OF ROADS

PROJECT : D/D ON ROAD DEVELOPMENT PROJECT ON BATINAH HIGHWAY

TITLE : P/U-6, A' SWAIQ RE-BAR ARRANGEMENT (?)

DATE

DWG NO. P-12

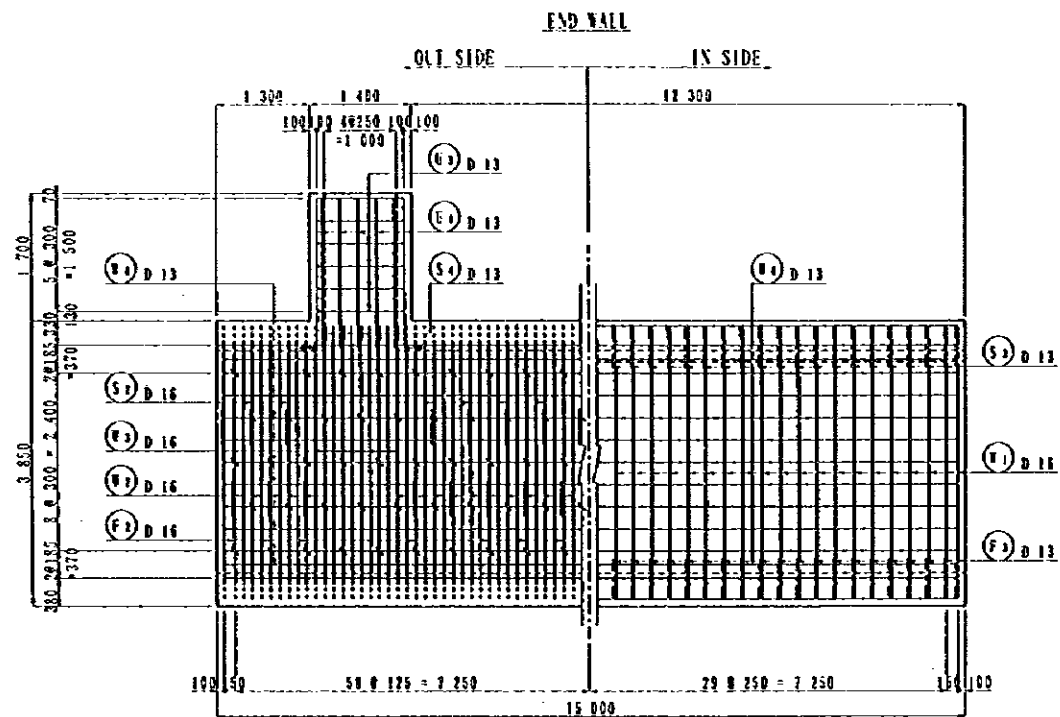


REIN. NO.	Ø (mm)	LENGTH (mm)	NO. OF BARS	UNIT WEIGHT (kg/m)	WEIGHT (kg)	REMARKS
TYPE-A						
S 1	D 19	4 260	2 235	119	9 521	1133.0
2	D 16	7 790	1 552	61	12 090	727.5
3	D 13	1 850	0 994	122	1 839	224.4
4	"	15 190	"	32	15 099	493.2
5	"	1 090	"	203	1 083	219.9
TYPE-B						
W 1	D 16	3 650	1 552	128	5 711	636.7
2	"	6 260	"	118	9 716	1127.1
3	D 13	15 190	0 994	44	15 099	664.4
4	"	520	"	294	0 517	152.0
TYPE-C						
S 1	D 19	4 260	2 235	53	9 521	504.6
2	D 16	7 790	1 552	28	12 090	338.5
3	D 13	1 850	0 994	56	1 839	163.0
4	"	6 650	"	32	12 818	211.5
5	"	1 090	"	87	1 083	94.2
TYPE-D						
W 1	D 16	3 650	1 552	56	5 711	319.8
2	"	6 260	"	50	9 716	485.8
3	D 13	6 550	0 994	44	6 511	286.5
4	"	520	"	126	0 517	65.1
TYPE-E						
F 1	D 19	4 260	2 235	53	9 521	504.6
2	D 16	7 790	1 552	28	12 090	338.5
3	D 13	990	0 994	56	0 984	55.1
4	"	6 550	"	32	6 511	286.5
5	"	1 130	"	63	1 123	70.7
TYPE-F						
S 1	D 15	4 260	2 235	65	9 521	809.3
2	D 16	7 790	1 552	44	12 090	532.0
3	D 13	1 850	0 994	80	1 839	161.8
4	"	10 910	"	32	10 874	348.0
5	"	1 090	"	88	1 083	95.3
TYPE-G						
W 1	D 16	3 650	1 552	85	5 711	502.6
2	"	6 260	"	82	9 716	756.7
3	D 13	10 910	0 994	44	10 874	478.5
4	"	520	"	204	0 517	91.0
TYPE-H						
F 1	D 19	4 260	2 235	65	9 521	809.3
2	D 16	7 790	1 552	44	12 090	532.0
3	D 13	990	0 994	80	0 984	86.6
4	"	10 910	"	32	10 874	348.0
5	"	1 130	"	88	1 123	95.8
TOTAL WEIGHT						
					D 19	4893.0
					D 16	7144.7
					D 13	5348.5
					TOTAL WEIGHT	17387.0

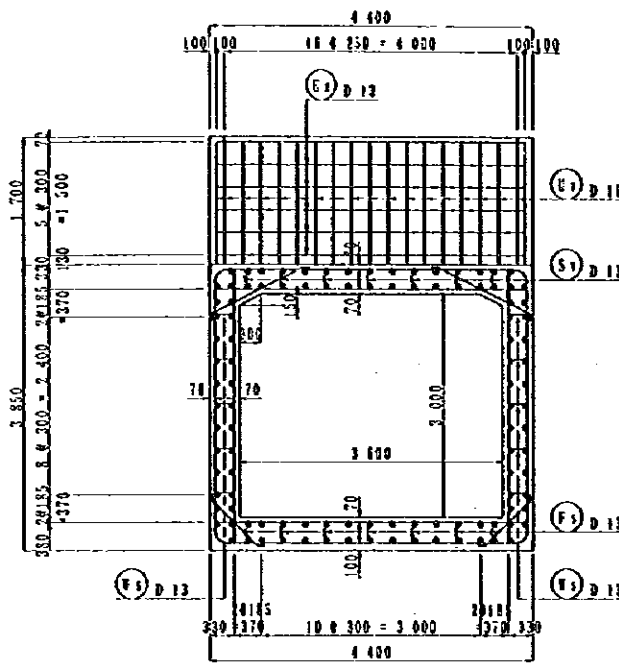
NOTES: () TYPE-C
[] TYPE-D

JAPAN INTERNATIONAL COOPERATION AGENCY (JICA)
JICA STUDY TEAM
PACIFIC CONSULTANTS INTERNATIONAL
FLUYAMA CONSULTANTS INTERNATIONAL

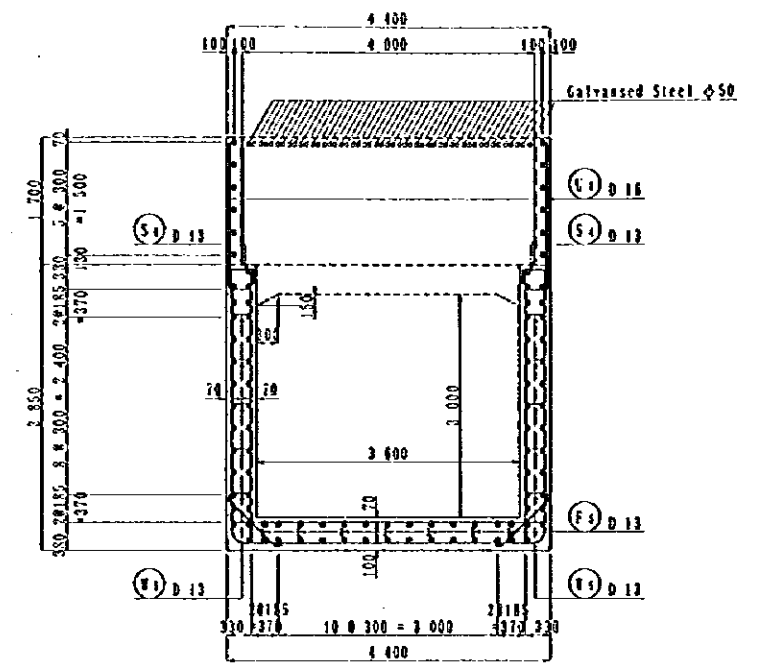
CLIENT : MINISTRY OF COMMUNICATIONS, DIRECTORATE GENERAL OF ROADS
PROJECT : D/D ON ROAD DEVELOPMENT PROJECT ON BATINAH HIGHWAY
TITLE : P/U-6, A' SUWAIQ RE-BAR ARRANGEMENT (B)
DATE : _____
DWG NO. P-13



SIDE VIEW
S=1/100

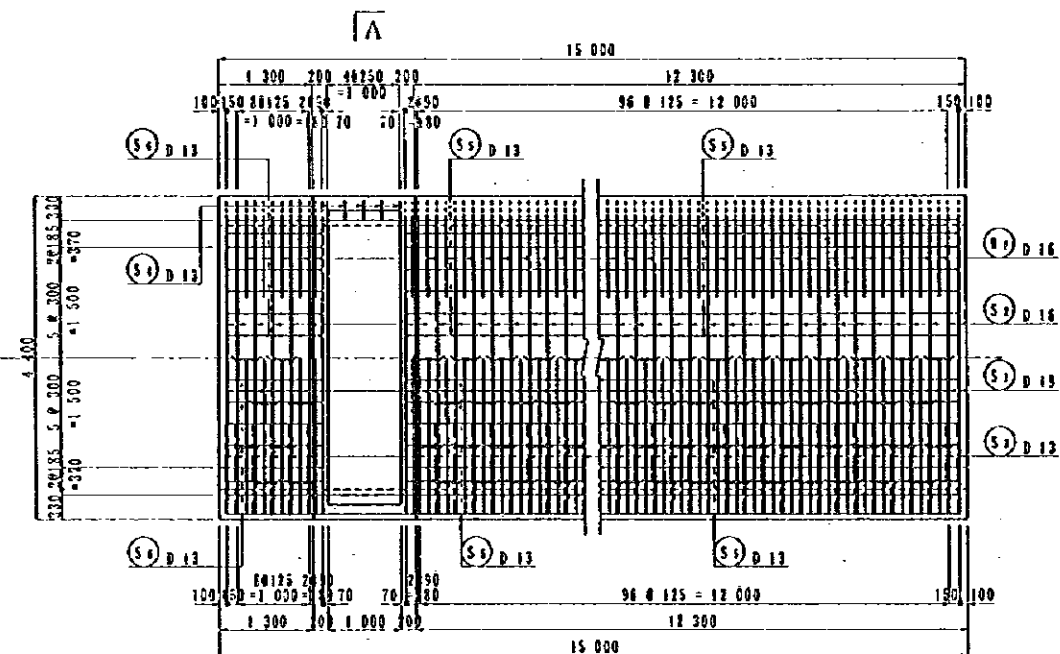


SECTION
S=1/100



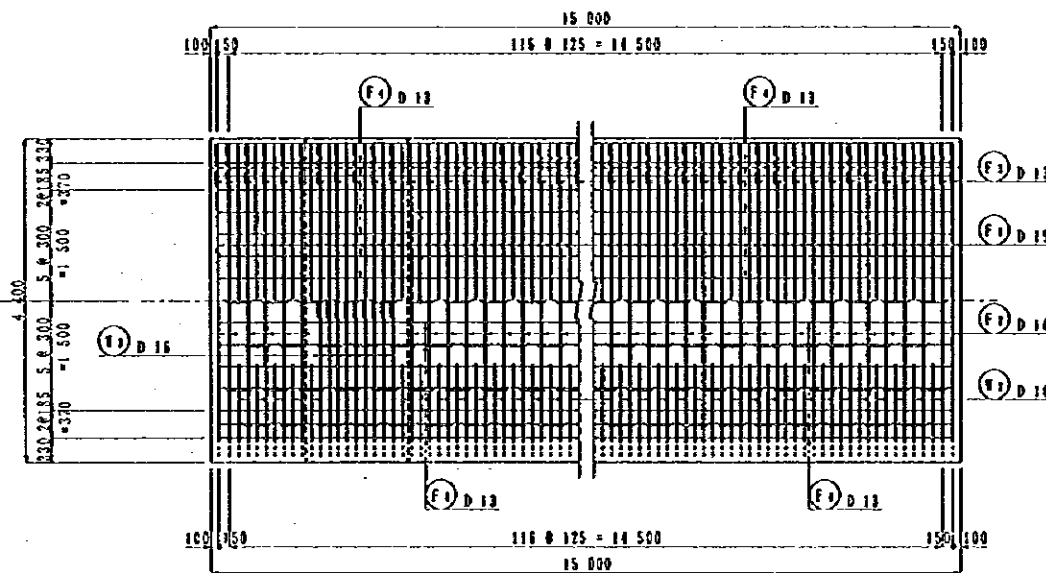
A-A
S=1/100

TOP EDITION
UNDER SIDE SURFACE

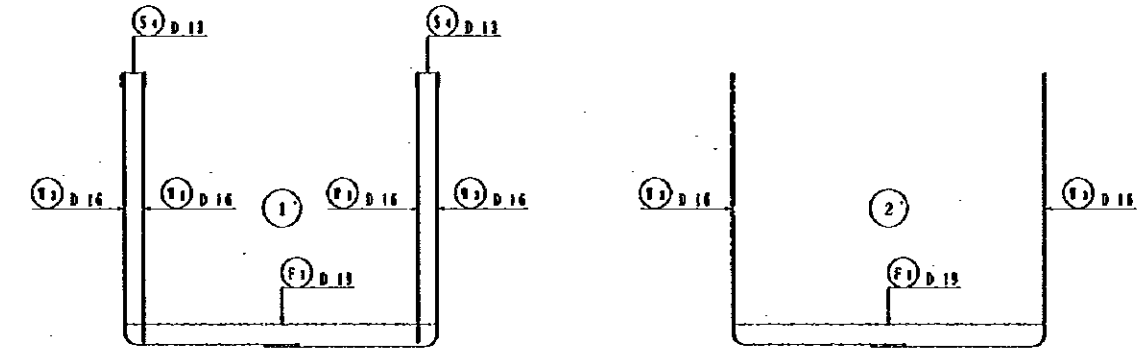
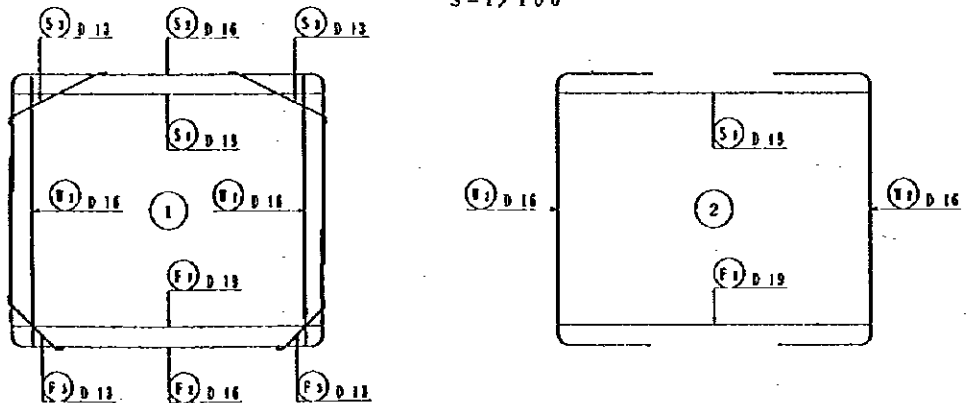
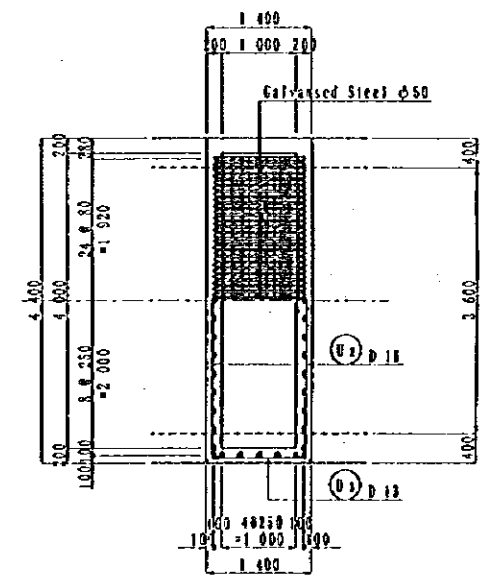
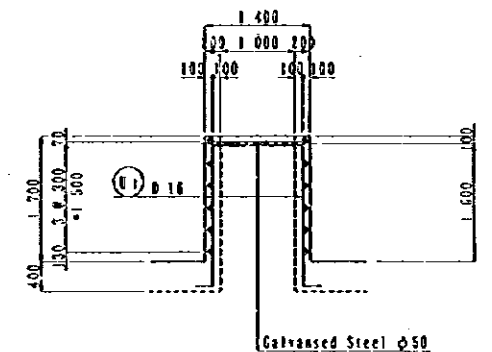


PLAN
S=1/100

BOTTOM EDITION
UNDER SIDE SURFACE



PLAN
S=1/100



NOTES:

JAPAN INTERNATIONAL COOPERATION AGENCY
(JICA)

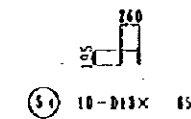
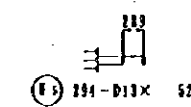
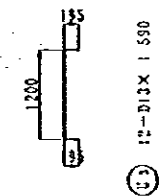
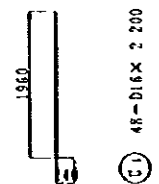
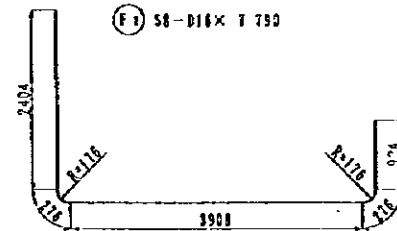
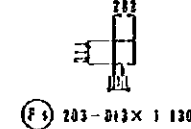
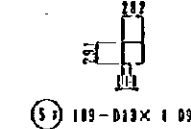
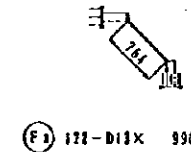
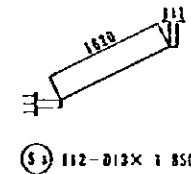
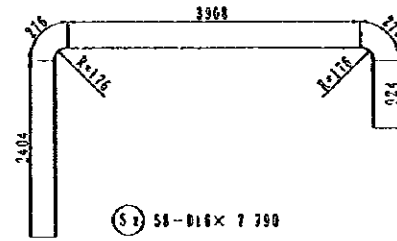
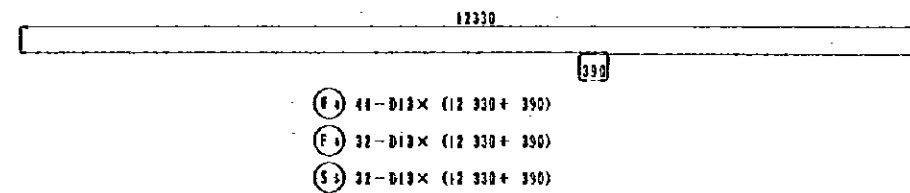
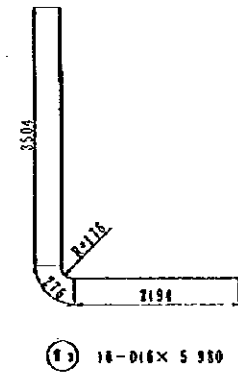
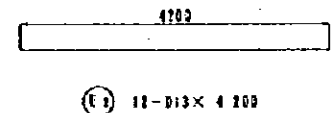
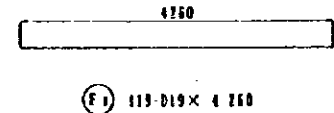
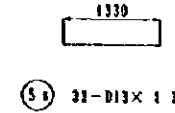
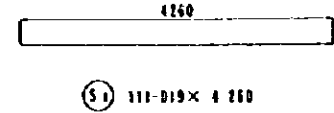
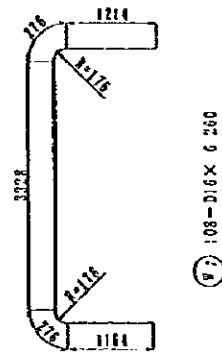
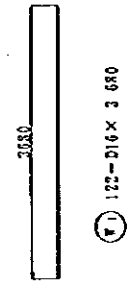
JICA STUDY TEAM
PACIFIC CONSULTANTS INTERNATIONAL
PULYANA CONSULTANTS INTERNATIONAL

CLIENT : MINISTRY OF COMMUNICATIONS, DIRECTORATE GENERAL OF ROADS

PROJECT : D/D ON ROAD DEVELOPMENT PROJECT ON BATENAH HIGHWAY

TITLE : P/U-6, A' SUWIQ RE-BAR ARRANGEMENT (9)

DATE : DFC NO. P-14



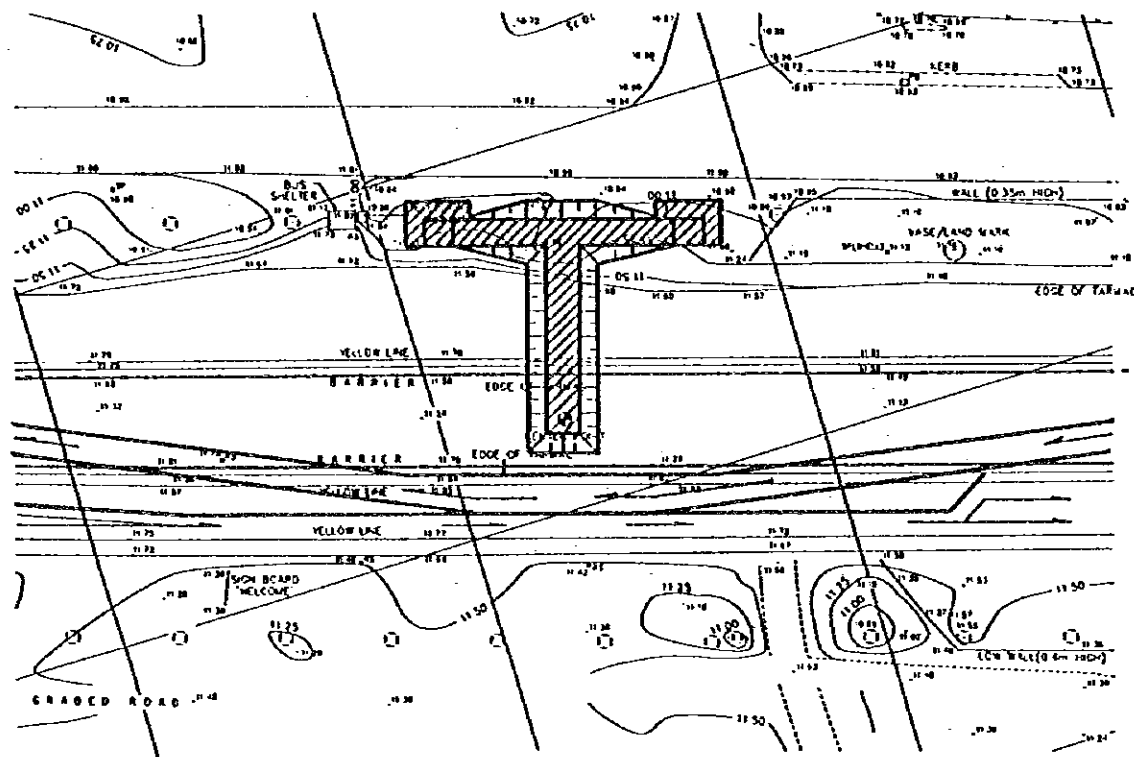
REIN. NO.	φ (mm)	LENGTH (mm)	NO. OF BARS	NO. OF LAPS	U WEIGHT	WEIGHT	REMARKS
TYPE - B							
S 1	D 19	4 260	2 235	111	9.585	1056.0	—
2	D 16	7 790	1.552	58	12.090	701.2	—
3	D 13	1 350	0.994	112	0.841	206.3	—
4	"	650	"	10	0.446	4.5	—
5	"	12 720	"	37	12.644	404.6	—
6	"	1 330	"	32	1.322	42.3	—
7	"	1 090	"	189	1.483	204.3	—
F 1	D 16	3 680	1.552	122	5.711	696.7	—
2	"	6 260	"	109	9.716	1049.3	—
3	"	5 980	"	18	9.281	167.1	—
4	D 13	12 720	0.994	44	12.644	556.3	—
5	"	520	"	294	0.517	152.0	—
F 1	D 19	4 260	2.235	119	9.581	1133.0	—
2	D 16	7 790	1.552	58	12.090	701.2	—
3	D 13	990	0.994	122	0.984	120.0	—
4	"	12 720	"	32	12.644	404.6	—
5	"	1 130	"	203	1.123	228.0	—
E 1	D 16	2 200	1.552	48	2.414	169.3	—
2	D 13	4 200	0.994	12	4.175	50.1	—
3	"	1 590	"	12	1.560	19.0	—
						D 19	2189.8
						D 16	3419.4
						D 13	2834.1
						TOTAL WEIGHT	8083.3

NOTES:

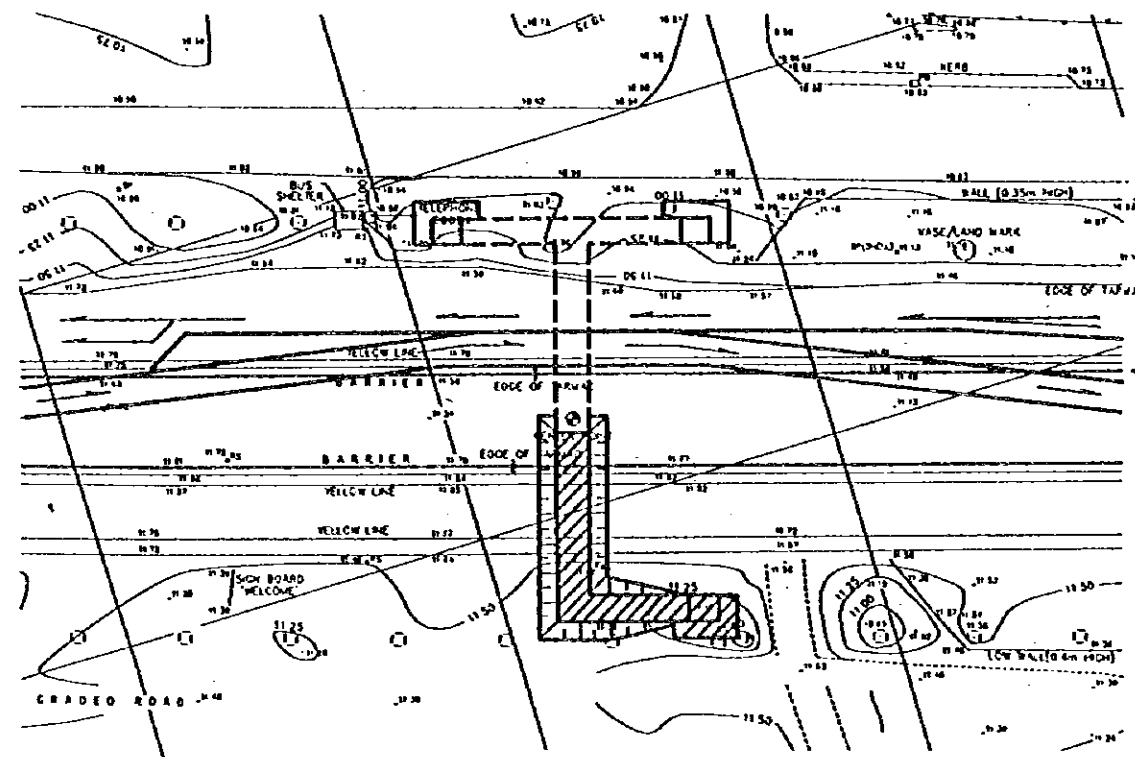
JAPAN INTERNATIONAL COOPERATION AGENCY (JICA)
 JICA STUDY TEAM
 PACIFIC CONSULTANTS INTERNATIONAL
 FUJYAMA CONSULTANTS INTERNATIONAL

CLIENT : MINISTRY OF COMMUNICATIONS, DIRECTORATE GENERAL OF ROADS
 PROJECT : D/D ON ROAD DEVELOPMENT PROJECT ON BATINAH HIGHWAY
 TITLE : P/U-6, A' SUWAIQ RE-BAR ARRANGEMENT (10)
 DATE : _____ DWG NO. P-15

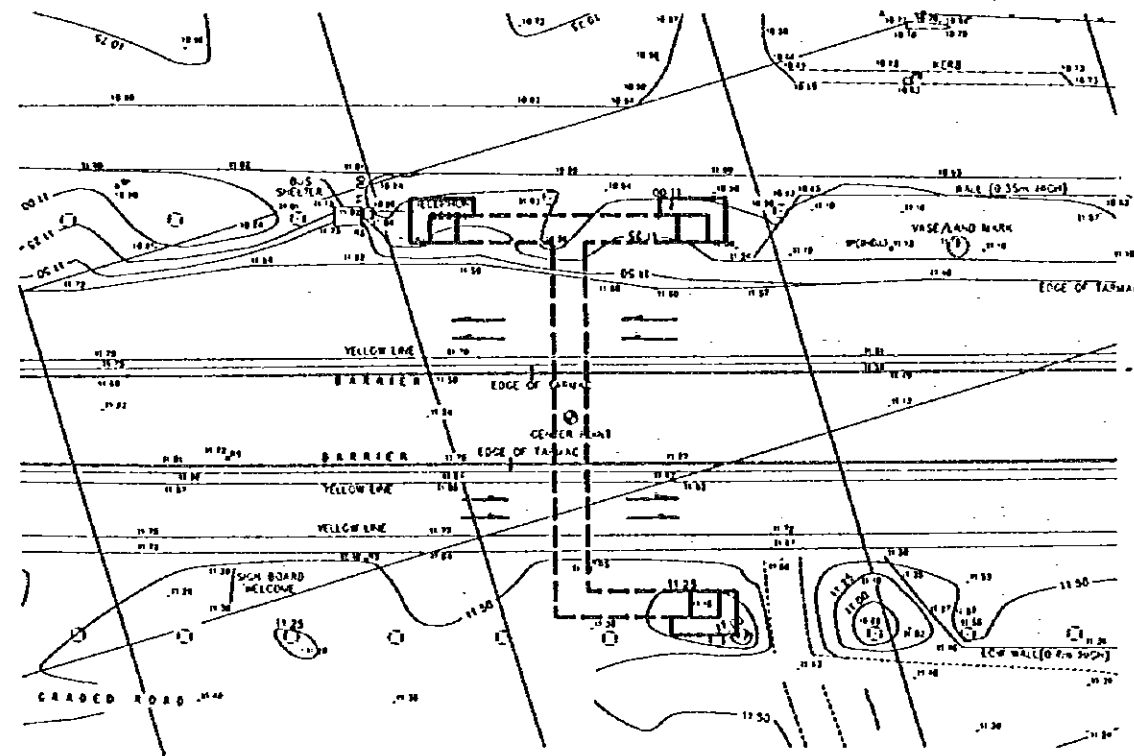
FIRST CONSTRUCTION STAGE



SECOND CONSTRUCTION STAGE



THIRD CONSTRUCTION STAGE



FIRST CONSTRUCTION STAGE

1. Divert traffic from the existing carriageway and demarcate the yard for the first stage of construction.
2. Carry out the first stage of construction for the underpass.
3. After completion of first stage of construction, restore the existing carriageway to allow traffic flow.

SECOND CONSTRUCTION STAGE

1. Divert traffic from the other carriageway and demarcate the yard for the second stage of construction.
2. Carry out the second stage of construction for the underpass.
3. After completion of second stage of construction, restore the existing carriageway to allow traffic flow.

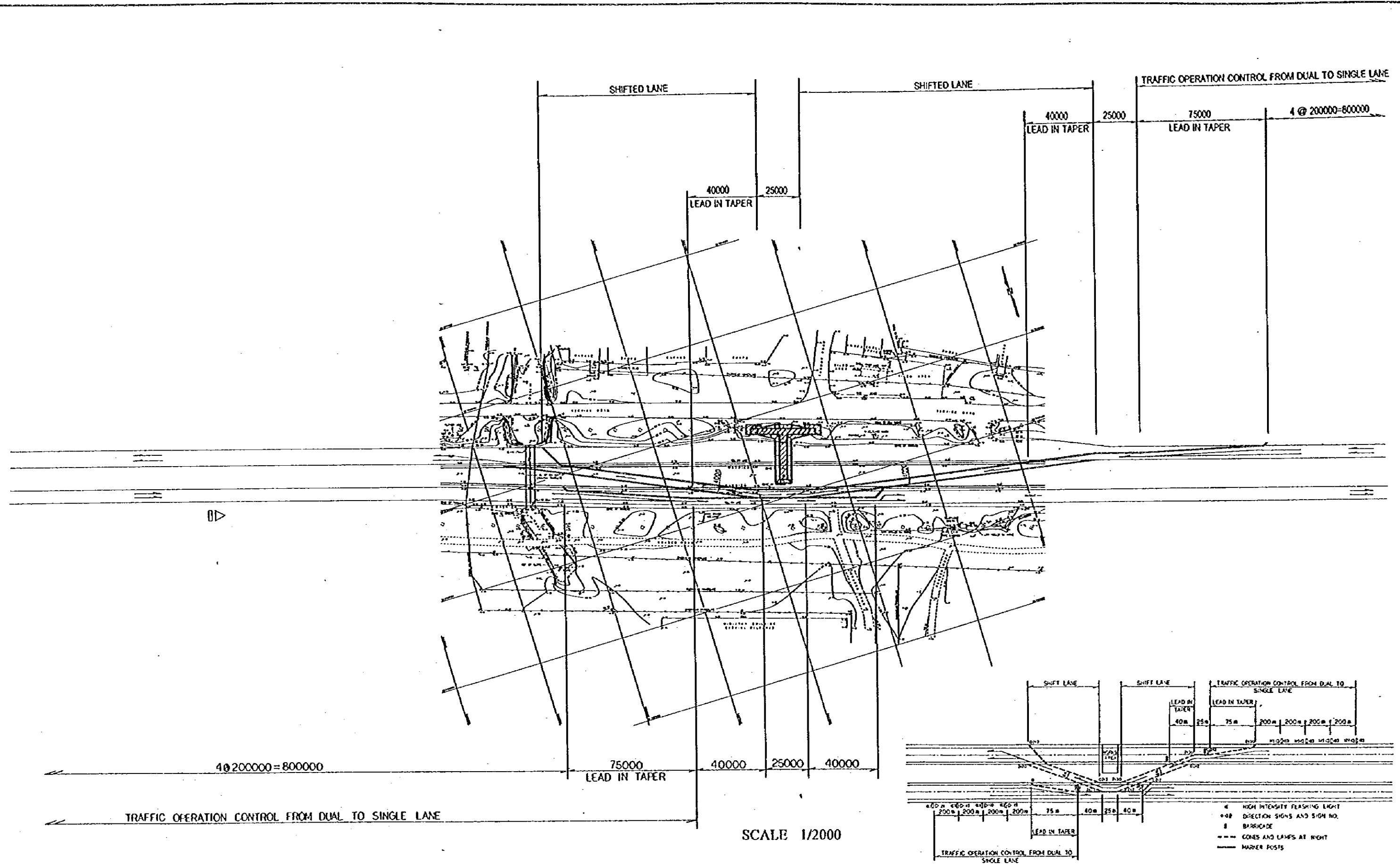
THIRD CONSTRUCTION STAGE

1. Carry out accessory installation work for pedestrian underpass and open it to use.
2. Construction completed.

NOTES:

JAPAN INTERNATIONAL COOPERATION AGENCY
(JICA)
JICA STUDY TEAM
PACIFIC CONSULTANTS INTERNATIONAL
FUKUYAMA CONSULTANTS INTERNATIONAL

CLIENT: MINISTRY OF COMMUNICATIONS, DIRECTORATE GENERAL OF ROADS
PROJECT: D/D ON ROAD DEVELOPMENT PROJECT ON BATINAH HIGHWAY
TITLE: SEQUENCE OF A'SUWEIQ PU CONSTRUCTION
DATE: _____ DWGNO. T-1



TRAFFIC OPERATION CONTROL FROM DUAL TO SINGLE LANE

SCALE 1/2000

GENERAL LAYOUT PLAN OF P/U WORKS

NOTES:	JAPAN INTERNATIONAL COOPERATION AGENCY (JICA)	CLIENT: MINISTRY OF COMMUNICATIONS, DIRECTORATE GENERAL OF ROADS
	JICA STUDY TEAM PACIFIC CONSULTANTS INTERNATIONAL FUKUYAMA CONSULTANTS INTERNATIONAL	PROJECT: D/D ON ROAD DEVELOPMENT PROJECT ON BATINAH HIGHWAY
		TITLE: DETOUR LAYOUT OF A'SUWEIQ P/U WORKS
	DATE	DWGNO. T-2



