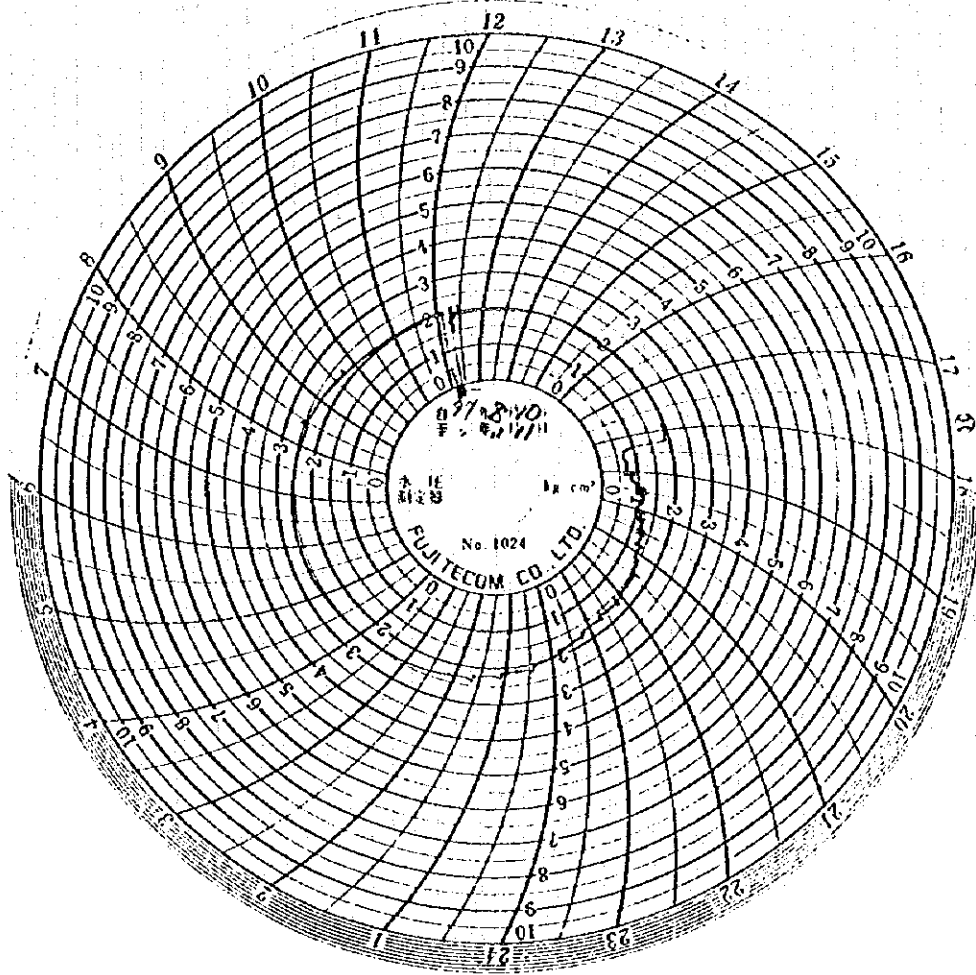
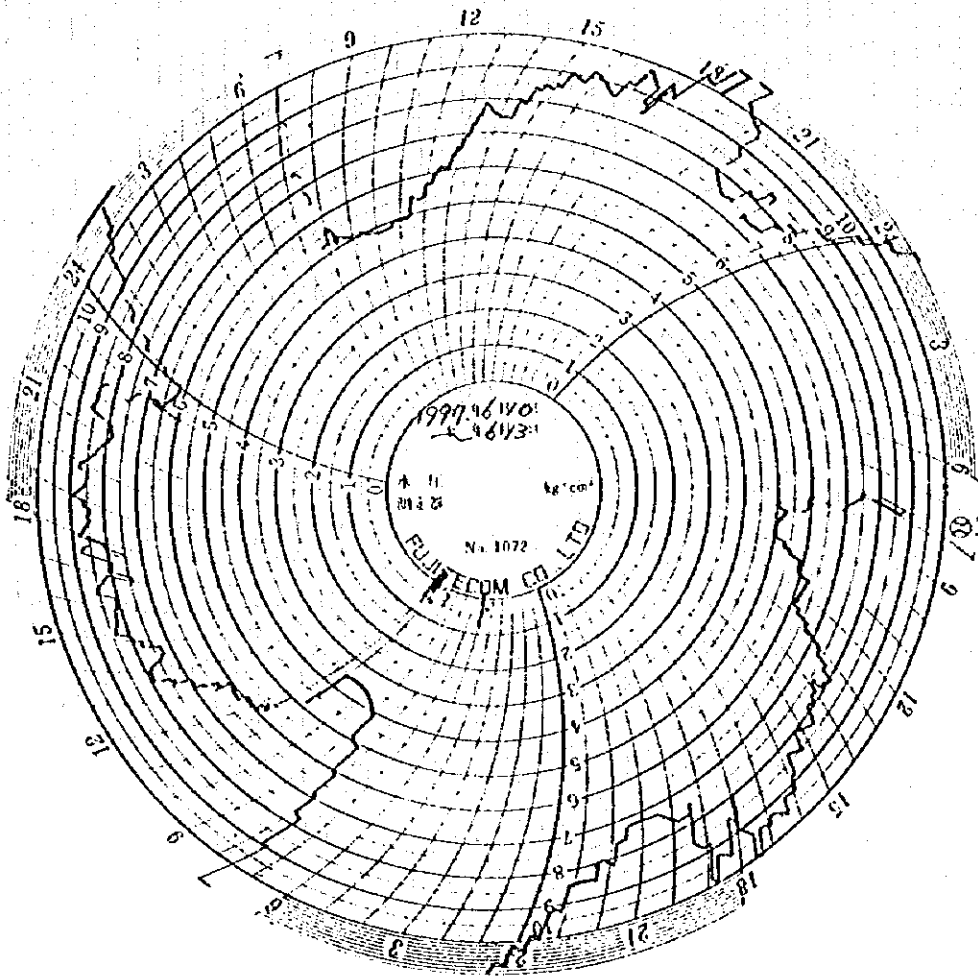


JAPAN INTERNATIONAL COOPERATION AGENCY (JICA)
 THE STUDY ON THE DEVELOPMENT OF
 WATER SUPPLY SYSTEM FOR THE DAMASCUS CITY
 Pressure Data (B03-P1:Wet)
 NIPPON KOEI CO., LTD.



JAPAN INTERNATIONAL COOPERATION AGENCY (JICA)
THE STUDY ON THE DEVELOPMENT OF WATER SUPPLY SYSTEM FOR THE DAMASCUS CITY
Pressure Data (B03-P1: Dry)
NIPPON KOEI CO., LTD.

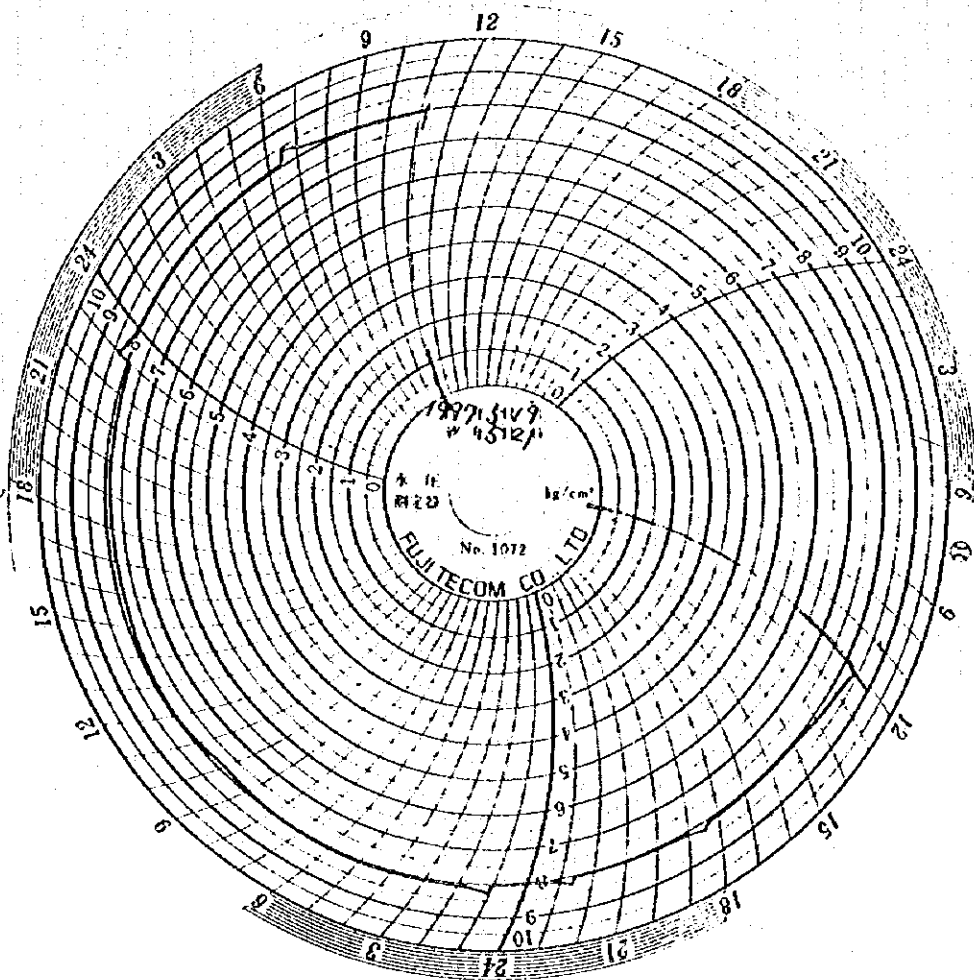


JAPAN INTERNATIONAL COOPERATION AGENCY (JICA)

THE STUDY ON THE DEVELOPMENT OF
WATER SUPPLY SYSTEM FOR THE DAMASCUS CITY

Pressure Data (D03-P1:Well)

NIPPON KOEI CO., LTD.

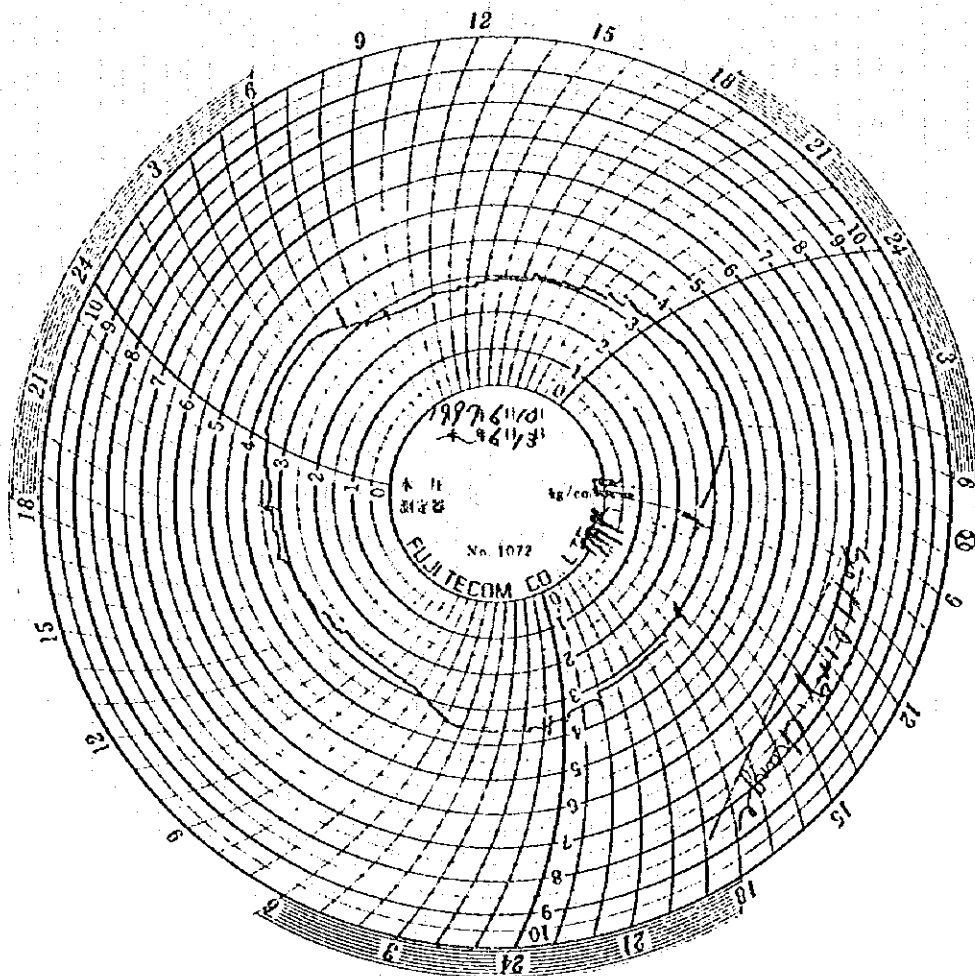


JAPAN INTERNATIONAL COOPERATION AGENCY (JICA)

THE STUDY ON THE DEVELOPMENT OF
WATER SUPPLY SYSTEM FOR THE DAMASCUS CITY

Pressure Data (D04-P1:Wet)

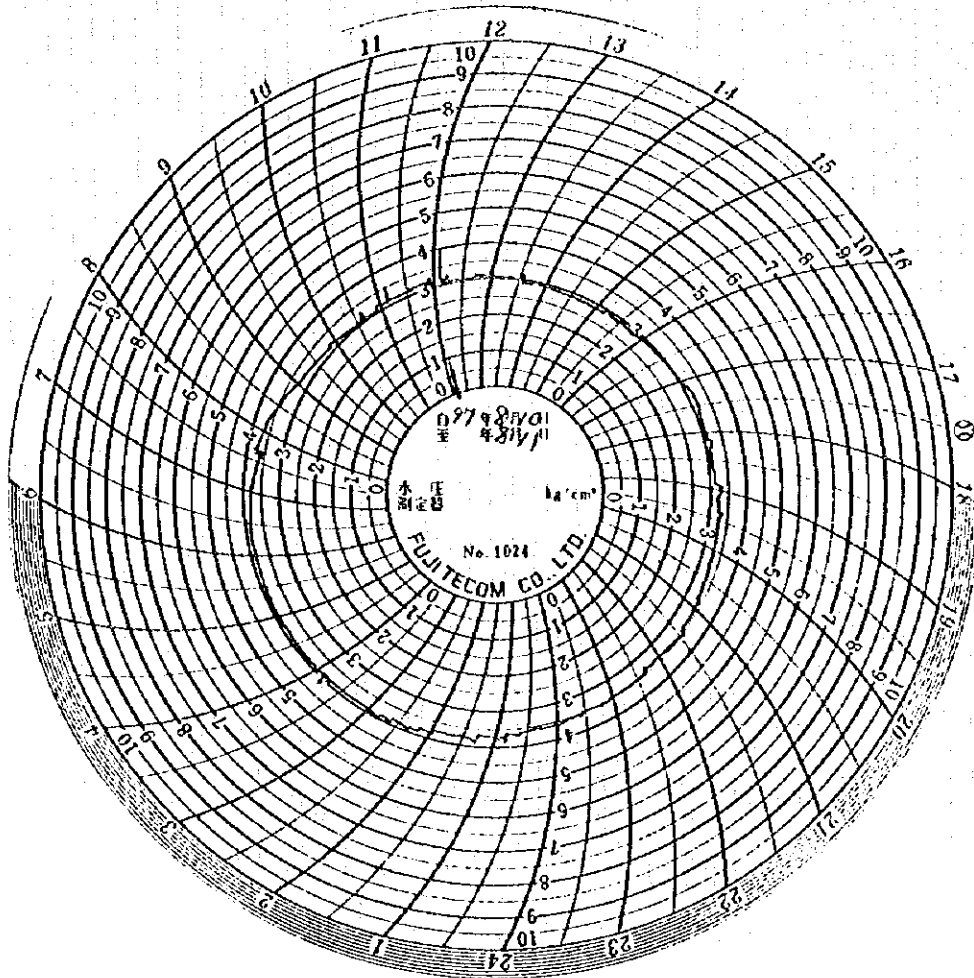
NAIPPOH KOEI CO., LTD.



JAPAN INTERNATIONAL COOPERATION AGENCY (JICA)
 THE STUDY ON THE DEVELOPMENT OF
 WATER SUPPLY SYSTEM FOR THE DAMASCUS CITY

Pressure Data (D04-P2:Wet)

HIPPOKOEI CO. LTD

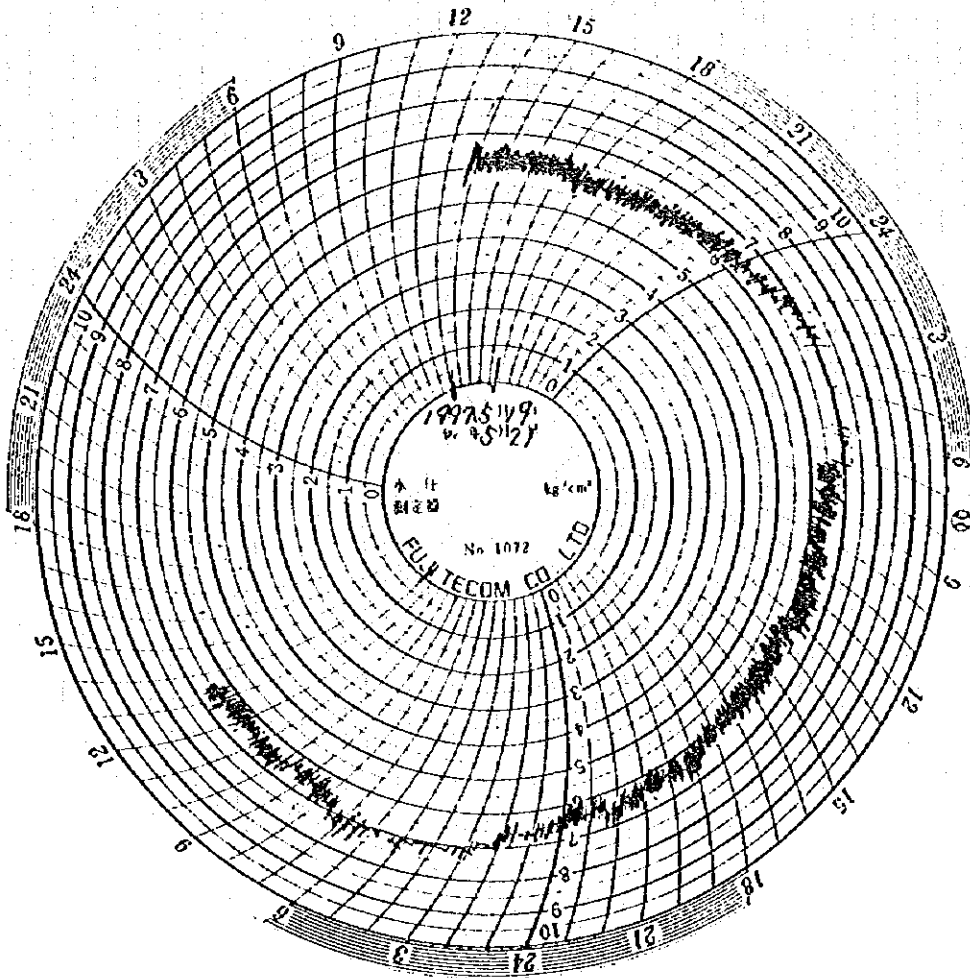


JAPAN INTERNATIONAL COOPERATION AGENCY (JICA)

THE STUDY ON THE DEVELOPMENT OF
WATER SUPPLY SYSTEM FOR THE DAMASCUS CITY

Pressure Data (D04-P2: Dry)

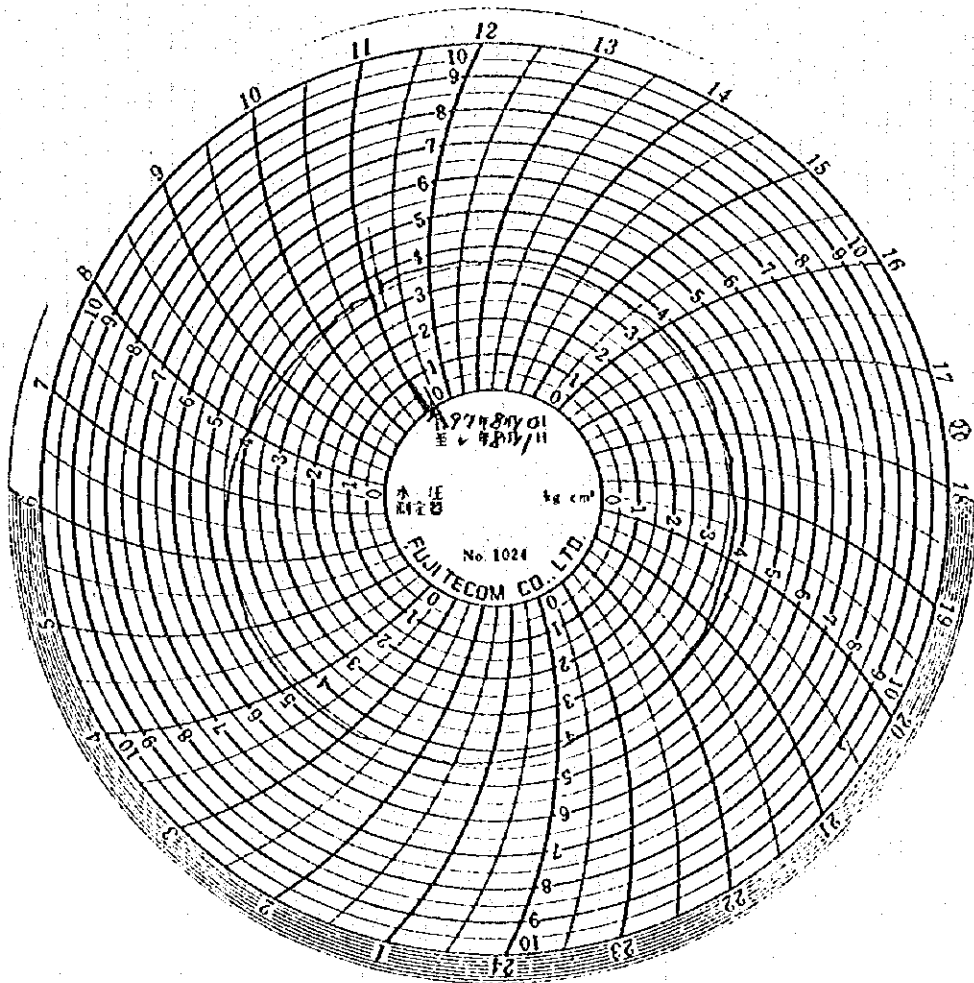
NIPPON KOEI CO., LTD.



JAPAN INTERNATIONAL COOPERATION AGENCY (JICA)
 THE STUDY ON THE DEVELOPMENT OF
 WATER SUPPLY SYSTEM FOR THE DAMASCUS CITY

Pressure Data (D05-P1:Wet)

HIPPOKOEI CO. LTD

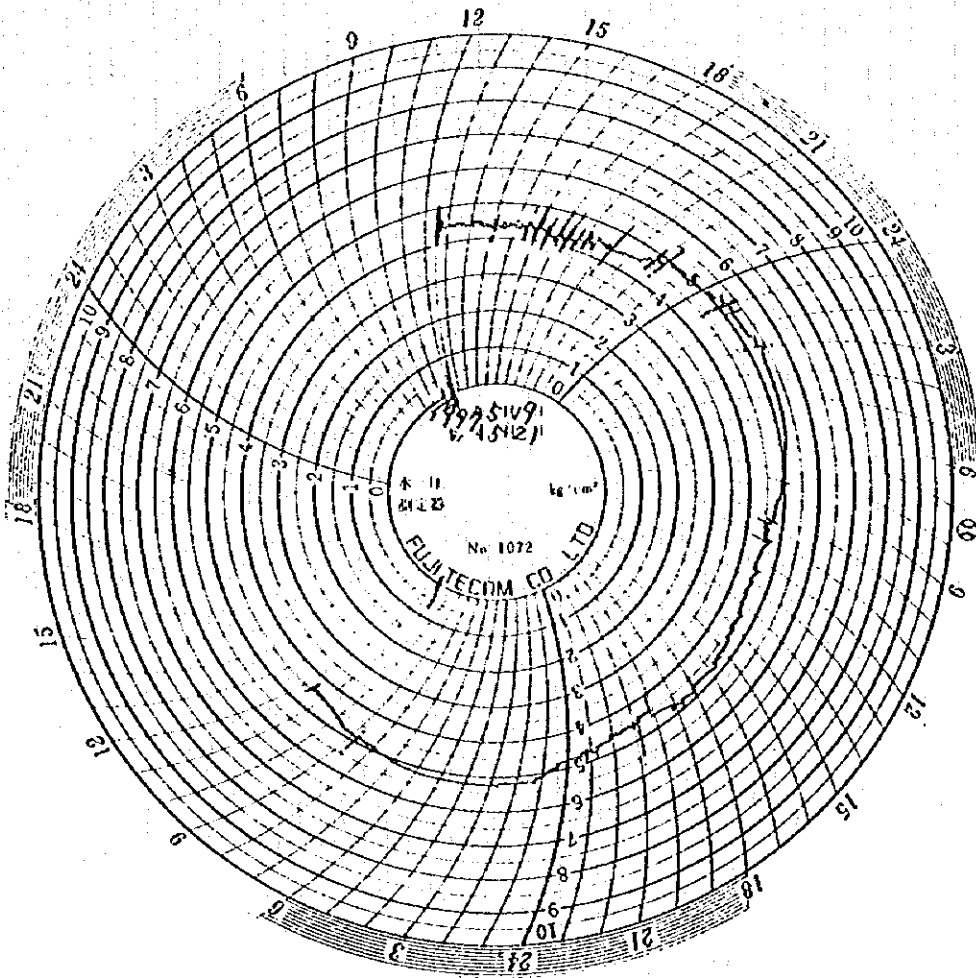


JAPAN INTERNATIONAL COOPERATION AGENCY (JICA)

THE STUDY ON THE DEVELOPMENT OF
WATER SUPPLY SYSTEM FOR THE DAMASCUS CITY

Pressure Data (D05-P1: Dry)

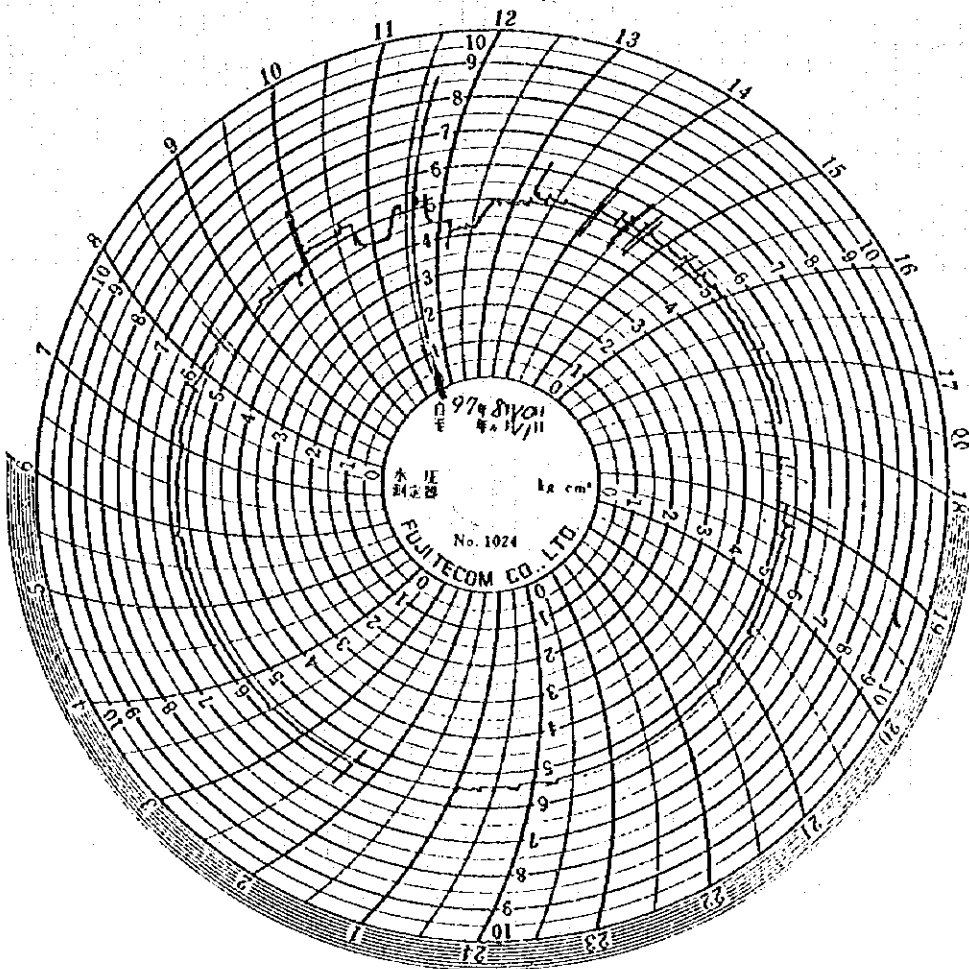
HIPPON KOEI CO., LTD.



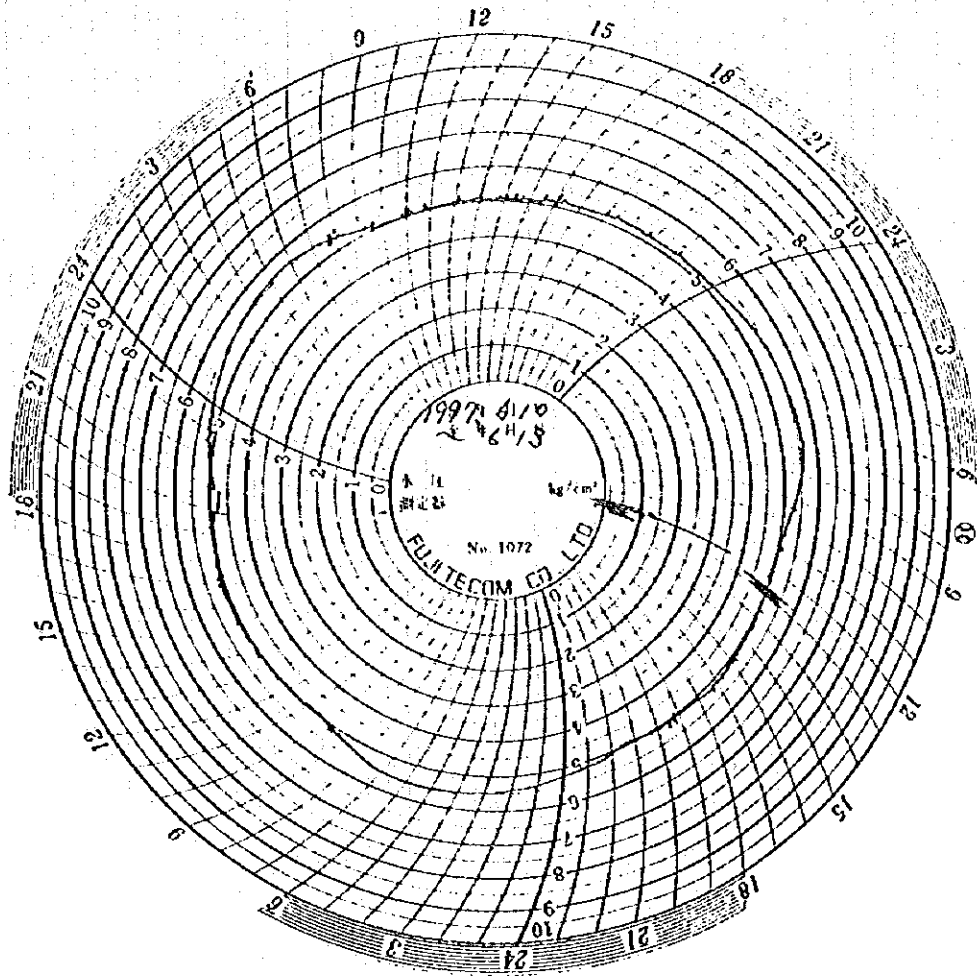
JAPAN INTERNATIONAL COOPERATION AGENCY (JICA)
 THE STUDY ON THE DEVELOPMENT OF
 WATER SUPPLY SYSTEM FOR THE DAMASCUS CITY

Pressure Data (D06-P1:Wet)

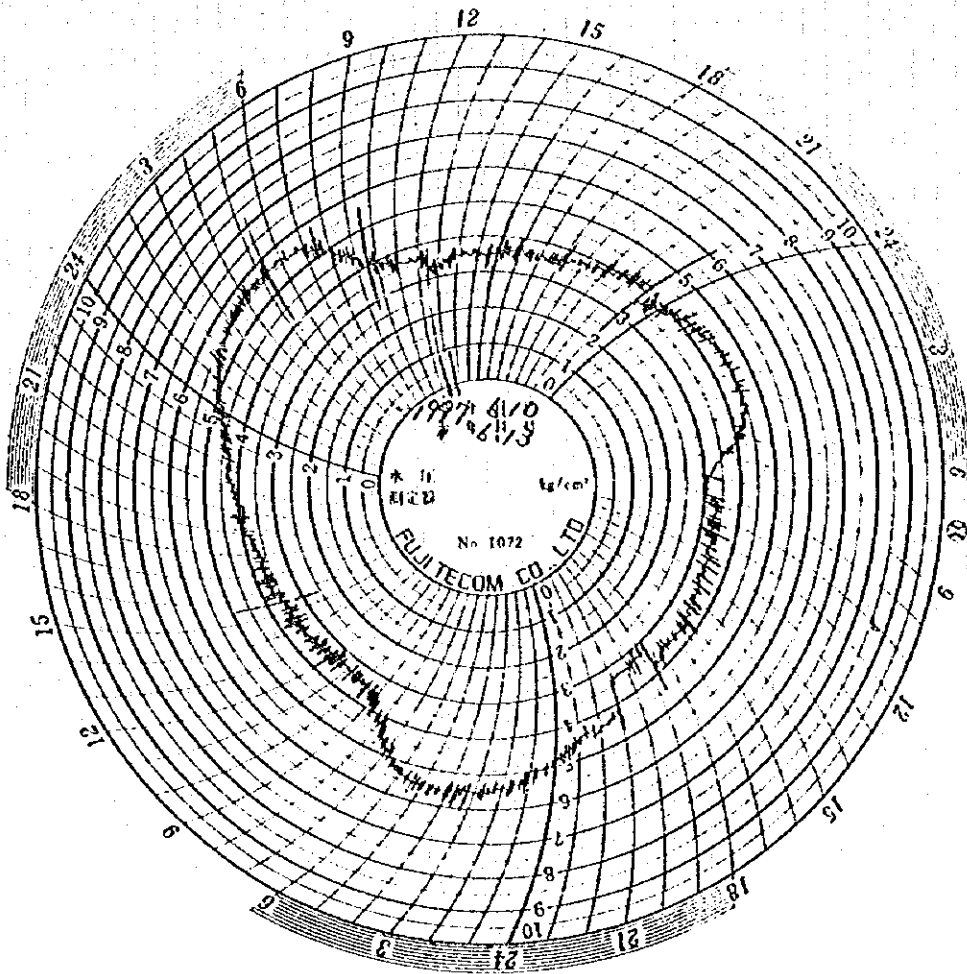
IBPPON KOEI CO. LTD



JAPAN INTERNATIONAL COOPERATION AGENCY (JICA)
THE STUDY ON THE DEVELOPMENT OF WATER SUPPLY SYSTEM FOR THE DAMASCUS CITY
Pressure Data (D06-P1: Dry)
NIPPON KŌEI CO., LTD.



JAPAN INTERNATIONAL COOPERATION AGENCY (JICA)
 THE STUDY ON THE DEVELOPMENT OF
 WATER SUPPLY SYSTEM FOR THE DAMASCUS CITY
 Pressure Data (D08-P1:Wet)
 NIPPON KOGI CO. LTD

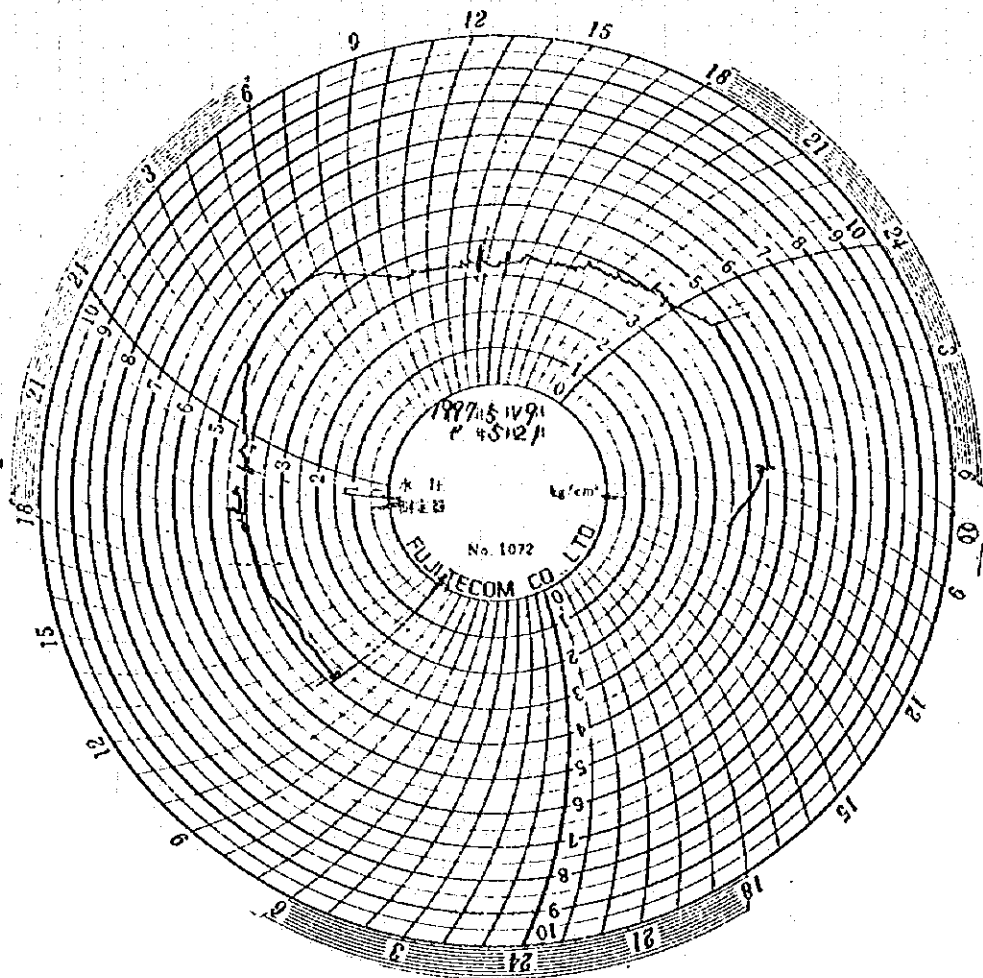


JAPAN INTERNATIONAL COOPERATION AGENCY (JICA)

THE STUDY ON THE DEVELOPMENT OF
WATER SUPPLY SYSTEM FOR THE DALLASGUS CITY

Pressure Data (D09-P1-Wet)

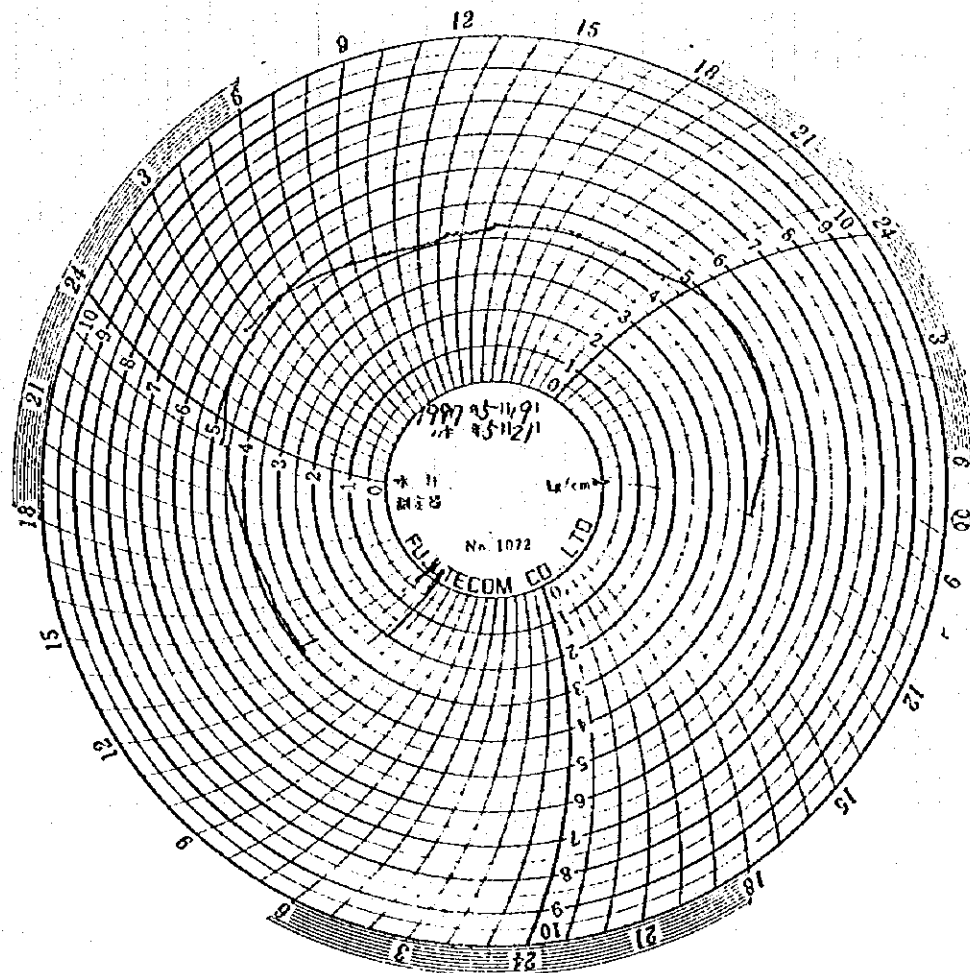
FUJITECOM CO., LTD



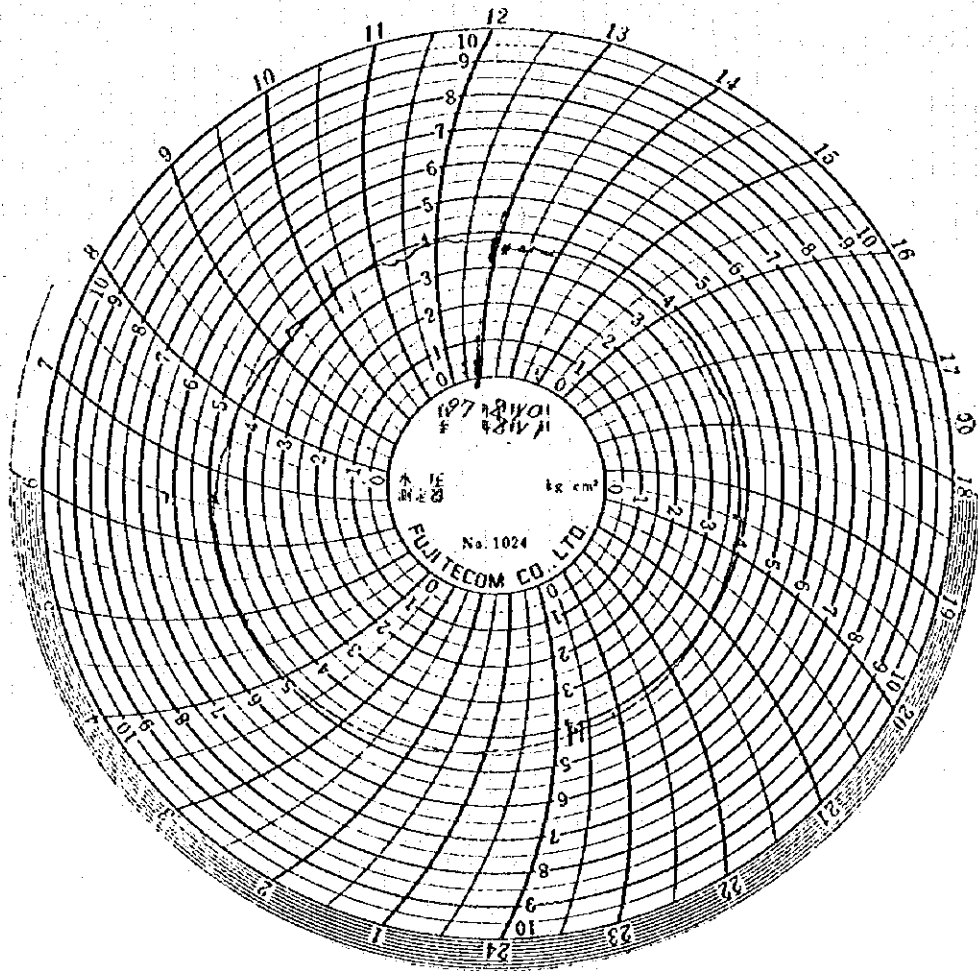
JAPAN INTERNATIONAL COOPERATION AGENCY (JICA)
THE STUDY ON THE DEVELOPMENT OF
WATER SUPPLY SYSTEM FOR THE DAMASCUS CITY

Pressure Data (D10-P1:Wet)

NIIPPON KOEI CO., LTD.



JAPAN INTERNATIONAL COOPERATION AGENCY (JICA)
THE STUDY ON THE DEVELOPMENT OF WATER SUPPLY SYSTEM FOR THE DAMASCUS CITY
Pressure Data (D10-P2:Wet)
FUJIKAWA KOGI CO., LTD

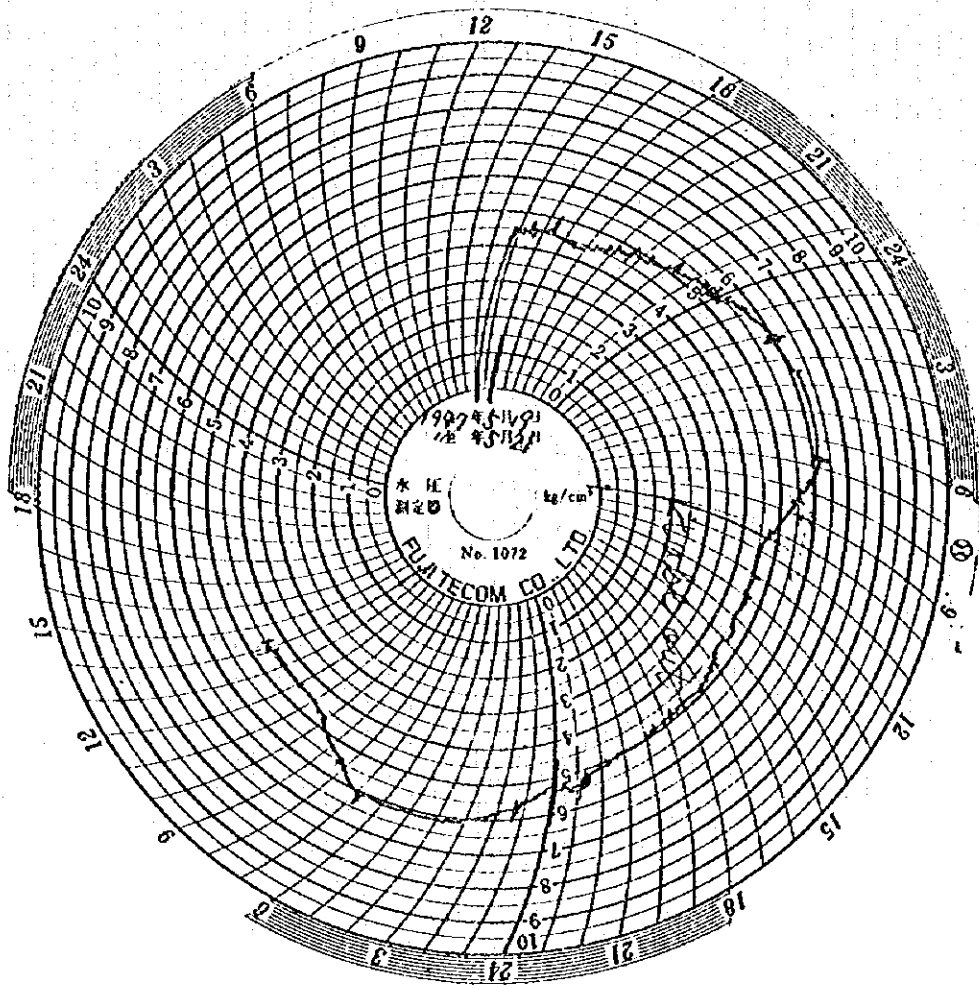


JAPAN INTERNATIONAL COOPERATION AGENCY (JICA)

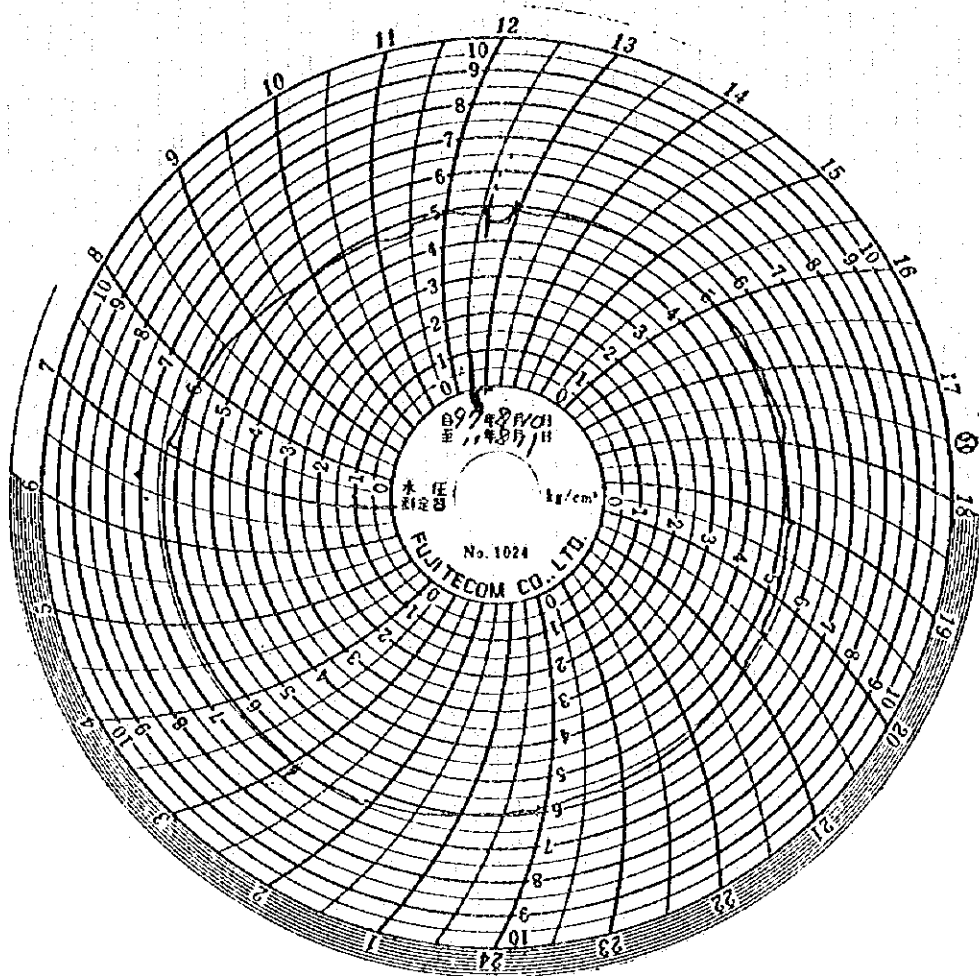
THE STUDY ON THE DEVELOPMENT OF
WATER SUPPLY SYSTEM FOR THE DAMASCUS CITY

Pressure Data (D10-P2: Dry)

IBPPONKEI CO., LTD



JAPAN INTERNATIONAL COOPERATION AGENCY (JICA)
 THE STUDY ON THE DEVELOPMENT OF
 WATER SUPPLY SYSTEM FOR THE DAMASCUS CITY
 Pressure Data (D10-P3:Wet)
 NIPPON KOEI CO., LTD.

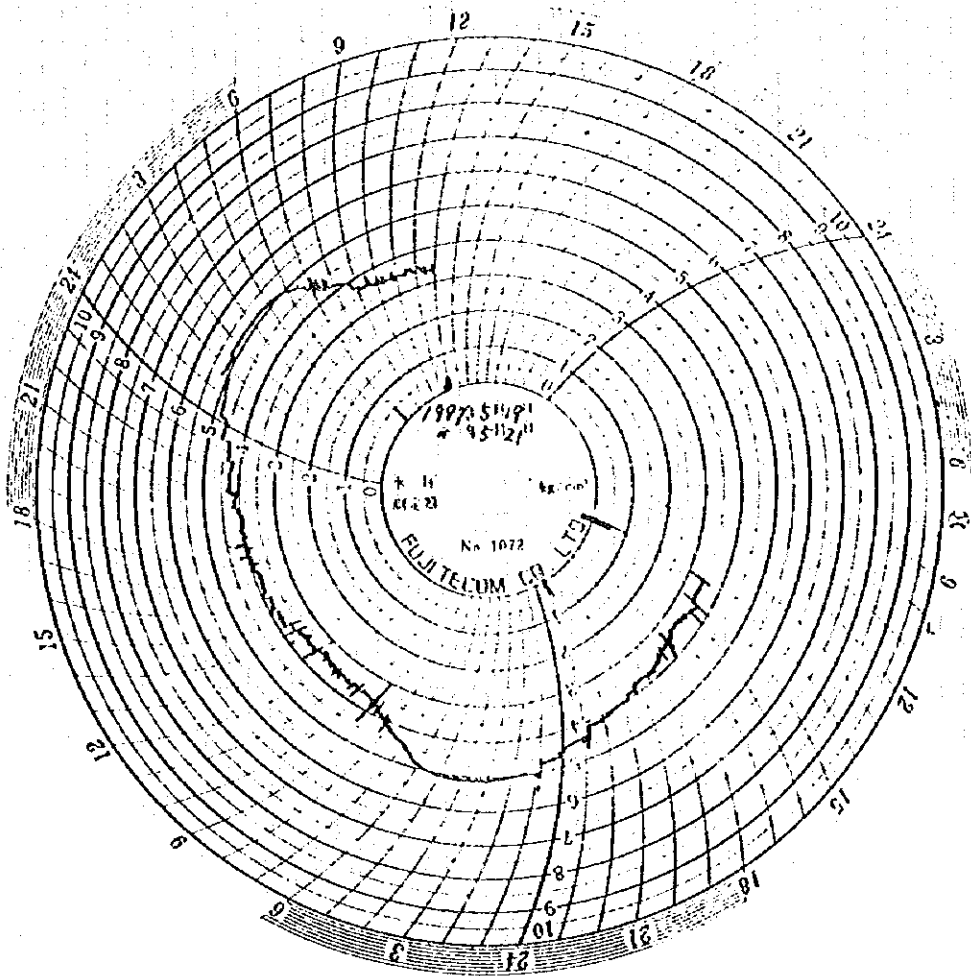


JAPAN INTERNATIONAL COOPERATION AGENCY (JICA)

THE STUDY ON THE DEVELOPMENT OF
WATER SUPPLY SYSTEM FOR THE DAMASCUS CITY

Pressure Data (D10-P3: Dry)

NIPPON KOEI CO., LTD.

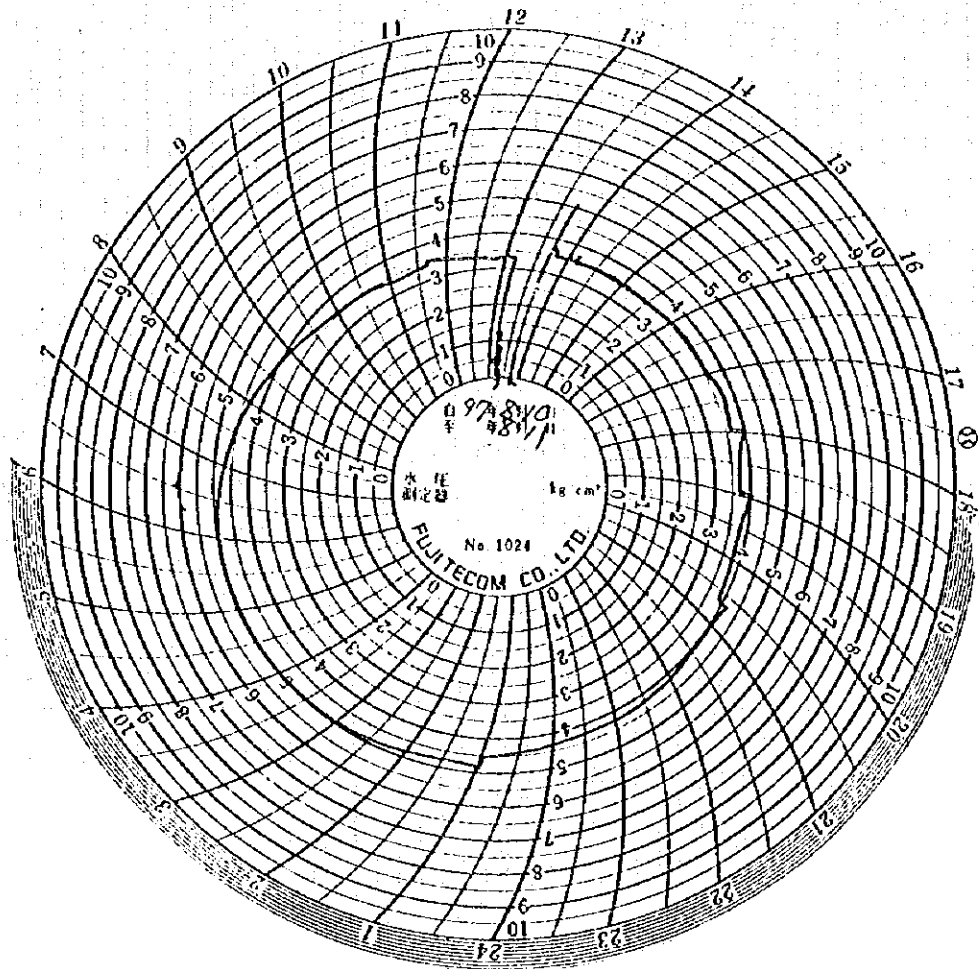


JAPAN INTERNATIONAL COOPERATION AGENCY (JICA)

THE STUDY ON THE DEVELOPMENT OF
WATER SUPPLY SYSTEM FOR THE DAMASCUS CITY

Pressure Data (D10-P4:Wet)

HIPPOI KOEI CO. LTD

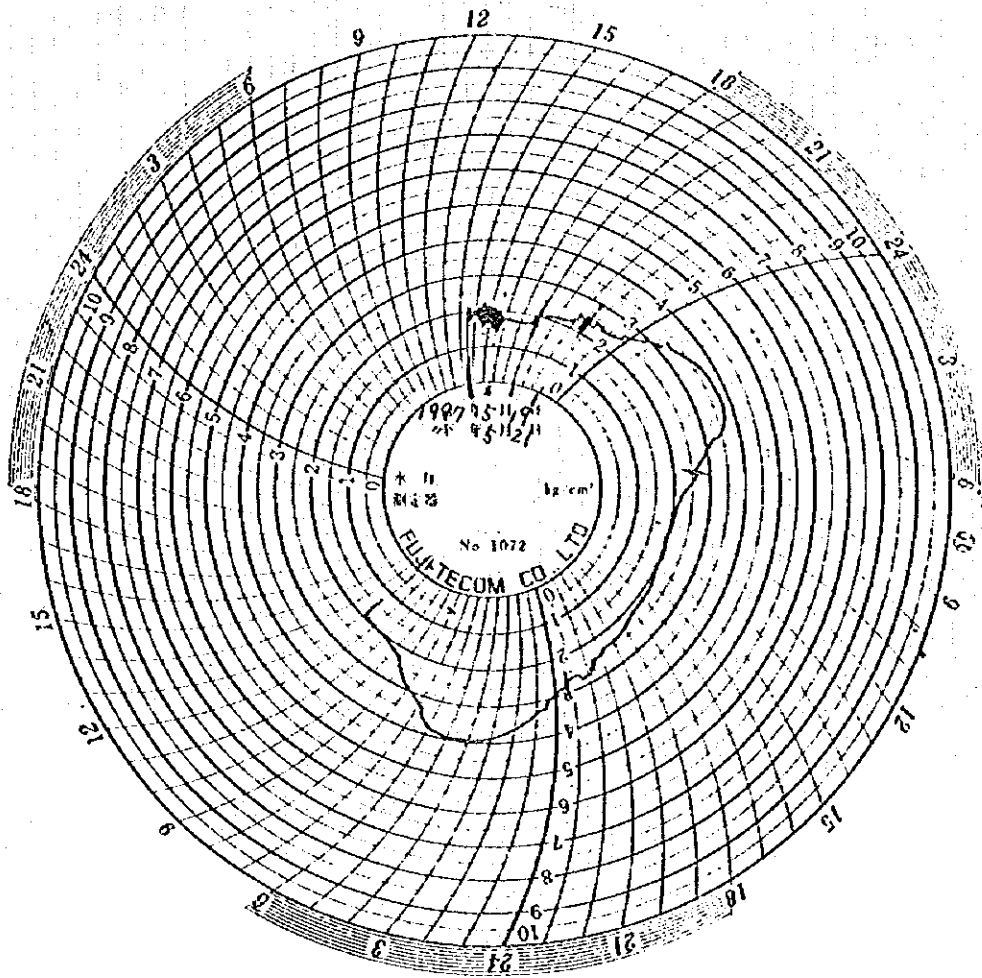


JAPAN INTERNATIONAL COOPERATION AGENCY (JICA)

THE STUDY ON THE DEVELOPMENT OF
WATER SUPPLY SYSTEM FOR THE DAMASCUS CITY

Pressure Data (D10-P4: Dry)

NIPPON KOEI CO., LTD.

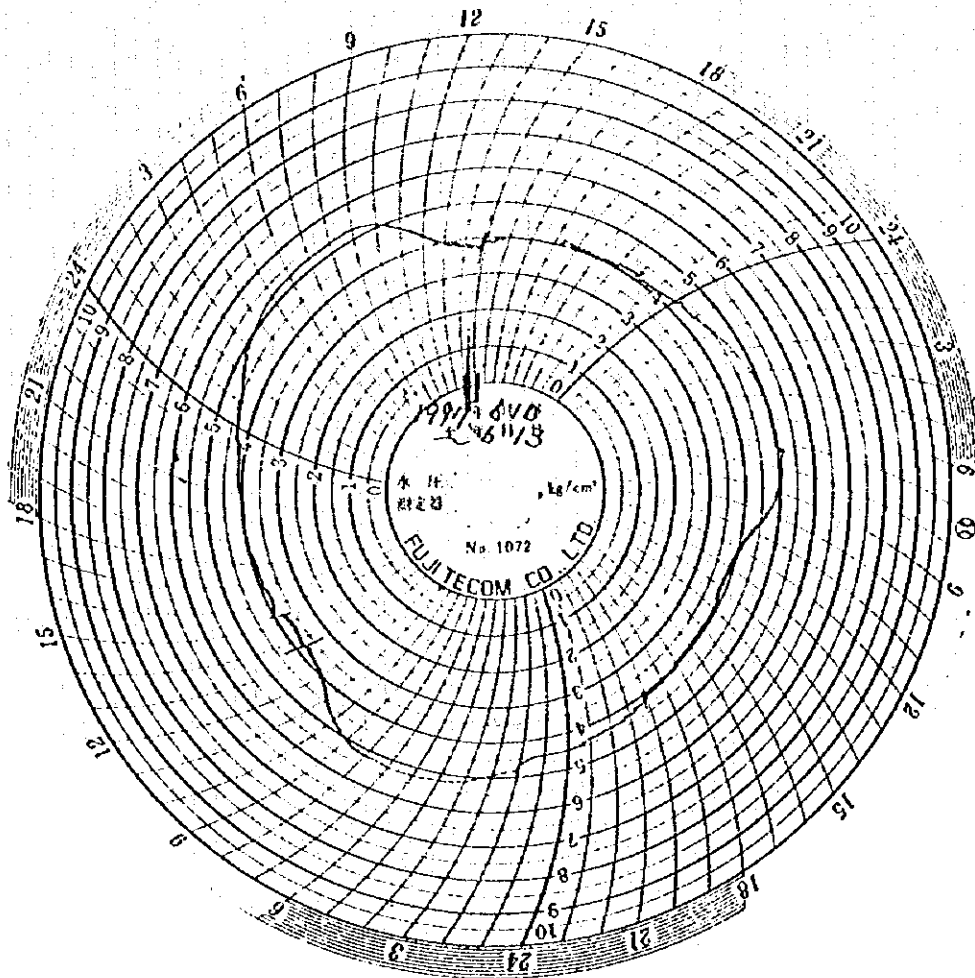


JAPAN INTERNATIONAL COOPERATION AGENCY (JICA)

THE STUDY ON THE DEVELOPMENT OF
WATER SUPPLY SYSTEM FOR THE DAMASCUS CITY

Pressure Data (D10-P5:Wet)

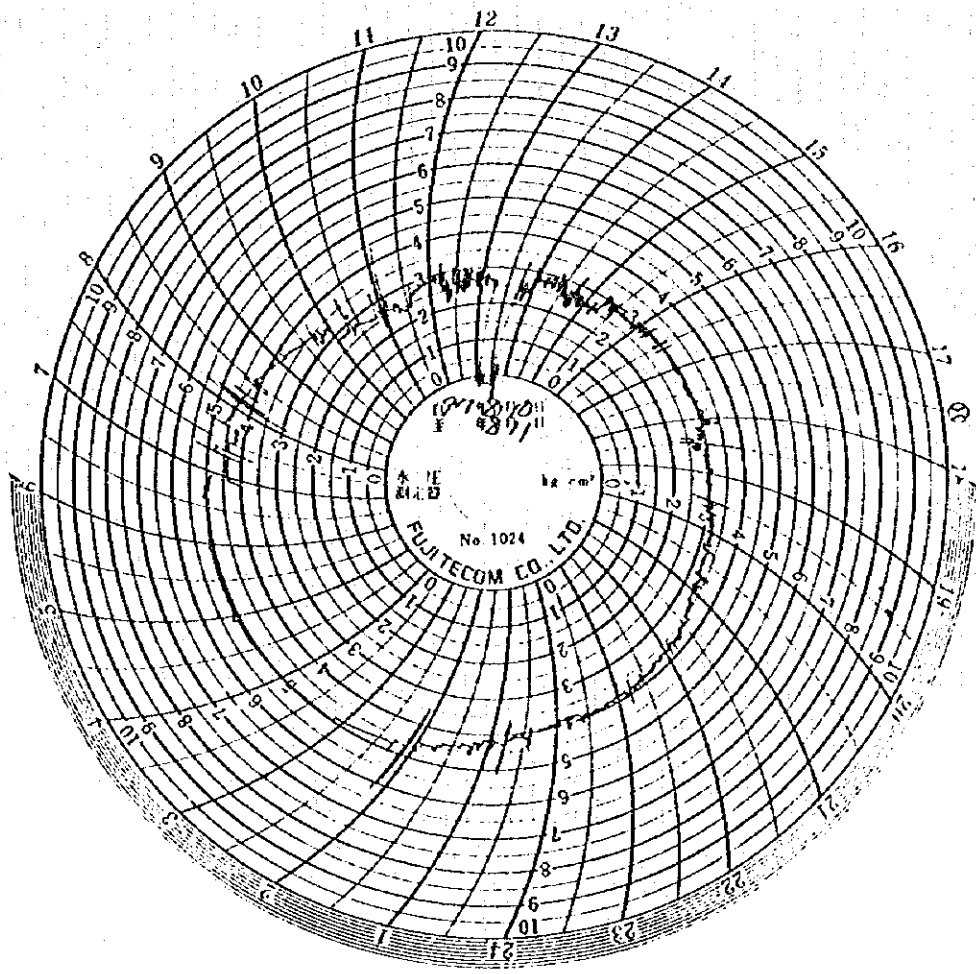
NIIPPON KOGI CO., LTD



JAPAN INTERNATIONAL COOPERATION AGENCY (JICA)
 THE STUDY ON THE DEVELOPMENT OF
 WATER SUPPLY SYSTEM FOR THE DAMASCUS CITY

Pressure Data (D10-P6: Wet)

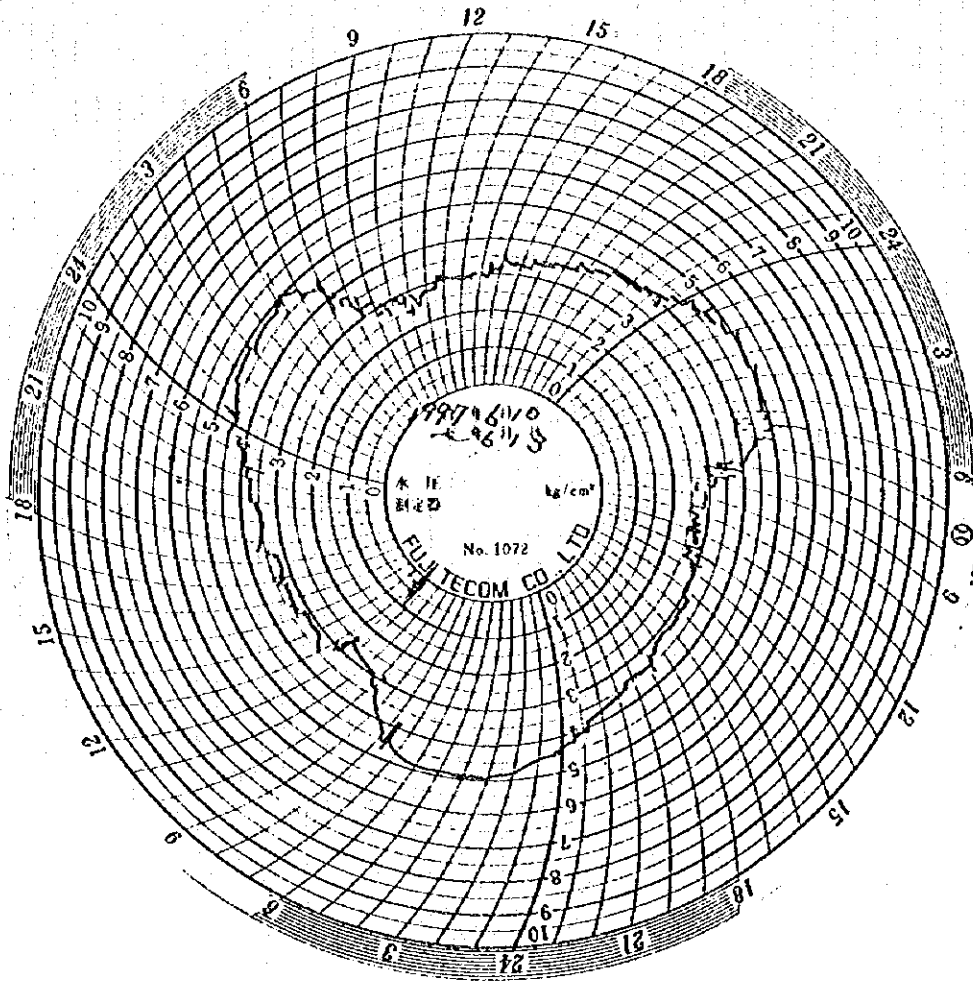
HIPPOH KOEI CO., LTD.



JAPAN INTERNATIONAL COOPERATION AGENCY (JICA)
 THE STUDY ON THE DEVELOPMENT OF
 WATER SUPPLY SYSTEM FOR THE DAMASCUS CITY

Pressure Data (D10-P6: Dry)

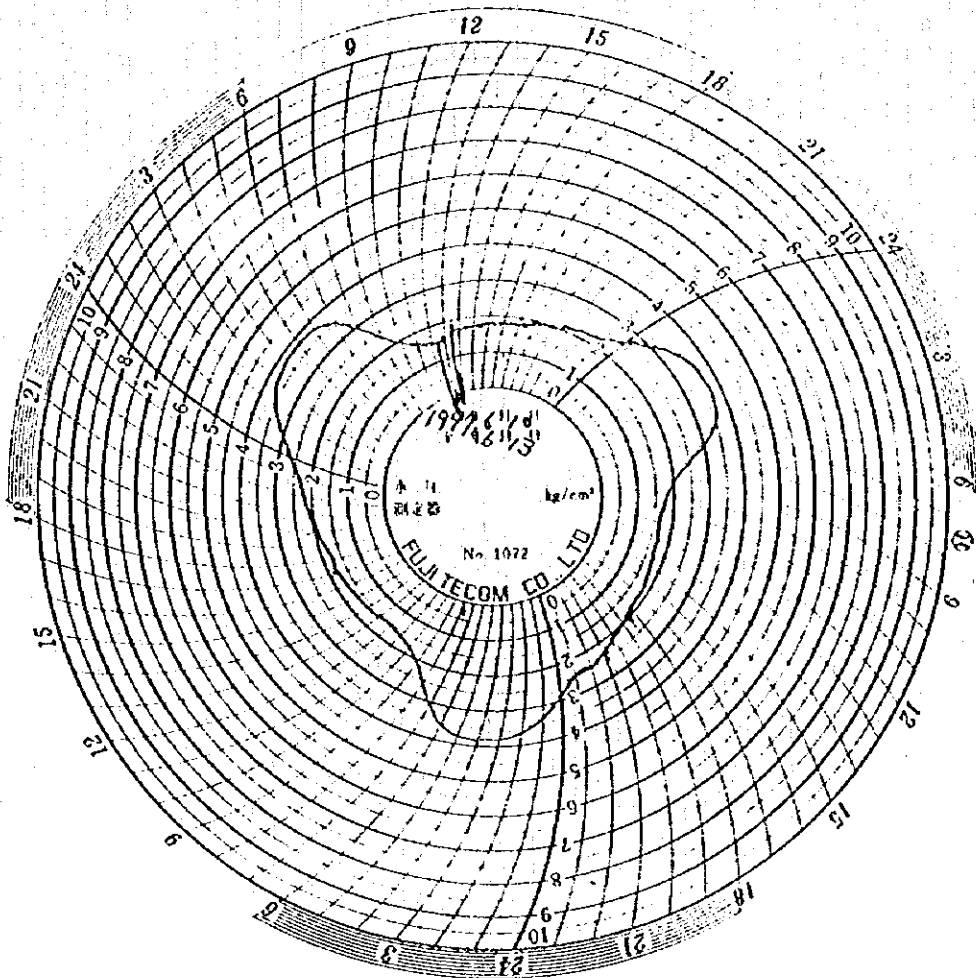
HIPOH KOEICO, LTD



JAPAN INTERNATIONAL COOPERATION AGENCY (JICA)
THE STUDY OF THE DEVELOPMENT OF
WATER SUPPLY SYSTEM FOR THE DAMASCUS CITY

Pressure Data (D10-P7:Wet)

HIPOH KOEI CO. LTD

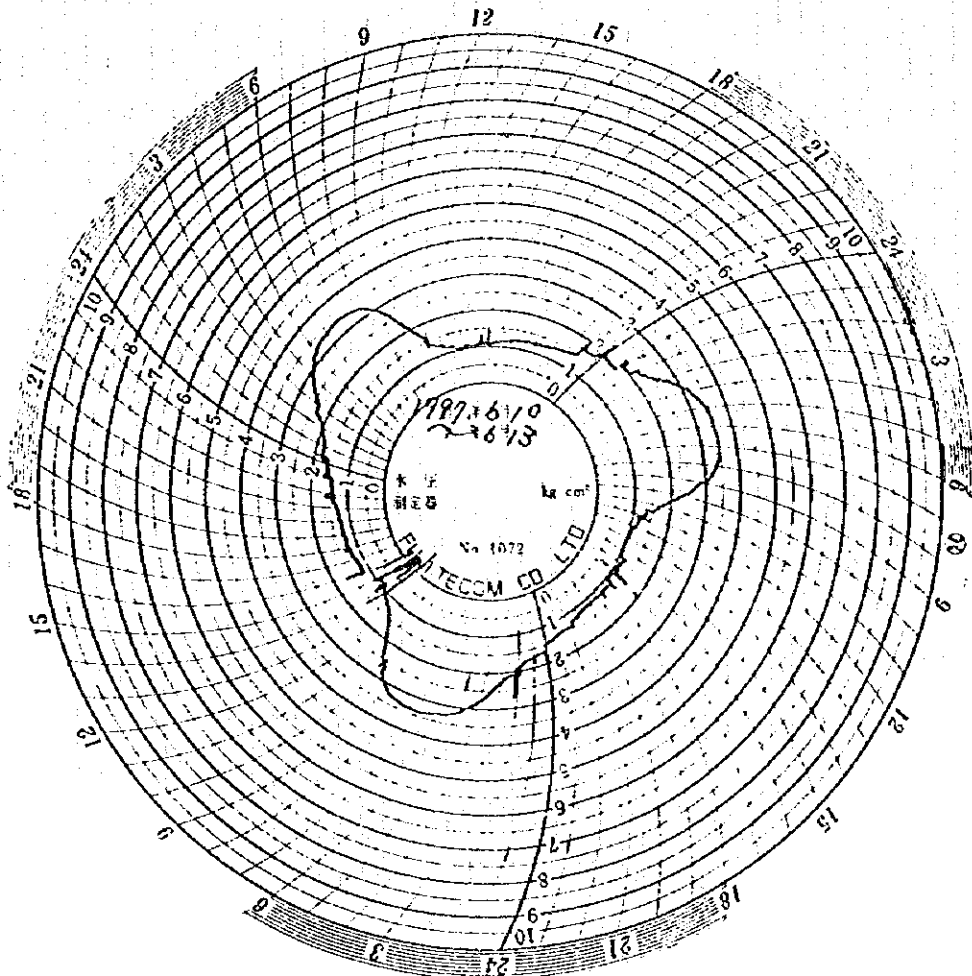


JAPAN INTERNATIONAL COOPERATION AGENCY (JICA)

THE STUDY ON THE DEVELOPMENT OF
WATER SUPPLY SYSTEM FOR THE DAMASCUS CITY

Pressure Data (D10-P8:Wet)

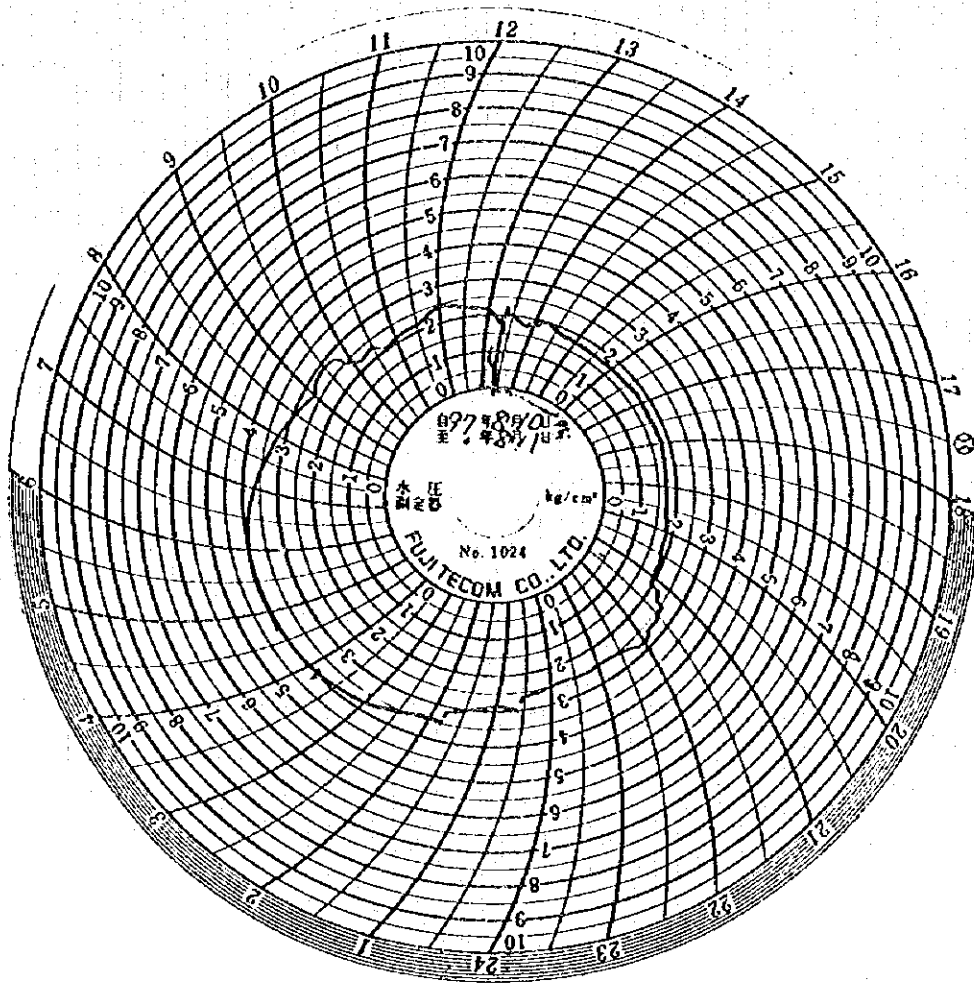
INPPON KOEI CO. LTD



JAPAN INTERNATIONAL COOPERATION AGENCY (JICA)
THE STUDY ON THE DEVELOPMENT OF
WATER SUPPLY SYSTEM FOR THE DAMASCUS CITY

Pressure Data (D10-P9:Wet)

HAPPON KOGI CO., LTD

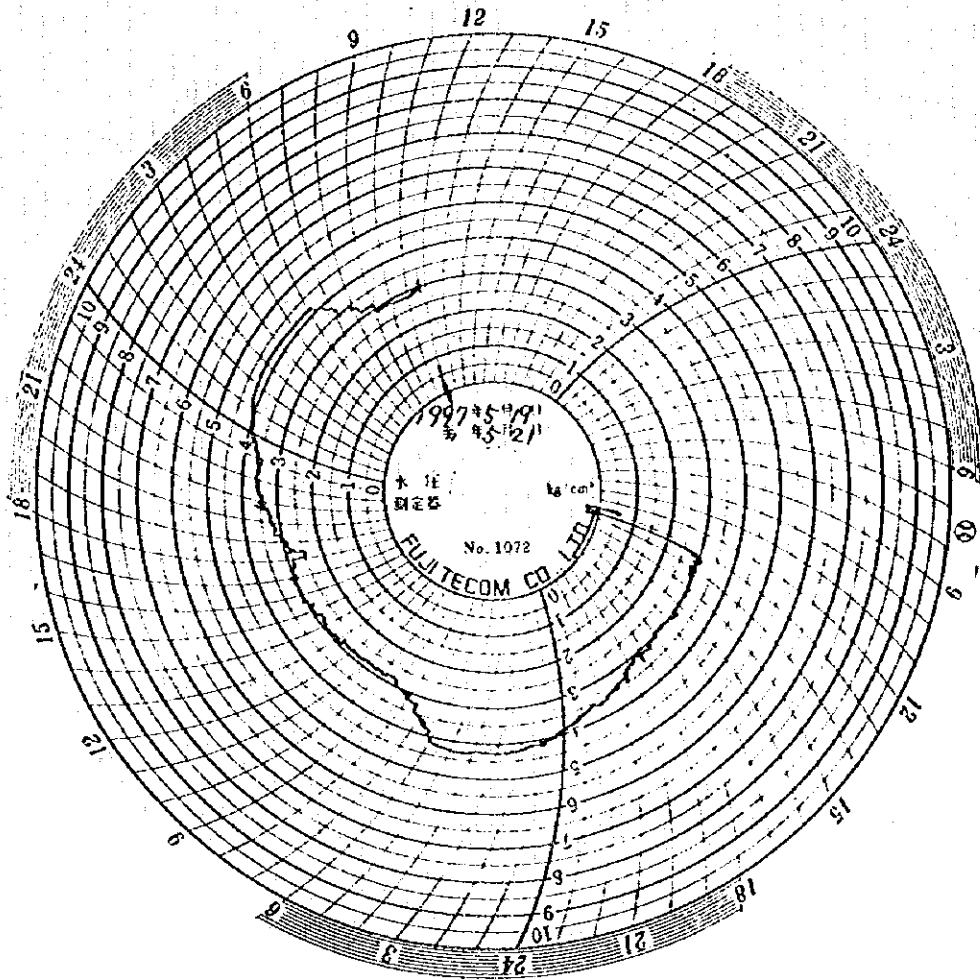


JAPAN INTERNATIONAL COOPERATION AGENCY (JICA)

THE STUDY ON THE DEVELOPMENT OF
WATER SUPPLY SYSTEM FOR THE DAMASCUS CITY

Pressure Data (D10-P9: Dry)

HIPOH KOEICO, LTD

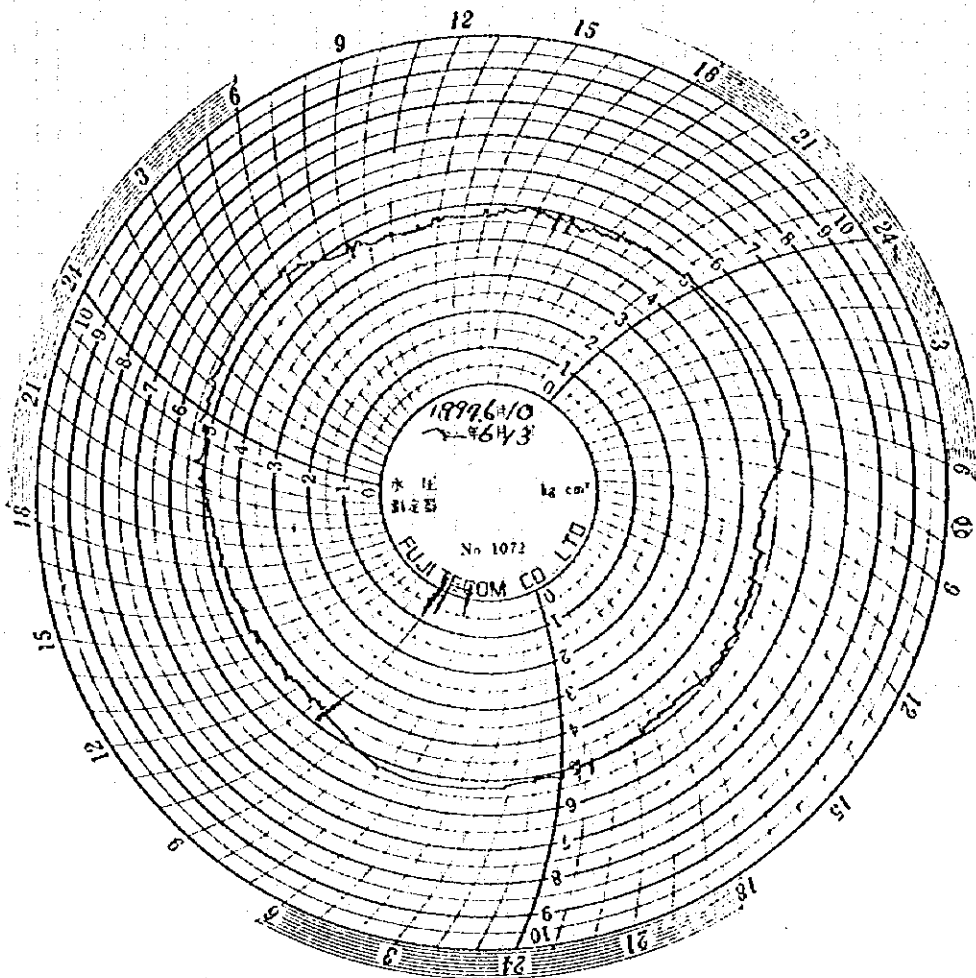


JAPAN INTERNATIONAL COOPERATION AGENCY (JICA)

THE STUDY ON THE DEVELOPMENT OF
WATER SUPPLY SYSTEM FOR THE DAMASCUS CITY

Pressure Data (M01-P1:Wet)

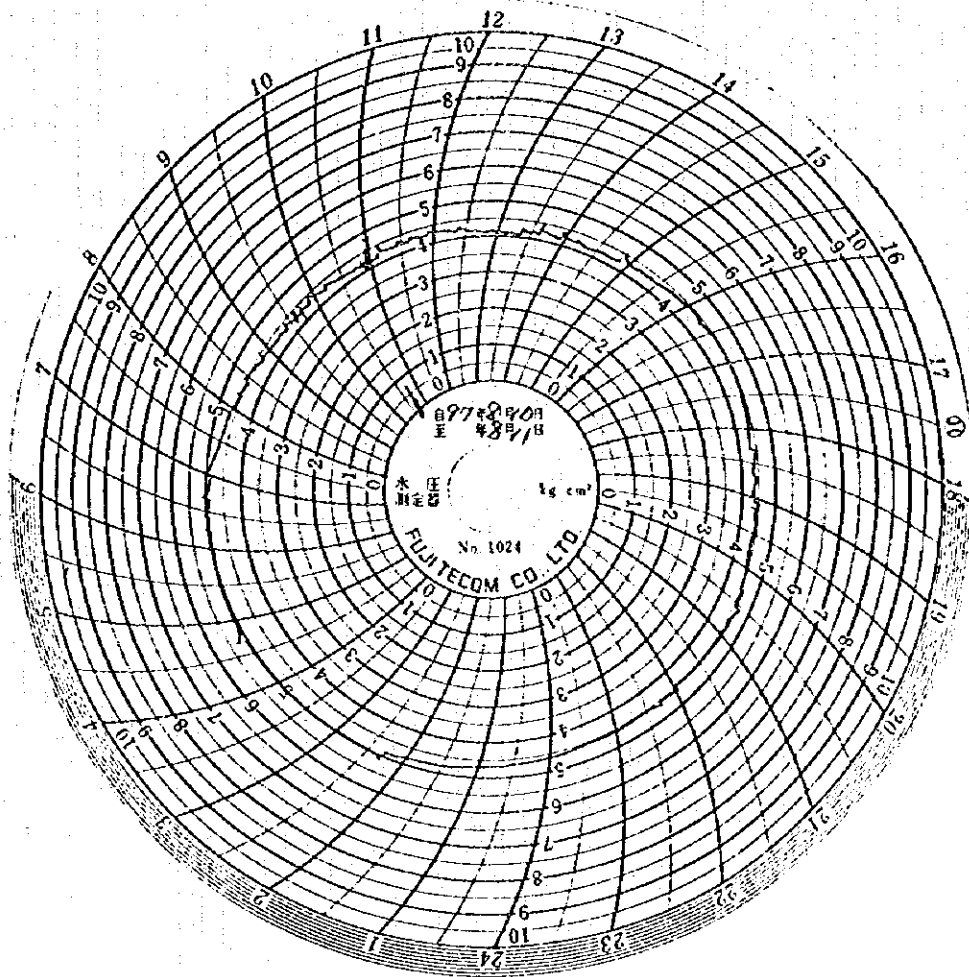
INPPON KOGI CO., LTD



UNEP INTERNATIONAL COOPERATION AGENCY (UNEP)
 THE STUDY ON THE DEVELOPMENT OF
 WATER SUPPLY SYSTEM FOR THE DAMASCUS CITY

Pressure Data (M02-P1: Wet)

INPPOR KOEICO, LTD



JAPAN INTERNATIONAL COOPERATION AGENCY (JICA)

THE STUDY ON THE DEVELOPMENT OF
WATER SUPPLY SYSTEM FOR THE DAMASCUS CITY

Pressure Data (M02-P2:Dry)

HAPPON KOEI CO., LTD

1-d DAWSSA's Pressure Records (1993) - 2/2

	January		February		March		April		May		June		July		August		September		October		November		
	Low	High	Low	High	Low	High	Low	High	Low	High	Low	High	Low	High	Low	High	Low	High	Low	High	Low	High	
DM4	Max	51	63	51	71	55	71	47	73	47	71	43	71	39	69	60	73	43	73	42	68	45	69
	Min	40	65	37	67	35	63	33	57	32	70	37	69	7	67	31	67	14	67	33	67	25	65
	Ave	47	67	44	70	40	69	43	71	43	71	41	70	34	69	45	70	38	69	39	67	41	68
BB2	Max	25	47	72	76	31	51	29	52	31	50	25	49	23	48	19	45	22	43	17	47	31	49
	Min	17	44	0	21	7	37	9	42	8	31	7	21	2	20	6	23	0	20	3	28	1	30
	Ave	21	46	33	50	20	44	23	49	21	47	15	37	11	36	13	39	9	30	8	38	11	42
BB1	Max	31	35	33	35	32	35	29	34	28	33	29	33	27	34	11	33	1	31	9	39	25	31
	Min	29	33	29	33	27	32	0	30	0	29	0	28	0	27	0	27	0	20	0	21	0	25
	Ave	30	35	31	34	30	34	18	32	14	31	4	31	4	31	2	30	0	29	1	29	2	29
DB12	Max																					14	36
	Min																					2	25
	Ave																					5	31
	Max	46	53	47	54	48	60	47	50	49	50	47	49	45	47	47	48	47	49	46	47	46	48
	Min	43	48	46	51	46	48	42	41	45	47	6	45	4	45	0	44	6	44	8	44	7	45
	Ave	46	50	46.7	52.7	47	51	45	47	47	49	26	46	36	46	30	46	18	46	42	46	30	46

1-d DAWSSA's Pressure Records (1994) - 2/2

	January		February		March		April		May		June		July		August		September		October		November		December		
	Low	High	Low	High	Low	High	Low	High	Low	High	Low	High	Low	High	Low	High	Low	High	Low	High	Low	High	Low	High	
DB12	Max	36	51	32	47	38	49	30	49	29	47	25	51	23	45	8	46	5	37	6	37	35	51	40	52
	Min	0	27	27	45	27	43	4	45	21	38	3	30	4	23	3	30	1	26	3	29	1	31	6	36
	Ave	17	40	29	46	30	46	25	47	25	43	18	42	11	37	5	39	3	31	5	32	5	38	23	49
DB30	Max	37	53	45	54	35	54	34	54	36	57	32	53	14	56	11	43	12	43	21	49	43	57		
	Min	34	50	0	45	4	43	26	43	8	35	9	31	7	36	6	32	7	36	2	39	5	46		
	Ave	35	52	34	51	30	51	30	47	23	47	19	45	10	46	8	38	10	39	9	42	30	53		
DM4	Max	55	71	55	71	57	73	54	73	41	67	32	65	31	64	48	72	50	69	49	70	55	69	59	74
	Min	23	61	5	70	43	69	19	67	12	29	28	61	0	40	19	58	15	50	13	57	20	61	30	64
	Ave	43	69	43	71	51	71	46	71	31	63	30	63	26	60	30	64	23	62	23	63	45	67	51	70
BB2	Max	32	51	28	52	31	53	23	51	15	49	12	40	11	37	12	41	12	42	13	50	28	49		
	Min	6	42	9	42	9	37	0	24	6	26	6	30	7	21	3	19	3	22	3	39	5	43		
	Ave	13	45	14.2	46.2	15	46	12	40	10	38	9	35	9	33	6	31	5	32	5	43	13	47		
BB1	Max	29	35	0	33	29	34	0	51	0	32	0	31	0	31	0	30	0	28	0	30	0	28	0	30
	Min	0	28	0	29	0	29	0	24	0	27	0	28	0	25	0	22	0	22	0	21	0	25	0	27
	Ave	5	31	0	30.7	3	31	0	40	0	30	0	29	0	28	0	28	0	25	0	26	0	26	0	28
	Max	48	59	47	49	47	52	45	47	45	48	7	46	44	45	11	56	10	53	11	51	51	55	52	56
	Min	45	49	43	47	43	45	42	44	42	44	7	43	5	43	2	53	8	48	7	47	10	50	47	51
	Ave	46	51	45	47	46	48	44	46	44	46	7	45	15	44	7	54	9	50	9	50	33	52	50	54

1-d DAWSSA's Pressure Records (1995) - 1/2

Location of Pressure Measurements		January		February		March		April		May		June		July		August		September		October		November		December	
		Low	High	Low	High	Low	High	Low	High	Low	High	Low	High	Low	High	Low	High	Low	High	Low	High	Low	High	Low	High
CH1	Max	33	39	31	39	33	39	30	37	30	39	29	38	28	37	0	53	0	36	0	37	0	36	0	37
	Min	30	36	20	35	25	27	26	35	0	34	25	35	0	30	0	31	0	30	0	31	0	32	0	3
	Ave	32	38	30	38	29	35	28	36	26	37	27	37	6	34	0	34	0	33	0	34	0	31	0	31
DB8	Max	59	61	51	55	51	56	51	53	51	57	43	49	21	49			0	39	0	46	0	47	0	49
	Min	15	49	46	51	5	52	46	53	38	45	7	41	0	41			0	25	0	28	0	45	0	33
	Ave	47	54	49	54	48	54	48	54	45	52	36	47	4	46			0	30	0	37	0	46	0	43
DB29	Max	43	55	36	45									0	36			0	35	0	34	0	35	0	36
	Min	20	40	30	40									0	31			0	26	0	30	0	31	0	27
	Ave	33	41	32	43									0	33			0	31	0	32	0	33	0	33
DB28	Max	57	62	59	61	64	59	57	60	57	60	54	60	42	45					16	38	16	50	15	45
	Min	44	54	52	57	52	56	52	56	51	56	49	54	10	38					4	32	8	37	6	30
	Ave	54	58	55	58	55	57	55	57	53	58	52	57	20	43					11	35	11	41	10	38
DB24	Max	26	45	28	43	23	42	23	42	21	41	18	41	19	45					15	37	15	33	16	33
	Min	2	23	17	36	2	33	4	39	4	32	2	31	5	29					6	24	2	21	7	28
	Ave	17	40	21	35	17	40	17	41	16	39	13	38	12	36					12	29	13	29	13	31
DB11	Max	40	51	39	50	37	49	36	48	36	48	32	47												
	Min	6	42	30	43	30	45	28	45	29	40	9	39												
	Ave	31	47	33	46	33	47	33	47	32	46	26	45												
DB11	Max	51	58	48	55	48	57	47	57	47	57	45	57	43	53	15	46	12	46	44	50	43	50	10	45
	Min	43	51	42	51	43	51	41	55	39	53	39	50	4	43	6	42	5	40	6	39	5	39	5	38
	Ave	46	55	44	54	45	55	45	56	43	55	42	55	19	48	8	44	8	43	11	43	10	43	7	41
DB1	Max	50	55	52	55	51	55	50	55	51	55	52	57			5	52	0	45	0	47				
	Min	31	51	45	50	45	50	45	52	44	50	24	46			0	29	0	35	0	32				
	Ave	45	53	49	53	48	53	48	54	47	53	46.5	53.7			2	48	0	43.1	0	42.7				
DB26	Max	34	53	40	59	33	49	31	49	33	49	36	59	30	56	28	65			14	43	10	44	12	44
	Min	16	39	6	41	25	43	24	46	25	43	15	43	3	33	21	56			7	37	5	37	4	34
	Ave	22	44	26	46	29	47	28	47	28	47	27	51	18	50	25	59			10	40	7	40	7	39
DB7	Max	46	55	42	52	27	49	27	45	29	46	25	53	42	45	1	45	0	41	16	41	0	40	0	47
	Min	20	37	16	37	15	39	21	42	20	37	0	39	2	40	0	39	0	27	0	32	0	30	0	27
	Ave	25	45	23	43	23	44	24	44	24	43	19	44	6	43	0	41	0	37	10	36	0	37	0	37
DB7	Max													45	63	18	45	16	42			13	40	14	49
	Min													2	49	0	35	0	32			0	33	0	25
	Ave													14	54	12	40	8	37			8	37	8	37
DB3	Max	63	67	62	67	61	65	61	65	62	65	64	69	41	46	0	41	0	0	38	41	37	41	0	35
	Min	38	61	56	62	50	62	55	61	57	61	36	61	0	35	0	34	0	0	0	32	0	32	0	31
	Ave	59	64	60	63	59	64	59	63	59	64	58	65	7	42	0	37	0	0	2	36	2	34	0	33
DB14	Max	41	45					33	41	31	41	29	44	29	49	15	46	14	45	15	43	14	42	15	45
	Min	7	39					23	39	23	35	10	33	0	39	8	37	8	35	10	36	9	37	9	32
	Ave	32	42					29	41	26	40	24	41	15	43	11	43	11	41	13	39	11	40	11	41
DB6	Max	27	32	37	33	27	31	26	30	21	30	23	29	20	31	9	27					19	41	17	28
	Min	23	29	31	29	16	28	6	22	11	22	13	25	6	19	5	15					2	11	4	17
	Ave	24	30	34	31	22	30	16	27	16	27	17	28	11	24	7	20					9	21	10	22
DB30	Max	44	57							31	45	36	53	35	57	21	53	18	52	18	50	17	51	16	52
	Min	9	41							27	43	17	45	13	45	11	43	9	43	13	45	11	45	11	40
	Ave	34	50							28	44	28	50	18	50	14	49	14	47	14	47	16	49	14	48
DB12	Max	40	52	81	53	34	39	33	47	33	47	29	49	35	55	14	51	11	49	12	47	12	47	11	48
	Min	5	44	28	44	24	43	24	44	25	42	8	38	7	43	7	43	7	40	9	41	5	41	7	32
	Ave	30	47	33	47	31	47	30	47	29	46	25	45	14	48	9	48	9	44	10	44	9	45	8	42
DM4	Max	58	75	62	73	58	75	57	75	60	75	46	73	67	76	52	72	27	71	47	71	50	73	55	78
	Min	2	72	43	69	43	70	43	74	41	71	6	71	0	61	0	53	11	59	14	61	13	43	4	1
	Ave	54	73	47	72	53	73	53	75	49	73	40	72	35	70	13	63	14	62	16	63	17	65	22	65
BB1	Max	3	30	3	31	5	31	2	30	0	31	0	30	0	26	0	31	0	33	0	32	2	39	0	33
	Min	0	27	0	27	0	27	0	26	0	20	0	22	0	22	0	20	0	20	0	23	0	27	0	26
	Ave	0	29	0	29	0	29	0	28	0	27	0	27	0	25	0	28	0	29	0	29	0	30	0	29

1-d DAWSSA's Pressure Records (1995) - 2/2

		January	February	March	April	May	June	July	August	September	October	November	December	
		Low High	Low High	Low High	Low High	Low High	Low High	Low High	Low High	Low High	Low High	Low High	Low High	
DB10	Max	52	57	53	57	50	54	53	56	50	56	49	54	
	Min	49	53	50	51	10	50	11	51	7	48	8	51	
	Ave	51	54	52	54	26	52	48	54	42	52	30	52	
DB10	Max		42	55	36	50				11	57	17	65	
	Min		30	45	31	41				2	41	3	43	
	Ave		33	49	34	49				8	52	7	50	
DB12	Max		81	53										
	Min		28	44										
	Ave		33	47										
MB1	Max					34	37	34	38	33	37	7	35	
	Min					23	35	7	35	4	31	7	29	
	Ave					30	36	30	36	11	33	7	32	
MB2	Max							45	65	29	69	30	56	
	Min							0	44	0	47	0	45	
	Ave							22	53	23	53	24	51	
MB3	Max					32	35	32	34	0	34	0	34	
	Min					29	33	28	32	0	32	0	31	
	Ave					31	34	30	33	7	33	0	33	
MH1	Max					50	62	34	38	50	29	0	57	
	Min					39	59	7	35	0	25	0	52	
	Ave					48	61	30	36	11	26	0	55	
MH2	Max					24	29	27	30	22	29	0	27	
	Min					5	24	0	25	0	25	0	23	
	Ave					19	27	16	28	4	26	0	25	
MH3	Max					53	69	53	71	53	67	8	60	
	Min					45	65	10	65	7	58	5	54	
	Ave					50	67	45	67	17	62	6	58	
DB20	Max					35	49	35	53	33	57	3	48	
	Min					32	47	7	43	2	38	0	39	
	Ave					34	48	29.2	47.5	7	46	1.23	43.1	
DB16	Max							4	55			0	55	
	Min							1	43			0	49	
	Ave							2	52			0	52	
DB21	Max							33	49			9	45	
	Min							7	37			5	37	
	Ave							10	41			7	41	
BM2	Max							51	53			33	80	
	Min							7	50			4	54	
	Ave							26	51			30	65	
DB27	Max									11	23	12	22	
	Min									2	19	3	15	
	Ave									9	21	10	20	
DB27	Max													
	Min													
	Ave													
DB13	Max											52	57	
	Min											5	50	
	Ave											11	53	
DB1	Max											0	45	
	Min											0	39	
	Ave											0	42	
DB10	Max												10	55
	Min												0	42
	Ave												5	49

I-d DAWSSA's Pressure Records (1996) - 1/3

Location of Pressure Measurements	January		February		March		April		May		June		July		August		September		October		November		December		
	Low	High	Low	High	Low	High	Low	High	Low	High	Low	High	Low	High	Low	High	Low	High	Low	High	Low	High	Low	High	
C111	Max	0	37			33	39	31	39	28	37	29	39	26	38	27	37	0	35	0	35	0	36	32	39
	Min	0	33			27	35	25	35	24	34	24	34	15	34	0	31	0	30	0	31	0	33	0	37
	Ave	0	35			30	37	29	37	27	35	26	36	24	35	11	34	0	32	0	33	0	35	22	37
MB1	Max	10	39	35	40	35	40	34	42	32	41	31	42	29	40	29	41	0	38	0	38	0	39	33	41
	Min	0	34	0	36	30	39	30	38	27	31	26	37	10	28	0	35	0	33	0	33	0	34	0	35
	Ave	1	37	25	38	33	39	33	40	30	39	29	39	26	38	13	38	0	35	0	35	0	36	24	38
MB2	Max	51	59	49	59							52	60	37	53	29	57	29	57	34	61	35	60	54	60
	Min	0	49	0	45							6	48	26	39	0	37	0	40	9	49	9	52	20	50
	Ave	13	53	41	54							46	56	29	45	20	47	17	53	25	53	29	55	44	56
MB3	Max	31	35	32	34	32	35	33	36	32	35	33	39	31	35	31	34	0	34	0	34	0	35	33	35
	Min	0	31	0	32	30	33	30	33	30	32	28	31	21	31	0	31	0	31	0	33	0	31	0	33
	Ave	2	33	24	33	31	33	31	34	31	33	30	35	29	33	10	33	0	33	0	33	0	33	23	34
MH1	Max	0	61	55	61	53	62	58	64	53	63	55	65	52	63	51	63	5	59	5	58	0	60	59	63
	Min	0	55	0	51	26	47	19	52	15	59	46	57	24	57	3	55	0	53	3	47	0	57	3	52
	Ave	0	57	39	59	48	59	49	61	49	61	51	61	46	60	23	59	4	55	4	56	0	58	41	60
MH2	Max	0	29			23	29	23	38	20	30	21	29	19	27	19	28	0	30	0	25	0	27	21	29
	Min	0	24			0	20	0	25	0	25	11	23	0	23	0	21	0	20	0	19	0	23	0	25
	Ave	0	26			18	26	19	28	17	27	18	27	12	26	6	24	0	22	0	23	0	23	14	27
MH3	Max	57	68	60	70	60	72	60	71	57	71	55	72	53	76	53	70	11	61	13	66	12	69	63	73
	Min	6	59	6	63	29	63	11	68	15	63	30	65	30	65	9	60	8	50	8	55	9	62	11	65
	Ave	11	63	45	67	53	68	51	70	50	68	51	68	48	68	28	65	9	58	10	60	11	65	47	70
DB27	Max	29	41	28	47	28	45	29	47	23	46	22	43	17	38	8	20	6	13	9	21	11	25	15	34
	Min	9	30	4	33	5	43	18	33	4	34	3	21	4	21	1	9	1	6	1	7	4	15	2	14
	Ave	15	36	23	41	22	44	23	43	18	41	16.4	38.9	12	28	6	15	4.5	10.4	6.06	12.9	9	19	11	25
DB27	Max	15	31	28	37	21	37	19	39	17	35	19	34	17	31										
	Min	5	20	2	24	4	35	11	27	4	24	3	17	3	13										
	Ave	10	26	15	32	15	36	16	36	12	32	12	30	9	22										
DB11	Max	9	46	47	51	43	53	42	53	41	51	40	52	31	48	27	45	0	31	0	30				
	Min	0	38	0	39	37	42	35	49	26	49	20	45	11	39	0	29	0	25	0	23				
	Ave	7	42	27	46	40	51	40	51	38	50	34	50	26	44	11	37	0	28	0	30				
DB11	Max	23	51																						
	Min	6	43																						
	Ave	11	44																						
DH16	Max	50	60	58	60	54	59	54	60	58	58	55	61	19	55	0	55	0	58	0	56	0	57	56	60
	Min	0	53	3	49	31	56	49	55	16	53	17	51	2	29	0	17	0	51	0	50	0	52	0	53
	Ave	3	57	39	57	50	58	51	58	47	57	49	58	4	44	0	39	0	52	0	53	0	55	35	57
DB8	Max	46	50	45	50	46	50	47	52	46	51	49	53	9	48	0	47	0	47	0	52	0	49	49	52
	Min	0	45	0	45	39	47	41	47	10	45	0	44	0	20	0	17	0	43	0	25	0	44	0	40
	Ave	16	47	35	47	44	49	44	50	39	48	40	49	0	35	0	35	0	44	0	45	0	47	31	49
DB29	Max	5	45	37	45	36	45	37	47	35	45	33	43	0	38	0	31	0	30	0	48	0	50	50	53
	Min	0	33	0	36	32	43	31	40	7	36	0	27	0	15	0	11	0	21	0	22	0	31	0	47
	Ave	1	38	26	42	34	44	34	44	30	42	26	40	0	24	0	23	0	26	0	27	0	48	32	50
DB25	Max	40	49	49	52	49	55	48	53	49	52	46	50			25	33	16	27	20	51			40	48
	Min	13	42	11	48	45	49	41	47	40	43	42	46			11	21	14	26	9	20			9	31
	Ave	22	45	41	50	47	52	45	50	46	50	41	49			17	28	15	27	13	26			26	37
DB7	Max	3	44	40	46	44	43	35	45	35	47	41	48	22	47	12	37	25	44			0	47	43	49
	Min	0	35	0	40	31	40	31	33	16	37	0	38	1	31	0	26	0	24			0	42	0	43
	Ave	0	41	27	43	33	41	33	42	29	41	33	44	9	38	6	32	10	34			0	45	17	46
DB7	Max	23	49	29	51	29	53	30	45	27	46	34	53					25	44			39	57	42	60
	Min	2	39	7	39	22	43	0	40	21	40	0	38					0	24			3	36	31	41
	Ave	12	44	26	45	27	45	26	46	25	44	22	46					10	34			29	49	35	50

1-d DAWSSA's Pressure Records (1996) - 2/3

		January		February		March		April		May		June		July		August		September		October		November		December		
		Low	High	Low	High	Low	High	Low	High	Low	High	Low	High	Low	High	Low	High	Low	High	Low	High	Low	High	Low	High	
DB1	Max	0	51	50	56	46	52	36	52	33	48	33	50	28	50	0	41	0	51	4	63	0	60	51	57	
	Min	0	45	2	47	0	50	29	39	15	37	9	34	0	35	0	18	0	24	0	41	0	55	0	51	
	Ave	0	49	35	52	42	51	34	48	29	46	28	46	6	44	0	27	0	41	0	41	0	57	28	54	
DB1	Max																	6	56	0	53	0	55	56	63	
	Min																	3	31	0	35	0	49	6	56	
	Ave																	5	46	0	44	0	52	35	59	
DB1	Max																	0	31	0	29					
	Min																	0	26	0	23					
	Ave																	0	28	0	26					
DB26	Max	19	50	29	51			35	45	26	43	27	42			14	37			12	27	11	42	26	47	
	Min	5	32	2	37			20	37	12	32	17	37			5	25			2	6	5	33	7	28	
	Ave	10	42	23.4	44.3			25	42	21	40	21	40			10	33			8	16	8	38	16	38	
DB26	Max																			9	36					
	Min																			3	27					
	Ave																			6	31					
DB3	Max	9	41	42	45	40	45	41	47	40	48	41	54	29	41	27	39	0	27	0	47	0	33	32	42	
	Min	0	32	0	38	37	41	36	43	27	42	26	39	3	32	0	27	0	22	0	21	0	27	0	28	
	Ave	1	34	33	43	39	43	39	45	37	44	34	43	25	35	11	33	0	24	0	27	0	30	16	36	
DB10	Max	19	57	54	59	50	58	49	60	49	59					13	55									
	Min	3	50	6	52	45	55	44	53	33	53					3	33									
	Ave	8	55	42	56	48	57	48	57	45	56					7	40									
DB14	Max	20	49	50	53			44	50	41	50	39	53	23	45	16	38	11	31	3	59	13	40	38	47	
	Min	7	40	13	42			35	45	24	39	17	34	12	31	7	25	5	20	0	24	9	20	7	31	
	Ave	13	44	41	48			39	48	36	48	32	48	16	38	12	32	8	26	0	30	11	35	22	40	
DB13	Max	26	56	58	62	54	61	54	61	54	61	57	62	47	58	44	55	6	43			0	49	15	57	
	Min	0	49	5	54	50	56	51	58	49	58	39	57	17	48	5	42	0	38			0	43	3	43	
	Ave	8	51	49	59	52	59	53	60	52	59	49	59	40	54	23	49	1	40			0	46	25	51	
DB6	Max	18	26	22	26	19	25	21	26	18	25	20	25	17	23	18	23	9	21	15	22	15	33	19	25	
	Min	2	19	11	22	9	22	0	21	9	21	0	15	0	12	0	11	0	12	0	14	2	16	0	22	
	Ave	11	23	16	24	14	23	15	24	14	24	11	23	9	17	2	17	1	15	3	17	7	22	16	24	
DB30	Max	19	59	48	59	39	53	39	57	36	51			28	54	19	44	13	41	15	51	19	49	34	54	
	Min	7	47	16	42	33	51	3	43	20	40			16	35	7	31	7	33	3	32	9	37	10	40	
	Ave	14	51	35	51	37	52	33	51	32	49			20	43	14	39	10.7	36.6	9.65	37.4	13	43	21	46	
BB12	Max	18	59			35	49	36	55	37	52	37	59	23	49	13	39	10	40	3	60	0	41			
	Min	5	33			30	43	32	47	21	41	10	35	9	34	5	29	1	26	0	20	0	33			
	Ave	10	49			33	48	34	49	33	50	32	50	13	39	9	35	6	31	0	30	0	36			
BB12	Max																									
	Min																									
	Ave																									
DM1	Max																						18	56	53	57
	Min																						12	51	12	52
	Ave																						13	53	35	54
DM2	Max					60	71																			
	Min					56	71																			
	Ave					59	71																			
DM3	Max					63	75	72	79	73	80					70	78	41	79	49	79	70	79	71	79	
	Min					39	72	54	68	34	77					34	75	37	73	37	75	40	76	49	73	
	Ave					61	74	59	73	67	79					54	77	39	76	40	77	46	78	63	77	
DM4	Max	45	74	61	73	57	74	58	77	52	75					50	73	38	73	51	73	47	74	55	73	
	Min	13	62	15	62	46	71	41	69	36	70					2	41	0	47	3	53	9	62	23	66	
	Ave	25	69	43	71	53	73	53	74	43	72					28	65	15	61	18	62	19	66	10	70	

1-d DAWSSA's Pressure Records (1996) - 3/3

		January		February		March		April		May		June		July		August		September		October		November		December	
		Low	High	Low	High	Low	High	Low	High	Low	High	Low	High	Low	High	Low	High	Low	High	Low	High	Low	High	Low	High
RB1	Max	0	31	0	29	0	29	0	31	0	29											0	30	9	31
	Min	0	28	0	26	0	26	0	25	0	21											0	27	0	27
	Ave	0	29	2	28	0	28	0	29	0	24											0	28	2	28
	Max	52	55	53	54	58	56	53	58	52	57	53	59	49	57	52	55	52	54	53	56				
	Min	10	48	10	48	49	52	50	53	47	52	49	52	9	51	11	45	45	45	11	43				
	Ave	28	50	40	52	51	52	51	56	50	54	50	55	33	53	34	52	48	51	38	53				
RM2	Max	80	83											0	27										
	Min	5	57											0	19										
	Ave	40	67											0	23										
DB17	Max			17	39	17	48	15	39	14	39	9	34	0	25	0	35	0	37	0	41	34	46		
	Min			11	37	3	32	0	26	7	35	0	13	0	10	0	23	0	24	0	33	0	32		
	Ave			15	35	14	39	10	36	12	38	1	21	0	14	0	28	0	30	0	36	17	38		
DB20	Max			41	53	42	55	42	58	37	57	15	47	3	38	0	39				0	42	33	49	
	Min			36	48	35	47	13	40	29	46	0	23	0	19	0	26				0	34	0	33	
	Ave			39	51	39	51	34	49	31	49	5	33	0	31	0	30				0	37	17	40	
DB25	Max			27	43																				
	Min			21	38																				
	Ave			25	42																				
DF9	Max			42	47	43	47																		
	Min			40	46	42	47																		
	Ave			41	47	42	47																		
DB4	Max			49	50																0	40	33	48	
	Min			27	43																0	31	0	32	
	Ave			46	48																0	35	17	43	
BR2	Max			17	45	19	49	11	43	1	38	13	36								12	36	20	46	
	Min			2	38	0	33	0	28	0	29	0	22								0	25	2	33	
	Ave			12	42	6	40	2	37	0	34	3	33								7	32	12	38	
MB4	Max									50	79	42	74												
	Min									26	63	27	62												
	Ave									39	70	33	67												
DB18	Max									51	60														
	Min									42	52														
	Ave									49	57														
DB??	Max									43	58														
	Min									18	43														
	Ave									35	54														
RM3	Max									71	79														
	Min									66	73														
	Ave									68	78														
DB24	Max													11	27	9	20				15	31	23	41	
	Min													7	19	2	12				6	20	6	22	
	Ave													10	22	7	15				12	25	17	32	
DB21	Max													11	37	5	37				7	42	31	45	
	Min													4	23	1	23				4	39	4	33	
	Ave													7	31	3	28				4	29	5	35	
DB2	Max																				12	41	0	47	
	Min																				0	31	0	27	
	Ave																				9	35	0	37	
DB22	Max																								
	Min																								
	Ave																								

I-d DAWSSA's Pressure Records (1997) - 1/3

Location of Pressure Measurements	January		February		March		April		May		June		July		
	Low	High	Low	High	Low	High	Low	High	Low	High	Low	High	Low	High	
C111	Max	30	38	31	54	36	42	31	41	34	42	32	42	31	43
	Min	25	35	0	32	0	34	28	38	9	39	28	39	9	36
	Ave	28	36	13	35	31	40	31	40	28	40	30	40	29	40
DM3	Max	71	78			77	86	76	87	80	91	82	91	80	89
	Min	61	75			52	83	58	80	55	84	34	86	70	80
	Ave	67	77			73	85	68	84	75	88	74	89	77	87
M113	Max	61	77	53	71	53	67	51	68	47	63	45	63	47	69
	Min	13	69	12	55	4	57	24	57	8	58	12	58	41	59
	Ave	55	72	37	63	47	61	46	61	41	61	44	61	45	61
MH2	Max	25	35	23	29	23	33	33	33	25	33	33	33	31	33
	Min	0	23	0	21	0	24	0	23	0	30	0	30	21	31
	Ave	20	26	8	25	21	29	20	30	18	31	23	32	22	32
MH1	Max	53	67	52	70	53	61	51	61	50	61	58	61		
	Min	21	57	4	56	4	54	27	51	20	58	3	57		
	Ave	47	61	34	60	49	60	47	59	43	60	46	59		
BB2	Max	26	43			27	43	27	43	22	41	31	47	31	48
	Min	10	34			0	33	0	22	0	27	19	40	0	37
	Ave	18	39			13	37	12	34	19	38	27	46	22	45
DB3	Max	25	31												
	Min	0	25												
	Ave	8	28												
DM1	Max	53	57	55	57	56	59	64	60	56	59			55	64
	Min	48	51	12	51	45	54	49	56	12	53			55	57
	Ave	51	54	50	55	52	56	54	58	48	56			57	60
DB30	Max	33	50	29	47										
	Min	19	35	15	39										
	Ave	28	45	22	43										
DB2	Max	29	41			33	51								
	Min	3	33			19	41								
	Ave	26	39			28	44								
DB7	Max	58	62	39	61	43	49	32	47	35	43	40	44	46	49
	Min	13	56	0	37	2	40	25	38	30	39	0	40	24	41
	Ave	52	59	23	46	34	42	28	44	33	42	33	42	40	46
DB7	Max			44	49			35	43	29	44	28	44	43	56
	Min			0	41			25	38	0	41	13	37	25	40
	Ave			18	44			32	40	26	43	25	42	34	48
DB14	Max	35	54	25	40										
	Min	0	42	15	31										
	Ave	21	50	18	36										
DB13	Max	45	56	41	55	52	59	54	61	53	60	53	60	52	62
	Min	16	48	1	43	5	47	49	52	46	49	30	53	49	58
	Ave	40	53	24	52	47	57	52	59	51	58	49	58	50	60
DB6	Max	19	26												
	Min	14	22												
	Ave	16	23												
DB4	Max	38	47	32	47	35	48	36	49	37	50	35	50	36	51
	Min	9	34	0	34	26	44	29	47	31	47	17	44	32	48
	Ave	27	41	15	42	32	47	33	49	33	49	31	48	34	50
DB26	Max	45	49	40	60	29	51	32	52	31	47	30	47	40	57
	Min	26	42	5	29	13	33	20	39	25	43	24	39	22	42
	Ave	40	45	20	44	23	39	27	45	27	45	27	45	29	47

1-d DAWSSA's Pressure Records (1997) - 2/3

		January		February		March		April		May		June		July	
		Low	High	Low	High	Low	High	Low	High	Low	High	Low	High	Low	High
DB26	Max	28	46												
	Min	12	29												
	Ave	19	39												
DB1	Max	52	55	57	61	52	55	45	55	46	55	48	52	52	57
	Min	5	50	4	55	3	48	36	49	41	51	9	47	31	49
	Ave	46	52	30	58	44	51	42	52	43	54	43	51	48	53
DB1	Max					58	61	47	53	47	53	45	57	56	60
	Min					6	47	40	48	37	43	15	49	34	51
	Ave					43	53	44	50	44	50	42	54	45	55
DB14	Max	25	39												
	Min	6	24												
	Ave	17	33												
D???	Max	25	45												
	Min	12	3												
	Ave	21	37												
DB?	Max	25	42			35	44								
	Min	3	23			0	39								
	Ave	19	35			31	42								
D???	Max	25	46												
	Min	9	23												
	Ave	21	35												
MB3	Max	32	34	33	34	33	39	32	34	31	33	31	33	32	35
	Min	30	31	0	32	30	31	29	31	14	31	29	31	13	31
	Ave	31	33	17	33	31	33	31	33	29	33	30	32	30	32
MB2	Max	54	60	57	82										
	Min	0	37	23	61										
	Ave	47	56	34	77										
MB1	Max	32	39	33	39	34	41	34	40	33	41	33	41	31	40
	Min	29	37	0	35	0	37	28	37	9	38	27	37	10	38
	Ave	30	38	11	37	31	39	31	39	28	39	29	39	28	39
DB16	Max	56	59	55	59	55	60	53	59	50	57	50	57	58	61
	Min	11	45	0	48	0	53	4	53	43	53	15	49	32	52
	Ave	48	54	26	56	49	57	46	55	48	55	47	54	49	56
DBS	Max	51	56	16	24										
	Min	0	44	15	21										
	Ave	40	50	15	23										
DB29	Max	49	53	53	57	48	52	45	51	49	49	45	49	53	54
	Min	0	43	0	46	0	45	40	46	39	40	22	41	27	45
	Ave	39	49	26	51	42	49	42	48	41	48	40	47	43	50
DB29	Max					20	35								
	Min					6	21								
	Ave					16	31								
DB28	Max	37	41	35	41	38	44	46	51	43	51	45	50		
	Min	30	34	8	28	15	30	35	43	38	46	19	43		
	Ave	34	37	24	37	31	40	42	49	40	49	40	48		
DB24	Max							25	43	20	40	20	39	21	49
	Min							4	32	15	37	11	29	14	33
	Ave							16	39	18	38	16	36	17	39
DB22	Max			15	31										
	Min			0	15										
	Ave			9	24										

1-d DAWSSA's Pressure Records (1997) - 3/3

	January		February		March		April		May		June		July	
	Low	High	Low	High	Low	High	Low	High	Low	High	Low	High	Low	High
DB21	Max		27	41	25	40	35	47	33	47	32	46	37	53
	Min		2	29	5	30	21	37	28	42	13	39	23	40
	Ave		9	35	20	35	29	44	30	45	29	44	31	47
DB17	Max		28	39	12	27	28	37	21	35	21	35	24	39
	Min		0	17	0	16	7	25	17	31	0	27	9	30
	Ave		12	30	6	22	18	33	19	33	18	33	18	34
DB20	Max		28	43	29	43	41	53	40	53	41	53	45	57
	Min		0	30	0	31	25	41	35	48	25	46	27	48
	Ave		12	36	23	38	36	49	37	51	34	51	37	52
DB12	Max		27	43	47	43	39	51	36	51	35	50	41	56
	Min		15	33	4	27	25	36	32	46	15	43	31	47
	Ave		23	39	24	39	33	48	33	49	32	48	36	51
DB3	Max		31	40			37	45	35	43	35	43	35	49
	Min		0	31			30	41	25	42	12	37	31	42
	Ave		14	37			34	43	32	43	31	42	33	44
DB2	Max		29	43										
	Min		7	23										
	Ave		21	38										
BR1	Max		29	35	29	33	24	39	26	31	25	33	28	34
	Min		0	23	0	24	0	21	0	26	7	27	0	23
	Ave		8	27	4	28	2	28	21	30	22	30	13	28
DM4	Max		57	73	57	77								
	Min		46	72	47	65								
	Ave		52.9	72.8	54	72								
DM9	Max		67	75										
	Min		23	75										
	Ave		49	75										
DB27	Max				13	29	19	33	15	31	15	29	51	59
	Min				9	13	2	23	8	17	7	14	42	49
	Ave				11	25	11	29	11	29	12	22	46	55
	Max												50	61
	Min												43	55
	Ave												46	60
DB23	Max												16	21
	Min												13	14
	Ave												14	17

