



3-6 批洲-乔歪沟子断裂, 批洲林场公路旁, 倾向230°, 倾角65° 66
 批洲-八道沟断裂红石-白山公路与那尔轰红石交叉路口南500m处, 倾向240°, 倾
 角40°-60°



3-7 老岭林场场断裂红盘村东约200m处, 倾向50°, 倾角50°
 3-7 老岭林场场断裂红盘村东约200m处, 倾向50°, 倾角50°





3-7 老岭林场断裂分水岭东倾向 40° ，倾角 66° 70
 3-7 老岭林场断裂红县村东头辽河与北西向沟交叉处，倾向 40° ，倾角 80°



85



3-8 三合屯-郎家店断裂三合屯村西，倾向 195° - 220° ，倾角 65° - 80°
 3-8 三合屯-郎家店断裂三合屯村西，探深面



86



3-8 三合屯-郎家店断裂三合屯村南500m处倾向200°，倾角61°

4-1 六道沟-七道沟断裂八道沟南冲沟处倾向275°-290°，倾角60°-80°

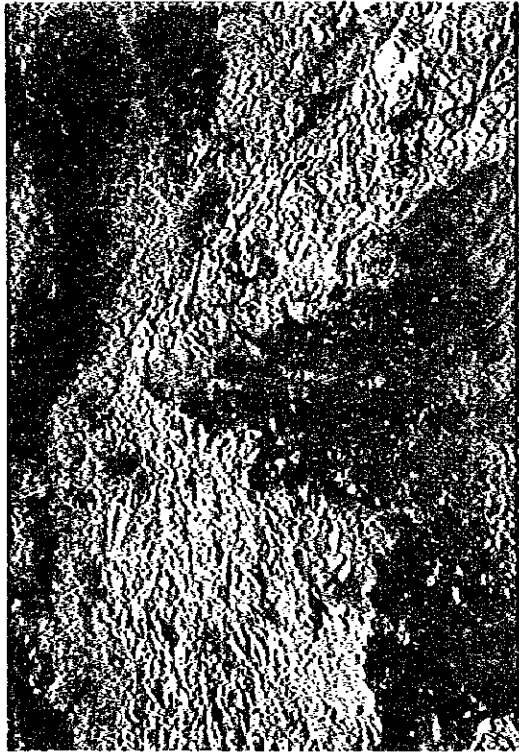
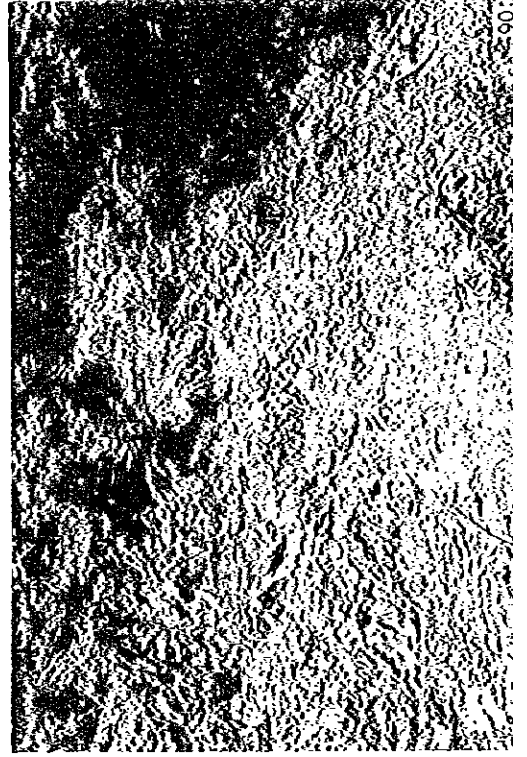


4-1 六道沟-七道沟断裂上堡第四系与七道沟分水岭挤压带

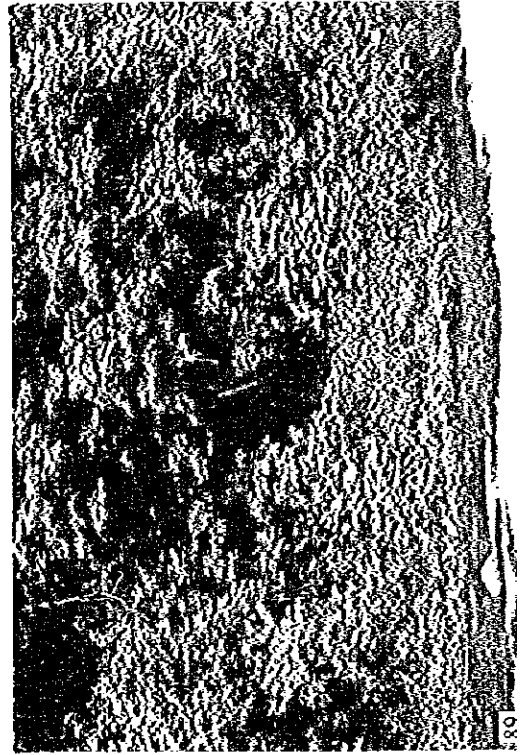


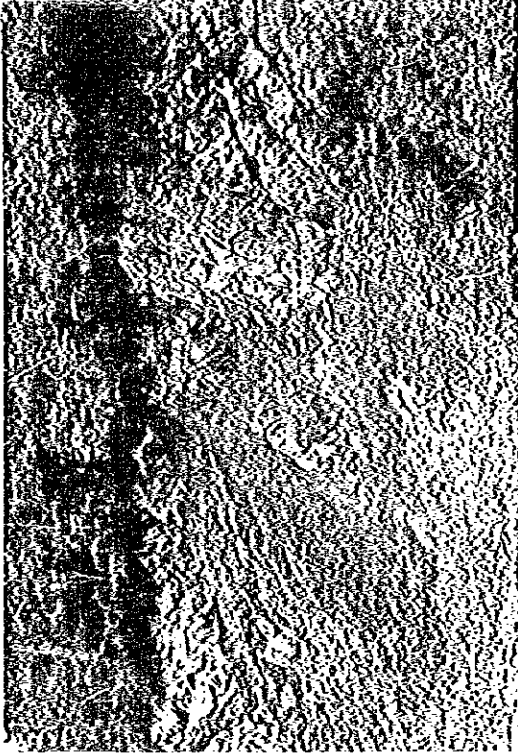


4-2 三合屯断裂老岭附近倾向70°，倾角40°-75°



4-2 三合屯断裂会全楼东，倾向265°，倾角75°
三合屯断裂胜利屯村东河边，倾向275°，倾角73°

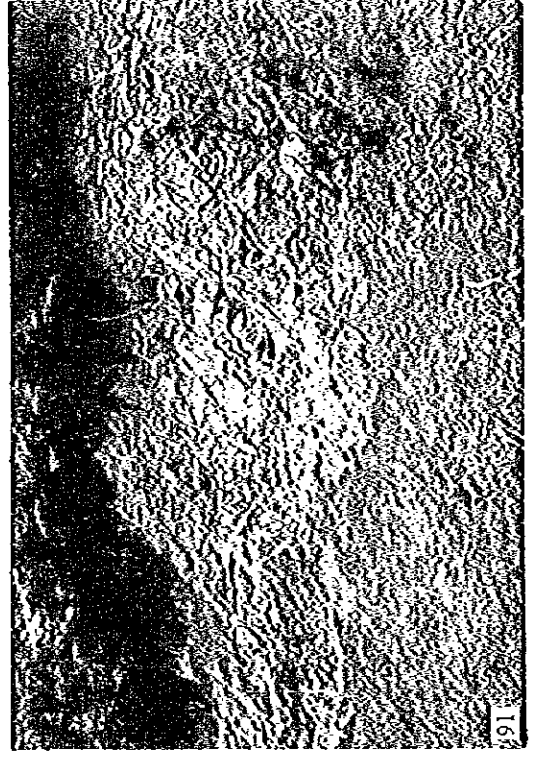


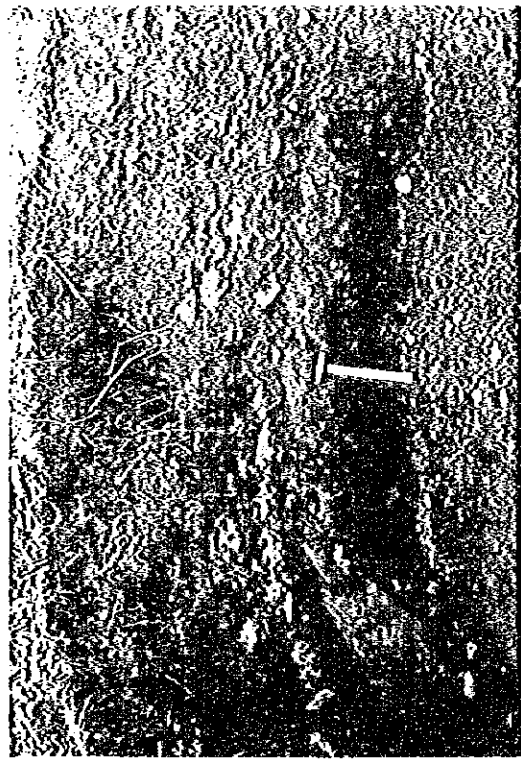


4-3 马家店-郎家店断裂西北岔附近剖面新裂发育在页状片麻岩之中
4-3 马家店-郎家店断裂附近挤压扁豆体

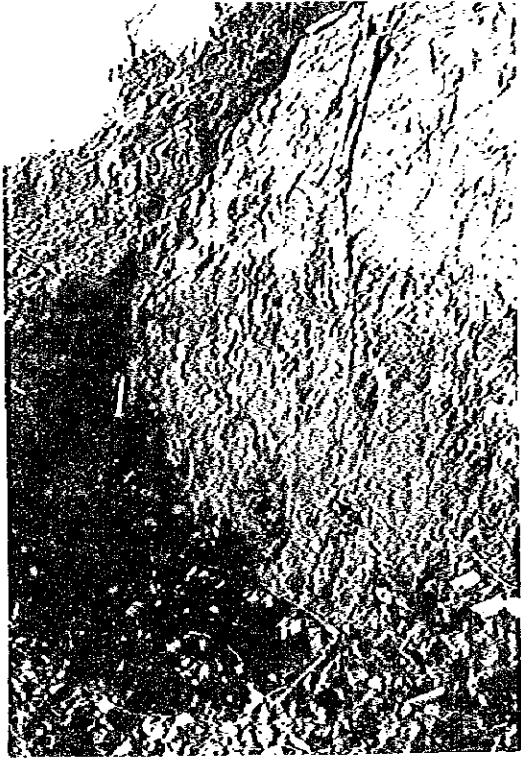
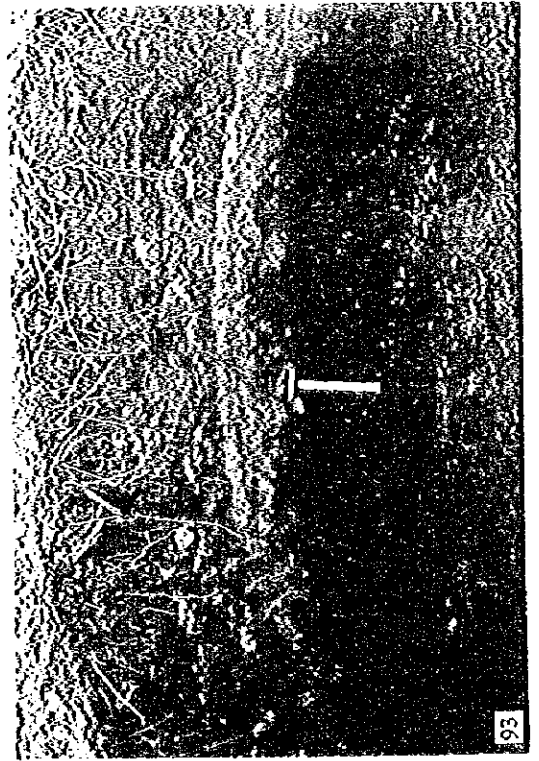


4-3 马家店-郎家店断裂 马家店北倾向280°, 倾角85°
4-3 马家店-郎家店断裂 马家店南分水岭, 倾向西, 倾角70°



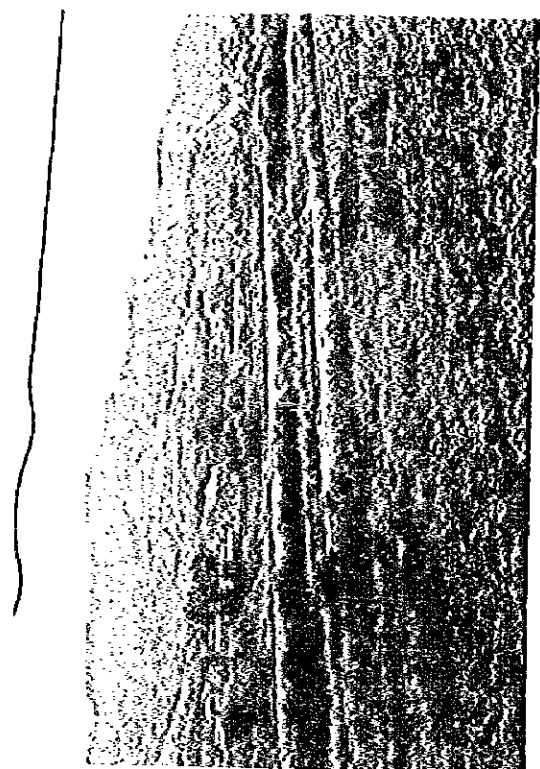


4-3 马家店-即家店断裂西北谷附近探槽断裂上覆盖的第四系

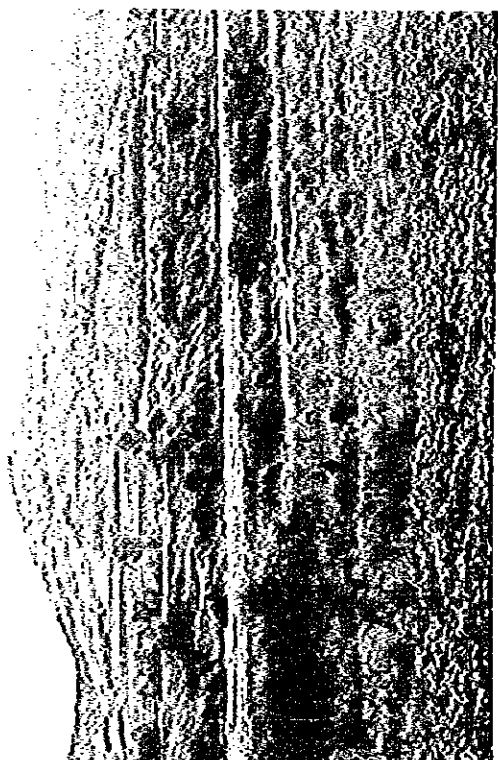
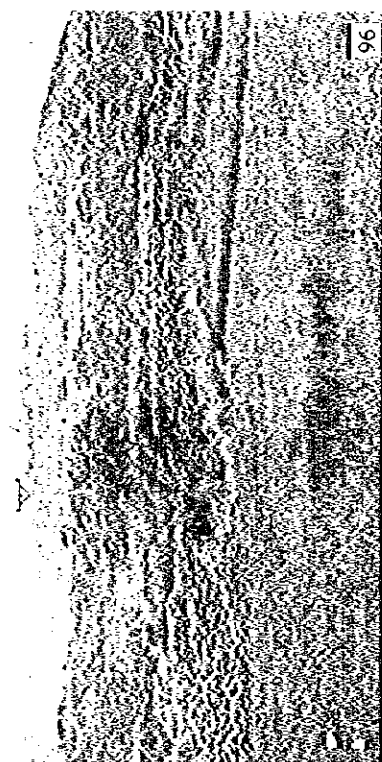


4-4 小河屯-马家店断裂马家店附近, 倾向95°, 倾角80°
4-4 小河屯-马家店断裂马家店附近, 石英斑岩, 挤压破碎, 走向:0°, 倾角近直立

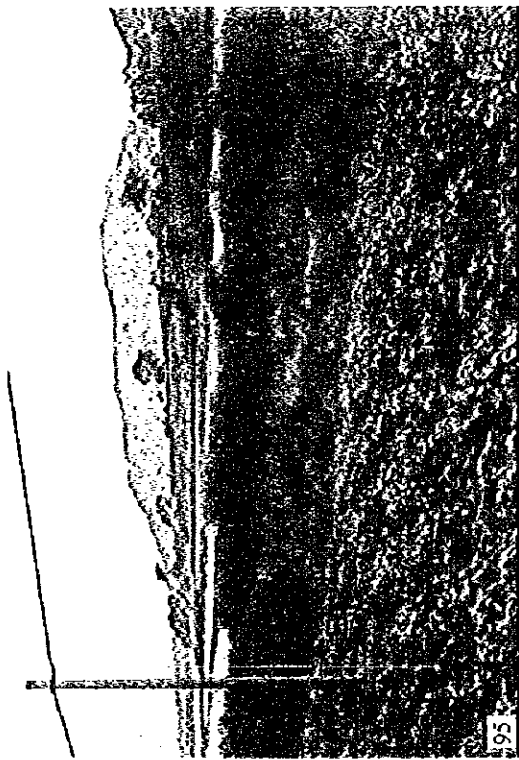


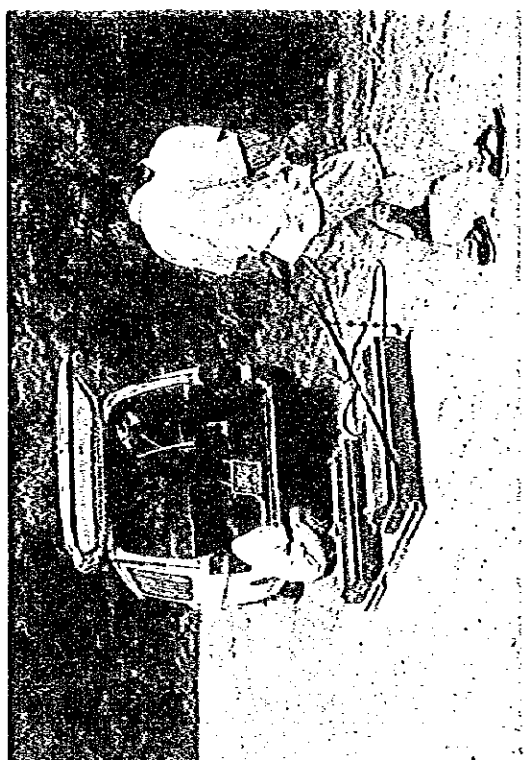


红石松花江阶地
大逊子河阶地

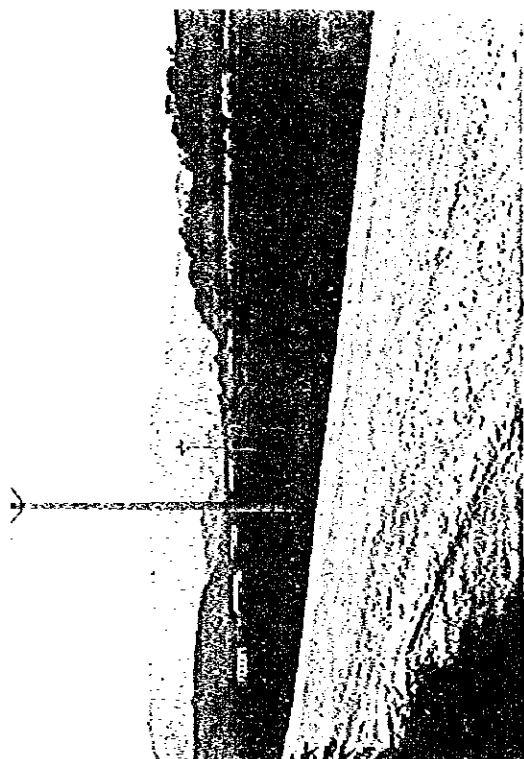
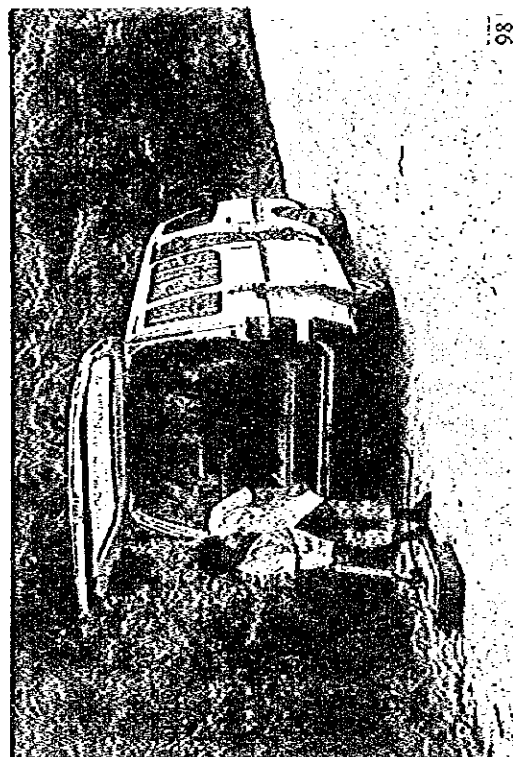


红石松花江阶地

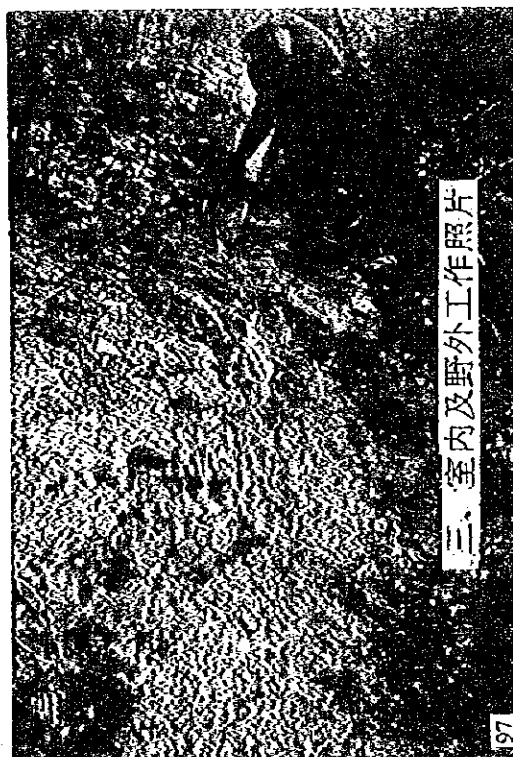




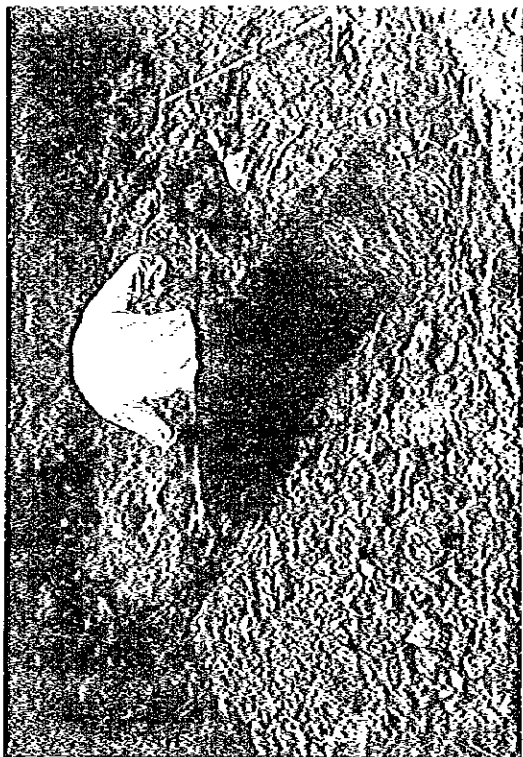
雷达工作照



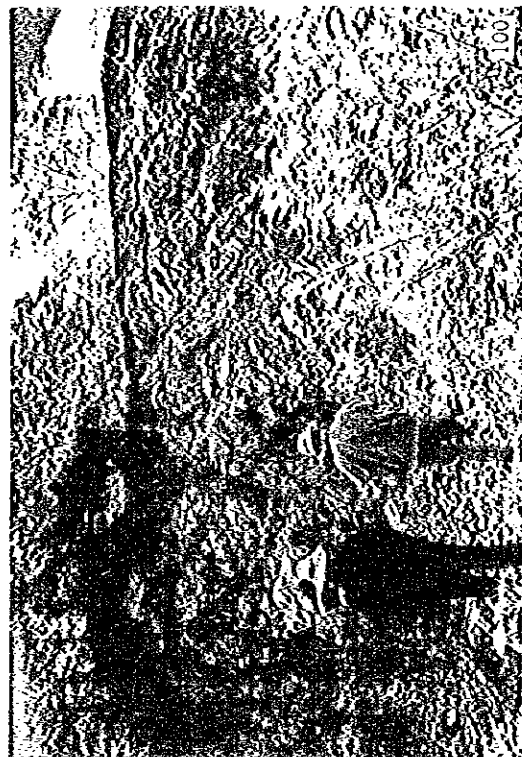
大翅子河阶地
下为人工开挖和采



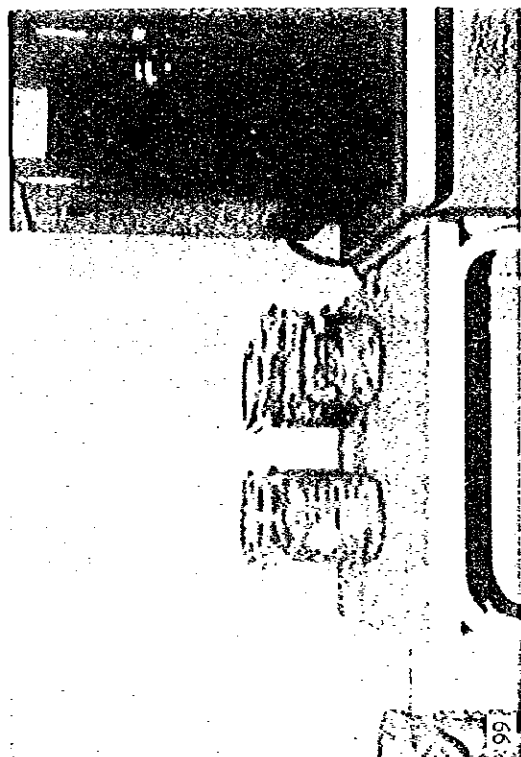
三、室内及野外工作照片



人工开挖探地質工作照



熱釋光样品分析工作照





1

2

3



JICA