

JAPAN INTERNATIONAL COOPERATION AGENCY (JICA)
MINISTRY OF PUBLIC WORKS AND COMMUNICATIONS
THE REPUBLIC OF PARAGUAY

THE FEASIBILITY STUDY
ON
ARTERIAL ROAD DEVELOPMENT PROJECT
IN
THE CENTRAL EASTERN AREA
IN
THE REPUBLIC OF PARAGUAY

FINAL REPORT

(Drawings)

JICA LIBRARY



J 1139972 (2)

FEBRUARY, 1997

CENTRAL CONSULTANT INC. (JAPAN)
IN ASSOCIATION WITH
YACHIYO ENGINEERING CO., LTD. (JAPAN)

SSF
JR
97-024

JAPAN INTERNATIONAL COOPERATION AGENCY (JICA)

MINISTRY OF PUBLIC WORKS AND COMMUNICATIONS
THE REPUBLIC OF PARAGUAY

**THE FEASIBILITY STUDY
ON
ARTERIAL ROAD DEVELOPMENT PROJECT
IN
THE CENTRAL EASTERN AREA
IN
THE REPUBLIC OF PARAGUAY**

FINAL REPORT

(Drawings)

FEBRUARY, 1997

**CENTRAL CONSULTANT INC. (JAPAN)
IN ASSOCIATION WITH
YACHIYO ENGINEERING CO., LTD. (JAPAN)**



1139972 (2)

CONTENTS

	TITLE	DRAWING No.		TITLE	DRAWING No.
1.	LOCATION MAP	01 / 43	3 - 26	PLAN(26), PROFILE (S.375+00 - S.390+00)	28 / 43
2.	TYPICAL CROSS SECTION	02 / 43	3 - 27	PLAN(27), PROFILE (S.390+00 - S.405+00)	29 / 43
3.	PLAN AND PROFILE OF SECTION PARAGUARI - VILLARRICA		3 - 28	PLAN(28), PROFILE (S.405+00 - S.415+00)	30 / 43
3 - 1	PLAN (01), PROFILE (S.0+00 - S.15+00)	03 / 43	4.	PLAN AND PROFILE OF SECTION LA COLMENA - TEBICUARY	
3 - 2	PLAN (02), PROFILE (S.15+00 - S.30+00)	04 / 43	4 - 01	PLAN (01), PROFILE (S.0+00 - S.15+00)	31 / 43
3 - 3	PLAN (03), PROFILE (S.30+00 - S.45+00)	05 / 43	4 - 02	PLAN (02), PROFILE (S.15+00 - S.30+00)	32 / 43
3 - 4	PLAN (04), PROFILE (S.45+00 - S.60+00)	06 / 43	4 - 03	PLAN (03), PROFILE (S.30+00 - S.40+00)	33 / 43
3 - 5	PLAN (05), PROFILE (S.60+00 - S.75+00)	07 / 43	4 - 04	PLAN (04), PROFILE (S.40+00 - S.55+00)	34 / 43
3 - 6	PLAN (06), PROFILE (S.75+00 - S.90+00)	08 / 43	4 - 05	PLAN (05), PROFILE (S.55+00 - S.70+00)	35 / 43
3 - 7	PLAN (07), PROFILE (S. 90+00 - S.105+00)	09 / 43	4 - 06	PLAN (06), PROFILE (S.70+00 - S.85+00)	36 / 43
3 - 8	PLAN (08), PROFILE (S.105+00 - S.120+00)	10 / 43	4 - 07	PLAN (07), PROFILE (S.85+00 - S.100+00)	37 / 43
3 - 9	PLAN (09), PROFILE (S.120+00 - S.135+00)	11 / 43	4 - 08	PLAN (08), PROFILE (S.100+00 - S.115+00)	38 / 43
3 - 10	PLAN (10), PROFILE (S.135+00 - S.150+00)	12 / 43	4 - 09	PLAN (09), PROFILE (S.115+00 - S.130+00)	39 / 43
3 - 11	PLAN (11), PROFILE (S.150+00 - S.165+00)	13 / 43	4 - 10	PLAN (10), PROFILE (S.130+00 - S.145+00)	40 / 43
3 - 12	PLAN (12), PROFILE (S.165+00 - S.180+00)	14 / 43	4 - 11	PLAN (11), PROFILE (S.145+00 - S.160+00)	41 / 43
3 - 13	PLAN (13), PROFILE (S.180+00 - S.195+00)	15 / 43	4 - 12	PLAN (12), PROFILE (S.160+00 - S.175+00)	42 / 43
3 - 14	PLAN (14), PROFILE (S.195+00 - S.210+00)	16 / 43	4 - 13	PLAN (13), PROFILE (S.175+00 - S.190+100)	43 / 43
3 - 15	PLAN (15), PROFILE (S.210+00 - S.225+00)	17 / 43			
3 - 16	PLAN (16), PROFILE (S.225+00 - S.240+00)	18 / 43			
3 - 17	PLAN (17), PROFILE (S.240+00 - S.255+00)	19 / 43			
3 - 18	PLAN (18), PROFILE (S.255+00 - S.270+00)	20 / 43			
3 - 19	PLAN (19), PROFILE (S.270+00 - S.285+00)	21 / 43			
3 - 20	PLAN (20), PROFILE (S.285+00 - S.300+00)	22 / 43			
3 - 21	PLAN (21), PROFILE (S.300+00 - S.315+00)	23 / 43			
3 - 22	PLAN (22), PROFILE (S.315+00 - S.330+00)	24 / 43			
3 - 23	PLAN (23), PROFILE (S.330+00 - S.345+00)	25 / 43			
3 - 24	PLAN (24), PROFILE (S.345+00 - S.360+00)	26 / 43			
3 - 25	PLAN (25), PROFILE (S.360+00 - S.375+00)	27 / 43			

LOCATION MAP

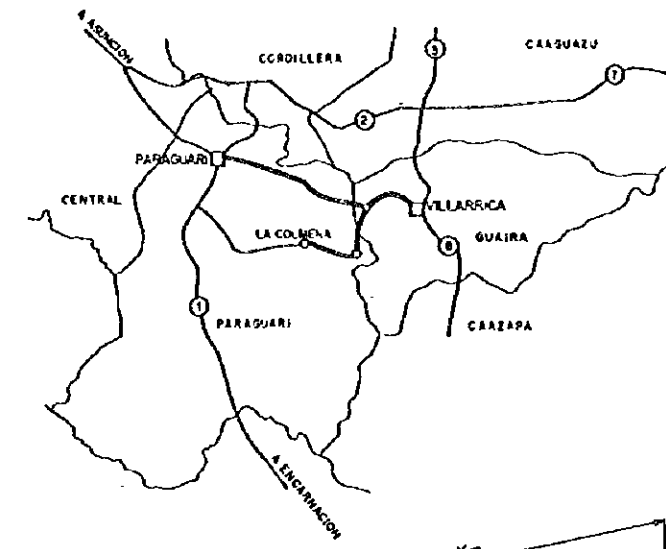
SOUTH AMERICA



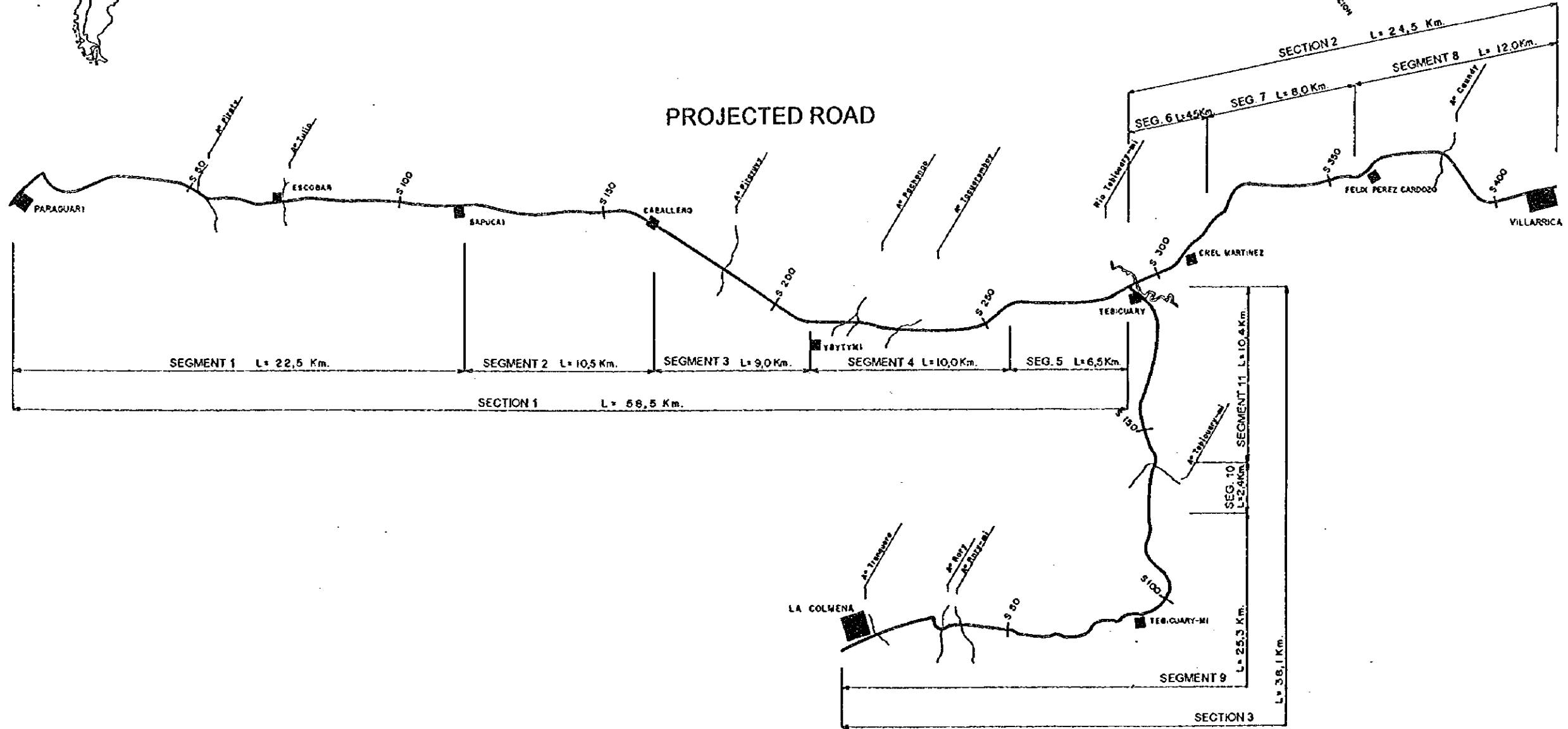
PARAGUAY



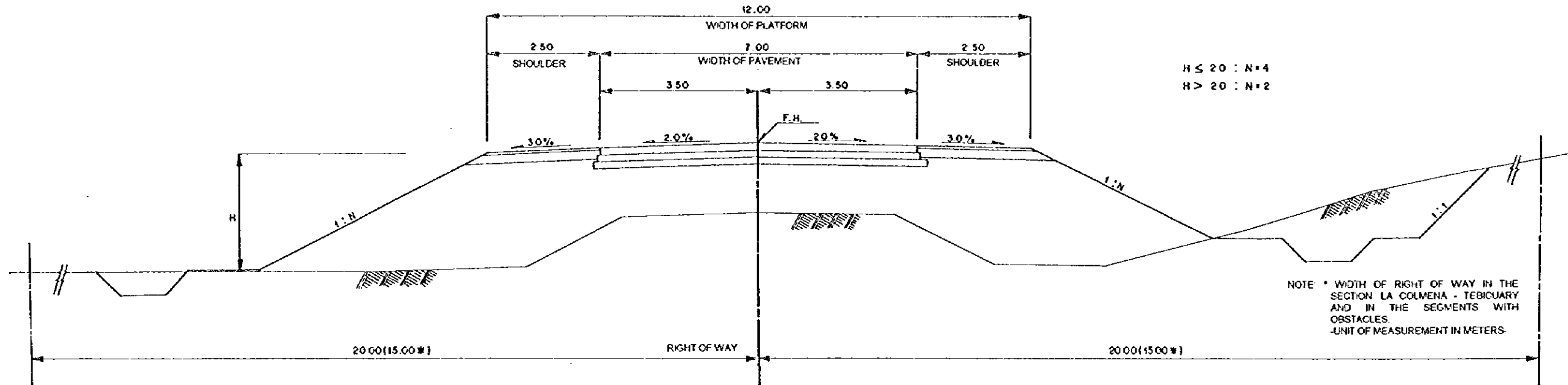
PROJECT AREA



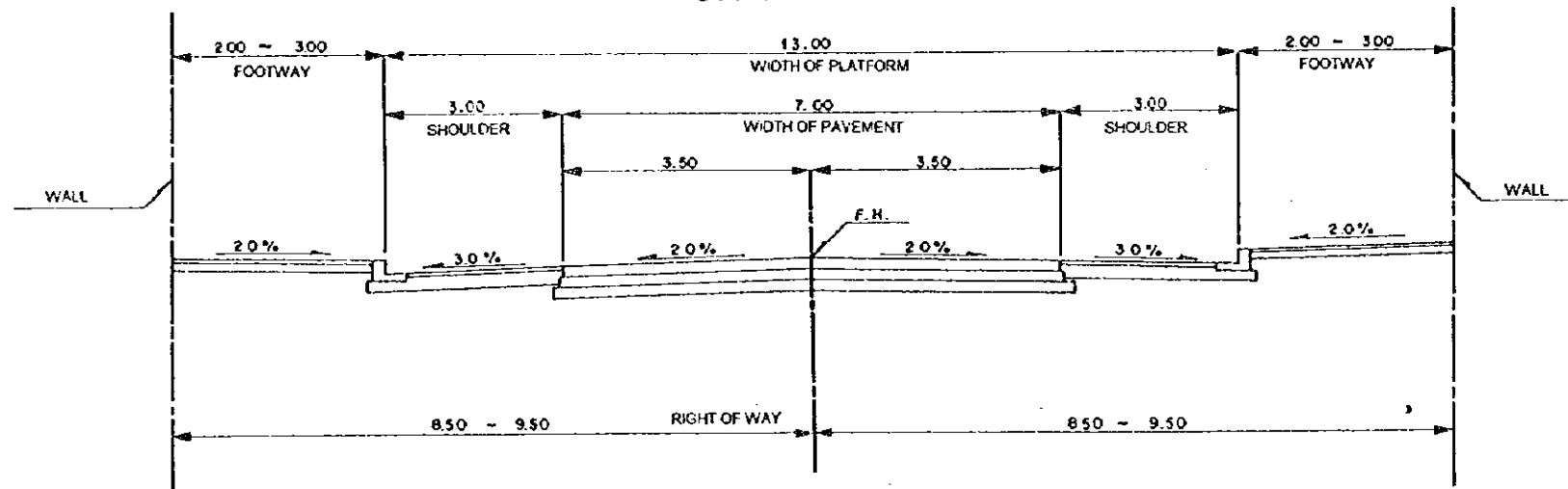
PROJECTED ROAD



TYPICAL CROSS SECTIONS - SCALE : 50
RURAL ZONE



URBAN ZONE



THICKNESS OF PAVEMENT - SCALE : 1:10

SECTION 1 S 0+000 - S 292+114,0	SECTION 2 S 292+114,0 - S 415+000	SECTION 3 S 0+000 - S 190+100	SHOULDER
A.C. 14	A.C. 14	A.C. 12	A.C. 4
C.S. 15	C.S. 15	C.S. 15	C.R. 20
C.R. 15	C.R. 25	C.R. 15	24
CBR = 6	CBR = 4	CBR = 4	

REFERENCES
A.C.: CONCRET ASPHALT - RUTTING COURSE
C.S.: CRUSHED STONE - BASE COURSE
C.R.: CRUSHED STONE WITHOUT SELECTION - SUB-BASE COURSE

NOTE: UNIT OF MEASURE IN CENTIMETERS

(PARAGUARI - VILLARRICA)

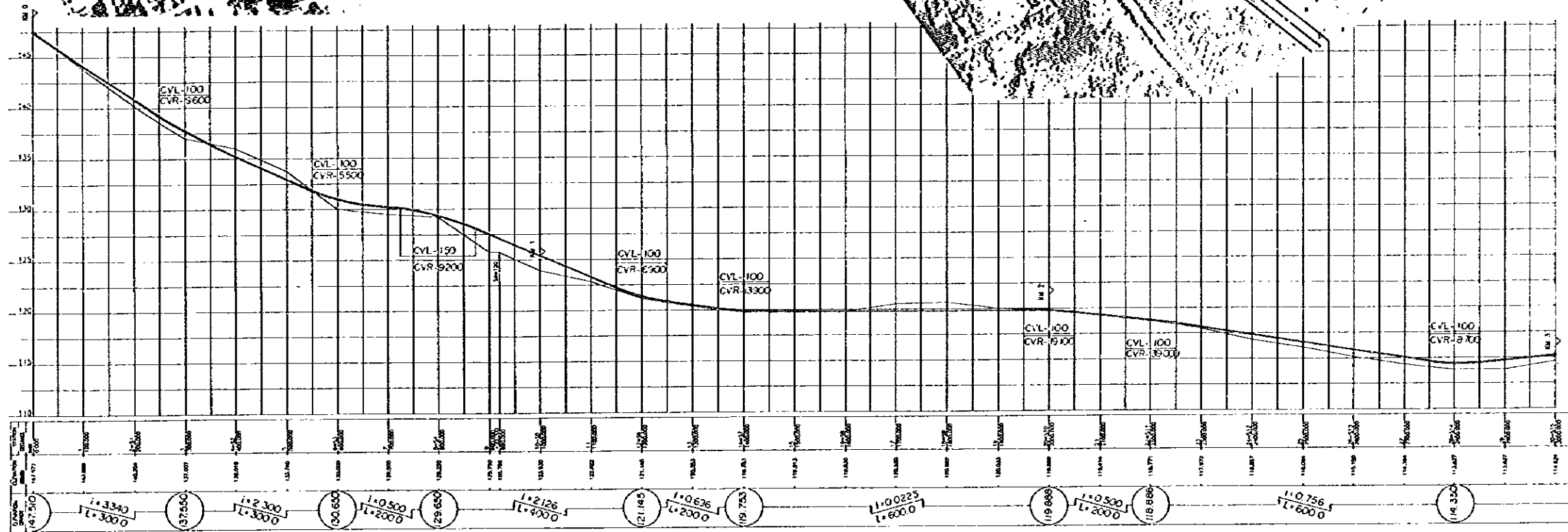
DE: PARAGUARI A VILLARRICA

FROM: PARAGUARI TO VILLARRICA

PLANTA PLAN (01)



PERFIL PROFILE

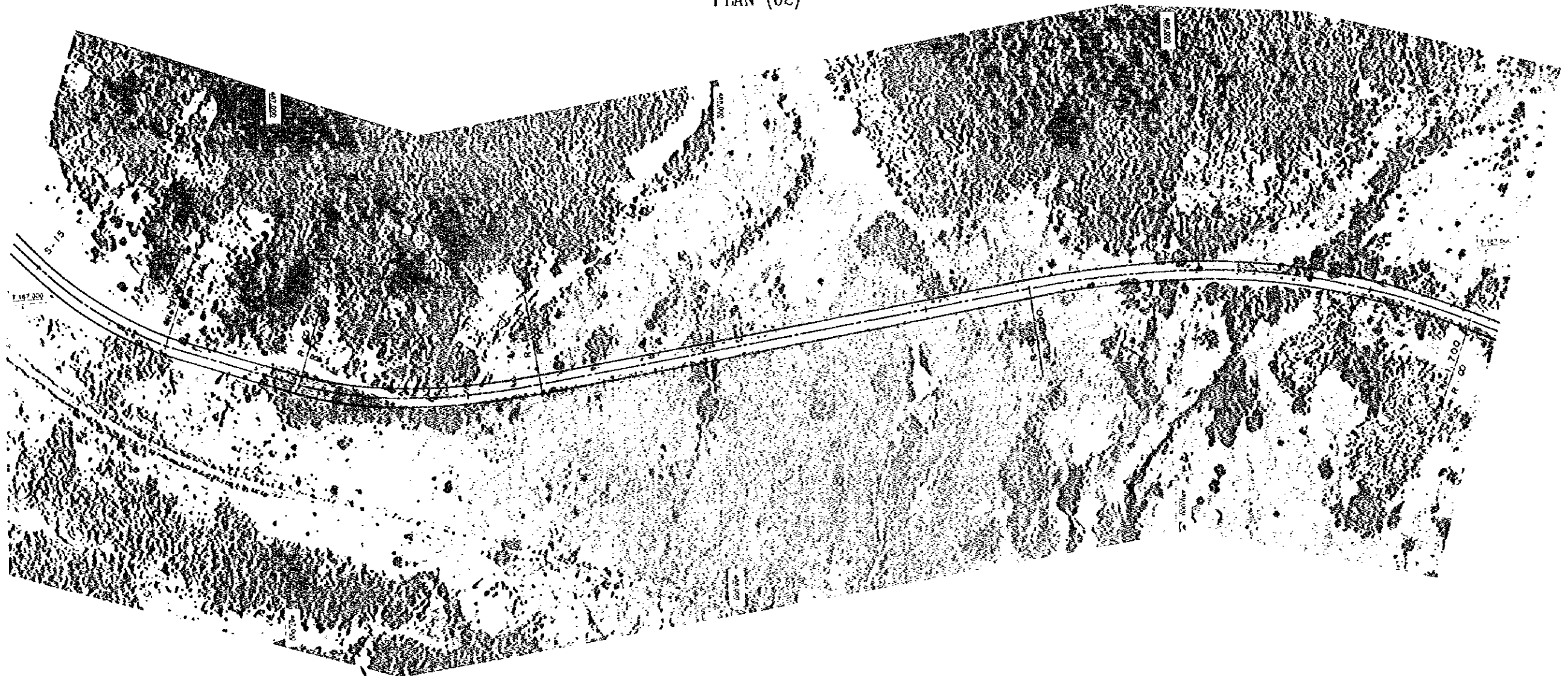


ESCALA
SCALE : HORIZONTAL VERTICAL

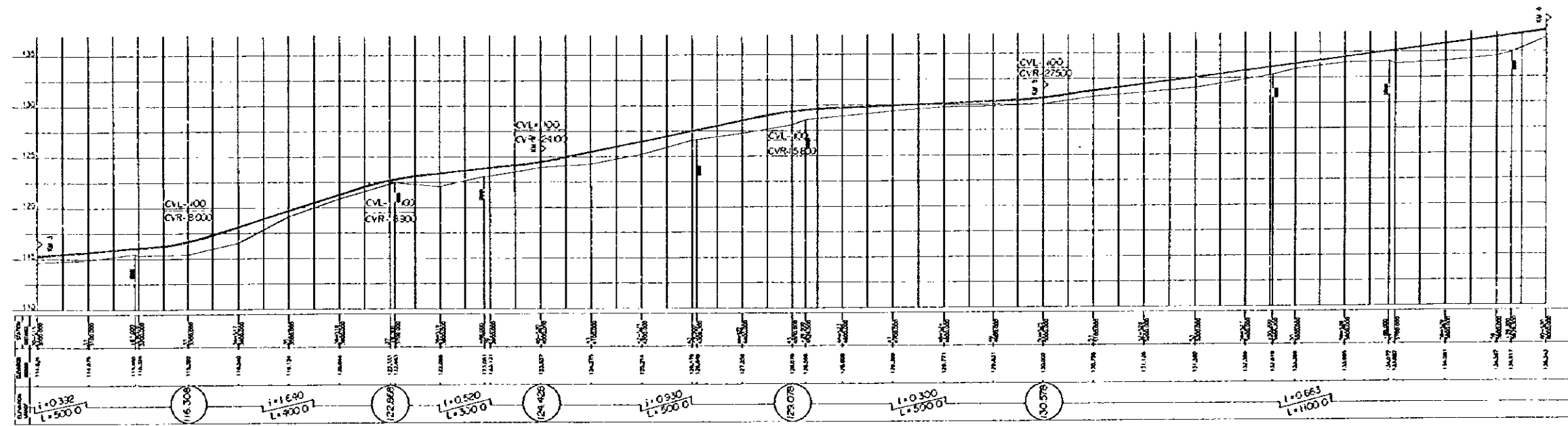
DE: PARAGUARI A VILLARRICA

FROM: PARAGUARI TO VILLARRICA

PIANTA
PLAN (02)



PERFIL
PROFILE

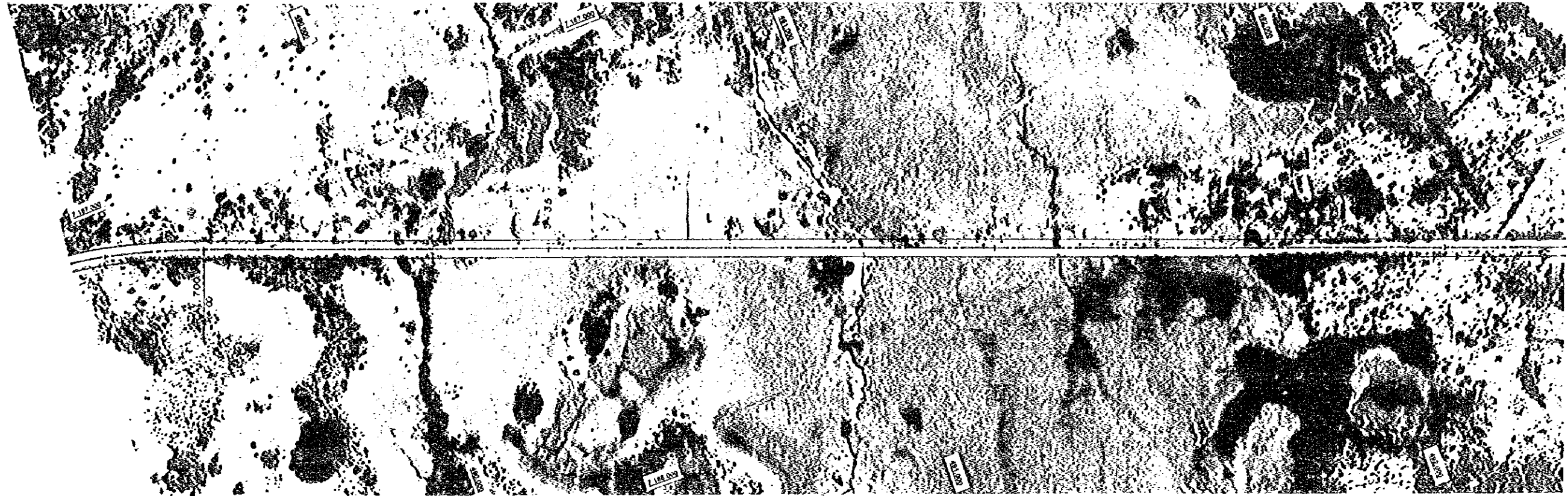


ESCALA
SCALE: HORIZONTAL VERTICAL

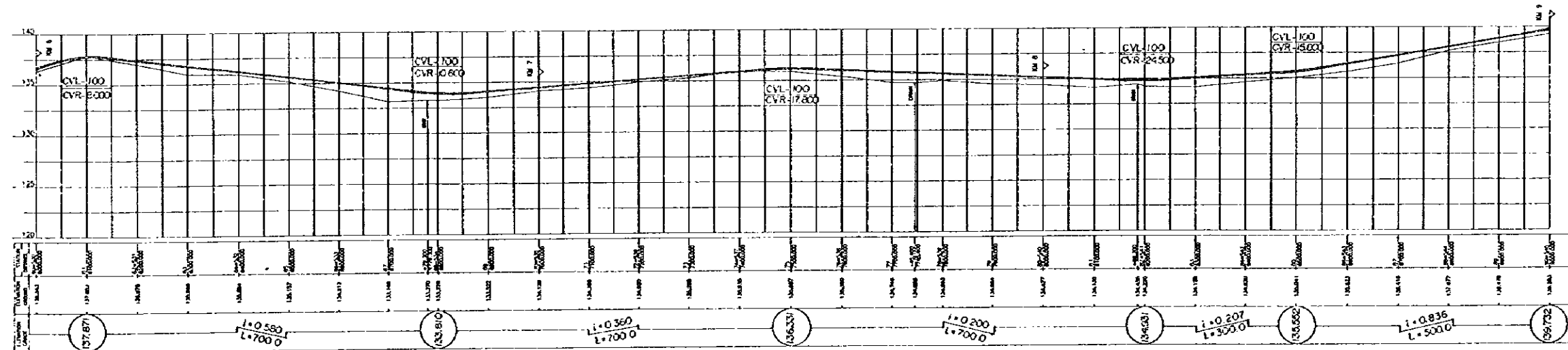
DE: PARAGUARI A VILLARRICA

PLANTA PLAN (03)

FROM: PARAGUARI TO VILLARRICA



PERFIL PROFILE

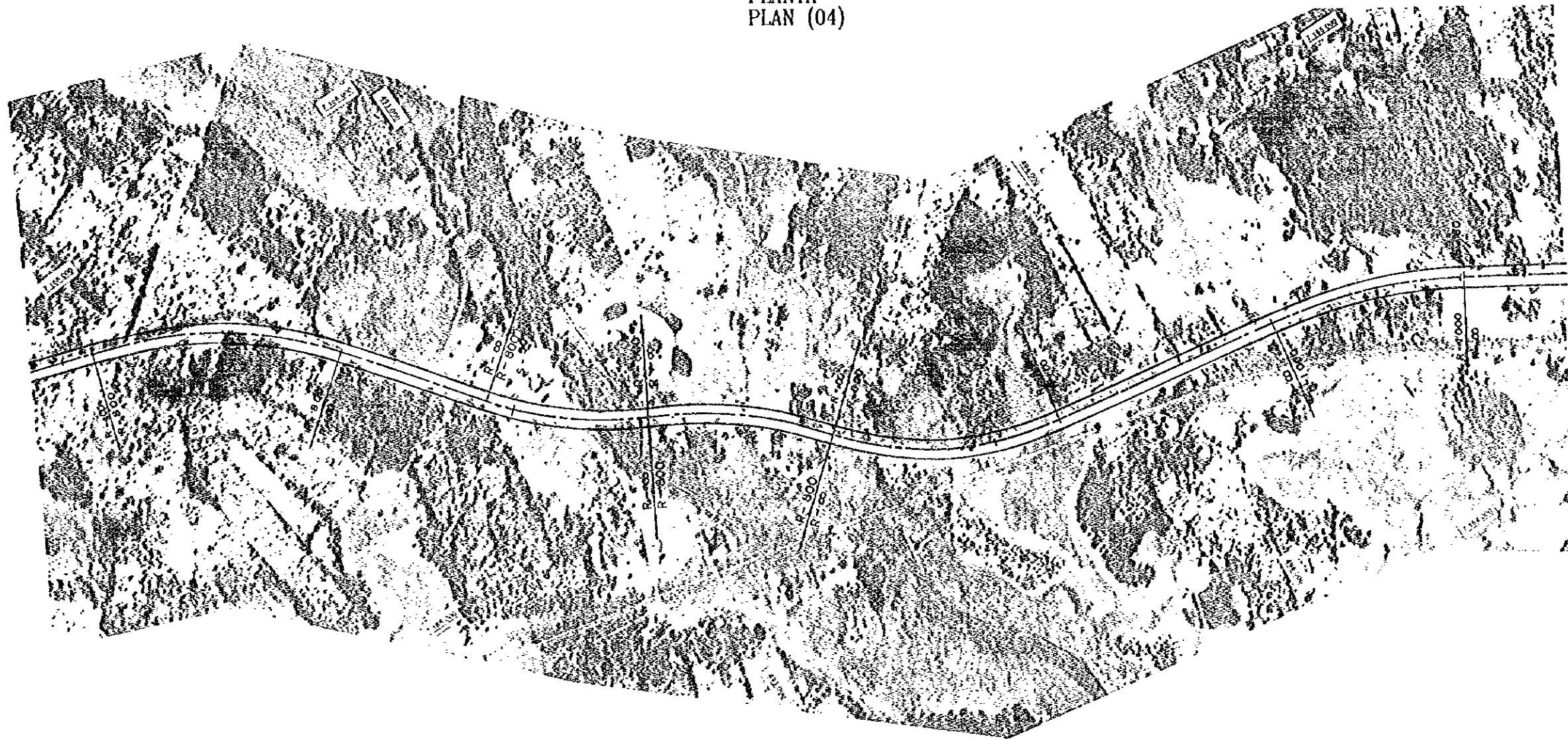


ESCALA SCALE: HORIZONTAL VERTICAL

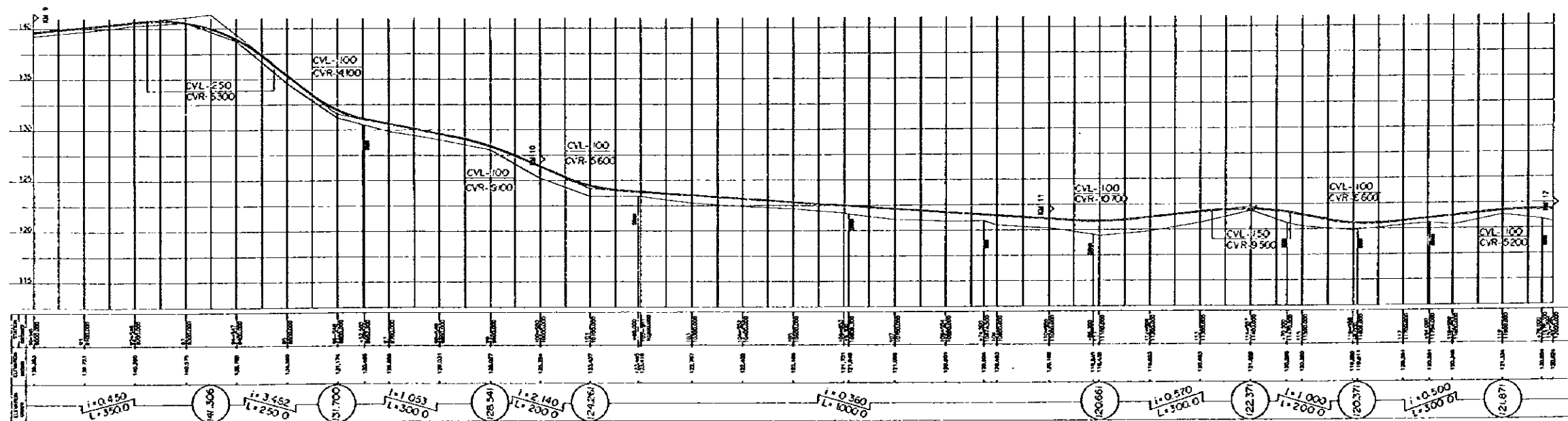
DE: PARAGUARI A VILLARRICA

FROM: PARAGUARI TO VILLARRICA

PLANTA
PLAN (04)



PERFIL
PROFILE



ESCALA
SCALE: HORIZONTAL VERTICAL

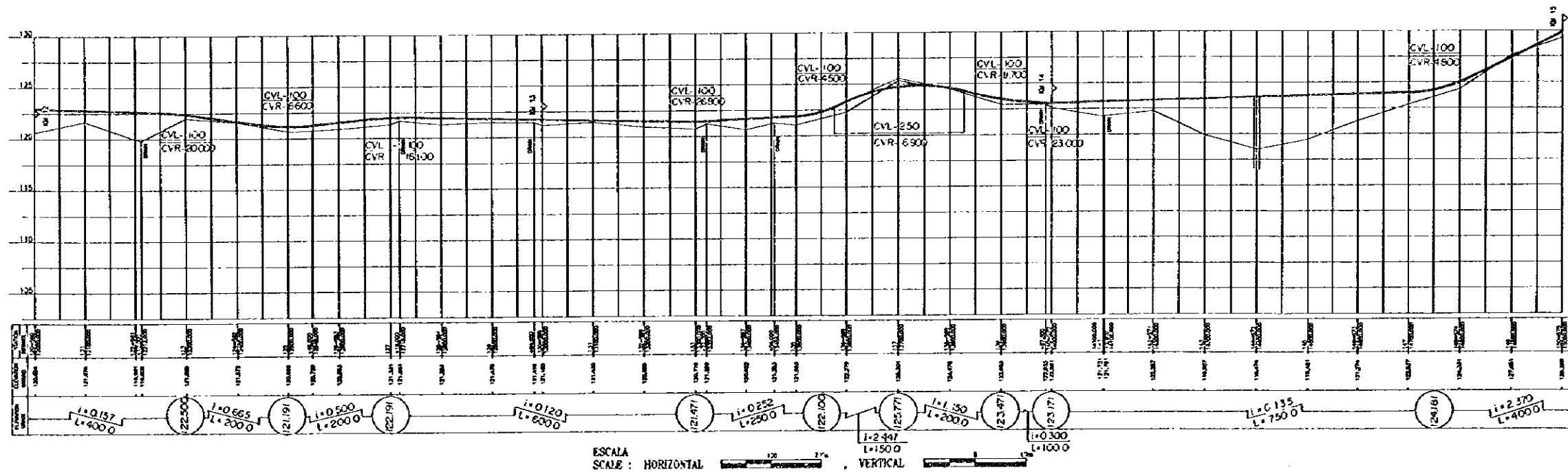
DE: PARAGUARI A VILLARRICA

FROM: PARAGUARI TO VILLARRICA

PLANTA PLAN (05)



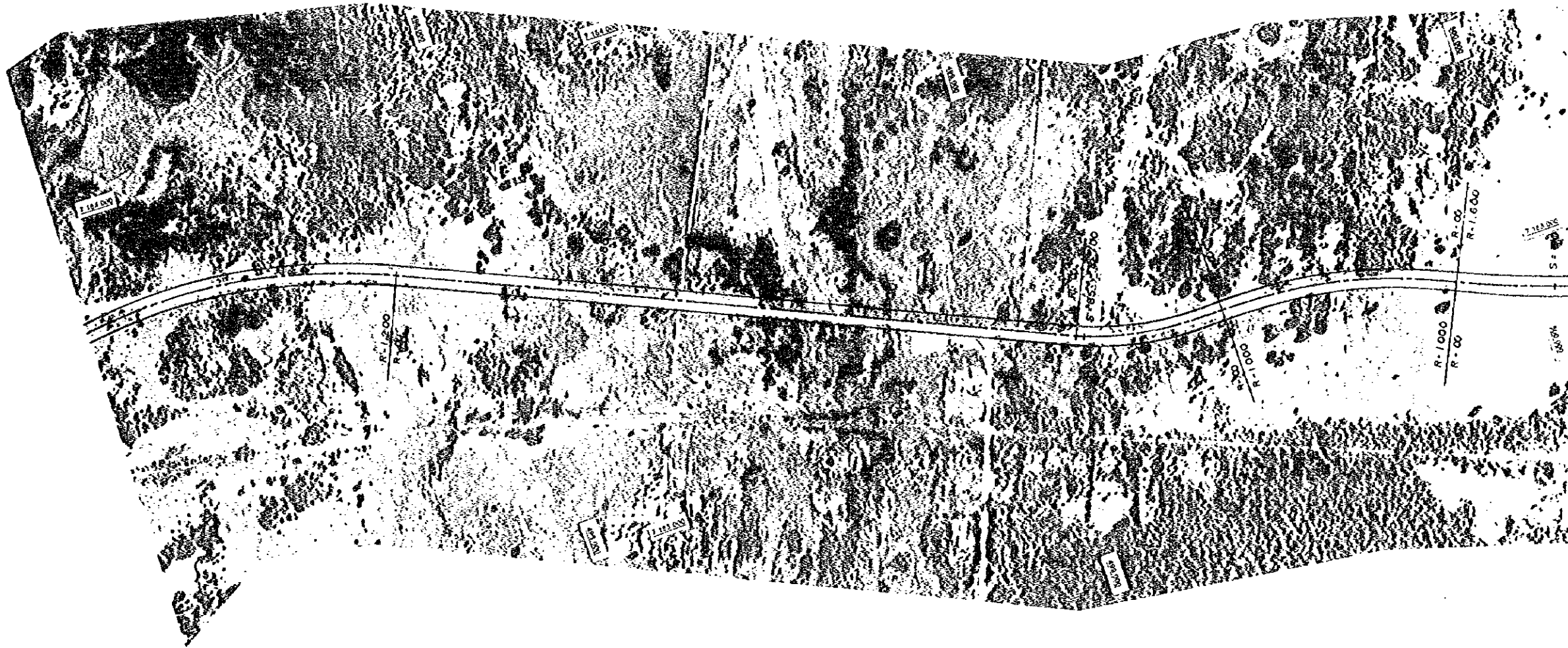
PERFIL PROFILE



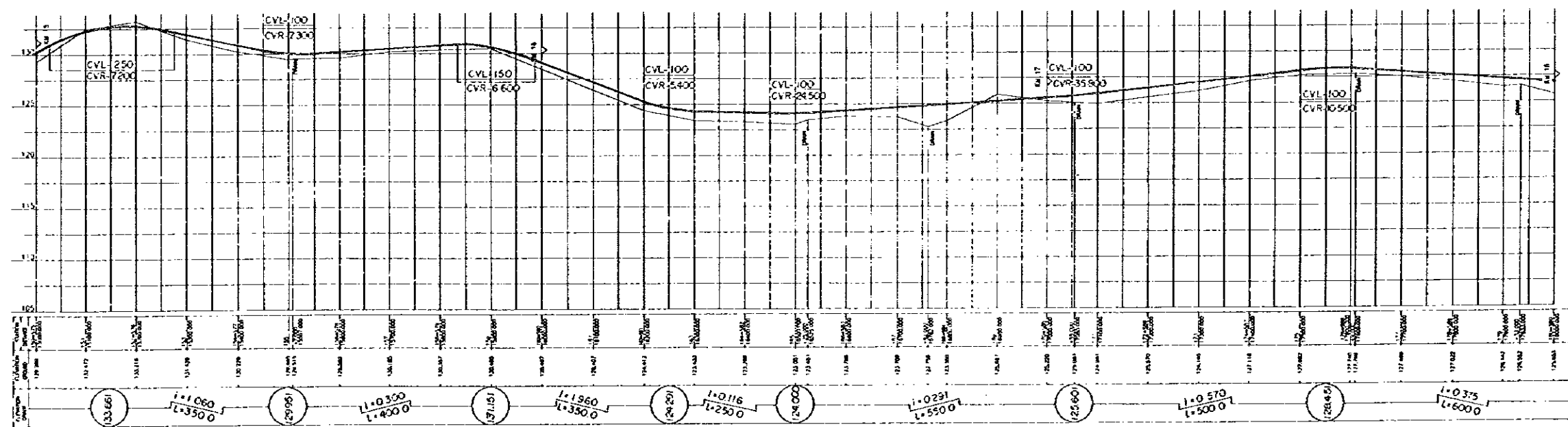
DE: PARAGUARI A VILLARRICA

FROM: PARAGUARI TO VILLARRICA

PLANTA
PLAN (06)



PERFIL
PROFILE

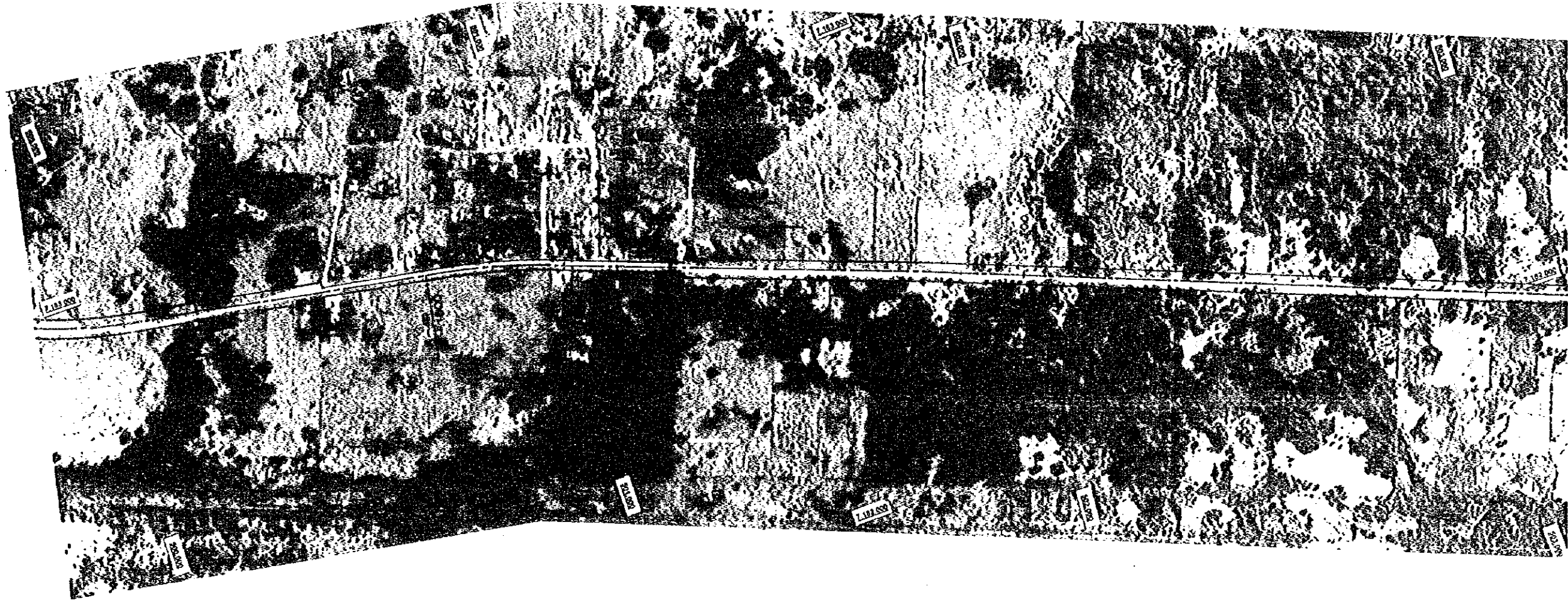


ESCALA
SCALE: HORIZONTAL VERTICAL

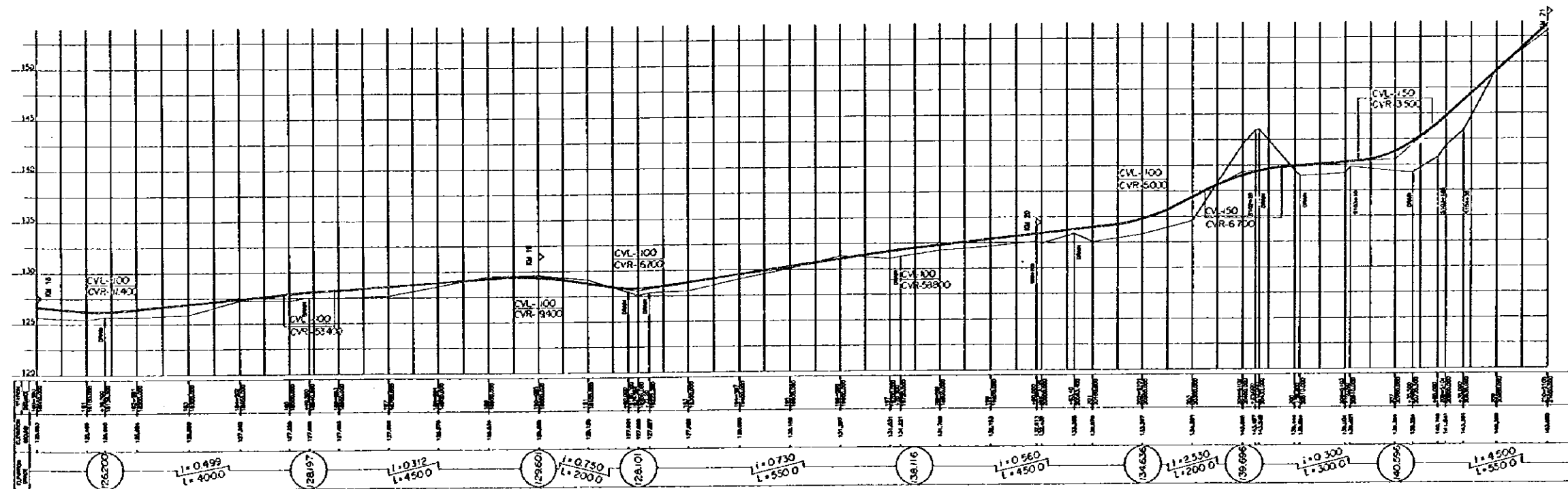
DE: PARAGUARI A VILLARRICA

FROM: PARAGUARI TO VILLARRICA

PLANTA PLAN (07)



PERFIL PROFILE

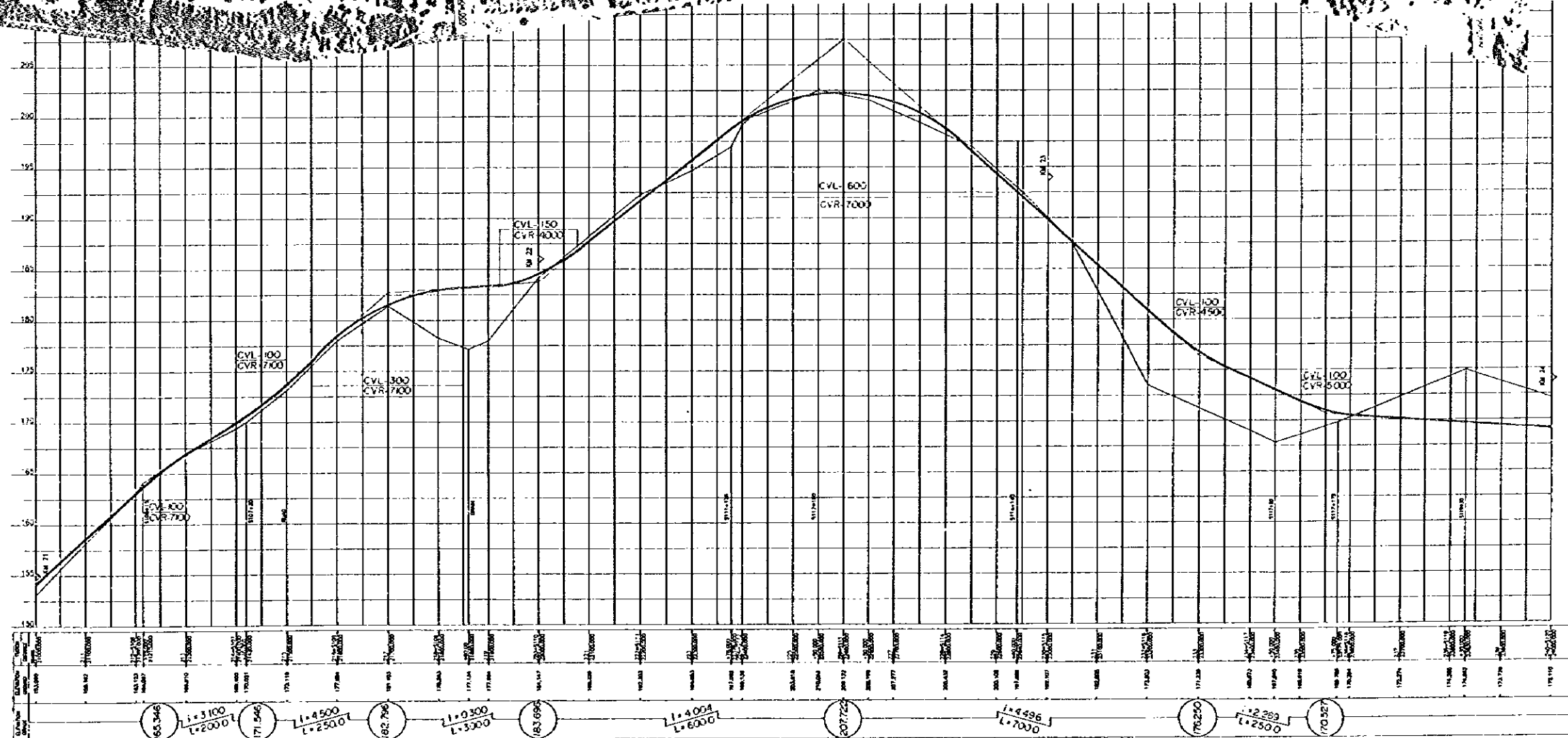
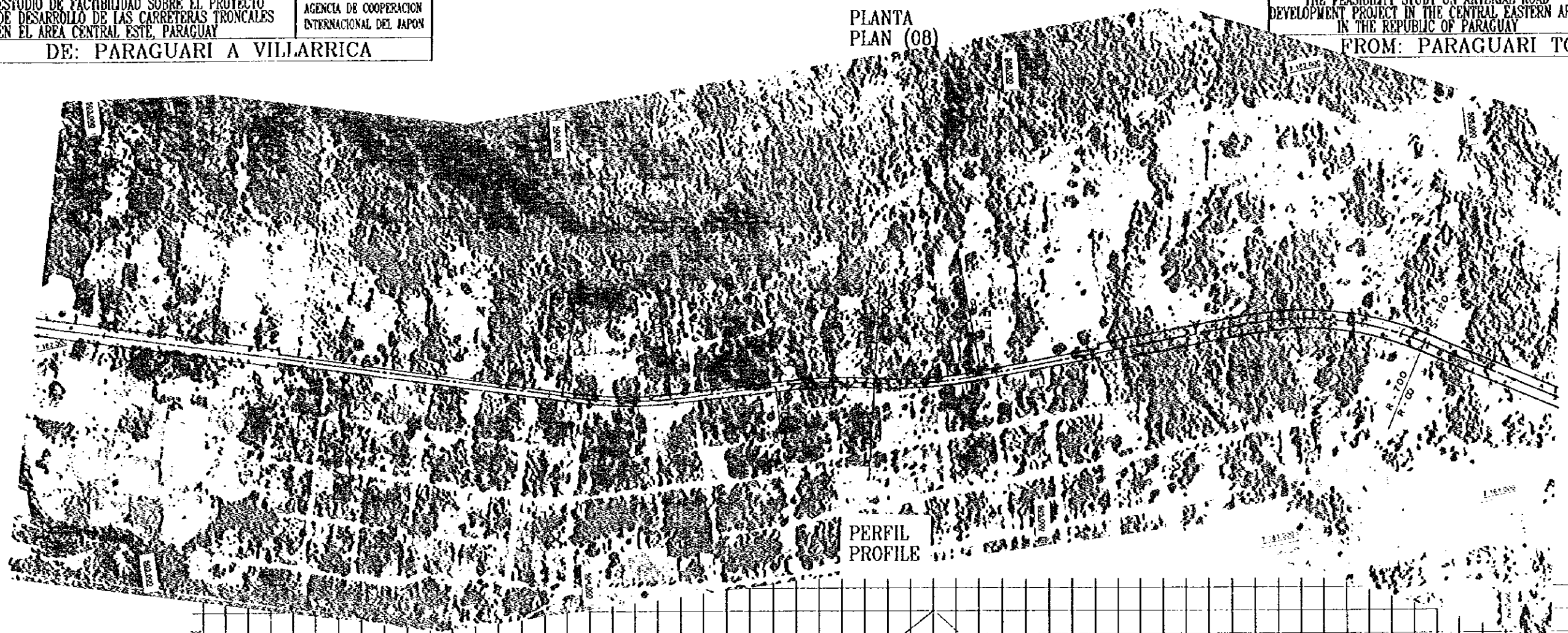


ESCALA SCALE: HORIZONTAL 1:4000 VERTICAL 1:1000

DE: PARAGUARI A VILLARRICA

PLANTA PLAN (08)

FROM: PARAGUARI TO VILLARRICA

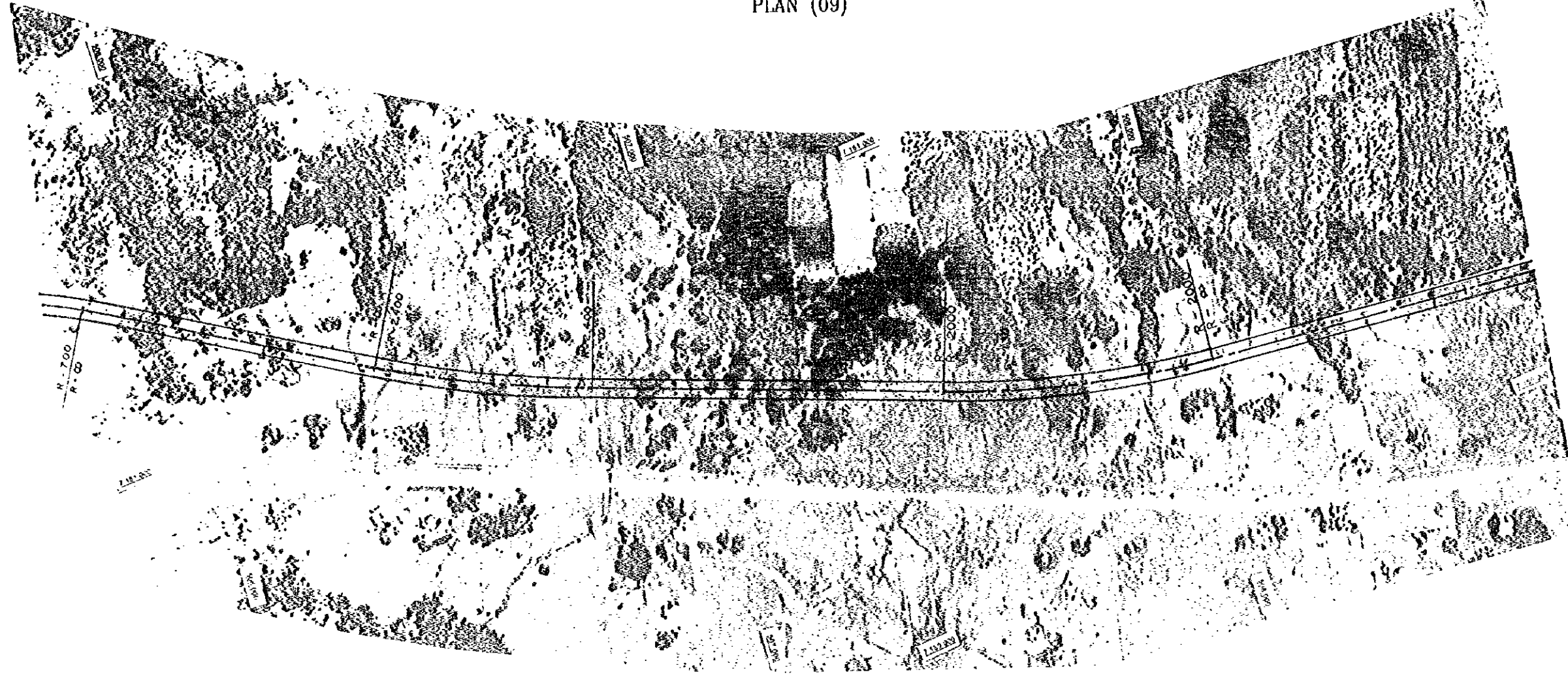


ESCALA SCALE: HORIZONTAL 1:2000, VERTICAL 1:200

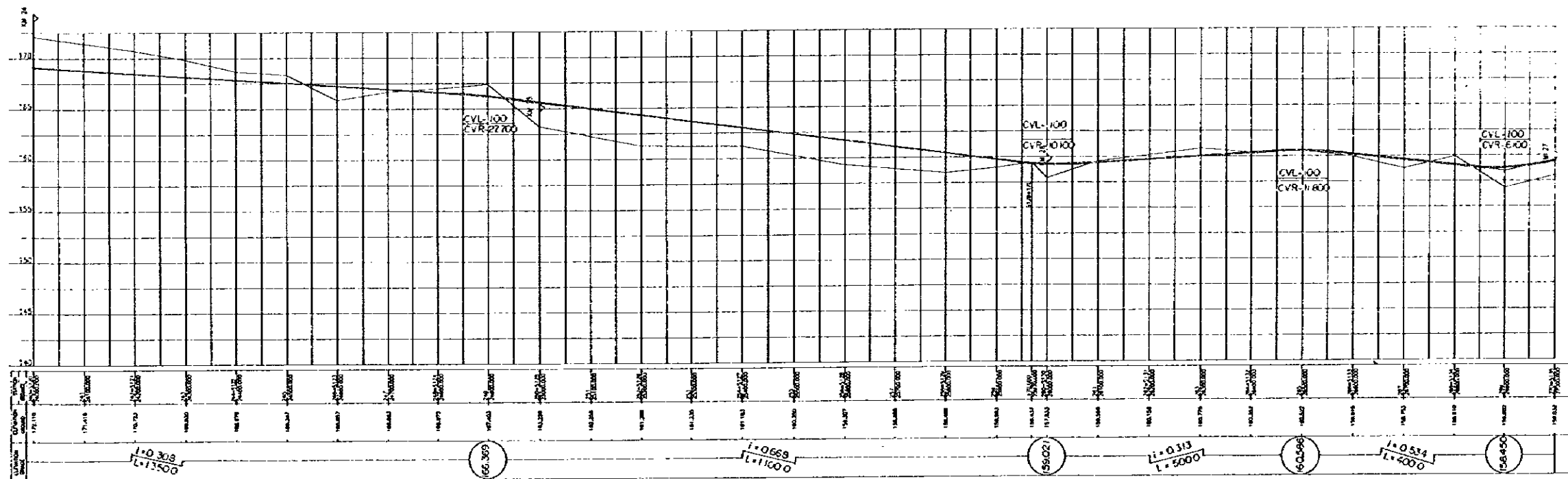
DE: PARAGUARI A VILLARRICA



FROM: PARAGUARI TO VILLARRICA

PIANTA PLAN (09)



PERFIL PROFILE

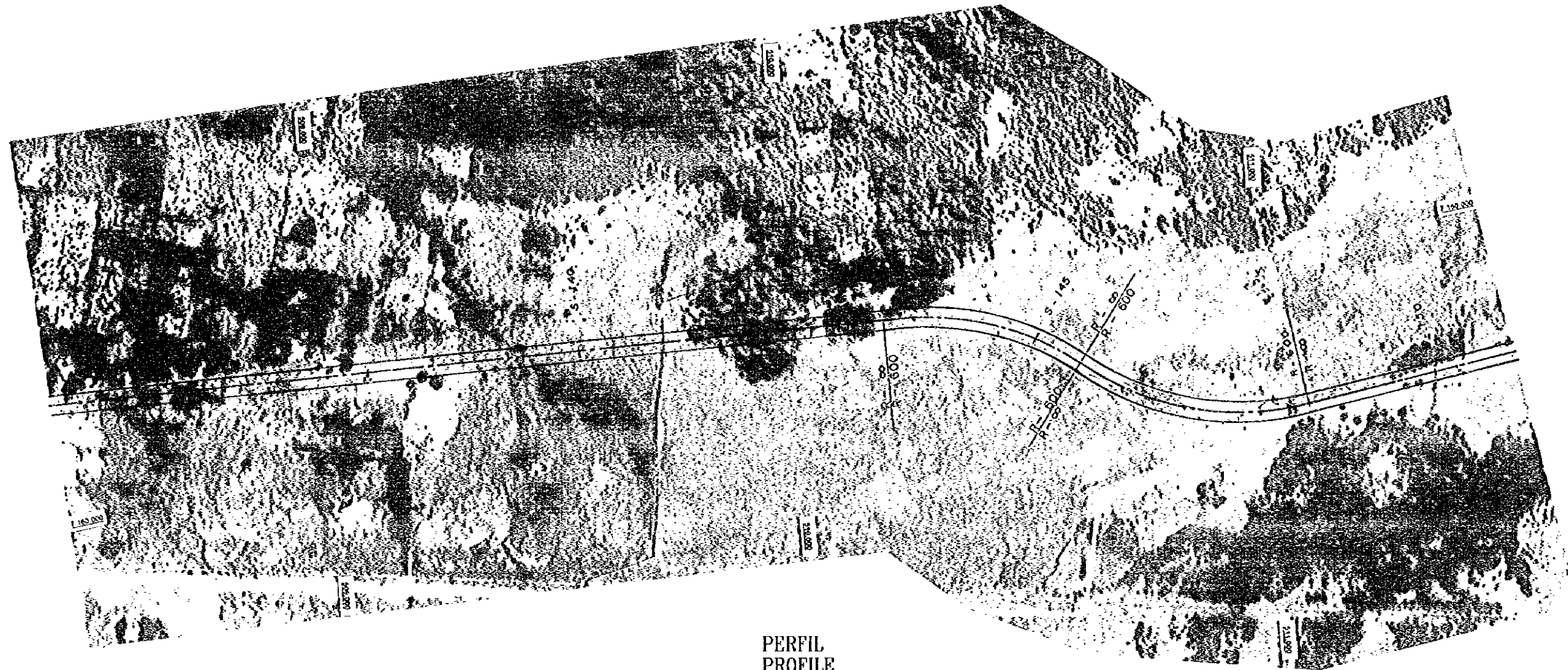


ESCALA SCALE: HORIZONTAL  VERTICAL 

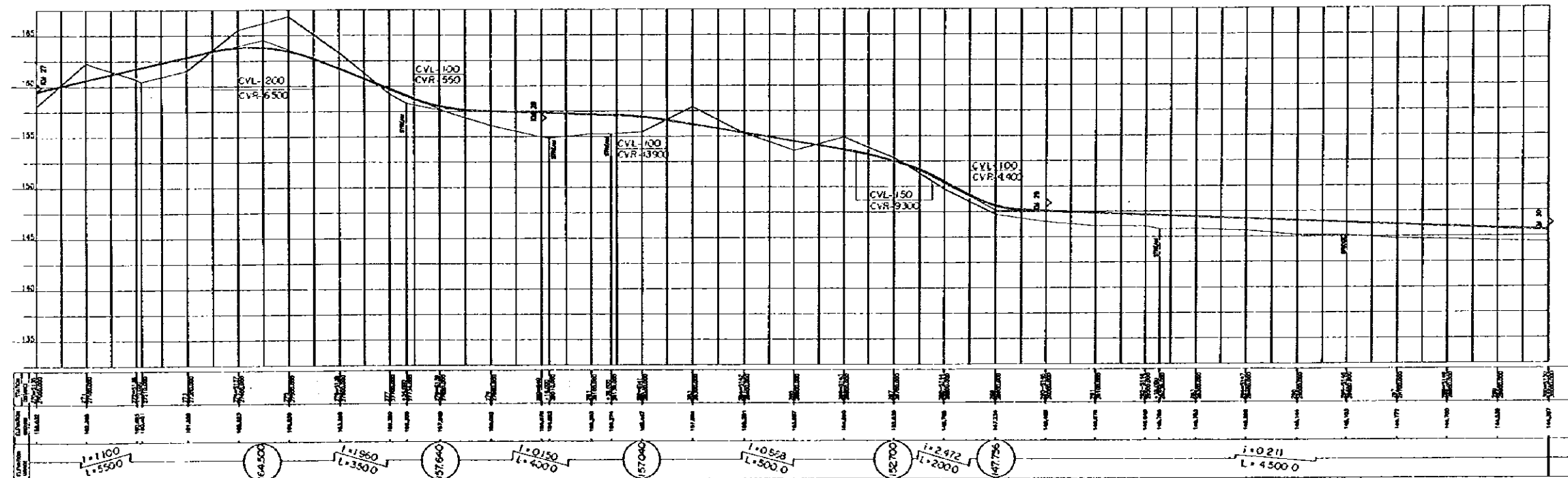
DE: PARAGUARI A VILLARRICA

FROM: PARAGUARI TO VILLARRICA

PLANTA
PLAN (10)



PERFIL
PROFILE



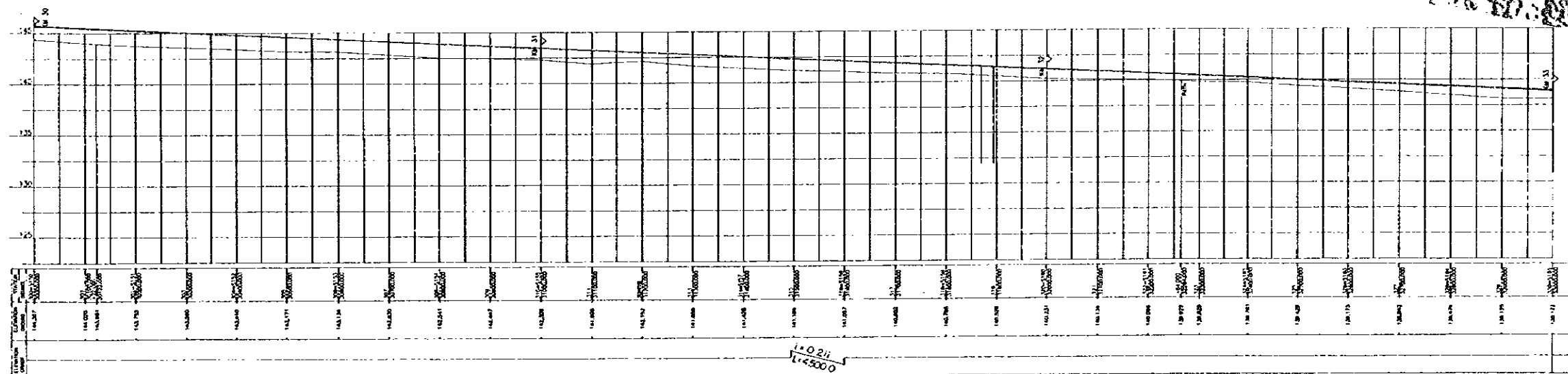
ESCALA
SCALE : HORIZONTAL VERTICAL

DE: PARAGUARI A VILLARRICA

FROM: PARAGUARI TO VILLARRICA

PLANTA
PLAN (11)

PERFIL
PROFILE

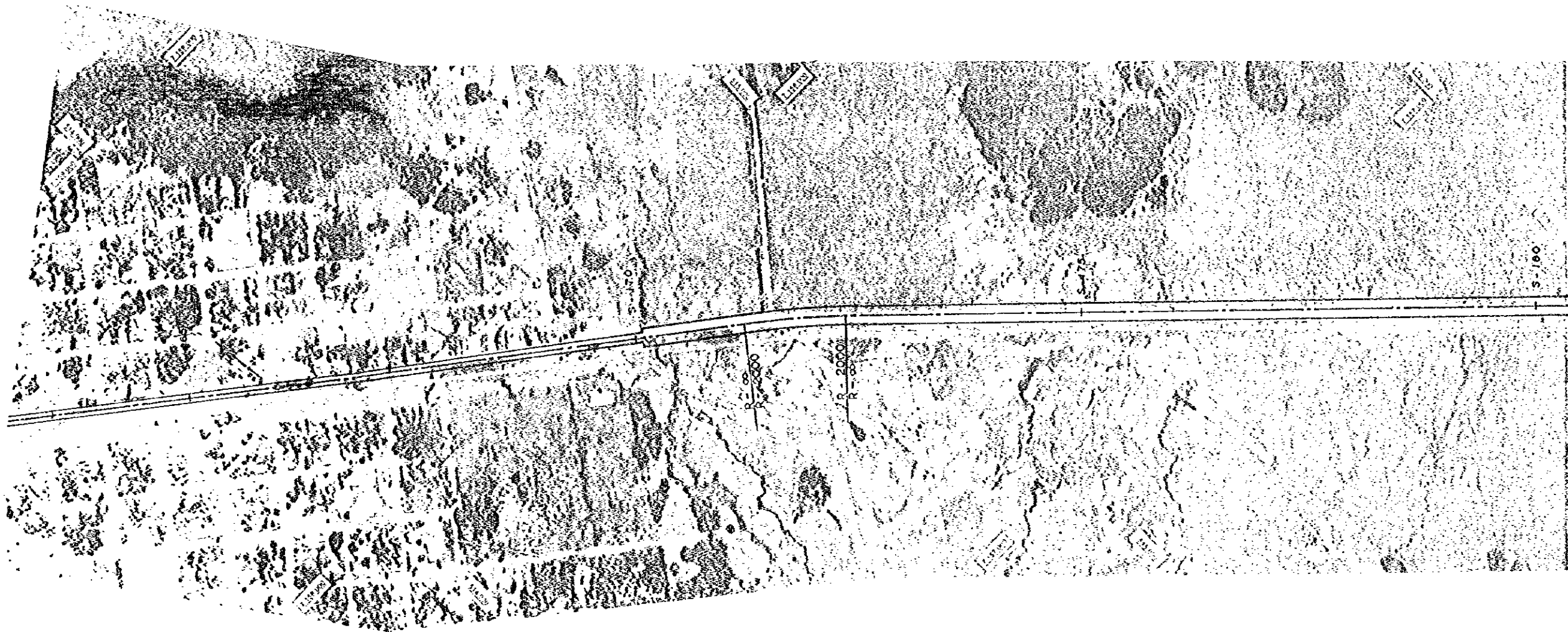


ESCALA
SCALE: HORIZONTAL  , VERTICAL 

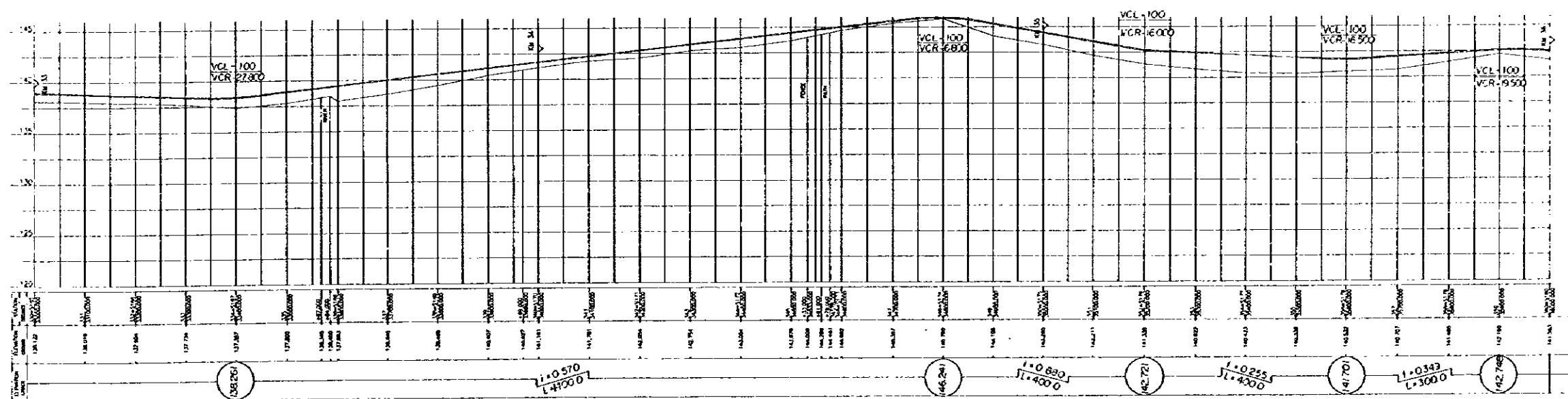
DE: PARAGUARI A VILLARRICA

FROM: PARAGUARI TO VILLARRICA

PLANTA
PLAN (12)



PERFIL
PROFILE



ESCALA
SCALE: HORIZONTAL 1:4000 VERTICAL 1:400