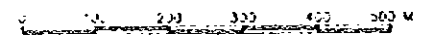


SCALE 1 : 5 000



LEGEND

- △ Existing Triangulation Point
- GPS Point
- Existing Bench Mark
- Spot height
- ▭ River
- ▭ Concrete Building (more than 4 m floor)
- ▭ House
- ▭ Mosque
- ▭ Church
- ▭ Hospital
- ▭ School
- ▭ Government Office
- ▭ Field
- ▭ Path
- ▭ Bridge
- ▭ Railway
- ⊕ Station
- ⊕ Electric Power Line
- ▭ Cutting and Embankment
- ▭ Swamp
- ▭ Muslim graves
- ▭ Christian cemetery
- ▭ Chinese graves
- ▭ Paddy field
- ▭ Boundary of vegetation
- ▭ Field
- ▭ Forest
- ▭ Grass
- ▭ Water hole
- ▭ Pond hole
- ▭ Road
- ▭ Land Slide

|          |          |    |    |    |    |          |    |    |    |    |
|----------|----------|----|----|----|----|----------|----|----|----|----|
|          | 1228-434 |    |    |    |    | 1228-444 |    |    |    |    |
| 1228-434 | 15       | 14 | 13 | 12 | 11 | 1228-444 | 18 | 17 | 16 | 15 |
| 1228-435 | 2        | 24 | 15 | 21 | 22 | 1228-445 | 2  | 25 | 16 | 24 |
| 1228-436 | 3        | 4  | 5  | 6  | 7  | 1228-446 | 3  | 6  | 7  | 8  |
| 1228-437 | 8        | 9  | 10 | 11 | 12 | 1228-447 | 8  | 9  | 10 | 11 |
| 1228-438 | 13       | 14 | 15 | 16 | 17 | 1228-448 | 13 | 14 | 15 | 16 |
| 1228-439 | 18       | 19 | 20 | 21 | 22 | 1228-449 | 18 | 19 | 20 | 21 |
| 1228-440 | 23       | 24 | 25 | 26 | 27 | 1228-450 | 23 | 24 | 25 | 26 |

X, Y - Based UTM Zone 48  
M: Mean sea level (TTG)

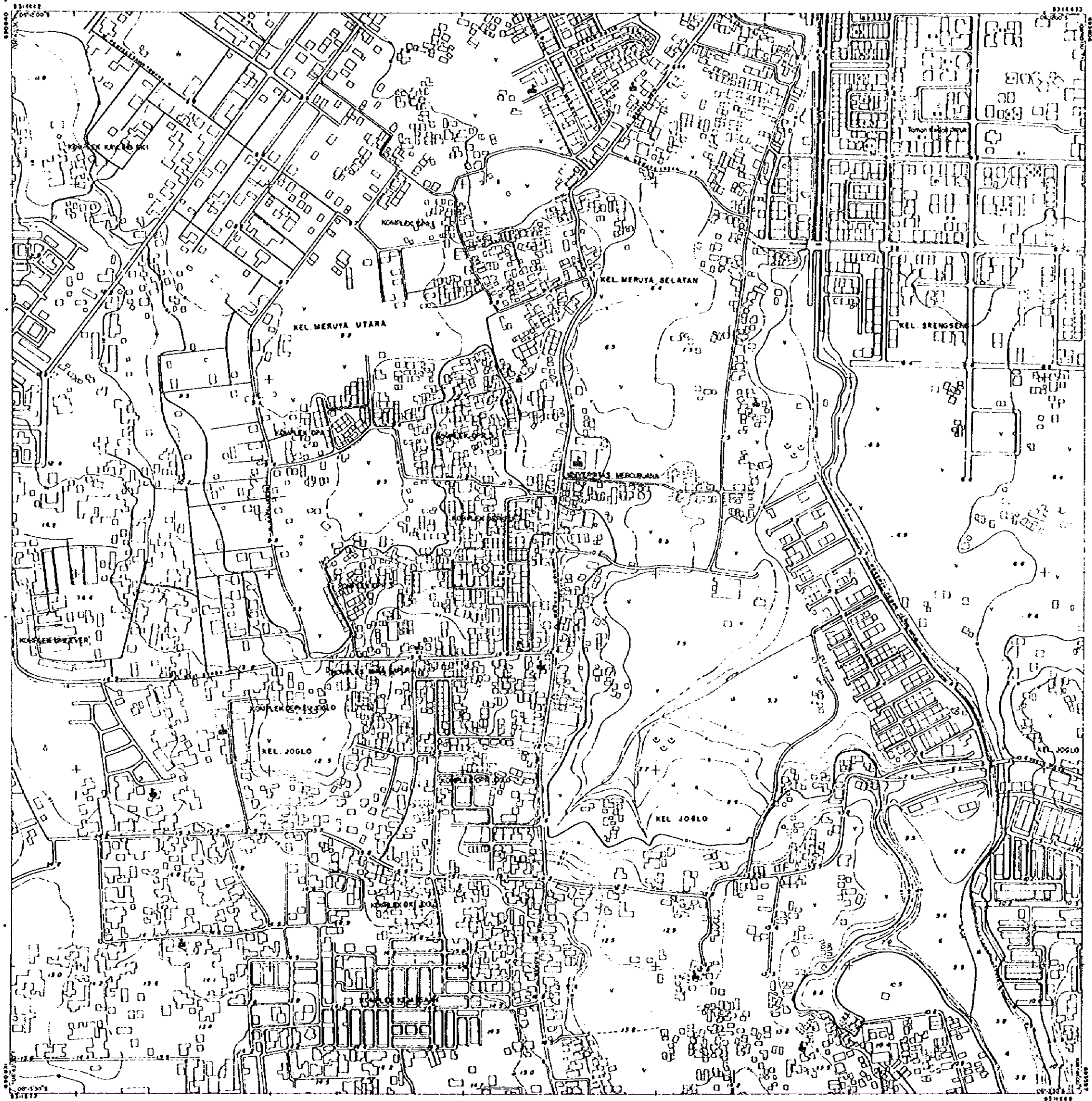
Index contour 10 meter  
Main contour 2 meter  
Supplemental contour 1 meter  
Aerial photography 1:20,000 May 1994

MINISTRY OF PUBLIC WORKS  
DIRECTORATE GENERAL OF WATER RESOURCES DEVELOPMENT  
OILIRUNG CIGADANE RIVER BASIN DEVELOPMENT PROJECT  
THE STUDY ON COMPREHENSIVE RIVER WATER MANAGEMENT PLAN IN JABOTABEK

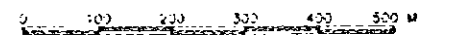
Drawing Title: **TOPOGRAPHIC MAP**

|            |             |          |
|------------|-------------|----------|
| Checked by | Approved by | Date     |
| Signature  | Signature   | 15/05/94 |
| Signature  | Signature   | 15/05/94 |
| Date       | Date        | 15/05/94 |

JICA JAPAN INTERNATIONAL COOPERATION AGENCY  
DPR. ATLAS DELTASATYA



SCALE 1:5000



LEGEND

- △ Existing Migration Point
- GPS Point
- Existing Bench Mark
- Spot height
- ▬ River
- ▭ Concrete Building (more than 1 floor)
- ▭ House
- ▭ Mosque
- ▭ Church
- ⊙ Hospital
- ▭ School
- ▭ Government Office
- ▬ Road
- ▬ Path
- ▬ Bridge
- ▬ Railway
- ⊕ Station
- ▬ Electric Power line
- ▬ Cutting and Embankment
- ▭ Swamp
- ▭ Macam grass
- ▭ Christian cemetery
- ▭ Chinese graves
- ▭ Paddy field
- ▭ Boundary of vegetation
- ▭ Field
- ▭ Forest
- ▭ Grass
- Water hole
- Pond, lake
- ▭ Sand
- ▭ Land Slide

|          |          |          |          |          |          |    |    |    |
|----------|----------|----------|----------|----------|----------|----|----|----|
|          | 1208-834 |          |          |          | 1208-444 |    |    |    |
| 1208-834 | 18       | 19       | 20       |          | 18       | 17 | 18 | 19 |
| 1208-835 | 23       | 24       | 25       | 21       | 22       | 23 | 24 | 25 |
| 1208-836 | 3        | 4        | 5        | 1        | 2        | 3  | 4  | 5  |
| 1208-837 | 6        | 6        | 13       | 6        | 7        | 8  | 9  | 10 |
| 1208-838 | 13       | 14       | 15       | 11       | 12       | 13 | 14 | 15 |
| 1208-839 | 18       | 18       | 18       | 18       | 17       | 18 | 19 | 20 |
| 1208-840 | 23       | 24       | 25       | 21       | 22       | 23 | 24 | 25 |
|          | 1208-432 | 1208-441 | 1208-441 | 1208-442 |          |    |    |    |

X, Y      Basal UTM Zone 48  
 H          Mean sea level (TTG)

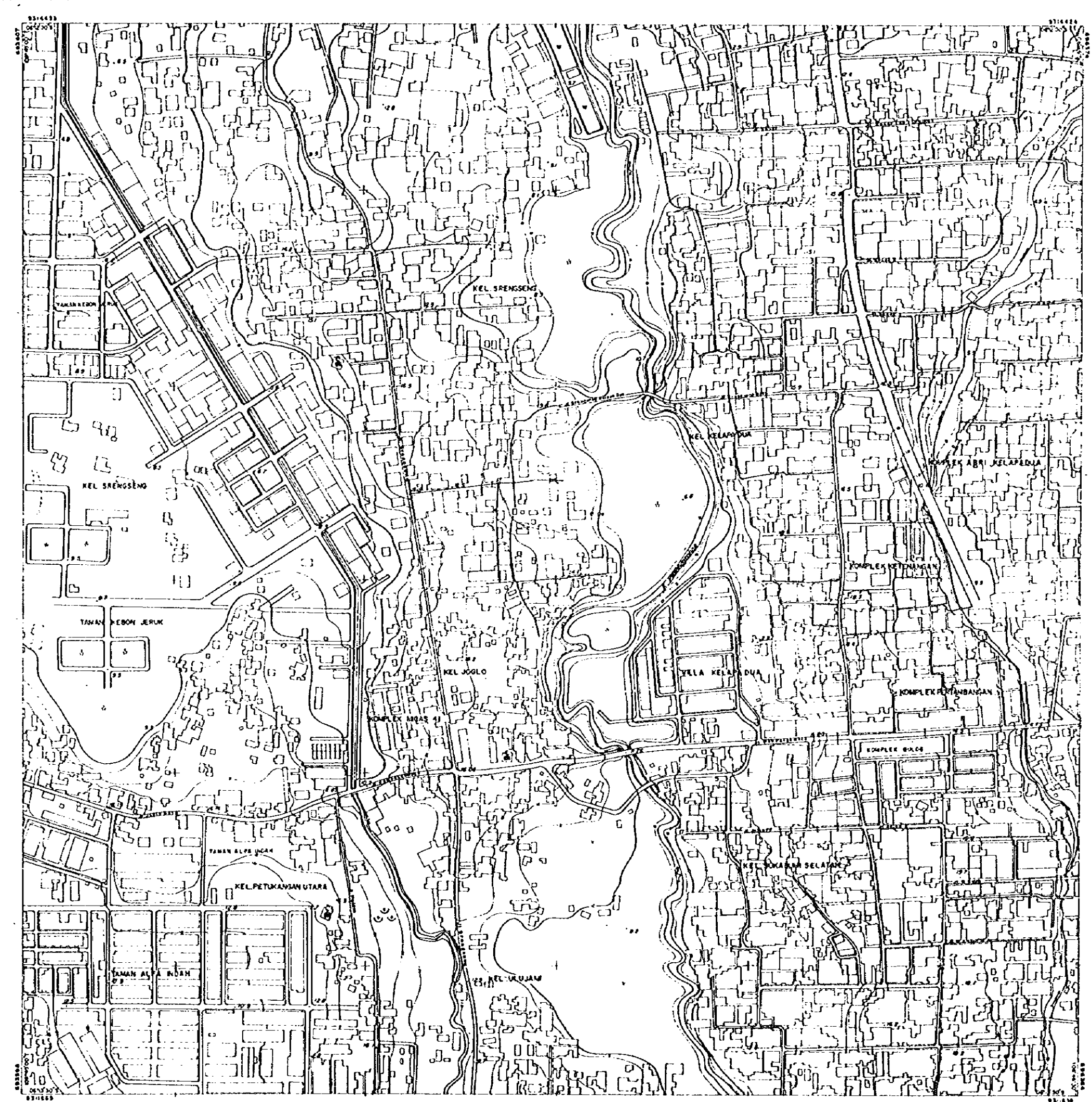
Index contour      : 10 meter  
 Main contour      : 2 meter  
 Supplemental contour : 1 meter  
 Aerial photography : 1:20 000  
 May 1994

MINISTRY OF PUBLIC WORKS  
 DIRECTORATE GENERAL OF WATER RESOURCES DEVELOPMENT  
 CLIMUNG DASARINE RIVER BASIN DEVELOPMENT PROJECT  
 THE STUDY ON COMPREHENSIVE RIVER WATER  
 MANAGEMENT PLAN IN JABOTABEK

Drawing Title: **TOPOGRAPHIC MAP**

|            |             |             |
|------------|-------------|-------------|
| Checked by | Approved by | Date Survey |
| Signature  | Signature   | 14/05/94    |
| Scale      | Scale       | Scale       |
| 1:5000     | 1:5000      | 1:5000      |

JICA JAPAN INTERNATIONAL COOPERATION AGENCY  
 PT. ATLAS DELTASATYA

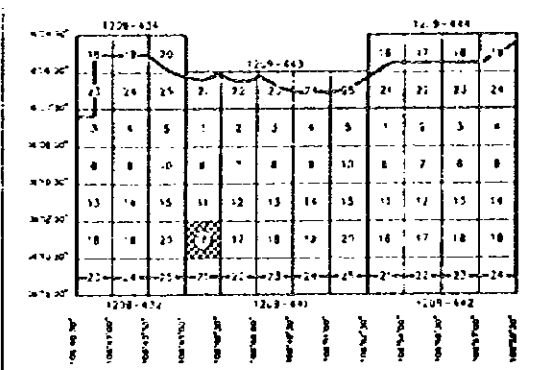


SCALE 1:5000



LEGEND

- △ Existing Triangulation Point
- ⊙ GPS Point
- Existing Bench Mark
- Spot height
- ~ River
- ▭ Concrete Buildings (more than 4 floor)
- ⊕ Mosque
- ⊕ Church
- ⊕ Hospital
- ⊕ School
- ⊕ Government Office
- Road
- Path
- Bridge
- Railway
- ⊕ Station
- Electric Power Line
- Cutting and Embankment
- Swamp
- Macen grass
- Chinese grass
- Paddy field
- Boundary of Vegetation
- Field
- Forest
- Grass
- Water hole
- Pond, lake
- Sand
- Land Slide



X, Y : Bessel UTM Zone 48  
 H : Mean spheroid (ITG)  
 index contour : 10 meter  
 main contour : 2 meter  
 supplementary contour : 1 meter  
 Aerial photography : 1:20,000  
 May 1994

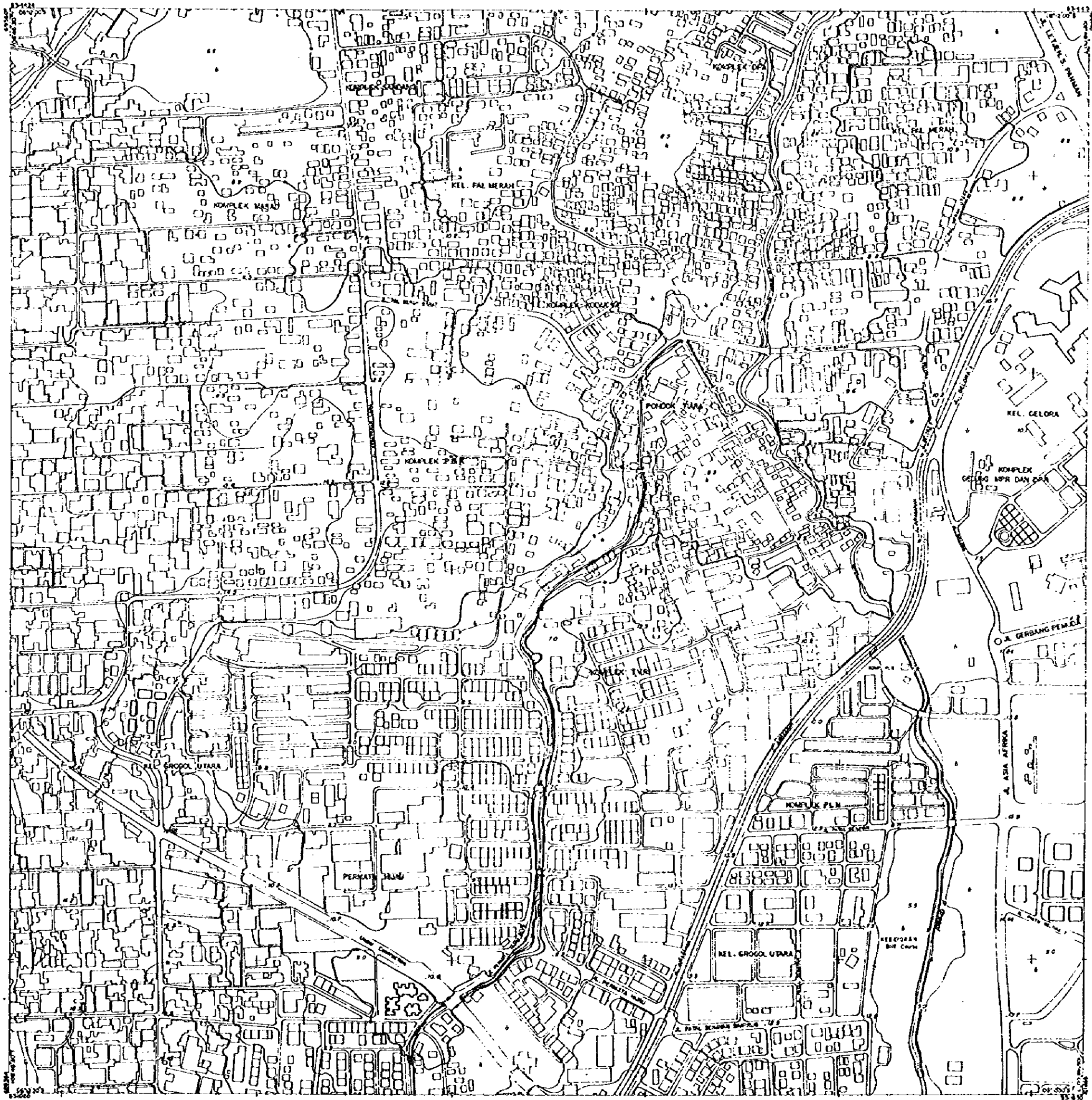
**MINISTRY OF PUBLIC WORKS**  
 DIRECTORATE GENERAL OF WATER RESOURCES DEVELOPMENT  
 OAHUNG OSADANE RIVER BASIN DEVELOPMENT PROJECT  
 THE STUDY ON COMPREHENSIVE RIVER WATER MANAGEMENT PLAN IN JABOTABEK

Drawing Title: **TOPOGRAPHIC MAP**

|          |            |             |                    |
|----------|------------|-------------|--------------------|
| Drawn by | Checked by | Approved by | Field Party No. 08 |
| Scale    | Scale      | Scale       | April 94 32 10     |
| Scale    | Scale      | Scale       | Printing 95 10     |
| Date     | Date       | Date        | Plotting 96 01     |

**JICA** JAPAN INTERNATIONAL COOPERATION AGENCY  
 P. P. ARAS DELYASATYA  
 Street No. 1229-011





SCALE 1:5000



LEGEND

- ⊙ Existing Transportation Point
- ⊙ UPS Point
- ⊙ Existing Service Mark
- Spot Height
- ⊙ River
- ⊙ Concrete Building (more than 4m floor)
- ⊙ House
- ⊙ Mosque
- ⊙ Church
- ⊙ Hospital
- ⊙ School
- ⊙ Government Office
- ⊙ Road
- ⊙ Path
- ⊙ Bridge
- ⊙ Railway
- ⊙ Station
- ⊙ Electric Power Line
- ⊙ Cutting and Embankment
- ⊙ Swamp
- ⊙ Mown grass
- ⊙ Christian cemetery
- ⊙ Chinese graves
- ⊙ Faddy field
- ⊙ Boundary of vegetation
- ⊙ Field
- ⊙ Forest
- ⊙ Grass
- ⊙ Water Tobe
- ⊙ Ford, lake
- ⊙ Sand
- ⊙ Land Slide

|          |          |    |    |    |          |    |    |    |          |    |    |    |
|----------|----------|----|----|----|----------|----|----|----|----------|----|----|----|
|          | 1228-424 |    |    |    | 1228-425 |    |    |    | 1228-426 |    |    |    |
| 1228-423 | 10       | 11 | 12 | 13 | 14       | 15 | 16 | 17 | 18       | 19 | 20 | 21 |
| 1228-424 | 22       | 23 | 24 | 25 | 26       | 27 | 28 | 29 | 30       | 31 | 32 | 33 |
| 1228-425 | 4        | 5  | 6  | 7  | 8        | 9  | 10 | 11 | 12       | 13 | 14 | 15 |
| 1228-426 | 16       | 17 | 18 | 19 | 20       | 21 | 22 | 23 | 24       | 25 | 26 | 27 |
| 1228-427 | 28       | 29 | 30 | 31 | 32       | 33 | 34 | 35 | 36       | 37 | 38 | 39 |
|          | 1228-427 |    |    |    | 1228-428 |    |    |    | 1228-429 |    |    |    |

U.T.M. Zone 45  
Mean sea level (TIG)

Index contour 10 meter  
 Main contour 2 meter  
 Supplementary contour 1 meter  
 Aerial photography 1:20,000  
 May 1994

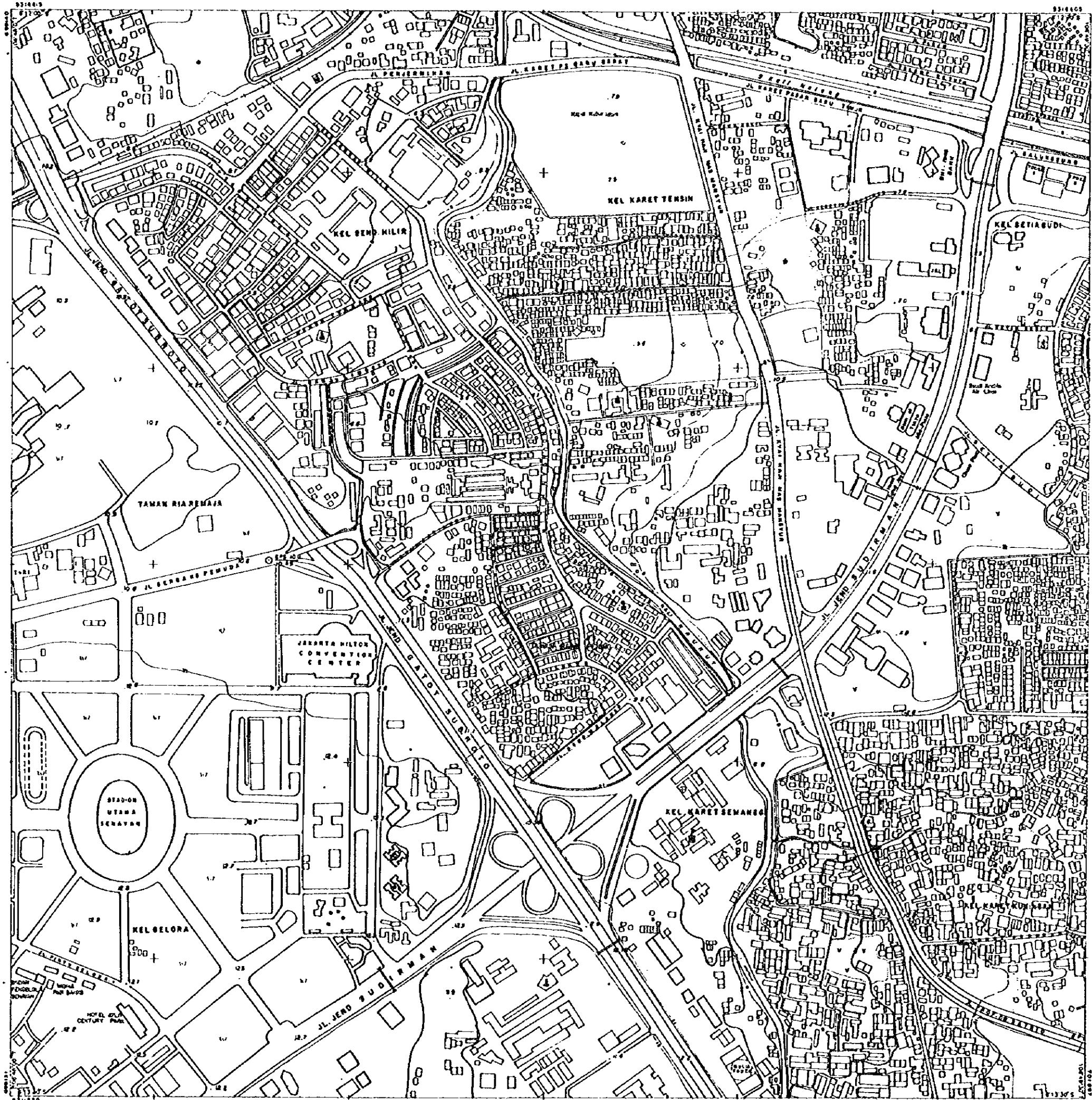
**MINISTRY OF PUBLIC WORKS**  
 DIRECTORATE GENERAL OF WATER RESOURCES DEVELOPMENT  
 CIBUNING CIBADANE RIVER BASIN DEVELOPMENT PROJECT

THE STUDY ON COMPREHENSIVE RIVER WATER  
 MANAGEMENT PLAN IN JABOTABEK

**TOPOGRAPHIC MAP**

|            |             |                 |
|------------|-------------|-----------------|
| Checked by | Approved by | Date Survey '94 |
| Signature  | Signature   | Date '94        |
| Date       | Date        | Date            |

JICA JAPAN INTERNATIONAL COOPERATION AGENCY  
 PT. ARAS DELASATYA

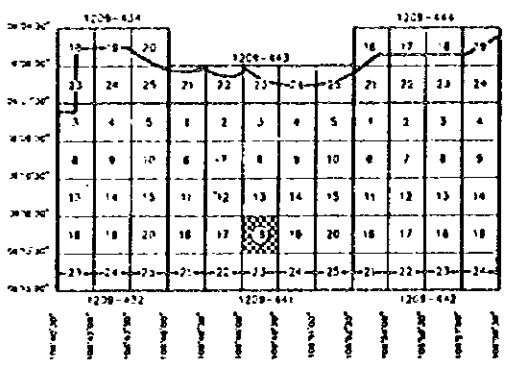


SCALE 1 : 5 000



LEGEND

- △ Existing Triangulation Point
- ⊙ GPS Point
- Existing Bench Mark
- Spot height
- ~ River
- ▭ Concrete Building (more than 4th floor)
- ▭ House
- ▭ Warehouse
- ⊕ Church
- ⊕ Hospital
- ⊕ School
- ⊕ Government Office
- Peas
- Path
- ⊕ Bridge
- ⊕ Railway
- ⊕ Sactor
- ⊕ Electric Power Line
- ⊕ Cutting and Embankment
- ⊕ Swamp
- ⊕ Western graves
- ⊕ Christian cemetery
- ⊕ Chinese graves
- ⊕ Paddy field
- ⊕ Boundary of Vegetation
- ⊕ Field
- ⊕ Forest
- ⊕ Grass
- ⊕ Water hole
- ⊕ Pond, lake
- ⊕ Sand
- ⊕ Land Slide



X, Y : Based UTM Zone 48  
 H : Mean sea level (TTG)

index contour : 10 meter  
 Main contour : 2 meter  
 Supplemental contour : 1 meter  
 Aerial photography : 1:20 000  
 May 1994

**MINISTRY OF PUBLIC WORKS**  
 DIRECTORATE GENERAL OF WATER RESOURCES DEVELOPMENT  
 OILUWING OSADANE RIVER BASIN DEVELOPMENT PROJECT

THE STUDY ON COMPREHENSIVE RIVER WATER MANAGEMENT PLAN IN JABOTABEK

Drawing Title: **TOPOGRAPHIC MAP**

|           |            |             |          |
|-----------|------------|-------------|----------|
| Drawn by  | Checked by | Approved by | Date     |
| Signature | Signature  | Signature   | 12/05/00 |
| 12/05/00  | 12/05/00   | 12/05/00    | 12/05/00 |

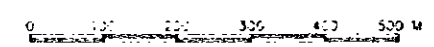
JICA JAPAN INTERNATIONAL COOPERATION AGENCY

PT. ARAS DOLASATYA



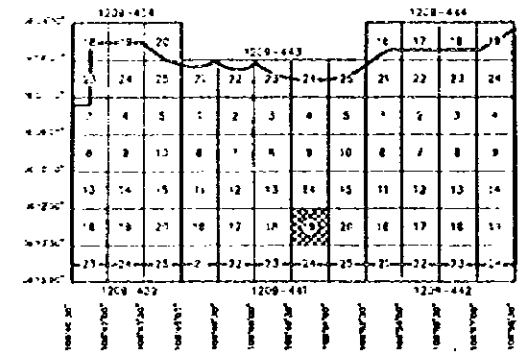


SCALE 1 : 5000



LEGEND

- △ Existing Triangulation Point
- JPS Point
- Existing Bench Mark
- Spot height
- ~ River
- ▭ Concrete Building (more than 4m floor)
- ▭ House
- ⊕ Mosque
- ⊕ Church
- ⊕ Hospital
- ⊕ School
- ⊕ Government Office
- ⊕ Post
- ⊕ Water
- ⊕ Bridge
- ⊕ Railway
- ⊕ Station
- ⊕ Electric Power wire
- ⊕ Cutting and Embankment
- ⊕ Swamp
- ⊕ Mosaic grass
- ⊕ Chinese cemetery
- ⊕ Chinese graves
- ⊕ Paddy field
- ⊕ Boundary of vegetation
- ⊕ Field
- ⊕ Forest
- ⊕ Grass
- ⊕ Water hole
- ⊕ Ford hole
- ⊕ Sand
- ⊕ Land Slide



X, Y Base of UTM Zone 48  
 H Mean sea level (TIG)  
 Index contour 10 meter  
 Main contour 2 meter  
 Supplementary contour 1 meter  
 Aerial photography 1:20,000 May 1994

**MINISTRY OF PUBLIC WORKS**  
 DIRECTORATE GENERAL OF WATER RESOURCES DEVELOPMENT  
 CILIMUNG OSADANE RIVER BASIN DEVELOPMENT PROJECT  
 THE STUDY ON COMPREHENSIVE RIVER WATER MANAGEMENT PLAN DI JABOTABEK

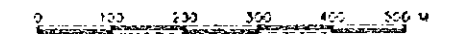
Drawing Title: **TOPOGRAPHIC MAP**

|           |            |             |            |
|-----------|------------|-------------|------------|
| Name      | Created by | Approved by | Date       |
| Signature | Signature  | Signature   | 1994.10.10 |
| Date      | 21.10.94   | 21.10.94    | 21.10.94   |

**JICA** JAPAN INTERNATIONAL COOPERATION AGENCY  
 DR. PL. ANAS DELIASATTA



SCALE 1 : 5 000



LEGEND

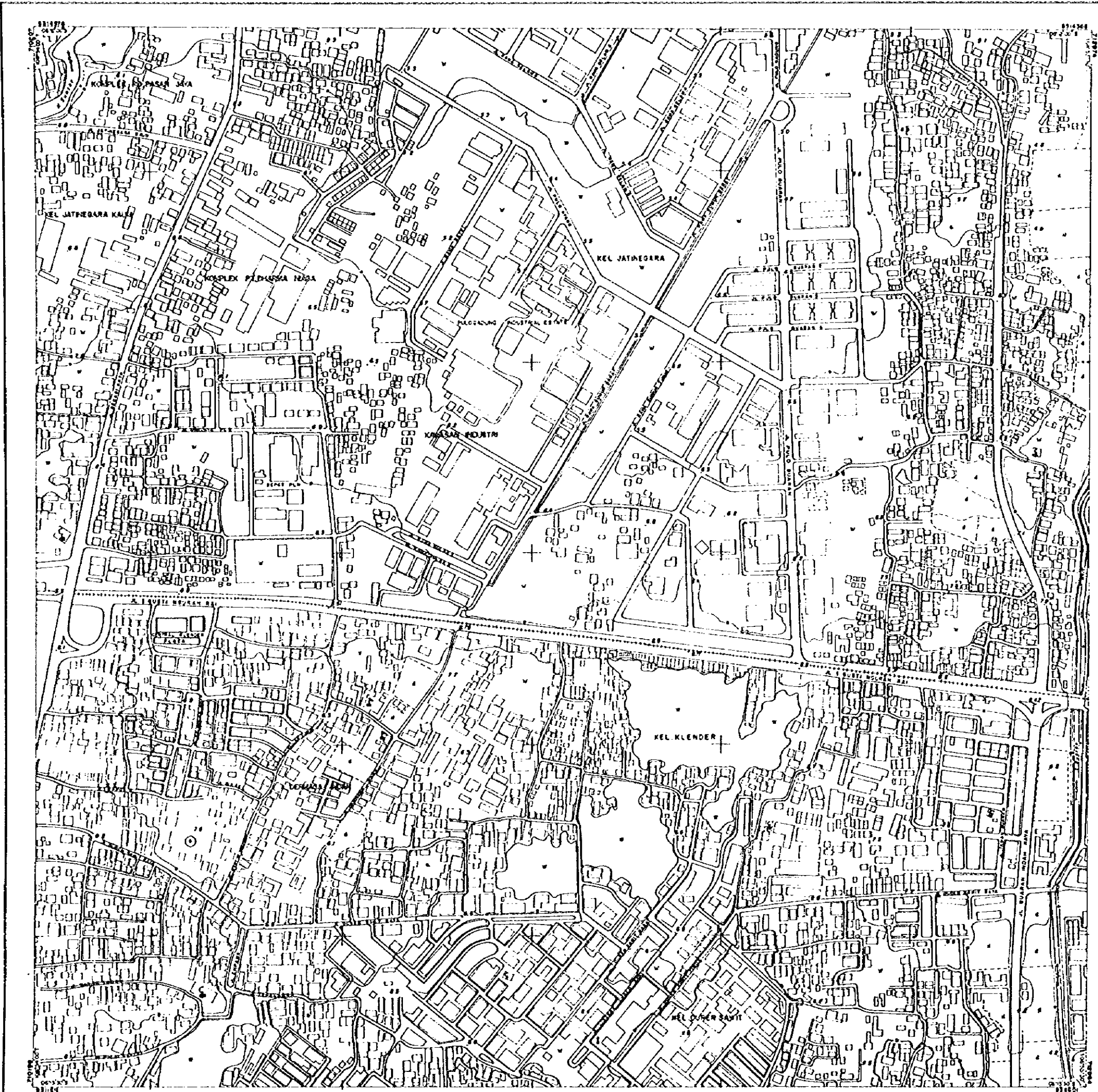
- △ Existing Triangulation Point
- GPS Point
- Existing Bench Mark
- Spot Height
- ~ River
- ▭ Concrete Building more than 4m floor
- ▭ House
- ⊕ Mosque
- ⊕ Church
- ⊕ Hospital
- ⊕ School
- ⊕ Government Office
- ▭ Flood
- ▭ Path
- ▭ Bridge
- ▭ Railway
- ⊕ Station
- ▭ Electric Power Line
- ▭ Cutting and Embankment
- ⊕ Swamp
- ⊕ Motion grass
- ⊕ Christian cemetery
- ⊕ Chinese graves
- ⊕ Paddy field
- ▭ Boundary of Vegetation
- ▭ Field
- ▭ Forest
- ▭ Grass
- ⊕ Water hole
- ⊕ Pond, lake
- ⊕ Sand
- ▭ Land Slide

|          |          |     |     |     |          |     |     |     |
|----------|----------|-----|-----|-----|----------|-----|-----|-----|
|          | 1208-434 |     |     |     | 1208-444 |     |     |     |
| 1208-424 | 10       | 11  | 12  | 13  | 14       | 15  | 16  | 17  |
| 1208-434 | 14       | 15  | 16  | 17  | 18       | 19  | 20  | 21  |
| 1208-444 | 18       | 19  | 20  | 21  | 22       | 23  | 24  | 25  |
| 1208-454 | 22       | 23  | 24  | 25  | 26       | 27  | 28  | 29  |
| 1208-464 | 26       | 27  | 28  | 29  | 30       | 31  | 32  | 33  |
| 1208-474 | 30       | 31  | 32  | 33  | 34       | 35  | 36  | 37  |
| 1208-484 | 34       | 35  | 36  | 37  | 38       | 39  | 40  | 41  |
| 1208-494 | 38       | 39  | 40  | 41  | 42       | 43  | 44  | 45  |
| 1208-504 | 42       | 43  | 44  | 45  | 46       | 47  | 48  | 49  |
| 1208-514 | 46       | 47  | 48  | 49  | 50       | 51  | 52  | 53  |
| 1208-524 | 50       | 51  | 52  | 53  | 54       | 55  | 56  | 57  |
| 1208-534 | 54       | 55  | 56  | 57  | 58       | 59  | 60  | 61  |
| 1208-544 | 58       | 59  | 60  | 61  | 62       | 63  | 64  | 65  |
| 1208-554 | 62       | 63  | 64  | 65  | 66       | 67  | 68  | 69  |
| 1208-564 | 66       | 67  | 68  | 69  | 70       | 71  | 72  | 73  |
| 1208-574 | 70       | 71  | 72  | 73  | 74       | 75  | 76  | 77  |
| 1208-584 | 74       | 75  | 76  | 77  | 78       | 79  | 80  | 81  |
| 1208-594 | 78       | 79  | 80  | 81  | 82       | 83  | 84  | 85  |
| 1208-604 | 82       | 83  | 84  | 85  | 86       | 87  | 88  | 89  |
| 1208-614 | 86       | 87  | 88  | 89  | 90       | 91  | 92  | 93  |
| 1208-624 | 90       | 91  | 92  | 93  | 94       | 95  | 96  | 97  |
| 1208-634 | 94       | 95  | 96  | 97  | 98       | 99  | 100 | 101 |
| 1208-644 | 98       | 99  | 100 | 101 | 102      | 103 | 104 | 105 |
| 1208-654 | 102      | 103 | 104 | 105 | 106      | 107 | 108 | 109 |
| 1208-664 | 106      | 107 | 108 | 109 | 110      | 111 | 112 | 113 |
| 1208-674 | 110      | 111 | 112 | 113 | 114      | 115 | 116 | 117 |
| 1208-684 | 114      | 115 | 116 | 117 | 118      | 119 | 120 | 121 |
| 1208-694 | 118      | 119 | 120 | 121 | 122      | 123 | 124 | 125 |
| 1208-704 | 122      | 123 | 124 | 125 | 126      | 127 | 128 | 129 |
| 1208-714 | 126      | 127 | 128 | 129 | 130      | 131 | 132 | 133 |
| 1208-724 | 130      | 131 | 132 | 133 | 134      | 135 | 136 | 137 |
| 1208-734 | 134      | 135 | 136 | 137 | 138      | 139 | 140 | 141 |
| 1208-744 | 138      | 139 | 140 | 141 | 142      | 143 | 144 | 145 |
| 1208-754 | 142      | 143 | 144 | 145 | 146      | 147 | 148 | 149 |
| 1208-764 | 146      | 147 | 148 | 149 | 150      | 151 | 152 | 153 |
| 1208-774 | 150      | 151 | 152 | 153 | 154      | 155 | 156 | 157 |
| 1208-784 | 154      | 155 | 156 | 157 | 158      | 159 | 160 | 161 |
| 1208-794 | 158      | 159 | 160 | 161 | 162      | 163 | 164 | 165 |
| 1208-804 | 162      | 163 | 164 | 165 | 166      | 167 | 168 | 169 |
| 1208-814 | 166      | 167 | 168 | 169 | 170      | 171 | 172 | 173 |
| 1208-824 | 170      | 171 | 172 | 173 | 174      | 175 | 176 | 177 |
| 1208-834 | 174      | 175 | 176 | 177 | 178      | 179 | 180 | 181 |
| 1208-844 | 178      | 179 | 180 | 181 | 182      | 183 | 184 | 185 |
| 1208-854 | 182      | 183 | 184 | 185 | 186      | 187 | 188 | 189 |
| 1208-864 | 186      | 187 | 188 | 189 | 190      | 191 | 192 | 193 |
| 1208-874 | 190      | 191 | 192 | 193 | 194      | 195 | 196 | 197 |
| 1208-884 | 194      | 195 | 196 | 197 | 198      | 199 | 200 | 201 |
| 1208-894 | 198      | 199 | 200 | 201 | 202      | 203 | 204 | 205 |
| 1208-904 | 202      | 203 | 204 | 205 | 206      | 207 | 208 | 209 |
| 1208-914 | 206      | 207 | 208 | 209 | 210      | 211 | 212 | 213 |
| 1208-924 | 210      | 211 | 212 | 213 | 214      | 215 | 216 | 217 |
| 1208-934 | 214      | 215 | 216 | 217 | 218      | 219 | 220 | 221 |
| 1208-944 | 218      | 219 | 220 | 221 | 222      | 223 | 224 | 225 |
| 1208-954 | 222      | 223 | 224 | 225 | 226      | 227 | 228 | 229 |
| 1208-964 | 226      | 227 | 228 | 229 | 230      | 231 | 232 | 233 |
| 1208-974 | 230      | 231 | 232 | 233 | 234      | 235 | 236 | 237 |
| 1208-984 | 234      | 235 | 236 | 237 | 238      | 239 | 240 | 241 |
| 1208-994 | 238      | 239 | 240 | 241 | 242      | 243 | 244 | 245 |
| 1209-004 | 242      | 243 | 244 | 245 | 246      | 247 | 248 | 249 |
| 1209-014 | 246      | 247 | 248 | 249 | 250      | 251 | 252 | 253 |
| 1209-024 | 250      | 251 | 252 | 253 | 254      | 255 | 256 | 257 |
| 1209-034 | 254      | 255 | 256 | 257 | 258      | 259 | 260 | 261 |
| 1209-044 | 258      | 259 | 260 | 261 | 262      | 263 | 264 | 265 |
| 1209-054 | 262      | 263 | 264 | 265 | 266      | 267 | 268 | 269 |
| 1209-064 | 266      | 267 | 268 | 269 | 270      | 271 | 272 | 273 |
| 1209-074 | 270      | 271 | 272 | 273 | 274      | 275 | 276 | 277 |
| 1209-084 | 274      | 275 | 276 | 277 | 278      | 279 | 280 | 281 |
| 1209-094 | 278      | 279 | 280 | 281 | 282      | 283 | 284 | 285 |
| 1209-104 | 282      | 283 | 284 | 285 | 286      | 287 | 288 | 289 |
| 1209-114 | 286      | 287 | 288 | 289 | 290      | 291 | 292 | 293 |
| 1209-124 | 290      | 291 | 292 | 293 | 294      | 295 | 296 | 297 |
| 1209-134 | 294      | 295 | 296 | 297 | 298      | 299 | 300 | 301 |
| 1209-144 | 298      | 299 | 300 | 301 | 302      | 303 | 304 | 305 |
| 1209-154 | 302      | 303 | 304 | 305 | 306      | 307 | 308 | 309 |
| 1209-164 | 306      | 307 | 308 | 309 | 310      | 311 | 312 | 313 |
| 1209-174 | 310      | 311 | 312 | 313 | 314      | 315 | 316 | 317 |
| 1209-184 | 314      | 315 | 316 | 317 | 318      | 319 | 320 | 321 |
| 1209-194 | 318      | 319 | 320 | 321 | 322      | 323 | 324 | 325 |
| 1209-204 | 322      | 323 | 324 | 325 | 326      | 327 | 328 | 329 |
| 1209-214 | 326      | 327 | 328 | 329 | 330      | 331 | 332 | 333 |
| 1209-224 | 330      | 331 | 332 | 333 | 334      | 335 | 336 | 337 |
| 1209-234 | 334      | 335 | 336 | 337 | 338      | 339 | 340 | 341 |
| 1209-244 | 338      | 339 | 340 | 341 | 342      | 343 | 344 | 345 |
| 1209-254 | 342      | 343 | 344 | 345 | 346      | 347 | 348 | 349 |
| 1209-264 | 346      | 347 | 348 | 349 | 350      | 351 | 352 | 353 |
| 1209-274 | 350      | 351 | 352 | 353 | 354      | 355 | 356 | 357 |
| 1209-284 | 354      | 355 | 356 | 357 | 358      | 359 | 360 | 361 |
| 1209-294 | 358      | 359 | 360 | 361 | 362      | 363 | 364 | 365 |
| 1209-304 | 362      | 363 | 364 | 365 | 366      | 367 | 368 | 369 |
| 1209-314 | 366      | 367 | 368 | 369 | 370      | 371 | 372 | 373 |
| 1209-324 | 370      | 371 | 372 | 373 | 374      | 375 | 376 | 377 |
| 1209-334 | 374      | 375 | 376 | 377 | 378      | 379 | 380 | 381 |
| 1209-344 | 378      | 379 | 380 | 381 | 382      | 383 | 384 | 385 |
| 1209-354 | 382      | 383 | 384 | 385 | 386      | 387 | 388 | 389 |
| 1209-364 | 386      | 387 | 388 | 389 | 390      | 391 | 392 | 393 |
| 1209-374 | 390      | 391 | 392 | 393 | 394      | 395 | 396 | 397 |
| 1209-384 | 394      | 395 | 396 | 397 | 398      | 399 | 400 | 401 |
| 1209-394 | 398      | 399 | 400 | 401 | 402      | 403 | 404 | 405 |
| 1209-404 | 402      | 403 | 404 | 405 | 406      | 407 | 408 | 409 |
| 1209-414 | 406      | 407 | 408 | 409 | 410      | 411 | 412 | 413 |
| 1209-424 | 410      | 411 | 412 | 413 | 414      | 415 | 416 | 417 |
| 1209-434 | 414      | 415 | 416 | 417 | 418      | 419 | 420 | 421 |
| 1209-444 | 418      | 419 | 420 | 421 | 422      | 423 | 424 | 425 |
| 1209-454 | 422      | 423 | 424 | 425 | 426      | 427 | 428 | 429 |
| 1209-464 | 426      | 427 | 428 | 429 | 430      | 431 | 432 | 433 |
| 1209-474 | 430      | 431 | 432 | 433 | 434      | 435 | 436 | 437 |
| 1209-484 | 434      | 435 | 436 | 437 | 438      | 439 | 440 | 441 |
| 1209-494 | 438      | 439 | 440 | 441 | 442      | 443 | 444 | 445 |
| 1209-504 | 442      | 443 | 444 | 445 | 446      | 447 | 448 | 449 |
| 1209-514 | 446      | 447 | 448 | 449 | 450      | 451 | 452 | 453 |
| 1209-524 | 450      | 451 | 452 | 453 | 454      | 455 | 456 | 457 |
| 1209-534 | 454      | 455 | 456 | 457 | 458      | 459 | 460 | 461 |
| 1209-544 | 458      | 459 | 460 | 461 | 462      | 463 | 464 | 465 |
| 1209-554 | 462      | 463 | 464 | 465 | 466      | 467 | 468 | 469 |
| 1209-564 | 466      | 467 | 468 | 469 | 470      | 471 | 472 | 473 |
| 1209-574 | 470      | 471 | 472 | 473 | 474      | 475 | 476 | 477 |
| 1209-584 | 474      | 475 | 476 | 477 | 478      | 479 | 480 | 481 |
| 1209-594 | 478      | 479 | 480 | 481 | 482      | 483 | 484 | 485 |
| 1209-604 | 482      | 483 | 484 | 485 | 486      | 487 | 488 | 489 |
| 1209-614 | 486      | 487 | 488 | 489 | 490      | 491 | 492 | 493 |
| 1209-624 | 490      | 491 | 492 | 493 | 494      | 495 | 496 | 497 |
| 1209-634 | 494      | 495 | 496 | 497 | 498      | 499 | 500 | 501 |
| 1209-644 | 498      | 499 | 500 | 501 | 502      | 503 | 504 | 505 |
| 1209-654 | 502      | 503 | 504 | 505 | 506      | 507 | 508 | 509 |
| 1209-664 | 506      | 507 | 508 | 509 | 510      | 511 | 512 | 513 |
| 1209-674 | 510      | 511 | 512 | 513 | 514      | 515 | 516 | 517 |
| 1209-684 | 514      | 515 | 516 | 517 | 518      | 519 | 520 | 521 |
| 1209-694 | 518      | 519 | 520 | 521 | 522      | 523 | 524 | 525 |
| 1209-704 | 522      | 523 | 524 | 525 | 526      | 527 | 528 | 529 |
| 1209-714 | 526      | 527 | 528 | 529 | 530      | 531 | 532 | 533 |
| 1209-724 | 530      | 531 | 532 | 533 | 534      | 535 | 536 | 537 |
| 1209-734 | 534      | 535 | 536 | 537 | 538      | 539 | 540 | 541 |
| 1209-744 | 538      | 539 | 540 | 541 | 542      | 543 | 544 | 545 |
| 1209-754 | 542      | 543 | 544 | 545 | 546      | 547 | 548 | 549 |
| 1209-764 | 546      | 547 | 548 | 549 | 550      | 551 | 552 |     |

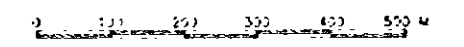








SCALE 1:5000



LEGEND

- Existing Transportation Point
- GPS Point
- Existing Barricade
- Spot Height
- River
- Concrete Building (more than 40 floor)
- House
- Mosque
- Church
- Hospital
- School
- Government Office
- Road
- Path
- Bridge
- Railway
- Station
- Electric Power Line
- Fencing and Embankment
- Swamp
- Mossy grass
- Christian cemetery
- Orchard grove
- Paddy field
- Boundary of Vegetation
- Field
- Forest
- Grass
- Water hole
- Pond, lake
- Sand
- Land slide

|          |          |          |          |          |          |          |          |          |          |          |          |          |          |          |          |          |          |          |          |          |
|----------|----------|----------|----------|----------|----------|----------|----------|----------|----------|----------|----------|----------|----------|----------|----------|----------|----------|----------|----------|----------|
| 1228-424 |          |          |          |          |          |          |          |          |          | 1228-444 |          |          |          |          |          |          |          |          |          |          |
| 1228-424 | 1228-425 | 1228-426 | 1228-427 | 1228-428 | 1228-429 | 1228-430 | 1228-431 | 1228-432 | 1228-433 | 1228-434 | 1228-435 | 1228-436 | 1228-437 | 1228-438 | 1228-439 | 1228-440 | 1228-441 | 1228-442 | 1228-443 | 1228-444 |
| 25       | 26       | 27       | 28       | 29       | 30       | 31       | 32       | 33       | 34       | 35       | 36       | 37       | 38       | 39       | 40       | 41       | 42       | 43       | 44       | 45       |
| 1        | 2        | 3        | 4        | 5        | 6        | 7        | 8        | 9        | 10       | 11       | 12       | 13       | 14       | 15       | 16       | 17       | 18       | 19       | 20       | 21       |
| 22       | 23       | 24       | 25       | 26       | 27       | 28       | 29       | 30       | 31       | 32       | 33       | 34       | 35       | 36       | 37       | 38       | 39       | 40       | 41       | 42       |
| 1228-424 | 1228-425 | 1228-426 | 1228-427 | 1228-428 | 1228-429 | 1228-430 | 1228-431 | 1228-432 | 1228-433 | 1228-434 | 1228-435 | 1228-436 | 1228-437 | 1228-438 | 1228-439 | 1228-440 | 1228-441 | 1228-442 | 1228-443 | 1228-444 |

K-1 Basser JIV Zone 45  
H Moon and level (TBM)

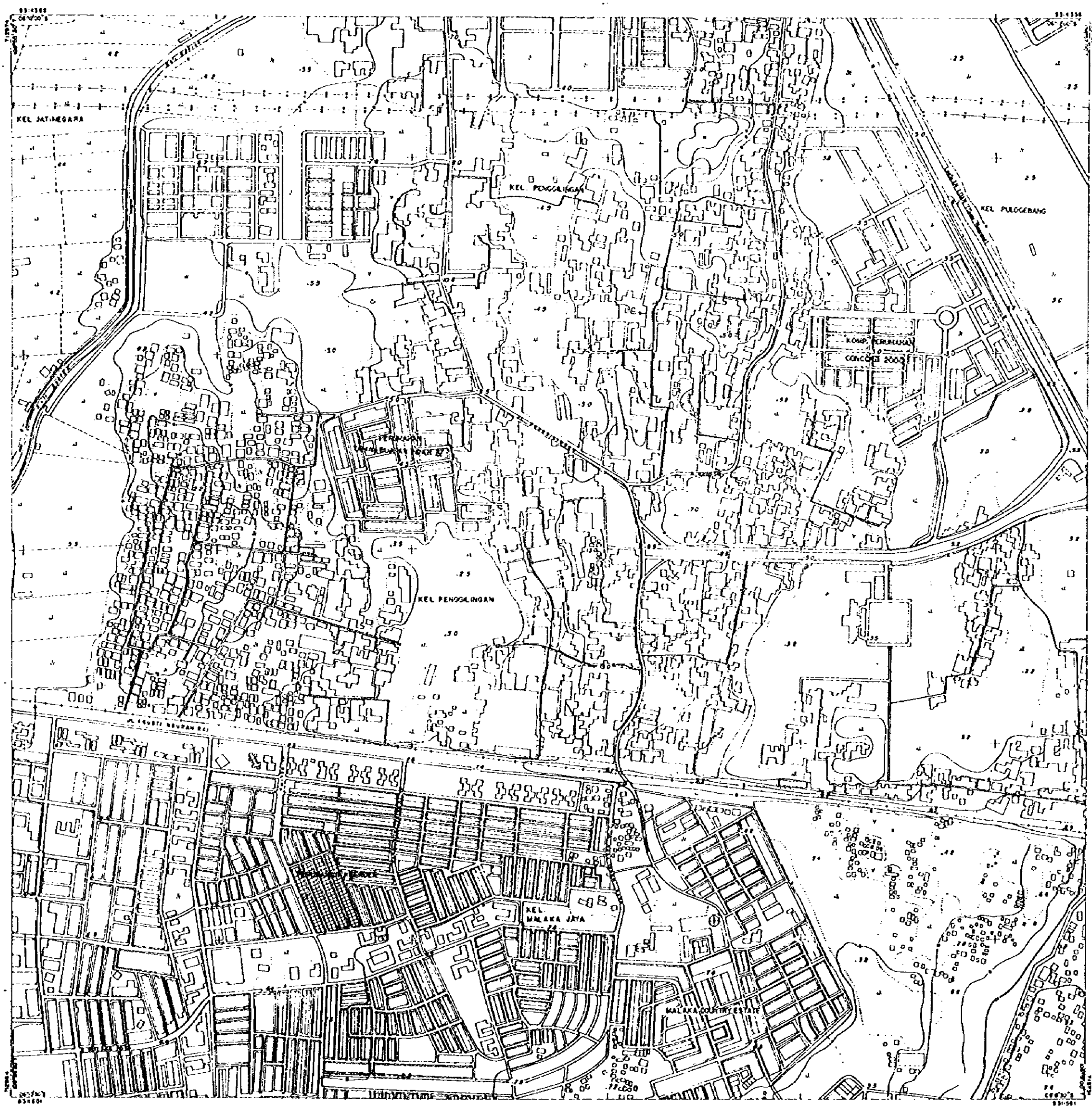
10m contour 10 meter  
 2m contour 2 meter  
 Supplemental contour 1 meter  
 Aerial photography 1:20,000  
 May 1994

MINISTRY OF PUBLIC WORKS  
 DIRECTORATE GENERAL OF WATER RESOURCES DEVELOPMENT  
 CILILING OSADANE RIVER BASIN DEVELOPMENT PROJECT

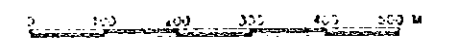
THE STUDY ON COMPREHENSIVE RIVER WATER MANAGEMENT PLAN IN JABOTABEK

Drawing Title: **TOPOGRAPHIC MAP**

|            |             |      |
|------------|-------------|------|
| Checked by | Reviewed by | Date |
| Signature  | Signature   | Date |



SCALE 1:50,000



LEGEND

- ⊗ Existing Trigonization Point
- ⊙ GPS Point
- ⊠ Existing Bench Mark
- Spot Height
- ⊡ River
- ▭ Concrete Building/structure on land
- ⊞ House
- ⊞ Mosque
- ⊞ Church
- ⊞ Hospital
- ⊞ School
- ⊞ Government Office
- Road
- Path
- Bridge
- Railway
- ⊞ Stator
- Electric Power Line
- ▨ Cutting and Embankment
- ⊞ Swamp
- ⊞ Marshy ground
- ⊞ Christian cemetery
- ⊞ Chinese graves
- ⊞ Paddy field
- Boundary of vegetation
- ⊞ Field
- ⊞ Forest
- ⊞ Grass
- ⊞ Water hole
- ⊞ Pond, lake
- ⊞ Sand
- ⊞ Land Slide

|          |          |          |          |
|----------|----------|----------|----------|
| 1220-424 |          | 1220-444 |          |
| 1220-400 | 1220-420 | 1220-440 | 1220-460 |
| 20       | 24       | 28       | 32       |
| 24       | 28       | 32       | 36       |
| 28       | 32       | 36       | 40       |
| 32       | 36       | 40       | 44       |
| 36       | 40       | 44       | 48       |
| 40       | 44       | 48       | 52       |
| 44       | 48       | 52       | 56       |
| 48       | 52       | 56       | 60       |
| 52       | 56       | 60       | 64       |
| 56       | 60       | 64       | 68       |
| 60       | 64       | 68       | 72       |
| 64       | 68       | 72       | 76       |
| 68       | 72       | 76       | 80       |
| 72       | 76       | 80       | 84       |
| 76       | 80       | 84       | 88       |
| 80       | 84       | 88       | 92       |
| 84       | 88       | 92       | 96       |
| 88       | 92       | 96       | 100      |
| 92       | 96       | 100      | 104      |
| 96       | 100      | 104      | 108      |
| 100      | 104      | 108      | 112      |
| 104      | 108      | 112      | 116      |
| 108      | 112      | 116      | 120      |
| 112      | 116      | 120      | 124      |
| 116      | 120      | 124      | 128      |
| 120      | 124      | 128      | 132      |
| 124      | 128      | 132      | 136      |
| 128      | 132      | 136      | 140      |
| 132      | 136      | 140      | 144      |
| 136      | 140      | 144      | 148      |
| 140      | 144      | 148      | 152      |
| 144      | 148      | 152      | 156      |
| 148      | 152      | 156      | 160      |
| 152      | 156      | 160      | 164      |
| 156      | 160      | 164      | 168      |
| 160      | 164      | 168      | 172      |
| 164      | 168      | 172      | 176      |
| 168      | 172      | 176      | 180      |
| 172      | 176      | 180      | 184      |
| 176      | 180      | 184      | 188      |
| 180      | 184      | 188      | 192      |
| 184      | 188      | 192      | 196      |
| 188      | 192      | 196      | 200      |
| 192      | 196      | 200      | 204      |
| 196      | 200      | 204      | 208      |
| 200      | 204      | 208      | 212      |
| 204      | 208      | 212      | 216      |
| 208      | 212      | 216      | 220      |
| 212      | 216      | 220      | 224      |
| 216      | 220      | 224      | 228      |
| 220      | 224      | 228      | 232      |
| 224      | 228      | 232      | 236      |
| 228      | 232      | 236      | 240      |
| 232      | 236      | 240      | 244      |
| 236      | 240      | 244      | 248      |
| 240      | 244      | 248      | 252      |
| 244      | 248      | 252      | 256      |
| 248      | 252      | 256      | 260      |
| 252      | 256      | 260      | 264      |
| 256      | 260      | 264      | 268      |
| 260      | 264      | 268      | 272      |
| 264      | 268      | 272      | 276      |
| 268      | 272      | 276      | 280      |
| 272      | 276      | 280      | 284      |
| 276      | 280      | 284      | 288      |
| 280      | 284      | 288      | 292      |
| 284      | 288      | 292      | 296      |
| 288      | 292      | 296      | 300      |
| 292      | 296      | 300      | 304      |
| 296      | 300      | 304      | 308      |
| 300      | 304      | 308      | 312      |
| 304      | 308      | 312      | 316      |
| 308      | 312      | 316      | 320      |
| 312      | 316      | 320      | 324      |
| 316      | 320      | 324      | 328      |
| 320      | 324      | 328      | 332      |
| 324      | 328      | 332      | 336      |
| 328      | 332      | 336      | 340      |
| 332      | 336      | 340      | 344      |
| 336      | 340      | 344      | 348      |
| 340      | 344      | 348      | 352      |
| 344      | 348      | 352      | 356      |
| 348      | 352      | 356      | 360      |
| 352      | 356      | 360      | 364      |
| 356      | 360      | 364      | 368      |
| 360      | 364      | 368      | 372      |
| 364      | 368      | 372      | 376      |
| 368      | 372      | 376      | 380      |
| 372      | 376      | 380      | 384      |
| 376      | 380      | 384      | 388      |
| 380      | 384      | 388      | 392      |
| 384      | 388      | 392      | 396      |
| 388      | 392      | 396      | 400      |
| 392      | 396      | 400      | 404      |
| 396      | 400      | 404      | 408      |
| 400      | 404      | 408      | 412      |
| 404      | 408      | 412      | 416      |
| 408      | 412      | 416      | 420      |
| 412      | 416      | 420      | 424      |
| 416      | 420      | 424      | 428      |
| 420      | 424      | 428      | 432      |
| 424      | 428      | 432      | 436      |
| 428      | 432      | 436      | 440      |
| 432      | 436      | 440      | 444      |
| 436      | 440      | 444      | 448      |
| 440      | 444      | 448      | 452      |
| 444      | 448      | 452      | 456      |
| 448      | 452      | 456      | 460      |
| 452      | 456      | 460      | 464      |
| 456      | 460      | 464      | 468      |
| 460      | 464      | 468      | 472      |
| 464      | 468      | 472      | 476      |
| 468      | 472      | 476      | 480      |
| 472      | 476      | 480      | 484      |
| 476      | 480      | 484      | 488      |
| 480      | 484      | 488      | 492      |
| 484      | 488      | 492      | 496      |
| 488      | 492      | 496      | 500      |
| 492      | 496      | 500      | 504      |
| 496      | 500      | 504      | 508      |
| 500      | 504      | 508      | 512      |
| 504      | 508      | 512      | 516      |
| 508      | 512      | 516      | 520      |
| 512      | 516      | 520      | 524      |
| 516      | 520      | 524      | 528      |
| 520      | 524      | 528      | 532      |
| 524      | 528      | 532      | 536      |
| 528      | 532      | 536      | 540      |
| 532      | 536      | 540      | 544      |
| 536      | 540      | 544      | 548      |
| 540      | 544      | 548      | 552      |
| 544      | 548      | 552      | 556      |
| 548      | 552      | 556      | 560      |
| 552      | 556      | 560      | 564      |
| 556      | 560      | 564      | 568      |
| 560      | 564      | 568      | 572      |
| 564      | 568      | 572      | 576      |
| 568      | 572      | 576      | 580      |
| 572      | 576      | 580      | 584      |
| 576      | 580      | 584      | 588      |
| 580      | 584      | 588      | 592      |
| 584      | 588      | 592      | 596      |
| 588      | 592      | 596      | 600      |
| 592      | 596      | 600      | 604      |
| 596      | 600      | 604      | 608      |
| 600      | 604      | 608      | 612      |
| 604      | 608      | 612      | 616      |
| 608      | 612      | 616      | 620      |
| 612      | 616      | 620      | 624      |
| 616      | 620      | 624      | 628      |
| 620      | 624      | 628      | 632      |
| 624      | 628      | 632      | 636      |
| 628      | 632      | 636      | 640      |
| 632      | 636      | 640      | 644      |
| 636      | 640      | 644      | 648      |
| 640      | 644      | 648      | 652      |
| 644      | 648      | 652      | 656      |
| 648      | 652      | 656      | 660      |
| 652      | 656      | 660      | 664      |
| 656      | 660      | 664      | 668      |
| 660      | 664      | 668      | 672      |
| 664      | 668      | 672      | 676      |
| 668      | 672      | 676      | 680      |
| 672      | 676      | 680      | 684      |
| 676      | 680      | 684      | 688      |
| 680      | 684      | 688      | 692      |
| 684      | 688      | 692      | 696      |
| 688      | 692      | 696      | 700      |
| 692      | 696      | 700      | 704      |
| 696      | 700      | 704      | 708      |
| 700      | 704      | 708      | 712      |
| 704      | 708      | 712      | 716      |
| 708      | 712      | 716      | 720      |
| 712      | 716      | 720      | 724      |
| 716      | 720      | 724      | 728      |
| 720      | 724      | 728      | 732      |
| 724      | 728      | 732      | 736      |
| 728      | 732      | 736      | 740      |
| 732      | 736      | 740      | 744      |
| 736      | 740      | 744      | 748      |
| 740      | 744      | 748      | 752      |
| 744      | 748      | 752      | 756      |
| 748      | 752      | 756      | 760      |
| 752      | 756      | 760      | 764      |
| 756      | 760      | 764      | 768      |
| 760      | 764      | 768      | 772      |
| 764      | 768      | 772      | 776      |
| 768      | 772      | 776      | 780      |
| 772      | 776      | 780      | 784      |
| 776      | 780      | 784      | 788      |
| 780      | 784      | 788      | 792      |
| 784      | 788      | 792      | 796      |
| 788      | 792      | 796      | 800      |
| 792      | 796      | 800      | 804      |
| 796      | 800      | 804      | 808      |
| 800      | 804      | 808      | 812      |
| 804      | 808      | 812      | 816      |
| 808      | 812      | 816      | 820      |
| 812      | 816      | 820      | 824      |
| 816      | 820      | 824      | 828      |
| 820      | 824      | 828      | 832      |
| 824      | 828      | 832      | 836      |
| 828      | 832      | 836      | 840      |
| 832      | 836      | 840      | 844      |
| 836      | 840      | 844      | 848      |
| 840      | 844      | 848      | 852      |
| 844      | 848      | 852      | 856      |
| 848      | 852      | 856      | 860      |
| 852      | 856      | 860      | 864      |
| 856      | 860      | 864      | 868      |
| 860      | 864      | 868      | 872      |
| 864      | 868      | 872      | 876      |
| 868      | 872      | 876      | 880      |
| 872      | 876      | 880      | 884      |
| 876      | 880      | 884      | 888      |
| 880      | 884      | 888      | 892      |
| 884      | 888      | 892      | 896      |
| 888      | 892      | 896      | 900      |
| 892      | 896      | 900      | 904      |
| 896      | 900      | 904      | 908      |
| 900      | 904      | 908      | 912      |
| 904      | 908      | 912      | 916      |
| 908      | 912      | 916      | 920      |
| 912      | 916      | 920      | 924      |
| 916      | 920      | 924      | 928      |
| 920      | 924      | 928      | 932      |
| 924      | 928      | 932      | 936      |
| 928      | 932      | 936      | 940      |
| 932      | 936      | 940      | 944      |
| 936      | 940      | 944      | 948      |
| 940      | 944      | 948      | 952      |
| 944      | 948      | 952      | 956      |
| 948      | 952      | 956      | 960      |
| 952      | 956      | 960      | 964      |
| 956      | 960      | 964      | 968      |
| 960      | 964      | 968      | 972      |
| 964      | 968      | 972      | 976      |
| 968      | 972      | 976      | 980      |
| 972      | 976      | 980      | 984      |
| 976      | 980      | 984      | 988      |
| 980      | 984      | 988      | 992      |
| 984      | 988      | 992      | 996      |
| 988      | 992      | 996      | 1000     |

K. T. Datum UTM Zone 48  
 h. Mean sea level (MSL)

Index contour 10 meter  
 Main contour 2 meter  
 Supplementary contour 1 meter  
 Aerial photography 1:20,000  
 May 1994

**MINISTRY OF PUBLIC WORKS**  
 DIRECTORATE GENERAL OF WATER RESOURCES DEVELOPMENT  
 CILUNGUNG BASIN RIVER BASIN DEVELOPMENT PROJECT  
 THE STUDY ON COMPREHENSIVE RIVER WATER MANAGEMENT PLAN IN JASOTABEK

Drawing No. **TOPOGRAPHIC MAP**

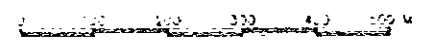
|           |            |             |                          |
|-----------|------------|-------------|--------------------------|
| Drawn by  | Checked by | Approved by | Field Survey 85/88       |
| Signature | Signature  | Signature   | Asst. Dir. 85/88         |
| Date      | Date       | Date        | 20/1/94 (in Draft) 14/01 |

**JICA** JAPAN INTERNATIONAL COOPERATION AGENCY  
 PT. ARAS DELTASATYA



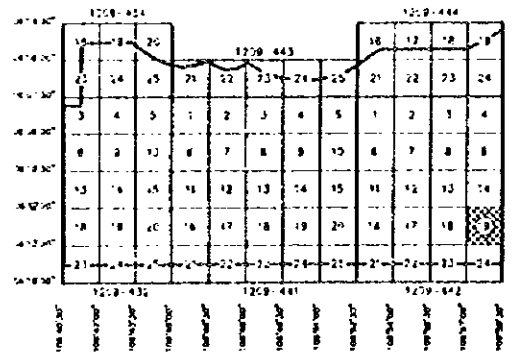


SCALE 1:5000



LEGEND

- ⊙ Existing triangulation point
- ⊙ GPS point
- ⊙ Existing bench mark
- ⊙ Spot height
- ⊙ River
- ⊙ Concrete Building (more than 4 floors)
- ⊙ House
- ⊙ Mosque
- ⊙ Church
- ⊙ High top
- ⊙ School
- ⊙ Government Office
- ⊙ Road
- ⊙ Path
- ⊙ Bridge
- ⊙ Railway
- ⊙ Station
- ⊙ Electric power line
- ⊙ Cutting and Embankment
- ⊙ Sluice
- ⊙ Mason yards
- ⊙ Christian cemetery
- ⊙ Chinese graves
- ⊙ Paddy field
- ⊙ Boundary of vegetation
- ⊙ Field
- ⊙ Forest
- ⊙ Grass
- ⊙ Water hole
- ⊙ Pond, lake
- ⊙ Pond
- ⊙ Canal



K, Y : Basal UTM Zone 48  
N : Mean sea level (MSL)

Index contour 10 meter  
Main contour 2 meter  
Supplemental contour 1 meter  
Berial photography 1:20,000 May 1994

**MINISTRY OF PUBLIC WORKS**  
 DIRECTORATE GENERAL OF WATER RESOURCES DEVELOPMENT  
**CIWUNG OSADANE RIVER BASIN DEVELOPMENT PROJECT**  
 THE STUDY ON COMPREHENSIVE RIVER WATER MANAGEMENT PLAN IN JABOTABEK

Drawing Title: **TOPOGRAPHIC MAP**

|                        |                        |                    |
|------------------------|------------------------|--------------------|
| Checked by             | Approved by            | Date Survey '93-94 |
| Signature: [Signature] | Signature: [Signature] | Date: '95-10       |
| Date: 10/2/94          | Date: 10/2/94          | Date: 10/2/94      |

**JICA** JAPAN INTERNATIONAL COOPERATION AGENCY **DPPE** DEPT. AIRAS DELTASATRIA

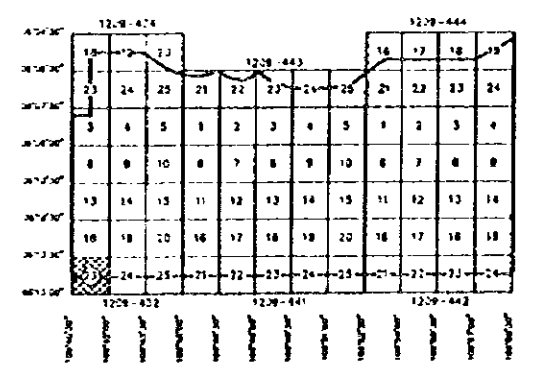


SCALE 1 : 5000



LEGEND

- △ Existing Triangulation Point
- GPS Point
- ( ) Existing Bench Mark
- Spot Height
- ~ River
- ~ Concrete bridge (monorail/road)
- House
- ⊞ Mosque
- ⊞ Church
- ⊞ Hospital
- ⊞ School
- ⊞ Government Office
- Road
- Path
- Bridge
- Railway
- ⊞ Station
- Electric Power Line
- Cutting and Embankment
- ⊞ Swamp
- ⊞ Moslem graves
- ⊞ Christian cemetery
- ⊞ Chinese graves
- ⊞ Paddy field
- Boundary of Vegetation
- ✓ Field
- Forest
- W Grass
- Water hole
- Pond, lake
- ~ Sand
- ~ Land Slide



X, Y : Based UTM Zone 48  
 H : Mean sea level (ETG)  
 Index contour : 10 meter  
 Main contour : 2 meter  
 Supplemental contour : 1 meter  
 Aerial photography : 1:10,000  
 October 1994

**MINISTRY OF PUBLIC WORKS**  
 DIRECTORATE GENERAL OF WATER RESOURCES DEVELOPMENT  
 CLIMUNG DASARANE RIVER BASIN DEVELOPMENT PROJECT

THE STUDY ON COMPREHENSIVE RIVER WATER MANAGEMENT PLAN IN JABOTABEK

Working Title : **TOPOGRAPHIC MAP**

|         |             |             |                 |
|---------|-------------|-------------|-----------------|
| Date    | Created by  | Approved by | Field Party No. |
| 8.10.94 | Y. S. S. S. | Y. S. S. S. | 1001            |
| 8.10.94 | Y. S. S. S. | Y. S. S. S. | 1001            |
| 8.10.94 | Y. S. S. S. | Y. S. S. S. | 1001            |

JICA JAPAN INTERNATIONAL COOPERATION AGENCY  
 PT. ANAS DELTASATYA 1228-432